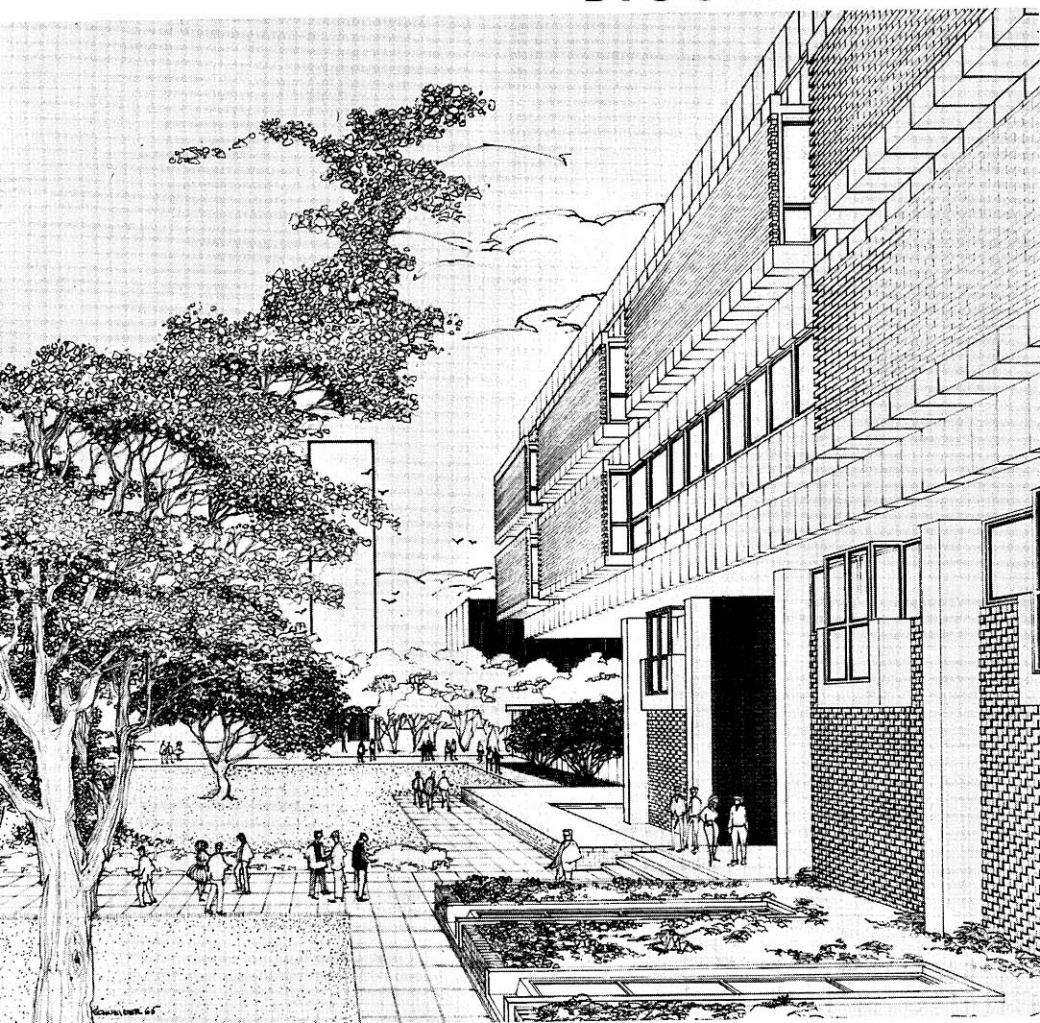


# BIOGRAPHIES



*Fine Arts Building, University  
of Wisconsin-Milwaukee*

**Biographies and Pictures**  
of Wisconsin constitutional executive  
officers, Supreme Court justices,  
legislators, and members of the U.S.  
Congress from Wisconsin

## INDEX TO BIOGRAPHIES

	Page		Page
Alfonsi, Paul R. ....	43	Grover, Herbert J. ....	49
Anderson, Gerald K. ....	66	Haase, Robert D. ....	42
Anderson, Norman C. ....	38	Hallows, E. Harold ....	8
Atkinson, William P. ....	57	Hanna, Daniel D. ....	56
Azim, James N., Jr. ....	44	Hansen, William C. ....	28
Barbee, Lloyd A. ....	51	Heffernan, Nathan S. ....	10
Barland, Thomas H. ....	41	Heinzen, Raymond F. ....	67
Beilfuss, Bruce F. ....	10	Hollander, Walter G. ....	26
Belting, George B. ....	62	Huber, Robert T. ....	57
Benson, Taylor ....	30	Hutnik, Willis J. ....	60
Bice, Raymond C. ....	31	Iverson, Donald L. ....	62
Bidwell, Everett V. ....	37	Jahnke, Franklin M. ....	44
Blanchard, Mrs. Carolyn ..	62	Johnson, Lawrence H. ....	40
Blaska, Jerome L. ....	39	Johnson, William A. ....	52
Bock, Gregor J. ....	45	Jones, Joseph E. ....	50
Bolle, Everett E. ....	48	Kafka, Lawrence J. ....	35
Borg, George M. ....	64	Kastenmeier, Robert W. ..	13
Brown, Manny S. ....	61	Kaufman, Eugene S. ....	48
Browne, Thomas H. ....	68	Kendziorski, Casimir ....	21
Buchli, Milton S. ....	36	Kenyon, Kyle ....	58
Buckley, James P. ....	68	Keppler, Ernest C. ....	27
Busby, Allen J. ....	23	Kessler, Frederick P. ....	53
Byrnes, John W. ....	16	Knowles, Robert P. ....	24
Carr, Peter P. ....	25	Knowles, Warren P. ....	4
Ceci, Louis J. ....	55	Kordus, Robert P. ....	54
Christopherson, Frank W., Jr. ....	29	Krueger, Clifford W. ....	24
Clemens, Harold W. ....	65	Kunde, Kenneth ....	63
Conradt, Ervin W. ....	59	LaFave, Reuben ....	30
Currie, George R. ....	8	La Follette, Bronson C. ....	6
Damon, Harold E. ....	32	Laird, Melvin R. ....	16
Davis, Glenn R. ....	17	Larsen, Lawrence R. ....	32
Dempsey, Chester E. ....	31	Leonard, Jerris ....	22
Dorman, Henry ....	27	Leverich, J. Earl ....	31
Doughty, Mrs. Esther S. ..	40	Lewison, Bernard M. ....	38
Draheim, William A. ....	27	Lipscomb, Mark G. ....	49
Dueholm, Harvey L. ....	36	Lorge, Gerald D. ....	25
Elfers, Earl H. ....	46	Lourigan, Joseph ....	28
Fairchild, Thomas E. ....	8	Lucey, Patrick J. ....	4
Flannigan, Allen J. ....	51	Lynch, Richard J. ....	56
Froehlich, Harold V. ....	58	McCann, James A. ....	54
Galli, G. Fred ....	44	McCormick, John E. ....	55
Gee, Harvey F. ....	67	McDougal, Milton ....	47
Gehrmann, Bernard E. ....	34	McEssy, Earl F. ....	43
Gessert, Harry L. ....	63	McKay, J. Curtis ....	59
Gordon, Myron L. ....	10	McParland, Leland S. ....	23
Greco, Angelo F. ....	50	Manders, Adrian J. ....	52
		Martin, David O. ....	67

# INDEX TO BIOGRAPHIES—Continued

	Page		Page
Mathews, Vincent R. ....	65	Rothwell, Angus B. ....	6
Mato, Louis V. ....	42	Schaeffer, Frank E., Jr. ..	50
Merkel, Kenneth J. ....	64	Schaus, Thomas M. ....	51
Mertz, Edward F. ....	52	Schmidt, Robert ....	57
Meunier, Alex J. ....	21	Schreiber, Martin J. ....	22
Miller, Jess ....	29	Schroeder, Frederick C. ....	64
Mittness, Lewis T. ....	61	Schuele, Wilfred C. ....	22
Molinaro, George ....	46	Schwefel, William S. ....	43
Moser, Fred J. ....	34	Shabaz, John C. ....	65
Myhra, Norman L. ....	60	Shurbert, Floyd E. ....	66
Nager, Edward ....	38	Smith, Charles F., Jr. ....	30
Nelson, Gaylord A. ....	12	Smith, Dena A. ....	6
Nikolay, Frank L. ....	37	Soik, Nile W. ....	58
Nitschke, Elmer C. ....	40	Stalbaum, Lynn E. ....	13
Nugent, William P. ....	32	Stalbaum, Merrill E. ....	61
Nuttelman, Norbert ....	47	Steiger, William A. ....	66
Obey, David R. ....	49	Stevenson, Leslie R. ....	42
O'Konski, Alvin E. ....	17	Struebing, Wilmer H. ....	36
O'Malley, David D. ....	39	Sussman, Norman ....	23
Panzer, Frank E. ....	25	Sweda, Joseph ....	47
Parys, Ronald G. ....	54	Tadych, Albert R. ....	53
Peloquin, Bruce S. ....	37	Terry, Walter E. ....	63
Perala, Reino A. ....	41	Thompson, Carl W. ....	26
Peterson, Francis L. ....	41	Thomson, Vernon W. ....	14
Pommerening, Glen E. ....	56	Tobiasz, Raymond J. ....	53
Proxmire, E. William ....	12	Uehling, Robert O. ....	39
Quinn, Jerome F. ....	35	Vanderperren, Cletus ....	35
Race, John A. ....	15	Wackett, Byron F. ....	45
Radcliffe, John ....	45	Warren, Earl W. ....	60
Rasmusen, Holger B. ....	28	Warren, Robert W. ....	21
Reuss, Henry S. ....	15	Wartinbee, D. Russell ....	46
Riehle, Ben A. ....	48	Whittow, Wayne F. ....	55
Risser, Fred A. ....	29	Wilkie, Horace W. ....	10
Rogers, William ....	59	Zablocki, Clement J. ....	14
Romell, Louis C. ....	34	Zaborski, Richard J. ....	24
Roseleip, Gordon W. ....	26	Zimmerman, Robert C. ....	4

## CONSTITUTIONAL EXECUTIVE OFFICERS

## GOVERNOR

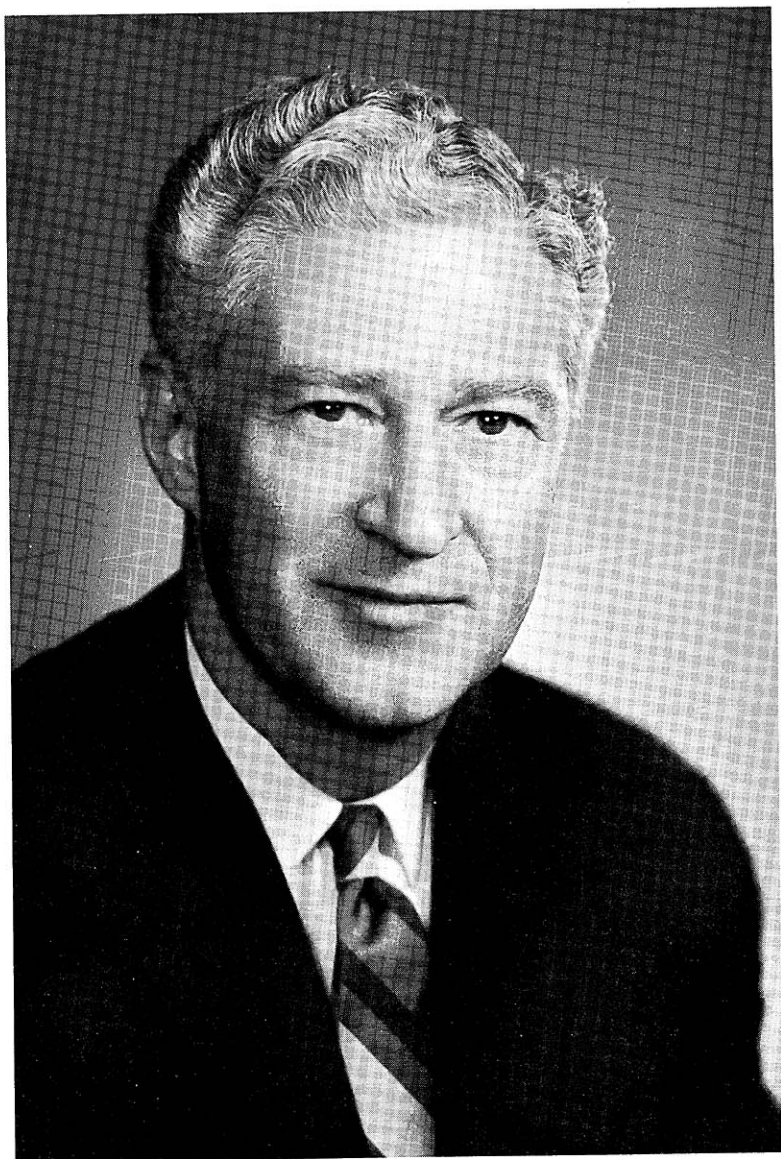
WARREN P. KNOWLES (Rep.) born River Falls Aug. 19, 1908. Educated River Falls graded and high schools. Received B.A. in 1930 from Carleton College (Minn.); in 1933 LL.B. from University of Wisconsin Law School. Since 1933 a practicing attorney. Served as director of several banks and other organizations for many years until he resigned to assume the office of governor January 4, 1965. Veteran of World War II; served as lieutenant in Navy aboard USS Nevada; participated in invasions of Attu, Normandy, and southern France. President Wisconsin Alumni Assn. 1952-53; member of many veterans organizations; past president Kiwanis, member Elks, Eagles, Madison Club and other civic, fraternal and conservation clubs. Delegate to Republican National Conventions 1948, 1956, 1960 and 1964. Served on county board 1935-40. Elected to State Senate and served in sessions from 1941 through 1954. Republican Senate Floor Leader 1943, 1945 (released from active duty in Navy to serve during 1945 session), 1947, 1949, 1951, 1953. Author and sponsor of bill creating Legislative Council; served as its first chairman. Author of 1949 act creating State Building Commission and authorizing long-range state building program; author of laws creating the Hospital Survey and Construction Act, Aeronautics Commission, and of various aviation measures. Member of Judicial Council 1952-55. Elected Lieutenant Governor 1954; re-elected 1956; elected again 1960. He was elected Governor in 1964. Mailing address: Executive Office, Madison.

## LIEUTENANT GOVERNOR

PATRICK J. LUCEY (Dem.) born La Crosse, March 21, 1918. Educated grade schools in southwestern Wisconsin, and Campion High School, Prairie du Chien; attended St. Thomas College; B.A. University of Wisconsin 1946. Realtor since 1954; president and director of an investment corporation and director of several other corporations. (Experience as a lumber dealer, farm and grocery store manager.) Veteran of World War II; served in Army: rose from private to captain. Appointed to State Investment Board, 1963; President John F. Kennedy's personal representative at the Cyprus Trade Fair, 1963. Began public career experience as Ferryville Justice of the Peace and school board member 1946; treasurer De Soto union free high school district 1947. Elected Assemblyman 1948. Chairman, Democratic Party of Wisconsin 1957-1963; national committeeman 1964; delegate to Democratic National Convention 1960 and 1964. Wisconsin Chairman of the John F. Kennedy Memorial Library. Elected Lieutenant Governor 1964. Mailing address: 1015 Farwell Court, Madison.

## SECRETARY OF STATE

ROBERT C. ZIMMERMAN (Rep.) born Town of Lake, Jan. 5, 1910. Attended Wisconsin public schools; graduate Madison, Wis. Central High School. Veteran of World War II; served in Army approximately two and one-half years. Member of Madison Press Club, National Association of Secretaries of State. Was appointed Assistant Secretary of State 1939; held that position approximately 15 years. Elected Secretary of State 1956; re-elected 1958, 1960, 1962 and 1964; now in 5th term. Member Commissioners of Public Lands, State Board of Canvassers. Mailing address: State Capitol, Madison.



**Governor WARREN P. KNOWLES**

## STATE TREASURER

DENA A. SMITH (Rep.) born Kewaunee, Oct. 19, 1899. Educated Kewaunee grade and high schools and attended business schools in Milwaukee. For 32 years manager of music departments in Milwaukee stores; from 1949 to 1957 secretary and assistant to the State Treasurer. Appointed State Treasurer Dec. 5, 1957 to fill the vacancy caused by the death of her husband, Warren R. Smith. Elected State Treasurer in 1960, the first woman elected in Wisconsin to a state-wide constitutional office; re-elected 1962 and 1964. Active in the Republican Party and interested in politics and government; served 3 terms as vice chairman of the 4th Congressional District Republican executive committee; acted as presidential elector in 1960. Member Commissioners of Public Lands, State Board of Canvassers, Board of Trustees of Conservation Wardens Pension Fund. Member of State, National and International Federation of Business and Professional Women's Clubs. Home address: 1628 W. Wisconsin Avenue, Milwaukee. Business address: State Capitol, Madison.

## ATTORNEY GENERAL

BRONSON C. LA FOLLETTE (Dem.) born Washington, D.C., February 2, 1936. Educated Landon School, Bethesda, Maryland; B.A. University of Wisconsin 1958, LL.B., 1960. Attorney. Member national, state, county and local bar associations. Assistant U.S. attorney, Western District of Wisconsin, 1962-1964. Member Antitrust and Investor Protection Committee, National Association of Attorneys General. Elected Attorney General 1964. Ex officio member of Comm'rs. of Public Lands, State Medical Grievance Com., Judicial Council, Board of Canvassers, Claims Comm., Group Insurance Board, State Library Board of Trustees, State Crime Laboratory Board, Natural Resources Com. of State Agencies, Legislative Council's Menominee Indian Study Com. and Com. on Public Records, and on the legislative Joint Survey Com. on Retirement Systems and Joint Survey Com. on Tax Exemptions. Mailing address: 733 Lakewood Boulevard, Madison.

## STATE SUPERINTENDENT OF PUBLIC INSTRUCTION

ANGUS B. ROTHWELL born Superior, July 25, 1905. Educated Superior public schools; in 1930 received B.E. from Superior State College; in 1932 M.A. from Columbia University; holds honorary LL.D. from Carroll College and honorary M.A. from Lawrence College. Was school administrator and author; elementary school principal, Wausau, 1926-1934; high school principal and curriculum supervisor, Superior, 1934-41; superintendent of schools, Superior 1941-49, and Manitowoc 1949-61. Veteran of World War II, served in Navy 1943-46. Board member of Council of Chief State School Officers; member Phi Delta Kappa, American Association of School Administrators; member of national and past president of state and local education assns.; past president of Rotary; member of Masonic orders, of Izaak Walton League. Served on Superior and Manitowoc boards for vocational and adult education, and for libraries. Wisconsin representative to 1955 and 1965 White House Conferences on Education. Member Governor's Retirement Study Commission 1958-59. Elected State Superintendent of Public Instruction April 1961 and re-elected 1965. Ex officio member Board of Regents of the Univ. of Wis., Board of Regents of State Colleges, State Board of Vocational, Technical and Adult Education, Coordinating Com. for Higher Educ. (vice chm., former chm.), Board for the Preservation of Scientific Areas. Mailing address: State Capitol, Madison.



**LUCEY**



**ZIMMERMAN**



**SMITH**



**La FOLLETTE**



**ROTHWELL**

PATRICK J. LUCEY, Lieutenant Governor; ROBERT C. ZIMMERMAN, Secretary of State; DENA A. SMITH, State Treasurer; BRONSON C. La FOLLETTE, Attorney General; ANGUS B. ROTHWELL, Superintendent of Public Instruction.

## SUPREME COURT JUSTICES

## CHIEF JUSTICE

GEORGE R. CURRIE born at Princeton, Wis. Jan. 16, 1900. Educated in Montello public schools. Attended Oshkosh State Teachers' College 2 years; taught school 3 years. Received legal education at University of Wisconsin Law School, LL.B. in 1925; awarded Order of the Coif; in senior year student editor-in-chief of Wisconsin Law Review. For 26 years practiced law at Sheboygan. During World War I, served several months in Student Army Training Corps. Member Sheboygan public library board for over 20 years; served as president during the last 16 years. Appointed to Supreme Court on Aug. 30, 1951, to fill vacancy resulting from the resignation of Justice Henry P. Hughes. Elected to Supreme Court without opposition to a full 10-year term, Apr. 1957. Became Chief Justice Jan. 6, 1964, upon the retirement of Chief Justice Timothy Brown at the end of his term.

## ASSOCIATE JUSTICES

THOMAS E. FAIRCHILD born Milwaukee, Dec. 25, 1912. Educated Milwaukee public schools; received A.B. in 1934 from Cornell University; in 1938, LL.B. from University of Wisconsin Law School. Practicing attorney in Portage 1938-42; attorney U.S. office of Price Administration 1942-45; practicing attorney in Milwaukee 1945-48 and 1953-57. Past member, executive committee Milwaukee Bar Assn., and board of directors Wisconsin Welfare Council. Elected state Attorney General in 1948. Served as U.S. Attorney for the Western District of Wisconsin, 1951-52. Democratic nominee for the U.S. Senate 1950 and 1952. Chairman of the 1963, cochairman of the 1960 Governor's Commissions on Constitutional Revision. Elected to Supreme Court April 3, 1956, to succeed Chief Justice Edward T. Fairchild, who retired January 7, 1957, at the end of his term.

E. HAROLD HALLOWS born Fond du Lac, April 20, 1904. Educated Fond du Lac public schools; received A.B. in 1926 from Marquette Univ.; attended Columbia Univ. 1926-27; graduated cum laude as doctor of jurisprudence, Univ. of Chicago Law School 1930; honorary doctor of laws Mount Mary College 1951. Practicing attorney 1930-58; professor of law at Marquette Univ. 1930-58. In 1954, received Eagles civic service award for contributions to community service; active in mental health and welfare; member Kiwanis, Knights of Columbus; president Milwaukee County Bar Assn. 1948-49, Wisconsin Bar Assn. 1953-54; member Amer. Bar Assn., its house of delegates, and its standing committees on Judicial Selection and Tenure and on Continuing Education of the Bar; Amer. Law Inst., Bar Assn. of 7th Federal Circuit, Inst. of Judicial Administration; former member Inter-Amer. Bar Assn., Amer. Soc. of International Law, past director Amer. Judicature Soc., secretary Wis. Bar Foundation. Member of Wis. Judicial Council since 1951. Appointed to Supreme Court Apr. 2, 1958, to succeed resigned Justice Roland J. Steinle. Elected to Supreme Court Apr. 1959, the first Justice to be elected for a full term pursuant to the 1953 constitutional amendment.



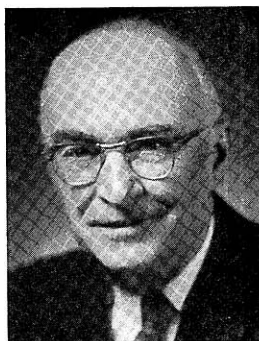
**FAIRCHILD**



**HALLOWS**



**GORDON**



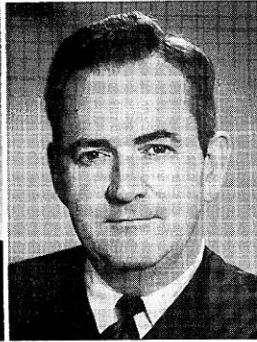
**CURRIE**



**WILKIE**



**BEILFUSS**



**HEFFERNAN**

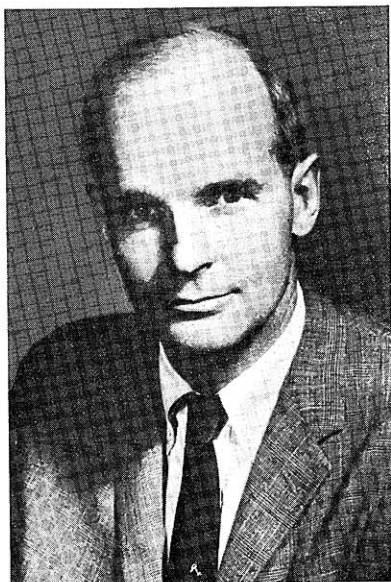
Members of the Supreme Court: Chief Justice GEORGE R. CURRIE; Associate Justices THOMAS E. FAIRCHILD, E. HAROLD HALLOWS, MYRON L. GORDON, HORACE W. WILKIE, BRUCE F. BEILFUSS, NATHAN S. HEFFERNAN.

MYRON L. GORDON born Kenosha, Feb. 11, 1918. Educated Kenosha public and high schools; graduated Phi Beta Kappa from University of Wisconsin; received B.A. (high honors) and M.A. in 1939; in 1942 LL.B. from Harvard University. Law clerk to federal judge 1942; worked as practicing attorney until 1950. Served as judge of the Milwaukee County Civil Court, 1950-55; as circuit judge for the 2nd Circuit (Milwaukee County), 1955-61. Past state commander of the Disabled American Veterans; member of American Legion; past president of the Milwaukee Hearing Society, a Red Feather agency. Elected to Supreme Court in April 1961 for term beginning Jan. 1962, to fill the vacancy resulting from the retirement of Chief Justice John E. Martin.

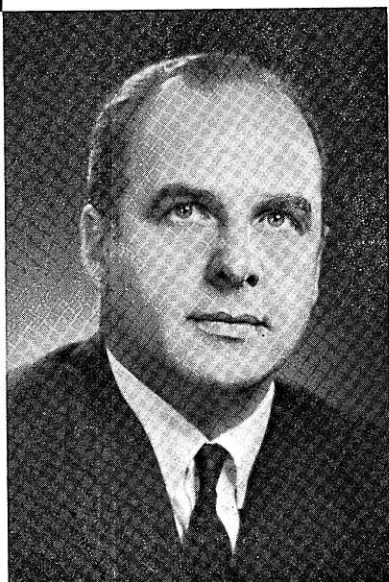
HORACE W. WILKIE born Madison, Jan. 9, 1917. Educated Madison public schools; B.A. Univ. of Wis. 1938; LL.B. George Washington Univ. 1944; graduate work Univ. of Minn., American Univ., Natl. Inst. Public Affairs. Attorney 1945-1962; formerly analyst U.S. Budget Bureau. World War II veteran. Member bar assns., Amer. Soc. Public Admin., Institute on Judicial Administration, Amer. Judicature Soc., Phi Beta Kappa. Chairman Madison Housing Auth. 1945-50; served on Mayor's Metropolitan Development Com. 1956-58. Elected to Senate 1956; re-elected 1960. Member ad hoc Com. on Tax Revision, Legis. Council Education, Judiciary, County Government, Efficiency in Government and Legislative Organization Coms.; served on standing coms. on Education; Labor, Taxation, Insurance, Banking; Public Welfare and Joint Finance. Appellate Judges Seminar, 1963. Appointed to the Supreme Court May 25, 1962, to fill vacancy caused by the death of Chief Justice Grover L. Broadfoot. Elected to 10-year term April 1964.

BRUCE F. BEILFUSS born Withee, Jan. 8, 1915. Educated Withee school, Neillsville Public High School; graduate University of Wisconsin, B.A. 1936, LL.B. 1938. Member of American Legion, VFW, American and Wisconsin Bar Associations, American Judicature Society and Institute of Judicial Administration. Served on Clark County Board of Supervisors 1940; as Clark County district attorney 1941-48. Appointed circuit judge of 17th Judicial Circuit Apr. 15, 1948; elected to full terms in 1951 and 1957. Elected to Supreme Court Apr. 2, 1963, to fill the vacancy resulting from the retirement of Chief Justice Timothy Brown.

NATHAN S. HEFFERNAN born Frederic, Aug. 6, 1920. Educated Sheboygan public schools; B.A. University of Wisconsin 1942; received undergraduate honors, Iron Cross, Phi Eta Sigma; LL.B. University of Wisconsin Law School 1948; member Order of Coif; graduate work Harvard School of Business Administration. Attorney; partner law firm Buchen and Heffernan, Sheboygan 1951-1959; U.S. Attorney for Western District of Wisconsin 1962-1964; counsel for League of Wis. Municipalities 1949; research assistant to Gov. Rennebohm 1949; assistant district attorney, Sheboygan County, 1951-53; city attorney, Sheboygan, 1953-59; deputy Attorney General 1959-1962; faculty of Univ. of Wis. Law School as lecturer in municipal corp. 1960-1964. World War II veteran; served in Navy in both European and Pacific theaters of operation 1942-46. Member of American, Wisconsin, Federal, Dane and Sheboygan County bar associations, American Judicature Society, American Legion, V.F.W., Military Order of World Wars, Moose, Kiwanis. Has served on Local Government Law and Law School Cooperation Committees, American Bar Assn.; Revision Com., Rules of Federal District Court; Bail Project and Defense of Indigents Com., Dane County Bar; President, City Attorneys Assn., League of Wis. Municipalities 1958-59. Appointed to Supreme Court August 1964 to succeed the late Justice Dieterich; elected to full term April 1965.



**E. WILLIAM PROXMIRE**



**GAYLORD A. NELSON**

## WISCONSIN MEMBERS OF THE 89TH CONGRESS

### SENATORS

E. WILLIAM PROXMIRE (Dem.) born Nov. 11, 1915. Member of Wisconsin Assembly 1951-52. Elected to U.S. Senate in special election Aug. 27, 1957; re-elected 1958 and 1964. Member of Senate Committees on Appropriations, on Banking and Currency (chairman of the Subcommittee on Small Business), and of the Joint Economic Committee. Home address: 4613 East Buckeye Road, Madison.

GAYLORD A. NELSON (Dem.) born Clear Lake, June 4, 1916. Educated in Clear Lake graded and high schools; received B.A. in 1939 from San Jose State College, California; in 1942 LL.B. from University of Wisconsin Law School. Practicing attorney since 1942. Veteran of World War II; served 46 months in Army. Member of American Legion, Veterans of Foreign Wars, Eagles, Leif Ericson Society. Attended Democratic National Conventions of 1952, 1956 and 1960; in 1952 served as chairman of Wisconsin delegation. Elected to Wisconsin Senate in 1948; re-elected 1952 and 1956. Member of Joint Committee on Finance 1949 and 1951, Joint Committee on Revisions, Repeals, and Uniform Laws 1953, 1955 and 1957. Member of Senate Committee on Education and Public Welfare 1953 and 1955, on Conservation 1957. Vacated his state Senate seat when elected Governor in 1958; re-elected Governor in 1960 to become the first Wisconsin 2-term Democratic Governor since 1891. Author of major state government reforms creating Departments of Administration and of Resource Development, billboard control law, state-wide program for public access to lakes and streams, \$5 million student loan program, and \$50 million crash program to preserve Wisconsin's outdoor resources. Elected to U.S. Senate 1962. Member of Senate Committees on Interior and Insular Affairs and on Labor and Public Welfare. Home Address: 5750 Bittersweet Place, Madison.



**STALBAUM**  
1st Cong. Dist.



**KASTENMEIER**  
2nd Cong. Dist.

**LYNN E. STALBAUM** (Dem.) born Waterford, May 15, 1920. Educated Racine County rural schools and Agric. School. Admin. assistant federal farm program 1936-44; dairy plant fieldman 1946-47; feed salesman 1947-51; executive secretary dairy co-op 1951-64. World War II veteran; in Navy 1944-46. Active in community affairs, past comdr. Waterford Amer. Legion, charter member Wind Lake V.F.W., Kiwanis. Elected to Wis. Senate 1954; re-elected 1958, 1962. Chosen Sen. Asst. Minority Leader 1963, caucus chairman 1957, '59, '61. Elected to 89th Congress 1964. Member of House Com. on Agriculture. Home address: 2914 Winthrop Avenue, Racine.

1st Congressional District: Kenosha, Racine, Rock, Walworth Counties.

**ROBERT W. KASTENMEIER** (Dem.) born Beaver Dam, Jan. 24, 1924. Educated Beaver Dam and Columbus public grade schools; Beaver Dam High School; attended Univ. of Wis. 1941-43, 1948-52, Carleton College (Minn.) 1943; received LL.B. in 1952 from Univ. of Wisconsin Law School. Practicing attorney 1952-58; branch office director in Philippines for U.S. War Department Claims Service 1946-48. World War II veteran; served in Army 1943-46. Member bar associations, Amvets, American Legion, V.F.W., U.W. Alumni Assn.; served on Wis. Democratic State Central Com. 1955-56. Justice of Peace 1955-58. Elected to Congress 1958; re-elected 1960, 1962 and 1964. Member of House Committee on Judiciary. Voted "Young Legislator Showing Greatest Potential" by Democratic Colleagues in Congress in poll conducted by Talmanac Magazine 1960. Home address: 300 N. Water St., Watertown.

2nd Congressional District: Columbia, Dane, Dodge, Green, Jefferson Counties.



THOMSON  
3rd Cong. Dist.



ZABLOCKI  
4th Cong. Dist.

VERNON W. THOMSON (Rep.) born Richland Center, Nov. 5, 1905. Attended Carroll College 1923-25. Received B.A. in 1927 from Univ. of Wisconsin; in 1932 LL.B. from U.W. Law School; honorary doctor of laws degree from Carroll College 1957. Since 1932 a practicing attorney at Richland Center; prior to that time taught 2 years at Viroqua High School and 3 years at Madison Vocational School. Member of Order of Coif, Chi Phi, Phi Delta Phi, Masons, Moose. From 1933 to 1935 CCC enrolling officer for Richland County. Richland County assistant district attorney 1933-35; Richland Center city attorney 1933-37 and 1942-44; president Richland Center library board 1939-51; mayor of Richland Center 1944-51. Delegate to Republican National Convention 1936, 1940, 1952 (member of Committee on Credentials), 1956. Presidential elector 1952 and 1956. In 1940 chairman of State Republican Platform Convention. Assemblyman 1935-51; served as Speaker 1939, '41, '43; as Republican Floor Leader 1945, '47, '49. Attorney General of Wisconsin 1951-57; Governor 1957-59. Elected to Congress 1960; re-elected 1962 and 1964. Member House Committee on Foreign Affairs. Home address: Richland Center.

3rd Congressional District: Buffalo, Crawford, Grant, Iowa, Jackson, Juneau, La Crosse, Lafayette, Monroe, Pepin, Pierce, Richland, Sauk, Trempealeau, Vernon Counties.

CLEMENT J. ZABLOCKI (Dem.) born Milwaukee, Nov. 18, 1912. Attended parochial school, Marquette Univ. High School; received Ph.B. in 1936 from Marquette Univ., then took additional graduate work in education. Taught public schools in Milwaukee 1937-42; worked as organist and choir director 1930-49. Member of Air Force Reserves, Adv. Board of Center for Strategic Studies at Georgetown Univ., Board of International Movement for Atlantic Union, Board of Pulaski Foundation, West Milwaukee Chamber of Commerce, Knights of Columbus, Catholic Order of Foresters, Eagles, St. Vincent Conf., Americanization League, National Alliance, Federation of Polish Associations of America, Holy Name Society. Kennedy delegate to 1960 Democratic National Convention. Elected state Senator 1942, re-elected 1946. Elected to Congress 1948; now in 9th consecutive term. Member House Committee on Foreign Affairs. Home address: 3245 West Drury Lane, Milwaukee.

4th Congressional District: Wards 8 (except Wood), 11, 12, 14, 17 and 19, City of Milwaukee; Cities of Cudahy, Franklin, Greenfield, Oak Creek, St. Francis, South Milwaukee, West Allis; Villages of Greendale, Hales Corners, West Milwaukee.



REUSS  
5th Cong. Dist.



RACE  
6th Cong. Dist.

HENRY S. REUSS (Dem.) born Milwaukee, Feb. 22, 1912. Educated Milwaukee schools; received A.B. in 1933 from Cornell Univ.; in 1936 LL.B. Harvard Law School. Practicing attorney 1936-55; lecturer, Wisconsin State College (Milwaukee) 1950-51; magazine writer, Milwaukee County asst. corporation counsel 1939-40; assistant general counsel, Marshall Plan, Paris, France, 1949. Special prosecutor Milwaukee County grand jury 1950. Personal counsel to late Secretary of State Fred Zimmerman in reapportionment case before Wisconsin Supreme Court, 1953. Former director nursery co., Hartland; past dir. bank, Milwaukee; past dir. share corporation, Buffalo, N.Y. Veteran of World War II; served in Army 1943-45. Past president Cornell Alumni Assn. of Wisconsin; vice chairman Milwaukee Foreign Policy Assn.; alumni trustee Harvard Law Review; alumni visitor Cornell Univ.; former member legal advisory committee National Resources Board; member National Institute for Infantile Paralysis; member of American Youth Hostels Advisory Board; author of *The Critical Decade*. Elected to Congress 1954; now in 6th consecutive term. Member House Committee on Banking and Currency (chairman, Subcommittee on International Finance); House Committee on Government Operations (chairman, Subcommittee on Research); Joint Economic Committee (chairman, International Exchange and Payments Subcommittee). Home address: 925 E. Wells St., Milwaukee.

5th Congressional District: The City of Milwaukee from the 16th Ward and the Menomonee River in the south to W. Hampton Avenue in the north and from W. 76th Street in the west to Lake Michigan in the east.

JOHN A. RACE (Dem.) born Fond du Lac, May 12, 1914. Graduated Fond du Lac high school; attended U.W. School for Workers. Machinist since 1942. Chairman Fond du Lac County Democratic Party; vice chairman Sixth District Democratic Party; member Sixth District Comprehensive Mental Health Planning Comm.; director of Workshops, Inc. of Fond du Lac. Has served as member of Coordinating Committee for Higher Education and of State Board of Vocational and Adult Education, past president machinists union, church treasurer. Served on Fond du Lac County Board 1960-64. Elected to Congress 1964. Member House Committee on Interior and Insular Affairs. Home address: 402 South Hickory Street, Fond du Lac.

6th Congressional District: Calumet, Fond du Lac, Green Lake, Ozaukee, Sheboygan, Washington, Winnebago Counties.



LAIRD  
7th Cong. Dist.



BYRNES  
8th Cong. Dist.

MELVIN R. LAIRD (Rep.) born Sept. 1, 1922. Educ. Marshfield grade and high schools; received B.A. in 1942 from Carleton Coll. (Minn.). Formerly secy.-treas. of lumber co.; resigned upon taking office as Congressman. World War II veteran; served aboard destroyer "Maddox" in Pacific. Mbr. Amer. Legion, "40 et 8", VFW, Disabled Amer. Vets., Elks. Chm. Wis. Rep. Party Platform Com. 1950, '52. Delegate to Rep. Natl. Conventions since 1948; mbr. Platform Com. 1952, '56, '60 (vice-chm.), 1964 (chm.); 1952 chm. of labor and public welfare subcom.; 1956 and 1960 chm. of agric. subcom. Author of *A House Divided: America's Strategy Gap*; editor, *The Conservative Papers*. The past 4 generations of his family have served in Wis. state offices: father as state Senator, mother as mbr. of Univ. Bd. of Regents. Elected to state Senate 1946; in 1948 re-elected without opposition. Legislative spokesman for Governors Oscar Rennebohm (1949) and Walter J. Kohler (1951). Mbr. Wis. Comm. on Improvement of Educational System 1947-49, Legis. Council 1949-53 (council chm. 1951-53, chm. Taxation Com. 1949-51), Jt. Finance Com. 1949-52, Veterans and Military Affairs Com. 1947-52 (chm. 1949-52). Elected to Congress 1952; now in 7th consecutive term. Mbr. House Agricultural Com. 84th Cong., House Appropriations Com. since 83rd Cong. (ranking minority mbr., Subcom. on Labor, Health, Educ. and Welfare, on Subcom. on Defense Appropriations), Bd. of Visitors to the Air Force Academy, 88th and 89th Congresses; chm. Rep. Conference, 89th Cong. Home address: 207 S. Central Ave., Marshfield.

7th Congressional District: Adams, Clark, Florence, Forest, Langlade, Lincoln, Marathon, Marquette, Menominee, Portage, Shawano, Taylor, Waupaca, Waushara, Wood Counties.

JOHN W. BYRNES (Rep.) born Green Bay, June 12, 1913. Attended Green Bay public and parochial schools; received B.A. in 1936 from Univ. of Wisconsin; in 1938 LL.B. from U.W. Law School. Practiced law in Green Bay; Special Deputy Commissioner of Banking, Wis., 1938-41. Member of Elks. Elected to state Senate in 1940. In 1943 chosen Republican Floor Leader, chairman of Judiciary Committee. Elected to Congress 1944; now in 11th consecutive term. Chairman House Republican Policy Committee, 86th to 89th Congresses. Member of House Ways and Means Com. since 80th Congress; also serves on Joint Com. on Internal Revenue Taxation, Joint Com. on Reduction of Nonessential Federal Expenditures. Home office address: 207 Federal Building, Green Bay.

8th Congressional District: Brown, Door, Kewaunee, Manitowoc, Marinette, Oconto, Outagamie Counties.



DAVIS  
9th Cong. Dist.



O'KONSKI  
10th Cong. Dist.

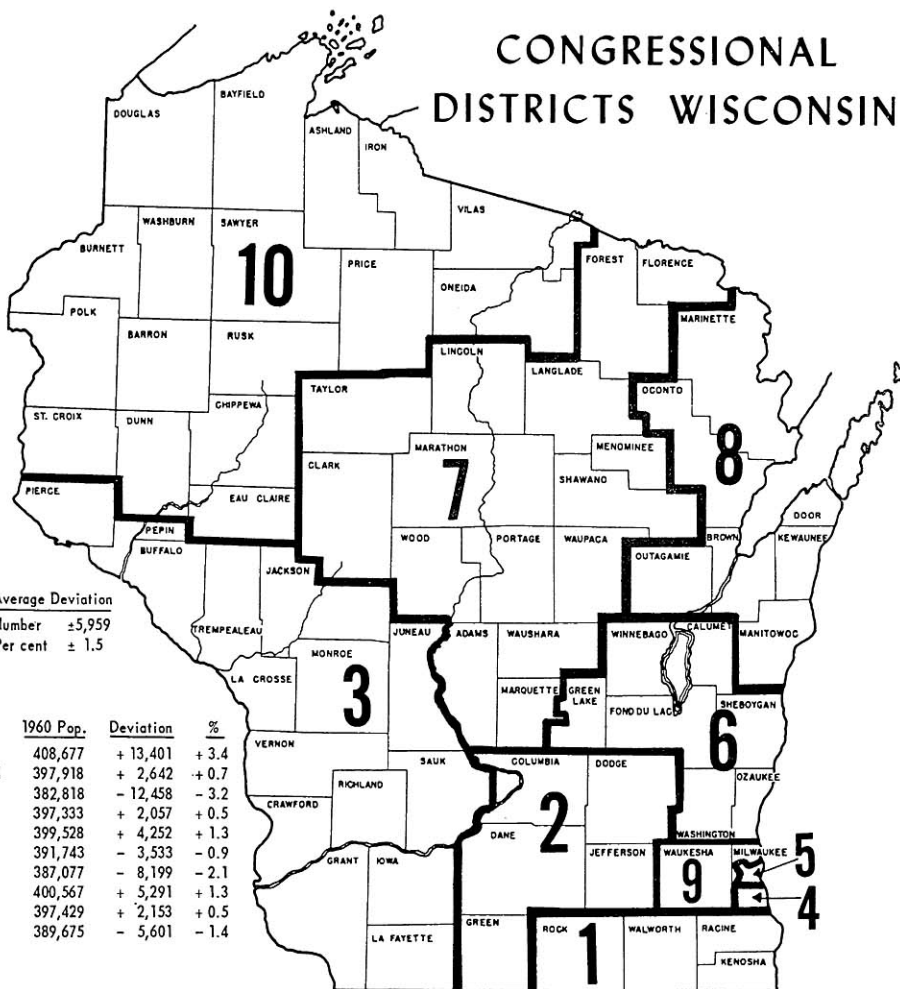
GLENN R. DAVIS (Rep.) born Town of Vernon, Waukesha County, Oct. 28, 1914. Graduated rural and high schools; B.Ed. Platteville State College 1934. After teaching high school 4 years, during which time he studied law in the summer, entered University of Wisconsin Law School, received LL.B. 1940. Since that time engaged in practice of law in Waukesha. World War II veteran; served in Navy 1942-45. Member state and county bar associations (past president of latter), Kiwanis (past president Waukesha), Masons, Elks, American Legion; delegate to 1956 and 1960 Republican National Conventions; chosen one of Ten Outstanding Young Men of America by National Jaycees 1948. Member of Wisconsin Assembly in 1941. In a special election in Apr. 1947 elected to Congress to fill vacancy. Re-elected 1948, 1950, 1952, 1954 and 1964. Member House Appropriations Com.; previously served on House Veterans Affairs Com. and Appropriations Com. Home address: 2300 Springdale Road, New Berlin.

9th Congressional District: Waukesha County; part of Milwaukee County: Villages of Bayside, Brown Deer, Fox Point, River Hills, Shorewood, Whitefish Bay; Cities of Glendale, Wauwatosa; that part of City of Milwaukee located northwest of the 5th District.

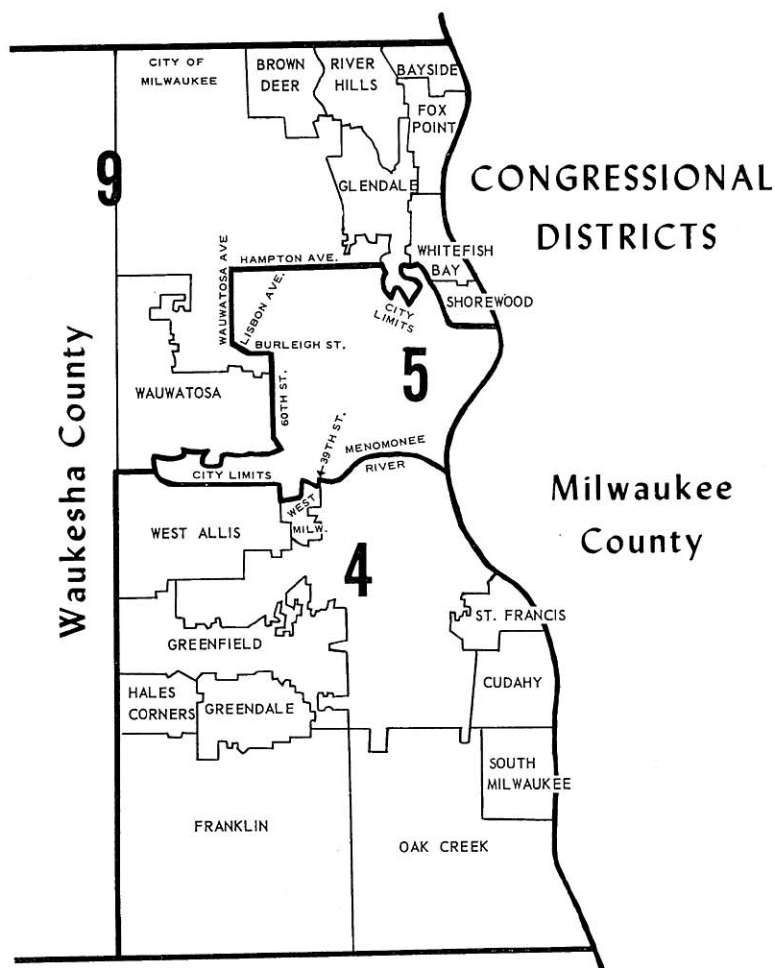
ALVIN E. O'KONSKI (Rep.) born on farm near Kewaunee, May 26, 1907. Educated Kewaunee rural and high schools; received Ed.B. in 1927 from Oshkosh State College; graduate training at Universities of Iowa and Wisconsin. Taught at Omro, Oconto, Pulaski High Schools in Wis., Itasca Junior College in Minn., Oregon State College in Oreg., University of Detroit in Mich.; president of television station at Rhinelander; educator, journalist, lecturer; former owner and publisher of newspaper at Hurley, radio stations at Merrill and Wausau. Elected to Congress 1942; now in 12th consecutive term. Former member House Committees on Veterans Affairs, Public Works, Education and Labor; member Katyn Forest Massacre Committee 1952; awarded "Palonia Restitucia," highest medal of Free Poland. Member House Committee on Armed Services. Ranked first among all Congressmen in United Press test in American history; voted *most distinguished American for 1945* by foreign language press on the basis of his work against Communism. Director of World League to Stop Communism; director Free World Forum; and World Bill of Rights Assn. Home address: Mercer.

10th Congressional District: Ashland, Barron, Bayfield, Burnett, Chipewewa, Douglas, Dunn, Eau Claire, Iron, Oneida, Polk, Price, Rusk, St. Croix, Sawyer, Vilas, Washburn Counties.

# CONGRESSIONAL DISTRICTS WISCONSIN

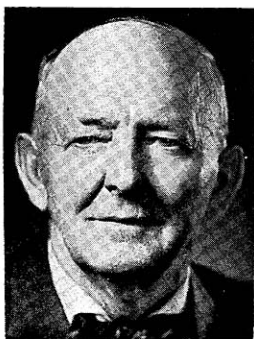


AVERAGE CONGRESSIONAL DISTRICT 395,276 LARGEST: 1st 408,677 SMALLEST: 3rd 382,818





President  
Lieut. Gov.  
LUCEY



President  
pro tem  
PANZER



Majority Leader  
KNOWLES



Majority  
Caucus Chairman  
SMITH



Minority  
Leader  
ZABORSKI



Minority  
Caucus Chairman  
SUSSMAN



Chief Clerk  
LARSEN\*

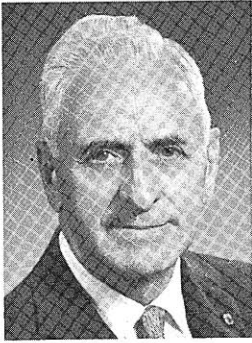


Chief Clerk  
NUGENT



Sergeant at Arms  
DAMON

\*Deceased March 2, 1965.



MEUNIER  
1st District



WARREN  
2nd District



KENDZIORSKI  
3rd District

ALEX J. MEUNIER (Rep.) born on farm in Door County's Tn. of Brussels, Nov. 9, 1897. Educ. rural school; 1917 graduate Algoma Teachers College; also correspondence and summer courses. Insurance representative; taught in Door Co. schools 9 yrs., operated own orchard 1940-46. Served in Army 1918. Dir., Ch. of Com., natl. committeeman, past pres. of N.E. Wis. Life Underwriters Assn. Mbr. Conserv. Cong., church Men's Club. Sheriff 4 yrs., undersheriff 12 yrs. Twice alternate to G.O.P. natl. conv. Assemblyman 1943-49; on Jt. Finance Com. 2 terms, Assembly Conserv. Com. 3 terms. Elected to Senate 1962. Mbr. Jt. Finance Com. 2 sessions; chm. Jt. Survey Com. on Tax Exemptions; mbr. Sen. Contingent Expend. Com., Com. to Visit State Institutions, Legis. Council's Taxation Com.; served on Legis. Council Urban Problems Com. and Co. Bds. Representation Com. 1963-65. Mailing address: 45 South 3rd Avenue, Sturgeon Bay.

1st Senatorial District: Assembly Districts Door-Kewaunee, Manitowoc 1st, 2nd.

ROBERT W. WARREN (Rep.) born Raton, N.M., Aug. 30, 1925. Educ. Pewaukee and So. Milw. public schs., Sturgeon Bay High Sch. (valedictorian); grad. magna cum laude Macalaster Coll., St. Paul, B.A. 1950; Univ. of Minn. M.A. in pub. admin. 1951, Univ. of Wis. LL.B. 1956; attended Army basic engineering course 1944, Univ. of Pa., Foreign Serv. Inst., Dept. of State 1951-52. Attorney; formerly shipfitter's helper, bank GI loan agent, foreign affairs officer U.S. Dept. of State 1951-53, mbr. Elkhorn law firm, partner Green Bay law firm. World War II vet.; in Army 1943-46. Mbr. VFW, DAV, Military Order of Purple Heart, Boy Scout District Com., bar assns. Assistant dist. attorney 1959-60; dist. attorney Brown County 1961-64. Elected to Senate 1964. Mbr. Jt. Com. on Finance, Sen. Judiciary Com.; Sen. Rep. caucus secy.; mbr. Legis. Coun. Judiciary Com.; Temp. Reorg. Comm., Gov.'s Com. on Wis. Water Resources, Civil Defense Council. Mailing address: 200 West Briar Lane, Green Bay 54301.

2nd Senatorial District: Assembly Districts Brown 1st and 2nd, Calumet.

CASIMIR KENDZIORSKI (Dem.) born in Poland, Dec. 3, 1898. Elementary and high school education in Poland; evening courses in Milwaukee. Real estate broker 1928-30, machinist and quality control inspector since 1930; retired in 1964. Past vice-pres. of local union and member of its boards on constitution legislation and education. Active in civic and labor activities. Elected to Assembly 1946; re-elected 1948. Elected to Senate 1949; re-elected 1950, 1954, 1958, 1962. In 1957 served as Dem. Asst. Floor Leader. Member of the Sen. Com. on Highways; member of the Advisory Com. on Unemployment Compensation; Gov.'s Council on Traffic Law Enforcement, Legis. Council Highway Adv. Com. Served on Com. to Investigate Publication and Distribution of Obscene Literature in Wis. 1963-65 interim. Mailing address: 2025 S. 14th St., Milwaukee 53204.

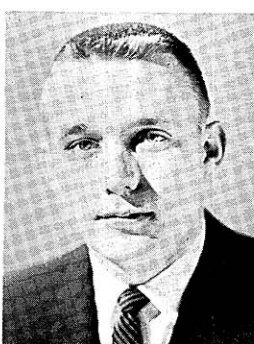
Elected from 3rd Senatorial District: 1962 Wards 11, 12, 14, City of Milwaukee.



LEONARD  
4th District



SCHUELE  
5th District



SCHREIBER  
6th District

**JERRIS LEONARD** (Rep.) born Chicago, Jan. 17, 1931. Educ. Milwaukee St. Elizabeth's School, Rufus King High Sch. B.S. in bus. admin., Marquette Univ. 1952; LL.B. Marquette Univ. 1955. Practicing attorney. Mbr. bar assns., Eagles. 1965 Jaycee award to outstanding men. Elected to Assembly 1956 and 1958. Assistant Rep. Floor Leader, 1959. Served as member Assembly Rules Revision Com.; Legis. Council Judiciary Com. Elected to Senate 1960 and 1964. Chm. Jt. Rep. Policy Com. 1963; Rep. Sen. caucus secy. 1961. Member Joint Finance Com., Sen. Com. on Committees, State Building Comm. Gov.'s Com. on Law Enforcement and Crime, Jt. Study Com. on Civil Service, Legis. Council and its Conserv. Com. and Nuclear Facilities Com. (chm. 1963); served on its State Fiscal Situation Com. 1963-65, Gov.'s Scholarship and Loan Com. 1965. Assistant Maj. Leader 1965. Mailing address: 626 E. Wisconsin Avenue, Milwaukee 53201.

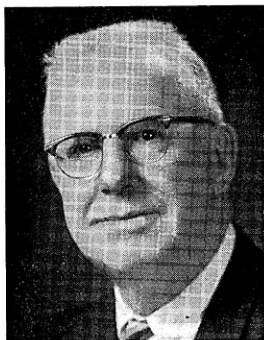
4th Senatorial District: Assembly Districts Milwaukee 3rd, 18th, 25th.

**WILFRED SCHUELE** (Dem.) born Hales Corners, May 15, 1906. Educated Cold Spring School, Boys Technical High School. Attended Marquette Univ. Vice pres. water softener mfg. co.; formerly business investment counselor; disbursement officer RFC, War Assets Admin. and U.S. Treasury Dept.; state WPA administrator. Member Milw. Co. Democratic Council, Eagles, Moose, Woodmen of World. Elected to Assembly 1958; re-elected 1960, 1962. Member of Assembly Excise and Fees Com. 1963; served on Legis. Council Urban Problems Com. 1961-65 interim. Served on Assembly Elections Com. (vice-chm. 1959), Labor Com., State Affairs Com. Participated in interim studies of Reapportionment, Youthful Drinking and Driving 1961-63 interim. Elected to Senate 1964 for unexpired term. Member Conservation Com., Legis. Council's Conserv. Com. Mailing address: 3036 N. 84th St., Milwaukee 53222.

Elected from old 5th Senatorial District: 1962 Wards 5, 9, 15, City of Milwaukee.

**MARTIN J. SCHREIBER** (Dem.) born Milwaukee, April 8, 1939. Grad. from Zion Lutheran School, Milw., and Milw. Lutheran High Sch. Studied at Valparaiso Univ., the Univ. of Wis.-Milwaukee (specializing in urban studies), Marquette Univ. Law School LL.B. Attorney. Mbr. 7th Ward Democratic unit, American Council to Improve Our Neighborhoods, 13th Ward Community Council, AFL-CIO, Midtown Neighborhood Improvement Assn., Co-operation West Side, Wis. League of Senior Citizens. Elected to Senate in 1962 for unexpired term and 1964. Mbr. Sen. Labor, Taxation, Insurance and Banking Com., Governor's Com. on Eminent Domain, Legis. Council's Insurance and Bkg. Com. and Insurance Law Revision Com.; served on Sen. Conserv. Com., Public Welfare Com. and Governor's Comm. on the Status of Women 1963, Legis. Council Judiciary Com. and State Fiscal Situation Com. 1963-65. Mailing address: 3128 N. 50th St., Milwaukee 53206.

6th Senatorial District: Assembly Districts Milwaukee 1st, 5th, 7th.



McPARLAND  
7th District



BUSBY  
8th District



SUSSMAN  
9th District

LELAND S. McPARLAND (Dem.) born Thorp, Dec. 18, 1896. Educated Thorp schools; Oshkosh State Coll. 2 years; LL.B. Marquette Univ. Practicing attorney since 1927; South Milwaukee teacher 1920-27. World War I veteran; Navy 1917-18. Chm. Milwaukee County Dem. Organizing Com. 1952-53. Assemblyman 1941-55; Dem. Floor Leader 1945, '47, '49. Senator since 1955; chm. Dem. Joint Caucus since 1953. Member Sen. Judiciary Com.; vice-chm. Legis. Council (also 1959, secy. 1963); chm. Com. for Review of Admin. Rules and of Com. on Legis. Organization and Procedure; served on Remedial Legislation Com. 1963-65 interim. Mailing address: 4757 S. Packard Ave., Cudahy 53321.

Elected from old 7th Senatorial District: Villages of Greendale, Hales Corners; Cities of Cudahy, Franklin, Greenfield, Oak Creek, St. Francis, South Milwaukee; 1962 Wards 17, 19, City of Milwaukee; Ward 5, City of West Allis.

ALLEN J. BUSBY (Rep.) born Chicago, March 6, 1900. Educated West Milwaukee, West Allis, Milw. State Coll.; B.A. Univ. of Wis., 1922, M.A. 1925, LL.B. 1928. Practicing attorney since 1933; vil. atty. West Milwaukee. School principal, 1922-24; high school teacher 1928-33. Assemblyman 1931, 1935; Senator since 1937; now serving 17th session. Co-author 1951 Rosenberry Apportionment Act; instrumental Milw. County Expressway Comm. law, Criminal Code, Family Code, judicial system reform. Chm. Sen. Judiciary Com.; member Sen. Legis. Procedure Com.; chm. Legis. Council's State Adv. Council for Home and Family and vice-chm. of its Judiciary Com. (also in 1963-65); member Judicial Council; served on Legis. Council Commercial Code Com. 1961-63 interim. Mailing address: 1673 S. 53rd St., Milwaukee 53214.

8th Senatorial District: Assembly Districts Milwaukee 20th, 21st, 22nd.

NORMAN SUSSMAN (Dem.) born Philadelphia, May 26, 1905. Educ. Milwaukee schools, Sch. of Engineering. Grocer, city Natatorium asst. supt.; formerly union business representative. Pres. Ind. Neighborhood Grocers Assn. 10 years. Steward, exec. bd. mbr. AFL-CIO Building Service Employees Union. Mbr. Milw. Govt. Serv. League, Civil Def. Disaster Com., Mental Health Assn., Fond du Lac Ave. Advance Assn., B'nai B'rith, NAACP. Human Rights Council award. Delegate to 1960 Dem. Natl. Conv. Mbr. Milw. Co. Dem. Council, State Dem. Admin. Com. Assemblyman 1957, '59; chm. Municipalities Com. 1959. Elected to Senate 1960; re-elected 1962. Chm. Sen. Minority Caucus 1963, '65. Mbr. Sen. Govtl. and Vets. Affairs Com., Public Welfare Com., Com. on Legis. Org. and Proc.; served on Sen. Com. on Educ. 1963 and on Legis. Council's Educ. Com. and Relief of Property Tax Burden Com. 1963-65. Mailing address: 1396 W. Fond du Lac Ave., Milwaukee 53205.

Elected from old 9th Senatorial District: 1962 Wards 2, 3, 6, City of Milwaukee.



KNOWLES  
10th District



ZABORSKI  
11th District



KRUEGER  
12th District

ROBERT P. KNOWLES (Rep.) born River Falls, Feb. 25, 1916. Educ. River Falls schools; B.S. River Falls State Univ. Since 1938 in insurance and real estate business. World War II veteran; Army Air Force 1942-45. Mbr. and past pres. of Kiwanis and Willow River Rod and Gun Club; mbr. Elks, Amer. Legion, Wis. Assn. of Insurance Agents. Elected to Senate 1955; re-elected 1956, 1960, 1964. Chosen Sen. Majority Leader 1963 and 1965; president of Natl. Conf. of Legislative Leaders 1965. Mbr. Temp. Reorganization Comm., Legis. Council (chm. 1963) and its Elections Com., Interstate Cooperation Comm., Joint Legis. Organization Com., Interim Legis. Org. and Procedures Com., Wis. Boundary Area Comm.'s Legis. Adv. Com.; served on 1963 Tax Compromise Com., Legis. Council Com. of 25, 1963-65 interim. Mailing address: New Richmond 54017.

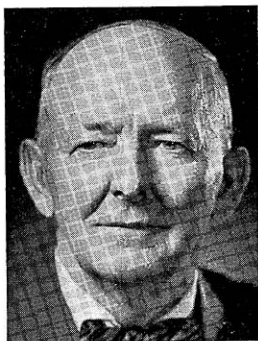
10th Senatorial District: Assembly Districts Buffalo, Burnett, Pepin, Pierce, Polk, St. Croix.

RICHARD J. ZABORSKI (Dem.) born Milwaukee, Jan. 7, 1927. Educated St. Mary School; Messmer High School; B.S. Marquette Univ. 1953. Postgraduate work Univ. of Wisconsin Law School. Salesman. Veteran of World War II and Korea; served in the infantry; received Purple Heart; participated in Nuremberg trials. Member American Legion, Holy Name Soc.; various other social, political, and school organizations; past chairman Milwaukee County Dem. Full Employment Conference. Elected to Senate 1954; re-elected 1958, 1962. Chosen Sen. Minority Leader 1963, 1965. Member Com. to Visit State Institutions, Jt. Com. on Legis. Organization, Com. on Interstate Cooperation, Sen. Governmental and Veterans Affairs Com., Legis. Council's Taxation Com.; served on 1963 Tax Compromise Com.; Legis. Council Com. of 25, 1963-65 interim. Served on Civil Defense Council. Mailing address: 713 S. 21st St., Milwaukee 53204.

Elected from old 11th Senatorial District: 1962 Wards 4, 8, 16, City of Milwaukee.

CLIFFORD W. KRUEGER (Rep.) born Madison, June 24, 1918. After high school graduation attended Merrill Commercial College. Sales manager. In 1946 elected Merrill alderman. Elected to Senate 1946 and 1950. A resident of Lincoln County, the 1951 Senate apportionment made him ineligible for re-election in 1954. Re-elected 1956, 1960 and 1964. Chairman of Sen. Committee on Conservation; member of the Sen. Committees on Agriculture and on Legislative Procedure, Legis. Council's Conserv. Com., Gov's Com. on Wis. Water Resources; served on Legis. Council Election Laws Com. and Accelerated Conservation Purchase Program Com. (1963-65), Committees on Boating (1957-59), on Conservation and on Reapportionment (1959-61), Water Resources (1961-63, vice-chm.). Rep. Caucus sergeant at arms. Mailing address: 122 N. State St., Merrill 54452.

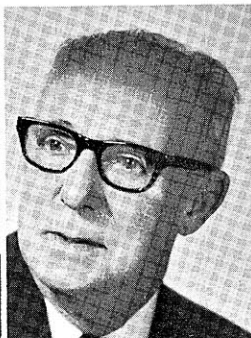
12th Senatorial District: Assembly Districts Clark, Forest, Lincoln, Oneida, Taylor, Vilas.



PANZER  
13th District



LORGE  
14th District



CARR  
15th District

FRANK E. PANZER (Rep.) born Sept. 1, 1890, Town of Hubbard, Dodge County. Educated public schools, Oakfield High School. Farmer; was school teacher, telegraph operator. Served as school clerk, town chairman; member Dodge County Board since 1925 (chm. since 1940). In 1956 elected chairman, Board of Managers, Council of State Governments. In 1960 delegate to Rep. National Convention, presidential elector. Assemblyman 1931. Senator 1935, 1937 and since 1943; chosen Sen. President pro tem. since 1947. Chairman Sen. Legislative Procedure Com. and Interstate Cooperation Comm.; member Joint Legis. Organization Com., Sen. Judiciary Com., Legislative Council (chm. 1957) and its Labor Com. and Highway Adv. Com. (also 1963); served on Legis. Council's "Com. of 25" 1963-65 interim, Natural Resources Com. of State Agencies. Mailing address: Route 1, Brownsville 53006.

Elected from old 13th Senatorial District: Dodge and Washington Counties.

GERALD D. LORGE (Rep.) born Bear Creek, July 9, 1922. Educ. in grade and high schools at Bear Creek. Grad. Marquette Univ. Law School. Practicing attorney. World War II veteran; served in Marines Jan. '42 to Dec. '45. Mbr. Outagamie and Wis. bar assns., Moose, Legion of the Moose, Knights of Columbus, Bear Creek and Outagamie Conserv. Clubs, Amer. Legion. Elected to Assembly in 1950 and 1952; in 1954 elected to Senate to fill unexpired term; re-elected to Senate in 1956, 1960 and 1964. Chairman of Sen. Com. on Labor, Taxation, Insurance and Banking; mbr. of Sen. Legislative Procedure Com., Interstate Cooperation Comm. Jt. Survey Com. on Tax Exemptions, Legislative Council (also 1963) and its Insurance and Banking Com.; vice-chm. of its Branch Banking Com.; served on its Educ. Com. and as chm. of its Insurance Com. 1963-65; mbr. of Gov. Knowles July 9, 1965, Wisconsin Day at World Fair Com. in New York. Mailing address: 147 Lorge Building, Bear Creek 54922.

14th Senatorial District: Assembly Districts Outagamie and Waupaca.

PETER P. CARR (Rep.) born North Jutland, Denmark. Educated Chicago public schools, Chicago Business College. Retired; formerly seedsman; member southern Wis. group operating grocery stores and warehouses 1931-46; Janesville wholesale grocery 1946-50. President Wis. Seed Dealers Assn. 1929; trust company director, Madison, 1925-31. During depression chairman Rock County President's Re-employment Board. President Janesville City Council 1954; elected to Senate 1954, 1958, and 1962. Chairman Senate Education Com.; member Sen. Legislative Procedure Com., Public Welfare Com.; Citizens Adv. Com. on County Institutions; vice-chm. Legis. Council Education Com. (also in 1963-65); served on Legis. Council Urban Problems Com. 1963-65. Served on Mental Health Adv. Com. Mailing address: 1705 Sherman Ave., Janesville 53545.

Elected from old 15th Senatorial District: Rock.



THOMPSON  
16th District



ROSELEIP  
17th District



HOLLANDER  
18th District

CARL W. THOMPSON (Dem.) born Washington, D.C., March 15, 1914. Educ. Stoughton grade and high schools; LL.B. 1939 Univ. of Wis. Practicing attorney, real estate broker, home building contractor, farm owner. World War II veteran; in Army intelligence 1942-46. Served as alderman, city attorney. Dem. national committeeman 1949-56; conv. alternate 1960. Pres. elector 1948. Dem. candidate for Governor 1948, '50. Assemblyman 1953, '55, '57, '59; in 1959 elected to Senate to fill unexpired term, re-elected 1960, '64. Mbr. Senate Agriculture Com., Education Com., Legis. Council Elections Com. and Branch Banking Com., Gov's Com. on Wis. Water Resources; served on Legis. Council U.W. Medical Center Com. and Highway Safety Com. 1963-65, and on Gov.'s Adv. Council on Traffic Law Enforcement in 1965. Has served on Retirement Research Council, Sen. Conserv. Com., Tobacco Marketing Com. Mailing address: 313 E. Main St., Stoughton 53589.

16th Senatorial District: Assembly Districts Dane 4th, Dane 5th, Rock 2nd.

GORDON W. ROSELEIP (Rep.) born Platteville, July 30, 1912. Educ. Platteville schools; high sch. grad. 1934. Businessman. Served in National Guard 1928-33; veteran of World War II and Korean Conflict. Served on many Rep. campaign committees incl. Veterans for Eisenhower, for Nixon; Thomson for Governor, for Congress. Mbr. veterans organizations (commander Wis. Dept. Amer. Legion 1954), 40 et 8, Elks, Eagles, Farm Bureau, Kiwanis, Masons, Moose, Shrine. While state commander of Amer. Legion received Freedom Foundation's Valley Forge award for outstanding Americanism. Mbr. county board; chm. legislative, building, defense committees. Elected to Senate 1962. Mbr. Civil War Centennial Comm., World's Fair Participation Comm., Senate Conserv. Com. and Governmental and Veterans Affairs Com., Legis. Council Elections Com.; served on Legis. Council Election Laws Com. 1963-65. Mailing address: Darlington 53530.

Elected from old 17th Senatorial District: Grant, Green, Iowa, Lafayette Counties.

WALTER G. HOLLANDER (Rep.) born Fond du Lac, Sept. 8, 1896. Grad. Omro High School. Retired. Formerly insurance agent; for 31 yrs. active farmer Town of Springvale (Hollander homestead since 1887). Has held local elective office since 1929; mbr. Fond du Lac County Board since 1938 (Board chm. since 1953). Elected to Senate 1956; re-elected 1960 and 1964. Has served on Sen. Agric. Com., Labor, Taxation, Insurance and Banking Com., State Bldg. Comm.; 1965 session: Sen. chm. Jt. Com. on Finance; mbr. Sen. Com. on Legis. Procedure and Contingent Expenditures Com.; chm. Board on Govt. Operations; mbr. state Claims Comm., Com. on Legis. Organization and Procedure, Gov.'s Com. on Wis. Water Resources, Legis. Council Local Govt. Com.; served on Legis. Council Com. of 25 and Co. Bds. Representation Com. 1963-65. Mailing address: Route 1, Rosendale 54974.

18th Senatorial District: Assembly Districts Dodge 2nd, Fond du Lac 1st, 2nd.



**DRAHEIM**  
19th District



**KEPPLER**  
20th District



**DORMAN**  
21st District

**WILLIAM A. DRAHEIM** (Rep.) born Neenah, December 15, 1898. Educ. Neenah elementary and high schools. Attended Lawrence College. Retired. Former occupations; mill worker, statistician-accountant, production planner, sporting goods dealer. Veteran of World War I and World War II; after 40 years of military service in National Guard and Army, retired as colonel. Served on county board. Elected to Senate 1950; re-elected 1954, 1958 and 1962. Chairman Sen. Governmental and Veterans' Affairs Com.; mbr. Legis. Procedure Com., State Board on Govt. Operations, Joint Study Com. on Civil Service, Legis. Council Labor Com. and Branch Banking Com.; former chm. Joint Com. on Finance; former mbr. Joint Survey Com. on Tax Exemptions; chm. Legis. Council U.W. Medical Center Com. 1963-65. Mailing address: 913 Hewitt St., Neenah 54956.

Elected from old 19th Senatorial District: Calumet and Winnebago Counties.

**ERNEST C. KEPPLER** (Rep.) born Sheboygan, Apr. 5, 1918. Educ. Sheboygan high, voc'l schools, U.W. Ext. Div.; B.S. Univ. of Wis. 1949, LL.B. in 1950. Attorney, real estate broker; was factory worker, truck driver, bookkeeper. Veteran of World War II (Philippines) and Korean Conflict; served in Army. In Boy Scouts of Amer. 34 years; holds Silver Beaver Award. Mbr. civic, veteran, fraternal, professional organizations. Sheboygan alderman 1941-45, 1951-53; asst. dist. atty. 1953-54; city and county civil def. dir. 1956-61; Assemblyman 1943-45. Elected to Senate 1960, '64. Chm. Sen. Revisions, Repeals, Uniform Laws Com.; mbr. Sen. Legis. Procedure Com., Labor, Taxation, Insurance and Bkg. Com., Interstate Cooperation Comm., Legis. Org. and Procedure Com., Legis. Council Insurance and Banking Com. and Insurance Law Revision Com., Com. to Visit State Institutions; served on Legis. Council's Conserv. Com. 1963-65 interim; Civil War Centennial Comm. Mailing address: 909 New York Ave., Sheboygan 53082.

20th Senatorial District: Assembly Districts Ozaukee and Sheboygan.

**HENRY DORMAN** (Dem.) born Racine, Sept. 24, 1916. Educated Washington Elementary and Junior High School, William Horlick High School, Racine; Ph.B. in American Institutions and LL.B. University of Wisconsin 1947. Attorney since 1947. World War II veteran; served in Army Air Corps 1942-45. Has served for 7 years as secretary Democratic Party Racine County; member bar assns., church board of directors, Junior Chamber of Commerce, B'nai B'rith. Member Racine County Board 1956-58; secretary, Mayor's Comm. on Human Rights for 5 years. Elected to Senate March 9, 1965 to succeed Senator Stalbaum. Member of Senate Public Welfare Com. and Joint Com. on Revisions, Repeals and Uniform Laws; mbr. Legis. Council Local Government Com. Mailing address: 422 16th Street, Racine.

Elected from old 21st Senatorial District: Racine County.



LOURIGAN  
22nd District



RASMUSEN  
23rd District



HANSEN  
24th District

JOSEPH LOURIGAN (Dem.) born March 19, 1901 in Kenosha. Graduated Kenosha public schools and Kenosha Business College. For past 46 years has been an auto worker. Served as secretary of auto workers local 1943-44 and president from 1945-47. Elected to city council 3 times, 1947, 1949, 1954. Assemblyman 1951, 1953, 1955. Served on Assembly Labor Com., Taxation Com., and Engrossed Bills Com. Elected to Senate 1964. Member Senate Labor, Taxation, Insurance and Banking Committee, Legislative Council Labor Com. Mailing address: 3604 - 19th Avenue, Kenosha 53140.

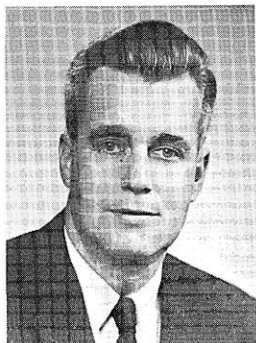
22nd Senatorial District: Assembly Districts Kenosha 1st, Kenosha 2nd.

HOLGER B. RASMUSEN (Rep.) born Apr. 26, 1894 at Superior. Attended elementary and high schools; Ph.G. 1916 Drake Univ., Des Moines, Iowa. Semi-retired pharmacist; in drugstore business since 1912, since 1919 as owner and operator. World War I Navy veteran. Member school board 1924-32, county school committee 1948-52; mayor of Spooner 3 terms 1942-48; civilian defense county chm. World War II. Active in fraternal and civic organizations. Assemblyman for 1949, 1951, 1953; elected to Senate 1956 for unexpired term; elected again 1962. Member Sen. Education Com., Public Welfare Com., Legis. Council Education Com. and Insurance Law Revision Com.; served on 1964 World's Fair Participation Comm., Obscene Literature Investigation Com. and Legis. Council Education Com. 1963-65 interim. Mailing address: 722 Franklin Ave., Spooner 54801.

Elected from old 23rd Senatorial District: Barron, Burnett, Polk, Rusk, Sawyer, Washburn Counties.

WILLIAM C. HANSEN (Dem.) born Neenah, July 4, 1891. Attended Withee high school, Stevens Point Normal Sch., B.S. Univ. of Wis. 1915, M.S. 1925; additional grad. work. Retired Pres. Wis. State Coll., Stevens Point 1940-62; formerly high sch. tchr. and principal, supt. of schools in Neillsville, Oconto, Stoughton. Pres. Northwestern Wis. Educ. Assn. at Eau Claire 1929, of Southern Wis. Educ. Assn. 1939, and of Wis. Educ. Assn. 1943, of Stevens Point Ch. of Com. 1957-58. Received Jaycees distinguished Citizens Award in 1959. Mbr. and past pres. of local Kiwanis and Rotary clubs. Mbr. Whiting Plover Sch. Bd. for 8 years, Stevens Point Area Sch. Bd., Portage County Sch. Com. Elected to Senate 1964. Mbr. Sen. Conserv. and Educ. Coms., Retirement Research Council, Legis. Council Education Com., Wis. Boundary Area Comm. Legis. Adv. Com. Mailing address: Route 4, Box 211, Stevens Point 54481.

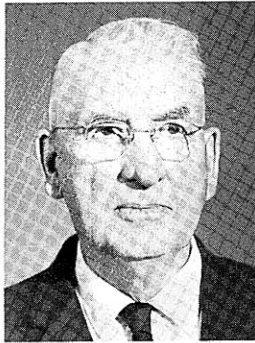
24th Senatorial District: Assembly Districts Green Lake, Portage, Waushara, Wood 1st, 2nd.



CHRISTOPHERSON  
25th District



RISSE  
26th District



MILLER  
27th District

FRANK W. CHRISTOPHERSON, JR. (Dem.) born Superior, May 24, 1927. Educ. St. Francis Sch., Superior East High Sch. Attended Superior State College. Locomotive engineer and fireman since 1945, newspaper publisher. World War II veteran; served in Army Air Corps. County bd. mbr. 1956-62, vice-chm. 1957-62. Elected to Assembly 1958; re-elected 1960. Served on Assembly Transportation Com. (chm.), Labor Com. (vice-chm.), Taxation Com., Insurance and Bkg. Com., Veterans and Military Affairs Com., Legis. Council Urban Problems Com., Judiciary Com., Reapportionment Com.; Interstate Ports Comm. (secy.). Elected to Senate 1962. Mbr. Sen. Highways Com. (also 1963), Agriculture Com., Building Comm., Com. to Visit State Institutions, Legis. Council Public Welfare Com., Gov.'s Comm. on Law Enforcement and Crime, Wis. Boundary Area Comm. Legis. Adv. Com; served on Legis. Council Urban Problems Com. and County Boards Representation Com. 1963-65. Mailing address: 2414 E. 6th St., Superior 54882.

Elected from old 25th Senatorial District: Ashland, Bayfield, Douglas Counties.

FRED A. RISSE (Dem.) born Madison, May 5, 1927. Educ. Madison pub. schools; Carleton Coll., Minn.; Univ. of Wis.; B.A. and LL.B. (1952) Univ. of Oregon. Practicing atty. World War II veteran. Mbr. Oreg., Wis., Dane Co. bar assns. Delegate to 1960 and 1964 Dem. Natl. conventions; pres. elector 1964; chm. State Electoral Coll. 1964. Elected to Assembly 1956; re-elected 1958, '60. Served on Bd. on Govt. Operations (chm.), Claims Comm., Emergency Bd., State Bldg. Comm.; Jt. Finance Com. (chm.); Assembly Rules standing and interim coms., State Affairs Com., Taxation Com.; Legis. Council. Elected to Senate 1962 for unexpired term; re-elected 1964. Mbr. Jt. Finance Com., Bd. on Govt. Operations, Legis. Council Judiciary Com.; served on Legis. Council's Com. on Remedial Legis. and Election Laws Com. 1963-65 interim. Asst. Minority Leader 1965. Mailing address: 15 W. Main St., Madison 53703.

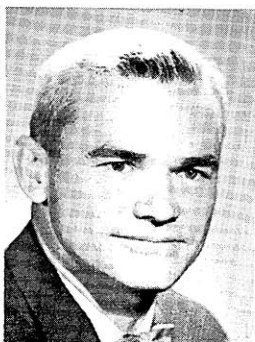
26th Senatorial District: Assembly Districts Dane 1st, 2nd, 3rd (City of Madison).

JESS MILLER (Rep.) born 1884 in Town of Eagle, Richland County. Educated in public schools. Realtor and auctioneer. Has held a number of public offices: chairman of Town of Eagle, chairman of County Highway Committee, County Mediation Board and County Republican Committee. Elected to Senate in 1938; re-elected in 1942, 1946, 1950, 1954, 1958 and 1962. Chairman of Sen. Com. on Highways; member Sen. Committee on Committees, Legislative Procedure Com. Member of Legislative Council since its creation in 1947; chairman Legis. Council Highway Advisory Committee every biennium except one since 1949. Deceased Dec. 11, 1965. Mailing address was: 257 S. Park Street, Richland Center 53581.

Elected from old 27th Senatorial District: Columbia, Crawford, Richland, Sauk Counties.



BENSON  
28th District



SMITH  
29th District



La FAVE  
30th District

TAYLOR BENSON (Dem.) born Milwaukee. Educ. Wisconsin Avenue School, Milwaukee, and Metropolitan High Sch., Los Angeles; Univ. of Notre Dame, A.B. Senior public relations representative for electronics firm; formerly reporter-writer. Veteran of World War II and Korean War; served in Air Force. Member Air Force Assn., Reserve Officers Assn., Army-Navy Union, Sons of the American Revolution, Christian Family Movement, Confraternity of Christian Doctrine, Holy Name Society, Milwaukee Press Club, Cape Canaveral Press Club, Caledonia Bus. and Prof. Men's Assn. Elected to Senate 1964. Member Sen. Judiciary Com., World's Fair Participation Comm., Temp. Comm. on Admin. Branch Reorganization, Jt. Study Com. on Civil Service; Dem. Caucus Secretary. Mailing address: 6729 Highway 38, Franksville 53126.

28th Senatorial District: Assembly Districts Milwaukee 23rd, Racine 3rd, Waukesha 4th.

CHARLES F. SMITH, JR. (Rep.) born Rhinelander, July 16, 1918. Educ. Wausau public schools; Univ. of Wis. B.A. 1941, LL.B. 1948. Practicing attorney; partner in Wausau law firm. World War II veteran; in Army 4 years overseas. Mbr. Internat'l Assn. of Insurance Counsel; county, state, American Bar assns.; Elks, Amer. Legion, Chamber of Commerce. Served as president and mbr. of local Rotary Club and Cancer Soc.; county chm. Republican Party 1959-62; Wausau alderman and county board mbr. 1950-60; twice chm. of Marathon County Board. Elected to Senate 1962. In 1963 Sen. Majority Caucus Secretary, in 1965 Caucus Chairman. Member of Sen. Highways Com., Labor, Taxation, Insurance and Banking Com., Legis. Council Taxation Com.; served on Legis. Council Judiciary Com., Urban Problems Com. 1963-65 interim. Mailing address: 630 Fourth St., Wausau 54401.

29th Senatorial District: Assembly Districts Marathon 1st, 2nd, Menominee-Shawano.

REUBEN LaFAVE (Rep.) born Oconto. Educ. public schools; Railroad Auditors Sch. Real estate broker. Served in Coast Guard. Chm. Sportsmen's Conserv. Congr.; past pres. Northeast Wis. Conserv. Council. Awards: Mil. Sen. *Outstanding Achievement in Conservation Field* 1953; 256 Wis. conserv. clubs' *Mr. Conservation* 1960. Served on county bd. Assemblyman 1951-57; chm. Conserv. Com. Senator since 1957. Chm. Sen. Contingent Expenditures Com.; mbr. Sen. Gov't and Veterans Affairs Com., Highways Com., Legis. Procedure Com.; chm. Jt. Admin. Rules Com., 1957-59 interim chm. Conservation Com.; vice-chm. Interstate Ports Comm.; chm. of Legis. Council's Menominee Indian Com. (also 1963-65) and mbr. of its Highway Adv. Com.; chm. Jt. Retirement Systems Survey Com. and Ret. Research Council. Mailing address: La Veaux Road, Rt. 1, Oconto 54153.

30th Senatorial District: Assembly Districts Brown 3rd, Florence, Langlade, Marinette, Oconto.



LEVERICH  
31st District



BICE  
32nd District



DEMPSEY  
33rd District

**JAMES EARL LEVERICH** (Rep.) born on farm in Town of Angelo, Monroe County; still resides there. Graduated Sparta High School, Madison College, Univ. of Wis. Agric. Short Course. Dairy farmer and fruit grower, farm leader. For many years bank vice-pres.; pres. co-op creamery assn. and livestock shipping assn. Served as school clerk; town clerk; town chairman; member county board, various other state-wide agric. and dairy coms. Elected to Senate 1934; re-elected to Senate since 1942. Chairman Sen. Agriculture Com.; member Legis. Procedure Com., Interstate Cooperation Comm., Com. to Visit State Institutions, Legis. Council Local Govt. Com.; served on Legis. Council's Conservation Com. 1963-65 interim. Mailing address: Rt. 4, Sparta 54656.

Elected from old 31st Senatorial District: Adams, Juneau, Marquette, Monroe, Vernon Counties.

**RAYMOND C. BICE** (Rep.) born La Crosse, Apr. 5, 1896. Educ. La Crosse public schools, Univ. of Wis. Ext. Div. Retired contractor and lumber retailer. Overseas with Army in World War I. Chm. Oak Forest Sanatorium bd. of trustees; past pres. La Crosse Co. Ch. of Com., Businessmen's Club; mbr. Amer. Legion. Received 1957 La Crosse "Civic Duty" award. Past officer County Bd.; chm. County Park Com. Assemblyman 1947, '49, '51, '53; chm. Assembly Trans. Com., author, "65/55" Wis. speed limit law and community day services for the mentally handicapped law. Elected Senator Apr. 1953; re-elected 1956, '60, '64. Chm. Sen. Com. on Committees; mbr. Sen. Education Com., Legis. Procedure Com., Legis. Council Public Welfare Com., Gov.'s Council on Traffic Law Enforcement, Wis. Boundary Area Comm. Legis. Adv. Com.; chm. Physical Plant Maintenance Com. 1963-65; served on Legis. Council U.W. Medical Center Com. and Relief of the Property Tax Burden Com. 1963-65. Mailing address: 2406 State St., La Crosse 54601.

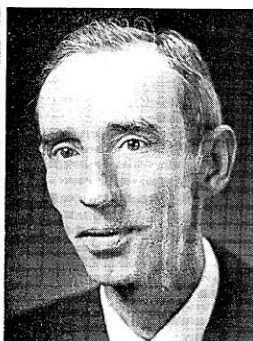
32nd Senatorial District: Assembly Districts Crawford, La Crosse, Vernon.

**CHESTER E. DEMPSEY** (Rep.) born Merton, Waukesha County, July 20, 1896. Educ. in county schools and has always been a close student of farming and farm problems. Owns and operates modern 300-acre dairy farm, which has been Dempsey family homestead since early pioneer days. Served on Waukesha County Board and has held various school and township offices. Elected to Senate 1934; re-elected 1946, '50, '54, '58, '62. Chm. Sen. Public Welfare Com.; member Sen. Agriculture Com., Legis. Procedure Com.; chm. Com. to Visit State Institutions; member Mental Health Adv. Com., State Building Comm.; chm. Legis. Council Public Welfare Com. and mbr. of its State Adv. Council for Home and Family; served on Sen. Com. on Committees (chm.); Board on Govt. Operations; Joint Com. on Finance; Legislative Council Taxation Com. 1961, Agriculture Com. 1959. Mailing address: Route 1, Hartland 53029.

Elected from old 33rd Senatorial District: Jefferson and Waukesha Counties.



LARSEN  
Chief Clerk



NUGENT  
Chief Clerk

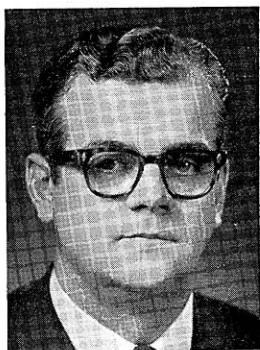


DAMON  
Sergeant at Arms

LAWRENCE R. LARSEN born Racine, Mar. 23, 1897. Educated in Racine elementary and high schools. Veteran of World War I; served in Army. Assemblyman from Racine County 1951 and 1953. First chosen Chief Clerk of the Senate in 1935. Unanimously re-elected in each succeeding session through 1945, and again in each session from 1955 to 1965. Deceased Mar. 2, 1965. Mailing address was 4801 Kinzie Ave., Racine.

WILLIAM P. NUGENT born Briggsville, June 24, 1917. Educated Briggsville Grade School and Oxford Union Free High School; attended University of Wisconsin. Senate Chief Clerk; served as Senate enrolling, journal and record clerk for 5 previous sessions; formerly Assembly desk clerk. Has served as Marquette County board member 1951-58 and chairman, town chairman, assessor and property appraiser, high school district clerk. Chosen Chief Clerk March 31, 1965 to succeed the late Lawrence Larsen. Mailing address: 709 Acewood Blvd., Madison.

HAROLD E. DAMON born Edgerton, Minn., Oct. 3, 1885. Since 1888 resident of Wisconsin. After graduation from high school attended Wausau Business College. At present engaged in insurance business. His public offices include alderman, supervisor, deputy sheriff and deputy clerk of court. In 1943 served as assistant sergeant at arms; in 1944 as acting sergeant at arms. In 1945 chosen Sergeant at Arms of the Senate; re-elected in each session since 1945. Mailing address: 707 First St., Wausau.



Speaker  
HUBER



Speaker  
pro tem  
MOLINARO



Majority Leader  
NIKOLAY



Majority  
Caucus Chairman  
GRECO



Minority Leader  
HAASE\*



Minority Leader  
ALFONSI



Minority  
Caucus Chairman  
FROELICH



Chief Clerk  
BUCKLEY



Sergeant at Arms  
BROWNE

\*Resigned September 15, 1965



ROMELL  
Adams, Juneau,  
Marquette



GEHRMANN  
Ashland, Bayfield,  
Iron



MOSER  
Barron, Washburn

LOUIS C. ROMELL (Rep.) born Chicago, Apr. 7, 1899. Engaged in beef cattle raising; real estate dealer. Served as town supervisor 1939-42, Adams Co. Board member 1941, school board member 1936-42. Member of the Assembly 1947-55. Re-elected to the Assembly 1960, 1962 and 1964. Vice chairman of the Administrative Rules Review Committee; member of the Assembly Committee on Highways, Legislative Council Labor Committee; served on Legislative Council's Com. to Study Apportioning of County Board Districts 1963-65 interim. Mailing address: Edgewood Dr., Rt. 1, Adams.

BERNARD E. GEHRMANN (Rep.) born Mellen, Nov. 6, 1920. Attended Mellen elementary and high schools; graduated Superior State College 1942 B.S. Sales manager since 1944. World War II veteran; served in U.S. Marine Corps 1941-44. Member V.F.W., American Legion and Chamber of Commerce. Member of Ashland City Council and of Ashland County Board since 1961; president Ashland County Fair. Elected to Assembly 1964. Member Assembly Highways Committee, Legislative Council Labor Committee. Mailing address: 801 Prentice Avenue, Ashland 54806.

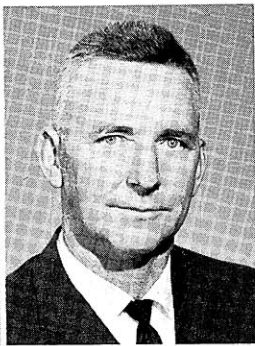
FRED J. MOSER (Dem.) born Plum City, May 2, 1898. Educated Plum City elementary school and River Falls High School; graduated University of Wisconsin 1927 Ph.B.; 4 years of graduate work in economics, psychology and education at the Universities of Wisconsin, Minnesota, Colorado, Oregon, Montana, Vermont. Retired school administrator, at Cumberland 26 years, teacher and guidance director. Veteran of World War I; served in Army. Alderman; chairman County School Committee. Elected to Assembly 1964. Vice chairman Assembly Committee on Third Reading; member Assembly Education Committee and Public Welfare Committee, Legislative Council Education Committee. Mailing address: Cumberland 54829.



QUINN  
Brown, 1st



KAFKA  
Brown, 2nd



VANDERPERREN  
Brown, 3rd

JEROME F. QUINN (Rep.) born Green Bay. Educated St. Patrick's School, Green Bay West High School; attended Univ. of Wisconsin. Merchant for 30 years, also real estate investment business. Member Green Bay Assn. of Commerce, West Side Businessmen's Assn., Elks. Was Green Bay alderman 16 years; on Brown Co. Board 6 years; past chairman Finance Com. Green Bay Bd. of Education. Elected to Assembly 1954; now in 6th term. Member Assembly Commerce and Manufactures Com. (chairman 1963); 1963 member Highways Com. and Veterans and Military Affairs Com.; mbr. Legis. Council Highway Adv. Com.; served on Legislative Council Highways Com. and Urban Problems Com. 1963-65 interim. Has served on Civil Defense Council, Assembly Rep. Policy Com. Mailing address: 137 N. Oakland Ave., Green Bay.

Brown County, 1st District: Wards 1, 4, 5, 7, 8, 10-15, 17-21, City of Green Bay.

LAWRENCE J. KAFKA (Rep.) born Denmark, Wis., March 16, 1898. Educated Langes School. Farmer; president of trucking firm. Chm. Denmark War Memorial Board for past 10 years; Heart Fund Drive; mbr. Elks, Holy Name Society. Chairman Town of New Denmark 1942 to present; mbr. Brown County Board 1942 to present and chm. of Highway Committee 1959 to present; served as supervisor Town of New Denmark 1932-1942, served on Brown County Sheriff's Com., Veteran's Com., Steering and Advice Com., Health and Welfare Com. Elected to Assembly 1964. Mbr. Assembly Public Welfare Com. Mailing address: Route 3, Denmark.

Brown County, 2nd District: Towns of Allouez, Bellevue, DePere, Eaton, Glenmore, Green Bay, Holland, Humboldt, Morrison, New Denmark, Rockland and Wrightstown; Villages of Denmark and Wrightstown; City of DePere, Wards 2, 3 and 6 of City of Green Bay.

CLETUS J. VANDERPERREN (Dem.) born in Brown County's Tn. of Pittsfield, Mar. 4, 1912. Educated Mills Center School. Farm owner and operator. Member Farm Bureau since 1947, local dairy herd improvement co-op. (past pres.) tri-county fire dept. (treas.). Serving as town chairman; county board member 16 years, mbr. of county coms. on agriculture, county arena, reforestation and conservation, roadside zoning and planning, veterans. Elected to Assembly 1958; re-elected 1960, '62, '64. Vice-chm. Assembly Agriculture Com.; member State Affairs Com. and Transportation Com.; Legis. Council and its Local Government Com.; member State Institutions Visiting Com. (also 1963-65). Served on Assembly Conserv. Com., Legis. Council Water Resources Com. Mailing address: Rt. 5, Green Bay.

Brown County, 3rd District: Towns of Ashwaubenon, Hobart, Lawrence, Pittsfield, Scott and Suamico; Villages of Howard and Pulaski; Wards 9, 16, 22-30 City of Green Bay.



BUCHLI  
Buffalo, Pepin,  
Pierce



DUEHOLM  
Burnett, Polk

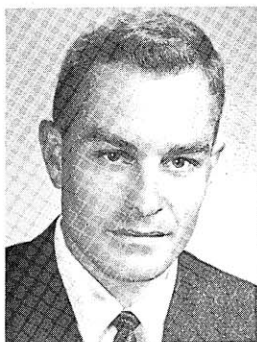


STRUEBING  
Calumet

MILTON S. BUCHLI (Dem.) born Town of Montana, Buffalo County, Aug. 18, 1910. Educated rural elementary schools, Arcadia High School, Buffalo County Teachers College. Farmer since 1946; teacher from 1929 to 1937. Veteran of World War II; served in Army 1942-45. Has been town treasurer for past 17 years; member Buffalo County Teachers College Board; served as town clerk and as member of school board, county school committee, Buffalo County Draft Board. Elected to Assembly 1964. Vice chairman Assembly Enrolled Bills Committee; member Conservation Committee and Taxation Committee, Legislative Council Public Welfare Committee. Mailing address: Route 1, Independence 54747.

HARVEY L. DUEHOLM (Dem.) born in Polk County's Town of Bone Lake, Jan. 29, 1910. Educated in Bone Lake Elementary School, Luck High School. Dairy farmer; member various co-op. executive boards. Served as community committeeman of Agricultural Conservation Service 1938-53, as town chairman 1945-59, as county board chairman 1957-59. Elected to Assembly 1958; re-elected 1960, 1962, 1964. Chosen member of Democratic Assembly Policy Committee 1961. Chairman, Assembly Public Welfare Com., member Education Com., State Affairs Com., vice-chm. Legis. Council Public Welfare Com.; served on Legis. Council Election Laws Com., Remedial Legislation Com. 1963-65 interim. Served on Assembly Commerce and Manufactures Com. (vice chairman 1959), Conservation, Elections, Public Welfare Coms.; Legis. Council Commercial Code Com., Education Com., Physical Plant Maintenance Com. Mailing address: Route 2, Luck.

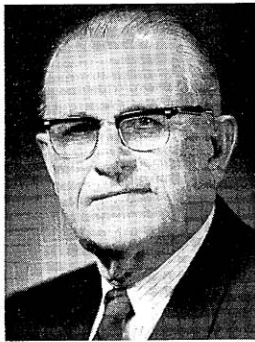
WILMER H. STRUEBING (Rep.) born in Town of Brillion, April 2, 1910, and raised on farm which has been family possession for over 80 years; still lives there. Educated in Brillion grade and high schools. Farmer and salvage dealer; owns and operates iron and metal company. Active in church activities. Member school board 1951-57; 1957 town chairman; member county board and its highways committee; 1965 director and secretary Calumet County Memorial Hospital Board. Elected to the Assembly 1962 and 1964. Mr. Struebing is a member of the Assembly Committee on State Affairs. Mailing address: Route 2, Brillion.



PELOQUIN  
Chippewa



NIKOLAY  
Clark



BIDWELL  
Columbia

BRUCE S. PELOQUIN (Dem.) born Chippewa Falls, Nov. 3, 1936. Educated Holy Ghost Elementary School, McDonell Memorial High School, Wisconsin State University at Eau Claire. College student; formerly supervisor for a rubber company. Member Chippewa County Board, Committee of 110. Elected to Assembly 1964. Member of Assembly Elections Committee, Public Welfare Committee, and the Committee to Visit State Institutions. Mailing address: 497 Irvine Street, Chippewa Falls 54729.

FRANK L. NIKOLAY (Dem.) born Marathon County (Day Tn.), Sept. 1, 1922. Educ. Abbottsford public schools; LL.B. 1948 Univ. of Wis. Attorney; lieutenant colonel, staff judge advocate, 32nd Div. Wis. Natl. Guard. World War II veteran; Army 1940-41, Navy 1943-46, chm. Wis. Humphrey delegation, 1960 Dem. Natl. Convention. Green Bay dist. counsel OPS 1951. U.S. atty. Western Dist. Wis. 1952-54; Abbottsford city atty. 1949-50 and since '54; Colby city atty. '58 to '62. Clark County posts: county board 1949-50 and since '55, welfare board since '57, asst. D.A. 1955-56. Assembly committee clerk 1943. Elected to Assembly 1958; re-elected '60, '62, '64. Chosen Assembly Majority Leader 1965 (Assistant Minority Leader 1963). Chm. Assembly Judiciary Com. and Rules Com.; vice-chm. Education Com.; ex officio member Jt. Com. on Legis. Organization and Comm. on Interstate Co-operation; mbr. Building Comm., Temp. Comm. on Admin. Branch Reorganization, Legis. Council; chm. Legis. Council Judiciary Com. (also mbr. 1963). Mailing address: Abbottsford.

EVERETT V. BIDWELL (Rep.) born Houston, Minn., October 22, 1899. Attended Minnesota rural schools and Univ. of Minn. Ice cream manufacturer, bank vice president; formerly salesman, farmer. Past director Portage Chamber of Commerce, Wis. Ice Cream Manufacturers Assn. Member county board 10 years. Elected to Assembly 1952; now in 7th term. Member Assembly Taxation Com. (chairman 1963) and Insurance and Banking Com.; vice chairman Legislative Council Insurance and Banking Committee; member Civil War Centennial Comm.; served on Tax Exemptions Jt. Survey Com., Legis. Council 1963-65 interim. Served on Joint Finance Com. (chm. 1961), Board on Govt. Operations. Gov. Thomson's Adv. Coms. on Industrial Development, on Problems of Land Acquisition, and on Operation of the Eminent Domain Law; Legis. Council Commercial Code Com. Mailing address: 612 W. Edgewater St., Portage.



LEWISON  
Crawford, Vernon



ANDERSON, N. C.  
Dane, 1st



NAGER  
Dane, 2nd

**BERNARD LEWISON** (Rep.) born on farm near Viroqua, Feb. 7, 1902. Educated in Viroqua public schools; attended Lawrence College 1921-22. Tobacco buyer and real estate broker, director savings and loan assn.; for 30 years operated automobile agency and body shop. Served as mayor 1943-48, as alderman for several years; was chm. Viroqua Board of Appeals, vice-chm. Board of Review. Now member of Vernon County Board; on county board finance, salary, legislative coms., and chm. industrial development com. Elected to Assembly 1954; re-elected 1956, 1960, 1962, 1964. Member of Assembly Transportation Com. (chm. 1961, 1963), Conservation Com., Remedial Legislation Com., Legislative Council Insurance Law Revision Com. Has served on Assembly Agriculture Com., Highways Com., State Affairs Com., Contingent Expenditures Com., Governor Thomson's Industrial Development Com.; past vice-chm. Legis. Council Conservation Com. Mailing address: 11 S. Washington Heights, Viroqua 54665.

**NORMAN C. ANDERSON** (Dem.) born Hammond, Ind., Mar. 11, 1928. Educated Hammond public schools; received B.S. in 1951 from Univ. of Wisconsin; LL.B. 1954 U.W. Law School. Practicing attorney. Served in Army 1946-47. Former member of Madison Redevelopment Authority. Acting Dane Co. coroner 1952-54. Elected to Assembly 1956, 1960, 1962 and 1964. In the 1959 session served as Assembly Chief Clerk. In 1965 Assistant Majority Leader. Chairman, Assembly Conservation Com.; vice-chm. State Affairs Com.; chairman Legislative Council Conservation Committee; member Administrative Rules Review Committee, Board on Government Operations, Governor's Committee on Wisconsin Water Resources. Mailing address: 3401 Dawes St., Madison 53714.

Dane County, 1st District: Wards 3, 7, 12, 15-18 and 22, City of Madison.

**EDWARD NAGER** (Dem.) born New York, N.Y., July 22, 1927. Educated in New York grade and high schools. He received the degree of B.S. in Government in 1950 from the City College of New York and the degree of LL.B. in 1955 from the University of Wisconsin's Law School. Mr. Nager is a practicing attorney in Madison. He served in the Army Air Force from 1945 to 1947. From 1960 until 1962 he was an assistant Dane County district attorney. Appointed to Madison City Plan Comm. 1965. Elected to the Assembly in 1962 and 1964. Member Assembly Judiciary Com., Labor Com.; Assembly chairman of Joint Com. on Revisions, Repeals and Uniform Laws; member Governor's Committee on Eminent Domain Laws, Committee for Review of Administrative Rules; secretary Legis. Council Judiciary Com. Mailing address: 840 Spaight St., Madison.

Dane County, 2nd District: Wards 2, 4, 6, 8, 9, 13 and 14, City of Madison.



UEHLING  
Dane, 3rd



BLASKA  
Dane, 4th



O'MALLEY  
Dane, 5th

ROBERT O. UEHLING (Rep.) born Wisconsin Rapids, April 23, 1915. Educated Wisconsin Rapids public schools; jr. college Santa Monica, Calif.; Univ. of Wisconsin B.A. 1939, LL.B. 1941. Practicing attorney since 1957; title and trust officer 1946-52, admin. officer state Selective Service System 1952-57. World War II veteran; Army 1941-45. Member bar assns., Elks, Optimist Club, National Guard Officers Assn. Madison alderman 1958-60. Elected to Assembly 1960; re-elected 1962 and 1964. Member Assembly Revision Com. and Veterans' and Military Affairs Com., Legislative Council Insurance and Banking Committee. In 1963 was Assembly chm. of Joint Revisions, Repeals, Uniform Laws Com.; vice-chm. Assembly Municipalities Com. Served on Legis. Council Judiciary Com. 1963-65 interim; member Civil Defense Council and Assembly Republican Campaign Com. Mailing address: 4330 Keating Terrace, Madison 53711.

Dane County, 3rd District: Wards 1, 5, 10, 11, 19, 20, 21, City of Madison.

JEROME L. BLASKA (Dem.) born Sun Prairie, July 4, 1919. Educated Sun Prairie public schools. Farmer; canning company field manager 1939-42. World War II veteran; Army 1942-46. Committeeman Agricultural Conserv. Service; mbr. farm organizations, volunteer fire dept. 12 years, V.F.W., American Legion. On school board 12 years; school clerk since 1950. Elected to Assembly in April 1959; re-elected 1960, '62, '64. Chairman Assembly Highways Com.; member Assembly Agriculture Com., Comm. on Interstate Co-operation, Legis. Council Highway Adv. Com.; served on Legis. Council Conservation Land Purchases Com. 1963-65. Mailing address: Rt. 2, Sun Prairie 53590.

Dane County, 4th District: Towns of Albion, Blooming Grove, Bristol, Burke, Christiana, Cottage Grove, Deerfield, Dunkirk, Dunn, Medina, Pleasant Springs, Sun Prairie, York; Villages of Cambridge, Cottage Grove, Deerfield, McFarland, Maple Bluff, Marshall, Monona, Rockdale; Cities of Stoughton, Sun Prairie.

DAVID O'MALLEY (Dem.) born Waunakee, Nov. 12, 1912. Educated Waunakee High School, Univ. of Wis. 1936-38. Lifetime farmer. Village supervisor, county board member 1957-59. Elected to Assembly 1958; re-elected 1960, '62, '64. Chairman Assembly Agriculture Com.; vice-chm. Veterans' and Military Affairs Com.; mbr. State Affairs Com., Legis. Council and its Public Welfare Com. Served on Assembly Taxation Com., Legis. Council Conservation Com., Tobacco Marketing Com. Mailing address: 315 W. Main St., Waunakee.

Dane County, 5th District: Towns of Black Earth, Berry, Blue Mounds, Cross Plains, Dane, Fitchburg, Madison, Mazomanie, Middleton, Montrose, Oregon, Perry, Primrose, Roxbury, Rutland, Springdale, Springfield, Vermont, Verona, Vienna, Westport and Windsor; Villages of Black Earth, Blue Mounds, Cross Plains, Dane, DeForest, Mazomanie, Mt. Horeb, Oregon, Shorewood Hills, Verona, Waunakee, Dane County parts of Belleville and Brooklyn; City of Middleton.



DOUGHTY  
Dodge, 1st



NITSCHKE  
Dodge, 2nd



JOHNSON, L. H.  
Door, Kewaunee

ESTHER S. DOUGHTY (Rep.) was born in Wisconsin. Educated St. Stephen's Lutheran School, Horicon; graduate of Horicon High School. Insurance and real estate agent. Elected to the Assembly in 1962 and 1964. Member of Assembly Committees on Insurance and Banking and on Third Reading, Legislative Council Education Committee. Served on Legislative Council Education Com. 1963-65 interim. Mailing address: 211 N. Hubbard St., Horicon.

Dodge County, 1st District: Towns of Ashippun, Clyman, Emmet, Herman, Hubbard, Hustisford, Lebanon, Leroy, Lomira, Oak Grove, Rubicon, Shields, Theresa, Williamstown; Villages of Brownsville, Clyman, Hustisford, Iron Ridge, Kekoskee, Lomira, Neosho, Theresa; Cities of Horicon, Juneau and Mayville, and the Dodge County part of the City of Watertown.

ELMER C. NITSCHKE (Rep.) born Burnett, May 20, 1911. Educated in Dodge Co. public schools. Real estate broker, insurance agent. Member of Dodge Co. Insurance Agents Assn., Lions, Elks. Served as school board director, deputy sheriff. Elected to Assembly in 1948; now serving 9th consecutive term. Member Assembly Excise and Fees Com. and Highway Com. Chairman Taxation Com. in 1953, of Highway Com. in 1957 and 1963, of Revision Com. in 1955; vice-chm. Excise and Fees 1961. Member Legislative Council Highway Advisory Com. (vice-chm. 1963); served on Accelerated Conservation Land Purchase Program Com. Mailing address: 208 Hamilton St., Beaver Dam.

Dodge County, 2nd District: Towns of Beaver Dam, Burnett, Calamus, Chester, Elba, Fox Lake, Lowell, Portland, Trenton, Westford; Villages of Lowell, Reeseville, Randolph (east ward only); Cities of Beaver Dam, Fox Lake; Wards 1-4, City of Waupun.

LAWRENCE H. JOHNSON (Rep.) born Nadeau, Mich., April 26, 1908. Educated rural school and Sturgeon Bay High School. Farmer since 1925; 18 years secy. dairy co-op.; active in many co-operatives and farm organizations. Member for 12 years of Door-Kewaunee County College Board. Active in soil conservation work; past vice-pres. Wis. Soil Conserv. Dist. Supervisors Assn.; past pres. Northeast Wis. Soil Conserv. Districts Assn.; past pres. Wis. County Highway Committee Members Assn.; president Wisconsin County Boards Association. Has held local public offices for 31 years; town clerk 1930-47, chairman since 1947; county board chairman since 1955. Elected to Assembly in 1960; re-elected 1962 and 1964. Member Assembly Agriculture Com., Joint Survey Com. on Retirement Systems. Mailing address: Rt. 2, Algoma.



PERALA  
Douglas



PETERSON  
Dunn



BARLAND  
Eau Claire, 1st

REINO A. PERALA (Dem.) born Maple, August 28, 1915. Educated Corner School at Maple, Wisconsin School for Blind, Superior State College; received LL.B. in 1943 from Univ. of Wisconsin Law School. Practicing attorney; also operates hotel in Superior. Served as justice of peace. Elected to Assembly 1952; now in 7th term. Chairman Assembly Taxation Com. (also in 1959); member Assembly Conservation Com., Transportation Com., Joint Survey Com. on Tax Exemptions, Legislative Council and its Taxation Committee. Served on Interstate Ports Commission, Assembly Taxation Com. (chairman 1959), Transportation Com. (vice-chm.), Legis. Council Judiciary Committee. Mailing address: 824 N. 22nd St., Superior.

FRANCIS L. PETERSON (Rep.) born Colfax, Jan. 23, 1904. Educated Colfax elementary schools, Boyceville High School. Merchant since 1928; formerly store clerk. Member hospital board; has served as church council president and president Y.G.O.P. Member Dunn County Park Board; has served as school board treasurer 1932-52; member village board 1934-36, county board 1936-39. Elected to Assembly 1964. Member Assembly Labor Committee. Mailing address: Boyceville 54725.

THOMAS H. BARLAND (Rep.) born San Francisco, Mar. 3, 1930. Educated public schools San Francisco; Wahiaw, Hawaii; high school in Eau Claire; Univ. of Wisconsin B.A. 1951, LL.B. 1956. Practicing attorney. Served in Army; in Army Reserve. Awarded 1959 Eau Claire Jaycees' *Distinguished Service* award and State Jaycees' *One of Five Outstanding Young Men of the State* award in 1963. Mbr. Bd. of Curators Wis. State Hist. Society, past chm. local Red Cross; mbr. bar assns., bd. of mgrs. Camp Galilee; dir. Tax Section Wis. State Bar. Elected to Assembly 1960, '62, '64. Chosen Assembly Maj. Caucus Chm. 1963. Mbr. Assembly Judiciary Com., Bd. on Govt. Operations, Temporary Comm. on Admin. Branch Reorganization; vice-chm. Legis. Council Taxation Com.; served on Jt. Finance Com., Tax Exemptions Jt. Survey Com., Assembly State Affairs and Taxation Coms., Legis. Council Judiciary Com. Mailing address: 1616 State St., Eau Claire 54701.

Eau Claire County, 1st District: Wards 1-3, 5-10, 13 and 15, City of Eau Claire.



MATO  
Eau Claire, 2nd



HAASE  
Florence, Marinette



STEVENSON  
Florence, Marinette

LOUIS V. MATO (Dem.) born Pogradec, Albania, July 20, 1903. Educated in grade and high schools in Albania; attended business college in Red Wing, Minn., 1921-22. Salesman for chef's supplies; operated own restaurant for 16 years. Possibly first person of Albanian descent to serve in Wisconsin Legislature. Active in civic and service programs in Eau Claire County. Has served on Eau Claire County Board since 1952. Member of the Mental Health Advisory Committee 1959-1963. Elected to the Assembly in 1962 and 1964. Chairman Assembly Revision Committee; member Joint Com. on Finance, Legislative Council Public Welfare Committee. Mailing address: Fairchild.

Eau Claire County, 2nd District: Eau Claire County except those wards of the City of Eau Claire which are in the 1st District.

ROBERT D. HAASE (Rep.) born Marinette, May 10, 1923. Educ. Marinette public schools. LL.B. 1951 Univ. of Wis. Attorney. World War II veteran; in Army Air Corps 1942-46. Past comdr. Marinette Amer. Legion; member 40 et 8, AMVETS. Elected to Assembly 1956; re-elected 1958, '60, '62, '64. Assembly Minority Leader 1965, Assembly Speaker 1963, Rep. Floor Leader 1961, Caucus Chm. 1959. Chm. Jt. Com. on Legis. Organization; mbr. Assembly Judiciary Com., Rules Com., Veterans' and Military Affairs Com., Interstate Co-operation Comm.; in 1963-65 served as vice-chm. Legis. Organization and Procedures Com., vice-chm. Legis. Council and member of its Obscene Literature Com., State Fiscal Situation Com., and "Com. of 25;" served on 1963 Tax Compromise Com., 1964 World's Fair Participation Comm., Interstate Ports Comm. 1959-61; chm. Legis. Council Ports and Navigation Com. 1957-59. Resigned September 14, 1965 to become state Commissioner of Insurance. Mailing address: 1221 Main St., Marinette 54143.

LESLIE R. STEVENSON (Dem.) born Marinette, July 31, 1915. Educated Marinette public schools, Jordan College, University of Wisconsin short courses. Superintendent of Public Works; formerly upholsterer. World War II veteran; served in Army Corps of Engineers, European Theater of Operations, 1944-46. Member American Public Works Association, Elks; served as president of United Automobile Workers local 1957-60; president Marinette and Menominee Labor Council 1958-61. Member Civil Defense Committee; was alderman, president of city council 1958-61. Elected to Assembly in special election November 16, 1965. Mailing address: 603 Ogden Street, Marinette.



McESSY  
Fond du Lac, 1st



SCHWEFEL  
Fond du Lac, 2nd



ALFONSI  
Forest, Oneida, Vilas

**EARL McESSY** (Rep.) born on farm in Fond du Lac County, Feb. 12, 1913. Graduated Fond du Lac High School; B.S. Marquette Univ. 1939. Real estate broker; formerly purchasing agent, traffic officer, undersheriff, factory laborer. World War II veteran; in Navy amphibious forces South Pacific 1942-46; awarded 7 battle stars and 3 special citations. Chairman Red Cross chapter 1957-58, Elks' Youth Activity Com. 1958-61. President local PTA 1953-55; vice-pres. Central Education Council 1953-55. Elected to Assembly 1956; re-elected '58, '60, '62, '64. Member Assembly Excise and Fees Com. and Municipalities Com., Governor's Comm. on Law Enforcement and Crime, Legis. Council Insurance and Banking Com.; served on 1964 World's Fair Participation Comm., Legis. Council Highway Adv. Com. Mailing address: 361 Forest Ave., Fond du Lac.

Fond du Lac County, 1st District: Towns of Empire and Fond du Lac; City of Fond du Lac.

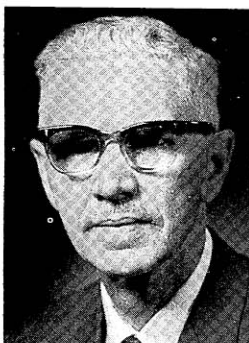
**WILLIAM S. SCHWEFEL** (Rep.) born Oakfield, Oct. 5, 1902. Educated Elder Grove elementary and Brownsville High School; University of Wisconsin agricultural short course. Retired farmer. Member Exchange Club. Town chairman, Fond du Lac County Board supervisor; town assessor from 1940 to 1946. Elected to Assembly 1964. Member Assembly Elections Committee. Mailing address: Route 1, Oakfield.

Fond du Lac County, 2nd District: Towns of Alto, Ashford, Auburn, Byron, Calumet, Eden, Eldorado, Forest, Friendship, Lamartine, Marshfield, Metomen, Oakfield, Osceola, Ripon, Rosendale, Springvale, Taycheedah and Waupun; Villages of Brandon, Campbellsport, Eden, Fairwater, Mount Calvary, North Fond du Lac, Oakfield, Rosendale and St. Cloud; City of Ripon, that part of City of Waupun in Fond du Lac County.

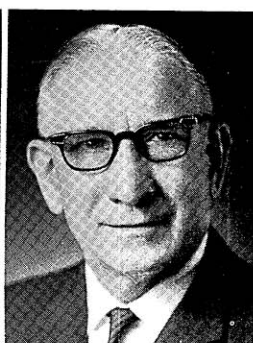
**PAUL R. ALFONSI** (Rep.) born Pence, Feb. 13, 1908. Educ. Hurley public schools; grad. Whitewater St. Coll.; attended Univ. of Wis. Pres. of insurance co. at Green Bay; was high sch. business educ. tchr. 1927-33, superv. prin. Minocqua schools 1948-55. World War II veteran; in Army 1943-46. Pres. elector 1960. Town chm. 1935-43. Elected to Assembly 1932-40, 1958-64. First person of Corsican descent to serve in Wis. Legis.; Speaker 1937; Prog. Floor Leader 1935 and '39; Asst. Maj. Leader 1961, Maj. Leader 1963, Asst. Min. Leader 1965 until chosen Min. Leader Oct. 1965. Mbr. Conserv. Com. (chm. 1963), Insurance and Bkg. Com., Rules Com. (chm. 1963); secy. Legis. Council (also mbr. 1963) and of its Conserv. Com. (chm. 1963), mbr. of its Ins. and Bkg. Com.; served on its State Fiscal Situation Com., Highway Adv. Com., Com. of 25, 1963-65. Mbr. Jt. Legis. Org. Com., Gov.'s Com. on Wis. Water Resources; Interstate Co-op. Comm.; Legis. Org. and Proc. Com.; served on 1963 Tax Compromise Com., State Bldg. Comm. Mailing address: Minocqua 54548.



AZIM  
Grant



GALLI  
Green, Lafayette



JAHNKE  
Green Lake, Waushara

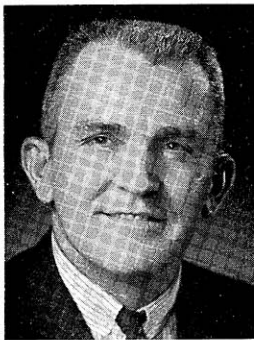
JAMES N. AZIM, JR. (Rep.) born Richland Center, Jan. 17, 1936. Educated St. John's Elementary and High Schools in Muscodia; attended College of St. Thomas, St. Paul, Minn., Marquette Univ., and graduated Wis. St. Coll. at Platteville, B.S. 1957. Grad. Univ. of Wis. Law School, 1965; attorney; history instructor 1957 to 1962, Muscodia High School. Chosen legislative page at the opening of the 1963 Session. Mbr. Wis. Academy of Science, Arts and Letters. Founder and past secy. Com. to Preserve Rural Television, past secy. Blue River Watershed Assn., past secy. Muscodia Chamber of Commerce. Muscodia village trustee 1960-63. Elected to Assembly April 1964 to fill vacancy caused by the death of Assemblyman Harper; re-elected Nov. 1964. Mbr. Assembly Taxation Com.; chm. Gov.'s Council on Traffic Law Enforcement (also chm. temp. previous com.), mbr. Legis. Council's Taxation Com.; served on its Highway Safety Com. 1964-65. Mailing address: Muscodia.

G. FRED GALLI (Rep.) born Cormondes, Switzerland, May 7, 1902. Educated Laupen, Switzerland elementary and high schools; college level courses in dairying in Bern, Switzerland 1920-21 and Univ. of Wis. 1932-33. Manager-exec. secy. of cheese producers co-op. assn.; formerly a cheesemaker and grader. Dir. Green County Agric. Chest; cheese judge at fairs and at State Cheesemakers conventions. Mbr. State Cheesemakers' Assn., American Dairy Science Assn. Past dir. and treas. Monroe Chamber of Com.; past dir. Wis. Cheese Foundation, also charter member and incorporator. Served on State Milk Standards Com., National Cheese Standards Com. Alderman 1952-60; city council pres. 1956-58. Elected to Assembly April 1964 to fill vacancy caused by the death of Assemblyman Stauffer; re-elected Nov. 1964. Mbr. Assembly Agric. Com.; served on Legis. Council's Aged Tax Relief Com. 1964-65 Interim. Mailing address: 804 - 27th Avenue, Monroe 53566.

FRANKLIN M. JAHNKE (Rep.) born in Town of Marquette, Green Lake County, Apr. 20, 1900. Educated Green Lake County public schools. Lifetime farmer; owns dairy and hog farm. Past pres. and dir. co-op. assns.; member Kiwanis Club. Pres. Wis. County Boards Assn. 1963-65; pres. Wis. Assn. of Soil Conservation Dist. Superv. 1954-56; chm. tn. Marquette 1933-65; chm. Green Lake Co. Board 1944-65. Member State Banking Review Board 1937-43. Elected to Assembly 1956; re-elected '58, '60, '62 and '64. Member Assembly State Affairs Com. (chm. 1963 session); served 4 terms on Agriculture Com. Chm. Legis. Council Water Resources Com. 1961-63; served as secretary of council's Conservation Study Com. and Co. Boards Representation Com. 1963-65 interim; also member Cooperative Education Agency Study Com. and of Dist. Comprehensive Mental Health Com. 1964-65. Mailing address: Rt. 3, Markesan.



BOCK  
Iowa, Richland



RADCLIFFE  
Jackson, Trempealeau



WACKETT  
Jefferson

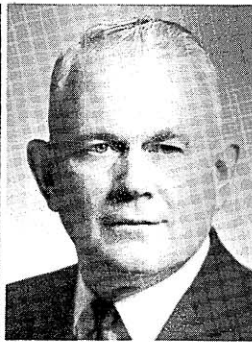
GREGOR J. BOCK (Rep.) born Muscoda, November 2, 1907. Educated at Black District School No. 4 and Muscoda public schools; attended University of Wisconsin. Sand and gravel producer; formerly employed by telephone company and as farm hand. Charter member Highland Lions Club; church trustee; member Knights of Columbus. County board supervisor 1961 to present; deputy sheriff 1932 to present; village president 1938-43; school board president 1950-59; Highland postmaster 1941-51. Elected to Assembly 1964. Member Assembly Transportation Committee. Mailing address: W. Dodgeville Street, Highland 53543.

JOHN RADCLIFFE (Dem.) born Little Falls, May 19, 1920. Educated Black River Falls elementary and Tony high school. Rubber company employe for past 20 years; formerly a surveyor. Veteran of World War II; served in Navy. Has variously served as president Strum PTA, district director Boy Scouts, Trempealeau County Democratic Party Chairman, chief steward C.I.O. Rubber Workers at Eau Claire; Veterans of Foreign Wars, Strum Commercial Club, Rod and Gun Club, State Horticulture Society. Served as member Strum-Eleva Central High School Board, chairman Strum-Skyline Park Board. Elected to Assembly 1964. Vice chairman Assembly Engrossed Bills Com.; member Agriculture Com. and Public Welfare Com., Legis. Council Highway Adv. Com. Mailing address: Strum.

BYRON F. WACKETT (Rep.) born Randolph, March 21, 1912. Educated Randolph public schools. Service station operator; formerly salesman. Past president Wis. Assn. of Petroleum Retailers. Chairman Watertown Chapter Red Cross 1950-52. Served as mayor of Watertown from 1946 to 1949. Elected to Assembly 1952; now in 7th term. Member Assembly State Affairs Com., Printing Com., Legislative Council Public Welfare Committee; served on Legis. Council U.W. Medical Center Com. 1963-65 interim; served on Assembly Municipalities Com., Veterans and Milit. Affairs Com. (chairman 1955 and 1957); Legis. Council Coms. on Reactivation of Camp McCoy 1957-59, on Taxation (vice-chm.) 1961-63, Water Resources Com. 1959-61. Mailing address: 100 Oak Hill Court, Watertown.



MOLINARO  
Kenosha, 1st



ELFERS  
Kenosha, 2nd



WARTINBEE  
La Crosse, 1st

GEORGE MOLINARO (Dem.) born Kenosha, Oct. 1, 1902. Educ. Kenosha public schools and Business Coll. Automobile worker, bank pres. Dir. and life member local county fair assn. On county bd. 1939-47. Elected to Assembly 1946; now in 10th term. Assembly Speaker Pro Tem. 1965, Assembly Minority Caucus chm. 1961 and 1963, Speaker of the Assembly 1959, Dem. Floor Leader 1951, '53. Chm. Jt. Com. on Finance (6th term as mbr.); mbr. Assembly Rules Com. (5th term), Claims Comm. (ex officio), Bd. on Govt. Operations (ex officio), Gov.'s Com. on Wis. Water Resources, Legis. Council (chm. 1959-61) and its Ins. and Bkg. Com. and Branch Bkg. Com.; served on its U.W. Medical Center Com., council repres. on Natural Resources Com. of State Agencies, Com. on Legis. Organization and Procedure (Ford Foundation) 1963-65 interim; served on Interstate Co-operation Comm. Mailing address: 424 - 44th St., Kenosha 53140.

Kenosha County, 1st District: Wards 1-3, 5, 7-13, 16-18, City of Kenosha.

EARL H. ELFERS (Dem.) born Bassett, May 26, 1913. Educated Oak Knoll elementary, Wilmet high school; graduated as licensed auctioneer from Chandler School of Auctioneering, Spencerian College, Milwaukee. Auctioneer and real estate broker; also in boat-bait-tackle and food service business; farmed 1,200 acres until 1958. Serving 6th term as town chairman and mbr. of Kenosha County Board, 10 years as school board director. Member of Farm Bureau. Elected to Assembly 1962 and 1964. Chairman Assembly Com. on Engrossed Bills; vice chairman Elections Com.; member Veterans' and Military Affairs Com., Legislative Council Elections Com. Mailing address: Box 86, Trevor.

Kenosha County, 2nd District: Towns of Brighton, Bristol, Paris, Pleasant Prairie, Randall, Salem, Somers, Wheatland; Villages of Paddock Lake, Silver Lake, Twin Lakes; Wards 4, 6, 14, 15, City of Kenosha.

D. RUSSELL WARTINBEE (Rep.) born La Crosse, Nov. 11, 1903. Educated La Crosse public schools; La Crosse State Coll.; Univ. of Wis. law training 1925-26, B. Mus. 1934; M.A. Univ. of Minn. 1948. Teacher of U.S. history and social studies in La Crosse Central High School since 1942, music teacher in same school 1927-42. Past President of La Crosse Musicians' Association; Director of La Crosse Concert Band when organized in 1931 and continuously since 1939. Elected to Assembly in 1960; re-elected 1962 and 1964. Member of Assembly Education Com., Legis. Council Elections Com.; previously served on Assembly Public Welfare and Insurance and Banking Coms., Legis. Council Urban Problems Com. Mailing address: 1444 Wood St., La Crosse.

La Crosse County, 1st District: Wards 1-5, 9-20, City of La Crosse as of 1960.



NUTTELMAN  
La Crosse, 2nd



McDOUGAL  
Langlade, Oconto



SWEDA  
Lincoln, Taylor

NORBERT NUTTELMAN (Rep.) born La Crosse County, Mar. 8, 1911. Educated La Crosse County schools, West Salem High School. Farmer since 1926. Served with local branch Federal Farm Home Admin. 1956-60. Received national award, *Superior Achievement in Agriculture and Community Service*, 1952. Active in 4-H work. Committeeman Wis.-Amer. Dairy Assn. Officer of breeders co-ops.: Vernon County (1941-47), Tri-State (1947-56), Wis. Guernsey. Officer La Crosse Milk Producers Assn., Interstate Fair Assn., Kiwanis; member chamber of commerce, West Salem PTA (past pres.). Elected to Assembly 1960; re-elected 1962 and 1964. Member Assembly Agriculture Com. (vice-chm. 1963), Legis. Council Public Welfare Com. Mailing address: Rt. 1, West Salem 54669.

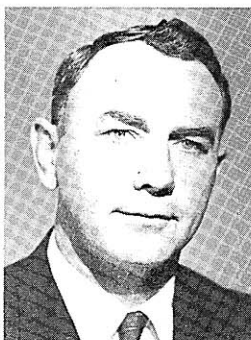
La Crosse County, 2nd District: La Crosse County except wards 1-5 and 9-20 of the City of La Crosse, which are in the 1st District.

MILTON McDOUGAL (Dem.) born Town of Spruce, Oconto County, July 21, 1917. Graduated elementary and high schools at Suring and Oconto Falls. Livestock business since 1935; owner and manager of dairy farm. Member sportsman's club, R.E.A. Chairman local senior citizens group. Elected to Assembly 1964. Member Assembly Agriculture Committee and Transportation Committee, Legislative Council Elections Committee. Mailing address: 402 Chestnut Street, Oconto Falls 54154.

JOSEPH SWEDA (Dem.) born Lublin, Jan. 3, 1926. Educated in Lublin and Withee public grade and high schools. Farmer since 1946. World War II veteran; served in Army Air Force 1945-46. Member American Legion, 3 years adjutant, 8 years post commander. Chairman local Boy Scouts committee. Served 2 years as director of county Farmers Union. Chairman county Dem. unit 1959-61. Since 1955 town chairman and member of county board, vice chairman since 1958. Member of the county board committees on finance and on higher education. Elected to the Assembly in 1962, and 1964. Mr. Sweda is vice chairman Assembly Committee on Conservation and a member of the Education Committee and Highways Committee; member of Commission on Interstate Co-operation, vice chairman Legislative Council Conservation Committee. Mailing address: Route 1, Lublin.



KAUFMAN  
Manitowoc, 1st



BOLLE  
Manitowoc, 2nd



RIEHLE  
Marathon, 1st

EUGENE S. KAUFMAN (Dem.) born Manitowoc, Sept. 28, 1922. Educated Manitowoc St. Boniface School, Lincoln High School; graduated Elgin Watchmakers College 1948. Retail jeweler since 1950; formerly dial phone system installer. Veteran of World War II; served in Army 1942-45, awarded 20 citations. Member of Holy Name Soc., K. of C., Amer. Legion, D.A.V., AMVETS, Eagles, County Fish and Game Protective Assn. and Deputy Sheriffs Assn., Wis. Retail Jewelers Assn. Member of county board of supervisors 6 years. Elected to Assembly 1962 and 1964. Chairman Assembly Commerce and Manufactures Com.; member Municipalities Com. and Taxation Com., Legis. Council Judiciary Com.; served on Legis. Council Urban Problems Com. 1963-65 interim. Mailing address: 918 S. 13th St., Manitowoc 54220.

Manitowoc County, 1st District: Towns of Manitowoc, Manitowoc Rapids, Newton; City of Manitowoc.

EVERETT E. BOLLE (Dem.) born in Manitowoc County's Town of Kossuth, August 29, 1919. Educated St. Ann's parochial school, Rockwood public schools, Two Rivers High School; labor problems and collective bargaining training from Univ. of Wisconsin Ext. Div. Real estate salesman and auctioneer; formerly farmer, trucker, general merchandise store, factory worker. Past pres. Holy Name Soc.; member Knights of Columbus, local fish and game protective assn.; served as district chm. Heart Fund, pres. labor union local. Served as town supervisor. Elected to Assembly 1960; re-elected 1962 and 1964. Chairman Assembly Excise and Fees Com.; member Agriculture Com., Highways Com., Legis. Council Labor Com. and Highway Adv. Com.; served on Legis. Council Education Com. 1963-65 interim. Mailing address: Francis Creek.

Manitowoc County, 2nd District: Manitowoc County except Towns of Manitowoc, Manitowoc Rapids, Newton and City of Manitowoc.

BEN A. RIEHLE (Dem.) born in Marathon Co., Town of Rietbrock, May 15, 1897. Completed 8th grade. Lifelong dairy farmer, connected with milk plants; logger; secy.-treas. of co-op. milk plant with 36 million pounds annual volume. Vice pres. cheese producers co-op. and co-op. storage co.; secy. co-op. livestock shipping assn.; member union co-op. board, beef producers co-op., transport co-op. World War I veteran; Army motor transp. 1918-19. School treas. 1925-40; county board 1941-42; chm. local soil conserv. com. 1936-39. Elected to Assembly 1954; now in 6th term. Serving 3rd term on Joint Finance Com., chairman Assembly Printing Com.; member State Institutions Visiting Com., member Legis. Council Local Government Com.; member Comm. on Interstate Co-operation 1959. Mailing address: Rt. 3, Athens.

Marathon County, 1st District: Marathon County except those towns, villages and cities which are in the 2nd District.



OBEY  
Marathon, 2nd



GROVER  
Menominee, Shawano



LIPSCOMB  
Milwaukee, 1st

DAVID R. OBEY (Dem.) born Okmulgee, Okla., Oct. 3, 1938. Wisconsin resident since 1941. Educated St. James School, Wausau High School; attended Wausau Extension Center; political science B.S. 1960 Univ. of Wis.; graduate study in Russian foreign policy. Real estate broker. Member admin. com. Wis. Democratic party 1960-62; director of Friends of the Menominees; active in Optimists, Knights of Columbus, Wausau Little League. Elected to Assembly in 1962 and 1964. Vice-chm. Joint Com. on Finance; member Board on Government Operations, Legis. Council Education Com. (also mbr. 1963-65 interim), Assembly Dem. Policy Committee. Mailing address: 515 N. 9th Ave., Wausau.

Marathon County, 2nd District: Towns of Maine, Texas, Wausau; Villages of Brokaw, Rothschild; Cities of Schofield, Wausau.

HERBERT J. GROVER (Dem.) born Fond du Lac, February 5, 1937. Educated Sacred Heart Grade School, Shawano High School; graduated St. Norbert College 1959, B.S.; American University 1963 M.A. Student; formerly management analyst with state and member Senator Proxmire's staff. Member Shawano Jaycees. Elected to Assembly 1964. Member Assembly Education Com., Taxation Com., Legislative Council's Menominee Indian Study Com. and Taxation Committee. Mailing address: Hartman Apts., Rt. 3, Shawano.

MARK G. LIPSCOMB, JR. (Dem.) born Milwaukee, September 1, 1935. Educated St. Thomas Aquinas Grade School and Marquette University High School, Milwaukee; graduated Marquette University B.S. in business administration 1957; LL.B. 1964. Attorney; formerly postal clerk. Served in Marine Corps 1957-1960; presently in Ready Reserve, USMCR. Member bar assns., AFL-CIO United Federation of Postal Clerks, Marquette University "M" Club, Holy Name Society, St. Vincent de Paul Society. Elected to Assembly 1964. Chairman Assembly Com. on Third Reading, member Joint Committee on Finance, Joint Study Com. on Civil Service, Milwaukee County Children's Court Study Com., Legis. Council Judiciary Com. Mailing address: 2120 W. Colfax Place, Milwaukee 53209.

Milwaukee County, 1st District: Ward 1, City of Milwaukee, and Ward 6, City of Glendale.



JONES  
Milwaukee, 2nd



GRECO  
Milwaukee, 3rd



SCHAEFFER  
Milwaukee, 4th

JOSEPH E. JONES (Dem.) born Antigo, June 29, 1914. Educated Antigo grade and high schools; studied at Univ. of Wis., Bowly Business Coll., Northwestern Univ. Machinist; formerly insurance agent. Veteran of World War II; served in Army 1944 to 1946. Member of Amer. Legion, V.F.W., Eagles, Knights of Columbus, Holy Name Soc., Milw. County Labor Council, Milw. County Dem. Council, Internat'l Assn. of Machinists (president of local 1960 to 1964). Elected to the Assembly in 1962 and 1964. Chairman Assembly Labor Com., member Commerce and Manufactures Com. and Conservation Com.; chairman Legislative Council Labor Com.; served on Legis. Council Conservation Com. 1963-65 interim. Mailing address: 4285 N. 26th St., Milwaukee 53209.

Milwaukee County, 2nd District: Ward 2, City of Milwaukee.

ANGELO F. GRECO (Dem.) born in Milwaukee, March 19, 1925. Educated Andrew Jackson School and Lincoln High School, Milw.; received B.A. 1950 Lawrence College; attended Marquette Univ. one year; in 1955 LL.B. Univ of Wis. Law School. Practicing attorney since 1955. World War II veteran; served 3 years in Army Medical Corps in China, Burma, India. Member of DAV and China, Burma, India Veterans, Elks, state and local bar assns., Delta Tau Delta, Shorewood Players, Holy Name Soc.; pres. Holy Rosary Home and School Assn. Elected to Assembly 1960; re-elected 1962 and 1964. Majority caucus chairman. Chm. Assembly Education Com.; vice-chm. Commerce and Manufactures Com.; mbr. Building Comm.; chm. Legis. Council Education Com.; served as vice-chm. Governor's Com. on Loans and Scholarships 1965, secretary Legis. Council Education Com. 1963-65 interim. Mailing address: 2021 E. Newberry Blvd., Milwaukee 53211.

Milwaukee County, 3rd District: Ward 3, City of Milwaukee.

FRANK E. SCHAEFFER, JR. (Dem.) born Milwaukee, Feb. 1, 1905. Grad. Gesu Catholic School; attended Milw. Vocational School. Employed by Milw. brewing co.; building supt. 20 years, painting contractor 18 years. Mbr. Brewery Workers Union, Red Cross, Civil Def. Council; past vice-pres. Building Serv. Union; delegate Federated Trade Council, state Dem. Conventions 1938, '44-52, '58-62. Mbr. Legislators Dem. Council, on Policy, Steering, Labor Coms. Elected to Assembly 1944; served in each Assembly since except 1955-57. Chm. Assembly Municipalities Com. (mbr. 14 years); mbr. Excise and Fees Com. 14 years, Public Welfare Com. 4 years; mbr. Jt. Study Com. on Civil Service, Legis. Council; vice-chm. its Local Govt. Com.; Secy. Legis. Council Water Resources Com. 1959-61 (chm. Abandonment of Dams Subcom.); mbr. of its Taxation Com. 1961; other interim study coms. on labor and management, budget. Mailing address: 1623 W. Wisconsin Ave., Milwaukee 53233.

Milwaukee County, 4th District: Ward 4, City of Milwaukee.



SCHAUS  
Milwaukee, 5th



BARBEE  
Milwaukee, 6th



FLANNIGAN  
Milwaukee, 7th

THOMAS M. SCHAUS (Dem.) born Milwaukee, June 7, 1937. Educated Gesu Elementary and West Division High School, Milwaukee; graduated Marquette University 1959 B.S., University of Wisconsin 1962 LL.B. Attorney. Served in U.S. Marine Corps Reserve. Member bar assns., Brotherhood of Railroad Trainmen, Knights of Columbus, group leader United Fund Drive; past treasurer Lawyers Club, Madison; vice president Holy Name Society; a director of the Lisbon Avenue Advancement Association. Elected to Assembly 1964. Member Assembly Judiciary Committee, Municipalities Committee, Revision Committee, Legislative Council Judiciary Committee. Mailing address: 2666 N. 36th Street, Milwaukee.

Milwaukee County, 5th District: Ward 5, City of Milwaukee.

LLOYD A. BARBEE (Dem.) born Memphis, Tenn., Aug. 17, 1925. Educ. Memphis high school; B.A. LeMoyne College, Memphis 1949; LL.B. Univ of Wisconsin 1956. Attorney; formerly law examiner Industrial Comm. World War II veteran; Navy. Chm. Milw. United School Integration Com.; bd. mbr. E. B. Phillips Day Care Center; bd. dir. Wis. Film Associates, Inc.; mbr. Milw. General Semantics Society, Milw. Citizens for Equal Opportunity; has served in official capacities with regional, state and local NAACP, with Wis. Citizens for Fair Housing, with Wis. State Employees' Assn. local; res. counselor Dane Co. Citizens Planning Com.; has been mbr. Madison Mayor's Comm. on Human Rights (chm. 1959-62), Citizens' Anti-Police Brutality Com.; delegate Milw. County Council, 6th Ward Dem. Party. Elected to Assembly 1964. Chm. Assembly Com. on Enrolled Bills; mbr. Jt. Finance Com.; secy. Legis. Council Public Welfare Com. Mailing address: 110 E. Wisconsin Avenue, Milwaukee.

Milwaukee County, 6th District: Ward 6, City of Milwaukee.

ALLEN J. FLANNIGAN (Dem.) born Princeton, Ind., June 9, 1909. Educ. in pub. schools; Univ. of Ill. 2 yrs.; Univ. of Wis. special courses. Tool grinder; formerly teletype operator, telegraph office mgr. World War II veteran; 32 mos. overseas in Army Signal Corps 1942-45. Mbr. and former officer of United Steelworkers; active in civic affairs; on bd. of Neighborhood House, a Milw. Red Feather agency. Elected to Assembly 1956; re-elected 1958, '60, '62 and '64. Asst. Dem. Assembly Floor Leader 1959. Chm. Assembly Labor Com. (also 1959), mbr. Insurance and Banking Com., Rules Com.; served on Veterans and Military Affairs, Municipalities, Transportation Coms.; served on Legis. Council's State Fiscal Situation Com. 1963-65 interim; previously on its Reapportionment Com.; past secy. Interstate Co-operation Comm. Deceased, February 17, 1965. Mailing address was 2605 W. Auer Ave., Milwaukee 6.

Milwaukee County, 7th District: Ward 7, City of Milwaukee.



JOHNSON, W. A.  
Milwaukee, 7th



MANDERS  
Milwaukee, 8th



MERTZ  
Milwaukee, 9th

WILLIAM A. JOHNSON (Dem.) born Michigamme, Michigan, February 3, 1922. Educated Riverside High School. Machinist. World War II veteran; served in Navy 1943-45. Member executive board 7th Ward Democratic unit; served as president AFL-CIO U.A.W. local 248, vice president Milwaukee County Labor Council, member State Advisory Committee on Workmen's Compensation, delegate to Milwaukee County Labor Council. Elected to Assembly 1965 to succeed the late Assemblyman Flannigan. Member Assembly Insurance and Banking Com. and Labor Com.; vice chairman Legislative Council Labor Committee. Mailing address: 3403 N. 22nd Street, Milwaukee.

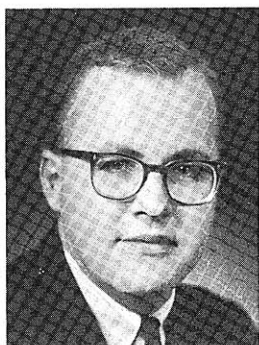
Milwaukee County, 7th District: Ward 7, City of Milwaukee.

ADRIAN J. MANDERS (Dem.) born Wrightstown, Brown Co., Apr. 17, 1912. Educated St. Joseph Sch., Nicolet High Sch., West DePere; Milw. Vocational Sch. 1945-46; attended Univ. of Wis. 1961. Real estate broker; former sheet metal mechanic. Chm. 8th Ward Dem. unit 1958-59; cited at 1958 state Dem. conv. for outstanding public relations and recruiting, awarded *Mr. Democrat* title 1959; mbr. Milw. Co. Dem. exec. bd. 1959-60; chief sergeant at arms state Dem. conv. 1959 and 1960. Member S. 16th St.-Muskego Ave. Businessmen's Assn., S. Division St. Civic Assn., sheet metal workers union, Holy Name Soc. Elected to Assembly 1960; re-elected 1962, '64. Vice-chm. Assembly Taxation Com.; mbr. Excise and Fees, Municipalities Coms.; vice-chm. Jt. Survey Com. on Tax Exemptions; mbr. Temp. Com. on Plumbing and Installation of Water Supply Appliances, Legis. Council Taxation Com.; served on its Obscene Lit. Investigation Com. 1963-65. Mailing address: 1406 S. 36th St., Milwaukee 53215.

Milwaukee County, 8th District: 1962 Ward 8, City of Milwaukee.

EDWARD F. MERTZ (Dem.) born Milwaukee, Aug. 15, 1890. Attended St. Boniface Parochial Sch., Milw.; studied bookkeeping and accounting Badger State Bus. Coll.; grad. Reich Amer. Sch. of Auctioneering, Mason City, Iowa 1960; licensed engineer. Appraiser, semiretired; law clerk 5 years, building contractor 14 yrs., operated tavern and restaurant 19 yrs. World War I veteran; served in Army 1917-19. Past commander Amer. Legion Post; mbr. 40 et 8; chaplain firing squad 9 yrs.; VFW, Badger Fisherman's League; member 31 years AFL-CIO local, Northwest Old Settlers Club; mbr. State Dem. Central Com. 1944-48; delegate Dem. Nat'l Conv. 1944, '48, '52; secy. 4 yrs. Dem. Co. Com., chm. 10 yrs. of its Finance Com. Member Milw. County Board 1956-60. Elected to Assembly 1948, '50, '52, '54 and '64. Vice-chm. Assembly Transp. Com., mbr. Conserv. and State Affairs Com., Legis. Council Conservation Com. Mailing address: 3112 W. Silver Spring Drive, Milwaukee.

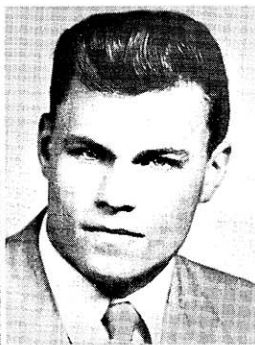
Milwaukee County, 9th District: Ward 9, City of Milwaukee, and Wards 4, 5, City of Glendale.



KESSLER  
Milwaukee, 10th



TOBIASZ  
Milwaukee, 11th



TADYCH  
Milwaukee, 12th

FREDERICK P. KESSLER (Dem.) born Milwaukee, Jan. 11, 1940. Educ. Our Redeemer Lutheran School, Milwaukee; Capitol Page School, Wash., D.C.; B.S. Univ. of Wis., 1962; LL.B., U.W. Law School, 1966. Formerly employed as machine operator, salesman, law clerk. Mbr. 10th Ward Dem. Club, Mid-Town Neighborhood Assn., Cooperation West Side, Milw. Measure for Measure. Page in U.S. House of Rep. 1955-57. Worked with Gov. Reynolds' staff on reapportionment court cases in 1964. Elected to Assembly 1960, defeated for Senate 1962, re-elected to Assembly 1964. Member Assembly Elections, Judiciary Coms., Jt. Survey Com. on Revisions, Repeals and Uniform Laws, Temporary Com. on Plumbing and Installation of Water Supply Appliances, Legis. Council Nuclear Facilities Com. and vice chairman of its Elections Com. Mailing address: 3004 W. Wells Street, Milwaukee.  
Milwaukee County, 10th District: Ward 10, City of Milwaukee.

RAYMOND J. TOBIASZ (Dem.) born Milwaukee, May 10, 1916. Educated St. Barbara's School, South Division High School, Milwaukee. Machine alignment worker; owned hobby and smoke shop. World War II veteran; served in Army. Member of AMVETS, American Legion, South Division Civic Assn., Polish National Alliance, American and Milwaukee Numismatic Assn., Holy Name Soc., Knights of Columbus. Served as 11th Ward Democratic committeeman 1956-60. Elected to the Assembly in 1960; re-elected 1962 and 1964. Chairman Assembly Transportation Com.; vice-chm. Labor Com.; member Insurance and Banking Com.; Unemployment Compensation Advisory Committee; secretary Legis. Council Taxation Committee; member Temporary Commission on Administrative Branch Reorganization. Vice chairman Democratic Caucus. Mailing address: 3145 S. 50th St., Milwaukee 19.  
Milwaukee County, 11th District: Ward 11, City of Milwaukee.

ALBERT R. TADYCH (Dem.) born Milwaukee, Mar. 23, 1932. Educated St. Anthony School, Don Bosco High School; received B.A. in 1954 from Marquette Univ., LL.B. from its Law School in 1958. Practicing attorney; formerly brewery worker, truck driver U.S. post office, assembler. Member Milwaukee and Wisconsin bar assns., Alpha Kappa Psi, Delta Theta Phi, Eagles, 12th Ward Democratic unit, former member Brewery Workers Union, Marquette Alumni Assn. Elected to the Assembly in 1960; re-elected 1962 and 1964. Member of the Assembly Committee on Judiciary; served on Commerce and Manufactures Com. 1963; member Legislative Council Taxation Committee. Mailing address: 2006 S. 15th St., Milwaukee 53204.  
Milwaukee County, 12th District: Ward 12, City of Milwaukee.



PARYS  
Milwaukee, 13th



KORDUS  
Milwaukee, 14th



McCANN  
Milwaukee, 15th

RONALD G. PARYS (Dem.) born Milwaukee, October 7, 1938. Educated St. Mary Czeszochowa Elementary and Riverside High School, Milwaukee. Industrial appraiser and tax assessor; formerly plant foreman and purchasing supervisor, buyer and inventory control. Has served in U.S. Army Reserves since 1955. Member 13th Ward Democratic Unit, 13th Ward Community Council, Polish National Alliance, St. Casimir Holy Name, St. Mary Czeszochowa Athletic Club. Elected to Assembly 1964. Vice chairman Assembly Printing Com.; member Commerce and Manufactures Com., Veterans' and Military Affairs Com., Legislative Council Labor Committee. Mailing address: 1221 E. Clarke Street, Milwaukee.

Milwaukee County, 13th District: Ward 13, City of Milwaukee and Wards 1, 2 and 3, City of Glendale.

ROBERT P. KORDUS (Dem.) born Milwaukee, Aug. 1, 1939. Educated St. Helen Elementary School and Pulaski High School, Milwaukee; Associate Degree Milwaukee Institute of Technology 1959. Cost accountant; formerly assistant office manager. Vice-pres. Wilson Park Advancement Assn.; mbr. 14th Ward Democratic Club, South Side Council of Advancement Assn., National Assn. of Accountants, Pulaski Alumni Assn., St. Helen Holy Name Society, Fathers and Sons Club of St. Helen, Explorer Post 264, Wilson Park Fourth of July Assn.; Boy Scout Merit Badge Counselor; precinct captain for voter registration. Elected to Assembly 1964. Vice chairman Assembly Revision Com.; member Assembly Labor Com., Veterans' and Military Affairs Com., Legislative Council Elections Committee. Mailing address: 2953 S. 12th Street, Milwaukee 53215.

Milwaukee County, 14th District: Ward 14, City of Milwaukee.

JAMES A. McCANN (Dem.) born Freedom, March 7, 1924. Educated St. Nicholas Elementary and Freedom High Schools; B.B.A. University of Wisconsin 1959. Certified public accountant; owner-manager insurance and real estate agency; formerly office manager and cost accountant. Veteran World War II and Korean Conflict; served in Army. Member 4th Degree Knights of Columbus (past Grand Knight), 15th Ward Democratic Unit. Elected to Assembly 1964. Vice chairman Assembly Contingent Expenditures Com.; member Excise and Fees Com., Insurance and Banking Com.; member Legislative Council Insurance and Banking Committee and Insurance Law Revision Committee. Mailing address: 3537 N. 95th Street, Milwaukee 53222.

Milwaukee County, 15th District: Ward 15, City of Milwaukee.



WHITROW  
Milwaukee, 16th



McCORMICK  
Milwaukee, 17th



CECI  
Milwaukee, 18th

WAYNE F. WHITROW (Dem.) born Milwaukee, Aug. 16, 1933. Educated Milwaukee public schools; studied at University of Wisconsin-Milwaukee; received B.B.A. degree 1963. Research analyst; formerly in traffic administration. Served in Army 1955-57. Member 16th Ward Democratic unit; Eagles; St. Joseph Children's Home Athletic Assn.; Bluemound Rd., State St. and Vliet St. Advancement Assns. Elected to Assembly in 1960; re-elected 1962 and 1964. Mr. Whitrow is a member of the Assembly Highways Committee and Insurance and Banking Committee; served on the Assembly Committee on Insurance and Banking in 1961 and Highways in 1963. Member Com. for Review of Administrative Rules. During the 1963 interim he served on the Legislative Council's Aged Tax Relief Com. Mailing address: 1439 N. 49th St., Milwaukee 53208.

Milwaukee County, 16th District: Ward 16, City of Milwaukee.

JOHN E. McCORMICK (Dem.) born Milwaukee, May 20, 1924. Educ. Sacred Heart Sch., Fernwood Sch., Marquette High Sch.; received LL.B. in 1951 from Marquette Univ. Law Sch. Practicing attorney. World War II overseas veteran; served in Army Air Corps 2½ years. Mbr. American Legion, Bay View, Inc. Interorganization Council, 17th Ward Dem. unit, bar assns., Holy Name Soc., Knights of Columbus. Elected to Assembly 1960; re-elected 1962, '64. Chm. Assembly Insurance and Banking Com.; vice-chm. Judiciary Com.; mbr. Gov.'s Comm. on Law Enforcement and Crime, chm. Legis. Council Insurance and Banking Com. and secy. of its Branch Banking Com.; served on Legis. Council Election Laws Com. 1963-65, Gov't Labor Relations Com. Served on Assembly Commerce and Mfrs. Com., Jt. Revisions, Repeals, Uniform Laws Com. Mailing address: 2954 S. Wentworth Ave., Milwaukee 53207.

Milwaukee County, 17th District: Ward 17, City of Milwaukee; City of St. Francis.

LOUIS J. CECI (Rep.) born New York, September 10, 1927. Educated elementary school, N.Y. and Messmer High School, Milwaukee; received Ph.B. in 1951 and LL.B. in 1954 from Marquette University. Attorney; formerly brewery worker, taxicab driver, and clerk-typist of War Department. Veteran of World War II; served in Navy. Vice chairman Northwest Civic Advancement Assn.; chairman Youth Opportunity Com. UNICO; member bar assns., Milwaukee Bar Special Commission on Children's Court Survey, Milwaukee Bar Speakers Bureau; past commander local American Legion post. Prosecuting assistant city attorney 1958-63. Elected to Assembly 1964. Member Assembly Commerce and Manufactures Com., Legis. Council Local Govt. Com. Mailing address: 8232 W. Winfield Ave., Milwaukee 53218.

Milwaukee County, 18th District: That part of Ward 18 in City of Milwaukee; Villages of Brown Deer, River Hills, that part of Village of Bayside in Milwaukee County.



HANNA  
Milwaukee, 19th



POMMERENING  
Milwaukee, 20th



LYNCH  
Milwaukee, 21st

DANIEL D. HANNA (Dem.) born Milwaukee, December 5, 1923. Educated St. Barbara's Elementary School and Pio-Nono High School, St. Francis; Attended Marquette University, University of Illinois, and University of Oregon. Restaurateur; formerly a salesman. Veteran of World War II; served in Army. American Legion past commander. Served as supervisor, Town of Lake in 1952. Elected to Assembly 1964. Member Assembly Highways Committee, Taxation Committee and the Committee to Visit State Institutions. Mailing address: 639 W. Layton Avenue, Milwaukee.

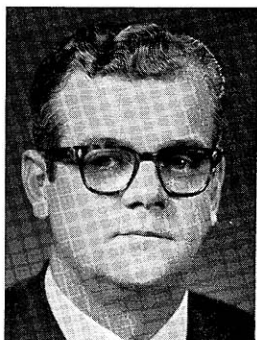
Milwaukee County, 19th District: Ward 19, City of Milwaukee, and City of Oak Creek.

GLEN E. POMMERENING (Rep.) born Milwaukee, Sept. 27, 1927. Educated Wauwatosa public schools; B.S. Univ. of Wis. 1950, LL.B. 1953. Practicing attorney. Elected to Assembly 1954; now in 6th term. Member Joint Com. on Finance (chm. 1963), Building Comm. (vice-chm. 1963, 1965); Joint Study Committee on Civil Service, Legislative Council Milwaukee County Children's Court Study Com.; served on Legis. Council and Com. of 25 during 1963-65 interim; vice-chm. Board on Government Operations 1963; member 1963, 1965 Tax Compromise Coms., Claims Comm. Past chm. Assembly Commerce and Manufactures Com., Elections Com. and Taxation Com. Served on Governor's Blue Ribbon Com. on Tax Policy, Tax Sources and Incidence Subcom. Mailing address: 2338 North 88th Street, Wauwatosa 13.

Milwaukee County, 20th District: Wards 1 to 6, City of Wauwatosa.

RICHARD J. LYNCH (Dem.) born Milwaukee, June 11, 1921. Educated Holy Assumption School, West Allis public grade and high schools. Milwaukee County deputy sheriff; formerly life insurance agent, railroad fireman, machine operator. World War II veteran; served overseas in Army 1942 to 1945. Member of the West Allis Democratic unit. Elected to the Assembly in 1962 and 1964. Mr. Lynch is vice chairman of the Assembly Highways Committee and a member of the Committee on Municipalities; member of Governor's Council on Traffic Law Enforcement, Legislative Council Highway Advisory Committee. Mailing address: 824 S. 120th St., West Allis 53214.

Milwaukee County, 21st District: Wards 7 and 8, City of Wauwatosa; Wards 3 and 5, City of West Allis.



HUBER  
Milwaukee, 22nd



SCHMIDT  
Milwaukee, 23rd



ATKINSON  
Milwaukee, 24th

ROBERT T. HUBER (Dem.) born Eckelson, N.D., Aug. 29, 1920. Grad. West Allis Central High School. Merchandising salesman; formerly contractor 1944-48. Auto parts and service salesman. Mbr. Knights of Columbus, Holy Name Soc. Elected to Assembly 1948; now in 9th term. Speaker of the Assembly. Minority Leader 1955, 1957, 1961, 1963. In 1959 became first Speaker pro tem. of the Assembly. Member Assembly Rules Com., Joint Com. on Legis. Org. (vice-chm. 1963); chairman Legis. Council; Comm. on Interstate Co-operation; secy. Legis. Org. and Procedure Com.; mbr. Gov.'s Com. on Wis. Water Resources; served on 1964 World's Fair Participation Comm., Legis. Council "Com. of 25" and Highway Adv. Com. in 1963-65 interim; served on State Building Comm., Government Operations Bd. Mailing address: 2228 S. 78th St., West Allis 19.

Milwaukee County, 22nd district: Village of West Milwaukee; Wards 1, 2, 4, City of West Allis.

ROBERT SCHMIDT (Dem.) born Kenosha, Aug. 2, 1913. Educated Greenfield Elementary School; 4 years West Allis Vocational School, studied political science at Marquette University. Retired; operated custard stand for 11 years; tool and die maker for 18 years. Member of Milwaukee Co. Historical Society, Kiwanis, 32nd degree Mason, Shrine, West Allis Y.M.C.A. Served as Greenfield town supervisor 1952-54; member Milwaukee Co. Board 1956-60. Elected to Assembly 1960; re-elected 1962 and 1964. Member of Assembly Commerce and Manufactures Com., Excise and Fees Com., Insurance and Banking Com., Legis. Council Conservation Com. and Insurance and Banking Com.; served on Physical Plant Maintenance Com. Mailing address: 6702 Crocus Ct., Greendale.

Milwaukee County, 23rd District: Villages of Greendale, Hales Corners; Cities of Franklin and Greenfield.

WILLIAM P. ATKINSON (Dem.) born Wilkensburg, Pennsylvania, May 14, 1901. Educated in elementary and high schools in San Antonio, Texas and Academy High School, Erie, Pennsylvania; B.S. in civil engineering Pennsylvania State University 1925. Professional engineer; formerly product engineer. Veteran of World War II; served in Navy. Member VFW, American Legion, Amvets, Catholic War Veterans, Ret. Officers Assn., Knights of Columbus, Eagles, National Assn. of Public Administrators, National Society of Professional Engineers, Engineering Society of Milwaukee, National Boating Assn. Alderman 4th Ward So. Milwaukee, 1951-56; Mayor, South Milwaukee 1956-64. Elected to Assembly 1964. Member Assembly Municipalities Com., Veterans' and Military Affairs Committee, Legis. Council Local Government Com. Mailing address: 115 - 16th Avenue, South Milwaukee 53172.

Milwaukee County, 24th District: Cities of Cudahy and South Milwaukee.



SOIK  
Milwaukee, 25th



KENYON  
Monroe



FROEHLICH  
Outagamie, 1st

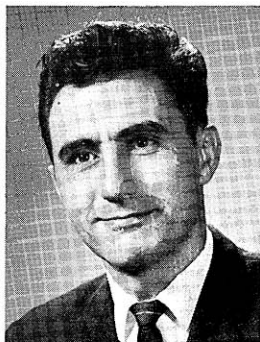
NILE W. SOIK (Rep.) born Milwaukee, May 2, 1923. Educ. Jerusalem Lutheran Sch., Riverside High Sch.; B.S. 1945 West Point; M.B.A. 1951 Univ. of Wis.; postgrad. study Cornell. Personnel Mgt., instruc. bus. admin. Marquette Univ. World War II veteran; Army Corps of Engrs. Vice-chm. Milw. Co. Rep. Party, North Shore Rep. Club. Mbr. Amer. Soc. of Trng. Dir., Community Chest, YMCA Northside Bldg. and Branch Sites Campaign, Arthritis and Rheumatism Found.; formerly Jaycees, Jr. Achievement. Elected to Assembly 1960, '62, '64. Mbr. Assembly Labor Com., Printing Com.; in 1963 session was vice-chm. Assembly Vet. and Milit. Aff. Com.; secretary Legis. Council Labor Com.; served on Legis. Council's U.W. Medical Center Com. 1963-65 interim; mbr. Insurance and Banking Com., Workmen's Comp. Adv. Com. Mailing address: 6266 N. Santa Monica Blvd., Whitefish Bay 53217.

Milwaukee County, 25th District: Villages of Fox Point, Shorewood, Whitefish Bay.

KYLE KENYON (Rep.) born at Wyeville. Educated rural school, Tomah High School; in 1952 received LL.B. from Univ. of Wisconsin Law School. Practicing attorney. County veterans service officer. World War II veteran; in Army 1943-46. Elected to Assembly 1956; re-elected 1958, '60, '62 and '64. Secretary of Assembly Republican Caucus 1961. Member Assembly Insurance and Banking Com. (chm. 1963); member Legislative Council Judiciary Committee; served on Legis. Council Remedial Legislation Committee (chm.), Insurance Com., Judiciary Com. 1963-65 interim. Served on Legislative Council; Reactivation of Camp McCoy Committee 1957-59; State Board on Government Operations 1961. Mailing address: Route 4, Tomah.

HAROLD V. FROEHLICH (Rep.) born Appleton, May 12, 1932. Educated Appleton public schools; Univ. of Wis. Commerce School B.B.A. 1959, Law School LL.B. 1962. Practicing attorney, certified public accountant. Veteran of Korean Conflict; in Navy 1951-55. Elected Rep. precinct committeeman 1956-62; chm. Rep. county statutory com. 1958-60, 1962; held local, district, state positions in Young Republicans. Member local, state, national bar and C.P.A. assns.; American Legion, V.F.W., Optimist Club, Jaycees, local Taxpayers Alliance. Elected to Assembly 1962 and 1964. Minority caucus chairman. Member Assembly Taxation Com.; has served on Judiciary Com., Municipalities Com.; mbr. Com. on Legis. Organization and Procedure, Legis. Council Taxation Com.; served on Legis. Council Urban Problems Com. 1963-65 interim. Mailing address: 322 E. College Ave., Appleton.

Outagamie County, 1st District: Wards 1-14, 20, City of Appleton.



ROGERS  
Outagamie, 2nd



CONRADT  
Outagamie, 3rd



McKAY  
Ozaukee

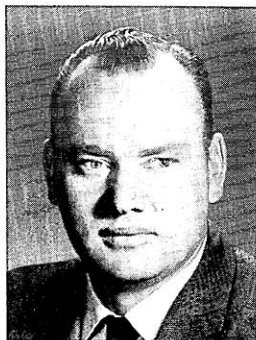
WILLIAM ROGERS (Dem.) born Appleton, Dec. 9, 1930. Educated St. Mary's School, Kaukauna; St. John's High School, Little Chute; Kaukauna High School; received B.S. degree 1958 from St. Norbert College. Teacher. Veteran of Korean Conflict; served in Army 1952-54. Member V.F.W., American Legion, Eagles, Knights of Columbus. Member of Kaukauna city council since 1960. Elected to the Assembly in 1962 and 1964. Mr. Rogers is vice chairman of the Assembly Committee on Public Welfare; member of the Assembly Elections Com. and Labor Com., the Committee to Visit State Institutions and the Legislative Council Menominee Indian Study Committee. Mailing address: 1317 Hillcrest Dr., Kaukauna.

Outagamie County, 2nd District: Towns of Buchanan, Freedom, Kaukauna, Oneida, Osborn, Seymour and Vandebroek; Villages of Combined Locks, Kimberly and Little Chute; Cities of Kaukauna and Seymour.

ERVIN W. CONRADT (Rep.) born Town of Bovina, Outagamie County, Oct. 4, 1916. Educated Spring Brook Elementary School, Outagamie County. Lifetime farmer, insurance agent since 1957. Pres. church council; Rep. Party precinct committeeman since 1956, and served on statutory com. 1957-58. Town board supervisor 1951-52; town chm. since 1953; county board member since 1953; served as school board member, member county Agric. and Conserv. Com., Highway Com. (vice-chm. 1959-65), Courts and Admin. of Justice Com., Special Coordinating Com. Elected to Assembly 1964. Member of Assembly State Affairs Com., Legis. Council Public Welfare Com. Mailing address: R.R. 2, Shiocton 54170.

Outagamie County, 3rd District: Towns of Black Creek, Bovina, Center, Cicero, Dale, Deer Creek, Ellington, Grand Chute, Greenville, Hortonville, Liberty, Maine, Maple Creek; Villages of Bear Creek, Black Creek, Hortonville, Shiocton; Wards 15-19, City of Appleton, and that part of City of New London in Outagamie County.

J. CURTIS MCKAY (Rep.) born Chicago, Oct. 10, 1926. Educated Armstrong school, Sullivan and Lane Technical High School, Chicago; received B.A. in 1950 from Grinnell College, Iowa; Juris Doctor of Law 1957 Northwestern University Law School. Practicing attorney. Elected to Assembly 1960; re-elected 1962 and 1964. Member Assembly Judiciary Com. (also in 1961), Contingent Expenditures Com. (3 sessions, chm. 1963); member Legislative Council and its Local Government Com. and Nuclear Facilities Com.; served as officer of State Building Comm. and as member Legislative Council's Conservation Com. 1963-65 interim; served on the Council's Judiciary Com. which developed the Wisconsin Commercial Code; member Joint Com. on Finance and Comm. on Interstate Co-operation 1963. Assembly Municipalities Com. 1961. Chosen Assembly Assistant Majority Leader 1963. Member Legislative Leaders Conference 1964. Mailing address: Rt. 1, Cedarburg.



MYHRA  
Portage



HUTNIK  
Price, Rusk, Sawyer



WARREN  
Racine, 1st

NORMAN L. MYHRA (Dem.) born Amherst, Portage County, Feb. 17, 1925. Educated in public schools in Portage County; high school and general business course at Milwaukee Vocational School. Former life insurance agent; World War II veteran; served in Army Infantry 1943-45. In 1944 lost both hands in combat; he was 19 years old at the time. Past commander of Rosholt American Legion post, presently active member Post #6; life member of V.F.W.; chapter adjutant Disabled American Veterans (past commander of local chapter and district, presently dept. judge advocate), Military Order of Purple Heart, Army and Navy union. Served as Rosholt village assessor 1953. Elected to Assembly 1960; re-elected 1962 and 1964. Chairman Assembly Veterans and Military Affairs Committee; member Agriculture Com. and State Affairs Com., Legis. Council Labor Com.; served on Legis. Council Water Resources Com. 1961. Mailing address: 2317 Welsby Ave., Stevens Point.

WILLIS J. HUTNIK (Rep.) born in Price County's Town of Elk, Mar. 23, 1915. Educated Price Co. public schools and Normal School; Central State Coll.; Univ. of Wis. Owns school and office supply business; formerly teacher, principal, personnel mgr. Camp Grant, Ill. Chairman Rusk Co. Conserv. Congr.; exec. councillor northwest Wis. Conserv. Congr.; member Ladysmith Community Club. Was pres. Price Co. Education Assn. Elected to Assembly 1952; now in 7th term. Chosen Assembly Speaker pro tem. 1961. Member Assembly Highways Com.; in 1963 chm. Assembly Labor Com.; has served as chairman of Assembly Education Com., State Affairs Com.; as member of Commerce and Manufactures, Public Welfare and Veterans Affairs Coms.; member Legis. Council Highway Advisory Com.; was vice-chm. Legis. Council Reapportionment Com. Member Temp. Com. on Plumbing and Installation of Water Supply Appliances. Mailing address: 101 Main Street, Ladysmith.

EARL W. WARREN (Dem.) born Hurley, Feb. 25, 1902. Graduated from Lincoln High School, Hurley; attended Ironwood, Mich. Business College. Assembler in radiator factory since 1936; formerly operated own business. Mbr. Elks, AFL-CIO, Eagles, United Commercial Travelers. Served on Racine Co. Board 4 terms 1948-55. Elected to Assembly 1954; now in 6th term. Chm. Assembly State Affairs Com.; vice-chm. Insurance and Banking Com.; mbr. Public Welfare Com.; chm. Legis. Council Local Government Com. In prior sessions mbr. of Joint Finance Com., Assembly Enrolled Bills Com. (chm. 1959), Commerce and Manufactures Com., Printing Com., Legis. Council County Boards Com., Water Resources Com. Mailing address: 2809 Virginia Street, Racine.

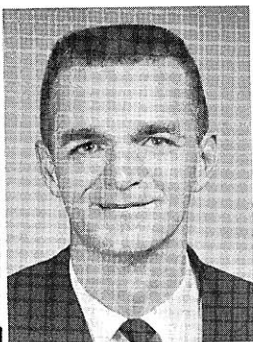
Racine County, 1st District: Town of Mt. Pleasant; Villages of Elmwood Park and Sturtevant; 1964 Wards 2, 3, 6, 10, 11, 13 and 14, City of Racine.



**BROWN**  
Racine, 2nd



**STALBAUM**  
Racine, 3rd



**MITTNESS**  
Rock, 1st

**MANNY S. BROWN** (Dem.) born Chicago, Ill., Nov. 2, 1917. Educ. Chicago and Racine's Wash. Park High School; B.A. Univ. of Wis. 1940, LL.B. Marquette Univ. 1952. Attorney since 1952; formerly U.S. Maritime Comm. expeditor; newspaper and publishing company editorial staff. Veteran of World War II; served in Navy. Mbr. bar assns., Racine Co. Humane Soc., Children's Service Soc., Racine Art Assn., Amer. Judicature Soc., Nat'l Coun. of Juv. Court Judges, Amer. Trial Lawyers Assn.; served on Bd. of Dir. Dem. Party Racine Co. Mbr. Bd. of Educ. Racine Unified Sch. Dist. No. 1, 1953 to present (pres. 1957-58), Racine Co. Safety Coun. since 1954; served on Racine City Recr. Comm. Elected to Assembly 1964. Vice-chm. Jt. Com. on Revisions, Repeals and Uniform Laws; mbr. Assembly Education, Labor Coms., Legis. Council Education Com. Mailing address: 2817 Ruby Ave., Racine.

Racine County, 2nd District: Villages of North Bay and Wind Point; 1964 Wards 1, 4, 5, 7 to 9, 12, 15, City of Racine.

**MERRILL STALBAUM** (Rep.) born in Racine County's Town of Norway, Apr. 24, 1911. Educated in Racine Co. rural and agricultural schools; Waterford High School. Surveyor; director of a farmer's mutual insurance company; active farmer 1930-59. Has served as Town of Norway clerk since 1937, as member of Racine Co. School Committee 1949-60. Elected to Assembly 1960; re-elected 1962 and 1964. Member of Assembly Municipalities Com. and Enrolled Bills Com., Legislative Council Elections Committee; served on Legis. Council Urban Problems Com. and on the Com. for Review of Administrative Rules 1963-65. Mailing address: Rt. 1, Waterford 53185.

Racine County, 3rd District: Towns of Burlington, Caledonia, Dover, Norway, Raymond, Rochester, Waterford, Yorkville; Villages of Rochester, Union Grove, Waterford; City of Burlington.

**LEWIS T. MITTNESS, JR.** (Dem.) born LaCrosse, July 29, 1929. Educated Wyeville Grade School and Tomah High School; attended Wis. State College at LaCrosse; B.S. in secondary education Wis. State College at Stevens Point 1954; M.E. in school administration University of Wisconsin 1958. Teacher; formerly drive-in owner and manager. Served in Army 1951-53. Member national, state and local education associations. Elected to Assembly 1964. Member Assembly Contingent Expenditures Com., Joint Committee on Finance, Legislative Council Education Committee. Mailing address: 730 N. Ringold Street, Janesville.

Rock County, 1st District: Towns of Bradford, Harmony, Johnstown and La Prairie; City of Janesville.



BLANCHARD  
Rock, 2nd



BELTING  
Rock, 3rd



IVERSON  
St. Croix

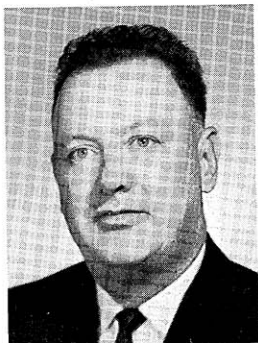
CAROLYN J. BLANCHARD (Rep.) born Cambridge, June 13, 1921. Educated Cambridge public schools; majored in speech correction and English at Univ. of Wis., B.S. 1943. Active in civic, charitable and religious organizations. Elected to Assembly in April 1963 special election (the first Wisconsin woman to be so elected) to fill vacancy caused by the death of her husband, Assembly Speaker David Blanchard; re-elected 1964. Member Assembly Public Welfare Committee, Legislative Council Education Committee; served as secy. Legis. Council's Election Laws Com. 1963-65 interim. Mailing address: 506 Chamberlain St., Edgerton 53534.

Rock County, 2nd District: Towns of Avon, Beloit, Center, Fulton, Janesville, Lima, Magnolia, Milton, Newark, Plymouth, Porter, Rock, Spring Valley, Union; Villages of Footville, Milton, Milton Junction, Orfordville; Cities of Edgerton, Evansville.

GEORGE B. BELTING (Rep.) born De Soto, July 15, 1914. Educated in Rock Co. public schools; B.A. and LL.B. (1938) Univ. of Wis. Practicing attorney; formerly Univ. of Wis. instructor. World War II veteran; in Navy landing forces Pacific. At Univ. of Wis. chosen senior class officer and pres. Men's Dormitory Assn. Dir. Beloit Better Business Bureau; was pres. Beloit Historical Soc., asst. scoutmaster; member bar assns., Izaak Walton League, Amer. Legion, Taxpayers League. On county board 3 terms. Elected to Assembly 1956; serving 5th term. Mbr. Assembly Municipalities Com., Revision Com.; in 1963 was vice-chm. Judiciary Com.; chm. Taxation Com. in 1961; served on Legis. Council Urban Problems Com. 1963-65 interim; Legis. Council Commercial Code Com. 1961-63. Mailing address: 2041 East Ridge Road, Beloit.

Rock County, 3rd District: Towns of Clinton, Turtle; Village of Clinton; City of Beloit.

DONALD L. IVERSON (Dem.) born St. Croix Falls, Feb. 3, 1923. Educated at St. Croix Falls elementary and high schools. B.S. River Falls State University; Doctor of Optometry, Chicago College of Optometry. Optometrist since 1954; high school science teacher 1953-54. World War II veteran; served in Army in Middle East Theater of Operations 1943-45. Member of American and Wis. Optometric Assns., International Board of Examiners in Optometry, Indianhead Optometric Assn., V.F.W., American Legion, Chamber of Commerce, St. Croix County Historical Society, Hudson Boosters (Little League). Member St. Croix County Welfare Board and county Mental Health Com.; alderman 1961-63; county board supervisor 1962 to present; member and past pres. State Board of Examiners in Optometry 1959-64. Elected to Assembly 1964. Member Assembly Conservation, Taxation and Printing Coms., Legis. Council Conservation Com. Mailing address: 822 Summer Street, Hudson 54016.



TERRY  
Sauk



KUNDE  
Sheboygan, 1st



GESSERT  
Sheboygan, 2nd

WALTER E. TERRY (Rep.) born Baraboo, Feb. 26, 1909. Educated rural and Baraboo public schools; in 1932 received Ph.B. in commerce from Notre Dame University. Presently a farmer; formerly worked as a field auditor for Wis. Public Welfare Dept. Has been an officer in various state and county dairy co-operatives. Elected to Assembly 1958; re-elected 1960, 1962 and 1964. Member Joint Com. on Finance, Legislative Council Conservation Committee; served 2 terms as chm. Assembly Public Welfare Com. and served on Conservation Com. 1963; served on Mental Health Advisory Com., Com. to Visit State Institutions, the State Building Comm., and the Legis. Council Agriculture Committee 1959-61. Mailing address: Rt. 3, Baraboo.

KENNETH KUNDE (Dem.) born July 24, 1916. Studied at Oshkosh State College, Univ. of Wisconsin Extension Division. Business manager, public relations; formerly credit manager, sales manager. World War II veteran, in Army 1941-45; also 5 years service in Wis. National Guard. Member of AMVETS, state commander 1948 and '56, state legis. director 1949-51. Vice pres. of Wis. Veterans Council. Served on statutory com. of Wis. Department of Veterans Affairs 1947. Democratic party county chm. 1957; 6th Cong. District vice-chm. 1960, candidate for Congress 1948 and 1950. Elected to Assembly 1962 and 1964. Chairman Assembly Com. on Contingent Expenditures; vice-chm. Excise and Fees Com.; member Highways Com., Legis. Council Highway Adv. Com.; served on Legis. Council U.W. Medical Center Com. 1963-65 interim. Mailing address: 2831 S. 10th St., Sheboygan 53081.

Sheboygan County, 1st District: City of Sheboygan.

HARRY L. GESSERT (Rep.) born Elkhart Lake. Educated Elkhart Lake public schools. Attended Plymouth Business College 2 years. Operates restaurant and retail store. Interested in the problems of farmers and of small town residents. Member Elkhart Lake Service Club and Chamber of Commerce. Elected Elkhart Lake justice of peace 1955; member of county board 1959. Elected to Assembly in 1960; re-elected 1962 and 1964. Member of Gov. Reynolds' budget tour. Member Assembly Com. on Commerce and Manufactures; served on Committee to Visit State Institutions 1963-65 interim; served on Assembly Highways, Labor, Taxation, Conservation, Enrolled Bills and State Affairs Coms. Mailing address: 222 Lake St., Elkhart Lake.

Sheboygan County, 2nd District: All the towns, cities and villages of the county, except the City of Sheboygan.



BORG  
Walworth



SCHROEDER  
Washington



MERKEL  
Waukesha, 1st

GEORGE M. BORG (Rep.) born Colorado Springs, Colo., Dec. 4, 1934. Wisconsin resident since 1935; attended Delavan public schools and Univ. of Wisconsin. Vice president local savings and loan assn.; former plant manager for manufacturing company. Veteran during Korean Conflict; served in Army. Vice president Delavan Sportsman Club; member of Elks. Delavan alderman 1959-61, Chairman health and license com., member civil defense com., finance, insurance, fire and police coms. Elected to Assembly in 1960, re-elected 1962 and 1964. Member Assembly Labor Com. and Contingent Expenditures Com.; member Governor's Committee on Wis. Water Resources; in 1963 was vice-chm. Assembly Enrolled Bills Com., member of Joint Finance Com.; served on Municipalities Com.; in 1963-65 interim served on Legislative Council's Education Com. Mailing address: 454 Borg Road, Delavan.

FREDERICK C. SCHROEDER (Rep.) born West Bend, Jan. 10, 1910. Educated at West Bend elementary and high schools. Farmer and retail dairy operator. Member of Board of Directors of county Holstein association for 18 years (has also been chm.) and was chm. of its com. sponsoring the Sire Calf Project; board of directors of East Central Breeders Cooperative at Waupun representing Washington Co. (has served as secy.); served 10 years on Washington Co. ASC Com. (chm. 4 years); in 1961 was a representative of the National Council of Churches and attended a church seminar in Washington, D.C.; served as church delegate of Board of Home Missions; has served 30 years on Washington Co. DHIA board of dir. Awards: Progressive Breeder Award of the Holstein-Friesian Assn. of America. Elected to Assembly 1964. Member Agriculture, Engrossed Bills Coms. Mailing address: 523 N. 10th Avenue, West Bend 53095.

KENNETH J. MERKEL (Rep.) born Marshfield, Aug. 9, 1926. Educated St. John's, Marshfield, and Marshfield High School; attended Michigan State Coll.; grad. Marquette Univ. 1949, engineering degree; attended Univ. of Wisconsin-Milwaukee Graduate School. Electrical engineer. World War II veteran; served in Army Air Force. Mbr. Registered Prof. Engineers, Wis. Society of Prof. Engineers, Knights of Columbus, John Birch Society, Americans for Constitutional Action, Elm-Brook Rep. Unit; former mbr. National Machine Tool Builders Electrical Standards Com. Elected to Assembly 1964. Mbr. of Assembly Education Com. Mailing address: 18300 Beverly Hill Drive, Brookfield.

Waukesha County, 1st District: Towns of Brookfield and Pewaukee; Villages of Butler, Elm Grove and Pewaukee; City of Brookfield and Ward 1, City of Waukesha.



CLEMENS  
Waukesha, 2nd



MATHEWS  
Waukesha, 3rd



SHABAZ  
Waukesha, 4th

HAROLD W. CLEMENS (Rep.) born Milwaukee, Oct. 21, 1918. Educ. Tn. of Oconomowoc, Milw. pub. schools, Milw. Boys Tech. High Sch. Resident Lac La Belle Village 34 yrs. Operates boat livery, picnic, swimming area; formerly printer, tool maker. World War II veteran; Navy 1944-46. Vill. trustee; was vill. clk., health officer, bldg. insp., civil def. dir.; co. supervisor, U.S.O. chm. Has been elected to Assembly since 1956; Assembly Speaker Pro Tem. 1963. Mbr. Assembly Municipalities Com., Veterans and Military Affairs Com. (chm. 1963); secy. Legis. Council Local Govt. Com.; 1963 vice-chm. Election and Rules Coms.; served on Interstate Cooperation Comm., Legis. Council and its Urban Problems Com. and Aged Tax Relief Com. 1963-65 interim. Mailing address: 272 Lac La Belle Drive, Oconomowoc.

Waukesha County, 2nd District: Towns of Lisbon, Merton, Oconomowoc; Villages of Chenequa, Hartland, Lac La Belle, Lannon, Menomonee Falls, Merton, Sussex; City of Oconomowoc.

VINCENT R. MATHEWS (Dem.) born Watertown, June 8, 1912. Educated Fort Atkinson public schools; B.A. Carroll College 1934. Insurance agent since 1951; formerly in department store personnel work. Interested in community projects, Boy Scouts, YMCA, Community Chest. Waukesha alderman 1947-51. Elected to Assembly 1958; re-elected '60, '62 and '64. Chairman Assembly Elections Com.; vice-chm. Municipalities Com.; member Commerce and Manufactures Com., Joint Survey Com. on Retirement Systems, Retirement Research Council, Temp. Comm. on Admin. Branch Reorg.; chm. Legis. Council Elections Com.; served on Legis. Council Education Com. Mailing address: 242 E. Park Avenue, Waukesha.

Waukesha County, 3rd District: Towns of Delafield, Genesee, Waukesha; Villages of Nashotah, North Prairie, Wales; City of Delafield and all of City of Waukesha except 1st ward.

JOHN C. SHABAZ (Rep.) born Milwaukee, June 25, 1931. Educated at Franklin Grade School and West Allis Nathan Hale High School; Univ. of Wisconsin 1953; L.L.B. Marquette Univ. 1957. Attorney; formerly in farming, sales, machine operation. Served in Army 1954-56. Member bar assns., U.S. Jaycees (past national director), New Berlin Lions Club (past pres.). West Allis Jaycees (past pres.); 1st vice pres. Metropolitan Jaycee Presidents Council. Awards: *Outstanding West Allis JCC 1963-64*; mbr. New Berlin Rep. Branch (past chm.). Elected to Assembly 1964. Member Assembly Conservation Com., Legis. Council Judiciary Com. Mailing address: 21425 West Glengarry Road, New Berlin.

Waukesha County, 4th District: Towns of Eagle, Mukwonago, Ottawa, Summit and Vernon; Villages of Big Bend, Dousman, Eagle, Mukwonago, Oconomowoc Lake; Cities of New Berlin, Muskego.



ANDERSON, G. K.  
Waupaca



STEIGER  
Winnebago, 1st



SHURBERT  
Winnebago, 2nd

GERALD K. ANDERSON (Rep.) born Town of Waupaca, Waupaca County, April 26, 1921. Educated Waupaca elementary and high schools; B.A. Univ. of Wisconsin 1942; attended Univ. of Missouri 1943; LL.B. Univ. of Wis. 1948. Attorney. World War II veteran; served in Army 1942-45. Member State Bar of Wisconsin, D.A.V., American Legion. Served as district attorney Waupaca County 1964. Elected to Assembly 1964. Member of Assembly Judiciary Com., Legislative Council Judiciary Committee. Mailing address: R.F.D. 1, Waupaca.

WILLIAM A. STEIGER (Rep.) born Oshkosh, May 15, 1938. Educated Oshkosh State College Training School, Oshkosh High School; received B.S. in 1960 from University of Wisconsin. Real estate developer. Member board of directors, Lutheran Home of Oshkosh, Inc., chm. Wis. Youth in Government Com.; national college chairman of Young Republican National Federation 1959-61. Chosen assistant chief page at 1960 Republican National Convention. Elected to Assembly 1960; re-elected 1962 and 1964. Member Assembly Elections Com. (chm. 1963), Public Welfare Com.; secretary Legislative Council Elections Committee; served as member Legis. Council, chm. of its Election Laws Com. 1963-65 interim and vice-chm. of its Youthful Drinking and Driving Com. 1961-63 interim. Mailing address: 684 Oak Street, P.O. Box 1279, Oshkosh 54902.

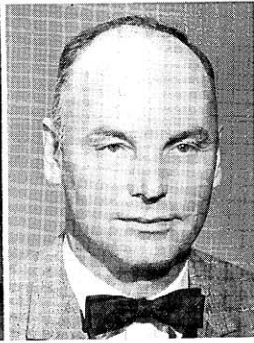
Winnebago County, 1st District: Wards 1 to 5, 7 to 12, 15 and 16, City of Oshkosh.

FLOYD E. SHURBERT (Rep.) born in Winnebago County, Oct. 30, 1900. Educated public elementary and high schools; attended Oshkosh Business College. Since 1945 retired; in wholesale-retail meat business 1925-45; owned mink farm 1936-54. Active in conservation groups. Served on county board since 1954. Elected to Assembly 1958; re-elected 1960, 1962 and 1964. Member Assembly Conservation Com. and Excise and Fees Com. (chm. 1961 and 1963). Legislative Council Conservation Com. (also 1963-65); has served on Assembly Public Welfare Com., Legis. Council, Youthful Drinking and Driving Com., Water Resources Com. Mailing address: 2904 Oakwood Lane, Oshkosh.

Winnebago County, 2nd District: Towns of Algoma, Black Wolf, Clayton, Menasha, Nekimi, Nepeuskun, Omro, Oshkosh, Poygan, Rushford, Utica, Vinland, Winchester, Winneconne, Wolf River; Village of Winneconne; City of Omro; Oshkosh City Wards 6, 13, 14.



MARTIN  
Winnebago, 3rd



HEINZEN  
Wood, 1st



GEE  
Wood, 2nd

DAVID O. MARTIN (Rep.) born Appleton, March 7, 1931. Educated Neenah public schools; received B.S. in forestry from Univ. of Michigan. Traffic analyst with paper company. Served as officer in Army Corps of Engineers 1954-56. Member of Jaycees board Neenah-Menasha 1959-61. Elected to Assembly 1960; re-elected 1962 and 1964. Member Assembly Education Com., Joint Study Com. on Civil Service, Temp. Com. on Administrative Branch Reorganization; served as vice chairman Assembly Taxation Com., member Commerce and Manufactures Com., Education Com., and Jt. Finance Com. 1963; served on Legis. Council Education Com. 1963-1965 interim and on its Taxation Com. 1961-63 interim. Mailing address: 521 Haylett St., Neenah.

Winnebago County, 3rd District: Town of Neenah; Cities of Menasha and Neenah.

RAYMOND F. HEINZEN (Rep.) born Marshfield, May 11, 1918. Educated St. John parochial school, Marshfield High School; attended Univ. of Wisconsin 3 years. Dairy farmer since 1939; pres. of credit union and secy.-treas. of creamery co-op. since 1955; farm columnist 1957-59. Member National Catholic Rural Life Conference. Served as Clerk of local school board 1952-57; member State Board of Vocational and Adult Education 1956-63. Elected to Assembly 1960; re-elected 1962 and 1964. Member of Assembly Education Com., Taxation Com., Legis. Council Education Com.; served on Legis. Council Education Com. 1963-65 interim. Mailing address: Rt. 5, Marshfield 54449.

Wood County, 1st District: Towns of Arpin, Auburndale, Cameron, Cary, Dexter, Hansen, Hiles, Lincoln, Marshfield, Milladore, Remington, Richfield, Rock, Rudolph, Sherry, Sigel, Wood; Villages of Auburndale, Milladore, Rudolph, Vesper; that part of City of Marshfield in Wood County, and City of Pittsville.

HARVEY F. GEE (Rep.) born in Wisconsin Rapids, Feb. 29, 1908. Educated Wisconsin Rapids public schools; B.A. in 1932 from Rollins College, Winter Park, Fla. Land developer. World War II veteran; served in Army. Member American Legion; was state organizer of National Infantile Paralysis Foundation. Wisconsin Rapids athletic field and park commissioner since 1947; county board member 1938-60. Elected to Assembly 1960; re-elected 1962 and 1964. Member of Assembly Labor Com. and Public Welfare Com.; member of State Institutions Visiting Com. (also in 1963-65 interim). Mailing address: 170 - 14th Ave. South, Wisconsin Rapids.

Wood County, 2nd District: Towns of Cranmoor, Grand Rapids, Port Edwards, Saratoga, Seneca; Villages of Biron, Port Edwards; Cities of Nekoosa, Wisconsin Rapids.



BUCKLEY  
Chief Clerk



BROWNE  
Sergeant at Arms

JAMES P. BUCKLEY born Waukesha, June 7, 1933. Educated at St. Joseph's Catholic Elementary School and Waukesha High School; B.S. in history from Carroll College. Deputy State Chairman, Wisconsin Democratic Party 1961-64. Served in Air Force 1951-55. Chosen Chief Clerk 1965. Mailing address: 453 North Washington Street, Waukesha 53186.

THOMAS H. BROWNE born Eau Claire, Jan. 24, 1920. Former Waukesha police officer and small businessman. Veteran of World War II; served in Army 312th Combat Engineers E.T.O. 1943 to 1945. Member Veterans of Foreign Wars, Boy Scouts. Democratic candidate for sheriff in Waukesha County, 1958 and 1960. Elected Assembly sergeant at arms 1959 and 1965. Mailing address: 313 Buchner Court, Waukesha.