

**DEWEY, NELSON** (Dec. 1  
1889), first governor of Wisconsin  
speculator, b. Lebanon, Conn.  
from Hamilton Academy, N.Y.  
in Louisville and Coopersville  
1836 he came to Cassville and  
for a New York firm of spec  
Cassville as the territorial  
elected Grant County registra  
was appointed district attor  
served in both the territorial  
1842) and council (1842-18  
re-election by the rise of the  
to law and s  
lead-mining  
County bar

**B  
I  
O  
G  
R  
A  
P  
H  
I  
E  
S**

**Biographies and Pictures**

Biographies of constitutional executive officers, members of the Wisconsin Supreme Court, U. S. Senators and members of the U. S. House of Representatives from Wisconsin and members of the Wisconsin Senate and Assembly.

### ***New Election Districts***

*The district descriptions found in the biographies for members of the U.S. House of Representatives, the State Senate, and the State Assembly, are those of the 1962 elections. They were used also in the special Assembly elections of April 2, 1963, for the 2nd Assembly District of Rock County, and of April 7, 1964, for the Grant County and Green County Assembly Districts.*

*Maps of the new Congressional districts of Wisconsin, enacted by Chapter 63, Laws of 1963, are shown on pages 19 and 20 of this Blue Book.*

*Maps, population figures, and text describing the new legislative districts of Wisconsin, promulgated by the Wisconsin Supreme Court on May 14, 1964, are shown in the ADDENDA at the very end of this Blue Book.*

*Index to Biographies*

	Page		Page
Abrahamson, Theodore . . .	50	Harper, Hugh A. . . . .	44
Alfonsi, Paul R. . . . .	46	Heinzen, Raymond F. . . . .	67
Anderson, Norman C. . . . .	39	Hollander, Walter G. . . . .	27
Azim, James N., Jr. . . . .	Addenda	Huber, Robert T. . . . .	57
Barabe, Robert F. . . . .	35	Hutnik, Willis J. . . . .	63
Barland, Thomas H. . . . .	43	Jahnke, Franklin M. . . . .	45
Barron, Michael J. . . . .	56	Johnson, Lawrence H. . . . .	41
Baumgart, Lloyd . . . . .	59	Johnson, Lester R. . . . .	18
Beilfuss, Bruce F. . . . .	11	Johnson, Robert I. . . . .	37
Belting, George B. . . . .	62	Jones, Joseph E. . . . .	53
Bice, Raymond C. . . . .	32	Kastenmeier, Robert W. . . . .	14
Bidwell, Everett V. . . . .	38	Kaufman, Eugene S. . . . .	48
Blanchard, Mrs. Carolyn . . .	62	Kellman, Norris J. . . . .	68
Blaska, Jerome L. . . . .	40	Kelly, Lawrence P. . . . .	58
Bolle, Everett E. . . . .	49	Kelly, Patrick H. . . . .	53
Borg, George M. . . . .	65	Kendziorski, Casimir . . . . .	22
Bouchard, Charles . . . . .	42	Kenyon, Kyle . . . . .	58
Busby, Allen J. . . . .	24	Kepler, Ernest C. . . . .	28
Byrnes, John W. . . . .	17	Kintz, Milford C. . . . .	39
Calvert, Walter B. . . . .	45	Knowles, Robert P. . . . .	25
Carr, Peter P. . . . .	26	Krueger, Clifford W. . . . .	25
Christopherson, Frank W., Jr. . . . .	30	Kunde, Kenneth . . . . .	64
Clemens, Harold W. . . . .	66	LaFave, Reuben . . . . .	31
Coggs, Isaac N. . . . .	52	Laird, Melvin R. . . . .	17
Currie, George R. . . . .	10	Larsen, Lawrence R. . . . .	33
Dailey, Paul, Jr. . . . .	43	Lathan, Raymond Lee . . . . .	54
Damon, Harold E. . . . .	33	Leonard, Jerris G. . . . .	23
Dempsey, Chester E. . . . .	32	Leverich, James Earl . . . . .	32
Dieterich, William H. . . . .	11	Lewison, Bernard M. . . . .	64
Dionesopulos, Frank G. . . . .	51	Lien, Edgar E. . . . .	38
Donnelly, Davis A. . . . .	31	Lorge, Gerald D. . . . .	26
Doughty, Mrs. Esther S. . . . .	41	Lynch, Richard J. . . . .	57
Draheim, William A. . . . .	28	McCormick, John E. . . . .	56
Dueholm, Harvey L. . . . .	37	McEssy, Earl F. . . . .	44
Elfers, Earl H. . . . .	Addenda	McKay, J. Curtis . . . . .	60
Fairchild, Thomas E. . . . .	10	McParland, Leland S. . . . .	24
Flannigan, Allen J. . . . .	52	Manders, Adrian J. . . . .	53
Froehlich, Harold V. . . . .	59	Martin, David O. . . . .	67
Galli, G. Fred . . . . .	Addenda	Mathews, Vincent R. . . . .	65
Gee, Harvey F. . . . .	68	Mato, Louis V. . . . .	43
Gessert, Harry L. . . . .	64	Merriam, William R. . . . .	62
Gordon, Myron L. . . . .	11	Meunier, Alex J. . . . .	22
Grant, Alexander R. . . . .	36	Miller, Jess . . . . .	30
Greco, Angelo F. . . . .	51	Molinaro, George . . . . .	47
Haase, Robert D. . . . .	50	Morton, Earl D. . . . .	29
Hallows, E. Harold . . . . .	10	Myhra, Norman L. . . . .	60
		Nager, Edward . . . . .	39

*Index to Biographies—Cont.*

	Page		Page
Naleid, Roy E. . . . .	61	Schaeffer, Frank E., Jr. . . . .	51
Nelson, Gaylord A. . . . .	13	Schlueter, Fred W. . . . .	44
Nikolay, Frank L. . . . .	38	Schmidt, Charles J. . . . .	23
Nitschke, Elmer C. . . . .	41	Schmidt, Robert . . . . .	58
Nowakowski, Richard C. . . . .	55	Schowalter, Elmer J. . . . .	65
Nuttelman, Norbert . . . . .	48	Schreiber, Martin J. . . . .	23
Obey, David R. . . . .	49	Schuele, Wilfred . . . . .	55
O'Brien, Leo P. . . . .	22	Shurbert, Floyd E. . . . .	67
O'Konski, Alvin E. . . . .	18	Smith, Charles F., Jr. . . . .	31
Olson, Jack . . . . .	6	Smith, Dena A. . . . .	8
Olson, Russell A. . . . .	47	Soik, Nile W. . . . .	56
O'Malley, David D. . . . .	40	Stalbaum, Lynn E. . . . .	28
Owen, William E. . . . .	42	Stalbaum, Merrill . . . . .	61
Panzer, Frank E. . . . .	26	Stauffer, Christ M. . . . .	45
Pelecky, Stan T. . . . .	50	Steiger, William A. . . . .	66
Perala, Reino A. . . . .	42	Struebing, Wilmer H. . . . .	37
Peterson, Merlin J. . . . .	46	Sussman, Norman . . . . .	24
Peterson, Richard E. . . . .	66	Sweda, Joseph . . . . .	60
Pommerening, Glen E. . . . .	57	Tadych, Albert R. . . . .	54
Potter, John M. . . . .	29	Terry, Walter E. . . . .	63
Priebe, Kenneth E. . . . .	68	Thompson, Carl W. . . . .	27
Proxmire, E. William . . . . .	13	Thompson, George . . . . .	8
Quinn, Jerome F. . . . .	36	Thomson, Vernon W. . . . .	15
Rasmusen, Holger B. . . . .	29	Tobiasz, Raymond J. . . . .	54
Reger, Fred C. . . . .	48	Uehling, Robert O. . . . .	40
Reuss, Henry S. . . . .	16	Vanderperren, Cletus . . . . .	36
Reynolds, John W. . . . .	6	Van Pelt, William K. . . . .	16
Riehle, Ben A. . . . .	49	Wackett, Byron F. . . . .	46
Risser, Fred A. . . . .	30	Ward, William W. . . . .	63
Rogers, William . . . . .	59	Warren, Earl W. . . . .	61
Romell, Louis C. . . . .	35	Wartinbee, D. Russell . . . . .	47
Roseleip, Gordon W. . . . .	27	Whittow, Wayne F. . . . .	55
Rothwell, Angus B. . . . .	8	Wilkie, Horace W. . . . .	11
Ryan, Mark W. . . . .	52	Zablocki, Clement J. . . . .	15
St. Angelo, Thomas . . . . .	35	Zaborski, Richard J. . . . .	25
Schadeberg, Henry C. . . . .	14	Zimmerman, Robert C. . . . .	6





**Governor JOHN W. REYNOLDS**

# CONSTITUTIONAL EXECUTIVE OFFICERS

## GOVERNOR

JOHN W. REYNOLDS (Dem.) was born in Green Bay Apr. 4, 1921. He attended elementary school in Green Bay and was graduated from the Green Bay East High School. He received a Ph.B. degree in 1946 from the University of Wisconsin, and in 1949 received the LL.B. degree from the University of Wisconsin Law School. He has been a practicing attorney since 1949. Governor Reynolds was appointed district director of the federal Office of Price Stabilization 1951-53, and was United States Commissioner for the Eastern Federal Judicial District of Wisconsin 1955-58. The Governor is a World War II veteran; he served in the Army 1942-46. He served as chairman of the Brown County Democratic Party 1953-57, and was a member of the Democratic state administrative committee 1955-59. He is a member of the Brown County, Wisconsin and American Bar Associations, and of the Kiwanis Club and the Knights of Columbus. He was a Kennedy delegate to the 1960 Democratic National Convention. He was elected Attorney General in 1958 and was re-elected in 1960. He was elected Governor in 1962. Residence: Green Bay, Wisconsin.

## LIEUTENANT GOVERNOR

JACK OLSON (Rep.) born Wisconsin Dells Aug. 29, 1920. Educated in Wisconsin Dells grade and high schools. Attended University of Wisconsin 1938-39; received B.S. in 1942 from Western Michigan University, Kalamazoo. Manager of a scenic boat line and bank director. A veteran of World War II, he served in the Navy as a PT Boat commander. By 1963 legislation, the Lieutenant Governor serves as the executive chairman of the Wisconsin World's Fair Participation Committee. Governor Olson is a director of the University of Wisconsin Student Aid Foundation and of the Wisconsin Good Roads Association. He is the past president of the Wisconsin Travel and Tourist Council; he is also director of Wisconsin Amphibious Ducks, Inc., and a co-sponsor of Fort Dells, 2 Dells tourist attractions. He was selected Wisconsin Recreation "Man of the Year" for 1959. In 1963 he was elected to the Executive Committee of the National Lt. Governor's Association. He is a member of the American Legion, Rotary Club, Wisconsin Dells Chamber of Commerce, Northern Great Lakes Area Governor's Council, and the Conservation Department's Advisory Recreational Publicity Committee. In 1961, at the request of Governor Quinn of Hawaii, he served as director of the Economic Development Project of the University of Hawaii Bureau of Business and Research. He was chairman of the Columbia County Republican Party, 1957-60; a candidate for Governor in 1960, and state chairman of the Volunteers for Nixon Organization in 1960. He was elected Lieutenant Governor in 1962. Business address: 105 Broadway, Wisconsin Dells.

## SECRETARY OF STATE

ROBERT C. ZIMMERMAN (Rep.) born Milwaukee Jan. 5, 1910. Attended Wisconsin public schools; graduate Madison Central High School. Veteran of World War II; served in Army approximately two and one-half years. Member of Lions International, Madison Press Club, National Association of Secretaries of State. Was appointed Assistant Secretary of State 1939; held that position approximately 15 years. Elected Secretary of State 1956; re-elected 1958, 1960 and 1962. Business address: State Capitol, Madison.

## CONSTITUTIONAL OFFICERS



**OLSON**



**ZIMMERMAN**



**SMITH**



**THOMPSON**



**ROTHWELL**

JACK B. OLSON, Lieutenant Governor; ROBERT C. ZIMMERMAN, Secretary of State; DENA A. SMITH, State Treasurer; GEORGE THOMPSON, Attorney General; ANGUS B. ROTHWELL, Superintendent of Public Instruction.

## STATE TREASURER

DENA A. SMITH (Rep.) born Kewaunee Oct. 19, 1899. Educated Kewaunee grade and high schools and attended business schools in Milwaukee. For 32 years manager of music departments in Milwaukee stores; from 1949 to 1957 secretary and assistant to the State Treasurer. Member of State, National and International Federation of Business and Professional Women's Clubs. Member Commissioners of Public Lands, State Board of Canvassers, Board of Trustees of Conservation Wardens Pension Fund. Active in the Republican Party and interested in politics and government. Served 3 terms as vice chairman of the 4th Congressional District Republican executive committee. Acted as presidential elector in 1960. Appointed State Treasurer Dec. 5, 1957, to fill the vacancy caused by the death of her husband, Warren R. Smith. Elected State Treasurer in 1960, the first woman elected in Wisconsin to a state-wide constitutional office; re-elected in 1962. Home address: 1628 W. Wisconsin Ave., Milwaukee.

## ATTORNEY GENERAL

GEORGE THOMPSON (Rep.) was born in Ellsworth on July 6, 1918. He received his elementary and high school education in Hudson; attended River Falls State College 1936-37, and St. Olaf College, Northfield, Minnesota, where he received his B.A. degree in 1940. He then attended the University of Wisconsin, where he received an M.A. degree in 1941 and an LL.B. degree in 1947. He has been a practicing attorney since 1947. A World War II veteran, he served in the Army 1942-45. Mr. Thompson served as a La Crosse police and fire commissioner 1952-54, and was elected La Crosse County District Attorney 1954-60. He was elected Attorney General in 1962. Home Address: 1721 King St., La Crosse. Business address: State Capitol, Madison.

## STATE SUPERINTENDENT OF PUBLIC INSTRUCTION

ANGUS B. ROTHWELL born Superior July 25, 1905. Educated Superior public schools. In 1930 received B.E. from Superior State College; in 1932 M.A. from Columbia University. Holds honorary LL.D. from Carroll College and honorary M.A. from Lawrence College. School administrator and author. Elementary school principal, Wausau, 1926-1934. High school principal and curriculum supervisor, Superior, 1934-41; superintendent of schools, Superior 1941-49, and Manitowoc 1949-61. Veteran of World War II, served in Navy 1943-46. Board member of Council of Chief State School Officers; member Phi Delta Kappa, American Association of School Administrators; member of national and past president of state and local education assns.; past president of Rotary; member of Masonic orders, of Izaak Walton League. Served on Superior and Manitowoc boards for vocational and adult education, and for libraries. Wisconsin representative to 1955 White House Conference on Education. Member Governor's Retirement Study Commission 1958-59. Elected State Superintendent of Public Instruction April 1961. Business address: State Capitol, Madison.

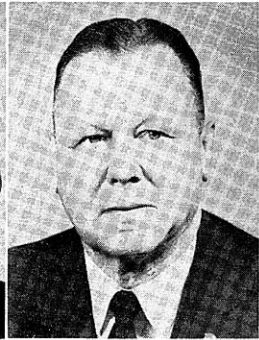
## SUPREME COURT JUSTICES



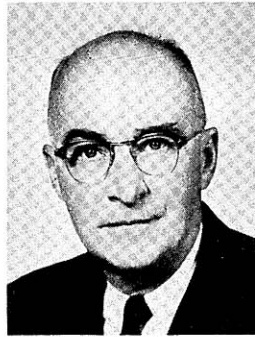
**FAIRCHILD**



**HALLOWS**



**DIETERICH**



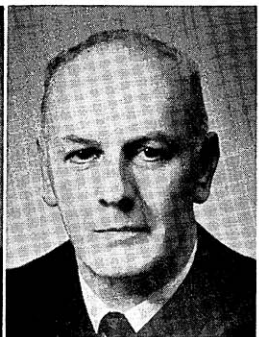
**CURRIE**



**GORDON**



**WILKIE**



**BEILFUSS**

Members of the Supreme Court: Chief Justice GEORGE R. CURRIE; THOMAS E. FAIRCHILD, E. HAROLD HALLOWS, WILLIAM H. DIETERICH, MYRON L. GORDON, HORACE W. WILKIE, BRUCE F. BEILFUSS.

**SUPREME COURT JUSTICES****CHIEF JUSTICE**

GEORGE R. CURRIE born at Princeton, Wis. Jan. 16, 1900. Educated in Montello public schools. Attended Oshkosh State Teachers' College 2 years; taught school 3 years. Received legal education at University of Wisconsin Law School, LL.B. in 1925; awarded Order of the Coif; in senior year student editor-in-chief of Wisconsin Law Review. For 26 years practiced law at Sheboygan. During World War I, served several months in Student Army Training Corps. Member Sheboygan public library board for over 20 years; served as president during the last 16 years. Appointed to Supreme Court on Aug. 30, 1951, to fill vacancy resulting from the resignation of Justice Henry P. Hughes. Elected to Supreme Court without opposition to a full 10-year term, Apr. 1957. Became Chief Justice Jan. 6, 1964, upon the retirement of Chief Justice Timothy Brown at the end of his term.

**ASSOCIATE JUSTICES**

THOMAS E. FAIRCHILD born Milwaukee Dec. 25, 1912. Educated Milwaukee public schools. Received A.B. in 1934 from Cornell University; in 1938 LL.B. from University of Wisconsin Law School. Practicing attorney in Portage 1938-42; attorney U.S. office of Price Administration 1942-45; practicing attorney in Milwaukee 1945-48 and 1953-57. Past member, executive committee Milwaukee Bar Assn., and board of directors, Wisconsin Welfare Council. Elected state Attorney General in 1948. Served as U.S. Attorney for the western district of Wisconsin, 1951-52. Democratic nominee for the U.S. Senate 1950 and 1952. Chairman of the 1963, cochairman of the 1960 Governor's Commissions on Constitutional Revision. Elected to Supreme Court April 3, 1956, to succeed Chief Justice Edward T. Fairchild who retired January 7, 1957, at the end of his term.

E. HAROLD HALLOWS born Fond du Lac Apr. 20, 1904. Educated Fond du Lac public schools. Received A.B. in 1926 from Marquette Univ.; attended Columbia Univ. 1926-27; graduated cum laude as doctor of jurisprudence, Univ. of Chicago Law School 1930; honorary doctor of jurisprudence Mount Mary College 1951. Practicing attorney 1930-58; professor of law at Marquette Univ. 1930-58. In 1954, received Eagles civic service award for contributions to community service; active in mental health and welfare. Member Kiwanis, Knights of Columbus. President Milwaukee County Bar Assn. 1948-49, Wisconsin Bar Assn. 1953-54. Member Amer. Bar Assn., its house of delegates, and its standing committees on Judicial Selection and Tenure and on Continuing Education of the Bar; Amer. Soc. of International Law, Amer. Law Inst., Bar Assn. of 7th Federal Circuit, Inst. of Judicial Administration, Inter-Amer. Bar Assn. Past director Amer. Judicature Soc., secretary Wis. Bar Foundation. Member of Wis. Judicial Council since 1951. Appointed to Supreme Court Apr. 2, 1958, to succeed resigned Justice Roland J. Steinle. Elected to Supreme Court Apr. 1959, the first Justice to be elected for a full term pursuant to the 1953 constitutional amendment.

WILLIAM HERBERT DIETERICH born Milwaukee Dec. 18, 1897. Educated Milwaukee public schools; Marquette Univ. Law School, Univ. of Wisconsin, Univ. of Montana 1919-23. Admitted to practice of law 1923. For 36 years trial lawyer in Milwaukee and Washington Counties; law offices in Milwaukee and Hartford. Secretary and counsel for 2 shoe manufacturing cos. and road building bituminous products corps. Formerly special asst. attorney general of Wis., town attorney, attorney for school boards. World War I veteran; served in 120th Field Artillery, 32nd division. Member natl. exec. com. Disabled Amer. Veterans, past state comdr. Disabled Amer. Veterans; past comdr. Amer. Legion, member Amer. Legion natl. security com.; past natl. pres. of Soc. of Amer. Legion Founders, member of natl. exec. com.; member U.S. Chapter Army and Navy Air Force in Canada. Member board of governors Wis. Bar Assn.; pres. Washington County Bar Assn.; member Milwaukee County Bar Assn. and its advisory fees com. Served as justice of peace; chairman Washington County school com., dir. of school board. Served on state Soldiers Rehabilitation Board. Elected to Supreme Court April 1958 for term beginning Jan. 1959, defeating appointed Justice Emmett L. Wingert.

MYRON L. GORDON born Kenosha Feb. 11, 1918. Educated Kenosha public and high schools. Graduated Phi Beta Kappa from University of Wisconsin; received B.A. (high honors) and M.A. in 1939; in 1942 LL.B. from Harvard University. Law clerk to federal judge 1942; worked as practicing attorney until 1950. Served as judge of the Milwaukee County Civil Court, 1950-55; as circuit judge for the 2nd Circuit (Milwaukee County), 1955-61. Past state commander of the Disabled American Veterans; member of American Legion. Past president of the Milwaukee Hearing Society, a Red Feather agency. Elected to Supreme Court in April 1961 for term beginning Jan. 1962, to fill the vacancy resulting from the retirement of Chief Justice John E. Martin.

HORACE W. WILKIE born Madison Jan. 9, 1917. Educated Madison public schools; B.A. Univ. of Wis. 1938; LL.B. George Washington Univ. 1944; graduate work Univ. of Minn., American Univ., Natl. Inst. Public Affairs. Attorney; formerly analyst U.S. Budget Bureau. World War II veteran. Chairman Madison Housing Auth. 1945-50; on Mayor's Metropolitan Development Com. 1956-58. Member bar assns., Natl. Assn. Housing Redevelopment Officials, Amer. Soc. Public Admin., Institute on Judicial Administration, Amer. Judicature Soc., Phi Beta Kappa. Elected to Senate 1956; re-elected 1960. Member ad hoc Com. on Tax Revision, Legis. Council Education, Judiciary, County Government, Efficiency in Government and Legislative Organization Coms.; served on standing coms. on Education, Labor-Taxation-Insurance-Banking, Public Welfare and Joint Finance. Appointed to the Supreme Court May 25, 1962, to fill the vacancy caused by the death of Chief Justice Grover L. Broadfoot.

BRUCE F. BEILFUSS born Withee Jan. 8, 1915. Educated Withee school, Neillsville Public High School; graduate University of Wisconsin, B.A. 1936, LL.B. 1938. Member of American Legion, VFW, American and Wisconsin Bar Associations, American Judicature Society and Institute of Judicial Administration. Served on Clark County Board of Supervisors 1940; as Clark County district attorney 1941-48. Appointed circuit judge of 17th Judicial Circuit Apr. 15, 1948; elected to full terms in 1951 and 1957. Elected to Supreme Court Apr. 2, 1963, to fill the vacancy resulting from the retirement of Chief Justice Timothy Brown.



**WISCONSIN MEMBERS OF THE 88TH CONGRESS**  
**SENATORS**



**United States Senator E. WILLIAM PROXMIRE**

**United States Senator GAYLORD A. NELSON**

## WISCONSIN MEMBERS OF THE 88TH CONGRESS

### SENATORS

E. WILLIAM PROXMIRE (Dem.) born Lake Forest Ill. Nov. 11, 1915. Received B.A. in 1938 from Yale University; in 1940 M.B.A. from Harvard Graduate School of Business Administration; in 1948 M.P.A. (public administration) from Harvard Graduate School of Arts and Sciences. Formerly owner of a printing plant in Waterloo, Wis. Veteran of World War II; served in Military Intelligence Service 1941-46. Member of Wisconsin Assembly 1951-52. Democratic candidate for Governor of Wisconsin 1952, 1954, 1956. Elected to U.S. Senate in special election Aug. 27, 1957, to fill vacancy caused by death of Sen. Joseph R. McCarthy; re-elected 1958. Member of Senate Committees on Appropriations, on Banking and Currency (chairman of the Subcommittee on Small Business), and of the Joint Economic Committee. Home address: 5421 Buckeye Road, Madison.

GAYLORD A. NELSON (Dem.) born Clear Lake June 4, 1916. Educated in Clear Lake graded and high schools. Received B.A. in 1939 from San Jose State College, California; in 1942 LL.B. from University of Wisconsin Law School. Practicing attorney since 1942. Veteran of World War II; served 46 months in Army. Member of American Legion, Veterans of Foreign Wars, Eagles, Leif Ericson Society. Attended Democratic National Conventions of 1952, 1956 and 1960; in 1952 served as chairman of Wisconsin delegation. Elected to Wisconsin Senate in 1948; re-elected 1952 and 1956. In 1951 chosen Democratic Floor Leader; in 1953 Assistant Democratic Floor Leader. Member of Joint Committee on Finance 1951, Joint Committee on Revisions, Repeals, and Uniform Laws 1953, 1955 and 1957. Member of Senate Committee on Education and Public Welfare 1953 and 1955, on Conservation 1957. Vacated his state Senate seat when elected Governor in 1958; re-elected Governor in 1960 to become the first Wisconsin 2-term Democratic Governor since 1891. Author of major state government reforms creating Departments of Administration and of Resource Development, billboard control law, state-wide program for public access to lakes and streams, \$5 million student loan program, and \$50 million crash program to preserve Wisconsin's outdoor resources. Elected to U.S. Senate 1962. Member of Senate Committees on Interior and Insular Affairs, and on Public Works. Home address: 5750 Bittersweet Place, Madison.



SCHADEBERG  
1st Cong. Dist.



KASTENMEIER  
2nd Cong. Dist.

HENRY C. SCHADEBERG (Rep.) born Manitowoc Oct. 12, 1913. Educated Manitowoc public schools. Attended Univ. of Wisconsin; in 1938 received B.A. from Carroll College, in 1941 B.D. from Garrett Biblical Seminary at Evanston, Ill. Clergyman. Veteran of World War II and Korean Conflict. Served as Navy chaplain in Pacific; recalled to active duty in 1952; commander in Naval Reserves. Member of Racine County Boy Scouts executive Board; past president of Burlington Rotary and of Evansville, Wis., ministerial assn.; chaplain of the Wisconsin department of the American Legion 1957-58. Elected to Congress in 1960; re-elected 1962. Member of House Committees on Un-American Activities and on Veterans Affairs; secretary of the 87th Congress Club. Business address: 442 Cannon Building, Washington, D.C.

1st Congressional District:\* Green, Kenosha, Racine, Rock, Walworth Counties.

ROBERT W. KASTENMEIER (Dem.) born Beaver Dam Jan. 24, 1924. Educated Beaver Dam and Columbus public grade schools; Beaver Dam High School. Attended Univ. of Wis. 1941-43, 1948-52, Carleton College (Minn.) 1943; received LL.B. in 1952 from Univ. of Wisconsin Law School. Branch office director in Philippines for U.S. War Department Claims Service 1946-48; practicing attorney 1952-58. World War II veteran; served in Army 1943-46. Justice of peace 1955-58. Elected to Congress 1958; re-elected 1960 and 1962. Member of House Committee on Judiciary. Home address: 300½ Main St., Watertown.

2nd Congressional District:\* Columbia, Dane, Dodge, Jefferson, Waukesha Counties.

\*These are the districts of the 1962 Election. For maps and description of the new congressional districts created by Chapter 63, Laws of 1963, see pp. 19-20.



THOMSON  
3rd Cong. Dist.



ZABLOCKI  
4th Cong. Dist.

VERNON W. THOMSON (Rep.) born Richland Center Nov. 5, 1905. Attended Carroll College 1923-25. Received B.A. in 1927 from Univ. of Wisconsin; in 1932 LL.B. from U.W. Law School; honorary doctor of laws degree from Carroll College 1957. Since 1932 a practicing attorney at Richland Center; prior to that time taught 2 years at Viroqua High School and 3 years at Madison Vocational School. Member of Order of Coif, Chi Phi, Phi Delta Phi, Masons, Moose. From 1933 to 1935 CCC enrolling officer for Richland County. Richland County assistant district attorney 1933-35; Richland Center city attorney 1933-37 and 1942-44; president Richland Center library board 1939-51; mayor of Richland Center 1944-51. Delegate to Republican National Convention 1936, 1940, 1952 (member of committee on credentials), 1956. Presidential elector 1952 and 1956. In 1940 chairman of State Republican Platform Convention. Assemblyman 1935-51; served as Speaker 1939, '41, '43; as Republican Floor Leader 1945, '47, '49. Attorney General of Wisconsin 1951-57; Governor 1957-59. Elected to Congress 1960; re-elected 1962. Member House Committee on Foreign Affairs. Home address: Richland Center.

3rd Congressional District:\* Crawford, Grant, Iowa, Juneau, La Crosse, Lafayette, Monroe, Richland, Sauk, Vernon Counties.

CLEMENT J. ZABLOCKI (Dem.) born Milwaukee Nov. 18, 1912. Attended parochial school, Marquette Univ. High School. Received Ph.B. in 1936 from Marquette Univ., then took additional graduate work in education. Taught high school in Milwaukee 1938-39; worked as organist and choir director 1932-48. Member of Knights of Columbus, Catholic Order of Foresters, Eagles, St. Vincent Conf., Americanization League, National Alliance, Federation of Polish Associations of America, Holy Name Society. Kennedy delegate to 1960 Democratic National Convention. Elected state Senator 1942, re-elected 1946. Elected to Congress 1948; now in 8th consecutive term. Member House Committee on Foreign Affairs. Home address: 3245 West Drury Lane, Milwaukee.

4th Congressional District:\* Part of Milwaukee County: Villages of Greendale, Hales Corners, West Milwaukee; Cities of Cudahy, Franklin, Greenfield, Oak Creek, St. Francis, South Milwaukee, Wauwatosa, West Allis; all of Wards 8, 11, 12, 14, 17, 19 and parts of Wards 3, 4, 10, 16, City of Milwaukee.



**REUSS**  
5th Cong. Dist.



**VAN PELT**  
6th Cong. Dist.

**HENRY S. REUSS** (Dem.) born Milwaukee Feb. 22, 1912. Educated Milwaukee schools. Received A.B. in 1933 from Cornell Univ.; in 1936 LL.B. Harvard Law School. Practicing attorney 1936-55; lecturer, Milwaukee State College, 1950-51; magazine writer. Milwaukee County asst. corporation counsel 1939-40. Assistant general counsel, Marshall Plan, Paris, France, 1949. Special prosecutor Milwaukee County grand jury, 1950. Personal counsel to late Secretary of State Fred Zimmerman in reapportionment case before Wisconsin Supreme Court, 1953. Former director White Elm Nursery Co., Hartland; past dir. Marshall and Ilsley Bank, Milwaukee; past dir. Niagara Share Corporation, Buffalo, N.Y. Veteran of World War II; served in Army 1943-45. Past president Cornell Alumni Assn. of Wisconsin; vice president Wis. Chi Psi Alumni Assn.; vice chairman Milwaukee Foreign Policy Assn.; alumni trustee Harvard Law Review; alumni visitor Cornell Univ.; former member legal advisory committee National Resources Board; member National Institute for Infantile Paralysis; member of American Youth Hostels Advisory Board. Elected to Congress 1954; now in 5th consecutive term. Member House Committee on Banking and Currency; chairman, Subcommittee on International Finance; House Committee on Government Operations; Joint Economic Committee; chairman, International Exchange and Payments Subcommittee. Home address: 2773 N. Maryland Ave., Milwaukee.

5th Congressional District:\* Part of Milwaukee County: Villages of Bayside, Brown Deer, Fox Point, River Hills, Shorewood, Whitefish Bay; City of Glendale; all of Wards 1, 2, 5, 6, 7, 9, 13, 15, 18, 20 and parts of Wards 3, 4, 10, 16, City of Milwaukee.

**WILLIAM K. VAN PELT** (Rep.) born Glenbeulah March 10, 1905. Graduated Fond du Lac elementary and high schools. Served 6 years as chairman of Fond du Lac County Republican committee. Member of Elks, Kiwanis, Masons. Delegate to Republican National Convention 1944, alternate 1948. Elected to Congress in 1950; now in 7th consecutive term. Member House Committee on Merchant Marine and Fisheries, and House Committee on Science and Astronautics. Home address: 47 Oaklawn Ave., Fond du Lac.

6th Congressional District:\* Calumet, Fond du Lac, Ozaukee, Sheboygan, Washington, Winnebago Counties.

\*These are the districts of the 1962 Election. For maps and descriptions of the new congressional districts created by Chapter 63, Laws of 1963, see pp. 19-20.



LAIRD  
7th Cong. Dist.



BYRNES  
8th Cong. Dist.

MELVIN R. LAIRD (Rep.) born Marshfield Sept. 1, 1922. Educated Marshfield grade and high schools. Received B.A. in 1942 from Carleton College (Minn.). Formerly secy.-treas. of lumber company; resigned upon taking office as Congressman. World War II veteran; served aboard destroyer "Maddox" in Pacific. Member American Legion, "40 et 8", V.F.W., Disabled American Veterans, Elks. Chairman Wis. Rep. Party Platform Committee 1950, 1952. Delegate to Rep. National Conventions since 1948; member Platform Committee 1952, 1956, 1960 (vice chairman); 1952 chairman of labor and public welfare subcom.; 1956 and 1960 chairman of agriculture subcom. The past 4 generations of his family have served in Wisconsin state offices: Father as state Senator, mother as member of University Board of Regents. Elected to state Senate 1946; in 1948 re-elected without opposition. Legislative spokesman for Governors Oscar Rennebohm (1949) and Walter J. Kohler (1951). Member Wis. Comn. on Improvement of Educational System 1947-49, Legis. Council 1949-53 (council chairman 1951-53, chairman Taxation Com. 1949-51), Joint Finance Com. 1949-52, Veterans and Military Affairs Com. 1947-52 (chairman 1949-52). Elected to Congress 1952; now in 6th consecutive term. Member House Agricultural Com. 84th Cong., House Appropriations Com. since 83rd Cong., Board of Visitors to the Air Force Academy, 88th Cong. Home address: 207 S. Central Ave., Marshfield.

7th Congressional District:\* Adams, Green Lake, Langlade, Marathon, Marquette, Menominee, Portage, Shawano, Waupaca, Waushara, Wood Counties.

JOHN W. BYRNES (Rep.) born Green Bay June 12, 1913. Attended Green Bay public and parochial schools. Received B.A. in 1936 from Univ. of Wisconsin; in 1938 LL.B. from U.W. Law School. Practiced law in Green Bay. Member of Elks. Elected to state Senate in 1940. In 1943 chosen Republican Floor Leader, chairman of Judiciary Committee. Elected to Congress 1944; now in 10th consecutive term. Chairman Republican Policy Committee, 86th and subsequent Congresses. Member of House Ways and Means Com. since 80th Congress; also serves on Joint Com. on Internal Revenue Taxation, Joint Com. on Reduction of Nonessential Federal Expenditures, exec. com. of the Interparliamentary Union. Home office address: Federal Building, Green Bay.

8th Congressional District:\* Brown, Door, Florence, Forest, Kewaunee, Manitowoc, Marinette, Oconto, Outagamie Counties.



JOHNSON  
9th Cong. Dist.



O'KONSKI  
10th Cong. Dist.

LESTER R. JOHNSON (Dem.) born Brandon, Wis. June 16, 1901. Educated Brandon public schools. Attended Lawrence College 2 years. Received Ph.B. in 1924 from Univ. of Wisconsin. For 14 years in retail lumber, feed, and coal business. In 1941 received LL.B. from U.W. Law School. Practiced law in Black River Falls. Delegate to 1952 and 1960 Democratic National Conventions. Elected Assembly Chief Clerk as Progressive 1935 and 1937. Elected Jackson County district attorney as Progressive 1942 and 1944, as Democrat 1952. Elected to Congress in special election Oct. 13, 1953, to fill vacancy caused by death of Merlin Hull; now in 6th consecutive term. Member House Committee on Agriculture; in 1959 named chairman Dairy and Poultry Subcommittee, now Dairy Subcommittee. Home address: Black River Falls.

9th Congressional District:\* Baron, Buffalo, Chippewa, Clark, Dunn, Eau Claire, Jackson, Pepin, Pierce, St. Croix, Trempealeau Counties.

ALVIN E. O'KONSKI (Rep.) born on farm near Kewaunee May 26, 1907. Educated Kewaunee rural and high schools. Received Ed.B. in 1927 from Oshkosh State College; graduate training at Universities of Iowa and Wisconsin. Taught at Omro, Oconto, Pulaski High Schools in Wis., Itaska Junior College in Minn., Oregon State College in Oreg., University of Detroit in Mich. Educator, journalist, lecturer. Former owner and publisher of newspaper at Hurley, radio stations at Merrill and Wausau. Elected to Congress 1942; now in 11th consecutive term. Former member House Committees on Veterans Affairs, Public Works, Education and Labor. Member Katyn Forest Massacre Committee 1952; awarded "Palonia Restitucia," highest medal of Free Poland. Member House Committees on Armed Services and District of Columbia. Ranked first among all Congressmen in United Press test in American history; voted *most distinguished American for 1945* by foreign language press on the basis of his work against Communism and the Yalta Agreement. Director of World League to Stop Communism; director Free World Forum; and World Bill of Rights Assn. Home address: Mercer.

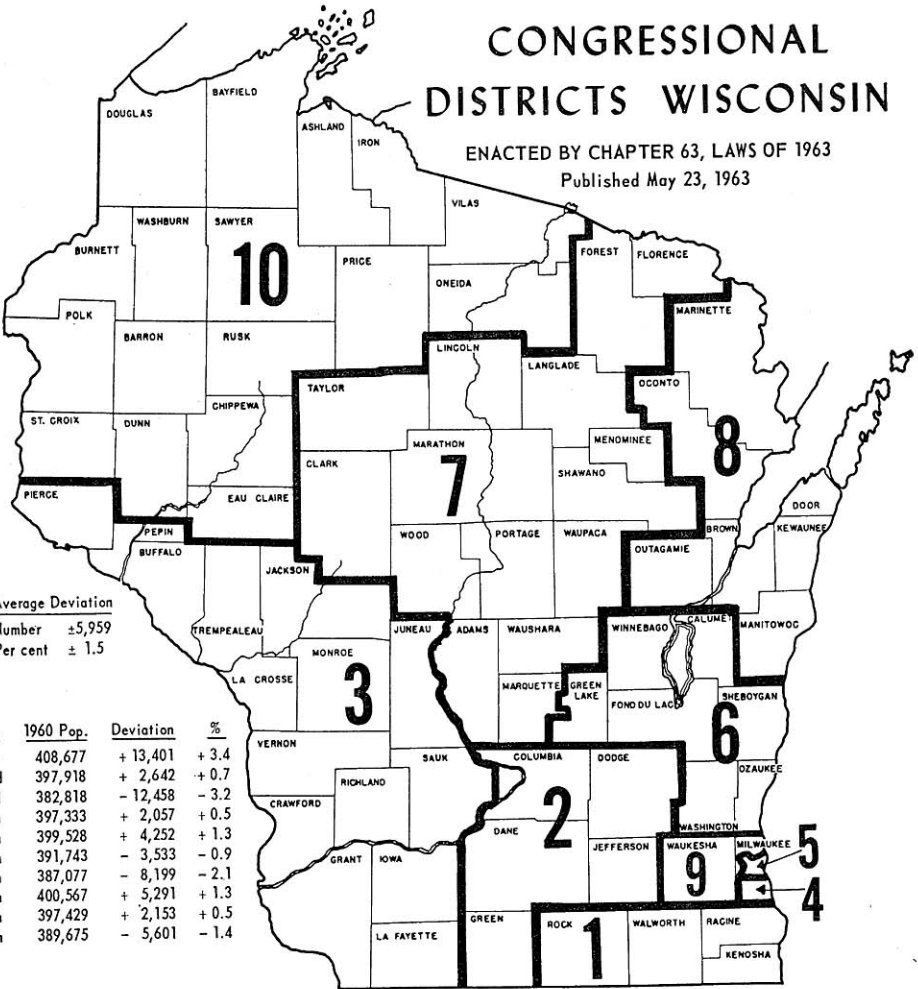
10th Congressional District:\* Ashland, Bayfield, Burnett, Douglas, Iron, Lincoln, Oneida, Polk, Price, Rusk, Sawyer, Taylor, Vilas, Washburn Counties.

\*These are the districts of the 1962 Election. For maps and descriptions of the new congressional districts created by Chapter 63, Laws of 1963, see pp. 19-20.



# CONGRESSIONAL DISTRICTS WISCONSIN

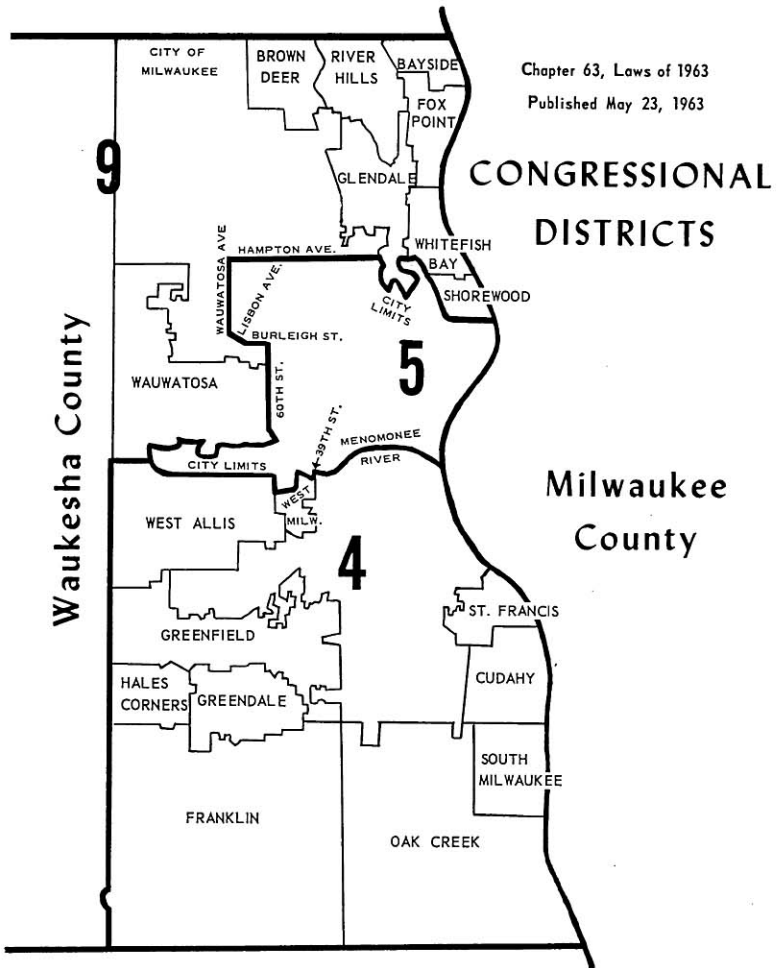
ENACTED BY CHAPTER 63, LAWS OF 1963  
Published May 23, 1963



Average Deviation  
Number  $\pm 5,959$   
Per cent  $\pm 1.5$

Dist.	1960 Pop.	Deviation	%
1st	408,677	+ 13,401	+ 3.4
2nd	397,918	+ 2,642	+ 0.7
3rd	382,818	- 12,458	- 3.2
4th	397,333	+ 2,057	+ 0.5
5th	399,528	+ 4,252	+ 1.3
6th	391,743	- 3,533	- 0.9
7th	387,077	- 8,199	- 2.1
8th	400,567	+ 5,291	+ 1.3
9th	397,429	+ 2,153	+ 0.5
10th	389,675	- 5,601	- 1.4

AVERAGE CONGRESSIONAL DISTRICT 395,276 LARGEST: 1st 408,677 SMALLEST: 3rd 382,818



**SENATE OFFICERS 1963**



**President  
Lieut. Gov.  
OLSON**



**President  
pro tem.  
PANZER**



**Majority Leader  
KNOWLES**



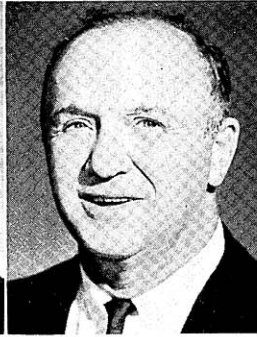
**Majority  
Caucus Chairman  
POTTER**



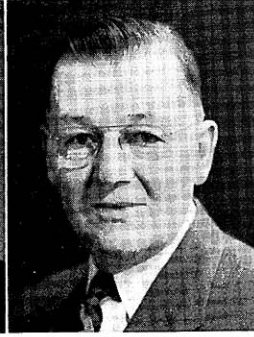
**Chief Clerk  
LARSEN**



**Minority Leader  
ZABORSKI**



**Minority  
Caucus Chairman  
SUSSMAN**



**Sergeant at Arms  
DAMON**



**MEUNIER**  
1st District

**O'BRIEN**  
2nd District

**KENDZIORSKI**  
3rd District

**ALEX J. MEUNIER** (Rep.) born on farm in Door County's Town of Brussels Nov. 9, 1897. Educated rural school; 1917 graduate Algoma Teachers College; also correspondence and summer courses. Insurance representative; taught in Door Co. schools 9 years, operated own orchard 1940-46, garage bookkeeper, salesman. Served in Army 1918. Director Chamber of Commerce. Natl. committeeman, past pres. of N.E. Wis. Life Underwriters Assn.; member natl., state, local assns. Member Lions (past pres.), Conservation Congr., Rod & Gun Club, Church Men's Club. Sheriff 4 years, undersheriff 12 years. Twice alternate to G.O.P. natl. conventions. Assemblyman 1943-49; on Joint Finance Com. 2 terms, Assembly Conservation Com. 3 terms. Elected to Senate 1962. Member Joint Finance Com., Sen. Contingent Expenditures Com., Legis. Council Urban Problems Com. Home address: Route 1, Sturgeon Bay. 1st Senatorial District: Door, Kewaunee, Manitowoc Counties.

**LEO P. O'BRIEN** (Rep.) born Fond du Lac July 20, 1893. Attended Univ. of Wisconsin, Marquette Univ., St. Norbert College. Insurance salesman, public relations specialist. Veteran World Wars I and II; 32 months Pacific combat incl. Solomon and Guadalcanal campaigns. Organizer, Navy Club of the USA (chartered by Congress); over 1½ years national public relations director. Member of usual veterans fraternal and service club organizations. Elected to Senate 1952; re-elected 1956 and 1960; first Senator ever to represent the 2nd District for three 4-year terms. Chairman Sen. Governmental and Veterans Affairs Com., Legis. Procedure Com.; member Legis. Council Coms. on Urban Problems 1961, County Boards and Reapportionment 1959. Home address: 1025 Porlier St., Green Bay. 2nd Senatorial District\*: Brown County.

**CASIMIR KENDZIORSKI** (Dem.) born in Poland Dec. 3, 1898. Elementary and high school education in Poland; evening courses in Milwaukee. Real estate broker 1928-30; since then has been machinist and quality control inspector. Past vice president of union local and member of its boards on legislation and education. Active in civic and labor activities. Elected to Assembly 1946; re-elected 1948. Elected to Senate 1949; re-elected 1950, 1954, 1958, 1962. In 1957 served as Democratic Assistant Floor Leader. Member of the Sen. Committee on Highways; member of the Advisory Committee on Unemployment Compensation. Serves on interim Committee to Investigate Publication and Distribution of Obscene Literature in Wisconsin. Home address: 2025 S. 14th St., Milwaukee 4. 3rd Senatorial District\*: 1962 Wards 11, 12, 14, City of Milwaukee.



LEONARD  
4th District



SCHMIDT  
5th District



SCHREIBER  
6th District

JERRIS LEONARD (Rep.) born Chicago Jan. 17, 1931. Educated Milwaukee St. Elizabeth's School, Rufus King High School. B.S. in bus. admin., Marquette Univ. 1952; LL.B. Marquette Univ. 1955. Practicing attorney. Member bar assns., Elks, Eagles. Elected to Assembly 1956 and 1958. Assistant Rep. Floor Leader, 1959. Member Assembly Rules Revision Com.; Legis. Council Judiciary Com. Elected to Senate 1960. Chairman Joint Rep. Policy Com. 1963; Rep. Sen. caucus secy. 1961. Member Joint Finance Com., Sen. Com. on Committees, State Building Comm., Legis. Council and its Nuclear Facilities Com. Address: 9420 N. Sleepy Hollow Road, Milwaukee 17.

4th Senatorial District\*: Villages of Bayside, Brown Deer, Fox Point, River Hills, Shorewood, Whitefish Bay; City of Glendale and 1962 Wards 1, 18, 20, City of Milwaukee.

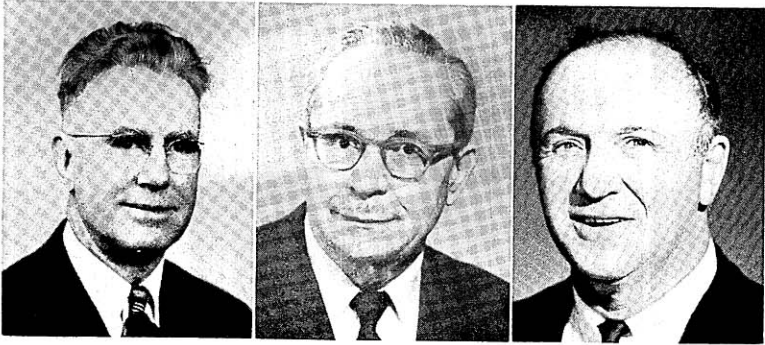
CHARLES C. SCHMIDT\*\* (Dem.) born Milwaukee, Mar. 20, 1907. Educated St. Anthony School, South Division High School; attended Univ. of Wis. Real estate and insurance agent; was interior decorator, inspector Industrial Comm., investigator U.S. Labor Dept. In State Guard during World War II. Member Milw. Board of Realtors, Insurance Agents Assn.; Natl. Assn. Real Estate Boards; McGovern Park July 4th Comm.; Eagles, Knights of Columbus, Holy Name Soc. Member *Kennedy for President* state exec. com. Served 7 terms in Assembly 1949-63; chosen Dem. Asst. Floor Leader 1953, chairman State Affairs Com. 1959. Served on Highways Com., Legis. Council, Retirement Research Council. Elected to Senate 1962. Vice chairman Jt. Retirement Systems Survey Com. Member Sen. Conservation, Public Welfare Coms. Home address: 4046 N. 48th St., Milwaukee 16.

5th Senatorial District\*: 1962 Wards 5, 9, 15, City of Milwaukee.

MARTIN J. SCHREIBER (Dem.) born in Milwaukee April 8, 1939. Graduated from Zion Lutheran School, Milwaukee, and Milwaukee Lutheran High School. Studied at Valparaiso Univ., the Univ. of Wis.-Milwaukee (specializing in urban studies), Marquette University Law School. Member of 7th Ward Democratic unit, American Council to Improve Our Neighborhoods, 13th Ward Community Council, AFL-CIO, Midtown Neighborhood Improvement Association, Wisconsin League of Senior Citizens. Elected to the Senate in 1962. Member of Senate Conservation Com., Public Welfare Com., Legis. Council Judiciary Com. Home address: 2528 W. Monroe St., Milwaukee 6. 6th Senatorial District\*: 1962 Wards 7, 10, 13, City of Milwaukee.

\*These were the districts of the elections for terms beginning in 1961 or 1963. For new districts see ADDENDA.

\*\*Resigned May 10, 1964, following his election to Milwaukee City Council.



McPARLAND  
7th District

BUSPY  
8th District

SUSSMAN  
9th District

LELAND S. McPARLAND (Dem.) born Thorp Dec. 18, 1896. Educated Thorp schools; Oshkosh State Coll. 2 years; LL.B. Marquette Univ. South Milwaukee teacher 1920-27; since 1927 practicing attorney. World War I veteran; Navy 1917-18. Chairman Milwaukee County Dem. Organizing Com. 1952-53. Assemblyman 1941-55; Dem. Floor Leader 1945, '47, '49. Senator since 1955; chairman Dem. Joint Caucus since 1953. Vice-chm. Legis. Council 1959, secy. 1963. Member Sen. Judiciary Com.; interim Legis. Org. & Procedures Com.; Legis. Council Admin. Rules Review Com., Remedial Legislation Com. Address: 4757 S. Packard Ave., Cudahy.

7th Senatorial District\*: Villages of Greendale, Hales Corners; Cities of Cudahy, Franklin, Greenfield, Oak Creek, St. Francis, South Milwaukee; 1962 Wards 17, 19, City of Milwaukee; Ward 5, City of West Allis.

ALLEN J. BUSBY (Rep.) educated West Milwaukee, West Allis, Milw. State Coll.; B.A. Univ. of Wis., 1922, M.A. 1925, LL.B. 1928. Little Chute High School principal 1922-24; West Allis High School teacher 1928-33. Since 1933 practicing attorney; vil. atty. West Milwaukee. Assemblyman 1931, 1935; Senator since 1937; now serving 16th session. Co-author 1951 Rosenberry Apportionment Act; instrumental Milw. County Expressway Comm. law, Criminal Code, Family Code, judicial system reform. Chairman Sen. Judiciary Com.; vice-chm. Legis. Council Judiciary Com.; member Judicial Council, Sen. Legis. Procedure Com. Served on Legis. Council Commercial Code Com. Address: 1673 S. 53rd St., Milwaukee 14.

8th Senatorial District\*: Village of West Milwaukee; City of Wauwatosa; Wards 1, 2, 3, 4, City of West Allis.

NORMAN SUSSMAN (Dem.) born Philadelphia May 26, 1905. Educated Milwaukee schools, School of Engineering. Grocer, City Natatorium asst. supt.; formerly union business representative AFL-CIO. Pres. Ind. Neighborhood Grocers Assn. 10 years. Steward, exec. board member AFL-CIO Building Service Employees Union. Member Milw. Govt. Service League, Civil Defense Disaster Com., Mental Health Assn., Fond du Lac Ave. Advance Assn., B'nai B'rith, NAACP. Received Human Rights Council award. Kennedy delegate to 1960 Dem. Natl. Convention. Member Milw. County Dem. Council, State Dem. Admin. Com. Assemblyman 1957, '59; chairman Municipalities Com. Elected to Senate 1960; re-elected 1962. In 1963 chosen chairman Sen. Minority Caucus. Member Senate and Legis. Council Education Com., Sen. Govtl. and Veterans Affairs Com. Home address: 1232 W. Fond du Lac Ave., Milwaukee 5.

9th Senatorial District\*: 1962 Wards 2, 3, 6, City of Milwaukee.



**KNOWLES**  
10th District

**ZABORSKI**  
11th District

**KRUEGER**  
12th District

**ROBERT P. KNOWLES** (Rep.) born River Falls Feb. 25, 1916. Educated River Falls schools; B.S. River Falls State College. Since 1938 in insurance and real estate business. World War II veteran; Army Air Force 1942-45. Member and past president of Kiwanis and Willow River Rod and Gun Club; member Elks, Amer. Legion, Wis. Assn. of Insurance Agents. Elected to Senate 1955; re-elected 1956, 1960. Chosen Sen. Majority Leader 1963; director of Natl. Conf. of Legislative Leaders 1962. Chairman Legis. Council; member Interstate Cooperation Com., Joint Legis. Organization Com., Sen. Labor, Taxation, Insurance and Banking Com., interim Legis. Org. and Procedures Com., 1963 Tax Compromise Com., Legis. Council Com. of 25. Home address: New Richmond.

10th Senatorial District\*: Buffalo, Dunn, Pepin, Pierce, St. Croix Counties.

**RICHARD J. ZABORSKI** (Dem.) born Milwaukee Jan. 7, 1927. Educated St. Mary School; Messmer High School; B.S. Marquette Univ. 1953. Post-graduate work Univ. of Wisconsin Law School. Veteran of World War II and Korea; served in Army; participated in Nuremberg trials. Member American Legion, Holy Name Soc.; various other social, political, and school organizations; past chairman Milwaukee County Dem. Full Employment Conference. Elected to Senate 1954; re-elected 1958, 1962. Chosen Sen. Minority Leader 1963. Vice-chm. Com. to Visit State Institutions; member Jt. Com. on Legis. Organization; Sen. Governmental and Veterans Affairs Com., 1963 Tax Compromise Com.; Legis. Council Com. of 25; Visiting Committee. Served on Civil Defense Council. Home address: 713 S. 21st St., Milwaukee 4.

11th Senatorial District\*: 1962 Wards 4, 8, 16, City of Milwaukee.

**CLIFFORD W. KRUEGER** (Rep.) born Madison June 24, 1918. After high school graduation attended Merrill Commercial College. Sales manager. In 1946 elected Merrill alderman. Elected to Senate 1946 and 1950. A resident of Lincoln County, the 1951 Senate apportionment made him ineligible for re-election in 1954. Re-elected 1956 and 1960. Chairman of Sen. Committee on Conservation; vice chairman of interim Conservation Committee. Member of the Sen. Committees on Agriculture and on Legislative Procedure, Legis. Council Election Laws Com. Served on Legis. Council Committees on Boating (1957-59), on Conservation and on Reapportionment (1959-61), Water Resources (1961-63, vice-chm.). Home address: 122 N. State St., Merrill.

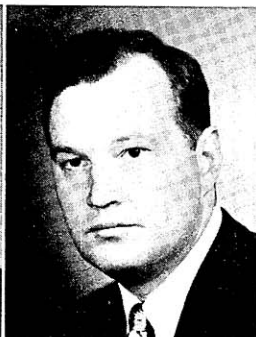
12th Senatorial District\*: Iron, Lincoln, Oneida, Price, Taylor, Vilas Counties.

\*These were the districts of the elections for terms beginning in 1961 or 1963. For new districts see ADDENDA.





PANZER  
13th District



LORGE  
14th District



CARR  
15th District

FRANK E. PANZER (Rep.) born Sept. 1, 1890. Educated public schools, Oakfield High School. Farmer; was school teacher, telegraph operator. Served as school clerk, town chairman; on Dodge County Board since 1925 (chm. since 1940). In 1956 elected chairman, Board of Managers, Council of State Governments. In 1960 delegate to Rep. National Convention, presidential elector. Assemblyman 1931. Senator 1935, 1937 and since 1943; chosen Sen. President pro tem. since 1947. Chairman Sen. Legislative Procedure Com., 1963 Tax Compromise Com., Interstate Cooperation Comn. Member Joint Legis. Organization Com., Sen. Conservation Com.; Legislative Council (chm. 1957), its "Com. of 25" and its Highways Com., Natural Resources Com. of State Agencies. Home address: Route 1, Brownsville.

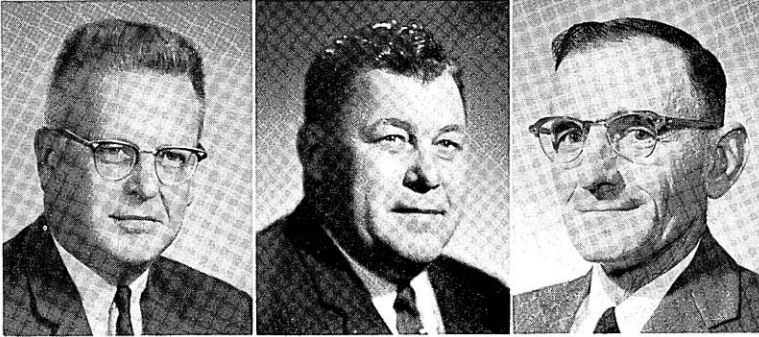
13th Senatorial District\*: Dodge and Washington Counties.

GERALD D. LORGE (Rep.) born Bear Creek July 9, 1922. Educated in grade and high schools at Bear Creek. Graduate of Marquette Univ. Law School. Practicing attorney. World War II veteran; served in Marines Jan. '42 to Dec. '45. Member Outagamie, Wis., and Amer. Bar Assns., Moose, Knights of Columbus, Bear Creek and Outagamie Conserv. Clubs, Amer. Legion. Elected to Assembly in 1950 and 1952; in 1954 elected to Senate to fill unexpired term; re-elected to Senate in 1956 and 1960. Chairman of Sen. Com. on Labor, Taxation, Insurance and Banking, Legis. Council Insurance Com. Member of Sen. Legislative Procedure Com., Jt. Survey Com. on Tax Exemptions, Civil Defense Council, Legislative Council and its Education Com. Home address: 147 Lorge Building, Bear Creek.

14th Senatorial District: Outagamie and Waupaca Counties.

PETER P. CARR (Rep.) born North Jutland, Denmark. Educated Chicago public schools, Chicago Business College. Retired; formerly seedsman; member southern Wis. group operating grocery stores and warehouses 1931-46, Janesville wholesale grocery 1946-50. President Wis. Seed Dealers Assn. 1929; trust company director, Madison, 1925-31. During depression chairman Rock County President's Re-employment Board. President Janesville City Council 1954; elected to Senate 1954, 1958, 1960. Chairman Senate Education Com.; vice-chm. Legis. Council Education Com. Member Sen. Legislative Procedure Com., Public Welfare Com.; Citizens Adv. Com. on County Institutions, Legis. Council Urban Problems Com. Served on Mental Health Adv. Com. Home address: 1705 Sherman Ave., Janesville.

15th Senatorial District\*: Rock County.



THOMPSON  
16th District

ROSELEIP  
17th District

HOLLANDER  
18th District

CARL W. THOMPSON (Dem.) born Washington, D.C. March 15, 1914. Educated Stoughton grade and high schools; LL.B. 1939 Univ. of Wis. Practicing attorney, home building contractor, farm owner, World War II veteran; in Army intelligence 1942-46. Served as alderman, city attorney. Democratic national committeeman 1949-56; convention alternate 1960. Presidential elector 1948. Dem. candidate for Governor 1948, '50. Assemblyman 1953, '55, '57, '59; in 1959 elected to Senate to fill unexpired term, re-elected 1960. Member Senate Agriculture Com., Education Com., Legis. Council U.W. Medical Center Com. Has served on Retirement Research Council, Sen. Conservation Com., Tobacco Marketing Com. Business address: 313 E. Main St., Stoughton.

16th Senatorial District\*: 1962 Wards 21 and 22, City of Madison; all towns, cities and villages in Dane County except City of Madison.

GORDON W. ROSELEIP (Rep.) born Platteville, July 30, 1912. Educated Platteville schools; high school graduate 1934. Businessman. Served in National Guard 1928-33; veteran of World War II and Korean Conflict. Served on many Rep. campaign committees incl. Veterans for Eisenhower, for Nixon; Thomson for Governor, for Congress. Member veterans organizations (commander Wis. Amer. Legion 1954), Elks, Eagles, Farm Bureau, 40 et 8, Kiwanis, Masons, Moose, Shrine. Received Freedom Foundation's *Valley Forge* award for *outstanding Americanism*. Member county board; chairman legislative, building, defense committees. Elected to Senate 1962. Member Civil War Centennial Com., Senate Conservation Com., Governmental and Veterans Affairs Com., Legis. Council Election Laws Com. Home address: Darlington.

17th Senatorial District\*: Grant, Green, Iowa, Lafayette Counties.

WALTER G. HOLLANDER (Rep.) born Fond du Lac Sept. 8, 1896. Graduated Omro High School. Insurance agent; for 31 years active farmer Town of Springvale (Hollander homestead since 1887). Held local elective office since 1929; member Fond du Lac County Board since 1938 (Board chairman since 1953). Elected to Senate 1956; re-elected 1960. Has served on Senate Agriculture Com., Labor, Taxation, Insurance and Banking Com., State Building Commission. 1963 session: Senate chairman Joint Committee on Finance; chairman Board on Government Operations; member state Claims Commission, Senate Committee on Legislative Procedure, 1963 Tax Compromise Com., Legis. Council Com. of 25. Home address: Route 1, Rosendale.

18th Senatorial District\*: Fond du Lac, Green Lake, Waushara Counties.

\*These were the districts of the elections for terms beginning in 1961 or 1963. For new districts see ADDENDA.



**DRAHEIM**  
19th District



**KEPPLER**  
20th District



**STALBAUM**  
21st District

**WILLIAM A. DRAHEIM** (Rep.) born Neenah December 15, 1898. Educated Neenah elementary and high schools. Attended Lawrence College. Occupations: mill worker, statistician-accountant, production planner, sporting goods dealer. Now retired. Veteran of World War I and World War II; after 40 years of military service in National Guard and Army retired as colonel. Served on county board. Elected to Senate 1950; re-elected 1954, 1958 and 1962. Member and past chairman of the Joint Committee on Finance; member of State Board on Government Operations, Joint Survey Com. on Tax Exemptions, Senate Contingent Expenditures Com. Chairman Legis. Council U.W. Medical Center Com. Home address: 913 Hewitt St., Neenah.

19th Senatorial District\*: Calumet and Winnebago Counties.

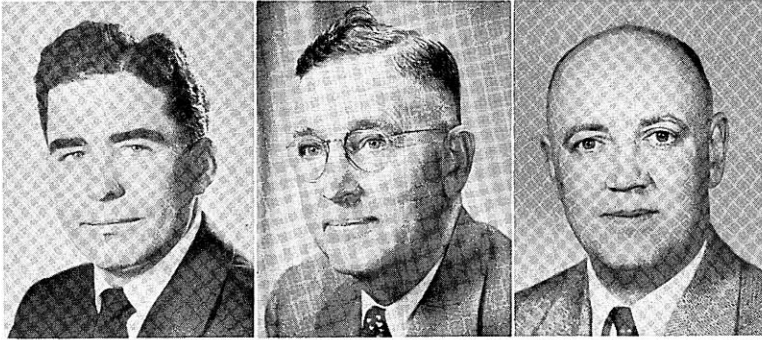
**ERNEST C. KEPPLER** (Rep.) born Sheboygan Apr. 5, 1918. Educated Sheboygan grade, high, vocational schools, U.W. Extension Div.; B.S. Univ. of Wis. 1949, LL.B. in 1950. Attorney, real estate broker; was factory worker, truck driver, bookkeeper. Veteran of World War II (Philippines) and Korean Conflict; served in Army. In Boy Scouts of America 32 years; holds Silver Beaver Award. Member of civic, veteran, fraternal, professional organizations. Assemblyman 1943-45; Sheboygan alderman 1941-45, 1951-53; asst. D.A. 1953-54; city (1956-57) and county (1957-61) civil defense dir. Elected to Senate 1960. Chairman Sen. Revisions, Repeals, Uniform Laws Com. Member Sen. Judiciary Com., Legis. Procedure Com.; interim Conservation Com., Legis. Org. and Procedures Com.; Civil War Centennial Comn. Address: 909 New York Ave., Sheboygan.

20th Senatorial District: Ozaukee and Sheboygan Counties.

**LYNN E. STALBAUM** (Dem.) born Waterford May 15, 1920. Educated Racine County rural schools and Agric. School. Since 1951 secy.-treas. Milk Producer's Co-op. Assn.; with U.S. Dept. of Agric., Racine County, 1936-44; admin. officer federal farm program 1939-44. World War II veteran; in Navy 1944-46. Active in community affairs, past comdr. Waterford Amer. Legion, charter member Wind Lake V.F.W., member Kiwanis. Elected to Senate 1954; re-elected 1958, 1962. Chosen Sen. Asst. Minority Leader 1963, caucus chairman 1957, '59, '61. Member Sen. Labor, Taxation, Insurance and Banking Com., Admin. Rules Review Com., Board on Government Operations, Interim Legis. Org. and Procedures Com., Legis. Council Election Laws Com. Served on Continuing Revenue Survey Comn., SE Wis. Regional Planning Comn., Governor's Dairy Farm Policy Comn. Home address: 904 Montclair Dr., Racine.

21st Senatorial District\*: Racine County.

\*These were the districts of the elections for terms beginning in 1961 or 1963. For new districts see ADDENDA.



**MORTON**  
22nd District

**RASMUSEN**  
23rd District

**POTTER**  
24th District

**EARL D. MORTON** (Rep.) born Kenosha Nov. 28, 1918. Educated Kenosha public schools. Received A.B. in 1949 from Carroll College; in 1951 LL.B. from Marquette Univ. Law School. Practicing attorney; laundry chemical analyst 1939-40, machine tool inspector 1937-39. World War II veteran; in Army 1940-45. Assistant district attorney 1954; Kenosha city councilman 1955-57. Served in Assembly 1957 and 1959. Elected to Senate 1960. Member State Building Comm., 1964 World's Fair Participation Comm., Sen. Judiciary Com., Revisions, Repeals, Uniform Laws Com. Chairman of Legis. Council Youthful Drinking and Driving Com. 1961, vice-chm. of its Election Laws Com. 1963. Served on Sen. Governmental and Veterans Affairs Com., Legis. Council Taxation Com. Home address: 4102 Wilson Road, Kenosha.

22nd Senatorial District\*: Kenosha and Walworth Counties.

**HOLGER B. RASMUSEN** (Rep.) born Apr. 26, 1894 at Superior. Attended elementary and high schools; Ph.G. 1916 Highland Park Colleges, Des Moines, Iowa. In drugstore business since 1912, since 1919 owned and operated his own drugstore. World War I Navy veteran. Held offices in various levels of local government; mayor of Spooner 3 terms 1942-48; civilian defense county school committee 1948-52. Active in fraternal and civic organizations. Assemblyman for 1949, 1951, 1953; elected to Senate 1956 for unexpired term; elected again 1962. Member Sen. Education Com., Public Welfare Com., 1964 World's Fair Participation Comm., interim Obscene Literature Investigation Com., Legis. Council Education Com. Home address: 722 Franklin Ave., Spooner.

23rd Senatorial District\*: Barron, Burnett, Polk, Rusk, Sawyer, Washburn Counties.

**JOHN M. POTTER** (Rep.) born Wisconsin Rapids Aug. 16, 1924. Educated Sacred Heart School, Nekoosa; St. Norbert, DePere; Alexander High School, Nekoosa. Attended Univ. of Mich.; LL.B. Univ. of Wis. 1948. Practicing attorney; director Cranberry Growers' Cooperative; pres. Wis. Cranberry Growers' Assn. Member KC's, Catholic Order of Foresters, Amer. Legion, Kiwanis. Wood County D.A. 1950-57, county corp. counsel since 1957. Special state counsel in 1958 Brown County sheriff's proceedings; member 1959 Cranberry Problems Com. Elected to Senate 1960. Chosen Sen. majority caucus chairman 1963. Chairman interim Legis. Org. & Procedures Com. Member Sen. Judiciary Com.; Labor, Taxation, Insurance and Banking Com.; interim Obscene Literature Investigation Com., Legis. Council Insurance Com., Judiciary Com. Home address: 311 Madison Ave., Port Edwards.

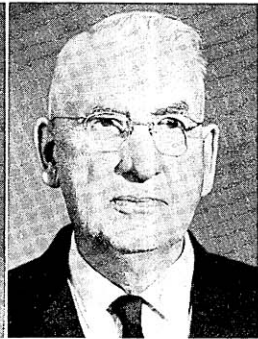
24th Senatorial District\*: Clark, Portage, Wood Counties.



**CHRISTOPHERSON**  
25th District



**RISSER**  
26th District



**MILLER**  
27th District

**FRANK W. CHRISTOPHERSON, JR.** (Dem.) born Superior May 24, 1927. Educated St. Francis School, Superior East High School. Attended Superior State College. Locomotive engineer and fireman since 1945. World War II veteran; served in Army Air Corps. County board member 1956-62, vice chairman 1957-62. Elected to Assembly 1958; re-elected 1960. Served on Assembly Transportation Committee (chm.), Labor Com. (vice-chm.), Taxation Com., Insurance and Banking Com., Veterans and Military Affairs Com.; Legis. Council Urban Problems Com.; Interstate Ports Commission (secy.); Legis. Council Judiciary Com., Reapportionment Com. Elected to Senate 1962; member Sen. Highways Com., Legis. Council Urban Problems Com. Home address: 2414 E. 6th St., Superior.

25th Senatorial District\*: Ashland, Bayfield, Douglas Counties.

**FRED A. RISSER** (Dem.) born Madison May 5, 1927. Educated Madison public schools; Carleton College, Minn.; Univ. of Wis.; B.A. and LL.B. (1952) Univ. of Oregon. Practicing attorney. World War II veteran; in Navy 1945-46. Member Oreg., Wis. Bar Assns. Delegate to 1960 Dem. National Convention. Elected to Assembly 1956; re-elected 1958, 1960. Served on Board on Government Operations (chm.), Claims Comn., Emergency Board, State Building Comn.; Joint Finance Com. (chm.); Assembly Rules standing and interim coms., State Affairs Com., Taxation Com.; Legislative Council. Elected to Senate 1962; member Jt. Finance Com. Business address: 109 W. Main St., Madison 3.

26th Senatorial District\*: City of Madison except 1962 Wards 21 and 22.

**JESS MILLER** (Rep.) born 1884 in Town of Eagle, Richland County. Educated in public schools. Farmer and auctioneer. Has held a number of public offices: chairman of Town of Eagle, chairman of County Highway Committee, County Mediation Board and County Republican Committee. Elected to Senate in 1938; re-elected in 1942, 1946, 1950, 1954, 1958 and 1962. Chairman of Sen. Committee on Highways; member Sen. Committee on Committees, Legislative Procedure Com. Member of Legislative Council; chairman Legis. Council Highway Advisory Committee. Home address: Richland Center.

27th Senatorial District\*: Co.umbia, Crawford, Richland, Sauk Counties.

\*These were the districts of the elections for terms beginning in 1961 or 1963. 1 or the new districts see ADDENDA.



DONNELLY  
28th District



SMITH  
29th District



LaFAVE  
30th District

DAVIS A. DONNELLY (Dem.) born Augusta, Wis. Mar. 9, 1927. Educated Augusta public schools; B.S. Wis. State College Eau Claire; LL.B. 1957 Univ. of Wis. Law School. Practicing attorney in Eau Claire; formerly commercial fisherman in Alaska, machinist, salesman, messenger in Wis. Assembly 1955. Overseas Navy veteran of World War II; veteran Korean Conflict. Member state and local bar associations. Elected to Senate 1956; re-elected 1960. Member Senate Committees on Agriculture and on Judiciary, 1964 World's Fair Participation Comn. Served on Citizens Advisory Committee on Tax Impact, Continuing Revenue Survey Commission; Legislative Council Governmental Labor Relations Committee, Conservation Committee. Business address: 131 S. Barstow St., Eau Claire.

28th Senatorial District\*: Chippewa and Eau Claire Counties.

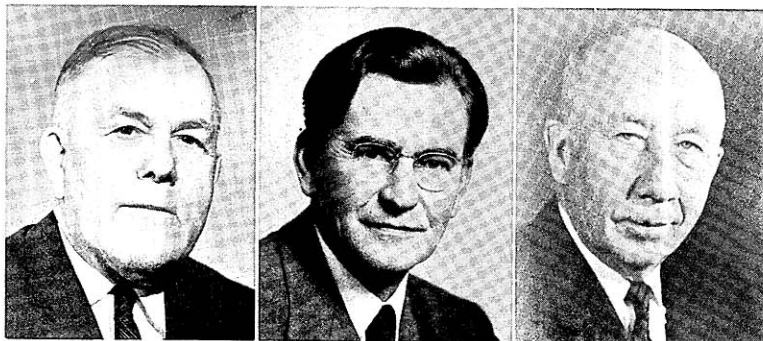
CHARLES F. SMITH, JR. (Rep.) born Rhinelander July 16, 1918. Educated Wausau public schools; Univ. of Wis. B.A. 1941, LL.B. 1948. Practicing attorney; partner in Wausau law firm. World War II veteran; in Army 4 years overseas. Member Internat'l Assn. of Insurance Counsel; county, state, American bar assns.; Elks, Amer. Legion, Chamber of Commerce. Served as president and member of local Rotary Club and Cancer Soc. Wausau alderman and county board member 1950-60; twice chairman of Marathon County Board. Elected to Senate 1962. In 1963 chosen Sen. majority caucus secretary. Member of Sen. Highways Com., Labor, Taxation, Insurance and Banking Com.; Legis. Council Judiciary Com., Urban Problems Com. Business address: 427 Fourth St., Wausau.

29th Senatorial District: Marathon, Menominee, Shawano Counties.

REUBEN LaFAVE (Rep.) born Oconto. Educated public schools; Railroad Auditors School. Real estate broker. Served in Coast Guard. Chairman Sportsmen's Conserv. Congr.; past pres. Northeast Wis. Conserv. Council; member Kiwanis, Wis. Service Assn., civic assns. Awards: Mil. Sen. Outstanding Achievement in Conservation Field 1953; 256 Wis. conserv. clubs' Mr. Conservation 1960. Served on county board. Assemblyman 1951-57; chm. Conserv. Com. Senator since 1957. Chairman Sen. Contingent Expenditures Com., Jt. Admin. Rules Com., 1957-59 interim chm. Conservation Com. Vice-chm. Interstate Ports Comn., Menominee Indian Com. Member Jt. Retirement Systems Survey Com.; Sen. Gov'l and Veterans Affairs Com., Highways Com., Legis. Procedure Com. Address: North Shore Road, Rt. 1, Oconto.

30th Senatorial District\*: Florence, Forest, Langlade, Marinette, Oconto Counties.





**LEVERICH**  
31st District

**BICE**  
32nd District

**DEMPSEY**  
33rd District

**JAMES EARL LEVERICH** (Rep.) born on farm in Town of Angelo, Monroe County Dec. 6, 1891; still resides there. Graduated Sparta High School, Madison College, Univ. of Wis. Agric. Short Course. Is a dairy farmer, fruit grower, farm co-op leader. For many years bank vice-pres.; pres. co-op creamery assn. and livestock shipping assn. Served as school clerk; town clerk and chairman; member county board, State Board of Vocational and Adult Education, various other state-wide agric. and dairy coms. Elected to Senate 1934; re-elected since 1942. Chairman Sen. Agriculture Com.; member Com. to Visit State Institutions, interim Conservation Com., Interstate Cooperation Comn., Sen. Legis. Procedure Com. Address: Rt. 1, Sparta.

31st Senatorial District\*: Adams, Juneau, Marquette, Monroe, Vernon Counties.

**RAYMOND C. BICE** (Rep.) born La Crosse Apr. 5, 1896. Educated La Crosse public schools; Univ. of Wis. Ext. Div. In retail lumber business. Overseas with Army in World War I. Chm. Oak Forest Sanatorium board of trustees; past pres. La Crosse Co. Chamber of Commerce, Businessmen's Club; member Amer. Legion, civic organizations. Received 1957 La Crosse "Civic Duty" award. Pres. La Crosse Vocational School Bd.; past officer County Bd., chm. County Park Com. Assemblyman 1947, '49, '51, '53; chm. Transportation Com., author '65/55' Wis. speed limit law. Elected Senator Apr. 1953; re-elected 1956, 1960. Chairman Sen. Com. on Committees, interim Physical Plant Maintenance Com. Member Sen. Education Com., Legis. Procedure Com.; Legis. Council U.W. Medical Center Com. Home address: 2406 State St., La Crosse.

32nd Senatorial District\*: Jackson, La Crosse, Trempealeau Counties.

**CHESTER E. DEMPSEY** (Rep.) born Merton, Waukesha County, July 20, 1896. Owns and operates modern 300-acre dairy farm which is Dempsey family homestead since early pioneer days. Educated in county schools and has always been a close student of farming and farm problems. Was a member of Waukesha County Board and has held various school and township offices. Elected to Senate 1934; re-elected 1946, '50, '54, '58, '62. Chairman of Senate Public Welfare Com. Member Sen. Agriculture Com., Legis. Procedure Com., Mental Health Adv. Com., State Building Comn., Visiting Com. Served on Sen. Com. on Committees (chm.); Board on Government Operations; Joint Committee on Finance; Legislative Council Taxation Com. 1961, Agriculture Com. 1959. Home address: Route 1, Hartland.

33rd Senatorial District\*: Jefferson and Waukesha Counties.





LARSEN  
Chief Clerk



DAMON  
Sergeant at Arms

LAWRENCE R. LARSEN born Racine Mar. 23, 1897. Educated in Racine elementary and high schools. Veteran of World War I; served in Army. Assemblyman from Racine County 1951 and 1953. First chosen Chief Clerk of the Senate in 1935. Unanimously re-elected in each succeeding session through 1945, and again in each session from 1955 to 1963. Home address: 4801 Kinzie Ave., Racine.

HAROLD E. DAMON born Edgerton, Minn. Oct. 3, 1885. Since 1888 resident of Wisconsin. After graduation from high school attended Wausau Business College. At present engaged in insurance business. His public offices include alderman, supervisor, deputy sheriff and deputy clerk of court. In 1943 served as assistant sergeant at arms; in 1944 as acting sergeant at arms. In 1945 chosen Sergeant at Arms of the Senate; re-elected in each session since 1945. Home address: 707 First St., Wausau.

---

\*These were the districts of the elections for terms beginning in 1961 or 1963. For the new districts see ADDENDA.

**ASSEMBLY OFFICERS 1963**



**Speaker  
HAASE**



**Speaker  
pro tem.  
CLEMENS**



**Majority Leader  
ALFONSI**



**Majority  
Caucus Chairman  
BARLAND**



**Chief Clerk  
FRIEBE**



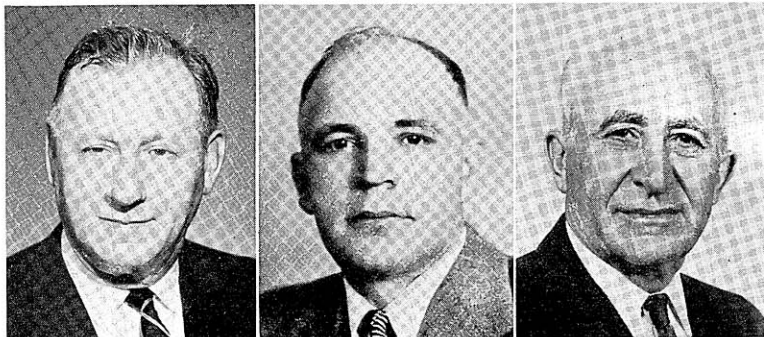
**Minority Leader  
HUBER**



**Minority  
Caucus Chairman  
MOLINARO**



**Sergeant at Arms  
KELLMAN**



**ROMELL**  
Adams, Juneau  
Marquette

**BARABE**  
Ashland, Bayfield\*

**ST. ANGELO**  
Barron\*

LOUIS C. ROMELL (Rep.) born Chicago, Apr. 7, 1899. Engaged in beef cattle raising; real estate dealer. Served as town supervisor 1939-42, Adams Co. Board member 1941, school board member 1936-42. Member of the Assembly 1947-55. Re-elected to the Assembly 1960 and 1962. Vice chairman of the Administrative Rules Review Committee. Member of the Assembly Committees on Commerce and Manufactures, on Highways, and on Rules. Home address: Edgewood Dr., Rt. 1, Adams.

ROBERT F. BARABE (Dem.) born Mellen, June 14, 1917. Educated Mellen public schools. Completed extension course at Univ. of Wisconsin 1961. Merchant for past 17 years. World War II veteran; served in Army, overseas with armored division 1942-46. Member of American Legion, Veterans of Foreign Wars. Served as alderman and Mayor of Mellen 1947-58; as member of Ashland County Board 1947-49. Elected to Assembly in 1958; re-elected 1960 and 1962. Member Assembly Education Com. Served on Assembly Highways Com., Public Welfare Com., State Affairs Com.; Legis. Council Public Health Com., Water Resources Com. Home address: Mellen.

THOMAS ST. ANGELO (Rep.) born Cumberland, Jan. 13, 1889. Educated Palmer School, Cumberland High School. Completed a law course with LaSalle Extension University of Chicago, and a course in engineering with the International Correspondence Schools of Scranton, Pa. Appraiser for F.H.A. and Veterans Administration since 1958; with Federal Farm Credit Administration 1933-57. Served as Barron County Red Cross chairman 1945-51 and 1958, on Agricultural War Board 1940-45, on Palmer School Board 1920-27. Elected to the Assembly in 1960; re-elected in 1962. Member of Assembly Conservation Com., Contingent Expenditures Com., Transportation Com. Served on Assembly Agriculture Com., Legis. Council Water Resources Com. Home address: Cumberland.

\*These were the districts of the elections for terms beginning in 1963. For the new districts see ADDENDA.



QUINN  
Brown, 1st



GRANT  
Brown, 2nd



VANDERPERREN  
Brown, 3rd

JEROME F. QUINN (Rep.) born Green Bay. Educated St. Patrick's School, Green Bay West High School. Attended Univ. of Wisconsin. Merchant for 30 years, also real estate business. Member Green Bay Assn. of Commerce, West Side Businessmen's Assn., Elks. Was Green Bay alderman 16 years; on Brown Co. Board 6 years. Past chairman Finance Com. Green Bay Bd. of Education. Elected to Assembly 1954; now in 5th term. Chairman Assembly Commerce and Manufactures Com. Member Assembly and Legis. Council Highways Coms.; Assembly Veterans and Milit. Affairs Com.; Legis. Council Urban Problems Com. Has served on Civil Defense Council, Assembly Rep. Policy Com. Home address: 137 N. Oakland Ave., Green Bay.

Brown County, 1st District\*: 1962 Wards 3, 6, 13-24, City of Green Bay.

ALEXANDER R. GRANT (Rep.) born Chicago, Nov. 28, 1925. Educated Our Lady of Mt. Carmel School, Chicago; Madison West High School, Univ. of Wisconsin B.S. 1950, LL.B. 1953. Attorney. Veteran of World War II and the Korean Conflict; served in Navy. Member Wis. District Attorneys Assn., Natl. Assn. of Prosecuting Attorneys, Brown Co. Assn. for Retarded Children, Elks. In 1958 elected Brown County D.A.; was asst. D.A. 1957-58. Elected to Assembly 1960; re-elected 1962. Vice chairman Joint Committee on Finance. Member Assembly Printing Com., interim Obscene Literature Investigation Com., Legis. Council and its Judiciary Com. Home address: 2707 Lola Drive, Green Bay.

Brown County, 2nd District\*: Towns of Allouez, Preble; 1962 Wards 1, 2, 4, 5, 7-12, City of Green Bay.

CLETUS J. VANDERPERREN (Dem.) born in Brown County's Town of Pittsfield, Mar. 4, 1912. Educated Mills Center School. Farm owner and operator. Member Farm Bureau since 1947, local dairy herd improvement co-op. (pres.), tri-county fire dept. (treas.). Serving as town chairman; county board member 12 years, member of committees on agriculture, county arena, reforestation and conservation, roadside zoning and planning and veterans. Elected to Assembly 1958; re-elected 1960, 1962. Member Assembly Agriculture Com., Printing Com., Taxation Com. Served on interim State Institutions Visiting Com., Assembly Conservation Com., Legis. Council Water Resources Com. Home address: Rt. 5, Green Bay.

Brown County, 3rd District\*: Brown County except Town of Allouez, Town of Preble, City of Green Bay.



JOHNSON, R. I.  
Buffalo, Pepin,  
Pierce

DUEHOLM  
Burnett, Polk

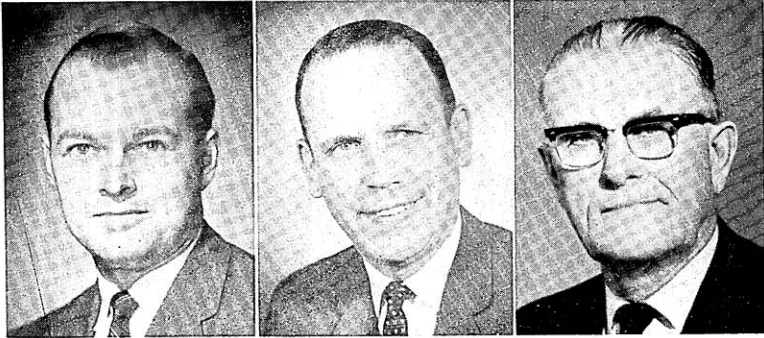
STRUEBING  
Calumet

ROBERT I. JOHNSON (Rep.) born Mondovi, May 24, 1928. Educated Devaney rural school, Mondovi High School. Graduated Univ. of Wisconsin Agricultural Short Course. Active farmer since 1946. Veteran of the Korean Conflict; served in Army artillery. Devaney 4-H Club leader 1946-51; president West-Central Jersey Cattle Club 1955-57. Elected to Assembly in 1960; re-elected 1962. Member of Assembly Committees on Agriculture and on Public Welfare; vice chairman Assembly Labor Committee. Served on Legis. Council Water Resources Com. Home address: Double "J" Farm, Route 2, Mondovi.

HARVEY L. DUEHOLM (Dem.) born in Polk County's Town of Bone Lake, Jan. 29, 1910. Educated in Bone Lake Elementary School, Luck High School. Dairy farmer; member various co-op. executive boards. Served as community committeeman of Agricultural Conservation Service 1938-53, as town chairman 1945-59, as county board chairman 1957-59. Elected to Assembly 1958; re-elected 1960, '62. Chosen member of Democratic Assembly Policy Committee 1961. Member Assembly Education Com., State Affairs Com.; Legis. Council Election Laws Com., Remedial Legislation Com. Served on Assembly Commerce and Manufactures Com. (vice chairman 1959), Conservation, Elections, Public Welfare Coms.; Legis. Council Commercial Code Com., Education Com., Physical Plant Maintenance Com. Home address: Route 2, Luck.

WILMER H. STRUEBING (Rep.) born in Town of Brillion, Apr. 2, 1910, and raised on farm which has been family possession for over 80 years; still lives there. Educated in Brillion grade and high schools. Farmer and salvage dealer; owns and operates iron and metal company. Active in church activities. Member school board 1951-57. Since 1957 town chairman, member county board and its highways committee, director and secretary Calumet County Memorial Hospital Board. Elected to the Assembly 1962. Mr. Struebing is a member of the Assembly Committee on Education and of the Assembly Committee on State Affairs. Home address: Route 2, Brillion.

\*These were the districts of the elections for terms beginning in 1963. For the new districts see ADDENDA.



LIEN  
Chippewa

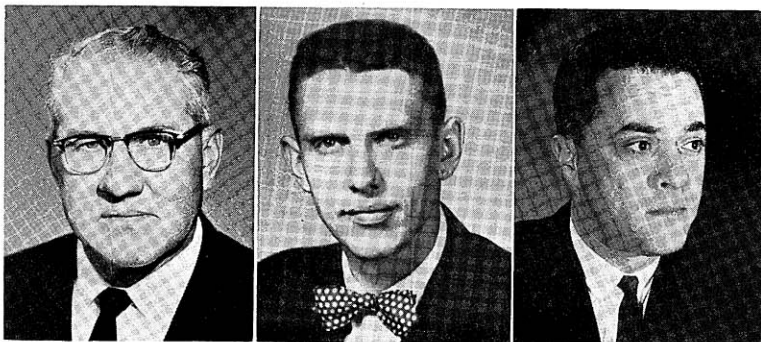
NIKOLAY  
Clark

BIDWELL  
Columbia

EDGAR E. LIEN (Rep.) born Milwaukee, Aug. 3, 1936. Educated Benjamin Franklin School, Emmanus Ev. Luth. School, Milwaukee Lutheran High School; B.A. Valparaiso University 1958, LL.B. 1960. Practicing attorney. Member 32nd Inf. Div. Wis. National Guard. Member Bloomer Chamber of Commerce, secretary 1962. Chippewa County court commissioner; has served as Bloomer city attorney. Elected to the Assembly in 1962. Mr. Lien is a member of the Assembly committees on Elections and on Judiciary, and of the Legislative Council Election Laws Committee. Business address: 1225 - 15th Ave., Bloomer.

FRANK L. NIKOLAY (Dem.) born Marathon County (Day tn.), Sept. 1, 1922. Educated Abbotsford public schools; LL.B. 1948 Univ. of Wis. Attorney; lieut. colonel, staff judge advocate general 32nd Div. Wis. Natl. Guard. World War II veteran; Army 1940-41, Navy 1943-46. Chm. Wis. Humphrey delegation, 1960 Dem. Natl. Convention. Green Bay dist. counsel OPS 1951. U.S. atty. Western Dist. Wis. 1952-54; Abbotsford vil. atty. 1949-50 and since '54; Colby city atty. '58 to '62. Clark County posts: county board 1949-50 and since '57, welfare board since '57, asst. D.A. 1955-56. Assembly committee clerk 1943. Elected to Assembly 1958; re-elected '60, '62. Chosen Assembly Asst. Minority Leader 1963. Member Assembly Education Com., Judiciary Com.; Joint Revisions, Repeals, Uniform Laws Com.; Legis. Council Judiciary Com. Business address: Abbotsford.

EVERETT V. BIDWELL (Rep.) born Houston, Minn., Oct. 22, 1899. Attended Minnesota rural schools and Univ. of Minn. Ice cream manufacturer, bank vice president; formerly salesman, farmer. Past director Portage Chamber of Commerce, Wis. Ice Cream Manufacturers Assn. Member county board 10 years. Elected to Assembly 1952; now in 6th term. Chairman of Assembly Taxation Com. Member Assembly Insurance and Banking Com., Tax Exemptions Jt. Survey Com., Civil War Centennial Com., Legis. Council. Served on Joint Finance Com. (chm. 1961), Board on Govt. Operations. Gov. Thomson's Adv. Coms. on Industrial Development, on Problems of Land Acquisition, and on Operation of the Eminent Domain Law; Legis. Council Commercial Code Com. Business address: 612 W. Edgewater St., Portage.



KINTZ  
Crawford, Richland\*

ANDERSON  
Dane, 1st

NAGER  
Dane, 2nd

MILFORD C. KINTZ (Rep.) born in Richland County's Town of Richland, Aug. 3, 1903. Educated Richland County public schools; attended Richland County Normal School. After teaching for one year, he started farming for himself. 4-H Club leader. Member of the committee on rural community high schools. Town chairman 1939-51; served as chairman of Richland County Board and as school board director. Elected to Assembly 1950; now in 6th term. Chairman of Assembly Printing Committee, vice-chm. Transportation Com. Member Education Com. (chairman 1953), State Affairs Com. Served on Joint Finance Committee in 1957 and 1961. In 1963 Mr. Kintz is a member of the State Board on Government Operations. Home address: Rt. 2, Richland Center.

NORMAN C. ANDERSON (Dem.) born Hammond, Ind., Mar. 11, 1928. Educated Hammond public schools. Received B.S. in 1951 from Univ. of Wisconsin; LL.B. 1954 U.W. Law School. Practicing attorney. Served in Army 1946-47. Member of Madison Redevelopment Authority. Acting Dane Co. coroner 1952-54. Elected to Assembly 1956, 1960 and 1962; in the 1959 Session served as Assembly Chief Clerk. Member Administrative Rules Review Committee; Assembly Conservation Committee, Insurance and Banking Com. In 1957 member Assembly State Affairs Com. Served ex officio on 1959-61 Revision of Assembly Rules Interim Com. Home address: 3401 Dawes St., Madison 14.

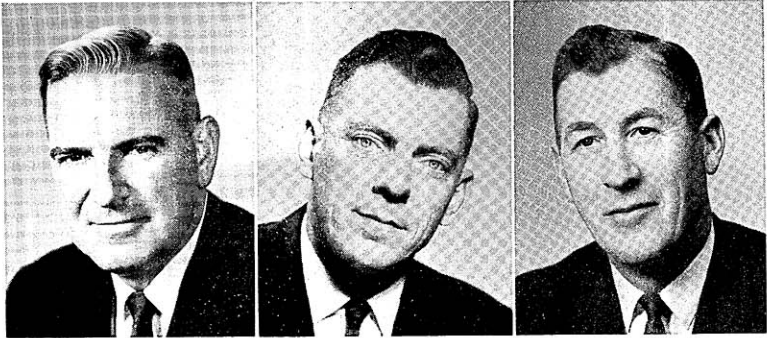
Dane County, 1st District\*: 1962 Wards 6, 7, 12, 15-18, City of Madison.

EDWARD NAGER (Dem.) born New York, N.Y., July 22, 1927. Educated in New York grade (and high schools. He received the degree of B.S. in Government in 1950 from the City College of New York, and the degree of LL.B. in 1955 from the University of Wisconsin's Law School. Mr. Nager is a practicing attorney in Madison. He served in the Army Air Force from 1945 to 1947. From 1960 until 1962 he was an assistant Dane County district attorney. Elected to the Assembly in 1962. Mr. Nager is a member of the Assembly Committee on Commerce and Manufacturers. Home address: 840 Spaight St., Madison.

Dane County, 2nd District\*: 1962 Wards 1-4, 8, 9, 14, City of Madison.

\*These were the districts of the elections for terms beginning in 1963. For the new districts see ADDENDA.





**UEHLING**  
Dane, 3rd

**BLASKA**  
Dane, 4th

**O'MALLEY**  
Dane, 5th

**ROBERT O. UEHLING** (Rep.) born Wisconsin Rapids, Apr. 23, 1915. Educated Wisconsin Rapids public schools; jr. college Santa Monica, Calif.; Univ. of Wisconsin B.A. 1939, LL.B. 1941. Practicing attorney since 1957; title and trust officer 1946-52, admin. officer state Selective Service System 1952-57. World War II veteran; Army 1941-45. Member bar assns., Elks, Optimist Club, National Guard Officers Assn. Madison alderman 1958-60. Elected to Assembly 1960; re-elected 1962. Chairman Joint Revisions, Repeals, Uniform Laws Com.; vice-chm. Assembly Municipalities Com. Member Assembly and Legis. Council Judiciary Coms.; Civil Defense Council. Business address: 111 S. Hamilton St., Madison 3.

Dane County, 3rd District\*: 1962 Wards 5, 10, 11, 13, 19, 20, City of Madison.

**JEROME L. BLASKA** (Dem.) born Sun Prairie, July 4, 1919. Educated Sun Prairie public schools. Farmer; canning company field manager 1939-42. World War II veteran; Army 1942-46. Committeeman Agricultural Conserv. Service; member farm organizations, volunteer fire dept. 12 years, Lions Club, V.F.W., American Legion. On school board 12 years; school clerk since 1950. Elected to Assembly in April 1959; re-elected 1960, 1962. Member Assembly Highways Com., Transportation Com. Home address: Rt. 2, Sun Prairie.

Dane County, 4th District\*: Towns of Albion, Blooming Grove, Bristol, Burke, Christiana, Cottage Grove, Deerfield, Dunkirk, Dunn, Medina, Pleasant Springs, Rutland, Sun Prairie, Windsor, York; Villages of Cambridge, Cottage Grove, Deerfield, DeForest, McFarland, Marshall, Monona, Rockdale; Cities of Stoughton, Sun Prairie; 1962 Ward 22, City of Madison.

**DAVID O'MALLEY** (Dem.) born Waunakee, Nov. 12, 1912. Educated St. John's School, Waunakee High School; Univ. of Wis. 1936-38. Lifetime farmer. Village supervisor, county board member 1957-59. Elected to Assembly 1958; re-elected 1960, 1962. Member Assembly Agriculture Com., Contingent Expenditures Com. Served on Assembly Taxation Com., Legis. Council Conservation Com., Tobacco Marketing Com. Home address: 315 W. Main St., Waunakee.

Dane County, 5th District\*: Towns of Black Earth, Berry, Blue Mounds, Cross Plains, Dane, Fitchburg, Madison, Mazomanie, Middleton, Montrose, Oregon, Perry, Primrose, Roxbury, Springdale, Springfield, Vermont, Verona, Vienna, Westport; Villages of Black Earth, Blue Mounds, Cross Plains, Dane, Maple Bluff, Mazomanie, Middleton, Mt. Horeb, Oregon, Shorewood Hills, Verona, Waunakee, Dane County parts of Belleville and Brooklyn; 1962 Ward 21, City of Madison.





**DOUGHTY**  
Dodge, 1st



**NITSCHKE**  
Dodge, 2nd



**JOHNSON, L. H.**  
Door, Kewaunee

**ESTHER S. DOUGHTY** (Rep.) was born in Wisconsin. Educated St. Stephen's Lutheran School, Horicon; graduate of Horicon High School. Mrs. Doughty lists her occupations as mother and insurance and real estate agent. Elected to the Assembly in 1962. Member of Assembly Committees on Insurance and Banking and on Taxation; Legislative Council Education Com. Business address: 232½ E. Lake St., Horicon.

Dodge County, 1st District\*: Towns of Ashippun, Clyman, Emmet, Herman, Hubbard, Hustisford, Lebanon, Leroy, Lomira, Rubicon, Shields, Theresa, Williamstown; Villages of Brownsville, Clyman, Hustisford, Iron Ridge, Lomira, Neosho, Theresa; Cities of Horicon and Mayville, and the Dodge County part of the City of Watertown.

**ELMER C. NITSCHKE** (Rep.) born Burnett, May 20, 1911. Educated in Dodge Co. public schools. Real estate broker, insurance agent. Member of Dodge Co. Insurance Agents Assn., Lions, Elks. Served as school board director, deputy sheriff. Elected to Assembly in 1948; now serving 8th consecutive term. In 1957 and 1963 chairman of Assembly Highways Com., member Excise and Fees Com. (vice-chm. 1961); past chm. Taxation Com. (1953), Revision Com. (1955). Vice chairman Legis. Council Highways Com. Home address: 208 Hamilton St., Beaver Dam.

Dodge County, 2nd District\*: Towns of Beaver Dam, Burnett, Calamus, Chester, Elba, Fox Lake, Lowell, Oak Grove, Portland, Trenton, Westford, Villages of Lowell, Reeseville, Randolph (east ward only); Cities of Beaver Dam, Fox Lake, Juneau; Wards 1-4, City of Waupun.

**LAWRENCE H. JOHNSON** (Rep.) born Nadeau, Mich., April 26, 1908. Educated rural school and Sturgeon Bay High School. Farmer since 1925; 16 years secy. dairy co-op.; 13 years pres. county co-op.; 10 years on Door-Kewaunee County College Board. Active in soil conservation work; vice-pres. Wis. Soil Conserv. Dist. Supervisors Assn.; pres. Northeast Wis. Soil Conserv. Districts Assn. President Wis. County Highway Committee Members Assn. Held local public offices for 31 years; town clerk 1930-47, chairman since 1947; county board chairman since 1955. Elected to Assembly in 1960; re-elected 1962. Vice chairman Assembly Highways Committee. Member Assembly Labor Com., Veterans and Military Affairs Com.; Joint Retirement Systems Survey Com.. interim State Institutions Visiting Com. Home address: Rt. 2, Algoma.

\*These were the districts of the elections for terms beginning in 1963. For the new districts see ADDENDA.



PERALA  
Douglas, 1st

BOUCHARD  
Douglas, 2nd

OWEN  
Dunn

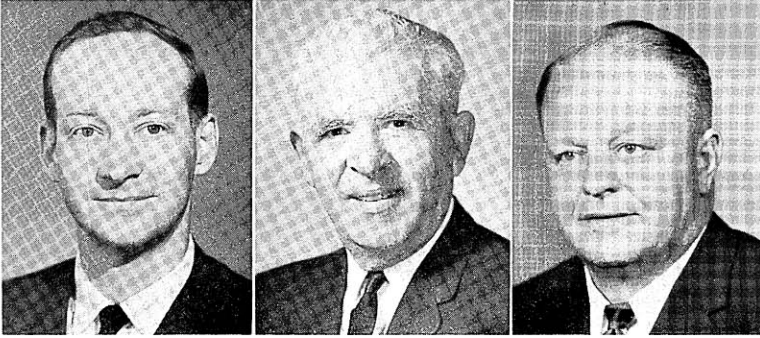
REINO A. PERALA (Dem.) born Maple, Aug. 28, 1915. Educated Corner School at Maple; Wisconsin School for Blind; Superior State College. Received LL.B. in 1943 from Univ. of Wisconsin Law School. Practicing attorney; also operates hotel in Superior. Served as justice of peace. Elected to Assembly 1952; now in 6th term. Member Assembly Conservation Com. Served on Interstate Ports Commission, Assembly Taxation Com. (chairman 1959), Transportation Com. (vice-chm.), Legis. Council Judiciary Committee. Home address: 824 N. 22nd St., Superior.

Douglas County, 1st District\*: Wards 4-16, City of Superior.

CHARLES J. BOUCHARD (Dem.) born Superior, Apr. 25, 1911. Educated Superior public grade and high schools; graduate of U.S. Maritime School, New London, Conn. Motor court owner since 1949; 10 years marine engineer. Served as an officer in the U.S. Maritime Service 1942-45. Mr. Bouchard is a member of the United Commercial Travelers of America, the Lions Club, and the Douglas-Ashland-Price-Iron County Development Commission. He has served 8 years as town chairman and member of the county board. He was elected to the Assembly in 1962. Mr. Bouchard is a member of the Assembly Committee on Conservation. Home address: Brule.

Douglas County, 2nd District\*: Douglas County except those wards of the City of Superior which are in the First District.

WILLIAM E. OWEN (Rep.) born in Dunn County's Town of New Haven, Nov. 28, 1888. Educated Connorsville rural school, Dunn County Agric. School. Lifetime farmer, specializing in purebred Guernsey; retired from farming 1945, now devotes his time to REA activities; pres. Dunn Co. REA since its founding 1937. President Wis. Electric Co-op. 1939-47; director and charter member Dairyland Power Co-op. For 18 years director creamery co-op. Served as president of high school board. A state Senator in 1951 and 1953, the 1951 Senate apportionment made him ineligible for re-election to Senate in 1954. Elected to Assembly in 1956, 1960, 1962. Chairman of Assembly Enrolled Bills Committee; member Assembly Commerce and Manufactures Com., Veterans and Milit. Affairs Com. Home address: 205 - 14th St., Menomonie.



**BARLAND**  
Eau Claire, 1st

**MATO**  
Eau Claire, 2nd

**DAILEY**  
Florence, Forest,  
Langlade\*

**THOMAS H. BARLAND** (Rep.) born in San Francisco, Calif., Mar. 3, 1930. Public school San Francisco, Wahiawa in Hawaii; high school in Eau Claire; Univ. of Wisconsin B.A. 1951, LL.B. 1956. Practicing attorney. Served in Army; now in Army Reserve. Awarded 1959 Eau Claire Jaycees' *Distinguished Service* award. Member Board of Curators Wis. State Historical Society, past chm. local Red Cross; member bar assns., board of managers Camp Galilee; active in Boy Scouts, YMCA, Civic Music. Elected to Assembly 1960 and 1962. Chosen Assembly Majority Caucus Chairman 1963. Member Board on Government Operations, Joint Finance Com., Tax Exemptions Joint Survey Com., Legis. Council Judiciary Com. Served on Assembly State Affairs Com., Taxation Com. Business address: 131 S. Barstow St., Eau Claire.

Eau Claire County, 1st District\*: Wards 1-3, 5-10, 13, City of Eau Claire.

**LOUIS V. MATO** (Dem.) born Pogradec, Albania, July 20, 1903. Educated in grade and high schools in Albania; attended business college in Red Wing, Minn., 1921-22. Salesman for chef's supplies; operated own restaurant for 16 years. Possibly first person of Albanian descent to serve in Wisconsin Legislature. Active in civic and service programs in Eau Claire County. Has served on Eau Claire County Board since 1952. Member of the Governor's Advisory Committee on Mental Health since 1959. Elected to the Assembly in 1962. Member of Assembly Committee on Taxation. Home address: Fairchild.

Eau Claire County, 2nd District: Eau Claire County except those wards of the City of Eau Claire which are in the First District.

**PAUL DAILEY, JR.** (Rep.) born Elcho, Jan. 20, 1915. Educated Elcho grade and high schools; studied at River Falls State College, University of Minnesota and Loyola University. A fur farmer, Mr. Dailey has been in this occupation for 21 years. He is a member of the Lions Club. Mr. Dailey has served as village president of Elcho and for 12 years has been a member of its school board. He was elected to the Assembly in 1962. Mr. Dailey serves on the Assembly Committee on Conservation and on the Assembly Committee on State Affairs. Home address: Route 1, Elcho.

\*These were the districts of the elections for terms beginning in 1963. For the new districts see ADDENDA.



McESSY  
Fond du Lac, 1st



SCHLUETER  
Fond du Lac, 2nd



HARPER  
Grant

EARL F. McESSY (Rep.) born on farm in Fond du Lac County, Feb. 12, 1913. Graduated Fond du Lac High School; B.S. Marquette Univ. 1939. In real estate and insurance business; formerly purchasing agent, traffic officer, undersheriff, factory laborer. World War II veteran; in Navy amphibious forces South Pacific 1942-46. Chairman Red Cross chapter 1957-58, Elks' Youth Activity Com. 1958-61. President local PTA 1953-55; vice-pres. Central Education Council 1953-55. Elected to Assembly 1956; re-elected '58, '60, '62. Chairman of Assembly Municipalities Committee. Member Assembly Elections Com., Excise and Fees Com.; 1964 World's Fair Participation Comn.; Legis. Council Highway Adv. Com. Home address: 361 Forest Ave., Fond du Lac.

Fond du Lac County, 1st District\*: Town of Fond du Lac; Village of North Fond du Lac; City of Fond du Lac.

FRED W. SCHLUETER (Rep.) born in Berlin, Wis., Apr. 16, 1895. Educated public schools; Univ. of Wisconsin Insurance short courses. General insurance agent; retired from farming in 1945. Board member mutual fire insurance co. since 1937, its president 1942-49, secretary since 1949. Member Ripon Chamber of Commerce 1950-58. Member of Rotary Club. Town of Ripon clerk since 1928. Elected to Assembly 1954; now in 5th term. Chairman Assembly Engrossed Bills Com. Serving 5th term on Assembly Agriculture Committee, 4th term on Taxation Com.; member Legis. Council Physical Plant Maintenance Com. Home address: P.O. Box 32, Ripon.

Fond du Lac County, 2nd District\*: Fond du Lac County except Fond du Lac Town, North Fond du Lac Village, Fond du Lac City.

HUGH A. HARPER\*\* (Rep.) born Lancaster, Dec. 24, 1885. Educated public schools Lancaster, Madison. Liberal arts, agriculture at Univ. of Wis., B.A. 1910. Lifetime farmer. Served 6 years in National Guard. Selected by the Helm's Athletic Foundation in 1908 as one of the top 10 college basketball players; played basketball for 3rd Wis. regiment and for 1910 AAU champion team. Past pres. Wis. Farm Bureau; dir. Amer. Farm Bureau Fed.; officer Amer. Equity Soc. Served as school board member, town chm., county board chm., pres. Wis. County Boards Assn. Elected to Assembly 1930; served 11 terms. Vice chairman Assembly Third Reading Com. Member Joint Finance Com., Legis. Council. Served on 11 standing committees including Agriculture, Education, Highways, State Affairs and various interim committees including Education, Highways, Water Resources. Home address: 1016 W. Maple St., Lancaster.

\*\*Deceased Aug. 8, 1963. Successor elected Apr. 7, 1964. See ADDENDA for biography.



STAUFFER  
Green\*

JAHNKE  
Green Lake, Waushara

CALVERT  
Iowa, Lafayette\*

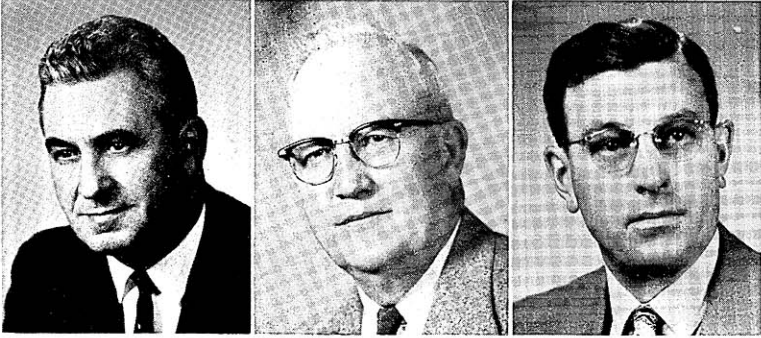
CHRIST M. STAUFFER\*\* (Rep.) born May, 25, 1896; raised on farm in Monticello. Educated public schools. Semi-retired; farmed with brother as partner until 1918; blacksmith, horse shoer, welder 1919-56. World War I veteran; in Army 1918-19. Vice pres. League of Wis. Municipalities 3 years; pres. businessmen's club; past comdr. local Amer. Legion; active in civic, church, fraternal organizations. Fire chief 1928-48; pres. grade and high school boards 1930-43; village pres. 1935-51; 2 years each selective service board, county school committee. Elected to Assembly 1956; re-elected 1958, '60, '62. Chairman of Assembly Com. on Third Reading; vice-chm. Commerce and Manufactures Com., member Agriculture Com. Served on Interstate Cooperation Comn. Home address: Monticello.

FRANKLIN M. JAHNKE (Rep.) born in Green Lake County's Marquette Town, Apr. 20, 1900. Educated Green Lake County public schools. Lifetime farmer; own dairy farm producing grade "A" milk; raises purebred hogs. Vice pres. Wis. County Boards Assn.; pres. Wis. Assn. of Soil Conservation Dist. Superv. 1954-56; pres. Grand River Rural Fire District. Past vice pres. and dir. co-op. assns.; member Kiwanis Club. Served as town assessor 1932, chairman since 1933; on Green Lake Co. Board since 1933, chairman since 1944; member State Banking Review Board 1937-43. Elected to Assembly 1956; re-elected '58, '60, '62. Chairman Assembly State Affairs Com., serving 4th term on Agriculture Com. Secretary Legis. Council Conservation Com.; served on Water Resources Com., County Boards Com. Home address: Rt. 3, Markesan.

WALTER B. CALVERT (Rep.) born Benton, Dec. 23, 1904. Educated Benton public schools. Attended Univ. of Wisconsin; B.S. Whitewater State College 1932. Engaged in farming since 1937; was commercial teacher 1926-37, high school principal 1944-45. Member Lions Club over 30 years; past president Sturgeon Bay and Benton Lions Clubs. Served as town chairman, county supervisor, county board chairman 1951-57. Elected to Assembly 1954; re-elected 1956, '58, '60, '62. In 1961 chosen chairman of Republican Assembly Caucus. Chairman of Assembly Education Committee 1957, 1961 and 1963; Legis. Council Education Com. 1963. Member Assembly Transportation Com.; Interstate Cooperation Comn. Served as chairman of Biennial Aids Adjustm. Com., member on Civil Defense Council, Assembly Printing Com., Public Welfare Com. Home address: Box 51, Benton.

\*These were the districts of the elections for terms beginning in 1963. For the new districts see ADDENDA.

\*\*Deceased Oct. 15, 1963. Successor elected Apr. 7, 1964. See ADDENDA for biography.



**ALFONSI**  
Iron, Oneida, Vilas\*

**PETERSON, M. J.**  
Jackson, Trempealeau

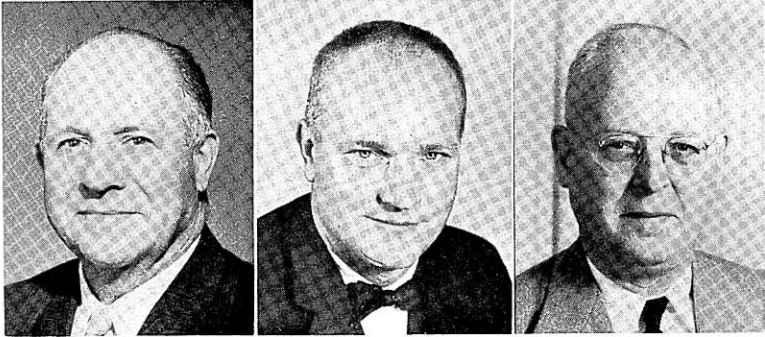
**WACKETT**  
Jefferson

**PAUL R. ALFONSI** (Rep.) born Pence, Feb. 13, 1908. Educated Hurley public schools. Graduated Whitewater State Coll.; attended Univ. of Wisconsin. President of insurance company at Green Bay; was high school business educ. teacher 1927-33, superv. principal Minocqua schools 1948-55. World War II veteran; in Army 1943-46. Presidential elector 1960. Town chairman 1935-43. Elected to Assembly 1932; first person of Corsican descent to serve in the Wis. Legislature. Assemblyman 1933-41; chosen Speaker 1937. Progressive Floor Leader 1935 and '39, chairman Education Com. 1935. Again elected to Assembly 1958, '60 and '62. Chosen Assembly Majority Leader 1963; Asst. Maj. Leader 1961. Chairman Assembly and Legis. Council Conservation Coms., Assembly Rules Com. Member 1963 Tax Compromise Com.; Joint Legislative Organization Com.; State Building Com.; Interstate Cooperation Com.; Legis. Council, its "Com. of 25" and its Highway Adv. Com.; Legis. Org. & Procedures Com. Home address: Minocqua.

**MERLIN J. PETERSON** (Rep.) born in Trempealeau County's Town of Pigeon, Dec. 30, 1901. Educated Black River Falls public schools. With State Traffic Patrol; formerly county traffic officer, farmer, livestock dealer. Elected to the Assembly in 1960; re-elected 1962. Member of the Assembly and Legislative Council Committees on Highways, and the Assembly Committee on Public Welfare. Home address: Rt. 2, Black River Falls.

**BYRON F. WACKETT** (Rep.) born Randolph, Mar. 21, 1912. Educated Randolph public schools. Service station operator; formerly salesman. Past president Wis. Assn. of Petroleum Retailers. Chairman Watertown Chapter Red Cross 1950-52. Served as mayor of Watertown from 1946 to 1949. Elected to Assembly 1952; now in 6th term. Member Joint Finance Com.; Assembly printing Com.; Legis. Council U.W. Medical Center Com. Served on Assembly Municipalities Com., Veterans and Milit. Affairs Com. (chairman 1955 and 1957); Legis. Council Coms. on Reactivation of Camp McCoy 1957-59, on Taxation (vice-chm.) 1961-63, Water Resources Com. 1959-61. Home address: 100 Oak Hill Court, Watertown.

\*These were the districts of the elections for terms beginning in 1963. For the new districts see ADDENDA.



**MOLINARO**  
Kenosha, 1st

**OLSON**  
Kenosha, 2nd

**WARTINBEE**  
La Crosse, 1st

**GEORGE MOLINARO** (Dem.) born Kenosha, Oct. 1, 1902. Educated Kenosha public schools and Business College. Automobile worker. Director and life member local county fair assn. On county board 1939-47. Elected to Assembly 1946; now in 9th term. Chosen Assembly Minority Caucus Chairman 1961 and 1963, Speaker of the Assembly 1959, Dem. Floor Leader 1951 and '53. Member of Natural Resources Com., Legislative Council (Chm. 1959-61) and its U.W. Medical Center Com., Legis. Org. & Procedures Com., Joint Finance Com. (5th term), Assembly Enrolled Bills Com., Rules Com. (4th term). Served on Government Operations Board, Interstate Cooperation Comm. Home address: 424 — 44th St., Kenosha.

Kenosha County, 1st District\*: Wards 1-3, 7-13, 16, 17, City of Kenosha.

**RUSSELL A. OLSON** (Rep.) born Chicago, Feb. 19, 1924. Educated Chicago public schools; attended Univ. of Illinois 2 years. Farmer and grain merchant since 1946; operated farm machinery agency 1951-55. World War II veteran; served in Marine Corps. Was secretary and treasurer of Kenosha Co. Farm Bureau 1958-60. Elected to Assembly 1960; in 1962 declared the winner of a contested election.\*\* Secretary Legis. Council U.W. Medical Center Com. Member Assembly Commerce and Manufactures Com., State Affairs Com. Has served on State Building Comm. Home address: Rolling Hills Farm, Bassett.

Kenosha County, 2nd District\*: Kenosha County except those wards of the City of Kenosha which are in the 1st District.

**D. RUSSELL WARTINBEE** (Rep.) born La Crosse, Nov. 11, 1903. Educated La Crosse public schools; La Crosse State Coll.; Univ. of Wis. law training 1925-26, B.Mus. 1934; M.A. Univ. of Minn. 1948. Teacher of U.S. history and social studies in La Crosse Central High School since 1942, music teacher in same school 1927-42. Past president of local musicians' association. Director of La Crosse Concert Band when organized in 1931 and continuously since 1939. Elected to Assembly in 1960; re-elected 1962. Member of Assembly Education Com. and Public Welfare Com.; Legis. Council U.W. Medical Center Com. Served on Assembly Insurance and Banking Com., Legis. Council Urban Problems Com. Home address: 1444 Wood St., La Crosse.

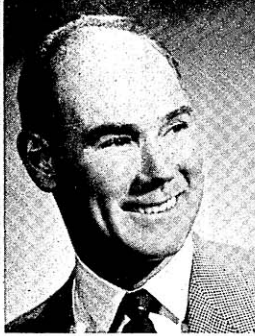
La Crosse County, 1st District\*: Wards 1-7, 9-16, 19, 20, City of La Crosse as of 1951.

\*\*Seated Feb. 7, 1963. Earl H. Elfers served at beginning of session (for his biography see ADDENDA); on May 21, 1964, the circuit court ruled that Elfers rather than Olson was the legal representative of Kenosha-2nd. As this Blue Book went to press the final outcome was still uncertain.





**NUTTELMAN**  
La Crosse, 2nd



**REGER**  
Lincoln\*



**KAUFMAN**  
Manitowoc, 1st

**NORBERT NUTTELMAN** (Rep.) born La Crosse County, Mar. 8, 1911. Educated La Crosse County schools, West Salem High School. Farmer since 1926. Served with local branch Federal Farm Home Admin. 1956-60. Received national award, *Superior Achievement in Agriculture and Community Service*, 1952. Active in 4-H work. Committeeman Wis.-Amer. Dairy Assn. Officer of breeders co-ops.; Vernon County (1941-47), Tri-State (1947-56), Wis. Guernsey. Officer La Crosse Milk Producers Assn., Interstate Fair Assn., Kiwanis; member chamber of commerce, West Salem PTA (past pres.). Elected to Assembly 1960; re-elected 1962. Vice-chm. Assembly Agriculture Com.; member Labor Com. Home address: Rt. 1, West Salem.

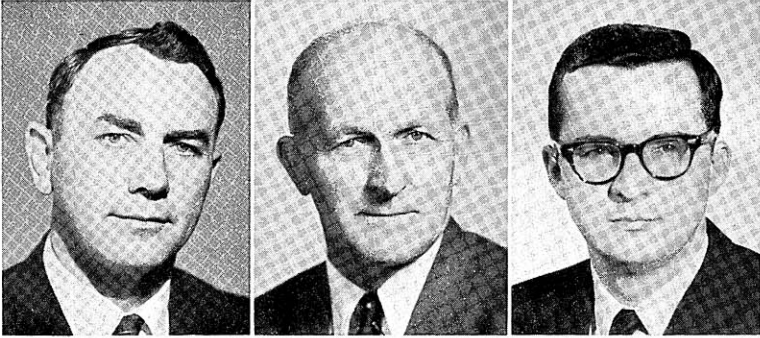
La Crosse County, 2nd District\*: La Crosse County except those 1951 wards of the City of La Crosse which are in the 1st District.

**FRED C. REGER** (Rep.) born Clare, Mich., Apr. 14, 1916. Educated in grade school at Merrill and Merrill High School; graduate of Lincoln County Teachers College. Insurance salesman since 1948; 12 years grade school teacher. Member Lincoln County Teachers Assn., its president 1946-47. Received Jr. Chamber of Commerce *Distinguished Service* award 1947. Mayor of Merrill 1946-48; member city council and county board 1941-46 and 1958 to present; council president since 1958. Since 1960 director Lincoln County Teachers College Board, Mayors Adv. Com. on Industrial Development. Elected to the Assembly in 1962. Member Assembly Taxation Com., Education Com.; Legis. Council Election Laws Com. Home address: 210 N. Oregon St., Merrill.

**EUGENE S. KAUFMAN** (Dem.) born Manitowoc, Sept. 28, 1922. Educated Manitowoc St. Boniface School, Lincoln High School; graduated Elgin Watchmakers College 1948. Retail jeweler since 1950; formerly dial phone system installer. Veteran of World War II; served in Army 1942-45, awarded 20 citations. Member of Holy Name Soc., K. of C., Amer. Legion, D.A.V., AMVETS, Eagles, County Fish and Game Protective Assn. and Deputy Sheriffs Assn., Wis. Retail Jewelers Assn. Member of county board of supervisors 6 years. Elected to Assembly 1962. Member Assembly Municipalities Committee, State Affairs Committee; Legis. Council Urban Problems Com. Home address: 1126 Washington St., Manitowoc.

Manitowoc County, 1st District: Towns of Manitowoc, Manitowoc Rapids, Newton; City of Manitowoc.





**BOLLE**  
Manitowoc, 2nd

**RIEHLE**  
Marathon, 1st

**OBEY**  
Marathon, 2nd

**EVERETT E. BOLLE** (Dem.) born in Manitowoc County's Town of Kossuth, Aug. 29, 1919. Educated St. Ann's parochial school, Rockwood public schools, Two Rivers High School. Labor problems and collective bargaining training from Univ. of Wisconsin Ext. Div. Real estate salesman; formerly farmer, trucker, general merchandise store, factory worker. Past pres. Holy Name Soc.; member Knights of Columbus, local fish and game protective assn. Served as town supervisor, district chairman Heart Fund, president labor union local. Elected to Assembly 1960; re-elected 1962. Member of Assembly Labor Com., Revision Com.; Legis. Council Education Com. Home address: Francis Creek (Rt. 2, Two Rivers).

Manitowoc County, 2nd District: Manitowoc County except Towns of Manitowoc, Manitowoc Rapids, Newton and City of Manitowoc.

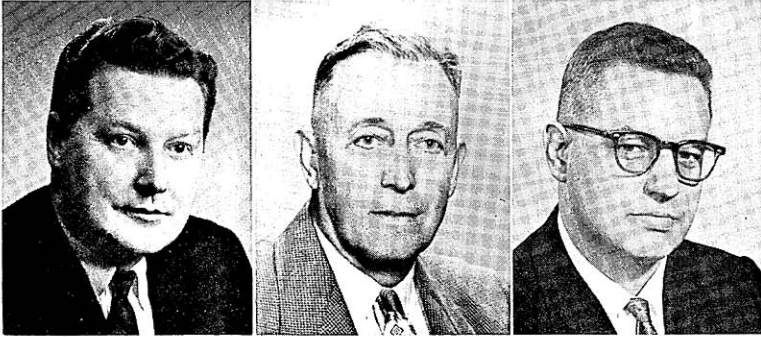
**BEN A. RIEHLE** (Dem.) born in Marathon Co., Town of Rietbrock, May 15, 1897. Completed 8th grade. All his life dairy farmer and connected with milk plants; secy.-treas. of co-op. milk plant with 30 million pounds annual volume. Vice pres. cheese producers co-op. and co-op storage co. Secy. co-op. livestock shipping assn. Member union co-op. board, beef producers co-op., transport co-op. World War I veteran; Army motor transp. 1918-19. School treas. 1925-40; county board 1941-42; chm. local soil conserv. com. 1936-39. Elected to Assembly 1954; now in 5th term. Member of Assembly Agriculture Com. Served 2 terms on Joint Finance Com., chairman Assembly Printing Com. 1959. Home address: Rt. 3, Athens.

Marathon County, 1st District: Marathon County except those towns, villages and cities which are in the 2nd District.

**DAVID R. OBEY** (Dem.) born Okmulgee, Okla., Oct. 3, 1938. Wisconsin resident since 1941. Educated St. James School, Wausau High School. Attended Wausau Extension Center; political science B.S. 1960 Univ. of Wis.; postgraduate study of Russian foreign policy under Natl. Defense Education Act grant 1960-63. Member admin. com. Wis. Democratic Party 1960-62. Active in Moose, Wausau Little League. Elected to Assembly in 1962. Member of Assembly Dem. Policy Committee, Assembly Public Welfare Com., Legis. Council Education Com. Home address: 515 N. 9th Ave., Wausau.

Marathon County, 2nd District\*: Towns of Maine, Ringle, Texas, Wausau, Weston; Villages of Brokaw, Rothschild; Cities of Schofield, Wausau.

\*These were the districts of the elections for terms beginning in 1963. For the new districts see ADDENDA.



HAASE  
Marinette\*

ABRAHAMSON  
Menominee, Shawano

PELECKY  
Milwaukee, 1st

ROBERT D. HAASE (Rep.) born Marinette, May 10, 1923. Educated Marinette public schools. Received LL.B. in 1951 from Univ. of Wisconsin Law School. Practicing attorney. World War II veteran; in Army Air Corps 1942-46. Past comdr. Marinette Amer. Legion; member 40 et 8, AMVETS, Elks. Elected to Assembly 1956; re-elected 1958, '60, '62. Chosen Assembly Speaker 1963, Rep. Floor Leader 1961, Caucus Chairman 1959. Chairman Jt. Com. on Legislative Organization. Vice chairman Legis. Council; Legislative Organization and Procedures Com. Member Assembly Rules Committee, Interstate Cooperation Com., 1963 Tax Compromise Com., 1964 World's Fair Participation Com., interim Obscene Literature Investigation Com., Legis. Council "Com. of 25". Served on Interstate Ports Com. 1959-61; chairman Legis. Council Ports and Navigation Com. 1957-59. Home address: 1221 Main St., Marinette.

THEODORE ABRAHAMSON (Rep.) born in Lyngdal, Norway, June 24, 1900. Received early education in Norway; attended evening school in United States. Owner of 2 feed elevators, founder and owner of pre-fab milkhouse company; formerly dairy farmer. President Tigerton Hospital Board, director of a bank; active in Morris Farmers Club, county fair assn., conservation clubs. Served as Tigerton village pres. 1948-64; county board member 1936-39 and 1956-64, member county finance committee. Elected to Assembly 1958; re-elected in 1960 and 1962. Vice chairman of Assembly Excise and Fees Com. and Insurance and Banking Com. Member Assembly Conservation Com., Legis. Council Menominee Indian Study Com. Served on Legis. Council Education Com. Home address: Tigerton.

STAN T. PELECKY (Dem.) born Milwaukee, Apr. 27, 1934. Educated Lee Street School, Steuben Jr.-High School, Washington High School. In 1956 received the B.S. degree in physics and mathematics from Univ. of Wisconsin; called to active duty with the 32nd Div. while a senior law student at Marquette University. Has been home secy. to Representative Reuss, editor of weekly newspaper, mathematician and physicist working on guided missile program. Served in Army Signal Corps 1957; trial counsel on special court-martial. 32nd Inf. Div. Arty. 1961-62. Member 9th Ward Citizens League, president 1957-58. Candidate for Senate 1958, for Assembly 1960. Elected to Assembly 1962. Member Assembly State Affairs Com. Home address: 2006 W. Roosevelt Blvd., Milwaukee 9.

Milwaukee County, 1st District\*: 1962 Ward 1, City of Milwaukee.



DIONESOPULOS  
Milwaukee, 2nd



GRECO  
Milwaukee, 3rd



SCHAEFFER  
Milwaukee, 4th

FRANK G. DIONESOPULOS (Dem.) born Milwaukee, Jan. 10, 1935. Educated Milwaukee public schools. Attended Spencerian Business College for 2 years. Law clerk and process server; formerly owner of wholesale photo finishing firm. Member of Eagles; on board of directors of St. Joseph Children's Home. Served on board of directors of Eagles Luncheon Club. Served as Milwaukee County coroner 1959-60. Elected to the Assembly in 1960; re-elected in 1962. Member of Assembly Insurance and Banking Committee; Legis. Council Insurance Com., State Institutions Visiting Com. In 1961 he served on the Assembly Municipalities Committee. Home address: 2319 W. McKinley St., Milwaukee 5.

Milwaukee County, 2nd District\*: 1962 Ward 2, City of Milwaukee.

ANGELO F. GRECO (Dem.) born in Milwaukee, March 19, 1925. Educated Andrew Jackson School and Lincoln High School, Milwaukee. Received B.A. in 1950 from Lawrence College; attended Marquette Univ. one year; in 1955 LL.B. from Univ. of Wisconsin Law School. Practicing attorney since 1955. World War II veteran; served 3 years in Army Medical Corps in China, Burma, India. Member of Disabled Amer. Veterans, Elks, state and local bar assns., Delta Tau Delta, Shorewood Players, Holy Name Soc. Elected to Assembly 1960; re-elected 1962. Secretary Legis. Council Education Com. Member of the Assembly Education Com., Veterans and Military Affairs Com. Served on Assembly Judiciary Com. Home address: 1522 E. Windsor Pl., Milwaukee 2.

Milwaukee County, 3rd District\*: 1962 Ward 3, City of Milwaukee.

FRANK E. SCHAEFFER, JR. (Dem.) born Milwaukee, Feb. 1, 1905. Graduate Gesu Catholic School; attended Milw. Vocational School. Employed by Milw. brewing co.; building supt. 20 years, painting contractor 18 years. Member Brewery Workers Union, Red Cross, Civil Defense Council; past vice pres. Building Service Union. Delegate Federated Trade Council; state Dem. conventions 1938, '44-52, '58-62. Member Legislators Dem. Council; on Policy, Steering, Labor Coms. Elected to Assembly 1944; now in 8th term. Vice-chm. Municipalities Com. 1959, member 10 years; Excise and Fees Com. 10 years. Secy. Legis. Council Water Resources Com. 1959-61 (chm. Abandonment of Dams Subcom.); member Taxation Com. 1961. Past member Public Welfare Com., interim studies on Labor and Management, Budget, Taxation. Home address: 1623 W. Wisconsin Ave., Milwaukee 3.

Milwaukee County, 4th District\*: 1962 Ward 4, City of Milwaukee.

\*These were the districts of the elections for terms beginning in 1963. For the new districts see ADDENDA.



**RYAN**  
Milwaukee, 5th

**COGGS**  
Milwaukee, 6th

**FLANNIGAN**  
Milwaukee, 7th

**MARK W. RYAN** (Dem.) born Milwaukee, Nov. 9, 1924. Educated St. Anne's School; Peckham, Washington High Schools; Milwaukee State Coll., Spencerian Coll.; Univ. of Wis.-Milwaukee. Electrical maint. engineer. World War II overseas veteran; regular Navy 1942-46, Naval Reserve 1946-51. President and bus. mgr. IBEW local, AFL-CIO 1956-60. Chairman 5th Ward Dem. unit 1958-60. Member Eagles, Knights of Columbus, Pi Rho Zeta commerce fraternity, Electrical Maint. Engineers Soc., V.F.W., Amer. Legion, Catholic War Vets. Elected to Assembly 1960; re-elected 1962. Member State Board on Government Operations, Joint Finance Com., Assembly Contingent Expenditures Com., Legislative Council. Served on Assembly Public Welfare Com., Legis. Council Judiciary Com. Home address: 3633 W. Meinecke Ave., Milwaukee 10.

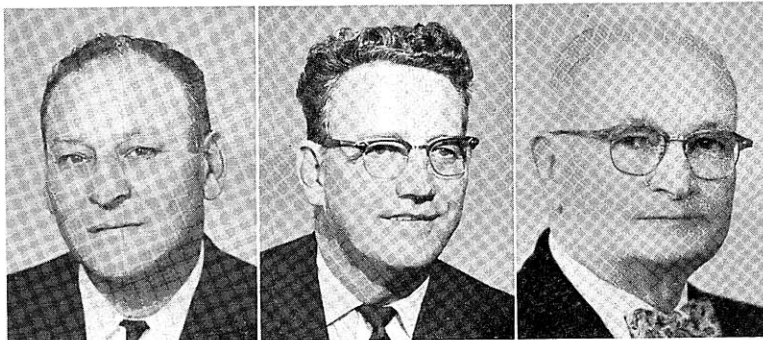
Milwaukee County, 5th District\*: 1962 Ward 5, City of Milwaukee.

**ISAAC N. COGGS** (Dem.) born Muskogee, Okla., June 5, 1920. B.S. Univ. of Wis. 1948. Accountant; formerly manufacturing, post office, World War II veteran; Army 1943-44. Pres. Near Northside Businessmen's Assn.; member YMCA Board, Amer. Legion, Disabled Amer. Veterans, AMVETS, Elks. Elected to Assembly 1952; now in 6th term. Chairman Assembly Public Welfare Com. 1959 (first Negro chairman of a Wis. legislative committee), member 1961 and '63. Member Revision Com., Civil War Centennial Com. Author of civil rights legislation: 1957 FEPC enforcement, 1959 temporary relief for nonresidents; in 1961 and 1963 led the fight to end discrimination in housing. Home address: 928 W. Meinecke Ave., Milwaukee 6.

Milwaukee County, 6th District\*: 1962 Ward 6, City of Milwaukee.

**ALLEN J. FLANNIGAN** (Dem.) born Princeton, Ind., June 9, 1909. Educated in public schools; Univ. of Ill. 2 years; Univ. of Wis. special courses. Tool grinder; formerly teletype operator, telegraph office mgr. World War II veteran; 32 mos. overseas in Army Signal Corps 1942-45. Member and former officer of United Steelworkers; active in civic affairs; on board of Neighborhood House, a Milw. Red Feather agency. Elected to Assembly 1956; re-elected 1958, '60, '62; Asst. Dem. Assembly Floor Leader 1959. Member Assembly Labor Com. (Chairman 1959), Veterans and Milit. Affairs Com. Served on Assembly Insurance and Banking, Municipalities, Transportation Coms.; Legis. Council Reapportionment Com.; past secy. Interstate Cooperation Comm. Home address: 2605 W. Auer Ave., Milwaukee 6.

Milwaukee County, 7th District\*: 1962 Ward 7, City of Milwaukee.



MANDERS  
Milwaukee, 8th

JONES  
Milwaukee, 9th

KELLY, P.H.  
Milwaukee, 10th

ADRIAN J. MANDERS (Dem.) born Wrightstown, Brown Co., Apr. 17, 1912. Educated St. Joseph School, Nioclet High School, West DePere; Milwaukee Vocational School 1945-46; attended Univ. of Wis. 1961. Sheet metal worker; licensed real estate salesman. Chairman 8th Ward Dem. unit 1958-59; cited at 1958 state Dem. convention for outstanding public relations and recruiting, awarded *Mr. Democrat* title 1959. Member Milw. Co. Dem. exec. board 1959-60. Chief sergeant at arms state Dem. convention 1959 and 1960. Member South 16th St.-Muskego Ave. Businessmen's Assn., South Division St. Civic Assn., sheet metal workers union, Holy Name Soc. Elected to Assembly 1960; re-elected 1962. Member Assembly Taxation Com., Engrossed Bills Com.; interim Obscene Literature Investigation Com. Home address: 1406 S. 36th St., Milwaukee 15.

Milwaukee County, 8th District\*: 1962 Ward 8, City of Milwaukee.

JOSEPH E. JONES (Dem.) born Antigo, June 29, 1914. Educated Antigo grade and high schools; studied at Univ. of Wis., Bolby Business Coll., Northwestern Univ. Machinist; formerly insurance agent. Veteran of World War II; served in Army 1944 to 1946. Member of Amer. Legion, V.F.W., Eagles, Knights of Columbus, Holy Name Soc., Milw. County Labor Council, Milw. County Dem. Council, Internat'l Assn. of Machinists (president of local 1960 to 1962). Elected to the Assembly in 1962. Member of Assembly Elections Com., Labor Com.; Legis. Council Conservation Com. Home address: 4285 N. 26th St., Milwaukee 9.

Milwaukee County, 9th District\*: 1962 Ward 9, City of Milwaukee.

PATRICK H. KELLY (Dem.) born in Chicago, June 13, 1890. Educated in Cassville, Wis., elementary school; attended high school. Retired from general contracting business in 1962; former occupations included carpentry, cabinet making, tool and diemaking, real estate salesman, private detective, principal of Minneapolis mechanical school. Member Eagles Club, 10th Ward Democratic unit. Served on local draft board during World War II. Elected to Assembly 1958; elected again 1962. Member of the Assembly Committees on Insurance and Banking, on Taxation, and on Third Reading. Home address: 940 N. 21st St., Milwaukee 3.

Milwaukee County, 10th District\*: 1962 Ward 10, City of Milwaukee.

\*These were the districts of the elections for terms beginning in 1963. For the new districts see ADDENDA.



**TOBIASZ**  
Milwaukee, 11th

**TADYCH**  
Milwaukee, 12th

**LATHAN**  
Milwaukee, 13th

**RAYMOND J. TOBIASZ** (Dem.) born Milwaukee, May 10, 1916. Educated St. Barbara's School, South Division High School. Owns hobby and smoke shop; realigns machinery. World War II veteran; served in Army. Member of AMVETS, American Legion, South Division Civic Assn., Polish National Alliance, American and Milwaukee Numismatic Assn., Holy Name Soc., Knights of Columbus. Served as 11th Ward Democratic committeeman 1956-60. Elected to the Assembly in 1960; re-elected 1962. Member of the Assembly Committees on Labor and on Public Welfare; Unemployment Compensation Advisory Committee. Home address: 3145 S. 50th St., Milwaukee 19.

Milwaukee County, 11th District\*: 1962 Ward 11, City of Milwaukee.

**ALBERT R. TADYCH** (Dem.) born Milwaukee, Mar. 23, 1932. Educated St. Anthony School, Don Bosco High School. Received B.A. in 1954 from Marquette Univ.; LL.B. from its Law School in 1958. Practicing attorney; formerly brewery worker, truck driver U.S. post office, assembler. Member Milwaukee and Wisconsin Bar Assns., Alpha Kappa Psi, Delta Theta Phi, Eagles; 12th Ward Democratic unit; former member Brewery Workers Union, Marquette Alumni Assn. Elected to the Assembly in 1960; re-elected 1962. Member of the Assembly Committee on Commerce and Manufactures. Home address: 2010 S. 15th St., Milwaukee 4.

Milwaukee County, 12th District\*: 1962 Ward 12, City of Milwaukee.

**RAYMOND LEE LATHAN** (Dem.) born Birmingham, Ala., Apr. 4, 1915. Educated in Birmingham's Westfield No. 1 School and Industrial High School. Graduated 1940 from Salma University Theological Seminary; B.Th. degree 1955 from Detroit School of Divinity. Minister. Member Ministers and Pastors Union, N.A.A.C.P. (chairman of education com.), education board Nat'l Baptist Convention. Grand Master of the Modern Free and Accepted Masons of the World in Wisconsin. Served as president of Milwaukee Christian Civic League 1957-60. Member of Governor's Commission on Human Rights 1960-63. Elected to the Assembly in 1962. Mr. Lathan is a member of the Assembly Committee on Transportation. Business address: 925 W. Burleigh St., Milwaukee 12.

Milwaukee County, 13th District\*: 1962 Ward 13, City of Milwaukee.

\*These were the districts of the elections for terms beginning in 1963. For the new districts see ADDENDA.



**NOWAKOWSKI**  
Milwaukee, 14th



**SCHUELE**  
Milwaukee, 15th



**WHITTOW**  
Milwaukee, 16th

**RICHARD C. NOWAKOWSKI** (Dem.) born Milwaukee, Sept. 17, 1933. Educated Blessed Sacrament School, South Division High School. Attended Marquette Univ. and Univ. of Miami. Building expediter and traffic manager; formerly cost accounting clerk, employe in Milw. comptroller's office. Past vice pres. Milw. Co. Property Owners Assn.; past member local exec. board United Steel Workers, union steward. Member of Polish National Alliance, The Milwaukee Soc., Wilson and Kosciusko Parks 4th of July Assns., St. Joseph Children's Home Athletic Assn., Holy Name Soc. (past vice pres.), Knights of Columbus. Parliamentarian of 14th ward Democratic unit. Elected to Assembly 1960; re-elected 1962. Served as Assembly Dem. Caucus vice-chm. Jan. to June 1963. Member of Assembly Elections Committee. Home address: 3148 S. 15th Place, Milwaukee 15.

Milwaukee County, 14th District\*: 1962 Ward 14, City of Milwaukee.

**WILFRED SCHUELE** (Dem.) born Hales Corners, May 15, 1906. Educated Cold Spring School, Boys Technical High School. Attended Marquette Univ. Sales representative for water softener manufacturer; formerly business investment counselor; disbursement officer RFC, war assets admin. and U.S. Treasury Dept.; state WPA administrator. Member Milw. Co. Democratic Council, Eagles, Moose, Woodmen of World. Elected to Assembly 1958; re-elected 1960, 1962. Member of Assembly Excise and Fees Com.; Legis. Council Urban Problems Com. Served on Assembly Elections Com. (vice-chm. 1959), Labor Com., State Affairs Com. Participated in interim studies of Reapportionment, Youthful Drinking and Driving. Home address: 3036 N. 84th St., Milwaukee 10.

Milwaukee County, 15th District\*: 1962 Ward 15, City of Milwaukee.

**WAYNE F. WHITTOW** (Dem.) born Milwaukee, Aug. 16, 1933. Educated Milwaukee public schools; studied at University of Wisconsin-Milwaukee; received B.B.A. degree 1963. Now in engineering administration; formerly traffic administration. Served in Army 1955-57. Member 16th Ward Democratic unit; Eagles; St. Joseph Children's Home Athletic Assn.; Bluemound Rd., State St. and Vliet St. Advancement Assns. Elected to Assembly in 1960; re-elected 1962. Mr. Whittow is a member of the Assembly Highways Committee. He served on the Assembly Committee on Insurance and Banking in 1961. Home address: 1439 N. 49th St., Milwaukee 8.

Milwaukee County, 16th District\*: 1962 Ward 16, City of Milwaukee.





**MCCORMICK**  
Milwaukee, 17th



**BARRON**  
Milwaukee, 18th



**SOIK**  
Milwaukee, 19th

**JOHN E. MCCORMICK** (Dem.) born Milwaukee, May 20, 1924. Educated Sacred Heart School, Fernwood School, Marquette High School. Received LL.B. in 1951 from Marquette Univ. Law School. Practicing attorney. World War II overseas veteran; served in Army Air Corps 2½ years. Member American Legion, Bay View Inc. Interorganization Council, 17th Ward Democratic unit, Wis. Bar Assn., Milw. Junior Bar Assn., Holy Name Soc., Knights of Columbus. Elected to Assembly 1960; re-elected 1962. Member Assembly Judiciary Committee; Legis. Council Election Laws Com. Served on Assembly Commerce and Manufactures Com., Joint Revisions, Repeals, Uniform Laws Com., Legis. Council Governmental Labor Relations Com. Home address: 2954 S. Wentworth Ave., Milwaukee 7.

Milwaukee County, 17th District\*: 1962 Ward 17, City of Milwaukee.

**MICHAEL J. BARRON** (Dem.) born Milwaukee, Dec. 18, 1933. Educated SS. Peter and Paul School, St. John's High School. Graduated from Milwaukee State College (now UW-Milw.) in 1956; in 1959 received LL.B. from Marquette Univ. Law School. Practicing attorney; formerly law clerk. Member of American, state and local bar assns., Holy Nam Soc., Elks, Board of Directors of East Side Businessmen's Assn., Lakeside Community Council. Active in Community Chest and Cancer Crusade. Served as president of student body at Milwaukee State College; as president of Marquette University Student Bar Assn. Elected to Assembly in 1960; re-elected 1962. Secretary Legis. Council Judiciary Committee. Member Assembly Judiciary Com., Transportation Com. Home address: 2610 E. Bradford Ave., Milwaukee 11.

Milwaukee County, 18th District\*: 1962 Ward 18, City of Milwaukee.

**NILE W. SOIK** (Rep.) born Milwaukee, May 2, 1923. Educated Jerusalem Lutheran School, Riverside High School; B.S. 1945 West Point; M.B.A. 1951 Univ. of Wis.; postgrad. study Cornell. Personnel management, instructor business admin. Marquette Univ. World War II veteran; West Point Army Engineers. Vice-chm. Milw. Co. Rep. Party, North Shore Rep. Club. Member Amer. Soc. of Trng. Dir., Community Chest, YMCA Northside Bldg. and Branch Sites Campaign, Arthritis and Rheumatism Found., Lions, W.B. Men's Club; formerly Jaycees, Jr. Achievement. Elected to Assembly 1960 and '62. Vice-chm. Assembly Veterans and Milit. Affairs Com.; Legis. Council U.W. Medical Center Com. Member Insurance and Banking Com., Labor Com., Workmen's Compensation Adv. Com. Home address: 6266 N. Santa Monica Blvd., Whitefish Bay 17.

Milwaukee County, 19th District\*: Villages of Bayside, Brown Deer, Fox Point, River Hills, Shorewood, Whitefish Bay; City of Glendale; 1962 Ward 20, City of Milwaukee.





POMMERENING  
Milwaukee, 20th

LYNCH  
Milwaukee, 21st

HUBER  
Milwaukee, 22nd

GLEN E. POMMERENING (Rep.) born Milwaukee, Sept. 27, 1927. Educated Wauwatosa public schools; B.S. Univ. of Wis. 1950, LL.B. 1953. Practicing attorney. On board of dirs. Wis. 4-H Club Foundation, Milw. Rescue Mission. Attended 1960 Rep. National Convention. Elected to Assembly 1954; now in 5th term. Chairman of Joint Finance Com. 1963, of Rep. Assembly Policy Com. 1961. Vice-chm. Board on Government Operations and State Building Comn. Member 1963 Tax Compromise Com., Claims Comn., Judgment Debtor Relief Comn., Legislative Organization and Procedure Com., Legislative Council and its "Com. of 25". Past chairman of Assembly Commerce and Manufactures Com., Elections Com. and Taxation Com. Served on Governor's *Blue Ribbon* Com. on Tax Policy, Tax Sources and Incidence Subcom.; Continuing Revenue Survey Comn. Home address: 2338 N. 88th St., Wauwatosa 13. Milwaukee County, 20th District: Wards 1 to 6, City of Wauwatosa.

RICHARD J. LYNCH (Dem.) born Milwaukee, June 11, 1921. Educated Holy Assumption School, West Allis public grade and high schools. Milwaukee County deputy sheriff; formerly life insurance agent, railroad firemen, machine operator. World War II veteran, served overseas in Army 1942 to 1945. Member of the West Allis Democratic unit. Elected to the Assembly in 1962. Mr. Lynch is a member of the Assembly Committee on Municipalities. Home address: 809 S. 120th St., West Allis 14.

Milwaukee County, 21st District\*: Wards 7 and 8, City of Wauwatosa; Ward 3, City of West Allis.

ROBERT T. HUBER (Dem.) born Eckelson, N.D., Aug. 29, 1920. Graduated West Allis Central High School. Merchandising salesman; formerly contractor 1944-48, auto parts and service salesman. Member Knights of Columbus, Holy Name Soc. Elected to Assembly 1948; now in 8th term; Dem. Assembly Floor Leader 1955, 1957, 1961; Minority Leader 1963. In 1959 became first Speaker pro tem. of the Assembly. Member 1963 Tax Compromise Com.; vice chairman Joint Legislative Organization Com.; secretary Legislative Organization and Procedure Com., Assembly Conservation Com., Highways Com. (chairman 1959), Rules Com.; 1964 World's Fair Participation Comn.; Legis. Council "Com. of 25" and Highway Adv. Com. Served on State Building Comn., Government Operations Board. Home address: 2228 S. 78th St., West Allis 19.

Milwaukee County, 22nd district: Village of West Milwaukee; Wards 1, 2, 4, City of West Allis.

\*These were the districts of the elections for terms beginning in 1963. For the new districts see ADDENDA.



SCHMIDT  
Milwaukee, 23rd

KELLY, L. P.  
Milwaukee, 24th

KENYON  
Monroe

ROBERT SCHMIDT (Dem.) born Kenosha, Aug. 2, 1913. Educated Greenfield Elementary School; 4 years West Allis Vocational School. Studied political science at Marquette University. Retired; operated custard stand for 11 years; tool and die maker for 18 years. Member of Milwaukee Co. Historical Society, Kiwanis, 32nd degree Mason, Shrine, West Allis Y.M.C.A. Served as Greenfield town supervisor 1952-54; member Milwaukee Co. Board 1956-60. Elected to Assembly 1960; re-elected 1962. Member of Assembly Commerce and Manufactures Com. Home address: 2920 S. 124th st., West Allis 19.

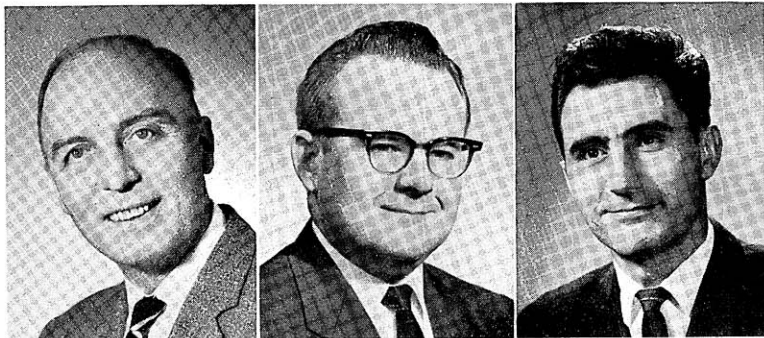
Milwaukee County, 23rd District\*: Villages of Greendale, Hales Corners; Cities of Franklin, Greenfield, Oak Creek; Ward 5, City of West Allis.

LAWRENCE P. KELLY (Dem.) born Sparta, Dec. 18, 1913. Educated St. Frederick's School, Cudahy High School; studied accountancy at La Salle University. Business manager. Chairman Community Blood Donor Club; member Lions Club (past local president), Chamber of Commerce, Variety Club of Wisconsin, Cudahy Dem. unit. Served 10 years' on city Board of Review, 2 years as chairman. Elected to the Assembly 1962. Member of the Assembly Committee on Public Welfare. Home address: 3535 E. Van Norman Ave., Cudahy.

Milwaukee County, 24th District\*: Cities of Cudahy, St. Francis, South Milwaukee; 1962 Ward 19, City of Milwaukee.

KYLE KENYON (Rep.) born at Wyeville. Educated rural school, Tomah High School. In 1952 received LL.B. from Univ. of Wisconsin Law School. Practicing attorney. World War II veteran; in Army 1943-46. County veterans service officer. Elected to Assembly 1956; re-elected 1958, '60, '62. Secretary of Assembly Republican Caucus 1961. Chairman of Assembly Insurance and Banking Committee, Legis. Council Remedial Legislation Committee. Member Assembly Judiciary Com.; Legis. Council Insurance Com., Judiciary Com. Served on Legislative Council; Reactivation of Camp McCoy Committee 1957-59; State Board on Government Operations 1961. Home address: 837 Lemonweir, Tomah.

\*These were the districts of the elections for terms beginning in 1963. For the new districts see ADDENDA.



**BAUMGART**  
Oconto\*

**FROEHLICH**  
Outagamie, 1st

**ROGERS**  
Outagamie, 2nd

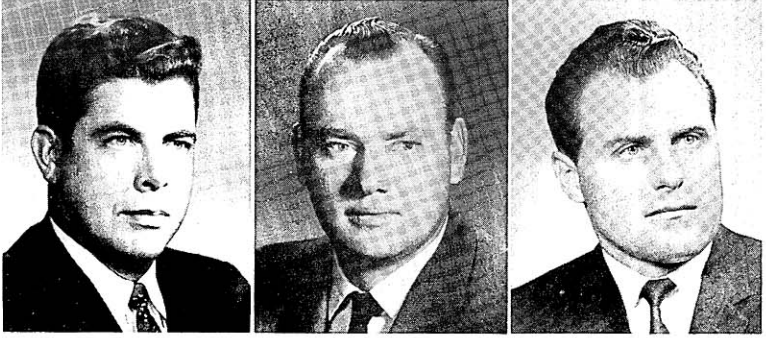
**LLOYD R. BAUMGART** (Rep.) born Green Bay, Jan. 29, 1908. Graduated high school Powers, Mich.; attended Green Bay Vocational School. President of carrier mfg. co., auctioneer, former owner hardware store, master plumber; formerly owner-operator of a large dairy farm and a dinner club, painting contractor. President Lena Civic Club 1949-51; vice-pres. Businessmen's Assn. 1954, 1958. Served as village trustee 1948-49, pres. 1949-54; county board member, 1949-58, chairman 1952-58. Elected to Assembly 1956; re-elected 1958, '60, '62. Chairman Assembly Revision Com.; vice-chm. Conservation Com. Member Assembly Excise and Fees Com.; Legis. Council Physical Plant Maintenance Com., Menominee Indian Study Com. Home address: Lena.

**HAROLD V. FROEHLICH** (Rep.) born Appleton, May 12, 1932. Educated Appleton public schools; Univ. of Wis. Commerce School B.B.A. 1959, Law School LL.B. 1962. Practicing attorney, certified public accountant. Veteran of Korean Conflict; in Navy 1951-55. Elected Rep. precinct committeeman 1956-62; chairman Rep. county statutory committee 1958-60, 1962; held local, district, state positions in Young Republicans. Member local, state, national Bar and C.P.A. assns.; American Legion, V.F.W., Optimist Club, Junior Chamber of Commerce, local Taxpayers Alliance. Elected to Assembly 1962. Member Assembly Judiciary Com., Municipalities Com.; Legis. Council Urban Problems Com. Business address: 102 E. College Ave., Appleton.

Outagamie County, 1st District\*: Towns of Center and Grand Chute, City of Appleton.

**WILLIAM ROGERS** (Dem.) born Appleton, Dec. 9, 1930. Educated St. Mary's School, Kaukauna; St. John's High School, Little Chute; Kaukauna High School; received B.S. degree 1958 from St. Norbert College. Teacher. Veteran of Korean Conflict; served in Army 1952-54. Member V.F.W., American Legion, Eagles, Knights of Columbus. Member of Kaukauna city council since 1960. Elected to the Assembly in 1962. Mr. Rogers is a member of the Assembly Committee on Agriculture. Home address: 1317 Hillcrest Dr., Kaukauna.

Outagamie County, 2nd District\*: Outagamie County except Towns of Center, Grand Chute, City of Appleton.



McKAY  
Ozaukee

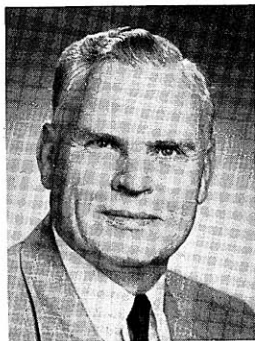
MYHRA  
Portage

SWEDA  
Price, Taylor\*

J. CURTIS McKAY (Rep.) born Chicago, Oct. 10, 1926. Educated Armstrong School, Sullivan and Lane Technical High School, Chicago. Received B.A. in 1950 from Grinnell College. Iowa: Juris Doctor of Law 1957 Northwestern University Law School. Practicing attorney. Elected to Assembly 1960; re-elected 1962. Chosen Assembly Assistant Majority Leader 1963. Officer Wisconsin State Building Commission. Chairman Assembly Contingent Expenditures Committee. Member Joint Committee on Finance; Legis. Council Conservation Com. Served on the interim Judiciary Committee of the Wisconsin Joint Legislative Council which developed the Wisconsin Commercial Code. Home address: Rt. 1, Sherman Road, Cedarburg.

NORMAN L. MYHRA (Dem.) born Amherst, Portage County, Feb. 17, 1925. Educated in public schools of Portage County; high school and general business course at Milwaukee Vocational School. Life insurance agent; formerly salesman. World War II veteran; served in Army Infantry 1943-45. In 1944 lost both hands in combat; he was 19 years old at the time. Past commander of local American Legion post, presently active member. Life member of Veterans of Foreign Wars, Disabled American Veterans (commander of local chapter and district), Military Order of Purple Heart, Army and Navy union. Served as Rosholt village assessor 1953. Elected to Assembly 1960; re-elected 1962. Serving 2nd term on Assembly Veterans and Military Affairs Committee. Served on Legis. Council Water Resources Com. Home address: 728 Welsby Ave., Stevens Point.

JOSEPH SWEDA (Dem.) born Lublin, Jan. 3, 1926. Educated in Lublin and Withee public grade and high schools. Farmer since 1946. World War II veteran; served in Army Air Force 1945-46. Member American Legion, 3 years adjutant, 6 years post commander. Chairman local Boy Scouts committee. Served 2 years as director of county Farmers Union. Chairman county Dem. unit 1959-61. Since 1955 town chairman and member of county board, vice chairman since 1958. Member of the county board committees on finance and on higher education. Elected to the Assembly in 1962. Mr. Sweda is a member of the Assembly Committee on Veterans and Military Affairs. Home address: Lublin.



WARREN  
Racine, 1st



NALEID  
Racine, 2nd



STALBAUM  
Racine, 3rd

EARL W. WARREN (Dem.) born Hurley, Feb. 25, 1902. Graduated from Lincoln High School, Hurley; attended Ironwood, Mich., Business College. Assembler in radiator factory since 1936; formerly operated own business. Member Elks, AFL-CIO, Eagles, United Commercial Travelers. Served on Racine Co. Board 4 terms 1948-55. Elected to Assembly 1954; now in 5th term. Member Insurance and Banking Com., Printing Com. In prior sessions member of Joint Finance Com., Assembly Enrolled Bills Com. (chairman 1959), Commerce and Manufactures Com., Legis. Council County Boards Com., Water Resources Com. Home address: 2809 Virginia St., Racine.

Racine County, 1st District\*: Wards 1-4, 6, 10, 11, 14 (2nd Precinct only), City of Racine.

ROY E. NALEID (Dem.) born Racine, Nov. 12, 1901. Educated Racine public schools. Attended Marquette Univ. Employed by farm implement company since 1935. Served as vice chairman of Racine Co. Board, member 16 years; 10 years on highway committee. Elected to Assembly 1954; re-elected 1956, '58, '60, '62. Member Assembly State Affairs Com. Served on Assembly Highways Com. (vice-chm.), Municipalities Com., Third Reading Com. (chairman), Transportation Com.; participated in interim study of Mental Health by Legislative Council. Home address: 705½ Chicago Street, Racine.

Racine County, 2nd District\*: Wards 5, 7-9, 12, 13, 14 (1st Precinct only), 15, City of Racine.

MERRILL STALBAUM (Rep.) born in Racine County's Town of Norway, Apr. 24, 1911. Educated in Racine Co. rural and agricultural schools; Waterford High School. Now a surveyor; director of a farmer's mutual insurance company; active farmer 1930-59. Served as Town of Norway clerk since 1937, as member of Racine Co. School Committee 1949-60. Elected to Assembly 1960; re-elected 1962. Member of Assembly Municipalities Com., State Affairs Com.; Legis. Council Urban Problems Com.; Administrative Rules Com. Home address: Rt. 1, Box 38, Waterford.

Racine County, 3rd District\*: The County of Racine except the City of Racine.

\*These were the districts of the elections for terms beginning in 1963. For the new districts see ADDENDA.



MERRIAM  
Rock, 1st

BLANCHARD  
Rock, 2nd

BELTING  
Rock, 3rd

WILLIAH R. MERRIAM (Rep.) born Delavan, Sept. 28, 1894. Educated Walworth Co. rural, Wis. Rapids High School; B.S. Iowa State College 1919. Lifetime farmer; farm mgr. 1919-27. World War I veteran; in Army QM corps. Was Janesville Rotary pres., Chamber of Commerce dir.; chairman Wis. Agric. Stabil. and Conserv. Com. Member Farm Bureau since 1927, 4 years dir.; on Rock Co. Selective Service Bd. 1949-56. Russia good will farm tour 1958. Elected to Assembly 1956; re-elected '58, '60, '62. Chairman Assembly Agriculture Com., member Elections Com.; Taxation Com.; Legis. Council. Served on Revenue Survey Comm. Home address: Rt. 1, Janesville.

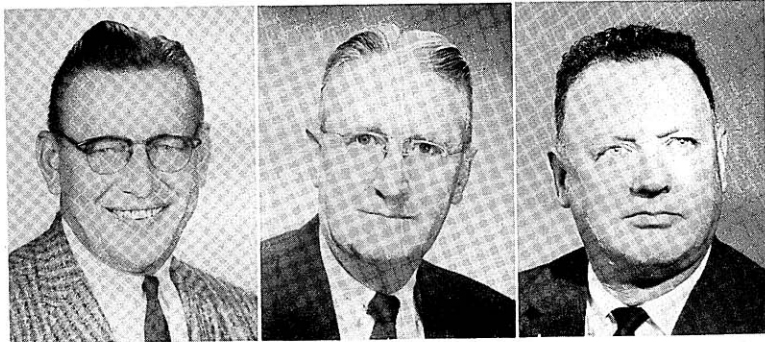
Rock County, 1st District\*: Towns of Bradford, Clinton, Harmony, Johnstown, La Prairie, Lima; Village of Clinton; City of Janesville.

CAROLYN J. BLANCHARD (Rep.) born Cambridge, June 13, 1921. Educated Cambridge public schools; majored in speech correction and English at Univ. of Wis., B.S. 1943. Housewife; active in civic, charitable and religious organizations. Elected to Assembly in April 1963 special election (the first Wisconsin woman to be so elected) to fill vacancy caused by the death of her husband, Assembly Speaker David Blanchard. Secretary Legis. Council Election Laws Com. Member Assembly Public Welfare Committee, State Affairs Committee. Home address: 506 Chamberlain St., Edgerton.

Rock County, 2nd District\*: Towns of Avon, Beloit, Center, Fulton, Janesville, Magnolia, Milton, Newark, Plymouth, Porter, Rock, Spring Valley, Union; Villages of Footville, Milton, Milton Junction, Orfordville; Cities of Edgerton, Evansville.

GEORGE B. BELTING (Rep.) born De Soto, July 15, 1914. Educated in Rock Co. public schools; B.A. and LL.B. (1938) Univ. of Wis. Practicing attorney; formerly Univ. of Wis. instructor. World War II veteran; in Navy landing forces Pacific. At Univ. of Wis. chosen senior class officer and pres. Men's Dormitory Assn. Dir. Beloit Better Business Bureau; was pres. Beloit Historical Soc., asst. scoutmaster. Member bar assns., Kiwanis, Izaak Walton League, Amer. Legion, Taxpayers League. On county board 3 terms. Elected to Assembly 1956; re-elected 1958, '60, '62. Vice chairman Assembly Judiciary Com.; Joint Revisions, Repeals, Uniform Laws Com. Member Assembly Municipalities Com.; Legis. Council Urban Problems Com. Served on Assembly Taxation Com. (chm. 1961), Legis. Council Commercial Code Com. Office address: 405 E. Grand Ave., Beloit.

Rock County, 3rd District\*: Town of Turtle; City of Beloit.



**HUTNIK**  
Rusk, Sawyer.  
Washburn\*

**WARD**  
St. Croix

**TERRY**  
Sauk

**WILLIS J. HUTNIK** (Rep.) born in Price County's Town of Elk, Mar. 23, 1915. Educated Price Co. public schools and Normal School; Central State Coll.; Univ. of Wis. Owns school and office supply business; formerly teacher, principal, personnel mgr. Camp Grant, Ill. Chairman Rusk Co. Conserv. Congr.; exec. councillor northwest Wis. Conserv. Congr.; member Ladysmith Community Club. Was pres. Price Co. Education Assn. Elected to Assembly 1952; now in 6th term. Chosen Assembly Speaker pro tem 1961. In 1963 chairman Assembly Labor Com.; member Assembly and Legis. Council Highways Com. Served as chairman of Assembly Education Com., State Affairs Com.; as member of Commerce and Manufactures, Public Welfare and Veterans Affairs Coms. Was vice-chm. Legis. Council Reapportionment Com. Business address: 101 Main St. (home: 716 E. 3rd St.N.), Ladysmith.

**WILLIAM W. WARD** (Dem.) born St. Croix Co., Aug. 8, 1903. Educated Star Prairie Grade School, Minneapolis high school. In 1929 received LL.B. from Univ. of Minnesota Law School. Practicing attorney; presently city attorney of New Richmond. Past pres. Pierce-St. Croix County Bar Assn., member Wis. Bar Assn., Knights of Columbus. Has served on school board. Elected to Assembly 1956; re-elected 1958, '60, '62. Assistant Dem. Floor Leader 1961. Member of Assembly Highways Com., Judiciary Com. (chairman 1959). Served on Assembly Education Com., Insurance and Banking Com. (vice-chm.), Interstate Cooperation Comm., Judicial Council, Legislative Council and its Judiciary Com. Home address: Box 127, New Richmond.

**WALTER E. TERRY** (Rep.) born Baraboo, Feb. 26, 1909. Educated rural and Baraboo public schools. In 1932 received Ph.B. in commerce from Notre Dame University. Presently a farmer; formerly worked as a field auditor for Wis. Public Welfare Dept. Vice-pres. of a dairy co-op. Elected to Assembly 1958; re-elected 1960 and 1962. Now serving 2nd term as chairman of Assembly Public Welfare Committee. Member of Mental Health Advisory Com., Assembly Conservation Com., interim State Institutions Visiting Com. Served on State Building Commission. Legis. Council Agriculture Committee 1959-61. Home address: Rt. 3, Baraboo.

\*These were the districts of the elections for terms beginning in 1963. For the new districts see ADDENDA.





**KUNDE**  
Sheboygan, 1st

**GESSERT**  
Sheboygan, 2nd

**LEWISON**  
Vernon\*

**KENNETH KUNDE** (Dem.) born July 24, 1916. Studied at Oshkosh State College; University of Wisconsin Extension Division. Business manager, public relations; formerly credit manager, sales manager. World War II veteran, in army 1941-45; also 5 years service in Wis. National Guard. Member of AMVETS, state commander 1948 and '56, state legislative director 1949-51. Vice president of Wis. Veterans Council. Served on statutory committee of Wis. Department of Veterans Affairs 1947. Democratic party county chairman 1957; 6th Cong. District vice chairman 1960, candidate for Congress 1952 and 1956. Elected to Assembly 1962. Member of Assembly Committee on Excise and Fees; Legis. Council U.W. Medical Center Com. Home address: 2831 S. 10th St., Sheboygan.

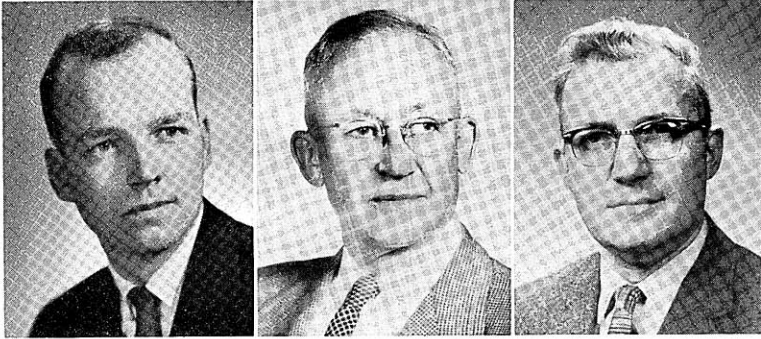
Sheboygan County, 1st District: City of Sheboygan.

**HARRY L. GESSERT** (Rep.) born Elkhart Lake, July 16, 1901. Educated Elkhart Lake public schools. Attended Plymouth Business College 2 years. Operates restaurant and retail store. Interested in the problems of farmers and of small town residents. Member Elkhart Lake Service Club and Chamber of Commerce. Elected Elkhart Lake justice of yeace 1955; member of county board 1959. Elected to Assembly in 1960; re-elected 1962. Member of Gov. Reynolds budget tour. Member of Committee to Visit State Institutions; Assembly Highways, Labor, Taxation Coms., served on Assembly Conservation, Enrolled Bills, State Affairs Coms. Home address: 222 Lake St., Elkhart Lake.

Sheboygan County, 2nd District: All the towns, cities and villages of the county, except the City of Sheboygan.

**BERNARD LEWISON** (Rep.) born on farm near Viroqua, Feb. 7, 1902. Educated in Viroqua public schools. Attended Lawrence College 1921-22. Tobacco buyer and real estate broker, director savings and loan assn.; for 30 years operated automobile agency and body shop. Served as mayor 1943-48, as alderman for several years. Was chairman Viroqua Board of Appeals, vice-chm. Board of Review. Now member of Vernon County Board; on finance, salary and legislative committees. Elected to Assembly 1954; now in 4th term. Chairman of Assembly Transportation Com. 1961 and 1963, of Contingent Expenditures Com. 1957. In 1963 member of Assembly Agriculture Com. Has served on Assembly highways Com., State Affairs Com.; Governor Thomson's Industrial Development Com.; past vice-chm. Legislative Council Conservation Com. Home address: 11 S. Washington Heights, Viroqua.





**BORG**  
Walworth

**SCHOWALTER**  
Washington

**MATHEWS**  
Waukesha, 1st

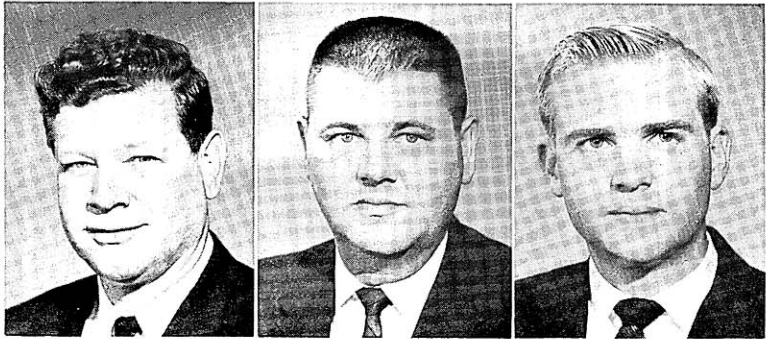
**GEORGE M. BORG** (Rep.) born Colorado Springs, Colo., Dec. 4, 1934. Wisconsin resident since 1935; attended Delavan public schools and Univ. of Wisconsin. Vice president local savings and loan assn.; former plant manager for manufacturing company. Veteran of Korean Conflict; served in Army. Vice president Delavan Sportsman Club; member of Elks. Delavan alderman 1959-61, chairman health and license com., member civil defense com., finance, insurance, fire and police coms. Elected to Assembly in 1960, re-elected 1962. Vice-chm. Assembly Enrolled Bills Committee, member of Joint Finance Com.; Legis. Council Education Com. Served on Assembly Contingent Expenditures Com., Municipalities Com. Home address: North Shore Dr., Delavan.

**ELMER J. SCHOWALTER** (Rep.) born in Washington County's Town of Jackson, Oct. 12, 1894. Educated grade school; Univ. of Wis. Farm Short Course. Owns dairy farm which is Schowalter homestead since 1843; produces canning crops, seed grains, white clover seed. Also operates animal farms raising deer, buffalo, longhorn cattle, African mountain sheep, elk; has supplied white-tailed deer to federal and state restocking projects since 1938. Active in local church and community affairs. Served as school treasurer, town assessor. Elected to Assembly 1954; now in 5th term. Vice chairman of Assembly Engrossed Bills and Revision Committees; Member Insurance and Banking Com. Served 4 terms on Assembly Agriculture Com. Member of the Committee to Visit State Institutions since 1959. Home address: Rt. 1, Jackson.

**VINCENT R. MATHEWS** (Dem.) born Watertown, June 8, 1912. Educated Fort Atkinson public schools; B.A. Carroll College 1934. Insurance agent since 1951; formerly in department store personnel work. Interested in community projects, Boy Scouts, YMCA, Community Chest. Waukesha alderman 1947-51. Elected to Assembly 1958; re-elected '60, '62. Member of Joint Retirement Systems Survey Committee and Assembly Municipalities Com. in all three sessions; in 1961 and 1963 also Retirement Research Council. Served on Legis. Council Education Com. Business address: 305 South St., Waukesha.

Waukesha County, 1st District\*: Towns of Eagle, Genesee, Mukwonago, Muskego, Ottawa, Vernon, Waukesha; Villages of Big Bend, Dousman, Eagle, Mukwonago, North Prairie, Wales; Cities of New Berlin, Waukesha.

\*These were the districts of the elections for terms beginning in 1963. For the new districts see ADDENDA.



CLEMENS  
Waukesha, 2nd

PETERSON, R. E.  
Waupaca

STEIGER  
Winnebago, 1st

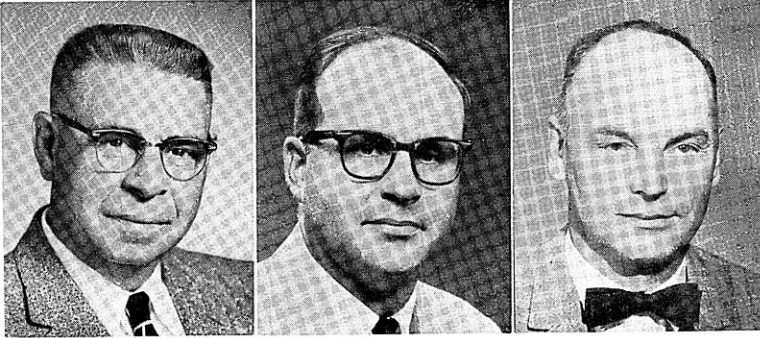
HAROLD W. CLEMENS (Rep.) born Milwaukee, Oct. 21, 1918. Educated Town of Oconomowoc, Milwaukee public schools; Milw. Boys Technical High School. Resident Lac La Belle Village 34 years. Operates boat livery, picnic, swimming area; formerly printer, tool maker. World War II veteran; Navy 1944-46. Village clerk; was health officer, building insp., civil defense dir.; county supervisor, U.S.O. chm. Elected to Assembly since 1956; chosen Assembly Speaker Pro Tem 1963. Chairman Assembly Veterans and Milit. Affairs Com.; vice-chm. Elections Com., Rules Com. Member Assembly Municipalities Com.; Interstate Cooperation Comm., Legis. Council and its Urban Problems Com. Home address: 272 Lac La Belle Drive, Oconomowoc.

Waukesha County, 2nd District\*: Towns of Brookfield, Delafield, Lisbon, Merton, Oconomowoc, Pewaukee, Summit; Villages of Butler, Chenequa, Elm Grove, Hartland, Lac La Belle, Lannon, Menomonee Falls, Merton, Nashotah, Oconomowoc Lake, Pewaukee, Sussex; Cities of Brookfield, Delafield, Oconomowoc.

RICHARD E. PETERSON (Rep.) born Waupaca, July 17, 1920. Educated Waupaca public schools; LL.B. Univ. of Wis. 1949. Attorney in Waupaca, Hortonville; lieut. colonel, was staff judge advocate 32nd Div. Wis. Natl. Guard. World War II veteran; interrupted education Oct. 1940 to join Wis. Natl. Guard, discharge from Army 61 months later. Member Amer. Legion, V.F.W. Elected to Assembly 1950; now in 7th term. Chairman of Assembly and Legis. Council Judiciary Committees. Vice-chm. Assembly Revisions, Repeals, Uniform Laws Com.; member Excise and Fees Com. Member Judicial Council. Served on Assembly Conservation Com., Insurance-Banking Com. (chairman), Taxation Com.; Legis. Council and its Com. to Study Veterans' Home at King (chairman). Home address: Rt. 3, Box 17, Waupaca.

WILLIAM A. STEIGER (Rep.) born Oshkosh, May 15, 1938. Educated Oshkosh State College Training School, Oshkosh High School; received B.S. in 1960 from University of Wisconsin. Real estate developer. Member of Elks Club. Active in politics; national college chairman of Young Republican National Federation 1959-61. Chosen assistant chief page at 1960 Republican National Convention. Elected to Assembly 1960; re-elected 1962. Chairman of Assembly Elections Com. and Legis. Council Election Laws Com. Member Legislative Council; Assembly Judiciary Com., Municipalities Com. Served as vice chairman of the Legis. Council's Youthful Drinking and Driving Com. Business address: 101-A High Ave., P.O. Box 1279, Oshkosh.

Winnebago County, 1st District\*: Wards 1 to 5, 7 to 12 and 15, City of Oshkosh.



**SHURBERT**  
Winnebago, 2nd

**MARTIN**  
Winnebago, 3rd

**HEINZEN**  
Wood, 1st

**FLOYD E. SHURBERT** (Rep.) born in Winnebago County, Oct. 30, 1900. Educated public elementary and high schools; attended Oshkosh Business College. Since 1945 retired; in wholesale-retail meat business 1925-45; owned mink farm 1936-54. Active in conservation groups. Served on county board since 1954. Elected to Assembly 1958; re-elected 1960, 1962. Chairman of Assembly Excise and Fees Committee. Member Assembly Conservation Com., Legis. Council Conservation Com. Served on Assembly Public Welfare Com., Legis. Council, Youthful Drinking and Driving Com., Water Resources Com. Home address: Rt. 4, Box 588, Oshkosh.

Winnebago County, 2nd District\*: Winnebago County, except Towns and Cities of Menasha and Neenah; Oshkosh City Wards 1-5, 7-12, 15.

**DAVID O. MARTIN** (Rep.) born Appleton, Mar. 7, 1931. Educated Neenah public schools; received B.S. in forestry from Univ. of Michigan. Employed by paper company. Served as officer in Army Corps of Engineers 1954-56. Member of Jaycees board Neenah-Menasha 1959-61. Elected to Assembly 1960; re-elected 1962. Vice-chairman Assembly Taxation Com. Member Joint Finance Com.; Assembly Commerce and Manufactures Com., Education Com. Member Legis. Council Education Com. 1963; in 1961 served on Taxation Com. Home address: 844 Reddin Ave., Neenah.

Winnebago County, 3rd District\*: Towns of Menasha and Neenah; Cities of Menasha and Neenah.

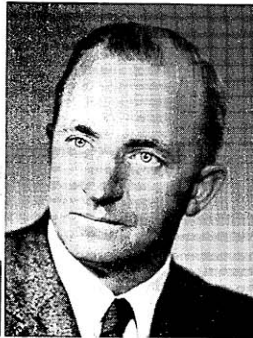
**RAYMOND F. HEINZEN** (Rep.) born Marshfield, May 11, 1918. Educated St. John parochial school, Marshfield High School; attended Univ. of Wisconsin 3 years. Farmer since 1939; pres. of credit union and secy.-treas. of creamery co-op, since 1955; farm columnist 1957-59. Member National Catholic Rural Life Conference. Served as clerk of local school board 1952-57. Member State Board of Vocational and Adult Education 1956-63. Elected to Assembly 1960; re-elected 1962. Member of Assembly Education Com., Public Welfare Com.; Legis. Council Education Com. Home address: Rt. 5, Marshfield.

Wood County, 1st District\*: That part of Wood County which is not in the Second District (northern Wood County).

\*These were the districts of the elections for terms beginning in 1963. For the new districts see ADDENDA.



GEE  
Wood, 2nd



PRIEBE  
Chief Clerk



KELLMAN  
Sergeant at Arms

HARVEY F. GEE (Rep.) born in Wisconsin Rapids, Feb. 29, 1908. Educated Wisconsin Rapids public schools; received B.A. in 1932 from Rollins College in Winter Park, Fla. World War II veteran; served in Army. Member American Legion; was state organizer of National Infantile Paralysis Foundation. Wisconsin Rapids athletic field and park commissioner since 1947, county board member 1938-60. Elected to Assembly 1960; re-elected 1962. Member of Assembly Insurance and Banking Com., Labor Com., Public Welfare Com.; interim State Institutions Visiting Com. Home address: 170 - 14th Ave. South, Wisconsin Rapids.

Wood County 2nd District\*: Towns of Cranmoor, Dexter, Grand Rapids, Hiles, Port Edwards, Remington, Saratoga, Seneca; Villages of Biron, Port Edwards; Cities of Nekoosa, Wisconsin Rapids.

KENNETH E. PRIEBE born Black Creek, Dec. 10, 1912. Educated Appleton public schools; attended Actual Business College. Insurance agent since 1937; formerly mill worker. President South Side Athletic Club; secretary Appleton Insurance Board; member Outagamie Conservation Club, United Commercial Travelers. Past pres. Appleton City Council; alderman 1943-61, member Zoning Com. of Industrial Development Corp. Elected to Assembly 1958; re-elected 1960. Served on Assembly Insurance and Banking (chairman), Municipalities, Veterans and Milit. Affairs Committees; Legislative Council County Boards and Urban Problems Coms. Chosen Chief Clerk of the Assembly 1963. Home address: 1206 S. Ritger St., Appleton.

NORRIS J. KELLMAN born Galesville, Oct. 23, 1898. Educated in Galesville public schools; La Crosse State College one year. Graduate of Univ. of Wisconsin, Ph.G. 1922, B.S. 1923. In general insurance business 38 years; was asst. postmaster of Galesville 10 years. World War I veteran; one of Wisconsin's youngest commissioned officers. Member of American Legion; commander local post 3 years. Attended Republican National Conventions; served as alternate 1936 while his father Frank A. Kellman was delegate, served as delegate 1940 and 1944. Assemblyman from Trempealeau County in 1939. Chosen Assembly Sergeant at Arms in 1941; now serving 11th term. Home address: Galesville.

\*These were the districts of the elections for terms beginning in 1963. For the new districts see ADDENDA.