

Biographies and Pictures of

CONSTITUTIONAL OFFICERS

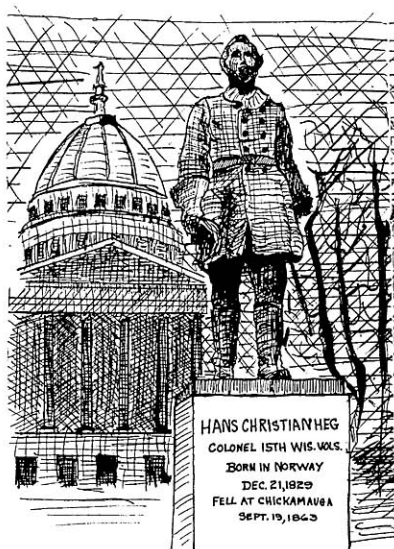
SUPREME COURT JUSTICES

MEMBERS OF CONGRESS

MEMBERS OF LEGISLATURE

HEG

This cenotaph to Colonel Hans C. Heg, erected by voluntary subscriptions, stands at the King Street entrance to the State Capitol. The sculptor was Paul Fjelde. Dedicated October 17, 1926, it honors Colonel Heg, a Norwegian-American who organized and led the famous 15th Wisconsin Regiment.





Governor GAYLORD A. NELSON

CONSTITUTIONAL OFFICERS

THE GOVERNOR

GAYLORD A. NELSON (Dem.) born Clear Lake June 4, 1916. Educated in Clear Lake graded and high schools. Received B.A. in 1939 from San Jose State College, California; in 1942 LL.B. from University of Wisconsin Law School. Practicing attorney since 1942. Veteran of World War II; served 46 months in Army. Member of American Legion, Veterans of Foreign Wars, Eagles, Leif Ericson Society. Attended Democratic National Conventions of 1952, 1956 and 1960; in 1952 served as chairman of Wisconsin delegation. Elected to Senate in 1948; re-elected 1952 and 1956. In 1951 chosen Democratic Floor Leader; in 1953 Assistant Democratic Floor Leader. Member of Joint Committee on Finance 1951, Joint Committee on Revisions, Repeals, and Uniform Laws 1953, 1955 and 1957. Member of Senate Committee on Education and Public Welfare 1953 and 1955, on Conservation 1957. Vacated his Senate seat when elected Governor in 1958; re-elected Governor in 1960 to become the first Wisconsin two-term Democratic Governor since 1891. Author of major state government reforms creating Departments of Administration and of Resource Development, billboard control law, state-wide program for public access to lakes and streams, \$5 million student loan program, and \$50 million crash program to preserve Wisconsin's outdoor resources. Home address: 5627 Crestwood Place, Madison. Executive Mansion: 99 Cambridge Road, Madison.

THE LIEUTENANT GOVERNOR

WARREN P. KNOWLES (Rep.) born River Falls Aug. 19, 1908. Educated River Falls graded and high schools. Received B.A. in 1930 from Carleton College (Minn.); in 1933 LL.B. from University of Wisconsin Law School. Since 1933 a practicing attorney. Veteran of World War II; served as lieutenant in Navy; aboard USS Nevada participated in invasions of Attu, Normandy, and southern France. President Wisconsin Alumni Assn. 1952-53, member of many veterans organizations, past president Kiwanis and conservation clubs. Delegate to Republican National Conventions 1948, 1956 and 1960. Served on county board 1936-40. Elected to Senate 1940 through 1954. Republican Senate Floor Leader 1943, 1945 (released from active duty in Navy to serve during 1945 session), 1947, 1949, 1951, 1953. Author and sponsor of bill creating Legislative Council; served as its first chairman. Author of 1949 act creating State Building Commission and authorizing long-range state building program; author of laws relating to hospital survey and construction, Aeronautics Commission, and various aviation measures. Member of Judicial Council 1952-55. Elected Lieutenant Governor 1954; re-elected 1956; elected again 1960. Home address: New Richmond.



KNOWLES



ZIMMERMAN



SMITH



REYNOLDS



ROTHWELL

WARREN P. KNOWLES, Lieutenant Governor; ROBERT C. ZIMMERMAN, Secretary of State; DENA A. SMITH, State Treasurer; JOHN W. REYNOLDS, Attorney General; ANGUS B. ROTHWELL, Superintendent of Public Instruction.

THE SECRETARY OF STATE

ROBERT C. ZIMMERMAN (Rep.) born Milwaukee Jan. 5, 1910. Attended Wisconsin public schools; graduate Madison Central High School. Veteran of World War II; served in Army approximately two and one-half years. Member of Lions International, Madison Press Club, National Association of Secretaries of State, Golf Writers Association of America. Was appointed Assistant Secretary of State 1939; held that position approximately 15 years. Elected Secretary of State 1956; re-elected 1958 and 1960. Business address: State Capitol, Madison 2.

THE STATE TREASURER

DENA A. SMITH (Rep.) born Kewaunee Oct. 19, 1899. Educated Kewaunee grade and high schools. For 32 years manager of music departments in Milwaukee stores; from 1949 to 1957 secretary to the State Treasurer. Active in the Republican Party and interested in politics and government. Served 3 terms as vice-chairman of the 4th Congressional District Republican executive committee. Acted as presidential elector in 1960. Appointed State Treasurer Dec. 5, 1957, to fill vacancy caused by the death of her husband, Warren R. Smith. Elected State Treasurer in 1960, the first woman elected in Wisconsin to a state-wide constitutional office. Home address: 1628 W. Wisconsin Ave., Milwaukee.

THE ATTORNEY GENERAL

JOHN W. REYNOLDS (Dem.) born Green Bay Apr. 4, 1921. Graduated Green Bay East High School. Received Ph.B. in 1946 from University of Wisconsin; in 1949 LL.B. from University of Wisconsin Law School. Since 1949 a practicing attorney; district director of the federal office of price stabilization 1951-53, United States commissioner for the eastern district of Wisconsin 1955-58. World War II veteran; served in Army 1942-46. Chairman of the Brown County Democratic Party 1953-57; member of the Democratic state administrative committee 1955-59. Member of Brown County, Wisconsin, and American Bar Associations, Kiwanis, Knights of Columbus. Director of national United Cerebral Palsy. Past president of Green Bay U.C.P., past state vice-president U.C.P. Kennedy delegate to 1960 Democratic National Convention. Elected Attorney General in 1958; re-elected 1960. Business address: State Capitol, Madison 2.

THE STATE SUPERINTENDENT OF PUBLIC INSTRUCTION

ANGUS B. ROTHWELL born Superior July 25, 1905. Educated Superior public schools. In 1930 received B.E. from Superior State College; in 1932 M.A. from Columbia University. Holds honorary M.A. from Lawrence College. School administrator and author. Elementary school principal, Wausau, 1926-1934. High school principal and curriculum supervisor, Superior, 1934-41; superintendent of schools, Superior 1941-49, and Manitowoc 1949-61. Veteran of World War II, served in Navy 1943-46. Member Phi Delta Kappa; American Association of School Administrators; member of national and past president of state and local education assns. Past president of Rotary; member of Masonic orders, of Izaak Walton League. Served on Superior and Manitowoc boards for vocational and adult education, and for libraries. Wisconsin representative to 1955 White House Conference on Education. Member Governor's Retirement Study Commission 1958-59. Elected State Superintendent of Public Instruction April 1961. Business address: State Capitol, Madison 2.

SUPREME COURT JUSTICES

GROVER L. BROADFOOT* born Independence, Wis. Dec. 27, 1892. Educated in common schools. Received LL.B. in 1918 from University of Wisconsin Law School. Practicing attorney at Mondovi until 1948; president of Mondovi State Bank. Veteran of World War I. Public offices include district attorney 1923-35; member Wisconsin Board of Tax Appeals 1939-43; mayor of Mondovi 1943-47. Served in the Assembly from 1945 until his appointment as Attorney General on June 5, 1948. Appointed to Supreme Court on Nov. 12, 1948, to succeed Justice Elmer E. Barlow, deceased. Elected for the remainder of the unexpired term Apr. 1952; elected to full term Apr. 1955. Became Chief Justice Jan. 1, 1962, upon the retirement of Chief Justice John E. Martin at the end of his term.

TIMOTHY BROWN* born Madison Feb. 24, 1889. Educated in Madison public schools. Received B.A. in 1911 from University of Wisconsin; in 1914 LL.B. from Harvard Law School. Practicing attorney in Milwaukee 1914-16, in Madison 1919-49. Veteran of World War I; served in Navy 1917-19. Served as Dane County court commissioner 1926-49. During World War II, government appeal agent and member of a selective service system appeal board. Executive counsel, in 1945, to Governor Goodland, in 1947-49 to Governors Goodland and Rennebohm. Commissioner of Public Service Commission Apr.-July 1949. Appointed to Supreme Court July 14, 1949, to succeed Justice John D. Wickhem, deceased. Elected to Supreme Court Apr. 1953 to a full 10-year term.

GEORGE R. CURRIE born at Princeton, Wis. Jan. 16, 1900. Educated in Montello public schools. Attended Oshkosh State Teachers' College 2 years; taught school 3 years. Received legal education at University of Wisconsin Law School, LL.B. in 1925; awarded Order of the Coif; in senior year student editor-in-chief of Wisconsin Law Review. For 26 years practiced law at Sheboygan. During World War I, served several months in Student Army Training Corps. Member Sheboygan public library board for over 20 years; served as president during the last 16 years. Appointed to Supreme Court on Aug. 30, 1951, to fill vacancy resulting from the resignation of Justice Henry P. Hughes. Elected to Supreme Court without opposition to a full 10-year term, Apr. 1957.

THOMAS E. FAIRCHILD born Milwaukee Dec. 25, 1912. Educated Milwaukee public schools. Received A.B. in 1934 from Cornell University; in 1938 LL.B. from University of Wisconsin Law School. Practicing attorney in Portage 1938-42; attorney U.S. office of Price Administration 1942-45; practicing attorney in Milwaukee 1945-48 and 1953-57. Past member, executive committee Milwaukee Bar Assn., and board of directors, Wisconsin Welfare Council. Elected state Attorney General in 1948. Served as U.S. attorney for the western district of Wisconsin, 1951-52. Democratic nominee for the U.S. Senate 1950 and 1952. Cochairman in 1960 of the Governor's Commission on Constitutional Revision. Elected to Supreme Court April 3, 1956, to succeed Chief Justice Edward T. Fairchild who retired January 7, 1957, at the end of his term.

*Chief Justice Broadfoot deceased May 18, 1962. As ranking associate justice, Mr. Justice Brown succeeded to the position of chief justice.



BROWN



CURRIE



FAIRCHILD



BROADFOOT



HALLOWS



DIETERICH



GORDON

Members of the Supreme Court: Chief Justice GROVER L. BROADFOOT; TIMOTHY BROWN; GEORGE R. CURRIE; THOMAS E. FAIRCHILD; WILLIAM H. DIETERICH; E. HAROLD HALLOWS; MYRON L. GORDON.

E. HAROLD HALLOWS born Fond du Lac Apr. 20, 1904. Educated Fond du Lac public schools. Received A.B. in 1926 from Marquette Univ.; attended Columbia Univ. 1926-27; graduated cum laude as doctor of jurisprudence, Univ. of Chicago Law School 1930; honorary doctor of jurisprudence Mount Mary College 1951. Practicing attorney 1930-58; professor of law at Marquette Univ. 1930-58. In 1954, received Eagles civic service award for contributions to community service; active in mental health and welfare. Member Kiwanis, Knights of Columbus. President Milwaukee County Bar Assn. 1948-49, Wisconsin Bar Assn. 1953-54. Member Amer. Bar Assn., its house of delegates, and its standing committees on jurisprudence and law reform and on continuing education of the bar; Amer. Soc. of International Law, Amer. Law Inst., Bar Assn. of 7th Federal Circuit, Inst. of Judicial Administration, Inter-Amer. Bar Assn. Director Amer. Judicature Soc.; past secretary Wis. Bar Foundation. Member of Wis. Judicial Council since 1951. Appointed to Supreme Court Apr. 2, 1958, to succeed resigned Justice Roland J. Steinle. Elected to Supreme Court Apr. 1959, the first Justice to be elected for a full term pursuant to the 1953 constitutional amendment.

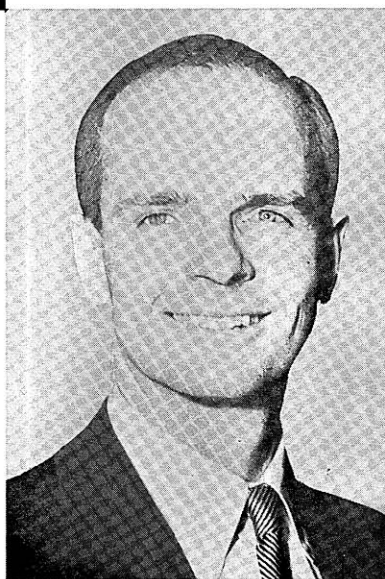
WILLIAM HERBERT DIETERICH born Milwaukee Dec. 18, 1897. Educated Milwaukee public schools; Marquette Univ. Law School, Univ. of Wisconsin, Univ. of Montana 1919-23. Admitted to practice of law 1923. For 36 years trial lawyer in Milwaukee and Washington Counties; law offices in Milwaukee and Hartford. Secretary and counsel for 2 shoe manufacturing cos. and road building bituminous products corps. Formerly special asst. attorney general of Wis., town attorney, attorney for school boards. World War I veteran; served in 120th Field Artillery, 32nd division. Member natl. exec. com. Disabled Amer. Veterans, past state comdr. Disabled Amer. Veterans; past comdr. Amer. Legion, member Amer. Legion natl. security com.; now pres. of Soc. of Amer. Legion Founders; member US Chapter Army and Navy Air Force in Canada. Member board of governors Wis. Bar Assn.; pres. Washington County Bar Assn.; member Milwaukee County Bar Assn. and its advisory fees com. Served as justice of peace; chairman Washington County school com., dir. of school board. Served on state Soldiers Rehabilitation Board. Elected to Supreme Court April 1958 for term beginning Jan. 1959, defeating appointed Justice Emmett L. Wingert.

MYRON L. GORDON born Kenosha Feb. 11, 1918. Educated Kenosha public and high schools. Graduated Phi Beta Kappa from University of Wisconsin; received B.A. (summa cum laude) and M.A. in 1939; in 1942 LL.B. from Harvard University. Law clerk to federal judge 1942; worked as practicing attorney until 1950. Served as judge of the 1st Branch, Milwaukee County Civil Court, 1950-55; as circuit judge for Branch 3 of the 2nd Circuit (Milwaukee County), 1955-61. Past state commander of the Disabled American Veterans; member of American Legion, Elks, and Eagles. Past president of the Milwaukee Hearing Society, a Red Feather agency. Elected to Supreme Court in April 1961 for term beginning Jan. 1962, to fill the vacancy resulting from the retirement of Chief Justice John E. Martin.

HORACE W. WILKIE, appointed to the Supreme Court May 25, 1962, to fill the vacancy caused by the death of Chief Justice Grover L. Broadfoot. For a biography of Mr. Justice Wilkie see 1962 *Blue Book*, p. 28.



United States Senator ALEXANDER WILEY



United States Senator E. WILLIAM PROXMIRE

WISCONSIN MEMBERS OF THE 87TH CONGRESS

SENATORS

ALEXANDER WILEY (Rep.) born Chippewa Falls May 26, 1884. Graduated from Chippewa Falls high school. For 2 years attended Augsburg College, Minneapolis; for 2 years Univ. of Michigan Law School. 1907 graduated Univ. of Wisconsin Law School. Has been an attorney, businessman and dairy farmer since that time. Served 3 terms (1909-15) as dist. atty. of Chippewa County. From 1916 to 1947 owned and operated a dairy farm in Barron County which was previously owned and operated by his parents. Member of Kiwanis (governor of Wisconsin-Upper Michigan Kiwanis district in 1933), Elks, Sons of Norway, Moose, Eagles, 33° Scottish Rite Freemason, Knights Templar, Shrine, Odd Fellows, Knights of Pythias, Sigma Phi Epsilon, Phi Delta Phi, Wis. Alumni Assn., Amer. and State Bar Assns. In 1936 Republican nominee for Governor. Elected to U.S. Senate in 1938; re-elected 1944, '50, '56. Former chairman and now ranking Rep. member of Senate Committees on Judiciary and on Foreign Relations, member of Senate Com. on Aeronautical and Space Administration. Member of former Senate Special Com. to Investigate Crime in Interstate Commerce. Official representative of the U.S. government at Interparliamentary Union Conference in Oslo, Norway, 1939, and British Empire Parliamentary Conference in Bermuda, 1946; head of U.S. delegation to British Empire Parliamentary Conference in Bermuda, 1948. U.S. delegate to Japanese Peace Conference in San Francisco, 1951; to Council of Europe, Strasbourg, France, 1951; to Interparliamentary Union Conference, Bern, Switzerland, 1952; to 7th United Nations General Assembly, 1952; to Interparliamentary Union, Washington, D.C., 1953. Delegate to Interparliamentary Union, Helsinki, Finland, 1954; to Interparliamentary Union, London, U.K., 1957. American representative to International Conference on Patents, Lisbon, Portugal, 1958. Home address: Chippewa Falls.

E. WILLIAM PROXMIRE (Dem.) born Lake Forest, Ill. Nov. 11, 1915. Received B.A. in 1938 from Yale University; in 1940 M.B.A. from Harvard Graduate School of Business Administration; in 1948 M.P.A. (public administration) from Harvard Graduate School of Arts and Sciences. Formerly owner of a printing plant in Waterloo, Wis. Veteran of World War II; served in Military Intelligence Service 1941-46. Member of Wisconsin Assembly 1951-52. Democratic candidate for Governor of Wisconsin 1952, 1954, 1956. Elected to U.S. Senate in special election Aug. 27, 1957, to fill vacancy caused by death of Sen. Joseph R. McCarthy; re-elected 1958. Member of Senate Committees on Agriculture and Forestry, Banking and Currency, and chairman of the Subcommittee on Small Business. Home address: Buckeye Road, Madison.



SCHADEBERG



KASTENMEIER



THOMSON



ZABLOCKI



REUSS

Members of House of Representatives: HENRY C. SCHADEBERG, 1st district; ROBERT W. KASTENMEIER, 2nd district; VERNON W. THOMSON, 3rd district; CLEMENT J. ZABLOCKI, 4th district; HENRY S. REUSS, 5th district.

MEMBERS OF THE HOUSE OF REPRESENTATIVES**1st CONGRESSIONAL DISTRICT**

Green, Kenosha, Racine, Rock, Walworth Counties

HENRY C. SCHADEBERG (Rep.) born Manitowoc Oct. 12, 1913. Educated Manitowoc public schools. Attended Univ. of Wisconsin; in 1938 received B.A. from Carroll College, in 1941 B.D. from Garrett Biblical Seminary at Evanston, Ill. Clergyman. Veteran of World War II and Korean Conflict. Served as Navy chaplain in Pacific; recalled to active duty in 1952; commander in Naval Reserves. Member of Racine county Boy Scouts executive board; past president of Burlington Rotary and of Evansville, Wis., ministerial assn.; chaplain of the Wisconsin department of the American Legion 1957-58. Elected to Congress in 1960. Member of House Committees on Un-American Activities and on Veterans Affairs; treasurer of the 87th Congress Club. Business address: 442 House Office Building, Washington, D.C.

2nd CONGRESSIONAL DISTRICT

Columbia, Dane, Dodge, Jefferson, Waukesha Counties.

ROBERT W. KASTENMEIER (Dem.) born Beaver Dam Jan. 24, 1924. Educated Beaver Dam and Columbus public grade schools; Beaver Dam High School. Attended Carleton College (Minn.); received LL.B. in 1952 from Univ. of Wisconsin Law School. Branch office director in Philippines for U.S. War Department Claims Service 1946-48; practicing attorney since 1952. World War II veteran; served in Army 1943-46. Justice of peace 1955-58. Elected to Congress 1958; re-elected 1960. Member of House Committee on Judiciary. Home address: 214 N. 1st St., Watertown.

3rd CONGRESSIONAL DISTRICT

Crawford, Grant, Iowa, Juneau, La Crosse, Lafayette, Monroe, Richland, Sauk, Vernon Counties.

VERNON W. THOMSON (Rep.) born Richland Center Nov. 5, 1905. Attended Carroll College 1923-25. Received B.A. in 1927 from Univ. of Wisconsin; in 1932 LL.B. from U.W. Law School. In 1957 awarded honorary doctor of laws degree by Carroll College. Since 1932 a practicing attorney at Richland Center, prior to that time taught 2 years at Viroqua High School and 3 years at Madison Vocational School. Member of Order of Coif, Chi Phi, Phi Delta Phi, Masons, Moose. From 1933 to 1935 CCC enrolling officer for Richland County. Richland County assistant district attorney 1933-35; Richland Center city attorney 1933-37 and 1942-44; president Richland Center library board 1939-51; mayor of Richland Center 1944-51. Delegate to Republican National Convention 1936, 1940, 1952 (member of committee on credentials), 1956. Presidential elector 1952 and 1956. In 1940 chairman of State Republican Platform Convention. Assemblyman 1935-51; served as Speaker 1939, '41, '43; as Republican Floor Leader 1945, '47, '49. Attorney General of Wisconsin 1951-57; Governor 1957-59. Elected to Congress 1960. Member House Committee on Interstate and Foreign Commerce. Home address: Richland Center.

4th CONGRESSIONAL DISTRICT

Part of Milwaukee County: Villages of Greendale, Hales Corners, West Milwaukee; Cities of Cudahy, Franklin, Greenfield, Oak Creek, St. Francis, South Milwaukee, Wauwatosa, West Allis; all of Wards 8, 11, 12, 14, 17, 19 and parts of Wards 3, 4, 10, 16 City of Milwaukee.

CLEMENT J. ZABLOCKI (Dem.) born Milwaukee Nov. 18, 1912. Attended parochial school, Marquette Univ. High School. Received Ph.B. in 1936 from Marquette Univ., then took additional graduate work in education. Taught high school in Milwaukee 1938-39; worked as organist and choir director 1932-48. Member of Knights of Columbus, Catholic Order of Foresters, Eagles, St. Vincent Conf., National Alliance, Federation of Polish Associations of America, Holy Name Society. Kennedy delegate to 1960 Democratic National Convention. Elected state Senator 1942, re-elected 1946. Elected to Congress 1948; re-elected 1950, 1952, 1954, 1956, 1958, 1960. Member House Committee on Foreign Affairs. Home address: 3245 West Drury Lane, Milwaukee.

5th CONGRESSIONAL DISTRICT

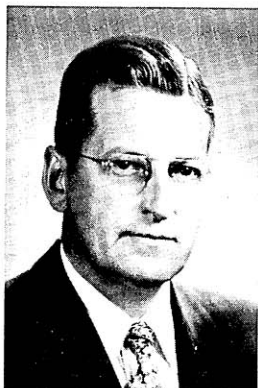
Part of Milwaukee County: Villages of Bayside, Brown Deer, Fox Point, River Hills, Shorewood, Whitefish Bay; City of Glendale; all of Wards 1, 2, 5, 6, 7, 9, 13, 15, 18, 20 and parts of Wards 3, 4, 10, 16, City of Milwaukee.

HENRY S. REUSS (Dem.) born Milwaukee Feb. 22, 1912. Educated Milwaukee schools. Received A.B. in 1933 from Cornell Univ.; in 1936 LL.B. Harvard Law School. Practicing attorney 1936-55; lecturer, Milwaukee State College, 1950-51; magazine writer. Milwaukee County asst. corporation counsel 1939-40. Assistant general counsel, Marshall Plan, Paris, France, 1949. Special prosecutor Milwaukee County grand jury, 1950. Personal counsel to late Secretary of State Fred Zimmerman in reapportionment case before Wisconsin supreme court, 1953. Former director White Elm Nursery Co., Hartland; past dir. Marshall and Ilsley Bank, Milwaukee; past dir. Niagara Share Corporation, Buffalo, N.Y. Veteran of World War II; served in Army 1943-45. Past president Cornell Alumni Assn. of Wisconsin; vice-president Wis. Chi Psi Alumni Assn.; vice-chairman Milwaukee Foreign Policy Assn.; alumni trustee Harvard Law Review; alumni visitor Cornell Univ.; former member legal advisory committee National Resources Board; member National Institute for Infantile Paralysis. Elected to Congress 1954; re-elected 1956, 1958, 1960. Member House Committee on Banking and Currency, House Committee on Government Operations, Joint Economic Committee. Home address: 2773 N. Maryland Ave., Milwaukee.

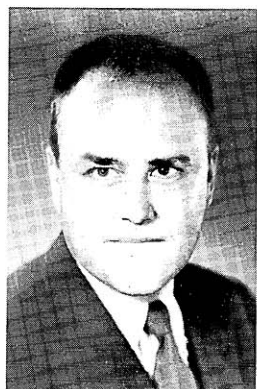
6th CONGRESSIONAL DISTRICT

Calumet, Fond du Lac, Ozaukee, Sheboygan, Washington, Winnebago Counties.

WILLIAM K. VAN PELT (Rep.) born Glenbeulah March 10, 1905. Graduated Fond du Lac elementary and high schools. Served 6 years as chairman of Fond du Lac County Republican committee. Member of Elks, Kiwanis, Masons. Delegate to Republican National Convention 1944, alternate 1948. Elected to Congress in 1950; re-elected 1952, 1954, 1956, 1958, 1960. Member House Committee on Merchant Marine and Fisheries, and House Committee on Science and Astronautics. Home address: 47 Oaklawn Ave., Fond du Lac.



VAN PELT



LAIRD



BYRNES



JOHNSON



O'KONSKI

Members of House of Representatives: WILLIAM K. VAN PELT, 6th district; MELVIN R. LAIRD, 7th district; JOHN W. BYRNES, 8th district; LESTER R. JOHNSON, 9th district; ALVIN E. O'KONSKI, 10th district.

7th CONGRESSIONAL DISTRICT

Adams, Green Lake, Langlade, Marathon, Marquette, Menominee, Portage, Shawano, Waupaca, Waushara, Wood Counties.

MELVIN R. LAIRD (Rep.) born Marshfield Sept. 1, 1922. Educated Marshfield grade and high schools. Received B.A. in 1942 from Carleton College (Minn.). Formerly secy.-treas. of lumber company; resigned upon taking office as Congressman. Veteran of World War II; served aboard destroyer "Maddox" in Pacific. Member of American Legion, "40 et 8", Veterans of Foreign Wars, Disabled American Veterans and Elks. Chairman Wis. Republican Party Platform Committee 1950 and 1952. Delegate to Republican National Conventions since 1948; member of Platform Committee 1952, 1956, 1960; chairman 1952 of its subcommittee on labor and public welfare; chairman 1956 and 1960 of its subcommittee on agriculture. The past 4 generations of his family have served in Wisconsin state offices; his father served as state Senator and his mother as member of the University Board of Regents. Elected to state Senate in 1946 and re-elected without opposition in 1948. Was legislative spokesman for Governors Oscar Rennebohm (1949) and Walter J. Kohler (1951). Member Wis. Commission on Improvement of Educational System 1947-49, Joint Legislative Council 1949-53 (council chairman 1951-53, chairman of Taxation Com. 1949-51), Joint Finance Committee 1949-52, Senate Labor and Management Com. 1947-50, Veterans and Military Affairs Com. 1947-52 (chairman 1949-52), Legislative Procedure Com. 1949-51. Elected to Congress 1952; re-elected 1954, '56, '58, '60. Member House Agricultural Committee 84th Congress; member House Appropriations Committee 83rd, 85th, 86th and 87th Congresses. Home address: 207 So. Central Ave., Marshfield.

8th CONGRESSIONAL DISTRICT

Brown, Door, Florence, Forest, Kewaunee, Manitowoc, Marinette, Oconto, Outagamie Counties.

JOHN W. BYRNES (Rep.) born Green Bay June 12, 1913. Attended Green Bay public and parochial schools. Received B.A. in 1936 from Univ. of Wisconsin; in 1938 LL.B. from U.W. Law School. Practiced law in Green Bay. Member of Elks. Elected to state Senate in 1940. In 1943 chosen Republican Floor Leader, chairman of Judiciary Committee. Elected to Congress 1944; re-elected 1946 through 1960. Member of Committees on Civil Service, Claims and War claims, 79th Congress; member of House Ways and Means Committee since 80th Congress. Elected chairman Republican Policy Committee, 86th Congress. Home office address: Federal Building, Green Bay.

9th CONGRESSIONAL DISTRICT

Barron, Buffalo, Chippewa, Clark, Dunn, Eau Claire, Jackson, Pepin, Pierce, St. Croix, Trempealeau Counties.

LESTER R. JOHNSON (Dem.) born Brandon, Wis. June 16, 1901. Educated Brandon public schools. Attended Lawrence College 2 years. Received Ph.B. in 1924 from Univ. of Wisconsin. For 14 years in retail lumber, feed, and coal business. In 1941 received LL.B. from U.W. Law School. Practiced law in Black River Falls. Delegate to 1952 and 1960 Democratic National Conventions. Elected Assembly Chief Clerk as Progressive 1935 and 1937. Elected Jackson County district attorney as Progressive 1942 and 1944, as Democrat 1952. Elected to Congress in special election Oct. 13, 1953, to fill vacancy caused by death of Merlin Hull; re-elected 1954, 1956, 1958, 1960. Member House Committee on Agriculture; in 1959 named chairman Dairy and Poultry Subcommittee. Home address: Black River Falls.

10th CONGRESSIONAL DISTRICT

Ashland, Bayfield, Burnett, Douglas, Iron, Lincoln, Oneida, Polk, Price, Rusk, Sawyer, Taylor, Vilas, Washburn Counties.

ALVIN E. O'KONSKI (Rep.) born on farm near Kewaunee May 26, 1907. Educated Kewaunee rural and high schools. Received Ed.B. in 1927 from Oshkosh State College; graduate training at Universities of Iowa and Wisconsin. Taught at Omro, Oconto, Pulaski High Schools in Wis., Itaska Junior College in Minn., Oregon State College in Oreg., University of Detroit in Mich. Educator, journalist, lecturer. Former owner and publisher of newspaper at Hurley, radio stations at Merrill and Wausau. Elected to Congress 1942; re-elected 1944 through 1960. Former member House Committees on Veterans Affairs, Public Works, Education and Labor. Member Katyn Forest Massacre Committee 1952; awarded "Palonia Restuticia," highest medal of Free Poland. Member House Committees on Armed Services and District of Columbia. Ranked first among all Congressmen in United Press test in American history; voted "most distinguished American for 1945" by foreign language press on the basis of his work against Communism and the Yalta Agreement. Present director Free World Forum; in 1945, president World Bill of Rights Assn. and in 1947 director of World League to Stop Communism. Home address: Mercer.

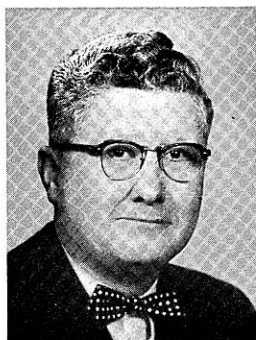
SENATE OFFICERS 1961



Lieut. Gov.
KNOWLES
President



Senator
PANZER
President
pro tem.



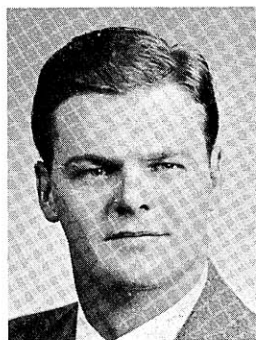
Majority
Floor Leader
SEN. TRAVIS



Majority
Caucus Secretary
SEN. LEONARD



Senate Chief Clerk
HON. LARSEN



Minority
Floor Leader
SEN. MOSER



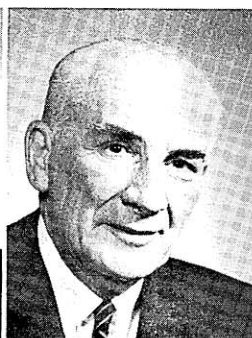
Minority
Caucus Chairman
SEN. STALBAUM



Senate Sergeant
at Arms
HON. DAMON



LAUN
1st District



O'BRIEN
2nd District



KENDZIORSKI
3rd District

ALFRED A. LAUN, JR. (Rep.) born New Holstein Feb. 14, 1905. Educated New Holstein and Milwaukee public schools. Oberlin College 2 years; Harvard Univ. A.B. cum laude 1927, M.B.A. 1929. Business: furniture manufacturing, retail building supplies, banking. Kiel alderman 1945-47. Member State Board of Vocational Education 1946-59; Stout Institute trustee 1946-55. Delegate, Republican National Convention 1956; alternate 1952. Presidential elector 1952. Republican chairman, 8th District, 1952-54. Elected to Senate 1954; re-elected 1958. Chairman Sen. Labor, Taxation, Insurance and Banking Com., Legis. Council Taxation Com.; member Sen. Legislative Procedure Com.; member State Building Commission. Home address: 502 River Terrace, Kiel. 1st Senatorial District: Door, Kewaunee, Manitowoc Counties.

LEO P. O'BRIEN (Rep.) born Fond du Lac July 20, 1893. Attended Univ. of Wisconsin, Marquette Univ., St. Norbert College. Insurance salesman, public relations specialist. Veteran World Wars I and II; 32 months Pacific combat incl. Solomon and Guadalcanal campaigns. Organizer, Navy Club of the USA (chartered by Congress); over 1½ years national public relations director. Member of usual veterans fraternal and service club organizations. Elected to Senate 1952; re-elected 1956 and 1960; first Senator ever to represent the 2nd District for three 4-year terms. Chairman Sen. Governmental and Veterans Affairs Com., member Contingent Expenditures Com., Legis. Procedure Com.; member Legis. Council Coms. on Urban Problems 1961, County Boards and Reapportionment 1959. Home address: 1025 Porlier St., Green Bay.

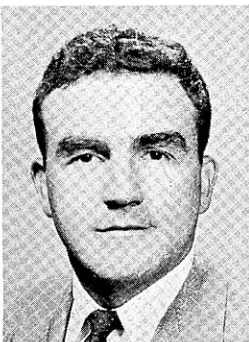
2nd Senatorial District: Brown County.

CASIMIR KENDZIORSKI (Dem.) born in Poland Dec. 3, 1898. Elementary and high school education in Poland; evening courses in Milwaukee. Real estate broker 1928-30; since then has been machinist and quality control inspector. Past vice-president of union local and member of its boards on legislation and education. Active in civic and labor activities. Elected to Assembly 1946; re-elected 1948. Elected to Senate 1949; re-elected 1950, 1954, 1958. In 1957 served as Democratic assistant floor leader. Member of the Senate Committee on Highways; member of the Advisory Committee on Unemployment Compensation. Home address: 2025 S. 14th St., Milwaukee 4.

3rd Senatorial District: Wards 11, 12, 14, City of Milwaukee.



LEONARD
4th District



BRENNAN
5th District



MOSER
6th District

JERRIS LEONARD (Rep.) born Chicago Jan. 17, 1931. Educated Milwaukee St. Elizabeth's School, Rufus King High School. B.S. in bus. admin., Marquette Univ. 1952; LL.B. Marquette Univ. 1955. Practicing attorney. Member bar assns., Elks, Eagles. Elected to Assembly 1956 and 1958. Assistant Rep. floor leader, 1959. Member Assembly Rules Revision Com.; Legis. Council Judiciary Com. Elected to Senate 1960. Republican Sen. caucus secretary 1961. Chairman Legis. Council Governmental Labor Relations Com., member ad hoc Com. on Tax Revision, Sen. Judiciary Com., Civil War Centennial Comm., Adv. Com. on Workmen's Compensation. Address: 9420 N. Sleepy Hollow Road, Milwaukee 17.

4th Senatorial District: Villages of Bayside, Brown Deer, Fox Point, River Hills, Shorewood, Whitefish Bay; City of Glendale and Wards 1, 18, 20, City of Milwaukee.

JAMES B. BRENNAN* (Dem.) born Milwaukee Feb. 1, 1926. Educated Milwaukee St. Monica School, Marquette High School. Received A.B. in 1949 from Notre Dame University; LL.B. 1952 Marquette University Law School. Practicing attorney. Veteran of World War II; served in Navy 1944-46. Kennedy delegate to 1960 Democratic National Convention. Elected to Senate 1958. Chairman of Committee for Revision of Administrative Rules; member Senate Committees on Education and on Public Welfare; member Legislative Council Commercial Code Committee. Home address: 2813 N. 87th St., Milwaukee 10.

5th Senatorial District: Wards 5, 9, 15, City of Milwaukee.

WILLIAM R. MOSER** (Dem.) born Chicago Oct. 14, 1927. Educated Milwaukee St. Michael's School, St. John's High School. B.S. St. Norbert College; LL.B. 1953 Marquette Univ. Practicing attorney. World War II veteran; in Army 1945-47. Member bar assns., Knights of Columbus, Holy Name Soc., Eagles; formerly Milw. Mayor's Advisory Council. State judge advocate Catholic War Vets. Director State St. Advancement Assn. Kennedy delegate to 1960 Dem. National Convention. Elected to Senate 1956 and 1960. Dem. floor leader 1960, 1961. Member Sen. Coms. on Education, Public Welfare, ad hoc Com. on Tax Revision; Legis. Council Coms. on Judiciary, Public Health, Reapportionment; Governor's Committee to Review Family Code (chm.); Joint Survey Com. Retirement Systems. Address: 710 N. Plankinton Ave., Milwaukee 3.

6th Senatorial District: Wards 7, 10, 13, City of Milwaukee.

*Resigned effective Apr. 29, 1961, to become U.S. District Attorney, Eastern District of Wisconsin.

**Resigned effective Feb. 1, 1962 to become a Milwaukee Co. judge.



McPARLAND
7th District

BUSBY
8th District

SUSSMAN
9th District

LELAND S. McPARLAND (Dem.) born Thorp Dec. 18, 1896. Educated Thorp schools. Oshkosh State College 2 years; LL.B. Marquette Univ. Teacher in South Milwaukee 1919-27; since 1927 practicing attorney. World War I veteran; in Navy 1917-18. Chairman Milwaukee County Dem. Organizing Com. 1952-53. Assemblyman 1941-55; Dem. floor leader 1945, '47, '49. Senator since 1955; chairman Dem. Joint Caucus 1953, '55, '57. Vice-chm. Legis. Council 1959. In 1961 member Senate Judiciary Com., Legis. Council, Admin. Rules Review Com.; has served on Legis. Council Coms. on Reapportionment, Remedial Legislation; Natural Resources Com. of State Agencies. Address: 4703 S. Packard Ave., Cudahy.

7th Senatorial District: Villages of Greendale, Hales Corners; Cities of Cudahy, Franklin, Greenfield, Oak Creek, St. Francis, South Milwaukee; Wards 17, 19, City of Milwaukee; Ward 5, City of West Allis.

ALLEN J. BUSBY (Rep.) born Milwaukee March 6, 1900. Educated West Milwaukee, West Allis, Milw. State College (now UW-Milw.); B.A. Univ. of Wis., 1922, M.A. 1925, LL.B. 1928. Little Chute High School principal 1922-24; West Allis High School teacher 1928-33. Since 1933 practicing attorney; vil. atty. West Milwaukee. Assemblyman 1931, 1935; Senator since 1937; now serving 15th session. Co-author 1951 Rosenberry Apportionment Act; instrumental Milw. County Expressway Commission law, Criminal Code, Family Code, judicial system reform. Chairman Sen. Judiciary Com.; member Legis. Council Judiciary Com. (vice-chm. 1959). Served on Judicial Council, Sen. Coms. on Legis. Procedure and on Revisions, Repeals and Uniform Laws, Legis. Council Commercial Code Com. Address: 1673 S. 53rd St., Milwaukee 14.

8th Senatorial District: Village of West Milwaukee; City of Wauwatosa; Wards 1, 2, 3, 4, City of West Allis.

NORMAN SUSSMAN (Dem.) born Philadelphia May 26, 1905. Educated Milwaukee schools; Milw. School of Engineering. Grocer; City Natatorium asst. supt.; formerly union representative. Pres. Independent Neighborhood Grocers Assn. 8 terms. Steward, exec. board member AFL-CIO. Member Building Service Employees Union, Milw. Govt. Service League, Civil Defense Disaster Com., county Mental Health Assn., Fond du Lac Ave. Advancement Assn., B'nai B'rith, NAACP. Received Human Rights Council award. Delegate Milw. County Dem. Council; Kennedy del. to 1960 Dem. Nat'l Convention. Assemblyman 1957, '59; elected to Senate 1960. Member Sen. Gov't and Veterans Affairs Com.; secy. Legis. Council Youthful Drinking and Driving Com.; in 1959 vice-chm. Legis. Council Urban Problems Com. Home address: 1232 W. Fond du Lac Ave., Milwaukee 5.

9th Senatorial District: Wards 2, 3, 6, City of Milwaukee.



KNOWLES
10th District



ZABORSKI
11th District



KRUEGER
12th District

ROBERT P. KNOWLES (Rep.) born River Falls Feb. 25, 1916. Educated River Falls schools. Received B.S. River Falls State College. Since 1938 in insurance and real estate business. World War II veteran; Army Air Force 1942-45. Member and past president Kiwanis, Willow River Rod and Gun Club; member Elks, Amvets, Wis. Assn. of Insurance Agents. Elected to Senate at special election Apr. 1955; re-elected 1956, 1960. Vice-chm. Legislative Council; member Sen. Committees on Contingent Expenditures, and on Labor, Taxation, Insurance and Banking. 1955-59 chairman Legis. Council Com. on State Government Operations; vice-chm. 1959-61 Legis. Council Taxation Com. Home address: New Richmond.

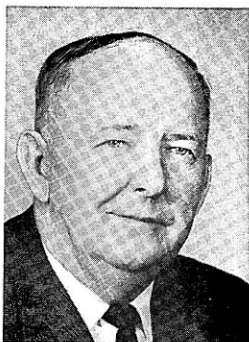
10th Senatorial District: Buffalo, Dunn, Pepin, Pierce, St. Croix Counties.

RICHARD J. ZABORSKI (Dem.) born Milwaukee Jan. 7, 1927. Educated St. Mary Czeist School; Messmer High School; B.S. Marquette Univ. 1953. Postgraduate work Univ. of Wisconsin Law School. Salesman. Veteran of World War II and Korea; served in Army; participated in Nuremberg trials. Member American Legion, Holy Name Soc.; various other social, political, and school organizations; past chairman Milwaukee County Dem. Full Employment Conference. Elected to Senate 1954; re-elected 1958. Vice-chm. Legis. Council Urban Problems Com. (chm. 1959); member ad hoc Com. on Tax Revision, Sen. Governmental and Veterans Affairs Com., Visiting Committee (vice-chm. 1959); served on Civil Defense Council. Home address: 713 S. 21st St., Milwaukee 4.

11th Senatorial District: Wards 4, 8, 16, City of Milwaukee.

CLIFFORD W. KRUEGER (Rep.) born Madison June 24, 1918. After high school graduation attended Merrill Commercial College. Sales manager. In 1946 elected Merrill alderman. Elected to Senate 1946 and 1950. A resident of Lincoln County, the 1951 Senate apportionment made him ineligible for re-election in 1954. Re-elected 1956 and 1960. Chairman of Senate Committee on Conservation; vice-chairman of Legis. Council Water Resources Committee; member of the Senate Committees on Agriculture and on Legislative Procedure. Served on Legis. Council Committees on Boating (1957-59), on Conservation and on Reapportionment (1959-61). Home address: 122 N. State St., Merrill.

12th Senatorial District: Iron, Lincoln, Oneida, Price, Taylor, Vilas Counties.



PANZER
13th District



LORGE
14th District



CARR
15th District

FRANK E. PANZER (Rep.) born Sept. 1, 1890. Educated public schools, Oakfield High School. Farmer; was school teacher, telegraph operator. Served as school clerk, town chairman; on Dodge County Board since 1925 (chm. since 1940). In 1956 elected chairman, Board of Managers, Council of State Governments. In 1960 delegate to Rep. National Convention, presidential elector. Assemblyman 1931. Senator 1935, 1937 and since 1943; elected Sen. President Pro Tem since 1947. Chairman Sen. Legislative Procedure Com., member Com. on Committees, Conservation Com. Member Interstate Cooperation Comn. (chm. 1959), Legislative Council (chm. 1957), ad hoc Com. on Tax Revision, Natural Resources Com. of State Agencies, Legis. Council Highways Com. Home address: Route 1, Brownsville.

13th Senatorial District: Dodge and Washington Counties.

GERALD D. LORGE (Rep.) born Bear Creek July 9, 1922. Educated in grade and high schools at Bear Creek. Graduate of Marquette Univ. Law School. Practicing attorney. World War II veteran; served in Marines Jan. '42 to Dec. '45. Member Outagamie, Wis., and Amer. Bar Assns., Moose, Knights of Columbus, Bear Creek and Outagamie Conserv. Clubs, Amer. Legion. Elected to Assembly in 1950 and 1952; in 1954 elected to Senate to fill unexpired term; re-elected to Senate in 1956 and 1960. Chairman of Joint Com. on Revisions, Repeals and Uniform Laws. Member of Joint Com. on Finance, ad hoc Com. on Tax Revision, Sen. Legislative Procedure Com., Civil Defense Council, Legislative Council and its Urban Problems Com. Home address: 147 Lorge Building, Bear Creek.

14th Senatorial District: Outagamie and Waupaca Counties.

PETER P. CARR (Rep.) born North Jutland, Denmark Aug. 6, 1890. Educated Chicago public schools, Chicago Business College. Retired; formerly seedsman; member (1931-46) southern Wis. group operating grocery stores and warehouses, (1946-50) Janesville wholesale grocery. President Wis. Seed Dealers Assn. 1929; trust company director, Madison, 1925-31. During depression chairman Rock County President's Re-employment Board. President Janesville City Council 1954; elected to Senate 1954 and 1958. Chairman Senate Education Com., member Public Welfare Com., Legislative Procedure Com. In 1961 member Legis. Council Education Com.; served on its committees on Public Health, on Urban Problems, on the Mental Health Adv. Com., and on the Citizens Adv. Com. on County Institutions. Home address: 1705 Sherman Ave., Janesville.

15th Senatorial District: Rock County.



THOMPSON
16th District



TRAVIS
17th District



HOLLANDER
18th District

CARL W. THOMPSON (Dem.) born Washington, D.C. March 15, 1914. Educated Stoughton grade and high schools; LL.B. 1939 Univ. of Wis. Practicing attorney, home building contractor, farm owner. World War II veteran; in Army intelligence 1942-46. Served as alderman, city attorney. Democratic national committeeman 1949-56; convention alternate 1960. Presidential elector 1948. Dem. candidate for Governor 1948, '50. Assemblyman 1953, '55, '57, '59; in 1959 elected to Senate to fill unexpired term, re-elected 1960. Member Senate Agriculture Com., Conservation Com., ad hoc Com. on Tax Revision, Legis. Council Tobacco Marketing Com. Has served on Retirement Research Council, Legis. Council Conservation Com. Business address: 313 E. Main St., Stoughton.

16th Senatorial District: Wards 21 and 22, City of Madison; all towns, cities and villages in Dane County except City of Madison.

ROBERT S. TRAVIS (Rep.) born Platteville May 2, 1909. Educated Potosi grade and high schools; attended Michigan State College 2 years. Insurance agent; formerly (1930-33) manager dairy products company, Omaha, Nebr.; (1933-40) engaged in farming. World War II veteran; served in antiaircraft. Delegate 1960 Republican National Convention. Assemblyman 1947-53. During 1949-53 sessions member Assembly Conservation Com. (chairman), Taxation Com., Rules Com. Elected to Senate 1954; re-elected 1958. Republican floor leader 1957, '59, '61. Served on Interstate Cooperation Comm., Legislative Council and its Highway Advisory Com.; Senate Conservation Com., Highways Com. Home address: 328 Lutheran St., Platteville.

17th Senatorial District: Grant, Green, Iowa, Lafayette Counties.

WALTER G. HOLLANDER (Rep.) born Fond du Lac Sept. 8, 1896. Graduated Omro High School. Insurance agent; for 31 years farmed Town of Springvale farm (Hollander homestead since 1887). Was officer in government farm programs, agricultural coms., cooperative assns. Held local elective offices since 1929; member Fond du Lac County Board since 1938 (chm. since 1953). In 1959 elected pres. Wis. County Boards Assn. Elected to Senate 1956; re-elected 1960. Member Sen. Agriculture Com., Labor, Taxation, Insurance and Banking Com.; State Building Comm.; Visiting Com. (secy.); Legis. Council Gov't Labor Relations Com., Water Resources Com.; served on its County School Superintendent Adv. Com. Home address: Route 1, Rosendale.

18th Senatorial District: Fond du Lac, Green Lake, Waushara Counties.



DRAHEIM
19th District

KEPPLER
20th District

STALBAUM
21st District

WILLIAM A. DRAHEIM (Rep.) born Neenah December 15, 1898. Educated Neenah elementary and high schools. Attended Lawrence College. Occupations: mill worker, statistician-accountant, production planner. Formerly sporting goods dealer. Veteran of World War I and World War II; after 40 years of military service in National Guard and Army retired as colonel. Member Rotary, American Legion. Served on county board. Elected to Senate 1950; re-elected 1954 and 1958. Chairman Joint Committee on Finance. Chairman Board on Government Operations; member ad hoc Com. on Tax Revision, Sen. Legislative Procedure Com., Legis. Council Water Resources Com.; Claims Comm.; Judgment Debtor Relief Comm. Home address: 116 W. Wisconsin Ave., Neenah.
19th Senatorial District: Calumet and Winnebago Counties.

ERNEST C. KEPPLER (Rep.) born Sheboygan Apr. 5, 1918. Educated Sheboygan grade, high, vocational schools, U.W. Extension Div.; B.S. Univ. of Wis. 1949, LL.B. in 1950. Attorney, real estate broker; was factory worker, truck driver, bookkeeper. Veteran of World War II (Philippines) and Korean Conflict; served in Army. Thirty years service in Boy Scouts of America, holds Silver Beaver Award. Member of Rotary, Eagles, other civic, veteran, fraternal, professional organizations. Assemblyman 1943-45; Sheboygan alderman 1941-45, 1951-53; asst. D.A. 1953-54; city (1956-57) and county (1957-61) civil defense dir. Elected to Senate 1960. Member Sen. Education Com., Public Welfare Com.; Legis. Council Education Com., Youthful Drinking and Driving Com.; Civil War Centennial Comm. Address: 719 New York Ave., Sheboygan.

20th Senatorial District: Ozaukee and Sheboygan Counties.

LYNN E. STALBAUM (Dem.) born Waterford May 1, 1920. Educated Racine County rural schools and Agric. School. Since 1951 secy.-treas. Milk Producer's Co-op. Assn.; with U.S. Dept. of Agric., Racine County, 1936-44; admin. officer federal farm program 1939-44. World War II veteran; in Navy 1944-46. Active in community affairs, past comdr. Waterford Amer. Legion, charter member Wind Lake V.F.W., member Kiwanis. Elected to Senate 1954; re-elected 1958. Dem. Senate caucus chairman 1957, '59, '61. Member Senate Labor, Taxation, Insurance and Banking Com., ad hoc Com. on Tax Revision, Board on Government Operations; Secy. Legis. Council Taxation Com. Served on Continuing Revenue Survey Comm., SE Wis. Regional Planning Comm., Governor's Dairy Farm Policy Comm. Home address: 904 Montclair Dr., Racine.
21st Senatorial District: Racine County.



MORTON
22nd District



CAMERON
23rd District



POTTER
24th District

EARL D. MORTON (Rep.) born Kenosha Nov. 18, 1918. Educated Kenosha public schools. Received A.B. in 1949 from Carroll College; in 1951 LL.B. from Marquette Univ. Law School. Practicing attorney; formerly laundry chemical analyst (1939-40), machine tool inspector (1937-39). World War II veteran; in Army 1940-45. Assistant district attorney 1954; Kenosha city councilman 1955-57. Served in Assembly 1957 and 1959. Elected to Senate 1960. Member of Senate Committees on Governmental and Veterans Affairs, and on Judiciary. Chairman of Legis. Council Youthful Drinking and Driving Com., member of its Judiciary Committee; has served on Legis. Council Taxation Com. Home address: 4102 Wilson Road, Kenosha.

22nd Senatorial District: Kenosha and Walworth Counties.

HOWARD W. CAMERON (Dem.) born Chippewa Falls Apr. 3, 1915. Educated rural school; Chippewa Falls McDonell High School; B.E. Superior State College 1941; LL.B. Univ. of Wis. 1945. Practicing attorney since 1946; formerly teacher. Member American, Washington State, Wisconsin Bar Assns., Natl. Assn. of Claimant's Compensation Attorneys, Wis. State Historical Soc. President Rice Lake Chamber of Commerce 1958; chairman local Red Cross 1947-51. Elected to Senate 1958. Member Senate Agriculture Com., Conservation Com.; Legis. Council Water Resources Com.; chairman Legis. Council Agriculture Com. 1959. Appointed to State Building Commission 1961. Home address: 102½ N. Main St., Rice Lake.

23rd Senatorial District: Barron, Burnett, Polk, Rusk, Sawyer, Washburn Counties.

JOHN M. POTTER (Rep.) born Wisconsin Rapids Aug. 16, 1924. Educated Sacred Heart School, Nekoosa; St. Norbert, DePere; Alexander High School, Nekoosa. Graduated Univ. of Michigan 1944; LL.B. Univ. of Wis. 1948. Practicing attorney; director Cranberry Growers' Cooperative; president Wis. Cranberry Growers' Assn. Member Knights of Columbus, Catholic Order of Foresters, American Legion, Kiwanis. Wood County D.A. 1950-57, county corporation counsel since 1957. Special state counsel in 1958 Brown County sheriff's proceedings; member 1959 Cranberry Problems Com. Elected to Senate 1960. Member Joint Committee on Finance, ad hoc Com. on Tax Revision. Chairman Legis. Council Judiciary Com., member of its Water Resources Com. Home address: 311 Madison Ave., Port Edwards.

24th Senatorial District: Clark, Portage, Wood Counties.



LAURI
25th District



WILKIE
26th District



MILLER
27th District

CARL E. LAURI* (Dem.) born Superior Jan. 16, 1924. Educated Superior public schools; B.S. Superior State College 1954. Formerly railroad clerk. World War II veteran, in Pacific 1942-46; outstanding Navy airman: Air Medal (4 gold stars), Distinguished Flying Cross, Pacific Ribbon (4 battle stars), Philippine Liberation Medal. Member Disabled Amer. Veterans, V.F.W., various conservation clubs. Delegate 1960 Democratic Natl. Convention; chairman 10th Dist. Dem. Party, member State Dem. Administrative Com. Elected to Senate 1954; re-elected 1958. Member Sen. Labor, Taxation, Insurance and Banking Com.; State Building Comm. 1959-61, Interstate Ports Comm. Home address: 2710 N. 22nd St., Superior.

25th Senatorial District: Ashland, Bayfield, Douglas Counties.

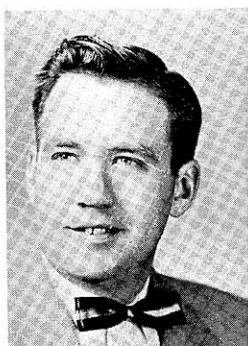
HORACE W. WILKIE (Dem.) born Madison Jan. 9, 1917. Educated Madison public schools; B.A. Univ. of Wis. 1938; LL.B. George Washington Univ. 1944; graduate work Univ. of Minn., American Univ., Natl. Inst. Public Affairs. Attorney; formerly admin. analyst U.S. Budget Bureau, consultant U.S. State Dept. World War II veteran; Coast Guard 1942-45. Chairman Madison Housing Auth. 1945-50; on Mayor's Metropolitan Development Com. 1956-58. Member bar assns., Natl. Assn. Housing Redevelopment Officials, Amer. Soc. Public Admin., Phi Beta Kappa. Elected to Senate 1956; re-elected 1960. Member Joint Finance Com., ad hoc Com. on Tax Revision, Legis. Council Education Com.; served on standing coms. on Education, Labor-Taxation-Insurance-Banking, Public Welfare. Home address: 3810 Council Crest, Madison 5.

26th Senatorial District: City of Madison except Wards 21 and 22.

JESS MILLER (Rep.) born 1884 in Town of Eagle, Richland County. Educated in public schools. Farmer and auctioneer. Has held a number of public offices: chairman of Town of Eagle, chairman of County Highway Committee, County Mediation Board and County Republican Committee. Elected to Senate in 1938; re-elected in 1942, 1946, 1950, 1954, 1958. Chairman of Senate Committee on Highways; member Senate Committee on Committees, Legislative Procedure Com. Member of Legislative Council and its Tobacco Marketing Com.; chairman Legis. Council Highway Committee, served on its Subcom. on Local Roads and Streets. Home address: Richland Center.

27th Senatorial District: Columbia, Crawford, Richland, Sauk Counties.

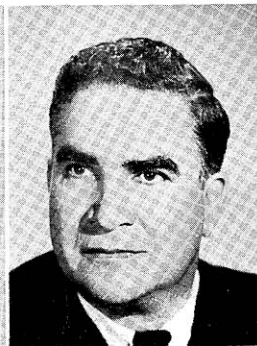
*Resigned effective Dec. 22, 1961 to accept appointment to Wis. Industrial Commission.



DONNELLY
28th District



DEAN
29th District



LaFAVE
30th District

DAVIS A. DONNELLY (Dem.) born Augusta, Wis. Mar. 9, 1927. Educated Augusta public schools; B.S. Wis. State College Eau Claire; LL.B. 1957 Univ. of Wis. Law School. Practicing attorney in Eau Claire; formerly commercial fisherman in Alaska, machinist, salesman, messenger in Wis. Assembly 1955. Overseas Navy veteran of World War II; veteran Korean Conflict. Member state and local bar associations. Elected to Senate 1956; re-elected 1960. Member Senate Committee on Judiciary; Citizens Advisory Committee on Tax Impact, Continuing Revenue Survey Commission; Legislative Council Governmental Labor Relations Committee 1961, Conservation Committee 1959. Business address: 131 S. Barstow St., Eau Claire.

28th Senatorial District: Chippewa and Eau Claire Counties.

ROBERT W. DEAN (Dem.) born Tomahawk July 20, 1923. Educated St. Mary's School, Tomahawk High; LL.B. Univ. of Wis. 1950. Attorney, practicing before U.S. Treasury Dept., U.S. dist. courts of Eastern, Western Dist. of Wis. Formerly associate in dist. atty.'s office. World War II veteran; Army Air Force 1943-46. Member Marathon Co., Wis., Amer. Bar Assns.; Amer. Legion, V.F.W. (past local comdr.); Wausau Chamber of Commerce, Jaycees; Knights of Columbus, Elks, Moose, Eagles, Lions, Civic Club. Village atty. Alma Center, Taylor, 1950-52. Elected Senator 1958; asst. Dem. floor leader 1961. Member Sen. Highways Com.; Retirement Research Council; vice-chm. Legis. Council Water Resources Com. 1959. Address: 1115 Hillcrest, Wausau.

29th Senatorial District: Marathon, Menominee, Shawano Counties.

REUBEN LaFAVE (Rep.) born Oconto 1915. Educated public schools; Railroad Auditors School. Real estate broker. Served in Coast Guard. Chairman Sportsmen's Conserv. Congr.; past pres. Northeast Wis. Conserv. Council; member Kiwanis, Wis. Service Assn., civic assns. Awards: *Mil. Sen.* "Outstanding Achievement in Conservation Field" 1953; 256 Wis. conserv. clubs' "Mr. Conservation" 1960. Served on county board. Assemblyman 1951-57; chm. Conserv. Com. Senator since 1957. Chairman Sen. Contingent Expenditures Com.; chm. Jt. Admin. Rules Com.; 1957-59 interim chm. Conservation Com. Vice-chm. Interstate Ports Comm., Menominee Indian Com. 1957-61. Member Jt. Retirement Systems Survey Com.; Sen. Govt'l and Veterans Affairs Com., Highways Com., Legis. Procedure Com. Address: 636 Brazeau Ave., Oconto.

30th Senatorial District: Florence, Forest, Langlade, Marinette, Oconto Counties.



LEVERICH
31st District



BICE
32nd District



DEMPSEY
33rd District

JAMES EARL LEVERICH (Rep.) born on farm in Town of Angelo, Monroe County; still resides there. Graduated Sparta High School, Madison College, Univ. of Wis. Agric. Short Course. Is a dairy farmer, fruit grower, farm co-op leader. For many years bank vice pres.; pres. co-op creamery assn. and livestock shipping assn. Served as school clerk; town clerk and chairman, county board; member State Board of Vocational and Adult Education and various other state-wide agric. and dairy coms. Elected to Senate 1934; re-elected since 1942. Chairman Senate Agriculture Com., vice-chm. Legis. Council Tobacco Marketing Com.; member Com. to Visit State Institutions, Interstate Co-operation Com., Sen. Legis. Procedure Com. Address: Rt. 1, Sparta. 31st Senatorial District: Adams, Juneau, Marquette, Monroe, Vernon Counties.

RAYMOND C. BICE (Rep.) born La Crosse Apr. 5, 1896. Educated La Crosse public schools; Univ. of Wis. Ext. Div. In retail lumber business. Overseas with Army in World War I. Chm. Oak Forest Sanatorium board of trustees; past pres. La Crosse Co. Chamber of Commerce, Businessmen's Club; member Amer. Legion, civic organizations. Received 1957 La Crosse "Civic Duty" award. Pres. La Crosse Vocational School Bd.; past officer County Bd.; past chm. County Park Com. Assemblyman 1947, '49, '51, '53; chm. Transportation Com., author 65/55 Wis. speed limit law. Elected Senator Apr. 1953; re-elected 1956, 1960. Chairman Sen. Pub. Welfare Com., vice-chm. Education Com., member Legis. Procedure Com.; member Legis. Council Education Com., Physical Plant Maintenance Com. Home address: 2406 State St., La Crosse.

32nd Senatorial District: Jackson, La Crosse, Trempealeau Counties.

CHESTER E. DEMPSEY (Rep.) born Merton, Waukesha County July 20, 1896. Owns and operates modern 300-acre dairy farm which has been homestead of Dempsey family since early pioneer days. Educated in county schools and has always been a close student of farming and farm problems. Was a member of Waukesha County Board and has held various school and township offices. Elected to Senate 1934; re-elected 1946, '50, '54, '58. Chairman of Senate Committee on Committees; member State Board on Government Operations, Joint Committee on Finance, Senate Committee on Legislative Procedure. Member Legislative Council Taxation Committee 1961, Agriculture Committee 1959. Home address: Route 1, Hartland.

33rd Senatorial District: Jefferson and Waukesha Counties.



LARSEN
Chief Clerk



DAMON
Sergeant at Arms

LAWRENCE R. LARSEN born Racine Mar. 23, 1897. Educated in Racine elementary and high schools. Veteran of World War I; served in Army. Assemblyman from Racine County 1951 and 1953. First chosen Chief Clerk of the Senate in 1935. Unanimously re-elected in each succeeding session through 1945, and again in each session from 1955 to 1961. Home address: 1028 Russet St., Racine.

HAROLD E. DAMON born Edgerton, Minn. Oct. 3, 1885. Since 1888 resident of Wisconsin. After graduation from high school attended Wausau Business College. At present engaged in insurance business. His public offices include alderman, supervisor, deputy sheriff and deputy clerk of court. In 1943 served as assistant sergeant at arms; in 1944 as acting sergeant at arms. In 1945 chosen Sergeant at Arms of the Senate; re-elected in each session since 1945. Home address: 707 First St., Wausau.

ASSEMBLY OFFICERS 1961



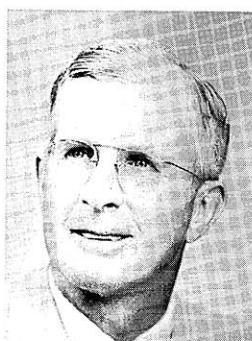
Assemblyman
BLANCHARD
Speaker



Assemblyman
HUTNIK
pro tem
Speaker



Majority
Floor Leader
Assemblyman
HAASE



Majority
Caucus Chairman
Assemblyman
CALVERT



Assembly
Chief Clerk
HON. MAROTZ



Minority
Floor Leader
Assemblyman
HUBER



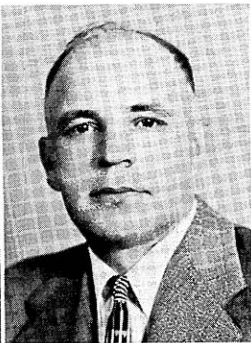
Minority
Caucus Chairman
Assemblyman
MOLINARO



Assembly
Sergeant at Arms
HON. KELLMAN



ROMELL
Adams, Juneau,
Marquette



BARABE
Ashland, Bayfield



ST. ANGELO
Barron

LOUIS C. ROMELL (Rep.) born Chicago Apr. 7, 1899. Engaged in beef cattle raising; real estate dealer. Served as town supervisor 1939-42, Adams Co. Board member 1941, school board member 1936-42. Member of the Assembly 1947-55. Re-elected to the Assembly 1960. Vice-chairman of the Assembly Committee on Municipalities; member of the Joint Committee on Finance. Member of the Administrative Rules Review Committee. Home address: Edgewood Dr., Rt. 1, Adams.

ROBERT F. BARABE (Dem.) born Mellen June 14, 1917. Educated Mellen public schools. Completed extension course at University of Wisconsin 1961. Merchant for past 17 years. World War II veteran; served in Army, overseas with armored division 1942-46. Member of American Legion, Veterans of Foreign Wars. Served as alderman and Mayor of Mellen 1947-58; as member of Ashland County Board 1947-49. Elected to Assembly in 1958; re-elected 1960. Member 1961 Assembly Education Committee and State Affairs Com., Legis. Council Water Resources Com.; in 1959 Assembly Highways Com. and Public Welfare Com., Legis. Council Public Health Com. Home address: Box 768, Mellen.

THOMAS ST. ANGELO (Rep.) born Cumberland Jan. 3, 1889. Educated Palmer School, Cumberland High School. Additional training in law and engineering from La Salle and International Correspondence Schools in Chicago. Appraiser for F.H.A. and Veterans Administration since 1958; with Federal Farm Credit Administration 1933-57. Served as Barron Co. Red Cross chairman 1945-51 and 1958, on Agricultural War Board 1940-45, on Palmer School Board 1920-27. Elected to the Assembly in 1960. Member of the Assembly Agriculture Committee and Transportation Com.; member Legis. Council Water Resources Com. Home address: Cumberland.



QUINN
Brown, 1st



GRANT
Brown, 2nd



VANDERPERREN
Brown, 3rd

JEROME F. QUINN (Rep.) born Green Bay May 23, 1910. Educated St. Patrick's School, Green Bay West High School. Attended Univ. of Wisconsin. Merchant for 30 years, also real estate business. Member Green Bay Assn. of Commerce, West Side Businessmen's Assn., Elks. Was Green Bay alderman 16 years; on Brown Co. Board 6 years. Past chairman Finance Com. Green Bay Bd. of Education. Elected to Assembly 1954; re-elected 1956, '58, '60. In 1959 served on Assembly Rep. Policy and Platform Coms. Vice-chm. Assembly Commerce and Manufactures Com.; member of Highways Com.; member Legis. Council Highways Com. In past sessions on Municipalities Com., and on Legis. Council Urban Problems Com. Member Civil Defense Council 1959. Home address: 137 N. Oakland Ave., Green Bay.

Brown County, 1st District: Wards 3, 6, 13-24, City of Green Bay.

ALEXANDER R. GRANT (Rep.) born Chicago Nov. 28, 1925. Educated Our Lady of Mt. Carmel School, Chicago; Madison West High School. Received B.S. in 1950 from Univ. of Wisconsin; in 1953 LL.B. from its law school. Attorney. Veteran of World War II and the Korean Conflict; served in Navy. Member Wis. District Attorneys Assn., Natl. Assn. of Prosecuting Attorneys, Brown Co. Assn. for Retarded Children, Elks. In 1958 elected Brown County District Attorney; was asst. D.A. 1957-58 and claims adjuster 1953-56. Elected to Assembly in 1960. Member of Assembly Education Committee and Judiciary Com.; Legis. Council Judiciary Com. Business address: 107 S. Madison, Green Bay.

Brown County, 2nd District: Towns of Allouez, Preble; Wards 1, 2, 4, 5, 7-12, City of Green Bay.

CLETUS J. VANDERPERREN (Dem.) born in Brown County's Town of Pittsfield Mar. 4, 1912. Educated Mills Center School. Owner and operator of a farm. Member Farm Bureau since 1947, local dairy herd improvement co-op. (pres.), tri-county fire dept. (treas.). Serving as town chairman; county board member 10 years, member of committees on agriculture, reforestation and conservation, roadside zoning and planning, public safety and war memorial and arena. Elected to Assembly 1958; re-elected 1960. Member ad hoc Com. on Tax Revision; Assembly Agriculture Com., Taxation Com.; Com. to Visit State Institutions. Served on Assembly Conservation Com., Legis. Council Water Resources Com. Home address: Rt. 5, Green Bay.

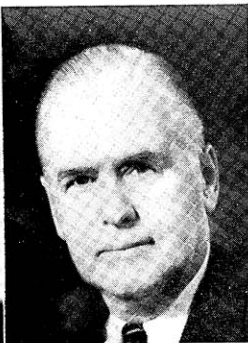
Brown County, 3rd District: Brown County except Town of Allouez, Town of Preble, City of Green Bay.



JOHNSON, R. I.
Buffalo, Pepin, Pierce



DUEHOLM
Burnett, Polk

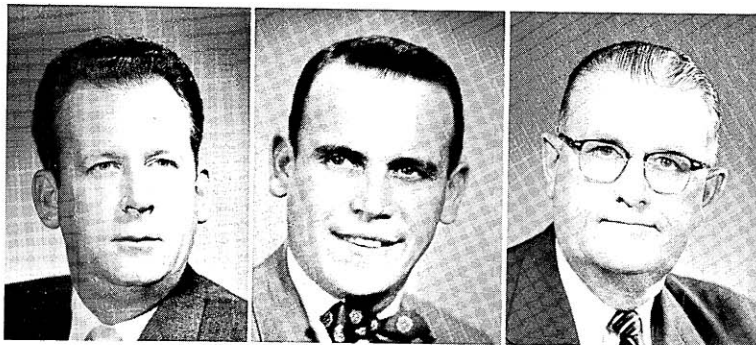


HIPKE
Calumet

ROBERT I. JOHNSON (Rep.) born Mondovi May 24, 1928. Educated Devaney rural school, Mondovi High School. Graduated Univ. of Wisconsin Agricultural Short Course. Active farmer since 1946. Veteran of the Korean Conflict; served in Army artillery. Devaney 4-H Club leader 1946-51; president West-Central Jersey Cattle Club 1955-57. Elected to Assembly in 1960. Member of Assembly Public Welfare Committee, Assembly State Affairs Com.; Legis. Council Water Resources Com. Home address: Double "J" Farm, Route 2, Mondovi.

HARVEY L. DUEHOLM (Dem.) born in Polk County's Town of Bone Lake Jan. 29, 1910. Educated in Bone Lake elementary school, Luck High School. Dairy farmer; member various co-op. executive boards. Served as community committeeman of Agricultural Conservation Service 1938-53, as town chairman 1945-59, as county board chairman 1957-59. Elected to Assembly 1958; re-elected 1960. Chosen member of Democratic Assembly Policy Committee 1961. Member of ad hoc Com. on Tax Revision. Vice-chairman of Assembly Commerce and Manufactures Com. 1959, member Conservation Com.; in 1961 member Elections Com. and Public Welfare Com. Member Legis. Council Education Com.; in past interims member Physical Plant Maintenance Com., Commercial Code Com., Remedial Legislation Com. Home address: Luck.

GILBERT J. HIPKE (Rep.) born New Holstein July 12, 1898. Educated New Holstein public schools; agriculture B.S. Univ. of Wis. 1921. Farmer and food processor since 1921; president of food processing co. estab. 1899. World War I veteran; served in Army. Organizer, chairman county civil defense in World War II. Director Natl. Canners Assn.; past pres. Wis. Canners Assn. and Wis. Horticultural Soc.; past comdr. local Amer. Legion post. New Holstein alderman 1930-34; board of education clerk since 1943; member Calumet Co. Board since 1934, 12 years chm. finance com. Elected to Assembly 1958; re-elected 1960. Member Board on Government Operations. Chairman Assembly Commerce and Manufactures Committee; member Veterans and Military Affairs Com. In 1959 member of Assembly Transportation Com.; Legis. Council Agriculture Com. Home address: 2109 Park Ave., New Holstein.



DORR
Chippewa

NIKOLAY
Clark

BIDWELL
Columbia

CLIFFORD E. DORR (Dem.) born New Auburn Aug. 11, 1920. Educated Chippewa Falls public schools. Law enforcement officer since 1946. World War II veteran; served in Army 1940-45. Sheriff of Chippewa County 1955-59. Elected to Assembly 1958; re-elected 1960. Vice-chairman Assembly Enrolled Bills Committee 1959, member of Conservation Com.; Municipalities Com. In 1961 member of Assembly Excise and Fees Com., Highways Com. Member Legislative Council Committee on Youthful Drinking and Driving. Home address: 820 Wilson St., Chippewa Falls.

FRANK L. NIKOLAY (Dem.) born Marathon County (Day tn.) Sept. 1, 1922. Educated Abbotsford public schools; LL.B. 1948 Univ. of Wis. Attorney; major and asst. judge advocate general 32nd Div. Wis. Natl. Guard. World War II veteran; Army 1940-41, Navy 1943-46. Chairman Wis. Humphrey delegation, 1960 Dem. Natl. Convention. Green Bay dist. counsel OPS 1951. U.S. atty. Western Dist. Wis. 1952-54; Abbotsford vil. atty. 1949-50 and since 1954; Colby city atty. since 1958. Clark County posts: county board 1949-50 and since 1957, welfare board since 1957, asst. D.A. 1955-56. Assembly committee clerk 1943. Elected to Assembly 1958; re-elected 1960. Vice-chairman Assembly Education Com. 1959, member 1961; member Assembly and Legis. Council Judiciary Coms. Served on Assembly State Affairs Com.; Joint Revisions, Repeals, Uniform Laws Com.; Legis. Council Highways Com. Business address: Abbotsford.

EVERETT V. BIDWELL (Rep.) born Houston, Minn. Oct. 22, 1899. Attended Minnesota rural schools and Univ. of Minn. Ice cream manufacturer, bank vice-president; formerly salesman, farmer. Past director Portage Chamber of Commerce, Wis. Ice Cream Manufacturers Assn. Member county board 10 years. Elected to Assembly 1952; now in 5th term. Chairman of Joint Finance Committee; vice-chairman Assembly Rules Com. Member Board on Govt. Operations, ad hoc Com. on Tax Revision, Assembly Elections Com., Civil War Centennial Comm., Legis. Council. Served on Gov. Thomson's Advisory Committees on Industrial Development, on Problems of Land Acquisition, and on Operation of the Eminent Domain Law; Legis. Council Commercial Code Com. Business address: 612 W. Edgewater St., Portage.



KINTZ
Crawford, Richland



ANDERSON
Dane, 1st



RISSE
Dane, 2nd

MILFORD C. KINTZ (Rep.) born in Richland County's Town of Richland Aug. 3, 1903. Educated Richland County public schools; attended Richland County Normal School. After teaching one year became a farmer. 4-H Club leader. Member of the committee on rural community high schools. Town chairman 1939-51; served as chairman of Richland County Board, school board director. Elected to Assembly 1950; re-elected 1952, '54, '56 and 1960. Chairman of Assembly Printing Committee, was chairman of the Assembly Education Com. 1953, Engrossed Bills Com. 1957. Member of Joint Finance Committee in the sessions of 1957 and 1961. Member Legis. Council Tobacco Marketing Com. Home address: Rt. 2, Richland Center.

NORMAN C. ANDERSON (Dem.) born Hammond, Ind. Mar. 11, 1928. Educated Hammond public schools. Received B.S. in 1951 from Univ. of Wisconsin; LL.B. 1954 U.W. Law School. Practicing attorney. Served in Army 1946-47. Member of Madison Redevelopment Authority. Acting Dane Co. coroner 1952-54. Elected to Assembly 1956 and 1960; in the 1959 Session served as Assembly Chief Clerk. Member Administrative Rules Review Committee; Assembly Conservation Committee, Revision Com. In 1957 member Assembly State Affairs Com. Served ex officio on 1959-61 Revision of Assembly Rules Interim Com. Home address: 3401 Dawes St., Madison 4.

Dane County, 1st District: Wards 6, 7, 12, 15-18, City of Madison.

FRED A. RISSE (Dem.) born Madison May 5, 1927. Educated Madison public schools; Carleton College, Minn.; Univ. of Wis.; B.A. and LL.B. (1952) Univ. of Oregon. Practicing attorney. World War II veteran; in Navy 1945-46. Member Oreg., Wis. Bar Assns. Delegate to 1960 Dem. National Convention. Elected to Assembly 1956; re-elected 1958, 1960. In 1959 chairman of Joint Com. on Finance; vice-chm. Assembly Rules Com. In 1961 member Board on Government Operations (past chm.); ad hoc Com. on Tax Revision; Assembly State Affairs Com., Taxation Com. Has served on Emergency Board, State Building Comm., Legislative Council, Claims Comm., Revision of Assembly Rules Interim Com. Business address: 109 W. Main St., Madison 3.

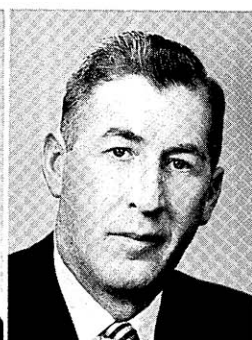
Dane County, 2nd District: Wards 1-4, 8, 9, 14, City of Madison.



UEHLING
Dane, 3rd



BLASKA
Dane, 4th



O'MALLEY
Dane, 5th

ROBERT O. UEHLING (Rep.) born Wisconsin Rapids Apr. 23, 1915. Educated Wisconsin Rapids public schools; jr. college Santa Monica, Calif.; Univ. of Wisconsin B.A. 1939, LL.B. 1941. Practicing attorney since 1957; title and trust officer 1946-1952, admin. officer State Selective Service System 1952-57. World War II veteran; Army 1941-45. Member bar assns., Elks, Optimist Club, National Guard Officers Assn. Alderman 1958-60 (Bargaining, Civil Defense, Alcoholic Comm.; board of dir. Madison General Hospital). Elected to Assembly 1960. Chairman Joint Revisions, Repeals, Uniform Laws Com.; member Assembly Judiciary Com., Municipalities Com. Member Civil Defense Council. Business address: 119 Monona Ave., Madison 3.

Dane County, 3rd District: Wards 5, 10, 11, 13, 19, 20, City of Madison.

JEROME L. BLASKA (Dem.) born Sun Prairie July 4, 1919. Educated Sun Prairie public schools. Farmer, field manager of canning company 1939-42. World War II veteran; Army 1942-46. Committeeman Agricultural Conserv. Service; member farm organizations, volunteer fire dept. 12 years, Lions Club, V.F.W., Amer. Legion. On school board 12 years; school clerk since 1950. Elected to Assembly in special election April 1959; re-elected 1960. Vice-chm. of Assembly Agriculture Com. 1959, member 1961; member Legis. Council Agriculture Com. 1959, Tobacco Marketing Com. 1961. Home address: Rt. 2, Sun Prairie.

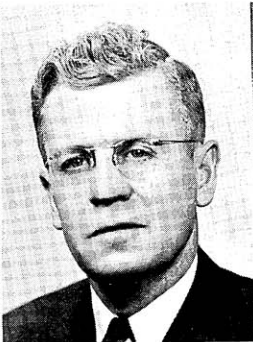
Dane County, 4th District: Towns of Albion, Blooming Grove, Bristol, Burke, Christiana, Cottage Grove, Deerfield, Dunkirk, Dunn, Medina, Pleasant Springs, Rutland, Sun Prairie, Windsor, York; Villages of Cambridge, Cottage Grove, Deerfield, DeForest, McFarland, Marshall, Monona, Rockdale; Cities of Stoughton, Sun Prairie; Ward 22, City of Madison.

DAVID O'MALLEY (Dem.) born Waunakee Nov. 12, 1912. Educated St. John's School, Waunakee High School; Univ. of Wis. 1936-38. A lifetime farmer. Village supervisor, county board member 1957-59. Elected to Assembly 1958; re-elected 1960. Member Assembly Agriculture Com., Legis. Council Tobacco Marketing Com. Served on Assembly Taxation Com., Legis. Council Conservation Com. Home address: 315 W. Main St., Waunakee.

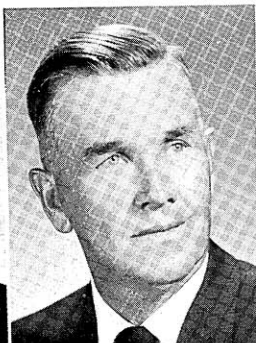
Dane County, 5th District: Towns of Black Earth, Berry, Blue Mounds, Cross Plains, Dane, Fitchburg, Madison, Mazomanie, Middleton, Montrose, Oregon, Perry, Primrose, Roxbury, Springdale, Springfield, Vermont, Verona, Vienna, Westport; Villages of Black Earth, Blue Mounds, Cross Plains, Dane, Maple Bluff, Mazomanie, Middleton, Mt. Horeb, Oregon, Shorewood Hills, Verona, Waunakee, Dane County parts of Belleville and Brooklyn; Ward 21, City of Madison.



GENZMER
Dodge, 1st



NITSCHKE
Dodge, 2nd



JOHNSON, L. H.
Door, Kewaunee

ELMER L. GENZMER (Rep.) born Mayville Jan. 3, 1903. Attended Milwaukee State College (now U.W.-Milw.); Marquette Univ. Law School 1923-24. President of local metal workers union since 1957; formerly school teacher. Mayville justice of peace 1930-42, mayor 1942-56. First elected to Assembly in 1934; now serving 14th consecutive term. Acclaimed in newspapers as the "Mayville Crusader" (Racine Jour.-Times) who makes "frequent efforts to inject reason into Assembly business" (Milw. Sentinel). Chairman of Assembly Labor Committee 1961 and 4 prior sessions; chairman of Excise and Fees Com. 1955, member 1961. Served on Legis. Council Public Health Com. Home address: 435 N. Main St., Mayville.

Dodge County, 1st District: That part of Dodge County (east and southeast) which is not in the Second District.

ELMER C. NITSCHKE (Rep.) born Burnett May 20, 1911. Educated in Dodge Co. public schools. Real estate broker, insurance agent. Member of Dodge Co. Insurance Agents Assn., Lions, Elks. Served as school board director, deputy sheriff. Elected to Assembly in 1948; now serving 7th consecutive term. In 1961 vice-chairman of Assembly Excise and Fees Committee, vice-chm. Highways Com.; served as chairman of Taxation Com. 1953, Revision Com. 1955, Highways Com. 1957. Member Legis. Council Highways Com. and its Subcom. on Local Roads and Streets. Home address: 208 Hamilton St., Beaver Dam.

Dodge County, 2nd District: Towns of Beaver Dam, Burnett, Calamus, Chester, Elba, Fox Lake, Lowell, Oak Grove, Portland, Trenton, Westford; Villages of Lowell, Reeseville, Randolph (east ward only); Cities of Beaver Dam, Fox Lake, Juneau; Wards 1-4, City of Waupun.

LAWRENCE H. JOHNSON (Rep.) born Nadeau, Mich. April 26, 1908. Educated rural school and Sturgeon Bay public schools. Farmer since 1925; 14 years secy. dairy co-op; 13 years pres. county co-op; 8 years on Door-Kewaunee County College Board. Active in soil conservation work; vice-pres. Wis. Soil Conserv. Dist. Supervisors Assn.; pres. Northeast Wis. Soil Conserv. Districts Assn. President Wis. County Highway Committee Members Assn. Held local public offices for 31 years; town clerk 1930-47, chairman since 1947; county board chairman since 1955. Elected to Assembly in 1960. Vice-chairman of Assembly Committee on State Affairs; member Assembly Highways Com.; member of Committee to Visit State Institutions. Home address: Rt. 2, Algoma.



PERALÁ
Douglas, 1st



CHRISTOPHERSON
Douglas, 2nd



OWEN
Dunn

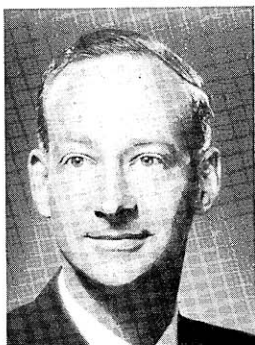
REINO A. PERALÁ (Dem.) born Maple Aug. 28, 1915. Educated Corner School at Maple; Wisconsin School for Blind; Superior State College. Received LL.B. in 1943 from Univ. of Wisconsin Law School. Practicing attorney; also operates hotel in Superior. Served as justice of peace. Elected to Assembly 1952; re-elected 1954, '56, '58, '60. In 1959 chairman of Assembly Taxation Committee, vice-chm. Transportation Com. In 1961 member Assembly Conservation Com. and Printing Com. Served on Interstate Ports Commission, Legis. Council Judiciary Committee. Home address: 824 N. 22nd St., Superior.

Douglas County, 1st District: Wards 4-16, City of Superior.

FRANK W. CHRISTOPHERSON, JR. (Dem.) born Superior May 24, 1927. Educated St. Francis School, Superior East High School. Attended Superior State College. Locomotive engineer and fireman since 1945. World War II veteran; served in Army Air Corps. County board member since 1956, vice-chairman since 1957. Elected to Assembly 1958; re-elected 1960. In 1959 Chairman Assembly Transportation Committee, vice-chm. Labor Com., member Taxation Com. In 1961 member Assembly Insurance and Banking Com., Veterans and Military Affairs Com.; Legis. Council Urban Problems Com. Served as secretary of Interstate Ports Commission; member Legis. Council Judiciary Com., Reapportionment Com. Home address: 2414 E. 6th St., Superior.

Douglas County, 2nd District: Douglas County except those wards of the City of Superior which are in the First District.

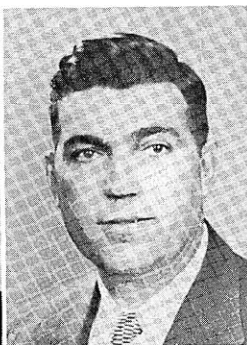
WILLIAM E. OWEN (Rep.) born in Dunn County's Town of New Haven Nov. 28, 1888. Educated Connorsville rural school, Dunn County Agric. School. Lifetime farmer, specializing in purebred Guernsey; retired from farming 1945, now devotes his time to REA activities; president Dunn Co. REA since its founding 1937. President Wis. Electric Co-op. 1939-47; director and charter member Dairyland Power Co-op. For 18 years director creamery co-op. Served as president of high school board. A state Senator in 1951 and 1953, the 1951 Senate apportionment made him ineligible for re-election to Senate in 1954. Elected to Assembly in 1956 and 1960. Chairman of Assembly Revision Committee; vice-chm. Conservation Com.; ranking legislative member of the Wisconsin Interstate Bridge Com.; member Assembly Taxation Com., Legis. Council Water Resources Com. Home address: 205 - 14th St., Menomonie.



BARLAND
Eau Claire, 1st



PRITCHARD
Eau Claire, 2nd



GRAY
Florence, Forest,
Langlade

THOMAS H. BARLAND (Rep.) born San Francisco, Calif. Mar. 3, 1930. Educated public schools San Francisco, Wahiawa in Hawaii; high school in Eau Claire. Univ. of Wisconsin; B.A. 1951, LL.B. 1956. Practicing attorney. Served in Army; now in Army Reserve. Awarded 1959 Eau Claire Jaycees' "Distinguished Service" award. Chairman Eau Claire Downtown Development Steering Com., past chm. local Red Cross; member bar assns., board of managers Camp Galilee; active in Boy Scouts, YMCA, Civic Music. Served on county board of election canvassers. Elected to Assembly 1960. Member Assembly State Affairs Committee and Taxation Com.; secy. Legis. Council Judiciary Com. Business address: 131 S. Barstow St., Eau Claire.

Eau Claire County, 1st District: Wards 1-3, 5-10, 13, City of Eau Claire.

JOHN PRITCHARD (Dem.) born Caernarvon, Wales Dec. 20, 1884. Early education in Wales; came to USA 1905. Studied agriculture at Univ. of Wis. 1908-09. Lifetime farmer. Awarded certificate of recognition by Wis. Assn. of Co-ops. 1960, by Eau Claire County FFA 1943. Held various local offices; 12 years on county board, chairman of finance and resolutions committees. First elected to Assembly 1932; now in 14th term. Member Assembly Agriculture Com., Legis. Council Urban Problems Com. Two sessions each chairman Assembly Agriculture Com. and Transportation Com. During his long tenure served on 12 different standing committees incl. Joint Finance, Taxation, Public Welfare, Highways, Commerce and Manufactures, and on many interim committees. Home address: Rt. 28, Eau Claire.

Eau Claire County, 2nd District: Eau Claire County except those wards of the City of Eau Claire which are in the First District.

JOHN R. GRAY (Dem.) born Bryant May 14, 1925. Educated Langlade county schools. Law enforcement officer; formerly city Policeman, railroad fireman. World War II veteran; served in Army 1942-46. Was sheriff of Langlade County 1955-59. Past pres. Wis. Sheriffs and Deputy Sheriffs Assn. Elected to Assembly 1958; re-elected 1960. Vice-chairman of Assembly Conservation Committee 1959, member 1961; member Assembly State Affairs Com. 1961. Four years on Legis. Council Menominee Indian Study Committee; on Legis. Council Conservation Com. 1959-61. Home address: 307 Virginia St., Antigo.



McESSY
Fond du Lac, 1st



SCHLUETER
Fond du Lac, 2nd



HARPER
Grant

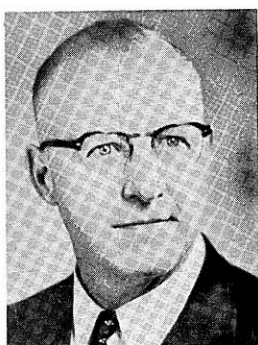
EARL F. McESSY (Rep.) born on farm in Fond du Lac County Feb. 12, 1913. Graduated Fond du Lac High School; B.S. Marquette Univ. 1939. In real estate and insurance business; formerly purchasing agent, traffic officer, undersheriff, factory laborer. World War II veteran; in Navy amphibious forces South Pacific 1942-46. Chairman Red Cross chapter 1957-58, Elks' Youth Activity Com. 1958-59; president local PTA 1953-55; vice-pres. Central Education Council 1953-55. Elected to Assembly 1956; re-elected 1958 and '60. Vice-chairman of Assembly Engrossed Bills Committee; member Excise and Fees Com., Insurance and Banking Com., Legis. Council Youthful Drinking and Driving Com. Home address: 361 Forest Ave., Fond du Lac.

Fond du Lac County, 1st District: Town of Fond du Lac; Village of North Fond du Lac; City of Fond du Lac.

FRED W. SCHLUETER (Rep.) born in Berlin, Wis. Apr. 16, 1895. Educated public schools; Univ. of Wisconsin Insurance short courses. General insurance agent; retired from farming in 1945. Board member mutual fire insurance co. since 1937, its president 1942-49, secretary since 1949. Member Ripon Chamber of Commerce 1950-58. Member of Rotary Club. Town of Ripon clerk since 1928. Elected to Assembly 1954; re-elected 1956, '58, '60. Now in 4th term as member of Assembly Agriculture Committee, in 3rd term on Taxation Com.; member Legis. Council Physical Plant Maintenance Com. Home address: P.O. Box 32, Ripon.

Fond du Lac County, 2nd District: Fond du Lac County except Fond du Lac Town, North Fond du Lac Village, Fond du Lac City.

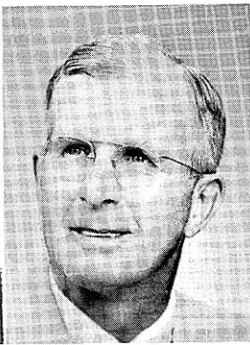
HUGH A. HARPER (Rep.) born Lancaster Dec. 24, 1885. Educated public schools Lancaster, Madison. Liberal arts, agriculture at Univ. of Wis., B.A. 1910. Lifetime farmer; now retired. Served 6 years in National Guard. Basketball at Univ. of Wis. and 3rd Wis. regiment, 1910 AAU champion team. Past pres. Wis. Farm Bureau, dir. Amer. Farm Bureau Fed., officer Amer. Equity Soc. Served as school board member, town chm., county board chm., pres. Wis. County Boards Assn. First elected to Assembly 1930; now in 10th term. Chairman Assembly Highways Committee 3rd term 1961, member Labor Com., Third Reading Com., Legis. Council; has served on 11 standing committees including Joint Finance, Agriculture, Commerce and Manufactures, Education, State Affairs; also various interim committees including Education, Highways, Water Resources. Home address: 1016 W. Maple St., Lancaster.



STAUFFER
Green



JAHNKE
Green Lake, Waushara



CALVERT
Iowa, Lafayette

CHRIST M. STAUFFER (Rep.) born May 25, 1896; raised on farm in Monticello. Educated public schools. Now semi-retired; farmed with brother as partner until 1918; blacksmith, horse shoer, welder 1919-56. World War I veteran; served in Army 1918-19. Vice-pres. League of Wis. Municipalities 3 years; pres. businessmen's club; past comdr. local Amer. Legion; active in civic, church, fraternal organizations. Fire chief 1928-48; pres. grade and high school boards 1930-43; village president 1935-51; 2 years each selective service board, county school committee. Elected to Assembly 1956; re-elected 1958 and 1960. Chairman of Assembly Com. on Third Reading; vice-chm. Agriculture Com. Member Commerce and Manufactures Com.; Legis. Council Governmental Labor Relations Com., Interstate Cooperative Comm. Home address: Monticello.

FRANKLIN M. JAHNKE (Rep.) born in Green Lake County's Marquette Town Apr. 20, 1900. Educated Green Lake County public schools. Lifetime farmer; owns dairy farm producing grade "A" milk; raises purebred hogs. President Wis. Assn. of Soil Conservation Dist. Supervisors 1954-56; president Grand River Rural Fire District. Past vice-pres. and dir. co-op. assns.; member Dairy Herd Improvement Assn., Kiwanis. Served as town assessor 1932, chairman since 1933; on Green Lake Co. Board since 1933, chairman since 1944; member State Banking Review Board 1937-43. Elected to Assembly 1956; re-elected 1958, 1960. Now serving 3rd term on Assembly Agriculture Com.; in 1961 also member of Assembly Taxation Com. Chairman Legis. Council Water Resources Com., member County Boards Com. 1959-61. Home address: Rt. 3, Markesan.

WALTER B. CALVERT (Rep.) born Benton Dec. 23, 1904. Educated Benton public schools. Attended Univ. of Wisconsin; B.S. Whitewater State College 1926. Engaged in farming since 1937; was commercial teacher 1926-37, high school principal 1944-45. Member Lions Club over 30 years; past president Sturgeon Bay and Benton Lions Clubs. Served as town chairman, county supervisor, county board chairman 1951-57. Elected to Assembly 1954; re-elected 1956, '58, '60. In 1961 chosen chairman of Republican Assembly Caucus. Chairman of Assembly Education Committee 1957 and again 1961; vice-chm. Legis. Council Com. on Education. Member Interstate Cooperation Comm.; has served on Civil Defense Council, Assembly Transportation Com., Printing Com., Public Welfare Com. Home address: Box 51, Benton.



ALFONSI
Iron, Oneida, Vilas



PETERSON, M. J.
Jackson, Trempealeau

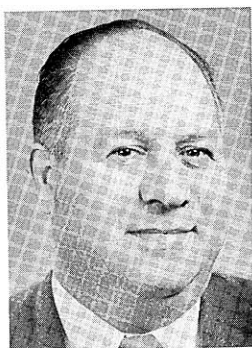


WACKETT
Jefferson

PAUL R. ALFONSI (Rep.) born Pence Feb. 13, 1908. Educated Hurley public schools. Graduated Whitewater State College; attended Univ. of Wisconsin. Insurance and accounting business; high school business education teacher 1927-33, supervising principal Minocqua schools 1948-55. World War II veteran; served in Army 1943-46. Presidential elector 1960. Served as town chairman 1935-43. Elected to Assembly 1932; the first person of Corsican descent to serve in the Wis. Legislature. Assemblyman 1933-41; elected Speaker 1937, Progressive Floor Leader 1935 and 1939, chairman Education Com. 1935. Again elected to Assembly 1958; re-elected 1960. Chosen Asst. Republican Floor Leader 1961. Chairman of Assembly Conservation Com.; vice-chm. Labor Com., Legis. Council Highways Com. Member ad hoc Com. on Tax Revision, Assembly Rules Com. Home address: Minocqua.

MERLIN J. PETERSON (Rep.) born in Trempealeau County's Town of Pigeon Dec. 30, 1901. Educated Black River Falls public schools. With State Traffic Patrol; formerly county traffic officer, farmer, livestock dealer. Elected to the Assembly in 1960. Member of the Assembly and Legislative Council Committees on Highways, and the Assembly Committee on Veterans and Military Affairs. Home address: Rt. 2, Black River Falls.

BYRON F. WACKETT (Rep.) born Randolph Mar. 21, 1912. Educated Randolph public schools. Service station operator; formerly salesman. Past president Wis. Assn. of Petroleum Retailers. Chairman Watertown Chapter Red Cross 1950-52. Served as mayor of Watertown from 1946 to 1949. Elected to Assembly 1952; re-elected 1954, '56, '58, '60. Chairman of Assembly Veterans and Military Affairs Committee 1955 and 1957; in 1961 vice-chm. Legis. Council Taxation Com., member Joint Finance Com., Assembly Municipalities Com. Served on Legis. Council Com. on Reactivation of Camp McCoy 1957-59, Water Resources Com. 1959-61. Home address: 100 Oak Hill Court, Watertown.



MOLINARO
Kenosha, 1st



OLSON
Kenosha, 2nd



WARTINBEE
La Crosse, 1st

GEORGE MOLINARO (Dem.) born Kenosha Oct. 1, 1902. Educated Kenosha public schools and Business College. Automobile worker. Director and life member local county fair assn. On county board 1939-47. Elected to Assembly 1946; now in 8th term. Chosen chairman Assembly Dem. Caucus 1961, Speaker of the Assembly 1959, Dem. Floor Leader 1951 and '53. In 1961 member of ad hoc Com. on Tax Revision, National Resources Com., Legislative Council; Assembly Conservation Com., Rules Com., Veterans and Military Affairs Com. In prior sessions served 4 terms on Joint Finance Com., 3 on Assembly Rules Com.; was chairman of Legis. Council 1959-61, member Government Operations Board, Interstate Cooperation Comm., Assembly Rules Revision Com. Home address: 422 - 44th St., Kenosha.

Kenosha County, 1st District: Wards 1-3, 7-13, 16, 17, City of Kenosha.

RUSSELL A. OLSON (Rep.) born Chicago Feb. 19, 1924. Educated Chicago public schools; attended Univ. of Illinois 2 years. Farmer and grain merchant since 1946; operated farm machinery agency 1951-55. World War II veteran; served in Marine Corps. Was secretary and treasurer of Kenosha Co. Farm Bureau 1958-60. Elected to Assembly 1960. Member State Building Commission, Assembly Insurance and Banking Com., Labor Com.; Legis. Council Governmental Labor Relations Com. Home address: Rolling Hills Farm, Bassett.

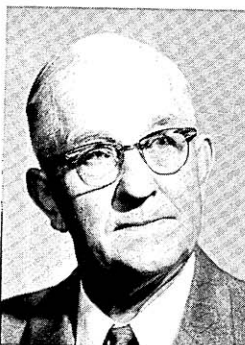
Kenosha County, 2nd District: Kenosha County except those wards of the City of Kenosha which are in the First District.

D. RUSSELL WARTINBEE (Rep.) born La Crosse Nov. 11, 1903. Educated La Crosse public schools; La Crosse State College. Univ. of Wis. law training 1925-26, B. Mus. in 1934; M.A. Univ. of Minn. 1948. Teacher of history and social studies since 1942; formerly taught instrumental music. Member of Rotary Club. Member of La Crosse Trades and Labor Council for 27 years. President local musicians association. Director La Crosse Concert Band when organized in 1931 and continuously since 1939. Elected to Assembly in 1960. Member Assembly Insurance and Banking Committee, Public Welfare Com., Legis. Council Urban Problems Com. Home address: 1444 Wood St., La Crosse.

La Crosse County, 1st District: Wards 1-7, 9-16, 19, 20, City of La Crosse.



NUTTELMAN
La Crosse, 2nd



HINZ
Lincoln



VOGEL
Manitowoc, 1st

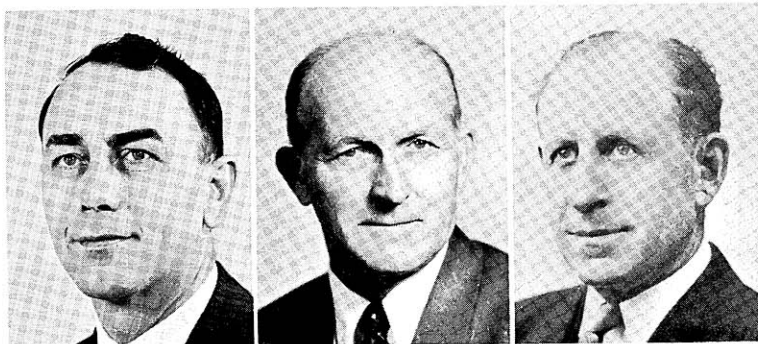
NORBERT NUTTELMAN (Rep.) born La Crosse County Mar. 8, 1911. Educated La Crosse County schools, West Salem High School. Farmer since 1926; with local branch Federal Farm Home Admin. since 1956. Received national award, "Superior Achievement in Agriculture and Community Service," 1952. Active in 4-H work. Committeeman Wis.-Amer. Dairy Assn. Officer of breeders co-ops: Vernon County (1941-47), Tri-State (1947-56), Wis. Guernsey. Officer La Crosse Milk Producers Assn., Interstate Fair Assn., Kiwanis; member chamber of commerce. Pres. West Salem PTA. Elected to Assembly 1960. Member Assembly Agriculture Com., Public Welfare Com.; Legis. Council Tobacco Marketing Com. Home address: Rt. 1, West Salem.

La Crosse County, 2nd District: La Crosse County except those wards of the City of La Crosse which are in the First District.

EMIL A. HINZ (Rep.) born in Proviso Town, Cook County, Ill. Feb. 21, 1889. Educated in parochial school in Illinois. Farmer since 1914; 1914-17 wheat farmer in Saskatchewan. World War I veteran; served in Army. Secretary of co-op cheese factory 21 years. Has been town treasurer and chairman; 19 years county board member, 8 years chairman. Elected to Assembly 1946; now in 8th term. Serving 5th term on Joint Finance Committee, in 1961 selected vice-chairman. In 1961 member Government Operations Board; Assembly Elections Com., Printing Com. Past chairman of Assembly Commerce and Manufactures Com., Printing Com.; past member of Committees on Elections, Enrolled Bills, Municipalities, State Affairs, Taxation. Member of Legislative Council 1959-61; its Mental Health Committee 1957-59. Home address: Rt. 3, Merrill.

HUGO E. VOGEL (Dem.) born in Manitowoc County's Town of Newton Aug. 29, 1888. Educated Manitowoc Co. parochial and public schools. Retired since 1958; barber for more than one-half century. Served as circuit court clerk 1919-20, county board member 1939-55. Was chairman and secretary of county finance com. 10 years. Member State Barbers Examining Board 1936 to 1950. Elected to Assembly in 1954; re-elected 1956, '58, '60. In 1961 member Assembly State Affairs Com., Taxation Com. In prior sessions on Assembly Public Welfare Com., Veterans and Military Affairs Com. Member State Institutions Visiting Com. 1959-61. Home address: 1409 S. 12th St., Manitowoc.

Manitowoc County, 1st District: Towns of Manitowoc, Manitowoc Rapids, Newton; City of Manitowoc.



BOLLE
Manitowoc, 2nd

RIEHLE
Marathon, 1st

LUEDTKE
Marathon, 2nd

EVERETT E. BOLLE (Dem.) born in Manitowoc County's Town of Kossuth Aug. 29, 1919. Educated St. Ann's parochial school, Rockwood public schools, Two Rivers High School. Labor problems and collective bargaining training from Univ. of Wisconsin Ext. Div. Tavern owner; formerly farmer, trucker, general merchandise store, factory worker. Past pres. Holy Name Soc.; member Knights of Columbus, local fish and game protective assn. Served as town supervisor, district chairman Heart Fund, president labor union local. Elected to Assembly 1960. Member of Assembly Labor Com., Legis. Council Education Com. Home address: Francis Creek (Rt. 2, Two Rivers).

Manitowoc County, 2nd District: Manitowoc County except Towns of Manitowoc, Manitowoc Rapids, Newton and City of Manitowoc.

BEN A. RIEHLE (Dem.) born in Marathon Co., Town of Rietbrock, May 15, 1897. Completed 8th grade. All his life dairy farmer and connected with milk plants; 8 years pres. of co-op milk plant with 30 million pounds annual volume. Vice-pres. cheese producers co-op and co-op storage co.; secy. co-op livestock shipping assn.; member union co-op board. World War I veteran; Army motor transp. 1918-1919. School treas. 1925-40; county board 1941-42; chm. local soil conserv. com. 1936-39. Elected to Assembly 1954; re-elected 1956, '58, '60. Now in 2nd term on Joint Finance Committee. Member Legis. Council Education Com. Chairman Assembly Printing Com. 1959; member Engrossed Bills Com. 1961. Home address: Rt. 3, Athens.

Marathon County, 1st District: Marathon County except those towns, villages and cities which are in the Second District.

PAUL A. LUEDTKE (Rep.) born Wausau Aug. 24, 1888. Educated public and parochial schools; commercial business course. Apprenticed and employed 8 years as decorator and wood finisher; when 28 started own decorating, wood finishing, paint, wallpaper business. Honorary member VFW. Was pres. city council, chm. city tax equal. board and county board; served on county highways and traffic coms., health and park boards. Elected to Assembly 1942; now in 10th term. Chairman Assembly Municipalities Com. 1961 and 6 prior sessions. Member State Building Com. 1961 and 1957-59. Member Assembly Excise and Fees Com.; Legis. Council Physical Plant Maintenance Com. Home address: 118 - 2nd Ave. S., Wausau.

Marathon County, 2nd District: Towns of Maine, Ringle, Texas, Wausau, Weston; Villages of Brokaw, Rothschild; Cities of Schofield, Wausau.



HAASE
Marinette



MERZ
Milwaukee, 1st



DIONESOPULOS
Milwaukee, 2nd

ROBERT D. HAASE (Rep.) born Marinette May 10, 1923. Educated Marinette public schools. Received LL.B. in 1951 from Univ. of Wisconsin Law School. Practicing attorney. World War II veteran; in Army Air Corps 1942-46. Past comdr. Marinette Amer. Legion; member "40 et 8", Amvets, Elks. Elected to Assembly 1956; re-elected 1958 and '60. Chosen Rep. Assembly Floor Leader 1961, Caucus Chairman 1959. Chairman Assembly Rules Committee; vice-chm. Elections Com., Secy. Legis. Council. Member ad hoc Com. on Tax Revision, Assembly Judiciary Com. Served on Legis. Council and Interstate Ports Comm. 1959-61; chairman Legis. Council Ports and Navigation Com. 1957-59. Home address: 1221 Main St., Marinette.

LOUIS L. MERZ (Dem.) born Milwaukee July 20, 1908. Attended Milwaukee parochial schools; Univ. of Wis.-Milw. 2 years; evening courses Milw. Vocational School. Real estate and sales broker, sales rep.; formerly pres. and gen. mgr. wood and plastics fabricating plant. Served in Naval Reserve. Retired member of Intnatl. Assn. of Machinists; member Democratic Party, Amer. Arbitration Assn., Eagles, S.P.E.B.S.Q.S.A., Holy Name Soc. Served on Milw. Zoning Bd. of Appeals 12 years, member Public Enterprise Com. of Milw. Elected to Assembly 1956, re-elected 1958, '60. Chairman Assembly Commerce-Manufactures Com. 1959, member '61. Member Dem. Policy Com., Assembly Highways Com.; Secy. Legis. Council Water Resources Com. Home address: 5373 N. 13th St., Milwaukee 9.

Milwaukee County, 1st District: Ward 1, City of Milwaukee.

FRANK G. DIONESOPULOS (Dem.) born Milwaukee Jan. 10, 1935. Educated Milwaukee public schools. Attended Spencerian Business College for 2 years. Law clerk and process server; former owner of wholesale photo finishing firm. Member of Eagles; on board of directors of Eagles Luncheon Club and St. Joseph Children's Home. Served as Milwaukee County Coroner 1959-1960. Elected to the Assembly in 1960. Member of Assembly Municipalities Committee. Home address: 2129 W. Walnut St., Milwaukee 5.

Milwaukee County, 2nd District: Ward 2, City of Milwaukee.



GRECO
Milwaukee, 3rd



SCHAEFFER
Milwaukee, 4th



RYAN
Milwaukee, 5th

ANGELO F. GRECO (Dem.) born Milwaukee March 19, 1925. Educated Andrew Jackson School and Lincoln High School, Milwaukee. Received B.A. in 1950 from Lawrence College; attended Marquette Univ. one year; in 1955 LL.B. from Univ. of Wisconsin Law School. Practicing attorney since 1955. World War II veteran; served 3 years in Army Medical Corps in China, Burma, India. Member of Disabled Amer. Veterans, Elks, state and local bar assns., Delta Tau Delta, Shorewood Players, Holy Name Soc. Elected to Assembly 1960. Member of the Assembly Committee on Judiciary. Home address: 1417 N. Cass St., Milwaukee 2. Milwaukee County, 3rd District: Ward 3, City of Milwaukee.

FRANK E. SCHAEFFER, JR. (Dem.) born Milwaukee Feb. 1, 1905. Graduate Gesu Catholic School, attended Milw. Vocational School. Employed by Milw. brewing co.; building supt. 20, painting contractor 18 years. Member Brewery Workers Union, Red Cross, Civil Defense Council; past vice-pres. Building Service Union. Delegate Federated Trade Council; state Dem. conventions 1938, '44-52, '58, '60. Member Legislators Dem. Council; on Policy, Steering, Labor Coms. Elected to Assembly 1944; now in 7th term. Vice-chm. Municipalities Com. 1959, member 1961; Excise and Fees Com. 1961. Secy. Legis. Council Water Resources Com. 1959-61 (chm. Abandonment of Dams Subcom.); member Taxation Com. 1961. Past member Public Welfare Com., interim studies on Labor and Management, Budget, Taxation. Home address: 1623 W. Wisconsin Ave., Milwaukee 3.

Milwaukee County, 4th District: Ward 4, City of Milwaukee.

MARK W. RYAN (Dem.) born Milwaukee Nov. 9, 1924. Educated St. Anne's School, Peckham, Washington High Schools, Milwaukee State College, Spencerian College. Electrical maint. engineer. World War II overseas veteran, served in regular Navy 1942 to 1946, Naval Reserve 1946 to 1951. President and business manager IBEW local, AFL-CIO 1956 to 1960. Chairman 5th Ward Dem. unit 1958 and 1959. Member Eagles, Knights of Columbus, Pi Rho Zeta commerce fraternity, Electrical Maint. Engineers Soc., Veterans of Foreign Wars, American Legion, Catholic War Vets. Elected to Assembly in 1960. Member of Assembly Public Welfare Committee; alternate member, Legis. Council Judiciary Committee. Home address: 2560 N. 35th St., Milwaukee 10.

Milwaukee County, 5th District: Ward 5, City of Milwaukee.



COGGS
Milwaukee, 6th



FLANNIGAN
Milwaukee, 7th



MANDERS
Milwaukee, 8th

ISAAC N. COGGS (Dem.) born Muskogee, Okla. June 5, 1920. B.S. Univ. of Wis. 1948. Accountant; formerly manufacturing, post office. World War II veteran; Army 1943-44. Pres. Near Northside Businessmen's Assn.; member YMCA Board, Amer. Legion, Disabled Amer. Veterans, Amvets, Elks, Masons. Elected to Assembly 1952; now in 5th term. Chairman Assembly Public Welfare Com. 1959 (first Negro chairman of a Wis. legislative committee), member 1961; contingent expenditures com. 1961; had been on education, elections, veterans committees. Member Civil War Centennial Comm., Legis. Council Public Health Com. Author of civil rights legislation: 1957 FEPC enforcement, 1959 temporary relief for nonresidents; in 1961 led the fight to end discrimination in housing. Home address: 928 W. Meinecke Ave., Milwaukee 6.

Milwaukee County, 6th District: Ward 6, City of Milwaukee.

ALLEN J. FLANNIGAN (Dem.) born Princeton, Ind. June 9, 1909. Educated in public schools; Univ. of Ill. 2 years; Univ. of Wis. special courses. Tool grinder; formerly teletype operator, telegraph office mgr. World War II veteran; in Army Signal Corps 1942-45. Member United Steelworkers; active in civic affairs; on board of Neighborhood House, a Milw. Red Feather agency. Elected to Assembly 1956; re-elected 1958, '60; Asst. Dem. Assembly Floor Leader 1959. Chairman Assembly Labor Com. 1959, member 1961; vice-chm. Legis. Council Gov't Labor Relations Com., member ad hoc Com. on Tax Revision, Assembly Transportation Com. Served on Assembly Insurance and Banking, Municipalities, Printing Coms., Interstate Cooperation Comm. (Secy.); Legis. Council Reapportionment Com. Home address: 2605 W. Auer Ave., Milwaukee 6.

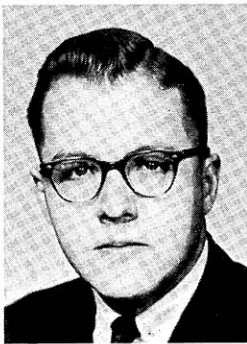
Milwaukee County, 7th District: Ward 7, City of Milwaukee.

ADRIAN J. MANDERS (Dem.) born Wrightstown, Brown Co. Apr. 17, 1912. Educated St. Joseph School, Nicolet High School, West DePere; Milwaukee Vocational School 1945-46; attended Univ. of Wis. 1961. Sheet metal worker; licensed real estate salesman. Chairman 8th Ward Dem. unit 1958-59; cited at 1958 state Dem. convention for outstanding public relations and recruiting, awarded "Mr. Democrat" title 1959. Member Milw. Co. Dem. exec. board 1959-60. Chief sergeant at arms state Dem. convention 1959 and 1960. Member South 16th St. - Muskego Ave. Businessmen's Assn., South Division St. Civic Assn., sheet metal workers union, Holy Name Soc. Elected to Assembly 1960. Member Assembly Taxation Com. Home address: 1315 South 35th St., Milwaukee 15.

Milwaukee County, 8th District: Ward 8, City of Milwaukee.



SCHMIDT, C. J.
Milwaukee, 9th



KESSLER
Milwaukee, 10th



TOBIASH
Milwaukee, 11th

CHARLES J. SCHMIDT (Dem.) born Milwaukee Mar. 20, 1907. Educated St. Anthony School, South Division High School; attended Univ. of Wis. Real estate and insurance agent; was interior decorator, inspector industrial comm., investigator U.S. Labor Dept. In State Guard during World War II. Member Milw. Board of Realtors, Insurance Agents Assn.; Natl. Assn. Real Estate Boards; McGovern Park July 4th Comn.; Eagles, Knights of Columbus, Holy Name Soc. Member "Kennedy for President" state exec. com. Elected to Assembly 1948; now in 7th term. Chosen Dem. Asst. Floor Leader 1953. Chairman Assembly State Affairs Com. 1959; in 1961 member Highways Com., Printing Com.; member Legis. Council; Retirement Systems Joint Survey Com., Retirement Research Council. Home address: 4046 N. 48th St., Milwaukee 16.

Milwaukee County, 9th District: Ward 9, City of Milwaukee.

FREDERICK P. KESSLER (Dem.) born Milwaukee Jan. 11, 1940. Educated Our Redeemer Lutheran School, Milwaukee; Capitol Page School, Washington, D.C.; Univ. of Wisconsin. Formerly employed as machine operator, salesman. Member 10th Ward Democratic club, United Steel Workers AFL-CIO, Mid-Town Neighborhood Assn.; delegate to COPE. Formerly Democratic club chairman; legislative representative Wisconsin Students Assn. Served as page in U.S. House of Representatives 1955-57. Elected to Assembly 1960. According to available records the youngest candidate ever elected to the Wis. State Legislature, Mr. Kessler reached the age of 21 on the opening date of the 1961 Session. Member Assembly Education Committee. Home address: 1536 N. 27th St., Milwaukee 8.

Milwaukee County, 10th District: Ward 10, City of Milwaukee.

RAYMOND J. TOBIASH (Dem.) born Milwaukee May 10, 1916. Educated St. Barbara's School, South Division High School. Owns hobby and smoke shop; realigns machinery. World War II veteran; served in Army. Member of Amvets, American Legion, South Division Civic Assn., Polish National Alliance, American and Milwaukee Numismatic Assns., AFL-CIO, Holy Name Soc., Knights of Columbus. Served as 11th Ward Democratic committeeman 1956-60. Elected to the Assembly in 1960. Member of the Assembly Committee on Labor. Business address: 2832 W. Lincoln Ave., Milwaukee 15.

Milwaukee County, 11th District: Ward 11, City of Milwaukee.



TADYCH
Milwaukee, 12th



MUELLER
Milwaukee, 13th



NOWAKOWSKI
Milwaukee, 14th

ALBERT R. TADYCH (Dem.) born Milwaukee Mar. 23, 1932. Educated St. Anthony School, Don Bosco High School. Received B.A. in 1954 from Marquette Univ.; LL.B. from its Law School in 1958. Practicing attorney; formerly brewery worker, truck driver U.S. post office, assembler. Member Milwaukee and Wisconsin Bar Assns., Alpha Kappa Psi, Delta Theta Phi, Eagles; 12th Ward Democratic unit; former member Brewery Workers Union, Marquette Alumni Assn. Elected to the Assembly in 1960. Member of the Assembly Committee on Insurance and Banking. Home address: 2010 S. 15th St., Milwaukee 4.

Milwaukee County, 12th District: Ward 12, City of Milwaukee.

ERVIN MUELLER (Dem.) born Milwaukee Sept. 2, 1904. Educated Milwaukee public schools; Hoffman Business College, Milwaukee. Sales manager; has been in wholesale food distributing business for 25 years. Past vice-chairman 13th Ward Democratic unit. Past president Downtown Parking Assn.; member United Commercial Travelers, Wholesale Grocers Assn., Toastmasters, Eagles, St. Jude's League, Holy Name Soc., Knights of Columbus. Elected to Assembly 1960. Member of the Assembly Committee on Public Welfare. Home address: 329 E. Chambers St., Milwaukee 12.

Milwaukee County, 13th District: Ward 13, City of Milwaukee.

RICHARD C. NOWAKOWSKI (Dem.) born Milwaukee Sept. 17, 1933. Educated Blessed Sacrament School, South Division High School. Attended Marquette Univ. and Univ. of Miami. Building expeditor; formerly cost accounting clerk and Milw. comptroller's office employe. On board of directors Milw. Co. Property Owners Assn. as a vice-pres.; past member local executive board United Steel Workers, union steward. Member of Polish National Alliance, The Milwaukee Soc., Wilson and Kosciusko Parks 4th of July Assns., St. Joseph Children's Home Athletic Assn., Holy Name Soc. Elected to the Assembly in 1960. Member of the Assembly Committee on Elections. Home address: 3148 South 15th Place, Milwaukee 15.

Milwaukee County, 14th District: Ward 14, City of Milwaukee.



SCHUELE
Milwaukee, 15th



WHITROW
Milwaukee, 16th



McCORMICK
Milwaukee, 17th

WILFRED SCHUELE (Dem.) born Hales Corners May 15, 1906. Educated Cold Spring School, Boys Technical High School. Attended Marquette Univ. Sales representative for water softener manufacturer; formerly business investment counselor; disbursement officer RFC, war assets admin. and U.S. Treasury Dept.; state WPA administrator. Member Milw. Co. Democratic Council, Eagles, Woodmen of World. Elected to Assembly 1958; re-elected 1960. Vice-chm. Assembly Elections Com. 1959; in 1961 member of Excise and Fees Com., Revision Com.; Legis. Council Youthful Drinking and Driving Com. Has served on Assembly Labor Com., State Affairs Com.; Legis. Council Reapportionment Com. Home address: 3036 N. 84th St., Milwaukee 1.

Milwaukee County, 15th District: Ward 15, City of Milwaukee.

WAYNE F. WHITROW (Dem.) born Milwaukee Aug. 16, 1933. Educated Milwaukee public schools. Attended University of Wisconsin at Milwaukee. Now in engineering administration; formerly traffic administration. Served in Army 1955-57. Member 16th Ward Democratic unit, St. Joseph Children's Home Athletic Assn., Bluemound Rd. and Vliet St. Advancement Assns., Eagles. Elected to Assembly in 1960. Member of the Assembly Committee on Insurance and Banking. Home address: 1348 N. 44th St., Milwaukee 8.

Milwaukee County, 16th District: Ward 16, City of Milwaukee.

JOHN E. McCORMICK (Dem.) born Milwaukee May 20, 1924. Educated Sacred Heart School, Fernwood School, Marquette High School. Received LL.B. in 1951 from Marquette University Law School. Practicing attorney. World War II overseas veteran; served in Army Air Corps 2-½ years. Member American Legion and V.F.W., 17th Ward Democratic club, Wis. Bar Assn., Holy Name Soc. Elected to Assembly in 1960. Member Joint Committee on Revisions, Repeals and Uniform Laws, Assembly Commerce and Manufactures Committee; Legis. Council Governmental Labor Relations Committee. Home address: 2954 S. Wentworth Ave., Milwaukee 7.

Milwaukee County, 17th District: Ward 17, City of Milwaukee.



BARRON
Milwaukee, 18th



SOIK
Milwaukee, 19th



POMMERENING
Milwaukee, 20th

MICHAEL J. BARRON (Dem.) born Milwaukee Dec. 18, 1933. Educated SS. Peter & Paul School, St. John's High School. Graduated from Milwaukee State College (now UW-Milw.) in 1956; in 1959 received LL.B. from Marquette Univ. Law School. Practicing attorney; formerly law clerk. Member of state and local bar assns., Holy Name Soc., Elks, East Side Businessmen's Assn. Active in Community Chest and Cancer Crusade. Served as president of student body at Milwaukee State College; as president of Marquette University Student Bar Assn. Elected to Assembly in 1960. Member Assembly Judiciary Committee, Legis. Council Judiciary Committee. Home address: 2730 N. Bartlett Ave., Milwaukee 11.

Milwaukee County, 18th District: Ward 18, City of Milwaukee.

NILE W. SOIK (Rep.) born Milwaukee May 2, 1923. Educated Jerusalem Lutheran School, Riverside High School; B.S. West Point, 1945; M.B.A. Univ. of Wis., 1951; postgraduate study Cornell. Personnel management, instructor business admin. Marquette Univ. World War II veteran. Served West Point and Army Engineers. Vice-chm. Milw. Co. Rep. Party; vice-chm. North Shore Rep. club. Member Amer. Soc. of Trng. Dir., Community Chest, Red Cross, Arthritis Found., Rheumatism Found., Lions; formerly Jaycees, Junior Achievement. Elected to Assembly 1960. Member Assembly Insurance and Banking Com., Labor Com.; Unemployment Compensation Adv. Com. Home address: 6266 N. Santa Monica Blvd., Whitefish Bay.

Milwaukee County, 19th District: Villages of Bayside, Brown Deer, Fox Point, River Hills, Shorewood, Whitefish Bay; City of Glendale and Ward 20, City of Milwaukee.

GLEN E. POMMERENING (Rep.) born Milwaukee Sept. 12, 1927. Educated Wauwatosa public schools. Received B.S. Univ. of Wis. 1950; LL.B. 1953. Practicing attorney. On board of dirs. Wis. 4-H Club Foundation, Milw. Rescue Mission. Attended 1960 Rep. National Convention. Elected to Assembly 1954; re-elected 1956, '58, '60. Chairman of Rep. Assembly Policy Com. 1961. Chairman of Taxation Com. 1957, vice-chm. 1961; chairman Elections Com. 1961; member ad hoc Com. on Tax Revision, Legis. Council Judiciary Com. Served on Commerce and Manufactures, Insurance and Banking, Veterans and Military Affairs Committees; Governor's Advisory Com. on Tax Policy, Tax Sources and Incidence Subcom.; Continuing Revenue Survey Comm. Home address: 2338 N. 88th St., Wauwatosa 13.

Milwaukee County, 20th District: Wards 1-6, City of Wauwatosa.



COLLINS
Milwaukee, 21st



HUBER
Milwaukee, 22nd



SCHMIDT, R.
Milwaukee, 23rd

ROBERT A. COLLINS (Dem.) born Milwaukee Nov. 4, 1924. Educated St. Anthony School, Solomon Juneau High School. Attended Lawrence College; Ph.B. Marquette Univ. 1949, LL.B. 1951 Law School. Practicing attorney. World War II veteran; served in Army. Member Milw. and Wis. Bar Assns., Eagles, American Legion; other civic, fraternal and veterans organizations. Elected to Assembly 1958; re-elected 1960. Member of Joint Finance Committee 1959 and 1961. In 1961 vice-chm. Legis. Council Judiciary Com., member Assembly Third Reading Com. Served on the Assembly Com. on Revisions 1959. Home address: 10402 W. Hillside Ave., Wauwatosa 13.

Milwaukee County, 21st District: Wards 7, 8, City of Wauwatosa; Ward 3, City of West Allis.

ROBERT T. HUBER (Dem.) born Eckelson, N.D. Aug. 29, 1920. Graduated West Allis Central High School. Merchandising salesman; formerly contractor 1944-48, auto parts and service salesman. Member Knights of Columbus, Holy Name Soc. Elected to Assembly 1948; now in 7th term; Dem. Assembly Floor Leader 1955, 1957, 1961; Asst. Floor Leader 1951. In 1959 became first Speaker Pro Tem of the Assembly. Chairman Assembly Highways Com. 1959, its member since 1949. Member ad hoc Com. on Tax Revision, Workmen's Compensation Adv. Com., Assembly Commerce and Manufactures Com., Legis. Council Urban Problems Com. Has served on State Building Comm., Government Operations Board; Municipalities Com., Veterans and Military Affairs Com. Home address: 2228 S. 78th St., West Allis 19.

Milwaukee County, 22nd District: Village of West Milwaukee; Wards 1, 2, 4, City of West Allis.

ROBERT SCHMIDT (Dem.) born Kenosha Aug. 2, 1913. Educated Greenfield Elementary School; 4 years West Allis Vocational School. Studies political science at Marquette University. Retired; operated custard stand for 11 years; tool and die maker for 18 years. Member of Milwaukee Co. Historical Society, Kiwanis, 32nd degree Mason, Shrine. Served as town supervisor 1952-54; member Milwaukee Co. Board 1956-60. Elected to Assembly 1960. Member of Assembly Commerce and Manufactures Com., Veterans and Military Affairs Com. Home address: 2920 South 124th St., West Allis 19.

Milwaukee County, 23rd District: Villages of Greendale, Hales Corners; Cities of Franklin, Greenfield, Oak Creek; Ward 5, City of West Allis.



SOBOCINSKI
Milwaukee, 24th



KENYON
Monroe



BAUMGART
Oconto

SHERMAN R. SOBOCINSKI (Dem.) born Cudahy Jan. 12, 1927. Educated Holy Family School, St. Francis Minor Seminary. Warehouse clerk, hydraulic lift operator; formerly asst. field manager. World War II veteran; in Navy 1943-45. Member Polish National Alliance, Polish Assn. of America, Polish Legion of American Veterans. Member Internatl. Assn. of Machinists, Holy Name Soc. Elected to Assembly 1956; re-elected 1958, '60. In 1959 chairman Assembly Elections Com., and Legis. Council County Boards Com. In 1961 member Assembly Elections Com., Transportation Com.; Legis. Council Taxation Com. In prior sessions on Excise and Fees, Transportation, Insurance and Banking Coms. Home address: 1807 Missouri Ave., South Milwaukee.

Milwaukee County, 24th District: Cities of Cudahy, St. Francis, South Milwaukee; Ward 19, City of Milwaukee.

KYLE KENYON (Rep.) born Wyeville Mar. 22, 1924. Educated rural school, Tomah High School. In 1952 received LL.B. from Univ. of Wisconsin Law School. Practicing attorney. World War II veteran; in Army 1943-46. County veterans service officer. Elected to Assembly 1956; re-elected 1958 and '60. Secretary of Assembly Republican Caucus. Chairman of Assembly Veterans and Military Affairs Committee; vice-chairman Judiciary Com. Served on the Committee on the Reactivation of Camp McCoy 1957-59; State Board on Government Operations 1961. Home address: 837 Lemonweir, Tomah.

LLOYD R. BAUMGART (Rep.) born Green Bay Jan. 29, 1908. Graduated high school Powers, Mich.; attended Green Bay Vocational School. President of carrier mfg. co., auctioneer, owns hardware store, master plumber; formerly owner-operator of a large dairy farm and a dinner club, painting contractor. President Lena Civic Club 1949-51; vice-pres. Businessmen's Assn. 1954, 1958. Served as village trustee 1948-49, pres. 1949-54; county board member, 1949-58, chairman 1952-58. Elected to Assembly 1956; re-elected 1958, '60. Chairman Assembly Contingent Expenditures Com.; member Excise and Fees Com., Insurance and Banking Com., Legis. Council Govt'l Labor Relations Com. Home address: Lena.



PRIEBE
Outagamie, 1st



BABBITT
Outagamie, 2nd



McKAY
Ozaukee

KENNETH E. PRIEBE (Rep.) born Black Creek Dec. 10, 1912. Educated Appleton public schools; attended Actual Business College. Insurance agent since 1937; formerly mill worker. President South Side Athletic Club; secretary Appleton Insurance Board; member Outagamie Conservation Club, United Commercial Travelers. Past pres. Appleton City Council; alderman 1943-61, member Zoning Com. of Industrial Development Corp. Elected to Assembly 1958; re-elected 1960. Chairman Assembly Insurance and Banking Committee, member Veterans and Military Affairs Com.; Legis. Council Urban Problems Com. In 1959 served on Assembly Municipalities Com.; Legis. Council County Boards Com. Home address: 1206 S. Ritger St., Appleton.

Outagamie County, 1st District: Towns of Center, Grand Chute; City of Appleton.

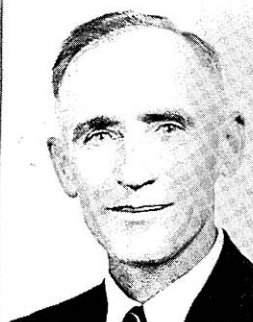
MARVIN E. BABBITT (Rep.) born Seymour Aug. 14, 1902. Educated Seymour public schools. Retired; for 30 years in plumbing and heating business. Served in Army. Director and trustee of local county fair association, 1952-60. Past president local Kiwanis. President of boards of education of local high school and common school; member board of appeals and county board. Elected to Assembly 1960. Member Assembly Education Committee and Public Welfare Com.; Legis. Council Education Com. Home address: 520 N. Main St., Seymour.

Outagamie County, 2nd District: Outagamie County except Towns of Center, Grand Chute, City of Appleton.

J. CURTIS MCKAY (Rep.) born Chicago Oct. 10, 1926. Educated Armstrong School, Sullivan and Lane Technical High School, Chicago. Received B.A. in 1950 from Grinnell College, Iowa; Doctor of Jurisprudence 1957 Northwestern University Law School. Practicing attorney. Elected to Assembly in 1960. Member of the Republican Assembly Policy Committee; Assembly Contingent Expenditures Committee, Judiciary Com., Municipalities Com.; Legis. Council Judiciary Com. Home address: 625 Juniper Lane, Mequon; P.O. Rt. 2, Thiensville.



MYHRA
Portage



ZELLINGER
Price, Taylor



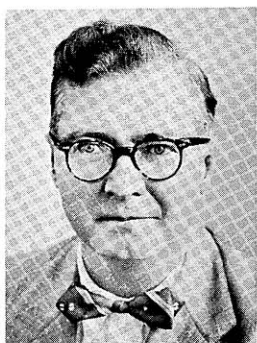
WARREN
Racine, 1st

NORMAN L. MYHRA (Dem.) born Amherst, Portage County Feb. 17, 1925. Educated in public schools of Portage County; high school and general business course at Milwaukee Vocational School. Life insurance agent; formerly salesman. World War II veteran; served in Army Infantry 1943-45. In 1944 lost both hands in combat; he was 19 years old at the time. Past commander of local American Legion post; member of Veterans of Foreign Wars, Disabled American Veterans, Purple Heart, Army and Navy union. Served as Rosholt village assessor 1953. Elected to Assembly 1960. Member of Assembly Veterans and Military Affairs Committee; Legis. Council Water Resources Com. Home address: 728 Welsby Ave., Stevens Point.

VINCENT J. ZELLINGER (Rep.) born Czechoslovakia Feb. 10, 1902. Educated in Nebraska and in Price Co. public schools. Dairy farmer since 1930; formerly farmers co-op. store mgr., electric welder, highway maintenance worker. Military training CMTC 1925 at Camp Custer, Mich. Past pres. Price Co. Guernsey Breeders Assn., legislative director Elk Worcester local Farmers Union; interested in conservation and reforestation; active in local industrial development. Was town clerk (13 years), town chairman, school district director, member county conservation and forestry committees. Elected to Assembly 1948; now in 6th term. Chairman Assembly Enrolled Bills Com.; vice-chm. Veterans and Military Affairs Com., serving 6th term on Conservation Com.; member Legis. Council Water Resources Com. Home address: Rt. 2, Phillips.

EARL W. WARREN (Dem.) born Hurley Feb. 25, 1902. Graduated from Lincoln High School, Hurley; attended Ironwood, Mich., Business College. Assembler in radiator factory since 1936; formerly operated own business. Served on Racine Co. Board 4 terms 1948-55. Elected to Assembly 1954; re-elected 1956, '58, '60. Chairman of Assembly Enrolled Bills Com. 1959; in 1961 member Insurance and Banking Com., Labor Com.; Legis. Council Water Resources Com. In prior sessions member of Joint Finance Com., Assembly Commerce and Manufactures Com., Legis. Council County Boards Com. Home address: 2809 Virginia St., Racine.

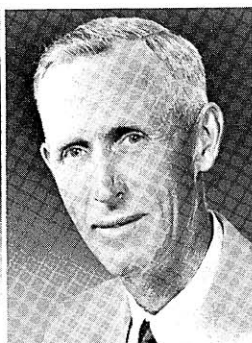
Racine County, 1st District: Wards 1-4, 6, 10, 11, 14 (2nd Precinct only), City of Racine.



NALEID
Racine, 2nd



STALBAUM
Racine, 3rd



MERRIAM
Rock, 1st

ROY E. NALEID (Dem.) born Racine Nov. 12, 1901. Educated Racine public schools. Attended Marquette Univ. Employed by farm implement company since 1935. Served as vice-chairman of Racine Co. Board, member 16 years; 10 years on highway committee. Elected to Assembly 1954; re-elected 1956, '58, '60. In 1959 chairman of Assembly Third Reading Committee; vice-chm. Highways Com., State Affairs Com. In 1961 member of the Assembly Committees on State Affairs and on Transportation. Served on Assembly Municipalities Com. 1955 and 1957; on Legis. Council Mental Health Com. 1959-61. Home address: 705½ Chicago St., Racine.

Racine County, 2nd District: Wards 5, 7-9, 12, 13, 14 (1st Precinct only), 15, City of Racine.

MERRILL STALBAUM (Rep.) born in Racine County's Town of Norway Apr. 24, 1911. Educated in Racine Co. rural and agricultural schools; Waterford High School. Now a surveyor; director of a farmers' mutual insurance company; active farmer 1930-59. Served as Town of Norway clerk 1937-60, as member of Racine Co. School Committee 1949-60. Elected to Assembly 1960. Member of Assembly Municipalities Com., Revision Com., State Affairs Com., Legis. Council Urban Problems Com.; Administrative Rules Review Com. Home address: Rt. 1, Box 38, Waterford.

Racine County, 3rd District: The County of Racine except the City of Racine.

WILLIAM R. MERRIAM (Rep.) born Delavan Sept. 28, 1894. Educated Walworth Co. rural, Wis. Rapids High School; B.S. Iowa State College 1919. Lifetime farmer; farm mgr. 1919-27. World War I veteran; in Army QM corps. Was Janesville Rotary pres., Chamber of Commerce dir.; chairman Wis. Agric. Stabil. and Conserv. Com. Member Farm Bureau since 1927, 4 years dir.; on Rock Co. Selective Service Bd. 1949-56. Russia good will farm tour 1958. Elected to Assembly 1956; re-elected 1958, '60. Represents Wis. Assembly on Council of State Governments' Midwest Agric. Com. Chairman Assembly Agriculture Com., member Rules Com.; Joint Finance Com.; Legis. Council. Served on Governor's Tax Policy Adv. Com., Revenue Survey Comm. Home address: Rt. 1, Janesville.

Rock County, 1st District: Towns of Bradford, Clinton, Harmony, Johnstown, La Prairie, Lima; Village of Clinton; City of Janesville.



BLANCHARD
Rock, 2nd



BELTING
Rock, 3rd



HUTNIK
Rusk, Sawyer,
Washburn

DAVID J. BLANCHARD (Rep.) born Edgerton Jan. 5, 1921. Educated Edgerton public schools; B.A. Univ. of Wis. 1942, LL.B. 1943. Practicing attorney. Active member of civic, church and conservation organizations. Elected to Assembly 1954; re-elected 1956, '58, '60. Speaker of the Assembly 1961, Rep. Floor Leader 1959. Chairman Legis. Council; member State Govt. Operations Bd., Interstate Cooperation Comm., ad hoc Com. on Tax Revision, Assembly Rules Com. Served on State Building Comm.; Assembly Agriculture, Judiciary, Public Welfare, State Affairs (chairman) Coms. Business address: 11 N. Main St., Edgerton. Rock County, 2nd District: Towns of Avon, Beloit, Center, Fulton, Janesville, Milton, Magnolia, Newark, Plymouth, Porter, Rock, Spring Valley, Union; Villages of Footville, Milton, Milton Junction, Orfordville; Cities of Edgerton, Evansville.

GEORGE B. BELTING (Rep.) born De Soto July 15, 1914. Educated in Rock Co. public schools; B.A. and LL.B. (1938) Univ. of Wis. Practicing attorney; formerly Univ. of Wis. instructor. World War II veteran; in Navy amphibious landing forces Pacific. At Univ. of Wis. chosen senior class officer and pres. Men's Dormitory Assn. Dir. Beloit Better Business Bureau; was pres. Beloit Historical Soc., asst. scoutmaster. Member bar assns., Elks, Kiwanis, Izaak Walton League, Amer. Legion, Taxpayers League. On county board 3 terms. Elected to Assembly 1956; re-elected 1958, '60. Chairman Assembly Taxation Com., vice-chm. Printing Com., member Judiciary Com.; Retirement Research Council. Served on Legis. Council Commercial Code Com. Home address: 925 Bushnell St., Beloit.

Rock County, 3rd District: Town of Turtle; City of Beloit.

WILLIS J. HUTNIK (Rep.) born in Price County's Town of Elk Mar. 23, 1915. Educated Price Co. public schools, Normal School; Central State College; Univ. of Wis. Owns school and office supply business; formerly teacher, school principal, personnel mgr. at Camp Grant, Ill. Chairman Rusk Co. Conserv. Congr.; exec. councilor northwest dist. Wis. Conserv. Congr.; member Ladysmith Chamber of Commerce; 4-H Club leader. Was pres. Price Co. Education Assn.; secy.-treas. Rusk Co. Conserv. Club. Elected to Assembly 1952; re-elected 1954, '56, '58, '60. Assembly Speaker Pro Tem 1961. Member Rep. Policy Com. Chairman Assembly State Affairs Com., 1955. Member Assembly Highways Com., Legis. Council; ad hoc Com. on Tax Revision. Served on Education Com. (chm.), Commerce and Manufactures, Labor, Public Welfare, Veterans Coms.; Legis. Council Reapportionment Com. (vice-chm.). Business address: 101 Main St., Ladysmith.



WARD
St. Croix



TERRY
Sauk



ABRAHAMSON
Shawano, Menominee*

WILLIAM W. WARD (Dem.) born St. Croix Co. Aug. 8, 1903. Educated Star Prairie Grade School, Minneapolis high school. In 1929 received LL.B. from Univ. of Minnesota Law School. Practicing attorney; presently city attorney of New Richmond. Past pres. Pierce-St. Croix County Bar Assn., member Wis. Bar Assn., Knights of Columbus. Has served on school board. Elected to Assembly 1956; re-elected 1958 and 1960. Assistant Dem. Floor Leader. Chairman of Assembly Judiciary Committee 1959, member 1961. Vice-chm. Insurance and Banking Com. 1959. Member Education Com. 1957 and 1961. Served on Interstate Cooperation Comn., Judicial Council, Legislative Council and its Judiciary Com. Home address: Box 127, New Richmond.

WALTER E. TERRY (Rep.) born Baraboo Feb. 26, 1909. Educated rural and Baraboo public schools. In 1932 received Ph.B. in commerce from Notre Dame University. Presently a farmer; formerly worked as a field auditor for Wis. Public Welfare Dept. Vice-pres. of a dairy co-op; secretary Southern Wisconsin Breeders Co-op. Elected to Assembly 1958; re-elected 1960. Chairman of Assembly Public Welfare Committee, vice-chm. of Revision Com., member Conservation Com. Member of the State Building Commission. Served on Legis. Council Agriculture Committee 1959-61. Home address: Rt. 3, Baraboo.

THEODORE ABRAHAMSON (Rep.) born in Lyngdal, Norway June 24, 1900. Received early education in Norway; attended evening school in United States. Owner of 2 feed elevators, founder and owner of pre-fab milkhouse company; formerly dairy farmer. President Tigerton Hospital Board, director of a bank; active in Morris Farmers Club, county fair assn., conservation clubs. Served as Tigerton village pres. 1948-62; county board member 1936-39 and 1956-62, member county finance committee. Elected to Assembly 1958; re-elected 1960. Vice-chairman of Assembly Insurance and Banking Com., member Commerce and Manufactures Com.; Legis. Council Education Com. Served on Legis. Council Menominee Indian Study Com. Home address: Tigerton.

*The combined Menominee-Shawano Assembly District was created by Chapter 679, Laws 1961, by attaching to the district that part of Menominee County which was formerly part of Oconto County.



HILLEMANN
Sheboygan, 1st



GESSERT
Sheboygan, 2nd



LEWISON
Vernon

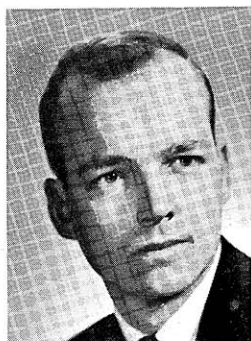
HENRY A. HILLEMANN* (Dem.) born Sheboygan Nov. 25, 1928. Educated Sheboygan public schools. Received B.A. in 1951 from Univ. of Wis., elected to Artus Honorary Economics Soc.; LL.B. 1953 from U.W. Law School. Practicing attorney; was law instructor at Lakeland College 1955-56, employe Wis. Public Service Com. 1953-54. Member Sheboygan Jaycees, Community Players; Wis. and local bar assns. Served as alderman 1957-61. Chairman Sheboygan Redevelopment Auth. Elected to Assembly 1958; re-elected 1960. Vice-chairman of Assembly Printing Committee 1959, member Judiciary Com. In 1961 member Assembly Contingent Expenditures Com., Municipalities Com. Served on Legis. Council 1959-61. Business address: 629-A N. 8th St., Sheboygan. Sheboygan County, 1st District: City of Sheboygan.

HARRY L. GESSERT (Rep.) born Elkhart Lake July 16, 1901. Educated Elkhart Lake public schools. Attended Plymouth Business College 2 years. Operates restaurant and retail store. Interested in the problems of farmers and of small town residents. Member Elkhart Lake Service Club and Chamber of Commerce. Elected Elkhart Lake justice of peace 1955; member of county board 1959. Elected to Assembly in 1960. Member of Committee to Visit State Institutions; Assembly Conservation Committee, Enrolled Bills Com., State Affairs Com. Home address: 222 Lake St., Elkhart Lake.

Sheboygan County, 2nd District: All the towns, cities and villages of the county, except the City of Sheboygan.

BERNARD LEWISON (Rep.) born on farm near Viroqua Feb. 7, 1902. Educated Viroqua public schools. Attended Lawrence College 1921-22. Tobacco buyer and real estate broker, owns and operates a farm; for 30 years operated automobile agency and body shop. Chairman of Viroqua Board of Appeals, vice-chm. Board of Review; served as mayor 1943-48, as alderman 1933-40. Elected to Assembly 1954 and 1956; re-elected 1960. Chairman of Assembly Transportation Com. 1961, Contingent Expenditures Com. 1957. In 1961 member of Assembly Highways Com., Legis. Council Tobacco Marketing Com. Has served on Assembly Agriculture Com., State Affairs Com.; Gov. Thomson's Industrial Development Advisory Com.; past vice-chairman Legis. Council Conservation Com. Home address: 11 S. Washington Heights, Viroqua.

*Resigned Sept. 1, 1961 to become executive secretary of the Wis. Judicial Council.



BORG
Walworth



SCHOWALTER
Washington



MATHEWS
Waukesha, 1st

GEORGE M. BORG (Rep.) born Colorado Springs, Colo. Dec. 4, 1934. Wisconsin resident since 1935; attended Delavan public schools and Univ. of Wisconsin. Plant manager for manufacturing company; vice-pres. local savings and loan assn. Veteran of Korean Conflict; served in Army. Vice-pres. Delavan Sportsman Club; member of Elks. Delavan alderman 1959-61, chairman health and license com., member civil defense com., finance, insurance, fire and police coms. Elected to Assembly in 1960. Vice-chm. Assembly Contingent Expenditures Committee, member of Joint Finance Com., Assembly Municipalities Com.; Legis. Council Education Com. Home address: 613 Parish St., Delavan.

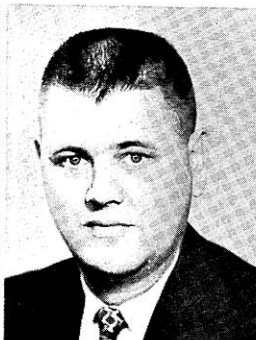
ELMER J. SCHOWALTER (Rep.) born in Washington County's Town of Jackson Oct. 12, 1894. Educated grade school; Univ. of Wis. Farm Short Course. Owns dairy farm which is Schowalter homestead since 1843; produces canning crops, seed grains, white clover seed. Also operates animal farms raising deer, buffalo, longhorn cattle, African mountain sheep, elk; has supplied white-tailed deer to federal and state restocking projects since 1938. Active in local church and community affairs. Served as school treasurer, town assessor. Elected to Assembly 1954; re-elected 1956, '58, '60. Chairman of Assembly Engrossed Bills Com. 1961; vice-chm. Public Welfare Com.; member of Agriculture Com. since 1955; in prior sessions on Enrolled Bills Com. Member of the Committee to Visit State Institutions since 1959. Home address: Rt. 1, Jackson.

VINCENT R. MATHEWS (Dem.) born Watertown June 8, 1912. Educated Fort Atkinson public schools; B.A. Carroll College 1934. Insurance agent since 1951; formerly in department store personnel work. Interested in community projects, Boy Scouts, YMCA, Community Chest. Waukesha alderman 1947-51. Elected to Assembly 1958; re-elected 1960. Member of Joint Survey Committee on Retirement Systems and Assembly Municipalities Com. in 1959 and 1961; in 1961 also Retirement Research Council and Assembly Enrolled Bills Com. Served on Legis. Council Education Com. Business address: 305 South St., Waukesha.

Waukesha County, 1st District: Towns of Eagle, Genesee, Mukwonago, Muskego, Ottawa, Vernon, Waukesha; Villages of Big Bend, Dousman, Eagle, Mukwonago, North Prairie, Wales; Cities of New Berlin, Waukesha.



CLEMENS
Waukesha, 2nd



PETERSON, R. E.
Waupaca



STEIGER
Winnebago, 1st

HAROLD W. CLEMENS (Rep.) born Milwaukee Oct. 21, 1918. Educated Town of Oconomowoc, Milwaukee public schools; Milw. Boys Technical High School. Resident of Lac La Belle Village 32 years. Operates boat livery, picnic, swimming area; formerly printer, tool maker. World War II veteran; Navy 1944-46. Was village clerk, health officer, building insp. civil defense dir.; county supervisor, U.S.O. chm. Elected to Assembly 1956; re-elected 1958, '60. Vice-chm. Assembly Education Committee, member Transportation Com.; chm. Legis. Council Urban Problems Com. Home address: Rt. 6, Oconomowoc.

Waukesha County, 2nd District: Towns of Brookfield, Delafield, Lisbon, Merton, Oconomowoc, Pewaukee, Summit; Villages of Butler, Chenequa, Elm Grove, Hartland, Lannon, Lac La Belle, Menomonee Falls, Merton, Nashotah, Oconomowoc Lake, Pewaukee, Sussex; Cities of Brookfield, Delafield, Oconomowoc.

RICHARD E. PETERSON (Rep.) born Waupaca July 17, 1920. Educated Waupaca public schools; LL.B. Univ. of Wis. 1949. Attorney in Waupaca, Clintonville, Hortonville; major on judge advocate's staff 32nd Div. Wis. Natl. Guard. World War II veteran; interrupted education Oct. 1940 to join Wis. Natl. Guard, discharge from Army 61 months later. Member Amer. Legion, V.F.W. Elected to Assembly 1950; now in 6th term. Chairman Assembly Judiciary Com., vice-chm. Revisions, Repeals, Uniform Laws Com., member Conservation Com. Member Judicial Council. Served on Assembly Commerce-Manufactures Com., Excise-Fees Com., Insurance-Banking Com. (chairman), Taxation Com.; Legis. Council Com. to Study Veterans' Home at King (chairman), Judiciary Com. 1953-59. Home address: Rt. 3, Box 17-A, Waupaca.

WILLIAM A. STEIGER (Rep.) born Oshkosh May 15, 1938. Educated Oshkosh State College Training School, Oshkosh High School; received B.S. in 1960 from University of Wisconsin. Member Elks; former vice-pres. of the Wis. Student Assn. Active in politics; national college chairman of Young Republican National Federation 1959-61. Chosen assistant chief page at 1960 Republican National Convention. Elected to Assembly 1960. Member of Assembly Education Committee and Taxation Com.; vice-chm. Legis. Council Youthful Drinking and Driving Com. Home address: 645 Wisconsin St., Oshkosh.

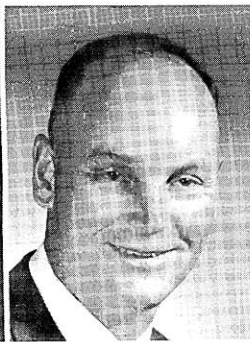
Winnebago County, 1st District: Wards 1-5, 7-12, 15, City of Oshkosh.



SHURBERT
Winnebago, 2nd



MARTIN
Winnebago, 3rd



HEINZEN
Wood, 1st

FLOYD E. SHURBERT (Rep.) born in Winnebago County Oct. 30, 1900. Educated public elementary and high schools; attended Oshkosh Business College. Since 1945 retired; in wholesale-retail meat business 1925-45; owned mink farm 1936-54. Active in conservation groups. Served on county board since 1954. Elected to Assembly 1958; re-elected 1960. Chairman of Assembly Excise and Fees Committee, member Conservation Com., Legis. Council Youthful Drinking and Driving Com. Served on Assembly Public Welfare Com., Legis. Council Water Resources Com. Home address: Rt. 4, Box 588, Oshkosh.

Winnebago County, 2nd District: Winnebago County, except Towns and Cities Menasha, Neenah; Oshkosh City Wards 1-5, 7-12, 15.

DAVID O. MARTIN (Rep.) born Appleton Mar. 7, 1931. Educated Neenah public schools; received B.S. in forestry from Univ. of Michigan. Employed by paper company. Served as officer in Army Corps of Engineers 1954-56. Member of Jaycees board Neenah-Menasha 1959-61. Elected to Assembly 1960. Member of Assembly Commerce and Manufactures Committee and Education Com.; Legis. Council Taxation Com. Home address: 844 Reddin Ave., Neenah.

Winnebago County, 3rd District: Towns of Menasha and Neenah; Cities of Menasha and Neenah.

RAYMOND F. HEINZEN (Rep.) born Marshfield May 11, 1918. Educated St. John parochial school, Marshfield High School; attended Univ. of Wisconsin 3 years. Farmer since 1939; pres. of credit union and secy.-treas. of creamery co-op. since 1955; farm columnist 1957-59. Member National Catholic Rural Life Conference. Served as clerk of local school board 1952-57. Member State Board of Vocational and Adult Education since 1956. Elected to Assembly 1960. Member of Assembly Education Committee and Labor Com.; Legis. Council Taxation Com. Home address: Rt. 5, Marshfield.

Wood County, 1st District: That part of Wood County which is not in the Second District (northern Wood County).



GEE
Wood, 2nd



MAROTZ
Chief Clerk



KELLMAN
Sergeant at Arms

HARVEY F. GEE (Rep.) born Wisconsin Rapids Feb. 29, 1908. Educated Wisconsin Rapids public schools; received B.A. in 1932 from Rollins College in Winter Park, Fla. World War II veteran; served in Army. Member American Legion; was state organizer of National Infantile Paralysis Foundation. Wisconsin Rapids athletic field commissioner 1947-60, county board member 1938-60. Elected to Assembly 1960. Member of the Assembly Labor Committee and Public Welfare Com.; Legis. Council Urban Problems Com. Home address: 170 - 14th Ave. South, Wisconsin Rapids.

Wood County, 2nd District: Towns of Cranmoor, Dexter, Grand Rapids, Hiles, Port Edwards, Remington, Saratoga, Seneca; Villages of Biron, Port Edwards; Cities of Nekoosa, Wisconsin Rapids.

ROBERT G. MAROTZ born Sheboygan Nov. 14, 1921. Educated St. James Lutheran School, Shawano High School. Attended Bowling Green State Univ., Ohio; Dartmouth College. Wis. bar exam 1946; in 1950 received LL.B. from Univ. of Wisconsin Law School. Practicing attorney. World War II veteran; in Marine Corps 1942-45. Assemblyman from Shawano County 1949-57; chosen Speaker 1957, Rep. Floor Leader 1955, Asst. Floor Leader 1953. Chairman Legis. Council 1957-59, secretary 1955-57. Chairman Legis. Council Judiciary Com. 1951-53; as member 1949-55 participated in revision of Criminal and Corporation Codes. Vice-chm. Interstate Cooperation Comm. 1957-59, member 1953-59. Chosen Chief Clerk of the Assembly 1961. Home address: 4161 Cherokee Drive, Madison 5.

NORRIS J. KELLMAN born Galesville Oct. 23, 1898. Educated in Galesville public schools; La Crosse State College one year. Graduate of Univ. of Wisconsin, Ph.G. 1922, B.S. 1923. In general insurance business 36 years; was asst. postmaster of Galesville 10 years. World War I veteran; one of Wisconsin's youngest commissioned officers. Member of American Legion; commander local post 3 years. Attended Republican National Conventions; served as alternate 1936 while his father Frank A. Kellman was delegate, served as delegate 1940 and 1944. Assemblyman from Trempealeau County in 1939. Chosen Assembly Sergeant at Arms in 1941; re-elected each session through 1957. Again elected to this office in 1961. Home address: Galesville.

ALPHABETICAL LIST OF 1961 WISCONSIN LEGISLATORS

Senators

| <i>Name</i> | <i>District</i> | <i>Name</i> | <i>District</i> |
|----------------------------|-----------------|---------------------------|-----------------|
| Bice, Raymond C. | 32nd | Leonard, Jerris | 4th |
| Brennan, James B. | 5th | Leverich, J. Earl | 31st |
| Busby, Allen J. | 8th | Lorge, Gerald D. | 14th |
| Cameron, Howard W. | 23rd | McParland, Leland S. | 7th |
| Carr, Peter P. | 15th | Miller, Jess | 27th |
| Dean, Robert W. | 29th | Morton, Earl D. | 22nd |
| Dempsey, Chester E. | 33rd | Moser, William R. | 6th |
| Donnelly, Davis A. | 28th | O'Brien, Leo P. | 2nd |
| Draheim, William A. | 19th | Panzer, Frank E. | 13th |
| Hollander, Walter G. | 18th | Potter, John M. | 24th |
| Kendziorski, Casimir | 3rd | Stalbaum, Lynn E. | 21st |
| Keppler, Ernest C. | 20th | Sussman, Norman | 9th |
| Knowles, Robert P. | 10th | Thompson, Carl W. | 16th |
| Krueger, Clifford W. | 12th | Travis, Robert S. | 17th |
| LaFave, Reuben | 30th | Wilkie, Horace W. | 26th |
| Laun, Alfred A., Jr. | 1st | Zaborski, Richard J. | 11th |
| Lauri, Carl E. | 25th | | |

Assemblymen

| <i>Name</i> | <i>District</i> | <i>Name</i> | <i>District</i> |
|---|-------------------|--------------------------|----------------------------|
| Abrahamson, Theodore | Shawano | Dionesopulos, | |
| Alfonsi, Paul R. .. Iron, Oneida, Vilas | | Frank G. | Milwaukee, 2nd |
| Anderson, Norman C. | Dane, 1st | Dorr, Clifford E. | Chippewa |
| Babbitt, Marvin E. .. Outagamie, 2nd | | Dueholm, Harvey L. .. | Burnett, Polk |
| Barabe, | | Flannigan, Allen J. .. | Milwaukee, 7th |
| Robert F. | Ashland, Bayfield | Gee, Harvey F. | Wood, 2nd |
| Barland, Thomas H. .. Eau Claire, 1st | | Genzmer, Elmer L. | Dodge, 1st |
| Barron, Michael J. .. Milwaukee, 18th | | Gessert, Harry L. | Sheboygan, 2nd |
| Baumgart, Lloyd R. | Oconto | Grant, Alexander R. | Brown, 2nd |
| Belting, George B. | Rock, 3rd | Gray, John R. | |
| Bidwell, Everett V. | Columbia | | Florence, Forest, Langlade |
| Blanchard, David J. | Rock, 2nd | Greco, Angelo F. | Milwaukee, 3rd |
| Blaska, Jerome L. | Dane, 4th | Haase, Robert D. | Marinette |
| Bolle, Everett E. | Manitowoc, 2nd | Harper, Hugh A. | Grant |
| Borg, George M. | Walworth | Heinzen, Raymond F. | Wood, 1st |
| Calvert, Walter B. | Iowa, Lafayette | Hillemann, | |
| Christopherson, | | Henry A. | Sheboygan, 1st |
| Frank W., Jr. | Douglas, 2nd | Hinz, Emil A. | Lincoln |
| Clemens, Harold W. .. Waukesha, 2nd | | Hipke, Gilbert J. | Calumet |
| Coggs, Isaac N. | Milwaukee, 6th | Huber, Robert T. | Milwaukee, 22nd |
| Collins, Robert A. | Milwaukee, 21st | Hutnik, Willis J. | |
| | | | Rusk, Sawyer, Washburn |

| <i>Name</i> | <i>District</i> | <i>Name</i> | <i>District</i> |
|------------------------------|--------------------|--------------------------------|------------------|
| Jahnke, Franklin M. | | Quinn, Jerome F. | Brown, 1st |
| Green Lake, Waushara | | Riehle, Ben A. | Marathon, 1st |
| Johnson, | | Risser, Fred A. | Dane, 2nd |
| Lawrence H. | Door, Kewaunee | Romell, Louis C. | |
| Johnson, Robert I. | | Adams, Juneau, Marquette | |
| Buffalo, Pepin, Pierce | | Ryan, Mark W. | Milwaukee, 5th |
| Kenyon, Kyle | Monroe | St. Angelo, Thomas | Barron |
| Kessler, | | Schaeffer, | |
| Frederick P. | Milwaukee, 10th | Frank E., Jr. | Milwaukee, 4th |
| Kintz, | | Schlueter, | |
| Milford C. | Crawford, Richland | Fred W. | Fond du Lac, 2nd |
| Lewison, Bernard | Vernon | Schmidt, Charles J. .. | Milwaukee, 9th |
| Luedtke, Paul A. | Marathon, 2nd | Schmidt, Robert | Milwaukee, 23rd |
| McCormick, | | Schowalter, Elmer J. | Washington |
| John E. | Milwaukee, 17th | Schuele, Wilfred | Milwaukee, 15th |
| McEssy, Earl F. | Fond du Lac, 1st | Shurbert, | |
| McKay, J. Curtis | Ozaukee | Floyd E. | Winnebago, 2nd |
| Manders, Adrian J. .. | Milwaukee, 8th | Sobocinski, | |
| Martin, David O. | Winnebago, 3rd | Sherman R. | Milwaukee, 24th |
| Mathews, Vincent R. .. | Waukesha, 1st | Soik, Nile W. | Milwaukee, 19th |
| Merriam, William R. | Rock, 1st | Stalbaum, Merrill | Racine, 3rd |
| Merz, Louis L. | Milwaukee, 1st | Stauffer, Christ M. | Green |
| Molinaro, George | Kenosha, 1st | Steiger, William A. .. | Winnebago, 1st |
| Mueller, Ervin | Milwaukee, 13th | Tadych, Albert R. .. | Milwaukee, 12th |
| Myhra, Norman L. | Portage | Terry, Walter E. | Sauk |
| Naleid, Roy E. | Racine, 2nd | Tobiasz, | |
| Nikolay, Frank L. | Clark | Raymond J. | Milwaukee, 11th |
| Nitschke, Elmer C. | Dodge, 2nd | Uehling, Robert O. | Dane, 3rd |
| Nowakowski, | | Vanderperren, Cletus | Brown, 3rd |
| Richard C. | Milwaukee, 14th | Vogel, Hugo E. | Manitowoc, 1st |
| Nuttelman, Norbert .. | La Crosse, 2nd | Wackett, Byron F. | Jefferson |
| Olson, Russell A. | Kenosha, 2nd | Ward, William W. | St. Croix |
| O'Malley, David | Dane, 5th | Warren, Earl W. | Racine, 1st |
| Owen, William E. | Dunn | Wartinbee, | |
| Perala, Reino A. | Douglas, 1st | D. Russell | La Crosse, 1st |
| Peterson, Merlin J. | | Whittow, | |
| Jackson, Trempealeau | | Wayne F. | Milwaukee, 16th |
| Peterson, Richard E. | Waupaca | Zellinger, Vincent J. | Price, Taylor |
| Pommerening, | | | |
| Glen E. | Milwaukee, 20th | | |
| Priebe, Kenneth E. | Outagamie, 1st | | |
| Pritchard, John | Eau Claire, 2nd | | |