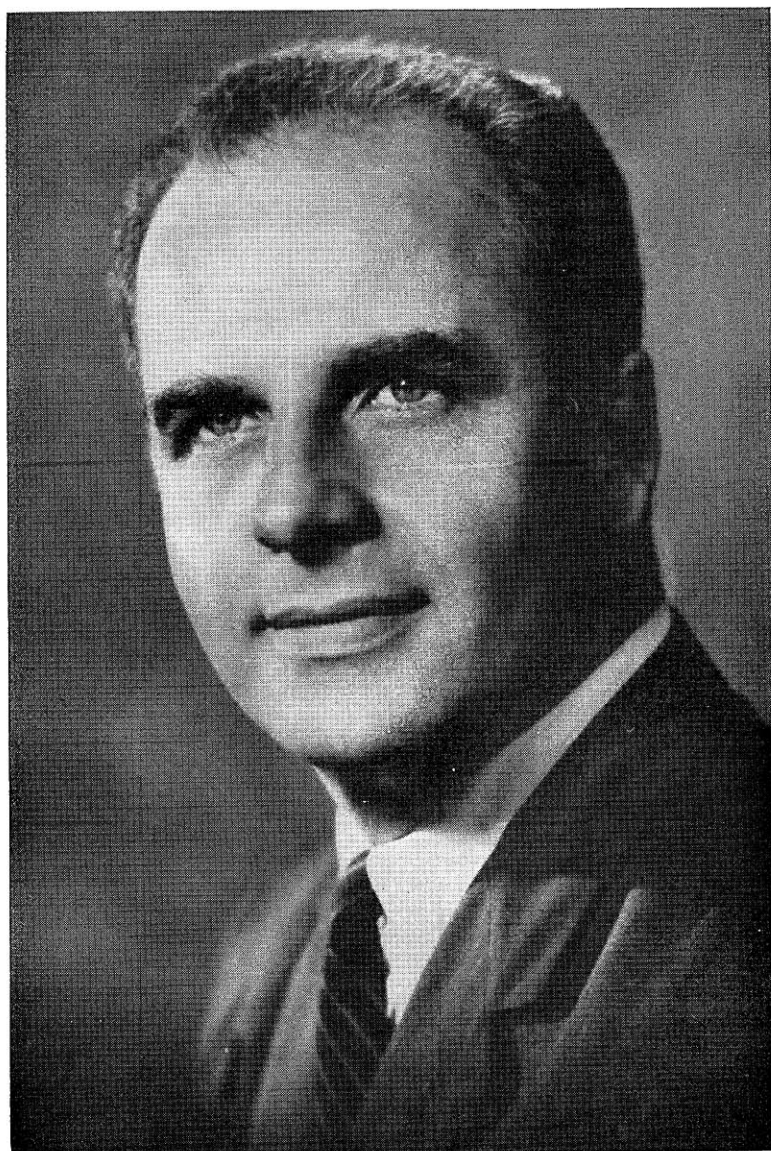


THE OFFICE OF GOVERNOR



THE GOVERNOR IS INAUGURATED. The Governor takes office on the first Monday in January of odd-numbered years. He and other constitutional officers elected in the preceding November are normally sworn into office by the Chief Justice of the Supreme Court at a ceremony in the rotunda of the Capitol.

Biographies and Pictures of
CONSTITUTIONAL OFFICERS
SUPREME COURT JUSTICES
MEMBERS OF CONGRESS
MEMBERS OF LEGISLATURE



Governor GAYLORD A. NELSON

CONSTITUTIONAL OFFICERS

THE GOVERNOR

GAYLORD A. NELSON (Dem.) born Clear Lake June 4, 1916. Educated in Clear Lake graded and high schools. In 1939 B.A. from San Jose State College in California; in 1942 LL.B. University of Wisconsin. Since 1942 a practicing attorney. Served in army 46 months during World War II. Elected to senate 1948; re-elected 1952 and 1956. In 1951 chosen Democratic floor leader; in 1953 assistant Democratic floor leader. Elected Governor 1958. Home Address: 5627 Crestwood Place, Madison.

THE LIEUTENANT GOVERNOR

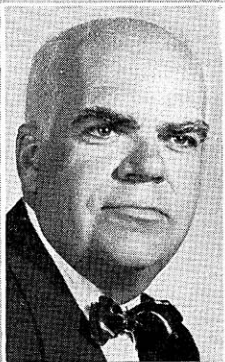
PHILLEO NASH (Dem.) born Oct. 25, 1909 in Wisconsin Rapids. Graduated Wisconsin Rapids grade and high schools; A.B. Univ. of Wis. 1932; Ph.D. Univ. of Chi. 1937. Cranberry grower; applied anthropologist. Administrative assistant U. S. President 1952-53; special assistant in the White House 1946-52; special assistant to director of OWI, White House liaison 1942-46; special consultant to the Secretary of War 1943; lecturer in anthropology, Univ. of Toronto 1937-41; president Georgetown Day School, Wash. D.C. 1944-51. Member board of directors Assn. on American Indian Affairs 1943 to date. State Chairman Democratic Party of Wis. 1955-57; finance chairman of party 1954-55; chairman Wood County Democratic Party 1955. Elected Lieutenant Governor 1958. Home Address: 1310 Third St. S., Wisconsin Rapids.

THE SECRETARY OF STATE

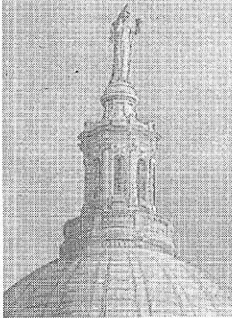
ROBERT C. ZIMMERMAN (Rep.) born Jan. 5, 1910 in Milwaukee. Attended Wisconsin public schools; graduate Central High School, Madison. Served in World War II; army two and one-half years. Appointed Assistant Secretary of State in 1939 and held that position for approximately 15 years. Elected Secretary of State 1956, re-elected 1958. Home Address: 2810 Arbor Drive, Madison.

THE STATE TREASURER

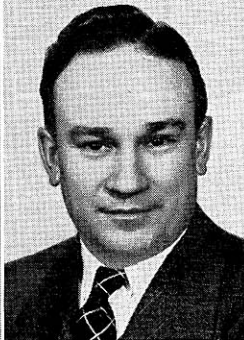
EUGENE M. LAMB (Dem.) born Sheboygan County, March 7, 1910. Educated in Milwaukee graded and high schools; University of Wisconsin, Milwaukee, 2 years; Marquette University 2 years. Studied business administration and accounting at the universities. Former employe of the Allis Chalmers Manufacturing Company. Former Wisconsin state champion ice speed skater. Served in the 1949, 1951 and 1953 legislatures, as assemblyman from Milwaukee County 9th District; 9th and 26th wards of the City of Milwaukee. Member Commissioners of Public Lands, State Board of Canvassers, Board of Trustees of Conservation Wardens Pension Fund. Elected State Treasurer 1958. Home Address: 3215 N. 81st Street, Milwaukee.



NASH



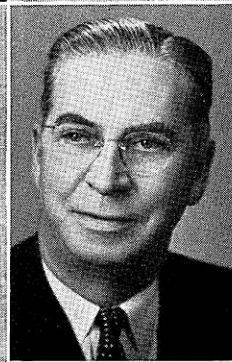
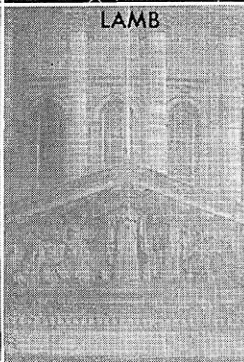
ZIMMERMAN



LAMB



REYNOLDS



WATSON

PHILLEO NASH, Lieutenant Governor; ROBERT C. ZIMMERMAN, Secretary of State; EUGENE M. LAMB, State Treasurer; JOHN W. REYNOLDS, Attorney General; GEORGE E. WATSON, Superintendent of Public Instruction.

THE ATTORNEY GENERAL

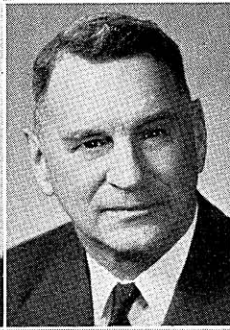
JOHN W. REYNOLDS (Dem.) born Apr. 4, 1921 at Green Bay. Ph.B. and LL.B. Univ. of Wis. Practicing attorney in Green Bay. U.S. Commissioner, Eastern Wis. 1955-58. World War II veteran; served 1942-46. Elected Attorney General 1958. Married Patricia Ann Brady of La Crosse; two daughters, Kate aged 7 and Molly aged 2. Business Address: State Capitol, Madison 2.

THE SUPERINTENDENT OF PUBLIC INSTRUCTION

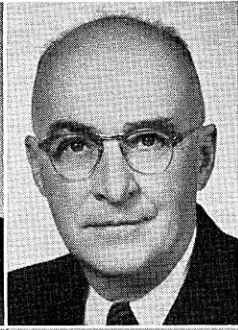
GEORGE EARL WATSON born Neenah Oct. 16, 1897. Graduated Appleton High School; B.A. Lawrence College 1921; M.A. University of Wisconsin 1932; honorary LL.D. Lawrence College 1949. High school teacher in Stevens Point 1921-1922; supervising principal, Fall River 1922-1923; high school principal at Stevens Point 1923-1924; superintendent of schools Waupaca, Marinette and Wauwatosa 1924-1949. From 1947-1949 member Milwaukee County School Committee. Other public activities include: chairman and member Wauwatosa Veterans Committee; chairman Milwaukee County Junior Red Cross; county commander Waupaca County American Legion; past president Wisconsin Association of School Administrators; past chairman Wisconsin Council on Education; presently member of National Veteran's Administrator's Vocational Rehabilitation and Education Advisory Committee; president Council of Chief State School Officers, 1959. Elected State Superintendent of Public Instruction in 1949; re-elected 1953 and 1957. Home Address: 111 W. Wilson St., Madison.



BROADFOOT



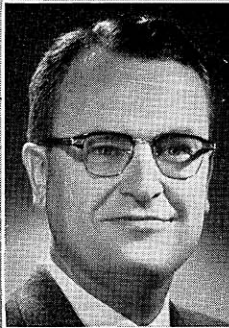
BROWN



CURRIE



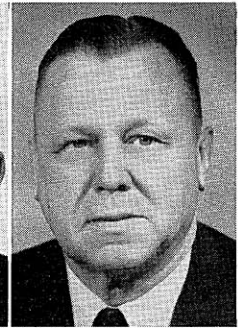
MARTIN



FAIRCHILD



HALLOWS



DIETERICH

Members of the Supreme Court: Chief Justice JOHN E. MARTIN; GROVER L. BROADFOOT; TIMOTHY BROWN; GEORGE R. CURRIE; THOMAS E. FAIRCHILD; WILLIAM H. DIETERICH; E. HAROLD HALLOWS.

JUSTICES OF THE SUPREME COURT

JOHN E. MARTIN born Nov. 15, 1891 Green Bay. Educated parochial and public schools of Green Bay; attended University of Wisconsin 1910-1914; graduated Law School University of Notre Dame in 1916. Served in World War I as first lieutenant in Company E, 127th Infantry, 32nd Division. In 1933 appointed assistant district attorney Milwaukee County and served for one year. In 1934 counsel for Banking Commission. Had held no elective public office until his election as Attorney General in 1938. Re-elected in 1940 and served as Attorney General from 1939 until his appointment to Supreme Court June 1, 1948 to succeed Justice Chester A. Fowler, deceased. In Apr. 1950 elected to Supreme Court; re-elected Apr. 1951. Became Chief Justice Jan. 7, 1957, upon termination of term of Chief Justice Fairchild.

GROVER L. BROADFOOT born Dec. 27, 1892 in Independence. Educated in common schools; LL.B. Law School of University of Wisconsin in 1918. Practiced law at Mondovi until 1948 and is president of Mondovi State Bank. Public offices include mayor of Mondovi 1943-1947; district attorney 1923-1935; member Wisconsin Board of Tax Appeals 1939-1943. Veteran of World War I. In assembly 1945 until his appointment as Attorney General on June 5, 1948. Appointed to Supreme Court Nov. 12, 1948 to succeed Justice Elmer E. Barlow, deceased. Elected to Supreme Court Apr. 1952; re-elected 1955.

TIMOTHY BROWN born Feb. 24, 1889 at Madison; educated in Madison public schools, University of Wisconsin (B.A. 1911) and Harvard Law School (LL.B. 1914). Admitted to Wisconsin bar in 1914, practiced law in Milwaukee 2 years, served in U.S. Navy 1917-1919; then returned to Madison where he practiced law continuously until 1949. From 1926-1949 court commissioner for Dane County. During World War II government appeal agent and member of an appeal board under Selective Service System. In 1945 executive counsel to Governor Goodland and again to Governors Goodland and Rennebohm, 1947-1949. From Apr.-July 1949 commissioner of Public Service Commission. Governor Rennebohm then appointed him to fill vacancy in Supreme Court caused by death of Justice John D. Wickhem. Elected to Supreme Court Apr. 1953.

GEORGE R. CURRIE born at Princeton, Wisconsin, Jan. 16, 1900. Educated public schools at Montello, attended Oshkosh State Teachers College 2 years, taught school 3 years, and then received legal education at University of Wisconsin Law School, LL.B. degree in 1925; awarded Order of the Coif. In his senior year student editor-in-chief of Wisconsin Law Review. For 26 years practiced law at Sheboygan. For over 20 years member of Sheboygan Public Library Board, the last 16 years president of board. During World War I served several months in Student Army Training Corps. Married in 1925 to Miss Gladys E. Bremer and has 2 daughters, Ann and Janet. On Aug. 30, 1951, appointed to Supreme Court to fill vacancy resulting from resignation of Justice Henry P. Hughes. Elected to Supreme Court Apr. 2, 1957 without opposition to a full 10-year term on such court commencing Jan. 6, 1958.

THOMAS E. FAIRCHILD born Dec. 25, 1912 Milwaukee. Educated Grand Avenue School, Milwaukee; Riverside High School, Milwaukee; A.B. Cornell University 1934; University of Wisconsin Law School, LL.B. 1938. Practicing attorney with Daniel H. Grady, Portage, 1938-1942; attorney U.S. Office of Price Administration 1942-1945; practicing attorney, Milwaukee 1945-1948, 1953-1957. Elected Attorney General 1948. U.S. Attorney, western district of Wisconsin 1951 to 1952. Resided at Verona 1949-53. Democratic nominee for U.S. Senate 1950 and 1952. Elected to Supreme Court April 3, 1956.

E. HAROLD HALLOWS born Apr. 20, 1904 at Fond du Lac. Educated Fond du Lac public grade and high schools; A.B. Marquette Univ. 1926; attended Columbia Univ. 1926-27; graduated Doctor of Jurisprudence cum laude Univ. of Chicago Law School 1930. Practicing attorney and professor of law at Marquette Univ. 1930-38. Past president Milwaukee Co. Bar Assn. 1948-49; past president Wis. Bar Assn. 1953-54; member Amer. Bar Assn.; Amer. Bar Assn. House of Delegates; Amer. Society of International Law; Amer. Law Institute; Bar Assn. of 7th Federal Circuit; Institute of Judicial Administration; Inter-Amer. Bar Assn.; director Amer. Judicature Society; secretary Wis. Bar Foundation. Member Wis. Judicial Council since its creation. Received Eagles' Civic Service Award for contributions to community service, 1954. In 1951 received honorary Doctor of Law from Mount Mary College. Appointed to Supreme Court Apr. 2, 1958 to succeed Justice Steinle, resigned. Elected to Supreme Court Apr. 7, 1959. Justice Hallows is the first justice to be elected for a full term pursuant to a constitutional amendment adopted in 1953.

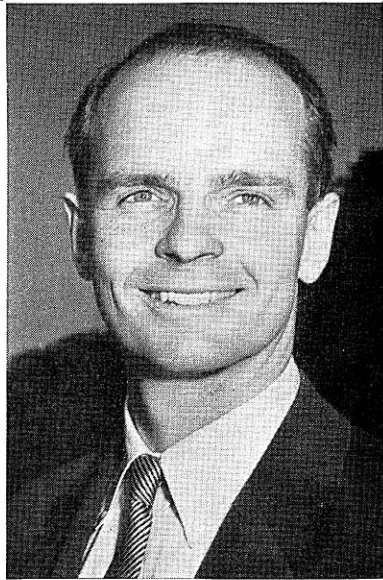
WILLIAM HERBERT DIETERICH born in Milwaukee Dec. 18, 1897. Educated Milwaukee public elementary and high schools; Marquette Univ. Law School; Univ. of Wis.; Univ. of Montana, 1919-23. Admitted to practice of law, 1923. Trial lawyer Milwaukee and Washington Counties for 36 years, with law offices in Milwaukee and Hartford. Secretary and counsel for 2 shoe manufacturing companies and a road building bituminous products corporation. Served as town attorney, Special Asst. Attorney General of Wis.; justice of peace; member of advisory fees committee, Milwaukee Bar Assn.; member Bd. of Governors Wis. Bar Assn.; pres. Washington Co. Bar Assn. Chairman Washington Co. School Committee; director school board; attorney for school boards. Served in World War I, 120th field artillery, 32nd division. Past state commander Disabled Amer. Veterans; member Natl. Executive Committee Disabled Amer. Veterans; past commander Amer. Legion; pres. Soc. of Amer. Legion Founders; member Amer. Legion Natl. Security Committee; member U.S. chapter Army and Navy Air Force in Canada. Married, wife Kathryn; son William H. Dieterich III. Elected to Supreme Court Apr. 1958.

WISCONSIN MEMBERS OF THE 86TH CONGRESS

SENATORS

ALEXANDER WILEY (Rep.) born Chippewa Falls on May 26, 1884. After graduation from Chippewa Falls High School attended Augsburg College, Minneapolis for 2 years and University of Michigan law school for 2 years. Graduated University of Wisconsin law school 1907. Has been a lawyer and businessman since that time. Since 1916 owned and operated a dairy farm in Barron County which was previously owned and operated by his parents. District attorney of Chippewa County 3 terms, 1909-1915; member of school board of Chippewa Falls; governor of Wisconsin-Upper Michigan Kiwanis district in 1933. In 1936 Republican nominee for Governor. Married in 1909 to May Jenkins (now deceased); 4 children; Elisabeth, Marshall, Rosemary, Winifred. Married Dorothy May Kydd, May 1952. Elected to U.S. Senate in 1938; re-elected 1944, 1950, 1956. Former chairman of Senate Committee on the Judiciary (now highest Republican member); former chairman and now senior Republican member Senate Foreign Relations Committee. Member, former Senate Special Committee to Investigate Crime in Interstate Commerce. Official representative of the U.S. government at Interparliamentary Union Conference in Oslo, Norway, Sept. 1939 and British Empire Parliamentary Conference in Bermuda, June 1946; head of U.S. delegation to Empire Parliamentary Conference in Bermuda, 1948; U.S. delegate to Japanese Peace Conference in San Francisco, 1951; U.S. delegate to Council of Europe, Strasbourg, France, 1951; U.S. delegate to Interparliamentary Union Conference, Bern, Switzerland, 1952; U.S. delegate to the Seventh United Nations General Assembly, 1952; U.S. delegate to the Interparliamentary Union, Washington, D.C. 1953; delegate to the Interparliamentary Union, Helsinki 1954; delegate to Interparliamentary Union, London 1957; American representative International Conference on Patents, Lisbon 1958. Home Address: Chippewa Falls.

E. WILLIAM PROXMIRE (Dem.) born Lake Forest, Ill. Nov. 11, 1915. Attended grade schools in Lake Forest and the Hill Preparatory School near Philadelphia. B.A. Yale University. M.B.A. Harvard University Graduate School of Business Administration; M.P.A. Graduate School of Arts and Sciences, Harvard. Formerly a bank clerk; newspaper and radio reporter; instructor in government at Harvard University; plant manager of a Wis. farm implement company; owner of a printing plant in Waterloo, Wis. World War II veteran, having served with the military intelligence 1941-46. Member of Wis. assembly 1951-52. Democratic candidate for Governor of Wisconsin 1952, 1954, 1956. Elected to U.S. Senate in a special election Aug. 27, 1957, to fill vacancy caused by death of Sen. McCarthy. Re-elected 1958. Married Ellen Hodges Sawall, Dec. 1, 1956. Member Senate Committees on Agriculture, Banking and Currency; chairman Subcommittee on Small Business. Home Address: Buckeye Road, Madison.



United States Senator ALEXANDER WILEY

United States Senator E. WILLIAM PROXMIRE

MEMBERS OF THE HOUSE OF REPRESENTATIVES

1ST CONGRESSIONAL DISTRICT

Green, Kenosha, Racine, Rock, Walworth Counties.

GERALD T. FLYNN (Dem.) born at Racine Oct. 7, 1910. Educated in Racine elementary and high schools; LL.B. Marquette University 1933. Practicing attorney 1933-58. State senator 1950-54. Past member of board of governors of Wis. State Bar Assn.; member Elks and former exalted ruler. Elected to Congress 1958. Home Address: 3065 Ruby Ave., Racine.

2ND CONGRESSIONAL DISTRICT

Columbia, Dane, Dodge, Jefferson, Waukesha Counties.

ROBERT W. KASTENMEIER (Dem.) born Jan. 24, 1924 at Beaver Dam. Educated Beaver Dam and Columbus public grade schools; graduated Beaver Dam High School, University of Wisconsin and University of Wisconsin Law School, 1952. Since 1952 practicing attorney. Branch office director Claims Service, U.S. War Dept. 1946-48; justice of peace 1955-58. World War II veteran; 1st Lieut. infantry 1943-46. Elected to Congress 1958. Home Address: 214 N. 1st St., Watertown.

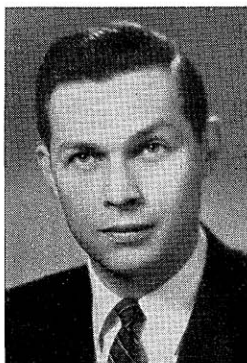
3RD CONGRESSIONAL DISTRICT

Crawford, Grant, Iowa, Juneau, La Crosse, Lafayette, Monroe, Richland, Sauk, Vernon Counties.

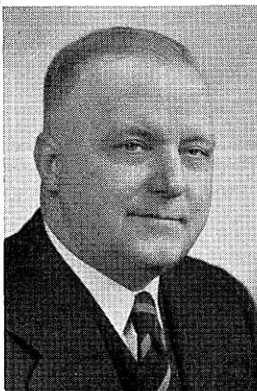
GARDNER R. WITHROW (Rep.) born La Crosse Oct. 5, 1892. Educated in grade and high schools of that city. After graduation from high school entered the train service of Chicago, Burlington and Quincy Railroad Company. In 1929 and 1931, was state representative of the trainmen's brotherhood. Served in assembly 1927; member of Joint Committee on Finance. Member of Congress 1931-39; re-elected to the 81st, 82nd, 83rd, 84th, 85th, 86th Congresses. Home Address: La Crosse.



FLYNN



KASTENMEIER



WITHROW



ZABLOCKI



REUSS

Members of House of Representatives: GERALD T. FLYNN, 1st district; ROBERT W. KASTENMEIER, 2nd district; GARDNER R. WITHROW, 3rd district; CLEMENT J. ZABLOCKI, 4th district; HENRY S. REUSS, 5th district.

4TH CONGRESSIONAL DISTRICT

Towns of Franklin, Greenfield, Oak Creek, Wauwatosa; villages of Greendale, Hales Corners, West Milwaukee; cities of Cudahy, St. Francis, South Milwaukee, Wauwatosa, West Allis; and wards 8, 11, 12, 14, 17, 19 and parts of wards 3, 4, 10 and 16, city of Milwaukee.

CLEMENT J. ZABLOCKI (Dem.) born in Milwaukee November 18, 1912. Attended parochial school, Marquette University High School; graduated Marquette University with Ph. B. degree. Later took graduate work in education Marquette University and taught high school in Milwaukee. On May 26, 1937 he married Miss Blanche M. Janic of Milwaukee; 2 children, Joseph Paul and Jane Frances. Elected state senator 1942, re-elected 1946. Elected to Congress 1948, 1950, 1952, 1954, 1956, 1958. Home Address: 3245 West Drury Lane, Milwaukee.

5TH CONGRESSIONAL DISTRICT

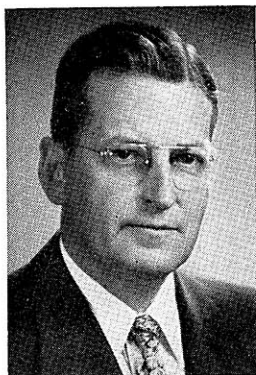
Town of Granville; villages of Bayside, Brown Deer, Fox Point, River Hills, Shorewood, Whitefish Bay; city of Glendale; 1st, 2nd, 5th, 6th, 7th, 9th, 13th, 15th, 18th, and parts of 3rd, 4th, 10th, 16th wards of city of Milwaukee.

HENRY S. REUSS (Dem.) born in Milwaukee February 22, 1912. Educated Milwaukee Schools; A.B. Cornell University; LL.B. Harvard Law School. Attorney in Milwaukee since 1936. Former lecturer Wisconsin State College, Milwaukee; magazine writer. Former assistant corporation counsel, Milwaukee County 1939-40; assistant general counsel, Marshall Plan, Paris, France, 1949; special prosecutor Milwaukee County grand jury 1950; personal counsel to late Secretary of State Fred Zimmerman in reapportionment case before Wisconsin Supreme Court 1953. Former director White Elm Nursery Co., Hartland, Wis.; former director Marshall and Ilsley Bank, Milwaukee. Entered army as private Jan. 1943; commissioned 2nd lieutenant, Nov. 1943; served in 63rd and 75th infantry divisions 1943-45. Bronze star medal for action at Rhine crossing; bronze battle stars for Normandy, Northern France and central Germany. Married; 4 children. Elected to Congress 1954, re-elected 1956 and 1958. Home Address: 2773 N. Maryland Ave., Milwaukee.

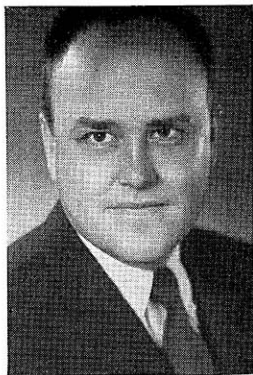
6TH CONGRESSIONAL DISTRICT

Calumet, Fond du Lac, Ozaukee, Sheboygan, Washington, Winnebago Counties.

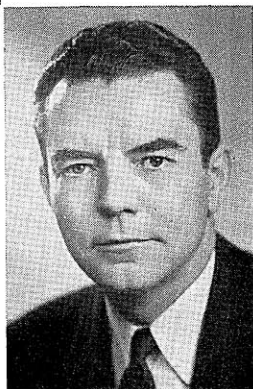
WILLIAM K. VAN PELT (Rep.) born Mar. 10, 1905 in Glenbeulah. Graduated Fond du Lac elementary and high schools. Owner retail fuel company. Father of 2 children, Peter age 20 and Julie Ann age 14. Was delegate to 1944 Republican National Convention and alternate delegate to 1948 convention. Elected to Congress in 1950; re-elected since 1952. Home Address: 47 Oaklawn Ave., Fond du Lac.



VAN PELT



LAIRD



BYRNES



JOHNSON



O'KONSKI

Members of House of Representatives: WILLIAM K. VAN PELT, 6th district; MELVIN R. LAIRD, 7th district; JOHN W. BYRNES, 8th district; LESTER R. JOHNSON, 9th district; ALVIN E. O'KONSKI, 10th district.

7TH CONGRESSIONAL DISTRICT

Adams, Green Lake, Langlade, Marathon, Marquette, Portage, Shawano, Waupaca, Waushara, Wood Counties.

MELVIN R. LAIRD (Rep.) born Sept. 1, 1922. Graduated Marshfield grade and high schools; B.A. Carleton College, 1942. Formerly secretary-treasurer of a lumber company; resigned upon taking office in Congress. A Purple Heart veteran, World War II, he served aboard the destroyer Maddox in Task Force 58 and Pacific 3rd Fleet. Elected to Wisconsin senate in 1946 and re-elected without opposition in 1948. While in Wisconsin legislature, in 1949 and 1951, served as legislative spokesman for former Gov. Oscar Rennebohm and Gov. Walter J. Kohler. Member Wisconsin Commission on Improvement of the Educational System 1947-49 and Joint Legislative Council 1951-53; chairman Taxation Committee of Legislative Council; member Joint Finance Committee 1949-52; Senate Labor and Management Committee 1947-50; Senate Veterans and Military Affairs Committee 1947-52 and its chairman, 1949-52; member Senate Legislative Procedure Committee 1949-51; chairman Wood County Republican Statutory Committee 1949-51; member Wisconsin delegation Republican National Conventions 1948, 1952, 1956; member Republican National Platform Committee 1952 and chairman of Subcommittee on Labor and Public Welfare; member Republican National Platform Committee 1956 and chairman Subcommittee on Agriculture; chairman Wisconsin Republican Party Platform Committee 1950 and 1952. Member of American Legion, 40 et 8, Veterans of Foreign Wars, Disabled American Veterans and B.P.O.E. The past 4 generations of his family have served in the legislature and have been elected to state office. His father, the late Melvin R. Laird, Sr., a former Presbyterian minister, was a Wisconsin state senator; his mother is a former member of the University of Wisconsin Board of Regents. Married Barbara Masters of Indianapolis Oct. 15, 1945; 3 children, John Osborne, Alison, and David Malcolm. Elected to 83rd Congress Nov. 4, 1952; re-elected to 84th, 85th, 86th Congresses. Member House Agricultural Committee 84th Congress; member House Appropriations Committee 83rd, 85th, 86th Congresses; presently serving on following subcommittees: Defense, Military Construction, Commerce, Health, Education, Welfare and Labor. Home Address: 313 E. Third St., Marshfield.

8TH CONGRESSIONAL DISTRICT

Brown, Door, Florence, Forest, Kewaunee, Manitowoc, Marinette, Oconto, Outagamie Counties.

JOHN W. BYRNES (Rep.) born Green Bay June 12, 1913. Attended parochial and public schools in that city; University of Wisconsin B.A. degree in 1936 and LL.B. in 1938. Practiced law in Green Bay. Elected Wisconsin State Senate 1940 where he was majority floor leader and chairman of Judiciary Committee in 1943 legislative session. Married Barbara Preston 1947; 6 children: John Robert, Michael Preston, Bonnie Jean, Charles Kirby, Barbara Harriet, Elizabeth Alice. In 1944 elected to House of Representatives and re-elected since 1946. Member of Committee on Ways and Means. Chairman Republican Policy Committee. Home Office Address: 414 E. Walnut St., Green Bay.

9TH CONGRESSIONAL DISTRICT

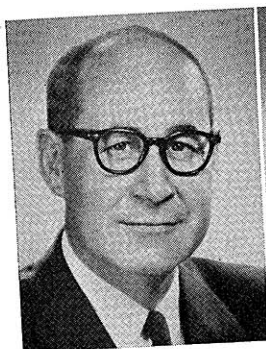
Barron, Buffalo, Chippewa, Clark, Dunn, Eau Claire, Jackson, Pepin, Pierce, St. Croix, Trempealeau Counties.

LESTER R. JOHNSON (Dem.) born at Brandon, Wis. June 16, 1901. Attended Brandon public schools; attended Lawrence College 2 years, discontinued college for one year; entered University of Wisconsin School of Commerce in 1922, majored in economics, graduated 1924. After 14 years association with a retail lumber, feed and coal business, entered University of Wisconsin Law School in 1938 graduating Feb. 1941; admitted to Wisconsin bar Feb. 1941 and began practice of law in Black River Falls. Elected chief clerk of Wisconsin assembly as a Progressive in 1935 and 1937. Elected district attorney of Jackson County as a Progressive in 1942 and 1944; and as a Democrat in 1952. Delegate to the Democratic National Convention in 1952. Married Marjorie Gray Nov. 9, 1954; has 3 daughters by his 1st marriage: Mary Lynn and twins Jane and Jone. In a special election Oct. 13, 1953 elected to fill vacancy caused by death of Congressman Merlin Hull; re-elected in 1954, 1956, 1958. Home Address: Black River Falls.

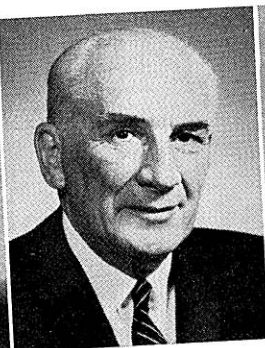
10TH CONGRESSIONAL DISTRICT

Ashland, Bayfield, Burnett, Douglas, Iron, Lincoln, Oneida, Polk, Price, Rusk, Sawyer, Taylor, Vilas, Washburn Counties.

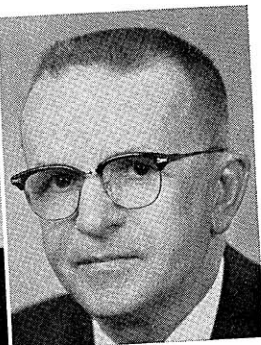
ALVIN E. O'KONSKI (Rep.) born and raised on a farm near Kewaunee. Graduated Kewaunee rural and high schools; Oshkosh State College 1927, Ed.B. history and pol. sci. majors. Graduate work at Iowa and Wisconsin universities, speech and pol. sci. majors. Teacher Omro, Oconto, Pulaski High Schools in Wisconsin; Itasca Junior College in Minn.; Oregon State College in Ore.; University of Detroit in Mich. Educator, journalist, lecturer. Former owner and publisher newspaper at Hurley, Wis. Former owner and operator radio stations at Merrill and Wausau. Ranked first among all congressmen in United Press test in American history. Former president World Bill of Rights Assn., 1945. Voted "most distinguished American for 1945" by foreign language press, for his work against communism and the Yalta agreement. Director World League to Stop Communism, 1947. Present director Free World Forum. Member Katyn Forest Massacre Committee, 1952. Awarded "Palonia Restitutia", highest medal of Free Poland. Married Veronica Hemming, Janesville. Former member Veterans Affairs, Public Works, Education and Labor Committees. Elected in 1942 to 78th Congress and re-elected each time since. Member House Armed Services Committee. Home Address: Mercer.



LAUN
1st District



O'BRIEN
2nd District

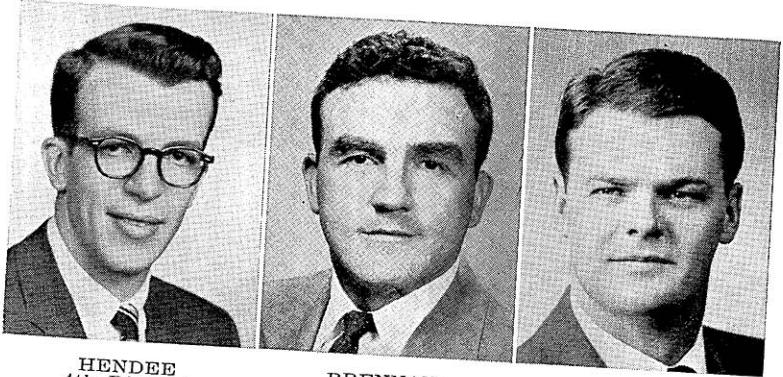


KENDZIORSKI
3rd District

ALFRED A. LAUN, JR. (Rep.) born New Holstein Feb. 14, 1905. Educated New Holstein and Milwaukee public schools. Oberlin College; A.B. Harvard University 1927; M.B.A. Harvard Graduate School of Business Administration 1929. With furniture co. since 1935; president since 1946. Alderman, Kiel, 1945-47. Member State Board of Vocational and Adult Education since 1946; also Board of Trustees of Stout Institute 1946-55. Alternate delegate to Republican National Convention 1952, delegate 1956. 8th district presidential elector, 1952; 8th district Republican chairman, 1952-54. Elected to senate 1954; re-elected 1958. Home Address: 502 River Terrace, Kiel.
1st senatorial district: Door, Kewaunee, Manitowoc Counties.

LEO P. O'BRIEN (Rep.) born July 20, 1893 Fond du Lac. Attended University of Wisconsin; Marquette University; St. Norbert College, DePere. Insurance salesman. Served 4 years as alderman in Green Bay. Veteran World War I and II; in World War II combat navy veteran, 32 months in Pacific including the Solomon-Guadalcanal campaigns. Elected to senate 1952; re-elected 1956. Address: P.O. Box 463, Green Bay.
2nd senatorial district: Brown County.

CASIMIR KENDZIORSKI (Dem.) born Poland Dec. 3, 1898. Elementary and high school education in Poland; evening courses in Milwaukee. From 1928-30 real estate broker, and since has been a machinist and inspector. Past vice president of his local union and member of board on legislation and education. Always been interested and active in civic and labor activities. Elected to assembly in 1946; re-elected in 1948. In 1949 elected to senate; re-elected 1950, 1954, 1958. In 1957 elected Democratic assistant floor leader. Home Address: 2025 S. 14th St., Milwaukee.
3rd senatorial district: 11th, 12th, 14th wards, city of Milwaukee.



HENDEE
4th District

BRENNAN
5th District

MOSER
6th District

KIRBY HENDEE (Rep.) born Mar. 12, 1923 in Milwaukee. Educated Saint Roberts Grade School; Shorewood High School; Holy Cross College 1950; LL.B. University of Michigan Law School 1953. Factory shop clerk 1941-42; practicing attorney since 1953. Member local, state bar assns.; member Holy Name Society and Knights of Columbus. World War II veteran 1943-46 serving in Philippines with field artillery in 1945. Held no public office until his election to the senate in 1956. Chairman Legislative Council's Committee on Mental Health and Problems of Children and Youth, 1958. Member Joint Finance Committee and Joint Survey Committee on Retirement Systems. Home Address: 3047 N. Murray Ave., Milwaukee.

4th senatorial district: Villages of Bayside, Brown Deer, Fox Point, River Hills, Shorewood, Whitefish Bay; city of Glendale and 1st, 18th, 20th wards city of Milwaukee.

JAMES J. BRENNAN (Dem.) born in Milwaukee Feb. 1, 1926. Graduated St. Monica School, Milwaukee; Marquette High School, Milwaukee; A.B. Notre Dame Univ. 1949; LL.B. Marquette Univ. Law School 1952. Since 1952 practicing attorney. World War II veteran; in navy 1944-46. Elected to senate 1958. Home Address: 2813 N. 87th St., Milwaukee.

5th senatorial district: 5th, 9th, 15th wards, city of Milwaukee.

WILLIAM R. MOSER (Dem.) born Oct. 14, 1927 in Chicago. Educated St. Michael's Elementary School, St. John's Cathedral High School, both Milwaukee; B.S. St. Norbert's College; LL.B. Marquette University Law School. Practicing attorney. Former member Advisory Council to Mayor of Milwaukee; director State Street Advancement Council to Mayor of Milwaukee; member state and local bar assns.; past commander St. Rose Post 1286, Catholic War Veterans; judge advocate Wis. Dept. Catholic War Veterans; member Knights of Columbus, Eagles. In army 1945-47. Elected to senate 1956. Business Address: 710 N. Plankinton Ave., Milwaukee.

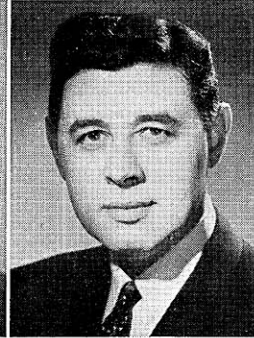
6th senatorial district: 7th, 10th, 13th wards city of Milwaukee.



McPARLAND
7th District



BUSBY
8th District



MAIER
9th District

LELAND S. McPARLAND (Dem.) born Thorp Dec. 18, 1896. Common and high school education at Thorp, attended Oshkosh State Teachers College 2 years, studied law Marquette University. Taught school in South Milwaukee 1919-27; since 1927 engaged in practice of law. City attorney Cudahy 1932-36. In navy 1917-18. Chairman Democratic Organizing Committee of Milwaukee County 1952-53. In 1945, 1947, 1949 sessions Democratic floor leader. Served 7 terms in assembly, Chairman Democratic joint caucus 1953, 1955, 1957. Elected to senate 1954; re-elected 1958. Business Address: 4703 S. Packard Ave., Cudahy.

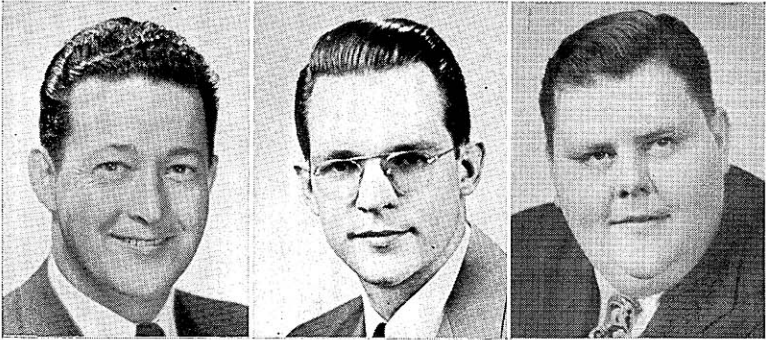
7th senatorial district: Cities of Cudahy, St. Francis, South Milwaukee; 17th, 19th wards (old town of Lake) city of Milwaukee; 5th ward city of West Allis; towns of Franklin, Greenfield, Oak Creek; villages of Greendale, Hales Corners.

ALLEN J. BUSBY (Rep.) a graduate of West Milwaukee public schools, West Allis High School, Milwaukee State Teachers College, University of Wisconsin with degrees of B.A., M.A., and LL.B. Admitted to bar 1928. Principal of high school at Little Chute 1922-24 and instructor West Allis High School 1928-33. Since 1932 village attorney West Milwaukee and member of law firm in Milwaukee. Elected to assembly 1930, 1934. Elected to senate 1936; re-elected 1940, 1944, 1948, 1952, 1956. Home Address: 1673 S. 53rd St., Milwaukee.

8th senatorial district: Village of West Milwaukee, city of Wauwatosa and 1st-4th wards city of West Allis.

HENRY W. MAIER (Dem.) born Feb. 7, 1918. Received B.A. University of Wisconsin in 1940. Served aboard the destroyer, U.S.S. Van Valkenburgh in World War II and was in battles in Iwo Jima and Okinawa. Upon release from service established a general insurance agency and taught workmen's compensation and general liability insurance at University of Wisconsin in Milwaukee. 1956 Democratic nominee for U.S. Senate. Formerly member Wis. Senate Governmental and Veterans Affairs Committee; presently member Committee on Education. Member American Legion, American Federation of Teachers. Elected to senate 1950; re-elected 1954 and 1958. Chosen Democratic floor leader, 1953, 1955, 1957, 1959. Home Address: 2237 N. Booth St., Milwaukee.

9th senatorial district: 2nd, 3rd, 6th wards of city of Milwaukee.



KNOWLES
10th District

ZABORSKI
11th District

KRUEGER
12th District

ROBERT P. KNOWLES (Rep.) born Feb. 25, 1916 at River Falls. Educated River Falls elementary and high schools; B.S. River Falls State College. Since 1938 engaged in insurance and real estate business. Circuit court commissioner since 1945. Member and past president Kiwanis Club and Willow River Rod and Gun Club; member Elks, Butler-Harmon Post #80 Amvets, Wis. Assn. of Insurance Agents. In U.S. army air force, June 1942-Aug. 1945. Elected Apr. 1955 at a special election to fill vacancy caused by resignation of Sen. Warren P. Knowles. Re-elected 1956. Member Legislative Council; chairman 1955-59 interim Legislative Council Committee on State Government Operations which studied efficiency in government. Home Address: New Richmond. 10th senatorial district: Buffalo, Dunn, Pepin, Pierce, St. Croix Counties.

RICHARD J. ZABORSKI (Dem.) born Milwaukee Jan. 7, 1927. Graduated St. Mary Czesz Parochial School, Messmer High School; B.S. Marquette University 1953. Salesman. World War II veteran and army reserve officer. Commissioned infantry officer at 18. Served overseas in Europe with 1st Infantry Division; participated in Nuernberg trials; recalled to active duty 1950; in Korea and Japan as officer in 1st Cavalry Division intelligence officer. Chairman Milwaukee County Democratic Full Employment Conference; delegate to Democratic state conventions. Member American Legion, Holy Name Society, various social, political and scholastic organizations. Elected to senate 1954; re-elected 1958. Home Address: 713 S. 21st St., Milwaukee.

11th senatorial district: 4th, 8th, 16th wards, city of Milwaukee.

CLIFFORD W. KRUEGER (Rep.) born in Madison June 24, 1918. After graduating from high school attended Merrill Commercial College. Presently a sales manager. In 1946 elected alderman, and in 1940 appointed deputy sheriff. Member of senate 1947, 1949, 1951, 1953, 1957. Member interim Legislative Council Committee on Boating. Home Address: 122 N. State St., Merrill.

12th senatorial district: Iron, Lincoln, Oneida, Price, Taylor, Vilas Counties.



PANZER
13th District

LORGE
14th District

CARR
15th District

FRANK E. PANZER (Rep.) attended public schools and Oakfield High School. Was school teacher and telegraph operator; at present engaged in farming. Has held several public offices including school clerk, town chairman, member of Dodge County Board since 1925 and chairman of Dodge County Board since 1940. Elected chairman Board of Managers of Council of State Governments, Dec. 5, 1956. In assembly in 1931; elected to senate in 1934; re-elected in 1942, 1946, 1950, 1954, 1958. Elected president pro tem 1947-59. Home Address: Route 1, Brownsville.

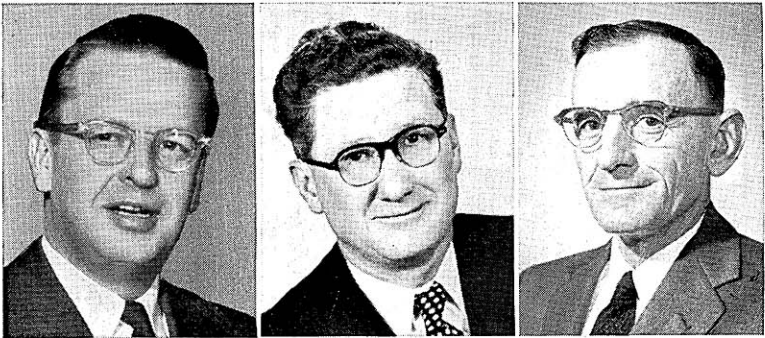
13th senatorial district: Dodge, Washington Counties.

GERALD D. LORGE (Rep.) born July 9, 1922 at Bear Creek, Outagamie County. Graduated grade and high school at Bear Creek; graduate Marquette University Law School. Practicing attorney at Bear Creek. Served in U.S. marines during World War II with duty in the South Pacific Jan. 1941-Dec. 1945. Elected to assembly 1950 and 1952; elected to senate in 1954 to fill unexpired term of a resigned senator; re-elected in 1956. Home Address: 147 Willow St., Bear Creek.

14th senatorial district: Outagamie, Waupaca Counties.

PETER P. CARR (Rep.) born North Jutland, Denmark, Aug. 6, 1890. Educated Chicago public schools, Chicago Business College. Formerly seedsman; member operating group of grocery stores and warehouses in Southern Wisconsin 1931-46; member Janesville wholesale grocery firm 1946-50. Now retired. President Janesville city council 1954. President Wisconsin Seed Dealers Assn. 1929; director of a Madison trust company 1925-31; chairman President's Re-employment Board, Rock County, during depression. Elected to senate 1954; re-elected 1958. Home Address: 524 N. Garfield Ave., Janesville.

15th senatorial district: Rock County.



THOMPSON
16th District

TRAVIS
17th District

HOLLANDER
18th District

CARL WILLIAM THOMPSON (Dem.) born Washington, D.C. Mar. 15, 1914. Graduate Stoughton elementary and high schools, University of Wisconsin Law School 1939. Practicing attorney at Stoughton; home building contractor. Served as alderman, city attorney. Democratic national committeeman 1949 to 1956. Presidential elector 1948. Democratic candidate for governor 1948, 1950. World War II veteran, U.S. army 1942-46, in military intelligence. Elected to assembly 1952; re-elected 1954, 1956, 1958. Elected to senate, special election Apr. 7, 1959, to fill vacancy caused by election of Sen. Gaylord Nelson to office of Governor. Home Address: 614 West St., Stoughton.

16th senatorial district: 21st ward city of Madison; all the towns, villages and cities in Dane County except city of Madison.

ROBERT TRAVIS (Rep.) born May 2, 1909 Platteville. Graduated from Potosi grade and high schools; attended Michigan State College 2 years. From 1930-33 manager of dairy products company in Omaha, Neb. From 1933-40 engaged in farming. World War II veteran, having served in anti-aircraft branch of armed forces. Member of assembly 1947-53. During 1949, 1951, 1953 sessions chairman Assembly Committee on Conservation, member Assembly Committee on Taxation, Committee on Rules. In 1955 member Senate Committee on Agriculture and Conservation. Elected to senate 1954; re-elected 1958. In 1957 and 1959 elected Republican floor leader. Home Address: Platteville.

17th senatorial district: Grant, Green, Iowa, Lafayette Counties.

WALTER G. HOLLANDER (Rep.) born Sept. 8, 1896 in Fond du Lac. Graduated Omro High School. Active farmer for 31 years on farm which has been the Hollander homestead since 1887. Presently operating insurance agency. First elected to town office in 1929. Served as chairman of Town of Springvale and member of Fond du Lac County Board since 1938; chairman of county board since 1953. In 1959 elected president of Wis. County Boards Assn. Has been an active officer in government farm programs, co-operative organizations and agricultural committees. Elected to senate in 1956. Member Committees on Agriculture, Governmental and Veterans Affairs, Committee to Visit State Institutions. Member State Building Commission. Home Address: Route 1, Rosendale.

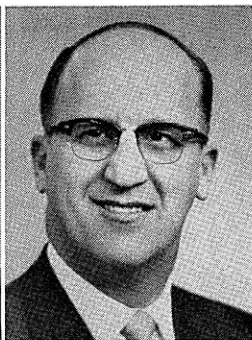
18th senatorial district: Fond du Lac, Green Lake and Waushara Counties.



DRAHEIM
19th District



HUIBREGTSE
20th District



STALBAUM
21st District

WILLIAM A. DRAHEIM (Rep.) born Neenah Dec. 15, 1898. Graduated Neenah elementary and high schools; attended Lawrence College for 2 years. Occupations: mill worker, statistician-accountant, production planner. Formerly sporting goods dealer. Former member Winnebago County board. Member Rotary Club, American Legion, Veterans of Foreign Wars. 40 years of military service in U.S. army, organized reserve and Wisconsin National Guard. Now U.S. army colonel, retired. Elected to senate 1950; re-elected 1954 and 1958. Home Address: 116½ W. Wisconsin Ave., Neenah.

19th senatorial district: Calumet and Winnebago Counties.

HAROLD F. HUIBREGTSE (Rep.) born Aug. 20, 1907, town of Lima, Sheboygan County. Educated Hingham Grade School; Memorial Academy at Cedar Grove, Wis. Vice president of a securities company; also a securities dealer. Formerly salesman and automobile dealer 1929-48. Farm owner since 1944. Member Sheboygan Falls Board of Education for 7 years. Member Sheboygan Kiwanis Club; director of a mutual fire insurance co. Served in assembly 1955 and 1957. Member Joint Committee on Finance and 1957 Governor's Retirement Study Commission. Elected to senate 1958 to fill vacancy caused by death of Sen. Prange. Home Address: 315 Elm St., Sheboygan Falls.

20th senatorial district: Ozaukee, Sheboygan Counties.

LYNN E. STALBAUM (Dem.) born Waterford, May 15, 1920. Educated Racine County rural schools, Racine County School of Agriculture. Since 1951 secretary-treasurer of a milk producers co-op assn. Employed U.S. Dept. of Agriculture, Racine County 1936-44; was administrative officer for federal farm programs for that county from 1939-44; terminated employment when he joined the navy in 1944. World War II veteran, U.S. navy destroyer, in South Pacific; discharged as 1st class petty officer 1946. Has been active in community affairs. Former commander Waterford American Legion; charter member Wind Lake Veterans of Foreign Wars; member, Kiwanis Club of Greater Racine; chairman Democratic Senate Caucus, 1957 and 1959 sessions. Elected to senate 1954; re-elected 1958. Appointed by Gov. Nelson to Citizens Advisory Committee on Tax Impact, 1959. Home Address: 904 Montclair Drive, Racine.

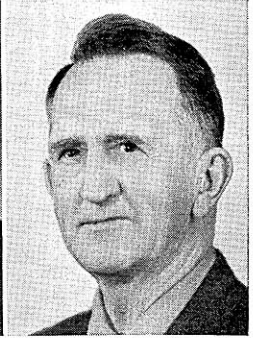
21st senatorial district: Racine County.



TRINKE
22nd District



CAMERON
23rd District



CLARK
24th District

WILLIAM F. TRINKE (Rep.) born on farm in Wisconsin Jan. 25, 1897. Orphaned, he left school at 6th grade, and worked as farm hand, construction laborer, building trades worker, realtor, lawyer and builder. In 1931 entered University of Wisconsin as an adult special, and achieved the record of going from 6th grade to a bachelor's degree in 4 years. In 1937, at age 40, graduated from University of Wisconsin Law School. Served as president of Walworth County Bar Association and state commander of American Legion, 1945-46. World War I veteran, having served in France 32nd (Red Arrow) Division. Nominated to fill vacancy caused by death of Senator Shearer on Oct. 8, 1948. This is his 3rd term in the senate. Home Address: Lake Geneva.

22nd senatorial district: Kenosha, Walworth Counties.

HOWARD W. CAMERON (Dem.) born Chippewa Falls, Apr. 3, 1915. Educated rural school and McDonell Memorial High School, Chippewa Falls; B.E. Superior State College 1941; LL.B. University of Wis. 1945. Since 1946 practicing attorney; formerly a teacher. President Rice Lake Chamber of Commerce 1958; chairman local Red Cross 1947-51; member American, Washington State and Wis. Bar Assns.; member Wis. State Historical Society; member Nat'l Assn. of Claimant's Compensation Attorneys. Elected to senate 1958. Business Address: 102½ N. Main St., Rice Lake.

23rd senatorial district: Barron, Burnett, Polk, Rusk, Sawyer, Washburn Counties.

WILLIAM WALTER CLARK (Rep.) born Plum City July 7, 1885. Graduated Plum City graded school, Ellsworth High School, River Falls Teachers College, attended University of Wisconsin. Taught number of years in country school, high school and Wood County Agricultural School; served as county agricultural agent. Farmer. Has acted as town chairman of town of Hansen and chairman of Wood County Board. Chairman of Committee on Education 1945, 1947, 1949, 1951. Member of Legislative Council 1949, 1951, 1953, 1955, 1957 and chairman of Education Committee of Legislative Council, 1949, 1951, 1955, 1957. Elected to assembly in 1920, and re-elected 1938, 1942, 1944, 1946, 1948, 1950. Elected to senate 1952; re-elected 1956. Member Senate Committee on Education and Public Welfare 1953; chairman 1955, 1957, 1959. Home Address: Route 1, Vesper.

24th senatorial district: Clark, Portage, Wood Counties.



LAURI
25th District

WILKIE
26th District

MILLER
27th District

CARL E. LAURI (Dem.) born Jan. 16, 1924 at Superior. Graduated Superior Central High School 1941; B.S. economics and English, Wisconsin State College at Superior Jan. 1954. Formerly railroad clerk; presently in an advertising agency. World War II veteran, U.S. navy 1942-1946, flying in Pacific Theater; decorated air medal with 4 gold stars in lieu of additional air medals; Distinguished Flying Cross; Pacific-Theater ribbon with 4 battle stars; Philippine Liberation Medal. Member Disabled American Veterans, Veterans of Foreign Wars, Loyal Order of Moose, Junior Chamber of Commerce, and various northern Wis. conservation clubs. Elected to senate 1954; re-elected 1958. Home Address: 2710 N. 22nd St., Superior.

25th senatorial district: Ashland, Bayfield, Douglas Counties.

HORACE W. WILKIE (Dem.) born Jan. 9, 1917 in Madison. Educated Madison public schools; B.A. University of Wisconsin 1938; LL.B. George Washington University, Wash. D.C. 1944. Graduate work in public administration University of Minnesota, American University, National Institute of Public Affairs. For 3 years administrative analyst U.S. Bureau of Budget; administrative consultant to U.S. State Dept. 1949. Practicing attorney since 1944. Member and chairman Madison Housing Authority 1945-50; member National Assn. of Housing and Redevelopment Officials, Mayor's Committee on Madison Metropolitan Development, American Society for Public Administration, local, state and national bar assns. Awarded Outstanding Young Man Award for Civic Service in Madison 1947. World War II veteran; in coast guard 1942-45. Elected to senate 1956. Home Address: 3810 Council Crest, Madison.

26th senatorial district: City of Madison except 21st ward.

JESS MILLER (Rep.) born 1884 in town of Eagle, Richmond County. Educated in public schools and is farmer and auctioneer by occupation. Has held a number of public offices: chairman of town of Eagle, chairman of county highway committee, county mediation board and county Republican committee. Elected to senate in 1938; re-elected 1942, 1946, 1950, 1954, 1958. Home Address: Richland Center.

27th senatorial district: Columbia, Crawford, Richland, Sauk Counties.



DONNELLY
28th District



DEAN
29th District



LaFAVE
30th District

DAVIS A. DONNELLY (Dem.) born Mar. 9, 1927 in Augusta, Wis.; son of Rev. and Mrs. W. J. Donnelly. Graduated Augusta elementary and high schools; B.S. degree Wis. State College, Eau Claire; LL.B. Univ. of Wis. Law School 1957. Practicing attorney in Eau Claire. Previous occupations include commercial fisherman in Alaska, machinist, salesman, messenger Wis. Assembly 1955. Volunteered in World War II and Korean War in U.S. navy; European and Pacific theatres. Elected to senate 1956 while a senior at Univ. of Wis. Law School. Member 1959 Senate Committee on Judiciary; Citizens' Advisory Committee on Tax Impact, 1959; state and local bar assns. Business Address: 131 S. Barstow St., Eau Claire.

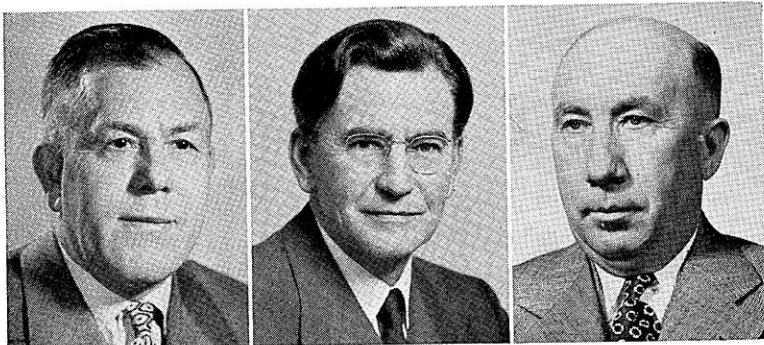
28th senatorial district: Chippewa, Eau Claire Counties.

ROBERT W. DEAN (Dem.) born July 20, 1923 at Tomahawk. Educated St. Mary's School, Tomahawk; Tomahawk High School; LL.B. Univ. of Wis. 1950. Presently practicing attorney. Formerly grocery clerk, construction worker, paper mill employe, newspaper advertising salesman and associate in district attorney's office. U.S. army air force 1943-46. Attorney for Alma Center and Taylor 1950-52. Past commander local VFW. Admitted to practice before U.S. Treasury Dept. Member county, state and Amer. bar assns.; County Committee for Physically Handicapped; American Legion; Knights of Columbus; Elks; Moose; Eagles; Lions Club and Civic Club; Wausau Taxpayers' League; Chamber of Commerce and Jr. Chamber of Commerce. Elected to senate 1958. Home Address: 601 Johnson St., Rothschild.

29th senatorial district: Marathon, Shawano Counties.

REUBEN LA FAVE (Rep.) born at Oconto. Member of county board 4 terms. Chairman Sportsmen's Congress; president Northeastern Wis. Conservation Council and Northeastern Wis. Bayshore Trap League; member of Yacht Club, Kiwanis Club, Wisconsin Service Assn. and various civic organizations. In 1953 received Milwaukee Sentinel award for outstanding achievement in conservation field. During World War II chief petty officer in auxiliary coast guard. Served 3 terms in assembly, chairman Assembly Conservation Committee and member Legislative Council 1955-56. Elected to senate 1956. Chairman Legislative Council Committee on Conservation and vice chairman Menominee Indian Study Committee 1957-59. Member 1959-60 Committees on Conservation, and Governmental and Veterans' Affairs and Joint Survey Committee on Retirement Systems. Home Address: 636 Brazeau Ave., Oconto.

30th senatorial district: Florence, Forest, Langlade, Marinette, Oconto Counties.



LEVERICH
31st District

BICE
32nd District

DEMPSEY
33rd District

JAMES EARL LEVERICH (Rep.) born on farm in town of Angelo, Monroe County; still resides there. Graduate of Sparta High School, Madison College, University of Wisconsin College of Agriculture. Is a dairy farmer, fruit grower and farm co-op leader; served as school clerk, town clerk, town chairman, member of Monroe County Board. For many years vice president and director of a bank; president of 2 co-op creamery assns. and a cooperative livestock shipping assn. Was agricultural member of State Board of Vocational and Adult Education as well as member of various state-wide dairy and other agricultural committees. Organized the anti-oleo demonstration at Madison in 1931 which resulted in elimination of oleo in Wisconsin. Elected to senate in 1934, 1942, 1946, 1950, 1954, 1958. Home Address: Route 1, Sparta.

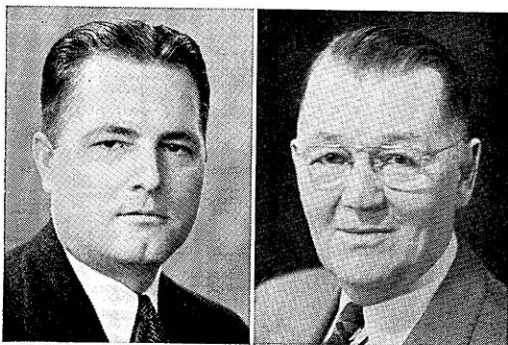
31st senatorial district: Adams, Juneau, Marquette, Monroe, Vernon Counties.

RAYMOND C. BICE (Rep.) born La Crosse Apr. 5, 1896. Educated La Crosse elementary and high schools and University of Wisconsin Extension Division. Presently engaged in retail lumber business. Public and civic activities include president La Crosse Vocational Adult School Board, vice chairman board of trustees of Oak Forest Sanatorium, member of numerous other civic organizations. Has been member and officer La Crosse County Board, chairman county park commission, president La Crosse County Chamber of Commerce and La Crosse Businessmen's Club. Overseas with army in World War I. Author Wis. present speed limit law. Served 4 terms in assembly; elected to senate April 7, 1953. Re-elected 1956. In 1957 received award for outstanding civic duty in La Crosse. Home Address: 2406 State St., La Crosse.

32nd senatorial district: Jackson, La Crosse, Trempealeau Counties.

CHESTER E. DEMPSEY (Rep.) born Merton, Waukesha County, July 20, 1896. Owns and operates modern dairy farm of 300 acres which has been homestead of Dempsey family since early pioneer days. Educated in county schools and has always been a close student of farming and farm problems. Was a member of Waukesha County Board and has held various school and township offices. Elected to senate in 1934, 1946, 1950, 1954, 1958. Home Address: Route 1, Hartland.

33rd senatorial district: Jefferson and Waukesha Counties.



LARSEN
Chief Clerk

DAMON
Sergeant at Arms

LAWRENCE R. LARSEN born Racine Mar. 23, 1897. Educated in elementary and high schools of that city. Served in World War I with Headquarters Company at Camp Shelby, Mississippi. Elected chief clerk of senate in 1935 and unanimously re-elected in each succeeding session through 1945. In 1955, 1957, 1959 again unanimously elected chief clerk of senate. Member of 1951, 1953 assembly. Home Address: 1028 Russet St., Racine.

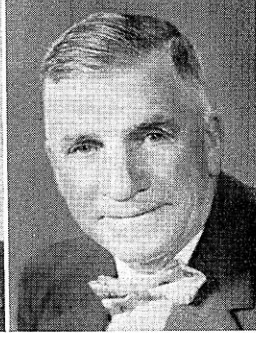
HAROLD E. DAMON born at Edgerton, Minnesota, Oct. 3, 1885. In 1888 came to Wisconsin where he has since resided. After graduation from high school attended Wausau Business College. At present engaged in insurance business. His public offices include alderman and supervisor, deputy sheriff and deputy clerk of court. In 1943 served as assistant sergeant at arms; in 1944 as acting sergeant at arms. Since 1945 has held the office of sergeant at arms of the senate. Home Address: 926 Washington St., Wausau.



TREMAIN
Adams, Juneau,
Marquette



BARABE
Ashland, Bayfield

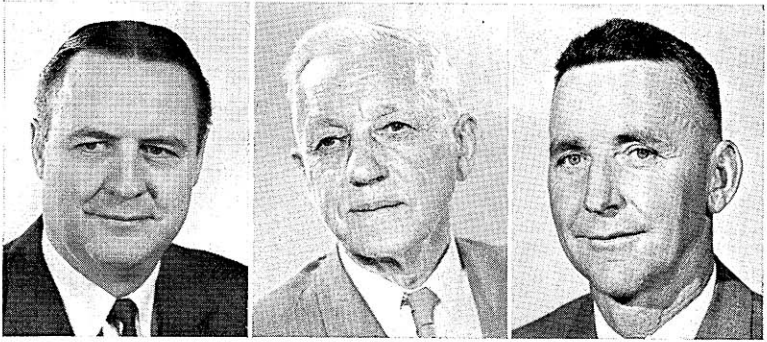


MIREAU
Barron

BEN TREMAIN (Rep.) born Feb. 25, 1888 in Monroe County. Graduated elementary and Mauston High Schools. Engaged in retail business for 26 years; now retired. Owner and manager of 2 farms. Member school board 1925-40; village president 1925-40; member county board 1925-56. Assemblyman 1931, 1947-53, 1957, 1959. Home Address: Hustler.

ROBERT F. BARABE (Dem.) born at Mellen June 14, 1917. Educated Mellen elementary and high schools. Merchant for past 15 years. World War II veteran, overseas armored division 1942-46. Alderman and mayor of Mellen 1947-58; county board member 1947-49. Member American Legion and Veterans of Foreign Wars. Elected to assembly 1958. Home Address: Mellen.

GEORGE MIREAU (Dem.) born Sept. 6, 1888 in town of Doyle, Barron County. Graduated from rural school. Since 1920 engaged in farming. Town chairman, 1935-58; county board member 1935-58; chairman county board 1945-47. For over 15 years president of board of directors of a butter and cheese co. Elected to assembly 1958. Home Address: Route 1, Rice Lake.



QUINN
Brown, 1st

DEERING
Brown, 2nd

VANDERPERREN
Brown, 3rd

JEROME QUINN (Rep.) born Green Bay May 23, 1910. Graduated grade and high schools; attended University of Wisconsin. Merchant and real estate operator. Former alderman of Green Bay; former supervisor Brown County; former member of Green Bay Board of Education. Member of Elks, Green Bay Assn. of Commerce. Elected to assembly 1954; re-elected 1956, 1958. Member Assembly Highway Committee and Committee on Municipalities in 1957; member Legislative Council's Committee on Highways 1957-59. Member Committee on Commerce and Manufactures 1959 and Committee on Municipalities 1959. Member G.O.P. Assembly Policy Committee 1959 and G.O.P. Assembly Platform Committee 1959. Home Address: 912 Howard St., Green Bay.

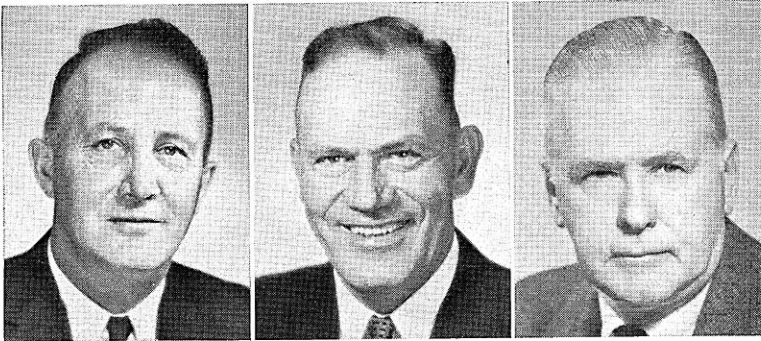
Brown County, 1st district: 3rd, 6th, 13th-24th wards city of Green Bay.

A. A. DEERING (Rep.) born in 1888 in Shawano County. Educated in elementary and high schools. Presently retired; formerly a bus driver. Undersheriff 1929. President of union 15 years; member city industrial development authority; vice president community chest for 5 years; Red Cross worker. Legislative representative Green Bay Labor Council. Elected to assembly 1958. Home Address: 1254 Crooks St., Green Bay.

Brown County, 2nd district: Towns of Allouez, Preble; 1st, 2nd, 4th, 5th, 7th-12th wards, city of Green Bay.

CLETUS J. VANDERPERREN (Dem.) born Mar. 4, 1912 in town of Pittsfield. Attended elementary school. Owner and operator of a farm. County board member; served on its agricultural, reforestation and conservation committee; roadside zoning and planning committee; safety committee; and war memorial and arena committee; chairman 8 years and supervisor 4 years town of Pittsfield; treasurer tri-county fire dept. Member Farm Bureau 18 years; president local dairy herd improvement co-op. Elected to assembly 1958. Home Address: Route 5, Green Bay.

Brown County, 3rd district: All towns, cities and villages in the county except towns of Allouez and Preble, and the city of Green Bay.



ROHL
Buffalo, Pepin, Pierce

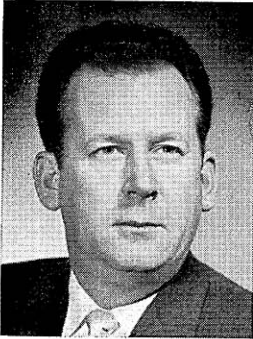
DUEHOLM
Burnett, Polk

HIPKE
Calumet

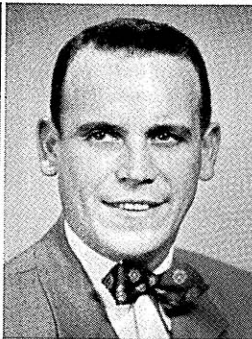
EDWIN C. ROHL (Dem.) born July 15, 1908 in town of Troy, St. Croix County. Raised and educated in St. Croix County. Since 1932 operated own farm. Member Pierce Valley School Board 1943-53; active member Farmers' Union 1952-58. Elected to assembly 1958. Home Address: R. 1, Prescott.

HARVEY L. DUEHOLM (Dem.) born Jan. 29, 1910 in Bone Lake Township, Wis. Graduated grade and attended high school. A dairy farmer. Town chairman since 1945; county board chairman 1957-59. Elected to assembly 1958. Home Address: Luck.

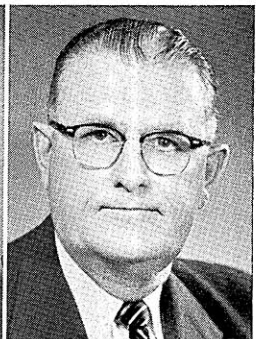
GILBERT J. HIPKE (Rep.) born July 12, 1898 at New Holstein. Graduated elementary and high schools; B.S. in agriculture Univ. of Wis. 1921. Since 1921 a food processor and farmer. Alderman 1930-34; county board supervisor 1934-58; serving 12th year as chairman of county board's finance committee; clerk New Holstein board of education 1943-58. Past commander local American Legion post; past president Wis. Cannery Assn.; past president Wis. Horticultural Society and Wis. Apple Institute; director Nat'l Cannery Assn.; organizer and chairman county civil defense in World War II. World War I veteran. Elected to assembly 1958. Business Address: Park and Broadway, New Holstein.



DORR
Chippewa



NIKOLAY
Clark

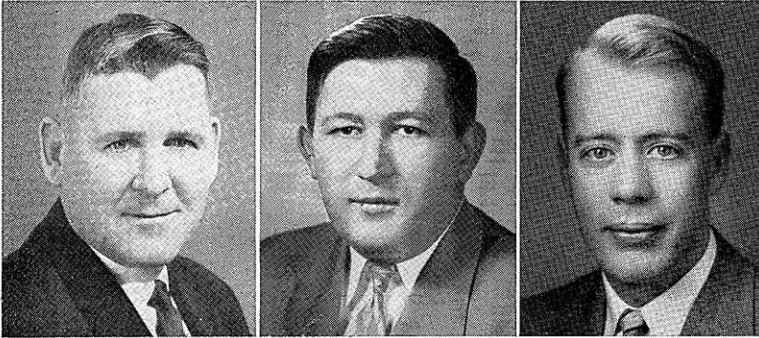


BIDWELL
Columbia

CLIFFORD E. DORR (Dem.) born Aug. 11, 1920 in New Auburn. Educated Chippewa Falls grade and high schools. Sheriff 1955-58; police officer 1946-54. Veteran World War II, with service in U.S. army 1940-45. Elected to assembly 1958. Home Address: 820 Wilson St., Chippewa Falls.

FRANK L. NIKOLAY (Dem.) born Sept. 1, 1922 in town of Day, Marathon County. Graduated Abbotsford schools; LL.B. Univ. of Wis. 1948. Practicing attorney since 1948. U.S. Attorney, western dist. Wis. 1952-54; district counsel OPS, Green Bay, 1951; village attorney, Abbotsford, 1949-50, 1954 to date; city attorney, Colby, 1958 to date; county supervisor 1949-50, 1957-58; Clark County asst. district attorney 1955-56. In army 1940-41; navy 1943-46. 32nd Div. National Guard member 1938-40, 1948 to date; presently asst. judge advocate general. Since 1957 member Clark County Welfare Bd. Member Democratic State Administrative Committee since Oct. 1957. On Assembly Chief Clerk's staff 1943. Elected to assembly 1958. Business Address: Abbotsford.

EVERETT V. BIDWELL (Rep.) born Houston, Minn. Oct. 22, 1899. Attended Minnesota rural schools and University of Minnesota. Formerly a farmer, ice cream manufacturer and salesman; now engaged in manufacture of ice cream and vice president of bank. Supervisor Columbia County Board for 10 years; former director Portage Chamber of Commerce and State Assn. of Ice Cream Manufacturers. Serving 4th term in assembly. Member Committees on Public Welfare and State Affairs 1955 and 1957. Business Address: 210 W. Edgewater St., Portage.



COSGROVE
Crawford, Richland

HENRY
Dane, 1st

RISSER
Dane, 2nd

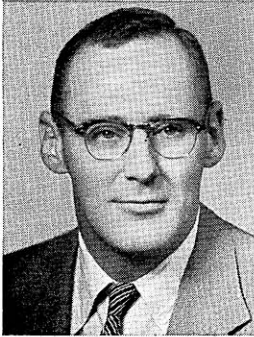
FRANK J. COSGROVE (Dem.) born Oct. 22, 1914 at Viola. Graduated elementary and high schools. Since 1950 insurance agent; previously a farmer. Town supervisor 1940-42. Supervisor Viola soil conservation district; former director and president Richland Center Chamber of Commerce; president local Kiwanis Club, 1957. Elected to assembly 1958. Home Address: 514 N. Central Ave., Richland Center.

GLENN L. HENRY (Dem.) born Aug. 25, 1921 in Tomah. Graduated Madison grade and high schools; B.A. Univ. of Wis. 1942; LL.B. Univ. of Wis. 1947. Practicing attorney since 1953. Dane County assistant district attorney 1947-50, 1952-53; Madison alderman 1956-58. World War II veteran; U.S. navy 1942-46, 1950-52. Elected to assembly 1958. Business Address: 2805 E. Washington Ave., Madison.

Dane County, 1st district: 6th, 7th, 12th, 15th-18th wards, city of Madison.

FRED A. RISSER (Dem.) born Madison May 5, 1927. Educated Madison public schools, Carleton College, University of Wisconsin. B.A. and LL.B. University of Oregon. Practicing attorney. Member of the Oregon and Wisconsin Bar Associations. World War II veteran. Elected to assembly 1956, re-elected 1958. Member Taxation Committee 1956; Assembly chairman Joint Committee on Finance 1959; vice chairman Committee on Rules 1959. Member State Building Commission and Emergency Board 1958-59. Business Address: 109 W. Main St., Madison.

Dane County, 2nd district: 1st, 2nd, 3rd, 4th, 8th, 9th, 14th wards, city of Madison.



CATES
Dane, 3rd



BLASKA
Dane, 4th



O'MALLEY
Dane, 5th

RICHARD L. CATES (Dem.) born New York City Nov. 22, 1925. Graduated grade and high schools; B.A. Dartmouth College; L.L.B. Univ. of Wis. 1951. Practicing attorney since 1951. Deputy Dane County district attorney July 1957-July 1959. World War II veteran, U.S. Marine Corps 1943-45, 1951-52. Elected to assembly 1958. Home Address: 5401 Hammersley Road, Madison.

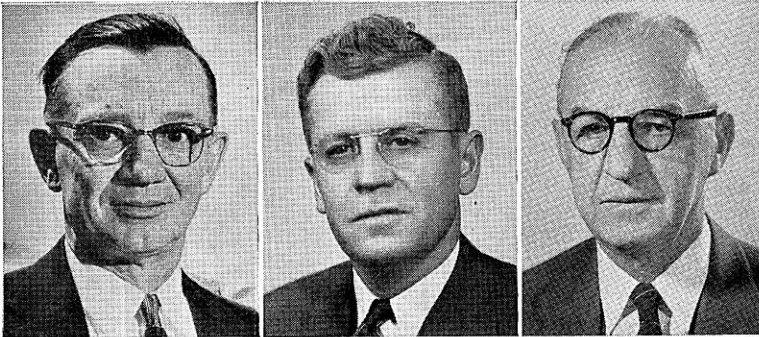
Dane County, 3rd district: 5th, 10th, 11th, 13th, 19th, 20th wards, city of Madison.

JEROME L. BLASKA (Dem.) born July 4, 1919 at Sun Prairie. Educated elementary and high schools. Presently a farmer. Field manager for a canning company 1939-42. Member school board 8 years; clerk school board 1950 to date; ACS committeeman; member various farm organizations; member volunteer fire department 10 years; member Veterans of Foreign Wars and American Legion. World War II veteran, 1942-46. Elected special election Apr. 7, 1959 to fill vacancy caused by resignation of Carl Thompson. Home Address: Rt. 2, Sun Prairie.

Dane County, 4th district: Towns of Albion, Blooming Grove, Bristol, Burke, Christiana, Cottage Grove, Deerfield, Dunkirk, Dunn, Medina, Pleasant Springs, Rutland, Sun Prairie, Windsor, York; villages of Cambridge, Cottage Grove, Deerfield, DeForest, McFarland, Marshall, Monona, Rockdale, Sun Prairie; city of Stoughton.

DAVID D. O'MALLEY (Dem.) born Nov. 12, 1912 at Waunakee. Graduated local elementary and high schools; attended University of Wisconsin 1936-38. A lifetime farmer. Village supervisor 1957-59; county board member; local PMA chairman 1940-50; vice president Waunakee civic club; chairman Dane County Probation Committee; secretary county civil defense committee; delegate Madison Welfare Council. Elected to assembly 1958. Home Address: 315 W. Main St., Waunakee.

Dane County, 5th district: Towns of Black Earth, Berry, Blue Mounds, Cross Plains, Dane, Fitchburg, Madison, Mazomanie, Middleton, Montrose, Oregon, Perry, Primrose, Roxbury, Springdale, Springfield, Vermont, Verona, Vienna, Westport; villages of Black Earth, Blue Mounds, Cross Plains, Dane, Maple Bluff, Mazomanie, Middleton, Mt. Horeb, Oregon, Shorewood Hills, Verona, Waunakee, and the parts of villages of Belleville and Brooklyn in Dane County; 21st ward city of Madison.



GENZMER
Dodge, 1st

NITSCHKE
Dodge, 2nd

GRAASS
Door, Kewaunee

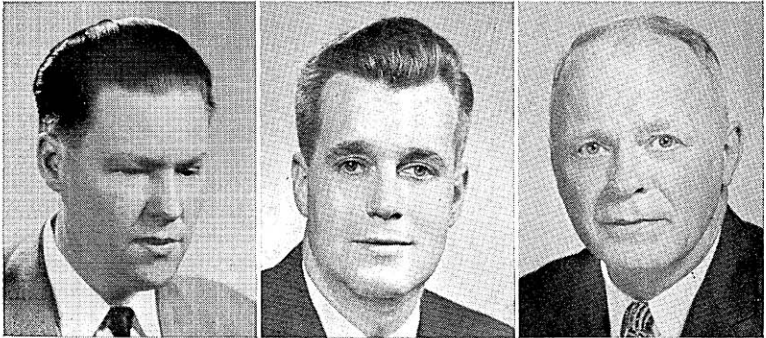
ELMER L. GENZMER (Rep.) born Jan. 3, 1903 Mayville. Attended Milwaukee State Teachers College; Marquette Law School 1923-24. President Mayville Metal Workers Union since Jan. 1, 1957. Justice of peace, Mayville, 1930-42. Mayor of Mayville 1942-56. Serving 13th consecutive term in assembly since 1935. "Has heard all the questions, listened to all the answers (has, in fact, contributed many of the latter himself). Yet keeps an interest as each session revives debate on whatever is yet unsettled. No longer bothers about minor bills that agitate his colleagues, unless his irrepressible sense of humor moves him to slay an especially obtuse newcomer. Never calculates on which side of an issue lie the most votes." Member Committee on Taxation. Home Address: 435 N. Main St., Mayville.

Dodge County, 1st district: see 1958 Blue Book, page 39.

ELMER C. NITSCHKE (Rep.) born Burnett May 20, 1911. Educated in elementary and high schools of Dodge County. Is a real estate broker and insurance agent. Was school board director and deputy sheriff; member of Lions Club, Elks Club, and Dodge County Insurance Agents' Assn. This is his 6th term. Home Address: 203 Hamilton St., Beaver Dam.

Dodge County, 2nd district: Towns of Beaver Dam, Burnett, Calamus, Chester, Elba, Fox Lake, Lowell, Oak Grove, Portland, Trenton, Westford; villages of Lowell, Reeseville, and east ward of Randolph; cities of Beaver Dam, Fox Lake, Juneau, and 1st-4th wards of city of Waupun.

FRANK N. GRAASS (Rep.) born Sturgeon Bay Aug. 19, 1885. Graduated Sturgeon Bay High School 1905. Entered forest seed business. Was director of a fruit growers co-operative. Served 2 terms as president Door County Chamber of Commerce; 12 years as legislative counsel for state conservation organizations; was among sponsors of the basic state conservation laws. Served on advisory board of Wisconsin Conservation Commission 4 years, secretary of Commission on Interstate Cooperation; member Council of State Governments board of managers; chairman Great Lakes Fisheries Committee; member Great Lakes Area Council. Was Governor Goodland's legislative and financial secretary over 4 years; served in Executive Office under Governor Rennebohm. Member of assembly 1917-19, 1935-41; re-elected in 1950, 1952, 1954, 1956, 1958. Home Address: Sturgeon Bay.



PERALA
Douglas, 1st

CHRISTOPHERSON
Douglas, 2nd

LUND
Dunn

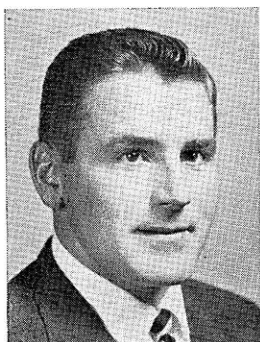
REINO A. PERALA (Dem.) born Maple, Wisconsin Aug. 28, 1915. Attended Corner School at Maple, Wisconsin School for Blind, Superior State College, University of Wisconsin 1938-43, LL.B. 1943. Practicing attorney; operator of a hotel in Superior; justice of peace. Elected to assembly 1952; re-elected 1954, 1956, 1958. Home Address: 1706 Broadway St., Superior.

Douglas County, 1st district: 4th-16th wards, city of Superior.

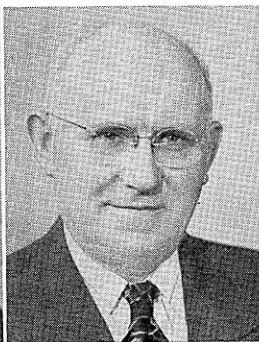
FRANK W. CHRISTOPHERSON, JR. (Dem.) born May 24, 1927 in Superior. Educated St. Francis Grade School, Superior East High School, Superior State College. Since 1945 a locomotive fireman. County supervisor 1956 to date; vice chairman county board 1957 to date. World War II veteran; army air corps. Elected to assembly 1958. Home Address: 2414 E. 6th St., Superior.

Douglas County, 2nd district: Towns of Amnicon, Bennett, Brule, Cloverland, Dairyland, Gordon, Hawthorne, Highland, Lakeside, Maple, Oakland, Parkland, Solon Springs, Summit, Superior, Wascott; villages of Lake Nebagamon, Oliver, Poplar, Solon Springs, Superior; 1st, 2nd, 3rd, 17th, 18th, 19th, 20th wards, city of Superior.

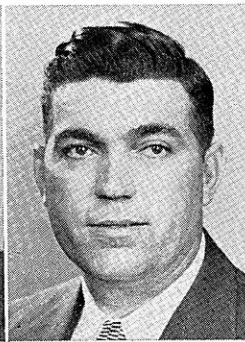
EINER PETER LUND (Dem.) born in Sweden in 1903. Educated Wis. elementary and high schools; Ph.B. Carroll College. Proprietor clothing store; formerly history teacher, track and football coach. Member local school board 1956 to date; director local chamber of commerce 1957-58; area representative Eau Claire State College; member Rotary. Elected to assembly 1958. Business Address: 606 Broadway, Menomonie.



GOETHEL
Eau Claire, 1st



PRITCHARD
Eau Claire, 2nd



GRAY
Florence, Forest,
Langlade

KARL J. GOETHEL (Dem.) born Apr. 7, 1930 in Eau Claire. Graduated Eau Claire elementary and high schools; B.A. Econ. Notre Dame 1952; LL.B. Notre Dame 1957. Practicing attorney since 1957. Korean War veteran, in army 1953-55. Elected to assembly 1958. Home Address: 603 2nd Ave., Eau Claire.

Eau Claire County, 1st district: 1st-3rd, 5th-10th, 13th wards, city of Eau Claire.

JOHN T. PRITCHARD (Dem.) born Dec. 20, 1884 in Caernarvon, Wales; received his early education there. In 1905 came to America. Studied in the College of Agriculture at the University of Wisconsin for 2 years. Since then he has engaged in farming, moving to Eau Claire County in 1913. In 1943 selected by the Eau Claire chapter of Future Farmers to receive the certificate of recognition at the Wisconsin State Fair. This award was made to him for outstanding accomplishments as a farmer in contributing to the education and training of rural youth in agriculture. Has held various public offices and for 12 years was a member of the county board and chairman of its finance and resolution committees. Serving 13th term in the assembly. Member Committees on Agriculture, Commerce and Manufactures, and Committee to Visit State Institutions. Home Address: Route 28, Eau Claire.

Eau Claire, 2nd district: All towns and villages of county; cities of Altoona, Augusta; and 4th, 11th, 12th, 14th, 15th wards city of Eau Claire.

JOHN R. GRAY (Dem.) born May 14, 1925 in Bryant, Wis. Attended Langlade County schools. Sheriff Langlade Co. 1955-59; Antigo police patrolman 1952-55; railroad fireman 1946-52. Served in army 1942-46. President Wis. Sheriffs and Deputy Sheriffs Assn. Elected to assembly 1958. Home Address: 307 Virginia St., Antigo.



McESSY
Fond du Lac, 1st

SCHLUETER
Fond du Lac, 2nd

HARPER
Grant

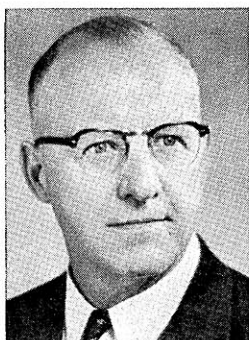
EARL F. McESSY (Rep.) born Feb. 12, 1913 in Fond du Lac. Graduated Fond du Lac High School; B.S. Marquette University, 1939. Born on farm; worked as factory laborer. Formerly purchasing agent, traffic officer, undersheriff; presently in real estate and insurance business. Chairman Red Cross chapter 1957-58; president local P.T.A. 1953-55; vice president Central Council of Education 1953-55; Chairman Elk's youth activity committee 1958-59. Lieutenant in navy 1942-46, with South Pacific amphibious forces; 7 battle stars, 3 citations. Elected to assembly 1956; re-elected 1958. Home Address: 361 Forest Ave., Fond du Lac.

Fond du Lac County, 1st district: Town of Fond du Lac; village of North Fond du Lac; city of Fond du Lac.

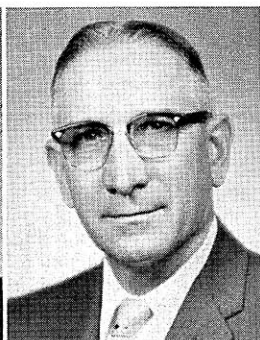
FRED W. SCHLUETER (Rep.) Educated public schools; attended insurance short courses, University of Wisconsin. General insurance agent. Clerk Town of Ripon since 1928. Member board of directors mutual fire insurance co. 1936; president 1942-49; secretary since 1949. Member Ripon Rotary Club. Serving 3rd term in legislature. Member Assembly Committees on Agriculture and Taxation 1955 and 1957. Member 1959 Assembly Committee on Agriculture. Home Address: P.O. Box 32, Ripon.

Fond du Lac County, 2nd district: Towns of Alto, Ashford, Auburn, Byron, Calumet, Eden, Eldorado, Empire, Forest, Friendship, Lamartine, Marshfield, Metomen, Oakfield, Osceola, Ripon, Rosendale, Springvale, Taycheedah, Waupun; villages of Brandon, Campbellsport, Eden, Fairwater, Oakfield, Rosendale, St. Cloud; city of Ripon, and 5th, 6th wards city of Waupun.

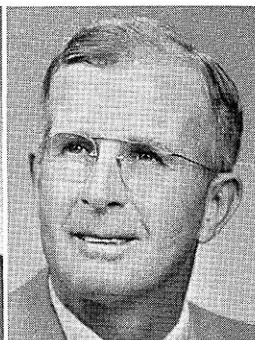
HUGH HARPER (Rep.) born Dec. 24, 1885. Attended Lancaster elementary schools, Madison Central High School; B.A. University of Wisconsin; attended U.W. agricultural courses. Active in athletics in university, serving 3 years on basketball team. Selected by the Helm's Athletic Foundation in 1908 as one of the top 10 college basketball players. For 6 years with Company F, 3rd Wisconsin Regiment and member of its 1910 A.A.U. champion basketball team. Retired farmer. Has served as school board member, town chairman, president Wis. County Board's Assn. Former officer American Society of Equity, Grant County Farm Bureau; former president Wis. Farm Bureau and director Amer. Farm Bureau Fed. Re-elected in 1958 to 9th term in assembly. Home Address: 1016 W. Maple St., Lancaster.



STAUFFER
Green



JAHNKE
Green Lake, Waushara

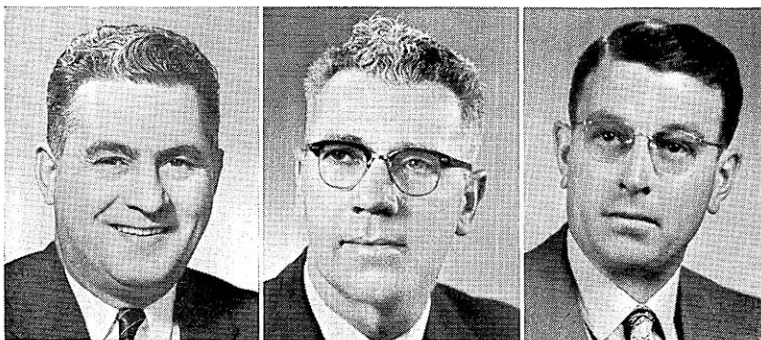


CALVERT
Iowa, Lafayette

CHRIST M. STAUFFER (Rep.) birth date May 25, 1896. Born and raised on farm in Monticello; farmed with brother as partner until 1918. Attended elementary school, 2 years high school. Blacksmith, horse shoer, welder 1919-56. Now semiretired. Village president 1935-51; fire chief 1928-48; president grade and high school boards of education 1930-43; on selective service board 2 years; Green County school committee 2 years; vice president League of Wisconsin Municipalities 3 years; president businessmen's club. Active in civic, church and fraternal organizations. Past commander local American Legion. World War I veteran, 7th Battalion Headquarters 1918-19. Elected to assembly 1956; re-elected 1958. Home Address: Monticello.

FRANKLIN JAHNKE (Rep.) born Apr. 20, 1900 in Town of Marquette. Educated Green Lake County public schools. Lifetime farmer; owns general dairy farm producing Grade "A" milk; raises purebred hogs; member dairy herd improvement assn. Town assessor 1932; town chairman since 1933; county board supervisor since 1933 and chairman 1944-59. President Grand River Rural Fire District; member Kiwanis Club. Member State Banking Review Board 1937-43; president Wis. Assn. of Soil Conservation District Supervisors 1954-56; formerly vice president and director of a co-operative assn. Member Legislative Council's 1957-58 Committee on Water Resources. Elected to assembly 1956; re-elected 1958. Home Address: Route 3, Markesan.

WALTER B. CALVERT (Rep.) born Dec. 23, 1904 at Benton. Educated Benton public schools and University of Wisconsin; B.S. Whitewater State College. Commercial teacher 1926-37; engaged in farming since 1937; high school principal 1944-45. Public offices include town chairman, county supervisor, chairman county board 1951-57. Member Lions Club 27 years; past president Sturgeon Bay and Benton Lions Clubs. Elected to assembly 1954; re-elected 1956 and 1958. Home Address: Benton.



ALFONSI
Iron, Oneida, Vilas

HARDIE
Jackson, Trempealeau

WACKETT
Jefferson

PAUL R. ALFONSI (Rep.) born Feb. 13, 1908 in Pence, Wis. Educated public schools, Whitewater State College, Univ. of Wis. For past 2 years engaged in insurance and accounting business. Business education teacher in high school 1927-33; supervising principal Minocqua schools 1948-55. Town chairman 1935-43; assemblyman 1933-41; speaker of assembly 1937; assembly floor leader, Progressive Party, 1935 and 1939. In U.S. army 1943-46. Elected to assembly 1958. Home Address: Minocqua.

KEITH HARDIE (Dem.) born town of Franklin in Jackson County May 16, 1910. Educated in Wilson Creek School, North Bend, Wisconsin. Born on farm, engaged in farming until 1933; then a carpenter and engaged in trucking. Presently operates a garage and service station at Franklin, where he resides. Member school board 1942-45. Elected to assembly 1952; re-elected 1954, 1956, and 1958. Elected assistant Democratic floor leader 1957; elected majority floor leader 1959. Home Address: Route 1, Taylor.

BYRON F. WACKETT (Rep.) born Mar. 21, 1912 at Randolph. Attended Randolph public schools. Former salesman, now a service station operator. Mayor of Watertown 1946-49. Chairman Watertown Chapter Red Cross 1950-52. Former president State Association of Petroleum Retailers. Elected to assembly 1952; re-elected 1954, 1956, 1958. Home Address: 601 Washington St., Watertown.



MOLINARO
Kenosha, 1st

MORTON
Kenosha, 2nd

PETERSON, J.
La Crosse, 1st

GEORGE MOLINARO (Dem.) born Oct. 1, 1902 Kenosha. Educated Kenosha public schools and Kenosha Business College. Employed as an auto worker. 1939-47 served continuously as member of county board. Director and life member Kenosha County Fair Assn. Member of Legislative Council, 1951-58 and in 1951-52 a member of its Committee on the State Budget. Member Joint Committee on Finance 1951-57; Assembly Committee on Rules 1955, 1957. This is his 7th term in the assembly. In 1959 elected speaker. In 1951, 1953 Democratic floor leader. Home Address: 422 - 44th St., Kenosha.

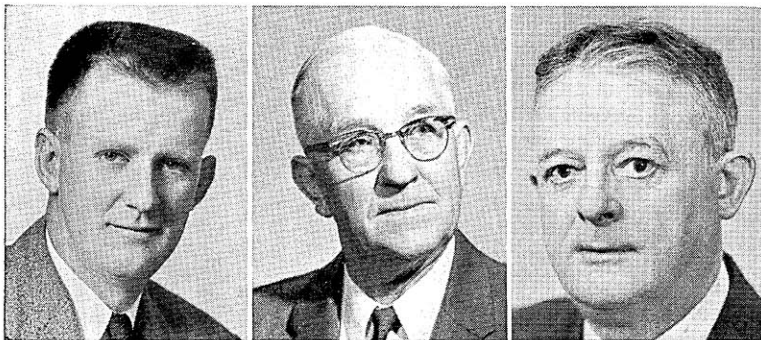
Kenosha County, 1st district: 1st-3rd, 7th-13th, 16th, 17th wards city of Kenosha.

EARL DAVID MORTON (Rep.) born Nov. 28, 1918 in Kenosha where he attended the public schools. Carroll College A.B. 1949; LL.B. Marquette University 1951. Chemical analyst in laundry 1939-40; machine tool inspector 1937-39; now practicing attorney. Assistant district attorney 1954; city councilman 1955-57. Served in infantry 1940-45. Elected to assembly 1956; re-elected 1958. Home Address: 4102 Wilson Road, Kenosha.

Kenosha County, 2nd district: Towns of Brighton, Bristol, Paris, Pleasant Prairie, Randall, Salem, Somers, Wheatland; villages of Silver Lake, Twin Lakes; 4th-6th, 14th, 15th, 18th wards city of Kenosha.

JAMES D. H. PETERSON (Rep.) born La Crosse Aug. 7, 1894. Educated La Crosse public schools, La Crosse State College, University of Wisconsin, Washington and Lee University. Practicing attorney since 1925. Assemblyman 1925-26; re-elected in 1954, 1956, 1958. World War I veteran having served in army 1917-19. Home Address: 326 N. 8th St., La Crosse.

La Crosse County, 1st district: 1st-7th, 9th-16th, 19th, 20th wards, city of La Crosse.



MULDER
La Crosse, 2nd

HINZ
Lincoln

VOGEL
Manitowoc, 1st

LELAND E. MULDER (Dem.) born at La Crosse June 9, 1925. Educated Union Mills Grade School, Mindoro High School, agricultural short course Univ. of Wis., La Crosse State College. Presently engaged in farming. Vice chairman Democratic Party 1955, 1957; Democratic precinct committeeman 1954-55. President La Crosse Co. Farmers' Union 1957-58. Elected to assembly 1958. Home Address: R.R. 2, Holmen.

La Crosse County, 2nd district: old 8th, old 17th, old 18th, old 21st wards, city of La Crosse, and entire county outside city of La Crosse.

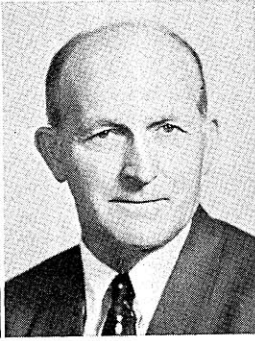
EMIL A. HINZ (Rep.) born Feb. 21, 1889 town of Proviso, Illinois. Educated parochial school in that state. 1914-17 a wheat farmer in Saskatchewan; since 1919 engaged in farming. Was secretary of cooperative cheese factory 21 years. Public offices include town treasurer; town chairman; county board member 19 years, chairman 8 years. World War I veteran. This is his 7th term in the assembly. Home Address: Route 3, Merrill.

HUGO E. VOGEL (Dem.) born Aug. 29, 1888 in town of Newton. Educated parochial and public schools Manitowoc County. Barber for more than one-half century; retired January 1, 1958. Circuit court clerk 1919-20; member Barbers Examining Board of State Board of Health 1936-50; county board member 16 years, 1939-55; chairman and secretary county finance committee for 10 years; also served on other county board committees. Elected to assembly 1954; re-elected 1956 and again in 1958. Home Address: 1409 S. 12th St., Manitowoc.

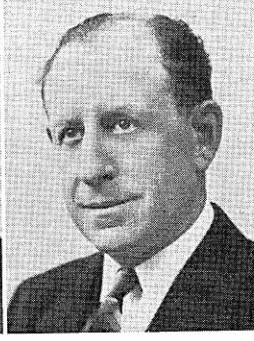
Manitowoc County, 1st district: Towns of Manitowoc, Manitowoc Rapids, Newton; city of Manitowoc.



SCHMEICHEL
Manitowoc, 2nd



RIEHLE
Marathon, 1st



LUEDTKE
Marathon, 2nd

EWALD J. SCHMEICHEL (Rep.) born at Two Rivers Dec. 22, 1889. Graduate Two Rivers High School 1909; B.E. Oshkosh State College 1931; attended Stout Institute, University of Wisconsin. Taught schools in Hayward, Winter, Manitowoc, 1912-19; and Two Rivers 1921-56. Employment manager for a manufacturing company 1919-21. Retired. Member Two Rivers Board of Education 1919-21. Past president and current secretary Two Rivers Lions Club; past president Two Rivers Red Cross; past president Manitowoc County Easter Seal Society. Elected to assembly 1956; re-elected 1958. Home Address: 1723 - 28th St., Two Rivers.

Manitowoc County, 2nd district: Remainder of Manitowoc County.

BEN RIEHLE (Dem.) born May 15, 1897, Town of Rietbrock. Completed 8th grade. Dairy farmer all his life. Father started first farmers' creamery in community in which he lived in 1906. Connected with milk plants practically all his life; served 8 years as president of milk plant with annual volume of 30 million pounds of milk. Presently vice president of a cheese producers' cooperative; vice president cooperative storage co.; secy. cooperative livestock shipping assn.; board member of union cooperative. School treasurer 1925-40; county supervisor 1941-42; chairman P.M.A. 1936-39. World War I veteran; served in motor transport Aug. 1918-Mar. 1919. Serving 3rd term in legislature. Home Address: Route 3, Athens.

Marathon County, 1st district: That part of Marathon County not listed in 2nd district.

PAUL A. LUEDTKE (Rep.) born Wausau Aug. 24, 1888. Educated elementary and parochial schools; commercial business course. Completed apprenticeship as decorator and wood finisher; worked 8 years in this field. When 28 went into business for himself. Since then has operated a paint and wallpaper, decorating and wood finishing business employing a crew of men. Has held a number of public offices: president city council; alderman and supervisor; chairman city equalization and tax board; chairman county board; member county highway committee, county traffic committee, county board of health, county park board. Honorary member Veterans of Foreign Wars. 9th term in the assembly. Home Address: 118 Second Ave., S., Wausau.

Marathon County, 2nd district: Towns of Maine, Ringle, Texas, Wausau, Weston; villages of Brokaw, Rothschild; cities of Schofield, Wausau.



HAASE
Marinette

MERZ
Milwaukee, 1st

SUSSMAN
Milwaukee, 2nd

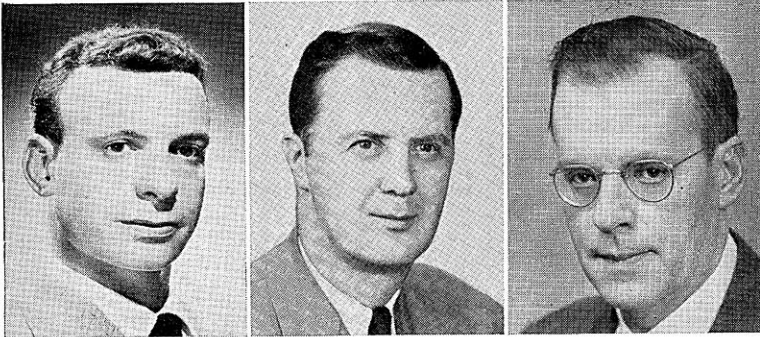
ROBERT D. HAASE (Rep.) born May 10, 1923, in Marinette. Graduated Marinette public schools. LL.B. University of Wisconsin Law School 1951. Practicing attorney since 1951. Past commander Marinette American Legion Post; member 40 and 8, Kiwanis, Elks, Amvets, U.S. Air Force 1942-46. Elected to assembly 1956; re-elected 1958. Elected Republican caucus chairman in 1959 session. Home Address: 1221 Main St., Marinette.

LOUIS L. MERZ (Dem.) born in Milwaukee July 20, 1908. Educated St. Boniface and Holy Angels Schools, Milwaukee and Milwaukee Vocational School; attended college 1928-30 specializing in industrial management; personnel administration. Occupations: owns building supplies business; real estate and sales broker; sales representative; formerly president and general manager wood and plastic fabricating plant. Member Milwaukee Zoning Board of Appeals 10 yrs.; Holy Name Society; "We Remember Battalion" of Amvets; International Assn. of Machinists; Eagles; Public Enterprise Committee; Society for Preservation and Encouragement of Barbershop Quartet Singing; American Arbitration Assn. Served in U.S. naval reserve. Member Legislative Council's Committee on Mental Health and Youth, 1957-59. Elected to assembly 1956; re-elected 1958. Home Address: 5373 N. 13th St., Milwaukee.

Milwaukee County, 1st district: 1st ward, city of Milwaukee.

NORMAN SUSSMAN (Dem.) born in Philadelphia, May 26, 1905. Graduated Milwaukee elementary and high schools; attended school of engineering one year. A grocer and assistant supervisor of natatorium, city of Milwaukee. Active in many civic and fraternal affairs. Chairman board of Independent Neighborhood Grocers Assn.; member Milwaukee Government Service League and City of Milwaukee Civil Defense and Disaster Committees. Member Building Service Employees Union Local 17; member Northwest Old Time Settlers of Milwaukee. Formerly business representative Amer. Fed. of State, County, Municipal Employees Local 2. Member 2nd Dist. Dem. unit; delegate Milwaukee County Dem. Council; delegate Dem. State Conventions. Elected to assembly 1956, re-elected 1958. Home Address: 1232 W. Fond du Lac Ave., Milwaukee.

Milwaukee County, 2nd district: 2nd ward, city of Milwaukee.



GRECO
Milwaukee, 3rd

SCHAEFFER
Milwaukee, 4th

TIMMERMAN
Milwaukee, 5th

JOSEPH ANTHONY GRECO (Dem.) born Dec. 5, 1919 at Milwaukee. Attended Andrew Jackson Grade School and Lincoln High School in Milwaukee, Western State College. Graduated Lawrence College; Marquette University Law School. Practicing attorney since 1951. World War II veteran. Recalled as reservist 1950. Life member Disabled American Veterans, American Legion, Elks Club, Loyal Order of Moose, Eagles, Wisconsin and Milwaukee County Bar Associations, St. Rita's Holy Name Society. Elected to assembly 1954; re-elected 1956 and 1958. Home Address: 2429 E. Wyoming Place, Milwaukee.

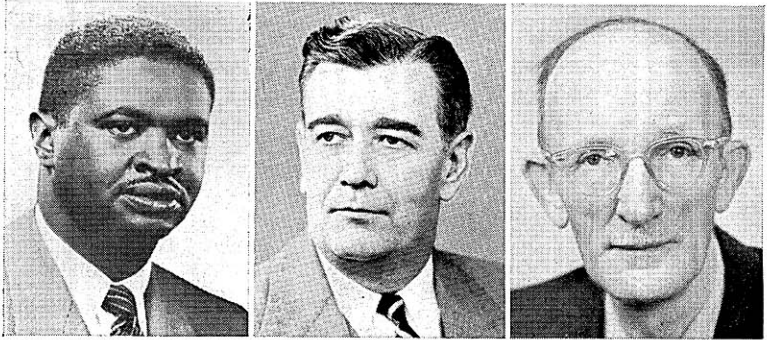
Milwaukee County, 3rd district: 3rd ward, city of Milwaukee.

FRANK E. SCHAEFFER, JR. (Dem.) born Feb. 1, 1905, Milwaukee. Graduate of Gesu Catholic School. 1920-23 took drafting and machine shop courses at Milwaukee Vocational School. 1928-40 painting contractor. Building superintendent for 20 years. Presently employed by a Milwaukee brewing company. Served as vice president Building Service Union, AFL Local # 150-B; and delegate to Federated Trade Council. Now member local Brewery Worker's Union. Public offices include: vice president Red Arrow Park 4th of July Committee; member Civilian Defense Council; Red Cross. Member Legislative's Committees on labor and management and state budget and taxation. Member Wis. Democratic Legislator's Council and its policy and steering and labor committees; chairman of its veteran's affairs committee. Delegate to state Democratic conventions 1938, 1944-52, 1958. Serving 6th term in legislature. Home Address: 1623 W. Wisconsin Ave., Milwaukee.

Milwaukee County, 4th district: 4th ward city of Milwaukee.

LAWRENCE W. TIMMERMAN (Rep.) born June 1, 1910 at Milwaukee. Educated Milwaukee parochial grade schools, Marquette University High School, LL.B. Marquette University. Attorney. Formerly employed as factory and office worker. Member Milwaukee and American Bar Assns., the State Bar of Wis.; American Judicature Society. Serving third term in assembly. Home Address: 2402 N. 56th St., Milwaukee.

Milwaukee County, 5th district: 5th ward, city of Milwaukee.



COGGS
Milwaukee, 6th

FLANNIGAN
Milwaukee, 7th

TALSKY
Milwaukee, 8th

ISAAC N. COGGS (Dem.) born Muskogee, Okla. June 5, 1920. Graduated University of Wisconsin 1948, B.S. degree. Employed in manufacturing plant 1946; U.S. Post Office 1948-49. Accountant. President Near Northside Businessmen's Assn.; member Y.M.C.A. board of management; American Legion; Disabled American Veterans; Amvets; Elks; Masonic Lodge. World War II veteran. Author of many civil rights bills; sponsored 1957 legislation that put enforcement powers in Fair Employment Practices Act. In previous sessions served on Transportation, Education and Elections Committees. Now chairman Public Welfare Committee; the first Negro to serve as chairman of a legislative committee. Member Veterans and Military Affairs Committee, 1959. Elected to assembly 1952, re-elected 1954, 1956, 1958. Home Address: 928 W. Meinecke Ave., Milwaukee.

Milwaukee County, 6th district: 6th ward, city of Milwaukee.

ALLEN J. FLANNIGAN (Dem.) born June 9, 1909, Princeton, Ind. Educated in public elementary and high schools, completed special courses at University of Wisconsin. Presently employed as a tool-grinder and member of United Steelworkers of America (AFL-CIO) Local 1114. Formerly telegraph office manager until 1942, when enlisted in the U.S. Army, serving 32 months overseas. Active in civic affairs and a board member of Neighborhood House, a Milwaukee Red Feather agency. Elected to assembly in first try for public office in 1956, re-elected in 1958. Elected assistant majority floor-leader 1959; appointed chairman of Committee on Labor; member of Committee on Insurance and Banking 1959. Home Address: 2605 W. Auer Ave., Milwaukee.

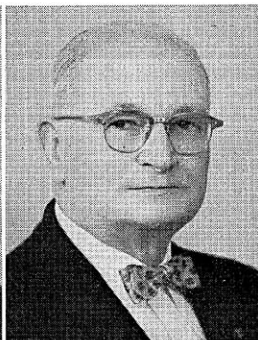
Milwaukee County, 7th district: 7th ward, city of Milwaukee.

GEORGE J. TALSKY (Dem.) born June 19, 1899 in Milwaukee. Father, Anton Talsky, was a pioneer baker on Milwaukee's South Side. Attended St. Lawrence Catholic School, Old 18 Avenue Public School, South Division High and Trade School. Painter and decorator contractor for over 25 years. Former member C.I.O. Actively interested in politics and civic affairs. Serving 3rd term in the legislature. Member 1957 Committees on Public Welfare and Revision. Chairman 1959 Committee on Engrossed Bills; member Committees on Excise and Fees, and Veterans' and Military Affairs. Ex officio Wisconsin assembly photographer pursuant to Res. 29, A., 1957 and Res. 11, A., 1959. Home Address: 2617 W. Scott St., Milwaukee.

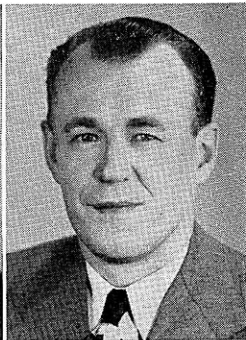
Milwaukee County, 8th district: 8th ward of city of Milwaukee.



SCHMIDT
Milwaukee, 9th



KELLY
Milwaukee, 10th



RYCZEK
Milwaukee, 11th

CHARLES J. SCHMIDT (Dem.) born Milwaukee Mar. 20, 1907. Graduated St. Anthony's parochial school; South Division High School. Attended University of Wisconsin evening courses. At present real estate and insurance agent. Formerly interior decorator; inspector Wis. Industrial Commission; auditor and investigator U.S. Dept. of Labor. In Wis. State Guard during World War II. Delegate 9th ward Democratic unit; secretary-treasurer joint policy committee, Democratic Legislators' Council. Member 9th ward Citizens League; Northwest Lions Club; McGovern Park Fourth of July Commission; Milwaukee Bd. of Realtors; Natl. Assn. Real Estate Bds.; Milwaukee Assn. of Insurance Agents; Knights of Columbus; Holy Name Society; Eagles. Chairman State Affairs Committee, 1959; member Insurance and Banking Committee, 1959. Assistant Democratic floor leader 1953. Elected to assembly 1948, 1950, 1952, 1954, 1956, 1958. Home Address: 4046 N. 48th St., Milwaukee. Milwaukee County, 9th district: 9th ward, city of Milwaukee.

PATRICK H. KELLY (Dem.) born June 13, 1890 in Chicago. Educated in Cassville, Wis. elementary and high schools. Since 1953 general contractor. Previous occupations: carpenter; foreman in auto plant; superintendent and principal of Minneapolis mechanical school; private detective; cabinetmaker. Member 10th ward Democratic Unit. Member Eagles Club; local draft board 1938. Elected to assembly 1958. Home Address: 940 N. 21st St., Milwaukee.

Milwaukee County, 10th district: 10th ward, city of Milwaukee.

ERVIN JOHN RYCZEK (Dem.) born Milwaukee Sept. 20, 1909. Attended St. Adalbert's Parochial School, South Division High School, graduated Marquette High School in 1928. In 1938 student Spencerian Business College in Milwaukee. Since 1930 assistant funeral director. Member Polish American Citizen Club; Roman Catholic Union; Catholic Order of Foresters; Polish Assn. of America; Polish National Alliance; Century Club; Federation Group; Holy Name Society; South Division Civic Association; Old Duffers' Club; Milwaukeeans Club; Blessed Sacrament and St. Joseph's Orphanage Athletic Associations; Covered Bar Social Club; St. Alexander's Athletic Club; 11th ward Democratic Party. Had held no public office until his election to assembly in 1940. Re-elected consecutively since 1942. Home Address: 3631 W. Ruskin St., Milwaukee.

Milwaukee County, 11th district: 11th ward, city of Milwaukee.



SOKOLOWSKI
Milwaukee, 12th



LARSEN
Milwaukee, 13th



MOGILKA
Milwaukee, 14th

GEORGE SOKOLOWSKI (Dem.) born April 21, 1917 at South Milwaukee. Attended St. Stanislaus Grade School, Milwaukee; pioneer graduate Notre Dame High School. Attended University of Wisconsin Extension Division, Milwaukee; Milwaukee Vocational School. Machinist for 18 years. Member USW-CIO, Local 4869; Veterans of Foreign Wars, Sgt. Leslie T. Knutson Post; Catholic Order of Foresters; Milwaukee Society, Polish National Alliance; Polish-American Citizens Club; South Slavic Benevolent Union "Sloga, Lodge Bled No. 19"; South Division Civic Assn.; St. Joseph's Athletic Assn.; honorary member 1001 Fishing Club of Milwaukee. Member 12th ward Democratic Party. In Wis. legislature served as 1959-60 chairman of Insurance and Banking Committee; was member of 1959-60 Committee on Rules and 1959-60 Committee on Revision. Honorable discharge U.S. Navy in 1946. Elected to assembly 1950, 1952, 1954, 1956, 1958. Home Address: 1813 South 10th St., Milwaukee.

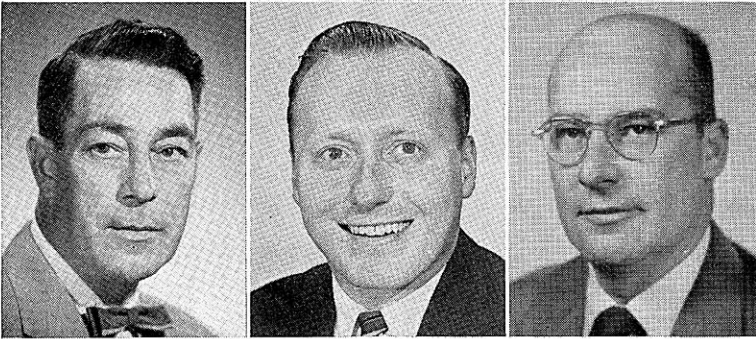
Milwaukee County, 12th district: 12th ward, city of Milwaukee.

MARTY LARSEN (Dem.) born May 9, 1905 at Oconto. Graduated Milwaukee elementary and high schools; B.E. Milwaukee State College. Formerly school teacher, now a building manager. County supervisor 1940-56. In coast guard 1940-42. Elected to assembly 1956; re-elected 1958. Home Address: 937 W. Center St., Milwaukee.

Milwaukee County, 13th district: 13th ward, city of Milwaukee.

DAVID R. MOGILKA (Dem.) born June 30, 1915 in Milwaukee. Graduate St. Josaphat Grade School, Bay View High School; LL.B. Marquette University Law School 1941. Assistant Milwaukee city attorney since 1951. Formerly employed by U.S. Veterans Administration, U.S. Dept. of Internal Revenue, U.S. Bureau of Census. Member St. John Kanty's Holy Name Society; 14th ward Democratic Unit; Milwaukee Century Club; Wis. State Bar Assn.; American Legion, St. Augustine's Society; 13th St. Advancement Assn.; Wilson Park Advancement Assn.; Government Service League; Polish Roman Catholic Union of America; Knights of Columbus. World War II veteran, overseas service in 6th Air Force. His election to assembly in 1956 was his first attempt for public office. Re-elected in 1958. Home Address: 2855 S. 13th St., Milwaukee.

Milwaukee County, 14th district: 14th ward, city of Milwaukee.



SCHUELE
Milwaukee, 15th

DUFFEY
Milwaukee, 16th

PELLANT
Milwaukee, 17th

WILFRED SCHUELE (Dem.) born May 15, 1906 in Hales Corners. Educated grade school; Boys' Technical High School; night courses at Marquette University. Sales representative for water softener manufacturer. Formerly business investment counselor; disbursement officer RFC, War Assets Administration and U.S. Treasury Dept.; state WPA administrator. Member Mil. County Council of Democrats; Eagles; Woodmen of World. Elected to assembly 1958. Home Address: 3036 N. 84th St., Milwaukee.

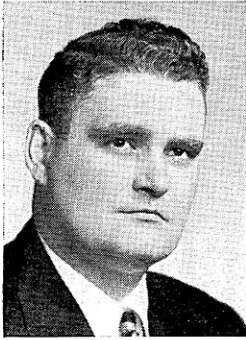
Milwaukee County, 15th district: 15th ward, city of Milwaukee.

THOMAS J. DUFFEY (Dem.) born Milwaukee Dec. 26, 1927. Graduated St. Rose Graded School, Marquette University High School; Marquette University Ph.B. 1950 and LL.B. Marquette University Law School 1952. Engaged in private practice of law in Milwaukee. Member numerous civic, fraternal and veterans' organizations including Wis. and Milwaukee Bar Assns.; Eagles; American Legion; Amvets. Elected to assembly 1954; re-elected 1956 and 1958. Home Address: 210 N. 90th St., Milwaukee.

Milwaukee County, 16th district: 16th ward, city of Milwaukee.

HOWARD F. PELLANT (Dem.) born in Milwaukee July 23, 1911. Attended grade school, high school, vocational school. Former occupations include foundry employe, tavern proprietor, insurance agent, bakery salesman, meat cutter, clerk. Presently international representative U.A.W.-A.F.L.-C.I.O. Former member Milwaukee County Health and Welfare Committee; chairman Milwaukee County Property Owners for Public Housing Committee. Member Wisconsin committee on the Hoover commission for reorganization of the federal government. Member of Eagles and Loyal Order of Moose. Elected to assembly 1952; re-elected 1954, 1956, 1958. Home Address: 3801 S. Kansas Ave., Milwaukee.

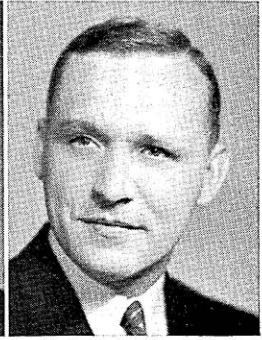
Milwaukee County, 17th district: 17th ward, city of Milwaukee.



CURLEY
Milwaukee, 18th



LEONARD
Milwaukee, 19th



POMMERENING
Milwaukee, 20th

ROBERT M. CURLEY (Dem.) born Nov. 23, 1922 in Milwaukee. Graduated grade and high schools; attended Notre Dame University; LL.B. Marquette University. Since 1948 practicing attorney. Past national commander U.S. Navy Club; president East Side Businessmen's Assn. Member Marquette Univ. and Notre Dame Alumni Assns.; St. Casimir's Civic Club; Elks; Eagles; American, Wis. and Mil. Bar Assns. U.S. navy 1942-46; presently in naval reserve. Elected to assembly 1958. Home Address: 3495 N. Maryland Ave., Milwaukee.

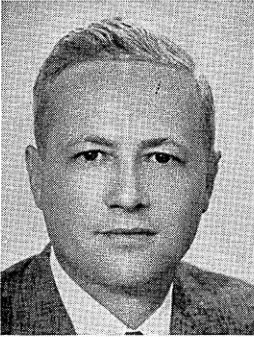
Milwaukee County, 18th district: 18th ward, city of Milwaukee.

JERRIS G. LEONARD (Rep.) born Jan. 17, 1931 at Chicago. Graduated St. Elizabeth's School, Rufus King High School; B.S. in BA 1952, Marquette University College of Business Administration; LL.B. Marquette University Law School 1955. Practicing attorney. Member Milwaukee Junior, Wisconsin and American Bar Assn. Elected to assembly 1956, re-elected 1958. Elected assistant Republican floor leader, 1959. Home Address: 9420 N. Sleepy Hollow Road, Milwaukee.

Milwaukee County, 19th district: Villages of Bayside, Brown Deer, Fox Point, River Hills, Shorewood, Whitefish Bay; city of Glendale and 20th ward, city of Milwaukee.

GLEN E. POMMERENING (Rep.) born Milwaukee Sept. 12, 1927. Educated in Wauwatosa grade and high schools; B.S. and LL.B. University of Wisconsin. Practicing attorney since June 1953. Elected to assembly in 1954; re-elected in 1956 and 1958. Member Assembly Taxation Committee, 1959 and Committee on Commerce and Manufactures, 1959. Chairman Republican Voluntary Assembly Campaign Committee, 1958. On board of directors Wis. 4-H Club Foundation and Milwaukee Rescue Mission. Home Address: 2338 N. 88th St., Wauwatosa.

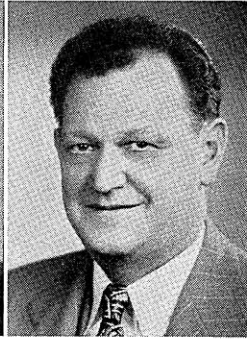
Milwaukee County, 20th district: 1st-6th wards, city of Wauwatosa.



COLLINS
Milwaukee, 21st



HUBER
Milwaukee, 22nd



LUEBKE
Milwaukee, 23rd

ROBERT A. COLLINS (Dem.) born Nov. 4, 1924 in Milwaukee. Graduated St. Anthony's Grade School; Solomon Juneau High School; attended Lawrence College; Ph.B. Marquette University 1949; LL.B. Marquette Law School 1951. Practicing attorney since 1951. Served in army World War II. Member numerous civic, fraternal and veterans' organizations, including Wis. and Milwaukee Bar Assns.; Eagles; American Legion. Elected to assembly 1958. Home Address: 10402 W. Hillside Ave., Wauwatosa.

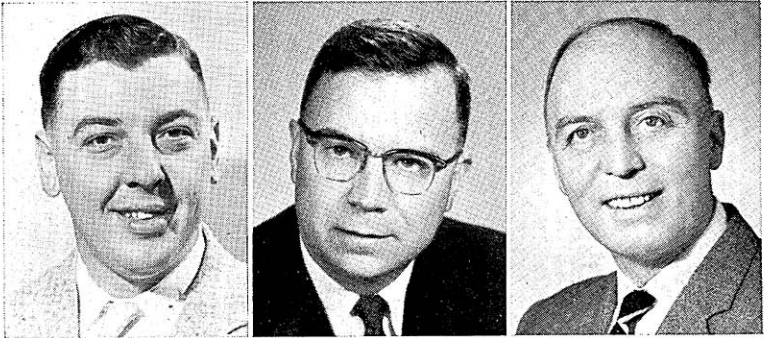
Milwaukee County, 21st district: 7th, 8th wards, city of Wauwatosa; 3rd ward, city of West Allis.

ROBERT T. HUBER (Dem.) born Eckelson, N.D. Aug. 29, 1920. Graduated West Allis Central High School; became auto parts and service salesman. 1944-48 contractor, is a merchandising salesman. Member of Knights of Columbus and Holy Name Society. Prior to election to assembly in 1948 had held no public office. Elected to assembly 1948, 1950, 1952, 1954, 1956, 1958. In 1951 Democratic assistant floor leader; floor leader 1955, 1957. Elected speaker pro tem 1959, the first person to hold this position. Home Address: 2217 S. 84th St., West Allis.

Milwaukee County, 22nd district: village of West Milwaukee; 1st, 2nd, 4th wards, city of West Allis.

WILLIAM LUEBKE (Dem.) born Apr. 28, 1906 in Milwaukee. Educated in elementary and vocational schools; high school at night; home study courses; University of Wisconsin summer session; School for Workers in Industry. Woolen mill superintendent and construction worker. Elected to assembly 1940, 1942, 1954, 1956, 1958. Home Address: 2835 S. 84th St., West Allis.

Milwaukee County, 23rd district: Villages of Greendale, Hales Corners; cities of Franklin, Greenfield, Oak Creek; 5th ward, city of West Allis.



SOBOCINSKI
Milwaukee, 24th

KENYON
Monroe

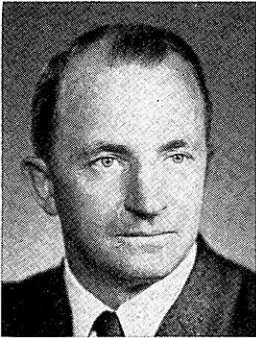
BAUMGART
Oconto

SHERMAN R. SOBOCINSKI (Dem.) born in Cudahy Jan. 12, 1927. Attended Holy Family Grade School and St. Francis Minor Seminary. Formerly assistant field manager; hydraulic lift operator and shipping clerk. Member International Assn. of Machinists; Polish National Alliance; Polish Assn. of America; Polish Legion of American Veterans; Holy Name Society. U.S. Navy 1943-45. Chairman 1959 Committee on Elections; member 3 committees: Highways, Excise and Fees, Insurance and Banking. Elected to assembly 1956; re-elected 1958. Home Address: 1807 Missouri Ave., South Milwaukee.

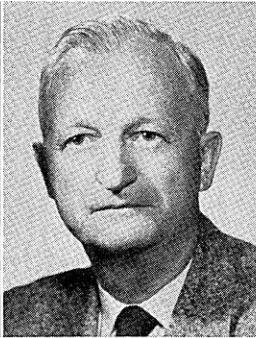
Milwaukee County, 24th district: 19th ward, city of Milwaukee; cities of Cudahy, St. Francis, South Milwaukee.

KYLE KENYON (Rep.) born Mar. 22, 1924 at Wyeville. Graduated rural elementary and Tomah High School; LL.B. University of Wisconsin Law School 1952. Monroe County veterans service officer. Practicing attorney since 1952. World War II veteran, in army 1943-46. Elected to assembly 1956; re-elected 1958. Member Committee on Veterans' and Military Affairs, 1959. Business Address: 1007½ Superior Ave., Tomah.

LLOYD R. BAUMGART (Rep.) born Green Bay Jan. 29, 1908. Graduated Powers High School, Powers, Mich.; attended Green Bay vocational school. Formerly owner and operator large dairy farm, painting contractor, owner and operator dinner club. Presently, president of a carrier mfg. co., owner of hardware store, auctioneer, master plumber, registered pump installer. Public offices: village trustee 1948-49; county board chairman 1952-58; village supervisor 1949-58; village president 1949-54. President Lena Civic Club 1949-51; vice president Businessmen's Assn., 1954, 1958. Elected to assembly 1956; re-elected 1958. Home Address: Lena.



PRIEBE
Outagamie, 1st



SULLIVAN
Outagamie, 2nd



GRADY
Ozaukee

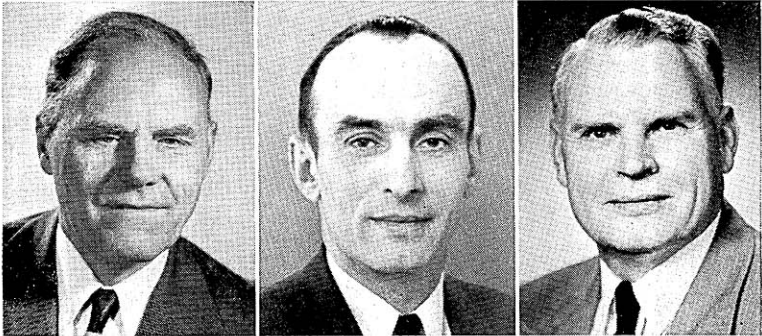
KENNETH E. PRIEBE (Rep.) born Dec. 10, 1912 at Black Creek. Graduated Appleton elementary and high schools; attended Actual Business College, Appleton. Insurance agent since 1937; previously mill worker. Alderman 1943-59. Past president city council; member zoning committee of Industrial Development Corporation; president South Side Athletic Club; member Outagamie Conservation Club; member United Commercial Travelers; secretary Appleton Insurance Board. Elected to assembly 1958. Home Address: 1206 S. Ritger St., Appleton.

Outagamie County, 1st district: Towns of Center, Grand Chute; city of Appleton.

WILLIAM T. SULLIVAN (Rep.) born Oconto Apr. 6, 1894. Graduated Oconto High School; attended University of Wisconsin; B.E. Oshkosh State College; graduate work at Lawrence College. Since 1927 director Kaukauna School of Vocational and Adult Education. High school teacher, 1915-27. Retired school administrator; now operating certified tree farm. World War I and World War II veteran; served in navy Apr.-Dec. 1918; lieutenant commander in navy 1943-45. Member American Legion, Forty et Eight, Elks, Knights of Columbus. Elected to assembly 1954; re-elected 1956 and 1958. Member Legislative Council's Committee on Education 1955-56, and chairman of its Advisory Committee on Local Library Services. Served on Assembly Committees on Conservation and Highways, 1957. Home Address: 184 W. Wisconsin Ave., Kaukauna.

Outagamie County, 2nd district: Towns of Black Creek, Bovina, Buchanan, Cicero, Dale, Deer Creek, Ellington, Freedom, Greenville, Hortonia, Kaukauna, Liberty, Main, Maple Creek, Oneida, Osborne, Seymour, Vandenbroek; villages of Bear Creek, Black Creek, Combined Locks, Hortonville, Kimberly, Little Chute, Shiocton; cities of Kaukauna, Seymour; 3rd ward, city of New London.

WARREN A. GRADY (Rep.) born Port Washington Mar. 3, 1924. Educated Port Washington public schools, Northwestern University, B.S.; University of Wisconsin, LL.B. Practicing attorney since 1950. Serving 4th consecutive term in assembly. Republican floor leader 1957. Business Address: 114 E. Main St., Port Washington.



KOSTUCK
Portage

WARGA
Price, Taylor

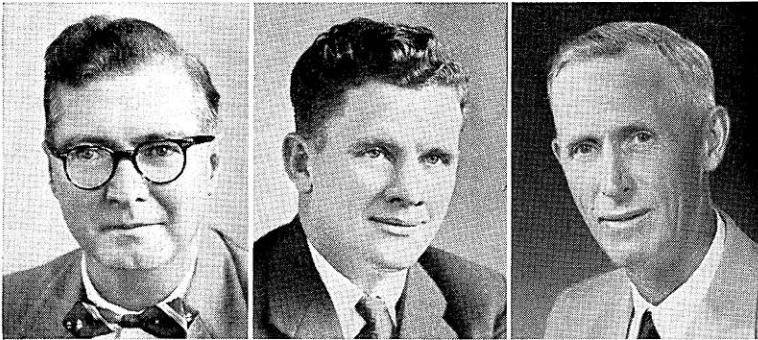
WARREN
Racine, 1st

JOHN T. KOSTUCK (Dem.) born Stevens Point Oct. 7, 1892. Leaving school at end of 3rd grade, he worked on a farm. At age of 14 when assisting in blasting stone, met with accident which made him blind. Entered Wisconsin State School for the Blind and after 10 years graduated from high school department in 1918. Then attended University of Wisconsin, specializing in political science and economics. Taught 3 years in high school department of School for the Blind at Staunton, Virginia; then entered piano business at Stevens Point. Salesman and piano tuner. In 1958 named Wisconsin Handicapped Man of the Year, by the Governor's Committee on the Employment of the Physically Handicapped. Serving 15th consecutive term in assembly. Home Address: 130 Algoma St., Stevens Point.

ANDREW F. WARGA (Dem.) born Feb. 12, 1919 at Thayer, Ill. Graduated elementary school. Since 1946 in garage and farm implement business; formerly a farmer. Served in army March 1941-Dec. 1, 1945. Member American Legion; Veterans of Foreign Wars; V.F.W. Firing Squad; Phillips Rod and Gun Club; Phillips Chamber of Commerce; charter member and former commander Phillips V.F.W. Elected to assembly 1958. Home Address: Route 3, Phillips.

EARL WARREN (Dem.) born Feb. 25, 1902 at Hurley. Educated in Hurley public schools, graduated Lincoln High School in Hurley. County supervisor 1948-55. For past 22 years employed as assembler by a radiator co. Previously operated own business. Serving 3rd term in the legislature. Home Address: 2809 Virginia St., Racine.

Racine County, 1st district: 1st, 2nd, 3rd, 4th, 6th, 10th, 11th wards and the 2nd precinct of the 14th ward, city of Racine.



NALEID
Racine, 2nd

HANSEN
Racine, 3rd

MERRIAM
Rock, 1st

ROY E. NALEID (Dem.) born Racine Nov. 12, 1901. Educated Racine elementary and high schools; business course, night classes, Marquette University. Employed by farm implement company since 1935. Vice chairman Racine County Board; county board member 16 years; member Racine County highway committee 10 years. Elected to assembly 1954; re-elected 1956, 1958. Chairman Committee on Third Reading; vice chairman Committee on Highways; vice chairman Committee on State Affairs. Home Address: 2400 W. High St., Racine.

Racine County, 2nd district: 5th, 7th, 8th, 9th, 12th, 13th, 15th wards, and 1st precinct of 14th ward, city of Racine.

JOHN R. HANSEN (Dem.) born Aug. 28, 1917 in town of Raymond. Educated elementary and high schools. Engaged in farming since 1939. Member Raymond School Board 1940-45, town board 1945-58, and county board 1951-58; director of county fair 1950-58. Elected to assembly 1958. Home Address: R. 1, Box 41, Franksville.

Racine County, 3rd district: Towns of Burlington, Caledonia, Dover, Mt. Pleasant, Norway, Raymond, Rochester, Waterford, Yorkville; villages of North Bay, Rochester, Sturtevant, Union Grove, Waterford, Wind Point; city of Burlington.

WILLIAM R. MERRIAM (Rep.) born Delavan Sept. 28, 1894. Educated Walworth County rural school, Wisconsin Rapids High School; B.S. Iowa State College. Farm manager 1919-27; farmer 1927-58. Member Farm Bureau 1927-56 and a director for 4 years; treasurer Wis. Laymen's Conference 1955-56; president Janesville Rotary Club 1951-52; member Rock County Selective Service Board 1949-56; director Janesville Chamber of Commerce 1948-52; chairman Wis. Agricultural Stabilization and Conservation Committee 1953-56. Took good will farm tour to Russia in 1958. World War I veteran; quartermaster and officers training. Elected to assembly 1956; re-elected 1958. Home Address: Route 1, Janesville.

Rock County, 1st district: Towns of Bradford, Clinton, Harmony, Johnstown, La Prairie, Lima; village of Clinton; city of Janesville.



BLANCHARD
Rock, 2nd

BELTING
Rock, 3rd

HUTNIK
Rusk, Sawyer,
Washburn

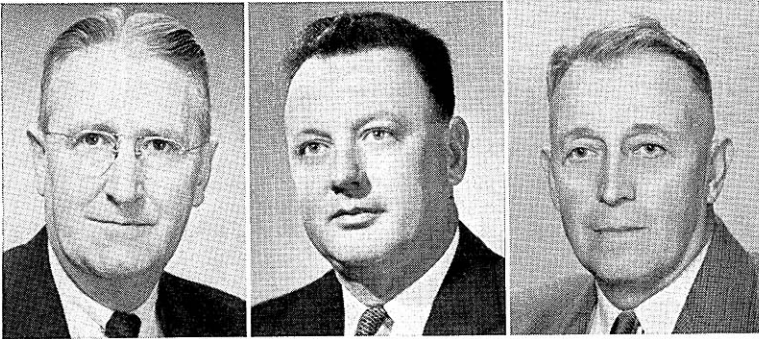
DAVID J. BLANCHARD (Rep.) born Edgerton Jan. 5, 1921. Educated Edgerton grade school and graduated Edgerton High School 1938; B.A. in 1942 and LL.B. University of Wisconsin in 1943. Practicing attorney. Active member of civic, church and conservation organizations. Elected to assembly in 1954; re-elected 1956 and 1958. In 1959 elected Republican floor leader. Business Address: 11 N. Main St., Edgerton.

Rock County, 2nd district: Towns of Avon, Beloit, Center, Fulton, Janesville, Milton, Magnolia, Newark, Plymouth, Porter, Rock, Spring Valley, Union; villages of Footville, Milton, Milton Junction, Orfordville; cities of Edgerton, Evansville.

GEORGE B. BELTING (Rep.) born De Soto, Wis. July 15, 1914. LL.B. University of Wis. Law School. In college, senior class officer and president Men's Dormitory Assn. Former instructor University of Wis. Practicing attorney. County board member 3 terms. Civic activities: Izaak Walton League; American Legion; past president of Beloit Historical Society; Elks; member Kiwanis; member state and local bar associations. Director Better Business Bureau. Former assistant scoutmaster. U.S. navy in amphibious landing forces Pacific; legal officer after hostilities. Elected to assembly 1956; re-elected 1958. Home Address: 925 Bushnell St., Beloit.

Rock County, 3rd District: Town of Turtle; city of Beloit.

WILLIS J. HUTNIK (Rep.) born March 23, 1915, town of Elk, Price County. Attended Deer Creek School, Phillips High School, Price County Normal, Central State Teachers College, University of Wisconsin. Owner of school and office supplies business in Ladysmith; former teacher and principal. Formerly personnel manager Camp Grant, Ill.; village trustee, village of Tony; former secretary-treasurer Rusk County Conservation Club; chairman, Rusk County Conservation Congress; executive councilor northwest district Wis. Conservation Congress; member Ladysmith Chamber of Commerce; past president Price County Education Assn., leader 4-H Club work. Member G.O.P. Policy Committee. 4th term in assembly. Chairman of Education Committee in 1955 Legislature. Member 1957 Committees on Education and Highways; vice chairman Legislative Council's Committee on Education 1955-56 and its Committee on Highways 1956-57; member Public Welfare and Veterans' Affairs Committees 1959. Home Address: Tony.



WARD
St. Croix

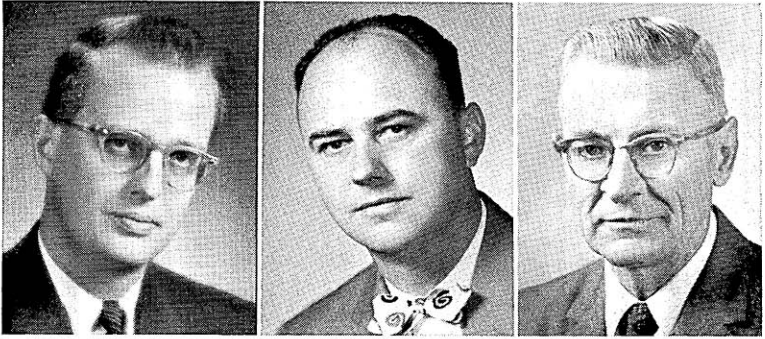
TERRY
Sauk

ABRAHAMSON
Shawano

WILLIAM W. WARD (Dem.) born Aug. 8, 1903 in St. Croix County. Graduated Star Prairie elementary school and Minneapolis high school; LL.B. University of Minnesota Law School. Practicing attorney 18 years. Presently New Richmond city attorney. Past member school board; member Knights of Columbus; member Wis. Bar Assn.; member and past president Pierce, St. Croix County Bar Assn. Elected to assembly 1956; re-elected 1958. Home Address: New Richmond.

WALTER TERRY (Rep.) born Feb. 26, 1909 at Baraboo. Attended rural and Baraboo public schools; Baraboo High School; Ph.B. in commerce Notre Dame University 1932. Presently a farmer. Formerly field auditor for State Dept. of Public Welfare. Vice president of a dairy cooperative; secretary Southern Wis. Breeders Co-op. Elected to assembly 1958. Home Address: Rt. 3, Baraboo.

THEODORE ABRAHAMSON (Rep.) born in Lyngdal, Norway June 24, 1900. Received early education in Norway and attended evening school after coming to America. Dairy farmer for 15 years. Presently owner of 2 feed elevators; founder and owner of a pre-fab milkhouse company. President Tigerton village now and for past 10 years; member county board 1936-39; 1956-58; presently member finance and other county board committees. President Tigerton hospital board; director of a bank; active in Morris Farmers Club, county fair assn., and conservation clubs. Elected to assembly 1958. Home Address: Tigerton.



HILLEMANN
Sheboygan, 1st

IRELAND
Sheboygan, 2nd

HAUGH
Vernon

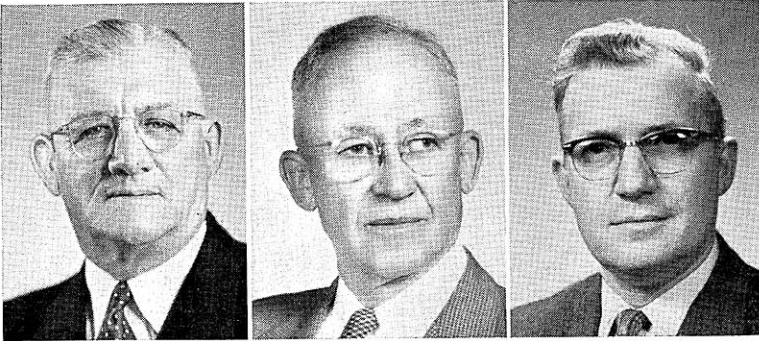
HENRY A. HILLEMANN (Dem.) born Nov. 25, 1928 in Sheboygan. Graduated Sheboygan elementary and high schools; Univ. of Wis. Law School 1953. Since 1955 practicing attorney. Former occupations: instructor in law, Lakeland College, 1955-56; employe Wis. Public Service Commission 1953-54. Alderman 1957-59. Member Sheboygan Jaycees; Wis. and Sheboygan Bar Assns. Elected to assembly 1958. Business Address: 629-A N. 8th St., Sheboygan.

Sheboygan County, 1st district: City of Sheboygan.

WALTER J. F. IRELAND (Rep.) born at Kohler, June 15, 1923. Educated Kohler elementary and high schools; attended Marquette University. Insurance broker since 1946. World War II veteran, in air force Dec. 1, 1942-Feb. 4, 1946. Member county board since 1951. Elected to assembly 1958. Home Address: 415 School St., Sheboygan.

Sheboygan County, 2nd district: All towns, cities and villages of county except city of Sheboygan.

PAUL HAUGH (Dem.) born May 12, 1896 in town of Union, Vernon County. Graduated rural elementary school. Farmer since 1920. Town chairman 15 years; county board chairman 1956-57; clerk of school board 18 years. Director and secretary mutual fire insurance co. 27 years; secretary cemetery assn. 38 years; member American Legion 35 years. In World War I served overseas in ambulance corps. Elected to assembly 1958. Home Address: Hillsboro.



RICE
Walworth

SCHOWALTER
Washington

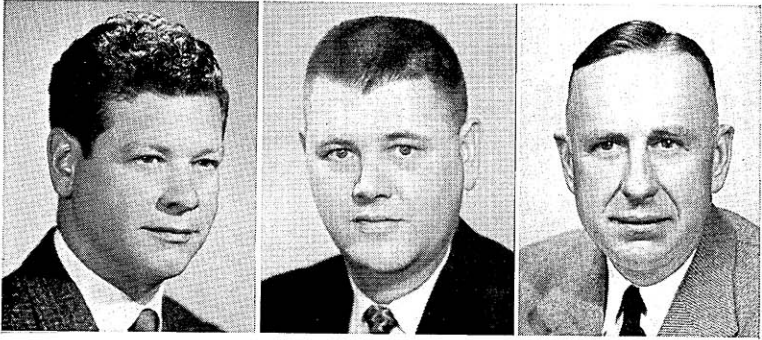
MATHEWS
Waukesha, 1st

ORA R. RICE (Rep.) born Boscobel Sept. 16, 1885. Graduated Boscobel High School; dental degree Northwestern University Dental College in 1907. 1907-36 practiced dentistry in Delavan and since 1936 has devoted time to farming and legislative duties. Elective and appointive offices include alderman of Delavan in 1916 and 1917 and mayor of city 1918-22. Chairman and member of State Centennial Committee. This is his 12th term in the assembly. Elected Speaker 1951, 1953. For 6 sessions before he was Speaker, was chairman of Committee on Agriculture, and also vice-chairman of Committee on Rules. Home Address: Delavan.

ELMER J. SCHOWALTER (Rep.) born in town of Jackson Oct. 12, 1894. Born and raised on farm which has been owned by family since 1843. Educated elementary schools, University of Wisconsin farmer's short course. Owns a dairy farm with main income from dairying, canning crops, seed grains and white clover seed. Operates licensed deer farms; breeds and ships white tail deer for pets, forests or estates; furnished deer to federal and state restocking projects since 1938. Has been active in local church and community affairs; former school treasurer and town assessor. Elected to assembly 1954; re-elected 1956 and 1958. Home Address: Route 1, Jackson.

VINCENT R. MATHEWS (Dem.) born June 8, 1912 in Watertown. Graduated Fort Atkinson grade and high schools; B.A. Carroll College 1934. Since 1951 an insurance agent; formerly employed in personnel work for a department store. Alderman city of Waukesha 1947-51. Interested in various community projects such as Boy Scouts, YMCA, community chest. Elected to assembly 1958. Business Address: 305 South St., Waukesha.

Waukesha County, 1st district: Towns of Eagle, Genesee, Mukwonago, Muskego, New Berlin, Ottawa, Vernon, Waukesha; villages of Big Bend, Dousman, Eagle, Mukwonago, North Prairie, Wales; city of Waukesha.



CLEMENS
Waukesha, 2nd

PETERSON, R.
Waupaca

ABRAHAM
Winnebago, 1st

HAROLD W. CLEMENS (Rep.) born Oct. 21, 1918 in Milwaukee. Educated public schools Town of Oconomowoc and Milwaukee; Boy's Trade and Technical High School, Milwaukee. A resident of the village of Lac La Belle for 28 years. Tool making machinist 1939-44; printer 1939; now operates with parents, boat livery, picnic area, swimming beach. Village clerk since 1952; county supervisor since 1948; village health officer, building inspector, civil defense director; county U.S.O. chairman 1947. U.S. Navy 1944-46. Elected to assembly 1956; re-elected 1958. Home Address: Route 2, Oconomowoc.

Waukesha County, 2nd district: Towns of Brookfield, Delafield, Lisbon, Menomonee, Merton, Oconomowoc, Pewaukee, Summit; villages of Butler, Chenequa, Elm Grove, Hartland, Lannon, Lac La Belle, Menomonee Falls, Merton, Pewaukee, Sussex; cities of Brookfield, Oconomowoc.

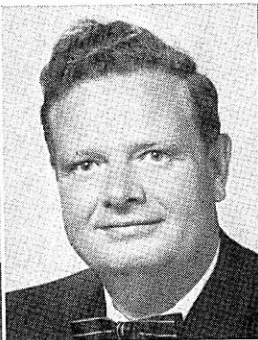
RICHARD E. PETERSON (Rep.) born July 17, 1920 in Waupaca, where he attended elementary and high schools. Entered University of Wisconsin 1938, interrupted education to enter service with Wis. National Guard Oct. 16, 1940; discharged 61 months later. In 1949 graduated University of Wis. Law School. Engaged in practice of law in Waupaca, Clintonville, Hortonville. Member American Legion and Veterans of Foreign Wars. Member Judge Advocate General's Staff of Wis. National Guard. This is his 5th term in the legislature. Chairman Assembly Committee on Insurance and Banking 1957; member Assembly Committee on Judiciary 1957. Member Judiciary Committee of Legislative Council 1954-58; chairman of 1956 committee to study Veterans' Home at King. Home Address: Route 3, Box 17 A, Waupaca.

HARVEY R. ABRAHAM (Rep.) born Oshkosh Jan. 15, 1895. Educated public schools; graduated Oshkosh Business College. Served in overseas combat duty 318 Engineers, 6th Division, World War I. Following honorable discharge became a partner in photo finishing business. Then travelled for 2 large nationally known food manufacturers until 1936. Since then has been a real estate salesman and broker. Past commander local post No. 70 American Legion; past exalted ruler B.P.O.E. No. 292. This is 7th term in legislature. Member Legislative Council and its Committee on Conservation; member Judiciary Committee, 1959. Assembly member State Natural Resources Committee. Home Address: 627 Ceape Ave., Oshkosh.

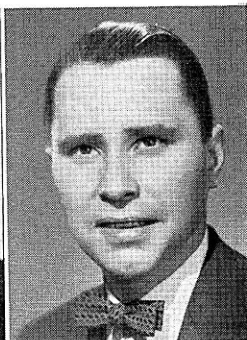
Winnebago County, 1st district: 1st-5th, 7th-12th, and 15th wards, city of Oshkosh.



SHURBERT
Winnebago, 2nd



CANE
Winnebago, 3rd



CRAWFORD
Wood, 1st

FLOYD E. SHURBERT (Rep.) born in Winnebago County Oct. 30, 1900. Graduated public elementary and high schools; attended Oshkosh Business College. Since 1945 retired. Formerly owner wholesale and retail meat market and mink farm. County board member 1954-58. Active in conservation groups. Elected to assembly 1958. Home Address: Route 4, Box 588, Oshkosh.

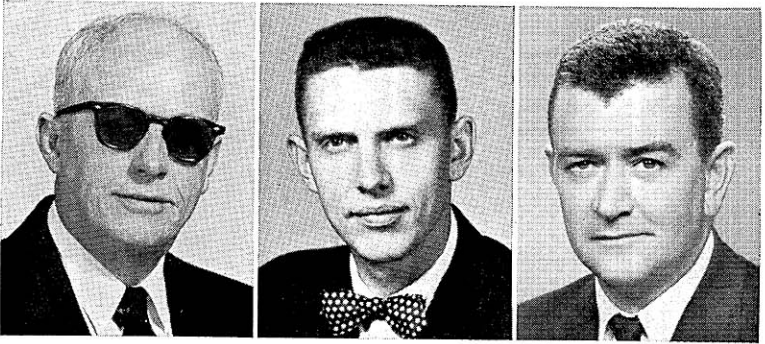
Winnebago County, 2nd district: All area not included in 1st and 3rd districts.

ARNOLD J. CANE (Rep.) born Dec. 11, 1914, Ontonagon, Mich. Attended Ontonagon public schools. Ph.B. 1935 and LL.B. 1937 Marquette Univ. Practicing attorney at Menasha since 1937. Justice of Peace 1941-49; member Menasha St. Mary's School Bd. 1942-49; member Menasha Bd. of Education (past president) 1950-54. Past pres. Kiwanis; past advocate Knights of Columbus; member and past district chairman Parent-Teachers Assn.; charter member and director North Winnebago chapter Wis. Mental Health Assn.; member Elks, Eagles, Chamber of Commerce, Neenah Club, Children's Service Soc. of Wis. Active in civic affairs and Amer., Wis. and Winnebago Co. Bar Assns.; past pres. Winnebago Co. Bar Assn. Serving 5th term in assembly. Home Address: 200 Lake St., Menasha.

Winnebago County, 3rd district: Towns of Menasha, Neenah; cities of Menasha, Neenah.

JOHN S. CRAWFORD (Rep.) born Sept. 11, 1923, Homestead, Pa. B.A. Pa. State Univ. 1948; M.A. and LL.B. Univ. of Wis. 1949-53. Master's thesis, Italian-American Labor Relations; 5,000 copies published by A.F.L.; used in North Africa for anti-communist propaganda by U.S. Information Service. Now practicing attorney. Army air force 1942-45; P.O.W.-Evadee, Italy. Cited 12th Army Air Force for meritorious service behind enemy lines in Northern Italy. In 1958 cited by Wis. D.A.V. for exceptional and meritorious conduct. Elected to assembly 1954, 1956, 1958. Member 1959-60 G.O.P. Policy Committee. Chairman 1955 Spec. Committee on Dairy Price Spread; chairman 1957 Committee on Commerce and Manufactures which initiated legislative policy for Wisconsin's participation in St. Lawrence Seaway; member Committees on Judiciary, and Labor and Conservation; member Legislative Council's Committee on Ports. Home Address: Silver Creek Farm, R.F.D. 3, Marshfield.

Wood County, 1st district: That part of Wood County not in 2nd district.



TREUTEL
Wood, 2nd

ANDERSON
Chief Clerk

BROWNE
Sergeant at Arms

ARTHUR H. TREUTEL (Dem.) born May 21, 1897 in Wausau. Educated Wausau public, parochial and high schools. Presently retired; formerly operated life and general insurance agency. Chairman Wood County Democratic statutory committee 1954, 1956; member Democratic State Central Committee 1950, 1954, 1958; state chairman Wis. Kefauver for President Club, 1956; delegate at large to Democratic National Convention 1952, 1956. Until his election to assembly in 1958 had held no public office. Home Address: 510 Fourth St., South, Wisconsin Rapids.

Wood County, 2nd district: Towns of Cranmoor, Dexter, Grand Rapids, Hiles, Port Edwards, Remington, Saratoga, Seneca; villages of Biron, Port Edwards; cities of Nekoosa, Wisconsin Rapids.

NORMAN C. ANDERSON born March 11, 1928 at Hammond, Indiana. Educated Hammond elementary and high schools; B. S. University of Wisconsin 1951; LL.B. University of Wisconsin Law School. Practicing attorney since 1954. Acting coroner Dane Co. 1952-54. Member Madison redevelopment authority. Army service 1946-47. Member of assembly 1957-58. Elected Assembly Chief Clerk 1959. Home Address: 3401 Dawes St., Madison.

THOMAS H. BROWNE, born Eau Claire Jan. 24, 1920. Graduated St. Joseph's elementary and Waukesha high schools; studied commercial subjects Waukesha vocational school. Formerly small businessman and Waukesha police officer; presently salesman. Military service: U.S.A. 312th combat engineers E.T.O. 1943 to 1945. Member Veterans of Foreign Wars, American Legion, Knights of Columbus, Boy Scouts. Democratic candidate for sheriff in Waukesha County, 1958. Elected assembly sergeant at arms 1959. Home Address: 1100 Lindbergh Ave., Waukesha.

**ALPHABETICAL LIST OF
1959 WISCONSIN LEGISLATORS**

Senators

| <i>Name</i> | <i>District</i> | <i>Name</i> | <i>District</i> |
|----------------------------|-----------------|---------------------------|-----------------|
| Bice, Raymond C. | 32nd | Laun, Alfred A., Jr. | 1st |
| Brennan, James B. | 5th | Lauri, Carl E. | 25th |
| Busby, Allen J. | 8th | Leverich, J. Earl | 31st |
| Cameron, Howard W. | 23rd | Lorge, Gerald D. | 14th |
| Carr, Peter P. | 15th | Maier, Henry W. | 9th |
| Clark, William W. | 24th | McParland, Leland S. | 7th |
| Dean, Robert W. | 29th | Miller, Jess | 27th |
| Dempsey, Chester E. | 33rd | Moser, William R. | 6th |
| Donnelly, Davis A. | 28th | O'Brien, Leo P. | 2nd |
| Draheim, William A. | 19th | Panzer, Frank E. | 13th |
| Hendee, Kirby | 4th | Stalbaum, Lynn E. | 21st |
| Hollander, Walter G. | 18th | Thompson, Carl W. | 16th |
| Huibregtse, Harold F. | 20th | Travis, Robert S. | 17th |
| Kendziorski, Casimir | 3rd | Trinke, William F. | 22nd |
| Knowles, Robert P. | 10th | Wilkie, Horace W. | 26th |
| Krueger, Clifford W. | 12th | Zaborski, Richard J. | 11th |
| LaFave, Reuben | 30th | | |

Assemblymen

| <i>Name</i> | <i>District</i> | <i>Name</i> | <i>District</i> |
|---------------------------------------|---------------------|-----------------------------|----------------------------|
| Abraham, Harvey R. | Winnebago, 1st | Crawford, John S. | Wood, 1st |
| Abrahamson, Theodore | Shawano | Curley, Robert M. .. | Milwaukee, 18th |
| Alfonsi, Paul R. | Iron, Oneida, Vilas | Deering, Adolph A. | Brown, 2nd |
| Barabe, Robert F. | Ashland, Bayfield | Door, Clifford E. | Chippewa |
| Baumgart, Lloyd R. | Oconto | Dueholm, Harvey L. | Burnett, Polk |
| Belting, George B. | Rock, 3rd | Duffey, Thomas J. | Milwaukee, 16th |
| Bidwell, Everett V. | Columbia | Flannigan, Allen J. | Milwaukee, 7th |
| Blanchard, David J. | Rock, 2nd | Genzmer, Elmer L. | Dodge, 1st |
| Blaska, Jerome L. | Dane, 4th | Goethel, Karl J. | Eau Claire, 1st |
| Calvert, Walter B. .. | Iowa, LaFayette | Graass, Frank N. | Door, Kewaunee |
| Cane, Arnold J. | Winnebago, 3rd | Grady, Warren A. | Ozaukee |
| Cates, Richard L. | Dane, 3rd | Gray, John R. | Florence, Forest, Langlade |
| Christopherson, Frank W., Jr. | Douglas, 2nd | Greco, Joseph A. | Milwaukee, 3rd |
| Clemens, Harold W. | Waukesha, 2nd | Haase, Robert D. | Marinette |
| Coggs, Isaac N. | Milwaukee, 6th | Hansen, John R. | Racine, 3rd |
| Collins, Robert A. | Milwaukee, 21st | Hardie, Keith C. | Jackson, Trempealeau |
| Cosgrove, Frank J. | Crawford, Richland | Harper, Hugh | Grant |
| | | Haug, Paul | Vernon |

| <i>Name</i> | <i>District</i> | <i>Name</i> | <i>District</i> |
|---------------------------|------------------------|---------------------------|--------------------------|
| Henry, Glenn L. | Dane, 1st | Priebe, | |
| Hillemann, | | Kenneth E. | Outagamie, 1st |
| Henry A. | Sheboygan, 1st | Pritchard, | |
| Hinz, Emil A. | Lincoln | John | Eau Claire, 2nd |
| Hipke, Gilbert J. | Calumet | Quinn, Jerome F. | Brown, 1st |
| Huber, | | Rice, Ora R. | Walworth |
| Robert T. | Milwaukee, 22nd | Riehle, | |
| Hutnik, Willis J. | | Bernard A. | Marathon, 1st |
| | Rusk, Sawyer, Washburn | Risser, Fred A. | Dane, 2nd |
| Ireland, | | Rohl, Edwin C. | |
| Walter J. | Sheboygan, 2nd | | Buffalo, Pepin, Pierce |
| Jahnke, Franklin M. | | Ryczek, Ervin J. | Milwaukee, 11th |
| | Green Lake, Waushara | Schaeffer, Frank E., Jr. | |
| Kelly, | | | Milwaukee, 4th |
| Patrick H. | Milwaukee, 10th | Schlueter, | |
| Kenyon, Kyle | Monroe | Fred W. | Fond du Lac, 2nd |
| Kostuck, John T. | Portage | Schmeichel, | |
| Larsen, Marty | Milwaukee, 13th | Ewald J. | Manitowoc, 2nd |
| Leonard, | | Schmidt, | |
| Jerris G. | Milwaukee, 19th | Charles J. | Milwaukee, 9th |
| Luebke, William | Milwaukee, 23rd | Schowalter, Elmer J. | Washington |
| Luedtke, Paul A. | Marathon, 2nd | Schuele, Wilfred | Milwaukee, 15th |
| Lund, Einer P. | Dunn | Shurbert, | |
| Mathews, | | Floyd E. | Winnebago, 2nd |
| Vincent R. | Waukesha, 1st | Sobocinski, | |
| McEssy, | | Sherman R. | Milwaukee, 24th |
| Earl F. | Fond du Lac, 1st | Sokolowski, | |
| Merriam, Wm. R. | Rock, 1st | George | Milwaukee, 12th |
| Merz, Louis L. | Milwaukee, 1st | Stauffer, Christ M. | Green |
| Mireau, George | Barron | Sullivan, | |
| Mogilka, | | William T. | Outagamie, 2nd |
| David R. | Milwaukee, 14th | Sussman, Norman | Milwaukee, 2nd |
| Molinaro, George E. | Kenosha, 1st | Talsky, George J. | Milwaukee, 8th |
| Morton, Earl D. | Kenosha, 2nd | Terry, Walter | Sauk |
| Mulder, | | Timmerman, | |
| Leland E. | La Crosse, 2nd | Lawrence W. | Milwaukee, 5th |
| Naleid, Roy E. | Racine, 2nd | Tremain, Ben | |
| Nikolay, Frank L. | Clark | | Adams, Juneau, Marquette |
| Nitschke, Elmer C. | Dodge, 2nd | Treutel, Arthur H. | Wood, 2nd |
| O'Malley, David D. | Dane, 5th | Vanderperren, Cletus | Brown, 3rd |
| Pellant, | | Vogel, Hugo E. | Manitowoc, 1st |
| Howard F. | Milwaukee, 17th | Wackett, Byron F. | Jefferson |
| Perala, Reino A. | Douglas, 1st | Ward, William W. | St. Croix |
| Peterson, | | Warga, Andrew F. | Price, Taylor |
| James D. | La Crosse, 1st | Warren, Earl W. | Racine, 1st |
| Peterson, Richard E. | Waupaca | | |
| Pommerening, | | | |
| Glen E. | Milwaukee, 20th | | |