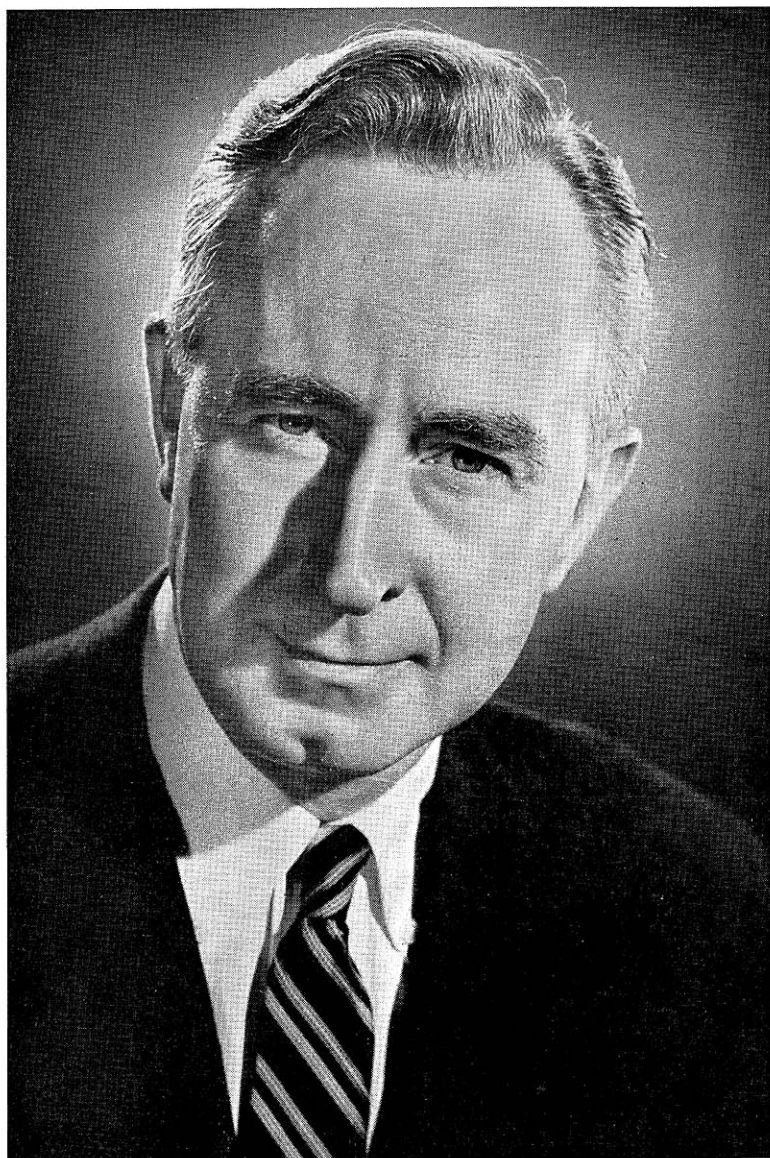


**BIOGRAPHIES AND PICTURES OF
CONSTITUTIONAL OFFICERS
SUPREME COURT JUSTICES
MEMBERS OF CONGRESS
MEMBERS OF LEGISLATURE**



Governor VERNON W. THOMSON

CONSTITUTIONAL OFFICERS

THE GOVERNOR

VERNON W. THOMSON (Rep.) son of A. A. Thomson and Ella Thomson; born Richland Center Nov. 5, 1905. Carroll College 1923-25; received B.A. degree University of Wisconsin 1927 and LL.B. from same school 1932. In June 1957 awarded honorary doctor of laws degree by Carroll College. Since 1932 has been a practicing attorney at Richland Center. Was assistant district attorney of Richland County 1933-35 and city attorney Richland Center 1933-37 and 1942-44. In Apr. 1944 elected mayor of Richland Center and was serving 4th term in that position when assumed duties of Attorney General. From 1933-35 was enrolling official of Civilian Conservation Corps for Richland County. Prior to practicing law taught 2 years in Viroqua High School and 3 years in Madison Vocational School. From 1939-51 president of library board at Richland Center. In 1936 and 1940 delegate from 3rd congressional district and in 1952 and 1956 delegate at large to National Republican Convention; member of Committee on Credentials in 1952 at National Republican Convention; presidential elector 1952 and 1956; in 1940 chairman of State Republican Platform Convention. Member of assembly 1935-51, and speaker of that body 3 sessions, 1939, 1941, 1943. In 1945, 1947 and 1949 Republican floor leader. From 1945-51 member of advisory committee to the Supreme Court on rules, pleadings, practice and procedure. From 1949-51 member and secretary of Legislative Council. Member of local and state bar associations. Elected Attorney General 1950; re-elected 1952, 1954. Elected Governor 1956. Home Address: Richland Center.

THE LIEUTENANT GOVERNOR

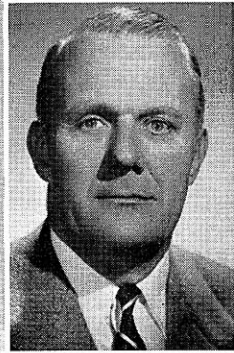
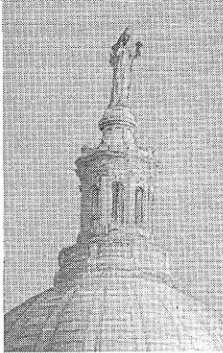
WARREN P. KNOWLES (Rep.) born Aug. 19, 1908 River Falls where he received early education. B.A. Carleton College 1930; LL.B. Law School of University of Wisconsin, 1933. Since 1933 engaged in practice of law. Was member of county board 1936-40; past president Kiwanis and Conservation Clubs. Was lieutenant in navy and served on U.S.S. Nevada during invasions of Attu, Normandy, and Southern France, being released from active duty to serve in 1945 session. Author and sponsor of bill creating Legislative Council and served as its 1st chairman. Author of 1949 act creating State Building Commission and authorizing a long-range state building program; author of 1943 act creating Veterans' Recognition Board; author of laws relating to hospital survey and construction, Aeronautics Commission, and various aviation measures. Member of Judicial Council. President Wisconsin Alumni Assn. 1952-53. Republican floor leader in senate 1943, 1945, 1947, 1949, 1951, 1953. Served 4 terms in the senate. Elected Lieutenant Governor 1954; re-elected 1956. Home Address: New Richmond.

THE SECRETARY OF STATE

ROBERT C. ZIMMERMAN (Rep.) born January 5, 1910 in Milwaukee. Attended Wisconsin public schools; graduate Central High School, Madison. Served in World War II; army two and one-half years. Appointed Assistant Secretary of State in 1939 and held that position for approximately 15 years. Elected Secretary of State 1956. Home Address: 2810 Arbor Drive, Madison.



KNOWLES



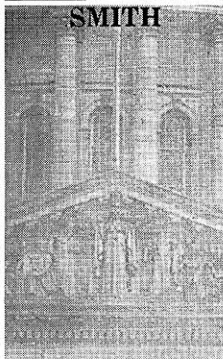
ZIMMERMAN



SMITH



HONECK



WATSON

WARREN P. KNOWLES, Lieutenant Governor; ROBERT C. ZIMMERMAN, Secretary of State; MRS. DENA A. SMITH, State Treasurer; STEWART G. HONECK, Attorney General; GEORGE E. WATSON, Superintendent of Public Instruction.

THE STATE TREASURER

MRS. DENA A. SMITH (Rep.) born Kewaunee Oct. 19, 1899. Graduated Kewaunee grade and high schools. For 32 years manager music departments in Milwaukee stores. From 1949-57 secretary to State Treasurer. Served 3 terms as vice chairman 4th district Republican executive committee. Active in Republican Party and interested in politics and government. Appointed State Treasurer Dec. 5, 1957 to fill the vacancy caused by the death of her husband, Warren R. Smith. Home Address: 2601 W. Wells St., Milwaukee.

THE ATTORNEY GENERAL

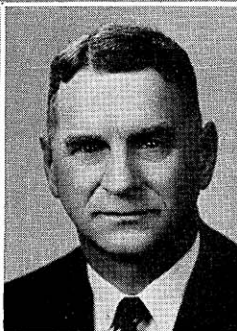
STEWART G. HONECK (Rep.) born Chicago Dec. 25, 1906. Educated Center Street School, Milwaukee; Riverside High School, Milwaukee; LL.B. cum laude Marquette University Law School 1929. In senior year student editor-in-chief, Marquette Law Review. Married in 1939 to Miss Lillian Carter Sewall and has one son and three daughters. Practicing lawyer since August 12, 1929. Deputy Attorney General April 9, 1946-January 6, 1957. Member of the bar of United States Supreme Court and Court of Appeals for District of Columbia. Prior to election as Attorney General took part in over 100 appeals before Wisconsin State and U. S. Supreme Courts. President Milwaukee Firemen's Annuity and Benefit Fund, 1940-45; special counsel by appointment of Wisconsin Supreme Court to represent Milwaukee Bar Association in Ambulance Chasing Investigation 1955-56; 15 year veteran service to Boy Scouts of America; active in Republican Party politics and civic affairs in Milwaukee County 1928-1946; member statutory Medical Grievance Committee 1946 to date; member Committee on Public Records, 1948 to date. Other public activities include: secretary Wisconsin Great Lakes Compact Commission; member Commission on Interstate Cooperation; chairman State Crime Laboratory; Commissioner of Public Lands; chairman Menominee Indian Study Committee of the Joint Legislative Council; trustee State Law Library; member State of Wisconsin Group Life Insurance Board. Also member American Bar, Wisconsin State Bar and Dane County Bar Associations, and Milwaukee Athletic Club. Elected Attorney General 1956. Home Address: 714 Oneida Place, Madison.

THE SUPERINTENDENT OF PUBLIC INSTRUCTION

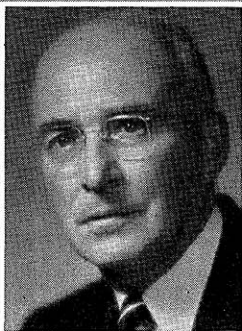
GEORGE EARL WATSON born Neenah Oct. 16, 1897. Graduated Appleton High School; B.A. Lawrence College 1921; M. A. University of Wisconsin 1932; honorary LL. D. Lawrence College 1949. High school teacher in Stevens Point 1921-1922; supervising principal, Fall River 1922-1923; high school principal at Stevens Point 1923-1924; superintendent of schools Waupaca, Marinette and Wauwatosa 1924-1949. From 1947-1949 member Milwaukee County School Committee. Other public activities include: chairman and member Wauwatosa Veterans Committee; chairman Milwaukee County Junior Red Cross; county commander Waupaca County American Legion; past president Wisconsin Association of School Administrators; past chairman Wisconsin Council on Education; presently member of National Veteran's Administrator's Vocational Rehabilitation and Education Advisory Committee. Elected State Superintendent of Public Instruction in 1949; re-elected 1953 and 1957. Home Address: 111 W. Wilson St., Madison.



BROADFOOT



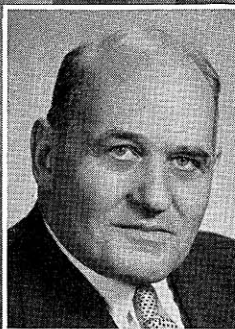
BROWN



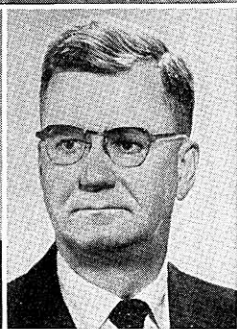
CURRIE



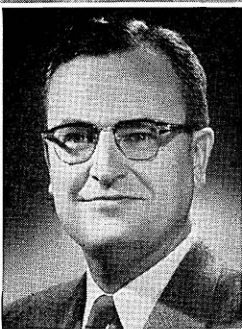
MARTIN



STEINLE



WINGERT



FAIRCHILD

Members of the Supreme Court: Chief Justice JOHN E. MARTIN; GROVER L. BROADFOOT; TIMOTHY BROWN; GEORGE R. CURRIE; ROLAND J. STEINLE*; EMMERT L. WINGERT; THOMAS E. FAIRCHILD.

*Resigned effective Mar. 2, 1958

JUSTICES OF THE SUPREME COURT

JOHN E. MARTIN born Nov. 15, 1891 Green Bay. Educated parochial and public schools of Green Bay; attended University of Wisconsin 1910-1914; graduated Law School University of Notre Dame in 1916. Served in World War I as first lieutenant in Company E, 127th Infantry, 32nd Division. In 1933 appointed assistant district attorney Milwaukee County and served for one year. In 1934 counsel for Banking Commission. Had held no elective public office until his election as Attorney General in 1938. Re-elected in 1940 and served as Attorney General from 1939 until his appointment to Supreme Court June 1, 1948 to succeed Justice Chester A. Fowler, deceased. In Apr. 1950 elected to Supreme Court; re-elected Apr. 1951. Became Chief Justice Jan. 7, 1957, upon termination of term of Chief Justice Fairchild.

GROVER L. BROADFOOT born Dec. 27, 1892 in Independence. Educated in common schools; LL.B. Law School of University of Wisconsin in 1918. Practiced law at Mondovi until 1948 and is president of Mondovi State Bank. Public offices include mayor of Mondovi 1943-1947; district attorney 1923-1935; member Wisconsin Board of Tax Appeals 1939-1943. Veteran of World War I. In assembly 1945 until his appointment as Attorney General on June 5, 1948. Appointed to Supreme Court Nov. 12, 1948 to succeed Justice Elmer E. Barlow, deceased. Elected to Supreme Court Apr. 1952; re-elected 1955.

TIMOTHY BROWN born Feb. 24, 1889 at Madison; educated in Madison public schools, University of Wisconsin (B.A. 1911) and Harvard Law School (LL.B. 1914). Admitted to Wisconsin bar in 1914, practiced law in Milwaukee 2 years, served in U.S. Navy 1917-1919; then returned to Madison where he practiced law continually until 1949. From 1926-1949 court commissioner for Dane County. During World War II government appeal agent and member of an appeal board under Selective Service System. In 1945 executive counsel to Governor Goodland and again to Governors Goodland and Rennebohm, 1947-1949. From Apr.-July 1949 commissioner of Public Service Commission. Governor Rennebohm then appointed him to fill vacancy in Supreme Court caused by death of Justice John D. Wickhem. Elected to Supreme Court Apr. 1953.

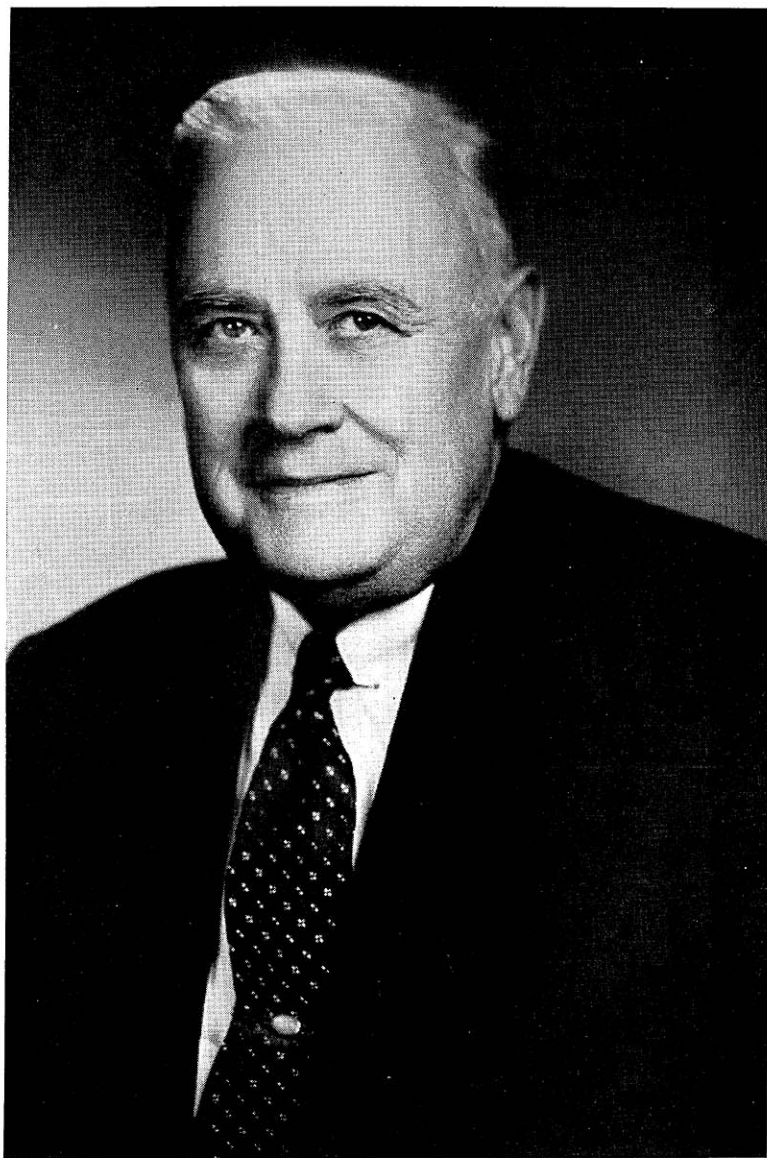
GEORGE R. CURRIE born at Princeton, Wisconsin, Jan. 16, 1900. Educated public schools at Montello, attended Oshkosh State Teachers College 2 years, taught school 3 years, and then received legal education at University of Wisconsin Law School, LL.B. degree in 1925; awarded Order of the Coif. In his senior year student editor-in-chief of Wisconsin Law Review. For 26 years practiced law at Sheboygan. For over 20 years member of Sheboygan Public Library Board, the last 16 years president of board. During World War I served several months in Student Army Training Corps. Married in 1925 to Miss Gladys E. Bremer and has 2 daughters, Ann and Janet. On Aug. 30, 1951, appointed to Supreme Court to fill vacancy resulting from resignation of Justice Henry P. Hughes. Elected to Supreme Court Apr. 2, 1957 to a full 10-year term on such court commencing Jan. 6, 1958.

ROLAND J. STEINLE* born at Milwaukee March 21, 1896. His elementary and high school training was received in Milwaukee. Completed law course at Marquette University in 1920 and admitted to Wisconsin bar in same year. In U.S. army as infantry officer in World War I. Practiced law in Milwaukee 1920-40. Served as special assistant district attorney in 4 Wisconsin counties: Dodge, Forest, Milwaukee, Waukesha. Instructor of jurisprudence at Marquette University 1928-53. On January 2, 1940 appointed judge of 2nd judicial circuit by Governor Heil, where he served until January 5, 1954. Chairman of Board of Circuit Judges in 1949. Appointed by Governor Kohler to fill the vacancy caused by resignation of Chief Justice Fritz. Elected to Supreme Court April 1954.

EMMERT L. WINGERT born Apr. 2, 1899 in Mt. Carroll, Ill. Educated Mt. Carroll public schools, Dixon and Mt. Carroll high schools, Beloit College, Harvard Law School. Practicing attorney at Madison 1923-56. Executive counsel of Governor of Wisconsin 1929-30. He represented the state in the National Conference of Commissioners on Uniform State Laws 1930-31. Vice chairman Governor's Commission on the Study of Retirement Systems 1955-56. Lecturer at University of Wis. Law School 1927 and occasional lectures there in later years. President Madison Community Chest 1948-49. Has held a number of offices in state, regional and county bar associations. Appointed to Supreme Court Sept. 5, 1956 to succeed Justice Edward J. Gehl, deceased.

THOMAS E. FAIRCHILD born Dec. 25, 1912 Milwaukee. Educated Grand Avenue School, Milwaukee; Riverside High School, Milwaukee; A.B. Cornell University 1934; University of Wisconsin Law School, LL.B. 1938. Practicing attorney with Daniel H. Grady, Portage, 1938-1942; attorney U.S. Office of Price Administration 1942-1945; practicing attorney, Milwaukee 1945-1948, 1953-1957. Elected Attorney General 1948. U.S. Attorney, western district of Wisconsin 1951 to 1952. Resided at Verona 1949-53. Democratic nominee for U.S. Senate 1950 and 1952. Elected to Supreme Court April 3, 1956.

*Resigned effective Mar. 2, 1958



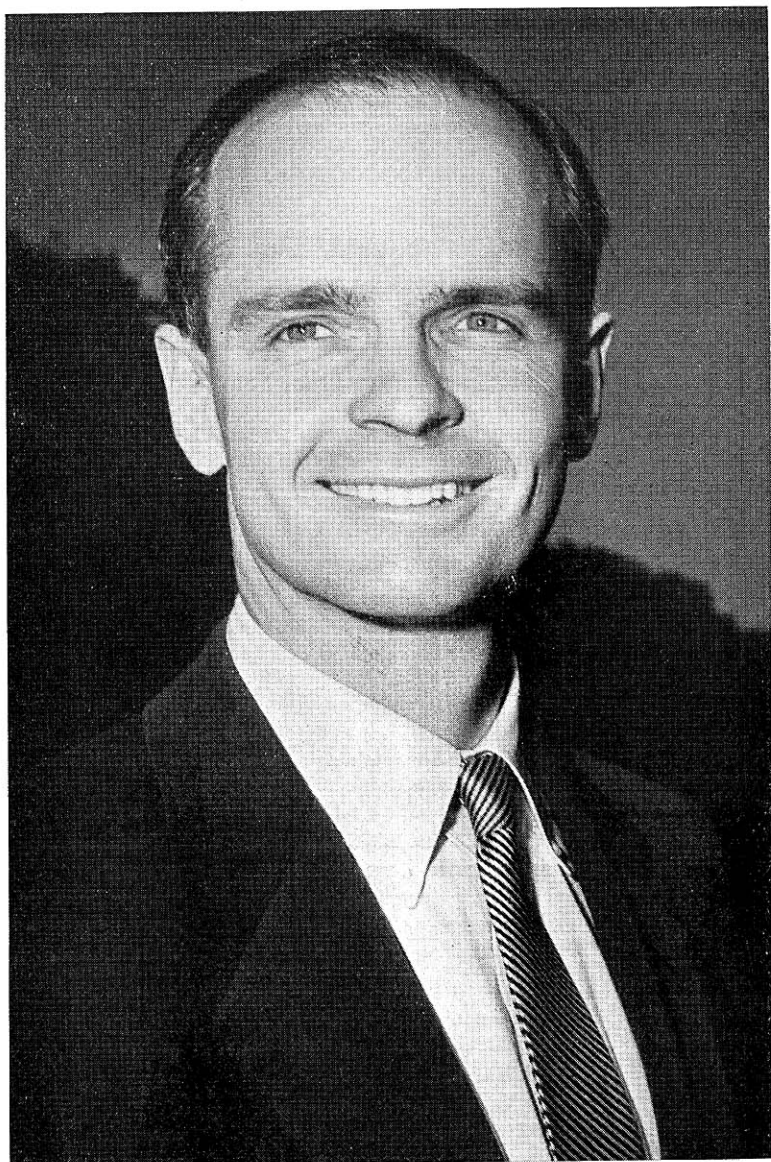
United States Senator ALEXANDER WILEY

WISCONSIN MEMBERS OF THE 85TH CONGRESS

SENATORS

ALEXANDER WILEY (Rep.) born Chippewa Falls on May 26, 1884. After graduation from Chippewa Falls High School attended Augsburg College, Minneapolis for 2 years and University of Michigan law school for 2 years. Graduated University of Wisconsin law school 1907. Has been a lawyer and businessman since that time. Since 1916 owned and operated a dairy farm in Barron County which was previously owned and operated by his parents. District attorney of Chippewa County 3 terms, 1909-1915; member of school board of Chippewa Falls; governor of Wisconsin-Upper Michigan Kiwanis district in 1933. In 1936 Republican nominee for Governor. Married in 1909 to May Jenkins (now deceased); 4 children; Elisabeth, Marshall, Rosemary, Winifred. Married Dorothy May Kydd, May 1952. Elected to U.S. Senate in 1938; re-elected 1944, 1950, 1956. Former chairman of Senate Committee on the Judiciary (now highest Republican member); former chairman and now senior Republican member Senate Foreign Relations Committee. Member, former Senate Special Committee to Investigate Crime in Interstate Commerce. Official representative of the U. S. government at Interparliamentary Union Conference in Oslo, Norway, Sept. 1939 and British Empire Parliamentary Conference in Bermuda, June 1946; head of U. S. delegation to Empire Parliamentary Conference in Bermuda, 1948; U. S. delegate to Japanese Peace Conference in San Francisco, 1951; U. S. delegate to Council of Europe, Strasbourg, France, 1951; U. S. delegate to Interparliamentary Union Conference, Bern, Switzerland, 1952; U. S. delegate to the Seventh United Nations General Assembly, 1952; U. S. delegate to the Interparliamentary Union, Washington, D. C. 1953. Home Address: Chippewa Falls.

E. WILLIAM PROXMIRE (Dem.) born Lake Forest, Ill. Nov. 11, 1915. Attended grade schools in Lake Forest and the Hill Preparatory School near Philadelphia. B.A. Yale University. M.B.A. Harvard University Graduate School of Business Administration; M.P.A. Graduate School of Arts and Sciences, Harvard. Formerly a bank clerk, newspaper and radio reporter; instructor in government at Harvard University; plant manager of a Wis. farm implement company. Owns and operates a printing plant in Waterloo, Wis. World War II veteran, having served with the military intelligence 1941-46. Member of Wis. assembly 1951-52. Democratic candidate for Governor of Wisconsin 1952, 1954, 1956. Elected to U. S. Senate in a special election Aug. 27, 1957, to fill vacancy caused by death of Sen. McCarthy. Member Senate Committees on Banking and Currency, Post Office and Civil Service, and Small Business. Home Address: Buckeye Road, Madison.



United States Senator E. WILLIAM PROXMIRE

MEMBERS OF THE HOUSE OF REPRESENTATIVES

1ST CONGRESSIONAL DISTRICT

Green, Kenosha, Racine, Rock, Walworth Counties.

LAWRENCE HENRY SMITH* (Rep.) born at Racine Sept. 15, 1892. Early education in elementary schools of Racine and Milwaukee University School. Attended Milwaukee State Teachers College 2 years, enrolled Marquette University, graduated from its law school June 1923. Since that time a practicing attorney in Racine. During World War I was in 32nd Division of the infantry from 1917-19. Department commander of American Legion Department of Wisconsin 1938-39. Also served as president Racine County Bar Assn. In a special election Aug. 1941 elected to Congress to fill vacancy caused by death of Congressman Bolles. Has been re-elected successively. Has been a member of the House Committee on Foreign Affairs 12 years and is presently serving on it. Home Address: 4510 Spring St., Racine.

2ND CONGRESSIONAL DISTRICT

Columbia, Dane, Dodge, Jefferson, Waukesha Counties.

DONALD E. TEWES (Rep.) born at Merrill Aug. 4, 1916. Graduated Merrill High School; B.A. Valparaiso University; LL.B. University of Wisconsin Law School. President Tewes-Roedel Plastics Corporation, Waukesha. In 1955 named small business representative and 1st chairman advisory committee of laymen and legislators to Wisconsin Industrial Development Division of State Executive Department. Former district chairman and member executive committee Republican Party of Wisconsin. Past president Waukesha Kiwanis Club. Entered military forces as private; served 4 years including 2 with General Chennault's 14th Air Force Flying Tigers as combat intelligence officer; awarded Air Medal; discharged as Major. Married Myra Torhorst in 1946; 2 children, James aged 6 and Barbara aged 3. Elected to Congress 1956. Home Address: 244 Frederick St., Waukesha.

3RD CONGRESSIONAL DISTRICT

Crawford, Grant, Iowa, Juneau, La Crosse, Lafayette, Monroe, Richland, Sauk, Vernon Counties.

GARDNER R. WITHROW (Rep.) born La Crosse Oct. 5, 1892. Educated in grade and high schools of that city. After graduation from high school entered the train service of Chicago, Burlington and Quincy Railroad Company. In 1929 and 1931 was state representative of the trainmen's brotherhood. Served in assembly 1927; member of Joint Committee on Finance. Member of Congress 1931-39; re-elected 1948, 1950, 1952, 1954, 1956. Home Address: La Crosse.

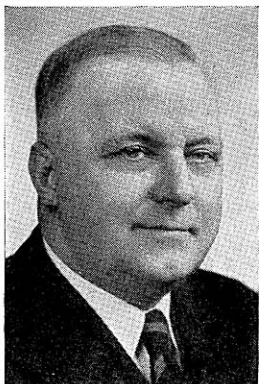
*Deceased Jan. 22, 1958.



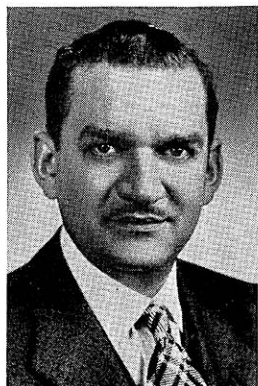
SMITH



TEWES



WITHROW



ZABLOCKI



REUSS

Members of House of Representatives: LAWRENCE H. SMITH*, 1st district; DONALD E. TEWES, 2nd district; GARDNER R. WITHROW, 3rd district; CLEMENT J. ZABLOCKI, 4th district; HENRY S. REUSS, 5th district.

*Deceased Jan. 22, 1958

4TH CONGRESSIONAL DISTRICT

Towns of Franklin, Greenfield, Oak Creek, Wauwatosa; villages of Greendale, Hales Corners, West Milwaukee; cities of Cudahy, St. Francis, South Milwaukee, Wauwatosa, West Allis; and wards 8, 11, 12, 14, 17, 19 and parts of wards 3, 4, 10 and 16, city of Milwaukee.

CLEMENT J. ZABLOCKI (Dem.) born in Milwaukee November 18, 1912. Attended parochial school, Marquette University High School; graduated Marquette University with Ph. B. degree. Later took graduate work in education Marquette University and taught high school in Milwaukee. On May 26, 1937 he married Miss Blanche M. Janic of Milwaukee; 2 children, Joseph Paul and Jane Frances. Elected state senator 1942, re-elected 1946. Elected to Congress 1948, 1950, 1952, 1954, 1956. Home Address: 1623 S. 21st St., Milwaukee.

5TH CONGRESSIONAL DISTRICT

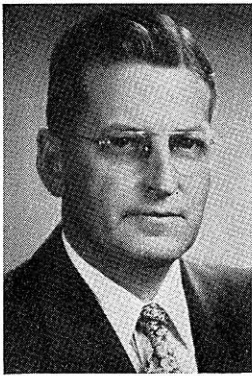
Town of Granville; villages of Bayside, Brown Deer, Fox Point, River Hills, Shorewood, Whitefish Bay; city of Glendale; 1st, 2nd, 5th, 6th, 7th, 9th, 13th, 15th, 18th, and parts of 3rd, 4th, 10th, 16th wards of city of Milwaukee.

HENRY S. REUSS (Dem.) born in Milwaukee February 22, 1912. Educated Milwaukee Schools; A.B. Cornell University; LL.B. Harvard Law School. Attorney in Milwaukee since 1936. Former lecturer Wisconsin State College, Milwaukee; magazine writer. Former assistant corporation counsel, Milwaukee County 1939-40; assistant general counsel, Marshall Plan, Paris, France, 1949; special prosecutor Milwaukee County grand jury 1950; personal counsel to late Secretary of State Fred Zimmerman in reapportionment case before Wisconsin Supreme Court 1953. Director White Elm Nursery Co., Hartland, Wis.; former director Marshall and Ilsley Bank, Milwaukee. Entered army as private Jan. 1943; commissioned 2nd lieutenant, Nov. 1943; served in 63rd and 75th infantry divisions 1943-45. Bronze star medal for action at Rhine crossing; bronze battle stars for Normandy, Northern France and central Germany. Married; 4 children. Elected to Congress 1954, re-elected 1956. Home Address: 1035 E. Ogden Ave., Milwaukee.

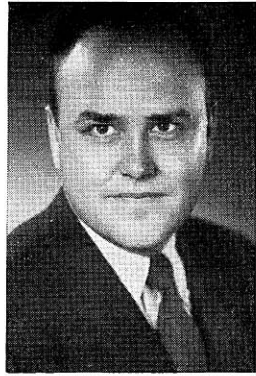
6TH CONGRESSIONAL DISTRICT

Calumet, Fond du Lac, Ozaukee, Sheboygan, Washington, Winnebago Counties.

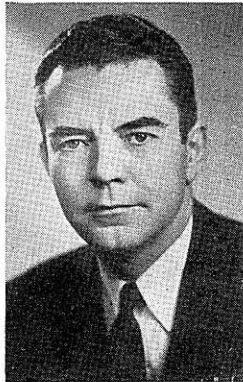
WILLIAM K. VAN PELT (Rep.) born Mar. 10, 1905 in Glenbeulah. Graduated Fond du Lac elementary and high schools. Owner retail fuel company. Father of 2 children, Peter age 17 and Julie Ann age 11. Was delegate to 1944 Republican National Convention and alternate delegate to 1948 convention. Elected to Congress in 1950; re-elected 1952, 1954, 1956. Home Address: 47 Oaklawn Ave., Fond du Lac.



VAN PELT



LAIRD



BYRNES



JOHNSON



O'KONSKI

Members of House of Representatives: WILLIAM K. VAN PELT, 6th district; MELVIN R. LAIRD, 7th district; JOHN W. BYRNES, 8th district; LESTER R. JOHNSON, 9th district; ALVIN E. O'KONSKI, 10th district.

7TH CONGRESSIONAL DISTRICT

Adams, Green Lake, Langlade, Marathon, Marquette, Portage, Shawano, Waupaca, Waushara, Wood Counties.

MELVIN R. LAIRD (Rep.) born Sept. 1, 1922. Graduated Marshfield grade and high schools; in 1942 B.A. Carleton College. Formerly secretary-treasurer of a lumber company; resigned upon taking office in Congress. A Purple Heart veteran, World War II, he served aboard the destroyer Maddox in Task Force 58 and Pacific 3rd Fleet. Elected to Wisconsin Senate in 1946 and re-elected without opposition in 1948. While in Wisconsin legislature, in 1949 and 1951, served as legislative spokesman for former Gov. Oscar Rennebohm and Gov. Walter J. Kohler. Member Wisconsin Commission on Improvement of the Educational System 1947-49 and Joint Legislative Council 1951-53; chairman Taxation Committee of Legislative Council; member Joint Finance Committee 1949-52; Senate Labor and Management Committee 1947-50; Senate Veterans and Military Affairs Committee 1947-52 and its chairman, 1949-52; member Senate Legislative Procedure Committee 1949-51; chairman Wood County Republican Statutory Committee 1949-51; member Wisconsin delegation Republican National Conventions 1948, 1952, 1956; member Republican National Platform Committee 1952 and chairman of Subcommittee on Labor and Public Welfare; member Republican National Platform Committee 1956 and chairman Subcommittee on Agriculture; chairman Wisconsin Republican Party Platform Committee 1950 and 1952. Member of American Legion, 40 et 8, Veterans of Foreign Wars, Disabled American Veterans, and B.P.O.E. Elder Presbyterian Church, Marshfield. The past 4 generations of his family have served in the legislature and elected to state offices. His father, the late Melvin R. Laird, Sr., a former Presbyterian minister, was a Wisconsin state senator; his mother is a member of University of Wisconsin Board of Regents. Married Barbara Masters of Indianapolis, Oct. 15, 1945; 3 children, John Osborne, Alison, and David Malcolm. Elected to Congress, Nov. 4, 1952; re-elected 1954, 1956. Home Address: 313 E. Third St., Marshfield.

8TH CONGRESSIONAL DISTRICT

Brown, Door, Florence, Forest, Kewaunee, Manitowoc, Marinette, Oconto, Outagamie Counties.

JOHN W. BYRNES (Rep.) born Green Bay June 12, 1913. Attended parochial and public schools in that city; University of Wisconsin B.A. degree in 1936 and LL.B. in 1938. Practiced law in Green Bay. Elected Wisconsin State Senate 1940 where he was majority floor leader and chairman of Judiciary Committee in 1943 legislative session. Married Barbara Preston 1947; 5 children: John Robert, Michael Preston, Bonnie Jean, Charles Kirby, Barbara Harriet. In 1944 elected to House of Representatives and re-elected since 1946. Member of Committee on Ways and Means. Home Office Address: 414 E. Walnut St., Green Bay.

9TH CONGRESSIONAL DISTRICT

Barron, Buffalo, Chippewa, Clark, Dunn, Eau Claire, Jackson, Pepin, Pierce, St. Croix, Trempealeau Counties.

LESTER R. JOHNSON (Dem.) born at Brandon, Wis. June 16, 1901. Attended Brandon public schools; attended Lawrence College 2 years, discontinued college for one year; entered University of Wisconsin School of Commerce in 1922, majored in economics, graduated 1924. After 14 years association with a retail lumber, feed and coal business, entered University of Wisconsin Law School in 1938 graduating Feb. 1941; admitted to Wisconsin bar Feb. 1941 and began practice of law in Black River Falls. Elected chief clerk of Wisconsin assembly as a Progressive in 1935 and 1937. Elected district attorney of Jackson County as a Progressive in 1942 and 1944; and as a Democrat in 1952. Delegate to the Democratic National Convention in 1952. Married Marjorie Gray Nov. 9, 1954; has 3 daughters by his 1st marriage: Mary Lynn and twins Jane and Jone. In a special election Oct. 13, 1953 elected to fill vacancy caused by death of Congressman Merlin Hull; re-elected in 1954, 1956. Home Address: Black River Falls.

10TH CONGRESSIONAL DISTRICT

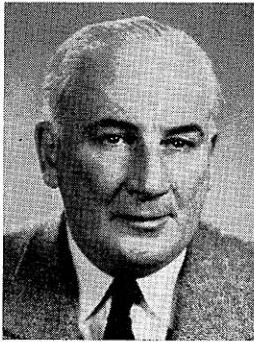
Ashland, Bayfield, Burnett, Douglas, Iron, Lincoln, Oneida, Polk, Price, Rusk, Sawyer, Taylor, Vilas, Washburn Counties.

ALVIN E. O'KONSKI (Rep.) born and raised on a farm near Kewaunee. Attended Kewaunee rural and high schools; graduated Oshkosh State College 1927, Ed. B. history and pol. sci. majors. Graduate work at Iowa and Wisconsin Universities, speech and pol. sci. majors. Instructor Omro and Oconto High Schools, Oregon State College, Corvallis, Ore. 1928-31; Supt. of Schools, Pulaski, Wis. 1933-35; head of speech dept. University of Detroit, 1936-38 and Itasca Junior College, Coleraine, Minn. 1936. Educator, journalist, lecturer. Former publisher and editor Montreal River Miner, weekly newspaper at Hurley. Owner radio stations WLIN and WOSA, Merrill and Wausau since 1947. Winner national and international honors in speech contests. Topped all congressmen in United Press test in American history. President World Bill of Rights Ass'n, 1945, organized to combat communism throughout the world. Awarded title "the most distinguished American for 1945" by foreign language press, for his fight on behalf of smaller nations. The first American public official to denounce the Yalta agreements in 1945. President American Anti-Communist Organization, 1947, organized to combat communism in the U.S. Speaker on all national networks on the rights of small nations and against appeasement of communism at Yalta, Potsdam, Nuremberg, Korea. Director Committee to Stop World Communism organized in 1948 to expose communism in the U.S. Member Katyn Forest Massacre Committee to investigate mass slaying of 15,000 Allied officers in early days of World War II and awarded "Polonia Restitvta" medal for outstanding member of the committee. Married Veronica Hemming, Janesville, Aug. 1935. Serving 8th term in Congress. Member House Armed Services Committee. Home Address: Mercer.





LAUN
1st District



O'BRIEN
2nd District



KENDZIORSKI
3rd District

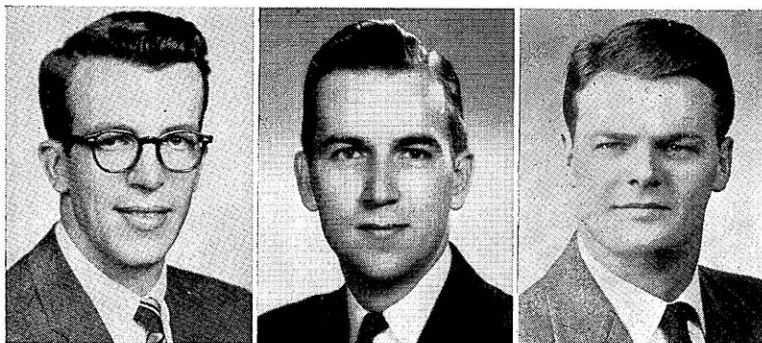
ALFRED A. LAUN, JR. (Rep.) born New Holstein Feb. 14, 1905. Educated New Holstein and Milwaukee public schools, Oberlin College; A.B. Harvard University 1927; M.B.A. Harvard Graduate School of Business Administration 1929. With A. A. Laun Furniture Co. since 1935; president since 1946. Alderman, Kiel, 1945-47. Member State Board of Vocational and Adult Education since 1946; also Board of Trustees of Stout Institute since 1946-1955. Alternate delegate to Republican National Convention 1952, delegate 1956. 8th district presidential elector, 1952; 8th district Republican chairman, 1952-54. Serving 1st term in the legislature. Home Address: 502 River Terrace, Kiel. 1st senatorial district: Door, Kewaunee, Manitowoc Counties.

LEO P. O'BRIEN (Rep.) born July 20, 1893 Fond du Lac. Attended University of Wisconsin; Marquette University; St. Norbert College, DePere. Insurance salesman. Served 4 years as alderman in Green Bay. Veteran World War I and II; in World War II combat navy veteran, 32 months in Pacific including the Solomon-Guadalcanal campaigns. Elected to senate 1952; re-elected 1956. Home Address: 501 Cherry St., Green Bay.

2nd senatorial district: Brown County.

CASIMIR KENDZIORSKI (Dem.) born Poland Dec. 3, 1898. Elementary and high school education in Poland; evening courses in Milwaukee. From 1928-30 real estate broker, and since has been a machinist and inspector. Past vice president of his local union and member of board on legislation and education. Always been interested and active in civic and labor activities. Elected to assembly in 1946; re-elected in 1948. In 1949 elected to senate; re-elected 1950, 1954. In 1957 elected Democratic assistant floor leader. Home Address: 2025 S. 14th St., Milwaukee.

3rd senatorial district: 11th, 12th, 14th wards city of Milwaukee.



HENDEE
4th District

MERTEN
5th District

MOSER
6th District

KIRBY HENDEE (Rep.) born Mar. 12, 1923 in Milwaukee. Educated Saint Roberts School; Shorewood High School; Holy Cross College (magna cum laude); LL.B. University of Michigan Law School 1953. Factory shop clerk 1941-42; practicing attorney since 1953. Active in City Club of Milwaukee; Milwaukee Junior Bar Assn; member local, state, national bar assns; leader in Community Chest, 1953-56; member Holy Name Society and Knights of Columbus. World War II veteran 1943-46 serving in Philippines with field artillery in 1945. Has held no public office until his election to the senate in 1956. Member senate committees on Judiciary; Labor, Taxation, Insurance and Banking; Joint Survey Committee on Retirement Systems. Home Address: 4425 N. Murray Ave., Milwaukee.

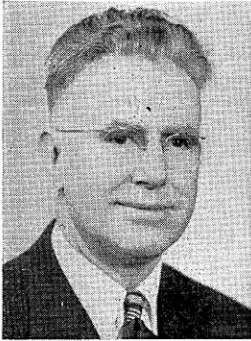
4th senatorial district: Villages of Bayside, Brown Deer, Fox Point, River Hills, Shorewood, Whitefish Bay; city of Glendale and 1st, 18th, 20th wards city of Milwaukee.

WALTER L. MERTEN (Rep.) born Milwaukee Dec. 11, 1922. Graduated St. Sebastian's Grade School and Marquette University High School. LL.B. Marquette University Law School 1950. Practicing attorney and circuit court commissioner. In World War II 1943-46; served overseas in Philippines and Japan with 25th Infantry Division. Entered army as private and discharged as 1st lieutenant. After discharge from military service, at request of War Department, served as civilian military officer in Japan, as specialist in government and education. Member American Legion; Wisconsin and Milwaukee Bar Assns.; Kiwanis. Served in assembly 1951, 1953. Served in senate 1955, 1957. Assistant Republican floor leader 1957; chairman Senate Committee on Judiciary 1957; chairman Urban Development Committee of the Legislative Council 1957; member Judicial Council 1957. Home Address: 2940 N. 50th St., Milwaukee.

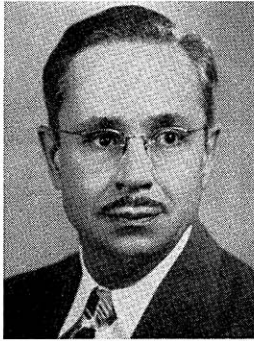
5th senatorial district: 5th, 9th, 15th wards city of Milwaukee.

WILLIAM R. MOSER (Dem.) born Oct. 14, 1927 in Chicago. Educated St. Michael's Elementary School, St. John's Cathedral High School, both Milwaukee; B.S. St. Norbert's College; LL.B. Marquette University Law School. Practicing attorney. Former member Advisory Council to Mayor of Milwaukee; director State Street Advancement Assn., Milwaukee; member state and local Bar Assns.; past commander Saint Rose Post 1286, Catholic War Veterans; judge advocate Wis. Dept. Catholic War Veterans; member Knights of Columbus, Eagles. In army 1945-47. Elected to senate 1956. Business Address: 710 N. Plankinton Ave., Milwaukee.

6th senatorial district: 7th, 10th, 13th wards city of Milwaukee.



McPARLAND
7th District



BUSBY
8th District



MAIER
9th District

LELAND S. McPARLAND (Dem.) born Thorp Dec. 18, 1896. Common and high school education at Thorp, attended Oshkosh State Teachers College 2 years, studied law Marquette University. Taught school in South Milwaukee 1919-27; since 1927 engaged in practice of law. City attorney Cudahy 1932-36. In navy 1917-18. Chairman Democratic Organizing Committee of Milwaukee County 1952-53. In 1945, 1947, 1949 sessions Democratic floor leader. Served 7 terms in assembly, Chairman Democratic joint caucus 1953, 1955, 1957. Elected to senate 1954. Business Address: 4703 S. Packard Ave., Cudahy.

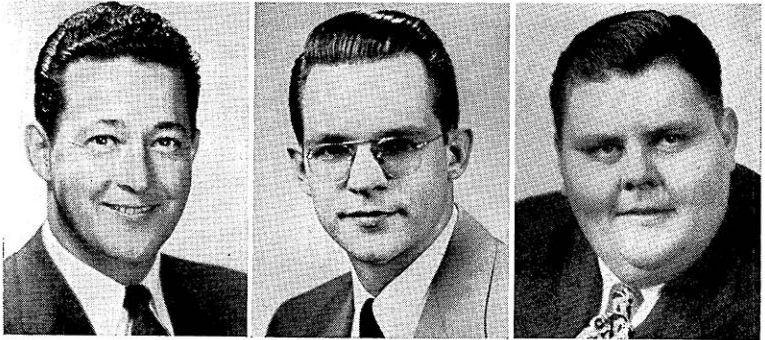
7th senatorial district: Cities of Cudahy, St. Francis, South Milwaukee; 17th, 19th wards (old town of Lake) city of Milwaukee; 5th ward city of West Allis; towns of Franklin, Greenfield, Oak Creek; villages of Greendale, Hales Corners.

ALLEN J. BUSBY (Rep.) a graduate of West Milwaukee public schools, West Allis High School, Milwaukee State Teachers College, University of Wisconsin with degrees of B.A., M.A., and LL.B. Admitted to bar 1928. Principal of high school at Little Chute 1922-24 and instructor West Allis High School 1928-33. Since 1932 village attorney West Milwaukee and member of law firm of Busby and Luehring in Milwaukee. Elected to assembly 1930, 1934. Elected to senate 1936; re-elected 1940, 1944, 1948, 1952, 1956. Home Address: 1673 S. 53rd St., Milwaukee.

8th senatorial district: Town of Wauwatosa; village of West Milwaukee; city of Wauwatosa and 1st-4th wards city of West Allis.

HENRY W. MAIER (Dem.) born Feb. 7, 1918. Received B.A. University of Wisconsin in 1940. Became an insurance field representative in Wisconsin until 1942 when he enlisted in Navy. Served aboard the destroyer, U.S.S. Van Valkenburgh and was in battles in Iwo Jima and Okinawa. Upon release from service established a general insurance agency and taught workmen's compensation and general liability insurance at University of Wisconsin in Milwaukee. 1956 Democratic nominee for U.S. Senate. Formerly member Wis. Senate Governmental and Veterans Affairs Committee; presently member Committee on Education. Member American Legion, American Federation of Teachers. Elected to senate 1950; re-elected 1954. Chosen Democratic floor leader, 1953, 1955, 1957. Home Address: 2237 N. Booth St., Milwaukee.

9th senatorial district: 2nd, 3rd, 6th wards of city of Milwaukee.



KNOWLES
10th District

ZABORSKI
11th District

KRUEGER
12th District

ROBERT P. KNOWLES (Rep.) born Feb. 25, 1916 at River Falls. Educated River Falls elementary and high schools; B.S. River Falls State College. Since 1938 engaged in insurance and real estate business. Circuit court commissioner since 1945. Member and past president Kiwanis Club and Willow River Rod and Gun Club; Member Elks, Butler-Harmon Post #80 Amvets, Wis. Ass'n of Insurance Agents. In U.S. army air force, June 1942-Aug. 1945. Elected Apr. 1955 at a special election to fill vacancy caused by resignation of Sen. Warren P. Knowles. Re-elected 1956. Chairman 1955-57 interim Legislative Council Committee on State Government Operations which studied efficiency in government. Home Address: New Richmond.

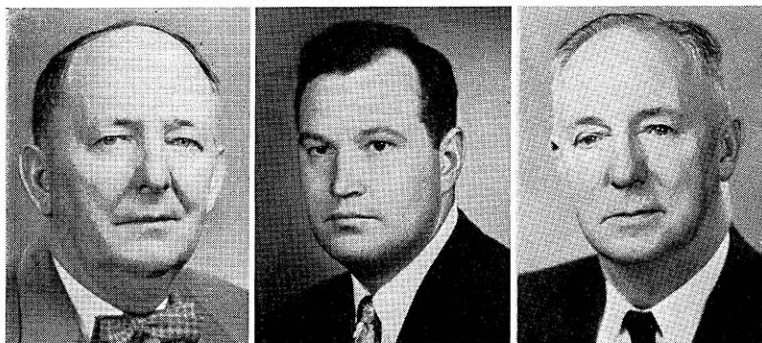
10th senatorial district: Buffalo, Dunn, Pepin, Pierce, St. Croix Counties.

RICHARD J. ZABORSKI (Dem.) born Milwaukee Jan. 7, 1927. Graduated St. Mary Czesz Parochial School, Messmer High School; B.S. Marquette University 1953. Salesman. World War II veteran and army reserve officer. Commissioned infantry officer at 18. Served overseas in Europe with 1st Infantry Division; participated in Nuernberg trials; recalled to active duty 1950; in Korea and Japan as officer in 1st Cavalry Division; intelligence officer. Chairman Milwaukee County Democratic Full Employment Conference; delegate to Democratic state conventions. Member American Legion, Holy Name Society, various social, political and scholastic organizations. Elected to senate 1954. Home Address: 713 S. 21st St., Milwaukee.

11th senatorial district: 4th, 8th, 16th wards, city of Milwaukee.

CLIFFORD W. KRUEGER (Rep.) born in Madison June 24, 1918. After graduating from high school attended Merrill Commercial College. Presently a sales manager. In 1946 elected alderman, and in 1940 appointed deputy sheriff. Member of senate 1947, 1949, 1951, 1953, 1957. Home Address: 122 N. State St., Merrill.

12th senatorial district: Iron, Lincoln, Oneida, Price, Taylor, Vilas Counties.



PANZER
13th District

LORGE
14th District

CARR
15th District

FRANK E. PANZER (Rep.). Attended public schools and Oakfield High School. Was school teacher and telegraph operator; at present engaged in farming. Has held several public offices including school clerk, town chairman, member of Dodge County Board since 1925 and chairman of Dodge County Board since 1940. Elected chairman Board of Managers of Council of State Governments, Dec. 5, 1956. In assembly in 1931; elected to senate in 1934; re-elected in 1942, 1946, 1950, 1954. Elected president pro tem 1947-57. Home Address: Route 1, Brownsville.

13th senatorial district: Dodge, Washington Counties.

GERALD D. LORGE (Rep.) born July 9, 1922 on a farm in Bear Creek, Outagamie County. Graduated from grade and high schools in Bear Creek, completing the 4-year high school course in 3 years. Entered Marquette University in 1946 majoring in courses preparatory to law school. Elected to assembly in 1950 from Outagamie County in his junior year at law school; after legislature adjourned in 1951 returned to Marquette University, graduating from law school in 1952. Prior to practicing law at Bear Creek, Sen. Lorge worked as a farmer in Outagamie and Waupaca Counties and did blacksmithing with his father who pioneered the blacksmith art in that area. Enlisted in marine corps, 1941; discharged Dec. 1945. On June 10, 1954 at the annual Wisconsin Marine Corps League convention was given Distinguished Service Award for meritorious service in the marine corps and the Marine Corps League. Member of Loyal Order of Moose, Disabled American War Veterans, American Legion, Marine Corps League, and national, state and local bar associations. Elected to assembly 1950 and 1952. Elected to senate 1954 to fill unexpired term of Sen. Bubolz, resigned; re-elected 1956. Home Address: 147 Railroad St., Bear Creek.

14th senatorial district: Outagamie, Waupaca Counties.

PETER P. CARR (Rep.) born North Jutland, Denmark, Aug. 6, 1890. Educated Chicago public schools, Chicago Business College. Formerly seedsman; member Carr's Inc. operating group of grocery stores and warehouses in Southern Wisconsin 1931-46; member of Janesville wholesale grocery firm 1946-50. Now retired. President Janesville city council 1952-54. President Wisconsin Seed Dealers Ass'n 1929; director Union Trust Co., Madison 1928-31; chairman President's Re-employment Board, Rock County, during depression. Elected to senate 1954. Home Address: 524 N. Garfield Ave., Janesville.

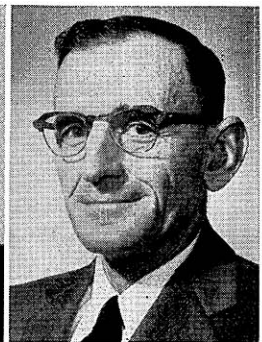
15th senatorial district: Rock County.



NELSON
16th District



TRAVIS
17th District



HOLLANDER
18th District

GAYLORD A. NELSON (Dem.) born Clear Lake June 4, 1916. Educated in Clear Lake graded and high schools. In 1939 B.A. from San Jose State College in California; in 1942 LL.B. University of Wisconsin. Since 1942 a practicing attorney. Elected to senate 1948; re-elected 1952 and 1956. In 1951 chosen Democratic floor leader; in 1953 assistant Democratic floor leader. Served in army 46 months during World War II. Home Address: 5627 Crestwood Place, Madison.

16th senatorial district: All the towns, villages and cities in Dane County except city of Madison; and 21st ward city of Madison.

ROBERT TRAVIS (Rep.) born May 2, 1909 Platteville. Graduated from Potosi grade and high schools; attended Michigan State College 2 years. From 1930-33 manager of Irvington Dairy Products Company in Omaha, Nebraska. From 1933-40 engaged in farming. World War II veteran, having served in anti-aircraft branch of armed forces. Member of assembly 1947-1953. During 1949, 1951, 1953 sessions chairman Assembly Committee on Conservation, member Assembly Committee on Taxation, Committee on Rules. In 1955 member Senate Committee on Agriculture and Conservation. Elected to senate 1954. In 1957 elected Republican floor leader. Home Address: Platteville.

17th senatorial district: Grant, Green, Iowa, Lafayette Counties.

WALTER G. HOLLANDER (Rep.) born Sept. 8, 1896 in Fond du Lac. Graduated Omro High School. Active farmer for 31 years on the farm which has been the Hollander homestead since 1887. For 10 years has operated local insurance agency. Member Springvale town board 1929-31; town clerk 1931-38; town chairman and county supervisor 1938 to date; chairman county board 1952 to date; director Rosendale Union Free High School 1931-38; member Fond du Lac County P.M.A. Committee 1942-53; present member agricultural advisory board, First National Bank, Fond du Lac; member various cooperative organizations; member local board Pure Milk Products Ass'n; member Fond du Lac County Fair Ass'n Board for past 6 years. Elected to senate 1956. Home Address: Route 1, Rosendale.

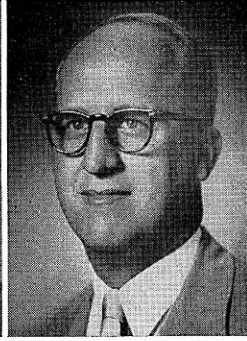
18th senatorial district: Fond du Lac, Green Lake, Waushara Counties.



DRAHEIM
19th District



PRANGE*
20th District



STALBAUM
21st District

WILLIAM A. DRAHEIM (Rep.) born Neenah Dec. 15, 1898. Graduated Neenah elementary and high schools; attended Lawrence College for 2 years. Occupations: mill worker, statistician-accountant, production planner. Sporting goods dealer. Semi-retired. Former member county board. Member Rotary Club, American Legion, Veterans of Foreign Wars. Private in World War I; rose from private to major in National Guard from 1920-40; major and colonel of infantry in World War II; on active duty 1940-46, served 38 months in Southwest Pacific with 32nd Division and other troops; colonel in army reserve. Elected to senate 1950; re-elected 1954. Home Address: 116½ W. Wisconsin Ave., Neenah.

19th senatorial district: Calumet and Winnebago Counties.

LOUIS H. PRANGE* (Rep.) born town of Sheboygan Falls. Educated county rural schools and Mission House College, Plymouth. Engaged in farming for over 40 years; owns a modern certified seed and Holstein-Friesian dairy farm. Past president Dairy State Bank, Plymouth. Served as school district officer; leader of 4-H groups; member county fair board; Tri-County Cheese and Dairymen's Cooperative Association of which he was secretary-treasurer 1931-40. President Plymouth Farmers Mutual Insurance Co. Interested in soil conservation; supervised development of Sheboygan County lime project. Member Wisconsin Agricultural Experiment Association. Elected to senate 1952; re-elected 1956. Home Address: Route 1, Plymouth.

20th senatorial district: Ozaukee, Sheboygan Counties.

LYNN E. STALBAUM (Dem.) born Waterford, May 15, 1920. Educated Racine County rural schools, Racine County School of Agriculture. Since 1951 secretary-treasurer Racine Milk Producers Co-op Assn. Employed by U. S. Dept of Agriculture in Racine County 1936-44, was administrative officer for federal farm programs for that county from 1939-44; terminated employment when he joined the navy in 1944. World War II veteran, U. S. navy destroyer, in South Pacific; discharged as 1st class petty officer 1946. Has been fieldman for milk plant; salesman for feed company; active in community affairs. Former Commander Waterford American Legion; charter member Wind Lake Veterans of Foreign Wars; member, Kiwanis Club of Greater Racine; chairman Democratic Senate Caucus, 1957 session. Elected to senate 1954. Home Address: 904 Montclair Drive, Racine.

21st senatorial district: Racine County.

*Deceased Aug. 19, 1957.



TRINKE
22nd District



RASMUSEN
23rd District



CLARK
24th District

WILLIAM F. TRINKE (Rep.) born on farm in Wisconsin Jan. 25, 1897. Orphaned, he left school at 6th grade, and worked as farm hand, construction laborer, building trades worker, realtor, lawyer and builder. In 1931 entered University of Wisconsin as an adult special, and achieved the record of going from 6th grade to a bachelor's degree in 4 years. In 1937, at age 40, graduated from University of Wisconsin Law School. Served as president of Walworth County Bar Association and state commander of American Legion, 1945-46. World War I veteran, having served in France in 32nd (Red Arrow) Division. Nominated to fill the vacancy caused by death of Senator Shearer on Oct. 8, 1948. This is his 3rd term in the senate. Home Address: Lake Geneva.

22nd senatorial district: Kenosha, Walworth Counties.

HOLGER B. RASMUSEN (Rep.) born Apr. 26, 1894 at Superior. Attended elementary and high schools; Ph. G. Highland Park Colleges, Des Moines, Iowa in 1916. In drug store business since 1912 and since 1919 owned and operated his own drug store. Has held offices in various levels of local government including mayor of Spooner 3 terms 1942-48; civilian defense county school committee 1948-52. Active in fraternal and civic organizations. World War I navy veteran. Assemblyman for 3 terms, 1949, 1951, 1953. Elected in 1956 for unexpired term caused by resignation of Senator Rogan. Home Address: 722 Franklin Ave., Spooner.

23rd senatorial district: Barron, Burnett, Polk, Rusk, Sawyer, Washburn Counties.

WILLIAM WALTER CLARK (Rep.) born Plum City July 7, 1885. Graduated Plum City graded school, Ellsworth High School, River Falls Teachers College, attended University of Wisconsin. Taught number of years in country school, high school and Wood County Agricultural School; served as county agricultural agent. Farmer. Has acted as town chairman of town of Hansen and chairman of Wood County Board. Chairman of Committee on Education 1945, 1947, 1949, 1951. Member of Legislative Council 1949, 1951, 1953, 1955 and chairman of Education Committee of Legislative Council, 1949, 1951. Elected to assembly in 1920, and re-elected 1938, 1942, 1944, 1946, 1948, 1950. Elected to senate 1952; re-elected 1956. Member Committee on Education and Public Welfare 1953; chairman 1955. Home Address: Route 1, Vesper.

24th senatorial district: Clark, Portage, Wood Counties.



LAURI
25th District



WILKIE
26th District



MILLER
27th District

CARL E. LAURI (Dem.) born Jan. 16, 1924 at Superior. Graduated Superior Central High School 1941; B.S. economics and English Superior State College Jan. 1954. Railroad clerk; presently an insurance agent. World War II veteran, U.S. navy 1942-46, flying in Pacific Theater; decorated air medal with 4 gold stars and distinguished flying cross. Member Disabled American Veterans, Veterans of Foreign Wars, Amvets, Loyal Order of Moose, Junior Chamber of Commerce, Fraternal Order of Eagles. Elected to senate 1954. Home Address: 2710 N. 22nd St., Superior.

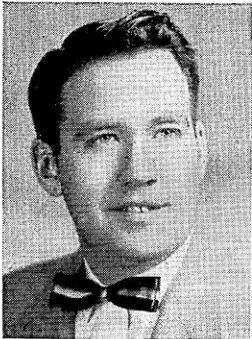
25th senatorial district: Ashland, Bayfield, Douglas Counties.

HORACE W. WILKIE (Dem.) born Jan. 9, 1917 in Madison. Educated Madison public schools; B.A. University of Wisconsin 1938; LL.B. George Washington University, Wash. D.C. 1944. Graduate work in public administration University of Minnesota, American University, National Institute of Public Affairs. For 3 years administrative analyst U.S. Bureau of Budget; administrative consultant to U.S. State Dept. 1949. Practicing attorney since 1944. Member and chairman Madison Housing Authority 1945-50; member National Assn. of Housing and Redevelopment Officials, Mayor's Committee on Madison Metropolitan Development, American Society for Public Administration, local, state and national Bar Assns. Awarded Outstanding Young Man Award for Civic Service in Madison 1947. World War II veteran; in coast guard 1942-45. Elected to senate 1956. Home Address: 3810 Council Crest, Madison.

26th senatorial district: City of Madison except 21st ward.

JESS MILLER (Rep.) born 1884 in town of Eagle, Richland County. Educated in public schools and is farmer and auctioneer by occupation. Has held a number of public offices: chairman of town of Eagle, chairman of county highway committee, county mediation board and county Republican committee. Elected to senate in 1938; re-elected 1942, 1946, 1950, 1954. Home Address: Richland Center.

27th senatorial district: Columbia, Crawford, Richland, Sauk Counties.



DONNELLY
28th District



JONES
29th District



LaFAVE
30th District

DAVIS A. DONNELLY (Dem.) born March 9, 1927 in Augusta. Graduated Augusta elementary and high schools; B.S. Eau Claire State College; LL.B. University of Wisconsin Law School 1957. Practicing attorney in Eau Claire. Previous occupations include salmon fisherman in Alaska, machinist, salesman, messenger Wis. Assembly 1955. World War II and Korean navy veteran. Elected to senate 1956. Member Senate Committee on Agriculture. Home Address: 131 S. Barstow St., Eau Claire.

28th senatorial district: Chippewa, Eau Claire Counties.

HUGH M. JONES (Rep.) born Dousman Oct. 9, 1892. Graduated Dodgeville elementary and high schools; B.S. University of Wisconsin College of Agriculture 1915. Formerly automobile dealer 1922-53; county agricultural agent 1919-22; assistant instructor University of Wisconsin 1915-17. Alderman, Bloomer, Wisconsin, 1932-36; director Wisconsin Motor Vehicle Dept. 1939-41, commissioner of same dept. 1941-43. World War I veteran: field artillery. World War II veteran: military govt. 1943-46. Chairman American Legion Conservation Committee, Dept. of Wisconsin 1928-30. Elected senate 1954. Home Address: 612 Kent St., Wausau.

29th senatorial district: Marathon, Shawano Counties.

REUBEN LA FAVE (Rep.) born Oconto Sept. 27, 1915. Graduated high school, attended Railroad School of Auditors. Was county case-worker; now real estate broker. Member of county board 4 terms. Chairman Sportsmen's Congress District 3, 1949-53; member Congress Conservation Council; president Northeastern Wis. Conservation Council; president Northeastern Wis. Bayshore Trap League; active member of Civic Club, Yacht Club, Kiwanis Club, Wisconsin Service Association and various civic organizations. In 1953 received Milwaukee Sentinel award for outstanding achievement in conservation field. During World War II chief petty officer in auxiliary coast guard. Served 3 terms in assembly, chairman assembly Conservation Committee 1955-56. Member Legislative Council 1955-56. Elected to senate 1956. Member senate Committees on Conservation and Agriculture. Home Address: 636 Brazeau Ave., Oconto.

30th senatorial district: Florence, Forest, Langlade, Marinette, Oconto Counties.



LEVERICH
31st District



BICE
32nd District



DEMPSEY
33rd District

JAMES EARL LEVERICH (Rep.) born on farm in town of Angelo, Monroe County; still resides there. Graduate of Sparta High School, Madison College, University of Wisconsin College of Agriculture. Is a dairy farmer, fruit grower and farm co-op leader; served as school clerk, town clerk, town chairman, member of Monroe County Board. For many years vice president and director Monroe County Bank; president of Sparta Co-op Creamery Association and Western Wisconsin Co-op Creamery Assn; and Sparta Coop Equity Livestock Shipping Assn. Was agricultural member of State Board of Vocational and Adult Education as well as member of various state-wide dairy and other agricultural committees. Organized the anti-oleo demonstration at Madison in 1931 which resulted in elimination of oleo in Wisconsin. Elected to senate in 1934, 1942, 1946, 1950, 1954. Home Address: Route 1, Sparta.

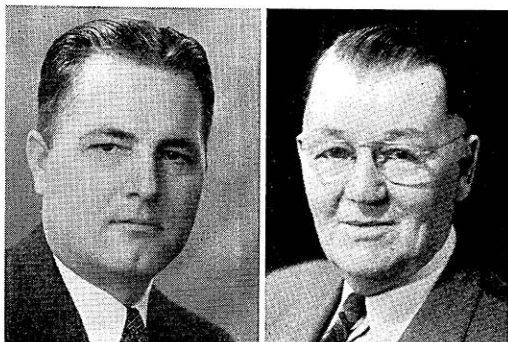
31st senatorial district: Adams, Juneau, Marquette, Monroe, Vernon Counties.

RAYMOND C. BICE (Rep.) born La Crosse Apr. 5, 1896. Educated La Crosse elementary and high schools and University of Wisconsin Extension Division. A partner in sash and door company; and later a building contractor; presently engaged in retail lumber business. Public and civic activities include president La Crosse Vocational Adult School Board, vice chairman board of trustees of Oak Forest Sanatorium, member of numerous other civic organizations. Has been member and officer La Crosse County Board, chairman county park commission, president La Crosse County Chamber of Commerce and La Crosse Businessmen's Club. Overseas with army in World War I. Served 4 terms in assembly; elected to senate April 7, 1953. Re-elected 1956. Home Address: 2406 State St., La Crosse.

32nd senatorial district: Jackson, La Crosse, Trempealeau Counties.

CHESTER E. DEMPSEY (Rep.) born Merton, Waukesha County, July 20, 1896. Owns and operates modern dairy farm of 300 acres which has been homestead of Dempsey family since early pioneer days. Educated in county schools and has always been a close student of farming and farm problems. Was a member of Waukesha County Board and has held various school and township offices. Elected to senate in 1934, 1946, 1950, 1954. Home Address: Route 1, Hartland.

33rd senatorial district: Jefferson and Waukesha Counties.

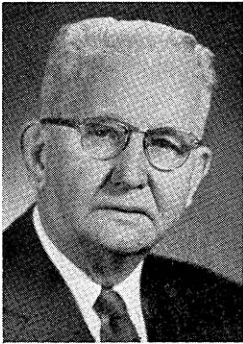


LARSEN
Chief Clerk

DAMON
Sergeant at Arms

LAWRENCE R. LARSEN born Racine Mar. 23, 1897. Educated in common and high schools of that city. Served in World War I with Headquarters Company at Camp Shelby, Mississippi. Elected chief clerk of senate in 1935 and unanimously re-elected in each succeeding session through 1945. In 1955 and 1957 again unanimously elected chief clerk of senate. Elected to assembly in 1950 and 1952. Home Address: 1028 Russet St., Racine.

HAROLD E. DAMON born at Edgerton, Minnesota, Oct. 3, 1885. In 1888 came to Wisconsin where he has since resided. After graduation from high school attended Wausau Business College. At present engaged in insurance business. His public offices include alderman and supervisor, deputy sheriff and deputy clerk of court. In 1943 served as assistant sergeant at arms; in 1944 as acting sergeant at arms. Since 1945 has held the office of sergeant at arms of the senate. Home Address: 926 Washington St., Wausau.



TREMAIN
Adams, Juneau,
Marquette



WALLIN
Ashland, Bayfield



SYKES
Barron

BEN TREMAIN (Rep.) born Feb. 25, 1888 in Monroe County. Graduated elementary and Mauston High Schools. Engaged in retail business for 26 years; now retired. Owner and manager of 2 farms. Member school board 1925-40; village president 1925-40; member county board 1925-56. Assemblyman 1931, 1947-53, 1957. Home Address: Hustler.

VIC C. WALLIN (Rep.) born Washburn May 27, 1899. Attended Grand View elementary schools; graduate of La Salle Extension University course in accounting. Since 1924 he and partners have been wholesale distributors of petroleum products and engaged in retail general merchandise and insurance business. From 1937-47 town chairman; was chairman of county board. Was vice president of Wisconsin Indianhead Country, Inc. for 4 years and now lifetime member of executive advisory committee; was chairman of County Conservation Congress; member State Forestry Advisory Committee. Serving 4th term in assembly. Home Address: Grand View.

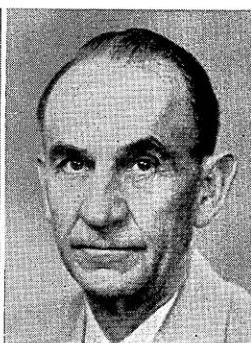
CHARLES H. SYKES (Rep.) born Jan. 11, 1881 at Brodhead; graduated Milton Junction High School; attended Janesville Business College. At 19 began farming in Rock County. In 1919 moved to farm in Barron County on which he resided until he retired in 1934. On county board of Rock County for 2 years and 12 years on county board of Barron County. Serving 10th term in assembly. Home Address: Chetek.



QUINN
Brown, 1st



LYNCH
Brown, 2nd



SEYMOUR
Brown, 3rd

JEROME QUINN (Rep.) born Green Bay May 23, 1910. Graduated grade and high schools; attended University of Wisconsin. Merchant and real estate operator. Alderman of Green Bay; supervisor Brown County; member of Green Bay Board of Education. Member of Elks, Green Bay Ass'n of Commerce. Elected to assembly 1954; re-elected 1956. Home Address: 912 Howard St., Green Bay.

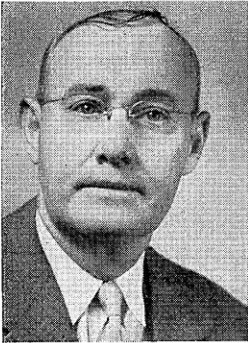
Brown County, 1st district: 3rd, 6th, 13th-24th wards city of Green Bay.

ROBERT E. LYNCH (Dem.) born Chicago. After graduation from Notre Dame became baseball coach there and later for Northwestern University, Northwestern Academy and Clemson College. He played in and managed professional baseball with clubs in the Wisconsin-Illinois League; the American Association; and the Western, Eastern and Southern Leagues. During war public relations officer Kewaunee Shipbuilding and Engineering Corporation. His election to assembly in 1932 marked his entrance into public office. Elected to assembly 1934, and since 1943 has served consecutively. Chairman Democratic caucus and assistant Democratic floor leader for 1947. In 1949 nominated Democratic candidate for speaker. Chairman Committee to Visit State Institutions in 1951; member 1953, 1955, 1956. Member Public Welfare and Transportation Committees 1957. Home Address: 1144 Cass St., Green Bay.

Brown County, 2nd district: Towns of Allouez, Preble; 1st, 2nd, 4th, 5th, 7th-12th wards, city of Green Bay.

EDWARD A. SEYMOUR (Rep.) born De Pere Aug. 1, 1887. Educated De Pere grade and high schools, Oshkosh State College, B.S. St. Norbert's College. Mayor of De Pere 10 years. Principal and superintendent of schools 1914-52; county superintendent of schools 1919-38; member Brown County Agricultural Committee 1920-38, Brown County Park Board 1918-34, De Pere Police and Fire Commission 1934-40. Elected district vice president, 2nd senatorial district, League of Wisconsin Municipalities. Serving 2nd term in the legislature. Business Address: De Pere.

Brown County, 3rd district: All towns, cities and villages in the county except towns of Allouez and Preble and city of Green Bay.



WARD, M.
Buffalo, Pepin, Pierce



NELSON
Burnett, Polk



PETERS
Calumet

MAMRE H. WARD (Rep.) born Jan. 16, 1899 Durand. In 1916 graduated from Durand High School. Has been a farmer all his life. In 1935 and 1936 town chairman. Was member of Wisconsin State Soil Conservation Committee for 12 years and chairman of that committee when elected to the assembly in 1950. For 12 years president Bank of Durand until it consolidated with Security National Bank of Durand, of which he is now a vice president and director, a post he has held for the past 9 years. Vice president Durand Canning Co., packers of peas and beans. This is his 4th term in the legislature. Chairman Commerce and Manufactures Committee 1955; member Committee on Highways 1955; chairman, Committee on Public Welfare 1957. In 1951 and 1953 served on Committee on Agriculture. Home Address: Mondovi.

LOWELL A. NELSON (Rep.) born Feb. 4, 1918 at Grantsburg. Graduated elementary and high schools. Presently a farmer. Public offices: town chairman 1949-57; county board member 1953-1957; former rural school board director. Director town mutual insurance company, member agricultural and civil defense committees; representative federal-state crop reporting service on various surveys; former cooperative creamery director. Elected to assembly 1956. Home Address: Grantsburg.

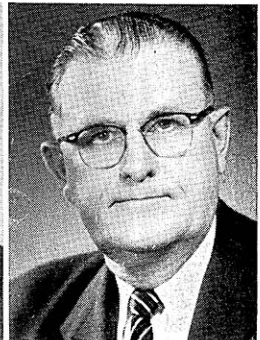
HENRY MARTIN PETERS (Rep.) born town of Woodville, Calumet County, Nov. 21, 1889. Attended public schools in Nebraska; became farmer and rancher. Was fireman and engineer, farmer and dairyman. Now retired. Town assessor for 10 years; town clerk for 9 years. Secretary of local cheese factory 28 years; member of Board Cheese Storage Company 15 years; secretary and treasurer of livestock shipping association 11 years. Elected to assembly in 1948; resigned as town clerk and re-elected to assembly in 1950, 1952, 1954, 1956. Home Address: Route 1, Menasha.



CRANE
Chippewa



GUELL
Clark

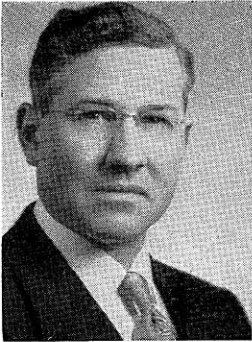


BIDWELL
Columbia

WILDER CRANE, JR. (Rep.) born Chippewa Falls Apr. 7, 1928. Graduate Chippewa Falls High School; B.A. Carleton College, 1950; A.M. Harvard University, 1951; Lehrgang fuer internationale Studien, University of Vienna, Austria, 1952. Junior partner Crane Lumber Co. since 1952 and teaching assistant, political science, University of Wisconsin, 1955-57. Author of periodical articles on government and speech. County board member 1952, 1953-56. Member Chippewa Falls JC's, Chippewa Little Theater, Chippewa County Taxpayers, Amer. Pol. Sci. Ass'n, Phi Beta Kappa, Chippewa Rod and Gun Club, Elks, Chippewa Falls Industrial Development Corporation. Elected to assembly 1956. Home Address: Chippewa Falls.

CORWIN C. GUELL (Rep.) born Fond du Lac Dec. 22, 1909. Educated elementary and high schools Fond du Lac; B.A. North Central College, Naperville, Ind.; 1930-31 Northwestern University Law School; LL.B. University of Wisconsin Law School 1934. Practicing attorney since 1934; and vice president and general counsel Thorp Finance Corporation. Public offices: director Thorp school board 1941 to date; county board member 1939-41; Thorp city attorney 1938 to date. Past president Clark Co. Bar Assn.; past president Area Committee of Eau Claire State College; director Wis. Law Alumni Assn., U. S. naval reserve 1943-45. Elected to assembly 1956. Home Address: Thorp.

EVERETT V. BIDWELL (Rep.) born Houston, Minn. Oct. 22, 1899. Attended Minnesota rural schools and University of Minnesota. Formerly a farmer, ice cream manufacturer and salesman; now engaged in manufacture of ice cream. Supervisor Columbia County Board; former director Portage Chamber of Commerce and State Assn. of Ice Cream Manufacturers. Serving 3rd term in Assembly. Member Committees on Public Welfare and State Affairs 1955 and 1957. Business Address: 210 W. Edgewater St., Portage.



KINTZ
Crawford, Richland



ANDERSON, N.
Dane, 1st



RISSER
Dane, 2nd

MILFORD C. KINTZ (Rep.) born Aug. 3, 1903 in township of Richland. Received early education in elementary and high schools and attended Richland County Normal School. After teaching 1 year became a farmer. Town chairman 1939-51; has served as chairman of county board, school board director, 4-H club leader, and Committee on Rural Community High Schools. This is his 4th term in the assembly. Home Address: Rural Route 2, Richland Center.

NORMAN C. ANDERSON (Dem.) born March 11, 1928, Hammond, Ind. Educated Hammond elementary and high schools; LL.B. University of Wisconsin Law School. During college days worked as construction laborer, school bus driver, janitor; 1953-56 real estate salesman. Practicing attorney since 1954. Acting coroner, Dane Co. 1952-54. Army service 1946-47. Elected to assembly 1956. Home Address: 2142 E. Johnson St., Madison.

Dane County, 1st district: 6th, 7th, 12th, 15-18th wards, city of Madison.

FRED A. RISSER (Dem.) born Madison May 5, 1927. Educated Madison public schools, Carleton College, University of Wisconsin. B.A. and LL.B. University of Oregon. Practicing attorney. Member of the Oregon and Wisconsin Bar Associations. World War II veteran; navy 1945-46. Elected to assembly 1956. Business Address: 109 W. Main St., Madison.

Dane County, 2nd district: 1st-4th, 8th, 9th, 14th wards, city of Madison.



METZNER
Dane, 3rd



THOMPSON
Dane, 4th



BRUNER
Dane, 5th

CARROLL E. METZNER (Rep.) born Milwaukee Apr. 24, 1919. B.S. Northwestern University; LL.B. University of Wisconsin 1943. Practicing attorney. Instructor School of Commerce, University of Wisconsin 1948-52. Member Madison city council 1951-56. Elected to assembly 1954; re-elected 1956. Home Address: 733 Huron Hill, Madison.

Dane County, 3rd district: 5th, 10th, 11th, 13th, 19th, 20th wards of city of Madison.

CARL WILLIAM THOMPSON (Dem.) born Washington, D.C. Mar. 15, 1914. Graduate Stoughton elementary and high schools, University of Wisconsin Law School 1939. Practicing attorney at Stoughton. Served as alderman, city attorney. Democratic national committeeman 1949 to date. Presidential elector 1948. Democratic candidate for governor 1948, 1950. World War II veteran, U.S. army 1942-46, in military intelligence. Elected to assembly 1952; re-elected 1954 and 1956. Home Address: 702 Ridge St., Stoughton.

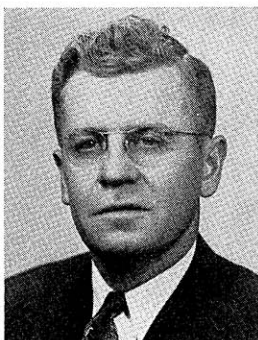
Dane County, 4th district: Towns of Albion, Blooming Grove, Bristol, Burke, Christiana, Cottage Grove, Deerfield, Dunkirk, Dunn, Medina, Pleasant Springs, Rutland, Sun Prairie, Windsor, York; villages of Cambridge, Cottage Grove, Deerfield, DeForest, McFarland, Marshall, Monona, Rockdale, Sun Prairie; city of Stoughton.

ERVIN M. BRUNER (Dem.) born Nov. 12, 1915 in Lenoir, N. C. Attended Wisconsin State College, Milwaukee; Ph.B. and LL.B. University of Wisconsin. Lawyer and farmer. Active in farm organizations and cooperatives. World War II infantry veteran. Elected to assembly consecutively since 1952. Resigned from assembly July 1, 1957, when he assumed office of judge of Dane County Small Claims Court to which he was elected in Apr. 1957. Home Address: Route 2, Verona.

Dane County, 5th district: Towns of Black Earth, Berry, Blue Mounds, Cross Plains, Dane, Fitchburg, Madison, Mazomanie, Middleton, Montrose, Oregon, Perry, Primrose, Roxbury, Springdale, Springfield, Vermont, Verona, Vienna, Westport; villages of Black Earth, Blue Mounds, Cross Plains, Dane, Maple Bluff, Mazomanie, Middleton, Mt. Horeb, Oregon, Shorewood Hills, Verona, Waunakee, and the parts of villages of Belleville and Brooklyn in Dane County; 21st ward city of Madison.



GENZMER
Dodge, 1st



NITSCHKE
Dodge, 2nd



GRAASS
Door, Kewaunee

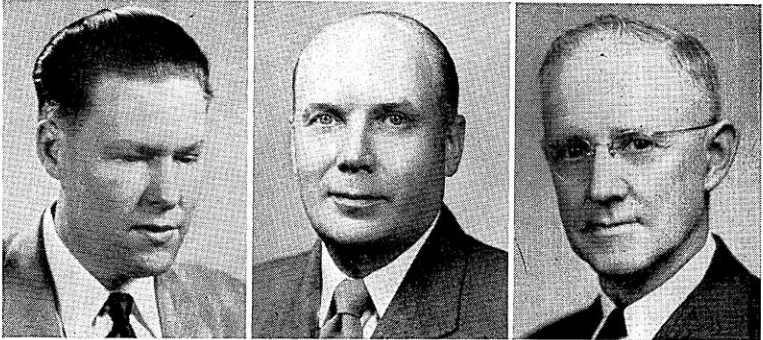
ELMER L. GENZMER (Rep.) born Jan. 3, 1903 Mayville. Attended Milwaukee State Teachers College; Marquette Law School 1923-24. President Mayville Metal Workers Union since Jan. 1, 1957. Justice of Peace in Mayville 1930-42. In 1942 elected mayor of Mayville and served continuously until 1956. Since 1935 served 12 consecutive terms in assembly. "Because of his piquant phrasemaking, Mr. Genzmer can make effective arguments on the floor. Few bother to refute him. The majority obviously enjoy his efforts, for he is one of the best-liked and most skillful speakers in the lower house in an era when the art of oratory appears to be lost." Previously chairman of Committee on Commerce and Manufactures, and Excise and Fees; presently chairman Committee on Labor. Home Address: 435 N. Main St., Mayville.

Dodge County, 1st district: Towns of Ashippun, Clyman, Emmet, Herman, Hubbard, Hustisford, Lebanon, Leroy, Lomira, Rubicon, Shields, Theresa, Williamstown; villages of Brownsville, Clyman, Hustisford, Iron Ridge, Lomira, Neosho, Theresa; cities of Horicon, Mayville; 5th, 6th, 13th, 14th wards city of Watertown.

ELMER C. NITSCHKE (Rep.) born Burnett May 20, 1911. Educated in elementary and high schools of Dodge County. Is a farmer and insurance agent. Was school board director and deputy sheriff; member of Lions Club, Elks Club, and Dodge County Insurance Agents' Association. This is his 5th term. Home Address: 208 Hamilton Street, Beaver Dam.

Dodge County, 2nd district: Towns of Beaver Dam, Burnett, Calamus, Chester, Elba, Fox Lake, Lowell, Oak Grove, Portland, Trenton, Westford; villages of Lowell, Reeseville, and east ward of Randolph; cities of Beaver Dam, Fox Lake, Juneau, and 1st-4th wards of city of Waupun.

FRANK N. GRAASS (Rep.) born Sturgeon Bay Aug. 19, 1885. Graduated Sturgeon Bay High School 1905, studied forestry and entered forest tree seed collecting and exporting business. Actively engaged in fruitgrowing business for many years; was director of Door County Fruit Growers Cooperative. Served 2 terms as president of Door County Chamber of Commerce; 12 years as legislative counsel for many state conservation organizations; was among those who sponsored the basic state conservation laws. Served on advisory board of Wisconsin Conservation Commission for 4 years. Served as secretary of Commission on Interstate Cooperation; member of board of managers of Council of State Governments; chairman of committee on Great Lakes Fisheries; member of Great Lakes Area Council. Actively interested in state budget and revenue affairs, conservation, rural school education, public welfare, hospitalization and education of dependent and crippled children. Was Governor Goodland's legislative and financial secretary for over 4 years; also served in Executive Office under Governor Rennebohm. Member of assembly 1917-19, 1935-41; re-elected in 1950, 1952, 1954, 1956. Home Address: Sturgeon Bay.



PERALA
Douglas, 1st

HAGEN
Douglas, 2nd

OWEN
Dunn

REINO A. PERALA (Dem.) born Maple, Wisconsin Aug. 28, 1915. Attended Corner School at Maple, Wisconsin School for Blind, Superior State College, University of Wisconsin 1938-43, LL.B. 1943. Practicing attorney, operator Mayeton Hotel in Superior, justice of peace. Elected to assembly 1952; re-elected 1954 and 1956. Home Address: 1706 Broadway St., Superior.

Douglas County, 1st district: 4th-16th wards, city of Superior.

LAWRENCE M. HAGEN (Rep.) born Apr. 4, 1904 at Black River Falls, Wis. Graduated Superior public and high schools. Operating engineer 1922-24; presently journeyman machinist. Member city council 1949-51. Member Advisory Committee of the National Rivers and Harbors Congress. Elected to assembly consecutively since 1952. Chairman Committee on Transportation; member Committee on State Affairs. Home Address: 719 22nd Ave. East, Superior.

Douglas County, 2nd district: Towns of Amnicon, Bennett, Brule, Cloverland, Dairyland, Gordon, Hawthorne, Highland, Lakeside, Maple, Oakland, Parkland, Solon Springs, Summit, Superior, Wascott; villages of Lake Nebagamon, Oliver, Poplar, Solon Springs, Superior; 1st, 2nd, 3rd, 17th, 18th, 19th, 20th wards, city of Superior.

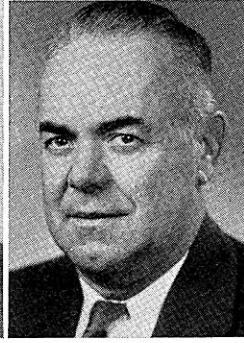
WILLIAM E. OWEN (Rep.) educated in Connorsville rural school and Dunn County Agricultural School. A farmer all his life, specializing in purebred Guernseys on his farm which was known as Weowena Farm. Retired from farming 1945 and devoted major part of time to REA activities; president Dunn County REA since its founding in 1937. President Wisconsin Electric Cooperative 1939-47; director cooperative creamery 18 years; charter member and director Dairyland Power Cooperative; president high school board. State senator 1951-53 sessions. Elected to assembly 1954. Home Address: 205 14th St., Menomonie.



DANIELSON
Eau Claire, 1st



PRITCHARD
Eau Claire, 2nd



LAUBY
Florence, Forest,
Langlade

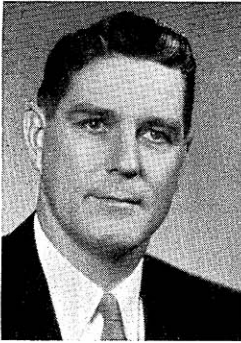
DENNIS B. DANIELSON (Rep.) born Jan. 29, 1921 in Dunn County. Educated rural and public schools, Eau Claire Senior High School, Eau Claire State College; LL.B. University of Wisconsin Law School. Presently engaged in the practice of law at Eau Claire. Eau Claire city councilman 1949-57; member and president city Board of Health 1949-57. Former member panel of conciliators and arbitrators W.E.R.B. World War II veteran, serving in navy air corps 1941-45. At present Lt. Commander air intelligence USNR. Elected to assembly 1956. Home Address: 343 Bartlett Court, Eau Claire.

Eau Claire County, 1st district: 1st-3rd, 5th-10th, 13th wards city of Eau Claire.

JOHN T. PRITCHARD (Rep.) born Dec. 20, 1884 in Caernarvon, Wales; received his early education there. In 1905 came to America. Studied in the College of Agriculture at the University of Wisconsin for 2 years. Since then he has engaged in farming, moving to Eau Claire County in 1913. In 1943 selected by the Eau Claire chapter of Future Farmers to receive the certificate of recognition at the Wisconsin State Fair. This award was made to him for outstanding accomplishments as a farmer in contributing to the education and training of rural youth in agriculture. Has held various public offices and for 12 years was a member of the county board and chairman of its finance and resolution committees. Serving 12th term in the assembly. Member Committees on Agriculture, Commerce and Manufactures, and Committee to Visit State Institutions. Home Address: Route 5, Eau Claire.

Eau Claire, 2nd district: All towns and villages of county; cities of Altoona, Augusta; and 4th, 11th, 12th, 14th, 15th wards city of Eau Claire.

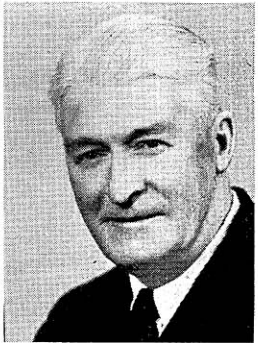
ALFRED J. LAUBY (Dem.) born Oct. 7, 1908 at Antigo. Graduated St. John's Parochial School and Antigo High School. Formerly dairy products salesman, painter and decorator; tavern operator. Now retired. Director Tavern League of Wis. 1949-51. World War II veteran; in navy 1943-45. Serving 2nd term in legislature. Home Address: 209-10th Ave., Antigo.



McESSY
Fond du Lac, 1st



SCHLUETER
Fond du Lac, 2nd



HARPER
Grant

EARL F. McESSY (Rep.) born Feb. 12, 1913 in Fond du Lac. Graduated Fond du Lac county rural school and Fond du Lac High School; B.S. Marquette University, 1939. Born and raised on a farm in Fond du Lac township; worked as factory laborer for several years and has extensive experience as a small businessman. Formerly purchasing agent, traffic officer, undersheriff; presently engaged in real estate and insurance business. Red Cross fund chairman 1955-56; community chest committee member 1954-55; president local P.T.A. 1953-55; vice president Central Council of Education 1953-55. Lieutenant in navy 1942-46, with South Pacific amphibious forces; 7 battle stars, 3 citations. Elected to assembly 1956. Home Address: 361 Forest Ave., Fond du Lac.

Fond du Lac County, 1st district: Town of Fond du Lac; village of North Fond du Lac; city of Fond du Lac.

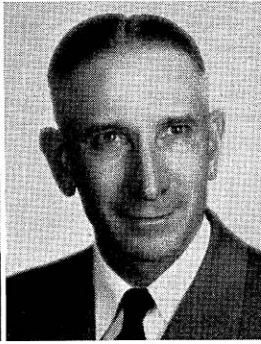
FRED W. SCHLUETER (Rep.) born Berlin Apr. 16, 1895. Educated public schools; attended insurance short courses, University of Wisconsin. Farmer and general insurance agent. Clerk of Town of Ripon since 1928. Member board of directors of Ripon Farmers Mutual Fire Insurance Co. 1936; president 1942-49; secretary since 1949. Director Ripon Chamber of Commerce. Serving 2nd term in legislature. Member Assembly Committees on Agriculture and Taxation 1955 and 1957. Home Address: P.O. Box 32, Ripon.

Fond du Lac, 2nd district: Towns of Alto, Ashford, Auburn, Byron, Calumet, Eden, Eldorado, Empire, Forest, Friendship, Lamartine, Marshfield, Metomen, Oakfield, Osceola, Ripon, Rosendale, Springvale, Taycheedah, Waupun; villages of Brandon, Campbellsport, Eden, Fairwater, Oakfield, Rosendale, St. Cloud; city of Ripon, and 5th, 6th wards city of Waupun.

HUGH HARPER (Rep.) born Dec. 24, 1885 at Lancaster. Attended Lancaster elementary schools, Madison Central High School; B.A. University of Wisconsin 1907; attended University of Wisconsin agricultural courses 1907-10. Active in athletics in university, serving 3 years on basketball team. For 6 years with Company F, 3rd Wisconsin Regiment and member of Company F's 1910 A.A.U. champion basketball team. Retired farmer. Former member Oak Grove school board; former town chairman; president Wisconsin County Boards Assn. 1937-38. Member American Society of Equity and secretary 1919-22; secretary and president Grant County Farm Bureau 1922-30; member Wisconsin Farm Bureau board of directors 1923-30 and president of Bureau 1926-28. Assemblyman 1931, 1933, 1935, 1945, 1947, 1949, 1951; re-elected 1956. Home Address: 1016 W. Maple St., Lancaster.



STAUFFER
Green



JAHNKE
Green Lake, Waushara

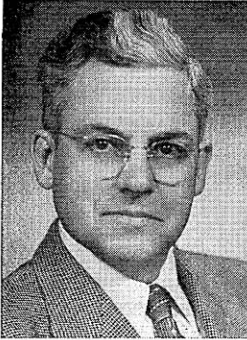


CALVERT
Iowa, Lafayette

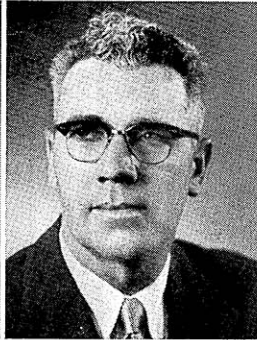
CHRIST M. STAUFFER (Rep.) Birth date May 25, 1896. Born and raised on farm in Monticello; farmed with brother as partner until 1918. Attended elementary school, 2 years high school. Blacksmith, horse shoer, welder 1919-56. Now retired. Village president 1935-51; fire chief 1928-48; president grade and high school boards of education 1930-43; on selective service board 2 years; Green County school committee 2 years; vice president League of Wisconsin Municipalities 3 years; president businessmen's club. Active in civic, church and fraternal organizations. Past commander local American Legion. World War I veteran, 7th Battalion Headquarters 1918-19. Elected to assembly 1956. Home Address: Monticello.

FRANKLIN JAHNKE (Rep.) born Apr. 20, 1900 in Town of Marquette. Educated Green Lake County public schools. Lifetime farmer, owns general dairy farm producing Grade "A" milk; raises purebred hogs. Town assessor 1932; town chairman since 1933; county board supervisor since 1933 and its chairman since 1944; member State Banking Review Board 1937-43. President Grand River Rural Fire District and Wis. Ass'n of Soil Conservation District Supervisors; vice president and director Grand River Co-op of Markesan; member Dairy Herd Improvement Ass'n. Elected to assembly for first time in 1956. Home Address: Route 3, Markesan.

WALTER B. CALVERT (Rep.) born Dec. 23, 1904 at Benton. Educated Benton public schools and University of Wisconsin; B.S. White-water State College. Commercial teacher 1926-37; engaged in farming since 1937; high school principal 1944-45. Public offices include town chairman, county supervisor, chairman county board 1951-57. Member Lions Club 27 years; past president Sturgeon Bay and Benton Lions Clubs. Elected to assembly 1954; re-elected 1956. Home Address: Benton.



DILLMAN
Iron, Oneida, Vilas



HARDIE
Jackson, Trempealeau



WACKETT
Jefferson

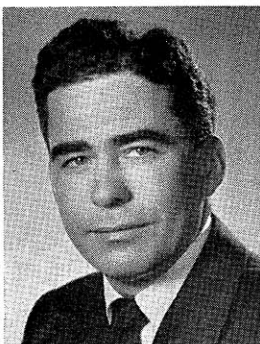
MARVIN E. DILLMAN (Rep.) born Reville, S.D. July 12, 1907. Educated elementary and high schools S.D., B.S. University of Illinois, 1931. Proprietor summer resort. With U. S. Indian Service 1931-35; principal elementary school 1951-53. Chairman Vilas County School Committee 1947-50. Serving 2nd term in assembly. Home Address: Lac du Flambeau.

KEITH HARDIE (Dem.) born town of Franklin in Jackson County May 16, 1910. Educated in Wilson Creek School, North Bend, Wisconsin. Born on farm, engaged in farming until 1933; then a carpenter and engaged in trucking. Presently operates bulk oil station in Black River Falls and a garage and service station at Franklin, where he resides. Member school board 1942-45. Elected to assembly 1952; re-elected 1954 and 1956. Elected assistant Democratic floor leader 1957. Home Address: Route 1, Taylor.

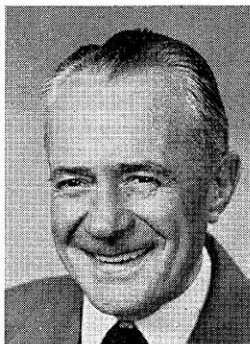
BYRON F. WACKETT (Rep.) born Mar. 21, 1912 at Randolph. Attended Randolph public schools. Former salesman, now a service station operator. Mayor of Watertown 1946-49. Chairman Watertown Chapter Red Cross 1950-52. Former president State Association of Petroleum Retailers. Elected to assembly 1952; re-elected 1954 and again in 1956. Home Address: 601 Washington St., Watertown.



MOLINARO
Kenosha, 1st



MORTON
Kenosha, 2nd



PETERSON, J.
La Crosse, 1st

GEORGE MOLINARO (Dem.) born Oct. 1, 1902 Kenosha. Educated Kenosha public schools and Kenosha Business College. Employed as an auto worker. 1939-47 served continuously as member of county board. Director and life member Kenosha County Fair Ass'n. Member of Legislative Council, 1953-56. This is his 6th term in the assembly. In 1951, 1953 Democratic floor leader. Home Address: 422 44th St., Kenosha.

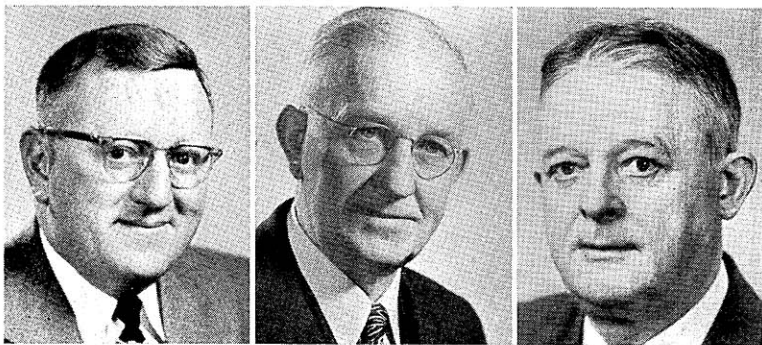
Kenosha County, 1st district: 1st-3rd, 7th-13th, 16th, 17th wards city of Kenosha.

EARL DAVID MORTON (Rep.) born Nov. 28, 1918 in Kenosha where he attended the public schools. Carroll College A.B. 1949; LL.B. Marquette University 1951. Chemical analyst in laundry 1939-40; machine tool inspector 1937-39; now practicing attorney. Assistant district attorney 1954; city councilman 1955-1957. Served in infantry 1940-45. Elected to assembly 1956. Home Address: 4102 Wilson Road, Kenosha.

Kenosha County, 2nd district: Towns of Brighton, Bristol, Paris, Pleasant Prairie, Randall, Salem, Somers, Wheatland; villages of Silver Lake, Twin Lakes; 4th-6th, 14th, 15th, 18th wards city of Kenosha.

JAMES D. H. PETERSON (Rep.) born La Crosse Aug. 7, 1894. Educated La Crosse public schools, La Crosse State College, University of Wisconsin, Washington and Lee University. Practicing attorney since 1925. Assemblyman 1925-26; re-elected in 1954 and 1956. World War I veteran, having served in army 1917-19. Home Address: 326 N. 8th St., La Crosse.

La Crosse County, 1st district: 1st-7th, 9th-16th, 19th, 20th wards, city of La Crosse.



TOEPEL
La Crosse, 2nd

HINZ
Lincoln

VOGEL
Manitowoc, 1st

EUGENE A. TOEPEL (Rep.) born Bangor, Wis. July 29, 1916. Educated Bangor schools; Northwestern College; B.A. and LL.B. University of Wisconsin. Practicing attorney. World War II veteran; army 1942-46; major USAR. Serving 3rd term in assembly. Appointed judge of La Crosse County Court May 2, 1957 to succeed Judge Ahlstrom, deceased; resigned from assembly May 31, 1957. Home Address: 2315 Adams St., La Crosse.

La Crosse County, 2nd district: 8th, 17th 18th, 21st wards city of La Crosse, and entire county outside city of La Crosse.

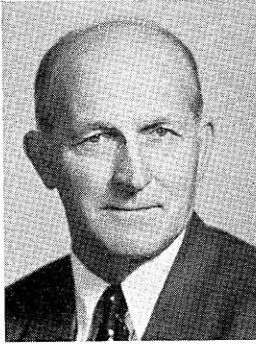
EMIL A. HINZ (Rep.) born Feb. 21, 1889 town of Proviso, Illinois. Educated parochial school in that state. 1914-17 a wheat farmer in Saskatchewan; since 1919 engaged in farming. Was secretary of co-operative cheese factory 21 years. Public offices include town treasurer; town chairman; county board member 19 years, chairman 8 years. World War I veteran. This is his 6th term in the assembly. Home Address: Route 3, Merrill.

HUGO E. VOGEL (Dem.) born Aug. 29, 1888 in town of Newton. Educated parochial and public schools Manitowoc County. Barber since 1906; in partnership with brother since 1923. Circuit court clerk 1919-20; member Barbers Examining Board of State Board of Health 1936-50; county board member 16 years, 1939-55; chairman and secretary county finance committee for 10 years; also served on other county board committees. Elected to assembly 1954; re-elected 1956. Home Address: 1409 S. 12th St., Manitowoc.

Manitowoc County, 1st district: Towns of Manitowoc, Manitowoc Rapids, Newton; city of Manitowoc.



SCHMEICHEL
Manitowoc, 2nd



RIEHLE
Marathon, 1st



LUEDTKE
Marathon, 2nd

EWALD J. SCHMEICHEL (Rep.) born at Two Rivers Dec. 22, 1889. Graduate Two Rivers High School 1909; B.E. Oshkosh State College 1931; attended summer sessions Stout Institute, Oshkosh State College, University of Wisconsin. Instructor Hayward High School 1912-14; principal Winter State Graded School 1914-18 and Manitowoc Junior High School 1918-19; instructor Two Rivers vocational and high school 1951-56. Employment manager Hamilton Mfg. Co., Two Rivers, 1919-21; member Two Rivers Board of Education 1919-21. Now retired. Past president and for past 15 years secretary Two Rivers Lions Club; past president and current director Two Rivers Red Cross; past president and currently director Manitowoc County unit Wisconsin Easter Seal Society. Elected to assembly 1956. Home Address: 1723 28th St., Two Rivers.

Manitowoc County, 2nd district: Towns of Cato, Centerville, Coopers-town, Eaton, Franklin, Gibson, Kossuth, Liberty, Maple Grove, Meeme, Mishicot, Rockland, Schleswig, Two Creeks, Two Rivers; villages of Reedsville, Mishicot, Valders; that part of the city of Kiel in Manitowoc County and city of Two Rivers.

BEN RIEHLE (Dem.) born May 15, 1897, Town of Rietbrock. In 1906 his father started first farmers' creamery in the community in which he lived. Completed 8th grade. Dairy farmer all his life. Connected with milk plants practically all his life, including serving for 8 years as president of a milk plant with an annual volume of 30 million pounds of milk. School treasurer 1925-40; county supervisor 1941-42; chairman P.M.A. 1936-39. World War I veteran, having served in motor transport Aug. 1918-Mar. 1919. Serving 2nd term in legislature. Home Address: Route 3, Athens.

Marathon County, 1st district, see p. 66.

PAUL A. LUEDTKE (Rep.) born Wausau Aug. 24, 1888. Educated in elementary and parochial schools and later took commercial business course. After completing apprenticeship as decorator and wood finisher worked 8 years in this field. At age of 28 went into business for himself. Since then has operated a paint and wall paper, decorating and wood finishing business employing a crew of men who are decorators and woodfinishers. Has held a number of public offices: president city council; alderman and supervisor; chairman city equalization and tax board; chairman county board; member county highway committee, county traffic committee, county board of health, county park board. Honorary member Veterans of Foreign Wars. This is his 8th term in the assembly. Home Address: 118 Second Ave., S., Wausau.

Marathon County, 2nd district: Towns of Maine, Ringle, Texas, Wausau, Weston; villages of Brokaw, Rothschild; cities of Schofield, Wausau.



HAASE
Marinette



MERZ
Milwaukee, 1st



SUSSMAN
Milwaukee, 2nd

ROBERT D. HAASE (Rep.) born May 10, 1923, in Marinette. Graduated Marinette public schools. LL.B. University of Wisconsin Law School 1951. Practicing attorney since 1951. Past commander Marinette American Legion Post; member 40 and 8 U.S. Air Force 1942-46. Elected to assembly 1956. Home Address: 1221 Main St., Marinette.

LOUIS L. MERZ (Dem.) born in Milwaukee July 20, 1908. Educated St. Boniface and Holy Angels Schools, Milwaukee and Milwaukee Vocational School; attended college 1928-29. Owns building supplies business, is a real estate and sales broker and a sales representative. Member Milwaukee Zoning Board of Appeals 8 yrs.; Holy Name Society; "We Remember Battalion" of Amvets; International Assn. of Machinists; Eagles; Public Enterprise Committee; Society for Preservation and Encouragement of Barbership Quartet Singing; American Arbitration Assn. Served in U.S. naval reserve. Elected to assembly 1956. Home Address: 5373 N. 13th St., Milwaukee.

Milwaukee County, 1st district: 1st ward city of Milwaukee.

NORMAN SUSSMAN (Dem.) born in Philadelphia, May 26, 1905. Graduated Milwaukee elementary and high schools; attended school of engineering one year. A grocer and now assistant supervisor of natorium, city of Milwaukee. Active in many civic and fraternal affairs. President Independent Neighborhood Grocers Assn.; member Milwaukee Government Service League and City of Milwaukee Civil Defense and Disaster Committees. Formerly business representative Amer. Fed. of State, County, Municipal Employes Local 2. Elected to assembly 1956. Home Address: 1232 W. Fond du Lac Ave., Milwaukee.

Milwaukee County, 2nd district: 2nd ward, city of Milwaukee.



GRECO
Milwaukee, 3rd



MURPHY
Milwaukee, 4th



TIMMERMAN
Milwaukee, 5th

JOSEPH ANTHONY GRECO (Dem.) born Dec. 5, 1919 at Milwaukee. Attended Andrew Jackson Grade School and Lincoln High School in Milwaukee, Western State College, Lawrence College; graduated Marquette University Law School. Practicing attorney since 1951. World War II veteran. Recalled as reservist 1950. Life member Disabled American Veterans, American Legion, Elks Club, Loyal Order of Moose, Eagles, Wisconsin and Milwaukee County Bar Associations, St. Rita's Holy Name Society. Elected to assembly 1954; re-elected 1956. Home Address: 2429 E. Wyoming Place, Milwaukee.

Milwaukee County, 3rd district: 3rd ward city of Milwaukee.

JOSEPH. P. MURPHY (Dem.) born Milwaukee Apr. 1, 1899. Received education St. Thomas Aquinas School, Marquette Academy, Wisconsin Commercial Academy, Wisconsin University Extension Division in Milwaukee. Formerly an auditor, is an accountant. World War I veteran, having served overseas in the 32nd Division; wounded in action at Chateau-Thierry. Prior to election to assembly in 1950 had held no public office. Re-elected 1952, 1954, 1956. Home Address: 3205 W. Wisconsin Ave., Milwaukee.

Milwaukee County, 4th district: 4th ward, city of Milwaukee.

LAWRENCE W. TIMMERMAN (Rep.) born June 1, 1910 at Milwaukee. Educated Milwaukee parochial grade schools, Marquette University High School, LL.B. Marquette University. Attorney. Formerly employed as factory and office worker. Member Milwaukee and American Bar Assns., and State Bar of Wis. Serving second term in assembly. Home Address: 2402 N. 56th St., Milwaukee.

Milwaukee County, 5th district: 5th ward, city of Milwaukee.



COGGS
Milwaukee, 6th

FLANNIGAN
Milwaukee, 7th

TALSKY
Milwaukee, 8th

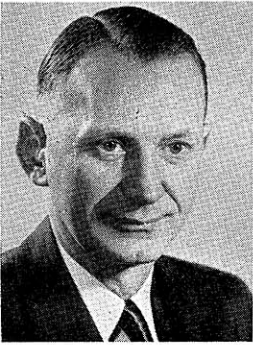
ISAAC N. COGGS (Dem.) born Muskogee, Okla., June 5, 1920. Graduated high school; University of Wisconsin 1948 B.S. degree. Employed Allis-Chalmers 1946; U.S. Post Office 1948-49. Accountant and tavern-keeper. Chairman Legislative Committee N.A.A.C.P.; president Near Northside Businessmen's Association; associate vice chairman Y.M.C.A. membership committee; member American Legion, Disabled American Veterans. World War II veteran. Elected to assembly 1952, re-elected 1954 and again in 1956. Home Address: 2009 N. First St., Milwaukee. Milwaukee County, 6th district: 6th ward, city of Milwaukee.

ALLEN J. FLANNIGAN (Dem.) born June 9, 1909, Princeton, Ind. Educated in Illinois elementary and high schools, completed special courses at University of Wisconsin. Presently employed as a tool-grinder and active in United Steelworkers of America (AFL-CIO). Officer and committeeman of Local 1114 (Steelworkers) for 8 years until he gave up positions to run for assembly in June 1956. Active in civic affairs and member of Board of Directors of Milwaukee Neighborhood House, a Red-Feather agency. Member of 7th Ward Democratic Unit. Formerly a telegraph operator and office manager until 1942, when enlisted in the U.S. army; served 32 months overseas. Elected to assembly in his first try for public office in 1956. Now a member of Committee on Municipalities and Committee on Printing. Home Address: 2605 W. Auer Ave., Milwaukee.

Milwaukee County, 7th district: 7th ward, city of Milwaukee.

GEORGE J. TALSKY (Dem.) born June 19, 1899 in Milwaukee. Father, Anton Talsky, was a pioneer baker on Milwaukee's South Side. Attended St. Lawrence Catholic School, Old 18 Avenue Public School, South Division High and Trade School. Painter and decorator contractor for over 25 years. Former member C.I.O. Actively interested in politics and civic affairs. Serving 2nd term in the legislature. Member Committee on Public Welfare and Committee on Revision 1957. Ex officio Wisconsin assembly photographer pursuant to Res. 29, A, 1957. Home Address: 2617 W. Scott St., Milwaukee.

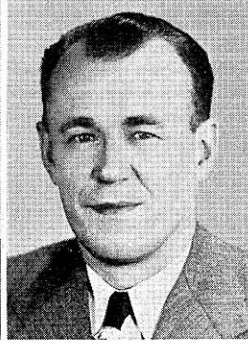
Milwaukee County, 8th district: 8th ward of city of Milwaukee.



SCHMIDT, C.
Milwaukee, 9th



O'CONNELL
Milwaukee, 10th



RYCZEK
Milwaukee, 11th

CHARLES J. SCHMIDT (Dem.) born Milwaukee Mar. 20, 1907. Graduated St. Anthony's Parochial School and South Division High School, attended University of Wisconsin Extension. Occupations: interior decorator; publicity director and inspector for Wis. Industrial Commission; auditor and investigator U.S. Dept. of Labor. During World War II conducted special surveys for War Production Board, War Labor Board, War Manpower Commission. Employe Veteran's Housing Administration. At present owner real estate and insurance business. Served in Wisconsin State Guard. Vice chairman 9th ward Democratic Unit; member Northwest Lions Club of Milwaukee, 9th ward Citizens League of Milwaukee, Milwaukee Board of Realtors and Board of Underwriters, and National Assn of Real Estate Boards, Knights of Columbus, Holy Name Society. Member Legislative Council's interim Subcommittee on Property Valuation. Secretary and treasurer Legislator's Council and Joint Policy Committee of the Legislator's Council. Elected to assembly 1948, 1950, 1952, 1954, 1956. Assistant Democratic floor leader 1953. In 1957 served on Taxation Committee and State Affairs Committee. Home Address: 4046 N. 48th St., Milwaukee.

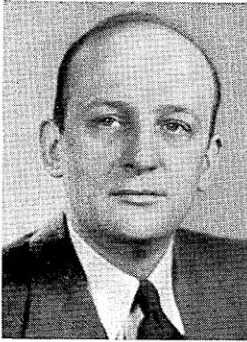
Milwaukee County, 9th district: 9th ward, city of Milwaukee.

MICHAEL F. O'CONNELL (Dem.) born Tipperary, Eire. Received education in public schools. A retired railroad conductor; since 1928 an election inspector. 1936-40 member of Taxpayers League. 4 sons all served in World War II, 1 losing his life while in service. Always concerned in legislation on public welfare and labor. Unanimous choice for speaker for his party, 1951, 1955 sessions. Member Labor Committee for 7 consecutive sessions and Elections Committee for 6 sessions. This is his 8th consecutive term in the assembly. Home Address: 1128 N. 18th St., Milwaukee.

Milwaukee County, 10th district: 10th ward, city of Milwaukee.

ERVIN JOHN RYCZEK (Dem.) born Milwaukee Sept. 20, 1909. Attended St. Adalbert's Parochial School, South Division High School, graduated Marquette High School in 1928. In 1938 student Spencerian Business College in Milwaukee. Since 1930 assistant funeral director. Air raid warden. Member Polish American Citizen Club, Roman Catholic Union, Catholic Order of Foresters, Polish Association of America, Polish National Alliance, Lehitas Club, Century Club, Federation Group, Holy Name Society, Layton Park Lions Club, South Division Civic Association, Old Duffers' Club, Milwaukeeans Club, Blessed Sacrament and St. Joseph's Orphanage Athletic Associations, 11th ward Democratic Party. Had held no public office until his election to assembly in 1940. Re-elected consecutively since 1942. Home Address: 3631 W. Ruskin St., Milwaukee.

Milwaukee County, 11th district: 11th ward, city of Milwaukee.



SOKOŁOWSKI
Milwaukee, 12th



LARSEN
Milwaukee, 13th



MOGILKA
Milwaukee, 14th

GEORGE SOKOŁOWSKI (Dem.) born Apr. 21, 1917 at South Milwaukee. Attended St. Stanislaus Grade School, Milwaukee; pioneer graduate Notre Dame High School. Attended University of Wisconsin Extension Division, Milwaukee; Milwaukee Vocational School. Machinist at Blackhawk Manufacturing Co. in Milwaukee for 16 years. Member of USW-CIO, Local 4869; Veterans of Foreign Wars, Sgt. Leslie T. Knutson Post; Catholic Order of Foresters; Milwaukee Society, Polish National Alliance; Polish-American Citizens Club; South Slavic Benevolent Union "Sloga, Lodge Bled No. 19"; South Division Civic Assn.; St. Anthony's Holy Name Society; honorary member of 1001 Fishing Club of Milwaukee. On the State Democratic Legislator's Council he is a member of the Finance, Government Reorganization and Civil Service Committee; member 12th ward Democratic Party. In Wis. legislature serves on Insurance and Banking Committee and Committee on Transportation. Honorable discharge from U.S. Navy in 1946. Elected to assembly 1950, 1952, 1954, 1956. Home Address: 1813 S. 10th St., Milwaukee.

Milwaukee County, 12th district: 12th ward, city of Milwaukee.

MARTY LARSEN (Dem.) born May 9, 1905 at Oconto. Graduated Milwaukee elementary and high schools; B.E. Milwaukee State College. Formerly school teacher, now a building manager. County supervisor 1940-56. In coast guard 1940-42. Elected to assembly 1956. Home Address: 937 W. Center St., Milwaukee.

Milwaukee County, 13th district: 13th ward city of Milwaukee.

DAVID R. MOGILKA (Dem.) born June 30, 1915 in Milwaukee. Graduate St. Josaphat Grade School, Bay View High School; LL.B. Marquette University Law School 1941. Employed by U.S. Veterans Administration, U.S. Dept. of Internal Revenue, U.S. Bureau of Census prior to becoming assistant city attorney of Milwaukee in Dec. 1951. Secretary St. John Kanty's Holy Name Society; social welfare officer St. Josaphat Catholic War Veterans; member Milwaukee Century Club; Milwaukee Bar Ass'n; American Legion; St. Augustine's Society; 13th St. Advancement Ass'n; Wilson Park Advancement Ass'n; Government Service League; Polish Roman Catholic Union of America. World War II veteran, overseas service in 6th Air Force. His election to assembly in 1956 was his first attempt for public office. Home Address: 2855 S. 13th St., Milwaukee.

Milwaukee County, 14th district: 14th ward city of Milwaukee.



FRICKER
Milwaukee, 15th

DUFFEY
Milwaukee, 16th

PELLANT
Milwaukee, 17th

EARLE W. FRICKER (Rep.) born Feb. 16, 1926. Educated Milwaukee elementary schools and Washington High School; attended Lawrence College; B.S. Marquette University; LL.B. Marquette University Law School 1950. Practicing attorney. Formerly real estate broker and iron worker. Member American Legion, Kiwanis, Junior Chamber of Commerce, Marquette Alumni Ass'n., Burleigh Street Businessmen's Ass'n., Navy Club, Trinity Men's Club, Y.M.C.A., state, Milwaukee and Junior Bar Ass'ns., and other associations. U.S. navy 3½ years, World War II. Elected to assembly 1954 and 1956. Author 1957 daylight savings time bill. Business Address: 4410 W. Burleigh St., Milwaukee.

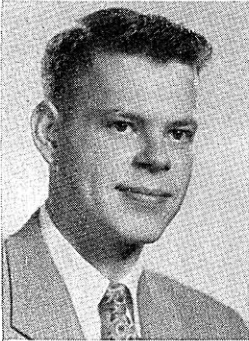
Milwaukee County, 15th district: 15th ward, city of Milwaukee.

THOMAS J. DUFFEY (Dem.) born Milwaukee Dec. 26, 1927. Graduated St. Rose Graded School, Marquette University High School; Marquette University Ph.B. 1950 and LL.B. Marquette University Law School 1952. Engaged in private practice of law in Milwaukee. Member numerous civic, fraternal and veterans' organizations including Wis. and Milwaukee Bar Assns., Eagles, American Legion, Amvets. Elected to assembly 1954; re-elected 1956. Home Address: 210 N. 90th St., Milwaukee.

Milwaukee County, 12th district: 12th ward, city of Milwaukee.

HOWARD F. PELLANT (Dem.) born in Milwaukee July 23, 1911. Attended grade school, high school, vocational school. Former occupations include foundry employe, tavern proprietor, insurance agent, bakery salesman, meat cutter, clerk. Presently international representative U.A.W.-C.I.O. Former member Milwaukee County Health and Welfare Committee; chairman Milwaukee County Property Owners for Public Housing Committee. Member Wisconsin committee on the Hoover commission for reorganization of the federal government. Elected to assembly 1952; re-elected 1954 and again in 1956. Home Address: 3801 S. Kansas Ave., Milwaukee.

Milwaukee County, 17th district: 17th ward, city of Milwaukee.



MEYER
Milwaukee, 18th



LEONARD
Milwaukee, 19th



POMMERENING
Milwaukee, 20th

JOHN R. MEYER (Rep.) born July 17, 1930 in Milwaukee. Education: Hartford Ave. School, Milwaukee; Milwaukee Country Day School; B.A. Harvard College 1951; M.A. Harvard University 1952. Research physicist Allis Chalmers Mfg. Co. 1955-56. Member executive committee 18th ward Republican Club. Had held no public office until elected to assembly 1956. Home Address: 2539 N. Terrace Ave., Milwaukee.

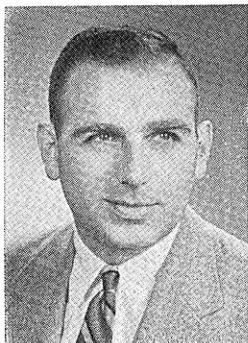
Milwaukee County, 18th district: 18th ward, city of Milwaukee.

JERRIS G. LEONARD (Rep.) born Jan. 17, 1931 at Chicago. Graduated St. Elizabeth's School, Rufus King High School; B.S. in B.A. 1952, Marquette University College of Business Administration; LL.B. Marquette University Law School 1955. 1949-52 brewery worker during summers; clothing salesman 1950-53; nursing home administrator 1953-55. At present practicing attorney. Member Milwaukee Junior Chamber of Commerce, chairman of its legislative committee and its traffic safety committee; member of board of directors and one of the founders of the North Shore Junior Chamber of Commerce. Member Milwaukee Junior and American Bar Ass'ns. Elected to assembly 1956. Home Address: 9420 N. Sleepy Hollow Lane, Milwaukee.

Milwaukee County, 19th district: Villages of Bayside, Brown Deer, Fox Point, River Hills, Shorewood, Whitefish Bay; city of Glendale and 20th ward, city of Milwaukee.

GLEN E. POMMERENING (Rep.) born Milwaukee Sept. 12, 1927. Educated in Wauwatosa grade and high schools; B.S. and LL.B. University of Wisconsin. Practicing attorney since June 1953. Elected to assembly in 1954; re-elected in 1956. Chairman Taxation Committee 1957. Home Address: 7830 W. North Ave., Wauwatosa.

Milwaukee County, 20th district: 1st-6th wards city of Wauwatosa.



HEIDER
Milwaukee, 21st



HUBER
Milwaukee, 22nd



LUEBKE
Milwaukee, 23rd

ROBERT R. HEIDER (Rep.) born Moline, Ill. Apr. 13, 1928. Attended elementary schools in Illinois, Bay View High School, Milwaukee; Michigan College of Mining and Technology; University of Minnesota; B.A. and LL.B. University of Wisconsin. Presently practicing attorney. 40 months U.S. army, World War II; Japanese linguist in General Headquarters, Tokyo, Japan; Korean War, special agent counter intelligence corps. Member American Legion, Wisconsin and Milwaukee Bar Assns. Elected to assembly 1956. Business Address: 135 W. Wells St., Milwaukee.

Milwaukee County, 21st district: 7th and 8th wards, city of Wauwatosa; 3rd ward, city of West Allis.

ROBERT T. HUBER (Dem.) born Eckelson, N. D. Aug. 29, 1920. Graduated West Allis Central High School; became auto parts and service salesman. 1944-48 contractor, is a merchandising salesman. Member of Knights of Columbus and Holy Name Society. Prior to election to assembly in 1948 had held no public office. Elected to assembly 1948, 1950, 1952, 1954, 1956. In 1951 Democratic assistant floor leader; floor leader 1955, 1957. Home Address: 2217 S. 84th St., West Allis.

Milwaukee County, 22nd district: village of West Milwaukee; 1st, 2nd, 4th wards city of West Allis.

WILLIAM LUEBKE (Dem.) born Apr. 28, 1906 in Milwaukee. Educated elementary and vocational schools, high school at night, home study courses, University of Wisconsin summer session, School for Workers in Industry. Formerly an electrician; presently woolen mill superintendent. Elected to assembly 1940, 1942, 1954, 1956. Home Address: 2835 S. 84th St., West Allis.

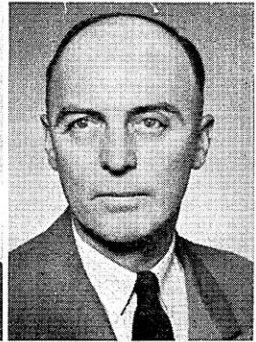
Milwaukee County, 23rd district: Towns of Franklin, Greenfield; villages of Greendale, Hales Corners; city of Oak Creek; 5th ward city of West Allis.



SOBOCINSKI
Milwaukee, 24th



KENYON
Monroe



BAUMGART
Oconto

SHERMAN R. SOBOCINSKI (Dem.) born in Cudahy Jan. 12, 1927. Graduate Holy Family Grade School and St. Francis Minor Seminary. Formerly assistant field manager Fuller Co.; hydraulic lift operator and shipping clerk. Presently tool crib attendant Ladish Co. Member International Ass'n of Machinists; Polish National Alliance; Polish Ass'n of America; Holy Name Society. U.S. Navy 1943-45. Elected to assembly 1956. Home Address: 1807 Missouri Ave., South Milwaukee.

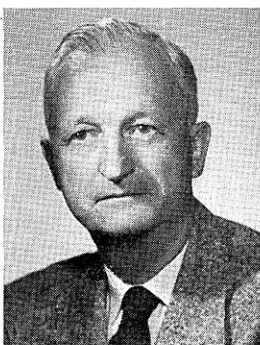
Milwaukee County, 24th district: 19th ward city of Milwaukee; cities of Cudahy, St. Francis, South Milwaukee.

KYLE KENYON (Rep.) born Mar. 22, 1924 at Wyeville. Graduated rural elementary and Tomah High School; LL.B. University of Wisconsin Law School 1952. Monroe County veterans service officer. Practicing attorney since 1952. World War II veteran, in army 1943-46. Elected to assembly 1956. Business Address: 1007½ Superior Ave., Tomah.

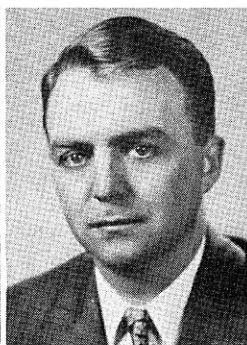
LLOYD R. BAUMGART (Rep.) born Green Bay Jan. 29, 1908. Graduated Powers High School, Powers, Mich.; attended Green Bay vocational school. Formerly owner and operator large dairy farm, painting contractor, owner and operator dinner club. Presently, president Tomlee Carrier Mfg. Co., owner of hardware store, auctioneer, master plumber, registered pump installer. Public offices: village trustee 1948-49; county board chairman 1952 to 1956; village supervisor 1949-56; village president 1949-1954. President Lena Civic Club 1949-51; vice president Businessmen's Assn., 1954, 1956. Elected to assembly 1956. Home Address: Lena.



FRANK*
Outagamie, 1st



SULLIVAN
Outagamie, 2nd



GRADY
Ozaukee

FRED H. FRANK* (Rep.) born in Lessor, Shawano Co., July 1, 1895. Educated Briarton Public School, Bushey Business College, correspondence course in bookkeeping in vocational school. Undersheriff 1936-40; sheriff 1940-45; member Outagamie County Board 1930-36. Member American Legion; Veterans of Foreign Wars; 40 et 8, UCT 100 F; Conservation Club; American Federation of Musicians; World War I veteran, 1917-19, 48th Division, First Army, A.E.F. Assemblyman 1945-49; re-elected 1956. Home Address: 724 S. Mason St., Appleton.

Outagamie County, 1st district: Towns of Center, Grand Chute; city of Appleton.

WILLIAM T. SULLIVAN (Rep.) born Oconto Apr. 6, 1894. Graduated Oconto High School; attended University of Wisconsin; B.E. Oshkosh State College; graduate work at Lawrence College. Since 1927 director Kaukauna School of Vocational and Adult Education. High school teacher, 1915-27. World War I and World War II veteran; served in navy Apr.-Dec. 1918; lieutenant commander in navy 1943-45. Member American Legion, Forty et Eight, Elks, Knights of Columbus. Elected to assembly 1954; re-elected 1956. Member Legislative Council's Committee on Education 1955-56, and chairman of its Advisory Committee on Local Library Services. Served on Assembly Committees on Conservation and Highways, 1957. Home Address: 184 W. Wisconsin Ave., Kaukauna.

Outagamie County, 2nd district: Towns of Black Creek, Bovina, Buchanan, Cicero, Dale, Deer Creek, Ellington, Freedom, Greenville, Hortonia, Kaukauna, Liberty, Main, Maple Creek, Oneida, Osborne, Seymour, Vandembroek; villages of Bear Creek, Black Creek, Combined Locks, Hortonville, Kimberly, Little Chute, Shiocton; cities of Kaukauna, Seymour; 3rd ward city of New London.

WARREN A. GRADY (Rep.) born Port Washington Mar. 3, 1924. Educated Port Washington public schools, Northwestern University, B.S.; University of Wisconsin, LL.B. Practicing attorney since 1950. Serving third term as city attorney. In U. S. navy 1943-46. Elected to assembly 1952, 1954, 1956. Chairman Assembly Committee on Taxation. Elected Republican floor leader 1957. Business Address: 114 E. Main St., Port Washington.

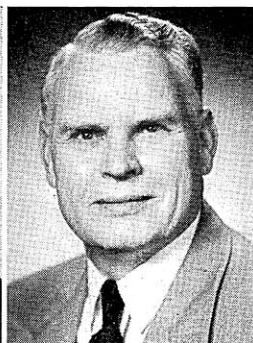
*Deceased July 10, 1957.



KOSTUCK
Portage



ZELLINGER
Price, Taylor



WARREN
Racine, 1st

JOHN T. KOSTUCK (Dem.) born Stevens Point Oct. 7, 1892. Leaving school at end of 3rd grade, he worked on a farm. At age of 14 when assisting in blasting stone, met with accident which made him blind. Entered Wisconsin State School for the Blind and after 10 years graduated from high school department in 1918. Then attended University of Wisconsin, specializing in political science and economics. Taught 3 years in high school department of School for the Blind at Staunton, Virginia; then entered piano business at Stevens Point. Salesman and piano tuner. Serving 14th consecutive term in assembly. Home Address: 130 Algoma St., Stevens Point.

VINCENT J. ZELLINGER (Rep.) born Czechoslovakia Feb. 10, 1901. Received early education in Nebraska and Price County public schools, has been highway maintenance worker, farmer's co-operative store manager, electric welder. Since 1930 dairy farmer. Has been town chairman, member of county conservation and forestry committees, school district director. Town clerk for 13 years. Was president of Price County Guernsey Breeders Association; legislative director of Elk Worcester Local Farmers Union. Has always been interested in bettering conservation and reforestation. In 1925 took military training at Camp Custer, Michigan. This is his 5th term in the assembly. Home Address: Phillips.

EARL WARREN (Dem.) born Feb. 25, 1902 at Hurley. Educated in Hurley public schools; graduated Lincoln High School in Hurley. County supervisor 1948-55. For past 22 years employed as assembler by Young Radiator Co. Previously operated own business. Serving 2nd term in the legislature. Home Address: 1209 10th St., Racine.

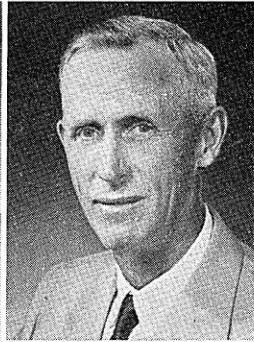
Racine County, 1st district: 1st, 2nd, 3rd, 4th, 6th, 10th, 11th, wards and the 2nd precinct of the 14th ward, city of Racine.



NALEID
Racine, 2nd



REWALD
Racine, 3rd



MERRIAM
Rock, 1st

ROY E. NALEID (Dem.) born Racine Nov. 12, 1901. Educated Racine elementary and high schools; business course, night classes, Marquette University. Is quality analyst with J. I. Case Co. where he has been employed since 1935. Vice chairman Racine County Board; county board member 16 years; member Racine County highway committee 10 years. Elected to assembly 1954, re-elected 1956. Member Committee on Municipalities 1957. Home Address: 2400 W. High St., Racine.

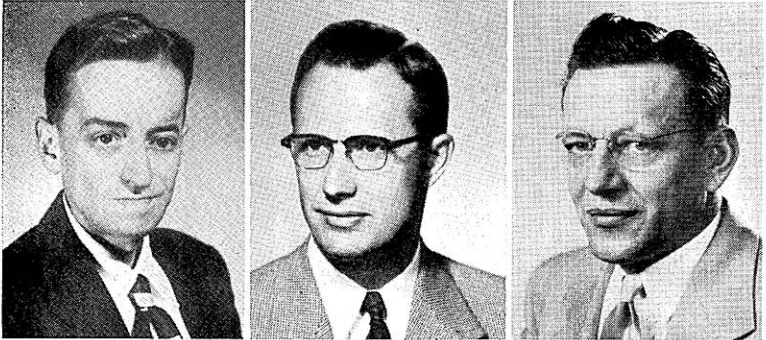
Racine County, 2nd district: 5th, 7th, 8th, 9th, 12th, 13th, 15th wards, and 1st precinct of 14th ward, city of Racine.

ANTHONY BERNARD REWALD (Rep.) born Burlington Mar. 7, 1906. Educated St. Charles Parochial School, Burlington High School, Milwaukee School of Engineering. Electrical contractor 1926-54. County supervisor 1936-50; chairman Burlington Municipal Building Committee. Elected to assembly 1954; re-elected 1956. Home Address: 650 Lewis St., Burlington.

Racine County, 3rd district: Towns of Burlington, Caledonia, Dover, Mt. Pleasant, Norway, Raymond, Rochester, Waterford, Yorkville; villages of North Bay, Rochester, Sturtevant, Union Grove, Waterford, Wind Point; city of Burlington.

WILLIAM R. MERRIAM (Rep.) born Delavan Sept. 28, 1894. Educated Walworth Co. rural school, Wisconsin Rapids High School; B.S. Iowa State College. Farm manager 1919-27; farmer 1927-56. Member Farm Bureau 1927-56 and a director for 4 years; treasurer Wis. Laymen's Conference 1955-56; president Janesville Rotary Club 1951-52; member Rock Co. Selective Service Board 1949-56; director Janesville Chamber of Commerce 1948-52; chairman Wis. Agricultural Stabilization and Conservation Committee 1953-56. World War I veteran; quartermaster and officers training. Elected to assembly 1956. Home Address: Route 1, Janesville.

Rock County, 1st district: Towns of Bradford, Clinton, Harmony, Johnstown, La Prairie, Lima; village of Clinton; city of Janesville.



BLANCHARD
Rock, 2nd

BELTING
Rock, 3rd

HUTNIK
Rusk, Sawyer,
Washburn

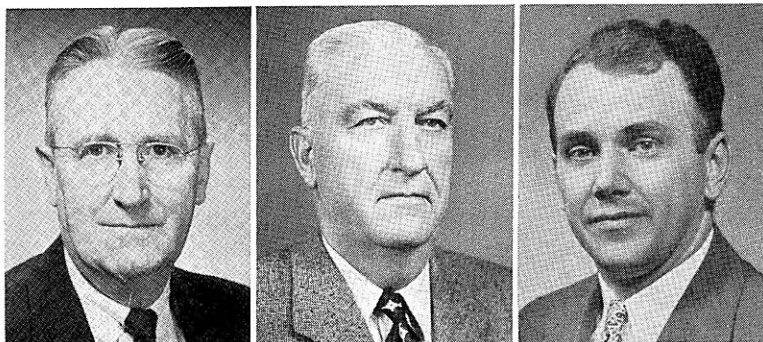
DAVID J. BLANCHARD (Rep.) born Edgerton Jan. 5, 1921. Educated Edgerton grade school and graduated Edgerton High School 1938; B.A. in 1942 and LL.B. University of Wisconsin in 1943. Practicing attorney. Active member of civic, church and conservation organizations. Elected to assembly in 1954; re-elected 1956. Business Address: 11 N. Main St., Edgerton.

Rock County, 2nd district: Towns of Avon, Beloit, Center, Fulton, Janesville, Milton, Magnolia, Newark, Plymouth, Porter, Rock, Spring Valley, Union; villages of Footville, Milton, Milton Junction, Orfordville; cities of Edgerton, Evansville.

GEORGE B. BELTING (Rep.) born De Soto, Wis. July 14, 1915. LL.B. Univ. of Wis. Law School. In college, senior class officer and president Men's Dormitory Assn. Former instructor Univ. of Wis. Practicing attorney. County board member 3 terms. Adult education instructor in family relations. Civic activities: member Izaak Walton League, American Legion, Taxpayers League, Beloit Historical Society, Elks, Kiwanis, state and local bar associations. Former assistant scoutmaster and director Assn. of Commerce Better Business Bureau. U.S. navy in amphibious landing forces Pacific; legal officer after hostilities. Elected to assembly 1956. Home Address: 925 Bushnell St., Beloit.

Rock County, 3rd district: Town of Turtle; city of Beloit.

WILLIS J. HUTNIK (Rep.) born Mar. 23, 1915, town of Elk, Price County. Attended Deer Creek School, Phillips High School, Price County Normal, Central State Teachers College, University of Wisconsin. Owner of School and Office Sales in Ladysmith; former teacher and principal. Formerly personnel manager Camp Grant, Ill.; village trustee, village of Tony; former secretary-treasurer Rusk County Conservation Club; chairman, Rusk County Conservation Congress; executive councilor northwest district Wis. Conservation Congress; member Ladysmith Chamber of Commerce; past president Price County Education Assn., leader 4-H Club work. 3rd term in assembly. Chairman of Education Committee in 1955 legislature. Home Address: Tony.



WARD, W.
St. Croix

STONE
Sauk

MAROTZ
Shawano

WILLIAM W. WARD (Dem.) born August 8, 1903 in St. Croix County. Graduated Star Prairie elementary school and Minneapolis high school; LL.B. University of Minnesota Law School. Practicing attorney 15 years. City attorney 1951-55; member school board; elected to assembly 1956. Home Address: New Richmond.

JAMES RILEY STONE (Rep.) born Oct. 17, 1886 in Sully County, South Dakota. Received elementary and high school education in Reedsburg public schools. In 1907 graduated from University of Wisconsin, receiving B.A. degree. Has held offices of postmaster and town clerk. From 1945-49 was sheriff of Sauk County. Owns and manages 2 Sauk County dairy farms. Has served as secretary and treasurer of Sauk County National Farm Assn. World War I veteran. This is his 5th term in the assembly. Home Address: 733 N. Park St., Reedsburg.

ROBERT G. MAROTZ (Rep.) born Sheboygan Nov. 14, 1921. Graduated St. James Lutheran School in Shawano and Shawano High School; Worked as apprentice in a law office. Served in marine corps from 1942-45 during which time he also attended Bowling Green State University in Ohio and Dartmouth College. In 1946 wrote the Wisconsin bar examination and was admitted to the bar the same year. Then attended Law School of University of Wisconsin where he received degree in 1949. Member Commission on Interstate Cooperation since 1953. Secretary Joint Legislative Council 1955-57; member of its Menominee Indian Study Committee 1955-57; member of its Judiciary Committee 1949-55 and chairman of this committee 1951-53; member Legislative Council's Civil Defense Committee 1950-51. The Judiciary Committee 1949-55, studied the revision of the criminal and corporation codes. Assistant Republican floor leader, 1953, floor leader 1955. Elected speaker 1957. This is his 5th term in the assembly. Home Address: Shawano.



SCHMIDT, W.
Sheboygan, 1st

HUIBREGTSE
Sheboygan, 2nd

LEWISON
Vernon

WALTER R. SCHMIDT (Rep.) born town Sheboygan Falls Dec. 22, 1898. Graduated grade and high schools. Formerly farmer and cheesemaker; since 1946 real estate broker. Member Sheboygan County Board since 1949; vice chairman of its Highway Committee. His reelection as county board supervisor April 2, 1957 will mark the first time in the city's history that a county board supervisor has served simultaneously as a member of the state assembly and the county board. Recently elected chairman of the 5-member building committee for the proposed 204-bed Sheboygan County home for the aged. President Wisconsin County Highway Committee Members Assn. since Jan. 1956. President local Lions Club since June 1956; has held many other positions of trust in the community. Elected to the state assembly 1956. Home Address: 2223 N. 9th St., Sheboygan.

Sheboygan County, 1st district: City of Sheboygan.

HAROLD F. HUIBREGTSE (Rep.) born Aug. 20, 1907, town of Lima, Sheboygan Co. Educated Hingham Grade School, Wis., Memorial Academy at Cedar Grove, Wis. Vice president H. C. Denison Co.; securities dealer. Formerly salesman and automobile dealer 1929-48. Farm owner since 1944. Member Board of Education Sheboygan Falls since 1952. Member Sheboygan Kiwanis Club; director Sheboygan Falls Mutual Fire Insurance Co. Serving 2nd term in legislature. Member Joint Committee on Finance, Committee on Contingent Expenditures and Joint Survey Committee on Retirement Systems. Home Address: 315 Elm St., Sheboygan Falls.

Sheboygan County, 2nd district: All towns, cities and villages of county except city of Sheboygan.

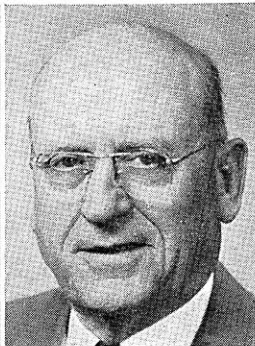
BERNARD LEWISON (Rep.) born Feb. 7, 1902 on a farm near Viroqua. Educated Viroqua public schools and Lawrence College. Operates Viroqua body shop. Farm owner and operator. Mayor Viroqua 1943-48; alderman city Viroqua 1938-40; chairman Viroqua Board of Appeals and vice chairman Board of Review. Elected to assembly 1954; re-elected 1956. Home Address: South Washington Heights, Viroqua.



RICE
Walworth



SCHOWALTER
Washington



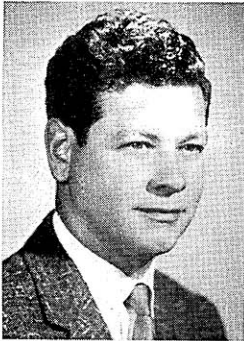
REDFORD
Waukesha, 1st

ORA R. RICE (Rep.) born Boscobel Sept. 16, 1885. Graduated Boscobel High School; dental degree Northwestern University Dental College in 1907. 1907-36 practiced dentistry in Delavan and since 1936 has devoted time to farming and legislative duties. Elective and appointive offices include alderman of Delavan in 1916 and 1917 and mayor of city 1918-22. Chairman and member of State Centennial Committee. This is his 11th term in the assembly. Elected Speaker 1951, 1953. For 6 sessions before he was Speaker, was chairman of Committee on Agriculture, and also vice-chairman of Committee on Rules. Home Address: Delavan.

ELMER J. SCHOWALTER (Rep.) born in town of Jackson Oct. 12, 1894. Born and raised on farm which has been owned by family since 1843. Educated elementary schools, University of Wisconsin farmer's short course. Owns a dairy farm with main income from dairying, canning crops, seed grains and white clover seed. Operates licensed deer farms; breeds and ships white tail deer for pets, forests or estates; furnished deer to federal and state restocking projects since 1938. Has been active in local church and community affairs; former school treasurer and town assessor. Elected to assembly 1954, re-elected 1956. Home Address: Route 1, Jackson.

ALVIN J. REDFORD (Rep.) born Aug. 25, 1883 in town of Pewaukee. Attended rural schools in Waukesha County. For more than 16 years city police officer; sheriff for 5 terms; deputy sheriff for 2 years; served on fire and police commission for over 20 years. Formerly employed by Otis E. Glidden and Co. Inc. of Waukesha. Now retired. Member of Elks. This is his 5th term in the legislature. Home Address: 240 Douglass Ave., Waukesha.

Waukesha County, 1st district: Towns of Eagle, Genesee, Mukwonago, Muskego, New Berlin, Ottawa, Vernon, Waukesha; villages of Big Bend, Dousman, Eagle, Mukwonago, North Prairie, Wales; city of Waukesha.



CLEMENS
Waukesha, 2nd



PETERSON, R.
Waupaca



ABRAHAM
Winnebago, 1st

HAROLD W. CLEMENS (Rep.) born Oct. 21, 1918 in Milwaukee. Educated public schools Town of Oconomowoc and Milwaukee; Boy's Trade and Technical High School, Milwaukee. A resident of the village of Lac La Belle for 28 years. Tool making machinist 1939-44; printer 1939; now operates, with parents, boat livery, picnic area, swimming beach. Village clerk since 1952; county supervisor since 1948; village health officer, building inspector, civil defense director; county U.S.O. chairman 1947. U.S. Navy 1944-46. Elected to assembly 1956. Home Address: Route 2, Oconomowoc.

Waukesha County, 2nd district: Towns of Brookfield, Delafield, Lisbon, Menomonee, Merton, Oconomowoc, Pewaukee, Summit; villages of Butler, Chenequa, Elm Grove, Hartland, Lannon, Lac La Belle, Menomonee Falls, Merton, Pewaukee, Sussex; cities of Brookfield, Oconomowoc.

RICHARD E. PETERSON (Rep.) born July 17, 1920 Waupaca, where he attended elementary and high schools. In 1949 graduated University of Wisconsin Law School. Engaged in practice of law. Active in Boy Scouts, member of American Legion and Veterans of Foreign Wars. Entered armed forces with Wisconsin national guard, Oct. 16, 1940; discharged 61 months later. This is his 4th term in the legislature. Chairman Committee on Insurance and Banking 1957; member Committee on Judiciary 1957. Home Address: 16-15th St., Clintonville.

HARVEY R. ABRAHAM (Rep.) born Oshkosh Jan. 15, 1895. Educated in public schools and graduated Oshkosh Business College. Sheet metal construction worker 8 years; assisted on farm 2 years prior to service in World War I. Served in overseas combat duty with 318 Engineers, 6th Division. Following honorable discharge associated with a partner in photo finishing business. Then travelled for 2 large nationally known food manufacturers until 1936. Since has been a real estate salesman. Past commander of local post No. 70 American Legion and past exalted ruler B.P.O.E. No. 292. This is his 6th term in the legislature. Member Legislative Council and its Committee on Conservation; chairman Excise and Fees Committee, member Rules and Judiciary Committees, 1957. Assembly member State Natural Resources Committee. Home Address: 627 Ceape Ave., Oshkosh.

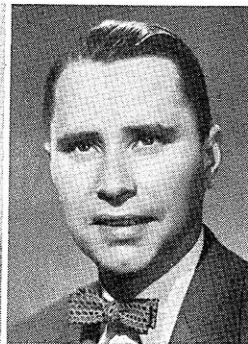
Winnebago County, 1st district: 1st-5th, 7th-12th, and 15th wards, city of Oshkosh.



ANDERSON, J.
Winnebago, 2nd



CANE
Winnebago, 3rd



CRAWFORD
Wood, 1st

JOSEPH H. ANDERSON (Rep.) born Menasha Nov. 1, 1893. Educated in rural and high schools, Oshkosh Business College. Dairy farmer for past 40 yrs. Treasurer town of Winneconne 30 yrs.; president Winneconne Community School Board of Education. Active in farm organizations. Serving 2nd term in legislature. Home Address: Route 1, Winneconne.

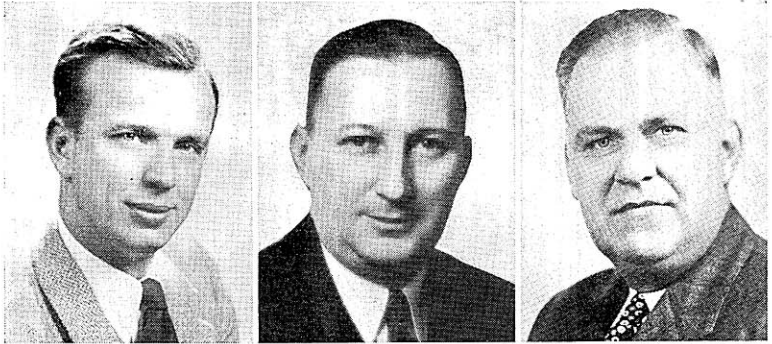
Winnebago County, 2nd district: Towns of Algoma, Black Wolf, Clayton, Nekimi, Nepeuskun, Omro, Oshkosh, Poygan, Rushford, Utica, Vinland, Winchester, Winneconne, Wolf River; village of Winneconne; city of Omro; 6th, 13th, 14th, 16th wards, city of Oshkosh.

ARNOLD J. CANE (Rep.) born Dec. 11, 1914 Ontonagon, Michigan. Attended public schools of that locality; Ph.B. Marquette University (Liberal Arts), 1935; LL.B. Marquette University Law School 1937. Practicing attorney at Menasha since 1937. Taught public speaking and coached debate at St. Mary's High School in Menasha 1937-40. Public offices include justice of peace 1941-49; member St. Mary's School Board, Menasha, 1942-49; member Menasha Board of Education (past president) 1950-54. Active member and past president Kiwanis; member and past advocate Knights of Columbus; member and past district legislative chairman Parent-Teachers Assn.; charter member and director North Winnebago chapter Wis. Mental Health Assn.; member Elks, Eagles, Chamber of Commerce, Neenah Club, Children's Service Society of Wis. Active in civic affairs and federal, state and local bar assns.; past president Winnebago County Bar Assn. Serving 4th term in the assembly. Home Address: 200 Lake St., Menasha.

Winnebago County, 3rd district: Towns of Menasha, Neenah; cities of Menasha, Neenah.

JOHN S. CRAWFORD (Rep.) born Sept. 11, 1923, Homestead, Pa. Educated Pennsylvania public schools; B.A. history, Pennsylvania State University; M.A. history and LL.B. University of Wisconsin 1949-53. Master's thesis, Italian-American Labor Relations, published by A.F.L. Practicing attorney. Newspaper reporter 1948-49. Served in army air force 1942-45; P.O.W., Evadee, Italy. Elected to assembly 1954; re-elected 1956. Chairman of Special Legislative Committee created by Jt. Res. 17, A., 1955, to Investigate the Dairy Price Spread. Home Address: 225 S. Central Ave., Marshfield.

Wood County, 1st district: Towns of Arpin, Auburndale, Cameron, Cary, Hansen, Lincoln, Marshfield, Milladore, Richfield, Rock, Rudolph, Sherry, Sigel, Wood; villages of Auburndale, Milladore, Vesper; cities of Marshfield, Pittsville.



CROWNS
Wood, 2nd

MAY
Chief Clerk

KELLMAN
Sergeant at Arms

ARTHUR J. CROWNS JR. (Rep.) born Wisconsin Rapids Jan. 24, 1922. Educated local public schools; Stevens Point State College 1941-42, 1945-47; B.S. Stevens Point State College; LL.B. University of Wisconsin 1950. Practicing attorney. Served in air force 1942-45. Active in Boy Scouts. State judge advocate of Disabled American Veterans. Serving 2nd term in the legislature. Business Address: Box 509, Wisconsin Rapids.

Wood County, 2nd district; Towns of Cranmoor, Dexter, Grand Rapids, Hiles, Port Edwards, Remington, Saratoga, Seneca; villages of Biron, Port Edwards; cities of Nekoosa, Wisconsin Rapids.

ARTHUR L. MAY born in Chicago Jan. 6, 1901. Attended elementary schools of Chicago and Wisconsin Rapids, graduated Central High School in Madison. In 1932 received LL.B. from the University of Wisconsin Law School. Has been a farmer, mechanic, businessman; since 1932 engaged in the practice of law. Served as justice of the peace 1931-39. Appointed court commissioner effective Mar. 2, 1955. Delegate to the 1944 Republican National Convention. Elected chief clerk of the assembly in 1941, and re-elected each session since then. Home Address: 2527 Van Hise Ave., Madison.

NORRIS J. KELLMAN, the son of Mr. and Mrs. Frank A. Kellman, born Oct. 23, 1898 at Galesville. Graduated Galesville High School, attended La Crosse State Teachers College one year and graduated University of Wisconsin in 1923. For 10 years assistant postmaster at Galesville and for past 28 years has been in general insurance business. Member of board of supervisors of Trempealeau County several years. Served in World War I and was one of the youngest men in the state to be commissioned as a second lieutenant. Has held a number of offices in the American Legion including commander of his local post for 3 years. In 1936 alternate to Republican National Convention in Cleveland and his father was a delegate to the same convention. Mr. Norris Kellman was a delegate to the 1940 national convention in Philadelphia, and the 1944 convention in Chicago. Member of the assembly in 1939. Since 1941 sergeant at arms of that body. Home Address: Galesville.

Marathon County, 1st district: Towns of Bergen, Berlin, Bern, Bevent, Brighton, Cassel, Cleveland, Day, Easton, Eau Pleine, Elderon, Emmet, Frankfort, Franzen, Green Valley, Guenther, Halsey, Hamburg, Harrison, Hewitt, Holton, Hull, Johnson, Knowlton, Kronenwetter, McMillan, Marathon, Mosinee, Norrie, Plover, Reid, Rib Falls, Rib Mountain, Rietbrock, Spencer, Stettin, Wien; villages of Athens, Edgar, Elderon, Fenwood, Hatley, Marathon, Spencer, Stratford, and the parts of Abbotsford and Unity villages in Marathon County; that part of the city of Colby in Marathon County and city of Mosinee.

ALPHABETICAL LIST OF 1957 WISCONSIN LEGISLATORS

Senators

<i>Name</i>	<i>District</i>	<i>Name</i>	<i>District</i>
Bice, Raymond C.	32nd	Lorge, Gerald D.	14th
Busby, Allen J.	8th	McParland, Leland S.	7th
Carr, Peter P.	15th	Maier, Henry W.	9th
Clark, William W.	24th	Merten, Walter L.	5th
Dempsey, Chester E.	33rd	Miller, Jess	27th
Donnelly, Davis A.	28th	Moser, William R.	6th
Draheim, William A.	19th	Nelson, Gaylord A.	16th
Hendee, Kirby	4th	O'Brien, Leo P.	2nd
Hollander, Walter G.	18th	Panzer, Frank E.	13th
Jones, Hugh M.	29th	¹ Prange, Louis H.	20th
Kendziorski, Casimir	3rd	Rasmusen, Holger B.	23rd
Knowles, Robert P.	10th	Stalbaum, Lynn E.	21st
Krueger, Clifford W.	12th	Travis, Robert S.	17th
LaFave, Reuben	30th	Trinke, William F.	22nd
Laun, Alfred A., Jr.	1st	Wilkie, Horace W.	26th
Lauri, Carl E.	25th	Zaborski, Richard J.	11th
Leverich, J. Earl	31st		

Assemblymen

<i>Name</i>	<i>District</i>	<i>Name</i>	<i>District</i>
Abraham,		Crowns, Arthur J., Jr.	Wood, 2nd
Harvey R.	Winnebago, 1st	Danielson,	
Anderson,		Dennis B.	Eau Claire, 1st
Joseph H.	Winnebago, 2nd	Dillman,	
Anderson,		Marvin E.	Iron, Oneida, Vilas
Norman C.	Dane, 1st	Duffey,	
Baumgart, Lloyd	Oconto	Thomas J.	Milwaukee, 16th
Belting, George B.	Rock, 3rd	Flannigan,	
Bidwell, Everett V.	Columbia	Allen J.	Milwaukee, 7th
Blanchard, David J.	Rock, 2nd	¹ Frank, Fred H.	Outagamie, 1st
² Bruner, Ervin M.	Dane, 5th	Fricke,	
Calvert, Walter B. ..	Iowa, Lafayette	Earle W.	Milwaukee, 15th
Cane, Arnold J.	Winnebago, 3rd	Genzmer, Elmer L.	Dodge, 1st
Clemens,		Graass, Frank N.	Door, Kewaunee
Harold W.	Waukesha, 2nd	Grady, Warren A.	Ozaukee
Coggs, Isaac N.	Milwaukee, 6th	Greco, Joseph A.	Milwaukee, 3rd
Crane, Wilder, Jr.	Chippewa	Guell, Corwin C.	Clark
Crawford, John S.	Wood, 1st	Haase, Robert D.	Marinette

¹ Deceased.
² Resigned.

<i>Name</i>	<i>District</i>	<i>Name</i>	<i>District</i>
Hagen, Lawrence M.	Douglas, 2nd	Peterson, James D.	La Crosse, 1st
Hardie,		Peterson, Richard E.	Waupaca
Keith C.	Jackson, Trempealeau	Pommerening,	
Harper, Hugh	Grant	Glen E.	Milwaukee, 20th
Heider,		Pritchard, John	Eau Claire, 2nd
Robert R.	Milwaukee, 21st	Quinn, Jerome F.	Brown, 1st
Hinz, Emil A.	Lincoln	Redford, Alvin J.	Waukesha, 1st
Huber, Robert T.	Milwaukee, 22nd	Rewald, Anthony B.	Racine, 3rd
Huibregtse,		Rice, Ora R.	Walworth
Harold F.	Sheboygan, 2nd	Riehle, Ben	Marathon, 1st
Hutnik, Willis J.		Risser, Fred A.	Dane, 2nd
.....	Rusk, Sawyer, Washburn	Ryczek,	
Jahnke, Franklin M.		Ervin John	Milwaukee, 11th
.....	Green Lake, Waushara	Schlueter,	
Kenyon, Kyle	Monroe	Fred W.	Fond du Lac, 2nd
Kintz,		Schmeichel,	
Milford C.	Crawford, Richland	Ewald J.	Manitowoc, 2nd
Kostuck, John T.	Portage	Schmidt,	
Larsen, Marty	Milwaukee, 13th	Charles J.	Milwaukee, 9th
Lauby, Alfred J.		Schmidt,	
.....	Florence, Forest, Langlade	Walter R.	Sheboygan, 1st
Leonard,		Schowalter, Elmer J.	Washington
Jerris G.	Milwaukee, 19th	Seymour, Edward A.	Brown, 3rd
Lewisohn, Bernard	Vernon	Sobocinski,	
Luebke, William	Milwaukee, 23rd	Sherman R.	Milwaukee, 24th
Luedtke, Paul	Marathon, 2nd	Sokolowski,	
Lynch, Robert E.	Brown, 2nd	George	Milwaukee, 12th
Marotz, Robert G.	Shawano	Stauffer, Christ M.	Green
McEssy, Earl	Fond du Lac, 1st	Stone, J. Riley	Sauk
Merriam, Wm. R.	Rock, 1st	Sullivan,	
Merz, Louis L.	Milwaukee, 1st	William T.	Outagamie, 2nd
Metzner, Carroll E.	Dane, 3rd	Sussman, Norman	Milwaukee, 2nd
Meyer, John R.	Milwaukee, 18th	Sykes, Charles H.	Barron
Mogilka,		Talsky, George J.	Milwaukee, 8th
David R.	Milwaukee, 14th	Thompson, Carl W.	Dane, 4th
Molinaro, George	Kenosha, 1st	Timmerman,	
Morton, Earl D.	Kenosha, 2nd	Lawrence W.	Milwaukee, 5th
Murphy, Joseph P.	Milwaukee, 4th	*Toepel, Eugene A.	La Crosse, 2nd
Naleid, Roy E.	Racine, 2nd	Tremain,	
Nelson, Lowell A.	Polk, Burnett	Ben	Adams, Juneau, Marquette
Nitschke, Elmer C.	Dodge, 2nd	Vogel, Hugo E.	Manitowoc, 1st
O'Connell,		Wackett, Byron F.	Jefferson
Michael F.	Milwaukee, 10th	Wallin, Vic C.	Ashland, Bayfield
Owen, William E.	Dunn	Ward, Mamre H.	
Pellant,		Buffalo, Pepin, Pierce
Howard F.	Milwaukee, 17th	Ward, William W.	St. Croix
Perala, Reino A.	Douglas, 1st	Warren, Earl W.	Racine, 1st
Peters, Henry M.	Calumet	Zellinger,	
		Vincent J.	Price, Taylor

*Resigned