



**BIOGRAPHIES AND PICTURES OF
CONSTITUTIONAL OFFICERS
SUPREME COURT JUSTICES
MEMBERS OF CONGRESS**



Governor WALTER J. KOHLER

CONSTITUTIONAL OFFICERS

THE GOVERNOR

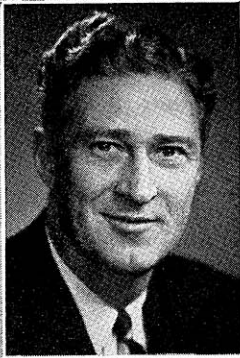
WALTER J. KOHLER (Rep.) born Sheboygan Apr. 4, 1904. Son of Walter J. Kohler — Wisconsin's Governor in 1929-30. Educated Sheboygan public schools, graduated Yale University 1925. At 14, began working for Kohler Co. as a laborer during summer vacations, and subsequently worked for the company in engineering, ceramic research, sales and merchandising before becoming its secretary in 1937. Volunteered for military service day after Pearl Harbor, and served for 3½ years in U. S. navy, World War II, most of time in Pacific combat area. On his return to Wisconsin became president of Vollrath Co., Sheboygan. In 1948 polled the greatest number of votes in Wis. presidential preference primary, and went to Republican National Convention as chairman of Wisconsin delegation. Elected Governor in Nov. 1950, re-elected 1952 by largest majority in state's history; re-elected in 1954. Served as chairman of 2 state campaigns of American Cancer Society, of which he was state president and is now national chairman of the board of directors. Until Feb. 1951 chairman of Wis. Committee on the Reorganization of the Federal Government. Chairman, National Governor's Conference on Highways. Member of American Legion, Veterans of Foreign Wars, and several other military and fraternal organizations. Home address: Kohler.

THE LIEUTENANT GOVERNOR

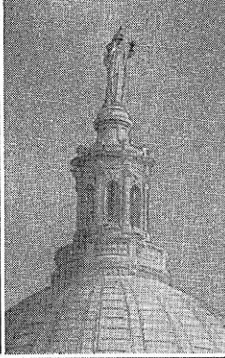
WARREN P. KNOWLES (Rep.) born Aug. 19, 1908 River Falls where he received early education. B.A. Carleton College 1930; LL.B. Law School of University of Wisconsin, 1933. Since 1933 engaged in practice of law. Was member of county board 1936-40; past president Kiwanis and Conservation Clubs. Was lieutenant in navy and served on U.S.S. Nevada during invasions of Attu, Normandy, and Southern France, being released from active duty to serve in 1945 session. Author and sponsor of bill creating Legislative Council and served as its 1st chairman. Author of 1949 act creating State Building Commission and authorizing a long-range state building program; author of 1943 act creating Veterans' Recognition Board; author of laws relating to hospital survey and construction, Aeronautics Commission, and various aviation measures. Member of Judicial Council. President Wisconsin Alumni Assn. 1952-53. Republican floor leader in senate 1943, 1945, 1947, 1949, 1951, 1953. Served 4 terms in the senate. Elected Lieutenant Governor 1954. Home Address: New Richmond.

THE SECRETARY OF STATE

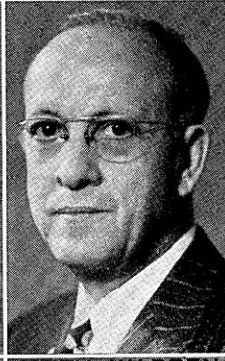
MRS. GLENN M. WISE (Rep.) born July 14, 1896, Wycocena. Graduated Reedsburg High School; B.A. Milwaukee Downer College 1917; M.A. economics University of Wisconsin 1919. Employed as secretary Dept. of Economics, University of Wisconsin; for 2 years organizer and director of Employment Exchange of Washington School for Secretaries, Wash. D.C., statistician University of Wisconsin. Vice chairman State Republican Voluntary Organization; former president Wis. Federation of Republican Women; serving 2nd term as secretary National Federation of Republican Women. Member recreational panel Madison Community Welfare Council; Board of Park Commissioners, Madison; served as chairman of hostess units, World War II of USO, YWCA, etc.; past president Madison League of Women Voters; state legislative chairman Women Voter group and American Ass'n of University Women; past president Randall PTA; served as safety chairman Madison PTA Council. Appointed Secretary of State by Governor Kohler, Jan. 3, 1955 to fill vacancy caused by death of Secretary of State Fred R. Zimmerman. Home Address: 2238 Eton Ridge, Madison.



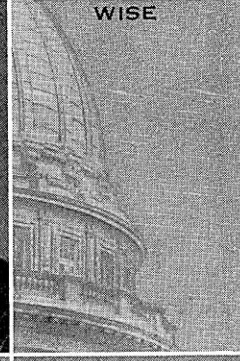
KNOWLES



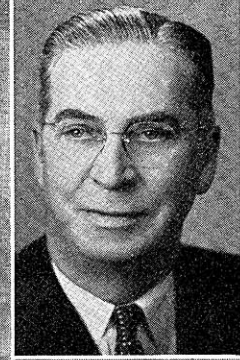
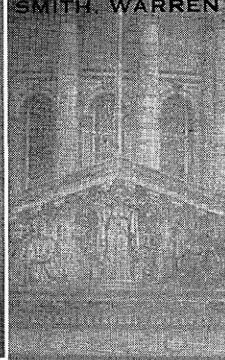
WISE



SMITH WARREN



THOMSON



WATSON

WARREN P. KNOWLES, Lieutenant Governor; MRS. GLENN M. WISE, Secretary of State; WARREN R. SMITH, State Treasurer; VERNON W. THOMSON, Attorney General; GEORGE E. WATSON, Superintendent of Public Instruction.

THE STATE TREASURER

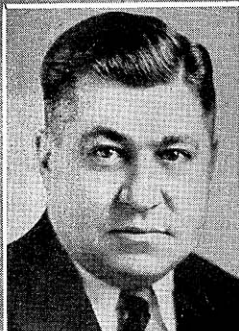
WARREN R. SMITH (Rep.) born at Oconto, Wis. July 20, 1889. Educated in Oconto Grade School and Oconto High School. Attended Oshkosh Normal School and then taught school 2 years, after which he attended Marquette University. Became associated with a large corporation and served as an accountant and auditor. In later years operated as a real estate and business broker in Milwaukee. During World War II inspector for army and navy and then transferred to International Harvester Company, Milwaukee. Although always active in civic and community affairs, he never held any public office until elected State Treasurer in 1948. Re-elected 1950, 1952, 1954. Member Commissioners of Public Lands, State Board of Canvassers, Board of Trustees of Conservation Wardens Pension Fund. Member Wisconsin Settlers Club and South Side Civic Association of Milwaukee. Served Republican Party as chairman of various committees in Milwaukee County and has been active for many years in the political field. Home Address: Milwaukee.

THE ATTORNEY GENERAL

VERNON W. THOMSON (Rep.) son of the late A. A. Thomson and Mrs. Thomson, born Richland Center Nov. 5, 1905. In 1927 received B.A. degree University of Wisconsin and LL.B. from same school 1932. Since that time has been a practicing attorney at Richland Center. Was assistant district attorney of Richland County 1933-1935 and city attorney Richland Center 1933-1937 and 1942-1944. In Apr. 1944 elected mayor of Richland Center and was serving 4th term in that position when assumed duties of Attorney General. From 1933-1935 was enrolling official of Civilian Conservation Corps for Richland County. Prior to practicing law taught 2 years in Viroqua High School and 3 years in Madison Vocational School. From 1939-1951 president of library board at Richland Center. In 1936 and 1940 delegate from 3rd congressional district and in 1952 delegate at large to National Republican Convention; member of Committee on Credentials in 1952 at National Republican Convention; presidential elector 1952; in 1940 chairman of State Republican Platform Convention. Member of assembly 1935-1951, and speaker of that body 3 sessions, 1939, 1941, 1943. In 1945, 1947, and 1949 Republican floor leader. From 1945-1951 member of advisory committee to the Supreme Court on rules, pleadings, practice and procedure. From 1949-1951 member and secretary of Legislative Council. Member of local and state bar associations. Elected Attorney General 1950; re-elected 1952, 1954. Home Address: Richland Center.

THE SUPERINTENDENT OF PUBLIC INSTRUCTION

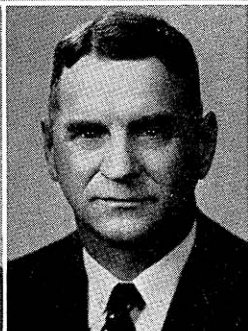
GEORGE EARL WATSON born Neenah Oct. 16, 1897. Graduated Appleton High School; B.A. Lawrence College 1921; M.A. University of Wisconsin 1932; honorary LL.D. Lawrence College 1949. High school teacher in Stevens Point 1921-1922; supervising principal, Fall River 1922-1923; high school principal at Stevens Point 1923-1924; superintendent of schools Waupaca, Marinette and Wauwatosa. From 1947-1949 member Milwaukee County School Committee. Other public activities include: chairman and member Wauwatosa Veterans Committee; chairman Milwaukee County Junior Red Cross; county commander Waupaca County American Legion; past president Wisconsin Association of School Administrators; chairman Wisconsin Council on Education. Elected State Superintendent of Public Instruction in 1949; re-elected 1953. Home Address: 4017 Naheda Trail, Madison.



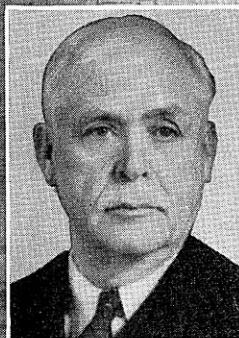
MARTIN



BROADFOOT



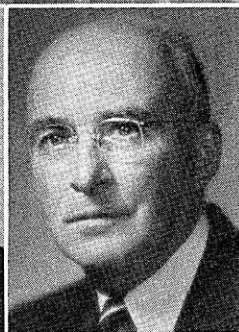
BROWN



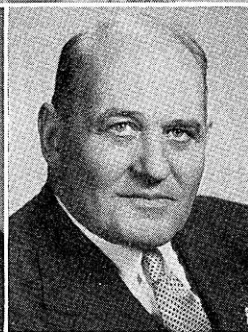
FAIRCHILD



GEHL



CURRIE



STEINLE

Members of the Supreme Court: Chief Justice EDWARD T. FAIRCHILD; JOHN E. MARTIN; GROVER L. BROADFOOT; TIMOTHY BROWN; EDWARD J. GEHL; GEORGE R. CURRIE; ROLAND J. STEINLE.

JUSTICES OF THE SUPREME COURT

EDWARD T. FAIRCHILD born Towanda, Pennsylvania, June 17, 1872. Received early education in public schools of Dansville, N. Y. Later employed in a newspaper office and studied law in the office of Rowe and Coyne. After being admitted to bar moved to Milwaukee and began practicing law there. Elected to state senate for sessions of 1907, 1909, 1915, and to position of circuit judge in 1916. In Apr. 1930 appointed Justice of Supreme Court and elected to that office Apr. 1936, and re-elected Apr. 1946. Became Chief Justice upon resignation of Chief Justice Fritz, Jan 1, 1954.

JOHN E. MARTIN born Nov. 15, 1891 Green Bay. Educated parochial and public schools of Green Bay; attended University of Wisconsin 1910-1914; graduated Law School University of Notre Dame in 1916. Served in World War I as first lieutenant in Company E, 127th Infantry, 32nd Division. In 1933 appointed assistant district attorney Milwaukee County and served for one year. In 1934 counsel for Banking Commission. Had held no elective public office until his election as Attorney General in 1938. Re-elected in 1940 and served as Attorney General from 1939 until his appointment to Supreme Court June 1, 1948 to succeed Justice Chester A. Fowler, deceased. In Apr. 1950 elected to Supreme Court; re-elected Apr. 1951.

GROVER L. BROADFOOT born Dec. 27, 1892 in Independence. Educated in common schools; LL.B. Law School of University of Wisconsin in 1918. Practiced law at Mondovi until 1948 and is president of Mondovi State Bank. Public offices include mayor of Mondovi 1943-1947; district attorney 1923-1935; member Wisconsin Board of Tax Appeals 1939-1943. Veteran of World War I. In assembly 1945 until his appointment as Attorney General on June 5, 1948. Appointed to Supreme Court Nov. 12, 1948 to succeed Justice Elmer E. Barlow, deceased. Elected to Supreme Court Apr. 1952; re-elected 1955.

TIMOTHY BROWN born Feb. 24, 1889 at Madison; educated in Madison public schools, University of Wisconsin (B.A. 1911) and Harvard Law School (LL.B. 1914). Admitted to Wisconsin bar in 1914, practiced law in Milwaukee 2 years, served in U.S. Navy 1917-1919; then returned to Madison where he practiced law continually until 1949. From 1926-1949 court commissioner for Dane county. During World War II government appeal agent and member of an appeal board under Selective Service System. In 1945 executive counsel to Governor Goodland and again to Governors Goodland and Rennebohm, 1947-1949. From Apr.-July 1949 commissioner of Public Service Commission. Governor Rennebohm then appointed him to fill vacancy in Supreme Court caused by death of Justice John D. Wickhem. Elected to Supreme Court Apr. 1953.

EDWARD J. GEHL born at Hartford Jan. 26, 1890. Graduated Hartford elementary and high schools and received LL.B. from University of Wisconsin Law School in 1913. Practiced law in Hartford and from 1932-1933 served as U.S. Attorney for eastern district of Wisconsin. Elected judge of 13th judicial circuit in 1940 and held that office until his election to the Supreme Court in 1949. As a member of the 127th Infantry of the 32nd Division in World War I decorated with the Purple Heart and the Silver Star.

GEORGE R. CURRIE born at Princeton, Wisconsin, Jan. 16, 1900. Educated public schools at Montello, attended Oshkosh State Teachers College 2 years, taught school 3 years, and then received legal education at University of Wisconsin Law School, LL.B. degree in 1925; awarded Order of the Coif. In his senior year student editor-in-chief of Wisconsin Law Review. For 26 years practiced law at Sheboygan. For over 20 years member of Sheboygan Public Library Board, the last 16 years president of board. During World War I served several months in Student Army Training Corps. Married in 1925 to Miss Gladys E. Bremer and has 2 daughters, Ann and Janet. On Aug. 30, 1951, appointed to Supreme Court to fill vacancy resulting from resignation of Justice Henry P. Hughes.

ROLAND J. STEINLE born at Milwaukee March 21, 1896. His elementary and high school training was received in Milwaukee. Completed law course at Marquette University in 1920 and admitted to Wisconsin bar in same year. In U.S. army as infantry officer in World War I. Practiced law in Milwaukee 1920-40. Served as special assistant district attorney in 4 Wisconsin counties: Dodge, Forest, Milwaukee, Waukesha. Instructor of jurisprudence at Marquette University 1928-53. On January 2, 1940 appointed judge of 2nd judicial circuit by Governor Hell, where he served until January 5, 1954. Chairman of Board of Circuit Judges in 1949. Appointed by Governor Kohler to fill the vacancy caused by resignation of Chief Justice Fritz. Elected to Supreme Court April 1954.



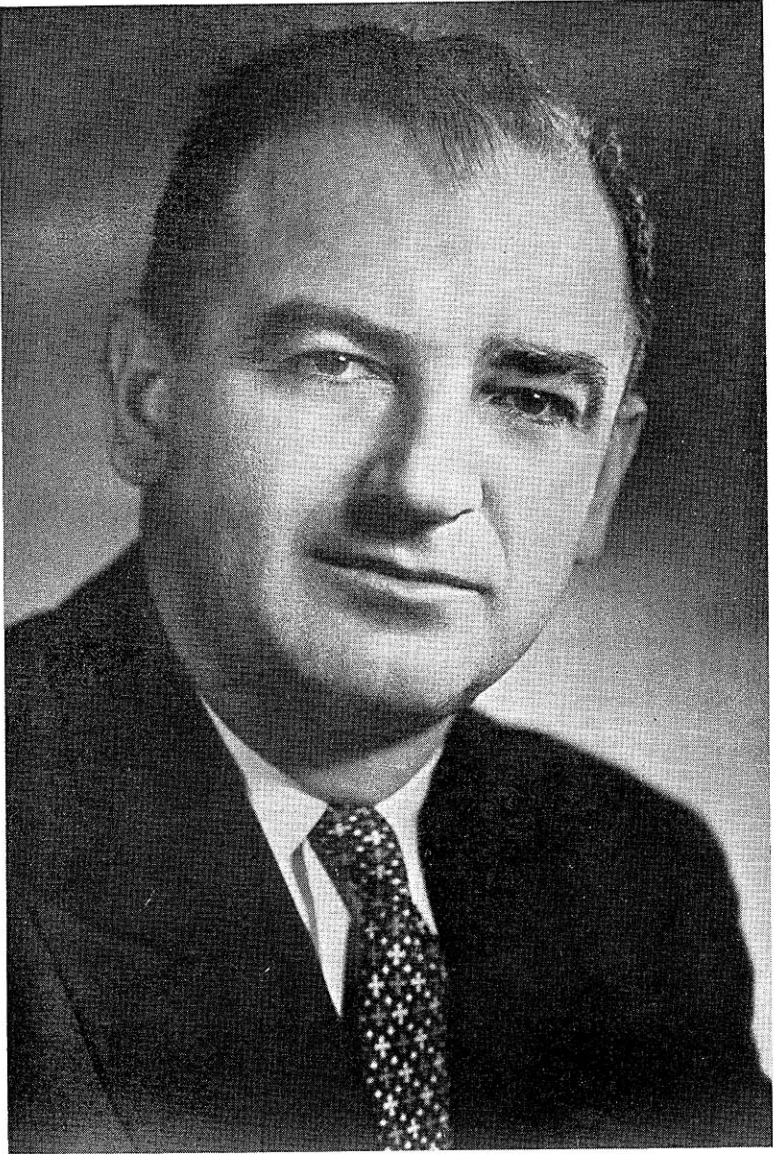
United States Senator ALEXANDER WILEY

WISCONSIN MEMBERS OF THE 84TH CONGRESS

SENATORS

ALEXANDER WILEY (Rep.) born Chippewa Falls on May 26, 1884. After graduation from Chippewa Falls High School attended Augsburg College, Minneapolis for 2 years and University of Michigan law school for 2 years. Graduated University of Wisconsin law school 1907. Has been a lawyer and businessman since that time. Since 1916 owned and operated a dairy farm in Barron County which was previously owned and operated by his parents. District attorney of Chippewa County 3 terms, 1909-1915; member of school board of Chippewa Falls; governor of Wisconsin-Upper Michigan Kiwanis district in 1933. In 1936 Republican nominee for Governor. Married in 1909 to May Jenkins (now deceased); 4 children: Elisabeth, Marshall, Rosemary, Winifred. Married Dorothy May Kydd, May 1952. Elected to U.S. Senate in 1938; re-elected 1944 and 1950. Former chairman of Senate Committee on the Judiciary (now highest Republican member); chairman Senate Foreign Relations Committee. Member former Senate Special Committee to Investigate Crime in Interstate Commerce. Official representative of the U.S. government at Interparliamentary Union Conference in Oslo, Norway, Sept. 1939 and British Empire Parliamentary Conference in Bermuda, June 1946; head of U.S. delegation to Empire parliamentary Conference in Bermuda, 1948; U.S. delegate to Japanese Peace Conference in San Francisco, 1951; U.S. delegate to Council of Europe, Strasbourg, France, 1951; U.S. delegate to Interparliamentary Union Conference, Bern, Switzerland, 1952; U.S. delegate to the Seventh United Nations General Assembly, 1952; U.S. delegate to the Interparliamentary Union, Washington, D.C. 1953. Home Address: Chippewa Falls.

JOSEPH R. McCARTHY (Rep.) born Nov. 14, 1909 at Grand Chute. Early education in Underhill Elementary School, graduated Little Wolf High School, Manawa, Wisconsin. In 1935 LL.B. Marquette University. 1940-46 judge of 10th circuit court. World War II veteran, having served in marines 1942-45. Elected to Senate in 1946, re-elected 1952. Member Senate Committee on Government Operations and Senate Permanent Investigations Subcommittee; member Committee on Appropriations. Married Jean Kerr September 1953. Home Address: Appleton.



United States Senator JOSEPH R. McCARTHY

MEMBERS OF THE HOUSE OF REPRESENTATIVES**1ST CONGRESSIONAL DISTRICT**

Green, Kenosha, Racine, Rock, Walworth Counties.

LAWRENCE HENRY SMITH (Rep.) born at Racine Sept. 15, 1892. Early education in elementary schools of Racine and Milwaukee University School. Attended Milwaukee State Teachers College 2 years, enrolled Marquette University, graduated from its law school June 1923. Since that time a practicing attorney in Racine. During World War I was in 32nd Division of the infantry from 1917-19. Department commander of American Legion Department of Wisconsin 1938-39. Also served as president Racine County Bar Assn. In a special election Aug. 1941 elected to Congress to fill vacancy caused by death of Congressman Bolles. Has been re-elected successively. Has been a member of the House Committee on Foreign Affairs 10 years and is presently serving on it. Home Address: 4510 Spring St. Racine.

2ND CONGRESSIONAL DISTRICT

Columbia, Dane, Dodge, Jefferson, Waukesha Counties.

GLENN R. DAVIS (Rep.) born town of Vernon, Waukesha County October 28, 1914. Graduated rural and high schools; B.Ed. Platteville State College. After teaching 4 years during which time he studied law in the summer, entered University of Wisconsin Law School, received LL.B. 1940. Since that time engaged in practice of law in Waukesha. World War II veteran, having served in navy 1942-45. Member of Wisconsin assembly in 1941. In a special election in Apr. 1947 elected to Congress to fill vacancy caused by death of Robert K. Henry. Re-elected 1948, 1950, 1952, 1954. Home Address: 203 N. Hartwell Ave., Waukesha.

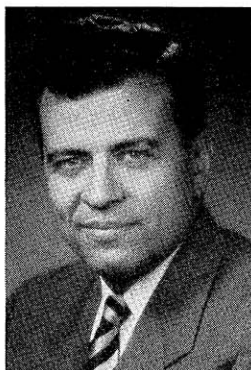
3RD CONGRESSIONAL DISTRICT

Crawford, Grant, Iowa, Juneau, La Crosse, Lafayette, Monroe, Richland, Sauk, Vernon Counties.

GARDNER R. WITHROW (Rep.) born La Crosse Oct. 5, 1892. Educated in grade and high schools of that city. After graduation from high school entered the train service of Chicago, Burlington and Quincy Railroad Company. In 1929 and 1931 was state representative of the trainmen's brotherhood. Served in assembly 1927; member of Joint Committee on Finance. Member of Congress 1931-39; re-elected 1948, 1950, 1952, 1954. Home Address: La Crosse.



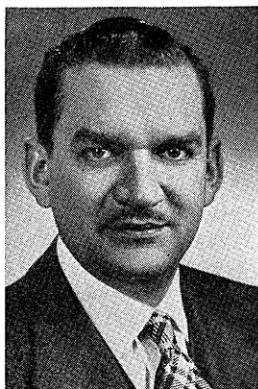
SMITH



DAVIS



WITHROW



ZABLOCKI



REUSS

Members of House of Representatives: LAWRENCE H. SMITH, 1st district; GLENN R. DAVIS, 2nd district; GARDNER R. WITHROW, 3rd district; CLEMENT J. ZABLOCKI, 4th district; HENRY S. REUSS, 5th district.

4TH CONGRESSIONAL DISTRICT OF WISCONSIN

Towns of Franklin, Greenfield, Oak Creek, Wauwatosa; villages of Greendale, Hales Corners, West Milwaukee; cities of Cudahy, St. Francis, South Milwaukee, Wauwatosa, West Allis; and wards 8, 11, 12, 14, 17, 19 and parts of wards 3, 4, 10 and 16, city of Milwaukee.

CLEMENT J. ZABLOCKI (Dem.) born in Milwaukee November 18, 1912. Attended parochial school, Marquette University High School; graduated Marquette University with Ph. B. degree. Later took graduate work in education Marquette University and taught high school in Milwaukee. On May 26, 1937 he married Miss Blanche M. Janic of Milwaukee, have one child, Joseph Paul. Elected state senator 1942, re-elected 1946. Elected to Congress 1948, 1950, 1952, 1954. Home Address: 1623 S. 21st St. Milwaukee.

5TH CONGRESSIONAL DISTRICT

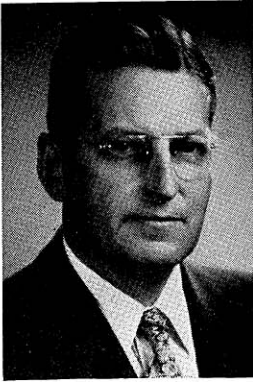
Town of Granville; villages of Bayside, Fox Point, River Hills, Shorewood, Whitefish Bay; city of Glendale; 1st, 2nd, 5th, 6th, 7th, 9th, 13th, 15th, 18th, and parts of 3rd, 4th, 10th, 16th wards of city of Milwaukee.

HENRY S. REUSS (Dem.) born in Milwaukee February 22, 1912. Educated Milwaukee Schools; A.B. Cornell University; LL.B. Harvard Law School. Attorney in Milwaukee since 1936. Former lecturer Wisconsin State College, Milwaukee; magazine writer. Former assistant corporation counsel, Milwaukee County 1939-40; assistant general counsel, Marshall Plan, Paris, France, 1949; special prosecutor Milwaukee County grand jury 1950; personal counsel to late Secretary of State Fred Zimmerman in reapportionment case before Wisconsin Supreme Court 1953; former member, legal advisory committee, U. S. National Resources Board; chief, price control branch, Office of Military Government for Germany, June-Dec. 1945. Director White Elm Nursery Co., Hartland, Wis.; former director Marshall and Ilsley Bank, Milwaukee; director Niagara Share Corporation. Entered army as private Jan. 1943; commissioned 2nd lieutenant, Nov. 1943; served in 63rd and 75th infantry divisions 1943-45. Bronze star medal for action at Rhine crossing; bronze battle stars for Normandy, Northern France and central Germany. Married; 4 children. Elected to Congress 1954. Home Address: 1935 E. Ogden Ave. Milwaukee.

6TH CONGRESSIONAL DISTRICT

Calumet, Fond du Lac, Ozaukee, Sheboygan, Washington, Winnebago Counties.

WILLIAM K. VAN PELT (Rep.) born Mar. 10, 1905 in Glenbeulah. Graduated Fond du Lac elementary and high schools. Owner retail fuel company. Father of 2 children, Peter age 15 and Julie Ann age 9. Was delegate to 1944 Republican National Convention and alternate delegate to 1948 convention. Elected to Congress in 1950; re-elected 1952, 1954. Home Address: 47 Oaklawn Ave. Fond du Lac.



VAN PELT



LAIRD



BYRNES



JOHNSON



O'KONSKI

Members of House of Representatives: WILLIAM K. VAN PELT, 6th district; MELVIN R. LAIRD, 7th district; JOHN W. BYRNES, 8th district; LESTER R. JOHNSON, 9th district; ALVIN E. O'KONSKI, 10th district.

7TH CONGRESSIONAL DISTRICT

Adams, Green Lake, Langlade, Marathon, Marquette, Portage, Shawano, Waupaca, Waushara, Wood Counties.

MELVIN R. LAIRD (Rep.) born Sept. 1, 1922. Graduated Marshfield grade and high schools; in 1942 B.A. Carleton College. Formerly secretary-treasurer of a lumber company; resigned upon taking office in Congress. A Purple Heart veteran, World War II, he served aboard the destroyer Maddox in Task Force 58 and Pacific 3rd Fleet. Elected to Wisconsin Senate in 1946 and re-elected without opposition in 1948. While in Wisconsin legislature, in 1949 and 1951, served as legislative spokesman for former Gov. Oscar Rennebohm and Gov. Walter J. Kohler. Member Wisconsin Commission on Improvement of the Educational System 1947-49 and Joint Legislative Council 1951-53; chairman Taxation Committee of Legislative Council; member Joint Finance Committee 1949-52, Senate Labor and Management Committee 1947-50; Senate Veterans and Military Affairs Committee 1947-52 and its chairman, 1949-52; member Senate Legislative Procedure Committee 1949-51; chairman Wood County Republican Statutory Committee 1949-51; member Wisconsin delegation Republican National Convention 1948 and 1952; member Republican National Platform Committee 1952 and chairman of Subcommittee on Labor and Public Welfare; chairman Wisconsin Republican Party Platform Committee 1950 and 1952. Member of American Legion, 40 et 8, Veterans of Foreign Wars, Disabled American Veterans, and B.P.O.E. Elder Presbyterian Church, Marshfield. The past 4 generations of his family have served in the legislature and elected to state offices. His father, the late Melvin R. Laird, Sr., a former Presbyterian minister, was a Wisconsin state senator; his mother is a member of University of Wisconsin Board of Regents. Married Barbara Masters of Indianapolis, Oct. 15, 1945; 3 children, John Osborne, Alison, and David Malcolm. Elected to the 83rd Congress, Nov. 4, 1952; re-elected 1954. Home Address: 313 E. Third St. Marshfield.

8TH CONGRESSIONAL DISTRICT

Brown, Door, Florence, Forest, Kewaunee, Manitowoc, Marinette, Oconto, Outagamie Counties.

JOHN W. BYRNES (Rep.) born Green Bay June 12, 1913. Attended parochial and public schools in that city; University of Wisconsin B.A. degree in 1936 and LL.B. in 1938. Practiced law in Green Bay. Elected Wisconsin State Senate 1940 where he was majority floor leader and chairman of Judiciary Committee in 1943 legislative session. Married Barbara Preston 1947; 4 children: John Robert, Michael Preston, Bonnie Jean, Charles Kirby. In 1944 elected to House of Representatives and re-elected since 1946. Member of Committee on Ways and Means. Home Office Address: 414 E. Walnut St. Green Bay.

9TH CONGRESSIONAL DISTRICT

Barron, Buffalo, Chippewa, Clark, Dunn, Eau Claire, Jackson, Pepin, Pierce, St. Croix, Trempealeau Counties.

LESTER R. JOHNSON (Dem.) born at Brandon, Wis. June 16, 1901. Attended Brandon public schools; attended Lawrence College 2 years, discontinued college for one year; entered University of Wisconsin School of Commerce in 1922, majored in economics, graduated 1924. After 14 years association with a retail lumber, feed and coal business, entered University of Wisconsin Law School in 1938 graduating Feb. 1941; admitted to Wisconsin bar Feb. 1941 and began practice of law in Black River Falls. Elected chief clerk of Wisconsin assembly as a Progressive in 1935 and 1937. Elected district attorney of Jackson County as a Progressive in 1942 and 1944; and as a Democrat in 1952. Delegate to the Democratic National Convention in 1952. Married Marjorie Gray Nov. 9, 1954; has 3 daughters by his 1st marriage: Mary Lyn and twins Jane and Jone. In a special election Oct. 13, 1953 elected to fill vacancy caused by death of Congressman Merliā Hull; re-elected in 1954. Home Address: Black River Falls.

10TH CONGRESSIONAL DISTRICT

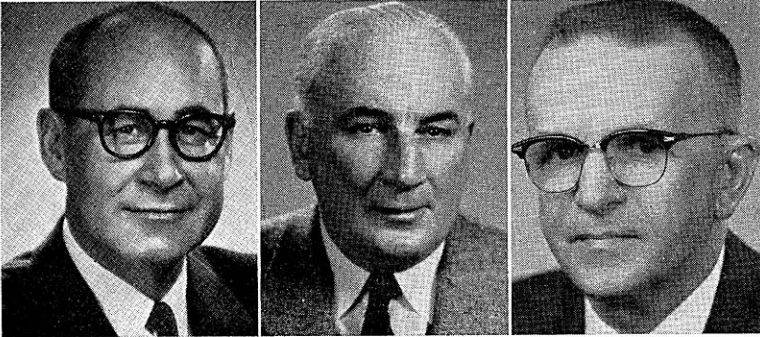
Ashland, Bayfield, Burnett, Douglas, Iron, Lincoln, Oneida, Polk, Price, Rusk, Sawyer, Taylor, Vilas, Washburn Counties.

ALVIN E. O'KONSKI (Rep.) born and raised on a farm near Kewaunee. Attended Kewaunee rural and high schools; graduated Oshkosh State College, 1927, Ed. B. history and pol. sci. majors. Graduate work at Iowa and Wisconsin Universities, speech and pol. sci. majors. Instructor Omro and Oconto High Schools, Oregon State College, Corvallis, Ore. 1928-31; Supt. of Schools, Pulaski, Wis. 1933-35; head of speech dept. University of Detroit, 1936-38 and Itasca Junior College, Coleraine, Minn. 1936. Educator, journalist, lecturer. Former publisher and editor Montreal River Miner, weekly newspaper at Hurley. Owner radio stations WLIN and WOSA, Merrill and Wausau since 1947. Winner national and international honors in speech contests. Topped all congressmen in United Press test in American history. President World Bill of Rights Ass'n, 1945, organized to combat communism throughout the world. Awarded title "the most distinguished American for 1945" by foreign language press, for his fight on behalf of smaller nations. The first American public official to denounce the Yalta agreements in 1945. President American Anti-Communist Organization, 1947, organized to combat communism in the U.S. Speaker on all national networks on the rights of small nations and against appeasement of communism at Yalta, Potsdam, Nurenburg, Korea. Director Committee to Stop World Communism organized in 1948 to expose communism in the U.S. Member Katyn Forest Massacre Committee to investigate mass slaying of 15,000 Allied officers in early days of World War II and awarded "Polonia Restitvta" medal for outstanding member of the committee. Married Veronica Hemming, Janesville, Aug. 1935. Serving 7th term in Congress. Member House Armed Services Committee. Home Address: Mercer.

BIOGRAPHIES AND PICTURES OF

MEMBERS OF THE 1955 LEGISLATURE

The district descriptions are in accordance with the reapportionment act of 1951 as amended in 1953. In the case of holdover senators elected from the effective date of the reapportionment acts, the descriptions are of the districts from which they were elected in 1952 and are designated as "the old district". In cases of variations in the composition of legislative districts as set forth in the official notice of election and in the official election returns, the latter has been used.



LAUN
1st District

O'BRIEN
2nd District

KENDZIORSKI
3rd District

ALFRED A. LAUN, JR. (Rep.) born New Holstein Feb. 14, 1905. Educated New Holstein and Milwaukee public schools, Oberlin College; A.B. Harvard University 1927; M.B.A. Harvard Graduate School of Business Administration 1929. With A.A. Laun Furniture Co. since 1935; president since 1946. Alderman, Kiel, 1945-47. Member State Board of Vocational and Adult Education since 1946; also Board of Trustees of Stout Institute since 1946. 8th district presidential elector, 1952; 8th district Republican chairman, 1952-54. Serving 1st term in the legislature. Home Address: 502 River Terrace, Kiel.

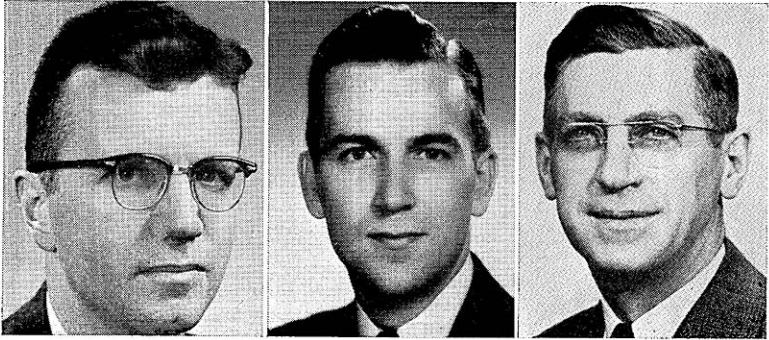
Elected from new 1st senatorial district: Door, Kewaunee, Manitowoc Counties.

LEO P. O'BRIEN (Rep.) born July 20, 1893 Fond du Lac. Attended University of Wisconsin; Marquette University; St. Norbert College, DePere. Insurance salesman. Served 4 years as alderman in Green Bay. Veteran World War I and II; in World War II combat navy veteran, 32 months in the Pacific including the Solomon-Guadalcanal campaigns. Elected to senate 1952. Home Address: 501 Cherry St. Green Bay.

Elected from old 2nd senatorial district: Brown, Oconto Counties.

CASIMIR KENDZIORSKI (Dem.) born Poland Dec. 3, 1898. Elementary and high school education in Poland; evening courses in Milwaukee. From 1928-30 real estate broker, and since has been a machinist and inspector. Member of Polish National Alliance, South Side Old Settlers Club, Polish American Citizens Club, Julius's 1001 Fishing Club, Park-view Sportsmen's Club, Sons of Neptune, N.B. Pleasure Club. Past vice president of his local union and member of board on legislation and education. Always been interested and active in civic and labor activities. Elected to assembly in 1946; re-elected in 1948. In 1949 elected to senate; re-elected 1950, 1954. Home Address: 2025 S. 14th St., Milwaukee.

Elected from new 3rd senatorial district: 11th, 12th, 14th wards city of Milwaukee.



FRANKE
4th District

MERTEN
5th District

SCHMIDT
6th District

HARRY F. FRANKE, JR. (Rep.) born Milwaukee Oct. 13, 1922. Graduated Milwaukee University School, attended University of Wisconsin and Marquette University, LL.B. University of Wisconsin Jan. 1949. Engaged in practice of law. Member various civic organizations, including World Affairs Council, Children's Service Society, Milwaukee and Wisconsin Bar Associations, Committee of Management YMCA, Junior Chamber of Commerce, American Legion. Served in World War II 1943-46. Elected to assembly in 1950; to senate in 1952. Home Address: 4129 N. Farwell Ave. Milwaukee.

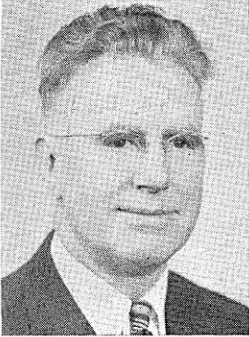
Elected from old 4th senatorial district: Town of Milwaukee; villages of Fox Point, River Hills, Shorewood, Whitefish Bay; 13th, 18th, 21st wards city of Milwaukee.

WALTER L. MERTEN (Rep.) born Milwaukee Dec. 11, 1922. Graduated St. Sebastian's Grade School and Marquette University High School. LL.B. Marquette University Law School 1950. Practicing attorney and member of Wisconsin and Milwaukee County Bar Associations. In World War II 1943-46; served overseas in Philippines and Japan with 25th Infantry Division. Entered army as private and discharged as 1st lieutenant. After discharge from military service, at request of War Department served as civilian military officer in Japan, as specialist in government and education. Member American Legion; Wisconsin and Milwaukee Bar Associations; Kiwanis. Served in assembly 1949, 1951. Elected to senate 1954. Home Address: 2325 N. 50th St. Milwaukee.

Elected from new 5th senatorial district: 5th, 9th, 15th wards city of Milwaukee.

WILLIAM A. SCHMIDT (Dem.) born Princeton May 21, 1902. Early education at St. John's Parochial School in Montello and Montello High School. Attended Marquette University 1 year. General foreman in industrial plant. Member A. F. of L. Supervisory Union, Smith Steel Athletic Assn., Knights of Columbus, Ushers and Holy Name Society of St. Michaels Church, Badger Fisherman's League, civil defense warden. Democratic assistant floor leader in 1951. Elected to senate in 1948; re-elected 1952. Home Address: 2532 W. Lloyd St. Milwaukee.

Elected from old 6th senatorial district: 2nd, 7th, 10th, 20th, 25th wards city of Milwaukee.



McPARLAND
7th District



BUSBY
8th District



MAIER
9th District

LELAND S. McPARLAND (Dem.) born Thorp Dec. 18, 1896. Common and high school education at Thorp, attended Oshkosh State Teachers College 2 years, studied law Marquette University. Taught school in South Milwaukee 1919-27; since 1927 engaged in practice of law. City attorney Cudahy 1932-36. In navy 1917-18. Chairman Democratic Organizing Committee of Milwaukee County 1952-53. In 1945, 1947, 1949 sessions Democratic floor leader. Served 7 terms in assembly, Chairman Democratic joint caucus 1953, 1955. Elected to senate 1954. Business Address: 4703 S. Packard Ave. Cudahy.

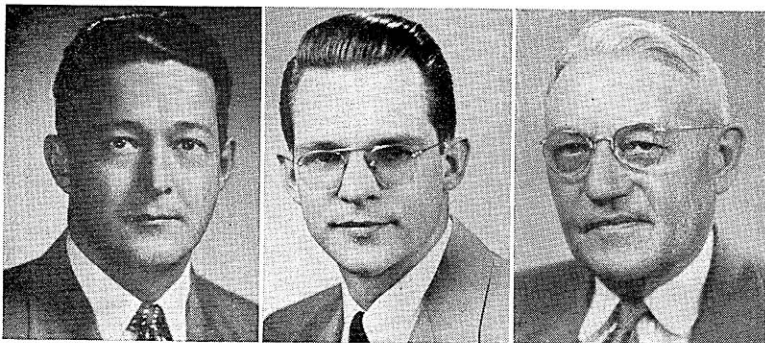
Elected from new 7th senatorial district: Cities of Cudahy, St. Francis, South Milwaukee; 17th, 19th wards (old town of Lake) city of Milwaukee; 5th ward city of West Allis; towns of Franklin, Greenfield, Oak Creek; villages of Greendale, Hales Corners.

ALLEN J. BUSBY (Rep.) a graduate of West Milwaukee public schools, West Allis High School, Milwaukee State Teachers College, University of Wisconsin with degrees of B.A., M.A., and LL.B. Admitted to bar 1928. Principal of high school at Little Chute 1922-24 and instructor West Allis High School 1928-33. Since 1932 village attorney West Milwaukee and member of law firm of Busby and Luehring in Milwaukee. Elected to assembly 1930, 1934. Elected to senate 1936; re-elected 1940, 1944, 1948, 1952. Home Address: 1673 S. 53rd St. Milwaukee.

Elected from old 8th senatorial district: Towns of Franklin, Granville, Greenfield, Wauwatosa; villages of Greendale, Hales Corners, West Milwaukee; 16th and 23rd wards city of Milwaukee, cities of Wauwatosa, West Allis.

HENRY W. MAIER (Dem.) born Feb. 7, 1918. Received B.A. University of Wisconsin in 1940. Became an insurance field representative in Wisconsin until 1942 when he enlisted in Navy. Served aboard the destroyer, U.S.S. Van Valkenburgh and was in battles of Iwo Jima and Okinawa. Upon release from service established a general insurance agency and taught workmen's compensation and general liability insurance at University of Wisconsin in Milwaukee. State vice chairman Democratic Organizing Committee; vice president Wisconsin Democrat. Elected to senate 1950; re-elected 1954. Chosen Democratic floor leader, 1953 and 1955. Member American Legion, American Federation of Teachers. Home Address: 2237 N. Booth St. Milwaukee.

Elected from new 9th senatorial district: 2nd, 3rd, 6th wards of city of Milwaukee.



KNOWLES
10th District

ZABORSKI
11th District

GEHRMANN
12th District

ROBERT P. KNOWLES (Rep.) born Feb. 25, 1916 at River Falls. Educated River Falls elementary and high schools; B.S. River Falls State College. Since 1938 engaged in insurance and real estate business. Circuit court commissioner since 1945. Member and past president Kiwanis Club and Willow River Rod and Gun Club; Member Elks, Butler-Harmon Post #80 Amvets, Wis. Ass'n of Insurance Agents. In U.S. army air force, June 1942-Aug. 1945. Elected Apr. 1955 at a special election to fill vacancy caused by resignation of Sen. Warren P. Knowles. Home Address: New Richmond.

Elected from old 10th senatorial district: Buffalo, Pepin, Pierce, St. Croix Counties.

RICHARD J. ZABORSKI (Dem.) born Milwaukee Jan. 7, 1927. Graduated St. Mary Czest Parochial School, Messmer High School; B.S. Marquette University 1953. Salesman. World War II veteran and army reserve officer. Commissioned infantry officer at 18. Served overseas in Europe with 1st Infantry Division; participated in Nuernberg trials; recalled to active duty 1950; in Korea and Japan as officer in 1st Cavalry Division; intelligence officer. Chairman Milwaukee County Democratic Full Employment Conference; delegate to Democratic state conventions. Member American Legion, Holy Name Society, various social, political and scholastic organizations. Elected to senate 1954. Home Address: 713 S. 21st St. Milwaukee.

Elected from new 11th senatorial district: 4th, 8th, 16th wards, city of Milwaukee.

B. J. GEHRMANN (Rep.) born Germany Feb. 13, 1880. At 13 came to this country; worked in Chicago packing plant and attended night school. 3 years later moved to Clark County. Since 1915 lived in Ashland County where he cleared a farm 5 miles from Mellen and has farmed ever since. Has held a number of public offices: assessor for 5 years, town chairman for 10 years, school clerk since 1919. Interested in better farming methods; carried on many experiments on his own farm; for many years Farm Institute conductor with Agricultural Extension Service of University of Wisconsin. Elected to assembly 1926 and 1930 and to senate in 1932. Resigned from senate in 1935 to enter congress. Elected to congress 1934, 1936, 1938, 1940. Again elected to assembly in 1946, 1948, 1950, 1952; and to senate in 1954 at a special election to fill the unexpired senatorial term of Senator Paul J. Rogan resigned. Thus, after a 22-year interval he is now serving the second half of a senatorial term. Home Address: Mellen.

Elected from old 12th senatorial district: Ashland, Iron, Price, Rusk, Sawyer, Vilas Counties.



PANZER
13th District

LORGE
14th District

CARR
15th District

FRANK E. PANZER (Rep.) born town of Hubbard, Dodge County, Sept. 1, 1890. Attended public schools and Oakfield High School. Was school teacher and telegraph operator; at present engaged in farming. Has held several public offices including school clerk, town chairman, member of Dodge County Board since 1925 and chairman of Dodge County Board since 1940. In assembly in 1931; elected to senate in 1934; re-elected in 1942, 1946, 1950, 1954. Elected president pro tem 1947-55. Home Address: Route 2, Oakfield.

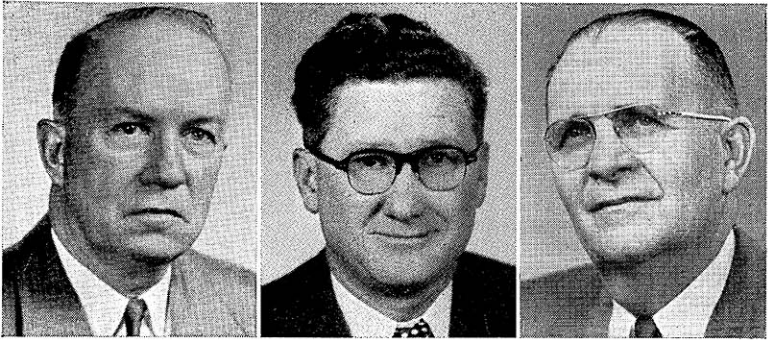
Elected from new 13th senatorial district: Dodge, Washington Counties.

GERALD D. LORGE (Rep.) born July 9, 1922 on a farm in Bear Creek, Outagamie County. Graduated from grade and high schools in Bear Creek, completing the 4-year high school course in 3 years. Entered Marquette University in 1946 majoring in courses preparatory to law school. Elected to assembly in 1950 from Outagamie County in his junior year at law school; after legislature adjourned in 1951 returned to Marquette University, graduating from law school in 1952. Prior to practicing law at Bear Creek, Sen. Lorge worked as a farmer in Outagamie and Waupaca Counties and did blacksmithing with his father who pioneered the blacksmith art in that area. Enlisted in marine corps, 1941; discharged Dec. 1945. On June 10, 1954 at the annual Wisconsin Marine Corps League convention was given Distinguished Service Award for meritorious service in the marine corps and the Marine Corps League. Member of Loyal Order of Moose, Disabled American War Veterans, American Legion, Marine Corps League, and national, state and local bar associations. Elected to assembly 1950 and 1952. Elected to senate 1954 to fill unexpired term of Sen. Bubolz, resigned. Home Address: 147 Willow St. Bear Creek.

Elected from old 14th senatorial district: Outagamie, Shawano Counties.

PETER P. CARR (Rep.) born North Jutland, Denmark, Aug. 6, 1890. Educated Chicago public schools, Chicago Business College. Warehouse and distributing operator. Formerly seedsman; member Carr's Inc. operating group of grocery stores and warehouses in Southern Wisconsin 1931-46; member of Janesville wholesale grocery firm 1946-50. President Janesville city council 1952-54. President Wisconsin Seed Dealers Ass'n 1929; director Union Trust Co., Madison 1928-31; chairman President's Re-employment Board, Rock County, during depression. Elected to senate 1954. Home Address: 524 N. Garfield Ave. Janesville.

Elected from new 15th senatorial district: Rock County.



PORTER
16th District

TRAVIS
17th District

VAN DE ZANDE
18th District

FOSTER B. PORTER (Rep.) born Barnum Aug. 22, 1891. Educated in elementary and high schools. Is general merchant; president of bank; and president of 2 mutual fire insurance companies. Public offices include village president 14 years; county board member 16 years; chairman of Mississippi Valley Parkway Committee; district chairman of war finance committee. World War I veteran; active in American Legion. Serving 3rd term. Home Address: Bloomington.

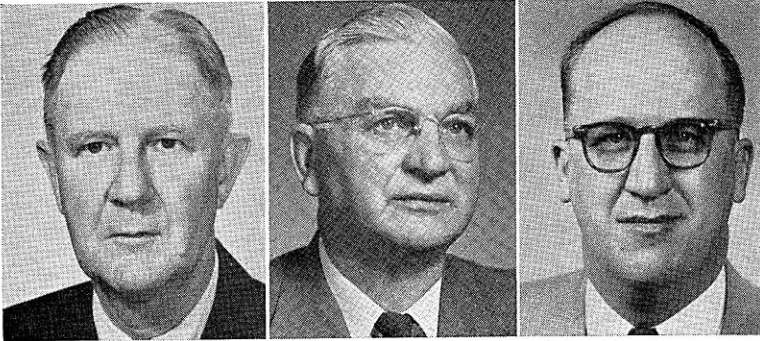
Elected from old 16th senatorial district: Crawford, Grant, Vernon Counties.

ROBERT TRAVIS (Rep.) born May 2, 1909 Platteville. Graduated from Potosi grade and high schools; attended Michigan State College 2 years. From 1930-33 manager of Irvington Dairy Products Company in Omaha, Nebraska. From 1933-40 engaged in farming. World War II veteran, having served in anti-aircraft branch of armed forces. Member of assembly 1947-1953. During 1949, 1951, 1953 sessions chairman Assembly Committee on Conservation, member Assembly Committee on Taxation, Committee on Rules. In 1955 member Senate Committee on Agriculture and Conservation. Elected to senate 1954. Home Address: Platteville.

Elected from new 17th senatorial district: Grant, Green, Iowa, Lafayette Counties.

ALFRED VAN DE ZANDE (Rep.) born Campbellsport Oct. 8, 1893. Graduated Campbellsport High School in 1912. Has been in insurance business since 1910 and is president of Campbellsport Mutual Insurance Company. Was president of village of Campbellsport 2 years, member of its board of trustees 4 years, undersheriff and sheriff of Fond du Lac County 1 term each. In 1918 assistant instructor of military tactics at University of Wisconsin. Served 4 terms in assembly and in 1948 elected to senate. Re-elected 1952. Resigned July 14, 1955 to become Commissioner of Insurance; resigned Oct. 1955. Home Address: Campbellsport.

Elected from old 18th senatorial district: Fond du Lac, Green Lake, Waushara Counties.



DRAHEIM
19th District

PRANGE
20th District

STALBAUM
21st District

WILLIAM A. DRAHEIM (Rep.) born Neenah Dec. 15, 1898. Graduated Neenah elementary and high schools; attended Lawrence College for 2 years. Occupations: mill worker, statistician-accountant, production planner. Sporting goods dealer. Real estate sales. Former member county board. Member Rotary Club, American Legion, Veterans of Foreign Wars. Private in World War I; rose from private to major in National Guard from 1920-40; major and colonel of infantry in World War II; on active duty 1940-46, served 38 months in Southwest Pacific with 32nd Division and other troops; colonel in army reserve. Elected to senate 1950; re-elected 1954. Home Address: 116½ W. Wisconsin Ave., Neenah.

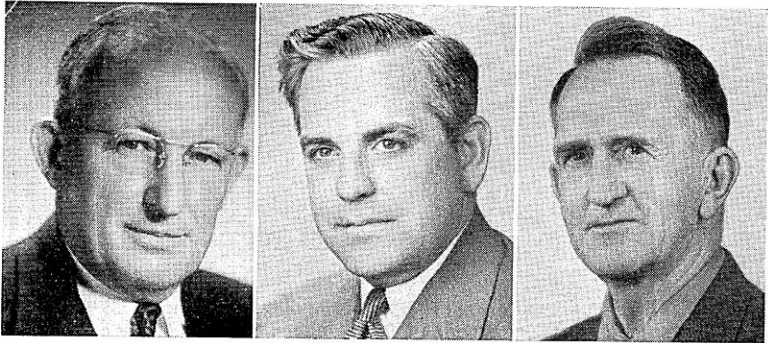
Elected from new 19th senatorial district: Calumet and Winnebago Counties.

LOUIS H. PRANGE (Rep.) born town of Sheboygan Falls. Educated county rural schools and Mission House College, Plymouth. Engaged in farming for over 40 years; owns a modern certified seed and Holstein-Friesian dairy farm. Past president Dairy State Bank, Plymouth. Served as school district officer; leader of 4-H groups; member county fair board; Tri-County Cheese and Dairymen's Cooperative Association of which he was secretary-treasurer 1931-40. Interested in soil conservation; supervised development of Sheboygan County lime project. Member Wisconsin Agricultural Experiment Association. Elected to senate 1952. Home Address: Plymouth.

Elected from old 20th senatorial district: Ozaukee, Sheboygan Counties.

LYNN E. STALBAUM (Dem.) born Waterford, May 15, 1920. Educated Racine County rural schools, Racine County School of Agriculture. Since 1951 secretary-treasurer Racine Milk Producers Co-op Ass'n. Employed by U.S. Dept. of Agriculture in Racine County 1936-44, was then administrative officer for that county from 1939-44; terminated employment when he joined the navy in 1944. World War II veteran, U.S. navy destroyer, in South Pacific; discharged as 1st class petty officer 1946. Has been fieldman for milk plant; salesman for feed company; active in community affairs. Former Commander Waterford American Legion; charter member Wind Lake Veterans of Foreign Wars. Legislative representative Administrative Committee of State Democratic Party, 1955-56. Serving 1st term in legislature. Home Address: 1013 Augusta St. Racine.

Elected from new 21st senatorial district: Racine County.



TRINKE
22nd District

ROGAN
23rd District

CLARK
24th District

WILLIAM F. TRINKE (Rep.) born on farm in Wisconsin Jan. 25, 1897. Orphaned, he left school at 6th grade, and worked as farm hand, construction laborer, building trades worker, realtor, lawyer and builder. In 1931 entered University of Wisconsin as an adult special, and achieved the record of going from 6th grade to a bachelor's degree in 4 years. In 1937, at age 40, graduated from University of Wisconsin Law School. Served as president of Walworth County Bar Association and state commander of American Legion, 1945-46. World War I veteran, having served in France in 32nd (Red Arrow) Division. Nominated to fill the vacancy caused by death of Senator Shearer on Oct. 8, 1948. This is his 2nd term in the legislature. Home Address: Lake Geneva.

Elected from old 22nd senatorial district: Kenosha, Walworth Counties.

PAUL J. ROGAN (Rep.) born Aug. 21, 1918 Eagle. Received education St. Mary's School in Wausau; St. Norbert's High School, West De Pere; St. Norbert's College; University of Wisconsin. Manager of chick hatchery, former manager of feed store, is proprietor of beauty parlor. Was president of Ladysmith Junior Chamber of Commerce. World War II veteran, having served with combat engineers 1942-45. Elected to assembly 1948, 1950; elected to senate 1952, re-elected 1954. Republican floor leader 1955. Resigned Nov. 1, 1955 when he became Insurance Commissioner. Home Address: Ladysmith.

Elected from new 23rd senatorial district: Barron, Burnett, Polk, Rusk, Sawyer, Washburn Counties.

WILLIAM WALTER CLARK (Rep.) born Plum City July 7, 1885. Graduated Plum City graded school, Ellsworth High School, River Falls Teachers College, attended University of Wisconsin. Taught number of years in country school, high school and Wood County Agricultural School; served as county agricultural agent. Farmer. Has acted as town chairman of town of Hansen and chairman of Wood County Board. Chairman of Committee on Education 1945, 1947, 1949, 1951. Member of Legislative Council 1949, 1951, 1953, 1955 and chairman of Education Committee of Legislative Council, 1949, 1951. Elected to assembly in 1920, and re-elected 1938, 1942, 1944, 1946, 1948, 1950. Elected to senate 1952. Member Committee on Education and Public Welfare 1953; chairman 1955. Home Address: Route 1, Vesper.

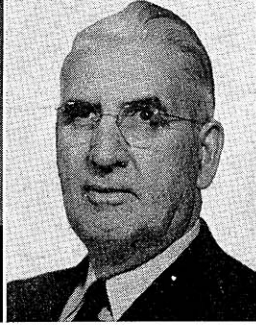
Elected from old 24th senatorial district: Clark, Taylor, Wood Counties.



LAURI
25th District



NELSON
26th District



MILLER
27th District

CARL E. LAURI (Dem.) born Jan. 16, 1924 at Superior. Graduated Superior Central High School 1941; B.S. economics and English Superior State College Jan. 1954. Railroad clerk. World War II veteran, U.S. navy 1942-46, flying in Pacific Theater; decorated air medal with 4 gold stars and distinguished flying cross. Member Disabled American Veterans, Veterans of Foreign Wars, Fraternal Order of Eagles. Elected to senate 1954. Home Address: 2710 N. 22nd St. Superior.

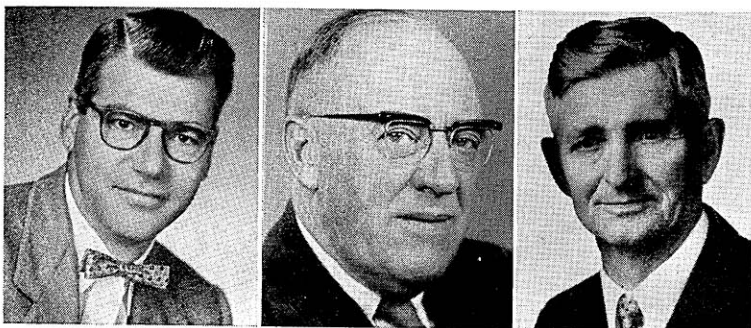
Elected from new 25th senatorial district: Ashland, Bayfield, Douglas Counties.

GAYLORD A. NELSON (Dem.) born Clear Lake June 4, 1916. Educated in Clear Lake graded and high schools. In 1939 B.A. from San Jose State College in California; in 1942 LL.B. University of Wisconsin. Since 1942 a practicing attorney. Prior to election to senate in 1948 had held no public office. Re-elected 1952. In 1951 chosen Democratic floor leader; in 1953 assistant Democratic floor leader. Served in Army 46 months during World War II. Home Address: 5627 Crestwood Place, Madison.

Elected from old 26th senatorial district: Dane County.

JESS MILLER (Rep.) born 1884 in town of Eagle, Richland County. Educated in public schools and is farmer and auctioneer by occupation. Has held a number of public offices: chairman of town of Eagle, chairman of county highway committee, county mediation board and county Republican committee. Elected to senate in 1938; re-elected 1942, 1946, 1950, 1954. Home Address: Richland Center.

Elected from new 27th senatorial district: Columbia, Crawford, Richland, Sauk Counties.



PADRUTT*
28th District

JONES
29th District

DOWNING
30th District

ARTHUR L. PADRUTT* (Rep.) born Huron, S. D. Sept. 26, 1917. Spent childhood on farm in town of Troy, Sauk Co. In 1928 moved to Chippewa Falls, where he has since resided. Graduated McDonnell Memorial High School, Chippewa Falls, 1935. B.S. Eau Claire State College 1939; after studying law taught Wis. public schools. Owned and operated a photo supply business. Resumed study of law 1954; LL.B. University of Wis. 1956. Now practicing attorney. Active in civic and fraternal affairs including: member Kiwanis, U.C.T., K. of C. past president Chippewa Falls Community Chest, Chippewa Falls Little Theater. Elected to assembly 1940, 1942, 1944, 1946. Elected to senate 1948, re-elected 1952. In 1953 Rep. nominee for congress, 9th congressional district. Member Legislative Council, Wis. State Centennial Committee, Committee to Visit State Institutions, various interim legislative committees, Joint Finance Committee member 1951, 1953; chairman Governmental and Veterans' Affairs Committee 1955. Since 1953 chairman Joint Survey Committee on Retirement Systems; now chairman Governor's Retirement Systems Study Committee. Member State Building Commission and Commission on Interstate Cooperation. Wisconsin's representative on Board of Managers Council of State Government. Home Address: 51 E. Birch St. Chippewa Falls.

Elected from old 28th senatorial district: Chippewa, Eau Claire Counties.

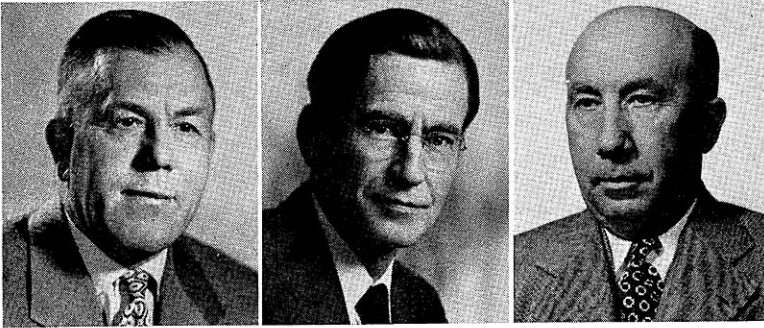
HUGH M. JONES (Rep.) born Dousman Oct. 9, 1892. Graduated Dodgeville elementary and high schools; B.S. University of Wisconsin College of Agriculture 1915. Salesman. Formerly automobile dealer 1922-53; county agricultural agent 1919-22; assistant instructor University of Wisconsin 1915-17. Alderman, Bloomer, Wisconsin. 1932-36; director Wisconsin Motor Vehicle Dept. 1939-41, commissioner of same dept. 1941-43. World War I veteran: field artillery. World War II veteran: military govt. 1943-46. Chairman American Legion Conservation Committee, Dept. of Wisconsin 1928-30. Elected senate 1954. Home Address: 612 Kent St. Wausau.

Elected from new 29th senatorial district: Marathon, Shawano Counties.

PHILIP DOWNING (Rep.) born Ontario, Canada Sept. 3, 1871; educated in Canada. One year after graduation from Vankleek Hill Normal School in Ontario came to Wisconsin where he taught school 9 years. Since that time has been a salesman. Was postmaster of Amberg for many years and Marinette county supervisor past 20 years. Has held many other local offices and has always been very active in civic affairs. This is his 4th term in the senate. Home Address: Amberg.

Elected from old 30th senatorial district: Florence, Forest, Langlade, Marinette, Oneida Counties.

*Resigned April 13, 1956.



LEVERICH
31st District

BICE
32nd District

DEMPSEY
33rd District

JAMES EARL LEVERICH (Rep.) born on farm in town of Angelo, Monroe County; still resides there. Graduate of Sparta High School, Madison College, University of Wisconsin College of Agriculture. Was a dairy farmer, fruit grower and farm co-op leader; served as school clerk, town clerk, town chairman, member of Monroe County Board. For many years president of Sparta Co-op Creamery Association and Western Wisconsin Co-op Creamery Association. Was agricultural member of State Board of Vocational and Adult Education as well as member of various state-wide dairy and other agricultural committees. Organized the anti-oleo demonstration at Madison in 1931 which resulted in elimination of oleo in Wisconsin. Elected to senate in 1934, 1942, 1946, 1950, 1954. Home Address: Route 1, Sparta.

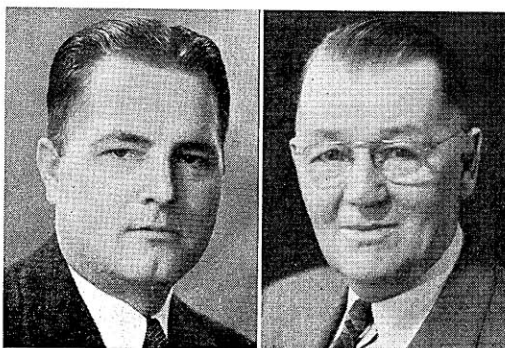
Elected from new 31st senatorial district: Adams, Juneau, Marquette, Monroe Counties.

RAYMOND C. BICE (Rep.) born La Crosse Apr. 5, 1896. Educated La-Crosse elementary and high schools and University of Wisconsin Extension Division. In 1916-18 employed by a sash and door factory; 1921-24 partner in sash and door company; and since a building contractor and engaged in retail lumber business. Public and civic activities include president La Crosse Vocational Adult School Board, vice chairman board of trustees of Oak Forest Sanatorium, member of numerous other civic organizations. Has been member and officer La Crosse County Board, chairman county park commission, president La Crosse County Chamber of Commerce and La Crosse Businessmen's Club. Overseas with army in World War I. Served 4 terms in assembly; elected to senate April 7, 1953 to fill vacancy caused by resignation of Senator Schlabach. Home Address: 2406 State St. La Crosse.

Elected from old 32nd district: Jackson, La Crosse, Trempealeau Counties.

CHESTER E. DEMPSEY (Rep.) born Merton, Waukesha County, July 20, 1896. Owns and operates modern dairy farm of 300 acres which has been homestead of Dempsey family since early pioneer days. Educated in county schools and has always been a close student of farming and farm problems. Was a member of Waukesha County Board and has held various school and township offices. Elected to senate in 1934, 1946, 1950, 1954. Home Address: Route 1, Hartland.

Elected from new 33rd senatorial district: Jefferson and Waukesha Counties.



LARSEN
Chief Clerk

DAMON
Sergeant at Arms

LAWRENCE R. LARSEN (Rep.) born Racine Mar. 23, 1897. Educated in common and high schools of that city. Served in World War I with Headquarters Company at Camp Shelby, Mississippi. Elected chief clerk of senate in 1935 and unanimously re-elected in each succeeding session through 1945. In 1955 again elected chief clerk of senate. Elected to assembly in 1950 and 1952. Home Address: 1028 Russet St., Racine.

HAROLD E. DAMON born at Edgerton, Minnesota, Oct. 3, 1885. In 1888 came to Wisconsin where he has since resided. After graduation from high school attended Wausau Business College. At present engaged in insurance business. His public offices include alderman and supervisor, deputy sheriff and deputy clerk of court. In 1943 served as assistant sergeant at arms; in 1944 as acting sergeant at arms. Since 1945 has held the office of sergeant at arms of the senate. Home Address: 926 Washington St., Wausau.



ROMELL
Adams, Juneau,
Marquette

WALLIN
Ashland, Bayfield

SYKES
Barron

LOUIS C. ROMELL (Rep.) born Chicago Apr. 7, 1899; educated in public schools; employed as a salesman and railroad machinist. At present engaged in farming, and resides on farm. Public offices: school district clerk and town supervisor. 4 sons served in armed forces in World War II and one lost his life in Hurtgen Forest engagement. Serving 5th term. On Committee on Highways in 1947, 1949, and 1951. Home Address: Route 1, Adams.

VIC C. WALLIN (Rep.) born Washburn May 27, 1899. Attended Grand View elementary schools; graduate of La Salle Extension University course in accounting. Since 1924 he and partners have been wholesale distributors of petroleum products and engaged in retail general merchandise and insurance business. From 1937-47 town chairman; was chairman of county board. Was vice president of Wisconsin Indianhead Country, Inc. for 4 years and now lifetime member of executive advisory committee; was chairman of County Conservation Congress; member State Forestry Advisory Committee. Serving 3rd term in assembly. Home Address: Grand View.

CHARLES H. SYKES (Rep.) born Jan. 11, 1881 at Brodhead; graduated Milton Junction High School; attended Janesville Business College. At 19 began farming in Rock County. In 1919 moved to farm in Barron County on which he resided until he retired in 1934. On county board of Rock County for 2 years and 12 years on county board of Barron County. Serving 9th term in assembly. Home Address: Chetek.



QUINN
Brown, 1st

LYNCH
Brown, 2nd

SEYMOUR
Brown, 3rd

JEROME QUINN (Rep.) born Green Bay May 23, 1910. Graduated grade and high schools; attended University of Wisconsin. Merchant and real estate operator. Alderman of Green Bay; supervisor Brown County; member of Green Bay Board of Education. Member of Elks, Green Bay Ass'n of Commerce. Elected to assembly 1954. Home Address: 912 Howard St., Green Bay.

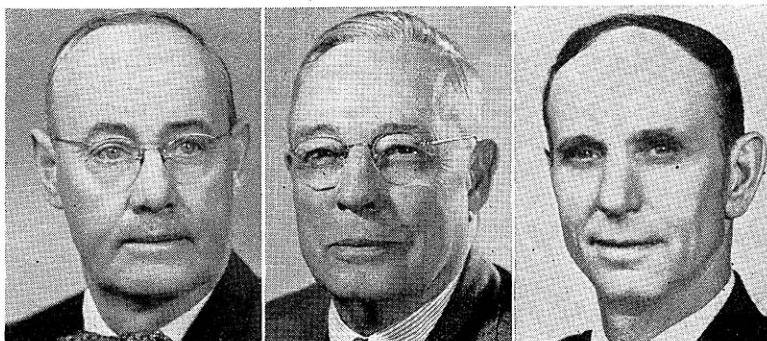
Brown County, 1st district: 3rd, 6th, 13th-24th wards city of Green Bay.

ROBERT E. LYNCH (Dem.) born Chicago. After graduation from Notre Dame became baseball coach there and later for Northwestern University, Northwestern Academy and Clemson College. He played in and managed professional baseball with clubs in the Wisconsin-Illinois League; the American Association; and the Western, Eastern and Southern Leagues. During war public relations officer Kewaunee Shipbuilding and Engineering Corporation. His election to assembly in 1932 marked his entrance into public office. Elected to assembly 1934, and since 1943 has served consecutively. Chairman Democratic caucus and assistant Democratic floor leader for 1947. In 1949 nominated Democratic candidate for speaker. Chairman Committee to Visit State Institutions in 1951; member 1953. Home Address: 1144 Cass St., Green Bay.

Brown County, 2nd district: Towns of Allouez, Preble; 1st, 2nd, 4th, 5th, 7th-12th wards, city of Green Bay.

EDWARD A. SEYMOUR (Rep.) born De Pere Aug. 1, 1887. Educated De Pere grade and high schools, Oshkosh State College, B.S. St. Norbert's College. Mayor of De Pere 10 years. Principal and superintendent of schools 1914-52; county superintendent of schools 1919-38; member Brown County Agricultural Committee 1920-38, Brown County Park Board 1918-34, De Pere Police and Fire Commission 1934-40. Elected district vice president, 2nd senatorial district, League of Wisconsin Municipalities. Serving 1st term in the legislature. Business Address: De Pere

Brown County, 3rd district: All towns, cities and villages in the county except towns of Allouez and Preble and city of Green Bay.



WARD
Buffalo, Pepin, Pierce

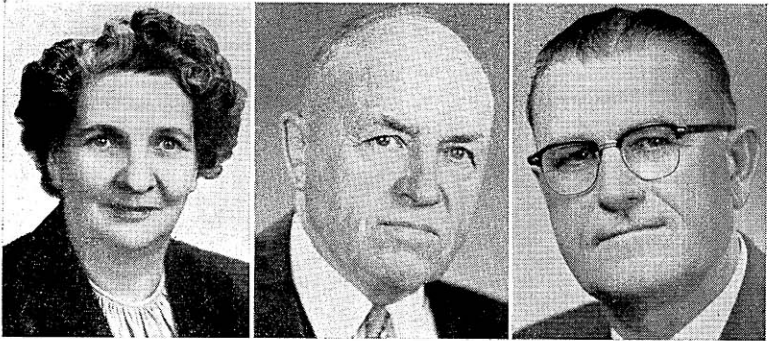
PEABODY
Burnett, Polk

PETERS
Calumet

MAMRE H. WARD (Rep.) born Jan. 16, 1899 Durand. In 1916 graduated from Durand High School. Has been a farmer all his life. In 1935 and 1936 town chairman. Was member of Wisconsin State Soil Conservation Committee and chairman of that committee until elected to the assembly in 1950. For 12 years president Bank of Durand until it consolidated with Security National Bank of Durand, of which he is now a director, a post he has held for the past 7 years. Vice president Durand Canning Co., packers of peas and beans. Director now and formerly of local cooperative creamery; member several cooperative organizations. This is his 3rd term in the legislature. Chairman Commerce and Manufactures Committee; member Committee on Municipalities; in 1951 and 1953 served on Committee on Agriculture. Home Address: Rural Route 2, Durand.

RAYMOND A. PEABODY (Rep.) born Feb. 24, 1883 Baldwin, St. Croix County, where his great-grandfather was a pioneer farm-settler a decade before Civil War. While still in his teens, worked as telegraph operator on railroads. In 1903, he, with others, started a mercantile and lumbering business in Washburn County, which he operated for next 15 years. Since 1922 interested in banking, insurance and finance business. 3 years a member of executive council of Wisconsin Bankers Association. Has been member of Legislative Council since its formation. Interested in governmental affairs all his life, was city council member for many years in his home village, served 3 years as mayor. Served on Polk County Board, including 3 years as chairman. Always interested in civic betterment movements and served in many organizations. This is his 7th term in the assembly. Home Address: Milltown.

HENRY MARTIN PETERS (Rep.) born town of Woodville, Calumet County, Nov. 21, 1889. Attended public schools in Nebraska; became farmer and rancher. Was fireman and engineer and is farmer and dairyman. Town assessor for 10 years; town clerk for 9 years. Secretary of local cheese factory 28 years; member of Board Cheese Storage Company 15 years; secretary and treasurer of livestock shipping association 11 years. Elected to assembly in 1948; resigned as town clerk and re-elected to assembly in 1950, 1952 and 1954. Home Address: Route 1, Menasha.



RAIHLE
Chippewa

COOK*
Clark

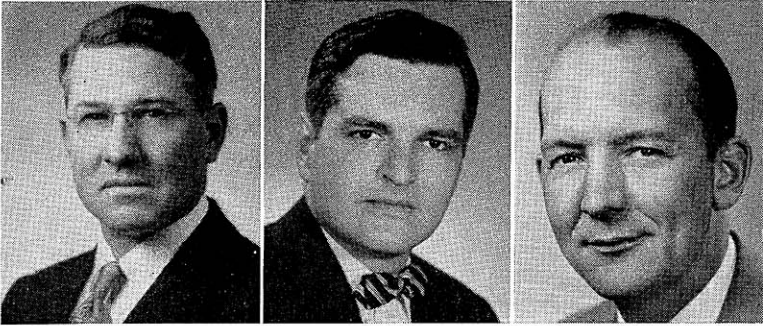
BIDWELL
Columbia

SYLVIA HAVRE RAIHLE (Rep.) attended public schools in Wisconsin and Minnesota; St. Cloud Teachers College, University of Minnesota, Minnesota College of Law; and University of Wisconsin. Taught public school 5 years; employed in Washington, D.C., and in Veterans Hospital at Fort Snelling as hospital contact worker 10 years. Her husband, Attorney Paul H. Raihle, was member of assembly in 1925. 5 children and 2 grandchildren. Active auxiliary member of various veterans organizations. Secretary of Chippewa Falls library board, past president of local American Legion auxiliary, Business and Professional Women's Club, and Chippewa County Federation of Women's Clubs. Charter member of Alpha Epsilon chapter of Phi Delta Delta legal sorority. Elected to assembly in 1948; re-elected 1950, 1952, 1954. Home Address: 1313 Superior St., Chippewa Falls.

WALTER E. COOK* (Rep.) born Unity Dec. 21, 1888. Born and raised on farm. Attended grade schools of that village, 2 years in high school. Owned and operated a farm 17 years and has been a farm and livestock auctioneer 28 years. Was a member of the council and school treasurer of Unity. Has always taken an active interest in agriculture and civic affairs. Member of assembly from 1939-45; re-elected in 1950, 1952, 1954. Home Address: Unity.

EVERETT V. BIDWELL (Rep.) born Houston, Minn. Oct. 22, 1899. Attended Minnesota rural schools and University of Minnesota. Formerly a farmer, ice cream manufacturer and salesman; now engaged in manufacture of ice cream. Supervisor Columbia County Board; former director Portage Chamber of Commerce and State Assn. of Ice Cream Manufacturers. Serving 2nd term in assembly. Home Address: 1117 W. Pleasant St. Portage.

* Deceased Oct. 12, 1955.



KINTZ
Crawford, Richland

BLOODGOOD
Dane, 1st

NESTINGEN*
Dane, 2nd

MILFORD C. KINTZ (Rep.) born Aug. 3, 1903 in township of Richland. Received early education in elementary and high schools and attended Richland County Normal School. After teaching 1 year became a farmer. Town chairman 1939-51; has served as chairman of county board, school board director, 4-H club leader, and Committee on Rural Community High Schools. This is his 3rd term in the assembly. Home Address: Rural Route 2, Richland Center.

JOSEPH WHEELER BLOODGOOD (Dem.) born Madison May 15, 1926. Educated Madison grade school; Wisconsin High School; B.A. University of Wisconsin 1948; LL.B. University of Wisconsin 1954. Practicing attorney. Employed U.S. Census Bureau 1949-50. Coroner Dane County 1951-54. Served in navy 1943-46; 1952-54. Elected to assembly 1954. Business Address: 111 W. Main St. Madison.

Dane County, 1st district: 6th, 7th, 12th, 15th-18th wards, city of Madison.

IVAN A. NESTINGEN* (Dem.) born Sparta Sept. 23, 1921. Graduated public schools in Sparta; Ph.B. and LL.B. University of Wisconsin. Practicing attorney since 1949. Alderman city of Madison 1951-54. Served on various city council committees, Madison Board of Public Works; Madison Board of Health. World War II veteran; Army Engineers 1943-46. Elected to assembly 1954. Business Address: 119 E. Washington Ave., Madison.

Dane County, 2nd district: 1st-4th, 8th, 9th, 14th wards city of Madison.

*Resigned effective April 16, 1956.



METZNER
Dane, 3rd



THOMPSON
Dane, 4th



BRUNER
Dane, 5th

CARROLL E. METZNER (Rep.) born Milwaukee Apr. 24, 1919. Educated Wisconsin public schools; B.S. Northwestern University; LL.B. University of Wisconsin 1943. Practicing attorney. Instructor School of Commerce, University of Wisconsin 1948-52. Member Madison city council 1951-53. Elected to assembly 1954. Home Address: 733 Huron Hill, Madison.

Dane County, 3rd district: 5th, 10th, 11th, 13th, 19th, 20th wards of city of Madison.

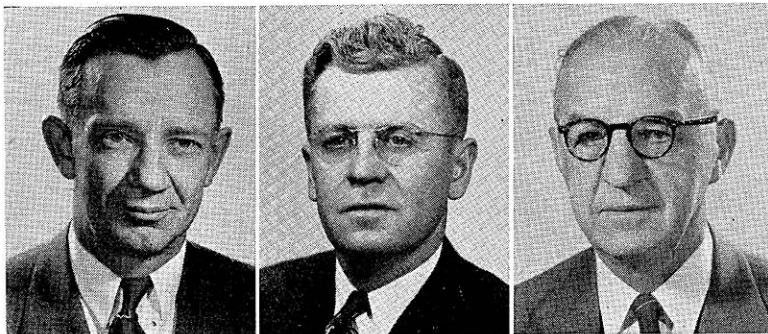
CARL WILLIAM THOMPSON (Dem.) born Washington, D.C. Mar. 15, 1914. Graduate Stoughton elementary and high schools, University of Wisconsin Law School 1939. Practicing attorney at Stoughton. Served as alderman, city attorney. Democratic national committeeman 1949 to date. Presidential elector 1948. Democratic candidate for governor 1948, 1950. World War II veteran, U.S. army 1942-46, in military intelligence. Elected to assembly 1952; re-elected 1954. Home Address: 702 Ridge St., Stoughton.

Dane County, 4th district: Towns of Albion, Blooming Grove, Bristol, Burke, Christiana, Cottage Grove, Deerfield, Dunkirk, Dunn, Medina, Pleasant Springs, Rutland, Sun Prairie, Windsor, York; villages of Cambridge, Cottage Grove, Deerfield, DeForest, McFarland, Marshall, Monona, Rockdale, Sun Prairie; city of Stoughton.

ERVIN M. BRUNER (Dem.) born Nov. 12, 1915 in Lenoir, N.C. Attended Wisconsin State College, Milwaukee; Ph.B. and LL.B. University of Wisconsin. Practicing attorney; also operates a farm and timber project. Village attorney for Verona. Active in farm organizations and co-operatives. World War II infantry veteran. Elected to assembly 1952. Home Address: Route 1, Verona.

Dane County, 3rd district: 5th, 10th, 11th, 13th, 19th, 20th wards city of Madison.

Dane County, 5th district: Towns of Black Earth, Berry, Blue Mounds, Cross Plains, Dane, Fitchburg, Madison, Mazomanie, Middleton, Montrose, Oregon, Perry, Primrose, Roxbury, Springdale, Springfield, Vermont, Verona, Vienna, Westport, villages of Black Earth, Blue Mounds, Cross Plains, Dane, Maple Bluff, Mazomanie, Middleton, Mt. Horeb, Oregon, Shorewood Hills, Verona, Waunakee, and that part of villages of Belleville and Brooklyn in Dane County.



GENZMER
Dodge, 1st

NITSCHKE
Dodge, 2nd

GRAASS
Door, Kewaunee

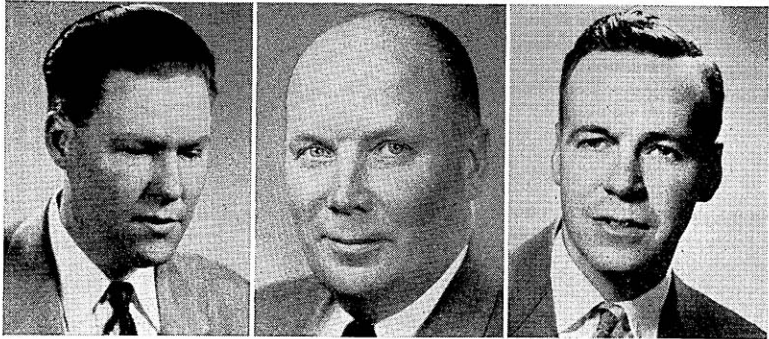
ELMER L. GENZMER (Rep.) born Jan. 3, 1903 Mayville. Attended Milwaukee State Teachers College and Marquette Law School 1923-24. In 1942 elected mayor of Mayville and served continuously until present time. Since 1935 served 11 consecutive terms in assembly. Because of his piquant phrasemaking, Mr. Genzmer can make seemingly effective arguments on the floor. No one bothers to refute him. Rather, the majority obviously enjoys his efforts for he is one of the best-liked and most skillful speakers in the lower house in an era when the art of oratory appears to be lost. Previously chairman of Committee on Labor; Committee on Commerce and Manufacturers, and presently of Excise & Fees. Home address: 435 N. Main St., Mayville.

Dodge County, 1st district: Towns of Ashippun, Clyman, Emmet, Herman, Hubbard, Hustisford, Lebanon, Leroy, Lomira, Rubicon, Shields, Theresa, Williamstown; villages of Brownsville, Clyman, Hustisford, Iron Ridge, Lomira, Neosho, Theresa; cities of Horicon and Mayville, and 5th, 6th, 13th, 14th wards of city of Watertown.

ELMER C. NITSCHKE (Rep.) born Burnett May 20, 1911. Educated in elementary and high schools of Dodge County. Is a farmer and insurance agent. Was school board director and deputy sheriff; member of Lions Club, Elks Club, and Dodge County Insurance Agents' Association. This is his 4th term. Home Address: 208 Hamilton Street, Beaver Dam.

Dodge County, 2nd district: Towns of Beaver Dam, Burnett, Calamus, Chester, Elba, Fox Lake, Lowell, Oak Grove, Portland, Trenton, Westford; villages of Lowell, Reeseville, and east ward of Randolph; cities of Beaver Dam, Fox Lake, Juneau, and 1st-4th wards of city of Waupun.

FRANK N. GRAASS (Rep.) born Sturgeon Bay Aug. 19, 1885. Graduated Sturgeon Bay High School 1905, studied forestry and entered forest tree seed collecting and exporting business. Actively engaged in fruit-growing business for many years; and was director of Door County Fruit Growers Cooperative. Served 2 terms as president of Door County Chamber of Commerce and 12 years as legislative counsel for many state conservation organizations; was among those who sponsored basic state conservation laws. On advisory board of Wisconsin Conservation Commission for 4 years. Served as secretary of Commission on Interstate Cooperation; member of board of managers of Council of State Governments; chairman of committee on Great Lakes Fisheries; member of Great Lakes Area Council. Actively interested in state budget and revenue affairs, conservation, rural school education and care, hospitalization and education of dependent and crippled children. Was Governor Goodland's legislative and financial secretary for over 4 years. Member of assembly 1917-19, 1935-41; re-elected in 1950, 1952, 1954. Home Address: Sturgeon Bay.



PERALA
Douglas, 1st

HAGEN
Douglas, 2nd

BAKKE
Dunn

REINO A. PERALA (Dem.) born Maple, Wisconsin Aug. 28, 1915. Attended Corner School at Maple, Wisconsin School for Blind, Superior State College, University of Wisconsin 1938-43, LL.B. 1943. Practicing attorney, operator Mayeton Hotel in Superior, justice of peace. Elected to assembly 1952; re-elected 1954. Home Address: 1706 Broadway St., Superior.

Douglas County, 1st district: 4th-16th wards, city of Superior.

LAWRENCE M. HAGEN (Rep.) born Apr. 4, 1904 at Black River Falls, Wis. Graduated Superior public and high schools. Operating engineer 1922-24; presently journeyman machinist. Member city council 1949-51. Elected to assembly 1952; re-elected 1954. Home Address: 719 22nd Ave. East; Superior.

Douglas County, 2nd district: Towns of Amnicon, Bennett, Brule, Cloverland, Dairyland, Gordon, Hawthorne, Highland, Lakeside, Maple, Oakland, Parkland, Solon Springs, Summit, Superior, Wascott; villages of Lake Nebagamon, Oliver, Poplar, Solon Springs, Superior; 1st-3rd, 17th-20th wards, city of Superior.

G. H. BAKKE (Rep.) born in town of Menomonie Aug. 21, 1918. Attended Hudson Road rural school, Dunn county School of Agriculture, and graduated from College of Agriculture of University of Wisconsin. Operates bulldozing service and rental real estate property. Was an organizer and past president of Menomonie Lions Club; honorary member Lions International; trustee of Dunn County Agricultural Society; and general chairman of 1st annual county-wide dairy day. Member of American Legion and Veterans of Foreign Wars. During World War II served in navy. On Apr. 3, 1951 elected to assembly to fill vacancy caused by death of Earl Hanson; re-elected in 1952, 1954. Home Address: 1102 - 11th St. Menomonie.



KUHLMAN
Eau Claire, 1st

RAETHER
Eau Claire, 2nd

LAUBY
Florence, Forest,
Langlade

RAY KUHLMAN (Rep.) born Eau Claire Sept. 10, 1900. Graduated high school 1920. Sheriff Eau Claire County 1943-48, 1951-54. Formerly engaged in grocery business. Serving 1st term in the legislature. Home Address: 201 West Grand Ave., Eau Claire.

Eau Claire County, 1st district: 1st-3rd, 5th-10th, 13th wards of city of Eau Claire.

BERNARD H. RAETHER (Dem.) born Casco township, Kewaunee County, June 15, 1889. Graduated Eau Claire High School; attended Eau Claire State College one year. Farmer since 1917; also insurance agent. Formerly carpenter. County board member and town chairman since 1948; town clerk 1926-41; town assessor 1923-26. President and general manager Ludington Co-op Creamery Assn. 20 yrs.; president and board member Eau Claire County REA; past president Eau Claire County Dairy Improvement Assn.; member Farmers' Union; Commander American Legion Spondly Post. World War I veteran. Elected to assembly 1954. Home Address; Route 1, Augusta.

Eau Claire, 2nd district: all the towns and villages of the county; cities of Altoona and Augusta; 4th, 11th, 12th, 14th, 15th wards of city of Eau Claire.

ALFRED J. LAUBY (Dem.) born Oct. 7, 1908 at Antigo. Graduated St. John's Parochial School and Antigo High School. Dairy products salesman. Formerly painter and decorator; tavern operator. Director Tavern League of Wis. 1949-51. World War II veteran; in navy 1943-45. Serving 1st term in legislature. Home Address: 209 10th Ave., Antigo.



LESSELYOUNG
Fond du Lac, 1st

SCHLUETER
Fond du Lac, 2nd

LOY
Grant

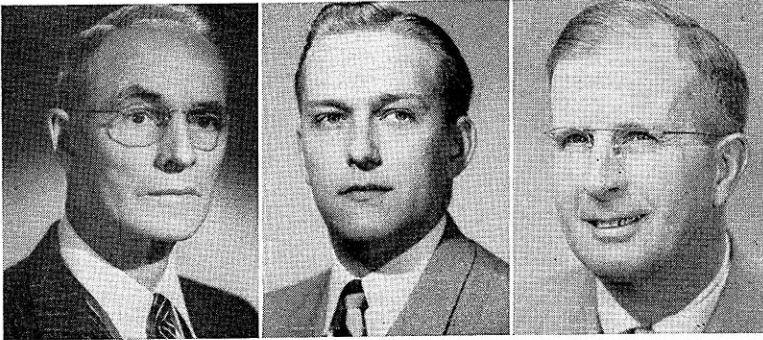
NICHOLAS J. LESSELYOUNG (Rep.) born Chilton Nov. 25, 1917. Graduated Chilton High School and Marquette University Law School in 1942. Since that time engaged in practice of law. First World War II commander of American Legion in Fond du Lac and re-elected. In 1947 received Junior Chamber of Commerce Distinguished Service Award for community service and personal achievement. In World War II served in navy. Serving 3rd term. Permanent chairman Assembly Republican caucus; chairman Judiciary Committee and Committee on Rules. Resigned Nov. 1, 1955, upon appointment to Public Service Commission. Home Address: 4105 Iroquois Dr., Madison.

Fond du Lac County, 1st district: Town of Fond du Lac; village of North Fond du Lac; city of Fond du Lac.

FRED W. SCHLUETER (Rep.) born Berlin Apr. 16, 1895. Educated public schools; attended insurance short courses, University of Wisconsin. Farmer and general insurance agent. Clerk of Town of Ripon since 1928. Member board of directors of Ripon Farmers Mutual Fire Insurance Co. 1936; president 1942-49; secretary since 1949. Director Ripon Chamber of Commerce. Serving 1st term in legislature. Home Address: P.O. Box 32, Ripon.

Fond du Lac, 2nd district: Towns of Alto, Ashford, Auburn, Byron, Calumet, Eden, Eldorado, Empire, Forest, Friendship, Lamartine, Marshfield, Metomen, Oakfield, Osceola, Ripon, Rosendale, Springvale, Taycheedah and Waupun; villages of Brandon, Campbellsport, Eden, Fairwater, Oakfield, Rosendale and St. Cloud; and city of Ripon, and 5th, 6th wards, city of Waupun.

WILLIAM A. LOY (Rep.) born May 5, 1895 at Livingston. Educated Livingston High School and College of Agriculture, University of Wisconsin. Formerly farmer and breeder of purebred Percheron horses and Shorthorn cattle. Chief deputy and undersheriff 1939-42; chief of police 1949-53. Member Livingston high school board; village president Livingston. Past president Wisconsin Horse Breeders Assn. World War I and II veteran; army 1917-18, navy 1942-46. Elected to assembly 1952; re-elected 1954. Home Address: 1630 Lincoln Ave., Fennimore.



KEEGAN
Green

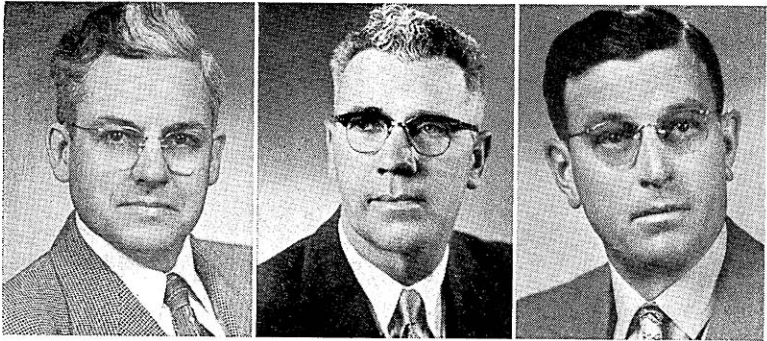
BELTER
Green Lake, Waushara

CALVERT
Iowa, Lafayette

HARRY A. KEEGAN (Rep.) born Madison, S. D. Nov. 18, 1882. Attended high school 1 year and took a 2-year course at business college, Monroe, Wis. In retail grocery business at Monroe 9 years. For past 30 years a dairy farmer. Former member city council. For over 4 years member of Company H, Wisconsin National Guard. In legislature 1939-45 and re-elected since 1948. Home Address: 1424 14th Ave., Monroe.

WILLIAM N. BELTER (Rep.) born July 7, 1926 at Wausau. Graduated Wautoma High School; Ph.B. University of Wisconsin, 1947; Bachelor's and Master's degrees in law, 1949. Since 1949 practicing attorney at Wautoma. Also licensed real estate broker, insurance agent and director Union State Bank, Wautoma. Justice of peace since 1947; airport commissioner since 1953; member Wautoma city planning commission since 1954. Active in community affairs; president Wautoma Community Band several years; president Wautoma Lions Club 1952-53; president Wautoma centennial corporation; director Wautoma community chest and chamber of commerce; treasurer Waushara Co. Republican Club. Elected to assembly 1952; re-elected 1954. Chairman Committee on Contingent Expenditures. Home Address: Wautoma.

WALTER B. CALVERT (Rep.) born Dec. 23, 1904 at Benton. Educated Benton public schools; B.S. Whitewater State College 1926. Engaged in farming since 1937. Commercial teacher 1926-37; high school principal 1944-45. Public offices include town chairman, county supervisor, chairman county board since 1951. Member Lions Club 25 years; past president Sturgeon Bay and Benton Lions Clubs. Farm Bureau member 10 years and served on its legislative committee. Elected to assembly 1954. Home Address: Benton.



DILLMAN
Iron, Oneida, Vilas

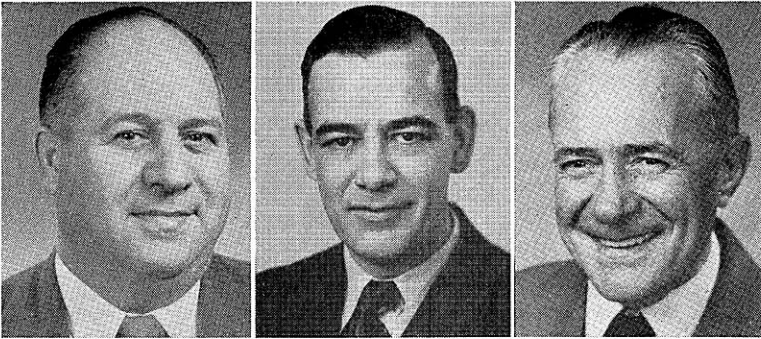
HARDIE
Jackson, Trempealeau

WACKETT
Jefferson

MARVIN E. DILLMAN (Rep.) born Revillo, S. D. July 12, 1907. Educated elementary and high schools S. D. B.S. University of Illinois, 1931. Proprietor summer resort. With U. S. Indian Service 1931-35; principal elementary school 1951-53. Chairman Vilas County School Committee 1947-50. Serving 1st term in assembly. Home Address: Lac du Flambeau.

KEITH HARDIE (Dem.) born town of Franklin in Jackson County May 16, 1910. Educated in Wilson Creek School, North Bend, Wisconsin. Born on farm, engaged in farming until 1933; then a carpenter and engaged in trucking. Presently operates bulk oil station in Black River Falls and a garage and service station at Franklin, where he resides. Member school board 1942-45. Elected to assembly 1952; re-elected 1954. Home Address: Taylor.

BYRON F. WACKETT (Rep.) born Mar. 21, 1912 at Randolph. Attended Randolph public schools. Former salesman, now a service station operator. Mayor of Watertown 1946-49. Chairman Watertown Chapter Red Cross 1950-52. Former president State Association of Petroleum Retailers. Elected to assembly 1952; re-elected 1954. Home Address: 601 Washington St., Watertown.



MOLINARO
Kenosha, 1st

LOURIGAN
Kenosha, 2nd

PETERSON, J.
La Crosse, 1st

GEORGE MOLINARO (Dem.) born Oct. 1, 1902 Kenosha. Educated Kenosha public schools and Kenosha Business College. Employed as an auto worker. 1939-47 served continuously as member of county board. Director and life member Kenosha County Fair Ass'n. Member of Legislative Council, 1953-54. This is his 5th term in the assembly. In 1951, 1953 Democratic floor leader. Home Address: 2308 52nd St., Kenosha.

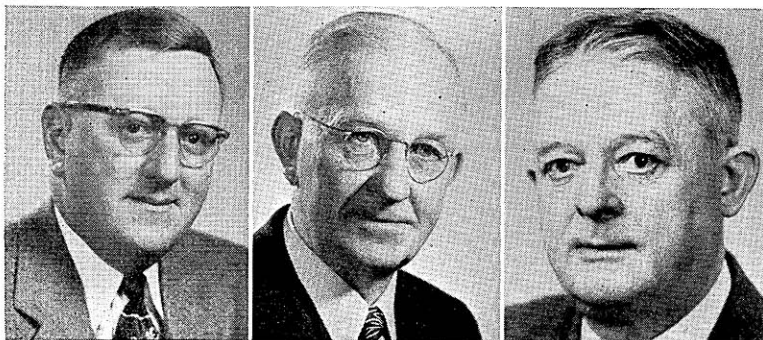
Kenosha County, 1st district: 1st-3rd, 7th-13th, 16th, 17th wards city of Kenosha.

JOSEPH LOURIGAN (Dem.) born Mar. 19, 1901 in Kenosha. Educated Kenosha public schools and graduated Kenosha Business College. For past 35 years has been an auto worker. Has held office of secretary of Local 72 U.A.W.-C.I.O. from 1943-44 and president from 1945-47. Member of city council from 1947-51. Serving 3rd term in legislature. Home Address: 7528-15th Ave., Kenosha.

Kenosha County, 2nd district: Towns of Brighton, Bristol, Paris, Pleasant Prairie, Randall, Salem, Somers, Wheatland; villages of Silver Lake, Twin Lakes; 4th, 5th, 6th, 14th, 15th, 18th wards city of Kenosha.

JAMES D. H. PETERSON (Rep.) born La Crosse Aug. 7, 1894. Educated La Crosse public schools, La Crosse State College, University of Wisconsin, Washington and Lee University. Practicing attorney since 1925. Assemblyman 1925-26; elected to assembly again 1954. World War I veteran, having served in army 1917-19. Home Address: 326 N. 8th St., La Crosse.

La Crosse County, 1st district: 1st-7th, 9th-16th, 19th, 20th wards, city of La Crosse.



TOEPEL
La Crosse, 2nd

HINZ
Lincoln

VOGEL
Manitowoc, 1st

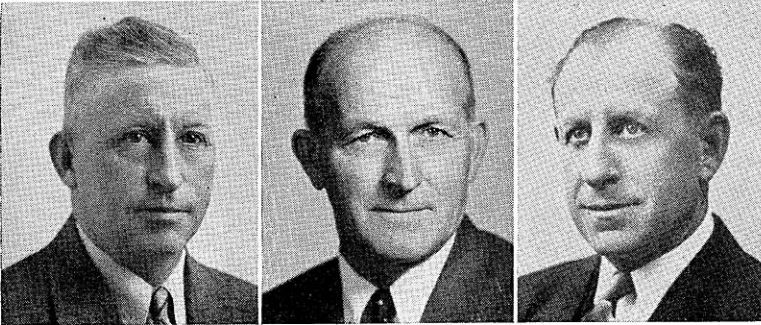
EUGENE A. TOEPEL (Rep.) born Bangor, Wis. July 29, 1916. Educated Bangor schools; Northwestern College; B.A. and LL.B. University of Wisconsin. Practicing attorney. World War II veteran; army 1942-46; major USAR. Serving 2nd term in assembly. Home Address: 2315 Adams St., La Crosse.

La Crosse County, 2nd district: 8th, 17th, 18th, 21st wards city of La Crosse, and entire county outside La Crosse.

EMIL A. HINZ (Rep.) born Feb. 21, 1889 town of Proviso, Illinois. Educated parochial school in that state. 1914-17 a wheat farmer in Saskatchewan; since 1919 engaged in farming. Was secretary of co-operative cheese factory 21 years. Public offices include town treasurer; town chairman; county board member 19 years, chairman 8 years. World War I veteran. This is his 5th term in the assembly. Home Address: Route 3, Merrill.

HUGO E. VOGEL (Dem.) born Aug. 29, 1888 in town of Newton. Educated parochial and public schools Manitowoc County. Barber since 1906; in partnership with brother since 1923. Circuit court clerk 1919-20; member Barbers Examining Board of State Board of Health 1936-50; county board member 16 years, 1939-55; chairman and secretary county finance committee for 10 years; also served on other county board committees. Elected to assembly 1954. Home Address: 1409 S. 12th St., Manitowoc.

Manitowoc County, 1st district: Towns of Manitowoc, Manitowoc Rapids, Newton; city of Manitowoc.



LeCLAIR
Manitowoc, 2nd

RIEHLE
Marathon, 1st

LUEDTKE
Marathon, 2nd

FRANK LE CLAIR (Rep.) born Jan. 1, 1888 Two Rivers. Received education in elementary schools and business college. Was commercial fisherman and at present is fish broker. Public offices include membership on school board and town board. Was director of Manitowoc County Farm Bureau Federation. World War I veteran, having served in navy. Elected to assembly in 1946 and re-elected in 1950, 1952, 1954. Home Address: Route 1, Two Rivers.

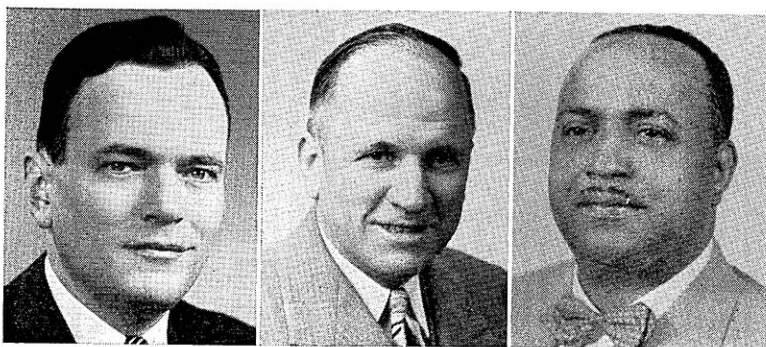
Manitowoc County, 2nd district: Towns of Cato, Centerville, Coopers-town, Eaton, Franklin, Gibson, Koesuth, Liberty, Maple Grove, Meeme, Mishicot, Rockland, Schleswig, Two Creeks, Two Rivers; villages of Reedsville, Valdars; city of Two Rivers and that part of city of Kiel in Manitowoc County.

BEN RIEHLE (Dem.) born May 15, 1897, Town of Rietbrock. Completed 8th grade. Dairy farmer all his life. School treasurer 1925-40; county supervisor 1941-42; chairman P.M.A. 1936-39. World War I veteran, having served in motor transport Aug. 1918-Mar. 1919. Serving 1st term in legislature. Home Address: Route 3, Athens.

Marathon County, 1st district: Towns of Bergen, Berlin, Bern, Bevent, Brighton, Cassel, Cleveland, Day, Easton, Eau Pleine, Elderon, Emmet, Frankfort, Franzen, Green Valley, Guenther, Halsey, Hamburg, Harrison, Hewitt, Holton, Hull, Johnson, Knowlton, Kronenwetter, Mc-Millan, Marathon, Mosinee, Norrie, Plover, Reid, Rib Falls, Rib Mountain, Rietbrock, Spencer, Stettin, Wein; villages of Athens, Edgar, Elderon, Fenwood, Hatley, Marathon, Spencer, Stratford, and the parts of Abbotsford and Unity villages in Marathon County; that part of the city of Colby in Marathon County and city of Mosinee.

PAUL A. LUEDTKE (Rep.) born Wausau Aug. 24, 1888. Educated in elementary and parochial schools and later took commercial business course. After completing apprenticeship as decorator and wood finisher worked 8 years in this field. At age of 28 went into business for himself. Since then has operated a paint and wall paper business employing a crew of men who are decorators and woodfinishers. Has held a number of public offices: president city council; alderman and supervisor; chairman city equalization and tax board; chairman county board; member county highway committee, county traffic committee, county board of health, county park board. Honorary member Veterans of Foreign Wars. This is his 7th term in the assembly. Home Address: 118 Second Ave. S., Wausau.

Marathon County, 2nd district: Towns of Maine, Ringle, Texas, Wausau, Weston; villages of Brokaw, Rothschild; cities of Schofield, Wausau.



SENGSTOCK
Marinette

MERTZ
Milwaukee, 1st

STEWART
Milwaukee, 2nd

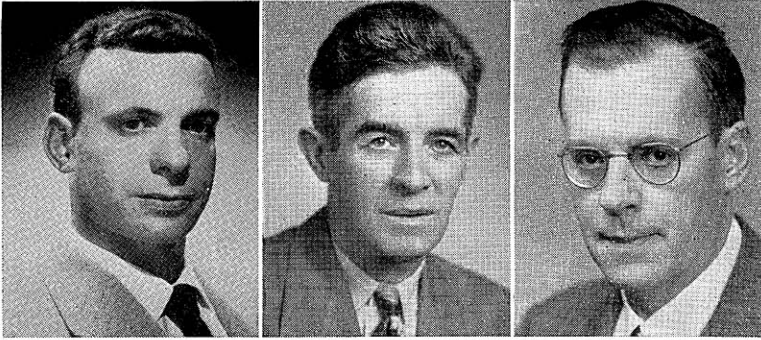
ROY H. SENGSTOCK (Rep.) born Marinette Feb. 3, 1913. Attended Marinette County Normal School and University of Wisconsin. Was employed as factory worker, taught school 3 years, since 1931 in insurance business. Has held several offices in local Republican committees. In 1939 assistant secretary in Governor Heil's office. For more than 3 years served with Service Forces, Infantry, Combat Engineers and Air Corps. Elected to assembly in 1940, and re-elected in 1946, 1948, 1950, 1952, 1954. Home Address: 1724 Main St., Marinette.

EDWARD F. MERTZ (Dem.) born Milwaukee Aug. 15, 1890. Attended St. Boniface Parochial School in Milwaukee, studied bookkeeping and accounting Badger State Business College. Law clerk 5 years, building contractor 14 years, has operated tavern and restaurant 19 years. Member American Legion 40 et 8; past commander American Legion post 473; chaplain of firing squad 9 years; Veterans of Foreign Wars; Fraternal Order of Eagles; Fraternal Order of Pilgrims, Badger Fisherman's League; Tavern League of Wisconsin and Northwest Old Settlers Club. In army 1917-19. Democratic committeeman 1st ward. This is his 4th term in the assembly. Home Address: 5233 N. Belle Isle Dr., Milwaukee.

Milwaukee County, 1st district: 1st ward of city of Milwaukee.

WALTON BRYAN STEWART (Dem.) born Henderson, Tenn. Apr. 20, 1914. Educated Tennessee elementary and high schools; B.Sc. Lane College, Jackson, Tenn. Machinist 1944-54; high school principal 1933-44. Member of the board of management of the Northside Y.M.C.A. Member of Board of Stewards of the St. Mark A.M.E. church. Interested in civic and community activities; active member organized labor. Served as chairman of the 6th ward Democratic unit for 5 years. Delegate at large 1952 Democratic National Convention; Prince Hall Mason. Serving 1st term in legislature. Home Address: 1723 N. 11th St., Milwaukee.

Milwaukee County, 2nd district: 2nd ward of city of Milwaukee.



GRECO
Milwaukee, 3rd

MURPHY
Milwaukee, 4th

TIMMERMAN
Milwaukee, 5th

JOSEPH ANTHONY GRECO (Dem.) born Dec. 5, 1919 at Milwaukee. Attended Andrew Jackson Grade School and Lincoln High School in Milwaukee, Western State College, Lawrence College; graduated Marquette University Law School. Practicing attorney since 1951. World War II veteran. Recalled as reservist 1950. Life member Disabled American Veterans, American Legion, Loyal Order of Moose, Eagles, Wisconsin and Milwaukee County Bar Associations, St. Rita's Holy Name Society. Elected to assembly 1954. Home Address: 1126 E. Pleasant St., Milwaukee.

Milwaukee County, 3rd district: 3rd ward city of Milwaukee.

JOSEPH P. MURPHY (Dem.) born Milwaukee Apr. 1, 1899. Received education St. Thomas Aquinas School, Marquette Academy, Wisconsin Commerical Academy, Wisconsin University Extension Division in Milwaukee. Formerly an auditor, is an accountant. World War I veteran, having served overseas in the 32nd Division; wounded in action at Chateau-Thierry. Prior to election to assembly in 1950 had held no public office. Re-elected 1952, 1954. Home Address: 3205 W. Wisconsin Ave., Milwaukee.

Milwaukee County, 4th district: 4th ward, city of Milwaukee.

LAWRENCE W. TIMMERMAN (Rep.) born June 1, 1910 at Milwaukee. Graduated St. Anne's Roman Catholic School, Marquette High School; LL.B. Marquette University. Practicing attorney. Formerly office manager, inspector, frame welder, crane hooker, machine operator, production worker, trucker, highway maintenance man, newsboy. Member American Bar Ass'n.; Eagles. Elected to assembly 1954. Home Address: 2326 N. 38th St., Milwaukee.

Milwaukee County, 5th district: 5th ward, city of Milwaukee.



COGGS
Milwaukee, 6th

LIPPERT
Milwaukee, 7th

TALSKY
Milwaukee, 8th

ISAAC N. COGGS (Dem.) born Muskogee, Okla., June 5, 1920. Graduated high school; University of Wisconsin 1948 B.S. degree. Employed Allis-Chalmers 1946; U.S. Post Office 1948-49. Accountant and tavern-keeper. Chairman Legislative Committee N.A.A.C.P.; president Near Northside Businessmen's Association; associate vice chairman Y.M.C.A. membership committee; member American Legion, Disabled American Veterans. World War II veteran. Elected to assembly 1952, re-elected 1954. Home Address: 2009 N. First St., Milwaukee.

Milwaukee County, 6th district: 6th ward, city of Milwaukee.

JAMES G. LIPPERT (Dem.) born Milwaukee Jan. 13, 1917. Graduated Milwaukee grade and high schools; B.S. in Business Administration and LL.B. Marquette University. Practicing attorney and real estate broker since 1945. Served U.S. navy 1942-45. Member American Legion; Milwaukee Bar Ass'n. Elected to assembly 1954. Home Address: 2454 N. 24th St., Milwaukee.

Milwaukee County, 7th district: 7th ward city of Milwaukee.

GEORGE J. TALSKY (Dem.) born June 19, 1899 in Milwaukee. Father, Anton Talsky, was a pioneer baker on Milwaukee's South Side. Attended St. Lawrence Catholic School, Old 18 Avenue Public School, South Division High and Trade School. Painter and decorator contractor for over 25 years. Member of C.I.O. and St. Matthew Catholic Church. Actively interested in politics and civic affairs. Serving 1st term in the legislature. Home Address: 2617 W. Scott St., Milwaukee.

Milwaukee County, 8th district: 8th ward of city of Milwaukee.



SCHMIDT
Milwaukee, 9th



O'CONNELL
Milwaukee, 10th



RYCZEK
Milwaukee, 11th

CHARLES J. SCHMIDT (Dem.) born Milwaukee Mar. 20, 1907. Graduated St. Anthony's Parochial School and South Division High School, attended University of Wisconsin Extension. Occupations: interior decorator; publicity director and inspector for Wis. Industrial Commission; auditor and investigator U.S. Dept. of Labor. During World War II conducted special surveys for War Production Bd., War Labor Bd., War Manpower Commission. Employee Veteran's Housing Administration. At present owner real estate and insurance business. Served Wisconsin State Guard; active in civic affairs. Vice chairman 9th ward Democratic unit; treasurer and member of executive board of Democratic Party of Milwaukee County; member Milwaukee Board of Realtors and Board of Underwriters; also National Ass'n of Real Estate Boards. Member St. Agnes parish, Knights of Columbus, Holy Name Society. Assistant Democratic floor leader 1953. At present member of State Legislative Council. This is his 4th term in the assembly. Home Address: 4046 N. 48th St., Milwaukee.

Milwaukee County, 9th district: 9th ward, city of Milwaukee.

MICHAEL F. O'CONNELL (Dem.) born Tipperary, Eire. Received education in public schools. A retired railroad conductor; since 1928 an election inspector. 1936-40 member of Taxpayers League. 4 sons all served in World War II, 1 losing his life while in service. Always concerned in legislation on public welfare and labor. Unanimous choice for speaker for his party, 1951, 1955 sessions. This is his 7th consecutive term in the assembly. Home Address: 1128 N. 18th St., Milwaukee.

Milwaukee County, 10th district: 10th ward, city of Milwaukee.

ERVIN JOHN RYCZEK (Dem.) born Milwaukee Sept. 20, 1909. Attended St. Adalbert's Parochial School, South Division High School, graduated Marquette High School in 1928. In 1938 student Spencerian Business College in Milwaukee. Since 1930 assistant funeral director. Air raid warden. Member Polish American Citizen Club, Roman Catholic Union, Catholic Order of Foresters, Polish Association of America, Polish National Alliance, Lehitas Club, Century Club, Federation Group, Holy Name Society, Layton Park Lions Club, South Division Civic Association, Old Duffers' Club, Milwaukeeans Club, Blessed Sacrament and St. Joseph's Orphanage Athletic Associations, 11th ward Democratic Party. Had held no public office until his election to assembly in 1940. Re-elected consecutively since 1942. Home Address: 3631 W. Ruskin St., Milwaukee

Milwaukee County, 11th district: 11th ward, city of Milwaukee.



SOKOLOWSKI
Milwaukee, 12th

BROWN
Milwaukee, 13th

NOWAKOWSKI
Milwaukee, 14th

GEORGE SOKOLOWSKI (Dem.) born Apr. 21, 1917 at South Milwaukee. Attended St. Stanislaus Grade School, Milwaukee; pioneer graduate Notre Dame High School. Attended University of Wisconsin Extension Division, Milwaukee; Milwaukee Vocational School. Machinist at the Blackhawk Manufacturing Co. in Milwaukee for 14 years. Member of USW-CIO, Local 4869; Veterans of Foreign Wars; Catholic Order of Foresters; Polish-American Citizens Club; South Division Civic Ass'n. St. Anthony's Holy Name Society; honorary member of 1001 Fishing Club of Milwaukee. On the State Democratic Legislator's Council he is a member of the policy and steering committee and of its highway committee; chairman of its veterans affairs committee; member 12th ward Democratic Party. Honorable discharge from U.S. Navy in 1946. Elected to assembly 1950, 1952, 1954. Home Address: 1813 S. 10th St., Milwaukee. Milwaukee County, 12th district: 12th ward, city of Milwaukee.

CECIL B. BROWN, JR. (Dem.) born Chicago July 29, 1926. Educated public schools of Iowa and Wisconsin; Ph. B. in business administration Marquette University; working on master's degree in speech. Tax consultant since Jan. 1951; public relations counselor since Sept. 1951; insurance agent since 1953. Formerly salesman appliances and household products. Committeeman 7th ward Milwaukee since 1950. Active in formation of Young Democratic Clubs of Wisconsin; delegate to national convention 1951. Director Milwaukee Masquers Drama Club; vice president Young Adult Council for Brotherhood; past president and vice president Gentlemen Club; member NAACP, Mt. Zion Baptist Church, Y.M.C.A. and other civic associations. Elected to assembly 1954. Business Address: 1319 W. Center, Milwaukee. Milwaukee County, 13th district: 13th ward, city of Milwaukee.

RICHARD B. NOWAKOWSKI (Dem.) born Milwaukee Jan. 4, 1921. Educated S.S. Cyril and Methodius Parochial School, South Division High School; Ph. B. and LL.B. Marquette University. Practicing attorney. Alderman 14th ward, 1950-52. World War II veteran; army Oct. 1942-Mar. 1946. Elected to assembly 1952; re-elected 1954. Home Address: 2544A S. 14th Street, Milwaukee. Milwaukee County, 14th district: 14th ward, city of Milwaukee.



FRICKER
Milwaukee, 15th

DUFFEY
Milwaukee, 16th

PELLANT
Milwaukee, 17th

EARLE W. FRICKER (Rep.) born Feb. 16, 1926 Detroit, Mich.; moved to Milwaukee Nov. 1926. Educated Milwaukee elementary schools and Washington High School; attended Lawrence College; B.S. Marquette University, LL.B. its Law School 1950. Practicing attorney and real estate broker. Formerly iron worker. World War II veteran; served U. S. navy 3½ years. Member American Legion, Kiwanis, Junior Chamber of Commerce, U. S. naval reserve. Elected to assembly 1954. Business address: 4410 W. Burleigh St., Milwaukee.

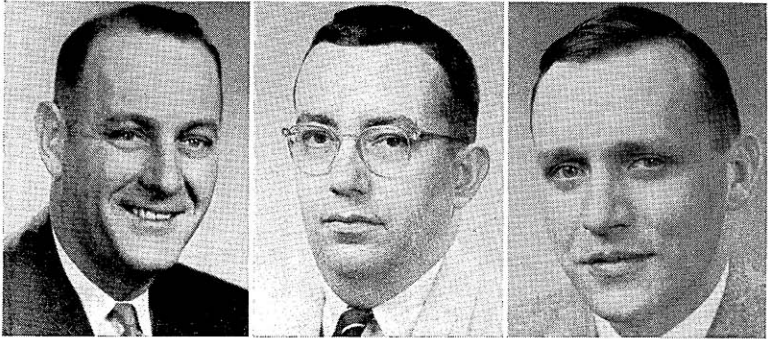
Milwaukee County, 15th district: 15th ward, city of Milwaukee.

THOMAS J. DUFFEY (Dem.) born Milwaukee Dec. 26, 1927. Graduated Marquette University High School; Marquette University Ph.B. 1950 and LL.B. 1952. Practicing attorney. Served in U. S. navy 1945-48. Member American Legion, Milwaukee and Wisconsin Bar Assns. Serving 1st term in assembly. Home Address: 9423 W. Wisconsin Ave., Milwaukee.

Milwaukee County, 16th district: 16th ward, city of Milwaukee.

HOWARD F. PELLANT (Dem.) born in Milwaukee July 23, 1911. Attended grade school, high school, vocational school. Former occupations include foundry employe, tavern proprietor, insurance agent, bakery salesman, meat cutter, clerk. Presently international representative U.A.W.-C.I.O. Former member Milwaukee County Health and Welfare Committee; chairman Milwaukee County Property Owners for Public Housing Committee. Elected to assembly 1952; re-elected 1954. Home Address: 3801 S. Kansas Ave., Milwaukee.

Milwaukee County, 17th district: 17th ward, city of Milwaukee.



LANDOWSKI
Milwaukee, 18th

KASIK
Milwaukee, 19th

POMMERENING
Milwaukee, 20th

RALPH JOHN LANDOWSKI (Dem.) born Mar. 23, 1912 Milwaukee. Graduated St. Casimir's Parochial School and Metropolitan Business College. A plumber. Member St. Casimir's Civic and Athletic Association, American Federation of Labor, local Democratic Club, St. Hedwigs Civic and Athletic Association. Had held no public office until election to assembly in 1948. Elected to assembly 1948, 1950, 1952, 1954. Home Address: 2519 N. Humboldt Ave., Milwaukee.

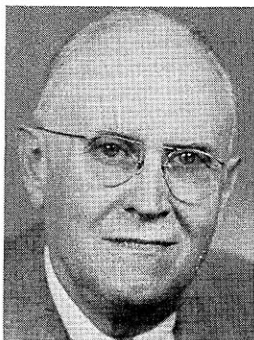
Milwaukee County, 18th district: 18th ward, city of Milwaukee.

WILLIAM R. KASIK (Rep.) born Milwaukee June 13, 1920. Educated Milwaukee Country Day School and Milwaukee University School. Vice president English Woolen Mills. World War II veteran, serving in the army in 1942 and 1943. This is his 1st term in the legislature. Home Address: 8340 N. Links Way, Milwaukee.

Milwaukee County, 19th district: Towns of Granville and Milwaukee; villages of Bayside, Fox Point, River Hills, Shorewood, Whitefish Bay; city of Glendale.

GLEN E. POMMERENING (Rep.) born Milwaukee Sept. 12, 1927. Educated grade and high schools; B.S. and LL.B. University of Wisconsin. Practicing attorney since June 1953. Has held no public office until his election to the assembly in 1954. Home Address: 6585 Washington Circle, Wauwatosa.

Milwaukee County, 20th district: 1st-6th wards city of Wauwatosa.



BALZER
Milwaukee, 21st



HUBER
Milwaukee, 22nd



LUEBKE
Milwaukee, 23rd

ARTHUR J. BALZER (Dem.) born Mar. 6, 1895 at Mequon, where his father, Constantine E. Balzer, was a teacher in the public schools. Attended Marquette University where he was cheer leader. Awarded medal for proficiency in debate 1922. For past 30 years resident of West Allis. In general merchandising business; also spends part time lecturing. In 1934 guest of Pres. Franklin D. Roosevelt at the White House. Nominated mayor of West Allis 1936. Elected to assembly 1932, 1936, 1938. Re-elected 1954. In 1933 chairman Assembly Committee on Labor; 1937 chairman Assembly Committee on Excise and Fees; 1955 member of Committee on Labor. World War I veteran; served in navy hospital corps. Home Address: 1116 S. 85th St. West Allis.

Milwaukee County, 21st district: 3rd ward city of West Allis; 7th, 8th wards city of Wauwatosa; town of Wauwatosa.

ROBERT T. HUBER (Dem.) born Eckelson, N. D. Aug. 29, 1920. Graduated West Allis Central High School; became auto parts and service salesman. 1944-48 contractor, is a merchandising salesman. Member of Knights of Columbus and Holy Name Society. Prior to election to assembly in 1948 had held no public office. Elected to assembly 1948, 1950, 1952, 1954. In 1951 Democratic assistant floor leader; floor leader 1955. Home Address: 2217 S. 84th St., West Allis.

Milwaukee County, 22nd district: village of West Milwaukee; 1st, 2nd, 4th wards city of West Allis.

WILLIAM LUEBKE, (Dem.) born Apr. 28, 1906 in Milwaukee. Educated elementary and vocational schools, high school at night, home study courses, University of Wisconsin summer session, School for Workers in Industry. Formerly an electrician; presently woolen mill superintendent. Elected to assembly 1940, 1942, 1954. Home Address: 3701 S. 90th Street, Milwaukee.

Milwaukee County, 23rd district: Towns of Franklin, Greenfield, Oak Creek; villages of Greendale, Hales Corners; precincts 33 and 34 of 11th ward city of Milwaukee; 5th ward city of West Allis.



WINDROW
Milwaukee, 24th



HALL
Monroe



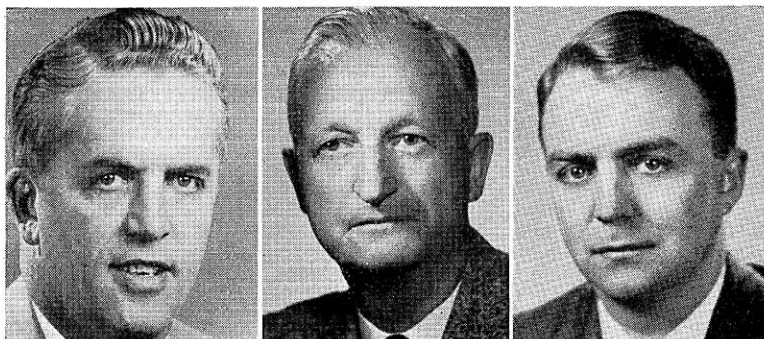
LaFAVE
Oconto

GEORGE C. WINDROW (Dem.) born Hondo, Texas Nov. 16, 1931. Attended University of Wisconsin 1949-51, Marquette University 1951-54. Awarded junior varsity football letter 1950. Since June 1951 employed as drop forger. Member executive board Democratic Party Milwaukee County 1953-54; member Milwaukee Junior Chamber of Commerce; member Defenders of Fur Bearers; chairman Action Committee for a No Vote on Area Reapportionment 1953; committeeman International Brotherhood of Boilermakers and Blacksmiths Local 1509. Serving 1st term in legislature. Home Address: 3546 E. Squire Ave., Cudahy.

Milwaukee County, 24th district: 19th ward, city of Milwaukee, cities of Cudahy, St. Francis, South Milwaukee.

EARL D. HALL (Rep.) born Tunnel City July 5, 1879. Rural school education; spent 4 years in train service, and since engaged in farming. For several years member of Monroe County Board and Monroe County Highway Committee. In 1924 elected to assembly without opposition and re-elected for each succeeding session through 1937. In 1950, 1952, 1954, again elected to assembly. Home Address: Route 2, Tomah.

REUBEN LA FAVE (Rep.) born Oconto Sept. 27, 1915. Graduated high school, attended Railroad School of Auditors. Was county case-worker; now real estate agent. Member of county board 3 terms. Chairman Sportsmen's Congress District 3, 1949-53; member Congress Conservation Council; president Northeastern Wis. Conservation Council; president Northeastern Wis. Bayshore Trap League; active member of Civic Club, Yacht Club, Kiwanis Club, Wisconsin Service Association and various civic organizations. In 1953 received Milwaukee Sentinel award for outstanding achievement in conservation field. During World War II chief petty officer in auxiliary coast guard. This is his 3rd term in the legislature. Home Address: 636 Brazeau Ave., Oconto.



CATLIN
Outagamie, 1st

SULLIVAN
Outagamie, 2nd

GRADY
Ozaukee

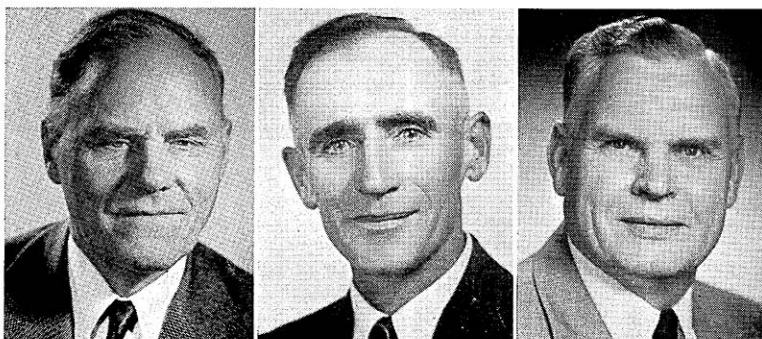
MARK S. CATLIN, JR. (Rep.) born Oct. 18, 1910 Appleton. Graduated Appleton High School in 1927, attended Lawrence College for 1 year. B.A. and LL.B. University of Wisconsin, 1933. Since 1933 a practicing attorney in Appleton. Member of Assembly 1937-44 re-elected in 1948, 1952, 1954. Republican floor leader 1941, 1943, 1953 sessions. Elected Speaker 1955. Served in U.S. marine corps July 1943-Jan. 1946. Presently major in U.S. marine corps reserve. Address: P.O. Box 391, Appleton.

Outagamie County, 1st district: Towns of Center, Grand Chute; city of Appleton.

WILLIAM T. SULLIVAN (Rep.) born Oconto Apr. 6, 1894. Graduated Oconto High School; attended University of Wisconsin; B.E. Oshkosh State College; graduate work at Lawrence College. Since 1927 director Kaukauna School of Vocational and Adult Education. High school teacher, 1915-27. World War I and World War II veteran: served in navy Apr.-Dec. 1918; lieutenant commander in navy 1943-45. Member Navy Ready Reserves, American Legion, Forty et Eight, Elks, Knights of Columbus. Elected to assembly 1954. Home Address: 119 Doty St., Kaukauna.

Outagamie County, 2nd district: Towns of Black Creek, Bovina, Buchanan, Cicero, Dale, Deer Creek, Ellington, Freedom, Greenville, Hortonia, Kaukauna, Liberty, Maine, Maple Creek, Oneida, Osborne, Seymour, Vandenbrook; villages of Bear Creek, Black Creek, Combined Locks, Hortonville, Kimberly, Little Chute, Shiocton; cities of Kaukauna, Seymour, 3rd ward of New London.

WARREN A. GRADY (Rep.) born Port Washington Mar. 3, 1924. Educated Port Washington public schools, Northwestern University, B.S.; University of Wisconsin, LL.B. Practicing attorney since 1950. Serving third term as city attorney. In U. S. navy 1943-46. Elected to assembly 1952; 1954. Chairman Assembly Committee on Taxation. Business Address: 114 E. Main St., Port Washington.



KOSTUCK
Portage

ZELLINGER
Price, Taylor

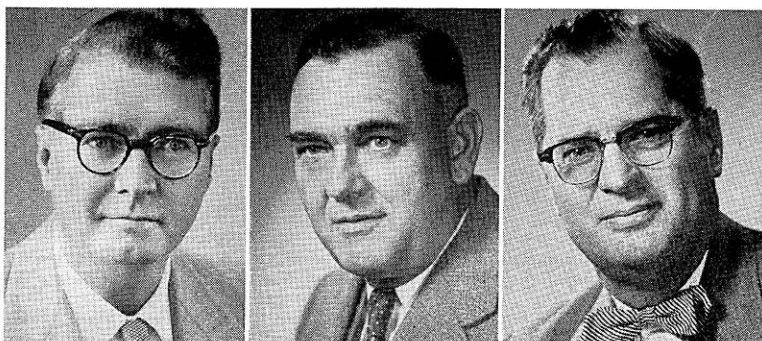
WARREN
Racine, 1st

JOHN T. KOSTUCK (Dem.) born Stevens Point Oct. 7, 1892. Leaving school at end of 3rd grade, he worked on a farm. At age of 14 when assisting in blasting stone, met with accident which made him blind. Entered Wisconsin State School for the Blind and after 10 years graduated from high school department in 1918. Then attended University of Wisconsin, specializing in political science and economics. Taught 3 years in high school department of School for the Blind at Staunton, Virginia; then entered piano business at Stevens Point. Salesman and piano tuner. Serving 13th consecutive term in assembly. Home Address: 130 Algoma St., Stevens Point.

VINCENT J. ZELLINGER (Rep.) born Czechoslovakia Feb. 10, 1901. Received early education in Nebraska and Price County public schools, has been highway maintenance worker, farmer's co-operative store manager, electric welder. Since 1930 dairy farmer. Has been town chairman, member of county conservation and forestry committees, school district director. Town clerk for 13 years. Was president of Price County Guernsey Breeders Association; legislative director of Elk Worcester Local Farmers Union. Has always been interested in bettering conservation and reforestation. In 1925 took military training at Camp Custer, Michigan. This is his 4th term in the assembly. Home Address: Phillips.

EARL WARREN (Dem.) born Feb. 25, 1902 at Hurley. Educated in Hurley public schools; graduated Lincoln High School in Hurley. County supervisor 1948-55. For past 18 years employed as assembler by Young Radiator Co. Previously operated own business. Serving 1st term in the legislature. Home Address: 1209 10th St., Racine.

Racine County, 1st district: 1st-6th, 10th, 11th, 13th, 14th wards city of Racine.



NALEID
Racine, 2nd

REWALD
Racine, 3rd

JEWETT
Rock, 1st

ROY E. NALEID (Dem.) born Racine Nov. 12, 1901. Educated Racine elementary and high schools; business course, night classes, Marquette University. Is quality analyst with J. I. Case Co. where he has been employed since 1935. Vice chairman Racine County Board; county board member 16 years; member Racine County highway committee 10 years. Elected to assembly 1954. Home Address: 1109 Carlisle Ave., Racine.

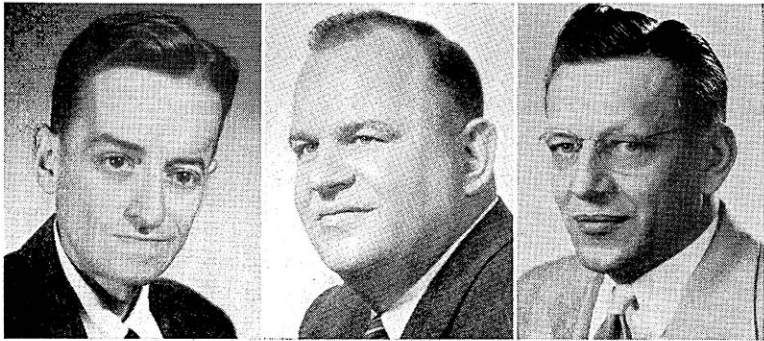
Racine County, 2nd district: 7th, 8th, 9th, 12th, 15th wards city of Racine.

ANTHONY BERNARD REWALD (Rep.) born Burlington Mar. 7, 1906. Educated St. Charles Parochial School, Burlington High School, Milwaukee School of Engineering. Electrical contractor 1926-54. County supervisor 1936-50; chairman Burlington Municipal Building Committee. Elected to assembly 1954. Home Address: 650 Lewis St., Burlington.

Racine County, 3rd district: Towns of Burlington, Caledonia, Dover, Mt. Pleasant, Norway, Raymond, Rochester, Waterford, Yorkville; villages of North Bay, Rochester, Sturtevant, Union Grove, Waterford, Windpoint; city of Burlington.

CLYDE A. JEWETT (Rep.) born in Richland County Jan. 18, 1907. Educated Richland Center elementary and high schools, Richland County Normal School. Partner in J. and W. Transfer and Storage Co. Janesville. Formerly employed Fisher Body division of General Motors and a local transfer company. Active in Lions Club and YMCA. Received distinguished service award of Junior Chamber of Commerce. Elected to assembly 1952; re-elected 1954. Home Address: 514 Prospect Ave., Janesville.

Rock County, 1st district: Towns of Bradford, Clinton, Johnstown, LaPrairie, Lima, Harmony; village of Clinton; city of Janesville.



BLANCHARD
Rock, 2nd

LESCHINSKY
Rock, 3rd

HUTNIK
Rusk, Sawyer,
Washburn

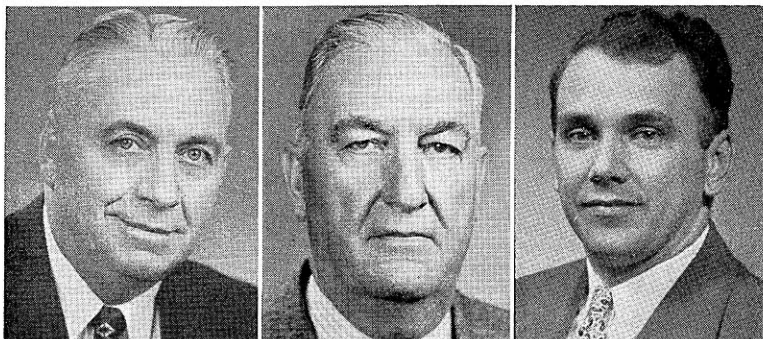
DAVID J. BLANCHARD (Rep.) born Edgerton Jan. 5, 1921. Educated Edgerton grade and high schools; B.A. in 1938 and LL.B. University of Wisconsin in 1943. Practicing attorney. Active member of civic, church and conservation organizations. Elected to assembly in 1954. Home Address: 506 Chamberlain St. Edgerton.

Rock County, 2nd district: Towns of Avon, Beloit, Center, Fulton, Janesville, Milton, Magnolia, Newark, Plymouth, Porter, Rock, Spring Valley, Union; villages of Footville, Milton, Milton Junction, Orfordville; cities of Edgerton, Evansville.

WALLACE LESCHINSKY (Rep.) born Beloit Mar. 12, 1920. Educated Beloit elementary and high schools; attended Rockford Business College. Restaurant manager. Formerly a salesman. Served in infantry 1940-41. City chairman of Beloit Republican Party 1952-54. Member American Amvets; Eagles. Elected to assembly 1954. Home Address: Colley Rd., Beloit.

Rock County, 3rd district: Town of Turtle; city of Beloit.

WILLIS J. HUTNIK (Rep.) born Mar. 23, 1915, town of Elk, Price County. Attended Deer Creek School, Phillips High School, Price County Normal, Central State Teachers College, University of Wisconsin. Owner of School and Office Sales in Tony; former teacher and principal. Formerly personnel manager Camp Grant, Ill.; village trustee, village of Tony; former secretary-treasurer Rusk County Conservation Club; chairman, Rusk County Conservation Congress; member Ladysmith Chamber of Commerce; past president Price County Education Assn., assistant leader 4-H Club work, sponsor Junior High School Basketball Tournament. 2nd term in assembly. Chairman of Education Committee. Home Address: Tony.



BERGERON
St. Croix

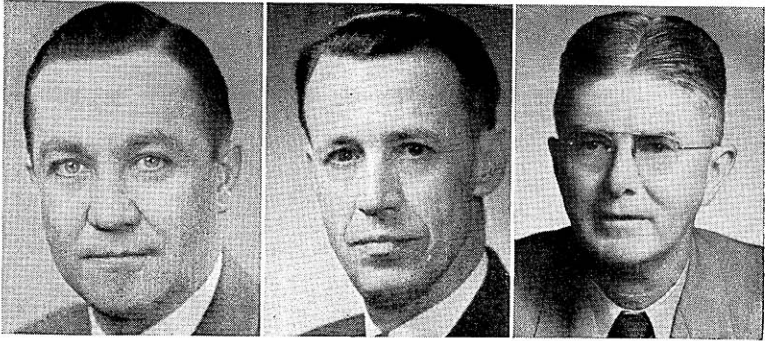
STONE
Sauk

MAROTZ
Shawano

WILLIAM A. BERGERON (Rep.) born July 3, 1898 at Stillwater, Minnesota. After attending elementary and high schools became a farmer. Since 1940 has engaged in various occupations. Town chairman, county board chairman, county welfare committee chairman, and other public offices. Has served as director and vice president of Midland Cooperative Wholesale, chairman of board of directors of mutual service life, casualty, and fire insurance companies, vice president of Farmington Mutual Fire Insurance Company, and president of Co-operative Auditing service. This is his 4th term in the assembly. Home Address: Somerset.

JAMES RILEY STONE (Rep.) born Oct. 17, 1886 in Sully County, South Dakota. Received elementary and high school education in Reedsburg public schools. In 1907 graduated from University of Wisconsin, receiving B.A. degree. Has held offices of postmaster and town clerk. From 1945-49 was sheriff of Sauk County. Owns and manages 2 Sauk County dairy farms. Has served as secretary and treasurer of Sauk County National Farm Assn. World War I veteran. This is his 4th term in the assembly. Home Address: 733 N. Park St., Reedsburg.

ROBERT G. MAROTZ (Rep.) born Sheboygan Nov. 14, 1921. Graduated St. James Lutheran School in Shawano and Shawano High School; worked as apprentice in a law office. Served in marine corps from 1942-45 during which time he also attended Bowling Green State University in Ohio and Dartmouth College. In 1946 wrote the Wisconsin bar examination and was admitted to the bar the same year. Then attended Law School of University of Wisconsin where he received degree in 1949. Assistant Republican floor leader, 1953, floor leader 1955. This is his 4th term in the assembly. Home Address: 618 W. Picnic St., Shawano.



NUERNBERG
Sheboygan, 1st

HUIBREGTSE
Sheboygan, 2nd

LEWISON
Vernon

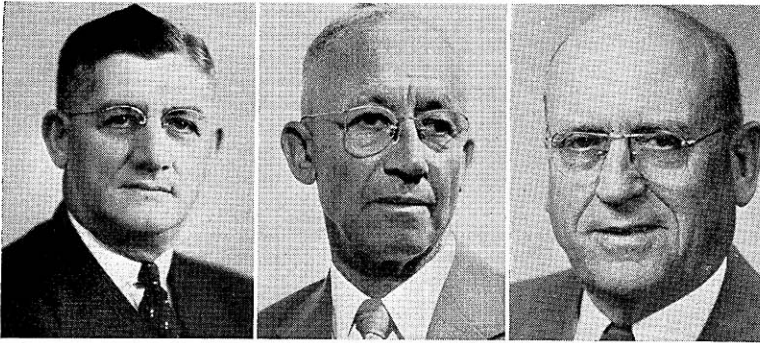
FRED E. NUERNBERG (Rep.) born Oct. 8, 1917 Sheboygan where he received elementary and high school education. After being employed by Garton Toy Company as production supervisor entered insurance business in 1946; vice president Dairyland Mutual Insurance Co. Active member of Kiwanis Club, Community Players, Life Underwriters Association, American Legion, Amvets, Veterans of Foreign Wars. In World War II served in navy. This is his 3rd term in the assembly. Chairman of Committee on Elections; vice chairman Committee on Insurance and Banking. Member of Legislative Council's Motor Accidents Committee 1952-53. Business Address: 1016 Michigan Avenue, Sheboygan.

Sheboygan County, 1st district: City of Sheboygan.

HAROLD F. HUIBREGTSE (Rep.) born Aug. 20, 1907, town of Lima, Sheboygan Co. Educated Hingham Grade School, Wis. Memorial Academy at Cedar Grove, Wis. Vice president H. C. Denison Co.; securities dealer. Formerly salesman and automobile dealer 1929-48. Farm owner since 1944. Treasurer Board of Education Sheboygan Falls since 1952. Member Sheboygan Kiwanis Club; director Sheboygan Falls Mutual Fire Insurance Co.; member board of trustees Pine Haven Christian Home; director Sheboygan Falls Chamber of Commerce. Serving 1st term in legislature. Home Address: 315 Elm St., Sheboygan Falls.

Sheboygan County, 2nd district: All towns, cities and villages of county except city of Sheboygan.

BERNARD LEWISON (Rep.) born Feb. 7, 1902 on a farm near Viroqua. Educated Viroqua public schools and Lawrence College. Operates Ford automobile agency and Viroqua body shop. For 10 years a farm owner and operator. Mayor Viroqua 1943-48; alderman city Viroqua 1938-40; chairman Viroqua Board of Appeals and vice chairman Board of Review. Elected to assembly 1954. Home Address: South Washington Heights, Viroqua.



RICE
Walworth

SCHOWALTER
Washington

REDFORD
Waukesha, 1st

ORA R. RICE (Rep.) born Boscobel Sept. 16, 1885. Graduated Boscobel High School; dental degree Northwestern University Dental College in 1907. 1907-36 practiced dentistry in Delavan and since 1936 has devoted time to farming and legislative duties. Elective and appointive offices include alderman of Delavan in 1916 and 1917 and mayor of city 1918-22. Chairman and member of State Centennial Committee. This is his 10th term in the assembly. Elected Speaker 1951, 1953. For 6 sessions before he was Speaker was chairman of Committee on Agriculture, and also vice-chairman of Committee on Rules. Home Address: Delavan.

ELMER J. SCHOWALTER (Rep.) born in town of Jackson Oct. 12, 1894. Born and raised on farm which has been owned by family since 1843. Educated elementary schools, University of Wisconsin farmer's short course. Farmer; operates licensed deer farms; breeds and ships white tail deer for pets, forests or estates; furnished deer to federal and state restocking projects since 1938. School treasurer 6 years; town assessor 1926-31. Elected to assembly 1954. Home Address: Jackson.

ALVIN J. REDFORD (Rep.) born Aug. 25, 1883 in town of Pewaukee. Attended rural schools in Waukesha County. For more than 16 years city police officer; sheriff for 5 terms; deputy sheriff for 2 years; served on fire and police commission for over 10 years. Presently employed by Otis E. Glidden and Co. Inc. of Waukesha. Member of Elks. This is his 4th term in the legislature. Home Address: 240 Douglass Ave., Waukesha.

Waukesha County, 1st district: Towns of Eagle, Genesee, Mukwonago, Muskego, New Berlin, Ottawa, Vernon, Waukesha; villages of Big Bend, Dousman, Eagle, Mukwonago, North Prairie, Wales; city of Waukesha.



LUDVIGSEN
Waukesha, 2nd

PETERSON, R.
Waupaca

ABRAHAM
Winnebago, 1st

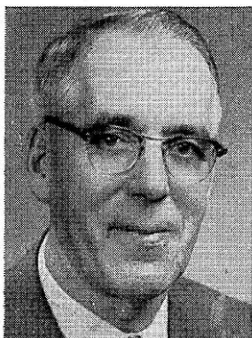
ALFRED R. LUDVIGSEN (Rep.) born on old farm homestead in town of Merton, Waukesha County Mar. 17, 1886. Educated in public schools and Luther College, Racine. Early years spent in farming. For many years engaged in landscape work and in development and sale of lake frontage. Served as member of Waukesha County Board and chairman of town of Merton 1923-28; has been secretary of Waukesha Co. Farm Drainage Board since 1923. Assembly chairman of Joint Committee on Finance; Member Joint Legislative Council. Member Commission on Interstate Cooperation; Emergency Board. This is his 11th term in the assembly. Home Address: Route 1, Hartland.

Waukesha County, 2nd district: Towns of Brookfield, Delafield, Lisbon, Menomonee, Merton, Oconomowoc, Pewaukee, Summit; villages of Butler, Chenequa, Hartland, Lac La Belle, Lannon, Menomonee Falls, Merton, Pewaukee, Sussex; city of Oconomowoc.

RICHARD E. PETERSON (Rep.) born July 17, 1920 Waupaca, where he attended elementary and high schools. In 1949 graduated University of Wisconsin Law School. Engaged in practice of law. Active in Boy Scouts, member of American Legion and Veterans of Foreign Wars. Entered armed forces with Wisconsin national guard, Oct. 16, 1940; discharged 61 months later. This is his 3rd term in the legislature. Home Address: 16-15th St., Clintonville.

HARVEY R. ABRAHAM (Rep.) born Oshkosh Jan. 15, 1895. Educated in public schools and graduated Oshkosh Business College. Sheet metal construction worker 8 years; assisted on farm 2 years prior to service in World War I. Served in overseas combat duty with 318 Engineers, 6th Division. Following honorable discharge associated with a partner in photo finishing business. Then travelled for 2 large nationally known food manufacturers until 1936. Since has been a real estate salesman. Past commander of local post No. 70 American Legion and past exalted ruler B.P.O.E. No. 292. This is his 5th term in the legislature. Member Legislative Council and its Committee on Conservation; member Municipalities and Judiciary Committees. Assembly member State Natural Resources Committee. Home Address: 194 Ceape St. Oshkosh.

Winnebago County, 1st district: 1st-5th, 7th-12th, and 15th wards, city of Oshkosh.



ANDERSON
Winnebago, 2nd



CANE
Winnebago, 3rd



CRAWFORD
Wood, 1st

JOSEPH H. ANDERSON (Rep.) born Menasha Nov. 1, 1893. Educated in rural and high schools, Oshkosh Business College. Dairy farmer for past 40 yrs. Treasurer town of Winneconne 27 yrs.; president Winneconne Community School Board of Education. Active in farm organizations. Serving 1st term in legislature. Home Address: Route 1, Winneconne.

Winnebago County, 2nd district: Towns of Algoma, Black Wolf, Clayton, Nekimi, Nepeuskun, Omro, Oshkosh, Poygan, Rushford, Utica, Vinland, Winchester, Winneconne, Wolf River; village of Winneconne; city of Omro; 6th 13th, 14th, 16th wards, city of Oshkosh.

ARNOLD J. CANE (Rep.) born Dec. 11, 1914 Ontonagon, Michigan. Attended public schools of that locality; Ph.B. Marquette University 1935; LL.B. Marquette University 1937. Practicing attorney at Menasha since 1937. Taught public speaking and coached debate at St. Mary's High School in Menasha 1937-40. Public offices include justice of peace 1941-49; member Menasha Board of Education (past president) 1950-1954; member St. Mary's School Board, Menasha, 1942-49. Member Kiwanis, Knights of Columbus, Elks, Eagles, Chamber of Commerce, Parent-Teachers Association; Children's Service Society of Wis.; Wis. Historical Society. Active in civic affairs and state and local bar association activities; president Winnebago County Bar Ass'n. Serving 3rd term in assembly. Home Address: 200 Lake St. Menasha.

Winnebago County, 3rd district. Towns of Menasha, Neenah; cities Menasha, Neenah.

JOHN S. CRAWFORD (Rep.) born Sept. 11, 1923, Homestead, Pa. Educated Pennsylvania public schools; B.A. history, Pennsylvania State University; M.A. history and LL.B. University of Wisconsin 1949-53. Master's thesis, Italian-American Labor Relations, published by A.F.L. Practicing attorney. Newspaper reporter 1948-49. Served in army air force 1942-45; P.O.W., Evadee, Italy. Elected to assembly 1954. Chairman of Special Legislative Committee created by Jt. Res. 17, A., 1955, to investigate the Dairy Price Spread. Home Address: 300 Park St., Marshfield.

Wood County, 1st district: Towns of Arpin, Auburndale, Cameron, Cary, Hansen, Lincoln, Marshfield, Milladore, Richfield, Rock, Rudolph, Sherry, Sigel, Wood; villages of Auburndale, Milladore, Vesper; cities of Marshfield, Pittsville.



CROWNS
Wood, 2nd

MAY
Chief Clerk

KELLMAN
Sergeant at Arms

ARTHUR J. CROWNS, JR. (Rep.) born Wisconsin Rapids Jan. 24, 1922. Educated local public schools; Stevens Point State College 1941-42, 1945-47; B.S. Stevens Point State College; LL.B. University of Wisconsin 1950. Practicing attorney. Served in air force 1942-45. Active in Boy Scouts. Serving 1st term in the legislature. Business Address: Box 509, Wisconsin Rapids.

Wood County, 2nd district: Towns of Dexter, Grand Rapids, Granmoor, Hiles, Port Edwards, Remington, Saratoga, Seneca; villages of Biron, Port Edwards; cities of Nekoosa, Wisconsin Rapids.

ARTHUR L. MAY born in Chicago Jan. 6, 1901. Attended elementary schools of Chicago and Wisconsin Rapids, graduated Central High School in Madison. In 1932 received LL.B. from the University of Wisconsin Law School. Has been a farmer, mechanic, businessman; since 1932 engaged in the practice of law. Served as justice of the peace 1931-39. Appointed court commissioner effective Mar. 2, 1955. Delegate to the 1944 Republican National Convention. Elected chief clerk of the assembly in 1941, and re-elected each session since then. Home Address: 2527 Van Hise Ave., Madison.

NORRIS J. KELLMAN, the son of Mr. and Mrs. Frank A. Kellman, born Oct. 23, 1898 at Galesville. Graduated Galesville High School, attended La Crosse State Teachers College one year and graduated University of Wisconsin in 1923. For 10 years assistant postmaster at Galesville and for past 28 years has been in general insurance business. Member of board of supervisors of Trempealeau County several years. Served in World War I and was one of the youngest men in the state to be commissioned as a second lieutenant. Has held a number of offices in the American Legion including commander of his local post for 3 years. In 1936 alternate to Republican National Convention in Cleveland and his father was a delegate to the same convention. Mr. Norris Kellman was a delegate to the 1940 national convention in Philadelphia, and the 1944 convention in Chicago. Member of the assembly in 1939. Since 1941 sergeant at arms of that body. Home Address: Galesville.