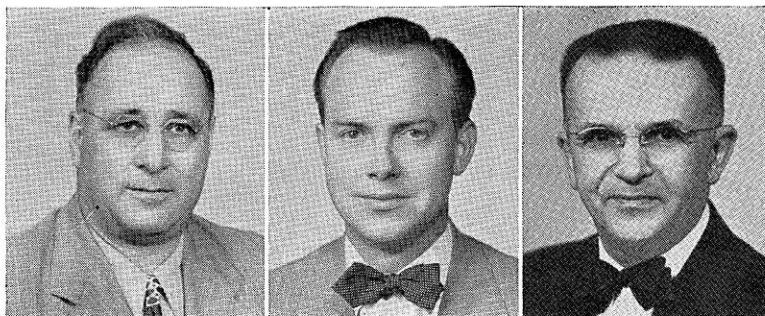

Members of the
Legislature



LaFOND
1st District

KAFTAN
2nd District

KENDZIORSKI
3rd District

EVERETT F. LAFOND (Rep.) was born on January 4, 1901 at Two Rivers. From 1906 to 1915 he attended St. Luke's School in Two Rivers, and attended the Two Rivers High School. Senator LaFond comes from a long line of lake fishermen. He is the fourth generation in the fishing industry from Two Rivers, his people having settled in Two Rivers in 1848, and the family has operated from that port ever since. Since 1919 he has been a commercial fisherman. Senator LaFond was a member of the city council in 1934, served on the Two Rivers school board from 1940 to 1943, and was a member of the Manitowoc County Board from 1934 to 1947. He is a World War I veteran, having served overseas with the mine sweepers in the navy. He is past commander of post 1248 of Veterans of Foreign Wars and is active in the American Legion and Veterans of Foreign Wars circles. This is his second term in the legislature. Home Address: 1704 Lake Shore Drive, Two Rivers.

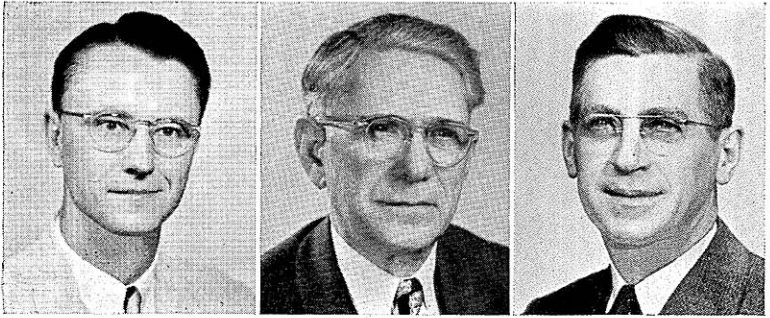
First senatorial district: Door, Kewaunee, and Manitowoc Counties.

FREDERICK FRANK KAFTAN (Rep.) was born on August 25, 1916 at Green Bay. After graduating from the Green Bay public schools he attended the University of Wisconsin, receiving his LL.B. in 1940. He is a practicing attorney in Green Bay. From 1944 to 1946 Senator Kaftan served in the navy. This is his first term in the legislature. Home Address: 146 East Mission Road, Green Bay.

Second senatorial district: Brown and Oconto Counties.

CASIMIR KENDZIORSKI (Dem.) was born in Poland on December 3, 1898. He received his elementary and high school education in Poland and evening courses in Milwaukee. From 1928 to 1930 he was a real estate broker, and since that time he has been a machinist and inspector. Senator Kendziorski is a member of the Polish National Alliance, South Side Old Settlers Club, Polish American Citizens Club, Julius's 1001 Fishing Club, Parkview Sportsmen's Club, Sons of Neptune, and the N.B. Pleasure Club. He is past vice president of his local union and a member of the board on legislation and education. He has always been interested and active in civic and labor activities. He had held no public office until his election to the assembly in 1946. He was re-elected to the assembly in 1948. In 1949 Senator Kendziorski was elected to the senate and was re-elected in 1950. Home Address: 1951 South 15th Street, Milwaukee.

Third senatorial district: The fifth, eighth, eleventh, and twenty-fourth wards of the city of Milwaukee.



MAYER
4th District

GETTELMAN
5th District

SCHMIDT
6th District

GEORGE A. MAYER (Rep.) was born on January 10, 1917 in Milwaukee County, where he completed his grade and high school education. He earned a *cum laude* rating at college and graduated from Harvard Law School in 1941. After beginning the practice of law in Milwaukee he entered the army in 1942. He served with counter-intelligence on the atom bomb project until 1946, when he resumed law practice. Senator Mayer has participated in various civic activities, holding chairmanships on the Community Fund, Cancer Drive, and Jaycees Industrial Relations Committee in Milwaukee. This is his first term in the legislature. Home Address: 3514 North Summit Avenue, Milwaukee.

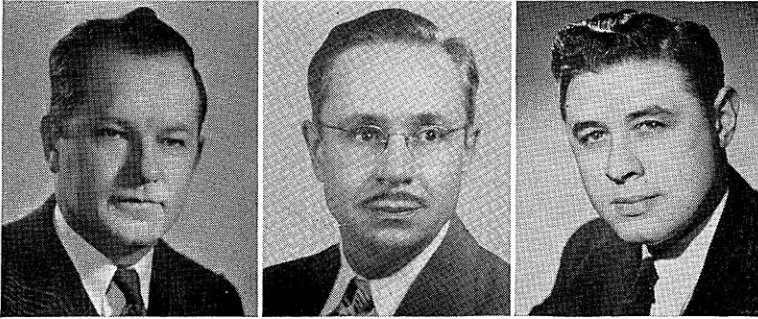
Fourth senatorial district: The thirteenth, eighteenth, and twenty-first wards of the city of Milwaukee; and the villages of Fox Point, River Hills, Shorewood, Whitefish Bay, and the town of Milwaukee.

BERNHARD GETTELMAN (Rep.) was born at Chicago, Illinois, on December 23, 1889. He received his education in the common schools of Milwaukee. Senator Gettelman is president-treasurer of the National Soap and Products Company. He has served in the Milwaukee County Sheriff's department both as motorcycle officers' chief and as undersheriff. He was elected a delegate to the Republican National Conventions of 1932, 1936, 1940 and again in 1944. He was elected chairman of the Wisconsin delegation in 1936 and in 1940. From 1917 to 1918 he was a member of the assembly, and from 1923 to 1934 of the senate. He was again elected to the senate in 1938 and re-elected in 1942, 1946, and in 1950. Home Address: 2254 North Hi-Mount Boulevard, Milwaukee.

Fifth senatorial district: The ninth, fifteenth, nineteenth, twenty-second, and twenty-sixth wards of the city of Milwaukee.

WILLIAM A. SCHMIDT (Dem.) was born in Princeton on May 21, 1902. He received his early education at St. John's Parochial School in Montello and the Montello High School. He attended Marquette University for one year. He was a welder and now is a maintenance foreman. Senator Schmidt has been active in his labor union; chairman of the bargaining and coordinating committees of his local union; and organizer of Smith Steel Athletic Association. He is a member of the Knights of Columbus, Fraternal Order of Eagles, Holy Name Society of St. Michael's Church, Badger Fisherman's League, and Montello Rod and Gun Club. Senator Schmidt was the Democratic assistant floor leader in 1951. He was elected to the senate in 1948. Home Address: 2532 West Lloyd Street, Milwaukee.

Sixth senatorial district: The second, seventh, tenth, twentieth, and twenty-fifth wards of the city of Milwaukee.



BLENSKI
7th District

BUSBY
8th District

MAIER
9th District

ROMAN R. BLENSKI (Dem.) was born in Milwaukee on January 24, 1917. He is the youngest son of the late Judge Michael F. Blenski. He graduated from Fernwood Grade School in 1931 and attended St. John's Military Academy for the next two years. After graduation from Bay View High School in 1936 he spent two years at Spencerian Business College. At present he is employed as an inspector in a machine shop. Senator Blenski is a member of the Eagles, Bay View Alumni Association, Polish National Association, and other organizations. He was a member of the assembly in 1945. He was elected to the senate in 1949 and was re-elected in 1950. Home Address: 3029 S. Hanson Ave., Milwaukee.

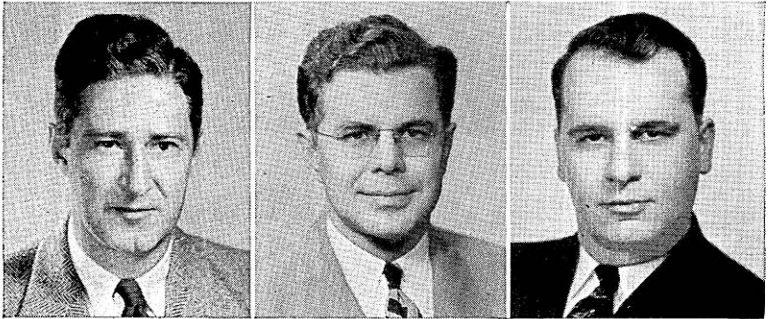
Seventh senatorial district: The twelfth, fourteenth, seventeenth, and twenty-seventh wards of the city of Milwaukee and the cities of Cudahy and South Milwaukee; towns of Lake and Oak Creek.

ALLEN J. BUSBY (Rep.) is a graduate of the West Milwaukee public schools, West Allis High School, Milwaukee State Teachers College, and the University of Wisconsin, from which he received the degrees of B.A., M.A., and LL.B. He was admitted to the bar in 1928. Prior to this, Senator Busby was principal of the high school at Little Chute from 1922 to 1924 and an instructor at the West Allis High School from 1928 to 1933. Since 1932 he has been village attorney of West Milwaukee and a member of the law firm of Busby and Luehring in Milwaukee. Senator Busby was elected to the assembly in 1930 and 1934. In 1936 he was elected to the senate and re-elected in 1940, 1944, and 1948. Home Address: 1673 South 53rd Street, Milwaukee.

Eighth senatorial district: Towns of Franklin, Granville, Greenfield, and Wauwatosa; villages of Greendale and West Milwaukee; sixteenth and twenty-third wards of the city of Milwaukee, and cities of Wauwatosa and West Allis.

HENRY W. MAIER (Dem.) was born on February 7, 1918. He received a B.A. from the University of Wisconsin in 1940. Upon graduation from university he became an insurance field representative in Wisconsin until 1942 when he enlisted in the navy. He served aboard the destroyer, U.S.S. Van Valkenburgh and was in the battles of Iwo Jima and Okinawa. Upon his release from service he established a general insurance agency and taught workmen's compensation and general liability insurance at the University of Wisconsin in Milwaukee. He is a state vice chairman of the Democratic Organizing Committee and vice president of the Wisconsin Democrat. Senator Maier is a member of the American Legion and American Federation of Teachers. Prior to his election to the senate in 1950 he had held no public office. Home Address: 2237 North Booth Street, Milwaukee.

Ninth senatorial district: The first, third, fourth, and sixth wards of the city of Milwaukee.



KNOWLES
10th District

LENROOT
11th District

HICKS
12th District

WARREN P. KNOWLES (Rep.) was born on August 19, 1908 at River Falls where he received his early education. He holds the degree of B.A. from Carleton College and LL.B. from the Law School of the University of Wisconsin. Since his graduation from the law school in 1933 he has engaged in the practice of law. Senator Knowles was a member of the county board from 1936 to 1940 and is past president of both the Kiwanis and Conservation Clubs. He was a lieutenant in the navy and served on the U.S.S. Nevada during the invasions of Attu, Normandy, and Southern France, being released from active duty to serve in the 1945 session. He was author and sponsor of the bill creating the Legislative Council and served as its first chairman. Senator Knowles acted as Republican floor leader in the senate during the 1943, 1945, 1947, 1949, and 1951 sessions. This is his third term in the senate. Home Address: New Richmond.

Tenth senatorial district: Buffalo, Pepin, Pierce, and St. Croix Counties.

ARTHUR A. LENROOT, JR. (Rep.) was born in Superior on February 18, 1912. He was educated in the common and high schools of Superior and then attended the Superior State College and the College of St. Thomas. Senator Lenroot served two terms in the assembly and was elected to the senate in 1946, and re-elected in 1950. Home Address: 707 East 8th Street, Superior.

Eleventh senatorial district: Bayfield, Burnett, Douglas and Washburn Counties.

CLAYTON HICKS (Rep.) was born at Phillips on June 17, 1919. After graduating from the Phillips High School he attended the University of Wisconsin from which he received his B.A. degree in 1940. In 1946 he was elected to the office of county clerk in Price County. From 1942 to 1946 he served in the army and is now in the army reserve. Senator Hicks is a member of the American Legion and of the Veterans of Foreign Wars. This is his first term in the legislature. Home Address: Phillips.

Twelfth senatorial district: Ashland, Iron, Price, Rusk, Sawyer, and Vilas Counties.



PANZER
13th District

BUBOLZ
14th District

ROBINSON
15th District

FRANK E. PANZER (Rep.) was born in the town of Hubbard in Dodge County on September 1, 1890. He attended the public schools and the Oakfield High School. Since 1918 he has been a school teacher and a telegraph operator and at present is engaged in farming. Senator Panzer has held several public offices including those of school clerk, town chairman, member of the Dodge County Board since 1925, and chairman of the Dodge County Board since 1940. He served in the assembly in the session of 1931 and was elected to the senate in 1934 and re-elected in 1942, 1946, and in 1950. Senator Panzer was elected president pro tem in 1947, 1949, and 1951. Home Address: Route 2, Oakfield.

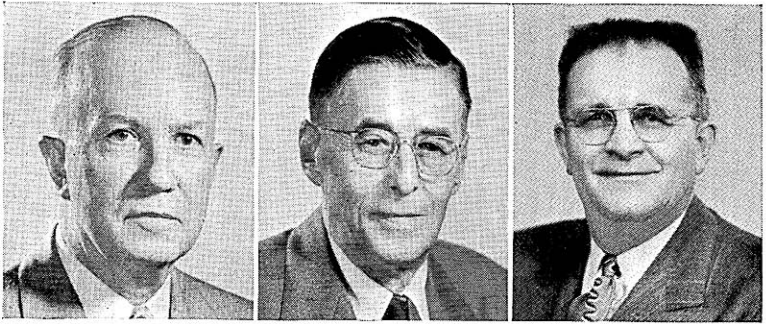
Thirteenth senatorial district: Dodge and Washington Counties.

GORDON A. BUBOLZ (Rep.) was born September 10, 1905 in Seymour. He is a graduate of Lawrence College, of the Wharton School of Commerce and Finance, University of Pennsylvania, and of the Law School of the University of Wisconsin. He obtained part of his law education at George Washington Law School. He was an accounting instructor at Lawrence College from 1937 to 1938 and was an associate agricultural economist for the Farm Credit Administration. He is a member of a law firm and a practicing attorney at Appleton. His civic activities include president of the Appleton Chamber of Commerce, president of the Appleton Kiwanis Club, president of Appleton Council of Social Agencies, chairman of Outagamie County Centennial Committee, chairman of the Outagamie USO, and chairman of the county safety council. He is serving his second term in the legislature. Home Address: 78 River Drive, Appleton.

Fourteenth senatorial district: Outagamie and Shawano Counties.

ROBERT P. ROBINSON (Rep.) was born in Beloit on May 15, 1884. He was graduated from the elementary and high schools and from Beloit College. He was a teacher from 1905 to 1916. From 1917 to 1919 he served in the army, entering the Reserve Corps as a lieutenant colonel. He was in the advertising business for many years and is now retired. Senator Robinson has been active in public and civic affairs having served as alderman, member of the school board, of the Y.M.C.A. board, and the Red Cross board, the Family Service Association, the Community Chest, and vice president of the Beloit Savings Bank for over ten years. He served as Housing Administrator and president of the Beloit Council of Defense. He is a member of the American Legion. This is his third term in the senate. Home Address: 837 Church Street, Beloit.

Fifteenth senatorial district: Rock County.



PORTER
16th District

OLSON
17th District

VAN DE ZANDE
18th District

FOSTER B. PORTER (Rep.) was born at Barnum on August 22, 1891. He received his education in the elementary and high schools. He is a general merchant; president of a bank; and president of two mutual fire insurance companies. His public offices include village president for fourteen years, county board member for sixteen years, member of the Mississippi Valley Parkway Committee, and district chairman of the war finance committee. He is a World War I veteran and is active in the American Legion. This is his second term in the legislature. Home Address: Bloomington.

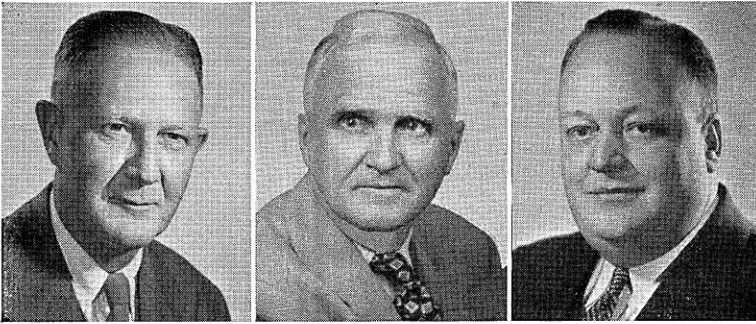
Sixteenth senatorial district: Crawford, Grant, and Vernon Counties.

MELVIN J. OLSON (Rep.) was born in the town of Blanchard in Lafayette County on May 18, 1887. After attending the common and high schools he was graduated from the Monroe Business College. He has been a farmer, a storekeeper, and at present is a farm implement and supply dealer. His public services include the offices of assessor, village treasurer, village president, and memberships on the county board, county relief committee, county selective service board, and the high school board. This is his third term in the senate. Home Address: South Wayne.

Seventeenth senatorial district: Green, Iowa, and Lafayette Counties.

ALFRED VAN DE ZANDE (Rep.) was born at Campbellsport on October 8, 1893. He graduated from the Campbellsport High School in 1912. He has been in the insurance business since 1910 and is president of the Campbellsport Mutual Insurance Company. Senator Van De Zande was president of the village of Campbellsport for two years, a member of its board of trustees for four years, and undersheriff and sheriff of Fond du La County for one term each. In 1918 he was an assistant instructor of military tactics at the University of Wisconsin. He served four terms in the assembly and in 1948 was elected to the senate. Home Address: Campbellsport.

Eighteenth senatorial district: Fond du Lac, Green Lake, and Wau-shara Counties.



DRAHEIM
19th District

BUCHEN*
20th District

FLYNN
21st District

WILLIAM A. DRAHEIM (Dem.) was born at Neenah on December 15, 1898. After graduating from the Neenah elementary and high schools he attended Lawrence College for two years. His occupations include mill worker, statistician-accountant, and production planner. At present he is a sporting goods dealer. He is a member of the county board. Senator Draheim is a member of the Rotary Club, local Chamber of Commerce, American Legion, Veterans of Foreign Wars, and is president of the Fox River Valley Reserve Officers Association and 127th Infantry Association of the 32nd Division. He was a private in World War I; rose from private to major in the national guard from 1920 to 1940; major and colonel in World War II; and is a colonel in the army reserve. This is his first term in the legislature. Home Address: 116 West Wisconsin Avenue, Neenah.

Nineteenth senatorial district: Calumet and Winnebago Counties.

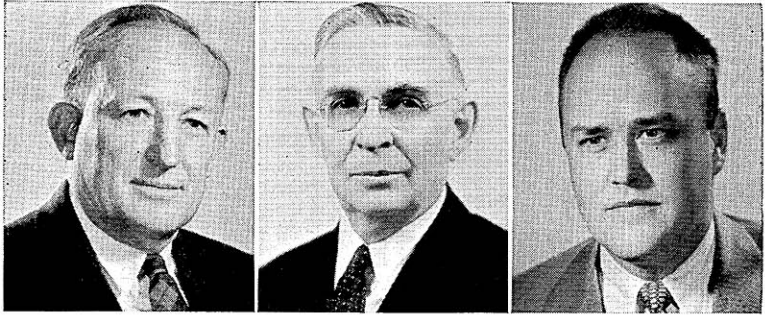
GUSTAVE W. BUCHEN* (Rep.) was born on a farm in the town of Lyndon in Sheboygan County on September 25, 1886. His parents came from Germany in 1854 and were among the early settlers of the county. He attended the country district school, the Waldo graded school, and the Sheboygan public schools. He is a graduate of the University of Wisconsin, receiving the degrees of B.A. in 1909 and LL.B. in 1912. From 1909 to 1911 he was assistant professor of rhetoric and oratory at the University of Oregon, and from 1911 to 1912 an instructor in public speaking at the University of Wisconsin. Since 1920 he has practiced law in Sheboygan, the name of his law firm being Buchen, Currie, Federer, Grote and Hesslink. Senator Buchen has always been active in community affairs. In 1936 he was chairman of the Sheboygan County Republican Club and a delegate to the Republican National Convention. This is his third term in the senate. Home Address: 919 North 5th Street, Sheboygan.

Twentieth senatorial district: Ozaukee and Sheboygan Counties.

GERALD T. FLYNN (Dem.) was born in Racine County on October 7, 1910. He graduated from Hood School and St. Catherine's School in Racine and received his LL.B. from Marquette University in 1933. Since that date he has practiced law in Racine. Senator Flynn is a member of numerous clubs, lodges, and organizations and is past exalted ruler of Racine Elks Lodge Number 252. Prior to his election to the senate in 1950 he had held no public office. Home Address: 3065 Ruby Street, Racine.

Twenty-first senatorial district: Racine County.

*Deceased December 3, 1951.



TRINKE
22nd District

NEALE
23rd District

LAIRD
24th District

WILLIAM F. TRINKE (Rep.) was born on a farm in Wisconsin, January 25, 1897. Orphaned, he left school at sixth grade, and worked as a farm hand, construction laborer, building trades worker, realtor, lawyer and builder. In 1931 he entered the University of Wisconsin as an adult special, and achieved the record of going from the sixth grade to a bachelor's degree in four years. In 1937, at age 40, he graduated from the University of Wisconsin Law School. Senator Trinke served as president of the Walworth County Bar Association and as state commander of the American Legion, 1945 to 1946. He is a World War I veteran, having served in France in the 32nd (Red Arrow) Division. Senator Trinke was nominated to fill the vacancy caused by the death of Senator Shearer on October 8, 1948. This is his first term in the legislature. Home Address: Lake Geneva.

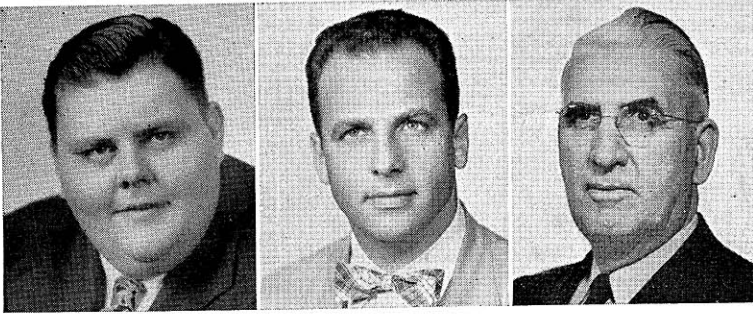
Twenty-second senatorial district: Kenosha and Walworth Counties.

OSCAR W. NEALE (Rep.) was born on December 17, 1873 at Birmingham, Ohio. He attended the Birmingham elementary and high schools, Denison University in Ohio, and Fremont College, Nebraska, receiving a B.S. degree. He has been a teacher in rural and city grade schools, principal of a high school, and county superintendent. Senator Neale was director of rural education at the State Teachers College at Kearney, Nebraska, for ten years and held a similar position for twenty-nine years at the Stevens Point State Teachers College. He is the author of two textbooks on art appreciation. He has been active in civic and municipal affairs, having served as an alderman for two terms, member of police and fire commission for eighteen years and at present is chairman of this commission. He was a trustee of the Portage County Home for four years. This is his second term in the legislature. Home Address: 402 Church Street, Stevens Point.

Twenty-third senatorial district: Portage and Waupaca Counties.

MELVIN R. LAIRD, JR. (Rep.) was born on September 1, 1922 at Omaha, Nebraska. He graduated from the Marshfield grade and high schools; in 1942 received a B.A. from Carleton College. At present he is secretary-treasurer of a building supply company. Senator Laird was on active duty in World War II with the U.S. navy, serving on the destroyer Maddox in Task Force 58 and Halsey's Pacific Third Fleet for over three years. He was elected to fill the vacancy caused by the death of his father in 1946 and re-elected in 1948. The past four generations of his family have served in the legislature and state offices in Wisconsin. He served on several important committees and is also chairman of the Military and Veterans Affairs Committee, vice chairman of the Legislative Council, and chairman of the Taxation Committee of the Council. Home Address: 301 South Cherry Street, Marshfield.

Twenty-fourth district: Clark, Taylor, and Wood Counties.



KRUEGER
25th District

NELSON
26th District

MILLER
27th District

CLIFFORD W. KRUEGER (Rep.) was born in Madison on June 24, 1918. After graduating from high school he attended Merrill Commercial College, and at present is a tavern operator. In 1946 he was elected alderman, and in 1940 appointed a deputy sheriff. Senator Krueger has been active in civic and fraternal organizations, and in 1945 received the Junior Chamber of Commerce distinguished service award for outstanding service in civic and fraternal work. This is his second term in the legislature. Home Address: 1202 East Main Street, Merrill.

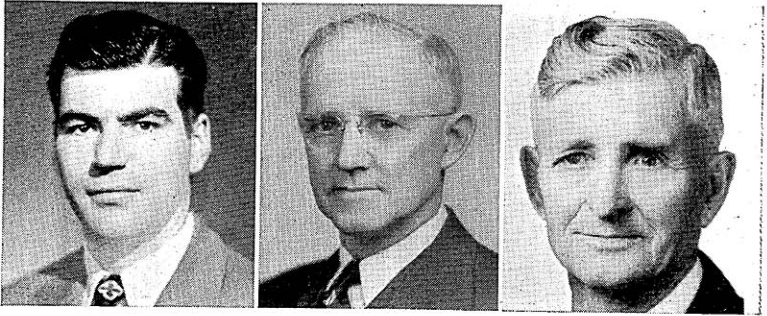
Twenty-fifth senatorial district: Lincoln and Marathon Counties.

GAYLORD A. NELSON (Dem.) was born at Clear Lake on June 4, 1916. He received his education in the Clear Lake graded and high schools. In 1939 he received a B.A. from San Jose State College in California and in 1942 his LL.B. from the University of Wisconsin. Since 1942 he has been a practicing attorney. Prior to his election to the senate in 1948 he had held no public office. In 1951 Senator Nelson was chosen Democratic floor leader. He served in the army for forty-six months during World War II. Home Address: 912 Regent Street, Madison.

Twenty-sixth senatorial district: Dane County.

JESS MILLER (Rep.) was born in 1884 in the town of Eagle, Richland County. He was educated in the public schools and is a farmer and auctioneer by occupation. Senator Miller has held a number of public offices — chairman of the town of Eagle, chairman of the county highway committee, the county mediation board, and the county Republican committee. He was elected to the senate for the first time in 1938 and re-elected in 1942, in 1946, and in 1950. Home Address: Richland Center.

Twenty-seventh senatorial district: Columbia, Richland, and Sauk Counties.



PADRUTT
28th District

OWEN
29th District

DOWNING
30th District

ARTHUR L. PADRUTT (Rep.) was born in Huron, South Dakota on September 26, 1917. In 1928 he moved with his parents to Chippewa Falls. He was graduated from McDonell Memorial High School in Chippewa Falls and received the Bachelor of Science degree from Eau Claire State Teachers College in 1939. Since then he has attended the University of Wisconsin Law School and has taught in the public schools of Wisconsin. At present he is engaged in operating a photographic studio and camera supply business in Chippewa Falls. He served four terms in the assembly and in 1948 was elected to the senate. Home Address: 51 East Birch Street, Chippewa Falls.

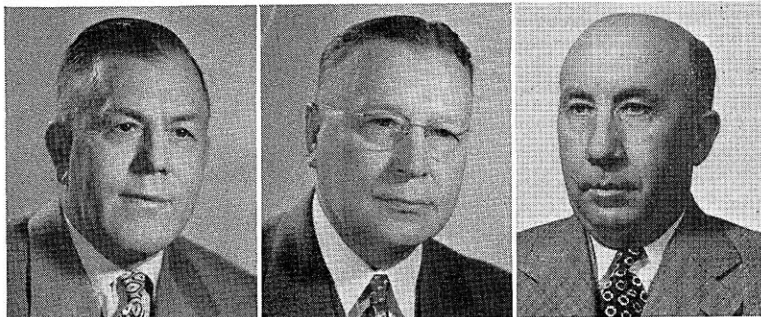
Twenty-eighth senatorial district: Chippewa and Eau Claire Counties.

WILLIAM E. OWEN (Rep.) was born in the township of New Haven, Dunn County, on November 28, 1888. He received his education in the Connorsville rural school and Dunn County Agricultural School. He has been a farmer all his life specializing in purebred Guernseys on his farm which was known as Weowena Farm. In 1945 Senator Owen retired from farming and has been devoting the major part of his time to R.E.A. activities. He was president of the state R.E.A. for eight years; president of the Dunn County Electric Cooperative since its organization in 1937; director of Dairyland Power Cooperative since its organization; president of the Dunn County Agricultural School's Board of Education; vice president of the Dunn County Fair Association; and director of the Wisconsin Electric Cooperative. This is his first term in the legislature. Home Address: 205 14th Street, Menomonie.

Twenty-ninth senatorial district: Barron, Dunn, and Polk Counties.

PHILIP DOWNING (Rep.) was born in Ontario, Canada on September 3, 1871, and was educated in Canada. One year after his graduation from the Vankleek Hill Normal School in Ontario he came to Wisconsin where he taught school for nine years. Since that time he has been a salesman. Senator Downing was postmaster of Amberg for a good many years and has been county supervisor for the past nineteen years. He has also held many other local offices and has always been very active in civic affairs. This is his third term in the senate. Home Address: Amberg.

Thirtieth senatorial district: Florence, Forest, Langlade, Marinette, and Oneida Counties.



LEVERICH
31st District

SCHLABACH
32nd District

DEMPSEY
33rd District

JAMES EARL LEVERICH (Rep.) was born on a farm in the town of Angelo, Monroe County, and still resides there. He is a graduate of Sparta High School, Madison College, and the University of Wisconsin College of Agriculture. He has been a dairy farmer, fruit grower, and farm co-op leader; and has served his community as school clerk, town clerk, town chairman, and a member of the Monroe County Board of Supervisors. He has also served for many years as president of the Sparta Co-op Creamery Association and the Western Wisconsin Co-op Creamery Association. He has been an agricultural member of the State Board of Vocational Education as well as a member of various state-wide dairy and other agricultural committees. He organized the anti-oleo demonstration at Madison in 1931 which resulted in the elimination of oleo in Wisconsin. Senator Leverich was elected to the senate in 1934, in 1942, in 1946, and in 1950. Home Address: Route 1, Sparta.

Thirty-first senatorial district: Adams, Juneau, Marquette, and Monroe Counties.

RUDOLPH M. SCHLABACH (Rep.) was born on April 4, 1890 at La Crosse. His parents were pioneering farmers who hewed their farm out of the forests of eastern Minnesota. He attended Ohio Wesleyan for his undergraduate work and received his B.S. in 1914. He then taught high school for several years. His legal studies at the University of Chicago were interrupted by World War I in which he served, and on his return in 1919 he entered the Law School of the University of Wisconsin, graduating in 1921. Since that time he has been practicing law in La Crosse. Senator Schlabach served two terms as district attorney for La Crosse County and was a member of the assembly in 1939. He was elected to the senate in 1940 and re-elected in 1944 and in 1948. Home Address: 132 South 16th Street, La Crosse.

Thirty-second senatorial district: Jackson, La Crosse, and Trempealeau Counties.

CHESTER E. DEMPSEY (Rep.) was born at Merton, Waukesha County, on July 20, 1895. He owns and operates a modern dairy farm of 240 acres which has been the homestead of the Dempsey family since early pioneer days. He received his education in the county schools and has always been a close student of farming and farm problems. He publishes Dempsey's Farm Economics, a paper with a wide circulation among farmers of the state. Prior to his election to the senate in 1934 he was a member of the Waukesha County Board and has held various school and township offices. In 1946 he was again elected to the senate, and re-elected in 1950. Home Address: Route 1, Hartland.

Thirty-third senatorial district: Jefferson and Waukesha Counties.



DONAHUE
Chief Clerk

DAMON
Sergeant at Arms

THOMAS M. DONAHUE was born on July 13, 1907 at Kenosha. After graduating from St. George Parochial School in Kenosha and the Kenosha High School he continued his education at the University of Wisconsin. From 1941 to 1950 Mr. Donahue was personnel examiner in the State Bureau of Personnel and since that date has been chief of the administrative division. He served in the navy from 1944 to 1946, and was stationed at New Guinea, Leyte, and Manila. He is a member of the American Legion. Mr. Donahue was assistant chief clerk of the senate in 1939, 1941, and 1943, and was elected chief clerk of the senate in 1947, 1949, and 1951. Home Address: 822 Hiawatha Drive, Madison.

HAROLD E. DAMON was born at Edgerton, Minnesota, on October 3, 1885. In 1888 he came to Wisconsin where he has since resided. After graduation from high school he attended Wausau Business College. At present he is engaged in the insurance business. His public offices include alderman and supervisor, deputy sheriff, and deputy clerk of court. In 1943 he served as assistant sergeant at arms, and in 1944 as acting sergeant at arms. Since 1945 he has held the office of sergeant at arms. Home Address: 926 Washington Street, Wausau.



ROMELL
Adams and Marquette

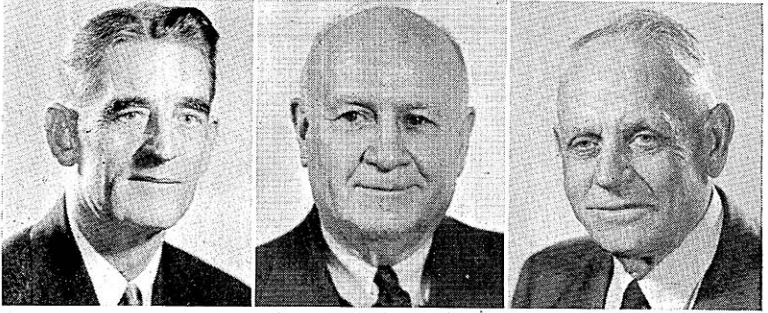
GEHRMANN
Ashland

SYKES
Barron

LOUIS C. ROMELL (Rep.) was born at Chicago on April 7, 1899. He was educated in the public schools and has been employed as a salesman and railroad machinist. At present he is engaged in farming, and now resides on the farm. His public offices include school district clerk and town supervisor. His four sons all served in the armed forces in World War II and one lost his life in the Hurtengen Forest engagement. This is his third term in the assembly. In addition to serving on other committees he was appointed to the Committee on Highways in 1947, 1949, and 1951. Home Address: Route 1, Adams.

B. J. GEHRMANN (Rep.) was born in Germany on February 13, 1880. At the age of thirteen he came to this country where he worked in a Chicago packing plant and attended night school. Three years later he moved to Clark County. Since 1915 he has lived in Ashland County where he cleared a farm five miles from Mellen and where he has farmed ever since. He has held a number of public offices, serving as assessor for five years, town chairman for ten years, and school clerk since 1919. He was always interested in better farming methods, carried on many experiments on his own farm, and for many years was Farm Institute Conductor with the Agricultural Extension Service of the University of Wisconsin. Mr. Gehrmann served as a member of Congress from 1935 to 1943. He was a member of the Wisconsin assembly in 1927 and 1931 and of the senate in 1933. He was elected to the assembly in 1946, 1948, and 1950. Home Address: Mellen.

CHARLES H. SYKES (Rep.) was born on January 11, 1881 at Brodhead. After his graduation from the Milton Junction High School he attended Janesville Business College. At the age of nineteen he began farming in Rock County. In 1919 he moved to a farm in Barron County on which he resided until he retired in 1934. Mr. Sykes served for two years on the county board of Rock County and for twelve years on the county board of Barron County. This is his seventh term in the assembly. Home Address: Route 1, Cameron.



WALLIN
Bayfield

LYNCH
Brown, 1st

LARSEN, H.
Brown, 2nd

VIC C. WALLIN (Rep.) was born at Washburn on May 27, 1899. After attending Grand View elementary and high schools he studied accounting with the La Salle Extension University. Since 1924 he and his partner have been wholesale distributors of petroleum products and engaged in the retail general merchandise and insurance business. From 1937 to 1947 Mr. Wallin was town chairman and he also served as chairman of the county board. For the past four years he has held the office of vice president of Wisconsin Indianhead Country, Inc. and formerly was chairman of the local Conservation Congress. This is his first term in the assembly. Home Address: Grand View.

ROBERT E. LYNCH (Dem.) was born in Chicago and was graduated from Notre Dame University. He is sales manager for a building materials company. During the war he was the public relations officer of the Kewaunee Shipbuilding and Engineering Corporation. His election to the assembly in 1932 marked his entrance into public office. He was again elected to the assembly in 1934, and since 1943 has served consecutively as a member of that house. Mr. Lynch was elected chairman of the Democratic caucus and assistant Democratic floor leader for 1947. In 1949 he was nominated by the Democratic caucus to be Democratic candidate for speaker. Home Address: 1144 Cass Street, Green Bay.

Brown County, first district: The city of Green Bay.

HARVEY E. LARSEN (Rep.) was born at Green Bay on September 8, 1879. He attended public school and since 1904 he has engaged in farming. For more than thirty-one years he has been raising purebred Percheron horses. His public offices include town chairman for eight years and member of the road and bridge committee for four years. Since 1935 he has held the office of president of the Denmark Co-op Service. He was elected to the assembly in 1946 and in 1950. Home Address: Route 2, Denmark.

Brown County, second district: All of the towns, cities, and villages of Brown County except the city of Green Bay.



WARD
Buffalo and Pepin

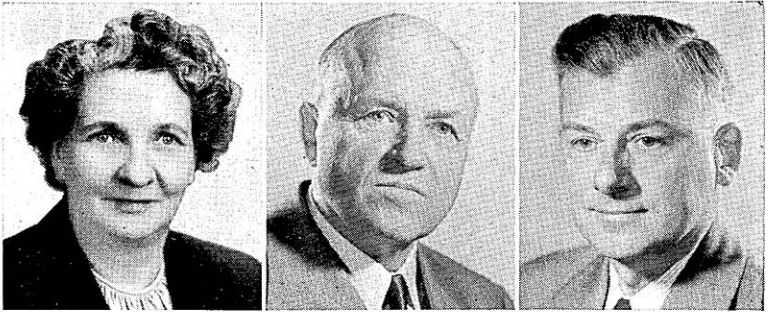
RASMUSEN
Burnett and Washburn

PETERS
Calumet

MAMRE H. WARD (Rep.) was born on January 16, 1899 in Durand. In 1916 he graduated from the Durand High School. He has been a farmer all his life. In 1935 and 1936 he held the office of town chairman. He has been a member of the Wisconsin State Soil Conservation Committee and at present is chairman of that committee. This is his first term in the legislature. Home Address: Rural Route 2, Durand.

HOLGER B. RASMUSEN (Rep.) was born on April 26, 1894 in Superior. After graduation from high school he attended Highland Park College of Pharmacy in Des Moines, Iowa. He received his Ph.G. from that college in 1916. Since 1912 he has been engaged in the drug business and since 1919 he has owned and operated his own drug store. He has served in various levels of local government including mayor of Spooner for three terms, from 1942 to 1948, and as a member of the county school committee. During World War II he was chairman of his county civilian defense committee. Mr. Rasmussen is a World War I veteran. This is his second term in the assembly. Home Address: 722 Franklin Avenue, Spooner.

HENRY MARTIN PETERS (Rep.) was born in the town of Woodville in Calumet County on November 21, 1889. After attending the public schools in Nebraska he became a farmer and a rancher. Later he was a fireman and an engineer and now is a farmer and a dairyman. He has held the office of town assessor for ten years and town clerk for nine years. Mr. Peters has served as secretary of the local cheese factory for twenty-eight years, member of Board Cheese Storage Company for fifteen years, and secretary and treasurer of a livestock shipping association for eleven years. He was elected to the assembly in 1948; resigned as town clerk and re-elected to the assembly in 1950. Home Address: Box 417, Route No. 1, Menasha.



RAIHLE
Chippewa

COOK
Clark

BETTS
Columbia

SYLVIA HAVRE RAIHLE (Rep.) attended the public schools in Wisconsin and Minnesota and also attended St. Cloud Teachers College, University of Minnesota, Minnesota College of Law, and the University of Wisconsin. She taught in the public schools for five years and was employed in Washington, D. C., and in the Veterans Hospital at Fort Snelling as a hospital contact worker for ten years. Her husband, Attorney Paul H. Raihle, was a member of the assembly in 1925. Mrs. Raihle has five children and two grandchildren. She is an active auxiliary member of various veterans organizations. She is secretary of the Chippewa Falls library board, past president of the local American Legion auxiliary, and member of Business and Professional Women's Club, League of Women Voters, and Chippewa County Federation of Women's Clubs. She is a charter member of Alpha Epsilon chapter of Phi Delta Delta legal sorority. In 1948 she was elected to the assembly and re-elected in 1950. Home Address: 1313 Superior Street, Chippewa Falls.

WALTER E. COOK (Rep.) was born at Unity on December 21, 1888. He was born and raised on a farm. After attending the grade schools of that village he spent two years in high school. Mr. Cook has owned and operated a farm for seventeen years and has been a farm and livestock auctioneer for twenty-eight years. He has served as a member of the council and as school treasurer of Unity. He was a member of the assembly from 1939 to 1945 and was re-elected in 1950. Home Address: Unity.

ARNIE F. BETTS (Rep.) was born in Waterloo on January 7, 1909. After graduating from the Waterloo High School he attended the University of Wisconsin, receiving his B.A. degree in 1935. Mr. Betts has been a farmer, secretary to Walter S. Goodland when he was Lieutenant Governor, and an editor. At present he is an editor, publisher, and owner of the Lodi Enterprise, a weekly newspaper. He is president of the Lodi Chamber of Commerce, and is a member of the Rotary Club. This is his third term in the assembly. He was chairman of the Assembly Committee on Taxation during the 1951 Session. Home Address: Lodi.



SATTER
Crawford

DOYLE
Dane, 1st

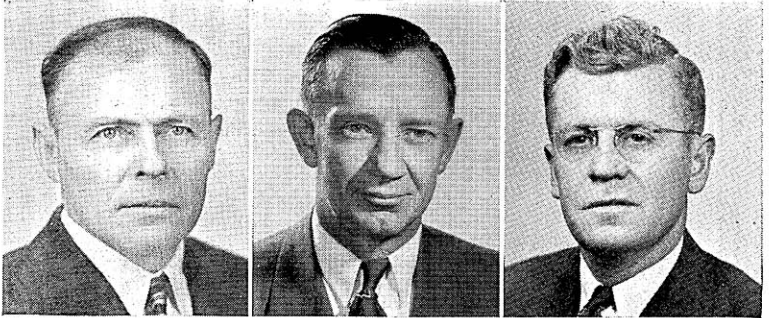
PROXMIRE
Dane, 2nd

RODNEY J. SATTER (Rep.) was born at Prairie du Chien on September 15, 1925. He attended the Prairie du Chien public schools and graduated from the College of Agriculture of the University of Wisconsin in 1950. Mr. Satter is a sales consultant and formerly engaged in farming. He served as constable in 1949, 1950, 1951, and 1952. He is a World War II veteran having served in the air corps from 1943 to 1946. Home Address: 614 South Beaumont Road, Prairie du Chien.

RUTH BACHHUBER DOYLE (Dem.) was born on October 14, 1916 in Milwaukee. A graduate of the Wausau graded and high schools, she received a B.A. degree from the University of Wisconsin in 1938. In 1939 she was granted her M.A. from Columbia University. She has been a teacher and served in an administrative post in the Office of the Alien Property Custodian in Washington, D. C. She is a housewife and mother of three children. Her father, grandfather, and great-grandfather all served as members of the Wisconsin legislature. Prior to her election to the assembly in 1948 Mrs. Doyle had held no public office. She was re-elected in 1950. Home Address: 216 Campbell Street, Madison. Dane County, first district: The city of Madison.

WILLIAM PROXMIRE (Dem.) was born in Lake Forest, Illinois, on November 11, 1915. He attended grade schools in Lake Forest and the Hill Preparatory School near Philadelphia. He received his B.A. from Yale University; his M.B.A. from the Harvard University Graduate School of Business Administration; and his M.P.A. from the Graduate School of Arts and Sciences of Harvard. He is plant manager of a farm implement company. Formerly he was a bank clerk, a newspaper and radio reporter, and an instructor in government at Harvard University. He is a World War II veteran, having served with the military intelligence from 1941 to 1946. This is his first term in the legislature. Home Address: Route 5, Buckeye Road, Madison.

Dane County, second district: Towns of Albion, Blooming Grove, Bristol, Burke, Christiana, Cottage Grove, Deerfield, Dunkirk, Dunn, Medina, Pleasant Springs, Rutland, Sun Prairie, Windsor, and York; villages of Cambridge, Cottage Grove, Deerfield, De Forest, McFarland, Marshall, Monona, Rockdale, and Sun Prairie; city of Stoughton.



EISNER
Dane, 3rd

GENZMER
Dodge, 1st

NITSCHKE
Dodge, 2nd

HERMANN EISNER (Rep.) was born in Austria on December 29, 1898. He received his education in the elementary schools. From 1923 to 1927 he was a blacksmith and since that time he has been a farmer. He is a town chairman and a county supervisor and formerly served as school clerk. He is taking an active interest in soil conservation. After the adjournment of the 1951 Legislature, Mr. Eisner left the Democratic Party and joined the Republican Party. This is his second term in the legislature. Home Address: Route 1, Cross Plains.

Dane County, third district: Towns of Berry, Black Earth, Blue Mounds, Cross Plains, Dane, Fitchburg, Madison, Mazomanie, Middleton, Montrose, Oregon, Perry, Primrose, Roxbury, Springdale, Springfield, Vermont, Verona, Vienna, and Westport; that part of the villages of Belleville and Brooklyn in Dane County and the villages of Black Earth, Blue Mounds, Cross Plains, Dane, Maple Bluff, Mazomanie, Middleton, Mount Horeb, Oregon, Shorewood Hills, Verona, and Waunakee.

ELMER L. GENZMER (Rep.) was born on January 3, 1903 in Mayville. He attended Milwaukee State Teachers College and Marquette Law School from 1923 to 1924. Mr. Genzmer served as justice of the peace from 1932 to 1942. In 1942 and 1944 he was elected mayor of Mayville and in 1946, 1948, and 1950 he was re-elected to that office. In 1939 he was one of several Democrats instrumental in furthering the Heil program. In 1943 he was Democratic floor leader, and that same year left the Democratic Party because of a policy division and joined the Republican Party. This is Mr. Genzmer's ninth consecutive term in the assembly. Home Address: 435 North Main Street, Mayville.

Dodge County, first district: Towns of Ashippun, Clyman, Emmet, Herman, Hubbard, Hustisford, Lebanon, Leroy, Lomira, Rubicon, Shields, Theresa, and Williamstown; villages of Clyman, Hustisford, Iron Ridge, Lomira, Neosho, and Theresa; cities of Horicon and Mayville, and the fifth, sixth, thirteenth, and fourteenth wards of the city of Watertown.

ELMER C. NITSCHKE (Rep.) was born at Burnett on May 20, 1911. He received his education in the elementary and high schools of Dodge County. He is a farmer and an insurance agent. Mr. Nitschke has held the offices of school board director and deputy sheriff. He is a member of the Lions Club, of the Elks Club, and of the Dodge County Insurance Agents Association. This is his second term in the legislature. Home Address: Route 1, Burnett.

Dodge County, second district: Towns of Beaver Dam, Burnett, Calamus, Chester, Elba, Fox Lake, Lowell, Oak Grove, Portland, Trenton, and Westford; villages of Lowell, Reeseville, and east ward of Randolph; cities of Beaver Dam, Fox Lake and Juneau, and first, second, third, and fourth wards of the city of Waupun.



GRAASS
Door

OSTBY
Douglas, 1st

NELSON
Douglas, 2nd

FRANK N. GRAASS (Rep.) was born at Sturgeon Bay on August 19, 1885. After graduating from Sturgeon Bay High School in 1905 he studied forestry and entered the forest tree seed collecting and exporting business. For many years he has been actively engaged in the fruit-growing business and served as director of the Door County Fruit Growers Cooperative. He served two terms as president of the Door County Chamber of Commerce and twelve years as legislative counsel for many state conservation organizations and was among those who sponsored the basic state conservation laws. He was on the advisory board of the Wisconsin Conservation Commission for four years. Mr. Graass was secretary of the Wisconsin Commission on Interstate Cooperation; member of the board of managers of the Council of State Governments; chairman of the committee on Great Lakes Fisheries; and member of the Great Lakes Area Council. He maintains an active interest in state budget and revenue affairs, conservation, rural school education, and the care, hospitalization, and education of poor and crippled children. He was Governor Goodland's legislative and financial secretary for over four years. He was a member of the assembly from 1917 to 1919, 1935 to 1941, and was re-elected in 1950. Home Address: Sturgeon Bay.

BYRON C. OSTBY (Rep.) was born at Superior on August 17, 1924. He received his education in the Superior public schools and graduated from Superior Central High School in 1942. He entered the University of Wisconsin in September 1946; graduated from the University of Wisconsin Law School on August 31, 1951; and was admitted to the bar on the same date. Mr. Ostby is state-wide sales coordinator for the Blue Shield plan of the State Medical Society. From 1943 to 1946 Mr. Ostby served in the navy. He is a member of the Richard I. Bong Post of the American Legion; the B.P.O.E. Elks No. 403; and the Scandinavian-American Fraternity. This is his second term in the legislature. Home Address: 925 North 21st Street, Superior.

Douglas County, first district: The fourth to sixteenth wards, inclusive, of the city of Superior.

CHARLES E. NELSON (Rep.) was born on July 11, 1882 in Sweden. After graduation from high school he attended the University of Wisconsin, graduating in 1906 with an A.B. degree. At present he is employed as a clerk. Mr. Nelson has held several public offices including alderman, county supervisor, and clerk of the circuit and superior court. This is his third term in the legislature. Home Address: 3410 North 21st Street, Superior.

Douglas County, second district: Towns of Amnicon, Bennett, Brule, Cloverland, Dairyland, Gordon, Hawthorne, Highland, Lakeside, Maple, Oakland, Parkland, Solon Springs, Summit, Superior and Wascott; villages of Lake Nebagamon, Oliver, Poplar, Solon Springs, and Superior; first, second, third, seventeenth, eighteenth, nineteenth, and twentieth wards of the city of Superior.



BAKKE
Dunn

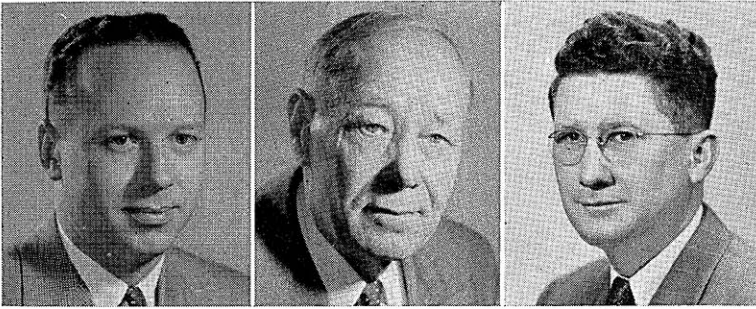
PRITCHARD
Eau Claire

GILLEY
Florence, Forest
and Oneida

G. H. BAKKE (Rep.) was born in the town of Menomonie on August 21, 1918. He attended the Hudson Road rural school, Dunn County School of Agriculture, and graduated from the College of Agriculture of the University of Wisconsin. Before his election to the assembly he was a special instructor in agriculture at the Dunn County School of Agriculture. Mr. Bakke was an organizer and past president of the Menomonie Lions Club; deputy district governor of Lions International; trustee of the Dunn County Agricultural Society; general chairman of the first annual county-wide dairy day; and director of the Community Chest. He is a member of the American Legion and Veterans of Foreign Wars. During World War II he served in the navy for two years, in the Asiatic-Pacific theater. On April 3, 1951 he was elected to the assembly to fill the vacancy caused by the death of Earl Hanson. Home Address: 1102 Eleventh Street, Menomonie.

JOHN T. PRITCHARD (Rep.) was born on December 20, 1884 in Caernarvon, Wales and received his early education there. In 1905 he came to America. He studied in the College of Agriculture at the University of Wisconsin for two years. Since then he has engaged in farming, moving to Eau Claire County in 1913. In 1943 Mr. Pritchard was selected by the Eau Claire chapter of Future Farmers to receive the certificate of recognition at the Wisconsin State Fair. This award was made to him for outstanding accomplishments as a farmer in contributing to the education and training of rural youth in agriculture. He has held various public offices and for twelve years was a member of the county board of supervisors. Mr. Pritchard is serving his tenth term in the legislature. Home Address: Route 5, Eau Claire.

CLARENCE WILLIAM GILLEY (Rep.) was born on May 11, 1919 at Rhinelander. He graduated from the high school in that city and later attended Coyne Electric School in Chicago. He was an electrical contractor, and at present is in the general insurance business. Mr. Gilley has held the office of Commander in the American Legion. He is a World War II veteran, having served in the 77th Infantry Division. This is his second term in the assembly. Home Address: 804 Keenan Street, Rhinelander.



LESSELYOUNG
Fond du Lac, 1st

PETERSON, C.
Fond du Lac, 2nd

TRAVIS
Grant, 1st

NICHOLAS J. LESSELYOUNG (Rep.) was born in Chilton on November 25, 1917. After graduating from Chilton High School he attended Marquette University Law School from which he received an LL.B. in 1942. Since that time he has engaged in the practice of law. He served as the first World War II commander of the American Legion in Fond du Lac and was re-elected to succeed himself. In 1947 he received the Junior Chamber of Commerce Distinguished Service Award for community service and personal achievement. Mr. Lesselyoung is adult chairman of the Fond du Lac youth center. In World War II he served in the navy. Prior to his election to the assembly in 1950 he had held no public office. Home Address: 222 Taft Street, Fond du Lac.

Fond du Lac County, first district: Towns of Calumet, Empire, Fond du Lac, and Taycheedah; city of Fond du Lac.

CHARLES A. PETERSON (Rep.) was born on April 12, 1884 in Harris, Minnesota. After graduating from Grantsburg High School he attended the College of Agriculture of the University of Wisconsin for two years. He has been a farm manager, a herdsman, and a teacher. At present he is a farmer and a breeder of Jersey cattle. Since 1939 he has served as town chairman and county board member. Mr. Peterson has held offices in the Wisconsin Farm Bureau, Wisconsin Dairymen's Association, and Wisconsin Jersey Breeder's Association. He has been chairman of the Wisconsin Association of County Agricultural Committees and Soil Conservation Districts. This is his second term in the assembly. Home Address: Rosendale.

Fond du Lac County, second district: Towns of Alto, Ashford, Auburn, Byron, Eden, Eldorado, Forest, Friendship, Lamartine, Marshfield, Metomen, Oakfield, Osceola, Ripon, Rosendale, Springvale and Waupun; villages of Brandon, Campbellsport, Eden, Fairwater, North Fond du Lac, Oakfield, Rosendale, and St. Cloud; city of Ripon and fifth and sixth wards of the city of Waupun.

ROBERT TRAVIS (Rep.) was born on May 2, 1909 at Platteville. After graduating from the Potosi grade and high schools he attended Michigan State College for two years. From 1930 to 1933 he was manager of the Irvington Dairy Products Company in Omaha, Nebraska. From 1933 to 1940 Mr. Travis was engaged in farming. He is a World War II veteran, having served in the anti-aircraft branch of the armed forces. This is his third term in the assembly. During the 1949 and 1951 sessions Mr. Travis has been chairman of the Committee on Conservation. Home Address: Platteville.

Grant County, first district: Towns of Beetown, Cassville, Clifton, Ellenboro, Glen Haven, Harrison, Hazel Green, Jamestown, Lima, Paris, Platteville, Potosi, Smelser, and Waterloo; villages of Cassville, Hazel Green, Livingston, Potosi, and Tennyson; cities of Cuba City and Platteville.



HARPER
Grant, 2nd



KEEGAN
Green



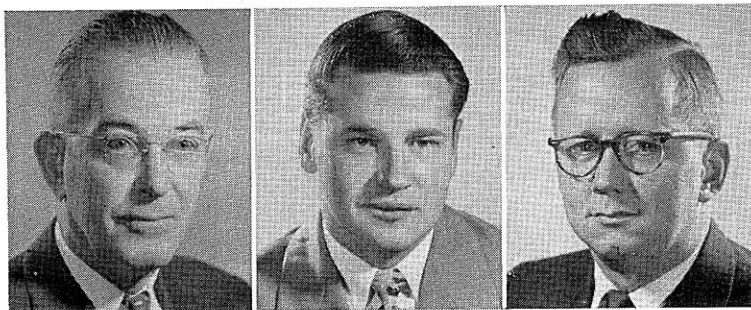
BROOKS
Green Lake and
Waushara

HUGH A. HARPER (Rep.) was born December 24, 1885 at Lancaster. He attended the University of Wisconsin where he studied both agriculture and liberal arts and was active in athletics, playing for three years on the basketball team. For six years Mr. Harper was with Company F, 3rd Wisconsin Regiment and member of Company F 1910 A.A.U. champion basketball team. His many public offices include chairman of the town board, member of the school board, member of the county board for ten years, three years as chairman. He held offices in the county National Farm Loan Association; county, state, and national Farm Bureaus; Live Stock Shippers Federation; Council of Agriculture; and Grant County Fair. He was a member of the assembly from 1931 to 1936, and was re-elected in 1944, 1946, 1948, and 1950. Home Address: Route 1, Lancaster.

Grant County, second district: Towns of Bloomington, Boscobel, Castle Rock, Fennimore, Hickory Grove, Liberty, Little Grant, Marion, Millville, Mt. Hope, Mt. Ida, Muscodia, North Lancaster, Patch Grove, South Lancaster, Watterstown, Wingville, Woodman, and Wyalusing; villages of Bagley, Bloomington, Blue River, Montfort, Mt. Hope, Muscodia, Patch Grove, and Woodman; cities of Boscobel, Fennimore, and Lancaster.

HARRY A. KEEGAN (Rep.) was born at Madison, South Dakota, on November 18, 1882. He attended high school for one year and then took a two-year course at Monroe Business College, Monroe, Wisconsin. He was in the retail grocery business at Monroe for nine years. For the past twenty-eight years he has been a dairy farmer. Mr. Keegan has served his community as a member of the city council and as treasurer of the school board of Monroe township. For over four years he was a member of Company H of the Wisconsin National Guard. Mr. Keegan served in the legislature from 1939 to 1945 and was re-elected in 1948 and in 1950. Home Address: 1424 Fourteenth Avenue, Monroe.

HALBERT W. BROOKS (Rep.) was born at Green Lake, Wisconsin. His great grandfather, with three sons, came from Vermont to Green Lake County in 1854. Mr. Brooks graduated from the Green Lake elementary and high schools, Ripon College Academy, and attended Ripon College. He has been in the general merchandise business since 1908 and during this time he was an athletic coach at Green Lake High School and athletic director and track coach at Ripon College. His public offices include undersheriff, sheriff, village president, village treasurer, trustee of the village board, and member of the county board. For twenty-two years he has been president of the Wisconsin State Checker Association. Mr. Brooks was a member of the assembly in 1945, 1949, and 1951. Home Address: Green Lake.



McCUTCHIN
Iowa

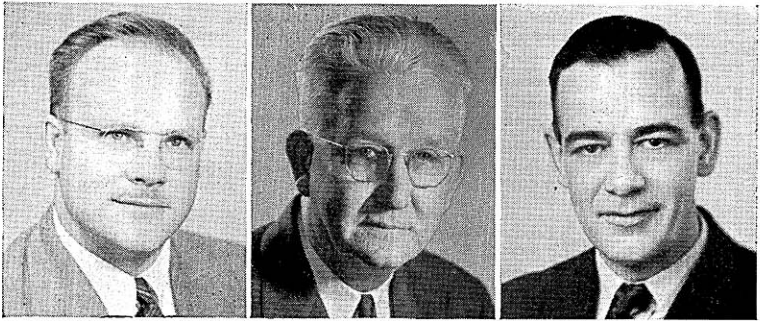
WICKLUND
Iron and Vilas

GILBERTSON
Jackson

ROBERT McCUTCHIN (Rep.) was born in the township of Arena on April 15, 1894. He attended the elementary and high schools and was graduated from the University of Wisconsin College of Agriculture in 1916. Since 1918 he has been a farmer. He is a director of the Arena and Ridgeway Telephone Company and vice president of the Mazomanie Mutual Insurance Company. Mr. McCutchin has been town chairman for fourteen terms and has served on the county highway committee for three years. He also served on the Iowa County Defense Council. Mr. McCutchin was elected to the assembly in 1942, and re-elected in 1946, in 1948, and in 1950. Home Address: Route 1, Arena.

ARNE H. WICKLUND (Dem.) was born at Gile on March 13, 1926. He attended Roosevelt School, Montreal, Wisconsin, and Orthopedic School in Superior. He graduated from Lincoln High School in Hurley; in May 1947 received a B.A. in economics from the University of Wisconsin; and in 1950 received an LL.B. from the University of Wisconsin Law School. Since that time he has been a practicing attorney. Prior to his election to the assembly in 1950 he had held no public office. Home Address: Gile.

LARRY D. GILBERTSON (Rep.) was born at Black River Falls on November 20, 1917. After graduating from Black River Falls High School in 1935 he attended the University of Minnesota, from which he received a B.A. in political science and economics. In 1942 he graduated from the University of Wisconsin Law School and since that time he has engaged in the practice of law. His public offices include village and district attorney for two terms. Mr. Gilbertson served in the infantry in World War II. This is his first term in the legislature. Home Address: 304 Chestnut Street, Black River Falls.



JONES
Jefferson

TREMAIN
Juneau

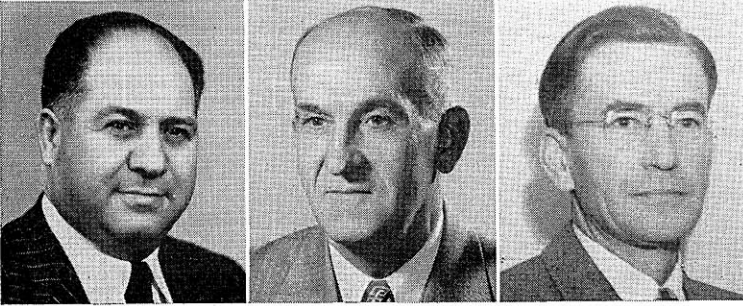
LOURIGAN
Kenosha, 1st

THEODORE S. JONES (Rep.) was born on January 27, 1919 at Lake Mills. After graduating from high school he attended Carroll College. Mr. Jones was an agent for the New York Life Insurance Company, was a war fund speaker, and state U. S. O. chairman. From 1938 to 1944 he served in the marines. He is an active member of the American Legion, Veterans of Foreign Wars, Amvets, and Marine Corps League. This is his third term in the legislature. Home Address: 308 East Lake Street, Lake Mills.

BEN TREMAIN (Rep.) was born on February 25, 1888 at Clifton, Monroe County. His education included attendance at both elementary and high schools. He has been an insurance salesman, a railway mail clerk, a business manager, and retail merchant and now is retired. Mr. Tremain has held many public offices: village president, supervisor, and treasurer; director of the Hustler schools; member and chairman of the county board. He was a member of the 1931 assembly and was again elected to that body in 1946 and re-elected in 1948 and in 1950. Home Address: Hustler.

JOSEPH LOURIGAN (Dem.) was born on March 19, 1901 in Kenosha. He received his education in the Kenosha public schools and graduated from the Kenosha Business College. For the past thirty years he has been an auto worker. He has held the office of secretary of Local 72 U.A.W. - C.I.O. from 1943 to 1944 and president from 1945 to 1947. Mr. Lourigan served as a member of the city council from 1947 to 1951. This is his first term in the legislature. Home Address: 7528 15th Avenue, Kenosha.

Kenosha County, first district: Third, fourth, fifth, sixth, seventh, thirteenth, fourteenth, fifteenth, sixteenth, seventeenth, and eighteenth wards of the city of Kenosha.



MOLINARO
Kenosha, 2nd

STANGEL
Kewaunee

BICE
La Crosse, 1st

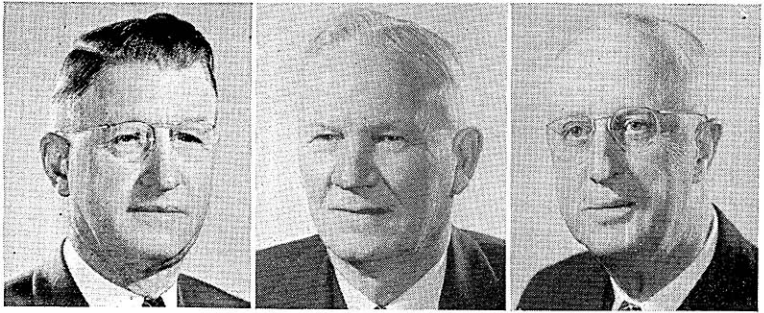
GEORGE MOLINARO (Dem.) was born on October 1, 1902 in Kenosha. He received his education in the Kenosha public schools and later attended the Kenosha Business College, and at present is employed as an auto worker. From 1939 to 1947 Mr. Molinaro served continuously as a member of the county board. This is his third term in the assembly. In 1951 he was chosen Democratic floor leader. Home Address: 2308 52nd Street, Kenosha.

Kenosha County, second district: Towns of Brighton, Bristol, Paris, Pleasant Prairie, Randall, Salem, Somers, and Wheatland; villages of Silver Lake and Twin Lakes; first, second, eighth, ninth, tenth, eleventh, and twelfth wards of the city of Kenosha.

JULIUS P. STANGEL (Rep.) was born on December 29, 1894 at Tisch Mills. After graduating from high school he attended Hoffman's Business College. His previous occupations include director of the State Bank of Kewaunee, farmer, trucker, and store manager. At present he is a farmer and an insurance agent. He has held the offices of town treasurer, town clerk, and school clerk. During the last war he served on the county war board and was chairman of his local Red Cross and bond drives. From 1942 to 1948 he was director and vice president of the Kewaunee Chamber of Commerce and from 1947 to 1951 director of the Kewaunee Rotary Club. This is his second term in the assembly. Home Address: Route 1, Kewaunee.

RAYMOND C. BICE (Rep.) was born at La Crosse on April 5, 1896. He received his education in the La Crosse elementary and high schools and the University of Wisconsin Extension Division. From 1916 to 1918 he was employed by a sash and door factory and from 1921 to 1924 he was a partner in a sash and door company, and since that time has been a building contractor and engaged in a retail lumber business. His many public and civic activities include president of the La Crosse Vocational and Adult School Board, member of board of trustees of Oak Forest Sanatorium, and member of numerous other civic organizations. He has also been a member and officer of the county board, chairman of the county park commission and president of the Businessmen's Club and of the county Chamber of Commerce. Mr. Bice served overseas with the army in World War I. This is his third term in the legislature. Home Address: 2406 State Street, La Crosse.

La Crosse County, first district: All of the city of La Crosse except the eighth, seventeenth, eighteenth, and twenty-first wards.



SCHILLING
La Crosse, 2nd

MONSON
Lafayette

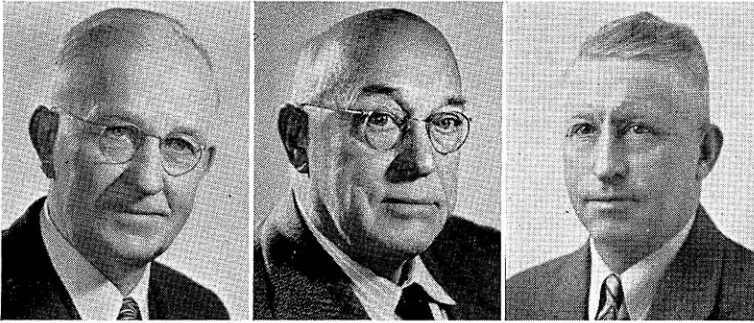
CAVERS
Langlade

HARRY W. SCHILLING (Rep.) was born on September 21, 1887 in Onalaska where he attended the public schools. In 1911 he was graduated from the short course in agriculture, at the University of Wisconsin. Since the age of seven he has resided on a farm and his occupation has always been farming. The public offices which he has held include director of the creamery board from 1916 to 1924, member of the county board in 1922, member of the town board from 1924 to 1926, and director of the district school since 1931. Mr. Schilling was a member of the assembly in 1935, 1937, 1947, 1949, and 1951. Home Address: Route 1, Onalaska.

La Crosse County, second district: The eighth, seventeenth, eighteenth, and twenty-first wards of the city of La Crosse, and the entire county outside La Crosse.

MARTIN O. MONSON (Rep.) was born on May 1, 1885 at Argyle. After attending grade school he took a business course. At present he is engaged in farming and road contracting, furnishing crushed rock for roads, driveways, and concrete work and also ground limestone for farms. For five years he has served as town chairman and county board member. Mr. Monson is president and director of the Lafayette Electric Co-op, and director of the Dairyland Power Co-op and the Wisconsin Electric Co-op. This is his third term in the assembly. Home Address: South Wayne.

WALTER D. CAVERS (Rep.) was born on a farm near Lansing, Iowa, on October 31, 1888. He attended the Iowa public schools and continued his education at Wisconsin Business University in La Crosse. He has held various positions with lumber companies and at present is operating a real estate and insurance agency. His public offices include president of the Village of White Lake, 1926-1937; member of board of education for seventeen years; member of county board for eleven years; member of county selective service board. Mr. Cavers is on the board of directors of the Antigo Association of Commerce. This is his first term in the assembly. Home Address: 307 Virginia Street, Antigo.



HINZ
Lincoln

NORMAN
Manitowoc, 1st

LE CLAIR
Manitowoc, 2nd

EMIL A. HINZ (Rep.) was born on February 21, 1889, in the town of Proviso, Illinois. He received his education in a parochial school in that state. From 1914 to 1917 he was a wheat farmer in Saskatchewan, and since 1919 he has been engaged in farming. He was secretary of a co-operative cheese factory for twenty-one years. His public offices include town treasurer, town chairman, and county board member for nineteen years, and chairman for eight years. Mr. Hinz is a World War I veteran. This is his third term in the assembly. Home Address: Route 3, Merrill.

JOHN A. NORMAN (Rep.) was born at Hartford. He received his early education in public and private schools. He attended the University of Wisconsin, receiving his A.B. degree in 1907. Since 1910 he has been a teacher. Prior to his election to the assembly in 1948 Mr. Norman had held no public office. Home Address: 312 State Street, Manitowoc. Manitowoc County, first district: Towns of Centerville, Liberty, Manitowoc, Manitowoc Rapids, Meeme, and Newton; city of Manitowoc.

FRANK LE CLAIR (Rep.) was born on January 1, 1888 at Two Rivers. He received his education in the elementary schools and business college. He was a commercial fisherman and at present is a fish broker. His public offices include membership on the school board and on the town board. Mr. Le Clair was director of the Manitowoc County Farm Bureau Federation. He is a World War I veteran, having served in the navy. He was elected to the assembly in 1946 and re-elected in 1950. Home Address: Route 1, Two Rivers.

Manitowoc County, second district: Towns of Cato, Cooperstown, Eaton, Franklin, Gibson, Koesuth, Maple Grove, Mishicot, Rockland, Schleswig, Two Creeks, and Two Rivers; villages of Reedsville and Valdars; city of Two Rivers and that part of the city of Kiel in Manitowoc County.



LUECK
Marathon, 1st

LUEDTKE
Marathon, 2nd

SENGSTOCK
Marinette

MARTIN C. LUECK (Rep.) was born at Hamburg on February 27, 1888. He was educated in the common schools and took a two-year course in the Marathon County School of Agriculture and Domestic Economy. Mr. Lueck has been a farmer all his life. He has held various public offices: town assessor, district school clerk, and member of the county board from 1934 to 1941. This is his sixth term in the assembly. Home Address: Hamburg.

Marathon County, first district: Towns of Bergen, Berlin, Bern, Bevent, Brighton, Cassel, Cleveland, Day, Eau Pleine, Elderon, Emmet, Frankfort, Franzen, Green Valley, Guenther, Halsey, Hamburg, Holton, Hull, Johnson, Knowlton, Kronenwetter, McMillan, Maine, Marathon, Mosinee, Reid, Rib Falls, Rib Mountain, Reitbrock, Spencer, Stettin, and Wein; that part of the villages of Abbotsford and Unity in Marathon County and villages of Athens, Edgar, Elderon, Fenwood, Marathon, Spencer, and Stratford; the city of Mosinee and that part of the city of Colby in Marathon County.

PAUL A. LUEDTKE (Rep.) was born in Wausau on August 24, 1888. He was educated in the elementary and parochial schools, and later took a commercial business course. After completing his apprenticeship as decorator and wood finisher he worked for eight years in this field. At the age of twenty-eight he went into business for himself. Since then he has operated a paint and wall paper store employing a crew of men. He has held a number of public offices: president of the city council; alderman and supervisor; chairman of the city equalization and tax board; chairman of the county board; a member of the county highway committee, of the county traffic committee, county board of health, and of the county park board. Mr. Luedtke is an honorary member of the Veterans of Foreign Wars. This is his fifth term in the assembly. Home Address: 118 Second Avenue, South, Wausau.

Marathon County, second district: Towns of Easton, Harrison, Hewitt, Norrie, Plover, Ringle, Texas, Wausau, Weston; villages of Brokaw, Hatley, Rothschild, and Schofield; city of Wausau.

ROY H. SENGSTOCK (Rep.) was born at Marinette on February 3, 1913. He attended the Marinette County Normal School and the University of Wisconsin. He was employed as a factory worker, taught school three years, and since 1931 has been in the insurance business. He has held several offices in the local Republican committees. In 1939 Mr. Sengstock was an assistant secretary in Governor Heil's office. For more than three years he served with the Service Forces, Infantry, Combat Engineers and the Air Corps. He was elected to the assembly in 1940, and re-elected in 1946, in 1948, and in 1950. Home Address: 1724 Main Street, Marinette.



LANDRY
Milwaukee, 1st

O'CONNELL
Milwaukee, 2nd

HUBER
Milwaukee, 3rd

ROBERT WATSON LANDRY (Dem.) was born on June 22, 1922 at Madison. He received his early education in the Atwater and Shorewood Schools, and graduated from the University of Chicago in 1946 with an A.B. degree in economics and from the University of Wisconsin Law School in 1949. Mr. Landry is a practicing attorney. He is a World War II veteran, having served in the navy from November 1942 to March 1946. This is his first term in the legislature. Home Address: 1505 North Franklin Place, Milwaukee.

Milwaukee County, first district: The first and third wards of the city of Milwaukee.

MICHAEL F. O'CONNELL (Dem.) was born in Tipperary, Eire, on January 27, 1877. He received his education in the public schools. He is a retired railroad conductor and since 1928 has been an election inspector. From 1936 to 1940 he was a member of the Taxpayers League. Mr. O'Connell's four sons all served in World War II, one losing his life while in service. Mr. O'Connell has always been concerned in legislation on public welfare and labor. This is his fifth term in the assembly. Home Address: 1128 North 18th Street, Milwaukee.

Milwaukee County, second district: Second and tenth wards of the city of Milwaukee.

ROBERT T. HUBER (Dem.) was born at Eckelson, North Dakota, on August 29, 1920. After graduation from West Allis Central High School he became an auto parts and service salesman. From 1944 to 1948 he was a contractor and at present is an auto service salesman. He is a member of the Knights of Columbus and Holy Name Society. Prior to his election to the assembly in 1948 Mr. Huber had held no public office. In 1951 he was the Democratic assistant floor leader. Home Address: 2215 South 84th Street, West Allis.

Milwaukee County, third district: Towns of Franklin and Greenfield; villages of Greendale and West Milwaukee; city of West Allis.



SCHAEFFER
Milwaukee, 4th

SOKOLOWSKI
Milwaukee, 5th

SIMMONS
Milwaukee, 6th

FRANK E. SCHAEFFER, JR. (Dem.) was born on February 1, 1905, in Milwaukee. He is a graduate of Gesu Catholic School, and from 1920 to 1923 attended drafting and machine shop courses at Milwaukee Vocational School. From 1928 to 1940 he was a painting contractor and later was an automobile body builder. For the past twenty years he has been a building superintendent. At present he is an inspector at Miller Brewing Company in Milwaukee. Mr. Schaeffer has served in his labor union in various capacities. His public offices include vice president of the Fourth of July Committee, and membership on the Red Arrow Park Committee, on the civilian defense council, and on the Red Cross. This is his fourth term in the legislature. Home Address: 828 North 9th Street, Milwaukee.

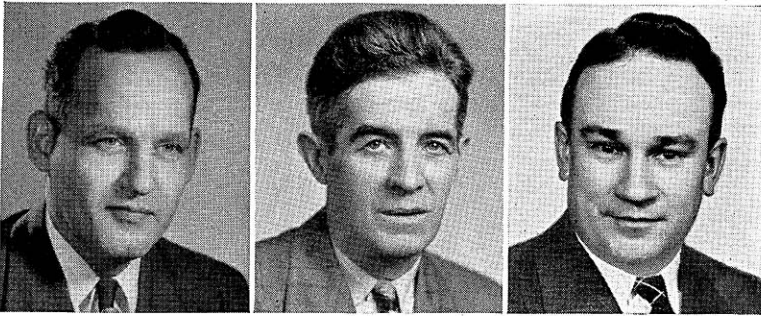
Milwaukee County, fourth district: The fourth ward of the city of Milwaukee.

GEORGE SOKOLOWSKI (Dem.) was born on April 21, 1917 at South Milwaukee. He attended St. Stanislaus Grade School in Milwaukee and is a pioneer graduate of Notre Dame High School. He attended the University of Wisconsin Extension Division in Milwaukee and also the Milwaukee Vocational School. For the past ten years he has been a machinist. He is a member of the Veterans of Foreign Wars, Catholic Order of Foresters, Polish-American Citizens Club, Eagles, South Division Civic Association, St. Anthony's Holy Name Society, and of the negotiating and grievance committee of his shop committee and is chairman and treasurer of the 1001 Fishing Club of Milwaukee. Mr. Sokolowski received an honorable discharge from the navy in 1946. This is his first term in the legislature. Home Address: 1813 South 10th Street, Milwaukee.

Milwaukee County, fifth district: Fifth and eighth wards of the city of Milwaukee.

LE ROY J. SIMMONS (Dem.) was born in Milwaukee on July 25, 1905. After graduation from high school he attended a night school in Chicago for two years where he studied law. He has been an insurance salesman, a postal clerk, and at present is a salesman. He had held no public office until his election to the assembly in 1944. Mr. Simmons is serving his fourth term in the assembly. Home Address: 517 West Garfield Avenue, Milwaukee.

Milwaukee County, sixth district: The sixth ward of the city of Milwaukee.



SCHALLER
Milwaukee, 7th

MURPHY
Milwaukee, 8th

LAMB
Milwaukee, 9th

JOHN SCHALLER (Dem.) was born in Augsburg, Germany on July 7, 1912. He came to Milwaukee in 1913. He received his education by attendance at St. Boniface Grade School and by correspondence courses in salesmanship and blueprint reading. He has been employed as a chef and a bartender and at present is an assistant foreman at Western Metal Specialty Company. Mr. Schaller is a member of International Association of Machinists and St. Boniface Holy Name Society. He was elected to the assembly in 1948 and re-elected in 1950. Home Address: 912 West Clarke Street, Milwaukee.

Milwaukee County, seventh district: Seventh ward of the city of Milwaukee.

JOSEPH P. MURPHY (Dem.) was born at Milwaukee on April 1, 1899. He received his education at St. Thomas Aquinas School, Marquette Academy, Wisconsin Commercial Academy, and the Wisconsin University Extension Division in Milwaukee. Formerly he was an auditor and presently is an accountant. Mr. Murphy is a World War I veteran, having served in the army. Prior to his election to the assembly in 1950 he had held no public office. Home Address: 708 North 29th Street, Milwaukee.

Milwaukee County, eighth district: The sixteenth and twenty-third wards of the city of Milwaukee.

EUGENE LAMB (Rep.) was born on March 7, 1910 in Sheboygan County. He received his education in St. Thomas and Hi-Mount Schools in Milwaukee; Boy's Technical High School; Wisconsin University Extension; and vocational night school. At present he is studying law at the La Salle Extension University Law School. His occupations include manager of a service station and of a paint store. He is now employed as an inspector at Allis-Chalmers. Mr. Lamb is a member of the Eagles. He formerly was state champion ice speed skater. This is his second term in the legislature. Home Address: 3215 North 81st Street, Milwaukee.

Milwaukee County, ninth district: The ninth and twenty-sixth wards of the city of Milwaukee.



McPARLAND
Milwaukee, 10th



RYCZEK
Milwaukee, 11th



BANACH*
Milwaukee, 12th

LELAND S. McPARLAND (Dem.) was born at Thorp on December 18, 1896. He received his common and high school education at Thorp, attended Oshkosh State Teachers College for two years, and studied law at Marquette University. He taught school in South Milwaukee from 1919 to 1927 and since 1927 has engaged in the practice of law. Mr. McParland was city attorney of Cudahy from 1932 to 1936. During World War I he served in the United States Navy from 1917 to 1918. In the 1945, 1947, and 1949 sessions he served as Democratic floor leader. This is his sixth term in the assembly. Home Address: 3764 East Armour Avenue, Cudahy.

Milwaukee County, tenth district: Towns of Lake and Oak Creek; cities of Cudahy and South Milwaukee.

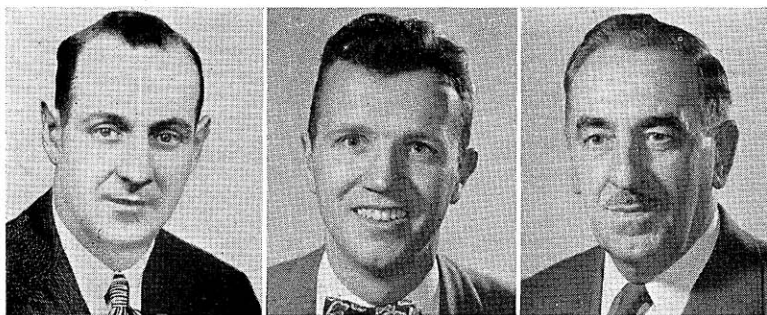
ERVIN JOHN RYCZEK (Dem.) was born in Milwaukee on September 20, 1909. He attended St. Adalbert's Parochial School and South Division High School and was graduated from Marquette High School in 1928. In 1938 he was a student at Spencerian Business College in Milwaukee. Since 1930 Mr. Ryczek has been an assistant funeral director. He is a member of the Polish American Citizen Club, Roman Catholic Union, Catholic Order of Foresters, Polish Association of America, Polish National Alliance, Lehitas Club, Federation Group, Holy Name Society, Layton Park Lions Club, South Division Civic Association, and Old Duffers' Club. He is also a member of the eleventh and twenty-fourth ward Democratic Party. He had held no public office until his election to the assembly in 1940. Home Address: 1910 West Becher Street, Milwaukee.

Milwaukee County, eleventh district: Eleventh and twenty-fourth wards of the city of Milwaukee.

WILLIAM P. BANACH* (Dem.) was born in Milwaukee on March 30, 1903. After graduating from St. Josaphat's School he attended South Division High School. From 1919 to 1940 he was a draftsman and an insurance salesman; he owned and operated a tavern. In April 1949 he was elected by the common council as alderman of the 14th ward. For eight years Mr. Banach served as president of the Holy Name Society. He was a member of the Milwaukee Society, Knights of Columbus, Polish American Citizen Club, Tavern Keepers' Association, and the 12th and 14th Ward Democratic Party. In a special election on April 21, 1947 he was elected to the assembly to fill the vacancy caused by the death of Peter P. Pyszczyński. He was re-elected in 1948 and in 1950. Home Address: 933 West Lincoln Avenue, Milwaukee.

Milwaukee County, twelfth district: Twelfth and fourteenth wards of the city of Milwaukee.

*Deceased March 24, 1951.



LANDOWSKI
Milwaukee, 13th

FRANKE
Milwaukee, 14th

FALBE
Milwaukee, 15th

RALPH JOHN LANDOWSKI (Dem.) was born on March 23, 1912 at Milwaukee. He graduated from St. Casimir's Parochial School and Metropolitan Business College. He is a plumber. He is a member of St. Casimir's Civic and Athletic Association, of the American Federation of Labor, and of his local Democratic Club. Mr. Landowski had held no public office until his election to the assembly in 1948. Home Address: 2519 North Humboldt Avenue, Milwaukee.

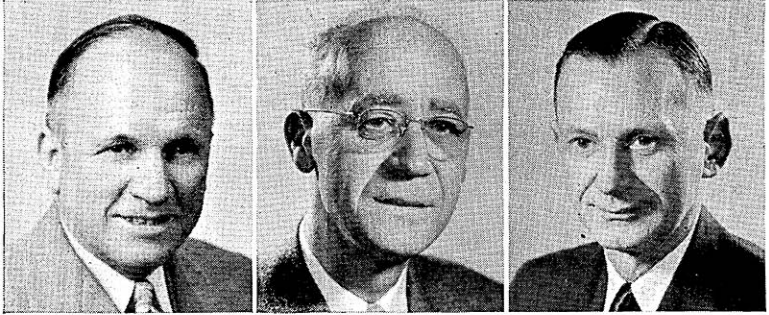
Milwaukee County, thirteenth district: Thirteenth and twenty-first wards of the city of Milwaukee.

HARRY F. FRANKE, JR. (Rep.) was born in Milwaukee on October 13, 1922. After graduation from Milwaukee University School he attended the University of Wisconsin and Marquette University, receiving an LL.B. from the University of Wisconsin in January 1949. He is engaged in the practice of law. Mr. Franke is a member of various civic organizations, including the Red Cross, YMCA, Junior Chamber of Commerce, Foreign Policy Association, and American Legion. He served in World War II from 1943 to 1946. Prior to his election in 1950 he had held no public office. Home Address: 4476 North Newhall Street, Milwaukee.

Milwaukee County, fourteenth district: Town of Milwaukee; villages of Fox Point, River Hills, Shorewood, and Whitefish Bay; eighteenth ward of the city of Milwaukee.

RALEIGH W. FALBE (Rep.) was born at Milwaukee on March 21, 1890. He received his education in the Milwaukee public schools. From 1918 to 1936 he was a police officer in the city of Milwaukee and from 1936 to 1947 he was in the restaurant and tavern business. At present he is a licensed real estate broker and is also engaged in the insurance business. He was drafted for military service in World War I but was released and returned to police headquarters. This is his second term in the legislature. Home Address: 3428 West Garfield Avenue, Milwaukee.

Milwaukee County, fifteenth district: The fifteenth and nineteenth wards of the city of Milwaukee.



MERTZ
Milwaukee, 16th

HOWARD
Milwaukee, 17th

SCHMIDT
Milwaukee, 18th

EDWARD F. MERTZ (Dem.) was born at Milwaukee on August 15, 1890. After attending St. Boniface Parochial School in Milwaukee he studied bookkeeping and accounting at Badger State Business College. He was a law clerk for five years, a building contractor for twelve years, and has operated a tavern and restaurant for fifteen years. Mr. Mertz is a member of the American Legion, 40 et 8, Veterans of Foreign Wars, Fraternal Order of Eagles, Fraternal Order of Pilgrims, Badger Fisherman's League, and Tavern League of Wisconsin. He served in the army from 1917 to 1919. Mr. Mertz is the Democratic committeeman of the 25th ward, and member of the Democratic State Central Committee. This is his second term in the assembly. Home Address: 3418 North Green Bay Avenue, Milwaukee.

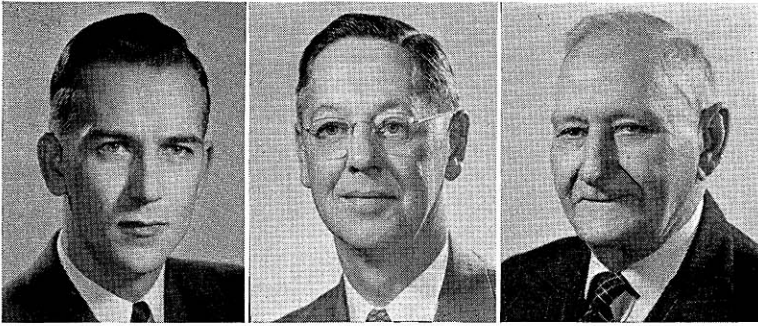
Milwaukee County, sixteenth district: The twenty-fifth ward of the city of Milwaukee.

MARTIN F. HOWARD (Rep.) was born at Milwaukee on September 12, 1892 and was educated in the public and parochial schools of West Allis. Before 1916 he was an electrician. Since that time he has been in the automobile business, both as salesman and as dealer, and has been a partner in a collection and an insurance agency. Since 1949 he has been associated with All-bright Electric Products Company as factory representative. He is a member of the Veterans of Foreign Wars, American Legion, Bay View Businessmen's Association, and Inter-organizational Council of Bay View. Mr. Howard served in World War I in the U. S. Army nineteen months as a sergeant, nine months of which was overseas. He was elected to the assembly in 1934; re-elected in 1936, 1946, 1948, and 1950. Home Address: 2500 South Howell Avenue, Milwaukee.

Milwaukee County, seventeenth district: Seventeenth and twenty-seventh wards of the city of Milwaukee.

CHARLES J. SCHMIDT (Dem.) was born in Milwaukee on March 20, 1907. After graduating from St. Anthony's Parochial School and South Division High School he attended the University of Wisconsin. His occupations include interior decorator; publicity director and inspector for the Wisconsin Industrial Commission; auditor and investigator for the U. S. Department of Labor; and employe of the U. S. Civilian Production Board. During World War II he conducted special surveys for the War Production Board, the War Labor Board, and the War Manpower Commission. At present he is in partnership in the real estate and insurance business. Mr. Schmidt served with the Wisconsin State Guard and was active in civic affairs. Mr. Schmidt is chairman of the 20th ward Democratic unit. He is a member of the Knights of Columbus, Holy Name Society, and the Eagles. This is his second term in the legislature. Home Address: 3923-A North 28th Street, Milwaukee.

Milwaukee County, eighteenth district: Twentieth ward of the city of Milwaukee.



MERTEN
Milwaukee, 19th

REILLY
Milwaukee, 20th

HALL
Monroe

WALTER L. MERTEN (Rep.) was born at Milwaukee on December 11, 1922. After graduating from St. Sebastian's Grade School and Marquette University High School he entered Marquette University. There he received his B.A. degree and was graduated from its Law School in 1950 with a LL.B. He is a practicing attorney and a member of the Wisconsin and Milwaukee County Bar Associations. In World War II he was in the infantry from 1943 through 1946 having served overseas in the Phillipines and Japan with the 25th Infantry Division. He entered the army as a private and was discharged as a 1st lieutenant. After his discharge from military service, at the request of the War Department he served as civilian military officer in Japan, as a specialist in government and education. He is a member of the American Legion. Prior to his election to the assembly Mr. Merten had held no public office. Home Address: 2728 North Sherman Boulevard, Milwaukee.

Milwaukee County, nineteenth district: The twenty-second ward of the city of Milwaukee.

JOHN E. REILLY, JR. (Rep.) was born in Milwaukee on December 20, 1902. He received his elementary education in St. Thomas Aquinas School and Marquette Academy. In 1928 he received an LL.B. from the University of Washington and has practiced law since that time. Mr. Reilly was a candidate for district attorney in 1948. He is a World War II veteran, having served in the army and the air corps from 1941 to 1946. This is his first term in the legislature. Home Address: 1904 Underwood Avenue, Wauwatosa.

Milwaukee County, twentieth district: City of Wauwatosa; towns of Granville and Wauwatosa.

EARL D. HALL (Rep.) was born at Tunnel City, July 15, 1879. He received a rural school education, spent four years in train service, and since then has been engaged in farming. For several years he was a member of the Monroe County Board and the Monroe County Highway Commission. In 1924 he was elected to the assembly without opposition and was re-elected for each succeeding session through 1937. In November 1950 he was again elected to the assembly. Home Address: Route 2, Tomah.



LA FAVE
Oconto

MELCHIOR
Outagamie, 1st

LORGE
Outagamie, 2nd

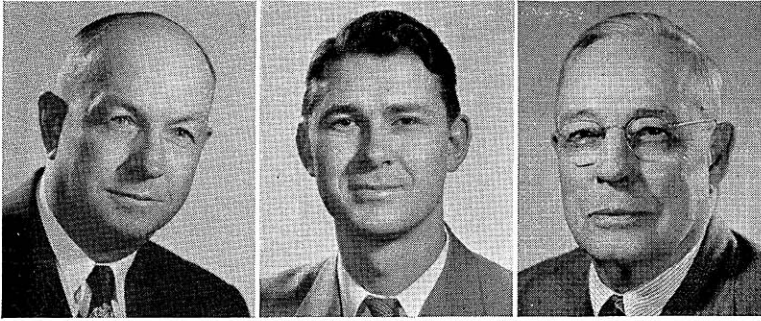
REUBEN LA FAVE (Rep.) was born at Oconto on September 27, 1915. After graduating from high school he attended the Railroad School of Auditors. He was a county caseworker and is the proprietor of a service station. Mr. La Fave is a member of the county board. He served as chairman of Sportmen's Congress in 1949 and 1950, and is an active member of the Civic Club, Yacht Club, Kiwanis Club, Wisconsin Service Association and various other civic organizations. During World War II he was chief petty officer in the auxiliary coast guard. This is his first term in the legislature. Home Address: 636 Brazeau Avenue, Oconto.

WALTER MELCHIOR (Rep.) was born in Green Bay on August 18, 1894. He attended the Wausaukee elementary and high schools. Since his graduation from the University of Wisconsin Law School in 1927 he has practiced law, been an insurance counsel and a pulp and paper maker. His public offices include city attorney of New London and government appeal agent in the selective service system during World War II. In 1932 and 1948 he was a delegate to the National Republican Conventions. Mr. Melchior is a World War I veteran of the Rainbow Division and was awarded the American Silver Star and the French Croix de Guerre. From 1940 to 1945 he was a lieutenant in the Wisconsin State Guard. This is his first term in the legislature. Home Address: 1731 North Harriman Street, Appleton.

Outagamie County, first district: Towns of Bovina, Center, Dale, Ellington, Grand Chute, and Greenville; village of Shiocton; city of Appleton.

GERALD D. LORGE (Rep.) was born July 9, 1922 at Bear Creek. He attended elementary and high schools in that locality and is studying for his law degree, taking courses at Marquette University. He has been a farmer all his life and also worked with his father in his blacksmith shop. From 1941 to 1945 he served in the marine corps. Prior to his election to the assembly in 1950 he had held no public office. Home Address: Bear Creek.

Outagamie County, second district: Towns of Black Creek, Buchanan, Cicero, Deer Creek, Freedom, Hortonia, Kaukauna, Liberty, Maine, Maple Creek, Oneida, Osborne, Seymour, and Vandenbroek; villages of Black Creek, Bear Creek, Combined Locks, Hortonville, Kimberly, and Little Chute; cities of Kaukauna, Seymour, and third ward of New London.



BICHLER
Ozaukee

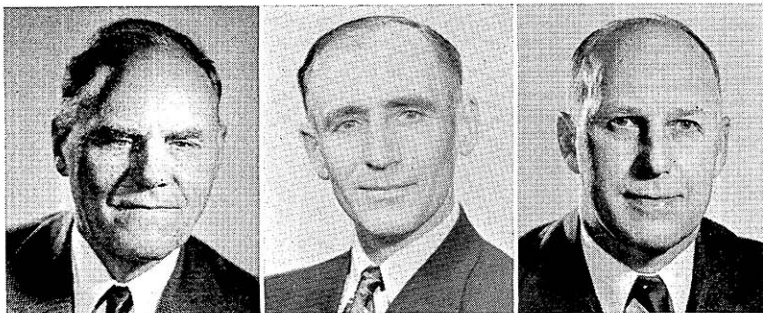
PETERSON, A.
Pierce

PEABODY
Polk

NICHOLAS J. BICHLER (Dem.) was born in the town of Belgium, November 26, 1895. He was educated in the public and parochial schools and attended Pio Nono College. After being graduated from St. Norberts College at De Pere, he took the short course in agriculture at the University of Wisconsin. Since 1920 he has farmed and engaged in the real estate business. For five years he was chairman of the town of Belgium and a member of the Ozaukee County Board until 1935. He was a member of the assembly in 1935, 1937, 1939, 1941, and was re-elected in 1950. Home Address: Route 1, Belgium.

ARTHUR L. PETERSON (Rep.) was born on June 27, 1926 at Glyndon, Minnesota. After attending elementary and high schools in Wisconsin he attended Lawrence College and Marquette University. He received an A. B. from Yale University; M.S. in public administration from the University of Southern California; attended the University of Minnesota; and completed course work for Ph.D. at the University of Chicago in 1950. When elected to office he was editor of The Reporter, River Falls, and previously was research assistant at Yale University; research associate at the University of Southern California; and extension division counselor at the University of Minnesota. Mr. Peterson is author of various government studies, including one on interstate compacts and another on delinquency control and police supervision. He is a World War II veteran and is a reserve officer in the marine corps. Mr. Peterson volunteered for active duty and was recalled to active duty in August 1951. This is his first term in the legislature. Home Address: Prescott.

RAYMOND A. PEABODY (Rep.) was born on February 24, 1883 at Baldwin, St. Croix County, where his great-grandfather was one of the pioneer farm-settlers a decade before the Civil War. Mr. Peabody, while still in his teens, worked as a telegraph operator on railroads. In 1903, he, with others, started a mercantile and lumbering business in Washburn County, which he operated for the next fifteen years. Since 1922 he has been interested in the banking, insurance, and finance business, and served three years as a member of the executive council of the Wisconsin Bankers Association. He has been a member of the Legislative Council since its formation. He has been interested in governmental affairs all his life and was a city council member for many years in his home village and served three years as mayor. Mr. Peabody served on the Polk County Board, including three years as chairman. He has always been interested in civic betterment movements and has served in many organizations. This is his fifth term in the assembly. Home Address: Milltown.



KOSTUCK
Portage

ZELLINGER
Price

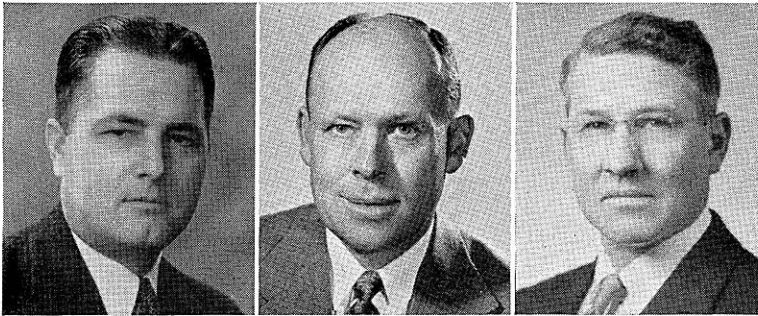
GADE
Racine, 1st

JOHN T. KOSTUCK (Dem.) a resident of Stevens Point, was born there on October 7, 1892. Leaving school at the end of the third grade, he went to work on a farm. At the age of fourteen when he was assisting in blasting stone, he met with an accident which made him blind. He entered the Wisconsin State School for the Blind and after ten years was graduated from the high school department in 1918. Then he attended the University of Wisconsin, specializing in political science and economics. After teaching for three years in the high school department of the School for the Blind at Staunton, Virginia, he entered the piano business at Stevens Point. At present he is a salesman and a piano tuner. He is serving his eleventh consecutive term in the assembly. Home Address: 130 Algoma Street, Stevens Point.

VINCENT J. ZELLINGER (Rep.) was born in Czechoslovakia on February 10, 1901. He received his early education in the Nebraska and Price County public schools. He has been a highway maintenance worker, a farmer's co-operative store manager, and an electric welder. Since 1930 he has been a dairy farmer. Mr. Zellinger has held the offices of town chairman, member of the county conservation and forestry committees, and school district director. He has served as town clerk for thirteen years. He was president of Price County Guernsey Breeders Association and legislative director of Elk Worcester Local Farmers Union. Mr. Zellinger has always been interested in bettering conservation and reforestation. In 1925 he took military training at Camp Custer, Michigan. This is his second term in the assembly. Home Address: Phillips.

HAROLD GADE (Dem.) was born in Denmark on February 12, 1899. He was graduated from high school in that country and later attended various business schools. He was an accountant for a number of years and at present is department manager of Racine Consumers Co-operative. From 1945 to 1947 he was a Racine alderman, and from 1947 to 1948 he was chairman of the Racine Housing Authority. This is his second term in the assembly. Home Address: 1921 Fairview Terrace, Racine.

Racine County, first district: The first, second, third, sixth, tenth, eleventh, thirteenth, and fourteenth wards of the city of Racine.



LARSEN, L.
Racine, 2nd

MATHESON
Racine, 3rd

KINTZ
Richland

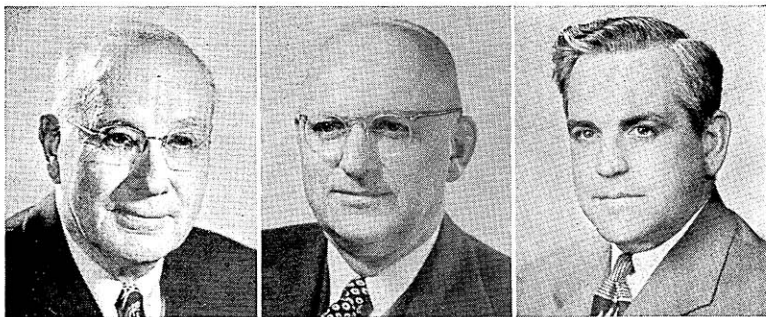
LAWRENCE R. LARSEN (Rep.) was born at Racine, Wisconsin on March 23, 1897, and received his education in the common and high schools of that city. He served in World War I with Headquarters Company at Camp Shelby, Mississippi. He was elected as chief clerk of the senate in 1935 and was unanimously re-elected in each succeeding session through 1945. In 1950 Mr. Larsen was elected to the assembly. Home Address: 1028 Russet Street, Racine.

Racine County, second district: The fourth, fifth, seventh, eighth, twelfth, and fifteenth wards of the city of Racine.

ROBERT J. MATHESON (Rep.) was born in the town of Dover, Racine County, on February 16, 1907. After attending elementary school he graduated from Racine County School of Agriculture. He formerly was manager of a commercial department in a law firm and is now engaged in the wholesale tobacco business. From 1933 to 1949 served as deputy sheriff, undersheriff, and sheriff of Racine County. From 1947 to 1949 he was a member of the State Crime Laboratory Board and served as chairman of the local War Manpower Board. Mr. Matheson was an active musician for twenty-six years and at present is president of the Racine Musician's Union. This is his first term in the legislature. Home Address: 5811 Spring Street, Racine.

Racine County, third district: Towns of Burlington, Caledonia, Dover, Mt. Pleasant, Norway, Raymond, Rochester, Waterford, and Yorkville; villages of Rochester, Sturtevant, Union Grove, and Waterford; city of Burlington and ninth ward of Racine.

MILFORD C. KINTZ (Rep.) was born on August 3, 1903 in the township of Richland. He received his early education in the elementary and high schools and attended Richland County Normal School. After teaching for one year he became a farmer. Mr. Kintz has served as town chairman since 1939; is chairman of the county board; and was a school board director. He was a 4-H club leader and a member of the Committee on Rural Community High Schools. This is his first term in the assembly. Home Address: Rural Route 2, Richland Center.



GRASSMAN
Rock, 1st

ENGEBRETSON
Rock, 2nd

ROGAN
Rusk and Sawyer

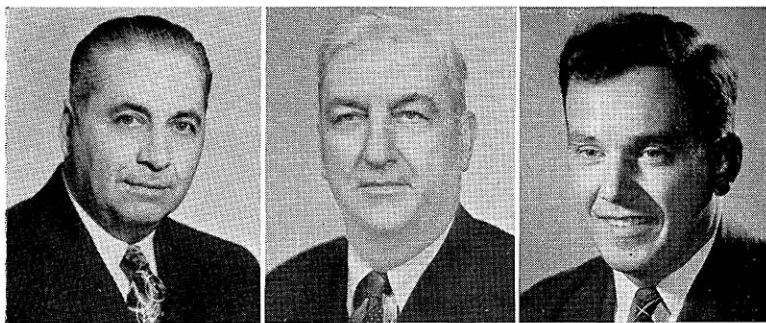
EDWARD GRASSMAN (Rep.) was born in Richland County. After having been graduated from Sextonville High School, he attended Whitewater State Normal and Valparaiso University and also took a six months' correspondence course in order to acquire a first grade teacher's certificate. He taught for the next eight years and then took up leaf tobacco buying and farming. Mr. Grassman has held a number of public offices: alderman of Edgerton, 1922 to 1926; mayor for the next biennium; and county supervisor for the three years preceding his election to the assembly in 1932. In October 1951, he was honored by the Rock River Valley School Administrator's Association for his service to education. He has served in the assembly continuously since 1933. Home Address: 501 Washington Street, Edgerton.

Rock County, first district: Towns of Center, Fulton, Harmony, Janesville, Lima, Milton, Magnolia, Porter, and Union; villages of Milton and Milton Junction; cities of Edgerton, Evansville, and Janesville.

BURGER M. ENGEBRETSON (Rep.) was born at Oslo, Norway on June 21, 1896. He was educated in the public schools of Beloit and attended the University of Wisconsin. He is a World War I veteran. Mr. Engebretson has been in the insurance and real estate business for the past twenty-five years. He was elected twice to the board of supervisors of Rock County. This is his eighth term in the assembly. Home Address: 742 McKinley Avenue, Beloit.

Rock County, second district: Towns of Avon, Beloit, Bradford, Clinton, Johnstown, La Prairie, Newark, Plymouth, Rock, Spring Valley, and Turtle; villages of Clinton, Footville, and Orfordville; city of Beloit.

PAUL J. ROGAN (Rep.) was born on August 21, 1918 at Eagle. He received his education in St. Mary's School in Wausau; St. Norbert's High School in West De Pere; and St. Norbert's College; and the University of Wisconsin. He is manager of a chick hatchery and former manager of a feed store, and is proprietor of a beauty parlor. Mr. Rogan was president of the Ladysmith Junior Chamber of Commerce. He is a World War II veteran, having served with the combat engineers from 1942 to 1945. This is his second term in the legislature. Home Address: Ladysmith.



BERGERON
St. Croix

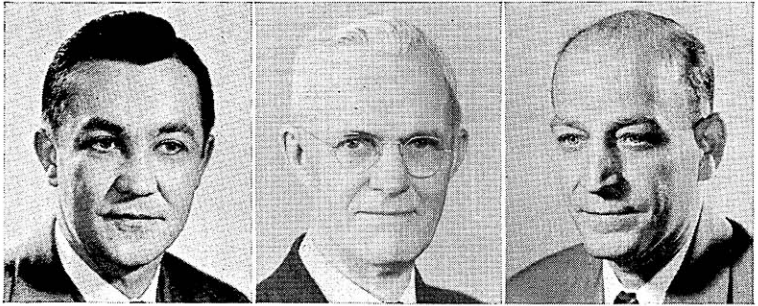
STONE
Sauk

MAROTZ
Shawano

WILLIAM A. BERGERON (Rep.) was born on July 3, 1898 at Stillwater, Minnesota. After attending elementary and high schools he became a farmer. Since 1940 he has engaged in various occupations. His public offices include town chairman, county board chairman, county welfare committee chairman, and other public offices. Mr. Bergeron has served as director and vice president of Midland Cooperative Wholesale, chairman of the board of directors of mutual service life, casualty, and fire insurance companies, vice president of Farmington Mutual Fire Insurance Company, and president of Cooperative Auditing Service. This is his second term in the assembly. Home Address: Somerset.

JAMES RILEY STONE (Rep.) was born on October 17, 1886 at Sully County, South Dakota. He received his elementary and high school education in the Reedsburg public schools. In 1907 he graduated from the University of Wisconsin, receiving a B.A. degree. He has held the offices of postmaster and town clerk. From 1945 to 1949 he was sheriff of Sauk County. He owns and manages two Sauk County dairy farms. Mr. Stone has served as secretary and treasurer of Sauk County National Farm Association. He is a World War I veteran, with service in the artillery. This is his second term in the assembly. Home Address: 203 First Street, Baraboo.

ROBERT G. MAROTZ (Rep.) was born at Sheboygan on November 14, 1921. After graduating from St. James Lutheran School in Shawano and Shawano High School he worked as an apprentice in a law office. He served in the marine corps from 1942 to 1945 during which time he also attended Bowling Green State University in Ohio and Dartmouth College. In 1946 he wrote the Wisconsin bar examination and was admitted to the bar the same year. He then attended the Law School of the University of Wisconsin where he received his degree in 1949. This is his second term in the assembly. Home Address: Shawano.



NUERNBERG
Sheboygan, 1st

TIMMER
Sheboygan, 2nd

KAPITZ
Taylor

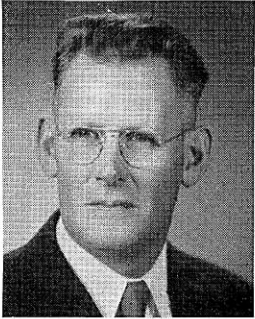
FRED E. NUERNBERG (Rep.) was born on October 8, 1917 in Sheboygan where he received his elementary and high school education. After being employed by the Garton Toy Company as production supervisor he entered the insurance business in 1946. In addition to being active in Red Cross and Boy Scout activities he is a member of the Kiwanis Club, Community Players, Life Underwriters Association, American Legion, and Amvets. In World War II he served in the Navy. This is his first term in the assembly. Home Address: 1955 North 4th Street, Sheboygan.

Sheboygan County, first district: The city of Sheboygan.

HENRY W. TIMMER (Rep.) was born at Gibbsville on June 18, 1873. He received his education in the elementary schools and later attended the Sheboygan Business College. He was born and raised on a farm. He has been a clerk, tinsmith, hardware dealer, and bank cashier. His public offices include county clerk, town clerk, town treasurer, chairman of town board, postmaster, member of Sheboygan County Normal School Board, and chief clerk of the local Selective Service Board. At present he is retired. This is his fourth term in the legislature. Home Address: Waldo.

Sheboygan County, second district: The entire county outside the city of Sheboygan.

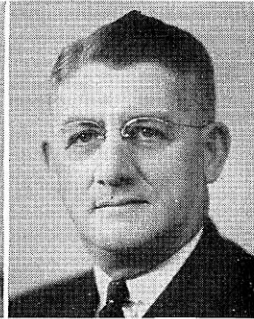
MILLARD M. KAPITZ (Rep.) was born in Rib Lake on July 31, 1906. He graduated from the Rib Lake elementary and high schools. He managed a bowling alley and a bar-cafe and now is in the insurance business. He was a village trustee from 1932 to 1935; member of the county board from 1936 to 1943 and from 1945 to 1950; member of the county board finance committee from 1936 to 1943; vice chairman of the county board from 1941 to 1943; and chairman from 1947 to 1950. He served in the navy in 1944 and upon his discharge he again became a member of the county board. Mr. Kapitz is a former president of the Rib Lake Commercial Club and former commander of the Rib Lake American Legion post. This is his first term in the assembly. Home Address: Rib Lake.



PAULSON
Trempealeau



MOCKRUD
Vernon

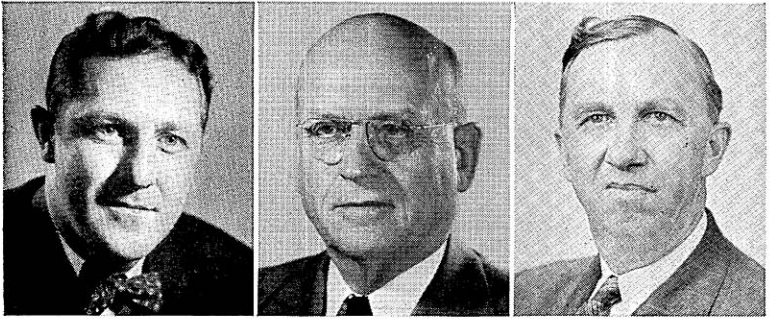


RICE
Walworth

RUSSELL PAULSON (Rep.) was born in the town of Chimney Rock on August 23, 1897. He is engaged in operating the home farm. He has held a number of public offices, including school treasurer; town chairman for twelve years; member of the county committee for the Federal Farm and Home Administration; chairman of the county board for three years; and chairman of the county highway committee for six years. Mr. Paulson is a veteran of World War I. This is his first term in the legislature. Home Address: Strum.

ARTHUR O. MOCKRUD (Rep.) was born on August 4, 1912 at Westby. After graduating from the Westby public and high schools he attended the University of Wisconsin, from which he received his Ph.B. and LL.B. degrees. Since 1942 he has been a practicing attorney, and since 1945 he has served as city attorney of Westby. In 1951 Mr. Mockrud was chosen Republican floor leader. He is chairman of the Assembly Committee on Judiciary and is a member of the Legislative Council. This is his third term in the legislature. Home Address: 200 West State Street, Westby.

ORA R. RICE (Rep.) was born at Boscobel on September 16, 1885. He is a graduate of Boscobel High School and received his dental degree from Northwestern University Dental College in 1907. From 1907 to 1936 he practiced dentistry in Delavan and since 1936 he has devoted his time to farming and legislative duties. Dr. Rice has held a number of elective and appointive offices including alderman of Delavan in 1916 and 1917 and mayor of the city from 1918 to 1922. He served as chairman and member of the State Centennial Committee. This is his eighth term in the assembly. In 1951 Mr. Rice was elected Speaker. For the past six sessions he has been chairman of the Committee on Agriculture, and is also vice-chairman of the Committee on Rules. Home Address: Delavan.



HAEBIG
Washington

REDFORD
Waukesha, 1st

LUDVIGSEN
Waukesha, 2nd

KENNETH WILLIAM HAEBIG (Rep.) was born at West Bend on September 2, 1915. After attending the West Bend elementary and high schools he graduated from Marquette University with the degrees B.S. and LL.B. Since 1947 he has been a practicing attorney. He is a World War II veteran, having served in the infantry. Prior to his election to the assembly in 1950 Mr. Haebig had held no public office. Home Address: Route 4, West Bend.

ALVIN J. REDFORD (Rep.) was born on August 25, 1883 in the town of Pewaukee and attended the rural schools in Waukesha County. For more than sixteen years he was a city police officer; he was sheriff for five terms; deputy sheriff for two years; and served on the fire and police commission for over ten years. He is presently employed by the Otis E. Glidden and Co. Inc. of Waukesha. Mr. Redford is a member of the Elks. This is his second term in the legislature. Home Address: 100 West Main Street, Waukesha.

Waukesha County, first district: Towns of Eagle, Genesee, Muskego, Mukwonago, New Berlin, Ottawa, Vernon, and Waukesha; villages of Big Bend, Dousman, Eagle, Mukwonago, North Prairie, and Wales; city of Waukesha.

ALFRED R. LUDVIGSEN (Rep.) was born on the old farm homestead in the town of Merton, Waukesha county on March 17, 1886. He received his education in the public schools and at Luther College, Racine. His early years were spent in farming. For many years he was engaged in landscape work and in the development and sale of lake frontage. He served as a member of the Waukesha County Board and chairman of the town of Merton during the years 1923 to 1928 and has been secretary of the Waukesha Farm Drainage Board since 1923. He is assembly chairman of the Joint Committee on Finance; member of the Commission on Interstate Cooperation; and chairman of the Joint Legislative Council. This is his ninth term in the assembly. Home Address: Route 1, Hartland.

Waukesha County, second district: Towns of Brookfield, Delafield, Lisbon, Menomonee, Merton, Oconomowoc, Pewaukee, and Summit; villages of Butler, Chenequa, Hartland, Lac La Belle, Lannon, Menomonee Falls, Merton, Pewaukee, and Sussex; city of Oconomowoc.



PETERSON, R.
Waupaca

ABRAHAM
Winnebago, 1st

CANE
Winnebago, 2nd

RICHARD E. PETERSON (Rep.) was born on July 17, 1920 at Waupaca, where he attended the elementary and high schools. In 1949 he graduated from the University of Wisconsin Law School. He is engaged in the practice of law. Mr. Peterson is active in the Boy Scouts, and is a member of the American Legion and Veterans of Foreign Wars. This is his first term in the legislature. Home Address: 16 15th Street, Clintonville.

HARVEY R. ABRAHAM (Rep.) was born in Oshkosh on January 15, 1895. He received his education in the public schools and graduated from the Oshkosh Business College. He was a sheet metal construction worker for eight years and assisted on a farm two years prior to his service in World War I. Mr. Abraham served in overseas combat duty with the 318th Engineers, 6th Division. Following his honorable discharge he was associated with a partner in a photo finishing business. He then travelled for two large nationally known food manufacturers until 1936. Since that time he has been a real estate salesman. He is a past commander of the local post No. 70 of the American Legion and a past exalted ruler of the B.P.O.E. No. 292. This is his third term in the legislature. He is a member of the Legislative Council and its Committee on Conservation; Chairman of the Excise and Fees Committee; and member of the Judiciary Committee. Home Address: 194½ Ceape Street, Oshkosh.

Winnebago County, first district: City of Oshkosh.

ARNOLD J. CANE (Rep.) was born on December 11, 1914 at Ontonagon, Michigan. He attended the public schools of that locality and graduated from Marquette University Law School in 1937. He is now engaged in the practice of law. From 1937 to 1940 he taught public speaking and coached debate at St. Mary's High School in Menasha. His public offices include justice of the peace, member of school board, acting police justice, and acting city attorney. Mr. Cane is a member of the Knights of Columbus, Elks, Eagles, and Parent-Teachers Association. He has been active in many civic affairs as well as in state and county bar association activities. This is his first term in the assembly. Home Address: 200 Lake Street, Menasha.

Winnebago County, second district: All of the towns, villages, and cities of the county except the city of Oshkosh.



CLARK
Wood

MAY
Chief Clerk

KELLMAN
Sergeant at Arms

WILLIAM WALTER CLARK (Rep.) was born in Plum City on July 7, 1885. He was graduated from Plum City graded school, Ellsworth High School, River Falls Teachers College, and attended the University of Wisconsin. He taught for a number of years in a country school, high school, and Wood County Agricultural School, and has also served as county agricultural agent. Mr. Clark is a farmer and cattle buyer. He has acted as town chairman of the town of Hansen and as chairman of the Wood County Board. Mr. Clark served as chairman of the Committee on Education in 1945, 1947, and 1949 and is a member of the Committee on Taxation. Mr. Clark is a member of the Legislative Council and was chairman of the Education Committee of the Legislative Council. He was elected to the assembly in 1920, and re-elected in 1938, 1942, 1944, 1946, 1948, and 1950. Home Address: Vesper.

ARTHUR L. MAY was born in Chicago on January 6, 1901. He attended the elementary schools of Chicago and Wisconsin Rapids and was graduated from Central High School in Madison. In 1932 he received the degree of LL.B. from the University of Wisconsin Law School. Mr. May has been a farmer, mechanic, businessman, and since 1932 has engaged in the practice of law. He served as justice of the peace from 1931 to 1939. He was a delegate to the 1944 Republican National Convention. He was elected chief clerk of the assembly in 1941, and re-elected each session since then. Home Address: 2527 Van Hise Avenue, Madison.

NORRIS J. KELLMAN, the son of Mr. and Mrs. Frank A. Kellman, was born on October 23, 1898 at Galesville. After his graduation from Galesville High School he attended La Crosse State Teachers College for one year and was graduated from the University of Wisconsin in 1923. For ten years he was assistant postmaster at Galesville and for the past twenty-six years he has been in the general insurance business. Mr. Kellman was a member of the board of supervisors of Trempealeau County for several years. He served in World War I and was one of the youngest men in the state to be commissioned as a second lieutenant. He has held a number of offices in the American Legion including that of commander of his local post for three years. In 1936 he was an alternate to the Republican National Convention in Cleveland and his father was a delegate to the same convention. Mr. Norris Kellman was a delegate to the 1940 national convention in Philadelphia, and the 1944 convention in Chicago. Mr. Kellman was a member of the assembly in the 1939 session. Since 1941 he has served as sergeant at arms of that body. Home Address: Galesville.