
Members of the
Legislature

MEMBERS OF THE SENATE



LaFOND
1st District

KAFTAN
2nd District

KENDZIORSKI
3rd District

EVERETT LAFOND (Rep.) was born on January 4, 1901 at Two Rivers. From 1906 to 1915 he attended St. Luke's School in Two Rivers, and attended the Two Rivers High School. Senator LaFond comes from a long line of lake fishermen. He is the fourth generation in the fishing industry from Two Rivers, his people having settled in Two Rivers in 1848, and the family has operated from that port ever since. Since 1919 he has been a commercial fisherman. Senator LaFond was a member of the city council in 1934, served on the Two Rivers school board from 1940 to 1943, and was a member of the Manitowoc County Board from 1934 to 1947. He is past commander of post 1248 of Veterans of Foreign Wars and is active in the American Legion and Veterans of Foreign Wars circles. He is a World War I veteran, having served overseas with the mine-sweepers in the navy. This is his first term in the legislature. Home Address: 1704 Lake Shore Drive, Two Rivers.

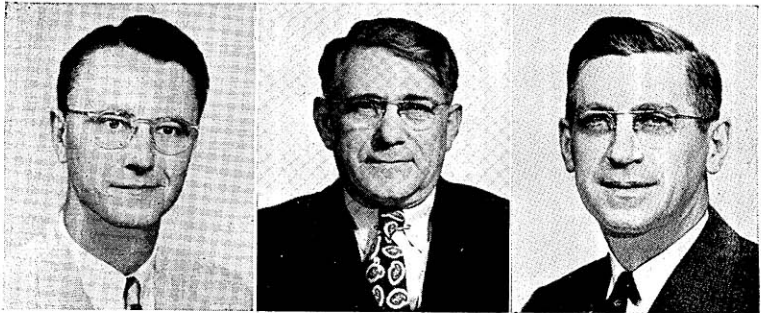
First senatorial district: Door, Kewaunee, and Manitowoc Counties.

FREDERICK FRANK KAFTAN (Rep.) was born on August 25, 1916 at Green Bay. After graduating from the Green Bay public schools he attended the University of Wisconsin, receiving his LL.B. in 1940. He is a practicing attorney in Green Bay and a part-time vocational school teacher. From 1944 to 1946 Senator Kaftan served in the navy. He is a member of Veterans of Foreign Wars, American Veterans, and Junior Chamber of Commerce. This is his first term in the legislature. Home Address: 146 East Mission Road, Green Bay.

Second senatorial district: Brown and Oconto Counties.

CASIMIR KENDZIORSKI (Dem.) was born in Poland on December 3, 1898. He received his elementary and high school education in Poland and evening courses in Milwaukee. From 1928 to 1930 he was a real estate broker, and since that time he has been a machinist and inspector. Senator Kendziorski is a member of the Polish National Alliance, South Side Old Settlers Club, Polish American Citizens Club, Julius's 1001 Fishing Club, Sons of Neptune, and the N.B. Pleasure Club. He is past vice president of his local union and a member of the board on legislation and education. He has always been interested and active in civic and labor activities. He had held no public office until his election to the assembly in 1946. He was re-elected to the assembly in 1948. In 1949 he was elected to the senate to fill the vacancy caused by the resignation of former Senator Clement J. Zablocki, who was elected to Congress. Home Address: 1951 South 15th Street, Milwaukee.

Third senatorial district: The fifth, eighth, eleventh, and twenty-fourth wards of the city of Milwaukee.



MAYER
4th District

GETTELMAN
5th District

SCHMIDT
6th District

GEORGE A. MAYER (Rep.) was born on January 10, 1917 in Milwaukee County, where he completed his grade and high school education. He earned a *cum laude* rating at college and graduated from Harvard Law School in 1941. After beginning the practice of law in Milwaukee he entered the army in 1942. He served with counter-intelligence on the atom bomb project until 1946, when he resumed law practice. Senator Mayer has participated in various civic activities, holding chairmanships on the Community Fund, Cancer Drive, and Jaycees Industrial Relations Committee in Milwaukee. This is his first term in the legislature. Home Address: 3514 North Summit Avenue, Milwaukee.

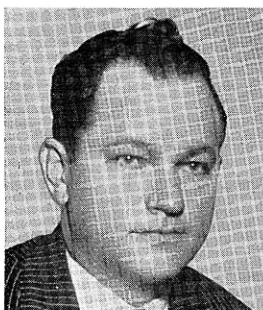
Fourth senatorial district: The thirteenth, eighteenth, and twenty-first wards of the city of Milwaukee; and the villages of Fox Point, River Hills, Shorewood, Whitefish Bay, and the town of Milwaukee.

BERNHARD GETTELMAN (Rep.) was born at Chicago, Illinois, on December 23, 1889. He received his education in the common schools of Milwaukee. Senator Gettelman is president-treasurer of the National Soap and Products Company. He has served in the Milwaukee County sheriff's department both as motorcycle officers' chief and as under-sheriff. He was elected a delegate to the Republican National Conventions of 1932, 1936, 1940 and again in 1944. He was elected chairman of the Wisconsin delegation in 1936 and in 1940. From 1917 to 1918 he was a member of the assembly, and from 1923 to 1934 of the senate. He was again elected to the senate in 1938 and re-elected in 1942 and again in 1946. Home Address: 2254 North Hi-Mount Boulevard, Milwaukee.

Fifth senatorial district: The ninth, fifteenth, nineteenth, twenty-second, and twenty-sixth wards of the city of Milwaukee.

WILLIAM A. SCHMIDT (Dem.) was born in Princeton on May 21, 1902. He received his early education at St. John's Parochial School in Montello and the Montello High School. He attended Marquette University for one year. He was a welder and now is a maintenance foreman. Senator Schmidt has been active in his labor union. He was organizer of Smith Steel Athletic Association, and chairman of the bargaining and coordinating committees of his local union. He is a member of the Knights of Columbus, Fraternal Order of Eagles, Holy Name Society of St. Michael's Church, Badger Fisherman's League, and Montello Rod and Gun Club. He was elected to the senate in 1948. Home Address: 2625 West Vine Street, Milwaukee.

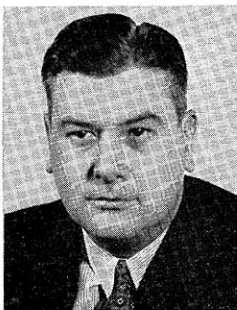
Sixth senatorial district: The second, seventh, tenth, twentieth, and twenty-fifth wards of the city of Milwaukee.



BLENSKI
7th District



BUSBY
8th District



TEHAN
9th District

ROMAN R. BLENSKI (Dem.) was born in Milwaukee on January 24, 1917. He is the youngest son of the late Judge Michael F. Blenski. He graduated from Fernwood Grade School in 1931 and attended St. John's Military Academy for the next two years. After graduation from Bay View High School in 1936 he spent two years at Spencerian Business College. At present he is employed as inspector in a machine shop. Senator Blenski is a member of the Eagles, Bay View Alumni Association, Polish National Association, and other organizations. He was a member of the assembly in 1945. In 1949 he was elected to the senate to fill the vacancy caused by the resignation of Anthony P. Gawronski. Home Address: 3029 South Hanson Avenue, Milwaukee.

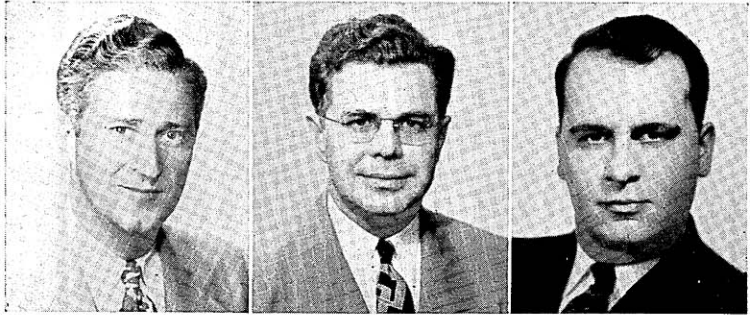
Seventh senatorial district: The twelfth, fourteenth, seventeenth, and twenty-seventh wards of the city of Milwaukee and the cities of Cudahy and South Milwaukee; towns of Lake and Oak Creek.

ALLEN J. BUSBY (Rep.) is a graduate of the West Milwaukee public schools, West Allis High School, Milwaukee State Teachers College, and the University of Wisconsin, from which he received the degrees of B.A., M.A., and LL.B. He was admitted to the bar in 1928. Prior to this Senator Busby was principal of the high school at Little Chute and an instructor at the West Allis High School. Since 1932 he has been village attorney of West Milwaukee and a member of the law firm of Busby and Luehring in Milwaukee. Senator Busby was elected to the assembly in 1931 and 1934. In 1936 he was elected to the senate and re-elected in 1940, 1944, and 1948. Home Address: 1673 South 53rd Street, Milwaukee.

Eighth senatorial district: Towns of Franklin, Granville, Greenfield, and Wauwatosa; villages of Greendale and West Milwaukee; sixteenth and twenty-third wards of the city of Milwaukee and cities of Wauwatosa and West Allis.

ROBERT E. TEHAN (Dem.) was born at Milwaukee on January 7, 1905. He attended Gesu Grade School and Marquette Academy and received his B.A. degree from Marquette University in 1927 and his LL.B. degree in 1929. Before becoming an attorney he was employed in the railroad shops at Milwaukee and as treasurer of the Pabst Theater. He is a member of the Milwaukee, the Wisconsin State and American Bar Associations. In 1944 Senator Tehan was elected chairman of the Democratic State Central Committee. He was elected Democratic National Committeeman in 1945, and re-elected for the 1948 to 1952 term in May 1948. He served three terms in the assembly and was elected to the senate in 1942 and re-elected in 1946. Senator Tehan resigned from the senate June 1, 1949 to become judge of the U. S. District Court for the eastern district of Wisconsin. Home Address: 534 North 11th Street, Milwaukee.

Ninth senatorial district: The first, third, fourth, and sixth wards of the city of Milwaukee.



KNOWLES
10th District

LENROOT
11th District

HICKS
12th District

WARREN P. KNOWLES (Rep.) was born on August 19, 1908 at River Falls where he received his early education. He holds the degree of B.A. from Carleton College and LL.B. from the Law School of the University of Wisconsin. Since his graduation from the law school in 1933 he has engaged in the practice of law. Senator Knowles was a member of the county board from 1936 to 1940 and is past president of both the Kiwanis and Conservation Clubs. He was a lieutenant in the navy and served on the U.S.S. Nevada during the invasions of Attu, Normandy, and Southern France, being released from active duty to serve in the 1945 session. He was author and sponsor of the bill creating the Legislative Council and served as its first chairman. Senator Knowles acted as Republican floor leader in the senate during the 1943, 1945, 1947 and 1949 sessions. This is his third term in the senate. Home Address: New Richmond.

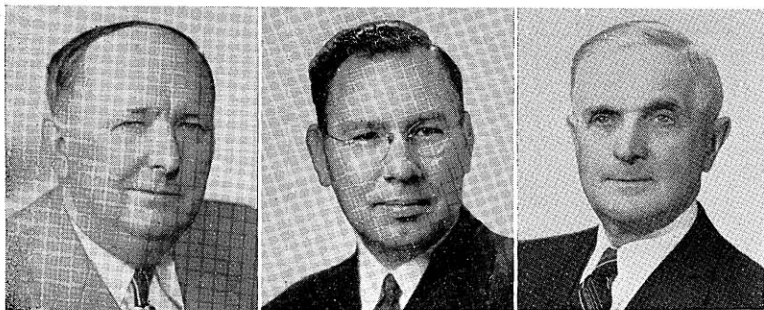
Tenth senatorial district: Buffalo, Pepin, Pierce, and St. Croix Counties.

ARTHUR A. LENROOT, JR. (Rep.) was born in Superior on February 18, 1912. He was educated in the common and high schools of Superior and then attended the Superior State Teachers College and the College of St. Thomas. Senator Lenroot served two terms in the assembly and was elected to the senate in 1946. Home Address: 821 8th Avenue, East, Superior.

Eleventh senatorial district: Bayfield, Burnett, Douglas and Washburn Counties.

CLAYTON HICKS (Rep.) was born at Phillips on June 17, 1919. After graduating from the Phillips High School he attended the University of Wisconsin from which he received his B.A. degree in 1940. Since 1946 he has held the office of county clerk in Price county. From 1942 to 1946 he served in the army and is now in the army reserve. Senator Hicks is a member of the American Legion and of the Veterans of Foreign Wars. This is his first term in the legislature. Home Address: Phillips.

Twelfth senatorial district: Ashland, Iron, Price, Rusk, Sawyer, and Vilas Counties.



PANZER
13th District

BUBOLZ
14th District

ROBINSON
15th District

FRANK E. PANZER (Rep.) was born in the town of Hubbard in Dodge County on September 1, 1890. He attended the public schools and the Oakfield High School. Since 1918 he has been a school teacher and a telegraph operator and at present is engaged in farming. Senator Panzer has held several public offices including those of school clerk, town chairman, member of the Dodge County Board since 1925, and chairman of the Dodge County Board since 1940. He served in the assembly in the session of 1931 and was elected to the senate in 1934 and re-elected in 1942 and in 1946. Senator Panzer was elected president pro tem in 1947 and again in 1949. Home Address: Route 2, Oakfield.

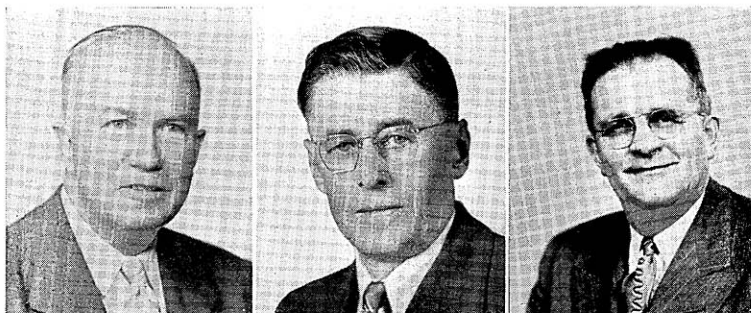
Thirteenth senatorial district: Dodge and Washington Counties.

GORDON A. BUBOLZ (Rep.) was born September 10, 1905 in Seymour. He is a graduate of Lawrence College, of the Wharton School of Commerce and Finance, University of Pennsylvania, and of the Law School of the University of Wisconsin. He obtained part of his law education at George Washington Law School. He was an accounting instructor at Lawrence College from 1937 to 1938 and was an associate agricultural economist for the Farm Credit Administration. He is a member of a law firm and a practicing attorney at Appleton. His civic activities include president of the Appleton Chamber of Commerce, president of the Appleton Kiwanis Club, president of Appleton Council of Social Agencies, chairman of Outagamie County Centennial Committee, chairman of the Outagamie USO, and chairman of the county safety council. He is serving his second term in the legislature. Home Address: 78 River Drive, Appleton.

Fourteenth senatorial district: Outagamie and Shawano Counties.

ROBERT P. ROBINSON (Rep.) was born in Beloit on May 15, 1884. He was graduated from the elementary and high schools and from Beloit College. He was a teacher from 1905 to 1916. From 1917 to 1919 he served in the army, entering the Reserve Corps as a lieutenant colonel. He was in the advertising business for several years and is now retired. Senator Robinson has been active in public and civic affairs having served as alderman, member of the school board, of the Y.M.C.A. board, and the Red Cross board, the Family Service Association, the Community Chest, and vice president of the Beloit Savings Bank for over ten years. He served as Housing Administrator and president of the Beloit Council of Defense. He is a member of the American Legion. This is his second term in the senate. Home Address: 837 Church Street, Beloit.

Fifteenth senatorial district: Rock County.



PORTER
16th District

OLSON, MELVIN
17th District

VAN DE ZANDE
18th District

FOSTER B. PORTER (Rep.) was born at Barnum on August 22, 1891. He received his education in the elementary and high schools. He is a general merchant. He is president of a bank, and president of two mutual fire insurance companies. His public offices include village president for fourteen years, county board member for sixteen years, member of the Mississippi Valley Parkway Committee, and district chairman of the war finance committee. He is a World War I veteran and is active in the American Legion. This is his second term in the legislature. Home Address: Bloomington.

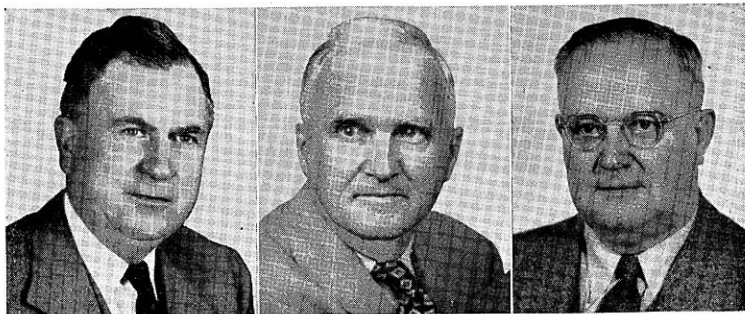
Sixteenth senatorial district: Crawford, Grant, and Vernon Counties.

MELVIN J. OLSON (Rep.) was born in the town of Blanchard in Lafayette County on May 18, 1887. After attending the common and high schools he was graduated from the Monroe Business College. He has been a farmer, a storekeeper, and at present is a farm implement and supply dealer. His public services include the offices of assessor, village treasurer, village president, and memberships on the county board, county relief committee, county selective service board, and the high school board. This is his second term in the senate. Home Address: South Wayne.

Seventeenth senatorial district: Green, Iowa, and Lafayette Counties.

ALFRED VAN DE ZANDE (Rep.) was born at Campbellsport on October 8, 1893. He graduated from the Campbellsport High School in 1912. He has been in the insurance business since 1910 and is president of the Campbellsport Mutual Insurance Company. Senator Van De Zande was president of the village of Campbellsport for two years, a member of its board of trustees for four years and undersheriff and sheriff of Fond du Lac County for one term each. In 1918 he was an assistant instructor of military tactics at the University of Wisconsin. He served four terms in the assembly and in 1948 was elected to the senate. Home Address: Campbellsport.

Eighteenth senatorial district: Fond du Lac, Green Lake, and Waushara Counties.



BROWN
19th District

BUCHEN
20th District

HILKER*
21st District

TAYLOR G. BROWN (Rep.) was born in Richland County on February 28, 1890. After his graduation from high school he taught in the rural schools for two years and then attended Platteville State Teachers College and the University of Wisconsin. He taught in the Viroqua High School for three years and was principal of Cashton High School for one year. In 1918 he served as county agricultural agent and from 1918 to 1930 as director of agriculture at Oshkosh under the Smith-Hughes act. Senator Brown has operated dairy farms since 1915. He was mayor of Oshkosh from 1930 to 1933 and has served as an officer of the New American Bank at Oshkosh, Oshkosh Fair, Wisconsin Association of Fairs, and Wisconsin Fox Waterways Association. This is his third term in the senate. Home Address: Route 5, Oshkosh.

Nineteenth senatorial district: Calumet and Winnebago Counties.

GUSTAVE W. BUCHEN (Rep.) was born on a farm in the town of Lyndon in Sheboygan County on September 25, 1886. His parents came from Germany in 1854 and were among the early settlers of the county. He attended the country district school, the Waldo graded school, and the Sheboygan public schools. He is a graduate of the University of Wisconsin, receiving the degrees of B.A. in 1909 and LL.B. in 1912. From 1909 to 1911 he was assistant professor of rhetoric and oratory at the University of Oregon, and from 1911 to 1912 an instructor in public speaking at the University of Wisconsin. Since 1920 he has practiced law in Sheboygan, the name of his law firm being Buchen, Currie, Federer, Grote, and Hesslink. Senator Buchen has always been active in community affairs. In 1936 he was chairman of the Sheboygan County Republican Club and a delegate to the Republican National Convention. This is his third term in the senate. Home Address: 919 North 5th Street, Sheboygan.

Twentieth senatorial district: Ozaukee and Sheboygan Counties.

EDWARD F. HILKER* (Rep.) was born on April 13, 1881 at Racine where he attended the common schools and business college. In 1898 he volunteered in the Spanish-American War. Senator Hilker was in business for many years and at the present time is a sales promoter. He is interested in athletics having played on and managed many a good ball club and also played polo for a good many years. For fourteen years he has served as alderman. He has been active in local politics as well as in state having served as delegate at large to the Republican National Conventions in 1936 and 1944. He served five terms in the assembly and was elected to the senate in 1942 and re-elected in 1946. Home Address: 2446 Kinzie Avenue, Racine.

Twenty-first senatorial district: Racine County.

*Deceased March 4, 1949. No successor has been elected.



TRINKE
22nd District

NEALE
23rd District

LAIRD
24th District

WILLIAM F. TRINKE (Rep.) was born on a farm in Wisconsin, January 25, 1897. Orphaned, he left school at sixth grade, and worked as a farm hand, construction laborer, building trades worker, realtor, lawyer, and builder. In 1931 he entered the University of Wisconsin as an adult special, and achieved the record of going from the sixth grade to a bachelor's degree in four years. In 1937, at age 40, he graduated from the University of Wisconsin Law School. Senator Trinke served as president of the Walworth County Bar Association and as state commander of the American Legion, 1945 to 1946. He is a World War I veteran, having served in France in the 32nd (Red Arrow) Division. Senator Trinke was nominated to fill the vacancy caused by the death of Senator Shearer on October 8, 1948. This is his first term in the legislature. Home Address: Lake Geneva.

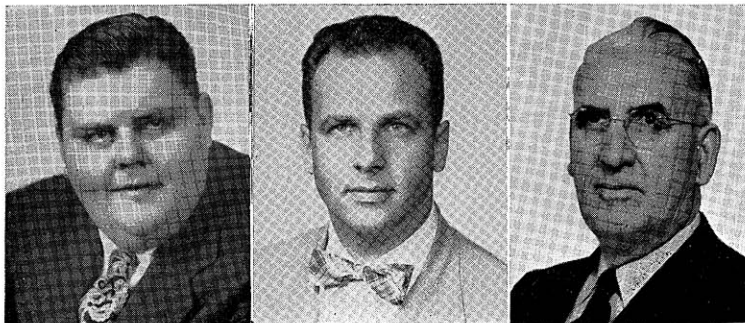
Twenty-second senatorial district: Kenosha and Walworth Counties.

OSCAR W. NEALE (Rep.) was born at Birmingham, Ohio. He attended the Birmingham elementary and high schools, Denison University in Ohio, and Fremont College, Nebraska, receiving a B.S. degree. He has been a teacher in rural and city grade schools, principal of a high school, and county superintendent. Senator Neale was director of rural education at the State Teachers College at Kearney, Nebraska, for ten years and held a similar position for twenty-nine years at the Stevens Point State Teachers College. He is the author of two textbooks on art appreciation. He has been active in civic and municipal affairs, having served as an alderman for two terms, member of police and fire commission for fourteen years, and was a trustee of the Portage County Home for four years. This is his first term in the legislature. Home Address: 402 Church Street, Stevens Point.

Twenty-third senatorial district: Portage and Waupaca Counties.

MELVIN R. LAIRD, JR. (Rep.) was born on September 1, 1922 at Omaha, Nebraska. He graduated from the Marshfield grade and high schools; in 1942 received a B.A. from Carleton College; and attended the University of Wisconsin Law School. At present he is secretary-treasurer of a building supply company. Senator Laird was on active duty with the U. S. Navy, serving on the destroyer Maddox in Task Force 58 and Halsey's Pacific Third Fleet. He was elected to fill the vacancy caused by the death of his father in 1946 and re-elected in 1948. In 1947, when the senator took office he was the youngest state senator in the United States. The past four generations of his family have served in the legislature and state offices in Wisconsin. In 1948 Senator Laird was a delegate to the Republican National Convention. Home Address: 301 South Cherry Street, Marshfield.

Twenty-fourth district: Clark, Taylor, and Wood Counties.



KRUEGER
25th District

NELSON
26th District

MILLER
27th District

CLIFFORD W. KRUEGER (Rep.) was born in Madison on June 24, 1918. After graduating from high school he attended Merrill Commercial College, and at present is a tavern operator. In 1946 he was elected alderman, and in 1940 appointed a deputy sheriff. Senator Krueger has been active in civic and fraternal organizations, and in 1945 received the Junior Chamber of Commerce distinguished service award for outstanding service in civic and fraternal work. This is his first term in the legislature. Home Address: 1202 East Main Street, Merrill.

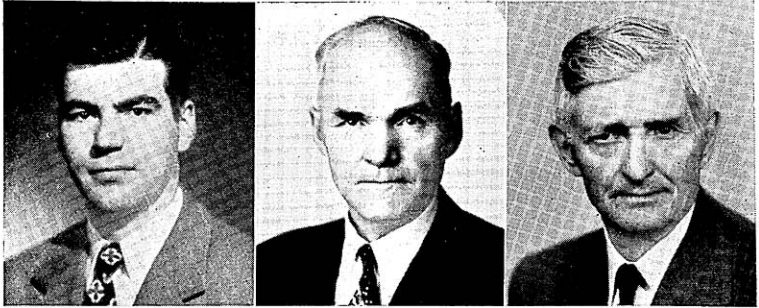
Twenty-fifth senatorial district: Lincoln and Marathon Counties.

GAYLORD A. NELSON (Dem.) was born at Clear Lake on June 4, 1916. He received his education in the Clear Lake graded and high schools. In 1939 he received a B.A. from San Jose State College in California and his LL.B. from the University of Wisconsin. Since 1942 he has been a practicing attorney. Prior to his election to the senate in 1948 he had held no public office. Senator Nelson is a World War II veteran. Home Address: 912 Regent Street, Madison.

Twenty-sixth senatorial district: Dane County.

JESS MILLER (Rep.) was born in 1884 in the town of Eagle, Richland County. He was educated in the public schools and is a farmer and auctioneer by occupation. Senator Miller has held a number of public offices — chairman of the town of Eagle, chairman of the county highway committee, the county mediation board, and the county Republican committee. He was elected to the senate for the first time in 1938 and re-elected in 1942 and again in 1946. Home Address: Richland Center.

Twenty-seventh senatorial district: Columbia, Richland, and Sauk Counties.



PADRUTT
28th District

OLSON, JOHN
29th District

DOWNING
30th District

ARTHUR L. PADRUTT (Rep.) was born in Huron, South Dakota on September 26, 1917. In 1928 he moved with his parents to Chippewa Falls. He was graduated from McDonell Memorial High School in Chippewa Falls and received the Bachelor of Science degree from Eau Claire State Teachers College in 1939. Since then he has attended the University of Wisconsin Law School and has taught in the public schools of Wisconsin. At present he is engaged in operating a photographic studio and camera supply business in Chippewa Falls. He served four terms in the assembly and in 1948 was elected to the senate. Home Address: 51 East Birch Street, Chippewa Falls.

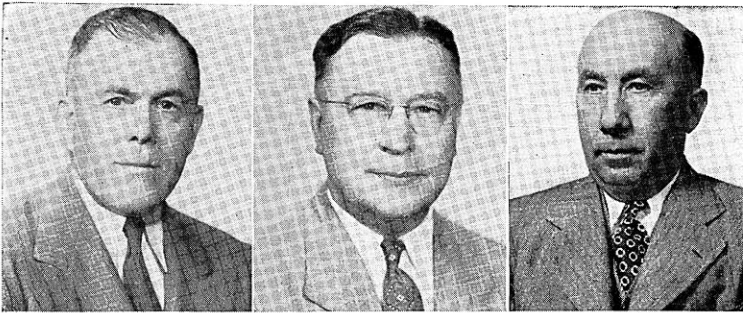
Twenty-eighth senatorial district: Chippewa and Eau Claire Counties.

JOHN F. OLSON (Dem.) was born on June 15, 1892 in the town of Sioux Creek. After attending the public schools he studied at River Falls Normal School, where he took a short course in agriculture. Senator Olson is a farmer. He has held the office of town chairman since 1931 and of chairman of the county board since 1947. He has held offices in various agricultural organizations, including president of Barron County Electric Cooperative; secretary-treasurer of Wisconsin Electric Cooperative; director of the Dairyland Power Cooperative; and director of the Barron County Farm Loan Association, a position he held for twenty-two years. Senator Olson was elected to fill the vacancy caused by the resignation of Senator Madsen. This is his first term in the legislature. Home Address: Route 1, Chetek.

Twenty-ninth senatorial district: Barron, Dunn, and Polk Counties.

PHILIP DOWNING (Rep.) was born in Ontario, Canada on September 3, 1871. He was educated in Canada. One year after his graduation from the Vankleek Hill Normal School in Ontario he came to Wisconsin where he taught school for nine years. Since that time he has been a salesman. Senator Downing was postmaster of Amberg for a good many years and has been county supervisor for the past seventeen years. He has also held many other local offices and has always been very active in civic affairs. This is his third term in the senate. Home Address: Amberg.

Thirtieth senatorial district: Forest, Florence, Langlade, Marinette, and Oneida Counties.



LEVERICH
31st District

SCHLABACH
32nd District

DEMPSEY
33rd District

EARL LEVERICH (Rep.) was born on a farm in the town of Angelo, Monroe County on December 6, 1891. He is a graduate of Sparta High School, Madison College, and the University of Wisconsin short course in agriculture. He has been a dairy farmer, fruit grower, and farm co-op leader and has served his community as school clerk, town clerk, and town chairman. He is president of the Sparta Co-op Creamery Association and the Western Wisconsin Co-op Creamery Association; agricultural member of the State Board of Vocational Education; a member of various state-wide dairy committees. He organized the anti-oleo demonstration at Madison in 1931 which resulted in the elimination of oleo in Wisconsin. Senator Leverich was elected to the senate in 1934, in 1942, and in 1946. Home Address: Route 1, Sparta.

Thirty-first senatorial district: Adams, Juneau, Marquette, and Monroe Counties.

RUDOLPH M. SCHLABACH (Rep.) was born on April 4, 1890 at La Crosse. His parents were pioneering farmers who hewed their farm out of the forests of eastern Minnesota. He attended Ohio Wesleyan for his undergraduate work and received his B.S. in 1914. He then taught high school for several years. His legal studies at the University of Chicago were interrupted by World War I in which he served, and on his return in 1919 he entered the Law School of the University of Wisconsin, graduating in 1921. Since that time he has been practicing law in La Crosse. Senator Schlabach served two terms as district attorney for La Crosse County and was a member of the assembly in 1939. He was elected to the senate in 1940 and re-elected in 1944, and in 1948. Home Address: 132 South 16th Street, La Crosse.

Thirty-second senatorial district: Jackson, La Crosse, and Trempealeau Counties.

CHESTER E. DEMPSEY (Rep.) was born at Merton, Waukesha County, on July 20, 1895. He owns and operates a modern dairy farm of 240 acres which has been the homestead of the Dempsey family since early pioneer days. He received his education in the county schools and has always been a close student of farming and farm problems. He publishes Dempsey's Farm Economics, a paper with a wide circulation among farmers of the state. Prior to his election to the senate in 1934 he was a member of the Waukesha County Board and has held various school and township offices. In 1946 he was again elected to the senate. Home Address: Route 1, Hartland.

Thirty-third senatorial district: Jefferson and Waukesha Counties.



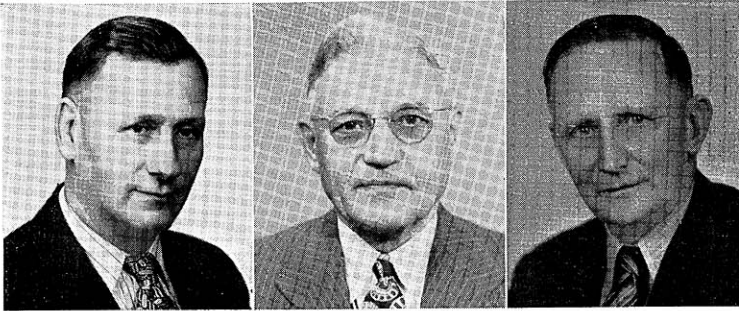
DONAHUE
Chief Clerk

DAMON
Sergeant at Arms

THOMAS M. DONAHUE was born on July 13, 1907 at Kenosha. After graduating from St. George Parochial School in Kenosha and the Kenosha High School he continued his education at the University of Wisconsin. Since 1941 Mr. Donahue has held the position of personnel examiner in the State Bureau of Personnel. He served in the navy from 1944 to 1946, and was stationed at New Guinea, Leyte and Manila. He is a member of the American Legion. Mr. Donahue was assistant chief clerk of the senate in 1939, 1941, and 1943, and was elected chief clerk of the senate in 1947 and 1949. Home Address: 822 Hiawatha Drive, Madison.

HAROLD E. DAMON was born at Edgerton, Minnesota, on October 3, 1885. In 1888 he came to Wisconsin where he has since resided. After graduation from high school he attended Wausau Business College. At present he is engaged in the insurance business. His public offices include alderman and supervisor, deputy sheriff, and deputy clerk of court. In 1943 he served as assistant sergeant at arms, and in 1944 as acting sergeant at arms. Since 1945 he has held the office of sergeant at arms. Home Address: 706 Franklin Street, Wausau.

MEMBERS OF THE ASSEMBLY



ROMELL
Adams and Marquette

GEHRMANN
Ashland

SYKES
Barron

LOUIS C. ROMELL (Rep.) was born at Chicago on April 7, 1899. He received his education in the public schools. His occupations include salesman, railroad machinist, and employment at the Badger Ordnance Plant in Baraboo, and at the Dodge plant in Chicago during the war emergency. At present he is engaged in farming. Mr. Romell has served as district school clerk and holds the office of town supervisor. He is interested in township government, elementary and high school education, R.E.A. and cooperatives. In 1942 his four sons were all students in the freshman, sophomore, junior, and senior classes of the same high school. Two of these sons served overseas, his second son was lost in Hurtengen Forest engagement, and the other served in the Philippine and Japanese areas. This is his second term in the legislature. Home Address: Route 1, Adams.

B. J. GEHRMANN (Rep.) was born in Germany on February 13, 1880. At the age of thirteen he came to this country where he worked in a Chicago packing plant and attended night school. Three years later he moved to Clark County. Since 1915 he has lived in Ashland County where he cleared a farm five miles from Mellen and where he has farmed ever since. He has held a number of public offices, serving as assessor for five years, town chairman for ten years, and school clerk since 1919. He was always interested in better farming methods, carried on many experiments on his own farm, and for many years was Farm Institute Conductor with the Agricultural Extension Service of the University of Wisconsin. Mr. Gehrmann served as a member of Congress from 1935 to 1943. He was a member of the Wisconsin assembly in 1927 and 1931 and of the senate in 1933. In 1946 and in 1948 he was elected to the assembly. Home Address: Mellen.

CHARLES H. SYKES (Rep.) was born on January 11, 1881 at Brodhead. After his graduation from the Milton Junction High School he attended Janesville Business College. At the age of nineteen he began farming in Rock County. In 1919 he moved to a farm in Barron County on which he resided until he retired in 1934. Mr. Sykes served for two years on the county board of Rock County and for twelve years on the county board of Barron County. This is his sixth term in the assembly. Home Address: Route 1, Cameron.



SQUIRES
Bayfield

LYNCH
Brown, 1st

DUFFY
Brown, 2nd

S. E. SQUIRES (Rep.) was born in Iowa on September 27, 1882. He was educated in the common and high schools and attended college in Iowa. He was a teacher and grain merchant from 1900 to 1917. Since 1919 he has been a farmer. Mr. Squires has served twenty-four terms on the county board. During World War I he served in the infantry. This is his fourth term in the assembly. Home Address: Route 2, Mason.

ROBERT E. LYNCH (Dem.) was born in Chicago and was graduated from Notre Dame University. He is sales manager for a building materials company. During the war he was the public relations officer of the Kewaunee Shipbuilding and Engineering Corporation. His election to the assembly in 1932 marked his entrance into public office. He was again elected to the assembly in 1934, and since 1943 has served consecutively as a member of that house. Mr. Lynch was elected chairman of the Democratic caucus and assistant Democratic floor leader for 1947. In 1949 he was nominated by the Democratic caucus to be Democratic candidate for speaker. Home Address: 1144 Cass Street, Green Bay.

Brown County, first district: The city of Green Bay.

WILLIAM J. DUFFY (Dem.) was born on October 29, 1916 at North Branch, Minnesota. After graduating from Kaukauna High School he attended St. Norbert College, De Pere, from which he received his B.A. In 1941 he graduated from the University of Wisconsin Law School. Since that date he has been a practicing attorney. Mr. Duffy is secretary-treasurer of both the Fourteenth Judicial Circuit and the Brown County Bar Associations. From 1941 to 1945 he served in the army air force. This is his first term in the legislature. Home Address: Route 1, Greenleaf.

Brown County, second district: All of the towns, cities, and villages of Brown County except the city of Green Bay.



HITT
Buffalo and Pepin

RASMUSEN
Burnett and Washburn

PETERS
Calumet

EDMUND HITT (Rep.) was born on February 9, 1901 in the town of Alma, Buffalo County. He graduated from the public graded and high schools in Alma and attended La Crosse Teachers College for three years. He has been a farmer and a farm labor investigator. In 1945 he retired. From 1936 to 1943 he served as town chairman and from 1946 to 1948 he served as mayor of Alma. This is his first term in the assembly. Home Address: Alma.

HOLGER B. RASMUSEN (Rep.) was born on April 26, 1894 in Superior. After graduation from high school he attended Highland Park College of Pharmacy in Des Moines, Iowa. He received his Ph.G. from that college in 1916. Since 1912 he has been engaged in the drug business and since 1919 he has owned and operated his own drug store. He has served as mayor of Spooner for three terms, from 1942 to 1948, and is a member of the county school committee. During World War II he was chairman of his county civilian defense committee. Mr. Rasmussen is a World War I veteran. This is his first term in the assembly. Home Address: 722 Franklin Avenue, Spooner.

HENRY MARTIN PETERS (Rep.) was born in the town of Woodville in Calumet County on November 21, 1889. After attending the public schools in Nebraska he became a farmer and a rancher. Later he was a fireman and an engineer and now is a farmer and a dairyman. He has held the office of town assessor and is town clerk. Mr. Peters has served as secretary of the local cheese factory, member of Board Cheese Storage Company and secretary and treasurer of a livestock shipping association. He was elected to the assembly in 1948. Home Address: Box 417, Route No. 1, Menasha.



RAIHLE
Chippewa

STADLER
Clark

BETTS
Columbia

SYLVIA HAVRE RAIHLE (Rep.) attended public schools in La Crosse and Minneapolis, St. Cloud Teachers College, University of Minnesota, and Minnesota College of Law. While teaching school in Beltrami County, Minnesota, she proved up a homestead on the shore of Lake Sylvia, which is named after her. She was the first hospital contact worker in the Veterans Administration, serving in Washington, D. C. and Fort Snelling. Mrs. Raihle's husband was a member of the 1925 Wisconsin Assembly. Mrs. Raihle has five children, and is a grandmother. She is secretary of the Chippewa Falls Library Board, a past president of the local American Legion Auxiliary, and also of the Chippewa County Federation of Women's Clubs. She is a charter member of Alpha Epsilon Chapter of Phi Delta Delta Legal Sorority. In 1948 she was elected to the assembly. Home Address: 1313 Superior Street, Chippewa Falls.

ARTHUR E. STADLER (Rep.) was born on April 17, 1892 in Marnesco, Michigan. After graduating from elementary and high schools he attended Williams Business College, Oshkosh. For three years he attended evening school in Minnesota, studying advanced accounting. Mr. Stadler was an accountant and at present is engaged in farming. He has been director of various cooperative organizations. His public offices include member of school board, chairman and supervisor of the county board, and chairman of the town board. This is his second term in the legislature. Home Address: Route 2, Owen.

ARNIE F. BETTS (Rep.) was born in Waterloo on January 7, 1909. After graduating from the Waterloo High School he attended the University of Wisconsin, receiving his B.A. degree in 1935. Mr. Betts has been a farmer, secretary to Walter S. Goodland when he was Lieutenant Governor, and an editor. At present he is an editor, publisher, and owner of the Lodi Enterprise, a weekly newspaper. He served as secretary of the Lodi-Lake Wisconsin Chamber of Commerce, and is a member of the Rotary Club. This is his second term in the assembly. Home Address: Lodi.



LUCEY
Crawford

DOYLE
Dane, 1st

BLASKA
Dane, 2nd

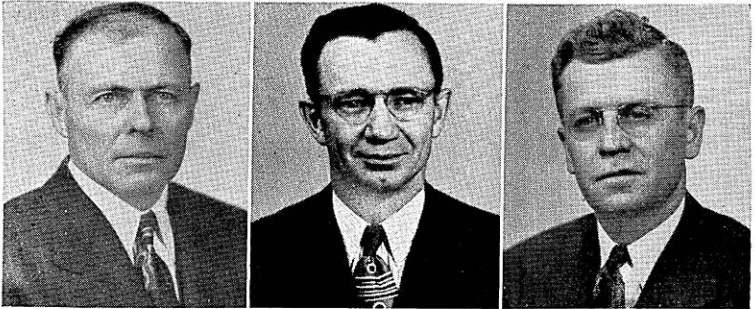
PATRICK J. LUCEY (Dem.) was born on March 21, 1918 at La Crosse. He attended grade school in Ferryville and Bagley and graduated from St. Mary's School in Glen Haven and Campion High School. He was a student at St. Thomas College in St. Paul and received his B.A. from the University of Wisconsin in 1946. While attending the university he was a salesman for a Madison grocery company. Prior to that time he had operated a grocery store. At present he is a farm and business manager. He has served as justice of the peace and treasurer of Ferryville Grade School and DeSoto High School. Mr. Lucey has held offices in the Veterans of Foreign Wars and is active in the Farm Bureau. He is a veteran of World War II, having served in the quartermaster corps from 1941 to 1945. This is his first term in the assembly. Home Address: Ferryville.

RUTH BACHHUBER DOYLE (Dem.) was born on October 14, 1916 in Milwaukee. A graduate of the Wausau graded and high schools, she received a B.A. degree from the University of Wisconsin in 1938. In 1939 she was granted her M.A. from Columbia University. She has been a teacher and served in an administrative post in the Office of the Alien Property Custodian in Washington, D.C. She is a housewife and mother of three children. Her father, grandfather, and great-grandfather all served as members of the Wisconsin legislature. Prior to her election to the assembly in 1948 Mrs. Doyle had held no public office. Home Address: 216 Campbell Street, Madison.

Dane County, first district: The city of Madison.

JOHN M. BLASKA (Dem.) was born in the town of Medina in Dane County on May 14, 1885. He received his education in the public schools. He has lived on a farm in the town of Sun Prairie all of his life and has operated the same farm for the last forty years. Mr. Blaska is a director of Dairyland Co-op of Juneau. In addition to other public offices he has held, Mr. Blaska has served as town chairman since 1929; member of county board; and member of county highway committee. This is his first term in the legislature. Home Address: Marshall.

Dane County, second district: Towns of Albion, Blooming Grove, Bristol, Burke, Christiana, Cottage Grove, Deerfield, Dunkirk, Dunn, Medina, Pleasant Springs, Rutland, Sun Prairie, Windsor, and York; villages of Cambridge, Cottage Grove, Deerfield, De Forest, McFarland, Marshall, Monona, Rockdale, and Sun Prairie; city of Stoughton.



EISNER
Dane, 3rd

GENZMER
Dodge, 1st

NITSCHKE
Dodge, 2nd

HERMANN EISNER (Dem.) was born in Austria on December 29, 1898. He received his education in the elementary schools. From 1923 to 1927 he was a blacksmith and since that time he has been a farmer. He is a town chairman and a county supervisor and formerly served as school clerk. This is his first term in the legislature. Home Address: Route 1, Cross Plains.

Dane County, third district: Towns of Berry, Black Earth, Blue Mounds, Cross Plains, Dane, Fitchburg, Madison, Mazomanie, Middleton, Montrose, Oregon, Perry, Primrose, Roxbury, Springdale, Springfield, Vermont, Verona, Vienna, and Westport; that part of the village of Brooklyn in Dane County and the villages of Belleville, Black Earth, Blue Mounds, Cross Plains, Dane, Maple Bluff, Mazomanie, Middleton, Mount Horeb, Oregon, Shorewood Hills, Verona, and Waunakee.

ELMER L. GENZMER (Rep.) was born on January 3, 1903 in Mayville. He attended Milwaukee State Teachers College and Marquette Law School from 1923 to 1924. Mr. Genzmer served as justice of the peace from 1932 to 1942. In 1942 and 1944 he was elected mayor of Mayville and in 1946 he was re-elected to that office. In 1939 he was one of several Democrats instrumental in furthering the Heil program. In 1943 he was Democratic floor leader, and that same year left the Democratic Party because of a policy division and joined the Republican Party. This is Mr. Genzmer's eighth consecutive term in the assembly. Home Address: 435 North Main Street, Mayville.

Dodge County, first district: Towns of Ashippun, Clyman, Emmet, Herman, Hubbard, Hustisford, Lebanon, Leroy, Lomira, Rubicon, Shields, Theresa, and Williamstown; villages of Clyman, Hustisford, Iron Ridge, Lomira, Neosho, and Theresa; cities of Horicon and Mayville, and the fifth, sixth, thirteenth, and fourteenth wards of the city of Watertown.

ELMER C. NITSCHKE (Rep.) was born at Burnett on May 26, 1911. He received his education in the elementary and high schools of Dodge County. He is a farmer and an insurance agent. Mr. Nitschke has held the offices of school board director and deputy sheriff. He is a member of the Lions Club and of the Dodge County Insurance Agents Association. This is his first term in the legislature. Home Address: Route 1, Burnett.

Dodge County, second district: Towns of Beaver Dam, Burnett, Calamus, Chester, Elba, Fox Lake, Lowell, Oak Grove, Portland, Trenton, and Westford; villages of Lowell, Reeseville, and east ward of Randolph; cities of Beaver Dam, Fox Lake and Juneau, and first, second, third, and fourth wards of the city of Waupun.



ROWE
Door

OSTBY
Douglas, 1st

NELSON
Douglas, 2nd

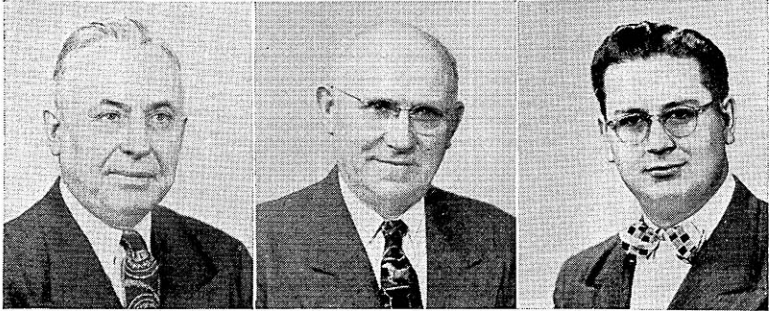
HALLIE H. ROWE (Rep.) was born at Weyauwega on July 3, 1896. He received his education in the public schools of the state. From 1928 to 1944 he was a conservation warden and from 1945 to 1948 he was sheriff of Door County. Mr. Rowe is a veteran of World War I, having served overseas with Company F, Second Supply Train, Second Division. This is his first term in the legislature. Home Address: 22 North 5th Avenue, Sturgeon Bay.

BYRON C. OSTBY (Rep.) was born at Superior on August 17, 1924. He received his education in the Superior public schools and graduated from Superior Central High School in 1942. He entered the University of Wisconsin in September 1946 and graduated December 1949 with a B.S. degree. He is a student in Law School at the University of Wisconsin. From 1943 to 1946 Mr. Ostby served in the navy. He is a member of the Richard I. Bong Post of the American Legion. This is his first term in the legislature. Home Address: 925 North 21st Street, Superior.

Douglas County, first district: The fourth, fifth, sixth, seventh, eighth, ninth, tenth, eleventh, twelfth, thirteenth, fourteenth, fifteenth, and sixteenth wards of the city of Superior.

CHARLES E. NELSON (Rep.) was born on July 11, 1882 in Sweden. After graduation from high school he attended the University of Wisconsin, graduating in 1906 with an A.B. degree. At present he is employed as a clerk. Mr. Nelson has held several public offices including alderman, county supervisor, and clerk of the circuit and superior court. This is his second term in the legislature. Home Address: 3410 North 21st Street, Superior.

Douglas County, second district: Towns of Amnicon, Bennett, Brule, Cloverland, Dairyland, Gordon, Hawthorne, Highland, Lakeside, Maple, Oakland, Parkland, Solon Springs, Summit, Superior and Wascott; villages of Lake Nebagamon, Oliver, Solon Springs, and Poplar; first, second, third, seventeenth, eighteenth, nineteenth, and twentieth wards of the city of Superior.



HANSON
Dunn

PRITCHARD
Eau Claire

GILLEY
Florence, Forest
and Oneida

EARL W. HANSON (Rep.) was born on October 17, 1888 at Elk Mound where he attended the public schools. In 1907 he was graduated from the Eau Claire Business College. He was cashier of the bank at Elk Mound from 1908 to 1931. Since 1931 he has been in the general insurance business. Mr. Hanson has served his community as village clerk, trustee, and president. He was a member of the county highway committee from 1937 to 1938, has been a member of the Dunn County Board since 1933 and its chairman since 1935. Mr. Hanson is a World War I veteran. He has served as chairman of the Assembly Committee on Public Welfare since 1941. This is his sixth term in the assembly. Home Address: Elk Mound.

JOHN T. PRITCHARD (Rep.) was born on December 20, 1884 in Caernarvon, Wales and received his early education there. In 1905 he came to America. He studied in the College of Agriculture at the University of Wisconsin for two years. Since then he has engaged in farming, moving to Eau Claire County in 1913. In 1943 Mr. Pritchard was selected by the Eau Claire chapter of Future Farmers to receive the certificate of recognition at the Wisconsin State Fair. This award was made to him for outstanding accomplishments as a farmer in contributing to the education and training of rural youth in agriculture. He has held various public offices and for twelve years was a member of the county board of supervisors. Mr. Pritchard is serving his ninth term in the legislature. Home Address: Route 5, Eau Claire.

CLARENCE WILLIAM GILLEY (Rep.) was born on May 11, 1919 at Rhinelander. He graduated from the high school in that city and later attended Coyne Electric School in Chicago. He has been an electrician and at present is an electrical contractor. Mr. Gilley has held the office of Commander in the American Legion and vice commander of the Veterans of Foreign Wars. He is a World War II veteran, having served in the 77th Infantry Division. This is his first term in the assembly. Home Address: 804 Keenan Street, Rhinelander.



DUEL
Fond du Lac, 1st

PETERSON
Fond du Lac, 2nd

TRAVIS
Grant, 1st

MYRTON DUEL (Rep.) was born on January 26, 1891 in Eldorado. He received his education in the Rosendale grade and high schools, Oshkosh State Teachers College, and by attendance at the University of Wisconsin short course in agriculture. He has been a farmer for twenty-five years and has taught in the Fond du Lac County rural schools. Mr. Duel has been clerk of the town of Fond du Lac since 1931. During World War I he served in the infantry. This is his second term in the legislature. Home Address: Mounted Route 26, Fond du Lac.

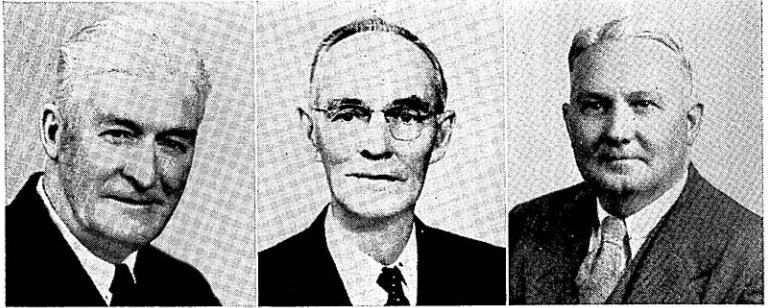
Fond du Lac County, first district: Towns of Calumet, Empire, Fond du Lac, and Taycheedah; city of Fond du Lac.

CHARLES A. PETERSON (Rep.) was born on April 12, 1884 in Harris, Minnesota. After graduating from Grantsburg High School he attended the College of Agriculture of the University of Wisconsin for two years. He has been a farm manager, a herdsman, and a teacher. At present he is a farmer and a breeder of Jersey cattle. Since 1939 he has served as town chairman and county board member. Mr. Peterson has held offices in the Wisconsin Farm Bureau, Wisconsin Dairymen's Association, and Wisconsin Jersey Breeder's Association. He is chairman of the Wisconsin Association of County Agricultural Committees and Soil Conservation Districts. This is his first term in the assembly. Home Address: Rosendale.

Fond du Lac County, second district: Towns of Alto, Ashford, Auburn, Byron, Eden, Eldorado, Forest, Friendship, Lamartine, Marshfield, Metomen, Oakfield, Osceola, Ripon, Rosendale, Springvale and Waupun; villages of Brandon, Campbellsport, Eden, Fairwater, North Fond du Lac, Oakfield, Rosendale, and St. Cloud; city of Ripon and fifth and sixth wards of the city of Waupun.

ROBERT TRAVIS (Rep.) was born on May 2, 1909 at Platteville. After graduating from the Potosi grade and high schools he attended Michigan State College for two years. From 1930 to 1933 he was manager of the Irvington Dairy Products Company in Omaha, Nebraska. From 1933 to 1940 Mr. Travis was engaged in farming. He is a World War II veteran, having served in the anti-aircraft branch of the armed forces. This is his second term in the assembly. Home Address: Platteville.

Grant County, first district: Towns of Beetown, Cassville, Clifton, Ellenboro, Glen Haven, Harrison, Hazel Green, Jamestown, Lima, Paris, Platteville, Potosi, Smelser, and Waterloo; villages of Cassville, Hazel Green, Livingston, Potosi, and Tennyson; cities of Cuba City and Platteville.



HARPER
Grant, 2nd

KEEGAN
Green

BROOKS
Green Lake and
Wausara

HUGH A. HARPER (Rep.) was born December 24, 1885 at Lancaster. He attended the University of Wisconsin where he studied both agriculture and liberal arts and was active in athletics, playing for three years on the basketball team. For six years Mr. Harper was with Company F, 3rd Wisconsin Regiment and member of Company F 1910 A.A.U. champion basketball team. His many public offices include chairman of the town board, member of the school board, member of the county board for ten years, three years as chairman. He held offices in the county National Farm Loan Association; county, state, and national Farm Bureaus; Live Stock Shippers Federation; Council of Agriculture; and Grant County Fair. He was a member of the assembly from 1931 to 1936, and was re-elected in 1944, in 1946, and again in 1948. Home Address: Route 1, Lancaster.

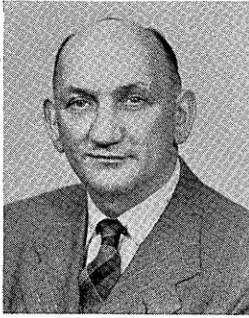
Grant County, second district: Towns of Bloomington, Boscobel, Castle Rock, Fennimore, Hickory Grove, Liberty, Little Grant, Marion, Millville, Mt. Hope, Mt. Ida, Muscodia, North Lancaster, Patch Grove, South Lancaster, Watterstown, Wingville, Woodman, and Wyalusing; villages of Bagley, Bloomington, Blue River, Montfort, Mt. Hope, Muscodia, Patch Grove, and Woodman; cities of Boscobel, Fennimore, and Lancaster.

HARRY A. KEEGAN (Rep.) was born at Madison, South Dakota, on November 18, 1882. He attended high school for one year and then took a two-year course at Monroe Business College, Monroe, Wisconsin. He was in the retail grocery business at Monroe for nine years. For the past twenty-eight years he has been a dairy farmer. Mr. Keegan has served his community as a member of the city council and as treasurer of the school board of Monroe township. For over four years he was a member of Company H of the Wisconsin National Guard. For six years he was vice president and during the past two years he has been a director of the Green County Mutual Insurance Company. Mr. Keegan served in the legislature from 1939 to 1945 and was re-elected in 1948. Home Address: 1424 Fourteenth Avenue, Monroe.

HALBERT W. BROOKS (Rep.) was born in Green Lake on December 9, 1885. His great grandfather, with three sons, came from Vermont to Green Lake County in 1854. He graduated from the Green Lake elementary and high schools, Ripon College Academy, and attended Ripon College. He has been in the general merchandise business since 1908 and during this time he was an athletic coach at Green Lake High School and athletic director and track coach at Ripon College. His public offices include undersheriff from 1921 to 1922, sheriff from 1925 to 1926, village president, village treasurer, trustee of the village board, and member of the county board. For twenty years he has been president of the Wisconsin State Checker Association. Mr. Brooks was a member of the assembly in 1945 and 1949. Home Address: Green Lake.



McCUTCHIN
Iowa



YESCHEK
Iron and Vilas



WALLER
Jackson

ROBERT McCUTCHIN (Rep.) was born in the township of Arena on April 15, 1894. He attended the elementary and high schools and was graduated from the University of Wisconsin College of Agriculture in 1916. Since 1918 he has been a farmer. He is president and manager of the Arena and Ridgeway Telephone Company and vice president of the Mazomanie Mutual Insurance Company. Mr. McCutchin has been town chairman for fourteen terms and has served on the county highway committee for three years. He also served on the Iowa County Defense Council. Mr. McCutchin was elected to the assembly in 1942, and re-elected in 1946, and again in 1948. Home Address: Route 1, Arena.

WILLIAM R. YESCHEK (Rep.) was born at New Bedford, Massachusetts on January 22, 1896. He graduated from the graded schools in Chicago and from the Chicago Business College. From 1921 to 1924 he was director of Hill State Bank in Chicago, and since that time has been a real estate broker, resort operator, and general store owner. His public offices include town chairman for eight years and Vilas county board member, where he served on the highway, conservation, and finance committees. He is a World War I veteran, having served overseas in the regular army. This is his first term in the legislature. Home Address: Lac du Flambeau.

CASPER D. WALLER (Rep.) popularly known as Cap Waller, was born at Hixton on May 20, 1892. He was graduated from the common and high schools and attended the Chicago Art Institute, where he specialized as a cartoonist and chalk talker. For the past twenty-seven years he has followed that vocation. In addition, he was a salesman for twenty years. His versatile hobbies include lecturing, singing, writing, music, landscape painting, sports, fly tying, and poetry. He is known throughout the capitol and state as the broadcaster of verbal sunshine and an advocate of good laws. From 1935 to 1942 he was register of deeds for Jackson County. This is his fourth term in the assembly. Home Address: Black River Falls.



JONES
Jefferson

TREMAIN
Juneau

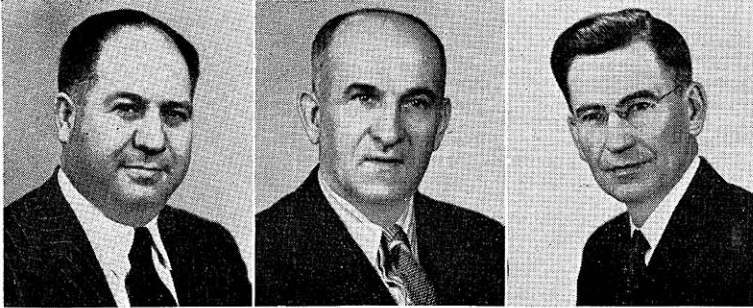
PFENNIG
Kenosha, 1st

THEODORE S. JONES (Rep.) was born on January 27, 1919 at Lake Mills. After graduating from high school he attended Carroll College. Mr. Jones was an agent for the New York Life Insurance Company, was a war fund speaker, and state U. S. O. chairman. From 1938 to 1944 he served in the marines. This is his second term in the legislature. Home Address: 308 East Lake Street, Lake Mills.

BEN TREMAIN (Rep.) was born on February 25, 1888 at Clifton, Monroe County. His education included attendance at both elementary and high schools. He has been an insurance salesman and a railway mail clerk, and at present he is a business manager and retail merchant. Mr. Tremain has held many public offices: village president, supervisor, and treasurer; director of the Hustler schools; member and chairman of the county board. He was a member of the 1931 assembly and was again elected to that body in 1946 and re-elected in 1948. Home Address: Hustler.

FREDERICK S. PFENNIG (Rep.) was born at Kenosha on October 26, 1905. He was educated in the elementary schools of Kenosha, was graduated from St. Johns Military Academy, and attended Northwestern University. Since 1926 Mr. Pfennig has been vice president of Charles H. Pfennig, Inc. He is serving his fifth term in the assembly. In 1947 Mr. Pfennig was chosen assistant Republican floor leader. Home Address: 610 69th Street, Kenosha.

Kenosha County, first district: Third, fourth, fifth, sixth, seventh, thirteenth, fourteenth, fifteenth, sixteenth, seventeenth, and eighteenth wards of the city of Kenosha.



MOLINARO
Kenosha, 2nd

STANGEL
Kewaunee

BICE
La Crosse, 1st

GEORGE MOLINARO (Dem.) was born on October 1, 1902 in Kenosha. He received his education in the Kenosha public schools and later attended the Kenosha Business College, and at present is employed as an auto worker. Since 1939 Mr. Molinaro has served continuously as a member of the county board. This is his second term in the assembly. Home Address: 2308 52nd Street, Kenosha.

Kenosha County, second district: Towns of Brighton, Bristol, Paris, Pleasant Prairie, Randall, Salem, Somers, and Wheatland; villages of Silver Lake and Twin Lakes; first, second, eighth, ninth, tenth, eleventh, and twelfth wards of the city of Kenosha.

JULIUS P. STANGEL (Rep.) was born on December 29, 1894 at Tisch Mills. After graduating from high school he attended Hoffman's Business College. His previous occupations include director of the State Bank of Kewaunee, farmer, trucker, and store manager. At present he is a farmer and an insurance agent. He has held the offices of town treasurer, town clerk, and school clerk. During the last war he served on the county war board and was chairman of his local Red Cross and bond drives. From 1942 to 1948 he was director and vice president of the Kewaunee Chamber of Commerce and from 1947 to 1948 director of the Kewaunee Rotary Club. This is his first term in the assembly. Home Address: Route 1, Kewaunee.

RAYMOND C. BICE (Rep.) was born at La Crosse on April 5, 1896. He received his education in the La Crosse elementary and high schools and the University of Wisconsin Extension Division. From 1916 to 1918 he was employed by a sash and door factory and from 1921 to 1924 he was a partner in a sash and door company, and since that time has been a building contractor and engaged in a retail lumber business. His many public and civic activities include member of the La Crosse Vocational and Adult School Board, chairman of board of trustees of Oak Forest Sanatorium, and member of numerous other civic organizations. He has also been a member and officer of the county board, chairman of the county park commission and president of the business Men's Club and of the county Chamber of Commerce. Mr. Bice served overseas with the army in World War I. This is his second term in the legislature. Home Address: 1707 Avon Street, La Crosse.

La Crosse County, first district: All of the city of La Crosse except the eighth, seventeenth, eighteenth, and twenty-first wards.



SCHILLING
La Crosse, 2nd

MONSON
Lafayette

FINCH
Langlade

HARRY W. SCHILLING (Rep.) was born on September 21, 1887 in Onalaska where he attended the public schools. In 1911 he was graduated from the short course in agriculture, at the University of Wisconsin. Since the age of seven he has resided on a farm and his occupation has always been farming. The public offices which he has held include director of the creamery board from 1916 to 1924, member of the county board in 1922, member of the town board from 1924 to 1926, and director of the district school since 1931. Mr. Schilling was a member of the assembly in 1935 and 1937 and in 1947 and 1949. Home Address: Route 1, Onalaska.

La Crosse County, second district: The eighth, seventeenth, eighteenth, and twenty-first wards of the city of La Crosse, and the entire county outside La Crosse.

MARTIN O. MONSON (Rep.) was born on May 1, 1885 at Argyle. After attending grade school he took a business course. At present he is engaged in farming and road contracting, furnishing crushed rock for roads, driveways, and concrete work and also ground limestone for farms. For five years he has served as town chairman and county board member. Mr. Monson is president and director of the Lafayette Electric Co-op, and director of the Dairyland Power Co-op and the Wisconsin Electric Co-op. This is his second term in the assembly. Home Address: South Wayne.

CLAIR L. FINCH (Rep.) was born on July 31, 1911 in Palisade, Colorado. He was educated in the public and high schools of Antigo and was graduated from the University of Wisconsin where he received his B.A. and LL.B. degrees. In addition, he took a postgraduate course in sociology at the same institution. He was graduated with honors from the Antigo High School and the School of Economics of the University of Wisconsin. Since 1940 he has practiced law in Antigo. He served in the assembly for four terms. At the end of the 1949 session, he resigned to become a member of the Board of Tax Appeals. Home Address: 425 Ridge Street, Madison.



HINZ
Lincoln

NORMAN
Manitowoc, 1st

STROUF
Manitowoc, 2nd

EMIL A. HINZ (Rep.) was born on February 21, 1889, in the town of Proviso, Illinois. He received his education in a parochial school in that state. From 1914 to 1917 he was a wheat farmer in Saskatchewan, and since 1919 he has been engaged in farming. He was secretary of a cooperative cheese factory for twenty-one years. His public offices include town treasurer, town chairman, and county board member for nineteen years, and chairman for eight years. Mr. Hinz is a World War I veteran. This is his second term in the assembly. Home Address: Route 3, Merrill.

JOHN A. NORMAN (Rep.) was born at Hartford in 1885. He received his early education in public and private schools. He attended the University of Wisconsin, receiving his A.B. degree in 1907. Since 1910 he has been a teacher. Prior to his election to the assembly in 1948 Mr. Norman had held no public office. Home Address: 812 State Street, Manitowoc.

Manitowoc County, first district: Towns of Centerville, Liberty, Manitowoc, Manitowoc Rapids, Meeme, and Newton; city of Manitowoc.

ADOLPH STROUF (Dem.) was born in Manitowoc County on May 20, 1878. He received his education in the elementary schools and then became a farmer. At present he is an insurance salesman. He has served as town chairman and president of the mediation board. Mr. Strouf has held offices in the Farmers Equity, Progressive Farmers, Mishicot Telephone Company, Kossuth Mutual Fire Insurance Company, and Manitowoc County Farm Loan Association. This is his first term in the legislature. Home Address: Route 2, Two Rivers.

Manitowoc County, second district: Towns of Cato, Cooperstown, Eaton, Franklin, Gibson, Koesuth, Maple Grove, Mishicot, Rockland, Schleswig, Two Creeks, and Two Rivers; villages of Reedsville and Valdars; city of Two Rivers and that part of the city of Kiel in Manitowoc County.



LUECK
Marathon, 1st

LUEDTKE
Marathon, 2nd

SENGSTOCK
Marinette

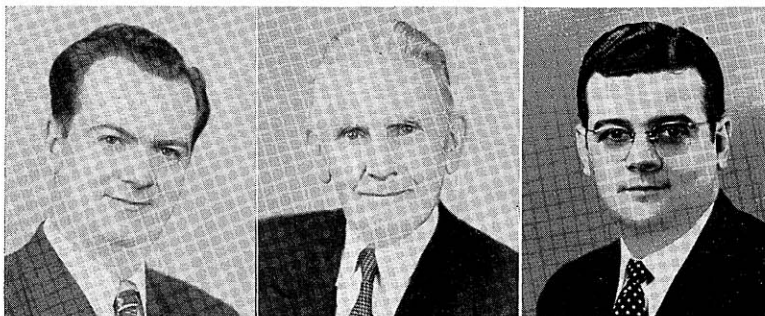
MARTIN C. LUECK (Rep.) was born at Hamburg on February 27, 1888. He was educated in the common schools and took a two-year course in the Marathon County School of Agriculture and Domestic Economy. Mr. Lueck has been a farmer all his life. He has held various public offices: town assessor, district school clerk, and member of the county board from 1934 to 1941. This is his fifth term in the assembly. Home Address: Hamburg.

Marathon County, first district: Towns of Bergen, Berlin, Bern, Bevent, Brighton, Cassel, Cleveland, Day, Eau Pleine, Elderon, Emmet, Frankfort, Franzen, Green Valley, Guenther, Halsey, Hamburg, Holton, Hull, Johnson, Knowlton, Kronenwetter, McMillan, Maine, Marathon, Mosinee, Reid, Rib Falls, Rib Mountain, Reitbrock, Spencer, Stettin, and Wein; that part of Abbotsford village in Marathon County and villages of Athens, Edgar, Elderon, Fenwood, Marathon, Spencer, and Stratford; the city of Mosinee and that part of the city of Colby in Marathon County.

PAUL A. LUEDTKE (Rep.) was born in Wausau on August 24, 1888. He was educated in the elementary and parochial schools, and later took a commercial business course. After completing his apprenticeship as decorator and wood finisher he worked for eight years in this field. At the age of twenty-eight he went into business for himself. Since then he has operated a paint and wall paper store employing a crew of men. He has held a number of public offices: president of the city council; alderman and supervisor; chairman of the city equalization and tax board; chairman of the county board; a member of the county highway committee, of the county traffic committee, county board of health, and of the county park board. Mr. Luedtke is an honorary member of the Veterans of Foreign Wars. This is his fourth term in the assembly. Home Address: 118 Second Avenue, South, Wausau.

Marathon County, second district: Towns of Easton, Harrison, Hewitt, Norrie, Plover, Ringle, Texas, Wausau, Weston; villages of Brokaw, Hatley, Rothschild, and Schofield; city of Wausau.

ROY H. SENGSTOCK (Rep.) was born at Marinette on February 3, 1913. He attended the Marinette County Normal School and the University of Wisconsin. He was employed as a factory worker, taught school three years, and since 1931 has been in the insurance business. He has held several offices in the local Republican committees. In 1939 Mr. Sengstock was an assistant secretary in Governor Heil's office. For more than three years he served with the Service Forces, Infantry, Combat Engineers and the Air Corps. He was elected to the assembly in 1940, and re-elected in 1946 and again in 1948. Home Address: 1724 Main Street, Marinette.



HICKEY
Milwaukee, 1st

O'CONNELL
Milwaukee, 2nd

HUBER
Milwaukee, 3rd

THOMAS A. HICKEY (Dem.) was born November 29, 1913 in Minneapolis. He received his education at St. John's Cathedral Grade School and Pio Nono High School. In 1938 he was employed by the Singer Machine Company and later by Technicolor Corporation. At present he is a lithographic helper. Mr. Hickey is a World War II veteran, who served overseas with the army. He is a member of the American Legion. Before his election to the assembly in 1948 he had held no public office. Home Address: 712 East Knapp Street, Milwaukee.

Milwaukee County, first district: The first and third wards of the city of Milwaukee.

MICHAEL F. O'CONNELL (Dem.) was born in Tipperary, Eire on January 27, 1877. He was educated in the public schools. He is a retired railroad conductor and since 1928 has been an election inspector. He was a member and officer of the Taxpayers League from 1936 to 1940. This is his fourth term in the assembly. Home Address: 1128 North 18th Street, Milwaukee.

Milwaukee County, second district: Second and tenth wards of the city of Milwaukee.

ROBERT T. HUBER (Dem.) was born at Eckelson, North Dakota, on August 29, 1920. After graduation from West Allis Central High School he became an auto parts and service salesman. From 1944 to 1948 he was a contractor and at present is an auto service salesman. He is a member of the Knights of Columbus and Holy Name Society. Prior to his election to the assembly in 1948 Mr. Huber had held no public office. Home Address: 2215 South 84th Street, West Allis.

Milwaukee County, third district: Towns of Franklin and Greenfield; villages of Greendale and West Milwaukee; city of West Allis.



SCHAEFFER
Milwaukee, 4th

SIMMONS
Milwaukee, 6th

FRANK E. SCHAEFFER JR. (Dem.) was born on February 1, 1905, in Milwaukee. He is a graduate of Gesu Catholic School, and from 1920 to 1923 attended drafting and machine shop courses at Milwaukee Vocational School. From 1928 to 1940 he was a painting contractor and later was an automobile body builder. For the past twenty years he has been a building superintendent. At present he is an inspector at Miller Brewing Company in Milwaukee. Mr. Schaeffer has served in his labor union in various capacities. His public offices include vice president of the Fourth of July Committee, and membership on the Red Arrow Park Committee, on the civilian defense council, and on the Red Cross. This is his third term in the legislature. Home Address: 828 North 9th Street, Milwaukee.

Milwaukee County, fourth district: The fourth ward of the city of Milwaukee.

Milwaukee County, fifth district: Fifth and eighth wards of the city of Milwaukee.

CASIMIR KENDZIORSKI (Dem.) elected to the senate April 5, 1949. See page 27.

LE ROY J. SIMMONS (Dem.) was born in Milwaukee on July 25, 1905. After graduation from high school he attended a night school in Chicago for two years where he studied law. He has been an insurance salesman, a postal clerk, and at present is a salesman. He had held no public office until his election to the assembly in 1944. Mr. Simmons is serving his third term in the assembly. Home Address: 517 West Garfield Avenue, Milwaukee.

Milwaukee County, sixth district: The sixth ward of the city of Milwaukee.



SCHALLER
Milwaukee, 7th

HAMMOND
Milwaukee, 8th

LAMB
Milwaukee, 9th

JOHN SCHALLER (Dem.) was born in Augsburg, Germany on July 7, 1912. He came to Milwaukee in 1913. He received his education by attendance at St. Boniface Grade School and by correspondence courses in salesmanship and blueprint reading. He has been employed as a chef and a bartender and at present is an assistant foreman at Western Metal Specialty Company. Mr. Schaller is a member of International Association of Machinists, Fathers and Brothers Marine Club, and St. Boniface Holy Name Society. He was elected to the assembly in 1948. Home Address: 912 West Clarke Street, Milwaukee.

Milwaukee County, seventh district: Seventh ward of the city of Milwaukee.

ALBERT HAMMOND (Dem.) was born at Detroit, Michigan, on January 30, 1883. He received his education at Cass Street and Holy Rosary schools in Milwaukee. From 1911 to 1921 he was a brakeman for the Chicago and Northwestern Railway. He is a painter. Mr. Hammond is a member of the local painter's union, Knights of Columbus, and Holy Name Society. He had held no public office until his election to the assembly in 1948. Home Address: 6012 West St. Paul Avenue, Milwaukee.

Milwaukee County, eighth district: The sixteenth and twenty-third wards of the city of Milwaukee.

EUGENE LAMB (Rep.) was born on March 7, 1910 in Sheboygan County. He received his education in St. Thomas and Hi-Mount Schools in Milwaukee and also attended Boy's Technical High School and vocational night school. His occupations include manager of a service station and of a paint store. He is now employed as an inspector at Allis-Chalmers. Mr. Lamb is a member of the Eagles. He formerly was state champion ice speed skater. This is his first term in the legislature. Home Address: 3215 North 81st Street, Milwaukee.

Milwaukee County, ninth district: The ninth and twenty-sixth wards of the city of Milwaukee.



McPARLAND
Milwaukee, 10th

RYCZEK
Milwaukee, 11th

BANACH*
Milwaukee, 12th

LELAND S. McPARLAND (Dem.) was born at Thorp on December 18, 1896. He received his common and high school education at Thorp, attended Oshkosh State Teachers College for two years, and studied law at Marquette University. He taught school in South Milwaukee from 1919 to 1927 and since 1927 has engaged in the practice of law. Mr. McParland was city attorney of Cudahy from 1932 to 1936. During World War I he served in the United States Navy from 1917 to 1918. In the 1945, 1947, and 1949 sessions he served as Democratic floor leader. This is his fifth term in the assembly. Home Address: 3764 East Armour Avenue, Cudahy.

Milwaukee County, tenth district: Towns of Lake and Oak Creek; cities of Cudahy and South Milwaukee.

ERVIN JOHN RYCZEK (Dem.) was born in Milwaukee on September 20, 1909. He attended St. Adalbert's Parochial School and South Division High School and was graduated from Marquette High School in 1928. In 1938 he was a student at Spencerian Business College in Milwaukee. Since 1930 Mr. Ryczek has been an assistant funeral director. He is a member of the Polish American Citizen Club, Roman Catholic Union, Catholic Order of Foresters, Polish Association of America, Polish National Alliance, Lehitas Club, Federation Group, Holy Name Society, Layton Park Lions Club, South Division Civic Association, Old Duffers' Club and Pol-Americ-Youth Club. He is also a member of the eleventh and twenty-fourth ward Democratic Party. He had held no public office until his election to the assembly in 1940. Home Address: 1910 West Becher Street, Milwaukee.

Milwaukee County, eleventh district: Eleventh and twenty-fourth wards of the city of Milwaukee.

WILLIAM P. BANACH* (Dem.) was born in Milwaukee on March 30, 1903. After graduating from St. Josaphat's School he attended South Division High School. From 1919 to 1935 he was a draftsman and from 1935 to 1940 he was an insurance salesman. Since that time he has owned and operated a tavern. In April 1949 he was elected by the common council as alderman of the 14th ward. For six years Mr. Banach served as president of the Holy Name Society, which position he now holds. He is also a member of the Milwaukee Society, Knights of Columbus, Lincoln Avenue Business Association, South Side Businessmen's Association, Polish American Citizen Club, Tavern Keepers' Association, and the 12th and 14th Ward Democratic Party. In a special election on April 21, 1947 he was elected to the assembly to fill the vacancy caused by the death of Peter P. Pyszczynski. He was re-elected in 1948. Home Address: 933 West Lincoln Avenue, Milwaukee.

Milwaukee County, twelfth district: Twelfth and fourteenth wards of the city of Milwaukee.

*Resigned December 9, 1949.



LANDOWSKI
Milwaukee, 13th



HEIMICK¹
Milwaukee, 14th



FALBE
Milwaukee, 15th

RALPH JOHN LANDOWSKI (Dem.) was born on March 23, 1912 at Milwaukee. He graduated from St. Casimir's Parochial School and Metropolitan Business College. He is a plumber. He is a member of St. Casimir's Civic and Athletic Association, of the American Federation of Labor, and of his local Democratic Club. Mr. Landowski had held no public office until his election to the assembly in 1948. Home Address: 2519 North Humboldt Avenue, Milwaukee.

Milwaukee County, thirteenth district: Thirteenth and twenty-first wards of the city of Milwaukee.

JOHN D. HEIMICK¹ (Rep.) was born in Milwaukee on December 10, 1899. He received his education in the public schools of Minnesota and Wisconsin. From 1924 to 1930 he was a salesman for Bulfin Printers, Inc., and in 1930 became president of the concern. Mr. Heimick has held the offices of school treasurer, assessor, member of the school board, and member of the advisory council of the Milwaukee County Safety Commission. This is his second term in the legislature. Home Address: 8119 North Whitney Road, Milwaukee.

Milwaukee County, fourteenth district: Eighteenth ward of the city of Milwaukee; villages of Fox Point, River Hills, and Shorewood; town of Milwaukee; village of Whitefish Bay.

RALEIGH W. FALBE (Rep.) was born at Milwaukee on March 21, 1890. He received his education in the Milwaukee public schools. From 1918 to 1936 he was a police officer in the city of Milwaukee and from 1936 to 1947 he was in the restaurant and tavern business. He was drafted for military service in World War I but was released and returned to police headquarters. This is his first term in the legislature. Home Address: 3428 West Garfield Avenue, Milwaukee.

Milwaukee County, fifteenth district: The fifteenth and nineteenth wards of the city of Milwaukee.

¹Deceased July 23, 1949.



MERTZ
Milwaukee, 16th

HOWARD
Milwaukee, 17th

SCHMIDT
Milwaukee, 18th

EDWARD F. MERTZ (Dem.) was born at Milwaukee on August 15, 1890. After attending St. Boniface Parochial School in Milwaukee he studied bookkeeping and accounting at Badger State Business College. He was a law clerk for five years, a building contractor for twelve years, and has operated a tavern and restaurant for fifteen years. Mr. Mertz is a member of the American Legion, 40 et 8, Veterans of Foreign Wars, Fraternal Order of Eagles, Fraternal Order of Pilgrims, Badger Fisherman's League, and Tavern League of Wisconsin. He served in the army from 1917 to 1919. Mr. Mertz is secretary of the Milwaukee Democratic County Committee, committeeman of the 25th ward, and member of the Democratic State Central Committee. He was elected to the assembly in 1948. Home Address: 3418 North Green Bay Avenue, Milwaukee.

Milwaukee County, sixteenth district: The twenty-fifth ward of the city of Milwaukee.

MARTIN F. HOWARD (Rep.) was born at Milwaukee on September 12, 1892 and was educated in the public and parochial schools of West Allis. Before 1916 he was an electrician. Since that time he has been in the automobile business, both as salesman and as dealer, and has been a partner in a collection and an insurance agency. Mr. Howard served his country in World War I. He was elected to the assembly in 1934, re-elected in 1936, in 1946, and 1948. Home Address: 2500 South Howell Avenue, Milwaukee.

Milwaukee County, seventeenth district: Seventeenth and twenty-seventh wards of the city of Milwaukee.

CHARLES J. SCHMIDT (Dem.) was born in Milwaukee on March 20, 1907. After graduating from St. Anthony's Parochial School and South Division High School he attended the University of Wisconsin. His occupations include interior decorator; publicity director and inspector for the Wisconsin Industrial Commission; auditor and investigator for the U. S. Department of Labor; and employe of the U. S. Civilian Production Board. During World War II he conducted special surveys for the War Production Board, the War Labor Board, and the War Manpower Commission. Since 1947 he has been a real estate salesman. Mr. Schmidt served with the Wisconsin State Guard and was active in civic affairs. Mr. Schmidt is chairman of the 20th ward Democratic unit. He is a member of the Knights of Columbus, Holy Name Society, and the Eagles. This is his first term in the legislature. Home Address: 3923A North 28th Street, Milwaukee.

Milwaukee County, eighteenth district: Twentieth ward of the city of Milwaukee.



WESTFAHL
Milwaukee, 19th

BURMASTER
Milwaukee, 20th

NICOL
Monroe

CHARLES F. WESTFAHL (Rep.) was born on April 10, 1885 in Milwaukee where he attended the public schools and Rhodes Business College. He was superintendent of the Westfahl File Company. During the war emergency he was serving as a mechanic in war production. He was a member of the 1931 legislature and has been a member continuously since 1939. Home Address: 4820 West Lisbon Avenue, Milwaukee.

Milwaukee County, nineteenth district: The twenty-second ward of the city of Milwaukee.

MILTON F. BURMASTER (Rep.) was born in Milwaukee on January 19, 1905. He attended the University of Wisconsin, and in 1929 received his LL.B. from the Marquette University Law School. Since then he has been a practicing attorney. From 1937 to 1941 he was a Wauwatosa alderman, and president of the common council in 1941. He is a member of the Wauwatosa Chamber of Commerce, and of several civic, fraternal and legal organizations. This is his fourth term in the assembly. Home Address: 614 North 74th Street, Wauwatosa.

Milwaukee County, twentieth district: City of Wauwatosa; Towns of Granville and Wauwatosa.

ALEX L. NICOL (Rep.) was born on March 13, 1895 near Sparta, Monroe County. After graduating from Sparta High School he served with the Wisconsin National Guard on the Mexican border. He was again called into service in March 1917. He served in France as a first lieutenant and commanded Company L, 128th Infantry, 32nd Division. He was wounded twice and was awarded the Distinguished Service Cross. Mr. Nicol has always been active in civic affairs. He served for ten years on the Sparta school board and held the office of county clerk from 1920 to 1938, when he was elected to the legislature where he has served continuously. In 1949 Mr. Nicol was elected Speaker. Home Address: 319 East Main Street, Sparta.



YOUNGS
Oconto

CATLIN
Outagamie, 1st

ROHAN
Outagamie, 2nd

JOHN E. YOUNGS (Rep.) was born at Plainfield on August 2, 1883 and received his education in the Oconto public schools. Since 1906 he has been a barber. Mr. Youngs has always been active in conservation and civic work. He was sealer of weights and measures in 1912 and 1913, secretary of the police and fire commission from 1918 to 1922, member of the board of education from 1922 to 1929, and member of the board of supervisors of Oconto County from 1937 to 1942. This is his sixth term in the assembly. Home Address: 522 1st Street, Oconto.

MARK S. CATLIN, JR. (Rep.) was born on October 18, 1910 at Appleton. He was graduated from Appleton High School in 1927 and attended Lawrence College for one year. He received his B.A. degree from the University of Wisconsin and his law degree from the same institution in 1933. Since 1933 he has been a practicing attorney in Appleton. Mr. Catlin was a member of the assembly from 1937 to 1944 and was re-elected in 1948. He served as Republican floor leader during the 1941 and 1943 sessions. Home Address: 905 North Rankin Street, Appleton.

Outagamie County, first district: Towns of Bovina, Center, Dale, Ellington, Grand Chute, and Greenville; village of Shiocton; city of Appleton.

WILLIAM M. ROHAN (Rep.) was born in the town of Buchanan, Outagamie County and still resides there on a farm east of Kaukauna. He received his early education in public and parochial schools and later attended Green Bay Business College. He was the first rural mail carrier delivering mail out of Kaukauna. He has held a number of public offices: town treasurer, town chairman, county board member, and chairman of the county highway committee. He was a member of the assembly in 1911, 1933, 1937, and 1943, and re-elected in 1946 and in 1948. Home Address: Route 3, Kaukauna.

Outagamie County, second district: Towns of Black Creek, Buchanan, Cicero, Deer Creek, Freedom, Hortonia, Kaukauna, Liberty, Maple Creek, Maine, Oneida, Osborne, Seymour, and Vandenbroek; villages of Black Creek, Bear Creek, Combined Locks, Hortonville, Kimberly, and Little Chute; cities of Kaukauna, Seymour, and third ward of New London.



ZAUN
Ozaukee

GUNDERSON
Pierce

PEABODY
Polk

RALPH L. ZAUN (Rep.) was born at Grafton on December 9, 1920. He attended the Grafton grade and high schools and graduated from the University of Wisconsin from which he received a Ph.B. degree. Following graduation he enlisted in the armed forces of World War II. After discharge from military service he was employed by Kimberly-Clark Corporation, later becoming associated as an officer of the Grafton State Bank and the Grafton Insurance Agency. Mr. Zaun is chairman of the board and treasurer of Sanborn Laboratories, Inc., county chairman of the University of Wisconsin Foundation's centennial campaign; and chairman of the Ozaukee County Advisory Loan Committee of the Department of Veterans Affairs; and member of the Governor's Committee on Veterans' Housing. This is his second term in the assembly. Home Address: Grafton.

SELMER W. GUNDERSON (Rep.) was born at Colfax on February 25, 1890. He was educated in the elementary schools of Madison and attended the Colfax High School for one year. During the 1903 and 1907 legislative sessions he served as messenger in the assembly. From 1910 to 1918 he was cashier for the Soo Line Railroad. Since 1918 he has engaged in dairy farming, specializing in purebred Guernsey cattle. Mr. Gunderson has been secretary of the Pierce County Guernsey Breeders Association for twenty years, director of the Wisconsin State Guernsey Breeders Association for twenty years and was elected vice president in 1940. Mr. Gunderson is a member of the Commission on Interstate Cooperation, which participates as a member of the Council of State Governments. This is his fifth term in the assembly. He has been a member of the Committee on Agriculture, Committee on Highways, Committee on Labor, and Committee on Education. Home Address: Route 1, Spring Valley.

RAYMOND A. PEABODY (Rep.) was born on February 24, 1883 at Baldwin, St. Croix County, where his great-grandfather was one of the pioneer farm-settlers a decade before the Civil War. Mr. Peabody, while still in his teens, worked as a telegraph operator on railroads. In 1903, he, with others, started a mercantile and lumbering business in Washburn County, which he operated for the next fifteen years. Since 1922 he has been interested in the banking, insurance, and finance business, and served three years as a member of the executive council of the Wisconsin Bankers Association. He has been interested in governmental affairs all his life and was a council member for many years in his home village and served three years as mayor. Mr. Peabody served on the Polk County Board, including three years as chairman. He has always been interested in civic betterment movements and has served in many organizations. This is his fourth term in the assembly. Home Address: Milltown.



KOSTUCK
Portage

ZELLINGER
Price

GADE
Racine, 1st

JOHN T. KOSTUCK (Dem.), a resident of Stevens Point, was born there on October 7, 1892. Leaving school at the end of the third grade, he went to work on a farm. At the age of fourteen when he was assisting in blasting stone, he met with an accident which made him blind. He entered the Wisconsin State School for the Blind and after ten years was graduated from the high school department in 1918. Then he attended the University of Wisconsin, specializing in political science and economics. After teaching for three years in the high school department of the School for the Blind at Staunton, Virginia, he entered the piano business at Stevens Point. At present he is a salesman and a piano tuner. He is serving his tenth consecutive term in the assembly. Home Address: 130 Algoma Street, Stevens Point.

VINCENT J. ZELLINGER (Rep.) was born in Czechoslovakia on February 10, 1901. He received his early education in the Nebraska and Price County public schools. He has been a highway maintenance worker, a farmer's cooperative store manager, and an electric welder. Since 1930 he has been a dairy farmer. Mr. Zellinger has held the offices of town chairman, member of the county conservation and forestry committees, and school district director. He has served as town clerk for thirteen years. He is president of Price County Guernsey Breeders Association and legislative director of Elk Worcester Local Farmers Union. Mr. Zellinger has always been interested in bettering conservation and reforestation. In 1925 he took military training at Camp Custer, Michigan. This is his first term in the assembly. Home Address: Phillips.

HAROLD GADE (Dem.) was born in Denmark on February 12, 1899. He graduated from high school in that country and later attended various business schools. He was an accountant for a number of years and at present is department manager of Racine Consumers Co-operative. From 1945 to 1947 he was a Racine alderman, and is chairman of the Racine Housing Authority. This is his first term in the assembly. Home Address: 1921 Fairview Terrace, Racine.

Racine County, first district: The first, second, third, sixth, tenth, eleventh, thirteenth, and fourteenth wards of the city of Racine.



TAYLOR
Racine, 2nd

BIRKETT¹
Racine, 3rd

THOMSON
Richland

THOMAS COLE TAYLOR (Dem.) was born on October 7, 1920 at Butte, Montana. He attended the elementary schools in Regina, Saskatchewan. He was a student at Franklin Junior High School in Racine and graduated from Washington Park High School of that city. Mr. Taylor has been a machine operator and a salesman. When elected to the assembly in 1948 he was a student at the University of Wisconsin, majoring in economics and political science. He is a World War II veteran, having served in the army from 1945 to 1947. In 1949 he received a scholarship to study at Ruskin College, Oxford, England. Home Address: 2058 St. Clair Street, Racine.

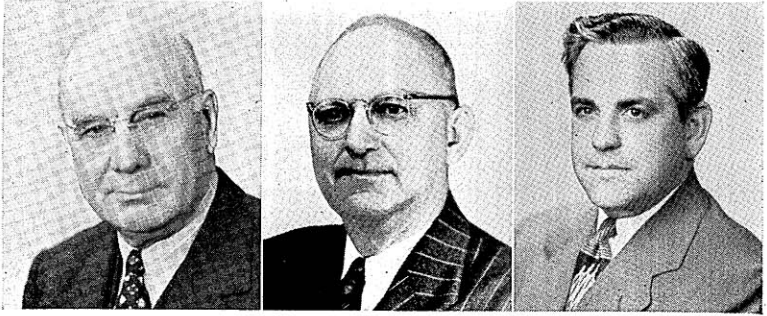
Racine County, second district: The fourth, fifth, seventh, eighth, twelfth, and fifteenth wards of the city of Racine.

GLENN W. BIRKETT¹ (Rep.) was born at Caledonia, Illinois, on February 9, 1888. After attending Elgin Academy he graduated from Beloit College in 1916, receiving a B.A. degree. He is a farmer. From 1925 to 1949 he was chairman of Rochester township and county supervisor. Mr. Birkett served in 339th infantry (North Russian Expedition) in World War I, where he received the Croix de Guerre. He also served in World War II. This is his first term in the assembly. Home Address: Burlington.

Racine County, third district: Towns of Burlington, Caledonia, Dover, Mt. Pleasant, Norway, Raymond, Rochester, Waterford, and Yorkville; villages of Sturtevant, Rochester, Union Grove, and Waterford; city of Burlington and ninth ward of Racine.

VERNON W. THOMSON (Rep.) son of the late Mr. A. A. Thomson and Mrs. Thomson, was born at Richland Center on November 5, 1905. In 1927 he received his B.A. degree from the University of Wisconsin and his LL.B. from the same school in 1932. Since that time he has been a practicing attorney at Richland Center. He was assistant district attorney of Richland County from 1933 to 1935 and city attorney of Richland Center from 1933 to 1937 and from 1942 to 1944. In April 1944 Mr. Thomson was elected mayor of Richland Center, and is serving his third term in that position. From 1933 to 1935 he was enrolling official of the Civilian Conservation Corps for Richland County. Prior to practicing law he taught for two years in the Viroqua High School and for three years in the Madison Vocational School. For the past several years Mr. Thomson has been president of the library board at Richland Center. In 1936 and 1940 he was a delegate from the third congressional district to the National Republican Convention, and in 1940 was chairman of the State Republican Platform Convention. He has been a member of the assembly since 1935 and speaker of that body for three sessions, 1939, 1941, 1943. In 1945, in 1947, and in 1949 he served as Republican floor leader. Home Address: Richland Center.

¹Deceased April 13, 1950.



GRASSMAN
Rock, 1st

ENGBRETSON
Rock, 2nd

ROGAN
Rusk and Sawyer

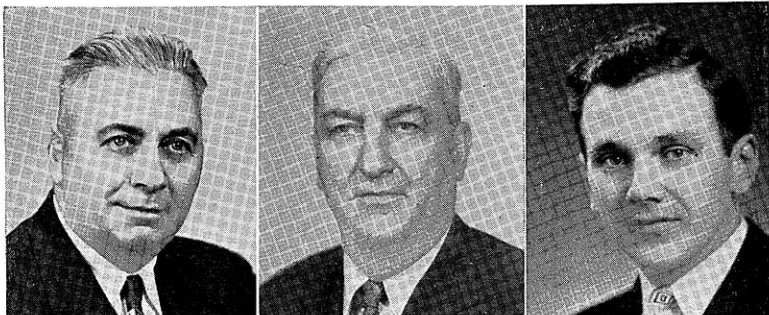
EDWARD GRASSMAN (Rep.) was born in Richland County. After having been graduated from Sextonville High School, he attended White-water State Normal and Valparaiso University and also took a six months' correspondence course in order to acquire a first grade teacher's certificate. He taught for the next eight years and then took up leaf tobacco buying and farming. Mr. Grassman has held a number of public offices: alderman of Edgerton, 1922 to 1926; mayor for the next biennium; and county supervisor for the three years preceding his election to the assembly in 1932. He has served in the assembly continuously since 1933. Home Address: 501 Washington Street, Edgerton.

Rock County, first district: Towns of Center, Fulton, Harmony, Janesville, Lima, Milton, Magnolia, Porter, and Union; village of Milton; cities of Edgerton, Evansville, and Janesville.

BURGER M. ENGBRETSON (Rep.) was born at Oslo, Norway on June 21, 1896. He was educated in the public schools of Beloit and attended the University of Wisconsin. He is a World War I veteran. Mr. Engebretson has been in the insurance and real estate business for the past twenty-five years. He was elected twice to the board of supervisors of Rock County. This is his seventh term in the assembly. Home Address: 742 McKinley Avenue, Beloit.

Rock County, second district: Towns of Avon, Beloit, Bradford, Clinton, Johnstown, La Prairie, Newark, Plymouth, Rock, Spring Valley, and Turtle; villages of Clinton, Footville, and Orfordville; city of Beloit.

PAUL J. ROGAN (Rep.) was born on August 21, 1918 at Eagle. He received his education in St. Mary's School in Wausau; St. Norbert's High School in West De Pere; and St. Norbert's College; and the University of Wisconsin. He is manager of a chick hatchery and former manager of a feed store, and is proprietor of a beauty parlor. Mr. Rogan was president of the Ladysmith Junior Chamber of Commerce. He is a World War II veteran, having served with the combat engineers from 1942 to 1945. This is his first term in the legislature. Home Address: Ladysmith.



BERGERON
St. Croix

STONE
Sauk

MAROTZ
Shawano

WILLIAM A. BERGERON (Rep.) was born on July 3, 1898 at Stillwater, Minnesota. After attending elementary and high schools he became a farmer. Since 1940 he has engaged in various occupations. His public offices include town chairman, county board chairman, county welfare committee chairman, and other public offices. Mr. Bergeron has served as director and vice president of Midland Cooperative Wholesale, director of Mutual Service Life Insurance Company, director of American Farmers Mutual Insurance Company, vice president of Farmington Mutual Fire Insurance Company, and president of Cooperative Auditing Service. This is his first term in the assembly. Home Address: Somerset.

JAMES RILEY STONE (Rep.) was born on October 17, 1886 in Sully County, South Dakota. He received his elementary and high school education in the Reedsburg public schools. In 1907 he graduated from the University of Wisconsin, receiving a B.A. degree. He has held the offices of postmaster and town clerk. From 1945 to 1949 he was sheriff of Sauk County. He owns and manages two Sauk County dairy farms. Mr. Stone has served as secretary and treasurer of Sauk County National Farm Association. He is a World War I veteran, with service in the artillery. This is his first term in the assembly. Home Address: 203 First Street, Baraboo.

ROBERT G. MAROTZ (Rep.) was born at Sheboygan on November 14, 1921. After graduating from St. James Lutheran School in Shawano and Shawano High School he worked as an apprentice in a law office. He served in the marine corps from 1942 to 1945 during which time he also attended Bowling Green State University in Ohio and Dartmouth College. In 1946 he wrote the Wisconsin bar examination and was admitted to the bar the same year. He then attended the Law School of the University of Wisconsin where he received his degree in 1949. This is his first term in the assembly. Home Address: Shawano.



SCHNEIDER
Sheboygan, 1st

TIMMER
Sheboygan, 2nd

ANDERSEN
Taylor

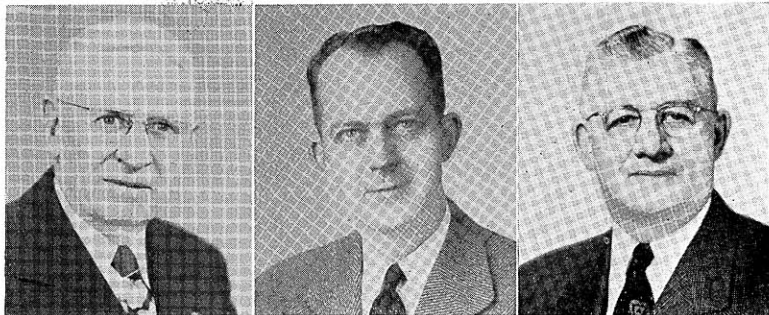
JOHN SCHNEIDER, JR. (Dem.) was born in Manitowoc on August 20, 1918 and has resided in the city of Sheboygan for the past twenty-five years. After graduation from high school he became a window trimmer and later was connected with the wholesale grocery business. At present he is engaged in the restaurant and liquor business. From 1942 to 1943 he served as alderman. In 1940 he was county chairman of Roosevelt's First Voter's Club. Mr. Schneider is a veteran of World War II, having served with a medical division in the European theatre of the war. He is caucus chairman of the joint Democratic Party caucus. In 1948 he was elected delegate-at-large to the Democratic National Convention in Philadelphia, pledged to President Truman for prosperity and progress. This is his third term in the assembly. Home Address: 1805 North 10th Street, Sheboygan.

Sheboygan County, first district: The city of Sheboygan.

HENRY W. TIMMER (Rep.) was born at Gibbsville on June 18, 1873. He received his education in the elementary schools and later attended the Sheboygan Business College. He was born and raised on a farm. He has been a clerk, tinsmith, hardware dealer, and bank cashier. His public offices include county clerk, town clerk, town treasurer, chairman of town board, postmaster, member of Sheboygan County Normal School Board, and chief clerk of the local Selective Service Board. At present he is retired. This is his third term in the legislature. Home Address: Waldo.

Sheboygan County, second district: The entire county outside the city of Sheboygan.

NELS ANDERSEN (Rep.) was born on January 15, 1891 at Biersted, Denmark. After attending the public schools he engaged in farming, which is his present occupation. His public services include member of school board, chairman of county board from 1944 to 1947, town chairman from 1934 to 1947, and member of the county Selective Service Board. Mr. Andersen has been a director of the Taylor County National Farm Loan Association for the past twelve years, and is active in a cooperative association. This is his second term in the assembly. Home Address: Route 1, Gilman.



WILEY
Trempealeau

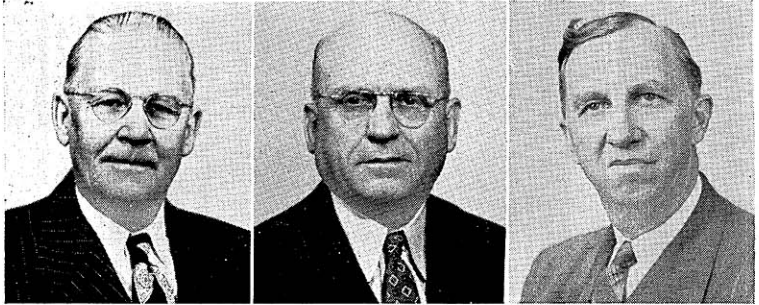
MOCKRUD
Vernon

RICE
Walworth

GUILFORD M. WILEY (Rep.) was born on July 10, 1880 at Whiteland, Indiana. He attended and taught in rural, village, and city schools. He studied at Franklin College in Indiana and Indiana University and received his B.A. from De Pauw University. He was principal of Central High School in La Crosse for five years and superintendent of the La Crosse public schools for sixteen years. In addition to his work as an instructor of mathematics and economics in various high schools he coached baseball and basketball. He also organized and directed Birchwood Lodge, a summer camp for boys. Mr. Wiley has been secretary and vice president of the Arnold Dryer Company of Milwaukee, which manufactures machines for dehydrating green forage crops. At present he is field secretary of the National Council of Presbyterian Men. He has served as president of the La Crosse Kiwanis Club, lieutenant-governor of the Wisconsin-Upper Michigan district of Kiwanis, a member of the board of directors of the La Crosse Y.M.C.A., and president and secretary of the Western Wisconsin Teachers Association. This is his second term in the legislature. Home Address: East Side Farm, Galesville.

ARTHUR O. MOCKRUD (Rep.) was born on August 4, 1912 at Westby. After graduating from the Westby public and high schools he attended the University of Wisconsin, from which he received his Ph.B. and LL.B. degrees. Since 1942 he has been a practicing attorney, and since 1945 he has served as city attorney of Westby. This is his second term in the legislature. Home Address: 200 West State Street, Westby.

ORA R. RICE (Rep.) was born at Boscobel on September 16, 1885. He is a graduate of Boscobel High School and received his dental degree from Northwestern University Dental College in 1907. From 1907 to 1936 he practiced dentistry in Delavan and since 1936 he has devoted his time to farming and legislative duties. Dr. Rice has held a number of elective and appointive offices including alderman of Delavan in 1916 and 1917 and mayor of the city from 1918 to 1922. He served as chairman and member of the State Centennial Committee. This is his seventh term in the assembly. For the past four sessions he has been chairman of the Committee on Agriculture, and is also vice-chairman of the Committee on Rules. Home Address: Delavan.



HOLTEBECK
Washington

REDFORD
Waukesha, 1st

LUDVIGSEN
Waukesha, 2nd

THEODORE HOLTEBECK (Rep.) was born June 4, 1883. He was educated in the public schools and later attended Buckley College in Minneapolis. He worked on a farm in Waupaca County until he was twenty years old. In 1909 he located in West Bend where he operated a barber shop for twenty-five years. Since 1934 he has conducted an insurance office. He has held a number of public offices: chairman of Washington County Republicans for six years, alderman from 1920 to 1924, and from 1936 to 1946; undersheriff from 1924 to 1928; and sheriff from 1929 to 1933. This is his third term in the assembly. Home Address: 539 South 6th Avenue, West Bend.

ALVIN J. REDFORD (Rep.) was born on August 25, 1883 in the town of Pewaukee and attended the rural schools in Waukesha County. For more than sixteen years he was a city police officer; he was sheriff for five terms; deputy sheriff for two years; and served on the fire and police commission for over ten years. He is presently employed by the Sunlite Dessert Company of Waukesha. Mr. Redford is a member of the Elks. This is his first term in the legislature. Home Address: 424 West College Avenue, Waukesha.

Waukesha County, first district: Towns of Eagle, Genesee, Mukwonago, Muskego, New Berlin, Ottawa, Vernon, and Waukesha; villages of Big Bend, Dousman, Eagle, Mukwonago, North Prairie, and Wales; city of Waukesha.

ALFRED R. LUDVIGSEN (Rep.) was born on the old farm homestead in the town of Merton, Waukesha county on March 17, 1886. He received his education in the public schools and at Luther College, Racine. His early years were spent in farming. For many years he was engaged in landscape work and in the development and sale of lake frontage which he owns. He served as a member of the Waukesha County Board and chairman of the town of Merton during the years 1923 to 1928 and has been secretary of the Waukesha Farm Drainage District Board since 1923. He is assembly chairman of the Joint Committee on Finance and he is now chairman of the Joint Legislative Council. This is his eighth term in the assembly. Home Address: Route 1, Hartland.

Waukesha County, second district: Towns of Brookfield, Delafield, Lisbon, Menomonie, Merton, Oconomowoc, Pewaukee, and Summit; villages of Butler, Chenequa, Hartland, Lac La Belle, Lannon, Menomonee Falls, Merton, Sussex, and Pewaukee; city of Oconomowoc.



SPEARBRAKER
Waupaca

ABRAHAM
Winnebago, 1st

STEFFENS
Winnebago, 2nd

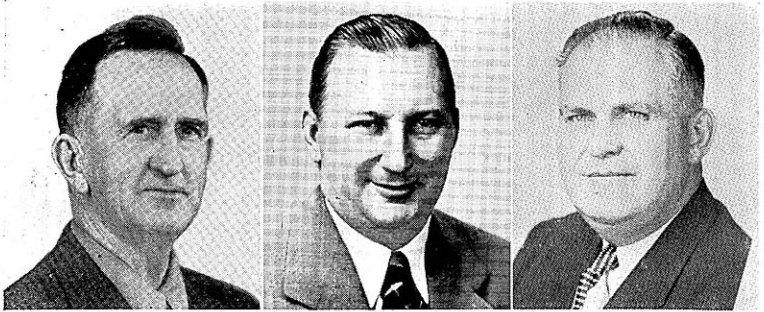
JULIUS SPEARBRAKER (Rep.) was born on September 8, 1886, at Clintonville where he has resided ever since. After his graduation from high school he attended Marquette University for one year. At the present time he is in the general insurance business. Mr. Spearbraker has held a number of positions of trust and honor — city clerk of Clintonville from 1912 to 1934, member and secretary of the municipal water and light commission for twenty-three years, member of the library board for twenty-one years, and jury commissioner of Waupaca County for many years. Mr. Spearbraker served as chairman of the Wisconsin Centennial Finance Committee. In 1940 and 1944 he was a delegate to the Republican National Convention and presidential elector in 1944. This is his sixth term in the assembly. Home Address: 16 Ninth Street, Clintonville.

HARVEY R. ABRAHAM (Rep.) was born in Oshkosh on January 15, 1895. He received his education in the public schools and graduated from the Oshkosh Business College. He was a sheet metal construction worker for eight years and assisted on a farm two years prior to his service in World War I. Mr. Abraham served in overseas combat duty with the 318th Engineers, 6th Division. Following his honorable discharge he was associated with a partner in a photo finishing business. He then travelled for two large nationally known food manufacturers until 1936. Since that time he has been a real estate salesman. He is a past commander of the local post No. 70 of the American Legion and a past exalted ruler of the B.P.O.E. No. 292. This is his second term in the legislature. Home Address: 194½ Ceape Street, Oshkosh.

Winnebago County, first district: City of Oshkosh.

RICHARD J. STEFFENS (Rep.) was born on August 23, 1921 in Neenah. He attended parochial school, the Menasha High School, Oshkosh State Teachers College, and the University of Wisconsin. He is immediate and past president of the Menasha High School Alumni Society and a member of Pi Kappa Delta. In 1948 he was elected junior vice commander of the Wisconsin Department of the Veterans of Foreign Wars, having served the year before as state chief of staff and on several state committees. In World War II he served in the coast artillery and was awarded the Croix de Guerre with palm, and the Bronze Star. He is a member of the Eagles, Germania Society, American Legion, Military Order of the Cootie, and the Winnebago County chapter of the Izaak Walton League. Mr. Steffens is serving his second term in the legislature. Home Address: 221 Second Street, Menasha.

Winnebago County, second district: All the towns, villages, and cities of the county except the city of Oshkosh.



CLARK
Wood

MAY
Chief Clerk

KELLMAN
Sergeant at Arms

WILLIAM WALTER CLARK (Rep.) was born in Plum City on July 7, 1885. He was graduated from Plum City graded school, Ellsworth High School, River Falls Teachers College, and attended the University of Wisconsin. He taught for a number of years in a country school, high school, and Wood County Agricultural School, and has also served as county agricultural agent. Mr. Clark is a farmer and cattle buyer. He has acted as town chairman of the town of Hansen and as chairman of the Wood County Board. Mr. Clark served as chairman of the Committee on Education in 1945, 1947, and 1949 and is a member of the Committee on Taxation. He was elected to the assembly in 1920, and re-elected in 1938, 1942, 1944, 1946 and 1948. Home Address: Vesper.

ARTHUR L. MAY was born in Chicago on January 6, 1901. He attended the elementary schools of Chicago and Wisconsin Rapids and was graduated from Central High School in Madison. In 1932 he received the degree of LL.B. from the University of Wisconsin Law School. Mr. May has been a farmer, mechanic, businessman, and since 1932 has engaged in the practice of law. He served as justice of the peace from 1931 to 1939. He was a delegate to the 1944 Republican National Convention. He was elected chief clerk of the assembly in 1941, and re-elected each session since then. Home Address: 2527 Van Hise Avenue, Madison.

NORRIS J. KELLMAN, the son of Mr. and Mrs. Frank A. Kellman, was born on October 23, 1898 at Galesville. After his graduation from Galesville High School he attended La Crosse State Teachers College for one year and was graduated from the University of Wisconsin in 1923. For ten years he was assistant postmaster at Galesville and for the past sixteen years he has been in the general insurance business. Mr. Kellman was a member of the board of supervisors of Trempealeau County for four years. He served in World War I and was one of the youngest men in the state to be commissioned as a second lieutenant. He has held a number of offices in the American Legion including that of commander of his local post for three years. In 1936 he was an alternate to the Republican National Convention in Cleveland and his father was a delegate to the 1944 Republican National Convention. Mr. Kellman was a member of the assembly in the 1939 session. Since 1941 he has served as sergeant at arms of that body. Home Address: Galesville.