

---

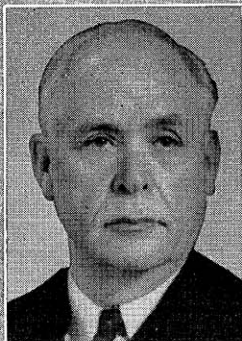
---

# Supreme Court Justices

---

---





FAIRCHILD



HUGHES



MARTIN



FRITZ



BROADFOOT



BROWN



GEHL

Members of the Supreme Court: Chief Justice ÖSCAR M. FRITZ; Justice EDWARD T. FAIRCHILD; Justice HENRY P. HUGHES; Justice JOHN E. MARTIN; Justice GROVER L. BROADFOOT; Justice TIMOTHY BROWN; Justice EDWARD J. GEHL.

## JUSTICES OF THE SUPREME COURT

OSCAR MARION FRITZ was born in Milwaukee on March 3, 1878, where he attended the public schools and the Milwaukee Law School, which is now a department of Marquette University. He was graduated from the College of Law of the University of Wisconsin in 1901. From 1901 to 1912 he practiced law as a member of a partnership with Theodore Kronshage, Francis E. McGovern, Guy D. Goff, Walter Corrigan, and Timothy J. Hannan. From 1912 to 1929 he was circuit judge of Milwaukee County. Judge Fritz was chairman of the Milwaukee Board of Circuit Judges for six years, and vice-chairman of the Wisconsin Board of Circuit Judges. He was advanced to the Supreme Court to succeed Justice Christian Doerfler on May 28, 1929, and was unanimously elected for the balance of the unexpired term in the spring of 1932, and for the full term in 1934. In 1944 he was re-elected. He was married August 30, 1902 to Ena B. Lorch of Madison, Wisconsin, who died on September 8, 1945, leaving two children, Marion Theodore and Norma Louise. On June 21, 1947 he was married to Anna M. Millmann, who was a teacher and principal in the public schools of Milwaukee for forty years. He became Chief Justice upon the expiration of the term of Chief Justice Rosenberry, January 1950.

EDWARD T. FAIRCHILD was born at Towanda, Pennsylvania, June 17, 1872. He received his early education in the public schools of Dansville, New York. Later he was employed in a newspaper office and studied law in the office of Rowe and Coyne. After being admitted to the bar he moved to Milwaukee and began practicing law there. He was elected to the state senate for the sessions of 1907, 1909, and 1915, and to the position of circuit judge in 1916. In April 1930 he was appointed Justice of the Supreme Court and elected to that office in April 1936, and re-elected in April 1946.

HENRY P. HUGHES was born in Columbia County, Wisconsin, on August 13, 1904. He received his early education in St. Peter's School. He attended Oshkosh State Teachers College and Marquette University and received his LL.B. from Georgetown University in 1927. He engaged in the practice of law from 1928 until 1934, acting also as city attorney for the city of Oshkosh in 1933 and 1934. From 1934 to 1937 he held the office of judge of the municipal court of Oshkosh and from 1937 to 1948 he held the office of Judge of the Third Judicial Circuit of Wisconsin. In April 1947 he was elected Justice of the Supreme Court.

JOHN E. MARTIN was born on November 15, 1891 in Green Bay. After attending the parochial and public schools of Green Bay he attended the University of Wisconsin from 1910 to 1914 and was graduated from the Law School of the University of Notre Dame in 1916. He is a practicing attorney. Mr. Martin served in World War I as a first lieutenant in Company E, 127th Infantry, 32nd Division. In 1933 he was appointed assistant district attorney of Milwaukee County and served for one year. In 1934 he was counsel for the Banking Commission. He had held no elective public office until his election as Attorney General in 1938. He was re-elected in 1940 and served as Attorney General from 1939 until his appointment to the Supreme Court on June 1, 1948 to succeed Justice Chester A. Fowler, deceased April 8, 1948. In April 1950 he was elected to the Supreme Court.

GROVER L. BROADFOOT was born on December 27, 1892 in Independence. He was educated in the common schools and received his LL.B. from the Law School of the University of Wisconsin in 1918. He practiced law at Mondovi until 1948 and is president of the Mondovi State Bank. His public offices include mayor of Mondovi 1943 to 1947; district attorney 1923 to 1935; and member of the Wisconsin Board of Tax Appeals 1939 to 1943. He is a veteran of World War I. He served in the assembly from 1945 until his appointment as Attorney General on June 5, 1948. He was appointed to the Supreme Court on November 12, 1948 to succeed Justice Elmer E. Barlow, deceased June 26, 1948.

TIMOTHY BROWN was born February 24, 1889 at Madison and was educated in the Madison public schools, the University of Wisconsin (B.A. 1911) and Harvard Law School (LL.B. 1914). He was admitted to the Wisconsin bar in 1914, practiced law in Milwaukee for two years, served in the United States Navy, 1917-1919, in a destroyer overseas, and then returned to the practice of law in Madison where he practiced continually until 1949. From 1926 to 1949 he was court commissioner for Dane county. During World War II he was government appeal agent and member of an appeal board under the Selective Service System. In 1945 he served as executive counsel to Governor Goodland and again to Governors Goodland and Rennebohm, 1947-1949. From April to July 1949 he served as a commissioner of the Public Service Commission by appointment by Governor Rennebohm who then appointed him to fill the vacancy in the Supreme Court caused by the death of Justice John D. Wickhem.

EDWARD J. GEHL was born at Hartford on January 26, 1890. He graduated from the Hartford elementary and high schools and received his LL.B. from the University of Wisconsin Law School in 1913. He practiced law in Hartford and from 1932 to 1933 he served as United States Attorney for the eastern district of Wisconsin. He was elected judge of the 13th judicial circuit in 1940 and held that office until his election to the Supreme Court in 1948 to fill the vacancy caused by the resignation of Chief Justice Rosenberry. As a member of the 127th Infantry of the 32nd Division in World War I he was decorated with the Purple Heart and the Silver Star.

