

---

---

# Members of the Legislature

---

---



## MEMBERS OF THE SENATE



LAFOND  
1st District



LYTIE  
2nd District



ZABLOCKI  
3rd District

EVERETT LAFOND (Rep.) was born on January 4, 1901 at Two Rivers. From 1906 to 1915 he attended St. Lukes' School in Two Rivers, and attended the Two Rivers High School. Since 1919 he has been a commercial fisherman. Senator Lafond was a member of the city council in 1934, served on the Two Rivers school board from 1940 to 1943, and has been a member of the Manitowoc County Board since 1934. He is past commander of post 1248 of Veterans of Foreign Wars, and is secretary and treasurer of the Wisconsin Commercial Fishermen's Association. He is a World War I veteran, having served in the navy. This is his first term in the legislature. Home Address: Two Rivers.

First senatorial district: Door, Kewaunee, and Manitowoc Counties.

HAROLD A. LYTIE (Dem.), the son of B. O. Lytie of Green Bay, was born in Portage County on June 9, 1899. He attended the public schools of Amherst. At the age of seventeen he was the youngest person in the state to receive the master barber's license. He has owned and operated his own barber shop for twenty-seven years. Mr. Lytie has been secretary, treasurer, and president of the Central West Side Business Men's Association of Green Bay. He is president of the Associated Master Barbers of Wisconsin and was chairman of the joint legislative committee of the Journeymen and Master Barbers for six years. He served three terms in the assembly, from 1937 to 1941 inclusive. In 1944 he was elected to the senate. Home Address: 409 West Walnut Street, Green Bay.

Second senatorial district: Brown and Oconto Counties.

CLEMENT J. ZABLOCKI (Dem.) was born on November 18, 1912 at Milwaukee. After attending St. Vincent's Parochial School and Marquette University High School, he continued his education at Marquette University where he received his Ph.B. degree. From 1935 to 1938 he was a teacher, and since 1933 he has been a church organist. He was elected to the senate in 1942 and re-elected in 1946. Home Address: 1623 South 21st Street, Milwaukee.

Third senatorial district: The fifth, eighth, eleventh, and twenty-fourth wards of the city of Milwaukee.



McBRIDE  
4th District

GETTELMAN  
5th District

REUTHER  
6th District

JOHN C. McBRIDE (Rep.) was born at Milwaukee on September 16, 1908. He attended Marquette University and was graduated from the University of Wisconsin Law School in 1935. Since that time he has been a practicing attorney in Milwaukee. He was elected to the assembly in 1939 to fill a vacancy created by the retirement of Milton T. Murray and was re-elected for the full term in 1940, and again in 1942. In 1944 he was elected to the senate. Home Address: 3026 North Frederick Avenue, Milwaukee.

Fourth senatorial district: The thirteenth, eighteenth, and twenty-first wards of the city of Milwaukee; and the villages of Fox Point, River Hills, Shorewood, Whitefish Bay, and the town of Milwaukee.

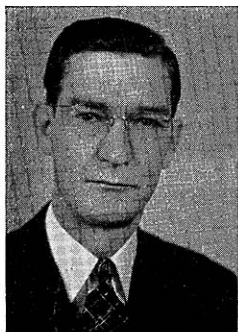
BERNHARD GETTELMAN (Rep.) was born at Chicago, Illinois, on December 23, 1889. He received his education in the common schools of Milwaukee. Senator Gettelman is president-treasurer of the National Soap and Products Company and Noving Publishing Company. He has served in the Milwaukee County sheriff's department both as motorcycle officers' chief and as undersheriff. He was elected a delegate to the Republican National Conventions of 1932, 1936, 1940 and again in 1944. He was elected chairman of the Wisconsin delegation in 1936 and in 1940. From 1917 to 1918 he was a member of the assembly, and from 1923 to 1934 of the senate. He was again elected to the senate in 1938 and re-elected in 1942 and again in 1946. Home Address: 2254 North Hi-Mount Boulevard, Milwaukee.

Fifth senatorial district: The ninth, fifteenth, nineteenth, twenty-second, and twenty-sixth wards of the city of Milwaukee.

EDWARD W. REUTHER (Dem.) was born in Milwaukee on March 30, 1915. After attending St. Joseph's Parochial School, he was graduated from Messmer High School. Prior to his present occupation in the advertising business he was a glass fitter and a federal employe with the Veteran's Administration. Senator Reuther was active in the war finance program and is now active in many civic affairs. This is his first term in the legislature. Home Address: 1637 North 16th Street, Milwaukee.

Sixth senatorial district: The second, seventh, tenth, twentieth, and twenty-fifth wards of the city of Milwaukee.





GAWRONSKI  
7th District



BUSBY  
8th District



TEHAN  
9th District

ANTHONY P. GAWRONSKI (Dem.) was born at Wisconsin Dells on March 24, 1900. He was graduated from Marquette Academy in 1919 and from Marquette University Law School in 1923. Since 1923 he has been a practicing attorney in Milwaukee. Senator Gawronski was a delegate to the Democratic National Convention at Chicago in 1932 and in the fall of that year was elected as one of the presidential electors from the Fourth Congressional District. He served as assistant district attorney and divorce counsel of Milwaukee County from 1933 to 1937. He was elected to the state senate in 1938 and re-elected in 1942 and again in 1946. Home Address: 1103 West Morgan Avenue, Milwaukee.

Seventh senatorial district: The twelfth, fourteenth, seventeenth, and twenty-seventh wards of the city of Milwaukee and the cities of Cudahy and South Milwaukee; towns of Lake and Oak Creek.

ALLEN J. BUSBY (Rep.) is a graduate of the West Milwaukee public schools, West Allis High School, Milwaukee State Teachers College, and the University of Wisconsin. He received the degrees of B.A., M.A., and LL.B. from the University of Wisconsin. He was admitted to the bar in 1928. Prior to engaging in the practice of law Senator Busby was principal of the high school at Little Chute for two years and an instructor of English and history at the West Allis High School for five years. Since 1932 he has been village attorney of West Milwaukee and a member of the law firm of Busby and Luehring in Milwaukee. Senator Busby served in the assembly in 1931 and again in 1935. In 1936 he was elected to the senate and re-elected in 1940 and 1944. Home Address: 1673 South 53rd Street, Milwaukee.

Eighth senatorial district: Towns of Franklin, Granville, Greenfield, and Wauwatosa; villages of Greendale and West Milwaukee; sixteenth and twenty-third wards of the city of Milwaukee and cities of Wauwatosa and West Allis.

ROBERT E. TEHAN (Dem.) was born at Milwaukee on January 7, 1905. He attended Gesu Grade School and Marquette Academy and received his B.A. degree from Marquette University in 1927 and his LL.B. degree in 1929. Before becoming an attorney he was employed in the railroad shops at Milwaukee and as treasurer of the Pabst Theater. He is a member of both the Milwaukee and the Wisconsin State Bar Associations. He served three terms in the assembly and was elected to the senate in 1942 and re-elected in 1946. Home Address: 534 North 11th Street, Milwaukee.

Ninth senatorial district: The first, third, fourth, and sixth wards of the city of Milwaukee.



KNOWLES  
10th District

LENROOT  
11th District

HEDEN  
12th District

WARREN P. KNOWLES (Rep.) was born on August 19, 1908 at River Falls where he received his early education. He holds the degree of B.A. from Carleton College and LL.B. from the Law School of the University of Wisconsin. Since his graduation from the law school in 1933 he has engaged in the practice of law. Senator Knowles was a member of the county board from 1936 to 1940 and is past president of both the Kiwanis and Conservation Clubs. He was a Lieutenant serving on the U.S.S. Nevada during the invasions of Attu, Normandy, and Southern France, being released from active duty to serve in the 1945 session. Senator Knowles acted as Republican floor leader in the senate during the 1943, 1945, and 1947 sessions. This is his second term in the senate. Home Address: New Richmond.

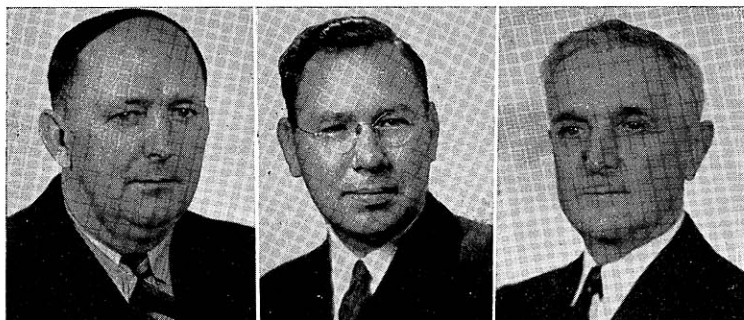
Tenth senatorial district: Buffalo, Pepin, Pierce, and St. Croix Counties.

ARTHUR A. LENROOT, JR. (Rep.) was born in Superior on February 18, 1912. He was educated in the common and high schools of Superior and then attended the Superior State Teachers College and the College of St. Thomas. His occupations include railroad laborer, employment in the traffic department of an oil company, traveling salesman, and abstractor. He is a member of the Wisconsin Title Association. Senator Lenroot is active in conservation and tourist promotion. He served two terms in the assembly and was elected to the senate in 1946. Home Address: 821 8th Avenue, East, Superior.

Eleventh senatorial district: Bayfield, Burnett, Douglas, and Washburn Counties.

ERNEST A. HEDEN (Rep.) was born at Ogema on February 12, 1888. He is a graduate of Gustavus Adolphus College at St. Peter, Minnesota. For twenty-one years prior to 1935 he was a banker and from 1911 to the present time he has been engaged in the logging business. Senator Heden is circuit court commissioner and jury commissioner of Price County. He was a delegate to the Republican National Convention in 1940 and 1944. He served three terms in the assembly and was elected to the senate in 1944. Home Address: Ogema.

Twelfth senatorial district: Ashland, Iron, Price Rush, Sawyer, and Vilas Counties.



PANZER  
13th District

BUBOLZ  
14th District

ROBINSON  
15th District

FRANK E. PANZER (Rep.) was born in the town of Hubbard in Dodge County on September 1, 1890. He attended the public schools and the Oakfield High School. Since 1918 he has been a school teacher and a telegraph operator and at present is engaged in farming. Senator Panzer has held several public offices including those of school clerk, town chairman, member of the Dodge County Board since 1925, and chairman of the Dodge County Board since 1940. He served in the assembly in the session of 1931 and was elected to the senate in 1934 and re-elected in 1942 and in 1946. Senator Panzer was elected president pro tem in 1947. Home Address: Route 2, Oakfield.

Thirteenth senatorial district: Dodge and Washington Counties.

GORDON A. BUBOLZ (Rep.) was born September 10, 1905 in Seymour. He is a graduate of Lawrence College, of the Wharton School of Commerce and Finance, University of Pennsylvania, and of the Law School of the University of Wisconsin. He obtained part of his law education at George Washington Law School. He was an accounting instructor at Lawrence College from 1937 to 1938 and was an associate agricultural economist for the Farm Credit Administration. He is a member of a law firm and a practicing attorney at Appleton. His civic activities include president of the Appleton Chamber of Commerce, president of the Appleton Kiwanis Club, chairman of the Outagamie County USO, chairman of the local war chest, and chairman of the county safety council. He has completed two regular sessions during his first term in the legislature. Home address: 78 River Drive, Appleton.

Fourteenth senatorial district: Outagamie and Shawano Counties.

ROBERT P. ROBINSON (Rep.) was born in Beloit on May 15, 1884. He was graduated from the elementary and high schools and from Beloit College. He was a teacher from 1905 to 1916. From 1917 to 1919 he served in the army, entering the Reserve Corps as a lieutenant colonel. He was in the advertising business for several years and is now retired. Senator Robinson has been active in public and civic affairs having served as alderman, as member of the school board, of the Y.M.C.A. board, and of the Red Cross board. He served as Housing Administrator and president of the Beloit Council of Defense. He is a member of the American Legion. This is his second term in the senate. Home Address: 837 Church Street, Beloit.

Fifteenth senatorial district: Rock County.



PORTER  
16th District

OLSON  
17th District

FELLENZ  
18th District

FOSTER B. PORTER (Rep.) was born at Barnum on August 22, 1891. He received his education in the elementary and high schools. He is a general merchant and a farm owner. He is director of a bank, president of a finance company, and president of a mutual fire insurance company. His public offices include village president for fourteen years, county board member for sixteen years, member of the Mississippi Valley Parkway Committee, and district chairman of the war finance committee. He is a World War I veteran and is active in the American Legion. This is his first term in the legislature. Home Address: Bloomington.

Sixteenth senatorial district: Crawford, Grant, and Vernon Counties.

MELVIN J. OLSON (Rep.) was born in the town of Blanchard in Lafayette County on May 18, 1887. After attending the common and high schools he was graduated from the Monroe Business College. He has been a farmer, a storekeeper, and at present is a farm implement and supply dealer. His public services include the offices of assessor, village treasurer, village president, and memberships on the county board, county relief committee, county selective service board, and the high school board. This is his second term in the senate. Home Address: South Wayne.

Seventeenth senatorial district: Green, Iowa, and Lafayette Counties.

LOUIS J. FELLENZ, JR. (Rep.) was born at Fond du Lac on March 27, 1915. After his graduation from the Fond du Lac High School he went to the University of Wisconsin where he received the degree of LL.B. from the law school in 1939. Since that time he has been a practicing attorney. In June 1944, after repeated efforts to enter various branches of the service, he resigned the office of state senator and volunteered for the United States Army wherein he served until discharged on December 10, 1944. He had held no public office until his election to the senate in 1940. Senator Fellenz was re-elected in 1944, having no opposition in either the primary or general elections. Home Address: 108 South Main Street, Fond du Lac.

Eighteenth senatorial district: Fond du Lac, Green Lake, and Wau-shara Counties.



**BROWN**  
19th District



**BUCHEN**  
20th District



**HILKER**  
21st District

**TAYLOR G. BROWN** (Rep.) was born in Richland County on February 28, 1890. After his graduation from high school he taught in the rural schools for two years and then attended Platteville State Teachers College and the University of Wisconsin. He taught in the Viroqua High School for three years and was principal of Cashton High School for one year. In 1918 he served as county agricultural agent and from 1918 to 1930 as director of agriculture at Oshkosh under the Smith-Hughes act. Senator Brown has operated dairy farms since 1915. He was mayor of Oshkosh from 1930 to 1933 and has served as an officer of the New American Bank at Oshkosh, Oshkosh Fair, Wisconsin Association of Fairs, and Wisconsin Fox Waterways Association. This is his third term in the senate. Home Address: Route 5, Oshkosh.

Nineteenth senatorial district: Calumet and Winnebago Counties.

**GUSTAVE W. BUCHEN** (Rep.) was born on a farm in the town of Lyndon in Sheboygan County on September 25, 1886. His parents came from Germany in 1854 and were among the early settlers of the county. He attended the county district school, the Waldo graded school, and the Sheboygan public schools. He is a graduate of the University of Wisconsin, receiving the degrees of B.A. in 1909 and LL.B. in 1912. From 1909 to 1911 he was assistant professor of rhetoric and oratory at the University of Oregon, and from 1911 to 1912 an instructor in public speaking at the University of Wisconsin. Since 1920 he has practiced law in Sheboygan. Senator Buchen has always been active in community affairs serving on the public library board, the school board, the public recreation board, and the county rural normal school board. In 1936 he was chairman of the Sheboygan County Republican Club and a delegate to the Republican National Convention. This is his second term in the senate. Home Address: 919 North 5th Street, Sheboygan.

Twentieth senatorial district: Ozaukee and Sheboygan Counties.

**EDWARD F. HILKER** (Rep.) was born on April 13, 1881 at Racine where he attended the common schools and business college. In 1898 he volunteered in the Spanish-American War. Senator Hilker was in business for many years and at the present time is a sales promoter. He is interested in athletics having played on and managed many a good ball club and also played polo for a good many years. For fourteen years he has served as alderman. He has been active in local politics as well as in state having served as delegate at large to the Republican National Conventions in 1936 and 1944. He served five terms in the assembly and was elected to the senate in 1942 and re-elected in 1946. Home Address: 2446 Kinzie Avenue, Racine.

Twenty-first senatorial district: Racine County.



SHEARER  
22nd District

NEALE  
23rd District

LAIRD  
24th District

CONRAD SHEARER (Rep.) was born in the town of Somers, Kenosha County. He received his early education in the rural schools and was graduated from the Kenosha High School and the Milwaukee State Normal School. He taught in the rural schools of Kenosha County, the Kenosha College of Commerce, and the Milwaukee public schools. For seven years he was employed at the Kenosha Post Office as letter carrier and postal clerk, and since 1907 has been the secretary-manager of the central office of the Kenosha Industries. He retired from this position July 1, 1946. Senator Shearer served as alderman from 1913 to 1919 and on the Kenosha Park Commission from 1919 to 1923. He was a member of the assembly from 1923 to 1927 and in 1928 was elected to the senate where he is serving his fifth consecutive term. Senator Shearer was chairman for three sessions of the Committee on Agriculture and Labor, and was elected president pro tempore in 1941, 1943, and 1945. Home Address: 520 68th Place, Kenosha.

Twenty-second senatorial district: Kenosha and Walworth Counties.

OSCAR W. NEALE (Rep.) was born at Birmingham, Ohio. He received his elementary and high school education in the Birmingham public schools, and attended Denison University in Ohio and Fremont College, Nebraska, receiving a B.S. degree. He has been a teacher in rural and city grade schools, principal of a high school, and county superintendent. Senator Neale was director of rural education at the State Teachers College at Kearney, Nebraska, for ten years and held a similar position for twenty-nine years at the Stevens Point State Teachers College. He is the author of two textbooks on art appreciation. He has been active in civic and municipal affairs, having served as an alderman for two terms, member of police and fire commission for fourteen years, and at present is a trustee of the Portage County Home. This is his first term in the legislature. Home Address: 402 Church Street, Stevens Point.

Twenty-third senatorial district: Portage and Waupaca Counties.

MELVIN R. LAIRD, Jr (Rep.) was born on September 1, 1922 at Omaha, Nebraska. He graduated from the Marshfield grade and high schools and in 1942 received his B.A. from Carleton College. At present he is secretary and treasurer of a building supply company. From May 1942 to April 1946 Senator Laird served first as an enlisted man, later as lieutenant aboard a destroyer in the U. S. Navy. He took part in the Battle of the Philippine Sea, the invasion of Luzon, Leyte, Iwo Jima, Okinawa, various Pacific engagements, and the occupation of Japan. Senator Laird was elected to fill the vacancy caused by the death of his father on March 19, 1946. This is his first term in the legislature. Home Address: 208 South Cherry Street, Marshfield.

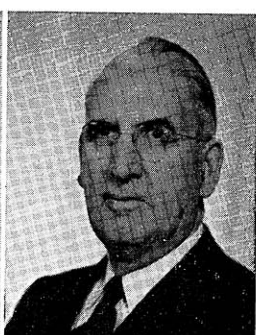
Twenty-fourth senatorial district: Clark, Taylor and Wood Counties.



**KRUEGER**  
25th District



**RISSEK**  
26th District



**MILLER**  
27th District

CLIFFORD W. KRUEGER (Rep.) was born in Madison on June 24, 1918. After graduating from high school he attended Merrill Commercial College, and at present is a tavern operator. In 1946 he was elected alderman, and in 1940 appointed a deputy sheriff. Senator Krueger has been active in civic and fraternal organizations, and in 1945 received the Junior Chamber of Commerce distinguished service award for outstanding service in civic and fraternal work. This is his first term in the legislature. Home Address: 1202 East Main Street, Merrill.

Twenty-fifth senatorial district: Lincoln and Marathon Counties.

FRED RISSEK (Prog.) was born near Fountain City, Wisconsin, on January 15, 1900. After graduation from high school, he spent several years on his father's farm before entering the University of Wisconsin, where he received his B.A. and LL.B. degrees. He taught history in the Beaver Dam High School and lectured on business law at Madison College. Since 1925 he has been a practicing attorney in Madison. Senator Risser served as town clerk in the Town of Madison and as treasurer of the Highlands-Mendota Beach School. He was three times elected district attorney of Dane County as a Republican and in 1933 was president of the Wisconsin District Attorney's Association. In 1939 he succeeded the late Governor Walter S. Goodland as a member of the State Office Building Commission. Senator Risser was elected to the senate in 1936 and re-elected in 1940 and 1944. Home Address: Route 2, Madison.

Twenty-sixth senatorial district: Dane County.

JESS MILLER (Rep.) was born in 1884 in the town of Eagle, Richland County. He was educated in the public schools and is a farmer and auctioneer by occupation. Senator Miller has held a number of public offices—chairman of the town of Eagle, chairman of the county highway committee, the county mediation board, and the county Republican committee. He was elected to the senate for the first time in 1938 and re-elected in 1942 and again in 1946. Home Address: Richland Center.

Twenty-seventh senatorial district: Columbia, Richland, and Sauk Counties.





HIPKE  
28th District

MADSEN  
29th District

DOWNING  
30th District

GEORGE H. HIPKE (Rep.) was born at New Holstein, on December 29, 1879. He received his education in the common schools of his home town. He has held a number of public offices. From 1921 to 1931, he was on the Stanley Board of Education. From 1919 to 1944, he was a member of the board of trustees of the Chippewa County Asylum; and from 1932 to 1935 was mayor of Stanley. He served three terms in the assembly and was elected to the senate in 1940 and again in 1944. Home Address: Route 1, Eau Claire.

Twenty-eighth senatorial district: Chippewa and Eau Claire Counties.

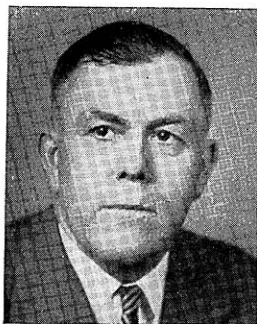
CHARLES D. MADSEN (Rep.) was born in Durham, Connecticut on November 6, 1906. He attended high school, Harvard University from which he received his B.A. degree, the University of Chicago, and the University of Wisconsin from which he received his LL.B. degree in 1934. Since then he has practiced law. Senator Madsen has held a number of public offices—justice of the peace in 1935 and 1936, member of the village board in 1939 and 1940, and district attorney in 1937 and 1938. From 1939 to 1944 he was municipal judge of Polk County. This is his second term in the senate. Home Address: Luck.

Twenty-ninth senatorial district: Barron, Dunn, and Polk Counties.

PHILIP DOWNING (Rep.) was born in Ontario, Canada on September 3, 1871. He was educated in Canada. One year after his graduation from the Vankleek Hill Normal School in Ontario he came to Wisconsin where he taught school for nine years. Since that time he has been a salesman. Senator Downing was postmaster of Amberg for a good many years and has been county supervisor for the past thirteen years. He has also held many other local offices and has always been very active in civic affairs. At the present time he is president of the Marinette County Recreational Association. This is his second term in the senate. Home Address: Amberg.

Thirtieth senatorial district: Forest, Florence, Langlade, Marinette, and Oneida Counties.





LEVERICH  
31st District



SCHLABACH  
32nd District



DEMPSEY  
33rd District

EARL LEVERICH (Rep.) was born on a farm in the town of Angelo, Monroe County on December 6, 1891. He is a graduate of Sparta High School, Madison College, and the University of Wisconsin short course in agriculture. He has been a dairy farmer, fruit grower, and farm co-op leader and has served his community as school clerk, town clerk, and town chairman. He is president of the Sparta Co-op Creamery Association and the Western Wisconsin Co-op Creamery Association; agricultural member of the State Board of Vocational Education; a member of various state-wide dairy committees. He organized the anti-oleo demonstration at Madison in 1931 which resulted in the elimination of oleo in Wisconsin. Senator Leverich was elected to the senate in 1934, in 1942, and in 1946. Home Address: Route 1, Sparta.

Thirty-first senatorial district: Adams, Juneau, Marquette, and Monroe Counties.

RUDOLPH M. SCHLABACH (Rep.) was born on April 4, 1890 at La Crosse. His parents were pioneering farmers who hewed their farm out of the forests of eastern Minnesota. He attended Ohio Wesleyan for his undergraduate work and received his B.S. in 1914. He then taught high school for several years. His legal studies at the University of Chicago were interrupted by World War I in which he served, and on his return in 1919 he entered the Law School of the University of Wisconsin, graduating in 1921. Since that time he has been practicing law in La Crosse. Senator Schlabach served two terms as district attorney for La Crosse County and was a member of the assembly in 1939. He was elected to the senate in 1940 and re-elected in 1944. Home Address: 132 South 16th Street, La Crosse.

Thirty-second senatorial district: Jackson, La Crosse, and Trempealeau Counties.

CHESTER E. DEMPSEY (Rep.) was born at Merton, Waukesha County, on July 20, 1895. He owns and operates a modern dairy farm of 240 acres which has been the homestead of the Dempsey family since early pioneer days. He received his education in the county schools and has always been a close student of farming and farm problems. He publishes Dempsey's Farm Economics, a paper with a wide circulation among farmers of the state. Prior to his election to the senate in 1934 he was a member of the Waukesha County Board and has held various school and township offices. In 1946 he was again elected to the senate. Home Address: Route 1, Hartland.

Thirty-third senatorial district: Jefferson and Waukesha Counties.

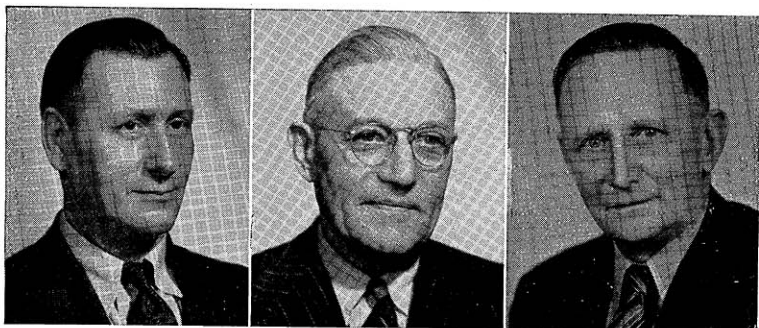


DONAHUE  
Chief Clerk

DAMON  
Sergeant at Arms

THOMAS M. DONAHUE was born on July 13, 1907 at Kenosha. After graduating from the St. George Parochial School in Kenosha and the Kenosha High School he continued his education at the University of Wisconsin. Since 1941 Mr. Donahue has held the position of personnel examiner in the State Bureau of Personnel. He served in the Navy from 1944 to 1946. He is a member of the American Legion. In the 1939, 1941, and 1943 legislative sessions he was assistant chief clerk of the senate and in 1947 was elected chief clerk of that body. Home Address: 841 East Johnson Street, Madison.

HAROLD E. DAMON was born at Edgerton, Minnesota on October 3, 1885. In 1888 he came to Wisconsin where he has since resided. After graduation from high school he attended Wausau Business College. Mr. Damon is president and general manager of Damon Brothers Insurance Agency and director and vice president of Time Insurance Company. His public offices include alderman and supervisor, deputy sheriff, and deputy clerk of court. In 1942 he was assistant sergeant at arms of the senate; in 1943 he was acting sergeant at arms; and in 1945 and again in 1947 he was elected sergeant at arms of the senate. Home Address: 706 Franklin Street, Wausau.



ROMELL  
Adams and Marquette

GEHRMANN  
Ashland

SYKES  
Barron

LOUIS C. ROMELL (Rep.) was born at Chicago on April 7, 1899. He received his education in the public schools. His occupations include salesman, railroad machinist, and employment at the Badger Ordnance Plant in Baraboo, and at the Dodge plant in Chicago during the war emergency. At present he is engaged in farming. Mr. Romell has served as district school clerk and holds the office of town supervisor. He is interested in township government, elementary and high school education, R.E.A. and cooperatives. In 1942 his four sons were all students in the freshman, sophomore, junior, and senior classes of the same high school. Two of these sons served overseas, his second son was lost in the Hurtengen Forest engagement, and the other served in the Philippine and Japanese areas. This is his first term in the legislature. Home Address: Route 1, Adams.

B. J. GEHRMANN (Rep.) was born in Germany on February 13, 1880. At the age of thirteen he came to this country where he worked in a Chicago packing plant and attended night school. Three years later he moved to Clark County. Since 1915 he has lived in Ashland County where he cleared a farm five miles from Mellen and where he has farmed ever since. He has held a number of public offices, serving as assessor for five years, town chairman for ten years, and school clerk since 1919. He has been an officer of the American Society of Equity for many years, serving as county president and member of the state executive board and as state president of the organization for years until it merged with the Farmers Union. Mr. Gehrmann served as a member of Congress from 1935 to 1943. He was a member of the Wisconsin assembly in 1927 and 1931 and of the senate in 1933. In 1946 he was again elected to the assembly. Home Address: Mellen.

CHARLES H. SYKES (Rep.) was born on January 11, 1881 at Brodhead. After his graduation from the Milton Junction High School he attended Janesville Business College. At the age of nineteen he began farming in Rock County. In 1919 he moved to a farm in Barron County on which he resided until he retired in 1934. Mr. Sykes served for two years on the county board of Rock County and for twelve years on the county board of Barron County. This is his fifth term in the assembly. Home Address: Route 1, Cameron.



SQUIRES  
Bayfield

LYNCH  
Brown, 1st

LARSEN  
Brown, 2nd

S. E. SQUIRES (Rep.) was born in Iowa on September 27, 1882. He was educated in the common and high schools and attended college in Iowa. He was a teacher and grain merchant from 1900 to 1917. Since 1919 he has been a farmer. Mr. Squires has served twenty-four terms on the county board. During World War I he served as captain in the infantry. This is his third term in the assembly. Home Address: Route 2, Mason.

ROBERT E. LYNCH (Dem.) was born in Chicago and was graduated from Notre Dame University. He is sales manager for a building materials company. During the war he was the public relations officer of the Kewaunee Shipbuilding and Engineering Corporation. His election to the assembly in 1932 marked his entrance into public office. He was again elected to the assembly in 1934, and since 1943 has served consecutively as a member of that house. Mr. Lynch was elected chairman of the Democratic caucus and assistant Democratic floor leader for 1947. Home Address: 1144 Cass Street, Green Bay.

Brown County, first district: The city of Green Bay.

HARVEY E. LARSEN (Rep.) was born at Green Bay on September 8, 1879. After attending public school he engaged in farming. For more than thirty-one years he has been engaged in raising purebred Percheron horses. His public offices include town chairman for eight years, member of the road and bridge committee for four years, and since 1935 president of the Denmark Co-op Service. Home Address: Route 2, Denmark.

Brown County, second district: All of the towns, cities, and villages of Brown County except the city of Green Bay.



**BROADFOOT**  
Buffalo and Pepin

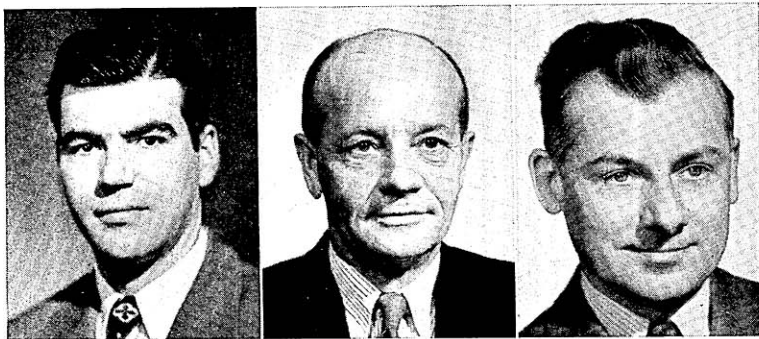
**BENSON**  
Burnett and Washburn

**BARNARD**  
Calumet

GROVER L. BROADFOOT (Rep.) was born on December 27, 1892 in Independence. He was educated in the common schools and received his LL.B. from the Law School of the University of Wisconsin in 1918. He is a practicing attorney, and president of the Mondovi State Bank. His public offices include mayor of Mondovi 1943 to 1947; district attorney 1923 to 1935; and member of the Wisconsin Board of Tax Appeals 1939 to 1943. He is a veteran of World War I. This is his second term in the assembly. Home Address: Mondovi.

GUY BENSON (Rep.) was born at Jordan, Green County on April 18, 1876. He was educated in the common schools and was graduated from the short course in agriculture at the University of Wisconsin in 1895. From 1895 to 1903 he farmed. Since 1903 he has been in the general merchandise business and has been located at Spooner for the past thirty-two years. In 1946 he retired. Mr. Benson was president of the board of public works at Rice Lake from 1906 to 1907, a member of the Washburn County Board for twelve years, alderman and mayor of Spooner for three and two years respectively, and president of the Spooner School Board since 1920. He was also a member of the Wisconsin National Guard for two years. He has been a member of the assembly since 1938. Home Address: Spooner.

CHARLES R. BARNARD (Rep.) was born on March 13, 1883 at Brillion where he was graduated from high school and attended business college. He was a bookkeeper from 1903 to 1910 and a farmer from 1910 to 1925. Since 1927 Mr. Barnard has been an oil dealer. He was elected to the assembly for the first time in 1940. Home Address: Brillion.



PADRUTT  
Chippewa

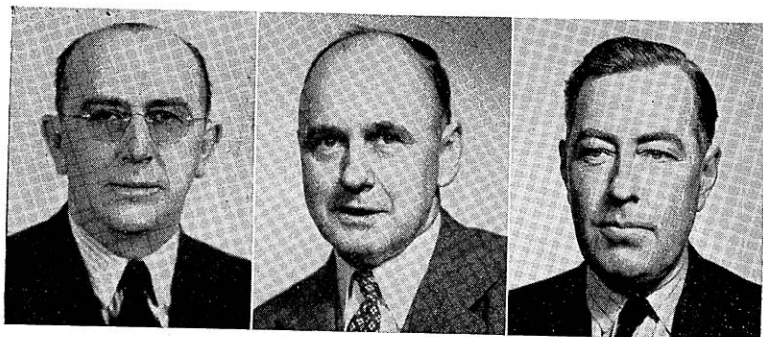
STADLER  
Clark

BETTS  
Columbia

ARTHUR L. PADRUTT (Rep.) was born in Huron, South Dakota on September 26, 1917. In 1928 he moved with his parents to Chippewa Falls. He was graduated from McDonell Memorial High School in Chippewa Falls and received the degree of B.S. from Eau Claire State Teachers College in 1939. Since then he has attended the University of Wisconsin Law School and has taught in the public schools of Wisconsin. At present he is engaged in operating a commercial photography plant in Chippewa Falls. This is his fourth term in the assembly. Home Address: 51 East Birch Street, Chippewa Falls.

ARTHUR E. STADLER (Rep.) was born on April 17, 1892 in Marnesco, Michigan. After graduating from elementary and high schools he attended Williams Business College, Oshkosh. For three years he attended evening school in Minnesota, studying advanced accounting. Mr. Stadler was an accountant and at present is engaged in farming. He has been director of various cooperative organizations. His public offices include member of school board, chairman and supervisor of the county board, and chairman of the town board. This is his first term in the legislature. Home Address: Route 2, Owen.

ARNIE F. BETTS (Rep.) was born in Waterloo on January 7, 1909. After graduating from the Waterloo High School he attended the University of Wisconsin, receiving his B.A. degree in 1935. Mr. Betts has been a farmer, secretary to the Lieutenant Governor, and an editor. At present he is an editor and publisher. He served as secretary of the Lodi-Lake Wisconsin Chamber of Commerce, and is a member of the Rotary Club. This is his first term in the assembly. Home Address: Lodi.



McDOWELL  
Crawford

BEGGS  
Dane, 1st

MULLEN  
Dane, 2nd

DONALD C. McDOWELL (Rep.) was born at Mt. Sterling in Crawford County on August 27, 1890. He received his education at Soldiers Grove High School, Lawrence College, and the University of Wisconsin. Mr. McDowell is interested in farming and is a farm owner. He was postmaster at Soldiers Grove from 1922 to 1935; a member of the school board from 1926 to 1933; of the Soldiers and Sailors Relief Commission for the past nine years; and at present is a member of the county board. He served in World War I with the famous 32nd Division. In 1945 and again in 1947 he was elected speaker. This is his sixth term in the assembly. Home Address: Soldiers Grove.

LYALL T. BEGGS (Rep.) was born on November 9, 1899 at Plainfield. He attended the schools in Cameron and graduated from Eau Claire Teachers College in 1922 and in 1925 from the Law School, University of Wisconsin. Mr. Beggs is a practicing attorney in Madison. From 1935 to 1939 he was district attorney and since 1939 circuit court commissioner. During World War I he served overseas with the 65th Regiment, C.A.C., First Army Corps. He is a past commander of the American Legion, former state commander of the Veterans of Foreign Wars, and at present is the national senior vice commander-in-chief of that organization. He served as state president of the Fraternal Order of Eagles in 1937 and 1938. In 1943 and 1945 he served as Progressive floor leader. He was first elected to the assembly in 1940. Home Address: 806 Miami Pass, Madison.

Dane County, first district: The city of Madison.

EARL MULLEN (Rep.) was born on September 27, 1902 at Deerfield. He is a graduate of the Deerfield High School and attended the University of Wisconsin. He has been a salesman and a farmer and at present is a barber. He is interested in farmers' cooperative movements and in conservation. Mr. Mullen has been very active in preserving the pure food laws of Wisconsin. He was co-author of the cooperative medical health bill, the first law of its kind in the United States. He is chairman of the Blooming Grove town board and is a member of the Dane County Board. Mr. Mullen is chairman of the Dane County Conservation Committee and for eight years has been director of the Dane County Conservation League. This is his third term in the assembly. Home Address: Route 50, Madison.

Dane County, second district: Towns of Albion, Blooming Grove, Bristol, Burke, Christiana, Cottage Grove, Deerfield, Dunkirk, Dunn, Medina, Pleasant Springs, Rutland, Sun Prairie, Windsor, and York; villages of Cambridge, Cottage Grove, Deerfield, De Forest, McFarland, Marshall, Monona, Rockdale, and Sun Prairie; city of Stoughton.





ROETHLISBERGER  
Dane, 3rd

GENZMER  
Dodge, 1st

CANNIFF  
Dodge, 2nd

RUDY W. ROETHLISBERGER (Rep.) was born at Wellman, Iowa, on April 9, 1894. He was educated in the common schools in Tennessee and has been a farmer for many years. His public offices include town assessor, town chairman, member of the county board, director and treasurer of a local school district, and director of a high school district. This is his second term in the legislature. Home Address: Route 2, Verona.

Dane County, third district: Towns of Berry, Black Earth, Blue Mounds, Cross Plains, Dane, Fitchburg, Madison, Mazomanie, Middleton, Montrose, Oregon, Perry, Primrose, Roxbury, Springdale, Springfield, Vermont, Verona, Vienna, and Westport; that part of the village of Brooklyn in Dane County and the villages of Belleville, Black Earth, Blue Mounds, Cross Plains, Dane, Maple Bluff, Mazomanie, Middleton, Mount Horeb, Oregon, Shorewood Hills, Verona, and Waunakee.

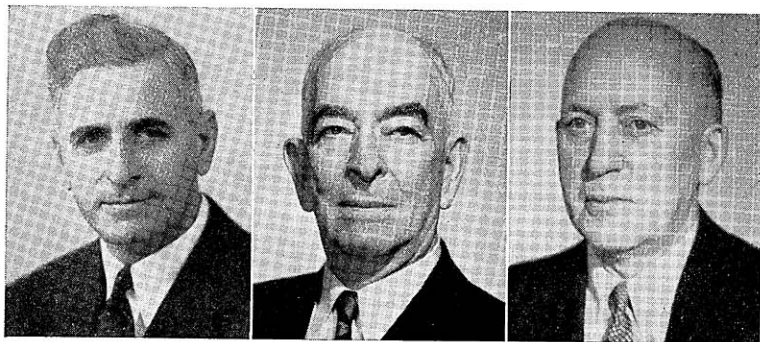
ELMER L. GENZMER (Rep.) was born on January 3, 1903 in Mayville. He attended Milwaukee State Teachers College and Marquette Law School from 1923 to 1924. Mr. Genzmer served as justice of the peace from 1932 to 1942. In 1942 and again in 1944 he was elected mayor of Mayville and in 1946 he was re-elected to that office. In 1939 he was one of several Democrats instrumental in furthering the Heil program. In 1943 he was Democratic floor leader, and that same year left the Democratic Party because of a policy division and joined the Republican Party. This is Mr. Genzmer's seventh consecutive term in the assembly. Home Address: 435 North Main Street, Mayville.

Dodge County, first district: Towns of Ashippun, Clyman, Emmet, Herman, Hubbard, Hustisford, Lebanon, Leroy, Lomira, Rubicon, Shields, Theresa, and Williamstown; villages of Clyman, Hustisford, Iron Ridge, Lomira, Neosho, and Theresa; cities of Horicon and Mayville, and the fifth, sixth, thirteenth, and fourteenth wards of the city of Watertown.

JESSE ANSON CANNIFF (Rep.) was born on a farm near Juneau on April 30, 1900. After attending high school he was graduated from the Beaver Dam Business College. Until 1926 he was a farmer and since that time has been an oil jobber. From 1936 to 1942 he served as alderman. This is his third term in the legislature. Home Address: 308 Mary Street, Beaver Dam.

Dodge County, second district: Towns of Beaver Dam, Burnett, Calamus, Chester, Elba, Fox Lake, Lowell, Oak Grove, Portland, Trenton, and Westford; villages of Lowell, Reeseville, and east ward of Randolph; cities of Beaver Dam, Fox Lake, and Juneau, and first, second, third, and fourth wards of the city of Waupun.





MEUNIER  
Door

WHEALDON  
Douglas, 1st

NELSON  
Douglas, 2nd

ALEX J. MEUNIER (Rep.) was born on November 9, 1897 on a farm in the town of Brussels, Door County. He attended the public schools and graduated from Algoma Normal School. He taught school in Door County for nine years. Mr. Meunier also was a garage bookkeeper, car salesman, collector, and is now a life insurance agent. He served as sheriff and undersheriff of Door County each for four years. For two years he was treasurer of the Lions Club and he is a member of the Sturgeon Bay Chamber of Commerce. In World War I the armistice was signed when he was on the way to Camp Logan, Texas. This is his third term in the legislature. Home Address: Sturgeon Bay.

ALBERT D. WHEALDON (Rep.) was born at Caldwell, Ohio, on May 18, 1868. After graduating from the Ohio public schools he attended State Teachers College, Warrensburg, Missouri, the University of Missouri, from which he received his A.B. degree, the University of Wisconsin, from which he received his M.A. degree, and the University of Berlin, Germany. He taught in the rural and high schools and later was professor of chemistry at the Superior State Teachers College, holding at present the chair of professor of chemistry, emeritus, at the same school. Mr. Whealdon has served as councilman since 1941, and as president of the city council since 1943. He has been active in many church, fraternal, and civic organizations. This is his first term in the legislature. Home Address: 1704 Hammond Avenue, Superior.

Douglas County, first district: The fourth, fifth, sixth, seventh, eighth, ninth, tenth, eleventh, twelfth, thirteenth, fourteenth, fifteenth, and sixteenth wards of the city of Superior.

CHARLES E. NELSON (Rep.) was born on July 11, 1882 in Sweden. After graduation from high school he attended the University of Wisconsin, graduating in 1906 with an A.B. degree. At present he is employed as a clerk. Mr. Nelson has held several public offices including alderman, county supervisor, and clerk of the circuit and superior court. This is his first term in the legislature. Home Address: 3410 North 21st Street, Superior.

Douglas County, second district: Towns of Amnicon, Bennett, Brule, Cloverland, Dairyland, Gordon, Hawthorne, Highland, Lakeside, Maple, Oakland, Parkland, Solon Springs, Summit, Superior, and Wascott; villages of Lake Nebagamon, Oliver, Solon Springs, and Poplar; first, second, third, seventeenth, eighteenth, nineteenth, and twentieth wards of the city of Superior.



HANSON  
Dunn

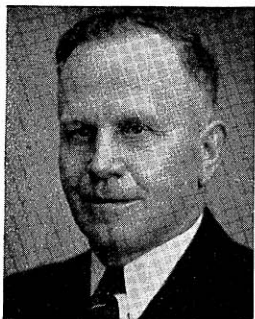
PRITCHARD  
Eau Claire

FISHER  
Florence, Forest  
and Oneida

EARL W. HANSON (Rep.) was born on October 17, 1888 at Elk Mound where he attended the public schools. In 1907 he was graduated from the Eau Claire Business College. He was cashier of the bank at Elk Mound from 1908 to 1931. Since 1931 he has been in the general insurance business. Mr. Hanson has served his community as village clerk, trustee, and president. He was a member of the county highway committee from 1937 to 1938, has been a member of the Dunn County Board since 1933 and its chairman since 1935. Mr. Hanson is a World War I veteran. This is his fifth term in the assembly. Home Address: Elk Mound.

JOHN T. PRITCHARD (Rep.) was born on December 20, 1884 in Caernarvon, Wales and received his early education there. In 1905 he came to America. He studied in the College of Agriculture at the University of Wisconsin for two years. Since then he has engaged in farming, moving to Eau Claire County in 1913. In 1943 Mr. Pritchard was selected by the Eau Claire chapter of Future Farmers to receive the certificate of recognition at the Wisconsin State Fair. This award was made to him for outstanding accomplishments as a farmer in contributing to the education and training of rural youth in agriculture. He has held various public offices and for twelve years was a member of the county board and chairman of its finance and resolution committees. Mr. Pritchard is serving his eighth term in the legislature. Home Address: Route 5, Eau Claire.

WALTER S. FISHER (Rep.) was born on April 6, 1894 in Minocqua where he attended the elementary schools. After graduation from the Minocqua High School he attended Oshkosh State Teachers College and the University of Wisconsin from which he received his LL.B. Mr. Fisher is a practicing attorney. In World War I he served in the 304th Field Signal Battalion. He had held no public office until his election to the assembly in 1940. Home Address: Minocqua.



DUEL  
Fond du Lac, 1st



VAN DE ZANDE  
Fond du Lac, 2nd



TRAVIS  
Grant, 1st

MYRTON DUEL (Rep.) was born on January 26, 1891 in Eldorado. He received his education in the Rosendale grade and high schools, Oshkosh State Teachers College, and by attendance at the University of Wisconsin short course in agriculture. He has been a farmer for twenty-five years and has taught in the Fond du Lac County rural schools. Mr. Duel has been clerk of the town of Fond du Lac since 1931. During World War I he served in the infantry. This is his first term in the legislature. Home Address: Route 1, Fond du Lac.

Fond du Lac County, first district: towns of Calumet, Empire, Fond du Lac, and Taycheedah; city of Fond du Lac.

ALFRED VAN DE ZANDE (Rep.) was born at Campbellsport on October 8, 1893. He graduated from the Campbellsport High School in 1912. He has been in the insurance business since 1910 and is president of the Campbellsport Mutual Insurance Company. Mr. Van De Zande was president of the village of Campbellsport for two years, a member of its board of trustees for four years, and undersheriff and sheriff of Fond du Lac County for one term each. In 1918 he was an assistant instructor of military tactics at the University of Wisconsin. This is his fourth term in the assembly. Home Address: Campbellsport.

Fond du Lac County, second district: Towns of Alto, Ashford, Auburn, Byron, Eden, Eldorado, Forest, Friendship, Lamartine, Marshfield, Metomen, Oakfield, Osceola, Ripon, Rosendale, Springvale, and Waupun; villages of Brandon, Campbellsport, Eden, Fairwater, North Fond du Lac, Oakfield, Rosendale, and St. Cloud; city of Ripon and fifth and sixth wards of the city of Waupun.

ROBERT TRAVIS (Rep.) was born on May 2, 1909 at Platteville. After graduating from the Potosi grade and high schools he attended Michigan State College for two years. From 1930 to 1933 he was manager of the Irvington Dairy Products Company in Omaha, Nebraska. From 1933 to 1940 Mr. Travis was engaged in farming. He is a World War II veteran, having served in the anti-aircraft branch of the armed forces. This is his first term in the assembly. Home Address: Platteville.

Grant County, first district: Towns of Beetown, Cassville, Clifton, Ellenboro, Glen Haven, Harrison, Hazel Green, Jamestown, Lima, Paris, Platteville, Potosi, Smelser, and Waterloo; villages of Cassville, Hazel Green, Livingston, Potosi, and Tennyson; cities of Cuba City and Platteville.



HARPER  
Grant, 2nd



SCHOONOVER  
Green



CLARK, B. A.  
Green Lake and  
Waushara

HUGH A. HARPER (Rep.) was born December 24, 1885 at Lancaster. He attended the University of Wisconsin where he studied both agriculture and liberal arts and was active in athletics, playing for three years on the basketball team. For six years Mr. Harper was with Company F, 3rd Wisconsin Regiment and member of Company F 1910 A.A.U. champion basketball team. His many public offices include chairman of the town board, member of the school board, member of the county board for ten years, three years as chairman. He held offices in the county National Farm Loan Association; county, state, and National Farm Bureaus; Live Stock Shippers Federation; Council of Agriculture; and Grant County Fair. He was a member of the assembly from 1931 to 1936, and was re-elected in 1944 and again in 1946. Home Address: Route 1, Lancaster.

Grant County, second district: Towns of Bloomington, Boscobel, Castle Rock, Fennimore, Hickory Grove, Liberty, Little Grant, Marion, Millville, Mt. Hope, Mt. Ida, Muscoda, North Lancaster, Patch Grove, South Lancaster, Watterstown, Wingville, Woodman, and Wyalusing; villages of Bagley, Bloomington, Blue River, Montfort, Mt. Hope, Muscoda, Patch Grove, and Woodman; cities of Boscobel, Fennimore, and Lancaster.

RAY H. SCHOONOVER (Rep.) was born at St. Paul, Minnesota, on June 9, 1896. He was educated in the Monticello public schools. From 1915 to 1941 he was engaged in the auto business and since 1946 has been in the insurance business. He has served as sheriff, under-sheriff, member of county board, and assistant coroner. He has held offices of commander in the local American Legion, chef de gare of the Green County 40 et 8, president of the Monroe Kiwanis Club, and president of the Monticello Commercial Club. Mr. Schoonover is a World War I veteran. This is his first term in the assembly. Home Address: 2144 17th Avenue, Monroe.

BOYD A. CLARK (Rep.) was born at Wild Rose on January 20, 1918. After graduation from the Sparta High School he attended the University of Wisconsin, from which he received his LL.B. in 1946. Since that time he has been a practicing attorney in Wild Rose and Wautoma. Mr. Clark is commander of American Legion Post 370 and treasurer of the Wild Rose Citizens Club. From 1942 to 1945 he served as cryptographer and vocational and educational counselor in the air force. This is his first term in the legislature. Home Address: Wild Rose.



McCUTCHIN  
Iowa

RAINERI  
Iron and Vilas

WALLER  
Jackson

ROBERT McCUTCHIN (Rep.) was born in the township of Arena on April 15, 1894. He attended the elementary and high schools and was graduated from the University of Wisconsin College of Agriculture in 1916. Since 1918 he has been a farmer. He is president and manager of the Arena and Ridgeway Telephone Company and vice president of the Mazomanie Mutual Insurance Company. Mr. McCutchin has been town chairman for fourteen terms and has served on the county highway committee for three years. He also served on the Iowa County Defense Council. Mr. McCutchin was elected to the assembly in 1942, and re-elected in 1946. Home Address: Route 1, Arena.

ALEX J. RAINERI (Rep.) was born in Hurley on September 17, 1918. He attended the public schools and attended Notre Dame and De Paul universities. He received his LL.B. degree in 1943 and at present is a practicing attorney. Mr. Raineri was chairman of the 6th war loan drive. He is a veteran of World War II having served with the engineers. This is his second term in the assembly. Home Address: 308 2nd Avenue, North, Hurley.

CASPER D. WALLER (Rep.) popularly known as Cap Waller, was born at Hixton on May 20, 1892. He was graduated from the common and high schools and attended the Chicago Art Institute where he specialized as a cartoonist and chalk talker. For the past twenty-seven years he has followed that vocation. In addition, he was a salesman for twenty years. His versatile hobbies include lecturing, singing, writing, music, landscape painting, sports, and poetry. From 1935 to 1942 he was register of deeds for Jackson County. This is his third term in the assembly. Home Address: Black River Falls.



JONES  
Jefferson

TREMAIN  
Juneau

PFENNIG  
Kenosha, 1st

THEODORE S. JONES (Rep.) was born on January 27, 1919 at Lake Mills. After graduating from high school he attended Carroll College. Mr. Jones was an agent for the New York Life Insurance Company, was a war fund speaker, and at present is the state U.S.O. chairman. From 1938 to 1944 he served in the marines. This is his first term in the legislature. Home Address: 308 East Lake Street, Lake Mills.

BEN TREMAIN (Rep.) was born on February 25, 1888 at Clifton, Monroe County. His education included attendance at both elementary and high schools. He has been an insurance salesman and a railway mail clerk, and at present he is a business manager and retail merchant. Mr. Tremain has held many public offices: village president, supervisor, and treasurer; director of the Hustler schools; member and chairman of the county board. He was a member of the 1931 assembly and was again elected to that body in 1946. Home Address: Hustler.

FREDERICK S. PFENNIG (Rep.) was born at Kenosha on October 26, 1905. He was educated in the elementary schools of Kenosha, was graduated from St. Johns Military Academy, and attended Northwestern University. Since 1926 Mr. Pfennig has been vice president of Charles H. Pfennig, Inc. He is serving his fourth term in the assembly. In 1947 Mr. Pfennig was chosen assistant Republican floor leader. Home Address: 610 69th Street, Kenosha.

Kenosha County, first district: Third, fourth, fifth, sixth, seventh, thirteenth, fourteenth, fifteenth, sixteenth, seventeenth, and eighteenth wards of the city of Kenosha.



MOLINARO  
Kenosha, 2nd

MLEZIVA  
Kewaunee

BICE  
La Crosse, 1st

GEORGE MOLINARO (Dem.) was born on October 1, 1902 in Kenosha. He received his education in the Kenosha public schools and later attended the Kenosha Business College, and at present is employed as an auto worker. Since 1939 Mr. Molinaro has served continuously as a member of the county board. This is his first term in the assembly. Home Address: 2417 53rd Street, Kenosha.

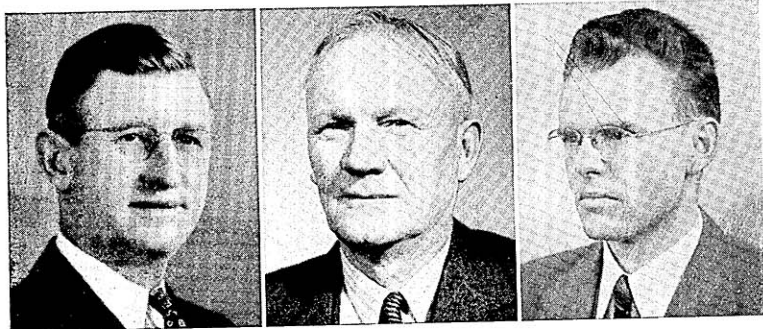
Kenosha County, second district: Towns of Brighton, Bristol, Paris, Pleasant Prairie, Randall, Salem, Somers, and Wheatland; villages of Silver Lake and Twin Lakes; first, second, eighth, ninth, tenth, eleventh, and twelfth wards of the city of Kenosha.

JOSEPH M. MLEZIVA (Rep.) was born in Kewaunee County on January 21, 1890. He received his early education in the rural schools and continued his studies at business college. During the six years that he worked in Chicago he attended night school at Lewis Institute, Crane Technical High School, and Northwestern University School of Commerce. When his father died in 1915 he returned to the home farm which he still owns and operates. Mr. Mleziva has held many business, farm, and public offices. He served six years as treasurer of Kewaunee County, four years as town treasurer, and three years as treasurer of his school district. He has held offices in the Kewaunee County Pure-Bred Seed Growers Association, Luxemburg Livestock Shipping Association, Green Bay Production Credit Association, and Farmers Trading Company at Luxemburg; and has been associated with the crop reporting service and the Agricultural Soil Conservation Program. In 1938 he was awarded a certificate of recognition as a Master Farmer of America. This is his fourth term in the assembly. Home Address: Route 1, Luxemburg.

RAYMOND C. BICE (Rep.) was born at La Crosse on April 5, 1896. He received his education in the La Crosse elementary and high schools and the University of Wisconsin Extension Division. From 1921 to 1924 he was a partner in a sash and door company, and since that time has been a building contractor and engaged in a retail lumber business. His many public and civic activities include member and officer of the county board, chairman of county park commission, president of the Business Men's Club and of the county Chamber of Commerce, secretary of the La Crosse Vocational and Adult School Board, member of board of trustees of Oak Forest Sanatorium, and member of numerous other civic organizations. This is his first term in the legislature. Home Address: 1707 Avon Street, La Crosse.

La Crosse County, first district: All of the city of La Crosse except the eighth, seventeenth, eighteenth, and twenty-first wards.





SCHILLING  
La Crosse, 2nd

MONSON  
Lafayette

FINCH  
Langlade

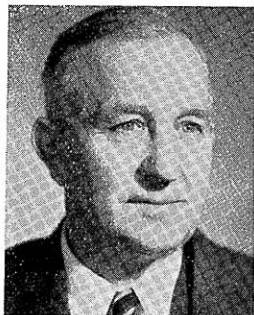
HARRY W. SCHILLING (Rep.) was born on September 21, 1887 in Onalaska where he attended the public schools. In 1911 he was graduated from the short course in agriculture at the University of Wisconsin. Since the age of seven he has resided on a farm and his occupation has always been farming. The public offices which he has held include director of the creamery board from 1916 to 1924, member of the county board in 1922, member of the town board from 1924 to 1926, and director of the district school since 1931. Mr. Schilling was a member of the assembly in 1935 and 1937, and again in 1947. Home Address: Route 1, Onalaska.

La Crosse County, second district: The eighth, seventeenth, eighteenth, and twenty-first wards of the city of La Crosse, and the entire county outside La Crosse.

MARTIN O. MONSON (Rep.) was born on May 1, 1885 at Argyle. After attending grade school he took a business course. At present he is engaged in farming and road contracting, furnishing crushed rock for roads, driveways, and concrete work and also ground limestone for farms. For five years he has served as town chairman and county board member. Mr. Monson is president and director of the Lafayette Electric Co-op, and director of the Dairyland Power Co-op and the Wisconsin Electric Co-op. This is his first term in the assembly. Home Address: South Wayne.

CLAIR L. FINCH (Rep.) was born on July 31, 1911 in Palisade, Colorado. He was educated in the public and high schools of Antigo and was graduated from the University of Wisconsin where he received his B.A. and LL.B. degrees. In addition, he took a postgraduate course in sociology at the same institution. He was graduated with honors from the Antigo High School and the School of Economics of the University of Wisconsin. Since 1940 he has practiced law in Antigo. This is his third term in the legislature. Home Address: 241 Edison Street, Antigo.





HINZ  
Lincoln



VOGEL  
Manitowoc, 1st



LE CLAIR  
Manitowoc, 2nd

EMIL A. HINZ (Rep.) was born on February 21, 1889, in the town of Proviso, Illinois. He received his education in a parochial school in that state. From 1914 to 1917 he was a wheat farmer in Saskatchewan, and since 1919 he has been engaged in farming. He was secretary of a co-operative cheese factory for twenty-one years. His public offices include town treasurer, town chairman, and county board member and chairman. Mr. Hinz is a World War I veteran. This is his first term in the assembly. Home Address: Route 3, Merrill.

OTTO A. VOGEL (Rep.) was born on October 10, 1886 in the town of Newton, Manitowoc County. He received his education in the parochial and public schools of Manitowoc County. In 1902 he learned barbering and has practiced his trade ever since going into business for himself in 1908. He has held a number of public offices: justice of the peace from 1912 to 1918, and alderman from 1918 to 1930 and from 1932 to 1934. For three years, from 1921 to 1924, he acted as secretary of the Municipal Public Utility Commission. He served in the assembly in 1935, 1939, 1943, 1945, and was re-elected in 1946. Home Address: 1120 Hamilton Street, Manitowoc.

Manitowoc County, first district: Towns of Centerville, Liberty, Manitowoc, Manitowoc Rapids, Meeme, and Newton; city of Manitowoc.

FRANK J. LE CLAIR (Rep.) was born on January 1, 1888 at Two Rivers. He received his education in the elementary schools and in business college. At present he is a commercial fisherman. His public offices include membership on the town board and clerk of the school board. Mr. Le Clair served in the navy in World War I, and is past commander of V.F.W. post 1248. This is his first term in the legislature. Home Address: Route 1, Two Rivers.

Manitowoc County, second district: Towns of Cato, Cooperstown, Eaton, Franklin, Gibson, Koesuth, Maple Grove, Mishicot, Rockland, Schleswig, Two Creeks, and Two Rivers; villages of Reedsville and Valders; city of Two Rivers and that part of the city of Kiel in Manitowoc County.



LUECK  
Marathon, 1st

LUEDTKE  
Marathon, 2nd

SENGSTOCK  
Marinette

MARTIN C. LUECK (Rep.) was born at Hamburg on February 27, 1888. He was educated in the common schools and took a two-year course in the Marathon County School of Agriculture and Domestic Economy. Mr. Lueck has been a farmer all his life. He has held various public offices: town assessor, district school clerk, and member of the county board from 1934 to 1941. This is his fourth term in the assembly. Home Address: Hamburg.

Marathon County, first district: Towns of Bergen, Berlin, Bern, Bevent, Brighton, Cassel, Cleveland, Day, Eau Pleine, Elderon, Emmet, Frankfort, Franzen, Green Valley, Guenther, Halsey, Hamburg, Holton, Hull, Johnson, Knowlton, Kronenwetter, McMillan, Maine, Marathon, Mosinee, Reid, Rib Falls, Rib Mountain, Reitbrock, Spencer, Stettin, and Wein; that part of Abbottsford village in Marathon County and villages of Athens, Edgar, Elderon, Fenwood, Marathon, Spencer, and Stratford; the city of Mosinee and that part of the city of Colby in Marathon County.

PAUL A. LUEDTKE (Rep.) was born in Wausau on August 24, 1888. He was educated in the elementary and parochial schools, and later took a commercial business course. After completing his apprenticeship as decorator and wood finisher he worked for eight years in this field. At the age of twenty-eight he went into business for himself. Since then he has operated a paint and wall paper store employing a crew of men. He has held a number of public offices: president of the city council; alderman and supervisor; chairman of the city equalization and tax board; chairman of the county board; and member of the county highway committee, of the county traffic committee, county board of health, and of the county park board. Mr. Luedtke is an honorary member of the Veterans of Foreign Wars. This is his third term in the assembly. Home Address: 118 Second Avenue South, Wausau.

Marathon County, second district: Towns of Easton, Harrison, Hewitt, Norrie, Plover, Ringle, Texas, Wausau, Weston; villages of Brokaw, Hatley, Rothschild, and Schofield; city of Wausau.

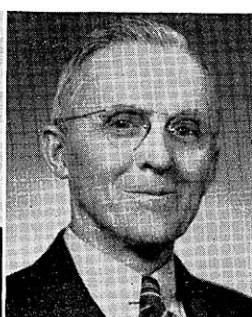
ROY H. SENGSTOCK (Rep.) was born at Marinette on February 3, 1913. He attended the Marinette County Normal School and the University of Wisconsin. He was employed as a factory worker, taught school three years, and since 1931 has been in the insurance business. He has held several offices in the local Republican committees. In 1939 Mr. Sengstock was an assistant secretary in Governor Heil's office. For more than three years he served with the Service Forces, Infantry, Combat Engineers and the Air Corps. He was elected to the assembly in 1940, and re-elected in 1946. Home address: 1724 Main Street, Marinette.



CAVEY  
Milwaukee, 1st



O'CONNELL  
Milwaukee, 2nd



HICKS  
Milwaukee, 3rd

JOHN M. CAVEY (Rep.) was born on May 30, 1907 at Milwaukee. He graduated from St. Rose's Parochial School in Milwaukee and St. John's Military Academy in Delafield. He then studied at Notre Dame and Minnesota and Marquette universities. In 1935 he received his LL.B. from Marquette University Law School. At present Mr. Cavey is engaged in private law practice. He is a member of the American Bar Association, the Wisconsin State Bar Association, and the Milwaukee Bar Association. He is also a member of American Legion Cudworth Post 23 and Veterans of Foreign Wars Post 2874. In 1940 he was chairman of the 1st ward Republican club in Milwaukee. During the recent war Mr. Cavey spent eighteen months in the Southwest Pacific areas. He was awarded four bronze battle stars including the Philippine. This is his first term in the legislature. Home Address: 1402 East Boylston Place, Milwaukee.

Milwaukee County, first district: The first and third wards of the city of Milwaukee.

MICHAEL F. O'CONNELL (Dem.) was born in Tipperary, Ireland on January 27, 1877. He was educated in the public schools. He is a retired railroad conductor and since 1928 has been an election inspector. He was a member and officer of the Taxpayers League from 1936 to 1940. This is his third term in the assembly. Home Address: 1128 North 18th Street, Milwaukee.

Milwaukee County, second district: Second and tenth wards of the city of Milwaukee.

LOUIS HICKS (Rep.) was born in England on September 17, 1881. He received his education in the elementary schools and later attended business college. Soon after arriving in this country he studied to become a masseur, a chiropodist, and in giving special electric treatments at the Prairie du Chien Sanitarium, where he lived for two years. Then, returning to Milwaukee, he entered the real estate and insurance business, in which he has continued in ever since. His first experience in the political field was his election to the assembly in 1946. Home Address: 1718 South 81st Street, West Allis.

Milwaukee County, third district: Towns of Franklin and Greenfield; villages of Greendale and West Milwaukee; city of West Allis.



SCHAEFFER  
Milwaukee, 4th



KENDZIORSKI  
Milwaukee, 5th



SIMMONS  
Milwaukee, 6th

FRANK E. SCHAEFFER, Jr. (Dem.) was born on February 1, 1905, in Milwaukee. He is a graduate of Gesu Catholic School, and from 1920 to 1923 attended drafting and machine shop courses at Milwaukee Vocational School. From 1928 to 1940 he was a painting contractor and later was an automobile body builder. For the past twenty years he has been a building superintendent. Mr. Schaeffer has served in his labor union in various capacities. His public offices include vice president of the Fourth of July Committee, and membership on the Red Arrow Park Committee, on the civilian defense council, and on the Red Cross. This is his second term in the legislature. Home Address: 826 North 9th Street, Milwaukee.

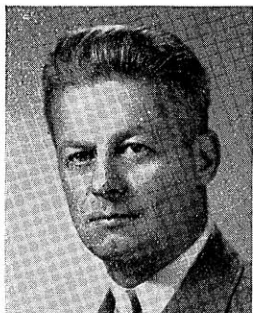
Milwaukee County, fourth district: The fourth ward of the city of Milwaukee.

CASIMIR KENDZIORSKI (Dem.) was born in Poland on December 3, 1898. He received his elementary and high school education in Poland and evening courses in Milwaukee. From 1928 to 1930 he was a real estate broker, and since that time he has been a machinist. Mr. Kendziorski is a member of the Polish National Alliance and is vice chairman of his local union. He has always been interested and active in civic and labor activities. He had held no public office until his election to the assembly in 1946. Home Address: 1951 South 15th Street, Milwaukee.

Milwaukee County, fifth district: Fifth and eighth wards of the city of Milwaukee.

LE ROY J. SIMMONS (Dem.) was born in Milwaukee on July 25, 1905. After graduation from high school he attended a night school in Chicago for two years where he studied law. He has been an insurance salesman, a postal clerk, and at present is a salesman. He had held no public office until his election to the assembly in 1944. Home Address: 1457 North 8th Street, Milwaukee.

Milwaukee County, sixth district: The sixth ward of the city of Milwaukee.



FOLLANSBEE  
Milwaukee, 7th



FINNEGAN  
Milwaukee, 8th



GRAF  
Milwaukee, 9th

CLYDE W. FOLLANSBEE (Rep.) was born in Milwaukee on November 14, 1902. After graduation from the public and high schools of Milwaukee he attended the Milwaukee Extension Center of the University of Wisconsin for two years. Mr. Follansbee is an electrical engineer employed by the Milwaukee fire and police alarm system. He has held offices in various associations and labor unions, including the Milwaukee Government Service League, Association of Municipal Engineers, and City Employe's Union. He is a World War II veteran, having served in the signal corps. This is his second term in the assembly. Home Address: 2779 North 8th Street, Milwaukee.

Milwaukee County, seventh district: Seventh ward of the city of Milwaukee.

JOHN E. FINNEGAN (Rep.) was born in Milwaukee on June 7, 1920. After graduating from parochial and high school he attended Marquette University and Carroll College. At present he is a salesman. He is a member of the Eagles, the American Legion, and the Reserve Officers Corps. From 1942 to 1946 he was a liaison pilot with the field artillery. This is his first term in the legislature. Home Address: 708 North 29th Street, Milwaukee.

Milwaukee County, eighth district: The sixteenth and twenty-third wards of the city of Milwaukee.

EDWARD L. GRAF (Rep.) was born on a farm at Fredonia, Ozaukee County on January 17, 1878. He was educated in the common schools and attended the Cream City Commercial Law School. He taught in the rural schools for five years from 1895 to 1900. He was an accountant and a real estate broker. At present he is again employed as an accountant. Mr. Graf is serving his fifth term in the assembly. Home Address: 2963 North 46th Street, Milwaukee.

Milwaukee County, ninth district: The ninth and twenty-sixth wards of the city of Milwaukee.



McPARLAND  
Milwaukee, 10th

RYCZEK  
Milwaukee, 11th

BANACH  
Milwaukee, 12th

LELAND S. McPARLAND (Dem.) was born at Thorp on December 18, 1896. He received his common and high school education at Thorp, attended Oshkosh State Teachers College for two years, and studied law at Marquette University. He taught school in South Milwaukee from 1919 to 1927 and since 1927 has engaged in the practice of law. Mr. McParland was city attorney of Cudahy from 1932 to 1936. During World War I he served in the United States Navy from 1917 to 1918. In the 1945 and 1947 sessions he served as Democratic floor leader. This is his fourth term in the assembly. Home Address: 3764 East Armour Avenue, Cudahy.

Milwaukee County, tenth district: Towns of Lake and Oak Creek; cities of Cudahy and South Milwaukee.

ERVIN JOHN RYCZEK (Dem.) was born at Milwaukee on September 20, 1909. He attended St. Adalbert's Parochial School and South Division High School and was graduated from Marquette High School in 1928. In 1938 he was a student at Spencerian Business College in Milwaukee. Since 1930 Mr. Ryczek has been an assistant funeral director. He is a member of the Polish American Citizen Club, Roman Catholic Union, Catholic Order of Foresters, Polish Association of America, Polish National Alliance, Lehitas Club, Federation Group, Holy Name Society, Layton Park Lions Club, South Division Civic Association, and is president of the Polish American Youth Club. He is also a member of the eleventh and twenty-fourth ward Democratic Party. He had held no public office until his election to the assembly in 1940. Home Address: 1910 West Becher Street, Milwaukee.

Milwaukee County, eleventh district: Eleventh and twenty-fourth wards of the city of Milwaukee.

WILLIAM P. BANACH (Dem.) was born in Milwaukee on March 30, 1903. After graduating from St. Josaphat's School he attended South Division High School. From 1919 to 1935 he was a draftsman and from 1935 to 1940 he was an insurance salesman. Since that time he has owned and operated a tavern. For six years Mr. Banach served as president of the Holy Name Society. He is also a member of the Milwaukee Society, Knights of Columbus, Lincoln Avenue Business Association, South Side Businessmen's Association, and the 12th and 14th Ward Democratic Party. In a special election on April 21, 1947 he was elected to the assembly to fill the vacancy caused by the death of Peter P. Pyszczyński. Home Address: 933 West Lincoln Avenue, Milwaukee.

Milwaukee County, twelfth district: Twelfth and fourteenth wards of the city of Milwaukee.



**NAWROCKI**  
Milwaukee, 13th

**HEIMICK**  
Milwaukee, 14th

**COLLAR**  
Milwaukee, 15th

**WILLIAM L. NAWROCKI** (Dem.) was born on December 4, 1899 in Milwaukee. He was graduated from the elementary schools of that city and attended St. Johns High School. For eight years prior to 1926 he was a shoe worker and since 1927 he has been a stock clerk. Mr. Nawrocki served as county committeeman from 1937 to 1940. This is his fourth term in the assembly. Home Address: 2664 North Fratney Street, Milwaukee.

Milwaukee County, thirteenth district: Thirteenth and twenty-first wards of the city of Milwaukee.

**JOHN D. HEIMICK** (Rep.) was born in Milwaukee on December 10, 1899. He received his education in the public schools of Minnesota and Wisconsin. From 1924 to 1930 he was a salesman for Bulfin Printers, Inc., and in 1930 became president of the concern. Mr. Heimick has held the offices of school treasurer, assessor, member of the school board, and member of the advisory council of the Milwaukee County Safety Commission. This is his first term in the legislature. Home Address: 8119 North Whitney Road, Milwaukee.

Milwaukee County, fourteenth district: Town of Milwaukee; villages of Fox Point, River Hills, Shorewood, and Whitefish Bay; eighteenth ward of the city of Milwaukee.

**CHARLES E. COLLAR** (Rep.) son of the late Dyton A. Collar, was born in Hortonville on April 20, 1877. He received his early education in Hortonville and attended Appleton High School and Oshkosh State Teachers College. He has been in the shoe business for many years and at the present time is district manager for the Martin Shoe Company. Mr. Collar is a former president of the Milwaukee Shoe Retailers Association. He enlisted in the Spanish-American War and saw service in Puerto Rico. He was mustered out as first sergeant on the non-commissioned staff. He also served six years in the Wisconsin National Guard. Mr. Collar is a member of the United Spanish War Veterans, Veterans of Foreign Wars, Knights of Columbus, Elks, and a number of musical organizations. He was first elected to the assembly in 1940. Home Address: 2106 North 49th Street, Milwaukee.

Milwaukee County, fifteenth district: The fifteenth and nineteenth wards of the city of Milwaukee.





RIEBAU\*  
Milwaukee, 16th



HOWARD  
Milwaukee, 17th



JAEGER  
Milwaukee, 18th

ERNEST L. RIEBAU\* (Rep.) was born in Milwaukee on August 7, 1895. He attended the elementary schools in Milwaukee and has taken university extension courses in accounting, traffic, and business management. Formerly he was president and manager of a shoe manufacturing company. At present he is secretary and treasurer of an investment firm. He also serves as a consultant in accounting and business administration. He has served as a member of the mayor's advisory council and has been president of several fraternal and civic organizations. This is his second term in the legislature. Home Address: 1527 West Atkinson Avenue, Milwaukee.

Milwaukee County, sixteenth district: The twenty-fifth ward of the city of Milwaukee.

MARTIN F. HOWARD (Rep.) was born at Milwaukee on September 12, 1892 and was educated in the public and parochial schools of West Allis. Before 1916 he was an electrician. Since that time he has been in the automobile business, both as salesman and as dealer, and has been a partner in a collection and an insurance agency. Mr. Howard served his country in World War I. He was elected to the assembly in 1934, re-elected in 1936, and again in 1946. Home Address: 2500 South Howell Avenue, Milwaukee.

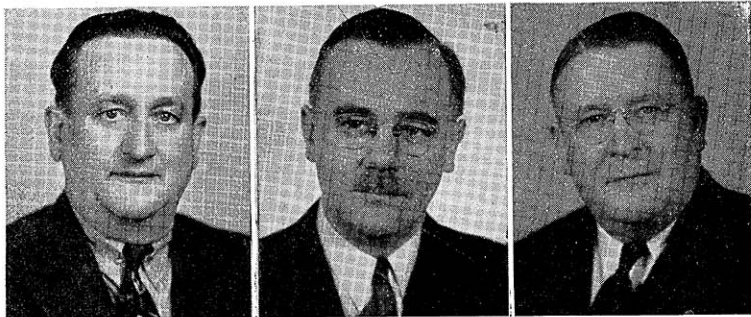
Milwaukee County, seventeenth district: Seventeenth and twenty-seventh wards of the city of Milwaukee.

PAUL O. JAEGER (Rep.) was born in Milwaukee on June 20, 1891. He received his education in the elementary and high schools. He completed a course in real estate law and abstracting in the vocational school, attended a blue print and drawing course in night school, and has taken a correspondence course in commercial law. From 1916 to 1918 he was a mail clerk and later became a cost clerk and construction foreman. Since 1926 he has been a real estate broker. In 1933 Mr. Jaeger was one of the six Milwaukee real estate brokers appointed by the federal government to appraise property and secure options in the sixth ward for a proposed federal slum clearance project. He attended the Mayors Advisory Council meetings and in 1937 served on the Milwaukee Housing Council. He has held the office of supreme sovereign master of the Fraternal Order of Pilgrims and is a member of the Knights of Pythias and of the Travelers Protective Association. This is his first term in the assembly. Home Address: 2141 West Hopkins Street, Milwaukee.

Milwaukee County, eighteenth district: Twentieth ward of the city of Milwaukee.

\*Deceased October 3, 1947.





WESTFAHL  
Milwaukee, 19th

BURMASTER  
Milwaukee, 20th

NICOL  
Monroe

CHARLES F. WESTFAHL (Rep.) was born on April 10, 1885 in Milwaukee where he attended the public schools and Rhodes Business College. He was superintendent of the Westfahl File Company. During the war emergency he was serving as a mechanic in war production. He has served in the 1931, 1939, 1941, 1943, 1945, and 1947 legislatures. Home Address: 4820 West Lisbon Avenue, Milwaukee.

Milwaukee County, nineteenth district: The twenty-second ward of the city of Milwaukee.

MILTON F. BURMASTER (Rep.) was born in Milwaukee on January 19, 1909. He attended the University of Wisconsin, and in 1929 received his LL.B. from the Marquette University Law School. Since then he has been a practicing attorney. From 1939 to 1946 he was a Wauwatosa alderman, and president of the common council in 1941. He is a member of the Wauwatosa Chamber of Commerce, and of several civic and fraternal organizations. This is his third term in the assembly. Home Address: 6229 West Lloyd Street, Wauwatosa.

Milwaukee County, twentieth district: Towns of Granville and Wauwatosa.

ALEX L. NICOL (Rep.) was born on March 13, 1895 in the township of Sparta, Monroe County. Directly after his graduation from Sparta High School in 1916 he was called into military service on the Mexican border. After he was discharged he attended Oshkosh Normal School until he again entered the service in March of 1917. He served eleven months in France as a first lieutenant and commanded Company L, 128th Infantry, 32nd Division. Mr. Nicol was wounded twice and awarded the Distinguished Service Cross. After spending two years in government hospitals he was discharged in October 1920. He held the office of county clerk from 1920 to 1939, and is serving his fourth term as a member of the school board. He was first elected to the assembly in 1938. Home Address: 319 East Main Street, Sparta.



YOUNGS  
Oconto

FRANK  
Outagamie, 1st

ROHAN  
Outagamie, 2nd

JOHN E. YOUNGS (Rep.) was born at Plainfield on August 2, 1883 and received his education in the Oconto public schools. Since 1906 he has been a barber. Mr. Youngs has always been active in conservation and civic work. He was sealer of weights and measures in 1912 and 1913, secretary of the police and fire commission from 1918 to 1922, member of the board of education from 1922 to 1929, and member of the board of supervisors of Oconto County from 1937 to 1942. This is his fifth term in the assembly. Home Address: 522 1st Street, Oconto.

FRED H. FRANK (Rep.) was born on July 1, 1895 in Shawano County. He was graduated from the elementary schools, has taken a correspondence course in bookkeeping, and attended business college. At present he is a salesman. Mr. Frank has served three terms on the county board, two terms as undersheriff, and two terms as sheriff. He was vice president of the Wisconsin Sheriff's Association, and has held various offices in the American Legion. He is a veteran of World War I, having served in France. This is his second term in the assembly. Home Address: 724 South Mason Street, Appleton.

Outagamie County, first district: Towns of Bovina, Center, Dale, Ellington, Grand Chute, and Greenville; village of Shiocton; city of Appleton.

WILLIAM M. ROHAN (Rep.) was born in the town of Buchanan, Outagamie County and still resides there on a farm east of Kaukauna. He received his early education in public and parochial schools and later attended Green Bay Business College. He has held a number of public offices: town treasurer, town chairman, county board member, and chairman of the county highway committee. He was a member of the assembly in 1911, 1933, 1937, and 1943, and re-elected for the fifth time in 1946. Home Address: Route 3, Kaukauna.

Outagamie County, second district: Towns of Black Creek, Buchanan, Cicero, Deer Creek, Freedom, Hortonville, Kaukauna, Liberty, Maple Creek, Maine, Oneida, Osborne, Seymour, and Vandenbroek; villages of Black Creek, Bear Creek, Combined Locks, Hortonville, Kimberly, and Little Chute; cities of Kaukauna, Seymour, and third ward of New London.



ZAUN  
Ozaukee



GUNDERSON  
Pierce



PEABODY  
Polk

RALPH L. ZAUN (Rep.) was born at Grafton on December 9, 1920. He attended the Grafton grade and high schools and graduated from the University of Wisconsin from which he received a Ph.B. degree. Following graduation he enlisted in the armed forces of World War II. After discharge from military service he was employed by Kimberly-Clark Corporation, later becoming associated with the Grafton State Bank and the Grafton Insurance Agency. Mr. Zaun is a member of the Veteran's Housing Committee. This is his first term in the assembly. Home Address: Grafton.

SELMER W. GUNDERSON (Rep.) was born at Colfax on February 25, 1890. He was educated in the elementary schools of Madison and attended the Colfax High School for one year. During the 1903 and 1907 legislative sessions he served as messenger in the assembly. From 1910 to 1918 he was cashier for the Soo Line Railroad. Since 1918 he has engaged in dairy farming, specializing in purebred Guernsey cattle. Mr. Gunderson has been secretary of the Pierce County Guernsey Breeders Association for twenty years, director of the Wisconsin State Guernsey Breeders Association for twenty years and was elected vice president in 1940. This is his fourth term in the assembly. He has been a member of the Committee on Agriculture, Committee on Highways, Committee on Labor, and Committee on Education. Home Address: Route 1, Spring Valley.

RAYMOND A. PEABODY (Rep.) was born on February 24, 1883 in Baldwin, St. Croix County. After completing his education in the common schools he became a railroad telegraph operator. From 1903 to 1918 he was a merchant and since 1918 he has been a banker. Mr. Peabody was a member of the village council from 1922 to 1930 and village president for three years. He was a member of the county board from 1930 to 1942 inclusive and chairman of the board for three years. From 1939 to 1942 he served on the executive council of the Wisconsin Bankers Association. Since the beginning of the association he has been director of Wisconsin Indianhead, Inc., director and officer of the Polk County Association of Commerce, and director of the Highway 35 Association. During the war he was chairman of the Polk County Council of Civilian Defense. This is his third term in the assembly. Home Address: Milltown.



KOSTUCK  
Portage

CUMMINGS  
Price

CHRISTENSEN  
Racine, 1st

JOHN T. KOSTUCK (Dem.), a resident of Stevens Point, was born there on October 7, 1892. Leaving school at the end of the third grade, he went to work on a farm. At the age of fourteen when he was assisting in blasting stone, he met with an accident which made him blind. He entered the Wisconsin State School for the Blind and after ten years was graduated from the high school department in 1918. Then he attended the University of Wisconsin, specializing in political science and economics. After teaching for three years in the high school department of the School for the Blind at Staunton, Virginia, he entered the piano business at Stevens Point. He now devotes full time to his legislative work and is serving his ninth consecutive term in the assembly. Home Address: 130 Algoma Street, Stevens Point.

MIKE J. CUMMINGS (Rep.) was born at Buffalo, New York, on February 2, 1898. He received his education in the elementary and high schools. He has been a lumberman, lumber buyer, lumber inspector, lumber salesman, and assistant sales manager of a lumbering company. At present he furnishes hunting, fishing, and tourist accommodations. His public services include town chairman, member of the highway, welfare, health, equalization, and planning committees of the county board, and delegate to the Conservation Congress. This is his second term in the assembly. Home Address: Fifield.

CARL C. CHRISTENSEN (Rep.) was born in Racine on October 1, 1891. He attended the elementary and high schools and La Salle College. He was an automobile trimmer and at present is proprietor of a filling station. He has been an alderman since 1926, and in 1941 and 1942 was president of the Racine Board of Health. Mr. Christensen served in the infantry in World War I. This is his third term in the assembly. Home Address: 2019 Slauson Avenue, Racine.

Racine County, first district: The first, second third, sixth, tenth, eleventh, thirteenth, and fourteenth wards of the city of Racine.



NIELD  
Racine, 2nd



RUNDEN  
Racine, 3rd



THOMSON  
Richland

WALLACE E. NIELD (Rep.) was born at Racine on April 1, 1889. He was educated in the public schools, and later took a business course. He is a farmer and also is engaged in shipping farm produce. For nine years he has served as school clerk for the North Racine School and has been a County supervisor for fourteen years. Mr. Nield is particularly interested in historical societies. He is a veteran of World War I. This is his first term in the legislature. Home Address: 1235 Geneva Street, Racine.

Racine County, second district: The fourth, fifth, seventh, eighth, twelfth, and fifteenth wards of the city of Racine.

RANDOLPH H. RUNDEN (Rep.) was born at Chicago on August 27, 1897. After his graduation from high school he attended the University of Wisconsin from 1915 to 1917. Since that time he has engaged in farming. Mr. Runden has held a number of public offices: town treasurer for one year, town chairman and member of the county board of supervisors since 1935, and commissioner for the Norway-Dover Drainage District. He is serving his fourth term in the assembly. Home Address: Route 1, Union Grove.

Racine County, third district: Towns of Burlington, Caledonia, Dover, Mt. Pleasant, Norway, Raymond, Rochester, Waterford, and Yorkville; villages of Sturtevant, Rochester, Union Grove, and Waterford; city of Burlington and ninth ward of Racine.

VERNON W. THOMSON (Rep.) son of the late Mr. A. A. Thomson and Mrs. Thomson, was born at Richland Center on November 5, 1905. In 1927 he received his B.A. degree from the University of Wisconsin and his LL.B. from the same school in 1932. Since that time he has been a practicing attorney at Richland Center. He was assistant district attorney of Richland County from 1933 to 1935 and city attorney of Richland Center from 1933 to 1937 and from 1942 to date. In April 1944 Mr. Thomson was elected mayor of Richland Center, and is serving his second term in that position. From 1933 to 1935 he was enrolling official of the Civilian Conservation Corps for Richland County. Prior to practicing law he taught for two years in the Viroqua High School and for three years in the Madison Vocational School. For the past several years Mr. Thomson has been president of the library board at Richland Center. In 1936 and 1940 he was a delegate from the third congressional district to the National Republican Convention, and in 1940 was chairman of the State Republican Platform Convention. He has been a member of the assembly since 1935 and speaker of that body for three sessions. In 1945 and again in 1947 he served as Republican floor leader. Home Address: Richland Center.



GRASSMAN  
Rock, 1st

ENGBRETSON  
Rock, 2nd

CLAUSEN  
Rusk and Sawyer

EDWARD GRASSMAN (Rep.) was born in Richland County. After having been graduated from Sextonville High School, he attended White-water State Normal and Valparaiso University and also took a six months' correspondence course in order to acquire a first grade teacher's certificate. He taught for the next eight years and then took up leaf tobacco buying and farming. Mr. Grassman has held a number of public offices: alderman of Edgerton, 1922 to 1926; mayor for the next biennium; and county supervisor for the three years preceding his election to the assembly in 1932. He has served in the assembly continuously since 1933. Home Address: 501 Washington Street, Edgerton.

Rock County, first district: Towns of Center, Fulton, Harmony, Janesville, Lima, Milton, Magnolia, Porter, and Union; village of Milton; cities of Edgerton, Evansville, and Janesville.

BURGER M. ENGBRETSON (Rep.) was born at Oslo, Norway on June 21, 1896. He was educated in the public schools of Beloit and attended the University of Wisconsin. He is a World War I veteran. Mr. Engebretson has been in the insurance and real estate business for the past twenty-two years. He was elected twice to the board of supervisors of Rock County. This is his sixth term in the assembly. Home Address: 742 McKinley Avenue, Beloit.

Rock County, second district: Towns of Avon, Beloit, Bradford, Clinton, Johnstown, La Prairie, Newark, Plymouth, Rock, Spring Valley, and Turtle; villages of Clinton, Footville, and Orfordville; city of Beloit.

HERMAN CLAUSEN (Rep.) was born in Germany on October 7, 1887. He received his early education in the German grade schools and later took two short courses in agriculture in Germany. From 1917 to 1940 Mr. Clausen was a farmer, and he still owns a dairy farm, stock, and machinery. Since 1938 he has been an insurance agent. His public offices include town chairman, town treasurer, member of the town board, school clerk, and school treasurer. Among his many public activities are: president of the Rusk County Farmers Mutual Fire Insurance Company, and of the Rusk County Guernsey Breeders Association; secretary of Farmers Mutual Insurance Company; and appraiser for GI loans, farm real estate, personal property, and homes. This is his first term in the assembly. Home Address: Bruce.



RUNDELL  
St. Croix

WOERTH  
Sauk

EBERT  
Shawano

ELMER LLOYD RUNDELL (Rep.) was born at Livingston on September 15, 1879. After his graduation from Platteville State Teachers College in 1900 he was principal of a school in Minnesota for two years. Prior to that time he taught for one year in a rural school in Wisconsin. Since 1910 he has been a dairy farmer and a breeder of purebred Guernseys. On his farm was bred the highest producing Guernsey cow in the United States west of the Alleghenies. Mr. Rundell was the first treasurer of the Roberts High School and has been either clerk or director of the rural school in his district for the past thirty-eight years. He served as president of the Wisconsin-Illinois Guernsey Breeders Association in 1922 and 1923. This is his fourth term in the assembly. Home Address: Roberts.

GEORGE J. WOERTH (Rep.) was born on December 4, 1875 at Loganville. With the exception of the 1939 term he has served continuously in the assembly since 1935. Home Address: Prairie du Sac.

CHARLES J. EBERT (Rep.) was born on April 30, 1885 in the town of Seymour, Outagamie County. He has owned and operated several cheese factories in past years and is now owner and operator of a cold storage locker plant in Gresham. Mr. Ebert was a member of the county board and is now serving his twenty-second term as village president. Since 1933 he has been a bank director. For seven years he was secretary of the Wisconsin Natural Cheese Marketing Association. He has served three years as secretary of the Northeastern Cheese Makers and Butter Makers Association and six years as secretary of the Wisconsin Cheese Makers Association. This is his fourth term in the legislature. Home Address: Gresham.





SCHNEIDER  
Sheboygan, 1st

TIMMER  
Sheboygan, 2nd

ANDERSEN  
Taylor

JOHN SCHNEIDER, Jr. (Dem.) was born in Manitowoc on August 20, 1918 and has resided in the city of Sheboygan for the past twenty-five years. After graduation from high school he became a window trimmer and later was connected with the wholesale grocery business. At present he is engaged in the restaurant and liquor business. From 1942 to 1943 he served as alderman. In 1940 he was county chairman of Roosevelt's First Voter's Club. Mr. Schneider is a veteran of World War II, having served with a medical division in the European theatre of the war. This is his second term in the assembly. Home Address: 1801 North 10th Street, Sheboygan.

Sheboygan County, first district: The city of Sheboygan.

HENRY W. TIMMER (Rep.) was born at Gibbsville on June 18, 1873. He received his education in the elementary schools and later attended the Sheboygan Business College. He was born and raised on a farm. He has been a clerk, tinsmith, hardware dealer, and bank cashier. His public offices include county clerk, town clerk, town treasurer, chairman of town board, postmaster, member of Sheboygan County Normal School Board, and chief clerk of the local Selective Service Board. At present he is retired. This is his second term in the legislature. Home Address: Waldo.

Sheboygan County, second district: The entire county outside the city of Sheboygan.

NELS ANDERSEN (Rep.) was born on January 15, 1891 at Biersted, Denmark. After attending the public schools he engaged in farming, which is his present occupation. His public services include member of school board, chairman of county board from 1944 to 1947, town chairman from 1934 to 1947, and member of the county Selective Service Board. Mr. Andersen has been a director of the Taylor County National Farm Loan Association for the past twelve years, and is active in a co-operative association. This is his first term in the assembly. Home Address: Route 1, Gilman.





WILEY  
Trempealeau



MOCKRUD  
Vernon



RICE  
Walworth

GUILFORD M. WILEY (Rep.) was born on July 10, 1880 at Whiteland, Indiana. He attended and taught in rural, village, and city schools. He studied at Franklin College in Indiana and Indiana University and received his B.A. from De Pauw University. He was principal of Central High School in La Crosse for five years and superintendent of the La Crosse public schools for sixteen years. In addition to his work as an instructor of mathematics and economics in various high schools he coached baseball and basketball. He also organized and directed Birchwood Lodge, a summer camp for boys. Mr. Wiley has been secretary and vice president of the Arnold Dryer Company of Milwaukee, which manufactures machines for dehydrating green forage crops. At present he is retired. He has served as president of the La Crosse Kiwanis Club, lieutenant-governor of the Wisconsin-Upper Michigan district of Kiwanis, member of the board of directors of the La Crosse Y.M.C.A., and president and secretary of the Western Wisconsin Teachers Association. This is his first term in the legislature. Home Address: East Side Farm, Galesville.

ARTHUR O. MOCKRUD (Rep.) was born on August 4, 1912 at Westby. After graduating from the Westby public and high schools he attended the University of Wisconsin, from which he received his Ph.B. and LL.B. degrees. For several sessions Mr. Mockrud was an assembly employee. Since 1942 he has been a practicing attorney, and since 1945 he has served as city attorney of Westby. This is his first term in the legislature. Home Address: 412 South Main Street, Westby.

ORA R. RICE (Rep.) was born at Boscobel on September 16, 1885. He is a graduate of Boscobel High School and received his dental degree from Northwestern University Dental College in 1907. From 1907 to 1936 he practiced dentistry in Delavan and since 1936 he has devoted his time to farming and legislative duties. Dr. Rice has held a number of elective and appointive offices including alderman of Delavan in 1916 and 1917 and mayor of the city from 1918 to 1922. This is his sixth term in the assembly. For the past four sessions he has been chairman of the Committee on Agriculture, and is also vice-chairman of the Committee on Rules. Home Address: Delavan.



HOLTEBECK  
Washington

DANCEY  
Waukesha, 1st

LUDVIGSEN  
Waukesha, 2nd

THEODORE HOLTEBECK (Rep.) was born June 4, 1883. He was educated in the public schools and later attended Buckley College in Minneapolis. He worked on a farm in Waupaca County until he was twenty years old. In 1909 he located in West Bend where he operated a barber shop for twenty-five years. Since 1934 he has conducted an insurance office. He has held a number of public offices: alderman from 1920 to 1924, and from 1936 to the present date; undersheriff from 1924 to 1928; and sheriff from 1929 to 1933. This is his second term in the assembly. Home Address: 539 South 6th Avenue, West Bend.

DAVID L. DANCEY (Rep.) was born on July 2, 1917 at Waukesha. After graduating from the Waukesha public schools he attended Carroll College, from which he received his B. A. degree, and the University of Wisconsin from which he received his LL.B. degree. From 1942 to 1943 he was an instructor in radio mechanics in the army air forces. At present he is engaged in the practice of law in Waukesha. Mr. Dancey is a member of the Kiwanis Club, Junior Chamber of Commerce, American Legion, and Veterans of Foreign Wars. He served in the navy in World War II. This is his first term in the legislature. Home Address: 226 North James Street, Waukesha.

Waukesha County, first district: Towns of Eagle, Genesee, Mukwonago, Muskego, New Berlin, Ottawa, Vernon, and Waukesha; villages of Big Bend, Dousman, Eagle, Mukwonago, North Prairie, and Wales; city of Waukesha.

ALFRED R. LUDVIGSEN (Rep.) was born on the old farm homestead in the town of Merton, Waukesha County on March 17, 1886. He received his education in the public schools and at Luther College, Racine. His early years were spent in farming. For many years he was engaged in landscape work and in the development and sale of lake frontage which he owns. He served as a member of the Waukesha County Board and chairman of the town of Merton during the years 1923 to 1928 and has been secretary of the Waukesha Farm Drainage District Board since 1923. Besides serving on various legislative committees he is a member of the Commission on Interstate Cooperation. This is his seventh term in the assembly. Home Address: Route 1, Hartland.

Waukesha County, second district: Towns of Brookfield, Delafield, Lisbon, Menomonie, Merton, Oconomowoc, Pewaukee, and Summit; villages of Butler, Chenequa, Hartland, Lac La Belle, Lannon, Menomonee Falls, Merton, Sussex, and Pewaukee; city of Oconomowoc.



SPEARBRAKER  
Waupaca

ABRAHAM  
Winnebago, 1st

STEFFENS  
Winnebago, 2nd

**JULIUS SPEARBRAKER** (Rep.) was born on September 8, 1886 at Clintonville where he has resided ever since. After his graduation from high school he attended Marquette University for one year. At the present time he is in the general insurance business. Mr. Spearbraker has held a number of positions of trust and honor—city clerk of Clintonville from 1912 to 1934, member and secretary of the municipal water and light commission for twenty-three years, member of the library board for twenty-one years, and jury commissioner of Waupaca County for many years. In 1940 and 1944 he was a delegate to the Republican National Convention and presidential elector in 1944. This is his fifth term in the assembly. Home Address: 16 Ninth Street, Clintonville.

**HARVEY R. ABRAHAM** (Rep.) was born at Oshkosh on January 15, 1895. He received his education in the public schools and graduated from the Oshkosh Business College. He was a salesman and since 1936 has been a real estate salesman. He is a past commander of the local post 70 of the American Legion, and a past exalted ruler of the Elks, No. 292. Mr. Abraham is a veteran of World War I, having served in overseas combat duty with the 318th engineers, 6th division. This is his first term in the legislature. Home Address: 194½ Ceape Street, Oshkosh.

Winnebago County, first district: City of Oshkosh.

**RICHARD J. STEFFENS** (Rep.) was born on August 23, 1921 in Neenah. He attended parochial school, the Menasha High School, and Oshkosh State Teachers College. At present he is completing his law studies at the University of Wisconsin. He is president of the Menasha High School Alumni Society and a member of Pi Kappa Delta. In 1947 he was elected chief of staff of the Wisconsin Department of the Veterans of Foreign Wars. In World War II he served in the coast artillery and was awarded the Croix de Guerre with palm and the Bronze Star. Mr. Steffens, who is serving his first term in the legislature, is the youngest member of the assembly. Home Address: 221 Second Street, Menasha.

Winnebago County, second district: All the towns, villages, and cities of the county except the city of Oshkosh.



CLARK, W. W.  
Wood

MAY  
Chief Clerk

KELLMAN  
Sergeant at Arms

WILLIAM WALTER CLARK (Rep.) was born in Plum City on July 7, 1885. He was graduated from Plum City graded school, Ellsworth High School, River Falls Teachers College, and attended the University of Wisconsin. He taught for a number of years in a country school, high school, and Wood County Agricultural School, and has also served as county agricultural agent. Mr. Clark is a farmer and a cattle buyer. He has acted as town chairman of the town of Hansen and as chairman of the Wood County Board. Mr. Clark served as chairman of the Committee on Education in 1945 and 1947, and is a member of the Committee on Transportation. He was elected to the assembly in 1920, and re-elected in 1938, 1942, 1944 and 1946. Home Address: Vesper.

ARTHUR L. MAY was born in Chicago on January 6, 1901. He attended the elementary schools of Chicago and Wisconsin Rapids and was graduated from Central High School in Madison. In 1932 he received the degree of LL.B. from the University of Wisconsin Law School. Mr. May has been a farmer, mechanic, businessman, and since 1932 has engaged in the practice of law. He served as justice of the peace from 1931 to 1939. He was a delegate to the 1944 Republican National Convention. He was elected chief clerk of the assembly in 1941, 1943, 1945, and again in 1947. Home Address: 1431 Morrison Street, Madison.

NORRIS J. KELLMAN, the son of Mr. and Mrs. Frank A. Kellman, was born on October 23, 1898 at Galesville. After his graduation from Galesville High School he attended La Crosse State Teachers College for one year and was graduated from the University of Wisconsin in 1923. For ten years he was assistant postmaster at Galesville and for the past sixteen years he has been in the general insurance business. Mr. Kellman was a member of the board of supervisors of Trempealeau County for four years. He served in World War I and was one of the youngest men in the state to be commissioned as a second lieutenant. He has held a number of offices in the American Legion including that of commander of his local post for three years. In 1936 he was an alternate to the Republican National Convention in Cleveland and his father was a delegate. He was a delegate to the 1940 convention of the party in Philadelphia and his father was an alternate. Mr. Kellman was elected a delegate to the 1944 Republican National Convention. Mr. Kellman was a member of the assembly in the 1939 session. In 1941, 1943, 1945, and 1947 he was elected sergeant at arms of that body. Home Address: Galesville.