

---

---

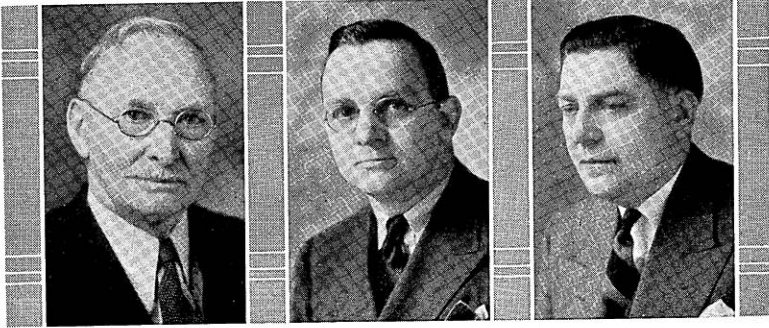
**Members of the  
Legislature**

---

---



## MEMBERS OF THE SENATE



CASHMAN  
1st District

KRESKY  
2nd District

ZIMNY  
3rd District

JOHN E. CASHMAN (Prog.) lives in the town of Franklin, Kewaunee county, where he owns and operates the land his father purchased from the government when Wisconsin was largely a wilderness. He was educated in the public schools, attended Valparaiso University, and spent two years at the Chicago Law School. He taught school for a number of years. He was a La Follette delegate to the National Republican Convention in 1924 and in the same year was appointed a regent of the University by Governor Blaine. Mr. Cashman is the author of a number of important laws: the 1931 highway law; the law exempting farm wood lots from taxation; the law requiring all beer sold in Wisconsin to be made from barley; and the law placing a fifteen cent per pound tax on oleomargarine to protect the dairy farmer. Because Mr. Cashman admired the progressive and liberal policies of President Roosevelt, he entered the 1936 race for Congress on the Democratic ticket and very nearly won the election over the incumbent. Mr. Cashman has served in the senate continuously since 1922. Home Address: Route 1, Denmark.

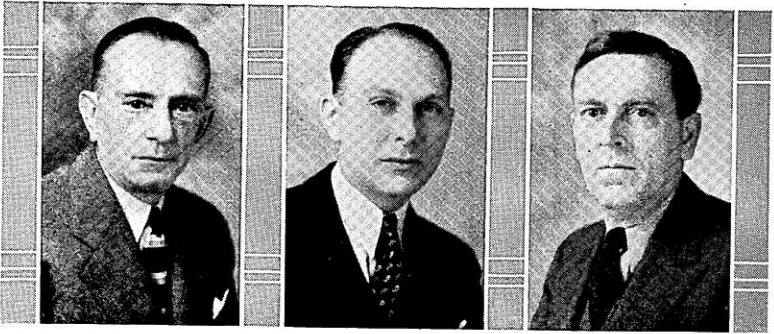
First senatorial district: Door, Kewaunee, and Manitowoc Counties.

MICHAEL F. KRESKY, JR., (Prog.) was born at Marinette on May 23, 1905. He was graduated from Marinette High School in 1923 and from Georgetown University Law School at Washington, D. C. in 1931. Since that time he has been a practicing attorney at Green Bay and a member of the law firm of Alk, Kresky & Cohen. This is Mr. Kresky's first term in the senate and the first time he has ever held a public office. Home Address: 1120 South Roosevelt Street, Green Bay.

Second senatorial district: Brown and Oconto Counties.

ARTHUR L. ZIMNY (Dem.) was born on August 5, 1900 at Milwaukee in the district he now represents. After his graduation from South Division High School he attended McDonald's Business College and later studied architectural engineering at the University of Wisconsin Extension Division. For fifteen years he has been in the advertising business. Mr. Zimny is a member of the Polish Roman Catholic Union, the Polish National Alliance, and the Century Club of Milwaukee. He was a pioneer in organizing the United Taxpayers Cooperative Association. Although active in civic affairs he had held no public office until his election to the senate in 1934. Home Address: 1640 South Muskego Avenue, Milwaukee.

Third senatorial district: The fifth, eighth, eleventh, and twenty-fourth wards of the city of Milwaukee.



MORRIS  
4th District

SCHOENECKER  
5th District

HAMPEL  
6th District

OSCAR H. MORRIS (Rep.) was born in Springfield, Massachusetts on March 8, 1876 and came to Milwaukee two years later with his parents. He left grade school at an early age to become "copy boy" for the Milwaukee Sentinel for which paper he finally became reporter and sports writer. Later he joined the Milwaukee Daily News and became reporter, city editor, and sports editor. For many years he was secretary of several commercial and trade organizations and at present is a department manager of the Milwaukee Association of Commerce. Senator Morris has been chairman of many interim committees while in the senate and in the last session served as chairman of the Committee on Corporations and Taxation. He was elected to the senate in 1920 and has served continuously since that time. In 1927 he was president pro tempore of the senate. In 1932 and 1936 he survived both Democratic landslides and was the only Republican senator to be elected in Milwaukee County in those two elections. Address: 611 North Broadway, Milwaukee.

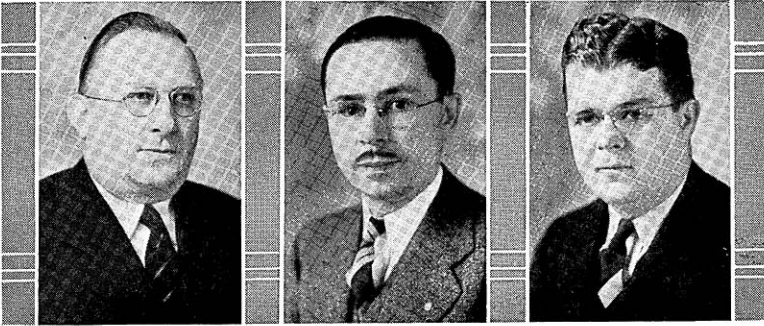
Fourth senatorial district: The thirteenth, eighteenth, and twenty-first wards of the city of Milwaukee; and the villages of Fox Point, River Hills, Shorewood, Whitefish Bay, and the town of Milwaukee.

HAROLD V. SCHOENECKER (Dem.) was born November 26, 1902 in Milwaukee and has lived there all his life. He received his B. A. degree from Marquette University in 1925 and his LL.B. from the same school. Mr. Schoenecker has held various positions including an association with his father in the V. Schoenecker Boot and Shoe Company. He is now practicing law at 710 North Plankinton Avenue, Milwaukee, as a member of the law firm of Kerwin, Schoenecker and Honeck. He is a member of the Milwaukee County, Wisconsin State, and American Bar Associations. Mr. Schoenecker was elected to the senate in 1934. Home Address: 2032 North Hi-Mount Boulevard, Milwaukee.

Fifth senatorial district: The ninth, fifteenth, nineteenth, twenty-second, and twenty-sixth wards of the city of Milwaukee.

GEORGE HAMPEL (Prog.) was born in Milwaukee on August 27, 1885. He was educated in the public schools, the International Correspondence School, and Hesse's Art School. Mr. Hampel is an accountant and is president of Hampel's Book Shop, Inc. Included in the public offices which he has held are county clerk of Milwaukee County in 1919 and 1920 and executive secretary of the Milwaukee Motion Picture Commission. He was a member of the assembly in 1931 and was elected to the senate in 1936. Home Address: 3651 North 17th Street, Milwaukee.

Sixth senatorial district: The second, seventh, tenth, twentieth and twenty-fifth wards of the city of Milwaukee.



GALASINSKI  
7th District

BUSBY  
8th District

CALLAN  
9th District

MAX J. GALASINSKI (Dem.) was born on March 18, 1879 at Milwaukee and received his education in the public, parochial, and evening schools of that city. From 1891 to 1893 he was an apprentice pharmacist. During the following nineteen years he was a stone cutter and sculptor. In 1912 he became superintendent of street sanitation for the fourteenth ward, and held that position for sixteen years. While he was alderman for his ward in 1928 he was instrumental in securing the purchase and development of Woodrow Wilson Park. He has held many offices including that of director of a building and loan association for eighteen years. In 1932 he was elected to the assembly and in 1934 to the senate. In 1936 he was a candidate for Congress from the tenth district. Home Address: 2433 South 6th Street, Milwaukee.

Seventh senatorial district: The twelfth, fourteenth, seventeenth, and twenty-seventh wards of the city of Milwaukee and the cities of Cudahy and South Milwaukee; towns of Lake and Oak Creek.

ALLEN J. BUSBY (Prog.) is thirty-six years old and is a graduate of the West Milwaukee public schools, West Allis High School, and Milwaukee State Teachers College. In 1922 he received the degree of B. A. from the University of Wisconsin and in 1925 an M. A. in history and politics. After studying law at the University of Chicago, he returned to the University of Wisconsin where he received his LL.B. in 1928 and was admitted to the bar. Prior to taking up law, Mr. Busby was principal of the high school at Little Chute for two years and an instructor of English and history in the West Allis High School from 1928 to 1933. Since 1932 he has been village attorney of West Milwaukee. He served in the assembly as a Progressive-Republican in 1931 and as a Progressive in 1935. In 1936 he was elected to the senate. Home Address: 925 South 38th Street, Milwaukee.

Eighth senatorial district: Towns of Franklin, Granville, Greenfield, and Wauwatosa; village of West Milwaukee; sixteenth and twenty-third wards of the city of Milwaukee and cities of Wauwatosa and West Allis.

JAMES L. CALLAN (Dem.), the oldest of eight children, was born in Milwaukee on June 3, 1910. He received his education in the parochial grade schools, Marquette University High School, and Marquette University. Since 1931 he has been a real estate and securities broker. He is serving his first term in the senate and is its youngest member. During the session of 1935 he was a member of the Committee on Corporations and Taxation. Home Address: 512 North 18th Street, Milwaukee.

Ninth senatorial district: The first, third, fourth, and sixth wards of the city of Milwaukee.



WHITE  
10th District

NELSON  
11th District

McDERMID  
12th District

KENNETH S. WHITE (Rep.), the son of Attorney Ferris M. White of River Falls, was born in that city on January 17, 1897. After attending the Teachers College at River Falls, he entered the Law School of the University of Minnesota. He served in the army with the A.E.F. in France and after his discharge continued his law course at the University of Wisconsin and was graduated from that institution in 1921. Since that time he has practiced law at River Falls in partnership with his father. Mr. White has always been active in community affairs, serving as district attorney of Pierce County for two terms and as a member of the county board for three terms. He was a delegate to the National Republican Convention held in Cleveland last June. He was elected to the senate for the first time in 1936. Home Address: River Falls.

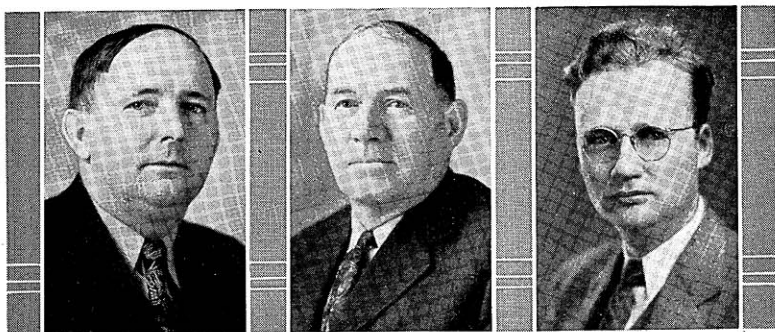
Tenth senatorial district: Buffalo, Pepin, Pierce, and St. Croix Counties.

PHILIP E. NELSON (Rep.) was born on September 1, 1891 on a farm at Curtiss, Wisconsin. He received his secondary education at Colby High School and later was graduated from the Williams Business College at Oshkosh. He has been employed by the Oakland Motor Car Company at Pontiac, Michigan as cost accountant and has operated cheese factories in Clark and Rusk Counties, and a general store at Conrath. He now owns and operates a farm at Cloverland, Maple P. O., Douglas County. During 1921-23 and 1925-35, he was a member of the county board of supervisors in Douglas County. For twenty-two months he served in the World War, most of the time with the A.E.F. in France. In 1927 and 1929, he was a member of the assembly and in 1931 of the senate, to which office he was re-elected in 1934. Home Address: Route 1, Maple.

Eleventh senatorial district: Bayfield, Burnett, Douglas, and Washburn Counties.

JOSEPH E. McDERMID (Prog.) was born in Minneapolis, Minnesota on March 20, 1894. He came to Wisconsin in 1899 with his parents. He attended Chicago Veterinary College for three years and Indiana Veterinary College at Indianapolis for one year, where he received the degree of D.V.M. He enlisted and served two years with the medical corps during the World War, and is a charter member of the Vinton Moore Post of the American Legion at Ladysmith. Since 1921 he has practiced veterinary medicine at Ladysmith. He is a member of the Rusk County Board of Supervisors, and is chairman of its road and bridge committee. He was elected to his first term in the legislature in April 1935 to fill a vacancy and was reelected in 1936. Home Address: Ladysmith.

Twelfth senatorial district: Ashland, Iron, Price, Rusk, Sawyer, and Vilas Counties.



PANZER  
13th District

MACK  
14th District

COAKLEY  
15th District

FRANK E. PANZER (Prog.) was born in the town of Hubbard in Dodge County on September 1, 1890. He attended the public schools and the Oakfield High School. Since 1918 he has been a school teacher and a telegraph operator and at present is engaged in farming. Mr. Panzer has held several public offices including those of school clerk, town chairman, and member of the Dodge County Board since 1925. He served in the assembly in the session of 1931 and was elected to the senate in 1934. Home Address: Route 2, Oakfield.

Thirteenth senatorial district: Dodge and Washington Counties.

MIKE MACK (Rep.) was born in Trempealeau County on November 15, 1873. After receiving a common school education he spent ten years in the lumber business. For the past forty years he has farmed in Outagamie County. During the World War, Senator Mack was chairman of the village Council of Defense. Before his election to the senate in 1932 he had served as a county board member and as a member of the county highway committee. During the 1935 session Senator Mack was a member of the senate Committee on Highways. Home Address: Shiocton.

Fourteenth senatorial district: Outagamie and Shawano Counties.

MAURICE P. COAKLEY (Rep.) was born at Beloit on January 9, 1906. He received the degrees of B. A. from Beloit College in 1926 and of LL.B. in 1930 from the Law School of the University of Wisconsin. He is a practicing attorney in Beloit, and during 1931-32 held the position of instructor in political science at Beloit College. From 1927 until his election to the senate he served as a record clerk in the senate. In 1932 he was admitted to the bar of the Territory of Hawaii at Honolulu. He is serving his first term in the legislature. Home Address: 1220 Emerson Street, Beloit.

Fifteenth senatorial district: Rock County.



ROETHE  
16th District

ENGBRETSON  
17th District

DUEL  
18th District

EDWARD J. ROETHE (Rep.) was born in Whitewater on May 12, 1878. After his graduation from Whitewater High School he taught school for two years. For the past thirty-seven years he has been connected with the Fennimore Times and at present is its publisher. Senator Roethe was elected president of the village of Fennimore in 1919 and when it was incorporated as a city in August of that year, became its first mayor. He was reelected as mayor in 1920, 1922, and 1924. For eight years he served as a member of the State Fair Advisory Board from the third Congressional district. Senator Roethe served in the senate in 1925 and 1929 and was reelected for the third time in 1936. He acted as chairman of the Interim Committee on Education which, after nearly two years of study, submitted a comprehensive plan for the reorganization of Wisconsin's educational system to the 1931 Legislature. Home Address: Fennimore.

Sixteenth senatorial district: Crawford, Grant, and Vernon Counties.

GEORGE ENGBRETSON (Prog.) was born on June 3, 1890 at Warren, Illinois. His parents moved shortly thereafter to the township of Wiota in Lafayette County, Wisconsin where he has lived ever since. He was educated at the Wiota common school and Platteville State Teachers College. His occupation is farming. During 1930-31 Senator Engebretson was a member of the Republican State Central Committee. He was elected to the senate in 1932 to fill a vacancy caused by the death of William Olson, and was reelected for a full term in 1934. Home Address: South Wayne.

Seventeenth senatorial district: Green, Iowa, and Lafayette Counties.

MORVIN DUEL (Rep.) was born in Fond du Lac County, July 8, 1888. He was reared on a farm and attended the rural schools. In 1906 he was graduated from the Rosendale High School and in 1910 from the Oshkosh State Teachers College. Mr. Duel taught in a rural school, was principal of a graded school, and for three years principal of a high school. From 1915 to 1921 he was county superintendent of schools of Fond du Lac County. He retired from that office to enter the insurance business in which he has been engaged ever since. Mr. Duel was elected to the senate for the first time in 1936. Home Address: 290 Sheboygan Street, Fond du Lac.

Eighteenth senatorial district: Fond du Lac, Green Lake, and Waushara Counties.





MORRISSEY  
19th District

BOLENS  
20th District

CLANCY  
21st District

PIERCE A. MORRISSEY (Dem.) was born on April 15, 1870 at Nepeuskum and was educated in the common schools and the state graded school at Waukau. He has been a farmer all his life. Senator Morrissey has held the following public offices in the town of Nepeuskum: 1904-13, assessor; 1912-17, chairman of the town and a member of the board of supervisors; 1922, member of the board of town chairmen and again a member of the board of supervisors. During the World War, he served on the committee on Liberty Loan drives. He is also a former member of the American Society of Equity for Wisconsin. Senator Morrissey is now serving his initial term in the legislature. Home Address: Route 1, Rush Lake.

Nineteenth senatorial district: Calumet and Winnebago Counties.

HARRY W. BOLENS (Dem.) was born on January 13, 1864. He has lived at Port Washington since 1879 except for six years spent in Sheboygan, where he published the Daily Journal. He is an inventor, manufacturer, and farmer. He has served as alderman, county supervisor, and county board chairman for several terms, and mayor for three terms. Senator Bolens organized the first independent military company in Wisconsin for the Spanish-American War, and in 1917 organized the first independent Wisconsin Company for the World War. He was later chairman of District Board No. 2, the expense of which according to Gen. Crowder was the lowest in the United States, and chairman of the county Council of Defense the expenses of which amounted to \$600. He has been a member of the senate since 1933. Home Address: 1242 Grand Avenue, Port Washington.

Twentieth senatorial district: Ozaukee and Sheboygan Counties.

JOSEPH CLANCY (Dem.) was born at Racine on August 2, 1890. He attended the St. Rose and Winslow Schools and was graduated from Racine High School in 1908. Between the time he left high school and 1914 he was in construction work on the Pacific Coast and also with the Chicago, Milwaukee and St. Paul Railroad. From 1914 to 1924 he was employed as general traffic manager by two large rubber companies. Since then he has been engaged in the selling of securities and real estate. After serving one term in the assembly in 1932-34, he was elected to the senate in the fall of 1934. Home Address: 1308 College Avenue, Racine.

Twenty-first senatorial district: Racine County.



SHEARER  
22nd District

SEVERSON  
23rd District

RUSH  
24th District

CONRAD SHEARER (Rep.) was born on October 18, 1874 in the town of Somers, Kenosha County. He attended the rural schools, was graduated from Kenosha High School in 1895, and Milwaukee Normal School in 1905. He taught in the rural schools, Kenosha College of Commerce, and the public schools of Milwaukee. For five years he worked in the Kenosha Post Office as clerk-carrier, and since 1907 has been the secretary-manager of the central office of the Kenosha Industries. Senator Shearer served as alderman in his city from 1913-19 and as a member of the Park Commission from 1919-23. He was a member of the state assembly from 1923-29. In 1928 he was elected to the senate and reelected in 1932 and 1936. Home Address: 520-68th Place, Kenosha.

Twenty-second senatorial district: Kenosha and Walworth Counties. HERMAN J. SEVERSON (Prog.) was born in Christiana, Dane County. He spent his boyhood years on his father's farm and received his early education in the public schools. Later he attended Stoughton Academy, Red Wing College, Drake University, and the University of Wisconsin Law School. After teaching school in Jefferson and Dane Counties for two years, he became principal of the graded school at London. In 1897 he graduated from the Wisconsin University Law School and was admitted to the bar and is a lawyer by profession. From 1904-08 he was Chairman of the Waupaca County Republican Committee and District Attorney for Waupaca County from 1908-10. He has been a member of the Legislature since 1918 and has served on important committees at each session. Was Chairman of the Committee on Corporations and Taxation in 1923, of Agriculture and Labor in 1925, of Corporations and Taxation again in 1931, President Pro Tem in 1931, Chairman of the Committee on Judiciary in 1933 and again in 1937. Home Address: Iola.

Twenty-third senatorial district: Portage and Waupaca Counties.

WALTER J. RUSH (Prog.) was born and reared on a farm in the town of Waterford, Racine County. He was educated in the common schools and at Rochester Academy. He received his B. S. degree from the University of Valparaiso in Indiana. He taught for three years, and then entered the University of Wisconsin where he completed the law course in 1900. Since then he has practiced law in Clark County. He was district attorney of Clark County from 1911-18 and a delegate to the Republican National Convention in Kansas City in 1928. He has always been affiliated with the Progressive cause in Wisconsin, and was a delegate to the Fond du Lac convention which organized the Progressive Party. Since 1929 he has been a member of the senate. Home Address: 202 South Clay Street, Neillsville.

Twenty-fourth senatorial district: Clark, Taylor and Wood Counties.



KANNENBERG  
25th District

RISSER  
26th District

ROWLANDS  
27th District

ROLAND E. KANNENBERG (Prog.) was born September 25, 1907 at Pleasant Prairie, Kenosha County. He attended the Marathon County public school, the Twin Oaks School, and the Wausau High School. Before becoming co-manager of the Kannenberg Granite Company of Wausau he had assisted on his father's farm and had spent four years quarrying granite in Marathon County. He was a member of the National Third Party Committee and one of the founders of the new Progressive Party of Wisconsin. In the September 1936 primary he was one of six candidates on the Progressive ticket for the office of lieutenant governor and received almost 25,000 votes. Mr. Kannenberg is serving his first term in the senate. Home Address: 1001 - 7th Avenue South, Wausau.

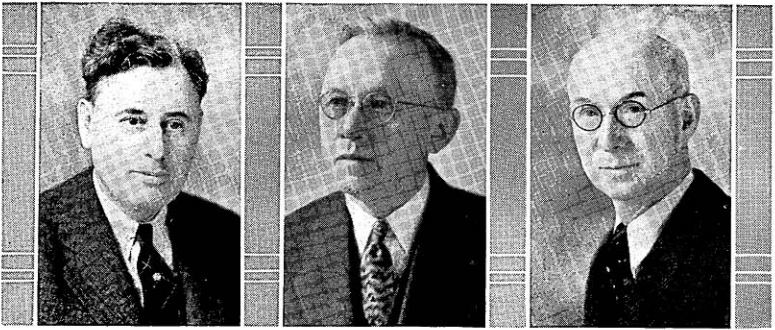
Twenty-fifth senatorial district: Lincoln and Marathon Counties.

FRED RISSER (Prog.) was born in the town of Buffalo, Buffalo County, on January 15, 1900. After he was graduated from the Winona High School at Winona, Minnesota he spent a couple of years on his father's farm and then entered the University of Wisconsin where he received his B. A. degree in 1923 and his LL.B. in 1925. He taught in the Beaver Dam High School for one year and since 1925 has been a practicing attorney in Madison. From 1925 to 1930 he lectured on business law at Madison College. Before his election to the senate in 1936 he had held a number of public offices: town clerk of the town of Madison from 1927-28; treasurer of the Highlands Mendota Beach School from 1930-37; and district attorney of Dane County from 1929-35. Home Address: Route 2, Madison.

Twenty-sixth senatorial district: Dane County.

E. MYRWYN ROWLANDS (Prog.) was born on April 1, 1901 at Cambria, Wisconsin. He received his elementary education in the Cambria public schools and St. John's Military Academy, and his higher education at Ripon College and the University of Wisconsin. During the past fourteen years he has been interested in banking, farming, and operation of a canning factory. He served Columbia County in the assembly from 1927 to 1934 and was elected to the state senate in 1935. He has the distinction of being the first chairman of the State Central Committee of the Progressive Party for 1934-36, and was reelected unanimously to serve in the same capacity for 1936-38. He is chairman of both the Committee on Committees and the Joint Committee on Finance. Home Address: Cambria.

Twenty-seventh senatorial district: Columbia, Richland, and Sauk Counties.



INGRAM  
28th District

ANDERSON  
29th District

SAULD  
30th District

G. ERLE INGRAM (Prog.) was born April 1, 1883 at Eau Galle. After receiving his secondary education in Dunn County, he attended Whitewater and La Crosse State Teachers Colleges, the Kansas City Business College, and the Northern Indiana Law School at Valparaiso. At the age of seventeen he began teaching and taught for several years in the elementary and high schools of the state. Since 1921 he has been practicing law in Eau Claire and has been vice president of the State Bar Association for the 19th judicial circuit. In 1928-29 he was a member of the Republican State Central Committee. He was elected to the assembly in 1930 and since 1933 has been a member of the senate. Legislative committees on which Mr. Ingram has served are the Interim Committee on Banking, the Interim Committee on Old Age Pensions, and the Advisory Legislative Committee to Investigate Finance Companies. Since September 1935 he has served part-time as special counsel for the Division of Consumer Credit of the Banking Commission. Home Address: 252 South 11th Street, Eau Claire.

Twenty-eighth senatorial district: Chippewa and Eau Claire Counties.

JOHN A. ANDERSON (Prog.) was born in Carver County, Minnesota on December 28, 1870 and received his education at Gustavus Adolphus College, St. Peter, Minnesota. With the exception of 1928-1929 he has been mayor of Barron since 1924. During 1924-1925 he was a member of the school board. He is serving his second term in the senate. Home Address: Barron.

Twenty-ninth senatorial district: Barron, Dunn, and Polk Counties.

ERNEST G. SAULD (Dem.) was born on July 4, 1884 in Europe in the duchy of Luxemburg. He is a graduate of the Iron Mountain, Michigan High School with the class of 1902 and took a business course at Green Bay Business College. Mr. Sauld was in the hotel and mercantile business with his father until 1918 when he entered the real estate business. He has held a number of public offices; chairman of the town of Pembine for sixteen years; clerk of the school board and chairman of the county highway committee since 1920; president of the Marinette County Agricultural Fair Association from 1930-1936; member of the executive committee of the county relief unit; director of the C.W.A. program; and work secretary of the WERA for over a year. Mr. Sauld was elected to the senate for the first time in 1936. Home Address: Pembine.

Thirtieth senatorial district: Forest, Florence, Langlade, Marinette, and Oneida Counties.



LEVERICH  
31st District

PAULSON  
32nd District

DEMPSEY  
33rd District

EARL LEVERICH (Prog.) was born on a farm in the town of Angelo, Monroe County on December 6, 1891. He is a graduate of Sparta High School, Madison College, and the University of Wisconsin short course in agriculture. During the twenty-five years in which he has been a dairy farmer, fruit grower, and farm co-op leader he has served his community as school clerk, town clerk, and town chairman. He is president of the Sparta Co-op Creamery Association, the Western Wisconsin Co-op Creamery Association, the Sparta Equity Livestock Shipping Association; agricultural member of the State Board of Vocational Education; and has been president and vice president, respectively, of the Wisconsin Horticultural Society and the American Society of Equity. He organized the anti-oleo demonstration at Madison in 1931 which resulted in the elimination of oleo in Wisconsin. Mr. Leverich was elected to the senate in 1934. During the 1935 session he was a member of the Committee on Education and Public Welfare, and in 1937, a member of the Special Joint Legislative Committee and chairman of the Committee on Agriculture and Labor. Home Address: Sparta.

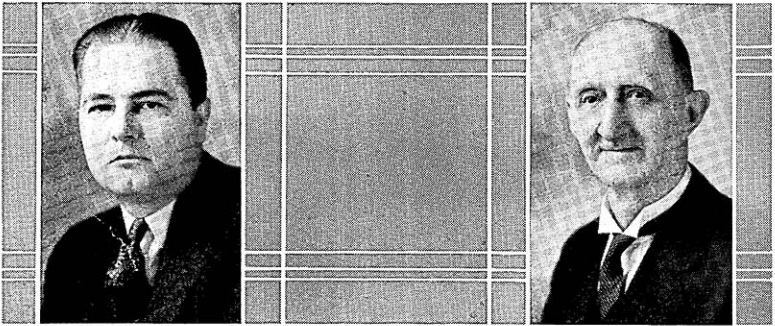
Thirty-first senatorial district: Adams, Juneau, Marquette, and Monroe Counties.

OSCAR S. PAULSON (Prog.) was born on December 12, 1889 on a farm near the village of Dalton in Otter Tail County, Minnesota. He was educated in the common schools of that county, and at Augsburg Academy, College, and Seminary at Minneapolis. Prior to his graduation he farmed for several years. Since 1916 he has been a Lutheran pastor at Argyle and La Crosse. He has been president of the Minneapolis district of the Lutheran Free Church since 1930, a member of the stewardship board since 1935, and president of the board of trustees of Oak Forest Sanatorium since 1935. This is his first term in the senate. Home Address: 1502 George Street, La Crosse.

Thirty-second senatorial district: Jackson, La Crosse, and Trempealeau Counties.

CHESTER E. DEMPSEY (Dem.) was born at Merton, Waukesha County, on July 20, 1895. He owns and operates a modern dairy farm of 275 acres which has been the homestead of the Dempsey family since early pioneer days. He received his education in the county schools and has always been a close student of farming and farm problems. He publishes Dempsey's Farm Economics, a paper with a wide circulation among farmers of the state. Prior to his election to the senate in 1934 he was a member of the Waukesha County Board and has held various school and township offices. Home Address: Route 1, Hartland.

Thirty-third senatorial district: Jefferson and Waukesha Counties.



LARSEN  
Chief Clerk

HARTMAN  
Sergeant-at-Arms

LAWRENCE R. LARSEN was born at Racine, Wisconsin on March 23, 1897, and received his education in the common and high schools of that city. After leaving school he was employed as purchasing agent, salesman, and advertising manager by several Racine industrial companies. He served in the World War as acting Sergeant-Major, Headquarters Company at Camp Shelby, Mississippi. His election as Chief Clerk of the Senate in 1935 was his first public office. He was unanimously reelected in 1937. Home Address: 1632 Flett Avenue, Racine.

EMIL A. HARTMAN was born and educated at Manitowoc, Wisconsin. He is a paperhanging and painting contractor. Mr. Hartman has served as secretary of the Manitowoc County Republican Committee, delegate to the Republican State Conventions, clerk with the Adjutant General, and filing clerk with the Secretary of State. Since 1915 he has served in various capacities with the senate: document clerk, mailing clerk, assistant sergeant-at-arms, and has been elected as sergeant-at-arms for the past four sessions. Home Address: 2253 Fox Avenue, Madison.

## MEMBERS OF THE ASSEMBLY



**BLOMQUIST**  
Adams and Marquette

**VAN GUILDER**  
Ashland

**BEGGS**  
Barron

**EDWIN W. BLOMQUIST** (Prog.) was born on October 30, 1896 at Chicago, Illinois where he attended grade school and high school. Later he took several courses at La Salle Extension University in that city. He has been employed by the Chicago and Northwestern Railroad since 1914 in the capacity of locomotive engineer and fireman. He is serving his third term as a member of the city council of Adams and for fifteen years has been an active officer in the Brotherhood of Locomotive Firemen and Enginemen. This is his second term in the assembly. Home Address: Adams.

**HARRY VAN GUILDER** (Prog.) was born at Cannon Falls, Minnesota on July 6, 1890. He was educated in the common schools of Burnett County. Mr. Van Guilder has been a clerk in a store and a bookkeeper, and since 1913 he has been employed by the Soo Line Railroad as a switchman. He has been president of the local Brotherhood of Railroad Trainmen for ten years and in 1935 was a delegate to the national convention at Cleveland. For four years he was vice president of the Ashland County Progressive Club and was a delegate to the Fond du Lac Convention at which the Progressive Party was formed. Until his election to the assembly in 1936, Mr. Van Guilder had held no public office. Home Address: 820—4th Avenue West, Ashland.

**CHARLES A. BEGGS** (Prog.) was born in Portage County in 1870 where he was educated in the common schools. For one year he was in the grocery business at Plainfield for four years and in general merchandising at Rice Lake. He has been engaged since in the growing and the shipping of produce for twenty-five years. Mr. Beggs was a member of the county board for twenty-one years. He has served in the assembly during the sessions of 1917, 1927 to 1931 inclusive, and continuously since 1935. Home Address: Rice Lake.



CARLSON  
Bayfield

LYTIE  
Brown, 1st

SWEENEY  
Brown, 2nd

LAURIE E. CARLSON (Prog.) was born on a farm in the town of Bayfield on January 12, 1908. After his graduation from Bayfield High School in 1925 he attended Northland College for two years and completed two years of work at the University of Wisconsin. Mr. Carlson is a fruit and dairy farmer. He has specialized in the growing of strawberries and has introduced head lettuce as a new cash crop into Bayfield County. Until his election to the assembly in 1936, he had held no public office. Home Address: Bayfield.

HAROLD A. LYTIE (Dem.), the son of B. O. Lytie of Amherst, was born in Portage County on June 9, 1899. He attended the public schools of Amherst. At the age of seventeen he was the youngest person in the state to receive the master barber's license. He has owned and operated his own barber shop for sixteen years. Mr. Lytie has been secretary and treasurer of the Central West Side Business Men's Association and is now president of that organization. He is first vice president of the Associated Master Barbers of Wisconsin and has been chairman of the joint legislative committee of the Journeymen and Master Barbers for three terms. He was elected to the assembly for the first time in 1936. Home Address: 228 North Ashland Avenue, Green Bay.

Brown County, first district: The city of Green Bay exclusive of the twenty-first ward.

WILLIAM J. SWEENEY (Dem.) was born in the town of Glenmore, Brown County. He was educated in the common schools and also took a correspondence business course. For nine years ending in 1931 he was a road and bridge contractor. Since then he has been an auctioneer, insurance agent, and farmer. He served the township of Glenmore as highway commissioner from 1920-22, as town clerk from 1922-27, and as town chairman from 1927-29. He was elected to the assembly in 1932 and reelected in 1934 and 1936. Home Address: Route 3, Green Bay.

Brown County, second district: All the towns, cities, and villages of Brown County except the city of Green Bay; and the twenty-first ward of the city of Green Bay.





HITT  
Buffalo and Pepin

BERGREN  
Burnett and  
Washburn

HUPFAUF  
Calumet

ARTHUR A. HITT (Prog.) was born in the town of Alma, Buffalo County on November 9, 1890. He was graduated from the Alma High School in 1910, La Crosse State Teachers College in 1913, and the University of Wisconsin (A. B. 1916, M. A. 1926). From 1921 to 1932 he taught school, the last five years in the Milwaukee Vocational School. He has given up teaching to devote full time to his farm near Alma, and to the assembly, in which he is serving his sixth consecutive term. Mr. Hitt takes an active part in the farm organizations of his district. He is on the county board of directors of the Farmers Equity Union in Buffalo County, is a member of the state board of directors of the Farmers Equity Union, and is secretary-treasurer of the Buffalo County Electric Cooperative which he helped organize. Mr. Hitt is a World War veteran. Home Address: Route 2, Alma.

HARRY BERNARD BERGREN (Prog.) was born September 8, 1888 at St. Paul, Minnesota, and was educated in the public schools of that city. Later he attended college and night school. He has been a printer for eleven years, credit manager and correspondence man for six years, and a poultry raiser for the past seven years. For three successive terms he held the office of town clerk of the town of Daniels. After serving for twenty-one months in the World War he was honorably discharged as a second lieutenant. He is serving his second term in the assembly. Home Address: Route 1, Siren.

HENRY HUPFAUF (Dem.) was born on a farm in the town of Harrison, Calumet County on August 11, 1885 and was educated in the common schools. He lived on a farm from 1885 to 1922; from 1922 to 1929 he was a field man for the Menominee River Sugar Company; and since 1929 he has operated a general store and a tavern at Darboy. Mr. Hupfauf was town clerk from 1914 to 1922 and school clerk of district number six from 1905 to 1920. He is interested in cooperatives. In 1910 he organized the Manitowoc Road Cooperative Telephone Company and was treasurer of a butter and cheese cooperative for a number of years. This is Mr. Hupfauf's first term in the assembly. Home Address: Route 4, Appleton.



HIPKE  
Chippewa

NEHS  
Clark

ROCHE  
Columbia

GEORGE H. HIPKE (Rep.) was born at New Holstein, Wisconsin on December 29, 1879. He received his education in the common schools of his home town. At an early age he entered the mercantile business and at present devotes his time to the canning industry, forest products, and the selling of land. He has held a number of public offices. From 1921 to 1931, he was on the Stanley Board of Education. Since 1919 he has been a member of the board of trustees of the Chippewa County Asylum; and from 1932 to 1935, mayor of Stanley. He is serving his second term in the assembly. Home Address: Stanley.

VICTOR NEHS (Prog.) was born at Menomonee Falls on July 28, 1887. He attended the public schools of Marshfield and was graduated from the high school of that city. In 1913 he was admitted to the bar after having completed the law course at the University of Wisconsin. He practiced law at Loyal in Clark County in 1914, and in 1917 formed a law partnership with Emery W. Crosby at Neillsville. Mr. Nehs has held various honorary and public offices, including mayor of Neillsville, clerk of the school board, justice of the peace, circuit court commissioner, divorce counsel, district attorney, city attorney, chairman of the county board, United States conciliation commissioner, president of the Kiwanis Club, commander of the American Legion Post. He served for twelve years in the Wisconsin National Guard with the Second Regiment Band of Marshfield. His military service also includes nine months in the Mexican border campaign and a year in the World War with the Signal Corps in France. Music, hunting, and fishing are his hobbies. He has served in the assembly since 1935. Home Address: Neillsville.

ROBERT H. ROCHE (Dem.) was born at Doylestown on October 1, 1891. He attended the graded school at Doylestown and the Columbus High School. He has been a farmer all his life with the exception of the last four years when he served as sheriff of Columbia County. He figured prominently in a hold-up and robbery and was seriously wounded in both: on September 11, 1931 he attempted to prevent the robbers of the Doylestown State Bank from escaping in his automobile, and on May 22, 1934 he attempted to question the suspects in a Baraboo drug store robbery as they were leaving the city. In 1936 he was elected to the assembly for the first time. Home Address: 707 East Cook Street, Portage.



McDOWELL  
Crawford

SCHENK  
Dane, 1st

HANSON  
Dane, 2nd

DONALD C. McDOWELL (Rep.) was born at Mt. Sterling in Crawford County on August 27, 1890. He is a graduate of the Soldiers Grove High School and attended Lawrence College and the University of Wisconsin. Mr. McDowell is interested in farming and is a farm owner. He has been postmaster at Soldiers Grove from 1922-35; a member of the school board from 1926-33; a member of the Soldiers and Sailors Relief Commission of Crawford County for the past five years; and at present is a supervisor and member of the county board. He served in the World War with the famous 32nd Division. This is his first term in the assembly. Home Address: Soldiers Grove.

HERBERT C. SCHENK (Prog.) was born on June 26, 1880 in Leeds. He attended the elementary school in Madison and also Northwestern Business College where he was graduated in 1898. From 1901-08 he was manager of a retail lumber yard and from that time on he has been a retail hardware dealer. Mr. Schenk has been a member of the board of education since 1921, and of the park commission and board of health from 1918 and 1923, respectively, to the present. He also belonged to the Wisconsin National Guard from 1898 to 1901. This is Mr. Schenk's second term in the assembly. Home Address: 2051 Winnebago Street, Madison.

Dane County, first district: The city of Madison.

JAMES C. HANSON (Prog.) came to America at the age of four from Slysrup, Lolland, Denmark, where he was born July 11, 1862. He has always made his home in the town of Christiana. He received his education in the public schools, Albion Academy, and Milton College. His occupation is farming and he has long been active in the cooperative movement. Besides holding many other offices of trust and honor, Mr. Hanson has been a member of the assembly since 1917 and is the oldest legislator in point of service. The University Board of Regents presented him with a testimonial of appreciation in 1932 for his pioneering services in the field of cooperative marketing and the organization of other cooperatives. Home Address: Route 2, Deerfield.

Dane County, second district: Towns of Albion, Blooming Grove, Bristol, Burke, Christiana, Cottage Grove, Deerfield, Dunkirk, Dunn, Medina, Pleasant Springs, Rutland, Sun Prairie, Windsor, and York; villages of Cambridge, Cottage Grove, Deerfield, DeForest, McFarland, Marshall, Rockdale, and Sun Prairie; city of Stoughton.



BAKER  
Dane, 3rd

GENZMER  
Dodge, 1st

KRUEGER  
Dodge, 2nd

ALBERT J. BAKER (Prog.), the son of the late P. O. Baker, a former assemblyman, was born December 14, 1874 in the town of Primrose, Dane County. He was educated in the common schools, and has been a farmer all his life. Mr. Baker has held numerous public and administrative offices. He was first elected to the assembly in 1926, and has been a member since that date. Home Address: 204 Wilson Street, Mount Horeb.

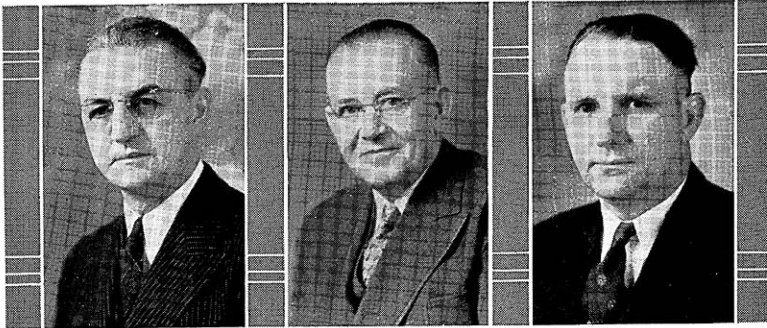
Dane County, third district: Towns of Berry, Black Earth, Blue Mounds, Cross Plains, Dane, Fitchburg, Madison, Mazomanie, Middleton, Montrose, Oregon, Perry, Primrose, Roxbury, Springdale, Springfield, Vermont, Verona, Vienna, and Westport; villages of Belleville, Black Earth, Blue Mounds, Brooklyn, Cross Plains, Dane, Maple Bluff, Mazomanie, Middleton, Mt. Horeb, Oregon, Shorewood Hills, Verona, and Waunakee.

ELMER L. GENZMER (Dem.), a descendant of Christian Genzmer, one of the early settlers of Mayville, was born there on January 3, 1903. From 1922-23 he attended Milwaukee State Teachers College and Marquette Law School from 1923-24. He was unable to continue his college work because his parents were dependent on him for a living. Mr. Genzmer taught in the rural schools of Dodge County for five years and later held various positions with industrial and business concerns in Wisconsin. He has been justice of the peace of Mayville since 1932. This is Mr. Genzmer's second consecutive term in the assembly. Home Address: 435 North Main Street, Mayville.

Dodge County, first district: Towns of Ashippun, Clyman, Emmet, Herman, Hubbard, Hustisford, Lebanon, Leroy, Lomira, Rubicon, Shields, Theresa, and Williamstown; villages of Clyman, Hustisford, Iron Ridge, Lomira, Neosho, and Theresa; cities of Horicon and Mayville, and the fifth, sixth, thirteenth, and fourteenth wards of Watertown.

HENRY EDWARD KRUEGER (Dem.) was born May 14, 1882 in Dodge County and received his education in the county schools. In 1907 he took a short course in agriculture at the University of Wisconsin. He is a farmer and specializes in seed-growing and raising Brown Swiss cattle. Mr. Krueger has served as clerk and assessor of the town of Beaver Dam at various times and for the past five years has been its town chairman. He is president of the Dodge County Fair and was elected as a Master Farmer for 1934 by the Wisconsin Agriculturist Farmer. He was elected to the assembly for the fifth time in 1936. Home Address: Route 1, Beaver Dam.

Dodge County, second district: Towns of Beaver Dam, Burnett, Calamus, Chester, Elba, Fox Lake, Lowell, Oak Grove, Portland, Trenton, and Westford; villages of Fox Lake, Lowell, Reeseville, and east ward of Randolph; cities of Beaver Dam and Juneau, and first, second, third, and fourth wards of the city of Waupun.



GRAASS  
Door

HALL, M. H.  
Douglas, 1st

PETERSON, E. C.  
Douglas, 2nd

FRANK N. GRAASS (Rep.) was born at Sturgeon Bay on August 19, 1885. He was graduated from Sturgeon Bay High School in 1905 and in the following year entered the forest tree seed exporting business. For twelve years he acted as legislative counsel for many state conservation organizations on all conservation measures coming before the legislature. He also served on the advisory board of the Wisconsin Conservation Commission for four years. He maintains an active interest in conservation, and in the care, hospitalization, and education of poor and crippled children. This is Mr. Graass' fourth term in the assembly, having been previously elected in 1916, 1918, and 1934. Home Address: Sturgeon Bay.

MICHAEL H. HALL (Prog.) was born at De Soto, Missouri on August 24, 1890. He attended the common and high schools of Mayville, New York. After leaving high school he worked as a grocery clerk for six months, and from 1908 to 1910 worked in engine service in New York State. In 1910 he entered engine service in Everett, Washington and transferred to Superior, Wisconsin in 1912 where he has been ever since. At present his occupation is locomotive engineer with the Great Northern Railway. In 1918 he was elected local chairman of the general grievance committee of the Great Northern System and in 1933 he was elected secretary-treasurer. He is serving his second term in the assembly. Home Address: 1311 Twelfth Street, Superior.

Douglas County, first district: The third, fourth, fifth, sixth, and seventh wards of the city of Superior.

ELMER C. PETERSON (Prog.) was born in Martin County, Minnesota on November 30, 1892. He was educated in the public schools of Rockford, Illinois and was graduated from Brown's Business College in that city. During the World War he served with the A. E. F. 311th French Mortar Battery, 86th Division. At the present time Mr. Peterson is engaged in farming in Douglas County. He has held a number of public offices, including town clerk, school clerk, town chairman, and member of the county board from 1930 to the present time. He has also been president of the Douglas County Farmers Union since 1931. This is Mr. Peterson's second term in the assembly. Home Address: Route 1, Poplar.

Douglas County, second district: Towns of Amnicon, Bennett, Brule, Cloverland, Dairyland, Gordon, Hawthorne, Highland, Lakeside, Maple, Oakland, Parkland, Solon Springs, Summit, Superior, and Wascott; villages of Lake Nebagamon, Oliver, Solon Springs, and Poplar; first, second, eighth, ninth, and tenth wards of Superior.



MILLAR  
Dunn

PRITCHARD  
Eau Claire

BERQUIST  
Florence, Forest and  
Oneida

JAMES D. MILLAR (Prog.) was born in Eau Claire on January 8, 1869. At the age of four he moved with his parents to a farm in Dunn County. He was educated in a one-room country school, the Menomonie High School, and River Falls State Normal School. Later he taught school, kept books, and engaged in the lumber manufacturing business. He owns and for the last 30 years has operated a farm preempted by his grandfather in 1856. He served as secretary of the Dunn County Agricultural Society for 19 years; chairman of the town of Red Cedar for 22 years; chairman of the county board of supervisors for six consecutive terms; secretary of the Dunn County Farmers Mutual Fire Insurance Company for 16 years; and a member of the Free Library Commission for four years. Mr. Millar was a member of the assembly in 1911 and 1913 and, with the exception of the session of 1933, from 1923 through 1937. Home Address: Menomonie.

JOHN T. PRITCHARD (Prog.) was born on December 20, 1883 in Caernarvon, Wales and received his early education there. In 1905 he came to America. He studied in the College of Agriculture at the University of Wisconsin for two years. Since then he has engaged in farming, moving to Eau Claire County in 1913. He has held various public offices and for the past fourteen years has been a member of the county board and chairman of its finance and resolution committees. Mr. Pritchard is serving his third term in the legislature. Home Address: Route 5, Eau Claire.

HENRY BERQUIST (Prog.) was born in Minneapolis on February 26, 1905. He was educated in the common schools and in the summer of 1934 he attended the Farm and Labor College at Tomahawk. Mr. Berquist has been active in fur farming. He has been national organizer and vice president of the American Fur Growers Association as well as cartoonist for its monthly magazine. In addition to farming for eight years he has been superintendent of the Northlands Packing Company and for the past three years has been a labor foreman. He had held no public office until his election to the assembly in 1936. Home Address: Rhinelander.



FITZSIMONS  
Fond du Lac, 1st

HINZ  
Fond du Lac, 2nd

GOLDTHORPE  
Grant, 1st

MAURICE FITZSIMONS, JR. (Dem.) of Fond du Lac was born September 30, 1906, and has always lived in the city of his birth. For two years he attended Marquette University, and since 1923 has been affiliated with M. Fitzsimons and Sons Shoe Company. In 1927 he became the owner and operator of the Fitzsimons Fur Farm. Mr. Fitzsimons has been a member of the assembly since 1932. Home Address: Box 129, Fond du Lac.

Fond du Lac County, first district: Towns of Calumet, Empire, Fond du Lac, and Taycheedah; city of Fond du Lac.

ARTHUR F. HINZ (Rep.) was born on a farm near Ripon on March 23, 1886. He attended country school and a Ripon High School. In 1906 he was graduated from the College of Agriculture of the University of Wisconsin. Mr. Hinz has owned and operated a farm for twenty-five years; has been manager and also secretary-treasurer of the Badger Farmer Company; was an organizer and secretary of the Fond du Lac County Guernsey Association for many years; and at present is secretary-treasurer of the Ripon Packing Company. He served as town assessor during 1920-21, is a member of the hospital commission, has been president of the park commission for the past six years, and a member of the city council since 1926. This is his first term in the assembly. Home Address: 229 Scott Street, Ripon.

Fond du Lac County, second district: Towns of Alto, Ashford, Auburn, Byron, Eden, Eldorado, Forest, Friendship, Lamartine, Marshfield, Metomen, Oakfield, Osceola, Ripon, Rosendale, Springvale, and Waupun; villages of Brandon, Campbellsport, Eden, Fairwater, North Fond du Lac, Oakfield, Rosendale, and St. Cloud; city of Ripon and fifth and sixth wards of Waupun.

WILLIAM H. GOLDTHORPE (Rep.) was born at Cobb on September 25, 1880. He was graduated from Platteville State Normal School in 1900. In 1899 Mr. Goldthorpe organized the Platteville Normal School Band which was the first normal school band in Wisconsin. His interest along musical lines was continued and in addition to conducting bands in his home town and the surrounding towns, he organized the Wisconsin Press Association Band in 1926 which was the first of its kind in the United States. Since 1923 he has been a newspaper publisher at Cuba City. He has also been postmaster of that city for the last twelve years. Mr. Goldthorpe was elected to the assembly in April 1935 to fill a vacancy, and was reelected in 1936. Home Address: Cuba City.

Grant County, first district: Towns of Beetown, Cassville, Clifton, Ellenboro, Glen Haven, Harrison, Hazel Green, Jamestown, Lima, Paris, Platteville, Potosi, Smelser, and Waterloo; villages of Cassville, Hazel Green, Livingston, and Potosi; cities of Platteville, and Cuba City.



McINTYRE  
Grant, 2nd

HOESLY  
Green

PETERSON, R. W.  
Green Lake and Waushara

P. BRADLEY McINTYRE (Rep.) was born at Muscoda on February 9, 1872. He attended the Muscoda grade and high schools and completed the commercial course at the Dixon, Illinois Business College in 1892. For two years after his graduation he was an accountant in an insurance company but resigned to return to Muscoda where he operated a farm for ten years. From 1905 to 1931 he was connected with a number of agricultural manufacturing concerns as traveling salesman, assistant sales manager, and sales manager. Since 1931 he has been with the Federal Land Bank of St. Paul as an appraiser of Wisconsin farms. Mr. McIntyre was town clerk of Muscoda from 1897 to 1903 and chairman of the town in 1904. This is the first term in the assembly. Home Address: 344 West Maple Street, Lancaster.

Grant County, second district: Towns of Bloomington, Boscobel, Castle Rock, Fennimore, Hickory Grove, Liberty, Little Grant, Marion, Millville, Mt. Hope, Mt. Ida, Muscoda, North Lancaster, Patch Grove, South Lancaster, Watterstown, Wingville, Woodman, and Wyalusing; villages of Bagley, Bloomington, Blue River, Montfort, Mt. Hope, Muscoda, Patch Grove, and Woodman; cities of Boscobel, Fennimore and Lancaster.

ERNST J. HOESLY (Prog.) born June 16, 1885 at New Glarus was educated at the local high school and at Northwestern Business College, Naperville, Illinois, where he was graduated in 1903. For seven years he was an assistant cashier at the Bank of New Glarus, assistant post-master four years, village clerk six years, supervisor of the village of New Glarus fourteen years, and member of the county highway committee twelve years. At present he is a banker and dealer in cattle. Mr. Hoesly has been a member of the assembly since 1927. Home Address: New Glarus.

REUBEN W. PETERSON (Rep.) was born November 22, 1899 in Berlin, Wisconsin. He attended the public schools of that city and was graduated from Berlin High School in 1917. During the World War he served in the United States Navy. In 1924 he was graduated from Marquette University Law School, and is now a practicing attorney in Berlin. He was elected district attorney of Green Lake County in 1927 and has since been reelected three times. Mr. Peterson was a member of the 1935 assembly and was reelected in 1936. Home Address: 221 Liberty Street, Berlin.





JACKSON  
Iowa

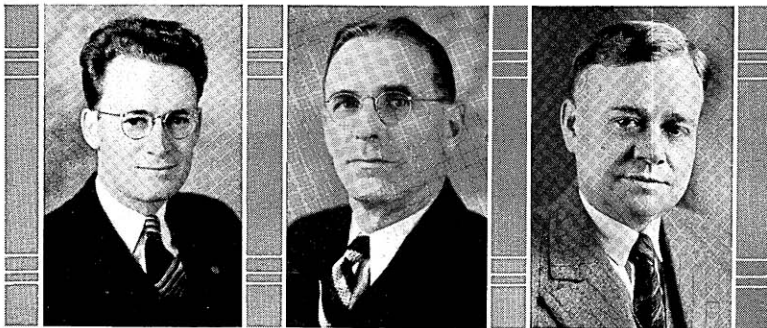
ALFONSI  
Iron and Vilas

HEMMY  
Jackson

JOHN S. JACKSON (Prog.) born at Waldwick, Iowa County, received his education in the public schools, and has engaged in farming all his life. Mr. Jackson has held several public offices including chairman of the town of Mineral Point, member of the Iowa County Board for thirteen years, clerk of the school board for fourteen years, and president of the Southwestern Wisconsin Shipping Association for fifteen years. He has been a member of the assembly since 1927. Home Address: Route 4, Mineral Point.

PAUL R. ALFONSI (Prog.), the first person of Corsican descent to serve in the legislature, was born February 13, 1908 at Pence, Wisconsin. He was graduated from Lincoln High School at Hurley in 1924 and from Whitewater State Teachers College in 1927, where he was a member of the debate team for three years. From 1927 to 1932, Mr. Alfonsi was head of the commercial department and forensic coach at Washburn High School. He has been a member of the assembly since 1933 and was elected Speaker in 1937. During the session of 1935 he served on several important committees and was Progressive floor leader. Home Address: Pence.

PETER A. HEMMY (Prog.) was born in the town of Honey Creek, Sauk County on March 22, 1875. He attended the common schools and high school at Prairie du Sac. Before 1900 he farmed in Sauk County and since that time he has farmed continuously in the town of Alma, Jackson County. During 1917 and 1918 he was a member of the assembly and has served continuously since 1935. Home Address: Route 1, Humbird.



DAUGS  
Jefferson

BARNES  
Juneau

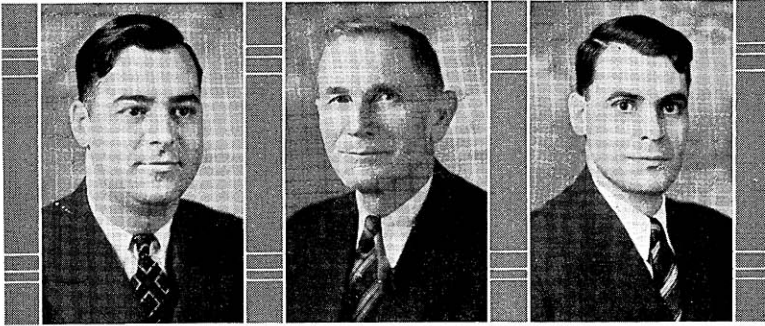
GROSVENOR  
Kenosha, 1st

PALMER F. DAUGS (Dem.) was born in the town of Farmington, Jefferson County, on February 10, 1903. He attended high school in Fort Atkinson and later the College of Business Administration of Marquette University. He is a salesman; a member of Delta Sigma Pi, International Commerce Fraternity; a charter and key member of the Fort Atkinson Lions Club; and has held many offices in civic and welfare organizations in Jefferson County. During his first term in the assembly he introduced a number of important bills which became law, including the one providing for the semi-annual payment of taxes. He had a perfect attendance record in the 1933 regular session and the succeeding special session. He was the author of the bill allowing the consolidation of two or more counties in the 1935 session, and was secretary of the Interim Committee on Taxation Problems. Mr. Daugs attended the 1936 Democratic National Convention at Philadelphia as an alternate delegate. This is his third term in the assembly. Home Address: 801 East Street, Fort Atkinson.

WILLIAM H. BARNES (Prog.) was born in the town of Lisbon. He was graduated from the New Lisbon High School in 1904, and from the short course of the College of Agriculture of the University of Wisconsin in 1907. He has farmed practically all his life and is actively interested in farm organizations. For the last ten years he has been a member of the school board of District No. 4, town of Fountain, and for the past five years secretary-treasurer and manager of the New Lisbon Creamery Association. He has been town chairman and member of the county board and is a director of the Four County Farmers Union Oil Company. This is his second term in the assembly. Home Address: New Lisbon.

ALFRED C. GROSVENOR (Dem.), a native of Kenosha since his birth on September 8, 1888 received his education in the Kenosha Central High School and the Kenosha College of Commerce. After finishing his education, he was associated with his mother, the late Elizabeth Grosvenor, in a newspaper distributing, confectionery, and notions store. Later he operated a recreational parlor, and at present is engaged in the management of real estate. Mr. Grosvenor is a veteran of the World War. From 1921-22, he was a member of the city council; 1923-33, a member of the Kenosha County Board; 1927-29, the chairman of the latter; and since 1933 has been a member of the assembly. Mr. Grosvenor is also a member of the Kenosha Harbor Commission and the Kenosha Historical Society. Home Address: 5933 - 7th Avenue, Kenosha.

Kenosha County, first district: Second, third, fourth, eighth, ninth, tenth, and twelfth wards of the city of Kenosha.



**COSTELLO**  
Kenosha, 2nd

**SHIMEK**  
Kewaunee

**FRITZ**  
La Crosse, 1st

**EMIL COSTELLO** (Prog.) was born on January 2, 1908 at Kenosha where he attended the public schools. He has been an assembler for the Simmons Company for eight years. Until his election to the assembly in 1936 he had held no public office. Home Address: 4028 - 14th Avenue, Kenosha.

Kenosha County, second district: Towns of Brighton, Bristol, Paris, Pleasant Prairie, Randall, Salem, Somers, and Wheatland; village of Silver Lake; first, fifth, sixth, seventh, and eleventh wards of the city of Kenosha.

**ALBERT D. SHIMEK** (Dem.) was born in the town of Casco, Kewaunee County on April 23, 1873. He spent his boyhood on a farm. He was graduated from Stevens Point Teachers College in 1904, from Green Bay Business College in 1905, and in 1908 completed the teachers' commercial course in Ferris Institute, Big Rapids, Michigan. For eighteen years he taught various business subjects in public and private schools. In addition to being an expert accountant, he has been general manager of a book concern and also manager of a garage. Mr. Shimek helped to organize the Algoma Hospital and the Algoma Building and Loan Association. He was president of the Algoma Board of Education; president of the Kewaunee County Automobile Dealers Association; and president of the Kewaunee County Grocers Association. This is his third consecutive term in the assembly. Home Address: Algoma.

**OLIVER H. FRITZ** (Prog.) was born at La Crosse on November 20, 1905. He worked his way through the grade schools and high school at La Crosse and attended the State Teachers College in 1925. He was the manager of a grocery store from 1925 to 1933. Mr. Fritz has been supervisor of his ward since 1933; a member of the county board especially interested in outdoor relief problems and the welfare of the workman; a member of the La Crosse Safety Commission since 1936; and a sergeant in the medical department of the Wisconsin National Guard from 1928-33. This is his first term in the assembly. Home Address: 828½ South 3rd Street, La Crosse.

La Crosse County, first district: The first, second, third, fourth, fifth, sixth, seventh, ninth, tenth, eleventh, twelfth, thirteenth, fourteenth, fifteenth, sixteenth, nineteenth, and twentieth wards of the city of La Crosse.



SCHILLING  
La Crosse, 2nd

YOUNGBLOOD  
Lafayette

CAVANAUGH  
Langlade

HARRY W. SCHILLING (Prog.) was born on September 21, 1887 in Onalaska where he attended the public schools. In 1911 he was graduated from the short course in agriculture at the University of Wisconsin. Since the age of seven he has resided on a farm and his occupation has always been farming. The public offices which he has held include director of the creamery board from 1916 to 1924, member of the county board in 1922, member of the town board from 1924 to 1926, and director of the district school since 1931. Mr. Schilling was an active advocate of the new Progressive Party, a delegate to the Fond du Lac convention, and also vice president of the La Crosse County Progressive Club. This is his second term in the assembly. Home Address: Route 1, Onalaska.

La Crosse County, second district: The eighth, seventeenth, eighteenth, and twenty-first wards of the city of La Crosse, and the entire county outside La Crosse.

HENRY YOUNGBLOOD (Rep.) was born on May 9, 1879 in the town of Wiota, Lafayette County. He was educated in the common schools. Mr. Youngblood has been a farmer all his life and in 1915 bought a farm of his own on which he now resides. He has held a number of public offices: supervisor of his town in 1926-27; town chairman from 1928-33; member of the road and bridge committee of La Fayette County from 1929-32. He has also served on the drought committee, seed and feed committee, and has been rural advisor for Lafayette and Iowa Counties. This is his first term in the assembly. Home Address: Route 1, Woodford.

JAMES T. CAVANAUGH (Dem.) born at Milwaukee, September 1, 1903, has lived most of his life at Antigo. He attended St. John's School there and the Antigo High School. His college work was done at St. Mary's College, Winona, Minnesota and at the Law School of Marquette University. In 1931, Mr. Cavanaugh was admitted to the bar. Previous to this he was employed as a passenger brakeman on the Northwestern Railroad. He has been a member of the assembly since 1933. Home Address: 438½ Edison Street, Antigo.



TREGO  
Lincoln

YINDRA  
Manitowoc, 1st

SIGMAN  
Manitowoc, 2nd

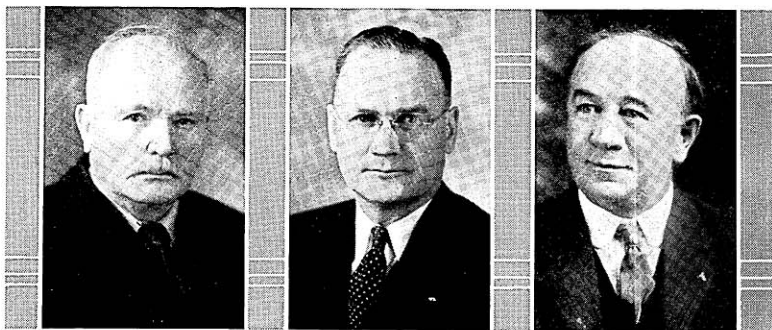
RENO W. TREGO (Prog.) was born on a farm in Benton County, Iowa on August 24, 1877. After attending the public schools and Tilford Academy at Vinton, Iowa he took a short commercial course at Kankakee, Illinois. From 1898 to 1901 he served in the Iowa National Guard. He has been a steam and electrical engineer, a machinist in the railroad shops, a foreman and also a road collector for the Waterloo Cement Tile Machinery Corporation, a bridge superintendent, and the owner of an automobile agency at Des Moines. In 1918, when his health failed, he moved to Wisconsin where he bought and operated two farms and a logging business in Wood County. In 1923 he sold his holdings in Wood County and moved to Merrill where he was employed as a steam and electrical engineer. Mr. Trego operated a trucking and warehousing business in Merrill until 1936 and is now engaged in the real estate and investment business. He was elected to the assembly in 1934 and reelected in 1936, and during the session of 1935 was a member of the Committee on Elections and Highways. Home Address: Merrill.

FRANCIS A. YINDRA (Dem.) was born on January 17, 1906 at Manitowoc. He attended Lincoln High School and was graduated from Marquette University with the degrees of Ph.B. and LL.B. Mr. Yindra is a practicing attorney in Manitowoc and has had experience in public accounting. He was a member of the assembly in 1933 and was reelected in 1936. Home Address: Manitowoc.

Manitowoc County, first district: Towns of Centerville, Liberty, Manitowoc Rapids, Meeme, and Newton; city of Manitowoc.

DAVID SIGMAN (Prog.) has been a resident of the city of Two Rivers, Manitowoc County for more than twenty-nine years. He received his education in the Two Rivers High School and the University of Wisconsin. Mr. Sigman is a representative of the American Federation of Labor and a member of the executive board of the Wisconsin State Federation of Labor. He is chairman of the Assembly Labor Committee and a member of the Elections Committee. He was elected to the assembly in 1930 and was reelected in 1934 and 1936. Home Address: Two Rivers.

Manitowoc County, second district: Towns of Cato, Cooperstown, Eaton, Franklin, Gibson, Koesuth, Maple Grove, Mishicot, Rockland, Schleswig, Two Creeks, Two Rivers; villages of Reedsville and Valdars; cities of Kiel and Two Rivers.



BARBER  
Marathon, 1st

MEISNER  
Marathon, 2nd

BUDLONG  
Marinette

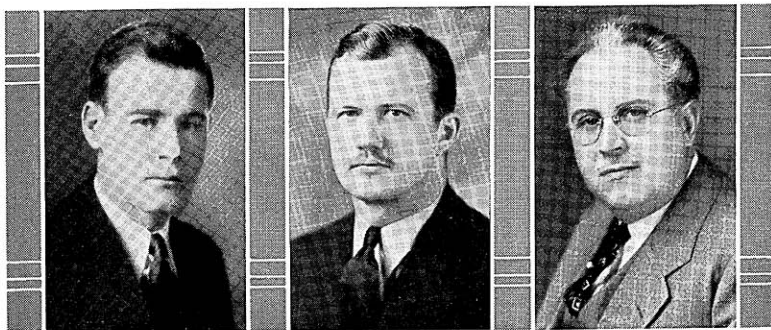
DR. JOSEPH L. BARBER (Prog.) was born in Calumet County on March 24, 1864 and has practiced medicine and surgery in Wisconsin since 1896. He is a member of the Marathon County Medical Society, the Wisconsin Medical Association, and the American Medical Association. Dr. Barber was one of the organizers of the Merchants and Farmers State Bank of Marathon and the organizer of the Hatley State Bank in Marathon County, of which he was director and vice president. He has been president of the village of Marathon and a member of the Marathon County Board. Dr. Barber was a delegate to the National Republican Convention at Chicago in 1920. In 1922 he was elected to the senate and to the assembly in 1928, and was reelected to the assembly in 1934 and 1936. Home Address: Marathon.

Marathon County, first district: Towns of Bergen, Berlin, Bern, Bevent, Brighton, Cassel, Cleveland, Day, Eau Pleine, Elderon, Emmet, Frankfort, Franzen, Green Valley, Guenther, Halsey, Hamburg, Holton, Hull, Johnson, Knowlton, Kronenwetter, McMillan, Maine, Marathon, Mosinee, Reid, Rib Falls, Rib Mountain, Reitbrock, Spencer, Stettin and Wein; that part of Abbotsford village in Marathon County and villages of Athens, Edgar, Elderon, Fenwood, Marathon, Spencer, and Stratford; the city of Mosinee and that part of the city of Colby in Marathon County.

RUDOLPH A. MEISNER (Dem.) was born at Wittenberg on December 18, 1898 and was graduated from high school in 1917. He served during the World War with the 122nd Aero Squadron. Following his discharge from the army he was employed as an accountant by the Wheeler Lumber, Bridge, and Supply Company of Des Moines, Iowa. In 1926 he organized the Meisner-Hubbard Beverage Company of Wausau and has been its treasurer ever since. He is past president and secretary of the Wausau Lions Club. He was elected to the assembly in 1934 and re-elected in 1936. Home Address: 409 Callon Street, Wausau.

Marathon County, second district: Towns of Easton, Harrison, Hewitt, Norrie, Plover, Ringle, Texas, Wausau, Weston; villages of Brokaw, Hatley, Rothschild, Schofield; city of Wausau.

CHARLES A. BUDLONG (Rep.) was born at Frankfort, New York and came to Black Earth when he was three years old. He was educated in the public schools of that village. For twelve years he was a telegrapher and railroad agent and after 1891 kept a general store in Amberg for a time. Mr. Budlong has held a number of public offices: town clerk, town chairman, clerk of the circuit court, sheriff, state inspector for the Board of Control, police judge of Marinette, and immigration inspector on the Canadian border. The present is his sixth term in the assembly. Home Address: 2628 Parkridge Avenue, Marinette.



YOUNG  
Milwaukee, 1st

BIEMILLER  
Milwaukee, 2nd

BALZER  
Milwaukee, 3rd

CORNELIUS T. YOUNG (Dem.) was born at Milwaukee on July 28, 1907. He was graduated from St. John's Military Academy in 1926 and from the University of Wisconsin Law School in 1931. He is a practicing attorney at 710 North Plankinton Avenue in Milwaukee. During the session of 1933 Mr. Young had the honor of being the youngest speaker in the history of the assembly. He is serving his fourth term in the assembly. Home Address: 2112 East Kenilworth Place, Milwaukee.

Milwaukee County, first district: The first and third wards of the city of Milwaukee.

ANDREW J. BIEMILLER (Prog.) was born on July 23, 1906 at Sandusky, Ohio, where he was educated in the grammar and high schools. In 1926 he received his B. A. degree from Cornell University and studied in the graduate school of the University of Pennsylvania from 1929-31. Mr. Biemiller was an instructor in history at Syracuse University from 1926-28, the University of Pennsylvania 1929-31, and Bryn Mawr Summer School for Workers 1930-31. He was a national organizer of the Socialist Party in 1932 and educational director of the party in Milwaukee from 1933-36. He is an active member of the Farmer-Labor Progressive Federation and the Socialist Party. From 1934-36 he was editor of the Wisconsin Leader, organ of the Socialist Party of Wisconsin. Mr. Biemiller is a member of the American Federation of Teachers, the American Newspaper Guild, and has served on the executive board of the Milwaukee Federated Trades Council. This is his first term in the assembly. Home Address: 1958 North 20th Street, Milwaukee.

Milwaukee County, second district: second and tenth wards of the city of Milwaukee.

ARTHUR J. BALZER (Prog. Dem.) was born on March 6, 1895 at Mequon. During his attendance at Marquette University he was varsity cheer leader. In 1922 he was given a medal for proficiency in debate. Mr. Balzer was in the hospital corps of the Navy during the World War and was a government student after the Armistice. For the past twelve years he has lived in West Allis where he has worked as a salesman. During the past few years he has devoted much time to lecturing. In 1932 he was a Smith candidate for delegate to the Democratic National Convention. He was elected to the assembly in 1932 and was reelected in 1936. Home Address: 1116 South 85th Street, West Allis.

Milwaukee County, third district: Towns of Franklin and Greenfield; village of West Milwaukee; city of West Allis.



TEHAN  
Milwaukee, 4th

KRYSZAK  
Milwaukee, 5th

RUBIN  
Milwaukee, 6th

ROBERT E. TEHAN (Dem.) was born at Milwaukee on January 7, 1905. He attended Gesu Grade School and Marquette Academy and received his B. A. degree from Marquette University in 1927 and his LL.B. degree in 1929. Before becoming an attorney he was employed in the railroad shops at Milwaukee and as treasurer of the Pabst Theater. He is a member of both the Milwaukee and the Wisconsin State Bar Associations. This is his first term in the assembly. Home Address: 1623 West Wisconsin Avenue, Milwaukee.

Milwaukee County, fourth district: The fourth ward of the city of Milwaukee.

MARY O. KRYSZAK (Dem.), the only woman in the legislature, has always lived in Milwaukee. She is a graduate of St. Mary's High School and Spencerian Business College, and attended the University of Wisconsin. She has been a school teacher, music teacher, bookkeeper, librarian, and newspaper writer, as well as housewife and mother of three children. Mrs. Kryszak has been active in many social, charitable, fraternal, and political activities: chairman of the South Side Defense Council during the war; chairman of the South Side Liberty Loan Drive; chairman of the N.R.A. drive on the south side; member of the Democratic State Central Committee and an organizer of the South Side Democratic Women's Division; and a member of Mayor Hoan's Committee of 100 on Youth. She was one of the first social service workers in Milwaukee and served as a voluntary member of the Family Welfare Committee for a good many years. This is her fourth term in the assembly. Home Address: 2003 South 11th Street, Milwaukee.

Milwaukee County, fifth district: Fifth and eighth wards of Milwaukee.

BEN RUBIN (Prog.) has been a resident of Milwaukee for more than twenty-five years. For the past fifteen years he has been employed by the Milwaukee Board of Park Commissioners. Mr. Rubin has been actively connected with the labor movement for more than thirty-five years, and at the present time is serving his fourth term on the executive board of the Milwaukee Federated Trades Council. Mr. Rubin was a member of the assembly in 1931 and was reelected in 1936. Home Address: 125 East Lloyd Street, Milwaukee.

Milwaukee County, sixth district: The sixth ward of the city of Milwaukee.





KOEGEL  
Milwaukee, 7th

RYAN  
Milwaukee, 8th

MUELLER  
Milwaukee, 9th

ARTHUR KOEGEL (Prog.) was born in Milwaukee, May 2, 1889 and after being graduated from the public schools, took a technical course. His occupation is bricklaying and he has been a member of the Bricklayers, Masons, and Plasterers Union for twenty-six years. This is Mr. Koegel's third term in the assembly. Home Address: 2548-A North 15th Street, Milwaukee.

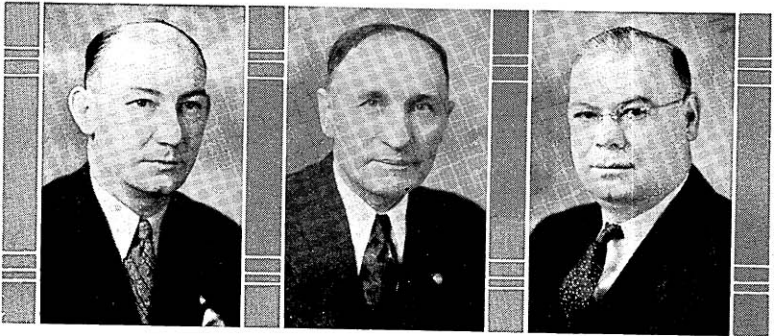
Milwaukee County, seventh district: Seventh ward of the city of Milwaukee.

DONALD P. RYAN (Dem.) was born February 5, 1910 at Milwaukee. He attended St. Rose's School and was graduated from St. John's in 1927. He is a locomotive fireman, and is working for the Milwaukee Railroad. He is a member of the I.B.E.W. Electrical Union, Local 528. From 1932 to 1934 he was a Democratic committeeman from the sixteenth ward of Milwaukee. He served three years in the 105th Cavalry of the Wisconsin National Guard. This is his second term in the legislature. Home Address: 505 North 26th Street, Milwaukee.

Milwaukee County, eighth district: The sixteenth and twenty-third wards of the city of Milwaukee.

JOSEPH F. MUELLER (Prog.) was born at Milwaukee on October 24, 1893. He was educated in the parochial and public schools of Milwaukee and in 1930 was graduated from the National Radio Institute at Washington, D. C. Mr. Mueller served an apprenticeship at Allis Chalmers Manufacturing Company from 1909-12; from 1912-30 he was a tool and die maker; and from 1930-32 a certified radiotrician. He has served as supervisor of the ninth district of Milwaukee County for the last four years. This is his first term in the assembly. Home Address: 4738 North 32nd Street, Milwaukee.

Milwaukee County, ninth district: The ninth and twenty-sixth wards of Milwaukee.



GROBSCHMIDT  
Milwaukee, 10th

FRANZKOWIAK  
Milwaukee, 11th

PYSZCZYNSKI  
Milwaukee, 12th

JOHN W. GROBSCHMIDT (Prog.) was born on January 3, 1896 at South Milwaukee and received his education in St. Mary's parochial school, South Milwaukee High School, and Marquette Academy. For the past fourteen years Mr. Grobschmidt has been engaged in the general insurance business. He has served on the Milwaukee County Republican Committee from the first ward of South Milwaukee, and in 1932 was elected as a Progressive delegate to the Republican National Convention in Chicago. He was active in founding the Progressive Party at the convention at Fond du Lac and was a delegate to the first state Farm-Labor and Progressive League Convention also held at Fond du Lac. Mr. Grobschmidt was the author of the bill repealing the state prohibition act. He was elected to the assembly in 1928 and reelected in 1930, 1934, and 1936. Home Address: 901½ Monroe Street, South Milwaukee.

Milwaukee County, tenth district: Towns of Lake and Oak Creek; cities of Cudahy and South Milwaukee.

MARTIN B. FRANZKOWIAK (Dem.) was born in Poland on November 10, 1870. He came to Milwaukee in May 1878 where he was educated in the parochial schools. He held several positions with Kieckhefer Brothers Company for twenty-two years. He then entered the retail grocery trade and remained in that business for twenty-seven years. He was one of the organizers of the Federation Life Insurance Company of America in 1913 of which he was treasurer and director, and local secretary of one of the company branches for fifteen years. He was also active in the organization of the Star Building and Loan Association, and served as its director for three years and president for three years. Mr. Franzkowiak has been an election inspector for twenty-four years. He has been a member of the assembly since 1933. Home Address: 2501 South 15th Street, Milwaukee.

Milwaukee County, eleventh district: Eleventh and twenty-fourth wards of the city of Milwaukee.

PETER PYSZCZYNSKI (Dem.) was born at Milwaukee on June 27, 1892. He was educated in the public and parochial schools. For eleven years prior to 1921 he was a shoe worker and since that time he has owned and operated a recreation parlor and tavern. He had held no public office until his election to the assembly in 1936. Home Address: 2932 South 13th Street, Milwaukee.

Milwaukee County, twelfth district: Twelfth and fourteenth wards of Milwaukee.



KROENKE  
Milwaukee, 13th

MURRAY  
Milwaukee, 14th

MURPHY  
Milwaukee, 15th

BERNARD B. KROENKE (Dem.) was born May 31, 1898 at Milwaukee. After being graduated from St. Mary's parochial school in 1913, he went to St. Lawrence College for one year, St. Francis Seminary for two years, and finished his college work at Marquette. He enlisted in the army upon the declaration of war and joined the 121st Field Artillery of the 32nd Division. He was overseas for fourteen months, spent six months in the front lines, and took part in five major engagements. Mr. Kroenke has been employed by the Milwaukee Railroad since 1919. This is his second term in the assembly. Home Address: 2863 North Holton Street, Milwaukee.

Milwaukee County, thirteenth district: Thirteenth and twenty-first wards of the city of Milwaukee.

MILTON T. MURRAY (Rep.) was born June 1, 1898 in Milwaukee and received his education at Milwaukee State Teachers College, Marquette University, and the University of Chicago. He was a teacher and athletic coach for ten years and is now a practicing attorney at 231 West Wisconsin Avenue in Milwaukee. Mr. Murray is serving his fourth consecutive term in the assembly. Home Address: 1828 Newberry Blvd., Milwaukee.

Milwaukee County, fourteenth district: Town of Milwaukee; villages of Fox Point, River Hills, Shorewood and Whitefish Bay; eighteenth ward of the city of Milwaukee.

FRANCIS T. MURPHY (Dem.) was born at Milwaukee on May 20, 1910. He is a graduate of both the College of Letters and Science and the Law School of Marquette University from which he received his law degree in 1935. Since that time he has been a practicing attorney. Prior to 1935 he was a branch manager in the circulation department of the Milwaukee Journal for five years. For several summers he worked for the Chicago, Milwaukee, and St. Paul Railroad. This is his first term in the assembly and the first time he has held any public office. Home Address: 2108 North 36th Street, Milwaukee.

Milwaukee County, fifteenth district: The fifteenth and nineteenth wards of Milwaukee.



WEGNER  
Milwaukee, 16th

HOWARD  
Milwaukee, 17th

KIEFER  
Milwaukee, 18th

HERMAN B. WEGNER (Prog.) was born on January 3, 1891 at Milwaukee. He attended parochial and public schools and at the age of fourteen became an apprentice in the glove cutting trade. In 1915 he changed to shoe cutting and in 1923 to leather garment cutting, which trade he is following at the present time. He is a member of the Amalgamated Clothing Workers of America, and has been an active member of the Glove Workers International Union and the United Shoe Workers Union. Mr. Wegner has been a member of the Socialist Party for the past nineteen years. He was elected to the assembly on the Socialist ticket for the first time in 1932 and has served continuously since that time. Home Address: 1305 West Cottage Place, Milwaukee.

Milwaukee County, sixteenth district: The twenty-fifth ward of Milwaukee.

MARTIN F. HOWARD (Dem.) was born at Milwaukee on September 12, 1892 and was educated in the public and parochial schools of West Allis. Before 1916 he was an electrician. Since that time he has been in the automobile business, both as salesman and as dealer, and has been a partner in a collection and an insurance agency. Mr. Howard served his country in the World War. He was elected to the assembly in 1934 and reelected in 1936. Home Address: 2500 South Howell Avenue, Milwaukee.

Milwaukee County, seventeenth district: Seventeenth and twenty-seventh wards of Milwaukee.

EDWARD H. KIEFER (Prog.) was born May 1, 1874 in Milwaukee and has resided in that city all his life. After attending the parochial and public schools he became an apprentice in the painting trade at the age of fifteen. He has been a delegate to a number of labor conventions, a member of the Brotherhood of Painters, Decorators, and Paperhangers for thirty-five years, and is an honorary member of that organization. Mr. Kiefer has acted as business manager of his local union for over eight years. He was a member of the assembly in 1911 and 1913 and has served continuously since 1931. Home Address: 2603 West Nash Street, Milwaukee.

Milwaukee County, eighteenth district: Twentieth ward of Milwaukee.



GARVENS  
Milwaukee, 19th

PERRY  
Milwaukee, 20th

HALL, E. D.  
Monroe

JOSEPH L. GARVENS (Dem.) was born at Elm Grove, April 20, 1886. After having been graduated from a parochial school, he studied engineering and attended an evening course at Marquette University. Until 1911 he was engaged in agriculture and from 1907 to 1911 was road superintendent in the town of Wauwatosa. During the next ten years his occupation was carpentry and building and since 1921 he has been a real estate dealer. Mr. Garvens was elected to the assembly in 1932 and has served continuously since that time. Home Address: 2435 North 38th Street, Milwaukee.

Milwaukee County, nineteenth district: The twenty-second ward of the city of Milwaukee.

CHARLES B. PERRY (Rep.) was born in New Haven County, Connecticut. After he was graduated from the Connecticut State Normal School at New Britain he attended Yale Law School for a year. Mr. Perry received his law degree from the University of Wisconsin and has been a practicing attorney since that time. He was city attorney of Wauwatosa from 1895 to 1905; mayor for five consecutive terms from 1906 to 1916; chairman of the Metropolitan Sewerage Commission of Milwaukee County since 1921. In the fall of 1936 he was elected to the assembly for the sixth time. Mr. Perry was speaker of the assembly during the sessions of 1929, 1931, and the special session of 1931. Home Address: 7208 Milwaukee Avenue, Wauwatosa.

Milwaukee County, twentieth district: Towns of Granville and Wauwatosa; city of Wauwatosa.

EARL D. HALL (Prog.) was born at Tunnel City, July 15, 1879. He received a rural school education, spent four years in train service, and since then has been engaged in farming. For several years he has been a member of the Monroe County Board of Supervisors and the Monroe County Highway Commission. In 1924 he was elected to the assembly without opposition and has been reelected for each succeeding session. Home Address: Route 1, Tunnel City.



LINGELBACH  
Oconto

CATLIN  
Outagamie, 1st

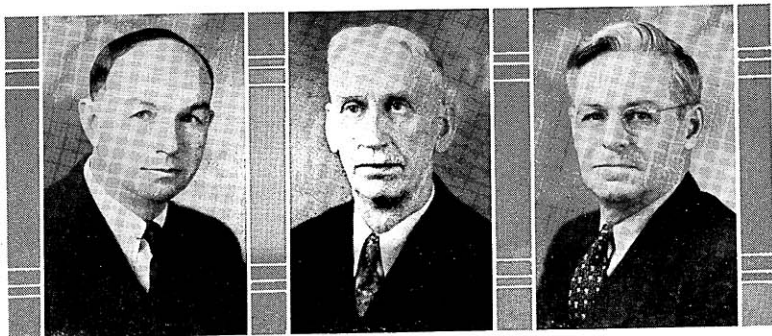
ROHAN  
Outagamie, 2nd

FRANK J. LINGELBACH (Dem.) was born at Sheboygan on July 7, 1888. He was educated in the parochial and public schools of Oconto and Green Bay Business College. Mr. Lingelbach has been in the real estate and insurance business for twenty-five years. He was a member of the county board from 1927-34; chairman of the county highway committee from 1929-34; and chairman of the mediation board in 1935. He is serving his first term in the assembly. Home Address: Oconto.

MARK S. CATLIN, Jr. (Rep.) was born on October 18, 1910 at Appleton. He was graduated from Appleton High School in 1927 and attended Lawrence College for one year. He received his B. A. degree from the University of Wisconsin and his law degree from the same institution in 1933. Since 1933 he has been a practicing attorney in Appleton. Mr. Catlin was elected to the assembly in 1936. This is the first time he has held any public office. Home Address: 322 South Court Street, Appleton.

WILLIAM M. ROHAN (Dem.) was born in the town of Buchanan, Outagamie County and still resides there on a farm east of Kaukauna. He received his early education in public and parochial schools and later attended Green Bay Business College. He has held a number of public offices: town treasurer, town chairman, county board member, and chairman of the county highway committee. He was a member of the assembly in 1911, 1933, and was reelected for a third time in 1936. Home Address: Route 3, Kaukauna.

Outagamie County, second district: Towns of Black Creek, Buchanan, Cicero, Deer Creek, Freedom, Hortonia, Kaukauna, Liberty, Maple Creek, Maine, Oneida, Osborne, Seymour, and Vandenbroek; villages of Black Creek, Bear Creek, Combined Locks, Hortonville, Kimberly and Little Chute; cities of Kaukauna, Seymour, and third ward of New London.



BICHLER  
Ozaukee

SWANSON  
Pierce

KENNEDY  
Polk

NICHOLAS J. BICHLER (Dem.) was born in the town of Belgium, November 26, 1895. He was educated in the public and parochial schools and attended Pio Nono College. After being graduated from St. Norberts College at De Pere, he took the short course in agriculture at the University of Wisconsin. Since 1920 he has farmed and engaged in the real estate business. For five years he was chairman of the town of Belgium and a member of the Ozaukee County Board until 1935. This is his second term in the assembly. Home Address: Route 1, Belgium.

THEODORE SWANSON (Prog.) was born on October 8, 1873 at Red Wing, Minnesota. Six years later he moved with his parents to a farm in Pierce County. He attended the common schools of that county and supplemented his education with home study. In addition to his work as a farmer, he has held many positions of public trust and honor. He has served as chairman, treasurer, and assessor of his township for twenty-three years, as school district clerk and treasurer, as secretary-manager of a farmers creamery, secretary of a farmers grain company, secretary-treasurer of a farmers telephone company, United States census enumerator, three times member of the county board for sixteen years, president of the County Wheat Allotment Committee, member of the County Corn and Hog Allotment Committee, and a member of the Equity and Farmers Union. Since 1925 he has been a member of the Interim Legislative Committee on Mississippi River Boundary Waters Pollution. He was a member of the assembly in 1925 and 1927 and has served continuously in that body since 1935. Home Address: Route 1, Ellsworth.

DOUGALD DUNCAN KENNEDY (Prog.) was born at Osceola on November 28, 1878. He began farming soon after his graduation from Amery High School. Mr. Kennedy farmed in North Dakota from 1903 to 1908, in Alberta, Canada from 1908 to 1914, when he moved to his farm in the town of Garfield in Polk County. He has served on the town board and at present is chairman of the town of Garfield. Mr. Kennedy has been prominent in the co-operative movement both in Canada and in the United States. This is his first term in the assembly. Home Address: R. F.D., Amery.



KOSTUCK  
Portage

KREMER  
Price

SIEB  
Racine, 1st

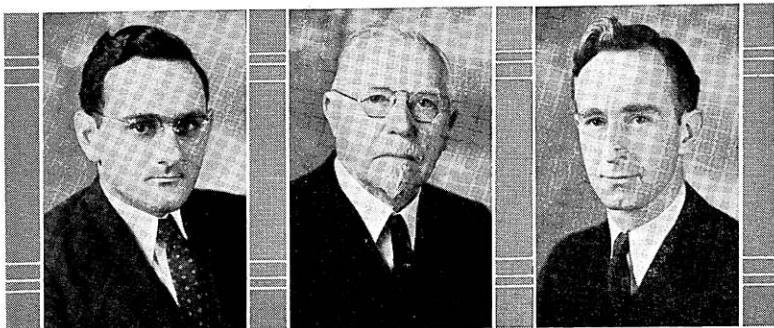
JOHN T. KOSTUCK (Prog.), a resident of Stevens Point, was born there on October 7, 1893. Leaving school at the end of the third grade, he went to work on a farm. At the age of fourteen when he was assisting in blasting stone, he met with an accident which made him blind. He entered the Wisconsin State School for the Blind and after ten years was graduated from the high school department in 1918. Then he attended the University of Wisconsin, specializing in political science and economics. After teaching for three years in the high school department of the School for the Blind at Staunton, Virginia, he entered the piano business at Stevens Point. He now devotes full time to his legislative work and is serving his fourth term in the assembly. Mr. Kostuck is the only blind member ever elected to the legislature. Home Address: 130 Algoma Street, Stevens Point.

FELIX A. KREMER (Prog.) was born on a farm near Mt. Carroll, Illinois on October 18, 1872. He is a graduate of the Northern Illinois College of Law and was admitted to the bar in 1896, after which he taught school and practiced law. From 1899 to 1916 he was a practicing attorney in Madison and since 1916 in Price County. Mr. Kremer has served as district attorney and as municipal judge of his county for several terms. He owns and operates a farm and is the owner and publisher of the Wisconsin Homestead, an agricultural paper. Mr. Kremer has held a number of offices in various associations: secretary of the Price County Fair; treasurer of the State Association of County Fairs; state commander of the Sons of Union Veterans of the Civil War and several national offices in that organization. This is Mr. Kremer's first term in the assembly. Home Address: Phillips.

JOHN L. SIEB (Prog.) was born November 6, 1864 in Michigan City, Indiana but has lived in Racine since he was one year old. He received his education in the Lutheran and public schools of that city. He is a barber and part owner of the Sieb and Rick Barber Shop in the Hotel Racine. He has been a member of the board of education for twelve years and president for two terms; a member of the city council and president for one year; deputy oil inspector; member of the city water commission; and president of the board of health. Mr. Sieb has been prominent in civic and fraternal affairs for many years. He was a member of the assembly in 1931 and was reelected in 1934 and 1936. Home Address: 940 Park Avenue, Racine.

Racine County, first district: The first, second, third, sixth, tenth, eleventh, thirteenth, and fourteenth wards of the city of Racine.





HARVEY  
Racine, 2nd

RAKOW  
Racine, 3rd

THOMSON  
Richland

JACK HARVEY (Prog.) was born on September 9, 1907 at Chelsea, Massachusetts. He was graduated from Racine High School in 1924 and attended the University of Wisconsin in 1926 and 1929. At present he is the manager of a cooperative restaurant and was previously employed in several local factories. Mr. Harvey was elected alderman in 1933 and reelected in 1935. He is serving his first term in the legislature. Home Address: 1023 Geneva Street, Racine.

Racine County, second district: The fourth, fifth, seventh, eighth, twelfth, and fifteenth wards of the city of Racine.

EDWARD F. RAKOW (Dem.) was born on August 30, 1861 in Burlington. He received his education in the public schools of that city. For nineteen years he was manager of the Citizen's Gas Company, after which he retired from business. He has held several public offices, having been appointed postmaster of Burlington in 1895 by President Cleveland, which office he held for four years; in 1901 he was elected mayor of Burlington, and held this office for six terms at various times. He was elected to the assembly in 1902 and was reelected in 1932, 1934, and 1936. Home Address: 391 Jefferson Street, Burlington.

Racine County, third district: Towns of Burlington, Caledonia, Dover, Mt. Pleasant, Norway, Raymond, Rochester, Waterford, and Yorkville; villages of Corliss, Rochester, Union Grove, and Waterford; city of Burlington and ninth ward of Racine.

VERNON W. THOMSON (Rep.), son of Mr. and Mrs. A. A. Thomson, was born at Richland Center on November 5, 1905. In 1927 he received his B. A. degree from the University of Wisconsin and his LL.B. from the same school in 1932. Since that time he has been a practicing attorney at Richland Center. He was assistant district attorney of Richland County from 1933 to 1935 and from 1933 to 1937 he has been city attorney of Richland Center. From 1933 to 1935 he was the enrolling official of the Civilian Conservation Corps for Richland County. Prior to practicing law he taught for two years in the Viroqua High School and for three years in the Madison Vocational School. He is serving his second term in the assembly. Home Address: Richland Center.



GRASSMAN  
Rock, 1st

ENGBRETSON  
Rock, 2nd

NYMAN  
Rusk and Sawyer

EDWARD GRASSMAN (Rep.) was born in Richland County, November 16, 1882. After having been graduated from Sextonville High School, he attended Whitewater State Normal and Valparaiso University and also took a six months' correspondence course in order to acquire a first grade teacher's certificate. He taught for the next eight years and then took up leaf tobacco buying and farming. Mr. Grassman has held a number of public offices: alderman of Edgerton, 1922-26; mayor for the next biennium; and county supervisor for the three years preceding his election to the assembly in 1932. He was reelected to the assembly in 1934 and again in 1936. Home Address: 501 Washington Street, Edgerton.

Rock County, first district: Towns of Center, Fulton, Harmony, Janesville, Lima, Milton, Magnolia, Porter, Union; village of Milton; cities of Edgerton, Evansville, and Janesville.

BURGER M. ENGBRETSON (Rep.) was born at Oslo, Norway on June 21, 1896. He was educated in the public schools of Beloit and attended the University of Wisconsin. He is a World War veteran. Mr. Engebretson has been in the insurance and real estate business for the past fifteen years and has been a member of the board of supervisors of Rock County since 1934. This is his first term in the assembly. Home Address: 742 McKinley Avenue, Beloit.

Rock County, second district: Towns of Avon, Beloit, Bradford, Clinton, Johnstown, La Prairie, Newark, Plymouth, Rock, Spring Valley, Turtle; villages of Clinton, Footville, Orfordville; city of Beloit.

CARL R. NYMAN (Prog.) was born in Sweden and came to this country at the age of six. After finishing his grade school education he took engineering and secretarial courses in night school for four years and attended the Dunn County Agricultural School for one year. He was a machinist for fifteen years and at the present time raises poultry. Mr. Nyman has been town chairman of Hayward since 1931, vice chairman of the Sawyer County Board since 1936, treasurer of the Sawyer County Fair for three years, and president of the Sawyer County Poultry Association for three years. He is a World War veteran. In April 1937 he was elected to the assembly for the first time to fill a vacancy caused by the death of Jorge W. Carow. Home Address: Hayward.



KELLY  
St. Croix

WOERTH  
Sauk

FUHRMAN  
Shawano

ARTHUR D. KELLY (Prog.) lives on a farm near Hudson where he was born June 9, 1873. After being graduated from Hudson High School in 1892, he spent a year at the Curtiss Business College in St. Paul. Since then he has engaged in farming, specializing in the raising of pure-bred Jersey cattle. For nineteen years he was town chairman and for seven years chairman of the county board. Mr. Kelly is serving his third term in the assembly. Home Address: Route 3, Hudson.

GEORGE J. WOERTH (Prog.) was born on December 4, 1875 at Loganville. He was educated in parochial and public schools and also attended Wartburg College at Waverly, Iowa. He entered the harness business, leaving that in 1910 to enter the employ of the Twin City Telephone Company of Sauk City. When the latter sold the exchange in 1924 Mr. Woerth became associated with the Prairie du Sac plant of the Wisconsin Power and Light Company holding a position with them until the Insull crash in 1931. Since then he has been unemployed. He has been alderman of Sauk City and is now serving as assessor. This is his second term in the assembly. Home Address: Sauk City.

PAUL T. FUHRMAN (Prog.) was born in the town of Fairbanks, Shawano County on May 10, 1883. He received a common school education. From 1902-07 he was a building contractor, from 1907-13 his occupation was logging and farming, from 1913-26 he was in the retail hardware business, and at the present time he is farming. Mr. Fuhrman served as town chairman for Bartelme from 1913-23, as a member of the local draft board during the World War, and as a member of the county state road and bridge committee from 1918-1925. He was president of the village of Bowler from 1924-32, and a supervisor from 1924-33. With the exception of the 1933 session, he has been a member of the assembly since 1927. Home Address: Bowler.



**THEISEN**  
Sheboygan, 1st

**LAACK**  
Sheboygan, 2nd

**NELSON**  
Taylor

**JOSEPH M. THEISEN** (Dem.) was born at Sheboygan on February 24, 1877 and has lived there all his life. He was educated in the Holy Name Parochial School of that city and attended the Sheboygan Business College from 1890 to 1891. For seventeen years he did general office work with the Mattoon Manufacturing Company and Northern Furniture Company and was timekeeper and cost accountant, for eleven and seven years respectively, with the Falls Motors Corporation and the American Chair Corporation. He has been active in singing societies for the past forty years and has acted as secretary for a number of these organizations at various times. For the past nineteen years he has also been secretary of the North Side Improvement Association. In 1906 and 1907 he was a member of the Sheboygan Library Board and served the city as alderman from 1907 to 1909. He was elected to the assembly for the first time in 1932 and reelected in 1934 and 1936. Home Address: 1904 Calumet Drive, Sheboygan.

Sheboygan County, first district: The city of Sheboygan.

**CHARLES A. LAACK** (Dem.) was born on May 30, 1871 in the town of Plymouth, Sheboygan County, where he attended the public schools. He has farmed near Plymouth for the past twenty-eight years. He was manager of the Plank Road Telephone Company for twenty-one years and has been president of the Farmers Call Board of Plymouth since its creation eleven years ago. Public offices held by Mr. Laack include town assessor for twelve years and school district treasurer for twenty-two years. He has served in the assembly since 1933. Home Address: Route 1, Plymouth.

Sheboygan County, second district: The entire county outside the city of Sheboygan.

**CARL M. NELSON** (Rep.) was born in the town of Deer Creek, Taylor County on November 12, 1892. He received his education in the local grade school and spent one winter in attendance at the Southern Minnesota Normal College at Austin, Minnesota. He has been a farmer all of his life. From 1927 to the present time, Mr. Nelson has been a chairman of the town of Deer Creek. He acted as vice-chairman of the Taylor County Board in 1931 and since 1932 has been chairman of the board. During the World War, he served in the First Marine Aviation Force for nineteen months, spending about seven months in active service in France and Belgium. This is his second term in the assembly. Home Address: Route 1, Medford.



LOMSDAHL  
Trempealeau

HALVORSEN  
Vernon

RICE  
Walworth

TOM LOMSDAHL (Prog.) was born in Norway, August 6, 1874. He received his education in the common schools there and studied part of two years in the school at Eltrick. He left Norway in December 1892 and came to Trempealeau County in February 1893. There he engaged in farming for twelve years, working in the lumber camps during three winters. He has been a hardware retailer for twenty-four years. He served as a member of the town board from 1908 to 1909, as a member of the village council for four years, and as village president of Osseo for two years. He helped to organize the farmers telephone company, known as the Beef River Valley Telephone Company, and served as one of its officers for several years. He also aided in organizing a farmers' elevator at Osseo and was for some time a director of the Farmers Exchange Bank of that village. This is his second term in the assembly. Home Address: Osseo.

H. S. HALVORSEN (Prog.) was born on a farm near Westby, Vernon County, on April 9, 1884. His education was received in the public schools and at Luther College, Decorah, Iowa. He has been in the hardware business at Westby from 1915 to 1936. Mr. Halvorsen served as deputy county auditor of Wells County, North Dakota from 1911 to 1914, and as a member of the board of education and the city council of Westby in 1918 and in 1931-32. He has been a member of the assembly since 1933. Home Address: Westby.

O. R. RICE (Rep.) was born at Boscobel on September 16, 1885. He is a graduate of Boscobel High School and received his dental degree from Northwestern University Dental College in 1907. Since 1907 he has practiced dentistry in Delavan and the past three years has also devoted considerable time to farming. Dr. Rice has held a number of elective and appointive offices; alderman of Delavan in 1916 and 1917; mayor of the city from 1918-21; and secretary of the Walworth County Mediation Board for the past four years. This is his first term in the assembly. Home Address: Delavan.



SCHOWALTER  
Washington

DOUGLASS  
Waukesha, 1st

LUDVIGSEN  
Waukesha, 2nd

HENRY O. SCHOWALTER (Dem.) was born on August 4, 1909 in the town of Jackson, Washington County. He attended the rural schools and West Bend High School, and was graduated from the University of Wisconsin receiving his B. A. degree in 1932 and his law degree in 1934. Since that time he has been a practicing attorney in West Bend. He is interested in church, scout, and civic affairs and resigned from his third term as secretary of the West Bend Chamber of Commerce to become a member of the assembly. Home Address: West Bend.

LYLE E. DOUGLASS (Rep.), born in Chicago, Illinois, came to Waukesha at the age of three. He was graduated from the public schools and Carroll College. With the exception of eighteen months service in the United States Army in the World War, Mr. Douglass has been active for the last twenty years in the real estate, insurance and loan business in Waukesha. This is his second term in the assembly. Home Address: 421 West Avenue, Waukesha.

Waukesha County, first district: Towns of Eagle, Genessee, Mukwonago, Muskego, New Berlin, Ottawa, Vernon, and Waukesha; villages of Big Bend, Dousman, Eagle, Mukwonago, North Prairie, and Wales; city of Waukesha.

ALFRED R. LUDVIGSEN (Rep.) was born March 17, 1886 in the town of Merton, Waukesha County. He received his education in the public schools and at Luther College, Racine. His early years were spent on his father's farm where he worked until he was appointed to the U. S. Railway Mail Service in 1910. Forced to give up this work because of eye trouble he again sought outdoor employment and has for many years been engaged in landscape gardening. He is also engaged in the development and sale of lake frontage which he owns. He served as a member of the Waukesha County Board and chairman of the town of Merton during the years 1923-28. Since 1923 he has been secretary of the Waukesha County Farm Drainage District Board and from 1930-34 was chairman of the Waukesha County Republican Committee. This is his second term in the assembly. Home Address: Route 1, Hartland.

Waukesha County, second district: Towns of Brookfield, Delafield, Lisbon, Menomonie, Merton, Oconomowoc, Pewaukee, and Summit; villages of Chenequa, Hartland, Lac La Belle, Lannon, Menomonee Falls, Merton, Butler, Sussex, and Pewaukee; city of Oconomowoc.



HANDRICH  
Waupaca

NIEMUTH  
Winnebago, 1st

LARSON<sup>1</sup>  
Winnebago, 2nd

ALVIN A. HANDRICH (Prog.) was born June 1, 1892 on a farm in the town of Bloomfield, Waushara County. He was educated in the common schools of the community. Here he grew to manhood, learning at first hand the problems of practical agriculture. With the exception of five years in California he has spent his entire life on the farm, and since 1917 has operated his own farm in the town of Little Wolf. He served on the town board for two terms and also on the school board for two terms. He was elected state secretary of the Wisconsin Division of the Farm Holiday Association when it was organized, which office he held for several years; he was a delegate to the convention at Fond du Lac which organized the Progressive Party; he was also a delegate to the Farmer-Labor convention in the same city. Mr. Handrich has made a special study of the problems and needs of agriculture and of the nation's monetary system. He was elected to his first term in the assembly by a substantial majority and was reelected in 1936. Home Address: Route 1, Manawa.

LEO T. NIEMUTH (Rep.) was born at Oshkosh on April 17, 1904. He was educated in the elementary schools and high school of that city. Mr. Niemuth has done clerical and accounting work for twelve years and has been a representative of the New York Life Insurance Company for one year. He has held a number of public offices: deputy sheriff for the past eight years; alderman for four years; and vice-mayor and council president of Oshkosh during 1935-36. This is his first term in the assembly. Home Address: 523 Elmwood Avenue, Oshkosh. Winnebago County, first district: City of Oshkosh.

NELS LARSON<sup>1</sup> (Rep.) was born in Denmark and came to America at the age of five. His family settled on a farm in Winchester, Winnebago County. He was educated in the common schools, the Oshkosh High School, and Oshkosh Business College. Mr. Larson was a clerk and bookkeeper for ten years and for twenty years preceding 1920 was in the wholesale cheese and cold storage business. He has served as alderman of Neenah for six years, has been a member of the Neenah City Water Commission for twenty-seven years, and a member of the Winnebago County Board for six terms. He has represented his district in the assembly a number of times,—1921, 1925 to 1931 inclusive,—and is now serving his sixth term. Home Address: 404 Winneconne Avenue, Neenah.

Winnebago County, second district: All the towns, villages, and cities of the county except the city of Oshkosh.

<sup>1</sup> Deceased May 30, 1937.



VAUGHAN  
Wood

JOHNSON  
Chief Clerk

RHEINGANS  
Sergeant-at-Arms

BYRDE M. VAUGHAN (Prog.) was born at Byron, Fond du Lac County on November 30, 1862. He received his B. S. degree from the University of Wisconsin in 1885 and was graduated from the Law School at the University with the class of 1888. He has practiced law since July 1888 and has engaged in farming and market gardening as a side line. For six years he was a member of the Grand Rapids (now Wisconsin Rapids) Board of Education; for two years city superintendent of schools; a member of the board of directors of the T. B. Scott Free Public Library for seven years; a member of Wood County Board for two terms; and court commissioner for Wood County for thirty years. Mr. Vaughan was a member of the Wisconsin National Guard in a provisional company (Gardner Rifles) for several years, serving as orderly, lieutenant, and captain. He has been a member of the assembly since 1933. Home Address: 121 Drake Street, Wisconsin Rapids.

LESTER R. JOHNSON (Prog.) was born on June 16, 1901, at Brandon where he received his education. After his graduation from high school he attended Lawrence College for two years and transferred to the University of Wisconsin where he was graduated in 1924. Since then he has been associated in the lumber and fuel business with his father and brother. He has always identified himself with the Progressive movement. In 1934 he was elected vice-chairman of the Fond du Lac County Progressive Club and has done organization work for the party in surrounding counties. Home Address: Brandon.

GUSTAVE RHEINGANS was born on September 8, 1890 in the town of Eaglepoint in Chippewa County. He has always resided in this county, changing his place of residence only once when he moved to the city of Chippewa Falls. He received a common school education and has had several occupations. Up to 1920, he was a dairy farmer; then for nine years, a hardware clerk; and now a truck gardener. He served Chippewa County as a member of the 1927 and 1929 legislatures. In the session of 1931 he was elected sergeant-at-arms by a large majority, receiving only nine opposition votes. He was again elected sergeant-at-arms for the 1935 and 1937 sessions. Home Address: 402 Wheaton Street, Chippewa Falls.