
Members of the Legislature

MEMBERS OF THE SENATE



CASHMAN
1st DISTRICT

BRUNETTE
2nd DISTRICT

ZIMNY
3rd DISTRICT

JOHN E. CASHMAN (Prog.) farms the land in Kewaunee County that his father purchased from the government in the days when Wisconsin was largely a wilderness. He was born in the town of Franklin and was educated in the public schools, with one term at Valparaiso University and two years at the Chicago Law School. After teaching school in Kewaunee and Brown Counties for a number of years, he became an inspector for the United States Bureau of Animal Industry at Chicago in 1901. Two years later, he was advanced to a position in the United States Bureau of Internal Revenue and remained there until 1919 when he returned to the farm. Mr. Cashman was one of the La Follette delegates to the National Republican Convention at Cleveland in 1924. In the same year he was appointed a regent of the University and served for the full term of six years. He has been an active member of the Senate Committee on Highways, and is the author of the present highway law enacted in 1931 which places the cost of highways on the users by means of the license and gasoline tax. He has represented his district in the senate since 1922. Home Address: Route 1, Denmark.

First senatorial district: Door, Kewaunee, and Manitowoc Counties.

E. F. BRUNETTE (Dem.) was born in the town of Howard, Brown County. His education was received in the common schools, Green Bay Business College, and the State Teachers College at Oshkosh. He was formerly engaged in the lumber and fuel business as secretary of his company. Senator Brunette has served for the past eleven years as member of the Brown County Board of Supervisors, being chairman of the town board of Howard. He represented the second district of Brown County in the assembly in the session of 1929, and was elected to the senate in 1932. He served on the Joint Finance Committee in the 1933 session and is now senate chairman of the same committee. Home Address: Route 4, Green Bay.

Second senatorial district: Brown and Oconto Counties.

ARTHUR L. ZIMNY (Dem.) was born on August 5, 1900 at Milwaukee in the district he now represents. After his graduation from South Division High School he attended McDonalds Business College and later studied architectural engineering at the University of Wisconsin Extension Division. For fifteen years he has been in the advertising business. Mr. Zimny is a member of the Polish Roman Catholic Union, the Polish National Alliance, and the Century Club of Milwaukee. He was a pioneer in organizing the United Taxpayers Cooperative Association. Although active in civic affairs he had held no public office until his election to the senate in 1934. Home Address: 1640 South Muskego Avenue, Milwaukee.

Third senatorial district: The fifth, eighth, eleventh, and twenty-fourth wards of the city of Milwaukee.



MORRIS
4th DISTRICT

SCHOENECKER
5th DISTRICT

PHILLIPS
6th DISTRICT

OSCAR H. MORRIS (Rep.) was born in Springfield, Massachusetts on March 8, 1876, and came to Milwaukee two years later with his parents. He left grade school at an early age to become "copy boy" for the Milwaukee Sentinel for which paper he finally became reporter and sports writer. Later he joined the Milwaukee Daily News and became reporter, city editor, and sports editor. For many years he was secretary of several commercial and trade organizations. Senator Morris has been chairman of many interim committees while in the senate and is now serving as chairman of the Committee on Corporations and Taxation. He was elected to the senate in 1920 and has served continuously since that time. In 1927 he was president pro tempore of the senate. Senator Morris is a department manager of the Milwaukee Association of Commerce. Home Address: 3726 North Prospect Avenue, Milwaukee.

Fourth senatorial district: The thirteenth, eighteenth, and twenty-first wards of the city of Milwaukee; and the villages of Fox Point, River Hills, Shorewood, and Whitefish Bay.

HAROLD V. SCHOENECKER (Dem.) was born November 26, 1902 in Milwaukee and has lived there all his life. He attended St. Francis Parochial School in 1910 and after his graduation in 1917 entered Marquette Academy. He received his B.A. degree from Marquette University in 1925, and his L.L.B. in 1935. Mr. Schoenecker held various positions from 1926-32, including assistant sales manager of the V. Schoenecker Boot and Shoe Company, and division accountant and office manager of Standard Brands, Inc. At the time he became a member of the senate he was an auditor in the State Treasury Department, Beverage Tax Division. Before his election to the senate in 1934, Senator Schoenecker had held no public office. Home Address: 2032 North Hi Mount Boulevard, Milwaukee.

Fifth senatorial district: The ninth, fifteenth, nineteenth, twenty-second, and twenty-sixth wards of the city of Milwaukee.

CHARLES H. PHILLIPS (Dem.) was born in Milwaukee on January 21, 1859. In 1893 he was graduated from the Law School of the University of Wisconsin. He is now practicing law in Milwaukee. Previous to his election to the senate in 1932 he had held no elective office, but from 1891 to 1895, during the administration of Governor Peck, he worked in the office of the Secretary of State. Senator Phillips was chairman of the Democratic County Committee, delegate to the Democratic National Convention in 1932, chairman of the Wisconsin Chicago Centennial of Progress Committee, the only interim committee ever to return part of its appropriation, and is now chairman of the Committee on Judiciary. Home Address: 1230 North 21st Street, Milwaukee.

Sixth senatorial district: The second, seventh, tenth, twentieth, and twenty-fifth wards of the city of Milwaukee.



GALASINSKI
7th DISTRICT

SHENNERS
8th DISTRICT

CALLAN
9th DISTRICT

MAX J. GALASINSKI (Dem.) was born on March 18, 1879 at Milwaukee and received his education in the public, parochial, and evening schools of that city. From 1891 to 1893 he was an apprentice pharmacist. During the following nineteen years he learned and practiced his father's trade of stone cutting and sculpturing, building some of the best known monuments in Milwaukee, including that erected to Gen. Kosciuszko in South Side Park. After a civil service examination in 1912 he became Superintendent of Street Sanitation for the fourteenth ward, and held that position for sixteen years. While he was alderman for his ward in 1928 he was instrumental in securing the purchase and development of Woodrow Wilson Park. In 1932 he was elected to the assembly from the twelfth district, and in 1934 to the senate from the seventh district. He has held many other offices, including that of director of a building and loan association for eighteen years, organizer and secretary of St. John Cantius Church, and an officer in various lodges. Home Address: 2483 South 6th Street, Milwaukee.

Seventh senatorial district: The twelfth, fourteenth, seventeenth, and twenty-seventh wards of the city of Milwaukee and the cities of Cudahy and South Milwaukee; towns of Lake and Oak Creek.

WILLIAM H. SHENNERS, JR. (Dem.) was born in Milwaukee on July 21, 1902. He was educated in the public and parochial schools of that city. Mr. Shenners is in the real estate and insurance business. Until his election to the senate in 1932, he had held no public office. Home Address: 7207 West Greenfield Avenue, West Allis.

Eighth senatorial district: Towns of Franklin, Granville, Greenfield, and Wauwatosa; village of West Milwaukee; sixteenth and twenty-third wards of the city of Milwaukee and the cities of Wauwatosa and West Allis.

JAMES L. CALLAN (Dem.) was born in Milwaukee on June 3, 1910. He received his education in the parochial grade schools, Marquette University High School, and Marquette University. Since 1931 he has been a real estate and securities broker. He is serving his first term in the senate and is the youngest member of the legislature. Home Address: 512 North 18th Street, Milwaukee.

Ninth senatorial district: The first, third, fourth, and sixth wards of the city of Milwaukee.



HUNT
10th District

NELSON
11th District

McDERMID
12th District

WALTER H. HUNT (Prog.) was born at Kingston, Green Lake County, September 5, 1868. After finishing his secondary education in the public schools he attended Valparaiso University in Indiana and several years after his graduation received his Ph.M. degree from the same school. He has held positions as county school superintendent and state school inspector, and since 1916 has been a teacher in River Falls State Teachers College. During the World War he did educational work overseas in the Army Educational Corps. Mr. Hunt also owns and operates a farm. He was elected to the senate in 1924 and has served continuously since then, having been reelected in 1928 and 1932. Home Address: River Falls.

Tenth senatorial district: Buffalo, Pepin, Pierce, and St. Croix Counties.

PHILIP E. NELSON (Rep.) was born on September 1, 1891 on a farm at Curtiss, Wisconsin. He received his secondary education at Colby High School and later was graduated from the Williams Business College at Oshkosh. He has been employed by the Oakland Motor Car Company at Pontiac, Michigan as cost accountant; has operated cheese factories in Clark and Rusk Counties, and has operated a general store at Conrath. He now owns and operates a farm at Cloverland, Maple P. O., Douglas County. During 1921-23, and 1925-35, he was a member of the County Board of Supervisors in Douglas County. For twenty-two months he served in the World War, most of the time with the A.E.F. in France. In 1927 and 1929, he was a member of the assembly and in 1931 of the senate, to which office he was re-elected in 1934. Home Address: Route 1, Maple.

Eleventh senatorial district: Bayfield, Burnett, Douglas, and Washburn Counties.

JOSEPH E. McDERMID (Prog.) was born in Minneapolis, Minnesota on March 20, 1894. He came to Wisconsin in 1899 with his parents who made their home on a timber farm in Rusk County. He received his elementary education in the public schools of Ingram and Hawkins. Later he attended Chicago Veterinary College for three years and Indiana Veterinary College at Indianapolis for one year, where he received the degree of D.V.M. He enlisted and served two years with the medical corps during the World War, and is a charter member of the Vinton Moore post of the American Legion at Ladysmith. Since 1921 he has practiced veterinary medicine at Ladysmith. He is a member of the Rusk County Board of Supervisors, and is chairman of its road and bridge committee. He was elected to his first term in the legislature in April 1935 to fill the vacancy caused by the resignation of Bernard J. Gehrmann on January 3, 1935. Home Address: Ladysmith.

Twelfth senatorial district: Ashland, Iron, Price, Rusk, Sawyer, and Vilas Counties.



PANZER
13th DISTRICT

MACK
14th DISTRICT

COAKLEY
15th DISTRICT

FRANK E. PANZER (Prog.) was born in the town of Hubbard in Dodge County on September 1, 1890. He attended the public schools and the Oakfield High School. Since 1918 he has been a school teacher and a telegraph operator and at present is engaged in farming. Mr. Panzer has held several public offices including those of school clerk, town chairman, and member of the Dodge County Board since 1925. He served in the assembly in the session of 1931 and was elected to the senate in 1934. Home Address: Route 2, Oakfield.

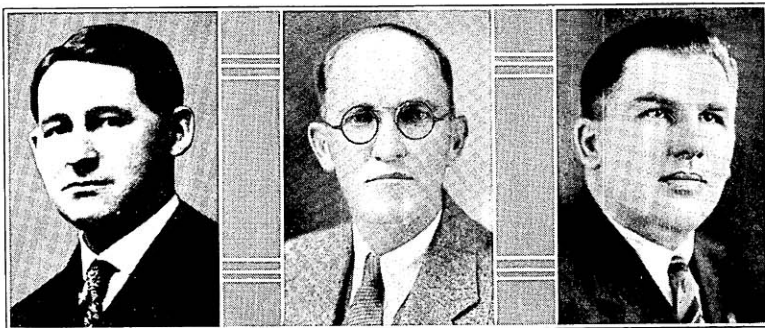
Thirteenth senatorial district: Dodge and Washington Counties.

MIKE MACK (Rep.) was born in Trempealeau County on November 15, 1873. After receiving a common school education he spent ten years in the lumber business. For the past forty years he has lived in Outagamie County where he has farmed. During the World War, Senator Mack was chairman of the Village Council of Defense. Before his election to the senate in 1932 he had served as a county board member and as a member of the county highway committee. Senator Mack was reelected to the senate in 1934 and is a member of the senate Committee on Highways. Home Address: Shiocton.

Fourteenth senatorial district: Outagamie and Shawano Counties.

MAURICE P. COAKLEY (Rep.) was born at Beloit on January 9, 1906. He received the degree of B.A. from Beloit College in 1926 and of LL.B. in 1930 from the Law School of the University of Wisconsin. He is a practicing attorney in Beloit, and during 1931-32 held the position of instructor in political science at Beloit College. From 1927 until his election to the senate he served as a record clerk in the senate. In 1932 he was admitted to the bar of the Territory of Hawaii at Honolulu. He is serving his first term in the legislature. Home Address: 1220 Emerson Street, Beloit.

Fifteenth senatorial district: Rock County.



CARROLL
16th DISTRICT

ENGBRETSON
17th DISTRICT

KELLY
18th DISTRICT

WILLIAM D. CARROLL (Dem.) was born at Hayton, Calumet County on June 5, 1880 and was educated in the common schools. Prairie du Chien has been his home for the past twenty-seven years. As a member of its city council from 1920-26 he was instrumental in obtaining lower electric rates for the city. He served as school board president for three years and as a county board member for one term. He was secretary of the Democratic State Central Committee from 1920-26 and was delegate to the National Convention in 1924 and 1928. Senator Carroll owns a hotel and several farms. For many years he engaged in the real estate and insurance business. He was elected to the senate in 1932. Home Address: 120 South Michigan Street, Prairie du Chien.

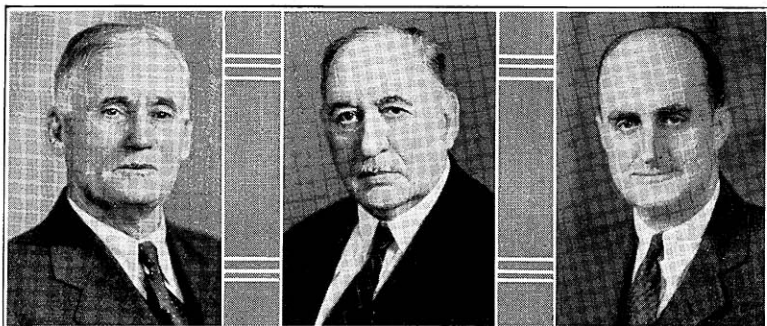
Sixteenth senatorial district: Crawford, Grant, and Vernon Counties.

GEORGE ENGBRETSON (Prog.) was born on June 3, 1890 at Warren, Illinois. His parents moved shortly thereafter to the Township of Wiota in Lafayette County, Wisconsin where he has lived ever since. He was educated at the Wiota common school and Platteville State Teachers College. His occupation is farming. During 1930-1931 Senator Engebretson was a member of the Republican State Central Committee. He was elected to the senate in 1932 to fill a vacancy caused by the death of William Olson, and was reelected for a full term in 1934. Home Address: South Wayne.

Seventeenth senatorial district: Green, Iowa, and Lafayette Counties.

MORLEY G. KELLY (Dem.) was born at Watertown, South Dakota. He finished his education at Wadena High School in Minnesota and became a linotype operator and later a newspaper editor. He has been a member of the National Guard, Company K, of Dickinson, North Dakota. Before his election to the senate in 1932, he had held no public office. Home Address: 184 East 13th Street, Fond du Lac.

Eighteenth senatorial district: Fond du Lac, Green Lake, and Waushara Counties.



MORRISSEY
19th DISTRICT

BOLENS
20th DISTRICT

CLANCY
21st DISTRICT

PIERCE A. MORRISSEY (Dem.) was born on April 5, 1870 at Nepeuskum and was educated in the common schools and the state graded school at Waukau. He has been a farmer all his life. Senator Morrissey has held the following public offices in the Town of Nepeuskum: 1904-13, assessor; 1912-17, chairman of the town and a member of the Board of Supervisors; 1922, member of the Board of Town Chairmen and again a member of the Board of Supervisors. During the World War, he served on the Committee on Liberty Loan Drives. He is also a former member of the American Society of Equity for Wisconsin. Senator Morrissey is now serving his initial term in the legislature. Home Address: Route 1, Rush Lake.

Nineteenth senatorial district: Calumet and Winnebago Counties.

HARRY W. BOLENS (Dem.) was born January 13, 1864. He has lived at Port Washington since 1879 except for six years spent in Sheboygan, where he published the Daily Journal. He is an inventor, manufacturer, and farmer. He has served as alderman, county supervisor, and county board chairman for several terms, and mayor for three terms. Senator Bolens organized the first independent military company in Wisconsin for the Spanish-American War, and in 1917 organized the first Wisconsin company for the World War. At that time also he was chairman of Draft District Board No. 2, and chairman of the County Council for Defense. He is serving as president pro tem of the senate. Home Address: 1242 Grand Avenue, Port Washington.

Twentieth senatorial district: Ozaukee and Sheboygan Counties.

JOSEPH CLANCY (Dem.) was born at Racine on August 2, 1890. He attended the St. Rose and Winslow Schools and was graduated from Racine High School in 1908. Between the time he left high school and 1914 he was in construction work on the Pacific Coast and also with the Chicago, Milwaukee and St. Paul Railroad. From 1914 to 1924 he was employed as general traffic manager by two large rubber companies. Since then he has been engaged in the selling of securities and real estate. After serving one term in the assembly in 1932-34, he was elected to the senate in the fall of 1934. Home Address: 1308 College Avenue, Racine.

Twenty-first senatorial district: The county of Racine.



SHEARER
22nd DISTRICT

SEVERSON
23rd DISTRICT

RUSH
24th DISTRICT

CONRAD SHEARER (Rep.) was born on October 13, 1874 in the town of Somers, Kenosha County. After completing the rural schools he attended Kenosha High School and was graduated in 1895. He was graduated from the Milwaukee State Normal School in 1905 and attended the Kenosha College of Commerce. From 1895 to 1901 he taught school and later was a post office employe at Kenosha for five years. He has been secretary and office manager of the central office of the Kenosha Industries from 1907 to the present time. Senator Shearer has held several public offices, having been a councilman in Kenosha from 1913 to 1919, and Park Commissioner from 1919 to 1923. During the war he was Sergeant in the Kenosha Provisional Battalion. He served in the assembly for three terms. In 1928 he was elected to the senate and was reelected in 1932. During the regular sessions of 1933 and 1935 he was chairman of the Committee on Agriculture and Labor and a member of the Committees on Committees and Legislative Procedure. Home Address: 520 Sixty-eighth Place, Kenosha.

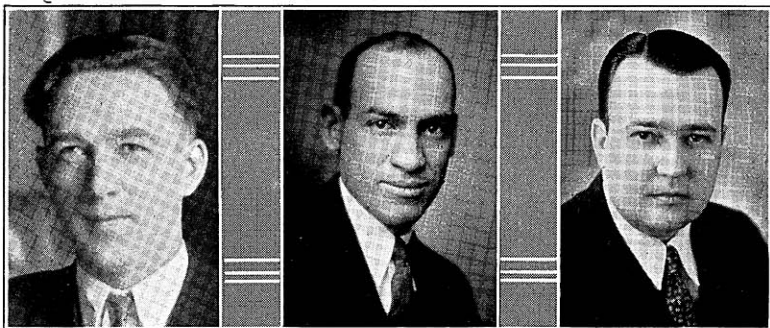
Twenty-second senatorial district: Kenosha and Walworth Counties.

HERMAN J. SEVERSON (Prog.) was born in Christiana, Dane County. He spent his boyhood years on his father's farm and received his early education in the public schools. Later he attended Stoughton Academy, Red Wing College, Drake University and the University of Wisconsin Law School. After teaching school in Jefferson and Dane Counties for two years, he became principal of the graded school at London. In 1897, he was admitted to the bar, and is a lawyer by profession. From 1904-08 he was chairman of the Waupaca County Republican Committee and district attorney from 1908-10. He has been a member of the legislature since 1918 and has been a member of important committees at each session. Home Address: Iola.

Twenty-third senatorial district: Portage and Waupaca Counties.

WALTER J. RUSH (Prog.) was born and raised on a farm in the town of Watford, Racine County. He was educated in the common schools and at Rochester Academy. He received his B.S. degree from the University of Valparaiso in Indiana. He then engaged in teaching for three years, after which time he entered the University of Wisconsin completing the law course in 1900. Since then he has resided in Clark County during which time he has been engaged in the practice of law. He was district attorney of Clark County from 1911 until 1918 and was a delegate to the Republican National Convention in Kansas City in 1928. Since 1929 he has been a member of the state senate. He has always been affiliated with the Progressive cause in Wisconsin, and last spring was a delegate to the Fond du Lac convention which organized the Progressive party. Home Address: 202 South Clay Street, Neillsville.

Twenty-fourth senatorial district: Clark, Taylor and Wood Counties.



KANNENBERG
25th DISTRICT

GROVES
26th DISTRICT

ROWLANDS
27th DISTRICT

ROLAND E. KANNENBERG (Prog.) was born September 25, 1907 at Pleasant Prairie, Kenosha County. He attended the Marathon County Public School, the Twin Oaks School, and the Wausau High School. Before becoming a co-partner in the Kannenberg-Ninneman Monument Company in 1932, he had assisted on his father's farm and had spent four years quarrying granite in Marathon County. He was a member of the National Third Party Committee and one of the founders of the new Progressive Party of Wisconsin. Mr. Kannenberg is serving his first term in the senate. Home Address: 724½-9th Avenue South, Wausau.

Twenty-fifth senatorial district: Lincoln and Marathon Counties.

HAROLD M. GROVES (Prog.) was born October 3, 1897 at Lodi and received his early education there. He was graduated from the University of Wisconsin in 1919 and received his Ph.D. in 1927. He also studied one year at the Harvard Law School. Mr. Groves has had long teaching experience both in schools of secondary and higher education and has been an instructor and a professor of economics at the University of Wisconsin since 1924. He has been a member of the Board of Managers of the American Legislative Association and of its Committee on Conflicting Federal and State Taxation. In 1931 he was elected to the assembly, in 1932 he became a member of the Wisconsin Tax Commission, and in 1934 was elected to the senate. Home Address: 1418 Drake Street, Madison.

Twenty-sixth senatorial district: Dane County.

E. MYRWYN ROWLANDS (Prog.) was born on April 1, 1901 at Cambria, Wisconsin. He received his elementary education in the Cambria public schools and at St. John's Military Academy, and his higher education at Ripon College and the University of Wisconsin. He is vice-president of the Bank of Cambria. He also operates a farm near that village. During 1925 and 1926 he was a trustee of the Village of Cambria and was a member of the state assembly from Columbia County from 1927 to 1934. He has the distinction of being the first chairman of the State Central Committee of the Progressive Party for 1934-36. In April 1935 he was elected to the senate to fill the vacancy caused by the death of Senator Fred W. Zantow, defeating the Democratic, Republican and Socialist candidates combined. Home Address: Cambria.

Twenty-seventh senatorial district: Columbia, Richland, and Sauk Counties.



INGRAM
28th DISTRICT

ANDERSON
29th DISTRICT

WADE
30th DISTRICT

G. ERLE INGRAM (Prog.) was born April 1, 1883 at Eau Galle. After receiving his secondary education in Dunn County, he attended Whitewater and La Crosse State Teachers Colleges, the Kansas City Business College, and the Northern Indiana Law School at Valparaiso. At the age of seventeen he began teaching and taught for several years in the elementary and high schools of the state. Since 1921 he has been practicing law in Eau Claire and has been vice-president of the State Bar Association for the 19th Judicial Circuit. In 1928-29 he was a member of the Republican State Central Committee. He was elected to the assembly in 1930 and to the senate in 1932. Legislative committees on which Mr. Ingram has served are the Interim Committee on Banking, the Interim Committee on Old Age Pensions, and the Advisory Legislative Committee to Investigate Finance Companies. Home Address: 252 South 11th Street, Eau Claire.

Twenty-eighth senatorial district: Chippewa and Eau Claire Counties.

JOHN A. ANDERSON (Prog.) was born in Carver County, Minnesota on December 28, 1870 and received his education at Gustavus Adolphus College, St. Peter, Minnesota. He is in the clothing and shoe business at Barron. With the exception of 1928-29 he has been mayor of that city since 1924. During 1924-25 he was a member of the school board. He is serving his second term in the senate. Home Address: Barron.

Twenty-ninth senatorial district: Barron, Dunn, and Polk Counties.

SHERMAN W. WADE (Dem.) was born at Hurley on December 12, 1895. He was educated in the public and parochial schools of Antigo and in commercial schools at Antigo and Wausau. He has been in the lumber business since 1916. At the time of the World War he served with the 102nd Squadron A.S.S.C. He was elected to the legislature for the first time in 1932. Home Address: 420 Edison Street, Antigo.

Thirtieth senatorial district: Forest, Florence, Langlade, Marinette, and Oneida Counties.



LEVERICH
31st DISTRICT

GRISWOLD
32nd DISTRICT

DEMPSEY
33rd DISTRICT

EARL LEVERICH (Prog.) was born on December 6, 1891 on a farm in the town of Angelo in Monroe County. After his graduation from Sparta High School in 1910, he took a business course at the Capital City Commercial College (now Madison College) in 1911 and the Short Course in Agriculture at the University of Wisconsin in 1913. In 1931 he was given the honorary degree of Master of Accounts by Madison College. He has held a number of public offices and for two years has been a farmer member of the Wisconsin State Board of Vocational Education. From 1930 to 1934 he was secretary of the Monroe County Progressive Republican Committee. Mr. Leverich has been a practical farmer for twenty years. He has taken an active part in the farm co-operative movement and has served as a member of important state farm committees. In 1931 he organized the anti-oleo demonstration at Madison which resulted in the elimination of oleo in Wisconsin. He was elected to the senate in 1934. This is his first term in the legislature. Home Address: Sparta.

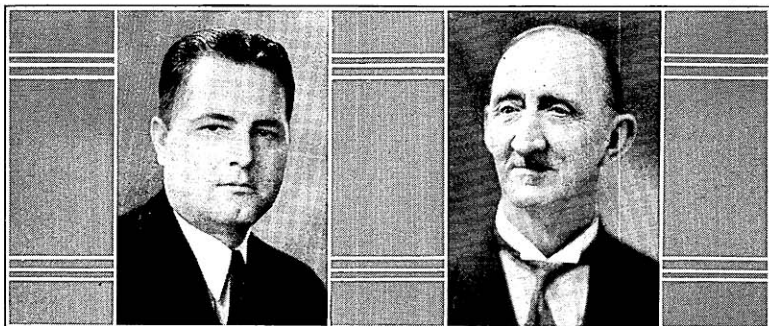
Thirty-first senatorial district: Adams, Juneau, Marquette and Monroe Counties.

HARRY W. GRISWOLD (Rep.) was born on May 19, 1886 on a farm at West Salem where he has spent his entire life. He was educated in the public schools and took the Short Course in Agriculture at the University of Wisconsin. He has held various offices with the Wisconsin Guernsey Breeders' Association, La Crosse County Guernsey Breeders' Association, County Guernsey Breeders, Monroe and La Crosse County Holstein Breeders. For seventeen years he served as a member of the board of the West Salem High School, and at present is a member of the State Board of Vocational Education. Senator Griswold was elected to the legislature for the first time in 1932. Home Address: Route 2, West Salem.

Thirty-second senatorial district: Jackson, La Crosse, and Trempealeau Counties.

CHESTER E. DEMPSEY (Dem.) of Merton, Waukesha County was born there on July 20, 1895. He owns and operates a modern dairy farm of two-hundred and seventy-five acres which has been the homestead of the Dempsey family since early pioneer days. He received his education in the county schools and has always been a close student of farming and farm problems. He publishes Dempsey's Farm Economics, a paper with a wide circulation among farmers of the state. Prior to his election to the senate in 1934 he was a member of the Waukesha County Board and has held various school and township offices. Home Address: Route 1, Hartland.

Thirty-third senatorial district: Jefferson and Waukesha Counties.



LARSEN
CHIEF CLERK

HARTMAN
SERGEANT-AT-ARMS

LAWRENCE R. LARSEN (Dem.) was born at Racine, Wisconsin on March 23, 1897, and received his education in the common and high schools of that city. After leaving school he was employed as purchasing agent, salesman, and advertising manager by several Racine industrial companies. He served in the World War as acting Sergeant-Major, Headquarters Company at Camp Shelby, Mississippi. His election as Chief Clerk of the Senate in 1935 was his first public office. Home Address: Racine.

EMIL A. HARTMAN was born on March 25, 1864 at Manitowoc. He was graduated from the First Ward School in 1880 and worked as bookkeeper and salesman for six years and later became a paper hanging and painting contractor. He enlisted as a private and charter member in Company H, 2nd Regiment of the Wisconsin National Guard when it was organized in 1881 and resigned from the service as second lieutenant in 1893. He was secretary of the Manitowoc County Republican Committee and served as a delegate to the Republican State Conventions in 1896 and 1898. In 1897 he took a position in the office of the Adjutant General and two years later he transferred to the department of the Secretary of State. He resigned the latter in 1904 to resume his contracting business which he still conducts. Since 1915 he has served the senate as document clerk, mailing clerk, assistant sergeant-at-arms, and since 1931 as Sergeant-at-Arms. Home Address: 2253 Fox Avenue, Madison.

MEMBERS OF THE ASSEMBLY



BLOMQUIST
ADAMS AND
MARQUETTE

OLSON
ASHLAND

BEGGS
BARRON

EDWIN W. BLOMQUIST (Prog.) was born October 30, 1896 at Chicago, Illinois where he attended grade school and high school. Later he took several courses at La Salle Extension University in that city. He has been employed by the Chicago and Northwestern Railroad since 1914 in the capacity of locomotive engineer and fireman. He is serving his second term as a member of the City Council of Adams and for fifteen years has been an active officer in the Brotherhood of Locomotive Fireman and Engineers. This is his first term in the legislature. Home Address: Adams.

CLARENCE V. OLSON (Prog.) was born in the city of Ashland on July 17, 1904. He received his college education at Northland College at Ashland and then entered the University of Wisconsin where he received his law degree in 1930. He is now an attorney in Ashland. He served his first term in the legislature in 1933 and was reelected in 1934. Home Address: 722 West 2nd Street, Ashland.

CHARLES A. BEGGS (Prog.) was born in Portage County in 1860. Educated in the common schools, he entered the grocery business at Plainfield, remaining only one year. There followed four years in the general merchandise business at Rice Lake. He has since been engaged in the growing and the shipping of produce. Mr. Beggs has been a member of the County Board for twenty-five years, and was elected to the assembly in 1916, 1926, 1928, 1930, and again in 1934. Home Address: Rice Lake.



SIBBALD
BAYFIELD

LYNCH
BROWN, 1ST

SWEENEY
BROWN, 2ND

JOHN C. SIBBALD (Prog.) was born in the city of Ashland, August 9, 1903 and was educated in the state graded school at Grandview. He is in the grocery business. He was town clerk in the town of Pratt from 1927 to 1931 and town chairman from 1931 to 1935. This is Mr. Sibbald's first term in the legislature. Home Address: Grandview.

ROBERT E. LYNCH (Dem.) was born in Chicago and was graduated from Notre Dame University. He is sales manager for a building materials company. His election to the assembly in 1932 marked his entrance into public office. He was reelected in 1934. Home Address: 1144 Cass Street, Green Bay.

Brown County, first district: The city of Green Bay exclusive of the twenty-first ward.

WILLIAM J. SWEENEY (Dem.) was born in the town of Glenmore, Brown County. He was educated in the common schools and also took a correspondence business course. For nine years ending in 1931 he was a road and bridge contractor. Since then he has been an auctioneer, insurance agent, and farmer. He served Glenmore Township as highway commissioner from 1920-22, as town clerk from 1922-27, and as town chairman from 1927-29. He was elected to the assembly in 1932 and reelected in 1934. Home Address: Box 232, De Pere.

Brown County, second district: All the towns, cities, and villages of Brown County except the city of Green Bay; and the twenty-first ward of the city of Green Bay.



HITT
BUFFALO & PEPIN

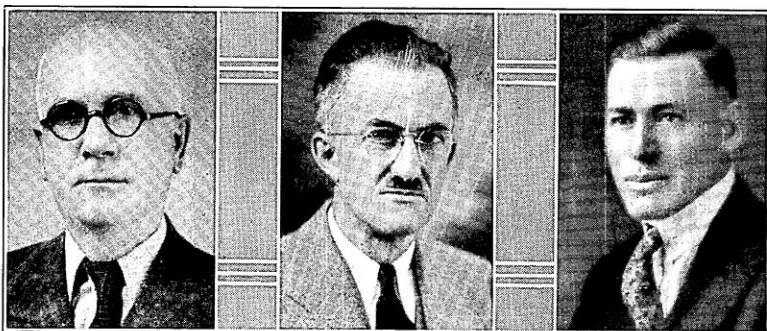
BERGREN
BURNETT &
WASHBURN

SHORT
CALUMET

ARTHUR A. HITT (Prog.) was born in the town of Alma, Buffalo County on November 9, 1890. He was graduated from the Alma High School in 1910, La Crosse State Teachers College in 1913, and the University of Wisconsin (A.B. 1916, M.A. 1926). From 1921 to 1932 he taught school, the last five years in the Milwaukee Vocational School. He has given up teaching to devote full time to his farm near Alma, and to the assembly, in which he is serving his fifth consecutive term. He takes an active part in the farm organizations of his district and is on the legislative committee of the Farmer-Labor Progressive League. Mr. Hitt is a World War veteran. Home Address: Route 2, Alma.

HARRY BERNARD BERGREN (Prog.) was born September 8, 1888 at St. Paul, Minnesota, and was educated in the public schools of that city. Later he attended college and night school. He has been a printer for eleven years, credit manager and correspondence man for six years, and a poultry raiser for the past seven years. For three successive terms he held the office of town clerk of the town of Daniels. After serving for twenty-one months in the World War he was honorably discharged as a Second Lieutenant. He is serving his first term in the assembly. Home Address: Route 1, Siren.

JOHN W. SHORT (Dem.) was born on a farm at Chilton, June 29, 1874. He was educated in the common schools of Chilton and later attended Milwaukee Business College. He has farmed all of his life on the farm where he was born. Mr. Short has been town clerk of Chilton, chairman of the town for eleven years, chairman of the County Board for one term, and has been school clerk for the past thirty years or more. The present is his first term in the legislature. Home Address: Route 3, Chilton.



HIPKE
CHIPPewa

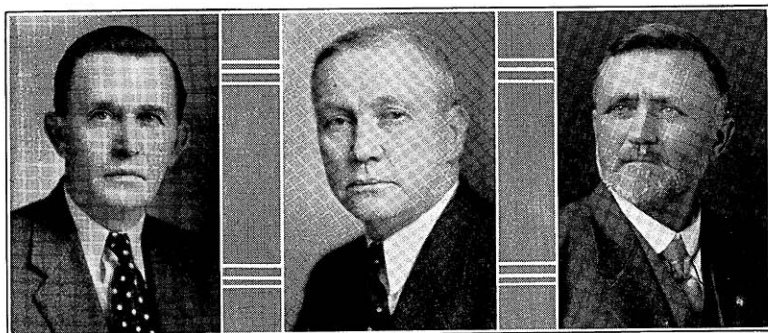
NEHS
CLARK

GROVES
COLUMBIA

GEORGE H. HIPKE (Rep.) was born at New Holstein, Wisconsin on December 29, 1879. He received his education in the common schools of his home town. At an early age he entered the mercantile business and at present devotes his time to the canning industry, forest products, and the selling of land. He has held a number of public offices. From 1921 to 1931 he was on the Stanley Board of Education; from 1919 to 1935 he was a member of the Board of Trustees of the Chippewa County Asylum; and from 1932 to 1935, mayor of Stanley. He is serving his first term in the assembly. Home Address: Stanley.

VICTOR NEHS (Prog.) was born at Menomonee Falls on July 28, 1887. He attended the public schools of Marshfield and was graduated from the high school of that city. For three years he was employed in the wholesale and retail ice cream business. In 1913 he was admitted to the bar after having completed the law course at the University of Wisconsin. He practiced law at Loyal in Clark County in 1914, and in 1917 formed a law partnership with Emery W. Crosby at Neillsville. Mr. Nehs has held various honorary and public offices, including mayor of Neillsville, clerk of the school board, justice of the peace, circuit court commissioner, divorce counsel, district attorney, city attorney, chairman of the County Board, United States Conciliation Commissioner, president of the Kiwanis Club, commander of the American Legion Post. He served for twelve years in the Wisconsin National Guard with the famous Second Regiment Band of Marshfield. His military service also includes nine months in the Mexican border campaign and a year in the World War with the Signal Corps in France. Music, hunting, and fishing are his hobbies. The present term is his first in the legislature. Home Address: Neillsville.

WILLIAM F. GROVES (Prog.) was born on September 23, 1893 on a farm near Lodi. He received his early education in the district school and was graduated from Lodi High School in 1912. For three years he attended the University of Wisconsin, but left in 1915 to operate the home farm in which agricultural pursuit he has engaged ever since. Mr. Groves has held no public office except treasurer of his school district for the past eight years. This is his first term in the assembly. Home Address: Route 1, Lodi.



PETERSON, T. A.
CRAWFORD

SCHENK
DANE, 1st

HANSON
DANE, 2nd

THORLIEF A. PETERSON (Dem.) was born on a farm in Utica, Crawford County on December 9, 1886. He received a common school education. He has been a farmer all his life and is living today on the farm where he was born. He is secretary-treasurer of a creamery and cheese company at the present time. For eighteen years he was a member of the school board and in 1926 and 1928-30 he was town supervisor. He has been active for many years in the good roads movement. Mr. Peterson was elected to the assembly in 1932 and is now serving his second term in the legislature.

Home Address: Route 3, Soldiers Grove.

HERBERT C. SCHENK (Prog.) was born on June 26, 1880 in Leeds. He attended the elementary school in Madison and also Northwestern Business College where he was graduated in 1898. From 1901-08 he was manager of a retail lumber yard and from that time on he has been a retail hardware dealer. Mr. Schenk was a member of the Board of Education from 1921 to 1925, and of the Park Commission and Board of Health from 1918 and 1923, respectively, to the present. He also belonged to the Wisconsin National Guard from 1898 to 1901. This is Mr. Schenk's first term in the legislature. Home Address: 2051 Winnebago Street, Madison.

Dane County, first district: The city of Madison.

JAMES C. HANSON (Prog.) came to America at the age of four from Slysrup, Lolland, Denmark, where he was born July 11, 1862. He has always made his home in the town of Christiana. He received his education in the public schools, Albion Academy, and Milton College. His occupation is farming and he has long been active in the cooperative movement. Besides holding many other offices of trust and honor, Mr. Hanson has been a member of the assembly since 1917 and is the oldest legislator in point of service. The University Board of Regents presented him with a testimonial of appreciation in 1932 for his pioneering services in the field of cooperative marketing and the organization of other cooperatives. Home Address: Route 2, Deerfield.

Dane County, second district: Towns of Albion, Blooming Grove, Bristol, Burke, Christiana, Cottage Grove, Deerfield, Dunkirk, Dunn, Medina, Pleasant Springs, Rutland, Sun Prairie, Windsor, and York; villages of Cambridge, Cottage Grove, Deerfield, De Forest, McFarland, Marshall, Rockdale, and Sun Prairie; city of Stoughton.



BAKER
DANE, 3rd

GENZMER
DODGE, 1st

KRUEGER
DODGE, 2nd

ALBERT J. BAKER (Prog.), the son of the late P. O. Baker, a former assemblyman, was born December 14, 1874 in the town of Primrose, Dane County. He was educated in the common schools, and has been a farmer all his life. Mr. Baker has held numerous public and administrative offices. He was first elected to the assembly in 1926, and has been a member since that date. Home Address: 204 Wilson Street, Mount Horeb.

Dane County, third district: Towns of Berry, Black Earth, Blue Mounds, Cross Plains, Dane, Fitchburg, Madison, Mazomanie, Middleton, Montrose, Oregon, Perry, Primrose, Roxbury, Springdale, Springfield, Vermont, Verona, Vienna, and Westport; villages of Belleville, Black Earth, Blue Mounds, Brooklyn, Cross Plains, Dane, Maple Bluff, Mazomanie, Middleton, Mt. Horeb, Oregon, Shorewood Hills, Verona, and Waunakee.

ELMER L. GENZMER (Dem.) was born at Mayville on January 3, 1903. In 1922 and 1923 he attended the Milwaukee State Teachers College and in 1923 and 1924 the Marquette Law School. For several years he taught in the rural schools of Dodge County. He has held positions with the Ford Motor Company in Milwaukee, with the Wisconsin Power and Light Company, and with an iron and steel company in Ohio. He was twice elected justice of the peace in Mayville, in 1932 and in 1934. This is his first term in the assembly. Home Address: 435 North Main Street, Mayville.

Dodge County, first district: Towns of Ashippun, Clyman, Emmet, Herman, Hubbard, Hustisford, Lebanon, Leroy, Lomira, Rubicon, Shields, Theresa, and Williamstown; villages of Clyman, Hustisford, Iron Ridge, Lomira, Neosha, and Theresa; cities of Horicon and Mayville, and the fifth, sixth, thirteenth and fourteenth wards of Watertown.

HENRY EDWARD KRUEGER (Dem.) was born May 14, 1882 in Dodge County and received his education in the county schools. In 1907 he took a short course in agriculture at the University of Wisconsin. He is a farmer and specializes in seed-growing and raising Brown Swiss cattle. Mr. Krueger has always taken an active part in public affairs. Since 1918 he has been the secretary of the Dodge County Good Roads Association. He has been the director of the Dodge County Fair since 1933, and was elected as a Master Farmer for 1934 by the Wisconsin Agriculturist Farmer. Home Address: Route 1, Beaver Dam.

Dodge County, second district: Towns of Beaver Dam, Burnett, Calamus, Chester, Elba, Fox Lake, Lowell, Oak Grove, Portland, Trenton, and Westford; villages of Fox Lake, Lowell, Reeseville, and east ward of Randolph; cities of Beaver Dam and Juneau and first, second, third, and fourth wards of the city of Waupun.



GRAASS
Door

HALL, M. H.
Douglas, 1st

PETERSON, E. C.
Douglas, 2nd

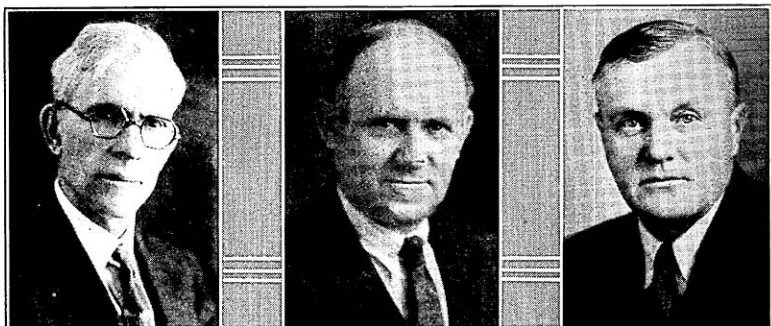
FRANK N. GRAASS (Rep.) was born at Sturgeon Bay on August 19, 1885. He was graduated from the Sturgeon Bay High School in 1905, and in the following year entered forestry work. He has been secretary-treasurer of the Wisconsin Division of the Isaac Walton League since 1923, and has acted as legislative counsel on all conservation measures coming before the legislature since that date. He also served on the advisory board of the Wisconsin Conservation Commission for four years. He has developed and maintains an active interest in the care, hospitalization and education of poor and crippled children. This is his third term in the assembly, having been previously elected in 1916 and 1918. Home Address: Sturgeon Bay.

MICHAEL H. HALL (Prog.) was born at De Soto, Missouri on August 24, 1890. He attended the common and high schools of Mayville, New York. After leaving high school he worked as a grocery clerk for six months, and from 1908 to 1910 worked in engine service in New York State. In 1910 he entered engine service in Everett, Washington and transferred to Superior, Wisconsin in 1912 where he has been ever since. At present his occupation is locomotive engineer with the Great Northern Railway. In 1918 he was elected local chairman of the General Grievance Committee of the Great Northern System and in 1933 he was elected secretary-treasurer. He is serving his first term in the assembly. Home Address: 1209 Cumming Avenue, Superior.

Douglas County, first district: The third, fourth, fifth, sixth, and seventh wards of the city of Superior.

ELMER C. PETERSON (Prog.) was born in Martin County, Minnesota on November 30, 1892. He was educated in the public schools of Rockford, Illinois and was graduated from Brown's Business College in that city. During the World War he served with the A. E. F. 311th French Mortar Battery, 86th Division. At the present time Mr. Peterson is engaged in farming in Douglas County. He has held a number of public offices, including town clerk, school clerk, town chairman, and member of the county board from 1930 to the present time. He has also been president of the Douglas County Farmers Union since 1931. This is Mr. Peterson's first term in the legislature. Home Address: Route 1, Poplar.

Douglas County, second district: Towns of Amnicon, Bennett, Brule, Cloverland, Dairyland, Gordon, Hawthorne, Highland, Lakeside, Maple, Oakland, Parkland, Solon Springs, Summit, Superior, and Wascott; villages of Lake Nebagamon, Oliver, Solon Springs, and Poplar; first, second, eighth, ninth, and tenth wards of Superior.



MILLAR
DUNN

PRITCHARD
EAU CLAIRE

KRONSCHNABL
FLORENCE, FOREST
& ONEIDA

JAMES D. MILLAR (Prog.) was born in Eau Claire on January 8, 1869. At the age of four he moved with his parents to a farm in Dunn County. He was educated in a one-room country school, the Menomonie High School, and River Falls State Normal School. Later he taught school, kept books, and engaged in the lumber manufacturing business. He owns and for the last 28 years has operated a farm preempted by his grandfather in 1856. He served as secretary of the Dunn County Agricultural Society for 19 years; chairman of the Town of Red Cedar for 20 years; chairman of the County Board of Supervisors for six consecutive terms; and secretary of the Dunn County Farmers Mutual Fire Insurance Company for 15 years. Mr. Millar was a member of the assembly in 1911 and 1913 and, with the exception of the session of 1933, from 1923 through 1935. Home Address: Menomonie.

JOHN T. PRITCHARD (Prog.) was born on December 20, 1883 in Caernarvon, Wales and received his early education there. In 1905 he came to America. He studied in the College of Agriculture at the University of Wisconsin for two years. Since then he has engaged in farming, moving to Eau Claire County in 1913. He has held various public offices and for the past twelve years has been a member of the County Board. Mr. Pritchard is serving his second term in the legislature. Home Address: Route 5, Eau Claire.

HERMAN L. KRONSCHNABL (Prog.) was born in Germany, January 22, 1879. He is a graduate of the common schools. He was railway mail clerk in 1913-14 but most of his life has been spent in the newspaper field, having edited and published the Clark County Herald at Dorchester from 1905-08, the Abbottsford Weekly Clarion from 1912-15, and the Crandon Forest Republican since 1925. He is known as "the fighting editor of northern Wisconsin." Public offices which Mr. Kronschnabl has held have been the following: assessor of the town of Mayville in Clark County from 1903-04, village clerk of Dorchester from 1906-07, postmaster of Dorchester from 1916-25. This is his first term in the assembly. Home Address: Crandon.



FITZSIMONS
FOND DU LAC, 1st

JOHNSON, J. E.
FOND DU LAC, 2nd

GOLDTHORPE
GRANT, 1st

MAURICE FITZSIMONS, JR. (Dem.) of Fond du Lac was born September 30, 1906, and has always lived in the city of his birth. For two years he attended Marquette University, and since 1923 has been affiliated with M. Fitzsimons and Sons Shoe Company. In 1927 he became the owner and operator of the Fitzsimons Fur Farm. Mr. Fitzsimons has been a member of the assembly since 1932. Home Address: Box 129, Fond du Lac.

Fond du Lac County, first district: Towns of Calumet, Empire, Fond du Lac, and Taycheedah; city of Fond du Lac.

JOHN E. JOHNSON (Prog.) was born in the town of Alto, Fond du Lac County on July 5, 1873, and lived and worked on a farm until he was twenty-three years old. He was educated in the public schools and took a short course in draftsmanship, building, and contracting. He has followed the carpenter trade, and is also interested in the lumber and fuel business. Mr. Johnson also served the village of Brandon as a member, trustee, and president of the village board and was its representative on the County Board for 1932-34. From 1916 to 1922 he was a member of the assembly and is again representing his district this session. Home Address: Brandon.

Fond du Lac County, second district: Towns of Alto, Ashford, Auburn, Byron, Eden, Eldorado, Forest, Friendship, Lamartine, Marshfield, Metomen, Oakfield, Osceola, Ripon, Rosendale, Springvale, and Waupun; villages of Brandon, Campbellsport, Eden, Fairwater, North Fond du Lac, Oakfield, Rosendale, and St. Cloud; city of Ripon and fifth and sixth wards of Waupun.

WILLIAM H. GOLDTHORPE (Rep.) was born at Cobb on September 25, 1880. After completing his course at Cobb High School he was graduated from Platteville State Normal School in 1900. In 1899 Mr. Goldthorpe organized the Platteville Normal School Band which was the first normal school band in Wisconsin. His interest along musical lines was continued and in addition to conducting bands in his home town and the surrounding towns, he organized the Wisconsin Press Association Band in 1926 which was the first of its kind in the United States. Since 1923 he has been a newspaper publisher at Cuba City. He has also been postmaster of that city for the last twelve years. Mr. Goldthorpe is serving his first term in the legislature having been elected to the assembly in April 1935 to fill the vacancy caused by the death of B. A. Clemens in January 1935. Home Address: Cuba City.

Grant County, first district: Towns of Beetown, Cassville, Clifton, Ellenboro, Glen Haven, Harrison, Hazel Green, Jamestown, Lima, Paris, Platteville, Potosi, Smelser, and Waterloo; villages of Cassville, Hazel Green, Livingston, and Potosi; cities of Platteville and Cuba City.



HARPER
GRANT, 2nd

HOESLY
GREEN

PETERSON, R. W.
GREEN LAKE &
WAUSHARA

HUGH A. HARPER (Prog.) was born December 24, 1885 at Lancaster. He attended Madison Central High School and the University of Wisconsin where he studied both agriculture and liberal arts and was active in athletics, playing guard and center for three years on the University basketball team. For six years Mr. Harper was with Company F, 3rd Wisconsin Regiment. He has held many public offices, among them chairman of the town board, member of the school board, secretary of the Grant County National Farm Loan Association, secretary of the Grant County Farm Bureau, a member of the Grant County Board, director of the American Farm Bureau, first president of the Wisconsin Live Stock Shippers Federation, president of the Wisconsin Farm Bureau, and director of the Wisconsin Council of Agriculture. He has been a member of the assembly since 1931. Home Address: Route 1, Lancaster.

Grant County, second district: Towns of Bloomington, Boscobel, Castle Rock, Fennimore, Hickory Grove, Liberty, Little Grant, Marion, Millville, Mt. Hope, Mt. Ida, Muscoda, North Lancaster, Patch Grove, South Lancaster, Watterstown, Wingville, Woodman and Wyalusing; villages of Bagley, Bloomington, Blue River, Montfort, Mt. Hope, Muscoda, Patch Grove and Woodman; cities of Boscobel, Fennimore and Lancaster.

ERNST J. HOESLY (Prog.) born June 16, 1885 at New Glarus was educated at the local high school and at Northwestern Business College, Naperville, Illinois, where he was graduated in 1903. He was for seven years an assistant cashier at the Bank of New Glarus, assistant postmaster four years, village clerk six years, supervisor of the village of New Glarus eleven years and member of the County Highway Committee nine years. At present he is engaged in banking and cattle dealing. Mr. Hoesly has been a member of the assembly since 1927. Home Address: New Glarus.

REUBEN W. PETERSON (Rep.) was born November 22, 1899 in Berlin, Wisconsin. He attended the public schools of that city and was graduated from Berlin high school in 1917. During the World War he served in the United States Navy. In 1924 he was graduated from Marquette University Law School, and is now a practicing attorney in Berlin. He was elected District Attorney in Green Lake County in 1927 and has since been re-elected three times. This is Mr. Peterson's first term in the legislature. Home Address: 221 Liberty Street, Berlin.



JACKSON
IOWA

ALFONSI
IRON & VILAS

HEMMY
JACKSON

JOHN S. JACKSON (Prog.) born at Waldwick, Iowa County, received his education in the public schools, and has engaged in farming all his life. Mr. Jackson has held several public offices including chairman of the town of Mineral Point, member of the County Board of Iowa County for thirteen years, clerk of the school board for fourteen years, and president of the Southwestern Wisconsin Shipping Association for ten years. He has been a member of the assembly since 1927. Home Address: Route 4, Mineral Point.

PAUL R. ALFONSI (Prog.), the first person of Corsican descent to serve in the legislature, was born February 13, 1908 at Pence, Wisconsin. He was graduated from Lincoln High School at Hurley in 1924 and from Whitewater State Teachers College in 1927, where he was a member of the debate team for three years. From 1927 until he was elected to the assembly in 1932, Mr. Alfonsi was head of the commercial department and forensic coach at Washburn High School. He was reelected to the assembly in 1934 and is chairman of the Assembly Committee on Education, a member of the Executive Council, a member of the Assembly Judiciary Committee, and Progressive floor leader. Home Address: Pence.

PETER A. HEMMY (Prog.) was born in the town of Honey Creek, Sauk County on March 22, 1875. He attended the common schools and high school at Prairie du Sac. Before 1900 he farmed in Sauk County and since that time he has farmed continuously in the town of Alma, Jackson County. During 1917 and 1918 he was a member of the assembly and was elected again in 1934. Home Address: Route 1, Humbird.



DAUGS
JEFFERSON

BARNES
JUNEAU

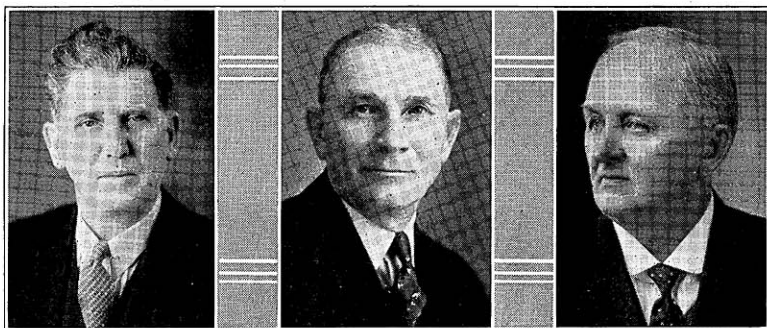
GROSVENOR
KENOSHA, 1st

PALMER F. DAUGS (Dem.) was born in the town of Farmington, Jefferson County on February 10, 1903. He attended high school in Fort Atkinson and later the College of Business Administration of Marquette University. He is a salesman, and is a member of Delta Sigma Pi, International Commerce Fraternity. He has held many offices in civil and welfare organizations in Jefferson County. During his first term in the assembly he introduced a number of important bills which became law, including the one providing for the semi-annual payment of taxes, and had a perfect attendance record in the 1933 regular session and succeeding special sessions. He was the author of the bill allowing the consolidation of one or more counties in the 1935 session, and was secretary of the Interim Committee on Taxation Problems. This is his second term in the assembly. Home Address: 801 East Street, Fort Atkinson.

WILLIAM H. BARNES (Prog.) was born in the town of Lisbon. He was graduated from the New Lisbon High School in 1904, and attended the short course of the College of Agriculture of the University of Wisconsin in 1907. He has farmed practically all his life and is actively interested in farm organizations. For the last eight years he has been a member of the school board of District No. 4, town of Fountain, and for the past three years secretary-treasurer and manager of the New Lisbon Creamery Association. At present he is town chairman, a member of the County Board, and a director of the Four County Farmers' Union Oil Company. This is his first term in the assembly. Home Address: New Lisbon.

ALFRED C. GROSVENOR (Dem.), a native of Kenosha since his birth on September 8, 1888, received his education in the high school and the College of Commerce of that city. After finishing his education, he was associated with his mother, the late Elizabeth Grosvenor, in a newspaper distributing, confectionery, and notions store. Later he operated a recreational parlor, and at present is engaged in the management of real estate. During the World War he served ten months in France. From 1921-22, he was a member of the city council; 1923-33, a member of the Kenosha County Board; 1927-29, the chairman of the latter, and since 1933 has been a member of the assembly. Mr. Grosvenor is also a member of the Kenosha Harbor Commission and the Kenosha Historical Society. Home Address: 5933 7th Avenue, Kenosha.

Kenosha County, first district: Second, third, fourth, eighth, ninth, tenth, and twelfth wards of the city of Kenosha.



SIEBERT
KENOSHA, 2nd

SHIMEK
KEWAUNEE

MULDER
LA CROSSE, 1st

MATT G. SIEBERT (Dem.) was born March 11, 1883 at Stevens Point and was educated in the parochial schools of that city. He was a paper maker at Stevens Point from 1899 to 1902, was employed as a hosiery worker in 1902, and from 1908 to 1916 was secretary and business agent of the Hotel and Restaurant Employees and Bartenders International Alliance of America. Since 1920 he has been in the hotel business in Salem, Wisconsin. He was town chairman and a member of the Kenosha County Board in 1926, 1927, and 1934. He is also a member of the Kenosha County Historical Society. This is his first term in the assembly. Home Address: Box 16, Salem.

Kenosha County, second district: Towns of Brighton, Bristol, Paris, Pleasant Prairie, Randall, Salem, Somers, and Wheatland; village of Silver Lake; first, fifth, sixth, seventh, and eleventh wards of the city of Kenosha.

ALBERT D. SHIMEK (Dem.) was born in the town of Casco, Kewaunee County on April 23, 1873. He spent his boyhood on a farm. He was graduated from Stevens Point Teachers College in 1904, from Green Bay Business College in 1905, and in 1908 completed the Teachers' Commercial Course in Ferris Institute, Big Rapids, Michigan. For eighteen years he taught various business subjects in public and private schools and is president of the Algoma School Board. He is at present in the garage and farm machinery business. This is his second consecutive term in the assembly. Home Address: Algoma.

JOHN MULDER (Rep.) was born on March 22, 1865 at New Amsterdam and has spent his entire life in La Crosse County. He is of Dutch descent, his parents having immigrated to America from Holland in 1856. He was educated in the schools of New Amsterdam and later attended La Crosse Business College. For forty years prior to 1929 Mr. Mulder was in the retail grocery business. Public offices which he has held in La Crosse include treasurer, alderman, and a member of the Board of Education. In the November election of 1934 he was reelected to the assembly for the fourth time, having served in this capacity since 1929. Home Address: 822 Rose Street, La Crosse.

La Crosse County, first district: The first, second, third, fourth, fifth, sixth, seventh, ninth, tenth, eleventh, twelfth, thirteenth, fourteenth, fifteenth, sixteenth, nineteenth, and twentieth wards of La Crosse.



SCHILLING
LA CROSSE, 2nd

ROBINSON
LAFAYETTE

CAVANAUGH
LANGLADE

HARRY W. SCHILLING (Prog.) was born on September 21, 1887 in Onalaska where he attended the public schools. In 1911 he was graduated from the Short Course in Agriculture at the University of Wisconsin. Since the age of seven he has resided on a farm and his occupation has always been farming. The public offices which he has held include director of the Creamery Board from 1916 to 1924, member of the County Board in 1922, member of the Town Board from 1924 to 1926 and director of the district school since 1931. Mr. Schilling was an active advocate of the new Progressive Party, a delegate to the Fond du Lac convention, and also vice-president of the La Crosse County Progressive Club. This is his first term in the legislature. Home Address: Route 1, Onalaska.

La Crosse County, second district: The eighth, seventeenth, eighteenth, and twenty-first wards of the city of La Crosse, and the entire county outside La Crosse.

JOSEPH S. ROBINSON (Rep.) was born on January 31, 1900 in the town of Elk Grove. Upon graduation from high school he attended the Platteville State Teachers College for two years. He has engaged in farming practically all his life. Mr. Robinson held the position of assessor in Elk Grove continuously from 1928 to 1933 with the exception of 1929. He is a member of the American Legion, Harold Bates Post, No. 214. He was elected to the assembly in 1932 and reelected for a second term in November 1934. Home Address: Route 4, Platteville.

JAMES T. CAVANAUGH (Dem.) born at Milwaukee, September 1, 1903, has lived most of his life at Antigo. He attended St. John's School there and the Antigo High School. His college work was done at St. Mary's College, Winona, Minnesota and at the Law School of Marquette University. In 1931, Mr. Cavanaugh was admitted to the bar. Previous to this he was employed as a passenger brakeman on the North Western Railroad. He has been a member of the assembly since 1933. Home Address: 438½ Edison Street, Antigo.



TREGO
LINCOLN

VOGEL
MANITOWOC, 1st

SIGMAN
MANITOWOC, 2nd

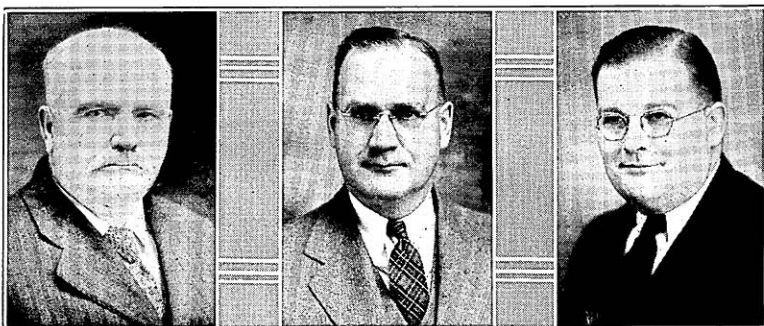
RENO W. TREGO (Prog.) was born on a farm in Benton County, Iowa on August 24, 1877. He attended the public schools and Tilford Academy at Vinton, Iowa. He also took a three months commercial course at Kankakee, Illinois. He has engaged in various enterprises: he was a steam and electrical engineer and a machinist in the Illinois Central Shops at Waterloo, Iowa; a foreman and subsequently a road collector for the Waterloo Cement Tile Machinery Corporation; a bridge superintendent for the M. M. Stark Bridge Company, and the Des Moines Bridge & Iron Company, both of Des Moines, Iowa; and in 1914 he purchased his own automobile agency at Des Moines. In 1918, when his health failed, he moved to Wisconsin where he bought and operated two farms and a logging business in Wood County. For two years he was president of the Potato Growers and Soy Bean Association of Wood County and Portage County. In 1923 he sold his holdings in Wood County and started a trucking and warehousing business in Merrill which he has operated up to the present time. He was elected to his first public office in the fall of 1934 as an assemblyman on the Progressive ticket. Home Address: Merrill.

OTTO A. VOGEL (Prog.) was born on October 10, 1886 in the town of Newton, Manitowoc County. He received his education in the public schools and attended high school for two years. In 1902 he learned barbering and has practiced his trade ever since going into business for himself in 1908. He has held a number of public offices,—justice of the peace from 1912 to 1918, and alderman from 1918 to 1930 and from 1932 to 1934. For three years, from 1921 to 1924, he acted as secretary of the Municipal Public Utility Commission. This is his first term in the legislature. Home Address: 1120 Hamilton Street, Manitowoc.

Manitowoc County, first district: Towns of Centerville, Liberty, Manitowoc, Manitowoc Rapids, Meene, and Newton; city of Manitowoc.

DAVID SIGMAN (Prog.) has been a resident of the city of Two Rivers, Manitowoc County for more than twenty-nine years. He received his education in the Two Rivers High School and the University of Wisconsin. Mr. Sigman is a labor organizer and is president of the Central Trades and Labor Council of Two Rivers. He is a member of the Judiciary and Labor Committees. He was elected to the assembly in 1930 and was reelected in November of 1934. Home Address: Two Rivers.

Manitowoc County, second district: Towns of Cato, Cooperstown, Eaton, Franklin, Gibson, Koesuth, Maple Grove, Mishicot, Rockland, Schleswig, Two Creeks, Two Rivers; villages of Reedsville and Valdars; cities of Kiel and Two Rivers.



BARBER
MARATHON, 1st

MEISNER
MARATHON, 2nd

STAUDENMAIER
MARINETTE

DR. JOSEPH L. BARBER (Prog.) has practiced medicine and surgery in Wisconsin since 1896, and has been active in many professional, commercial, and political organizations. He was born in Calumet County on March 24, 1864, and was educated in the common and high schools previous to enrolling in the medical course. He is a member of the Marathon County Medical Society, the Wisconsin Medical Association, and the American Medical Association. Dr. Barber was one of the organizers of the Farmers' State Bank of Marathon and the organizer of the Hatley State Bank in Marathon County, of which he is director and vice-president. He was president of the village of Marathon and a member of the Marathon County Board. Dr. Barber was a delegate to the National Republican Convention at Chicago in 1920. In 1922 he was elected to the senate and to the assembly in 1928, and was reelected to the assembly in 1934. Home Address: Marathon.

Marathon County, first district: Towns of Bergen, Berlin, Bern, Bevent, Brighton, Cassel, Cleveland, Day, Eau Pleine, Elderon, Emmet, Frankfort, Franzen, Green Valley, Guenther, Halsey, Hamburg, Holton, Hull, Johnson, Knowlton, Kronenwetter, McMillan, Maine, Marathon, Mosinee, Reid, Rib Falls, Rib Mountain, Reitbrock, Spencer, Stettin and Wein; that part of Abbotsford village in Marathon county and villages of Athens, Edgar, Elderon, Fenwood, Marathon, Spencer, and Stratford; the city of Mosinee and that part of the city of Colby in Marathon County.

RUDOLPH A. MEISNER (Dem.) was born at Wittenberg on December 18, 1898, and was graduated from high school in 1917. He served during the World War with the 122nd Aero Squadron. Following his discharge from the army he was employed as an accountant by the Wheeler Lumber, Bridge, and Supply Company of Des Moines, Iowa. In 1926 he organized the Meisner-Hubbard Beverage Company of Wausau and has been its treasurer ever since. He is past president and secretary of the Wausau Lions Club. His election to the assembly in 1934 is his first to public office. Home Address: 409 Callon Street, Wausau.

Marathon County, second district: Towns of Easton, Harrison, Hewitt, Norrie, Plover, Ringle, Texas, Wausau, Weston; villages of Brokaw, Hatley, Rothschild, Schofield; city of Wausau.

LOUIS W. STAUDENMAIER (Dem.) was born at Wathena, Kansas on September 21, 1906. He has resided in Wisconsin since 1921. After his graduation from a Marinette County rural school, he attended Lourdes High School at Marinette. He completed a six year course at Marquette University in 1933, at which time he received his law degree. While at Marquette, he was a member of the varsity debate team. Since 1933 he has been a practicing attorney in Marinette. This is his first term in the assembly and also the first time he has held any public office. Home Address: Marinette.



YOUNG
MILWAUKEE, 1st

KRETLOW
MILWAUKEE, 2nd

BUSBY
MILWAUKEE, 3rd

CORNELIUS T. YOUNG (Dem.) was born at Milwaukee on July 23, 1907. He was graduated from St. John's Military Academy in 1926 and from the University of Wisconsin Law School in 1931. He is now a practicing attorney at 710 North Plankinton Avenue in Milwaukee. During the session of 1933 Mr. Young had the honor of being the youngest speaker in the history of the assembly. He is now serving his third term in the assembly. Home Address: 2218 North Summit Avenue, Milwaukee.

Milwaukee County, first district: The first and third wards of the city of Milwaukee.

CLARENCE C. KRETLOW (Dem.) was born in Milwaukee, December 13, 1892. After finishing his education in the public and parochial schools and the Badger State Business College, he became an inspector for the Milwaukee Gas and Light Company in 1909. During the World War, he was a sergeant in the Infantry. From 1924 to 1926 he was an assistant cemetery superintendent and since then has been engaged in recreational enterprises. He served as inspector of elections from 1928-32 and also as Democratic committeeman, and has been a member of the assembly since 1933. Home Address: 2235 West Cherry Street, Milwaukee.

Milwaukee County, second district: Second and tenth wards of the city of Milwaukee.

ALLEN J. BUSBY (Prog.) is thirty-four years old and is a graduate of the West Milwaukee public schools, West Allis High School, and Milwaukee State Teachers College. In 1922 he received the degree of B.A. from the University of Wisconsin and in 1925 an M.A. in history and politics. After studying law at the University of Chicago, he returned to the University of Wisconsin where he received his LL.B. in 1928 and was admitted to the bar. Prior to taking up law, Mr. Busby was principal of the high school at Little Chute for two years and an instructor of English and history in the West Allis High School from 1928 to 1933. He served in the assembly as a Progressive-Republican in 1931 and 1932 but was defeated in 1932. He was reelected in 1934 for his second term. Since 1932 he has been village attorney of West Milwaukee. Home Address: 925 South 38th Street, Milwaukee.

Milwaukee County, third district: Towns of Franklin and Greenfield; village of West Milwaukee; city of West Allis.



O'MALLEY
MILWAUKEE, 4th

KRYSZAK
MILWAUKEE, 5th

KAISER
MILWAUKEE, 6th

JOHN O'MALLEY (Dem.) was born in County Mayo, Ireland on May 13, 1875. He came to America in 1888, lived for a time in Rock County and later in Chicago and St. Louis. Mr. O'Malley received a common school education and learned the stone mason trade. However, he has followed many occupations and has owned saloons in St. Louis and Milwaukee. He has made his residence in the fourth ward in Milwaukee since 1902, and he has been employed in the street department for the last seven years. This is Mr. O'Malley's second term in the assembly, having been elected to the legislature for the first time in 1932. Home Address: 848 North 9th Street, Milwaukee.

Milwaukee County, fourth district: The fourth ward of the city of Milwaukee.

MARY O. KRYSZAK (Dem.) has lived in Milwaukee since her birth. She was graduated from St. Mary's High School and the Spencerian Business College and later attended the University of Wisconsin. She has been a school teacher, music teacher, bookkeeper, librarian, and newspaper writer, as well as housewife and mother of three children. Since 1919 she has been the managing editor of *Głos Polek* (Polish Women's Voice) and has been active in many social, charitable, and political activities. During the World War she was president of the Defense Council and chairman of the Liberty Loan Drives in Milwaukee. In 1933 she was chairman of the N. R. A. drive in the south side district and a member of the Women's Division State Advisory Committee. She is also a member of the Motion Picture Commission and the Municipal Christmas Tree Commission. Mrs. Kryszak, the only woman member in the legislature, is serving her third term in the assembly and was elected to the present session by a large majority. Home Address: 2003 South 11th Street, Milwaukee.

Milwaukee County, fifth district: Fifth and eighth wards of Milwaukee.

JOHN N. KAISER (Dem.) was born May 16, 1899 at Milwaukee and attended St. Ann's Parochial School. After graduation he was employed by the Mayer Boot and Shoe Company, by the Milwaukee Electric Railway and Light Company for ten years, and later became a salesman for various concerns. He was a member of the Wisconsin National Guard before the World War and served in the U. S. Army throughout the war. He was in France with Battery C, 120th Field Artillery of the Thirty-second Division for sixteen months. Mr. Kaiser was elected to the assembly in 1932 and reelected in 1934. He is chiefly interested in taxation problems and is a member of the Interim Committee on Taxation. Home Address: 2235 North Holton Street, Milwaukee.

Milwaukee County, sixth district: The sixth ward of the city of Milwaukee.



KOEGEL
MILWAUKEE, 7th

RYAN
MILWAUKEE, 8th

WEISSLEDER
MILWAUKEE, 9th

ARTHUR KOEGEL (Soc.) was born in Milwaukee, May 2, 1889 and after being graduated from the public schools, took a technical course. His occupation is bricklaying and he has been a member of the Bricklayers, Masons, and Plasterers Union for twenty-six years. This is Mr. Koegel's second term in the assembly. Home Address: 2548-A North 15th Street, Milwaukee.

Milwaukee County, seventh district: Seventh ward of the city of Milwaukee.

DONALD P. RYAN (Dem.) the youngest member of the assembly was born February 5, 1910 at Milwaukee. He attended St. Rose's School and was graduated from St. John's in 1927. He is a locomotive fireman, and is working for the Milwaukee Road. He is a member of the I.B.E.W. Electrical Union, Local 528. From 1932 to 1934 he was a Democratic Committeeman from the sixteenth ward of Milwaukee. He served three years in the 105th Cavalry of the Wisconsin National Guard. This is his first term in the legislature as well as his first in public office. Home Address: 3403 West Michigan Street, Milwaukee.

Milwaukee County, eighth district: The sixteenth and twenty-third wards of the city of Milwaukee.

GEORGE H. WEISSLEDER (Dem.) was born at Hartford on December 13, 1879. He was educated in the public schools of Milwaukee and the Milwaukee Law School which is now a part of Marquette University from which he received a LL.B. degree. For many years he received private instruction in higher mathematics, chemistry, physics, and engineering. He has been a practicing attorney since he was admitted to the bar in 1909 and also a consulting engineer since 1900. In the legislative sessions of 1913 and 1915 he represented the Sixth Senatorial District and has been a member of the assembly since 1932. Home Address: 2813 North 54th Street, Milwaukee.

Milwaukee County, ninth district: The ninth and twenty-sixth wards of Milwaukee.



GROBSCHMIDT
MILWAUKEE, 10th

FRANZKOWIAK
MILWAUKEE, 11th

MICHALSKI
MILWAUKEE, 12th

JOHN W. GROBSCHMIDT (Prog.) was born on January 3, 1896 at South Milwaukee and received his education in St. Mary's parochial school, South Milwaukee High School, and Marquette Academy. For the past fourteen years Mr. Grobschmidt has been engaged in the general insurance business. He has served on the Milwaukee County Republican Committee from the first ward of South Milwaukee, and in 1932 was elected as a Progressive delegate to the Republican National Convention in Chicago. He was active in founding the Progressive Party at the convention at Fond du Lac and was a delegate to the first State Farm-Labor and Progressive League Convention also held at Fond du Lac. Mr. Grobschmidt was elected to the assembly in 1928, and was the author of the bill repealing the state prohibition act. He was reelected in 1930 and again in 1934. Home Address: 901½ Monroe Street, South Milwaukee.

Milwaukee County, tenth district: Towns of Lake and Oak Creek, cities of Cudahy and South Milwaukee.

MARTIN B. FRANZKOWIAK (Dem.) was born in Poland on November 10, 1870. He came to Milwaukee eight years later where he was educated in the parochial schools. He held several positions with Kleckhefer Brothers Company for twenty-two years. He then entered the retail grocery trade, and remained in that business for twenty-seven years. He was one of the organizers of the Federation Life Insurance Company of America in 1913 of which he was treasurer and director, and local secretary of the company branches for fifteen years. He was also active in the organization of the Star Building and Loan Association, and served as its director for three years and president for three years. Mr. Franzkowiak has been an election inspector for twenty-four years. He was elected to his first term in the assembly in 1932, and was reelected in 1934 by a large majority. Home Address: 2501 South 15th Street, Milwaukee.

Milwaukee County, eleventh district: eleventh and twenty-fourth wards of the city of Milwaukee.

CLEMENS F. MICHALSKI (Liberal Dem.) was born on April 21, 1902 in Milwaukee. He was educated in the public, parochial, and evening schools of that city. In 1918 he became a machinist apprentice which trade he has followed ever since. He is now employed by the Allis-Chalmers Manufacturing Company. He served as an inspector for the State Athletic Commission for two years beginning September 1, 1933, but resigned January 1, 1935. At the time of his election to the assembly he was chairman of the Twelfth Ward Democratic Committee. This is his first term in the legislature. Home Address: 1904-A South 7th Street, Milwaukee.

Milwaukee County, twelfth district: Twelfth and fourteenth wards of Milwaukee.



KROENKE
MILWAUKEE, 13th

MURRAY
MILWAUKEE, 14th

CAFFREY
MILWAUKEE, 15th

BERNARD B. KROENKE (Dem.) was born May 31, 1898 at Milwaukee. After being graduated from St. Mary's Parochial school in 1913, he went to St. Lawrence College for one year, St. Francis Seminary for two years, and finished his college work at Marquette. He enlisted in the army upon the declaration of war and joined the 121st Field Artillery of the 32d Division. He was over seas for fourteen months, spent six months in the front lines, and took part in five major engagements. Mr. Kroenke has been employed by the Milwaukee Railroad since 1919. This is his first term in the assembly. Home Address: 2863 North Holton Street, Milwaukee.

Milwaukee County, thirteenth district: Thirteenth and twenty-first wards of the city of Milwaukee.

MILTON T. MURRAY (Rep.) was born June 1, 1898 in Milwaukee and received his education at Milwaukee State Teachers College, Marquette University, and the University of Chicago. He was a teacher and athletic coach for ten years and is now a practicing attorney at 231 West Wisconsin Avenue in Milwaukee. Mr. Murray is now serving his third consecutive term in the assembly. Home Address: 1828 Newberry Blvd., Milwaukee.

Milwaukee County, fourteenth district: Town of Milwaukee; villages of Fox Point, River Hills, Shorewood, and Whitefish Bay; eighteenth ward of the city of Milwaukee.

THOMAS H. CAFFREY (Dem.) was born on October 3, 1893 at South Bound Brook, New Jersey. After coming to Milwaukee he attended St. Thomas Aquinas Grade School and was graduated from Marquette Academy in 1912. He learned the machinist trade but is at present engaged in the amusement business. During the World War, Mr. Caffrey served with the 410th Telegraph Battalion for over two years, thirteen months of which were overseas. He is serving his second term in the assembly, and is chairman of the Interim Committee on Prison Labor. Home Address: 1956 North 37th Street, Milwaukee.

Milwaukee County, fifteenth district: The fifteenth and nineteenth wards of Milwaukee.



WEGNER
MILWAUKEE, 16th

HOWARD
MILWAUKEE, 17th

KIEFER
MILWAUKEE, 18th

HERMAN B. WEGNER (Soc.) was born on January 3, 1891 at Milwaukee. He attended parochial and public schools and at the age of fourteen became an apprentice in the glove cutting trade. In 1915 he changed to shoe cutting and in 1923 to leather garment cutting, which trade he is following at the present time. He is a member of the Amalgamated Clothing Workers of America, and has been an active member of the Glove Workers International Union and the United Shoe Workers Union. He also serves on the board of directors, executive board, and joint board of his union. He was elected to the assembly for the first time in 1933 and was reelected in 1935. Home Address: 1305 West Cottage Place, Milwaukee.

Milwaukee County, sixteenth district: The twenty-fifth ward of Milwaukee.

MARTIN F. HOWARD (Dem.) was born at Milwaukee on September 12, 1892 and was educated in the public and parochial schools of West Allis. Before 1916 he was an electrician. Since that time he has been in the automobile business, both as salesman and as dealer, and has been a partner in a collection and an insurance agency. Mr. Howard served his country in the World War. The present term in the assembly is his first in public office. Home Address: 2500 South Howard Avenue, Milwaukee.

Milwaukee County, seventeenth district: Seventeenth and twenty-seventh wards of Milwaukee.

EDWARD H. KIEFER (Soc.) was born May 1, 1874 in Milwaukee and has resided in that city all his life. After attending the parochial and public schools he became an apprentice in the painting trade at the age of fifteen. He has been a delegate to a number of labor conventions, a member of the Brotherhood of Painters, Decorators, and Paperhangers for thirty-five years, and has acted as business manager of his local union for eight and a half years. He was elected to the assembly in 1910 and 1912 and again in 1930, 1932, and 1934 from the same district. Home Address: 2603 West Nash Street, Milwaukee.

Milwaukee County, eighteenth district: Twentieth ward of Milwaukee.



GARVENS
MILWAUKEE, 19th

FOLEY
MILWAUKEE, 20th

HALL, E. D.
MONROE

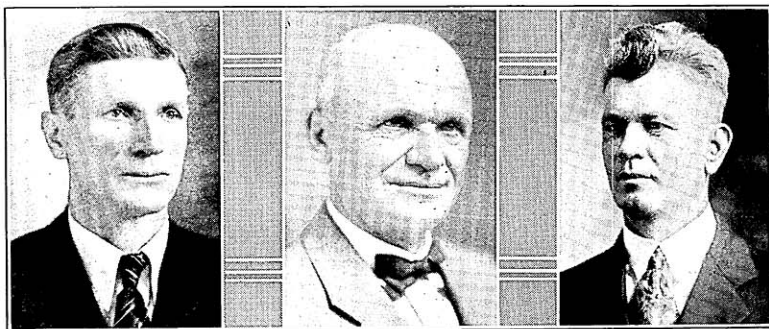
JOSEPH L. GARVENS (Dem.) was born at Elm Grove, April 20, 1886. After having been graduated from a parochial school, he studied engineering and attended an evening course at Marquette University. Until 1911 he was engaged in agriculture. In the next ten years his occupation was carpentry and building. Since 1921 he has been a real estate dealer. Mr. Garvens was elected to the assembly in 1932 and reelected in 1934. Home Address: 2435 North 38th Street, Milwaukee.

Milwaukee County, nineteenth district: The twenty-second ward of the city of Milwaukee.

JAMES L. FOLEY, JR. (Dem.) was born at Wauwatosa on November 12, 1885. He is a graduate of the Wauwatosa High School and attended Marquette University and later the University of Wisconsin for one year each. He has been a farmer all his life. Although he has never held public office until the present time, he has always been active in politics, in education, and in civic affairs. He is serving his first term in the assembly. Home Address: 1505 Mower Court, Wauwatosa.

Milwaukee County, twentieth district: Towns of Granville and Wauwatosa; city of Wauwatosa.

EARL D. HALL (Prog.) was born at Tunnel City, July 15, 1879. He received a rural school education, spent four years in train service, and since then has been engaged in farming. For several years he has been a member of the Monroe County Board of Supervisors and the Monroe County Highway Commission. In 1924 he was elected to the assembly without opposition and has been reelected for each succeeding session. Home Address: Route 1, Tunnel City.



BRANDT
OCONTO

LAABS
OUTAGAMIE, 1st

BAY
OUTAGAMIE, 2nd

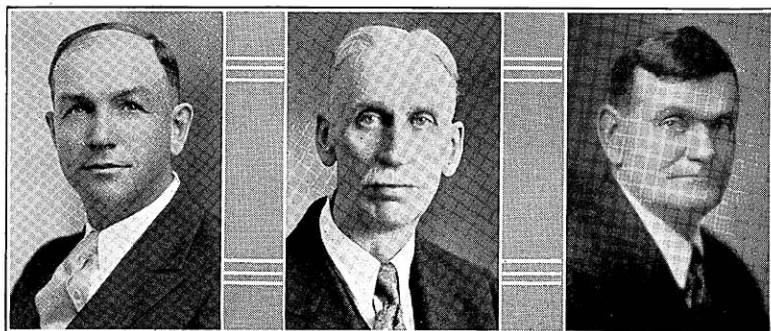
BERNARD E. BRANDT (Prog.) was born February 20, 1881 in the town of Forest Junction, Calumet County. He was educated in the common schools and has been a farmer all his life. Since 1908 he has owned and operated a farm of his own. He served as treasurer of the town of Spruce in 1916 and 1917; as a member of the board of supervisors in 1925 and 1926; and as town chairman in 1927 and 1928 and again from 1930 through 1934. He is serving his first term in the assembly. Home Address: Route 1, Lena.

AUGUST W. LAABS (Rep.), born in Milwaukee, October 26, 1873, was educated in the Milwaukee public schools. From 1892-1907 he worked as a telegraph operator, a train dispatcher, and finally chief train dispatcher for the Chicago and North Western Railroad. He founded the Wisconsin Rendering Works at Appleton which he owned and operated until 1918. During this period he also owned and managed several farms. From 1918-23 he was an alderman in Appleton; from 1921-32, town chairman of Grand Chute, Outagamie County; and from 1927-32, member of the Outagamie County Board. He has been a member of the assembly since 1932. Home Address: 347 West College Avenue, Appleton.

Outagamie County, first district: Towns of Bovina, Center, Dale, Ellington, Grand Chute, and Greenville; village of Shiocton; city of Appleton.

WILLIAM BAY (Prog.) was born at Kaukauna on February 20, 1885, and received a common school education. He has been a locomotive fireman and brakeman and at present is a railway carman. In 1930 he was elected a member of the assembly, and was reelected in 1934. Home Address: 217 West 4th Street, Kaukauna.

Outagamie County, second district: Towns of Black Creek, Buchanan, Cicero, Deer Creek, Freedom, Hortononia, Kaukauna, Liberty, Maple Creek, Maine, Oneida, Osborne, Seymour, and Vandenbroek; villages of Black Creek, Bear Creek, Combined Locks, Hortonville, Kimberly and Little Chute; cities of Kaukauna, Seymour, and third ward of New London.



BICHLER
OZAUKEE

SWANSON
PIERCE

DUEHOLM
POLK

NICHOLAS J. BICHLER (Dem.) was born in the town of Belgium, November 26, 1895. He was educated in the public and parochial schools and attended Pio Nono College. After being graduated from St. Norberts College at De Pere, he took the short course in agriculture at the University of Wisconsin. Since 1920 he has farmed and engaged in the real estate business. For the past six years he has been chairman of the town of Belgium and a member of the Ozaukee County Board. This is his first term in the assembly. Home Address: Route 1, Belgium.

THEODORE SWANSON (Rep.) was born on October 8, 1873 at Red Wing, Minnesota. Six years later he moved with his parents to a farm in Pierce County. He attended the common schools of that county and supplemented his education with home study. In addition to his work as a farmer, he has held many positions of public trust and honor. He has served as chairman, treasurer, and assessor of his township for twenty-two years, as school district clerk and treasurer, as secretary-manager of a Farmer's Creamery, secretary of a Farmer's Grain Company, secretary-treasurer of a Farmer's Telephone Company, United States census enumerator, three times member of the County Board for fifteen years, president of the County Wheat Allotment Committee, member of the County Corn and Hog Allotment Committee, and a member of the Equity and Farmer's Union. He was a member of the assembly for two terms in 1925 and 1927 and was reelected in 1934. Since 1925 he has been a member of the Interim Legislative Committee on Mississippi River Boundary Waters Pollution. Home Address: Route 1, Ellsworth.

MARIUS DUEHOLM (Prog.) was born at Sonberg, Denmark, January 5, 1881. At the age of nine he came to America and has lived in Polk County ever since. He has farmed for many years, and as a young man he worked in the woods and on the river drives. He was a member of the town board for fifteen years; of the county board for nine years; of the school board for eighteen years; and of the creamery board for eighteen years. This is his third term in the assembly. Home Address: Route 2, Luck.



KOSTUCK
PORTAGE

STONE
PRICE

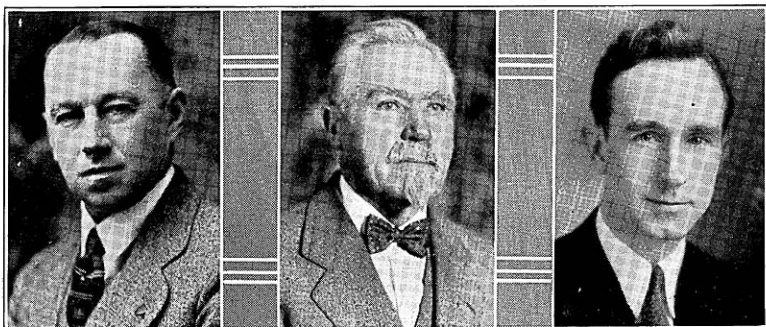
SIEB
RACINE, 1st

JOHN T. KOSTUCK (Prog.), a resident of Stevens Point, was born there on October 7, 1893. Leaving school at the end of the third grade, he went to work on a farm. At the age of fourteen when he was assisting in blasting stone, he met with an accident which made him blind. He entered the Wisconsin State School for the Blind and after ten years was graduated from the high school department in 1918. Then he attended the University of Wisconsin, specializing in political science and economics. After teaching for three years in the high school department of the School for the Blind at Staunton, Virginia, he entered the piano business at Stevens Point. He now devotes full time to his legislative work and is serving his third term in the assembly. Mr. Kostuck is the only blind member ever elected to the legislature. Home Address: 711 Wyatt Avenue, Stevens Point.

FRANK STONE (Rep.) was born on a farm in Cornwall, England on April 9, 1876. He was educated in the schools of England and received his business college education by attending night school in the United States. He came to this country in 1895 and became a citizen in 1901. Mr. Stone farmed for one year when he first came to this country and later was a foreman in a paper mill and also a general office man and bookkeeper. Since 1932 he has engaged in farming again. He has held a number of public offices. From 1901 to 1904 he was treasurer of Park Falls, from 1907 to 1911 treasurer of Price County, from 1923 to 1929 mayor of Park Falls, and postmaster of that city from 1929 to 1932. He is serving his first term in the legislature. Home Address: Park Falls.

JOHN L. SIEB (Prog.) was born November 6, 1864 in Michigan City, Indiana but has lived in Racine since he was one year old. He received his education in the Lutheran and public schools of that city. He is a barber and part owner of the Sieb and Rick Barber Shop in the Hotel Racine. He has been a member of the Board of Education for twelve years and president for two terms; a member of the City Council and president for one year; deputy oil inspector; member of the City Water Commission; and president of the Board of Health. Mr. Sieb has been prominent in civic and fraternal affairs for many years. This is his second term in the legislature, having been elected for the first time in 1930. Home Address: 940 Park Avenue, Racine.

Racine County, first district: The first, second, third, sixth, tenth, eleventh, thirteenth, and fourteenth wards of the city of Racine.



HAMATA
RACINE, 2nd

RAKOW
RACINE, 3rd

THOMSON,
RICHLAND

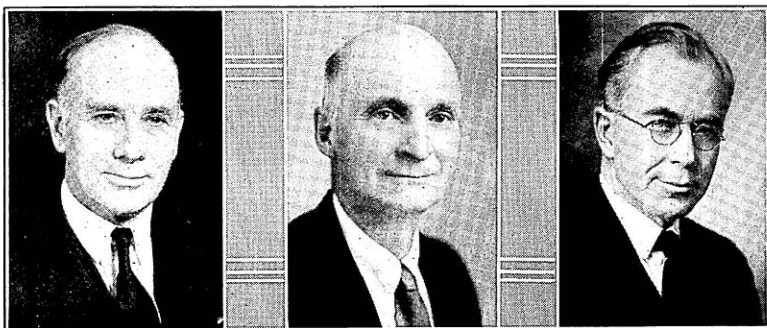
JOSEPH C. HAMATA (Dem.), born February 15, 1882 at Racine, received his education there in the parochial and public schools. When he was eighteen, he assumed management of his father's retail grocery business in which capacity he served until 1917 when he was elected secretary of the Racine Aerie of Eagles, a position he still holds. He has also been a member of the school board, the local draft board for Division Number One, Racine, and a deputy collector of customs for the Port of Racine. Mr. Hamata has been elected to the assembly for the 1913, 1933, and 1935 sessions. Home Address: 1659 North Main Street, Racine.

Racine County, second district: The fourth, fifth, seventh, eighth, twelfth, and fifteenth wards of the city of Racine.

EDWARD F. RAKOW (Dem.) was born on August 30, 1861 in Burlington. He received his education in the public schools of that city. For nineteen years he was manager of the Citizen's Gas Company, after which he retired from business. He has held several public offices, having been appointed postmaster of Burlington in 1895 by President Cleveland, which office he held for four years; in 1901, he was elected mayor of Burlington, and held this office for six terms at various times. He was also a member of the assembly in 1903, 1933, and again in 1935. Home Address: Burlington.

Racine County, third district: Towns of Burlington, Caledonia, Dover, Mt. Pleasant, Norway, Raymond, Rochester, Waterford, and Yorkville; villages of Corliss, Rochester, Union Grove, and Waterford; city of Burlington and ninth ward of Racine.

VERNON W. THOMSON (Rep.), son of Mr. and Mrs. A. A. Thomson, was born at Richland Center on November 5, 1905. In 1927 he received his B.A. degree from the University of Wisconsin and his LL.B. from the same school in 1932. Since that time he has been a practicing attorney at Richland Center. He was assistant district attorney of Richland County from 1933 to 1935 and since 1933 he has been city attorney of Richland Center. From 1933 to 1935 he was the enrolling official of the Civilian Conservation Corps for Richland County. Prior to practicing law he taught for two years in the Viroqua High School and for three years in the Madison Vocational School. He is serving his first term in the legislature. Home Address: 475 East 2nd Street, Richland Center.



GRASSMAN
Rock, 1st

INMAN
Rock, 2nd

CAROW
RUSK & SAWYER

EDWARD GRASSMAN (Rep.) was born in Richland County, November 16, 1882. After having been graduated from Sextonville High School, he attended Whitewater State Normal and Valparaiso University and also took a six months' correspondence course in order to acquire a first grade teacher's certificate. He taught for the next eight years and then took up leaf tobacco buying and farming. Mr. Grassman has held a number of public offices: alderman of Edgerton, 1922-26, mayor for the next biennium, and county supervisor for the three years preceding his election to the assembly in 1932. He was reelected to the assembly in 1934. Home Address: 501 Washington Street, Edgerton.

Rock County, first district: Towns of Center, Fulton, Harmony, Janesville, Lima, Milton, Magnolia, Porter, Union; village of Milton; cities of Edgerton, Evansville, and Janesville.

IRA E. INMAN (Rep.) was born in Plymouth township, Rock County on December 7, 1868. He received his education in the rural schools and has been engaged in farming all his life. Since 1911 he has been the secretary-treasurer of both the Brown Swiss Cattle Breeders Association and the Register of Production of that organization. In June 1932 he was a delegate to the Republican National Convention. Mr. Inman is serving his second term in the assembly. Home Address: Route 5, Beloit.

Rock County, second district: Towns of Avon, Beloit, Bradford, Clinton, Johnstown, La Prairie, Newark, Plymouth, Rock, Spring Valley, Turtle; villages of Clinton, Footville, Orfordville; city of Beloit.

JORGE W. CAROW (Prog.) was born at Baraboo on April 20, 1874 and received his elementary education in the common schools. He was graduated from the Law School of the University of Wisconsin in 1902 and practiced law at Baraboo until 1907 and at Ladysmith from 1907 to the present. He has been a member of the assembly since 1929 and was elected Speaker in the 1935 session. Home Address: Ladysmith.



KELLY
ST. CROIX

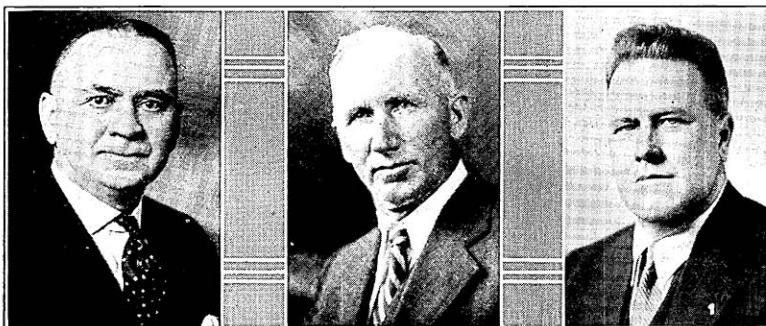
WOERTH
SAUK

FUHRMAN
SHAWANO

ARTHUR D. KELLY (Prog.) lives on a farm near Hudson where he was born June 9, 1873. After being graduated from Hudson High School in 1893, he spent a year at the Curtiss Business College in St. Paul. Since then he has engaged in farming, specializing in the raising of pure-bred Jersey cattle. For nineteen years he was town chairman and for seven years chairman of the county board. Mr. Kelly is serving his second term in the assembly. Home Address: Route 3, Hudson.

GEORGE J. WOERTH (Prog.) was born on December 4, 1875 at Loganville. He was educated in parochial and public schools and also attended Wartburg College at Waverly, Iowa. After leaving school he entered the harness business, leaving that in 1910 to enter the employ of the Twin City Telephone Company of Sauk City. When the latter sold the exchange in 1924 Mr. Woerth became associated with the Prairie du Sac plant of the Wisconsin Power and Light Company holding a position with them until the Insull crash in 1931. Since then he has been unemployed. He has been alderman of Sauk City and is now serving as assessor. This is his first term in the legislature. Home Address: Sauk City.

PAUL T. FUHRMAN (Prog.) was born in the town of Fairbanks, Shawano County on May 10, 1883. He received a common school education. From 1902-07 he was a building contractor, from 1907-13 his occupation was logging and farming, from 1913-26 he was in the retail hardware business, and at the present time he is farming. Mr. Fuhrman served as town chairman for Bartelme from 1913-23, as a member of the local draft board during the World War, and as a member of the County-State Road and Bridge Committee from 1918 to 1925. He was president of the village of Bowler from 1924-32, and a supervisor from 1924-33. With the exception of the 1933 session, he has been a member of the assembly since 1927. Home Address: Bowler.



THEISEN
SHEBOYGAN, 1st

LAACK
SHEBOYGAN, 2nd

NELSON
TAYLOR

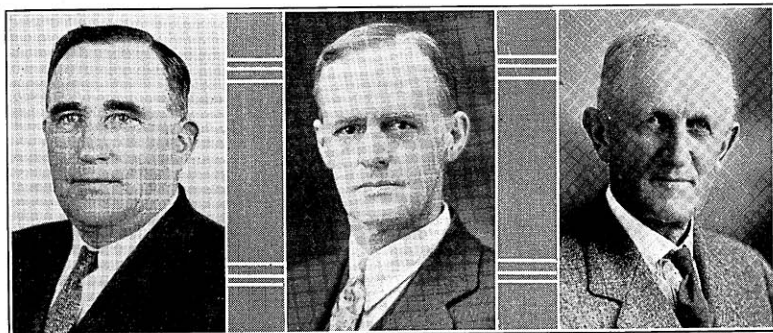
JOSEPH M. THEISEN (Dem.) was born at Sheboygan on February 24, 1877 and has lived there all his life. He was educated in the Holy Name Parochial School of that city and attended the Sheboygan Business College from 1890 to 1891. For seventeen years he did general office work with the Mattoon Manufacturing Company and Northern Furniture Company and was cost accountant, for eleven and seven years respectively, with the Falls Motors Corporation and the American Chair Corporation. He has been active in singing societies for the past forty years and has acted as secretary for a number of these organizations at various times. For the past nineteen years he has also been secretary of the North Side Improvement Association. In 1906 and 1907 he was a member of the Sheboygan Library Board and served the city as alderman from 1907 to 1909. He was elected to the legislature for the first time in 1933 and reelected in 1935. Home Address: 1904 Calumet Drive, Sheboygan.

Sheboygan County, first district; The city of Sheboygan.

CHARLES A. LAACK (Dem.) was born on May 30, 1871 in the town of Plymouth, Sheboygan County, where he attended the public schools. He has farmed near Plymouth for the past twenty-eight years. He was manager of the Plank Road Telephone Company for twenty-one years and has been president of the Farmers Call Board of Plymouth since its creation eleven years ago. Public offices held by Mr. Laack include town assessor for twelve years, and school district treasurer for eighteen years. He served in the assembly in the 1933 session and was reelected in 1934 by a large majority. Home Address: Route 1, Plymouth.

Sheboygan County, second district: The entire county outside the city of Sheboygan.

CARL M. NELSON (Rep.) was born in the town of Deer Creek, Taylor County, on November 12, 1892. He received his education in the local grade school and spent one winter in attendance at the Southern Minnesota Normal College at Austin, Minnesota. He has been a farmer all of his life. From 1927 to the present time, Mr. Nelson has been a chairman of the town of Deer Creek. He acted as vice-chairman of the Taylor County Board in 1931 and since 1932 has been chairman of the board. During the World War, he served in the First Marine Aviation Force for nineteen months, spending about seven months in active service in France and Belgium. This is his first term in the legislature. Home Address: Route 1, Medford.



LOMSDAHL
TREMPEALEAU

HALVORSEN
VERNON

LA BAR
WALWORTH

TOM LOMSDAHL (Prog.) was born in Norway, August 6, 1874. He received his education in the common schools there and studied part of two years in the school at Eltrick. He left Norway in December 1892 and came to Trempealeau County in February 1893. There he engaged in farming for twelve years, working in the lumber camps during three winters. He has been a hardware retailer for twenty-four years. He served as a member of the town board from 1908 to 1909, as a member of the village council for four years, and as village president of Osseo for two years. He helped to organize the Farmers' Telephone Company, known as the Beef River Valley Telephone Company, and served as one of its officers for several years. He also aided in organizing a farmers' elevator at Osseo and was for some time a director of the Farmers Exchange Bank of that village. This is his first term in the legislature. Home Address: Osseo.

H. S. HALVORSEN (Prog.) was born on a farm near Westby. His education was received in the public schools and at Luther College, Decorah, Iowa. Since 1915 he has been in the hardware business at Westby. Mr. Halvorsen served as deputy county auditor of Wells County, North Dakota, from 1911 to 1914, and as a member of the Board of Education and the City Council of Westby in 1918 and in 1931-1932. He was elected to the assembly in 1932 and again in 1934. Home Address: Westby.

DANIEL E. LA BAR (Rep.), a member of the assembly since 1929, was born at Delavan, Walworth County on August 21, 1857. He is a graduate of the Delavan High School and Wayland Academy. Among the numerous public offices which Mr. La Bar has held have been the following: alderman of Delavan 1901-05, member of the County Board 1906-07, mayor of Delavan 1908-10 and again in 1912-16. Home Address: Delavan.



POLTŁ
WASHINGTON

DOUGLASS
WAUKESHA, 1st

LUDVIGSEN
WAUKESHA, 2nd

ADAM F. POLTL (Prog.) was born on February 6, 1891 at Kissoda, Austria Hungary. He was educated in European schools between 1897 and 1905 and received private instruction for three years. He was in the retail meat business between 1911 and 1934. Since 1915 he has been a poultry breeder and has been engaged in horticulture for the last eleven years. He has held a number of offices and has been active in other public activities. Mr. Poltl was clerk of the school board from 1924 to 1930, president of the Chamber of Commerce during 1928-29, president of the White Plymouth Rock Club of America during 1927-28, and has been mayor of Hartford since 1930. He is serving his first term in the legislature. Home Address: Hartford.

LYLE E. DOUGLASS (Rep.), born in Chicago, Illinois, came to Waukesha at the age of three. He was graduated from the public schools and Carroll College. With the exception of eighteen months service in the United States Army in the World War, Mr. Douglass has been active for the last twenty years in the real estate, insurance and loan business in Waukesha. This is his first term in the assembly. Home Address: 421 West Avenue, Waukesha.

Waukesha County, first district: Towns of Eagle, Genessee, Mukwonago, Muskego, New Berlin, Ottawa, Vernon and Waukesha; villages of Big Bend, Dousman, Eagle, Mukwonago, North Prairie, and Wales; city of Waukesha.

ALFRED R. LUDVIGSEN (Rep.) was born March 17, 1886 in the town of Merton, Waukesha County. He received his education in the public schools and at Luther College, Racine. His early years were spent on his father's farm where he worked until he was appointed to the U. S. Railway Mail Service in 1910. Forced to give up this work because of eye trouble he again sought outdoor employment and has for many years been engaged in landscape gardening. He is also engaged in the development and sale of lake frontage which he owns. He served as a member of the Waukesha County Board and chairman of the Town of Merton during the years 1923-28. Since 1923 he has been secretary of the Waukesha County Farm Drainage District Board and for the last four years chairman of the Waukesha County Republican Committee. This is his first term in the legislature. Home Address: Route 1, Hartland.

Waukesha County, second district: Towns of Brookfield, Delafield, Lisbon, Menomonie, Merton, Oconomowoc, Pewaukee, and Summit; villages of Chenequa, Hartland, Lac La Belle, Lannon, Menomonee Falls, Merton, Butler, Sussex, and Pewaukee; city of Oconomowoc.



HANDRICH
WAUPACA

NOVOTNY
WINNEBAGO, 1st

GRIMES
WINNEBAGO, 2nd

ALVIN A. HANDRICH (Prog.) was born June 1, 1892 on a farm in the town of Bloomfield, Waushara County. He was educated in the common schools of the community. Here he grew to manhood, learning at first hand the problems of practical agriculture. With the exception of five years in California he has spent his entire life on the farm, and since 1917 has operated his own farm in the town of Little Wolf. He was elected state secretary of the Wisconsin Division of the Farm Holiday Association when it was organized, which office he still holds; he was a delegate to the convention at Fond du Lac which organized the Progressive Party; he was also a delegate to the Farmer-Labor convention in the same city. Mr. Handrich has made a special study of the problems and needs of agriculture and of the nation's monetary system. He was elected to his first term in the assembly by a substantial majority. Home Address: Route 1, Manawa.

RAY NOVOTNY (Dem.) was born at Jennikov, Czechoslovakia on July 31, 1902. When he was eleven years old he came to America and made his home in Oshkosh where he has lived ever since. He received his secondary education in the Oshkosh High School. After his graduation he studied civil engineering for two years at the University of Wisconsin. At present he is an industrial engineer. Previous to his election to the assembly in the fall of 1932, Mr. Novotny had held no public office. This is his second term in the legislature. Address: 816 Oregon Street, Oshkosh.

Winnebago County, first district: City of Oshkosh.

WILLIAM P. GRIMES (Dem.) of Winnebago County was born in Menasha on August 17, 1868. After finishing his work in the district school it was necessary for him to assume the management of the home farm. In 1911 he organized a group of farmers interested in building their own telephone lines thus creating the West Menasha Telephone Company. He has been an officer of this company since its formation. Mr. Grimes was elected to the town board in 1898 and after becoming its chairman three years later, he was re-elected to this position for eighteen consecutive years. From 1910 to 1930 he was treasurer of the district school board. Since 1920 he has been a director of the Vinland Fire Insurance Company. This is Mr. Grimes' second term in the assembly. Home Address: Route 3, Neenah.

Winnebago County, second district: All the towns, villages, and cities of the county except the city of Oshkosh.



VAUGHAN
WOOD

JOHNSON, L. R.
CHIEF CLERK

RHEINGANS
SERGEANT-AT-ARMS

BYRDE M. VAUGHAN (Prog.) was born at Byron, Fond du Lac County on November 30, 1862. He received his B.S. degree from the University of Wisconsin in 1885 and was graduated from the Law School at the University with the class of 1888. He has practiced law since July 1888 and has engaged in farming and market gardening as a side line. For six years he was a member of the Grand Rapids (now Wisconsin Rapids) Board of Education, a member of the board of directors of the T. B. Scott Free Public Library for seven years, and court commissioner of Wood County for thirty years. Mr. Vaughan was a member of the Wisconsin National Guard in a provisional company (Gardner Rifles) for several years. He served his first term in the legislature in 1933 and was reelected to the assembly in 1934. Home Address: 121 Drake Street, Wisconsin Rapids.

LESTER R. JOHNSON (Prog.) was born on June 16, 1901 at Brandon where he received his education. After his graduation from high school he attended Lawrence College for two years and transferred to the University of Wisconsin where he was graduated in 1924. Since then he has been associated in the lumber and fuel business with his father and brother. He has always identified himself with the Progressive movement. In 1934 he was elected vice-chairman of the Fond du Lac County Progressive Club and has done organization work for the party in surrounding counties. Home Address: Brandon.

GUSTAVE RHEINGANS was born on September 8, 1890 in the town of Eaglepoint in Chippewa County. He has always resided in this county, changing his place of residence only once when he moved to the city of Chippewa Falls. He received a common school education and has had several occupations. Up to 1920, he was a dairy farmer; then for nine years, a hardware clerk; and now a truck gardener. He served Chippewa County as a member of the 1927 and 1929 legislatures. In the session of 1931 he was elected sergeant-at-arms by a large majority, receiving only nine opposition votes. He was again elected sergeant-at-arms for the 1935 session. Home Address: 402 Wheaton Street, Chippewa Falls.

LEGISLATIVE DIRECTORY

Senate

Name	Address	District	Politics	Occupation	Committees
Anderson, J. A.	Barron	29	Prog.	Merchant	Agriculture and Labor
Bolens, H. W.	1242 Grand Ave., Pt. Washington	20	Dem.	Manufacturer	Legislative Procedure (Chairman), Corporations and Taxation
Brunette, E. F.	Route 4, Green Bay	2	Dem.	Building Materials	Joint Committee on Finance (Chairman), Legislative Procedure
Callan, J. L.	512 N. 18th St., Milwaukee	9	Dem.	Real Estate & Securities	Corporations and Taxation
Carroll, W. D.	120 S. Michigan St., Prairie du Chien	16	Dem.	Hotel Keeper	Committee on Committees (Chairman), Agriculture and Labor, Legislative Procedure
Cashman, J. E.	Route 1, Denmark	1	Prog.	Farmer	Highways
Clancy, Joseph	1308 College Ave., Racine	21	Dem.	Real Estate	Highways (Chairman), Legislative Procedure
Coakley, M. P.	1220 Emerson St., Beloit	15	Rep.	Lawyer	Judiciary
Dempsey, C. E.	Route 1, Hartland	33	Dem.	Farmer	Education and Public Welfare
Engebretson, George	Route 1, South Wayne	17	Prog.	Farmer	Agriculture and Labor
Galasinski, M. J.	2483 S. 6th St., Milwaukee	7	Dem.	Stone cutter and sculptor	State and Local Government (Chairman), Committee on Committees, Legislative Procedure
Gehrmann, B. J. ¹	Route 1, Mellen	12	Prog.	Farmer	
Griswold, H. W.	Route 2, West Salem	32	Rep.	Farmer	Contingent Expenditures, Joint Committee on Finance
Groves, H. M.	1418 Drake Street, Madison	26	Prog.	Professor	Corporations and Taxation
Hunt, W. H.	River Falls	10	Prog.	Teacher, Farmer	State and Local Government
Ingram, G. E.	252 S. 11th St., Eau Claire	28	Prog.	Lawyer	Contingent Expenditures, Corporations & Taxation
Kannenberg, R. E.	724 1/2 9th Ave. South, Wausau	25	Prog.	Monument Business	Education and Public Welfare

¹Elected to Congress.

Senate—Continued

Name	Address	District	Politics	Occupation	Committees
Kelly, M. G.....	184 East 13th St., Fond du Lac.....	18	Dem.	Linotype Operator.....	Contingent Expenditures (Chairman), Education and Public Welfare, Legislative Procedure
Leverich, Earl.....	Route 3, Sparta.....	31	Prog.	Farmer.....	Education and Public Welfare
McDermid, J. E. ¹	Ladysmith.....	12	Prog.	Veterinarian.....	State and Local Government
Mack, M. A.....	Shiocton.....	14	Rep.	Farmer.....	Highways
Morris, O. H.....	3726 N. Prospect Ave., Milwaukee....	4	Rep.	Departmental Manager.....	Corporations and Taxation (Chairman) Legislative Procedure
Morrissey, P. A.....	Route 1, Rush Lake.....	19	Dem.	Farmer.....	Agriculture and Labor
Nelson, P. E.....	Route 1, Maple.....	11	Rep.	Farmer.....	Education and Public Welfare (Chairman) Legislative Procedure
Panzer, F. E.....	Route 2, Oakfield.....	13	Prog.	Farmer.....	State and Local Government
Phillips, C. H.....	1230 N. 21st St., Milwaukee.....	6	Dem.	Lawyer.....	Judiciary (Chairman) Legislative Procedure
Rowlands, E. M. ²	Cambria.....	27	Prog.	Banker.....	Joint Committee on Finance
Rush, W. J.....	202 South Clay St., Neillsville.....	24	Prog.	Lawyer.....	Judiciary
Schoenecker, H. V.....	2032 N. Hi Mount Blvd., Milwaukee....	5	Dem.	Lawyer, Accountant and Auditor.....	Judiciary
Severson, H. J.....	Iola.....	23	Prog.	Lawyer.....	Judiciary
Shearer, Conrad.....	520—68th Place, Kenosha.....	22	Rep.	Office Manager.....	Agriculture and Labor (Chairman), Committee on Committees, Legislative Procedure
Shenners, W. H., Jr.....	7207 W. Greenfield Ave., West Allis....	8	Dem.	Real Estate and Insurance.....	State and Local Government
Wade, S. W.....	420 Edison Street, Antigo.....	30	Dem.	Lumbering.....	Joint Committee on Finance
Zantow, F. W. ³	Route 4, Box 30, Baraboo.....	27	Prog.	Farmer.....	
Zimny, A. L.....	1640 S. Muskego Ave., Milwaukee.....	3	Dem.	Advertising.....	Joint Committee on Finance

¹Elected April 6, 1935 to succeed B. J. Gehrmann, elected to Congress.²Elected April 6, 1935 to succeed Fred W. Zantow, deceased.³Deceased.

Assembly

Name	Address	District	Politics	Occupation	Committees
Alfonsi, P. R.....	Pence.....	Iron & Vilas	Prog.	Educator.....	Education (Chairman), Judiciary
Baker, A. J.....	204 Wilson Street, Mt. Horeb.....	Dane, 3rd	Prog.	Various Enterprises.....	Finance
Barber, J. L.....	Marathon.....	Marathon, 1st	Prog.	Doctor.....	Agriculture, Elections, Enrolled Bills (Chairman)
Barnes, W. H.....	Route 2, New Lisbon.....	Juneau	Prog.	Farmer.....	Agriculture, Conservation
Bay, William.....	217 West 4th St., Kaukauna.....	Outagamie, 2nd	Prog.	Railway Carman.....	Labor (Chairman), Transportation
Beggs, C. A.....	Rice Lake.....	Barron	Prog.	Retired.....	Contingent Expenditures, Finance (Chairman)
Bergren, H. B.....	Route 1, Siren.....	Burnett and Washburn	Prog.	Poultry Raising.....	Commerce & Manufactures State Affairs
Bichler, N. J.....	Route 1, Belgium.....	Ozaukee	Dem.	Farmer.....	Enrolled Bills
Blomquist, E. W.....	Adams.....	Adams and Marquette	Prog.	Railroad Fireman, Engineer	Labor, Transportation
Brandt, B. E.....	Route 1, Lena.....	Oconto	Prog.	Farmer.....	Agriculture, Taxation
Busby, A. J.....	935 S. 38th Street, Milwaukee.....	Milwaukee, 3rd	Prog.	Village Attorney.....	Commerce & Manufactures (Chairman) Judiciary
Caffrey, T. H.....	1956 N. 37th St., Milwaukee	Milwaukee, 15th	Dem.	Amusement Business	Commerce and Manufactures
Carow, J. W.....	Ladysmith.....	Rusk and Sawyer	Prog.	Lawyer.....	Rules (Ex-Officio) Speaker
Cavanaugh, J. T.....	438½ Edison St., Antigo.....	Langlade	Dem.	Lawyer.....	Judiciary
Clemens, B. A. ¹	Cuba City.....	Grant, 1st	Rep.	Insurance Collections.....	Commerce and Manufactures

¹Deceased January 1935

Assembly—Continued

Name	Address	District	Politics	Occupation	Committees
Daug, P. F.....	801 East Street, Ft. Atkinson.....	Jefferson	Dem.	Salesman.....	State Affairs
Douglass, L. E.....	421 West Avenue, Waukesha.....	Waukesha, 1st	Rep.	Real Estate, Insurance, Loans.....	Insurance and Banking, State Affairs
Dueholm, Marius.....	Route 2, Luck.....	Polk	Prog.	Farmer.....	Highways, Public Welfare (Chairman), Rules
Fitzsimons, Maurice Jr..	Box 129 Fond du Lac.....	Fond du Lac, 1st	Dem.	Furs, Retail Shoes.....	Conservation
Foley, L. J., Jr.....	1505 Mower Court, Wauwatosa.....	Milwaukee, 20th	Dem.	Farmer.....	Excise and Fees
Franzkowiak, M. B.....	2501 S. 15th St., Milwaukee.....	Milwaukee, 11th	Dem.	Retired Grocer.....	Printing
Fuhrman, P. T.....	Bowler.....	Shawano	Prog.	Farmer.....	Finance, Revision (Chairman)
Garvens, J. L.....	2435 N. 38th St., Milwaukee.....	Milwaukee, 19th	Dem.	Real Estate Dealer.....	Revision
Genzmer, E. L.....	435 N. Main St., Mayville.....	Dodge, 1st	Dem.	Shoe Worker.....	Third Reading
Goldthorpe, W. H. ¹	Cuba City.....	Grant, 1st	Rep.	Editor.....	Elections, Printing
Graass, F. N.....	Sturgeon Bay.....	Door	Rep.	Exporter of Forestry Seeds	Conservation
Grassman, Edward.....	501 Washington Street, Edgerton.....	Rock, 1st	Rep.	Farmer, Insurance.....	Transportation, Taxation
Grimes, W. P.....	Route 3, Neenah.....	Winnebago, 2nd	Dem.	Farmer.....	Labor
Grobschmidt, J. W.....	901 ½ Monroe St., So. Milwaukee	Milwaukee, 10th	Prog.	Insurance.....	Insurance and Banking (Chairman), Mu- nicipalities Excise and Fees

¹Elected April 1935 to fill the vacancy caused by the death of B. A. Clemens.

Grosvenor, A. C.	5933 7th Avenue, Kenosha	Kenosha, 1st	Dem.	Real Estate Management	Highways
Groves, W. F.	Route 1, Lodi	Columbia	Prog.	Farmer	Agriculture, Education
Hall, E. D.	Route 1, Tunnel City	Monroe	Prog.	Farmer, Salesman	Highways (Chairman), Printing
Hall, M. H.	1209 Cumming Ave., Superior	Douglas, 1st	Prog.	Locomotive Engineer	Highways, Labor
Halvorsen, H. S.	Westby	Vernon	Prog.	Retail Hardware	Insurance and Banking Taxation (Chairman)
Hamata, J. C.	1659 North Main St., Racine	Racine, 2nd	Dem.	Secretary	Engrossed Bills (Chairman), Insurance and Banking
Handrich, A. A.	Route 1, Manawa	Waupaca	Prog.	Farmer	Agriculture, Labor
Hanson, J. C.	Route 2, Deerfield	Dane, 2nd	Prog.	Farmer	Agriculture (Chairman), Insurance and Banking
Harper, H. A.	Route 1, Lancaster	Grant, 2nd	Prog.	Farmer	Contingent Expenditures (Chairman)
Hemmy, P. A.	Route 1, Humbird	Jackson	Prog.	Farm Owner	Finance Conservation (Chairman) State Affairs
Hipke, G. H.	Stanley	Chippewa	Rep.	Land Salesman	Highways
Hitt, Arthur	Route 2, Alma	Buffalo & Pepin	Prog.	Farmer	Education, State Affairs (Chairman)
Hoesly, E. J.	New Glarus	Green	Prog.	Stock Buyer	Elections, Finance, Rules (Chairman)
Howard, M. F.	2500 S. Howell Ave., Milwaukee	Milwaukee, 17th	Dem.	Automobile Salesman	Contingent Expenditures
Inman, I. E.	Route 5, Beloit	Rock, 2nd	Rep.	Farmer	Municipalities
Jackson, J. S.	Route 4, Mineral Point	Iowa	Prog.	Farmer	Insurance & Banking, State Affairs
Johnson, J. E.	Brandon	Fond du Lac, 2nd	Prog.	Lumber, Coal	Commerce & Manufactures, Printing, State Affairs
Kaiser, J. N.	2235 N. Holton St. Milwaukee	Milwaukee, 6th	Dem.	Salesman	Taxation
Kelly, A. D.	Route 3, Hudson	St. Croix	Prog.	Farmer	Elections (Chairman), Finance
Kiefer, E. H.	2603 W. Nash St., Milwaukee	Milwaukee, 18th	Soc.	Painting, Decorating	Agriculture, Labor Education

Assembly—Continued

Name	Address	District	Politics	Occupation	Committees
Koegel, Arthur.....	2548-A N. 15th St., Milwaukee....	Milwaukee, 7th	Soc.	Bricklayer.....	Contingent Expenditures, State Affairs
Kostuck, J. T.	711 Wyatt Ave., Stevens Point....	Portage	Prog.	Piano dealer & piano tuner	Education
Kretlow, C. C.	2235 W. Cherry St., Milwaukee....	Milwaukee, 2nd	Dem.	Inspector.....	Commerce and Manufactures, Revision
Kroenke, B. B.	2863 N. Holton St., Milwaukee	Milwaukee, 13th	Dem.	Passenger Brakeman.....	Revision
Kronschnabl, H. L.	Crandon.....	Florence, Forest & Oneida	Prog.	Editor, Publisher.....	Printing (Chairman) Public Welfare
Krueger, H. E.	Route 1, Beaver Dam.....	Dodge, 2nd	Dem.	Farmer.....	Agriculture
Kryszak, M. O. (Mrs.) ..	2003 S. 11th St., Milwaukee.....	Milwaukee, 5th	Dem.	Editor.....	Municipalities
Laabs, A. W.	347 West College Ave., Appleton....	Outagamie, 1st	Rep.	Real Estate.....	Municipalities
Laack, C. A.	Route 1, Plymouth.....	Sheboygan, 2nd	Dem.	Farmer.....	Agriculture
LaBar, D. E.	Delavan.....	Walworth	Rep.	Various Enterprises.....	Insurance and Banking
Lomsdahl, Tom.....	Osseo.....	Trempealeau	Prog.	Retail Hardware.....	Education, Municipalities
Ludvigsen, A. R.	Route 1, Hartland.....	Waukesha, 2nd	Rep.	Various Interests.....	Conservation, Education
Lynch, R. E.	1144 Cass St., Green Bay.....	Brown, 1st	Dem.	Contractor, Sales Manager..	Public Welfare
Meisner, R. A.	409 Callon St., Wausau.....	Marathon, 2nd	Dem.	Meisner Hubbard Bev. Co..	Enrolled Bills
Michalski, C. F.	1904-A S. 7th St., Milwaukee.....	Milwaukee, 12th	Dem.	Machinist.....	Excise and Fees
Millar, J. D.	Menomonie.....	Dunn	Prog.	Farmer.....	Rules, State Affairs, Taxation
Mulder, John.....	822 Rose Street, La Crosse.....	La Crosse, 1st	Rep.	Conservation, Public Welfare
Murray, M. T.	1828 Newberry Blvd., Milwaukee..	Milwaukee, 14th	Rep.	Attorney.....	State Affairs

Nebs, V. W.-----	Neillsville-----	Clark	Prog.	Lawyer-----	Excise and Fees, Insurance and Banking, Judiciary
Nelson, C. M.-----	Route 1, Medford-----	Taylor	Rep.	Farmer-----	Finance
Novotny, Ray-----	816 Oregon Street, Oshkosh-----	Winnebago, 1st	Dem.	Industrial Engineer-----	Municipalities
Olson, C. V.-----	722 West 2nd St., Ashland-----	Ashland	Prog.	Attorney-----	Contingent Expenditures, Excise and Fees Judiciary (Chairman)
O'Malley, John-----	848 N. 9th St., Milwaukee-----	Milwaukee, 4th	Dem.	-----	Labor
Peterson, E. C.-----	Route 1, Poplar-----	Douglas, 2nd	Prog.	Farmer-----	Conservation, State Affairs
Peterson, R. W.-----	221 Liberty Street, Berlin-----	Green Lake & Waushara	Rep.	Attorney-----	Commerce and Manufactures, Judiciary
Peterson, T. A.-----	Route 3, Soldiers Grove-----	Crawford	Dem.	Farmer-----	Printing
Polti, A. F.-----	Hartford-----	Washington	Prog.	Horticulturist, Retail Meats	Labor, Municipalities
Pritchard, J. T.-----	Route 5, Eau Claire-----	Eau Claire	Prog.	Farmer-----	Taxation, Transportation (Chairman)
Rakow, E. F.-----	Burlington-----	Racine, 3rd	Dem.	-----	Municipalities
Robinson, J. S.-----	Route 4, Platteville-----	Lafayette	Rep.	Farmer-----	Excise and Fees (Chairman) Revision
Ryan, D. P.-----	3403 W. Michigan St., Milwaukee-----	Milwaukee, 8th	Dem.	Locomotive Fireman-----	Engrossed Bills
Schenk, H. C.-----	2051 Winnebago St., Madison-----	Dane, 1st	Prog.	Hardware Merchant-----	Insurance and Banking, Municipalities
Schilling, H. W.-----	Route 1, Onalaska-----	La Crosse, 2nd	Prog.	Farmer-----	Agriculture, Highways
Shimek, A. D.-----	Algoma-----	Kewaunee	Dem.	Garage, Farm Machinery	Education
Short, John-----	Route 3, Chilton-----	Calumet	Dem.	Farmer-----	Third Reading
Sibbald, J. C.-----	Grandview-----	Bayfield	Prog.	Grocer-----	Finance
Sieb, J. L.-----	940 Park Ave., Racine-----	Racine, 1st	Prog.	Barber-----	Finance, Third Reading (Chairman)
Siebert, M. G.-----	Box 16, Salem-----	Kenosha, 2nd	Dem.	Hotel, Tavern-----	Engrossed Bills
Sigman, David-----	16th & Jackson St., Two Rivers-----	Manitowoc, 2nd	Prog.	Labor Organizer-----	Judiciary, Labor
Staudenmaier, L. W.-----	Stephenson Bldg., Marinette-----	Marinette	Dem.	Lawyer-----	Excise and Fees

Assembly—Continued

Name	Address	District	Politics	Occupation	Committee
Stone, Frank.....	Park Falls.....	Price	Rep.	Bookkeeper, Office Man....	Elections
Swanson, Theodore.....	Route 1, Ellsworth.....	Pierce	Rep.	Farmer.....	Education; Public Welfare
Sweeney, W. J.....	Box 232, De Pere.....	Brown, 2nd	Dem.	Farmer.....	Transportation
Theisen, J. M.....	1904 Calumet Drive, Sheboygan...	Sheboygan, 1st	Dem.	Accountant.....	Transportation
Thomson, V. W.....	475 East 2nd St., Richland Center	Richland	Rep.	Lawyer.....	Judiciary, Public Welfare
Trego, R. W.....	Merrill.....	Lincoln	Prog.	Trucking, Warehousing.....	Elections, Highways
Vaughan, B. M.	121 Drake St., Wisconsin Rapids...	Wood	Prog.	Attorney.....	Judiciary, Municipalities (Chairman)
Vogel, O. A.....	1120 Hamilton St., Manitowoc....	Manitowoc, 1st	Prog.	Barber	Public Welfare, Transportation
Wegner, H. B.....	1305 W. Cottage Place, Milwaukee	Milwaukee, 16th	Soc.	Leather Garment Cutter...	Elections
Weissleder, G. H.....	2813 N. 54th St., Milwaukee.....	Milwaukee, 9th	Dem.	Attorney, Counselor	Elections, Judiciary
Woerth, G. J.....	Sauk City.....	Sauk	Prog.	Telephone.....	Municipalities, Taxation
Young, C. T.....	2218 N. Summit Ave., Milwaukee-	Milwaukee, 1st	Dem.	Attorney.....	Judiciary, Rules

OFFICERS OF THE SENATE, 1935

Thomas J. O'Malley, Lieutenant Governor, Milwaukee-----President
 Harry W. Bolens, Port Washington-----President Pro Tem
 Lawrence R. Larsen, Racine-----Chief Clerk
 Emil A. Hartman, Madison-----Sergeant-at-Arms

STANDING COMMITTEES OF THE SENATE

Agriculture and Labor—Shearer (Chairman), Carroll, Morrissey, Anderson, Engebretson.

Committee on Committees—Carroll (Chairman), Shearer, Galasinski.

Contingent Expenditures—Kelly (Chairman), Griswold, Ingram.

Corporations and Taxation—Morris (Chairman), Bolens, Callan, Ingram, Groves.

Education and Public Welfare—Nelson (Chairman), Kelly, Dempsey, Kanenberg, Leverich.

Joint Committee on Finance—Brunette (Chairman), Griswold, Wade, Zimny, Rowlands.

Highways—Clancy (Chairman), Mack, Cashman.

Judiciary—Phillips (Chairman), Schoenecker, Coakley, Rush, Severson.

Legislative Procedure—Bolens (Chairman), Brunette, Shearer, Kelly, Clancy, Phillips, Morris, Carroll, Galasinski, Nelson.

State and Local Government—Galasinski (Chairman), MacDermid, Shenners, Hunt, Panzer.

OFFICERS OF THE ASSEMBLY, 1935

Jorge W. Carow, Ladysmith-----Speaker
 Lester R. Johnson, Brandon-----Chief Clerk
 Gustave Rheingans, Chippewa Falls-----Sergeant-at-Arms

STANDING COMMITTEES OF THE ASSEMBLY

Agriculture—Hanson (Chairman), Barber, Groves, Krueger, Laack, Handrich, Brandt, Barnes, Schilling, Hall, Peterson, T. A.

Commerce and Manufactures—Busby (Chairman), Johnson, Kretlow, Bergren, Caffrey, Genzmer, Peterson, R. W.

Conservation—Hemmy (Chairman), Mulder, Ludvigsen, Barnes, Graass, Peterson, E. C., Fitzsimons.

Contingent Expenditures—Harper (Chairman), Beggs, Olson, Howard, Koegel.

Education—Alfonsi (Chairman), Kostuck, Swanson, Ludvigsen, Groves, Lomsdahl, Shimek, Hitt, Kiefer.

Elections—Kelly (Chairman), Goldthorpe, Barber, Trego, Wegner, Weissleder, Stone.

Engrossed Bills—Hamata (Chairman), Ryan, Siebert.

Enrolled Bills—Barber (Chairman), Meisner, Bichler.

Excise and Fees—Robinson (Chairman), Olson, Michalski, Grobschmidt, Staudenmaier, Nehs, Foley.

Finance—Beggs (Chairman), Baker, Hoesly, Fuhrman, Harper, Sieb, Kelly, Sibbald, Nelson.

Highways—Hall, E. D. (Chairman), Dueholm, Trego, Grosvenor, Schilling, Hall, M. H., Hipke.

Insurance and Banking—Grobschmidt (Chairman), La Bar, Hamata, Hanson, Douglass, Jackson, Nehs, Halvorsen, Schenk.

Judiciary—Olson (Chairman), Nehs, Vaughan, Busby, Thomson, Young, Cavanaugh, Alfonsi, Sigman, Peterson, R. W., Weissleder.

Labor—Bay (Chairman), Sigman, Blomquist, Kiefer, Handrich, Poltl, Grimes, O'Malley, Hall, M. H.

Municipalities—Vaughan (Chairman), Poltl, Schenk, Grobschmidt, Kryszak, Laabs, Novotny, Inman, Rakow, Lomsdahl, Woerth.

Printing—Kronschnabl (Chairman), Johnson, Peterson, T. A., Franzkowiak, Goldthorpe.

Public Welfare—Dueholm (Chairman), Thomson, Vogel, Swanson, Kronschnabl, Mulder, Lynch.

Revision—Fuhrman (Chairman), Robinson, Kretlow, Garvens, Kroenke.

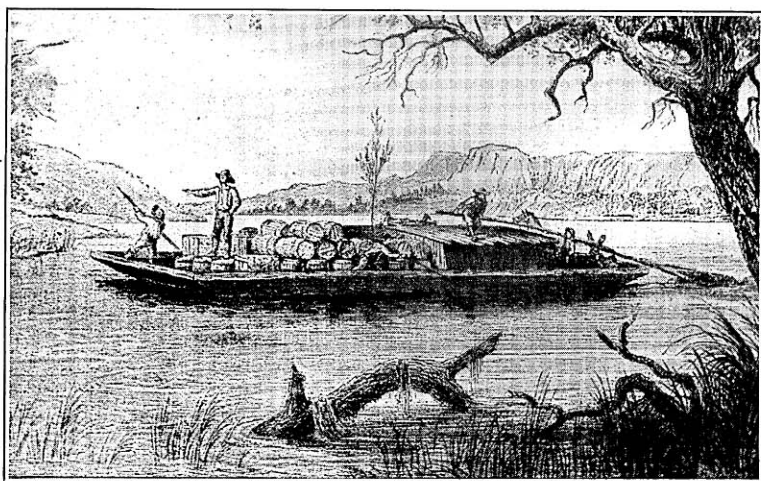
Rules—Hoesly (Chairman), Millar, Young, Dueholm, Carow (*ex officio*).

State Affairs—Hitt (Chairman), Murray, Millar, Douglass, Jackson, Hemmy, Bergren, Daus, Koegel, Johnson, Peterson, E. C.

Taxation—Halvorsen (Chairman), Millar, Pritchard, Kaiser, Brandt, Woerth, Grassman.

Third Reading—Sieb (Chairman), Short, Genzmer.

Transportation—Pritchard (Chairman), Blomquist, Vogel, Bay, Grassman, Sweeney, Theisen.



A Mississippi River flatboat in the early days.

INVESTIGATING COMMITTEES

Appointed or Continued by the 1933 Legislature

INTERIM (Directed to report in 1935)

JOINT

Automobile Insurance on the Compensation Plan, Compulsory (Jt. Res. 94, S, 1933)

Members

Senators: Shearer, chairman; Severson.

Assemblymen: Russell; Mulder; Olson.

Appropriation: Not to exceed \$1,000 as allotted by the Emergency Board (Chap. 407, Laws of 1933)

Report: Made on August 15, 1935 (Senate Journal, pp. 1890—1896)

Building and Loan Association Legislation (Jt. Res. 126, A, 1933; continued by Jt. Res. 82, A, Special Session, 1933—34)

Members

Senators: Carroll, chairman; Polakowski; Fons.

Assemblymen: Weissleder; Bachhuber; Galasinski; Inman; Vaughan.

Appropriation: Not to exceed \$1,000 as allotted by the Emergency Board (Chap. 407, Laws of 1933)

Report: None.

Economy in State Government (Jt. Res. 11, A, 1931; continued by Jt. Res. 181, A, 1933)

Members

Senators: Clifford, chairman; Gettelman.

Assemblymen: Lynch; Clancy; Dolan.

Appropriation: Not to exceed \$1,000 as allotted by the Emergency Board (Chap. 407, Laws of 1933)

Report: Made on Feb. 1, 1934 to Special Session, 1933—34 (Assembly Journal, pp. 520—25)

Finance Companies, Advisory Legislative Committee to Investigate (Jt. Res. 48, A, Special Session, 1933—34)

Members

Senators: Carroll, chairman; Ingram.

Assemblymen: Leary; Murray; Cavanaugh.

Appropriation: Actual and necessary expenses to be paid by the Banking Commission or the Emergency Board (Jt. Res. 61, S, Special Session, 1933—34)

Report: Made on April 10, 1935 (Senate Journal, p. 609)

Intoxicating Liquors, Regulation of the Sale of (Jt. Res. 123, S, 1933)

Members

Senators: Bolens, chairman; Griswold.

Assemblymen: Scheuer; Kieker; Westlund.

Appropriation: Not to exceed \$1,000 as allotted by the Emergency Board (Chap. 407, Laws of 1933)

Report: Made on Dec. 11, 1933 to Special Session, 1933—34 (Senate Journal, pp. 10—14)

Milwaukee County and Civil Service Commission, Investigation of (Jt. Res. 172, A, 1933)

Members

Senators: Morris, chairman; Shenners.

Assemblymen: Weissleder; Galasinski; Higgins.

Appropriation: All expenses of this committee to be paid by the city and county of Milwaukee.

Report: Made on March 5, 1935 (Senate Journal, pp. 319—320)

Milwaukee County Courts, Unification of (Jt. Res. 103, S, 1931; continued by Jt. Res. 179, A, 1933)

Members

Senators: Mehigan, chairman; Polakowski.

Assemblymen: Young; Murray; Caffrey.

Appropriation: Financed by the County Board of Milwaukee County.

Report: None.

Old Age Assistance (Jt. Res. 71, A, 1933)

Members

Senators: Ingram, chairman; Paul.

Assemblymen: Kaiser, Alfonsi, Kryszak.

Appropriation: Not to exceed \$1,000 as allotted by the Emergency Board (Chap. 407, Laws of 1933)

Report: None.

Prison Labor (Jt. Res. 112, A, 1933)

Members

Senators: Kelly; Engebretson.

Assemblymen: Caffrey¹, chairman; Higgins; Rowlands.

Appropriation: Not to exceed \$1,000 as allotted by the Emergency Board (Chap. 407, Laws of 1933)

Report: Made to the Governor on July 3, 1934.

Silicosis and Labor Conditions in the Stone Cutting Industry (Jt. Res. 155, A, 1933; continued by Jt. Res. 66, A, Special Session, 1933-34)

Members

Senators: Severson, chairman; Brunette.

Assemblymen: Bachhuber; Callahan; Budlong.

Governor's Appointee: H. J. Nelson, Wausau.

Board of Control Representative: Mrs. Katherine Sullivan.

Industrial Commission Representative: Voyta Wrabetz.

Appropriation: Expenses of the committee to be paid out of the Industrial Commission's appropriation.

Report: Final report, February 12, 1935 (Senate Journal, pp. 161-169)

State Office Building Commission (Chapter 486, Laws of 1929)

Members

Senators: Goodland, chairman; Mueller.

Assemblymen: Laffey; Rowlands; Martin.

Appropriation: \$600,000 for purchase of site and erection of first unit of building.

Report: Senate Journal, 1931, pp. 265-311; Senate Journal, 1933, pp. 1259-1308; Senate Journal, 1935, pp. 1549-1566.

State Trunk and Federal Aid Highway System, Revision of (Chap. 447, Laws of 1933)

Members

Senators: Griswold, chairman; Mack.

Assemblymen: Clancy; Grosvenor; Thompson.

Appropriation: A sum sufficient out of highway funds.

Report: Filed with Highway Commission, December 28, 1934.

Taxation Problems (Chap. 400, Laws of 1933)

Members

Senators: Mueller, chairman; Gehrmann; Mehigan.

Assemblymen: Daus; Kaiser; Lamb.

Citizens: Leo P. Fox, Chilton; E. E. Witte, Madison; Jesse Whyte, Kenosha.

Appropriation: \$2,500.

Report: Printed report, January 30, 1935 (Jt. Res. 23, A, 1935)

¹ Succeeded Kelly as chairman.

Wisconsin Memorial Hospital, Disposition of (Jt. Res. 135, S, 1933)

Members

Senators: Goodland, chairman; Mueller; Nelson.

Assemblymen: Fitzsimons; Novotny; Perry; Kaiser; Higgins.

Appropriation: Not to exceed \$1,000 as allotted by the Emergency Board (Chap. 407, Laws of 1933)

Report: Mimeographed report filed with the clerk of each house on February 15, 1935.

OF ONE HOUSE

Rules of the Assembly, Revision of (Res. 68, A, 1933)

Members

Fox, chairman; Perry; Novotny; Tombleson.

Appropriation: \$250 from the contingent fund of the assembly.

Report: None.

Salaries of State Employees (Jt. Res. 182, A, 1933, continuing, sub-committee of Joint Committee on Finance)

Members

Assemblymen: Novotny, chairman; Hoesly; Shimek.

Appropriation: Not to exceed \$1,000 as allotted by the Emergency Board (Chap. 407, Laws of 1933)

Report: Made to the assembly on January 31, 1935 (Assembly Journal, pp. 176-87)

SPECIAL

Highways, Safety on (Jt. Res. 25, S, Special Session, 1933-34)

Members

Public Service Commission: E. N. Maurer.

Highway Commission: E. J. O'Meara; Harry D. Blake.

Appropriation: None.

Report: None.

SPECIAL

Veterans Memorial Commission (Chap. 467, Laws of 1931)

Members

Senators: Loomis, chairman.

Assemblymen: Hilker; Keller.

Citizens: Crave; Szulakiewicz.

Appropriation: \$1,300.

Report: Made on September 12, 1935 (Senate Journal pp. 2189-2193)

COMMITTEES APPOINTED BY THE GOVERNOR

Relief Committee in Lincoln County Forest Fire Area.

Members

Walter Chilsen, Merrill, chairman; Senator Wade; R. B. Page, Merrill; Assemblyman Leidiger; Mrs. John Militor, Antigo.

Appropriation: No specific appropriation provided.

Report: None.

Relief Committee in Richland County Tornado Area

Members

Senators: Carroll, chairman; Kelly.

Assemblymen: McDonald; Halvorsen; Martin.

Department of Agriculture and Markets: Joseph D. Beck.

Industrial Commission: Peter A. Napiecinski.

Appropriation: \$25,000; federal funds to be requested also.

Report: None.

COMMISSIONS

Chicago Centennial of Progress (Chap. 8, Laws of 1931; continued by Chap. 33, Laws of 1933)

Members

Senators: Phillips, chairman; Bolens; Brunette; ex-Senator J. H. Carroll, Glidden.

Assemblymen: Young; Caldwell; Fox; ex-Assemblymen E. G. Smith, Beloit; Mauthe.

Citizens: Paul A. Hemmy, Juneau; W. D. Thompson, Racine; J. L. Barchard, Milwaukee; Gustave A. Dick, Milwaukee; George A. Nelson, Milltown; Mrs. Esther Haas, Madison.

Appropriation: \$35,000 from the general fund; in addition, receipts from sales for Wisconsin exhibitors to be reappropriated to the committee.

Report: Filed with Chief Clerk of the Senate, February 8, 1935 (Senate Journal, p. 155)

Kosciuszko, Thaddeus, Observance of 150th anniversary of naturalization of (Jt. Res. 33, A, 1933)

Members

Senators: Fons, chairman; Polakowski.

Assemblymen: Chermak; Galasinski.

Appointed by the Governor: T. A. Jasiorkowski, Milwaukee; J. Kapniarski, Milwaukee; John C. Kleczka, Milwaukee; John A. Meleski, Stevens Point; Peter A. Napiecinski, Madison; Frank X. Suretlik, Milwaukee.

Appropriation: None.

Report: None.

Tercentenary of White Man's Discovery of Wisconsin (Chap. 441, Laws of 1933)

Members

Senators: Kelly, chairman; Brunette; Engebretson; Cashman.

Assemblymen: Lynch; Sweeney; Ramstack; Garvens; Laabs.

Appropriation: \$500.

Report: None.

INVESTIGATING COMMITTEES¹

Appointed or Continued by the 1935 Legislature

INTERIM (Directed to report in 1937)

JOINT

American Society of Composers, Authors, and Publishers, Investigation of (Jt. Res. 101, A, 1935)

Members

Senators: Galasinski, chairman; Coakley.

Assemblymen: Graass; Halvorsen; R. W. Peterson.

Carl Schurz Monument, Selection of a site for (Jt. Res. 187, A, 1935)

Members

Senators: Morris, chairman; Schoenecker.

Assemblymen: Weissleder; Kaiser; Kroenke.

Centennial Celebration in Conjunction with the 1936 Wisconsin State Fair, Advisability of Holding (Jt. Res. 98, A, 1935)

Members

Senators: Shenners chairman; Leverich; Schoenecker.

Assemblymen: Busby; Grobschmidt; Laabs; Grimes.

¹No appropriation unless specified.

Farm Machinery, Price of (Jt. Res. 61, S, 1935)

Members

Senators: Brunette, chairman; Cashman.

Assemblymen: Hitt; Groves; Bichler.

Mississippi River Pollution (Jt. Res. 18, S, 1925; continued by each succeeding legislature and Chap. 301, Laws of 1935)

Members

Senators: Hunt, chairman.

Assemblymen: Ex-Assemblyman Perry; Swanson.

Report: Made on July 11, 1935 (Senate Journal, pp. 1420-1425)

Veterans Mental Hospital in Wisconsin, Proposed Construction of a New (Jt. Res. 188, A, 1935)

Members

Senators: Phillips, chairman; Nelson.

Assemblymen: Kaiser; R. W. Peterson; Bergren.

Wisconsin Centennial Celebration (Jt. Res. 41, S, 1935; continued by Jt. Res. 135, S, 1935)

Members

Senators: Kelly, chairman; Morris; Ingram.

Assemblymen: Schenk; Dueholm; Douglass; Cavanaugh.

OF ONE HOUSE

Federal Unemployment Relief Frauds and Abuses, Investigation of (Res. 62, S, 1935)

Members

Shenners, chairman; Bolens; Brunette; Carroll; Clancy; Griswold; Mack; Phillips; Wade.

Rosenberg, I. J., Investigation of Circumstances and Conditions Surrounding the Parole of (Res. 59, S, 1935)

Members

Galasinski, chairman; Clancy; Zimny; Coakley; Shenners.

Report: Made on September 27, 1935 (Senate Journal, pp. 2465-2470)

Rules of the Assembly, Revision of (Res. 65, A, 1935)

Members

A. J. W. Carow, Speaker, chairman; Harper; E. J. Onstad.

SPECIAL JOINT

Automobile Insurance, Compulsory (Jt. Res. 94, S, 1933; continued by Jt. Res. 39, S, 1935)

Members

Senators: Shearer, chairman; Severson.

Assemblymen: Russell; Mulder; Olson.

Report: Made on August 15, 1935 (Senate Journal, pp. 1830-1836)

Budget and Revenue Measures (Jt. Res. 169, A, 1935)

Members

Senators: Griswold, chairman; Brunette; Carroll; Coakley; Groves; Rowlands.

Assemblymen: Alfonsi; Hamata; Harper; Murray; Novotny; Thomson.

Report: Made on August 30, 1935 (Senate Journal, p. 2006)

Economic Causes of the Present Depression, Investigation of (Jt. Res. 13, A, 1935)

Members

Senators: Morrissey, chairman; Nelson; Kannenberg.

Assemblymen: Laabs; Kaiser; Kiefer; Handrich.

Erection of a Permanent Centennial Memorial in the Capitol (Jt. Res. 29, S, 1935)

Members

Senators: Brunette, chairman; Cashman.

Assemblymen: E. D. Hall; Swanson; Lynch.

Farm Machinery (Chap. 240, Laws of 1935)

Members

Senators: Severson, chairman; Dempsey.

Assemblymen: Alfonsi; Johnson; Nelson.

Appropriation: \$1,000.

Finance Companies, Advisory Legislative Committee to Investigate (Jt. Res. 48, A, and 61, S, Special Session, 1933-34; continued by Jt. Res. 8, S, 1935; additional duties imposed by Jt. Res. 29, A, 1935)

Members

Senators: Carroll, chairman; Ingram.

Assemblymen: Ex-Assemblyman Leary; Murray; Cavanaugh.

Report: Made on April 10, 1935 (Senate Journal p. 609)

Inter-Family Relationship in the State and Public Service (Jt. Res. 109, A, 1935)

Members

Senators: Callan, chairman; Coakley.

Assemblymen: Fitzsimons; Millar; M. H. Hall.

Report: Mr. Fitzsimons' report, September 25, 1935 (Senate Journal, pp. 2401-2405); Hall and Millar report, Capital Times, Sept. 22, 1935.

Manufacturing Establishments in this State, Investigation of (Jt. Res. 100, A, 1935)

Members

Senators: Morris, chairman; Clancy.

Assemblymen: Grassman; Busby; Daus.

Motor Vehicles, Investigation of Registration of (Jt. Res. 22, A, 1935; additional duties imposed by Jt. Res. 46, S, 1935)

Members

Senators: Anderson, chairman; Dempsey.

Assemblymen: Novotny; Graass; Poltl.

Report: Made on September 26, 1935 (Senate Journal, pp. 2451-2452)

Rules for Conduct of Interpellation Proceedings (Jt. Res. 50, S, 1935)

Members

Senators: Bolens, chairman; Griswold; Callan.

Assemblymen: Nehs; Harper; R. W. Peterson.

State Charitable and Penal Institutions, Improvement of Administration of (Chap. 11, Laws of 1935)

Members

Senator: Bolens, chairman.

Assemblymen: Murray; Nehs.

Appropriation: Sum sufficient.

SPECIAL SENATE

Communism at State Controlled Educational Institutions (Res. 14, S, 1935)

Members

Brunette, chairman; Griswold; Bolens; Panzer; Shenners.

Report: Made on Sept. 21, 1935 (Senate Journal, pp. 2332-2355)

Poor and Unemployment Relief in the State of Wisconsin (Res. 16, S, 1935)

Members

Carroll, chairman; Leverich; Clancy.

Tax Measures (Res. 18, S, 1935)

Members

Bolens, chairman; Griswold; Galasinski.

SPECIAL ASSEMBLY

Drouth Relief Loans, Convenient Methods for Farmers to Repay (Res. 29, A, 1935)

Members

Alfonsi, chairman; Nelson; Stone; Cavanaugh; Hitt.

Lobbying Practices (Res. 67, A, 1935)

Members

Hitt, chairman; Handrich; Halvorsen; Staudenmaier; Ludvigsen.

Report: Made on September 27, 1935 (Assembly Journal, pp. 3100-3106)

SPECIAL

Bill Files for Members of the Legislature, More Adequate System of (Jt. Res. 207, A, 1935)

Members

Chief Clerks and Sergeant at Arms of both Houses; Director of Purchases.

Appropriation: Not to exceed \$100 from contingent fund of each house.

State Office Building, Plan for Completing and Making it Self-Liquidating and Self-Sustaining (Chap. 256, Laws of 1935)

Members

Director of the Budget, chairman; State Chief Engineer; Commissioner of Insurance.

EMPLOYEES OF THE SENATE

Chief Clerk's Force:

Milton J. Bailey, Elderon, assistant chief clerk.
 Hanford A. Wesley, Iola, journal clerk.
 Darel E. Simon, Oshkosh, assistant journal clerk.
 Harvey E. Sims, Milwaukee, record clerk.
 Lowell A. McIntire, Boscobel, assistant record clerk.
 Bennett O. Odegard, Rice Lake, revision clerk.
 William P. Welch, Madison, enrolling clerk.
 C. G. Riley, Madison, index clerk.
 Marvin F. Hartman, Madison, mailing clerk.
 W. Wrenn O'Connell, Milwaukee, mailing clerk.
 Arthur W. Markham, Independence, engrossing clerk.
 Walter E. Hasse, Monroe, clerk, joint committee on Finance.
 Thomas M. Donahue, Kenosha, clerk, committee on Highways.
 R. H. Lehner, Princeton, clerk, committee on Agriculture and Labor.
 Andrew L. Leavitt, Merrill, clerk, committee on Education and Public Welfare.
 Fred H. Meyer, Milwaukee, clerk, committee on Corporations and Taxation.
 Malcolm P. Dixon, Milwaukee, clerk, committee on Judiciary.
 Clement A. Zoltak, Milwaukee, clerk, committee on State and Local Government.
 Pat E. Howlett, Oshkosh, stenographer.
 Donald R. Jones, Beloit, stenographer.
 Charles G. Pagel, Brandon, stenographer.
 Lewis A. Grinnell, Madison, stenographer.
 Harry J. Danen, De Pere, typist.
 Bruce M. Fannier, Chippewa Falls, typist.

Force of Sergeant-at-Arms:

Albert E. Daley, Superior, assistant sergeant-at-arms.
 Robert Rush, Neillsville, document clerk.
 Jerome E. Czarnecki, Milwaukee, document clerk.
 Joseph Westlund, Superior, postmaster.
 Wm. M. Brinkley, Madison, gallery attendant.
 Simon F. Wehrwein, Manitowoc, policeman.
 Wm. V. Reilly, Madison, night watchman.
 Roy B. Larsen, Denmark, night laborer.
 William C. Rohan, Kaukauna, night laborer.
 Raymond Adomaitis, Chilton, messenger.
 Donald O. Babcock, Sparta, messenger.
 Richard Fell, Antigo, messenger.
 John H. Hanson, Fond du Lac, messenger.
 Merle E. Jackson, Madison, messenger.
 Russel Kiley, Mazomanie, messenger.
 Raymond McAdams, Watertown, messenger.
 Loren E. Olson, Wheeler, messenger.
 Richard M. Reese, Madison, messenger.
 William J. Rowe, Burlington, messenger.
 Richard Showman, Kenosha, messenger.
 Glen F. Vogel, Shiocton, messenger.

EMPLOYEES OF THE ASSEMBLY

Department of Chief Clerk:

Elmer E. Wilson, Spooner, general clerk.
 Charles W. Woerpel, Sun Prairie, general clerk.
 H. O. Femrite, Blooming Grove, record clerk.
 Norman J. Hippert, Two Rivers, asst. record clerk.
 C. E. Tuffley, Boscobel, journal clerk.
 Martin J. Zilz, Wausau, asst. journal clerk.
 Norman Berggren, Milwaukee, voting machine operator.
 Erick J. Onstad, Blooming Grove, engrossing clerk.
 Floyd H. Tuchscher, Marshfield, proof reader and revision clerk.
 Bronte H. Leicht, New Lisbon, proof reader and revision clerk.
 William A. Nathanson, Madison, index clerk.
 H. A. Wrucke, Campbellsport, mailing clerk.
 John W. Mannering, Racine, mailing clerk.
 Edmund Burke, West De Pere, stenographer.
 Raphael De Muth, Hollandale, stenographer.
 Richard A. Eiseman, Wausau, stenographer.
 Leonard W. Fell, Sparta, stenographer.
 Dalos H. Grobe, Menomonie, stenographer.
 Walter L. Hillestad, Poplar, stenographer.
 A. J. Kaempfer, Milwaukee, stenographer.
 Richard E. Mueller, Madison, stenographer.

Arthur F. Stofen, Racine, stenographer.
 Arthur C. Tretow, Wauwatosa, stenographer.
 Edward J. Walden, Kaukauna, stenographer.
 Hans F. Wenthur, Milwaukee, stenographer.
 Frank M. Whitman, Baraboo, stenographer.
 Harold J. Wichern, Madison, stenographer.
 William L. Morse, Lancaster, typist.
 Fred E. Shepherd, Wild Rose, typist.
 Joseph P. Wergin, Edgerton, typist.
 Walter G. Williams, Madison, typist.

Department of Sergeant-at-Arms:

R. L. Williams, Ladysmith, asst. sergeant-at-arms.
 William Kasiska, Baraboo, postmaster.
 Harold Schultz, Milwaukee, document room attendant.
 Arlie M. Knutson, Tomahawk, document room attendant.
 Phil Lalor, Madison, floor policeman.
 Wilmer Carow, Ladysmith, night watchman.
 Harry Cooks, Eau Claire, gallery attendant.
 Robert M. Gerling, Madison, gallery attendant.
 John C. Danielson, Manitowoc, night laborer.
 Sheridan Davy, La Crosse, night laborer.
 Arvid Morner, Prentice, cloak room attendant.
 Mark Shumway, Beloit, post office messenger.
 Morris Barber, Madison, messenger.
 Paul Boebel, Madison, messenger.
 Harold Gilbert, Elkhorn, messenger.
 Carl H. Hafeman, Jackson, messenger.
 William Harms, Port Washington, messenger.
 George Heath, Madison, messenger.
 Oivind Hovde, Westby, messenger.
 Bryan Kimball, Ashland, messenger.
 Gordon MacDonald, Columbus, messenger.
 Eugene Meyer, Milwaukee, messenger.
 Donald Millar, Menomonie, messenger.
 Arthur Mockrud, Westby, messenger.
 Torston Olson, Superior, messenger.
 Lloyd Paust, Columbus, messenger.
 Henry B. Sussman, Milwaukee, messenger.
 Ben Sweet, Madison, messenger.
 Harold A. Wenger, Madison, messenger.

REPRESENTATIVES OF THE PRESS

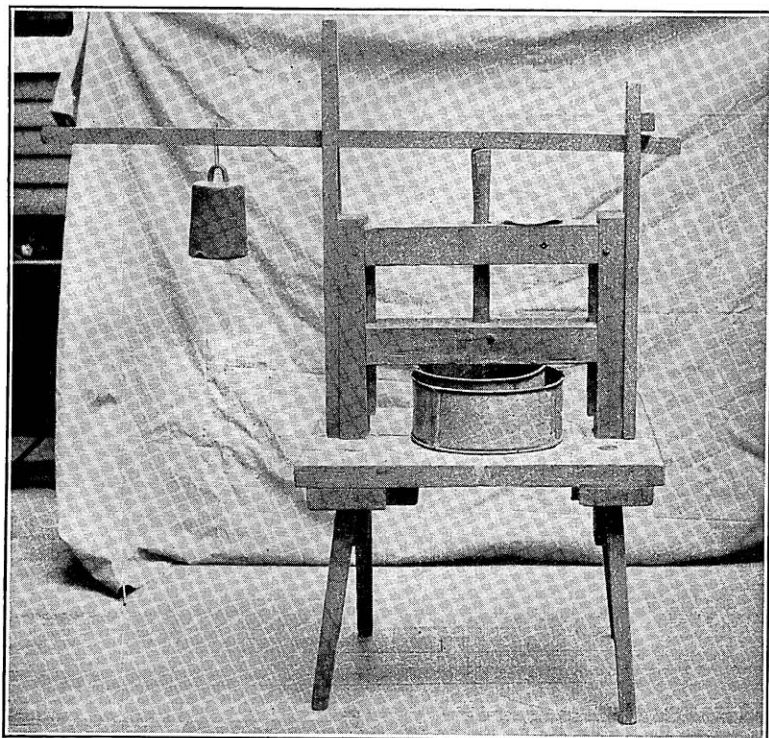
E. L. Almen	-----	The Associated Press
Don Anderson	-----	United States Daily
A. D. Bolens	-----	Wisconsin Statesman
W. J. Bollenbeck	-----	Sheboygan Press
Wm. F. Canfield	-----	Wisconsin Press Association
George Crownhart	-----	Wisconsin Medical Journal
Harry G. Croy	-----	Wisconsin News
Julius C. Edelstein	-----	Central Press & Milwaukee Leader
Laurence C. Eklund	-----	Milwaukee Journal
J. Winter Everett	-----	The Wisconsin State Journal
William T. Evjue	-----	The Capital Times
Edward N. Hein	-----	The Capital Times
Charles W. Holmburg	-----	The Capital Times
Kenneth Hopping	-----	Associated Press
E. Dee Ingold	-----	Chicago Tribune
Iver M. Kalnes	-----	The Wisconsin State Journal
Edward T. Kaveny	-----	Milwaukee Sentinel
Mrs. Alice Krombholz	-----	Milwaukee Sentinel
F. N. MacMillin	-----	The Municipality
Roy L. Matson	-----	The Wisconsin State Journal
D. D. Mich	-----	The Wisconsin State Journal
William H. McCall	-----	United Press
Bruce R. McCoy	-----	Wisconsin Press Association
J. Craig Ralston	-----	Milwaukee Journal
Morris H. Rubin	-----	The Wisconsin State Journal
Kenneth Russell	-----	Associated Press
Thornton L. Smith	-----	Chicago Tribune
Willard R. Smith	-----	United Press
Leonard C. Schubert	-----	United Press
Arthur A. Tiller	-----	Tiller News Service, Inc.
Gabriel Tolan	-----	The Capital Times
Herb H. Ward	-----	Veterans Herald
William P. Welch	-----	Eau Claire Telegram
Carl A. Zielke	-----	Wisconsin Press Association
Perry C. Hill, Jr.	-----	Milwaukee Sentinel

LENGTH OF WISCONSIN LEGISLATIVE SESSIONS

Year	Length of Session	Days	Measures Introduced			Laws En-acted
			Bills	Joint Resolutions	Resolutions	
1848	June 5—Aug. 21.....	78	217	-----	-----	155
1849	Jan. 10—April 2.....	83	423	-----	-----	220
1850	Jan. 9—Feb. 11.....	34	438	-----	-----	284
1851	Jan. 8—Mar. 17.....	69	707	-----	-----	407
1852	Jan. 14—April 19.....	97	813	-----	-----	504
1853	Jan. 12—June 13.....	153	1,145	-----	-----	521
1854	Jan. 11—April 3.....	83	880	-----	-----	437
1855	Jan. 10—April 2.....	83	955	-----	-----	500
1856	Jan. 9—Mar. 31.....					
	Sept. 3—Oct. 14.....	125	1,242	-----	-----	688
1857	Jan. 14—Mar. 9.....	55	895	-----	-----	517
1858	Jan. 13—Mar. 31.....					
	April 10—May 17.....	116	1,364	157	342	436
1859	Jan. 12—Mar. 21.....	69	986	113	143	680
1860	Jan. 11—April 2.....	83	1,024	69	246	489
1861	Jan. 9—April 17.....	99	857	100	235	387
1861	Spec. Sess. May 15-27.....	13	23	24	23	13
1862	Jan. 8—June 17.....	161	1,008	125	207	514
1862	Spec. Sess. Sept. 10-26.....	17	43	25	37	17
1863	Jan. 14—April 2.....	79	895	101	157	383
1864	Jan. 13—April 4.....	83	835	66	141	509
1865	Jan. 11—April 10.....	90	1,132	82	190	565
1866	Jan. 10—April 2.....	93	1,107	64	208	733
1867	Jan. 9—April 11.....	93	1,161	97	161	790
1868	Jan. 8—Mar. 6.....	59	987	73	119	692
1869	Jan. 13—Mar. 11.....	58	887	52	81	657
1870	Jan. 12—Mar. 17.....	65	1,043	54	89	666
1871	Jan. 11—Mar. 25.....	74	1,066	55	82	671
1872	Jan. 10—Mar. 26.....	77	709	79	124	322
1873	Jan. 8—Mar. 20.....	72	611	62	122	308
1874	Jan. 14—Mar. 12.....	58	688	91	111	349
1875	Jan. 13—Mar. 6.....	53	637	39	93	344
1876	Jan. 12—Mar. 14.....	63	715	57	115	415
1877	Jan. 10—Mar. 8.....	58	720	59	95	384
1878	Jan. 9—June 7.....	150	735	79	134	342
1878	Extra Sess. June 4-7.....	4	6	14	10	5
1879	Jan. 8—Mar. 5.....	57	610	49	105	256
1880	Jan. 14—Mar. 17.....	64	669	58	93	323
1881	Jan. 12—April 14.....	83	780	104	100	334
1882	Jan. 11—Mar. 31.....	80	728	57	90	330
1883	Jan. 10—April 4.....	85	705	75	100	360
1885	Jan. 14—April 13.....	90	963	97	108	471
1887	Jan. 12—April 15.....	94	1,293	114	60	553
1889	Jan. 9—April 19.....	101	1,355	136	82	529
1891	Jan. 14—April 25.....	102	1,216	137	91	483
1892	Spec. Sess. June 28—July 1.....	4	3	7	7	1
1892	Spec. Sess. Oct. 17-26.....	10	8	6	14	2
1893	Jan. 11—April 20.....	100	1,124	135	86	312
1895	Jan. 9—April 20.....	102	1,154	139	88	387
1896	Spec. Sess. Feb. 18-28.....	11	3	10	15	1
1897	Jan. 13—Aug. 20.....	220	1,077	155	39	381
1899	Jan. 11—May 4.....	114	910	113	40	355
1901	Jan. 9—May 15.....	127	1,091	81	39	470
1903	Jan. 14—May 23.....	130	1,115	65	81	451
1905	Spec. Sess. Dec. 4-19.....	16	24	15	26	17
1905	Jan. 11—June 21.....	162	1,357	134	101	523
1907	Jan. 9—July 16.....	189	1,685	205	84	677
1909	Jan. 13—June 18.....	157	1,567	213	49	550
1911	Jan. 11—July 15.....	186	1,710	267	37	665
1912	Spec. Sess. April 30—May 6.....	7	41	7	6	22
1913	Jan. 8—Aug. 9.....	214	1,847	175	79	778
1915	Jan. 13—Aug. 24.....	224	1,560	220	79	637
1916	Spec. Sess. Oct. 10-11.....	2	2	8	4	2
1917	Jan. 10—July 16.....	188	1,439	229	115	679
1918	Spec. Sess. Feb. 19—Mar. 9.....	19	27	22	28	16
1918	Spec. Sess. Sept. 24-25.....	2	2	6	9	2
1919	Jan. 8—July 30.....	204	1,350	268	100	703
1919	Spec. Sess. Sept. 4-8.....	5	7	4	6	7
1920	Spec. Sess. May 25—June 4.....	11	46	10	22	32
1921	Jan. 12—July 14.....	184	1,199	207	93	591
1922	Spec. Sess. Mar. 22-28.....	7	10	7	12	4

LENGTH OF WISCONSIN LEGISLATIVE SESSIONS—Continued

Year	Length of Session	Days	Measures Introduced			Laws En-acted
			Bills	Joint Resolu-tions	Resolu-tions	
1923	Jan. 10—July, 14.....	186	1,247	215	93	449
1925	Jan. 14—June 29.....	167	1,144	200	115	454
1926	Spec. Sess. April 15-16.....	2	1	8	12	1
1927	Jan. 12—Aug. 13.....	214	1,341	235	167	542
1928	Spec. Sess. Jan. 24—Feb. 4.....	12	20	35	23	5
1928	Spec. Sess. Mar. 6-13.....	8	13	9	17	2
1929	Jan. 9—Sept. 20.....	255	1,366	278	185	530
1931	Jan. 14—June 27.....	165	1,429	291	160	487
1931	Spec. Sess. Nov. 24, '31— Feb. 5, '32.....	74	99	93	83	31
1933	Jan. 11—July 25.....	196	1,411	324	157	496
1933	Spec. Sess. Dec. 11, '33— Feb. 3, '34.....	55	45	160	53	25
1935	Jan. 9—Sept. 27.....	262	1,662	346	190	556



Cheese press about 100 years old.

SPEAKERS OF THE ASSEMBLY

1848-1935

Legislature	Name	Counties	Date
1.	Ninian E. Whitesides	Lafayette	1848
2.	Harrison C. Hobart	Sheboygan	1849
3.	Moses M. Strong	Iowa	1850
4.	Frederick W. Horn	Washington	1851
5.	James M. Schafter	Sheboygan	1852
6.	Henry L. Palmer	Milwaukee	1853
7.	Frederick W. Horn	Ozaukee	1854
8.	Charles C. Scholes	Kenosha	1855
9.	William Hull	Grant	1856
10.	Wyman Spooner	Walworth	1857
11.	Frederick S. Lovell	Kenosha	1858
12.	William P. Lyon	Racine	1859
13.	William P. Lyon	Racine	1860
14.	Amasa Cobb	Iowa	1861
15.	James W. Beardsley	Pierce	1862
16.	J. Allen Barber	Grant	1863
17.	William W. Field	Grant	1864
18.	William W. Field	Grant	1865
19.	Henry D. Barron	Polk	1866
20.	Angus Cameron	La Crosse	1867
21.	Alexander M. Thomson	Rock	1868
22.	Alexander M. Thomson	Rock	1869
23.	James M. Bingham	Jefferson	1870
24.	William E. Smith	Dodge	1871
25.	Daniel Hall	Jefferson	1872
26.	Henry D. Barron	Polk	1873
27.	Gabe Bouck	Winnebago	1874
28.	Frederick W. Horn	Ozaukee	1875
29.	Sam S. Fifield	Ashland	1876
30.	John B. Cassoday	Rock	1877
31.	Augustus R. Barrows	Chippewa	1878
32.	David M. Kelly	Brown	1879
33.	Alexander A. Arnold	Trempealeau	1880
34.	Ira B. Bradford	Eau Claire	1881
35.	Franklin L. Gilson	Pierce	1882
36.	Earl P. Finch	Winnebago	1883
37.	Hiram O. Fairchild	Marinette	1885
38.	Thomas B. Mills	Jackson	1887
39.	Thomas B. Mills	Jackson	1889
40.	James J. Hogan	La Crosse	1891
41.	Edward Keogh	Milwaukee	1893
42.	George B. Burrows	Dane	1895
43.	George A. Buckstaff	Winnebago	1897
44.	George H. Ray	La Crosse	1899
45.	George H. Ray	La Crosse	1901
46.	Irvine L. Lenroot	Douglas	1903
47.	Irvine L. Lenroot	Douglas	1905
48.	Herman L. Ekern	Trempealeau	1907
49.	L. H. Bancroft	Richland	1909
50.	C. A. Ingram	Pepin	1911
51.	Merlin Hull	Jackson	1913
52.	Lawrence C. Whittet	Rock	1915
53.	Lawrence C. Whittet	Rock	1917
54.	Riley S. Young	Walworth	1919
55.	Riley S. Young	Walworth	1921
56.	John L. Dahl	Barron	1923
57.	Herman Sachtjen*	Dane	1925
58.	John W. Eber	Milwaukee	1927
59.	Charles B. Perry	Milwaukee	1929
60.	Charles B. Perry	Milwaukee	1931
61.	Cornelius T. Young	Milwaukee	1933
62.	Jorge W. Carow	Rusk	1935

* George A. Nelson, Polk County, elected to serve at special session April 15, 1926 because of appointment of Herman Sachtjen as circuit judge.

CHIEF CLERKS OF THE LEGISLATURE

1848-1935

Session	Year	Senate	Assembly
1	1848	Henry G. Abbey	Daniel N. Johnson
2	1849	William R. Smith	Robert L. Ream
3	1850	William R. Smith	Alex T. Gray
4	1851	William Hull	Alex T. Gray
5	1852	John K. Williams	Alex T. Gray
6	1853	John K. Williams	Thomas McHugh
7	1854	Samuel G. Bugh	Thomas McHugh
8	1855	Samuel G. Bugh	David Atwood
9	1856	Byron Paine	James Armstrong
10	1857	William Henry Brisbane	William C. Webb
11	1858	John L. V. Thomas	L. H. D. Crane
12	1859	Hiram Bowen	L. H. D. Crane
13	1860	J. H. Warren	L. H. D. Crane
14	1861	J. H. Warren	L. H. D. Crane
15	1862	J. H. Warren	John S. Dean
16	1863	Frank M. Stewart	John S. Dean
17	1864	Frank M. Stewart	John S. Dean
18	1865	Frank M. Stewart	John S. Dean
19	1866	Frank M. Stewart	E. W. Young
20	1867	Leander B. Hills	E. W. Young
21	1868	Leander B. Hills	E. W. Young
22	1869	Leander B. Hills	E. W. Young
23	1870	Leander B. Hills	E. W. Young
24	1871	O. R. Smith	E. W. Young
25	1872	J. H. Waggoner	E. W. Young
26	1873	J. H. Waggoner	E. W. Young
27	1874	J. H. Waggoner	George W. Peck
28	1875	Fred A. Dennett	R. M. Strong
29	1876	A. J. Turner	R. M. Strong
30	1877	A. J. Turner	W. A. Nowell
31	1878	A. J. Turner*	
32	1879	Charles E. Bross	Jabez R. Hunter
33	1880	Charles E. Bross	John E. Eldred
34	1881	Charles E. Bross	John E. Eldred
35	1882	Charles E. Bross	John E. Eldred
36	1883	Charles E. Bross	E. D. Coe
37	1885	Charles E. Bross	I. T. Carr
38	1887	Charles E. Bross	E. D. Coe
39	1889	Charles E. Bross	E. D. Coe
40	1891	J. P. Hume	E. D. Coe
41	1893	Sam J. Shafer	George W. Porth
42	1895	Walter L. Houser	George W. Porth
43	1897	Walter L. Houser	W. A. Nowell
44	1899	Walter L. Houser	W. A. Nowell
45	1901	Walter L. Houser	W. A. Nowell
46	1903	Theodore W. Goldin	W. A. Nowell
47	1905	L. K. Eaton	C. O. Marsh
48	1907	A. R. Emerson	C. O. Marsh
49	1909	F. E. Andrews	C. E. Shaffer
50	1911	F. M. Wylie	C. E. Shaffer
51	1913	F. M. Wylie	C. E. Shaffer
52	1915	O. G. Munson	C. E. Shaffer
53	1917	O. G. Munson	C. E. Shaffer
54	1919	O. G. Munson	C. E. Shaffer
55	1921	O. G. Munson	C. E. Shaffer
56	1923	F. W. Schoenfeld	C. E. Shaffer
57	1925	F. W. Schoenfeld	C. E. Shaffer
58	1927	O. G. Munson	C. E. Shaffer
59	1929	O. G. Munson	C. E. Shaffer
60	1931	R. A. Cobban	C. E. Shaffer
61	1933	R. A. Cobban	John J. Slocum
62	1935	Lawrence R. Larson	Lester R. Johnson

* Resigned February 7, 1875, and Charles E. Bross elected to fill vacancy; also elected Chief Clerk for extra session in June 1878.

SERGEANTS-AT-ARMS OF THE LEGISLATURE

1848-1935.

Session	Year	Senate	Assembly
1	1848	Lyman H. Seaver	John Mullanphy
2	1849	F. W. Shollner	Felix McLinden
3	1850	James Hanrahan	E. R. Hugunin
4	1851	E. D. Masters	C. M. Kingsbury
5	1852	Patrick Cosgrove	Elisha Starr
6	1853	Thomas Hood	Richard F. Wilson
7	1854	J. M. Sherwood	William H. Gleason
8	1855	William H. Gleason	William Blake
9	1856	Joseph Baker	Egbert Mosely
10	1857	Alanson Filer	William C. Rogers
11	1858	Nathaniel L. Stout	Francis Massing
12	1859	Asa Kinney	Emanuel Munk
13	1860	Asa Kinney	Joseph Gates
14	1861	J. A. Hadley	Craig B. Peebe
15	1862	B. U. Caswell	A. A. Huntington
16	1863	Luther Bashford	A. M. Thompson
17	1864	Nelson Williams	A. M. Thompson
18	1865	Nelson Williams	Alonzo Wilcox
19	1866	Nelson Williams	L. M. Hammond
20	1867	Asa Kinney	Daniel Webster
21	1868	W. H. Hamilton	C. L. Harris
22	1869	W. H. Hamilton	Rolin C. Kelly
23	1870	E. M. Rogers	Ole C. Johnson
24	1871	W. W. Baker	Sam S. Fifield
25	1872	W. D. Hoard	Sam S. Fifield
26	1873	Albert Emonson	O. C. Bissel
27	1874	O. U. Aiken	Joseph Deuster
28	1875	O. U. Aiken	J. W. Brackett
29	1876	E. T. Gardner	Elisha Starr
30	1877	C. E. Bullard	Thomas B. Reid
31	1878	L. J. Brayton	Anton Klaus
32	1879	Chalmers Ingersoll	Miletus Knight
33	1880	Chalmers Ingersoll	D. H. Pulcifer
34	1881	W. W. Baker	G. W. Church
35	1882	A. T. Glaze	D. E. Welch
36	1883	A. D. Thorp	Thomas Kennedy
37	1885	Hubert Wolcott	John M. Ewing
38	1887	T. J. George	William A. Adamson
39	1889	T. J. George	F. E. Parsons
40	1891	John A. Barney	Patrick Whelan
41	1893	John B. Becker	Theodore Knapstein
42	1895	Charles Pettibone	B. F. Millard
43	1897	Charles Pettibone	C. M. Hambricht
44	1899	Charles Pettibone	James H. Agen
45	1901	Charles Pettibone	A. M. Anderson
46	1903	Sanfield McDonald	A. M. Anderson
47	1905	R. C. Falconer	Nicholas Streveler
48	1907	R. C. Falconer	W. S. Irvine
49	1909	R. C. Falconer	W. S. Irvine
50	1911	C. A. Leicht	W. S. Irvine
51	1913	C. A. Leicht	W. S. Irvine
52	1915	F. E. Andrews	W. S. Irvine
53	1917	F. E. Andrews	T. G. Cretney
54	1919	John Turner	T. G. Cretney
55	1921	Vincent Kielpinski	T. G. Cretney
56	1923	C. A. Leicht	T. W. Bartingale
57	1925	C. A. Leicht	C. E. Hanson
58	1927	George W. Rickeman	C. F. Moulton
59	1929	George W. Rickeman	C. F. Moulton
60	1931	Emil A. Hartman	Gustave Rheingans
61	1933	Emil A. Hartman	George C. Faust
62	1935	Emil A. Hartman	Gustave Rheingans

MEMBERS OF WISCONSIN LEGISLATURE

From 1927 to 1935 Inclusive

For 1848 to 1913, inclusive, see Wisconsin Blue Book, 1915.

For 1915 see Biographical List in Wisconsin Blue Book, 1915.

For 1917 to 1925, inclusive, see Wisconsin Blue Book, 1927.

SENATORS

Name	Post Office Address	District Represented	Sessions
Anderson, J. A.	Barron	29	1931, 33, 35
Barker, J. A.	Antigo	30	1927, 29, 35**
Blanchard, G. W.	Edgerton	15	1927, 29, 31, 33**
Boldt, H. E.	Sheboygan Falls	20	1927, 29, 31
Bolens, H. W.	Port Washington	20	1933, 35
Brunette, E. F.	Green Bay	2	1933, 35*
Caldwell, Robert	Lodi	27	1927, 29**
Callan, J. L.	Milwaukee	9	1935
Carroll, J. H.	Glidden	12	1927, 29, 31, 33, 35
Carroll, W. D.	Prairie du Chien	16	1933, 35
Cashman, J. E.	Denmark	1	1927, 29, 31, 33, 35
Casperson, C. B.	Frederic	29	1927, 29**
Chase, J. B.	Oconto	2	1927
Clancy, Joseph	Racine	21	1935*
Clifford, E. A.	Juneau	13	1931, 33
Coakley, Maurice	Beloit	15	1935
Daggett, H. B.	West Milwaukee	8	1927, 29, 31
Dempsey, C. F.	Hartland	33	1935
Duncan, T. N.	Milwaukee	6	1929, 31* **
Edwards, W. H.	Sussex	33	1931, 33* **
Engelbreton, George	South Wayne	17	1933, 35
Englund, John	Wittenberg	14	1927
Fellenz, L. J.	Fond du Lac	18	1929, 31
Fons, L. C.	Milwaukee	7	1931, 33
Galasinski, M. J.	Milwaukee	7	1935*
Gehrmann, B. J.	Mellen	12	1933, 35*
Gottelman, Bernhard	Milwaukee	5	1927, 29, 31, 33**
Goodland, W. S.	Racine	21	1927, 29, 31, 33
Griswold, H. W.	West Salem	32	1933, 35
Groves, H. M.	Madison	26	1935*
Hall, E. S.	Green Bay	2	1929, 31
Hull, G. W.	Whitewater	22	1927
Hunt, W. H.	River Falls	10	1927, 29, 31, 33, 35
Hutchinson, C. W.	Mineral Point	17	1927, 29**
Ingram, G. E.	Eau Claire	28	1933, 35*
Johnson, O. H.	Gratiot	17	1927
Johnson, R. B.	Superior	11	1929**
Kannenber, R. E.	Wausau	25	1935
Kelly, M. G.	Fond du Lac	18	1933, 35
Keppel, V. S.	Holmen	32	1927, 29, 31
Lange, H. T.	Eau Claire	28	1927
Leverich, Earl	Sparta	31	1935
Loomis, O. S.	Mauston	31	1931, 33*
McDermid, J. E.	Ladysmith	12	1935
Mack, Mike	Shiocton	14	1933, 35
Markham, William	Horicon	13	1927, 29
Mehigan, I. P.	Milwaukee	9	1927, 29, 31, 33
Miller, A. M.	Kaukauna	14	1929, 31* **
Morris, O. H.	Milwaukee	4	1927, 29, 31, 33, 35
Morrissey, P. A.	Rush Lake	19	1935
Mueller, Otto	Wausau	25	1927, 29, 31, 33
Nelson, P. E.	Maple	11	1931, 33, 35*
Olson, William	Monroe	17	1931**
Panzer, F. E.	Oakfield	13	1935*
Phillips, C. H.	Milwaukee	6	1933, 35
Polakowski, Walter	Milwaukee	3	1927, 29, 31, 33* **
Reis, A. C.	Madison	26	1933*

* See List of Assemblymen.

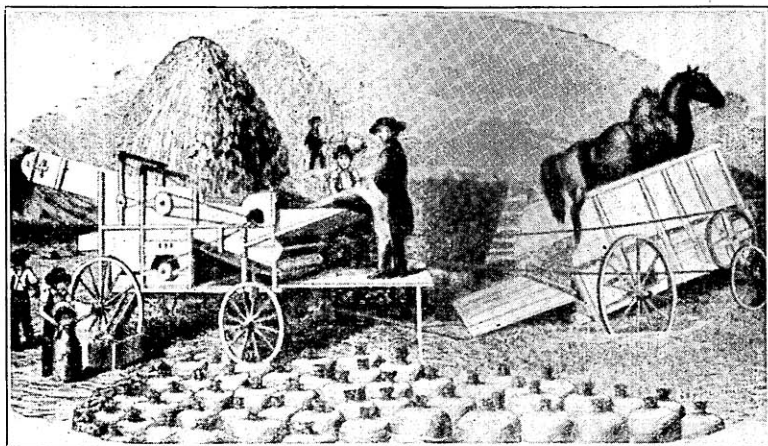
** See List of Assemblymen, Wisconsin Blue Book, 1927.

SENATORS—Continued

Name	Post Office Address	District Represented	Sessions
Roberts, G. D.-----	Madison-----	26	1929, 31
Roethe, E. J.-----	Fennimore-----	16	1927, 29, 31
Rowlands, E. M.-----	Cambria-----	27	1935 *
Ruffing, A. C.-----	Milwaukee-----	6	1927**
Rush, W. J.-----	Neillsville-----	24	1929, 31, 33, 35
Sauthoff, Harry-----	Madison-----	26	1927
Schoenecker, H. V.-----	Milwaukee-----	5	1935
Schumann, J. C.-----	Watertown-----	33	1927, 29
Severson, H. J.-----	Iola-----	23	1927, 29, 31, 33, 35
Shearer, Conrad-----	Kenosha-----	22	1929, 31, 33, 35* **
Shenners, W. H.-----	Milwaukee-----	8	1933, 35
Smith, H. H.-----	Milwaukee-----	7	1927, 29**
Smith, P. J.-----	Eau Claire-----	28	1929, 31
Smith, W. L.-----	Neillsville-----	24	1927**
Teasdale, Howard-----	Sparta-----	31	1927, 29
Titus, W. A.-----	Fond du Lac-----	18	1927
Wade, S. W.-----	Antigo-----	30	1933, 35
White, M. F.-----	Winneconne-----	19	1927, 29, 31, 33
Zantow, F. W.-----	Baraboo-----	27	1931, 33, 35
Zimny, A. L.-----	Milwaukee-----	3	1935

* See List of Assemblymen.

** See List of Assemblymen, Wisconsin Blue Book, 1927.



J. I. Case threshing machine, 1850.

ASSEMBLYMEN

Name	Post Office Address	District Represented	Sessions
Alfonsi, P. R.	Pence	Iron, Vilas	1933, 35
Ashley, L. H.	Hudson	St. Croix	1929
Aune, H. A.	Baldwin	St. Croix	1931
Bachhuber, F. E.	Wausau	Marathon, 2nd	1933
Baker, A. J.	Mt. Horeb	Dane, 3rd	1927, 29, 31, 33, 35
Baker, J. S.	Evansville	Rock, 1st	1927
Balzer, A. J.	West Allis	Milwaukee, 3rd	1933
Barber, J. L.	Marathon	Marathon, 1st	1929, 35
Barnard, C. A.	Brillion	Calumet	1929
Barnes, W. H.	New Lisbon	Juneau	1935
Baumann, E. H.	Milwaukee	Milwaukee, 11th	1927
Bay, William	Kaukauna	Outagamie, 2nd	1931, 35
Beck, Walter	North Freedom	Fond du Lac, 2nd	1929
Beck, Lorenz	Woodland	Dodge, 1st	1931
Beggs, C. A.	Rice Lake	Barron	1927, 29, 31, 35
Benson, John	Land O' Lakes	Iron, Vilas	1931
Bergsen, H. B.	Siren	Burnett, Washburn	1935
Berres, M. J.	Edgar	Marathon, 1st	1927
Biehler, N. J.	Belgium	Ozaukee	1935
Bingham, G. W.	Friendship	Adams, Marquette	1929
Blahnik, J. J.	Algoma	Kewaunee	1931
Bliese, G. E.	Phillips	Price	1931
Blomquist, E. E.	Adams	Adams, Marquette	1935
Brandt, B. E.	Lena	Oconto	1935
Brunette, E. F.	Green Bay	Brown, 2nd	1929
Budlong, C. A.	Marinette	Marinette	1927, 29, 31, 33
Buntin, A. J.	Milwaukee	Milwaukee, 14th	1929
Burnham, D. F.	Waupaca	Waupaca	1929, 31
Burtis, I. E.	Beaver Dam	Dodge, 2nd	1931
Busby, A. J.	Milwaukee	Milwaukee, 19th	1931, 35
Caffrey, T. H.	Milwaukee	Milwaukee, 15th	1933, 35
Caldwell, W. G.	Waukesha	Waukesha, 1st	1933
Callahan, K. K.	Montello	Adams, Marquette	1931, 33
Carow, J. W.	Ladysmith	Rusk, Sawyer	1929, 31, 33, 35
Cavanaugh, J. T.	Antigo	Langlade	1933, 35
Charbonneau, Agnes	Superior	Douglas, 1st	1931
Chermak, Frank	Milwaukee	Milwaukee, 10th	1933
Chmurski, A. J.	Milwaukee	Milwaukee, 11th	1929
Clancy, Joseph	Racine	Racine, 1st	1933
Clemens, B. A.	Cuba City	Grant, 1st	1933, 35
Coleman, W. C.	Milwaukee	Milwaukee, 20th	1927
Conway, J. P.	Elroy	Juneau	1933
Conway, T. H.	Milwaukee	Milwaukee, 1st	1927, 29
Cords, F. W.	Milwaukee	Milwaukee, 6th	1929
Daugs, P. F.	Fort Atkinson	Jefferson	1933, 35
Davies, E. G.	Wales	Waukesha, 1st	1927, 29, 31
Dettinger, W. F.	Hixton	Jackson	1931, 33
Dewey, C. E.	Kenosha	Kenosha, 1st	1929
Dieringer, T. J.	Campbellsport	Fond du Lac, 2nd	1927
Dihring, J. M.	Brownsville	Dodge, 1st	1927, 29
Dolan, W. J.	Shawano	Shawano	1933
Donley, W. E.	Menomonie	Dunn	1933
Douglas, L. E.	Waukesha	Waukesha, 1st	1935
Dueholm, Marius	Luck	Polk	1931, 33, 35
Duncan, T. M.	Milwaukee	Milwaukee, 4th	1927
Eastman, L. D.	Lancaster	Grant, 2nd	1927, 29
Ebbe, P. R.	Marshfield	Wood	1927, 29, 31
Eber, J. W.	Milwaukee	Milwaukee, 10th	1927, 29, 31
Edwards, W. H.	Sussex	Waukesha, 2nd	1927, 29
Ellenbecker, Henry	Wausau	Marathon, 2nd	1927, 29, 31
Engel, Theodore	Milwaukee	Milwaukee, 15th	1927, 29, 31
Ermenc, John	Milwaukee	Milwaukee, 5th	1931
Evans, I. C.	Spring Green	Sauk	1933
Fitzsimons, Maurice, Jr.	Fond du Lac	Fond du Lac, 1st	1933, 35
Flatley, G. C.	Oconto Falls	Oconto	1933
Foley, J. L.	Wauwatosa	Milwaukee, 20th	1935
Fox, Jerome	Chilton	Calumet	1931, 33
Frank, J. R.	Antigo	Langlade	1927, 29, 31
Franzkowiak, M. B.	Milwaukee	Milwaukee, 11th	1933, 35
Furhman, Paul	Bowler	Shawano	1927, 29, 31, 35
Galasinski, M. J.	Milwaukee	Milwaukee, 13th	1933
Gamper, John	Medford	Taylor	1927, 29, 31
Garvens, J. L.	Milwaukee	Milwaukee, 19th	1933, 35
Gauer, George	Milwaukee	Milwaukee, 14th	1927
Gebert, Paul, Sr.	Merrill	Lincoln	1929
Gehrmann, B. J.	Mellen	Ashland	1927, 31
Genzmer, E. L.	Mayville	Dodge, 1st	1935
Gesicki, Leo	Merrill	Lincoln	1931
Gilbertson, E. G.	Black River Falls	Jackson	1927, 29

ASSEMBLYMEN—Continued

Name	Post Office Address	District Represented	Sessions
Goff, M. B.	Sturgeon Bay	Door	1929, 31
Goldthorpe, W. H.	Cuba City	Grant, 1st	1935
Graham, R. M.	Roberts	St. Croix	1927
Grandine, J. D.	Argonne	Florence, Forest, Oneida	1927, 29
Grass, F. N.	Sturgeon Bay	Door	1935
Grassman, Edward	Edgerton	Rock, 1st	1933, 35
Graves, W. R.	Prairie du Chien	Crawford	1931
Grimes, W. P.	Neenah	Winnebago, 2nd	1933, 35
Groschmidt, J. W.	So. Milwaukee	Milwaukee, 17th	1929, 31, 35
Grosvenor, A. C.	Kenosha	Kenosha, 1st	1933, 35
Groves, H. M.	Madison	Dane, 1st	1931*
Groves, W. F.	Lodi	Columbia	1935
Gwidt, S. J.	Rhineland	Florence, Forest, Oneida	1931
Hahn, Bernard	Fish Creek	Door	1927
Hall, E. D.	Tunnel City	Monroe	1927, 29, 31, 33, 35
Hall, M. H.	Superior	Douglas, 1st	1935
Halvorsen, H. S.	Westby	Vernon	1933, 35
Hamata, J. C.	Racine	Racine, 2nd	1933, 35
Hampel, George	Milwaukee	Milwaukee, 3rd	1931
Handrich, A. A.	Manawa	Waupaca	1935
Hanson, C. E.	River Falls	Pierce	1929
Hanson, J. C.	Deerfield	Dane, 2nd	1927, 29, 31, 33, 35
Hardgrove, J. H.	Eden	Fond du Lac, 2nd	1933
Harper, H. A.	Lancaster	Grant, 2nd	1931, 33, 35
Hemmy, P. A.	Humbird	Jackson	1935
Higgins, J. W.	Milwaukee	Milwaukee, 8th	1933
Hilker, E. F.	Racine	Racine, 2nd	1927, 29, 31
Hillman, Carl	Brillion	Calumet	1927
Hinkley, G. C.	West Allis	Milwaukee, 19th	1927
Hipke, G. H.	Stanley	Chippewa	1935
Hitt, Arthur	Alma	Buffalo and Pepin	1927, 29, 31, 33, 35
Hoesly, E. J.	New Glarus	Green	1927, 29, 31, 33, 35
Howard, M. F.	Milwaukee	Milwaukee, 17th	1935
Huber, J. J.	West Bend	Washington	1927, 29, 31
Huckstead, Arlo	Neillsville	Clark	1927, 29
Hunter, T. G.	Galesville	Trempealeau	1929
Husband, E. E.	Balsam Lake	Polk	1927, 29
Ingalls, Wallace	Racine	Racine, 1st	1927
Ingram, G. E.	Eau Claire	Eau Claire	1931*
Inman, I. E.	Beloit	Rock, 2nd	1933, 35
Jackson, J. S.	Mineral Point	Iowa	1927, 29, 31, 33, 35
Janke, C. W.	Sheboygan	Sheboygan, 1st	1929, 31
Jensen, J. H.	Grantsburg	Burnett & Washburn	1931
Johnson, J. E.	Brandon	Fond du Lac	1935
Jungers, John	Grafton	Ozaukee	1927
Kaiser, J. N.	Milwaukee	Milwaukee, 6th	1933, 35
Kamke, Richard	Merrill	Lincoln	1927
Kamper, J. H.	Franksville	Racine, 3rd	1927, 29, 31
Kay, W. A.	Spring Valley	Pierce	1931
Kehrein, Otto	Milwaukee	Milwaukee, 9th	1929, 31
Keller, R. J.	Sauk City	Sauk	1929, 31
Kellman, F. A.	Galesville	Trempealeau	1931, 33
Kelly, A. D.	Hudson	St. Croix	1933, 35
Kiefer, Edward	Milwaukee	Milwaukee, 18th	1931, 33, 35
Kieker, L. G.	Thiensville	Ozaukee	1929, 33
Kiesner, Julius	Milwaukee	Milwaukee, 9th	1927
Klug, N. R.	Milwaukee	Milwaukee, 20th	1929
Koegel, Arthur	Milwaukee	Milwaukee, 7th	1933, 35
Koenig, Carl	Loganville	Sauk	1927
Koenigs, Math	Fond du Lac	Fond du Lac, 1st	1927
Kostuck, J. T.	Stevens Point	Portage	1931, 33, 35
Krause, C. C.	Milwaukee	Milwaukee, 17th	1927
Kretlow, C. C.	Milwaukee	Milwaukee, 2nd	1933, 35
Krez, F. W.	Plymouth	Sheboygan, 2nd	1931
Kroenke, B. B.	Milwaukee	Milwaukee, 13th	1935
Kronschabl, H. L.	Crandon	Florence, Forest, Oneida	1935
Krueger, H. E.	Beaver Dam	Dodge, 2nd	1933, 35
Kryszak, Mrs. M. O.	Milwaukee	Milwaukee, 5th	1929, 33, 35
Kuptz, W. P.	Milwaukee	Milwaukee, 13th	1931
Laabs, A. W.	Appleton	Outagamie, 1st	1933, 35
Laack, Charles	Plymouth	Sheboygan, 2nd	1933, 35
La Bar, D. E.	Delavan	Walworth	1929, 31, 33, 35
Lacy, C. L.	Mercer	Iron and Vilas	1929
Laffey, Michael	Milwaukee	Milwaukee, 2nd	1927, 29, 31
Lamb, Francis	Madison	Dane, 1st	1933
Lamoureux, L. A.	Ashland	Ashland	1929
Lang, Ben.	Marshfield	Marathon, 1st	1931

* See List of Senators.

ASSEMBLYMEN—Continued

Names	Post Office Address	District Represented	Sessions
Lang, W. W.	Superior	Douglas, 1st	1927
Langve, D. M.	Westby	Vernon	1929, 31
Larson, J. L.	West Salem	La Crosse, 2nd	1927
Larson, Nels.	Neenah	Winnebago, 2nd	1927, 29, 31
Lawson, F. E.	Walworth	Walworth	1927
Lawton, Ray	Viola	Richland	1931
Leary, W. D.	Rice Lake	Barron	1933
Leidiger, Louis	Merrill	Lincoln	1933
Lomsdahl, Tom	Osseo	Trempealeau	1935
Long, J. L.	Grafton	Ozaukee	1931
Loomis, O. S.	Mauston	Juneau	1929*
Lorfeld, John	Cleveland	Manitowoc, 1st	1929, 31
Ludvigsen, A. R.	Hartland	Waukesha, 2nd	1935
Lynch, R. E.	Green Bay	Brown, 1st	1933, 35
Lyons, J. E.	Colby	Clark	1933
McDonald, Alex.	Markesan	Green Lake & Waushara	1933
McDowell, A. J.	Soldiers Grove	Crawford	1927, 29
McEachin, Neil	Rhineland	Florence, Forest, and Oneida	1933
Mahoney, G. E.	Kenosha	Kenosha, 2nd	1933
Malchow, H. C.	Green Bay	Brown, 1st	1927, 31
Martin, H. A.	Richland Center	Richland	1927, 29, 33
Mau, B. A.	West Salem	La Crosse, 2nd	1933
Mauthe, C. W.	Fond du Lac	Fond du Lac, 1st	1929, 31
Meisner, R. A.	Wausau	Marathon, 2nd	1935
Mentink, John	Cedar Grove	Sheboygan, 2nd	1927, 29
Mersch, M. J.	Stevens Point	Portage	1927, 29
Meyer, Emil	Milwaukee	Milwaukee, 4th	1931
Meyer, W. A.	Oshkosh	Winnebago, 1st	1929, 31
Michalski, C. F.	Milwaukee	Milwaukee, 12th	1935
Miller, J. D.	Menomonie	Dunn	1927, 29, 31, 35
Miller, A. J.	Milwaukee	Milwaukee, 16th	1927
Miller, A. M.	Kaukauna	Outagamie, 2nd	1927*
Miller, W. F.	West Salem	La Crosse, 2nd	1929, 31
Moldenhauer, E. F.	Clintonville	Waupaca	1933
Moore, W. H.	Sawyer	Door	1933
Moul, F. F.	Burnett	Dodge, 2nd	1929
Mulder, John	La Crosse	La Crosse, 1st	1929, 31, 33, 35
Murray, M. T.	Milwaukee	Milwaukee, 18th	1931, 33, 35
Nehs, V. W.	Neillsville	Clark	1935
Nelson, C. M.	Medford	Taylor	1935
Nelson, P. E.	Maple	Douglas, 2nd	1927, 29*
Nixon, R. A.	Washburn	Bayfield	1929, 31, 33
Novotny, Ray	Oshkosh	Winnebago, 1st	1933, 35
O'Connor, G. N.	Hancock	Green Lake & Waushara	1927, 29, 31
Olson, C. V.	Ashland	Ashland	1933, 35
O'Malley, John	Milwaukee	Milwaukee, 4th	1933, 35
Opachen, A. J.	Medford	Taylor	1933
Pahl, E. F.	Milwaukee	Milwaukee, 13th	1929
Panzer, F. E.	Oakfield	Dodge, 1st	1931*
Penniston, Dell	Argyle	Lafayette	1927, 29, 31
Perry, C. B.	Wauwatosa	Milwaukee, 20th	1929, 31, 33
Peterson, E. C.	Poplar	Douglas, 2nd	1935
Peterson, Frederick	Milwaukee	Milwaukee, 6th	1927
Peterson, R. W.	Berlin	Green Lake & Waushara	1935
Peterson, T. A.	Soldiers Grove	Crawford	1929, 35
Phalen, Eugene	West Allis	Milwaukee, 19th	1929
Pinn, R. L.	Superior	Douglas, 1st	1929
Piper, A. J.	Racine	Kenosha, 2nd	1929, 31
Polewczynski, L. S.	Milwaukee	Milwaukee, 8th	1927
Pohl, A. F.	Hartford	Washington	1935
Powell, L. W.	Kenosha	Kenosha, 1st	1931
Prescott, F. L.	Whitefish Bay	Milwaukee, 15th	1927, 29
Prince, J. E.	Jim Falls	Chippewa	1933
Pritchard, J. R.	Eau Claire	Eau Claire	1933, 35
Przybylski, J. J.	Milwaukee	Milwaukee, 5th	1929
Rakow, E. F.	Burlington	Racine, 3rd	1933, 35
Ramstack, G. W.	Milwaukee	Milwaukee, 13th	1933
Rasmus, I. E.	Chippewa Falls	Chippewa	1931
Reckard, M. H.	Milwaukee	Milwaukee, 14th	1931
Reis, A. C.	Madison	Dane, 1st	1927, 29*
Rheingans, G. E.	Chippewa Falls	Chippewa	1927, 29
Robinson, J. S.	Platteville	Lafayette	1933, 35
Roethel, Herman	Kiel	Manitowoc, 2nd	1927
Rohan, J. E.	Kaukauna	Outagamie, 2nd	1929
Rohan, W. M.	Kaukauna	Outagamie, 2nd	1933

* See List of Senators.

ASSEMBLYMEN—Continued

Name	Post Office Address	District Represented	Sessions
Rowlands, E. M.	Cambria	Columbia	1927, 29, 31, 33*
Rubin, Ben.	Milwaukee	Milwaukee, 6th	1931
Russell, J. E.	Hartford	Washington	1933
Ryan, D. P.	Milwaukee	Milwaukee	1935
Saugen, C. N.	Eleva	Eau Claire	1927, 29
Schauer, A. G.	Kewaunee	Kewaunee	1927, 29
Schenk, H. C.	Madison	Dane, 1st	1935
Scheuer, R. J.	Misconsin	Manitowoc, 2nd	1933
Schider, Adam	Manawa	Waupaca	1927
Schilling, H. W.	Onalaska	La Crosse, 2nd	1935
Schmidt, George	Arcadia	Trempealeau	1927
Schmiege, Oscar	Appleton	Outagamie, 1st	1927, 29, 31
Schmittfranz, J. R.	Thorp	Clark	1931
Schoenebeck, Carl	Lena	Oconto	1927, 29, 31
Schuette, Charles	Manitowoc	Manitowoc, 1st	1927
Schultz, A. C.	Bruce	Rusk and Sawyer	1927
Seftenberg, C. D.	Oshkosh	Winnebago, 1st	1927
Sellers, M. A.	Green Bay	Brown, 1st	1927
Shanger, L. S.	Ogema	Price	1929, 31
Shearer, Conrad	Kenosha	Kenosha, 1st	1927
Shimek, A. D.	Algoma	Kewaunee	1933, 35
Shortner, F. J.	Edgar	Marathon, 1st	1933
Sibbald, J. C.	Grandview	Bayfield	1935
Sieb, J. L.	Racine	Racine, 1st	1931, 35
Siebert, M. G.	Salem	Kenosha, 2nd	1935
Sigman, David	Two Rivers	Manitowoc, 2nd	1931, 35
Slagg, S. W.	Edgerton	Rock, 1st	1929, 31
Slater, H. G.	Milwaukee	Milwaukee, 12th	1929
Short, John	Chilton	Calumet	1935
Smith, A. E.	Viroqua	Vernon	1927
Smith, D. V.	Lake Mills	Jefferson	1927, 29, 31
Smith, E. G.	Beloit	Rock, 2nd	1927, 29, 31
Sonnenman, E. A.	Sheboygan	Sheboygan, 1st	1927
Spott, B. F.	Milwaukee	Milwaukee, 13th	1927
Springer, F. W.	Milwaukee	Milwaukee, 4th	1927
Staab, H. A.	Milwaukee	Milwaukee, 12th	1927
Staudenmaier, L. W.	Marinette	Marinette	1935
Steele, W. H.	Fewaukee	Waukesha, 2nd	1931, 33
Stephens, H. E.	Platteville	Grant, 1st	1927, 29, 31
Stone, Frank	Park Falls	Price	1929
Sullivan, T. A.	Reedsville	Manitowoc, 2nd	1927
Swanson, Theodore	Ellsworth	Pierce	1927, 35
Sweeney, W. J.	De Pere	Brown, 2nd	1933, 35
Telfer, A. A.	Elroy	Juneau	1927
Tews, G. L.	Milwaukee	Milwaukee, 5th, 11th	1927, 31
Thayer, L. L.	Birchwood	Burnett and Washburn	1927, 29
Thaisen, J. M.	Sheboygan	Sheboygan, 1st	1933, 35
Thompson, H. F.	Park Falls	Price	1927
Thompson, L. J.	Spooner	Burnett and Washburn	1933
Thompson, V. V.	Richland Center	Richland	1935
Tombleson, Lloyd	Ellsworth	Pierce	1933
Trego, R. W.	Merrill	Lincoln	1935
Tremain, Ben.	Hustler	Juneau	1931
Trembath, R. C.	Hustler	Iron and Vilas	1927
Ungrodt, Paul	Washburn	Bayfield	1927
Vaughan, B. M.	Wisconsin Rapids	Wood	1933, 35
Vincent, D. J.	Genoa City	Kenosha	1927
Vogel, O. A.	Manitowoc	Manitowoc, 1st	1935
Wegner, H. B.	Milwaukee	Milwaukee, 16th	1933, 35
Weinberg, M. E.	Superior	Douglas, 1st	1933
Weissleder, G. H.	Milwaukee	Milwaukee, 9th	1933, 35
Werner, E. C.	Milwaukee	Milwaukee, 17th	1933
Wenz, P. F.	Milwaukee	Milwaukee, 7th	1927, 29, 31
Westfahl, C. F.	Milwaukee	Milwaukee, 12th	1931
Westlund, J. E.	Superior	Douglas, 2nd	1931, 33
Wiczynski, B. C.	Milwaukee	Milwaukee, 8th	1931
Withrow, G. R.	La Crosse	La Crosse, 1st	1927
Woerth, G. J.	Sauk City	Sauk	1935
Woller, A. F.	Milwaukee	Milwaukee, 3rd	1927, 29
Wood, R. B.	Adams	Adams & Marquette	1927
Wruke, H. A.	Campbellsport	Fond du Lac, 2nd	1931
Yindra, F. A.	Manitowoc	Manitowoc, 1st	1933
Young, C. T.	Milwaukee	Milwaukee, 1st	1931, 33, 35
Zink, P. J.	Beaver Dam	Dodge, 2nd	1927
Zittlow, G. J.	West De Pere	Brown, 2nd	1927, 31

* See List of Senators.