
Legislative Branch of the State Government

THE LEGISLATURE

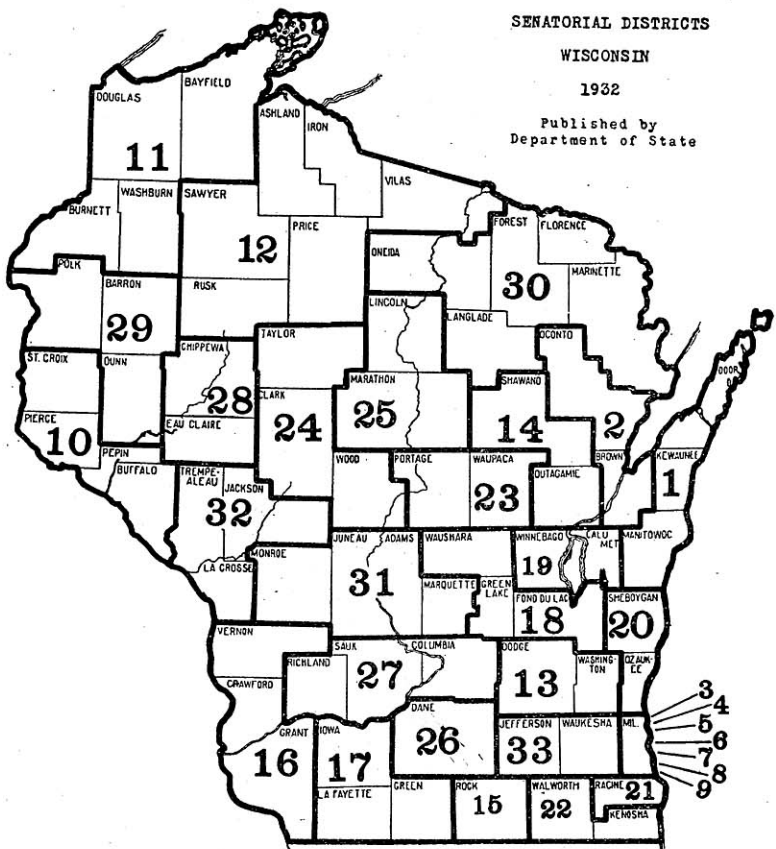
Total personnel: 133 members, 4 officers (besides the Lieutenant Governor and the Speaker), 105 employees.

Expenditures, fiscal year 1930-31: \$300,446, of which amount \$15,171 was by interim and special committees; fiscal year 1931-32, \$222,073, of which \$11,809 was by interim committees.

Appropriations, 1933-35: Legislature, a sum sufficient, with an allotment of \$1,000 per year to each house as a contingent fund. Should any interim committees be created special appropriations of limited amounts will, if the usual practice is followed, be made to them.

Publications: Journals of each house (daily during sessions and in bound form after their close); Manuals of each house (giving rules; Legislative Directory; Bulletins of committee hearings (weekly during sessions by each house); Bulletin of Proceedings (weekly during sessions after first five weeks and in bound form after close); Calendars (daily during sessions for use of members); Bills, Joint Resolutions; Amendments to bills and joint resolutions; Acts; Session Laws (published by the secretary of state after close of sessions); Interim Committee Reports. (All of the above publications except the Session Laws will be mailed as they appear for \$25 per session paid to the secretary of state for this service, or the acts alone, as published, for \$5. Single copies of these publications can be obtained, while the supply lasts, on request from members of the legislature or the legislative reference library. The Session Laws are sold by the director of purchases at cost.

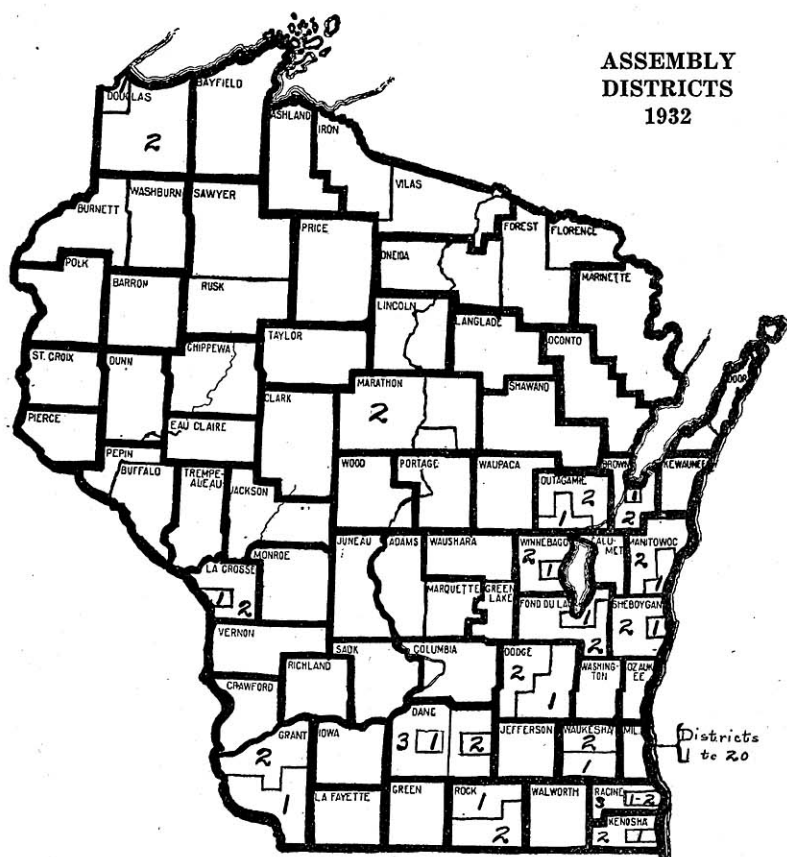
THE Wisconsin legislature consists of two houses, the senate and the assembly, the members of both of which are elected by the people in the November general election, from districts into which the state is divided by legislative act after each federal census. There are thirty-three senators, who are elected for terms of four years. The sixteen senators who represent even-numbered districts are elected in the years in which presidential elections occur and the seventeen who represent odd-numbered districts, in the even-numbered years in which there are no presidential elections. The assembly consists of one hundred members, elected for two-year terms. The present salary of both senators and assemblymen is \$100 per month throughout their term of office, plus which they receive ten cents per mile for one journey to and from the capitol during each session. They receive no additional compensation either for special sessions or for interim committee service.



Regular sessions of the legislature are held in each odd-numbered year, beginning on the second Wednesday in January. These regular sessions usually last about six months, and during such sessions the legislature may act upon any subject within the functions of the state government. After adjournment of the regular session, the legislature may be convened in special session by the Governor, but in special sessions can act only upon matters specifically mentioned in the call of the Governor. Since 1915 there have been ten special sessions, the longest of which lasted two and one-half months.

Each house elects its own officers, except that the lieutenant governor, under the constitution, is the president of the senate, with a casting vote in case of a tie. The corresponding officer in the assembly is the speaker, who is an assemblyman elected by the members. The other officers are a chief clerk and a sergeant-at-arms in each house, elected by the members. The legislature has a total of 105 employes, all of whom are appointed under civil service rules. These

ASSEMBLY DISTRICTS 1932



employees are under the direction of the chief clerks and sergeants-at-arms of the respective houses.

Meetings of the legislature are held in the state capitol in the chambers assigned respectively to the senate and the assembly. Under the rules of the houses daily sessions are held which, unless otherwise ordered, begin at 10:00 A. M., and these sessions usually last until noon or a little later. Frequently the houses begin work earlier than 10:00 A. M. and often hold night sessions. Toward the end of each regular session the houses meet practically continuously.

The afternoons of each day, until near the close of the session, are devoted to committee hearings. The assembly has 23 standing committees, the senate 9, but 6 of the assembly committees and 2 of the senate committees have other functions than the consideration of bills. The committees of the assembly are appointed by the speaker and those of the senate upon the recommendation of a committee on committees elected by the senate. In the senate the rule prevails that

each senator shall be appointed to one of the committees to which bills are referred and only one such committee, while in the assembly some members serve on more than one. The most important committee of two houses, the joint committee on finance, is a joint body, which acts and votes on all measures jointly. Other committees frequently arrange joint hearings, but act upon all measures independently. All bills upon introduction are referred to committees, which schedule hearings upon them. These hearings are announced in the bulletins of committee hearings, which appear on each Friday and list the hearings of the coming week. All hearings are held in the afternoon beginning at 2:00 P. M., usually in a room in the state capitol assigned to the particular committee.

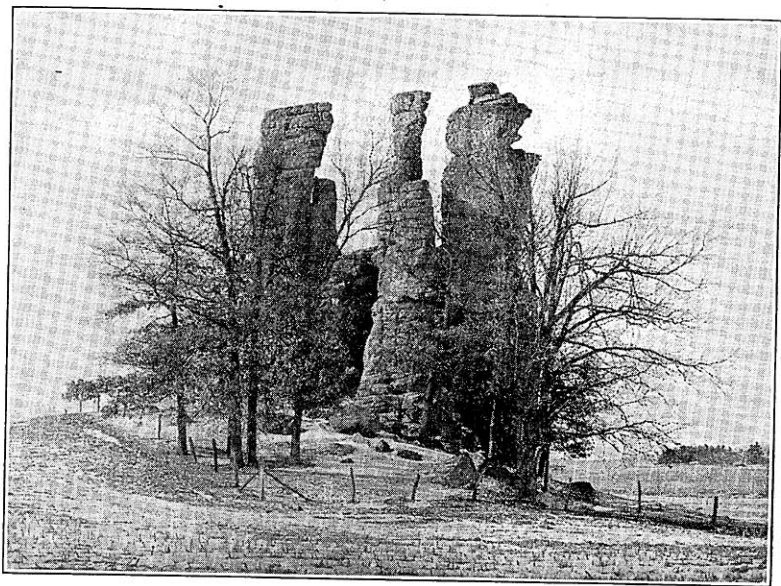
Besides the regular committees, some special committees are appointed during each legislative session. These study special problems or conduct special investigations. Each legislature also creates several interim committees to investigate special subjects. These committees function during the interval between legislative sessions and report their findings and recommendations to the next legislature. Interim committees have no bills referred to them and special committees only infrequently.

All bills and joint resolutions introduced in the legislature are printed, usually within one day after introduction. Under the Wisconsin procedure every bill introduced is given a public hearing, is reported upon by the committee to which it was referred, and is voted on in the house of its introduction—in both houses unless “killed” in the first. Amendments may be reported by the committee to which the measure was referred or may be offered by a member on the floor when it comes up for consideration. If passed by one house a bill is sent to the other and goes through the same course in the second house. If concurred in it is enrolled (i.e., printed in act form), signed by the presiding officers of the two houses and the chief clerk of the house in which it originated, and delivered by such clerk to the Governor. The Governor, within six days not counting Sundays or holidays, must either approve or veto the measure, except at the close of the session, when the bills die automatically unless signed by the Governor within ten days. If approved, he reports this fact to the house in which the bill originated and files the original copy, which carries his signature, with the secretary of state. If vetoed, he sends a veto message to the house in which the bill originated. This ends the bill unless it is repassed by a two-thirds vote in each house. After passage and approval by the Governor, acts are published in the official state paper, and usually take effect on the day following such publication, but may take effect at some other time as specified in the measure.

Each house of the legislature keeps a complete record of its proceedings known as the “Journal”. No verbatim record is kept of the debates in either house, nor of the statements made by persons appearing at committee hearings. A record is kept, however, of the names of the persons appearing, which after the session is filed in

the office of the secretary of state, together with the bill and the votes thereon.

The acts passed by the legislature are published, usually on the day after their approval, in the official state paper, now the *Sheboygan Press*. Later the Session Laws are issued in book form by the secretary of state, and soon thereafter the revisor of statutes issues the biennial *Wisconsin Statutes* in one volume which contains all of the permanent general statutes of the state, including those enacted at the last legislative session.



The Three Chimneys.
(Near Viroqua)

LEGISLATIVE DIRECTORY

Senate

196

WISCONSIN BLUE BOOK

Name	Address	District and Politics	Occupation	Committees
Anderson, J. A.	Barron	29-P. R.	Merchant	Agriculture and Labor
Blanchard, G. W. (Resigned Mar. 4, 1933)	411 Randolph St., Edgerton	15-R.	Attorney	Judiciary, Mortgage Foreclosures
Bolens, H. W.	1242 Grand Ave., Port Washington	20-D.	Manufacturer	Contingent Expenditures, Corporations and Taxation, State and Local Government, Small Loans Lobbying (Chm.)
Brunette, E. F.	R. 4, Green Bay	2-D.	Fuel and Lumber	Jt. Committee on Finance, Sources of Revenue for School Purposes, State Fair for 1933.
Carroll, W. D.	120 S. Michigan St., Prairie du Chien	16-D.	Hotel Keeper	Education and Public Welfare.
Cashman, J. E.	R. 1, Denmark	1-P. R.	Farmer	Highways (Chairman), Legislative Procedure, Huber Memorial Exercises (Chairman)
Clifford, E. A.	248 E. Oak St., Juneau	13-D.	Attorney	Judiciary, Farm Machinery Prices, Reduction in Cost of Government (Chm.)
Edwards, W. H.	Sussex	33-R.	Retired Farmer	Committee on Committees (Chairman), Corporations and Taxation, Legislative Procedure
Engebretson, George	R. 1, South Wayne	17-R.	Farmer	Contingent Expenditures, Education and Public Welfare, Mortgage Foreclosures
Fons, L. C.	3050 S. Superior St., Milwaukee	7-P. R.	Attorney	Judiciary, Building and Loan Ass'n Legislation
Gehrmann, B. J.	R. 1, Mellen	12-P. R.	Farmer	Contingent Expenditures, Agriculture and Labor, Investigation of Grain & Warehouse Commission, Mortgage Foreclosures, Stabilization of Milk Prices (Chairman)

Gettelman, Bernhard	2248 N. Hi-Mount Blvd., Milwaukee	5-I. R.	Publisher	Contingent Expenditures (Chairman), Education and Public Welfare, Legislative Procedure, Mortgage Foreclosures, Reduction in Cost of Gov't, Sources of Revenue for School Purposes (Chairman)
Goodland, W. S.	1632 Wisconsin St., Racine	21-R.	Editor	Jt. Committee on Finance, Stabilization of Milk Prices
Griswold, H. W.	West Salem	32-R.	Farmer	Agriculture and Labor, Building and Loan Ass'n Legislation (Chairman) Investigation of Dept. of Agriculture and Markets
Hunt, W. H.	River Falls	10-P. R.	Teacher and Farmer	Education and Public Welfare (Chm.), Legislative Procedure.
Ingram, G. E.	252 S. 11th St., Eau Claire	28-P. R.	Lawyer	Judiciary, Investigation of Dept. of Agriculture and Markets (Chm.)
Kelly, M. G.	184 E. 13th St., Fond du Lac	18-D.	Linotype Operator	Agriculture and Labor, Mortgage Foreclosures, Investigation of Quality and Price of Beer (Chairman), Investigation of Grain and Warehouse Commission (Chairman)
Loomis, O. S.	404 Tremont St., Mauston	31-R.	Lawyer	Education and Public Welfare, Legislative Procedure (Chairman), Mortgage Foreclosures (Chairman)
Mack, Mike	Shiocton	14-R.	Farmer	Highways
Mehigan, I. P.	231 W. Wisconsin Ave., Milwaukee	9-R.	Attorney	Judiciary, Investigation of Quality and Price of Beer.
Morris, O. H.	740 N. 2nd St., Milwaukee	4-R.	Dept. Mgr., Ass'n of Com.	Corporations and Taxation (Chairman) Legislative Procedure.
Mueller, Otto	615 Grand Ave., Wausau	25-R.	Real Estate Broker	Jt. Committee on Finance (Chairman) Legislative Procedure, Additional Farm Lands for State Prison (Chm.)
Nelson, P. E.	R. 1, Maple	11-R.	Farmer	Contingent Expenditures, Jt. Committee on Finance, Investigation of Grain and Warehouse Commission

LEGISLATIVE DIRECTORY—Continued

Name	Address	District and Politics	Occupation	Committees
Paul, A. M.	Milton Junction	15-D.	Farmer	State and Local Government
Phillips, C. H.	1230 N. 21st St., Milwaukee	6-D.	Lawyer	State and Local Government
Polakowski, Walter	2200 S. 11th St., Milwaukee	3-S.	Master Upholsterer	Corporations and Taxation, Building and Loan Ass'n Legislation
Reis, A. C.	414 Com. State Bank Bldg., Madison	26-R.	Lawyer	Corporations and Taxation, Stabiliza- tion of Milk Prices
Rush, W. J.	202 S. Clay St., Neillsville	24-P. R.	Lawyer	Committee on Committees, Jt. Com- mittee on Finance
Severson, H. J.	Iola	23-P. R.	Lawyer	Judiciary (Chairman), Legislative Pro- cedure, Huber Memorial Exercises, Farm Machinery Prices (Chairman), Small Loans Lobbying
Shearer, Conrad	520-68th Place, Kenosha	22-R.	Office Mgr., Sec'y	Agriculture and Labor (Chairman), Committee on Committees, Legisla- tive Procedure, Small Loans Lobby- ing, Huber Memorial Exercises
Shenners, W. H., Jr.	7207 W. Greenfield Ave., West Allis	8-D.	Real Estate & Insurance	State and Local Government, Mortgage Foreclosures, State Fair for 1933 (Chairman)
Wade, S. W.	107 E. Fifth Ave., Antigo	30-D.	Lumbering and Farming	Highways, Investigation of Dept. of Agriculture and Markets
White, M. F.	Winneconne	19-R.	Retired	Legislative Procedure, State and Local Government (Chairman)
Zantow, F. W.	R. 4, Box 30, Baraboo	27-P. R.	Farmer	State and Local Government

Assembly

Name	Address	Politics	Occupation	Committees
Alfonsi, P. R. Iron and Vilas	Pence	P. R.	Educator	Education.
Bachhuber, F. E. Marathon, 2nd	Wausau	D.	Lawyer	Judiciary, Building and Loan Ass'n Legislation, Small Loans Lobbying.
Baker, A. J. Dane, 3rd	Mt. Horeb	P. R.	Retired Farmer	Municipalities.
Balzer, A. J. Milwaukee, 3rd	1116 S. 85th St., West Allis	D.	Salesman	Labor (Chairman), Municipalities, State Fair for 1933.
Becker, Lorenz. Dodge, 1st	Woodland	D.	Insurance	Insurance and Banking, Labor.
Bliese, J. E. Price	R. No. 3, Phillips	D.	Farmer	Conservation (Chairman), Third Read- ing.
Budlong, C. A. Marinette	2628 Parkridge Ave., Marinette	I. R.	Retired	Elections, Highways, Farm Machinery Prices, Small Loans Lobbying, Huber Memorial Exercises.
Caffrey, T. H. Milwaukee, 15th	1956 N. 37th St., Milwaukee	D.	Machinist	Insurance and Banking, Public Welfare.
Caldwell, W. G. Waukesha, 1st	411 N. Grand Ave., Waukesha	D.	Civil Engineer	Highways (Chairman), Stabilization of Milk Prices.
Callahan, K. J. Adams & Marquette	Montello	R.	Lawyer	Judiciary, Small Loans Lobbying.
Carow, J. W. Rusk and Sawyer	Ladysmith	R.	Lawyer	Judiciary.
Cavanaugh, J. T. Langlade	622 Lincoln St., Antigo	D.	Lawyer	Judiciary, Rules.

LEGISLATIVE DIRECTORY—Continued

200

WISCONSIN BLUE BOOK

Name	Address	Politics	Occupation	Committees
Chermak, Frank Milwaukee, 10th	1318 Madison Ave., So. Milwaukee	D.	Insurance	State Affairs, (Chairman) Municipalities.
Clancy, Joseph Racine, 1st	1308 College Ave., Racine	D.	R. E., Ins., & Securities	Contingent Expenditures, Insurance & Banking, Small Loans Lobbying, Sources of Revenue for School Purposes.
Clemens, B. A. Grant, 1st	Cuba City	R.	Insurance & Justice of Peace	Highways, Revision.
Conway, J. P. Juneau	Elroy	D.	Farmer	Taxation, Revision, Investigation of Dept. of Agriculture and Markets.
Daugb, P. F. Jefferson	801 East St., Ft. Atkinson	D.	Salesman	Commerce & Manufactures (Chairman), Taxation.
Dettinger, W. F. Jackson	R. 1, Hixton	P. R.	Farmer	Revision, Transportation.
Dolan, W. J. Shawano	Shawano	D.	Real Estate & Insurance	Contingent Expenditures (Chairman), State Affairs, Reduction in cost of Government.
Donley, W. E. Dunn	Menomonie	D.	Lawyer	Judiciary, Commerce & Manufactures.
Dueholm, Marius Polk	R. 2, Luck	P. R.	Farmer	Engrossed Bills, Public Welfare.
Evans, I. C. Sauk	Spring Green	D.	Live Stock Dealer	Transportation (Chm.), State Affairs.
Fitzsimons, Maurice, Jr. Fond du Lac, 1st	P. O. Box 129, Fond du Lac	D.	Fur Farmer, Retail Shoes	Excise and Fees, Finance, State Fair for 1933, Additional Farm Hands for State Prison.
Flatley, G. C. Oconto	Oconto Falls	D.	Furniture Dealer	Conservation, Public Welfare.

Fox, Jerome ----- Calumet	121 No. State St., Chilton
Franzkowiak, M. B. ----- Milwaukee, 11th	2501 S. 15th St., Milwaukee
Galasinski, M. J. ----- Milwaukee, 12th	2483 S. 6th St., Milwaukee
Garvens, J. L. ----- Milwaukee, 19th	2435 N. 38th St., Milwaukee
Grassman, Edward ----- Rock, 1st	501 Washington St., Edgerton
Grimes, W. P. ----- Winnebago	R. 3, Neenah
Grosvenor, A. C. ----- Kenosha, 1st	5933 7th Avenue, Kenosha
Hall, E. D. ----- Monroe	Tunnel City
Halvorsen, H. S. ----- Vernon	Westby
Hamata, J. C. ----- Racine, 2nd	1659 N. Main St., Racine
Hanson, J. C. ----- Dane, 2nd	Deerfield
Hardgrove, J. H., M. D. ----- Fond du Lac, 2nd	Eden
Harper, H. A. ----- Grant, 2nd	Lancaster
Higgins, J. W. ----- Milwaukee, 8th	2319 W. Michigan St., Milwaukee
Hitt, Arthur ----- Buffalo and Pepin	R. 2, Alma

D.	Lawyer -----	Judiciary, (Chairman), Elections, Rules.
D.	Retired Grocer -----	Conservation, Education.
D.	Retired -----	Municipalities (Chairman), Commerce and Manufactures, Excise & Fees.
D.	Real Estate -----	Commerce and Manufactures, Taxation, Labor.
R.	Tobacco Buyer, Farm Owner -----	Insurance and Banking.
D.	Farmer -----	Revision (Chairman), Agriculture.
D.	Prop. Mgr. & Merchant -----	State Affairs, Taxation.
R.	Farmer -----	Contingent Expenditures, Transporta- tion.
P. R.	Hardware Dealer -----	Education.
D.	Secretary -----	Finance (Chairman).
R.	Farmer -----	State Affairs.
D.	Physician -----	Public Welfare.
R.	Farmer -----	Commerce and Manufactures, State Affairs.
D.	Mgr. Cleaning and Dyeing -----	Excise and Fees, State Affairs.
P. R.	Farmer -----	Contingent Expenditures, Transporta- tion.

LEGISLATIVE DIRECTORY—Continued

Name	Address	Politics	Occupation	Committees
Hoesly, E. J. Green	New Glarus	R.	Stock Dealer	Finance.
Inman, Ira	Beloit	R.	Farmer	Municipalities.
Jackson, J. S. Iowa	R. 4, Mineral Point	R.	Farmer	Agriculture.
Kaiser, J. N. Milwaukee, 6th	Milwaukee	D.	Salesman	Commerce & Manufactures, Highways.
Kellman, F. A. Trempealeau	Galesville	R.	Real Estate and Insurance ...	Public Welfare.
Kelly, A. D. St. Croix	R. No. 3, Hudson	P. R.	Farmer	Public Welfare.
Kiefer, E. H. Milwaukee, 18th	2603 W. Nash St., Milwaukee	S.	Painter and Decorator	Education, Third Reading.
Kieker, L. G. Ozaukee	Thiensville	D.	Prop. Hotel and Apt.	Excise and Fees, Highways, Huber Memorial Exercises.
Koegel, Arthur	2548A N. 15th St., Milwaukee	S.	Bricklayer	Elections.
Kostuck, J. T. Portage	Stevens Point	R.	Piano tuner	Education.
Kretlow, C. C. Milwaukee, 2nd	2113 W. Galena St., Milwaukee	D.	Mgr. Private Bowling Alley ..	Municipalities, Printing, State Affairs.
Krueger, H. E. Dodge, 2nd	R. 1, Beaver Dam	D.	Farmer	Rules (Chairman), Agriculture.
Kryszak, M. O. Milwaukee, 5th	2003 S. 11th St., Milwaukee	D.	Editor	Public Welfare, (Chm.), Education.

Laabs, A. W. Outagamie, 1st	347 W. College Ave., Appleton
Laack, Charles	R. 1, Plymouth
La Bar, D. E. Walworth	Delavan
Lamb, Francis	1 S. Pinckney St.
Leary, W. D. Barron	25 E. Marshall St., Rice Lake
Laidiger, Louis	1604 E. Main St., Merrill
Lynch, R. E. Brown, 1st	1144 Cass St., Green Bay
Lyons, J. E. Clark	Colby
Mahoney, G. E. Kenosha, 2nd	R. 2
Martin, H. A. Richland	Richland Center
Mau, B. A. La Crosse, 2nd	West Salem
McDonald, Alex. Green Lake and Waushara	Markesan
McEachin, Neil	Rhineland
Florence, Forest and Oneida	
Moldenhauer, E. F. Waupaca	Clintonville
Moore, W. H. Door	R. 1, Sawyer

R.	Real Estate Broker	Enrolled Bills, Labor.
D.	Farmer	Agriculture, Enrolled Bills.
R.	Various Interests	Insurance and Banking, Investigation of Dept. of Agriculture and Markets.
R.	Lawyer	Judiciary, Bldg. & Loan Ass'n Legisla- tion, Investigation of Quality and Price of Beer.
D.	Newspaper Publisher	Printing (Chairman), Insurance & Bank- ing, Building and Loan Ass'n Legis- lation (Chm.), Small Loans Lobbying.
D.	Mfr. of Soft Drinks	Excise and Fees (Chm.), Conservation.
D.	Salesman	Finance, Revision, Reduction in Cost of Government.
D.	Gen. Prod. Warehouse	Agriculture, Engrossed Bills.
D.	Farmer and Real Estate	Elections, Municipalities.
D.	Farmer & Sec. Live Stk. Ass'n	Agriculture (Chairman), Investigation of Dept. of Agriculture & Markets.
D.	Banker	Insurance & Banking (Chairman).
D.	Retired Farmer, R. E. & Ins.	Insurance and Banking.
D.	Attorney	Conservation, Judiciary.
D.	Editor	Taxation (Chm.), Transportation.
P. R.	Farmer	Conservation, Printing.

LEGISLATIVE DIRECTORY—Continued

Name	Address	Politics	Occupation	Committees
Mulder, John..... La Crosse, 1st	822 Rose St., La Crosse.....	R.	Retired.....	Excise and Fees, State Affairs.
Murray, M. T..... Milwaukee, 14th	3044 N. Maryland Ave., Milwaukee....	R.	Lawyer.....	Judiciary, State Fair for 1933.
Nixon, R. A..... Bayfield	Washburn.....	P. R.	Attorney.....	Taxation, Huber Memorial Exercises.
Novotny, Ray..... Winnebago, 1st	395-23rd St., Oshkosh.....	D.	Industrial Engineer.....	Finance, Investigation of Dept. of Agriculture & Markets, Sources of Revenue for School Purposes, Additional Farm Hands for State Prison.
Olson, C. V..... Ashland	Ashland.....	R.	Attorney.....	Education, Elections.
O'Malley, John..... Milwaukee, 4th	848 N. 9th St., Milwaukee.....	D.	Retired.....	Elections, Labor.
Opachen, A. J..... Taylor	R. 3, Medford.....	D.	Laborer.....	Engrossed Bills (Chairman), Agriculture.
Perry, C. B..... Milwaukee, 20th	7208 Milwaukee Ave., Wauwatosa.....	R.	Lawyer.....	Finance, Reduction in Cost of Gov't.
Peterson, T. A..... Crawford	Soldiers Grove.....	D.	Farmer.....	Agriculture, Contingent Expenditures.
Prince, J. E..... Chippewa	R. 1.....	P. R.	Farmer and Resort Owner.....	Agriculture, Printing.
Pritchard, J. T..... Eau Claire	R. 5, Eau Claire.....	R.	Farmer.....	State Affairs.
Rakow, E. F..... Racine, 3rd	391 Jefferson St., Burlington.....	D.	Retired.....	Education (Chm.), Municipalities.
Ramstack, G. W..... Milwaukee, 13th	2645 N. Second St., Milwaukee.....	D.	Railway Clerk.....	Transportation.

Robinson, J. S. Lafayette	Platteville	R.	Farmer	Labor.
Rohan, W. M. Outagamie, 2nd	R. 4, Kaukauna	D.	Farmer	Highways, Stabilization of Milk Prices, Investigation of Quality and Price of Beer.
Rowlands, E. M. Columbus	Cambria	P. R.	Banker	Insurance and Banking, Building and Loan Ass'n Legislation.
Russell, J. E. Washington	R. 5, Hartford	D.	Farmer	Third Reading (Chairman), Printing, State Affairs.
Scheuer, R. J. Manitowoc, 2nd	Mishicot	D.	Automobile Financing	Education, Investigation of Quality and Price of Beer.
Shimek, A. D. Kewaunee	Algoma	D.	Automobiles and Farm Imp...	Finance.
Shortner, F. J. Marathon, 1st	Edgar	D.	Real Estate and Insurance	Agriculture, Labor, Stabilization of Milk Prices.
Steele, W. H. Waukesha, 2nd	Pewaukee	R.	Farmer	Agriculture, Taxation, Stabilization of Milk Prices.
Sweeney, W. J. Brown, 2nd	P. O. Box 232, De Pere	D.	Farmer	Labor, Municipalities.
Theisen, J. M. Sheboygan, 1st	1904 Calumet Drive, Sheboygan	D.	Accountant and Notary	Elections (Chairman), Commerce and Manufactures.
Thompson, L. J. Burnett and Washburn	Spooner	D.	Insurance	Finance.
Tombleson, Lloyd .. Pierce	Ellsworth	R.	Farmer	Municipalities, Stabilization of Milk Prices, Sources of Revenue for School Purposes.
Vaughan, B. M. Wood	121 Drake St., Wisconsin Rapids	R.	Lawyer	Municipalities.
Wegner, H. B. Milwaukee, 16th	1305 W. Cottage Place, Milwaukee	S.	Leather Garment Cutter	Labor.
Weinberg, M. E. Douglas, 1st	1017 Hammond Ave., Superior	D.	Salesman	Enrolled Bill, (Chairman), Highways.

LEGISLATIVE DIRECTORY—Continued

Name	Address	Politics	Occupation	Committees
Weissleder, G. H.----- Milwaukee, 9th	2813 N. 54th St., Milwaukee-----	D.	Lawyer-----	Judiciary, Transportation, Building and Loan Ass'n Legislation.
Werner, E. C.----- Milwaukee, 17th	3212 S. Indiana Ave., Milwaukee-----	D.	Barber-----	Finance.
Westlund, J. E.----- Douglas, 2nd	Superior-----	R.	Pharmacist-----	Conservation, Excise and Fees.
Yindra, F. A.----- Manitowoc, 1st	904 S. 8th St., Manitowoc-----	D.	Lawyer-----	Judiciary, Rules.
Young, C. T.----- L. Milwaukee, 1st	735 N. Water St., Room No. 1424, Milwaukee-----	D.	Attorney-----	Rules (ex officio).

OFFICERS OF THE SENATE, 1933

Thomas J. O'Malley, Lieutenant Governor, Milwaukee.....President
 Orland S. Loomis, MaustonPresident Pro Tem
 R. A. Cobban, MadisonChief Clerk
 Emil A. Hartman, Madison.....Sergeant-at-Arms

STANDING COMMITTEES OF THE SENATE

Committee on Committees—Senators Edwards (Chairman), Shearer, Rush.
Committee on Legislative Procedure — Senators Loomis (Chairman),
 Shearer, Morris, Edwards, White, Hunt, Severson, Cashman, Mueller, Get-
 telman.

Agriculture and Labor—Senators Shearer (Chairman), Griswold, Ander-
 son, Gehrmann, Kelly.

Contingent Expenditures—Senators Gettelman (Chairman), Nelson, Gehr-
 mann, Bolens, Engebretson.

Corporations and Taxation—Senators Morris (Chairman), Edwards, Pola-
 kowski, Reis, Bolens.

Education and Public Welfare—Senators Hunt (Chairman), Gettelman,
 Loomis, Ingram, Carroll.

Highways—Senators Cashman (Chairman) Mack, Wade.

Judiciary—Senators Severson (Chairman), Mehigan, Fons, Clifford,
 Blanchard.

State and Local Government—Senators White (Chairman), Zantow, Shen-
 ners, Phillips, Engebretson.

Joint Committee on Finance—Senators Mueller (Chairman), Goodland,
 Rush, Nelson and Brunette. Assemblymen Hamata (Chairman), Perry,
 Hoesly, Novotny, Lynch, Fitzsimons, Thompson, Werner, and Shimek.

SPECIAL COMMITTEES

Building and Loan Association Legislation—Senators Griswold (Chair-
 man), Fons, Polakowski.

Investigation of Grain and Warehouse Commission—Senators Kelly (Chair-
 man), Nelson, Gehrmann.

Mortgage Foreclosures—Senators Loomis (Chairman), Gehrmann, Kelly,
 Shenners, Gettelman, Engebretson, Blanchard.

OFFICERS OF THE ASSEMBLY, 1933

Cornelius T. Young, Milwaukee.....Speaker
 John J. Slocum, Wausau.....Chief Clerk
 George C. Faust, Oshkosh.....Sergeant-at-Arms

STANDING COMMITTEES OF THE ASSEMBLY

Agriculture—Martin (Chairman), Lyons, Krueger, Opachen, Grimes,
 Shortner, Peterson, Laack, Jackson, Steele and Prince.

Commerce and Manufactures—Daug (Chairman), Galasinski, Kaiser,
 Donley, Harper, Theisen, Garvens.

Conservation—Bliese (Chairman), Flatley, Leidiger, McEachin, Moore,
 Westlund, Franzkowiak.

Contingent Expenditures—Dolan (Chairman), Hall, Hitt, Peterson, Clancy.

Education—Rakow (Chairman), Kostuck, Scheuer, Kiefer, Halvorsen, Olson, Alfonsi, Franzkowiak, Kryszak.

Elections—Theisen (Chairman), O'Malley, Mahoney, Fox, Koegel, Olson, Budlong.

Engrossed Bills—Opachen (Chairman), Lyons, Dueholm.

Enrolled Bills—Weinberg (Chairman), Laack, Laabs.

Excise and Fees—Leidiger (Chairman), Kieker, Galasinski, Higgins, Fitzsimons, Mulder, Westlund.

Finance—Hamata (Chairman), Perry, Hoesly, Novotny, Lynch, Fitzsimons, Thompson, Werner, Shimek.

Highways—Caldwell (Chairman), Kieker, Rohan, Clemens, Weinberg, Kaiser, Budlong.

Insurance and Banking—Mau (Chairman), Leary, Becker, LaBar, Rowlands, Clancy, Grassman, Caffrey, McDonald.

Judiciary—Fox (Chairman), Cavanaugh, Donley, McEachin, Yindra, Bachhuber, Weissleder, Murray, Callahan, Carow, Lamb.

Labor—Balzer (Chairman), Ramstack, O'Malley, Wegner, Laabs, Robinson, Becker, Sweeney, Shortner.

Municipalities—Galasinski, (Chairman), Kretlow, Mahoney, Balzer, Rakow, Chermak, Sweeney, Tombleson, Inman, Vaughan, Baker.

Printing—Leary (Chairman), Russell, Kretlow, Prince, Moore.

Public Welfare—Kryszak (Chairman), Dueholm, Hardgrove, Kellman, Kelly, Caffrey, Flatley.

Revision—Grimes (Chairman), Lynch, Conway, Clemens, Dettinger.

Rules—Krueger (Chairman), Cavanaugh, Fox, Yindra, Young (Speaker) *ex officio*.

State Affairs—Chermak (Chairman), Grosvenor, Higgins, Kretlow, Dolan, Hanson, Evans, Russell, Pritchard, Harper, Mulder.

Taxation—Moldenhauer (Chairman), Daus, Grosvenor, Nixon, Garvens, Conway, Steele.

Third Reading—Russell (Chairman), Bliese, Kiefer.

Transportation—Evans (Chairman), Moldenhauer, Weissleder, Ramstack, Hall, Hitt, Dettinger.

SPECIAL COMMITTEE

Building and Loan Association Legislation—Leary (Chairman), Weissleder, Rowlands, Bachhuber, Lamb.

SPECIAL JOINT COMMITTEES

Investigation of the Department of Agriculture and Markets—Senators Ingram (Chairman), Griswold, Wade; Assemblymen Martin, Novotny, LaBar, Conway.

Farm Machinery Prices—Interim Committee appointed during 1931 special session continued: Senators Severson (Chairman), Clifford; Assemblyman Budlong.

Stabilization of Milk Prices—Senators Gehrman (Chairman), Goodland, Reis; Assemblymen Caldwell, Tombleson, Rohan, Shortner, Steele.

Small Loans Lobbying—Senators Bolens, (Chairman), Severson, Shearer; Assemblymen Bachhuber, Leary, Callahan, Clancy, Budlong.

Reduction in Cost of Government—Senators Clifford (Chairman), Gettelman; Assemblymen Lynch, Dolan, Perry.

Sources of Revenue for School Purposes—Senators Gettelman (Chairman), Brunette; Assemblymen Clancy, Novotny, Tombleson.

Investigation of the Quality and Price of Beer—Senators Kelly (Chairman), Mehigan; Assemblymen Scheuer, Rohan, Lamb.

State Fair for 1933—Senators Shenners (Chairman), Brunette; Assemblymen Balzer, Murray, Fitzsimons.

Additional Farm Lands for State Prison—Senator Mueller (Chairman); Assemblymen Fitzsimons, Novotny.

Huber Memorial Exercises—Senators Cashman (Chairman), Shearer, Severson; Assemblymen Nixon, Kieker, Budlong.

INTERIM COMMITTEES OF THE 1931 LEGISLATURE

Directed to Report in 1933

I. JOINT COMMITTEES:

Consolidation of University and Capitol Heating Plants:

(Jt. Res. 163, A., 1931, continuing committee appointed by Jt. Res. 58, S., 1931)

Members:

Senators: O. S. Loomis, Mauston, Chairman; G. D. Roberts, Madison.

Assemblymen: A. J. Baker, Mt. Horeb; L. S. Shauger, Ogema; P. F. Wenz, Milwaukee.

Appropriation:

Not to exceed \$1,000, including expenses of members.

Cut-Over Land and Tax Problems of Northern Wisconsin:

(Jt. Res. 28, S., 1931)

Members:

Senators: J. H. Carroll, Glidden, Chairman; P. E. Nelson, Maple; V. S. Keppel, Holman.

Assemblymen: J. R. Fronek, Antigo, Secretary; Paul Fuhrman, Bowler; B. J. Gehrmann, Mellen; L. S. Shauger, Ogema.

Appropriation:

Chap. 398, Laws of 1931—\$5,000.

La Follette Memorial:

(Jt. Res. 104, S., 1931, continuing committee created by Jt. Res. 106, A., 1925, and continued by Jt. Res. 106, S., 1927, and Jt. Res. 118 S., 1929)

Members:

Senator: J. E. Cashman, Denmark, Chairman.

Assemblymen: J. W. Eber, Milwaukee; H. M. Groves, Madison.

Ex-Senator: Howard Teasdale, Sparta.

Ex-Assemblyman: F. J. Weber, Milwaukee.

Appropriation:

None.

Mississippi River Pollution: (Chap. 284, Laws of 1931, continuing committee created by Jt. Res. 18, S., and Jt. Res. 69, A., 1925, and continued by Jt. Res. 107, A., 1927 and Chap. 90, Laws of 1929)

Members:

Senator: W. H. Hunt, River Falls, Chairman.

Assemblyman: C. B. Perry, Wauwatosa.

Ex-Assemblyman: Theodore Swanson, Ellsworth.

Appropriation:

A sum sufficient to enable the committee to complete its work, but not to exceed \$500, and the unexpended balance of the \$500 appropriation made by Chap. 90, Laws of 1929.

Revision of the Standard Fire Insurance Policy: (Jt. Res. 76, A., 1931)

Members:

Commissioner of Insurance, Revisor of Statutes, and an assistant attorney general.

Appropriation:

Members shall be reimbursed actual and necessary expenses from appropriations made to their respective departments.

Unification of Courts of Milwaukee County: (Jt. Res. 103, S., 1931)

Members:

Senators: I. P. Mehigan, Milwaukee, Chairman; Walter Polakowski, Milwaukee.

Assemblymen: J. W. Eber, Milwaukee; M. T. Murray, Milwaukee; A. J. Busby, West Milwaukee.

Appropriation:

County board of Milwaukee county is authorized to pay expenses of the committee.

II. OTHER INTERIM COMMITTEES:

State Memorial to Wisconsin Soldiers: (Chap. 467, Laws of 1931) (Bill 999, A., 1931)

Members:

Senator: O. S. Loomis, Mauston, Chairman.

Assemblymen: R. J. Keller, Sauk City; E. F. Hilker, Racine.

Citizens: Captain W. Szulakiewicz, Milwaukee; Peter Crane, Beloit.

Appropriation: \$500.

Commission also authorized to use any moneys which may be contributed voluntarily by veterans' organizations and private individuals.

State Office Building: (Chap. 486, Laws of 1929)

Members:

Senators: W. S. Goodland, Racine, Chairman; Otto Mueller, Wausau.

Assemblymen: Michael Laffey, Milwaukee, Vice-Chairman; H. A. Martin, Richland Center, Secretary; E. M. Rowlands, Cambria.

Appropriation:

Ch. 115, Laws of 1931—\$37,980.

Ch. 385, Laws of 1931—\$70,625 on July 1, 1931 and \$70,625 on July 1, 1932 for granite needed to complete the central portion of the state office building; \$40,000 for completion of plans and specifications of state office building.

Investigation of Wisconsin Boxing Commission:

(Res. 43, S., 1931-32 Special Session.)

Members:

Senators: Bernhard Gettelman, Milwaukee, Chairman; O. H. Morris, Milwaukee; P. E. Nelson, Maple.

Appropriation: None.

EMPLOYES OF THE SENATE**Chief Clerk's Force:**

C. J. Knoche, Madison, assistant chief clerk.
H. A. Wesley, Iola, journal clerk.
Joseph N. Kienzle, West Allis, assistant journal clerk.
M. P. Coakley, Beloit, record clerk.
L. A. Gordon, Madison, assistant record clerk.
F. W. Hunter, Fox Lake, revision clerk.
William P. Welch, Madison, enrolling clerk.
C. G. Riley, Madison, index clerk.
Marvin F. Hartman, Madison, mailing clerk.

EMPLOYES OF THE SENATE—Continued

Donald B. Roethe, Fennimore, mailing clerk.
 Norman S. Anderson, Madison, mailing clerk.
 Erwin H. Voigt, Madison, engrossing clerk.
 Walter E. Hasse, Monroe, clerk, joint committee on Finance.
 Harry L. Scheimpflug, Boscobel, clerk, committee on Highways.
 M. R. Wold, Ashland, clerk, committee on Agriculture and Labor.
 Fred H. Meyer, Milwaukee, clerk, committee on Corporations and Taxation.
 F. E. Simon, Milwaukee, clerk, committee on Judiciary.
 Gordon A. Huseby, Madison, clerk, committee on Education and Public Welfare.
 Robert E. Scullin, Fort Atkinson, clerk, committee on State and Local Government.
 Arthur W. Markham, Independence, stenographer.
 George R. Neuhauser, Madison, stenographer.
 Robert C. Thrun, Eagle River, stenographer.
 Harry G. Luer, Eau Claire, typist.
 Richard Mueller, Madison, typist.
 James C. Femrite, Blooming Grove, typist.
 William Nathenson, Madison, typist.
 Carl A. Buss, Jefferson, typist.

Force of Sergeant-at-Arms:¹

Norman J. Hippert, Two Rivers, assistant sergeant-at-arms.
 James E. Trainor, Madison, assistant sergeant-at-arms.
 Robert Rush, Neillsville, document clerk.
 Harold Schultz, Milwaukee, document clerk.
 William Kasiska, Baraboo, postmaster.
 Joseph Kernler, Ashland, postmaster.
 Albert Daley, Superior, policeman.
 John Danielson, Manitowoc, night watchman.
 Wenzel Koula, Coon Valley, night watchman.
 Roy Larsen, Denmark, night watchman.
 Everett P. Skroch, Neillsville, night watchman.
 Edward Dithmar, Baraboo, night laborer.
 Arthur K. Ehrlich, Racine, night laborer.
 Richard G. Harvey, Jr., Racine, night laborer.
 Lyle Hopper, Beloit, night laborer.
 Maurice G. Young, Oshkosh, night laborer.
 William M. Brinkley, Madison, gallery attendant.
 Hermant Boldt, Jr., Sheboygan Falls, messenger.
 Henry Cline, Dane, messenger.
 John Donaghey, Madison, messenger.
 Leon Edman, Madison, messenger.
 Arthur Fadness, Madison, messenger.
 Joseph Gehrmann, Mellen, messenger.
 Price J. George, Mauston, messenger.
 Edward H. Gibson, Madison, messenger.
 Alois Graczyk, Milwaukee, messenger.
 Walton Green, Madison, messenger.
 Merle Jackson, Madison, messenger.
 Richard J. Knoche, Madison, messenger.
 Robert M. Larson, Madison, messenger.
 Ray J. Lavin, Madison, messenger.
 Lester Lingard, Madison, messenger.
 Francis McCloskey, Sun Prairie, messenger.
 Richard Noelck, Hartford, messenger.
 Harry Polakowski, Milwaukee, messenger.
 Clarence Pollard, Madison, messenger.
 William Ramstack, Milwaukee, messenger.
 Reuben Raymond, Madison, messenger.
 Thomas F. Reynolds, Green Bay, messenger.
 Thorof Rogeberg, Madison, messenger.
 John W. Scheib, Madison, messenger.
 Hubert Schneider, Madison, messenger.
 Bruce D. Scott, Madison, messenger.
 Richard Showman, Kenosha, messenger.
 Mark Shumway, Beloit, messenger.
 Charles H. Statz, Madison, messenger.
 Henry Temkin, Madison, messenger.
 Glen F. Vogel, Shiocton, messenger.
 Fredric Young, Milwaukee, messenger.

¹ All positions under the sergeant-at-arms of the senate have been staggered, there being two appointees for each position, who have alternated in filling it.

EMPLOYEES OF THE ASSEMBLY

Department of Chief Clerk:

Arno C. Handel, Madison, general clerk.
 Cyril J. Ballam, Madison, general clerk.
 Mark Russell Kilp, Oshkosh, record clerk.
 Hyman Navin, Superior, record clerk.
 Edmund L. Lenahan, Madison, journal clerk.
 Charles W. Woerpel, Sun Prairie, journal clerk.
 Norman Berggren, Madison, voting machine operator.
 Robert C. Stadelman, Madison, engrossing clerk.
 Robert Maffett, Madison, proof reader.
 Bennett Odegard, Rice Lake, proof reader.
 Fred Frusher, Jr., Madison, index clerk.
 Thomas M. Donahue, Kenosha, mailing clerk.
 Joseph Sullivan, Milwaukee, mailing clerk.
 Milton Bailey, Elderon, stenographer.
 Wallace W. Dolan, Shawano, stenographer.
 Eugene Dunn, Milwaukee, stenographer.
 Royal Gordon, Madison, stenographer.
 Robert Hibbard, Ft. Atkinson, stenographer.
 Edmund T. Kubiak, Milwaukee, stenographer.
 Leo E. Packard, Milwaukee, stenographer.
 Charles G. Pagel, Brandon, stenographer.
 Frank Rivers, Milwaukee, stenographer.
 Russell Ryan, Brillion, stenographer.
 Arthur Stofen, Madison, stenographer.
 Martin West, Elcho, stenographer.
 William L. Wollin, Jefferson, stenographer.
 Joseph L. York, Milwaukee, stenographer.
 Lawrence Larson, Racine, stenographer.
 Lewis Koltes, Dane, typist.
 Anthony T. Mickle, Richland Center, typist.
 Bruce Pannier, Chippewa Falls, typist.
 Claude Salter, Germantown, typist.
 Clarence J. Williamsen, De Pere, typist.
 John Hanson, Fond du Lac, clerk.
 Eugene Seelig, Milwaukee, clerk.
 George Gafney, Madison, clerk.
 Joseph Sweeney, Madison, clerk.

Department of Sergeant-at-Arms:

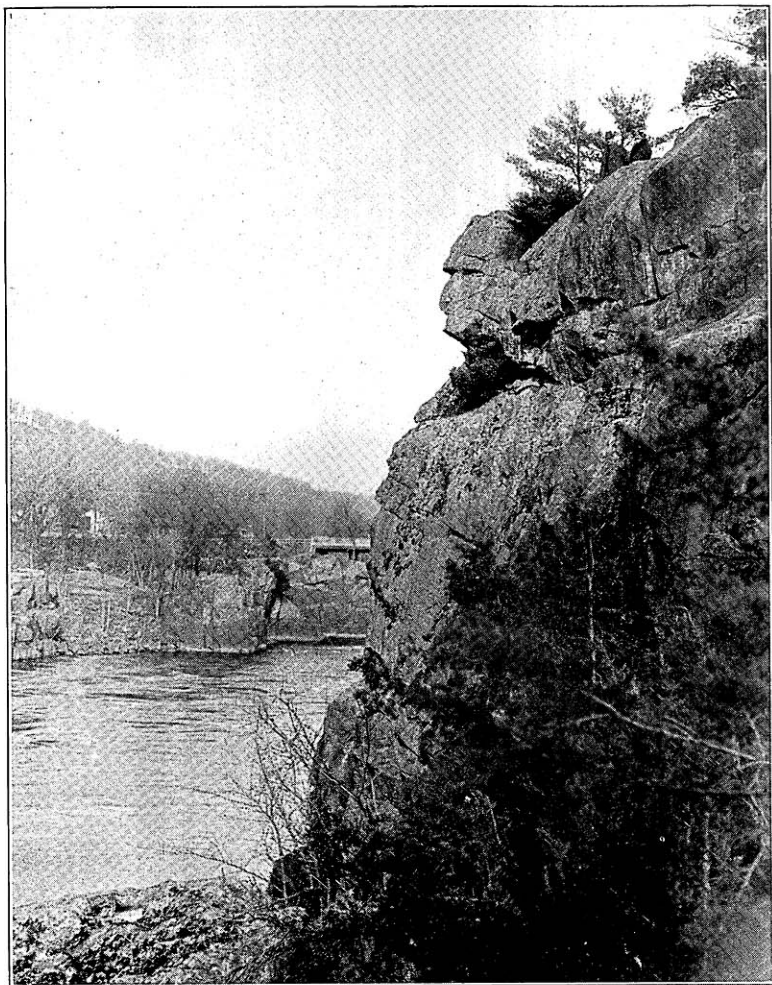
John E. Rohan, Madison, asst. sergeant-at-arms.
 James Carew, Waupaca, postmaster.
 Conrad A. Lewis, McFarland, document room.
 W. Wrenn O'Connell, Milwaukee, document room.
 Harold Stryzewski, Oshkosh, floor policeman.
 Curtis Farmer, Crandon, night watchman.
 Ray Adomaitis, Chilton, post office messenger.
 Hilmer Woelfel, Milwaukee, messenger.
 Everett Stevenson, Gays Mills, state filer.
 Martin J. Roehm, Antigo, messenger.
 Leo Callahan, Montello, messenger.
 Lloyd P. Connor, Webster, messenger.
 Cyril A. Talbot, Merrill, messenger.
 Wm. J. Rowe, Burlington, messenger.
 Francis Grogan, Kaukauna, messenger.
 Arvid Mörner, Prentice, messenger.
 Harold Schneider, Manitowoc, messenger.
 William Reilly, Madison, night laborer.
 Emmett Killeen, Rice Lake, night laborer.
 Judson G. Bogart, Milwaukee, gallery attendant.
 William Rabinowitz, Sheboygan, gallery attendant.
 Thomas Bourke, Madison, night messenger.
 Edward J. Owens, Milwaukee, messenger.
 Leo J. McCoy, Fond du Lac, night messenger.
 Dan C. O'Connor, Portage, night gallery attendant.
 Kermit Berger, Hales Corners, night cloak room attendant.
 Robert Dixon, Chippewa Falls, night messenger.
 William Norton, Watertown, night messenger.
 Mark Schmitz, Madison, messenger.
 Morris Barber, Madison, messenger.
 Eugene Cawley, Madison, cloak room attendant.
 Kenneth McLeod, Rice Lake, night laborer.

REPRESENTATIVES OF THE PRESS

E. L. Almen	Associated Press
Don Anderson	United States News
Calmer Browy	The Capital Times
William F. Canfield	Wisconsin Press Association
George Crownhart	Wisconsin Medical Journal
Harry G. Croy	Wisconsin News
J. Winter Everett	The Wisconsin State Journal
William T. Evjue	The Capital Times
Lawrence Fitzpatrick	The Wisconsin State Journal
Michael Griffin	The Wisconsin State Journal
Bryn Griffiths	Wisconsin State Employees Magazine
Edward N. Hein	Milwaukee Sentinel and Holmes News Service
Charles W. Holmburg	The Capital Times
Fred L. Holmes	Milwaukee Sentinel and Holmes News Service
Kenneth Hopping	Associated Press
E. Dee Ingold	Chicago Tribune
Carson F. Lyman	Associated Press
Bruce R. McCoy	Wisconsin Press Association
William F. McIlrath	United Press
E. R. McIntyre	Wisconsin Agriculturist and Farmer
Roy L. Matson	The Wisconsin State Journal
Z. H. Mischka	Wisconsin Press Association
J. Craig Ralston	Milwaukee Journal
Leonard Schubert	United Press
Fred C. Sheasby	Milwaukee Journal
Thornton L. Smith	Chicago Tribune
Willard R. Smith	United Press
Arthur A. Tiller	Tiller News Service
William P. Welch	Eau Claire Telegram



White Oaks Make a Natural Arch.
(Near Montello)



Old Man of The Dalles.
(St. Croix Falls)

MEMBERS OF THE SENATE

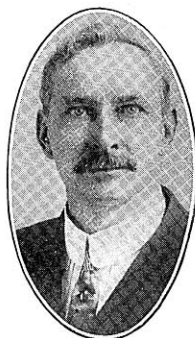
FIRST SENATORIAL DISTRICT

Door, Kewaunee, and Manitowoc Counties.

JOHN E. CASHMAN (Rep.) was born in Franklin, Kewaunee County, where he farms the land his father purchased from the government when Wisconsin was very much a wilderness. He was educated in the common schools, a term at Valparaiso University, and two years at the Chicago Law School. For a number of years he taught school in Kewaunee and Brown Counties. In 1901 he took a position as inspector for the United States Bureau of Animal Industry at Chicago. After two years he was advanced to a position in the United States Bureau of Internal Revenue, which position he held until 1919, when he returned to the farm. In 1924, Senator Cashman was one of the La Follette delegates to the National Republican Convention at Cleveland. In the same year he was made a University regent and served in this capacity for a full term of six years.

He was first elected to the state Senate in 1922; he was reelected in 1926 and again in 1930. He is chairman of the Senate Committee on Highways and the author of the new highway measure which bears his name, and which takes the place of the 1925 highway law of which he was the sponsor.

Home Address: Denmark.



SECOND SENATORIAL DISTRICT

Brown and Oconto Counties.

E. F. BRUNETTE (Dem.) was born in the Town of Howard, Brown County. His education was received in the common schools, Green Bay Business College, and the state teachers college at Oshkosh. He was formerly engaged in the lumber and fuel business as secretary of his company. Senator Brunette has served for the past nine years as member of the Brown County Board of Supervisors, being chairman of the Town Board of Howard. He represented the second district of Brown County in the Assembly in the session of 1929, and was elected to the Senate in 1932.

Address: Route 4, Green Bay.



THIRD SENATORIAL DISTRICT

The Fifth, Eighth, Eleventh, and Twenty-fourth Wards of the City of Milwaukee.



WALTER POLAKOWSKI (Soc.) was born in Buffalo, New York, January 18, 1888; began to earn his living when a lad as a newsboy and boot-black; at fourteen was apprenticed to an upholsterer, and at eighteen represented the upholsterers' union in the Federated Trades Council of Milwaukee. He is a member of the Board of Directors of the Style Builders Cooperative Clothes Shop, Milwaukee. Until elected to the Assembly in 1920, he had never held a public office. In 1922, he ran for the Senate and has been a member of that body ever since. Senator Polakowski was the Socialist candidate for Congress in the Fourth District in 1928 and 1932.

Address: 2200 S. 11th St., Milwaukee.

FOURTH SENATORIAL DISTRICT

The 13th, 18th, and 21st Wards of the City of Milwaukee; the Town of Milwaukee; and the Villages of Fox Point, River Hills, Shorewood, and Whitefish Bay.



OSCAR HASKELL MORRIS (Rep.) was born in Springfield, Mass., March 8, 1876, and came to Milwaukee with his parents when two years of age. He left graded school at an early age to become "copy boy" on the *Milwaukee Sentinel*. Later he became reporter and sports writer on this paper; reporter, city editor, and sports editor on the *Milwaukee Daily News*; and department manager of the Milwaukee Association of Commerce. He was elected to the Senate in 1920, 1924, 1928, and 1932; and served as president pro tempore in 1927. He was

chairman of the interim committee on prison labor which reported to the 1929 legislature and of the aeronautics committee which reported in 1931; and is now the chairman of the Committee on Corporations and Taxation.

Address: 740 N. Second St., Milwaukee.

FIFTH SENATORIAL DISTRICT

The 9th, 15th, 19th, 22nd, and 26th Wards of the City of Milwaukee.



BERNHARD GETTELMAN (Rep.) was born Dec. 23, 1889, in Chicago and moved to Milwaukee at an early age, where he was educated in the public schools. He was the chief deputy sheriff during the Cudahy riots, and is the father of the Gettelman Firemen's Law and of a plan to tax chain stores, having been the first sponsor of this idea in Wisconsin. Through his efforts, lumber companies have been compelled to use a more careful method of disposing of timber on state owned lands. Senator Gettelman is chairman of the La Follette Bronze Tablet memorial committee and of the state interim traffic committee which presented safety recommendations to the 1931 legislature. He was elected to the Assembly in 1916, and is now serving his fourth successive term in the Senate.

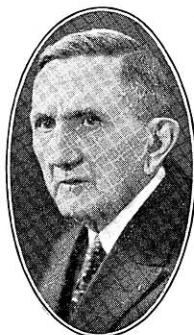
Home Address: 2248 N. Hi-Mount Blvd., Milwaukee.

SIXTH SENATORIAL DISTRICT

The Second, Seventh, Tenth, Twentieth, and Twenty-Fifth Wards of the City of Milwaukee.

CHARLES H. PHILLIPS (Dem.) was born January 21, 1859, at Milwaukee. He received his education in the parochial and public schools, Markham's Academy, and the University of Wisconsin, graduating from the Law School in 1893. For a time he worked with his father and with a Milwaukee leather company, and is at present practicing law. He has held, previous to his election to the Assembly in 1932, no elective office, but was with Governor Peck's administration from 1891 to 1895 in the office of the Secretary of State, and has been chairman of the Democratic County Committee. He is chairman of the Wisconsin Chicago Centennial of Progress Committee.

Address: 1230 N. 21st St., Milwaukee.



SEVENTH SENATORIAL DISTRICT

The Twelfth, Fourteenth, Seventeenth, and Twenty-Seventh Wards of the City of Milwaukee and the Cities of Cudahy and South Milwaukee; Towns of Lake and Oak Creek.

LEONARD C. FONS (Rep.) was born October 30, 1903, in Milwaukee, the son of former Senator Louis A. Fons, who represented the same district. He was born and educated in Milwaukee county, and is a graduate of Marquette and Georgetown universities. He is now practicing law in Milwaukee. Senator Fons has held no previous public office.

Home Address: 3040 S. Superior St., Milwaukee.



EIGHTH SENATORIAL DISTRICT

Towns of Franklin, Granville, Greenfield, and Wauwatosa; Village of West Milwaukee; Sixteenth and Twenty-third wards of the City of Milwaukee and the cities of Wauwatosa and West Allis.

WILLIAM H. SHENNERS, Jr. (Dem.) was born on July 21, 1902, in the Twenty-third Ward of Milwaukee. After receiving a public and parochial school education, he entered the real estate and insurance business. He has always been interested in local government, but had never held public office before his election to the Senate in 1932.

Address: 7207 W. Greenfield Ave., West Allis.





NINTH SENATORIAL DISTRICT

The First, Third, Fourth, and Sixth Wards of Milwaukee.

IRVING P. MEHIGAN (Rep.) was born in Milwaukee, January 15, 1898. After graduating from Marquette Academy, he took a six-year course at Marquette University, receiving his law degree in 1923, and is now practicing law in Milwaukee. He was elected to the Senate in December, 1924, to fill a vacancy, and was elected for the full term in 1926 and reelected in 1930.

Home Address: 512 N. Fifteenth St., Milwaukee.



TENTH SENATORIAL DISTRICT

Buffalo, Pepin, Pierce, and St. Croix Counties.

WALTER H. HUNT (Rep.) was born in the town of Kingston in Green Lake County September 5, 1868. He received a common and high school education and graduated from Valparaiso University, Indiana, later on receiving the master's degree from the same university. He has been county superintendent of schools and state school inspector, and since 1916 a teacher in River Falls State Teachers College. During the war he enlisted in the Army Educational corps and did overseas educational work. He also owns and operates a farm. He was elected to the Senate in 1924 and reelected in 1928.

Home Address: River Falls.



ELEVENTH SENATORIAL DISTRICT

Bayfield, Burnett, Douglas, and Washburn Counties.

PHILIP E. NELSON, (Rep.) was born on a farm at Curtiss, Wisconsin, September 1, 1891. He is a graduate of the Colby High School and the Williams Business College of Oshkosh. For a time he was employed as cost accountant for the Oakland Motor Car company at Pontiac, Michigan; operated cheese factories in Clark and Rusk Counties, and later kept a general store at Conrath, Rusk County. He served on the county board of supervisors of Douglas County from 1921 to 1923 and 1925 to 1931. He is a director of the Tri-State Fair Board. He served one year and ten months in the World War, most of this time with the A. E. F. in France. At the present time he owns and operates a farm in the town of Cloverland, Maple

P. O., Douglas County. He was a member of the Assembly in 1927, and 1929, and was elected to the State Senate in 1930.

Home Address: Maple.

TWELFTH SENATORIAL DISTRICT

Ashland, Iron, Price, Rusk, Sawyer, and Vilas Counties.

B. J. GEHRMANN (Rep.) was born in Germany, February 13, 1880, and was thirteen when he came to this country and went to work in a packing plant, attending night school at the same time. In 1895, he moved to Clark County where he lived until 1915, when he moved to Ashland County and cleared a farm five miles from Mellen. He has been an officer of the American Society of Equity for years, serving as county president and member of the state executive board, and is now the vice-president of this farmers' organization. He served as town chairman for four years, assessor for five years, and school clerk since 1919. Mr. Gehrmann was elected to the Assembly in 1926 and again in 1930, and to the Senate in 1932.

Home Address: Route 1, Mellen.

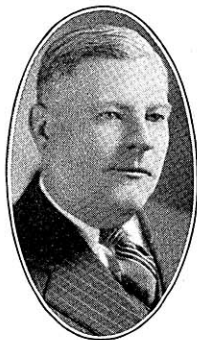


THIRTEENTH SENATORIAL DISTRICT

Dodge and Washington Counties.

EUGENE A. CLIFFORD (Dem.) was born December 5, 1886, in the town of Clyman, Dodge County. He was educated in the Juneau High School and the University of Wisconsin law school, and is a practicing attorney. Senator Clifford was for fifteen years city attorney of Juneau, for four years supervisor, and for four years mayor; and has been a member of the board of education for fifteen years. This is his second term in the legislature.

Home Address: 248 E. Oak Street, Juneau.



FOURTEENTH SENATORIAL DISTRICT

Outagamie and Shawano Counties.

MIKE MACK (Rep.) was born November 15, 1873, in Trempealeau County, but has lived in Outagamie County for the past thirty-eight years. He was educated in common school. He spent ten years in the lumber business, but has been for many years a farmer. He has held several public offices before his election to the Senate in 1932, having served as county board member for seventeen years (chairman for eight of these) and member of county highway committee for four years. During the World War, Senator Mack was chairman of the village Council of Defense. He is a member of the Senate committee on Highways.

Address: Shiocton.



FIFTEENTH SENATORIAL DISTRICT

Rock County.



ALEXANDER M. PAUL (Dem.) was born at Milton Junction on November 30, 1875, and has lived there all his life. He finished his education in the local high school. His occupation is farming, and he is a director of the Farmers Bank of Milton Junction. Senator Paul was a member of the Assembly in the legislative session of 1931 and was elected to the Senate in a special election held on April 18, 1933, to fill the vacancy caused by the election of Senator George W. Blanchard to the House of Representatives. In this election Senator Paul received 7,296 votes against 4,843 for his opponent, L. A. Markham (Rep.).

Address: Milton Junction.

SIXTEENTH SENATORIAL DISTRICT

Crawford, Grant, and Vernon Counties.

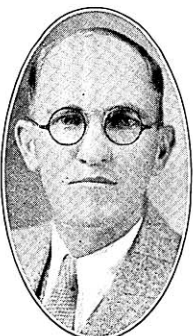


WILLIAM D. CARROLL (Dem.) was born June 5, 1880, at Hayton, Calumet County, and received a common school education. He has lived in Prairie du Chien for the past twenty-five years, and has been a member of its City Council (1920-1926), school board president for three years, and county board member for one term. From 1920-1926 Senator Carroll was secretary of the Democratic State Central Committee, and acted as delegate to the Democratic National Convention in the years 1924 and 1928. He owns a hotel and several farms. For many years he engaged in the real estate and insurance business. While on the Prairie du Chien City Council, he was instrumental in securing the lowered electric rates which that city now enjoys.

Address: 120 S. Michigan St., Prairie du Chien.

SEVENTEENTH SENATORIAL DISTRICT

Green, Iowa, and Lafayette Counties.



GEORGE ENGBRETSON (Rep.) was born at Warren, Illinois, on June 3, 1890. His parents moved shortly thereafter to the Township of Wiota, Lafayette County, Wisconsin, where he has since lived. He received his education at the Wiota common school and the Platteville State Teachers College. His occupation is farming. Senator Engbretson was a member of the Republican State Central Committee during 1930-31. This is his initial term in the Senate.

Address: Route 1, South Wayne.

EIGHTEENTH SENATORIAL DISTRICT

Fond du Lac, Green Lake, and Waushara Counties.

MORLEY GARFIELD KELLY (Dem.) was born at Watertown, South Dakota. After finishing his education at the Wadena (Minnesota) High School, he became first a linotype operator and later a newspaper editor. He has been a member of the National Guard, Company K of Dickinson, North Dakota. Before his election to the present Legislature, Senator Kelly had held no public office.

Address: 184 E. 13th St., Fond du Lac.



NINETEENTH SENATORIAL DISTRICT

Calumet and Winnebago Counties.

MERRITT F. WHITE (Rep.) was born August 26, 1865, at Winneconne, and was educated in the Winneconne public schools and at Oshkosh State Teachers College. He has been a merchant and a traveling salesman, but is now retired from business. He was a member of the Senate in the sessions of 1911 and 1913, and has been a member from 1923 to the present time. Senator White was village president and member of the county board for thirty years; was a member of the county highway committee for twelve years, and school board member for eighteen years.

Address: Winneconne.

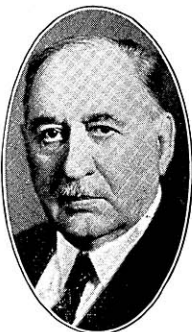


TWENTIETH SENATORIAL DISTRICT

Ozaukee and Sheboygan Counties.

HARRY W. BOLENS (Dem.) was born on January 13, 1864, and has lived since 1879 at Port Washington except for six years spent in Sheboygan, where he published the *Sheboygan Daily Journal*. He is an inventor, manufacturer, and farmer. For two terms beginning in 1898 he was alderman at Port Washington, has been county supervisor and county board chairman for several terms, and mayor for three terms. Senator Bolens was the first president of the Wisconsin Manufacturers Association (1910), and a charter member (1898) and past president of the Wisconsin League of Municipalities. He organized the first independent military company in Wisconsin in the Spanish-American War, and in 1917 organized the first Wisconsin company for the World War. At that time also, he was chairman of Draft District Board No. 2, chairman of the County Council for Defense, and Fuel Administrator. He is serving for the first time as member of the Legislature.

Address: 1242 Grand Ave., Port Washington.



TWENTY-FIRST SENATORIAL DISTRICT

The County of Racine.



WALTER S. GOODLAND (Rep.) was born at Sharon, Wisconsin, on December 22, 1863. He is a son of the late Judge John Goodland, who was judge of the 10th Judicial Circuit for twenty-five years. He received a high school education at Appleton and attended Lawrence College but did not graduate. He was admitted to the bar in the Wisconsin Supreme Court in 1884, and practiced law for a few years before entering the newspaper business. He was mayor of Racine for four years from 1911 to 1915. He is now president of the Municipal Water Commission of Racine. Since 1887 he has been engaged in the newspaper business and was editor of the Racine Times-Call from 1900 to its merger with the Journal last year. He was elected to the Senate in 1926 and 1930.

Home Address: 1632 Wisconsin St., Racine.

TWENTY-SECOND SENATORIAL DISTRICT

Kenosha and Walworth Counties.



CONRAD SHEARER (Rep.) was born at Somers, Kenosha County, October 18, 1874. He was educated in the rural schools, Kenosha High School, Milwaukee State Teachers College, and Kenosha College of Commerce. He taught school six years and served as an employe of the Kenosha Post Office for five years. During the past twenty-five years Senator Shearer has been secretary and manager of the central office, Kenosha Manufacturing Industries. He has many times been a member of Republican state and county conventions; was a member of the Kenosha City Council from 1913 to 1919 and of the City Park Commission from 1919 to 1923. He was elected to the Assembly in 1923, serving three terms; and was elected to the Senate in 1928 and 1932.

Address: 520-68 Place, Kenosha.

TWENTY-THIRD SENATORIAL DISTRICT

Portage and Waupaca Counties.



HERMAN J. SEVERSON (Prog. Rep.) is a native of the town of Christiana, Dane County, where he spent his boyhood years on his father's farm. He was educated in the public schools of that county, Stoughton Academy, Red Wing College, Drake University, and the Law School of the University of Wisconsin. For two years he taught school in Jefferson and Dane Counties, and one year was principal of the graded school at London. He was admitted to the bar in 1897 and is by profession a lawyer. He was chairman of the Waupaca Co. Republican Committee 1904-08, district attorney 1908-10 and has been a member of important committees in each session of the legislature since his first election in 1918.

Home Address: Iola.

TWENTY-FOURTH SENATORIAL DISTRICT

Clark, Taylor, and Wood Counties.

WALTER J. RUSH (Rep.) was born April 21, 1871, at Waterford, Racine County. He received a B.S. degree from the Valparaiso University in 1893 and his LL.B. from the University of Wisconsin in 1900. He has been a practicing attorney since that year. Senator Rush was district attorney of Clark County from 1911 to 1919, and has been a member of the Senate since 1929.

Address: 202 S. Clay St., Neillsville.



TWENTY-FIFTH SENATORIAL DISTRICT

Lincoln and Marathon Counties.

OTTO MUELLER (Rep.) was born at Wausau, Wisconsin, December 19, 1875, where he attended the public schools. He served two years as county supervisor of Marathon County, and as trustee of Mt. View Tuberculosis Sanitorium for eight years. He is a jeweler by profession. The present is Senator Mueller's fourth legislative session in the Senate.

Home Address: 615 Grand Ave., Wausau.



TWENTY-SIXTH SENATORIAL DISTRICT

Dane County.

ALVIN C. REIS (Rep.) was born in Evansville, Indiana, on March 24, 1892. He graduated from the University of Wisconsin in 1913 and from Harvard Law School in 1917. He was a major in the United States Army during the World War, serving nineteen months in France and taking part in the Chateau Thierry, Saint Mihiel and Meuse-Argonne offensives. From 1920 to 1926 Senator Reis was Assistant Attorney General and counsel for the Department of Markets. He has been chairman of the Committee on Legislation and Committee on Cooperative Organization for the National Association of Marketing Officials and is now a member of the administrative board of the National Association of Cooperative Marketing Attorneys, composed of American and Canadian lawyers. Senator Reis was elected to the Assembly in 1926 and 1928 and was Chairman of the Assembly Judiciary Committee in the 1927 and 1929 sessions. He was elected to the Senate in 1932.

Address: 2262 West Lawn Ave., Madison.



TWENTY-SEVENTH SENATORIAL DISTRICT

Columbia, Richland, and Sauk Counties.



FRED W. ZANTOW (Rep.) was born February 24, 1879, in the town of Sumpter, Sauk County. He was educated in a common school in Sumpter and the high school of Sauk City. Senator Zantow is occupied in farming and dairying, and has lived his entire life on the farm where he was born. He has been affiliated with various farm organizations, is a staunch advocate of the contract system of cooperative marketing, and has been interested in political campaigns all his life. He was a staunch supporter of Robert La Follette, senior. On March 11, 1930, at a Progressive conference at Sauk City, he was unanimously endorsed for the position of State Senator.

Home Address: Route 4, Box 30, Baraboo.

TWENTY-EIGHTH SENATORIAL DISTRICT

Chippewa and Eau Claire Counties.



G. ERLE INGRAM (Prog. Rep.) was born at Eau Claire, Wisconsin, April 1, 1883, and received his education in the common schools of Dunn County, Whitewater and La Crosse State Teachers College, Kansas City Business College, and Northern Indiana Law School (Valparaiso). He began to teach school at the age of seventeen, and taught in the common and high schools of the state for several years. He began the practice of law in Eau Claire in 1921. Senator Ingram was a member of the Republican State Central Committee in 1928 and 1929, and is vice-president of the State Bar Association for the Nineteenth Judicial Circuit. He was elected to the Assembly in 1930 and to the Senate in 1932.

Address: 252 S. 11th St., Eau Claire.

TWENTY-NINTH SENATORIAL DISTRICT

Barron, Dunn, and Polk Counties.



JOHN A. ANDERSON (Rep.) was born December 28, 1870, in Carver County, Minnesota, and was educated at Gustavus Adolphus College, St. Peter, Minnesota. He is in the clothing and shoe business. He has been mayor of Barron since 1924, with the exception of the years 1928-1929, and was a member of the school board in 1924-25. He was elected to the Senate in 1930.

Home Address: Barron.

THIRTIETH SENATORIAL DISTRICT

Forest, Florence, Langlade, Marinette, and Oneida Counties.

SHERMAN W. WADE, (Dem.) was born on December 12, 1895, at Hurley. He was educated in the public and parochial schools of Antigo and commercial schools at Antigo and Wausau. Since 1916 he has been in the lumber business. During the World War he served with the 102nd Squadron A. S. S. C. Before his election to the Senate in 1932, he had held no public office.

Address: 107 E. Fifth Ave., Antigo.



THIRTY-FIRST SENATORIAL DISTRICT

Adams, Juneau, Marquette, and Monroe Counties.

ORLAND S. LOOMIS (Rep.) was born at Mauston on November 2, 1893. He was educated in the common and high schools of that city, Ripon College, and the University of Wisconsin, graduating from the Law School in 1917. He has been a practicing attorney at Mauston since that time. In 1918-1919 he served in the World War as a member of the American Expeditionary Forces in France. He served as city attorney of Mauston from 1921 to 1931. He represented Juneau County in the Assembly in 1929 and served during that session as a member of the Interim Committee on Education. In 1930 he was elected to the Senate and has served in the 1931 regular session, the 1931-1932 special session, and the 1933 regular session. In 1932-1933 he served as chairman of the veterans memorial commission. In 1933 he was elected president *pro tempore* of the Senate.

Address: 404 Tremont St., Mauston.



THIRTY-SECOND SENATORIAL DISTRICT

Jackson, La Crosse, and Trempealeau Counties.

HARRY W. GRISWOLD (Rep.) has spent his entire life on the farm at West Salem where he was born on May 19, 1886. He was educated in the public schools of West Salem and in the Short Course in Agriculture at the University of Wisconsin. He has served as president, secretary, and director of the Wisconsin Guernsey Breeders' Association, and was one of the organizers of the La Crosse County Guernsey Breeders' Association, at present serving as its president. He also has been sales manager for the County Guernsey Breeders and the Monroe and La Crosse County Holstein Breeders. Senator Griswold was for seventeen years a member of the West Salem High School Board, and is now a member of the State Board of Vocational Education. He was elected to the Legislature for the first time in 1932.

Address: West Salem.



THIRTY-THIRD SENATORIAL DISTRICT

Jefferson and Waukesha Counties.



WILLIAM H. EDWARDS (Rep.) was born on a farm in the town of Lisbon, May 14, 1861. After completing his course at Carroll College, he taught school for fifteen years, six of them as principal of the school at Sussex. For the next twenty years he was actively engaged in the management of his farm, retiring to his home in Sussex in 1914. He served two terms as town clerk and ten terms as county supervisor, during one of which he was chairman of the county board. He was a member of the Assembly from 1915 to 1929 with the exception of the 1923 session and was elected to the Senate in 1930.

Home Address: Sussex.



CHIEF CLERK

ROBERT A. COBBAN (Rep.) was assistant chief clerk during the 1929 session of the Legislature. He was born in Rhinelander, Wisconsin, and educated in the common and high schools of this state. During the World War, he was a first lieutenant in the United States Marine Corps, serving for twenty-eight months. In the 1931 session Mr. Cobban was made chief clerk of the Senate, and was reelected at the beginning of the present session.

Address: Madison.



SERGEANT-AT-ARMS

EMIL A. HARTMAN was born at Manitowoc, Wisconsin, March 25, 1864. He received his schooling in that city, graduating from the First Ward School in June, 1880. After leaving school he worked as bookkeeper and salesman for nearly six years, when he became a paper hanging and painting contractor. When Co. H., 2nd Regiment of the Wisconsin National Guard, was organized in December, 1881, he enlisted as a private and charter member, and resigned from the service as second lieutenant in 1893. In 1896 he was elected secretary of the Manitowoc County Republican Committee, and served as delegate to the Republican State Conventions in 1896 and 1898. In 1897 he took a position in the Adjutant General's office; four years later he changed to the Secretary of State's department, resigning in 1904 to

resume his contracting business, in which he is still engaged. He has served the Senate since 1915, as document clerk, mailing clerk, assistant sergeant-at-arms, and since 1931, sergeant-at-arms.

Address: 2253 Fox Ave., Madison.

MEMBERS OF THE ASSEMBLY

ADAMS AND MARQUETTE COUNTIES

K. J. CALLAHAN (Rep.) was born at Montello, Wisconsin, November 17, 1897. He graduated from the Montello High School, Oshkosh State Teachers College, and the University of Wisconsin Law School, beginning the practice of law in 1924. He served as district attorney from 1924 to 1930, when he was first elected to the Legislature.

Address: Montello.



ASHLAND COUNTY

CLARENCE V. OLSON (Prog. Rep.) was born July 17, 1904, at Ashland. After attending Northland College, at Ashland, he entered the University of Wisconsin, receiving his law degree in 1930. He is an attorney. His membership in the present Assembly is his first public office.

Address: 515 W. Eighth Ave., Ashland.



BARRON COUNTY

WARREN D. LEARY (Dem.) was born at Elmira, New York, on December 3, 1891. He is a graduate of Elmira Academy (1909), and has the degree of B. Litt. from Columbia University (1916). During the World War he served as second lieutenant with the 148th Field Artillery, A. E. F., and during the spring of 1919 attended the Université de Grenoble, in France. Mr. Leary has always been a newspaper man, being now business manager and half-owner of the Rice Lake Chronotype and having been in the past reporter and editorial assistant of the New York Herald and New York Tribune, editor of Le Digesteur at Grand'Mere, Quebec, and editor of the Chippewa Falls Gazette. Up to his recent election to the Assembly he had held no public office.

Address: 25 East Marshall St., Rice Lake.



BAYFIELD COUNTY



ROBERT A. NIXON (Prog. Rep.) was born June 25, 1900, on a farm in the Town of Sterling, Vernon County, where he grew up. He was educated in the rural schools of Vernon County, the Viroqua High School, and George Washington University, Washington, D. C. While a student in Washington he was employed as secretary to Congressman J. D. Beck and later to Congressman H. H. Peavey. Since 1927 he has been practicing law in Washburn. He has been a member of the Assembly since 1929, was the Progressive floor leader in the regular session of 1931, the special session of 1931-1932, and the regular session of 1933, and was secretary of the Republican State Platform Convention in 1930.

Address: Washburn.

BROWN COUNTY



First District: The City of Green Bay exclusive of the Twenty-first Ward.

ROBERT E. LYNCH (Dem.) was born in Chicago. After graduation from Notre Dame University, he became baseball coach for his alma mater, and later for Northwestern University, Northwestern Academy, and Clemson College. He has played in and managed professional baseball with clubs in the Wisconsin-Illinois League, the American Association, and the Western, Eastern, and Southern Leagues. Mr. Lynch is a sales manager. He is serving in public office for the first time.

Residence: 1144 Cass St., Green Bay.

BROWN COUNTY



Second District: All the towns, cities and villages of Brown County except the city of Green Bay; and the twenty-first ward of the city of Green Bay.

WILLIAM J. SWEENEY (Dem.) was born in the Town of Glenmore, Brown County, April 2, 1887. His education, besides that of the common schools, included a correspondence business course. From 1922 to 1931 he was a road and bridge contractor, but since then he has combined the professions of auctioneer, insurance agent, and farmer. He was highway commissioner 1920-1922, town clerk 1922-1927, town chairman 1927-1929, all of Glenmore Township, and was elected to the Assembly in 1932.

Address: Box 232, De Pere.

BUFFALO AND PEPIN COUNTIES

ARTHUR A. HITT (Prog. Rep.) was born in the town of Alma, Buffalo County, on November 9, 1890. He was graduated from the Alma High School in 1910, La Crosse State Normal School in 1913, and the University of Wisconsin (A.B. 1916, M.A. 1926). From 1921 to 1932 he taught school, the last five years in the Milwaukee Vocational School. He has given up teaching to devote full time to his farm, near Alma, and to the Assembly, in which he is serving his fourth consecutive term. He is taking an active and prominent part in the farm organizations of his district. Mr. Hitt is a World War veteran.

Address: Alma.



BURNETT AND WASHBURN COUNTIES

LOU J. THOMPSON (Dem.) was born June 10, 1876, at Black River Falls, where he finished his education in the Black River Falls High School. In 1898 he became an employe of the Great Northern Railway at Superior, and three years later moved to Spooner, where he has since resided, combining in business insurance, real estate, and timber products. He was for fourteen years secretary-treasurer of the Federal Loan Association. Mr. Thompson has enjoyed a long public career, having held the offices of city clerk for one term, city supervisor for eight years, chairman of the Washburn County Board for five years, secretary-treasurer of the Board of Education for twelve years. He was first elected to the Legislature in 1932.

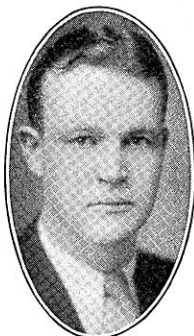
Address: Spooner.



CALUMET COUNTY

JEROME FOX (Dem.) was born at Chilton, March 26, 1904. He was educated in St. Augustine's Parochial School, Chilton High School, Notre Dame University (B.S. 1924), Marquette Law School (1926-1928), and the University of Wisconsin (LL.B. 1930). He was an instructor in Trinity College, Sioux City, Iowa, from 1924 to 1926. Mr. Fox is practicing law in Chilton in the firm of Fox and Fox, and is serving his second term in the Assembly.

Address: 121 N. State Street, Chilton.



CHIPPEWA COUNTY



JOHN E. PRINCE (Rep.) was born in the Town of Auburn, Chippewa County. He received his education in the public schools, and has spent practically all of his life farming, with the exception of one year cattle ranching in Alberta, Canada. He was a member of the town board for fourteen years, has been a member of the American Society of Equity for twenty-six years, serving on its executive board for five of these, and has been active in the cooperative movement for thirty-four years, helping to promote the first cooperative creamery in Chippewa county. He acted as treasurer of the school board of Auburn for twenty years. At the present time, he is conducting Prince's Resort at Cornell Lake. He is serving for the first time in the Legislature.

Address: Route 1, Jim's Falls.

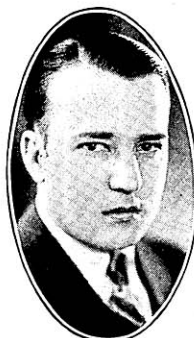
CLARK COUNTY



JAMES E. LYONS (Dem.) was born June 23, 1857, in Glasgow, Scotland, and came to the United States (Fond du Lac) at the age of eleven. He later moved to Appleton and, in 1899, to Colby, where he has since resided. He has been in the general produce business practically his entire life. While a resident of Appleton, he served four years as alderman. At Colby he served as alderman from 1904 to 1906 and as mayor from 1908 to 1914, and from 1926 to date, a total of six terms. Mr. Lyons was a delegate to the Democratic National Convention of 1932, and has been a delegate to many state conventions. The present is his first term in the Legislature.

Address: Colby.

COLUMBIA COUNTY



E. MYRWYN ROWLANDS (Rep.) was born in the village of Cambria, April 1, 1901. After graduation from St. John's Military Academy at Delafield, he finished his education at Ripon College and the University of Wisconsin. At the age of twenty-three he was elected a trustee of the village board of Cambria, the youngest man who has ever held that office. He is a director and assistant cashier of the Bank at Cambria. He has been a member of the Assembly since the legislative session of 1927.

Address: Cambria.

CRAWFORD COUNTY

THORLIEF A. PETERSON (Dem.) was born in the Town of Utica, Crawford County, December 9, 1886, on the farm where he still lives. Mr. Peterson's grandfather was the first Scandinavian settler in Crawford County and his father was a Civil War veteran. Mr. Peterson received a common school education, and has been a farmer all his life. He was a town supervisor in the years 1926, 1928, 1929, and 1930, and a member of the school board for eighteen years. He is the secretary-treasurer of a creamery and cheese company, and has been active in the good roads movement for many years. This is his first term in the Legislature.

Address: Route 3, Soldiers Grove.

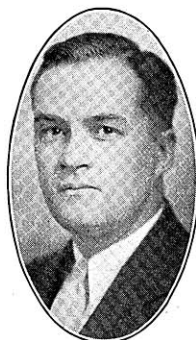


DANE COUNTY

First District: The City of Madison.

FRANCIS LAMB (Rep.) was born at Freeport, Illinois, November 12, 1900. He received his education in Madison, attending the public schools and the University of Wisconsin, taking his bachelor's degree in 1923 and his law degree in 1926. Since that time he has practiced law in this city. He is holding his first governmental office.

Address: 1809 Keyes Ave., Madison.

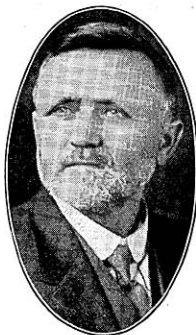


DANE COUNTY

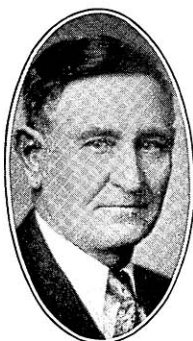
Second District: Towns of Albion, Blooming Grove, Bristol, Burke, Christiana, Cottage Grove, Deerfield, Dunkirk, Dunn, Medina, Pleasant Springs, Rutland, Sun Prairie, Windsor, and York; Villages of Cambridge, Cottage Grove, Deerfield, De Forest, McFarland, Marshall, Rockdale, and Sun Prairie; City of Stoughton.

JAMES C. HANSON (Rep.) was born in Slysrup, Lolland, Denmark, July 11, 1862, and came to America at the age of four. His family settled on a farm in the town of Christiana, where Mr. Hanson has since made his home. He was educated in the common schools, Albion Academy, and Milton College. He is a farmer by occupation and has been active in the cooperative movement for several years. He has held many offices of trust and honor, and has been a member of the Assembly since 1917, being in point of service the oldest member of the Legislature. In 1932, the University Board of Regents presented Mr. Hanson with a testimonial of appreciation of his pioneering services to cooperative marketing and organization of other cooperatives.

Address: Route 2, Deerfield.



DANE COUNTY



Third District: Towns of Berry, Black Earth, Blue Mounds, Cross Plains, Dane, Fitchburg, Madison, Mazomanie, Middleton, Montrose, Oregon, Perry, Primrose, Roxbury, Springdale, Springfield, Vermont, Verona, Vienna, and Westport; Villages of Belleville, Black Earth, Blue Mounds, Brooklyn, Cross Plains, Dane, Maple Bluff, Mazomanie, Middleton, Mt. Horeb, Oregon, Shorewood Hills, Verona, and Waunakee.

ALBERT J. BAKER (Rep.) was born Dec. 14, 1874, in the Town of Primrose, Dane County, the son of the late P. O. Baker, member of the Assembly. Mr. Baker was educated in the common schools, and has been a farmer all his life. He has been town chairman, president and manager of a creamery company, member and clerk of the school board, and town assessor; director and treasurer of a farmers' mutual insurance company. He has been a member of the Assembly since the session of 1927.

Address: 204 Wilson St., Mt. Horeb.

DODGE COUNTY



First District: Towns of Ashippun, Clyman, Emmet, Herman, Hubbard, Hustisford, Lebanon, Leroy, Lomira, Rubicon, Shields, Theresa, and Williamstown; Villages of Clyman, Hustisford, Iron Ridge, Lomira, Neosho, and Theresa; Cities of Horicon and Mayville, and the 5th, 6th, 13th and 14th Wards of Watertown.

LORENZ BECKER (Dem.) was born at Woodland, Wisconsin, August 10, 1889, and was educated in the public school and later in business college. He is in the general insurance business, and has been secretary of the Woodland Farmers Town Mutual since 1920 and cashier of the Woodland State Bank from 1915 to 1932. He is serving for the first time in public office.

Address: Woodland.

DODGE COUNTY



Second District: Towns of Beaver Dam, Burnett, Calamus, Chester, Elba, Fox Lake, Lowell, Oak Grove, Portland, Trenton, and Westford; Villages of Fox Lake, Lowell, Reeseville, and east ward of Randolph; Cities of Beaver Dam and Juneau and 1st, 2nd, 3rd, and 4th wards of the City of Waupun.

HENRY EDWARD KRUEGER (Dem.) was born in the Town of Beaver Dam on May 14, 1882. He was educated in the public and parochial schools of the county and the Short Course of the University of Wisconsin. He is a farmer, specializing in pure-bred seeds. He has been given several public offices by the Town of Beaver Dam, including those of clerk, assessor, school board clerk, and chairman. He has been a member of the Assembly during the sessions of 1911, 1913, and 1933. Mr. Krueger has been a member of the Democratic County Committee for twenty-six years. He has been treasurer of the Burnett and Beaver Dam Mutual Fire Insurance Company since 1919.

Address: Route 1, Beaver Dam,

DOOR COUNTY

WILLIAM H. MOORE (Prog. Rep.) was born November 13, 1886, on a farm in the Town of Gardner, Door County. He was educated in the public schools of that county and the Dollar Bay (Michigan) High School, graduating in 1905. He has been running his present farm since 1910, specializing in breeding purebred Guernsey cattle and pedigreed seed grain. He is president of the Door County Live Stock Breeders Association and the Door County Purebred Seed Growers Association. Mr. Moore has been assessor and chairman of the Town of Nasewaupée and member of the Door County Board. He was elected to the Assembly for the first time in 1932 as an independent after having been defeated in the primary election.

Address: Route 1, Sawyer.



DOUGLAS COUNTY

First District: The Third, Fourth, Fifth, Sixth, and Seventh Wards of the City of Superior.

MAURICE E. WEINBERG (Dem.) was born May 17, 1907, at Superior. He was educated in the grade and high schools of Superior, attended the Superior State Teachers College for one year, and spent two and one-half years at the University of Wisconsin, part of this time in the law school. While attending high school Mr. Weinberg worked as a shoe salesman, and later managed the shoe department in a department store. In 1930 he was a financial census taker for the United States government. Since then he has been a salesman of insurance and clothing. His membership in the present Assembly is his first public office.

Address: 1017 Hammond Ave., Superior.

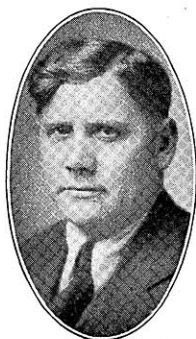


DOUGLAS COUNTY

Second District: Towns of Amnicon, Bennett, Brule, Cloverland, Dairyland, Gordon, Hawthorne, Highland, Lakeside, Maple, Oakland, Parkland, Solon Springs, Summit, Superior, and Wascott; Villages of Lake Nebagamon, Oliver, Solon Springs, and Poplar; First, Second, Eighth, Ninth, and Tenth Wards of Superior.

JOSEPH E. WESTLUND (Rep.) was born February 1, 1896, at Superior. After completing his high school course, he attended the Minnesota Institute of Pharmacy, in Minneapolis, and is now a registered pharmacist practicing in Superior. During the war he served with the 150th Field Artillery, 42nd (Rainbow) Division. He is serving his second term in the Assembly.

Address: 1915 Susquehanna Ave., Superior.





DUNN COUNTY

WILLIS E. DONLEY (Dem.) was born June 24, 1901, on a farm in the Town of Frankfort, Pepin County. He attended the rural schools of that county, and later Durand High School, Ripon College and the Law College of Marquette University, whence he was admitted to the bar in 1925. For a time Mr. Donley taught rural school in Pierce County. He is now a practicing attorney, president of the Menomonie Civic and Commerce Association, and state president of the Loyal Order of Moose. Until his election to the Legislature in 1932 he held no public office.

Address: Menomonie.



EAU CLAIRE COUNTY

JOHN T. PRITCHARD (Rep.) was born in Caernarvon, Wales, December 20, 1883. He received his early education in his native land, and in 1905 came to the United States, attended the University of Wisconsin College of Agriculture for two years, and has engaged in farming ever since. He moved to Eau Claire County in 1913 and has served the public in various capacities, including membership on the county board, for the past ten years. This is Mr. Pritchard's initial term in the Assembly.

Address: Eau Claire.



FLORENCE, FOREST, AND ONEIDA COUNTIES

NEIL McEACHIN (Dem.) was born January 28, 1900, at Cavour, Wisconsin. He attended Marquette University from 1918 to 1921 and Valparaiso University in 1921 and 1923, and is now a practicing attorney. Mr. McEachin served for five months in the World War and later, from 1927 to 1930, as municipal judge of Oneida County. The present is his first term in the Legislature.

Address: 103 Alban St., Rhinelander.

FOND DU LAC COUNTY

First District: Towns of Calumet, Empire, Fond du Lac, and Taycheedah; City of Fond du Lac.

MAURICE FITZSIMONS, JR. (Dem.) was born in the City of Fond du Lac, September 30, 1906, where he has lived ever since. After his graduation from high school in 1924, he attended Marquette University for two years. He has been affiliated with M. Fitzsimons and Sons Shoe Company since 1923 and has been the owner and operator of the Fitzsimons Fur Farm since 1927.

Address: Box 129, Fond du Lac.



FOND DU LAC COUNTY

Second District: Towns of Alto, Ashford, Auburn, Byron, Eden, Eldorado, Forest, Friendship, Lamartine, Marshfield, Metomen, Oakfield, Osceola, Ripon, Rosendale, Springvale, and Waupun; Villages of Brandon, Campbellsport, Eden, Fairwater, North Fond du Lac, Oakfield, Rosendale, and St. Cloud; City of Ripon and Fifth and Sixth Wards of Waupun.

JOSEPH H. HARDGROVE (Dem.) was born at Fond du Lac on November 26, 1870. At the age of fifteen he learned the cooper trade, and until 1901 worked at his trade and taught district school. In 1903 he was graduated from Oshkosh State Teachers College and was made principal of the state graded school at Tigerton. Later he helped organize the Tigerton High School and was its first principal. Thereafter, he was the principal of Manawa High School for five years, and then entered the Medical School of Marquette University, where he took his M. D. in 1916, and since that year has practiced medicine at Eden. He has been president of the Fond du Lac County Rural Normal School Board since 1921. He was elected to the Assembly for the first time in 1932.

Address: Eden.



GRANT COUNTY

First District: Towns of Beetown, Cassville, Clifton, Ellenboro, Glen Haven, Harrison, Hazel Green, Jamestown, Lima, Paris, Platteville, Potosi, Smelser, and Waterloo; Villages of Cassville, Hazel Green, Livingston, and Potosi; Cities of Platteville and Cuba City.

BERT A. CLEMENS (Rep.) was born at Cuba City August 15, 1874. He graduated from common school in 1890 and from business college three years later. Since 1926 he has been occupied with insurance and real estate; prior to that year he was engaged in farming. During his life Mr. Clemens has held many positions of trust. The present is his first term in the Assembly.

Address: Cuba City.



GRANT COUNTY



Second District: Towns of Bloomington, Boscobel, Castle Rock, Fennimore, Hickory Grove, Liberty, Little Grant, Marion, Millville, Mt. Hope, Mt. Ida, Muscoda, N. Lancaster, Patch Grove, S. Lancaster, Watterstown, Wingville, Woodman and Wyalusing; Villages of Bagley, Bloomington, Blue River, Montfort, Mt. Hope, Muscoda, Patch Grove and Woodman; Cities of Boscobel, Fennimore and Lancaster.

HUGH A. HARPER (Rep.) was born at Lancaster, December 24, 1885. After finishing grade school, he went through Madison Central High School and the University of Wisconsin, studying both agriculture and liberal arts; for three years playing guard and center on the University basketball team. Mr. Harper was with Company F, 3rd Wisconsin Regiment, for six years and has held a great many public offices, including chairman of town board, secretary Grant County National Farm Loan Association, school board member, director of American Farm Bureau, first president Wisconsin Live Stock Shippers' Federation, president of Wisconsin Farm Bureau, director Wisconsin Council of Agriculture, secretary Grant County Farm Bureau, member of Grant County Board. He is serving his second term in the Assembly.

Address: Lancaster.

GREEN COUNTY



E. J. HOESLY (Rep.) was born June 18, 1885, at New Glarus, and was educated in the New Glarus High School and Northwestern Business College, Naperville, Illinois, where he graduated in 1903. He served for seven years as assistant cashier of the Bank of New Glarus; for four years as assistant postmaster; for six years as village clerk; for nine years as supervisor of the village of New Glarus, and for seven years, member of the county highway committee. At present he combines the occupations of banker and cattle dealer. This is his fourth successive term in the Assembly.

Address: New Glarus.

GREEN LAKE AND WAUSHARA COUNTIES



ALEX McDONALD (Dem.) was born June 28, 1866, at Manchester, Green Lake County. He was educated in the common schools and Valparaiso University, from which he graduated in 1889. From that time until 1910 his occupation was farming. He is now doing field work for a canning factory. Mr. McDonald was town clerk from 1889 to 1902 and supervisor of assessment of Green Lake County from 1902 to 1906. He was elected to the Assembly for the first time in 1932.

Address: Markesan.

IOWA COUNTY

JOHN S. JACKSON (Rep.) was born in the Town of Waldwick, Iowa County, and received his education in the common schools. He has served as chairman of the Town of Mineral Point and member of the County Board of Iowa County for thirteen years, clerk of the school board for fourteen years, and president of the Southwestern Wisconsin Shipping Association for ten years. He has been a farmer all his life, and a member of the Assembly since 1927.

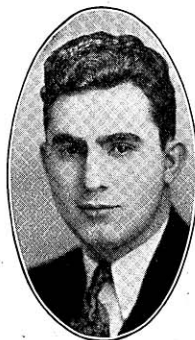
Address: Mineral Point.



IRON AND VILAS COUNTIES

PAUL R. ALFONSI (Prog. Rep.) is the first person of Corsican descent to serve in the Wisconsin Legislature. He was born February 13, 1908, at Pence, Wisconsin, graduated from Lincoln High School, Hurley, in 1924, and from Whitewater State Teachers College three years later. During the three college years he was a member of the debate team at Whitewater. Since graduation from Whitewater, Mr. Alfonsi has headed the commercial department of the Washburn High School and at the same time acted as forensic coach, having had several entries in the state contests. His present term in the Assembly is his first in public office.

Address: Pence.



JACKSON COUNTY

WILLIAM F. DETTINGER (Prog. Rep.) was born in the Town of Northfield, Jackson County, on September 24, 1880. He was educated in the common schools and in the Short Course of the College of Agriculture, University of Wisconsin. Except for five years with the Armour Packing Company, he has always lived on a farm. He was president of the York Creamery Association, Northfield, for three years; town supervisor from 1912 to 1915; and town chairman from 1915 to 1918. Mr. Dettinger is a successful farmer, specializing in purebred Guernsey cattle and seed grain. He is serving his sixth term in the Assembly, having been a member from 1919 to 1925 and from 1931 to the present time.

Address: Route 1, Hixton.



JEFFERSON COUNTY



PALMER F. DAUGS (Dem.) was born February 10, 1903, in the town of Farmington, Jefferson County. He attended high school in Fort Atkinson and later the College of Business Administration, Marquette University. Mr. Daugs has always been a salesman and at the present time is a representative of Remington Rand, Inc. Although this is his first term in the Assembly, he has held many previous offices, including those of chairman Red Cross Roll Call in southern Jefferson County, 1930; chairman Fort Atkinson Community Drive, 1931; vice chairman Fort Atkinson Red Cross Chapter for the past two years; vice president Fort Atkinson Lions Club, 1931 and 1932; past president of Fort Atkinson High School Alumni Association, 1929. Mr. Daugs is a member of Delta Sigma Pi International Commerce Fraternity and is the secretary of the Wisconsin Division, Young Democratic Clubs of America. He is a member of the board of directors of the Wisconsin Democrat Publishing Company, publishers of the Wisconsin Democrat. This is his first term in the Assembly.

Address: 801 East Street, Fort Atkinson.

JUNEAU COUNTY



JOHN P. CONWAY (Dem.) was born October 25, 1880, at Elroy. He was educated in the grade and high schools of Elroy and in 1905 attended the short course of the College of Agriculture of the University of Wisconsin. Since then his occupation has been farming. He has held the offices of town clerk, for three years, town chairman, for one year, school board member, for six; and was elected to the Legislature for the first time in 1932. In addition to his public offices, Mr. Conway has been a director of the Elroy Fair Association for twelve years, director of the Elroy Cooperative Dairy Association for two years, and captain of the Fourth Company, Wisconsin State Guards Reserve.

Address: Elroy.

KENOSHA COUNTY



First District: Second, Third, Fourth, Eighth, Ninth, Tenth, and Twelfth Wards of the City of Kenosha.

ALFRED C. GROSVENOR (Dem.) was born September 8, 1888, at Kenosha, and received his education in the high school and the College of Commerce of that city. For the next three years he was the local distributor of the Milwaukee Sentinel, and for the two following was associated with his mother in a confectionery and notions store. Since then he has been occupied with a recreation parlor and the management of real estate. Public offices held before his election to the Assembly include those of common council member (1921-1922), member of Kenosha County Board (1923-1933), chairman of the latter (1927-1929). Mr. Grosvenor is a member of the Kenosha Safety Council and the Kenosha Historical Society, and is a World War veteran, having served ten months in France.

Address: 5933 Seventh Avenue, Kenosha.

KENOSHA COUNTY

Second District: Towns of Brighton, Bristol, Paris, Pleasant Prairie, Randall, Salem, Somers, and Wheatland; Village of Silver Lake; First, Fifth, Sixth, Seventh, and Eleventh Wards of the City of Kenosha.

GEORGE E. MAHONEY (Dem.) was born April 30, 1867, in Pleasant Prairie, Kenosha County. He was educated in the common schools of the county and in the mechanical department of the Chicago Vocational School. From 1888 to 1903 Mr. Mahoney was a locomotive engineer; since then he has engaged in farming and real estate. Public offices held before his recent election to the Assembly include those of Justice of the Peace and member of the County School Board.

Address: Route 2, Box 149, Kenosha.



KEWAUNEE COUNTY

ALBERT D. SHIMEK (Dem.) was born April 23, 1873, in the Town of Casco, Kewaunee County, and grew up on a farm. He graduated from Stevens Point State Teachers College in 1904, from the Green Bay Business College a year later, and from the teachers' commercial course of the Ferris Institute, Big Rapids, Michigan, in 1908. He was a teacher in public and private schools for eighteen years, teaching various business subjects, including higher accounting. For several years he has been in the garage and farm implement business at Algoma, and is president of the Algoma School Board. He is serving his first term in the Legislature.

Address: Algoma.



LA CROSSE COUNTY

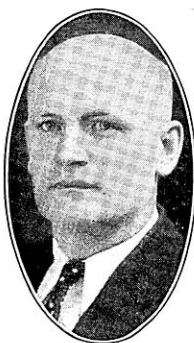
First District: The 1st, 2nd, 3rd, 4th, 5th, 6th, 7th, 9th, 10th, 11th, 12th, 13th, 14th, 15th, 16th, 19th, and 20th Wards of La Crosse.

JOHN MULDER (Rep.) was born at New Amsterdam, La Crosse County, March 22, 1865, and all his life has made his home in that county. He is of Dutch descent, his parents having immigrated to this country from Holland in 1856. His education was received in the schools of the village where he was born, supplemented by a course at the La Crosse Business College. For forty years prior to 1929 he was engaged in the retail grocery business. Mr. Mulder has held various political offices, having served the city of La Crosse as treasurer, alderman, and member of the board of education. He has been a member of the Assembly since 1929.

Address: 822 Rose St., La Crosse.



LA CROSSE COUNTY



Second District: The Eighth, Seventeenth, Eighteenth, and Twenty-first Wards of the City of La Crosse, and the entire county outside La Crosse.

BERNHARD A. MAU (Dem.) was born March 26, 1886. After completing his second year at West Salem High School, he entered Keefe Business College and graduated in 1904. For the next five years he was employed by a general store in West Salem. From 1910 to 1921 he was an assistant bank cashier; for the following three years manager and part owner of a general store. He became bank cashier in 1924, in which position he remained up to 1932, when he became vice president of another West Salem Bank. He has been village treasurer (1911-1913, 1931 and 1932), and trustee

of the village board (1916-1920). He is serving his first term in the Assembly.

Address: West Salem.

LAFAYETTE COUNTY



JOSEPH S. ROBINSON (Rep.) was born at Elk Grove, January 31, 1900. He had two years' work at the Platteville State Teachers College after graduating from high school. Mr. Robinson is a farmer, and has followed this occupation practically his entire life. He was elected assessor of the Town of Elk Grove in 1928 and, with the exception of the next year, held this office until he entered the Assembly in the present year. He is a member of the Leo M. Kane Post No. 42 of the American Legion.

Address: Platteville.

LANGLADE COUNTY



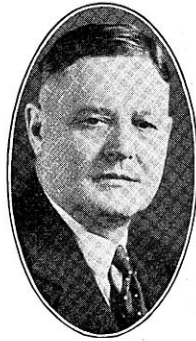
JAMES T. CAVANAUGH (Dem.) was born September 1, 1903, at Milwaukee, but has lived most of his life at Antigo. There he attended St. John's School and the Antigo High School. He did his college work at St. Mary's College, Winona, Minnesota, and the Law School of Marquette University. Before his admission to the bar, in 1931, Mr. Cavanaugh had been employed as passenger brakeman on the Northwestern Railroad. His election to the Assembly in 1932 was his first to public office.

Address: 622 Lincoln St., Antigo.

LINCOLN COUNTY

LOUIS LEIDIGER (Dem.) was born December 18, 1882, at Sturgeon Bay. After attending high school at Merrill, Wisconsin, he enrolled in the Wahl-Henius Institute of Fermentology, where he graduated in 1907. Mr. Leidiger was manager of the Leidiger Brewing Company at Merrill up to 1920, since when he has been a manufacturer of soft drinks. He was a member of his county board from 1917 to 1922 (its chairman in 1921), and was elected to his first term in the Legislature in 1932.

Address: 1604 E. Main Street, Merrill.

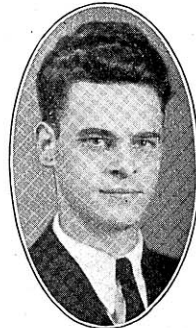


MANITOWOC COUNTY

First District: Towns of Centerville, Liberty, Manitowoc, Manitowoc Rapids, Meeme, and Newton; City of Manitowoc.

FRANCIS A. YINDRA (Dem.) was born January 17, 1906, at Manitowoc. His education was received in Lincoln High School at Manitowoc and the Colleges of Liberal Arts and Law of Marquette University, from which institution he received the degrees of Ph.B. and LL.B. While a student, Mr. Yindra acquired a wide variety of experience in part-time work, in the aluminum, canning, and furniture industries, farming, telephone operation, and mail carrying. He is now a practicing attorney, and is serving for the first time in public office.

Address: Manitowoc.



MANITOWOC COUNTY

Second District: Towns of Cato, Cooperstown, Eaton, Franklin, Gibson, Koesuth, Maple Grove, Mishicot, Rockland, Schleswig, Two Creeks, Two Rivers; Villages of Reedsville and Valders; Cities of Kiel and Two Rivers.

RAYMOND J. SCHEUER (Dem.) was born November 8, 1887, at Mishicot, where he attended the graded school. After attending high school in Manitowoc, he went into the brewing business (1904-1918). From 1920 to 1931 he was in the retail automobile business, which he left for automobile financing. Mr. Scheuer was a sergeant in the Medical Corps during the World War. He has held no previous public office.

Address: Mishicot.



MARATHON COUNTY



First District: Towns of Bergen, Berlin, Bern, Bevent, Brighton, Cassel, Cleveland, Day, Eau Pleine, Elderon, Emmet, Frankfort, Franzen, Green Valley, Guenther, Halsey, Hamburg, Holton, Hull, Johnson, Knowlton, Kronenwetter, McMillan, Maine, Marathon, Mosinee, Reid, Rib Falls, Rib Mountain, Rietbrock, Spencer, Stettin and Wein; that part of Abbotsford Village in Marathon County and Villages of Athens, Edgar, Elderon, Fenwood, Marathon, Spencer, and Stratford; the City of Mosinee and that part of the City of Colby in Marathon County.

FRANK J. SHORTNER (Dem.) was born in Wood County, November 10, 1890, and attended the public school at Edgar up to the seventh grade, when he left school. From 1904 to 1906 he was clerk in a general store; from 1906 to 1913, laborer. Since 1913 he has been in the real estate and insurance business. Mr. Shortner has held many public offices, and is at present chief of the Edgar Fire Department, village president, and member of his county board. He has been, besides, justice of the peace and clerk and assessor of his village. He is serving his first term in the Legislature.

Address: Edgar.

MARATHON COUNTY



Second District: Towns of Easton, Harrison, Hewitt, Norrie, Plover, Ringle, Texas, Wausau, Weston; Villages of Brokaw, Hatley, Rothschild, Schofield; City of Wausau.

FRANK E. BACHHUBER (Dem.) was born November 17, 1884, on a farm in Dodge County. He was graduated from the Mayville High School in 1902, Marquette University in 1907, and the American Institute of Banking in 1912. He was employed by the Marshall and Ilsley Bank of Milwaukee from 1902 to 1919 and has since then practiced law. Mr. Bachhuber is a police and fire commissioner of his city. He was first elected to the Legislature in 1932.

Address: 716 McIndoe Street, Wausau.

MARINETTE COUNTY



CHARLES A. BUDLONG (Rep.) was born at Frankfort, New York, and came to Black Earth, Wisconsin, at the age of three, where he received his education in the public schools. He followed the occupation of telegrapher and railroad agent for twelve years, moved into Marinette County in 1891, and for a time kept a general store at Amberg. Mr. Budlong has held the position of town clerk, town chairman, clerk of the circuit court, and sheriff. For three years he was immigration inspector on the Canadian border; for eight years, state inspector for the board of control; for five years, police judge of the City of Marinette. The present is his fifth term in the Assembly.

Address: 2628 Parkridge Ave., Marinette.

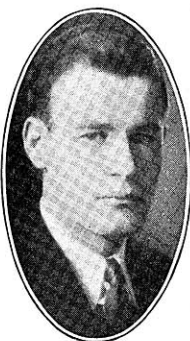
MILWAUKEE COUNTY

First District: The First and Third Wards of the City of Milwaukee.

CORNELIUS T. YOUNG (Dem.) was born July 28, 1907, in Milwaukee, where he has spent his entire life. His education was received in St. John's Military Academy, where he was graduated in 1926, and the University of Wisconsin, from which institution he was admitted to the bar in 1931. The present is Mr. Young's second term in the Assembly, of which he has been elected the youngest speaker in its history.

Office Address: 735 N. Water Street, Milwaukee.

Home Address: 719 E. Pleasant Street, Milwaukee.



MILWAUKEE COUNTY

Second District: Second and Tenth Wards of the City of Milwaukee.

CLARENCE C. KRETLOW (Dem.) was born December 13, 1892, at Milwaukee. He received his education in the public and parochial schools and the Badger State Business College. After finishing school, he became an inspector for the Milwaukee Gas Light Company (1909-1923), was an assistant cemetery superintendent from 1924 to 1926, and has since then been the manager of recreational enterprises. He served as inspector of elections and Democratic committeeman 1928-1932. During the World War Mr. Kretlow was a sergeant in the Infantry. The present is his first term in the Legislature.

Address: 2235 W. Cherry St., Milwaukee.



MILWAUKEE COUNTY

Third District: Towns of Franklin and Greenfield; Village of West Milwaukee; City of West Allis.

ARTHUR J. BALZER (Prog. Dem.) was born on March 6, 1895, above the school house at Mequon where his father taught for twenty-three years. During his attendance at Marquette University, he was varsity cheer leader, and received a medal in 1922 for proficiency in debate. He was in the hospital corps of the Navy during the World War and a government student after the Armistice. Mr. Balzer has for the past nine years resided in West Allis, where he is in the real estate business. In 1932 he was a Smith candidate for delegate to the Democratic National Convention. He is serving his first term in the Assembly, and is chairman of the Committee on Labor.

Address: 1116 S. 85th Street, West Allis.





MILWAUKEE COUNTY

Fourth District: The Fourth Ward of the City of Milwaukee.

JOHN O'MALLEY (Dem.) was born May 13, 1875, in County Mayo, Ireland. Coming to the United States in 1888, he lived for a time in Rock County, and thereafter in Chicago and St. Louis. After a common school education Mr. O'Malley learned the stone mason trade, but has since worked at a great variety of occupations and has been the owner of saloons in both St. Louis and Milwaukee. Since 1902 he has resided in the fourth ward and for the past five years has been employed in the street department. His present term in the Assembly is his first in public office.

Address: 848 N. Ninth Street, Milwaukee.



MILWAUKEE COUNTY

Fifth District: Fifth and Eighth Wards of Milwaukee.

MARY O. KRYSZAK (Dem.) has lived in Milwaukee all her life. After graduating from St. Mary's High School and the Spencerian Business College, she entered the University of Wisconsin, and has since been school teacher, music teacher, bookkeeper, librarian and newspaper writer, having been editor of *Glos Polek* (Polish Women's Voice) since 1919; and has found time to combine with her duties as housewife and mother of three children a great many other activities of social, charitable, and political nature. She was president of the Defense Council and chairman of the Liberty Loan Drives in Milwaukee, and is now a

member of the Motion Picture Commission and the Municipal Christmas Tree Commission. Mrs. Kryszak was first elected to the Assembly in 1929, and was again elected to that body in November, 1932, being in both these sessions the only woman member. She is chairman of the Committee on Public Welfare and member of the Committee on Education.

Address: 2003 S. 11th St., Milwaukee.

MILWAUKEE COUNTY

Sixth District: The Sixth Ward of the City of Milwaukee.



JOHN N. KAISER (Dem.) was born May 16, 1899, at Milwaukee. He graduated from St. Ann's Parochial School in 1914, and later took a position with the Mayer Boot and Shoe Company. He was employed by the Milwaukee Electric Railway and Light Company for ten years, and afterward was a salesman for various companies. Prior to the World War he was a member of the Wisconsin National Guard and served in the U. S. Army throughout the war. For sixteen months he was in France with the Thirty-second Division (Battery C, 120th Field Artillery). Mr. Kaiser was elected to the Assembly for the first time in 1932. His principal interest in government lies in taxation problems.

Address: 2235 N. Holton St., Milwaukee.

MILWAUKEE COUNTY

Seventh District: Seventh Ward of the City of Milwaukee.

ARTHUR KOEGEL (Soc.) was born May 2, 1898, in Milwaukee. After graduating from public school, he took a technical course and has since been a bricklayer, having been a member of the Bricklayers, Masons and Plasterers Union of America for twenty-four years. Mr. Koegel's election in November, 1932, was his first to public office.

Address: 2548 N. 15th St., Milwaukee.



MILWAUKEE COUNTY

Eighth District: The Sixteenth and Twenty-third Wards of the City of Milwaukee.

JAMES W. HIGGINS (Dem.) was born on September 6, 1896, at Milwaukee, attended the Holy Rosary school from 1904 to 1912, and East Side High School from 1912 to 1914. He has held several positions, including those of manager of cleaning and dyeing establishment, press agent, and manager of the Orpheum Circuit theaters. He was a United States food administrator in 1917, and the following year joined the Navy. He is now holding his first public office.

Address: 2319 W. Michigan St., Milwaukee.



MILWAUKEE COUNTY

Ninth District: The Ninth and Twenty-sixth Wards of Milwaukee.

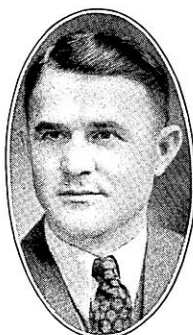
GEORGE H. WEISSELEDER (Dem.) was born on December 13, 1879, at Hartford. He received his education in Milwaukee, attending the public schools, Milwaukee Law School (now a part of Marquette University), and for many years receiving private instruction in higher mathematics, chemistry, physics, and engineering. Since admission to the bar in 1909, he has been a practicing attorney, and has been a consulting engineer since 1900. He represented the Sixth Senatorial District in the legislative sessions of 1913 and 1915, and was elected to the Assembly in 1932.

Address: 2813 N. 54th St., Milwaukee.



MILWAUKEE COUNTY

Tenth District: Towns of Lake and Oak Creek;
Cities of Cudahy and South Milwaukee.



FRANK CHERMAK (Dem.) was born in Austria-Hungary on September 20, 1893, and attended the Roman Catholic High School in Pressburg, graduating in 1910. After coming to America Mr. Chermak clerked for a time in a grocery store, and later owned stores, first at Cudahy and later at South Milwaukee. Since 1929 he has been a member of the City Planning Commission of South Milwaukee. He is serving his first term in the Assembly.

Address: 1318 Madison Ave., South Milwaukee.

MILWAUKEE COUNTY

Eleventh District: Eleventh and Twenty-fourth
Wards of the City of Milwaukee.



MARTIN B. FRANZKOWIAK (Dem.) was born in Poland, November 10, 1870, and came to Milwaukee in 1878, where he was educated in the parochial schools. After working as a press hand, order and shipping clerk with the Kieckhefer Brothers Company for twenty-two years, he began a retail grocery business, remaining in this business from 1905 to 1932, when he retired. He was one of the organizers of the Federation Life Insurance Company of America in 1913, of which later on he was the treasurer for six years and director for four. He has been this organization's local secretary for the past fifteen years. In 1924

he was one of the organizers of the Star Building and Loan Association and has been its director and president for three years each. Mr. Franzkowiak has been an election inspector for the past twenty-four years. The present is his first term in the Assembly.

Address: 2501 S. 15th St., Milwaukee.

MILWAUKEE COUNTY

Twelfth District: 12th and 14th Wards of
Milwaukee.



MAX J. GALASINSKI (Dem.) was born March 18, 1879, in the part of Milwaukee which he now represents in the Assembly. He was educated in the public and parochial, and in evening schools, where he took a course in bookkeeping. From 1891 to 1893 he was apprentice pharmacist, and in the following nineteen years learned and practiced his father's trade of stone cutting and sculpturing, building some of the best known monuments in Milwaukee, including that erected to General Kosciuszko in South Side Park. In 1912 he became, after a civil service examination, superintendent of street sanitation for the fourteenth ward, and

remained in this position for sixteen years. In 1928 he was chosen alderman for his ward, and was instrumental during his term of office in securing the purchase and development of Woodrow Wilson Park. He has held many other offices, including that of director of a building and loan association and secretary of St. John Cantius Church. The present is Mr. Galasinski's first term in the Legislature.

Address: 2483 S. Sixth St., Milwaukee.

MILWAUKEE COUNTY

Thirteenth District: Thirteenth and Twenty-first Wards of the City of Milwaukee.

GROVER W. RAMSTACK (Dem.) was born in Milwaukee on June 3, 1886, and was educated in parochial and public schools. He became a civil service employe in the water department of the City of Milwaukee, resigning this position to enter the moulding business, in which he was employed as time keeper and foreman. Later he became a railway clerk, and has held this position ever since. Mr. Ramstack has always been prominent in civic activities. In 1922 he was chairman of the Pageant of Progress Committee. He is serving his first term in the Legislature.

Address: 2645 N. Second St., Milwaukee.



MILWAUKEE COUNTY

Fourteenth District: Town of Milwaukee; Villages of Fox Point, River Hills, Shorewood, and Whitefish Bay; Eighteenth Ward of the City of Milwaukee.

MILTON T. MURRAY (Rep.) was born in Milwaukee June 1, 1898. He received his education in Milwaukee Teachers College, Marquette University and the University of Chicago. He spent ten years as teacher and athletic coach, and now is engaged in the practice of law at 774 North Water Street. This is his second term in the Assembly.

Address: 3044 N. Maryland Ave., Milwaukee.



MILWAUKEE COUNTY

Fifteenth District: The Fifteenth and Nineteenth Wards of Milwaukee.

THOMAS H. CAFFREY (Dem.) was born at South Bound Brook, New Jersey, on October 3, 1893. Moving to Milwaukee, he attended St. Thomas Aquinas Grade School and later Marquette Academy, graduating from the latter in 1912. After leaving school, he learned the machinist trade, but is at present engaged in the amusement business. During the War, Mr. Caffrey served with the 410th Telegraph Battalion for twenty-six months, thirteen of these overseas. Prior to his recent election to the Assembly, he had held no public office.

Address: 1956 North 37th Street, Milwaukee.



MILWAUKEE COUNTY

Sixteenth District: The Twenty-fifth Ward
of Milwaukee.



HERMAN B. WEGNER (Soc.) was born in Milwaukee on January 3, 1891. He attended both parochial and public schools up to the age of fourteen, when he became an apprentice in the glove cutting trade. In 1915 he left glove cutting for shoe cutting, and in 1923 changed to leather garment cutting, his present trade. Mr. Wegner has, since his apprenticeship, been an active union man and has been a member of the Glove Workers International Union and the United Shoe Workers Union. He has held no previous public office.

Address: 1305 W. Cottage Place, Milwaukee.

MILWAUKEE COUNTY

Seventeenth District: Seventeenth and Twenty-seventh Wards of Milwaukee.

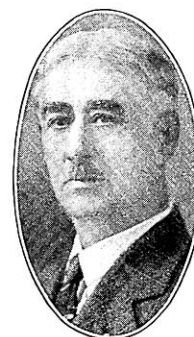


EDWARD C. WERNER (Dem.) was born on May 26, 1850, at Milwaukee, where he attended public and parochial schools. After learning the barber trade, he worked first as a journeyman and later kept shop for about fifty years. He was later elected Justice of the Peace and resigned upon the creation of civil courts; served as deputy sheriff one term; was appointed and served nine years as inspector of public utilities. The present is his first term in the Legislature.

Address: 3212 S. Indiana Avenue, Milwaukee.

MILWAUKEE COUNTY

Eighteenth District: Twentieth Ward of
Milwaukee.



EDWARD H. KIEFER (Soc.) was born in Milwaukee May 1, 1874. He attended the parochial and public schools of that city up to the age of fifteen, when he became an apprentice in the painting trade, which he has followed since. He has been a member of the Brotherhood of Painters, Decorators and Paperhangers since 1900 and held the office of business manager of Local No. 781 for over eight years. He has been a member of the Assembly in the sessions of 1911, 1913, 1931 and 1933.

Address: 2603 W. Nash St., Milwaukee.

MILWAUKEE COUNTY

Nineteenth District: The Twenty-second Ward of the City of Milwaukee.

JOSEPH L. GARVENS (Dem.) was born April 20, 1886, at Elm Grove. After graduating from parochial school he took an engineering course and an evening course at Marquette University. He was engaged in agriculture up to 1911, when he changed his occupation to carpentry and building. Since 1921 he has been a real estate dealer. Before his recent election to the Assembly Mr. Garvens had held no public office.

Address: 2435 N. 38th St., Milwaukee.



MILWAUKEE COUNTY

Twentieth District: Towns of Granville and Wauwatosa; City of Wauwatosa.

CHARLES B. PERRY (Rep.) was born in New Haven County, Connecticut. After graduating from the Connecticut State Normal School at New Britain, and spending a year in the Yale Law School, he entered the Law School of the University of Wisconsin and has, since taking his degree, been a practicing attorney. He has lived in Wauwatosa since 1892; was its city attorney, 1895-1905; mayor for five consecutive terms, 1906-1916; and has been chairman of the Metropolitan Sewerage Commission of Milwaukee County since 1921. He served in the Assembly during the sessions of 1911, 1923, 1925, 1929, and 1931, being speaker in 1929 and 1931, including the special session. Mr. Perry was vice president of the Perry's Victory Memorial Commission created by Congress several years ago.

Home Address: Wauwatosa.

Office: Majestic Bldg., Milwaukee.



MONROE COUNTY

EARL D. HALL (Rep.) was born July 15, 1879, at Tunnel City, and received a rural school education. He spent four years in train service, and for a number of years has been engaged in farming. He has been a member of the Monroe County Board of Supervisors and the Monroe County Highway Commission for several years. He was elected to the Assembly without opposition in 1924, and was reelected in 1926, 1928, 1930, and 1932.

Address: Tunnel City.



OCONTO COUNTY



GREGORY C. FLATLEY (Dem.) was born March 14, 1898, in the Town of Stiles, Oconto County. After graduation from the Oconto Falls High School in 1917, he attended St. Thomas College at St. Paul, Minnesota, and later completed some special courses of study at the University of Chicago. He served in the World War, being commissioned with the rank of ensign in the United States Navy, and is one of the past post commanders of his local American Legion post. For the past several years he has been associated in business with his father, as secretary and treasurer of the Flatley Furniture Company, and is also acting manager of the telephone exchange of Oconto Falls. He is serving in the Legislature for his first term.

Address: Oconto Falls.

OUTAGAMIE COUNTY

First District: Towns of Bovina, Center, Dale, Ellington, Grand Chute, and Greenville; Village of Shiocton; City of Appleton.

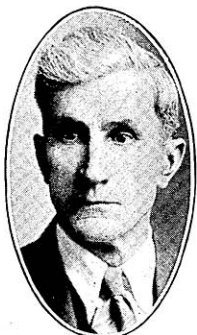


A. W. LAABS (Rep.) was born October 26, 1873, at Milwaukee, and was educated in the public schools. From 1892 to 1907 he was employed by the Chicago and Northwestern Railroad as telegraph operator, train dispatcher, and chief train dispatcher. He then founded the Wisconsin Rendering Works at Appleton, of which he was owner and operator until 1918. During these years he also owned and operated several farms. He served as alderman in Appleton from 1918 to 1923, town chairman of Grand Chute from 1918 to 1923, and town chairman and county board member in Outagamie County from 1926 to 1931. He was elected to the Assembly for the first time in 1932.

Address: Route 6, Appleton.

OUTAGAMIE COUNTY

Second District: Towns of Black Creek, Buchanan, Cicero, Deer Creek, Freedom, Hortonville, Kaukauna, Liberty, Maple Creek, Maine, Oneida, Osborne, Seymour, and Vandenbrook; Villages of Black Creek, Bear Creek, Combined Locks, Hortonville, Kimberly and Little Chute; Cities of Kaukauna, Seymour, and Third Ward of New London.



WILLIAM M. ROHAN (Dem.) was born in the Town of Buchanan, Outagamie County, March 31, 1873, and still resides there on a farm east of Kaukauna. He received his early education in public and parochial schools, and later attended Green Bay Business College. He served four terms as town treasurer beginning in 1905. From 1922 to 1925 he was town chairman and county board

member; in 1926 he was made chairman of the county highway committee. He was a member of the Assembly in the session of 1911.

Address: Route 4, Kaukauna.

OZAUKEE COUNTY

LOUIS G. KIEKER (Dem.) was born in the Town of Mequon, Ozaukee County, October 4, 1880. He lived on a farm with his parents, attending rural school, until he was sixteen; and graduated from Oshkosh State Teachers College in 1898. Mr. Kieker was chairman of the Board of Supervisors in the Town of Mequon from 1908 to 1911; school clerk 1907-1924; postmaster at Thiensville, 1915-1921. He has served for a number of years on the county board of supervisors and is a member of the county highway committee. Since 1900 he has run the Thiensville Hotel. He is active in various real estate companies. In the November, 1928, election he was elected a member of the Assembly, and was reelected in 1932.

Address: Thiensville.



PIERCE COUNTY

LLOYD TOMBLESON (Rep.) was born at Ellsworth in 1883. After finishing public school, he entered the River Falls State Teachers College, graduating in 1905. From 1900 to 1911 he held several school positions, ranging from rural school teacher to high school principal. He has since then been occupied in farming in Pierce County. Mr. Tombleson was chairman of his county board for two years, and has been town chairman for eleven. He is serving his first term in the Assembly.

Address: Ellsworth.



POLK COUNTY

MARIUS DUEHOLM (Rep.) was born at Sonberg, Denmark, January 5, 1881. He came to America at the age of nine and has lived ever since in Polk County. He has always been a farmer. Mr. Dueholm was a member of the town board for fifteen years and of the county board for nine years prior to his legislative service. He has been a member of the creamery board for eighteen years and of the school board for fourteen years. He has served in the Assembly since 1931.

Address: Route 2, Luck.



PORTAGE COUNTY



JOHN T. KOSTUCK (Rep.) was born October 7, 1893, in Stevens Point. He left school at the end of the third grade to work on a farm. At the age of fourteen, while assisting in blasting stone, he became blind. Soon after, he entered the Wisconsin State School for the Blind, where he spent ten years, graduating in 1918 from the high school department. He then entered the University of Wisconsin, doing work in political science and economics. For three years, he taught in the high school department of the School for the Blind at Staunton, Virginia, and has since been in the piano business at Stevens Point. Recently, he gave this up and is now devoting full time to his legislative work. Mr. Kostuck is the first blind member of the Legislature. He was elected for the first time in 1930.

Address: 711 Center Ave., Stevens Point.

PRICE COUNTY



GUSTAVE E. BLIESE (Dem.) was born in Aldendorff, Germany, and came to the United States as a small child. He attended school in Fontanelle, Iowa, and Phillips, Wisconsin, and then became manager of a general store (1905-1915) and employment manager for West Lumber Company (1915-1931). In 1910 he moved to a farm near Phillips, which he still occupies. He served as treasurer of the Price County Agricultural Society for six years and has been its secretary for the past four. His present term is his first in the Legislature, but he has held many other public offices, including those of alderman, president of city council (both of Phillips), and chairman of the Town of Worcester.

Address: Phillips.

RACINE COUNTY



First District: The First, Second, Third, Sixth, Tenth, Eleventh, Thirteenth, and Fourteenth Wards of the City of Racine.

JOSEPH CLANCY (Dem.) was born at Racine, August 2, 1890. He attended St. Rose School, Winslow School, and the Racine High School, from which he graduated with the class of 1908. He was employed as general traffic manager for two large rubber companies from 1914 to 1924. Since then he has been occupied in selling securities. The present is his first term in the Assembly.

Address: 1308 College Ave., Racine.

RACINE COUNTY

Second District: The Fourth, Fifth, Seventh, Eighth, Twelfth, and Fifteenth Wards of the City of Racine.

JOSEPH C. HAMATA, (Dem.) was born February 15, 1882, at Racine, Wisconsin. He received his education in the parochial and public schools of the city of Racine. At the age of eighteen years he took over his father's business, that of a retail grocer. He conducted this until the year 1917, when he was elected secretary of Racine Aerie of Eagles, a position which he still holds. He has also served as a member of the school board and the local draft board for Division Number One, Racine; and as deputy collector of customs for the Port of Racine. In the year 1912 he was elected a member of the Assembly and served one term.

Address: 1659 N. Main St., Racine.



RACINE COUNTY

Third District: Towns of Burlington, Caledonia, Dover, Mt. Pleasant, Norway, Raymond, Rochester, Waterford, and Yorkville; Villages of Corliss, Rochester, Union Grove, and Waterford; City of Burlington and Ninth Ward of Racine.

EDWARD F. RAKOW (Dem.) was born at Burlington on August 30, 1861, and was educated there in the public schools. For nineteen years preceding his retirement from business, he was manager of the Citizen's Gas Company. In 1895 he was appointed postmaster by President Cleveland and held this office for four years. He was elected Mayor of Burlington in 1901 and held this office for six terms at various times, and was a member of the Assembly in the session of 1903.

Address: 391 Jefferson St., Burlington.



RICHLAND COUNTY

HARLEY A. MARTIN (Dem.) was born January 3, 1880, at Cottonwood Falls, Kansas, and came to Wisconsin with his parents when four years old. He graduated from the Sextonville High School in 1898, the Wisconsin Business College in 1899, and the University Short Course two years later. He is a raiser of purebred livestock, and for the past twenty-eight years has been secretary of the Red Polled Cattle Club of America. Mr. Martin served as a rural school director for ten years and for eight years as a director of the Richland Center city schools. In 1926, Mr. Martin was elected to the Assembly, and in 1928 and 1932 was reelected. In 1929 he was made a member of the State Office Building Commission, while serving his second term in the Legislature.

Address: Richland Center.



ROCK COUNTY



First District: Towns of Center, Fulton, Harmony, Janesville, Lima, Milton, Magnolia, Porter, Union; Village of Milton; Cities of Edgerton, Evansville, and Janesville.

EDWARD GRASSMAN (Rep.) was born November 16, 1882, in Richland County. He was graduated from the Sextonville High School in 1900, spent a year in Whitewater State Normal, and took a six months' correspondence course so as to acquire a first grade teacher certificate. His first eight years out of school were spent as a teacher and the following years in the tobacco and farming occupations. Mr. Grassman served as an alderman of Edgerton from 1922 to 1926, as mayor for the next biennium, and resigned his office as county supervisor, which he had held for three years, when elected to the Assembly in 1932.

Address: 501 Washington St., Edgerton.

ROCK COUNTY



Second District: Towns of Avon, Beloit, Bradford, Clinton, Johnstown, La Prairie, Newark, Plymouth, Rock, Spring Valley, Turtle; Villages of Clinton, Footville, Orfordville; City of Beloit.

IRA E. INMAN (Rep.) was born December 7, 1868, in Plymouth Township, Rock County. He was educated in rural school, and has been a farmer all his life. Since 1911 he has held the offices of secretary-treasurer of the Brown Swiss Cattle Breeders Association and of the Register of Production of Brown Swiss Cattle Breeders Association. Mr. Inman was a delegate to the Republican National Convention in June, 1932. The present is his first term in the Assembly.

Address: Beloit.

RUSK AND SAWYER COUNTIES



J. W. CAROW (Rep.) was born at Baraboo, Wisconsin, on April 20, 1874. After finishing his elementary educational work in the common schools, he attended the University of Wisconsin. Since then Mr. Carow has been engaged in the practice of law, with headquarters at Ladysmith. He was chairman of the Rusk County Board for three years. In the legislative session of 1929 he was appointed to the Corrupt Practices Committee, and was co-author with Assemblyman Nixon of the corrupt practices bill of 1931 and 1933. He is serving his third consecutive term in the Assembly.

Address: Ladysmith.

ST. CROIX COUNTY

ARTHUR D. KELLY (Prog. Rep.) was born June 9, 1873, on the farm near Hudson where he still lives. He graduated from Hudson High School in 1892 and attended the Curtiss Business College at St. Paul the next year. Since leaving school his occupation has been farming, with the raising of pure-bred Jersey cattle as a specialty. He has been town chairman for nineteen years, and chairman of his county board for seven years. This is Mr. Kelly's first term in the Assembly.

Address: Route 3, Hudson.



SAUK COUNTY

ISAAC C. EVANS (Dem.) was born January 17, 1879, at Spring Green in the house he now occupies. After graduation from high school, he spent two years at the University of Wisconsin before becoming a farmer and livestock buyer. The present term is his first in the Legislature.

Address: Spring Green.



SHAWANO COUNTY

WALTER J. DOLAN (Dem.) was born in the town of Highland, Iowa County, on July 22, 1876. He received his education in the Highland High School, and taught in the schools of Iowa County for several years following, later entering the cheese business. Moving to Shawano County in 1908, he went into partnership with his brother in the real estate and insurance business. During the World War he was chairman of the Committee on Labor of the Council of Defense. At present he is a member of the Shawano County Board. Mr. Dolan owns and operates several farms.

Address: Shawano.



SHEBOYGAN COUNTY

First District: The City of Sheboygan.



JOSEPH M. THEISEN (Dem.) was born in Sheboygan, February 24, 1877, and has lived in this city all his life. He was graduated from the Holy Name School in 1890 and the Sheboygan Business College in the next year. After working for many years as a stenographer and typist, he was employed, in 1913, as cost accountant, pay roll clerk, and employment manager for a motor concern. In 1924 he changed his employment, working as cost accountant until 1931, since which year Mr. Theisen has been out of employment. He has been secretary of the North Side Improvement Association since its inception in 1915, and has been especially active in singing societies, having been secretary of the East Wisconsin Singing Societies since 1920, and secretary of four songfests held in his city between 1905 and 1929. In 1932 he was elected secretary of the Northwest Saengerfest Association. He served one term each on the Library Board and the Board of Aldermen, and is serving his first term in the Assembly.

Address: 1904 Calumet Drive, Sheboygan.

SHEBOYGAN COUNTY

Second District: The entire county outside the City of Sheboygan.



CHARLES LAACK (Dem.) was born in the Town of Plymouth, Sheboygan County, May 30, 1871. He attended public school, and for the past twenty-six years has operated a farm on Highway 23 near Plymouth. For twenty-one years he was manager of the Plank Road Telephone Company and has been president of the Farmers Call Board of Plymouth since its organization eleven years ago. He was elected to the Legislature for the first time in 1932. Other public offices held by Mr. Laack include those of town assessor, for twelve years, and school district treasurer, for eighteen.

Address: Route 1, Plymouth.



TAYLOR COUNTY

ANTHONY J. OPACHEN (Dem.) was born in the Town of Hammel, Taylor County, on October 18, 1909. Since his graduation from grade school (1922) and the Medford High School (1927) he has been a candy maker, and since 1930, a laborer. His present term in the Assembly is Mr. Opachen's introduction to public office.

Address: Route 3, Medford.

TREMPEALEAU COUNTY

FRANK A. KELLMAN (Rep.) was born April 24, 1869, in Boras, Sweden. He attended graded school until the age of sixteen, after which he worked for a number of years as a tinsmith. He then went into the hardware business, which occupation he pursued for thirty-five years. Mr. Kellman was mayor of Galesville for two terms, president of the business men's association for six years, and manager of the Arctic Springs Creamery for ten years, and has been a member of the local library board for the past decade and a half. The present term is his second in the Legislature. He is now in the real estate and insurance business, and is a collector of first editions.

Address: Galesville.



VERNON COUNTY

H. S. HALVORSEN (Prog. Rep.) was born on a farm near Westby. His education was received in the public schools and at Luther College, Decorah, Iowa. Since 1915 he has been in the hardware business at Westby. Mr. Halvorsen served as deputy county auditor of Wells County, North Dakota, from 1911 to 1914, and as a member of the Board of Education and the City Council of Westby in 1918 and in 1931-1932. The present is his first term in the Legislature.

Address: Westby.



WALWORTH COUNTY

DANIEL E. LABAR (Rep.) was born August 21, 1857, in the town of Delavan, Walworth County. He graduated from the Delavan High School and Wayland Academy. He has held numerous public offices, among them alderman in Delavan 1901 to 1905, member of the county board 1906-07, and mayor of Delavan 1908-10 and 1912-16. In November, 1928, he was elected to represent Walworth County in the Assembly and was reelected in 1930 and 1932.

Address: 134 S. Sixth St., Delavan.



WASHINGTON COUNTY



JOSEPH E. RUSSELL (Dem.) was born in the Town of Erin, Washington County, April 7, 1864, and has lived there all his life. After completing his education in the Whitewater Normal School, he taught in the schools of the county for ten years. Since that time he has been a farmer and was an organizer of the first cooperative cheese factory in his town, serving as its director until its close in 1918. Mr. Russell's public activities include those of town clerk and school district clerk. He was chairman of the Town of Erin Council of Defense during the World War. With the help of his son, Mr. Russell is at present the proprietor and operator of the Russell Stock Farm, noted for production of Poland China hogs and Guernsey dairy cattle. He was first elected member of the Assembly in November, 1932.

Address: Route 5, Hartford.

WAUKESHA COUNTY



First District: Towns of Eagle, Genesee, Mukwonago, Muskego, New Berlin, Ottawa, Vernon and Waukesha; Villages of Big Bend, Dousman, Eagle, Mukwonago, North Prairie, and Wales; City of Waukesha.

WALTER G. CALDWELL (Dem.) was born at Pewaukee on February 19, 1886; was graduated from the Pewaukee High School in 1903, attended Marquette College for the next two years, and the University of Wisconsin for the following five, receiving his degree in civil engineering. For the following eight years he was employed by the Wisconsin Highway Commission and other agencies as engineer in the construction of roads and bridges, and from 1923 to the present time has been a consulting engineer. Public offices held by Mr. Caldwell include those of county highway engineer (1919-1923), county surveyor (1922 to date), and secretary of City of Waukesha Board of Appeals (1926 to date). In 1918 Assemblyman Caldwell served in the Engineering Corps at Camp Humphreys.

Address: 411 N. Grand Ave., Waukesha.

WAUKESHA COUNTY



Second District: Towns of Brookfield, Delafield, Lisbon, Menomonie, Merton, Oconomowoc, Pewaukee, and Summit; Villages of Chenequa, Hartland, Lac La Belle, Lannon, Menomonie Falls, Merton, New Butler, Sussex, and Pewaukee; City of Oconomowoc.

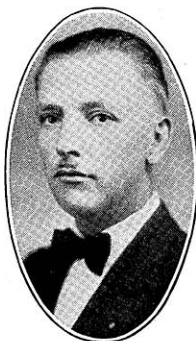
WILLIAM H. STEELE (Rep.) was born in Waukesha County, May 15, 1872. He was educated in the Pewaukee schools and the University of Wisconsin, and taught school for twelve years in Waukesha and Pewaukee. In 1911, he bought a dairy farm on the outskirts of Pewaukee, where he has lived since then. He was town chairman and member of county board from 1919 to 1925; has been president of the Pewaukee School Board for twenty-four years; and is a director of the Waukesha County Guernsey Breeders' Ass'n and the Golden Guernsey Milk Cooperative.

Address: Pewaukee.

WAUPACA COUNTY

EARLE F. MOLDENHAUER (Dem.) was born on May 7, 1898, in the Town of Lebanon, Dodge County. At an early age he accompanied his parents to Waupaca County, where he grew up on a farm. After graduation from the Clintonville High School in 1916, he entered the journalism course of the University of Pennsylvania. In December, 1917, he enlisted in the army and served fourteen months until the end of the World War, largely with Co. B of the Eighth Division Motor Supply Train. Upon return, he became associated with his father in the Clintonville Tribune and in 1920 became editor, in which capacity he is still engaged. He has been actively associated with the American Legion and the Lions Club, in both of which he has been an officer, but has never before the 1932 campaign been a candidate for any public office. He is the first Democrat to have been elected to any county office in Waupaca County in forty years.

Address: Clintonville.



WINNEBAGO COUNTY

First District: City of Oshkosh.

RAY NOVOTNY (Dem.) was born July 31, 1902, in Jennikov, Czechoslovakia. He came to America at the age of eleven and has since lived in Oshkosh. For two years after his graduation from the Oshkosh High School, Mr. Novotny was a student in civil engineering at the University of Wisconsin. He is now an industrial engineer and his present term in the Assembly his introduction to public office.

Address: 395—23rd Street, Oshkosh.



WINNEBAGO COUNTY

Second District: All the towns, villages, and cities of the county except the City of Oshkosh.

WILLIAM P. GRIMES (Dem.) was born in the Town of Menasha, Winnebago County, August 17, 1868. After finishing district school, it became necessary for him to assume the management of the home farm. In 1911 he organized the West Menasha Telephone Company, a group of farmers who built their own lines, and has continued as an officer of this company ever since. In 1898 he was elected to the town board and three years later became its chairman, to which position he was re-elected for eighteen consecutive years. He was treasurer of the district school board from 1910 to 1930, and has been a director of the Vinland Fire Insurance Company since 1920. He is serving his first term in the Legislature.

Address: Route 3, Neenah.



WOOD COUNTY



BYRDE M. VAUGHAN (Rep.) was born November 30, 1862, at Byron, in Fond du Lac County. He received his education in the Howe High School, Grand Rapids (now Wisconsin Rapids), University of Wisconsin General Science Course (class of 1885), and the University of Wisconsin Law School (1888). He has practiced law ever since, specializing in drainage law, and for many years running a farm as a side line. From 1888 to 1928 he was a court commissioner, and has also served as city superintendent of education and member of the library board of his city. Mr. Vaughan was for several years a member of the National Guard and for a time captain of his company. The present is his first term in the Assembly.

Address: 121 Drake St., Wisconsin Rapids.

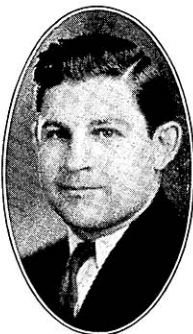
CHIEF CLERK



JOHN J. SLOCUM (Dem.) chief clerk of the Assembly, was born in Wausau, September 20, 1905. He was educated in the schools of that city, graduating from St. Mary's Parochial School in 1919 and from the Wausau High School in 1923. He then attended Notre Dame University, studying law during the years 1923, 1924 and 1925. Returning to Wausau, he became affiliated with the Democratic organization of Marathon County and has been one of the leading campaigners since that time. In April, 1933, he was the unanimous choice of the Young Democratic Club as convention chairman and was later elected state chairman of that organization. His selection as chief clerk by the present Assembly was his first appointment to public office.

Address: 412 Prospect Ave., Wausau.

SERGEANT-AT-ARMS



GEORGE C. FAUST (Dem.) was born at Rhineland, October 21, 1901, moving shortly thereafter to Oshkosh, where he has resided ever since. He attended the common schools of the city and the Oshkosh Teachers College, later establishing connection with a large contracting firm in an executive capacity. He is one of the active members of the local Democratic county organization, which endorsed his candidacy in the last election for the office of Clerk of Court, and is a member of the Oshkosh police and fire board. This is his first public office.

Address: 149 High St., Oshkosh.