
**Legislative Branch of the
State Government**



THE LEGISLATURE

Total personnel: 133 members, 4 officers (besides the Lieutenant Governor and the Speaker), 105 employes.

Expenditures: Legislature: Biennium, 1928-30, \$378,970. Special and Interim Committees: Biennium, 1928-30, \$34,714.

Appropriations: Legislature, sum sufficient; Interim Committees, various specified amounts.

Publications: See below.

THE Wisconsin legislature consists of two houses, the senate and the assembly, the members of both of which are elected by the people in the November general election. There are thirty-three senators, who represent the districts into which the state is divided after each federal census. Their term of office is four years. The sixteen senators who represent even-numbered districts are elected in the years in which presidential elections occur and the seventeen who represent odd-numbered districts, in the even-numbered years in which there are no presidential elections. The assembly consists of one hundred members, also elected by districts. The term of office is two years, so that there are no "holdover" assemblymen, as there are senators. The salary of senators and assemblymen is \$100 per month, payable monthly during the entire term; however, the holdover senators (even-numbered districts) of the 1931 legislature receive a salary of only \$500 for their present term, due to the fact that this was the salary when they were elected.

Regular sessions of the legislature are held in each odd-numbered year, beginning on the second Wednesday in January. These regular sessions usually last about six months, and during such sessions the legislature may act upon any subject within the functions of the state government. After adjournment of the regular session, the legislature may be convened in special session by the Governor, but in special sessions can act only upon matters specifically mentioned in the call of the Governor.

Each house elects its own officers, except that the lieutenant governor, under the constitution, is the president of the senate, with a casting vote in case of a tie. The corresponding officer in the assembly is the speaker, who is an assemblyman elected by the members. The other officers are a chief clerk and a sergeant-at-arms in each house, elected by the members. The legislature has a total of 105 employes, all of whom are appointed under civil service rules. These employes are under the direction of the chief clerks and sergeants-at-arms of the respective houses.

Meetings of the legislature are held in the state capitol in the chambers assigned respectively to the senate and the assembly. Under the rules of the houses daily sessions are held which, unless otherwise ordered, begin at 10:00 A. M., and these sessions usually last

until noon or a little later. Frequently the houses begin work earlier than 10:00 A. M. and often hold night sessions. Toward the end of each regular session the houses meet practically continuously.

The afternoons of each day, until near the close of the session, are devoted to committee hearings. The assembly has 23 standing committees, the senate 9, but 6 of the assembly committees and 2 of the senate committees have other functions than the consideration of bills. The committees of the assembly are appointed by the speaker and those of the senate upon the recommendation of a committee on committees elected by the senate. In the senate the rule prevails that each senator shall be appointed to one of the functioning committees and only one such committee, while in the assembly some members serve on more than one. The most important committee of the two houses, the joint committee on finance, is a joint body, which acts and votes on all measures jointly. Other committees frequently arrange joint hearings, but act upon all measures independently. All bills upon introduction are referred to committees, which schedule hearings upon them. These hearings are announced in bulletins of committee hearings, which appear on each Friday for the hearings of the coming week, beginning on Tuesday. All hearings are held in the afternoon beginning at 2:00 P. M. Each committee has its own committee room in which normally its hearings are held.

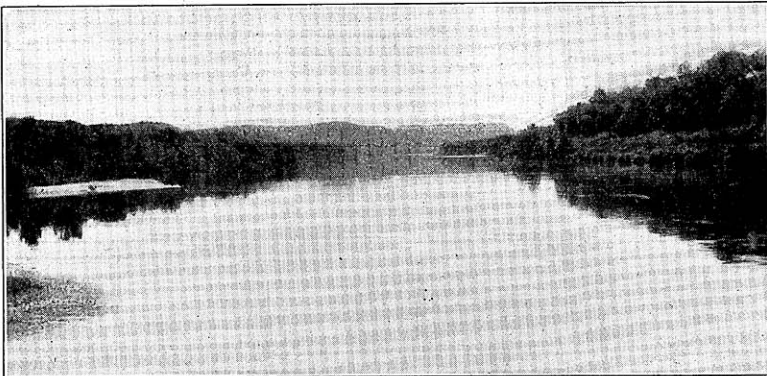
Besides the regular committees, some special committees are appointed during each legislative session. These study special problems or conduct special investigations. Each legislature also creates several interim committees to investigate special subjects. These committees function during the interval between legislative sessions and report their findings and recommendations to the next legislature. Interim committees have no bills referred to them and special committees only infrequently.

All bills and joint resolutions introduced in the legislature are printed, usually within one day after introduction. Under the Wisconsin procedure every bill introduced is given a public hearing, is reported upon by the committee to which it was referred, and is voted on in the house of its introduction—in both houses unless "killed" in the first. Amendments may be reported by the committee to which the measure was referred or may be offered by a member on the floor when it comes up for consideration. If passed by one house a bill is sent to the other and goes through the same course in the second house. If concurred in it is enrolled (i. e., printed in act form), signed by the presiding officers of the two houses and the chief clerk of the house in which it originated, and delivered by such clerk to the Governor. The Governor, within six days not counting Sundays or holidays, must either approve or veto the measure. If approved, he reports this fact to the house in which the bill originated and files the original copy, which carries his signature, with the secretary of state. If vetoed, he sends a veto message to the house in which the bill originated. This ends the bill unless it is re-

passed by a two-thirds vote of the members of both houses. After passage and approval by the Governor, acts are published in the official state paper, and usually take effect on the day following such publication, but may take effect at some other time as specified in the measure.

Each house of the legislature keeps a complete record of its proceedings known as the "Journal". This is issued daily during the session and is bound in book form after the close thereof. No verbatim record is kept of the debates in either house, nor of the statements made by persons appearing at committee hearings. A record is kept, however, of the names of the persons appearing, which is filed with the bill with the secretary of state. Besides the journals, the legislature prints bills, joint resolutions, acts, bulletins of proceedings, calendars, a legislative directory, manuals (giving rules of the two houses with other information), and interim committee reports. All legislative publications can be secured as printed by anyone upon payment of a \$25 fee to the secretary of state; acts alone, \$5; interim committee reports, free of charge from the legislative reference library.

The acts passed by the legislature are published currently in the official state paper, which at present is the Capital Times at Madison. At the close of each session any newspaper may reprint all of the laws enacted, and are paid therefor by the state. Many of the weekly newspapers publish such "Copy Law Supplement", which is the earliest publication of the collected laws of each session, appearing almost immediately after adjournment. Later the Session Laws are issued in book form by the secretary of state, and practically at the same time or soon thereafter the revisor issues the biennial statutes, which contain all of the permanent general statutes of the state, including those enacted at the last legislative session properly fitted into the body of the statutes. The Statutes can be purchased from the director of purchases at \$5 per copy and the Session Laws at \$2.50 per copy.



Wisconsin River near Prairie du Chien.

LEGISLATIVE DIRECTORY

Senate

Name	Address	District and Politics	Occupation	Committee
Anderson, J. A.	Barron.....	29-R.	Merchant.....	Highways
Barker, J. A.	R. 2, Antigo.....	30-R.	Farmer.....	State and Local Government
Blanchard, G. W.	411 Randolph St., Edgerton.....	15-R.	Attorney.....	Judiciary
Boldt, H. E.	119 Broadway St., Sheboygan Falls.....	20-R.	Various business interests.....	Joint Finance, Contingent Expenditures
Carroll, J. H.	Glidden.....	12-R.	Farmer.....	Joint Finance, Contingent Expenditures
Cashman, J. E.	R. 1, Denmark.....	1-P. R.	Farmer.....	Highways, Leg. Procedure, Committees
Clifford, E. A.	248 E. Oak St., Juneau.....	13-D.	Attorney.....	Judiciary
Daggett, H. B.	1244 S. 50th St., West Milwaukee.....	8-R.	Real Estate.....	Corporations and Taxation
Duncan, T. M.	5306 W. Juneau Ave., Milwaukee.....	6-S.	Cooperative Printing.....	Joint Finance, Leg. Procedure, Committees
Edwards, W. H.	Sussex.....	33-R.	Retired.....	State and Local Government
Fellenz, L. J.	91 S. Main St., Fond du Lac.....	18-R.	Attorney.....	Judiciary
Fons, L. C.	3050 S. Superior St., Milwaukee.....	7-R.	Lawyer.....	Judiciary
Gettelman, B.	955-50th St., Milwaukee.....	5-R.	President Soap Co.	Education & Public Welfare
Goodland, W. S.	1632 Wisconsin St., Racine.....	21-R.	Newspaper Editor.....	Education & Public Welfare
Hall, E. S.	1000 Shawano Ave., Green Bay.....	2-R.	Insurance and Real Estate.....	Agriculture and Labor
Hunt, W. H.	River Falls.....	10-P.R.	Teacher and Farmer.....	Education and Public Welfare, Committees, Legislative Procedure.
Keppel, V. S.	Holmen.....	32-R.	Dairyman—Creamery Mgr.	Agriculture and Labor, Legislative Procedure

Loomis, O. S.	500 Tremont St., Mauston.....	31-R.	Attorney.....	Corporations & Taxation
Mehigan, I. P.	221 W. Wisconsin Ave., Milwaukee....	9-R.	Attorney.....	Corporations & Taxation
Miller, A. M.	R. 1, Kaukauna.....	14-R.	Farmer.....	State and Local Government, Legisla- tive Procedure
Morris, O. H.	740 N. Second St., Milwaukee.....	4-R.	Manager.....	State and Local Government
Mueller, Otto.....	615 Grand Ave., Wausau.....	25-R.	Jeweler.....	Agriculture and Labor
Nelson, P. E.	R. 1, Maple.....	11-R.	Varied Activities.....	Joint Finance
Olson, W.	Monroe.....	17-R.	Farmer, Dairyman.....	Agriculture and Labor, Contingent Ex- penditures
Polakowski, W.	2200 S. 11th St., Milwaukee.....	3-S.	Master Upholsterer.....	Corporations and Taxation
Roberts, G. D.	1 W. Main St., Madison.....	26-R.	Lawyer.....	Joint Finance
Roethe, E. J.	Fennimore.....	16-R.	Publisher.....	Highways
Rush, W. J.	Neillsville.....	24-R.	Lawyer.....	Judiciary, Legislative Procedure
Severson, H. J.	Iola.....	23-P.R.	Lawyer.....	Corporations and Taxation, Legislative Procedure
Shearer, Conrad.....	520-68th Place, Kenosha.....	22-R.	Office Manager.....	Education and Public Welfare
Smith, P. J.	S. A. F. Bldg., Eau Claire.....	28-R.	Sec'y Fraternal Insurance.....	Education & Public Welfare, Contingent Expenditures, Legislative Procedure
White, M. F.	Winneconne.....	19-R.	Retired.....	State & Local Government
Zantow, F. W.	R. 4, Box 30, Baraboo.....	27-R.	Farmer.....	Agriculture & Labor, Contingent Ex- penditures

LEGISLATIVE DIRECTORY—Continued

Assembly

Name	Address	Politics	Occupation	Committee
Aune, H. A. St. Croix	Baldwin	P. R.	Educator	Education, Public Welfare
Baker, A. J. Dane, 3rd	204 Wilson, St., Mt. Horeb	R.	Retired Farmer	Contingent Expenditures, Finance
Bay, William Outagamie, 2nd	217 W. 4th St., Kaukauna	P. R.	Railway Carman	Labor, Commerce & Manufactures
Beggs, C. A. Barron	Rice Lake	R.	Retired Farmer	Finance, Contingent Expenditures
Benson, John Iron-Vilas	Land o' Lakes	P. R.	Lumber Dealer	Transportation, Elections
Blahnik, J. J. Kewaunee	Algoma	P. R.	Farmer	Elections, Commerce and Mfrs.
Budlong, C. A. Marinette	2628 Parkridge Ave., Marinette	R.	Retired	Municipalities, Printing
Burnham, D. F. Waupaca	329 W. Union St., Waupaca	P. R.	Publisher, Farmer	Printing, State Affairs
Burtis, I. E. Dodge, 2nd	Beaver Dam	R.	Pres., Garment Co.	Insurance and Banking
Busby, A. J. Milwaukee, 19th	925 S. 38th St., West Milwaukee	R.	Teacher, Lawyer	Education
Callahan, K. J. Adams-Marquette	Montello	I. R.	Lawyer	Judiciary
Carow, J. W. Rusk-Sawyer	Ladysmith	R.	Lawyer	Rules, Judiciary, Highways
Charbonneau, Agnes Douglas, 1st	1413-24th St., Superior	R.	Housewife	Public Welfare

Davies, E. G. Waukesha, 1st	Wales	I. R.	Insurance and Dairying	Insurance and Banking
Dettinger, W. F. Jackson	Hixton	R.	Farmer	Finance
Dueholm, M. Polk	R. 2, Luck	R.	Farmer	Agriculture
Ebbe, P. R. Wood	409 Cherry St., Marshfield	P. R.	Farmer	Agriculture, Contingent Expenditures
Eber, J. W. Milwaukee, 10th	520 N. 34th St., Milwaukee	R.	Lawyer	Commerce and Manufactures
Ellenbecker, H. Marathon, 2nd	120 S. 5th Ave., Wausau	R.	Retired Contractor	Highways, Finance, Rules
Engel, Theo. Milwaukee, 15th	2824 Juneau Ave., Milwaukee	R.	Retired	Municipalities
Ermenc, John. Milwaukee, 5th	1016 S. 5th St., Milwaukee	S.	Real Estate	Education, Eng. Bills
Fox, Jerome. Calumet	121 N. State St., Chilton	D.	Lawyer	Judiciary
Fronek, John Langlade	R. 2, Antigo	P. R.	Farmer	Conservation, State Affairs
Fuhrman, Paul Shawano	Bowler	P. R.	Timber Cruiser	Eng. Bills, Finance
Gamper, John Taylor	Goodrich Star Route, Medford	P. R.	Farmer	Elections, State Affairs
Gehrmann, B. J. Ashland	R. 1, Mellon	P. R.	Farmer	Agriculture, Conservation
Gesicki, Leo Lincoln	305 Pier St., Merrill	R.	Life Insurance	Municipalities, Conservation
Goff, M. B. Door	R. 4, Sturgeon Bay	R.	Fruit Farmer	State Affairs, Taxation
Graves, W. R. Crawford	Prairie du Chien	R.	Lawyer	Judiciary

LEGISLATIVE DIRECTORY—Continued

Name	Address	Politics	Occupation	Committee
Grobschmidt, J. W. Milwaukee, 17th	901 Monroe Ave., South Milwaukee	R.	Real Estate, Insurance	Rules, Insurance and Banking, Municipalities
Groves, H. M. Dane, 1st	1320 Spring St., Madison	P. R.	University Professor	Taxation, State Affairs
Gwidt, S. J. Florence, Forest, Oneida	14½ S. Brown St., Rhinelander	P. R.	Real Estate Broker	Conservation, Highways
Hall, E. D. Monroe	Tunnel City	R.	Farmer	Transportation, Highways
Hampel, George Milwaukee, 3rd	1627-17th St., Milwaukee	S.	President, Book Shop	Industries and Banking
Hanson, J. C. Dane, 2nd	R. 2, Deerfield	R.	Farmer	State Affairs, Agriculture
Harper, H. A. Grant, 2nd	Lancaster	R.	Farmer	Agriculture, Commerce and Mfrs.
Hilker, E. F. Racine, 2nd	319 Lafayette Ave., Racine	R.	Coal Broker	Municipalities, Enrolled Bills
Hitt, Arthur Buffalo, Pepin	Alma	R.	Teacher	Taxation, Education
Hoesly, E. J. Green	New Glarus	R.	Banker, Cattle Dealer	Finance, Revision
Huber, J. J. Washington	824 Cedar St., West Bend	R.	Editor, Printer	Conservation, Printing
Ingram, G. E. Eau Claire	252 S. 11th St., Eau Claire	P. R.	Lawyer	Judiciary, Insurance and Banking
Jackson, J. S. Iowa	R. 4, Mineral Point	P. R.	Farmer	Agriculture, Taxation
Janke, C. W. Sheboygan, 1st	617 S. 14th St., Sheboygan	R.	Accountant, Insurance	Contingent Expenditures

Jensen, J. H. Burnett, Washburn	Grantsburg
Kamper, J. H. Racine, 3rd	Franksville
Kay, W. A. Pierce	Spring Valley
Kehrein, Otto Milwaukee, 9th	1637 N. 20th St., Milwaukee
Keller, R. J. Sauk	Sauk City
Kellman, F. A. Trempealeau	Galesville
Kiefer, E. H. Milwaukee, 20th	3528 a N. 24th Pl., Milwaukee
Kostuck, J. T. Portage	711 Center Ave., Stevens Point
Krez, F. W. Sheboygan, 2nd	Plymouth
Kuptz, W. P. Milwaukee, 13th	2457 a N. Bremen St., Milwaukee
LaBar, D. E. Walworth	Delavan
Laffey, Michael Milwaukee, 2nd	1122 Kilbourn Ave., Milwaukee
Lang, Ben. Marathon, 1st	R. 4, Marshfield
Langve, D. M. Vernon	Westby
Larson, Nels. Winnebago, 2nd	Neenah
Lawton, Ray Richland	Viola

R.	Real Estate, Insurance	Finance
R.	Farmer	State Affairs
R.	Farmer	Public Welfare
S.	Contractor	Elections
R.	Lawyer	Judiciary, Insurance and Banking
R.	Real Estate, Insurance	Public Welfare
S.	Painter-Decorator	Labor
P. R.	Piano Tuner and Dealer	Enrolled Bills, Education
R.	Lawyer	Printing, Excise & Fees
R.	Auto Service Station	Elections, Excise & Fees
R.	Various Interests	Conservation, 3rd Reading
R.	Real Estate	Taxation, Labor
P. R.	Farmer	Agriculture
P. R.	Lawyer	Judiciary, Transportation
R.	Retired	Labor, Highways
P. R.	Farmer	Municipalities

LEGISLATIVE DIRECTORY—Continued

Name	Address	Politics	Occupation	Committee
Long, J. L. Ozaukee	Grafton	R.	Attorney	Municipalities
Lorfeld, John Manitowoc, 1st	Cleveland	P. R.	Bank President	Transportation, Commerce & Mfrs.
Malchow, H. C. Brown, 1st	222 E. Walnut St., Green Bay	R.	Lawyer	State Affairs, 3rd Reading
Mauthe, C. W. Fond du Lac, 1st	108 W. Division St., Fond du Lac	R.	Manufacturer	Labor, Insurance and Banking
Meyer, Emil Milwaukee, 4th	2813 N. 4th St., Milwaukee	S.	Printer	Printing
Meyer, W. A. Winnebago, 1st	616 Wisconsin Ave., Oshkosh	R.	Retired	Commerce & Mfrs., Excise & Fees
Millar, J. D. Dunn	Menomonie	R.	Farmer	Education, Elections
Miller, W. F. La Crosse, 2nd	West Salem	P. R.	Farmer	Contingent Expenditures, Taxation
Mulder, John La Crosse, 1st	822 Rose St., La Crosse	R.	Grocer	Municipalities, Conservation
Murray, M. T. Milwaukee, 18th	2615 N. Cramer St., Milwaukee	R.	Lawyer	Judiciary, Highways
Nixon, R. A. Bayfield	Washburn	P. R.	Lawyer	Judiciary, Rules
O'Connor, G. M. Green Lake, Waushara	Hancock	R.	Farmer	Finance
Panzer, F. E. Dodge, 1st	R. 2, Oakfield	P. R.	Farmer	Labor

Penniston, Dell Lafayette	Argyle	P. R.	Farmer	Municipalities
Perry, C. B. Milwaukee, 16th	130 E. Milwaukee Ave., Wauwatosa	I. R.	Lawyer	Rules (ex officio)
Piper, A. J. Kenosha, 2nd	R. 4, Racine	I. R.	Farmer	Excise & Fees, Taxation
Powell, L. W. Kenosha, 1st	2019-62nd St., Kenosha	R.	Lawyer	Judiciary
Rasmus, I. E. Chippewa	Chippewa Falls	R.	Lawyer	Education
Reckard, M. W. Milwaukee, 14th	2602 S. Superior St., Milwaukee	S.	Mechanic	Labor, Revision
Rowlands, E. M. Columbia	Cambria	P. R.	Banker	Insurance & Banking, State Affairs
Rubin, Ben. Milwaukee, 6th	2016 N. 7th St., Milwaukee	S.	Animal Keeper	Labor
Schmiege, O. J. Outagamie, 1st	207 W. College Ave., Appleton	R.	Lawyer	Insurance and Banking
Schmittfranz, J. Clark	Thorp	I. R.	Cheese Maker	Agriculture
Schoenebeck, C. Oconto	Lena	R.	Real Estate	3rd Reading, Highways
Shauger, L. S. Price	Ogema	R.	Farmer and Physician	Transportation, Excise and Fees
Sieb, J. L. Racine, 1st	940 Park Ave., Racine	R.	Barber	Labor, Public Welfare
Sigman, David Manitowoc, 2nd	1055 Harbor St., Two Rivers	P. R.	Law Student	Elections, Eng. Bills
Slagg, S. W. Rock, 1st	Edgerton	R.	Attorney	Judiciary, Municipalities
Smith, D. V. Jefferson	Lake Mills	R.	Farmer	Public Welfare, Agriculture

LEGISLATIVE DIRECTORY—Continued

Name	Address	Politics	Occupation	Committee
Smith, E. G.----- Rock, 2nd	716 Emerson St., Beloit-----	R.	Prof. Emeritus, Banker-----	Education
Steele, W. H.----- Waukesha, 2nd	Pewaukee-----	R.	Farmer-----	Agriculture, Revision
Stephens, H. E.----- Grant, 1st	26 S. Hickory St., Platteville-----	C. R.	Farming and Mining-----	Public Welfare
Tews, G. L.----- Milwaukee, 11th	2013 S. Layton Blvd., Milwaukee-----	S.	Real Estate Broker-----	Transportation, Revision
Tremain, Ben----- Juneau	Hustler-----	R.	Merchant-----	Finance
Wenz, P. F.----- Milwaukee, 7th	2340 N. 12th St., Milwaukee-----	S.	Carpenter-----	Municipalities, Commerce & Mfrs.
Westfahl, C. F.----- Milwaukee, 12th	2608 N. 40th St., Milwaukee-----	R.	Adv. Manager-----	Transportation, Excise & Fees
Westlund, J. E.----- Douglas, 2nd	2009 Wyoming Ave., Superior-----	R.	Pharmacist-----	Excise and Fees, Enrolled Bills
Wiczynski, B. C.----- Milwaukee, 8th	3313 S. 11th St., Milwaukee-----	R.	Public School Teacher-----	Education
Wrucke, H. A.----- Pond du Lac, 2nd	Campbellsport-----	P. R.	Sec. Ins. Co. & Bank Director-----	State Affairs
Young, C. T.----- Milwaukee, 1st	528 Jackson St., Milwaukee-----	D.	Law Student-----	State Affairs
Zittlow, Gustav----- Brown, 2nd	Route 1, West De Pere-----	P. R.	Farmer-----	Revision, Agriculture

OFFICERS OF THE SENATE, 1931

Henry A. Huber, Lieutenant Governor, Stoughton.....President
 H. J. Severson, Senator, Iola.....President Pro Tem
 R. A. Cobban, Madison.....Chief Clerk
 Emil A. Hartman, Madison.....Sergeant-at-Arms

STANDING COMMITTEES OF THE SENATE

Agriculture and Labor—Senators Keppel (Chairman), Olson, Zantow, Mueller and Hall.

Corporations and Taxation—Senators Severson (Chairman), Polakowski, Loomis, Daggett and Mehigan.

Education and Public Welfare—Senators Hunt (Chairman), Smith, Goodland, Gettelman and Shearer.

Highways—Senators Cashman (Chairman), Roethe and Anderson.

Judiciary—Senators Rush (Chairman), Clifford, Fons, Blanchard and Fellenz.

State and Local Government—Senators Miller, A. M. (Chairman), White, Morris, Barker and Edwards.

Joint Committee on Finance—Senators Duncan (Chairman), Carroll, Boldt, Roberts and Nelson. Assemblymen Beggs (Chairman), Baker, Ellenbecker, O'Connor, Hoesly, Fuhrman, Paul, Dettinger, Jensen and Tremain.

Contingent Expenditures—Senators Smith (Chairman), Carroll, Olson, Zantow and Boldt.

Committee on Committees—Senators Hunt (Chairman), Cashman and Duncan.

Committee on Legislative Procedure—Senators Severson (Chairman), Duncan, Keppel, Hunt, Cashman, Rush, Miller, Smith.

SPECIAL COMMITTEE

Lobbying on Power Bills—Senators Goodland (Chairman), Severson, Clifford.

OFFICERS OF THE ASSEMBLY, 1931

Charles B. Perry, Assemblyman, Wauwatosa.....Speaker
 C. E. Shaffer, Madison.....Chief Clerk
 Gustave Rheingans, Chippewa Falls.....Sergeant-at-Arms

STANDING COMMITTEES OF THE ASSEMBLY

Agriculture—Gehrmann (Chairman), Hanson, Ebbe, Zittlow, Don V. Smith, Harper, Jackson, Lang, Schmittfranz, Steele, and Dueholm.

Commerce and Manufactures—William A. Meyer (Chairman), Lorfeld, Eber, Wenz, Harper, Bay, Blahnik.

Conservation—Fronck (Chairman), Huber, LaBar, Gesicki, Gehrmann, Gwidt, and Mulder.

Contingent Expenditures—Baker (Chairman), Ebbe, Beggs, Janke, and William F. Miller.

Education—J. D. Millar (Chairman), E. G. Smith, Hitt, Kostuck, Busby, Wiczynski, Stephens, Ermenc, and Rasmus.

Elections—Gamper (Chairman), Sigman, Benson, Blahnik, Kehrein, J. D. Millar, and Kuptz.

Engrossed Bills—Fuhrman (Chairman), Sigman, and Ermenc.

Enrolled Bills—Kostuck (Chairman), Hilker, and Westlund.

Excise and Fees—Piper (Chairman), William A. Meyer, Shauger, Westlund, Krez, Westfahl, and Kuptz.

Finance—Beggs (Chairman), Baker, Ellenbecker, O'Connor, Hoesly, Fuhrman, Dettinger, Jensen, and Tremain.

Highways—Ellenbecker (Chairman), Hall, Carow, Larson, Murray, Gwidt, and Schoenebeck.

Insurance and Banking—Rowlands (Chairman), Mauthe, Davies, Grobschmidt, Keller, Schmiege, Ingram, Burtis, and Hampel.

Judiciary—Nixon (Chairman), Carow, Slagg, Langve, Keller, Graves, Ingram, Fox, Murray, Powell, Callahan.

Labor—Mauthe (Chairman), Larson, Laffey, Kiefer, Reckard, Panzer, Rubin, Sieb, and Bay.

Municipalities—Engel (Chairman), Grobschmidt, Mulder, Budlong, Hilker, Slagg, Lawton, Wenz, Penniston, Gesicki, and Long.

Printing—Burnham (Chairman), Budlong, Huber, Krez, and Emil Meyer.

Public Welfare—Don V. Smith (Chairman), Stephens, Kay, Sieb, Charbonneau, Penniston, and Kellman.

Revision—Zittlow (Chairman), Hoesly, Tews, Reckard, and Steele.

Rules—Carow (Chairman), Nixon, Grobschmidt, Ellenbecker, and Perry.

State Affairs—Kamper (Chairman), Fronck, Goff, Rowlands, Gamper, Malchow, Hanson, Burnham, Groves, Wrucke, and Young.

Taxation—Hitt (Chairman), Groves, Goff, Jackson, Laffey, William F. Miller, and Piper.

Third Reading—Schoenebeck (Chairman), LaBar, and Malchow.

Transportation—Hall (Chairman), Lorfeld, Shauger, Tews, Langve, Westfahl, and Benson.

SPECIAL COMMITTEES

Highway Investigation—Langve (Chairman), Carow, Murray, Hoesly, Keller.

Forest Fires—Budlong (Chairman), Fuhrman, Huber.

Conservation Commission Investigation—Perry (Chairman), Goff, Gwidt, Ingram, Huber.

JOINT COMMITTEES OF THE 1931 LEGISLATURE

Northern Wisconsin Problems (Interim Committee)—Senators Carroll, Nelson, Keppel; Assemblymen Fuhrman, Grobschmidt, Fronek, Gehrman.

Investigation of Memorial Union—Senators Fellenz, A. M. Miller; Assemblymen Sigman, Groves, Burtis.

Manufacture of Farm Machinery in State Prison—Senators Anderson, Shearer; Assemblymen Don V. Smith, Dueholm, Bay.

University and Capitol Heating Plants—Senators Loomis, Roberts; Assemblymen Baker, Shauger, Wenz.

Congressional Reapportionment—Senators Cashman, Roberts, Fons, Zantow, and Mueller; Assemblymen Grobschmidt, Kamper, Panzer, Graves, Mauthe, Tremain, Ebbe, Goff, Millar, Nixon, and Young.

INTERIM COMMITTEES OF THE 1929 LEGISLATURE

I. JOINT COMMITTEES TO REPORT TO THE 1931 LEGISLATURE:

Aviation: (Jt. Res. 60, A., 1929)

Members:

Senators:

O. H. Morris, Milwaukee, Chairman; I. P. Mehigan, Milwaukee.

Assemblymen:

H. G. Slater, Milwaukee, Secretary; O. J. Schmiede, Appleton; N. R. Klug, Milwaukee.

Appropriation:

Chap. 520, Laws of 1929, appropriates \$3,000 to the committee. Jt. Res. 60, A. authorizes county boards to make appropriations to this committee.

Campaign Expenditures and Election Methods: (Chap. 48, Laws of 1929) (Bill 49, S., 1929)

Members:

Senators:

Geo. W. Blanchard, Edgerton, Chairman; O. H. Morris, Milwaukee.

Assemblymen:

J. W. Carow, Ladysmith; M. B. Goff, Sturgeon Bay; R. A. Nixon, Washburn, Secretary.

Appropriation:

\$10,000.

Educational System of the State: (Jt. Res. 108, S., 1929)

Members:

Senators:

E. J. Roethe, Fennimore, Chairman; Walter J. Rush, Neillsville; Thos. M. Duncan, Milwaukee.

Assemblymen:

E. G. Smith, Beloit, Secretary; O. S. Loomis, Mauston; Wm. H. Edwards, Sussex; J. D. Millar, Menomonie.

Appropriation:

Chap. 520, Laws of 1929—\$8,000.

Fire Insurance: (Jt. Res. 105, A., 1929)

Members:

Senators:

H. E. Boldt, Sheboygan Falls, Chairman; L. J. Fellenz, Fond du Lac.

Assemblymen:

C. W. Mauthe, Fond du Lac, Secretary; H. A. Martin, Richland Center; A. J. McDowell, Soldiers Grove.

Appropriation:

\$5,000. (Chap. 520, Laws of 1929)

Forestry and Public Lands: (Jt. Res. 77, A., 1929) (Continuing committee appointed by Jt. Res. 4, A., 1927)

Members:**Senators:**

Geo. W. Blanchard, Edgerton, Chairman; Otto Mueller, Wausau.

Assemblymen:

A. C. Reis, Madison, Secretary; John Fronck, Antigo; Philip E. Nelson, Maple.

Appropriation:

Unexpended balance of appropriation of \$10,000 made by Chap. 528, Laws of 1927.

Guardianship Laws: (Jt. Res. 75, S., 1929)

Members:**Senators:**

Glenn D. Roberts, Madison; L. J. Fellenz, Fond du Lac.

Assemblymen:

D. M. Langve, Westby; L. H. Ashley, Hudson; O. S. Loomis, Mauston.

Appropriation:

Chap. 520, Laws of 1929, appropriates \$300.

Inferior Courts: (Jt. Res. 133, A., 1929)

Members:**Senators:**

L. J. Fellenz, Fond du Lac; I. P. Mehigan, Milwaukee.

Assemblymen:

L. H. Ashley, Hudson; S. W. Slagg, Edgerton; H. C. Malchow, Green Bay.

Appropriation:

Chap. 520, Laws of 1929—\$3,000.

La Follette Memorial: (Jt. Res. 118, S., 1929; continuing committee created by Jt. Res. 106, A., 1925, and continued by Jt. Res. 106, S., 1927)

Members:**Senators:**

J. E. Cashman, Denmark; Howard Teasdale, Sparta.

Assemblyman:

John W. Eber, Milwaukee.

Ex-Assemblymen:

C. G. Price, Mauston; Frank Weber, Milwaukee.

Appropriation:

None.

Mississippi River Pollution: (Chap. 90, Laws of 1929; continuing interim committee created in 1925 and continued in 1927)

Members:**Senator:**

W. H. Hunt, River Falls, Chairman.

Assemblyman:

C. B. Perry, Wauwatosa.

Ex-Assemblyman:

Theodore Swanson, Ellsworth.

Appropriation:

\$500 and the unexpended balance of \$1,000 appropriation made by Chap. 254, Laws of 1925.

Prison Labor: (Chap. 511, Laws of 1929, continuing committee created by Chap. 354, Laws of 1927)

Members:**Senator:**

O. H. Morris, Milwaukee, Chairman.

Ex-Senator:

W. L. Smith, Neillsville.

Assemblymen:

E. Myrwyn Rowlands, Cambria, Secretary; John W. Eber, Milwaukee.

Ex-Assemblyman:

H. A. Staab, Milwaukee.

Appropriation:

Balance of \$5,000 appropriation made by Chap. 354, Laws of 1927.

Retirement System for State Employees: (Chap. 326, Laws of 1929)

Members:**Senator:**

P. J. Smith, Eau Claire, Chairman.

Assemblymen:

Wallace Ingalls, Racine; E. Myrwyn Rowlands, Cambria.

Representing State Employees (appointed by Governor):
R. N. Qualley, Madison; E. E. Witte, Madison, Secretary.

Appropriation:

\$1,000.

Rules of Legislature: (Jt. Res. 110, A., 1929)

(Two separate committees which are to cooperate with each other and to act jointly in matters relating to the joint rules)

Members:**Senate Committee:**

Oscar H. Morris, Milwaukee; Conrad Shearer, Kenosha; W. J. Rush, Neillsville.

Assembly Committee:

W. H. Edwards, Sussex; C. B. Perry, Wauwatosa;
A. C. Reis, Madison.

Appropriation:

None.

Soldier Memorial: (Jt. Res. 73, A., 1929)

Members:**Senators:**

W. H. Markham, Horicon, Chairman; Thos. M. Duncan, Milwaukee.

Assemblymen:

R. J. Keller, Sauk City, Secretary; E. F. Hilker, Racine; A. J. McDowell, Soldiers Grove.

Appropriation:

Chap. 520, Laws of 1929—\$1,000.

Traffic Accidents: (Jt. Res. 121, S., 1929)

Members:

Senators:

Ben Gettelman, Milwaukee, Chairman; Walter J. Polakowski, Milwaukee.

Assemblymen:

E. F. Hilker, Racine, Secretary; Don V. Smith, Lake Mills; Al Buntin, Milwaukee.

Citizens (appointed by Governor):

J. M. Liegler, Racine; P. O. Powell, Milwaukee.

Appropriation:

Chap. 520, Laws of 1929—\$2,500.

Water and Electric Power: (Jt. Res. 136, S., 1929, continuing interim committee created by Jt. Res. 5, A. and Jt. Res. 68, A., 1927, and Chap. 450, Laws of 1927)

Members:

Senators:

H. B. Daggett, Milwaukee, Chairman; J. A. Barker, Antigo; Thos. M. Duncan, Milwaukee.

Assemblymen:

A. C. Reis, Madison, Secretary; L. L. Thayer, Birchwood.

Appropriation:

Unexpended balance of \$10,000 appropriation made by Chap. 450, Laws of 1927.

II. COMMITTEES OF ONE HOUSE ONLY DIRECTED TO REPORT TO 1931 LEGISLATURE:

Prices Paid Farmers for Milk and Meat Animals: (Assembly Committee) (Res. 123, A., 1929)

Members:

Assemblymen:

J. H. Dohring, Brownsville; Henry Ellenbecker, Wausau; Frank Prescott, Milwaukee.

Appropriation:

None, but Res. 123, A. provides that members shall be reimbursed actual and necessary expenses.

State Athletic Commission: (Senate Committee) (Res. 56, S., 1929, continuing committee created by Res. 21, S.)

Members:

W. H. Markham, Horicon, Chairman; O. H. Morris, Milwaukee; Geo. Little, Madison.

Appropriation:

None.

III. OTHER INTERIM COMMITTEES:

State Office Building: (Chap. 486, Laws of 1929)

Members:

Senators:

W. S. Goodland, Racine, Chairman; Otto Mueller, Wausau.

Assemblymen:

M. E. Laffey, Milwaukee; E. Myrwyn Rowlands, Cambria; H. A. Martin, Richland Center, Secretary.

Appropriation:

\$600,000 for purchase of site and erection of first unit of building. Members to be reimbursed only actual and necessary expenses.

La Follette Tablet in State Capitol: (Jt. Res. 79, S., 1929)

Members:

Senators:

Ben Gettelman, Milwaukee, Chairman; G. D. Roberts, Madison, Treasurer.

Assemblymen:

Geo. W. Bingham, Friendship; Geo. O'Connor, Hancock; A. C. Reis, Madison.

Appropriation:

None. Funds to be raised by popular subscription.

Pulaski Sesqui-Centennial: (Jt. Res. 43, S., 1929)

Members:

Senators:

W. J. Polakowski, Milwaukee; Ben Gettelman, Milwaukee.

Assemblymen:

A. J. Chmurski, Milwaukee; Mary O. Kryszak, Milwaukee.

Citizen Members (appointed by Governor):

J. J. Przybylski, Milwaukee; Casimir Gouski, Milwaukee; Mrs. Peter Prasecki, Milwaukee; Stephen Worzalla, Stevens Point; John Callahan, Madison; Judge Michael Blenski, Milwaukee.

Appropriation:

None.

EMPLOYEES OF THE SENATE

Chief Clerk's Force:

C. J. Knoche, Madison, assistant chief clerk.
 H. A. Wesley, Iola, journal clerk.
 Julien C. Whaley, Benton, assistant journal clerk.
 M. P. Coakley, Madison, record clerk.
 L. A. Gordon, Madison, assistant record clerk.
 F. W. Hunter, Fox Lake, revision clerk.
 William P. Welch, Madison, enrolling clerk.
 C. G. Riley, Madison, index clerk.
 Marvin F. Hartman, Madison, mailing clerk.
 Don E. Roethe, Fennimore, mailing clerk.
 Arthur W. Markham, Independence, engrossing clerk.
 E. H. Voigt, Madison, secretarial stenographer.
 E. L. Dole, Milwaukee, clerk, joint committee on Finance.
 Richard H. Dahl, Eau Claire, clerk, committee on Highways.
 Walter C. Daumling, Madison, clerk, committee on Agriculture and Labor.
 O. E. Knudsen, Waupaca, clerk, committee on Corporations and Taxation.
 A. R. Millett, Madison, clerk, committee on Judiciary.
 George R. Neuhauser, Madison, clerk, committee on Education and Public Welfare.
 Robert E. Scullin, Fort Atkinson, clerk, committee on State and Local Government.
 Louis S. Lester, Madison, stenographer.
 Harry L. Scheinpflug, Boscobel, stenographer.
 C. R. Alt, Algoma, typist.
 M. R. Wold, Ashland, typist.

Sergeant-at-Arms Force:

Norman J. Hippert, Two Rivers, assistant sergeant-at-arms.
 Albert E. Daley, Superior, assistant sergeant-at-arms.
 Leo Brennan, Madison, document clerk.
 Robert Rush, Neillsville, document clerk.
 Jos. Kernler, Ashland, postmaster.
 Donald M. Caldwell, Rio, night watchman.
 Richard G. Harvey, Jr., Racine, night laborer.
 Maurice G. Young, Oshkosh, night laborer.
 Leo W. Peleski, Superior, night laborer.
 George E. Currier, Stoughton, gallery attendant.
 George H. Boldt, Jr., Sheboygan Falls, messenger.

Wm. M. Brinkley, Madison, messenger.
 Henry A. Cline, Dane, messenger.
 John Conway, Madison, messenger.
 Lester Lingard, Madison, messenger.
 Adolph A. Hendrickson, Holmen, messenger.
 Lyle E. Henshaw, Pickett, messenger.
 Barth J. Kelliher, Madison, messenger.
 Malcolm Lein, Madison, messenger.
 Thos. F. McCaul, Elroy, messenger.
 Reuben J. Raymond, Madison, messenger.
 Victor Hagenah Trumpy, Madison, messenger.

EMPLOYES OF THE ASSEMBLY

Department of Chief Clerk

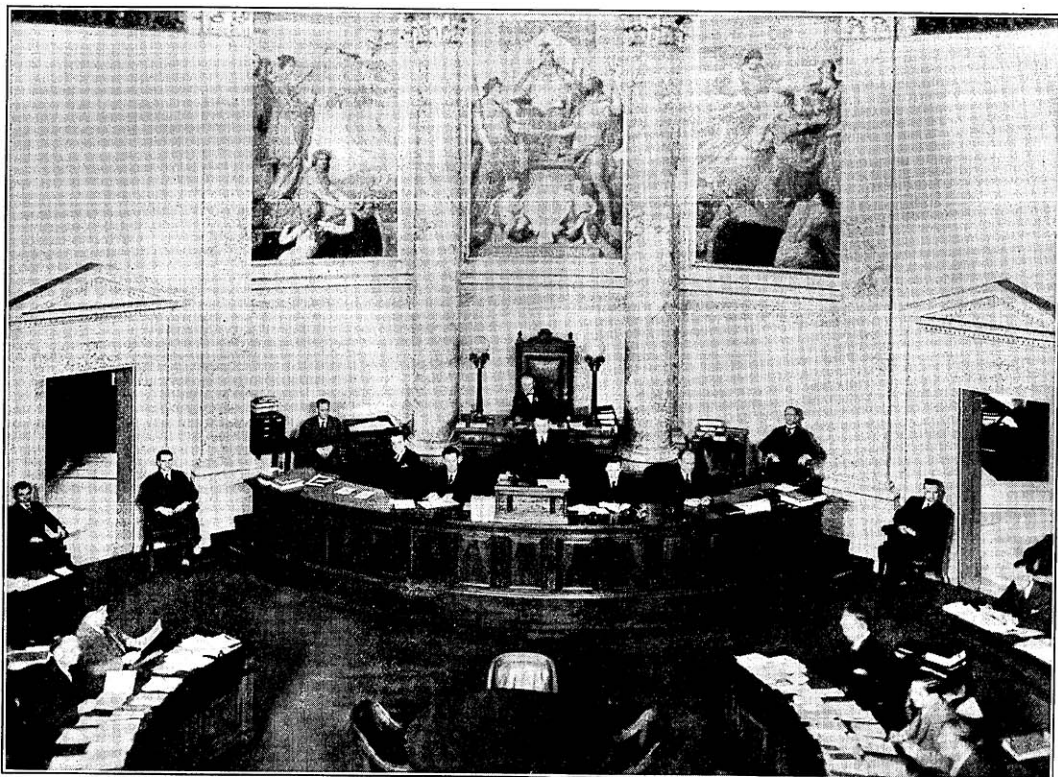
C. E. Tuffley, Boscobel, Journal Clerk.
 Donald P. Hackney, Tomah, Journal Clerk.
 H. O. Femrite, Blooming Grove, Record Clerk.
 M. B. Pinkerton, Madison, Record Clerk.
 W. J. Goldschmidt, Milwaukee, General Clerk.
 R. P. Maffet, Madison, Proof Reader and Enrolling Clerk.
 W. C. Dean, Madison, Proof Reader and Enrolling Clerk.
 Robert S. Harrison, Madison, Index Clerk.
 Victor G. Gilbertson, Madison, Engrossing Clerk.
 Archie G. Ellis, Mazomanie, Mailing Clerk.
 James Femrite, Blooming Grove, Mailing Clerk.
 Norman Berggren, Madison, Voting Machine Operator.
 Dexter I. Munson, Janesville, Stenographer.
 E. J. Walden, Madison, Stenographer.
 Arthur S. Haugen, Tomahawk, Stenographer.
 H. A. Degner, Fall Creek, Stenographer.
 H. P. Huddleston, Ladysmith, Stenographer.
 F. C. Middleton, Madison, Stenographer.
 Arthur F. Stofen, Racine, Stenographer.
 Thomas Watson, Madison, Stenographer.
 Matthew L. Peterson, Beloit, Stenographer.
 Arno C. Handel, Madison, Stenographer.
 Martin N. West, Elcho, Stenographer.
 Robert C. Stadelman, Madison, Stenographer.
 John L. Engebretsen, Ashland, Stenographer.
 Richard Mueller, Madison, Stenographer.
 Erwin Schubert, West Allis, Typist.
 William Nathenson, Madison, Typist.
 Frank H. Rivers, Milwaukee, Typist.
 Frank M. Whitman, Baraboo, Typist.

Department of Sergeant-at-Arms

Edward J. Konkol, Ashland, Assistant Sergeant-at-Arms.
 Wm. H. Kasiska, Baraboo, Postmaster.
 John Ahern, Madison, Custodian of Document Room.
 Roy L. Pinn, Superior, Custodian of Document Room.
 Norris Maloney, Ladysmith, Gallery Attendant.
 G. Gallman, Cambridge, Gallery Attendant.
 Russell L. Williams, Ladysmith, Floor Police.
 Robert Dixon, Chippewa Falls, Night Watchman.
 James W. Brown, Madison, Cloak Room Attendant.
 Robert Dougherty, Kilbourn, Night Laborer.
 Walter G. Konrad, Madison, Night Laborer.
 Joseph Gehrman, Mellen, Post Office Messenger.
 Charles Woerpel, Sun Prairie, Messenger.
 John Donaghey, Madison, Messenger.
 Sterling Sorenson, Pine River, Messenger.
 George D. Conlin, Madison, Messenger.
 Morris Barber, Madison, Messenger.
 Samuel B. Halperin, Madison, Messenger.
 Oscar F. Johnson, Madison, Messenger.
 Joseph Astell, Madison, Messenger.
 Lloyd Paust, Columbus, Messenger.
 John E. Rohan, Kaukauna, Messenger.
 Stanley Burdon, Bloomington, Messenger.
 Howard Meiller, Madison, Messenger.
 Russell Peterson, Beloit, Messenger.
 George Heath, Madison, Messenger.
 John J. Brokish, Dodgeville, Messenger.
 John Nixon, Viroqua, Messenger.
 Gordon MacDonald, Cambria, Messenger.

REPRESENTATIVES OF THE PRESS

E. L. Almen.....	Associated Press
Don Anderson.....	United States Daily
George Crownhart.....	Wisconsin Medical Journal
Harry G. Croy.....	Wisconsin News
J. Winter Everett.....	The Wisconsin State Journal
William T. Evjue.....	The Capital Times
Michael Griffin.....	Wisconsin State Journal
Edward N. Hein.....	Holmes News Service and Chicago Tribune
Fred L. Holmes.....	Holmes News Service and Chicago Tribune
Stanley E. Kalish.....	Associated Press
Edward T. Kaveny.....	Milwaukee Sentinel
Frederick N. MacMillin.....	The Municipality
William F. McIlrath.....	United Press
E. R. McIntyre.....	Wisconsin Agriculturist and Farmer
John B. Miller.....	United Press
Lynn Peavey.....	Capital Times
J. Craig Ralston.....	Milwaukee Journal
H. Paul Ringler.....	Milwaukee Journal
Fred C. Sheasby.....	Milwaukee Journal
P. D. Shoemaker.....	Associated Press
Willard R. Smith.....	United Press
William L. Thompson.....	Associated Press
Arthur A. Tiller.....	Tiller News Service, Inc.
William P. Welch.....	Eau Claire Telegram
Alfred T. Willoughby.....	Anderson's Madison Service, Inc.



The Senate Chamber.

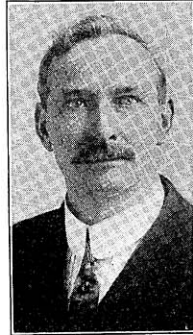
MEMBERS OF THE SENATE

FIRST SENATORIAL DISTRICT

Door, Kewaunee, and Manitowoc Counties.

JOHN E. CASHMAN (Rep.) was born in Franklin, Kewaunee County, where he farms the land his father purchased from the government when Wisconsin was very much a wilderness. He was educated in the common schools, a term at Valparaiso University, and two years at the Chicago Law School. For a number of years he taught school in Kewaunee and Brown Counties. In 1901 he took a position as inspector for the United States Bureau of Animal Industry at Chicago. After two years he was advanced to a position in the United States Bureau of Internal Revenue, which position he held until 1919, when he returned to the farm. In 1924, Senator Cashman was one of the La Follette delegates to the National Republican Convention at Cleveland. In the same year he was made a University regent and served in this capacity for a full term of six years.

He was first elected to the state Senate in 1922; he was reelected in 1926 and again in 1930. He is chairman of the Senate Committee on Highways and the author of the new highway measure which bears his name, and which takes the place of the 1925 highway law of which he was the sponsor. Home Address: Denmark.



SECOND SENATORIAL DISTRICT

Brown and Oconto Counties.

ELMER S. HALL (Rep.) was born September 17, 1866, at New London, Waupaca County, but has lived all but a few months of his life in Green Bay. He attended common school until he was fifteen, when he went to work in the printing trade. Later he worked as post office clerk and railroad accountant and auditor. He was county clerk of Brown County for twelve years, during part of which time he also served as secretary of the Green Bay Commercial Club and president of the Brown County Fair Association. He resigned as county clerk in 1916 to become mayor of Green Bay in which capacity he served until elected secretary of state in 1920. Thereafter he served as conservation commissioner from 1923 to 1927. He was elected to the Senate in 1928.

Home Address: 1000 Shawano Ave., Green Bay.





THIRD SENATORIAL DISTRICT

The Eighth, Eleventh, Fourteenth, and Twenty-fourth Wards of the City of Milwaukee.

WALTER POLAKOWSKI (Soc.) was born in Buffalo, N. Y., January 18, 1888; began to earn his living when a lad as a newsboy and bootblack; at fourteen was apprenticed to an upholsterer, and at eighteen represented the upholsterers' union in the Federated Trades Council of Milwaukee. He is now president of the Associated Buyers Corporation of Milwaukee and a member of the Board of Directors of the Cooperative Clothes Shop, Milwaukee. Until elected to the Assembly in 1920, he had never held a public office. In 1922, he ran for the Senate and has been a member of that body ever since. He was the Socialist candidate for Congress in the Fourth Congressional District in 1928, and was reelected to the State Senate in 1930.

Home Address: 918 Sixth Ave., Milwaukee.



FOURTH SENATORIAL DISTRICT

The 13th, 18th, 21st, and 25th Wards of the City of Milwaukee; the Town of Milwaukee; and the Villages of Shorewood and Whitefish Bay.

OSCAR HASKELL MORRIS (Rep.) was born in Springfield, Mass., March 8, 1876, and came to Milwaukee with his parents when two years of age. He left school to become "copy boy" on the *Milwaukee Sentinel*. Later, he became reporter and sports writer on this paper; reporter, city editor, and sports editor on the *Milwaukee Daily News*; and manager of the Better Business Bureau of the Milwaukee Association of Commerce. He was elected to the Senate in 1920, 1924, and 1928: was on the trunk highway committee of 1924, the prison labor committee and the waterway committee of 1927, and president pro tem, chairman

of the aeronautical survey committee, and member of the committee to investigate the corrupt practices act, in 1929. In 1930, he was appointed delegate by Governor Kohler to the Regional Aviation Conference in Chicago and the Washington Conference on Aviation.

Home Address: 3726 N. Prospect Ave., Milwaukee.



FIFTH SENATORIAL DISTRICT

The 15th, 19th, 20th, and 22nd Wards of the City of Milwaukee.

BERNHARD GETTELMAN (Rep.) was born Dec. 23, 1889, in Chicago and moved to Milwaukee at an early age, where he was educated in the public schools. He was the chief deputy sheriff during the Cudahy riots, and is the father of the Gettelman Firemen's Law and of a plan to tax chain stores, having been the first sponsor of this idea in Wisconsin. Through his efforts, lumber companies have been compelled to use a more careful method of disposing of timber on state owned lands. Senator Gettelman is chairman of the La Follette Bronze Tablet memorial committee and of the state interim traffic committee which presented safety recommendations to the 1931 legislature.

He was elected to the Assembly in 1916, and is now serving his third successive term in the Senate.

Home Address: 955 Fiftieth St., Milwaukee.

SIXTH SENATORIAL DISTRICT

The 6th, 7th, 9th, and 10th Wards of the City of Milwaukee.

THOMAS M. DUNCAN (Soc.) was born March 5, 1893, in Wisconsin. He received his education in the Milwaukee public schools and Yale University, from which he graduated in 1915. From 1920 to 1929, he was secretary to Mayor Daniel W. Hoan. Senator Duncan was a member of the commission which prepared the Milwaukee fireman's and policeman's pension law now in force, and originated the plan to eliminate Milwaukee's bonded indebtedness (the only one of its kind in the world); through which the city now owns \$3,500,000 of its own bonds in excess of the constitutional debt retirement requirements. He was the author of the first measure in the United States to outlaw Yellow Dog contracts—which became a law in Wisconsin in the 1929 session. His state-wide referendum to repeal the Severson state prohibition act carried Wisconsin by a majority of 140,000 in April 1929 and Senator Duncan then introduced as a substitute for a pending bill the measure which repealed the Severson law.

He was a member of the Assembly from 1922 to 1928, when he was elected to the Senate.

Business Address: 540 West Juneau Avenue, Milwaukee.



SEVENTH SENATORIAL DISTRICT

The Fifth, Twelfth, and Seventeenth Wards of the City of Milwaukee and the Cities of Cudahy and South Milwaukee; Towns of Lake and Oak Creek.

LEONARD C. FONS (Rep.) was born October 30, 1903, in Milwaukee, the son of former Senator Louis A. Fons, who represented the same district. He was born and educated in Milwaukee county, and is a graduate of Marquette and Georgetown universities. He is now practicing law in Milwaukee. Senator Fons has held no previous public office.

Home Address: 3050 S. Superior St., Milwaukee.



EIGHTH SENATORIAL DISTRICT

Towns of Franklin, Granville, and Greenfield; Village of West Milwaukee; Cities of North Milwaukee, Wauwatosa, and West Allis, and the 16th and 23rd Wards of Milwaukee.

HARRY B. DAGGETT (Rep.) was born Feb. 25, 1857, in Linn Co., Iowa. He was educated in the common schools. For a time he engaged in farming, but is now in the real estate business. He has been president of the Village of West Milwaukee for the past 14 years and has been a member of the village board since it was organized in 1905. He is a member of the Holstein-Friesian Ass'n of America, having been at one time its vice-president. Senator Daggett was first elected to the Senate in 1924 and was reelected in 1928.

Home Address: 1244 S. 50th St., West Milwaukee.



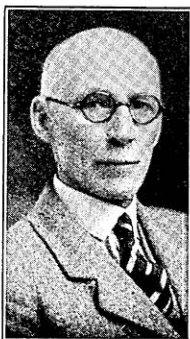


NINTH SENATORIAL DISTRICT

The First, Second, Third, and Fourth Wards of Milwaukee.

IRVING P. MEHIGAN (Rep.) was born in Milwaukee, January 15, 1898. After graduating from Marquette Academy, he took a six-year course at Marquette University, receiving his law degree in 1923, and is now practicing law in Milwaukee. He was elected to the Senate in December, 1924, to fill a vacancy, and was elected for the full term in 1926 and reelected in 1930.

Home Address: 90 Fifteenth St., Milwaukee.



TENTH SENATORIAL DISTRICT

Buffalo, Pepin, Pierce, and St. Croix Counties.

WALTER H. HUNT (Rep.) was born in the town of Kingston in Green Lake County September 5, 1868. He received a common and high school education and graduated from Valparaiso University, Indiana, later on receiving the master's degree from the same university. He has been county superintendent of schools and state school inspector, and since 1916 a teacher in River Falls State Teachers College. During the war he enlisted in the Army Educational corps and did overseas educational work. He also owns and operates a farm. He was elected to the Senate in 1924 and reelected in 1928.

Home Address: River Falls.



ELEVENTH SENATORIAL DISTRICT

Bayfield, Burnett, Douglas, and Washburn Counties.

PHILIP E. NELSON (Rep.) was born on a farm at Curtiss, Wisconsin, September 1, 1891. He is a graduate of the Colby High School and the Williams Business College of Oshkosh. For a time he was employed as cost accountant for the Oakland Motor Car company at Pontiac, Michigan; operated cheese factories in Clark and Rusk Counties, and later kept a general store at Conrath, Rusk County. He served on the county board of supervisors of Douglas County from 1921 to 1923 and 1925 to 1931. He is a director of the Tri-State Fair Board. He served one year and ten months in the World War, most of this time with the A. E. F. in France. At the present time he owns and operates a farm in the town of Cloverland, Maple

P. O., Douglas County. He was a member of the Assembly in 1927, and 1929, and was elected to the State Senate in 1930.

Home Address: Maple.

TWELFTH SENATORIAL DISTRICT

Ashland, Iron, Price, Rusk, Sawyer, and Vilas Counties.

JAMES H. CARROLL (Rep.) was brought up on a farm at Collins in Manitowoc County, attended the common schools there, and graduated from Oshkosh Normal in 1900. He taught school for two years in northern Wisconsin and in 1904 went to South Dakota, where he followed the banking and real estate business, later opening an office in Minneapolis; afterwards moving to Glidden, Ashland County, where he now resides. In 1918 he was appointed supervisor of farm loans by the U. S. Treasury Department and assigned to the Seventh Federal Land Bank District, which position he held until 1924, when he resigned to take the oath of office as senator from the 12th district. At the present time he owns and operates a 120-acre farm and also handles farm loans and insurance. He was elected to the Senate in 1924 and 1928.

Home Address: Glidden.



THIRTEENTH SENATORIAL DISTRICT

Dodge and Washington Counties.

EUGENE A. CLIFFORD (Dem.) was born December 5, 1886, in the town of Clyman, Dodge County. He was educated in the Juneau High School and the University of Wisconsin law school, and is a practicing attorney. Senator Clifford was for fifteen years city attorney of Juneau, for four years supervisor, and for four years mayor; and has been a member of the board of education for fifteen years. This is his first term in the legislature.

Home Address: 248 E. Oak Street, Juneau.



FOURTEENTH SENATORIAL DISTRICT

Outagamie and Shawano Counties.

ANTON M. MILLER (Rep.) is a farmer by occupation. Born on a farm in Outagamie County, May 1, 1876, he was educated in the common schools and then worked in the paper mills for three years, after which he returned to the farm where he was born and where he has since lived. He has been a member of the Society of Equity for 16 years, president of local union for 10 years, and of the county union for 4 years; but never held a public office until elected to the Assembly in 1920. He continued a member of that body until 1928, when he was elected senator.

Home Address: Route 1, Kaukauna.





FIFTEENTH SENATORIAL DISTRICT

Rock County.

GEORGE W. BLANCHARD (Rep.) was born at Colby, January 26, 1884. He received a common and high school education and graduated from the College of Letters and Science, University of Wisconsin in 1906 and from the Law School in 1910. For two years he was principal of the Colby High School. He is practicing law at Edgerton, where he served for two years as city clerk and has been city attorney since 1913. He was elected to the Assembly in 1924, and has been a member of the Senate since 1926.

Home Address: Edgerton.

SIXTEENTH SENATORIAL DISTRICT

Crawford, Grant, and Vernon Counties.



EDWARD J. ROETHE (Rep.) was born in Whitewater, May 12, 1878. After his graduation from the Whitewater High School, he had two years' teaching experience and for the past 30 years has been connected with the Fennimore Times, being its present publisher. Senator Roethe was elected president of the Village of Fennimore in 1919 and, when it was incorporated as a city in August of the same year, became its first mayor; was reelected mayor in 1920, 1922, and 1924. For eight years he served as member of the State Fair Advisory Board from the third Congressional district. He was elected to the Senate in 1924 and again in 1928. Between the 1929 and 1931 sessions, Senator Roethe served as chairman of the Interim Committee on Education.

Home Address: Fennimore.

SEVENTEENTH SENATORIAL DISTRICT

Green, Iowa, and Lafayette Counties.



WILLIAM OLSON (Rep.) was born in the town of Jordan, Green County, October 11, 1873. He was educated in the common schools and Northern Indiana Normal School at Valparaiso, Ind.; taught school during the winter months for many years; worked on his father's farm in summer, and since 1898 has operated his own dairy farm. He has held various local positions, among them bank director, school officer, town clerk, town supervisor, and member of the county board. Senator Olson has been active in cooperative farm and marketing organizations and other movements to better social and economic conditions of farm life. He was a member of the Assembly in 1919, 1921, and 1925, and was elected to the Senate in 1930.

Home Address: Monroe.

EIGHTEENTH SENATORIAL DISTRICT

Fond du Lac, Green Lake, and Waushara Counties.

LOUIS J. FELLEZ (Rep.) attended common schools in Campbellsport and graduated from Oshkosh Normal School in 1902. After teaching for two years, he entered the University of Wisconsin Law School, graduating in 1907. Senator Fellenz entered upon the practice of law in Fort Atkinson, where he remained for three years, then moving to Fond du Lac, where he has ever since practiced law. In 1914 he was elected district attorney of Fond du Lac County, and was reelected in 1916. He has always been identified with the Republican party and actively interested in its campaigns. Senator Fellenz was chairman of the interim committee on courts created by 1929 legislature and also served on the interim committees on fire insurance and guardianship. He was elected to the Senate in 1928.

Home Address: 25 Cottage Ave., Fond du Lac.

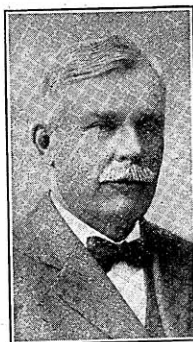


NINETEENTH SENATORIAL DISTRICT

Calumet and Winnebago Counties.

MERRITT F. WHITE (Rep.) was born at Winneconne, August 26, 1865. He was educated in the schools of Winneconne and at Oshkosh Normal. For eighteen years, he served as a member of the Winneconne Educational Board; for thirty years he has been president of the village of Winneconne, and for the same length of time a member of the county board of Winnebago County. For twelve years he has been a member of the Winnebago County Highway Commission. He was first elected to the Senate in 1910 and has been continuously a member since 1923. Mr. White is a retired merchant.

Home Address: Winneconne.



TWENTIETH SENATORIAL DISTRICT

Ozaukee and Sheboygan Counties.

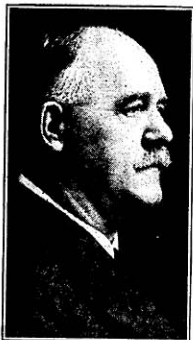
HERMAN E. BOLDT (Rep.) was born in Sheboygan Falls, May 13, 1865. He received his education in district and parochial schools, and later, while engaged in carpenter and contract work, in night school. For a time he ran a lumber yard and a sash and door factory at Sheboygan Falls. He has been interested in numerous other business enterprises and has helped in getting a large number of successful business establishments under way. He holds trust positions in a bank and a loan and trust company. He served as village trustee and president, city assessor, mayor, and president of the Board of Education in Sheboygan Falls, county executive of Boy Scouts, executive member Safe Drivers Club, and member of the Republican County Committee. He has also held offices in the F. and A. M., M. W. A., and E. F. U. He has been a member of the Senate since 1925, and in the 1929 session was chairman of the Joint Finance Committee.

Home Address: Sheboygan Falls.



TWENTY-FIRST SENATORIAL DISTRICT

The County of Racine.



WALTER S. GOODLAND (Rep.) was born at Sharon, Wisconsin, on December 22, 1863. He is a son of the late Judge John Goodland, who was judge of the 10th Judicial Circuit for twenty-five years. He received a high school education at Appleton and attended Lawrence College but did not graduate. He was admitted to the bar in the Wisconsin Supreme Court in 1884, and practiced law for a few years before entering the newspaper business. He was mayor of Racine for four years from 1911 to 1915. He is now president of the Municipal Water Commission of Racine. Since 1887 he has been engaged in the newspaper business and has been editor of the Racine Times-Call since 1900. He was elected to the Senate in 1926 and 1930.

Home Address: 1632 Wisconsin St., Racine.

TWENTY-SECOND SENATORIAL DISTRICT

Kenosha and Walworth Counties.



CONRAD SHEARER (Rep.) was born at Somers, Kenosha County, Oct. 18, 1874. He was educated in the rural schools, Kenosha High, Milwaukee State Normal, and Kenosha College of Commerce. He taught school six years and served as an employee of the Kenosha Post Office for five years. During the past twenty-four years Senator Shearer has been secretary and manager of the central office of Kenosha manufacturing industries. He has many times represented the Republican Party at state and county conventions, was a member of the Kenosha City Council from 1913 to 1919 and of the City Park Commission from 1919 to 1923. He was elected to the Assembly in 1923, serving three terms, and was elected to the Senate in 1928.

Home Address: 520-68th Place, Kenosha.

TWENTY-THIRD SENATORIAL DISTRICT

Portage and Waupaca Counties.



HERMAN J. SEVERSON (Prog. Rep.) is a native of the town of Christiana, Dane County, where he spent his boyhood years on his father's farm. He was educated in the public schools of that county, Stoughton Academy, Red Wing College, Drake University, and the Law school of the University of Wisconsin. For two years he taught school in Jefferson and Dane Counties, and one year was principal of the graded school at London. He was admitted to the bar in 1897 and is by profession a lawyer. He was chairman of the Waupaca Co. Republican Committee 1904-08, district attorney 1908-10 and has been a member of important committees in each session of the legislature since his first election in 1918. In this session

he is president pro tempore and chairman of the committee on corporations and taxation.

Home Address: Iola.

TWENTY-FOURTH SENATORIAL DISTRICT

Clark, Taylor, and Wood Counties.

WALTER J. RUSH, (Rep.) was born in the town of Waterford, Racine County, April 21, 1871. He was educated in the public schools and Rochester Academy of that county, and graduated from Valparaiso University in 1893. From 1894 to 1897 he was principal of the Waterford School. Senator Rush was graduated from the University of Wisconsin Law School in 1900 and since that time has practiced law in Neillsville. He served as district attorney of Clark County from 1911 to 1919, delegate to the Republican National Convention in the spring of 1928, and was elected to the Senate in the fall of 1928.

Home Address: Neillsville.



TWENTY-FIFTH SENATORIAL DISTRICT

Lincoln and Marathon Counties.

OTTO MUELLER (Rep.) was born at Wausau, Wisconsin, December 19, 1875, where he attended the public schools. He served two years as county supervisor of Marathon County, and as trustee of Mt. View Tuberculosis Sanitorium for eight years. He is a jeweler by profession. The present is Senator Mueller's third legislative session in the Senate.

Home Address: 615 Grand Ave., Wausau.



TWENTY-SIXTH SENATORIAL DISTRICT

Dane County.

GLENN D. ROBERTS (Rep.) was born August 31, 1897, at Sparta, Wisconsin, and was educated in the public schools of Sparta, and in Beloit College and the University of Wisconsin, graduating from the school of law in 1922. Since then he has practiced law at Madison, being a member of the firm of La Follette, Rogers and Roberts. He was assistant district attorney of Dane County in 1925 and 1926, and district attorney in 1927 and 1928. In November, 1928, he was elected to the Senate.

Home Address: Madison.



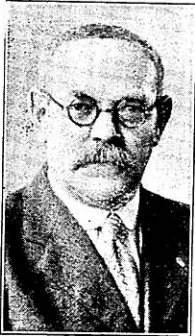


TWENTY-SEVENTH SENATORIAL DISTRICT

Columbia, Richland, and Sauk Counties.

FRED W. ZANTOW (Rep.) was born February 24, 1879, in the town of Sumpter, Sauk County. He was educated in a common school in Sumpter and the high school of Sauk City. Senator Zantow is occupied in farming and dairying, and has lived his entire life on the farm where he was born. He has been affiliated with various farm organizations, is a staunch advocate of the contract system of cooperative marketing, and has been interested in political campaigns all his life. He was a staunch supporter of Robert La Follette, senior. On March 11, 1930, at a Progressive conference at Sauk City, he was unanimously endorsed for the position of State Senator.

Home Address: Route 4, Box 30, Baraboo.



TWENTY-EIGHTH SENATORIAL DISTRICT

Chippewa and Eau Claire Counties.

PETER J. SMITH (Rep.) was born in Jylland, Denmark, August 22, 1867. He was educated in the common schools of his native land and came to Wisconsin in 1889 and to Eau Claire in 1893. He went to business college, and was later employed by the Northwestern Lumber Co., as shipping clerk and contractor for several years. In 1904 he became supreme secretary of the Scandinavian-American Fraternity, a position he still holds. He has served the public in various capacities, including those of alderman, book-keeper in secretary of state's office, assistant post-master, member of the board of normal school regents, supervisor on the county board, member of the Eau Claire fire and police commission, Republican

county chairman member of State Central Committee, and delegate to the 1924 national convention. He was elected to Senate in 1928.

Home Address: S. A. F. Building, Eau Claire.



TWENTY-NINTH SENATORIAL DISTRICT

Barron, Dunn, and Polk Counties.

JOHN A. ANDERSON (Rep.) was born December 28, 1870, in Carver County, Minnesota, and was educated at Gustavus Adolphus College, St. Peter, Minnesota. He is in the clothing and shoe business. He has been mayor of Barron since 1924, with the exception of the years 1928-1929, and was a member of the school board in 1924-25. He was elected to the Senate in 1930.

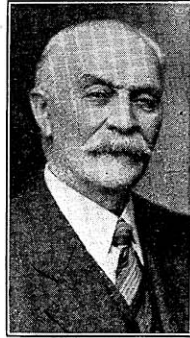
Home Address: Barron.

THIRTIETH SENATORIAL DISTRICT

Florence, Forest, Langlade, Marinette, and Oneida Counties.

JAMES A. BARKER (Rep.) was born at Troy, New York, in 1857. He received a common school education. For fourteen years he was employed by Marshall Field and Company, and for ten years by a men's furnishing store in Chicago. For the past twenty years he has been engaged in farming in Langlade County. He was elected to the Assembly in 1922 and since 1924 has been a state senator.

Home Address: Route 2, Antigo.



THIRTY-FIRST SENATORIAL DISTRICT

Adams, Juneau, Marquette, and Monroe Counties

ORLAND S. LOOMIS (Rep.) was born at Mauston on November 2, 1893. He was educated in the common and high schools of that city, Ripon College, and the University of Wisconsin, graduating from the Law School in 1917. He was admitted to the bar in 1917 and has been a practicing attorney at Mauston since that time, and is now a member of the firm of Loomis and Roswell. In 1918-1919 he served in the World War as a member of the American Expeditionary Forces in France. He has been a bank director in Mauston for several years and has filled the position of city attorney of Mauston for the past ten years. He was elected to and served as a member of the Assembly from Juneau County in the session of 1929 and was a member of the Interim Committee on Education following that session. He was elected to the state Senate for the Thirty-first Senatorial District in the election of 1930.

Home Address: Mauston.



THIRTY-SECOND SENATORIAL DISTRICT

Jackson, La Crosse, and Trempealeau Counties.

V. S. KEPPEL (Rep.) was born in La Crosse County, Feb. 21, 1865, and received a common school education. Up to 1910 Mr. Keppel was actively engaged in farming and still owns the homestead farm. For twenty-six years he has been secretary and manager of the Holmen Cooperative Creamery. For twenty-three years he was a supervisor and for two terms chairman of the county board of La Crosse County. He was one of the original La Follette supporters. In 1906 he was elected to the Assembly and has been a member of the Senate since 1925.

Home Address: Holmen.



THIRTY-THIRD SENATORIAL DISTRICT

Jefferson and Waukesha Counties.



WILLIAM H. EDWARDS (Rep.) was born on a farm in the town of Lisbon, May 14, 1861. After completing his course at Carroll College, he taught school for fifteen years, six of them as principal of the school at Sussex. For the next twenty years he was actively engaged in the management of his farm, retiring to his home in Sussex in 1914. He served two terms as town clerk and ten terms as county supervisor, during one of which he was chairman of the county board. He was a member of the Assembly from 1915 to 1929 with the exception of the 1923 session and was elected to the Senate in 1930.

Home Address: Sussex.



CHIEF CLERK

ROBERT A. COBBAN (Rep.) was assistant chief clerk during the 1929 session of the legislature. He was born in Rhinelander, Wisconsin, and educated in the common and high schools of this state. During the World War, he was a first lieutenant in the United States Marine Corps, serving for twenty-eight months.

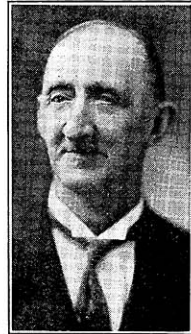
Home Address: Madison.



SERGEANT-AT-ARMS

EMIL A. HARTMAN was born at Manitowoc, Wisconsin, March 25, 1864. He received his schooling in that city, graduating from the First Ward School in June, 1880. After leaving school he worked as book-keeper and salesman for W. H. Wernecke, dealer in farm machinery, for nearly six years, when he started in for himself as paper hanging and painting contractor, a business which he had learned from his father while a student in school. When Co. H., 2nd Regiment of the Wisconsin National Guard was organized in December, 1881, he enlisted as a private and charter member; he was commissioned as Second Lieutenant by Governor W. D. Hoard, January 24th, 1890, and resigned from the service May 3rd, 1893. In 1896 he was elected secretary of the Manitowoc County Republican Committee, and served as delegate to the Republican State Conventions of 1896 and 1898. In 1897 he was appointed by Adjutant General C. R. Boardman to a position in the Pension Division of the Adjutant General's Office at Madison. In 1899 he was appointed as filing clerk in the office of Secretary of State by the Honorable William H. Froehlich; was reappointed by Mr. Froehlich in 1901, and again reappointed in 1903 by the Honorable Walter L. Houser, Secretary of State. He resigned February 1st, 1904, to resume his business as contractor in the decorating field, in which he is still engaged. He began his service with the upper house of the Wisconsin Legislature in 1915, when appointed as Document Clerk to the Senate, and has served in every session since that time. In 1917 he was again appointed Document Clerk; from 1919 to 1927 served as mailing clerk; in 1927 was drafted for position of Assistant Sergeant-at-Arms, and was again appointed in 1929. In 1931 he was elected Sergeant-at-Arms to the Senate.

Home Address: 421 Chamberlain Ave.





ASSEMBLY CHAMBER. .
The Governor Addresses a Joint Session of the Legislature.

MEMBERS OF THE ASSEMBLY

ADAMS AND MARQUETTE COUNTIES

K. J. CALLAHAN (Rep.) was born at Montello, Wisconsin, November 17, 1897. He graduated from the Montello High School, Oshkosh Normal School, and the University of Wisconsin Law School, beginning the practice of law in 1924. He served as district attorney from 1924 to 1930. This is Mr. Callahan's first session in the legislature.

Home Address: Montello.



ASHLAND COUNTY

B. J. GEHRMANN (Rep.) was born in Germany, February 13, 1880, and was thirteen when he came to this country and went to work in a packing plant, attending night school at the same time. In 1895, he moved to Clark County where he lived until 1915, when he moved to Ashland county and cleared a farm five miles from Mellen. He has been an officer of the American Society of Equity for years, serving as county president and member of the state executive board, and is now the vice-president of this farmers' organization. He served as town chairman for four years, assessor for five years, and school clerk since 1919. Mr. Gehrman was elected to the Assembly in 1926 and again in 1930. In the present session he is the chairman of the committee on agriculture.

Home Address: Route 1, Mellen.



BARRON COUNTY

C. A. BEGGS (Rep.) was born in Portage County in 1860. His education was received in the common schools. His first financial venture was in the grocery business at Plainfield for a year, after which he engaged in the general merchandise business at Rice Lake for four years. Since that time he has been engaged in farming and the shipping of produce. Mr. Beggs has represented his ward on the county board for twenty-one years, and was elected to the Assembly in 1916, 1926, 1928, and 1930.

Home Address: Rice Lake.





BAYFIELD COUNTY

ROBERT A. NIXON (Prog. Rep.) was born at Viroqua on June 25, 1900. He was educated in the public schools of Vernon County and in George Washington University. From 1921 to 1924 he acted as private secretary to Congressman Joseph D. Beck from the Seventh District, resigning to accept the same position with Honorable Hubert H. Peavey of the Eleventh District. In 1927 he returned to Wisconsin and began the practice of law at Washburn. Mr. Nixon was first elected to the Assembly in 1928.

Home Address: Washburn.

BROWN COUNTY

First District: The City of Green Bay.



HAROLD C. MALCHOW (Rep.) was born January 24, 1903, in Green Bay. After his elementary education in the public schools, he attended Lawrence College and received his law degree from the Tennessee Law School. For a time he practiced law in Mississippi and was the editor of the only Republican newspaper in that state. In 1927, he returned to Green Bay and the next year was nominated and elected to the Assembly. In 1930 he was reelected for a second term. Mr. Malchow is active in fraternal circles, and a member of the Modern Woodmen of America, the Modern Brotherhood of America, Loyal Order of Moose, and the Order of Odd Fellows.

Home Address: 222 East Walnut St., Green Bay.

BROWN COUNTY

Second District: All the towns, cities, and villages except the City of Green Bay.



GUSTAV J. ZITLOW (Rep.) was born Jan. 9, 1870, in the town of Lawrence, Brown County, was educated in the public schools, and has devoted his life to farming, specializing in the breeding of pure-bred Holstein cattle. He served as clerk of his school district from 1891 to 1909 and has been treasurer of the South Lawrence Butter and Cheese Company and secretary-treasurer of the Wrightstown local American Society of Equity since 1918. He was elected to the Assembly in 1920 and was reelected in 1922, 1924, 1926, and 1930.

Home Address: Route 1, West De Pere.

BUFFALO AND PEPIN COUNTIES

ARTHUR A. HITT (Rep.) was born at Alma, Wisconsin, November 9, 1890. He received his education at the Alma High School, La Crosse State Normal School, University of Wisconsin, and the University of Nebraska. He is a teacher in the Milwaukee Vocational School. This is his third consecutive session in the Assembly.

Home Address: Alma.



BURNETT AND WASHBURN COUNTIES

JAMES H. JENSEN (Rep.) was born in Burnett County, August 16, 1864, the first white child born in the county. He received a common school education. He was county clerk six years, and county board member (part of the time chairman) and village president for twelve years, and court commissioner for eighteen years. Mr. Jensen is in the real estate and insurance business. He served as a member of the assembly in 1917 and 1919, and was again elected assemblyman in 1930.

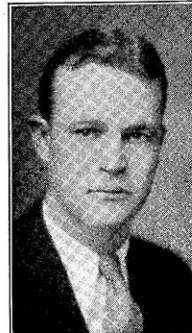
Home Address: Grantsburg.



CALUMET COUNTY

JEROME FOX (Dem.) was born at Chilton, March 26, 1904. He was educated in St. Augustine's Parochial School, Chilton High School, Notre Dame University (B. S. 1924), Marquette Law School (1926-28), and the University of Wisconsin (L. L. B. 1930). He was an instructor in Trinity College, Sioux City, Iowa, from 1924 to 1926. Mr. Fox is practicing law in Chilton in the firm of Fox and Fox, and represents the first ward of the City of Chilton on the Calumet County Board.

Home Address: 121 N. State St., Chilton.





CHIPPEWA COUNTY

INGOLF E. RASMUS (Rep.) was born July 4, 1906, in the town of Eagle Point, Chippewa County. He attended the public schools in Chippewa County, Ripon College, and the Law School of the University of Wisconsin. He is a lawyer by profession, and held no public office prior to his election to the Assembly in 1930.

Home Address: Chippewa Falls.



CLARK COUNTY

JOSEPH SCHMITTFRANZ (Rep.) was born July 13, 1892, at Chelsea, Wisconsin. He received his education in the public school at Chelsea, the Medford High School, and also took the Dairy Course at the University of Wisconsin. He has been a cheese maker for fifteen years and is now state president of the American Cheesemakers Association. Previous to his election to the Assembly in 1930, he held no public office.

Home Address: Route 1, Thorp.



COLUMBIA COUNTY

E. MYRWYN ROWLANDS (Prog. Rep.) was born in the village of Cambria, April 1, 1901. After graduation from St. John's Military Academy at Delafield, he finished his education at Ripon College and the University of Wisconsin. At the age of twenty-three he was elected a trustee of the village board of Cambria, the youngest man who has ever held that office. He is a director and assistant cashier of the Bank of Cambria. He was first elected to the Assembly in 1926, and was reelected in 1928 and 1930.

Home Address: Cambria.

CRAWFORD COUNTY

W. R. GRAVES (Rep.) was born in the town of Haney, Crawford County, January 29, 1873. He was educated in common school, Boscobel High School, and the University of Wisconsin. He is an attorney. Mr. Graves was clerk of the Circuit Court of Crawford County from 1899 to 1903 and district attorney of the county, 1903 to 1907. He was first elected to the legislature in November, 1930.

Home Address: Prairie du Chien.



DANE COUNTY

First District: Town of Madison, Village of Shorewood Hills, City of Madison.

HAROLD M. GROVES (Rep.) was born at Lodi, October 3, 1897. He was educated in the high school at Lodi, the University of Wisconsin (Ph.D., 1927) and Harvard University, where he spent one year in the law school. He was for three years teacher and principal in the public schools of this state—one year at Rice Lake and two years at Waupun; and has been an instructor and professor of economics at the University of Wisconsin since 1924. Mr. Groves has represented the American Federation of Teachers in Madison and has taught for two years in the Madison Labor College. He has held no previous public office.

Home Address: 1320 Spring Street, Madison.

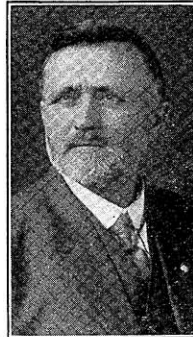


DANE COUNTY

Second District: Towns of Albion, Blooming Grove, Bristol, Burke, Christiana, Cottage Grove, Deerfield, Dunkirk, Dunn, Medina, Pleasant Springs, Sun Prairie, Windsor, and York; Villages of Cambridge, Cottage Grove, Deerfield, De Forest, McFarland, Marshall, Rockdale, and Sun Prairie; City of Stoughton.

JAMES C. HANSON (Rep.) was born in Slysrup, Lolland, Denmark, July 11, 1862, and came to America at the age of three. His family settled on a farm in the town of Christiana, where Mr. Hanson has since made his home. He was educated in the common schools, Albion Academy, and Milton College. He is a farmer by occupation and has been active in the cooperative movement for several years. He is affiliated with the Progressive movement of the Republican party, has held many offices of trust and honor, and has been a member of the Assembly since 1917, being in point of service the oldest member of the legislature.

Home Address: Route 3, Deerfield.





DANE COUNTY

Third District: Towns of Berry, Black Earth, Blue Mounds, Cross Plains, Dane, Fitchburg, Mazomanie, Middleton, Montrose, Oregon, Perry, Primrose, Roxbury, Rutland, Springdale, Springfield, Vermont, Verona, Vienna, and Westport; Villages of Belleville, Black Earth, Blue Mounds, Brooklyn, Cross Plains, Dane, Mazomanie, Middleton, Mt. Horeb, Oregon, Verona, and Waunakee.

ALBERT J. BAKER (Rep.) was born Dec. 14, 1874, in the town of Primrose, Dane County, the son of the late P. O. Baker, member of the Assembly. Mr. Baker was educated in the common schools, and has been a farmer all his life. He has been chairman of the town of Springdale for four years, president and manager of the Mt. Horeb Creamery Co. for several years, member of school board for 30 years and its clerk for 15 years, and town assessor for 7 years. He has been director and treasurer of a farmers' mutual insurance company for 10 years. He was first elected to the Assembly in 1926.

Home Address: 204 Wilson St., Mt. Horeb.

DODGE COUNTY



First District: Towns of Ashippun, Clyman, Emmet, Herman, Hubbard, Hustisford, Lebanon, Leroy, Lomira, Rubicon, Shields, Theresa, and Williamson; Villages of Clyman, Hustisford, Iron Ridge, Lomira, Neosho, and Theresa; Cities of Horicon and Mayville and the 5th, 6th, 13th, and 14th Wards of Watertown.

FRANK PANZER (Rep.) was born September 1, 1890, in the township of Hubbard, Dodge County. He was educated in the rural schools and Oakfield High School. He is occupied in farming and cattle dealing. Offices held by Mr. Panzer include those of school clerk, town chairman, chairman of local board of health, member of Dodge County Board, and member of the agricultural committee of the Dodge County 4-H Club. He is serving his first term in the Legislature.

Home Address: Route 2, Oakfield.

DODGE COUNTY



Second District: Towns of Beaver Dam, Burnett, Calamus, Chester, Elba, Fox Lake, Lowell, Oak Grove, Portland, Trenton, and Westford; Villages of Fox Lake, Lowell, Reeseville, and east ward of Randolph; Cities of Juneau and Beaver Dam and third and fourth wards of the City of Waupun.

IRA E. BURTIS (Rep.) was born August 19, 1881, on an Illinois farm, and was educated in the public schools and the State Normal University of that state. The first part of his business career was devoted to telegraphic construction work and iron manufacture. He is now president and treasurer of the Beaver Garment Co. and a director of the American National Bank, the Sun Coal Co., and the Wisconsin Coal Co. Mr. Burtis has served in the following civic capacities:

national councillor, U. S. Chamber of Commerce; president, Beaver Dam Vocational School; trustee of Wayland Academy; acting chairman, Beaver Dam Planning Commission; trustee, Williams Free Library.

Home Address: Beaver Dam.

DOOR COUNTY

MOULTON B. GOFF (Ind. Rep.) was born in Madison, June 15, 1889. He received his education in the Madison schools, the University of Wisconsin, and Cornell University. For the past twenty-two years he has made his home in Door County, where he is engaged in fruit growing and cooperative marketing. He was first elected to the legislature in 1928.

Home Address: Sturgeon Bay.



DOUGLAS COUNTY

First District: The Third, Fourth, Fifth, Sixth, and Seventh Wards of the City of Superior.

AGNES CHARBONNEAU (Rep.) was born in Ironwood, Michigan, but has lived in Wisconsin since 1911. She attended Bessemer High School and is a graduate of Northwestern University in physical education and public speaking. Since her marriage, immediately after leaving college, Mrs. Charbonneau has been active in public affairs and club work. She is chairman of the women's Republican organization for the Eleventh District of the combined men and women's Republican organization of the state and chairman of the Wisconsin organization of Republican women for the Eleventh Congressional District. This is her first term in the legislature.

Home Address: 1413 24th St., Superior.



DOUGLAS COUNTY

Second District: Towns of Amnicon, Bennett, Brule, Cloverland, Dairyland, Gordon, Hawthorne, Highland, Lakeside, Maple, Oakland, Parkland, Solon Springs, Summit, Superior, and Wascott; Villages of Lake Nebagamon, Oliver, Solon Springs, and Poplar; First, Second, Eighth, Ninth, and Tenth Wards of Superior.

JOSEPH E. WESTLUND (Rep.) was born Feb. 1, 1896, at Superior. After completing his high school course, he attended the Minnesota Institute of Pharmacy, in Minneapolis, and is now a registered pharmacist practicing in Superior. During the war, he served with the 150th Field Artillery, 42nd (Rainbow) Division. The present is his first term in the Assembly.

Home Address: 2009 Wyoming Avenue, Superior.



DUNN COUNTY



J. D. MILLAR (Rep.) was born Jan. 8, 1869, in Eau Claire. He moved with his parents to a farm in Dunn County at the age of four, and received his education in a one-room country school, the Menominee High School, and River Falls State Normal School. He owns and has operated for the past 24 years the farm preempted by his grandfather in 1856. Previous to this, he taught school, kept books, and engaged in the lumber manufacturing business. He served as secretary of the Dunn County Agricultural Society for 19 years; chairman of the town of Red Cedar for 16 years; chairman of the county board of supervisors for six consecutive terms; and secretary of the Dunn County Farmers Mutual Fire Insurance Company for 11 years. Mr. Millar was elected to the Assembly in 1910, 1912, 1922, 1924, 1926, 1928, and 1930.
Home Address: Menomonie.

EAU CLAIRE COUNTY



G. ERLE INGRAM (Rep.) was born at Eau Galle, Wisconsin, April 1, 1883, and received his education in the common schools of Dunn County, Whitewater State Normal, La Crosse Normal, Kansas City Business College, and Northern Indiana Law School (Valparaiso). He began to teach school at the age of seventeen and taught in the common and high schools of the state for several years. He began the practice of law in Eau Claire in 1921. Mr. Ingram was a member of the Republican State Central Committee in 1928 and 1929, and is vice-president of the State Bar Association for the Nineteenth Judicial Circuit.
Home Address: 252 South 11th St., Eau Claire.

FLORENCE, FOREST, AND ONEIDA COUNTIES



S. J. GWIDT (Rep.) was born October 19, 1887, at Bevent, Marathon County. He attended common and evening schools and took correspondence school courses; and has spent the greater part of his life in the study of natural resources. He was conservation warden and forest ranger from 1914 to 1924, and served in the Assembly during the session of 1925, after which he was employed by the Conservation Commission in the study of stream pollution. His profession is that of real estate and insurance broker.
Home Address: 14½ S. Brown St., Rhinelander.

FOND DU LAC COUNTY

First District: Towns of Calumet, Empire, Fond du Lac, and Taycheedah; City of Fond du Lac.

CARLTON WILLIAM MAUTHE (Rep.) was born in Fond du Lac, April 18, 1907. His early education was received in the schools of his native city. For two years following his high school course, he worked at common labor in the plant of the Demountable Typewriter Company, after which he spent six months traveling through Europe. On his return he took a year's course at the Babson Institute at Wellesley Hills, Mass., and then became an executive of the Demountable Typewriter Company and the Standard Refrigerator Company, with which manufacturing establishments he is still connected. He was first elected to the Assembly in 1928.

Home Address: 108 W. Division St., Fond du Lac.

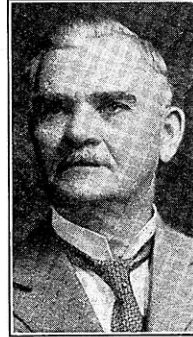


FOND DU LAC COUNTY

Second District: Towns of Alto, Ashford, Auburn, Byron, Eden, Eldorado, Forest, Friendship, Lamarline, Marshfield, Metomen, Oakfield, Osceola, Ripon, Rosendale, Springvale and Waupun; Villages of Brandon, Campbellsport, Eden, Fairwater, North Fond du Lac, Oakfield, Rosendale, and St. Cloud; Cities of Ripon and Waupun.

H. ALBERT WRUCKE (Rep.) was born in the Town of Hubbard (Dodge County) March 1, 1868. After graduation from Horicon High School, he taught for several years, becoming principal of the Campbellsport School in 1894. Since then, he has been a justice of the peace, the first village clerk of Campbellsport, clerk of school board, director of high school board, member of the county board, and member of the county school board. Mr. Wrucke is secretary of the Campbellsport Mutual Fire Insurance Company, a director of the First State Bank of Campbellsport, and a member of the County Children's Code Board.

Home Address: Campbellsport.

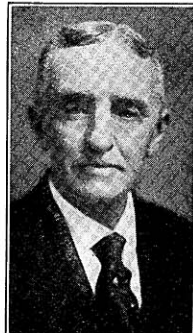


GRANT COUNTY

First District: Towns of Beetown, Cassville, Clifton, Ellenboro, Glen Haven, Harrison, Hazel Green, Jamestown, Lima, Paris, Platteville, Potosi, Smelser, and Waterloo; Villages of Cassville, Hazel Green, Livingston, and Potosi; Cities of Platteville and Cuba City.

HARRY E. STEPHENS (Rep.) was born November 2, 1857, near Platteville in Lafayette County. He received a common school education. For thirty-five years he was a livestock buyer. At present he is associated with Charles Kistler in the ownership of the Blockhouse Mining Co., a lead and zinc property near Platteville, and is also engaged in farming. He served as mayor of Platteville for two years and has been a director of the State Bank of Platteville since its organization 25 years ago. He has been a member of the Assembly since 1927.

Home Address: 26 S. Hickory St., Platteville.





GRANT COUNTY

Second District: Towns of Bloomington, Boscobel, Castle Rock, Fennimore, Hickory Grove, Liberty, Little Grant, Marion, Millville, Mt. Hope, Mt. Ida, Muscoda, N. Lancaster, Patch Grove, S. Lancaster, Waterstown, Wingville, Woodman, and Wyalusing; Villages of Bagley, Bloomington, Blue River, Montfort, Mt. Hope, Muscoda, Patch Grove, and Woodman; Cities of Boscobel, Fennimore and Lancaster.

HUGH A. HARPER (Rep.) was born at Lancaster Dec. 24, 1885. After finishing grade school, he went through Madison Central High School and the University of Wisconsin, studying both agriculture and liberal arts; for three years playing guard and center on the university basketball team. He has been town chairman, member of county board and school

board, director and president of the State Farm Bureau, and director of the American Farm Bureau. The present is his first term in the Assembly.
Home Address: Lancaster.



GREEN COUNTY

E. J. HOESLY (Rep.) was born June 18, 1885, at New Glarus, and was educated in the New Glarus High School and Northwestern Business College, Naperville, Illinois, where he graduated in 1903. He served for seven years as assistant cashier of the Bank of New Glarus; for four years as assistant postmaster; for six years as village clerk; for nine years as supervisor of the village of New Glarus, and for seven years, member of the county highway committee. His present occupation is that of banker and cattle dealer. This is his third successive term in the Assembly.

Home Address: New Glarus.



GREEN LAKE AND WAUSHARA COUNTIES

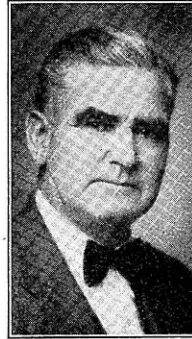
GEORGE M. O'CONNOR (Rep.) was born at Hancock, Wisconsin, February 27, 1902. He graduated from the Hancock High school in 1919 and entered the College of Agriculture of the University of Wisconsin, taking his degree with senior honors in 1923. He holds a commission as captain of the infantry reserves. He is now and always has been a farmer. He was first elected to the Assembly in 1926 and has been twice reelected.

Home Address: Hancock.

IOWA COUNTY

JOHN S. JACKSON (Prog. Rep.) was born in the town of Waldwick, Iowa County, November 9, 1874, and received his education in the common schools. He has served as chairman of the town of Mineral Point for ten years, member of the County Board of Iowa County for ten years, clerk of the school board for twelve years, and president of the Southwestern Wisconsin Shipping Association for seven years. He has been a farmer all his life and a member of the Assembly since 1927.

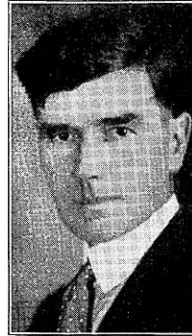
Home Address: Mineral Point.



IRON AND VILAS COUNTIES

JOHN BENSON (Rep.) was born February 17, 1886, on a farm near Sparta, Wisconsin, and received his education in the rural schools. His business is that of retail lumberman, with yards at Land O'Lakes and Eagle River. He was elected to the office of town chairman of Eagle River in April, 1916, and served one year; from 1921 to 1926 he was chairman of the town of State Line; and he served as member of the road and bridge committee of Vilas County from 1921 to 1926, having been elected chairman of that body in 1923. On December 17, 1930, Mr. Benson was taken ill with a stroke of paralysis and a month later was removed to the Wisconsin General Hospital, at Madison, where he is still confined. He has been unable to attend any session of the Legislature thus far.

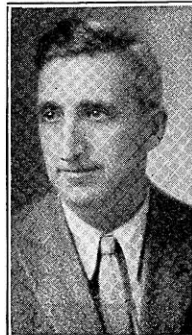
Home Address: Land O'Lakes.



JACKSON COUNTY

WILLIAM F. DETTINGER (Rep.) was born September 24, 1880, in the town of Northfield, Jefferson County, where he still lives. He was educated in the common schools and the College of Agriculture of the University of Wisconsin. He has always lived on a farm, but was employed by the Armour Packing Company for five years. He was president and manager of the York Creamery Association, Northfield, for three years; town supervisor from 1912 to 1915; and town chairman from 1915 to 1918. Mr. Dettinger is a successful farmer, specializing in purebred Guernsey cattle and seed grain. He was a member of the Assembly from 1919 to 1925, and was reelected in 1930.

Home Address: Route 2, Hixton.

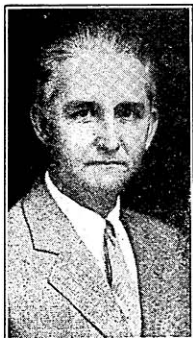




JEFFERSON COUNTY

DON V. SMITH (Rep.) was born in the town of Aztalan, Jefferson County, June 29, 1894, attended common schools, and graduated from the Lake Mills High School in 1913. He served for two years with the United States Navy, but returned upon the death of his father to operate the homestead farm. He has served as assessor of the town of Aztalan, and for the past seven years has been chairman of the town and member of the Jefferson County Board. He is secretary of the Jefferson County Farm Drainage Board. During the World War, he served on the Council for Defense, in the Troop Train Service, and is Y. M. C. A. leader. In 1930 he was the census supervisor for the Second Congressional District. His occupation is farming. This is Mr. Smith's third consecutive term in the Assembly.

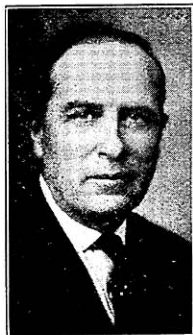
Home Address: Route 1, Lake Mills.



JUNEAU COUNTY

BEN TREMAIN (Rep.) was born in the town of Clifton, Monroe County. He was educated in the county schools and the Mauston High School. He was president of the village of Hustler and member of the County Board of Juneau County from 1926 to 1930. Mr. Tremain is a merchant. The present is his first session in the legislature.

Home Address: Hustler.



KENOSHA COUNTY

First District: Second, Third, Fourth, Eighth, Ninth, Tenth, and Eleventh Wards of the City of Kenosha.

LEWIS W. POWELL (Rep.) was born October 18, 1882, in Kenosha County. He was educated in the public schools, Whitewater State Teachers College, and Marquette Law School, and is now practicing law in Kenosha. Previous public offices held by Mr. Powell include those of president of board of education (nine years), assistant district attorney from 1923 to 1924, district attorney from 1925 to 1928, and court commissioner (three years). The present is his first term in the legislature.

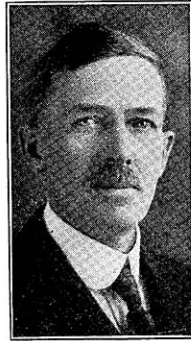
Home Address: 2019-62nd St., Kenosha.

KENOSHA COUNTY

Second District: The towns of Brighton, Bristol, Paris, Pleasant Prairie, Randall, Salem, Somers, and Wheatland; Village of Silver Lake; First, Fifth, Sixth, and Seventh Wards of the City of Kenosha.

AUGUST J. PIPER (Rep.) is a farmer by occupation. He was born in Kenosha County in 1864, and received his education in the common schools of Racine and Kenosha Counties. Mr. Piper has been a member of the Kenosha County Board for three terms; a member of the Kenosha County Park Board; and a director of the Racine City Bank. He was first elected to the Assembly in November, 1928, and was reelected in 1930.

Home Address: Route 4, Racine.



KEWAUNEE COUNTY

JACOB J. BLAHNIK (Dem.) was born in the town of Ahnapee, Kewaunee County, August 2, 1881, and received his education in the common school. He taught school two years, reorganized the Kodan Telephone Company, and was for a time a director and examining committee member of the Bank of Algoma. He has been a director of the federal land bank, assessor, director of the Algoma Farmers Cooperative, and member of the Council of Defense during the World War. His occupation is farming. This is his first term in the Assembly.

Home Address: Route 3, Algoma.



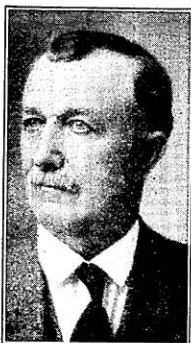
LA CROSSE COUNTY

First District: The 1st, 2nd, 3rd, 4th, 5th, 6th, 7th, 9th, 10th, 11th, 12th, 13th, 14th, 15th, 16th, 19th, and 20th Wards of La Crosse.

JOHN MULDER (Rep.) was born at New Amsterdam, La Crosse County, March 22, 1865, and all his life has made his home in that county. He is of Dutch descent, his parents having immigrated to this country from Holland in 1856. His education was received in the schools of the village where he was born, supplemented by a course at the La Crosse Business College. For forty years prior to 1929 he was engaged in the retail grocery business. Mr. Mulder has held various political offices, having served the city of La Crosse as treasurer, alderman, and member of the board of education. He was first elected to the Assembly in 1928.

Home Address: 822 Rose St., La Crosse.





LA CROSSE COUNTY

Second District: The 8th, 17th, 18th, and 21st Wards of the City of La Crosse, and the entire county outside La Crosse.

WILLIAM F. MILLER (Rep.) was born in the town of Barre, La Crosse County, Sept. 24th, 1869, and has always lived on a farm. He was educated in the common school. Besides operating his farm, he has been manager of the Farmers' Cooperative Supply and Shipping Association and is a director of the Shelby Farmers' Fire Insurance Company. Mr. Miller has been a member of the State Board of Vocational Education. The only office he had held when first elected to the Assembly was that of town treasurer, 1912-13. He has been a member of the Assembly in 1921, 1923, 1929, and 1931.

Home Address: West Salem.



LAFAYETTE COUNTY

S. DELL PENNISTON (Rep.) was born at Argyle June 9, 1870. He was educated in the common schools and three years of high school. He has been a member of the town board for ten years, and is engaged in farming, operating a 321-acre farm three miles from Argyle, on which he has lived for thirty-three years. He was first elected to the Assembly in 1926 without opposition, and was reelected in 1928 and 1930.

Home Address: Argyle.



LANGLADE COUNTY

JOHN FRONEK (Prog. Rep.) was born in Czechoslovakia, May 11, 1883, and three years later came to America. He was educated in the public schools of Coal City, Illinois. For the past twenty-five years he has been engaged in farming, and owns a 120-acre farm in Langlade County. He has served his town as school director for one term, supervisor for two terms, and assessor for twelve years. In 1925 he took the agricultural census. He has been an assemblyman since 1927.

Home Address: Route 2, Antigo.

LINCOLN COUNTY

LEO GESICKI (Rep.) was born in the town of Cassel, Marathon County, in 1891. He was reared on a farm and received his education in the common schools of Marathon County and three years in college at Prairie du Chien. In his early days, he was employed as clerk in a hardware store in Spokane for two years, and was later engaged for seven years in the general store business in Marathon County. For six years he was a state deputy oil inspector, and is now in the life insurance business. This is his first term in the Assembly.

Home Address: 305 Pier St., Merrill.



MANITOWOC COUNTY

First District: Towns of Centerville, Liberty, Manitowoc, Manitowoc Rapids, Meeme, and Newton;
City of Manitowoc.

JOHN LORFELD (Rep.) was born in the town of Meeme, January 25, 1867, was educated in the common schools, and was occupied as a successful farmer and thresherman for years. For the past nine years he has been president of the Cleveland State Bank; was school clerk from 1896 to 1919, town supervisor 1905-1908, and member of the County Board 1908-1922. Mr. Lorfeld was first elected to the Assembly in 1918, and was reelected in 1920, 1928, and 1930.

Home Address: Cleveland.



MANITOWOC COUNTY

Second District: Towns of Cato, Cooperstown, Eaton, Franklin, Gibson, Koesuth, Maple Grove, Mishicot, Rockland, Schleswig, Two Creeks, and Two Rivers; Villages of Reedsville and Valders; Cities of Kiel and Two Rivers.

DAVID SIGMAN (Prog. Rep.) has been a resident of the City of Two Rivers, Manitowoc County, for more than twenty-four years. He received his education in the Two Rivers High School and the University of Wisconsin. He was first elected to the Assembly in November, 1930.

Home Address: 1055 Harbor St., Two Rivers.





MARATHON COUNTY

First District: Towns of Bergen, Berlin, Bern, Brighton, Cassel, Cleveland, Day, Eau Pleine, Emmet, Flieth, Frankfort, Green Valley, Halsey, Hamburg, Holton, Hull, Johnson, McMillan, Maine, Marathon, Mosinee, Rib Falls, Rietbrock, Spencer, and Wein; that part of Abbotsford village in Marathon County and Villages of Athens, Edgar, Fenwood, McMillan, Marathon, Mosinee, Spencer, Stratford, and that part of Unity village in Marathon County; that part of City of Colby in Marathon County.

BEN LANG (Rep.) was born in the town of Hartford, Washington County, Nov. 11, 1870. He is a farmer by occupation, and has been secretary of the McMillan Grange Mutual Fire Insurance Co., since its organization in 1898; director of Marshfield Coop. Produce Co., which he helped organize in 1912; president of the Marshfield Consumers Store Co.; president of the Marathon County Union of the American Society of Equity and member of the executive committee of the Wisconsin State Union. Mr. Lang has been a member of the county board of education, president of the Marathon County Agricultural School, and chairman of the town of McMillan. This is his first term in the Assembly. Home Address: Route 4, Marshfield.



MARATHON COUNTY

Second District: Towns of Bevent, Easton, Elderon, Franzen, Guenther, Harrison, Hewitt, Knowlton, Kronenwetter, Norris, Plover, Reid, Ringle, Texas, Wausau, Weston; Villages of Brokaw, Elderon, Hatley, Rothschild, and Schofield; city of Wausau.

HENRY ELLENBECKER (Rep.) was born in Belgium, Ozaukee County, Wisconsin. He has held public offices for thirty years. He was elected to the Assembly in 1922; reelected in 1924 (without opposition) in 1926, in 1928, and again in 1930. He is a retired contractor. Home Address: Wausau.



MARINETTE COUNTY

CHARLES A. BUDLONG (Rep.) was born in Frankfort, New York. He came to Wisconsin at the age of three and received his education in the common schools of this state. He followed the occupation of telegrapher and railroad agent for about ten years. He moved into Marinette County in 1891 and for a time kept a general store at Amberg. Mr. Budlong has held the positions of town clerk, town chairman, clerk of the circuit court, and sheriff. For three years he was immigration inspector on the Canadian border; for eight years, state inspector for the board of control; for five years police judge of the City of Marinette. He has been a member of the Legislature for four terms.

Home Address: 2628 Parkridge Ave., Marinette.

MILWAUKEE COUNTY

First District: The First and Third Wards of the City of Milwaukee.

CORNELIUS T. YOUNG (Dem.) was born July 28, 1907, in Milwaukee. He graduated from St. John's Military Academy in 1926 and has since been a student in Georgetown University and the University of Wisconsin, where he is now studying law. He has been a newspaper reporter, and last year worked in the office of a Milwaukee law firm. This is his initial term in the Assembly.

Home Address: 528 Jackson St., Milwaukee.

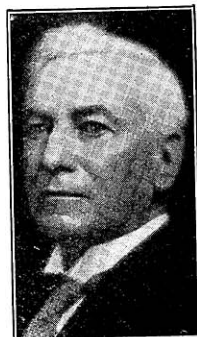


MILWAUKEE COUNTY

Second District: Second and Fourth Wards of Milwaukee.

MICHAEL LAFFEY (Rep.) was born on a farm in the township of Clyman, Dodge County, July 5, 1863, and received a common school education. At the age of seventeen, he left the farm and went to work in a general merchandise business in Watertown, where he remained for seven years. In 1885, he moved to Milwaukee, taking a position as traveling salesman and remaining on the road for ten years. He entered the real estate business in 1895. He served on the Milwaukee Common Council in 1896 and 1897; was state treasury agent 1915-21, and assemblyman in 1923, '25, '27, '29, and '31.

Home Address: 1122 Kilbourn Ave., Milwaukee.



MILWAUKEE COUNTY

Third District: The Twenty-fifth Ward of the City of Milwaukee.

GEORGE HAMPEL (Soc.) was born in Milwaukee, August 27, 1885. He was educated in the public schools, the International Correspondence School, and Hesse's Art School. He is an accountant and president of Hampel's Book Shop, Inc. Previous public offices held by Mr. Hampel include those of county clerk of Milwaukee County (1919-20) and executive secretary of the Milwaukee Motion Picture Commission.

Home Address: 1627—17th St., Milwaukee.



WISCONSIN BLUE BOOK



MILWAUKEE COUNTY

Fourth District: 21st Ward of the City of Milwaukee.

EMIL MEYER (Soc.) was born in the City of Milwaukee, August 2, 1876, and has lived there all his life. He attended the public schools in that city. After leaving high school, he learned the printing trade and has since worked on Milwaukee papers as a linotype operator. He has been active in the Milwaukee Typographical Union, of which he has been a member since 1900; also in the labor movement and civic organizations. He has never held public office before.

Home Address: 2813 N. 4th St., Milwaukee.



MILWAUKEE COUNTY

Fifth District: Fifth and Twelfth Wards of the City of Milwaukee.

JOHN ERMENC (Soc.) was born October 21, 1887, at Ljubno in Jugoslavia. He came to this country in the year 1901, and finished his education at night school in Milwaukee Technical School. Mr. Ermenc is in the real estate and insurance business, and organized the J. P. Z. Sloga fraternal society. He has held no previous public office.

Home Address: 1016 S. 5th St., Milwaukee.

MILWAUKEE COUNTY

Sixth District: The Sixth Ward of the City of Milwaukee.



BEN RUBIN (Soc.) was born December 20, 1886, in Pittsburgh, Pennsylvania. He attended public school up to the age of ten, when he became an apprentice in a cigar factory. He worked as cigar maker up to 1919 and during these years was a member of the cigar makers' union, which he served in various capacities. Since 1919, he has been employed as animal keeper in Washington Park Zoological garden. For several years he has been president of the Building Service Employes Union and secretary of the Central Board of city employes' unions, and has been a member of the Socialist party for about twenty years.

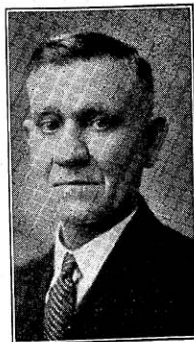
Home Address: 2016 N. Seventh St., Milwaukee.

MILWAUKEE COUNTY

Seventh District: Seventh Ward of the City of Milwaukee.

PHILIP F. WENZ (Soc.) was born in Milwaukee, April 13, 1873. His education was received in the public and engineering schools. At the age of sixteen, he became an apprentice in carpentry, and has followed this trade all his life, with the exception of a few years which he spent as machinist and a later period selling insurance and stocks. The present is his third successive term in the Assembly.

Home Address: 2340 N. 12th St., Milwaukee.



MILWAUKEE COUNTY

Eighth District: The Eighth and Fourteenth Wards of the City of Milwaukee.

BEN C. WICZYNSKI (Rep.) was born January 1, 1895, in Milwaukee, the son of Mr. Bennon G. Wiczynski, for forty-eight years a member of the Milwaukee fire department, and Mrs. Anna Heller Wiczynski. He received his education in St. Hyacinth's Parochial School, Windlake Avenue School, South Division High School, Milwaukee State Teachers College, and Marquette University. He is now a teacher as well as member of the firm of Gut-Wiczynski Realty Company. In 1926, Mr. Wiczynski helped organize the Capital Building and Loan Ass'n and is its present secretary. During the World War, he was a member of the Field Artillery Central Officers Training School Band, holding a rating of musician of the first class. He was elected to the Assembly in November, 1930.

Home Address: 3313 S. 11th St., Milwaukee.

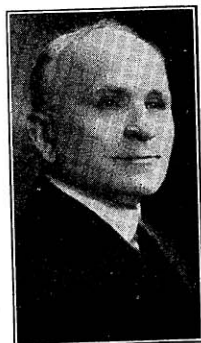


MILWAUKEE COUNTY

Ninth District: The Ninth and Tenth Wards of Milwaukee.

OTTO KEHREIN (Soc.) was born in the town of Jackson, Washington County, in 1873. He was reared on a farm and received his education in the common schools and the West Bend High School. Upon leaving school, Mr. Kehrein went to Milwaukee, where he learned and followed the carpenter's trade. For the past twenty years he has been actively interested in the teaming, trucking, and garage business in Milwaukee. He held no public office until his election to the Assembly in 1928 and reelection in 1930.

Home Address: 527-20th St., Milwaukee.



WISCONSIN BLUE BOOK



MILWAUKEE COUNTY

Tenth District: Sixteenth and Twenty-third Wards of the City of Milwaukee.

JOHN W. EBER (Rep.) was born at Sheboygan on Oct. 16, 1895. He acquired his education and legal training in the schools of the state of Wisconsin. He is engaged as secretary of a building and loan association. Mr. Eber was elected to the Assembly in 1922, and reelected in 1924, 1926, 1928, and 1930. At the session of 1927, he was elected speaker, having the honor of being the youngest man elected to that position in the history of the state. He was reelected in 1930, receiving 4,103 votes to 1,251 for Richard F. Cline, 2,513 for Otto F. Erick, and 429 for John P. Murphy.

Home Address: 17 36th St., Milwaukee.



MILWAUKEE COUNTY

Eleventh District: Eleventh and Twenty-fourth Wards of the City of Milwaukee.

GEORGE L. TEWS (Soc.) was born Sept. 25, 1883, at Jones Island, Milwaukee. He completed a public school education in 1897 and graduated from the Business Institute in 1900. He is at present a real estate broker. Previous public offices held by Mr. Tews include treasurer of school board in towns of Wauwatosa and Greenfield, Milwaukee County, and member of the Assembly in the sessions of 1915 and 1927. He has been an active Socialist all his life.

Home Address: 2013 S. Layton Blvd., Milwaukee.



MILWAUKEE COUNTY

Twelfth District: 22nd Ward of the City of Milwaukee.

CHARLES F. WESTFAHL (Rep.) was born in Milwaukee April 10, 1885, and was educated in its public schools. His first business activities were connected with the Westfahl File Works, which he developed and expanded from a small beginning made by his father. Several years ago, he severed his connection with this establishment, becoming associated with the *Northwest Times*. Until his election, he had never held public office. He now represents the district in which he has spent his entire life.

Home Address: 986 40th St., Milwaukee.

MILWAUKEE COUNTY

19th District: Towns of Greenfield and Franklin; Village of West Milwaukee; city of West Allis.

LEN J. BUSBY (Rep.) has been a resident of the 19th Assembly district for over thirty years. He is a graduate of the West Milwaukee Public School and the West Allis High School. In 1920 he was graduated from the Milwaukee State Normal School and in 1922 from the University of Wisconsin with the A. B. degree. Returning to the University he took a Master's degree in history and politics in 1925. After studying law in the Universities of Chicago and Wisconsin, he received his L. L. B. from Wisconsin and was admitted to the bar.



Before taking up law, Mr. Busby was principal of the high school at Little Chute for two years and an instructor in the West Allis High School for three years. Since his admission to the bar in 1928 he has been engaged in the practice of law in West Milwaukee and West Allis.

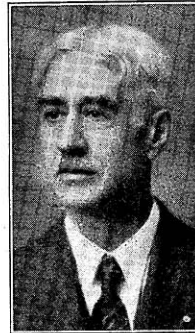
Home Address: 925 S. 38th St., Milwaukee.

MILWAUKEE COUNTY

Twentieth District: Twentieth Ward of the City of Milwaukee.

EDWARD H. KIEFER (Soc.) was born in Milwaukee, May 1, 1874. He attended the public and parochial schools of that city up to the age of fifteen, when he became an apprentice in the painting trade. He has been a member of the Brotherhood of Painters, Decorators, and Paperhangers since 1900 and business manager of Local Union number 781 for nine years. Mr. Kiefer was a member of the Assembly in the sessions of 1911 and 1913 and was again elected assemblyman in November, 1930.

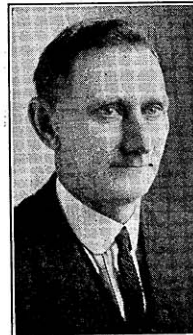
Home Address: 3528a N. 24th Place.



MONROE COUNTY

EARL D. HALL (Rep.) was born July 15, 1879, at Tunnel City, and received a rural school education. He spent four years in train service, and for a number of years has been engaged in farming. He has been a member of the Monroe County Board of Supervisors and the Monroe County Highway Commission for several years. He was elected to the Assembly without opposition in 1924, and was reelected in 1926, 1928, and 1930.

Home Address: Tunnel City.





OCONTO COUNTY

CARL SCHOENEBECK (Rep.) was born in Germany, February 2, 1866, and received a common school education. He came to this country when nineteen years of age and followed the trade of carpenter for many years. He worked in Milwaukee two years; moved to Oconto in 1877, and to Lena in 1895, where he engaged in business for a number of years. He has served as town chairman and deputy sheriff for one term and as a member of the village board and local health board for four years. He is in the real estate and life insurance business. He was first elected to the Assembly in 1926 and has been twice reelected.

Home Address: Lena.

OUTAGAMIE COUNTY



First District: Towns of Bovina, Center, Dale, Ellington, Grand Chute, and Greenville; Village of Shiocton; City of Appleton.

OSCAR JOHN SCHMIEGE (Rep.) was born in the city of Appleton. He graduated with honors from the Appleton High School, received an A. B. with honors at the University of Wisconsin in 1925, and the degree of LL.B. in 1928. In 1926, while still a student, he ran for the Assembly and defeated his opponent by the largest majority in the history of his county. In 1928 he was reelected by a still larger majority and was again elected in 1930. He is a practicing attorney at Appleton and assistant district attorney of Outagamie County. He is also secretary-treasurer of the County Republican Committee.

Home Address: 207 W. College Ave., Appleton.

OUTAGAMIE COUNTY



Second District: Towns of Black Creek, Buchanan, Cicero, Deer Creek, Freedom, Hortonville, Kaukauna, Liberty, Maple Creek, Maine, Oneida, Osborne, Seymour, and Vandenbrook; Villages of Black Creek, Bear Creek, Combined Locks, Kimberly, Little Chute, and Hortonville; Cities of Kaukauna, Seymour, and 3rd Ward of New London.

WILLIAM BAY (Prog. Rep.) was born in Kaukauna February 20, 1885. His first position was in a pulp and paper mill in the Fox River Valley, since which he has been, successively, locomotive fireman, brakeman, and carman. He is president of Local #445, B. R. C. of A., vice-chairman of the carmen's organization of the Chicago and Northwestern, and president of the Central Labor Council of Kaukauna. This is his first election to public office.

Home Address: 217 W. 4th St., Kaukauna.

OZAUKEE COUNTY

JOHN L. LONG (Rep.) was born at Sturgeon Bay, July 11, 1895. He is a graduate of the River Falls State Normal School and the Colleges of Agriculture and Law of the University of Wisconsin. He was principal of the Grafton Agricultural High School for eight years and is now an attorney. His election to the Assembly in November, 1930, was his first election to public office.

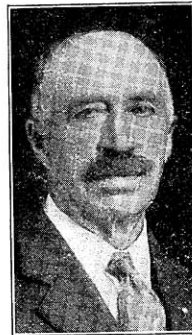
Home Address: Grafton.



PIERCE COUNTY

WILLIAM A. KAY (Rep.), was born February 22, 1864, in the town of Martell, Pierce County, and was educated in the public schools. His business is farming and stock raising. He is now serving his 37th year as school district treasurer. He has held the office of supervisor and assessor of his town; was elected chairman of his town board and held the office for seven terms; and was elected to the Assembly in 1906, 1908, 1910, 1914, and 1930.

Home Address: Spring Valley.



POLK COUNTY

MARIUS DUEHOLM (Prog. Rep.) was born at Sonberg, Denmark, January 5, 1881. He came to America at the age of nine and has lived ever since in Polk County. He has always been a farmer. Mr. Dueholm has been a member of the town board for fifteen years; of the county board, nine years; of the creamery board, sixteen years; of the school board, twelve years. He was elected to the Assembly in November, 1930.

Home Address: Route 2, Luck.





PORTAGE COUNTY

JOHN T. KOSTUCK (Prog. Rep.) was born October 7, 1893, in Stevens Point. He left school at the end of the third grade to work on a farm. At the age of fourteen, while assisting in blasting stone, he became blind. Soon after, he entered the School for the Blind, where he spent ten years, graduating in 1918 from the high school department. He then entered the University of Wisconsin, doing work in political science and economics. For three years, he taught in the high school department of the School for the Blind at Staunton, Va., and is now in the piano business in Stevens Point. Mr. Kostuck is the first blind member of the Wisconsin legislature.

Home Address: 711 Center Ave., Stevens Point.



PRICE COUNTY

L. S. SHAUGER (Rep.) was born in Outagamie County in 1878. He received his education in the common and high schools of that county and in 1903 received the degree of M. D. from the Keokuk Medical College. For the next eight years he practiced medicine in Waupaca County, and in 1911 moved to Ogema, in Price County, where he has since resided. For the past twenty years he has devoted most of his time to agriculture, with medicine as a secondary interest. Mr. Shauger has been chairman of his township for the past ten years and chairman of the county board for the last eight. The present is his second term in the Assembly.

Home Address: Ogema.



RACINE COUNTY

First District: The first, 2nd, 3rd, 6th, 10th, 11th, 13th, and 14th Wards of the City of Racine.

JOHN L. SIEB (Rep.) was born November 6, 1864, in Michigan City, Indiana, but has lived in Racine since he was one year old. He attended the Lutheran and public schools in that city, and has been president of the school board, deputy oil inspector, president of the City Council, president of the Board of Health, and member of the City Water Commission. Mr. Sieb is a member of the firm of Sieb and Rick of the Hotel Racine Barber Shop. This is his first term in the Assembly.

Home Address: 940 Park Avenue, Racine.

RACINE COUNTY

Second District: The Fourth, 5th, 7th, 8th, 12th, and 15th Wards of Racine.

EDWARD F. HILKER (Rep.) was born April 18, 1881, at Racine, and was educated in common school and business college. In 1898 he volunteered in the Spanish-American War. For a time he was engaged in the wholesale candy business, but is now a coal broker. He is interested in athletics, and has played on and managed the Racine Ball Club. He has served for fourteen years as alderman of his ward, the sixth term in response to petitions filed after his voluntary retirement and the seventh after election without opposition. He is serving his fourth term in the Assembly. In 1929 he was Assembly Chairman of the Joint Committee on Finance.

Home Address: 319 La Fayette Ave., Racine.

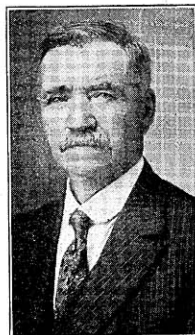


RACINE COUNTY

Third District: Towns of Burlington, Caledonia, Dover, Mt. Pleasant, Norway, Raymond, Rochester, Waterford, and Yorkville; Villages of Corliss, Rochester, Union Grove, and Waterford; City of Burlington and Ninth Ward of Racine.

JOHN H. KAMPER (Rep.) was born in Denmark, December 17, 1857. He came to Wisconsin with his parents in 1866, settling in Racine County, where he has ever since resided. At the age of 22, he was elected justice of the peace, which office he held 14 years. For 17 years he was chairman of the town of Raymond and a member and for four years chairman of the county board, and has held numerous other positions of trust. He was a member of the Assembly in the sessions of 1909 and 1911, and has been continuously a member since 1923.

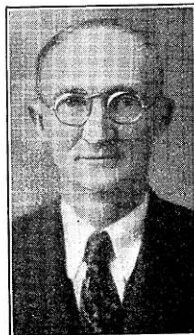
Home Address: Route 1, Franksville.



RICHLAND COUNTY

A. RAY LAWTON (Rep.) was born May 30, 1884, on the Maple Park Stock Farm in the town of Forest, where he still lives. After teaching rural school for a year, he entered the College of Agriculture at the state university, and has spent the balance of his life on the old homestead breeding pure bred livestock and raising grains. For the past ten years, he has been president of the Richland Co. Holstein Breeders Ass'n. Mr. Lawton has been president of the La Farge Equity local and La Farge Cooperative Creamery; he helped to organize the Farmers State Bank in 1914 and has since acted as a director and, for the past three years, second vice-president; and has been member of the school board, chairman of jury commission, member of the child welfare board, and secretary-treasurer of the Tunnelville Coop. Electric Light Co. He is serving his initial term in the legislature.

Home Address: Viola.





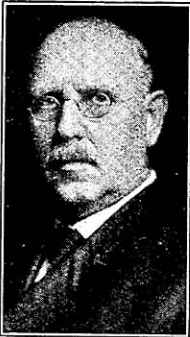
ROCK COUNTY

First District: Towns of Center, Fulton, Harmony, Janesville, Lima, Milton, Magnolia, Porter, Union; Village of Milton; Cities of Edgerton, Evansville and Janesville.

STANLEY W. SLAGG (Rep.) was born July 6, 1903, on a farm in the Town of Albion, Dane County, Wisconsin. He was educated in the Dane County Public Schools, Edgerton High School and the University of Wisconsin. After graduation from the Law School in 1924 he became associated with Senator G. W. Blanchard in the practice of law at Edgerton. In 1926, he was appointed Assistant District Attorney of Dane County by Philip F. La Follette, then District Attorney. He was elected Member of the Assembly from Rock County in 1928 and 1930.

Home Address: 508 Crescent St., Edgerton.

ROCK COUNTY



Second District: Towns of Avon, Beloit, Bradford, Clinton, Johnston, La Prairie, Newark, Plymouth, Rock, Spring Valley, and Turtle; Villages of Clinton, Footville, and Orfordville; City of Beloit.

ERASTUS G. SMITH (Rep.) was born in South Hadley, Mass., April 30, 1855. He received his B. A. from Amherst in 1877 and his Ph. D. in chemistry from Georgia Augusta University, Goettingen, Germany, in 1883; LL.D. from Beloit College, 1921. He was professor of chemistry in Beloit College from 1881 to 1921 and was for sixteen years president of the Beloit Savings Bank, the largest mutual savings bank in the state. He is now chairman of the board of this bank. He was war chairman of the Red Cross from his district and has served as chairman of various civic bodies. He was mayor of Beloit for four terms. The present is his third successive term in the Assembly.

Home Address: 718 Emerson St., Beloit.



RUSK AND SAWYER COUNTIES

J. W. CAROW (Rep.) was born at Baraboo, Wisconsin, on April 20, 1874. After finishing his elementary educational work in the common schools, he attended the University of Wisconsin. Since then Mr. Carow has been engaged in the practice of law, with headquarters at Ladysmith. He was elected to the Assembly in 1928 and reelected in 1930.

Home Address: Ladysmith.

ST. CROIX COUNTY

HANS A. AUNE, (Rep.) was born in the town of Baldwin, St. Croix County, in December, 1878. During his boyhood he worked on the farm and attended the country school. Later he graduated from the Menomonie High School and the River Falls State Normal School. He taught in the country schools and state graded schools of St. Croix County and was elected county superintendent of that county in April, 1905. He served efficiently as county superintendent of St. Croix County from 1905 until 1923. In 1923 he was elected principal of the high school at Osseo, Wisconsin, which position he held until June, 1930. He resigned this position to take up work with a book company. Mr. Aune had retained his residence in Baldwin and spent his summers there. When he came back to Baldwin after resigning his position at Osseo, he announced his candidacy for the assembly. In a close race with four candidates participating, Mr. Aune won the nomination and in November the election. Previously Mr. Aune had taken a correspondence course in law and was admitted to practice in the state of Wisconsin. During Mr. Aune's long career as a school man in Wisconsin, his success was outstanding. Mr. Aune always took a keen interest in politics and was an admirer and follower of the late Senator La Follette and therefore a strong believer in progressive policies.



SAUK COUNTY

ROBERT J. KELLER (Rep.) was born at Baraboo on November 9, 1893. He was educated in the public schools of Baraboo, the University of Wisconsin, and Marquette University, graduating from the last in 1924. During the World War he served overseas with the 116th Ambulance Company and received a division citation for valor. He is an active member of the American Legion, having served as post adjutant from 1924 to 1928, Sauk County commander, 1927-28, and seventh district vice-commander, 1928. Since 1924, Mr. Keller has engaged in the practice of law in Sauk City, and has been clerk and attorney of the village since 1925. He was elected to the Assembly in 1928 and reelected in 1930.

Home Address: Sauk City.

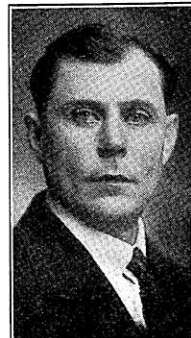


SHAWANO COUNTY

PAUL FUHRMAN (Rep.) was born May 10, 1883, in the town of Fairbanks, Shawano County. He received a common school education. He was engaged as a building contractor in 1902-07; logging and farming, 1907-13; retail hardware merchant, 1913-26. At the present time he is engaged in logging. He served as town chairman for the town of Bartelme, 1913 to 1923 and supervisor and president of the village of Bowler continuously since 1924.

During the World War he served as a member of the local draft board, and from 1918 to 1925 as member of the county-state road and bridge committee. He has been a member of the Assembly since 1927.

Home Address: Bowler.



SHEBOYGAN COUNTY

First District: The City of Sheboygan.



CURT W. JANKE (Rep.) was born in the town of Herman, Sheboygan County, September 30, 1892. He received his education in the common and high schools and the Sheboygan Business College. Mr. Janke is a public accountant, and is also engaged in the general insurance business. He is secretary-treasurer of the Sheridan Realty Company and the Ninety-nine Realty Company, and a member of the Sheboygan Business Men's Association and the Southwest Side Advancement Association of Sheboygan. Mr. Janke is an alderman of his home city, now serving his third term, and has been a member of the Assembly since 1929.

Home Address: 617 S. 14th St., Sheboygan.

SHEBOYGAN COUNTY

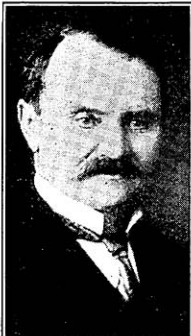
Second District: The entire county outside the City of Sheboygan.



FREDERICK W. KREZ (Rep.) was born in Sheboygan, October 22, 1899. He was educated in the Sheboygan High School, at Ripon College for one year, graduated from the civil engineering department of the University of Wisconsin in 1921 and from the Law School in 1927. For the past four years he has been practicing law in Plymouth. He has held no previous public office.

Home Address: 605 Reed St., Plymouth.

TAYLOR COUNTY



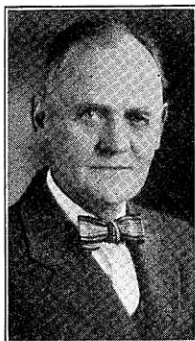
JOHN GAMPER (Rep.) was born in Chur, Switzerland, in 1860, and was educated in the common and high schools, normal school, and university of Zurich. In the last institution he attended, under Professor Gottfried Kinkel (who was also a teacher of the Wisconsin statesman and patriot, Carl Schurz) the reading of the Greek classics, besides studying German literature and general history. Mr. Gamper came to America in 1883 and has since resided in Taylor County, where he is the proprietor of a dairy farm and has held many local offices, including those of register of deeds and sheriff. He holds the unique record of having sat in the Assembly both as Democrat and Republican, having been elected in 1914 as a Democrat and served in all subsequent sessions save those of 1918 and 1924 as a Republican. He is allied with the Progressive wing of the party.

Home Address: Goodrich Star Route, Medford.

TREMPEALEAU COUNTY

FRANK A. KELLMAN (Rep.) was born April 24, 1869, in Boras, Sweden. He attended graded school until the age of sixteen, after which he worked for a number of years as a tinsmith. He then went into the hardware business, which occupation he pursued for thirty-five years. Mr. Kellman was mayor of Galesville for two terms, president of the business men's association for six years, and manager of the Arctic Springs Creamery for ten years, and has been a member of the local library board for the past decade and a half. The present term is his first in the legislature. He is now in the real estate and insurance business, and is a collector of first editions.

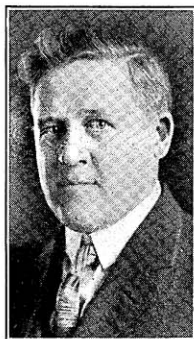
Home Address: Galesville.



VERNON COUNTY

DEDRICK M. LANGVE (Prog. Rep.) was born on a farm in the town of Utica, Crawford County. He received his education at the Normal School of Madison, Minnesota, and Valparaiso University, Indiana. From 1917 to 1923 he was clerk of circuit court for Crawford County except during the war period, when he served with the American forces in France. Mr. Langve has practiced law in the cities of La Crosse and Westby since 1923. He was first elected to the Assembly in 1928.

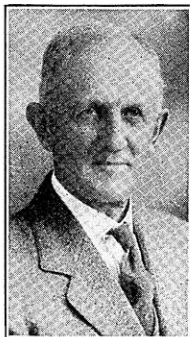
Home Address: Westby.



WALWORTH COUNTY

DANIEL E. LABAR (Rep.) was born August 21, 1857, in the town of Delavan, Walworth County. He graduated from the Delavan High School and Wayland Academy. He has held numerous public offices, among them alderman in Delavan 1901 to 1905, member of the county board 1906-07, and mayor of Delavan 1908-10 and 1912-16. In November, 1928, he was elected to represent Walworth County in the Assembly and was reelected in 1930.

Home Address: Delavan.





WASHINGTON COUNTY

JOSEPH J. HUBER (Rep.) was born March 2, 1893, at West Bend. After graduating from the public schools, he attended Marquette University for a time. He served as postoffice clerk at West Bend from 1913 to 1919, and since then has been editor and manager of the West Bend News, Washington County's oldest and largest newspaper, with which a large commercial printing plant is connected. From 1924 to 1930, he was secretary of the Washington County Agricultural Society. He has been a member of the Assembly since 1926.

Home Address: 824 Cedar St., West Bend.

WAUKESHA COUNTY

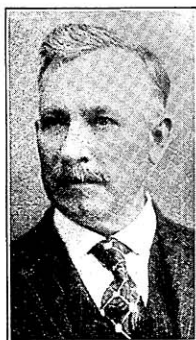


First District: Towns of Eagle, Genesee, Mukwonago, Muskego, New Berlin, Ottawa, Vernon, and Waukesha; Villages of Big Bend, Dousman, Eagle, Mukwonago, Wales, and North Prairie; City of Waukesha.

EVAN G. DAVIES (Rep.) was born on a farm near Wales July 14, 1877. He graduated from Carroll College in 1897 and later attended the University of Wisconsin. Mr. Davies has a large general insurance agency, and for several years has acted in the capacity of agent and adjuster for several leading old line insurance companies. He is also a successful farmer, operating a dairy farm within the village limits of Wales, specializing in Guernsey cattle and supplying Grade A milk to the Milwaukee market. He was a member of the Waukesha County Board for three years and has been an assemblyman since 1925.

Home Address: Wales.

WAUKESHA COUNTY



Second District: Towns of Brookfield, Delafield, Lisbon, Menomonie, Merton, Oconomowoc, Pewaukee, and Summit; Villages of Chenequa, Hartland, Merton, Menominee Falls, New Butler, Sussex, and Pewaukee; City of Oconomowoc.

WILLIAM H. STEELE (Rep.) was born in Waukesha County, May 15, 1872. He was educated in the Pewaukee schools and the University of Wisconsin, and taught school for twelve years in Waukesha and Pewaukee. In 1911, he bought a dairy farm on the outskirts of Pewaukee, where he has lived since then. He was town chairman and member of county board from 1919 to 1925; has been president of the Pewaukee School Board for twenty-four years; and is a director of the Waukesha County Guernsey Breeders Ass'n and the Golden Guernsey Milk Cooperative.

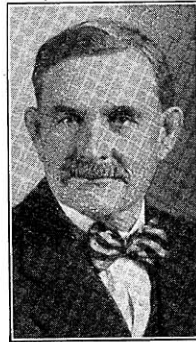
Home Address: Pewaukee.

WAUPACA COUNTY

DANIEL F. BURNHAM (Prog. Rep.) was born Feb. 8, 1864, and spent his youth three miles from Waupaca on a farm which he now owns. At the age of 19, he combined farming in summer with teaching district school in winter. Later, he attended summer sessions at the University and received a license to teach in high schools.

After 13 years of teaching he was elected county superintendent of schools. In 1908 he purchased the Waupaca Republican and Waupaca Post and merged the two, securing the financial cooperation of the employees, who had hitherto worked only for wages. This cooperative organization is still functioning successfully, although Mr. Burnham has withdrawn from active leadership to become a minority stockholder. He was first elected to the assembly in 1928.

Home Address: Waupaca.

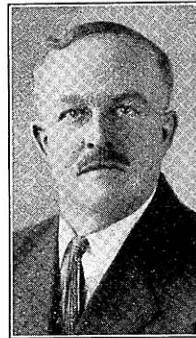


WINNEBAGO COUNTY

First District: City of Oshkosh.

WILLIAM A. MEYER (Rep.) was born in Oshkosh, March 20, 1877, and received his education in the schools of Oshkosh, one year of it in training in the German and English Academy. He has shifted for himself from an early age, and built a successful mercantile business. After his retirement he accepted an appointment in 1926 as inspector on the election board, and in 1927 was elected supervisor of his ward, which position he still holds. He was ward chairman of the Republican Club, which made a good showing in 1928, and is enrolled as an active member of the Winnebago County Republican Club. In 1928, he was chairman of Winnebago County for the Wisconsin Good Will Tour. Mr. Meyer was elected to the Assembly in November, 1928, and reelected in November, 1930.

Home Address: 616 Wisconsin Ave., Oshkosh.



WINNEBAGO COUNTY

Second District: All the towns, cities, and villages of the county except the city of Oshkosh.

NELS LARSON (Rep.) was born in Denmark and came to America at the age of five. His family settled on a farm in Winchester, Winnebago County, where Mr. Larson spent his boyhood. He was educated in the common schools, the Oshkosh High School, and the Oshkosh Business College. For ten years he was employed as clerk and bookkeeper and for the next twenty years was engaged in the wholesale cheese and cold storage business, selling out in January, 1920. Mr. Larson served as alderman of Neenah for six years, has been a member of the Neenah City Water Commission for twenty-two years and a member of the Winnebago County Board for six terms. He was elected to the Assembly in 1920, 1924, 1926, 1928 and again in 1930.

Home Address: 404 Winneconne Ave., Neenah.



WOOD COUNTY



PETER R. EBBE (Prog. Rep.) was born May 4, 1865, in Wanthore Province, Nystedan Lolland, Denmark, and immigrated to the United States in May, 1883. His earlier days were spent in the lumbering woods in the central and northern parts of Wisconsin, doing such work as logging and lumbering and later owning and operating a sawmill in the northwestern part of Wood County. Since then he has been a farmer. During this time he held many public offices, such as rural postmaster, school director, health officer, member of the town board, and fire warden. He has been president of the Farmers Cooperative Produce Company of Marshfield for twelve years and is a board member of the Equity Livestock Shipping Association and Central Wisconsin Cooperative Storage Company of Marshfield. He has been a member of the Assembly since 1927.

Home Address: 409 S. Cherry St., Marshfield.

CHIEF CLERK



C. E. SHAFFER (Rep.) chief clerk of the Assembly for many sessions, has been elected time and again without opposition. He was born on a farm in Dane County, where he worked until he became of age. He was educated in the common schools, business college, and private academy, after which he taught in the district and graded schools. For a time he was instructor in mathematics and bookkeeping in the Capital City Commercial College, since which time he has been engaged in the real estate and insurance business. He has taken an active part in politics, having served three terms as secretary on the Dane County Republican Committee.

Home Address: 27 East Main St., Madison.

SERGEANT-AT-ARMS



GUSTAVE RHEINGANS (Rep.) was born on a farm in the town of Eaglepoint, Chippewa county, September 8, 1890, where he remained until he moved to the City of Chippewa Falls. He served Chippewa county as a member of the legislature in the sessions of 1927 and 1929 and was elected Sergeant-at-Arms at the opening of this session by just one opposing candidate and received a vote of 89 to 9. His education was received in the common schools of his native county.