

---

---

# **Biographical**

---

**U. S. Senators  
State Officers  
Supreme Court Judges  
State Senators  
Members of Assembly**

---

---

## MEMBERS OF SIXTY-SEVENTH CONGRESS

## SENATORS

ROBERT MARION LA FOLLETTE, senior United States Senator, has held a public office during 31 of the last 41 years. He was born at Primrose, Dane county, June 14, 1855; was graduated from the University of Wisconsin with the class of 1879; admitted to the bar in February 1880 and that fall was elected district attorney of Dane county and was re-elected in 1882. In 1884 he was elected to the 49th congress and was re-elected in 1886 and 1888 but defeated in 1890. Was elected governor of Wisconsin in 1900 and re-elected in 1902 and 1904, but resigned January 1, 1906, to succeed J. V. Quarles as United States Senator and was re-elected in 1911, 1916 and 1922. His present term expires in 1929. He was elected a district delegate to the national republican convention in 1896 and delegate-at-large to the convention in 1904. He was three times a candidate for the republican nomination for president.

IRVINE LUTHER LENROOT was elected to the United States senate at a special election, April 2, 1918, to fill the unexpired term of the late Senator Paul Hustung, which expired in 1921, and was re elected in 1920 for the regular term which expires in 1927. Senator Lenroot was born at Superior, January 31, 1869. He received a common school education, studied stenography and became a court reporter, studied law and was admitted to the bar in 1897. He was elected to the assembly in 1900-02-04 and served as speaker during the sessions of 1903-05. In 1908 he was elected to the 61st congress and was re-elected in 1910-12-14-16, resigning in April, 1918, to accept the office of junior United States senator. He was elected November 2, 1920, for a six-year term.

## REPRESENTATIVES

## FIRST CONGRESSIONAL DISTRICT

Kenosha, Racine, Rock, Walworth and Waukesha counties.

HENRY ALLEN COOPER (Rep.) of Racine, was born at Spring Prairie, Walworth county, Sept. 8, 1850; graduated from Northwestern University in 1873, and from Union College of Law, Chicago (Now Law School of Northwestern university) in 1875, is by profession a lawyer; resided in Chicago from 1873 to 1879; otherwise has always lived in Wisconsin; in 1880 was elected district attorney of Racine county, and re-elected without opposition in 1882 and 1884; state senator in 1886. He was author of the law which first established the Australian ballot system in Wisconsin. He was elected representative in congress in 1892-94-96-98, 1900-02-04-06-08-10-12-14-16-20-22.

## SECOND CONGRESSIONAL DISTRICT

Jefferson, Columbia, Dodge, Washington, Ozaukee and Sheboygan counties.

EDWARD VOIGT (Rep.) of Sheboygan, was born in Bremen, Germany, Dec. 1, 1873. He came to Milwaukee with his parents in 1884, when 11 years of age, attended the public schools, worked in law and insurance offices for a few years and entered the Law College, University of Wisconsin 1896, graduating in 1899. He immediately engaged in the practice of law in Sheboygan, served as district attorney of Sheboygan county 1905 to 1911 and city attorney of Sheboygan 1913 to 1917. He was chosen in convention

as the Republican candidate for congress in 1914, two weeks before election, following the sudden death of the Republican nominee, but was defeated. He was elected to the Sixty-fifth congress in 1916 and re-elected in 1918, 1920 and 1922.

### THIRD CONGRESSIONAL DISTRICT

Crawford, Dane, Grant, Green, Iowa, Lafayette, and Richland counties.

JOHN MANDT NELSON (Rep.) of Madison, was born in the town of Burke, Dane county, Oct. 10, 1870; received a collegiate education, being graduated from the university of Wisconsin in 1892, and from its law department in 1896; pursued post-graduate studies at the state university, 1901-03. He was married in 1891 to Thea Johanna Stondall; they have six children. He was elected school superintendent of Dane county in 1892 and re-elected in 1894; resigned to become book-keeper in the office of the secretary of state 1894-97; correspondent in the state treasury 1898-1902; elected to the 59th congress in September 1906 to fill a vacancy, and was re-elected to the 60th, 61st, 62nd, 63rd, 64th, 65th, 67th and 68th congresses.

### FOURTH CONGRESSIONAL DISTRICT

The 3rd, 4th, 5th, 8th, 11th, 12th, 14th, 16th, 17th, 23rd and 24th Wards city of Milwaukee, towns of Wauwatosa, Greenfield, Franklin, Oak Creek and Lake, the village of West Milwaukee and cities of West Allis, Wauwatosa, South Milwaukee and Cudahy, all in Milwaukee county.

JOHN C. SCHAFER (Rep.) is a locomotive engineer who enlisted in the 13th Engineers, U. S. Army, May 24, 1917, and served with that unit under the French Fourth Army at Champagne; French Second Army at Verdun, St. Mihiel and in the Meuse-Argonne offensive. He was born in Milwaukee, May 7, 1893, educated in the district school, town of Wauwatosa and West Allis high school. Before taking up railroad work he was employed in the office of the Allis-Chalmers Co. He never held an office until elected to the assembly in 1920. He was elected to Congress in November, 1922.

### FIFTH CONGRESSIONAL DISTRICT

The 1st, 2nd, 6th, 7th, 9th, 10th, 13th, 15th, 18th, 19th, 20th, 21st, 22nd and 25th wards, city of Milwaukee, the towns of Granville and Milwaukee, and the villages of North Milwaukee, east Milwaukee and Whitefish Bay, all in Milwaukee county.

VICTOR L. BERGER (Soc.) was the first Socialist ever elected to congress, having been a member of the Sixty-Second Congress. He was born Feb. 28, 1860 in Nieder-Rehbach, Austria, and was educated in the Universities of Budapest and Vienna. He is a member of the International Typographical Union and often served as a delegate to the conventions of the American Federation of Labor. He was one of the founders of the Socialist party and except at short intervals has been a member of its National Executive Committee since its organization, and has represented the party in America at various times in International Socialist Congresses and in the sessions of the International Socialist Bureau in Brussels. He is editor of the Milwaukee Leader. He was the Socialist candidate for United States Senator in the special election in April, 1918, and was elected to Congress in November, but was not seated. In November, 1922, he was elected a member of congress.

## SIXTH CONGRESSIONAL DISTRICT

Calumet, Fond du Lac, Green Lake, Manitowoc, Marquette and Winnebago counties.

FLORIAN LAMPERT (Rep.) was elected a member of the 65th and 66th congresses at the same time in Nov. 1918, being chosen to succeed James H. Davidson (deceased) and at the same time being elected for the regular term. He was re-elected in 1920 and re-elected in 1922. He was born July 8, 1863, in West Bend, and was educated in the public school and then engaged in merchantile business in Oshkosh. He was sheriff of Winnebago county in 1897-98, comptroller of the city of Oshkosh 1893-96, and was commissioner of the city 1914-18. He was married May 4, 1885, to Mary C. Vetter, to whom seven children were born, five sons and two daughters. All of the sons served their country in the world war, the eldest, Lt-Col. J. G. B. Lampert, died in France, Jan. 6, 1919.

## SEVENTH CONGRESSIONAL DISTRICT

Adams, Clark, Jackson, Juneau, LaCrosse, Monroe, Sauk, and Vernon counties.

JOSEPH D. BECK (Rep.) of Viroqua, was born near Bloomingdale, Wis., March 14, 1866. He was graduated from the Stevens Point Normal school in 1897 and from the University of Wisconsin in 1903; was Commissioner of Labor and Industrial Statistics of Wisconsin 1903-11; member of the Wisconsin Industrial Commission 1911-17, and was its chairman 1916-17. President of the International Association of Bureau of Labor Officials 1907-09. He is a farmer by profession. He was elected to 67th congress in 1920 after defeating John J. Esch for the nomination in the primaries and was re-elected in 1922.

## EIGHTH CONGRESSIONAL DISTRICT

Marathon, Portage, Waupaca, Waushara, Wood and Shawano counties.

EDWARD EVERTS BROWNE (Rep.) is serving his fifth consecutive term in congress. He was born Feb. 16, 1868, in Waupaca, attended the public schools, graduated from the Waupaca high school in 1886, University of Wisconsin 1890 and University Law college in 1892 and took up the practice of law in Waupaca. He was district attorney of Waupaca county three terms, state senator six years, and regent of the University of Wisconsin. He was married to Rose Cleveland in 1892 and has four children. The eldest graduated from her father's Alma Mater in 1917, one in 1919 and another a Junior there, while the youngest is in the Western High school, Washington. Mr. Browne was elected to congress in 1912 and re-elected in 1914, 1916, 1918, 1920, and 1922.

## NINTH CONGRESSIONAL DISTRICT

Langlade, Forest, Florence, Marinette, Oconto, Outagamie, Brown, Kewaunee and Door counties.

GEORGE J. SCHNEIDER (Rep.) was born in the town of Grand Chute, Outagamie county, October 30th, 1877. Educated in the public schools of Appleton where he has always made his home. He is a paper maker by trade. For twelve years was Vice-President of the International Brotherhood of Paper Makers Union, a position which required extensive traveling both in this country and Canada. As a delegate, he attended several conventions of the American Federation of Labor. He was twice elected a member of the Executive Board of the Wisconsin Federation of Labor. He was chosen in convention by the Farmer-Labor and Progressive forces of the district as their

candidate for congress and secured the nomination in the primaries over two opponents, Elmer S. Hall, Secretary of State, and Circuit Judge Henry Graass. He was elected to the 68th Congress, November 7, 1922, receiving 35,117 votes, against 22,105 by his opponent Judge Henry Graass, who ran as an independent.

#### TENTH CONGRESSIONAL DISTRICT

Dunn, Barron, Chippewa, Eau Claire, Trempealeau, Buffalo, Pepin, Pierce and St. Croix counties.

JAMES A. FREAR (Rep.) of Hudson, Wisconsin, was born in that city; graduated National Law University, Washington, D. C.; appointed district attorney St. Croix County in 1896, and elected thereafter for three terms; Wisconsin Assembly 1902; State Senate 1904; Secretary of State three terms; elected to Sixty-third and all subsequent Congresses, and renominated and re-elected to Sixty-eighth Congress.

#### ELEVENTH CONGRESSIONAL DISTRICT

Douglas, Bayfield, Ashland, Iron, Vilas, Burnett, Polk, Washburn, Sawyer, Rusk, Price, Taylor, Oneida and Lincoln counties.

H. H. PEAVEY was born in Adams, Minnesota, January 12, 1881; moved to Redwood Falls, Minn., when five years of age and was brought up on a farm nine miles south of that town. At seventeen he attended the high school at Redwood Falls, Minn., and attended the Pillsbury school at Owatonna, Minn., for the two years following. He worked for the Beatrice Creamery company of Lincoln, Nebraska, for two years and then for a wholesale fruit and vegetable house in Wichita, Kansas, and Enid, Okla., in 1903. He engaged in the real estate business in Redwood Falls, Minn., from 1904 to 1906; real estate and town sites at Carlyle, Cresbard and Lowry, S. D., and moved to Washburn, Wisconsin in 1910. He was elected alderman in the spring of 1911, and mayor in 1912. He is American born and a Progressive Republican in politics; served as delegate to the convention in Faulk county, S. D., during 1906. Elected to the Wisconsin Assembly in 1912. In 1915 became owner and editor of the Washburn News, published at Washburn, Wisconsin. In May, 1917, he volunteered his services to Governor Philipp and was commissioned a captain of infantry. Recruited Bayfield County Company of 176 men accepted at Camp Douglas and designated as "D" Company 6th Wisconsin Infantry. During re-organization of 32nd Division at Waco, Texas, October, 1917, was assigned with 125 original men as "B" Company of the 107 Military Police. Embarked to France in January, 1918. Was relieved of command by sickness while on the Belfort front in June, 1918, and was invalided back to the United States in September, 1918. Was assigned to the U. S. Army Hospital, Des Moines, from which received discharge January, 1919. Re-entered newspaper field as editor of the Washburn News, being retained in this position when elected to Congress November 7th, 1922, having previously defeated Congressman A. P. Nelson in the September primaries.

## STATE OFFICERS

## GOVERNOR

JOHN J. BLAINE (Rep.), was born May 4, 1875, on a farm in the town of Wingville, Grant County, Wisconsin; attended common school and was graduated from Montfort high school, Montfort, Wisconsin; afterwards attended Northern Indiana University at Valparaiso, Indiana, and was graduated from the law department thereof on June 3, 1896. He practiced law in Montfort, Wisconsin, one year, after which he removed to Boscobel, Wisconsin, where he has since practiced law. He served as mayor of Boscobel four terms and member of county board of supervisors of Grant county four years. He was elected to the state senate in 1908 and served in the sessions for 1909 and 1911, but was not a candidate for reelection. In 1912 he was alternate delegate to the republican national convention at Chicago, and in 1916 a delegate to the republican national convention at Chicago. In 1918 he was elected attorney general. In 1920 he was elected a delegate at large to the republican national convention at Chicago, and at the November election 1920 he was elected to the office of Governor on the republican ticket, and reelected November 7, 1922.

## LIEUTENANT GOVERNOR

GEORGE F. COMINGS is a native of the old Green Mountain State, Vermont. He was born in Orleans County March 13, 1848 of New England Pilgrim Stock. His paternal ancestor, Isaac Comings, came to Massachusetts Colony in 1625. His mother's name was Mary Huntington whose ancestors came to Norwich, Connecticut a few years later. One of the family, Samuel Huntington, representing the Colony of Connecticut, signed the Declaration of Independence. This fine old Revolutionary Ancestry no doubt accounts in part at least for Mr. Comings' devotion to the high ideals of Americanism for which his ancestors fought against British tyranny. He was educated in the common schools of his native state, supplemented by a few terms in select schools and several terms in Barre Academy where he prepared for college.

In 1870, with his father's family he moved to St. Joseph, Michigan, where the next thirty years of his life were spent. Here he engaged in the fruit growing business and became one of the largest and best known growers in the state.

In 1901 he removed to Eau Claire, Wisconsin and entered the business of dairying and the breeding of Holstein cattle. From 1909 to 1919 he was a worker in the farm institutes and has a state wide acquaintance as a lecturer for the Equity Society. He served four years as a member of the State Board of Agriculture, having been appointed by Governor McGovern. He also served on the Committee of Thirteen appointed by State Superintendent Cary to study the rural schools and suggest ways and means for their improvement. During the past five years he has been a member of the State Board of Vocational Education, having been appointed by Governor Philipp.

Since arriving at his majority he has been actively identified with all the great progressive movements of the country; favoring and supporting prohibition, equal suffrage, public ownership of public utilities, the initiative and referendum, the taxation of land values, and during all his life he has been an active supporter of farmers clubs

and other organizations for the improvement of rural conditions. He was elected Lieutenant Governor on the Republican ticket in 1920 and reelected in November, 1922.

#### SECRETARY OF STATE

FRED R. ZIMMERMAN (Rep.), was born November 20, 1880, in the city of Milwaukee and has lived in the county all his life. His grandparents were among the sturdy emigrants of 1848.

He lives now in Lake Township, south of Milwaukee.

When he was five years old his father died and very early in life he was contributing to the family support.

In 1909 he was a member of the assembly and was active in the support of Progressive Legislation, which although defeated then, has since been made the law of the land.

In 1916 and again in 1920 he was a Republican delegate to the National Convention in Chicago and voted to nominate Robert M. LaFollette for president of the United States.

In 1918 and 1919 he was a member of the Town Board of Lake, where if he had any special interests, it was for good roads.

This was his first state wide campaign.

He has been employed professionally by some of the largest manufacturers in the state and has kept in close touch with labor.

In factory production work and as manager of Industrial Relations he has met perhaps every problem in both skilled and unskilled labor.

He lives among the small farmers and truck gardeners, in the Town of Lake, where he is kept familiar with the problems of the farm. For his special home amusement he keeps several colonies of bees.

He is married and has two sons. His wife comes from a family of Civil War veterans, both her father and grandfather having served in the war. Her grandfather, the Rev. Fred Moser, was active in religious work during his years of service. He was elected Secretary of State in 1922.

#### STATE TREASURER

SOLOMON LEVITAN, (Rep.), born on November 1, 1862, came to this country in the fall of 1880. He worked on a farm near Baltimore until he saved enough money to buy a small stock of merchandise with which to become an itinerant merchant. In 1882 he came to Wisconsin and continued the selling of goods from door to door, first on foot and then with a horse and wagon. He finally managed to start a general store in New Glarus, where he made his home until 1905, when he moved to Madison. One of the original stockholders of the Commercial National Bank, at Madison, he was elected a director, then vice-president, and finally president.

Mr. Levitan's first public office was Justice of the Peace, at New Glarus. He was a delegate to a number of state Republican conventions, and in 1912 and 1920 served as alternate delegate to the Republican National Conventions. In 1912 he received the largest vote cast for presidential electors on the Republican ticket. He has been an active Progressive Republican for the last twenty-six years.

Mr. Levitan first ran for state treasurer in 1918, receiving 31,000 votes. He ran again in 1920, and increased his vote to 122,185. In the 1922 primary he won the Republican nomination, receiving a vote of 240,000; and in the general election he was overwhelmingly elected by a vote of 343,177.

#### ATTORNEY GENERAL

HERMAN L. EKERN (Rep.), was born in Trempealeau county, Wisconsin on December 27, 1872. He graduated from the law school of the University of Wisconsin in 1894. The same year he formed a part-

nership with H. A. Anderson to practice law at Whitehall and was nominated and elected to the office of district attorney for Trempealeau county. He held this office for two terms. In 1902 he was elected to the assembly where he served three terms and during the last term was speaker of the assembly. He served on the special committee of the legislature which investigated the life insurance business in 1906. During 1909 and 1910 he was Deputy Commissioner of Insurance. When this office was made appointive in 1911, he was appointed for a four year term. Since 1915 he has practiced law in Madison and Chicago, specializing in insurance law, in partnership with Erwin A. Meyers and Harold P. Janisch. In this practice he has served as the general counsel for the associations of farmers' and other mutual fire, automobile, and casualty insurance companies throughout the United States. In 1922 Mr. Ekern was nominated and elected Attorney General of Wisconsin as a Progressive Republican. His majority at the election was 286,171.

#### STATE SUPERINTENDENT PUBLIC INSTRUCTION

JOHN CALLAHAN, who was elected State Superintendent at the election, held April 5th, 1921, by a total vote of 207,521 to his opponent's, C. P. Cary vote of 177,582 was born in Westchester county, New York, December 16, 1866, and came to Wisconsin with his parents in 1869, making his home at Prescott, Pierce county. He has had over thirty years experience in Wisconsin public schools and for twenty-seven years had held the life certificate. For three years he was with the Pierce county schools, eight years Supervisory Principal at Glenwood City, three years at New Richmond, and Superintendent of Schools at Menasha for seventeen years. For the past three years he has been State Director of Vocational Education. He was conductor of the Teachers Institutes, president of the Northwest Teachers Association 1900, president of the Northeast Teachers Association 1908, president of the State Teachers Association 1913, and for the past twelve years has been a member of the Teachers Legislative Committee. He has made a specialty of rural and graded school work and has an exceptional familiarity with the entire school system of the state. He assumed the duties of his office as State Superintendent of Public Instruction July 1, 1921.

---

#### MEMBERS OF SUPREME COURT

---

AAD JOHN VINJE came to Wisconsin in his youth and by hard work, close study and an ambition, gradually worked himself up to a position on the bench in the highest tribunal of the state. Born in Norway, Nov. 10, 1857, he came to America with his parents when a lad of 12, the family settling in Marshall county, Iowa. He attended the public schools, Iowa College at Grinnell in the winter of 1873-74, Northwestern University of Iowa, Des Moines 1874-75; taught school three years and entered the University of Wisconsin in 1878, graduating from the literary department in 1884 and the law school in 1887. While attending college he served as assistant in the state library 1884 to 1888; assistant to the Supreme Court reporter 1888 to 1891; practiced law in Superior 1891 to 1895; was appointed judge of the Eleventh judicial circuit Aug. 10, 1895, was reelected and held the office until Sept. 10, 1910, when he was appointed associate justice of the Supreme court to fill the unexpired term of Justice J. E. Dodge, resigned. In 1911



he was re-elected for the full term which expired in January 1922. In 1921 he was again re-elected without opposition for the full term ending January 1932.

MARVIN B. ROSENBERY was appointed associate Justice of the Supreme Court February 12, 1916, to succeed the late Justice John Barnes, resigned. Two years later, in April 1918, he was elected for the residue of the term by the largest majority ever given a sitting justice and one year later, April, 1919, was re-elected for the regular term ending Jan. 1930, by a still larger majority. He was born Feb. 12, 1868, at River Styx, Medina county, Ohio, but his parents moved to Fulton, Kalamazoo county, Michigan, eight months later, and he was raised on the farm, attending the common schools until he was 16. He attended the Michigan State Normal at Ypsilanti for three years, teaching in the meantime to defray his expenses. Later he became a student of law in the office of Silverthorn, Hurley, Ryan & Jones, in Wausau, where he remained for a year and one-half and then entered the law department of the University of Michigan, at Ann Arbor, where he was graduated in 1893 and returning to Wausau began to practice. On January 1, 1895, he became a member of the law firm of Bump, Kreutzer & Rosenberry, which six years later became Kreutzer, Bird & Rosenberry. He was united in marriage, Sept. 2, 1897, to Miss Kate Landfair, at Leslie, Mich., who died Jan. 26, 1917, leaving two children, Katherine and Samuel. On June 24, 1918, Justice Rosenberry was married to Mrs. Lois Mathews, of Madison, dean of women of the University of Wisconsin.

FRANZ C. ESCHWEILER born at Houghton, Michigan, Sept. 6, 1863, received his early education in the schools of that city, later attending Iowa and Michigan state universities. Served in the railway mail service, studying law at the same time and was admitted to the bar in Milwaukee in 1889 and practiced law in that city until 1910 when he was elected judge of the circuit court, and in April 1916 was elected Associate Justice to succeed Hon. W. H. Timlin, deceased. He married Miss Ida C. Kindt of Milwaukee in 1893 and is the father of three children.

WALTER C. OWEN was advanced to the Supreme court from the office of Attorney General, which he held for five years. He was born on a farm in the town of Trenton, Pierce county, Sept. 26, 1868; educated in the common and high schools of Pierce county, and graduated from the law department, University of Wisconsin with the class of 1891. He immediately began the practice of law in Superior, where he remained seven years and then removed to Maiden Rock where he continued to practice until elected attorney-general. He was elected to the senate in 1907 without opposition to succeed James A. Frear and was re-elected for a full term in 1908, again without opposition. He was elected attorney-general in 1912 and re-elected in 1914 and 1916, and was elected Associate Justice of the Supreme Court in 1917.

BURR W. JONES was born in the town of Union near Evansville, Rock County, Wisconsin, March 9, 1846.

He lived and worked on a farm until about eighteen years of age, prepared for college at Evansville Seminary, graduated at the State University in 1870 and from the Law School in 1871.

After practicing his profession for a few months in Portage he removed to Madison, where he has lived and practised law until September 1920.

He was District Attorney for Dane County four years, 1873-1877, and was a member of the 48th Congress. He was chairman of the Democratic State Convention in 1892, and of the first State Tax Commission 1897-8. For thirty years 1885-1915 he was professor in the

Wisconsin University Law School and in 1916 there was conferred upon him by the University the degree of LL.D. For some time he was chairman of the Dane County Bar Association and was president of the State Bar Association in 1908. He is the author of a treatise on the law of Evidence published in 1896 followed by several editions.

He was appointed Associate Justice of the Supreme Court by Gov. Emanuel L. Philipp, Sept. 3, 1920, and elected April 4, 1922, for the term ending January, 1926.

CHRISTIAN DOERFLER was born in Milwaukee March 2, 1862. His father, a pioneer tanner, settled in Milwaukee in 1846 and conducted a tannery on the site of the South Side Library.

Mr. Doerfler attended graded and high school and was graduated from the Milwaukee Normal school in 1880. He then taught in the Sixth ward public school for three years. From 1883 to 1885, he studied law and has practised law in Milwaukee continuously since, with the exception of seven years during which he was ill. He was assistant district attorney from 1889 to 1891; school commissioner from 1889 to 1891, and member of the commission to appoint school directors from 1896 to 1900; district delegate to the Republican National Convention in 1912; delegate-at-large in 1916 and alternate delegate-at-large in 1920. He was president of the Milwaukee County Bar association in 1912, and president of the Wisconsin Bar association in 1915. He is married, has one son, Frederic.

CHARLES H. CROWNHART was born in Fond du Lac county, Wisconsin, April 16, 1863. His father, a Civil War veteran, returned from the war in 1866, and shortly thereafter moved his family in a prairie schooner to Pierce county, where Mr. Crownhart grew to manhood on a farm. He attended common school and the River Falls Normal. He taught school for a few years, studied law and graduated from the University of Wisconsin law school in 1889. Practiced law in Ellsworth, Wisconsin, a year and a half, then in 1891 moved to Superior, and later formed the partnership of Crownhart, Owen and Foley. Mr. Owen is now a Supreme Court Justice of Wisconsin, and Mr. Foley is a circuit judge of the Eleventh judicial district.

Mr. Crownhart was district attorney for Douglas county 1901-1905; State Normal School regent 1905-1912; Chairman Industrial Commission 1911-1915; Revisor of Statutes 1920-1922; appointed by Governor Blaine a justice of the Supreme Court of Wisconsin April 4, 1922, and elected for term of 10 years in April, 1923, without opposition. He moved to Madison in 1911, where he now resides. He is married and has two sons, George, an executive secretary, and Charles, in high school.

---

## MEMBERS OF SENATE

---

### FIRST SENATORIAL DISTRICT

Manitowoc, Kewaunee and Door counties.

JOHN E. CASHMAN (Rep.) is a farmer. He was born fifty-six years ago in the town of Franklin, Kewaunee county. The state senatorship, to which he was elected in the fall of 1922, is the first political office he has ever held or sought. Besides much home study and careful reading, he received a common school education, a term at Valparaiso University, Ind., and two years evening sessions at the Chicago Law school, where he was president of his class and winner of the gold medal of the institution in 1904. Prior to this he had taught school several years; then took the United States Competitive Civil Service examination, and

standing at the top of the list of competitors, was appointed first to a position in the U. S. Government Meat Inspection Service in 1901 at Chicago, and then as the result of another civil service examination was promoted to a responsible position in the U. S. Internal Revenue Service in Chicago. He held this position for many years until circumstances at home required his return to the farm, which he had continued to hold during this time. His specialty is farming, owning and operating at present two eighty-acre farms near Denmark, Wis. He is a Progressive Republican and a staunch supporter of Senator LaFollette. In the 1922 election he received 13,500 votes to 3,647 for Frank A. Yindra (Dem.).

#### SECOND SENATORIAL DISTRICT

Brown and Oconto counties.

TIMOTHY BURKE (Rep.) is the only lawyer in Wisconsin who ever held the office of sheriff, having served his county from 1901 to 1903. Born in the town of Morrison, Brown county, Feb. 2, 1866, he received a common school education, mastered the usual collegiate subjects himself and attended the Law College, University of Wisconsin, in 1897-1898. He has represented both districts of Brown county in the assembly, the second district in 1895 and first district in 1907, and was elected to the senate in 1908, 1912, 1916 and 1920, being president in the 1917 and 1921 sessions. He enlisted as a private in 2nd Sep. Co., later in Co. G, Ninth infantry, Wisconsin State Guard, Aug. 2, 1917, and March 23, 1918, was promoted to major and assigned to the Judge Advocate department as ranking officer. Nov. 24, 1920, he was commissioned Major Judge Advocate General in the Wisconsin National Guard. He was chairman of the Brown county Republican committee from 1904 to 1912. Is President of the Calumet County Bank of Brillion, Wis.; was the first to recommend that the Election Machinery of the state be used for registering men under the "Selective Draft Act," during the late war. This recommendation was suggested to the Secretary of War by Governor Philipp and was adopted as the policy of the nation. In the 1920 election he received 12,997 votes to 2,899 for John B. Eberhard (Soc.).

#### THIRD SENATORIAL DISTRICT

The Eighth, Eleventh, Fourteenth and Twenty-fourth Wards,  
City of Milwaukee.

WALTER POLAKOWSKI (Soc.), born in Buffalo, N. Y., Jan. 18, 1888; began to earn his living when a lad as a newsboy and bootblack; at 14 began service as an apprentice to an upholsterer and at 18 represented the Upholsterers' Union in the Federated Trades Council, Milwaukee. He was married at 19 and engaged in the grocery and saloon business, becoming proprietor at 21. He later sold out and engaged in the insurance business until 1920, when he established the Union Upholstering and Auto Trim Shop. He had never held a public office until elected to the state assembly in 1920. In the fall of 1922 he was elected to the state senate, receiving 5,778 votes to 3,796 for Thaddeus J. Pruss (Rep.).

#### FOURTH SENATORIAL DISTRICT

The Thirteenth, Twenty-first, Twenty-fifth, and Eighteenth Wards, City of Milwaukee, the town of Milwaukee and the villages of Shorewood and Whitefish Bay.

OSCAR HASKELL MORRIS (Rep.) has been engaged in the newspaper and publishing business in Milwaukee for 24 years. Born in Springfield, Mass., March 8, 1876, he was educated in the public schools and then took up newspaper work. He was editor and publisher of a

number of trade journals and secretary of the Wisconsin Retail Dry Goods Association, Wisconsin Retailers' Federation and is now secretary of The Better Business Bureau of the Milwaukee Association of Commerce. He was elected to the senate in 1920, receiving 14,052 votes to 9,906 for Max Hattetlet (Soc.), and 396 for J. D. Mishoff (Pro.).

#### FIFTH SENATORIAL DISTRICT

The Fourteenth, Nineteenth, Twentieth, and Twenty-first Wards,  
City of Milwaukee.

BERNHARD GETTLEMAN (Rep.) was born Dec. 23, 1889, in Chicago, Ill., moved to Milwaukee at an early age. Educated in public schools; connected with Electric Company for 10 years; was then appointed deputy sheriff; was elected to the assembly in 1916, defeating A. C. Ruffing (Soc.) and Wm. H. Van Nostrand (Pro.). After the session was again appointed deputy sheriff by Pat McManus (Rep.), sheriff. With the change from Republican sheriff to Socialist sheriff was appointed acting chief deputy pending civil service examination. Passed high examination from list of forty candidates and appointed chief deputy. Had complete charge of sheriff's force during Cudahy riots, ordering his men to fire over the heads of rioters after they had fired directly into sheriff's forces. Father of the Gettleman Fireman's law. Elected to senate in 1922 by a majority of more than 2,000 over the Socialist candidate.

#### SIXTH SENATORIAL DISTRICT

The Sixth, Seventh, Ninth and Tenth Wards, City of Milwaukee.

JOSEPH JOSHUA HIRSCH (Soc.) was born in Roumania, Aug. 27, 1888, and came to America when but a small lad. He was educated in the public schools of New Jersey and later graduated from an agricultural college. He came to Milwaukee when 15 years of age, has resided there since and is a furniture salesman by profession. He had never held public office until elected to the senate in 1920, when he received 8,828 votes of the 8,831 cast for senator in his district.

#### SEVENTH SENATORIAL DISTRICT

The Fifth, Twelfth, and Seventeenth Wards, City of Milwaukee, the Cities of Cudahy and South Milwaukee and the Towns of Lake and Oak Creek.

WILLIAM F. QUICK (Soc.) was born in Milwaukee July 31, 1885. He was educated in the public schools and studied law in the night school. He has been employed as construction superintendent, machinist, and is now a lawyer practicing in Milwaukee. He has never before held a public office. In the November, 1922, senatorial election he received 5,823 to 5,531 for John S. Kanney (Rep.) and 747 votes for Albert A. Ullenberg (Dem.).

#### EIGHTH SENATORIAL DISTRICT

The Sixteenth and Twenty-third Wards, City of Milwaukee, the cities of West Allis, North Milwaukee and Wauwatosa, the village of West Milwaukee and the towns of Franklin, Greenfield, Granville, and Wauwatosa.

GEORGE F. CZERWINSKI (Rep.) was born in Milwaukee, Sept. 19, 1890, he was educated in the public and parochial schools and at 24 years of age secured his first contract for building streets. Since then he has built some of the most important pavements in Milwaukee city and county, including the first federal aid project in the county. His



MEMBERS OF ASSEMBLY—1923

(1) E. R. Cushman, (2) A. E. Matheson, (3) Herbert B. Moseley, (4) D. J. Summerville, (5) Ethan B. Minier, (6) Dwight S. Welch, (7) August Beversdorf, (8) Jacob Jung, (9) Henry Ott, (10) John Gamper.



contracts amount to more than \$150,000 annually and he employs from 150 to 200 men daily. During the war he was ward food administrator and chairman of the Twelfth Ward Council of Defense. He was elected to the assembly in 1918 over W. L. Smith (Soc.), and defeated the same man for the senate in 1920, receiving 10,805 votes to 9,670 for his opponent.

#### NINTH SENATORIAL DISTRICT

The First, Second, Third and Fourth Wards, City of Milwaukee.

BEN H. MAHON (Rep.) was born April 15, 1888, in the town of Liberty, Manitowoc county. He was educated in the public schools in the city of Milwaukee, and for a time attended the Milwaukee Medical College, now one of the departments of Marquette University. For many years, and while attending school, he was employed in various capacities in the circulation departments of several of the big Milwaukee newspapers. In 1913 he served as deputy state treasury agent. For the last several years he has been engaged in the insurance and real estate business in the city of Milwaukee. He was elected to the assembly in 1916 and re-elected in 1920. He was elected to the senate in the fall of 1922, receiving 6,358 votes to 2,065 for Clarence U. Baxter (Soc.), 1,178 for Jacob Killa (Dem.), and 602 for Martin Higgins (Ind. Rep.).

#### TENTH SENATORIAL DISTRICT

Buffalo, Pepin, Pierce and St. Croix counties.

GEORGE B. SKOGMO (Rep.) was a member of the Eau Claire District Draft Board, chairman of the Pierce County Legal Advisory Board and chairman of the War Saving Stamp campaign for his county during the war. Born on a farm in Whalen, Filmore county, Minn., Aug. 12, 1880, he received a common school education while spending his boyhood on the farm. Later he moved to River Falls, graduated from the high school in 1902 and immediately entered the law office of Ferris M. White, where he studied law and was admitted to the bar in 1906, when he became junior member of the law firm of White & Skogmo, which was dissolved in 1917, since when he has practiced alone. He was city treasurer of River Falls 1910 to 1912, and was elected to the senate in 1912 and re-elected in 1916 and 1920 without opposition.

#### ELEVENTH SENATORIAL DISTRICT

Douglas, Bayfield, Burnett and Washburn Counties.

Marcus A. Kemp (Rep.) was born at Colburn, Ontario, Sept. 25, 1878. He received a common school education and for a number of years has been employed as a machinist. He was appointed by Governor Blaine as a member of the state board of conciliation two years ago. He was nominated for the state senate Feb. 3, 1923, over Ray J. Nye. Elected at a special election Feb. 17, 1923, to fill vacancy caused by the death of O. G. Kinney, senator-elect.

#### TWELFTH SENATORIAL DISTRICT

Ashland, Iron, Vilas, Price, Rusk and Sawyer counties.

CHESTER HOWELL WERDEN (Rep.) of Ashland, was born in Hastings, Ontario, Canada, and was educated in the public schools and Queen's University, Toronto. He is a lumberman and banker of Ashland by profession, who has always felt it his duty to serve his community, state or nation, when called upon, no matter at what sacrifice. He served as chairman of the town of Mason, Bayfield county, 1908-13, and chairman of the county board 1911-13. Was a member of the

Bayard County Council of Defense and chairman of the local Draft Board for Bayfield county, 1917-19. He was elected to the senate in 1920 without opposition.

#### THIRTEENTH SENATORIAL DISTRICT

Dodge and Washington counties.

HERMAN J. F. BILGRIEN (Rep.) was born on a farm near Iron Ridge, Dodge county, March 19, 1864, and has spent his entire life on the same farm. He attended the Iron Ridge state graded school and besides being an extensive dairy farmer is a practical cheese maker and butcher, having conducted a meat market for twelve years. He has been director of the Iron Ridge graded school for thirty-one years; was town treasurer 1906-07 and has been town chairman since 1912. He was the first president of the Farmers Co-Operative Meat Packing Company of Madison, a \$750,000 corporation owned entirely by farmers, and served two years. He was elected to the senate in 1918 and re-elected in 1922, receiving 9,789 votes to Lawrence S. Keeley (Dem.) 5,348, a plurality of 4,441 votes.

#### FOURTEENTH SENATORIAL DISTRICT

Outagamie and Shawano counties.

ANTONE KUCKUK (Rep.) conducted a jewelry and music store in Shawano for over thirty-three years, but is now devoting his time to banking, the manufacture of the Four Wheel Drive Trucks and the Iwen Box & Veneer Co. He was born in Schleisingerville, Feb. 10, 1863, attended the common schools and evening business college, and then held a number of clerical positions in Hartford, Wausau and Shawano until he engaged in the jewelry and music business for himself. He was instrumental in starting the Wisconsin National Bank, Shawano, 1902; the State Bank of Gresham, 1909; Farmers State Bank, Beaver Dam, 1911; State Bank of Caroline, 1913; and is director in each and vice-president of the two former ones. He is also President Menomonie Motor Truck Mfg. Co., director of the Four Wheel Drive Co., and the Iwen Box & Veneer Co., treasurer Retail Lumber and Supply Co. He served as a member of the Shawano county board and Shawano school board for years, was nominated and elected to the assembly in 1906 without opposition and elected to the senate in 1916, and re-elected in 1920, receiving 9,880 votes to 8,811 for C. B. Ballard (Ind.).

#### FIFTEENTH SENATORIAL DISTRICT

Rock county.

ALVA E. GAREY (Rep.) was born June 2, 1883, in the town of Porter, Rock county, Wis. He was educated in the common school at Stebbinsville, correspondence night study on the farm, short course in agriculture, University of Wisconsin, Milton Academy, and graduated with a B. A. degree from Milton college, an M.A. degree in June, 1920, from the University of Wisconsin, completing his work after the war, and a law degree in June, 1917, from the University of Georgia. He has been a farmer, instructor in Bayfield, Green Bay and Antigo high schools and Milton college. He enlisted for service in the World War as a private and served two and one-half years, eighteen months of which was overseas. At the conclusion of his service he was a captain and was commissioned a major in the Reserve Corps. He has held the position of adjutant of the Edgerton Post of the American Legion. He is a practicing lawyer at Edgerton. In the September primary, 1922, as a senatorial candidate Mr. Garey received 6,773 votes to 5,038 for T. S. Nolan. He was elected without opposition in November, 1922.



## SIXTEENTH SENATORIAL DISTRICT

Grant, Crawford and Vernon counties.

HENRY E. ROETHE (Rep.), editor of the Fennimore Times, is serving his second term, fourth session, in the senate without having introduced a single bill. He served in the assembly in the 1907-09-13 sessions and offered but a few bills to amend existing laws. He was elected to the state senate in 1916 on a platform of fewer laws, strict economy in public expenditures and opposition to the creation of unnecessary offices and has fought for these principles in each session. He was nominated and re-elected to the state senate in 1920 without opposition, receiving 10,569 votes in the primary and 16,556 votes in the election. He was born in Whitewater, May 24, 1866, was educated in the common schools and normal; served as town clerk, and village president of Fennimore; presidential elector and messenger to Washington in 1900. Resides at Fennimore.

## SEVENTEENTH SENATORIAL DISTRICT

Iowa, Lafayette and Green counties.

O. H. JOHNSON (Rep.) was born on a farm in the town of Wiota, Lafayette county, Wisconsin, March 10, 1893. He received a common school education; was graduated from Pleasant View Academy, Ottawa, Illinois, and from St. Olaf College, Northfield, Minn. His occupation is insurance. Served as private secretary to Congressman John M. Nelson during the Sixty-seventh Congress. He resigned this position to become a candidate for state senator, and was elected to the state senate in 1922 without opposition, receiving 10,374 votes.

## EIGHTEENTH SENATORIAL DISTRICT

Fond du Lac, Waushara and Green Lake counties.

WILLIAM A. TITUS (Rep.) was born on a farm in the town of Empire, Fond du Lac county, Aug. 30, 1868. Four years later the family removed to the town of Eden, where he resided until he was thirty, except the four years he spent as a public-school teacher. He was educated in the rural schools, Fond du Lac high school, University of Wisconsin and University of Chicago. He became identified with the Standard Lime & Stone Company, first as secretary-treasurer and later as president. He served as president of the Board of Education of Fond du Lac two terms and member of the Board of Visitors of the University four terms. Was elected Curator of the State Historical Society in 1920. He has always shown a keen interest in agricultural and social problems. In political views, he is a pronounced Progressive. Was elected to the senate in 1920, receiving 15,355 votes to 952 for William Tomelty (Soc.).

## NINETEENTH SENATORIAL DISTRICT

Calumet and Winnebago counties.

MERRITT F. WHITE (Rep.) was born at Winneconne, Aug. 26, 1865. He was educated in the schools of Winneconne and at the Oshkosh Normal. For a number of years he has been engaged in the grass matting business with the Waite Grass Carpet Co., Oshkosh. For twenty-three years he was president of the village of Winneconne, eighteen years a member of the county board of Winnebago county, eighteen years a member of the county highway commission, and served as state senator from Winnebago county during the sessions of 1911 and 1913. In the November, 1922, senatorial election he received 11,841 votes to 3,700 for Julius H. Dennhardt (Ind. Rep.), a majority of 8,141.

## TWENTIETH SENATORIAL DISTRICT

Sheboygan and Ozaukee counties.

**THEO. BENFEY** (Rep.) is a veteran of the Spanish-American war of 1898. He enlisted with Company C, Second Wisconsin National Guard, and served through the Porto Rican campaign. He was born in Plymouth, Wis., June 11, 1871, graduated from the Sheboygan high school, the University of Wisconsin and Law College of the University, and since 1895 has been engaged in the practice of law in Sheboygan. He was district attorney of Sheboygan county from 1899 to 1905 and has been an alderman of Sheboygan since 1915. He was first elected to the senate in 1916 and was chairman of the judiciary committee in the 1919 session. When his nomination papers in 1920 were carried in the mails to New York through some unaccountable error, arriving in Madison too late to have his name appear on the official ballot, over 1,400 electors wrote his name on the ballot, nominating him in the primary and he was re-elected in November, 1920, receiving 11,284 votes to 5,011 for W. J. Bichler (Dem.), and 4,761 for Ernest Kreuter (Soc.).

## TWENTY-FIRST SENATORIAL DISTRICT

Racine county.

**MAX W. HECK** (Rep.) was born June 9, 1869, at Chicago, and obtained his education in the public schools of Racine, Howlands academy, and at the University of Wisconsin law school, where he graduated in 1892. He started his career as a newsboy, then letter carrier and after graduation began the practice of law at Racine. He was city attorney of Racine, 1898-1902; county judge of Racine, 1902-1914. He has been active in lodge work. He was chief ranger two years, high chief ranger two years, supreme counselor three years and supreme chief ranger one year of the United Order of Foresters. He was venerable counsel one year, member of the state camp two years and member of the head camp two years of the Modern Woodmen of America. He has been chancellor commander one year, member of the Grand Lodge fifteen years, Deputy Grand Chancellor two years of the Knights of Pythias; W. M. one year and a member of the Grand Lodge three years of the F. & A. M.; H. P. one year and a member of the Grand Chapter three years of the R. A. M.; Commander K. T. E. commandery one year and member of the Grand Commandery three years. Consistory of Scottish Rite Masons member 20 years; Ancient and A. Order of Mystic Shrine Potentate two years; member of Imperial Council (National) four years; Order of Eastern Star Worthy Patron one year; member of Grand Chapter eighteen years, Worthy Grand Patron one year; member of the General Grand Chapter (National) eighteen years; treasurer of the Eastern Star Masonic Home Association sixteen years. He enlisted in the Spanish-American war April 28, 1898, served in Company F, First Wisconsin Volunteer Infantry. He has been provost judge of the State Encampment Spanish-American War Veterans for one year, and is also a member of other fraternal and social associations. He is a practicing lawyer at Racine. He was elected to the senate in November, 1922, receiving 13,002 votes to 3,129 for George L. Buck (Ind. Rep.), and 404 for Samuel Sherman (Soc.).

## TWENTY-SECOND SENATORIAL DISTRICT

Kenosha and Walworth counties.

**ELDO T. RIDGWAY** (Rep.) is a physician and surgeon of Elkhorn. He was born in Knox, Indiana, Dec. 17, 1880, and was educated in the Amboy, Ind., public school and high school and Hahnemann Medical College and Hospital of Chicago, from which he was graduated in 1906. He began the practice of medicine in Wautoma in 1907, remaining there

five years and then removed to Elkhorn in 1912. He served as mayor of Elkhorn 1918-20, and member of the board of education in 1920. He was elected to the senate in 1920, receiving 21,956 votes to 3,673 for Oliver P. Murwin (Dem.), and 584 for William C. Dean (Pro.).

#### TWENTY-THIRD SENATORIAL DISTRICT

Portage and Waupaca counties.

HERMAN J. SEVERSON (Rep.), of Iola, is a native of the town of Christiana, Dane county, where he spent his boyhood years on his father's farm. He was educated in the public schools of that county, and at the Stoughton Academy, Red Wing College, Drake University, and is a graduate from the law department of the University of Wisconsin. For two years he was a teacher in the public schools of Jefferson and Dane counties and one year was the principal of the graded school at London. He was admitted to the bar in June, 1897, and is by profession a lawyer. Chairman of Republican county committee of Waupaca county 1904-08. District Attorney for Waupaca county 1908-10. Delegate to Republican national convention at Chicago in June, 1908. Was a member of the senate judiciary committee in the sessions of 1919-21. He was elected to the senate in 1918 and re-elected in November, 1922, receiving 10,462 of the 10,479 votes cast in the senatorial election.

#### TWENTY-FOURTH SENATORIAL DISTRICT

Clark, Taylor and Wood counties.

WILLIAM L. SMITH (Rep.) was born at Geary, New Brunswick, Feb. 12, 1878, was educated in the Eau Claire high school and Stevens Point normal and for several years has been engaged in the telephone business in Neillsville. He has taken an active part in community and welfare work, served as alderman in 1906, president of the Neillsville Community Club and Business Men's Association and president of Public Library Board. During the World War he served as Fuel Administrator and chairman of the Clark County Liberty Loan committee for the second and third loans, and of the War Savings committee. He was a member of the assembly during the 1917 session and was elected to the senate in 1920, receiving 11,700 votes to 2,791 for Robert A. Steinbach (Soc.), and 1,580 for A. B. Sutor (Dem.).

#### TWENTY-FIFTH SENATORIAL DISTRICT

Lincoln and Marathon counties.

DR. JOSEPH BARBER (Rep.) was born in the town of Charlestown, Calumet county, Wisconsin, March 24, 1864. Educated in the common and high schools. Finished medical course in 1896 and practiced medicine and surgery since that time in Wisconsin. Member of Marathon County Medical Society and their vice-president 1922. Member of Wisconsin Medical Association and the American Medical Association. Has been president of the Marathon City Telephone Company for five years. One of the organizers of the Merchants and Farmers State Bank and was the first vice-president of same in this city, also a director. He was the organizer of the Hatley State Bank in Marathon County, and has been director and vice-president of the bank since its organization. Was elected by a majority of 7,000 in the Eighth Congressional district as a delegate to the National Republican convention at Chicago in 1920. In the 1922 election he received 11,308 votes to 3,448 for Ralph E. Smith (Ind. Rep.), and 2,456 for A. J. Flowman (Ind. Dem.).

## TWENTY-SIXTH SENATORIAL DISTRICT

Dane county.

HENRY A. HUBER (Rep.) was born Nov. 6, 1869, in Evergreen, Alleghany county, Pa., and came to a farm in Pleasant Springs, Dane county, with his parents in 1879. He attended the common schools and Albion academy and graduated from the Law College, University of Wisconsin, in 1896, since which time he has been practicing law in Stoughton. He was city attorney of Stoughton four years; member of the county board two years; executive clerk to Governor La Follette 1903-04; was elected to the assembly in 1904 and to the senate in 1913 and re-elected in 1916 and in 1920 without opposition.

## TWENTY-SEVENTH SENATORIAL DISTRICT

Columbia, Richland and Sauk counties.

GEORGE STAUDENMAYER (Rep.) was elected to the senate in 1914 as a Democrat, carrying every county in the district, and was re-elected from the same district in 1918 as a Republican, the most unique record in the political history of the state. He was born in the town of Caledonia, Columbia county, Dec. 3, 1857, and received his education in the country schools of his native town. He began farming in 1882 in his home town and took up threshing in 1887, following both professions ever since. He was elected president of the Wisconsin Brotherhood of Threshermen in 1918-19-20; chairman of his native town (Caledonia) in 1919, which position he still holds. He has been a member of the committee on education and public welfare of the senate for four years; a member of the committee on highways ever since that committee was created eight years ago, and a member of the joint committee on finance for four years. He was re-elected to the senate in November, 1922, as a Progressive Republican, without opposition. Until elected to the senate the first time he had never held a public office.

## TWENTY-EIGHTH SENATORIAL DISTRICT

Eau Claire and Chippewa counties.

HERMAN T. LANGE (Rep.) has held many positions of trust and honor, considering it a privilege and duty to serve. He was born in Portage, April 9, 1857, and was educated in the public schools. He is president of the H. T. Lange Co., wholesale grocers, and an officer of the Lange Canning Co.; served as alderman of Eau Claire six years, president of the Y. M. C. A. nine years, and numerous other offices. He was elected to the senate in 1920 without opposition.

## TWENTY-NINTH SENATORIAL DISTRICT

Barron, Dunn and Polk counties

CARL B. CASPERSON (Rep.) was born Aug. 17, 1887, in the town of Laketown, Polk county. He received his education in the common schools and the Stoughton Academy and began his business career as a carpenter and contractor. At the present time he is engaged in the lumbering business at Frederic. He has been a member of the county board of Polk county for fifteen years; has served as school clerk, president of the Atlas Creamery Company and director of the Farmers and Merchants Savings Bank at Luck, Wis. He has also served as a director of the Equity Telephone Company. He was elected to the assembly in 1917, and in November, 1922, was elected state senator without opposition, receiving 11,182 votes.

## THIRTIETH SENATORIAL DISTRICT

Florence, Forest, Langlade, Marinette and Oneida counties.

BERNARD N. MORAN (Rep.) of Rhinelander, is a timber estimator and land looker by profession. He was born in Oshkosh, Jan. 31, 1869, and was educated in the St. Joseph's Orphans Home, Green Bay. He has served as town assessor, treasurer, clerk, and chairman; chairman of the county board of Oneida county for several years, supervisor of county assessors, member of the assembly in 1915 and state supervisor of oil inspectors for six years. He was elected to the senate in 1920, receiving 12,078 votes to 1,783 for Peter Christ (Ind.).

## THIRTY-FIRST SENATORIAL DISTRICT

Adams, Juneau, Monroe and Marquette counties.

HOWARD TEASDALE (Rep.) was born at Janesville, Wis., Aug. 9, 1855. He is a resident of the city of Sparta. Graduated from country schools in 1876 and from high school in 1878. Took modern classical course at University of Wisconsin during 1878-79 and then took special course in law in 1880-81, graduating in 1882. Now practicing his profession in Sparta. Was justice of the peace at Sparta in 1891-92; city clerk from 1891-96; superintendent of waterworks from 1895-1905, also city attorney for several years. Appointed district attorney of Monroe county by Governor La Follette in May, 1901, and elected the next term; president of water commission, 1905-1910; treasurer of city school board for over fifteen years. Has held the positions of deputy county clerk, special treasury agent and court commissioner for a number of years. He is secretary and superintendent of the Monroe County Telephone Company and the Ontario and Wilton Telephone Company, and the New Cashton Telephone Company. As a member of the state senate during the sessions of 1911 and 1913 he was active in all legislation tending to curb and diminish the liquor traffic; chairman of the legislative vice committee of 1913; author of a law for the uniform accounting of asylums; law requiring track connection and switching between railroads and other progressive laws. In the November, 1922, senatorial election he was chosen without opposition, receiving 8,544 votes.

## THIRTY-SECOND SENATORIAL DISTRICT

Jackson, La Crosse and Trempealeau counties.

EUGENE F. CLARK (Rep.) was born in Kingfield, Maine, Aug. 14, 1850. He came to Wisconsin with his parents four years later, settling in Monticello, Green county, but one year later removed to Galesville, Trempealeau county, where he has since resided. Since 1884 he has been president of the Bank of Galesville; for twenty-five years has been a member of the Trempealeau county board of supervisors; for thirty years has been secretary of the Trempealeau County Mutual Farmers Insurance Company; and for twenty-four years has been clerk of the Galesville board of education. He was a member of the assembly in 1895 and again in 1901 and was elected to the senate in 1916 and re-elected in 1920, receiving 10,156 votes to 6,116 for R. G. Knudson (Dem.), and 406 for H. S. Willey (Pro.). In the 1917 session he was a member of the finance and highway committees; in the 1919 and 1921 sessions was chairman of the committee on highways and member of the education and public welfare committee.

## THIRTY-THIRD SENATORIAL DISTRICT

Jefferson and Waukesha counties.

JOHN C. SCHUMANN (Rep.) was born in Milwaukee, Dec. 6, 1881. He was educated in the parochial, public and evening courses in a busi-

ness college. After he left school he worked for two years at the printing trade, then learned the machinist trade, which he followed until he took up farming about eighteen years ago. With the exception of one term, 1920-22, when he was elected town treasurer, Mr. Schumann has never held public office before. During recent years he has been interested in the welfare of agriculture and has devoted much time in organization work. He has been secretary for the Farmers' Co-operative Company of Watertown since its origin ten years ago and for the past year has been secretary of the Milk Producers Co-operative organization, an agency to aid the farmers in the marketing of their milk profitably. Mr. Schumann was elected to the senate in November, 1922, receiving 10,865 votes against 3,794 votes for Charles Mulberger (Ind. Dem.).

#### CHIEF CLERK

F. W. SCHOENFELD, Edgerton, was elected chief clerk of the senate, Jan. 10, 1923. He was born of German parentage on a farm near Beaver Dam, Aug. 14, 1868. He attended the common schools, graduating from Northwestern College and Union Biblical Institute in 1892. As a Congregational minister he has held charges at Prairie du Chien, Bloomington, Dodgeville and Edgerton, his present home. He retired from active work in the ministry seven years ago devoting attention to his farm holdings.

#### SERGEANT-AT-ARMS

CHARLES A. LEICHT was born in New Lisbon, Wisconsin, Oct. 6 1861. Admitted to practice law in 1884. Served as postmaster of New Lisbon four years. Was city clerk and school clerk a number of years. Compiled the Assembly Journal Index for three sessions of the legislature; was bookkeeper of the assembly in 1903, and Journal clerk of the same body in 1905. From 1889 to 1909 was engaged in newspaper work, having been editor and publisher of the Juneau County Argus, New Lisbon Times, and Marathon Times. He founded the two last named newspapers. Was delegate to numerous county conventions, and represented Juneau county as a delegate in the last two Republican state conventions. He served two terms as mayor of New Lisbon. Was Circuit Court Commissioner for several years. He was a messenger sent by the state to Camp Grant in 1918 to take the Wisconsin soldier vote in the November election. He was assistant sergeant-at-arms of the National Republican convention in Chicago in 1920. He was legal advisor to the Juneau County Draft Board during war and served without pay. He served as sergeant-at-arms of the senate in 1911 and in 1913. He was a republican presidential elector in the general election of 1912. He is at present editor and owner of the New Lisbon Times. He was re-elected as sergeant-at-arms of the senate in 1923.

---

## MEMBERS OF ASSEMBLY

---

### ADAMS AND MARQUETTE COUNTY

WILLIAM A. GRAHM (Rep.) was born near Montello, Feb. 15, 1874. He received a public school education. For a number of years he was engaged in farming and at the present time operates a store and mill at Lawrence, Marquette county. Mr. Graham was one of the early organizers for the Wisconsin Society of Equity. He was the first member of the organization in Chippewa county and organized the local at Bob Creek. He lived in Chippewa county from 1898 to 1911. He then

moved to Marquette county. He served one term as clerk of Westfield and from 1917-18 was undersheriff of Marquette county. He was elected to the assembly in November, 1922, without opposition.

#### CHIPPEWA COUNTY

CHARLES H. LIEHE (Rep.) was born in the city of Chippewa Falls, Sept. 14, 1874. One year later his parents moved on a farm in the town of Eagle Point, Chippewa county. This home farm is owned and operated by him; also a general inland store located on the farm. He was educated in the common schools. He served as town chairman, 1913-17; was elected chairman of the county state road and bridge committee by the county board, 1918, 1919, 1920, 1921 and 1922. He assisted in organizing the Eagleton Cooperative Creamery company, 1901, and was secretary and manager of it for thirteen years. He helped to organize and is still a director and treasurer of the Chippewa Valley Holstein Breeders' Association. He was secretary of the Northern Wisconsin State Fair in 1919 and is still a member of the executive committee of the association. He was elected in November, 1922, without opposition, receiving 5,071 votes.

#### ASHLAND COUNTY

FRED C. SMITH (Rep.) was born Feb. 15, 1859, at Rockland, Mich. He received a public school education in the schools of Rockland. As a boy he worked in and around the copper mines of Michigan, also as a gardener and on farms. He came to Ashland in 1887 and worked for four years in a general store. In the spring of 1888 he started his present business as a florist. He served two terms as supervisor in Ashland and for several years was chairman of the Ashland County Republican committee. He defeated his primary opposition by nearly a two to one vote and was elected in November, 1922, without opposition.

#### BARRON COUNTY

JOHN L. DAHL (Rep.) speaker of the 1923 assembly is a lawyer, senior member of the law firm of Dahl & Gannon at Rice Lake, farmer and manufacturer. Born on a farm in Trempealeau county, he attended the common schools, the Osseo high school, and is a graduate of the River Falls normal and the University of Wisconsin, with the degree of Ph. B.; attended the law school at the university and received his law degree from Hamilton College of Law, Chicago, and was admitted to the state bar in 1916. Taught as high school principal and city superintendent of schools after graduating from the normal and the university; served as county food administrator during the period of the Federal Food Administration; served as district attorney of Barron county 1919-20; was a delegate from the tenth congressional district to the National Republican convention, 1920, and was elected to the assembly in 1920 and re-elected in November, 1922, without opposition, receiving 4,139 votes. In addition to the practice of law, he owns and operates a well improved farm in Barron county, raising pure bred Holstein cattle, and is president of a furnace company of St. Paul and president of a produce company of Rice Lake.

#### BAYFIELD COUNTY

ALFRED M. WARDEN (Rep.) was born Dec. 29, 1852, on a farm in Eastfork township, seven miles southeast of Hillsboro, Montgomery county, Ill. He was educated at the district school, known still as Walnut Grove, and at a normal school and the old time Hillsboro academy, established as a preparatory school for colleges in 1836 and still in ex-

istence. He read law in the office of Judge Edward Lane, Hillsboro; admitted to the bar in his native state; after admission went west under the advice of Horace Greeley, but after three years in that wild country finally came to Wisconsin in 1881 and in April, 1882, located at Bayfield, Bayfield county, afterwards moving to Washburn, where he has lived ever since. He has held numerous local offices. In the September, 1922, primary he was nominated for assemblyman, receiving a majority over two opponents and was elected in November without opposition. He is a lawyer by profession.

#### BROWN COUNTY

First District. The city of Green Bay.

JAMES T. OLIVER (Rep.) was born in Yorkshire, England, August 18, 1849, and received his education in that country. He came to America in 1868, working on railroads in Rhode Island, Massachusetts, Pennsylvania and New Jersey. He came to DePere in 1872 where he worked in the car shops, later going to Green Bay, then Grand Rapids and back again to Green Bay. For many years he served as a marine engineer on Green Bay and Lake Michigan. Although taking an interest in political matters he never sought office of any kind until elected to the assembly in 1920 and was re-elected in 1922 without opposition after defeating a primary opponent by better than a two to one vote.

#### BROWN COUNTY

All the towns, cities and villages in the county outside of the city of Green Bay.

GUSTAV J. ZITTLOW (Rep.) was born Jan. 9, 1870, in the town of Lawrence, Brown county, was educated in the common schools and has devoted his life to farming. He is a breeder of pure bred Holstein cattle. He served as clerk of his school district from 1891 to 1909, treasurer of the South Lawrence Butter & Cheese Co. and secretary and treasurer of the Wrightstown local American Society of Equity since 1918. He was elected to the assembly in 1920, and was re-elected in November, 1922, receiving 3,280 votes to 3,061 for Herbert J. Smith, Jr. (Dem.).

#### BUFFALO AND PEPIN COUNTIES

DUTEE A. WHELAN (Rep.) was born at Mondovi, March 25, 1879. He received a common school education and graduated from the course of letters and science at the University of Wisconsin in 1900. He has been a farmer and since 1915 has served as cashier of the First National bank of Mondovi. He was treasurer of the town of Mondovi four years; treasurer of the Buffalo County Agricultural society for 15 years; treasurer of the school district since 1909. He has been prominent in organizations of a co-operative nature and is a director of the Equity Exchange board, one of the largest of its kind in the state. He is a director of the Farmers' Lumber company and during the World war was chairman of the Buffalo County War Savings committee. He was elected to the assembly in November, 1922, he received 2,896 votes to 237 for A. J. Will (Ind. Dem.)

#### BURNETT AND WASHBURN COUNTIES

ERICK H. JOHNSON (Rep.) received 2,896 of the 2,910 votes cast for assemblyman in Burnett and Washburn counties in November, 1922. He was born April 10, 1865, in Hogfors, Sweden, arrived in the United States June 18, 1868, and resided at Peshtigo for one year; was educated in the common schools of Wisconsin and Gustavus Adolphus college, St. Peter, Minn., and is a farmer and merchant. He was elected town



clerk in 1888; justice of the peace since 1895, assessor, 1910; town treasurer, 1915-20; postmaster at Frederic under President McKinley; member county school committee, 1917-18. He is a member of various farmer organizations, member of the National Geographic society, American-Scandinavian foundation, life member of the State Historical Society of Wisconsin and member of the Augustana Synod of the Lutheran church. He has been a Progressive Republican for twenty years. He was elected to the assembly in 1920 and served as a member of the committee on Insurance and Banking and was re-elected in November, 1922.

#### CALUMET COUNTY

CARL HILLMANN (Rep.) was born March 29, 1870, in the town of Rantoul, Calumet county. He received a common school education and for many years has been engaged in farming in the town of Rantoul. He was town supervisor in 1899, town chairman of Rantoul, 1902-21, chairman of county board of Calumet five terms, school treasurer six years, justice of the peace fifteen years and is secretary of the Calumet County Drainage Commission. In the November, 1922, election he received 2,573 votes to 1,036 for George J. Schwalbach, (Dem.)

#### CLARK COUNTY

GEORGE W. SCHMIDT (Rep.) was born Feb. 22, 1864, at Little Cottonwood, Brown county, Minn. He was educated in the common schools, St. Peter, Minn., high school; Northwestern college, Ill.; Syracuse University, N. Y., graduating in 1888; University of Freiburg, Germany, 1895-6. He was an academy instructor and college professor for twenty-six years. He is now engaged in farming, near Stanley, Clark county. He was elected assemblyman in November, 1922, receiving 3,205 votes to 1,001 for Philip J. Ablor (Ind.).

#### COLUMBIA COUNTY

ROBERT CALDWELL (Rep.) banker and farmer of Lodi, was born March 7, 1866 on a farm in the town of Arlington, Columbia county and received his education in the public schools of the county. He has made a success of farming, specializing in stock raising and feeding. He has served the public in various capacities, some of which are president of the village of Lodi, president of the Lodi Union Agricultural Society, also secretary of the same, a member of the Local Draft Board for Columbia county during the world war. At the present time and for several years he has been Supervisor of the County Board, a member of the Board of Education of the Lodi school system, and president of the Columbia bank. He served in the Assembly during the sessions of 1915 and 1921 and was nominated at the primary in 1922 over K. A. Johnson (Rep.) and at the election he received 3,250 votes to 1,484 for Peter Trapp (Ind.).

#### CRAWFORD COUNTY

ALBERT C. JOHNSON (Rep.) farmer and banker of Soldiers Grove, was born in Soldiers Grove, January 26, 1879. He was educated in the public schools and graduated from the Red Wing college, Red Wing, Minn., and the Wisconsin Business University, La Crosse. He served as village clerk of Soldiers Grove four years and represented his village on the county board from 1917-20. On December 8, 1922, Mr. Johnson was chosen secretary and treasurer of the Wisconsin Co-Operative Tobacco Pool. He was elected to the assembly in 1920 and re-elected in November, 1922, receiving 1,900 votes to 764 for Frank J. Antoine (Dem.).

## DANE COUNTY

First District, City of Madison and town of Madison.

HERMAN W. SACHTJEN (Rep.) was born in Minneapolis, November 28th, 1886, educated in the public schools of Madison and was graduated from the college of Letters and Science, University of Wisconsin in 1909 and the Law School in 1911, since which time he has practiced law in Madison. He served as secretary of the Dane County Republican committee in 1912-13 and as chairman since 1916.

He was nominated for the assembly without opposition within his party and election without opposition from a major party, 1920, the first instance of the kind in the history of the district.

In 1922 he was nominated in the Republican primary by a large vote over the opposition and then elected in November, 1922, without opposition of the other parties.

## DANE COUNTY

Second District. Towns of Albion, Blooming Grove, Bristol, Burke, Cottage Grove, Christiana, Deerfield, Dunkirk, Dunn, Medina, Pleasant Springs, Sun Prairie, Windsor and York; the villages of Cambridge, Deerfield, De Forest, McFarland, Marshall, Rockdale, and Sun Prairie and the city of Stoughton.

JAMES C. HANSON (Rep.) was elected to the assembly in 1916, 1918, 1920 and 1922. He was born in Slysrup, Lolland, Denmark, July 11, 1862 and three years later came to America with his parents. They settled on a farm in the town of Christiana, Dane county, where he has since made his home with the exception of one season in 1879 when he was employed in railroad construction work in the Dakotas. He was educated in the common schools, Albion Academy and Milton college. He is a farmer and has been affiliated with the progressive movement for many years.

## DANE COUNTY

Third District. Towns of Black Earth, Berry, Blue Mounds, Cross Plains, Dane, Fitchburg, Mazomanie, Middleton, Montrose, Oregon, Perry, Primrose, Roxbury, Rutland, Springdale, Springfield, Vermont, Verona, Vienna and Westport; and the villages of Belleville, Black Earth, Brooklyn, Dane, Mazomanie, Middleton, Mt. Horeb, Oregon, Verona and Waunakee.

CARL M. GRIMSTAD (Rep.) is a retired farmer who has held numerous offices of trust and honor. Born in the town of Brigham, Iowa county, Aug. 9, 1856, he was educated in the common schools, Wisconsin Academy at Madison, and Teachers' Training course. He taught in the rural schools of Wisconsin, Minnesota and Dakota for several years and in 1879 took up some government land in the Red River Valley, North Dakota, where he farmed for 10 years, organized the county, town and school district, served as town clerk, county assessor and deputy county auditor. In 1889 he returned to his farm in Iowa county. In 1915 he rented his farm and moved to Mount Horeb, Dane county. While in Iowa county he was town chairman 8 years, school clerk and member county board of education. He was elected to the assembly in 1918 and was re-elected in 1920 and 1922 without opposition.

## DODGE COUNTY

First District. Towns of Ashippun, Clyman, Emmett, Herman, Hubbard, Hustisford, Lebanon, Leroy, Lomira, Rubicon, Shields, Theresa and Williams-town; the villages of Hustisford, Lomira, Neosho, Iron Ridge and Theresa; and the cities of Horicon and Mayville, and the fifth, sixth, thirteenth and fourteenth wards of the city of Watertown.

HERMAN A. ZIEMER (Rep.) after serving as chairman of the town of Emmett, Dodge county, from 1911 to 1917, and member of the public building committee 1914-17, retired from public office and was literally drafted by his

party in 1920 and was elected to the assembly. Mr. Ziemer was born in Lebanon, Dodge county, Feb. 23, 1861, was educated in the common schools and has been a farmer all his life in the town of Shields. He was re-elected to the assembly in November, 1922, receiving 3,940 votes to 963 for Leo Koll (Dem.) and 415 for Emil Freinwald (Soc.).

## DODGE COUNTY

Second District. The towns of Beaver Dam, Burnett, Calamus, Chester, Elva, Fox Lake, Lowell, Oak Grove, Portland, Trenton, Westford; the villages of Fox Lake, Lowell, Reeseville, East ward of the village of Randolph; and the cities of Juneau and Beaver Dam, and 1st, 2nd, 3d and 4th wards, city of Waupun.

FRED E. MOUL (Rep.) was born June 5, 1878, and has always lived on the same farm. He was educated in the public and graded school of Burnett, served as town chairman in 1902-03 and 1909, and town treasurer from 1904 to 1909. He is not only a successful farmer but a well known shipper of live stock. He was elected to the assembly in 1920 and re-elected in November, 1922, receiving 2,891 votes to 1,782 for A. A. Nowak (Dem.) and 99 votes for Samuel Grainges (Soc.).

## DOOR COUNTY

JOHN PELTIER (Rep.) was born in Michigan, January 30, 1860, and was educated in the common schools. He is both a successful dairy farmer and commercial fisherman, having been engaged in the latter occupation for forty years. He has made a deep study of the different species of fish caught in Green Bay and Lake Michigan and is considered one of the best posted men in the state on that subject, and served as president and general organizer of the State Fishermen's Association of Wisconsin. He served as town chairman from 1907 to 1915 and during the World war served as solicitor for the sale of bonds and in the Red Cross, Y. M. C. A. and other campaigns. He was elected to the assembly in 1920 and re-elected in November, 1922, receiving 2,782 votes.

## DOUGLAS COUNTY

First District. The third, fourth, fifth, sixth and seventh wards of the city of Superior.

SIXTUS LINDAHL (Rep.) was born Sept. 20, 1878 at Horben, Norway, and came to the United States in 1902. He received a public school and business college education and was engaged in business up to July 1, 1919. He has never held public office before although he has been connected with the Republican party since he came to this country from Norway. He takes great interest in fishing and hunting and the protection of wild game. He is a promotor of the Ski sport at the Head of the Lakes. He was elected to the assembly in November, 1922, receiving 2,567 votes to 2,333 votes for C. J. Whereatt (Ind.).

## DOUGLAS COUNTY

Second District. Towns of Amnicon, Bennett, Brule, Cloverland, Dairyland, Gordon, Hawthorne, Highland, Lakeside, Maple, Oakland, Parkland, Solon Springs, Summit, Superior and Wascott; the villages of Lake Nebagamon, Oliver and Poplar; and the first, second, eighth, ninth and tenth wards of the city of Superior.

LEWIS H. ALLEN (Rep.) was born Dec. 8, 1877 at Waupun, Wis. He received a graded school education and for a number of years has been employed as a locomotive engineer on the "Soo Line." He never held a public office before. He was elected to the assembly in November, 1922, receiving 3,005 to 911 for Mary Scott Johnson (Ind. Rep.) and 118 for Phil Mertes (Dem.).

## DUNN COUNTY

J. D. MILLAR (Rep.) was born Jan. 8, 1869 in Eau Claire. He was educated in the common schools, Menomonie high school and the River Falls state normal. His present occupation is that of a farmer. Previous to this he was engaged in the lumber manufacturing business. He has served as secretary of the Dunn County Agricultural Society for fifteen years, chairman of the town of Red Cedar for eight years; twice chairman and the present chairman of the county board of Dunn county. He has been a member of the board of directors of the Dunn County Farmers' Mutual Fire Insurance company for thirteen years and is at present secretary of the organization. He served as a member of the assembly in 1911, 1913 and was re-elected in November, 1922, without opposition.

## EAU CLAIRE COUNTY

C. N. SAUGEN (Rep.) of Pleasant Valley, Eau Claire county, was born in Norway, January 1, 1852; came to Trempealeau county with his parents in 1866 settling on a homestead, where he worked and attended country school up to 1876 when he moved to Eau Claire county and began farming. He represented his town on the county board for 16 years, and was assessor of his town for 4 years. He was elected to the assembly in 1904 and 1916. He was elected to the assembly in 1922 receiving 5,090 votes to 1,095 for H. B. Crane (Dem.).

## FOREST, FLORENCE, ONEIDA COUNTIES

JOSEPH D. GRANDINE was born in November, 1860 in Wayne county, New York, came to Wisconsin when a youth and was educated in the graded and high schools in Menasha, and for years has been a successful farmer in Forest county. He was president of the North Crandon school board when the first consolidated school in Wisconsin was established and it is still in successful operation. Mr. Grandine served as a member of the Forest county draft board during the war. He was elected to the assembly in 1920 and re-elected in 1922 without opposition receiving 5,479 votes.

## FOND DU LAC COUNTY

First District. The towns of Calumet, Empire, Fond du Lac and Taycheedah and the city of Fond du Lac.

MATH KOENIGS (Rep.) was born on a farm in Fond du Lac county and has continued to reside in this county all his life. He attended parochial school and after graduating from the common school secured the remainder of his education by study at home. For a time he was employed in creameries and for three years operated a cheese factory. In 1912 he purchased a farm near the city of Fond du Lac which he still operates and the milk from the farm is retailed in the city. He was appointed a member of the State Fair advisory board by Gov. Blaine, March 14, 1921. He invented an efficient 30-day quack grass killing method after 7 years of experimenting. He was elected to the assembly in 1922 receiving 3,645 votes to 1,074 for Pacific Lauder-mann (Dem.) and 112 for Thomas W. Abel (Soc.).

## FOND DU LAC COUNTY

Second District. The towns of Alto, Ashford, Auburn, Byron, Eden, Eldorado, Forest, Friendship, Lamartine, Marshfield, Metomen, Oakfield, Osceola, Ripon, Rosendale, Springvale and Waupun; the villages of Brandon, Campbellsport, Eden, North Fond du Lac, Oakfield, Rosendale and St. Cloud; the city of Ripon and the fifth and sixth wards of the city of Waupun.

THOMAS J. DIERINGER (Rep.) of Campbellsport was born on May 23, 1861 in the town of Ashford. At an early age he moved with his parents to a

farm in the town of Auburn where he still makes his home. Following his schooling at St. Francis Seminary, he engaged in farming. He has been a practical farmer all his life. However, during the past few years he has added other duties which include two years as representative of the International Harvester Co. and five years with the Menominee River Sugar Co. For two years Mr. Dieringer was treasurer of the town of Auburn and for one year was assessor for the village of Campbellsport. At the present time Mr. Dieringer is secretary-treasurer of the Campbellsport branch of the Federal Farm Loan association, which position he has held since its organization, three years ago. For the past two years he has also been a member of the executive board of the Federal Farm Loan Bank of St. Paul. His father, Andrew Dieringer, was a member of the assembly from 1866 to 1868. Mr. Dieringer was elected to the assembly in November, 1922, receiving 3,720 votes to 25 for Walter S. Whiting (Ind.).

#### GRANT COUNTY

First District. Towns of Beetown, Cassville, Clifton, Ellenboro, Glen Haven, Harrison, Hazel Green, Jamestown, Lima, Paris, Platteville, Potosi, Smelser, and Waterloo—the villages of Cassville, Cuba City, Hazel Green, Livingston, and Potosi, and city of Platteville.

GEORGE SLACK (Rep.) was born in Smelser township April 2, 1874. He received a common school education and at an early age went to work on the farm. He has been engaged in farming all of his life. He has served as road commissioner, but this was the only office held until elected to the assembly in 1922. He was nominated in the primary by a three to one vote over the opposition and was then elected in November without opposition.

#### GRANT COUNTY

Second District. The towns of Bloomington, Boscobel, Castle Rock, Fennimore, Hickory Grove, Liberty, Little Grant, Marion, Millville, Mt. Hope, Mt. Ida, Muscoda, North Lancaster, Patch Grove, South Lancaster, Watterstown, Wingville, Woodman, and Wyalusing; the villages of Bagley, Bloomington, Blue River, Montfort, Mt. Hope, Muscoda, Patch Grove and Woodman; and the cities of Boscobel, Fennimore and Lancaster.

CHARLES E. TUFFLEY (Rep.) was born on the farm in Grant county on which he now lives. He attended the country school and Boscobel high school, served as county clerk of Grant county for six years and as journal clerk in the assembly through four sessions. He is a successful breeder of pure bred Holstein cattle, Oxford sheep and Poland China hogs. He was elected to the assembly in 1920, and was re-elected in November, 1922, receiving 2,850 votes to 1,400 for William Victoria (Dem.).

#### GREEN COUNTY

FRED K. HEFTY (Rep.) was born in the town of Washington, Green county, Sept. 20, 1871. He received a common school education and at Evansville academy. For three generations his people have lived on the farm which he owns and operates. He is a breeder of Holstein cattle. He has been chairman of the town of Wellington since 1904; member of the road and bridge committee for fifteen years and in point of service is the second oldest member on the Green county board. He was elected to the assembly in November, 1922, receiving 3,483 votes to 1,491 for William Olson (Pro.) and 316 for John O'Connor (Dem.).

## GREEN LAKE AND WAUSHARA COUNTIES

NEWCOMB SPOOR (Rep.) was born in 1852, in Oswego, N. Y. Moved to Waushara county with his parents the same year. In 1904 went to Berlin, Green Lake county. Is a machinist by trade and a farmer by occupation. Graduated from the Berlin high school in 1874. Has held various offices of public trust and was elected to the assembly in 1910, 1912, and again in 1914 and 1916, and in 1922 without opposition in the November election.

## IOWA COUNTY

CHARLES W. HUTCHISON (Rep.) was born Feb. 26, 1865, at Mineral Point. He received his education in the Mineral Point schools. He has always been a farmer and served for four years as a member of the county board of Iowa county and for six years was a member of the Mineral Point school board. He is a member of the Farm Bureau and has taken an active interest in their organization work. At the primaries he defeated J. T. Paul, Ridgeway, and in the November, 1922, election, he received 2,497 votes to 762 for W. G. Ruggles (Ind. Dem.).

## IRON AND VILAS COUNTIES

HYMAN MAURICE MARK (Rep.) has never held public office until elected to the assembly in 1920. He was re-elected in 1922 without opposition. Mr. Mark was born in Duluth, Minn., May 10, 1891. He was educated in the public school at Ironwood, Mich., and since 1907 has been engaged in business first in the clothing and dry goods business, then as commission merchant, wholesale liquor, laundry, and for several years has been engaged in the scrap iron and metal business.

## JACKSON COUNTY

WILLIAM F. DETTINGER (Rep.) of Hixton, is a successful farmer and breeder of pure bred Guernsey cattle and select seed grain. A native of the town of Northfield, Jackson county, where he still lives, he was born Sept. 24, 1880, and was educated in the common schools and the College of Agriculture, University of Wisconsin. He has always lived on a farm, but was employed by the Armour Packing company for 5 years. He was president and manager of the York Creamery Association, Northfield, for three years, town supervisor from 1912 to 1915 and town chairman from 1915 to 1918. He was elected to the assembly in 1918, re-elected in 1920 and again in 1922 without opposition.

## JEFFERSON COUNTY

EUGENE H. KILLIAN (Rep.) is a printer by trade, member of the Typographical Union and of the general executive committee of the Wisconsin State Federation of Labor. He was born in Watertown, Dec. 1, 1873, and educated in the local schools and Sacred Heart College. He is serving his second term in the assembly, receiving 6,010 votes to 1,440 votes for Wm. Everson (Dem.).

## JUNEAU COUNTY

CLINTON G. PRICE (Rep.) of Mauston was born January 3, 1875, in Wonewoc, Juneau county, Wisconsin. As a boy worked on a farm, in a saw mill and hardware store. Worked way through Wonewoc high school by teaching school and as American Express agent. Volunteered as private in Co. G of Madison, 1st Reg., during the Spanish-American war. Later promoted to regimental adjutant. Paid way through University of Wisconsin as assistant librarian of Historical Library and



MEMBERS OF ASSEMBLY—1923

(1) George Schmidt, (2) A. E. Smith, (3) Frank E. Lawson, (4) A. G. Becker, (5) W. A. Freehoff, (6) Homer R. Dopp, (7) George W. Meggers, (8) Charles Rahr, (9) George H. Jones, (10) E. E. Royce.





as university law librarian. Served two terms as City Attorney of Mauston. First Assistant City Attorney of Milwaukee 1906-1910. Three terms District Attorney of Juneau county. Government Appeal Agent, Federal Food Administrator and Member of Executive Committee of Council of Defense of Juneau county during the World war. Volunteered and enlisted as Second Lieutenant in Motor Transport Corps in 1918 during the World war. Elected and re-elected President of Mauston Commercial Club 1919-1920. Became active member of the Milwaukee Press Club and honorary member of Typographical Union No. 23 of Milwaukee through experience in newspaper work and as a printer. Judge Advocate of United Spanish War Veterans of Wisconsin 1921 and elected Junior Vice-Commander of United Spanish War Veterans of Wisconsin 1922. Serving sixth year as Commander of United Spanish War Veterans Camp of Mauston. Elected as Progressive Republican, receiving 2,234 votes to 1,293 for F. A. Wheelihan (Ind.).

#### KENOSHA COUNTY

First District. The first, second, third, sixth, seventh and ninth wards of the city of Kenosha.

CONRAD SHEARER (Rep.) was born on a farm in Somers township, Kenosha county, Wisconsin, Oct. 18, 1874. He received his early education in the country schools and later in the Kenosha high school, graduating from that institution in June, 1895. Having secured a teacher's certificate before completing his high school course, he decided to enter the teaching profession, and in September, 1895, he left the farm and commenced the duties of school-teacher. After a period of six years in this work, he entered the State Normal School at Milwaukee for a teacher's course. During his three years in the Normal, he was particularly active in the school debating society and served as a member of the team that defeated Oshkosh in 1904. As president of his class, he took the lead in all class movements up to the time of his graduation in March, 1905. After teaching for the balance of the year in the Twelfth District No. 1, Milwaukee, he returned to Kenosha and accepted a situation as general delivery and stamp clerk in the local post office. This position he held until October, 1907, when the representatives of industry in Kenosha decided to form an association and open executive offices in the down town district. Mr. Shearer was selected as secretary and general manager of their offices, which position he has held for over fifteen years. During this time he has interviewed personally over one hundred thousand individuals seeking employment in industry and is intimately acquainted with most of the factory employees of his city.

In the line of service in public office, Mr. Shearer was elected alderman from his ward in 1913 and served on the Kenosha Common Council for six years. During this time he was chairman of the Committee on Finance, and in 1917 and 1918 was president of the Council. On retiring from the Council in 1919, he was named a City Park Commissioner, serving in that capacity until November, 1922, when the new form of city government released the Park Commission.

He was elected to the assembly in November, 1922, receiving 3,406 votes to Andrew Anderson (Ind. Dem.) 734 votes.

#### KENOSHA COUNTY

Second District. The towns of Brighton, Bristol, Paris, Pleasant Prairie, Randall, Salem, Somers and Wheatland, and the fourth, fifth and eighth wards of the city of Kenosha.

D. J. VINCENT (Rep.) was born May 4, 1860, in Kenosha county, where he was educated in the common schools of Kenosha county. For nine years he was clerk of the school board and for four years served

on the county board. He has been president of the Kenosha County Experimental order and of the Kenosha & Racine County Breeders' association. He was elected to the assembly in 1914-1916. He was re-elected in November, 1922, receiving 2,344 votes to 1,377 for Mathew G. Seibert (Dem.).

#### KEWAUNEE COUNTY

ANTON HOLLY (Rep.) was born on a farm in the town of Franklin, Kewaunee county, March 19, 1875, learned the butchers trade when 19 years old and won many contests, establishing a record of slaughtering and dressing a beef complete for the block in 4 minutes and 26 seconds. He conducted a meat market in Tisch Mills for 18 years and since 1910 owned and operated a farm of 160 acres in the town of Carlton. He was elected to the assembly in 1920 and was re-elected in November, 1922, receiving 2,541 votes to 1,037 for W. J. Marek (Dem.) and 514 votes for August Fenske, (Ind. Rep.).

#### LA CROSSE COUNTY

First District. The first, second, third, fourth, fifth, sixth, seventh, ninth, tenth, eleventh, twelfth, thirteenth, fourteenth, fifteenth, sixteenth, nineteenth and twentieth wards of city of La Crosse.

HENRY NEIN, (Rep.) was born at Wenings, Germany, June 7, 1860, and came to La Crosse, with his parents, in 1870. He received a common school education. From the age of 15 to 20 he worked in saw mills after which he began firing an engine on the C., M. & St. P. R. R. In 1883 he was promoted to the position of engineer, which he still holds. He was elected to the assembly in November, 1922, receiving 4,481 votes to 493 for Henry N. Stephenson, (Pro.).

#### LA CROSSE COUNTY

Second District. The Eighth, Seventeenth, and Twenty-first Wards of the City of La Crosse and all that part of the county outside of the City of La Crosse.

WILLIAM F. MILLER (Rep.) was born in the town of Barre, La Crosse county, Sept. 24, 1869, and has always lived on a farm. He was educated in the common school. Besides operating his farm he has been manager of the Farmers Co-Operative Supply and Shipping Association, and is a director in the Shelby Farmers Mutual Fire Insurance Company. The only office he ever held until chosen for the assembly was as town treasurer, 1912-13. He was elected to the assembly in 1920. He was re-elected in November, 1922, receiving 2,854 votes to 263 for Horace G. Willey (Pro.).

#### LAFAYETTE COUNTY

JAMES GOODMAN (Rep.) was born in Jo Davies county, Ill, in 1872, was educated in the common schools and taught school for nine years before taking up farming twenty-two years ago. He now owns two fine farms of 70 and 200 acres, operating one and renting the other. He has served the town of Lamont as chairman three years, clerk two years and supervisor two years and town of Argyle as chairman two years. He has been president of the Equity Shipping Association since its organization in 1915. He was elected to the assembly in 1920. He was re-elected to the assembly in November, 1922, receiving 2,773 votes to 1,324 for Chas. C. Haffele (Dem.).

## LANGLADE COUNTY

JAMES A. BARKER (Rep.) was born in Troy, N. Y., 1858. He received a common school education. For fourteen years he was shirt cutter for Marshall Field & Company, Chicago, and for ten years he was in a gent's furnishing goods store at Chicago. For the past thirteen years he has been engaged in farming in Langlade county. He was elected to the assembly in November, 1922, receiving 2,884 votes to 1,315 for Burke Rynders (Dem.) and 341 Joseph Zoern (Ind. Rep.).

## LINCOLN COUNTY

RICHARD KAMKE (Dem.) was the only Democrat elected to the legislature in November, 1922. He was born in Schofield, Marathon county, June 3, 1883. He received a common school, high school and business college education. He is at present engaged in the hardware and implement business at Merrill. He has been an alderman in Merrill for ten years and has served, as president of the common council for three years. He was elected to the assembly in November, receiving 2,830 votes to 2,295 for Thomas Metcalfe (Rep.).

## MANITOWOC COUNTY

First District. The towns of Centerville, Liberty, Manitowoc, Manitowoc Rapids, Meeme and Newton and the City of Manitowoc.

ROBERT NAUMANN (Rep.) was born July 31, 1862, in the town of Newton, Manitowoc county. He received a common school education. He engaged in farming until 1895, when he purchased a cheese factory in which he made cheese for twenty-one years. Since that time he has been engaged in the taxi business. He never before held public office. He was elected to the assembly in November, 1922, receiving 4,156 votes to 1,172 for Mrs. Jessie Eggers (Dem.).

## MANITOWOC COUNTY

Second District. Towns of Cato, Cooperstown, Eaton, Franklin, Gibson, Kossuth, Maple Grove, Mishicot, Rockland, Schleswig, Two Creeks and Two Rivers; the villages of Reedsville and Valders; and the cities of Kiel and Two Rivers.

FRED A. FREDRICH (Rep.) was born in the town of Maple Grove, Aug. 22, 1870. He received a common school education. As a young man he was employed as a carpenter, but twenty-two years ago engaged in farming and has followed this occupation since. He owns a farm northwest of Reedsville, in the town of Maple Grove. He served as town chairman for nine years and chairman of the county board of Manitowoc county, 1920. He served as school clerk for thirteen years. He is president of the Rockland Insurance Company. He was elected to the assembly in November, 1922, receiving 3,378 votes to 1,299 for Martin Rappel (Dem.).

## MARATHON COUNTY

First District. Bergen, Berlin, Bern, Brighton, Cassel, Cleveland, Day, Eau Pleine, Emmet, Flieth, Frankfort, Green Valley, Halsey, Hamburg, Holton, Hull, Johnson, McMillan, Maine, Marathon, Mosinée, Rib Falls, Rietbrock, Spencer and Wein; that part of Abbotsford village in Marathon county and the villages of Athens, Edgar, Fenwood, McMillan, Marathon, Mosinee, Spencer, Stratford and that part of Unity village in Marathon county and that part of the City of Colby in Marathon county.

J. W. SALTER (Rep.) was born Feb. 5, 1852, on a farm near West Bend. He was educated in the common schools and the University of Wisconsin. In 1880 he organized the High School at Unity, Wisconsin, and was principal of that school for three years. For thirty years after that he was engaged in the mercantile business at Unity. He has always been very much interested in farming and in the production of a fine herd of pure-bred Red Polled cattle. He was appointed postmaster at Unity by President Arthur. He was for many years a member of the board of education there and served several times on the Marathon county board of supervisors. At the present time he is president of the Unity State Bank and is a member of the state board of education. He was elected member of assembly on the Republican Progressive ticket in the first district in Marathon county, Nov. 5, 1922, receiving 4,605 votes.

#### MARATHON COUNTY

Second District. The towns of Bevent, Easton, Elderon, Franzen, Guenther, Harrison, Hewitt, Knowlton, Kroñenwetter, Norrie, Plover, Reid, Ringle, Texas, Wausau and Weston; the villages of Brokaw, Elderon, Hatley, Rothschild and Schofield and the city of Wausau.

HENRY ELLENBECKER (Rep.) was born Feb. 27, 1871, in Belgium, Ozaukee county, Wisconsin. He received a common school education. For a time he was employed as a clerk in the general store and later learned the painting trade. At present he is the owner of a decorating and paint store at Wausau. He has been alderman, president of the council and water commissioner of Wausau. He was elected to the assembly in 1922, receiving 5,623 votes to 1,005 for George Morisette (Ind. Dem.), and 303 for Frederic Kanneberg (Ind. Soc.).

#### MARINETTE COUNTY

JAMES PEDERSEN (Rep.) has been in the wholesale fish business for the last eleven years, dealing in all kinds of fresh and smoked fish. He was born in Denmark, Nov. 5, 1868, and came to America when 19 years of age. He has served as alderman in Marinette for four terms and during the war was agent for the Public Service Reserve in Marinette county. He was elected to the assembly in 1918 and was re-elected in November, 1922, without opposition.

#### MILWAUKEE COUNTY

First District. The first and third wards of the city of Milwaukee.

THOMAS HENRY CONWAY (Rep.) was a superintendent of structural iron work from 1883 to 1910, since which time he had been engaged in the insurance business. His work took him into nearly every state in the Union. Forty years ago he made a trip from Portland, Ore., around Cape Horn to Ireland and back to New York. Born in Troy, N. Y., Feb. 9, 1860, he was educated in the public schools of New York and Homer Academy, Homer, N. Y. Although serving as inspector of the city hall 1893-95 and ward superintendent 1910-12, in Milwaukee, he never held an elective office until chosen for the assembly in 1920. He was re-elected to the assembly in November, 1922, receiving 3,386 votes to 1,040 for Wm. H. Park (Ind.) and 874 for Martin Binn (Soc.).

#### MILWAUKEE COUNTY

Second District. The second and fourth wards of the city of Milwaukee.

MICHAEL LAFFEY (Rep.) was born on a farm in the township of Clyman, Dodge county, Wisconsin, July 5, 1863, and received a common school education. At the age of 17 years he left the farm and went to

work in a general merchandise business in Watertown, where he remained for seven years. In 1885 he moved to Milwaukee taking a position as traveling salesman for a Milwaukee firm and remaining on the road for ten years. In 1895 he retired from the road to enter the real estate business. He served in the Milwaukee common council during 1896-97. He was appointed state treasury agent by Gov. E. L. Philipp in 1915-17-19. He was elected assemblyman in November, 1922, receiving 2,860 votes to 1,352 for James Johnson (Soc.) and 442 for William O'Malley (Dem.).

## MILWAUKEE COUNTY

Third District. Twenty-fifth ward.

FRANK J. WEBER (Soc. Dem.) was born in the city of Milwaukee, Aug. 7, 1849. In 1852 his parents moved to the village of Grafton, Ozaukee county. Attended the district school at Ulao. He learned the trade of seaman, when a seaman had to be capable of building and fitting out a sailing ship from laying the keel to the placing of the mast truct, in which capacity he visited all of the most important seaports of the world. He became a member of the Knights of Labor in 1869 when it yet had the system of accepting members by and through the committee of the Unknown Knights, and he has been a member of labor organizations ever since. He organized the Wisconsin State Federation of Labor in 1893 and was continuously an officer thereof until 1917, when he declined to continue as such. He is general secretary of the Milwaukee Federated Trades Council since 1902. He was a member of the assembly in 1907, 1909, 1911 and 1915 and was elected without opposition as a member of the 1923 assembly from the third assembly district of Milwaukee county, receiving 3,098 votes.

## MILWAUKEE COUNTY

Fourth District. The twenty-first ward of the city of Milwaukee.

THOMAS M. DUNCAN (Soc.) was born March 5, 1893 in Wisconsin. He received his common school education. He was elected to the assembly in November, 1922, without opposition receiving 3,233 votes.

## MILWAUKEE COUNTY

Fifth District. The fifth and twelfth wards of the city of Milwaukee.

H. G. TUCKER (Soc.) was born January 19, 1879 in Germany. He received a public and trade school education. After serving an apprenticeship at the machinist trade he traveled extensively in Europe working at trade. He came to the United States in 1905 and after working in several eastern cities came to Wisconsin in 1907. He has been a member of organized labor for 25 years and connected with the Socialist movement for over 20 years and has held many offices of trust in both movements. His present position is that of a tool and die maker. He was elected to the assembly in November, 1922, receiving 2,734 votes to 1,820 for Peter M. Peterson (Rep.) and 528 for John J. Bonk (Dem.).

## MILWAUKEE COUNTY

Sixth District The sixth ward of the city of Milwaukee.

FREDERICK J. PETERSON (Rep.) was born in Neenah, February 24, 1874. He was educated in the public schools and high school of Neenah and in the Philadelphia Orthopedic Institute of Physio-Therapy at Philadelphia and returning to this state taking charge of the Therapeutic department at the Northern Hospital at Oshkosh, Wisconsin for eight years, the same position at Pennoyers sanatorium at Kenosha, Wisconsin for three years, and at the Lake Geneva Sanatorium eight years after which he moved to

Milwaukee and has practiced his profession in that city ever since. Although taking a keen interest in municipal, state and national politics, Dr. Peterson never sought or held a public office until elected to the Assembly in 1920. He was re-elected to the assembly in November, 1922, receiving 1,489 votes to 1,413 for Eugene Cooney (Soc.).

#### MILWAUKEE COUNTY

Seventh District. The seventh ward of the city of Milwaukee.

ALEX C. RUFFING (Soc.) was the youngest member of the fifty-fourth session of the legislature. He was born in Milwaukee, Nov. 2, 1892 and was 26 years old three days before being elected to the assembly in 1918. He was educated in the public and parochial schools and learned the machinist trade at the Allis Chalmers plant. He never before entered politics but was elected to the assembly in 1918, and re-elected in 1920 and 1922 without opposition.

#### MILWAUKEE COUNTY

Eighth District. Eighth and fourteenth wards of the city of Milwaukee.

JOHN POLAKOWSKI (Soc.) was born in Buffalo, N. Y., July 7, 1896. He came to Milwaukee with his parents twenty-two years ago. He was educated in the parochial schools, evening and high schools and is a graduate of the American School of Practipadicts. He has been a show worker and later was employed by Ed Schuster & Co., as a salesman. He never held public office before, but is the second son of Frank Polakowski to be elected to the legislature. In the November, 1922, election he received 2,191 votes to 1,471 for Louis Polewczwinski (Rep.) and 856 for Frank S. Kubatzki (Dem.).

#### MILWAUKEE COUNTY

Ninth District. The ninth and tenth wards of the city of Milwaukee.

JULIUS KIESNER (Soc.) is an automobile tire vulcanizer by profession. He was born in Chilton, Oct. 29, 1884 and was educated in the public schools of that city. He has traveled extensively in the United States and Europe and is especially interested in education and public welfare. In 1910 after locating in Milwaukee he joined the Socialist party. His first public office was that of assemblyman to which he was elected in 1918. He was re-elected in 1920 and in November, 1922, received 2,920 votes to 1,966 for Louis S. Wiener (Rep.).

#### MILWAUKEE COUNTY

Tenth District. The sixteenth and twenty-third wards of the city of Milwaukee.

JOHN W. EBER (Rep.) was born Oct. 16, 1895 at Sheboygan. He received a graded, high school and University education. For one year he was employed in an insurance office and at the present time is employed in an attorney's office in Milwaukee. He has never held public office before. He was elected to the assembly in November, 1922, receiving 3,829 votes to 2,618 for Wm. E. Jordan (Soc.).

#### MILWAUKEE COUNTY

Eleventh District. The eleventh and twenty-fourth wards of the city of Milwaukee.

OLAF C. OLSEN (Soc.) was born February 26, 1899 at Milwaukee, Wisconsin. He graduated from the South Division High School of Milwaukee and until the opening of the legislature was attending the Marquette University Law School. He has never held a public office before. He was elected to the assembly in November, 1922, receiving 3,643 votes to 887 for Alex J. Roselik (Dem.).

## MILWAUKEE COUNTY

Twelfth District. The twenty-second ward of the city of Milwaukee.

LAWRENCE J. TIMMERMAN, (Rep.) was born August 11, 1878, in the city of Milwaukee, Wisconsin, where he has resided ever since. Attended school until thirteen years of age, at which age he commenced to work. While employed he attended the public evening schools, business college and Milwaukee Law School, which school affiliated with Marquette University. Was admitted to the bar of this state in 1909 and received the degree of Bachelor of Laws from Marquette University the same year. He has been engaged in the practice of law in Milwaukee since 1920. For eighteen years previous to that time he was employed by the United States Post Office Department as a Railway Post Office Clerk. He has never held any public office. Received 3,239 votes against 2,394 for John C. Ritter, (Soc.).

## MILWAUKEE COUNTY

Thirteenth District. The thirteenth ward of the city of Milwaukee.

RICHARD ELSNER (Soc.) was born May 29, 1859 in Germany. He received a public school, German gymnasium (College) and a technical school education in Germany. Later he attended Marquette University and the University of Wisconsin Law School where he graduated in 1894. He is a practicing lawyer by profession. He was a civil judge of Milwaukee county from 1910-1916; register of deeds of Milwaukee county, 1919-1920; he was one of the leaders in the labor movement in 1886. He was elected a member of the assembly in November, 1922, receiving 1,679 votes to 1,667 for Leander J. Pierson (Rep.).

## MILWAUKEE COUNTY

Fourteenth District. The seventeenth ward of the city of Milwaukee.

GEORGE GAUER (Soc.) was born in Milwaukee, Nov. 30, 1892 and has resided there ever since. He graduated from the Milwaukee public school and is a printing press man by trade although for the past several years he has been engaged in the real estate business. For over twelve years he has been a member of the Pressmen's Union and the Socialist party. He was elected in November, 1922, receiving 2,046 votes to 1,493 for Edward F. Volmer (Rep.) and 137 for Edward J. Watson (Dem.).

## MILWAUKEE COUNTY

Fifteenth District. The Fifteenth and Nineteenth Wards of the City of Milwaukee.

THEODORE ENGEL (Rep.) was born in Milwaukee county in 1866, attended the Grace Lutheran school and also the first ward public school and after leaving school learned the plumber trade, which he followed for over twenty years and then went into the contracting business, in which he is still engaged. He was elected to the assembly in 1916 and again in 1920, and was re-elected in November, 1922, receiving 4,400 votes to 2,591 for Herman Kluckow (Soc.) and 295 for Mary L. Fitzpatrick (Dem.).

## MILWAUKEE COUNTY

Sixteenth District. Towns of Granville and Wauwatosa and Cities of Wauwatosa and North Milwaukee.

CHARLES B. PERRY (Rep.) was born in New Haven county, Connecticut. He attended the public schools of that state, the East Side high school of Cleveland, Ohio, graduated from the State Normal school at New Britain, Conn., attended the Yale law school for one year, and

graduated from the College of Law of the University of Wisconsin in 1886. He taught three years in the public schools of Connecticut and one year in the city of New Orleans. He has resided in the city of Wauwatosa, Wisconsin, since 1892; was its city attorney from 1895 to 1905, and its mayor for five consecutive terms from 1906 to 1916. He was elected to the Wisconsin assembly in 1910 and served in the regular and special sessions of that body for the terms following that election. He is chairman of the Metropolitan Sewerage Commission of Milwaukee county, to which position he was appointed by Governor John J. Blaine in 1921, upon nomination by the state board of health. This commission, together with the Milwaukee Sewerage Commission, have charge of the construction of sewage disposal works and intercepting sewers designed to collect and dispose of the sewage of the city of Milwaukee, all the suburban cities, and most of the towns of Milwaukee county, at an estimated cost exceeding \$15,000,000, designed to be ready for operation in 1924. Since 1894 Mr. Perry has been in the active practice of law in the city of Milwaukee, Wisconsin. He was elected to his present office by 3,295 votes against 1,404 votes for his Socialist opponent.

#### MILWAUKEE COUNTY

Seventeenth District. The towns of Lake and Oak Creek and the cities of Cudahy and South Milwaukee.

JOHN HERMAN KOCH (Rep.) was born in Germany July 24, 1864, coming to the United States with his parents in 1870, first settling near Mayville, Wisconsin, and three years later on a farm in the town of Hartland, Shawano county, Wisconsin. After attending various schools, he completed his education in 1889, when he graduated from the Lutheran School Seminary in Milwaukee. Ordained as a minister, he took charge of a church in the town of Paris, Kenosha county. In the year 1892 he was called by the Lutheran Synod of Wisconsin as a missionary and as such organized congregations in Waukegan, Illinois, South Milwaukee and Cudahy, Wisconsin. South Milwaukee soon became the only field of his labor. In 1909 he accepted a call as superintendent of the Lutheran Children's Home Finding Society of Wisconsin. Ill health made it necessary for him to retire from active pastoral work and since 1916 has made his home in the town of Lake, one block outside the Milwaukee limits. He never sought a public office, but upon request became a candidate for the assembly, being elected in 1922, receiving 1,770 votes to 1,529 for Elmer A. Krahan (Soc.) and 388 for R. J. Hopkins (Ind.).

#### MILWAUKEE COUNTY

Eighteenth District. The Eighteenth Ward of the City of Milwaukee, the Town of Milwaukee and the villages of Whitefish Bay and Shorewood.

FRANK L. PRESCOTT (Rep.) was born in the city of Milwaukee, Oct. 27, 1878. He was educated in public schools and business college. Engaged in advertising and publishing business and served in the assembly in 1915, 1920, and was returned again in 1922, receiving 4,097 votes to 1,142 for Mary R. Randolph (Dem.) and 1,020 for William J. Prang (Soc.). Politically he is a conservative republican representing one of the most conservative districts in Wisconsin.

#### MILWAUKEE COUNTY

Nineteenth District. The City of West Allis, village of West Milwaukee and the town of Greenfield.

GEORGE C. HINKLEY (Rep.) was born in Saginaw county, Mich., Aug. 13, 1862. He was educated in the public schools of Milwaukee



and high school. He was an operative flour mill man for thirty years. In 1907 he engaged in the real estate and insurance business. At that time he organized the Hinkley company and has been president of the company since its inception. He assisted in the organization of the West Allis State Bank in 1911, acted as president of that institution until 1918; remained on the board of directors and again elected to the presidency in 1923. He was elected to the assembly in November, 1922.

## MILWAUKEE COUNTY

Twentieth District. The Twentieth Ward of the City of Milwaukee.

ALBERT F. WOLLER (Soc.) has been a member of the Socialist party for fifteen years. He was born in Germany Dec. 12, 1886, and came to the United States with his parents in 1892. He received a public school education at Marengo, Illinois. He early learned the machinist trade and at present is engaged in auto repair work for the Milwaukee Western Fuel Company. He has never held public office before. He was elected to the assembly in November, 1922, receiving 3,246 votes to 2,049 for Charles Meising (Rep.).

## MONROE COUNTY

EDWARD EIRSCHLE (Rep.) was born at Clifton, Monroe county, Dec. 27, 1869. He received a common school education. His entire life has been spent as a farmer. He was treasurer of the town of Clifton for four years, town assessor thirteen years, and school clerk for four years. He was elected to the assembly in November, 1922, without opposition.

## OCONTO COUNTY

PETER ANKERSON (Rep.) was born in Germany, Jan. 21, 1874 and immigrated to Wisconsin at the age of 7 years. He was educated in the common schools of Brown county and worked as a farm hand and in the woods until 1896 when he began farming for himself, and has lived on the same farm in Oconto county since 1903. He has been a member of the Society of Equity 12 years and President of his county union the last six years, served as town clerk two years, town supervisor four years and member of the county board one year. He was elected to the assembly in 1920 without opposition and was re-elected in November, 1922, receiving 3,336 votes to 1,752 votes for Carl Riggins (Dem.).

## OUTAGAMIE COUNTY

First District. The towns of Bovina, Center, Dale, Ellington, Grand Chute and Greenville, the village of Shiocton and the city of Appleton.

CHARLES M. SCHRIMPF (Rep.) was born May 31, 1890, at Milwaukee. He received a common and graded school education and has been employed as a farmer, clerk and cigar maker. At the present time he is a cigar manufacturer. He was endorsed by the Farmer-Labor and Progressive League for assembly and defeated Mark S. Catlin in the primary. He was elected in November, 1922, without opposition.

## OUTAGAMIE COUNTY

Second District. The towns of Black Creek, Buchanan, Cicero, Deer Creek, Freedom, Hortonia, Kaukauna, Liberty, Maple Creek, Maine, Oneida, Osborne, Seymour and Vandebrook; the villages of Black Creek, Combined Locks, Kimberly, Little Chute and Hortonville; and the cities of Kaukauna, Seymour and third ward of New London.

ANTON M. MILLER (Rep.) is a farmer by profession. Born on a farm in Outagamie county, May 1, 1876, he was educated in the common

schools and then worked in the paper mills for three and one-half years after which he returned to the farm where he was born and where he has since lived. He has been a member of the Society of Equity for 14 years, president of Local Union for 8 years, County union for 2 years, but never held a public office until elected to the assembly in 1920. He was re-elected to the assembly in November, 1922, receiving 4,865 votes without opposition.

#### OZAUKEE COUNTY

FRED J. BUSSE (Rep.) was born at Chicago, Ill. He came to Wisconsin when twelve years old and lived on a farm in Fond du Lac county. He moved to Ozaukee county in 1908 and started a pure bred Holstein farm. He lived on this farm for eleven years and since that time has resided at Theinsville, Town of Mequon, Wisconsin. He has served as town chairman of Mequon and was a member of the county board of Ozaukee, 1917-1922. He was elected to the assembly in November, 1922, receiving 2,310 votes to 1,073 for Gerhard Aussen (Dem.).

#### PIERCE COUNTY

CHARLES E. HANSON (Rep.) a member of the 1917 session of the assembly, was re-elected in 1918-1920, and 1922, without opposition. He was born in Modum, Norway, Feb. 27, 1855, immigrated to Wisconsin with his parents when 11 years old and settled in Pierce county in 1871. He was educated in the public schools, and has followed farming all his life. He served for several terms as assessor of the town of River Falls, as a member of the board of directors of the Equity Elevator & Warehouse Co., River Falls.

#### POLK COUNTY

GEORGE A. NELSON (Rep.) was born in Milltown, Polk county, Nov. 15, 1873. He was educated in the common schools, worked at farming, lumbering and milling for the most part, but also at various other occupations in 38 states and Canada. He spent three years in Alaska gold mining and served as a deep water sailor and also on river steamers before returning to his farm in Polk county. He has always been foremost in the ranks of co-operation. At present he is president of the Wisconsin Co-operative Creamery Company and of the American Society of Equity. He was elected to the assembly in 1920 and was re-elected in November, 1922, without opposition.

#### PORTAGE COUNTY

BEN HALVERSON (Rep.) was born Sept. 18, 1863, in the town of New Hope, Portage county. He received a common school and Stevens Point high school education. He has been engaged in farming and has been a dealer in pumps and windmills, 1890-1902. In 1902 he was elected county treasurer of Portage county and re-elected in 1904, holding the office until Jan. 1, 1907. He then returned to the farm and has been engaged in farming since. He held the position of town chairman 1907, and is now chairman of the county state road and bridge committee holding that office for the past six years and has been chairman of the county board for three years. He is president of the New Hope Norwegian Ins. Company and has held this position for fifteen years. He was elected to the assembly in November, 1922, receiving 4,087 votes to 2,597 for James Tovey (Dem.).

#### PRICE COUNTY

ARVID B. BLOMBERG (Rep.) was born May 12, 1893, at Ogema, Wisconsin. He received a common school and high school education and at-

tended the University of Wisconsin law school in 1921 and 1922. He has been employed as a farmer and woodsman but his present occupation is that of a farmer. He was a soldier in the World war against Germany. He never before held public office. He was elected to the assembly in November, 1922, without opposition.

#### RACINE COUNTY

First District. The first, second, third, sixth, tenth, eleventh, thirteenth and fourteenth wards of the city of Racine.

W. GRANT NELSON (Rep.) was born July 4, 1869, Racine county. He received a public school education. He was elected to the assembly, receiving 4,227 votes to 1,657 votes for Wallace Ingalls (Ind. Rep.) in November, 1922.

#### RACINE COUNTY

Second District. The fourth, fifth, seventh, eighth, twelfth and fifteenth wards of the city of Racine.

JACOB STOFFEL, JR., (Rep.) was born July 2, 1861, at Racine. He received a graded school education and at Parsons Business College. For a time he was employed as a dry goods clerk but for the past 42 years has been a dry goods merchant. He has held the position of Alderman, President of the School Board and at present is Vice-President of the Park Board. For the past 28 years he has been director of the First National Bank and still holds this position. He was elected to the assembly in November, 1922, receiving 5,082 votes to 386 votes for Ernest Anheuser (Soc.).

#### RACINE COUNTY

Third District. The towns of Burlington, Caledonia, Dover, Mt. Pleasant, Norway, Raymond, Rochester, Waterford and Yorkville; the villages of Corliss, Rochester, Union Grove and Waterford; the city of Burlington and the ninth ward of the city of Racine.

JOHN H. KAMPER (Rep.) was born in Denmark, Dec. 17, 1857. He came to Wisconsin with his parents in 1866, settling in Racine, where he has ever since resided. At the age of 22 he was elected justice of the peace which office he held 14 years. For 17 years he was chairman of the town of Raymond and a member of the county board of supervisors of Racine county, holding the position for 4 years as chairman. He has held numerous other offices of trust. He is a retired farmer. He was first elected to the assembly in 1908, re-elected in 1910 and in November 1922 was again elected assemblyman, receiving 3,498 votes to 792 for E. F. Rakow (Dem.) and 131 for Julius Jacobson (Soc.).

#### RICHLAND COUNTY

ELIAS R. CUSHMAN (Rep.) is a miller by trade and spent 25 years in lumbering and merchandising, but for some time has been farming. He was born in Vernon county, August 14, 1860, and was educated in the common schools of Vernon and Richland counties. He served as president of the village of Viola, 1900 to 1903, and as a member of the Richland county board from 1909 to 1920. He was elected to the assembly in 1920, and was re-elected in November, 1922, receiving 2,527 votes to 772 for P. H. Slaney (Dem.).

#### ROCK COUNTY

First District. The towns of Center, Fulton, Harmony, Janesville, Lima, Milton, Magnolia, Porter and Union; the village of Milton; and the cities of Edgerton, Evansville and Janesville.

ALEXANDER E. MATHESON (Rep.) was born in Eagle, Wis., July 11, 1868, was educated in Beloit College and the University of Wisconsin.

sin, receiving his Ph.B. degree in 1890 and M.A. in 1893 at Beloit, and LL.B. in 1894 at Wisconsin, since which time he has practiced law in Janesville. He served as alderman, 1903-1905, and as executive member and secretary of Local Board for Division No. 1, Rock County Draft Board during the World war. He was elected to the assembly in 1920, and was re-elected in November, 1922, receiving 3,913 votes to 1,952 for Leigh J. Woodworth (Ind.).

#### ROCK COUNTY

Second District. The towns of Avon, Beloit, Bradford, Clinton, Johnson, La Prairie, Newark, Plymouth, Rock, Spring Valley, and Turtle; the villages of Clinton, Footville and Orfordville; and the city of Beloit.

H. B. MOSELEY (Rep.) was born October 14, 1874, at Beloit. He received a common school education and is at present engaged in farming. For 13 years he was county supervisor and was chairman of the county board of Rock county, 1914-1915. Since that time he has been chairman of the county and state road bridge committee. He was elected to the assembly in November, 1922, without opposition.

#### RUSK AND SAWYER COUNTIES

DAVID J. SUMMERVILLE (Rep.) was born March 22, 1875, in Carroll county, Ill., moved to Iowa with his parents in 1879 and was educated in the common schools, taught school in Iowa for three years and has since been engaged in farming. He came to Wisconsin in 1913, served as a member of the Rusk county board, 1917 to 1923, member of the Road and Bridge Committee and has served on his district school board since it was established. Is president of the Rusk County Agricultural Society. He was elected Town Chairman in 1921, while a member of Legislature receiving every vote in his town. He was elected to the assembly in 1920 and again in 1922 without opposition.

#### ST. CROIX COUNTY

ETHAN B. MINIER (Rep.) was born in Ulster, Penn, Sept. 1, 1874. He moved with his parents from Pennsylvania to Wisconsin, when thirteen years of age, settling on a farm near New Richmond. He was educated in the schools of New Richmond, taught school for two years and then graduated from the law department of the University of Minnesota in 1900. He practiced the profession for some years at Amery, but for the past ten years has been engaged in farming, near New Richmond. He never before held public office. He was elected to the assembly in November, 1922, without opposition.

#### SAUK COUNTY

DWIGHT S. WELCH (Rep.) was born on a farm in the town of Delton, Sauk county, Jan. 13, 1874. He was educated in the common schools. He has been engaged in the farming business all of his life except three years when he was in the livery and transfer business. He has been a member of the school board since 1916 and Vice-President of the Farmers' Telephone Company since 1914. He was a member of the State Central Republican Committee four years. He was elected to the assembly in November, 1922, without opposition.

#### SHAWANO COUNTY

AUGUST BEVERSDORF (Rep.) was born in Germany, Sept. 22, 1864, came to Milwaukee with his parents in 1867 where he was educated in the public schools and in 1878 moved to the town of Richmond, Sha-

wano county, when it was a wilderness. At the age of 21 he purchased a farm in Belle Plaine township which he has developed into one of the finest farms in the county. He served as town treasurer ten years, chairman twelve years, was a member of the county asylum building committee and trustee for six years. He has been President of the Shawano County Agriculture Society for the last five years, and has been school clerk of his district for 26 years. He served in the session of 1920 and 1921 and was re-elected in November, 1922, receiving 4,983 votes to 429 for William Dailey (Ind. Dem.).

#### SHEBOYGAN COUNTY

First District. The city of Sheboygan.

JACOB JUNG (Rep.) was born Jan. 11, 1857, in the city of Sheboygan. He received a Lutheran parochial and Sheboygan high school education. He learned the carriage and wagon makers trade and worked 14 years at the bench. He then bought out his father's business, and operated it for 30 years as the Jung Carriage Company. In 1888 he branched out in the mercantile business and became one of the founders of the J. and W. Jung Company operating a department store in which he is at present engaged with two of his sons. He has never before held public office. He was elected to the assembly in November, 1922, receiving 3,747 votes to 2,173 votes for Ernest Kreuter (Soc.).

#### SHEBOYGAN COUNTY

Second District. All the towns, cities and villages of the county except the city of Sheboygan.

HENRY OTT (Rep.) was a progressive member of the assembly in 1913 and was returned as such in 1920 after an absence of eight years. Born in Cedar Grove, March 6, 1865, he was educated in the rural schools and Plymouth high school, took up dairy farming and has long been a leader in that great industry in his county. He served as town clerk 11 years, chairman six years, secretary Plymouth Farmers Fire Insurance Association 12 years, and director of the State Bank of Plymouth since 1917. He was elected to the assembly in 1920 and was re-elected in November, 1922, receiving 3,608 votes to 535 for James Mooney, Jr., (Ind. Dem.).

#### TAYLOR COUNTY

JOHN GAMPER (Rep.) holds the unique record of having served his county in the assembly both as a democrat and republican. He was first elected to the assembly in 1914 as a democrat but was nominated and elected as a republican in 1916 and again in 1920 and 1922. Mr. Gamper was born in 1860 in Chur, Switzerland, and was educated in the common and high school, normal and University of Zurich. He came to America in 1883 to join the editorial staff of a German newspaper in St. Louis but did not like the city life and came to Wisconsin, working on a farm in Sauk county and that fall went to Medford where he has since resided. He owns a fine farm and specializes in raising pure bred Holstein cattle. He was re-elected to the assembly in November, 1922, receiving 2,532 votes to 282 for D. J. Smith (Ind.).

#### TREMPEALEAU COUNTY

GEORGE SCHMIDT (Rep.) was born in Switzerland, June 26, 1857, and came to the United States with his parents, settling in Buffalo county, Wisconsin, May, 1867. He attended the common school and Fountain city graded schools, also the Galesville University now Gale

College. He taught school in the district and graded school for 11 years, working on the farm during the vacation time. He was elected to the office of county superintendent of schools of Buffalo county in the fall of 1886 and continued in that office until 1895. In the fall of 1895 he purchased a farm in the town of Arcadia, Trempealeau county, which he managed for 9 years when he removed to a smaller farm near the village of Arcadia where he still resides. He has held various minor offices, town clerk, town treasurer and chairman of the town board in 1920 and was elected supervisor of assessment which office he held for 6 years declining re-election. He was appointed assessor of incomes for district 28 comprising Buffalo, Pepin and Trempealeau counties in 1912 when that office was created and continued in same to January, 1923. He was nominated and elected to the assembly without opposition.

#### VERNON COUNTY

A. E. SMITH (Prog. Rep.) was born August 27, 1879, at Berlin, Wisconsin. He graduated from the University of Wisconsin, receiving the B.L. degree in 1901. He was an instructor in the Viroqua high school in 1902-1906; principal Cashton high school 1906-1907; principal Vernon County Training School 1907-1920. He is now engaged in the general insurance business at Viroqua. He was elected mayor of the city of Viroqua in 1921 and was elected assemblyman in November, 1922, without opposition.

#### WALWORTH COUNTY

FRANK E. LAWSON (Rep.) was born August 9, 1868, at Delavan, Wisconsin. He received his education in the district school at Walworth and Sharon, Wisconsin high school. He lived on a farm until 1907 and has been cashier of the Walworth State Bank of Walworth, Wisconsin, since that time. He was town clerk of the town of Walworth from 1901 to 1907, and was president of the Walworth County Agricultural Society in 1909, and has been president of the Walworth Village Board since 1917. He was chairman of the Liberty Loan drives for the town of Walworth during the World war. He was elected to the assembly in November, 1922, receiving 3,372 votes to 512 for Duncan McFarlane (Ind. Dem.) and 297 for Henry H. Tubbs (Pro.).

#### WASHINGTON COUNTY

ALFRED G. BECKER (Rep.) a member of the assembly committee on public welfare, 1919, chairman of Engrossed Bills and Labor, 1921; was born on a farm in the town of Addison, Washington county, August 24, 1887. He was educated in the district and parochial school and the Hartford high school and after teaching four years in Washington county engaged in dairy farming and the breeding of pure bred Holstein cattle. He served as chairman of his town for four years and was elected to the assembly in 1918, and re-elected in 1920. He was re-elected to the assembly in 1922, receiving 2,881 votes to 1,434 for Jacob W. Wolf (Dem.) and 989 for Wm. S. Olwein (Ind. Rep.).

#### WAUKESHA COUNTY

First District. The towns of Eagle, Genesee, Mukwonago, Muskego, New Berlin, Ottawa, Vernon and Waukesha; the villages of Dousman, Eagle, Mukwonago and North Prairie, and the city of Waukesha.

WILLIAM A. FREEHOFF (Rep.) is a son of Henry Freehoff who served in the assembly during the 1915 and 1917 sessions. Born in the town of Greenfield, La Crosse county, Dec. 27, 1889, he was educated in the common schools, the La Crosse high school and the University of

Wisconsin. He was actively engaged in farming until two years ago when he retired from the farm to devote his entire time to writing for the agricultural press of the country, in which profession he has been singularly successful. He never held office until elected to the assembly in 1920. He was re-elected in November, 1922, receiving 3,205 votes to 832 for Albert Federer (Ind. Dem.).

#### WAUKESHA COUNTY

Second District. The towns of Brookfield, Delafield, Lisbon, Menomonee, Merton, Oconomowoc, Pewaukee and Summit; the villages of Hartland, Menomonee Falls, New Butler and Pewaukee; and the city of Oconomowoc.

HOMER R. DOPP (Rep.) was born at Oconomowoc, November 25, 1875. He graduated from the University of Wisconsin in 1902 with the degree of Bachelor of Science. He taught high school for two years and is at present engaged in farming. He was elected to the assembly in 1922 receiving 3,267 votes to 1,020 for Judson Hall (Ind. Dem.).

#### WAUPACA COUNTY

GEORGE W. MEGGERS (Rep.) was born May 15th, 1888, at the town of Larrabee, Waupaca county. He received his education in the Clintonville public school, and is at present engaged in farming. He is a member of the county board of Waupaca county and a member of the common council of the city of Clintonville at the present time. He won out as an Independent candidate. He received 3,667 votes as an Independent La Follette Progressive candidate for the assembly to 3,125 votes for Lila Matteson (Rep.).

#### WINNEBAGO COUNTY

First District. The city of Oshkosh.

CHARLES RAHR (Rep.) was born Dec. 17, 1865, at Oshkosh, Wisconsin. He received a graded school education and for many years was proprietor of the Rahr Brewing Company. He is now retired. He never before held public office. He was elected to the assembly in November, 1922, without opposition.

#### WINNEBAGO COUNTY

Second District. All the towns, villages and cities of the county except the city of Oshkosh.

GEORGE H. JONES (Rep.) was born on a farm in the town of Algoma, Winnebago county, July 13, 1859. He was educated in the district school, Oshkosh Normal and business college, and successfully conducted a farm in the town of Algoma until April, 1920, when he retired. He has been town clerk since April, 1893; president of the Nekimi Mutual Farmers' Insurance Co., 15 years; director of the Winnebago County Fair Association, 10 years; treasurer Plymouth Congregational Church, Oshkosh, 5 years; holding all of these positions at the present time. He was elected to the assembly in 1920, and was re-elected in November, 1922, without opposition.

#### WOOD COUNTY

ELWYN E. ROYCE (Rep.) was born at Watertown, N. Y., March 18, 1868. He was educated in the public schools of New York state, Union Academy, Belleville, N. Y., and one year in the Plymouth, Wisconsin, high school. He is a progressive Republican. He is now engaged in

farming near Marshfield, Wood county. He was elected to the assembly in November, 1922, receiving 6,099 to 415 for H. Siebenhaar (Ind. Soc.).

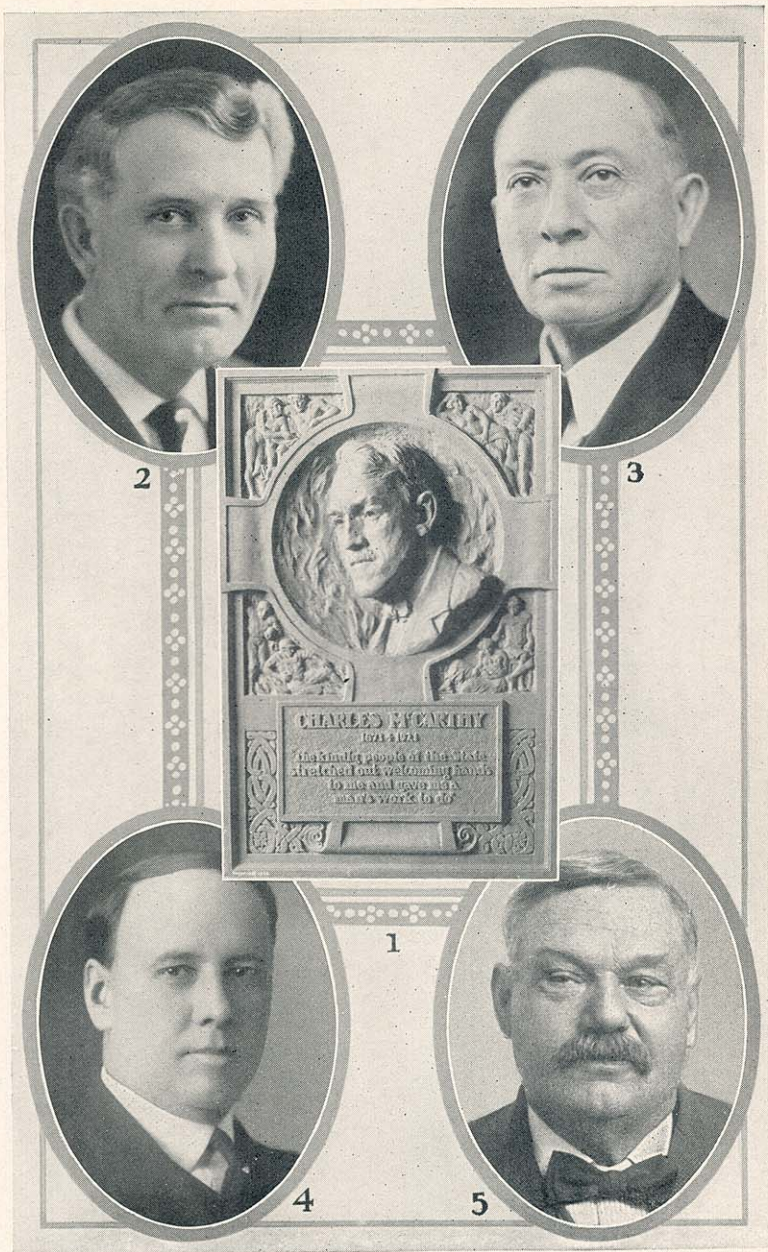
#### CHIEF CLERK

C. E. SHAFFER (Rep.) has been chief clerk of the assembly at every session since 1907, being re-elected time and again without opposition. He was born on a farm in Dane county where he worked until he became of age, except during the time spent in school. He was educated in the common schools, business college and private academy, after which he taught in the district and graded schools. He was instructor for a time in mathematics and bookkeeping in the Capital City Commercial College, since which time he has been engaged in the real estate and insurance business. He has taken an active part in politics, having served three terms as secretary on the Dane County Republican Committee.

#### SERGEANT AT ARMS

THOMAS W. BARTINGALE (Rep.) was born in Ely, England, June 24, 1851, came to Wisconsin as a youth, was educated in the common schools of Chippewa and Eau Claire counties and from 1875 as long as the pine lasted worked in the pinneries and as log driver, then took up farming. He served as town clerk, town chairman, clerk of co-operative creamery for several years, was elected to the assembly in 1912, and re-elected in 1918 and 1920 without opposition. He served as organizer for the American Society of Equity and in 1919-20 in clearing land with the use of T. N. T. He was elected Sergeant at Arms at the opening of the 1923 session.





OFFICIALS OF LEGISLATURE

(1) Medallion to late Dr. Charles McCarthy, (2) F. W. Schoenfeld, Chief Clerk of the Senate, (3) C. A. Leicht, Sergeant-at-arms of the Senate, (4) C. E. Shaffer, Chief Clerk of the Assembly (5) T. W. Bartingale, Sergeant-at-arms of the Assembly.

