

BIOGRAPHICAL SKETCHES

STATE OFFICERS

GOVERNOR

JOHN J. BLAINE (Rep.), was born May 4, 1875, on a farm in the town of Wingville, Grant County, Wisconsin; attended common school and was graduated from Montfort high school, Montfort, Wisconsin; afterwards attended Northern Indiana University at Valparaiso, Indiana, and was graduated from the law department thereof on June 3, 1896. He practiced law in Montfort, Wisconsin, one year, after which he removed to Boscobel, Wisconsin, where he has since practiced law. He served as mayor of Boscobel four terms and member of county board of supervisors of Grant county four years. He was elected to the state senate in 1908 and served in the sessions for 1909 and 1911, but was not a candidate for reelection. In 1912 he was alternate delegate to the Republican National Convention at Chicago, and in 1916 a delegate to the Republican National Convention at Chicago. In 1918 he was elected Attorney General. In 1920 he was elected a delegate at large to the Republican National Convention at Chicago, and at the November election 1920 he was elected to the office of Governor on the Republican ticket, receiving 366,247 votes, against 247,746 votes for Robert McCoy (Dem.), 6,047 for Henry H. Tubbs and 71,126 for William Coleman.

LIEUTENANT GOVERNOR

GEORGE F. COMINGS is a native of the old Green Mountain State, Vermont. He was born in Orleans County March 18, 1848 of New England Pilgrim Stock. His paternal ancestor, Isaac Comings, came to Massachusetts Colony in 1625. His mother's name was Mary Huntington whose ancestors came to Norwich, Connecticut a few years later. One of the family Samuel Huntington, representing the Colony of Connecticut, signed the Declaration of Independence. This fine old Revolutionary Ancestry no doubt accounts in part at least for Mr. Comings' devotion to the high ideals of Americanism for which his ancestors fought against British tyranny. He was educated in the common schools of his native state, supplemented by a few terms in select schools and several terms in Barre Academy where he prepared for college.

In 1870, with his father's family he moved to St. Joseph, Michigan, where the next thirty years of his life were spent. Here he engaged in the fruit growing business and became one of the largest and best known growers in the state.

In 1901 he removed to Eau Claire, Wisconsin and entered the business of dairying and the breeding of Holstein cattle. From 1909 to 1919 he was a worker in the farm institutes and has a state wide acquaintance as a lec-

turer for the Equity Society. He served four years as a member of the State Board of Agriculture, having been appointed by Governor McGovern. He also served on the Committee of Thirteen appointed by State Superintendent Cary to study the rural schools and suggest ways and means for their improvement. During the past three years he has been a member of the State Board for Vocational Education having been appointed by Governor Philipp.

Since arriving at his majority he has been actively identified with all the great progressive movements of the country; favoring and supporting prohibition, equal suffrage, public ownership of public utilities, the initiative and referendum, the taxation of land values, and during all his life he has been an active supporter of farmers clubs and other organizations for the improvement of rural conditions.

SECRETARY OF STATE

ELMER S. HALL was born September 17, 1866, at New London, Wau-paca County, Wisconsin. In January, 1867, he moved with his parents to Green Bay, where he has since resided. He attended the common schools until he was fifteen years of age, after which he worked for a short time at the printing trade and as clerk in the postoffice. He served for fourteen years as railroad accountant and auditor, then returned to the mail service where he spent the next eight years. He was elected County Clerk of Brown County in 1904, in which capacity he served until April 16, 1916, being elected three terms without opposition. He resigned as county clerk to become commission mayor of the city of Green Bay, which office he held until January 3, 1921, when he assumed his duties as Secretary of State, to which office he was elected by a vote of 436,221 against 122,065 for W. V. Silverthorne (Dem). While County Clerk of Brown County he also served as secretary of the Green Bay Commercial Club for nine years and director and president of the Brown County Fair Association for five years. In 1920 he was a delegate to the National Convention held in Chicago. He has been an active Progressive Republican for the past twenty-five years.

STATE TREASURER

HENRY JOHNSON, now serving his fourth consecutive term as State Treasurer, has been a public servant for the last 40 years. Born in Denmark, he attended the common schools in that country and emigrated to Wisconsin in 1873, at the age of 19 years, arriving in Oshkosh without a cent on May 16. He immediately went to work on a farm at \$7 per month in the summer, but worked for his board in the winter while attending school. He then went to Shawano where he worked until 1879 when he was married and settled in Oconto county where he cleared and cultivated a large farm, engaged in the lumber business and built a warehouse at Suring. His first public office was as treasurer of his school district, then as justice of the peace, town assessor, treasurer and chairman. He was elected to the assembly in 1900, 1902, and 1904, was assistant State Treasurer for six years under Andrew Dahl and succeeded him in office, being elected in 1912 and was re-elected in 1914, 1916, 1918 and 1920.

ATTORNEY-GENERAL

WILLIAM J. MORGAN was born on a farm in Charlestown, Calumet County, December 13, 1883; attended district schools in Calumet, Clark and Manitowoc counties. After graduating from high school at Manitowoc he

taught the district school at Valders, Wis., which both he and his father had attended. His vacations were spent as a railroad section-hand and quarry laborer. After attending the University of Wisconsin he became a traveling salesman. He graduated from the Law Department of the University of Michigan in 1908. In September, 1908, after being admitted to the Wisconsin bar, he entered the law office of Nathan Glicksman, then one of the Board of Bar Examiners. In 1910 he opened his own law office in Milwaukee, and in 1914 became a member of the firm of Saltzstein, Morgan & Breidenbach, in which he continued until the firm was dissolved when Otto H. Breidenbach was elected Judge. In 1918 he joined the firm of Frank M. Hoyt and Guy D. Goff, which has since been known as Hoyt, Goff & Morgan. Mr. Morgan was never before a candidate for State office, but he has always been actively interested in civic and state affairs and the welfare of the Republican Party. He opened his campaign for the Republican nomination for Attorney-General on August 5, 1920 and at the primary election on September 7th following, defeated Adolph Kanneberg, his opponent, who was endorsed by Senator La Follette and the Nonpartisan League, Mr. Morgan's vote being the largest vote cast for any candidate in the Republican primary. He was elected Attorney-General by a majority of 207,549 over his Democratic opponent.

STATE SUPERINTENDENT PUBLIC INSTRUCTION

JOHN CALLAHAN, who was elected State Superintendent at the election, held April 5th, 1921, by a total vote of 207,521 to his opponent's, C. P. Cary vote of 177,582 was born in Westchester county, New York, December 16, 1866, and came to Wisconsin with his parents in 1869, making his home at Prescott, Pierce county. He has had over thirty years experience in Wisconsin public schools and for twenty-seven years had held the life certificate. For three years he was with the Pierce county schools, eight years Supervisory Principal at Glenwood city, three years at New Richmond, and Superintendent of Schools at Menasha for seventeen years. For the past three years he has been State Director of Vocational Education. He was conductor of the Teachers Institutes, president of the Northwest Teachers Association 1900, president of the Northeast Teachers Association 1908, president of the State Teachers Association 1913, and for the past twelve years has been a member of the Teachers Legislative Committee. He has made a specialty of rural and graded school work and has an exceptional familiarity with the entire school system of the state. He assumes the duties of his office as State Superintendent of Public Instruction July 1, 1921.

JUSTICES OF SUPREME COURT

ROBERT G. SIEBECKER, is the oldest member of the Supreme Court in point of service, having been a member since April 9, 1903. He was born in Sauk county, Oct. 17, 1854, attended the district school until he was 17 and then a private academy in Madison for two years, entered the University of Wisconsin in 1874 and was graduated in 1878. He then entered the law school and was graduated in 1880 although he had been admitted to the bar upon examination in 1879 and immediately began to practice in Madison. He was elected city attorney of Madison in 1886 and served until January 1890 when he was appointed as judge of the Ninth judicial circuit. In April he was elected for the unexpired term and for the ensuing full term and was twice re-elected without opposition. He was elected a

justice of the Supreme court April 7, 1903, for the term beginning Jan. 1, 1904, and on April 9 was appointed for the unexpired term caused by the death of Justice C. V. Bardeen. He was re-elected in 1913 without opposition, and on July 13, 1920 succeeded to the chief justiceship, owing to the death of Chief Justice J. B. Winslow.

AAD JOHN VINJE came to Wisconsin in his youth and by hard work, close study and an ambition, gradually worked himself up to a position on the bench in the highest tribunal of the state. Born in Norway, Nov. 10, 1857, he came to America with his parents when a lad of 12, the family settling in Marshall county, Iowa. He attended the public schools, Iowa College at Grinnell in the winter of 1873-74, Northwestern University of Iowa, Des Moines 1874-75; taught school three years and entered the University of Wisconsin in 1878, graduating from the literary department in 1884 and the law school in 1887. While attending college he served as assistant in the state library 1884 to 1888; assistant to the Supreme Court reporter 1888 to 1891; practiced law in Superior 1891 to 1895; was appointed judge of the Eleventh judicial circuit Aug. 10, 1895, was re-elected and held the office until Sept. 10, 1910, when he was appointed associate justice of the Supreme court to fill the unexpired term of Justice J. E. Dodge, resigned. In 1911 he was re-elected for the full term which expires in January 1922. In 1921 he was again re-elected without opposition for the full term ending January 1932.

MARVIN B. ROSENBERRY was appointed associate Justice of the Supreme Court February 12, 1916, to succeed the late Justice John Barnes, resigned. Two years later, in April 1918, he was elected for the residue of the term by the largest majority ever given a sitting justice and one year later, April, 1919, was re-elected for the regular term ending Jan. 1930, by a still larger majority. He was born Feb. 12, 1868, at River Styx, Medina county, Ohio, but his parents moved to Fulton, Kalamazoo county, Michigan, eight months later, and he was raised on the farm, attending the common schools until he was 16. He attended the Michigan State Normal at Ypsilanti for three years, teaching in the meantime to defray his expenses. Later he became a student of law in the office of Silverthorn, Hurley, Ryan & Jones, in Wausau, where he remained for a year and one-half and then entered the law department of the University of Michigan, at Ann Arbor, where he was graduated in 1893 and returning to Wausau began to practice. On January 1, 1895 he became a member of the law firm of Bump, Kreutzer & Rosenberry, which six years later became Kreutzer, Bird & Rosenberry. He was united in marriage, Sept. 2, 1897, to Miss Kate Landfair, at Leslie, Mich., who died Jan. 26, 1917, leaving two children, Katherine and Samuel. On June 24, 1918, Justice Rosenberry was married to Mrs. Lois Matthews, of Madison, dean of women of the University of Wisconsin.

FRANZ C. ESCHWEILER born at Houghton, Michigan, Sept. 6, 1863, received his early education in the schools of that city, later attending Iowa and Michigan state universities. Served in the railway mail service, studying law at the same time and was admitted to the bar in Milwaukee in 1889 and practiced law in that city until 1910 when he was elected judge of the circuit court, and in April 1916 was elected Associate Justice to succeed Hon. W. H. Timlin, deceased. He married Miss Ida C. Kindt of Milwaukee in 1893 and is the father of three children.

WALTER C. OWEN was advanced to the Supreme court from the office of Attorney General, which he held for five years. He was born on a farm in the town of Trenton, Pierce county, Sept. 26, 1868; educated in the common and high schools of Pierce county, and graduated from the law department, University of Wisconsin with the class of 1891. He immediately began the practice of law in Superior, where he re-

mained seven years and then removed to Maiden Rock where he continued to practice until elected attorney-general. He was elected to the senate in 1907 without opposition to succeed James A. Frear and was re-elected for a full term in 1908, again without opposition. He was elected attorney-general in 1912 and re-elected in 1914 and 1916, and was elected Associate Justice of the Supreme Court in 1917.

BURR W. JONES was born in the town of Union near Evansville, Rock County, Wisconsin, March 9, 1846.

He lived and worked on a farm until about eighteen years of age, prepared for college at Evansville Seminary, graduated at the State University in 1870 and from the Law School in 1871.

After practicing his profession for a few months in Portage he removed to Madison, where he has lived and practised law until September 1920.

He was District Attorney for Dane County four years, 1873-1877, and was a member of the 48th Congress. He was chairman of the Democratic State Convention in 1892, and of the first State Tax Commission 1897-8. For thirty years 1885-1915 he was professor in the Wisconsin University Law School and in 1916 there was conferred upon him by the University the degree of LL.D. For some time he was chairman of the Dane County Bar Association and was president of the State Bar Association in 1908. He is the author of a treatise on the law of Evidence published in 1896 followed by several editions.

He was appointed Associate Justice of the Supreme Court by Gov. Emanuel L. Philipp Sept. 3, 1920.

CHRISTIAN DOERFLER was born in Milwaukee March 2, 1862. His father, a pioneer tanner, settled in Milwaukee in 1846 and conducted a tannery on the site of the South Side Library.

Mr. Doerfler attended graded and high school and was graduated from the Milwaukee Normal school in 1880. He then taught in the Sixth ward public school for three years. From 1883 to 1885, he studied law and has practiced law in Milwaukee continuously since, with the exception of seven years during which he was ill. He was assistant district attorney from 1889 to 1891; school commissioner from 1889 to 1891, and member of the commission to appoint school directors from 1896 to 1900; district delegate to the Republican National Convention in 1912; delegate-at-large in 1916 and alternate delegate-at-large in 1920. He was president of the Milwaukee County Bar association in 1912, and president of the Wisconsin Bar association in 1915. He is married, has one son, Frederic

MEMBERS OF SIXTY-SEVENTH CONGRESS

SENATORS

ROBERT MARION LA FOLLETTE, senior United States senator, has held a public office during 31 of the last 41 years. He was born at Primrose, Dane county, June 14, 1855; was graduated from the University of Wisconsin with the class of 1879; admitted to the bar in February 1880 and that fall was elected district attorney of Dane county and was re-elected in 1882. In 1884 he was elected to the 49th congress and was re-elected in 1886 and 1888 but defeated in 1890. Was elected governor of Wisconsin in 1900 and re-elected in 1902 and 1904, but resigned January 1, 1906, to succeed J. V. Quarles as United States Senator and was re-elected in 1911 and 1916. His present term expires in 1923. He was elected a district delegate to the national republican convention in 1896 and delegate-at-large to the convention in 1904. He was twice a candidate for the republican nomination for president.

IRVINE LUTHER LENROOT was elected to the United States senate at a special election, April 2, 1918, to fill the unexpired term of the late Senator Paul Husting, which expired in 1921, and was re-elected in 1920 for the regular term which expires in 1927. Senator Lenroot was born at Superior, January 31, 1869. He received a common school education, studied stenography and became a court reporter, studied law and was admitted to the bar in 1897. He was elected to the assembly in 1900-02-04 and served as speaker during the sessions of 1903-05. In 1908 he was elected to the 61st congress and was re-elected in 1910-12-14-16, resigning in April, 1918, to accept the office of junior United States senator.

REPRESENTATIVES

FIRST CONGRESSIONAL DISTRICT

Kenosha, Racine, Rock, Walworth and Waukesha counties.

HENRY ALLEN COOPER (Rep.) of Racine, was born at Spring Prairie, Walworth county, Sept. 8, 1850; graduated from Northwestern University in 1873, and from Union College of Law, Chicago (Now Law School of Northwestern university) in 1875, is by profession a lawyer; resided in Chicago from 1873 to 1879; otherwise has always lived in Wisconsin; in 1880 was elected district attorney of Racine county, and re-elected without opposition in 1882 and 1884; state senator in 1886. He was author of the law which first established the Australian ballot system in Wisconsin. He was elected representative in congress in 1892-94-96-98, 1900-02-04-06-08-10-12-14-16-20.

SECOND CONGRESSIONAL DISTRICT

Jefferson, Columbia, Dodge, Washington, Ozaukee and Sheboygan counties.

EDWARD VOIGT (Rep.) of Sheboygan, was born in Bremen, Germany, Dec. 1, 1873. He came to Milwaukee with his parents in 1884, when 11 years of age, attended the public schools, worked in law and insurance offices for a few years and entered the Law College, University of Wisconsin 1896, graduating in 1899. He immediately engaged in the practice of law in Sheboygan, served as district attorney of Sheboygan county 1905 to 1911 and city attorney of Sheboygan 1913 to 1917. He was chosen in convention as the Republican candidate for congress in 1914, two weeks before election, following the sudden death of the Republican nominee, but was defeated. He was elected to the Sixty-fifth congress in 1916 and reelected in 1918 and 1920 defeating Harry Bolens (Dem.) and Jac. F. Miller (Soc.).

THIRD CONGRESSIONAL DISTRICT

Crawford, Dane, Grant, Green, Iowa, LaFayette, and Richland counties.

JOHN MANDT NELSON (Rep.) of Madison, was born in the town of Burke, Dane county, Oct. 10, 1870; received a collegiate education, being graduated from the university of Wisconsin in 1892, and from its law department in 1896; pursued post-graduate studies at the state university, 1901-03. He was married in 1891 to Thea Johanna Stondall; they have six children. He was elected school superintendent of Dane county in 1892 and re-elected in 1894; resigned to become book-keeper in the office of the secretary of state 1894-97; correspondent in the state treasury 1898-02; elected to the 59th congress in Sept. 1906 to fill a vacancy, and was re-elected to the 60th, 61st, 62nd, 63rd, 64th, 65th and 67th congresses.

FOURTH CONGRESSIONAL DISTRICT

The 3rd, 4th, 5th, 8th, 11th, 12th, 14th, 16th, 17th, 23rd and 24th Wards city of Milwaukee, towns of Wauwatosa, Greenfield, Franklin, Oak Creek and Lake, the village of West Milwaukee and cities of West Allis, Wauwatosa, South Milwaukee and Cudahy, all in Milwaukee County.

JOHN C. KLECZKA (Rep.) was born in Milwaukee May 6th, 1885. He graduated from Marquette University at Milwaukee from which institution he received the degrees of A.B.; A.M. and LL.B. He also took post-graduate courses at University of Wisconsin and the Catholic University of America at Washington, D. C. He has been engaged in the active practice of law since 1909. He was elected State Senator from the Eighth Senatorial District in 1908 and in 1912 was elected delegate to the National Republican Convention. In 1914 he was appointed Court Commissioner of the Circuit Courts in Milwaukee. In 1918 he was drafted by a non-partisan committee of citizens of Milwaukee to become a candidate for the Republican nomination for Congress, secured the nomination in the primary was elected in November 1918 and re-elected in 1920.

FIFTH CONGRESSIONAL DISTRICT

The 1st, 2nd, 6th, 7th, 9th, 10th, 13th, 15th, 18th, 19th, 20th, 21st, 22nd and 25th wards, city of Milwaukee, the towns of Granville and Milwaukee, and the villages of North Milwaukee, east Milwaukee and Whitefish Bay, all in Milwaukee county.

WILLIAM H. STAFFORD (Rep.) of Milwaukee, attended the public schools and later Harvard college and Harvard Law school, from which he was graduated. Practiced law at Milwaukee. Elected to the 58th, 59th, 60th, 61st, 63rd, 64th, 65th and 67th congresses. Defeated Victor L. Berger, socialist, in the elections of 1904, 1912, 1914, 1916 and 1920, and was defeated by him in 1918.

SIXTH CONGRESSIONAL DISTRICT

Calumet, Fond du Lac, Green Lake, Manitowoc, Marquette and Winnebago counties.

FLORIAN LAMPERT (Rep.) was elected a member of the 65th and 66th congresses at the same time in Nov. 1918, being chosen to succeed James H. Davidson (deceased) and at the same time being elected for the regular term. He was re-elected in 1920 for the 67th congress. He was born July 8, 1863, in West Bend, and was educated in the public school and then engaged in merchantile business in Oshkosh. He was sheriff of Winnebago county in 1897-98, comptroller of the city of Oshkosh 1893-96, and was commissioner of the city 1914-18. He was married May 4, 1885 to Mary C. Vetter, to whom seven children were born, five sons and two daughters. All of the sons served their country in the world war, the eldest, Lt-Col. J. G. B. Lampert, died in France, Jan. 6, 1919.

SEVENTH CONGRESSIONAL DISTRICT

Adams, Clark, Jackson, Juneau, LaCrosse, Monroe, Sauk, and Vernon counties.

JOSEPH D. BECK (Rep.) of Viroqua, was born near Bloomingdale, Wis., March 14, 1866. He was graduated from the Stevens Point Normal school in 1897 and from the University of Wisconsin in 1903; was Commissioner of Labor and Industrial Statistics of Wisconsin 1903-11; member of the Wisconsin Industrial Commission 1911-17, and was its chairman 1916-1917. President of the International Association of Bureau of Labor Officials 1907-09. He is a farmer by profession. He was elected to 67th congress in 1920 after defeating John J. Esch for the nomination in the primaries, receiving 37,000 to 9,000 for his opponent.

EIGHTH CONGRESSIONAL DISTRICT

Marathon, Portage, Waupaca, Waushara, Wood and Shawano counties.

EDWARD EVERTS BROWNE (Rep.) is serving his fifth consecutive term in congress. He was born Feb. 16, 1868 in Waupaca, attended the public schools, graduated from the Waupaca high school in 1886, University of Wisconsin 1890 and University Law college in 1892 and took up the practice of law in Waupaca. He was district attorney of Waupaca county three terms, state senator six years, and regent of the University of Wisconsin. He was married to Rose Cleveland in 1892 and has four children. The eldest graduated from her father's Alma Mater in 1917, one in 1919 and another a Junior there, while the youngest is in the Western High school, Washington. Mr. Browne was elected to congress in 1912 and re-elected in 1914, 1916, 1918 and 1920.

NINTH CONGRESSIONAL DISTRICT

Langlade, Forest, Florence, Marinette, Oconto, Outagamie, Brown, Ke-waunee and Door counties.

DAVID G. CLASSON (Rep.) was born in the town of Oconto, Oconto county, Sept. 27, 1870. He was graduated from the Oconto high school in 1887 and the Law College, University of Wisconsin in 1891 and is senior member of the law firm of Classon & O'Kelliher. He was county judge of Oconto county 1894 to 1898; mayor of Oconto two terms, 1898 to 1900; city attorney 1900 to 1906; president of the Board of Education 1912-13; President of the Fire and Police Commission 1915-16. He was married in 1899 to Miss Myrtie L. Orr and has four children. He was elected to congress in 1916 and re-elected by an increased majority in 1918 and 1920.

TENTH CONGRESSIONAL DISTRICT

Dunn, Barron, Chippewa, Eau Claire, Trempealeau, Buffalo, Pepin, Pierce and St. Croix counties.

JAMES A. FREAR (Rep.) of Hudson, Wisconsin, was born in that city; graduated National Law University, Washington, D. C.; appointed district attorney St. Croix County in 1896, and elected thereafter for three terms; Wisconsin Assembly 1902; State Senate 1904; Secretary of State three terms; elected to Sixty-third and all subsequent Congresses, and renominated and re-elected to Sixty-seventh Congress without opposition by 44,658 votes.

ELEVENTH CONGRESSIONAL DISTRICT

Douglas, Bayfield, Ashland, Iron, Vilas, Burnett, Polk, Washburn, Sawyer, Rusk, Price, Taylor, Oneida and Lincoln counties.

ADOLPHUS P. NELSON, Republican, of Grantsburg, Wis., was born on a farm near Alexandria, Minn., March 28, 1872, of Swedish parents. Graduated from the Alexandria High School in 1892; worked his way through college and graduated from Hamline University, receiving degree of A.B. in 1897; has been a resident of Wisconsin for 23 years; has been a regent of the University of Wisconsin for 13 years, 4 years vice president and twice president of the board. June, 1919, the trustees and faculty of Upper Iowa University conferred upon him the honorary degree of LL.D. Has been vice president and still is a member of the board of trustees of Hamline University, his alma mater; president of the First Bank of Grantsburg, Grantsburg, Wis., and Burnett County State Bank, Webster, Wis.; and associate director of the Old Line Life Insurance Co. of Milwaukee, Wis.; was president of the General Conference Laymen's Association of the Methodist Episcopal Church, for the last quadrennium, and has been delegate to the general conference of the Methodist Episcopal church for the years 1904, 1908, 1912, 1916, and 1920. Has been chairman of the Burnett County council of defense; mayor of his town; president for eight years of the local school board; was married to Lulu E. Strang August 4, 1897; was elected to the Sixty-fifth Congress for the unexpired term of Hon. I. L. Lenroot, and to the Sixty-sixth Congress by a vote of 16,413 to 2,976 for his opponent, John P. Jensen, Socialist. Had no opposition for the unexpired term of the Sixty-fifth Congress; was reelected to the Sixty-seventh Congress at the general election held November 2, 1920, by a vote of 38,057 to 6,524 for his opponent, John P. Jensen, Socialist.

MEMBERS OF SENATE

FIRST SENATORIAL DISTRICT

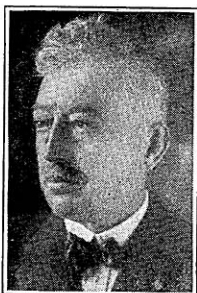
Door, Kewaunee and Marinette counties.



HERBERT L. PETERSON (Rep.) is a farmer, merchant, manufacturer and banker. Born on a farm in Door county, May 16, 1876, he was educated in the public schools, then took a "job" as delivery boy and clerk in a general store in Sturgeon Bay where he acquired the training which later made him senior partner in a large general store, which interest he still holds. In 1902 he engaged in the banking business, but continued to live on the farm until 1917. He still owns and manages two farms, is president of the Door County State bank, president of the Marinette Hoop & Stave Co., and treasurer of the Universal Shipbuilding Co., which he was instrumental in organizing. He was chairman of the county Republican committee six years and presidential elector in 1908. He was nominated in the district in the primary election in 1918 and was then elected without opposition.

SECOND SENATORIAL DISTRICT

Brown and Oconto counties.



TIMOTHY BURKE (Rep.) is the only lawyer in Wisconsin who ever held the office of sheriff, having served his county from 1901 to 1903. Born in the town of Morrison, Brown county, Feb. 2, 1866, he received a common school education, mastered the usual collegiate subjects himself and attended the Law College, University of Wisconsin in 1897-1898. He has represented both districts of Brown county in the assembly, the second district in 1895 and first district in 1907, and was elected to the senate in 1908, 1912, 1916 and 1920, being president in the 1917 and 1921 sessions. He enlisted as a private in 2nd Sep. Co. later in Co. G, Ninth infantry, Wisconsin State Guard, Aug. 2, 1917 and March 23, 1918 was promoted to major and assigned to the Judge Advocate department as ranking officer. Nov. 24, 1920 he was commissioned Major Judge Advocate General in the Wisconsin National Guard. He was chairman of the Brown county Republican committee from 1904 to 1912. Is Vice President of the State Bank of Suamico, Suamico, Wis., and President of the Calumet

Co. Bank of Brillion, Wis., was the first to recommend that the Election Machinery of the state be used for registering men under the "Selective Draft Act," during the late war. This recommendation was suggested to the Secretary of War by Gov. Philipp and was adopted as the policy of the nation. In the 1920 election he received 12,997 votes to 2,899 for John B. Eberhard (Soc.)

THIRD SENATORIAL DISTRICT

Racine and Kenosha counties.

GEORGE L. BUCK (Rep.) was born on a farm in Shaftsbury, Vermont, and attended the country schools until 14 years of age, then entered the North Bennington high school and later graduated from the Fort Edward Collegiate Institute. He taught school several years in Vermont and in Racine county, was appointed railway mail clerk in 1891 and later promoted to post-office inspector. In 1903 he resigned to engage in the manufacturing business which has grown from a small plant to the present Racine Iron & Wire works of which he is president and treasurer. He is also vice-president and director of the American Trades & Savings bank and The Bank of Franksville, president and director of the Racine Building & Loan Association, chairman of the trustees of the First M. E. church and member of several fraternities and other organizations working on the problems to better the conditions of the working people of Racine. He was elected to the senate in 1918, receiving 6,364 votes to 4,886 for R. M. Hurley, (Dem.) and 1,146 for W. F. Goodman (Soc.).



FOURTH SENATORIAL DISTRICT

The 13th, 18th, 21st and 25th wards, city of Milwaukee, towns of Granville and Milwaukee and villages of North Milwaukee, Shorewood and Whitefish Bay.

OSCAR HASKELL MORRIS (Rep.) has been engaged in the newspaper and publishing business in Milwaukee for 24 years. Born in Springfield, Mass., March 8, 1876, he was educated in the public schools and then took up newspaper work. He was editor and publisher of a number of trade journals and secretary of the Wisconsin Retail Dry Goods Association, Wisconsin Retailers' Federation and is now secretary of The Better Business bureau of the Milwaukee Association of Commerce. He was elected to the senate in 1920, receiving 14,052 votes to 9,906 for Max Hattetlet (Soc.) and 396 for J. D. Mishoff (Proh.).



FIFTH SENATORIAL DISTRICT



The 15th, 16th, 19th, 20th and 22nd wards city of Milwaukee, the city and town of Wauwatosa.

RUDOLPH BEYER (Soc.) is a bookkeeper by profession and a lamproom (chemical and surgical) glassblower by trade. He was born Oct. 30, 1889, in Tueringen, Germany, but came to Milwaukee with his parents when 2½ years old. He attended the Milwaukee public schools, North Division high school two years and Spencerian Business college one year. Leaving school he followed the profession of bookkeeper for 8 years and then entered his father's business as glassblower. He was elected to the senate in 1918, receiving 6,874 votes to 6,237 for Charles B. Perry (Rep.) and 3,871 for Joseph Phillips (Dem.).

SIXTH SENATORIAL DISTRICT



The 6th, 7th, 9th, 10th wards, city of Milwaukee.

JOSEPH JOSHUA HIRSCH (Soc.) was born in Roumania, Aug. 27, 1888, and came to America when but a small lad. He was educated in the public schools of New Jersey and later graduated from an Agricultural college. He came to Milwaukee when 15 years of age and has resided there since and is a furniture salesman by profession. He had never held a public office until elected to the senate in 1920 when he received 8,828 of the 8,831 votes cast for senator in his district.

SEVENTH SENATORIAL DISTRICT



The 14th, 17th and 24th wards, city of Milwaukee; the cities of Cudahy, West Allis and South Milwaukee, the village of West Milwaukee, and towns of Oak Creek, Franklin, Greenfield and Lake, Milwaukee County.

LOUIS A. ARNOLD (Soc.) was born in Booneville, Ind., July 13, 1872, and four months later his parents moved to Newburg, Washington County, Wis., where he attended the common schools. He was graduated from the West Bend High school and taught school one year, then entered the employ of the Vilter Manufacturing Co., Milwaukee, with whom he was engaged in the erection of ice and refrigerating plants. He was alderman of the 17th ward, Milwaukee, 1908 to 1911 and tax commissioner 1912 to 1915. He is now connected with the Ozone Company of America, Milwaukee, which company manufactures appliances for the elimination of bacteria in air and water by means of ozone. He was elected to the senate in 1914 and reelected in 1918, receiving 4,730 votes to 4,532 for David Love (Rep.)

EIGHTH SENATORIAL DISTRICT

The 5th, 8th, 11th, 12th and 23rd wards, city of Milwaukee.

GEORGE F. CZERWINSKI (Rep.) is the youngest member of the senate and youngest and one of the largest public works contractors in the state. Born in Milwaukee, Sept. 19, 1890, he was educated in the public and parochial schools and at 24 years of age secured his first contract for building streets. Since then he has built some of the most important pavements in Milwaukee city and county, including the first federal aid project in the county. His contracts amount to more than \$150,000 annually and he employs from 150 to 200 men. During the war he was ward food administrator and chairman of the 12th ward Council of Defense. He was elected to the assembly in 1918 over W. L. Smith (Soc.) and defeated the same man for the senate in 1920, receiving 10,805 votes to 9,670 for his opponent.



NINTH SENATORIAL DISTRICT

The 1st, 2nd, 3rd, and 4th wards, city of Milwaukee.

DAVID V. JENNINGS (Dem.) was elected to the assembly in 1912 when but 25 years of age and in 1914 was elected to the senate, being the youngest member of both houses at that time. He was re-elected to the senate in 1918, receiving 3,873 votes to 1,503 for A. H. Sibilsky (Soc.). Born in Keshena, Shawano county, Jan. 19, 1887, he attended the common schools there and moved to Milwaukee with his parents in 1900, graduated from the Marquette academy in 1904, the University in 1907 and the Law school in 1911 and engaged in the real estate and mortgage loan business, but later became chief examiner for the Milwaukee county Civil Service Commission, which position he still holds.



TENTH SENATORIAL DISTRICT

St. Croix, Pierce, Pepin, and Buffalo counties.

GEORGE B. SKOGMO (Rep.) was a member of the Eau Claire District Draft Board, chairman of the Pierce county Legal Advisory board and chairman of the War Saving Stamp campaign for his county during the war. Born on a farm in Whalen, Fillmore county, Minn., Aug. 12, 1880, he received a common school education while spending his boyhood on the farm. Later he moved to River Falls, graduated from the high school in 1902 and immediately entered the law office of Ferris M. White where he studied law and was admitted to the bar in 1906 when he became junior member of the law firm of White & Skogmo, which was dissolved in 1917, since



when he has practiced alone. He was city treasurer of River Falls 1910 to 1912, and was elected to the senate in 1912 and reelected in 1916 and 1920 without opposition.

ELEVENTH SENATORIAL DISTRICT

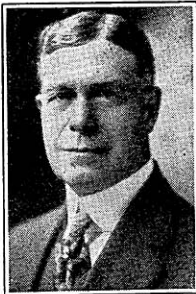
Douglas, Washburn and Burnett counties.



RAY J. NYE (Rep.) is a member of the Grain and Warehouse Commission and is engaged in the general insurance business in Superior. He was born in Davenport, Ia., March 21, 1871, was educated in the public schools and business college, moved to Wisconsin with his parents in 1880 and to Superior in 1892. He was a member of the Douglas county board for six terms, three of which he was chairman. Was a member of the assembly in 1907-11-13-15 and was elected to the senate in 1918, receiving 4,595 votes to 678 for C. L. Carlin (Soc.). Mr. Nye was author of the Soldiers Educational Bonus bill passed by the legislature in 1919, the first law of the kind on record. He was a member of the Joint Finance committee during the 1919 session and became chairman in 1921.

TWELFTH SENATORIAL DISTRICT

Ashland, Bayfield, Price, Rusk and Sawyer counties.



CHESTER HOWELL WERDEN (Rep.) of Ashland, was born in Hastings, Ontario, Canada, Aug. 10, 1857, and was educated in the public schools and Queen's University, Toronto. He is a lumberman and banker of Ashland by profession, who has always felt it his duty to serve his community, state or nation when called upon, no matter at what sacrifice. He served as chairman of the town of Mason, Bayfield county 1908-13 and chairman of the county board 1911-13. Was a member of the Bayfield County Council of Defense and chairman of the local Draft Board for Bayfield county 1917-19. He was elected to the senate in 1920 without opposition.

THIRTEENTH SENATORIAL DISTRICT

Dodge and Washington counties.



HERMAN J. F. BILGRIEN (Rep.) was born on a farm near Iron Ridge, Dodge county, March 19, 1864, and has spent his entire life on the same farm. He attended the Iron Ridge state graded school and besides being an extensive dairy farmer is a practical cheese maker and butcher, having conducted a meat market for 12 years. He has been director of the Iron Ridge graded school for 25 years; was town treasurer 1906-07 and has been town chairman since

1912. He was the first president of the Farmers Co-Operative Meat Packing Company, of Madison, a \$750,000 corporation owned entirely by farmers, and served two years. He was elected to the senate in 1918, receiving 6,626 votes to 4,101 for John H. G. Leiven (Dem.), and 2,301 for John H. Thoma (Soc.).

FOURTEENTH SENATORIAL DISTRICT

Outagamie and Shawano counties.

ANTONE KUCKUK (Rep.) conducted a jewelry and music store in Shawano for over 33 years, but is now devoting his time to banking, the manufacture of the Four Wheel Drive trucks and the Iwen Box & Veneer Co. He was born in Schleisingerville, Feb. 10, 1863, attended the common schools and evening business college, and then held a number of clerical positions in Hartford, Wausau and Shawano until he engaged in the jewelry and music business for himself. He was instrumental in starting the Wisconsin National Bank, Shawano, 1902; the State Bank of Gresham, 1909; Farmers State Bank, Beaver Dam, 1911; State Bank of Caroline, 1913; and is director in each and vice-president of the two former ones. He is also Pres. Menomonie Motor Truck Mfg. Co., director of the Four Wheel Drive Co. and the Iwen Box & Veneer Co., Treas. Retail Lumber and Supply Co. He served as a member of the Shawano county board and Shawano school board for years, was nominated and elected to the assembly in 1906 without opposition and elected to the senate in 1916, and reelected in 1920, receiving 9,880 votes to 8,811 for C. B. Ballard (Ind.).



FIFTEENTH SENATORIAL DISTRICT

Calumet and Manitowoc counties.

HENRY KLEIST (Soc.) was born on a farm in the town of Eaton, Manitowoc county, Sept. 29, 1860. Six years later his parents moved to the town of Rantoul, Calumet county, where he has lived ever since. He attended the common schools as a boy in the winter, working on the farm in the summer, and later worked in the woods in the winter. Since the death of his father in 1888, he and his brother, Charles, have operated the homestead farm, now known as Kleist Brothers' Grain and Dairy Farm. He has always lived with his mother, now 84 years of age. He is president of the Calumet County Equity Society and the Farmers' Advancement Association of Brillion, and a member of the Brillion Masonic and Odd Fellow lodges. He was elected to the senate in 1918, receiving 4,393 votes to 3,611 for Leo P. Fox (Dem.). Was a candidate for Lt. Governor on the Socialist ticket in the fall of 1920 and received 75,457 votes.



SIXTEENTH SENATORIAL DISTRICT

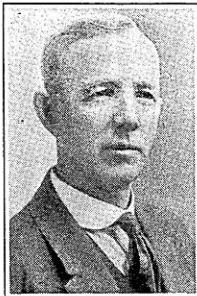
Crawford, Grant and Richland counties.



HENRY E. ROETHE (Rep.), editor of the Fennimore Times, is serving his second term, third session, in the senate without having introduced a single bill. He served in the assembly in the 1907-09-13 sessions and offered but a few bills to amend existing laws. He was elected to the senate in 1916 on a platform of fewer laws, strict economy in public expenditures and opposition to the creation of unnecessary offices and has fought for those principles in each session. He was renominated and elected in 1920 without opposition, receiving 10,569 votes in the primary and in the election 16,556 votes. He was born in Whitewater, May, 24, 1866, was educated in the common schools and normal; served as town clerk, village clerk and village president of Fennimore; presidential elector and messenger to Washington in 1900. Resides at Fennimore.

SEVENTEENTH SENATORIAL DISTRICT

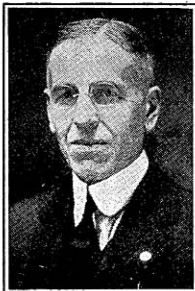
Green, Iowa and LaFayette counties.



OSCAR R. OLSON (Rep.), banker and farmer of Blanchardville, was born March 24, 1869, in the town of Jordan, Green county, attended the district school and later Valpariso University, Valpariso, Ind. Taught in the country schools for three winters, working on the farm in summer. Was elected register of deeds of Green county in 1892 when but 23 years of age and was reelected two terms. Was a member of the Wisconsin National Guard six years, serving as captain and adjutant of the First Wisconsin Volunteer Infantry in the war with Spain. Engaged in farming 11 years and served as town chairman several terms. Engaged in the banking business in Blanchardville and is now president of the Union State Bank. He was elected to the senate in 1918 without opposition, and served as a member of the state affairs and reconstruction committees in the 1919 session and chairman of the legislative visiting committee, member of joint finance committee and committee on re-apportionment in 1921.

EIGHTEENTH SENATORIAL DISTRICT

Fond du Lac and Green Lake counties.



WILLIAM A. TITUS (Rep.) was born on a farm in the town of Empire, Fond du Lac county, Aug. 30, 1868. Four years later the family removed to the town of Eden where he resided until he was 30, except the four years he spent as a public-school teacher. He was educated in the rural schools, Fond du Lac high school, University of Wisconsin and University of Chicago. He became identified with the Standard Lime & Stone Co., first as secretary-treas-

urer and later as president. He served as president of the Board of Education of Fond du Lac two terms and member of the Board of Visitors of the University three terms. He enlisted in Company C, Ninth regiment, Wisconsin State Guard in 1917 and was mustered out in 1920. Was elected to the senate in 1920, receiving 15,355 votes to 952 for William Tomalty (Soc.).

NINETEENTH SENATORIAL DISTRICT

Winnebago county.

JULIUS H. DENNHARDT (Rep.) was a member of the assembly during the 1911 session and elected to the senate in 1918, receiving 4,838 votes to 1,014 for Homer E. Greenwood (Soc.) and 363 for James Ivy (Proh.). He was born in Naumberg, Saxony, Germany, Feb. 5, 1860, and came to America and to Wisconsin when a young man. He was educated in the common schools and then engaged in the implement business, and for years has been the most prominent auctioneer in the Fox River Valley.



TWENTIETH SENATORIAL DISTRICT

Sheboygan and Ozaukee counties.

THEO. BENFEY (Rep.) is a veteran of the Spanish-American war of 1898. He enlisted with Company C, Second Wisconsin National Guard at the outbreak of the war and served through the Porto Rican campaign. He was born in Plymouth, June 11, 1871, graduated from the Sheboygan high school, the University of Wisconsin and Law College of the University, and since 1895 has been engaged in the practice of law in Sheboygan. He was district attorney of Sheboygan county from 1899 to 1905 and has been alderman of the First ward, Sheboygan, since 1915. He was first elected to the senate in 1916 and was chairman of the judiciary committee in the 1919 session. When his nomination papers in 1920 were carried in the mails to New York through some unaccountable error, arriving in Madison too late to have his name appear on the official ballot, over 1,400 electors wrote his name on the ballot, nominating him in the primary and he was reelected in November, receiving 11,284 votes to 5,011 for W. J. Bichler (Dem.) and 4,761 for Ernest Kreuter (Soc.).



TWENTY-FIRST SENATORIAL DISTRICT

Adams, Juneau, Marquette and Waushara counties.



JOHN A. CONANT (Rep.) was born in Weyauwega, Aug. 7, 1887. He was educated in the country schools, graduated from the Eagle River high school and the University of Minnesota, studied law, was admitted to the bar and took up the practice of his profession in Westfield, Marquette county. He served as district attorney for Marquette county from 1915 to 1919, when he resigned to assume his seat in the senate. He was elected to the senate in 1918, without opposition, after having won the nomination in the primary election over Frank H. Hanson. He was the first member of the Wisconsin legislature to come to Madison in an aeroplane. He was chairman of the Judiciary committee in 1921 session. He is a member of the Republican State Central committee.

TWENTY-SECOND SENATORIAL DISTRICT

Rock and Walworth counties.



ELDO T. RIDGWAY (Rep.) is a physician and surgeon of Elkhorn. He was born in Knox, Indiana, Dec. 17, 1880 and was educated in the Amboy, Ind., public school and high school and Hahnemann Medical College and Hospital of Chicago, from which he was graduated in 1906. He began the practice of medicine in Wautoma in 1907, remaining there five years and then removed to Elkhorn in 1912. He served as mayor of Elkhorn 1918-20, and member of the board of education in 1920. He was elected to the senate in 1920, receiving 21,956 votes to 3,673 for Oliver P. Murwin (Dem.) and 584 for William C. Dean (Proh.).

TWENTY-THIRD SENATORIAL DISTRICT

Waupaca and Portage counties.



HERMAN J. SEVERSON (Rep.), of Iola, is a native of the town of Christiana, Dane county, where he spent his boyhood years on his father's farm. He was educated in the public schools of that county, and at the Stoughton Academy, Red Wing College, Drake University and is a graduate from the law department of the University of Wisconsin. For two years he was a teacher in the public schools of Jefferson and Dane counties and one year was the principal of the graded school at London. He was admitted to the bar in June, 1897, and is by profession a lawyer. Chairman of Republican county com-

mittee of Waupaca county 1904-08. District Attorney for Waupaca county 1908-10. Delegate to Republican national convention at Chicago in June 1908. Was a member of the senate judiciary committee in the sessions of 1919-21. He was elected to the senate in 1918, receiving 5,527 votes against 2,591 votes for William F. Collins (Dem.).

TWENTY-FOURTH SENATORIAL DISTRICT

Clark and Wood counties.

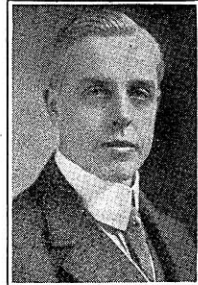
WILLIAM L. SMITH (Rep.) was born at Geary, New Brunswick, Feb. 12, 1878, was educated in the Eau Claire high school and Stevens Point normal and for several years has been engaged in the telephone business in Neillsville. He has taken an active part in community and welfare work, served as alderman in 1906, president of the Neillsville Community Club and Business Men's Association and president of Public Library Board. During the World war he served as Fuel Administrator and chairman of the Clark County Liberty Loan committee for the second and third loans, and of the War Savings committee. He was a member of the assembly during the 1917 session and was elected to the senate in 1920, receiving 11,700 votes to 2,791 for Robert A. Steinbach (Soc.) and 1,580 for A. B. Sutor (Dem.).



TWENTY-FIFTH SENATORIAL DISTRICT

Langlade and Marathon counties.

CLAIRE B. BIRD (Rep.) although prominent in public life for many years, never held an elective office until elected to the senate in 1918, when he received 5,056 votes to 3,794 for Christ Bloom (Soc.). He was born in Jefferson, Oct. 27, 1868; graduated from the Wayland Academy, Beaver Dam, in 1886; from the University of Wisconsin 1889; and the Law College 1891, since when he has practiced law in Wausau. He was appointed city attorney of Wausau in 1897 and served two years; was vice-president of the State Board of Education 1917-18, resigning when elected to the senate; and served as president of the Wisconsin State Bar Association in 1914, when he proposed the legal incorporation of all attorneys as a practical means to give adequate discipline against abuses and better control by court. The idea was later taken up by other state bar associations and the American Society of Judicature. He was chairman of the Marathon County Council of De-



fense during the World war, and is a member of numerous national, social, judicial and economic organizations.

TWENTY-SIXTH SENATORIAL DISTRICT

Dane county.



HENRY A. HUBER (Rep.) was born Nov. 6, 1869, in Evergreen, Alleghany county, Pa., and came to a farm in Pleasant Springs, Dane county, with his parents in 1879. He attended the common schools and Albion academy and graduated from the Law College, University of Wisconsin, in 1896, since which time he has been practicing law in Stoughton. He was city attorney of Stoughton 4 years; member of the county board 2 years; executive clerk to Gov. La Follette 1903-04; was elected to the assembly in 1904 and to the senate in 1913 and reelected in 1916 and in 1920 without opposition.

TWENTY-SEVENTH SENATORIAL DISTRICT

Columbia and Sauk counties.



GEORGE STAUDENMAYER (Rep.) was elected to the senate in 1914 as a Democrat and reelected from the same district in 1918 as a Republican, the most unique record in the political history of the state. He was born in the town of Caledonia, Columbia county, Dec. 3, 1857, and educated in the common schools. He began farming in 1882 in his native town and took up threshing in 1887, and has followed both professions since. He was elected president of the Wisconsin Brotherhood of Threshermen in 1918. Until elected to the senate the first time he had never held a public office. In 1918 he received 4,948 votes to 2,473 for J. E. Jones (Ind.).

TWENTY-EIGHTH SENATORIAL DISTRICT

Eau Claire and Chippewa counties.

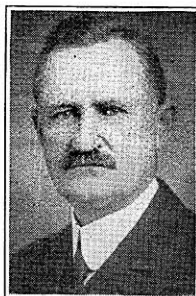


HERMAN T. LANGE (Rep.) has held many positions of trust and honor, considering it a privilege and duty to serve. He was born in Portage, April 9, 1857 and was educated in the public schools. He is president of the H. T. Lange Co., wholesale grocers, and an officer of the Lange Canning Co., served as alderman of Eau Claire six years, president of the Y. M. C. A. nine years, and numerous other offices. He was elected to the senate in 1920 without opposition.

TWENTY-NINTH SENATORIAL DISTRICT

Barron, Dunn and Polk Counties.

AL. C. ANDERSON (Rep.) Menomonie. Secy-treas., Anderson Bros., Inc., cigar manufacturers, and secy-treas., A. B. Leaf Tobacco Company, leaf tobacco packers. Elected to the senate, 1916, for an unexpired term; reelected without opposition, 1918. Ranking member on following committees: Reconstruction, 1919; Visiting Charitable and Penal Institutions, 1919; Highways, 1921; Committee on Committees, 1921; Joint Finance, 1918-19-21.



THIRTIETH SENATORIAL DISTRICT

Florence, Forest, Iron, Lincoln, Oneida, Taylor and Vilas counties.

BERNARD N. MORAN (Rep.), of Rhinelander, is a timber estimator and land looker by profession. He was born in Oshkosh, January 31, 1869 and was educated in the St. Joseph's Orphans Home, Green Bay. He has served as town assessor, treasurer, clerk, and chairman; chairman of the county board of Oneida county for several years, supervisor of county assessors, member of the assembly in 1915 and state supervisor of oil inspectors for six years. He was elected to the senate in 1920, receiving 12,078 votes to 1,783 for Peter Christ (Ind.).



THIRTY-FIRST SENATORIAL DISTRICT

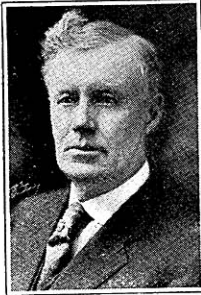
Jackson, Monroe and Vernon counties.

J. HENRY BENNETT (Rep.) is a lawyer and resides at Viroqua. He was born in Vernon county, educated in the public schools, admitted to the bar in 1895. He was elected district attorney in 1898 and continued to serve as such for fourteen years; has also served as city attorney for the city of Viroqua. Was attorney for the Legislative University Investigation committee in 1906. Elected to the senate in 1914, reelected in 1918 after a contest with J. D. Beck. Has served on the senate committee on judiciary, and became chairman of such committee in 1917, and chairman of the committee on corporations in 1919 and a member of the committee on legislative procedure. Is a member of the national, state and local bar associations and actively engaged in the practice of law.



THIRTY-SECOND SENATORIAL DISTRICT

LaCrosse and Trempealeau counties.



EUGENE F. CLARK (Rep.) was born in Kingfield, Maine, Aug. 14, 1850. He came to Wisconsin with his parents 4 years later, settling in Monticello, Green county, but one year later removed to Galesville, Trempealeau county, where he has since resided. Since 1884 he has been president of the Bank of Galesville; for 25 years has been a member of the Trempealeau county board of supervisors; for 30 years has been secretary of the Trempealeau County Mutual Farmers Insurance company; and for 24 years has been clerk of the Galesville board of education. He was a member of the assembly in 1895 and again in 1901 and was elected to the senate in 1916 and reelected in 1920, receiving 10,156 votes to 6,116 for R. G. Knudson (Dem.) and 406 for H. S. Willey (Proh.). In the 1917 session he was a member of the finance and highway committees; in the 1919 and 1921 sessions was chairman of the committee on highways and member of the education and public welfare committee.



THIRTY-THIRD SENATORIAL DISTRICT

Waukesha and Jefferson counties.

CHARLES MULBERGER (Dem.) was born in Watertown, Nov. 1, 1873. He was educated in the public schools and high school and graduated from Law College, University of Wisconsin, in 1894. Was manager of the Globe Milling Company for 20 years; was alderman of Watertown 1900 to 1904; president of the fire and police commission four years; and mayor of Watertown from 1915 to 1921. He was elected to the senate in 1914 and reelected in 1918, receiving 5,294 votes to 1,014 for George Neu (Soc.).

CHIEF CLERK



OLIVER G. MUNSON (Rep.) has had more legislative experience than any other man in Wisconsin, having been connected with the legislature most of the time since 1881. He began as bookkeeper of the senate; was a member of the senate for 12 years, 1896 to 1908; was elected chief clerk of the senate in 1915 without his knowledge and reelected in 1917, 1919 and 1921. During Gov. James O. Davidson's five years incumbency in the executive office Mr. Munson was his private secretary. He was born March 2, 1856, in Howard county, Iowa, and came to Wisconsin in 1876, and published the Richland County Republican-Observer for 10 years. For the last 35

years he has been a resident of Viroqua and was editor and publisher of the Vernon County Censor until he retired in 1920. In the campaign of 1916 he was chosen as one of Wisconsin's presidential electors on the republican ticket.

SERGEANT-AT-ARMS

VINCENT KIELPINSKI (Rep.) served at the age of fifteen as messenger in the senate during the sessions of 1905 and 1907, and returned for the 1921 session when elected sergeant-at-arms. Born Oct. 20, 1889, he was educated in the Parochial and District schools and is a copyist by profession. A member of the Wisconsin National Guard for years, he served with Company K, First Wisconsin infantry on the Mexican border from June 1916 to January 1917, and from July 15, 1917 to June 9, 1919 in the 32nd Div. in the World war. While in France with the Expeditionary Forces he fought in the famous battles of Chateau Thierry, Soissons, Argonne Forest and Meuse. He was wounded in action Sept. 1, 1918 at Juvigny and received two decorations, a Distinguished Service cross and the much coveted Croix de Guerre with a gold star. On the night of Oct. 16, 1918, Sgt. Kielpinski carried a German machine gun which he had captured that day to a position in front of his line, stayed by it all night firing at every sound made in the direction of the enemy lines to protect the men of his company who sorely needed sleep. They had had nothing to eat for two days and had fought from dawn until dusk and were completely exhausted. He had led his men in the battle and refused to rest at night.



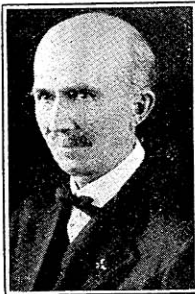
MEMBERS OF ASSEMBLY

ADAMS AND MARQUETTE COUNTIES



JAMES F. McDOWELL (Rep.) was born in Packwaukee, Wis., May 27, 1862. He was educated in the common schools, the Oshkosh normal and Northern Indiana normal at Valparaiso, Ind.; taught in the public schools for four years and served as county superintendent of schools in Marquette county for three terms, from Jan. 1, 1895 to 1901. He spent four years in South Dakota buying grain. He purchased a farm in Packwaukee in 1892 where he lived until the spring of 1914 when he retired and moved to Montello. From Jan. 1, 1915 to Jan. 1, 1919 he served as deputy clerk of the circuit court of Marquette county. He was elected to the assembly in 1918, and reelected in 1920 without opposition.

ASHLAND COUNTY



ABE L. BIGLOW (Rep.) was elected to the assembly in 1920 without opposition. Born April 27, 1861 at Farmer, Ohio, he was educated in the Farmer high school, Ada University, Ada, Ohio, and Washingtonia Institute, Washingtonia, Penn.; served as superintendent of schools, Farmer, O., 1884-1890, Archibold, O., 1890-94, and Delta, O., 1894-96. Became one of the incorporators and superintendent of construction of the Northern Construction Co., Bryan, O., in 1897, and was engineer in charge of construction of 19 large telephone systems in Ohio, West Virginia and Indiana. Served as traveling salesman and in 1910 came to Ashland as general manager of the Ashland Home Telephone Co., North Wisconsin Toll Line Co., and Bayfield County Telephone Co., resigning in 1918 to become manager of the Sunbeam Chemical Co., at Cable. Since 1920 has been stock salesman for Wisconsin Skead Mines, Ltd. He served as town clerk at Farmer, O., 1884-88 and member Ashland county board 1914-15.

BARRON COUNTY

JOHN L. DAHL is a lawyer, farmer and banker at Rice Lake. Born on a farm in the town of Unity, Trempealeau county, the eldest of nine children of Norwegian parents, he attended the common schools and earned his way through school, attending the Osseo high school and graduating from the River Falls normal and University of Wisconsin; attended the Law School at the university and received his law degree from the Hamilton College of Law, Chicago, and was admitted to the state bar in 1916. Taught as high school principal and city superintendent of schools after graduating from the normal and university; served as County Food Administrator during the period of the Federal Food Administration; served as district attorney of Barron county 1919-20; was delegate from Tenth Congressional district to the National Republican convention 1920 and was elected to the assembly in Nov. 1920, receiving 4,679 votes to 2,917 for Lila J. Stout (Ind.). In addition to the practice of law, he owns and operates a well improved farm in Barron county, specializing in raising certified New York Rural potatoes and pure Bred Holstein cattle. He is also a director in the Citizens State Bank of Rice Lake.



BAYFIELD COUNTY

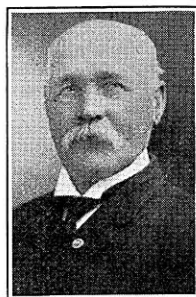
FRANK W. DOWNS (Rep.), of Washburn, never held a political elective or appointive office until elected to the assembly in 1918. Having secured the nomination at the primary he was elected without opposition in Nov. 1918, and reelected without opposition in 1920. Mr. Downs was born in Monroe Centre, Conn., August 22, 1870. He received a common school education and then took up electrical engineering, which profession he has since followed.



BROWN COUNTY

First District. The towns of Ashwaubenon, Howard, Pittsfield, Suamico, the city of Green Bay and village of Pulaski.

JAMES T. OLIVER (Rep.) was born in Yorkshire, England, August 18, 1849, and received his education in that country. He came to America in 1868, working on railroads in Rhode Island, Massachusetts, Pennsylvania and New Jersey. He came to DePere in 1872 where he worked in the car shops, later going to Green Bay, then Grand Rapids and back again to Green Bay. For many years he served as a marine engineer on Green Bay and Lake Michigan. Although taking an interest in political matters he never sought office of any kind until elected to the assembly in 1920 when he received 4,858 votes to 2,474 for E. R. Fischer (Dem.).



BROWN COUNTY

Second District. The towns of Allouez, Bellevue, DePere, Eaton, Green Bay, Hobart, Humboldt, Preble, Holland, Glenmore, Morrison, Lawrence, New Denmark, Rockland, Wrightstown, Scott, the village of Wrightstown and city of DePere.



GUSTAV J. ZITTLow (Rep.) was born Jan. 9, 1870, in the town of Lawrence, Brown county, was educated in the common schools and has devoted his life to farming. He is a breeder of pure bred Holstein cattle. He served as clerk of his school district from 1891 to 1909, treasurer of the South Lawrence Butter & Cheese Co. and secretary and treasurer of the Wrightstown local American Society of Equity since 1918. He was elected to the assembly in 1920, receiving 2,826 votes to 1,442 for George Krawczyk (Dem.).

BUFFALO AND PEPIN COUNTIES



ELMER A. KENYON (Rep.) was born in Gilman-ton, Buffalo county, Sept. 14, 1870, was educated in the common schools and began farming at 18. In 1903 he purchased a half interest in a general store in Gilman-ton with W. F. Allen, who was killed Sept. 14, 1910 when the store was destroyed by fire. Mr. Kenyon then engaged in business for himself and now carries a complete line of general merchandise, furniture, hardware and machinery. He served as postmaster from 1907 to 1915; president Gilman-ton State Bank, 1913-15; treasurer Gilman-ton Creamery 1905-20; county board of education since 1915 and looks after the management of his two farms near his home. He was elected to the assembly in 1920, receiving 3,925 votes to 1,140 for George L. Pattison (Dem.).

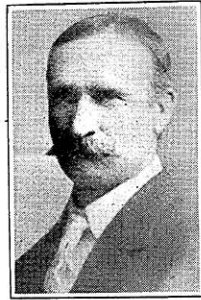
BURNETT AND WASHBURN COUNTIES



ERICK H. JOHNSON (Rep.) received 4,089 of the 4,101 votes cast for assemblyman in Burnett and Washburn counties in 1920. He was born April 10, 1865, in Hogfors, Sweden, was educated in the common schools of Wisconsin and Gustavus Adolphus College, St. Peter, Minn., and is a farmer and merchant. He was elected town clerk in 1888; justice of the peace since 1895, assessor 1910; town treasurer since 1915; postmaster under President McKinley; member county school committee 1917-18. He is a member of various farmer organizations and an ardent supporter of all prohibitive measures, including the Volstead act.

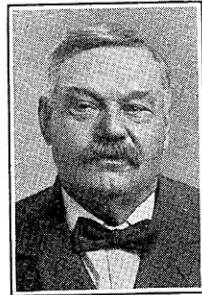
CALUMET COUNTY

GEORGE J. SCHWALBACH, (Dem.) was born on a farm in the town of Harrison, Calumet county, May 5, 1866 and received a common school education. At the age of 21 he purchased an 80-acre farm adjoining that of his father and in 1892, with his father engaged in well drilling in addition to conducting the farms. He served as president and sales manager of the Darboy Butter & Cheese company for many years, as town clerk, town chairman since 1913 and school clerk for many years. He was elected to the assembly in 1920, receiving 1,319 votes to 1,105 for Otto Lerche (Soc.).



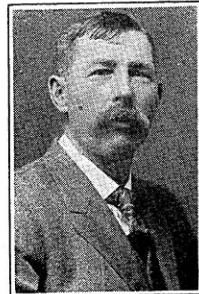
CHIPPEWA COUNTY

THOMAS W. BARTINGALE (Rep.) was born in Ely, England, June 24, 1851, came to Wisconsin as a youth, was educated in the common schools of Chippewa and Eau Claire counties and from 1875 as long as the pine lasted worked in the pineries and as log driver, then took up farming. He served as town clerk, town chairman, clerk of co-operative creamery for several years, was elected to the assembly in 1912, and reelected in 1918 and 1920 without opposition. He served as organizer for the American Society of Equity and in 1919-20 in clearing land with the use of T. N. T.

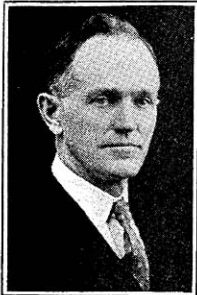


CLARK COUNTY

JOHN VERKUILEN (Rep.) has served his town in official capacity for the last 24 years, three years as supervisor, six as assessor and for the last fifteen as chairman, the last ten years as chairman of the County Board. He was born in Pensaukee, Sept. 3, 1867, was educated in the common and parochial schools of Calumet and Brown counties and has been a farmer all his life. He was elected to the assembly in 1920, receiving 6,024 votes to 871 for Albert Leibzeit (Soc.)



COLUMBIA COUNTY



ROBERT CALDWELL (Rep.), banker and farmer, served in the assembly during the 1915 session and was nominated in the primary in 1920 over three opponents with a large plurality, and elected without opposition. He was born in the town of Arlington, Columbia county, March 7, 1866, and educated in the public and high schools. He served as president of the village of Lodi, secretary of the Lodi Union Agricultural Society, as a member of the Columbia County Council of Defense and local draft board during the war and is a member of the Board of Education of Lodi, president of the Union Agricultural Society, president of the Columbia Bank and member of the county board.

CRAWFORD COUNTY



ALBERT C. JOHNSON (Rep.) farmer and banker of Soldiers Grove, was born in Soldiers Grove Jan. 26, 1889, was educated in the public schools and graduated from the Red Wing College, Red Wing, Minn., and Wisconsin Business University, LaCrosse. He served as village clerk of Soldiers Grove four years and represented his village on the county board from 1917 to 1920. He was elected to the assembly in 1920, receiving 3,312 votes to 1,229 for A. E. Dillman (Dem.).

DANE COUNTY

First District. The towns of Blooming Grove, Dunn, Madison and Pleasant Springs and the city of Madison.



HERMAN W. SACTJEN (Rep.) was nominated for the assembly without opposition within his party and elected without opposition from a major party, the first instance of the kind in the history of the district. He was born in Minneapolis, Nov. 28, 1886, educated in the public schools of Madison and was graduated from the college of Letters and Science, University of Wisconsin in 1909 and the Law school in 1911, since which time he has practiced law in Madison. He served as secretary of the Dane County Republican committee in 1912-13 and as chairman since 1916.

DANE COUNTY

Second District. The towns of Albion, Bristol, Burke, Cottage Grove, Christiana, Deerfield, Dunkirk, Medina, Sun Prairie, Windsor, Westport, York; the villages of Cambridge, Deerfield, DeForest, Marshall, Sun Prairie, and Waunakee; and city of Stoughton.

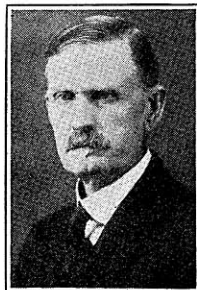
JAMES C. HANSON (Rep.) was elected to the assembly in 1916, 1918 and 1920. He was born in Slysrup, Lolland, Denmark, July 11, 1862 and three years later came to America with his parents. They settled on a farm in the town of Christiana, Dane county, where he has since made his home with the exception of one season in 1879 when he was employed in railroad construction work in the Dakotas. He was educated in the common schools, Albion Academy and Milton college. He is a farmer, has been affiliated with the progressive movement in the Republican party for years and has held many local offices of trust and honor. He has been active in the co-operative movement for several years. In 1920 he received 5,567 votes to 139 for R. S. Pearsall (Ind.).



DANE COUNTY

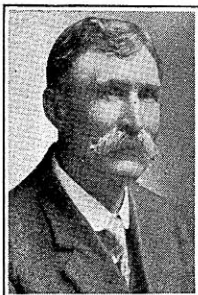
Third District. The towns of Black Earth, Berry, Blue Mounds, Cross Plains, Dane, Fitchburg, Mazomanie, Middleton, Montrose, Oregon, Primrose, Perry, Roxbury, Rutland, Springfield, Springdale Vienna, and Verona and the villages of Black Earth, Dane, Middleton, Oregon, Mazomanie, Belleville, Mount Horeb and Brooklyn.

CARL M. GRIMSTAD (Rep.) is a retired farmer who has held numerous offices of trust and honor. Born in the town of Brigham, Iowa county, Aug. 9, 1856, he was educated in the common schools, Wisconsin Academy at Madison, and Teachers' Training course. He taught in the rural schools of Wisconsin, Minnesota and Dakota for several years and in 1879 took up some government land in the Red River Valley, North Dakota, where he farmed for 10 years, organized the county, town and school district, served as town clerk, county assessor and deputy county auditor. In 1889 he returned to his farm in Iowa county. In 1915 he rented his farm and moved to Mount Horeb, Dane county. While in Iowa county he was town chairman 8 years, school clerk and member county board of education. He was elected to the assembly in 1918 and was re-elected in 1920 without opposition.



DODGE COUNTY

First District. The towns of Ashippun, Clyman, Emmett, Herman, Hubbard, Hustisford, Lebanon, Leroy, Lomira, Rubicon, Theresa, Williamstown; the villages of Hustisford, Lomira, Neosho, Iron Ridge and Theresa; and the cities of Horicon and Mayville and 5th, 6th, 13th and 14th wards of Watertown.



HERMAN A. ZIEMER (Rep.) after serving as chairman of the town of Emmett, Dodge county, from 1911 to 1917, and member of the public building committee 1914-17, retired from public office and was literally drafted by his party in 1920 and was elected to the assembly, receiving 4,980 votes to 1,232 for Adolph Rohde (Dem.) and 688 for John Lechner (Soc.). Mr. Ziemer was born in Lebanon, Dodge county, Feb. 23, 1861, was educated in the common schools and has been a farmer all his life.

DODGE COUNTY

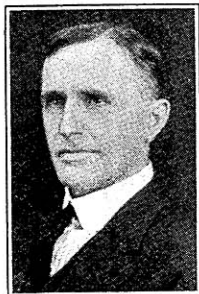
Second District. The towns of Beaver Dam, Burnett, Calamus, Chester, Elva, Fox Lake, Lowell, Oak Grove, Portland, Trenton, Westford; the villages of Fox Lake, Lowell, Reeseville, East ward of the village of Randolph; and the cities of Juneau and Beaver Dam, and 1st, 2nd, 3rd and 4th wards, city of Waupun.



FRED E. MOUL (Rep.) was born June 5, 1878, and has always lived on the same farm. He was educated in the public and graded school of Burnett, served as town chairman in 1902-03 and 1909, and town treasurer from 1904 to 1909. He is not only a successful farmer but a well known shipper of live stock. He was elected to the assembly in 1920, receiving 3,644 votes to 2,346 for Lawrence Hartsheim (Dem.) and 293 for Ray Weaver (Soc.).

DOOR COUNTY

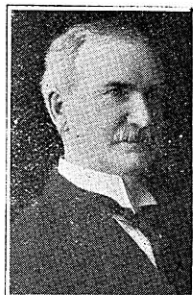
JOHN PELTIER (Rep.) was born in Michigan, January 30, 1860, and was educated in the common schools. He is both a successful dairy farmer and commercial fisherman, having been engaged in the latter occupation for forty years. He has made a deep study of the different species of fish caught in Green Bay and Lake Michigan and is considered one of the best posted men in the state on that subject, and served as president and general organizer of the State Fishermen's Association of Wisconsin. He served as town chairman from 1907 to 1915 and during the World war served as solicitor for the sale of bonds and in the Red Cross, Y. M. C. A. and other campaigns. He was elected to the assembly in 1920, receiving 2,574 votes to 1,704 for Frank N. Graass (Ind.), whom he had defeated in the primaries for the nomination.



DOUGLAS COUNTY

First District. The 3rd, 4th, 5th, 6th, and 7th wards, city of Superior.

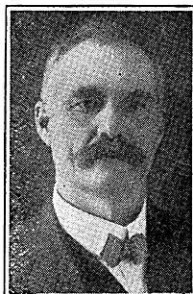
JAMES B. FRENCH (Rep.) was born in the town of Alton, near Dover, New Hampshire, July 29, 1857, a lineal descendant of early New England ancestors who were among the first settlers of Dover and Portsmouth and served in the Indian and Colonial wars and the American Revolution. He received his preliminary education in the public schools of Iowa; graduated from the Iowa University (A. B. 1882); came to Superior in 1888; admitted to the Wisconsin Bar and is a member of the Wisconsin Bar Association. Has served as chairman of the Douglas County Republican committee; was a member of the assembly 1911-13, 1918-19 and was reelected in 1920, receiving 3,778 votes to 792 for E. L. Hauton (Ind.). Chairman Assembly Judiciary Committee and Committee on Rules—1921.



DOUGLAS COUNTY

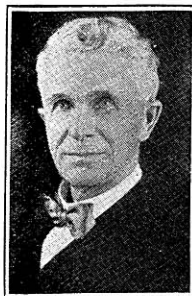
Second District. The towns of Amnicon, Bennett, Brule, Gordon, Hawthorne, Highland, Lakeside, Maple, Parkland, Solon Springs, South Range, Summit, Superior, Wascott; the village of Lake Nebagamom and the 1st, 2nd, 9th and 10th wards, city of Superior.

CHARLES COLE (Rep.) was born July 11, 1861, in Orleans county, Vermont. He was educated in the public schools at Watertown and has been a resident of Douglas county since 1889, being engaged in lumbering and farming. He served as treasurer of the town of Superior three terms and chairman of the town of Parkland 1914 to 1920. He was elected to the assembly in 1920 without opposition.

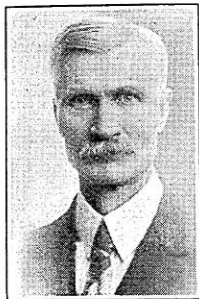


DUNN COUNTY

ALONZO L. BEST (Rep.) is proprietor of the famous Meadow Side Stock farm near Downing, Dunn county, and a breeder of Double Standard Polled short horn cattle and Poland China hogs. Born Oct. 6, 1854 at Big Spring, Adams county, he received most of his education from his father at home. In 1866 the family moved to Dunn county when there were no highways laid out, no school district near and Menomonie, 30 miles through the woods by trail, was the closest trading point and post office. It took three days to make the trip by ox team. He taught school for 16 years, served as town clerk, was town chairman and supervisor 25 years and secretary of the school board 30 years. He was elected to the assembly in 1918 and 1920 without opposition.



EAU CLAIRE COUNTY



RUSH BULLIS (Rep.) is a farmer who has made a study of road construction. He was born in Milton Junction June 10, 1863, and received his education in the common schools of Rock county, and has been a farmer all his life. He has been chairman of the town of Washington, Eau Claire county, since 1913 and an active member of the Eau Claire county state road and bridge committee since 1915. He was elected to the assembly in 1918 and reelected in 1920, receiving 5,426 votes to 3,072 for C. N. Saugen (Ind.).

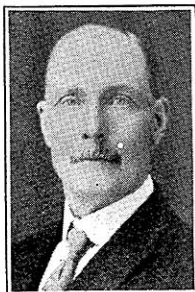
FOREST, FLORENCE, ONEIDA COUNTIES



JOSEPH D. GRANDINE was born in November 1860 in Wayne county, New York, came to Wisconsin when a youth and was educated in the graded and high school in Menasha, and for years has been a successful farmer in Forest county. He was president of the North Crandon school board when the first consolidated school in Wisconsin was established and it is still in successful operation. Mr. Grandine served as a member of the Forest county draft board during the war. He was elected to the assembly in 1920 from Florence, Forest and Oneida counties, receiving 4,623 votes to 463 for A. J. Schultz (Soc.).

FOND DU LAC COUNTY

First District. The towns of Fond du Lac, Calumet, Empire, Forest, Friendship, Marshfield and Taycheedah; the villages of North Fond du Lac, and St. Cloud and the city of Fond du Lac.



JOSEPH J. LAMB (Rep.) was born in the town of Friendship, Fond du Lac county, June 4, 1866 and after a common school education attended the Fond du Lac English Academy. He worked on the railroad for five years and in the Chicago post office for nine years during which time he was a member of the Illinois National Guard, 1892 to 1898, entering as a private and being honorably discharged as lieutenant. He is an organizer of Farmers' Cooperative Associations; at the present time is vice president of the Van Dyne State Bank. For the last 20 years he has been farming in Fond du Lac county and served his town as clerk 1908 to 1912 and justice of the peace in 1920. He was elected to the assembly in 1920, receiving 6,165 votes to 2,572 for Spencer Palmer (Dem.).

FOND DU LAC COUNTY

Second District. The towns of Alto, Ashford, Auburn, Byron, Eden, Eldorado, Lamartine, Metomen, Oakfield, Osceola, Ripon, Rosendale, Springvale and Waupun; the villages of Brandon, Campbellsport, Eden and Oakfield; the 5th and 6th wards of city of Waupun and city of Ripon.

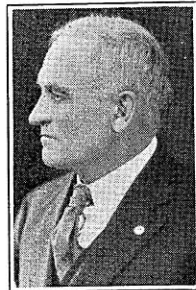
JOHN E. JOHNSON (Rep.) is serving his third term in the assembly. He was elected in 1916, 1918 and re-elected in 1920, receiving 5,131 votes to 131 for W. H. Ferber (Ind.). Mr. Johnson was born in the town of Alto, Fond du Lac county, July 5, 1873, was educated in the district school and Brandon high school and later took a course in building, contracting and architecture. He spent four years in California, returning to Brandon in 1905, since which time he has been engaged in the lumber business. He was a member of the village board for several years and assisted in the organization of the Farmers State Bank of Brandon, of which he is vice-president.



GRANT COUNTY

First District. The towns of Beetown, Cassville, Clifton, Ellenboro, Glen Haven, Harrison, Hazel Green, Jamestown, Lima, Paris, Platteville, Potosi, Smelser, and Waterloo; the villages of Cassville, Cuba City, Hazel Green and Potosi; and city of Platteville.

CONRAD J. WEITTENHILLER, (Rep.) was born in Platteville, Sept. 27, 1855, and was educated in the public school and Platteville Normal. As a young man he learned the coopers trade which he followed with his father for several years and then took up farming. He retired from active work a few years ago but still looks after the management of his farm. Mr. Weittenhiller has held numerous offices of public trust, as member of the school board, president of different mining companies and co-operative creamery, and member of the county board. He was nominated for the assembly in the republican primary in 1920 with a majority over his two opponents and was elected without opposition.



GRANT COUNTY



Second District. The towns of Bloomington, Boscobel, Castle Rock, Fennimore, Hickory Grove, Liberty, Little Grant, Marion, Millville, Mt. Hope, Mt. Ida; Muscoda, North Lancaster, Patch Grove, South Lancaster, Watterstown, Wingville, Woodman, Wyalusing; the villages of Bloomington, Fennimore, Montfort, Muscoda; and the cities of Boscobel and Lancaster.

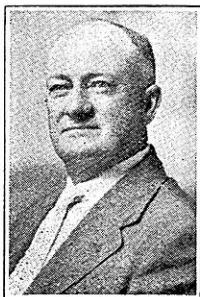
CHARLES E. TUFFLEY (Rep.) was born on the farm in Grant county on which he now lives. He attended the country school and Boscobel high school, served as county clerk of Grant county for six years and as journal clerk in the assembly through four sessions. He is a successful breeder of pure bred Holstein cattle, Oxford sheep and Poland China hogs. He was elected to the assembly in 1920, receiving 3,978 votes to 1,648 for Leo P. Bartley (Dem.).

GREEN COUNTY



WILLIAM OLSON (Rep.) having served in the 1919 session was reelected to the assembly in 1920 without opposition. Born in the town of Jordan, Green county, Oct. 11, 1873, he was educated in the common schools and Northern Indiana Normal at Valparaiso, Ind., taught school during the winter months for many years; worked on his father's farm in summer, and since 1898 has operated his own dairy farm. He has held various local positions, such as bank director, school officer, town clerk, town supervisor and member of county board since 1916. Mr. Olson has been active in co-operative farm and marketing organizations and anything tending to better the social and economic conditions of farm life. He was a member of the committee of agriculture during the session of 1919 and was appointed chairman of this committee in the 1921 session. He was the Progressive Republican farmer and labor candidate for speaker of the assembly in 1921—it taking four ballots to decide between him and the successful competitor, Riley S. Young.

IOWA COUNTY

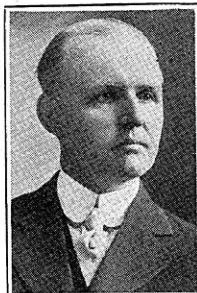


WILLIAM M. SMITH (Rep.) engaged in farming, mining and banking in village and town of Linden. Was born Feb. 27th, 1870 in village of Linden, Iowa Co. Wis., received his education at the Linden High School. Served as town clerk one year, trustee of village five years, assessor four years, member county board two years, county road and bridge commissioner one year. Director of Bank of Linden ten years and is now Pres. of Bank. Was elected to the

assembly in 1920, receiving 4,646 votes, Mr. A. D. Brown (Dem.) 991 votes and Ralph Hodgson (Proh.) 239.

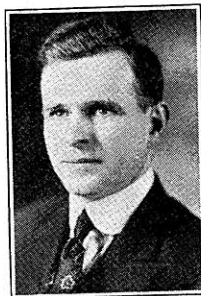
GREEN LAKE COUNTY

IRA W. PARKER (Rep.) was elected to the assembly at a special election, Feb. 28, 1921, to fill the vacancy caused by the death, Jan. 15, of Samuel Owens, who had served in the 1919 session and was re-elected in 1920. Mr. Parker was born April 9, 1877, in Kingston and was educated in the Markesan common school. He entered the employ of the Markesan State Bank in 1896 at the age of 19 years, became assistant cashier in 1900 and has been cashier since 1908. Although always taking an active interest in civic and state affairs he never held office before and was elected to the assembly without opposition.



IRON AND VILAS COUNTIES

HYMAN MAURICE MARK (Rep.) has never held public office until elected to the assembly in 1920 when he received 2,428 votes in Iron and Vilas counties to 477 for Emil S. Weisse, (Dem.). Mr. Mark was born in Duluth, Minn., May 10, 1891. He was educated in the public school at Ironwood, Michigan, and since 1907 has been engaged in business first in the clothing and dry goods business, then as commission merchant, wholesale liquor, laundry and for several years has been engaged in the scrap iron and metal business.



JACKSON COUNTY

WILLIAM F. DETTINGER (Rep.) of Hixton, is a successful farmer and breeder of pure bred Guernsey cattle and select seed grain. A native of the town of Northfield, Jackson county, where he still lives, he was born Sept. 24, 1880, and was educated in the common schools and the College of Agriculture, University of Wisconsin. He has always lived on a farm, but was employed by the Armour Packing company for 5 years. He was president and manager of the York Creamery Association, Northfield, for three years, town supervisor from 1912 to 1915 and town chairman from 1915 to 1918. He was elected to the assembly in 1918 and re-elected in 1920 receiving every vote cast in his county for assembly.



JEFFERSON COUNTY

First District. The towns of Concord, Farmington, Hebron, Ixonia, Milford, Palmyra, Sullivan, Watertown; the villages of Johnson Creek and Palmyra; and the 1st, 2nd, 3rd, 4th, 7th, 8th, 9th, 10th, 11th and 12th wards of the city of Watertown.



EUGENE H. KILLIAN (Rep.) is a printer by trade, member of the Typographical Union and of the general executive committee of the Wisconsin State Federation of Labor. He was born in Watertown, Dec. 1, 1873 and educated in the local schools. After three years as clerk in the Watertown post-office he learned the printers trade and worked in various states but for the last 20 years has been in Watertown where he has been active in the trade union movement. He was elected to the assembly in 1920, receiving 3,581 votes to 1,141 for George Shinnick (Dem.).

JEFFERSON COUNTY

Second District. The towns of Waterloo, Lake Mills, Oakland, Sumner, Koshkonong, Jefferson, Cold Spring and Aztalan; the village of Waterloo; and cities of Fort Atkinson Jefferson and Lake Mills.



HENRY WILLIAM STOKES (Rep.) was born in a log cabin in the town of Portland, Dodge county, Nov. 17, 1871, was educated in the common school and Waterloo high school. For 36 years he has owned and operated a farm of 187½ acres one mile south of the village of Waterloo and also owns the Waterloo Driving Park of 12 acres in the village. He has served on the Board of Directors of the Waterloo Canning Co.; town treasurer; delegate to the Farmers National Congress in 1898; is secretary-treasurer of the Farmers Equity of Waterloo doing an annual business of \$200,000; school clerk and president M. W. A. He was one of the three men selected by the National Wool Growers Association to appraise two Iowa woolen mills. He was elected to the assembly in 1920 receiving 2,872 votes to 1,898 for William Everson, (Dem.).

JUNEAU COUNTY

FRANK H. HANSON (Rep.) was a member of the senate from the 21st district during the 1915 and 1917 sessions, serving on the committees on state affairs and conservation in both sessions. He was born in Wisconsin in 1884, educated in the Mauston public schools, served as telegraph lineman and was graduated from the University of Wisconsin Law school in 1907, practiced in Madison one year and since in Mauston. He has served as city attorney two years, district attorney six years, divorce counsel three years, state republican central committee 1916-17, member



national republican finance committee 1916 campaign, associate manager for Harding and Coolidge in 7th congressional district 1920, chairman Juneau county Legal Advisory Board during the war, editor Mauston Star 1917-18, and has been mayor of Mauston since 1920. He was elected to the assembly in 1920, defeating Louis Weidenbeck (Rep.) in the primary and Oscar F. Miller (Ind.) and Alex Hersen (Soc.) in the election.

KENOSHA COUNTY

MALCOLM DOUGLAS FARR (Rep.) is president of the Independent Ice company and of the Sunshine Coal company of Kenosha. He was born in Kenosha in 1884, was educated in the Kenosha public school and the Northwestern Military Academy. Although actively interested in civic affairs and politics he never sought nor held office until nominated to the assembly in 1920. He was elected in a four-cornered contest, receiving 5,990 votes to 3,141 for Peter M. Anderson (Ind.) 1,989 for Joseph Toeller (Dem.) and 616 for Arnold Langenbach (Soc.).



KEWAUNEE COUNTY

ANTON HOLLY (Rep.) was born on a farm in the town of Franklin, Kewaunee county, March 19, 1875, learned the butchers trade when 19 years old and won many contests, establishing a record of slaughtering and dressing a beef complete for the block in 4 minutes and 26 seconds. He conducted a meat market in Tisch Mills for 18 years and since 1910 owned and operated a farm of 160 acres in the town of Carlton. He was elected to the assembly in 1920 receiving 2,198 votes to 1,124 for August Fenski (Dem.). The only other office he ever held was one year as supervisor of his town.



LA CROSSE COUNTY

First District. The 1st, 2nd, 3rd, 4th, 5th, 6th, 7th, 9th, 10th, 11th, 12th, 13th, 14th, 15th, 16th, 19th and 20th wards city of La Crosse.

FRANK H. FOWLER (Rep.) was born in Oldtown, Maine, April 15, 1861 and received his education in the Maine Wesleyan Seminary. For twenty-five years he has served as principal of schools in La Crosse. He served as Lieutenant in the Third Wisconsin Infantry in the Spanish-American war and as Lieutenant Colonel, Division Staff, Thirty-Second Division in the World War under General Haan. He had never held a public office until elected to the assembly in 1920 when he received 6,065 votes to 350 for E. L. Townsend, (Proh.).



LA CROSSE COUNTY

Second District. The towns of Bangor, Barre, Burns, Campbell, Farmington, Greenfield, Hamilton, Holland, Onalaska, Shelby and Washington, the villages of Bangor, West Salem, Rockland, and the 8th, 17th, 18th and 21st wards, city of La Crosse and the city of Onalaska.



WILLIAM F. MILLER (Rep.) was born in the town of Barre, La Crosse county, Sept. 24, 1869 and has always lived on a farm. He was educated in the common school. Besides operating his farm he is manager of the Farmers Cooperative Supply and Shipping Association. The only office he ever held until chosen for the assembly was as town treasurer 1912-13. He was elected to the assembly in 1920, receiving 3,361 votes to 1,361 for R. W. Davis (Ind.) and 172 for E. C. Farnam (Proh.).

LA FAYETTE COUNTY



JAMES GOODMAN (Rep.) was born in Jo Davis county, Ill. in 1872, was educated in the common schools and taught school for nine years before taking up farming 22 years ago. He now owns two fine farms of 70 and 200 acres, operating one and renting the other. He has served the town of Lamont as chairman 3 years, clerk two years and supervisor two years and town of Argyle as chairman 2 years. He has been president of the Equity Shipping Association since its organization in 1915. He was elected to the assembly in 1920 receiving 3,808 votes to 1,970 for John J. Kirwan (Ind.).

LANGLADE COUNTY



BURT W. RYNDERS (Dem.) is one of only two members of the assembly elected on the democratic ticket. He was born in the town of Ellington, Outagamie county, Feb. 3, 1871, was educated in the public schools at Hortonville and the Oshkosh Normal, taught school for eight years and then engaged in the real estate and insurance business in Antigo for fourteen years. For the last two years he has been operating a hotel. He has served as supervisor of his ward, alderman, president of the city council, mayor of Antigo two years, president of the fire and police commission and treasurer of the Langlade county Training school. He was elected to the assembly in 1920 receiving 3,282 votes to 2,427 for James A. Barker (Rep.).

LINCOLN COUNTY

RAY M. ATCHERSON (Rep.) served throughout the world war as a sergeant in Co. A. 119th Machine Gun battalion of the famous Thirty-Second Division being discharged April 5, 1919. Born in Tomahawk, Feb. 18, 1891, he was educated in the public schools, Tomahawk high school and Ripon college where he received his degree of bachelor of arts in 1914 and engaged in the grain business in Tomahawk with his father which he resumed on his return from the battlefields. He had never held office until elected to the assembly in 1920, receiving 3,218 votes to 1,002 for John Shewe (Soc.).



MANITOWOC COUNTY

First District. The towns of Centerville, Liberty, Manitowoc, Manitowoc Rapids, Meeme and Newton and city of Manitowoc.

JOHN LORFELD (Rep.) was elected to the assembly in 1918 by two votes and reelected in 1920 when he received 3,582 votes to 2,153 for George E. Rath-sack (Soc.). Mr. Lorfeld was born in the town of Meeme, Manitowoc county, Jan. 25, 1867, was educated in the common schools and has been a successful farmer and thresherman for years. He has been school clerk since 1896, town chairman since 1908 and member of the board of supervisors since 1905.



MANITOWOC COUNTY

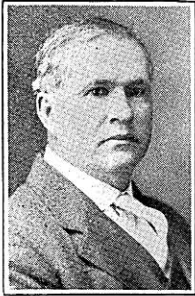
Second District. The towns of Cato, Cooperstown, Eaton, Franklin, Gibson, Kossuth, Maple Grove, Mishicot, Rockland, Schleswig, Two Creeks, and Two Rivers, the villages of Kiel and Reedsville and the city of Two Rivers.

THOMAS A. SULLIVAN (Rep.) was born in Connecticut, July 31, 1855. He was educated in the common schools of Manitowoc county and then engaged in carpenter and contracting work. For the last 25 years he has been a successful farmer, specializing in the breeding of blooded sheep, horses, hogs and cattle, for years has been a leading stock exhibitor at the county fairs. He has served as superintendent of the sheep and swine department of the Manitowoc county fair several years. He was a member of the county board for years. He has long been an advocate of good schools and good roads and assisted in laying out and building many miles of good highways. He has been secretary of St. Patrick's parish of Maple Grove for years. He was elected to the assembly in 1920 with a majority in a three-cornered contest, receiving 3,084 votes to 1,744 for Herman Roethal (Soc.) and 1,285 for David LeClair (Dem.).



MARATHON COUNTY

First District. The towns of Bergen, Berlin, Bern, Brighton, Cassel, Cleveland, Day, Eau Pleine, Emmett, Green Valley, Frankfort, Flieth, Halsey, Hamburg, Holton, Hull, Johnson, Maine, McMillan, Marathon, Mosinee, Rib Falls, Rietbrook, Spencer, Stettin, Wein; the villages of Athens, Edgar, Fenwood, Marathon, McMillan, Mosinee, Spencer and Stratford, and that part of Abbotsford, Unity and Colby, in Marathon county.



JOSEPH WEIX (Rep.) was born in LeRoy, Dodge county, Feb. 13, 1874, and was educated in the parochial school of LeRoy. He is engaged in the lumber and real estate business in Colby. After conducting a country store for eight years he purchased a half interest in the Colby Lumber Co., which is operated under the firm name of Umhoefer & Weix. He served his ward as alderman for four years and since 1915 has served as supervisor. He was elected to the assembly in 1920, receiving 3,717 votes to 2,296 for Charles Zarnke (Soc.) and 915 for Jerry Bradley (Dem.).

MARATHON COUNTY

Second District. The towns of Easton, Elderon, Franzen, Guenther, Harrison, Hewitt, Knowlton, Kronenwetter, Norrie, Pike Lake, Plover, Ringle, Texas, Wausau and Weston; the villages of Brokaw and Schofield; and the city of Wausau.



LEWIS H. COOK (Rep.) is engaged in the real estate and insurance business in Wausau. He was born in Gravesville, Calumet county, Nov. 25, 1876, and was educated in the common and high school of Unity. He has served as town clerk, member of the county board from Unity six years, supervisor of assessments two years, county clerk six years, secretary and at present president of the Marathon County Agricultural society, also president of the Marathon County Building and Loan Association. He acted as secretary of the Marathon county draft boards during the late war. He has taken a keen interest in raising pure bred stock, sheep and poultry. He was elected to the assembly in 1920, receiving 5,084 votes to 3,204 for Herman A. Marth (Soc.) and 1,100 for Kurt A. Beyreis (Dem.).

MARINETTE COUNTY

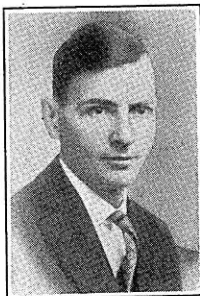
E. A. BURDEN (Rep.) is now engaged in the real estate business in Niagara. He was born in Howell, Mich., June 3, 1878 and educated in the public schools. At the outbreak of the Spanish-American war he volunteered for service and served through the war and in the Cuban campaign. He came to Wisconsin in 1901 and has always taken an active part in the affairs of his community. He served as member of his county board from 1916 to 1920 and was elected to the assembly in 1920, receiving 4,768 votes to 2,064 for James Pedersen (Ind.) and 696 for James A. Campbell (Dem.).



MILWAUKEE COUNTY

First District. The first ward of the city of Milwaukee.

BEN H. MAHON (Rep.) was born April 15, 1888, in the town of Liberty, Manitowoc county. He was educated in the public schools in the city of Milwaukee and for a time attended the Milwaukee Medical college, now one of the departments of Marquette University. For many years and while attending school, he was employed in various capacities in the circulation departments of several of the big Milwaukee newspapers. In 1913 he served as deputy state treasury agent. For the last several years he has been engaged in the insurance and real estate business in Milwaukee. He was elected to the assembly in 1916 and re-elected in 1920 when he received 2,973 votes to 1,246 for Jacob Kila (Dem.) 596 for Martin Binn (Soc.) and 45 for Richard Smith (Proh.).



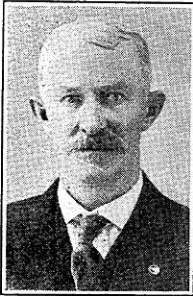
MILWAUKEE COUNTY

Second District. The second ward of the city of Milwaukee.

MARTIN M. HIGGINS (Rep.) and his wife both served throughout the world war, Mr. Higgins in the navy and his wife in the Ordnance department from which both received honorable discharges. He was born in Chicago, Jan. 5, 1891, was educated in the public and parochial schools and business college, and is engaged in the advertising business, specializing in periodical magazine work. He had never held public office until elected to the assembly in 1920 when he received 2,185 votes to 1,206 for Joseph Klein (Soc.).



MILWAUKEE COUNTY



Third District. The third and fourth wards of the city of Milwaukee.

THOMAS HENRY CONWAY (Rep.) was a superintendent of structural iron work from 1883 to 1910, since which time he had been engaged in the insurance business. His work took him into nearly every state in the Union. Forty years ago he made a trip from Portland, Ore., around Cape Horn to Ireland and back to New York. Born in Troy, N. Y., Feb. 9, 1860, he was educated in the public schools of New York and Homer Academy, Homer, N. Y. Although serving as inspector of the City hall 1893-95 and ward superintendent 1910-12, in Milwaukee, he never held an elective office until chosen for the assembly in 1920 when he received 3,563 votes to 2,218 for John P. Donnelly (Dem.) and 998 for Robert M. Miller (Soc.).

MILWAUKEE COUNTY



Fourth District. The twentieth and twenty-second wards, city of Milwaukee.

CHARLES MEISING (Rep.) was born at Taylor Falls, Minn., April 9, 1876, was educated in the Chase public school, Kansas City, Mo. and for several years has been a Manufacturer's Agent with offices in the Merchants & Manufacturers bank building, Milwaukee. He was twice a candidate for supervisor, once for alderman and once for the state senate, but never held a public office until elected to the assembly in 1920, when he received 7,278 votes to 6,664 for Louis J. Green (Soc.).

MILWAUKEE COUNTY

Fifth District. The fifth ward of the city of Milwaukee.



EDMUND BENJAMIN GRUNWALD (Rep.) is the youngest member of the assembly and probably the youngest in the history of the legislature. Born March 27, 1899, he cast his first vote at the primary in Sept. 1920 when he was nominated and was but 21 years and 7 months old when elected, receiving 1,699 votes to 1,500 for Henry S. Helleman (Soc.). He was educated in the public and parochial schools and business college and engaged in business with his father. When the United States entered the world war he volunteered, enlisting in the regular army and served in Co. I, 19th Infantry until after the signing of the armistice. Upon receiving his honorable discharge he returned to Milwaukee where he has been employed since as salesman.

MILWAUKEE COUNTY

Sixth District. The sixth ward of the city of Milwaukee.

FREDERICK J. PETERSEN. (Rep.) was born in Neenah, February 24, 1874. He was educated in the public schools and high school of Neenah and in the Philadelphia Orthopaedic Institute of Physio-Therapy since when he has been practicing his profession in Milwaukee. Although taking a keen interest in municipal, state and national politics, Dr. Petersen never sought or held a public office until elected to the assembly in 1920, when he received 1,884 votes to 1,838 votes for Eugene Cooney (Soc.).



MILWAUKEE COUNTY

Seventh District. The seventh and tenth wards city of Milwaukee.

ALEX C. RUFFING (Soc.) was the youngest member of the fifty-fourth session of the legislature. He was born in Milwaukee, Nov. 2, 1892 and was 26 years old three days before being elected to the assembly in 1918. He was educated in the public and parochial schools and learned the machinist trade at the Allis Chalmers plant. He never before entered politics but was elected to the assembly in 1918, and re-elected in 1920 without opposition.



MILWAUKEE COUNTY

Eighth District. The eighth ward of the city of Milwaukee.

WALTER POLAKOWSKI (Soc.), born in Buffalo, N. Y. Jan. 18, 1888, is the son of Mr. Frank Polakowski; began to earn his living when a lad as a newsboy and bootblack, began serving as apprentice to an upholsterer at 14 and at 18 represented the Upholsterers Union in the Federated Trades Council, was married at 19 and engaged in grocery and saloon business, becoming proprietor at 21. He later sold out and engaged in the insurance business until 1920 when he established the Union Upholstering & Auto Trim Shop. He had never held a public office until elected to the assembly in 1920 when he received 1,593 votes to 1,572 for Frank S. Kubatski (Dem.) who had served three terms in the assembly.



MILWAUKEE COUNTY



Ninth District. The 9th ward, city of Milwaukee.

JULIUS KIESNER, (Soc.) is an automobile tire vulcanizer by profession. He was born in Chilton, Oct. 29, 1884 and was educated in the public schools of that city. He has traveled extensively in the United States and Europe and is especially interested in education and public welfare. He had never held office until elected to the assembly in 1918. He was re-elected in 1920 receiving 2,191 votes to 1,636 for Fred A. Deharde (Rep.).

MILWAUKEE COUNTY



Tenth District. The twenty-first and twenty-fifth wards of the city of Milwaukee.

FRED J. HASLEY (Soc.) was born in Milwaukee, Dec. 5, 1884 and was educated in the public schools, graduating in 1900 when he began learning the printer's trade which he has followed ever since, having been a member of the Typographical Union since 1904. He had never held a public office of any kind until elected to the assembly in 1920, and was chosen at both the primary and general election without opposition, receiving 6,921 of the 6,924 votes cast in his district.

MILWAUKEE COUNTY

Eleventh District. The eleventh and twenty-third wards, city of Milwaukee.



WILLIAM E. JORDAN (Soc.) serving his third term in the assembly, is a bricklayer by trade and a prominent member of the bricklayers Union. Born in East Prussia, Germany, Sept. 10, 1883, he came to America with his parents in 1891, settling in Milwaukee, where he attended the public schools. After finishing the grades he attended business college and worked for 4 years as a stenographer. After attaining his majority he learned the bricklayers trade, which he has followed since. He was elected to the assembly in 1916 and was re-elected in 1918 and in 1920 without opposition.

MILWAUKEE COUNTY

Twelfth District. The twelfth ward, city of Milwaukee.

JULIUS JENSEN (Rep.) was born in Denmark, Jan. 10, 1872, learned to read and write in Denmark and attended the public schools after coming to America in 1883. At the age of 15 he shipped as cabin boy and sailed until he was 20. He was employed by the Milwaukee Street Railway Co., for several years and is now proprietor of a cigar store and billiard hall. During the World war he was secretary of the Twelfth District Council of Defense. He was a member of the Milwaukee County Republican committee in 1916, but never held an elective office until chosen for the assembly in 1920 when he received 1,766 votes to 1,640 for Herman S. Tucker (Soc.).



MILWAUKEE COUNTY

Thirteenth District. The thirteenth ward, city of Milwaukee.

LEANDER J. PIERSON (Rep.) is engaged in mining non-metallic minerals. He was born in Oshkosh, Nov. 29, 1872 and was educated in the Oshkosh parochial schools and the Oshkosh normal. He served as alderman of the thirteenth ward, Milwaukee, from 1908 to 1910 and was elected to the assembly in 1920, receiving 2,894 votes to 2,031 for John M. Sell (Soc.).



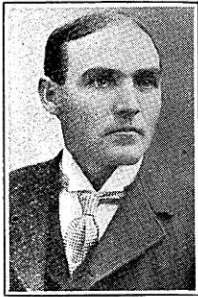
MILWAUKEE COUNTY

Fourteenth District. The fourteenth and twenty-fourth wards, city of Milwaukee.

STEPHEN S. STOLOWSKI (Soc.) was born in Milwaukee, August 17, 1893. He was educated in the parochial and public schools and also studied economics in the night school of the University of Wisconsin Extension Division. He is a printer by trade and had never held an office until elected to the assembly in 1920, when he received 2,800 votes to 2,169 for Klemens Boruki (Rep.) and 1,208 for Alex Gramza (Dem.).



MILWAUKEE COUNTY



Fifteenth District. The 15th and 19th wards of the city of Milwaukee.

THEODORE ENGEL (Rep.) was born in Milwaukee county in 1866, attended the Grace Lutheran school and also the First ward public school and after leaving school learned the plumber trade, which he followed for over twenty years and then went into the contracting business in which he is still engaged. He was elected to the assembly in 1916 and re-elected in 1920, receiving 6,368 votes to 3,280 for Arthur W. Richter (Soc.).

MILWAUKEE COUNTY



Sixteenth District. The sixteenth ward, city of Milwaukee and the town and city of Wauwatosa.

JOHN C. SCHAFER (Rep.) is a locomotive engineer who enlisted in the 13th Engineers, U. S. Army, May 24, 1917 and served with that unit under the French Fourth Army at Champagne; French Second Army at Verdun, St. Mihiel and in the Meuse-Argonne offensive. He was born in Milwaukee, May 7, 1893, educated in the district school, town of Wauwatosa and West Allis high school. Before taking up railroad work he was employed in the office of the Allis-Chalmers Co. He never held an office until elected to the assembly in 1920 when he received 5,354 votes to 1,463 votes for J. T. O. Baird, (Soc.).

MILWAUKEE COUNTY



Seventeenth District. The seventeenth ward, city of Milwaukee, town of Lake and city of Cudahy.

EDWARD F. VOLLMER (Rep.) was born June 1, 1877 in Milwaukee, attended the parochial schools and later Spencerian Business College. For a while he worked for his father in the grocery business, then learned telegraphy but never followed that trade. He entered the employ of the Illinois Steel Company of which he is at present chief timekeeper in the Milwaukee plant. Although always interested in local and state politics, he never sought office until 1920 when he was elected to the assembly, receiving 4,067 votes to 3,351 votes for Frank B. Metcalfe (Soc.).

MILWAUKEE COUNTY

Eighteenth District. The eighteenth ward, city of Milwaukee, towns of Granville and Milwaukee, and villages of North Milwaukee, Whitefish Bay and East Milwaukee.

FRANK L. PRESCOTT (Rep.) was returned to the assembly in 1920 after an absence of six years. Born in Milwaukee, Oct. 27, 1878, he was educated in the public schools and Business College. He is engaged in the publicity and advertising business as proprietor of the Wisconsin Publicity Bureau, Milwaukee. He served in the assembly in 1915 and was elected again in 1920 receiving 4,878 votes to 2,995 for his opponent.



MILWAUKEE COUNTY

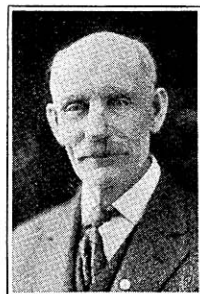
Nineteenth District. The towns of Greenfield, Franklin, Oak Creek, the village of West Milwaukee and Cities of West Allis and South Milwaukee.

NICHOLAS F. LUCAS (Rep.) was born in Calumet, Mich., Dec. 15, 1895. He attended the public schools and high school in Calumet, graduating from Calumet high school in 1914, attended the West Division high school, Milwaukee, Marquette University and was graduated from the Law department at Marquette in 1919 and immediately began the practice of law in Milwaukee. He had never held an office of any kind until elected to the assembly in 1920 when he received 3,367 votes to 2,478 for Vern Rogers (Soc.).

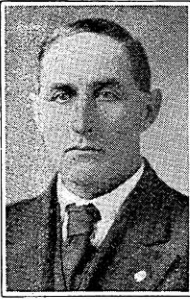


MONROE COUNTY

MILES HINEMAN (Rep.) now serving his fourth term in the assembly, was first elected in 1887. He was elected again in 1916, 1918 and 1920, receiving 6,199 votes to 449 for Carl H. Shattuck, (Proh.). Born in the town of Dunkirk, Dane county, Nov. 26, 1851, he removed with his parents to La Crosse county when 3 years old and two years later moved to Tomah, where he has since made his home. He received a common school education and then taught for 18 years, since which time he has been a farmer. He served as school clerk and chairman and for many years secretary of the Eastern Monroe County Agricultural Society. For 26 years he has been president of the Farmers Mutual Town Fire Insurance company, resigning said office in Dec. 1921.



OCONTO COUNTY

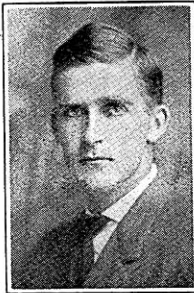


PETER ANKERSON (Rep.) was born in Germany, Jan. 21, 1874 and immigrated to Wisconsin at the age of 7 years. He was educated in the common schools of Brown county and worked as a farm hand and in the woods until 1896 when he began farming for himself, and has lived on the same farm in Oconto county since 1903. He has been a member of the Society of Equity 12 years and President of his county union the last six years, served as town clerk two years, town supervisor four years and member of the county board one year. He was elected to the assembly in 1920 without opposition.

OUTAGAMIE COUNTY

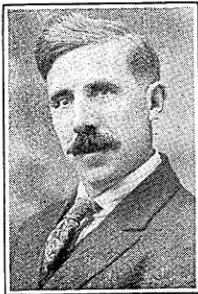
First District. The towns of Bovina, Center, Dale, Ellington, Grand Chute and Greenville, the village of Shiocton and City of Appleton.

MARK S. CATLIN (Rep.) is an attorney of Appleton and one of the best known athletes and sportsmen in Wisconsin. Born in Aurora, Ill., Nov. 12, 1882, he first attracted attention as an athlete on the Aurora high school teams, and became famous as an athlete at the University of Chicago, which institution he represented in the Olympic games at St. Louis in 1904 when he was the individual point winner. He received his Ph.B. degree at Chicago in 1905 and LL.B. at Iowa in 1909, since when he has practiced law at Appleton. He served as district attorney of Outagamie county 1914-18 and was president of the Wisconsin Game Protective Association in 1920. He was elected to the assembly in 1920, receiving 3,913 votes to 3,089 for George J. Schneider (Dem.).



OUTAGAMIE COUNTY

Second District. The towns of Buchanan, Black Creek, Cicero, Deer Creek, Freedom, Hortonia, Kaukauna, Liberty, Maple Creek, Maine, Oneida, Osborne, Seymour, and Vandenbroek, the villages of Black Creek, Kimberly, Combined Locks, Little Chute, Hortonville, and Welcome and the cities of Kaukauna, Seymour and third ward of New London.



ANTON M. MILLER (Rep.) is a farmer by profession. Born on a farm in Outagamie county, May 1, 1876, he was educated in the common schools and then worked in the paper mills for three and one-half years after which he returned to the farm where he was born and where he has since lived. He has been a member of the Society of Equity for 14 years, president of Local Union for 8 years, County union for 2 years, but never held a public office until elected to the assembly in 1920 when he received 3,437 votes to 1,843 for David J. Crowe (Dem.).

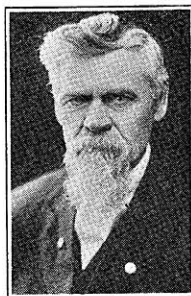
OZAUKEE COUNTY

LOUIS L. PIERRON (Rep.) has held office in his town almost continuously for 25 years, as chairman, and treasurer of the town school board, justice of the peace, etc. He was born in the town of Belgium, Ozaukee county, March 10, 1870, was educated in the district school and one year in the high school and in Pionono college, at St. Francis, Wis., since which time he has lived on a farm. He was elected to the assembly in 1918 and re-elected in 1920, receiving 2,316 votes to 1,914 for L. G. Kieker (Dem.).



PIERCE COUNTY

CHARLES E. HANSON (Rep.), a member of the 1917 session of the assembly, was re-elected in 1918 and 1920 without opposition. He was born in Modum, Norway, Feb. 27, 1855, immigrated to Wisconsin with his parents when 11 years old and settled in Pierce county in 1871. He was educated in the public schools, and has followed farming all his life. He served for several terms as assessor of the town of River Falls, as a member of the board of directors of the Equity Elevator & Warehouse Co., River Falls, and as a director of the Wisconsin Society of Equity.



POLK COUNTY

GEORGE A. NELSON (Rep.) is perhaps the most extensive traveler in the assembly. Born in Milltown, Polk county, Nov. 15, 1873, he was educated in the common schools, worked at farming, lumbering and milling for the most part, but also at various other occupations in 38 states and Canada. He spent three years in Alaska gold mining and served as a deep water sailor and also on river steamers before returning to his farm in Polk county. He has served as school treasurer and clerk 19 years, town chairman, village president and supervisor, chairman of the county board, bank director and has held various offices in co-operative telephone, store and laundry companies. Is director of the Wisconsin Society of Equity, and was first president of the Wis. Co-operative Creamery Association. He was elected to the assembly in 1920, receiving every one of the 4,638 votes cast for the office.

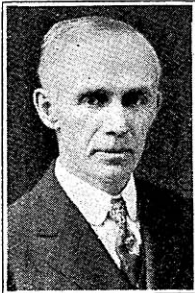


PORTAGE COUNTY



WILLIAM MARTELL SCRIBNER (Rep.) was born in the town of Euenta Vista, Portage county, May 6, 1877. He was educated in the common schools and Stevens Point high school from which he was graduated. Leaving school he entered the railroad business as call boy and worked his way up to that of road master and then retired to take up farming. As a farmer he has made a specialty of marketing his own produce, especially potatoes, selling both the eating and seed stock direct to the consumer. He served as school clerk from 1916 to 1918 and was elected to the assembly in 1920, receiving 5,446 votes to 2,460 for John G. Marchel (Dem.).

PRICE COUNTY



JOSEPH R. FARR (Rep.) was elected mayor of Phillips in 1898, and member of the assembly in 1899, representing Price, Oneida and Vilas counties. The following year he was appointed U. S. Gen. Supt. or logging and timber on Indian reservations in Wisconsin, and a year later he was promoted and his supervision extended to all reservations in the United States, which position he held for ten years.

He was born April 8, 1864, raised on a farm in Marquette county and educated in the common schools and at the age of 17 moved to Price county with the pioneers and engaged in woods work, scaling, estimating timber, surveying and logging, and later became a dealer in timber and lands, and for years past has been active in the settlement and development of the cut-over lands of upper Wisconsin. He was elected to the assembly again in 1920, receiving 2,661 votes to 878 for Harvey Vincent (Dem.).

RACINE COUNTY



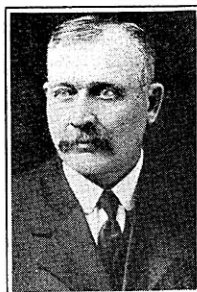
First District. The 1st, 2nd, 3rd, 4th, 5th, 6th, 8th, 10th, 11th and 14th wards, city of Racine.

WALLACE INGALLS (Rep.) returned to the assembly in 1920 after an absence of five terms. He was born in Walworth county, Nov. 22, 1859, educated in the common schools, Lake Geneva high school, Walworth Academy and Albany, N. Y., Law school. He served as district attorney of Walworth county 1892-96, and later removed to Racine where he has since practiced law. He served in the 1909 session of the assembly and was elected again in 1920, receiving 4,871 votes to 3,584 for Harry J. Herzog (Dem.), and 658 Niels P. Nielsen (Soc.).

RACINE COUNTY

Second District. The towns of Burlington, Caledonia, Dover, Mt. Pleasant, Norway, Raymond, Rochester, Yorkville, the villages of Corliss, Union Grove, Waterford, the city of Burlington and the 7th, 9th, 12th, 13th, and 14th wards, city of Racine.

HENRY F. JOHNSON (Rep.) has been an office holder for 35 years. Born in the town of Norway, Racine county, March 5, 1860, he attended the common schools since when he has followed farming. He has been treasurer of the school board since 1885, was a member of the board of supervisors 5 years, town chairman and member of the county board 7 years, and has been trustee of the Racine county asylum 14 years, and has served as director of the Town Insurance and Telephone companies for several years. He was elected to the assembly in 1918, and re-elected in 1920, receiving 6,316 votes to 2,053 for Max Law, (Dem.) and 692 for Otto Fehlberg, (Soc.).



RICHLAND COUNTY

ELIAS R. CUSHMAN (Rep.) is a miller by trade and spent 25 years in lumbering and merchandising, but for some time has been farming. He was born in Vernon county, August 14, 1860 and was educated in the common school of Vernon and Richland counties. He served as president of the village of Viola 1900 to 1903 and as a member of the Richland county board from 1909 to 1920. He was elected to the assembly in 1920 without opposition.



ROCK COUNTY

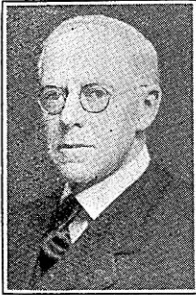
First District. The towns of Center, Fulton, Janesville, Lima, Milton, Magnolia, Porter, Union, the village of Milton and cities of Edgerton, Evansville and Janesville.

ALEXANDER E. MATHESON (Rep.) was born in Eagle, Wis., July 11, 1868, was educated in Beloit College and the University of Wisconsin, receiving his Ph.B. degree in 1890 and M.A. in 1893 at Beloit, and LL.B. in 1894 at Wisconsin, since which time he has practiced law in Janesville. He served as alderman 1903-1905, and as executive member and secretary of Local Board for Division No. 1, Rock County draft board during the World war. He was elected to the assembly in 1920, receiving 7,276 votes to 1,477 for John G. McWilliams (Dem.) and 125 for B. I. Jeffery (Proh.).



ROCK COUNTY

Second District. The towns of Avon, Beloit, Bradford, Clinton, Harmony, Johnstown, La Prairie, Newark, Plymouth, Rock, Spring Valley and Turtle, the villages of Clinton and Orfordville and city of Beloit.



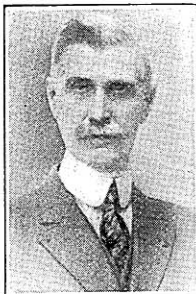
EDWIN G. FIFIELD (Rep.) was never a candidate and never held a public office until nominated and elected to the assembly in 1920 without opposition. He was born in Janesville, June 15, 1862, and educated in the public schools. In 1879-80 he conducted a lumber and fuel business in Pewaukee for his father, then for seven years was bookkeeper and assistant manager of the Janesville lumber business for his father and uncle. In 1887 he was in the jewelry firm of Hall, Sayles & Fifield, Janesville, retiring in 1904 to move to Beloit and manage the family real estate interests. During the war he was Government Appeal Agent for Local Draft Board No. 2, Rock county and associate member of the Legal Advisory Board.

RUSK & SAWYER COUNTIES



DAVID J. SUMMERVILLE, (Rep.), advocating better marketing of farm products, a closer co-operation among farmers and support of the good roads movement as a means of developing Northern-Wisconsin, was elected to the assembly in 1920 from Rusk and Sawyer counties without opposition. He was born March 22, 1875 in Carrol county, Ill., moved to Iowa with his parents in 1879 and was educated in the common schools, taught school in Iowa for three years and has since been engaged in farming. He came to Wisconsin in 1913, served as a member of the Rusk county board 1917 to 1920, member of the Road and Bridge committee and has served on his district school board since it was established. Is president of the Rusk County Agricultural Society.

ST. CROIX COUNTY



GEORGE OAKES (Rep.) was a member of the executive committee of the St. Croix county Council of Defense during the World War, and also a member of the local draft board. Born on a farm near New Richmond, April 21, 1861, he was educated in the common schools and the University of Minnesota where he received the degree of LL.B. and for more than 30 years has been in partnership with H. H. Smith in the practice of law in New Richmond. He served as city attorney in 1887-88 and from 1907 to 1911, and has been a member of the county board since 1910. He was elected to the assembly in 1918 and re-elected in 1920, receiving 4,783 votes to 2,394 for Edward Snoeyenbos (Dem.). He was chairman of the Assembly committee on finance in 1921.

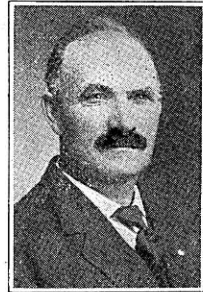
SAUK COUNTY

CARL KOENIG (Rep.) was born in Germany, March 10, 1864, and came to Wisconsin with his parents four years later, settling in Dane county. He was educated in the district and parochial schools and in 1878 moved with his parents to a farm of 53 acres in the town of Westfield, Sauk county, which he has operated since he attained the age of 19 years, increasing the farm to 430 acres and specializing in dairying and the breeding of pure bred milking Shorthorn cattle and Poland China hogs. Mr. Koenig has served as school clerk 24 years, treasurer Westfield Fire Insurance Co., 25 years, president and secretary Loganville and Leland Creameries 10 years, road supervisor 8 years, town assessor 6 years, chairman 8 years, vice-president Loganville State Bank 6 years, secretary-treasurer Westfield Local Equity 2 years, secretary Sauk County Equity 3 years, director Westfield Fire Insurance Co., 2 years, elder Zion Lutheran church 24 years, delegate to republican convention 1894, 96-02. He was elected to the assembly in 1920, receiving 5,474 votes to 2,133 for Wayne Newell (Ind.) and 380 for Luther B. Irish (Proh.).



SHAWANO COUNTY

AUGUST BEVERSDORF (Rep.) was born in Germany, Sept. 22, 1864, came to Milwaukee with his parents in 1867 where he was educated in the public schools and in 1878 moved to the town of Richmond, Shawano county, when it was a wilderness. At the age of 21 he purchased a farm in Belle Plaine township which he has developed into one of the finest farms in the county. He served as town treasurer six years, chairman twelve years, was a member of the county asylum building committee and trustee ever since. He was elected to the assembly in 1920, receiving 5,076 votes to 2,151 for Herman Warner (Soc.).



SHEBOYGAN COUNTY

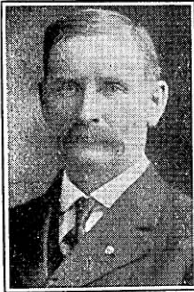
First District. The town of Sheboygan, village of Kohler and city of Sheboygan.

WILLIAM G. KAUFMANN (Rep.) was born in Sheboygan, Dec. 10, 1869 and received a common school education in that city. At the age of 21 years he engaged in the retail meat business which he operated for thirty years, retiring recently. Although always interested in clean politics he never sought office until elected to the assembly in 1920 when he received 5,630 votes to 2,806 for Charles Burhop, (Soc.).



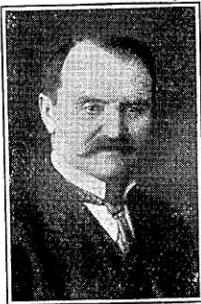
SHEBOYGAN COUNTY

Second District. The towns of Greenbush, Herman, Holland, Lima, Mitchell, Mosel, Plymouth, Rhine, Russell, Scott, Sheboygan Falls, Sherman and Wilson the villages of Cascade, Elkhart Lake, Cedar Grove, Glenbeulah, Oostburg, and Random Lake and the cities of Plymouth and Sheboygan Falls.



HENRY OTT (Rep.) was a progressive member of the assembly in 1913 and was returned as such in 1920 after an absence of eight years. Born in Cedar Grove, March 6, 1865, he' was educated in the rural schools and Plymouth high school, took up dairy farming and has long been a leader in that great industry in his county. He served as town clerk 11 years, chairman six years, secretary Plymouth Farmers Fire Insurance Association 12 years, and director of the State Bank of Plymouth since 1917. In the 1920 election he received 6,054 votes to 1,170 for Charles Severin (Soc.).

TAYLOR COUNTY



JOHN GAMPER (Rep.) holds the unique record of having served his county in the assembly both as a democrat and republican. He was first elected to the assembly in 1914 as a democrat but was nominated and elected as a republican in 1916 and again in 1920 when he received 2,647 votes to 191 for C. P. Hoffman (Ind.). Mr. Gamper was born in 1860 in Chur, Switzerland, and was educated in the common and high school, normal and University of Zurich. He came to America in 1883 to join the editorial staff of a German newspaper in St. Louis but did not like the city life and came to Wisconsin, working on a farm in Sauk county and that fall went to Medford where he has since resided. He owns a fine farm and specializes in raising pure bred Holstein cattle.



TREMPEALEAU COUNTY

HANS ALFRED ANDERSON (Rep.) was born in Norway March 4, 1855 and was educated in the common schools and the University of Wisconsin Law school and then began the practice of law in Whitehall. He served his county as district attorney in 1889 and 1890 and from 1910 to 1920 as county judge. He was elected to the assembly in 1920, receiving 4,400 votes to 657 for Peter Nelson (Dem.) and 95 for W. P. Massuere (Ind.).

VERNON COUNTY

LUTHER M. ROSELAND (Rep.) was born in Milwaukee, Dec. 23, 1887. He was graduated from the Austin, Minn., high school and then attended St. Olaf college, Northwestern University, Weidners Seminary, Chicago, was graduated from the United Lutheran Church Seminary and ordained to the ministry in 1913. He served as pastor at Elk Point, S. D. and at Viroqua and as Camp pastor during the World war under the National Lutheran Commission. Returning from the army he entered the lumber business in Viroqua and Viola in 1918, was appointed humane officer for Vernon county and was elected mayor of Viroqua in 1920. He was elected to the assembly in 1920, receiving 3,576 votes to 2,300 for R. M. Grimsrud (Ind.).



WALWORTH COUNTY

RILEY S. YOUNG (Rep.) Speaker of the 1919 and 1921 sessions of the assembly, is a banker of Darien. Born on a farm in Sharon, Sept. 25, 1860, he was educated in the district school, Sharon Academy and Delavan high school when he began clerking in a general store in Darien, studied pharmacy and opened a drug store in Ipswich, S. D., in 1886. Two years later he sold out and returning to Darien purchased a drug store which he conducted until 1919. He is president of the Farmers' State Bank of Darien. His only public office until elected to the assembly in 1916 was as town clerk from 1887 to 1894. He was re-elected to the assembly in 1920, receiving 7,710 votes to 1,579 for Earl Rogers (Dem.) and 250 for Arthur G. Palmer (Proh.). He was re-elected Speaker in 1921 over three opponents.



WASHINGTON COUNTY

ALFRED G. BECKER (Rep.) a member of the assembly committee on public welfare, 1919, chairman of Engrossed bills and Labor 1921, was born on a farm in the town of Addison, Washington county, Aug. 24, 1887. He was educated in the district and parochial school and the Hartford high school and after teaching four years in Washington county engaged in dairy farming and the breeding of pure bred Holstein cattle. He served as chairman of his town for four years and was elected to the assembly in 1918, and re-elected in 1920, receiving 5,003 votes to 1,885 for Jacob Wolf, Sr. (Dem.) and 294 for Abe Herman (Soc.).



WAUKESHA COUNTY



First District. The towns of Eagle, Genesee, Mukwonago, Muskego, New Berlin, Ottawa, Vernon, Waukesha, the villages of Eagle and Mukwonago, and the city of Waukesha.

WILLIAM A. FREEHOFF (Rep.) is a son of Henry Freehoff who served in the assembly during the 1915 and 1917 sessions. Born in the town of Greenfield, La Crosse county, December 27, 1889, he was educated in the common schools, the La Crosse high school and the University of Wisconsin. He was actively engaged in farming until two years ago when he retired from the farm to devote his entire time to writing for the agricultural press of the country, in which profession he has been singularly successful. He never held office until elected to the assembly in 1920, when he received 3,349 votes to 2,389 for G. H. Daubner (Dem.) and 232 for William H. Hoan (Soc.).

WAUKESHA COUNTY



Second District. The towns of Brookfield, Delafield, Lisbon, Menomonie, Merton, Oconomowoc, Pewaukee, Summit, the villages of Hartland, Menomonee Falls, New Butler, and Pewaukee and the city of Oconomowoc.

W. H. EDWARDS (Rep.) is serving his fourth term in the assembly and is chairman of the committee on taxation. He was born on a farm in the town of Lisbon, May 14, 1861, was educated in the common schools and Carrol college, Waukesha, after which he taught school for 15 years, 6 of which as principal of the school at Sussex. For the next 20 years he was actively engaged in the management of his large farm, retiring to his home in Sussex Oct. 1, 1914. He served two terms as town clerk, ten terms as county supervisor, one of which he was chairman of the county board. He was elected to the assembly in 1914 and re-elected in 1916, 1918 and 1920, receiving at the last election 3,145 votes to 1,732 for Judson Hall (Dem.), 210 for Martin Henrich (Soc.) and 70 for A. A. Glover (Proh.).



WAUPACA COUNTY

FRED HESS (Rep.) was born Nov. 13, 1858, in Winnebago county. He worked on his father's farm and attended district school. In 1883 he moved to the town of Dale, Outagamie county, where he purchased a farm. In 1888 he removed to Clintonville, Waupaca county, and three years later was elected

chief of police of that city, which office he held for about 10 years. He was then elected sheriff of Waupaca county and four years later was re-elected. He is a member of the board of trustees Waupaca County Asylum. He was elected to the assembly in 1914, 1916 and 1920 when he received 7,827 votes to 647 for Charles F. Miller (Soc.).

WAUSHARA COUNTY

FRANK W. PLOETZ (Rep.) was induced to become a candidate for the assembly in 1918 when 1,335 electors wrote his name on the ballot at the election in 1916 when he was not a candidate. He was elected in 1918 without opposition and re-elected in 1920, receiving 3,868 votes to 461 for A. W. Ranger, (Ind.). He was born in Germany, April 27, 1870, educated in the common schools and has been a farmer all his life. He served as town assessor 5 years, treasurer and school work 3 years each. He assisted in organizing the Coloma Creamery Co., the Coloma Produce Co., and Coloma Telephone Co., and is president or all three. He is married and the father of 14 children, one of whom served his country in France during the world war. Mr. Ploetz is the farmer member of the State Board of Vocational Education.



WINNEBAGO COUNTY

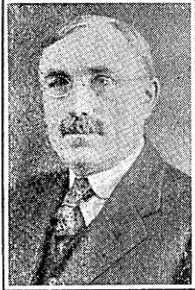
First District. The 1st, 2nd, 4th, 5th, 7th, 8th, 10th, 11th and 12th wards city of Oshkosh.

CLARK M. PERRY (Rep.) was elected to the assembly in 1918 with more than four times as many votes as were cast for his two opponents and was re-elected in 1920 when he received 4,398 votes to 1,216 for Albert Gertsch (Soc.). He was born in Winnebago county, July 27, 1872, was educated in the common school and Oshkosh high school and then became a contracting decorator. He served as supervisor in 1912-13-14-15 and has been a member of the local board of state civil service examiners since its organization. He has always taken a keen interest in civic matters and was author of the bill introduced in 1919 to create the city manager plan of municipal government.



WINNEBAGO COUNTY

Second District. The towns of Clayton, Menasha, Neenah, Oshkosh, Vinland, Winchester, Winneconne and the cities of Menasha and Neenah.



NELS LARSON (Rep.) is a retired wholesale cheese dealer of Neenah. He was born in Denmark, March 18, 1869, and came to America with his parents five years later, settling on a farm in the town of Winchester where he remained until he became of age. He was educated in the common schools, Oshkosh high school and business college, spent ten years as book-keeper and clerk and for the last twenty years has been engaged in the cold storage and wholesale cheese business in Neenah, selling out and retiring Jan. 1, 1920. He served as alderman six years and member of the county board two terms. He was elected to the assembly in 1920, receiving 3,622 votes to 1,533 for Martin C. Flanagan (Dem.).

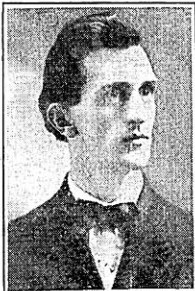
WINNEBAGO COUNTY

Third District. The towns of Algoma, Black Wolf, Nekimi, Nepenskum, Omro, Poygan, Rushford and Utica and the 3rd, 6th, 9th and 13th wards, city of Oshkosh.



GEORGE H. JONES (Rep.) was born on a farm in the town of Algoma, Winnebago county, July 13, 1859. He was educated in the district school, Oshkosh Normal and business college, and successfully conducted a farm in the town of Algoma until April 1920, when he retired. He has been town clerk since April 1893, president of the Nekimi Mutual Farmers Insurance Co., 15 years, director of the Winnebago County Fair Association 10 years, treasurer Plymouth Congregational Church, Oshkosh, 5 years, holding all of those positions at the present time. He was elected to the assembly in 1920, receiving 3,169 votes to 1,142 for Otto M. Seibold (Soc.).

WOOD COUNTY



WILLIAM WALTER CLARK (Rep.) has been both a successful school-teacher and farmer. He was born in Plum City in 1885, was educated in the common school, graded school, normal and University of Wisconsin and taught in a country school two years, high school six years and county agricultural school two years and also served as county agent. He had never held a political office until elected to the assembly in 1920, when he received 6,212 votes to 1,906 for Herman Siebenhaar (Soc.) and 926 for Daniel A. Knilians (Ind.).

CHIEF CLERK

C. E. SHAFFER (Rep.) has been chief clerk of the assembly at every session since 1907, being re-elected time and again without opposition. He was born on a farm in Dane county where he worked until he became of age, except during the time spent in school. He was educated in the common schools, business college and private academy, after which he taught in the district and graded schools. He was instructor for a time in mathematics and bookkeeping in the Capital City Commercial College, since which time he has been engaged in the real estate and insurance business. He has taken an active part in politics, having served three terms as secretary on the Dane county Republican committee.



SERGEANT-AT-ARMS

THOMAS GRANT CRETNEY (Rep.) is serving his third term as sergeant-at-arms of the assembly, having been elected in 1917 and re-elected in 1919 and 1921. He was born in the town of Ridgeway, Iowa county, Aug. 20, 1870, attended the public schools during the winter and worked on his father's farm in summer. When 22 years of age he started to learn the carpenter's trade and three years later became a successful building contractor. He served as president of the village of Ridgeway and in 1909 assisted in the organization of the State Bank of Arena, becoming its president. He was elected to the assembly in 1914 from Iowa county and at the expiration of his term moved to Madison and engaged in the real estate business.

