

PART VIII.

BIOGRAPHICAL SKETCHES.

U. S. SENATORS.

REPRESENTATIVES IN CONGRESS.

STATE OFFICERS.

JUSTICES OF SUPREME COURT.

STATE SENATORS.

MEMBERS OF ASSEMBLY.



BIOGRAPHICAL SKETCHES.

MEMBERS OF THE SIXTY-THIRD CONGRESS.

ROBERT MARION LA FOLLETTE (Rep.) was born at Primrose, Dane county, Wisconsin, June 14th, 1855; graduated from the state university of Wisconsin June, 1879, admitted to the bar February, 1880; elected district attorney of Dane county November, 1880; reelected in 1882; elected a member of the forty-ninth congress 1884; reelected in 1886; reelected in 1888; defeated for reelection in 1890; elected a district delegate to the national Republican convention June, 1896; elected a delegate-at-large to the Republican national convention June, 1904; elected governor of Wisconsin 1900; reelected 1902; reelected 1904; elected to the United States senate to succeed Joseph V. Quarles January 25, 1905. Took his seat as United States senator January 4th, 1906. Reelected 1911. His term of service will expire March 4, 1917.

ISAAC STEPHENSON (Rep.), was born in York county near Fredericton, New Brunswick, June 18, 1829. His early life was spent in assisting his father who was a farmer and a lumberman. A short time was spent at public schools but most of his education is the result of observation and experience. At the age of fourteen years he moved to Bangor, Me., but shortly thereafter came west, locating at Milwaukee. After a few years spent in unsuccessful farming, he transferred his operations to lumbering in the northern peninsula of Michigan. His earliest work in the field was contracting for putting in logs in the winter, while during the summer, he carried freight to Chicago and Milwaukee by boat. When the first land office was opened in northern Michigan in 1848 Mr. Stephenson and his associates purchased large tracts of timber lands on the Escanaba, Ford and Sturgeon rivers and on Big Bay de Noquet. In 1857 he discontinued contracting logs and engaged in the manufacture of lumber. Since that date his business operations have grown rapidly until to-day he is one of the most extensive lumber manufacturers in the United States. In addition to its manufacture, he maintains large yards for the wholesale and retail distribution of lumber and is also heavily interested in the manufacture of paper. Mr. Stephenson is also a banker and owns a model dairy and stock farm. His business interests are centered at Chicago, Milwaukee and at his home city, Marinette. Politically he has been a Republican since the organization of that party. He was a member of the assembly in 1866 and reelected in 1868. In 1882 he was elected to congress and served three terms, when his business affairs required his declining a renomination. In 1880 and 1892 he was a delegate to the Republican national convention. In 1900 he was delegate-at-large to the Republican national convention at Philadelphia; elected delegate-at-large to Chicago convention in 1904 and was chairman of the delegation. In 1908 was elected delegate-at-large at the primary election to the national convention at Chicago. In May, 1907, Mr. Stephenson was elected to the United States senate to serve for the unexpired term of Hon. John C. Spooner, resigned. His term of office expired March 4, 1909. He was reelected March 4, 1909. His term of office will expire March 4, 1915.

REPRESENTATIVES.

FIRST CONGRESSIONAL DISTRICT.

Racine, Kenosha, Walworth, Rock and Waukesha counties. Population, 1910—212,605.

HENRY ALIEN COOPER (Rep.), of Racine, was born at Spring Prairie, Walworth county, Wisconsin, September 8, 1850; graduated from Northwestern University in 1873, and from Union College of Law, Chicago (now Law School of N. W. University) in 1875; is by profession a lawyer; resided in Chicago from 1873 to 1879; otherwise has always lived in Wisconsin; in 1880 was elected district attorney of Racine county, and reelected without opposition in 1882 and in 1884; state senator in 1886; author of the law which first established the Australian ballot system in Wisconsin; was elected representative in congress in 1892, 1894, 1896, 1898, 1900, 1902, 1904, 1906, 1908, 1910 and again in 1912, receiving 18,914 votes against 13,816 for Calvin Stewart (Dem.), 1,333 for M. S. Kellogg (Pro.), and 1,523 for Joseph Orth (Soc. Dem.).

SECOND CONGRESSIONAL DISTRICT.

Jefferson, Columbia, Dodge, Washington, Ozaukee, and Sheboygan counties. Population, 1910—208,666.

MICHAEL E. BURKE (Dem.), of Beaver Dam, was born in that city October 15, 1863; was educated in the district schools of the town of Beaver Dam and in Wayland Academy, in said city, from which institution he graduated in 1884; worked as a hired farm hand for the farmers in that town in the summer time from the age of 13 to 26; commenced the study of law in the law department of the University of Wisconsin in 1886; was admitted to the bar in 1888, and followed the practice of his profession continuously at his native city and vicinity until he entered congress; in 1890 and 1892 was elected to the assembly of the state of Wisconsin, in which body he served as chairman of the committee on legislative expenditures in 1891 and chairman of the assembly committee on judiciary in 1893; in 1894 was elected to the senate of the state of Wisconsin, in which body he served for one term of four years; in 1893 was elected city attorney of Beaver Dam, and was reelected for fifteen consecutive annual terms thereafter to such position; married to Miss Emma Sontag, of Winneconne, Wis., in 1898; was serving his second consecutive term as mayor of his native city when first elected to congress; has attended many conventions of his party, and in 1904 was a district delegate to the Democratic National convention held at St. Louis; was elected to the Sixty-second congress, and reelected to the Sixty-third congress as a democrat from the new second congressional district, receiving 20,665 votes to 14,698 for Henry J. Grell, republican, 1,512 for Edward Deuss, socialist, and 538 for William E. Mack, prohibitionist.

THIRD CONGRESSIONAL DISTRICT.

Crawford, Richland, Grant, Iowa, Dane, Lafayette and Green counties. Population, 1910—215,752.

JOHN MANDT NELSON (Rep.) of Madison, was born in the town of Burke, Dane county, Wis., Oct. 10, 1870; received a collegiate education, being graduated from the University of Wisconsin in 1892, and from its law department in 1896; pursued post-graduate studies at the state university 1901-1903. He was married in 1891 to Thea Johanna Stondall; they have six children. He

was elected school superintendent of Dane county in 1892 and reelected in 1894; resigned to become bookkeeper in the office of the secretary of state, 1894-1897; correspondent in the state treasury 1898-1902; elected to the 59th congress in Sept. 1906, to fill a vacancy; reelected to the 60th, 61st, 62d and again to the 63d congress, receiving 22,388 votes against 18,219 for A. H. Long (Dem.), 1,219 for C. H. Berryman (Pro.), and 496 for W. E. Middleton (Soc.).

FOURTH CONGRESSIONAL DISTRICT.

3d, 4th, 5th, 8th, 11th, 12th, 14th, 16th, 17th, 23d, and 24th, wards of the city of Milwaukee together with the following subdivisions of Milwaukee county: town of Wauwatosa, city of Wauwatosa, town of Greenfield, town of Franklin, city of West Allis, village of West Milwaukee, city of South Milwaukee, town of Oak Creek, town of Lake, city of Cudahy. Population, 1910—214,330.

WILLIAM JOSEPH CARY was born March 22, 1865, at Milwaukee, Wis. Received a primary education, and at the age of 13 was left an orphan with five younger children; began work as a messenger boy, the younger children being placed in an orphan asylum; at 18 he was a telegraph operator, and at 19 took the younger children from the asylum and gave them a home; was married in 1889; elected alderman from his ward in 1900 and reelected in 1902; elected sheriff of Milwaukee county in 1904 with a plurality of 11,000, leading his ticket by 3,000; in 1903 was elected to the 60th congress to succeed Theobald Otjen; was reelected to the 61st, 62d and 63d congresses, receiving 14,906 votes against 10,830 for W. R. Gaylord (Soc. Dem.), 6,945 for John M. Beffel (Rep.), and 541 for Wm. R. Nethercut (Pro.).

FIFTH CONGRESSIONAL DISTRICT.

1st, 2d, 6th, 7th, 9th, 10th, 13th, 15th, 18th, 19th, 20th, 21st, 22d and 25th wards of the city of Milwaukee, together with the following subdivisions of Milwaukee county; village of North Milwaukee, village of East Milwaukee, village of Whitefish Bay, town of Granville and town of Milwaukee. Population, 1910—218,857.

WILLIAM H. STAFFORD (Rep.), of Milwaukee, attended the public schools, and later attended Harvard college and Harvard law school, from which he was graduated. At the time of his election to congress he was in the active practice of the law in Milwaukee. He was elected to the 58th, 59th, 60th, and 61st congresses, and was elected to the 63d congress by a fusion of republicans and democrats in opposition to the socialist candidate.

SIXTH CONGRESSIONAL DISTRICT.

Marquette, Green Lake, Fond du Lac, Winnebago, Calumet, Manitowoc counties. Population, 1910—201,637.

MICHAEL K. REILLY (Dem.), Fond du Lac, Wisconsin. Congressman-elect, Sixth Wisconsin district. Born in town of Empire, Fond du Lac county, Wisconsin; early life spent on farm; attended district school, graduated from Oshkosh Normal, 1889; University of Wisconsin, College of Letters, 1894, College of Law, 1895. From 1896 to 1899 member of law firm of Williams & Reilly, Oshkosh, Wisconsin, and since then he has practiced his profession in the city of Fond du Lac, at the present time, being senior member of the law firm of Reilly, Fellenz & Reilly.

District attorney of Fond du Lac county, two years; city attorney of Fond du Lac, five years. Delegate Democratic National convention, Denver, 1908; temporary chairman Democratic state convention, Milwaukee, 1910. Chairman of Democratic city committee, Fond du Lac, Wis., from 1904 to 1910. Since 1911, member of University Board of Visitors. Elected to congress, 1912, receiving 16,742 votes against 15,505 for James H. Davidson (Rep.), 1,659 for Martin Georgison (Soc. Dem.) and 505 for Frank L. Smith (Pro.).

SEVENTH CONGRESSIONAL DISTRICT.

La Crosse, Jackson, Monroe, Clark, Vernon, Juneau, Adams and Sauk counties.
Population, 1910—209,184.

JOHN JACOB ESCH (Rep.), of La Crosse, was born near Norwalk, Monroe county, Wis., March 20, 1861. He was educated in the public schools of Milwaukee and Sparta, Wis., entered the state university in 1878, and graduated from the modern classical course in 1882. The next four years he spent in reading law and teaching at Sparta; was offered the principalship of the high school, but declined and entered the university law school, graduating in the class of 1897. From this time to the present he has been engaged in the practice of law at La Crosse as a member of the firm of Winter & Esch. In 1883 he organized the Sparta Rifles, afterwards known as Co. I, 3d Regiment W. N. G., and was at one time its captain. He also helped organize the Gateway City Guards of La Crosse, now Co. M, 3d Regiment W. N. G.; held but one elective office, that of city treasurer of Sparta, and this for only one year. Has always been a Republican. Was elected to the 56th, 57th, 58th, 59th, 60th, 61st, and 62d congresses, reelected 1912, receiving 20,065 votes against 10,795 for Wm. N. Coffland (Dem.), 901 for B. S. Hawley (Pro.), and 804 for C. A. Noetzelman (Soc. Dem.).

EIGHTH CONGRESSIONAL DISTRICT.

Marathon, Portage, Waupaca, Waushara, Wood and Shawano counties. Population, 1910—200,134.

EDWARD E. BROWNE (Rep.) was born at Waupaca, Waupaca county, Wisconsin, February 16, 1868. He attended the public schools of the city of Waupaca and after finishing the high school there was graduated from the state University in 1890 and from the University Law School in 1892, since which time he has been engaged in the practice of law in the city of Waupaca. He was elected district attorney of Waupaca county in 1898, which office he held 6 years. He was appointed regent of the state University in June, 1904, resigning in 1906 to accept seat in the state senate. There was no opposition to his nomination or election, Mr. Browne having been nominated on the Republican ticket and endorsed by the Democratic, Prohibition and Social Democratic parties. He was again elected to the senate in 1910, was elected to congress in 1912 receiving 17,099 votes against 12,236 for A. J. Plowman (Dem.), 687 for A. R. Bucknam (Pro.), and 1,254 for C. A. Boorman (Soc. Dem.).

NINTH CONGRESSIONAL DISTRICT.

Langlade, Forest, Florence, Marinette, Oconto, Outagamie, Brown, Kewaunee and Door counties. Population, 1910—225,389.

THOMAS F. KONOP (Dem.), was born in the town of Franklin, Kewaunee county, Wis., August 17, 1879; attended country school, then high school at Two Rivers for two winters; prepared himself for teaching profession; attended State Normal School at Oshkosh; taught for five years; studied law at Northern Illinois College of Law and University of Nebraska. Graduated from last-named institution in 1904 with degree of L. L. B. Admitted to the bar in his native state in the fall of that year, and entered upon the practice of the legal profession in the city of Kewaunee. Was district attorney of Kewaunee county for three terms. He was elected to the sixty-second congress by a majority of 5 votes and reelected to the sixty-third congress by a majority of 704, receiving 16,843 votes against 16,139 for E. A. Morse (Rep.), 631 for J. L. Sizer (Pro.), and 1,138 for James Oliver (Soc. Dem.). Congressman Konop married Madge Lucille Nolan August 22, 1905, and has four children.

TENTH CONGRESSIONAL DISTRICT.

Dunn, Barron, Chippewa, Eau Claire, Trempealeau, Buffalo, Pepin, Pierce and St. Croix counties. Population, 1910—213,698.

JAMES A. FREAR (Rep.), was born at Hudson, Wis., October 24, 1861. Attended Lawrence University in 1878, when with his parents he moved to Washington, D. C. Served five years in the U. S. Signal Corps at Fort Myer, Va., Indianapolis and Washington. Graduated from the National Law University, Washington, in 1884. Admitted to the supreme court, District of Columbia and returned to Hudson the same year. Was city attorney for several terms; appointed district attorney for St. Croix county in April 1896, and was elected for three consecutive terms thereafter. Elected to the assembly in 1902, and to the senate in 1904. Chairman of the senate investigation committee on state insurance and chairman of the Wisconsin legislative insurance investigation during 1906. Elected secretary of state in 1906, reelected in 1908 and again in 1910, was elected to congress in 1912, receiving 19,915 votes against 8,794 for Charles Donahue (Dem.), 868 for B. White (Pro.), and 1,031 for Albert Slaughter (Soc. Dem.).

ELEVENTH CONGRESSIONAL DISTRICT.

Douglas, Bayfield, Ashland, Iron, Vilas, Burnett, Polk, Washburn, Sawyer, Rusk, Price, Taylor, Oneida and Lincoln counties. Population, 1910—213,608.

IRVINE L. LENROOT (Rep.), is a native of Wisconsin, born at Superior in 1869. His parents emigrated to this country from Sweden in 1855 and settled in Wisconsin in 1856. Mr. Lenroot received a common school education, became a stenographer and studied law. He was admitted to the bar in 1897. He has always been a republican, actively interested in politics. In 1900 he was elected a member of the Wisconsin assembly. Reelected in 1903, he was elected speaker of the assembly, and reelected in 1905. Was elected a member of congress in 1908 and 1910 and reelected in 1912, receiving 17,466 votes against 7,998 for Henry Johnson (Dem.), 722 for D. W. Emerson (Pro.), and 3,122 for E. B. Harris (Soc. Dem.).

STATE OFFICERS.

GOVERNOR.

FRANCIS E. McGOVERN (Rep.), of Milwaukee, was born on a farm near Elkhart, Sheboygan county, January 21, 1866. He attended district school and worked on his father's farm until he was seventeen. For three years he taught a country school and then entered the University of Wisconsin, graduating with honors in June, 1890. He was principal of the Brodhead High School from 1890 to 1893; principal of the Ryan High School, Appleton, from 1893 to 1897; was admitted to the practice of law at Milwaukee, June, 1897; was appointed first assistant district attorney for Milwaukee county in 1901; reappointed 1903; was elected district attorney for Milwaukee county in 1905 and reelected in 1907. While in the district attorney's office, as first assistant and as head of the department, he waged a crusade against dishonesty in the public service and, through the well known "graft prosecutions," took rank as one of the leaders in the nation-wide movement for clean municipal government. In 1908 he was a candidate for the republican nomination for United States senator. He was elected governor in November, 1910, and again in 1912, leading his ticket and receiving more votes than any other candidate. The vote for him was 179,317, against 167,298 for J. C. Karel (Dem.), 34,385 for Carl D. Thompson (Soc. Dem.), 3,206 for William H. Curtis (Soc. Lab.), and 9,426 for Chas. L. Hill (Pro.).

LIEUTENANT GOVERNOR.

THOMAS MORRIS (Rep.), of La Crosse, was born on a farm near Bedford, Canada, December 3, 1861. He received his education in the common schools of Canada and the Bedford Academy. He is a lawyer, having graduated from the Wisconsin University law school in 1889. He was elected district attorney of La-Crosse county in 1898 and reelected in 1900. He was twice elected chairman of the Republican Congressional Committee of the Seventh Congressional District, and resigned the position when he became a candidate for the senate, at the election of 1908. He was elected to the senate in 1904, also in 1908, and in 1910 was elected lieutenant governor and reelected in 1912, receiving 178,594 votes against 8,784 for J. V. Collins (Pro.); 35,155 for H. M. Parks (Soc. Dem.); 3,048 for J. Vierthaler (Soc. Lab.), and 153,990 for H. W. Bolens (Dem.).

SECRETARY OF STATE.

JOHN S. DONALD (Rep.), of Mt. Horeb, was born on a farm where he now resides, January 12, 1869. His education was continued from the district school to the Northwestern Business College at Madison, from which he graduated in 1887. In 1894 he received the degree of B. S. at the University of Valparaiso, Valparaiso, Indiana, and in 1897 the degree of D. D. S. at the Chicago College. In 1892 he served as assessor of his town (Springdale) and was chairman of the board of supervisors from 1899 to 1902. He was elected to the assembly in 1902, was reelected in 1904 and in 1908 was elected state senator and served the four-year term. In 1912, he was elected secretary of state, receiving 176,486 votes against 154,106 for A. P. Kealy (Dem.), 8,503 for H. J. Noyes (Pro.), 35,128 for Rae Weaver (Soc. Dem.), and 3,067 for Wm. Rossman (Soc. Lab.).

STATE TREASURER.

HENRY JOHNSON, Suring, Oconto county, Wisconsin, (now residing in South Madison), was born in Denmark, December 2, 1854.

He was educated in the common schools and has earned his own living since he was eight years old. Came to this country in 1873 and went direct to Oshkosh. Worked for several years at Shawano, married in 1879, and now has a family of eight children. He moved into the town of How, Oconto county; cleared a farm and engaged in lumbering. Has held town offices from the town chairmanship to justice of the peace. Was elected to the legislature from Oconto county in 1901-3-5 and served on some of the most important committees in the assembly. Was appointed assistant state treasurer in 1907, and was elected state treasurer in 1912 by a majority of 24,029 over his democratic opponent, receiving 178,321 votes against 154,097 for Nic Schmidt (Dem.), 8,696 for Thos. Edwards (Pro.), 35,195 for H. J. Ammann (Soc. Dem.), and 2,985 for Nic Semmelhack (Soc. Lab.).

ATTORNEY-GENERAL.

WALTER C. OWEN (Rep.), was born on a farm in the town of Trenton, Pierce county, Wisconsin, Sept. 26, 1868. He was educated in the common and high schools of Pierce county, and graduated from the law department of the University of Wisconsin with the class of 1891. He engaged in the practice of law at Superior, Wisconsin, becoming a member of the firm of Crownhart, Owen & Foley, and continuing with said firm until January 1, 1898, when he removed to Maiden Rock, Wisconsin, where he has since continued in the active practice of his profession. Though he has always taken an active interest in politics, he never held public office until his election to the state senate from the Tenth district, to fill the vacancy caused by the resignation of Senator James A. Frear. He was elected without opposition, receiving 4,291 votes, and in 1908 was again elected without opposition to succeed himself, receiving 6,391 votes. He was elected attorney-general in 1912, receiving 175,535 votes against 154,043 for C. A. Kading (Dem.), 8,655 for H. S. Siggelko (Pro.), 34,936 for L. D. Joseph (Soc. Dem.), and 3,082 for J. W. Swanson (Soc. Lab.).

STATE SUPERINTENDENT.

C. P. CARY was born in southern Ohio, January 28, 1856. His mother was of German descent and his father was directly related to the English political economist, Henry Cary. From the time he arrived at school age till he was seventeen he worked on his father's farm in summer and attended the district school in winter. At the age of seventeen he began to teach district school in winter and continued working on the farm in summer. In 1877 he entered the Ohio Central Normal School and was graduated in 1879. After this he taught for seven years as principal of graded schools in Ohio and Kansas, and served during most of this period as county examiner of teachers and instructor in teacher's institutes. In 1886 he was elected county superintendent of schools in Brown county, Kansas, but declined renomination for a second term, and accepted the position of superintendent and high school principal at Fairbury, Nebraska. This position he resigned in the summer of 1893 to accept the position of instructor in pedagogy and principal of the training department of the Milwaukee State Normal School. This position he resigned in the summer of 1901 to accept the position of superintendent of the Wisconsin School for the Deaf at Delavan, Wis. This position he resigned in the fall of 1902 to accept the nomination for the office of state superintendent of public instruction. He holds a life certificate to teach in the schools of Nebraska, also in Wisconsin, and is a graduate of the University of Chicago, class of '98. He is an active member of the National Educational Association, and a member of the National Society for the Scientific Study of Education, and has devoted his life to the study of all the sciences and arts that bear upon the problems of education; was elected superintendent of public instruction in 1902, 1905, 1909, and reelected in 1913, receiving 136,056 votes against 100,130 for Wm. Kittle.

JUSTICES OF THE SUPREME COURT.

JOHN B. WINSLOW, LL. D., (University of Wisconsin 1904, Lawrence 1912), was born Oct. 4, 1851, at Nunda, Livingston county, N. Y. He graduated at Racine college, Wis., in 1871, and entered upon the study of law in the law office of E. O. Hand, and later in the law office of Fuller & Dyer. He finished his course of reading in the law department of the University of Wisconsin, from which he graduated in 1875, and entered upon the practice at Racine. He was for several years city attorney of Racine, was president of the American Institute of Criminology during the year beginning September 1, 1911. In April, 1883, he was elected circuit judge of the First judicial circuit, and entered upon judicial duties in January, 1884, serving in that capacity (being reelected) until May 4, 1891, when he was appointed associate justice of the supreme court, in place of Hon. David Taylor, deceased. In April, 1892 he was elected to fill the residue of Judge Taylor's term; in April, 1895, he was reelected for a full term; and again reelected for a full term in April, 1905. He became chief justice by reason of seniority of service upon the death of Chief Justice Cassoday, Dec. 30, 1907. He is the author of a history of the Supreme Court of Wisconsin from 1848 to 1880, entitled "The Story of a Great Court."

ROUJET D. MARSHALL, LL. D., Lawrence University, 1904, and LL. D., University of Wisconsin, 1905, was born December 27, 1847, in Nashua, N. H. His paternal ancestors, Marshalls and Emersons, came to this country from England about 1635 and settled at Boston, Mass. His maternal ancestors, Dodges and Pitkins came likewise from England about 1659, the Dodges settling near Boston and the Pitkins at Hartford, Conn. He came to Wisconsin with his parents who settled at Delton, Sauk county, Wisconsin, in 1854. He was educated in the common schools of his town, the Delton Academy, Baraboo Collegiate Institute and Lawrence University. He commenced the study of law at 17, pursuing the same, partly with his school work, till he was 24, when he was admitted to the bar, commenced practicing law in Chippewa Falls, Chippewa county, Wisconsin, and so continued till he became circuit judge. He was appointed county judge of Chippewa county by Governor Ludington in 1876, holding the office under the appointment and a subsequent election six years; member of the board of regents of the University of Wisconsin, 1884-1886; elected circuit judge of the eleventh circuit in 1888, and reelected in 1894; appointed to the supreme bench by Governor Upham, 1895, to succeed Chief Justice Harlow S. Orton, deceased, elected to that office in 1896 for the unexpired term of the deceased chief justice, reelected for a term of ten years in 1897 and reelected for a like term in 1907.

ROBERT G. SIEBECKER was born October 17, 1854, in Sauk county, Wisconsin. He was educated in the district school until he was seventeen and then attended a private academy at Madison for two years. He entered the University of Wisconsin in September, 1874, and graduated in June, 1878. In the fall of this year he entered the law school of the university and graduated therefrom in June, 1880. He was admitted to the bar on examination in September, 1879. In October of that year he began the practice of law at Madison and this he continued until his appointment as judge of the Ninth judicial circuit on January 7, 1890. In March, 1886, he was elected city attorney of Madison and was annually reelected until he went on the circuit bench. In April, 1890, he was elected judge of the circuit court for the unexpired term and for the ensuing full term. He was twice thereafter reelected to this position without opposition. On April 7, 1903, he was elected a justice of the supreme court, for the term beginning in January, 1904, and on April 9, 1903, was appointed for the unexpired term in this office, caused by the death of Justice C. V. Bardeen. On April 1, 1913, he was reelected without opposition to this position for the term beginning in January, 1914.

JAMES C. KERWIN was born in the town of Menasha, Winnebago county, Wisconsin, May 4, 1850. He attended the common schools of the neighborhood and later the Menasha high school, from which he was graduated. He prepared himself for the practice of law by a course of study in the law school of the University of Wisconsin, and was graduated in 1875. Returning to his native county, he opened an office in Neenah and has since been actively engaged in the profession. He was city attorney of Neenah for twelve years, and was appointed a member of the board of regents of the University of Wisconsin in 1901. In April 1904, he was elected associate justice of the supreme court, and entered upon judicial duties in January, 1905.

W. H. TIMLIN was born at Mequon, Ozaukee county, Wisconsin, May 28, 1852, admitted to the bar in 1877, and practiced law at Kewaunee, Green Bay and Milwaukee. Elected justice of supreme court in April, 1906, for the term commencing January 7, 1907.

JOHN BARNES was born in Manitowoc county July 26, 1859. Was educated in the common schools, at the Manitowoc high school and at the Oshkosh normal school. Taught school for several years; studied law, and graduated from the law school of the University of Wisconsin in 1883. Began the practice of law at Rhinelander in 1885, served as first municipal judge of Oneida county, and as president of the school board of the city of Rhinelander for a number of years. Was appointed a member of the Wisconsin railroad commission in 1905, and elected chairman of that body; resigned August 1, 1907. At the April election in 1908, was elected to fill the vacancy on the supreme court bench caused by the death of Chief Justice Cassoday. Was reelected for a full term in April, 1909.

AAD JOHN VINJE was born in Voss, Norway, Nov. 10, 1857. Emigrated to the United States with his parents in 1869. Settled in Marshall county, Iowa. Attended Iowa College at Grinnell, Iowa, in the winter of 1873-74, and the Northwestern University of Iowa at Des Moines in the winter of 1874-5. Taught school for several years in Iowa. Entered the University of Wisconsin in the fall of 1878 and graduated from the literary department in 1884, and from the law department in 1887. Was assistant in the state library from 1884 to 1888, and assistant to the supreme court reporter from 1888 to 1891. Practiced law in Superior from 1891 to 1895. August 10, 1895, was appointed judge of the Eleventh judicial circuit of Wisconsin, and held the office till September 10, 1910, when he was appointed justice of the supreme court to fill the unexpired term of Justice Joshua E. Dodge, resigned. April 4, 1911, elected for full term commencing January, 1912.

THE WISCONSIN LEGISLATURE.

SENATE.

FIRST SENATORIAL DISTRICT.

Door, Kewaunee and Marinette Counties. Population, 1910—69,307.



M. W. PERRY (Rep.) was born at Racine, Wisconsin, Feb. 26, 1864. His parents at that time were residents of Wolf River, Wis., afterwards called Ahnapee, and now Algoma. Attended common school until 14. Worked as a carpenter and millwright from 1879 to 1886. Then located at Sheboygan, starting in the veneer business as a common hand. Advanced to a superintendency. Returned to Algoma in 1892, and promoted the Ahnapee Veneer and Seating Co., the firm he is now manager and secretary of, with factories at Algoma and Birchwood. Has always been active in Republican politics. A delegate to state conventions of 1898, 1902 and 1904. Alternate to national Republican convention in Chicago, 1904. Elected mayor of Algoma 1910. Elected state senator in 1910, receiving 3,258 votes against 2,865 for Leo. J. Evans (Dem.), 2,298 for Dr. A. J. Kreitzer (Ind. Rep.), and 660 for Dr. N. Z. Wagner (Soc. Dem.).

SECOND SENATORIAL DISTRICT.

Brown and Oconto Counties. Population, 1910—79,755.



TIMOTHY BURKE (Rep.), Green Bay, was born on a farm in the town of Morrison, Brown county, Wis. He received a common school education, and besides, mastered all the usual collegiate subjects through his individual efforts. He taught school in Manitowoc and Brown counties for several years, and during his leisure time studied law. He entered the law department of the University of Wisconsin in the fall of 1897, and passed the bar examination in December of that year, but attended the law school until the summer of 1898. He was a member of assembly from the Second district of Brown county in 1895 and 1896, and was sheriff of Brown county from January 1901, to January 1903, having been the only attorney who ever held that office in this state. In January, 1903, he engaged in the practice of law, and is now a member of the firm of Kittell & Burke. He was elected chairman of the Republican county committee of Brown county in 1904 and

continued in that capacity until 1912. He was the only chairman who ever succeeded in having the entire county and legislative ticket of his party elected, which he succeeded in doing in 1906. He was a member of assembly for the First district of Brown county in 1907 and 1908, and was elected to the senate in 1908, receiving 7,819 votes against 4,745 for George Dagen (Dem.). He was renominated without opposition in 1912, and was reelected at the following election, receiving 6,061 votes against 4,591 for John J. Colignon (Dem.), 625 for Joseph Prevot (Soc. Dem.), 225 for Joseph K. Volk (Ind.)

THIRD SENATORIAL DISTRICT.

Kenosha and Racine counties. Population, 1910—90,353.

ISAAC THORN BISHOP (Rep.), of Somers, Kenosha county, Wis., is a native of that place. Born June 6, 1844, of New England parents. Attended common schools only. He was a farmer until the year 1861, when he accepted a clerkship with Doan & Hawley, dry goods merchants, in the city of Kenosha. He volunteered in Sept., 1862, and served three years in the civil war, participating in the battles of Arkansas Post, Raymond, Champion Hills, Black River Ridge and the siege of Vicksburg. After the war he engaged in farming and now owns and operates a farm that his father bought from the government before the subject of this sketch was born. He served his town as chairman five years, justice of the peace eleven years, and is serving his 28th year as secretary of the Somers Mutual Fire Insurance company. He was elected state senator in 1906, and again in 1910, receiving 5,319 votes against 1,453 for S. S. Walkup (Soc. Dem.) and 155 for Wm. R. Hausche (Pro.).



FOURTH SENATORIAL DISTRICT.

Milwaukee County.

The 13th, 18th, 21st, and 25th wards of the city of Milwaukee, the towns of Granville and Milwaukee, and the villages of North Milwaukee, East Milwaukee, and Whitefish Bay. Population, 1910—66,644.

WILLIAM L. RICHARDS, (Rep.) was born in the city of Milwaukee on the 7th day of February, 1881; was educated in the common schools and East Side High School and is a graduate of Milwaukee Law School and Marquette University. He was for some years prior to taking up the active practice of the law associated in the garden business with his father, Charles D. Richards. He was nominated for alderman in the 21st ward in the spring of 1912, and was defeated by Wm. Arnold (Soc.) by 17 votes. Was nominated and elected in the fall of 1912 as state senator receiving 4,888 votes against 2,881 votes cast for Emil Hoefs (Rep.) and 3,932 votes cast for Frank Weber (Soc.)



FIFTH SENATORIAL DISTRICT.

15th, 16th, 19th, 20th and 22nd wards of the city of Milwaukee, the city of Wauwatosa and the town of Wauwatosa. Population, 1910—75,203.



GEORGE J. WEIGLE (Rep.) was born in Milwaukee, Wisconsin, December 4, 1871, and has always resided there. Attended a parochial school and business college; entered a drug store as apprentice at the age of fifteen and opened his own store at the age of twenty-two and now has one of the largest drug stores in the city of Milwaukee. He is secretary and treasurer of Thompson's Malted Food Company. Was elected state senator in 1910, receiving 4,909 votes against 3,839 for H. J. Steinman (Dem.) and 3,142 for B. J. Sherer (Soc. Dem.).

SIXTH SENATORIAL DISTRICT.

6th, 7th, 9th and 10th wards of the city of Milwaukee. Population, 1910—37,703.



GEORGE H. WEISSLEDER was born in Hartford, Wis., December 13, 1879. At the age of three years he removed with his parents to Milwaukee where he attended the common schools, Milwaukee Law school and Marquette university. From the latter he received the LL. B. degree. At the age of 18 years he had completed his apprenticeship as coppersmith and in the year 1905 he became the secretary and treasurer of the Herm Weissleder Co., coppersmiths and general contractors. He devoted his time to the managing of this business and to traveling throughout the United States, Mexico and Canada. In the year 1909 he was admitted to the bar and in addition to managing the business of which he is an officer, he is also actively engaged in the practice of the law. He was elected in 1912 to the senate, receiving 4,292 votes against 4,195 votes for E. J. Berner (S. D.) and 2,129 votes for David Rothmann (Rep.), 90 votes for Emil Thoms (Pro.).

SEVENTH SENATORIAL DISTRICT.

14th, 17th and 24th wards of the city of Milwaukee, the city of Cudahy, the village of West Milwaukee, the city of West Allis, the city of South Milwaukee, the town of Oak Creek, the town of Franklin, the town of Greenfield, and the town of Lake. Population, 1910—73,185.



GABRIEL ZOPHY (Soc. Dem.) was born in Schwanden, Canton Glarus, Switzerland, April 17, 1869. He came to the United States in 1879 locating in Juda, Green county, Wis., where he attended the public school in winter and worked on farms in the summer. In 1885 he moved to Milwaukee where he learned the carpenter trade. He worked as journeyman until 1894, when he engaged in the business of contracting and building which he has since followed. He located in West Allis in 1901 before its incorporation as a village and took an active interest in public affairs. He was

elected village trustee in 1903 serving one term. Later he was appointed school commissioner. He was elected to the senate in 1910, receiving 4,344 votes against 3,374 for B. F. Steinel (Dem.) and 3,864 for George G. Brew (Rep.).

EIGHTH SENATORIAL DISTRICT.

5th, 8th, 11th, 12th and 23rd wards of the city of Milwaukee. Population, 1910—86,147.

ALEXANDER E. MARTIN (Rep.) was born in Two Rivers, Wis., Oct. 9, 1867. He came to Milwaukee with his parents when he was one year old, and has resided there almost continuously since. He received a public school education, and later took a course in railroad telegraphy, which occupation he followed for several years. In 1895 he started a grocery business, and continued in it until 1905, when he became one of the incorporators of the Central Foundry company. In December 1910, he became one of the incorporators of the Hoyer Metallic Packing company and at the present time is secretary of both these firms. In 1900 he was elected supervisor from the twelfth ward, on the Republican ticket, and held that office for two years. In 1903 he was appointed a member of the school board. In 1906 was a candidate for the office of city treasurer on the Republican ticket, but was defeated by his Democratic opponent, William H. Graebner. In November, 1912, he was elected state senator, receiving 5,800 votes against 2,544 for Fred Lorenz, (Rep.) and 5,279 for Fred Brockhausen, (Soc. Dem.) and 214 for Carl L. Lund (Pro.).



NINTH SENATORIAL DISTRICT.

1st, 2nd, 3rd and 4th wards of the city of Milwaukee. Population, 1910—64,305.

EDWARD F. KILEEN (Rep.) elected from the old ninth district, but now representing the twenty-first, was born on a farm in the town of Aurora, Waushara county, Wisconsin, on the 12th day of January, 1869. He was educated in the common schools of that county and in the high school in the city of Berlin, Green Lake county, from which he graduated in the year 1890. He taught school for two years in Waushara county. Entered the law school of the University of Wisconsin in the year 1892 from which he graduated in 1894. That same year he engaged in the practice of law at Wautoma in Waushara county, Wisconsin, and has continued to practice at that place ever since. He was elected district attorney that same year, which office he has continued to hold until January 1911, except the years 1899 and 1900. He has been president of the village of Wautoma six years and clerk of the board of education of that village for ten years. He was elected state senator in 1910, receiving 5,333 votes against 2,861 for Thomas Patterson (Dem.) and 669 for C. A. Boorman (Soc. Dem.).



TENTH SENATORIAL DISTRICT.

St. Croix, Pierce, Pepin and Buffalo Counties. Population, 1910—71,572.



GEORGE B. SKOGMO (Rep.) was born in Whalen, Fillmore county, Minn., August 12, 1880. He spent his boyhood on a farm and received a common school education. He graduated from the high school in River Falls, Wis., in 1902. The following fall he entered the law office of Ferris M. White and studied law. He passed the bar examination and was admitted to the bar in May, 1906, associating himself with Mr. White and is now in the law firm of White & Skogmo. He was elected city treasurer of River Falls in 1910 and held that office for two years. At the primary campaign in 1912 he was nominated state senator over William Kay, carrying each of the four counties in his district, and was elected state senator over his Democratic opponent by again carrying each of the four counties, receiving 6,674 votes against 3,807 for William C. Bradley (Dem.).

ELEVENTH SENATORIAL DISTRICT.

Douglas, Washburn and Burnett Counties. Population, 1910—64,644.



VICTOR LINLEY (Rep.) was born at Atchison, Kansas, September 5, 1865. Graduated from the State University of Kansas, took the law course at Columbia Law School. Came to Wisconsin in 1891 settling at Superior where he took up the practice of law. Was mayor of that city from 1906 to 1908. Elected state senator in 1910, receiving 5,027 votes against 1,140 for Ellis B. Harris and 137 for J. W. Helmuth.

TWELFTH SENATORIAL DISTRICT.

Ashland, Bayfield, Sawyer, Rusk and Price Counties. Population, 1910—69,134.



A. PEARCE TOMKINS (Rep.) born at Ashland, Wis., April 15, 1875, was educated in the public schools of that city, graduating from its high school in 1892; afterward he attended the University of Wisconsin and Columbian Law School, Washington, D. C., and was admitted to the practice of law by the state board in June, 1897; member of the firm of Smith & Tomkins, 1897-1900; Tomkins & Tomkins 1901-1908. He was a resident of Bayfield county during the seven years previous to 1910, being engaged in dairy farming and served as chairman of the town of Eileen for five years, and as chairman of the Bayfield county board for four years. During 1911 and 1912 he was assessor of Ashland and engaged in the practice of law. In September, 1912, he formed a law partnership with M. E. Dillon, under the firm name of Dillon & Tomkins, of which he is still a member. He was elected to the senate in 1912, receiving 5,847 votes against 2,578 for Henry Lafreniere, (Dem.) 960 for Charles E. Auster, (Soc. Dem.) 296 for Edward Kerswill, (Ind.).

THIRTEENTH SENATORIAL DISTRICT.

Dodge and Washington counties. Population, 1910—
71,220.

PAUL O. HUSTING (Dem.) was born at Fond du Lac, Wisconsin, on April 25th, 1866, a son of John P. Husting and Mary M. Husting, nee Juneau, the latter being a daughter of Solomon Juneau, the founder of Milwaukee. He removed with his parents to Mayville, Wisconsin, in the year 1876. Received a common school education. Left school in his seventeenth year and became successively clerk in general store, railway postal clerk, and mailing clerk, and later, assistant bookkeeper in the office of the secretary of state. Entered the law school of the University of Wisconsin and passed the state bar examination and was admitted to the bar in 1895. Began the practice of law alone at Mayville immediately thereafter and in 1897 associated himself with C. W. Lamoreaux under the firm name of Lamoreaux & Husting which was dissolved by the election of Mr. Lamoreaux to the office of county judge in 1911, when Mr. Husting associated himself with his brother, G. B. Husting, under the firm name of Husting & Burke, which firm still exists. Was elected district attorney of Dodge county in 1902 and was re-elected in 1904. Was elected to the senate in 1906 and again in 1910, receiving 4,734 votes against 79 for Benj. F. Sawyer (Pro.); 2,612 for C. M. Davidson (Rep.) and 164 for Rae Weaver (Soc. Dem.).



FOURTEENTH SENATORIAL DISTRICT.

Outagamie and Shawano counties. Population, 1910—
73,722.

HENRY M. CULBERTSON was born at Medina, Outagamie county, Wisconsin, August 4th, 1860, on the farm which he now owns and which has always been his home, his father as a pioneer having located on it in 1848. His schooling was confined to the rural school and six months in high school. He has always been associated with agriculture, as farmer, writer, and farmers' institute conductor under Supts. Morrison and McKerrow. He is now serving his fourth year at head of the State Grange of Wisconsin. His experience, traveling in every county of this state and thirty-one states of the union has enabled him to become a wide student of agriculture. He has never been associated with partisan politics, but progressive principles have always been his policy. In April, 1912, he was elected at a special election as state senator and re-elected at the general election in November, 1912, receiving 6,447 votes, against 5,421 for Herman Meisner, (Dem.) 264 for Wm. H. Copp (Soc. Dem.).



FIFTEENTH SENATORIAL DISTRICT.

Calumet and Manitowoc counties. Population, 1910—61,679.



SAMUEL W. RANDOLPH (Dem.) was born December 5th, 1872, at Manitowoc, Wis., and was educated in the first ward public school of that city. For a number of years he has been interested in navigation of the Great Lakes and represents several transportation companies. Was appointed harbor master January, 1902, to fill an unexpired term, and reappointed for a full term in April, 1902. He was elected state senator in 1902, reelected in 1906 and again in 1910, receiving 5,007 votes against 3,933 for S. F. Wehrwein (Rep.) and 848 for D. J. Bosina (Soc. Dem.).

SIXTEENTH SENATORIAL DISTRICT.

Grant, Crawford and Richland counties. Population, 1910—74,104.



ROBERT GLENN was born in Wyalusing, Wis., November 30th, 1858, received his education in the common school and by private tuition. Except for four years in the lumbering and grain business and two years sheriff of Grant county, engaged in farming and stock raising, served several terms on board, special life work; conservation and preservation of State Park lands at confluence of Wisconsin and Mississippi rivers. Was elected as state senator, 1912, receiving 7,606 votes against 5,920 for R. A. Watkins (Dem.) 544 for A. B. Williamson, (Pro.).

SEVENTEENTH SENATORIAL DISTRICT.

Green, Iowa and Lafayette counties. Population, 1910—64,213.



HARRY CHAPMAN MARTIN (Rep.) was born on a farm near Darlington, Lafayette county, December 15, 1854. With his parents he moved to Darlington when he was nine years of age. Received his early education in a little red schoolhouse a mile and a half from his home, then in the public school at Darlington, after which he taught school for one year and then attended the University of Wisconsin, from which he graduated in 1879. He studied law and was admitted to the bar in 1881, and has since practiced law at Darlington. Soon after his admission to the bar he was appointed county superintendent of schools of Lafayette county, and was twice thereafter elected to that office. In 1887 he was elected mayor of the city of Darlington and was reelected in 1888. He was city attorney for several years thereafter and was elected district attorney of Lafayette county in 1892; was a member of the Republican state central committee for four years; was a member of the Wisconsin National Guard five years; president of Alumni Association, University of Wisconsin 1904; was president of the high school board at Darlington from 1895 until he resigned in 1910; is a director of the Citizens National Bank of Darlington; was elected from the First congressional district as delegate to the national

Republican convention held in Chicago, 1908; was appointed by Governor Davidson, senate member of the legislative committee to visit the charitable, penal and reformatory institutions of the state; was elected to the assembly in 1895 to fill vacancy occasioned by the death of James Freeman; was elected to the state senate in 1898 and reelected in 1902, 1906 and 1910, receiving 5,639 votes against 4,186 for Thos. H. Arthur (Dem.); 49 for J. P. Parnley (Pro.) and 1 for E. W. Stewart (Soc Dem.). Was elected president pro tempore of the senate in 1911 and reelected in 1913.

EIGHTEENTH SENATORIAL DISTRICT.

Fond du Lac and Green Lake counties. Population, 1910—67,101.

LEWIS G. KELLOGG (Dem.) was born May 17, 1856, in a log house about two miles east of the city of Ripon. He received his education in the country school, high school and Ripon college and for twenty-five years was engaged in the business of farming, fruit growing and the growing and selling of nursery stock. He moved into the city of Ripon in April, 1897. From April 1899 he served as alderman for three years. In 1903 he was elected school commissioner for three years and served two years as clerk of the school board. In 1907 he was elected mayor of the city of Ripon without opposition and was reelected in 1908, 1910 and 1912 without opposition. In 1912 he was elected to the senate, receiving 5,708 votes against 5,649 votes for Charles H. Graham (Rep.) 331 for John W. Long.



NINETEENTH SENATORIAL DISTRICT.

Winnebago county. Population, 1910—62,116.

MERRITT F. WHITE (Rep.) was born in the town of Winneconne, Winnebago county, August 26, 1865. He received his education at the common schools of Winneconne and the Oshkosh normal school. He has always resided in Winneconne and has been president of the village of Winneconne for nine years, member of the Winnebago county board for nine years, and member of the high school board for six years. At present he is purchasing agent for the Crex Carpet company of New York. He was elected senator in 1910, receiving 5,437 votes against 3,741 for John N. Stone, (Dem.) 551 for Charles Emmerich, (Soc. Dem.) 49 for Lyra B. Webb, (Pro.).



TWENTIETH SENATORIAL DISTRICT.

Sheboygan and Ozaukee counties. Population, 1910—72,011.

WILLIAM J. BICHLER, (Dem.), was born in the town of Holland, Sheboygan county, November 14, 1870. He spent his boyhood on the farm and acquired a common school and college education; he taught school at the age of eighteen. In 1894 he settled in the town of Belgium, Ozaukee county, and took up general farming, where he has since conducted a grain and dairy farm. He is also engaged in the real estate business. Has been secretary



of his local fire insurance company, town chairman and chairman of the county board, and was elected to the assembly from Ozaukee county for three consecutive sessions, 1906, 1908 and 1910. At the session of 1911 he received the Democratic vote for speaker. He was elected to the senate in the fall of 1912 from the Ozaukee-Sheboygan counties district, receiving 6,444 votes, against 4,485 votes for James Mallman, (Rep.) and 1,234 votes for Bauernfeind, (Soc. Dem.).

TWENTY-FIRST SENATORIAL DISTRICT.

Waushara, Adams, Juneau and Marquette counties. Population, 1910—57,800.



EDWARD E. BROWNE (Rep.) was born at Waupaca, Waupaca county, Wisconsin, February 16, 1868. He attended the public schools of Waupaca and after finishing the high school there was graduated from the University of Wisconsin in 1890 and from the university law school in 1892, since which time he has been engaged in the practice of law in the city of Waupaca. He was elected district attorney of Waupaca county in 1898, which office he held six years. He was appointed regent of the state university in June, 1904, resigning in 1906 to accept a seat in the state senate. There was no opposition to his nomination or election, Mr. Browne having been nominated on the Republican ticket and endorsed by the Democratic, Prohibition and Social Democratic parties. He was again elected to the senate in 1910, receiving 4,866 votes against 1,799 for T. H. Hanna (Dem.) and 411 for Frank Lear (Soc. Dem.). He was elected to congress from the Eighth congressional district in 1912, carrying all the counties in the district except one. His term of office as congressman began March 4, 1913.

TWENTY-SECOND SENATORIAL DISTRICT.

Rock and Walworth counties. Population, 1910—85,152.



LAWRENCE E. CUNNINGHAM was born in Beloit, Wis., March 1, 1852, and has always resided in that city. He was educated in the public schools and began his business career as a carpenter. He established in 1874 the firm of Cunningham Brothers, general contractors, lumber dealers and manufacturers, of which firm he is still the head. He has been elected mayor of Beloit four consecutive times, and now is serving the eighth year in that capacity. He has also served eight years as a member of the board of education of Beloit. He was elected senator in 1912, receiving 8,102 votes against 5,189 for Ed. M. Carey, (Dem.) 644 for Henry H. Mullen, (Pro.).

TWENTY-THIRD SENATORIAL DISTRICT.

Waupaca and Portage counties. Population, 1910—63,727.

CHARLES A. SNOVER (Dem.) elected from the old twenty-third, but now representing the thirty-third, was born on a farm in the town of Eagle, Waukesha county, Wisconsin, August 2, 1855. Was educated in the common schools in that locality, later in high school in Fort Atkinson, Jefferson county, Wisconsin. In his early life he was a railroad man, was a postal clerk several years, owned and conducted a hotel at Fort Atkinson for a number of years in which city he held the office of city clerk, alderman, supervisor and mayor. He was elected sheriff of Jefferson county in 1909. He now owns a Guernsey dairy farm at Fort Atkinson. He was elected to the state senate in 1910, receiving 5,018 votes against 332 for W. E. Mack (Pro.), 4,102 for C. S. Douglas (Rep.) and 375 for F. Krobsky (Soc. Dem.).



TWENTY-FOURTH SENATORIAL DISTRICT.

Clark and Wood counties. Population, 1910—60,657.

ROBERT W. MONK was born on a farm near Fond du Lac, Wisconsin, March 28, 1866. His parents moved to Sheboygan county, in 1868, and he received his education in a public school of that county, and at the Commercial college in Fond du Lac. For four years he was employed by railway and express companies at Menasha, and then engaged in the general merchandise business at St. Cloud, Wis. Selling his business, he entered Northwestern university, and graduated from its medical department in the class of 1894. He practiced one year with his preceptor at St. Cloud and then located at Chilton, Wis., where he remained nine years, serving on the county board of supervisors and as mayor from 1902 to 1904. Disposing of his practice, he studied one year in Chicago and located at Neillsville in 1906. He was elected as state senator in 1912, receiving 4,922 votes against 3,776 for Bernard A. Goggins, (Dem.) 416 for Ludolph Wolleson, (Soc. Dem.).



TWENTY-FIFTH SENATORIAL DISTRICT.

Langlade and Marathon counties. Population, 1910—72,116.

W. W. ALBERS (Dem.) of Wausau, was born in New Holstein, Calumet county, May 20, 1860, on a farm where he spent his boyhood days. He attended the district school and in 1879 and 1880 the University of Wisconsin. In 1881 he went to Chicago to enter the profession of pharmacy, receiving his diploma in March, 1884. In April of the same year he moved to Wausau, where he has conducted a pharmacy ever since. He was a pioneer in the independent telephone field and has served as treasurer and director of the Wausau company since 1895. He has been a member of the city council of Wausau and of the county board of Marathon



county. Was president of the Wisconsin Pharmaceutical Association in 1909. He is a member of the board of education of Wausau and of the library board. He was elected state senator in 1910, receiving 5,076 votes against 4,882 for W. N. Daniels (Rep.).

TWENTY-SIXTH SENATORIAL DISTRICT.

Dane county. Population, 1910—77,435.



HENRY A. HUBER (Rep.), of Stoughton, was born in Evergreen, Alleghany county, Pa., November 6, 1869. He came with his parents to Wisconsin in 1879, settling on a farm in the town of Pleasant Springs, Dane county, received his education in the common schools and the Albion academy, and graduated from the law department of the University of Wisconsin in 1896. Since that time he has been practicing his profession in the city of Stoughton. He was city attorney of Stoughton four years, member of the county board of Dane county two years, and was appointed executive clerk by Gov. La Follette, March 18, 1903, serving in that capacity until July 1, 1904. He was elected to the assembly in 1904 and in 1912 was elected to the senate, receiving 8,140 votes against 6,918 for Julius O. G. Zehnter (Dem.), and 338 for W. McCarthy (Pro.).

TWENTY-SEVENTH SENATORIAL DISTRICT.

Columbia and Sauk counties. Population, 1910—63,998.



JOHN M. TRUE was born in Moultonboro, N. H., in 1838. Educated in the public schools of the state, and the New Hampton, N. H. Literary and Biblical Institution. Came to Wisconsin in 1866, locating on a farm at Baraboo. Taught school in New England and Wisconsin for nearly twenty years. Was register of deeds of Sauk county six years and chairman of its county board eleven years. Served as member of board of education of the city of Baraboo for twenty-five years. Was member of assembly from the 1st Sauk county district in 1897 and 1899. Was appointed a member of the board of Regents of the state University by Gov. W. D. Hoard, and during the term of service was chairman of Agricultural committee and a member of the Executive committee. Served twelve years as secretary of the State Board of Agriculture, leaving the position in 1911. Was elected senator 1910, receiving 4,818 votes against 3,173 for Clarence S. Powell, (Dem.) 293 for James M. Blachley. (Pro.).

TWENTY-EIGHTH SENATORIAL DISTRICT.

Eau Claire and Chippewa counties. Population, 1910—64,824.



EDWARD F. ACKLEY (Rep.) was born in Chippewa Falls, Wisconsin on July 21, 1887, and has resided there ever since. He received his education in the public schools of that city and graduated from the Chippewa Falls high school. Later he studied law at the University of Minnesota and in the office of W. H. Stafford, an attorney of his home city. He was elected alderman, which office he held until he was elected clerk of the Circuit court of Chippewa county, in 1910. While clerk

of the court he took a great interest in the work of the court clerks throughout the state, and was elected president of the state organization of court clerks during the years of 1911 and 1912. He was elected to the senate in 1912, receiving 5,475 votes against 3,569 votes for W. H. Frawley (Dem.), 284 for August Schreiber (Soc. Dem.).

TWENTY-NINTH SENATORIAL DISTRICT.

Dunn, Barron and Polk counties. Population, 1910—75,741.

GEORGE E. SCOTT (Rep.), of Prairie Farm, was born in Durand, Pepin county, Wis., July 3, 1860, where he received a common school education. He is a merchant and miller. In both 1904 and 1906 he was elected to the assembly without opposition and was reelected in 1908. Elected member of the senate in 1910, receiving 5,587 votes against 332 for A. M. Eidsmore (Soc. Dem.).



THIRTIETH SENATORIAL DISTRICT.

Taylor, Iron, Vilas, Oneida, Lincoln, Forest and Florence counties. Population, 1910—68,626.

WILLARD T. STEVENS, (Rep.) was born in Beetown, Grant county, September 6, 1865, going with his parents to Cassville when one year old. He attended the common school at Cassville and business college at Dubuque, Ia., moving to Rhineland in 1889. He is president of the Stevens Lumber company and was sheriff of Oneida county two terms; was member of the state central committee in 1904 and 1906. He was elected state senator in April, 1912, for the unexpired term of the late Senator James A. Wright, and was reelected senator in November, 1912, receiving 6,194 votes, against 3,974 for Ferdinand Ollhoff (Dem.), 744 for Richard Bucholtz.



THIRTY-FIRST SENATORIAL DISTRICT.

Jackson, Vernon and Monroe counties. Population, 1910—74,072.

HOWARD TEASDALE (Rep.) was born at Janesville, Wisconsin, August 9, 1855. He is a resident of the city of Sparta. Graduated from country schools in 1876, from high school in 1878. Took modern classical course at the University of Wisconsin during 1878-9 and then took special course in law in 1880-1, graduating in 1882. Now practicing his profession in Sparta. Was justice of the peace in 1891-92; city clerk of city from 1891-96; superintendent of city water works from 1895-1905; also city attorney for several years. Appointed district attorney by Governor La Follette in May, 1901, and elected the next term; president of water commission 1905-10; treasurer of city school board for last fifteen years. Has been deputy county clerk, and has been special treasury agent for the past twelve years. Court commissioner for the last eight years. He is secretary and superintendent of the Monroe County Telephone Company and the Ontario and Wilton Telephone Company, a director of



the Bank of Sparta and the Ontario State Bank. He has always taken an active part in municipal affairs. Was elected member of the state senate in 1910, receiving 4,855 votes against 2,849 for J. H. Carnahan (Dem.). During the 1911 session he vigorously opposed the teachers' pension law and certain portions of the income tax law. Was active in all legislation tending to diminish the evils of the liquor traffic; was a member of the committee appointed to visit charitable and penal institutions during 1911; author of law for uniform accounting of asylums; authorizing cemetery assessments; law protecting owners and county from unjust drainage assessments; the law requiring track connection and switching between railroads; and of a bill directing ad valorem assessment of telephone properties.

THIRTY-SECOND SENATORIAL DISTRICT.

La Crosse and Trempealeau counties. Population, 1910—66,111.



OTTO BOSSHARD (Rep.) was born in the town of Bangor, La Crosse county, Wisconsin, August 9, 1876. Attended common and high schools in city of La Crosse. Attended state university, graduating in the college of letters and science, 1898. Graduated at Georgetown College of Law, Washington, D. C., 1900. District attorney La Crosse county three terms, 1903 to 1909. Chairman Republican State Platform Convention at Madison, Wis., in September 1912. President Bank of Holmen, Holmen, Wis. Member of the law firm of Bunge & Bosshard, La Crosse, elected to the senate in 1910, and reelected in 1912, receiving 6,111 votes against 4,743 for R. W. Davis, (Dem.) 354 for Sam. A. Johnson (Soc. Dem.) and 238 for Benjamin Thomas (Pro.).

THIRTY-THIRD SENATORIAL DISTRICT.

Waukesha and Jefferson counties. Population, 1910—71,406.



GEO. E. HOYT (Rep.) is a native of Menomonee Falls. He received his schooling in the common and high schools and the Northwestern University at Evanston and Chicago from which he graduated in medicine. Since leaving Alexian Hospital as interne, in 1893, he has practiced as physician and surgeon at Menomonee Falls. He is president of the Citizens' State Bank of that place. He was elected to the assembly in 1908 and to the senate in 1910, receiving 5,544 votes against 4,932 for Wm. Shinnors (Dem.) and 798 for G. A. Voigt (Soc. Dem.).

CHIEF CLERK.

F. M. WYLLIE was born at New Lisbon, Juneau county, Wisconsin, September 23, 1883, and was educated in the common schools of Columbia county, Windsor High School, the University of Wisconsin, and the National University Law School, Washington, D. C. He was several years editor of the DeForest Times, one year assistant state printing clerk, one year reporter on the Milwaukee Free Press, one year secretary to Congressman John M. Nelson, and was secretary of the La Follette presidential campaign committee, Washington, D. C., 1911-'12. He was assistant journal clerk of the senate in 1905, bookkeeper of the senate in 1907 and in 1909, and was elected chief clerk of the senate in 1911 and in 1913.



SERGEANT-AT-ARMS.

CHARLES A. LEICHT was born in New Lisbon, Wisconsin, October 6th, 1861. Admitted to practice law in 1884. Served as postmaster of New Lisbon four years. Was city clerk and school clerk a number of years. Compiled the Assembly Journal Index for three sessions of the legislature; was Bookkeeper of the assembly in 1903, and Journal Clerk of the same body in 1905. From 1889 to 1909 was engaged in newspaper work, having been editor and publisher of the Juneau County Argus, New Lisbon Times, and Marathon Times. He founded the two last named newspapers. Was delegate to numerous county conventions, and represented Juneau county as a delegate in the two last Republican state conventions. Is now serving his second term as mayor of New Lisbon. He is also circuit court commissioner. At present he is engaged in the real estate and insurance business. Was elected Sergeant-at-arms of the senate in 1911. Was a Republican Presidential Elector in the general election of Nov. 5, 1912. In 1913 he was reelected Sergeant-at-arms of the senate, receiving the entire 32 votes of the Republicans and Democrats.



ASSEMBLY.

ADAMS AND MARQUETTE COUNTIES.

One District. Population, 1910—19,345.



GEORGE W. BINGHAM (Rep.) was born April 6, 1860, at Friendship, Adams county, Wisconsin, where he has always resided. Received his education in the common schools. His principal occupation is farming. He has been chairman of his town several terms; sheriff of Adams county for four years; county treasurer for four years; deputy county clerk for eight years; secretary Adams County Fair Association for seven years; president of Adams County Fair Association for the past eight years; chairman Adams county Republican county committee for fourteen years; treasurer of board of education Friendship high school for sixteen years. He is now engaged in farming, the development and promotion of the Friendship Electric Light and Power Company and the Friendship Telephone Company. Is also engaged in the betterment of labor conditions and living conditions in rural communities, in the improvement of country highways, in the securing of actual settlers and home owners for our state, and in the development of dairy farming in Wisconsin. Was elected member of the assembly in 1910, and reelected in 1912, receiving 2,279 votes against 6 scattering.

ASHLAND COUNTY.

One District. Population, 1910—21,965.



D. E. BOWE (Rep.) of Mellen, was born on a farm near Waseca, Minnesota, December 16th, 1881; attended district school; graduated from the Waseca high school in 1901; attended the Minnesota state university; graduated from the law school in 1905; city attorney of Mellen, Ashland county, Wisconsin from 1907 to 1911; elected alderman and president of Mellen city council in 1912; circuit court commissioner from 1910 to present time. Mr. Bove is engaged in the practice of law. Was elected to the assembly in 1912, receiving 1,734 votes against 1,007 for H. C. Ashmun (Dem.) and 145 for Ole E. Olson (Pro.).

BARRON COUNTY.

One District. Population, 1910—29,114.



ANDREW GULICKSON (Rep.) was born in Telemarken, Norway, December 18, 1856. Came to the United states with his parents in 1868 and lived for five years in Waupaca county. Went to Barron county in 1873. In 1880 he purchased a farm in the town of Stanley, where he now resides. Received a common school education in the schools at Iola and Scandinavia, Waupaca county. Was chairman of the town of Stanley for sixteen years, chairman of the county board of Barron county for two terms, and county clerk of Barron county from 1905 till 1911. He was one of the organizers of the Oak Grove Farmers' Mutual Fire Insurance Com-

pany in 1891 and was secretary of said company for ten years and a director for fourteen years. Was elected member of the assembly in 1910, and reelected in 1912, receiving 2,277 votes against 888 for Jos. K. Nelson (Dem.), 253 for Theo. C. Surdson (Soc. Dem.), 250 for John Waldal (Pro.).

BAYFIELD COUNTY.

One District. Population, 1910—15,987.

H. H. PEAVEY was born in Adams, Minnesota, January 12, 1881; moved to Redwood Falls, Minn., when five years of age and was brought up on a farm nine miles south of that town. At seventeen he attended the high school at Redwood Falls, Minn., and attended the Pillsbury school at Owatonna, Minn., for the two years following. He worked for the Beatrice Creamery company of Lincoln, Neb., for two years and then for a wholesale fruit and vegetable house in Wichita, Kansas, and Enid, Okla., in 1903. He engaged in the real estate business in Redwood Falls, Minn., from 1904 to 1906; real estate and townsites at Carlyle, Cresbard, and Lowry, S. D., and moved to Washburn, Wis., in 1910. He was elected alderman in the spring of 1911, and mayor in 1912. He is American born and a Progressive Republican in politics; served as delegate to the convention in Faulk county, S. D., during 1906. Elected to the assembly 1912, receiving 1,199 votes against 517 for Henry Wachsmith (Dem.), 302 for Gustav A. Hering (Soc. Dem.).



BROWN COUNTY.

First District. The towns of Ashwaubenon, Howard, Pittsfield, Suamico, the city of Green Bay, and that part of Pulaski village within the county of Brown. Population, 1910—29,999.

ARCHIE MCCOMB, (Rep.) was born at Fort Atkinson, Wisconsin, January 22, 1885. After graduating from the Fort Atkinson high school he engaged in farm work and taught school. Graduated from the University of Wisconsin law school in 1910. He was associated with the law firm of Webb & Tratt in Fort Atkinson and also managed the publication of a real estate journal until August 1911 when he located in Green Bay as a practicing lawyer. Was elected a member of the assembly in 1912, receiving 1,945 votes against 1,734 for Herman Anson, (Dem.) 445 for Chas. H. Robinson, (Soc. Dem.) 117 for Louis Barlament, (Pro.).



BROWN COUNTY.

Second District. The towns of Allouez, Bellevue, De Pere, Eaton, Green Bay, Hobart, Humbolt, Preble, Holland, Glenmore, Morrison, Lawrence, New Denmark, Rockland, Wrightstown, Scott, the village of Wrightstown and the city of De Pere. Population, 1910—24,099.



JOHN LOUIS SCHNITZLER of De Pere was born on a farm in Manitowoc county, August 29, 1866. He is the son of the Rev. Theodore and Mrs. Electa Schnitzler. After his parents had made a trip to Germany, they went to De Pere to live in 1869, where the son received a common school education. During vacations he worked in the De Pere News Printing office and learned the printers' trade. When he was about 18 years old, he went to La Crosse, Wis., and worked in the La Crosse Republican and Leader office three years. He then went to Oshkosh, where he worked on the Oshkosh Times. After spending a year in the composing room of that paper, he was promoted to a position on the editorial staff. He held this position five years, and resigned to accept a position as telegraph editor of the Milwaukee Sentinel in 1892. A few years later he was promoted to the position of night editor. He remained with the Sentinel for seventeen years. In 1909 he resigned his position with the Sentinel to become night editor of the Milwaukee Free Press. He returned to his old home in De Pere in 1910 and took up fire and life insurance work. He also is doing some work for the De Pere News. He has been a Republican all his life, and carried his district by 167, his home city giving him more votes than it gave to any other candidate on any of the tickets. He was elected to the assembly, receiving 1,627 votes, against 1,460 for Lewis Knuth (Dem.), 49 for Charles D. Haskins (Pro.)

BUFFALO AND PEPIN COUNTIES.

One District. Population, 1910—17,222.



JAMES ALLISON was born July 25, 1859, on a farm in Buffalo county, Wisconsin, and has resided in that county ever since. He attended district school in his home county, and later attended the Durand high school for several terms, after which he taught for a short time in the common schools of Buffalo county. Mr. Allison has followed farming as his life work, and has always taken a very deep interest in anything which would be of benefit to the farmer. He used his influence to establish the rural mail delivery and telephone in his section of the county. He is secretary of the American Society of Equity for Buffalo county, and has served as town chairman of the town of Maxville, Buffalo county, for seven terms, thus gaining an excellent knowledge of governmental affairs and becoming well informed relative to the needs of the district he represents. In public life he has always been a very conscientious worker. He is a man of broad and varied experience in the affairs of the world, and has always stood for the

best in life, ever ready to lend a willing hand to any movement which will be of benefit to mankind. He is a man of the highest character. Elected member of the assembly 1912, receiving 1,975 votes, against 1,575 for Nic Weinandy (Dem.).

BURNETT AND WASHBURN COUNTIES.

One District. Population, 1910—17,222.

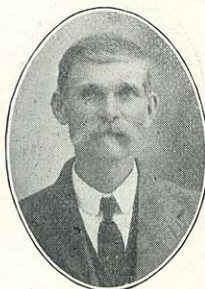
HANS M. LAURSEN (Rep.) was born in Denmark, December 23, 1865. He came to Neenah, Wisconsin, with his parents May 1867. In 1869 they moved on a homestead in the town of Luck, Polk county, where he remained until he was twenty-three years old. Since then he has followed lumbering as a business and is now president and general manager of the Lakeside Lumber company, Shell Lake, Wis. He also owns a farm there. He was elected town clerk when twenty-one years old and has since held the offices of town clerk eight years, justice of the peace eleven years, member of school board four years, member of the county board for seven years, and chairman of that body for four years. He was lumber inspector (state scaler) for four years. He was elected member of the assembly in 1912, without opposition, receiving 2,082 votes.



CALUMET COUNTY.

One District. Population, 1910—16,701.

AUGUST THEODORE DORN was born in Germany, March 25, 1849, and came to America with his parents in 1860 to the city of Oshkosh. He lived in Winnebago county for eight years and moved to Calumet county in 1868, where he has lived ever since as a farmer. He was elected to the assembly 1912, receiving 1,383 votes, against 1,306 for Mathias Schmitt (Rep.).



CHIPPEWA COUNTY.

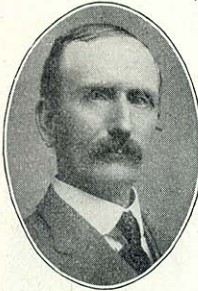
One District. Population, 1910—32,103.

THOMAS W. BARTINGALE was born at Ely, Cambridgeshire, England, June 24, 1851; came with his parents to America in 1854 and settled in Chippewa county in 1859, after staying short times in Chicago, Milwaukee and Beaver Dam. The family arrived in Chippewa county with a yoke of cattle drawing all their possessions. Mr. Bartingale received a common school education and practical training as farmer, woodsman and mechanic. He was clerk of the town of Wheaton for three years, and county chairman for four years. He was elected to the assembly in 1912, receiving 2,468 votes against 2,026 for Geo. Peterson (Dem.).



CLARK COUNTY.

One District. Population, 1910—30,074.



ARNT O. RHEA (Rep.) was born in Trondhjem, Norway, October 10, 1850. He came to America with his parents in 1861, and settled in La Crosse county where he resided thirty-two years. He received his elementary education in the common schools, supplemented by attendance for sometime in Gale college, La Crosse Business college, River Falls Normal, and Winona Normal schools. He taught in the common and graded schools of the county twelve years, and later was elected county superintendent of schools and served seven years. In 1893, he moved to the village of Thorpe, Clark county, where he was employed as principal of schools five years, and in 1900 was elected county superintendent of schools and served in that capacity eleven years. He has a farm in the village of Thorpe, and is also associated with the Gilman Manufacturing company, Gilman, Taylor county, being at present vice president of that concern. He is also one of the directors of The Farmers' Exchange Bank at Thorpe. He was elected to the assembly in 1912, receiving 2,625 votes against 1,443 for Richard B. Salter, (Dem.).

COLUMBIA COUNTY.

One District. Population, 1910—31,129.



K. A. JOHNSON (Rep.) was born on a farm in the town of Leeds, Columbia county, Wisconsin, October 8, 1848. He received a common school education. He has held town offices, been a member of the county board, and held various other offices of public trust. He was president of the Arlington Farmers' Mutual Fire Insurance company for several years during its reorganization. Besides being extensively interested in farming, he has been interested in lumber, grain, general merchandise, and real estate business. He has lived in Portage, Wisconsin, since 1900. He was elected a member of the assembly in 1912, receiving 2,857 votes against 2,595 for George Standenmeyer (Dem.).

CRAWFORD COUNTY.

One District. Population, 1910—16,288.



T. F. CLANCY (Rep.) was born in Vernon county, Wisconsin, June 7, 1871, and was educated in the common schools of that county. He moved to Soldiers Grove, Crawford county, in 1896 and was engaged in the retail harness and saddlery business from that time until January 1, 1907, when he sold the business and engaged in the well drilling business, which he still follows. He was treasurer of the village of Soldiers Grove four years and is at present serving his fourth year as village president. He was elected to the assembly in 1912, receiving 1,645 votes against 1,564 for Jeremiah O'Neil, (Dem.).

DANE COUNTY.

First District. The towns of Blooming Grove, Dunn, Madison, Pleasant Springs, the city of Madison and the village of Fair Oaks. Population, 1910—32,105.

FRED L. HOLMES (Rep.) was born near Waukau, Winnebago county, Wisconsin, May 9, 1883. He worked on a farm until 18 years old and was educated in the common school and high school at Omro, after which he taught rural school one year near Allenville, Wis. He earned his way through the University of Wisconsin by manual labor and by contributions to newspapers and magazines, graduating in 1906. Has been legislative correspondent and political writer for leading daily papers in Wisconsin. Since 1909 he has been business manager of La Follette's Weekly Magazine. He was elected a member of the assembly in 1912, receiving 3,796 votes against 3,499 for A. S. Merz (Dem.) 112 for A. W. Larson (Pro.).



DANE COUNTY.

Second District. The towns of Albion, Bristol, Burke, Cottage Grove, Christiana, Deerfield, Dunkirk, Medina, Sun Prairie, Windsor, Westport, York, the villages of Cambridge, Deerfield, De Forest, Marshall, Sun Prairie, Waunakee and the city of Stoughton. Population, 1910—23,466.

EDWARD C. MELAND (Rep.) was born January 30, 1866, on a farm in the town of Leeds, Columbia county, Wisconsin, where he made his home until 1890. Was educated in the common schools and North Western Business college. Entered the University of Wisconsin in 1885 and was graduated in 1889. Taught in the North Western Business college from 1889 to 1893 and was principal of public schools at Deerfield, from 1893 to 1895. Since 1895 he has been principal of the Windsor township high school at De Forest, and publisher of the De Forest Times. Has held various local offices, such as village clerk, town clerk, school director, village trustee and bank director. Was elected member of the assembly in 1912, receiving 2,340 votes against 1,468 for H. J. Barry (Dem.) 131 for Wm. Nelson (Ind. Rep.) and 111 for J. A. Kidd, (Pro.).



DANE COUNTY.

Third District. The towns of Black Earth, Berry, Blue Mounds, Cross Plains, Dane, Fitchburg, Mazomanie, Middleton, Montrose, Oregon, Primrose, Perry, Roxbury, Rutland, Springfield, Springdale, Vienna, Verona, the villages of Black Earth, Dane, Middleton, Oregon, Mazomanie, Belleville, Mount Horeb, and that part of the village of Brooklyn within the county of Dane. Population, 1910—21,864.

THOMAS A. STEWART (Dem.) was born in the town of Verona, Dane county, Wisconsin, March 2d, 1849; received his education in the common schools of his native town, North Western Business College and the state University; is a farmer and stock raiser; has held the office of chairman of his town and member of the coun-



ty board for seventeen years; has held the offices of director of the Verona township high school, president of the Farmers' Mutual Benefit Association, president of the Verona Detective Association; was a delegate to the Democratic state convention in 1900, 1902, 1904; was elected member of the assembly in 1906, 1908, and re-elected in 1912, receiving 2,059 votes against 1,902 for A. H. Sholtz (Rep.), 117 for Paul P. Syftstedt (Pro.).

DODGE COUNTY.

First District. The towns of Ashippun, Clyman, Emmett, Herman, Hubbard, Hustisford, Lebanon, Leroy, Lomira, Rubicon, Shields, Theresa, Williamstown, the fifth and sixth wards of the city of Watertown, the villages of Hustisford, Lomira, Neosho, Theresa, and the cities of Horicon and Mayville. Population, 1910—23,518.



CHARLES LENTZ (Dem.) was born in the town of Herman, Dodge county, Wisconsin, on the 28th day of October, 1859. Received a common and parochial school education. Worked on his father's farm until 1881: went to Illinois and was there employed in a malleable iron foundry for eight months. He came back again to Wisconsin and has almost always been engaged in farming. He held numerous offices of trust and honor, having been district school clerk for twelve years, town supervisor two years, town clerk for six years, town chairman for ten years (of which he served four years as chairman of the county board), also thirteen years director and six years treasurer of the Herman Farmers' Mutual Insurance company, was elected sheriff of Dodge county in 1904, moved to Juneau (the county seat), January 2, 1905; moved back on his farm in 1908. He was elected member of assembly in 1908, moved to the city of Mayville in 1910, was re-elected member of assembly in 1910 and again in 1912, receiving 2,637 votes against 1,589 for E. A. Bartsch, (Rep.).

DODGE COUNTY.

Second District. The towns of Beaver Dam, Burnett, Calamus, Chester, Elba, Fox Lake, Lowell, Oak Grove, Portland, Trenton, Westford, the villages of Fox Lake, Lowell, Reeseville, the east ward of the village of Randolph, the first, second, third and fourth wards of the city of Waupun, and the cities of Juneau and Beaver Dam. Population, 1910—23,918.



HENRY EDWARD KRUEGER of Beaver Dam was born in the town of Beaver Dam, Dodge county, Wisconsin, May 14, 1882. He was educated in the public schools of that county, and graduated from the University of Wisconsin short course in agriculture, class of 1907. He served three years, 1905-6-7, as volunteer in company K, second Infantry, Wisconsin National Guard. For the past five years he has served his town as clerk. At present he is a member of the Wisconsin State Board of Agriculture, and secretary-treasurer of the Dodge county Experiment association. He was raised and al-

ways worked on a farm and at an early age became manager of his mother's farm, later purchasing a farm of his own, Fair View Farms, three miles south of the city of Beaver Dam. He has taken world's championship on his Wisconsin pedigree barley the past five years at national shows, 1908-1909 Omaha, Neb., 1910 Columbus, O., 1911 Chicago, 1912 New York. He is also the grower of the wheat that won the world's championship at Omaha in 1909, and afterward selling at auction at the record price of \$832 per bushel. His present occupation is farming and growing of pure bred seed grain and live stock. He was elected to the assembly 1912, receiving 2,512 votes against 1,403 for Geo. W. Smith, (Rep.) 80 for John J. Madigan, (Pro.) 59 for John P. Hollenstein, (Soc. Dem.).

DOOR COUNTY.

One District. Population, 1910—18,711.

LEWIS L. JOHNSON (Rep.) was born on a farm in the town of Lincoln, Kewaunee county, Wisconsin, January 3, 1880. He was educated in the public schools, Menominee, Michigan, high school, Bethany college, Lindsburg, Kansas, and Detroit College of Law. He was admitted to the bar at Lansing, Michigan, June, 1905. Removed to Los Angeles, California, where he engaged in abstracting and real estate work. He returned to Door county in 1907. He has served as principal of the Maplewood school, town chairman of the town of Clay Banks, clerk of the school board and justice of the peace. He was elected member of the assembly in 1910 and reelected in 1912, receiving 1,496 votes against 712 for Joseph Dana (Dem.), 174 for N. Y. Wagner (Soc. Dem.), 112 for John R. Seaquist (Pro.), 174 for Henry Reynolds (Ind.).



DOUGLAS COUNTY.

First District. The third, fourth, fifth, sixth and seventh wards of the city of Superior. Population, 1910—26,941.

PHILIP GANNON (Rep.) was born in Syracuse, New York, February 22, 1870. Attended the parochial schools till fifteen. Worked as a sailor on the Great Lakes till 1889 when he located in Superior where he has lived ever since. Worked on docks until 1892, when he became a member of the firm of M. J. Healy & Co., general contractors, remaining for eighteen years, when the firm retired from business. Was appointed alderman in 1909, was elected in 1911 and had one year to serve when the city adopted the commission form of government. Was elected to the assembly in 1912, receiving 965 votes against 659 for Peter B. Cadigan (Dem.), 629 for Edwin T. Harris (Soc. Dem.), 292 for Roy D. Latton (Ind.), 157 for Andrew N. Lent (Ind.), 66 for John W. Gallant (Pro.).



DOUGLAS COUNTY.

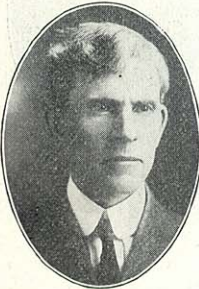
Second District. The towns of Amnicon, Bennett, Brule, Gordon, Hawthorne, Highland, Lake Side, Maple, Parkland, Solon Springs, South Range, Summit, Superior, Wascott, the village of Lake Nebagamon and the first, second, eighth, ninth, and tenth wards of the city of Superior. Population, 1910—20,481.



R. J. NYE was born in Davenport, Iowa, March 21, 1871 and came to Milwaukee with his parents in 1880, which city was his home until 1892. Since then he has resided in Superior where he is in the insurance and real estate business with his brother, under the name of R. J. Nye & Co. He represented the First ward of the city of Superior on the county board of Douglas county for six years, and during three of these years was chairman of the board. Was elected to the assembly from the Second district of Douglas county in 1906, in 1910, and in 1912, received 1,243 votes against 506 for Chas. H. Bird, (Dem.) 409 for Henry W. Jackson, (Soc. Dem.) 82 for Wm. V. Bolds, (Pro.).

DUNN COUNTY.

One District. Population, 1910—25,260.



JAMES D. MILLAR (Rep.) of Menomonie, was born at Eau Claire, Wisconsin, January 8, 1869, and received his education in the common schools in the town of Red Cedar, Dunn county, the Menomonie high school and the River Falls state normal school. He is by occupation a farmer, having also been engaged in the lumber manufacturing business at New London, Wisconsin. He has been chairman of the town of Red Cedar, in Dunn county, two years and is the present secretary of the Dunn County Agricultural Society, an office he has held for the past four years. His father, William Millar, was assemblyman in the session of 1887, and senator in the sessions of 1889 and 1891. He was elected to the assembly in 1910, and reelected in 1912, receiving 2,739 votes against 237 for C. B. Bird (Soc. Dem.).

EAU CLAIRE COUNTY.

One District. Population, 1910—32,721.



HENRY LAYCOCK (Rep.) was born in Yorkshire, England, March 14, 1842, coming to America in 1861. He settled in Illinois where he lived for ten years, coming to Eau Claire, Wisconsin, in 1875. Mr. Laycock was a contractor and builder until 1895, when he retired. He has held various municipal offices and was elected to the assembly in 1908, and again in 1912, receiving 2,695 votes against 1,549 for Bert Frederick (Dem.), 255 for Wm. E. Stein (Soc. Dem.).

FOREST, FLORENCE AND ONEIDA COUNTIES.

One District. Population, 1910—21,596.

DOUGLAS ANDERSON was born at Shawano, Wisconsin, September 28, 1886. He attended the common schools at Crandon and North Crandon, graduating at the Rhinelander high school in 1904, after which he attended the University of Wisconsin for four years. He is at present occupied in the publication of city and county directories at Rhinelander, Wis. He first became a candidate for the assembly in 1908, being defeated for the Republican nomination. In 1912 he again became a candidate, receiving 2,240 votes against 1,042 for John Masbaum (Dem.), 195 for Charles Keep (Soc. Dem.) and 127 for M. A. Betts (Ind.).



FOND DU LAC COUNTY.

First District. The towns of Calumet, Empire, Fond du Lac, Forest, Friendship, Marshfield and Taycheedah, the villages of North Fond du Lac, St. Cloud and the city of Fond du Lac. Population, 1910—29,198.

CHRISTIAN PICKART (Dem.) was born in the town of Marshfield, Fond du Lac county, Wis., Nov. 15, 1870; received a common school education; was a cheese manufacturer from 1886 to 1892, when he entered the mercantile business in company with his brother Joseph, in which business he is still engaged; he has been town clerk of his town five years; organized a new school district in his town and has been clerk of the same since its organization; was elected member of assembly in 1904, 1906, 1908, 1910, and reelected in 1912, receiving 3,053 votes against 1,748 for J. W. Briggs (Rep.), 260 for Emil Valkoske (Soc. Dem.), 92 for John B. Tripp (Pro.).



FOND DU LAC COUNTY.

Second District. The towns of Alto, Ashford, Auburn, Byron, Eden, Eldorado, Lamartine, Metomen, Oakfield, Osceola, Ripon, Rosendale, Springvale and Waupun, the villages of Brandon, Campbellsport, Eden and Oakfield, the fifth and sixth wards of the city of Waupun and city of Ripon. Population, 1910—22,412.

WILLIAM F. SOMMERFIELD (Rep.) was born in the town of Metomen, Fond du Lac county, January 19, 1877. Educated in public and private schools, is engaged in the furniture and undertaking business, and is president of the village of Oakfield. Has held various offices of public trust and was elected member of the assembly in 1912, receiving 2,161 votes against 1,608 for Oscar Hanisch (Dem.) and 27 for Leonard Gudex (Soc. Dem.).



GRANT COUNTY.

First District. The towns of Beetown, Cassville, Clifton, Ellenboro, Glen Haven, Hazel Green, Harrison, Jamestown, Lima, Paris, Platteville, Potosi, Smelzer, Waterloo, the villages of Cassville, Cuba City, Hazel Green, Potosi and the city of Platteville. Population, 1910—20,037.



JAMES DOLAN (Dem.) was born in Belmont township, LaFayette county, Wisconsin, Dec. 17, 1863. He attended district school until sixteen, then two terms at the Platteville Normal, and worked on farm until twenty-two years of age. Later he attended the Platteville Normal and taught school, finishing that institution in 1891. Was principal of high school at Highland, 1891-2; principal graded school city of Platteville, 1892-3-4. He entered the law department of the University of Wisconsin in 1894, received his diploma and was admitted to the bar in 1897; practiced law at Platteville continuously from this date to present time. He was city justice 1898-9; member county board 1906-7; candidate for assembly on Democratic ticket in 1906; president Tri-State (Wisconsin, Illinois and Iowa) Mining association, 1907-8; mayor city of Platteville, 1907-8-9-10; circuit court commissioner since 1907 and member of city board of education for same time. He was actively engaged in developing the mining industry of southwestern Wisconsin from 1902 to 1909, was largely instrumental in organizing the State Bank of Platteville and has been vice president of that bank continuously from the date of its organization in 1905. He was elected member of the assembly in 1912, receiving 1,862 votes against 1,833 for H. I. Gibson (Rep.) and 71 for J. N. McLeod (Pro.)



GRANT COUNTY.

Second District. The towns of Bloomington, Boscobel, Castle Rock, Fennimore, Hickory Grove, Liberty, Little Grant, Marion, Millville, Mt. Hope, Mt. Ida, Muscoda, North Lancaster, Patch Grove, South Lancaster, Waterstown, Wingville, Woodmar, Wyalusing, the villages of Bloomington, Fennimore, Montfort, Muscoda, the city of Boscobel and the city of Lancaster. Population, 1910—18,970.

HENRY E. ROETHE (Rep.) Badger born, resides at Fennimore. Hobby, walking; known as the legomobile editor of the Fennimore Times. Advocates fewer laws, less offices and rigid economy in public expenditures. Elected to the assembly in 1906, 1908, 1912.



GREEN COUNTY.

One District. Population, 1910—21,641.

S. A. SCHINDLER was born April 28, 1871, at New Glarus, Wis., where he has always resided. He received his education in the public schools of this place and also attended the Madison high school. He served as first president of the village of New Glarus when it was incorporated in 1901, holding office for four terms. Was a member of the county board for the past seven years, being chairman of the committee on finance. Was en-

gaged in the mercantile business until Jan. 1912, when he sold his business and became assistant cashier in the bank of New Glarus. He has always been a Republican. Elected member of the assembly in 1912, receiving 1,931 votes against 1,856 votes for W. Ludlow (Dem.).

GREEN LAKE COUNTY.

One District. Population, 1910—21,641.

NEWCOMB SPOOR (Rep.) was born in Oswego, New York, in 1852. Moved to Waushara county in 1852. In 1904 went to Berlin, Green Lake county. Is a machinist by trade and a farmer by occupation. Graduated from the Berlin high school in 1874. Has held various offices of public trust and was elected to the assembly in 1910, and reelected in 1912, receiving 1,425 votes against 1,393 for Chas. M. Boettge (Dem.), 65 for Will F. Robinson (Pro.), 30 for Chas. Kobiski (S. Dem.).



IOWA COUNTY.

One District. Population, 1910—22,497.

ALBERT D. RICHARDSON was born in the town of Wyoming, Iowa county, Sept. 3, 1864, and has resided on a farm there ever since. His parents settled in Wyoming in 1848, his father being a native of Tennessee, and his mother of New York. She was the first school-teacher in the town. He was educated in the common schools and the Dodgeville high school. Has served on the school board many years, has been chairman of the town board nine years, also member of the county board for the same time. Was elected to the assembly in 1912, receiving 2,225 votes against 2,157 for Thos. H. Arthur (Dem.).



IRON AND VILAS COUNTIES.

One District. Population, 1910—14,325.

WILLIAM J. WHITESIDE (Rep.) was born in Marquette county, Michigan, November 5, 1881, and was educated in the public schools of Hurley, Wisconsin. Is a machinist by vocation, having been in the employ of the United States Steel company for eight years and with the Cleveland Cliffs Iron company for two years. Was elected to the office of county treasurer of Iron county in November, 1908, which office he held for two years and was elected sheriff in November, 1910. Was elected to the assembly at the general election of 1912, receiving 1,173 votes against 678 for Emil S. Weisse (Dem.).



JACKSON COUNTY.

One District. Population, 1910—17,075.



MERLIN HULL (Rep.) of Black River Falls, was educated in the common schools of his home county, and later attended Gale College at Galesville, Wisconsin, completing his courses at DePauw and Columbian universities. Mr. Hull is a practicing lawyer and is also publisher of the Jackson County Journal. He was admitted to practice in the United States supreme court in 1894, and was elected clerk of the circuit court of Jackson county the same year. For several years he was in the government service at Washington, D. C. In 1906 he was elected district attorney of Jackson county. He was elected to the assembly in 1908 and 1910, and re-elected in 1912, each time without opposition. He was elected speaker of the 1913 assembly, receiving the full Republican vote. In the legislature he has devoted much time and effort to the promotion of legislation for improvement of rural conditions, for the advancement of coöperative marketing, for the development of a better system of agricultural instruction, and for the improvement of the common schools.

JEFFERSON COUNTY.

First District—The towns of Concord, Farmington, Hebron, Ixonia, Milferd, Palmyra, Sullivan, Watertown, the villages of Johnson's Creek, Palmyra, the first, second, third, fourth and seventh wards of the city of Watertown. Population, 1910—16,619.



C. F. VIEBAHN (Dem.) of Watertown, a native of Germany, has resided in Wisconsin since 1852, in the counties of Sauk, Juneau, Manitowoc and Jefferson. Was educated in the common schools of Germany and Wisconsin, by private instruction and at the University of Wisconsin. As teacher, high school principal, county superintendent, city superintendent, etc., he has made education his life work. He has for many years under five different state superintendents served upon the state board of examiners. He has been president of the Wisconsin Teachers' association and is a life member of the N. E. A. He was elected to the assembly in 1908, 1910, and again in 1912, receiving 2,240 votes against 889 for W. E. Blumenstein (Rep.) and 40 for T. Bergman (Soc. Dem.). During his second term he was chairman of the committee on education and the democratic member of the committee on legislative procedure.

JEFFERSON COUNTY.

Second District. Population, 1910—16,619.



O. F. ROESSLER (Dem.) was born in Jefferson, Wis., January 29, 1860, and has resided at Jefferson all his life except two years at Greeley, Colo., one year at Kilbourn City and one year at Juneau, Wis., when he was a journeyman printer. He attended the high school and the Jefferson Liberal institute. At present he is editor of the Jefferson Banner. He has served as alderman and chief of the fire department of his city and as member of the county board and chairman thereof. He was secretary of the Wisconsin Press association nine years;

assistant executive commissioner of the Wisconsin State Board of World's Fair Managers at Chicago, secretary of the Wisconsin State Firemen's association for five years; secretary of the Jefferson county fair for fifteen years; member of the State Board of Agriculture for five years and is trustee of the Jefferson county insane asylum. He was elected to the assembly in 1910 and again in 1912, receiving 2,192 votes against 83 for George J. Kellogg (Pro.), 1,075 for Joseph M. Gannon (Rep.) and 67 for Charles DeForest (Soc. Dem.).

JUNEAU COUNTY.

One District. Population, 1910—19,569.

A. A. TELFER (Rep.) was born on a farm in the town of Plymouth, Juneau county, Wisconsin, in July, 1864. He attended the district and the Elroy high schools in winter and worked on the farm in summer until about eighteen years of age. He was elected on the town board one year, was then elected town clerk and held the office for ten years, resigning at the time of his removal to the city of Elroy. He was a director of the Farmers' Insurance company for four years, and secretary for two years of that time. In 1904 he moved to Elroy and was elected cashier of the Citizens' Bank. He held that office for six years, and is now vice president of the bank. For two years he was alderman of the First ward of Elroy and at present he is mayor. He was elected to the assembly in 1912, receiving 1,904 votes against 204 votes for A. J. Kamke (Soc. Dem.).



KENOSHA COUNTY.

One District. Population, 1910—32,929.

CHARLES H. PFENNIG (Rep.) of Kenosha, was born at Neenah, Wisconsin, January 22, 1871, and moved to Kenosha with his parents in 1873. He was educated in the public and parochial schools in the city of Kenosha and was engaged in the retail grocery business with his father for a number of years, but for the past ten years has been in the real estate and insurance business. Served as alderman of the Second ward of Kenosha from 1898 to 1900. Was elected mayor of Kenosha in 1900 and served a term of two years. Elected sheriff of Kenosha county in 1905. Elected member of assembly in 1912, receiving 3,184 votes, against 2,231 for M. J. Scholey (Dem.), 462 for L. L. Hill (Soc. Dem.).



KEWAUNEE COUNTY.

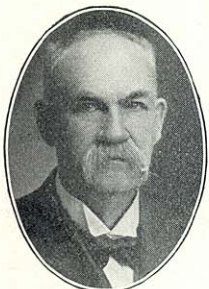
One District. Population, 1910—16,784.

PAUL HOVERSON (Rep.) was born on a farm in the town of Franklin, Kewaunee county, Wisconsin, Oct. 13, 1868, upon which he still resides. He received his education in the common school. His occupation has always been farming. He was elected supervisor of the town for two years. Was appointed chairman in 1910 and elected in 1911 but declined to serve longer. He was elected member of assembly in 1912, receiving 1,565 votes against 1,429 for August F. Fensky (Dem.).



LA CROSSE COUNTY.

First District. The first, second, third, fourth, fifth, sixth, seventh, ninth, tenth, eleventh, twelfth, thirteenth, fourteenth, fifteenth, sixteenth, nineteenth and twentieth wards of the city of La Crosse. Population, 1910—22,954.



CLARK L. HOOD (Dem.) was born June 23, 1847, at Hancock, Delaware county, New York state. He was educated at the Delaware Literary Institute, Franklin, Delaware county, N. Y., taught school a short time and then studied law at Binghamton. He was admitted to the bar at Binghamton in 1869 and settled in the same year in La Crosse, where he has since resided. He has served as city attorney three years, alderman three years, and district attorney, four years. He is a member of Wilson Colwell Post G. A. R. He was elected to the assembly on the Democratic ticket in 1912, receiving 1,887 votes against 1,810 for John E. McConnell (Rep.), 238 for Oscar Houck (Soc. Dem.) and 53 for David C. Chappel (Pro.).

LA CROSSE COUNTY.

Second District. The towns of Bangor, Barre, Burns, Farmington, Greenfield, Hamilton, Holland, Onalaska, Shelby and Washington, the villages of Bangor and West Salem, the 3d, 8th, 17th, 18th, and 21st wards of the city of La Crosse, and the city of Onalaska. Population, 1900—21,157.



E. J. KNEEN (Dem.) was born in the town of Burns, La Crosse county, Wisconsin, February 24, 1867. He received his education in the public schools at Bangor, Wisconsin, which place he left at the age of seventeen, moving to Kansas City where he worked in brickyards for four years, thence moving to Minneapolis where he was engaged in the wholesale fruit business until 1902, when he moved back to Bangor, Wisconsin, engaging in the general merchandise business. Elected president of the village of Bangor in 1905. He has always taken an active part in all public improvements, and is now manager of the Bangor and Cashton Telephone Company, which, through his efforts, has been built up to one of the largest exchanges in La Crosse county. Is also a member of the board of directors of the Bangor State Bank. Elected member of the assembly in 1908, 1910, and again in 1912, receiving 1,808 votes against 1,703 for Frank Strupp (Rep.), 108 for B. N. Anderson (Soc. Dem.), 84 for A. M. Joey (Pro.).



LAFAYETTE COUNTY.

One district. Population, 1910—20,075.

J. M. ENGBRETSON (Rep.) was born December 25, 1884, in the town of Wiota, Lafayette county, Wisconsin. He was educated in the common schools and by occupation is a farmer. He served as a member of the Lafayette county board for eleven consecutive years. Elected to the assembly in 1912, receiving 2,425 votes against 2,001 for E. D. Parkinson (Dem.).

LANGLADE COUNTY.

One District. Population, 1910—17,062.

ED. NORDMAN (Dem.) was born on a farm near New London, Wisconsin, October 24, 1864. Although his father and mother died when he was eleven years old, he continued to attend the district and graded school in New London until his sixteenth year, meanwhile working on the farm of which his brothers were managers. At the age of sixteen years he secured work on a construction train that took him to Langlade county, which has been his home ever since. He bought the land upon which he now lives in 1884, teaching school to pay for it. He was elected county superintendent in 1888 and held office for eight years; he was chosen supervisor of assessments in 1901, but at the end of one term refused to seek reelection in order that he might continue his farm work. He was a member of the State Board of Agriculture from 1905 to 1910. Ten years ago at the request of Supt. George McKerrow, he joined the Farmers' institute force, and has been a member ever since, devoting his winters to the work. Mr. Nordman is a strong exponent of the teachings of Henry George, having been a student of his works for the last twenty-six years. He was elected to the assembly in 1912, receiving 1,852 votes against 946 for Andrew H. Anderson (Rep.).



LINCOLN COUNTY.

One District. Population, 1910—19,064.

JOHN O'DAY (Dem.) was born in England, June 28th, 1856. His parents moved to New York in 1857 and three years later moved west to Grand Rapids, Wisconsin, settling on a farm. He received a common school training but most of his education is the result of observation and actual experience. At the age of fifteen years he commenced working in the woods and on the river at common labor. By his own efforts he worked himself up to the position of foreman and later to superintendent. His earliest work for himself was contracting for putting in logs in the winter and for driving on the river in the spring and summer. Later he became interested in the Merrill Railway and Lighting Co., and he is also heavily interested in the manufacture of paper. He has been a resident of Merrill for the past thirty years and has held the office of mayor of the city for two years. Elected member of the assembly in 1910 and reelected in 1912, receiving 1,531 votes against 1,529 for Ralph H. Clark (Rep.), 180 for Rudolph J. Dotter (Soc. Dem.).



MANITOWOC COUNTY.

st District. The towns of Centerville, Liberty, Manitowoc, Manitowoc Rapids, Meeme and Newton, and the city of Manitowoc. Population, 1910—21,942.



CARL HANSEN (Dem.) was born in Manitowoc, January 3, 1866, and has lived there all his life. Received his education in the public schools. He has always been a farmer until recently when he took up the real estate and fire insurance business. Was city treasurer from 1889 to 1892 inclusive; assessor in 1893; harbor master in 1896 and alderman in 1898-9. Was elected a member of the assembly in 1910, and reelected in 1912, receiving 1,751 votes, against 1,305 for John F. Dumke (Rep.), 443 for Wm. Bull (Soc. Dem.).

MANITOWOC COUNTY.

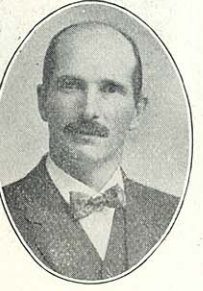
Second District. The towns of Cato, Cooperstown, Eaton, Franklin, Gibson, Kossuth, Maple Grove, Mishicot, Rockland, Schleswig, Two Creeks, Two Rivers, the villages of Kiel, Reedsville and the city of Two Rivers. Population, 1910—23,036.



PETER J. MURPHY (Dem.) was born in the town of Cato, Manitowoc county, Wisconsin, in 1860, and received his education in the common schools. He served as chairman of the town of Cato for three years and was elected director of the school board, which office he holds at the present time. He owns and operates a farm of 160 acres situated in the town of Cato. He was elected to the assembly in 1912, receiving 1,918 votes against 1,551 for Chas. Schimel (Rep.) and 387 for Joseph Rech (Soc. Dem.).

MARATHON COUNTY.

First District. The towns of Bergen, Berlin, Bern, Brighton, Cassel, Cleveland, Day, Eau Pleine, Emmet, Frankfort, Flieth, Halsey, Hamburg, Holton, Hull, Johnson, Maine, McMillan, Marathon, Mosinee, Rib Falls, Rietbrock, Spencer, Stettin, Wein, the village of Athens, the village of Marathon, the village of McMillan, the village of Mosinee, east ward of the city of Colby, village of Edgar, village of Spencer, village of Stratford and that part of the village of Unity within the county of Marathon. Population, 1910—26,064.



F. X. SCHILLING (Rep.) was born April 26, 1868, on a farm three miles south of Marathon City. He attended the Wausau Business college, and after teaching for nine years, cleared his own farm out of the forest two and one-half miles southwest of Marathon City, where he now lives. He was town treasurer of the town of Cassel for ten years and was chairman of the Marathon county board for three years. He now holds and has held for the periods indicated the following offices: town chairman, 12 years; justice of the peace, 22 years; notary public, 8 years; court commissioner, 5

years; secretary of local creamery, 3 years; president of the Marathon City Telephone company, 3 years; treasurer of the G. U. G. Germania, 1 year. He was elected to the assembly in 1912, receiving 1,905 votes against 1,774 for Robert Plisch (Dem.) 81 for J. Brannwalder (S. Dem.) 48 for R. A. Buckmaster (Pro.).

MARATHON COUNTY.

Second District. The towns of Easton, Eldron, Franzen, Harrison, Hewitt, Knowlton, Kronenwetter, Norrie, Pike Lake, Plover, Ringle, Texas, Wausau, Weston, the village of Brokaw, the village of Schofield, and the city of Wausau. Population, 1910—28,990.

OSCAR L. RINGLE was born in the city of Wausau, April 12, 1878. He attended the schools of Wausau, graduating in 1896. He entered the University of Wisconsin immediately thereafter, taking studies in the college of letters and science for two years and attending the law school for three years, graduating in 1901. Since graduating from the university, he has practiced law in the city of Wausau in partnership with Frank P. Regner, under the firm name of Regner & Ringle. He was elected member of assembly in 1912 from the Second District of Marathon county. Has held no political office prior to such time. Received 2,254 votes against 2,106 for J. D. Christie (Rep.), 445 for C. F. Kiesner, (Soc. Dem.), 130 for F. A. Wilcox (Pro.).



MARINETTE COUNTY.

One District. Population, 1910—33,812.

ALBERT E. SCHWITTAY, lawyer and publisher, was born in Germany, Jan. 17, 1874. He attended the German public schools until 14 years of age, then entered the academy of Ortellsburg, Germany, which he attended until his parents came to the United States. The family located at Pound, Marinette county, in 1890, and here for several years thereafter he devoted his time to lumbering and farming. Entered the law school of the University of Wisconsin after a year's preparatory course at the Wisconsin academy and graduated in 1901. Located thereafter at Marinette for the practice of law. Was elected district attorney in 1908 and in 1910 was elected sheriff. In 1909 he founded "The Searchlight," a weekly newspaper, which he devoted to the propagation of progressive Republican principles, and has ever since the first issue been its owner, editor and manager. In November, 1912, he was elected to the legislature on the Republican ticket, of which party he had always been a strong adherent, defeating his opponent, P. F. Melchior, on the democratic ticket by a majority vote of 553, although the Democratic nominee for the presidency carried the county.



MARINETTE COUNTY.

One District. Population, 1910—33,812.



JAMES LARSON (Ind.) was born in Denmark in 1855 and came to the United States in 1871, settling in Racine, Wisconsin, where he was married and continued to reside for nine years, when he moved to Door county, and later to Marinette, where he has resided for thirty years. During his residence in Marinette he has been engaged in fishing and sailing and in the construction of boats and ships. He has served several years as a member of the common council and the county board and in 1891-2 represented his county in the assembly. He is the possessor of a gold life saving medal for saving the crew of the bark "Two Friends" in 1880. Mr. Larson was elected to the assembly to fill the vacancy created by the death of Albert E. Schwittay, at a special election held on Feb. 25. He received 983 votes against 430 for Peter M. Nelson (Rep.)

MILWAUKEE COUNTY.

First District. The first ward of the city of Milwaukee. Population, 1910—17,057.



EDWIN HINKEL (Dem.) was born in Milwaukee, December 2, 1866. He attended the Second ward public school and a private school, and after taking a course in the Spencerian Business college he entered into the restaurant business with his father, in which business he continued until April, 1897, when he accepted a position with the Chicago, Milwaukee & St. Paul Railway Company in the abstracting department. On June 5, 1899, he was appointed deputy city clerk by E. M. Schuengel, then city clerk, who died in December, 1904. On December 27, 1904, he was elected city clerk, serving until April, 1910. He was elected to the assembly in 1912, receiving 1,828 votes, against 728 for Erich C. Stern (Rep.), 331 for Charles McDonald (Soc. Dem.), and 40 for Roberts (Pro.).

MILWAUKEE COUNTY.

Second District. The second ward of the city of Milwaukee. Population, 1910—16,375.



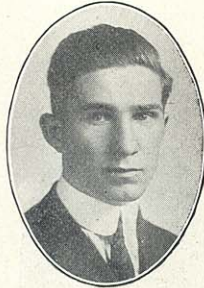
THOS. A. MANNING (Dem.) is one of the youngest members of the legislature, having been born twenty-six years ago in Milwaukee, where he is now a practicing attorney. He received his education at parochial and public schools and Marquette university, where he graduated from the college of letters and sciences in 1908, and from the department of law in 1911. He was admitted to the Wisconsin bar in August, 1911, and in September of the same year entered the law firm of O'Connor, Schmitz, Wild and Gross. While attending Marquette university he was considered one of the best orators and debaters that ever represented the school, having won the Phil Grau oratorical prize, a coveted honor at that institution, together with numerous medals for elocutionary honors. Mr. Manning was an athlete of wide reputation, having been captain of the Marquette university football

team of 1909 which was tied with Notre Dame for the championship of the west of that year. At the same time he was a member of the track and baseball teams. He belonged to the Omega Mu Delta fraternity, William Shakespeare Dramatic club, Marquette University Orchestra and Glee club. He was elected to the assembly in 1912, receiving 1,308 votes against 736 for William J. Gilboy (Soc. Dem.), 530 for I. J. Rosenberg (Rep.).

MILWAUKEE COUNTY.

Third District. The third and fourth wards of the city of Milwaukee. Population, 1910—30,873.

DAVID V. JENNINGS (Dem.) was born at Keshena, Shawano county, Wisconsin, in 1887. He moved to Milwaukee in 1900 and graduated from Marquette academy in 1904. Attended the arts and science department of Marquette university from 1904 to 1907 and entered the Marquette university law department in 1908, graduating and receiving his legal degree in 1911. He is twenty-five years of age, the youngest member of the Legislature. He never before sought public office. Mr. Jennings represents the richest district in the state of Wisconsin, comprising the Third and Fourth wards of the city of Milwaukee. He is a member of the firm of Jennings & Jennings at Milwaukee. He was elected to the assembly in 1912, receiving 3,001 votes against 1,069 for T. W. Pollard (Rep.) and 666 for W. H. Gladding (Soc. Dem.), 49 for John A. Murray (Pro.).



MILWAUKEE COUNTY.

Fourth District. Twentieth and twenty-second wards of the city of Milwaukee. Population, 1910—27,555.

CARL MINKLEY (Soc. Dem.) was born in Strelno, Germany, Nov. 14, 1866, and received a common school education. He studied designing for interior decoration in the trade school of Berlin, Germany, and came to this country in 1892, settling in Milwaukee in 1893. He has been a member of the trades union since 1887 and was elected a delegate from the city of Berlin to the National convention in 1890. He was also a delegate to the National Convention of Brotherhood of Decorators and Painters of America. He was a delegate to the National Socialist convention in 1912. Held the office of alderman-at-large in the city of Milwaukee, filling the vacancy left by Victor L. Berger, resigned. He is the state organizer of the Social-Democratic party of Wisconsin. Was elected a member of the assembly in 1912, receiving 2,365 votes against 1,969 for Paul G. Dorow (Ind.), 1,331 Max J. Leutermann (Rep.), 54 for Peter M. Norgaard (Pro.).



MILWAUKEE COUNTY.

Fifth District. The fifth ward of the city of Milwaukee. Population, 1910—18,130.



C. J. STEMPER (Dem.) was born in Milwaukee county, town of Franklin, Dec. 6, 1858; educated in the district school, Pio Nono college, and in 1873 moved to the Fifth ward in Milwaukee. He then attended St. Gall's school for over a year; then South Side Business college; then entered the flour and feed business with his father, and then the livery business for ten years. He retired from that to engage in the manufacture of cement building blocks. He was elected to the assembly in 1912, receiving 1,432 votes against 859 for Gilbert H. Poor (Soc. Dem.), 545 for Chas. J. Hirsch (Rep.) 58 for John W. Stone (Pro.).

MILWAUKEE COUNTY.

Sixth District. The sixth ward of the city of Milwaukee. Population, 1910—18,465.



A. J. HEDDING (Dem.) was born May 29, 1883, at Port Washington, Wis. He attended the local schools, graduating from the high school in 1902 and then entered the law school of the University of Wisconsin, graduating in 1906. He has practiced law since graduation in the city of Milwaukee, where he is now located. While at the university he was an active participant in athletics and debating. He has worked on various newspapers and is a member of the Milwaukee Press club. Was secretary of the Democratic platform convention in 1912. He was elected to the assembly in 1912, receiving 1,256 votes against 942 for Arthur Kahn (Soc. Dem.) 617 for Adolph Beer (Rep.)

MILWAUKEE COUNTY.

Seventh District. The seventh and tenth wards of the city of Milwaukee. Population, 1910—31,961.



EDWARD H. ZINN (Soc. Dem.) was born in Milwaukee, July 30, 1877. He graduated from the public school and after attending the high school and engineering schools entered the employ of the Pawling & Harnischfeger Company as mechanical engineer apprentice in 1897. In 1906 he took a position with the Allis Chalmers company and later with other engineering concerns of Milwaukee. In 1910 he was appointed special assessment clerk in the Department of Public Works of Milwaukee but in 1912 returned to engineering. He was elected to the assembly in 1912, receiving 2,215 votes against 1,794 for Frank K. Muench (Dem.) and 1,117 for Edw. Wunderlich (Rep.) 32 for George W. Zinnern (Pro.).

MILWAUKEE COUNTY.

Eighth District. The eighth ward of the city of Milwaukee. Population, 1910—19,279.

JACOB LITZA, JR., was born Aug. 29, 1880, at Milwaukee and received his education at St. Stanislaus parochial school and the city public schools. He is a Spanish war veteran, having served in Company "K" First Wisconsin Volunteers. Was appointed deputy sheriff of Milwaukee in 1910 and served in that office for two years under Sheriff H. E. Franke; was for years city agent of the Miller Brewing company and the Jung Brewing company. He is now conducting a buffet and bowling alleys at 474-476 Mitchell street. He was elected member of the assembly in 1912, receiving 1,298 votes against 1,065 for Michael Katzban (Soc. Dem.) 424 for Charles Strassburger (Rep.).



MILWAUKEE COUNTY.

Ninth District. The ninth ward of the city of Milwaukee. Population 1910—17,277.

W. E. WALSH was born in Ireland, Dec. 25, 1869, and attended school until the age of fourteen, when he started to learn the tailor trade. In 1887, at the age of eighteen years, he sailed for Rio de Janeiro and remained in Brazil for about one year, when he took passage for New Orleans. After remaining there a short time he went to Port Limon, Costa Rica, remaining there for about eight months. From there he went to New York and later to Boston and St. Louis, working at the tailoring trade in every place visited. In 1893 he came to Milwaukee and worked for leading tailors until 1898, when he enlisted in Company G, Fourth Wisconsin Volunteer infantry and served in the Spanish-American war until his regiment was mustered out in Alabama, Feb. 28, 1899. For the last thirteen years he has been manager of tailoring departments in Milwaukee retail houses. He was elected to the assembly in 1912, receiving 1,209 votes against 1,035 for Herman O. Kent (Soc. Dem.) 459 for Eugene Herman (Rep.) 31 for Frank F. Wolfe (Pro.).



MILWAUKEE COUNTY.

Tenth District. The twenty-first and twenty-fifth wards of the city of Milwaukee. Population, 1910—28,780.

ED. H. KIEFER was born in the city of Milwaukee, May 1, 1874, and was educated in a parochial school in Brown county and the public school of Milwaukee. He is a painter by trade, and has been quite active in the trade union movement for thirteen years, having held various offices in his union. He was elected to the assembly in 1910 and again in 1912, receiving 2,359 votes against 1,606 for Lyman H. Browne (non-partisan) and 1,032 for George A. Heiden (Rep.).



MILWAUKEE COUNTY.



Eleventh District. The eleventh and twenty-third wards of the city of Milwaukee. Population, 1910—30,892.

JAMES H. VINT (Soc. Dem.) was born in the city of Hamilton, Ontario, Canada, Jan. 14, 1881. He came to Milwaukee in 1892, was educated in the district schools. He is a machinist by trade, and has been a member of the machinists' union for eleven years. He was elected to the assembly in 1910 and reelected in 1912, receiving 2,242 votes, against 2,015 for J. F. Heffernan (Dem.), 1,146 for L. A. Conlan (Rep.) 103 for Lucias A. Willis (Pro.).

MILWAUKEE COUNTY.

Twelfth District. The twelfth ward of the city of Milwaukee. Population, 1910—17,846.



WILLIAM L. SMITH (Soc. Dem.) was born in Milwaukee county in the town of Franklin, in 1878. He has lived in Milwaukee county all his life, and is essentially a self-made man. He attended the public and parochial schools, but at the age of fourteen years was compelled to earn his own living. He became a barber's apprentice, and has since followed that calling. Mr. Smith has always been a union man and employs nothing but union men in his shop at 835 Kinnickinnic avenue where he has been established for about 16 years, and has seen Bay View grow to its present greatness. He was elected a member of the assembly in 1912, receiving 1,125 votes against 1,007 for J. F. Filut (Nonp.) 450 for M. G. Gedlinski (Rep.) and 31 for Walter Leverenz (Pro.)

MILWAUKEE COUNTY.

Thirteenth District. The thirteenth ward of the city of Milwaukee. Population, 1910—18,226.



CHARLES E. ESTABROOK (Rep.), elected as a fusion candidate on the Democratic ticket of Milwaukee, was born near Platteville, Grant county, Wisconsin, Oct. 31, 1847. His early life was spent on a farm performing the usual duties of a farmer's son, and in attending country district school during the winter months. He enlisted in August, 1864, in Company B, Forty-third Wisconsin volunteer infantry and served with the regiment until discharged at the close of the war, July 1865. After returning from the army he attended school at Platteville academy and the normal school. Then engaged in teaching at Platteville and Belmont. Moved from Platteville to Manitowoc in 1871, and for a year taught school, having charge of the First Ward public school; subsequently studied law and engaged in the practice of his profession at Manitowoc until 1887; was city attorney of Manitowoc from April, 1874, until December, 1880. Resigned on being elected a member of the assembly; served as member of the assembly in 1881, 1882 and 1885 from Manitowoc county; was delegate to the National Republican convention in Chi-

cago in June, 1884; elected attorney-general in 1886 and reelected in 1888. Moved to Milwaukee in 1893, where he has since resided. In addition to his professional duties he has given attention to legislative and historical work connected with the state. As a legislator he served on a sub-committee and assisted in drafting one of the first measures to pass the assembly providing for a bank examiner; was one of the early advocates of plan to abolish special charters for cities, and was a member of the commission which drew what is now known as the "general charter." He is the author of the law providing for farmers' institutes and the law requiring examinations for admission to the bar. The acts in substance have been quite generally adopted in the several states. More recently he has secured the enactment of the anti-sweat shop law, tenement house law, budget law for cities of the first class, law providing for social centers, county park commission, a state park board. He is a life member of the State Historical society, and a member of and chairman of the history commission. Was elected to the assembly of 1907 and 1909 from Milwaukee, and reelected in 1912, receiving 1,338 votes against 924 for Fred Leviash (Soc. Dem.), 602 for Christoph Paulus (Rep.), 41 for Geo. H. Schultz (Pro.).

MILWAUKEE COUNTY.

Fourteenth District. The fourteenth and twenty-fourth wards of the city of Milwaukee. Population, 1910—27,750.

MARTIN GORECKI was born in Bromberg, German Poland, October 20, 1871. Received a public school education and immigrated to America at the age of eighteen. In 1902 he settled in Milwaukee, worked in the Schlitz brewery and joined Beer Bottlers' Union, Local 213, and was later transferred to Brewers' Union, No. 9. He served as a delegate to the Federated Trades council from both these bodies. He has been active in organizing the five Polish branches of the Social-Democratic party in Milwaukee, and in establishing the Naprzod, a weekly Polish paper. In 1910 he was elected alderman-at-large for two years. Was elected as member of assembly in 1912, receiving 1,519 votes against 1,094 for Jacob Posanski (Dem.) 609 for John Phillips (Rep.).



MILWAUKEE COUNTY.

Fifteenth District. The fifteenth and nineteenth wards of the city of Milwaukee. Population, 1910—23,523.

AUGUST DIETRICH (Rep.) was born July 6, 1858, in New York City. He received his education in the public schools of Milwaukee, and was employed for fifteen years by the George Poppert Manufacturing company as foreman. He then entered the real estate, fire insurance and loan business, in which he has been engaged for nineteen years, under the firm name of Dietrich & Schuengel. From 1890 to 1894 he served as alderman of the Ninth ward for two terms. He was reelected and served for one term from 1896 to 1898,



representing the Nineteenth ward. In July, 1908, he was appointed a member of the city service commission, to fill the unexpired term of Irving B. Cary. He was elected president of the commission and served in that capacity until the expiration of his term. He was elected member of assembly in 1904, receiving 1,740 votes against 1,696 for John Hassmann (Soc. Dem.) and 1,261 for Stephen Leahy (Dem.). In 1912 he was elected as a Republican on the nonpartisan ticket for member of assembly from the Milwaukee district, his vote being 2,509, against 1,237 for Carl F. Busacker, (Rep.) 1,229 for Edwin W. Knappe, (Soc. Dem.), 62 for Adolph Koehler, (Pro.).

MILWAUKEE COUNTY.

Sixteenth District. The sixteenth ward of the city of Milwaukee, the town of Wauwatosa and the city of Wauwatosa. Population, 1910—24,125.



EDWARD J. BURKE was born in Milwaukee, May 19, 1876, and received his education in the public and parochial schools there and in Chicago. He is a machinist by trade and was engaged at that business for twelve years, and attended law school evenings in Milwaukee and Chicago; was elected justice of the peace for the Fourth judicial district in Milwaukee in 1909, which office he now holds. He was elected to the assembly in 1912 on the Democratic ticket receiving 2,060 votes against 1,382 votes for Charles Perry (Rep.) 531 for Geo. J. Indra (S. D.) and 90 for F. H. Sporer (Pro.).

MILWAUKEE COUNTY.

Seventeenth District. The seventeenth ward of the city of Milwaukee, the town of Lake, and the city of Cudahy. Population, 1910—23,621.



JOHN PAULU was born in Bohemia in 1850 and immigrated with his parents to the United States in 1857, locating on a farm in Kewaunee county, where he attended the public school. At the age of sixteen years he learned the architect and building trade. He came to Milwaukee in 1871, and the following year engaged in the carriage and wagon manufacturing business but in 1886 he took up architecture, in which he is engaged at the present time. He was married in 1872, and has a wife and six children. In 1889 he moved into the town of Lake, and the following spring was elected justice of the peace. He held office for eleven years, and devoted considerable of his time studying law. In 1900 he was elected town chairman of supervisors and represented his town on the county board for six years, acting as chairman of the committee of laws and legislation. During this time he represented the town and county in the state legislature. In 1912 he was elected to the assembly, receiving 1,505 votes against 1,493 for Frank B. Metcalfe, (S. Dem.) 848 for Frank W. James, (Rep.) 55 for Fred O. Rossiter (Pro.).

MILWAUKEE COUNTY.

Eighteenth District. The eighteenth ward of the city of Milwaukee, the town of Granville, the town of Milwaukee, the village of North Milwaukee, the village of Whitefish Bay and the village of East Milwaukee. Population, 1910—19,638.

JOS. F. SMART was born at Cleveland, Ohio, January 14, 1870. He received a public school education, started out as a salesman, and at the present time is a representative of the Great Northern Life Insurance Company of Wausau, Wis. He was elected to the assembly 1912, receiving 1,970 votes against 1,202 for Frank Mackut, Jr., (Rep.) 596 for Chas. Kasdorf (Soc. Dem.) and 48 for Lee A. McIntyre (Pro.).



MILWAUKEE COUNTY.

Nineteenth District. The village of West Milwaukee, the city of West Allis, the city of South Milwaukee, the town of Greenfield, the town of Franklin and the town of Oak Creek. Population, 1910—21,814.

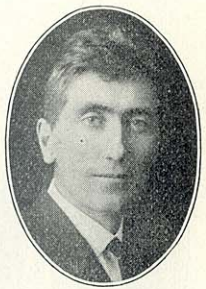
LUKE SCANLAN (Dem.) was born near Lockport, Will county, Ill., Oct. 16, 1841, and came with his parents to Milwaukee county, in 1842. He has lived on a farm in the town of Oak Creek up to the present time. He served in the 12th Wisconsin during the Civil War. Served for upwards of twenty years on the town and county boards and is at present chairman of his town. He was elected to the assembly in 1912, receiving 1,380 votes against 959 for Henry S. Berninger (Rep.) 864 for Bernard Jentzsch (S. Dem.) 84 for Hugh A. Mount (Pro.)



MONROE COUNTY.

One District. Population, 1910—28,881.

A. E. FREDERICK (Rep.) of Kendall was born in Madison, Wisconsin, July 6, 1885. After his graduation from the Madison high school he entered the law department of the University of Wisconsin, later completing his work and taking the degree of LL. B. at Georgetown university. His college work was done at the University of Wisconsin, being the regular work required for the B. A. degree. Having by way of special university work and private study in theology prepared himself for religious and social activity, he entered the ministry in the West Wisconsin conference of the Methodist Episcopal church in 1908 and is an ordained elder in this church, with his pastorate at Kendall and Wilton. His college course and law study have been supplemented by experience as a journalist and as a writer of special articles, a year's employment in the government service in Washington, and a study of social and religious conditions in Europe. In the spring of 1912 he was appointed by Gov. McGovern as humane officer for Monroe county, where he has been active in reform movements and where he is known as "the fighting parson." He was elected to the assembly in 1912, receiving 2,369 votes against 1,850 for T. A. Serrurier (Dem.) and 190 for W. P. Hitchcock (Pro.).



OCONTO COUNTY.

One District. Population, 1910—25,657.



ROBERT G. SHARP (Rep.) born June 25, 1884, at Oconto, Wisconsin, and received his education in the parochial and high schools in that city. Editor of the Golden (British Columbia) Star in 1903-1904. Since then he has been editor of The Enquirer published at Oconto and founded July 30, 1881, by his father, the late F. Charles Sharp. Served as postmaster of Oconto during 1910-1911 under a recess appointment. Elected to the assembly in 1912, receiving 2,508 votes against 1,483 for Mathew Finnegan (Dem.) 112 for Marinus Jensen (Soc.).

OUTAGAMIE COUNTY.

First District. The towns of Bovina, Center, Dale, Ellington, Grand Chute, Greenville, the village of Shioc-ton, and the city of Appleton. Population, 1910—24,871.



ISAAC NEWTON STEWART was born in the town of Pompey, Onondaga county, New York, January 9, 1838. On July 4, 1842, he landed in Milwaukee and settled on a farm in Pewaukee, Waukesha county, on which he lived for thirty years. He began teaching in December, 1853, and has taught every grade from district to full course high schools. He graduated from the University of Wisconsin in 1862. Twice he has been county superintendent of Waukesha county. He was chief clerk in the state superintendent's office in 1894. He entered on a ten years' work as an editorial writer on the Milwaukee Journal. He served as sergeant in Co. I, First Wisconsin Volunteer H. A. His first presidential ballot was cast for Stephen A. Douglas. He was elected from the First assembly district of Outagamie county in 1912, receiving 2,192 votes, against 1,920 for C. B. Ballard (Rep.) 82 for Chas. Drenks (S. Dem.).

OUTAGAMIE COUNTY.

Second District. The towns of Buchanan, Black Creek, Cicero, Deer Creek, Freedom, Hortonia, Kaukauna, Liberty, Maple Creek, Maine, Oneida, Osborne, Seymour, Van den Broek, the villages of Black Creek, Kimberly, Little Chute, Hortonville, Welcome, the cities of Kaukauna, Seymour, and the third ward of the city of New London. Population, 1910—24,231.



CHAS. H. MORY (Rep.) was born in the town of Greenville, Outagamie county, January, 27, 1854 and lived there until 1882, when he removed to Cicero township. He received a common school education. His occupation has always been farming. Was elected town clerk for six consecutive years and declined to serve any longer. Held the office of district clerk for two terms and is now a member of the school board serving as director. Was elected member of the assembly in 1912, receiving 1,858 votes against 1,823 for Wm. Rohan (Dem.) and 97 for Anton Miller (Soc. Dem.).

OZAUKEE COUNTY.

One District. Population, 1910—17,123.

JACOB DIETRICH, (Dem.) was born in Green Bay, Wisconsin, August 22, 1857 and removed with his parents to Cedarburg, Wis., in 1860, where he has since resided, with the exception of five years from 1882 to 1887 when he conducted a general market in Bismark, N. D., in partnership with his brother. He is at present in the real estate business; is secretary of the Ozaukee County Agricultural society, which office he has held for the last fifteen years; director of the Farmers' and Merchants' bank, director of the Cedarburg Driving association, treasurer of the Cedarburg Advancement association, treasurer Cedarburg Electric Light commission, president Cedarburg Turnverein, secretary of the A. J. Meyer Motor Car company. Elected member of assembly in 1912, receiving 1,866 votes against 670 for Wm. H. Horn, (Rep.).



PIERCE COUNTY.

One District. Population, 1910—22,079.

CASSIUS D. HAWN was born at Iron Ridge, Dodge county, September 5, 1864, and in 1867 came with his parents to Rock Elm, Pierce county, where he has since resided. He received his education in the common schools of that place. He is by occupation a sawmill operator and farmer and has done his part in clearing away the forest and developing his section of the state. He is a member of the Independent Order of Good Templars and has served that order in various capacities. He is school director and has served as director of the Pepin County Coöperative Mercantile Company but when this department withdrew and became the Rock Elm Coöperative Company he was made president and still serves in that capacity. He was elected to the assembly from Pierce county in 1912, receiving 2,107 votes against 786 for Ferris M. White (Dem.).



POLK COUNTY.

One District. Population, 1910—21,367.

AXEL JOHNSON (Rep.) was born in Denmark in 1870; received a common school education in Denmark and America; studied agriculture and worked on dairy farms in Minnesota for some time, then went to Colorado and Wyoming for two years. He came to Polk county, Wisconsin, in 1892, bought the farm upon which he now lives and has been engaged in dairying and stock-raising since. He has served his town as clerk for six years, has been a school director for many years, is also a director of the Polk County Mercantile Company, a very large mercantile establishment on the coöperative plan, and has been secretary and manager of the Apple River and Beaver Creamery Company for six years. He was elected to the assembly 1908 and 1910, and reelected in 1912, receiving 2,187 votes against 332 for C. W. Staples (S. Dem.) 2 for O. S. Lee (Dem.).



PORTAGE COUNTY.

One District. Population, 1910—30,945.



DON C. HALL (Rep.) was born in Eau Pleine, Portage county, Wisconsin, March 6, 1867, ten miles north of Stevens Point, on the old stage road at what was known as the Hall tavern. His mother, Ann M. Van Buskirk, who taught school in the early sixties, was married to his father, William Hall, in the town of Hull just at the close of the Civil war. His residence since leaving his native town, has always been in Stevens Point. He received his education at the district school in Eau Pleine and at the Stevens Point high school, after which he spent some time as student and member of the faculty of eastern business colleges. Has traveled extensively throughout the United States and adjoining countries, following the occupation of an actor and writer of dramatic plays and stories. He was married Jan. 18, 1888 to Miss Clara Crocker and they have three children, all interested with their parents in theatrical enterprises. He was elected member of the assembly in 1912, receiving 2,347 votes against 2,395 for Patrick H. Cashin (Dem.), 188 for Henry L. Kellogg (Ind.) and 103 for L. P. Schuweiler (Soc. Dem.).

PRICE COUNTY.

One District. Population, 1910—13,795.



AUGUST HEDEN (Rep.) was born in Dalsland, Sweden, May 21, 1856. He attended the public schools and at the age of 24 came to Pennsylvania. Shortly after he went to the upper peninsula of Michigan and there worked in the pineries. In 1883 he came to Ogema, Wis., and has remained there. Since that time he has been directly and indirectly interested in the logging and manufacture of forest products, having been timber cruiser, logger and is now engaged in the manufacture of lumber. He also operated between the years 1894-1909, a general store, and has for the last twenty-five years resided on and worked a farm on the outskirts of Ogema. Has been a member of the town board, town assessor and jury commissioner, but has held no other public office until 1912 when he was elected to the assembly, receiving 1,257 votes against 521 for J. Gruber (Dem.) and 355 for C. Sandquist (Soc. Dem.).

RACINE COUNTY.

First District. The first, second, third, fourth, fifth, sixth, eighth, tenth, eleventh, and fourteenth wards of the city of Racine. Population, 1910—29,358.



CHARLES H. EVERETT, (Rep.) was born in the town of Turtle, Rock county, March 22, 1855, educated in common schools of that county, followed farming, live stock breeding until 1895 since which time he has filled the position as editor of the Wisconsin Agriculturist. For fifteen years of his farm life, he was lecturer in Wisconsin farm institutes. He was president of the Wisconsin State Dairymen's association for two terms, secretary of the Wisconsin State Board of Agriculture

one term, has been a member of the Wisconsin State Board of Agriculture for the past twelve years and is a member of the Wisconsin Live Stock Sanitary board. He was elected to the Wisconsin legislature November 5, 1912, receiving 1,887 votes against 1,618 for Peter J. Meyers, (Dem.) 135 for Willis Cahoon, (Pro.) 353 for Arthur C. Bowman (Soc. Dem.).

RACINE COUNTY.

Second District. The towns of Burlington, Caledonia, Dover, Mt. Pleasant, Norway, Raymond, Rochester, Yorkville, the villages of Corliss, Union Grove, Watford, the seventh, ninth, twelfth, thirteenth and fifteenth wards of the city of Racine and the city of Burlington. Population, 1910—28,066.

JOSEPH C. HAMATA was born February 15, 1882, at Racine, Wisconsin. He received his education in the parochial and public schools of the city of Racine, and at the age of eighteen years, on account of the illness of his father, he took over his father's business, that of a retail grocer, and has since conducted the same. Politically he has always been a democrat. Prior to this time he has never held any public office. Was elected as member of the assembly 1912, receiving 1,942 votes against 1,911 for John H. Kamper, (Rep.) 223 for Arthur C. Jackson, (Soc. Dem.) 197 for Olin R. Moyle, (Pro.).



RICHLAND COUNTY.

One District. Population, 1910—18,809.

J. B. JENSON, (Rep.) was born on a farm near Green Bay, Brown county, Wisconsin, December 3, 1864, of Danish parentage. With his parents he moved to the town of Oakland, Jefferson county, in 1869 and in the spring of 1872 moved with his parents to the town of Westford, Richland county, and settled on a farm where he is still engaged in farming, principally dairying. He has served his town as chairman for six years and for twenty-one years has been on the board of education. He was elected to the assembly in 1912, receiving 1,826 votes against 1,415 for F. A. Core (Dem.) and 420 for T. L. Barton (Pro.) 95 for Wm. A. Garrison, (Soc. Dem.).



ROCK COUNTY.

First District. The towns of Center, Fulton, Janesville, Lima, Milton, Magnolia, Porter, Union, the cities of Edgerton, Evansville, Janesville and the village of Milton. Population, 1910—27,749.

ALEXANDER M. PAUL (Dem.) of Milton Junction, was born November 30, 1874 on a farm in the town of Milton, Rock county. He was educated in the public schools, is a practical farmer and a buyer and shipper of live stock; a director in the newly organized Farmers' bank at Milton Junction. He has always been actively interested in politics and public affairs; has never sought nor held an elective office until elected to the assembly in 1912, receiving 2,473 votes against 2,023 for M. P. Richardson (Rep.).



ROCK COUNTY.

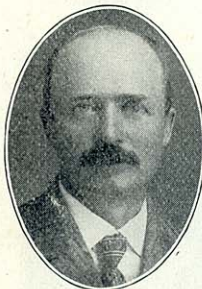
Second District. The towns of Avon, Beloit, Bradford, Clinton, Harmony, Johnston, La Prairie, Newark, Plymouth, Rock, Spring Valley, Turtle, the village of Clinton, the village of Orfordville, and the city of Beloit. Population, 1910—27,789.



CHARLES D. ROSA was born on a farm in Center, Rock county, Wisconsin, September 15, 1870. He attended country school, worked on the farm until eighteen and two years on the railroad section. He then attended Evansville seminary, Beloit academy and Beloit college, graduating from the last named institution in 1898 as salutatorian of his class. Was principal of the Edgerton public schools for three years and two years later graduated from the law school of the University of Wisconsin. After graduation he began the practice of law at Beloit with H. W. Adams. In 1906 he was elected municipal judge, carrying Rock county against J. W. Bates by a vote of 3,834 to 2,190. He held this office six years, declined reelection and returned to the practice of law as senior member of the firm of Rosa & Ritland. He was induced to become a candidate for the assembly in July, 1912 and won the nomination by a vote of 907 to 483 for former Assemblyman Simon Smith and 536 for Simon G. Strong. During all his life Mr. Rosa has been interested in farming and in breeding of pure bred stock and grain, and has held many offices in live stock and other agricultural organizations. For the past ten years he has devoted a portion of his time to the breeding, on his farm near Beloit, of a pure bred type of corn which bears his name. For four years past he has been a member of the faculty of Beloit college as lecturer on commercial law. Was elected member of assembly 1912, receiving 2,875 votes, against 1,440 for Chas. Oliver, (Dem.).

RUSK AND SAWYER COUNTIES.

One District. Population, 1910—17,387.



DELL H. RICHARDS was born at Richland Center, Wisconsin, July 27, 1868, and attended the public schools of that city. On leaving school he entered what is sometimes called the "American boys' college"—the printing office—working five years in the Republican Observer office at his native town; spent one winter in the office of the Appleton Post, then returned to Richland Center and edited the Richland Rustic for two years. He purchased this property and published the paper until 1898, when he sold out and went to Warner, Chippewa county, where, in May, 1900, he started the publication of the Journal. He took an active part in the stirring fight for county division which resulted in the creation of Gates (now Rusk) county and the fixing of the county seat at Ladysmith (formerly Warner). He represented Ladysmith on the county board and the board of education, and was mayor from 1909 to 1913. Since 1908 he has been engaged in real estate and farming. He was elected to the assembly in 1912, receiving 1,497 votes, against 714 for Wm. Alexander, (Dem.)

ST. CROIX COUNTY.

One District. Population, 1910—25,910.

JOHN A. CHINNOCK was born in Warren, Ohio, March 23, 1850 and came with his parents to St. Croix county in 1851, settling on a farm in what is now the town of Troy. Arriving at twenty-one years of age he purchased a farm in same town, which he still owns. In 1904 he removed to Hudson city where he now lives. Was chairman of his town several years and chairman of the county board one term. Was elected to the assembly in 1908, and at the conclusion of the 1909 session, was appointed by the Speaker to serve on the special good roads committee. Was nominated without opposition in the September primaries and was elected to the assembly in 1912, receiving 2,101 votes against 2,036 for Herman Hiebink (Dem.) 125 for Chas. H. Olson (Soc. Dem.).



SAUK COUNTY.

One District. Population, 1910—32,869.

GEORGE CARPENTER (Rep.) was born April 25, 1866 in the town of Franklin, Sauk county, Wisconsin. He has always resided in the county of his birth and devoted his early years to farming. In 1886 he was married to Minnie Uttendorfer and in 1888 he moved to the city of Reedsburg where he was engaged in the lumber and contracting business. In 1900 Mr. Carpenter moved to Baraboo where he has since been engaged in the lumber and produce business and is now president of the Deppe-Carpenter Lumber company. He never lost interest along agricultural lines and for a number of years he has conducted a large farm near Baraboo, making a specialty of stock raising. His stock may be seen on exhibition at any of the state fairs in the Northwest and at the International Stock exhibit at Chicago. Mr. Carpenter has always been a staunch believer in the Republican party and in later years he has been active in his support of progressive principles within the party. He was nominated for the assembly in Sauk county at the September, 1912, primaries without opposition and was elected, receiving 2,733 votes against 2,465 for John R. Hofstatter, (Dem.).



SHAWANO COUNTY.

One District. Population, 1910—31,884.

THOS. J. MAHON (Rep.) was born March 26, 1882, in the town of Liberty, Manitowoc county, Wisconsin. Preliminary education in the public and high schools of Milwaukee. Graduated from college of letters and science of Wisconsin university in 1905 and from the law school in 1907. Is a member of the Iron Cross and the honorary society and law fraternity of Phi Delta Phi. Practiced law in Milwaukee for one year and is now practicing at Eland. Secretary of Wisconsin branch of Progressive Republican League. Was elected member of assembly in 1910, and reelected in 1912, receiving 2,539 votes against 1,546 for Louis Rollman (Dem.) 116 for T. L. K. Hutchins (Pro.) 87 for B. E. Taggart (S. Dem.)



SHEBOYGAN COUNTY.

First District. The town of Sheboygan, the city of Sheboygan. Population, 1910—28,687.



CARL ZILLIER (Dem.) of the city of Sheboygan, was born April 18, 1838, in the city of Halberstadt, Province Saxony, Prussia, and came to the United States with his parents in 1849, who settled on a farm in the town of Sheboygan. He attended schools in Germany and public and private schools in this country, finally graduating from a printing office. In 1857 he started the National Demokrat, a German paper, which is now published by the Demokrat Printing company, of which he is the president. He represented his district in the assembly in 1863 and 1864. Was elected county clerk of Sheboygan county in 1870, holding that office for six years, upon retiring from which he was elected supervisor from his ward and later chairman of the county board, which position he occupied for a number of years. Was appointed postmaster by President Cleveland in 1886 and again in 1895. Has held various municipal offices and is at present the president of the board of trustees of the county asylum and president of the board of trustees of the public library. In 1884 he attended the Democratic National convention as a delegate. Was elected to the assembly in 1912, receiving 1,925 votes against 1,684 for H. H. Engelking (Rep.), and 927 for Fred Kneevers (Soc. Dem.).

SHEBOYGAN COUNTY.

Second District. The towns of Greenbush, Herman, Holland, Lima, Lyndon, Mitchell, Mosel, Plymouth, Rhine, Russell, Scott, Sheboygan Falls, Sherman, Wilson, the villages of Cedar Grove, Elkhart Lake, Oostburg, Random Lake, Sheboygan Falls and the city of Plymouth. Population, 1910—26,201.



HENRY OTT, a farmer and dairyman of the town of Plymouth, Sheboygan county, was born in the town of Holland on March 6, 1865. His parents were Carl and Caroline Ott. He lived in Holland until his eighteenth year when he removed with his parents to the town of Plymouth, which has been his home ever since. He now owns the homestead. He obtained his education in a rural school, by contact with men in his business relations and was a public officer. He was the clerk of his town for eleven years, has been chairman for six years, and is still holding the office. He has been chairman of the finance committee of the county board for some time. For the past four years he has been secretary of the Plymouth Farmers' Fire Insurance association. Politically, Mr. Ott has always been a Republican and a pronounced Progressive. He favors a graduated income tax law. He will favor amending the present law when, after a fair trial, it is shown to possess defects. He was elected to the assembly in 1912, receiving 2,493 votes against 2,250 for Otto A. La Budde (Dem.) and 167 for John C. Boll (Soc. Dem.).

TAYLOR COUNTY.

One District. Population, 1910—13,641.

ELIAS L. URQUHART (Rep.) was born in Glengarry county, Canada West, (now Ontario), Dominion of Canada, January 15, 1846. Received a common school education. Remained on a farm until October, 1864, and then came to New York state. From there he came to Michigan in 1865 and to Wisconsin in July, 1870. Followed surveying, estimating timber and lumbering until 1890. Was a member of the county board of Taylor county in 1878 and 1879; sheriff of Taylor county in 1880 and 1881; was a member of the county board in 1889, 1890, 1891, 1892, 1893, 1894, 1897, 1898, 1899, 1900, 1904, 1905, 1906, 1907, 1908, 1909, 1910, 1911 and 1912. Served as chairman of the county board in all eighteen years. Has been a member of the school board the past nineteen years. Was postmaster at Medford from 1890 to 1894. Since then he has been conducting a real estate, insurance and abstract office at Medford, Wisconsin. He was elected to the assembly in 1908 and 1910, reelected in 1912, receiving 986 votes, against 852 for John Gamper (Dem.) 338 for Vincent Storch (Soc. Dem.).



TREMPEALEAU COUNTY.

One District. Population, 1910—22,928.

L. L. GRINDE (Rep.) was born in Norway Sept. 12, 1847, and came to the United States with his parents in 1857 and settled in Columbia county, Wis. In the fall of 1860 together with his parents he moved to Trempealeau county, which place has been his home ever since. At present he resides in the town of Gale, near Galesville, of which town he is the present chairman. He obtained his education in the common schools, and until recently he has been engaged in farming. For twelve years he has served as a member of the county board and in the year 1890 he was elected county treasurer which position he held for four years. He was elected to the assembly from Trempealeau county in 1912 on the Republican ticket, receiving 2,379 votes against 1,266 for Peter Nelton (Dem.) 25 for F. L. Augustine (Soc. Dem.).



VERNON COUNTY.

One District. Population, 1910—28,116.

LAWRENCE GRIMSRUD (Rep.) was born in Vernon county in 1872. In his boyhood he attended the common schools and worked on his father's farm. At the age of nineteen he went to Decorah, Iowa, attending the Breckenridge Institute for a brief period, when he decided to take up a full college course. He then entered St. Olaf college at Northfield, Minn., from which school he graduated in 1899. Studied law at Drake university and was admitted to the Wisconsin bar in 1901. After a short stay in North Dakota, he returned to Wisconsin and took up the practice of law at Westby, where he has since resided. He has served as village attorney,



supervisor, and at present holds the position of village president. Elected member of the assembly in 1910, and reelected in 1912, receiving 2,679 votes against 1,573 for Christ Ellefson (Dem.).

WALWORTH COUNTY.

One District. Population, 1910—29,614.



S. CLAYTON GOFF (Rep.) was born January 23, 1861, at East Troy, Walworth county, Wisconsin. Educated in the common schools and the high school at Elkhorn. Graduated from the Indiana Dental College in 1883. Since then has practiced dentistry at Elkhorn up to the present time. Served two years as village clerk, five years on the village board, three years as member of the county board of supervisors, elected twice as chairman of the Republican county committee. Alternate delegate to the Republican national convention in 1908. Delegate to the Republican National convention in 1912. Has served two terms as mayor of the city of Elkhorn. Elected member of the assembly in 1910, and reelected in 1912, receiving 2,989 votes against 1,986 for Ed. F. Dunn (Dem.) 314 for Henry H. Tubbs (Pro.) 79 for F. W. Weaver (Soc. Dem.).

WASHINGTON COUNTY.

One District. Population, 1910—23,784.



JOSEPH S. GIUDICE was born in 1866 in Kreuznach, Germany. There he was likewise reared and given the advantage of a classical education. He had been attracted to America from early boyhood and upon completing his studies decided to come to the United States. In 1886 he came direct to Kenosha county, where he worked on a farm and afterwards obtained a clerkship in a general mercantile store. During that period he not only became familiar with the language and customs of the people but acquired a good knowledge of American commercial methods. In 1897 he engaged in business for himself at Burlington, Wis., and in 1905 he closed out his stock and located in Schleisingerville, Wis., becoming cashier of the State Bank of Schleisingerville, which position he still holds. Mr. Giudice has not confined his energies to the bank alone, but is interested in various other local activities. He assisted in the organization of the Farmers' Grain company of which he is the treasurer, the Standard Machinery company of which he is both treasurer and secretary, the Farmers' Supply company and the Washington County Telephone company of which he is a director. Was elected as member of assembly 1912, receiving 2,286 votes, against 2,095 for Henry J. Folk (Rep.) 136 for Daniel Silver (Soc. Dem.).

WAUKESHA COUNTY.

First District. The towns of Eagle, Genesee, Mukwonago, Muskego, New Berlin, Ottawa, Vernon, Waukesha, and the villages of Eagle, and Mukwonago and the city of Waukesha. Population, 1910—18,726.

PERCY SAWYER (Rep.) was born in Mt. Pulaski, Logan county, Illinois, May 7, 1877. In 1881 his parents moved to Waukesha where they had both lived in earlier life. His education was received in the common and high schools in Waukesha and at the University of Wisconsin. He has been a civil engineer and contractor since graduation. In 1910 he was secretary of the county committee and assisted in electing the entire ticket. He was elected to the assembly in 1912, receiving 1,895 votes against 1,509 for A. H. Craig (Dem.) and 119 for C. W. Rose (Pro.).



WAUKESHA COUNTY.

Second District. The towns of Brookfield, Delafield, Lisbon, Menomonee, Merton, Oconomowoc, Pewaukee, Summit, the villages of Hartland, Menomonee Falls, Pewaukee and the city of Oconomowoc. Population, 1910—18,374.

JUDSON HALL was born in the town of Merton in Waukesha county, October 22, 1855, was raised on a farm and received his education principally in the common schools. At the age of eighteen Mr. Hall began teaching school which profession he followed for fifteen years; he was twice elected town clerk of the town of Merton, twice county clerk of Waukesha county and three times as president and supervisor of the village of Hartland, his present residence. Since 1895 Mr. Hall has been employed as traveling salesman with Wisconsin as his territory. He was elected to the assembly on the Democratic ticket, receiving 1,618 votes to 1,590 votes given his opponent, Philip R. Jones (Rep.).



WAUPACA COUNTY.

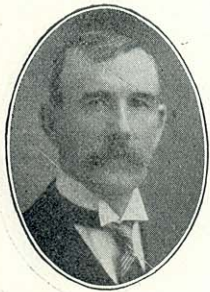
One District. Population, 1910—32,782.

ANDREW R. POTTS (Rep.) was born at Rural, Waupaca county, Wisconsin, September 19, 1853. Received his education in the district and public high school of that village. Clerked in a general store for about six years since which time he has been engaged in farming. Was a member of the school board for nineteen years, town treasurer for five years, chairman of the town board fifteen years and of the county board for three years. Was elected member of the assembly in 1910, and reelected in 1912, receiving 3,736 votes against 1,211 for Julius Prenzlow (Dem.), 163 for John W. Evans (Pro.), 135 for Frank Lear (Soc. Dem.).



WAUSHARA COUNTY.

One District. Population, 1910—18,886.



MICHAEL O'CONNOR (Rep.) was born on a farm in the town of Hancock, Waushara county, Wisconsin, July 21, 1856, upon which he still resides. He received his education in the common schools. His occupation has always been farming. Was elected chairman of the town for three consecutive years, declining to serve longer; was treasurer of the school district for twenty-four years and has been a member of the Waushara county training school board since its organization. Was elected member of the assembly in 1910, and re-elected in 1912, receiving 2,190 votes against 537 for W. R. Bussewitz (Dem.) 2 for J. R. Jeffers (Soc. Dem.) 1 for H. Ferguson (Pro.).

WINNEBAGO COUNTY.

First District. The 1st, 2d, 4th, 5th, 7th, 8th, 10th, 11th and 12th wards of the city of Oshkosh. Population, 1910—21,528.



MARTIN T. BATTIS was born Aug. 15, 1870, in Oshkosh, where he is a member of the firm of Battis Brothers, boiler manufacturers and mill supply house. He served in the common council for nine years and had three years more to serve, when the city of Oshkosh adopted the commission form of government. He served one term as president of the council. He is a thirty-second degree Mason, a Shriner, an Elk, a Knight of Pythias and an Eagle. He was elected on the straight Taft Republican ticket, for assemblyman in 1912, receiving 1,902 votes against 1,070 for J. M. Smick (Dem.) 245 for John C. Bever (Soc. Dem.) 465 for Frederick C. Horn (Ind.) 62 for Fred E. Morehouse (Pro.).

WINNEBAGO COUNTY.

Second District. The towns of Clayton, Menasha, Neenah, Oshkosh, Vinland, Winchester, Winneconne, Wolf River, the village of Winneconne, the city of Menasha and the city of Neenah. Population, 1910—20,481.



CHAS. SCHULTZ (Dem.) was born in Harrison, O., Jan. 18, 1858. He is at the head of the firm of Chas. Schultz & Son, manufacturers of cigars, at Neenah, Wis. He was elected to the assembly in 1912, receiving 1,626 votes against 1,524 for Julius H. Dennhardt (Rep.) and 114 for Joseph Voss (Soc. Dem.).

WINNEBAGO COUNTY.

Third District. The towns of Algoma, Black Wolf, Nekimi, Nepenscum, Omro, Poygan, Rushford and Utica, and the 3d, 6th, 9th and 13th wards of the city of Oshkosh. Population, 1910—20,107.

WILBUR E. HURLBUT (Rep.) was born on a farm in Franklin county, Vermont, October 19, 1867. Leaving home at the age of thirteen he worked his way through school, college, and university by his own industry and energy. He prepared for college at Brigham academy, Bakerfield, Vermont, and was graduated from Norwich university in 1893, receiving both the degree of civil engineer and bachelor of science. For the next three years he was principal and superintendent of the public schools of Northfield, Vermont. From 1892 to 1896 he was a registered law student in the law office of Judge Frank Plumley, one of the ablest and most noted jurists of New England. In June 1896 he received the degree of master of science in Norwich university and in 1898 the degree of bachelor of laws from the university of Michigan. In the same year he was admitted to the bar in both Michigan and Vermont. He came to Oshkosh in November, 1898, and was admitted to the bar in Wisconsin in January, 1899, and has been actively and exclusively engaged in the practice of the law ever since. Elected member of the assembly in 1910, and reelected in 1912, receiving 1,731 votes against 179 for Will S. Fridd (Dem.).



WOOD COUNTY.

One District. Population, 1910—30,583.

D. D. CONWAY, Progressive Democrat, was born May 3, 1868, on a farm in the town of Rudolph, Wood county, Wisconsin. He worked on the farm, in saw mills and in the woods, attending school at such times as he could be spared from the farm and other work. His education, aside from the district schools, has been attained through his own efforts and is an example of the results attainable by the American boy, who is the fortunate possessor of energy, thrift and ceaseless endeavor. He attended the Oshkosh Normal school, graduated from the Northwestern Business college at Madison, taught school three years and graduated from the law school of the University of Wisconsin in June, 1895, and has practiced law in the city of Grand Rapids since July 1, 1895, and has made a specialty of personal injury cases for the laboring men. He was elected clerk of the Circuit court of Wood county in 1890 at the age of twenty-two and held that position two terms. He has been a member of the county board, city attorney and district attorney and was the only Democrat on the county ticket elected, defeating Robert Morris (a Republican), a popular man, who had held the office of county superintendent of schools for eight years. Was elected as member of assembly 1912, receiving 2,370 votes against 2,318 for Robert Morris (Rep.) 318 for Clark Lyon (Soc. Dem.) 112 for F. E. Kellner (Pro.).



CHIEF CLERK.



C. E. SHAFFER (Rep.) is a native of Dane county and was born and raised on a farm where, with the exception of the time spent at school, he worked until the age of twenty-one. He was educated in the common schools, a business college, and a private academy. He taught in district and graded schools and for a time was instructor in mathematics and bookkeeping in the Capital City Commercial College. He was secretary of the Republican county committee of Dane county for three terms, from 1906 to 1912; he is a resident of the city of Madison and is engaged in the real estate and insurance business. He was elected chief clerk of the assembly in 1907, 1909, 1911, and 1913.

SERGEANT-AT-ARMS.



WILLIAM S. IRVINE (Rep.) was born in Maryland, March 18, 1851; came with his parents to Wisconsin in 1852, settling in Trempealeau county; received his education in the common schools; removed to Clark county in 1870, and began farming in 1873; was elected member of assembly in 1902 and reelected in 1904. Was chosen sergeant-at-arms of the assembly at the sessions of 1907, 1909, 1911, and again in 1913.

LEGISLATIVE EMPLOYEES.

EMPLOYEES OF THE SENATE, 1913

CHIEF CLERK'S FORCE.

A. C. Tretow, Milwaukee, Assistant Chief Clerk.
 G. L. McLaughlin, Grand Rapids, Bookkeeper.
 John Mehl, Cochrane, Journal Clerk.
 A. R. Oates, Darlington, Asst. Bookkeeper.
 W. N. Mackin, Ladysmith, Asst. Journal Clerk.
 H. E. G. Kemp, Oregon, Index Clerk.
 Elmer Trickey, Vesper, Revision Clerk.
 J. H. Kidder, LaCrosse, Enrolling Clerk.
 Chas. E. Mullen, Milton Jct., Engrossing Clerk.
 Leon G. Vogt, Kilbourn, Clerk, Committee on Finance.
 F. W. Spencer, Waupaca, Clerk, Committee on Judiciary.
 A. J. Nelson, Madison, Clerk, Committee on Corporations.
 R. H. Hillyer, Madison, Clerk, Committee on Education and Public Welfare.
 W. A. Campbell, Milwaukee, Clerk, Committee on State Affairs.
 I. J. Schulte, Milwaukee, Clerk, Special Committee on Conservation.
 R. T. Runge, Baraboo, Clerk, Special Committee on Insurance.
 Roy E. Gordon, Ashland, Clerk, Special Committee on Highways.
 W. J. Wandrey, Milwaukee, Stenographer.
 A. C. Miller, Milwaukee, Stenographer.
 E. G. Cooper, Madison, Mailing Clerk.

SERGEANT-AT-ARMS' FORCE.

C. H. Rawlinson, La Crosse, Asst. Sergeant-at-Arms.
 E. E. Gehlert, Menomonee Falls, Document Clerk.
 W. D. McGuire, Baraboo, Postmaster.
 A. C. Ellestad, Madison, Day Policeman.
 A. McQuarrie, Superior, Night Watchman.
 Robert M. Reiser, Sauk City, Night Laborer.
 Henry M. Graef, Madison, Night Laborer.
 Albert Daley, Superior, Gallery Police.
 H. M. Marsh, Greenwood, Messenger.
 C. Schlegelmilch, Sheboygan, Messenger.
 Orrin F. Niebuhr, Madison, Messenger.
 Robert A. Cobban, Rhineland, Messenger.
 H. E. Ketchum, Wittenberg, Messenger.
 C. A. Bontly, Madison, Messenger.
 R. J. Kilgust, South Madison, Messenger.
 Harry B. Haley, Madison, Messenger.
 Merlin V. Conley, Madison, Messenger.

ASSEMBLY EMPLOYEES, 1913

DEPARTMENT OF CHIEF CLERK.

W. W. Jones, Milwaukee, Journal Clerk.
 W. J. Goldschmidt, Milwaukee, Bookkeeper.
 C. E. Tuffley, Boscobel, Assistant Journal Clerk.
 J. C. Hawker, Forest Junction, Assistant Bookkeeper.
 L. M. Shearer, Madison, General Clerk.
 W. F. Bart, Loyal, General Clerk.
 George Brown, Poynette, Index Clerk.

George F. Sharp, Oconto, Proof Reader and Enrolling Clerk.
 Herbert Whipple, Superior, Proof Reader and Enrolling Clerk.
 C. A. Nickerson, Madison, Stenographer.
 L. T. Pond, Eau Claire, Stenographer.
 D. J. Sapogs, Milwaukee, Stenographer.
 O. C. Brandt, Madison, Stenographer.
 Paul C. Bode, Milwaukee, Stenographer.
 Witt Bowden, Madison, Stenographer.
 A. A. Heinrich, Cedarburg, Stenographer.
 N. E. Lummerding, Kaukauna, Stenographer.
 W. E. Kirk, Kenosha, Stenographer.
 Frank Robotka, Franksville, Stenographer.
 Alvah Gruhn, Racine, Stenographer.
 L. B. George, Madison, Stenographer.
 A. H. Gardiner, Oshkosh, Stenographer.
 Herbert Mertz, Washburn, Typewriter.
 Ben C. Cover, Madison, Typewriter.
 William Sneeberger, Racine, Typewriter.
 Lawrence M. Mielke, Wautoma, Typewriter.

DEPARTMENT OF SERGEANT-AT-ARMS.

Olaf Goldstrand, Rhinelander, Assistant Sergeant-at-Arms.
 John W. Bathgate, Portage, Custodian of Document Room.
 Helmer O. Femrite, Madison, Assistant Custodian of Document Room.
 Oscar T. Toebaas, Madison, Postmaster.
 Julius O. Hembre, Greenwood, Post-office Messenger.
 Ernest F. Wright, Cumberland, Floor Police.
 Elmer R. Meacham, Downing, Gallery Police.
 Martin J. Olson, Madison, Cloakroom Attendant.
 Carl A. Neprud, La Crosse, Night Watchman.
 E. W. Weaver, Wauwatosa, Gallery Attendant.
 Hilding E. Anderson, Madison, Night Laborer.
 Marshall M. Arnold, Superior, Messenger.
 Frank P. Vogt, Kilbourn, Messenger.
 Paul W. Dietz, Monroe, Messenger.
 A. E. Pickel, Antigo, Messenger.
 L. P. Hilsenhoff, Madison, Messenger.
 John J. Knudsen, Waupaca, Messenger.
 R. L. Jacobson, Kilbourn, Messenger.
 Hayden M. Pickering, Superior, Messenger.
 Wilfred J. Evans, Madison, Messenger.
 Harvey C. Hartwig, Milwaukee, Messenger.
 H. Meade Durbrow, Madison, Messenger.
 Frederick Gunderson, McFarland, Messenger.
 John W. Holm, Madison, Messenger.
 Helmer J. Hembre, Greenwood, Messenger.

PRESS REPRESENTATIVES, 1913

Dr. J. L. Alexander—Milwaukee Herald and Germania.
 Col. W. J. Anderson—Milwaukee Free Press.
 A. O. Barton—Madison State Journal.
 Louis W. Bridgman—Associated Press.
 Frank L. Clarke—Madison Democrat.
 J. W. Everett—Milwaukee Daily News and Oshkosh Daily Northwestern.
 Col. George P. Mathes—Milwaukee Sentinel.
 J. Craig Ralston—Milwaukee Journal.
 H. V. Ross—Milwaukee Leader.
 W. D. Schoenfeld—Milwaukee Sentinel and Chicago Tribune.
 Fred C. Sheasby—Wisconsin State Journal.
 G. E. Vandercook—Milwaukee Evening Wisconsin.