

- Sheboygan Co., First Dist.—The town of Sheboygan, and the city of Sheboygan. Population, 1900—25,143.
- Sheboygan Co., Second Dist.—The towns of Greenbush, Herman, Holland, Lima, Lyndon, Mitchell, Mosel, Plymouth, Rhine, Russell, Scott, Sheboygan Falls, Sherman and Wilson, the villages of Cedar Grove, Elkhart Lake and Sheboygan Falls, and the city of Plymouth. Population, 1900—25,202.
- Waukesha Co., First Dist.—The towns of Eagle, Genesee, Mukwonago, Muskego, New Berlin, Ottawa, Vernon and Waukesha, the village of Eagle, and the city of Waukesha. Population, 1903—17,364.
- Waukesha Co., Second Dist.—The towns of Brookfield, Delafield, Lisbon, Menomonee, Merton, Oconomowoc, Pewaukee and Summit, the villages of Hartland, Menomonee Falls and Pewaukee, and the city of Oconomowoc. Population, 1900—17,865.
- Waupaca Co., First Dist.—The towns of Caledonia, Dayton, Farmington, Fremont, Lind, Little Wolf, Royalton, St. Lawrence, Scandinavia, Waupaca and Weyauwega, the villages of Weyauwega, Fremont, Manawa and Scandinavia, and the city of Waupaca. Population, 1900—16,337.
- Waupaca Co., Second Dist.—The towns of Bear Creek, Dupont, Harrison, Helvetia, Iola, Lebanon, Larrabee, Matteson, Mukwa, Union and Wyoming, the villages of Embarrass, Iola and Marion, the city of Clintonville, and the first, second, fourth and fifth wards of the city of New London. Population, 1900—15,278.
- Winnebago Co., First Dist.—The town of Oshkosh, the first, second, fourth, fifth, seventh, eighth, tenth, eleventh, and twelfth wards of the city of Oshkosh. Population, 1900—20,317.
- Winnebago Co., Second Dist.—The towns of Clayton, Menasha, Neenah, Vinland, Winchester, Winneconne and Wolf River, the village of Winneconne, and the cities of Menasha and Neenah. Population, 1900—18,670.
- Winnebago Co., Third Dist.—The towns of Algoma, Black Wolf, Nekimi, Nepeuskun, Omro, Poygan, Rushford and Utica, the village of Omro, the third, sixth, ninth and thirteenth wards of the city of Oshkosh. Population, 1900—19,238.

Note.—One of the last acts of the legislature of 1905 was to pass a law changing the name of Gates county to Rusk county; hence the territory embraced in Gates county in the above apportionment will hereafter be known as Rusk county. Several new towns, villages, wards, and voting precincts have also been created since the above apportionment was made, but are not included above. They can be found elsewhere under the head of "election statistics."

## PART VIII.

---

### **BIOGRAPHICAL SKETCHES**

U. S. SENATORS.

REPRESENTATIVES IN CONGRESS.

STATE OFFICERS.

JUSTICES OF SUPREME COURT

STATE SENATORS

MEMBERS OF ASSEMBLY.

UNIVERSITY FACULTY.



## BIOGRAPHICAL SKETCHES.

---

### MEMBERS OF THE SIXTY-FIRST CONGRESS.

---

#### UNITED STATES SENATORS.

ROBERT MARION LA FOLLETTE (Rep.) was born at Primrose, Dane county, Wisconsin, June 14th, 1855; graduated from the state university of Wisconsin January, 1879; admitted to the bar February 1880; elected district attorney of Dane county November, 1880; re-elected in 1882; elected a member of the forty-ninth congress 1884; re-elected in 1886; re-elected in 1888; defeated for re-election in 1890; elected a district delegate to the national Republican convention June, 1896; elected a delegate-at-large to the Republican national convention June, 1904; elected governor of Wisconsin 1900; re-elected 1902; re-elected 1904; elected to the United States senate to succeed Joseph V. Quarles January 25, 1905. Took his seat as United States senator January 4th, 1906. His term of service will expire March 3, 1911.

ISAAC STEPHENSON (Rep.) was born in York county, near Fredericton, New Brunswick, June 18, 1829. His early life was spent in assisting his father who was a farmer and a lumberman. A short time was spent at public schools but most of his education is the result of observation and experience. At the age of fourteen years he moved to Bangor, Me., but shortly thereafter came west, locating at Milwaukee. After a few years spent in unsuccessful farming, he transferred his operations to lumbering in the northern peninsula of Michigan. His earliest work in the field was contracting for putting in logs in the winter, while during the summer, he carried freight to Chicago and Milwaukee by boat. When the first land office was opened in northern Michigan in 1848, Mr. Stephenson and his associates purchased large tracts of timber lands on the Escanaba, Ford and Sturgeon rivers and on Big Bay de Noquet. In 1857 he discontinued contracting logs and engaged in the manufacture of lumber. Since that date his business operations have grown rapidly until today he is one of the most extensive lumber manufacturers in the United States. In addition to its manufacture, he maintains large yards for the wholesale and retail distribution of lumber and is also heavily interested in the manufacture of paper. Mr. Stephenson is also a banker and owns a model dairy and stock farm. His business interests are centered at Chicago, Milwaukee and at his home city, Marinette. Politically he has been a Republican since the organization of that party. He was a member of the assembly in 1866 and re-elected in 1868. In 1882 he was elected to congress and served three terms when his



business affairs required his declining a renomination. In 1880 and in 1892 he was a delegate to the Republican national convention. In 1890 was delegate at large to the Republican National convention at Philadelphia; elected delegate at large to Chicago convention in 1904 and was chairman of the delegation. In 1903 was elected delegate at large at the primary election to the National convention at Chicago. In May, 1907, Mr. Stephenson was elected to the United States senate to serve for the unexpired term of Hon. John C. Spooner, resigned. His term of office expired March 4, 1909. He was re-elected March 4, 1909. His term of office will expire March 4, 1915.

---

## REPRESENTATIVES

---

### FIRST CONGRESSIONAL DISTRICT.

Green, Kenosha, Lafayette, Racine, Rock and Walworth counties. Population, 1900—191,491.

**HENRY ALLEN COOPER** (Rep.), of Racine, was born at Spring Prairie, Walworth county, Wisconsin, September 8, 1850; graduated from Northwestern University in 1873, and from Union College of Law, Chicago (now Law School of N. W. University) in 1875; is by profession a lawyer; resided in Chicago from 1873 to 1879; otherwise has always lived in Wisconsin; in 1889 was elected district attorney of Racine county, and re-elected without opposition in 1892 and in 1894; state senator in 1896; author of the law which first established the Australian ballot system in Wisconsin; was elected representative in congress in 1892, 1894, 1896, 1898, 1900, 1902, 1904, 1906 and again in 1908 receiving 26,723 votes against 14,018 for H. A. Moehlenpah (Dem.), 1,791 for W. A. Jacobs (Soc. Dem.) and 1,576 for J. H. Berkey (Pro.).

### SECOND CONGRESSIONAL DISTRICT.

Adams, Columbia, Dane, Green Lake, Jefferson and Marquette counties. Population, 1900—170,792.

**JOHN MANDT NELSON** (Rep.), of Madison, was born in the town of Burke, Dane county, Wis., October 10, 1870; received a collegiate education, graduating from the University of Wisconsin in June, 1892; was elected superintendent of schools in Dane county in 1892 and re-elected in 1894; resigned to accept the position of bookkeeper in the office of the Secretary of State 1894-1897; edited the State 1897-1898; correspondent in State Treasury 1898-1902; was graduated from the law department of the state university 1896; pursued post-graduate studies at the University of Wisconsin 1901-1903; was secretary of the Alumni Association of the University of Wisconsin 1904-1905; was married in 1891 to Thea Johanna Stoddall; they have six children; is by profession a lawyer; was elected to the fifty-ninth congress September 4th, 1906, to fill a vacancy; re-elected to the sixtieth congress; re-elected to the sixty-first congress, receiving 20,925 votes, to 17,748 for J. E. Jones, (Dem.), 363 for W. A. Hall, (Soc. Dem.).

## THIRD CONGRESSIONAL DISTRICT.

Crawford, Grant, Iowa, Juneau, Richland, Sauk and Vernon counties. Population, 1900—180,750.

ARTHUR W. KOPP (Rep.), of Platteville, Wisconsin, was born in the town of Smelser, Grant county, Wisconsin, February 28th, 1874; he was educated in country schools and in 1895 graduated from the State Normal School at Platteville, Wisconsin. He then taught school for five years. He graduated from the Law Department of Wisconsin University in 1920; since that time he has practiced Law at Platteville; he served as City Attorney of Platteville for two terms and four years as District Attorney of Grant County, Wisconsin; was elected to congress in November, 1908, on the Republican ticket receiving 21,160 votes against 16,010 for J. W. Murphy (Dem.), and 918 for John Hardcastle (Pro.).

## FOURTH CONGRESSIONAL DISTRICT.

The 2d, 3d, 4th, 5th, 7th, 8th, 11th, 12th, 14th, 15th, 16th, 17th and 23d wards of the city of Milwaukee and the towns of Franklin, Greenfield, Lake, Oak Creek and Wauwatosa, the village of Cudahy, the cities of South Milwaukee, West Allis and Wauwatosa in Milwaukee county. Population in 1900—183,540.

WILLIAM JOSEPH CARY (Rep.) was born March 22, 1835, at Milwaukee, Wis. At the age of thirteen he was left an orphan, with four younger sisters and a brother. The five younger children were placed in an orphan asylum, and young Cary went to work as a cash-boy in Chapman's store. He left to become a telegraph messenger, and at the age of eighteen he became a full fledged operator, having studied the key after hours, and when not running messages. At nineteen he had saved enough money to take the four younger children from the asylum, and give them a home of their own. In 1890 he was elected alderman from his ward, on account of the demand for a reform representative, and in 1902 was re-elected. In 1904 he was elected sheriff of Milwaukee county, and in 1906 was elected congressman to succeed Theobald Otjen, who had held the office in the fourth district for twelve years; was re-elected in 1908, receiving 15,509 votes against 9,783 votes for Edmund J. Melms (Soc. Dem.), and 14,370 votes for Wm. J. Kershaw (Dem.).

## FIFTH CONGRESSIONAL DISTRICT.

The 1st, 6th, 9th, 10th, 13th, 18th, 19th, 20th, 21st and 22d wards of the city of Milwaukee, the towns of Granville and Milwaukee, the villages of East Milwaukee, North Milwaukee and Whitefish Bay, in Milwaukee county, and the county of Waukesha. Population, 1900—181,706.

WILLIAM H. STAFFORD (Rep.), the representative from the fifth congressional district, is a native of Milwaukee. He attended the Milwaukee public schools, and later attended Harvard college and Harvard law school, from which he was graduated. At the time of his election to congress he was in the active practice of law in Milwaukee. He was elected to the fifty-eighth congress, and re-elected to the fifty-ninth, sixtieth and sixty-first congress, receiving 16,394 votes against 11,279 for Albert J. Welch (Soc. Dem.), 12,871 for G. Holmes Daubner (Dem.).

## SIXTH CONGRESSIONAL DISTRICT.

Dodge, Fond du Lac, Ozaukee, Sheboygan and Washington counties. Population, 1900—194,517.

CHAS. H. WEISSE (Dem.) was born in Sheboygan Falls, Oct. 24, 1866; received his education in the parochial and high schools of his native city; entered his father's tannery in 1889 and became a partner in the firm of Chas. S. Weisse & Co., tanners and furriers, in 1888; was elected president of the village of Sheboygan Falls in 1893 and re-elected for three successive terms; served three years as treasurer of school board of Sheboygan Falls; chosen as a delegate-at-large to the Democratic national convention at St. Louis, in 1904; member of the campaign committee of the national Democratic congressional committee, 1906; was elected to the 58th congress in 1902, to the 59th congress in 1904; 60th congress in 1906, and re-elected to the 61st congress in 1908 by a plurality of 7,133, receiving 23,317 votes against 16,184 for George Spratt (Rep.), and 866 for Edward C. Damrow (Soc. Dem.).

## SEVENTH CONGRESSIONAL DISTRICT.

Buffalo, Clark, Eau Claire, Jackson, La Crosse, Monroe, Pepin and Trempealeau counties. Population in 1900—193,890.

JOHN JACOB ESCH (Rep.), of La Crosse, was born near Norwalk, Monroe county, Wis., March 20, 1831. He was educated in the public schools of Milwaukee and Sparta, Wis.; entered the state university in 1878, and graduated from the modern classical course in 1882. The next four years he spent in reading law and teaching at Sparta; was offered the principalship of the high school, but declined and entered the university law school, graduating in the class of 1897. From this time to the present he has been engaged in the practice of law at La Crosse as a member of the firm of Winter & Esch. In 1883 he organized the Sparta Rifles, afterwards known as Co. I, 3d Regiment W. N. G., and was at one time its captain. He also helped organize the Gateway City Guards of La Crosse, now Co. M, 3d Regiment W. N. G. Never held but one elective office, that of city treasurer of Sparta, and this for only one year. Has always been a Republican. Was elected to the 56th, 57th, 58th, 59th, 60th and 61st congresses, receiving 25,202 votes against 11,466 for B. F. Keeler (Dem.), and 372 for W. Gray (Soc. Dem.)

## EIGHTH CONGRESSIONAL DISTRICT.

Calumet, Manitowoc, Portage, Waupaca, Waushara and Winnebago counties. Population, 1900—194,634.

JAMES H. DAVIDSON (Rep.), of Oshkosh, was born in Colchester, Delaware county, New York, June 18th, 1858; was educated in the public schools and at Walton (New York) Academy; taught school, studied law, graduated from Albany Law School as president of the class in 1884, and was in the same year admitted to the bar of New York; subsequently removed to Wisconsin and commenced the practice of law at Princeton in 1887; in 1892 removed to Oshkosh and continued the practice of law; in 1895 was appointed city attorney; was chairman of the Republican congressional committee from 1899 to 1896; was elected to the 55th, 56th, 57th, 58th, 59th, 60th and 61st congresses, receiving 26,097 votes against 14,984 for Lyman J. Nash (Dem.), 1,389 for Martin Georrenson (Soc. Dem.), 851 for Byron E. Van Kueren (Pro.).

## NINTH CONGRESSIONAL DISTRICT.

Brown, Door, Kewaunee, Marinette, Oconto and Outagamie counties. Population in 1900—179,097.

GUSTAV KUSTERMANN (Rep.), of Green Bay, was born in Detmold, Germany, May 24, 1850; received his education at the academy of his native city (Gymnasium Leopoldinum) from which he graduated in 1864. After having been employed for several years in a wholesale dry goods house in Hamburg, Germany, he emigrated to the United States in 1868, settling in Green Bay, Wis., where he and his family still reside; and where for over thirty years he was engaged in the mercantile business. He has held various public positions, and from 1892 to 1896 served as postmaster of Green Bay. In 1901 he received the appointment as member of the state board of control, of which he became president in 1904. He was elected to the 60th congress in 1906, receiving 14,180 votes against 8,689 for Philip A. Badour (Dem.), and 547 for Joseph E. Harris (Soc. Dem.). He was re-elected to the 61st congress in 1908, receiving 13,562 votes against 15,249 for Luther Lindauer (Dem.), and 783 for J. E. Harris (Soc. Dem.).

## TENTH CONGRESSIONAL DISTRICT.

Ashland, Florence, Forest, Iron, Langlade, Lincoln, Marathon, Oneida, Price, Shawano, Taylor, Vilas and Wood counties. Population in 1900—190,975.

ELMER A. MORSE (Rep.), of Antigo, Wisconsin, was born in Racine county in 1870; was educated in the common schools of Racine county; graduated from Ripon College in 1893, then served four years as superintendent of schools of Racine county; entered the law school at Wisconsin university and was admitted to the bar in 1900. He commenced practicing law in the city of Antigo in the year 1900 and has been actively engaged in the practice since that time. He served two terms as city attorney of the city of Antigo resigning during third term. He has always resided in Wisconsin. He was elected member of the 60th congress in 1906 and re-elected to 61st congress in 1908, receiving 26,031 votes, against 16,777 for Wells M. Ruggles (Dem.).

## ELEVENTH CONGRESSIONAL DISTRICT.

Barron, Bayfield, Burnett, Chippewa, Douglas, Dunn, Pierce, Polk, Rusk, St. Croix, Sawyer and Washburn counties. Population in 1900—217,650.

IRVINE L. LENROOT (Rep.), is a native of Wisconsin, born at Superior in 1869. His parents emigrated to this country from Sweden in 1855 and settled in Wisconsin in 1856. Mr. Lenroot received a common school education, became a stenographer and studied law. He was admitted to the bar in 1897. He has always been a Republican, actively interested in politics. In 1900 he was elected a member of the Wisconsin Assembly. Re-elected in 1903 he was elected Speaker of the Assembly, and re-elected in 1905. In 1906 Mr. Lenroot was a candidate for the Republican nomination for Governor of Wisconsin, but was defeated. At the session of the legislature of 1907 he was a candidate to succeed Senator Spooner in the United States Senate. A deadlock lasting eight weeks was created, Mr. Lenroot being one of the leading candidates. He finally withdrew and Hon. Isaac Stephenson was elected. In 1908 he became a candidate for member of congress, and defeated Hon. J. J. Jenkins for the Republican nomination by a majority of 6,500 votes, and at the November election was elected, receiving 39,104 votes to 10,467 votes for his democratic opponent J. S. Konkell and 1,117 for E. B. Harris (Soc. Dem.).

## STATE OFFICERS.

## GOVERNOR.

JAMES O. DAVIDSON (Rep.), of Soldiers Grove, was born in Norway, Feb. 10, 1854, and was educated in the common schools of his native country. He came to Wisconsin in 1872, residing, first at Madison, later at Boscobel, and since 1877 at Soldiers Grove. He has been engaged for thirty-two years in the mercantile business. He was president of the village of Soldiers Grove in 1888 and 1889, treasurer in 1892 and 1893, and again in 1897 and 1898; was elected to the assembly in 1892 and re-elected in 1894 and again in 1896. He was chairman of the Republican committee of the third congressional district for several years; was elected state treasurer in 1898 and re-elected in 1900; was elected Lieutenant Governor in 1902, and re-elected in 1904, upon the resignation of Gov. R. M. La Follette he became Governor, Jan. 1, 1906. The following November he was elected governor and was re-elected in 1908 receiving 242,963 votes against 165,977 for John A. Aylward (Dem.), 28,583 for H. D. Brown (Soc. Dem.), 11,754 for W. D. Cox (Pro.), and 394 for Herman Bottema (Soc. Labor).

## LIEUTENANT GOVERNOR.

JOHN STRANGE (Rep.) was born at Oakfield, Fond du Lac county, on June 27, 1852. His parents, Thomas Strange and Martha Dixon Strange, with John and an older child moved to Menasha, during the fall of the same year. The father worked at manual labor during most of his life time, at Menasha, dying at the age of seventy-six in 1897. The mother is still alive at the age of eighty-three. John worked in the woodenware factory during a part of each year of his boyhood, attending the district school a portion of the time. In 1870 he took some special work at Beloit College and later taught school in Rock county, Wisconsin, and Clinton county, Iowa. The year 1871 was spent clerking in a grocery store at Minneapolis; 1872 was spent in scaling logs on the Menominee river and doing camp work. In 1873-4-5-6 he made powder kegs for the Marquette Michigan Powder Mills, part of each year and bought wheat and did the office work for a 500 barrel flour mill at Menasha or worked at woodenware making, parts of each of these years. In 1875-6 he built the first store at Dale, Outagamie county, selling out to W. H. Spangler in the spring of 1876. On July 11, 1876, he married Miss Mary M. McGregor of Neenah and the same fall moved to Iowa where for two years he conducted a retail lumber yard. He returned to Neenah in 1899 and became interested in the manufacture and sale of lumber at points along the W. C. Ry. and elsewhere. Later he built a saw mill and woodenware factory at Menasha which three years later was changed into a wrapping paper mill. At present he is managing director of the John Strange Paper Co., at Menasha, a director in the R. McMillen Sash & Door Co., the Standard Mirror of Oshkosh and the Fox River Paper Co., of Appleton. Mr. and Mrs. Strange have two daughters and two sons. The former, Mrs. Robert McMillen and Mrs. J. W. McLaughlin of Oshkosh. The sons, Hugh Strange and Paul Strange, twenty-three and twenty-one years of age, both engaged in business with the father. The family home is at 305 Algoma St., Oshkosh. He was elected Lieutenant Governor in 1908 receiving 243,443 votes against 159,795 for Burt Williams (Dem.), and 28,461 votes for Chester M. Wright (Soc. Dem.), and 11,146 votes for Charles H. Forward (Pro.), and scattering, 374.

## SECRETARY OF STATE.

JAMES A. FREAR (Rep.) was born at Hudson, Wis., Oct. 24, 1861. Attended Lawrence University at Appleton, Wisconsin, in 1878, when with his parents he moved to Washington, D. C. Served five years in the U. S. Signal Corps at Fort Myer, Va., Indianapolis and Washington, and graduated from the National Law University, Washington, in 1884. He was admitted to the bar of the supreme court, District of Columbia, the same year and then returned to Hudson, entering the practice of law in that city. Has held different city offices, including city attorney for several years. He was appointed district attorney for St. Croix county by Governor Upham in April, 1899, and was elected for three consecutive terms thereafter. He was appointed on the staff of the governor in 1901 and elected to the assembly in 1902, and to the state senate in 1904. He was appointed chairman of the senate investigation committee on state insurance March 9th, 1905, and at the same session chosen a member of the Wisconsin Insurance Investigation committee. Served as chairman of both committees during the year 1906. He was elected secretary of state in 1906 and was re-elected in 1908, receiving 243,443 votes against 157,460 for F. B. Schutz (Dem.), 28,441 for J. G. Irwin (Soc. Dem.), 10,869 for L. H. Park (Pro.), and 880 for John Vierthaler (Independent)

## STATE TREASURER.

ANDREW H. DAHL (Rep.), of Westby, was born in Lewiston, Columbia county, Wisconsin, April 13, 1859, and was educated in the high school at Viroqua and the Northwestern Business College at Madison. Vernon county has been his home since 1864, where he is engaged in dealing in general merchandise. He was supervisor of the village of Westby during 1896 and 1897, and was elected trustee of Vernon county asylum in 1897 and re-elected in 1901 and 1904. He was president of the village from 1899 to 1902, and was elected to the assembly in 1898, 1900, 1902 and 1904; was chairman of committee on penal and charitable institutions in the legislature of 1903, and served as chairman of committee on "Assessment and Collection of Taxes" during the session of 1905. He was elected state treasurer in 1906 and was re-elected in 1908, receiving 245,760 votes against 157,101 for G. T. Heslin (Dem.), 28,471 for H. M. Parks (Soc. Dem.), and 10,809 for Waldemar Ager (Pro.).

## ATTORNEY GENERAL.

FRANK L. GILBERT (Rep.), of Madison, was born March 3, 1864, in Arena, Iowa county, Wisconsin. When but a few months old he was made an orphan by the death of his father in the civil war. His early youth was spent in Iowa county, Wisconsin, working on farms in the summer and attending school in the winter. He taught his first school at the age of sixteen and graduated from the Mazomanie high school in 1883. He later entered the academic department of the University, but before graduating was obliged to abandon his studies in order to earn means to pursue them. In 1896 he entered the law school of the state university, passed the state bar examination in 1897, and though engaged actively in practice continued his studies in the law school, graduating in 1899. Served as district attorney of Dane county from January 1st, 1902, to January 1st, 1907. He was elected attorney general in 1906 and was re-elected in 1908, receiving 244,705 votes against 157,492 for E. A. Evans (Dem.), 28,373 for H. B. Walmsley (Soc. Dem.), and 10,817 for J. B. Smith (Pro.).

## INSURANCE COMMISSIONER.

GEORGE E. BEEDLE was born in Shawano, Wis., July 17th, 1864; was educated in the common schools; was in the employ of the Chicago & Northwestern Railway Company, from 1883 to 1899; was elected a member of the county board of supervisors in 1901, resigning that position to become one of the first trustees of the Waupaca county asylum, which position he held until his term expired, December 31st, 1906, when he retired to take up the duties of Commissioner of Insurance. Was elected member of assembly in 1902 and re-elected in 1904. He was appointed one of the Legislative Insurance Investigating committee at the special session of the legislature in 1905. He was elected Commissioner of Insurance in 1906 and was re-elected in 1908, receiving 244,749 votes against 156,222 for Wm. Guillaume (Dem.), 28,356 for H. W. Bistorius (Soc. Dem.), 10,882 for D. W. Emerson (Pro.), and 416 for Theodore Horn (Soc. Labor).

## STATE SUPERINTENDENT.

C. P. CARY was born in southern Ohio, January 28, 1856. His mother was of German descent and his father was directly related to the English political economist, Henry Cary. From the time he arrived at school age till he was seventeen he worked on his father's farm in summer and attended the district school in winter. At the age of seventeen he began to teach district school in winter and continued working on the farm in summer. In 1877 he entered the Ohio Central Normal School and was graduated in 1879. After this he taught for seven years as principal of graded schools in Ohio and Kansas, and served during most of this period as county examiner of teachers and instructor in teachers' institutes. In 1886 he was elected county superintendent of schools in Brown county, Kansas, but declined renomination for a second term, and accepted the position of superintendent and high school principal at Fairbury, Nebraska. This position he resigned in the summer of 1893 to accept the position of instructor in pedagogy and principal of the training department of the Milwaukee State Normal School. This position he resigned in the summer of 1901 to accept the position of superintendent of the Wisconsin School for the Deaf at Delavan, Wis. This position he resigned in the fall of 1902 to accept the nomination for the office of state superintendent of public instruction. He holds a life certificate to teach in the schools of Nebraska, also in Wisconsin, and is a graduate of the University of Chicago, class of '98. He is an active member of the National Educational Association, and a member of the National Society for the Scientific Study of Education, and has devoted his life to the study of all the sciences and arts that bear upon the problems of education; was elected superintendent of public instruction in 1902, 1905 and was re-elected in 1909, receiving 86,210 votes against 75,278 for L. W. Wood, 49,735 for J. T. Hooper, and 30,992 for W. C. Hewitt.

## JUSTICES OF THE SUPREME COURT.

JOHN B. WINSLOW, LL. D., University of Wisconsin, was born Oct. 4, 1851, at Nunda, Livingston county, N. Y. He graduated at Racine college, Wis., in 1871, and entered upon the study of law in the law office of E. O. Hand, and later in the law office of Fuller & Dyer. He finished his course of reading in the law department of the University of Wisconsin, from which he graduated in 1875, and entered upon the practice at Racine. He was for several years city attorney of Racine. In April, 1883, he was elected circuit judge of the First judicial circuit, and entered upon judicial duties in January, 1884, serving in that capacity (being re-elected) until May 4, 1891, when he was appointed associate justice of the supreme court, in place of Hon. David Taylor, deceased. In April, 1892, he was elected to fill the residue of Judge Taylor's term; in April, 1895, he was re-elected for a full term; and again re-elected for a full term in April, 1905. He became Chief Justice by reason of seniority of service upon the death of Chief Justice Cassoday, Dec. 30, 1907.

ROUJET D. MARSHALL, LL. D., Lawrence University, 1904, and LL. D., University of Wisconsin, 1905, was born December 27th, 1847, in Nashua, N. H. His paternal ancestors, Marshalls and Emersons, came to this country from England about 1635 and settled at Boston, Mass. His maternal ancestors, Dodges and Pitkins came likewise from England about 1659, the Dodges settling near Boston and the Pitkins at Hartford, Conn. He came to Wisconsin with his parents who settled at Delton, Sauk county, Wisconsin, in 1854. He was educated in the common schools of his town, the Delton Academy, Baraboo Collegiate Institute and Lawrence University. He commenced the study of law at 17, pursuing the same, partly with his school work, till he was 24, when he was admitted to the bar, commenced practicing law in Chippewa Falls, Chippewa county, Wisconsin, and so continued till he became Circuit Judge. He was appointed County Judge of Chippewa county by Governor Ludington in 1876, holding the office under the appointment and a subsequent election, six years; member of the Board of Regents of the University of Wisconsin, 1884-1886; elected Circuit Judge of the Eleventh circuit in 1888, and re-elected in 1894; appointed to the Supreme Bench by Governor Upham, 1895, to succeed Chief Justice Harlow S. Orton, deceased, elected to that office in 1896 for the unexpired term of the deceased Chief Justice, re-elected for a term of ten years in 1897 and re-elected for a like term in 1907.

JOSHUA ERIC DODGE was born Oct. 25, 1854, in West Cambridge (now Arlington), Middlesex county, Mass.; received his education in the public schools of that place, Westford Academy, at Westford, in the same county and graduated with the class of 1875 from Iowa College at Grinnell, Ia.; graduated from the Law School of the Boston University in 1877. He was admitted to the bar by the supreme court of Massachusetts in that year; moved to Racine, Wis., in March, 1878, and there continued in the general practice of the law until September, 1893, when he was appointed assistant attorney general of the United States, which position he occupied until July, 1897, when he returned to Wisconsin and engaged in practice at Milwaukee until his appointment as associate justice of the supreme court upon the resignation of Mr. Justice Pinney Nov. 22, 1898; was a member of assembly in 1891 and 1892, and was appointed a member of the board of commissioners for the promotion of Uniformity of Legislation in the United States, April 18, 1893. Mr. Dodge was elected to full term on the supreme bench in April, 1901.



ROBERT G. SIEBECKER was born October 17, 1854, in Sauk county, Wisconsin. He was educated in the district school until he was seventeen and he then attended a private academy at Madison for two years. He entered the University of Wisconsin in September, 1874, and graduated in June, 1878. In the fall of this year he entered the law school of the university and he graduated therefrom in June, 1880. He was admitted to the bar on examination in September, 1879. In October of that year he began the practice of law at Madison and this he continued until his appointment as judge of the Ninth judicial circuit on January 7th, 1890. In March, 1886, he was elected city attorney of Madison and was annually re-elected until he went on the circuit bench. In April, 1890, he was elected judge of the circuit court for the unexpired term and for the ensuing full term. He was twice thereafter re-elected to this position without opposition. On April 7th, 1903, he was elected a justice of the supreme court, for the term beginning in January, 1904, and on April 9th, was appointed for the unexpired term in this office, caused by the death of Justice C. V. Bardeen.

JAMES C. KERWIN was born in the town of Menasha, Winnebago county, Wisconsin, May 4, 1850. He attended the common schools of the neighborhood and later the Menasha high school, from which he was graduated. He prepared himself for the practice of law by a course of study in the law school of the University of Wisconsin, and was graduated in 1875. Returning to his native county, he opened an office in Neenah and has since been actively engaged in the profession. He was city attorney of Neenah for twelve years, and was appointed a member of the board of regents of the University of Wisconsin in 1901. In April, 1904, he was elected associate justice of the supreme court, and entered upon judicial duties in January, 1905.

W. H. TIMLIN was born at Mequon, Ozaukee county, Wisconsin, May 28th, 1852, admitted to the bar in 1877, and practiced law at Kewaunee, Green Bay and Milwaukee. Married and has four children. Elected Justice of Supreme Court in April, 1906, for the term commencing January 7th, 1907.

JOHN BARNES was born in Manitowoc county July 26, 1859. Was educated in the common schools, at the Manitowoc high school and at the Oshkosh normal school. Taught school for several years; studied law, and graduated from the law school of the University of Wisconsin in 1883. Began the practice of law at Rhinelander in 1885, served as first municipal judge of Oneida county, and as president of the school board of the city of Rhinelander for a number of years. Was appointed a member of the Wisconsin Railroad Commission in 1905, and elected chairman of that body; resigned August 1, 1907. At the April election in 1908, was elected to fill the vacancy on the supreme court bench caused by the death of Chief Justice Cassoday. Was re-elected for a full term in April, 1909.

## THE WISCONSIN LEGISLATURE.

## SENATE.

The senate is composed of thirty-three members, who hold office for four years and receive \$500 each for their services at each regular session. Members of the senate, session of 1907, representing odd-numbered districts, were elected in 1906. Their terms will end Jan. 1, 1911. Those representing even-numbered districts were elected in 1908. Their terms will end Jan. 1, 1913. The lieutenant-governor is president of the senate, but can vote only in case of a tie. A temporary president, to act in the absence of the president, is chosen by the members of the senate. The senate of 1909 contains 28 republicans, 4 democrats, and one social democrat. Lieutenant-Governor John Strange, president; Jas. H. Stout, president pro tem; F. E. Andrews, chief clerk; R. C. Falconer, sergeant-at-arms.

## FIRST SENATORIAL DISTRICT.

Door, Kewaunee and Marinette counties. Population, 1900—65,617.

HARLAN PAGE BIRD (Rep.), of Wausaukee, is a native of Pennsylvania. He is a lumberman and banker. He was elected state senator in 1902; re-elected in 1906, receiving 4,995 votes against 3,125 for Leo J. Evans (Dem.), and 216 for James Larson (Soc. Dem.).



Harlan Page Bird.

## SECOND SENATORIAL DISTRICT.

Brown and Oconto counties. Population, 1900—67,233.

TIMOTHY BURKE (Rep.), of Green Bay, was born in the town of Morrison, Brown county, Wisconsin, February 2, 1866. He received a common school education and besides mastered all of the usual collegiate subjects through his individual efforts. He was a teacher in the district schools, which occupation he followed, together with that of farming, for several years, and during his leisure time studied law. He entered the law department of the University of Wisconsin in the fall of 1897 and passed the state bar examination in December of that year, but attended the law school until the summer of 1898; was member of assembly from the second district of Brown county, Wisconsin, in 1895 and 1896, and was sheriff of Brown county in 1901 and 1902. After leaving

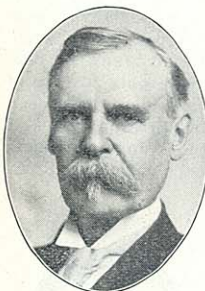


Timothy Burke

the sheriff's office he engaged in the practice of law and is a member of the firm of Kittell & Burke; was elected chairman of the Republican committee for Brown county in 1904 and was re-elected in 1906, and again in 1908, which position he now holds. He was member of assembly for the first district of Brown county in 1907 and 1908; was elected state senator in 1908, receiving 7,819 votes against 4,745 for George Dagan (Dem.), and 561 for Chas. Robinson (Soc. Dem.).

### THIRD SENATORIAL DISTRICT.

Kenosha and Racine counties. Population, 1900—67,351.



Isaac Thorn Bishop.

ISAAC THORN BISHOP (Rep.), of Somers, Kenosha county, Wis., is a native of that place. Born June 6th, 1844, of New England parents. Attended common schools only. He was a farmer until the year 1861, when he accepted a clerkship with Doan & Hawley, dry goods merchants, in the city of Kenosha. He volunteered in Sept., 1862, and served three years in the civil war, participating in the battles of Arkansas Post, Raymond, Champion Hills, Black River Bridge and the siege of Vicksburg. After the war he engaged in farming and now owns and operates a farm that his father bought from the government before the subject of this sketch was born. He served his town as chairman five years, justice of the peace eleven years, and is serving his 28th year as secretary of the Somers Mutual Fire Insurance company. He was elected state senator in 1906, receiving 4,973 votes against 4,392 for Michael Higgins (Dem.), 1,116 for W. W. Britton (Soc. Dem.), and two for O. W. Johnson (Pro.).

### FOURTH SENATORIAL DISTRICT.

The 1st, 13th, 18th and 21st wards of the city of Milwaukee, the towns of Granville and Milwaukee, and the villages of North Milwaukee, East Milwaukee and Whitefish Bay. Population, 1900—61,035.



Henry H. Bodensstab. Charles Votova (Soc. Dem.).

HENRY H. BODENSTAB (Rep.) was born at Howards Grove, Sheboygan county, Wisconsin, on the 29th day of June, 1874. When about twelve years of age, his parents moved to the city of Milwaukee, where he has resided ever since. He was admitted to the bar in 1896. He then entered the law department at the University of Michigan and received the degree of LL. B. in 1898. He began the practice of law in the city of Milwaukee in the summer of 1898, and in 1903 went into partnership with Albert Froede under the firm name of Froede & Bodensstab, which partnership still exists. In the spring of 1908 he was elected as a Republican delegate to the Milwaukee Charter Convention. He was elected to the state senate in 1908, receiving 5,591 votes against 4,780 votes for M. H. Moore (Dem.), and 3,125 votes for



## FIFTH SENATORIAL DISTRICT.

The 2d, 3d, 4th, 6th, 7th, 15th and 16th wards of the city of Milwaukee. Population, 1900—69,196.

EDWARD T. FAIRCHILD (Rep.), of Milwaukee, Milwaukee county, was born at Towanda, Pa., June 17, 1872; his parents moved to Dansville, Livingston county, New York, when he was five years of age. He attended the public school of that village, and studied law in the office of Chas. H. Rowe; was admitted to practice in 1894, and soon came to Milwaukee, entering into the law firm of Lenicheck, Fairchild & Boesel; was assistant district attorney of Milwaukee county, 1900-1904. He was elected to the state senate in 1906, receiving 6,541 votes against 3,454 votes for Henry Cummings (Dem.), and 2,442 votes for Chas. Zainer (Soc. Dem.).



Edward T. Fairchild.

## SIXTH SENATORIAL DISTRICT.

The 9th, 10th, 19th, 20th and 22d wards of the city of Milwaukee. Population, 1900—71,771.

WINFIELD R. GAYLORD (Soc. Dem.) was born June 14, 1870, at Verona, Mississippi. He received a common school education in Cleveland, Ohio; studied at Ohio Wesleyan University, Delaware, O.; Hamline University, St. Paul, Minn.; Northwestern University, Evanston, Ill.; and Chicago Theological Seminary, Chicago, Ill., finishing at latter school in 1903. Served as pastor in Methodist and Congregational churches in Minnesota, Illinois and Wisconsin from 1889 to 1902. Since 1902 has lectured on popular and economic subjects in twenty states. He is national lecturer for the Socialist party; member of the state executive board of the Social Democratic party, and was a delegate to the Milwaukee charter convention of 1903. Elected in 1903 to state senate from the Sixth district with 6,236 votes, against August Langhoff (Rep.), 5,820 votes, there being no Democratic candidate.



Winfield R. Gaylord.

## SEVENTH SENATORIAL DISTRICT.

The 14th and 17th wards of the city of Milwaukee, the towns of Franklin, Greenfield, Lake, Oak Creek and Wauwatosa, the cities of South Milwaukee, Wauwatosa, West Allis and Cudahy, and the village of West Milwaukee. Population, 1900—63,533.

GEORGE E. PAGE (Rep.), born in the city of Milwaukee on the 19th of March, 1873, and has continuously resided there; was educated in the public schools of Milwaukee; was elected to the office of justice of the peace for the 17th ward of said city in the year 1900, resigning the same year to enter the law department of the Columbian University, Washington, D. C., from which he was graduated in 1903; was admitted to the bar in the same year; was elected to the legislature



George E. Page.



John C. Kleczka.

as member of the assembly in 1904 and as state senator in 1906, receiving 4,250 votes against 2,603 for Anthony Szczerbinski (Dem.), and 2,737 for W. L. Hamann (Soc. Dem.).

## EIGHTH SENATORIAL DISTRICT.

The 5th, 8th, 11th, 12th and 23d wards of the city of Milwaukee. Population, 1900—64,482.

JOHN C. KLECZKA (Rep.), was born in Milwaukee on the 6th day of May, 1885. After graduating from the parochial school he attended Marquette University, from which institution he graduated in 1903 with the degree of A. B. He then pursued a post-graduate and the law course at the Catholic University of America at Washington, D. C. On January 1st, 1906, he was appointed deputy clerk of the circuit courts of Milwaukee county, in which capacity he served until the fall of 1908, when he was elected state senator against ex-city treasurer and quondam Democratic candidate for mayor Wm. H. Graebner and Ferd Rehfeld the Social Democratic candidate, despite the fact that the district was carried by Bryan and the entire Democratic county ticket, receiving 4,396 votes against 4,312 for Graebner and 4,073 for Rehfeld.



Theodore W. Brazeau.

## NINTH SENATORIAL DISTRICT.

Adams, Marquette, Waushara and Wood counties.  
Population, 1900—61,487.

THEODORE W. BRAZEAU (Rep.) was born at the city of Grand Rapids, Wood county, Wisconsin, March 12th, 1873. He attended the elementary schools of that city and graduated from the high school. After teaching school a year, he entered the University of Wisconsin with the class of '96. Before graduation he taught school in the Grand Rapids high school one year and graduated from the university in the class of 1897. He then taught school another year and finished the law school with the class of 1900. Since completing his law course he has practiced law in the city of Grand Rapids in partnership with B. R. Goggins, under the firm name of Goggins & Brazeau up to the year 1907 and after that with the firm of Goggins, Brazeau & Briere. He served as district attorney of Wood county from 1903 to 1907. He was elected state senator in 1906, receiving 6,657 votes against 2,712 for F. B. Rawson (Dem.). He was alternate delegate to the national convention of 1908.



Walter C. Owen.

## TENTH SENATORIAL DISTRICT.

Pierce and St. Croix counties. Population, 1900—50,773.

WALTER C. OWEN (Rep.) was born on a farm in the town of Trenton, Pierce county, Wisconsin, Sept. 26, 1868. He was educated in the common and high schools of Pierce county, and graduated from the law



department of the University of Wisconsin with the class of 1891. He engaged in the practice of law at Superior, Wisconsin, becoming a member of the firm of Crownhart, Owen & Foley, and continuing with said firm until January 1, 1898, when he removed to Maiden Rock, Wisconsin, where he has since continued in the active practice of his profession. Though he has always taken an active interest in politics, he never held public office until his election to the state senate from the tenth district, to fill the vacancy caused by the resignation of Senator James A. Freear. He was elected without opposition, receiving 4,291 votes, and in 1908 was again elected without opposition to succeed himself, receiving 6,391 votes.

#### ELEVENTH SENATORIAL DISTRICT.

Burnett, Douglas and Polk counties. Population, 1900—61,614.

GEORGE B. HUDNALL (Rep.) was born at Rural, Waupaca county, Wis., Jan. 9, 1864. He was educated in the district and high schools and at the Wisconsin University law school, class of 1891. Lived on a farm until twenty-four years old when he engaged in teaching and took up the study of law. Was assistant city attorney of Superior from 1900 to May, 1902. He was elected state senator in 1902 and re-elected in 1906 and 1908, each time without opposition, receiving at the last election 5,093 votes.



George B. Hudnall.

#### TWELFTH SENATORIAL DISTRICT.

Ashland, Bayfield, Price, Sawyer, Taylor and Washburn counties. Population, 1900—64,050.

ALBERT W. SANBORN (Rep.) was born in Swanton, Vermont, January 17, 1853; removed to Guernsey county, Ohio, when a small boy, with his parents, and lived there on a farm until 1876. Was educated at Muskingum college at New Concord, Ohio. Studied law with Barnes & Anderson at Cambridge, Ohio, and was there admitted to the bar, April 10, 1876; came to Oshkosh, Wisconsin, in April, 1876, and studied law in Finch & Barber's office for about two months. Located at Stevens Point, Wisconsin, in June, 1876, where he practiced law, first as a member of the firm of Jones & Sanborn, and then as a member of the firm of Cate, Jones & Sanborn, and afterwards as a member of the firm of Cate, Sanborn, Lamoreux & Park. Was district attorney of Portage county for one term and a member of the assembly from Portage county in 1885. Was a delegate from the Ninth congressional district to the national convention in 1888; moved to Ashland, Wisconsin, in 1893, where he has continued in the practice of his profession; is now a member of the firm of Sanborn, Lamoreux & Pray. He was elected to the senate in 1904, receiving 11,129 votes against 3,595 for G. Schwindt (Dem.), and was re-elected in 1908, receiving 9,652 votes against 3,337 votes for Henry Lafreniere (Dem.).



Albert W. Sanborn.

## THIRTEENTH SENATORIAL DISTRICT.

Dodge county. Population, 1900—46,631.



Paul O. Husting.

PAUL O. HUSTING (Dem.) was born at Fond du Lac, Wisconsin, on April 25th, 1866, a son of John P. Husting and Mary M. Husting, nee Juneau, the latter being a daughter of Solomon Juneau, the founder of Milwaukee. He removed with his parents to Mayville, Wisconsin, in the year 1876. Received a common school education. Left school in his seventeenth year and became successively clerk in general store, railway postal clerk and mailing clerk, and later promoted to assistant bookkeeper in the office of the secretary of state. Entered the law school of the University of Wisconsin and passed the state bar examination and was admitted to the bar in 1895. Began the practice of law alone at Mayville immediately thereafter and in 1897 associated himself with C. W. Lamoreux under the firm name of Lamoreux & Husting which still exists. Was elected district attorney of Dodge county in 1902 and was re-elected in 1904. Was elected to the senate in 1906, receiving 4,646 votes against 2,746 for Leon Reible (Rep.), and 124 for G. A. Paddock (Pro.).

## FOURTEENTH SENATORIAL DISTRICT.

Outagamie and Shawano counties. Population, 1900—73,722.



J. Elmer Lehr.

J. ELMER LEHR (Rep.), of Appleton, Outagamie county, Wisconsin, is a native of Michigan, born in the town of Marengo, Calhoun county, Michigan, December 26, 1868. His early education was obtained in the public and private schools of that state. In June, 1898, he graduated from the Illinois College of Law, at Chicago, Illinois, obtaining the degrees of LL. B. and LL. M. In December, 1895, he located at the city of Clintonville, Waupaca county, Wisconsin, taking charge of the collection department of Captain F. M. Guernsey, attorney-at-law of that place. In June, 1898, he formed a partnership with Captain F. M. Guernsey, for the practice of law, under the firm name of Guernsey & Lehr, attorneys-at-law, which partnership continued until June, 1901, when he located at Appleton, Wisconsin, and formed a partnership for the practice of law with Hon. Humphrey Pierce, and Ex-County Judge Moeskes, under the name of Pierce, Lehr & Moeskes, which partnership continued until March, 1903, when Judge Moeskes withdrew from the firm, and Mr. Lehr and Mr. Pierce continued to practice law under the firm name of Pierce & Lehr, until January 1st, 1907, after which time he has continued the practice of law alone. He was admitted to the bar July 7, 1898. While living at Clintonville he was twice elected city attorney (1899-1900), serving two terms. In 1902 he was elected chairman of the Republican county committee of Outagamie county, which office he held for two years. November 1, 1907, he married Miss Emma A. Groth of Appleton, Wisconsin, a daughter of one of the oldest families of that city. He was

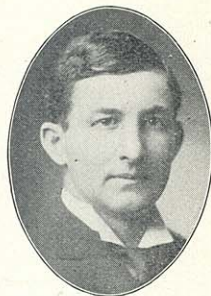


elected state senator in 1908, of the Fourteenth senatorial district, which consists of the counties of Outagamie and Shawano, receiving 7,575 votes against 6,765 votes for G. F. Peabody (Dem.).

#### FIFTEENTH SENATORIAL DISTRICT.

Calumet and Manitowoc counties. Population, 1900—59,339.

SAMUEL W. RANDOLPH (Dem.) was born December 5th, 1872, at Manitowoc, Wis., and was educated in the first ward public school of that city. For a number of years he has been interested in navigation of the Great Lakes and represents several transportation companies. Was appointed harbor master January, 1902, to fill an unexpired term, and re-appointed for a full term in April, 1902. He was elected state senator in 1902 and re-elected in 1906, receiving 4,613 votes against 3,994 for G. G. Sedgwick (Rep.), and 894 for Henry Bruins (Soc. Dem.).



Samuel W. Randolph.

#### SIXTEENTH SENATORIAL DISTRICT.

Crawford and Grant counties. Population, 1900—56,167.

JOHN J. BLAINE (Rep.) was born May 4, 1875, on a farm in town of Wingville, Grant county, Wisconsin; attended common school and was graduated from Montfort high school, Montfort, Wisconsin; afterwards attended Northern Indiana University at Valparaiso, Indiana, and was graduated from law department thereof on June 3, 1896. He practiced law in Montfort, Wisconsin, one year, after which he removed to Boscobel, Wisconsin, where he has since practiced law. He served as mayor of Boscobel three terms and member of county board of supervisors for Grant county four years. He was elected to the state senate in 1908, receiving 7,017 votes against 5,120 votes for R. A. Watkins (Dem.).



John J. Blaine.

#### SEVENTEENTH SENATORIAL DISTRICT.

Green, Iowa and Lafayette counties. Population, 1900—66,792.

HARRY CHAPMAN MARTIN (Rep.) was born on a farm near Darlington, Lafayette county, December 15th, 1854. With his parents he moved to Darlington when he was nine years of age. Received his early education in a little red school house a mile and a half from his home. Then, in the public school at Darlington, after which he taught school for one year and then attended the University of Wisconsin, from which he graduated in 1879. He studied law and was admitted to the bar in 1881, and has since practiced law at Darlington. Soon after his admission to the bar he was appointed county superintendent of schools of La-



Harry C. Martin.



fayette county, and was twice thereafter elected to that office. In 1887 he was elected mayor of the city of Darlington and was re-elected in 1888. He was city attorney for several years thereafter and was elected district attorney of Lafayette county in 1892; was a member of the Republican state central committee for four years; was a member of the Wisconsin National Guard five years; President of Alumni Association, University of Wisconsin 1904; is now serving his fifth term as Director of the School Board at Darlington, having been first elected in 1895; is one of the Directors of the Citizens National Bank of Darlington; was elected from the First Congressional District as delegate to the National Republican Convention held in Chicago, 1908; was appointed by Governor Davidson Senate member of the Legislative Committee to visit the charitable, penal and reformatory institutions of the state; was elected to the assembly in 1895 to fill vacancy occasioned by the death of James Freeman; was elected to the state senate in 1898 and re-elected in 1902 and in 1906, receiving 6,284 votes against 4,383 for J. B. Simpson (Dem.), and 189 for C. Marty (Soc. Dem.).

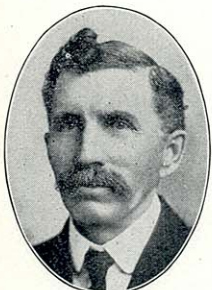


E. H. Lyons.

## EIGHTEENTH SENATORIAL DISTRICT.

Fond du Lac and Green Lake counties. Population, 1900—63,386.

E. H. LYONS (Rep.) was born in Athens county, Ohio, December 22, 1855, and removed to Fond du Lac county with his parents when but five months old. He lived on a farm until 1885, at which time he entered the general mercantile business at Eden, Fond du Lac county, Wisconsin. He was appointed postmaster in 1895 and continued seven years; was elected county treasurer in 1902 and again in 1904; retired from the mercantile business in 1902, and engaged in the manufacture of lime. At present he is the president of the Standard Lime & Stone Co., also vice-president of the Badger Pressed Brick Co., whose home offices are at Fond du Lac, Wisconsin. He was elected state senator in November, receiving 8,160 votes against 6,374 votes for B. E. Sampson (Dem.).



John A. Fridd.

## NINETEENTH SENATORIAL DISTRICT.

Winnebago county. Population, 1900—53,225.

JOHN A. FRIDD (Rep.) was born in Winnebago county October 23, 1850; received his education in the common schools and in Ripon College; is a farmer by occupation; served his town as side supervisor three years, and as chairman ten years; has been director of the Eureka Canning Factory since 1900. Was elected member of assembly in 1902, and re-elected in 1904. He was elected state senator in 1906, receiving 4,591 votes against 3,310 for J. Harrington (Dem.), and 1,048 for B. E. Stevens (Ind.).

## TWENTIETH SENATORIAL DISTRICT.

Ozaukee and Sheboygan counties. Population, 1900—66,708.

HENRY KRUMREY (Rep.) was born on the farm where he still lives, in the town of Plymouth, Sheboygan county, on February 3d, 1852, and was educated in the public and German private schools of Plymouth; is a farmer and live stock dealer. He has held the offices of supervisor, town treasurer, chairman of the town board, and was the director of the school board of his district, which takes in the city of Plymouth, for fourteen years. In 1900 he was the Republican nominee for presidential elector for the then Fifth congressional district, but resigned upon being nominated for the assembly, to which he was elected, serving during the session of 1901. At the spring election in 1908, he was elected as a delegate to represent the Sixth congressional district in the Republican national convention, which was held in Chicago June, 1908. He was elected to the state senate in 1908, receiving 6,748 votes against 6,535 votes for H. W. Bolens (Dem.), and 781 votes for O. A. Damrow (Soc. Dem.).

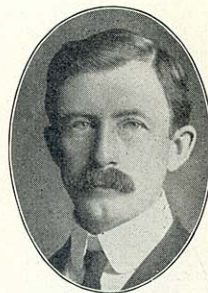


Henry Krumrey.

## TWENTY-FIRST SENATORIAL DISTRICT.

Portage and Waupaca counties. Population, 1900—61,098.

EDWARD E. BROWNE (Rep.) was born at Waupaca, Waupaca county, Wisconsin, February 16, 1868. He attended the public schools of the city of Waupaca and after finishing the high school of Waupaca was graduated from the state university in 1890 and from the university law school in 1892, since which time he has been engaged in the practice of law in the city of Waupaca. He was elected district attorney of Waupaca county in 1898, which office he held 6 years. He was appointed regent of the state university in June, 1904, and was nominated and elected state senator in 1906, receiving 4,397 votes. There was no opposition to his nomination or election, Mr. Browne having been nominated on the Republican ticket and endorsed by the Democratic, Prohibition and Social Democratic parties.



Edward E. Browne.

## TWENTY-SECOND SENATORIAL DISTRICT.

Rock county. Population, 1900—51,203.

JOHN M. WHITEHEAD (Rep.) was born July 29, 1852, on a farm near Hillsboro, Ill. He was educated at Hillsboro Academy, preparatory department of Wabash College, Crawfordsville, Ind. (1871-2), Williston Seminary, Easthampton, Mass. (1872-3), Yale College (1873-77), where he took the degree of A. B. He studied law and was admitted to the bar of Illinois in October, 1880, and to the bar of Wisconsin in September, 1883. He came to Wisconsin in August, 1883, set-



John M. Whitehead.





John A. Hazelwood.

ting at Janesville, where he has since resided. Has been a member of the county board of Rock county, representing the fourth ward of Janesville. Was elected to the state senate in 1896, 1900, 1904 and again in 1908, receiving 7,634 votes against 3,240 votes for J. J. RJordan (Dem.).

#### TWENTY-THIRD SENATORIAL DISTRICT.

Jefferson and Walworth counties. Population, 1900—64,043.

JOHN A. HAZELWOOD (Dem.) was born at Concord, Jefferson county, Wis., Oct. 23, 1867. He received his training in the common schools, St. John's Military Academy, Delafield, Wis., Valparaiso Normal School and Indiana University and Law School. He was engaged for a period of ten years in teaching at Ixonia, Oconomowoc, and at Indiana Normal School. In 1898 he was elected county superintendent of schools of Jefferson county and was re-elected three times. He has been president of the S. W. T. A., vice-president W. T. A., president of the County Superintendents' Association and state commander of the S. O. V. He has served as city attorney of Jefferson for several years. He is now practicing law at Jefferson, Wisconsin. In 1906 he was elected to the state senate, receiving 5,345 votes against 4,473 votes for Zadoc B. Beach (Rep.), and 87 votes for A. L. Morrison (Soc. Dem.).



John W. Thomas.

#### TWENTY-FOURTH SENATORIAL DISTRICT.

Chippewa, Eau Claire and Rusk counties. Population, 1900—64,729.

JOHN W. THOMAS (Rep.), of Chippewa Falls, was born in Wales, March 31, 1846; came to this country with his parents in 1849, settling in Troga county, Pennsylvania. He was left an orphan at the age of seven and he came to Wisconsin in 1857, driving a team for a family of friends with whom he settled in the town of Anson, Chippewa county. He received his education in the common schools, is a farmer and dairyman by occupation. At the age of seventeen he enlisted and went out with the 36th Wisconsin Volunteers, serving to the end of the war. He participated in the brilliant services of his regiment in Grant's campaign of 1864 before Richmond and Petersburg. He was chairman of the county board several terms and served as county treasurer. He was secretary of the Chippewa county Agricultural Society eight years. In 1897 he was appointed by the governor a member of the state board of agriculture, was reappointed in 1899 for three years and declined a third appointment. He was elected to the assembly from the second district of Chippewa county in 1894 and re-elected in 1896, 1898 and 1900, serving four consecutive terms. He was elected railroad commissioner in 1902 and re-elected in 1904. In 1908 was elected state senator, receiving 7,901 votes against 5,522 votes for W. H. Frawley (Dem.).

## TWENTY-FIFTH SENATORIAL DISTRICT.

Clark and Marathon counties. Population 1900—69,104.

SPENCER M. MARSH (Rep.) was born in the town of Grant, Clark county, Wis., July 26, 1864. Reared on a farm, taught country schools, beginning at the age of 16 years. Attended State Normal School at River Falls in 1882 and 1883. Commenced the study of law in 1885, admitted to the bar in 1889, became a law partner of present Circuit Judge James O'Neill in 1891, under firm name of O'Neill & Marsh, practicing at Neillsville, Wis. This partnership continued until Judge O'Neill went on the bench in 1898. Since that time he has continued the practice of law at Neillsville a portion of the time as a member of the firm of Marsh & Tucker, and later of the firm of Marsh & Schoengarth. He served as district attorney of Clark county two terms, having been elected on the Republican ticket in 1898 and in 1900. He has been president of the Commercial State Bank at Neillsville from its organization in 1898. He was elected state senator in 1906, receiving 5,962 votes against 4,360 for W. W. Albers (Dem.).

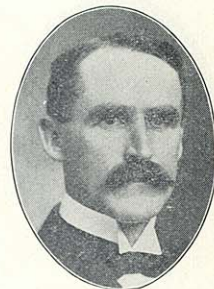


Spencer M. Marsh.

## TWENTY-SIXTH SENATORIAL DISTRICT.

Dane county. Population, 1900—69,435.

JOHN S. DONALD, (Rep.), of Mt. Horeb, was born on the farm where he now resides, January 12th, 1869. His education was continued from the district school to the Northwestern Business College of Madison, from which he graduated in 1887. In 1894 he received the degree of B. S. at the Valparaiso University, Valparaiso, Indiana, and in 1897 the degree of D. D. S. at the Chicago College. In 1892 he served as assessor of his town (Springdale) and was chairman of the board of supervisors from 1899 to 1902. He was elected to the assembly in 1902, was re-elected in 1904 and in 1908 was elected state senator receiving 9,507 votes against 7,478 votes for William Fehlandt (Dem.), and 142 scattering votes.



John S. Donald.

## TWENTY-SEVENTH SENATORIAL DISTRICT.

Columbia and Sauk counties. Population, 1900—64,127.

CHARLES L. PEARSON (Dem.) was born forty-six years ago in the town of Buffalo, Marquette county, Wis., and came with his parents to the township of Greenfield, near Baraboo, in the year 1870. He attended school in Greenfield and Baraboo and a business college in Janesville. He was a railroad telegraph operator for a few years, leaving the service of his own accord to engage in farming and fruit growing. After operating a farm in West Point, Columbia county, for four years, he purchased the old homestead, where he has since lived. Mr. Pearson has held various local offices, and is an active member of the Wisconsin State Horticultural society. He was elected to the state senate in 1906, receiving 4,629 votes against 4,546 for M. F. Foley (Rep.), and 342 for T. R. White (Pro.).



Charles L. Pearson.





David G. James.

#### TWENTY-EIGHTH SENATORIAL DISTRICT.

Richland and Vernon counties. Population, 1900—47,834.

DAVID GOODRICH JAMES (Rep.), of Richland Center, was born in Deerfield, Rockingham county, New Hampshire, August 3, 1843, removing with his parents to Richland county in 1855, where he has since resided. He enlisted in the civil war October 13, 1861, in Company F, 16th Wisconsin Infantry. In 1864 he was captured and taken to Andersonville prison. When he was mustered out July 18, 1865, it was with the rank of Captain of Brevet, dating October 3, 1863, and his papers state "for conspicuous bravery" manifested by him at the battles of Corinth and Atlanta." After the war he returned to Richland Center, learned the tinner's trade, and in 1866 became a member of the firm of G. H. & N. L. James, becoming sole proprietor in 1881, which business he is still conducting. In 1888 he attended the National Republican convention as delegate. In 1900 he was made Department Commander of the G. A. R. He has served as trustee of the Wisconsin Soldiers' Home for eight years. He was elected state senator in 1908 receiving 6,358 votes against 3,360 for J. K. Schreiner (Dem.)



James H. Stout.

#### TWENTY-NINTH SENATORIAL DISTRICT.

Barron, Buffalo, Dunn and Pepin counties. Population, 1900—73,390.

JAMES H. STOUT (Rep.), of Menomonie, was born at Dubuque, Ia., Sept. 25, 1848, and was educated in the public schools of Dubuque and in the Chicago University. He came to Wisconsin in 1889, and has since been engaged in the lumber business at Menomonie and in Arkansas. He has been for several years one of the trustees of the Dunn county insane asylum; president of the Menomonie board of education; life member of the Dubuque library; and life trustee of the Findlay hospital at Dubuque. He was elected to the senate in 1894, and was re-elected in 1898, in 1902, and in 1906, receiving 5,920 votes and having no opposition.

#### THIRTIETH SENATORIAL DISTRICT.

Florence, Forest, Iron, Langlade, Lincoln, Oneida and Vilas counties. Population, 1900—53,835.



James A. Wright.

JAMES A. WRIGHT, of Merrill, Lincoln county, has always been a Republican, is a native of Wisconsin. Was born in Racine, Wis., June 17th, 1873, moving to Merrill, Wis., in 1880, and has since resided there. Was educated in public schools and later took a business course at Northern Illinois Normal School and Dixon Business College. Was then associated with the H. W. Wright Lumber Company, served as vice president, and upon death of father in 1901 became president of same. In 1903 organized the Wisconsin Lumber Company of Littell, Washington, and was elected president of the same. He is also a director of Lincoln County Bank, of Merrill, Wis. He was elected to the state senate in 1904 and was re-elected in 1908 receiving 8,928 votes against 4,863 votes for Mat. Stapleton (Dem.).

## THIRTY-FIRST SENATORIAL DISTRICT.

Jackson, Juneau and Monroe counties. Population, 1900—66,198.

H. W. BARKER (Rep.), of Sparta, was born in the town of Leon, Monroe County, Wis., March 18th, 1860. Is now proprietor of the H. W. Barker Medical Co. Was elected senator of the 31st district in 1906, receiving 6,300 votes against 2,713 votes for W. S. Wells (Dem.).



H. W. Barker.

## THIRTY-SECOND SENATORIAL DISTRICT.

La Crosse and Trempealeau counties. Population, 1900—66,111.

THOMAS MORRIS (Rep.), of La Crosse, was born on a farm near Bedford, Canada, December 9, 1861. He received his education in the common schools of Canada and the Bedford Academy. He is a lawyer, having graduated from the Wisconsin University Law School in 1889, and is a member of the law firm of Morris & Hartwell, at La Crosse. He was elected district attorney of La Crosse county in 1898, and was re-elected in 1900. He was twice elected chairman of the Republican Congressional Committee of the Seventh Congressional District, and resigned the position when he became a candidate for the senate, at the last election. At present he is a member of the State Board of Normal School Regents.

Mr. Morris was elected to the state senate in 1904 and again in 1908 receiving 8,475 votes against 1,251 votes for Peter Gullickson (Dem.).



Thomas Morris.

## THIRTY-THIRD SENATORIAL DISTRICT.

Washington and Waukesha counties. Population, 1900—58,818.

HENRY LOCKNEY (Rep.), of Waukesha, Waukesha county, was born on a farm in the town of Muskego, Waukesha county, Oct. 26th, 1874. When about six years of age removed with his parents to the city of Waukesha which has since been his home. Was educated in the Waukesha public schools and in 1893 entered the University of Wisconsin from which he graduated in 1897 with the degree of B. L. Was admitted to the bar in 1898. At once began practice as a member of the firm of Tullar & Lockney. Was elected city attorney in 1902, and re-elected in 1904 and 1906. Was for some time a library commissioner for the city of Waukesha. Served for one term as secretary and for two terms as chairman of the Republican county committee. Was elected state senator in 1906, receiving 5,635 votes against 4,845 for A. Konrad (Dem.), 197 for C. W. Rose (Pro.), and 196 for G. Gollmitzer (Soc. Dem.).



Henry Lockney.



## OFFICERS OF THE SENATE.



F. E. Andrews.

## CHIEF CLERK.

F. E. ANDREWS was born in the town of Edson, Chippewa county, Wisconsin, August 19, 1874. When about three years of age his parents moved to a homestead near Wadena, Minnesota, where he lived until twenty-one years of age. He received his education in the country schools of Wadena county and in the high school of Wadena, from which institution he graduated in 1893. Two years following his graduation he taught school in Wadena and Hubbard counties, and then moved to Bloomer, Wisconsin, and entered the newspaper business. He has been editor and proprietor of The Bloomer Advance for the past twelve years. He served as engrossing clerk of the senate in 1899 and as journal clerk in the sessions of 1901 and 1903. He was elected chief clerk of the senate in the session of 1909.



Russel C. Falconer.

## SERGEANT-AT-ARMS.

RUSSEL C. FALCONER was born in Williamsburg, N. Y., Feb. 4, 1851; received a common school education; came to Wisconsin in 1855 and settled at Quincy, Adams county; remained there until 1858 when he removed to Columbia county; was chairman of the town of Wyocena in 1880; sheriff of Columbia county one term; mayor of the city of Portage; was elected state senator in 1890; removed to Camp Douglas in 1899, where he engaged in the real estate business. He was elected sergeant-at-arms of the senate at the session of 1905, 1907 and was re-elected in 1909.

## ASSEMBLY.

L. H. BANCROFT, Speaker; C. E. SHAFFER, Chief Clerk; W. S. IRVINE, Sergeant-at-Arms.

The assembly consists of 100 members. They are chosen biennially and receive \$500 for their services during the term. The speaker is chosen by the members and receives an additional \$500 for his services as speaker. The assembly of 1909 contains 76 republicans, 19 democrats, and 5 social democrats.

## ADAMS AND MARQUETTE COUNTIES.

One District. Population, 1900—19,650.

FRANK J. KIMBALL (Rep.) was born in Washington county, New York, Nov. 25th, 1846, came to Wisconsin in 1854 where he received a common school education, lived on a farm in Columbia county until 1872, then moved to Briggsville, Marquette county, his present home. After leaving the farm, clerked in a general store for one year and then went into the sewing machine business. He was local agent for three years and general agent for six years; went into general merchandising in 1885 which occupation he still follows; held the office of town clerk for five years, school district clerk for twenty and notary public for fifteen years; was elected member of assembly in 1902 and 1906 and was re-elected in 1908 receiving 2,682 votes against 1,266 for Hugh Hamilton (Dem.).



Frank J. Kimball.

## ASHLAND COUNTY.

One District. Population, 1900—20,176.

JOHN C. CHAPPLE (Rep.) was born May 27, 1875, at La Porte City, Black Hawk county, Iowa. He was educated in the public schools of his native city, also attending Cornell College of Mt. Vernon, Ia., and the North Wisconsin Academy (now Northland College), of Ashland, Wisconsin. He entered a printing office in his native town and learned the printers' trade, afterwards going into the publishing business. He published the Saturday Evening Press, of Phoenix, Arizona, the La Porte City Press, of La Porte City, Iowa, and is at the present time published of the Ashland Daily Press, of Ashland, Wisconsin. Came to Wisconsin in 1888 working first at Bayfield, on the Bayfield County Press after which he settled in Ashland as manager of the Ashland Daily Press. Is vice president of the Chapple Publishing Company, of Boston, Massachusetts, publishers of the National Magazine. In politics has always been an ardent Republican. Was elected and served the second ward of the city of Ashland on the city council



John C. Chapple.



and county board for four years, being chairman of the county board during his last term as a member of that body. Is at the present time, and has been for four years, chairman of the Ashland County Republican Central committee. He was elected to the assembly in 1908, receiving 2,118 votes against 1,696 votes for F. J. Colignon (Dem.).



George E. Scott.

#### BARRON COUNTY.

One District. Population, 1900—23,677.

GEORGE E. SCOTT (Rep.), of Prairie Farm, was born in Durand, Pepin county, Wis., July 3, 1860, where he received a common school education. He is a merchant and miller. In both 1904 and 1906 he was elected to the assembly without opposition and was re-elected in 1908, receiving 3,115 votes against 1,091 votes for S. W. Sparlin (Dem.). Mr. Scott had no opposition at the primary in 1908.

#### BAYFIELD, SAWYER AND WASHBURN COUNTIES.

One District. Population, 1900—23,506.



Frank Hammill.

FRANK HAMMILL (Rep.) was born at Parma, Jackson county, Michigan, December 23, 1857, and was educated in the Parma schools. At the age of eighteen he was employed as locomotive fireman on the Michigan Central railway. Coming to Wisconsin in 1878 he located in Baraboo, where he continued his work as locomotive fireman and engineer until 1883 when he went to the C., St. P., M. & O. railway as engineer. He continued with this company until May, 1903, when he was forced on account of poor health to resign. December 1, 1902, he located at Spooner and served that village as president of the board during the years of 1903-4-5-6-7. In 1904 he purchased the Spooner Advocate and Spooner Register, two weekly papers published at Spooner, and consolidated them under the name of The Spooner Advocate, which he still owns and publishes. He has always been a Republican, is now and has been for twenty-five years a member of the Brotherhood of Locomotive Engineers. In 1908 he was elected to the assembly, receiving 4,033 votes against 1,024 for Alfred Warden (Dem.), and 211 for James Kenney (Soc. Dem.).

#### BROWN COUNTY.

First District. The towns of Ashwaubenon, Howard, Pittsfield, Suamico and the city of Green Bay. Population, 1900—23,372.



Ferdinand Wittig.  
(Deceased).

FERDINAND WITTIG (Rep.), of Green Bay, was born October 20, 1851, in Hoiby, Sjelland, Denmark. He left Denmark September 17, 1873, arriving in New York October 16, 1873; came to Green Bay October 22, 1873, and moved to New Denmark, Brown county, Wisconsin, next

day. He worked in the woods of northern Wisconsin during the winters and on the farm during summers for the next four years. He was married to Miss Kate Buckman, of New Denmark, June 28, 1877; was engaged on his own farm for about five years and in 1883 started in the general mercantile business at New Denmark. He started a cheese factory in 1885, and stayed in the general mercantile business until 1904, when he was elected county treasurer for Brown county, being re-elected in 1906 on the Republican ticket. In 1908 he was elected to the assembly, receiving 2,737 votes against 1,783 for John Shepeck (Dem.), and 372 for Joseph Prevot (Soc. Dem.).

Mr. Wittig died during the session of 1909 after a week's illness on April 17, 1909.

#### BROWN COUNTY.

Second District. The towns of Allouez, Bellevue, Depere, Eaton, Glenmore, Green Bay, Holland, Humboldt, Lawrence, Morrison, New Denmark, Preble, Rockland, Scott and Wrightstown, the village of Wrightstown, the city of De Pere, and that part of Oneida reservation within the county of Brown. Population, 1900—22,987.

LEWIS W. PETERSON (Rep.) was born in New Denmark, Brown county, Wisconsin, March 24, 1872, and received his education in the district school, Ft. Howard high school and Oshkosh normal. He taught school from 1893 to 1898, when he began farming, at which he is still engaged. He was a member of the Brown county board of supervisors from 1901 to 1906 and in 1907 was elected a member of the Brown county asylum trustees. He was elected to the assembly in 1908, receiving 2,008 votes against 1,679 for John Vander Linden (Dem.), and 58 for Henry Gerke (Soc. Dem.).



Lewis W. Peterson.

#### BUFFALO AND PEPIN COUNTIES.

One District. Population, 1900—24,670.

C. A. INGRAM (Rep.), of Durand, was born in the town of Waubeek, Pepin county, March 19, 1867; attended district school; taught school in Dunn and Pepin counties; attended the state university; graduated from the law school in 1892; district attorney of Pepin county from 1893 to 1897. Mr. Ingram is engaged in the practice of law, and is also interested in farming, newspaper publishing and banking. Was elected to the assembly in 1906 and re-elected in 1908, receiving 2,942 votes against 1,402 votes for Charles Bauer (Dem.).



C. A. Ingram.



## BURNETT AND POLK COUNTIES.

One District. Population, 1900—25,279.



Axel Johnson.

AXEL JOHNSON (Rep.) was born in Denmark in 1870; received a common school education in Denmark and America; studied agriculture and worked on dairy farms in Minnesota for some time, then went to Colorado and Wyoming for two years. He came to Polk county, Wisconsin, in 1892, bought the farm upon which he now lives and has been engaged in dairying and stock-raising since. He has served his town as clerk for six years, has been a school director for many years, is also a director of the Polk County Mercantile Company, a very large mercantile establishment on the co-operative plan, and has been secretary and manager of the Apple River and Beaver Creamery Company for six years. He was elected to the assembly in 1903, receiving 4,155 votes against 924 for F. A. Partlow (Dem.).

## CALUMET COUNTY.

One District. Population, 1900—17,078.



Henry Rollmann.

HENRY ROLLMANN (Dem.) was born in the town of Marshfield, Fond du Lac county, Wisconsin, February 9th, 1853, received a common school education in the public school of the town, then attended the high school at Fond du Lac, for two years, and in 1870 entered a drug store as an apprentice, where he remained until 1875; he then went to Chilton, Calumet county, Wis., and started a drug store, and has since resided there; has served four years as alderman, city mayor for two years, and member of the county board for two years; was elected to the assembly in 1906 and was re-elected in 1908, receiving 1,697 against 1,577 votes for J. W. Baldock (Rep.).

## CHIPPEWA COUNTY.

First District. The towns of Edson, Delmar, Lafayette, Sigel, Tilden and Wheaton, the 3d, 4th, 5th, 6th 8th, 9th and 10th wards of the city of Chippewa Falls, the city of Stanley, and the villages of Boyd and Cadott. Population, 1900—15,676.



Clarence B. Culbertson.

CLARENCE B. CULBERTSON (Rep.) was born in Edinboro, Pennsylvania, October 17, 1869. His parents moved to Augusta, Wisconsin in 1872, where they still reside. He graduated from the Augusta high school in 1888, entered the University of Wisconsin in 1890, took two years of special work in the literary course and then took the law course, graduating from the law in 1894. He began the practice of law at Stanley, in Chippewa county, in the fall of 1894, and is still engaged in the practice of his profession at that place. He served as district attorney of Chippewa county for the term beginning January, 1897. Has served as city attorney of the city of Stanley for nine terms, which office he now holds. Mr. Culbertson is married and has two boys, ten and five years old. He was elected to the assembly in 1908, receiving 2,100 votes against 1,220 votes for George Peterson (Dem.).

## CHIPPEWA COUNTY (AND RUSK).

Second District. The towns of Anson, Auburn, Arthur, Bloomer, Big Bend, Cleveland, Colburn, Dewey, Eagle Point, Flambeau, Lawrence, Sampson, and Strickland, the village of Bloomer, the first, second, and seventh wards of the city of Chippewa Falls. Population, 1900—17,361. [By act of legislature in 1901 the county of Gates—now Rusk—was formed (comprising the towns of Atlanta, Big Bend, Dewey, Lawrence, Rusk, Strickland and Flambeau and the part of township 33 north, range 7 west, lying south of Chippewa river), and remains a part of the Second Assembly district of Chippewa county.]

ARNT ERICKSON (Rep.) was born in Norway, July 4, 1866, and came to Chippewa county, Wisconsin, in 1882, where he has ever since resided, except about two years that he spent in the state of Colorado. He received his education in the public schools of Norway and Chippewa county, Wisconsin. Was for six years engaged as a clerk in the clothing business at Chippewa Falls, Wisconsin, and later engaged in the mercantile business for himself at New Auburn and Chippewa Falls, and is at present interested in real estate and banking at New Auburn. He has been a member of the school board for about eighteen years and has served as chairman of the town of Auburn and supervisor of the village of New Auburn. Has been a member of the county board of supervisors of Chippewa county for eight years, and was four times elected chairman of that body. He was elected to the assembly in 1908, receiving 2,887 votes against 1,330 for G. W. Heaverin (Dem.).



Arnt Erickson.

## CLARK COUNTY.

One District. Population, 1900—25,848.

CHARLES M. BRADFORD (Rep.) was born in Sheboygan county, October 22, 1850. He received his education in high school in the city of Plymouth. Moved to Clark county in 1877 and purchased a farm. Taught school winters and cleared up his farm summers. He was elected county treasurer of Clark county in November, 1892, and held that office two terms, was elected county clerk in November, 1896, and held the office for five consecutive terms ending January 1, 1907. He has conducted a fire insurance business for ten years and is still engaged in that business. He was elected to the assembly in 1908, receiving 2,894 votes against 1,565 for R. B. Salter (Dem.), and 642 for Fred Sears (Ind.).



Charles M. Bradford.



## COLUMBIA COUNTY.



James S. Towers.

First District. The towns of Arlington, Caledonia, Dekorra, Fort Winnebago, Lewiston, Lodi, New Port, Pacific and West Point, the villages of Kilbourn City, Lodi and Poynette, and the city of Portage. Population, 1900—15,117.

JAMES S. TOWERS (Rep.) was born on a farm in the town of Caledonia, Columbia county, Wisconsin, April 24th, 1859, and still lives in the same town; is a farmer and received a common school education with the exception of one term in the Portage high school. He has represented Caledonia on the county board for five years, is now a member of that body and is a director of the Merrimac State Bank. He was elected to the assembly in 1908, receiving 1,849 votes against 1,317 for William Morrissey (Dem.), and 69 for Fred J. Coopman (Soc. Dem.).

## COLUMBIA COUNTY.



Elmer E. Haight.

Second District. The towns of Columbus, Courtland, Fountain Prairie, Hampden, Leeds, Lowville, Marcellon, Otsego, Randolph, Scott, Springdale and Wyocena, the villages of Cambria, Pardeeville and Rio, Doylestown, the west ward of the village of Randolph, and the city of Columbus. Population, 1900—16,004.

ELMER E. HAIGHT (Rep.) was born in the town of Empire, Fond du Lac county, April 1st, 1861. When he was four years of age his parents moved to Fond du Lac and when he was sixteen they moved to Lowville, Columbia county, where he has since resided, with the exception of two years, spent in the town of Leeds, and four years, in the village of Poynette, both in Columbia county. He has been engaged in farming with the exception of the time he resided in Poynette, where he conducted a hardware business and cold storage warehouse. He was elected to the assembly in 1908, receiving 2,046 votes against 1,131 for Eugene Brassard (Dem.), and 65 for J. C. Cuff (Soc. Dem.).

## CRAWFORD COUNTY.

One District. Population, 1900—17,286.



George T. Atwood.

GEORGE T. ATWOOD (Rep.) was born on a farm in Albion, Dane county, Wisconsin, January 10th, 1839. Received his early education in the common schools and Albion Academy. Graduated from the college of letters and science of the state university in 1892, and from the college of law in 1894. Began the practice of law at Oconto in the fall of 1894, where he served as district attorney of Oconto county for two years. Moved to Green Bay in 1897, continuing the practice of law in that city and in Stevens Point until 1901, when he moved to Gays Mills, Crawford county, Wisconsin, dropping the active practice of law and engaging in farming, milling and electric lighting. Was elected to the assembly in 1908, receiving 1,909 votes against 1,706 for Jeremiah O'Neil (Dem.), and 73 for R. Dobson (Pro.).

## DANE COUNTY.

First District. The towns of Blooming Grove, Dunn, Madison and Pleasant Springs; the village of Fair Oaks, and the city of Madison. Population, 1900—24, 458.

DR. FRANK SMITH (Rep.) was born on a farm in Lauderdale county, Tennessee. At the age of seventeen he left the farm and enlisted in the regular army, and after serving three years was honorably discharged. He then settled on a farm in Green county, Wisconsin, but after farming a few years, accepted a position as traveling salesman for a drug house. He traveled four years and resigned to accept a position as engineer in the capitol building at Madison, and held this position for nine years, when he resigned and went to Chicago to study dentistry. He graduated from the Chicago College of Dental Surgery in 1894. He practiced his profession in Chicago until 1901, when he returned to Madison, where he has since resided. In 1902 he was elected on the Republican ticket to the common council from the third ward of the city of Madison by 105 majority, the ward being normally about 150 Democratic, and he was re-elected in 1904 by a majority of 81. In the September primary election of 1908 he was made the regular Republican nominee for member of assembly, First district, Dane county, by a vote of 1,432 as against 1,130 for E. N. Warner, 382 for H. C. Duke, and 2 for W. J. McKay. In the triangular contest for the election which followed he received 3,217 votes as against 2,923 for E. T. Elver (Dem.), 1,307 for W. J. McKay (Ind.), and 35 for Wm. T. Boorman (Soc. Dem.).



Dr. Frank Smith.

## DANE COUNTY.

Second District. The towns of Albion, Bristol, Burke, Christiana, Cottage Grove, Deerfield, Dunkirk, Medina, Sun Prairie, Westport, Windsor and York, the villages of Cambridge, Deerfield, DeForest, Marshall, Sun Prairie and Waunakee, and the city of Stoughton. Population, 1900—22,510.

OTTO ONSTAD (Rep.) was born June 4th, 1874, on a farm in the town of Christiana, Dane county, Wisconsin. Was educated in the common schools, Albion Academy, Albion, Wisconsin, and Luther College, Decorah, Iowa. He taught in the rural schools near his home and later was for two years instructor in mathematics and natural sciences at Albion Academy. For six years he served as town clerk and is at present chairman of the town board of his native town. He was elected to the assembly in 1908, receiving 3,276 votes against 1,622 for A. E. Sanders (Dem.), and 168 for C. S. Thompson (Pro.).



Otto Onstad.



## DANE COUNTY.

Third District. The towns of Berry, Black Earth, Blue Mounds, Cross Plains, Dane, Fitchburg, Mazomanie, Middleton, Montrose, Oregon, Perry, Primrose, Roxbury, Rutland, Springdale, Springfield, Vermont, Verona and Vienna, the villages of Black Earth, Dane, Oregon, Mazomanie, Middleton, Belleville, Brooklyn and Mount Horeb. Population, 1900—22,467.



Thomas A. Stewart.

THOMAS A. STEWART (Dem.) was born in the town of Verona, Dane county, Wisconsin, March 2d, 1849; received his education in the common schools of his native town, North Western Business College and the state university; is a farmer and stock raiser; has held the office of chairman of his town and member of the county board for seventeen years; has held the offices of director of the Verona township high school, president of the Farmers' Mutual Benefit Association, president of the Verona Detective Association; was a delegate to the Democratic state convention in 1900, 1902, 1904; was elected member of the assembly in 1906 and re-elected in 1908, receiving 2,532 votes against 2,235 for C. O. Ruste (Rep.).

## DODGE COUNTY.

First District. The towns of Ashippun, Clyman, Emmett, Herman, Hubbard, Hustisford, Lebanon, Leroy, Lomira, Rubicon, Shields, Theresa and Williams-town, the 5th and 6th wards of the city of Watertown, the villages of Lomira, Theresa, Hustisford and Neosha, the cities of Horicon and Mayville. Population, 1900—23,636.



Charles Lentz.

CHARLES LENTZ (Dem.) was born in the town of Herman, Dodge county, Wisconsin, on the 28th day of October, 1859. Received a common school education and parochial school education. Worked on his father's farm until 1881; went to Illinois and was there employed in a malleable iron foundry for eight months. He came back again to Wisconsin on the farm, got married in 1883 and has almost always been engaged in farming. He has held numerous offices of trust and honor, having been district school clerk for twelve years, town supervisor two years, town clerk for six years, town chairman for ten years (of which he served four years as chairman of the county board), also thirteen years director and six years treasurer of the Herman Farmers' Mutual Insurance Company. Was elected sheriff of Dodge county for the term 1905-1906. Was elected member of the assembly in 1908, receiving 3,177 votes against 1,736 votes for Theodore E. Melcher (Rep.).

## DODGE COUNTY.

Second District. The towns of Calamas, Chester, Elba, Fox Lake, Lowell, Oak Grove, Portland, Trenton and Westford, the villages of Fox Lake, Lowell and Reeseville, the east ward of the village of Randolph, the south ward of the city of Waupun, and the cities of Juneau and Beaver Dam. Population, 1900—22,995.

JOHN F. HUGHES (Dem.) was born in the town of Lowell, Dodge county, Wisconsin, June 12th, 1870; is at present publisher of the "Reeseville Review" and the "Wisconsin Druggist." Was elected member of the assembly in 1906 and re-elected in 1908, receiving 2,792 votes against 1,914 for J. E. Tarrant (Rep.), and 123 for E. S. Millard (Pro.).

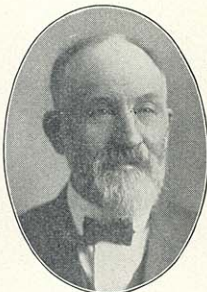


John F. Hughes.

## DOOR COUNTY.

One District. Population, 1900—17,583.

THOMAS REYNOLDS (Rep.) was born in Ireland on the 17th of March, 1840; came to the United States in 1866; ran a farm in the town of Burke, Dane county, one year; came to Door county in the winter of 1866 and '67; got out cord wood and cedar posts for the Chicago market for eight years; then commenced farming, which occupation he has followed since; has been a member of the county board for eight years; attended the national schools in Ireland; had to stop going to school early in life, being obliged to help his father on the little farm in order to enable him to pay the rent and taxes, the privileged class in that country imposed on him. He was elected to the assembly in 1906 and re-elected in 1908, receiving 2,232 votes against 577 for C. L. Fallows (Ind.), and 46 for G. W. Allen (Soc. Dem.).



Thos. Reynolds.

## DOUGLAS COUNTY.

First District. The 2d, 3d, 4th, 5th and 6th wards of the city of Superior. Population, 1900—18,040.

JAMES S. STACK (Rep.) was born on a farm near Detroit, Michigan, September 14th, 1852. The family removed to Ishpeming, Michigan, in 1864 and to Brown county, Minnesota, in 1869. He was educated in the public schools of Ishpeming and Mankato, Minnesota. Located in Fargo, North Dakota, in 1873 and engaged in the land business, was municipal judge of Fargo from 1875 to 1885. Was married in 1878 to Rose I. Crandall, who died in 1888, leaving three sons, all of whom reside in Superior. Came to Superior in 1887 and engaged in the hotel business for two years, was Indian agent at Cloquet, Minnesota, from 1889 to 1891. Was under-sheriff of Douglas county six years and deputy railroad commissioner from 1899 to 1903. He was elected to the assembly in 1908, receiving 1,581 votes against 729 for Carl Hanton (Dem.), 331 for O. W. Wilcox (Soc. Dem.), and 129 for C. H. Shong (Pro.).



James S. Stack.



## DOUGLAS COUNTY.



Walter D. Egan.

Second District. The towns of Amnicon, Brule, Gordon, Hawthorne, Highland, Maple, Nebagamon, Solon Springs, South Range, Summit and Superior, the village of Nebagamon, and the 1st, 7th, 8th, 9th and 10th wards of the city of Superior. Population, 1900—18,295.

WALTER D. EGAN (Rep.) was born in Chicago in 1866 and educated in the common schools of that city. Securing his first position with the C., B. & Q. railway, where he remained for several years in the capacity of checker, his services being so satisfactory that Mr. McMullen, agent of the Western Transit Company line of steam boats, who was well acquainted with his worth, offered him a position with his company. Mr. Egan was soon promoted to head foreman for all the Western Transit boats in Chicago, where he remained until he removed to Superior to accept a position with Walsh & Company, as dockmaster on the Great Northern docks. In the year of 1900 the Great Northern railway, after attempting to perform their own work on their docks, and being greatly hampered by strikes and labor troubles, accepted the proposition of Mr. Egan to form a co-operative or profit-sharing company for the handling of their freight. Largely through the labor and ability of Mr. Egan this experiment has proved successful and since that time his company has employed at times as many as 500 men without any strikes or labor trouble and to the entire satisfaction of the Great Northern Railway Co., as well as the men. Mr. Egan incorporated 100 laboring men into a co-operative, profit-sharing company, he taking the position of general manager. This company then made freight handling contracts with the Great Northern Railway Co., and steamboat lines on a tonnage basis. All profits are divided equally among the men who comprise the company, and thus the laborer is fully and completely rewarded. Mr. Egan is a consistent friend of labor. He understands and responds to all their just needs, has always remained in the ranks as a toiler and thus is strongly seated in the regard and affection of all those who toil. He has strong and advanced views upon co-operative and economic questions. In politics he is a staunch conservative Republican. He was elected to the assembly in 1908, receiving 2,045 votes against 268 for H. W. Jackson (Soc. Dem.), and 197 for C. A. Perkins (Pro.).

## DUNN COUNTY.

One District. Population, 1900—25,043.



D. C. Coolidge.

D. C. COOLIDGE (Rep.) was born at St. Cloud, Wisconsin, in 1871. Completed academic education in 1891. Since death of father in 1891 he has had charge of the Downing Mfg. Company's saw mills, general store and farms. Finished logging in 1900 and organized state bank in 1901. Town chairman three years. Chairman

county board two years. Received unanimous vote as a delegate to last national convention. At present he is a member of the board of trustees Dunn county insane asylum. He was elected to the assembly in 1906 and re-elected in 1908, receiving 3,444 votes, having no opposition at either election.

#### EAU CLAIRE COUNTY.

First District. The town of Seymour, the 1st, 2d, 3d, 4th, 5th, 6th, 8th, 9th and 10th wards of the city of Eau Claire, and the city of Altoona. Population, 1900—15,790.

HENRY LAYCOCK (Rep.) was born in Yorkshire, England, March 14, 1842, coming to America in 1861. He settled in Illinois where he lived for ten years, coming to Eau Claire, Wisconsin, in 1875. Mr. Laycock was a contractor and builder until 1895, when he retired. He has held various municipal offices and was elected to the assembly in 1908, receiving 1,784 votes against 1,295 votes for J. M. Charles (Dem.).



Henry Laycock.

#### EAU CLAIRE COUNTY.

Second District. The towns of Bridge Creek, Brunswick, Clear Creek, Drammen, Fairchild, Lincoln, Luddington, Otter Creek, Pleasant Valley, Union and Washington, the village of Fairchild, the 4th and 7th wards of the city of Eau Claire, and the city of Augusta. Population, 1900—15,902.

CHARLES H. DAUB (Rep.), of the town of Washington, Eau Claire county, was born in the city of Siegen, Westphalia, Prussia, September 12, 1855. In 1868 he came with his parents to Lewiston, Winona county, Minnesota, and to Eau Claire, Wisconsin, in 1889. He worked on a farm summers and in the woods winters, attending school very little. He was in the employ of the Eau Claire Lumber Company for eighteen years as clerk in their store, was engaged in logging for some time and in 1890 went to Castle Rock, Washington, where he manufactured red cedar shingles. He returned to Eau Claire county, Wisconsin, and is at present engaged in general farming and strawberry growing. He was elected to the assembly in 1908, receiving 1,635 votes against 1,055 votes for Elmer E. Tobey (Dem.).



Charles H. Daub.

#### FLORENCE, FOREST AND LANGLADE COUNTIES.

One District. Population, 1900—17,146.

WILLIAM READER (Rep.) was born in the town of Stockbridge, Calumet county, Wisconsin, May 16, 1864; received a common school education; went to Langlade county in 1882, where he followed farming in the summer and worked in the lumber woods during the winter.



William Reader.





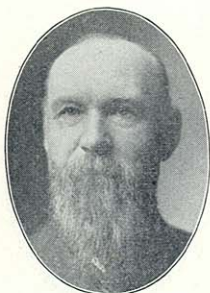
Christian Pickart.

During the time intervening from the time between 1882 and 1900, he cleared from nature's forest a large farm in the town of Peck. He served that town as its chairman for seven years and resigned that office to attend to the duties of register of deeds of Langlade county, to which office he was elected in 1900. He filled that office for eight years and was elected to the assembly in 1908, receiving 3,396 votes against 1,783 votes for Edward Nordman (Dem.).

## FOND DU LAC COUNTY.

First District. The towns of Calumet, Empire, Fond du Lac, Forest, Friendship, Marshfield and Taycheedah, and the city of Fond du Lac. Population, 1900—24,041.

CHRISTIAN PICKART (Dem.) was born in the town of Marshfield, Fond du Lac county, Wis., Nov. 15, 1870; received a common school education; was a cheese manufacturer from 1886 to 1892, when he entered the mercantile business in company with his brother Joseph, in which business he is still engaged; he has been town clerk of his town five years; organized a new school district in his town and has been clerk of the same since its organization; was elected member of assembly in 1904, 1906, and was re-elected in 1908, receiving 3,173 votes against 2,795 for Henry M. Felleny (Rep.) and 104 for John B. Fellerath (Soc. Dem.).

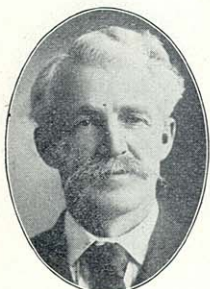


James Fenelon.

## FOND DU LAC COUNTY.

Second District. The towns of Alto, Ashford, Auburn, Byron, Eden, Eldorado, Lamartine, Metomen, Oakfield, Osceola, Ripon, Rosendale, Springvale and Waupun, the village of Brandon, the north ward of the city of Waupun, and the city of Ripon. Population, 1900—23,848.

JAMES FENELON (Rep.) was born in Carlow county, Ireland, May 25, 1846, coming to the United States and settling in Wisconsin in 1850. He was educated in the public schools, St. Gall's academy, Milwaukee, and at St. Mary's seminary, Chicago. He has held various offices in the towns of Metomen and Ripon, Fond du Lac county, having been in office almost constantly for the past twenty-five years. In 1884 he refused the Democratic nomination for state senator and in 1900 was elected to the assembly as a Republican. He was re-elected in 1908, receiving 3,127 votes against 1,707 votes for John L. Gudex (Dem.).



A. V. Wells.

## GRANT COUNTY.

First District. The towns of Beetown, Cassville, Clifton, Ellenborough, Glen Haven, Harrison, Hazel Green, Jamestown, Lima, Paris, Platteville, Potosi, Smelser and Waterloo, the villages of Cassville, Cuba City, Hazel Green and Potosi, and the city of Platteville. Population, 1900—19,694.

A. V. WELLS (Rep.) was born in Grant county, Wisconsin, January 18, 1856. Educated in common schools

and Platteville state normal. Attended College of Physicians and Surgeons, New York, Rush Medical College, Chicago, and before graduating bought the farm on which he now resides. Occupation farmer. He has been a member of the Grant county board for sixteen years and was elected to the assembly in 1903, receiving 2,607 votes against 1,861 for Frank H. Grimm (Dem.), and 162 for John McLeod (Pro.).

#### GRANT COUNTY.

Second District. The towns of Bloomington, Boscobel, Castle Rock, Fennimore, Hickory Grove, Liberty, Little Grant, Marion, Millville, Mt. Hope, Mt. Ida, Muscoda, North Lancaster, Patch Grove, South Lancaster, Watterstown, Wingville, Woodman and Wyaulusing, the villages of Bloomington, Fennimore, Montfort and Muscoda, the cities of Boscobel and Lancaster. Population, 1900—19,187.

HENRY E. ROETHE (Rep.) of Fennimore, Grant county, editor of the Fennimore Times, having the largest circulation (4,000) of the country papers of the state, and known as the "legomobile" editor, from the fact that he has been all over his large county afoot and thus is personally acquainted with nearly all of his constituents, is 43 years old and a native of Whitewater, Wis. He received a common school and Normal education; came to Fennimore in 1885; was bookkeeper and cashier seven years and then engaged in the newspaper business. Has served as village clerk, town clerk seven consecutive years, and village president. Was a delegate to numerous state and other political conventions, and served during one session as bookkeeper of the state senate. In 1900 was a member of the electoral college of the United States that elected McKinley and Roosevelt and was chosen by his state colleagues as official messenger to carry the electoral vote of Wisconsin to Washington. He was elected to the assembly in 1906 and was re-elected in 1908 receiving 2,330 votes against 1,703 for J. S. Wright (Dem.), and 47 for A. R. Manley (Soc Dem.). Mr. Roethe has made both of the trips to Madison to attend the session of the legislature afoot, a distance of seventy-seven miles. At this session his bills to abolish numerous offices and commissions he considered unnecessary attracted wide attention.



Henry E. Roethe.

#### GREEN COUNTY.

One District. Population, 1900—22,719.

A. B. COMSTOCK (Rep.) was born in the township of Albany, Green county, Wisconsin, April 5, 1857, on the farm which he now owns and where he has spent his entire life. He was educated in district school, deriving such benefit as was possible from attending school during the winter months when his services were not



A. B. Comstock.



needed on the farm. He has always taken an active interest in local politics and at the age of thirty was elected member of the board of trustees of his township and five years later was elected chairman, which position he has filled ever since. As a member of the county board he has always been active and popular, being chairman of the county bridge committee for over seven consecutive years. Aside from his farming Mr. Comstock has been for many years engaged in mercantile business at Albany, being interested in the hardware and agricultural implement business. He was elected to the assembly in 1908, receiving 2,410 votes against 1,770 for J. Theiler (Dem.), and 405 for Samuel Isely (Pro.)



Chris. C. Wellensgard

## GREEN LAKE COUNTY.

One District. Population, 1900—15,797.

CHRISTIAN C. WELLENSGARD (Rep.) was born in the Kingdom of Denmark, July 29th, 1849; came to this country in September, 1871, and settled at Berlin, Green Lake county, Wis., engaging in the pursuit of farming for a number of years; engaged in the business of selling farm machinery, and organized the Berlin Pickle & Canning Co., of which he is now sole owner; he is a director of the First National Bank of Berlin, and the Berlin Brewing Co., besides operating in farm pursuits; for sixteen years he was a member of the school board of Berlin and for six years a member of the common council of that city; was elected to the assembly in 1906 and re-elected in 1908, receiving 1,944 votes against 1,747 votes for A. O. Ellison (Dem.).

## IOWA COUNTY.

One District. Population, 1900—23,114.



Platt Whitman.

PLATT WHITMAN (Rep.), of Highland, Wisconsin, banker and lawyer, was born at Dodgeville, Wisconsin, on the 6th day of February, 1871. He graduated from the Dodgeville high school in 1888; from the University of Wisconsin in 1893; and from the law department of the University of Wisconsin in 1895. Mr. Whitman was engaged in the practice of law at Boscobel, Wisconsin, until 1904, and in 1903 organized the Highland State Bank, of which he is president. He moved to Highland, Wisconsin, in 1904 and since that time has been actively engaged in the banking business. Was elected to the Wisconsin assembly from the 29th assembly district in 1908, receiving 3,027 votes against 1,954 votes for John B. Egan (Dem.), and 235 votes for Chas. H. Berryman (Pro.).

## IRON, ONEIDA AND VILAS COUNTIES.

One District. Population, 1900—20,420.

DANIEL BARTLETT STEVENS (Rep.), of Rhineland, Oneida county, was born in Paris, Oxford county, Maine, January 24, 1837, and is a grandson of Thomas Stevens, sergeant in the war of the revolution. He has an academic education. He came to Wisconsin in the spring of 1858, landing in Prairie du Chien. He went to Grant county the same year where he later served as town clerk for Beetown. In 1844 he removed to Cassville on the Mississippi river, engaging in the manufacture of lumber. Here he also served in different capacities in the village and was elected to the legislature in 1882 from Grant county. He removed to Rhineland in 1890, engaging again in the manufacture of lumber and was elected to the assembly again in 1908 without opposition, receiving 3,468 votes.



Daniel Bartlett Stevens.

## JACKSON COUNTY.

One District. Population, 1900—17,465.

MERLIN HULL (Rep.), of Black River Falls, was educated in the common schools and at De Pauw and Columbian universities. Mr. Hull is a lawyer and publisher of the Jackson County Journal. He was admitted to practice in the United States supreme court in 1894; was elected clerk of the circuit court for Jackson county the same year; was for several years in the government service at Washington, D. C.; was elected district attorney for Jackson county in 1906, and to the assembly in 1908 without opposition, receiving 2,828 votes.

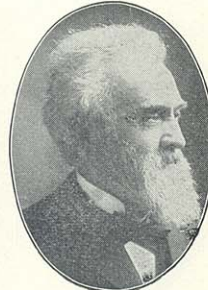


Merlin Hull.

## JEFFERSON COUNTY.

First District. The towns of Concord, Farmington, Hebron, Ixonia, Milford, Palmyra, Sullivan and Watertown, the village of Palmyra, and the 1st, 2d, 3d, 4th and 7th wards of the city of Watertown. Population, 1900—17,377.

C. F. VIEBAHN (Dem.) was born in 1842, near Cologne, Germany. In 1852 he came with his parents to Wisconsin, where, until 1862, his home was on a farm. He was educated in the public schools, by private instruction and study, and by attending the state university for three years. During two winter terms his course as a student was interrupted by teaching a country school. He studied law and was admitted to practice, but finally decided to adopt teaching as a profession. As an educator he has successively held the following positions: Principal of a graded school at Sauk City, county superintendent of Sauk county, principal of the south side school at Manitowoc, county superintendent of Manitowoc county, and city superintendent



C. F. Viebahn.



and principal of the high school at Watertown. The last position he held for twenty-three years. Mr. Viebahn has been president of the Wisconsin Teachers' Association, is a life member of the National Educational Association, has often been a member of the official board of visitors to the state university and to state normal schools; has frequently conducted teachers' institutes, and has at different times, presented many papers and addresses at educational gatherings. He was the first teacher of Wisconsin who received the unlimited state certificate. While he was county superintendent, he prepared and introduced a course of study for country schools, and this was the first course of the kind in Wisconsin. Mr. Viebahn is at present chairman of the state board of examiners for state teachers' certificates, of which board he has been a member for many years. He was elected to the assembly in 1903, receiving 2,071 votes against 1,523 for E. F. Wieman (Rep.), and 32 for Theodore Zick (Soc. Dem.).

## JEFFERSON COUNTY.

Second District. The towns of Aztalan, Cold Spring, Jefferson, Koshkonong, Lake Mills, Oakland, Sumner and Waterloo, the villages of Lake Mills and Waterloo, and the cities of Fort Atkinson and Jefferson. Population, 1900—17,412.



Geo. W. Kindlin.

GEO. W. KINDLIN (Dem.) was born in the town of Koshkonong, Jefferson county, Wis., Sept. 11th, 1863. He received a common school education, later completed an agricultural course in the state university. Was elected county surveyor of Jefferson county in 1894; is serving his eighth year as town clerk of the town of Koshkonong. At present is engaged in general farming and the breeding of pure bred stock; was elected to the assembly in 1906 and was re-elected in 1908, receiving 2,331 votes against 1,659 votes for John W. Porter (Rep.).

## JUNEAU COUNTY.

One District. Population, 1900—20,629.



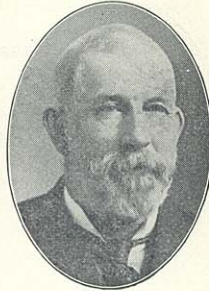
H. J. Mortensen.

H. J. MORTENSEN (Rep.) was born in the town of Fountain, Juneau county, Wisconsin, September 18, 1876. He received his education in the common and high schools of New Lisbon, from which he graduated in 1896. He completed his course in the Stevens Point normal in 1898, and on account of his oratorical ability, was elected to the presidency of the State Inter-Normal Oratorical League while there. He was principal of the Cadott High School for the next two years after which he resigned to take up the study of law at the University of Wisconsin, graduating with the law class of 1902. He has since then been engaged in the practice of law at New Lisbon. Was city attorney for four terms, district attorney of Juneau county for three terms and was elected member of assembly in 1903, receiving 2,211 votes against 1,911 for Williard Temple (Dem.).

## KENOSHA COUNTY.

One District. Population, 1900—21,707.

W. M. CURTISS (Rep.), of the town of Salem, Kenosha county, Wis., (post office, Trevor), was born in the town where he resides Nov. 1st, 1852; received a common school education; is by occupation a farmer; has been elected to numerous offices of public trust; was elected to the assembly in 1904 and 1906 and was re-elected in 1908, receiving 3,269 votes against 2,157 for M. Greenwald (Dem.) and 587 for Wm. Kaufman (Soc. Dem.).



W. M. Curtiss.

## KEWAUNEE COUNTY.

One District. Population, 1900—17,212.

MOSES SHAW (Rep.) was born in the town of Ahnapee, November 8, 1861, and received his education in the common school of his district, which he attended until fourteen years of age. He is by occupation a farmer, having lived all his life upon a farm. He has held several offices of trust in the past, was postmaster at Woodside for four years, school clerk for the last twelve years, town chairman for seven years and was lately elected secretary and treasurer of local union farmers' society of equity for the town of Ahnapee. Was elected member of assembly in 1908, receiving 1,717 votes against 1,619 for J. M. Borgman (Dem.), and 46 for Max Seidl (Soc. Dem.).



Moses Shaw.

## LA CROSSE COUNTY.

First District. The town of Campbell and the 1st, 2d, 4th, 5th, 6th, 7th, 9th, 10th, 11th, 12th, 13th, 14th, 15th, 16th, 19th and 20th wards of the city of La Crosse. Population, 1900—21,840.

JOHN E. McCONNELL (Rep.) was born in the town of Farmington, La Crosse county, Wisconsin, on the 6th day of December, 1863. He was educated in the public schools of La Crosse county and in the state university, from which he was graduated in 1887. He then studied law and was admitted to the bar in 1889 and has since his admission practiced his profession at La Crosse. He was elected district attorney of La Crosse county in 1894 and served four years. In 1904 he was elected chairman of the Republican county committee of La Crosse county and served as such through the campaigns of 1904 and 1906. He was elected a member of the assembly in 1908, receiving 2,317 votes against 1,837 for James T. Day (Dem.), 76 for Earl G. Staats (Pro.).



J. E. McConnell.



## LA CROSSE COUNTY.



E. J. Kneen.

Second District. The towns of Bangor, Barre, Burns, Farmington, Greenfield, Hamilton, Holland, Onalaska, Shelby and Washington, the villages of Bangor and West Salem, the 3d, 8th, 17th, 18th and 21st wards of the city of La Crosse, and the city of Onalaska. Population, 1900—21,157.

E. J. KNEEN (Dem.) was born in the town of Burns, La Crosse county, Wisconsin, February 24, 1867. He received his education in the public schools at Bangor, Wisconsin, which place he left at the age of seventeen, moving to Kansas City where he worked in brick yards for four years, thence moving to Minneapolis where he was engaged in the wholesale fruit business until 1902, when he moved back to Bangor, Wisconsin, engaging in the general merchandise business. His fellow townsmen have shown him their confidence by electing him president of the village in 1905. Mr. Kneen has always taken an active part in all public improvements, and is now manager of the Bangor and Ashton Telephone Company, which through his efforts has been built up to one of the largest exchanges in La Crosse county. Mr. Kneen is also a member of the board of directors of the Bangor State Bank. He was elected to the assembly in 1903, receiving 2,232 votes against 1,952 for V. S. Keppel (Rep.), and 115 for M. C. Ashberg (Pro.).



M. J. Cleary.

## LAFAYETTE COUNTY.

One District. Population 1900—20,956.

M. J. CLEARY (Rep.) was born Sept. 23d, 1877, in the town of Moscow, Iowa county, Wis. Educated in common school, Valparaiso, Ind. Business College, Wisconsin Academy of Madison, and graduated with the class of 1897. Took two years' work in the University of Wis., also completed the law course at the state university in 1901. Since has practiced law and engaged in the insurance and banking business at Blanchardville in Lafayette county. Was chairman of the county board of Lafayette county for two years. Elected to the assembly in 1906 and re-elected in 1908, receiving 2,936 votes against 2,000 for J. H. King (Dem.).

## LINCOLN COUNTY.

One District. Population, 1900—16,269.



F. W. Kubasta.

F. W. KUBASTA (Rep.), of Merrill, Lincoln county, Wis., a native of Wisconsin, was born at New Lisbon, June 8th, 1877; removed to Merrill in 1882, and has since resided there. Was educated in the public schools of Merrill. After graduating from the Merrill high school entered the law offices of Messrs. Flett & Porter as law clerk and student and served in that capacity for six years, leaving such employ to engage with D. M. Phinney in the insurance, real estate and abstract business. In 1904 assisted in organizing the German American State Bank of Merrill and is at present a director and vice-president of that institution.

Also secretary and treasurer of the Phinney Abstract and Land Co. Elected and served as a member of the Lincoln county board for four years; also acted as deputy clerk of circuit court for four years and as chairman of the Lincoln county republican committee for two years. He was elected to the assembly in 1906 and re-elected in 1908, receiving 2,266 votes against 1,866 for R. C. Thielman (Dem.), and 56 for E. A. Bigelow (Soc. Dem.).

#### MANITOWOC COUNTY.

First District. The towns of Centerville, Liberty, Manitowoc, Manitowoc Rapids, Meeme and Newton, and the city of Manitowoc. Population, 1900—20,343.

S. F. WEHRWEIN (Rep.) was born in the town of Newton, Manitowoc county, Wis., January, 1869; was educated in the public schools of that county; later attended the Oshkosh Normal School for two years. He taught for seven years in Manitowoc county, then took charge of his father's farm, during which time he was chosen one of the trustees of the Farmers' Mutual Fire Ins. Co.; he is now again engaged in teaching. In 1906 he was elected president of the Manitowoc County Teachers' Association, and for three years he served as a member of the board of common school examiners. He has been elected to represent his district as a delegate to county and state conventions, was elected member of the assembly in 1904 and 1906 and was re-elected in 1908, receiving 2,089 votes against 1,685 for John Hardow (Dem.), and 501 for Henry Bruins (Soc. Dem.).

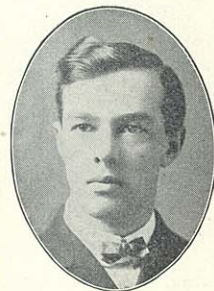


S. F. Wehrwein.

#### MANITOWOC COUNTY.

Second District. The towns of Cato, Cooperstown, Eaton, Franklin, Gibson, Kossuth, Maple Grove, Mishicot, Rockland, Schleswig, Two Creeks, and Two Rivers, the villages of Kiel and Reedsville, and the city of Two Rivers. Population, 1900—21,918.

LAWRENCE W. LEDVINA (Rep.), of Two Rivers, was born in the town of Franklin, Manitowoc county, September 28, 1880. He attended the common and parochial schools of that county and at the age of sixteen began teaching school, which profession he followed for six years at Kellnersville and in the town of Manitowoc Rapids. In 1902 he was elected president of the Manitowoc County Teachers' Association. Graduated from the law department of the University of Wisconsin in 1906. He is at present engaged in the practice of law at Two Rivers. He holds the highest national office, that of chief justice in the Phi Alpha Delta Law Fraternity. In the last four campaigns he was engaged in campaigning in the Bohemian language under the auspices of the National Republican Committee. He was elected to the assembly in 1904 being the youngest member that session and the only Republican ever elected from his district. He was elected again in 1906 and was re-elected in 1908, receiving 2,183 votes against 572 votes for Joseph Konop (Dem.).



L. W. Ledvina.



## MARATHON COUNTY.



Nic. Schmidt.

First District. The towns of Bergen, Berlin, Brighton, Cassel, Cleveland, Day, Eau Pleine, Emmett, Frankfort, Halsey, Hamburg, Holton, Hull, Johnson, Maine, McMillan, Marathon, Mosinee, Rib Falls, Reitbrock, Spencer, Stettin and Wein, the villages of Marathon, McMillan, Mosinee and Edgar, and the east ward of Colby. Population, 1900—21,559.

NICHOLAS SCHMIDT (Dem.) was born in Germany, November 2, 1860; received a common school education, learned the machinist's trade in early youth and studied evenings both at home and night school to gain an education; traveled extensively in Europe to promote his efficiency as a machinist; came to America in 1880 and resided for a while in Chicago working at his trade and continuing his studies in evening school to acquaint himself with the English language; he continued working at his trade for about five years when an accident befell him from which he never permanently recovered; this compelled him to enter business for himself; for the next six years he was engaged in flour feed, wood and coal business, and later entered the loan and real estate business. In 1901 he bought the Marathon City Brewery of which company he is now president and manager; came to Wisconsin in 1902 and has been a member of the village board of Marathon for five years; is president of the Marathon Excelsior & Manufacturing Co., the State Bank of Marathon; he was elected member of the assembly in 1906 and was re-elected in 1908, receiving 2,490 votes against 2,070 votes for A. E. Beebee.

## MARATHON COUNTY.

Second District. The towns of Easton, Eldron, Harrison, Hewitt, Knowlton, Kronenwetter, Norrie, Pike Lake, Plover, Texas, Wausau and Weston, and the city of Wausau. Population, 1900—21,697.



Aug. F. Marquardt.

AUGUST F. MARQUARDT (Rep.) was born at Bandenkow, Pommern, Germany, January 8th, 1850, and came to the city of Wausau July 1st, 1866, when a boy of 17. He was for many years engaged in logging, lumbering, mercantile occupations and farming and now owns a beautiful farm partly within the city limits. He is at present a director of the Citizens State Bank of Wausau. He has held many official positions in the city and county. He represented his ward on the common council of the city of Wausau for eighteen years; was president of the council 1900-1901; was member of the county board for sixteen years; was president of the Marathon County Agricultural Society for two years; was vice-president of the State Agricultural Society in 1899; was elected by the common council as member of the board of water commissioners May 1st, 1905, for a term of three years; on November 7th, 1906, he was appointed by the mayor of the city as a member of the park board for a term of five years; was elected sheriff



of Marathon county in the fall of 1900 and served for two years; was elected member of the assembly in 1904, 1906, and was re-elected in 1908, receiving 2,736 votes against 2,537 for A. J. Blowman (Dem.), and 178 for J. C. Chiber (Soc. Dem.).

#### MARINETTE COUNTY.

First District. The city of Marinette. Population, 1900—16,195.

EDWARD WEBSTER LE ROY (Rep.) was born January 30, 1874, in the city of Marinette. He was educated in the Marinette public schools. He held the position of city editor of the Daily Eagle at the time of his first election to the assembly. Later he was editor of the Daily Star and is now one of the editors and proprietors of the Daily Eagle-Star. He was elected to the assembly in 1902, 1904, 1906 and was re-elected in 1908, receiving 1,312 votes against 590 for Joseph Maurer (Dem.), and 624 for Otto Nelson (Pro.). Mr. Le Roy was elected speaker pro tem. during the 1909 session to preside during the absence of Speaker Bancroft. He was chairman of the committee which drew the public utilities act in the 1907 session.



Edward W. Le Roy.

#### MARINETTE COUNTY.

Second District. The towns of Amberg, Athelstane, Beaver, Crivitz, Coleman, Dunbar, Grover, Lake, Porterfield, Peshtigo, Pound, Stephenson, Wausaukee; the village of Coleman; the city of Peshtigo. Population, 1900—14,627.

PETER M. NELSON (Rep.) was born in Tromsø, Norway, May 16, 1861, where he received a common school education. At the age of twenty-one he immigrated to America, coming directly to Marinette county, Wisconsin, where he has lived since, being engaged in farming most of the time. In 1895 he was elected assessor of the town of Coleman, which position he held for six years. After the town of Beaver was created he was elected chairman, which office he still holds. He has also been a member of the school board for ten years. Was elected to the assembly in 1908, receiving 1,987 votes against 656 votes for F. E. Christ (Dem.).



Peter M. Nelson.

#### MILWAUKEE COUNTY.

First District. The 1st and 18th wards of the city of Milwaukee. Population, 1900—23,396.

JOHN T. FARRELL (Dem.), of Milwaukee, First assembly district, comprising the first and eighteenth wards, was born in New Orleans, Louisiana, September 23rd, 1860, where he received a common school education. He came to Milwaukee in 1890 and has resided in the eighteenth ward for the past seventeen years; has been a traveling man for eighteen years; is married and is engaged at present in the publishing business. He was elected to the assembly in 1908, receiving 2,438 votes against 2,252 for Charles Hamilton (Rep.), and 582 for Richard Schmidt (Soc. Dem.).



John T. Farrell.

## MILWAUKEE COUNTY.

Second District. The 2d and 6th wards of the city of Milwaukee. Population, 1900—23,580.



Otto A. Harrass.

OTTO A. HARRASS (Rep.) was born in the city of Milwaukee July 13th, 1869; was educated in parochial and public schools; he is a mason by occupation. In 1898 he enlisted in the Spanish-American war, Company D, 4th Wisconsin Volunteers, and served until mustered out February 28th, 1899; elected member of the assembly in 1906 and re-elected in 1908, receiving 1,708 votes against 1,590 for E. P. Stuetzel (Dem.), and 1,120 for Thomas Feeley (Soc. Dem.).

## MILWAUKEE COUNTY.

Third District. The seventeenth ward of the city of Milwaukee, the towns of Oak Creek and Lake, the village of Cudahy, and the city of South Milwaukee. Population 1900—22,236.

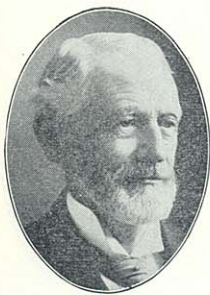


William Disch.

WILLIAM DISCH (Rep.) was born in Glarus, Switzerland, January 12, 1840; came to America in 1853; lived in New Jersey one year; removed to Milwaukee in 1854 where he has since resided; received his education in the common schools; is a retired farmer; served two years and ten months in the civil war, being a private in Company K, 24th Wis., receiving his honorable discharge at the close of the war; was a night-watch at the state capitol two years, policeman and janitor five years; never sought or held an elective office; was elected to the assembly in 1906 and re-elected in 1908, receiving 2,188 votes against 1,827 for Luke Scanlon (Dem.), and 1,465 for Albert Newman (Soc. Dem.).

## MILWAUKEE COUNTY.

Fourth District. The 15th and 16th wards of the city of Milwaukee. Population, 1900—22,346.



Carl H. Dorner.

CARL HERMAN DORNER (Rep.) was born December 22d, 1837, in Hamburg, Germany. Studied natural sciences in the universities of Jena and Leipzig; graduated in 1864 as doctor philosophiae. Returning to Hamburg he taught natural sciences during the years 1864 to 1871. Was appointed scientific secretary of the Zoological society at Hamburg and occupied this position and that of director of the zoological garden from 1871 to 1875. In 1875 he was called to Cincinnati, Ohio, for the purpose of laying out and organizing the zoological garden there, then to build and manage the aquarium at New York, until 1879, when he came to Milwaukee. From 1879 to 1883 he held the position of teacher of natural sciences at the German-English academy and the National German-American Teachers' seminary; was then appointed principal of the Second district school, until 1886 principal of the German-English academy and the National German-American Teachers' Seminary un-



til 1889, and principal of the Thirteenth district school until 1893; chief examiner and secretary of the Milwaukee civil service commission from 1899 to 1902; member of the Milwaukee county board of supervisors from the 15th ward from 1904 to 1908. Published several school-books on Science, Physiology and Botany, in both the German and English language. In 1908 he was elected member of the assembly, receiving 2,953 votes against 2,233 for B. F. Steiner (Dem.), 934 for Thomas Gaynor (Soc. Dem.), and 111 for J. E. Clayton (Pro.).

## MILWAUKEE COUNTY.

Fifth District. The 5th and 12th wards of the city of Milwaukee. Population, 1900—23,247.

M. W. KALAHER was born on a farm in Walworth county on the 22nd of June 1870 and received his early education in the district schools. He entered the Lake Geneva High School in 1886 and after his graduation he taught school for a period of two years after which he worked his way through the State University. After his graduation from the University he taught school for a number of years in the city of Manitowoc, Wisconsin. He was admitted to the bar in 1903 and moved to Milwaukee in 1906 where he is engaged in the practice of law. He was elected to the assembly in 1903 receiving 1,671 votes against 1,356 for George A. Knapp (Soc. Dem.) and 1,148 votes for Frank R. Ammon (Rep.)



M. W. Kalaher.

## MILWAUKEE COUNTY.

Sixth District. The 3d, 4th and 7th wards of the city of Milwaukee. Population, 1900—23,270.

THOMAS F. RAMSEY (Dem.) was born in the city of Milwaukee, Wisconsin, December 12th, 1858; received his education in the public schools of his native city; is a real estate and insurance agent; was cashier in the Milwaukee office of the Western Union Telegraph Co. eighteen years; was manager of the Milwaukee office of the Postal Telegraph Co. three years; was member of the common council in the city of Milwaukee for seven years; a member of several important committees, serving two years as chairman of the committee on judiciary; was trustee of Milwaukee public museum seven years. He was elected member of the assembly in 1904, and again elected in 1908, receiving 2,352 votes against 1,770 for Chauncey W. Yockey (Rep.), and 579 for Edward Campbell (Soc. Dem.).



Thomas F. Ramsey.

## MILWAUKEE COUNTY.

Seventh District. The towns of Franklin, Greenfield and Wauwatosa, the village of West Milwaukee, and the cities of Wauwatosa and West Allis. Population, 1900—20,646.

GEORGE G. BREW (Rep.) was born in the city of Milwaukee in the year 1868, later moving with his par-



George G. Brew.



ents to the town of Greenfield, where he has since resided, being engaged in the manufacture of pickles, etc. He was educated in the local and Milwaukee schools and the Spencerian Business College. For the past three years he has been president of the village of West Milwaukee and he was elected to the assembly in 1908, receiving 3,023 votes against 1,453 for S. S. Leonard (Dem.), and 728 for J. P. Mueller (Soc. Dem.).



Fred R. Zimmerman.

#### MILWAUKEE COUNTY.

Eighth District. The 8th and 23d wards of the city of Milwaukee. Population, 1900—19,332.

FRED R. ZIMMERMAN (Rep.) was born in the city of Milwaukee, Wisconsin, November 20th, 1880, where he received his education in the public schools. For years he covered the states as a commercial traveler and in this capacity has visited most of the central, southern and western states. As a member of the session of 1909, Mr. Zimmerman is holding his first public office. He was elected to the assembly in 1908, receiving 1,703 votes, against 1,697 for H. R. Logan (Dem.), and 1,159 for G. H. Poor (Soc. Dem.).



Ed. J. Berner.

#### MILWAUKEE COUNTY.

Ninth District. The ninth ward of the city of Milwaukee. Population, 1900—47,653.

EDMUND J. BERNER (Soc. Dem.) was born in Freistadt, Ozaukee county, Wisconsin, May 17th, 1864, came to Milwaukee in the year of 1872, was educated in the 9th district school. Has been interested in the trades union movement for the past fifteen years; held various offices in same; was elected a member of the assembly in 1904, 1906, and was re-elected in 1908, receiving 1,236 votes against 944 for Michael Hauser (Dem.), and 895 for Silas Lehman (Rep.).



H. E. Georgi.

#### MILWAUKEE COUNTY.

Tenth District. The 10th ward of the city of Milwaukee. Population, 1900—17,024.

HERMAN EMIL GEORGI (Rep.) was born June 16th, 1870, in Milwaukee, Wisconsin. Was educated in the public and high schools of said city, taught school and attended the University of Wisconsin, graduating therefrom in June, 1891. Has since practiced law in the city of Milwaukee. Was elected to assembly in 1906 and re-elected in 1908, receiving 1,219 votes against 1,210 for William Coleman (Soc. Dem.), and 896 for W. A. Aschman (Dem.).

## MILWAUKEE COUNTY.

Eleventh District. The 11th ward of the city of Milwaukee. Population, 1900—21,903.

FREDERICK BROCKHAUSEN (Soc. Dem.) was born in the city of Fredericia, Denmark, May 20th, 1858; received a public school education; learned the trade of cigar making; came to the United States in 1879; lived nineteen years in Wisconsin; has also lived in New York, Iowa, Montana and Minnesota. For the past nine years has served the Wisconsin State Federation of Labor as its secretary-treasurer. He was elected to the assembly in 1904, 1906 and re-elected in 1908, receiving 1,575 votes against 1,288 for Charles Miksch (Dem.).



Fred. Brockhausen.

## MILWAUKEE COUNTY.

Twelfth District. The 19th and 22d wards of the city of Milwaukee. Population, 1900—20,231.

CARL F. BUSACKER (Rep.) was born at Reval, Pommern, Germany, April 3d, 1854. At the age of fifteen he became an apprentice at the milling and millwright trade in which he was engaged until the age of 20 years, when he enlisted in the German army. He served three years, during the third year of service he was promoted to the military pioneer school. Came over to this country in the year 1881, and settled in the city of Milwaukee. Worked at the carpenter trade until 1886, when he engaged in the carpentry and contracting business, and is still active in the same. He is a director of the Badger State Bank of Milwaukee. Was elected supervisor of the twenty-second ward of Milwaukee in 1904, and re-elected for the same office in 1906. In 1908 he was elected to the assembly, receiving 2,047 votes against 1,956 for C. D. Thompson (Soc. Dem.), 1,839 for George Schaefer (Dem.), and 100 for B. C. Hughes (Pro.).



Carl F. Busacker.

## MILWAUKEE COUNTY.

Thirteenth District. The 13th ward of the city of Milwaukee. Population, 1900—17,026.

CHARLES E. ESTABROOK (Rep.), of Milwaukee, was born near Platteville, Grant county, Wisconsin, October 31, 1847; educated at Platteville Academy and Normal School; enlisted in August 1864, in Company B, forty-third Wisconsin Volunteer Infantry served with the regiment until discharged at the close of the war July, 1865; moved from Platteville to Manitowoc in 1871, and for a year taught school, having charge of the First Ward public school; subsequently studied law and engaged in the practice of his profession at Manitowoc until 1887; was city attorney of Manitowoc from April, 1877 until December 1878; resigned on being elected a member of the Assembly; served as member of the As-



Charles E. Estabrook.



sembly in 1881, 1883 and 1885 from Manitowoc county; was delegate to the National Republican Convention in Chicago in June 1884; elected Attorney General in 1886 and re-elected in 1888. Moved to Milwaukee in 1893, where he has since resided; elected to the Assembly of 1907, from the city of Milwaukee, and re-elected in 1908, receiving 1,280 votes against 1,253 for C. F. Wall (Dem.), and 1,029 for C. O. Vogel (Soc. Dem.).



Jos. A. Domachowski.

#### MILWAUKEE COUNTY.

Fourteenth District. The 14th ward of the city of Milwaukee. Population, 1900—20,651.

JOSEPH A. DOMACHOWSKI (Dem.) was born in Poland November 26, 1872. Came to Milwaukee in 1881. Was educated in the St. Hyacinth parochial school and in evening public school. Is a painter and decorator by trade, but at present is with the Prudential Insurance Co. Was elected member of the assembly in 1906 and re-elected in 1908, receiving 2,001 votes against 852 for Martin Gorrecki (Soc. Dem.), and 736 for Stanislaus Matuszewski (Rep.).

#### MILWAUKEE COUNTY.

Fifteenth District. The 21st ward of the city of Milwaukee, the towns of Granville and Milwaukee, and the villages of East Milwaukee, North Milwaukee and Whitefish Bay. Population, 1900—20,613.



Peter F. Leuch.

PETER F. LEUCH (Rep.) was born in the town of Milwaukee, county of Milwaukee, Wisconsin, December 1st, 1883. He attended the parochial school, public schools, the west division high school and later attended the McDonald Business College. In March, 1902, he was employed by the Jos. Schlitz Brewing Co. and served there until November, 1907, in various capacities in the office. While working for the J. Schlitz Brewing Co. he studied law with the Chicago Correspondence School of Law and the Milwaukee Law School, which school affiliated with Marquette University. Was admitted to the bar of this state in January, 1908, and received a degree of Bachelor of Laws from Marquette University the same year. Upon passing the bar examination he engaged in the practice of the law in which business he is now engaged. Is of German-American descent. Mr. Leuch was elected to the assembly in 1908, receiving 1,722 votes against 1,668 for V. L. Berger (Soc. Dem.), and 1,206 for Gerhard Aussen (Dem.).



## MILWAUKEE COUNTY.

Sixteenth District. The 20th ward of the city of Milwaukee. Population, 1900—16,863.

FRANK J. WEBER (Soc. Dem.) was born in the city of Milwaukee, August 7th, 1849. At the age of three years he removed with his parents to Grafton, Ozaukee county. He learned the trade of seaman, in which capacity he visited all the most important seaports of the world. He has been a member of a labor organization for forty years. He organized the Wisconsin State Federation of Labor in 1893 and has been continually an officer thereof. He is also one of the general organizers of the American Federation of Labor. He was elected to the assembly in 1906 and re-elected in 1908, receiving 1,799 votes against 1,380 for Louis Goulki (Rep.), and 825 for Charles Newser (Dem.).

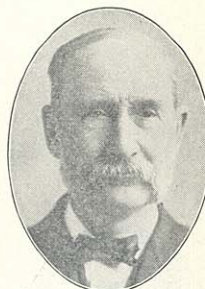


Frank J. Weber.

## MONROE COUNTY.

One District. Population, 1900—23,103.

JOHN R. JONES (Rep.) was born at Pittsburg, Pa., in the year 1850, of Welsh parentage. Came west with his parents in 1856, and settled on a farm in the town of Leon, Monroe county, Wisconsin. Received a common and high school education. Is by occupation a farmer. Held various offices in his town, and was chairman eleven years. Was twice elected chairman of the county board, and one term chairman of the Republican county committee of his county. He was elected to the assembly in 1906 and re-elected in 1908, receiving 3,336 votes against 2,045 for John Cremer (Dem.), and 89 for A. W. Brey (Soc. Dem.).



John R. Jones.

## OCONTO COUNTY.

One District. Population, 1900—20,874.

JOHN GROSSE (Rep.) was born at Green Bay, Wisconsin, on the 15th day of August, 1864, in the old historic bank building. He was educated in the common school in the town he now lives in, and graduated from the Green Bay Business College in 1884. He held the office of town clerk for a number of years and is the present clerk; has held the office of chairman of supervisors of his town for six years, and as such was elected vice-chairman of the county board of Oconto county. He holds a U. S. government pilot and engineer's license and at present is engaged in the general merchandise business, farming and fishing. He was elected to the assembly in 1908, receiving 2,993 votes against 1,543 votes for Mathew Finnegan (Dem.).



John Grosse.

## OUTAGAMIE COUNTY.



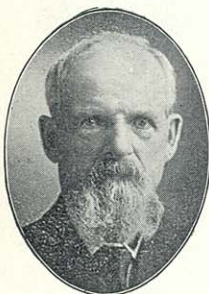
Clinton B. Ballard.

First District. The towns of Bovina, Center, Dale, Ellington, Grand Chute and Greenville, and the city of Appleton. Population, 1900—23,102.

CLINTON B. BALLARD (Rep.) was born at Appleton, Wisconsin, November 16th, 1860, and was educated in the common schools. By occupation he is a farmer and stock raiser and owns a farm just outside the limits of the city of Appleton, upon which practically all his life has been spent. Was school clerk nine years and in April, 1897, was elected chairman of the board of supervisors, having since been re-elected to this position each year. In 1908 he received the Republican nomination at the primary without opposition, and was elected, receiving 2,637 votes against 2,183 for Carl Ludwig (Dem.), and 94 for M. G. Smith (Soc. Dem.).

## OUTAGAMIE COUNTY.

Second District. The towns of Black Creek, Buchanan, Cicero, Deer Creek, Freedom, Hortonia, Kaukauna, Liberty, Maine, Maple Creek, Osborn and Seymour, that part of the Oneida reservation that lies within Outagamie county, the villages of Hortonville and Little Chute, the cities of Kaukauna and Seymour and the 3d ward of the city of New London. Population, 1900—23,145.



Peter Philipps, Sr.

PETER PHILIPPS, SR. (Rep.), of the city of Kaukauna, was born June 5th, 1835, in Geisfeld, Prussia. Received a common school education; is a retired farmer and blacksmith; came with his parents to Wisconsin in 1846, and to Meeme, Manitowoc county, in March, 1848. Enlisted in Company B, 45th Regiment, Wisconsin Volunteer Infantry, as a private; was stationed at Nashville, Tennessee; promoted to sergeant and was mustered out at the expiration of war by order of the war department. Has been postmaster of Meeme nineteen years. Was secretary at the Meeme Mutual Home Protective Fire Insurance Co. seven years. He was elected to the assembly from the First district, Manitowoc county, for the year 1882. Moved with his family to the city of Kaukauna in 1890, was appointed postmaster in 1894 by Dr. H. B. Tanner, first Republican mayor of the city of Kaukauna, and held the office under different Republican administrations for four years. Is now holding the office of supervisor of the third ward and has been ten years, the last five years having been elected without opposition. Was elected member of the assembly in 1908, receiving 2,265 votes against 2,225 votes for Henry Knapstein (Dem.).

## OZAUKEE COUNTY.

One District. Population, 1900—16,363.

WILLIAM J. BICHLER (Dem.), of Belgium, Wis., was born in the town of Holland, Sheboygan county, November 14th, 1870. Followed farm life and attended



the common schools of said town; later entered the Pio Nono College at St. Francis, Wis., and at the age of eighteen began teaching, which profession he followed for five years in Sheboygan county. In 1894 he settled in the town of Belgium, Ozaukee county, and took up general farming, where he has since conducted a grain and dairy farm. He is also engaged in the real estate and insurance business. Has been secretary of the town of Belgium Mutual Fire Insurance Co. since 1895. Is serving as chairman of the town of Belgium since the spring of 1906. In the fall of 1908 he was chosen chairman of the county board of Ozaukee county. Was elected to the assembly in 1906, and re-elected in 1908, receiving 2,008 votes against 984 votes for Henry Kickhafer (Rep.).



William J. Bichler.

#### PIERCE COUNTY.

One District. Population, 1900—23,943.

WILLIAM A. KAY (Rep.), of Pierce county, was born in the town of Martell, Pierce county, Wisconsin, on the 22d day of February, 1864. Was educated in the public schools of the county. His business is farming and stock raising. He owns and has operated a steam threshing machine in the Red River valley of North Dakota and Minnesota for the past seventeen years. Is now serving his fifteenth year as school district treasurer; was elected supervisor of his town in 1894, re-elected in 1895; was elected assessor in 1893 and was elected chairman of his town in the years 1897, 1898, 1900, 1901, 1903 and 1904; was elected first vice-president of the Pierce County Farmers' Co-operative Mercantile Co. in 1904 and re-elected in 1905 and 1906. Was elected to the assembly in 1906 and re-elected in 1908, receiving 2,978 votes against 865 votes for F. M. White (Dem.).



William A. Kay.

#### PORTAGE COUNTY.

One District. Population, 1900—29,483.

O. A. CROWELL (Rep.) was born in Almond, Portage county, Wisconsin, October 5th, 1872. Attended the village school until 1899, then two years at the University of Wisconsin until the death of his father. Has been in the general store business and farming since that time; organized the Portage County Bank in 1901 and has been president of the same since its organization. Was postmaster from 1896 to 1901 and has been president of the village since its incorporation in 1905. Was elected to the assembly in 1908, receiving 3,180 votes against 2,396 votes for Charles Brady (Dem.).



O. A. Crowell.

## PRICE AND TAYLOR COUNTIES.

One District. Population, 1900—20,368.



Elias L. Urquhart.

ELIAS L. URQUHART (Rep.) was born in Glengarry county Canada West, (now Ontario), Dominion of Canada, January 15, 1846. Received a common school education. Remained on a farm until October, 1864, and then came to New York state. From there he came to Michigan in 1865 and to Wisconsin in 1870. Followed surveying, estimating timber and lumbering until 1890. Was a member of the county board of Taylor county in 1878 and 1879; sheriff of Taylor county in 1880 and 1881; was a member of the county board in 1889, 1890, 1891, 1892, 1893, 1894, 1897, 1898, 1899, 1900, 1904, 1905, 1906, 1907 and 1908. Served as chairman of the county board in all fourteen years. Was a member of the school board the past sixteen years. Was postmaster at Medford from 1890 to 1894. Since then he has been conducting a real estate, insurance and abstract office at Medford, Wisconsin. He was elected to the assembly in 1908, receiving 3,371 votes against 1,363 for F. W. Sackett (Dem.), and 322 for Fred Plinky (Soc. Dem.).

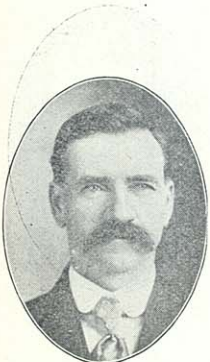


Wallace Ingalls.

## RACINE COUNTY.

First District. The 1st, 2d, 3d, 4th, 5th, 6th (and at the present time, the 8th, 9th, 10th and 11th) wards of the city of Racine. Population, 1900—24,807.

WALLACE INGALLS (Rep.) was born November 21st, 1859, on a farm in the town of Lun, Walworth county, Wisconsin. Remained on the farm until twenty-two years of age. Taught country district schools for several winters. Graduated from the Albany Law School, Albany, New York, in 1882. Commenced practice of law at Sharon, Wisconsin, afterward removing to Elkhorn, Wisconsin, and finally coming to Racine in 1893. Has followed no other occupation except the practice of law since graduating from the law school. Held the office of district attorney of Walworth county for four years and had no other political office until he was elected to the assembly in 1903, when he received 2,856 votes against 1,987 for N. F. Billings (Dem.), and 601 for J. C. Peterson (Soc. Dem.).



John H. Kamper.

## RACINE COUNTY.

Second District. The towns of Burlington, Caledonia, Dover, Mt. Pleasant, Norway, Raymond, Rochester, Waterford and Yorkville, the villages of Union Grove, Corliss and Waterford, the seventh ward of the city of Racine and the city of Burlington. Population, 1900—20,837.

JOHN H. KAMPER (Rep.) was born in Denmark December 17, 1857. He came to Wisconsin with his parents in 1866, settling in Racine county, where he has ever since resided. At the age of twenty-two he was elected



justice of the peace, which office he held fourteen years. He has filled the office of school district clerk over twenty years; has been chairman of his town the past nine years and chairman of the Racine county board of supervisors the last three years. He is president of the Town Insurance Company, holding the position now ten years. He owns and operates a farm adjoining the village of North Cape and is president and manager of a large co-operative creamery. He was elected to the assembly in 1908, receiving 2,240 votes against 2,118 for Geo. Herzog (Dem.), and 176 for H. Meyer (Soc. Dem.).

#### RICHLAND COUNTY.

One District. Population, 1900—19,483.

LEVI H. BANCROFT (Rep.) was born December 26th, 1860, Sauk county, Wis. Educated in common schools. Graduate of Lone Rock high school, and of U. W. law department, class of 1884. Elected district attorney Richland county, 1886; city attorney for Richland Center six years; county judge of Richland county, 1897 to 1902; assistant attorney general, 1902-1904; member of assembly for Richland county, 1906; alternate to national Republican convention at St. Louis, 1896; delegate to Republican national convention at Philadelphia, 1900; delegate to Republican state conventions of 1892, 1894, 1896, 1898, 1900, 1902, 1904; has practiced law at Richland Center, Wisconsin, since 1885. He was elected to the assembly in 1906, and re-elected in 1908, receiving 2,091 votes against 1,341 for Clement Dougherty (Dem.), 781 for F. M. McHail (Ind.), and 194 for John Maley (Pro.). He was elected Speaker of the Assembly at the session of 1909.



Levi H. Bancroft.  
Speaker.

#### ROCK COUNTY.

First District. The towns of Center, Fulton, Janesville, Lima, Magnolia, Milton, Porter, Rock, Spring Valley and Union, and the cities of Edgerton and Evansville. Population, 1900—16,902.

LAWRENCE C. WHITTET (Rep.), of Edgerton, Rock county, Wisconsin, was born in Albion, Wisconsin, June 16th, 1871. When a child his parents moved from the farm in Jefferson county to Edgerton, where he has since resided. Mr. Whittet was educated in the Edgerton public schools and the University of Wisconsin, where the foundation for his life's work was laid. He has held various public offices, being postmaster of Edgerton under both President McKinley and Roosevelt, 1901 to 1906; for a number of years member of the Rock county board of supervisors, likewise treasurer of the board of education, and member of the library board in his home city. His business is one of the most important in Edgerton, being a manufacturer of brick as well as packing boxes. He is a lumber dealer, having large retail as well as manufacturing interests. He was elected to the assembly in 1908, carrying every voting precinct in his district, and receiving 2,394 votes against 1,080 votes for Austin Fessenden (Dem.).



Lawrence C. Whittet.

## ROCK COUNTY.

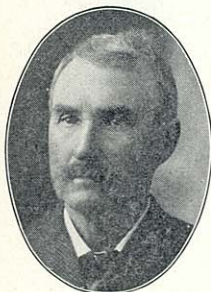


Grant U. Fisher.

Second District. Bradford, Harmony, Johnston, La Prairie and the city of Janesville. Population, 1900—17,091.

GRANT U. FISHER (Rep.), of Janesville, was born in the town of Center, Rock county, Wisconsin, August 25th, 1865. He received his education in the district schools, the Evansville Seminary and Silsby Business College, all of Rock county. He was engaged in farming and the breeding of pure bred livestock until 1903. Since that time he has been engaged in manufacturing and the shipping of sand and gravel. He has served as assessor and town clerk, president of the Farmers' Mutual Fire Insurance Co. of the town of Center, member of the state board of agriculture and member of Wisconsin livestock sanitary board. He was elected to the assembly in 1908, receiving 1,852 votes against 1,211 for J. E. Hutchinson (Dem.), and 91 for J. R. Horn (Soc. Dem.).

## ROCK COUNTY.



Simon Smith.

Third District. The towns of Avon, Beloit, Clinton, Newark, Plymouth and Turtle, the village of Clinton, and the city of Beloit. Population, 1900—17,210.

SIMON SMITH (Rep.), Beloit Wis., was born in Axbridge, England, November 14th, 1839; came to this country with his parents when a boy; received a common school education; settled in Beloit in 1856. At the breaking out of the civil war he enlisted in Company D, 15th Illinois Infantry, of which he was a member for four years and four months, participating in all the battles fought by the Army of the Tennessee. After the war he returned to Beloit and engaged in the painting business; is now retired. Has been a member of the county board twenty-three years; was for two years chairman of the board. Was mayor of the city of Beloit from April, 1899, to April, 1904; has always been a Republican in politics. He was elected to the assembly in 1906 and re-elected in 1908, receiving 3,362 votes against 904 for Matt. Lathers (Dem.), and 118 for F. J. Heneke (Soc. Dem.).

## ST. CROIX COUNTY.

One District. Population, 1900—26,830.



John A. Chinnoek.

JOHN A. CHINNOCK (Rep.) was born March 23d, 1850, in Trumbell county, Ohio. Came to St. Croix county, Wisconsin, in 1851 with his parents, settling on a farm in what is now the town of Troy. At 21 years of age he bought a farm in same town, in 1881 bought another farm and was married. Has carried on both farms until 1905, when he removed to his present home in the city of Hudson. Was chairman of the town of Troy several years and served as chairman of the county board of supervisors one term. Was elected to assembly in 1908, receiving 2,923 votes against 2,105 for A. J. Walker (Dem.).



## SAUK COUNTY.

First District. The towns of Baraboo, Dellona, Delton, Excelsior, Fairfield, Freedom, Greenfield, Merrimac, Prairie du Sac and Sumpter, the villages of Ableman, Merrimac, North Freedom, Prairie du Sac and Sauk City, and the city of Baraboo. Population, 1900—16,905.

VIRGIL H. CADY (Dem.) was born in the town of Excelsior, Sauk county, December 25th, 1876. Received a common and high school education. Established and published an independent high school journal, known as the "Review," during 1895 and 1896. Studied law from 1899 to 1901. Admitted to practice law before the state board of law examiners at Milwaukee in December, 1901, since which time he has practiced his profession at Baraboo. Was nominated for member of assembly from the First district of Sauk county, and was the first Democrat elected to the legislature from that district for eighteen years. At the November election in 1903 Mr. Cady received 1,960 votes to 1,474 votes cast for Wilber Cahoon, Republican candidate for re-election. Taft's majority in the same district was 1,107. Mr. Cady is the Democratic member of the assembly judiciary committee.

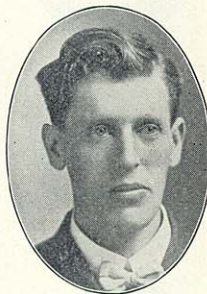


Virgil H. Cady.

## SAUK COUNTY.

Second District. The towns of Bear Creek, Franklin, Honey Creek, Ironton, La Valle, Reedsburg, Spring Green, Troy, Washington, Westfield, Winfield and Woodland, the villages of La Valle and Spring Green and the city of Reedsburg. Population, 1900—16,101.

SILAS A. TOWNE (Dem.) was born in the town of Greenwood, Vernon county, Wisconsin, July 14th, 1875. He was educated mainly in the common schools of Sauk county, graduating from the graded school at Valton at the age of 14. Subsequently he engaged in teaching in the schools of Sauk county for a period of seven years. In 1898 he purchased a farm in the township of La Valle, since which time he has been engaged in farming. He has been honored with many local offices. At the time of his election to the assembly he held the office of town clerk, school district clerk, superintendent of highways, and many offices in societies of which he is a member. At the November election he was elected member of assembly for the Second district of Sauk county, receiving 1,511 votes against 1,461 for Frank L. Mueller (Rep.), and 47 for Patrick Daly (Ind. Dem.).



Silas A. Towne.

## SHAWANO COUNTY.

One District. Population, 1900—27,475.

BENJAMIN A. CADY (Rep.) was born in the town of Granville, Addison county, Vermont, February 11th, 1840. Came with his parents to Waukesha county, Wis-



Benjamin A. Cady.

consin, in 1850. Was educated in the common schools, high school of Berlin, Wisconsin, and Milton academy, now Milton college. Taught school four years; served in the civil war as private in Company I, 37th Regiment Wisconsin Volunteer Infantry until April 20, 1865. Was admitted to the bar in Waushara county circuit court at the March term, 1867. Has held numerous offices of public trust. Was member of the county board of Waushara county eighteen years; two years chairman of said county board and four years district attorney for said county. In 1883 he moved to Birnamwood, Shawano county, where he now resides. There he has been a member of the county board ten years, district attorney four years, and delegate to three state conventions. He has always been a Republican in politics. His early years were spent in farming and lumbering. Since his admission to the bar he has been engaged in the practice of law, insurance, loans and real estate business. Was nominated in 1908 for assembly without opposition and was elected, receiving 3,200 votes against 1,820 votes for Chas. A. Raisler (Dem.).

## SHEBOYGAN COUNTY.

First District. The town of Sheboygan and the city of Sheboygan. Population, 1905—25,143.



Edward J. Kempf.

EDWARD J. KEMPF (Rep.) was born February 21st, 1862, at Sheboygan, Wisconsin, and received his education in the public schools of that city. At the age of 14 years he worked during the season in a brick yard. The next three summers he was a sailor on Lake Michigan, working at the shoemakers' trade during the winter months. He stuck to the "last" until a few years ago when the bill posting business, which he had been building as a side issue for several years, assumed such proportions as to require his entire time and attention. He is secretary and treasurer of the Wisconsin Bill Posters' Association, clerk of Chair City Camp, M. W. A., record keeper of Jonathan Tent, K. O. T. M., secretary of Council No. 78, Fraternal Reserve Association and secretary of Camp No. 430, Modern Protective Association. He was elected to the assembly in 1903, receiving 2,376 votes against 2,287 for John Detling (Dem.), and 566 for Fred Kneevors (Soc. Dem.).

## SHEBOYGAN COUNTY.

Second District. The towns of Greenbush, Herman, Holland, Lima, Lyndon, Mitchell, Mosel, Plymouth, Rhine, Russell, Scott, Sheboygan Falls, Sherman and Wilson, the villages of Cedar Grove, Elkhart Lake, and Sheboygan Falls, and the city of Plymouth. Population, 1900—25,202.



Edward J. Keyes.

EDWARD J. KEYES (Rep.) was born Jan. 29, 1859, in the town of Lyndon, Sheboygan county, Wis.; received a common school education. Has resided in the town of Lyndon except four years, from 1880 to 1884, when he was a resident of Dekalb, Ill., where he



worked on a farm for two years and later worked for the I. L. Elwood Barb Wire Fence Mfg. Co. Owned and operated a cheese factory for thirteen years; is a farmer by occupation. Has held various local offices. He was elected to the assembly in 1906 and re-elected in 1908, receiving 3,433 votes against 2,167 for John Dassow (Dem.), and 167 for R. P. Dassow (Soc. Dem.).

#### TREMPEALEAU COUNTY.

One District. Population, 1900—23,114:

ALBERT THEODORE TWESME (Rep.) was born on a farm in the town of Ettrick, Trempealeau county, Wisconsin. His early training was received in the district schools and the graded schools of Ettrick. Preparatory to entering the University of Wisconsin, he studied for two years at Gale College, Galesville, Wisconsin, and one year at the Wisconsin Academy at Madison from which latter school he graduated with the class of 1902. The following year he entered the University of Wisconsin and took up a course in the College of Letters and Science. In 1906 he received his degree of Bachelor of Arts and in February, 1908, he graduated from the law school of the university, receiving the degree of Bachelor of Laws. While in the university, Mr. Twesme was wholly dependent upon himself. His vacations were mostly spent in canvassing for leading magazine firms. During the summer of 1906 he was employed on the state board of assessment, and during the session of the 1907 legislature he was employed as clerk in the office of the chief clerk of the assembly. Mr. Twesme has always been a Republican. During the campaign of 1906 he spent about eight weeks on the stump for the Republican ticket, and in the spring of 1908 he early announced his candidacy for the office of member of assembly from Trempealeau county. He was nominated by a majority over Speaker Herman L. Ekern of 263 votes and at the last election again defeated Speaker Ekern, who was running as an independent candidate, receiving 2,162 votes against 2,010 for Ekern (Ind. Rep.) candidate, and 1,386 for J. Q. Dewey (Dem.) He is a Norwegian by birth, a member of the Madison Lodge F. & A. M., and La Crosse Lodge No. 300 B. P. O. Elks. He is also a member of the college fraternities Alpha Tau Omega and Phi Alpha Tau, and at present is practicing law at Galesville, Wis.



Albert Theodore Twesme

#### VERNON COUNTY.

One District. Population, 1900—23,351.

DAVID F. MAINS (Rep.), of Viroqua, was born Sept. 14, 1874, in the town of Webster, Vernon county, and has been a resident of said county since. Is a farmer by occupation. He was educated in the district schools and the Cashton and Viroqua high schools. He taught school from 1896 to 1900, the last three years of which time he served as town clerk of the town of Clinton. He was elected clerk of the circuit court in 1900, re-elected in 1902, and in 1904. Was elected to the assembly in 1906 and re-elected in 1908, receiving 4,000 votes against 1,615 votes for W. R. Butt (Dem.).



David F. Mains.



## WALWORTH COUNTY.

One District. Population, 1900—29,259.



Edwin O. Kull.

EDWIN O. KULL (Rep.) was born on a farm in the town of Bloomfield, Walworth county, Wisconsin, February 7, 1855. Was educated in the public schools of that county and later took a course at Wheaton college. He then taught four years in the common schools of Illinois and in his home county. Since then he has given his attention to farming and has taken an active part in farmers' institutes. He is owner of a good farm located in his native town. He has been assigned by his townsmen to various positions of trust for a term of sixteen years, acting either in the capacity of justice, assessor or member of the town board of supervisors. At present he is president and manager of a farmers co-operative creamery, which position he has held for the last ten years. He is also director of the Farmers' Fire Insurance Company of Geneva and was elected member of the assembly in 1903, receiving 3,480 votes against 2,631 for J. W. Page (Dem.), 437 for James Hague (Pro.), and 66 for F. W. Weaver (Soc. Dem.).



Henry V. Schwalbach.

## WASHINGTON COUNTY.

One District. Population, 1900—23,539.

HENRY V. SCHWALBACH (Dem.) was born at South Germantown, Wisconsin, April 24, 1878; received a common school education; commenced clerking at the age of fourteen in his father's general merchandise store and since 1897 he successfully managed the large general merchandise and implement business run under the firm name of J. F. Schwalbach. Through his efforts and promotion in 1907 South Germantown now has an adequately equipped fire department of which he has been honored with the office of chief. He also heads the Advancement association of his home town. Was elected member of assembly in 1908, receiving 2,643 votes against 2,544 votes for Jos. F. Huber (Rep.).

## WAUKESHA COUNTY.

First District. The towns of Eagle, Genesee, Mukwonago, Muskego, New Berlin, Ottawa, Vernon and Waukesha, the village of Eagle, the village of Mukwonago and the city of Waukesha. Population, 1900—17,364.



James E. Thomas.

JAMES E. THOMAS (Rep.) was born on a farm in the town of Delafield, Waukesha county, Wisconsin, September 21, 1872, and attended the public school at Delafield. Later he attended Carroll College at Waukesha, Wisconsin, and was graduated from that institution in the class of 1892. He then entered the University of Wisconsin and was graduated from the university in 1896, receiving the degree of B. A. During the two years following his graduation he taught in the East Troy high

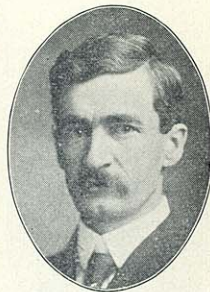


school in Walworth county, Wisconsin, and for the succeeding five years was principal of the schools at Escondido, California. He then returned to Wisconsin and took up the study of law in the college of law at the state university, and was graduated from the law school in 1905. After graduation he formed a partnership with Mr. Milo Muckleston, under the firm name of Muckleston & Thomas at Waukesha, Wisconsin. During the campaign of 1906 he was chairman of the Republican county committee of Waukesha county, and also secretary of the Republican state central committee. He was elected to the assembly in 1908, receiving 2,287 votes against 1,711 for J. M. McGovern (Dem.), and 98 for G. O. Duncan (Soc. Dem.).

#### WAUKESHA COUNTY.

Second District. The towns of Brookfield, Delafield, Lisbon, Menomonee, Merton, Oconomowoc, Pewaukee and Summit, the villages of Hartland, Menomonee Falls and Pewaukee, and the city of Oconomowoc.

GEO. E. HOYT (Rep.), of Menomonee Falls, was born there in 1861. He got his schooling in the common and high schools and the Northwestern University at Evanston and Chicago from which he graduated in medicine. Since leaving Alexian hospital, as interne, in 1893, he has practiced as physician and surgeon at Menomonee Falls. He is president of the Citizens' State Bank of that place. His election to the assembly was unopposed except by the Social Democrats who polled 137 votes for Louis Stoffel, Mr. Hoyt receiving 2,503 votes.



Geo. E. Hoyt.

#### WAUPACA COUNTY.

First District. The towns of Caledonia, Dayton, Farmington, Fremont, Lind, Little Wolf, Royalton, St. Lawrence, Scandinavia, Waupaca and Weyauwega, the villages of Weyauwega, Fremont, Manawa and Scandinavia, and the city of Waupaca. Population, 1900—16,337.

WESLEY IRVINE (Rep.) was born in Canada in December, 1866; he completed the high school course in his native village and later moved to New York, where he attended the Cook Academy for one year; he later entered the medical department of the University of Maryland, from which institution he graduated in 1892; immediately after graduation he removed to Waupaca county, where he has since practiced his profession; was elected member of assembly in 1906 and reelected in 1908, receiving 2,532 votes against 628 votes for H. W. Glocke (Dem.).



Wesley Irvine.

## WAUPACA COUNTY.



Ole A. Buslett.

Second District. The towns of Bear Creek, Dupont, Harrison, Helvetia, Iola, Lebanon, Larrabee, Matteson, Mukwa, Union and Wyoming, the villages of Embarrass, Iola and Marion, the city of Clintonville, and the 1st, 2d, 4th and 5th wards of the city of New London. Population, 1900—15,278.

OLE A. BUSLETT (Rep.) was born in Gausdal, Norway, May 28, 1855, and immigrated to Waupaca county, this state, in 1863, together with his father, mother, sisters and brothers. He is the first born of eight children; is a merchant at the cross roads village of Northland, Norwegian-American poet, author and journalist. He has held the positions of postmaster, justice of the peace, town clerk and was for seven years a member of the county board of Waupaca county and was elected trustee for the Waupaca county asylum for chronic insane in the fall of 1907. He was married in 1878 and settled at Stevens Point, but from 1882 made his home in Madison for four years and removed to his present home in 1888. Mr. Buslett was instrumental in having Northland postoffice established and the town of Harrison set off a year later. He was elected to the assembly in 1908, receiving 2,134 votes against 875 votes for J. F. Meisner (Dem.).



E. G. Keup.

## WAUSHARA COUNTY.

One District. Population, 1900—15,972.

E. G. KEUP (Rep.) was born at Oshkosh in 1869; received an education in the common schools and the Bryant & Stratton Business College; was elected chairman of the town of Mt. Morris for eight consecutive years. Is vice-president of the Mt. Morris Norwegian Mutual Fire Ins. Co.; was elected to the assembly in 1906 and re-elected in 1908, receiving 2,796 votes against 472 votes for G. B. Fox (Dem.).

## WINNEBAGO COUNTY.

First District. The town of Oshkosh and the 1st, 2d, 4th, 5th, 7th, 8th, 10th, 11th and 12th wards of the city of Oshkosh. Population, 1900—20,317.



William M. Bray.

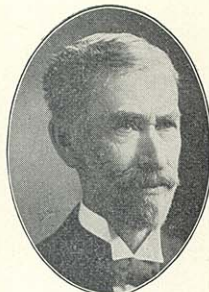
WILLIAM M. BRAY (Rep.) was born in Oshkosh, Wisconsin, March 17, 1880, and was educated in the public schools of that city, also spending three years at Northwestern University of Evanston, Illinois, and one year at Harvard. He has been engaged in the lumber business on the Pacific coast and in the southern states since leaving school. Mr. Bray was elected to the assembly in 1908, receiving 2,500 votes against 1,897 for Herbert Jensen (Dem.), 148 for B. F. Baldwin (Pro.), and 121 for G. T. Thom (Soc. Dem.).



## WINNEBAGO COUNTY.

Second District. The towns of Clayton, Menasha, Neenah, Vinland, Winchester, Winneconne and Wolf River, the village of Winneconne, and the cities of Menasha and Neenah. Population, 1900—18,670.

JAMES R. BARNETT (Rep.) was born at Pewaukee, Wisconsin, May 31, 1842, and removed in 1848 to Fond du Lac county, where he resided until the civil war. He taught school during the years 1860 and 1861. He enlisted and served throughout the war in the First Wisconsin Cavalry, sharing in all its engagements and being promoted to first lieutenant. In 1868 he graduated from Rush Medical College and came in 1871 to Neenah, where he has since resided. Mr. Barnett was superintendent of the city schools for four years; served on the board of education ten years; was president of the Wisconsin state medical society in 1888 and has been chief medical examiner for the Equitable Fraternal Union since its organization in 1897. He was elected to the assembly in 1908, receiving 1,977 votes against 1,735 votes for M. M. Schoetz (Dem.).



James R. Barnett.

## WINNEBAGO COUNTY.

Third District. The towns of Algoma, Black Wolf, Nekimi, Nepeuskum, Omro, Poygan, Rushford and Utica, and the 3d, 6th, 9th and 13th wards of the city of Oshkosh. Population, 1900—19,238.

CHARLES NEITZEL (Rep.) was born in the town of Black Wolf, Winnebago county, April 1, 1853; received a common school education; is a successful farmer; has held a number of offices of honor and trust; has been a member of town board and town treasurer seven years, town chairman five years, school director for twenty-seven years, director of the Nekimi Fire Ins. Co. for ten years. Was elected to the assembly in 1906 and re-elected in 1908, receiving 2,327 votes against 1,612 votes for H. W. Kuntzendorff (Dem.).



Charles Neitzel.

## WOOD COUNTY.

One District. Population, 1900—25,865.

GEORGE P. HAMBRECHT (Rep.) was born in Milwaukee February 1, 1871. He graduated from the Lake Geneva public schools; attended the University of Wisconsin three years; the law school of University of Chicago one year where he did sufficient extra work in the academic department of that school to graduate with a bachelor's degree. He then passed the Wisconsin state bar examination and while attending the Chicago university he won a scholarship to the Yale law school from which department he graduated. At Yale he won the Kent Club prize in a competitive examination on the



George P. Hambrecht

subject of parliamentary law, and assisted Prof. Baldwin, chief justice of Connecticut in the preparation of his work on railroad law by verifying the citations in this work. Mr. Hambrecht has been a successful teacher, having been assistant and principal of the Howe high school at Grand Rapids. Since graduating from Yale he has practiced law in Grand Rapids being associated with Hon. H. C. Wipperman until 1907, since which time he has been in business alone. He served his ward as supervisor two years and for the past year has been city attorney. He was elected to the assembly in 1903, receiving 2,820 votes against 2,720 for W. E. Whelan (Dem)., and 217 for Louis Wollason (Soc. Dem.).



C. E. Shaffer.

---

#### OFFICERS OF THE ASSEMBLY.

---

##### CHIEF CLERK.

C. E. SHAFFER (Rep.) is a native of Dane county and was born and raised on a farm where, with the exception of the time spent at school, he worked until the age of twenty-one. He was educated in the common schools, private academy and a business college. He taught in district and graded schools and in 1900-01 was instructor in mathematics and bookkeeping in the Madison Business College. He was elected chief clerk of the assembly January 9, 1907, and again in January, 1909. He is Secretary of the Republican county committee of Dane county, to which position he was elected in 1906 and re-elected in 1908. He is a resident of the city of Madison and since 1901 has been engaged in th real estate and insurance business.



William S. Irvine.

##### SERGEANT-AT-ARMS.

WILLIAM S. IRVINE (Rep.) was born in Maryland, March 18th, 1851; came with his parents to Wisconsin in 1852, setting in Trempealeau county; received his education in the common schools; removed to Clark county in 1870, and began farming in 1873; was elected member of assembly in 1902 and re-elected in 1904. Was chosen sergeant-at-arms of the assembly at the session of 1907 and again at the session of 1909.



## UNIVERSITY DEPARTMENT HEADS.

## PRESIDENT OF THE UNIVERSITY.

CHARLES RICHARD VAN HISE, Ph. D., LL. D., President of the University, was born May 29, 1857, at Fulton, Wisconsin. He graduated from the University of Wisconsin in 1879, with the degree of Bachelor of Metallurgical Engineering. Since that time from the University he has received the following degrees: Bachelor of Science in 1880; Master of Science in 1882; and Doctor of Philosophy in 1892. He received the honorary degree of Doctor of Laws from the University of Chicago, in 1903, from Yale University in 1904, Harvard University in 1908, and Williams College in 1908. Immediately after graduating in 1879 he entered the instructional force of the University of Wisconsin and has remained on its staff in various positions to the present time. In the University he has been instructor in metallurgy, 1886-88; professor of mineralogy and petrology, 1888-90; professor of Archaen and applied geology, 1890-92; professor of geology, 1892-1903; and he was elected President of the University in 1903. At the University of Chicago he was non-resident professor of structural and metamorphic geology from its foundation to 1903. He has held various positions on the United States Geological Survey from 1883 to the present time. Under this organization he was assistant geologist on the United States Geological Survey, 1883-88; geologist in charge of Lake Superior Division, 1888-1900; geologist in charge of pre-Cambrian and metamorphic geology, 1900-1903, and was appointed consulting geologist in 1909. For the State Geological and Natural History Survey he was consulting geologist from 1897 to 1903. Since 1903 he has been chairman of the Board of Commissioners of the Survey. In 1908 was appointed a member of the National Conservation Commission and is chairman of the State Conservation Commission. He has been chairman of the State Forestry Commission since 1905. He was president of the Wisconsin Academy of Science, Arts and Letters, 1893-1896; and vice president of Section E of the American Association for the Advancement of Science, 1901. He is a member of the National Academy of Sciences; the Washington Academy of Science; the Geological Society of America; the American Institute of Mining Engineers; the Scientific Society of Christiania, Norway, Royal Swedish Academy of Sciences, Stockholm, the Boston Society of Natural History. American Philosophine Society, American Academy of Political and Social Science. He has been editor (for structural geology) of the Journal of Geology since 1892. He has made many contributions to geological literature, of which the more important are: the Archaen and Algonkian, the Penokee Iron-bearing Series of Michigan and Wisconsin (with R. D. Irving), Principles of North American Pre-Cambrian Geology, the Marquette Iron-bearing District of Michigan (with W. S. Bayley), the Iron Ores of the Lake Superior region. President Van Hise has also given various addresses upon educational subjects.

FREDERICK EUGENE TURNEAURE, C. E., Dr. Eng., Dean of the College of Mechanics and Engineering. Born in Stephenson county, Illinois, in 1866. Received a country school education and attended the Freeport, Ill., high school for a short time. Entered Cornell University in 1885, and graduated

from Civil Engineering Course in 1889. From 1889 to 1900 he was engaged in railroad engineering in Virginia and Kentucky. From 1890 to 1892 he was instructor in Civil Engineering at Washington University, St. Louis, and in 1892 was appointed to the chair of Bridge and Sanitary Engineering of the University of Wisconsin. He was also city engineer of Madison from 1900 to 1902, and has been engaged as consulting engineer on municipal work. He is a member of the American Society of Civil Engineers, of the Western Society of Engineers, and the American Association for the Advancement of Science. He has published as joint author, *Modern Framed Structures*, 1893; *Public Water Supplies*, 1901 and *Principles of Reinforced Concrete Construction*, 1907; besides contributions to the proceedings of various societies, and to technical journals.

H. L. RUSSELL, Dean of the college of Agriculture was born in Poynette, Columbia county, Wisconsin, March 12, 1866. Entered University of Wisconsin, 1884, graduating in 1888. Was fellow in Biology in the University from 1888 to 1890, specializing in bacteriology. Studied in Europe in Koch's Laboratory, University of Berlin, Zoological Station at Naples, The Pasteur Institute in Paris. Given the degree of Ph. D. from John Hopkins' University, 1892. Continued bacteriological studies at the Woods Holl Biological Station, Mass. Fellow in Bacteriology, University of Chicago, 1892-93. Called to the University of Wisconsin in 1893 as assistant professor of bacteriology and bacteriologist in the Experiment Station. Elected professor of bacteriology 1896. This was a new line of work inaugurated by Dean Henry, the first college to take up consideration of agricultural problems from the bacteriological point of view. Most of his work since coming here at the Agricultural College has been along dairy and animal disease lines, especially in connection with investigations concerning the ripening of cheese and bovine tuberculosis. Dean College of Agriculture and director Agricultural Experiment station, 1907.

EDWARD ASAHEL BIRGE, Ph. D., Sc. D., Dean of the College of Letters and Science, was born Sept. 7, 1851, at Troy, N. Y.; graduated from Williams College in 1873, with the degree of Bachelor of Arts, and received the degree of Master of Arts in 1876; studied zoology in the Agassiz Museum of Comparative Zoology at Cambridge, Mass., until December 1875; received the degree of Doctor of Philosophy from Harvard University in 1878; of Doctor of Science (honorary) from the Western University of Pennsylvania in 1897; and of Doctor of Laws from Williams College in 1903; studied histology and physiology in the University of Leipsic, Germany, during the college year 1880-1; elected instructor in natural history at the University of Wisconsin in 1875; professor of zoology in 1879; in 1891 he received the additional office of dean of the College of Letters and Science and served as acting president 1900-3. He is secretary of the Wisconsin Commissioners of Fisheries, superintendent of the Wisconsin Geological and Natural History Survey, member of the Wisconsin Forestry, State Park and Conservation Boards, president of the Madison Public Library. His papers are on scientific subjects, mainly in the Transactions of the Wisconsin Academy of Sciences, Arts and Letters.

HARRY SANGER RICHARDS, Dean of the College of Law. Born in Osceola, Clarke county, Iowa, November 20, 1868. Attended the public schools; graduated from the Academic Department of Parsons College, Fairfield, Iowa, in 1883; graduated from the College of Liberal Arts of the State University of Iowa, in 1892, with the degree of Bachelor of Philosophy; graduated from the Law School of Harvard University in 1895, with the degree of Bachelor of Laws; served a clerk in the office of Horatio D. Wood, St. Louis, Mo., during the year 1896; located for the practice of law at Ottumwa, Iowa, in 1897; was elected Professor of Law in the Law Department of the State University of Iowa in 1898; was elected Dean of the College of Law, University of Wisconsin, in June, 1903. Was granted the degree of Doctor of Laws by the State University of



Iowa in June 1904. Member of Phi Beta Kappa, legal fraternity of Phi Delta Phi, honorary legal fraternity Theta Kappa Nu; member of American Bar Association, Wisconsin Bar Association; member of Executive Committee of the Association of American Law Schools, 1903-06; member from Wisconsin General Council, American Bar Association, 1904-06; chairman of section on Legal Education, American Bar Association, 1908-09; author of various papers dealing with legal education read before the Association of American Law Schools and American Bar Association.

## VICE-PRESIDENT OF THE UNIVERSITY.

JOHN BARBER PARKINSON, A. M., Vice-President of the University, professor of Constitutional and International Law, was born at Edwardsville, Madison county, Ill., April 11, 1834; graduated from the University of Wisconsin in 1860; was an instructor in the University, 1861-62; county superintendent of La Fayette county, 1862-64; regent of the University, 1866-67; was appointed to a full professorship—the first from the alumni—in 1867; held the chair of Mathematics, 1867-72; of Civil Polity and Constitutional Law, 1872-74; was in journalism and president of the Wisconsin State Board of Centennial Managers, 1874-76; professor of Civil Polity and Political Economy, 1876-93; was appointed professor of Constitutional and International Law in 1893; was made Emeritus professor of Constitutional and International Law in 1906, and has been vice-president of the University since 1885. He has thus been connected with the University in some capacity, for forty-five years. Several of his addresses, read before the State Agricultural Society, the Academy of Sciences, Arts and Letters, and other societies, have been published; courses of lectures on International Law, English and American Constitutional Law and Political Economy have been prepared, but not yet published.

