

PART VIII.

BIOGRAPHICAL SKETCHES.

U. S. Senators.

Representatives in Congress.

State Officers.

Supreme Judges.

State Senators.

Members of Assembly.

University Faculty.

BIOGRAPHICAL SKETCHES.

MEMBERS OF THE SIXTIETH CONGRESS.

UNITED STATES SENATORS.

ROBERT MARION LA FOLLETTE (Rep.) was born at Primrose, Dane county, Wisconsin, June 14th, 1855; graduated from the state university of Wisconsin January, 1879; admitted to the bar February 1880; elected district attorney of Dane county November, 1880; re-elected in 1882; elected a member of the forty-ninth congress 1884; re-elected in 1886; re-elected in 1888; defeated for re-election in 1890; elected a district delegate to the national republican convention June, 1896; elected a delegate at large to the republican national convention June, 1904; elected governor of Wisconsin 1900; re-elected 1902; re-elected 1904; elected to the United States senate to succeed Joseph Very Quarles January 25, 1905. Took his seat as United States senator January 4th, 1906. His term of service will expire March 3, 1911.

ISAAC STEPHENSON (Rep.) was born in York county, near Fredericton, New Brunswick, June 18, 1829. His early life was spent in assisting his father who was a farmer and a lumberman. A short time was spent at public schools but most of his education is the result of observation and experience. At the age of fourteen years he moved to Bangor, Me., but shortly thereafter came west, locating at Milwaukee. After a few years spent in unsuccessful farming, he transferred his operations to lumbering in the northern peninsula of Michigan. His earliest work in the field was contracting for putting in logs in the winter, while during the summer, he carried freight to Chicago and Milwaukee by boat. When the first land office was opened in northern Michigan in 1848, Mr. Stephenson and his associates purchased large tracts of timber lands on the Escanaba, Ford and Sturgeon rivers and on Big Bay de Noquet. In 1857 he discontinued contracting logs and engaged in the manufacture of lumber. Since that date his business operations have grown rapidly until today he is one of the most extensive lumber manufacturers in the United States. In addition to its manufacture, he maintains large yards for the wholesale and retail distribution of lumber and is also heavily interested in the manufacture of paper. Mr. Stephenson is also a banker and owns a model dairy and stock farm. His business interests are centered at Chicago, Milwaukee and at his home city, Marinette. Politically, he has been a republican since the organization of that party. He was a member of the assembly in 1866 and re-elected in 1868. In 1882 he was elected to congress and served three terms when his business affairs required his declining a renomination. In 1880 and in 1892 he was a delegate to the republican national convention. In 1900 was delegate

at large to the Republican National convention at Philadelphia; honestly elected delegate at large to Chicago Convention in 1904 and was chairman of the delegation, but was counted out because the national committee had the power to do as it pleased. In May, 1907, Mr. Stephenson was elected to the United States senate to serve for the unexpired term of Hon. John C. Spooner, resigned. His term of office will expire March 4, 1909.

REPRESENTATIVES.

FIRST CONGRESSIONAL DISTRICT.

Green, Kenosha, Lafayette, Racine, Rock and Walworth Counties. Population, 1900—191,491.

HENRY ALLEN COOPER (Rep.), of Racine, was born at Spring Prairie, Walworth county, Wisconsin, September 8, 1850; graduated from Northwestern University in 1873, and from Union College of Law, Chicago (now Law School of N. W. University) in 1875; is by profession a lawyer; resided in Chicago from 1873 to 1879; otherwise has always lived in Wisconsin; in 1880 was elected district attorney of Racine county, and re-elected without opposition in 1883 and in 1884; state senator in 1886; author of the law which first established the Australian ballot system in Wisconsin; was elected representative in congress in 1892, 1894, 1896, 1898, 1900, 1902, 1904 and again in 1906, receiving 16,226 votes against 8,818 for John J. Cunningham (Dem.) and 1,504 for Moses Hull (Soc. Dem.).

SECOND CONGRESSIONAL DISTRICT.

Adams, Columbia, Dane, Green Lake, Jefferson and Marquette. Population, 1900—170,792.

JOHN MANDT NELSON (Rep.), of Madison, was born in the town of Burke, Dane county, Wis., Oct. 10, 1870; received a collegiate education, graduating from the University of Wisconsin in June, 1892; was elected superintendent of schools in Dane county in 1892 and re-elected in 1894; resigned to accept the position of bookkeeper in the office of the secretary of state, where he served from 1894 to 1897; edited *The State* 1897-98; correspondent in state treasury 1898-1902; was graduated from the law department of the state university 1896; pursued post-graduate studies at the state university 1901-1903; is married; has practiced law the past four years; was a member of the Republican State Central Committee 1902-1906; was elected to fifty-ninth congress September 4, 1906, to fill the vacancy caused by the death of Hon. H. C. Adams, and re-elected November 6, to the sixtieth congress, receiving 14,806 votes to 12,881 for George W. Levis (Dem.), 724 for William L. Dibble (Pro.) and 354 for W. A. Hall, Sr. (Soc. Dem.).

THIRD CONGRESSIONAL DISTRICT.

Crawford, Grant, Iowa, Juneau, Richland, Sauk and Vernon Counties. Population, 1900—180,750.

JAMES WILLIAM MURPHY (Dem.), of Platteville, Wis., was born at Platteville April 17, 1858; was graduated from the state normal school at Platteville in 1873; taught school for five years; was graduated from the law

department of the University of Michigan in 1880; has practiced law at Platteville 26 years, serving four years as district attorney of Grant county; was elected mayor of Platteville in 1904 and 1906; he has for many years been interested in lead and zinc mining in Wisconsin; was married in 1881 and has four children. He was elected to the 60th congress, receiving 14,701 votes against 13,690 votes for Joseph Weeks Babcock (Rep.), and 934 for Herbert J. Noyes (Pro.).

FOURTH CONGRESSIONAL DISTRICT.

The 2d, 3d, 4th, 5th, 7th, 8th, 11th, 12th, 14th, 15th, 16th, 17th and 23d wards of the city of Milwaukee and the towns of Franklin, Greenfield, Lake, Oak Creek and Wauwatosa, the village of Cudahy, the cities of South Milwaukee, West Allis and Wauwatosa in Milwaukee county. Population in 1900—183,540.

WILLIAM JOSEPH CARY (Rep.) was born March 22, 1865, at Milwaukee, Wis. At the age of thirteen he was left an orphan, with four younger sisters and a brother. The five younger children were placed in an orphan asylum, and young Cary went to work as a cash-boy in Chapman's store. He left to become a telegraph messenger, and at the age of eighteen he became a full fledged operator, having studied the key after hours, and when not running messages. At nineteen he had saved enough money to take the four younger children from the asylum, and give them a home of their own. In 1900 he was elected alderman from his ward, on account of the demand for a reform representative, and in 1902 was re-elected. In 1904 he was elected sheriff of Milwaukee county, and in 1906 was elected congressman to succeed Theobald Otjen, who had held the office in the fourth district for twelve years, receiving 12,331 votes against 8,759 votes for Edmund J. Melms (Soc. Dem.), and 8,656 votes for Thomas J. Fleming (Dem.).

FIFTH CONGRESSIONAL DISTRICT.

The 1st, 6th, 9th, 10th, 13th, 18th, 19th, 20th, 21st and 22d wards of the city of Milwaukee, the towns of Granville and Milwaukee, the villages of East Milwaukee, North Milwaukee and Whitefish Bay, in Milwaukee county, and the county of Waukesha. Population, 1900—181,706.

WILLIAM H. STAFFORD (Rep.), the representative from the fifth congressional district, is a native of Milwaukee. He attended the Milwaukee public schools, and later attended Harvard college and Harvard law school, from which he was graduated. At the time of his election to congress he was in the active practice of law in Milwaukee. He was elected to the fifty-eighth congress, and re-elected to the fifty-ninth and to the sixtieth congress, receiving 13,943 votes against 8,870 for Albert J. Welch (Soc. Dem.), 8,192 for J. G. Donnelly (Dem.), and 506 for Chas. T. Everett (Pro.).

SIXTH CONGRESSIONAL DISTRICT.

Dodge, Fond du Lac, Ozaukee, Sheboygan and Washington counties. Population, 1900—184,517.

CHAS. H. WEISSE, (Dem.), was born in Sheboygan Falls, Oct. 24, 1866; received his education in the parochial and high schools of his native city; entered his father's tannery in 1880 and became a partner in the firm of Chas. S. Weisse & Co., tanners and curriers, in 1888; was elected president of the village of Sheboygan Falls in 1893 and re-elected for three successive terms; served three years as treasurer of school board of Sheboygan Falls;

chosen as a delegate-at-large to the democratic national convention at St. Louis, in 1904; member of the campaign committee of the national democratic congressional committee, 1906; was elected to the 58th congress in 1902, to the 59th congress in 1904; re-elected to congress in 1906, by a plurality of 8,934, receiving 19,446 votes against 10,512 for Alvin Dreger (Rep.), and 764 for A. Damrow (Soc. Dem.).

SEVENTH CONGRESSIONAL DISTRICT.

Buffalo, Clark, Eau Claire, Jackson, La Crosse, Monroe, Pepin and Trempealeau counties. Population in 1900—193,890.

JOHN JACOB ESCH (Rep.), of La Crosse, was born near Norwalk, Monroe county, Wis., March 20, 1861. He was educated in the public schools of Milwaukee and Sparta, Wis.; entered the state university in 1878, and graduated from the modern classical course in 1882. The next four years he spent in reading law and teaching at Sparta; was offered the principalship of the high school, but declined and entered the university law school, graduating in the class of 1887. From this time to the present he has been engaged in the practice of law at La Crosse as a member of the firm of Winter & Esch. In 1883 he organized the Sparta Rifles, afterwards known as Co. I, 3d Regiment W. N. G., and was at one time its captain. He also helped organize the Gateway City Guards of La Crosse, now Co. M, 3d Regiment W. N. G. Never held but one elective office, that of city treasurer of Sparta, and this for only one year. Has always been a republican. Was elected to the 56th, 57th, 58th, 59th and 60th congresses, receiving 18,042 votes against 6,779 for Chas. F. Hille (Dem.).

EIGHTH CONGRESSIONAL DISTRICT.

Calumet, Manitowoc, Portage, Waupaca, Waushara and Winnebago Counties. Population, 1900—194,634.

JAMES H. DAVIDSON, (Rep.), of Oshkosh, was born in Colchester, Delaware county, New York, June 18th, 1858; was educated in the public schools and at Walton (New York) Academy; taught school, studied law, graduated from Albany Law School as president of the class in 1884, and was in the same year admitted to the bar of New York; subsequently removed to Wisconsin and commenced the practice of law at Princeton in 1887; in 1892 removed to Oshkosh and continued the practice of law; in 1895 was appointed city attorney; was chairman of the republican congressional committee from 1890 to 1896; was elected to the 55th, 56th, 57th, 58th, 59th and 60th congresses, receiving 16,966 votes, against 9,549 for John E. McFullen (Dem.), 1,103 for J. J. Pitz (Soc.), 700 for Chas. H. Forward (Pro.), and 54 for Wm. B. Minehan (Ind. Rep.).

NINTH CONGRESSIONAL DISTRICT.

Brown, Door, Kewaunee, Marinette, Oconto and Outagamie counties. Population in 1900—179,097.

GUSTAV KÜSTERMANN (Rep.), of Green Bay, was born in Detmold, Germany, May 24, 1850; received his education at the academy of his native city (Gymnasium Leopoldinum), from which he graduated in 1864. After having been employed for several years in a wholesale dry goods house in Hamburg, Germany, he emigrated to the United States in 1868, settling in Green Bay, Wis., where he and his family still reside and where for over thirty years he has

been engaged in the mercantile business. He has held various public positions, and from 1892 to 1896 served as postmaster of Green Bay. In 1901 he received the appointment as member of the state board of control, of which he became president in 1904. He was elected to the 60th congress in 1906, receiving 14,180 votes against 8,689 for Philip A. Badour (Dem.), and 547 for Joseph E. Harris (Soc. Dem.).

TENTH CONGRESSIONAL DISTRICT.

Ashland, Florence, Forest, Iron, Langlade, Lincoln, Marathon, Oneida, Price, Shawano, Taylor, Vilas and Wood counties. Population in 1900—190,975.

ELMER A. MORSE (Rep.), of Antigo, Wisconsin, was born in Racine county in 1870; was educated in the common schools of Racine county; graduated from Ripon College in 1893, then served four years as superintendent of Schools of Racine county; entered the law school at Wisconsin University and was admitted to the bar in 1900. He commenced practicing law in the city of Antigo in the year 1900 and has been actively engaged in the practice since that time. He served two terms as city attorney of the city of Antigo resigning during third term. He has always resided in Wisconsin. He was elected member of the 60th congress in 1906, receiving 20,225 votes, against 10,669 for D. Conway (Dem.), and 913 for J. Cox (Soc. Dem.).

ELEVENTH CONGRESSIONAL DISTRICT.

Barron, Bayfield, Burnett, Chippewa, Douglas, Dunn, Pierce, Polk, Rusk, St. Croix, Sawyer and Washburn counties. Population in 1900—217,650.

JOHN J. JENKINS (Rep.), of Chippewa Falls, was born in Weymouth, England, August 20th, 1843, settled in Baraboo, June 1852, attended the common schools for a few terms, served during the Civil War in Company A., 6th Wisconsin Infantry. Member of assembly from Chippewa county, county judge of Chippewa county, appointed United States Attorney for the Territory of Wyoming by President Grant, March, 1876. Elected to the 54th, 55th, 56th, 57th, 58th, 59th and to the 60th congresses, receiving 19,002 votes, against 5,146 for J. Maguire (Dem.), and 1,213 for C. W. Swanson (Soc. Dem.).

STATE OFFICERS.

GOVERNOR.

JAMES O. DAVIDSON (Rep.), of Soldiers Grove, was born in Norway, Feb. 10, 1854, and was educated in the common schools of his native country. He came to Wisconsin in 1872, residing first at Madison, later at Boscobel, and since 1877 at Soldiers Grove. He has been engaged for twenty-three years in the mercantile business. He was president of the village of Soldiers Grove in 1888 and 1889, treasurer in 1892 and 1893, and again in 1897 and 1898; was elected to the assembly in 1892 and re-elected in 1894 and again in 1896. He was chairman of the republican committee of the third congressional district for several years; was elected state treasurer in 1898 and re-elected in 1900; was elected Lieutenant Governor in 1902, and re-elected in 1904, upon the resignation of Gov. R. M. La Follette he became Governor, Jan. 1, 1905. The following September he was nominated as the republican candidate for governor, receiving 109,583 votes at the primary election, against 61,178 for I. L. Lenroot. He was elected in November, receiving 183,526 votes, against 103,114 for J. A. Aylward (Dem.), 24,435 for W. R. Gaylord (Soc. Dem.), 8,215 for E. L. Eaton (Pro.), and 456 for O. T. Rosaas (Soc. Lab.).

LIEUTENANT GOVERNOR.

WILLIAM D. CONNOR (Rep.), of Marshfield, was born on a farm near Stratford, Ontario, March 24th, 1864. When eight years of age he moved with his parents to Wisconsin and grew to manhood on a farm at Auburndale, Wood County. He was educated in the district school and later attended the state normal at Oshkosh for two years. He moved to Marshfield in 1895, where he has since resided. He has been engaged in the lumber business for the greater part of his life. He has always been interested in politics and for twenty years was a member of the Wood County Board of Supervisors, of which body he was twice elected chairman. In 1892, 1894, 1896, 1902 and 1904 he was elected a delegate to the Republican State Convention and in 1904 he was also elected one of the four delegates-at-large to the National Republican Convention, by the regular Republican State Convention.

Through his efforts Marshfield secured a free public library and Mr. Connor has been president of the library board since its organization.

At the present time Mr. Connor is a trustee of the Wood County Normal Training School and also of Carroll College. He was chairman of the Rep. State Central Committee in the campaigns of 1904 and 1906, and was elected Lieutenant Governor in 1906, receiving 174,750 votes against 104,398 for Michael F. Blenski (Dem.), 25,036 for William Kaufmann (Soc. Dem.), 8,724 for August F. Fehlandt (Pro.), and 510 for John Veirthaler (Soc. Lab.).

SECRETARY OF STATE.

JAMES A. FREAR (Rep.), was born at Hudson, Wis., Oct. 24, 1861. Was attending Lawrence University at Appleton, Wisconsin, in 1878, when with his parents he moved to Washington, D. C. Served five years in the U. S. Signal Corps at Fort Myer, Va., Indianapolis and Washington, and graduated from the National Law University, Washington, in 1884. He was admitted to the bar of the supreme court, District of Columbia, the same year and then returned to Hudson, entering the practice of law in that city. Has held different city offices, including city attorney for several years. He was appointed district attorney for St. Croix county by Governor Upham in April 1896, and was elected for three consecutive terms thereafter. He was appointed on the staff of the governor in 1901 and elected to the assembly in 1902, and to the state senate in 1904. He was appointed chairman of the senate investigation committee on state insurance March 9th, 1905, and at the same session was chosen a member of the Wisconsin Insurance Investigation committee. He served as chairman of both committees during the year 1906. September 4th of that year he was nominated at the primaries for Secretary of State and was elected to that office in November, receiving 178,818 votes, against 100,194 for Clarence J. Noel (Dem.), 24,427 for Chas. V. Schmidt (Soc. Dem.), 8,174 for John E. Clayton (Pro.), and 463 for Albert Wang (Soc. Lab.)

STATE TREASURER.

ANDREW H. DAHL (Rep.), of Westby, was born in Lewiston, Columbia county, Wisconsin, April 13, 1859, and was educated in the high school at Viroqua and the Northwestern Business college at Madison. Vernon county has been his home since 1864, where he is engaged in dealing in general merchandise. He was supervisor of the village of Westby during 1896 and 1897, and was elected trustee of Vernon county asylum in 1897 and re-elected in 1901 and 1904. He was president of the village from 1899 to 1902, and was elected to the assembly in 1898, 1902 and 1904; was chairman of committee on penal and charitable institutions in the legislature of 1903, and served as chairman of committee on "Assessment and Collection of Taxes" during the session of 1905. September 4th, 1906, he was nominated at the primaries for state treasurer over John J. Kempf, John W. Thomas, Julius Howland and Henry D. James, and was elected in November, receiving 178,050 votes, against 101,054 for Andrew Jensen (Dem.), 24,259 for Joseph Ammann (Soc. Dem.), 8,227 for David W. Emerson (Pro.), and 461 for Theo. Horn (Soc. Lab.).

ATTORNEY GENERAL.

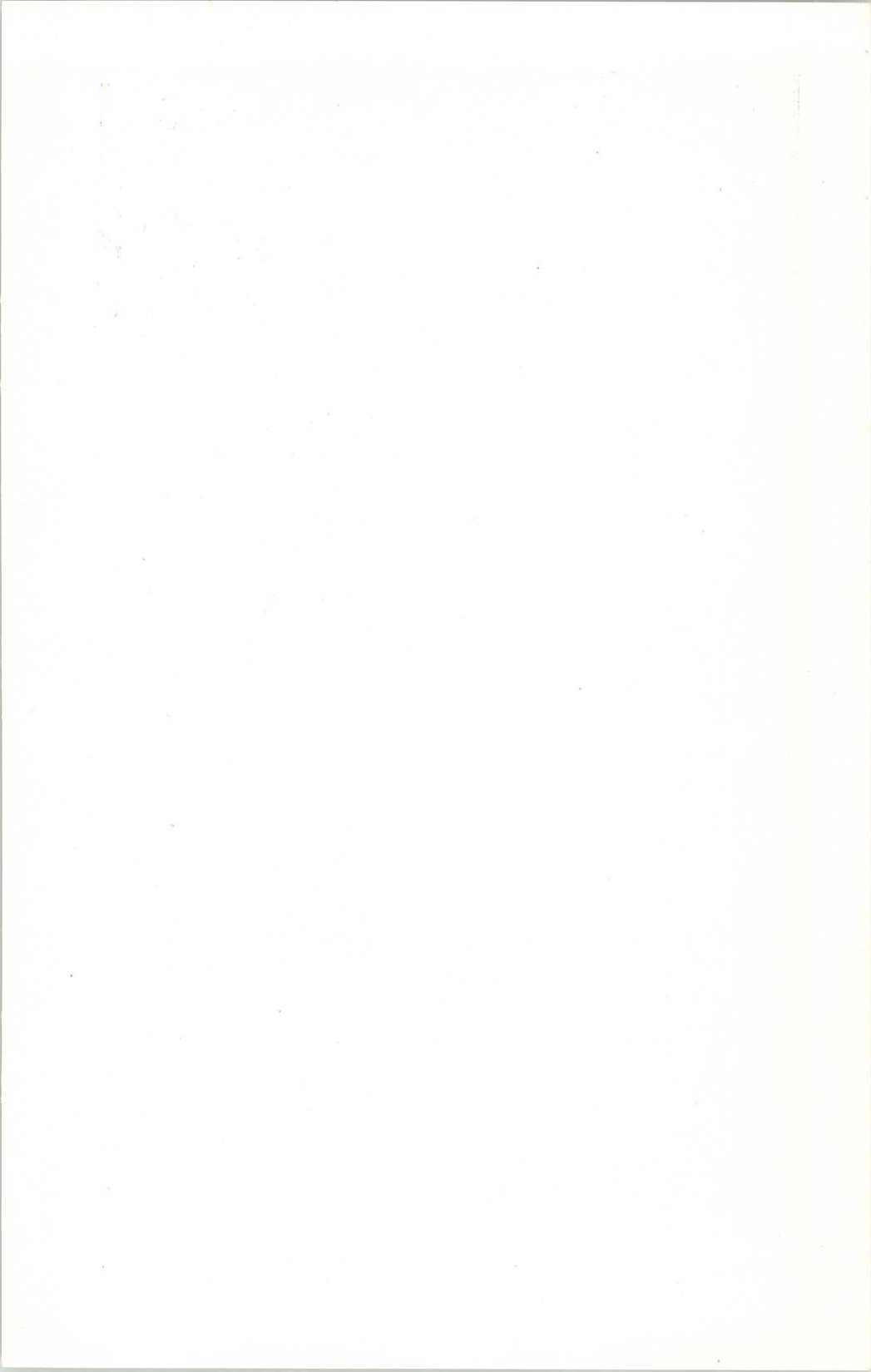
FRANK L. GILBERT, (Rep.), of Madison, was born March 3, 1864, in Arena, Iowa County, Wisconsin. When but a few months old he was made an orphan by the death of his father in the civil war. His early youth was spent in Iowa County, Wisconsin, working on farms in the summer and attending school in the winter. He taught his first school at the age of sixteen and graduated from the Mayomanie high school in 1883. He later entered the academic department of the University, but before graduating was obliged to abandon his studies in order to earn means to pursue them. In 1896 he entered the law school of the state university, passed the state bar examination in 1897, and though engaged actively in practice continued his studies in the law school, graduating in 1900. Served as district attorney of Dane county from January 1st, 1902, to January 1st, 1907. Was nominated as the republican candidate for attorney general in 1906, receiving 73,761 votes against 44,102 for C. A. A. Mc Gee and 26,423 for Wallace Ingalls. Was elected attorney general, receiving 179,427 votes, against 99,391 for Martin Lueck (Dem.), 24,411 for Richard Elsner (Soc. Dem.), and 7,991 for B. E. Van Keuren, (Pro.).

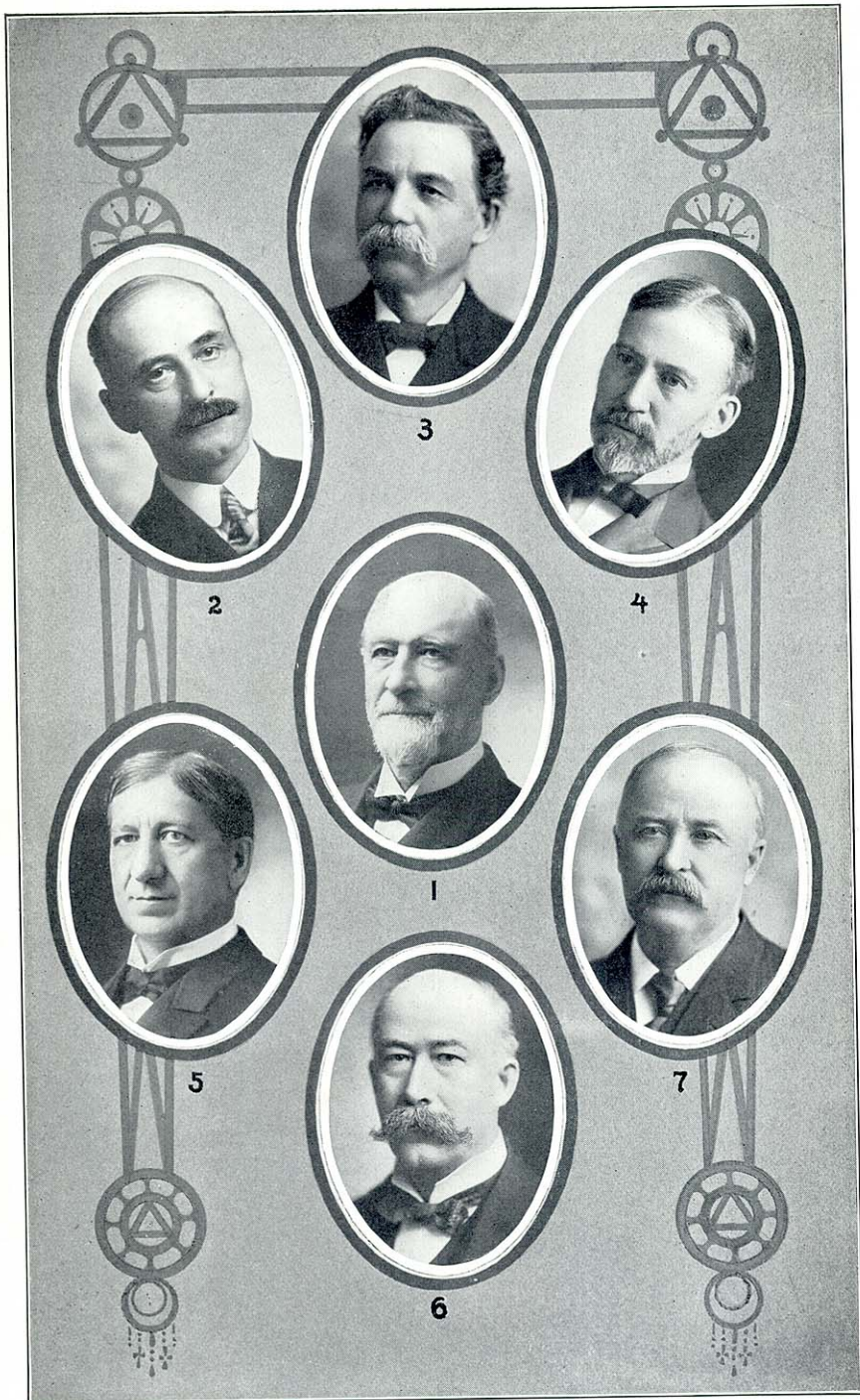
INSURANCE COMMISSIONER.

GEORGE E. BEEDLE was born in Shawano, Wis., July 17th, 1864; was educated in the common schools; was in the employ of the Chicago & Northwestern Railway Company, from 1883 to 1899; was elected a member of the county board of supervisors in 1901, resigning that position to become one of the first trustees of the Waupaca county asylum, which position he held until his term expired, December 31st, 1906, when he retired to take up the duties of Commissioner of Insurance. Was elected member of assembly in 1902 and re-elected in 1904. He was appointed one of the Legislative Insurance Investigating committee at the special session of the legislature in 1905. He was elected Commissioner of Insurance in 1906, receiving 177,082 votes, against 99,810 for Henry J. Neunens (Dem.), 24,240 for Herman W. Bistorius (Soc. Dem.), 8,151 for Lincoln Abraham (Pro.), 532 for A. B. Gunderson (Soc. Lab.).

STATE SUPERINTENDENT.

C. P. CARY was born in southern Ohio, January 28, 1856. His mother was of German descent and his father was directly related to the English political economist, Henry Cary. From the time he arrived at school age till he was seventeen he worked on his father's farm in summer and attended the district school in winter. At the age of seventeen he began to teach district school in winter and continued working on the farm in summer. In 1877 he entered the Ohio Central Normal School and was graduated in 1879. After this he taught for seven years as principal of graded schools in Ohio and Kansas, and served during most of this period as county examiner of teachers and instructor in teachers' institutes. In 1883 he was elected county superintendent of schools in Brown county, Kansas; but declined renomination for a second term, and accepted the position of superintendent and high school principal at Fairbury, Nebraska. This position he resigned in the summer of 1893 to accept the position of instructor in pedagogy and principal of the training department of the Milwaukee State Normal School. This position he resigned in the summer of 1901 to accept the position of superintendent of the Wisconsin School for the Deaf at Delevan, Wis. This position he resigned in the fall of 1902 to accept the nomination for the office of state superintendent of public instruction. He holds a life certificate to teach in the schools of Nebraska, also in Wisconsin, and is a graduate of the University of Chicago, class of '98. He is an active member of the National Educational Association, and a member of the National Society for the Scientific Study of Education, and has devoted his life to the study of all the sciences and arts that bear upon the problems of education; was elected superintendent of public instruction in 1902, and re-elected in April, 1905, receiving 115,284 votes, against 86,743 votes, for Albert Salisbury.





JUSTICES OF THE SUPREME COURT.

1. J. B. Cassoday, Chief Justice. 2. J. B. Winslow. 3. R. D. Marshall. 4. J. E. Dodge. 5. R. G. Siebecker. 6. Jas. C. Kerwin. 7. W. H. Timlin.

JUSTICES OF THE SUPREME COURT.

JOHN B. CASSODAY, LL. D., Beloit College, 1881, and LL. D., University of Wisconsin, 1905, chief justice, was born in Herkimer County, N. Y., July 7, 1830, removing with his widowed mother to Tioga County, Pa., three years later. His early studies were pursued in the common schools, at the academies in Wellsboro and Knoxville, Pa., and two years at the Alfred Academy, where he graduated. After spending one year at the Michigan University he attended the Albany Law School, afterward reading in a law office in Wellsboro, Pa. In July, 1857, he settled in Janesville, Wis., and continued actively in practice until called to the supreme bench. He was a member of the assembly in 1865, and again in 1877, when he was elected speaker of that body. He was a delegate to the national convention at Baltimore which nominated Lincoln in 1864, and was chairman of the Wisconsin delegation to the national convention at Chicago which nominated Garfield in 1880. November 11, 1880, he was appointed by Gov. William E. Smith, an associate justice of the supreme court, a vacancy having been caused by the promotion of Associate Justice Cole to the chief justiceship to fill the vacancy caused by the death of Chief Justice Edward G. Ryan. He was elected associate justice in April, 1881, re-elected in April, 1889, and again in 1899, and from 1885 to 1899 was a professor in the College of Law of the University of Wisconsin, lecturing on the subject of Constitutional Law. He is the author of "Cassoday on Wills," a law text book published in 1893. In July, 1895, upon the death of Justice Orton, by virtue of his seniority in service he became chief justice, and has continued as such ever since.

JOHN B. WINSLOW, LL. D., University of Wisconsin, was born Oct. 4, 1851, at Nunda, Livingston county, N. Y. He graduated at Racine college, Wis., in 1871, and entered upon the study of law in the law office of E. O. Hand, and later in the law office of Fuller & Dyer. He finished his course of reading in the law department of the University of Wisconsin, from which he graduated in 1875, and entered upon the practice at Racine. He was for several years city attorney of Racine. In April, 1883, he was elected circuit judge of the First judicial circuit, and entered upon judicial duties in January, 1884, serving in that capacity (being re-elected) until May 4, 1891, when he was appointed associate justice of the supreme court, in place of Hon. David Taylor, deceased. In April, 1892, he was elected to fill the residue of Judge Taylor's term; in April, 1895, he was re-elected for a full term; and again re-elected for a full term in April, 1905.

ROUJET D. MARSHALL, LL. D., University of Wisconsin, 1905, was born Dec. 27, 1847, in Nashua, N. H.; was educated principally at the Delton Academy, Baraboo Collegiate Institute and Lawrence University. The Marshalls came to this country from England in 1650 and settled in Boston. The subject of this sketch came to Wisconsin in 1854; resided at Delton, Sauk county, until 1872, and since that time in Chippewa Falls; commenced the study of law at the age of 17, which he continued with his school work till he was 24, since which time he has been actively engaged in the profession; as county judge of Chippewa county from 1876 to 1883; member of the board of regents of the University of Wisconsin from 1884 to 1889; elected circuit judge of the Eleventh circuit in April, 1888, and re-elected in April, 1894; was appointed to the supreme bench in August, 1895, and was elected to the supreme bench in April, 1896, for ^{the} unexpired term of Chief Justice Orton, deceased; was re-elected April 9, full term.

JOSHUA ERIC DODGE was born Oct. 25, 1854, in West Cambridge (now Arlington), Middlesex county, Mass.; received his education, in the public schools of that place, Westford Academy, at Westford in the same county and graduated with the class of 1875 from Iowa College at Grinnell, Ia.; graduated from the Law School of the Boston University in 1877. He was admitted to the bar by the supreme court of Massachusetts in that year; moved to Racine, Wis., in March, 1878, and there continued in the general practice of the law until September, 1893, when he was appointed assistant attorney general of the United States, which position he occupied until July, 1897, when he returned to Wisconsin and engaged in practice at Milwaukee until his appointment as associate justice of the supreme court upon the resignation of Mr. Justice Pinney Nov. 22, 1898; was a member of assembly in 1891 and 1892, and was appointed a member of the board of commissioners for the promotion of Uniformity of Legislation in the United States, April 18, 1893. Mr. Dodge was elected to full term on the supreme bench in April, 1901.

ROBERT G. SIEBECKER was born October 17, 1854, in Sauk county, Wisconsin. He was educated in the district school until he was seventeen and he then attended a private academy at Madison for two years. He entered the University of Wisconsin in September, 1874, and graduated in June, 1878. In the fall of this year, he entered the law school of the University and he graduated therefrom in June, 1880. He was admitted to the bar on examination in September, 1879. In October of that year he began the practice of law at Madison and this he continued until his appointment as judge of the Ninth judicial circuit on January 7th, 1890. In March, 1888, he was elected city attorney of Madison and was annually re-elected until he went on the circuit bench. In April, 1891, he was elected judge of the circuit court, for the unexpired term and for the ensuing full term. He was twice thereafter re-elected to this position without opposition. On April 7th, 1903, he was elected a justice of the supreme court, for the term beginning in January, 1904, and on April 9th was appointed for the unexpired term in this office, caused by the death of Justice C. V. Bardeen.

JAMES C. KERWIN was born in the town of Menasha, Winnebago county, Wisconsin, May 4, 1850. He attended the common schools of the neighborhood and later the Menasha high school, from which he was graduated. He prepared himself for the practice of the law by a course of study in the law school of the University of Wisconsin, and was graduated in 1875. Returning to his native county, he opened an office in Neenah and has since been actively engaged in the profession. He was city attorney of Neenah for twelve years, and was appointed a member of the board of regents of the University of Wisconsin in 1901. In April 1904, he was elected associate justice of the supreme court, and entered upon judicial duties in January, 1905.

W. H. TIMLIN was born at Mequon, Ozaukee County, Wisconsin, May 28th, 1852, admitted to the bar in 1877, and practiced law at Kewaunee, Green Bay and Milwaukee. Married and has four children. Elected Justice of Supreme Court in April 1906, for the term commencing January 7th, 1907.

THE WISCONSIN LEGISLATURE.

SENATE.

The senate is composed of thirty-three members, who hold office for four years and receive \$500 each for their services at each regular session. Members of the senate, session of 1907, representing odd-numbered districts, were elected in 1906. Their terms will end Jan. 1, 1911. Those representing even-numbered districts were elected in 1904. Their terms will end Jan. 1, 1909. The lieutenant-governor is president of the senate, but can vote only in case of a tie. A temporary president, to act in the absence of the president, is chosen by the members of the senate. The senate of 1907 contains 27 republicans, 5 democrats, and one social democrat. Lieutenant-Governor W. D. Connor, president; Jas. H. Stout, president pro tem; A. R. Emerson, chief clerk; R. C. Falconer, sergeant-at-arms.

FIRST SENATORIAL DISTRICT.

Door, Kewaunee and Marinette counties. Population, 1900—65,617.

HARLAN PAGE BIRD (Rep.), of Wausaukee, is a native of Bradford Co., Pa., born 66 years ago of New England parents. Attending common schools only, he engaged in land surveying and bookkeeping, which took him to Brooklyn, N. Y., and thence to the lumber woods of Marinette Co. He volunteered in '61, served four years in the civil war, two of which was as staff officer at division and corps headquarters; was wounded in the Vicksburg rifle pits. After the war he engaged in lumbering and mercantile pursuits; is also president of the Wausaukee State Bank. He was elected state senator in 1902, and re-elected in 1906, receiving 4,995 votes, against 3,125 for Leo. J. Evans (Dem.), and 216 for James Larson (Soc. Dem.).



Harlan Page Bird.

SECOND SENATORIAL DISTRICT.

Brown and Oconto counties. Population, 1900—67,233.

HENRY F. HAGEMEISTER (Rep.), of Green Bay, Brown county, is a native of Wisconsin. He was born in Green Bay, Nov. 18, 1855, and was educated in the parochial and public schools of that city. He is president and manager of the Hagemeister Brewing Company of Green Bay and president of Kellogg's National Bank. He has served his city in the capacity of alderman and supervisor and in 1892 was elected a member of the assembly as a democrat, and was re-elected in 1894. He was elected state senator in 1900 on the republican ticket, and re-elected in 1904. He received 7,606 votes, against 5,318 for F. R. Singleton (Dem.).



Henry F. Hagemeister.

THIRD SENATORIAL DISTRICT.

Kenosha and Racine counties, Population, 1900—67,351.



Isaac Thorn Bishop.

ISAAC THORN BISHOP (Rep.), of Somers, Kenosha County, Wis., is a native of that place. Born June 6th, 1844, of New England parents. Attended common schools only. He was a farmer until the year 1861, when he accepted a clerkship with Doan & Hawley, dry goods merchants, in the city of Kenosha. He volunteered in Sept. 1862, and served three years in the Civil War, participating in the battles of Arkansas Post, Raymond, Champion Hills, Black River Bridge and the siege of Vicksburg. After the war he engaged in farming and now owns and operates a farm that his father bought from the government before the subject of this sketch was born. He served his town as chairman five years, justice of the peace 11 years, and has just rounded out his twenty-fifth year as secretary of the Somers Mutual Fire Insurance Company. He was elected state senator in 1906, receiving 4,978 votes against 4,392 for Michael Higgins (Dem.), 1,116 for W. W. Britton (Soc. Dem.), and two for O. W. Johnson (Pro.).

FOURTH SENATORIAL DISTRICT.

The 1st, 13th, 18th and 21st wards of the city of Milwaukee, the towns of Granville and Milwaukee, and the villages of North Milwaukee, East Milwaukee and Whitfish Bay. Population, 1900—61,035.



Theo. C. Froemming.

THEO. C. FROEMMING (Rep.), was born in Milwaukee May 11, 1873; is the youngest member in the State Senate; was educated in a parochial school of Milwaukee, and graduated from Milwaukee Business University; also attended Concordia College for two years; was a member of the Republican county committee from 1898 to 1900; was elected alderman of the 21st ward in 1900 and re-elected in 1902, his term expiring in April, 1904; is engaged as grading contractor; is also in the stone quarry business. He was elected state senator in 1904 on the republican ticket; he received 5,246 votes, against 3,697 for Herman Reel (Dem.), and 3,184 for Alexis Fischer (Soc. (Dem.).

FIFTH SENATORIAL DISTRICT.

The 2d, 3d, 4th, 6th, 7th, 15th and 16th wards of the city of Milwaukee. Population, 1900—69,196.



Edward T. Fairchild.

EDWARD T. FAIRCHILD (Rep.) of Milwaukee, Milwaukee county, was born at Towanda, Pa., June 17, 1872; his parents moved to Dansville, Livingston county, New York, when he was five years of age. He attended the public school of that village, and studied law in the office of Chas. H. Rowe; was admitted to practice

in 1894, and soon came to Milwaukee, entering into the law firm of Lenicheck, Fairchild & Boesel; was assistant district attorney of Milwaukee county, 1900-1904. He was elected to the state senate in 1906, receiving 6,541 votes against 3,454 votes for Henry Cummings (Dem.) and 2,442 votes for Chas. Zainer (Soc. Dem.).

SIXTH SENATORIAL DISTRICT.

The 9th, 10th, 19th, 20th, and 22d wards of the city of Milwaukee. Population, 1900—71,771.

JACOB RUMMEL (Soc. Dem.) was born in Washington county, Wis., April 17, 1857, where he attended common school; came to Milwaukee in 1872 and entered college; learned the cigar trade; is foreman for Williams & Brendle Cigar Mfg. Co. at the present time. He was elected state senator in 1904, receiving 5,848 votes against 5,801 for A. J. Langhoff (Rep.), and 3,127 for Gottfried Hergarten (Dem.).



Jacob Rummel.

SEVENTH SENATORIAL DISTRICT.

The 14th and 17th wards of the city of Milwaukee, the towns of Franklin, Greenfield, Lake, Oak Creek and Wauwatosa, the cities of South Milwaukee, Wauwatosa, West Allis and Cudahy, and the village of West Milwaukee. Population, 1900—63,533.

GEORGE E. PAGE (Rep.), born in the city of Milwaukee on the 19th of March, 1873, and has continuously resided there; was educated in the public schools of Milwaukee; was elected to the office of justice of the peace for the 17th ward of said city in the year 1900, resigning the same year to enter the Law Department of the Columbian University, Washington, D. C., from which he was graduated in 1903; was admitted to the bar in the same year; was elected to the legislature as member of the assembly in 1904 and as state senator in 1906, receiving 4,250 votes against 2,603 for Anthony Szczerbinski (Dem.), and 2,737 for W. L. Hamann (Soc. Dem.).



George E. Page.

EIGHTH SENATORIAL DISTRICT.

The 5th, 8th, 11th, 12th, and 23d wards of the city of Milwaukee. Population, 1900—64,482.

JULIUS EDWARD ROEHR (Rep.) was born March 6, 1860, in Brooklyn, N. Y.; was educated in the public schools of Brooklyn and Milwaukee, and attended the Wisconsin university from 1879 to 1881, graduating therefrom in June, 1881; came to Wisconsin in May, 1873, settling in Milwaukee, where he has since resided; has practiced law since 1881; was nominated for mem-



Julius E. Roehr.

ber of assembly by the republicans of the Eighth assembly district in 1892, and was defeated by the Bennett law issue; in the spring of 1892 he was nominated on the republican ticket for judge of the superior court, but was defeated by Judge John C. Ludwig; was appointed circuit court commissioner for Milwaukee county by Judge D. H. Johnson in 1888, and re-appointed in 1894 in 1900 and in 1906; represented the Fourth congressional district at the Republican national convention at St. Louis in 1896; was elected to the senate in 1896, and was a member of the legislative committee which revised the statutes known as "the Statutes of 1898" was chairman of the Committee on Insurance and Banking for three sessions; was member of committee to investigate insurance companies, known as "Legislative Investigating Committee." Senator Roehr was elected president of the Bar Association of Milwaukee county on December 10, 1904. He was again elected to the senate in 1900 and re-elected in 1904, receiving 4,788 votes against 4,656 for F. N. Rehfeld (Soc. Dem.), and 3,909 for R. T. Ziarnek (Dem.).



Theodore W. Brazeau.

NINTH SENATORIAL DISTRICT.

Adams, Marquette, Waushara and Wood counties. Population, 1900—61,487.

THEODORE W. BRAZEAU (Rep.) was born at the city of Grand Rapids, Wood county, Wisconsin, March 12th, 1873. He attended the elementary schools of the city and graduated from the high school. After teaching school a year, he entered the University of Wisconsin with the class of '96. Before graduation he taught school in the Grand Rapids High School one year and graduated from the university in the class of 1897. He then taught school another year and finished the law school with the class of 1900. Since completing his law course he has practiced law in the city of Grand Rapids in partnership with B. R. Goggins, under the firm name of Goggins & Brazeau. He served as district attorney of Wood county from 1903 to 1907. He was elected state senator in 1906, receiving 6,657 votes against 2,712 for F. B. Rawson (Dem.).



Walter C. Owen.

TENTH SENATORIAL DISTRICT.

Pierce and St. Croix counties. Population 1900—50,773

WALTER C. OWEN (Rep.) was born on a farm in the town of Trenton, Pierce county, Wisconsin, Sept. 26, 1868. He was educated in the common and high schools of Pierce county, and graduated from the law department of the University of Wisconsin with the class of 1891. He engaged in the practice of law at Superior, Wisconsin, becoming a member of the firm of Crownhart, Owen & Foley, and continuing with said firm until

January 1, 1898, when he removed to Maiden Rock, Wisconsin where he has since continued in the active practice of his profession. Though he has always taken an active interest in politics, he never held public office until his election to the state senate from the tenth district, to fill the vacancy caused by the resignation of Senator James A. Frear. He was elected without opposition, receiving 4,291 votes.

ELEVENTH SENATORIAL DISTRICT.

Burnett, Douglas and Polk counties. Population, 1900—61,614.

GEORGE B. HUDNALL (Rep.) was born at Rural, Waupaca county, Wis., Jan. 9, 1864. He was educated in the district and high schools and at the Wisconsin university law school, class of 1891. Lived on a farm until twenty-four years old when he engaged in teaching and took up the study of law. Was assistant city attorney of Superior from 1900 to May, 1902. He was elected state senator in 1902 and re-elected in 1906, each time without opposition.

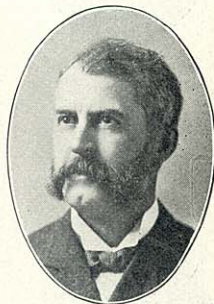


George B. Hudnall.

TWELFTH SENATORIAL DISTRICT.

Ashland, Bayfield, Price, Sawyer, Taylor and Washburn counties. Population, 1900—64,050.

ALBERT W. SANBORN (Rep.), was born in Swanton, Vermont, January 17, 1853; removed to Guernsey county, Ohio, when a small boy with his parents and lived there on a farm until 1876. Was educated at Muskingum college at New Concord, Ohio. Studied law with Barnes & Anderson at Cambridge, Ohio, and was there admitted to the bar, April 10, 1876; came to Oshkosh, Wisconsin, in April, 1876, and studied law in Finch & Barber's office for about two months. Located at Stevens Point, Wisconsin, in June, 1876, where he practiced law, first as a member of the firm of Jones & Sanborn, and then as a member of the firm of Cate, Jones & Sanborn, and afterwards as a member of the firm of Cate, Sanborn, Lamoreux & Park. Was district attorney of Portage county for one term and a member of the assembly from Portage county in 1885. Was a delegate from the Ninth Congressional District to the National Convention in 1888; moved to Ashland, Wisconsin, in 1893, where he has continued in the practice of his profession; is now a member of the firm of Sanborn, Lamoreux & Pray. He was elected to the senate in 1904, receiving 11,129 votes against 3,595 for G. Schwindt (Dem.).



Albert W. Sanborn.

THIRTEENTH SENATORIAL DISTRICT.

Dodge County. Population, 1900—46,631.



Paul O. Husting.

PAUL O. HUSTING (Dem.), was born at Fond du Lac, Wisconsin, on April 25th, 1866, a son of John P. Husting and Mary M. Husting nee Juneau, the latter being a daughter of Solomon Juneau, the founder of Milwaukee. He removed with his parents to Mayville, Wisconsin in the year 1876. Received a common school education. Left school in his seventeenth year and became successively clerk in general store; railway postal clerk; and mailing clerk and later promoted to assistant bookkeeper in the office of the secretary of state. Entered the law school of the University of Wisconsin and passed the state bar examination and was admitted to the bar in 1895. Began the practice of law alone at Mayville immediately thereafter and in 1897 associated himself with C. W. Lamoreux under the firm name of Lamoreux & Husting which still exists. Was elected District Attorney of Dodge County in 1902 and was re-elected in 1904. Was elected to the Senate in 1906 receiving 4,646 votes against 2,746 for Leon Reible (Rep.) and 124 for G. A. Paddock (Pro.).

FOURTEENTH SENATORIAL DISTRICT.

Outagamie and Shawano counties. Population, 1900—73,722.



Fred M. Wilcox.

FRED M. WILCOX (Rep.), of Appleton, Wis., was born in Marshall county, Iowa, July 17, 1870. Graduated from high school at Montour, Iowa, in 1887, and from the State University of Iowa in 1893; assistant postmaster to C. G. Wilcox at De Pere, Wisconsin, during the year 1894; commenced practice of law at Seymour, Wis., in November, 1894; elected district attorney of Outagamie county in 1898, and immediately removed to Appleton; re-elected in 1900 and again in 1902; in March, 1904, with his brother, John C. Wilcox, formed the law partnership of Wilcox & Wilcox. He was elected state senator in 1904, receiving 8,476 votes against 5,487 for Theo. Knapstein (Dem.).

FIFTEENTH SENATORIAL DISTRICT.

Calumet and Manitowoc counties. Population, 1900—59,339.



Samuel W. Randolph.

SAMUEL W. RANDOLPH (Dem.), was born December 5th, 1872, at Manitowoc, Wis., and was educated in the First Ward public school of that city. For a number of years he has been interested in navigation of the Great Lakes and represents several transportation companies. Was appointed harbor master, January, 1902, to fill an unexpired term and reappointed for a full term in April, 1902. He was elected state senator in

1902 and re-elected in 1906, receiving 4, 613 votes against 3,994 for G. G. Sedgewick (Rep.), and 864 for Henry Bruins (Soc. Dem.).

SIXTEENTH SENATORIAL DISTRICT.

Crawford and Grant counties. Population, 1900—56,167.

EDWARD EUGENE BURNS (Rep.), of Platteville, Grant county, was born Jan. 20, 1858, at Dunleith (now East Dubuque), Illinois. In the year of his birth his parents moved to Jamestown, Grant county, Wisconsin, and settled on a farm where he spent his early years. He was educated in the common schools of Grant county, the Platteville State Normal School and the law school of the University of Wisconsin, from which he graduated in 1887. He moved to Platteville on Dec. 1, 1890, where he has since resided and engaged in the practice of law. He was a member of the county board of Grant county in 1895 and 1896, representing the city of Platteville. In 1897 he was elected city attorney of Platteville, and was re-elected in 1898, which position he resigned on entering the army, and was again re-elected on his return in 1899. He served in the Spanish-American War as captain of Co. C, of the 4th Wis. Inf. Vol., from June 30, 1898, to Feb. 28, 1899. He was elected to the state senate in 1900, and re-elected in 1904, receiving 7,365 votes against 4,924 cast for W. W. Gilman (Dem.), and 400 votes cast for Josiah Thomas (Pro.).



Edward E. Burns.

SEVENTEENTH SENATORIAL DISTRICT.

Green, Iowa and Lafayette counties. Population, 1900—66,792.

HARRY CHAPMAN MARTIN (Rep.), of Darlington, Lafayette county, was born at Darlington, Dec. 15, 1854, and received his early education in the public schools of that place, after which he taught school for one year and then attended the University of Wisconsin, from which he graduated in 1879. He studied law and was admitted to the bar in 1881, and has since practiced law at Darlington. Soon after his admission to the bar he was appointed county superintendent of schools of Lafayette county, and was twice thereafter elected to that office. In 1887 he was elected mayor of the city of Darlington and was re-elected in 1888. He was city attorney for several years thereafter and was elected district attorney of Lafayette county in 1892; was a member of the Republican State Central committee for four years; was elected to the assembly in 1895 to fill vacancy occasioned by the death of James Freeman; was elected to the state senate in 1898 and re-elected in 1902 and in 1906, receiving 6,284 votes against 4,383 for J. B. Simpson (Dem.), and 189 for C. Marty (Soc. Dem.).



Harry C. Martin.

EIGHTEENTH SENATORIAL DISTRICT.

Fond du Lac and Green Lake counties. Population, 1900—63,386.



Charles H. Smith.

CHARLES H. SMITH (Dem.), of Markesan, was born in the town of Green Lake, June 1st, 1863. He was educated in district schools, Berlin High School and Commercial College of Oshkosh. He is a farmer by occupation. He was town treasurer of Green Lake in 1887 and 1888, supervisor of the town in 1890 and 1891, school clerk in the village of Markesan for the past eight years; has served on the village board for several years. He was elected to the assembly in 1902, and to the state senate in 1904, receiving 8,024 votes against 7,024 votes for O. A. Piggott (Rep.).

NINETEENTH SENATORIAL DISTRICT.

Winnebago county. Population, 1900—58,225.



John A. Fridd.

JOHN A. FRIDD (Rep.) was born in Winnebago county, Oct. 23, 1850; received his education in the common schools and in Ripon College; is a farmer by occupation; served his town as side supervisor three years, and as chairman ten years; has been director of the Eureka Canning Factory since 1900. Was elected member of assembly in 1902, and re-elected in 1904. He was elected state senator in 1906, receiving 4,591 votes against 3,310 for J. Harrington (Dem.), and 1,048 for E. E. Stevens (Ind.).

TWENTIETH SENATORIAL DISTRICT.

Ozaukee and Sheboygan counties. Population, 1900—66,708.



George W. Wolff.

GEORGE W. WOLFF (Rep.), was born in the town of Rhine, Sheboygan county, in the year 1849, and has since resided there; received a common school education; is a farmer by occupation. He has served as chairman of his town and county board and as a member of the assembly; elected to the state senate in 1900 and 1904, receiving 6,510 votes against 6,097 for E. R. Bowler (Dem.).

TWENTY-FIRST SENATORIAL DISTRICT.

Portage and Waupaca counties. Population, 1900—61,098.

EDWARD E. BROWNE (Rep.) was born at Waupaca, Waupaca county, Wisconsin, February 16, 1868. He attended the public schools of the city of Waupaca and after finishing the high school of Waupaca was

graduated from the State University in 1890 and from the university law school in 1892, since which time he has been engaged in the practice of law in the city of Waupaca. He was elected district attorney of Waupaca county in 1898, which office he held 6 years. He was appointed regent of the State University in June, 1904, and was nominated and elected state senator in 1903, receiving 4,397 votes. There was no opposition to his nomination or election, Mr. Browne having been nominated on the Republican ticket and endorsed by the Democratic, Prohibition and Social Democratic parties.



Edward E. Browne.

TWENTY-SECOND SENATORIAL DISTRICT.

Rock county. Population, 1900—51,203.

JOHN M. WHITEHEAD (Rep.) was born July 29, 1852, on a farm near Hillsboro, Ill. He was educated at Hillsboro Academy, preparatory department of Wabash College, Crawfordsville, Ind. (1871-2), Williston Seminary, Easthampton, Mass. (1872-3), Yale College (1873-77), where he took the degree of A. B. He studied law and was admitted to the bar of Illinois in October, 1880, and to the bar of Wisconsin in September, 1883. He came to Wisconsin in August, 1883, settling at Janesville, where he has since resided. Has been a member of the county board of Rock county, representing the fourth ward of Janesville. Was elected to the state senate in 1893, 1900, and again in 1904, receiving 5,810 votes against 4,200 for Robert M. Richmond (Dem.), 428 for Morris Mortimer (Soc. Dem.), and 401 for Thos. W. North (Pro.).



John M. Whitehead.

TWENTY-THIRD SENATORIAL DISTRICT.

Jefferson and Walworth counties. Population, 1900—64,048.

JOHN A. HAZELWOOD (Dem.) was born at Concord, Jefferson county, Wis., Oct. 28, 1837. He received his training in the common schools, John's Military Academy, Delafield, Wis., Valparaiso Normal School, and Indiana University and Law School. He was engaged for a period of ten years in teaching at Ixonia, Oconomowoc, and at Indiana Normal School. In 1898 he was elected county superintendent of schools of Jefferson county and was re-elected three times. He has been president of the S. W. T. A., vice-president W. T. A., president of the County Superintendents' Association and state commander of the S. O. V. He has served as city attorney of Jefferson for several years. He is now practicing law at Jefferson, Wisconsin. In 1906 he was elected to the state senate, receiving 5,345 votes against 4,273 votes for Zadoc B. Beach (Rep.), and 87 votes for A. L. Morrison (Soc. Dem.).



John A. Hazelwood.

TWENTY-FOURTH SENATORIAL DISTRICT.

Chippewa, Eau Claire and Rusk counties. Population, 1900—64,729.



Dr. James H. Noble.

DR. JAMES HARVEY NOBLE (Rep.), of Eau Claire, was born March 30, 1851, in Dane county, Wis. Studied in the public schools of Madison and preparatory department of State University, afterwards taking up the study of medicine at Hahnemann Medical College of Chicago, from which he graduated in 1871, and the same year located at Eau Claire, Wis., where he has pursued the practice of his profession ever since. He has been city and county physician, eight years a member of the Board of Education and part of that time its president. Since becoming a voter he has always acted with the Republican party. He was elected to the state senate in 1904, receiving 7,591 votes against 4,963 for Wm. H. Stafford (Dem.), 267 for Frank E. Cummings (Pro.), and 186 for August Schreiber (Soc. Dem.).

TWENTY-FIFTH SENATORIAL DISTRICT.

Clark and Marathon counties. Population, 1900—69,104.



Spencer M. Marsh.

SPENCER M. MARSH (Rep.) was born in the town of Grant, Clark county, Wis., July 26, 1864. Reared on a farm, taught country schools, beginning at the age of 16 years. Attended State Normal School at River Falls in 1882 and 1883. Commenced the study of law in 1885, admitted to the bar in 1889, became a law partner of present Circuit Judge James O'Neill in 1891, under firm name of O'Neill & Marsh, practicing at Neillsville, Wis. This partnership continued until Judge O'Neill went on the bench in 1898. Since that time he has continued the practice of law at Neillsville a portion of the time as a member of the firm of Marsh & Tucker, and latter of the firm of Marsh & Schoen-garth. He served as district attorney of Clark county two terms, having been elected on the Republican ticket in 1898 and in 1900. He has been president of the Commercial State Bank at Neillsville from its organization in 1898. He was elected state senator in 1906, receiving 5,962 votes against 4,360 for W. W. Albers (Dem.).

TWENTY-SIXTH SENATORIAL DISTRICT.

Dane county. Population, 1900—69,435.



Albert M. Stoddall.

ALBERT M. STODDALL (Rep.), of Madison, was born on a farm in the town of Cottage Grove, Dane county, August 4, 1865. He received a common school education, and later attended the Northwestern Business College of Madison. He was a farmer until the year 1894, when he went into the business of buying and selling Wisconsin lands, especially operating in Wood,

Clark, Washburn and Barron counties. He was elected to the state senate in 1904, receiving 9,547 votes against 7,136 votes for James M. Clancy (Dem.), and 375 for Lucius F. Bigelow (Pro.).

TWENTY-SEVENTH SENATORIAL DISTRICT.

Columbia and Sauk counties. Population, 1900—64,127.

CHARLES L. PEARSON (Dem.) was born forty-six years ago in the town of Buffalo, Marquette county, Wis., and came with his parents to the township of Greenfield, near Baraboo, in the year 1870. He attended school in Greenfield and Baraboo and a business college in Janesville. He was a railroad telegraph operator for a few years, leaving the service of his own accord to engage in farming and fruit growing. After operating a farm in West Point, Columbia county, for four years he purchased the old home-stead, where he has since lived. Mr. Pearson has held various local offices, and is an active member of the Wisconsin State Horticultural society. He was elected to the state senate in 1906, receiving 4,629 votes against 4,546 for M. F. Foley (Rep.), and 342 for T. R. White (Pro.).



Charles L. Pearson.

TWENTY-EIGHTH SENATORIAL DISTRICT.

Richland and Vernon counties. Population, 1900—47,834.

OLIVER G. MUNSON (Rep.), of Viroqua, was born March 2, 1856, in Howard county, Ia.; was educated in the common and high schools of Iowa and Minnesota; came to Wisconsin in 1876; resided in Richland Center ten years and in Viroqua twenty-one years; is an editor and publisher, having published the Richland Republican ten years and the Vernon County Censor twenty-one years; has been city clerk of Richland Center, supervisor from city of Viroqua, bookkeeper in the state senate several terms and assistant chief clerk of the assembly two terms. He was elected to the senate in 1896, re-elected in 1900 and 1904, receiving 6,654 votes against 2,939 votes for Capt. H. Conner (Dem.). Was appointed private secretary to the Governor, Jas. O. Davidson, Jan. 1, 1906, and re-appointed for a term of two years, Jan. 1, 1907.



Oliver G. Munson.

TWENTY-NINTH SENATORIAL DISTRICT.

Barron, Buffalo, Dunn and Pepin counties. Population, 1900—73,390.

JAMES H. STOUT (Rep.), of Menomonie, was born at Dubuque, Ia., Sep. 25, 1848, and was educated in the public schools of Dubuque and in the Chicago University. He came to Wisconsin in 1889, and has since been



James H. Stout.

engaged in the lumber business at Menomonie and in Arkansas. He has been for several years one of the trustees of the Dunn county insane asylum; president of the Menomonie board of education; life member of the Dubuque library; and life trustee of the Findlay hospital at Dubuque. He was elected to the senate in 1894, and was re-elected in 1898, in 1902, and in 1906, receiving 5,920 votes and having no opposition.

THIRTIETH SENATORIAL DISTRICT.

Florence, Forest, Iron, Langlade, Lincoln, Oneida and Vilas counties. Population, 1900—53,835.



James A. Wright.

JAMES A. WRIGHT, of Merrill, Lincoln county, has always been a Republican, is a native of Wisconsin. Was born in Racine, Wis., June 17th, 1873, moving to Merrill, Wis., in 1880, and has since resided there. Was educated in public schools and later took a business course at Northern Illinois Normal School and Dixon Business College. Was then associated with the H. W. Wright Lumber Company, served as vice president, and upon death of father in 1901 became president of same. In 1903 organized the Wisconsin Lumber Company of Littell, Washington, and was elected president of the same. He is also a director of Lincoln County Bank, of Merrill, Wis. He had never sought office before, but was unanimously nominated on the Republican ticket, and in the election for state senator November 8th, 1904, received 9,792 votes against 4,382 cast for D. H. Walker (Dem.).

THIRTY-FIRST SENATORIAL DISTRICT.

Jackson, Juneau and Monroe counties. Population, 1900—66,198.



H. W. Barker.

H. W. BARKER (Rep.) was born in the town of Leon, Monroe county, Wis., March 18th, 1860. Is now proprietor of the H. W. Barker Medical Co., manufacturer of medicines, which are for sale by wholesale and retail druggists in nearly every state in the union. Resided for a while at Elbow Lake, Minnesota, at which place he held the office of mayor for three terms. Was elected senator of the 31st district in 1906, receiving 6,300 votes against 2,713 votes for W. S. Wells (Dem.).

THIRTY-SECOND SENATORIAL DISTRICT.

La Crosse and Trempealeau counties. Population, 1900—66,111.

THOMAS MORRIS (Rep.), of La Crosse, was born on a farm near Bedford, Canada, December 9, 1861. He received his education in the common schools of Can-

ada and the Bedford Academy. He is a lawyer, having graduated from the Wisconsin University Law School in 1889, and is a member of the law firm of Morris & Hartwell, at La Crosse. He was elected district attorney of La Crosse county in 1898, and was re-elected in 1900. He was twice elected chairman of the Republican Congressional Committee of the Seventh Congressional District, and resigned the position when he became a candidate for the senate, at the last election. At present he is a member of the State Board of Normal School Regents.

Mr. Morris was elected to the state senate November 8, 1904, by a vote of 8,193 to 4,809 for Stephen Richmond (Dem.).



Thomas Morris.

THIRTY-THIRD SENATORIAL DISTRICT.

Washington and Waukesha counties. Population, 1900—
58,818.

HENRY LOCKNEY (Rep.), of Waukesha, Waukesha county, was born on a farm in the town of Muskego, Waukesha county, Oct. 26th, 1874. When about six years of age removed with his parents to the city of Waukesha which has since been his home. Was educated in the Waukesha public schools and in 1893 entered the University of Wisconsin from which he graduated in 1897 with the degree of B. L. Was admitted to the bar in 1898. At once began practice as a member of the firm of Tullar & Lockney. Was elected city attorney in 1902, and re-elected in 1904 and 1906. Was for some time a library commissioner for the city of Waukesha. Served for one term as secretary and for two terms as chairman of the Republican county committee. Was elected state senator in 1906, receiving 5,635 votes against 4,845 for A. Konrad (Dem.), 197 for C. W. Rose (Pro.), and 196 for G. Gollnitzer (Soc. Dem.).



Henry Lockney.

OFFICERS OF THE SENATE.

CHIEF CLERK.



A. R. Emerson.

A. R. EMERSON was born in the village of Etna, Lafayette county, Wisconsin, July 21st, 1833, and has been a continuous resident of the state, except for a few years spent in Minneapolis and the west. He received his early education in the common schools and at the Platteville Normal, later attending the University summer school and the Minneapolis Business College. He taught school for several years, was town clerk of his town for two years, county clerk of Lafayette county from 1901 to 1905, and Journal clerk of the state senate at the regular and special sessions of 1905. Since that time he has been cashier of the Belmont State Bank at Belmont, Wis. He was elected chief clerk of the senate in the session of 1907.



Russel C. Falconer.

SERGEANT-AT-ARMS.

RUSSEL C. FALCONER was born in Williamsburg, N. Y., Feb. 4, 1851; received a common school education; came to Wisconsin in 1855 and settled at Quincy, Adams county; remained there until 1858 when he removed to Columbia county; was chairman of the town of Wyocena in 1880; sheriff of Columbia county one term; mayor of the city of Portage; was elected state senator in 1890; removed to Camp Douglas in 1899, where he engaged in the real estate business. He was elected sergeant-at-arms of the senate at the session of 1905 and was re-elected in 1907.

ASSEMBLY.

HERMAN L. EKERN, Speaker; C. E. SHAFFER, Chief Clerk; W. S. IRVINE, Sergeant-at-Arms.

The assembly consists of 100 members. They are chosen biennially and receive \$500 for their services during the term. The speaker is chosen by the members and receives an additional \$500 for his services as speaker. The assembly of 1907 contains 76 republicans, 19 democrats, and 5 social democrats.

ADAMS AND MARQUETTE COUNTIES.

One District. Population, 1900—19,650.

FRANK J. KIMBALL (Rep.) was born in Washington county, New York, Nov. 25th, 1846, came to Wisconsin in 1854 where he received a common school education, lived on a farm in Columbia county until 1872 then moved to Briggsville, Marquette county, his present home. After leaving the farm, clerked in a general store for one year and then went into the sewing machine business. He was local agent for three years and general agent for six years; went into general merchandising in 1885 which occupation he still follows; held the office of town clerk for five years, school district clerk for twenty and notary public for fifteen years; was elected member of assembly in 1902 and was re-elected in 1906, receiving 2,086 votes against 93 for E. Reynolds (Pro.).



Frank J. Kimball.

ASHLAND COUNTY.

One District. Population, 1900—20,176.

OVE H. BERG (Rep.) was born in Schleswig-Holstein, Germany, Dec. 20, 1840, where he received a good common school education. After his thirty-second year he held several responsible positions, one of which he filled for nine successive years from 1872 to 1881 when he emigrated with his family to America and in 1883 finally settled in Ashland, Wis. Here he conducted a meat-market and grocery store in company with his son, M. H. Berg, who now conducts the business alone, O. H. Berg having withdrawn in 1892. In political affairs he has always been a staunch and active republican; has been a member of the republican county committee for twenty-two years and a member of the republican city committee of which he has also served as chairman. At present he is a member of the board of education on which he has served for two terms. He received the nomination for member of the assembly in 1906, and at the general election received 1,796 votes against 733 for Albert F. Fox (Dem.), and 226 votes for Jno. F. Miles (Soc. Dem.).



Ove H. Berg.

BROWN COUNTY.



Timothy Burke.

First District. The towns of Ashwaubenon, Howard, Pittsfield, Suamico and the city of Green Bay. Population, 1900—23,372.

TIMOTHY BURKE, (Rep.), of Green Bay, was born on a farm in the town of Morrison, Brown county, Wisconsin; was educated in the district schools of that town but mastered all the higher studies largely through his own efforts; taught school for several years and during his leisure time studied law. He entered the law department of the University of Wisconsin in the fall of 1897 and passed the state bar examination in December of that year, but attended the law school until the summer of 1898; was member of the assembly for the second district of Brown county, Wisconsin, in 1895 and 1896 and was sheriff of Brown county in 1901 and 1902; after leaving the sheriff's office, he engaged in the practice of law and is a member of the firm of Kittell & Burke; was elected chairman of the republican county committee in 1904 and was re-elected in 1906; was elected to the assembly in 1906 receiving 2,023 votes against 845 for T. J. Boyle (Dem.), and 229 votes for F. Camm (Soc. Dem.).

BROWN COUNTY.

Second District. The towns of Allouez, Bellevue, Depere, Eaton, Glenmore, Green Bay, Holland, Humboldt, Lawrence, Morrison, New Denmark, Preble, Rockland, Scott and Wrightstown, the village of Wrightstown, the city of De Pere, and that part of Oneida reservation within the county of Brown. Population, 1900—22,987.



Wallace S. Hager.

WALLACE S. HAGER (Rep.) was born in the town of Freedom, Outagamie county, in 1861. Received his education in country school and Appleton high school. Taught school in Outagamie, Brown and Shawano counties. Was married in 1882. Moved to Shawano county in 1884, where he cleared a farm. Was member of county board, school clerk and town clerk five years. Sold his farm and moved to Maple Valley, Oconto county, where he lived from 1894 to 1902, being engaged in logging, farming and fruit raising. Was member of school board four years. Came to De Pere in 1902 where he has since conducted a fruit garden. Has served on the city council three years, all of which time he has been a member of the committee on streets and sewers. Has been two years member of the library board. Has always been an active and progressive republican in politics. Was president of the republican club in 1904, also member of the county committee. Was nominated at the primary without opposition and elected member of assembly in 1906, receiving 1,201 votes against 1,102 votes for Edw. Mulloy (Dem.).

BARRON COUNTY.

One District. Population, 1900—23,677.

GEORGE E. SCOTT (Rep.), of Prairie Farm, was born in Durand, Pepin county, Wis., July 3, 1860, where he received a common school education. He is a merchant and miller. In both 1904 and 1906 he was elected to the assembly without opposition.

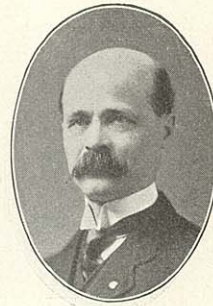


George E. Scott.

BAYFIELD, SAWYER AND WASHBURN COUNTIES.

One District. Population, 1900—23,506.

LORENZO N. CLAUSEN (Rep.) was born in Hemes, Helgeland, Norway, October 5, 1855, where he received a common school education. At the age of fifteen he emigrated with his parents to America, coming direct to Otter Tail county, Minn. Here he remained for nearly ten years, being engaged most of the time in common farm work and teaching school, having meanwhile attended the State Normal School at St. Cloud, Minn., for some time. He then moved to Dalton, Minn., where he was appointed postmaster in 1881, and afterward clerked in Fergus Falls, Minn., for about two years. He was the first mail agent between Wadina and Fergus Falls. On account of ill health he was compelled to resign the position in 1884, and moved to Washburn, Wisconsin, where he resided since. In 1885 he was appointed town clerk, holding this office by re-election for four years; has served as justice of the peace most of the time since 1885; was secretary of the board of education for several years, and at the present time is a member of the board; was appointed deputy collector at Washburn in 1886, holding this position nearly eight years. In 1893 he was elected chairman of the town board for one term. During the five years from 1889 to 1894 he was cashier of the Bayfield County Bank, and in 1898 was elected county treasurer for Bayfield county for one term. Has been chairman of the republican county committee of Bayfield county for ten years. He is engaged in real estate and insurance business. Was elected to the assembly in 1904, and re-elected in 1906, receiving 2,815 votes against 624 votes for Wm. Alexander (Dem.), and 168 votes for Emil Swanson (Soc. Dem.).



Lorenzo N. Clausen.

BUFFALO AND PEPIN COUNTIES.

One District. Population, 1900—24,670.

C. A. INGRAM (Rep.) of Durand, was born in the town of Waubeek, Pepin county, March 19, 1867; attended district school; taught school in Dunn and Pepin counties; attended the state university; graduated from the law school in 1892; district attorney of Pepin county from 1893 to 1897; established the "Entering Wedge" at Durand in 1893 and interested in its publi-



C. A. Ingram.



J. P. Peterson.

cation until January 1st, 1901; is senior member of the firm of Ingram & Ingram, attorneys at law. Was elected to the assembly in 1906, receiving 1,911 votes against 1,035 for Frank Pierce (Dem.).

BURNETT AND POLK COUNTIES.

One District. Population, 1900—25,279.

J. P. PETERSON (Rep.) of Luck, Polk county, Wis., was born in Denmark, March 21, 1859; came to Neenah, Wis. in 1867. Moved to Luck, Wis. in 1869, where he has resided since; attended the city schools of Neenah, normal school and college. He began teaching in the public schools in 1877 and taught several years, was superintendent of schools of his county six years and is an active member of the National Educational Association and of various scientific societies. He has at various times held the offices of justice of the peace, town clerk, chairman of his town, postmaster and other public and semi-public positions. He has been in the mercantile business since 1889. Nominated for member of assembly in 1906 and elected, receiving 2,035 votes against 1,006 votes for C. W. Staples (Soc. Dem.).



Henry Rollmann.

CALUMET COUNTY.

One District. Population, 1900—17,078.

HENRY ROLLMANN (Dem.) was born in the town of Marshfield, Fond du Lac county, Wisconsin, February 9th, 1853, received a common school education in the public school of the town, then attended the high school at Fond du Lac, for two years, and in 1870 entered a drug store as an apprentice, where he remained until 1875; he then went to Chilton, Calumet county, Wis. and started a drug store, and has since resided there; has served four years as alderman, city mayor for two years, and member of the county board for two years; was elected to the assembly in 1906, receiving 1,436 votes against 1,003 votes for Daniel R. Curtin (Rep.), and 71 votes for Herman C. Thiersen (Soc. Dem.).



Thos. A. Roycraft.

CHIPPEWA COUNTY.

First Distr'ct. The towns of Edson, Delmar, Lafayette, Sigel, Tilden and Wheaton, the 3rd, 4th, 5th, 6th, 8th, 9th and 10th wards of the city of Chippewa Falls, the city of Stanley, and the villages of Boyd and Cadott. Population, 1900—15,676.

THOS. A. ROYCRAFT (Rep.) was born in County Cork, Ireland, May 26, 1853; came to this country in 1863 and settled on a farm near Omro, Winnebago county, Wis. Moved to Chippewa county in 1866, where he has resided ever since; received a common school education; is a farmer, dairyman and mechanic; has

held the office of assessor for three years, chairman of the town board for three years, and town treasurer for six; has also been a director of the Eagle Point Insurance Company for seventeen years. Organized the Lafayette Dairying company in 1897, and has been the secretary of that company ever since. He has always been a republican. He was elected to the assembly in 1904, re-elected in 1906, receiving 1,330 votes against 993 for Louis Olson (Dem.).

CHIPPEWA COUNTY (AND RUSK).

Second District. The towns of Anson, Auburn, Arthur, Bloomer, Big Bend, Cleveland, Colburn, Dewey, Eagle Point, Flambeau, Lawrence, Sampson, and Strickland, the village of Bloomer, the first, second, and seventh wards of the city of Chippewa Falls. Population, 1900—17,361. [By act of legislature in 1901 the county of Gates—now Rusk—was formed (comprising the towns of Atlanta, Big Bend, Dewey, Lawrence, Rusk, Strickland and Flambeau and the part of township 33 north, range 7 west, lying south of Chippewa river), and remains a part of the Second Assembly district of Chippewa county.]



Theodore M. Thomas.

THEODORE M. THOMAS (Rep.) of Ladysmith, is a native of Wisconsin, being born in Fond du Lac county, September 11th, 1870. He is a lawyer by profession and was a successful practitioner for five years at Beaver Dam, removing from there to Ladysmith in July 1904. Was elected city attorney of Ladysmith in April, 1905, re-elected in 1906. Was elected to the assembly in 1906 receiving 1,853 votes against 749 votes for Sewel Peterson (Dem.).

CLARK COUNTY.

One District. Population, 1900—25,848.

F. M. JACKSON (Rep.) was born on a farm in Green county, Wisconsin, and attended the district school until 1886 when he entered the high school at Brodhead. In 1889 he graduated from the Brodhead high school and removed to Monroe in the same county. In the fall of 1889 he entered the University of Wisconsin from which he graduated in June 1893 from the Ancient Classical Course. In the fall of 1893 Mr. Jackson was elected principal of the Colby high school and held that position for eight years, spending his spare time studying law. He quit teaching school in 1901 and entered the law office of R. B. Salter in Colby, Wisconsin. In the winter of 1902 he took a course of law lectures in the Illinois College of Law at Chicago and passed the state bar examination in April 1902. The same year he was nominated and elected district attorney of Clark county and was re-elected in 1904. In 1906 Mr. Jackson was nominated for member



F. M. Jackson.

of assembly for the Clark county district and was elected, receiving 2,494 votes against 624 for James Richmond (Dem.),



John Scott.

COLUMBIA COUNTY.

First District. The towns of Arlington, Caledonia, Dekorra, Fort Winnebago, Lewiston, Lodi, New Port, Pacific and West Point, the villages of Kilbourn City, Lodi and Poynette, and the city of Portage. Population, 1900—15,117.

JOHN SCOTT (Rep.) of Dekorra, was born in Milwaukee June 1861; moved with his parents to Columbia county where he received his education in the common schools; has represented his town on the county board for eleven years serving two years of that time as chairman of that body; is a farmer and stock raiser; was elected to the assembly in 1904 and re-elected in 1906, receiving 1,280 votes against 1,102 for T. McMahon (Dem.), and 58 for H. Dunham (Soc. Dem.).



Wm. Rufus Turner.

COLUMBIA COUNTY.

Second District.* The towns of Columbus, Courtland, Fountain Prairie, Hampden, Leeds, Lowville, Marcelion, Otsego, Randolph, Scott, Springdale, and Wycena, the villages of Cambria, Pardeeville, and Rio, the west ward of the village of Randolph, and the city of Columbus. Population, 1900—16,004.

WILLIAM RUFUS TURNER (Rep.) of Columbus, Wis., was born in the town of Fountain Prairie, Columbia county, Wis., March 21, 1855. He received a common school education, later graduating from the high school of the city of Columbus; in 1878 entered into the marble and granite business and has continued in the business since that time as traveling salesman. From 1892 to 1895 he served the first ward of the city of Columbus in the common council; was elected member of assembly in 1904, and re-elected in 1906, receiving, 1,605 votes against 532 for Frank Hall (Dem.), and 4 for C. L. Spear (Soc. Dem.).



Jeremiah O'Neil.

CRAWFORD COUNTY.

One District. Population, 1900—17,286.

JEREMIAH O'NEIL (Dem.) was born on a farm in the town of Utica, Crawford county, Wis., Jan. 13, 1836; was educated in the common and graded schools of Mt. Sterling and in the state normal school at Oshkosh, completing the elementary course of the Normal School in June 1893. Taught school five years in Crawford county and three years in Washington county, being principal of the graded schools of Kewaskum from 1893 to 1896. Has been editor and publisher of

The Kickapoo Chief at Wauzeka since January 1st, 1890. Has held the office of president of the village board of Wauzeka two terms; was defeated for member the assembly in 1904, but was elected in 1905, receiving 1,567 votes against 1,325 for A. M. Laird (Rep.).

DANE COUNTY.

First District. The towns of Blooming Grove, Dunn, Madison and Pleasant Springs, and the city of Madison. Population, 1900—24,458.

ELMORE T. ELVER (Dem.) was born March 4th, 1877, in the town of Vermont, Dane county; came to Madison in 1889; was educated in the high school of his home city and graduated from the University in 1898, and from the college of law in 1901; he never held a public office until he was elected member of the assembly in 1905, receiving 2,062 votes against 1,885 votes for Alfred Kroncke (Rep.), and 1,570 votes for Wm. J. McKay (Ind.).



Elmore T. Elver.

DANE COUNTY.

Second District. The towns of Albion, Bristol, Burke, Christiana, Cottage Grove, Deerfield, Dunkirk, Medina, Sun Prairie, Westport, Windsor, and York, the villages of Cambridge, Deerfield, DeForest, Marshall, Sun Prairie and Waunakee, and the city of Stoughton. Population, 1900—22,510.

OLE P. SORENSON (Rep.) of Marshall, Wisconsin, was born in Denmark, May 24, 1848, and received a public school education at that place; came to Wisconsin in 1866 and settled in Jefferson county where he resided until 1884 when he came to Marshall, Dane county. Has always been engaged in farming until 1905 when he retired from farm life; has served six years as chairman of the board of supervisors of the town of Medina, for three years was treasurer of the Medina high school board; and at present is supervisor for the village of Marshall. Was nominated for member of assembly in 1906 and elected, receiving 2,037 votes against 204 for A. E. Roberts (Dem.).



Ole P. Sorenson.

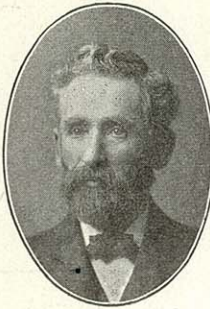
DANE COUNTY.

Third District. The towns of Berry, Black Earth, Blue Mounds, Cross Plains, Dane, Fitchburg, Mazomanie, Middleton, Montrose, Oregon, Perry, Primrose, Roxbury, Rutland, Springdale, Springfield, Vermont, Verona and Vienna, the villages of Black Earth, Dane, Oregon, Mazomanie, Belleville, Brooklyn and Mount Horeb. Population, 1900—22,467.

THOMAS A. STEWART (Dem.) was born in the town of Verona, Dane county, Wis., Mar. 2, 1849; received his education in the common schools of his



Thomas A. Stewart.



Frank S. Bauer.

native town, North Western Business College and the State University; is a farmer and stock raiser; has held the office of chairman of his town and member of the county board for 17 years; has held the offices of director of the Verona township high school, president of the Farmers Mutual Benefit Association, president of the Verona Detective Association; was a delegate to the democratic state convention in 1900, 1902, 1904; was elected member of the assembly in 1906, receiving 1,805 votes against 1,578 for A. B. Thorsrud (Rep.).

DODGE COUNTY.

First District. The towns of Ashippun, Clyman, Emmett, Herman, Hubbard, Hustisford, Lebaun, Leroy, Lomira, Rubicon, Shields, Theresa and Williamstown, the 5th and 6th wards of the city of Watertown, the villages of Lomira and Theresa, the cities of Horicon and Mayville. Population, 1900—23,636.

FRANK S. BAUER (Dem.) was born on a farm at Leroy, Wis., in 1856; settled at Knowles, Wis., in 1879, where he resided twenty-three years, and where he was appointed the first postmaster, holding the office for eight years; was station agent and operator for seven years, during which time he also ran a general store; is at present in the mercantile business at Leroy; he is also engaged in farming; was elected member of assembly in 1904, and re-elected in 1906, receiving 2,552 votes against 1,327 votes for Jacob Steiner (Rep.).



John F. Hughes.

DODGE COUNTY.

Second District. The towns of Calamas, Chester, Elba, Fox Lake, Lowell, Oak Grove, Portland, Trenton and Westford, the villages of Fox Lake, Lowell and Reeseville, the east ward of the village of Randolph, the south ward of the city of Waupun, and the cities of Juneau and Beaver Dam. Population, 1900—22,995.

JOHN F. HUGHES (Dem.) was born in the town of Lowell, Dodge county, Wis., June 12, 1870; is at present publisher of the "Reeseville Review" and the "Wisconsin Druggist" was elected member of the assembly in 1906 receiving 2,180 votes against 1,275 votes for Hayden Caniff (Rep.), and 82 votes for Richard Jones (Pro.).



Thos. Reynolds.

DOOR COUNTY.

One District. Population, 1900—17,583.

THOS. REYNOLDS (Rep.) was born in Ireland on the 17th of March 1840; came to the United States in 1866; ran a farm in the town of Burke, Dane county one year; came to Door county in the winter of 1866

and '67; got out cord wood and cedar posts for the Chicago market for eight years then commenced farming which occupation he has followed since; has been a member of the county board for eight years; attended the national schools in Ireland; had to stop going to school early in life being obliged to help his father on the little farm in order to enable him to pay the rent and taxes the privileged class in that country imposed on him. He was elected to the assembly in 1906, receiving 1,303 votes against 676 for Charles Plinske (Ind.).

DOUGLAS COUNTY.

First District. The 2d, 3d, 4th, 5th and 6th wards of the city of Superior. Population. 1900—18,040.

ALBERT W. DURLEY (Rep.) of Superior was born on a farm near Hennepin in Putnam county, Illinois, on October 15, 1841 and was educated in the common and high schools of that locality; later attended college at Wheaton, Ill., for two years, and Yale College for two years. He served as Superintendent of Schools of Putnam county from 1872 to 1875, and since then has held no official position till now. He was admitted to the practice of law by the Supreme court of Illinois in 1868 and has ever since then been engaged in the practice of his profession. He moved to Superior, Wis., in 1892 and has lived there since that time. He has been a life long republican; was nominated for the assembly in 1906 without opposition, and was elected, receiving 780 votes against 678 votes for J. S. Koukee (Dem.), 127 votes for Jacob Lundee (Soc. Dem.) and 69 votes for Wm. V. Bolds (Pro.).



Albert W. Durley.

DOUGLAS COUNTY.

Second District. The towns of Amnicon, Brule, Gordon, Hawthorne, Highland, Maple, Nebagamon, Solon Springs, South Range, Summit and Superior, the village of Nebagamon, and the 1st, 7th, 8th, 9th and 10th wards of the city of Superior. Population in 1900—18,295.

RAY J. NYE (Rep.) was born in Davenport, Ia., March 21, 1871. Attended the public schools at Minneapolis and Milwaukee. Located in Superior in 1892 and is member of the insurance firm of Jerrard, Lenroot & Nye. Was elected to the county board representing the first ward of the city of Superior in 1903, 1904, 1905 and 1906—the last three terms of which he was chairman of the board. Was elected to the assembly in 1906, receiving 1,369 votes against 194 votes for Frank H. Clark (Soc. Dem.), and 94 votes for B. Swanland (Pro.).



Ray B. Nye

DUNN COUNTY.

One District. Population, 1900—25,043.



D. C. Coolidge.

D. C. COOLIDGE (Rep.) was born at St. Cloud, Wis., in 1871. Completed academic education in 1891. Since death of father in 1891 he has had charge of the Downing Mfg. Company's saw mills, general store and farms. Finished logging in 1900 and organized state bank in 1901. Town chairman three years. Chairman county board two years. Received unanimous vote as a delegate to last National Convention. At present he is a member of the board of trustees Dunn county insane asylum. Elected to assembly in 1906 without opposition at primaries or general election, receiving 1,929 votes.

EAU CLAIRE COUNTY.

First District. The town of Seymour, the 1st, 2d, 3d, 4th, 5th, 6th, 8th, 9th and 10th wards of the city of Eau Claire, and the city of Altoona. Population, 1900—15,700.



David Douglas.

DAVID DOUGLAS (Dem.) was born at St. Andrews, Scotland, Aug. 21, 1845. Educated at the Madras College, St. Andrews, and later in special subjects at King's College, London, England. Has diplomas as civil engineer and chemist. Was engaged in the construction and operation of gas and water works in England. Came to this country in 1876 and has carried on the same kind of business in different parts of the United States and in Canada. Purchased an interest in the gas works at Eau Claire in 1894, of which company he is the president. He resided there from that date until now. Was elected mayor of the city in 1899. Elected member of assembly in 1906, receiving 1,387 votes against 1,027 for Chas. McArthur (Rep.), and 71 votes for Joseph Paul (Soc. Dem.).

EAU CLAIRE COUNTY.

Second District. The towns of Bridge Creek, Brunswick, Clear Creek, Drammen, Fairchild, Lincoln, Luddington, Otter Creek, Pleasant Valley, Union and Washington, the village of Fairchild, the 4th and 7th wards of the city of Eau Claire, and the city of Augusta. Population, 1900—15,902.



W. A. Cernahan.

W. A. CERNAHAN (Dem.) was born at the Pines, town of Union, in Eau Claire county, January 30, 1866; is a farmer by occupation; was educated in the common schools of his native county. Mr. Cernahan has held numerous town and county offices and was elected member of assembly in 1906, receiving 876 votes against 746 for Chris. N. Saugen (Rep.) and 13 for R. Biegel (Soc. Dem.).

FLORENCE, FOREST AND LANGLADE COUNTIES.

One District. Population, 1900—17,146.

E. F. NELSON (Rep.) was born at Menasha, Wis., September 13, 1868; moved with his parents to Oshkosh in 1880, where he attended school until 1887. From 1887 to 1890 was a student in the Denison University at Granville, Ohio; also studied for a time at the University of Wisconsin; in 1891 he became manager of the Wisconsin Mfg. Co., at Elmhurst, at that time a branch establishment of the same name whose headquarters was at Oshkosh. In 1893 he purchased the establishment at Elmhurst, and has since run the business himself; has been a member of the republican county committee for several years and has been a delegate to several republican state conventions. Was elected member of assembly in 1904, and re-elected in 1906, receiving 2,386 votes against 749 for Edward Nordman (Dem.).

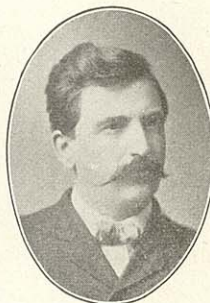


E. F. Nelson.

FOND DU LAC COUNTY.

First District. The towns of Calumet, Empire, Fond du Lac, Forest, Friendship, Marshfield and Taychedah, and the city of Fond du Lac. Population, 1900—24,041.

CHRISTIAN PICKART (Dem.) was born in the town of Marshfield, Fond du Lac county, Wis., Nov. 15, 1870; received a common school education; was a cheese manufacturer from 1886 to 1892, when he entered the mercantile business in company with his brother Joseph, in which business he is still engaged; has been town clerk of his town five years; organized a new school district in his town and has been clerk of the same since its organization; was elected member of assembly in 1904, re-elected in 1906 receiving 2,765 votes against 1,978 votes for Spencer Palmer.



Christian Pickart.

FOND DU LAC COUNTY.

Second District. The towns of Alto, Ashford, Auburn, Byron, Eden, Eldorado, Lamartine, Metomen, Oakfield, Osceola, Ripon, Rosendale, Springvale and Waupun, the village of Brandon, the north ward of the city of Waupun, and the city of Ripon. Population, 1900—23,848.

FRED R. SOPER (Rep.) of Ripon, was born February 21, 1855, in the town of Brooklyn, Greenlake county, Wisconsin, and shortly thereafter moved, with his parents to a farm about a mile west of Ripon; when he became of age he purchased a farm for himself and devoted his entire time to farming and the raising of fine stock and horses, up to three years ago, when he moved to Ripon, and became interested in the agricultural implement business. He was elected to the assembly in 1906, receiving 1,766 votes against 1,323 votes for John L. Gudex (Dem.).



Fred R. Soper.

GRANT COUNTY.



Duncan McGregor.

First District. The towns of Beetown, Cassville, Clifton, Ellenborough, Glen Haven, Harrison, Hazel Green, Jamestown, Lima, Paris, Platteville, Potosi, Smelser and Waterloo, the villages of Cassville, Cuba City, Hazel Green and Potosi, and the city of Platteville. Population, 1900—19,694.

DUNCAN MCGREOR (Rep.) of Platteville, Grant county, was born in Perthshire, Scotland, in 1836, and came directly to Wisconsin with his father's family in 1857. His preparatory education was obtained in Perth Academy, and his collegiate in University and King's College, Aberdeen, and Lawrence University, Appleton. For four years after coming to Wisconsin he found employment in running the Wisconsin river, farming in summer and teaching in winter. He enlisted from Wauwata, where he had been principal of the high school, and was commissioned captain of Co. A, 42d Wis. Inf. serving with his regiment to the close of the war. In 1867 he was elected professor of mathematics in the Platteville Normal School, the first normal school established in the state, and remained in the school until June, 1904, in all thirty-seven years. He was institute conductor for the Platteville school for nine years, and president for twenty-three. He was elected member of assembly in 1904 and re-elected in 1906, receiving 1,799 votes against 1,366 for James Dolan (Dem.).

GRANT COUNTY.

Second District. The towns of Bloomington, Boscobel, Castle Rock, Fennimore, Hickory Grove, Liberty, Little Grant, Mar'ion, Millville, Mt. Hope, Mt. Ida, Muscoda, North Lancaster, Patch Grove, South Lancaster, Waterstown, Wingville, Woodman and Wyalusing, the villages of Bloomington, Fennimore, Montfort and Muscoda, the cities of Boscobel and Lancaster. Population, 1900—19,187.



Henry E. Roethel.

HENRY E. ROETHEL (Rep.) of Fennimore, Grant county, editor of the Fennimore Times, having the largest circulation (3,500) of the country papers of the state, and known as the "legomobile" editor, from the fact that he has been all over his large county afoot and thus personally acquainted with nearly all of his constituents, is 41 years old and a native of Whitewater, Wis. He received a common school and Normal education; came to Fennimore in 1885; was bookkeeper and cashier seven years and then engaged in the newspaper business. Has served as village clerk, town clerk seven consecutive years, and village president. Was a delegate to numerous state and other political conventions. In 1900 was a member of the electoral college of the United States that elected McKinley and Roosevelt, and was chosen by his state colleagues as official messenger to carry the electoral vote of Wisconsin to Washington. In 1906 he was nominated

at the republican primaries for the assembly and was elected, receiving 2,089 votes against 1,000 votes for Herbert E. Austin (Dem.) and 194 votes for Charles W. Stone (Pro.). Mr. Roethe made his initial trip to Madison to attend the session of the legislature afoot, making the distance of 77 miles in two days.

GREEN COUNTY.

One District. Population, 1900—22,719.

FRED TIES (Rep.) born in the village of Hagedorn, Westphalia, Prussia, Jan. 4, 1841; was educated in the public schools at Schwalenberg, Lippe Detmold. He came with his parents to America in 1858 and settled in the town of Spring Grove, Green county, Wis., where he worked on a farm. On the 15th day of October, 1861 he enlisted in Co. B, 18th Wis. Vol. Inf., and fought under Generals Grant and Sherman from Shiloh to the surrender of the Rebel army under Johnston at Raleigh, N. C., and took part in the grand review on May 24, 1865. During the war he was successively promoted to corporal, sergeant, first sergeant, and second lieutenant; was wounded in a bayonet charge at Jackson, Miss., May 14th, 1863, and two days later taken prisoner and sent to Libby prison, where he was paroled. At the end of the war he came back to the town of Spring Grove and bought the farm which he still owns. He served his town a number of times as assessor; three times as chairman; was elected county clerk of Green county in 1892 and re-elected in 1894, and again in 1896. At the end of this service he moved back to his farm and in October, 1899, bought a residence in Brodhead, into which he moved the following month. In November, 1900, the county board elected him superintendent of poor and trustee of Green County Insane Asylum, and re-elected him to the same position in 1903 and 1906 and now serves as secretary of said board of trustees. In July, 1903 and again in 1907 he was elected a member of the board of education in Brodhead, and is now the president of said board. Was elected member of assembly in 1904, and re-elected in 1906, receiving 1,522 votes against 1,501 for Willis Ludlow (Dem.).

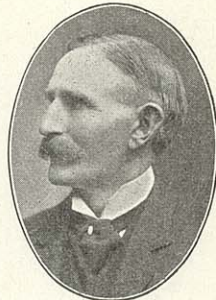


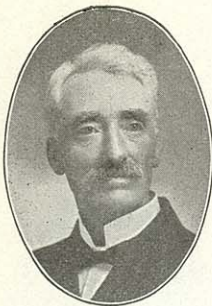
Fred Ties.

GREEN LAKE COUNTY.

One District. Population, 1900—15,797.

CHRISTIAN C. WELLENSGARD (Rep.) was born in the Kingdom of Denmark, July 29th, 1849; came to this country in September, 1871 and settled at Berlin, Green Lake county, Wis., engaging in the pursuit of farming for a number of years; engaged in the business of selling farm machinery, and organized the Berlin Pickle & Canning Co., of which he is now sole owner; he is a director of the First National Bank of Chris. C. Wellensgard.





David J. Morris.

Berlin, and the Berlin Brewing Co., besides operating in farm pursuits; for sixteen years he was a member of the school board of Berlin and for six years a member of the common council of that city; was elected to the assembly in 1906, receiving 1,674 votes against 1,370 for Ephraim Dixon (Dem.), and 64 for Wm. F. Robinson (Pro.).

IOWA COUNTY.

One District. Population, 1900—23,114.

DAVID J. MORRIS (Rep.) was born in Carenarthanshire, Wales, Dec. 24, 1849. Came with his parents to America in 1851, locating on a farm in the town of Ridgeway, Iowa county, Wis. Was educated in the public schools, with one year at the Wisconsin State University. Is a farmer by occupation. Has always been a republican. He was elected to the assembly in 1906, receiving 2,376 votes against 1,692 for Arthur G. Roethe (Dem.), and 130 votes for Fred. L. Cork (Pro.).



Edward A. Everett.

IRON, ONEIDA AND VILAS COUNTIES.

One District. Population, 1900—20,420.

EDWARD A. EVERETT (Rep.) was born at Beloit, Rock county, Wis., March 23, 1861; educated in Beloit schools; engaged in hotel business in Chicago for ten years; located at Eagle River, Vilas county, in 1896, establishing the "Everett Hunting and Fishing Resort," in which business he is now engaged. Never before held a political office. Was elected member of assembly in 1904, and re-elected in 1906, receiving 2,845 votes against 282 votes for Herman Zander (Dem.).

JACKSON COUNTY.

One District. Population, 1900—17,465.



John F. Baker.

JOHN FRANKLIN BAKER (Rep.) Alma Center, Wis., was born in the town of Garden Valley, Jackson county, Wis., Nov. 14th, 1881. He attended the common schools and later in 1899 completed the course in the Alma Center high school. In 1900 he was graduated from the Black River high school. In 1901 he entered the University of Wisconsin and took his major work in economics and political science. He received the degree of A. B. in the year 1905. In the fall of 1906 he entered the law school of the university, where he is still engaged in the study of law. He has the distinction of being the youngest member of the present legislature. He was elected to the assembly in 1906, receiving 1,004 votes against 288 for Charles F. Rainey (Dem.).

JEFFERSON COUNTY.

First District. The towns of Concord, Farmington, Hebron, Ixonia, Milford, Palmyra, Sullivan and Watertown, the village of Palmyra, and the 1st, 2nd, 3d, 4th and 7th wards of the city of Watertown. Population, 1900—17,377.

FRED SMITH (Dem.) was born near Berlin, Germany, January 15th, 1864; attended the public schools of Prussia from the age of 5 to 14 as is compulsory in that country; he then went to Berlin as an apprentice in the drug and fancy grocery trade, and also attended the free night schools of the city. After serving 3 years without pay as apprentice, he received the customary papers as to deportment, business ability, etc., and continued to serve as clerk until May 1st, 1883, when he came to America, following his parents who had gone the year before. He settled on the farm on which he still lives, situated in the town of Ixonia in 1885; he was elected town clerk in 1894 which position he has ever since held. He was elected member of assembly in 1906, receiving 1,498 votes against 1,163 for John Thauer (Rep.).



Fred Smith.

JEFFERSON COUNTY.

Second District. The towns of Aztalan, Cold Spring, Jefferson, Koshkonong, Lake Mills, Oakland, Sumner and Waterloo, the villages of Lake Mills and Waterloo, and the cities of Fort Atkinson and Jefferson. Population, 1900—17,412.

GEO. W. KINDLIN (Dem.) was born in the town of Koshkonong, Jefferson county, Wis., Sept. 11th, 1868. He received a common school education, later completed an agricultural course in the State University. Was elected county surveyor of Jefferson county in 1894; is serving his eighth year as town clerk of the town of Koshkonong. At present is engaged in general farming and the breeding of pure bred stock; was elected to the assembly in 1906, receiving 1,861 votes against 1,289 votes for John F. Widman (Rep.).



Geo. W. Kindlin.

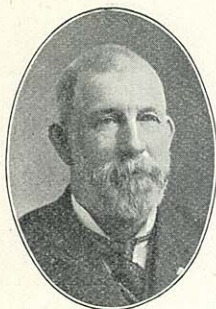
JUNEAU COUNTY.

One District. Population, 1900—20,629.

J. D. HARRING (Rep.) was born in the town of Muskego, Waukesha county, Wisconsin; educated in the common schools of the country. In 1870 moved onto a farm in Richland Center. While there held the offices of assessor, supervisor, and member of the county board for five years. In 1885 moved to Juneau county and purchased a farm in the town of Armenia; while here he has held the offices of town clerk, justice of the peace, supervisor, and member of the county



J. D. Harring.



W. M. Curtiss.

board, the last named for nine years; has also been postmaster at Armenia for the last seven years. In 1906 was elected to the assembly, receiving 2,050 votes against 1,461 for Peter A. Cleary (Dem.).

KENOSHA COUNTY.

One District. Population, 1900—21,707.

W. M. CURTISS (Rep.), of the town of Salem, Kenosha county, Wis., (post office, Trevor), was born in the town where he resides Nov. 1st, 1852; received a common school education; is by occupation a farmer; has been elected to numerous offices of public trust; was elected to the assembly Nov. 8, 1904, and re-elected in 1906, receiving 2,047 votes against 1,668 for Elmer L. Marlette (Dem.), 191 votes for Alfred T. Decker (Pro.), and 269 for John Burns (Soc. Dem.).

KEWAUNEE COUNTY.

One District. Population, 1900—17,212.



Anton G. Schauer.

ANTON G. SCHAUER (Rep.) was born in the township of Mishicott, Manitowoc county, Wis., June 13th, 1830; was educated in the common schools of said town, and at Lawrence University, Appleton, Wis.; taught school in Kewaunee county for twenty-six years, and has been engaged in teaching until the present time; was town clerk and justice of the peace of the township of Carlton, Kewaunee county fifteen years, postmaster of Norman nine years, is at present notary public in Kewaunee county; was sheriff of Kewaunee county in 1897 and 1898, clerk of circuit court, Kewaunee county in 1901 and 1902; is at present engaged in farming. Was elected member of assembly in 1904, and re-elected in 1906, receiving 1,505 votes against 1,055 for Albert Oswald (Dem.), and 54 for Max Seidl (Soc. Dem.).

LA CROSSE COUNTY.

First District. The town of Campbell and the 1st, 2d, 4th, 5th, 6th, 7th, 9th, 10th, 11th, 12th, 13th, 14th, 15th, 16th, 19th and 20th wards of the city of La Crosse. Population, 1900—21,840.



Thomas H. Miller.

THOMAS H. MILLER was born in Red Wing, Minn., March 14th, 1868. Received his education in the common and high schools and Hamline University. He began the study of medicine in 1885 with Dr. John H. Murphy of St. Paul, Minn. and graduated from Rush Medical College in 1890. After two years of hospital work he located at Maiden Rock, Pierce county, Wis., practicing there until the spring of 1905 when he removed to La Crosse. He is a member of the Ameri-

can Medical Association, State Medical Society of Wis., La Crosse Co. Medical Society and has served in official capacity in several other medical organizations. Although taking an active interest in political matters since coming into the state he has never held public office until elected to the assembly in 1906, when he received 1,966 votes against 1,670 votes for Oloff R. Skaar (Dem.), and 72 votes for Henry Goodsell, (Pro.).

LA CROSSE COUNTY.

Second District. The towns of Bangor, Barre, Burns, Farmington, Greenfield, Hamilton, Holland, Onalaska, Shelby and Washington, the villages of Bangor and West Salem, the 3d, 8th, 17th, 18th and 21st wards of the city of La Crosse, and the city of Onalaska. Population, 1900—21,157.

V. S. KEPPEL (Rep.) is a farmer of the town of Onalaska and widely known through his long service on the county board. He was born in Mormon Coulee in 1865, but his parents moved into the town of Onalaska a year or two later and he has lived there ever since. He was educated in the public schools and has since early manhood taken an active interest in public affairs. His fellow townsmen have shown their confidence in him by electing him to various offices in all of which he has shown himself capable. For six years he has been secretary and manager of the Holmen Creamery. His legislative experience on the county board has given him special fitness for legislative work. He was elected member of assembly in 1906, receiving 1,598 votes against 1,399 votes for E. Jones (Dem.), and 416 votes for John A. Berg (Pro.).



V. S. Keppel.

LAFAYETTE COUNTY.

One District. Population, 1900—20,956.

M. J. CLEARY (Rep.) was born Sept. 23rd, 1877 in the town of Moscow, Iowa county, Wis. Educated in common school, Valparaiso Ind. Business College, Wis. Academy of Madison, and graduated with the class of 1897. Took 2 years' work in the University of Wis., also completed the law course at the State University in 1901. Since has practiced law and engaged in the insurance and banking business at Blanchardville in Lafayette county. Was chairman of the county board of Lafayette county for two years. Elected to the assembly in 1906, receiving 2,166 votes against 1,632 for W. J. Martin (Dem.).



M. J. Cleary.

LINCOLN COUNTY.

One District. Population, 1900—16,269.



F. W. Kubasta.

F. W. KUBASTA (Rep.) of Merrill, Lincoln county, Wis., a native of Wisconsin, was born at New Lisbon, June 8th, 1877; removed to Merrill in 1882, and has since resided there. Was educated in the public schools of Merrill. After graduating from the Merrill high school entered the law offices of Messrs. Flett & Porter as law clerk and student and served in that capacity for six years, leaving such employ to engage with D. M. Phinney in the insurance, real estate and abstract business. In 1904 assisted in organizing the German American State Bank of Merrill and is at present a director and vice-president of that institution. Also secretary and treasurer of the Phinney Abstract and Land Co. Elected and served as a member of the Lincoln county board for four years; also acted as deputy clerk of circuit court for four years and as chairman of the Lincoln county republican committee for two years. Had no opposition at the primaries, and was elected to the assembly Nov. 6th, 1906, receiving 1,665 votes against 1,030 for E. S. King (Dem.).

MANITOWOC COUNTY.

First District. The towns of Centerville, Liberty, Manitowoc, Manitowoc Rapids, Meeme and Newton, and the city of Manitowoc. Population, 1900—20,343.



S. T. Wehrwein.

S. F. WEHRWEIN (Rep.) was born in the town of Newton, Manitowoc county, Wis., January, 1869; was educated in the public schools of that county; later attended the Oshkosh Normal School for two years. He taught for seven years in Manitowoc county, then took charge of his father's farm during which time he was chosen one of the trustees of the Farmers' Mutual Fire Ins. Co.; he is now again engaged in teaching. In 1906 he was elected president of the Manitowoc County Teachers' Association, and for two years he served as a member of the board of common school examiners. He has been elected to represent his district as a delegate to county and state conventions and was elected member of the assembly in 1904 and re-elected in 1906, receiving 1,784 votes against 1,214 for Albert Tomahek (Dem.).

MANITOWOC COUNTY.

Second District. The towns of Cato, Cooperstown, Eaton, Franklin, Gibson, Kossuth, Maple Grove, Misticott, Rockland, Schleswig, Two Creeks, and Two Rivers, the villages of Kiel and Reedsville, and the city of Two Rivers. Population, 1900—21,918.

LAWRENCE W. LEDVINA (Rep.), of Two Rivers, was born in the town of Franklin, Manitowoc county, September 28, 1880. He attended the common and

parochial schools of that county and at the age of sixteen began teaching school, which profession he followed for six years at Kellnersville and in the town of Manitowoc Rapids. In 1902 he was elected president of the Manitowoc County Teachers' Association. Graduated from the law department of the University of Wisconsin in 1906. He is at present engaged in the practice of law at Two Rivers. He holds the highest national office, that of chief justice in the Phi Alpha Delta Law Fraternity. In the last four campaigns he was engaged in campaigning in the Bohemian language under the auspices of the National Republican Committee. He was elected to the assembly in 1904 being the youngest member that session and the only Republican ever elected from his district. Re-elected in 1906 receiving 1,801 votes against 1,352 for Martin Roppel (Dem.), and 328 for Fred M. Althen (Soc. Dem.). He served on Judiciary Committees of both sessions and as Chairman of Committee on Libraries, 1907.



L. W. Ledvina.

MARATHON COUNTY.

First District. The towns of Bergen, Berlin, Brighton, Cassel, Cleveland, Day, Eau Pleine, Emmett, Frankfort, Halsey, Hamburg, Holton, Hull, Johnson, Maine, McMillan, Marathon, Mosinee, Rib Falls, Reitbrock, Spencer, Stettin and Wein, the villages of Marathon, McMillan, Mosinee and Edgar, and the east ward of Colby. Population, 1900—21,559.

NIC SCHMIDT (Dem.) was born in Germany, November 2nd, 1860; received a common school education, learned the machinists trade in early youth and studied evenings both at home and night school to gain an education; traveled extensively in Europe to promote his efficiency as a machinist; came to America in 1880 and resided for a while in Chicago working at his trade, and continuing his studies in evening school to acquaint himself with the English language; he continued working at his trade for about five years when an accident befell him from which he never permanently recovered; this compelled him to enter business for himself; for the next six years he was engaged in flour, feed, wood and coal business, and later sold real estate. In 1901 he bought the Marathon City Brewery of which company he is now president and manager, and has been a member of the village board for three years; is president of the Marathon Excelsior & Manufacturing Co., the State Bank of Marathon, the Marathon Lumber Co., and the Marathon Telephone Co., he was elected member of the assembly in 1906, receiving 1,642 votes against 1,489 votes for A. E. Beebe (Rep.), and 55 votes for A. F. Becker (Soc. Dem.).



Nic Schmidt.

MARATHON COUNTY.



Aug. F. Marquardt.

Second District. The towns of Easton, Eldron, Harrison, Hewitt, Knowlton, Kronenwetter, Norrie, Pike Lake, Plover, Texas Wausau, and Weston, and the city of Wausau. Population, 1900—21,697.

AUGUST F. MARQUARDT (Rep.) was born at Bandekow, Pommern, Germany, January 8th, 1850, and came to the city of Wausau July 1st, 1866, when a boy of 17. He was for many years engaged in logging, lumbering, mercantile occupations and farming and now owns a beautiful farm partly within the city limits. He is at present a director of the Citizens State Bank of Wausau. He has held many official positions in the city and county. He represented his ward on the common council of the city of Wausau for eighteen years; was president of the council 1900-1901; was member of the county board for sixteen years; was president of the Marathon County Agricultural Society for two years; was vice-president of the State Agricultural Society in 1899; was elected by the common council as member of the board of water commissioners May 1st, 1905 for a term of three years; on Nov. 7th, 1906 he was appointed by the mayor of the city as a member of the park board for a term of five years; was elected sheriff of Marathon county in the fall of 1900 and served for two years; was elected member of the assembly in 1904, and re-elected in 1906, receiving 2,079 votes against 1,944 for Otto Muenchow (Dem.).

MARINETTE COUNTY.

First District. The city of Marinette. Population, 1900—16,195.



Edward W. Le Roy.

EDWARD WEBSTER LE ROY (Rep.) was born January 30, 1874, in the city of Marinette. He was educated in the Marinette public schools. He held the position of city editor of the Daily Eagle at the time of his first election to the assembly. Later he was editor of the Daily Star and is now one of the editors and proprietors of the Daily Eagle-Star. He never held a public office until he was elected to the assembly in 1902, and was re-elected in 1904, and 1906, receiving 1,204 votes against 693 votes for Harry T. La Voy (Dem.), 111 for Horace W. Pope (Pro.), and 77 for Louis Larson (Soc. Dem.).

MARINETTE COUNTY.

Second District. That towns of Amberg, Athelstane, Beaver, Crivitz, Coleman, Dunbar, Grover, Lake, Porterfield, Peshtigo, Pound, Stephenson, Wausaukee; the village of Coleman; the city of Peshtigo. Population, 1900—14,627.

W. H. FALVEY (Rep.) was born in the town of Franklin, Manitowoc county of Irish parents; received

a common and high school education, taught school eight years; worked in the office of the Butler-Mueller Lumber Co. for three years, and for the Peshtigo Lumber Co. five years; was deputy sheriff of Marinette county for seven years; at present is chairman of the town of Stephenson, Marinette county having held the office for five successive years: is also secretary of township board of school directors having held same for eight years, and is chairman of county road and bridge committee of Marinette county. He was elected to the assembly in 1906, receiving 1,377 votes against 368 for J. W. Monroe (Dem.).



W. H. Falvey.

MILWAUKEE COUNTY.

First District. The 1st and 18th wards of the city of Milwaukee. Population, 1900—23,396.

H. H. HEILBRON (Rep.) of Milwaukee, was born in the city of Bochum, Germany, on the 19th day of March 1869. After a few years' attendance in the public schools of his home city, he was admitted as a student in the imperial academy at the age of nine years, from which institution he graduated in 1887. Believing he would be more successful in life in America, Mr. Heilbron came to Milwaukee on the 30th day of July, 1887. He at once found employment in a mercantile business where he remained until 1894. In the latter year he engaged in the grocery and commission business and during this time he again took up his old studies and became a student in the Milwaukee Law School in 1898, from which he graduated in 1900, being one of the few who successfully completed the three years' course in two years. In October of the same year he was admitted to practice law in the courts of the state of Wisconsin and opened his law office in the Cawker Building 14 Wells St., Milwaukee where he is still located. He has always affiliated himself with the republican party, having always been a strong supporter of Senator La Follette and the principles he contends for, and having at all times taken an active interest in the local affairs of his ward and city, of which he has been a resident for sixteen years. He was nominated at the primary without opposition, in 1906, and was elected to the assembly, receiving 1,863 votes against 1,631 for Jos. M. Crowley (Dem.), and 593 votes for David White (Soc. Dem.).



H. H. Heilbron.

MILWAUKEE COUNTY.

Second District. The 2d and 6th wards of the city of Milwaukee. Population, 1900—23,580.

OTTO A. HARRASS (Rep.) was born in the city of Milwaukee, July 13th, 1869; was educated in parochial and public schools; he is a mason by occupation. In



Otto A. Harrass.



William Disch.

1898 he enlisted in the Spanish-American war, Company D, 4th Wisconsin Volunteers, and was promoted to the rank of corporal and served until mustered out February 28th, 1899; elected member of the assembly in 1906, receiving 1,707 votes against 1,148 votes for Chas. Grobowski (Soc. Dem.), and 970 votes for Jos. R. Cushbert (Dem.).

MILWAUKEE COUNTY.

Third District. The seventeenth ward of the city of Milwaukee, the towns of Oak Creek and Lake, the village of Cudahy, and the city of South Milwaukee. Population, 1900—22,236.

WILLIAM DISCH (Rep.) was born in Glarus, Switzerland, Jan. 12, 1840; came to America in 1853; lived in New Jersey one year; removed to Milwaukee in 1854 where he has since resided; received his education in the common schools; is a retired farmer; served two years and ten months in the Civil war, being a private in Company K, 24th Wis. receiving his honorable discharge at the close of the war; was a night-watch at the state capitol two years, policeman and janitor five years; never sought or held an elective office; was elected to the assembly in 1906, receiving 1,801 votes against 1,214 votes cast for A. T. Neumann (Soc. Dem.).



George F. Grasse.

MILWAUKEE COUNTY.

Fourth District. The 15th and 16th wards of the city of Milwaukee. Population, 1900—22,346.

GEORGE F. GRASSE (Rep.) was born in Methuen, Mass., April 25, 1871, lived in Oshkosh and Appleton, Wis., Sycamore, Ill., and Keokuk, Ia., until 1885 when with his parents moved to Milwaukee where he has lived practically continuously since. Graduated from Beloit college in 1895 and engaged in newspaper business which vocation he still follows. Was elected member of assembly in 1906, receiving 2,873 votes against 1,093 for Isadore Leiser (Dem.), and 828 for Patrick Devine (Soc. Dem.).

MILWAUKEE COUNTY.

Fifth District. The 5th and 12th wards of the city of Milwaukee. Population, 1900—23,247.



William J. Alldridge.

WILLIAM J. ALLDRIDGE (Soc. Dem.), of Milwaukee, was born at Bay View, Wis., March 18, 1879; is a machinist by trade and member of the machinists' union. Never sought or held public office until he was elected to the assembly in 1904. He was re-elected in 1906, receiving 1,503 votes against 1,015 votes for Frank R. Ammon (Rep.), and 887 votes for John H. Desseler (Dem.).

MILWAUKEE COUNTY.

Sixth District. The 3d, 4th and 7th wards of the city of Milwaukee. Population, 1900—23,270.

LUCIAN H. PALMER (Rep.) was born in Huntsville, Ala., March 12th, 1855; at the age of seven years he was left without parents; some years later he moved with an older sister to Nashville, Tenn., where he attended the public schools. Later he entered Central Tennessee College, now known as Waldron University, from which institution he graduated in 1876, having worked his way through college. Soon after this he found employment in the Grand Pacific Hotel in Chicago and later became manager of Lakeside Resort at Pewaukee, Wis.; in 1883 he engaged in the business of caterer and continued therein until the panic of 1893; during the next ten years he acted as steward of the Milwaukee Yacht Club; he resigned this position to become superintendent and steward of the Wisconsin state building at the World's Fair held at St. Louis; at the time of his election he was steward of the Pasadena Flats in Milwaukee. He has held appointive positions such as "U. S. Weigher of Mails," "Commissioner for Negro Exhibits at the New Orleans Exposition," "Census Enumerator," "Checking Clerk in the U. S. Marshal's Office" and "Messenger of the U. S. District Court;" he is at present a trustee of St. Mark's A. M. E. Church; was elected member of the assembly in 1906, receiving 1,668 votes against 1,601 votes cast for T. F. Ramsey (Dem.), and 507 votes for Jos. Sultaire (Soc. Dem.).



Lucian H. Palmer.

MILWAUKEE COUNTY.

Seventh District. The towns of Franklin, Greenfield and Wauwatosa, and the city of Wauwatosa. Population, 1900—20,646.

ELMER E. CAIN (Rep.) was born in Wauwatosa, Milwaukee county, Feb. 8th, 1881. He received his education at the Wauwatosa high school, Lawrence University and the University of Wisconsin. He entered the produce commission brokerage business in the city of Milwaukee. Since arriving at his majority he has taken an interest in public matters and last year was elected local assessor. He was elected member of assembly in 1906, receiving 2,103 votes against 576 for Carl J. Blunarr (Soc. Dem.), and 97 votes for Winfred B. Cox (Pro.).



Elmer E. Cain.

MILWAUKEE COUNTY.

Eighth District. The 8th and 23d wards of the city of Milwaukee. Population—19,332.

SIMON KANDER (Rep.), of Milwaukee, was born in Baltimore, Md., December 21st, 1848. Moved to Williamsport, Pa., where he received his education in the public schools and Dickinson Seminary. From Williams-



Simon Kander.



Ed. J. Berner.

port, moved to Titusville, Pa., whence after a residence of several years, he came to Milwaukee with his parents in 1868 where he has since that time resided. Mr. Kander has been engaged in the real estate business for the past twenty years. Was school commissioner four years, and has always taken a deep interest in educational matters. Since becoming a voter he has always acted with the republican party. He was elected member of assembly in 1906, receiving 1,563 votes against 1,192 for Edwin Scaife (Soc. Dem.).

MILWAUKEE COUNTY.

Ninth District. The ninth ward of the city of Milwaukee. Population, 1900—17,653.

ED. J. BERNER (Soc. Dem.) was born in Freistadt, Ozaukee county, Wis., May 17, 1864, came to Milwaukee in the year of 1872, was educated in the 9th district school. Has been interested in the trades union movement for the past 15 years; held various offices in same; was elected a member of the assembly in 1904, and re-elected in 1906, receiving 1,147 votes against 902 for A. H. Lambeck (Rep.), and 539 for Jacob Kehrein (Dem.).



H. E. Georgi.

MILWAUKEE COUNTY.

Tenth District. The 10th ward of the city of Milwaukee. Population, 1900—17,024.

HERMAN EMIL GEORGI (Rep.) was born June 16th, 1870 in Milwaukee, Wisconsin. Was educated in the public and high schools of said city, taught school and attended the University of Wisconsin, graduating therefrom in June, 1891. Has since practiced law in the city of Milwaukee. Was elected to assembly in 1906, receiving 1,221 votes against 1,004 for George Mensing (Soc. Dem.).

MILWAUKEE COUNTY.

Eleventh District. The 11th ward of the city of Milwaukee. Population, 1900—21,903.



Fred. Brockhausen.

FREDERICK BROCKHAUSEN (Soc. Dem.) was born in the city of Fredericia, Denmark, May 20, 1858; received a public school education; learned the trade of cigar making; came to the United State in 1879; lived twelve years in Wisconsin; has also lived in New York, Iowa, Montana and Minnesota. For the past five years has served the Wisconsin State Federation of Labor as its secretary-treasurer. He was elected to the assembly in 1904, and re-elected in 1906, receiving 1,434 votes against 972 votes for James C. Bartholf (Rep.), and 674 votes for Bruno B. Choinski (Dem.).

MILWAUKEE COUNTY.

Twelfth District. The Nineteenth and Twenty-second wards of the city of Milwaukee. Population, 1900—20,231.

CARL D. THOMPSON (Soc. Dem.) was born in the village of Berlin, Mich., March 24, 1870; graduated from Gates College, Nebraska, 1895, Chicago Theological Seminary, 1898, received Master's degree from Chicago University, 1900. Served in the Congregational ministry from 1891 to 1901. Was pastor of congregational church in Sharon, Wis. for three years. For the last three years has served as state organizer and lecturer for the social-democratic party of Wisconsin, and is a member of the national committee. Was elected to the assembly in 1906, receiving 1,648 votes against 1,545 votes for Aug. Dietrich (Rep.), and 1,010 votes for Adam Muth (Dem.).



Carl D. Thompson.

MILWAUKEE COUNTY.

Thirteenth District. The thirteenth ward of the city of Milwaukee. Population, 1900—17,026.

CHARLES E. ESTABROOK (Rep.), of Milwaukee, was born near Platteville, Grant county, Wisconsin, October 31st, 1847; educated at Platteville Academy and the Normal School; moved from Platteville to Manitowoc in 1871, and for a year taught school, having charge of the first ward public school; subsequently studied law and has been engaged in the practice of his profession at Manitowoc and Milwaukee since January, 1874; enlisted in August, 1864, in Co., B, 43d Wisconsin Volunteer Infantry, served with the regiment until discharged at the close of the war, July, 1865; was city attorney of Manitowoc from April, 1877, until December, 1880, resigning on being elected as member of assembly; was a delegate to the national republican convention at Chicago, in June, 1884; was member of assembly in 1881, 1883 and 1885; elected attorney general in 1886 and re-elected in 1888; removed to Milwaukee in 1893, where he has since resided. In 1906 he was again elected member of assembly from the city of Milwaukee, receiving 1,224 votes against 593 for F. J. Gorski (Dem.), and 905 for H. F. Lutzen (Soc. Dem.).



Charles E. Estabrook.

MILWAUKEE COUNTY.

Fourteenth District. The 14th ward of the city of Milwaukee. Population, 1900—20,651.

JOS A. DOMACHOWSKI (Dem.) was born in Poland, November 26, 1872. Came to Milwaukee in 1881. Was educated in the St. Hyacinth parochial school and in evening public school. Is a painter and decorator by trade, but at present is engaged in the saloon business.



Jos. A. Domachowski.



Jacob Luy.

Was elected member of assembly in 1906, receiving 1,004 votes against 915 for Martin Gorecki (Soc. Dem.), and 460 for Nic Rataiczyk (Rep.).

MILWAUKEE COUNTY.

Fifteenth District. The 21st ward of the city of Milwaukee, the towns of Granville and Milwaukee, and the villages of East Milwaukee, North Milwaukee and Whitefish Bay. Population, 1900—20,613.

JACOB LUY (Rep.) was born Oct. 7th, 1855 in the town of Milwaukee of which he is still a resident. He has been a carpenter contractor for the past 25 years in which business he is still engaged. He was elected side-supervisor of his town in 1892 and served in that capacity until 1897. Was chairman of his town and represented the town of Milwaukee in the county board of supervisors from 1900 to 1906. Was elected to the assembly from his district in 1906, receiving 1,521 votes against 1,302 for Chas. B. Whitnalls (Soc. Dem.).



Frank J. Weber.

MILWAUKEE COUNTY.

Sixteenth District. The 20th ward of the city of Milwaukee. Population, 1900—16,863.

FRANK J. WEBER (Soc. Dem.) was born in the city of Milwaukee, August 7th, 1849. At the age of 3 years he removed with his parents to Grafton, Ozaukee county. He learned the trade of seaman, in which capacity he visited all the most important seaports of the world. He has been a member of a labor organization for 40 years. He organized the Wisconsin State Federation of Labor in 1893 and has been continuously an officer thereof. He is also one of the General Organizers of the American Federation of Labor. He was elected to the assembly in 1906, receiving 1,580 votes against 1,080 for Edward H. Groeling (Rep.).



John R. Jones.

MONROE COUNTY.

One District. Population, 1900—23,103.

JOHN R. JONES (Rep.) was born at Pittsburg, Pa. in the year 1850, of Welsh parentage. Came west with his parents in 1856, and settled on a farm in the town of Leon, Monroe county, Wis. Received a common and high school education. Is by occupation a farmer. Held various offices in his town, and was chairman eleven years. Was elected twice chairman of the county board, and one term chairman of the republican county committee of his county. In 1906 was elected member of assembly for said county, receiving 2,083 votes against 1,428 for Myron Brackett (Dem.).

OCONTO COUNTY.

One District. Population, 1900—20,874.

W. J. MCGEE (Rep.) was born at St. Andrews, New Brunswick, in 1838 where he received a common school education and in 1854 emigrated to the state of Maine where he served three years apprenticeship in ship-building until the panic of 1857 caused the death of that industry when he returned to his former home and served a three years' apprenticeship at the carpenter and joiners' trade and later worked at the trade, employing his leisure hours in studying architecture. In 1867 he came to Oconto and has since that time engaged in that business and in contracting and building except during the time he has served the people in a public capacity. In 1876 he was appointed assistant chief of the Oconto fire department and after serving two years he was made chief, which position he held for three years. He was elected alderman in 1872 and in 1875, and in 1882 he was appointed undersheriff of Oconto county. He served four years as a member of the school board and was president of that body for two years. In 1883 he was again elected to the city council and in 1886 he was elected sheriff. He was city marshal in 1890, '91 and '92. He was appointed state carpenter in 1894 by Governor Upham and reappointed in 1897 by Governor Scofield, serving two years under each administration. In 1901 he was appointed special deputy game warden which position he held until he concluded to become a candidate for the assembly in 1906, to which office he was elected, receiving 1,888 votes against 988 votes for Jos. P. Gehling (Dem.).



W. J. McGee.

OUTAGAMIE COUNTY.

First District. The towns of Bovina, Center, Dale, Ellington, Grand Chute, and Greenville and the city of Appleton. Population, 1900—23,102.

F. PETERSEN, JR. (Dem.) was born in Winnebago county, this state, on the 25th of March, 1860; is a dealer and shipper of live stock and is also interested in the meat business; has been alderman four years in Appleton, where he has resided since 1866; was president of city council for two years; received his education in the schools of the city of Appleton and at Lawrence University. He was elected to the assembly in 1904, and re-elected in 1906, receiving 2,098 votes against 1,718 votes for J. G. Rosebush (Rep.).



F. Petersen, Jr.

OUTAGAMIE COUNTY.



Charles Hagen.

Second District. The towns of Black Creek, Buchanan, Cicero, Deer Creek, Freedom, Hortonia, Kaukauna, Liberty, Maine, Maple Creek, Osborn and Seymour, that part of the Oneida reservation that lies within Outagamie county, the villages of Hortonville and Little Chute, the cities of Kaukauna and Seymour and the 3d ward of the city of New London. Population, 1900—23,145.

CHARLES HAGEN (Rep.), of Outagamie county, was born in the town of Lomira, Dodge county, Wisconsin, on the 12th day of March, 1862. He continued to reside there upon the old homestead until 1882, when he came to Outagamie county and located at Black Creek and established himself in business on a small scale. His business interests have grown yearly and he now has a good sized manufacturing institution turning out cheese boxes, cisterns, tanks, window and door frames, etc., with a lumber yard in connection. Mr. Hagen received a common school education, which has been added to by practical business experience. Mr. Hagen served as town clerk and justice of the peace at Black Creek, and was tendered the nomination again, but his business interests had increased to such an extent that he could not accept. Subsequently he was elected president of the school board of the Black Creek graded schools and has officiated in that capacity for the past twelve years. He is now serving as president of the village board of the recently incorporated village; was elected to the assembly in 1904, and re-elected in 1906, receiving 1,511 votes against 1,457 votes for G. Folk (Dem.).

OZAUKEE COUNTY.

One District. Population, 1900—16,363.



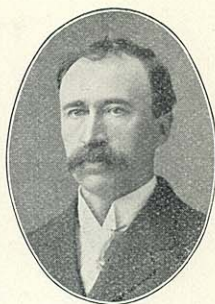
William J. Bichler.

WILLIAM J. BICHLER (Dem.), of Belgium, Wis., was born in the town of Holland, Sheboygan county, Nov. 14, 1870. Followed farm life and attended the common schools of said town; later entered the Pio Nono College at St. Francis, Wis., and at the age of eighteen began teaching, which profession he followed for five years in Sheboygan county. In 1894 he settled in the town of Belgium, Ozaukee county and took up general farming, where he has since conducted a grain and dairy farm. He is also engaged in the real estate and insurance business. Has been secretary of the town of Belgium Mutual Fire Ins. Co. since 1895. In the spring of 1906 he was elected chairman of the town of Belgium. Was elected to the assembly in 1906, receiving 1,804 votes against 831 for Peter L. Pierron (Rep.), 69 for William E. Vetter (Soc. Dem.), and 63 for Arthur J. Pallansch (Ind.).

PIERCE COUNTY.

One District. Population, 1900—23,943.

WILLIAM A. KAY (Rep.) was born in the town of Martell, Pierce county, Wis., on the 22nd day of February, 1864. Received a common school education. His business is farming and stock raising. Is now serving his fourteenth year as school district treasurer; was elected supervisor of his town in 1894, re-elected in 1895; was elected assessor in 1896, and was elected chairman of his town in the years 1897, 1898, 1900, 1901, 1903, 1904. Was elected first vice-president of the Pierce Co. Farmers' Co-operative Mercantile Co. In 1904 and re-elected in 1905 and 1906. Was elected to the assembly in 1906, receiving 1,623 votes against 599 votes for Geo. T. Heslin (Dem.); and 46 votes for Geo. D. Smith (Soc. Dem.).



Wm. A. Kay.

PORTAGE COUNTY.

One District. Population, 1900—29,483.

FRED J. CARPENTER (Rep.), of Stevens Point, was born in Plover, Portage county, Wisconsin, September 20th, 1871. Attended the common and high schools and graduated from the law department of the University of Wisconsin in the class of 1895. Since his graduation he has been engaged in the practice of law at Stevens Point. Was city attorney for three terms, and was a member of the board of education for three years. During the Spanish-American war he served as first lieutenant of Co. I, 4th Reg., Wis. Vol. Inf. Was elected member of the assembly in 1902, and 1904, and re-elected in 1906, receiving 2,325 votes against 1,615 votes for John Een (Dem.).



Fred J. Carpenter.

PRICE AND TAYLOR COUNTIES.

One District. Population, 1900—20,368.

CHARLES F. STOUT (Rep.), of Westboro, was born in Kent county, Michigan, April 15, 1866. He was educated in the common schools of Cedar Springs, Michigan; studied law in an office at Evart, Michigan; was admitted to the bar July 1887, and afterward, for a time, attended the Ferris Institute of Big Rapids, Michigan. Born, and growing up, amidst the lumbering industries, he became conversant with, and attached to, that line of business. He came to Westboro in 1899 as sales manager for the lumber company at that place. In 1904 he organized the C. F. Stout Lumber Company, of Westboro. From an early age he took an active interest in politics, affiliating with the republican party. He was elected to the assembly in 1906, receiving 2,362 votes to 1,765 votes for C. A. Rosander (Dem.).



Charles F. Stout.

RACINE COUNTY.



William H. Bell.

First District. The 1st, 2d, 3d, 4th, 5th, 6th (and at the present time, the 8th, 9th, 10th and 11th) wards of the city of Racine. Population, 1900—24,807.

WILLIAM H. BELL (Rep.) born August 8th, 1863, in Liverpool, England, came to Racine 1880; worked at the machinist trade until 1893. Since then has been engaged in real estate business. In 1901 was appointed public administrator for Racine county; re-appointed 1906. Has served five years as alderman of the city of Racine; is still a member of the council. Was elected member of the assembly 1904, re-elected 1906, receiving 2,156 votes against 691 for Wm. Somers (Soc. Dem.), and 132 for L. H. Parks (Pro.).

RACINE COUNTY.

Second District. The towns of Burlington, Caledonia, Dover, Mt. Pleasant, Norway, Raymond, Rochester, Waterford and Yorkville, the village of Union Grove, the seventh ward of the city of Racine, and the city of Burlington. Population, 1900—20,837.



John O. Thomas.

JOHN O. THOMAS (Rep.) was born in the town of Caledonia, Racine county, Wis., Nov. 23, 1867, of Welsh parentage. He received his education in the district school of his home district and the Belle City Business College of Racine, Wis. He is engaged in dairying and general farming. He served for three years as town clerk of the town of Caledonia, Racine county, Wis. He was elected member of assembly in 1904, and re-elected in 1906, receiving 1,267 votes, against 1,117 for Chas. A. Apple (Dem.), 201 for Walter Moe (Soc. Dem.), and 112 for Thomas A. Griffiths (Pro.).

RICHLAND COUNTY.

One District. Population, 1900—19,483.



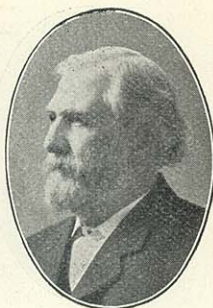
L. H. Bancroft.

L. H. BANCROFT (Rep.) born December 26th, 1830, Sauk county, Wis. Educated in common schools. Graduate of Lone Rock high school, and of U. W. law department class of 1884. Elected district attorney Richland county 1886; city attorney for Richland Center six years; county judge of Richland county 1897 to 1902; assistant attorney general 1902-1904; member of assembly for Richland county 1906; alternate to national republican convention at St. Louis 1896; delegate to republican national convention at Philadelphia 1900; delegate to republican state conventions of 1892, 1894, 1896, 1898, 1900, 1902, 1904; has practiced law at Richland Center, Wis. since 1885. He was elected to the assembly in 1906, receiving 1,741 votes against 1,259 for J. W. Brown (Dem.) and 288 votes for Abraham Lincoln (Pro.), and 29 votes for Vincent Stanck (Soc. Dem.).

ROCK COUNTY.

First District. The towns of Center, Fulton, Janesville, Lima, Magnolia, Milton, Porter, Rock, Spring Valley and Union, and the cities of Edgerton and Evansville. Population, 1900—16,902.

ALLEN S. BAKER (Rep.) was born near Evansville, Wis., January 12, 1842. Received a common school education and commenced business for himself in 1859 as a mechanic. Enlisted in the 2d Reg., Wisconsin Volunteer Inf., April 20th, 1861; was assigned to the army of the Potomac in June, 1861; in General Sherman's brigade in first battle of Bull Run; later to Gibbons brigade, afterwards known as the "Iron Brigade;" he participated in most of the battles in which this brigade was engaged and received wounds in the battles of Ganesville, Va., and Gettysburg, Pa. In 1886 went into business in Evansville as blacksmith and carriage builder. In 1873 he sold out and established what is now known as the Baker Manufacturing Company, engaged in the manufacture of pumps and wind-mills and has continued in this business until the present time, at first as general manager and in later years as president and treasurer. He was elected to the assembly in 1904, re-elected in 1906, receiving 1,175 against 707 for John Sherman (Dem.).



Allen S. Baker.

ROCK COUNTY.

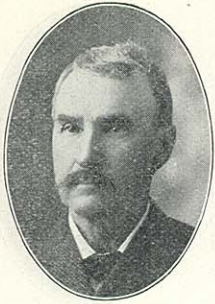
Second District. Bradford, Harmony, Johnston, La Prairie and the city of Janesville. Population, 1900—17,091.

PLINY NORCROSS (Rep.) of Janesville, was born in Templeton, Worcester county, Massachusetts, November 16, 1838; received a common school and academic education; is by profession a lawyer; came to Wisconsin in 1852 and settled in La Grange, Walworth county, whence he removed in 1865 to Janesville, where he now resides; enlisted April 16, 1861, in the 1st Wisconsin Vol. Inf.,—a three months' regiment,—and afterwards was captain of Co. K, 13th Wis. Vol. Inf., participating in all the engagements of the regiment; has been district attorney of Rock county four years, city attorney two years and mayor of Janesville two years. Mr. Norcross has not practiced law since 1883, but has been engaged in various kinds of manufacturing business. In June, 1904, he was elected department commander of the state of Wisconsin G. A. R. He is at present a member of the board of regents of the University of Wisconsin. He was elected to the assembly in 1865 and again in 1884; was re-elected to the assembly in 1904 and 1906, receiving 1,069 votes against 57 for John R. Horn (Soc. Dem.).



Pliny Norcross.

ROCK COUNTY.



Simon Smith.

Third District. The towns of Avon, Beloit, Clinton, Newark, Plymouth and Turtle, the village of Clinton, and the city of Beloit. Population, 1900—17,210.

SIMON SMITH (Rep.) Beloit, Wis., was born in Axbridge, Eng., Nov. 14, 1839; came to this country with his parents when a boy; received a common school education; settled in Beloit in 1856. At the breaking out of the civil war he enlisted in Co. D. 15th Ill. Inf.; after the war he returned to Beloit and engaged in the painting business; is now retired. Has been a member of county board twenty years; was for two years chairman of the board. Was mayor of the city of Beloit from April 1899 to April 1904; has always been a republican in politics. He was elected to the assembly in 1906, receiving 1,268 votes against 667 for F. Lathers (Dem.).

SAUK COUNTY.



Wilber Cahoon.

First District. The towns of Baraboo, Dellona, Delton, Excelsior, Fairfield, Freedom, Greenfield, Merrimac, Prairie du Sac and Sumpter, the villages of Ableman, Merrimac, North Freedom Prairie du Sac and Sauk City and the city of Baraboo. Population, 1900—16,905.

WILBER CAHOON (Rep.) was born in the town of Baraboo, March 22, 1868, and still resides within half a mile from where he was born; he received a common school education; by occupation he is a farmer; has been elected to numerous offices of public trust. He was elected to the assembly in 1906, receiving 1,599 votes against 849 for Fred W. Zantow (Dem.) and 175 for Edwin R. Thomas (Pro.).

SAUK COUNTY.



Frank F. Mueller.

Second District. The towns of Bear Creek, Franklin, Honey Creek, Ironton, La Valle, Reedsburg, Spring Green, Troy, Washington, Westfield, Winfield and Woodland, the villages of La Valle and Spring Green and the city of Reedsburg. Population, 1900—16,101.

FRANK F. MUELLER (Rep.) was born on a farm in the town of Woodland, Sauk county, January 5, 1870. He attended the district school and the Wonewoc high school, and a preparatory school at Waverly, Iowa. In 1887 he entered the employ of a druggist in Reedsburg serving three years as apprentice. He then took a pharmacy course at the University of Wisconsin, and after receiving a druggist's certificate, gained practical experience in drug stores in various towns in the state, and in 1895 established a drug store in Reedsburg in company with his brother-in-law, G. E. Dangel. Five years later they dissolved partnership, Mr. Mueller soon after purchas-

ing the Ramsey pharmacy, which he has conducted ever since. Mr. Mueller has been a republican from the time he cast his first vote, and stands squarely for the principles laid down in the past several state platforms. He was elected to the assembly in 1906, receiving 1,054 votes against 776 for Guy B. Harvey (Dem.), 265 for Wm. F. Schaefer (Ind.), and 139 for Sidney Wakefield (Pro.).

SHAWANO COUNTY.

One District. Population, 1900—27,475.

ANTONE KUCKUK (Rep.) was born at Schleisingerville, Washington county, Wis., Feb. 10, 1863. Attended public and parochial schools until 13 years of age. Was employed for two years in hotel at Hartford, Wis.; six years as clerk in a store at Wausau and Shawano; for twenty-one years has been engaged in jewelry and music business at Shawano; has been several years a member of the Shawano county board and of the school board of Shawano. Was delegate to state convention in 1900. Nominated in 1906 for assembly without opposition and elected, receiving 1,675 votes against 916 votes for Frank A. Wolf (Dem.).

SHEBOYGAN COUNTY.

First District. The town of Sheboygan and the city of Sheboygan. Population, 1905—25,143.

JOHN M. DETLING (Dem.) was born in the city of Sheboygan, Wis., June 21, 1880. Attended the parochial, common and high schools of that city and was graduated from the law department of the University of Wisconsin in the class of 1905. Since his graduation he has been engaged in the practice of law at Sheboygan. Was elected to the assembly in 1906, receiving 1,964 votes against 1,361 for Ulrich Moeckli (Rep.) and 364 for Charles Gilsdorf (Soc. Dem.).

SHEBOYGAN COUNTY.

Second District. The towns of Greenbush, Herman, Holland, Lima, Lyndon, Mitchell, Mosel, Plymouth, Rhine, Russell, Scott, Sheboygan Falls, Sherman and Wilson, the villages of Cedar Grove, Elkhart Lake, and Sheboygan Falls, and the city of Plymouth. Population, 1900—25,202.

EDWARD J. KEYES (Rep.) was born Jan. 29, 1859, in the town of Lyndon, Sheboygan county, Wis.; received a common school education. Has resided in the town of Lyndon except four years, from 1880 to 1884, when he was a resident of Dekalb, Ill., where he worked on a farm for two years and later worked for



Antone Kuckuk.



John M. Detling.



Edward J. Keyes.

the I. L. Elwood Barb Wire Fence Mfg. Co. Owned and operated a cheese factory for thirteen years; is a farmer by occupation. Has held various local offices. Was nominated by the republicans of the 2nd assembly district of Sheboygan county, without opposition and was elected, receiving 2,506 votes against 1,601 cast for Otto C.Luecke (Dem.) and 144 votes for Frank Sanders (Soc. Dem.).



Peter C. Anderson.

ST. CROIX COUNTY.

One District. Population, 1900—26,830.

PETER C. ANDERSON (Dem.) of Hammond came to Wisconsin from Norway in 1870. Settled in that year in the town of Hammond, where he has ever since resided. Was employed for four years upon a farm, and for the succeeding four years was in the employ of a firm engaged in the implement and hardware business. In 1878 he embarked in this business for himself, and to it, together with the sale of real estate and insurance, he has devoted his energies since that time. Has held prominent offices in the village of Hammond, such as those of supervisor, treasurer and president, the last named of which he occupies at the present time. He is also president of the Hammond Telephone Co., and since Feb. 1907 has been president of the Bank of Hammond, of which he was one of the founders. He was elected to the assembly in 1906, receiving 2,023 votes against 1,697 for A. Johnson (Rep.) and 54 for F. B. Webster (Pro.).

TREMPEALEAU COUNTY.

One District. Population, 1900—23,114.



Herman L. Ekern.

HERMAN L. EKERN (Rep.), was born in the town of Pigeon, Trempealeau county, Wis., Dec. 27, 1872. He was educated in the common schools at Pigeon and Whitehall and graduated from the college of law at the University of Wisconsin in the class of 1894, and since his graduation has been practicing law at Whitehall, Wis., in co-partnership with H. A. Anderson under the firm name of Anderson & Ekern. In 1894 he was nominated and elected to the office of district attorney for Trempealeau county on the republican ticket, and held the office for two terms. He served in the assembly in 1902, and was re-elected in 1904, and again in 1906, receiving 1,813 votes against 532 votes for Peter Nelson (Dem.). He was elected speaker of the assembly at the session of 1907.

VERNON COUNTY.

One District. Population, 1900—28,351.

DAVID F. MAINS (Rep.), of Viroqua, was born Sept. 24, 1874, in the town of Webster, Vernon county, and has been a resident of said county since. Is a farmer by occupation. He was educated in the district schools and the Cashton and Viroqua high schools. He taught school from 1896 to 1900, the last three years of which time he served as town clerk of the town of Clinton. He was elected clerk of the circuit court in 1900, re-elected in 1902, and in 1904. Was elected to the assembly in 1906, receiving 2,360 votes against 1,451 votes for J. K. Schreiner (Dem.).



David F. Mains.

WALWORTH COUNTY.

One District. Population, 1900—29,259.

EDWARD H. SPRAGUE was born at Waterloo, Grant county, June 8, 1848. His early education was received in the primitive log school house and later at "Lancaster Institute," a private academy at Lancaster, to which city his mother, who had become a widow, had removed with her family. Shortly after the close of the civil war, he went into Dakota, Montana and British America on a trapping and trading expedition from which he returned in 1867 to enter the Platteville Normal school, where he was a student until June 24, 1869, when he graduated with the first Normal class in this state. He taught as principal of the high school at Augusta two years and at Stockbridge one year, going to Elkhorn as principal of the high school there in 1873. After holding that position four years he resigned and entered the law department of the State University. Immediately after graduation in 1878 he located at Elkhorn for the practice of his profession. He has served three years as district attorney of Walworth county, a number of terms on the county board, as president of the village, and for more than twenty years on the board of education. He founded the Charles E. Sprague Free Library, which was named in honor of his deceased son. In addition to the practice of law, Mr. Sprague is actively interested in farming, manufacturing, and in several mercantile establishments. He was elected a member of the assembly in 1906, receiving 2,603 votes against 1,128 for Lawrence Clancy (Dem.) and 174 for James Hague (Pro.).



Edward H. Sprague.

WASHINGTON COUNTY.

One District. Population, 1900—23,589.

B. S. POTTER (Dem.) was born in the town of Elba, Genesee county, N. Y., Feb. 3, 1836. He came to West Bend in 1856 and clerked in a general store from that time until 1860, when he engaged in the mercantile



B. S. Potter.

business for himself, which business he continued until 1878 when he sold out and became connected with a wholesale grocery house in the capacity of commercial traveler. In 1883 he entered into the milling business and continued in that business until six years ago. He is now engaged in the real estate business in West Bend. He is president of the Advancement Association. In 1884 was a delegate to the democratic national convention at Chicago. Had never sought or held office until elected member of assembly in 1902, receiving a majority over his opponent, Ph. G. Duerrwaechter, (Rep.) of 166. Was reelected in 1904 receiving a majority of 246 over his opponent, Ole Halverson, (Rep.). Was reelected in 1906 over his opponent, Low Maxon, (Rep.) by a majority of 1124. At the special session of the legislature in 1905 was appointed and served as one of the assembly members of the committee to investigate life insurance companies doing business in this state.



James A. McKenzie.

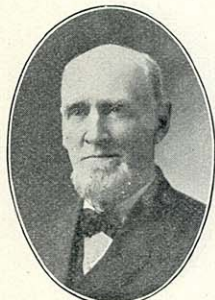
WAUKESHA COUNTY.

First District. The towns of Eagle, Genesee, Mukwonga, Muskego, New Berlin, Ottawa, Vernon and Waukesha, the village of Eagle, and the city of Waukesha. Population, 1900—17,364.

JAMES A. MCKENZIE (Rep.), of Vernon, was born January 27, 1862, in the town of Vernon, Waukesha county; was educated in the common schools of his native town and at Carroll College, Waukesha. For two years (1884 and 1885) clerked in a general store at Boardman, Wis. Since then he has been engaged in the general merchandise business at Vernon. He was elected town clerk three years in succession and was assistant postmaster for fourteen years. He was elected to the assembly in 1904, and re-elected in 1906, receiving 1,717 votes against 1,667 for John M. McGovern (Dem.), and 62 votes for Chris. Becklold (Soc. Dem.).

WAUKESHA COUNTY.

Second District. The towns of Brookfield, Delafield, Lisbon, Menomonee, Merton, Oconomowoc, Pewaukee and Summit, the villages of Hartland, Menomonee Falls and Pewaukee, and the city of Oconomowoc.



Roderick Ainsworth.

RODERICK AINSWORTH (Rep.), of Merton, is a farmer, born in Du Page county, Ill., and came to Wisconsin in 1844, where he obtained his education in Wisconsin common and normal schools. He has held various town offices and the secretaryship of the Lisbon Insurance company several years, and has taught school many years. He was elected to the assembly in 1900, and re-elected in 1902, 1904 and 1906, receiving 1,461 votes against 1,443 votes for Wm. Doolan (Dem.), and 101 votes for Moritz A. Schmoyer (Pro.), and 53 votes for Louis Schneider (Soc. Dem.).

WAUPACA COUNTY.

First District. The towns of Caledonia, Dayton, Farmington, Fremont, Lind, Little Wolf, Royalton, St. Lawrence, Scandinavia, Waupaca and Weyauega, the villages of Weyauega, Fremont, Manawa and Scandinavia, and the city of Waupaca. Population, 1900—16,337.

WESLEY IRVINE (Rep.) was born in Canada in December 1866; he completed the high school course in his native village and later moved to New York, where he attended the Cook Academy for one year; he later entered the medical department of the University of Maryland, from which institution he graduated in 1892; immediately after graduation he removed to Waupaca county, where he has since practiced his profession; was elected member of assembly in 1906, receiving 1,437 votes against 224 for Wm. McLugh (Dem.), and 123 for Henry A. Larson (Pro.).



Wesley Irvine.

WAUPACA COUNTY.

Second District. The towns of Bear Creek, Dupont, Harrison, Helvetia, Iola, Lebanon, Larrabee, Matteson, Mukwa, Union and Wyoming, the villages of Embarrass, Iola and Marion, the city of Clintonville, and the 1st, 2d, 4th and 5th wards of the city of New London. Population, 1900—15,278.

OTTO L. OLEN (Rep.) was born in Winneconne, Winnebago county, Wis.; was brought up on a farm and educated in Ball Prairie school, Winneconne high school, and Oshkosh Normal School; taught school winters, and worked on rivers driving logs, and on farm summers for several years to earn money to go to law school. Graduated from the Chicago Law School 1899, and opened a law office at Monawa, Wis. same year. In Oct. 1901, moved to Clintonville, Wis. and engaged in the practice of law with his brother Walter A. Olen, under the firm name of Olen & Olen; has been vice-chairman of the county board of Waupaca county for the past two years, and president of the Clintonville Free Library Board since its organization. He was elected to the assembly in 1906, receiving 1,104 votes against 498 for J. Prenzlów (Dem.).



Otto L. Olen.

WAUSHARA COUNTY.

One District. Population, 1900—15,972.

E. G. KEUP (Rep.) was born at Oshkosh in 1869; received an education in the common schools and the Bryant & Stratton Business College; was elected chairman of the town of Mt. Morris for eight consecutive years. Is vice-president of the Mt. Morris Norwegian



E. G. Keup.

Mutual Fire Ins. Co.; was elected to the assembly in 1906, receiving 2,021 votes against 187 for Walter A. Kelly (Dem.), and 79 for W. J. Knights (Pro.).

WINNEBAGO COUNTY.

First District. The town of Oshkosh and the 1st, 2d, 4th, 5th, 7th, 8th, 10th, 11th and 12th wards of the city of Oshkosh. Population, 1900—20,317.



Wm. M. Perry.

WM. M. PERRY (Rep.) was born in Portage county, Ohio, May 27, 1842. Received common school education, was brought up on the farm, enlisted in Company F, 7th Ohio Infantry in June 27, 1861 and served three years in the Civil War, was wounded at Dumfrees Landing and taken prisoner on the 27th of December, 1862 and spent the winter of 1862 in Libby Prison. Was exchanged April 4, 1863 and discharged at Cleveland, Ohio, on the 7th of July, 1864. Moved to Wisconsin in 1865, was a member of the board of supervisors of Taylor county in 1880, then moved to Oshkosh where he has since resided; is a mason and contractor by trade; was elected member of assembly in 1904, and re-elected November 6, 1906, receiving 1,799 votes against 1,598 for John Villwalk (Dem.), and 83 for Stephen P. Jones (Pro.).

WINNEBAGO COUNTY.

Second District. The towns of Clayton, Menasha, Neenah, Vinland, Winchester, Winneconne and Wolf River, the village of Winneconne, and the cities of Menasha and Neenah. Population, 1900—18,670.



M. L. Campbell.

M. L. CAMPBELL (Dem.) was born in Omro, March 26, 1864. He received a liberal education in the Omro high school. In 1883 he attended the state university at Madison, and afterwards taught school two years, one year as principal of the Seymour high school. In 1886 he went to Valparaiso, Ind., where he spent one year in business college and one year in college. In 1888 he was admitted to the bar and practiced law in Outagamie county for one year, coming to Neenah in 1899. In 1892 the citizens of the first ward in Neenah determined that he was the right man to represent them on the county board, and though a democrat in a strong republican ward, he was elected supervisor, and was re-elected in 1893. He has served as city attorney for Neenah for six terms. In 1901 he was elected mayor by a flattering majority over one of Neenah's most popular business men. In 1897, upon the organization of the Equitable Fraternal Union, an insurance society, Mr. Campbell was elected secretary, a position he has held to the present time. He was elected to the assembly in 1906, receiving 1,404 votes against 1,201 votes for Geo. E. Scott (Rep.), and 63 votes for W. A. Mason (Pro.).

WINNEBAGO COUNTY.

Third District. The towns of Algoma, Black Wolf, Nekimi, Nepeuskum, Omro, Poygan, Rushford and Utica, and the 3d, 6th, 9th and 13th wards of the city of Oshkosh. Population, 1900—19,238.

CHAS. NEITZEL (Rep.) was born in the town of Black Wolf, Winnebago county, April 1, 1853; received a common school education; is a successful farmer; has held a number of offices of honor and trust; has been a member of town board and town treasurer seven years, town chairman five years; school director for twenty-seven years, director of the Nekimi Fire Ins. Co. for ten years. Was elected to the assembly in 1906, receiving 1,788 votes against 1,059 for J. Jones (Dem.), and 123 for W. S. Fridd (Pro.).



Chas. Neitzel.

WOOD COUNTY.

One District. Population, 1900—25,865.

CLIFFORD R. GOLDSWORTHY (Rep.) is a product of the state of Wisconsin. He was born on a farm in Racine county in 1865, and attended the district school until he was 18 years of age. He then attended the Union Grove high school for two terms and finished his education by taking a business course at Spencerian College in Milwaukee in 1886. When he became 21 years of age, with his fathers assistance, he started farming on his own account on a farm of 160 acres of land in Kenosha county. This farm he operated successfully for eight years and in 1894 leased the farm and engaged in the real estate business at Union Grove. Following the real estate business he first visited Wood county, on a tour of investigation, on July 6th, 1896, and being impressed with the natural advantages of Wood county, he at once set to work locating settlers in and near Vesper, invested a little in lands himself, built a small saw-mill and also engaged in the general merchandise business at Vesper and became post-master at that place. He has twice served his town as chairman and been a member of the county board; is now engaged in the real estate business, placing loans and farming. He was elected to the assembly in 1906, receiving 2,155 votes against 1,992 for Frank Pomainville (Dem.).



C. R. Goldsworthy.

OFFICERS OF THE ASSEMBLY.

CHIEF CLERK.



C. E. Shaffer.

C. E. SHAFFER (Rep.) is a native of Dane county and was born and raised on a farm where, with the exception of the time spent at school, he worked until the age of twenty-one. He was educated in the common schools, private academy and a business college. He taught in district and graded schools and in 1900-01 was instructor in mathematics and bookkeeping in the Madison Business College. Upon the recommendation of Gen. Geo. E. Bryant, who was then a member of the assembly, he was appointed assistant index clerk of the assembly for the session of 1899. He served as assistant bookkeeper during the sessions of 1901 and 1903 and in the next legislature was advanced to the position of head bookkeeper. In 1906 he was elected secretary of the republican county committee, which office he still holds. He was elected chief clerk of the assembly January 9, 1907. He is a resident of the city of Madison and since 1901 has been engaged in the real estate and insurance business.

SERGEANT-AT-ARMS.



William S. Irvine.

WILLIAM S. IRVINE (Rep.) was born in Maryland, March 18th, 1851; came with his parents to Wisconsin in 1852, settling in Trempealeau county; received his education in the common schools; removed to Clark county in 1870, and began farming in 1873; represented his town on the county board for 16 years; was assessor four years; appointed tax commissioner for Eau Claire county for 1901; was elected member of assembly in 1902, and re-elected in 1904. Was chosen sergeant-at-arms of the assembly at the session of 1907.

UNIVERSITY DEPARTMENT HEADS.

PRESIDENT OF THE UNIVERSITY.

CHARLES RICHARD VAN HISE, Ph. D., LL. D., President of the University, was born May 29, 1857, at Fulton, Wisconsin. He graduated from the University of Wisconsin in 1879, with the degree of Bachelor of Metallurgical Engineering. Since that time from the University he has received the following degrees: Bachelor of Science in 1880; Master of Science in 1882; and Doctor of Philosophy in 1892. He has received the honorary degree of Doctor of Laws from the University of Chicago, in 1903, and from Yale University in 1904. Immediately after graduating in 1879 he entered the instructional force of the University of Wisconsin and has remained on its staff in various positions to the present time. In the University he has been instructor in metallurgy, 1886-88; professor of mineralogy and petrology, 1888-90; professor of Archaen and applied geology, 1890-92; professor of geology, 1892-1903; and he was elected President of the University in 1903. At the University of Chicago he was non-resident professor of structural and metamorphic geology from its foundation to 1903. He has held various positions on the United States Geological Survey from 1883 to the present time. Under this organization he was assistant geologist on the United States Geological Survey, 1883-88; geologist in charge of Lake Superior Division, 1888-1900; and he has been geologist in charge of pre-Cambrian and metamorphic geology, 1900 to the present time. For the State Geological and Natural History Survey he was consulting geologist from 1897 to 1903. Since 1903 he has been president of the Board of Commissioners of the Survey. He was president of the Wisconsin Academy of Science, Arts and Letters, 1893-1896; and vice president of Section E of the American Association for the Advancement of Science, 1901. He is a member of the National Academy of Sciences; the Washington Academy of Science; the Geological Society of America; the American Institute of Mining Engineers; the Scientific Society of Christiana, Norway; the Boston Society of Natural History. He has been editor (for structural geology) of the Journal of Geology since 1892. He has made many contributions to geological literature, of which the more important are: the Archaen and Algonkian, the Penokee Iron-bearing Series of Michigan and Wisconsin (with R. D. Irving), Principles of North American Pre-Cambrian Geology, the Marquette Iron-bearing District of Michigan (with W. S. Bayley), the Iron Ores of the Lake Superior region. President Van Hise has also given various addresses upon educational subjects.

VICE-PRESIDENT OF THE UNIVERSITY.

JOHN BARBER PARKINSON, A. M., Vice-President of the University, professor of Constitutional and International Law, was born at Edwardsville, Madison county, Ill., April 11, 1834; graduated from the University of Wisconsin in 1860; was an instructor in the University, 1861-62; county superintendent of La Fayette county, 1862-64; regent of the University, 1866-67; was appointed to a full professorship—the first from the alumni—in 1867; held the chair of Mathematics, 1867-72; of Civil Polity and Constitutional Law, 1872-74; was in journalism and president of the Wisconsin State Board

of Centennial Managers, 1874-76; professor of Civil Polity and Political Economy, 1876-93; was appointed professor of Constitutional and International Law in 1893, and has been vice-president of the University since 1885. He has thus been connected with the University forty years. Several of his addresses, read before the State Agricultural Society, the Academy of Sciences, Arts and Letters, and other societies, have been published; courses of lectures on International Law, English and American Constitutional Law and Political Economy have been prepared, but not yet published.

EDWARD ASAHIEL BIRGE, Ph. D., Sc. D., Dean of the College of Letters and Science, was born Sept. 7, 1851, at Troy, N. Y.; graduated from Williams College in 1873, with the degree of Bachelor of Arts, and received the degree of Master of Arts in 1876; studied zoology in the Agassiz Museum of Comparative Zoology at Cambridge, Mass., until December 1875; received the degree of Doctor of Philosophy from Harvard University in 1878, and of Doctor of Science (honorary) from the Western University of Pennsylvania in 1897; studied histology and physiology in the University of Leipsic, Germany, during the college year 1880-1; elected instructor in natural history at the University of Wisconsin in 1875; professor of zoology in 1879; and in 1891 received the additional office of dean of the College of Letters and Science and served as acting president 1900-3. He is secretary of the Wisconsin Commissioners of Fisheries, superintendent of the Wisconsin Geological and Natural History Survey, president of the Madison Public Library, and president of the American Microscopical Society. His papers are on scientific subjects, mainly in the Archiv für Physiologie, the Biologisches Centralblatt, and the Transactions of the Wisconsin Academy of Sciences, Arts and Letters.

H. L. RUSSEL, Dean of the college of Agriculture was born in Poynette, Columbia County, Wisconsin, March 12, 1886. Entered University of Wisconsin 1884, graduating in 1888. Was fellow in the University in Biology from 1888 to 1890, specializing in bacteriology. Studied in Europe in Koch's Laboratory, University of Berlin, Zoological Station at Naples, The Pasteur Institute in Paris. Given the degree of Ph. D. from John Hopkins' University, 1892. Continued bacteriological studies at the Woods Hall Bacteriological Station, Mass. Fellow in Bacteriology, University of Chicago, 1892-93. Called to the University of Wisconsin in 1893 as assistant professor of bacteriology and bacteriologist in the Experiment Station. This was a new line of work inaugurated by Dean Henry, the first college to take up consideration of agricultural problems from the bacteriological point of view. Most of his work since coming here at the Agricultural College has been along dairy and animal disease lines, especially in connection with tuberculosis.

FREDERICK EUGENE TURNEAURE, C. E., Acting Dean of the College of Mechanics and Engineering. Born in Stephenson county, Illinois, in 1866. Received a country school education and attended the Freeport, Ill., high school for a short time. Entered Cornell University in 1885, and graduated from Civil Engineering Course in 1889. From 1889 to 1900 he was engaged in railroad engineering in Virginia and Kentucky. From 1890 to 1892 he was instructor in Civil Engineering at Washington University, St. Louis, and in 1892 was appointed to the chair of Bridge and Sanitary Engineering of the University of Wisconsin. He was also city engineer of Madison from 1900 to 1902, and has been engaged as consulting engineer on municipal work. He is a member of the American Society of Civil Engineers, of the Western Society of Engineers, and the American Association for the Advancement of Science. He has published as joint author, Modern Framed Structures, 1893, and Public Water Supplies, 1901; besides contributions to the proceedings of various societies, and to technical journals.

HARRY SANGER RICHARDS, Dean of the College of Law. Born in Osceola, Clarke county, Iowa, November 20, 1868. Attended the public schools; graduated from the Academic Department of Parsons College, Fairfield, Iowa, in 1888; graduated from the College of Liberal Arts of the State University of Iowa, in 1892, with the degree of Bachelor of Philosophy; graduated from the Law School of Harvard University in 1895, with the degree of Bachelor of Laws; served a clerk in the office of Horatio D. Wood during the year 1896; located for the practice of law at Ottumwa, Iowa, in 1897; was elected Professor of Law in the Law Department of the State University of Iowa in 1898; was elected Dean of the College of Law, University of Wisconsin, in June, 1903. Was granted the degree of Doctor of Laws by the State University of Iowa in June, 1904. Member of Phi Beta Kappa and legal fraternity, Phi Delta Phi. Member of the American Bar Association and of the Executive Committee of the Association of American Law Schools. Read various papers before the American Bar Association and the Association of American Law Schools.

