

PART VIII.

BIOGRAPHICAL SKETCHES.

U. S. Senators.

Representatives in Congress.

State Officers.

Supreme Judges.

State Senators.

Members of Assembly.

University Faculty.

BIOGRAPHICAL SKETCHES.

MEMBERS OF THE FIFTY-EIGHTH CONGRESS.

UNITED STATES SENATORS.

JOHN C. SPOONER (Rep.), of Madison, was born at Lawrenceburg, Dearborn county, Ind., Jan. 6, 1843; removed with his father's family to Wisconsin and settled at Madison June 1, 1859; graduated at the state university in 1864; was private in Company D, Fortieth regiment, and captain of Company A, Fiftieth regiment, Wisconsin Infantry volunteers; was brevetted major at the close of service; was private and military secretary of Gov. Lucius Fairchild, of Wisconsin; was admitted to the bar in 1867, and served as assistant attorney general of the state until 1870, when he removed to Hudson, where he practiced law from 1870 until 1884; was member of the assembly from St. Croix county in 1872; member of the board of regents of the Wisconsin university; was elected United States senator to succeed Angus Cameron (Rep.), for the term beginning March 4, 1885; was succeeded as United States senator by W. F. Vilas March 4, 1891; was nominated as republican candidate for governor of Wisconsin in 1892, but was defeated; removed from Hudson to Madison in 1893 where he practiced law until re-elected United States senator for the term beginning March 4, 1897, succeeding W. F. Vilas (Dem.) In 1898 was tendered the position of Secretary of the Interior, and in 1901 the attorney generalship in McKinley's cabinet, both of which were declined; was elected to succeed himself in the United States senate in 1903 for the term ending March 4, 1909.

ROBERT MARION LA FOLLETTE—Senator Elect—(For biography see p 1069.

REPRESENTATIVES.

FIRST CONGRESSIONAL DISTRICT.

Green, Kenosha, Lafayette, Racine, Rock and Walworth Counties. Population, 1900—191,491.

HENRY ALLEN COOPER (Rep.), of Racine, was born at Spring Prairie, Walworth county, Wisconsin, September 8, 1850; graduated from Northwestern University in 1873, and from Union College of Law, Chicago (now Law School of N. W. University) in 1875; is by profession a lawyer; resided in Chicago

from 1873 to 1879; otherwise has always lived in Wisconsin; in 1880 was elected district attorney of Racine county, and re-elected without opposition in 1882 and in 1884; state senator in 1886; author of the law which first established the Australian ballot system in Wisconsin; was elected representative in Congress in 1892, 1894, 1896, 1898, 1900, 1902 and again in 1904 receiving 25,125 votes against 13,379 for Calvin Stewart (Dem.) and 1,235 for Henry H. Tubbs (Pro.) and 2,461 for Jacob W. Born (Soc. Dem.).

SECOND CONGRESSIONAL DISTRICT.

Adams, Columbia, Dane, Green Lake, Jefferson and Marquette Counties. Population, 1900—170,792.

HENRY CULLEN ADAMS (Rep.) was born in Verona, Oneida county, N. Y., Nov. 28, 1850, and came with his parents to Wisconsin the following year; received his education in the common schools, Albion Academy and the University of Wisconsin; later he engaged in dairying and fruit raising; was elected member of assembly in 1883 and re-elected in 1885; during the winters of 1887, 1888 and 1889 took an active part in the Wisconsin Farmers' Institutes throughout the state; was president of the State Dairymen's Association three years; secretary of the State Horticultural Society two years; was appointed by Gov. Hoard superintendent of public property in 1888; was appointed dairy and food commissioner in 1895 and served until May 1, 1902, when he resigned to become a candidate for congress; was elected to the 58th Congress and re-elected in 1904, receiving 22,773 votes against 15,265 for John J. Wood (Dem.), 958 for Wm. J. McKay (Pro.), and 461 for Henry J. Dunham (Soc. Dem.).

THIRD CONGRESSIONAL DISTRICT.

Crawford, Grant, Iowa, Juneau, Richland, Sauk and Vernon Counties. Population, 1900—180,750.

JOSEPH WEEKS BABCOCK (Rep.), of Necedah, was born in Swanton, Vt., March 6, 1850; moved with his parents to Iowa in 1855, where he resided until 1881, when he removed to Necedah, Wis., where he has since resided and for many years was engaged in the manufacture of lumber; was elected to the Wisconsin assembly in 1888, and re-elected in 1890; was elected chairman of the National Republican Congressional Committee for the years of 1894, 1896, 1898, 1900, 1902, and 1904, and successfully conducted the campaigns for those years; was elected to the fifty-third congress in 1892, and re-elected to the fifty-fourth, fifty-fifth, fifty-sixth, fifty-seventh, fifty-eighth and fifty-ninth congresses; was appointed chairman of the committee on the District of Columbia in the fifty-fourth, fifty-fifth, fifty-sixth, fifty-seventh and fifty-eighth congresses, and a member of the committee on Ways and Means in the fifty-sixth, fifty-seventh and fifty-eighth congresses.

FOURTH CONGRESSIONAL DISTRICT.

The 2d, 3d, 4th, 5th, 7th, 8th, 11th, 12th, 14th, 15th, 16th, 17th and 23d wards of the city of Milwaukee and the towns of Franklin, Greenfield, Lake, Oak Creek and Wauwatosa, the village of Cudahy, the cities of South Milwaukee and Wauwatosa in Milwaukee county. Population in 1900—183,540.

THEOBALD OTJEN (Rep.), of Milwaukee, was born Oct. 27, 1851, at West China, Mich. He was educated at an academy at Marine City, Mich., and at a private school in Detroit. He graduated from the Michigan University law department in 1875. He resided at Milwaukee from 1870 to 1872, and has resided there continuously since 1882. He was yard foreman of the rolling mills

during the former period, and since 1875 has been an attorney at law. He was the village attorney of Bay View, Wisconsin, from 1883 to 1886, alderman of Milwaukee and member of the Milwaukee public library and museum board from April 1887, to April, 1894. He was elected to the house of representatives in 1894, 1896, 1898, 1900, 1902 and re-elected in 1904, receiving 17,582 votes against 12,385 for Peter J. Sommers (Dem.), 9,625 for W. R. Gaylord (Soc. Dem.), and 585 for Thomas Gardner (Pro.).

FIFTH CONGRESSIONAL DISTRICT.

The 1st, 6th, 9th, 10th, 13th, 18th, 19th, 20th, 21st and 22d wards of the city of Milwaukee, the towns of Granville and Milwaukee, the villages of East Milwaukee, North Milwaukee and Whitefish Bay, in Milwaukee county, and the county of Waukesha. Population, 1900—181,706.

WILLIAM H. STAFFORD, the representative from the fifth congressional district, is a native of Milwaukee. He attended the Milwaukee public schools, and later attended Harvard college and Harvard law school, from which he was graduated. At the time of his election to congress he was in the active practice of law in Milwaukee. He was elected to the fifty-eighth congress, and re-elected to the fifty-ninth congress receiving 17,231 votes against 10,626 for Victor L. Berger (Soc. Dem.), 9,978 for Arthur Dopp (Dem.), and 556 for Moritz Schmoyser.

SIXTH CONGRESSIONAL DISTRICT.

Dodge, Fond du Lac, Ozaukee, Sheboygan and Washington counties. Population, 1900—184,517.

CHAS. H. WEISSE (Dem.) was born in Sheboygan Falls Oct. 24, 1866; received his education in the parochial and high schools of his native city; entered his father's tannery in 1880 and became a partner in the firm of Chas. S. Weiss & Co., tanners and curriers, in 1888; was chairman of the county board of supervisors of Sheboygan county in 1900; was elected president of the village of Sheboygan Falls in 1893 and re-elected for three successive terms; served three years as treasurer of school board of Sheboygan Falls; was defeated for congress in 1900 by S. S. Barney; was elected to congress in 1902, and re-elected in 1904 receiving 20,665 votes against 17,687 for R. L. Morse (Rep.), and 368 for Wm. J. Perry (Pro.).

SEVENTH CONGRESSIONAL DISTRICT.

Buffalo, Clark, Eau Claire, Jackson, La Crosse, Monroe, Pepin and Trempealeau counties. Population in 1900—193,890.

JOHN JACOB ESCH (Rep.), of La Crosse, was born near Norwalk, Monroe county, Wis., March 20, 1861. He was educated in the public schools of Milwaukee and Sparta, Wis.; entered the State University in 1878, and graduated from the modern classical course in 1882. The next four years he spent in reading law and teaching at Sparta; was offered the principalship of the high school, but declined and entered the University Law School, graduating in the class of 1887. From this time to the present he has been engaged in the practice of law at La Crosse as a member of the firm of Winter & Esch. In 1883 he organized the Sparta Rifles, afterwards known as Co. I, 3d Regiment W. N. G., and was at one time its captain. He also helped organize the Gateway City Guards of La Crosse, now Co. M, 3d Regiment W. N. G. Never held but one elective office, that of city treasurer of Sparta, and this for only one year. Has always been a republican. Was elected to the 56th, 57th, 58th, and also the 59th congresses, receiving 25,505 votes against 11,271 for Norris Bacheller (Dem.), 963 for Geo. A. Markham (Pro.), and 409 for Henry Leinenkugel (Soc. Dem.).

EIGHTH CONGRESSIONAL DISTRICT.

Calumet, Manitowoc, Portage, Waupaca, Waushara and Winnebago Counties.
Population, 1900—194,634.

JAMES H. DAVIDSON, of Oshkosh, was born in Colchester, Delaware county, New York, June 18th, 1838; was educated in the public schools and at Walton (New York) Academy; taught school, studied law, graduated from Albany Law School as president of the class in 1884, and was in the same year admitted to the bar of New York; subsequently removed to Wisconsin and commenced the practice of law at Princeton in 1887; in 1892 removed to Oshkosh and continued the practice of law; in 1895 was appointed city attorney; was chairman of the republican congressional committee from 1890 to 1896; was elected to the Fifty-fifth, Fifty-sixth, Fifty-seventh and Fifty-eighth Congresses, and re-elected to the Fifty-ninth as a republican, receiving 25,233 votes, against 12,889 for C. F. Crane (Dem.), 1,092 for J. J. Petz (Soc.), and 777 for Charles A. Smart (Pro.).

NINTH CONGRESSIONAL DISTRICT.

Brown, Door, Kewaunee, Marinette, Oconto and Outagamie counties. Population in 1900—179,097.

EDWARD S. MINOR (Rep.), of Sturgeon Bay, was born in Jefferson county, N. Y., in 1840. He came with his parents to Wisconsin in 1845, first settling in the town of Greenfield, Milwaukee county. In 1857 he removed to Door county. He received his education in the common schools and at a private academy. In 1861 he enlisted as a private soldier in Company G, 2d Wisconsin volunteer cavalry, participating in all the raids, expeditions, engagements and battles in which the regiment took part during the war. He was promoted to corporal-sergeant, second and first lieutenant, and as such was mustered out with his regiment, December, 1865. After his return home from the army he became a merchant in Door county. He continued in this business till the spring of 1884, at which time he was appointed superintendent of the Sturgeon Bay and Lake Michigan Ship Canal, which position he held for seven years. Mr. Minor was elected to the Wisconsin assembly in 1878, and was re-elected in 1880 and 1881. He was elected to the state senate in 1883 and 1885, and was president pro tempore of that body during the latter term. He was also a member of the Wisconsin fish commission for four years. He has held numerous local offices at various times and was mayor of the city of Sturgeon Bay in 1895. He was elected to congress in 1894, 1896, 1898, 1900, 1902 and 1904, receiving 19,764 votes, against 12,124 for Robt. J. McGeehan (Dem.), 667 for Joseph W. Harris (Soc. Dem.), and 450 for Chas. W. Loomis (Pro.).

TENTH CONGRESSIOINAL DISTRICT.

Ashland, Florence, Forest, Iron, Langlade, Lincoln, Marathon, Oneida, Price, Shawano, Taylor, Vilas and Wood counties. Population in 1900—190,975.

WEBSTER EVERETT BROWN (Rep.), of Rhinelander, was born on a farm in Madison county, New York, July 16th, 1851; came with his parents to Wisconsin in 1857; lived on a farm till 17 years of age. His elementary education was received in the common schools of Portage county; prepared for college at Lawrence University, Appleton, Wis.; in 1870 entered the Wisconsin State University and graduated with the class of 1874; was married Dec. 26th, 1877, to Juliet D. Meyer, also a graduate of the Wisconsin State University with the class of 1875; took up the lumber business in 1875 at Stevens Point, Wis., continuing at that point till the fall of 1882, when the business was transferred

to Rhinelander, Wis., where he is still operating with his brothers; has been chairman of town and county boards; also member of school board and has served two terms as mayor of the city of Rhinelander; was elected to the Fifty-seventh and Fifty-eighth congress, and re-elected to the Fifty-ninth, receiving 29,393 votes, against 14,121 for Wells M. Ruggles (Dem.), 790 for Albert B. Crawford (Soc. Dem.), and 619 for David W. Emerson (Pro.).

ELEVENTH CONGRESSIONAL DISTRICT.

Barren, Bayfield, Burnett, Chippewa, Douglas, Dunn, Gates, Pierce, Polk, St. Croix, Sawyer and Washburn counties. Population in 1900—217,650.

JOHN J. JENKINS (Rep.), of Chippewa Falls, was born in Weymouth, England, August 20, 1843; settled in Baraboo, Wis., in 1852; attended the common schools a few terms; served during the war in Company A, Sixth Wisconsin volunteers; clerk of the circuit court of Baraboo, Sauk county; city clerk and city attorney of Chippewa Falls; member of assembly from Chippewa county; also county judge; appointed United States attorney of the Territory of Wyoming by President Grant in 1876; was elected to the 54th, 55th, 56th, 57th and 58th congresses and re-elected to the 59th congress, receiving 31,275 votes, against 8,637 for Geo. C. Cooper (Dem.), 1,087 for J. S. White (Pro.), and 810 for W. B. Freil (Soc. Dem.).

STATE OFFICERS.

GOVERNOR.

ROBERT MARION LA FOLLETTE (Rep.), was born at Primrose, Dane Co., Wis., June 14th, 1855, son of Josiah and Mary (Ferguson) La Follette. He comes from an old French Huguenot family which settled in this country more than a century ago. After attending the district school and a preparatory academy at Madison, he entered the preparatory department of the State University in 1874, graduated from the General Science course with the class of 1879 and entered the Law department the same year. In February, 1880, he passed the state bar examinations, was admitted to practice, and immediately opened an office in the city of Madison. At the ensuing election he was elected district attorney of Dane county, and was re-elected to that office in 1882, carrying Dane county by 118 votes, although all other republican nominees in Dane county suffered defeat by about 2,000 votes. In 1884 he was elected a member of Congress from the then Third Congressional district, comprising Dane, Grant, Green, Iowa, and La Fayette counties, defeating Burr W. Jones, democrat. He was three times elected to Congress and again renominated in 1890, but was defeated in common with most republican nominees in the state that year. During his last term in Congress he served on the Ways and Means committee and framed several schedules of the McKinley Tariff law.

Upon his retirement from Congress Mr. La Follette entered upon the practice of his profession at Madison as the senior member of the firm of La Follette, Harper, Roe & Zimmerman. This partnership was dissolved in 1894, since which time he has practiced alone. He was elected governor in 1900, 1902, and re-elected in 1904, receiving 227,253 votes, against 176,301 for Geo. W. Peck (Dem.),

24,857 for W. A. Arnold (Soc. Dem.), 12,136 for Edw. Schofield (Nat. Rep.), 8,764 for W. H. Clark (Pro.), and 249 for C. H. Minkley (Soc. Lab.). Was elected to the United States Senate to succeed J. V. Quarles for the term beginning March 4th, 1905.

LIEUTENANT GOVERNOR.

JAMES O. DAVIDSON (Rep.), of Soldiers' Grove, was born in Norway, Feb. 10, 1854, and was educated in the common schools of his native country. He came to Wisconsin in 1872, residing first at Madison, later at Boscobel, and since 1877 at Soldiers' Grove. He has been engaged for twenty-three years in the mercantile business. He was president of the village of Soldiers' Grove in 1888 and 1889, treasurer in 1892 and 1893, and again in 1897 and 1898; was elected to the assembly in 1892 and re-elected in 1894 and again in 1896. He was chairman of the republican committee of the Third Congressional district for years; was elected state treasurer in 1898 and re-elected in 1900; was elected Lieutenant Governor in 1902, and re-elected in 1904, receiving 247,159 votes, against 151,403 for Henry A. Lathrop (Dem.), 28,108 for Henry J. Ammann (Soc. Dem.), 10,864 for Geo. H. Ray (Nat. R.), 9,152 for John H. Nicholson (Pro.), and 256 for Oscar T. Rosaas (Soc. Lab.).

SECRETARY OF STATE.

WALTER L. HOUSER (Rep.), of Mondovi, Buffalo county, was born May 6th, 1855, in Tididoute, Warren County, Pennsylvania. He came to Wisconsin with his mother in 1865 and settled in Pierce county. Received a common school and academic education. He settled in Mondovi in 1875 and founded the Mondovi Herald in 1876, of which paper he is still part proprietor. He is also engaged in farming and stock raising. Besides some local offices, he has held the position of clerk of the committees on enrolled bills and judiciary in the senate, assistant chief clerk in the assembly and chief clerk of the senate. He was elected secretary of state in 1902, and re-elected in 1904, receiving 247,080 votes, against 150,424 for James P. Nolan (Dem.), 26,390 for Rudolph O. Stoll (Soc. Dem.), 10,952 for Nels Holman (Nat. Rep.), 9,514 for Chas. L. Hill (Pro.), and 247 for Michael Gross (Soc. Lab.).

STATE TREASURER.

JOHN J. KEMPF (Rep.), of Milwaukee, is a native of the county from which he was elected, having been born in the town of Granville, in Milwaukee county, on May 4th, 1857. He is of German-French extraction and his parents lived on one of the oldest homesteads in the state of Wisconsin, a farm located by one of the pioneers of the state. Mr. Kempf was reared on the home farm and attended the district school at Granville until he moved into the city of Milwaukee, where he completed his public schooling at the old sixth ward school, under the tutelage of the well-known Prof. Wall. After this he attended the Spencerian Business College with a view to fitting himself for the mercantile career he has since followed. Having acquired a liking for the boot and shoe business, at the age of sixteen Mr. Kempf entered the employ of a Milwaukee firm and continued in the service of the same firm until he attained to his majority, when he started the store which he now owns. Mr. Kempf secured his first public office in 1887, when he was elected alderman of the sixth ward. During his term as alderman, he received the honor of appointment by the mayor to the Library Board, and served on the Finance committee of the Board. After serving but one year of his aldermanic term, he was nominated senator of the Fourth Senatorial district, and he thereupon resigned from the common council to make the run for senator, to which position he was elected over three opposing candidates. He served four years as

state senator. In 1894, he received the republican nomination for register of deeds of Milwaukee county and was elected to that office by the largest plurality on the county ticket, running about 1,100 votes ahead of any other candidate. He was the last register to serve under the old fee system. He was elected state treasurer in 1902, and re-elected in 1904, receiving 238,759 votes, against 155,340 for Andrew Jenson (Dem.), 17,945 for Henry Luther (Soc. Dem.), 13,219 for Gustav Wollaeger, Jr. (Nat. Rep.), 19,061 for John A. Berg (Pro.), and 219 for Henry D. Puck (Soc. Lab.).

ATTORNEY GENERAL.

LAFAYETTE M. STURDEVANT (Rep.), of Neillsville, was born Sept. 17, 1856, in Chandler's Valley, Pa. He came to Wisconsin in 1865 and settled in the town of Pine Valley, Clark county. He grew to manhood upon the farm and was educated in the schools of his county. By strict application to his studies he was able to secure a certificate to teach, and from 1872 to 1878 taught school and studied law, and was admitted to the bar in 1878. He held the office of district attorney of his county four years, 1884, 1885, 1890, and 1891, and was chairman of the Clark county republican committee from 1894 to 1898. He was elected to the assembly from Clark county in 1898, and re-elected in 1900; was elected attorney general in 1902, and re-elected in 1904, receiving 248,253 votes against 149,960 for Wm. F. Wolfe (Dem.), 11,035 for David G. Classon (Nat. Rep.), and 9,680 for W. Mayhew Mott (Pro.).

STATE SUPERINTENDENT.

C. P. CARY (Rep.), was born in southern Ohio, Jan. 28, 1856. His mother was of German descent and his father was directly related to the English political economist, Henry Cary. From the time he arrived at school age till he was seventeen he worked on his father's farm in summer and attended the district school in winter. At the age of seventeen he began to teach district school in winter and continued working on the farm in summer. In 1877 he entered the Ohio Central Normal School and was graduated in 1879. After this he taught for seven years as principal of graded schools in Ohio and Kansas, and served during most of this period as county examiner of teachers and instructor in teachers' institutes. In 1886 he was elected county superintendent of schools in Brown county, Kansas; but declined renomination for a second term, and accepted the position of superintendent and high school principal at Fairbury, Nebraska. This position he resigned in the summer of 1893 to accept the position of instructor in pedagogy and principal of the training department of the Milwaukee State Normal School. This position he resigned in the summer of 1901 to accept the position of superintendent of the Wisconsin School for the Deaf at Delavan, Wis. This position he resigned in the fall of 1902 to accept the nomination for the office of state superintendent of public instruction. He holds a life certificate to teach in the schools of Nebraska, also in Wisconsin, and is a graduate of the University of Chicago, class of '98. He is an active member of the National Educational Association, and a member of the National Society for the Scientific Study of Education, and has devoted his life to the study of all the sciences and arts that bear upon the problems of education; was elected superintendent of public instruction in 1902, and re-elected in April, 1905, receiving 115,286 votes against 86,743 votes for Albert Salisbury.

RAILROAD COMMISSIONER.

JOHN W. THOMAS (Rep.), of Chippewa Falls, was born in Wales, March 31, 1846, coming to this country with his parents in 1849. His first residence was in

Hoga county, Pennsylvania. He received a common school education. He was left an orphan at the age of seven, and he came to Wisconsin in 1857 with a family of friends with whom he settled in the town of Anson. He is a farmer and dairyman by occupation, and received first premium on wheat and dairy butter at the world's fair. He enlisted in February, 1864, in the Thirty-sixth Wisconsin Volunteers, serving to the end of the war. He participated in the brilliant service of his regiment in Grant's campaign of 1864, before Richmond and Petersburg. He was town clerk seven years, secretary of the school board for three years, and served four years as town treasurer, two years as supervisor and ten years as town chairman. He was chairman of the county board for two years, was elected county treasurer in 1884, and was defeated for reelection in 1886 by a small majority, receiving over five hundred votes more than Governor Rusk in the county. He was president of the Chippewa county Agricultural Society in 1883, and has served eight years as secretary. He was treasurer of the Eagle Point Insurance company two years and director for 21, which position he now holds. He has become by his long service and intimate connection with local affairs, an expert in town and county matters. In 1897 he was appointed by the governor a member of the State Board of Agriculture, and reappointed in 1899 for three years. He was elected to the assembly in 1894, re-elected in 1896 and in 1898 and again in 1900 for a fourth consecutive term. During his service in the assembly he was a member of the committee on Railroads, serving as chairman the last two terms and was the author of several laws to regulate railroads. He was elected railroad commissioner in 1902, and re-elected in 1904, receiving 248,499 votes against 148,887 for Ed. L. Hanton (Dem.), 27,509 for Harry E. Briggs (Soc. Dem.), 11,285 for Fred O. Tarbox (Nat. Rep.), 9,581 for David Wood (Pro.), and 266 for Carl Gross (Soc. Lab.).

INSURANCE COMMISSIONER.

ZENO M. HOST (Rep.), of Milwaukee, was born of German parentage in Lyons, Walworth county, Wisconsin, on July 1st, 1869. In February, 1883, he removed with his parents to Milwaukee. With the exception of two terms of night school at the Spencerian Business College of Milwaukee, he received his education in the public schools of Walworth county.

At the age of fourteen he found employment in a spice mill and afterwards as clerk in a retail grocery store. In November, 1884, he was employed as office boy in a wholesale and retail coal company's office, and worked himself up step by step until he was given the position of head bookkeeper, which he held until July 1st, 1891. September 1st, 1891, he became bookkeeper for a building and loan association, where he remained until December 31st, 1894. In the winter of '95 he organized the Wisconsin National Loan and Building association and was made a director and its secretary, which position he still holds. In 1893 he began writing fire insurance in connection with the building and loan business, and is at present associated with his brother, Clemens P. Host, in the insurance agency known as "Host Brothers." In August, 1900, he was chosen secretary of the Republican State Central committee for a term of two years. He never held public office, but was very active in fraternal organizations. He has been grand chancellor of the Knights of Pythias of Wisconsin, and is at the present time representative from Wisconsin to the supreme lodge; he was also assistant adjutant general on the staff of Gen. C. D. Lisle, commander of Wisconsin Brigade, Uniform Rank, Knights of Pythias, and is treasurer of the High Court of Wisconsin, Independent Order of Foresters. He was elected commissioner of insurance in November, 1902, and re-elected November 8th, 1904, receiving 248,381 votes against 148,836 for Henry Fetzner (Dem.), 10,891 for William Roenitz (Nat. Rep.), 9,458 for Myron D. Reed (Pro.), 27,817 for Arnold Zander (Soc. Dem.), and 297 for William Beyer (Soc. Labor.).

JUSTICES OF THE SUPREME COURT.

JOHN B. CASSIDAY, LL. D., Beloit College, 1881, and LL. D., University of Wisconsin, 1905, chief justice, was born in Herkimer county, N. Y., years later. His early studies were pursued in the common schools, at the academies in Wellsboro and Knoxville, Pa., and two years at the Alfred academy, where he graduated. He spent one year at the Michigan University and then attended the Albany law school; afterward reading in a law office in Wellsboro, Pa. In July, 1857, he settled in Janesville, Wis., and continued actively in practice until called to the supreme bench; was member of the assembly in 1865, and again in 1877, when he was elected speaker of that body. He was a delegate to the national convention at Baltimore which nominated Lincoln in 1864, and was chairman of the Wisconsin delegation to the national convention at Chicago which nominated Garfield in 1880. In 1880, Nov. 11, he was appointed by Gov. William E. Smith, as associate justice of the supreme court, a vacancy having been caused by the promotion of Associate Justice Cole to the chief justiceship to fill the vacancy caused by the death of Chief Justice Edward G. Ryan. He was elected associate justice in April, 1881, and again in April, 1889, and again in 1899, and is a professor in the College of Law, University of Wisconsin, lecturing on constitutional law. He is the author of "Cassiday on Wills," a law text book published in 1893. He became chief justice upon the death of Justice Orton in July, 1895, by virtue of his seniority in service, and has continued such ever since.

JOHN B. WINSLOW was born Oct. 4, 1851, at Nunda, Livingston county, N. Y. He graduated at Racine college, Wis., in 1871, and entered upon the study of law in the law office of E. O. Hand, and later in the law office of Fuller & Dyer. He finished his course of reading at the law department of the University of Wisconsin, from which he graduated in 1875, and entered upon the practice at Racine. He was for several years city attorney of Racine. In April, 1883, he was elected circuit judge of the First judicial circuit, and entered upon judicial duties in January, 1884, serving in that capacity (being re-elected) until May 4, 1891, when he was appointed associate justice of the supreme court, in place of Hon. David Taylor, deceased. In April, 1892, he was elected to fill the residue of Judge Taylor's term; in April, 1895, he was re-elected for a full term; and again re-elected for a full term in April, 1905.

ROUJET D. MARSHALL, LL. D., University of Wisconsin, 1905, was born Dec. 27, 1847, in Nashua, N. H.; was educated principally at the Delton Academy, Baraboo Collegiate Institute and Lawrence University. The Marshalls came to this country from England in 1650 and settled in Boston. The subject of this sketch came to Wisconsin in 1854; resided at Delton, Sauk county, until 1872, and since that time in Chippewa Falls; commenced the study of law at the age of 17, which he continued with his school work till he was 24, since which time he has been actively engaged in the profession; as county judge of Chippewa county from 1876 to 1883; member of the board of regents of the University of Wisconsin from 1884 to 1889; elected circuit judge of the Eleventh circuit in April, 1888, and re-elected in April, 1894; was appointed to the supreme bench in August, 1895, and was elected to the supreme bench in April, 1896, for the unexpired term of Chief Justice Orton, deceased; was re-elected April 6, 1897, for a full term.

JOSHUA ERIC DODGE was born Oct. 25, 1854, in West Cambridge (now Arlington), Middlesex county, Mass.; received his education, in the public schools of that place, Westford Academy, at Westford in the same county and graduated with the class of 1875 from Iowa College at Grinnell, Ia.; graduated from the Law School of the Boston University in 1877. He was admitted to the bar by the supreme court of Massachusetts in that year; moved to Racine, Wis., in March, 1878, and there continued in the general practice of the law until September, 1893, when he was appointed assistant attorney general of the United States, which position he occupied until July, 1897, when he returned to Wisconsin and engaged in practice at Milwaukee until his appointment as associate justice of the supreme court upon the resignation of Mr. Justice Pinney Nov. 22, 1898; was a member of assembly in 1891 and 1892, and was appointed a member of the board of commissioners for the promotion of Uniformity of Legislation in the United States, April 18, 1893. Mr. Dodge was elected to full term on the supreme bench in April, 1901.

ROBERT G. SIEBECKER was born October 17, 1854, in Sauk county, Wisconsin. He was educated in the district school until he was seventeen and he then attended a private academy at Madison for two years. He entered the University of Wisconsin in September, 1874, and graduated in June, 1878. In the fall of this year, he entered the law school of the University and he graduated therefrom in June, 1880. He was admitted to the bar on examination in September, 1879. In October of that year he began the practice of law at Madison and this he continued until his appointment as judge of the Ninth judicial circuit on January 7th, 1890. In March, 1886, he was elected city attorney of Madison and was annually re-elected until he went on the circuit bench. In April, 1891, he was elected judge of the circuit court, for the unexpired term and for the ensuing full term. He was twice thereafter re-elected to this position without opposition. On April 7th, 1903, he was elected a justice of the supreme court, for the term beginning in January, 1904, and on April 9th was appointed for the unexpired term in this office, caused by the death of Justice C. V. Bardeen.

JAMES C. KERWIN was born in the town of Menasha, Winnebago county, Wisconsin, May 4, 1850. He attended the common schools of the neighborhood and later the Menasha high school, from which he was graduated. He prepared himself for the practice of the law by a course of study in the law school of the University of Wisconsin, and was graduated in 1875. Returning to his native county, he opened an office in Neenah and has since been actively engaged in the profession. He was city attorney of Neenah for twelve years, and was appointed a member of the board of regents of the University of Wisconsin in 1901. In April, 1904, he was elected associate justice of the supreme court, and entered upon judicial duties in January, 1905.

THE WISCONSIN LEGISLATURE.

SENATE.

The senate is composed of thirty-three members, who hold office for four years and receive \$500 each for their services at each regular session. Members of the senate, session of 1905, representing odd-numbered districts, were elected in 1902. Their terms will end Jan. 1, 1907. Those representing even-numbered districts were elected in 1904. Their terms will end Jan. 1, 1909. The lieutenant-governor is resident of the senate, but can vote only in case of a tie. A temporary president, to act in the absence of the president, is chosen by the members of the senate. The senate of 1905 contains 28 republicans, 4 democrats, and one social democrat. Lieutenant-Governor James O. Davidson, president; James J. McGillivray, president pro tem.; L. K. Eaton, chief clerk; R. C. Falconer, sergeant-at-arms.

FIRST SENATORIAL DISTRICT.

Door, Kewaunee and Marinette counties. Population in 1900—65,617.

HARLAN PAGE BIRD (Rep.), of Wausaukee, is a native of Bradford Co., Pa., born 64 years ago of New England parents. Attending common schools only, he engaged in land surveying and bookkeeping, which took him to Brooklyn, N. Y., and thence to the lumber woods of Marinette Co. He volunteered in '61, served four years in the civil war, two of which was as staff officer at division and corps headquarters; was wounded in the Vicksburg rifle pits. After the war he engaged in lumbering and mercantile pursuits; is also president of the Wausaukee State Bank. He was elected state senator in 1902, receiving 6,042 votes against 3,948 for Chas. Metzger (Dem.), and 208 for J. J. Sherman (Pro.).



Harlan Page Bird.

SECOND SENATORIAL DISTRICT.

Brown and Oconto counties. Population, 1900—67,233.

HENRY F. HAGEMEISTER (Rep.), of Green Bay, Brown county, is a native of Wisconsin. He was born in Green Bay, Nov. 18, 1855, and was educated in the parochial and public schools of that city. He is president and manager of the Hagemeister Brewing Company of Green Bay and president of Kellogg's National Bank. He has served his city in the capacity of alderman and supervisor and in 1892 was elected a member of the assembly as a democrat, and was re-elected in 1894. He was elected state senator in 1900 and re-elected in 1904 on the republican ticket. He received 7,606 votes against 5,318 cast for F. R. Singleton (Dem.).



Henry Hagemeister.



Otis W. Johnson.

THIRD SENATORIAL DISTRICT.

Kenosha and Racine counties. Population, 1900—67,351.

OTIS WELLS JOHNSON (Rep.), of Racine, Wisconsin, was born in Sagatuck, Michigan, March 12, 1855; was educated in the public schools there and at Racine, and later attended Farmington in Maine. Was first employed in St. Ignace in the lumber business, later for a while in a Chicago lumber yard, and afterwards again at St. Ignace, Mich., where he resided until he came to Racine in about 1890 and engaged in the manufacture of farm wagons. Was elected in 1902 to the state senate, receiving 6,095 votes against 6,023 votes cast for Michael Higgins (Dem.), and 311 votes for James P. Corse (Pro.).

FOURTH SENATORIAL DISTRICT.

The 1st, 13th, 18th and 21st wards of the city of Milwaukee, the towns of Granville and Milwaukee, and the villages of North Milwaukee, East Milwaukee and Whitefish Bay. Population, 1900—61, 035.



Theo. C. Froemming.

THEO. C. FROEMMING (Rep.) was born in Milwaukee May 11, 1873; is the youngest member in the State Senate; was educated in the parochial school of Milwaukee, and graduated from Milwaukee Business University; also attended Concordia College for two years; was a member of the Republican county committee from 1898 to 1900; was elected alderman of the 21st ward in 1900 and re-elected in 1902, his term expiring in April, 1904; is engaged as grading contractor; is also in the stone quarry business. He was elected State Senator in 1904 on the republican ticket; he received 5,246 votes against 3,697 for Herman Reel (Dem.), and 3,184 for Alexis Fischer (Soc. Dem.).

FIFTH SENATORIAL DISTRICT.

The 2d, 3d, 4th, 6th, 7th, 15th, and 16th wards of the city of Milwaukee. Population, 1900—69,196.



Charles C. Rogers.

CHARLES CASSIUS ROGERS (Rep.) was born Dec. 15th, 1847, at Cambridge, Maine, and was educated in Bisbie Military Academy, Poughkeepsie, N. Y. Was professor of mathematics in Eastman College and president of Association for Advancement of Milwaukee and is a member of Milwaukee Chamber of Commerce. He made his first canvass for public office in the fall of 1902 and was elected state senator, receiving 7,380 votes against 5,739 votes cast for A. Huebschmann (Dem.), and 1,758 votes cast for Vie Peterson.

SIXTH SENATORIAL DISTRICT.

The 9th, 10th, 19th, 20th, and 22d wards of the city of Milwaukee. Population, 1900—71,771.

JACOB RUMMEL (Soc. Dem.) was born in Washington county, Wis., April 17, 1857, where he attended common school; came to Milwaukee in 1872 and entered college; learned the cigar trade; is foreman for Williams & Brendle Cigar Mfg. Co. at the present time. He was elected state senator in 1904 on the Social Democratic ticket, receiving 5,848 votes against 5,801 for A. J. Langhoff (Rep.), and 3,127 for Gottfried Hergarten (Dem.).



Jacob Rummel.

SEVENTH SENATORIAL DISTRICT.

The 14th and 17th wards of the city of Milwaukee, the towns of Franklin, Greenfield, Lake, Oak Creek and Wauwatosa, the village of Cudahy and the cities of South Milwaukee and Wauwatosa. Population, 1900—63,533.

BARNEY AUGUSTUS EATON (Rep.), of Milwaukee, was born October 29, 1853, in the town of Lake, Milwaukee county, and received a common school and business education in Milwaukee; has resided in Milwaukee county, excepting five years, from 1873 to 1878, when he was a resident of Georgetown, Colo.; is a farmer and small fruit grower by occupation; represented his district in the assembly in 1894; was president of the village of Cudahy in 1895-96; president of the Cudahy school board in 1895; director of the Town of Lake Fire Insurance company six years and served as school director twelve years. He was elected to the assembly in 1894 and 1896, and to the state senate in 1898, and re-elected in 1902, receiving 4,442 votes against 4,148 votes cast for Thos. J. Flemming (Dem.), and 1,328 votes cast for Frank Conine (Soc. Dem.).



Barney A. Eaton.

EIGHTH SENATORIAL DISTRICT.

The 5th, 8th, 11th, 12th, and 23d wards of the city of Milwaukee. Population, 1900—64,482.

JULIUS EDWARD ROEHR (Rep.) was born March 6, 1860, in Brooklyn, N. Y.; was educated in the public schools of Brooklyn and Milwaukee, and attended the Wisconsin University at Madison from 1879 to 1881, graduating therefrom in June, 1881; came to Wisconsin in May, 1873, settling in Milwaukee, where he has since resided; has practiced law since 1881; was nominated for member of assembly by the republicans of the Eighth assembly district in 1892, and was defeated by the Bennett law issue; in the spring of 1892 he was nominated on the Republican ticket for judge of the superior court, but was defeated by Judge John C. Ludwig; was appointed circuit court commissioner for Milwaukee county by Judge D. H. Johnson in 1888, and re-appointed in 1894.



Julius E. Roehr.

and re-appointed in 1900; represented the Fourth congressional district at the Republican national convention at St. Louis in 1896; was elected to the senate in 1896, and was a member of the legislative committee which revised the statutes known as "the Statutes of 1898." Senator Roehr was elected president of the Bar Association of Milwaukee county on December 10, 1904. He was again elected to the senate in 1900 and re-elected in 1904, receiving 4,788 votes against 4,656 for F. N. Rehfeld (Soc. Dem.) and 3,909 for R. T. Ziarnik (Dem.)

NINTH SENATORIAL DISTRICT.

Adams, Marquette, Waushara and Wood counties. Population, 1900—61,487.



H. C. Wipperman.

HERMAN C. WIPPERMAN (Rep.) was born in 1853 in the town of Moselle, Sheboygan county, Wis., and was reared there on his father's farm. He received a common school education, and after leaving school learned the carpenter's trade. In 1873 he removed from the place of his birth to the city of Chilton, Calumet county, where together with his brother he conducted a furniture business until 1886, at which time he took up the study of law in the law office of A. A. Nugent, in Chilton. In 1888 he entered the law school of the University of Wisconsin and graduated with the class of 1889. He practiced law in the city of Chilton until August, 1891, when he removed to Grand Rapids. He held the office of city attorney from 1893 to 1895 and was twice elected mayor of Grand Rapids. In 1894 he was elected member of the assembly from Wood county and in 1896 was re-elected. In 1900 he was elected district attorney for Wood county, and in 1902 was elected state senator, receiving 7,328 votes against 3,575 votes for Edward Lynch (Dem.).

TENTH SENATORIAL DISTRICT.

Pierce and St. Croix counties. Population, 1900—50,773.



James A. Frear.

JAMES A. FREAR (Rep.), was born at Hudson, Wis., Oct. 24, 1861. Was attending Appleton, Wisconsin, University in 1878, when with his parents he moved to Washington, D. C. Served five years in the U. S. Signal Corps at Fort Myer, Va., Indianapolis and Washington, and graduated from the National Law University, Washington, in 1884. He was admitted to the bar of the supreme court, District of Columbia, the same year and then returned to Hudson, entering the practice of law in that city. Has held different city offices, including city attorney for several years. He was appointed district attorney for St. Croix county by Governor Upham in April, 1896, and was elected for three consecutive terms thereafter. He was appointed on the staff of the governor in 1901 and elected to the assembly in 1902, and to the state senate in 1904, receiving 6,107 votes against 3,650 for Ferris M. White (Dem.).

ELEVENTH SENATORIAL DISTRICT.

Burnett, Douglas and Polk counties. Population, 1900—61,614.

GEORGE B. HUDNALL (Rep.) was born at Rural, Waupaca county, Wis., Jan. 9, 1864. He was educated in the district and high schools and at the Wisconsin University law school, class of 1891. Lived on a farm until twenty-four years old when he engaged in teaching and took up the study of law. Was assistant city attorney of Superior from 1900 to May, 1902. He was nominated and elected state senator in 1902, receiving 5,531 votes against 8 scattering votes, there being no nomination against him.



George B. Hudnall.

TWELFTH SENATORIAL DISTRICT.

Ashland, Bayfield, Price, Sawyer, Taylor and Washburn counties. Population, 1900—64,050.

ALBERT W. SANBORN (Rep.), was born in Swanton, Vermont, January 17, 1853; removed to Guernsey county, Ohio, when a small boy with his parents and lived there on a farm until 1876. Was educated at Muskingum College at New Concord, Ohio. Studied law with Barnes & Anderson at Cambridge, Ohio, and was there admitted to the bar, April 10, 1876; came to Oshkosh, Wisconsin, in April, 1876, and studied law in Finch & Barber's office for about two months. Located at Stevens Point, Wisconsin, in June, 1876, where he practiced law, first as a member of the firm of Jones & Sanborn, and then as a member of the firm of Cate, Jones & Sanborn, and afterwards as a member of the firm of Cate, Sanborn, Lamoreux & Park. Was district attorney of Portage county for one term and a member of the assembly from Portage county in 1885. Was a delegate from the Ninth Congressional District to the National Convention in 1888; moved to Ashland, Wisconsin, in 1893, where he has continued in the practice of his profession; is now a member of the firm of Sanborn, Lamoreux & Pray. He was elected to the senate in 1904, receiving 11,129 votes against 3,595 for G. Schwindt (Dem.).



Albert W. Sanborn.

THIRTEENTH SENATORIAL DISTRICT.

Dodge county. Population, 1900—46,631.

WILLIAM CAMPBELL NORTH (Dem.) was born in Dodge county, Wis., June 21st, 1859, and was educated in the common schools of Dodge county, finally studying law in the law office of Hon. Chas. Allen of Horicon. He was admitted to the bar in 1880 and entered upon the practice of his profession at Chillicothe, Missouri, but after three years returned to Dodge county and in 1895 opened an office in Fox Lake, his present home and place of business. He was elected to the senate in 1902, receiving 5,065 votes against 2,976 votes cast for M. P. Elkinton (Rep.), and 164 votes for B. F. Sawyer (Pro.).



William C. North.



Fred M. Wilcox.

FOURTEENTH SENATORIAL DISTRICT.

Outagamie and Shawano counties. Population, 1900—73,722.

FRED M. WILCOX (Rep.), of Appleton, Wis., was born in Marshall county, Iowa, July 17, 1870. Graduated from High School at Montour, Iowa, in 1887, and from the State University of Iowa in 1893; assistant postmaster to C. G. Wilcox at De Pere, Wisconsin, during the year 1894; commenced practice of law at Seymour, Wis., in November, 1894; elected district attorney of Outagamie county in 1898, and immediately removed to Appleton; re-elected in 1900 and again in 1902; in March, 1904, with his brother, John C. Wilcox, formed the law partnership of Wilcox & Wilcox. He was elected state senator in 1904, receiving 8,476 votes against 5,487 for Theo. Knapstein (Dem.)

FIFTEENTH SENATORIAL DISTRICT.

Calumet and Manitowoc counties. Population, 1900—59,339.



Samuel W. Randolph.

SAMUEL W. RANDOLPH (Dem.), was born December 5th, 1872, at Manitowoc, Wis., and was educated in the First Ward public school of that city. For a number of years he has been interested in navigation of the Great Lakes and represents several transportation companies. Was appointed harbor master, January, 1902, to fill the unexpired term and reappointed for a full term in April, 1902. He was elected state senator Nov. 4, 1902, receiving 4,758 votes against 4,615 votes for Wm. N. Knauf (Rep.), and 531 votes for A. L. Rocker (Soc. Dem.)

SIXTEENTH SENATORIAL DISTRICT.

Crawford and Grant counties. Population, 1900—56,167.



Edward E. Burns.

EDWARD EUGENE BURNS (Rep.), of Platteville, Grant county, was born Jan. 20, 1858, at Dunleith (now East Dubuque), Illinois. In the year of his birth his parents moved to Jamestown, Grant county, Wisconsin, and settled on a farm where he spent his early years. He was educated in the common schools of Grant county, the Platteville State Normal School and the Law School of the University of Wisconsin, from which he graduated in 1887. He moved to Platteville on Dec. 1, 1890, where he has since resided and engaged in the practice of law. He was a member of the county board of Grant county in 1895 and 1896, representing the city of Platteville. In 1897 he was elected city attorney of Platteville, and was re-elected in 1898, which position he resigned on entering the army, and was again re-elected on his return in 1899. He served in the Spanish-American War as captain of Co. C, of the 4th Wis. Inf. Vol., from June 30, 1898, to Feb. 28, 1899. He was elected to the state senate in 1900, and re-elected in 1904, receiving 7,365 votes against 4,924 cast for W. W. Gilman (Dem.), and 400 votes cast for Josiah Thomas (Pro.).

SEVENTEENTH SENATORIAL DISTRICT.

Green, Iowa and LaFayette counties. Population, 1900—66,792.

HARRY CHAPMAN MARTIN (Rep.), of Darlington, Lafayette county, was born at Darlington, Dec. 15, 1854, and received his early education in the public schools of that place, after which he taught school for one year and then attended the University of Wisconsin, from which he graduated in 1879. He studied law and was admitted to the bar in 1881, and has since practiced law at Darlington. Soon after his admission to the bar he was appointed county superintendent of schools of Lafayette county, and was twice thereafter elected to that office. In 1887 he was elected mayor of the city of Darlington and was re-elected in 1888. He was city attorney for several years thereafter and was elected district attorney of LaFayette county in 1892; was a member of the Republican State Central committee for four years; was elected to the assembly in 1895 to fill vacancy occasioned by the death of James Freeman; was elected to the state senate in 1898 and re-elected in 1902, receiving 7,236 votes against 5,343 votes cast for Geo. W. Crawford (Dem.).



Harry C. Martin.

EIGHTEENTH SENATORIAL DISTRICT.

Fond du Lac and Green Lake counties. Population, 1900—63,386.

CHARLES H. SMITH (Dem.), of Markesan, was born in the town of Green Lake, June 1st, 1863. He was educated in district schools, Berlin High School and Commercial College of Oshkosh. He is a farmer by occupation. He was town treasurer of Green Lake in 1887 and 1888, supervisor of the town in 1890 and 1891, school clerk in the village of Markesan for the past six years; has served on the village board for several years. He was elected to the assembly in 1902, receiving 1,603 votes against 1,382 for Christian C. Wellengard (Rep.), and 76 for John Nobles (Pro.). Was elected to the state senate in 1904, receiving 8,024 votes, against 7,024 votes for O. A. Piggott (Rep.).

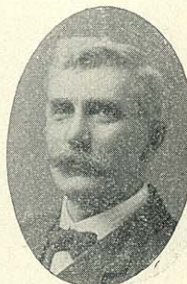


Charles H. Smith.

NINETEENTH SENATORIAL DISTRICT.

Winnebago County. Population, 1900—58,225.

EPHRAIM E. STEVENS (Rep.), was born January 31, 1851, in the town of Knox, Waldo county, Maine, migrated to Oshkosh, Wisconsin, September, 1852. He was educated in the schools of Oshkosh, is a mechanic, did general contracting and building of buildings, in 1872 studied architecture in the office of D. M. Harteau, Green Bay, and attended night school at Blackman's College. In 1882 to 1887 was alderman in Oshkosh common council; 1889 was elected mayor of his city, at that time the city was Democratic by from 500 to 700;



Ephraim E. Stevens



George W. Wolff.

always a Republican, he has been chairman of city, county and assembly district committees many times, generally acts according to his own ideas and not on the dictations of others. Was elected state senator in 1904 to fill out the unexpired term of Christian Sarau, receiving 6,923 votes, against 4,819 cast for A. C. McComb (Dem.), and 307 for W. E. Monroe (Pro.).

TWENTIETH SENATORIAL DISTRICT.

Ozaukee and Sheboygan counties. Population, 1900—66,708.

GEORGE W. WOLFF (Rep.), was born in the town of Rhine, Sheboygan county, in the year 1849, and has since resided there; received a common school education; is a farmer by occupation. He has served as chairman of his town and county board and as a member of the assembly for two terms; elected to the state senate in 1900, and re-elected in 1904, receiving 6,510 votes against 6,097 for E. R. Bowler (Dem.).



William H. Hatton.

TWENTY-FIRST SENATORIAL DISTRICT.

Portage and Waupaca counties. Population, 1900—61,098.

WILLIAM H. HATTON (Rep.), of New London, Waupaca county, is a native of the state of New York. He is a lumberman. In 1898 he was elected to the state senate to represent the Twenty-first district and re-elected in 1902.

TWENTY-SECOND SENATORIAL DISTRICT.

Rock county. Population, 1900—51,203.



John M. Whitehead.

JOHN M. WHITEHEAD (Rep.) was born July 29, 1852, on a farm near Hillsboro, Ill. He was educated at Hillsboro Academy, preparatory department of Wabash College, Crawfordsville, Ind. (1871-2), Williston Seminary, Easthampton, Mass. (1872-3), Yale College (1873-77), where he took the degree of A. B. He studied law and was admitted to the bar of Illinois in October, 1880, and to the bar of Wisconsin in September, 1883. He came to Wisconsin in August, 1883, settling at Janesville, where he has since resided. Has been a member of the county board of Rock county, representing the fourth ward of Janesville. Was elected to the state senate in 1896, 1900, and again in 1904, receiving 5,810 votes against 4,200 for Robert M. Richmond (Dem.), and 428 for Morris Mortimer (Soc. Dem.), and 401 for Thos. W. North (Pro.).

TWENTY-THIRD SENATORIAL DISTRICT.

Jefferson and Walworth counties. Population, 1900—64,048.

ZADOC P. BEACH (Rep.) was born at Whitewater, Wis., Jan. 21, 1861. Was educated in the common and normal schools. Has been engaged in cold storage and creamery business and is president of Union Produce company. Was a member of the board of aldermen of Whitewater from 1888 to 1894 and mayor of the city in 1895 and 1896. Was appointed member of the board of regents of normal schools in 1898 and on reorganization of the board was re-appointed for five years, term expiring in 1905. Was elected state senator in 1902, receiving 5,661 votes against 4,864 votes for O. J. Kerschesteiner (Dem.), and 446 votes for Wm. E. Mack (Pro.).



Zadoc P. Beach.

TWENTY-FOURTH SENATORIAL DISTRICT.

Chippewa, Eau Claire and Gates counties. Population, 1900—64,729.

DR. JAMES HARVEY NOBLE (Rep.), of Eau Claire, was born March 30, 1851, in Dane county, Wis. Studied in the public schools of Madison and preparatory department of State University, afterwards taking up the study of medicine at Hahnemann Medical College of Chicago, from which he graduated in 1871, and the same year located at Eau Claire, Wis., where he has pursued the practice of his profession ever since. He has been city and county physician, eight years a member of the Board of Education and part of that time its president. Since becoming a voter he has always acted with the Republican party. He was elected to the state senate in 1904, receiving 7,591 votes against 4,963 for Wm. H. Stafford (Dem.), 267 for Frank W. Cummings (Pro.), and 186 for August Schrieber (Soc. Dem.).



Dr. James H. Noble

TWENTY-FIFTH SENATORIAL DISTRICT.

Clark and Marathon counties. Population, 1900—69,104.

ANDREW LAWRENCE KREUTZER (Rep.), of Wausau, Marathon county, Wis., was born August 31, 1862, in Germantown, Washington county, and received his education in the common schools and in the law department of the University of Wisconsin. He is the senior member of the law firm of Kreutzer, Bird & Rosenberry. He was elected district attorney of Marathon county in 1894 and was re-elected to the same office in 1896. He was appointed by Governor Upham a commissioner to the Atlanta Exposition in 1895; was appointed on Governor Scofield's staff to the rank of colonel and was the acting judge advocate general of Wisconsin National Guards during the years of 1897-9. He was elected to the senate in 1898 and was re-elected in 1902, receiving 6,680 votes against 4,894 votes for H. S. Mulvey (Dem.). During the sessions of 1901, 1903 and 1905 he was chairman of the committee on Judiciary.



Andrew L. Kreutzer

TWENTY-SIXTH SENATORIAL DISTRICT.

Dane county. Population, 1900—69,435.



Albert M. Stondall.

ALBERT M. STONDALL (Rep.), of Madison, was born on a farm in the town of Cottage Grove, Dane county, August 4, 1865. He received a common school education, and later attended the Northwestern Business College of Madison. He was a farmer until the year 1894, when he went into the business of buying and selling Wisconsin lands, especially operating in Wood, Clark, Washburn and Barron counties. He was elected to the state senate in 1904, receiving 9,547 votes against 7,136 votes for James M. Clancy (Dem.), and 375 for Lucius F. Bigelow (Pro.).

TWENTY-SEVENTH SENATORIAL DISTRICT.

Columbia and Sauk counties. Population, 1900—64,127.



George Wylie.

GEORGE WYLIE (Rep.), of Columbia county, was born in Scotland in the year 1848; was educated in the common schools of this country; is engaged in general farming and breeding of pure bred stock; is at present a member of the State Board of Agriculture and the State Live Stock Sanitary Board. Was elected member of assembly in 1897 and again in 1899. Was elected in 1902 state senator, receiving 6,198 votes against 4,075 votes for John M. Kelley (Dem.), and 449 votes for Ben. F. Thomas (Pro.), scattering, 1.

TWENTY-EIGHTH SENATORIAL DISTRICT.

Richland and Vernon counties. Population, 1900—47,834.



Oliver G. Munson.

OLIVER G. MUNSON (Rep.), of Viroqua, was born March 2, 1856, in Howard county, Ia.; was educated in the common and high schools of Iowa and Minnesota; came to Wisconsin in 1876; resided in Richland Center ten years and in Viroqua nineteen years; is an editor and publisher, having published the Richland Republican ten years and the Vernon County Censor nineteen years; has been city clerk of Richland Center, supervisor from city of Viroqua, bookkeeper in the state senate several terms and assistant chief clerk of the assembly two terms. He was elected to the senate in 1896, re-elected in 1900 and 1904, receiving 6,654 votes, against 2,939 votes for Capt. H. Conner (Dem.).

TWENTY-NINTH SENATORIAL DISTRICT.

Barron, Buffalo, Dunn and Pepin counties. Population, 1900—73,390.

JAMES H. STOUT (Rep.), of Menomonie, was born at Dubuque, Ia., Sept. 25, 1848, and was educated in the public schools of Dubuque and in the Chicago University.

He came to Wisconsin in 1889, and has since been engaged in the lumber business at Menomonie. He has been for several years one of the trustees of the Dunn county insane asylum; president of the Menomonie board of education, life member of the Dubuque library and life trustee of the Findlay hospital at Dubuque. He was elected to the senate in 1894, and was re-elected in 1898, and again in 1902, receiving 6,010 votes against 74 votes for Theodore Buehler (Dem.), and scattering, 3.



James H. Stout.

THIRTIETH SENATORIAL DISTRICT.

Florence, Forest, Iron, Langlade, Lincoln, Oneida and Vilas counties. Population, 1900—53,835.

JAMES A. WRIGHT, of Merrill, Lincoln county, has always been a Republican, is a native of Wisconsin. Was born in Racine, Wis., June 17th, 1873, moving to Merrill, Wis., in 1880, and has since resided there. Was educated in public schools and later took a business course at Northern Illinois Normal Schools and Dixon Business College. Was then associated with the H. W. Wright Lumber Company, served as vice president, and upon death of father in 1901 became president of same. In 1903 organized the Wisconsin Lumber Company of Littell, Washington, and was elected president of the same. Also a director of Lincoln County Bank, of Merrill, Wis. Never sought office before, but was unanimously nominated on Republican ticket, and in the election for state senator November 8th, 1904, received 9,792 votes against 4,382 cast for D. H. Walker (Dem.).



James A. Wright.

THIRTY-FIRST SENATORIAL DISTRICT.

Jackson, Juneau and Monroe counties. Population, 1900—66,198.

JAMES J. MCGILLIVRAY (Rep.), of Black River Falls, Jackson county, was born at Barrachios, Gasbie county, Canada, East, June 16, 1848. He received his education in the common schools, and came to Black River Falls, Nov. 21, 1866. He is an architect and manufacturer. He was elected to the assembly in 1890, and re-elected in 1892. During his first term in the assembly he was sponsor of the bills exempting wide tired wagons from taxes; for reduction of interest on money loaned to school district from 6 and 7 to 4 per cent., and reduction of interest on tax sale certificates from 25 to 15 per cent. In the senate in 1897, he introduced and was instrumental in securing the passage of bills to prohibit the state from accepting bounties from cities and towns for the location of public institutions; exempting sugar factories from taxation for five years; to promote the health of children of the state by causing vaccine to be stamped by the manufacturer; to promote health and honesty in the dairy interests; also a memorial to congress requesting that body to submit to the people of the United States a constitutional amendment empowering



James J. McGillivray.

them to control trusts and combinations. He has worked hard for equal taxation and good road legislation. He was honored by being selected to nominate Senator John C. Spooner for the United States senate in 1897 and again in 1903. He has always espoused the cause of woman's suffrage in both assembly and senate, has been assigned to the most prominent committees in whichever house of the legislature he has served. He was the author of an anti-trust bill which was calculated to prohibit trusts and combinations in Wisconsin and which passed both houses of the legislature but was vetoed by Gov. Peck. Mr. McGillivray has been prominently mentioned for some of the highest offices within the gift of the state, the more important of which are governor, representative in congress and United States senator. He is the oldest member in the legislature in point of service, having been a member since 1890. He served as president pro tem. of the senate of 1901, 1903 and 1905, and has always been noted for his fair rulings in that capacity. He nominated Gov. R. M. La Follette for U. S. Senator in 1905, making the 3rd successful candidate for that office, Mr. McGillivray had the honor to nominate. He was elected to the state senate in 1894, and re-elected in 1898 and 1902, receiving 6,808 votes against 3,793 votes for A. D. Gill (Dem.).

THIRTY-SECOND SENATORIAL DISTRICT.

La Crosse and Trempealeau counties. Population, 1900—86,111.



Thomas Morris.

THOMAS MORRIS (Rep.), of La Crosse, was born on a farm near Bedford, Canada, December 9, 1861. He received his education in the common schools of Canada and the Bedford Academy. He is a lawyer, having graduated from the Wisconsin University Law School in 1889, and is a member of the law firm of Morris & Hartwell, at La Crosse. He was elected district attorney of La Crosse county in 1898, and was re-elected in 1900. He was twice elected chairman of the Republican Congressional Committee of the Seventh Congressional District, and resigned the position when he became a candidate for the senate, at the last election. At present he is a member of the State Board of Normal School Regents.

Mr. Morris was elected to the state senate November 8, 1904, by a vote of 8,193 to 4,869 for Stephen Richmond (Dem.).

THIRTY-THIRD SENATORIAL DISTRICT.

Washington and Waukesha counties. Population, 1900—58,818.



Ernst Merton.

ERNST MERTON (Dem.), of Waukesha, Waukesha county, was born August 9, 1848, in Germany; came to Wisconsin in 1859; early education was received in parochial schools and higher education obtained by private study, finally studying law, and was admitted to practice in 1877, locating in Burlington, where he served as first president of village from 1885 to 1889, when he

moved to Waukesha and entered into law partnership of Ryan & Merton. Has held position of school commissioner in city of Waukesha, president of school board and was a member of the common council of the city when elected to the state senate in November, 1902, when he received 5,848 votes against 5,354 votes cast for Alfred M. Jones (Rep.).

OFFICERS OF THE SENATE.

CHIEF CLERK.

L. K. EATON was born in the city of Oshkosh 28 years ago, where he has always lived except the time spent in college. He graduated from Williams College in the class of 1899 and was admitted to the bar in the District of Columbia in 1901. Since that time he has been engaged in the practice of law in his native city. Was elected chief clerk of the senate in the session of 1905.



L. K. Eaton.

SERGEANT-AT-ARMS.

RUSSEL C. FALCONER was born in Williamsburg, N. Y., Feb. 4, 1851; received a common school education; came to Wisconsin in 1855 and settled at Quincy, Adams county; remained there until 1858 when he removed to Columbia county, was chairman of the town of Wyocena in 1880; sheriff of Columbia county one term; mayor of the city of Portage; was elected state senator in 1890; removed to Camp Douglas in 1899, where he engaged in the real estate business.



Russel C. Falconer.

JOINT SPECIAL LEGISLATIVE COMMITTEES.

At the time the legislative committees found elsewhere in this book were compiled, the following "joint special" committees had not been created. Hence their insertion here.

Rules—Herman L. Ekern, chairman; Edward W. LeRoy, Roy C. Smelker, W. W. Andrew and B. S. Potter.

Capitol and Grounds—I. L. Lenroot, chairman; Chas. F. Greenwood, Jos. P. Chandler, H. L. Brooks and Peter A. Cleary.

EMPLOYES OF THE SENATE, 1905.

A. R. Emerson	Journal Clerk	Darlington.
J. D. O'Brien	Bookkeeper	Milwaukee.
Ralph Pomeroy	General Clerk	Appleton.
H. Wipperman, Jr. ...	Engrossing Clerk	Grand Rapids.
O. G. Briggs	Enrolling Clerk	Cashton.
Chas. Good	Asst. Sergeant-at-Arms	Ashland.
Thomas Walby	Document Clerk	Hudson.
Chris. Paulus	Postmaster	Milwaukee.

ASSEMBLY.

IRVINE L. LENROOT, Speaker; C. O. MARSH, Chief Clerk; NICHOLAS STREVELER, Sergeant-at-Arms.

The assembly consists of 100 members. They are chosen biennially and receive \$500 for their services during the term. The speaker is chosen by the members and receives an additional \$500 for his services as speaker. The assembly of 1905 contains 85 republicans, 11 democrats, and 4 social democrats.

ADAMS AND MARQUETTE COUNTIES.

One District. Population, 1900—19,650.



John A. Henry.

JOHN A. HENRY (Rep.), of Easton, Adams county, was born in Oswego county, New York, October 14, 1845; came to Waterford, Racine Co., in 1850; lived there until 1863, when he moved with his parents to Easton, Adams county; obtained his education in the common schools and the Brunson Institute at Point Bluff, Adams county; enlisted in Company M, Fourth Wisconsin Cavalry, Feb. 14th, 1864, and remained in the service until the close of the war. Has been postmaster twenty years and justice of the peace several terms. Was elected to the assembly in 1900 and again in 1904, receiving 2,242 votes against 1,379 votes for Martin Quantius (Ind.)

ASHLAND COUNTY.

One District. Population, 1900—20,176.



Edward B. Gordon.

EDWARD B. GORDON (Rep.) was born in Middletown, Conn., in 1862. At the age of 17 he set out for the west and in 1879 arrived at Chippewa Crossing (now Glidden.) He secured employment in the lumber woods where he worked until 1884. That year he was elected school clerk in the town of Jacobs and began teaching, which he followed up until 1888. By economy and thrift he had accumulated considerable timbered land and started in the lumbering business for himself, which occupation he followed up until 1896. He began his profession of teaching again and taught until 1901, during that time purchasing his present holdings in Glidden, the Gordon Mercantile company store. It was then he took charge of the store. He repeatedly held the highest offices possible for his townspeople to bestow upon him since 1884. In brief he was school clerk for 15 years; chairman of town of Morse in '94-5-6; assessor for same town in '97-8-9; succeeded in having the town of Gordon set off from the town of Morse in '99 and has been a chairman of that town ever since; also was chairman of the county board for two years. He was elected to the assembly in 1904, receiving 3,033 votes against 1,449 votes for Ferdinand J. Colignon (Dem.).

BROWN COUNTY.

First District. The towns of Ashwaubenon, Howard, Pittsfield, Suamico and the city of Green Bay. Population, 1900—23,372.

WILLARD E. BURDEAU (Rep.), of Flintville, Brown county, Wisconsin, was born in Clinton county, N. Y., Dec. 1st, 1859, and came to Wisconsin with his parents in June, 1868, locating on a farm in the town of Suamico, Brown county, and has resided there up to the present time; was educated in the public schools; engaged in lumbering from 1876 to 1889, and has since combined mercantile business with farming; is also dealing in farm implements and real estate, and operates a cheese factory; has been school director, supervisor and chairman of his town board from 1893 up to the present time; was postmaster at Flintville for seven years, resigning that office when elected to the Assembly in 1900; he was re-elected to the Assembly in 1904, receiving 2,451 votes against 2,355 votes for Andrew Refs (Dem.), and 151 votes for Fred Schefe (Soc. Dem.)



Willard E. Burdeau.

BROWN COUNTY.

Second District. The towns of Allouez, Bellevue, De Pere, Eaton, Glenmore, Green Bay, Holland, Humboldt, Lawrence, Morrison, New Denmark, Preble, Rockland, Scott and Wrightstown, the village of Wrightstown, the city of De Pere, and that part of Oneida reservation within the county of Brown. Population, 1900—22,987.

MAURICE B. BRENNAN (Rep.), of Morrison, Wis., was born in Ireland Apr. 6, 1842, emigrated to America in 1848 and settled in Springfield, Mass. Came to Wisconsin in 1852, settling in Brown county; received a common school education; is a farmer and live stock shipper; has held various local offices; was elected to the assembly in 1881 and again in 1904, receiving 2,336 votes against 1,581 votes for Michael Flaherty (Dem.).



Maurice B. Brennan

BARRON COUNTY.

One District. Population, 1900—23,677.

GEORGE E. SCOTT (Rep.), of Prairie Farm, was born in Durand, Pepin county, Wis., July 3, 1860, where he received a common school education. He is a merchant and miller and has served seven years on the county board—last two years as chairman. In 1904 he was elected to the assembly without opposition.



George E. Scott.

BAYFIELD, SAWYER AND WASHBURN COUNTIES.

One District. Population, 1900—23,506.

LORENZO N. CLAUSEN (Rep.) was born in Hemnes, Helgeland, Norway, October 5, 1855, where he received a common school education. At the age of fifteen he



Lorenzo N. Clausen.

emigrated with his parents to America, coming direct to Otter Tail county, Minn. Here he remained for nearly ten years, being engaged most of the time in common farm work and teaching school, having meanwhile attended the State Normal School at St. Cloud, Minn., for some time. He then moved to Dalton, Minn., where he was appointed postmaster in 1881, and afterward clerked in Fergus Falls, Minn., for a couple of years. He was the first mail agent between Wadena and Fergus Falls. On account of ill health he was compelled to resign the position in 1884, and moved to Washburn, Wisconsin, where he has resided since. In 1885 he was appointed town clerk, holding this office by re-election for four years; has served as justice of the peace most of the time since 1885; was secretary of the board of education for several years, and at the present time is president of the board; was appointed deputy collector at Washburn in 1886, holding this position nearly eight years. In 1893 he was elected chairman of the town board for one term. During the five years from 1889 to 1894 he was cashier of the Bayfield County bank, and in 1898 was elected county treasurer for Bayfield county for one term. Has been chairman of the republican county committee of Bayfield county for ten years. He is engaged in real estate and insurance business. Was elected to the assembly in 1904, receiving 3,737 votes against 1,515 votes for Winfield E. Tripp.



Fred J. Bohri.

BUFFALO AND PEPIN COUNTIES.

One District. Population, 1900—24,670.

FRED J. BOHRI (Rep.), of Fountain City, Buffalo county, was born at Fountain City, Aug. 20, 1870. Graduated from Fountain City high schools 1887, and from Winona, Minn., high schools 1889; is a general merchant and grain dealer by occupation. Has served a number of terms as member of county board, also as mayor of Fountain City for two terms, as well as chairman of the Buffalo county republican committee; is secretary of the republican congressional committee of the Seventh congressional district; was delegate to the republican state conventions in 1898, 1900, 1902 and 1904. Elected member of assembly in 1904, receiving 2,888 votes against 1,576 for Henry Pattison (Dem.).



Amund P. Jerdee.

BURNETT AND POLK COUNTIES.

One District. Population, 1900—25,279.

AMUND P. JERDEE (Rep.), of Devonda, Polk Co., Wis., was born in Liberty Prairie, Dane county, Wisconsin, on Dec. 18, 1850; received his education in Albion and Marshall colleges and the State University of Wisconsin; is a farmer, stock raiser and dealer in real estate; Mr. Jerdee has never sought or held office until elected to the Assembly in 1904, receiving 3,373 votes against 1,209 votes for W. T. Kennedy (Ind.).

CALUMET COUNTY.

One District. Population, 1900—17,078.

DANIEL R. CURTIN (Rep.) was born in the town of Woodville, Calumet county, July 3, 1857; was reared on the farm which he now owns; received his education in the public schools of his native county and the mining school of Ontario, Canada; is at present engaged in mining, real estate dealing, dairy farming and lumbering; was elected to the assembly in 1904, receiving 1,630 votes, against 1,389 votes for Louis Rupp (Dem.), and 93 votes for Albert Buss (Soc. Dem.), and 27 votes for Edwin M. Dick (Pro.).



Daniel R. Curtin.

CHIPPEWA COUNTY.

First District. The towns of Edson, Delmar, LaFayette, Sigel, Tilden and Wheaton, the third, fourth, fifth, sixth, eighth, ninth, and tenth wards of the city of Chippewa Falls, the city of Stanley, and the villages of Boyd and Cadott. Population, 1900—15,676.

THOS. A. ROYCRAFT (Rep.) was born in County Cork, Ireland, May 26, 1853; came to this country in 1863 and settled on a farm near Omro, Winnebago county, Wis. Moved to Chippewa county in 1866, where he has resided ever since; received a common school education; is a farmer, dairyman and mechanic; has held the office of assessor for three years, chairman of the town board for three years, and town treasurer for a number of years, which office he now holds; has also been a director of the Eagle Point Insurance Company for fifteen years. Organized the Lafayette Dairying company in 1897, and has been the secretary of that company ever since. He has always been a republican. He was elected to the assembly in 1904, receiving 1,969 votes against 1,326 votes for Geo. B. McCall (Dem.).



Thos. A. Roycraft.

CHIPPEWA COUNTY (AND RUSK).

Second District. The towns of Anson, Auburn, Arthur, Bloomer, Big Bend, Cleveland, Colburn, Dewey, Eagle Point, Flambeau, Lawrence, Sampson, and Strickland, the village of Bloomer, the first, second, and seventh wards of the city of Chippewa Falls. Population, 1900—17,361. [By act of legislature in 1901 the county of Gates was formed (comprising the towns of Atlanta, Big Bend, Dewey, Lawrence, Rusk, Strickland and Flambeau and the part of township 33 north, range 7 west, lying south of Chippewa river), and remains a part of the Second Assembly district of Chippewa county.]

L. L. THAYER (Rep.), of Bloomer, was born in Concord, Jefferson county, Wis., June 3, 1863. Was educated in the public schools of the state. Has lived successively in Vernon, Rock and Chippewa counties. For twelve years he was a teacher in the public schools of



L. L. Thayer.



William S. Irvine.

Vernon county and for the past ten years has been engaged in the ministry. He has held several public offices, such as town clerk, chairman and president of village. Was elected to the assembly in 1904, receiving 2,601 votes against 1,211 for Jabez C. Stubbs (Dem.).

CLARK COUNTY.

One District. Population, 1900—25,848.

WILLIAM S. IRVINE (Rep.) was born in Maryland, March 18th, 1851; came with his parents to Wisconsin in 1852, settling in Trempealeau county; received his education in the common schools; removed to Clark county in 1870, and began farming in 1873; represented his town on the county board for 16 years; was assessor four years; appointed tax commissioner for Eau Claire county for 1901; elected to member of assembly in 1902, and was re-elected in 1904, receiving 3,221 votes against 1,902 votes for Julien C. Baker (Dem.), and 186 votes for Wm. A. Sheldon (Pro.).

COLUMBIA COUNTY.

First District. The towns of Arlington, Caledonia, Dekorra, Fort Winnebago, Lewiston, Lodi, New Port, Pacific and West Point, the villages of Kilbourn City, Lodi and Poynette, and the city of Portage. Population, 1900—15,117.



John Scott.

JOHN SCOTT (Rep.), of Dekorra, was born in Milwaukee June, 1861; moved with his parents to Columbia county, where he received his education in the common schools; was elected chairman of the town board of supervisors nine years in succession; also served two years as chairman of the board of supervisors of Columbia county; is a farmer and stock raiser. He was elected to the assembly in 1904, receiving 1,786 votes against 1,400 votes for H. P. Jamieson (Dem.), and 93 votes for Wm. F. Cochran (Pro.), and 92 votes for J. F. Anderson (Soc. Dem.).

COLUMBIA COUNTY.

Second District. The towns of Columbus, Courtland, Fountain Prairie, Hampden, Leeds, Lowville, Marcellon, Otsego, Randolph, Scott, Springdale, and Wyocena, the villages of Cambria, Pardeeville, and Rio, the west ward of the village of Randolph, and the city of Columbus. Population, 1900—16,004.



Wm. Rufus Turner.

WILLIAM RUFUS TURNER (Rep.), of Columbus, Wis., was born in the town of Fountain Prairie, Columbia county, Wis., March 21, 1855. He received a common school education, later graduating from the high school of the city of Columbus; in 1878 entered into the marble and granite business and has continued in the business since that time as traveling salesman. From 1892 to 1895 he served the first ward of the city of Columbus in the common council; was elected member of assembly in 1904, receiving 2,075 votes against 1,278 for Clinton E. Smith (Dem.), and 123 for Fred H. Turner (Pro.)

CRAWFORD COUNTY.

One District. Population, 1900—17,286.

JAMES DINSDALE (Rep.) was born in Yorkshire, England, November 18, 1848; came with his parents to America in 1849, settling in Grant county; taught school a short time and entered the State University; he graduated at Lawrence University in 1875; graduated at Rush Medical College in 1878, and began practicing medicine in Soldiers Grove the same year; has held various town offices and was chairman of the county board of Crawford county one year; was president of the village of Soldiers Grove three years; member of the board of pension examiners ten years; was elected member of assembly in 1902, and was re-elected in 1904, receiving 1,908 votes against 1,770 votes for Jeremiah O'Neil (Dem.).



James Dinsdale.

DANE COUNTY.

First District. The towns of Blooming Grove, Dunn, Madison and Pleasant Springs, and the city of Madison. Population, 1900—24,458.

ERNEST NOBLE WARNER (Rep.), of Madison, was born on a farm in the town of Windsor, Dane county, Wis., July 23, 1868, son of Col. Clement E. and Eliza (Noble) Warner, the ancestors of both of whom settled in New England in the early part of the 17th century. He attended the district school and the Madison high school, and was graduated from the modern classical course of the State University with the class of 1889; taught a country school for one term while attending the University, and was principal of the Mazomanie high school for one year after graduation. He was graduated from the Law department of the University in 1892, although admitted to practice upon passing the state bar examinations in July, 1891, since which time he has practiced law continuously at Madison. He was nominated for district attorney of Dane county in 1892 but went down to defeat with the rest of the republican ticket of that year; was law examiner in the Attorney General's department 1899-1903; was secretary of Dane county republican campaign committee 1902-1904; was elected member of assembly in 1904, receiving 3,761 votes against 2,926 votes for Joseph C. Schubert (Dem.), and 82 for Wm. W. Bewick (Pro.).



Ernest N. Warner.

DANE COUNTY.

Second District. The towns of Albion, Bristol, Burke, Christiana, Cottage Grove, Deerfield, Dunkirk, Medina, Sun Prairie, Westport, Windsor, and York, the villages of Cambridge, Deerfield, Sun Prairie and Waunakee, and the city of Stoughton. Population, 1900—22,510.

HENRY A. HUBER (Rep.), of Stoughton, Dane county, Wis., was born in Evergreen, Alleghany county, Pa., Nov. 6, 1869. Came with his parents to Wisconsin in 1879, settling on a farm in the town of Pleasant



Henry A. Huber.

Springs, Dane county. He received his education in the common schools and the Albion Academy, and graduated from the Law department of the State University in 1896. Since that time he has been practicing his profession in the city of Stoughton; was city attorney of Stoughton three years, member of the county board of Dane county two years, and was appointed executive clerk by Gov. La Follette March 18, 1903, serving in that capacity until July 1, 1904; was elected member of assembly in 1904, receiving 3,413 votes against 1,740 for Peter N. Johnson (Dem.), and 173 for R. L. Pearsall (Pro.).

DANE COUNTY.

Third District. The towns of Berry, Black Earth, Blue Mounds, Cross Plains, Dane, Fitchburg, Mazomanie, Middleton, Montrose, Oregon, Perry, Primrose, Roxbury, Rutland, Springdale, Springfield, Vermont, Verona and Vienna, the villages of Black Earth, Dane, Oregon, Mazomanie, Belleville, and Mount Horeb. Population, 1900—22,467.



John S. Donald.

JOHN S. DONALD, of Mt. Horeb, was born on the farm where he now resides, January 12th, 1869. His education was continued from the district school to the Northwestern Business College of Madison, from which he graduated in 1887. In 1894 he received the degree of B. S. at the Northern Indiana College of Valparaiso, and in 1897 the degree of D. D. S. at the Chicago College. In 1892 he served as assessor of his town (Springdale) and was chairman of the board of supervisors from 1899 to 1902. He was elected to the assembly in 1902, and was re-elected in 1904, receiving 2,778 votes against 2,080 votes for Wm. F. Pierstorff (Dem.), and 105 for Peter C. Gilbertson (Pro.).

DODGE COUNTY.

First District. The towns of Ashippun, Clyman, Emmett, Herman, Hubbard, Hustisford, Lebanon, Leroy, Lomira, Rubicon, Shields, Theresa and Williamstown, the 5th and 6th wards of the city of Watertown, the villages of Lomira and Theresa, the cities of Horicon and Mayville. Population, 1900—23,636.



Frank S. Bauer.

FRANK S. BAUER (Dem.) was born on a farm at LeRoy, Wis., in 1856; settled at Knowles, Wis., in 1879, where he resided twenty-three years, and where he was appointed the first postmaster, holding the office for eight years; was station agent and operator for seventeen years, during which time he also run a general store; is at present in the mercantile business at LeRoy; he is also engaged in farming; was elected member of assembly in 1904, receiving 3,098 votes against 1,753 votes for Thomas P. Perkins (Rep.).

DODGE COUNTY.

Calamas, Chester, Eiba, Fox Lake, Lowell, Oak Grove, Portland, Trenton and Westford, the villages of Fox Lake, Lowell and Reeseville, the east ward of the village of Randolph, the south ward of the city of Wau-pun, and the cities of Juneau and Beaver Dam. Population, 1900—22,995.

DANIEL L. HANNIFIN (Dem.) was born on a farm in the town of Portland, Dodge county, Wis., where he now resides, June 12th, 1863. He received his education in the common schools of Dodge county, and the Waterloo high school. Twelve years of his life has been employed in teaching school and four years secretary and bookkeeper for the Waterloo Canning company of Waterloo, Wis. He is town clerk of the town of Portland, which office he has held the past twelve years. He was elected a member of the assembly in 1902 and again in 1904, receiving 2,288 votes against 1,948 votes for Charles H. Smith (Rep.), against 93 votes for David E. Jones (Pro.).



Daniel L. Hannifin.

DOOR COUNTY.

One District. Population, 1900—17,583.

CHARLES REYNOLDS (Rep.) was born in Ireland, November 15, 1839; came to America and settled in Madison, Wis., in 1860; was appointed sergeant-major of the 12th Wis. Vol. Inf., September 27, 1861; was promoted to second lieutenant and mustered out as captain of Company A; was appointed assistant adjutant-general on the staff of Gen. Ewing in 1865; was engaged in the lumber business and real estate until 1900; was elected to the assembly in 1902, and re-elected in 1904 without opposition.



Charles Reynolds.

DOUGLAS COUNTY.

First District. The 2d, 3d, 4th, 5th and 6th wards of the city of West Superior. Population, 1900—18,040.

IRVINE L. LENROOT (Rep.), of West Superior, was born in Superior Jan. 31, 1869, of Swedish parentage. He was educated in the common schools of Douglas county, is a lawyer and official reporter of the superior court of Douglas county since 1893. He never sought an elective office until 1900, when he was elected to the Assembly. He was re-elected in 1902, and was chosen speaker of the Assembly of 1903. He was again elected to the Assembly in 1904, receiving 1,659 votes, against 717 votes for John I. Hobe (Dem.), and 181 votes for Henry M. Parks (Soc. Dem.), and was re-elected speaker of the Assembly of 1905.

Irvine L. Lenroot.
(Speaker.)

DOUGLAS COUNTY.



Wallace W. Andrew.

Second District. The towns of Brule, Gordon, Nebagamon and Superior, and the 1st, 7th, 8th, 9th and 18th wards of the city of West Superior. Population in 1900—18,295.

WALLACE W. ANDREW (Rep.), of South Superior, was born in Sheboygan county, Dec. 25, 1850. Later his parents moved to Oregon, Dane county, and he attended the schools in Oregon. Early in life he engaged in purchasing grain and live stock, which business he successfully followed for twenty years. He then became interested in the manufacturing business, and in 1894, with his three brothers, went to Superior and established the Duplex Manufacturing company, at South Superior, in which company he has since been interested and of which he is now vice-president. He was elected to the assembly in 1900 and re-elected in 1904, receiving 2,548 votes against 816 votes for Geo. W. Kane (Dem.), and 193 votes for F. H. Clark (Soc. Dem.).



Ole G. Kinney.

DUNN COUNTY.

One District. Population, 1900—25,043.

OLE G. KINNEY (Rep.), of Colfax, was born June 1, 1858, in Dane county, Wis. He removed to Crawford county in 1860 and from there to Dunn county in 1863; was educated in the common schools; is a general merchant and grain dealer by occupation. He has held the positions of town clerk and chairman of his town, and in 1902 was elected to the assembly, and was re-elected in 1904, receiving 3,169 votes, against 647 votes for I. C. Dammon (Dem.).

EAU CLAIRE COUNTY.

First District. The town of Seymour, the 1st, 2d, 3d, 4th, 5th, 6th, 8th, 9th and 10th wards of the city of Eau Claire, and the city of Altoona. Population, 1900—15,790.



Charles A. Evans.

CHARLES A. EVANS (Rep.), of Eau Claire, was born at Eau Claire, April 6, 1862. He received a common school education and perfected himself in the calling of blacksmithing. He served as a member of the board of supervisors of Eau Claire county one term and as an alderman of the city of Eau Claire two years. He was elected in 1904 to the assembly, receiving 1,358 votes against 1,277 for John H. Fleming (Dem.), 301 for Granville F. Hurd (Pro.), and 228 for Wm. Miller (Soc. Dem.).

EAU CLAIRE COUNTY.

Second District. The towns of Bridge Creek, Brunswick, Clear Creek, Drammen, Fairchild, Lincoln, Luddington, Otter Creek, Pleasant Valley, Union and Washington, the village of Fairchild, the 4th and 7th wards of the city of Eau Claire, and the city of Augusta. Population, 1900—15,902.

CHRIS. N. SAUGEN (Rep.), of Pleasant Valley, Eau Claire county, Wis., was born in Norway January 1, 1852; came to Trempealeau county, Wis., with his parents in 1866, settling on a homestead, where he worked and attended a country school until 1870; worked in the lumber woods and on the river up to 1876, when he removed to Eau Claire county and began farming; represented his town on the county board for 8 years; was assessor 4 years, and has been president of the Pleasant Valley Co-operative Creamery company five years; was elected to the assembly in 1904, receiving 1,750 votes against 771 votes for Bert Frederick (Dem.), and 87 votes for John Mayo (Pro.).



Chris. N. Saugen.

FLORENCE, FOREST AND LANGLADE COUNTIES.

One District. Population, 1900—17,146.

E. F. NELSON (Rep.) was born at Menasha, Wis., September 13, 1868; moved with his parents to Oshkosh in 1880, where he attended school until 1887. From 1887 to 1890 was a student in the Denison University at Granville, Ohio; also studied for a time at the University of Wisconsin; in 1891 he became manager of the Wisconsin Mfg. Co., at Elmhurst, at that time a branch establishment of the same name whose headquarters was at Oshkosh. In 1893 he purchased the establishment at Elmhurst, and has since run the business himself; has been a member of the republican county committee for several years and has been a delegate to several republican state conventions. Was elected member of assembly in 1904, receiving 3,108 votes against 1,851 for Hugh R. Edwards (Dem.).



E. F. Nelson.

FOND DU LAC COUNTY.

First District. The towns of Calumet, Empire, Fond du Lac, Forest, Friendship, Marshfield and Taycheedah, and the city of Fond du Lac. Population, 1900—24,041.

CHRISTIAN PICKART (Dem.) was born in the town of Marshfield, Fond du Lac county, Wis., Nov. 15, 1870; received a common school education; was a cheese manufacturer from 1886 to 1892, when he entered the mercantile business in company with his brother Joseph, in which business he is still engaged; has been town clerk of his town five years; organized a new school district in his town and has been clerk of the same since its organization; was elected member of assembly in 1904, receiving 3,309 votes against 2,984 votes for R. C. Fairbank (Rep.).



Christian Pickart.

FOND DU LAC COUNTY.



John W. Powell.

Second District. The towns of Alto, Ashford, Auburn, Byron, Eden, Eldorado, Lamartine, Metomen, Oakfield, Osceola, Ripon, Rosendale, Springvale and Waupun, the village of Brandon, the north ward of the city of Waupun, and the city of Ripon. Population, 1900—23,848.

JOHN W. POWELL (Rep.), of Rosendale, Wisconsin, was born in the town of Chelsea, Jo Davis county, Ill., Sept. 12, 1846; was educated by his father, Rev. J. N. Powell, and in Peterborough Academy, Peterborough, N. Y., and in Yates Polytechnic Institute, Chittenango, N. Y. Graduated from Rush Medical college, Chicago, Ill., in 1882, and has been engaged in the practice of medicine since that time in Rosendale, Fond du Lac county, Wis; member of the Wisconsin State Medical Society and of the Fond du Lac county Medical Society and for seven years president of the Fond du Lac Board of Pension Examining Surgeons. Was elected member of assembly in 1904, receiving 2,993 votes against 2,102 for James Bannon (Dem.), and 85 votes for Westby E. Webb (Pro.).

GRANT COUNTY.

First District. The towns of Beetown, Cassville, Clifton, Ellenborough, Glen Haven, Harrison, Hazel Green, Jamestown, Lima, Paris, Platteville, Potosi, Smelser and Waterloo, the villages of Cassville, Cuba City, Hazel Green, and Potosi, and the city of Platteville. Population, 1900—19,694.



Duncan McGregor.

DUNCAN MCGREGOR (Rep.), of Platteville, Grant county, was born in Prethshire, Scotland, in 1836, and came directly to Wisconsin with his father's family in 1857. His preparatory education was obtained in Perth Academy, and his collegiate in University and King's College, Aberdeen, and Lawrence University, Appleton. For four years after coming to Wisconsin he found employment in running the Wisconsin river, farming in summer, and teaching in winter. He enlisted from Waupaca, where he had been principal of the high school, and was commissioned captain of Co. A, 42d Wis. Inf., serving with his regiment to the close of the war. In 1867 he was elected professor of mathematics in the Platteville Normal School, the first normal school established in the state, and remained in the school until June, 1904, in all thirty-seven years. He was institute conductor for the Platteville school for nine years, and president for twenty-three. He was elected member of assembly in 1904, receiving 2,193 votes against 2,095 for J. W. Murphy (Dem.), and 65 for J. N. McLeod (Pro.).

GRANT COUNTY.

Second District. The towns of Bloomington, Boscobel, Castle Rock, Fennimore, Hickory Grove, Lancaster, Liberty, Little Grant, Marion, Milleville, Mt. Hope, Mt. Ida, Muscoda, Patch Grove, Watterstown, Wingville, Woodman and Wyalusing, the villages of Bloomington, Fennimore, Montford and Muscoda, the cities of Boscobel and Lancaster. Population, 1900—19,187.

JOSEPH P. CHANDLER (Rep.), of Montford, Grant county, Wis., was born at Monticello, Louis county, Missouri, Aug. 22, 1840; came to Wisconsin in 1847; has been a resident of Grant county for 55 years; was educated in the common schools and academy of Platteville, Wis. Has always made farming his occupation; was assessor for his town for 20 successive years; has been chairman of board of supervisors and member of county board for the past 5 years and at present is president of the board of education of Montford high school. Was elected member of assembly in 1902 and was re-elected in 1904, receiving 2,527 votes against 1,880 votes for Thomas Edge (Dem.), and 138 votes for Arasmus E. Cooley (Pro.).



Joseph P. Chandler

GREEN COUNTY.

One district. Population, 1900—22,719

FRED TIES (Rep.), born in the village of Hagedorn, Westphalia, Prussia, Jan. 4th, 1841; was educated in the public schools at Schwalenberg, Lippe Detmold. He came with his parents to America in 1858 and settled in the town of Spring Grove, Green county, Wis., where he worked on a farm. On the 16th day of October, 1861, he enlisted in Co. B, 18th Wis. Vol. Inf., and fought under Generals Grant and Sherman from Shiloh to the surrender of the Rebel army under Johnston at Raleigh, N. C., and took part in the grand review on May 24th, 1865. During the war he was successively promoted to corporal, sergeant, first sergeant, and second lieutenant; was wounded in a bayonet charge at Jackson, Miss., May 14th, 1863, and two days later taken prisoner and sent to Libby prison, where he was paroled. At the end of the war he came back to the town of Spring Grove and bought the farm which he still owns. He served his town a number of times as assessor; three times as chairman; was elected county clerk of Green county in 1892 and re-elected in 1894, and again in 1896. At the end of this service he moved back to his farm and in October, 1899, bought a residence in Brodhead, into which he moved the following month. In November, 1900, the county board elected him superintendent of poor and trustee of Green County Insane Asylum, and re-elected him to the same position in 1903, and now serves as secretary of said board of trustees. In July, 1903, he was elected a member of the board of education in Brodhead, and is now the president of said board. Was elected member of assembly in 1904, receiving 2,474 votes against 2,039 for Willis Ludlow (Dem.), and 175 for William Smiley (Pro.), and 105 for Peter R. Burns (Soc. Dem.).



Fred Ties.

GREEN LAKE COUNTY.

One district. Population, 1900—15,797.

GARD MILLER (Rep.), of Ripon, was born in Wisconsin in 1851; is a farmer by occupation; was elected to the assembly in 1904, receiving 1,814 votes against 1,621 for Harvey C. Truesdell (Dem.), and 81 votes for Horace Van Kirk (Pro.).



Gard Miller.

IOWA COUNTY.

One district. Population, 1900—23,114.

ROY C. SMELKER (Rep.), was born in Iowa county, Wis., March 7, 1875; graduated from the Dodgeville high school in 1892 and from the State University in 1897; enlisted in Co. G, 1st Wis. Vols., April 28, 1898, and was mustered out at the close of the Spanish-American war. Graduated from the law school in 1899 and began practicing with his father under the firm name of Smelker & Smelker. Was elected member of assembly in 1902, and re-elected in 1904, receiving 2,871 votes against 2,064 votes for Michael H. Murphy (Dem.), and 147 votes for Daniel Lee (Pro.).



Roy C. Smelker.

IRON, ONEIDA AND VILAS COUNTIES.

One district. Population, 1900—20,420.

EDWARD A. EVERETT (Rep.), was born at Beloit, Rock Co., Wis., March 23, 1861; educated in Beloit schools; engaged in hotel business in Chicago for ten years; located at Eagle River, Vilas county, in 1896, establishing the "Everett Hunting and Fishing Resort," in which business he is now engaged. Never before held a political office. Was elected member of assembly in 1904, receiving 3,938 votes against 1,390 votes for Mart Hirtzel (Dem.), and 42 votes for Robert R. Rutherford (Soc. Dem.).



Edward A. Everett.

JACKSON COUNTY.

One district. Population, 1900—17,465.

W. S. BRADDOCK (Rep.), was born Aug. 23, 1848, in Philadelphia, Pa., and received his education in the public schools of his native city and at Yale College. In 1869 he removed to a farm in Minnesota; was appointed chief of division in the pension bureau in 1875 and for more than ten years was in the employ of the government, most of the time as law clerk at St. Paul in the military department of Dakota. In 1888 he came to Jackson county, Wis., and engaged in the cranberry business. Was president of the State Cranberry Growers' association several terms, and for the past ten years has been a member of the county board of supervisors of Jackson county. Is in the real estate business at Ma-ther, Wis. He was elected to the assembly in 1902, and re-elected in 1904, receiving 2,421 votes against 783 votes for Charles F. Hille (Dem.), and 102 votes for W. F. Murray (Pro.).



W. S. Braddock

JEFFERSON COUNTY.

First District. The towns of Concord, Farmington, Hebron, Ixonia, Milford, Palmyra, Sullivan and Watertown, the village of Palmyra, and the 1st, 2d, 3d, 4th and 7th wards of the city of Watertown. Population, 1900—17,377.

E. RACEK (Dem.), was born October 11th, 1846, in Polna, Austria, came with his parents to this country in 1851 and settled in Watertown, Jefferson county, Wis., where he has ever since resided. Received his education in the schools of Watertown and Bryant & Stratton's Commercial College, Milwaukee; clerked in a mercantile store during the rebellion; served three years as teller in Wisconsin National Bank of Watertown when first organized; has been engaged in a general mercantile business since 1871; is also engaged in cement stone construction and production of crushed and building stone for the market from a quarry located at Richwood, Wis. In political life has served nine terms as alderman, representing the 3d ward, and two terms as mayor; was elected member of assembly in 1904, receiving 1,819 votes against 1,806 votes for Robert Jones (Rep.).



E. Racek.

JEFFERSON COUNTY.

Second District. The towns of Aztalan, Cold Spring, Jefferson, Koshkonong, Lake Mills, Oakland, Sumner and Waterloo, the villages of Lake Mills and Waterloo, and the cities of Fort Atkinson and Jefferson. Population, 1900—17,412.

CHAS. F. GREENWOOD (Rep.), was born in the town of Aztalan, Jefferson county, Wisconsin, May 6, 1852. He is a banker, educated in public schools and Jefferson Liberal Institute. He was brought up on a farm. He was proprietor of a general store at Johnson's Creek, Wisconsin, from 1873 to 1878. He then bought the old homestead farm, living there until 1883, at which date he with his brother Arthur established a bank at Lake Mills, of which he is now the president. He has been a member of the county board of supervisors for many years and chairman of the county board two years. He was elected to the assembly in 1904, receiving 1,987 votes against 1,941 votes for Lewis Benson (Dem.), and 83 votes for Mack (Pro.).



Chas. F. Greenwood.

JUNEAU COUNTY.

One district. Population 1900—20,629.

P. A. CLEARY (Dem.), was born in Andover, Alleghany Co., N. Y., Dec. 31, 1873, and moved to Wisconsin with his parents in the spring of 1881, locating on a farm in town of Glendale, Monroe county; moved to Elroy, where he has resided ever since; was educated in the public schools of Elroy, graduating from the El-



P. A. Cleary.



W. M. Curtiss.

roy High School with the class of 1891; worked as a cashier and bookkeeper for three years and since that time has been in the real estate and insurance business. Was city assessor for Elroy in the years of 1900 and 1901; was elected mayor in spring of 1902 and was re-elected in 1904 without any opposition; was also secretary of Elroy Fair Association, which office he has held for 4 years. He was elected to the Assembly in 1904, receiving 2,315 votes against 2,185 votes for Frank M. Reed (Rep.).

KENOSHA COUNTY.

One district. Population, 1900—21,707.

W. M. CURTISS (Rep.), of the town of Salem, Kenosha county, Wis. (post office, Trevor), was born in the town where he resides Nov. 1st, 1852; received a common school education; is by occupation a farmer; has been elected to numerous offices of public trust; was elected to the assembly Nov. 8, 1904, receiving 2,695 votes against 2,173 for W. Dexter (Dem.), 76 for Chester E. Ozaune and 386 for W. W. Britten (Soc. Dem.).



Anton G. Schauer.

KEWAUNEE COUNTY.

One district. Population, 1900—17,212.

ANTON G. SCHAUER (Rep.), was born in the township of Mishicott, Manitowoc Co., Wis., June 13, 1860; was educated in the common schools of said town, and at Lawrence University, Appleton, Wis.; taught school in Kewaunee county for twenty-five years and has been engaged in teaching until now; was town clerk and justice of the peace of the township of Carlton, Kewaunee Co., fifteen years; post master of Norman post office nine years; was sheriff of Kewaunee county in 1897 and 1898; clerk of circuit court, Kewaunee county, in 1901 and 1902; is at present engaged in farming. Was elected member of assembly in 1904, receiving 1,580 votes against 1,496 for Edward Decker, Jr. (Dem.), and 94 votes for Charles Waegli (Soc. Dem.).

LA CROSSE COUNTY.

First District. The town of Campbell and the 1st, 2d, 4th, 5th, 6th, 7th, 9th, 10th, 11th, 12th, 13th, 14th, 15th, 16th, 19th and 20th wards of the city of La Crosse. Population, 1900—21,840.



John S. Durland.

JOHN S. DURLAND (Rep.), was born at Chester, Orange Co., New York, Dec. 1st, 1847; received his earlier education at that place, finishing it at Bloomfield, New Jersey. Came west in 1869 and settled at Rushford, Minn.; during his residence at that place, was a member of city council and board of education; came to La Crosse, Wis., in 1888, and engaged in grocery business; was a member of the county board of La Crosse county 5 years, and is now a trustee of the La Crosse

County Insane Asylum, and a member of the board of education of this city. In 1904 was elected member of assembly, receiving 2,356 votes against 1,975 votes for Bernard F. Keeler (Dem.), and 72 votes for Sam. A. Johnson (Pro.).

LA CROSSE COUNTY.

Second District. The towns of Bangor, Barre, Burns, Farmington, Greenfield, Hamilton, Holland, Onalaska, Shelby and Washington, the villages of Bangor and West Salem, the 3d, 8th, 17th and 18th wards of the city of La Crosse, and the city of Onalaska. Population, 1900—21,157.

THOMAS JOHNSON (Rep.), was born in Norway, March 16, 1854. Came with his parents to La Crosse county in 1859; received a common school education; held the office of assessor of his town several years, and chairman twelve years; is president of the Holman Creamery company and secretary of the Scandinavian Farmers' Mutual Insurance company of La Crosse county. Was elected member of assembly in 1902, and was re-elected in 1904, receiving 2,279 votes against 1,856 votes for Elias Jones (Dem.), and 95 votes for Christian M. Casberg (Pro.).



Thomas Johnson.

LAFAYETTE COUNTY.

One district. Population, 1900—20,956.

RICHARD E. TARRELL (Rep.), was born in the town of Paris in Grant county, Wisconsin, May 5th, 1856; educated in the common schools; is a blacksmith by trade, and followed that business for twenty-two years; in the spring of 1878 moved to the village of Elk Grove, La Fayette county, Wisconsin; in 1880 was elected director of the school board in the village of Elk Grove, and was re-elected for fourteen years. At the age of twenty-four was elected as a member of the board of supervisors and served several terms in that capacity; also elected treasurer of the town and served one term; and was elected as chairman of the board and served two terms, resigning that office in November of 1894, when he was elected sheriff of La Fayette county; served as sheriff during the years 1895-96; since that time has been engaged in the furniture and undertaking business in Darlington, Wis. Was elected member of assembly in 1902, receiving 2,367 votes against 2,125 for Michael A. O'Brien (Dem.), and re-elected in 1904, receiving 2,609 votes against 2,219 for John Kittler (Dem.), and 75 for Hans H. Moe (Pro.).



Richard E. Tarrell.

LINCOLN COUNTY.

One district. Population, 1900—16,269.

HALL L. BROOKS (Rep.), of Tomahawk, Wis., was born in Medford, Mass., Oct. 1, 1864. Came to Wisconsin in 1885; was for eight years a member of board of



Hall L. Brooks.



Simon Wehrwein.

supervisors of Langlade county; has lived for the past six years at Tomahawk, Lincoln county; always has been engaged in the lumber and cedar pole business. He was elected to the assembly in 1904, receiving 2,339 votes against 1,539 votes for James E. Leary (Dem.), and 98 votes for Joseph Weiss (Soc. Dem.).

MANITOWOC COUNTY.

First District. The towns of Centerville, Liberty, Manitowoc, Manitowoc Rapids, Meeme and Newton, and the city of Manitowoc. Population, 1900—20,343.

SIMON WEHRWEIN, JR. (Rep.), was born in the town of Newton, Manitowoc Co., Wis., January, 1869; was educated in the public schools of said town; later attended the Oshosh Normal School for two years; engaged in teaching for seven years, then took charge of his father's farm; has been chosen one of the trustees of the Farmers' Newton Fire Ins. Co.; was elected member of the legislature in 1904, receiving 2,180 votes against 1,735 for Daniel Tracy (Dem.), and 314 for Fred Koepke (Soc. Dem.).

MANITOWOC COUNTY.

Second District. The towns of Cato, Cooperstown, Eaton, Franklin, Gibson, Kossuth, Maple Grove, Mishicot, Rockland, Schleswig, Two Creeks, and Two Rivers, the villages of Kiel and Reedsville, and the city of Two Rivers. Population, 1900—21,918.



La. W. Ledvina.

LAWRENCE W. LEDVINA (Rep.), of Kellnersville, was born in the town of Franklin, Manitowoc county, Sept. 28, 1880. He attended the common and parochial schools of that county and at the age of sixteen began teaching school. He taught for six years at Kellnersville and in the town of Manitowoc Rapids. In 1902 he was elected president of the Manitowoc County Teachers' Association, and for three years he served as a member of the board of common school examiners. In the fall of 1903 he entered the law school of the University of Wisconsin, where he is still engaged in the study of law. He is a member of the Phi Alpha Delta Honorary Law Fraternity. Ever since attaining his majority he has been actively interested in politics, having been elected to represent his district as a delegate to all the county, congressional and state conventions he was eligible to. In the last campaign he was engaged in campaigning in the Bohemian language under the auspices of the National Cong. Committee. He enjoys the distinction of being the youngest member of the present legislature. He is a member of the Judiciary Committee and of the Committee on Bills on Third Reading. In his election to the assembly he received 2,298 votes against 1,730 for J. A. Geimer (Dem.), and 307 for J. Zahorik (Soc. Dem.).

MARATHON COUNTY.

First District. The towns of Bergen, Berlin, Brighton, Cassel, Cleveland, Day, Eau Pleine, Emmett, Frankfort, Halsey, Hamburg, Holton, Hull, Johnson, Maine, McMillan, Marathon, Mosinee, Rib Falls, Reitbrock, Spencer, Stettin and Wein, the villages of Marathon, McMillan, Mosinee and Edgar, and the east ward of Colby. Population, 1900—21,559.



Fred Prehn.

FRED PREHN (Rep.), was born in the city of Manitowoc May 5, 1860; was brought up on a farm in his native county; received his education in common school and the Manitowoc High School; later he learned the trade of harness maker; in 1881 he removed to Marathon city, where he followed his trade for a time, later conducting a hardware and furniture establishment; was appointed postmaster of Marathon city under Harrison's administration; was president of his village three years, served on the county board two years and on the school board three years; has always been an active Republican; was elected member of assembly in 1904, receiving 2,354 votes against 2,145 for Willis F. La Du (Dem.).

MARATHON COUNTY.

Second District. The towns of Easton, Eldron, Harrison, Hewitt, Knowlton, Kronenwetter, Norrie, Pike Lake, Plover, Texas, Wausau, and Weston, and the city of Wausau. Population, 1900—21,697.



Aug. F. Marquardt.

AUGUST F. MARQUARDT (Rep.), was born at Bandekow, Pommern, Germany, January 8th, 1850, and came to the city of Wausau July 1, 1866, when a boy of 17. He was for many years engaged in logging, lumbering and mercantile occupations and now owns a beautiful farm partly within the city limits, and has been for many years a practical farmer. He has held many official positions in the city and county. He represented his ward on the common council of the city for eighteen years; was member of the county board for sixteen years; was president for two years of the Marathon County Agricultural Society and was vice president of the State Agricultural Society in 1899; was elected sheriff of Marathon county in the fall of 1900, and served for two years, and was elected member of the assembly in 1904, receiving 2,872 votes against 2,017 votes for Joseph Reiser (Dem.), and 135 votes for A. R. Bucknan (Pro.).

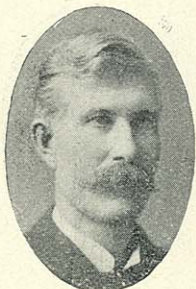
MARINETTE COUNTY.

First District. The city of Marinette. Population, 1900—16,195.

EDWARD WEBSTER LE ROY (Rep.), was born January 30, 1874, in the city of Marinette. He was educated in the Marinette public schools. He held the position of city editor of the Daily Eagle at the time of his first election to the assembly. Later he was editor of the Daily Star and is now one of the editors and pro-



Edward W. Le Roy.



James F. Slight.

prietors of the Daily Eagle-Star. He never held a public office until he was elected to the assembly in 1902, and was re-elected in 1904, receiving 1,580 votes against 389 votes for L. J. Evans (Dem.), and 175 votes for James Larson (Soc. Dem.), and 114 for H. W. Pope (Pro.).

MARINETTE COUNTY.

Second District. The towns of Amberg, Crivitz, Coleman, Dunbar, Grover, Porterfield, Peshtigo and Wausaukee. Population, 1900—14,627.

JAMES F. SLIGHT (Rep.), was born on a farm in Dodge county, Wis., Jan. 6, 1859. He attended the rural school and at the age of 18 began teaching in the district schools of his county, and in 1882 entered the Normal School at Oshkosh, completing the full course in 1887. After a year of teaching in Michigan he took charge of the high school at Peshtigo as principal, which position he held till 1894, resigning to engage in the real estate and insurance business. When Peshtigo was incorporated as a city he was appointed its first city clerk. He was elected to the assembly in 1904, receiving 2,064 votes against 67 votes for R. L. Thomas (Pro.).



Joseph M. Crowley.

MILWAUKEE COUNTY.

First District. The 1st and 18th wards of the city of Milwaukee. Population, 1900—23,396.

JOSEPH MARTIN CROWLEY (Dem.), was born April 29, 1871, in the city of Milwaukee; he received his education in the public schools and St. John's Cathedral school; he was for eight years engaged in the abstract of title business in Milwaukee county and he is now secretary of the Mutual Building & Savings Association and does a general real estate and fire insurance business. He had neither sought or held any public office until elected as member of the assembly in 1902, and was re-elected in 1904, receiving 2,385 votes against 1,866 votes for Edward L. Tracy (Rep.), and 659 votes for Swan Nelson (Soc. Dem.). He received the vote of the democratic members for speaker, for the session of 1905.



J. S. Bletcher.

MILWAUKEE COUNTY.

Second District. The 2d and 6th wards of the city of Milwaukee. Population, 1900—23,580.

J. S. BLETCHER (Rep.), was born in Fremont, Ohio, July 24th, 1850, where he received his education and learned the "printing trade." Located in Milwaukee October, 1881, where he continued at his profession as superintendent in some of the largest plants in the city until October, 1901, when he engaged in the printing business for himself and has since built up a good busi-

ness. Was elected member of assembly in 1904, receiving 1,977 votes against 1,589 for G. A. Dick (Dem.), and 1,393 for Fred Koll (Soc. Dem.).

MILWAUKEE COUNTY.

Third District. The seventeenth ward of the city of Milwaukee, the towns of Oak Creek and Lake, the village of Cudahy, and the city of South Milwaukee. Population, 1900—22,236.

GEORGE E. PAGE (Rep.), born at the city of Milwaukee, Wis., on the 19th of March, 1873, and has continuously resided there; was educated in the public schools of Milwaukee; was elected to the office of justice of the peace for the 17th ward of said city in the year 1900, resigning the same year to enter the Law Department of the Columbian University, Washington, D. C., from where he graduated in 1903; was admitted to the bar in the same year; was elected to the legislature as member of the assembly in 1904, receiving 2,219, over Ambrose McGuigan (Dem.), 1404, and Henry Flamm (Soc. Dem.), 1,248.



George E. Page.

MILWAUKEE COUNTY.

Fourth District. The 15th and 16th wards of the city of Milwaukee. Population, 1900—22,346.

FREDERICK C. WESTFALL, JR. (Rep.), was born in Milwaukee, Wis., Jan. 17, 1876, where he always resided; graduated from the Milwaukee high school in 1895; appointed deputy clerk of the United States courts for the Eastern District of Wisconsin in 1896; and served until 1902; was admitted to the bar in 1897 and began practicing law in 1902; was elected member of assembly in 1902, and re-elected in 1904, receiving 2,959 votes against 1,749 for J. M. Clark (Dem.), and 897 for Jerome Undernill (Soc. Dem.).



Fred. C. Westfall.

MILWAUKEE COUNTY.

Fifth District. The 5th and 12th wards of the city of Milwaukee. Population, 1900—23,247.

WILLIAM J. ALLDRIDGE (Soc. Dem.), of Milwaukee, was born at Bay View, Wis., March 18, 1879; is a machinist by trade and member of the machinists' union. Never sought or held public office until he was elected to the assembly in 1904, receiving 1,629 votes against 1,568 votes for William T. Duke (Rep.), and 1,518 votes for Joseph O'Hearn (Dem.), and 34 votes for Charles M. Frink (Ind. Dem.).



William J. Alldridge

MILWAUKEE COUNTY.



Thomas F. Ramsey.

Sixth District. The 3d, 4th and 7th wards of the city of Milwaukee. Population, 1900—23,270.

THOMAS F. RAMSEY (Dem.) was born in the city of Milwaukee, Wisconsin, Dec. 12, 1858; received his education in the public schools of his native city, is a real estate and insurance agent; was member of the common council in the city of Milwaukee for seven years; was trustee of Milwaukee public museum seven years. He was elected member of assembly in 1904, receiving 2,404 votes against 2,199 for Albert L. Vannaman (Rep.), and 750 for Joseph P. Lahm (Soc. Dem.).

MILWAUKEE COUNTY.



Frederick Hartung.

Seventh District. The towns of Franklin, Greenfield and Wauwatosa, and the city of Wauwatosa. Population, 1900—20,646.

FREDERICK HARTUNG (Rep.), of Wauwatosa, was born July 30, 1857, at Wauwatosa, and received his education in the common schools of that town and the German-English Academy in Milwaukee. He is a farmer and was treasurer of the town of Wauwatosa in the year 1888; was elected assessor of said town in 1893-4-5; elected chairman of the board of supervisors of the town in 1896, and re-elected in 1898, 1900 and 1902. He was elected to the assembly in 1898, 1900, 1902, and was re-elected in 1904, receiving 2,852 votes against 1,238 votes for F. L. Bell (Dem.), and 649 votes for Wm. Miller (Soc. Dem.).

MILWAUKEE COUNTY.



Oscar F. Thieme.

Eighth District. The 8th and 23d wards of the city of Milwaukee. Population—19,332.

OSCAR F. THIEME (Rep.), of Milwaukee, was born in Milwaukee, May 28th, 1869, and received his education in the public schools of that city. Mr. Thieme has practically resided all his life in the district he represents. For the past three years he has been engaged in the real estate, insurance and surety bond business, previous to this time he served under Judges J. E. Mann, J. M. Pereles and Emil Wallber as clerk and assistant register of probate respectively of the Milwaukee county court. He was elected to the assembly in 1904, receiving 1,994 votes against 1,234 for David Geraghty (Dem.), and 1,261 for Wm. Baumann (Soc. Dem.).

MILWAUKEE COUNTY.



Ed. J. Berner.

Ninth District. The ninth ward of the city of Milwaukee. Population, 1900—17,653.

ED. J. BERNER (Soc. Dem.) was born in Freistadt, Ozaukee county, Wis., May 17, 1864, came to Milwaukee in the year of 1872, was educated in the 9th district

school. Has been interested in the trades union movement for the past 15 years; held various offices in same; was elected a member of the assembly in 1904, receiving 1,348 votes against 1,168 votes for Frank Mueller (Rep.), and 844 votes for Jacob Kehrein (Dem.), and 28 votes for Elias Lehman (Ind. Rep.).

MILWAUKEE COUNTY.

Tenth District. The 10th ward of the city of Milwaukee. Population, 1900—17,024.

LOUIS METZLER (Rep.) was born in Milwaukee county Feb. 18, 1864. He received his education in the public school. He was an employee in the general auditing department of the C., M. & St. Paul Ry. from 1883 to 1890; from 1891 to 1894 he held a similar position with the Milwaukee, Lake Shore and Western Ry., and in 1896 to 1903 followed the vocation of bookkeeper. In the spring of 1904 he received the nomination for justice of the peace of the 9th district, being defeated by the Social Democratic candidate by 425 votes. In 1904 he was elected to the assembly, receiving 1,411 votes against 627 for Wm. H. Biesel (Dem.) and 1,209 for Jacob Hunger (Soc. Dem.). He has been a life-long republican, and has always been recognized as a staunch supporter of Republican principles.



Louis Metzler.

MILWAUKEE COUNTY.

Eleventh District. The 11th ward of the city of Milwaukee. Population, 1900—21,903.

FREDERICK BROCKHAUSEN (Soc. Dem.) was born in the city of Fredericia, Denmark, May 20, 1858; received a public school education; learned the trade of cigar making; came to the United States in 1879; lived twelve years in Wisconsin; has also lived in New York, Iowa, Montana and Minnesota. For the past five years has served the Wisconsin State Federation of Labor as its secretary-treasurer. He was elected to the assembly in 1904, receiving 1,524 votes against 1,515 votes for Herman J. Pomrening (Rep.), and 1,163 votes for Charles Miksch (Dem.).



F. Brockhausen.

MILWAUKEE COUNTY.

Twelfth District. The Nineteenth and Twenty-second wards of the city of Milwaukee. Population, 1900—20,231.

AUGUST DIETRICH (Rep.) was born July 6, 1858, in the city of New York, N. Y. He received his education in the public schools of Milwaukee; he was employed for the term of 15 years by the George Poppert Mfg. Co. as foreman. He then entered into the real estate, fire insurance and loan business, in which business he has been engaged for the period of 12 years, now having associated



August Dietrich.



Henry J. Holle.

with himself Edward M. Schuengel, the firm now being Dietrich and Schuengel. In 1890 to 1894 he served as alderman of the ninth ward of the city of Milwaukee for two terms. He was re-elected alderman and served for one term from 1896 to 1898, representing the 19th ward. He has been eminently successful in his business, and is today a self-made man. Was elected a member of assembly in 1904, receiving 1,740 votes against 1,696 for John Hassmann (Soc. Dem.), 1,261 for Stephen Leahy (Dem.).

MILWAUKEE COUNTY.

Thirteenth District. The thirteenth ward of the city of Milwaukee. Population, 1900—17,026.

HENRY J. HOLLE was born in the city of Milwaukee on the 12th day of October, 1859, attended the Lutheran Parochial school until his 14th year and then the public schools of his native city; after graduating he took a one-year course in Spencer's Business College. After that he learned the machinist's trade and worked at it until 1890. In 1890 he was appointed a deputy sheriff, and 1892 under sheriff of Milwaukee county. After the expiration of his term he engaged in the real estate and insurance business. At present and for the last five years he has been engaged in the wholesale liquor business. He was elected to the Assembly in 1904, receiving 1,320 votes against 1,117 votes for Fred Buenger (Soc. Dem.), and 845 votes for Joseph Skobis (Dem.), and 6 votes for August Schnobel (Soc. Lab.). The vote of Fred Buenger as it appears on page 487, should have been 1,117, instead of 1,217. This mistake was made in the county clerk's report of the vote on members of Assembly.)



John H. Szymarek.

MILWAUKEE COUNTY.

Fourteenth District. The 14th ward of the city of Milwaukee. Population, 1900—20,651.

JOHN H. SZYMAREK (Dem.), was born in Poland March 4, 1875; came to Wisconsin in 1879; was educated in the parochial schools and in Marquette College from which he graduated in 1895; was several years in the employ of the Farmers' Lumber Company of Milwaukee and is city agent for the Milwaukee Brewing Company; is at present engaged in the real estate business. Was elected member of assembly in 1902, and re-elected in 1904, receiving 1,623 votes against 975 for Martin Gorlecki (Soc. Dem.), and 855 for John J. Derwort (Rep.).

MILWAUKEE COUNTY.

Fifteenth District. The 21st ward of the city of Milwaukee, the towns of Granville and Milwaukee, and the villages of East Milwaukee, North Milwaukee and Whitefish Bay. Population, 1900—20,613.

PHILIP H. HAMM (Rep.), was born in Reeseville, Dodge county, Wis., July 5, 1859, where he received his education; removed to Milwaukee in 1886; is a real es-



Philip H. Hamm.

tate and insurance agent; was member of the common council in the city of Milwaukee for four years; was trustee of Milwaukee public library two years; deputy game warden one year. He was elected member of assembly in 1902, and was re-elected in 1904, receiving 1,693 votes against 1,403 votes for Herman G. Hansen (Soc. Dem.), and 804 votes for Charles Desfield (Dem.), and 16 votes for E. M. Rubringer (Soc. Labor).

MILWAUKEE COUNTY.

Sixteenth District. The 20th ward of the city of Milwaukee. Population, 1900—16,863.

A. W. STREHLOW (Soc. Dem.), was born in Germany Jan. 31, 1867; was educated in the public schools; came to America in 1881; followed the trade of hard-wood finishing and house painting, later becoming a contractor in this line of business; has been affiliated with organized labor many years; is a member of the Painters' union; was the defeated candidate on the Social Democratic ticket for supervisor in 1902 and also as a candidate for member of assembly in the same year; was elected member of assembly on the Social Democratic ticket in 1904, receiving 1,549 votes against 1,349 for F. B. Breitwisch (Rep.), and 533 for Joseph Heller (Dem.), and 11 for Carl Oberhen (Soc. Lab.).

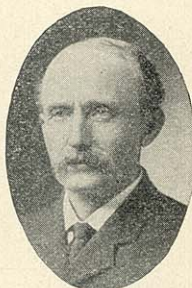


A. W. Strehlow.

MONROE COUNTY.

One District. Population, 1900—23,103.

GEO. P. STEVENS (Rep.), of Tomah, was born in Washington county, Wisconsin, July 5, 1851. He went to Monroe county with his parents in 1856 and received his education in the common district schools. He has, for the most of his life, lived upon a farm. He served as a member of the county board for six years, and in 1892 he was elected county treasurer for his county. In 1894 he was re-elected to the same office; in 1902 was elected to the assembly, and re-elected in 1904, receiving 3,397 votes against 2,241 votes for Charles B. Hall (Dem.), and 137 votes for W. W. Link (Pro.).



Geo. P. Stevens.

OCONTO COUNTY.

One District. Population, 1900—20,874

HENRY JOHNSON (Rep.), of Suring, was born in Denmark, Dec. 2, 1854, where he received a common school education, and came to America in 1873, settling in Oshkosh, where he remained until 1879. He then bought land in the town of How, Oconto county, to which he moved and engaged in farming and lumbering. During the last three years he has also conducted a general warehouse and real estate business at Suring. He has been chairman of the town board two years and town



Henry Johnson.



F. Petersen, Jr.

treasurer nine years; was elected member of assembly in 1900 and 1902, and was re-elected in 1904, receiving 2,889 votes against 1,422 votes for Peter J. Webber (Dem.).

OUTAGAMIE COUNTY.

First District. The towns of Bovina, Center, Dale, Ellington, Grand Chute, and Greenville and the city of Appleton. Population, 1900—23,102.

F. PETERSEN, JR. (Dem.), was born in Winnebago county, this state, on the 25th of March, 1860; is a dealer and shipper of live stock and is also interested in the meat business; has been alderman four years in Appleton, where he has resided since 1866; was president of city council for 2 years; received his education in the common schools and Lawrence University of the city of Appleton. He was elected to the assembly in 1904, receiving 2,595 votes against 2,215 votes for Charles H. Bauke (Rep.).

OUTAGAMIE COUNTY.

Second District. The towns of Black Creek, Buchanan, Cicero, Deer Creek, Freedom, Hortonia, Kaukauna, Liberty, Maine, Maple Creek, Osborn and Seymour, that part of the Oneida reservation that lies within Outagamie county, the villages of Hortonville and Little Chute, the cities of Kaukauna and Seymour, and the 3d ward of the city of New London. Population, 1900—23,145.



Charles Hagen.

CHARLES HAGEN (Rep.), of Outagamie county, was born in the town of Lomira, Dodge county, Wisconsin, on the 12th day of March, 1862. He continued to reside there upon the old homestead until 1882, when he came to Outagamie county and located at Black Creek and established himself in business on a small scale. His business interests have grown yearly and he now has a good sized manufacturing institution turning out cheese boxes, cisterns, tanks, window and door frames, etc., with a lumber yard in connection. Mr. Hagen received a common school education, which has been added to by practical business experience. Mr. Hagen served as town clerk and justice of the peace at Black Creek, and was tendered the nomination again, but his business interests had increased to such an extent that he could not accept. Subsequently he was elected as president of the school board of the Black Creek graded schools and has officiated in that capacity for the past twelve years. He is now serving as president of the village board of the recently incorporated village; was elected to the assembly in 1904, receiving 2,561 votes against 1,779 votes for John Brill (Dem.).

OZAUKEE COUNTY.

One District. Population, 1900—16,363.

PETER L. PIERRON ((Rep.), of Belgium, Ozaukee county, Wisconsin, was born March 16th, 1860. Was chairman of the town of Belgium from 1894 to 1898; was again elected chairman of the town in 1902 and is still holding such office; has been justice of the peace for four years. His business is farming; educated in the common schools. Made a canvass in 1900 for the assembly, being defeated by a close margin; was elected to the assembly in 1904, receiving 1,527 votes against 1,526 votes for Michael G. Bohan (Dem.).



Peter L. Pierron.

PIERCE COUNTY.

One District. Population, 1900—23,943.

W. L. OLTMAN (Rep.), was born in Germany Nov. 6, 1866; came to this country with his parents in 1868 and settled on a farm in the town of Diamond Bluff, Pierce Co.; followed farm life and received a common school education; attended college in the winter of 1891, but owing to the sickness and death of his father in the spring of that year, he was compelled to give up school and carry on the home farm. Was elected as chairman of his town for four years. In 1901 was elected supervisor of assessments of Pierce county and held that office for two years and resigned. Was elected president of the Pierce Co. Co-operative Mercantile Company in 1903 and re-elected in 1904. In the fall of 1904 he received the nomination for member of assembly by acclamation and was elected to that office, receiving 3,279 votes against 766 votes for Thomas J. Griffin (Dem.), and 137 votes for Hugh Bell (Pro.).



W. L. Oltman.

PORTAGE COUNTY.

One District, Population, 1900—29,483.

FRED J. CARPENTER (Rep.), of Stevens Point, was born in Plover, Portage county, Wisconsin, September 20th, 1871. Attended the common and high schools and graduated from the law department of the University of Wisconsin in the class of 1895. Since his graduation he has been engaged in the practice of law at Stevens Point. Was city attorney for three terms, and is a member of the board of education. During the Spanish-American war he served as first lieutenant of Co. "I," 4th Reg., Wis. Vol. Inf. Was elected member of the assembly in 1902, and re-elected in 1904, receiving 3,615 votes against 2,229 votes for Frank E. Poll (Dem.).



Fred J. Carpenter.

PRICE AND TAYLOR COUNTIES.

One District. Population, 1900—20,368.



John B. Hagarty.

JOHN B. HAGARTY (Rep.), of Medford, Wisconsin, was born in County Meath, Ireland; received a common school and collegiate education; graduated at St. Lawrence University, New York, in 1876, and from the law department of the University of Wisconsin in 1883; is by profession a lawyer; resided in Washington county, New York, from 1852 to 1879; since 1879 has made Wisconsin his home; began practice of his profession at Medford in 1884; in 1901 was elected mayor of the city of Medford; was a delegate to the Republican State Convention of 1904; elected to the assembly in 1904, receiving 3,313 votes against 1,785 votes for M. W. Ryan (Dem.).

RACINE COUNTY.

First District. The 1st, 2d, 3d, 4th, 5th 6th (and at the present time, the 8th, 9th, 10th and 11th) wards of the city of Racine. Population, 1900—24,807.



William H. Bell.

WILLIAM H. BELL (Rep.), was born in the city of Liverpool, England, October 8th, 1863; was educated there and came to Racine October, 1880; learned the machinist's trade and worked at the same until 1893. Since then he has been engaged in the real estate business. In 1901 he was appointed public administrator for Racine county, which office he still holds. In 1892 was elected alderman for the sixth ward of the city of Racine, and in 1904 re-elected as alderman of the eleventh ward. Elected member of assembly, 1904, receiving 2,411 votes against 1,789 for Finch (Dem.), 1,043 for Bedinger (Dem.), and for Jackson (Pro.) 141.

RACINE COUNTY.

Second District. The towns of Burlington, Caledonia, Dover, Mt. Pleasant, Norway, Raymond and Rochester, Waterford and Yorkville, the village of Union Grove, the seventh ward of the city of Racine, and the city of Burlington. Population, 1900—20,837.



John O. Thomas.

JOHN O. THOMAS (Rep.), was born in the town of Caledonia, Racine county, Wis., Nov. 23, 1867, of Welsh parentage. He received his education in the district school of his home district and the Belle City Business College of Racine, Wis. He is engaged in dairying and general farming. He served for three years as town clerk of the town of Caledonia, Racine county, Wis. He was elected member of assembly in 1904, receiving 2,535 votes against 1,577 for Edward Rakow (Dem.), 264 for Chas. Dobberman (Soc. Dem.), and 112 for Thomas P Griffiths (Pro.).

RICHLAND COUNTY.

One District. Population, 1900—19,483.

J. E. COFFLAND (Dem.), was born in Ohio, 1864, educated in common schools; moved to Wisconsin in 1887 and engaged in the clothing and furnishing goods business under the firm name of Coffland Brothers. Business is still conducted under the same firm name. Elected member of the county board, 1895; served on building committee of the Richland County Asylum and is serving eighth year as trustee of same institution; has been elected president of the Association of Trustees and Superintendents of County Asylums of Wisconsin four successive years. Was elected mayor of Richland Center spring of 1902 and re-elected without opposition spring of 1904. Elected member of assembly 1902; re-elected 1904, receiving 2,350 votes against 1,747 for M. H. B. Cunningham (Rep.), and 276 for Lee A. McIntyre (Pro.).



J. E. Coffland.

ROCK COUNTY.

First District. The towns of Center, Fulton, Janesville, Lima, Magnolia, Milton, Porter, Rock, Spring Valley and Union, and the cities of Edgerton and Evansville. Population, 1900—16,902.

ALLEN S. BAKER (Rep.), was born near Evansville, Wis., January 12, 1842. Received common school education and commenced business for himself in 1859 as a mechanic. Enlisted in the 2d Reg., Wisconsin Volunteer Inf., April 20th, 1861; was assigned to the army of the Potomac in June, 1861; in General Sherman's Brigade in first battle of Bull Run; later to Gibbon's Brigade, afterwards known as the "Iron Brigade," participating in most of the battles in which this brigade was engaged and receiving wounds in the battles of Ganesville, Va., and Gettysburg, Pa. In 1866 went into business in Evansville as blacksmith and carriage builder. In 1873 he sold out and established what is now known as the Baker Manufacturing Company, engaged in the manufacture of pumps and windmills and has continued in this business until the present time, at first as general manager and in later years as president and treasurer. He was elected to the assembly in 1904, receiving 2,266 votes against 1,234 votes for Clark B. Palmer (Dem.), and 191 votes for Wm. W. Gillies (Pro.).



Allen S. Baker.

ROCK COUNTY.

Second District. Bradford, Harmony, Johnston, La Prairie, and the city of Janesville. Population, 1900—17,091.

PLINY NORCROSS (Rep.), of Janesville, was born in Templeton, Worcester county, Massachusetts, November 16, 1838; received a common school and academic education; is by profession a lawyer; came to Wisconsin in 1852 and settled in La Grange, Walworth county, whence



Pliny Norcross.

he removed in 1865 to Janesville, where he now resides; enlisted April 16, 1861, in the 1st Wisconsin Vol. Inf.,—a three months' regiment,—and afterwards was captain of Co. K, 13th Wis. Vol. Inf., participating in all the engagements of the regiment; has been district attorney of Rock county four years, city attorney two years and mayor of Janesville two years. Mr. Norcross has not practiced law since 1883, but has been engaged in various kinds of manufacturing business. In June, 1904, he was elected department commander of the state of Wisconsin G. A. R. He was elected to the assembly in 1865 and again in 1884; was re-elected to the assembly in 1904, receiving 1,687 votes against 1,296 votes for J. W. St. John (Dem.), and 179 votes for T. J. McKlignie (Soc. Dem.).

ROCK COUNTY.

Third District. The towns of Avon, Beloit, Clinton, Newark, Plymouth and Turtle, the village of Clinton, and the city of Beloit. Population, 1900—17,210.



William O Hansen.

WILLIAM O. HANSEN (Rep.), was born at Beloit, Wis., Oct. 7, 1860; educated in the public schools of that city; learned the trade of a blacksmith; engaged in manufacturing; instructor for eleven years in the Chicago Manual Training School in forge and foundry work. Served as an alderman in the council of Beloit 1890-1892; elected as a member of the assembly, third district, Rock county, Nov. 8, 1904, receiving 2,368 votes against 1,117 votes for Chas. Oliver (Dem.), 233 votes for Wm. H. Grinnell (Pro.), and 248 votes for Wm. L. Tuttle (Soc. Dem.).

SAUK COUNTY.

First District. The towns of Baraboo, Dellona, Delton, Excelsior, Fairfield, Freedom, Greenfield, Merrimac, Prairie du Sac and Sumpter, the villages of Ableman, Merrimac, North Freedom, Prairie du Sac and Sauk City, and the city of Baraboo. Population, 1900—16,905.



J. B. Ragatz.

J. B. RAGATZ (Rep.), was born at Honey Creek, Sauk Co., Wis., Dec. 16, 1862; was educated in the common schools; remained on the farm until he was twenty-one when he accepted a position as clerk in a store at Prairie du Sac, which position he filled until 1888 when he went into the mercantile business at that place for himself, which he still conducts. He has repeatedly represented his community at various conventions, was a member of the village council for several years; was elected a member of the county board in 1902; re-elected in 1903 and 1904, which position he still holds; was elected member of assembly in 1904, receiving 2,230 votes against 1,380 votes for E. C. Perkins (Dem.), and 155 for Albert R. Spaulding (Pro.).

SAUK COUNTY.

Second District. The towns of Bear Creek, Franklin, Honey Creek, Ironton, La Valle, Reedsburg, Spring Green, Troy, Washington, Westfield, Winfield and Woodland, the villages of La Valle and Spring Green and the city of Reedsburg. Population, 1900—13,101.

DAVID B. HULBURT (Rep.), of Loganville, Sauk county, was born in Portland, Chautauqua county, New York, December 8, 1829; received an academic education and graduated from the normal school department; is a farmer and surveyor; came to Wisconsin in 1857 and settled at Loganville; was school superintendent of his town six years; justice of the peace twenty-five years; and chairman of the board a number of terms; has been county surveyor for twenty-eight years; was postmaster at Loganville from 1871 until his election to the legislature in 1875; was enrolling officer during the war; was a member of the assembly in 1876, '77 and '78, and was elected state senator in 1884; was chairman of the committee on Education in the 38th session. Was again elected to the assembly in 1904, receiving 1,665 votes against 1,466 votes for Henry Sorge (Dem.), and 154 votes for Joshua Bible (Pro.).

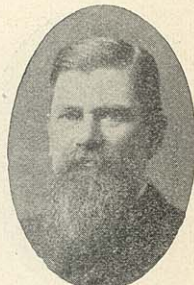


David B. Hulburt.

SHAWANO COUNTY.

One District. Population, 1900—27,475.

JONAS SWENHOLT (Rep.), of Shawano county, was born in town of Oconomowoc, Waukesha county, Wis., Dec. 20, 1855. In 1863 he moved with his parents to Scandinavia, Waupaca county, where he grew up on a farm and was educated in the public schools. Moved to Wittenberg, Shawano county, in 1880 and conducted a mercantile and lumber business. He was postmaster of Wittenberg two terms under Presidents Hayes and Harrison. Held a number of different town and village offices. In 1894 he was elected register of deeds for Shawano county and was re-elected to that office in 1896. Since 1898 he has been in the real estate business. He was elected member of the assembly for Shawano county in 1900 and was again elected in 1904 by 3,320 votes, against 1,565 for Frank F. Koske (Dem.).



Jonas Swenholt.

SHEBOYGAN COUNTY.

First District. The town of Sheboygan and the city of Sheboygan. Population, 1900—25,143.

HERMAN HEINECKE (Rep.), was born in the city of Sheboygan, Wis., November 14th, 1859; received a common school education; was engaged as a carriage painter for ten years; left Sheboygan in 1881; spent three years in the states of Iowa and northern Michigan; returned to Sheboygan in 1884; has been engaged in the meat business since. At the time of his election to the assembly was serving second term as alderman in this city;



Herman Heinecke.



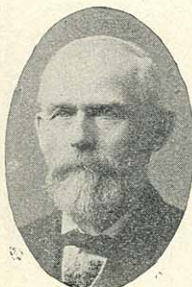
Aug. G. Meyers.

has since resigned from the office of alderman; was elected member of the assembly in 1904, receiving 2,221 votes against 1,850 votes for Peter Bartzten (Dem.), and 875 votes for Henry E. Meyer (Soc. Dem.).

SHEBOYGAN COUNTY.

Second District. The towns of Greenbush, Herman, Holland, Lima, Lyndon, Mitchell, Mosel, Plymouth, Rhine, Russell, Scott, Sheboygan Falls, Sherman, and Wilson, the villages of Cedar Grove, Elkhart Lake, and Sheboygan Falls, and the city of Plymouth. Population, 1900—25,202.

AUG. G. MEYERS (Rep.), was born in the town of Herman, Sheboygan Co., Wis., Jan. 1st, 1864. After attending the public schools he followed farming for a time; later took a course in Janesville College, after which he resumed farming; in 1898 he accepted a position as demonstrator with a Milwaukee Fur Co. at the Trans-Mississippi Exposition at Omaha, Neb.; he later became a traveling salesman, following that occupation for about four years, traveling in nearly every state in the Union. He later purchased the "Washington House" at Howard's Grove, and is at present conducting the hotel; he is also postmaster of Howard's Grove. Was elected member of assembly in 1904, receiving 3,017 votes against 2,340 for E. E. Eastman (Dem.).



Julius Beer.

ST. CROIX COUNTY.

One district. Population, 1900—26, 830.

JULIUS BEER (Rep.), member of assembly elect from St. Croix Co., was born in Saxony, Germany, in 1843; came to this country with his parents in 1853; came to St. Croix Co. from Cook Co., Ill., where he married in 1869 and began farming. In 1880 he built the first cheese factory in St. Croix Co. In 1882 he entered mercantile business with his brother and continues this business to the present time. Has been chairman of the town of St. Joseph several terms and owns about a section of land. He was elected to the assembly in 1904, receiving 3,210 votes against 2,396 votes for Herman Hubink (Dem.), and 103 votes for Webster (Pro.).

TREMPEALEAU COUNTY.

One district. Population, 1900—23,114.



Herman L. Ekern.

HERMAN L. EKERN (Rep.), was born in the town of Pigeon, Trempealeau county, Wis., Dec. 27, 1872. He was educated in the common schools at Pigeon and Whitehall and graduated from the college of law at the University of Wisconsin in the class of 1894, and since his graduation has been practicing law at Whitehall, Wis., in co-partnership with H. A. Anderson under the firm name of Anderson & Ekern. In 1894 he was nominated

and elected for the office of district attorney for Trempealeau county on the Republican ticket, and held the office for two terms. He was elected to the assembly in 1902, and was re-elected in 1904, receiving 3,309 votes against 1,201 votes for Albert E. Bernet (Dem.), and 127 votes for Henry Russeling (Pro.).

VERNON COUNTY.

One district. Population, 1900—28,351.

ANDREW H. DAHL (Rep.), of Westby, was born in Columbia county, April 13, 1859, and was educated in the high school at Viroqua and the Northwestern Business college at Madison. Vernon county has been his home since 1864, and he is engaged in dealing in general merchandise. He was supervisor of the village of Westby during 1896 and 1897, and was elected trustee of Vernon county asylum in 1897 and re-elected in 1901 and 1904. He was president of the village from 1899 to 1902, and was elected to the assembly in 1898 and 1900; was chairman of committee on penal and charitable institutions in the legislature of 1903; was again elected in 1902, and re-elected in 1904, receiving 4,417 votes against 1,018 votes for P. D. Miller (Dem.), and 232 votes for Vernon A. Stoddard (Pro.). He served as chairman of committee on "Assessment and Collection of Taxes" during the session of 1905.



Andrew H. Dahl.

WALWORTH COUNTY.

One district. Population, 1900—29,259.

FRANK H. JOHNSON (Rep.), of Darien, was born near Sheridan, Madison Co., Montana, Dec. 13th, 1867; has resided in Darien, Walworth Co., since 1875; received a common school education; is a general dealer in farm produce; was elected to the assembly in 1904, receiving 4,343 votes against 1,830 votes for Joseph Cassin (Dem.), and 296 votes for James Hague (Pro.), and 126 votes for Robt. McBeath (Soc. Dem.).



Frank H. Johnson.

WASHINGTON COUNTY.

One district. Population, 1900—23,589.

B. S. POTTER (Dem.), was born in the town of Elba, Genesee county, N. Y., Feb. 3, 1836. He came to West Bend in 1856 and clerked in a general store from that time until 1860, when he engaged in the mercantile business for himself, which business he continued until 1878 when he sold out and became connected with a wholesale grocery house in the capacity of commercial traveler. In 1883 he entered into the milling business and continued in that business until two years ago. He is now engaged in the real estate business in West Bend. He is president of the Advancement association. Had never sought or held office until elected member of assembly in 1902. He was re-elected in 1904, receiving 2,534 votes against 2,289 votes for Ole Halverson (Rep.).



B. S. Potter.

WAUKESHA COUNTY.



James A. McKenzie.

First District. The towns of Eagle, Genesee, Mukwonago, Muskego, New Berlin, Ottawa, Vernon and Waukesha, the village of Eagle, and the city of Waukesha. Population, 1900—17,364.

JAMES A. MCKENZIE (Rep.), of Vernon, was born January 27, 1862, in the town of Vernon, Waukesha county; was educated in the common schools of his native town and at Carroll College, Waukesha. For two years (1884 and 1885) clerked in a general store at Boardman, Wis. Since then he has been engaged in the general merchandise business at Vernon. He was elected town clerk three years in succession and was assistant postmaster for fourteen years. He was elected to the assembly in 1904, receiving 2,100 votes against 1,883 for W. H. Twohy (Dem.), and 109 votes for Daniel W. Hoon (Soc. Dem.), and 102 votes for Solomon Vanderwalker (Pro.).

WAUKESHA COUNTY.



Roderick Ainsworth.

Second District. The towns of Brookfield, Delafield, Lisbon, Menomonee, Merton, Oconomowoc, Pewaukee and Summit, the villages of Hartland, Menomonee Falls and Pewaukee, and the city of Oconomowoc.

RODERICK AINSWORTH (Rep.), of Merton, is a farmer, born in Du Page county, Ill., and came to Wisconsin in 1844, where he obtained his education in Wisconsin common and normal schools. He has held various town offices and the secretaryship of the Lisbon Insurance company several years, and has taught school many years. He was elected to the assembly in 1900, 1902, and again in 1904, receiving 2,386 against 1,594 votes for Eugene W. Delaney (Dem.), and 95 votes for Fred C. Soll (Soc. Dem.).

WAUPACA COUNTY.



P. H. Peterson.

First District. The towns of Caledonia, Dayton, Farmington, Fremont, Lind, Little Wolf, Royalton, St. Lawrence, Scandinavia, Waupaca and Weyauwega, the villages of Weyauwega, Fremont, Manawa and Scandinavia, and the city of Waupaca. Population, 1900—16,337.

P. H. PETERSON (Rep.), was born in the town of St. Lawrence, Waupaca county, April 29, 1856 received his education in the common schools of his native town; is a farmer by occupation; was assessor of his town 5 years; was chairman 3 years, district clerk 6 years; was elected member of assembly in 1904, receiving 2,001 votes against 846 votes for H. A. Larson (Pro.), and 785 votes for J. M. Ware (Dem.).

WAUPACA COUNTY.

Second District. The towns of Bear Creek, Dupont, Harrison, Helvetia, Iola, Lebanon, Larrabee, Matteson, Mukwa, Union and Wyoming, the villages of Embarrass, Iola and Marion, the city of Clintonville, and the 1st, 2d, 4th and 5th wards of the city of New London. Population, 1900—15,278.

GEORGE E. BEEDLE (Rep.), was born in Shawano, Wis., July 17, 1864; was educated in the common schools; is a lumberman by occupation; was in the employ of the C. & N. W. Ry. Co. from 1883 to 1899; was elected member of the county board of supervisors in 1901, resigning that position to become one of the first trustees of the Waupaca County asylum, which position he still holds; was elected member of assembly in 1902, and re-elected in 1904, receiving 2,328 votes against 660 votes for M. W. Knappstein (Dem.).

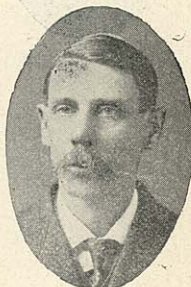


George E. Beedle.

WAUSHARA COUNTY.

One District. Population, 1900—15,972.

BYRON O. STORM was born Nov. 27, 1851, in the city of Whitewater, Wisconsin. At the age of five years he removed with his parents to Wautoma in Waushara county, and has since that time been a resident of that county. He was educated in the public schools of Wautoma, and at the age of eighteen learned the tinner's trade, and during the ten years following devoted his time to the hardware business at Wautoma and Plainfield. He moved to the latter village in 1877. For the past ten years he has been living upon his farm adjacent to the village of Plainfield. He has been for five successive years president of the village board of the village of Plainfield, and during the past six successive years has been supervisor from said village and a member of the school board. In the fall of 1903 he was unanimously elected chairman of the county board. He was elected to the assembly in the fall of 1904 by a vote of 2,899, as against 538 for F. B. Rawson (Dem.), and 105 for O. A. Olson (Pro.).

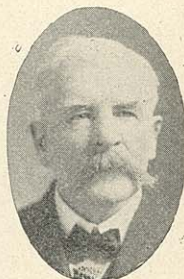


Byron O. Storm.

WINNEBAGO COUNTY.

First District. The town of Oshkosh and the 1st, 2d, 4th, 5th, 7th, 8th, 10th, 11th and 12th wards of the city of Oshkosh. Population, 1900—20,317.

WM. M. PERRY (Rep.) was born in Portage county, Ohio, May 27, 1842. Received common school education; was brought up on the farm; enlisted in Co. F, 7th Ohio volunteer infantry in June, 1861, and served three years in the civil war; wounded and taken prisoner at Dumfries landing on the 27th day of December, 1862, and spent the winter of 1862 in Libby prison; was exchanged April 4, 1863, and discharged July 7,



Wm. M. Perry.

1864. Moved to Wisconsin in 1865; a member of board of supervisors of Taylor county in 1880; moved to Oshkosh, where he has since resided; is a mason and contractor by trade; was elected member of assembly in 1904, receiving 2,276 votes, against 1,996 votes for Joseph E. Mallery (Dem.), and 82 votes for Albert E. Bousfield (Pro.).

WINNEBAGO COUNTY.

Second District. The towns of Clayton, Menasha, Neenah, Vinland, Winchester, Winneconne and Wolf River, the village of Winneconne, and the cities of Menasha and Neenah. Population, 1900—18,670.



A. D. Eldridge.

A. D. ELDRIDGE (Rep.) was born in Menasha April 29th, 1851, and received a common school education in that city; 1871 to 1887 he was in the employ of W. P. Hewitt & Co., Menasha Woolen Mills, as bookkeeper. He left that position in 1887 to accept the office of auditor and material agent of Coronado Beach Co. of San Diego, California, one of the largest firms then doing business in Southern California. In 1890 Mr. Eldridge returned to Neenah and took charge of Henry Sherry's extensive office business. He conducted that until 1895, when he resigned to engage in business on his own account, and became cashier and director of the First National Bank of Iron Mountain, Mich. After nearly three years of service in that position a reorganization of the bank was effected and Mr. Eldridge returned to Neenah. In 1898 he organized the Neenah Cold Storage Co., and as president and manager built up a large business. In 1899 he sold his stock in that company, and engaged in the cheese trade on his own account, as jobber and commission merchant, and has built up a successful and extensive business.

While Mr. Eldridge has not been in any sense a politician he has served the city most acceptably in the common council. In 1894 he was chosen alderman by the electors of the Second ward by one of the largest majorities ever polled there. His record as chairman of the finance committee during his two years of service proves he was easily the leader of that body and of great value to the whole city. In 1895 he was elected president of the common council by unanimous vote. Although Mr. Eldridge has repeatedly been asked to accept the republican nomination for mayor since his return to Neenah in 1898, he has steadily refused. He consented to allow his name to go before the assembly convention of the Second Winnebago district only on the urgent request of friends in Neenah and Menasha and the country districts. He kept himself out of the caucus campaign consistently, and accepted the nomination with one hope only—to be of service to his party and the people of the district. In his election to the assembly in 1904, Mr. Eldridge received 2,030 votes against 1,629 votes for Maximilian M. Schoetz (Dem.).

WINNEBAGO COUNTY.

Third District. The towns of Algoma, Black Wolf, Nekimi, Nepeuskun, Omro, Poygan, Rushford and Utica, the village of Osseo, and the 3d, 6th, 9th and 13th wards of the city of Oshkosh. Population, 1900—19,238.

JOHN A. FRIDD (Rep.) was born in Winnebago county, Oct. 23, 1850; received his education in the common schools and in Ripon College; is a farmer by occupation; served his town as side supervisor three years, and as chairman ten years; has been director of the Eureka Canning factory since 1900 and was elected member of assembly in 1902, and was re-elected in 1904, receiving 2,456 votes against 1,419 votes for Joseph Kloeckner (Dem.), and 149 votes for Frank Cole (Pro.).



John A. Fridd.

WOOD COUNTY.

One District. Population, 1900—25,865.

ELI E. WINCH (Rep.), of Marshfield, Wis., was born in Essex Co., N. Y., April, 1848; moved to Wisconsin in 1855; was married in 1877; became a resident of Wood county in 1878; is a manufacturer by occupation; was elected to the assembly in 1904, receiving 3,372 votes against 2,369 for Amos E. Germer (Dem.), and 130 for Henry E. Ward (Soc. Dem.).



Eli E. Winch.

OFFICERS OF THE ASSEMBLY.

CHIEF CLERK.

C. O. MARSH (Rep.) was born in the town of Burnett, Dodge county, in 1859; educated at the Sun Prairie public schools and the University of Wisconsin, from which institution he graduated in the Ancient Classical course in 1883. On graduation, organized the high school at Antigo; was principal of same till 1886; principal of high school at Two Rivers from 1886 to 1892; in business at Antigo the following year; principal of the high school at Antigo from 1892 to 1899; city superintendent in 1898 and 1899; county superintendent of schools in Langlade county from 1901 to 1903. In 1899 purchased the Antigo Republican, of which he has been editor and proprietor since; is a member of the board of directors of the Antigo public library; has served a number of terms on the city council of Antigo and has been a member of the county board of Langlade county; in 1899 and 1900 was president of the Langlade Agricultural society; was delegate to both Republican state conventions in 1900; was a member of



C. O. Marsh.



Nicholas Streveler.

the Republican Congressional committee of the Ninth Congressional district. Was secretary of the Republican State convention of 1904; chairman of board of visitors to River Falls Normal School 1903-04; was chief clerk of assembly in 1902 and re-elected without opposition by present assembly.

SERGEANT-AT-ARMS.

NICHOLAS STREVELER was born at Doeningen, Grand Duché of Luxemburg, March 11, 1860; after going through the elementary school course in his home town went to a business college in the city of Luxemburg; after complying with his military duties immigrated to the U. S. in 1880; first arrived in the city of Milwaukee, where he lived for three years; on June 7, 1883, removed to the city of Marshfield, clerked for seven years and married in 1890; engaged in dairy farming and after some time engaged in the manufacture of butter and cheese; in 1901 sold his farm and dairy interests with the exception of a ceramery; in 1902 started in the general merchandise business, in which he is engaged at the present time.

EMPLOYES OF THE ASSEMBLY, 1905.

Chas. A. Leicht	Journal Clerk	New Lisbon.
C. E. Shaffer	Bookkeeper	Madison.
Ralph E. Smith	General Clerk	Merrill.
L. B. Nagler	General Clerk	Hudson.
A. W. Pott	Enrolling Clerk	Sheboygan.
J. E. Noyes	Engrossing Clerk	Greenwood.
C. H. Collins	Asst. Sergeant-at-Arms	Victory.
Walter Eagan	Second Asst. Sergeant-at-Arms	Superior.
Burne Pollock	Document Clerk	Lancaster.
John Harris	Postmaster	West Bend.

UNIVERSITY DEPARTMENT HEADS.

PRESIDENT OF THE UNIVERSITY.

CHARLES RICHARD VAN HISE, Ph. D., LL. D., President of the University, was born May 29, 1857, at Fulton, Wisconsin. He graduated from the University of Wisconsin in 1879, with the degree of Bachelor of Metallurgical Engineering. Since that time from the University he has received the following degrees: Bachelor of Science in 1880; Master of Science in 1882; and Doctor of Philosophy in 1892. He has received the honorary degree of Doctor of Laws from the University of Chicago, in 1903, and from Yale University in 1904. Immediately after graduating in 1879 he entered the instructional force of the University of Wisconsin and has remained on its staff in various positions to the present time. In the University he has been instructor in metallurgy, 1886-88; professor of mineralogy and petrology, 1888-90; professor of Archaen and applied geology, 1890-92; professor of geology, 1892-03; and he was elected President of the University in 1903. At the University of Chicago he was non-resident professor of structural and metamorphic geology from its foundation to 1903. He has held various positions on the United States Geological Survey from 1883 to the present time. Under this organization he was assistant geologist on the United States Geological Survey, 1883-88; geologist in charge of Lake Superior Division, 1888-1900; and he has been geologist in charge of pre-Cambrian and metamorphic geology, 1900 to the present time. For the State Geological and Natural History Survey he was consulting geologist from 1897 to 1903. Since 1903 he has been president of the Board of Commissioners of the Survey. He was president of the Wisconsin Academy of Science, Arts and Letters, 1893-1896; and vice president of Section E of the American Association for the Advancement of Science, 1901. He is a member of the National Academy of Sciences; the Washington Academy of Science; the Geological Society of America; the American Institute of Mining Engineers; the Scientific Society of Christiania, Norway; the Boston Society of Natural History. He has been editor (for structural geology) of the *Journal of Geology* since 1892. He has made many contributions to geological literature, of which the more important are: the Archaen and Algonkian, the Penokee Iron-bearing Series of Michigan and Wisconsin (with R. D. Irving), Principles of North American Pre-Cambrian Geology, the Marquette Iron-bearing District of Michigan (with W. S. Bayley), the Iron Ores of the Lake Superior region. President Van Hise has also given various addresses upon educational subjects.

EDWARD ASAHIEL BIRGE, Ph. D., Sc. D., Dean of the College of Letters and Science, was born Sept. 7, 1851, at Troy, N. Y.; graduated from Williams College in 1873, with the degree of Bachelor of Arts, and received the degree of Master of Arts in 1876; studied zoology in the Agassiz Museum of Comparative Zoology at Cambridge, Mass., until December, 1875; received the degree of Doctor of Philosophy from Harvard University in 1878, and of Doctor of Science (honorary) from the Western University of Pennsylvania in 1897; studied histology and physiology in the University of Leipsic, Germany, during the college year 1880-1; elected instructor in natural history at the University of Wisconsin in 1875; professor of zoology in 1879; and in 1891 received the additional office of dean of the College of Letters and Science and served as acting president 1900-3. He is secretary of the Wisconsin Commissioners of Fisheries, superintendent of the Wisconsin Geological and Natural History Survey, president of the Madison Public Library, and president of the American Microscopical Society. His papers are on scientific subjects, mainly in the *Archiv für Physiologie*, the *Biologisches Centrallblatt*, and the *Transactions of the Wisconsin Academy of Sciences, Arts and Letters*.

VICE-PRESIDENT OF THE UNIVERSITY.

JOHN BARBER PARKINSON, A. M., Vice-President of the University, Professor of Constitutional and International Law, was born at Edwardsville, Madison county, Ill., April 11, 1834; graduated from the University of Wisconsin in 1860; was an instructor in the University, 1861-62; County Superintendent of La Fayette county, 1862-64; Regent of the University, 1866-67; was appointed to a full professorship—the first from the alumni—in 1867; held the chair of Mathematics, 1867-72; of Civil Polity and Constitutional Law, 1872-74; was in journalism and president of the Wisconsin State Board of Centennial Managers, 1874-76; Professor of Civil Polity and Political Economy, 1876-93; was appointed Professor of Constitutional and International Law in 1893, and has been vice-president of the University since 1885. He has thus been connected with the University nearly forty years. Several of his addresses, read before the State Agricultural Society, the Academy of Sciences, Arts and Letters, and other societies, have been published; courses of lectures on International Law, English and American Constitutional Law and Political Economy have been prepared, but not yet published.

WILLIAM ARNON HENRY, Agr. B., Dean of the College of Agriculture, was born at Norwalk, Ohio, June 16, 1850. His early life was spent on a farm in northwestern Ohio. He studied at the Defiance, Ohio, high school, Holbrook normal school, and Ohio Wesleyan University. Was principal of the New Haven, Indiana, high school, 1871. Principal of the Boulder, Colorado, high school, 1873-76. Entered Cornell University in the fall of '76, and was graduated from that institution in 1880, with the degree of Bachelor of Agriculture. In the summer of 1897 was with Professor C. V. Riley of the United States Entomological Commission, Washington, D. C. During 1879 and 1880 was assistant in the botanical department at Cornell University. Was appointed professor of botany and agriculture, University of Wisconsin, beginning work in September, 1880. In 1882, was relieved of botanical work and elected professor of agriculture. In 1887, was given charge of the work of the experiment station under the title of Director. In 1891, was appointed Dean of the College of Agriculture; present title, Dean of the College of Agriculture and Director of the Agricultural Experiment Station. Since 1887, has served as staff correspondent for the Breeders' Gazette, Chicago. In 1881-82, under the direction of the legislature, he conducted experiments in the manufacture of sugar from amber cane, and the ensiling of fodders, the report of the work being embraced in two volumes published by the state. The Experiment Station, under his direction, has issued nineteen annual reports and ninety-seven bulletins. He is the author of the chapter on Cattle Feeding in the special report on Diseases of Cattle and Cattle Feeding, published by the Department of Agriculture, Washington. By direction of the legislature of 1895, he prepared a hand-book for the homeseeker, a volume of 200 pages, with nearly 100 half-tone illustrations setting forth the agricultural features of northern Wisconsin. Of this publication 50,000 copies were printed and distributed. In December, 1896, he published a bulletin of forty pages, showing that Wisconsin is adapted to the production of sugar from the beet root, and strongly urged the erection of beet sugar factories in our state. In March, 1898, he published a volume of 661 pages on stock feeding, entitled "Feeds and Feeding: a Hand-book for the Student and Stockman." This work has gone through five editions.

FREDERICK EUGENE TURNEAURE, C. E., Acting Dean of the College of Mechanics and Engineering. Born in Stephenson county, Illinois, in 1866. Received a country school education and attended the Freeport, Ill., high school for a short time. Entered Cornell University in 1885, and graduated from Civil Engineering Course in 1889. From 1889 to 1900 he was engaged in railroad engineering in Virginia and Kentucky. From 1890 to 1892 he was instructor in Civil Engineering at Washington University, St. Louis, and in 1892 was

appointed to the chair of Bridge and Sanitary Engineering of the University of Wisconsin. He was also city engineer of Madison from 1900 to 1902, and has been engaged as consulting engineer on municipal work. He is a member of the American Society of Civil Engineers, of the Western Society of Engineers, and the American Association for the Advancement of Science. He has published as joint author, *Modern Framed Structures*, 1893, and *Public Water Supplies*, 1901; besides contributions to the proceedings of various societies, and to technical journals.

HARRY SANGER RICHARDS, Dean of the College of Law. Born in Osceola, Clarke county, Iowa, November 20th, 1868. Attended the public schools; graduated from the Academic Department of Parsons College, Fairfield, Iowa, in 1888; graduated from the College of Liberal Arts of the State University of Iowa, in 1892, with the degree of Bachelor of Philosophy; graduated from the Law School of Harvard University in 1895, with the degree of Bachelor of Laws; served as clerk in the office of Horatio D. Wood during the year 1896; located for the practice of law at Ottumwa, Iowa, in 1897; was elected Professor of Law in the Law Department of the State University of Iowa in 1898; was elected Dean of the College of Law, University of Wisconsin, in June, 1903. Was granted the degree of Doctor of Laws by the State University of Iowa in June, 1904. Member of Phi Beta Kappa and legal fraternity, Phi Delta Phi. Member of the American Bar Association and of the Executive Committee of the Association of American Law Schools. Read various papers before the American Bar Association and the Association of American Law Schools.

