

tion is required of all. A light gymnasium suit is required and a regulation gymnasium towel may be purchased in Madison. Laundry for gymnasium suit and towels is provided by the gymnasium fee.

Books. A number of books will be needed by Winter Course students. It is impossible to state in advance, what books will be required and it is not advisable for prospective students to buy any textbooks until they are instructed to do so.

Medical Supervision

Special attention is given to the health of the student-body. The health of the students will be cared for by the clinical department of the School of Medicine. The students will be given a medical examination on entrance and any student feeling indisposed will be at liberty to consult the physicians in charge of the university clinic free of cost at any time. The university puts forth every effort to safeguard the health of the student-body.

The infirmary fee provides for care without extra charge in the university infirmary or hospital in case of sickness, but students requiring special care—X-ray service, major surgery, treatment of the eye, ear, and so forth, are referred to specialists at the student's expense.

Social Activities

The Literary Society is conducted every Tuesday night by the students in the Winter Courses. At the weekly meet-



Winter Course Orchestra

ings members of the society participate in parliamentary drill, debating and public speaking. These meetings are frequently addressed by prominent agriculturists and members of the faculty. Social features are often included.

A special feature in the nature of an oratorical contest, plays or class debate is introduced each year. Contestants from both classes enter this contest.

The Winter Course Glee Club and Orchestra under faculty direction, furnishes music for Farmers' Course meetings and other meetings during the winter, as well as for the Literary Society. Be sure to bring your musical instrument if you have had some experience.

A Winter Course Athletic Association is maintained which provides for team contests in basketball, indoor baseball, wrestling, boxing, swimming and volley ball not only between classes but with outside or city teams. Each year a track meet is held between classes which has proven of great interest.



Short Course Glee Club

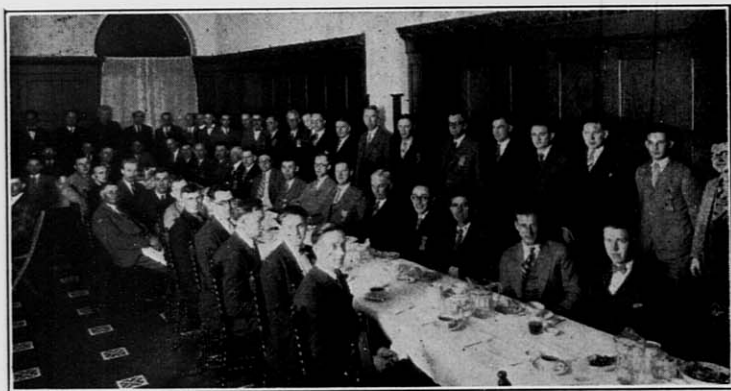
Winter Course Y. M. C. A. The students have their own organization and are assisted by the university Y. M. C. A. A series of Sunday morning meetings and Bible study groups for students are held during the winter. A series of luncheons with discussions and social hour, with opportunity to meet out-standing people of the city and University is one of the activities of this organization. Students of this or-

ganization will meet new students if requested. Write T. L. Bewick at least a week before arrival stating time of arrival.

City Organizations. The various churches of the city have welcomed the students into their student organizations. The City Y. W. C. A. has co-operated with the director in providing several evenings of social activity. The Y. M. C. A. and Badger Club have welcomed the students so there are plenty of opportunities for a wide acquaintanceship among the general university students and also among the city people.

Agricultural College Organizations. Practically all the college student organization meetings are open to Winter Course students. The Country Magazine, the Poultry Club, the Grafters Club, the Saddle and Sirloin, the Ag. Triangle meetings are open to Winter Course students. These give opportunities for a touch of college spirit that gives students an idea of "The Spirit of Wisconsin."

The Agricultural Experiment Association. The association is an organization of former students of the College of Agriculture and others who are interested in introducing improved methods and practice upon their farms. This association has been especially helpful in conducting field tests with grain and forage crops and in growing and disseminating purebred seeds.



Cow-testers' Banquet (Mostly Short Course Students)

The annual meeting of this association occurs during the second term of the Winter Course and the students are given an opportunity to attend the meetings and to become members. R. A. Moore is secretary of the association.

The Wisconsin International. The Wisconsin International put on by the Saddle and Sirloin Club is an event that shows the real mettle of the Winter Course boy. The competition is keen in the show ring and a large share of the prizes are won by the Winter Course boys.

Closing Day Exercise

Students who compete the studies of the Winter Course in a satisfactory manner will be granted Winter Course certificates duly signed by the President of the University and Dean of the College of Agriculture.

For the last ten years the certificates have been presented at the Closing Day exercises held on the last day of the course. Some prominent speaker is procured to give the address and special music is furnished for this occasion.

Winter Courses at the College of Agriculture

The General Farming Course—See page 18 and 19. This is our main course requiring two winters of 15 weeks each and 36 credits to receive the certificate. Each winter is divided into three terms. The first year is a requirement for all who are not high school graduates or its equivalent. In the second year and extended schedule on page . . . are suggestions for those who wish to take a third winter at the College. Upon completion of the third year a special certificate is granted.

The Winter Dairy Manufacturers Course.—A 12 weeks' course beginning the first week in November and continuing until the latter part of January is open to persons who have had at least six months' experience in a creamery or cheese factory. The course leads to buttermaking, cheese making or city-milk supply. A special circular may be secured by addressing H. C. Jackson, Dairy Department.

The Summer Dairy Manufacturers Course.—Is intended for beginners or those having little practical knowledge of creamery or dairy work. Students are admitted at any time