

**Library**  
of the  
**University of Wisconsin**





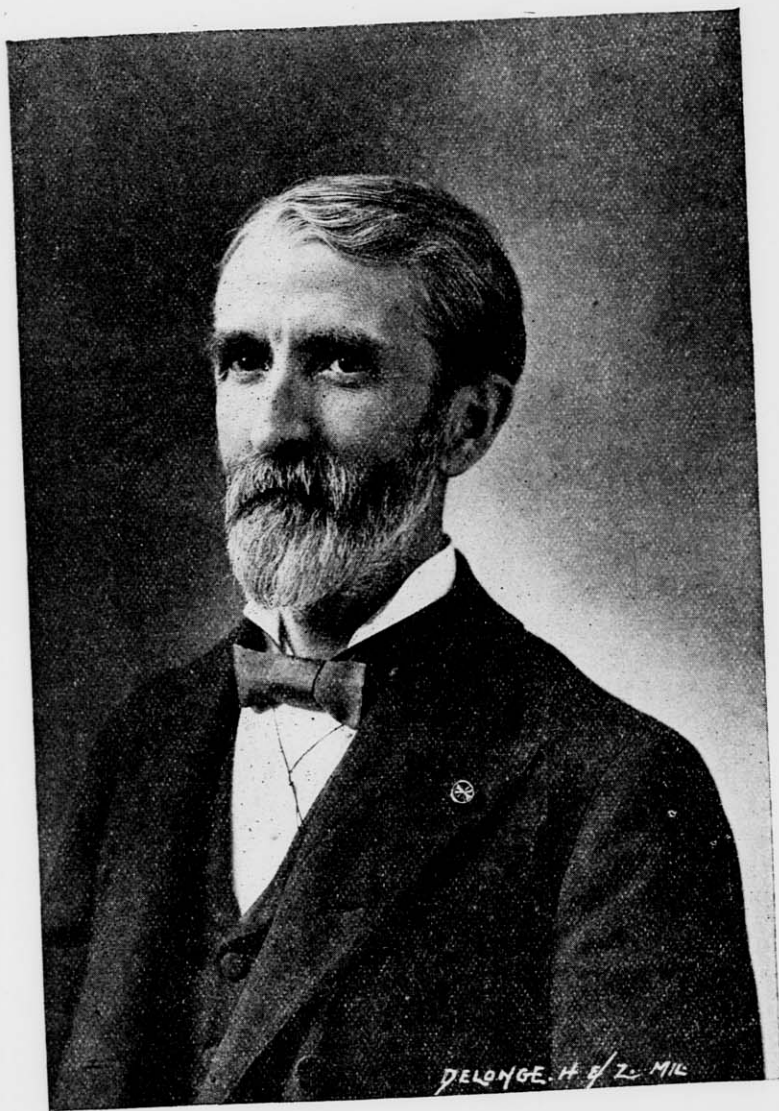
"The Farmers' Institute has been found to be a cheap, practical and available arrangement at which agricultural knowledge can be presented, explained and discussed. Here each farmer attending has opportunity to state his difficulties, draw upon his brother farmers' experience, and reduce to an available form in his own mind, for future use, the information and experience given."

Hon. Franklin Dye, New Jersey.

~~~~~

"Go to the country where man lives close to nature's heart, study him as he there meets the problems of life and you will find literature which is realistic in the best and truest sense. Men of the country are to our national life what the steel frame work is to the mighty stone or brick structure, when the crises come which shake the nation to its foundation. It is the loyal hearts, and clear brains of the country folk which save it from destruction."

(Ian MacLaren) Rev. John Watson.



GOVERNOR EDWARD SCOFIELD.