

## HIGHEST HONOR, CLASS A, CHEESE MAKERS

---

**P. H. KASPER**, Bear Creek, American Cheese  
First Sweepstake Prizes, 1900, 1922, 1923, 1924, 1927

**GOTTLIEB WERREN**, Blue Mounds, Block Swiss  
First Prizes, 1921, 1923, January 1924

**OSWALD SCHNEIDER**, Appleton, Brick Cheese  
First Prizes, 1911, 1915, 1919, 1926, 1927, 1928

**ROBERT HERRMANN**, Dallas, Drum Swiss Cheese  
First Prizes, 1930, 1931, 1933

**EMANUEL HESS**, Belleville, Limburger Cheese  
First Prizes, 1927, 1929, 1932

**ELMER J. SCHNEIDER**, Appleton, Brick Cheese  
First Prizes, 1931, 1932, 1933

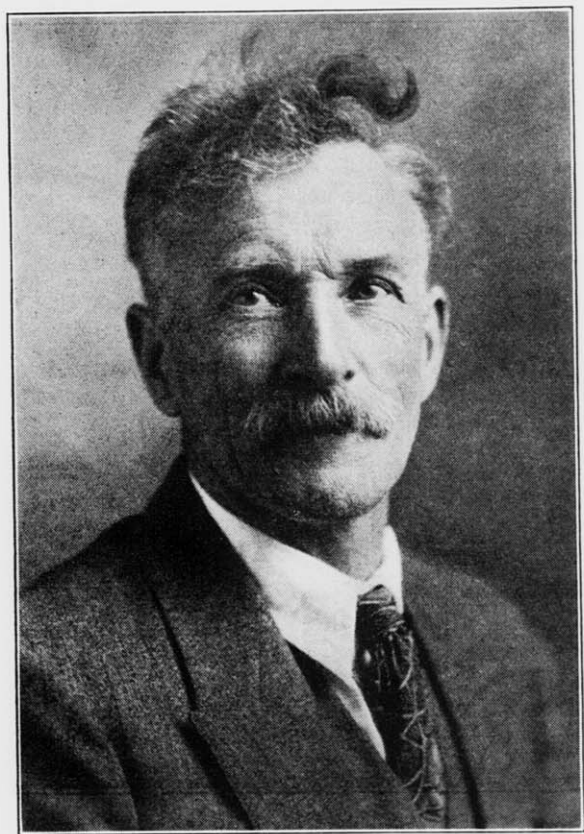
### **Resolution adopted in 1928:**

*Resolved*, That this Association, in order to do greater honor to our best prize winning cheese makers, adopt the following rules:

1. A special class of honor cheese makers shall be created from our membership during the past twelve years.

2. Every cheese maker who, by the records in the secretary's office, is shown to have received either three first sweepstake prizes on American cheese, or three first prizes on Swiss cheese, or three first prizes on Brick cheese, or three first prizes on Limburger cheese shall be placed in this honor class.

3. Members of this class shall hereafter compete only for such prizes as may be offered for this honor class.



**ROBERT HERRMANN**  
Dallas, Wis.

**HIGHEST HONOR, CLASS A, CHEESE MAKER**  
First Prizes, Drum Swiss, 1930, 1931, 1933



**EMANUEL HESS**

Belleville, Wis.

Born Oct. 22, 1899—Died Nov. 27, 1932

**HIGHEST HONOR, CLASS A, CHEESE MAKER**

First Prizes, Limburger, 1927, 1929, 1932



**ELMER J. SCHNEIDER**  
Appleton, Wis.

**HIGHEST HONOR, CLASS A, CHEESE MAKER**  
First Prizes, Brick Cheese, 1931, 1932, 1933



WALTER A. HARRIS  
HARRIS, W.  
HARRIS HONOR CLASS A. HARRIS  
The Harris family, 1880