

and Ephraim, both villages adjoining the park. Camp sites may be had by applying to the superintendent, and several unfurnished houses may be leased for the season.

Two lookout towers to aid in detecting forest fires have been erected on Sven's Bluff and Eagle Bluff, which are connected by telephone with the superintendent's residence and the local exchange. As these towers are built with railed stairways and landings, they may be climbed safely by anyone, and visitors to the park find the views well worth the climb. From both towers, buildings in Marinette, eighteen miles across the bay, may be seen on clear mornings with the naked eye.

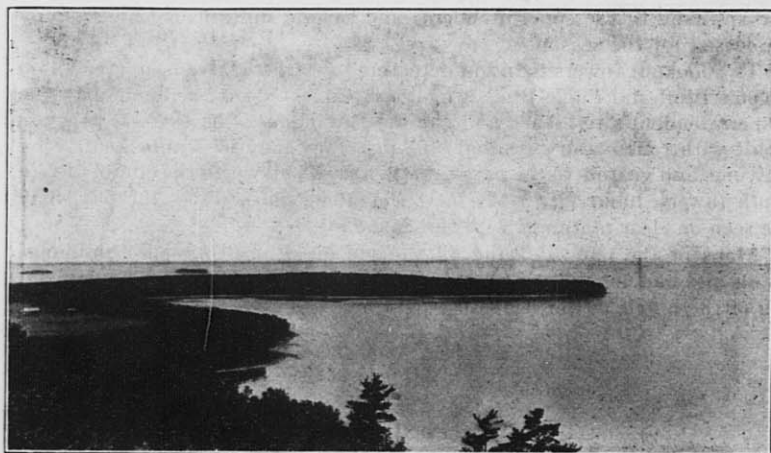
Maps of the park showing all wooded areas, fields, roads, buildings, trails and lookout towers, are now being prepared and will be available at all of the hotels in the region.

### BRULE PARK.

A part of the Nebagamon Lumber Company grant of 4,321 acres of land along the Brule river, a famous trout stream, in Douglas county, has been set aside as a state park and is being managed as such. It is located between the Northern Pacific and the Duluth, South Shore and Atlantic railroads and is within easy walking distance from the Brule and Winneboujou stations. Twenty-seven lots have been laid out along either side of the river in Section 23. These cottage sites will be leased either for portable or permanent buildings for periods of from one to twenty years, as desired. Approximately three-quarters of a mile of new road was opened up adjacent to the lots on the east side of the river, which connects on the west end with the proposed road through the recently platted Heimbaugh and Spring addition. When this road is completed, it will, in all probability, be the main road between Brule and Winneboujou. Because there is but little timber growth on the lands, the greater part of the river lots, as well as some fifty acres of hill land on the west side of the river, was planted to coniferous forest trees to the amount of 72,000. The needed protection from fire has been given the plantations by opening the old logging railroad grades, which makes all parts of the planted areas accessible.

### CUSHING MEMORIAL PARK.

The Cushing Memorial Park is located about a half mile west of Delafield, Waukesha county, on the site of the old Cushing homestead. It comprises about eight acres, one-fourth of which is low and marshy, along the Bark river, the remaining portion rising slowly in a dry even slope. At the crest of this slope is located the shaft erected in memory of the "Three Wisconsin Cushings," while on the site of the old farm home, no traces of which remain, but in which two of the boys were born, a large stone marker has been placed.



LIGHTHOUSE POINT AND SHANTY BAY FROM LOOKOUT TOWER.  
PENINSULA STATE PARK



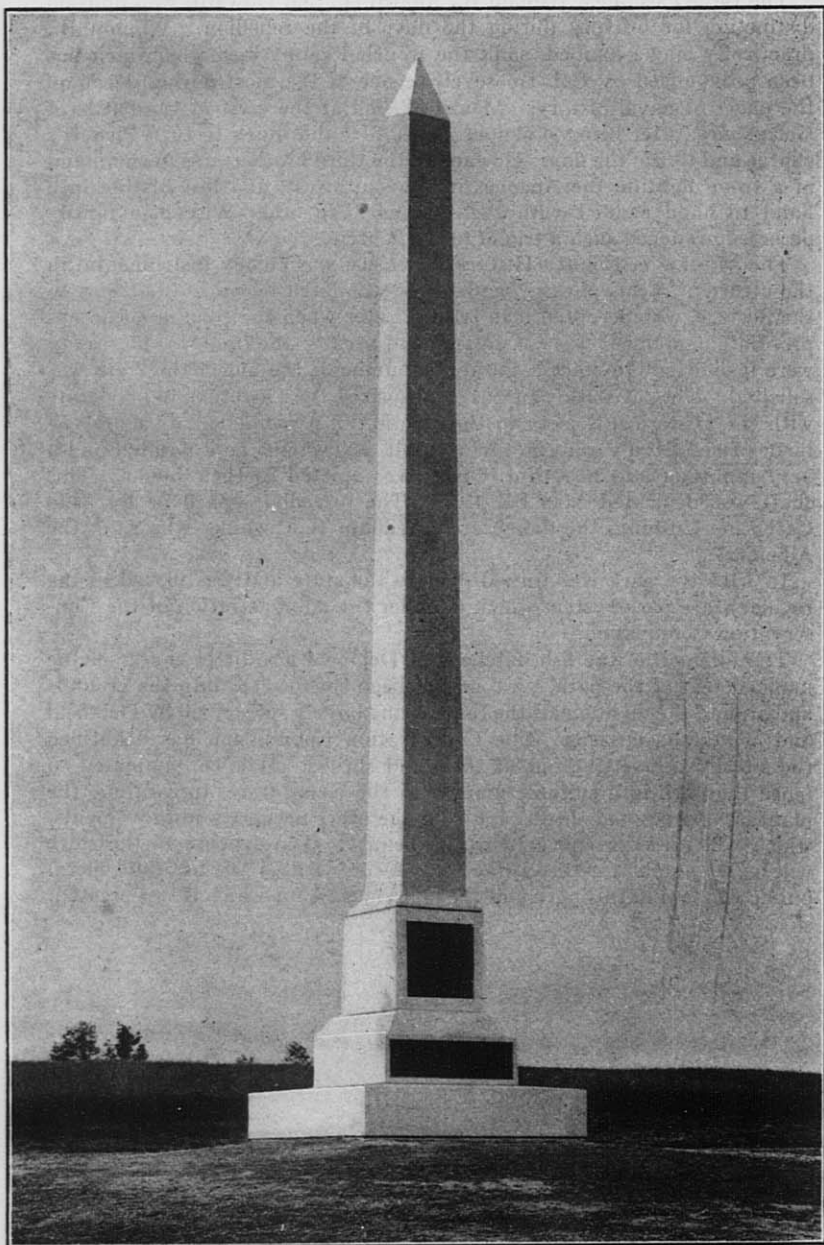
AN EFFORT AT "FORMAL" PLANTING BY NATURE  
PENINSULA STATE PARK

The three Cushings, William B., Alonzo H., and Howard, won unusual distinction for bravery during the days of the rebellion. William B., practically single handed, sank the ironclad ram Albemarle, which has been pronounced by Col. Roosevelt as one of the most daring deeds on the pages of naval history. Alonzo H., fell at the crest of the battle of Gettysburg, after being shot four times. He did much to turn Pickett's charge and to win the day. Howard B. the third brother, was in command of a troop fighting the Apaches in the southwest, and lost his life in a hand to hand conflict with the Indians. No other Wisconsin family perhaps, produced such a trio of brave fighters.

The Waukesha County Historical Society was chiefly instrumental in the creation of this park. The land was donated by various citizens to the Society, who accepted it in trust. Later when the erection of an appropriate monument was considered, and because the funds of the society were insufficient to erect a suitable monument, the aid of the state was solicited. The legislature of 1911 authorized the Governor to cooperate with the Historical Society in the erection of a monument to mark the birth place of the Cushings. As a result, \$5,000 was appropriated and a very imposing and beautiful obelisk was erected in their honor. This shaft was dedicated May 31, 1915. The unveiling was done by Miss Catherine Cushing, the daughter of William B. Cushing, who sank the Albemarle.

In 1915 the park was turned over to the state and was placed in the regular state park system which is under the administration of the Conservation Commission.

The foreman of the fish hatchery at Delafield has direct charge of the management of the park. A road has been constructed into the grounds and around the monument, the funds being largely subscribed by Delafield and Waukesha citizens. The Conservation Commission has beautified the site by the setting out of trees and shrubs. It is contemplated to fence the park in a suitable manner in the near future, to continue the planting of trees and shrubs and to make other necessary improvements, which will preserve and enhance its beauty. The expense to the state will be very small for this work, and is warranted by the use the general public will find in this park and the high purpose for which it was created.



CUSHING MEMORIAL MONUMENT