

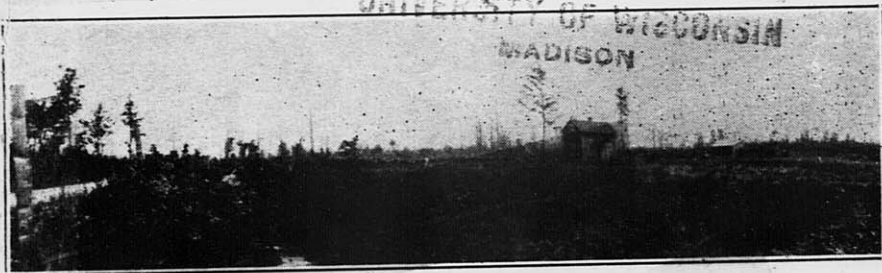
How You Can Get A Wisconsin Farm



A SIX MONTHS' CLEARING ON A READY-TO-START-FARM

This farmer, Mr. Mike Beckett from Northern Iowa, bought a good piece of rich clay loam, cut-over land, on which not an acre had been cleared. He got the standard house and barn that a farmer can have built on his land if he wants them. He also got the good dairy cows that will be furnished to a new farmer. In less than six months he has made a good clearing, and has in a nice crop, together with a big clearing for hay in the background.

LIBRARY
COLLEGE OF AGRICULTURE
UNIVERSITY OF WISCONSIN
MADISON



A FOUR MONTHS' CLEARING ON A READY-TO-START-FARM

Dozens and dozens of farmers are starting on this mellow, virgin land that they can get so cheap on such remarkably easy terms. Some put up their own buildings, but most of them take the standard house and barn that we will build for them on their land if they want them. This shows what Mr. R. C. Hoyt from Southern Wisconsin did in four months. Imagine what he can do in five years. These are two examples of average clearing done when following our modern methods explained in this bulletin. You can see many others who have done as well, and some who have done better.

AGRICULTURAL LITERATURE DEPARTMENT
NATIONAL LAND COLONIZING COMPANY
MAIN OFFICE—MADISON, WISCONSIN