

More Pioneers



Dr. Maxam & his pet - Sam.



Bill Herbst, Dorothy Herbst's father.



This is the Maas & Potl Meat Market, later owned by Lionel Bull and used as his real estate and insurance office. It now houses a ceramics school and gift shop operated by Mrs. Edwin Horsch, Jr. The man in front of the counter is Mike Gensman, the man with the knife is John Duehning, the man near the scale might be Fred Horsch and next to him stands John Maas.



L. to R. Ed Theisen, Fred Horsch, Bill Duehning, Eddy Kohl & Bill Horsch.



Telephone workmen around 1915.



COMPLIMENTS
of
YOUR SCHOOL CONTRACTORS
CHARLES D. SMITH & SON, INC.

General Contractors
Fond du Lac, Wisc.

J. F. AHERN CO.

PLUMBING
&
HEATING
CONTRACTORS

FOND DU LAC, WIS

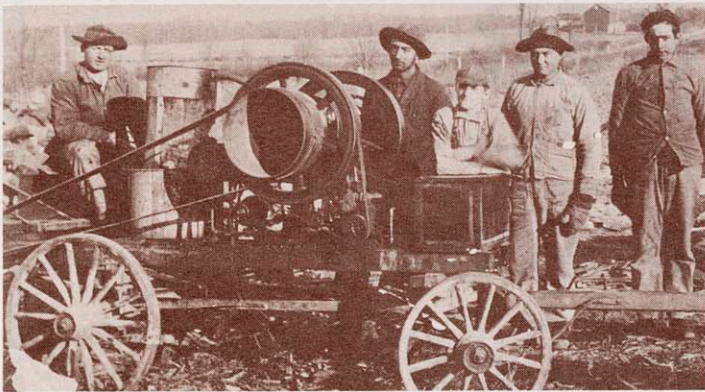
W. J. LEASA

ELECTRICAL
CONTRACTOR

FOND DU LAC, WIS.

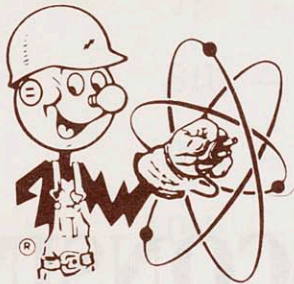


From L. to R. — Back row, Fred Becker, Nick Schmidt, Mr. Enders, Charles Eckert, Jacob Eiche, Wm. Schmidt, Christ Melius, Wilmer Heinz. Front Row, Phil Becker, Sy Stratton, Andrew Becker. Picture taken about 1910 at Rib Lake Lumber Company. These men were all from the Slinger area.



Picture taken in 1903. Mrs. Peter Schuck, Fritz Roth, Edwin Roth, Lillie Schuck, Mr. Firme, Peter Schuck.

L. to R. Dan Endres, Matt Becker, Oscar Zwald, Emil Zoemich and Bill Guerdnt.



For Slinger's Second Hundred Years... **Nuclear Electric Power**

When Slinger was founded in 1869, no electric power was available. As a matter of fact, it was thirteen years later when Thomas A. Edison first generated electricity in his Pearl Street Station in New York City.

Now — with Slinger at the beginning of its second century, electric power generated by a nuclear plant is just around the corner.

A giant step into the nuclear age will be completed in 1970 by Wisconsin Electric Power Company and its subsidiary, Wisconsin Michigan Power

Company. More power for the homes, farms, industry and business of this area will be available when the first 454,000 kilowatt unit of the Point Beach Nuclear Plant on the west shore of Lake Michigan, just east of Appleton, is placed in operation. A second unit of the same size is also under construction and planned for completion in 1971.

Slinger's slogan, "A small community with big opportunities for industry," is supported by big electric power resources at its service.

WISCONSIN electric power COMPANY

CONGRATULATIONS

SLINGER

**ON YOUR 100TH
ANNIVERSARY**

**FROM THE
CITY OF**

WEST BEND, WISCONSIN