

Rockford, Beloit & Janesville Interurban Railway.

The Rockford Lines owe their origin to the horse car line built in 1882 extending from Charles and Seventh streets to South Main and Montague streets, and north on Church street to John street, with four cars in operation. The company dragged along in a rather precarious sort of existence, surmounted difficulties and overcame obstacles until 1889, when Electric power supplanted the faithful mule. Steady improvements were made in equipment and extensions carefully planned and executed.

Rockford now has the most up-to-date street car line of any city of its size in the country. The Belvidere line was built and placed in operation in 1901. In 1904 the Freeport line was opened. In August, 1904, the Rockford, Beloit and Janesville Railroad was completed from Janesville to Rockford, and operated as a separate company until April, 1906, when the line was taken over by the Rockford & Interurban Railway Company, making the present Rockford system with over one hundred miles of track and serving a population of approximately 200,000 people.

Gives hourly service between the following cities and towns: Rockford, Roscoe, Rockton, Beloit, Janesville, Belvidere, Cherry Valley, Elgin, Winnebago, Pecatonica, Ridott, Freeport. with direct hourly connections for Elgin, Aurora, Joliet and

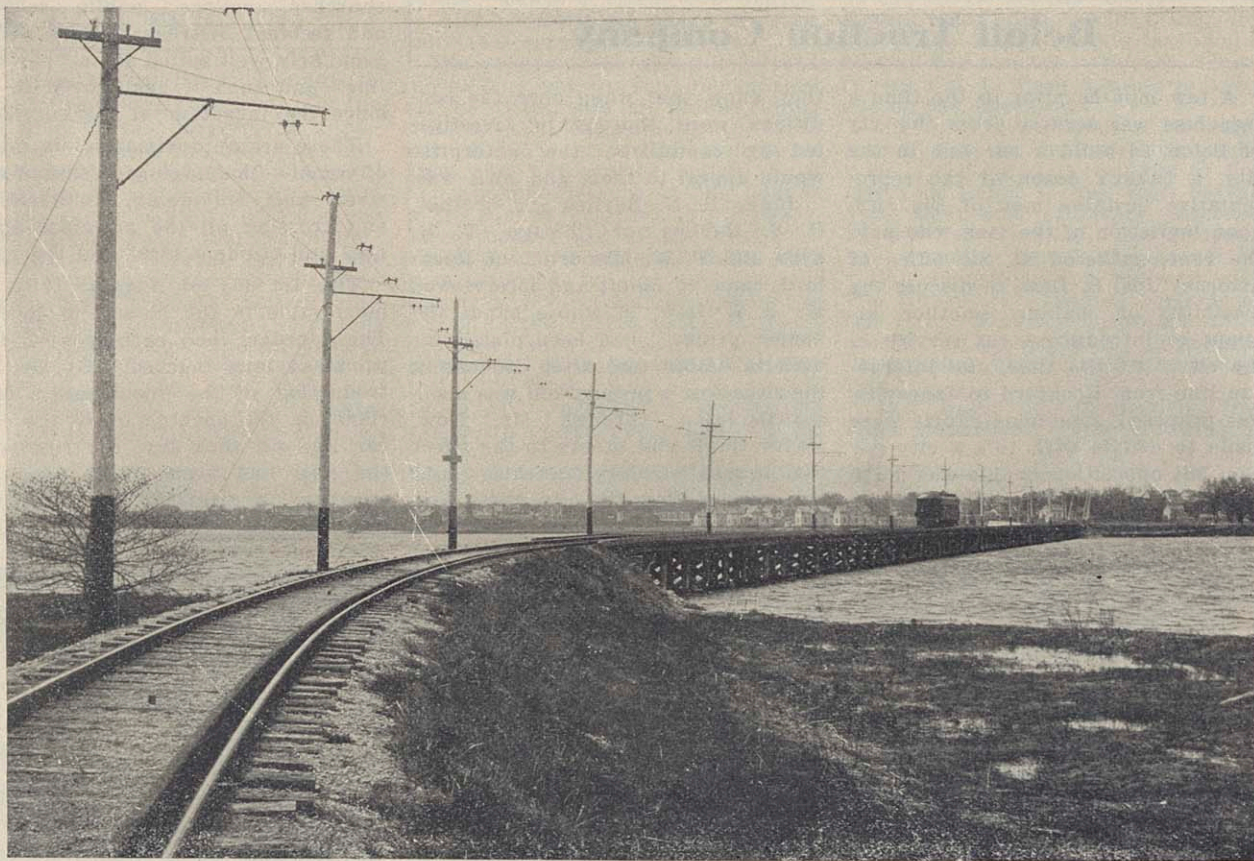
cities and towns to secure supplies fresh from the markets of the larger cities as well as to dispose of all products to the best advantage.

The United States Express company operates over the lines of this company with through service be-

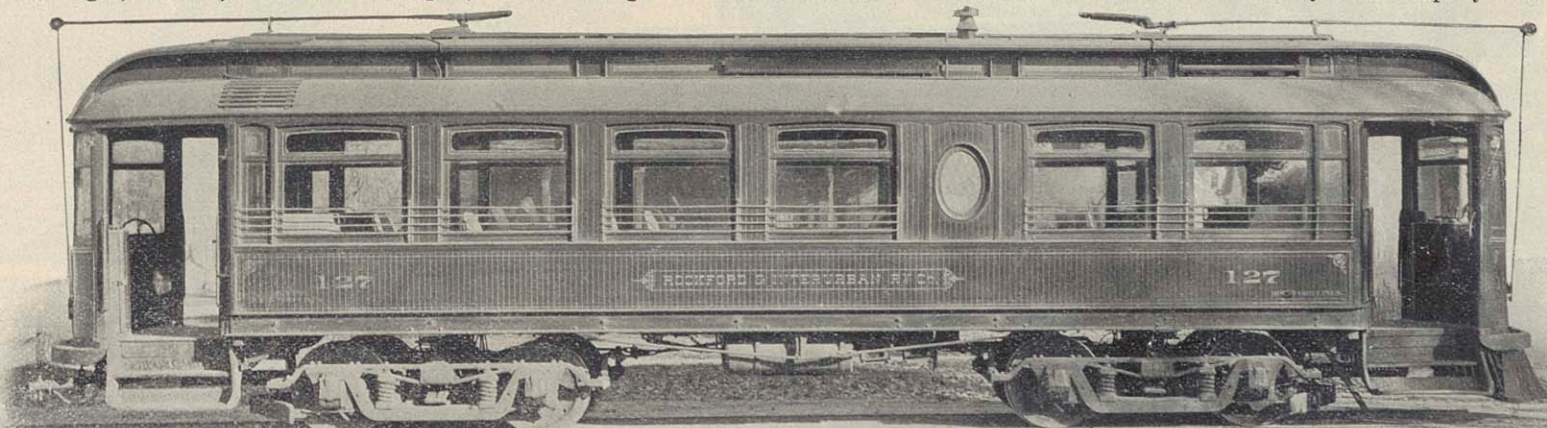
For the benefit of parties desiring to take pleasure trips through the surrounding country, too much cannot be said of the scenic beauty of the Rockford Lines. In fact, it would be necessary to travel many hundreds of miles to find natural scen-

division, and Washington park on the Belvidere division. These parks are well equipped and afford ample opportunity for the entertainment of picnic and outing parties.

The City lines of Rockford operated by this company have been care-



ALONG THE LINE BETWEEN BELOIT AND JANESVILLE.



Chicago. In addition to which two limited trains to Chicago leave Rockford daily at 7:30 a. m. and 4:30 p. m.

Fast express and freight service is operated over all these lines, giving two express cars daily to all points, enabling the people of the different

tween Janesville, Beloit, Rockford, and Chicago, calling for and delivering express at the usual rates. This company also has special arrangements for calling for and delivering baggage, charging rates for the same which, in most cases, are lower than the transfer charges would be.

ery more beautiful than that of the Rock River Valley between Rockford and Janesville.

A number of parks are operated in connection with this system, including Harlem and Love's park at Rockford; Ho-no-ne-gah and Yost parks, on the Beloit and Janesville

fully planned and laid out to cover the entire business and residence portions of the city and all points of interest.

The company offers special rates to churches, Sunday schools, lodges and clubs, and special service and attention are given to this branch of the business.

The company employs over two hundred people and has an annual pay roll of over \$200,000.00, and, with over 100 cars, makes ample equipment for the handling of large crowds.

During the period of extension a number of reorganizations and consolidations have taken place, the present owners being a syndicate of eastern capitalists who acquired this property last June.

This syndicate is a large operator of Electric properties throughout the country and has planned numerous extensions and improvements for the Rockford and Interurban Lines.



SCENE ALONG ROCKFORD, BELOIT & JANESVILLE RAILWAY NEAR BELOIT.