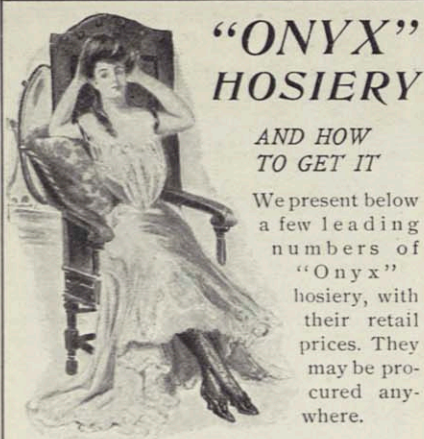


The New Summer Shirtwaists for Girls

DESIGNED AND DRAWN ESPECIALLY FOR THE JOURNAL

By Katherine Vaughan Holden



"ONYX" HOSIERY

AND HOW TO GET IT

We present below a few leading numbers of "Onyx" hosiery, with their retail prices. They may be procured anywhere.

FOR CHILDREN

51 S—Misses' 1 x 1 Rib "Onyx" Lisle Hose, sizes 5 to 9½. 25 cts.
172 B—Boys' Cotton Hose, 1 x 1, and 2/1 Rib, sizes 6 to 10. 25 cts.

FOR WOMEN

196/8—Women's "Onyx" Gauze Cotton Hose, double sole, high spliced heel. 25 cts.
123 M—Women's "Onyx" Gauze Lisle. 35 cts. 3 for \$1.00.
E 602—A very fine and elastic Gauze Lisle Hose "Onyx." 50 cts.
B 241—"Onyx" Black "Lace all over" Lisle Hose, assorted patterns. 50 cts.
814 M—"Onyx" Black "Lace Instep" Lisle Hose, assorted patterns. 50 cts.

FOR MEN

50/8—"Onyx" Black Lisle Half Hose, high spliced heel, with double soles. 25 cts.
65 K—"Onyx" black and colored cotton, medium weight, very durable, with double sole and high spliced heel. 25 cts.
E 310—"Onyx" black or colored Lisle, made throughout with 4 threads, with six-thread heel and toe, high spliced heel and double sole. Very durable, and endorsed by leading Men's Furnishers. 50 cts. per pair.

If your local merchant does not carry these lines, write to us direct, and we will notify you where to procure them. We guarantee every pair of "Onyx" hose sold.

LORD & TAYLOR

Wholesale, NEW YORK

Send for Samples

OF SUMMER

White or Colored

Wash Goods

We are not retailers but distribute direct from the

FACTORY to the CONSUMER

Our business is done wholly by mail, and we save for you the large profit required to run a retail store and can therefore offer you the best quality of goods at

Wholesale Prices

Among our samples you are sure to find something different from what your neighbor has. The large number of samples you keep to examine at your leisure.

Illustrated Books—Sent FREE

describing our muslin underwear, muslin and bobinet curtains, etc., showing styles as well as originals. It is our experience that customers have obtained perfect satisfaction through this manner of buying.

Send a letter, postal or telegram, and it will receive our prompt and careful attention.

BAY STATE MANUFACTURING CO.
68 Chauncey Street, Boston, Mass.



Danish Cloth

Half wool and half cotton, woven with a poplin cord. For years a well-known Summer Dress Goods and Waistings.

WOMEN in many of the large cities and towns all over the country have been accustomed to buy at the beginning of each season whole pieces, and when asked by one of the largest retailers of the country why they always ordered Danish Cloth have unanimously replied—"because it washes so well and makes such cool dresses for summer."

Made in both 22 and 36 inch widths.

To be had of all dealers in a great variety of shades—cream a specialty.

LADIES! PEET'S Patent Invisible Eyes

take the place of silk loops, and make a flat seam. The Triangular ends keep the stitches firm and the Eye from turning over. Ideal for Plackets.

It's in the TRIANGLE

2 doz. Eyes 5c; with Spring Hooks 10c. Black or White. Sizes No. 1, 2, 3 and 4. For sale at all stores, or by mail. Beware of imitations, and see that our trade mark, "It's in the Triangle," is on every package. PEET BROTHERS, Philadelphia

NEW COLLARS—10c

To introduce our Embroidery Novelties, we send a Bishop Collar, Fern design, a Tab Collar, Grapes, Tie Ends to match and a Turnover Collar with Cuffs to match, Rose design. All stamped on Linen 10c.

WALTER P. WEBBER, Lynn, Mass., Box 1



MADE OF COLORED LINEN
THIS model would be attractive reproduced in pale blue or pink linen, with a yoke of gulfure, unlined. It will take three yards and a half of linen and half a yard of gulfure.

FOR A JUNE AFTERNOON
THIS blouse will require about four yards and a half of linen. Over the stitched double box-plaits and the tops of the sleeves are incrustated medallions of heavy Cluny lace.

A SUMMER EVENING BLOUSE
FOR this dressy little blouse about four yards of sheer Swiss muslin, finely tucked, is required. The ornamentation is made by piecing one of the heavy laces. The quantity required depends upon the design.

OF NET AND LACE
THIS design should be reproduced in net with appliques of lace. Two yards of wide width will be required. The amount of lace needed depends upon the design.

FOR THE HOUSE
THIS model may be reproduced in white net or batiste, with a yoke of lace. Two yards of wide net or three of batiste will be needed. The undersleeves are finished with lace cuffs and the waist with insertion.

FOR THE SEASHORE
THREE yards of linen crash will be needed for developing this design. The trimming is Renaissance braid with spiders in the squares and large French knots elsewhere.

TO WEAR ON WARM AFTERNOONS
THIS cool-looking design would be pretty if made of mull or Swiss muslin, finely tucked. Three yards of mull and about seven yards of lace would be required.