



Here is the Grosvenor design in silver and china



In the friendly Georgian dining-room shown on page 18, this candle-lighted table glows hospitably



Here we used the Noblesse design in silver and china



And here the Deauville design in silver and china

THE NEW TABLE ENSEMBLE CHINA AND SILVER OF THE SAME DESIGN

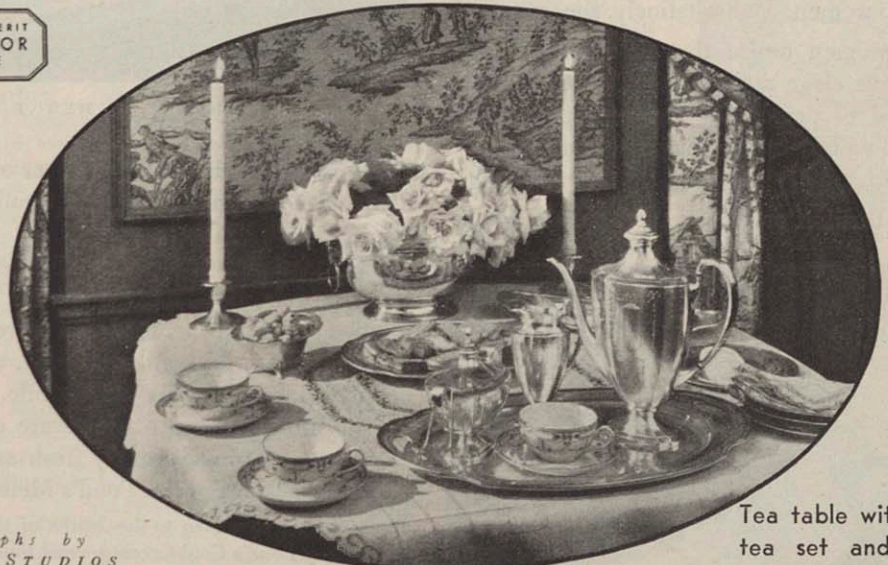
A NEW adventure for the hostess—china to match her silver!
The makers of Community Plate have selected three of their most popular designs—*Grosvenor*, *Noblesse* and *Deauville*—and have created for each a china service of the same design. In each case the design of the china captures, most artistically and graciously, the spirit of the silver design, as well as the actual motifs of the design.

At once then there is perfect harmony between the flatware and plates at the individual places, and this harmony may be carried out, too, in the hollowware, the candlesticks, the salt and pepper sets. Patterns in the glasses will be suggested to further the harmony of the ensemble. Then to complete the table-symphony, all the hostess has to do is to choose a table-cloth, plan the central decorations—and light the candles!

We're very enthusiastic about the table-cloths that we chose as backgrounds for these silver-china ensembles. Every hostess associates the name Mosse (pronounced Moss-say, even though it lost its accent somewhere in the past) with inspired ideas in table-coverings: and here we show (in the first picture above, left) their glistening green cloth, *Mer de Glace*, of silken weave, with a gracefully designed monogram on the napkins; a felicitously striped cloth, *Cabaña* (below, left) which you can buy by the yard, to make a cloth of any length you wish; and a tea cloth of linen and lace, with an inserted center panel. On the candle-lighted table above is the handsome, gracefully scrolled *Venetian Scarf* design. And on the table in the center, left, is *Atlantic*, a brilliant and successful linen damask design in the modern feeling. Each cloth was chosen because its design and texture are in key with the design of the silver and china and glass.

Community Plate (flatware and hollowware) and Community China, Oneida Community, Ltd., Oneida, New York. Linen: *Atlantic* design, from The "Old Bleach" Linen Company, Ltd., New York; *Venetian Scarf* design, from Brown's "Shamrock" Linens, Ltd., New York; *Mer de Glace* cloth (with monogrammed napkins), cloth of *Cabaña* design, and tea-cloth and napkins, from Mosse, Inc., New York. Glass, Bryce Brothers Company, Mt. Pleasant, Pennsylvania. Flower containers, Fountain and Ellerm, New York. Candles, Waxels, Will and Baumer Candle Company, Syracuse, New York. Tea biscuits, Huntley and Palmers

OF PROVED MERIT
DELINEATOR
INSTITUTE



Tea table with Grosvenor tea set and tea china.

Photographs by
the GOULD STUDIOS

Beauty experts warn

against this common error in choosing soap

WOMEN prize youth. Men are attracted to youth. Youth means radiance, beauty, natural charm. "That schoolgirl complexion" is responsible for more conquests than men will admit.

Palmolive Soap is made for one purpose—and one only—to keep lovely complexions young—to keep that schoolgirl complexion.

Ordinary soaps may harm

Don't be misled. Just ordinary soaps—whatever their claims—will not do for you what Palmolive does.

Until women saw the value of Palmolive as a beauty cleanser, few used soap on the face.

When the cosmetic oils of olive and palm were blended in a complexion soap millions, on expert advice, turned to this new, simple, natural beauty method. Millions of lovely complexions testify to its value.

Today over 20,000 leading beauty experts—recognized specialists—urge the use of Palmolive. Because they know the use of this soap makes their work easier and surer of perfect results. No other soap—no other

beauty aid—has or ever had such a weight of professional authority back of it.

Why will these important beauty specialists with a large clientele stake their reputations on this strong recommendation? It is important for you to know.

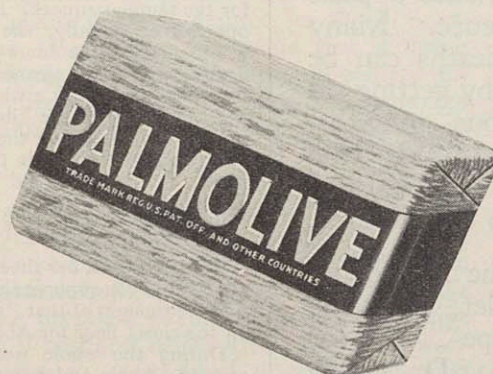
Olive and palm oils

Palmolive—uniquely—is made of olive and palm oils—no other fats whatever. This is very important to you who would use soap on the face. Nothing in all ages has compared with a blend of olive and palm oils for skin care and beauty. More women know that—more believe it today than ever before.

There is nothing in Palmolive to roughen or dry the skin. Only the "deep cleansing," lotion-like lather so peculiar to a soap containing olive oil. No wonder beauty specialists urge it.

They see its results. They note the smooth, soft, clear complexions that result.

If you want to keep that schoolgirl complexion, choose Palmolive Soap—and no other!



Keep that Schoolgirl Complexion