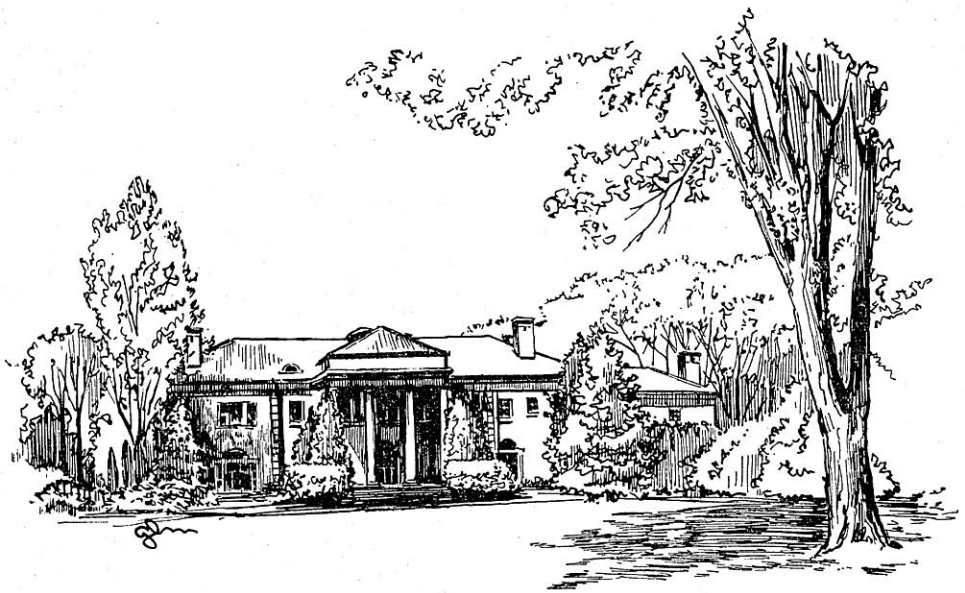


## THE OFFICE OF GOVERNOR



THE EXECUTIVE MANSION. During his term of office the Governor lives in a house owned by the state located at 101 Cambridge Road in Maple Bluff, a suburb of Madison.

**EXECUTIVE BRANCH AND  
CONSTITUTIONAL DEPARTMENTS**



## CONSTITUTIONAL DEPARTMENTS

### Explanatory Note

The Constitution in Article V says that the executive power is vested in the Governor. Article VI lists the Secretary of State, State Treasurer and Attorney General as administrative officers. Article X refers to the Superintendent of Public Instruction. Article V expressly provides for the Lieutenant Governor as part of the executive branch of the state.

Throughout the statutes the term Executive Department is used to describe the Governor's Office and the functions over which he has immediate controls. Neither the Constitution nor the statutes give official names to the agencies under control of the other constitutional officers. Custom has developed the practice of designating these offices as, Office of Secretary of State, Office of State Treasurer, Office of Attorney General and Department of Public Instruction. At no point does the Constitution or the statutes refer to the Department of Public Instruction.

Within this section we use the term Executive Department to include the functions of the office of Governor and in other cases we use the title of the man in charge. Article X, Section 7, of the Constitution provides for the Land Commissioners. The Lieutenant Governor is expressly provided for in Article V of the Constitution.

---

### EXECUTIVE DEPARTMENT

*Governor:* GAYLORD A. NELSON.

*Executive Secretary:* EDWIN BAYLEY.

*Financial Secretary:* HOWARD J. KOOP.

*Legal Counsel:* BRUCE THOMAS.

*Press Secretary:* WILLIAM S. FAIRFIELD.

*Agricultural Coordinator:* ROBERT G. LEWIS.

*Administrative Assistant:* JAMES W. WIMMER.

*Office:* State Capitol.

Publications: Regular and budget messages to the legislature (mimeographed and later printed in bound legislative journals);  
The Governor Reports; press releases; proclamations; Welcome to the Capitol — A Souvenir of Your Visit.

The Governor is considered the chief executive of the state, and as such his staff is commonly described as the Executive Office.

The 1959 Legislature passed the Governor's reorganization bill which created the new Department of Administration. The Bureaus

of Personnel, Purchasing and Engineering, and the Division of Departmental Research became part of this new department. These bureaus and divisions were formerly a part of the "executive department," but in fact operated as independent and autonomous agencies. The reorganization act brought these so-called house-keeping functions, together with the Department of Budget and Accounts, into a single, integrated staff agency headed by a commissioner appointed by and responsible directly to the Governor.

The Governor is elected by the people for a 2-year term at the general election in November of each even-numbered year. He takes office on the first Monday in January following the general election. Under the State Constitution, the Governor is the state's principal executive officer. He is commander-in-chief of the militia and appoints all national guard officers; and he is also the ceremonial head of state, representing it and its citizens in many ceremonies of importance throughout the state and nation.

#### Functions of the Governor:

##### 1. *Legislative*

- a. Recommends legislative program to each session of legislature in his biennial and budget messages and in special messages from time to time.
- b. Recommends budget for biennium to each session of legislature. The budget represents a balance between anticipated expenses and anticipated receipts, as the state's Constitution prevents deficit financing.
- c. Passes on all legislation submitted to him by the legislature.
- d. May call the legislature into special session.
- e. Reports to the legislature the reprieves, commutations or pardons granted during the preceding biennium.
- f. Reports expenditures from his contingent fund to the legislature.

##### 2. *Administrative*

- a. Appoints members of numerous state boards and commissions and some department heads.
- b. Appoints officials to county offices, the courts, state offices and U.S. senator to fill vacancies caused by deaths or resignations.
- c. Reviews and directs the state departments and agencies through budgetary processes and through the Department of Administration.
- d. May call special elections to fill vacancies in offices of U. S. senator, Lieutenant Governor (under certain conditions), congressmen, state senators and assemblymen.
- e. Approves the spending of federal aid grants, purchases of land, or construction of highways or airports.

- f. Serves as ex officio member of, or appoints his representative to, more than a dozen state agencies.
- g. Reviews the record creation, storage and destruction program.
- h. Approves travel requests for state employes to travel to meetings out of state.
- i. Reviews and approves the leasing of land or buildings for state use.
- j. Signs the administrative orders of the Conservation Department, the Department of Agriculture and the State Board of Health.
- k. Acts as chairman of the Investment Board, which manages and invests the state's funds; and of the Building Commission, which plans the government's long-range building program and which must approve all construction involving an expenditure of over \$15,000 and which releases money from the building fund for approved construction projects.
- l. Appoints nonstatutory committees to secure advice from various segments of residents to aid in problems of state government. A list of these will be found at the end of this section.
- m. Co-ordinates activities of existing service agencies of the state through the Department of Administration to promote more efficient and economical expenditure of state tax dollars and more effective administration of state governmental services.

### 3. *Legal*

- a. May, for proven malfeasance, dismiss from office sheriffs, district attorneys, coroners and registers of deeds. If he dismisses one of these officials, he may appoint a person to fill the vacancy.
- b. Decides upon applications from other states for extradition of persons charged with criminal offenses.
- c. Is the exclusive source of executive clemency, and may grant pardons, reprieves and commutations of sentence to persons convicted of criminal offenses.
- d. May direct the Attorney General to act for the protection of the public interest in various legal actions.

### 4. *Public Relations*

- a. Represents the state at interstate and national meetings.
- b. Takes part in significant ceremonies within the state.
- c. Travels throughout the state talking with citizens in every area.
- d. Prepares and issues about 4 proclamations a week. These relate to the observance of holidays, special days, weeks and months.

## THE LIEUTENANT GOVERNOR

*Lieutenant Governor:* PHILLEO NASH.

*Office:* State Capitol.

*Publications:* None.

The Lieutenant Governor is both the second ranking constitutional officer of the state and the presiding officer of the state senate. His position in the state government is similar to that of the Vice President in the federal government.

The office of Lieutenant Governor is provided for in the Constitution, Article V, Section 1. This section of the Constitution states that the Lieutenant Governor shall be chosen at the same time as and in the same manner in which the Governor is elected. The Lieutenant Governor must be a citizen of the United States and must be a qualified elector. He is elected for a term of 2 years.

The Wisconsin State Constitution contemplates that there will always be a chief executive within the boundaries of the state. Whenever the Governor is absent from the state, the Lieutenant Governor automatically becomes Acting Governor, with all the powers and duties of Governor. The same thing would be true if the Governor should be unable to fulfill his duties for any other reason. In this capacity the Lieutenant Governor is a standby for the Governor, so that the people of the state will have a chief executive at all times and under all conditions. The Lieutenant Governor is often asked to represent the Governor or to take his place when the Governor is otherwise engaged.

The most active duties of the Lieutenant Governor are those connected with being president of the senate. The role of president of the senate descends from a tradition generated by Thomas Jefferson, the first Vice President of the United States and the first president of the United States Senate. Jefferson attached the highest importance to orderly debate and dignity of proceedings in the United States Senate. In his time, the senate was a new type of deliberative body, attempting to create a new kind of representative democracy. With little to fall back upon except the customs of the British Parliament, Jefferson prepared a manual for his guidance and that of his successors. It is so wise that it is the basis of the rules of the United States Senate and of the Wisconsin Senate even today. Jefferson perceived intuitively and described accurately how a democracy must function. He wrote: "It is always in the power of the majority, by their numbers, to stop any improper measures proposed on the part of their opponents . . . The only weapons by which the minority can defend themselves against similar attempts from those in power are the forms and rules of proceeding . . . It is very material that order, decency and regularity be preserved in a dignified public body."

Consistent with this philosophy, the president of the Wisconsin State Senate presides over all sessions of the senate. Each day the senate meets, he takes the chair and calls the members to order. He announces the business before the senate in the order in which it is to be acted upon. He receives and submits all motions and propositions presented by the senators. He puts to the vote all questions which are regularly moved. He enforces the observance of order and decorum. He interprets the rules of debate and parliamentary procedure. He authenticates by his signature all acts, orders and proceedings of the senate. In all that he does, the president of the senate stands for and represents the senate as a whole, subject only to the will of the senate as expressed in its standing rules.

## STATE, SECRETARY OF

*Secretary of State:* ROBERT C. ZIMMERMAN.

*Supervisor of Division of Corporations:* RODERICK J. LIPPERT.

*Assistant Supervisor of Division of Corporation:* LISLE W. SCHROEDER.

*Supervisor of Division of Elections and Records:* GAIGE S. ROBERTS.

*Assistant Supervisor of Division of Elections and Records:* RICHARD E. MUELLER.

*Notary Division Clerk:* MRS. ESTHER KERN.

*Administrative Assistant:* MRS. HAZEL B. OTTO.

*Cashier:* MRS. AGNES B. JACK.

Office: State Capitol.

Publications: Election Laws; Session Laws; Corporation Laws; Detective Law; Lobby Law; Trade-Mark Law; Notary Public Law; Election Calendar; U.S., State, Judicial, Congressional and County Officers.

The Secretary of State is elected for a 2-year term pursuant to the provision in the Wisconsin Constitution. As prescribed by the Constitution, the Secretary of State is the keeper of the Great Seal of the State of Wisconsin, and is required to affix the seal and counter-sign all official acts of the Governor, his approval of the laws excepted, and shall record the same in his office. He is a member of the Commissioners of the Public Lands, the State Board of Canvassers.

Corporation Division.

Administers the program designed to enforce the statutory regulations governing corporations in Wisconsin.

1. Accepts for filing articles of incorporation and all amendments thereto and issues corporate charters for all domestic corporations, except banks and insurance companies.

2. Upon application, issues certificates of authority to foreign corporations desiring to do business or hold property in Wisconsin.
3. Files annual information reports for all business corporations, and issues certified copies, certificates of corporate status and furnishes information to the public on corporate officers, directors and status.

#### Elections and Records.

The statutes make the Secretary of State the central election officer of the state, and as such he is the filing officer for all candidates seeking office whose districts are larger than one county. After the official canvass of an election is completed, certificates of election are issued by him to the successful candidates. In addition, this division:

1. Issues and records city charters; village incorporations and town organization papers.
2. Licenses private detective agencies and lobbyists.
3. Files statements of trust receipt financing.
4. Records and files railroad deeds, mortgages and equipment contracts.
5. Registers trade-marks, marks of ownership and brands of beverages.
6. Files appointments, bonds, oaths of office.
7. Issues certified copies of official documents on file for the statutory fees.

#### Notary Public Division.

1. Issues notary public commissions.
2. Issues notarial certificates authenticating legal documents.

#### Additional duties of the Secretary of State.

1. Issuing and recording of school district and special loans.
2. Certification of the annual state tax levy.

## TREASURER, STATE

*State Treasurer:* EUGENE M. LAMB.

*Administrative Assistant:* ELMER E. WILSON.

Office: State Capitol.

Publications: Daily, Monthly and Biennial Reports of the Financial Condition of the State.



The State Treasurer is elected for a 2-year term pursuant to the provision in the Wisconsin Constitution and is one of the constitutional officers of the state. His duties consist of:

1. Custody of all state funds. Receives weekly or oftener, from every state department, all moneys paid to the state as fees, taxes, etc. necessitating the issuance of 14,000 official receipts totaling \$2,548,006,280 in the past fiscal year. This money is deposited in working banks designated by the Wisconsin Investment Board and nearly one million checks are drawn covering all payments by the state. These checks amounted to \$2,546,704,801 from July 1, 1958 to June 30, 1959 and included payments to the municipalities of the state covering apportionment of liquor tax, income tax, utility tax, school aids, highway money, etc.
2. Securities representing investments of the various funds of the state are in custody of the State Treasurer.
3. Holds securities deposited by banks or trust companies acting in a fiduciary capacity and deposits of securities made by insurance companies for the benefit of policyholders.
4. Moneys and other securities deposited in accordance with the Motor Vehicle Safety Responsibility Law are held by this officer.
5. Estates which escheat to the state and escheated bank deposits are deposited and remain with this office unless refunded as provided by statute.
6. Required to be in attendance at the State Fair to receive money and pay expenditures incurred during the operation of the fair.
7. Member of Commissioners of Public Lands, Board of Canvasers and the Wisconsin Wardens' State Pension Fund Committee.
8. A monthly financial statement is printed and reports are made quarterly and biennially to the Governor.
9. Notifies all railroad, street railway, light and power, telegraph, express and sleeping car companies; air carriers; conservation and regulation companies, or pipe line companies to pay taxes to him at the proper statutory time.
10. Settles with each county treasurer for the state's share of taxes and offsetting aids paid to the counties by the state.
11. Treasurer of the school fund and university trust fund.
12. Ex officio treasurer of Investment Board.

**ATTORNEY GENERAL**

*Attorney General:* JOHN W. REYNOLDS.

*Deputy Attorney General:* N. S. HEFFERNAN.

*Assistant Attorneys General:* JOHN E. ARMSTRONG; RICHARD E. BARRETT; JOHN H. BOWERS; LEROY L. DALTON; A. J. FEJFAREK; ALBERT O. HARRIMAN; BEATRICE LAMPERT; MORTIMER LEVITAN; JAMES H. McDERMOTT; ROY G. MITA; HAROLD H. PERSONS; WILLIAM A. PLATZ; WARREN H. RESH; GEORGE F. SIEKER; ROY G. TULANE; ROBERT J. VERGERONT; JAMES R. WEDLAKE; E. WESTON WOOD.

*Attorneys:* GEORGE SCHWAHN; WILLIAM H. WILKER.

*Chief Investigator:* MILO W. OTTOW.

Office: State Capitol.

Publication: Opinions of the Attorney General (quarterly in pamphlet form and an annual bound volume.)

The Attorney General is a constitutional officer chosen on a partisan ballot by the electors of the state for a term of 2 years. He is the chief law officer of the state. He is required by law to furnish all legal services to the departments and divisions of state government, the district attorneys, and the corporation counsel. He is not authorized to render official legal service to private individuals or concerns. In addition to the duties described generally above, the Attorney General is one of the 3 Commissioners of Public Lands. He or one of his staff also serves as a member of the following agencies: State Medical Grievance Committee, Judicial Council, Board of Canvassers, Claims Commission, Group Insurance Board, Board of Trustees of the State Library, State Crime Laboratory Board, Natural Resources Committee, Legislative Council's Menominee Indian Study Committee and Committee on Public Records.

**Duties of the Attorney General**

1. Represent the state. He represents the state in nearly all civil actions in which the state is a party, and all state and federal courts including the Wisconsin and United States Supreme Courts. He represents the state in all criminal cases in the Supreme Court and appears in cases in the trial courts when expressly authorized by statute or when requested to do so by the Governor, either branch of the legislature and in some cases by state department heads. He represents state employes in certain cases authorized by statute. He has neither the right nor the duty to participate in litigation which is purely of a private character and which does not affect the public interest.

2. Upon request, gives written legal opinions to the Governor, either house of the legislature, state department heads, district attorneys and corporation counsels. These opinions do not have the force and effect of judicial decisions but they are accorded great respect by the courts, may be relied upon by the persons to whom they are rendered, and have considerable influence upon matters affecting the public interest and the rights of all persons within the state.
3. Consult and advise with the district attorneys and the corporation counsels of the counties on all matters concerning the civil and criminal duties of their offices.
4. Represent the various commissions, boards and agencies of state government. He represents these agencies in proceedings to review their decisions in the circuit court and upon appeals therefrom to the Supreme Court and advises and assists all of the various state examining and licensing boards.
5. Approves state contracts and bonds. When requested to do so, the Attorney General approves all contracts entered into by the state or any of its departments or agencies and is required to approve the form of official bonds required under state statutes.
6. Prosecutes violations of state antitrust and unfair discrimination in trade laws.
7. Examines and certifies county and municipal bond issues.

## PUBLIC INSTRUCTION, STATE SUPERINTENDENT OF

*State Superintendent of Public Instruction:* G. E. WATSON.

*First Assistant Superintendent:* R. F. LEWIS.

*Publications Supervisor:* GORDON C. BOARDMAN.

*Assistant Superintendent, Supervision:* ROBERT VAN RAALTE.

*Curriculum Coordinator:* (Vacancy).

*Elementary and Secondary School Supervisor:* DONALD ANDERSON.

*Elementary School Supervisors:* FRANK N. BROWN, LEONA E.

FISHER, MARTHA KELLOGG, IDA E. OOLEY, HARDEAN I. PETERSON,  
one vacancy.

*Mental Health Supervisor:* ELY A. SIRES.

*Music and Art Education Supervisor:* G. LLOYD SCHULTZ.

*School Health, Physical Education and Safety Coordinator:* ORLO  
W. MILLER.

*School Libraries Supervisors:* IRENE M. NEWMAN, ANNA M. VOLD.

*Secondary School Supervisors:* FLOYD WIEGAN, R. L. LIEBENBERG,  
R. L. MOSELEY, CHESTER W. SPANGLER.

*Veterans Education Supervisor:* LAURIN P. GORDON.

*Assistant Superintendent, Indian Education, Reorganization and Transportation:* VICTOR E. KIMBALL.

*Indian Education Supervisor:* ALAN KINGSTON.

*School District Reorganization Supervisors:* RALPH E. JOLLIFFE,  
HENRY A. OLSON.

*Transportation Director:* THEO. A. SORENSON.

*Assistant Superintendent, Administration:* ARTHUR R. PAGE.

*School Building Service Supervisors:* A. L. BUECHNER, LEO HIL-  
FIKER.

*School Lunch Administrative Assistant:* GORDON W. GUNDERSON.

*Surplus Property Administrative Assistant:* PALMER O. JOHNSON.

*Assistant Superintendent, Special Education:* JOHN W. MELCHER.

*Child Welfare Consultant:* VIRGINIA A. STEPHENSON.

*Crippled Children's Division Medical Director:* PATRICIA MCILLECE,  
M.D.

*Deaf and Hard of Hearing Supervisor:* SAMUEL MILESKY.

*Exceptional Children Supervisors:* KENNETH BLESSING, DANIEL  
MATHIAS, FLOYD L. BARIBEAU.

*Hearing Consultants:* MARJORIE E. SULIVER, ORVIN WALSVICK.

*Medical Social Consultant:* ELIE M. ASLESON.

*Cardiac Nursing Consultant:* KATHERINE MAY.

*Physical Therapy Consultants:* LILLIE BACHANZ, FAE A. HENRY,  
LOIS M. MITCHELL, ALFARETTA WRIGHT.

*School for the Deaf, Superintendent, Delavan:* KENNETH F. HUFF.

*School for the Visually Handicapped, Superintendent, Janesville:*  
RAYMOND E. LONG.

*Speech Supervisors:* GRETCHEN M. PHAIR, VERNON SMITH.

*Assistant Superintendent, School Aids:* WILLIAM C. KAHL.

*Assistant Superintendent, National Defense Education Act:* WALTER  
B. SENTRY.

Office: State Capitol.

Publications: Biennial Report; Department Newsletter (monthly);  
Official School Directory (annual); Curriculum Publications;  
Official Wisconsin School Library List (biennial); Reading  
Circle Book List (annual); research studies.

The State Department of Public Instruction in Wisconsin is organized around the State Superintendent, a constitutional officer, set up originally on August 16, 1848. Article X, Section 1, of the Constitution provides that "The supervision of public instruction shall be vested in a state superintendent and such other officers as their legislature shall direct; and their qualifications, powers, duties and compensations shall be prescribed by law . . .".

In addition to the functions listed below under the various assistant superintendents, the State Superintendent has a number of specific legal duties enumerated under Section 39.02 of the Wisconsin Statutes. Some of these duties include: exclusion of sec-

tarianism from public schools; attendance at educational meetings; provision of public information; examination and determination of appeals; establishing suitable reporting forms for school officers; preparation of courses of study; reporting to Governor; and other duties. The State Superintendent of Schools is also ex officio member of a number of boards including Board of Regents of the University of Wisconsin, Board of Regents of State Colleges, Coordinating Committee for Higher Education, and State Board of Vocational and Adult Education.

In the summer of 1959, the legislature gave authority to the State Superintendent to implement the National Defense Education Act for Wisconsin. This program through Titles III, V and X will channel federal aid to Wisconsin education for use in science, mathematics, modern foreign languages, testing, guidance and counseling, and in improving the statistical and reporting services.

The State Superintendent has, in his work, the help of a first assistant superintendent and 5 assistant superintendents. There are 6 major divisions of the department.  
First Assistant Superintendent.

The first assistant superintendent has a general deputy function as indicated from time to time by the State Superintendent and has charge of:

1. Certification. All teachers who teach on grade and high school levels in Wisconsin are certified to teach through the department. Various kinds of licenses and certificates, dependent on amount and kind of background training, are issued to teachers entitling them to occupy certain kinds of teaching positions.
2. North Central Association. This association is an unofficial organization which makes periodic surveys of high schools with a view to their accreditation. The work of this organization is at the present time centralized in the department.
3. Publications. The work of getting out the department's publications is centered in this division.
4. Teacher Training. Although the department has many relationships such as teacher training certification, its only direct responsibility in this area is with the county colleges, the supervision of which lies in this department.

Assistant Superintendent, Supervision.

Under this assistant, the various high school and grade school supervisors (special and general) carry out their jobs of visiting schools with a view to helping local administrators and supervisors improve the quality of teaching.

1. Besides the general supervisors, there are special supervisors in health, physical education and safety, in music and art, in library science, science and driver education, and mental health.

2. These supervisors also help the State Superintendent with information necessary for certain functions such as the classification of school districts for aid purposes.
3. Veteran Education. This assistant superintendent has also those responsibilities which relate to education in veterans' affairs.

Assistant Superintendent, Indian Education, School District Reorganization, Transportation.

1. Indian Education. Administers federal funds made available to the state through contract with the State Department of Public Instruction for the payment of cost of education of children of one-quarter or more Indian blood who reside on tax-exempt lands.
2. School District Reorganization. Administers the laws governing the creation and alteration of public school districts.
3. Transportation. Administers the laws governing the transportation of public school children.

Assistant Superintendent, Administration.

1. School Building Service. This division of the department is concerned with surveys of future building needs, selection of sites, functional planning of new buildings and the improved utilization of present structures.
2. Other Functions. Other functions are those connected with special federal school building aids in federally-affected areas; school lunch; surplus property and the supervision and administration of the department budget.

Assistant Superintendent, Special Education.

1. Bureau for Handicapped Children. This division of the department is known as the Bureau for Handicapped Children. As the name suggests, the work centers about children with physical (crippled children's division), visual, and mental handicaps and speech and hearing handicaps. The bureau's activity is concerned with helping school districts in the location, appraisal, education, and in some cases, treatment of handicapped children.

The State School for the Deaf at Delavan and the School for the Visually Handicapped at Janesville are also under the supervision of the bureau.

Assistant Superintendent, School Aids.

The 1959 Legislature set aside \$104,400,000 for flat and equalization aids and \$10,400,000 for transportation aids for the biennium. In addition to these major items, further grants are made for such services as those given to handicapped children. The job of working out, according to legislative formula, the amount of state aids going to each district and the dispensing of these aids lies with this division. Statistical studies are regularly made in the division to help to do a better job with the administration of state school aids.

**PUBLIC LANDS, COMMISSIONERS OF**

*Commissioners:* EUGENE M. LAMB; JOHN W. REYNOLDS; ROBERT C. ZIMMERMAN.

*Chief Clerk:* T. H. BAKKEN.

*Office:* State Capitol.

*Publication:* Biennial Report.

The land department is the only state department, in addition to the elective state officers, which is created by the Constitution. This department is headed by the Commissioners of the Public Lands, who under the Constitution are the Secretary of State, the State Treasurer and the Attorney General. A chief clerk employed by them has immediate charge of the work of the department which has the following duties:

1. Exclusive control over the lands and moneys belonging to the constitutional trust funds which consist of the common school fund, normal school fund, university fund and the agricultural college fund. 147,500 acres of timber or unimproved land belonging to these funds, with a value of approximately \$3,000,000, remain unsold.
2. Moneys belonging to the trust funds total over \$27,300,000 and are loaned to school districts and municipalities.
3. Has original records of sale and conveyance of state lands.
4. Has on file copies of state patents issued and the field notes and plats of the original and subsequent surveys of lands in Wisconsin. Documents made by this office from these records are used by abstractors and lawyers; and the field notes and plats by surveyors in running and locating the original section lines and corners.
5. Protects the interest of the state in lands under federal grants.
6. Under the Constitution, escheated real and personal property, as well as penal fines and forfeitures, are under the jurisdiction of this commission.

## ELECTIVE AND APPOINTIVE STATE ADMINISTRATIVE OFFICERS

December 15, 1959

For later appointments see Addenda

### ELECTIVE OFFICERS

Department	Name	Home Address <sup>3</sup>	Term Expires	Salary
Governor .....	Gaylord A. Nelson	Madison .....	1st Mon. Jan. 1961	\$20,000 per year
Lieutenant Governor	Philleo Nash .....	Wis. Rapids	1st Mon. Jan. 1961	13,000 per term
Secretary of State ....	Robert C. Zimmerman .....	Madison .....	1st Mon. Jan. 1961	12,000 per year
State Treasurer .....	Eugene M. Lamb ..	Milwaukee ..	1st Mon. Jan. 1961	12,000 per year
Attorney General .....	John W. Reynolds	Green Bay ..	1st Mon. Jan. 1961	17,000 per year
Superintendent of Public Instruction ..	George E. Watson	Madison .....	1st Mon. July 1961	17,000 per year

### STATE OFFICERS APPOINTED BY THE GOVERNOR AS REQUIRED BY STATUTE<sup>1</sup>

Department <sup>2</sup>	Name	Home Address <sup>3</sup>	Term Expires	Salary or Compensation <sup>4</sup>	
Accountancy Board .. 135.01	John A. Hoppe ....	Baraboo .....	June 25, 1960 .....	\$10 per day and exp.	
	Arthur E. Wegner	Madison .....	June 25, 1961 .....	Same	
	Russell S. Wenzlaff	Madison .....	June 25, 1962 .....	Same	
Adjutant General .... 21.18	Maj. Gen. Ralph J. Olson .....	Madison .....	Indefinite .....	\$14,500 per year	
<sup>5</sup> Administration, Comm'n'r. of .....	Joe E. Nusbaum ..	Madison .....	Indefinite .....	Set by Governor	
<sup>5</sup> Aeronautics Comm... 114.30 (1)	L. O. Simenstad ..	Osceola .....	April 30, 1961 .....	Expenses	
	Douglas A. Taylor	Rhinelande ..	April 30, 1961 .....	Expenses	
	Gordon D. Leonard	Milwaukee ..	April 30, 1963 .....	Expenses	
	Edwin Larkin .....	Eau Claire ..	April 30, 1965 .....	Expenses	
	Don A. Olson .....	Two Rivers ..	April 30, 1965 .....	Expenses	
<sup>5</sup> Agriculture Board ... 93.02	Harry C. Dix .....	Menomonie ..	June 2, 1961 .....	Not exc. \$10 per day nor \$600 per year and exp.	
	Paul C. Schmoldt ..	Medford .....	June 2, 1961 .....	Same	
	Lester M. Palmer ..	Mauston .....	June 2, 1963 .....	Same	
	Edward A. Terrill	Waunakee ..	June 2, 1963 .....	Same	
	Wilson L. Wright ..	Waukesha ..	June 2, 1963 .....	Same	
	Arnie W. Agnew ..	Milton Junction ....	June 2, 1965 .....	Same	
	Wesley E. Thompson .....	Foxboro .....	June 2, 1955 .....	Same	
	Armory Board .....	Col. Dan A. Hardt	Appleton .....	Indefinite .....	None
		John W. Roach ....	Madison .....	Indefinite .....	None
		Lieut. Col. Edward S. Silvers .....	Sun Prairie ..	Indefinite .....	None
Athletic Comm. .... 169.01	Ray Markey .....	Milwaukee ..	Aug. 20, 1960 .....	\$5 per day but not exc. \$3,000 per yr. for entire board and travel exp.	
	Joey E. Sangor ....	Milwaukee ..	Aug. 20, 1961 .....	Same	
	Savior Canadeo ..	Green Bay ..	Aug. 20, 1962 .....	Same	
	William B. Goodsitt .....	Milwaukee ..	Aug. 20, 1963 .....	Same	
	Alfred Jaeger .....	Fond du Lac	Aug. 20, 1964 .....	Same	



**STATE OFFICERS APPOINTED BY THE GOVERNOR  
AS REQUIRED BY STATUTE—Continued**

Department <sup>2</sup>	Name	Home Address <sup>3</sup>	Term Expires	Salary or Compensation <sup>4</sup>
<sup>5</sup> Auditor, State ..... 15.21 (1)	J. Jay Keliher .....	Madison .....	June 30, 1961 .....	\$14,500 per year <sup>6</sup>
Banking Commissioner .....	Paul McGettigan ..	Darlington ....	June 30, 1965 .....	\$13,000 per year
<sup>5</sup> Banking Review Board .....	John A. Puelicher ..	Milwaukee ..	1st Mon. Jan. 1960	\$15 per day but not exc. \$900 per year and exp.
	John Rose .....	Green Bay ..	1st Mon. Jan. 1961	Same
	Stuart V. Willson ..	Eau Claire ..	1st Mon. Jan. 1962	Same
	William A. Canary ..	Footville .....	1st Mon. Jan. 1963	Same
	Edward J. Ruetz ..	Kenosha .....	1st Mon. Jan. 1964	Same
<sup>5</sup> Basic Sciences Board of Examiners 147.03	B. H. Kettelkamp ..	River Falls ..	April 1, 1961 .....	\$10 per day and exp.
	William H. Barber ..	Ripon .....	April 1, 1963 .....	\$10 per day and exp.
	John W. Saunders, Jr. ..	Milwaukee ..	April 1, 1965 .....	\$10 per day and exp.
Building Comm. .... 13.351	J. R. Roethermel, Jr. ....	Madison .....	Indefinite .....	Travel expenses
<sup>5</sup> Chiropractic Board of Examiners .....	Merlin W. Groskopp .....	Clear Lake ..	April 1, 1961 .....	\$10 per day and exp.
147.23 (2)	S. C. Syverud .....	Mt. Horeb ...	April 1, 1963 .....	\$15 per day and exp.
	Robert P. Hintz ...	Burlington ...	April 1, 1965 .....	\$15 per day and exp.
Civil Defense Director 21.02(3) (a)	Maj. Gen. Ralph J. Olson .....	Madison .....	Indefinite .....	Set by Governor
Civil Defense Council 21.02 (3) (b)	See Addenda .....		Indefinite .....	None
Civil Service Ad- visory Committee ..	Neil G. Cafferty ..	Madison .....	Oct. 16, 1960 .....	None
16.051	Harold L. Plumme ..	Madison .....	Oct. 16, 1960 .....	None
	L. P. Voigt .....	Madison .....	Oct. 16, 1960 .....	None
	Donald N. McDowell .....	Madison .....	Oct. 16, 1961 .....	None
	Charles Manson ..	Wausau .....	Oct. 16, 1961 .....	None
	Wilbur J. Schmidt ..	Madison .....	Oct. 16, 1961 .....	None
	James Karns .....	Madison .....	Oct. 16, 1962 .....	None
	Joe E. Nusbaum ..	Madison .....	Oct. 16, 1962 .....	None
	Mathias F. Schimenz .....	Milwaukee ..	Oct. 16, 1962 .....	None
Civil War Centennial Comm. S.J.R. 35, 1957	Mrs. Della C. Alexander .....	Madison .....	June 30, 1966 .....	None
	Mrs. Mica Christensen .....	Oshkosh .....	June 30, 1966 .....	None
	Leslie H. Fishel, Jr. ....	Madison .....	June 30, 1966 .....	None
	W. Norman FitzGerald .....	Milwaukee ..	June 30, 1966 .....	None
	Donald M. Gerlinger .....	Milwaukee ..	June 30, 1966 .....	None
	William B. Hesseltine .....	Madison .....	June 30, 1966 .....	None
	John Hunter .....	Madison .....	June 30, 1966 .....	None
	Frank Klement ..	Milwaukee ..	June 30, 1966 .....	None
	Milton Longhorn ..	Platteville ..	June 30, 1966 .....	None
	Allan Oakley .....	Madison .....	June 30, 1966 .....	None
	Edward J. Owens ..	Madison .....	June 30, 1966 .....	None
	George A. Powers ..	Madison .....	June 30, 1966 .....	None
	Lois Scholfield .....	Madison .....	June 30, 1966 .....	None
	Mary Schucht .....	Milwaukee ..	June 30, 1966 .....	None
	Jerome M. Slechtal	Jefferson .....	June 30, 1966 .....	None

**STATE OFFICERS APPOINTED BY THE GOVERNOR  
AS REQUIRED BY STATUTE—Continued**

Department <sup>2</sup>	Name	Home Address <sup>3</sup>	Term Expires	Salary or Compensation <sup>4</sup>
	Bruce Thomas .....	Madison .....	June 30, 1966 .....	None
	Mrs. Bessie M. Western .....	Madison .....	June 30, 1966 .....	None
	Mrs. H. E. Westphal .....	Milwaukee ..	June 30, 1966 .....	None
	Mrs. Helen Wilbur .....	Madison .....	June 30, 1966 .....	None
	Walker Wyman .....	River Falls ..	June 30, 1966 .....	None
	Henry Youmans .....	Waukesha ..	June 30, 1966 .....	None
Claims Comm. .... 15.94	Bruce Thomas .....	Madison .....	Indefinite .....	Expenses
<sup>5</sup> Conservation Comm. 23.09 (2)	Arthur R. MacArthur .....	Janesville ...	July 27, 1961 .....	Expenses
	Russell D. Stouffer .....	Shell Lake ..	July 27, 1961 .....	Expenses
	Guido R. Rahr .....	Manitowoc ..	July 27, 1963 .....	Expenses
	Charles F. Smith .....	Wausau .....	July 27, 1963 .....	Expenses
	John R. Lynch .....	Gordon .....	July 27, 1965 .....	Expenses
	Paul J. Olson .....	Madison .....	July 27, 1965 .....	Expenses
<sup>5</sup> Consumer Credit Review Board .... 220.037	Frank Luick .....	Milwaukee ..	July 17, 1960 .....	Expenses
	James F. Miller .....	Menomonie ..	July 17, 1961 .....	Expenses
	J. H. Hendee .....	Milwaukee ..	July 17, 1962 .....	Expenses
	Paul A. Hemmy, Jr. ....	Juneau .....	July 17, 1963 .....	Expenses
	Marvin E. Brickson .....	Madison .....	July 17, 1964 .....	Expenses
<sup>5</sup> Credit Union Review Board .... 186.015	Albert G. Fahrenkrug .....	Neenah .....	1st Mon. June 1960	Expenses
	Edwin E. Eich .....	Milwaukee ..	1st Mon. June 1961	Expenses
	Joseph Hamelink .....	Kenosha .....	1st Mon. June 1962	Expenses
	William H. Hughes .....	Madison .....	1st Mon. June 1963	Expenses
	Ray J. Theisen .....	Eau Claire ..	1st Mon. June 1964	Expenses
<sup>5</sup> Crime Laboratory Board .....	Joseph LaMonte .....	Milwaukee ..	2nd Mon. Mar. 1961	Expenses
165.01 (4) (5)	Francis Riley .....	Portage .....	2nd Mon. Mar. 1961	Expenses
	George Sawyer .....	Delavan .....	2nd Mon. Mar. 1961	Expenses
	Clemens F. Michalski .....	Milwaukee ..	2nd Mon. Mar. 1963	Expenses
	Jasper A. Webb .....	Janesville ...	2nd Mon. Mar. 1963	Expenses
Dental Examiners Board .....	John S. Semrau .....	Milwaukee ..	May 2, 1960 .....	\$15 per day and exp.
152.01 (1)	S. F. Donovan .....	Tomah .....	May 2, 1961 .....	\$3,000 per year <sup>7</sup>
	Harvey S. Huxtable .....	Mineral Point	May 2, 1962 .....	\$15 per day and exp.
	Byron D. Ising .....	Oshkosh .....	May 2, 1963 .....	\$15 per day and exp.
	Michael L. Richdorf .....	Sheboygan ..	May 2, 1964 .....	\$15 per day and exp.
Educational Advisory Committee, Govern- or's .....	Chester Allen .....	Madison .....	Indefinite .....	None
15.98 (1)	J. F. Friedrich .....	Milwaukee ..	Indefinite .....	None
	Laurin P. Gordon .....	Madison .....	Indefinite .....	None
	Clarence Greiber .....	Madison .....	Indefinite .....	None
	Gordon Huseby .....	Madison .....	Indefinite .....	None
	LeRoy Luberg .....	Madison .....	Indefinite .....	None
	Eugene R. McPhee .....	Madison .....	Indefinite .....	None
	Otto A. Mortensen .....	Madison .....	Indefinite .....	None
	W. B. Senty .....	Madison .....	Indefinite .....	None
	Walter Simon .....	Madison .....	Indefinite .....	None
	William C. Van Cleaf .....	Milwaukee ..	Indefinite .....	None
	George E. Watson .....	Madison .....	Indefinite .....	None
	Ralph E. Weber .....	Milwaukee ..	Indefinite .....	None
	Charles A. Wedemeyer .....	Madison .....	Indefinite .....	None

**STATE OFFICERS APPOINTED BY THE GOVERNOR  
AS REQUIRED BY STATUTE—Continued**

Department <sup>2</sup>	Name	Home Address <sup>3</sup>	Term Expires	Salary or Compensation <sup>4</sup>
<sup>5</sup> Employment Relations Board 111.03	Laurence E. Gooding .....	Madison .....	May 12, 1961 .....	\$11,500 per year <sup>8</sup>
	John E. Fitzgibbon .....	Milwaukee ..	May 12, 1963 .....	\$11,500 per year <sup>8</sup>
	Morris Slavney .....	Madison .....	May 12, 1965 .....	\$13,000 per year <sup>9</sup>
Fair Employment Practices Advisory Committee 111.34	Ford Charlton .....	Kenosha .....	Sept. 1, 1960 .....	Expenses
	George Hall .....	Milwaukee ..	Sept. 1, 1960 .....	Expenses
	George W. Hamilton .....	Milwaukee ..	Sept. 1, 1960 .....	Expenses
	William Klug .....	Milwaukee ..	Sept. 1, 1960 .....	Expenses
	Roger D. O'Neil .....	Beloit .....	Sept. 1, 1960 .....	Expenses
	Robert Rodriguez .....	Milwaukee ..	Sept. 1, 1960 .....	Expenses
	John R. Wrage .....	Madison .....	Sept. 1, 1960 .....	Expenses
Fine Arts Comm. .... 15.95 (1)	Edmund D. Lewandowski ..	Milwaukee ..	April 1, 1963 .....	Expenses
Fire Prevention and Protection, Adv. Committee on Training Program for 41.14 (3)	Lawrence Larkin ..	Black River Falls .....	July 1, 1961 .....	Expenses
	Ernest E. Moss .....	Eau Claire ..	July 1, 1961 .....	Expenses
	Walter Okey .....	Cassville .....	July 1, 1963 .....	Expenses
	John Pavlik .....	West Milwaukee	July 1, 1963 .....	Expenses
	Ardell Braun .....	Sheboygan ..	July 1, 1965 .....	Expenses
	Harvey A. Ott .....	New Glarus	July 1, 1965 .....	Expenses
Food Standards Adv. Committee 93.07 (20)	Mary Bergin .....	Milwaukee ..	Sept. 1, 1961 .....	\$15 per day but not exc. \$600 per year and exp.
	Aaron J. Ihde .....	Madison .....	Sept. 1, 1961 .....	Same
	Henry Scott .....	Madison .....	Sept. 1, 1963 .....	Same
	Stephen F. Darling .....	Appleton .....	Sept. 1, 1965 .....	Same
	Mrs. Rae W. Evans	Madison .....	Sept. 1, 1965 .....	Same
Frozen Food Locker Plants Advisory Committee 99.13 (2)	Elmer J. Fechner ..	Merrill .....	April 23, 1958 .....	None
	Marvin Hewitt .....	Marshfield ...	April 23, 1958 .....	None
	Irvin W. Lustzow	Lake Mills ...	April 23, 1958 .....	None
Grain and Warehouse Comm. .... 126.01	Bernard F. Glonek	Superior .....	1st Mon. Feb. 1960	\$5,500 per year <sup>10</sup>
	Harvey C. Buchanan .....	Superior .....	1st Mon. Feb. 1961	\$5,500 per year <sup>10</sup>
	John Murkovich .....	Superior .....	1st Mon. Feb. 1962	\$5,500 per year <sup>10</sup>
Great Lakes Compact Comm. .... 30.22 (1)	Kenneth Holms .....	Menasha .....	June 30, 1961 .....	Expenses
	Harry C. Brockel ..	Milwaukee ..	June 30, 1963 .....	Expenses
	John W. Reynolds	Green Bay ..	Indefinite .....	Expenses
Group Insurance Board 66.919 (2)	Stanley G. DeBoer	Black River Falls .....	July 1, 1961 .....	Expenses
	Robert W. Walker	Milwaukee ..	July 1, 1961 .....	Expenses
	H. Edwin Young ..	Madison .....	July 1, 1961 .....	Expenses
<sup>5</sup> Health, Board of .... 140.01	Samuel L. Henke	Eau Claire ..	1st Mon. Feb. 1960	\$10 per day but not exc. \$600 per year and exp.
	James P. Conway	Milwaukee ..	1st Mon. Feb. 1961	Same
	Joseph C. Griffith	Milwaukee ..	1st Mon. Feb. 1962	Same
	W. T. Clark .....	Janesville ...	1st Mon. Feb. 1963	Same
	Elizabeth Baldwin	Marshfield ..	1st Mon. Feb. 1964	Same
	John S. Hollingsworth ..	Sheboygan ..	1st Mon. Feb. 1965	Same
	Edward N. Vig .....	Viroqua .....	1st Mon. Feb. 1966	Same

**STATE OFFICERS APPOINTED BY THE GOVERNOR  
AS REQUIRED BY STATUTE<sup>1</sup>—Continued**

Department <sup>2</sup>	Name	Home Address <sup>3</sup>	Term Expires	Salary or Compensation <sup>4</sup>	
Health and Welfare Interagency Com- mittee ..... 15.97	See Addenda .....		Indefinite .....	None	
			Indefinite .....	None	
			Indefinite .....	None	
<sup>5</sup> Higher Education, Coordinating Com- mittee on State Institutions of ..... 39.024 (2)	Norton E. Masterson .....	Stevens Point	Oct. 18, 1961 .....	Expenses	
	Arthur E. Wegner .....	Madison .....	Oct. 18, 1963 .....	Expenses	
	Lee C. Rasey .....	Wauwatosa..	Oct. 18, 1965 .....	Expenses	
	Meyer M. Cohen ..	Green Bay ..	Oct. 16, 1967 .....	Expenses	
<sup>5</sup> Highway Comm. .... 84.01	Vere L. Fiedler ....	Madison .....	March 1, 1961 .....	\$14,000 per year	
	G. H. Bakke .....	Menomonie ..	March 1, 1963 .....	\$13,500 per year <sup>11</sup>	
	Harvey Grasse ..	Ellison Bay ..	March 1, 1965 .....	\$14,000 per year <sup>9</sup>	
Human Rights, Gov- ernor's Comm. on 15.85	Emil Drobac .....	Milwaukee ..	Sept. 15, 1960 .....	None	
	Robert C. Hood ..	Marinette ...	Sept. 15, 1960 .....	None	
	Mrs. Ulysses G. Lindsay .....	Milwaukee ..	Sept. 15, 1960 .....	None	
	H. M. Mark .....	Hurley .....	Sept. 15, 1960 .....	None	
	Victor Minahan ...	Appleton ....	Sept. 15, 1960 .....	None	
	Rev. Ewald Moerke .....	Milwaukee ..	Sept. 15, 1960 .....	None	
	Mrs. Carl Nordhagen .....	Whitehall ...	Sept. 15, 1960 .....	None	
	Jeremiah O'Sullivan .....	Milwaukee ..	Sept. 15, 1960 .....	None	
	Rev. Harold L. Patton .....	LaCrosse ....	Sept. 15, 1960 .....	None	
	Linn D. Pauchty ..	West DePers ..	Sept. 15, 1960 .....	None	
	Stella Pedersen ..	Eau Claire ..	Sept. 15, 1960 .....	None	
	Rev. Perry H. Saito .....	Stevens Point	Sept. 15, 1960 .....	None	
	Robert Taylor .....	Milwaukee ..	Sept. 15, 1960 .....	None	
	Paul Dahl .....	Viroqua .....	Sept. 15, 1961 .....	None	
	Mrs. Willard Downing .....	Milwaukee ..	Sept. 15, 1961 .....	None	
	David Fellman ...	Madison .....	Sept. 15, 1961 .....	None	
	Robert P. Goodman	Racine .....	Sept. 15, 1961 .....	None	
	Rev. William P. O'Connor .....	Madison .....	Sept. 15, 1961 .....	None	
	David Rabinovitz ..	Sheboygan ..	Sept. 15, 1961 .....	None	
	Clinton Rose .....	Milwaukee ..	Sept. 15, 1961 .....	None	
	John H. Wilson .....	Ripon .....	Sept. 15, 1961 .....	None	
	Father Stephen V. Labaj .....	Racine .....	Sept. 15, 1962 .....	None	
	Robert Levine ....	Madison .....	Sept. 15, 1962 .....	None	
	Tom Miglautsch ..	Oconomowoc ..	Sept. 15, 1962 .....	None	
	John W. Schmitt ..	Milwaukee ..	Sept. 15, 1962 .....	None	
	Mrs. Irene Secora	Milwaukee ..	Sept. 15, 1962 .....	None	
	Rabbi Manfred Swarsensky ....	Madison .....	Sept. 15, 1962 .....	None	
	Alfred W. Winter ..	Prairie du Chien .....	Sept. 15, 1962 .....	None	
	<sup>5</sup> Industrial Comm. .... 101.02	John H. Rouse .....	Madison .....	June 1, 1961 .....	\$13,000 per year <sup>12</sup>
		George W. Otto .....	Madison .....	June 1, 1963 .....	\$13,500 per year
		Mathias F. Schimenz .....	Milwaukee ..	June 1, 1965 .....	\$14,500 per year <sup>9</sup>
Institution Standards, Joint Committee on 46.165	Ellen Hemstreet ..	Elkhorn .....	Jan. 1, 1960 .....	Expenses	
	Frank E. Panzer ..	Brownsville ..	Jan. 1, 1960 .....	Expenses	
	William Rhyme ....	Portage .....	Jan. 1, 1960 .....	Expenses	



**STATE OFFICERS APPOINTED BY THE GOVERNOR  
AS REQUIRED BY STATUTE—Continued**

Department <sup>2</sup>	Name	Home Address <sup>3</sup>	Term Expires	Salary or Compensation <sup>4</sup>
Merit Award Board .. 16.305 (1)	LeRoy E. Luberg	Madison .....	July 1, 1960 .....	Expenses
	Roy E. Kubista .....	Madison .....	July 1, 1961 .....	Expenses
	Carl K. Wettengel	Madison .....	July 1, 1962 .....	Expenses
Metropolitan Study Comm. .... 59.075 (1)	Harold E. Beck ....	Milwaukee ..	July 1, 1961 or sooner if study completed	Expenses
	O. W. Carpenter ..	Fox Point ...	Same .....	Expenses
	Richard W. Cutler	Fox Point ...	Same .....	Expenses
	Robert T. Foote ...	Shorewood ..	Same .....	Expenses
	Mrs. Jean Gordon	Whitefish Bay	Same .....	Expenses
	Albert F. Houghton .....	Milwaukee ..	Same .....	Expenses
	Robert E. Jensen ..	Milwaukee ..	Same .....	Expenses
	A. S. Kliebhan ....	Milwaukee ..	Same .....	Expenses
	J. Martin Klotsche	Milwaukee ..	Same .....	Expenses
	Irvin Knoebel .....	West Allis ..	Same .....	Expenses
	John H. Kopmeier	Bayside .....	Same .....	Expenses
	John C. Lobb .....	Shorewood ..	Same .....	Expenses
	Ebner F. Luetzow ..	Milwaukee ..	Same .....	Expenses
	Clifford A. Randall .....	Shorewood ..	Same .....	Expenses
William F. Rasche	Milwaukee ..	Same .....	Expenses	
<sup>5</sup> Motor Vehicle Commissioner .....	James L. Karns ....	Madison .....	Jan. 21, 1965 .....	\$13,000 per year <sup>12</sup>
<sup>5</sup> Nursing Board .....	Ruth Coe .....	Madison .....	March 1, 1963 .....	Expenses
	Monsig. Edmund J. Goebel .....	Milwaukee ..	March 1, 1963 .....	Expenses
	Sylvia Haubrich ..	Green Bay ..	March 1, 1963 .....	Expenses
	Sister M. Regula Pongratz .....	LaCrosse .....	March 1, 1963 .....	Expenses
	Ione M. Rowley ..	Madison .....	March 1, 1963 .....	Expenses
	Howard V. Sandin	Ashland .....	March 1, 1963 .....	Expenses
	Rev. A. H. Schmeuszer	Milwaukee ..	March 1, 1963 .....	Expenses
Jeanette R. Welsch	Milwaukee ..	March 1, 1963 .....	Expenses	
Optometry Board of Examiners .....	E. D. La Course ..	Manitowoc ..	Aug. 9, 1960 .....	Not exc. \$10 per day and exp.
	Augustus N. Abbott .....	Shawano .....	Aug. 9, 1961 .....	Same
	Newton E. W. Lenz	Waupun .....	Aug. 9, 1962 .....	Not exc. \$15 per day and exp. plus \$3,600 per year <sup>7</sup>
	P. G. Jacobson ....	Milwaukee ..	Aug. 9, 1963 .....	Not exc. \$15 per day and exp.
	Don Iverson .....	Hudson .....	Aug. 9, 1964 .....	Same
<sup>5</sup> Personnel Board .....	John H. Shiels ....	Madison .....	July 1, 1961 .....	\$25 per day but not exc. \$600 per year and exp.
	Charles F. Brecher .....	Janesville ...	July 1, 1963 .....	Same
	Jerry M. Slechta ..	Jefferson .....	July 1, 1965 .....	Same
Personnel Director ... 16.003 (3)	Carl K. Wettengel	Madison .....	Indefinite .....	Not exc. \$14,640 per year and bonus <sup>13</sup>
Pharmacy Board .....	Peter J. Hauer ..	Union Grove	April 12, 1960 .....	\$20 per day and exp.
	Sylvester H. Dretzka .....	Milwaukee ..	April 12, 1961 .....	\$20 per day and exp.
	George E. Elwers	Neeah .....	April 12, 1962 .....	\$20 per day and exp.
	Robert E. Steele ..	Tomah .....	April 12, 1963 .....	\$20 per day and exp.
	Arthur C. Moin ....	Superior .....	April 12, 1964 .....	\$20 per day and exp.

**STATE OFFICERS APPOINTED BY THE GOVERNOR  
AS REQUIRED BY STATUTE<sup>1</sup>—Continued**

Department <sup>2</sup>	Name	Home Address <sup>3</sup>	Term Expires	Salary or Compensation <sup>4</sup>	
Portage Levee Comm. .... 20.620 (71)	Charles Clemmons	Portage .....	Duration of Comm.	Expenses	
	Walter Harvey .....	Portage .....	Same .....	Expenses	
	William L. Mohr ..	Portage .....	Same .....	Expenses	
<sup>6</sup> Public Service Comm. .... 195.01 (1)	Martin G. Glaeser	Madison .....	1st Mon. Mar. 1961	\$13,500 per year <sup>11</sup>	
	Arthur L. Padrutt	Madison .....	1st Mon. Mar. 1963	\$13,500 per year <sup>11</sup>	
	Leonard Bessman	Milwaukee ..	1st Mon. Mar. 1965	\$15,000 per year <sup>9</sup>	
<sup>6</sup> Public Welfare Board .....	Leo Jelinske .....	Shawano ....	April 1, 1961 .....	\$25 per day, \$10 per day visiting institu- tions, but not exc. \$800 per year and exp.	
	Mrs. Karl Kleinpell .....	Cassville .....	April 1, 1961 .....	Same	
	William D. Stovall .....	Madison .....	April 1, 1961 .....	Same	
	Mrs. C. R. Beck ..	West Allis ...	April 1, 1963 .....	Same	
	Harold W. Story ..	Milwaukee ..	April 1, 1963 .....	Same	
	Ralph A. Uihlein	Milwaukee ..	April 1, 1963 .....	Same	
	Mrs. Wallace Lomoe .....	Milwaukee ..	April 1, 1965 .....	Same	
	John P. Mann .....	Appleton .....	April 1, 1965 .....	Same	
	William H. Studley .....	Milwaukee ..	April 1, 1965 .....	Same	
	Radio Council .....	Duane S. McCall ..	Oconto .....	Indefinite .....	Expenses
		Lulu Radlund .....	Prairie du Sac	Indefinite .....	Expenses
Milo K. Swanton ..		Madison .....	Indefinite .....	Expenses	
<sup>6</sup> Real Estate Brokers Board .....	Julius J. Dinger ..	Eau Claire ..	July 12, 1961 .....	\$10 per day and exp.	
	M. William Gerrard .....	LaCrosse .....	July 12, 1963 .....	\$10 per day and exp.	
	Howard J. Meister .....	Milwaukee ..	July 12, 1965 .....	\$10 per day and exp.	
<sup>6</sup> Resource Develop- ment Director .....	David Carley .....	Madison .....	Indefinite .....	Not exc. \$14,000	
	Ch. 442, 1959				
Resource Develop- ment Adv. Com- mittee .....	See Addenda .....		Indefinite .....	Expenses	
			Indefinite .....	Expenses	
			Indefinite .....	Expenses	
			Indefinite .....	Expenses	
			Indefinite .....	Expenses	
			Indefinite .....	Expenses	
			Indefinite .....	Expenses	
			Indefinite .....	Expenses	
			Indefinite .....	Expenses	
			Indefinite .....	Expenses	
			Indefinite .....	Expenses	
			Indefinite .....	Expenses	
			Indefinite .....	Expenses	
Retirement Fund Board of Trustees ..	Thomas J. Lucas, Sr. ....	Madison .....	Jan. 1, 1959 .....	Travel Exp.	
	Frank E. Panzer ..	Brownsville	Jan. 1, 1959 .....	Travel Exp.	
	Edwin O. Rosten ..	Madison .....	Jan. 1, 1960 .....	Travel Exp.	
	Robert J. Poss .....	Marinette ...	Jan. 1, 1961 .....	Travel Exp.	
	Irvin F. Knoebel ..	West Allis ...	Jan. 1, 1962 .....	Travel Exp.	
	George F. Reinke	Madison .....	Jan. 1, 1962 .....	Travel Exp.	
	John Bolgert .....	Sheboygan ..	Jan. 1, 1963 .....	Travel Exp.	
	Margaret L. Clark	Green Bay ..	Jan. 1, 1963 .....	Travel Exp.	

**STATE OFFICERS APPOINTED BY THE GOVERNOR  
AS REQUIRED BY STATUTE<sup>1</sup>—Continued**

Department <sup>2</sup>	Name	Home Address <sup>3</sup>	Term Expires	Salary or Compensation <sup>4</sup>
Retirement Research Council ..... Ch. 395, 1959	Arthur J. Allmeyer .....	Madison .....	July 1, 1963 .....	Expenses
	George A. Hardy .....	Milwaukee .....	July 1, 1963 .....	Expenses
	Nels M. Justeson .....	Wis. Rapids .....	July 1, 1963 .....	Expenses
	Roy E. Kubista .....	Madison .....	July 1, 1963 .....	Expenses
	Daryl K. Lien .....	Amery .....	July 1, 1963 .....	Expenses
	Marcella Schneider .....	Milwaukee .....	July 1, 1963 .....	Expenses
	Will G. Ballentine .....	Menomonie .....	July 1, 1963 .....	Expenses
	Retirement Systems, Joint Survey Com. on ..... 13.40	Arthur L. Padrutt .....	Madison .....	April 1, 1959 .....
Revenue Survey Comm., Continuing ..... Ch. 585, 1959	Walter J. Burke .....	Milwaukee .....	Dec. 31, 1960 .....	\$20 per day and exp.
	James Doyle .....	Madison .....	Dec. 31, 1960 .....	\$20 per day and exp.
	Edmund Fitzgerald .....	Milwaukee .....	Dec. 31, 1960 .....	\$20 per day and exp.
	Jacob F. Friedrich .....	Milwaukee .....	Dec. 31, 1960 .....	\$20 per day and exp.
	Stanley R. Greene .....	Sturgeon Bay .....	Dec. 31, 1960 .....	\$20 per day and exp.
	Gordon M. Haferbecker .....	Stevens Point .....	Dec. 31, 1960 .....	\$20 per day and exp.
	Edwin Larkin .....	Eau Claire .....	Dec. 31, 1960 .....	\$20 per day and exp.
	John C. Lobb .....	Milwaukee .....	Dec. 31, 1960 .....	\$20 per day and exp.
	James A. Martineau .....	Oconto .....	Dec. 31, 1960 .....	\$20 per day and exp.
	Howard M. Packard .....	Racine .....	Dec. 31, 1960 .....	\$20 per day and exp.
	Glen Pommerening .....	Wauwatosa .....	Biennium ending 2nd Wed., Jan. 1961 .....	\$20 per day and exp.
	Lynn Stalbaum .....	Racine .....	Same .....	\$20 per day and exp.
	Miller Upton .....	Beloit .....	Dec. 31, 1960 .....	\$20 per day and exp.
	Verne Wing .....	Baraboo .....	Dec. 31, 1960 .....	\$20 per day and exp.
	Wilbert L. Witte .....	Madison .....	Dec. 31, 1960 .....	\$20 per day and exp.
<sup>5</sup> Savings and Loan Advisory Committee ..... 215.60	Alois Fons .....	Milwaukee .....	1st Mon. July 1960	\$10 per day and exp.
	Iveaux W. Andersen .....	Neenah .....	1st Mon. July 1961	\$10 per day and exp.
	Lee Bort .....	Beloit .....	1st Mon. July 1961	\$10 per day and exp.
	Francis E. Bachhuber .....	Wausau .....	1st Mon. July 1962	\$10 per day and exp.
	Emmett G. Hampton .....	Madison .....	1st Mon. July 1963	\$10 per day and exp.
	Catherine O'Hara .....	Milwaukee .....	1st Mon. July 1963	\$10 per day and exp.
<sup>5</sup> Savings and Loan Commissioner ..... 215.50	Roman J. Winkowski .....	Milwaukee .....	June 1, 1965 .....	\$11,500 per year
<sup>5</sup> Securities Director .. 189.01	Edward J. Samp .....	Madison .....	May 1, 1961 .....	\$12,000 per year <sup>14</sup>
Soil Conservation Committee ..... 92.04 (1)	Harry Schuyler .....	Fish Creek .....	July 1, 1959 .....	\$10 per day and exp.
	George Nygaard .....	Chaseburg .....	July 1, 1960 .....	\$10 per day and exp.
	Foster Patch .....	Viola .....	July 1, 1960 .....	\$10 per day and exp.
	Watford Sequin .....	Eleva .....	July 1, 1961 .....	\$10 per day and exp.



**STATE OFFICERS APPOINTED BY THE GOVERNOR  
AS REQUIRED BY STATUTE—Continued**

Department <sup>2</sup>	Name	Home Address <sup>3</sup>	Term Expires	Salary or Compensation <sup>4</sup>	
<sup>5</sup> State Colleges Board of Regents .. 37.01	Harold G. Andersen .....	Whitewater	1st Mon. Feb. 1960	Compensation for specific service and exp.	
	Harold K. Geyer ..	Platteville .....	1st Mon. Feb. 1960	Same	
	Lyel N. Jenkins ....	Stevens Point ..	1st Mon. Feb. 1960	Same	
	Robert L. Pierce ..	Menomonie .....	1st Mon. Feb. 1960	Same	
	Barney B. Barstow ..	Superior .....	1st Mon. Feb. 1961	Same	
	Mary M. Walter .....	De Pere .....	1st Mon. Feb. 1961	Same	
	Anita V. Hinrichs ..	Milwaukee .....	1st Mon. Feb. 1962	Same	
	Foster B. Porter ..	Bloomington ..	1st Mon. Feb. 1962	Same	
	William D. McIntyre .....	Eau Claire .....	1st Mon. Feb. 1963	Same	
	Eugene W. Murphy ..	La Crosse .....	1st Mon. Feb. 1963	Same	
	Mrs. Erna McIntyre .....	Appleton .....	1st Mon. Feb. 1964	Same	
	David Rodli .....	Baldwin .....	1st Mon. Feb. 1964	Same	
	<sup>6</sup> Tax Appeals Board 73.01 (2)	Clair L. Finch .....	Antigo .....	1st Mon. May 1961	\$6,000 per year <sup>15</sup>
Joseph Michalski ..		Milwaukee .....	1st Mon. May 1963	\$6,000 per year <sup>15</sup>	
Jerome J. Reinke ..		Kewaunee .....	1st Mon. May 1965	\$6,300 per year	
<sup>6</sup> Taxation, Commis- sion of .....	John A. Gronouski .....	Madison .....	July 1, 1965 .....	\$15,000 per year	
	<sup>6</sup> Turnpike Comm. .... 15.96 (1)	C. K. Alexander ..	Madison .....	June 15, 1959 .....	\$25 per day and exp.
Edmund Fitzgerald ..		Milwaukee .....	June 15, 1959 .....	\$25 per day and exp.	
Bruce M. Jeffris .....		Janesville .....	June 15, 1959 .....	\$25 per day and exp.	
Glen V. Rork .....		Eau Claire .....	June 15, 1959 .....	\$25 per day and exp.	
Robert Stevenson ..		Milwaukee .....	June 15, 1959 .....	\$25 per day and exp.	
Uniform State Laws Comm. ....	Colburn C. Cherney, Chm. ..	Green Bay .....	July 11, 1961 .....	Expenses	
	Sverre Roang .....	Edgerton .....	July 11, 1963 .....	Expenses	
	<sup>6</sup> University of Wis- consin Regents .... 36.02 (1)	Wilbur H. Renk ....	Sun Prairie .....	May 1, 1960 .....	Expenses
Oscar Rennebohm ..		Madison .....	May 1, 1961 .....	Expenses	
Harold A. Konnak ..		Racine .....	May 1, 1962 .....	Expenses	
A. Matt Werner ..		Sheboygan .....	May 1, 1963 .....	Expenses	
Ellis E. Jensen .....		Janesville .....	May 1, 1964 .....	Expenses	
Charles D. Gelatt ..		La Crosse .....	May 1, 1965 .....	Expenses	
Carl E. Steiger ....		Oshkosh .....	May 1, 1966 .....	Expenses	
Robert C. Bassett ..		Milwaukee .....	May 1, 1967 .....	Expenses	
Arthur De Bardeleben .....		Park Falls .....	May 1, 1968 .....	Expenses	
<sup>6</sup> Veterans Affairs Board .....		James F. Burns ....	Milwaukee .....	March 1, 1961 .....	Expenses
		Herbert C. Geitmann .....	Beaver Dam .....	March 1, 1961 .....	Expenses
	Paul B. Clemens ..	Superior .....	March 1, 1963 .....	Expenses	
	Ralph J. Olson .....	Madison .....	March 1, 1963 .....	Expenses	
	Morton L. Gazerwitz .....	Oshkosh .....	March 1, 1965 .....	Expenses	
	Royal J. Mashek ..	Milwaukee .....	March 1, 1965 .....	Expenses	
<sup>6</sup> Veterans Affairs Director .....	Gordon A. Huseby ..	Madison .....	Indefinite .....	Not exc. \$11,500 per year <sup>8</sup>	
	Veterans Memorial Comm. ....	John L. Leason, Jr. ....	Marinette ....	March 1, 1959 .....	None
Leslie H. Fishel, Jr. ....		Madison .....	March 1, 1961 .....	None	
Richard A. Smith ..		Madison .....	March 1, 1961 .....	None	
Bentley Courtenay .....		Madison .....	March 1, 1963 .....	None	
Walter A. Rose .....		Milwaukee .....	March 1, 1963 .....	None	
I. D. Hale .....		Milwaukee .....	March 1, 1965 .....	None	

**STATE OFFICERS APPOINTED BY THE GOVERNOR  
AS REQUIRED BY STATUTE—Continued**

Department <sup>2</sup>	Name	Home Address <sup>3</sup>	Term Expires	Salary or Compensation <sup>4</sup>	
Vocational and Adult Education Board .. 41.13	John Last .....	Lake Mills ..	July 1, 1961 .....	\$100 and exp.	
	William C. Van Cleaf .....	West Allis ..	July 1, 1961 .....	\$100 and exp.	
	Elmer Wilkins .....	Platteville ..	July 1, 1961 .....	\$100 and exp.	
	Edgar J. Fransway .....	Wauwatosa ..	July 1, 1963 .....	\$100 and exp.	
	Ray F. Heinzen ..	Marshfield ..	July 1, 1963 .....	\$100 and exp.	
	Henry Herreid ..	Racine .....	July 1, 1963 .....	\$100 and exp.	
	Harvey H. Kitzman .....	Milwaukee ..	July 1, 1965 .....	\$100 and exp.	
	John A. Race .....	Fond du Lac ..	July 1, 1965 .....	\$100 and exp.	
	Leo Roddems .....	Baraboo .....	July 1, 1965 .....	\$100 and exp.	
	Watchmaking Board of Examiners .....	Erwin J. Metzke ..	Milwaukee ..	May 15, 1960 .....	\$15 per day and exp.
		Emerson S. Waldhier .....	Beaver Dam ..	May 15, 1961 .....	\$15 per day and exp.
B. W. Heald .....		Thiensville ..	May 15, 1962 .....	\$3,600 per year and exp. <sup>7</sup>	
Clyde J. Cauwenbergh ..		Green Bay ..	May 15, 1963 .....	\$15 per day and exp.	
Frederic A. Smith		Milwaukee ..	May 15, 1964 .....	\$15 per day and exp.	

<sup>1</sup>Boards and commissions may have additional members, such as ex officio members, legislators appointed as are standing committees, representatives of state departments selected by department heads, or members of other boards chosen by those boards.

<sup>2</sup>Numbers under each department refer to sections of the Wisconsin Statutes authorizing the appointment of these officials by the Governor.

<sup>3</sup>Home address is the area from which officer was originally appointed or elected.

<sup>4</sup>Per diems are paid only for the time actually spent in the performance of official duties and are established by the sections of the statutes setting forth the powers and duties of the agency; expenses are authorized either by the section creating the agency, by section 20.940, or are provided for out of departmental appropriations.

<sup>5</sup>Appointments require confirmation by the senate.

<sup>6</sup>New term — \$15,000 per year.

<sup>7</sup>Secretary, salary set by board.

<sup>8</sup>New term — \$12,000 per year.

<sup>9</sup>Chairman.

<sup>10</sup>New term — \$5,800 per year.

<sup>11</sup>New term — \$14,000 per year.

<sup>12</sup>New term — \$13,500 per year.

<sup>13</sup>Under civil service. Civil service range 21: \$12,540-\$14,640.

<sup>14</sup>New term — \$12,500.

<sup>15</sup>New term — \$6,300.

**SPECIAL COMMITTEES APPOINTED BY THE  
GOVERNOR FOR PARTICULAR PURPOSES**

As of January 1, 1960

In order to secure advice from laymen and experts on problems which cross department lines or where no statutory provision for an advisory group exists, the Governor has, for many years, resorted to special committees appointed by him to secure such assistance. These people, who serve in such capacity without pay, have no authority, but provide an important link between the executive or the operating departments and the public. Some of our existing statutory agencies developed from such beginnings. The duration of these committees is normally indefinite and the membership may vary.

It is assumed that state officials and employes appointed to the following committees are selected because of their official capacity and therefore such persons are dropped when they leave the state service regardless of whether or not a successor is named.

**AGING, PLANNING COMMITTEE FOR THE THIRD  
GOVERNOR'S CONFERENCE ON**

*Members of Executive Committee:* ROBERT W. HANSEN, *chairman of planning committee and general chairman of the conference;* S. JANICE KEE, *secretary to the planning committee;* E. A. FRIEDMANN; MAX J. HAYS; JOHN W. JOANIS; ERSSEL E. LEMASTERS.

Under the general direction of the statutory Interdepartmental Committee on Aging Population, the committee organized September 1959 will plan and conduct the 3rd Governor's Conference on the Aging to be held in 1960 and in cooperation with many organizations carry out a state-wide program of preparation for the 1961 White House Conference on Aging.

**ATOMIC ENERGY, INTERDEPARTMENTAL  
STUDY COMMITTEE**

*Members:* WILLIAM L. LEA, *chairman;* GEORGE HANSON; LAWRENCE MOTL; O. J. MUEGGE; WARREN OAKEY; ROGER OSTREM; RALPH PURUCKER; WARREN RESH; EDWARD SAMP; JOHN E. WILLARD; HARVEY E. WIRTH; THEODORE WISNIEWSKI.

This committee was created in March 1956 to keep up with development in atomic fields and to coordinate activities of departments.

**BONG AIR FORCE BASE,  
LAND USE COMMITTEE ON**

*Members:* JACOB BEUSCHER, *chairman*; JOHN ALEXANDER, EDWIN R. BAYLEY; HENRY BEYER; DAVID CARLEY; PAUL JAEGER; WILLIAM LOOMER; RAY PENN; RICHARD RATCLIFF; WALTER ROWLANDS; LESTER P. VOIGT.

This committee was appointed in 1959 to investigate the various problems and possibilities relating to the disposition of the Bong Air Force Base. After examining the base and conferring with representatives of the U.S. Air Force and Corps of Engineers, the committee made some recommendations to complete certain construction contracts which were well under way when the decision to halt work was announced.

**CHILDREN AND YOUTH, WISCONSIN COMMITTEE ON**

*Officers:* H. KENT TENNEY, *chairman*; MRS. KARL L. KLEINPELL, *vice chairman*; PHIL BANDT, *secretary-treasurer*.

*Executive Committee:* Vacancy, *executive secretary*; MRS. REBECCA BARTON; ELIZABETH BURR; JAMES CEASE; MARGARET CHENOWETH; HELEN C. DAWE; MRS. R. J. DOUGLAS; MRS. O. L. FALK; MARGARET HATFIELD; FRED HOLT; AMY L. HUNTER; FRANCIS KRANZ; RUSSELL LEWIS; A. L. LUEBKE; J. P. MANN; MRS. CARL NESS; ARNOLD H. NIELSEN; WILLIAM SPALDING.

This state-wide voluntary citizen group was created in 1948 to coordinate planning for children and youth activities carried on by state and local agencies and organizations. The committee annually sponsors a Governor's Conference on Children and Youth and publishes a quarterly informational bulletin to stimulate local committee and community council activity.

**CRANBERRY INSPECTION AND MARKETING,  
GOVERNOR'S ADVISORY COMMITTEE ON**

*Members:* JOHN J. BIRDSALL, *chairman*; ROBERT G. LEWIS, *secretary*; RICHARD BRAZEAU; ERNEST L. CHAMBERS; MALCOLM N. DANA; VERNON GOLDSWORTHY; FRED GRIFFITH; GEORGE C. KLINGBIEL; CARL N. NEUPERT; JOHN M. POTTER.

Established in November 1959 the committee was directed to determine all of the available facts as to the purity and healthfulness of Wisconsin cranberries and to devise a workable plan whereby consumers can buy healthful and wholesome cranberries with complete confidence and security.

**DAIRY MARKETING, RESEARCH AND ADVISORY COMMITTEE  
ON PROBLEMS IN**

*Members:* MARVIN A. SCHAARS, *chairman*; HAROLD E. CALBERT; HUGH L. COOK; TRUMAN GRAF; HARLOW H. HALVORSEN; WILLARD F. MUELLER; WM. C. WINDER.

This committee, consisting of University of Wisconsin professors, was appointed July 1959 to study economic and technical phases of improved dairy marketing. It is to report on the possibility of assistance to farmers in developing a federated sales agency, advantages of consolidation and expansion of farmer-owned enterprises, marketing order programs, promotional programs, grading and quality standards and any other action which might help raise income returns to dairy farmers.

**ECONOMIC CONTROLS ADVISORY COMMITTEE TO THE  
STATE CIVIL DEFENSE DIRECTOR**

*Members:* DONALD N. McDOWELL, *chairman*; V. M. BUSHMAN; RICHARD S. FALK; GEORGE HABERMAN; WALTER JENSEN; HERBERT OLSON; MARTIN G. PEETERS; WILBUR J. SCHMIDT; EMORY G. STEDMAN; EVERETT YERLY.

The committee was created March 1958 for the purpose of meeting with the Wisconsin Civil Defense Director and his staff to formulate tentative policies for economic controls during a state or national civil defense emergency.

**EDUCATION BEYOND THE HIGH SCHOOL,  
GOVERNOR'S CONFERENCE ON**

*Members of Executive Committee:* ALLEN ABRAMS, *chairman*; IRA I. BALDWIN; ROBERT BLISS; CATHERINE B. CLEARY; J. F. FRIEDRICK; CARL J. FORSBERG; C. L. GREIBER; E. P. HAMILTON; DOUGLAS KNIGHT; CLIFFORD S. LIDDLE; E. R. MCPHEE; E. J. O'DONNELL; ROBERT D. STEELE; MILO SWANTON; KARL WERWATH.

This committee was established in 1958 to appraise the educational program for those who have finished high school. A state-wide conference was held at Madison in April 1958, and regional conferences are being planned.

**FAMILY CODE BILL, REVIEW COMMITTEE ON THE**

*Members:* WILLIAM J. BRONNER; ASSEMBLYMAN ARNOLD J. CANE; JOHN R. DEVITT; MRS. JANE GILDAY; ROBERT H. GOLLMAR; S. RICHARD HEATH; SENATOR WILLIAM R. MOSER; ASSEMBLYMAN FRANK L. NIKOLAY; MARTINUS SILSETH.

In November 1959 this committee was established to provide an orderly method to review proposals for amendments or further improvements in regard to the Family Code and to make recommendations to the legislature.

**FULBRIGHT SCHOLARSHIPS, COMMITTEE ON STATE**

*Members:* GEORGE E. WATSON, *chairman*; IRA BALDWIN; DOUGLAS M. KNIGHT; EUGENE R. MCPHEE; E. J. O'DONNELL.

The committee annually nominates students to receive the state award available under the international educational exchange program established in 1946 by the Fulbright Act (P.L. 584, 79th Congress). The Governor appoints members to the committee for an indefinite term. The committee screens applicants who are recommended by participating colleges and universities in the state. The committee may send the names of not more than 4 nominees to the national Board of Foreign Scholarships.

**HIGHWAY SAFETY, GOVERNOR'S COORDINATING COMMITTEE  
OF STATE OFFICIALS FOR**

*Members:* MATT SCHIMENZ, *chairman*; C. L. GREIBER; JAMES KARNS; CARL J. NEUPERT; RANDALL C. SWANSON; GEORGE WATSON; KURT WENDT.

This committee was established in 1957 to help reduce Wisconsin's traffic death toll. The coordinating committee is based on procedure recommended by the National Governors' Conference.

**LAND ACQUISITION, GOVERNOR'S STUDY COMMITTEE  
ON THE PROBLEMS OF**

*Members:* CHARLES GOLDBERG, *chairman*; C. STANLEY PERRY, *secretary*; CHARLES W. AHNER; RICHARD E. BARRETT; A. J. FEIFAREK; WILLIAM KASAKAITAS; E. C. POMMERENING; KENNETH SARLES; F. A. SCHLICHTING; GROVER M. STAPLETON.

*Subcommittee:* CHARLES GOLDBERG, *chairman*; RICHARD BARRETT; JACOB BEUSCHER; JAMES BURKE; C. STANLEY PERRY; E. C. POMMERENING; BRUCE THOMAS.

This committee was appointed March 1958 to study the whole problem of land acquisition with particular attention to condemnation procedures and methods of determining damages. Problems of condemnation have become aggravated by the interstate highway construction program. Report issued: "Draft of Proposed Legislative Bill to Effect a Revision of Present Chapter 32, Wisconsin Statutes, relating to Eminent Domain", 1958. Recommended Bills No. 483, A., and No. 285, S., 1959.

The subcommittee was appointed October 1959 to iron out the legal conflicts and confusion with respect to Bill No. 483, A., relating to eminent domain passed by the 1959 legislature but not signed by the Governor. The committee will study the bill's effect on the state's controlled-access highway program, on award and contesting procedures, on establishing formulas for just compensation, on equity between awards for land condemned and land sold and on determining which party pays for the cost of appeals.

#### LINCOLN SESQUICENTENNIAL COMMITTEE, WISCONSIN

*Members:* JERRY SLECHTA, *chairman*; GERTRUDE PUELICHER, *vice chairman*; MRS. MARGUERITE BENSON; LOUIS BRIDGMAN; CECIL FISHER; GEORGE R. CURRIE; J. F. FRIEDRICK; DONALD M. GERLINGER; JOHN HUNTER; R. L. LATHAN; MRS. FOREMAN LEBOLD; FRED LOECK; JACK PHELPS; MRS. VEL PHILLIPS; CHRIST SERAPHIM; EDWARD WATERBURY; WALKER WYMAN.

The purpose of this committee, appointed February 1959 in accordance with Jt. Res. of Congress P.L. 85-262, is to assist in the observance of the 150th anniversary of Abraham Lincoln's birth. The committee is to provide an exhibit of Lincolnia for the State Historical Society's Historymobile, to purchase a collection of Lincoln documents for the Historical Society and to provide for the reenactment of the famous Lincoln agricultural address delivered at the Wisconsin State Fair on September 30, 1859.

#### LITTER ALONG WISCONSIN HIGHWAYS, GOVERNOR'S COMMITTEE FOR ELIMINATION OF

*Executive Committee:* JOHN R. FREDERICK, *chairman*; MRS. RAY MARTENS, *vice chairman*; CLIFF HUTCHINSON, *secretary*; WALTER M. LINDEMANN, *treasurer*; THOMAS E. BRANAGAN; F. H. ELWELL; MAURICE HASSELL; RUSS J. NEUGEBAUER.

This 30-member committee also known as the Keep Wisconsin Clean and Beautiful Committee, established in 1956, consists of: 2 representatives from each of the 10 congressional districts, 3 members at large representing business giving the greatest contributions, and 7 advisory members representing the Federated Women's Clubs, garden clubs, the Izaak Walton League, Conservation

Department, Highway Department and Department of Public Instruction.

In a report October 1958, the committee reported having raised \$18,000 in donations, distributed 500,000 litterbags, launched a state-wide publicity program in cooperation with the Conservation Department, Highway Department and publicity departments of the paper industry, prepared and distributed information to the public and parochial schools stressing importance of keeping the outdoors clean.

#### **MINERAL RESOURCES DEVELOPMENT, GOVERNOR'S SPECIAL COMMITTEE ON WISCONSIN**

*Members:* GOVERNOR GAYLORD A. NELSON; LEONARD BESSMAN; GEORGE A. DONALD; ARTHUR J. HANSON; GEORGE F. HANSON; LEONARD KUEHL; M. C. McIVER; HAROLD PEAVY; JOHN W. REYNOLDS; EDWIN B. SHOREY.

This committee was established in 1956 to study the proposed development of the taconite industry in the northern part of Wisconsin. The committee published a report in 1958 relating to its inspection of Minnesota taconite operations.

#### **NORTHERN GREAT LAKES AREA COUNCIL**

*Members:* GOVERNOR GAYLORD A. NELSON, *chairman*; H. L. ASHWORTH; GLEN R. DOUGLAS; ARLIE M. MUCKS, JR.; JACK OLSON; HARRY THOMA; JAMES WIMMER.

Following the 1945 Governors' Conference at Mackinac Island, the Governor of Michigan requested a meeting with the Governors of Minnesota and Wisconsin and the Province of Ontario to consider an intergovernmental organization for cooperatively publicizing this area in the noncompetitive aspects of recreation. In September 1945 the Governors met and organized the Northern Great Lakes Area Council. The council has received appropriations from member states since 1946. The council meets 2 or 3 times a year and each state is represented by its Governor and 6 other representatives.

#### **PHYSICALLY HANDICAPPED, GOVERNOR'S COMMITTEE FOR THE EMPLOYMENT OF**

*Members:* A. F. TREBILCOCK, *chairman*; L. A. MINGENBACH, *1st vice chairman*; MRS. MARIE HOYER, *2nd vice chairman*; A. L. BEIER, *executive secretary*; S. R. SPENCER, *assistant executive secretary*; STUART H. BECKER; MARGUERITE BENSON; GEORGE C. BERTEAU;



GEORGE CARD; THOMAS J. DORAN; R. A. EWENS; WILLIAM J. FELDSTEIN; C. L. GREIBER; K. W. HAAGENSEN; GEORGE A. HABERMAN; GEORGE HAMPPEL, JR.; ROBERT W. HORGAN; E. A. JOHNSON; C. W. KAMMEIER; JOHN A. KUBIAK; JOHN E. LINSTER; DAVID J. LIPPERT; BERNARD J. LONTKOWSKI; RAY B. MACARTHUR; MICHAEL MAHER; GEORGE E. NASH; HARRY A. NELSON; RAY PIASKOSKI; JOHN P. ROEMER; A. THOMAS ROSE; LEO V. RYAN; MATHIAS F. SCHIMENZ; EDWARD D. SCHWADE; CHARLES M. SCHULTZ; WILLIAM H. SIEMERING; PALMER SONDRAL; EDWARD STLUKA; KENNETH L. SVEE; MILO K. SWANTON; H. C. WEINLICK; JOHN WRAGE.

The committee was created in 1946 to work in conjunction with the President's Committee on National Employ the Physically Handicapped Week. It is a citizens' committee composed of management, labor, the public and interested groups and organizations. Representatives of state agencies work as consultants to the committee.

#### TAX IMPACT, UNIVERSITY OF WISCONSIN STUDY COMMITTEE ON

*Members:* HAROLD M. GROVES, W. DONALD KNIGHT, *co-chairmen*; WILLIAM F. HELLMUTH, JR.; ROBERT J. LAMPMAN; CLARA PENNIMAN.

This committee, appointed January 1959 serves as a technical advisory committee to study and to provide information on the impact of the present tax system and the impact of various alternative methods of raising the additional revenue required for state and local purposes for the next few years.

#### TAX POLICY, GOVERNOR'S ADVISORY COMMITTEE ON

*Members:* MILLER UPTON, *general chairman*; JAMES DOYLE, JOHN C. LOBB, *vice chairmen* and the following members who are listed according to the subcommittee to which they were assigned.

*Tax Burden Subcommittee:* JACOB FRIEDRICH; ASSEMBLYMAN KEITH HARDIE; SENATOR HAROLD HUIBREGTSE; GORDON M. HAERBECKER; EDWIN LARKIN; WILBERT L. WITTE.

*Tax Sources and Incidence Subcommittee:* WALTER J. BURKE; JOHN C. LOBB; JAMES MARTINEAU; HOWARD M. PACKARD; ASSEMBLYMAN GLEN POMMERENING; SENATOR LYNN STALBAUM.

*Tax Sharing and Related Problems Subcommittee:* SENATOR DAVIS DONNELLY; JAMES DOYLE; EDMUND FITZGERALD; STANLEY GREEN; ASSEMBLYMAN WILLIAM MERRIAM; VERNE WING.

This 19-member committee, popularly known as the "Citizens Blue Ribbon Tax Committee", was appointed by the Governor June 1959. It is to propose measures that will raise revenue sufficient for essential state programs, that will distribute the tax

burden on a more equitable basis, that will encourage economic growth and that will provide stable state income from year to year. Committee members are to base their recommendations on suggestions in the University Tax Impact Committee's report. This nonstatutory committee has been established by Chapter 585, Laws of 1959, as a statutory committee known as Continuing Revenue Survey Commission.

#### UNITED NATIONS, GOVERNOR'S COMMITTEE ON THE

*Members:* BRUNO V. BITKER, *chairman*; L. H. ADOLFSON; RALPH ALTON; NATHAN A. BARACK; PERCY DUNN; GEORGE A. HABERMAN; PERCY HARDIMAN; HERBERT JOHNSON; GILBERT ROHDE; RICHARD ROSSITER; MRS. GEORGE W. SHORES; MRS. R. H. WENBERG; OLIVER WITTE, JR.

The Governor appointed this committee October 1959 for the purpose of coordinating and planning Wisconsin's official participation in the observance of United Nations' Day, October 23rd. During the coming year, the committee is to support activities which promote the United Nations as an instrument for world peace.

#### WATERSHED COORDINATING COMMITTEE OF STATE AND FEDERAL AGENCIES

*Members:* GOVERNOR GAYLORD A. NELSON; HENRY L. AHLGREN; M. F. SCHWEERS; L. P. VOIGT. *Advisors:* JOHN DALE; W. DONALD KNIGHT.

The Governor established this committee, July 1957 to promote a coordinated program on watershed development such as those existing between the Agricultural Extension Service, State Soil Conservation Committee, U.S. Soil Conservation Service and the Wisconsin Conservation Department. Suggestions for more effective watershed operations will be submitted to the Natural Resources Committee of State Agencies.

#### YOUTH FITNESS, WISCONSIN COUNCIL ON

*Members:* H. KENT TENNEY, *executive director*; JOHN ANDERSON; FRANCIS Z. CUMBEE; MARY JULIA DENTON; ROBERT J. FRANCIS; WILLIAM GLENN; AMY HUNTER; JOHN ROBERTS; GELINDA E. VESCOLANI; GEORGE WATSON; HENRY WEINLICK.

The Governor established this council in 1957 for the purpose of fostering the improvement of existing programs to promote physical fitness. The members of the council represent private and public agencies which are concerned with this problem. This is the executive committee of Wisconsin's larger committee on youth fitness, the latter being organized to cooperate with the National Council on Youth Fitness organized under the President's Executive Order 10673, July 16, 1956.