

---

---

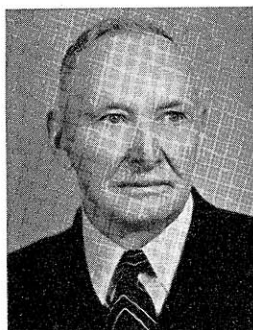
Members of the  
Legislature

---

---



## MEMBERS OF THE SENATE



CASHMAN  
1st District



BYRNES  
2nd District



ZIMNY  
3rd District

JOHN E. CASHMAN (Prog.) farms the land in Kewaunee County that his father purchased from the government. He was born in the town of Franklin, was educated in the public schools, Valparaiso University, and the Chicago Law School. After teaching in Kewaunee and Brown Counties, he became an inspector for the United States Bureau of Animal Industry at Chicago in 1901. From 1903 to 1919 he served in the United States Bureau of Internal Revenue and then returned to the farm. Senator Cashman was one of the La Follette delegates to the National Republican Convention at Cleveland in 1924. He served as a regent of the University for six years. In 1938 he ran for Congress from the eighth district but failed of election by only 583 votes. He is the author of much outstanding legislation including the present highway law and the tax on oleomargarine and other butter substitutes. Senator Cashman was a member of the senate from 1923 to 1937 and was elected again in 1940. Home Address: Route 1, Denmark.

First senatorial district: Door, Kewaunee, and Manitowoc Counties.

JOHN W. BYRNES (Rep.) was born at Green Bay on June 12, 1913. After attending St. John's Parochial School and East Green Bay High School he continued his education at the University of Wisconsin where he received the degrees of B.A. and LL.B. Since his graduation he has been a practicing attorney in Green Bay. Senator Byrnes has also been employed by the Banking Department of Wisconsin as a special deputy commissioner of banking but resigned from this position when he assumed his duties as a state senator in January 1941. Home Address: 939 South Webster Avenue, Green Bay.

Second senatorial district: Brown and Oconto Counties.

ARTHUR L. ZIMNY (Dem.) was born on August 5, 1900 at Milwaukee. After his graduation from South Division High School he attended McDonald's Business College and later the University of Wisconsin Extension Division. For fifteen years he has been in the advertising business. Senator Zimny is a member of the Polish Roman Catholic Union, the Polish National Alliance, the Century Club of Milwaukee, and the Knights of Columbus Council No. 524, Milwaukee. He was a pioneer in organizing the United Taxpayers Cooperative Association. He was elected to the senate in 1934 and re-elected in 1938. Home Address: 3819 West Forest Home Avenue, Milwaukee.

Third senatorial district: The fifth, eighth, eleventh, and twenty-fourth wards of the city of Milwaukee.



MURRAY  
4th District



GETTELMAN  
5th District



HAMPEL  
6th District

MILTON T. MURRAY (Rep.) was born June 1, 1898 in Milwaukee and received his education at Milwaukee State Teachers College, Marquette University, and the University of Chicago. He was a teacher and athletic coach for ten years and is now a practicing attorney in Milwaukee. He resigned from his fifth consecutive term in the assembly to run for a seat in the senate left vacant by the death of Oscar H. Morris. Mr. Murray was elected in April 1939 to fill the unexpired term and re-elected in 1940. Home Address: 419 West Acacia Road, Milwaukee.

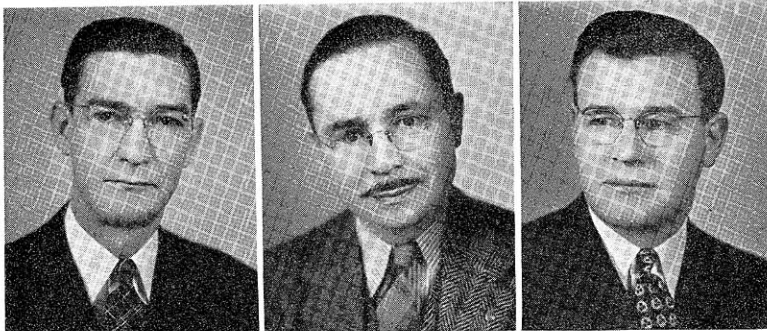
Fourth senatorial district: The thirteenth, eighteenth, and twenty-first wards of the city of Milwaukee; and the villages of Fox Point, River Hills, Shorewood, Whitefish Bay, and the town of Milwaukee.

BERNARD GETTELMAN (Rep.) was born at Chicago, Illinois on December 23, 1889. He received his education in the common schools of Milwaukee. Senator Gettelman is president-treasurer of the National Soap and Products Company. He has served in the Milwaukee County sheriff's department both as motorcycle officers' chief and as under-sheriff. He was elected a delegate to the Republican National Conventions of 1932 and 1936 and was chairman of the Wisconsin delegation at the latter convention. From 1917 to 1918 he was a member of the assembly, from 1923 to 1934 of the senate and in 1938 he was again elected to the senate. Home Address: 2254 North Hi-Mount Boulevard, Milwaukee.

Fifth senatorial district: The ninth, fifteenth, nineteenth, twenty-second, and twenty-sixth wards of the city of Milwaukee.

GEORGE HAMPEL (Prog.) was born in Milwaukee on August 27, 1885. He was educated in the public schools, the International Correspondence School, and Hesse's Art School. Senator Hampel is an accountant and is president of Hampel's Book Shop, Inc. Included in the public offices which he has held are county clerk of Milwaukee County in 1919 and 1920 and executive secretary of the Milwaukee Motion Picture Commission. He was a member of the assembly in 1931, was elected to the senate in 1936, and re-elected in 1940. Home Address: 3651 North 17th Street, Milwaukee.

Sixth senatorial district: The second, seventh, tenth, twentieth, and twenty-fifth wards of the city of Milwaukee.



GAWRONSKI  
7th District

BUSBY  
8th District

YOUNG  
9th District

ANTHONY P. GAWRONSKI (Dem.) was born at Wisconsin Dells on March 24, 1900. He was graduated from Marquette Academy in 1919 and from Marquette University Law School in 1923. Since 1923 he has been a practicing attorney in Milwaukee. Mr. Gawronski was a delegate to the Democratic National Convention at Chicago in 1932 and in the fall of that year was elected as one of the presidential electors from the Fourth Congressional District. He served as assistant district attorney and divorce counsel of Milwaukee County from 1933 to 1937. He was elected to the state senate in 1938. Home Address: 3032 South 12th Street, Milwaukee.

Seventh senatorial district: The twelfth, fourteenth, seventeenth, and twenty-seventh wards of the city of Milwaukee and the cities of Cudahy and South Milwaukee; towns of Lake and Oak Creek.

ALLEN J. BUSBY (Rep.) is forty years old and is a graduate of the West Milwaukee public schools, West Allis High School, and Milwaukee State Teachers College. In 1922 he received the degree of B.A. from the University of Wisconsin and in 1925 an M.A. in history and politics. After studying law at the University of Chicago, he returned to the University of Wisconsin where he received his LL.B. in 1928 and was admitted to the bar. Prior to taking up law, Senator Busby was principal of the high school at Little Chute for two years and an instructor of English and history in the West Allis High School from 1928 to 1933. Since 1932 he has been village attorney of West Milwaukee. He served in the assembly as a Progressive-Republican in 1931 and as a Progressive in 1935. In 1936 he was elected to the senate and in 1940 re-elected as a Republican. Home Address: 1673 South 53rd Street, Milwaukee.

Eighth senatorial district: Towns of Franklin, Granville, Greenfield, and Wauwatosa; villages of West Milwaukee and Greendale; sixteenth and twenty-third wards of the city of Milwaukee and cities of Wauwatosa and West Allis.

CORNELIUS T. YOUNG (Dem.) was born at Milwaukee on July 23, 1907. He was graduated from St. John's Military Academy in 1926 and from the University of Wisconsin Law School in 1931. He is a practicing attorney in Milwaukee. During the session of 1933 Senator Young had the honor of being the youngest speaker in the history of the assembly. He has served four terms in the assembly and was elected to the senate in 1938. Home Address: 2102 East Kenilworth Place, Milwaukee.

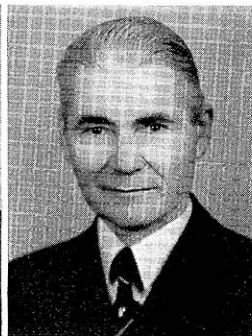
Ninth senatorial district: The first, third, fourth, and sixth wards of the city of Milwaukee.



KNOWLES  
10th District



NELSON  
11th District



CARROLL  
12th District

WARREN P. KNOWLES (Rep.) was born on August 19, 1908 at River Falls where he received his early education. He holds the degree of B.A. from Carleton College and LL.B. from the Law School of the University of Wisconsin. Since his graduation from the law school in 1933 he has engaged in the practice of law. Senator Knowles was a member of the county board from 1936-1940 and is a past president of both the Kiwanis and Conservation Clubs. This is his first term in the senate. Home Address: New Richmond.

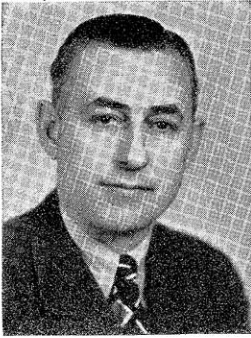
Tenth senatorial district: Buffalo, Pepin, Pierce, and St. Croix Counties.

PHILIP E. NELSON (Rep.) was born on September 1, 1891 on a farm at Curtiss, Wisconsin. He received his secondary education at Colby High School and later was graduated from the Williams Business College at Oshkosh. He has been employed by the Oakland Motor Car Company at Pontiac, Michigan as cost accountant and has operated cheese factories in Clark and Rusk Counties, and a general store at Conrath. He now owns and operates a farm at Cloverland, Maple P. O., Douglas County. During 1921-23 and 1925-35, he was a member of the county board of supervisors in Douglas County. For twenty-two months he served in the World War, most of the time with the A. E. F. in France. In 1927 and 1929 he was a member of the assembly and has served in the senate since 1931. Home Address: Route 1, Maple.

Eleventh senatorial district: Bayfield, Burnett, Douglas, and Washburn Counties.

JAMES H. CARROLL (Rep.) was brought up on a farm at Collins in Manitowoc County. He attended the common schools and was graduated from Oshkosh Normal School in 1900. After two years of teaching in northern Wisconsin he went to South Dakota in 1904. Here he engaged in banking and the real estate business and later opened an office in Minneapolis. From 1918 to 1924 he was supervisor of farm loans in the Seventh Federal Land Bank District. At the present time he owns and operates a 160-acre farm, deals in timber products, and handles farm loans and fire insurance. Senator Carroll was elected to the senate as a Republican in 1924, 1928, and again in 1940. Home Address: Glidden.

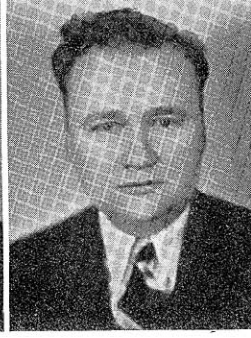
Twelfth senatorial district: Ashland, Iron, Price, Rusk, Sawyer, and Vilas Counties.



PETERS  
13th District



MACK  
14th District



COAKLEY  
15th District

JESSE M. PETERS (Rep.) was born at Iron Ridge, Dodge County, on July 21, 1897. After attending the graded schools at Iron Ridge and Pardeeville High School he entered Marquette University where he was graduated from the law school in 1924. Mr. Peters is a World War veteran. With the exception of serving as district attorney of Washington County from 1929 to 1930 he had held no public office until his election to the senate in 1938. Home Address: 202 South Rural Street, Hartford.

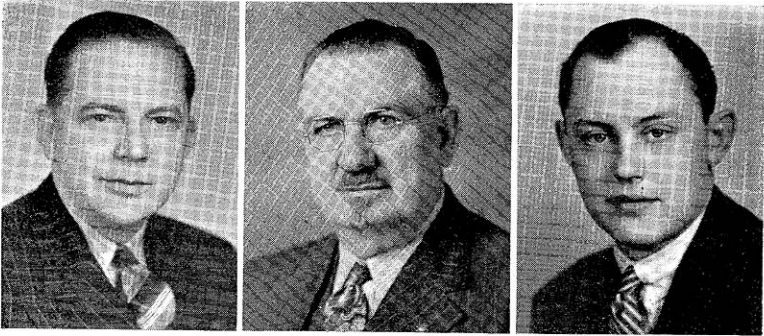
Thirteenth senatorial district: Dodge and Washington Counties.

MIKE MACK (Rep.) was born in Trempealeau County on November 15, 1873. After receiving a common school education he spent ten years in the lumber business. For the past forty years he has farmed in Outagamie County. During the World War, Senator Mack was chairman of the village Council of Defense. Before his election to the senate in 1932 he had served as a county board member and as a member of the county highway committee. Senator Mack has been a member of a number of important committees during his service in the senate. Home Address: Shiocton.

Fourteenth senatorial district: Outagamie and Shawano Counties.

MAURICE P. COAKLEY (Rep.) was born at Beloit on January 9, 1906. He received the degrees of B.A. from Beloit College in 1926 and of LL.B. in 1930 from the Law School of the University of Wisconsin. He is a practicing attorney in Beloit. During 1931 and 1932 he was an instructor in the department of government at Beloit College. From 1927 until his election to the senate he served as a record clerk in the senate. In 1932 he was admitted to the bar of the Territory of Hawaii at Honolulu. In the 1939 and 1941 sessions Senator Coakley served as Republican floor leader in the senate and in July 1940 was appointed private and military secretary to Governor Heil. He is serving his second term in the legislature. Home Address: 1234 Central Avenue, Beloit.

Fifteenth senatorial district: Rock County.



LEWIS  
16th District

LOVELACE<sup>1</sup>  
17th District

FELLENZ  
18th District

HELMAR A. LEWIS (Rep.) was born at McFarland on February 7, 1900. After attending the McFarland grade school and Stoughton High School he came to the University of Wisconsin where he was graduated from the law school in 1928. Senator Lewis has been a farmer and laborer, but since 1928 has engaged in the practice of law. He has held a number of public offices: city attorney of Boscobel from 1930 to 1932, district attorney of Grant County from 1933 to 1937, and mayor of Boscobel from 1939 to 1941. This is his first term in the senate. Home Address: Boscobel.

Sixteenth senatorial district: Crawford, Grant, and Vernon Counties.

CARL LOVELACE<sup>1</sup> (Rep.) was born on November 29, 1878 on a farm near Wiota in Lafayette County. His formal education ended with the completion of the eighth grade in the district school. After returning from the Spanish-American War he and his brother engaged in a mercantile business for a few years. Later he sold his interest in the partnership and became a traveling salesman in Minnesota where he worked his way up to division manager of a major oil company. In 1926 Senator Lovelace returned to Wisconsin where he entered the retail hardware business at Woodford. He has been president of the bank of Woodford since 1933. This is his first term in the senate. Home Address: Woodford.

Seventeenth senatorial district: Green, Iowa, and Lafayette Counties.

LOUIS J. FELLENZ, JR. (Rep.) was born at Fond du Lac on March 27, 1915. After his graduation from the Fond du Lac High School he went to the University of Wisconsin where he received the degree of LL.B. from the law school in 1939. Since that time he has been a practicing attorney. He had held no public office until his election to the senate in 1940. Home Address: 172 East Division Street, Fond du Lac.

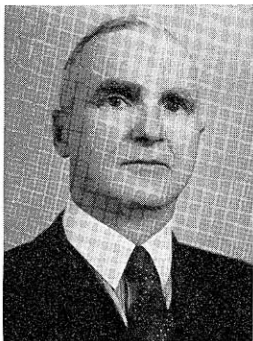
Eighteenth senatorial district: Fond du Lac, Green Lake, and Waushara Counties.

<sup>1</sup>Deceased February 12, 1941.





**BROWN**  
19th District



**BUCHEN**  
20th District



**GREENQUIST**  
21st District

**TAYLOR G. BROWN** (Rep.) was born in Richland County on February 28, 1890. After his graduation from high school he attended Platteville State Teachers College and the University of Wisconsin. He taught in the rural schools for two years, in the Viroqua High School for three years and was principal of Cashton High School for one year. In 1918 he served as county agricultural agent and from 1918 to 1930 as director of agriculture at Oshkosh under the Smith-Hughes Act. Mr. Brown has operated dairy farms since 1915. He was mayor of Oshkosh from 1930 to 1933, has been director of the New American Bank at Oshkosh since 1925, secretary of the Oshkosh Fair since 1918, president of the Wisconsin Association of Fairs from 1935 to 1937, and president of the Wisconsin-Fox Waterways Association from 1930 to 1934. This is his first term in the senate. Home Address: Jackson Drive, Oshkosh.

Nineteenth senatorial district: Calumet and Winnebago Counties.

**GUSTAVE W. BUCHEN** (Rep.) was born on a farm in the town of Lyndon in Sheboygan County on September 25, 1886. His parents came from Germany and were among the early settlers of the county. He attended the county district school, the Waldo graded school, and the Sheboygan public schools. He is a graduate of the University of Wisconsin, receiving the degrees of B.A. in 1909 and LL.B. in 1912. From 1909 to 1911 he was assistant professor of rhetoric and oratory at the University of Oregon, and from 1911 to 1912 an instructor in public speaking at the University of Wisconsin. Since 1920 he has practiced law in Sheboygan where he is the senior member of the law firm of Buchen, Federer and Grote. Mr. Buchen has always been active in community affairs serving on the public library board, the school board, the public recreation board, and the county rural normal school board. In 1936 he was chairman of the Sheboygan County Republican Club and a delegate to the Republican National Convention from the sixth congressional district. This is his first term in the legislature. Home Address: 1314 North 5th Street, Sheboygan.

Twentieth senatorial district: Ozaukee and Sheboygan Counties.

**KENNETH L. GREENQUIST** (Prog.) was born on April 3, 1910 at Florence and is of Scandinavian descent. He is a graduate of Racine High School, attended the University of Kentucky from 1929 to 1931, and was graduated from the Law School of the University of Wisconsin in 1936. He has worked as a laborer, machine operator and spot welder assistant in the J. I. Case Company, Massey-Harris Company and Modine Manufacturing Company. Mr. Greenquist practices law with the firm of Flynn, Storms and Greenquist in Racine. This is the first public office he has ever held. Home Address: 1700 Wisconsin Avenue, Racine.

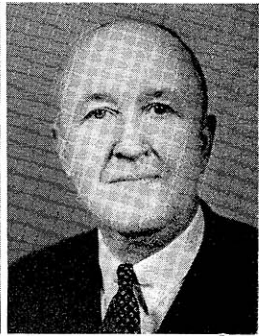
Twenty-first senatorial district: Racine County.



SHEARER  
22nd District



FISHER  
23rd District



LAIRD  
24th District

CONRAD SHEARER (Rep.) was born in the town of Somers, Kenosha County. He received his early education in the rural schools and was graduated from the Kenosha High School and the Milwaukee State Normal School. He taught in the rural schools of Kenosha County, the Kenosha College of Commerce, and the Milwaukee public schools. For seven years he was employed at the Kenosha Post Office as letter carrier and postal clerk, and since 1907 has been the secretary-manager of the central office of the Kenosha Industries. Senator Shearer served his city as alderman from 1913 to 1919 and as a member of the Kenosha Park Commission from 1919 to 1923. He was elected to the assembly in 1922 and served in that body until 1929 when he took his seat in the senate where he is now serving his fourth consecutive term. Senator Shearer has always taken an active part in the work of the Committee on Agriculture and Labor and served three sessions as its chairman. In January 1941, he was elected president pro tempore of the senate. Home Address: 520 - 68th Place, Kenosha.

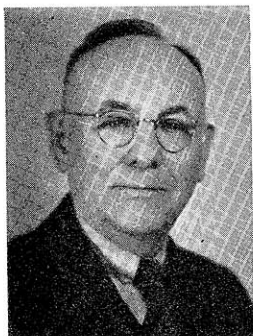
Twenty-second senatorial district: Kenosha and Walworth Counties.

FRED R. FISHER (Rep.) was born on a farm in the town of Farmington, Waupaca County. At the age of eighteen he entered an apprenticeship as a flour miller and has followed this line of work ever since. In 1905 at Waupaca he formed the partnership of Fisher and Fallgatter which is still in operation. Mr. Fisher has been active in many public activities. He has served both as alderman and mayor of Waupaca, as a member of the board of education, county board, county highway commission, and the mediation board. He is serving his first term in the senate. Home Address: Waupaca.

Twenty-third senatorial district: Portage and Waupaca Counties.

MELVIN R. LAIRD (Rep.) was born on a farm near Griggsville, Illinois, where he attended the rural schools and high school. He received his B.A. degree from Illinois, his M.A. from Princeton, and his DD. from James Millikin University. He was also a graduate student at the Universities of Wisconsin and Chicago. Senator Laird taught country school in Illinois, was principal of the Barry, Illinois High School and president of Lincoln College at Lincoln, Illinois. He also served as Presbyterian minister at Prairie du Sac, Wisconsin, Lincoln, Illinois, and Omaha, Nebraska. For the past twelve years he has been a member of the Wood County Board of Supervisors. At the present time he is office and credit manager of the Connor Lumber and Land Company at Marshfield. During the World War he served as chaplain of the 335th regiment in France. This is his first term in the senate. Home Address: 208 South Cherry Street, Marshfield.

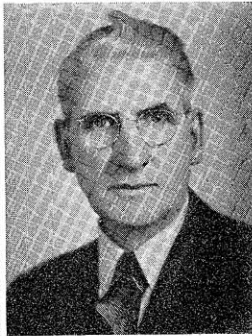
Twenty-fourth senatorial district: Clark, Taylor and Wood Counties.



MUELLER  
25th District



RISSER  
26th District



MILLER  
27th District

OTTO MUELLER (Rep.) was born at Wausau on December 19, 1875 and was educated in the public schools of that city. He was county supervisor of Marathon County for two years and a trustee of Mt. View Tuberculosis Sanatorium for the last twenty years. He is a jeweler by profession. Senator Mueller served in the senate for two terms beginning in 1927 and was re-elected again in 1938. Home Address: 1607 - 3d Street, Wausau.

Twenty-fifth senatorial district: Lincoln and Marathon Counties.

FRED RISSER (Prog.) was born in the town of Buffalo, Buffalo County, on January 15, 1900. After he was graduated from the Winona High School at Winona, Minnesota he spent a couple of years on his father's farm and then entered the University of Wisconsin where he received his B.A. degree in 1923 and his LL.B. in 1925. He taught in the Beaver Dam High School for one year and since 1925 has been a practicing attorney in Madison. From 1925 to 1930 he lectured on business law at Madison College. Before his election to the senate in 1936 he had held a number of public offices: town clerk of the town of Madison from 1927 to 1928; treasurer of the Highlands Mendota Beach School since 1930; and district attorney of Dane County from 1929 to 1935. Home Address: Route 6, Madison.

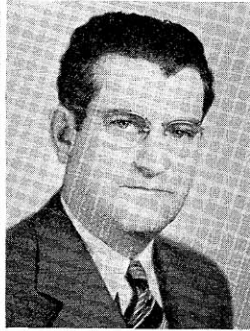
Twenty-sixth senatorial district: Dane County.

JESS MILLER (Rep.) was born in 1884 in the town of Eagle, Richland County. He was educated in the public schools and is a farmer and auctioneer by occupation. Mr. Miller has held a number of public offices—chairman of the town of Eagle, chairman of the county highway committee, the county mediation board, and the county Republican committee. He was elected to the senate for the first time in 1938. Home Address: Richland Center.

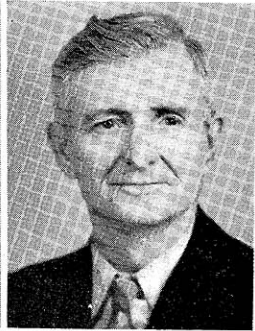
Twenty-seventh senatorial district: Columbia, Richland, and Sauk Counties.



HIPKE  
28th District



CONNORS  
29th District



DOWNING  
30th District

GEORGE H. HIPKE (Rep.) was born at New Holstein, on December 29, 1879. He received his education in the common schools of his home town. At an early age he entered the mercantile business and at present devotes his time to the canning industry, forest products, and the selling of land. He has held a number of public offices. From 1921 to 1931, he was on the Stanley Board of Education. Since 1919 he has been a member of the board of trustees of the Chippewa County Asylum; and from 1932 to 1935 was mayor of Stanley. He served three terms in the assembly and was elected to the senate in 1940. Home Address: Stanley.

Twenty-eighth senatorial district: Chippewa and Eau Claire Counties.

A. J. CONNORS (Prog.) was born at Duluth, Minnesota, on September 13, 1891. He attended Stillwater High School and was graduated from the Minnesota College of Law in 1921. He practiced law at Rice Lake from 1927 to 1928 and at Barron since 1929. Senator Connors has been district attorney of Barron County since 1929. He served in the army for three years and is a member of the American Legion and the Veterans of Foreign Wars. This is his first term in the senate. Home Address: Barron.

Twenty-ninth senatorial district: Barron, Dunn, and Polk Counties.

PHILIP DOWNING (Rep.) was born at Ontario, Canada on September 3, 1871. He was educated in Canada. One year after his graduation from the Vankleek Hill Normal School in Ontario he came to Wisconsin where he taught school for nine years. Since that time he has been a salesman. Senator Downing was postmaster of Amberg for a good many years and has been county supervisor for the past twelve years. He has also held many other local offices and has always been very active in civic affairs. At the present time he is president of the Marinette County Recreational Association. This is his first term in the senate. Home Address: Amberg.

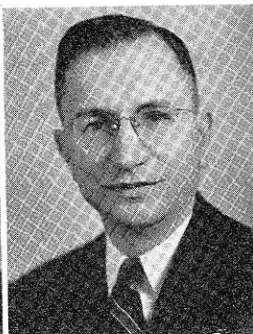
Thirtieth senatorial district: Forest, Florence, Langlade, Marinette and Oneida Counties.



COLLER  
31st District



SCHLABACH  
32nd District



FREEHOFF  
33rd District

AMROSE B. COLLER (Rep.) was born in the village of Marquette on September 6, 1885. He attended the public schools of that village and as soon as he was old enough worked on farms during his vacations. In 1899 he moved with his parents to a farm between Arkdale and Friendship. Later he purchased a tract of timber land and engaged in a farm lumbering operation which was eventually organized into the Arkdale Manufacturing Company which manufactures boxes and crates. This company was later moved to Necedah but it still owns considerable acreage of timber and ranch land near Friendship. This is the first time Senator Coller has held any public office. Home Address: Necedah.

Thirty-first senatorial district: Adams, Juneau, Marquette, and Monroe Counties.

RUDOLPH M. SCHLABACH (Rep.) was born on April 4, 1890 at La Crosse. He was graduated from Ohio Wesleyan in 1914 and from the Law School of the University of Wisconsin in 1921. Senator Schlabach has been a practicing attorney in La Crosse since 1921. He is a World War veteran. Before he was elected to the assembly in 1938 he had held the office of district attorney of La Crosse County from 1928 to 1932. He was elected to the senate in 1940. Home Address: 132 South 16th Street, La Crosse.

Thirty-second senatorial district: Jackson, La Crosse, and Trempealeau Counties.

WILLIAM A. FREEHOFF (Rep.) was born on a farm near La Crosse on December 27, 1889. After his graduation from high school he worked for a year on the La Crosse Leader Press. At the University of Wisconsin he took the long course in agriculture but before the course was finished he accepted a position on the college staff for one year. Until 1926 Mr. Freehoff engaged in farming and since that time he has been in the insurance business. He has been on the staff of the Wisconsin Agriculturist and has written for a number of farm publications as well as for general magazines and newspapers. He served in the assembly from 1921 to 1924 and was elected to the senate in 1938. Home Address: Route 1, Waukesha.

Thirty-third senatorial district: Jefferson and Waukesha Counties.



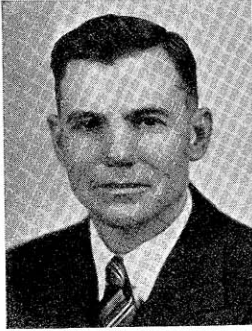
LARSEN  
Chief Clerk

HARTMAN  
Sergeant-at-Arms

LAWRENCE R. LARSEN was born at Racine, Wisconsin on March 23, 1897, and received his education in the common and high schools of that city. He served in the World War as acting Sergeant-Major, Headquarters Company at Camp Shelby, Mississippi. He was elected as chief clerk of the senate in 1935 and has been unanimously re-elected in each succeeding session. Home Address: 1028 Russett Street, Racine.

EMIL A. HARTMAN was born and educated at Manitowoc, Wisconsin. He is a paper hanging and painting contractor. Mr. Hartman has served as secretary of the Manitowoc County Republican Committee, delegate to the Republican state conventions, clerk with the Adjutant General, and filing clerk with the Secretary of State. Since 1915 he has served in various capacities with the senate: document clerk, mailing clerk, assistant sergeant-at-arms, and has been elected as sergeant-at-arms for the past six regular sessions and all intervening special sessions. Home Address: 2253 Fox Avenue, Madison.

## MEMBERS OF THE ASSEMBLY



LONG  
Adams and Marquette



VAN GUILDER  
Ashland

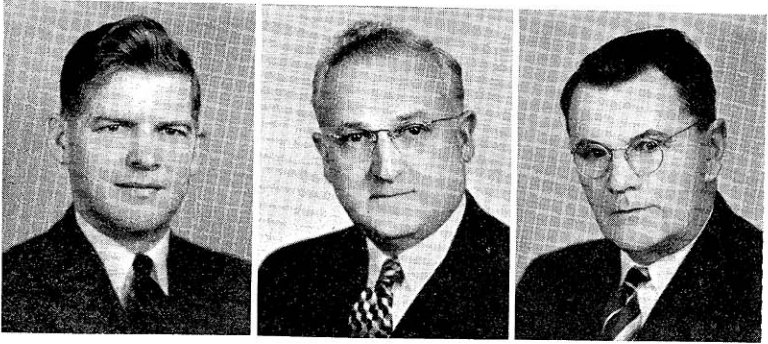


SYKES  
Barron

ROBERT M. LONG (Rep.) was born at Westfield on April 9, 1895. After his graduation from the Westfield High School in 1914 he began farming on the home farm where he still resides. Mr. Long was clerk of his school district for ten years, chairman of the town of Westfield for eight years, and chairman of the board of supervisors of Marquette County for four years. He was elected to the assembly for the first time in 1938. Home Address: Westfield.

HARRY VAN GUILDER (Prog.) was born at Cannon Falls, Minnesota on July 6, 1890. He was educated in the common schools of Burnett County. Mr. Van Guilder has been a clerk in a store and a bookkeeper, and since 1913 he has been employed by the Soo Line Railroad as a switchman. He has been president of the Local Brotherhood of Railroad Trainmen for ten years and in 1935 was a delegate to the national convention at Cleveland. For four years he was vice president of the Ashland County Progressive Club and was a delegate to the Fond du Lac convention at which the Progressive Party was formed. This is Mr. Van Guilder's third term in the assembly. Home Address: 820 - 4th Avenue West, Ashland.

CHARLES H. SYKES (Prog.) was born on January 11, 1881 at Brodhead. After his graduation from the Milton Junction High School he attended Janesville Business College. At the age of nineteen he began farming in Rock County. In 1919 he moved to a farm in Barron County on which he resided until he retired in 1934. Mr. Sykes served for two years on the county board of Rock County and for twelve years on the county board of Barron County. This is his second term in the assembly. Home Address: Route 1, Cameron.



CARLSON  
Bayfield

LYTIE  
Brown, 1st

SWEENEY  
Brown, 2nd

LAURIE E. CARLSON (Prog.) was born on a farm in the town of Bayfield on January 12, 1908. After his graduation from Bayfield High School in 1925 he attended Northland College for two years and the University of Wisconsin for two years. He is a fruit and dairy farmer. Mr. Carlson is interested in enlarging educational opportunities for both young and old and in 1937 introduced the first folk school bill in any state legislature. He is also interested in vocational aids to the smaller communities for agriculture, home economics, and general vocational education. This is his third consecutive term in the legislature. Home Address: Bayfield.

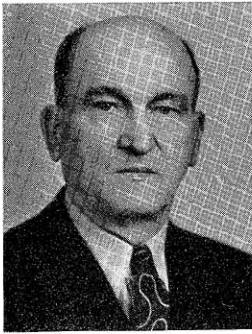
HAROLD A. LYTIE (Dem.), the son of B. O. Lytie of Green Bay, was born in Portage County on June 9, 1899. He attended the public schools of Amherst. At the age of seventeen he was the youngest person in the state to receive the master barber's license. He has owned and operated his own barber shop for eighteen years. Mr. Lytie has been secretary, treasurer, and president of the Central West Side Business Men's Association. He is first vice-president of the Associated Master Barbers of Wisconsin and was chairman of the joint legislative committee of the Journeymen and Master Barbers for six years. He is serving his third term in the assembly. Home Address: 409 West Walnut Street, Green Bay.

Brown County, first district: The city of Green Bay.

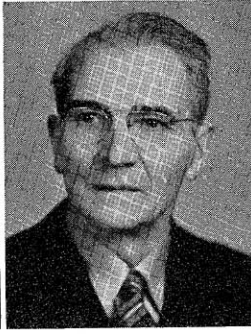
WILLIAM J. SWEENEY (Dem.) was born in the town of Glenmore, Brown County. He was educated in the common schools and also took a correspondence business course. For nine years ending in 1931 he was a road and bridge contractor. Since then he has been an auctioneer and farmer, and he also operates a stone quarry. He served the township of Glenmore as highway commissioner from 1920-22, as town clerk from 1922-27, and as town chairman from 1927-29. He was elected to the assembly in 1932 and has served continuously since that time. Home Address: Route 3, Green Bay.

Brown County, second district: All the towns, cities, and villages of Brown County except the city of Green Bay.





**HAMMERGREN**  
Buffalo and Pepin



**BENSON**  
Burnett and Washington



**BARNARD**  
Calumet

DAVID I. HAMMERGREN (Rep.) was born at St. Paul, Minnesota on June 16, 1875 where he was graduated from high school and business college. He was formerly a compositor and foreman, and superintendent of various St. Paul and Chicago concerns. For the past thirty years he has been in the publishing business. At one time he owned two farms and was a breeder of purebred Holstein cattle. Mr. Hammergren was a member of the Minnesota Legislature from 1905 to 1907, has been a member of the Buffalo County Board since 1932, and from 1936 to 1939 was chairman of the board. He is serving his second term in the assembly. Home Address: Cochrane.

GUY BENSON (Rep.) was born at Jordan, Green County on April 18, 1876. He was educated in the common schools and was graduated from the short course in agriculture at the University of Wisconsin in 1895. From 1895 to 1903 he farmed. Since 1903 he has been in the general merchandise business and has been located at Spooner for the past twenty-six years. Mr. Benson was president of the board of public works at Rice Lake from 1906 to 1907, a member of the Washburn County Board for twelve years, alderman and mayor of Spooner for three and two years respectively, and president of the Spooner School Board since 1920. He was also a member of the Wisconsin National Guard for two years. He has been a member of the assembly since 1938. Home Address: Spooner.

CHARLES R. BARNARD (Rep.) was born on March 13, 1883 at Brillion where he was graduated from high school and attended business college. He was a bookkeeper from 1903 to 1910 and a farmer from 1910 to 1925. Since 1927 Mr. Barnard has been an oil dealer. This is his first term in the assembly. Home Address: Brillion.



PADRUTT  
Chippewa

COOK  
Clark

AUSTIN  
Columbia

ARTHUR L. PADRUTT (Prog.) was born in Huron, South Dakota on September 26, 1917. He was graduated from high school in Chippewa Falls and received the degree of B.S. from Eau Claire State Teachers College in 1939. He has been employed by the Gillette Tire Company at Eau Claire. This is his first term in the assembly. Home Address: 45 East Birch Street, Chippewa Falls.

WALTER E. COOK (Rep.) was born on a farm at Unity on December 21, 1888. After attending the grade schools of that village he spent two years in high school. Mr. Cook has owned and operated a farm for fifteen years and has been a farm and livestock auctioneer for twenty years. He has served as a member of the council and as school treasurer of Unity. In 1938 he was elected to the assembly and re-elected in 1940. Home Address: Unity.

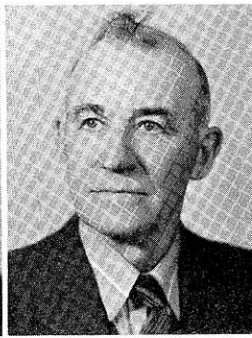
ARTHUR E. AUSTIN (Rep.) was born on January 22, 1891 in the town of Lowville, Columbia County. He received his education in the country school, the graded school at Rio, and the Columbus High School. He is a farmer and livestock dealer and still lives on the farm on which he was born. Mr. Austin has served his community as town treasurer, a member of the school board, secretary-treasurer of the Rio Cooperative Creamery, and as a church trustee. He was elected to the assembly for the first time in 1938. Home Address: Rio.



McDOWELL  
Crawford



BEGGS  
Dane, 1st



LEIN  
Dane, 2nd

DONALD C. McDOWELL (Rep.) was born at Mt. Sterling in Crawford County on August 27, 1890. He is a graduate of the Soldiers Grove High School and attended Lawrence College and the University of Wisconsin. Mr. McDowell is interested in farming and is a farm owner. He was post-master at Soldiers Grove from 1922 to 1935; a member of the school board from 1926 to 1933; a member of the Soldiers and Sailors Relief Commission of Crawford County for the past five years; and at present is a supervisor and member of the county board. He served in the World War with the famous 32nd Division. This is his third term in the assembly. Home Address: Soldiers Grove.

LYALL T. BEGGS (Prog.) was born on November 9, 1899 at Plainfield. He attended the elementary and high schools in Cameron and was graduated from Eau Claire Teachers College in 1922. In 1925 he received the degree of LL.B. from the Law School of the University of Wisconsin. Mr. Beggs is a practicing attorney in Madison. From 1935 to 1939 he was district attorney for Dane County and since 1939 has been circuit court commissioner. In 1939 and 1940 he was chairman of the Dane County Progressive Club. During the World War he served overseas for one year with the 65th Regiment, C. A. C., First Army Corps. He is a past commander of the American Legion and the Veterans of Foreign Wars and served as state president of the Fraternal Order of Eagles in 1937 and 1938. This is his first term in the legislature. Home Address: 806 Miami Pass, Madison.

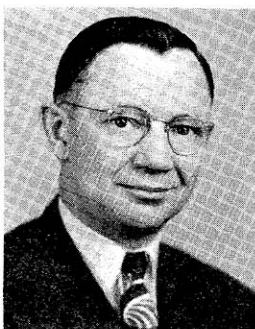
Dane County, first district: The City of Madison.

LARS O. LEIN (Prog.) was born in the town of Albion on May 17, 1874. He attended the rural schools and was graduated from Albion Academy in 1891. Mr. Lein has been a farmer since 1894. He is vice president of the Albion Mutual Insurance Company, a director of the Tobacco Exchange Bank, and manager of Hillside Creamery. He was elected to the assembly for the first time in 1940. Home Address: Edgerton.

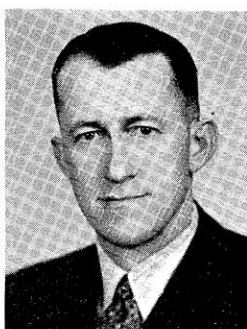
Dane County, second district: Towns of Albion, Blooming Grove, Bristol, Burke, Christiana, Cottage Grove, Deerfield, Dunkirk, Dunn, Medina, Pleasant Springs, Rutland, Sun Prairie, Windsor, and York; villages of Cambridge, Cottage Grove, Deerfield, De Forest, McFarland, Marshall, Rockdale, and Sun Prairie; city of Stoughton.



BAKER  
Dane, 3rd



GENZMER  
Dodge, 1st



JONES  
Dodge, 2nd

ALBERT J. BAKER (Prog.), son of the late P. O. Baker, a former assemblyman, was born December 14, 1874 in the town of Primrose, Dane County. He was educated in the common schools, and has been a farmer all his life. Mr. Baker has held numerous public and administrative offices. He was a member of the assembly from 1927 to 1939 and was re-elected in 1940. Home Address: 204 Wilson Street, Mount Horeb.

Dane County, third district: Towns of Berry, Black Earth, Blue Mounds, Cross Plains, Dane, Fitchburg, Madison, Mazomanie, Middleton, Montrose, Oregon, Perry, Primrose, Roxbury, Springdale, Springfield, Vermont, Verona, Vienna, and Westport; villages of Belleville, Black Earth, Blue Mounds, Brooklyn, Cross Plains, Dane, Maple Bluff, Mazomanie, Middleton, Mount Horeb, Oregon, Shorewood Hills, Verona, and Waunakee.

ELMER L. GENZMER (Dem.) is a grandson of Christian Genzmer, one of Dodge County's early pioneers who farmed east of Mayville. He was born at Mayville on January 3, 1903. From 1922 to 1923 he attended Milwaukee State Teachers College and Marquette Law School from 1923 to 1924. Mr. Genzmer taught in the rural schools of Dodge County for five years and later held various positions with industrial and business concerns in Wisconsin. He has been justice of the peace of Mayville since 1932. This is Mr. Genzmer's fourth consecutive term in the assembly. Home Address: 435 North Main Street, Mayville.

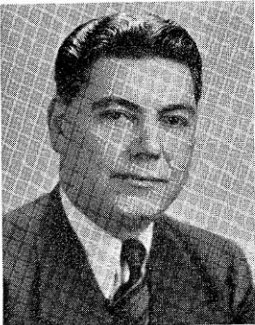
Dodge County, first district: Towns of Ashippun, Clyman, Emmet, Herman, Hubbard, Hustisford, Lebanon, Leroy, Lomira, Rubicon, Shields, Theresa, and Williamstown; villages of Clyman, Hustisford, Iron Ridge, Lomira, Neosho, and Theresa; cities of Horicon and Mayville, and the fifth, sixth, thirteenth, and fourteenth wards of Watertown.

WILLIAM E. JONES (Rep.) was born on November 8, 1894 in the town of Calamus, Dodge County where he attended the common schools and Columbus High School. Mr. Jones has been a farmer all his life. He is serving his fourth term as town chairman. During the World War he was with the Keystone Division. This is his second term in the assembly. Home Address: Route 3, Beaver Dam.

Dodge County, second district: Towns of Beaver Dam, Burnett, Calamus, Chester, Elba, Fox Lake, Lowell, Oak Grove, Portland, Trenton, and Westford; villages of Fox Lake, Lowell, Reeseville, and east ward of Randolph; cities of Beaver Dam and Juneau, and first, second, third, and fourth wards of the city of Waupun.



GRAASS  
Door



SHEAHAN  
Douglas, 1st



PETERSON  
Douglas, 2nd

FRANK N. GRAASS (Rep.) was born at Sturgeon Bay on August 19, 1885. After he was graduated from the Sturgeon Bay High School in 1905 he studied forestry and entered the forest tree seed exporting business. For many years he was actively engaged in the fruit-growing business. Mr. Graass served two terms as president of the Door County Chamber of Commerce. For twelve years he acted as legislative counsel for many state conservation organizations. He also served on the advisory board of the Wisconsin Conservation Commission for four years. Mr. Graass is secretary of the Wisconsin Committee on Interstate Cooperation, a member of the board of managers of the Council of State Governments, and chairman of a committee on Great Lakes Fisheries. He maintains an active interest in state budget and revenue affairs, conservation, rural school education, and in the care, hospitalization, and education of poor and crippled children. This is Mr. Graass' sixth term in the assembly. Home Address: Sturgeon Bay.

FRANK D. SHEAHAN (Prog.) was born at Superior on December 30, 1901. After attending high school he was graduated from business college and later took a correspondence course in traffic management. Since 1918 he has been chief bill clerk and cashier with the Northern Pacific Railway. Mr. Sheahan has been active in the Brotherhood of Railway Clerks of the Lake Superior Division of the Northern Pacific since 1920. Since 1939 he has been a member of the city council, police and fire commission, city planning commission, and since 1940 chairman of the local projects committee of the W.P.A. This is his first term in the assembly. Home Address: 1411 12th Street, Superior.

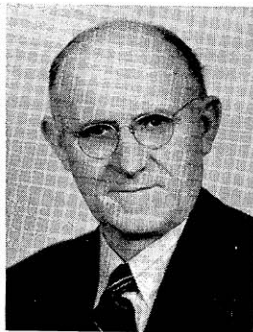
Douglas County, first district: The third, fourth, fifth, sixth, and seventh wards of the city of Superior.

ELMER C. PETERSON (Prog.) was born in Martin County, Minnesota on November 30, 1892. He was educated in the public schools of Rockford, Illinois and was graduated from Brown's Business College in that city. During the World War he served with the A.E.F. 311th French Mortar Battery, 86th Division. At the present time Mr. Peterson is engaged in farming in Douglas County. He has held a number of public offices, including town clerk, school clerk, town chairman, and a member of the county board from 1930 to 1935. He was also president of the Douglas County Farmers Union from 1931 to 1938. This is Mr. Peterson's fourth term in the assembly. Home Address: Route 1, Poplar.

Douglas County, second district: Towns of Amnicon, Bennett, Brule, Cloverland, Dairyland, Gordon, Hawthorne, Highland, Lakeside, Maple, Oakland, Parkland, Solon Springs, Summit, Superior, and Wascott; villages of Lake Nebagamon, Oliver, Solon Springs, and Poplar; first, second, eighth, ninth, and tenth wards of Superior.



HANSON  
Dunn



PRITCHARD  
Eau Claire



BERQUIST  
Florence, Forest and  
Oneida

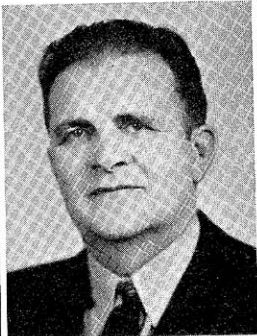
EARL W. HANSON (Rep.) was born on October 17, 1888 at Elk Mound where he attended the public schools. In 1907 he was graduated from the Eau Claire Business College. He was cashier of the bank at Elk Mound from 1908 to 1931. Since 1931 he has been in the general insurance business. Mr. Hanson has served his community as village clerk, trustee, and president. He was a member of the county highway committee from 1937-1938, has been a member of the Dunn County Board since 1933 and its chairman since 1935. Mr. Hanson is a World War veteran. This is his second term in the assembly. Home Address: Elk Mound.

JOHN T. PRITCHARD (Prog.) was born on December 20, 1884 in Caernarvon, Wales and received his early education there. In 1905 he came to America. He studied in the College of Agriculture at the University of Wisconsin for two years. Since then he has engaged in farming, moving to Eau Claire County in 1913. He has held various public offices and for twelve years was a member of the county board and chairman of its finance and resolution committees. Mr. Pritchard is serving his fifth term in the legislature. Home Address: Route 5, Eau Claire.

HENRY J. BERQUIST (Prog.) was born in Minneapolis on February 26, 1905 and has a common school education. He has been a labor foreman and superintendent of the Northlands Fur and Packing Company and national organizer and vice president of the American Fur Growers Association, as well as cartoonist for its monthly magazine. Mr. Berquist has been interested in fur farming but at the present time he is engaged in truck gardening. He has taken an active part in legislation pertaining to forestry and was secretary of the 1939 interim committee on Land Utilization Policy for the Northern Area of Wisconsin. This is his third term in the assembly. Home Address: Rhinelander.



NUSS  
Fond du Lac, 1st



VAN DE ZANDE  
Fond du Lac, 2nd



GOLDTHORPE  
Grant, 1st

WILLIAM J. NUSS, JR. (Rep.) was born at Sheboygan on June 12, 1914. After his graduation from Fond du Lac High School in 1931 he attended Notre Dame for two years and was graduated from Marquette University Law School in 1937 with the degree of LL.B. Since 1937 he has been a practicing attorney in Fond du Lac. Mr. Nuss has been active in the Republican Party and was chairman of the Young Republicans of Fond du Lac County from 1938 to 1939. Since 1939 he has been chairman of the Republican Party of Fond du Lac County. This is his first term in the assembly. Home Address: 231 Melrose Boulevard, Fond du Lac.

Fond du Lac County, first district: Towns of Calumet, Empire, Fond du Lac, and Taycheedah; city of Fond du Lac.

ALFRED VAN DE ZANDE (Rep.) was born at Campbellsport on October 8, 1893. He received his education in the local grade school and was graduated from the Campbellsport High School in 1912. He has been in the insurance business since 1910 and is vice president of the Campbellsport Mutual Insurance Company. Mr. Van De Zande was president of the village of Campbellsport for two years, a member of its board of trustees for two years, and undersheriff and sheriff of Fond du Lac County for one term each. In 1918 he was an assistant instructor of military tactics at the University of Wisconsin. This is his first term in the assembly. Home Address: Campbellsport.

Fond du Lac County, second district: Towns of Alto, Ashford, Auburn, Byron, Eden, Eldorado, Forest, Friendship, Lamartine, Marshfield, Metomen, Oakfield, Osceola, Ripon, Rosendale, Springvale, and Waupun; villages of Brandon, Campbellsport, Eden, Fairwater, North Fond du Lac, Oakfield, Rosendale, and St. Cloud; city of Ripon and fifth and sixth wards of the city of Waupun.

WILLIAM H. GOLDTHORPE (Rep.) was born at Cobb. He was educated in the local schools and Platteville Teachers College and later studied law and advertising. Mr. Goldthorpe is a newspaper publisher. He was president of the Cuba City board of education for a number of terms, president and secretary of the local commercial club, and postmaster under four presidents. He is very interested in music. Mr. Goldthorpe organized and conducted the first teachers college band in Wisconsin and played for two presidents of the United States. He also organized and conducted the first press association band in the United States. He is serving his fourth term in the assembly and his second term as chairman of the Committee on Education. Home Address: Cuba City.

Grant County, first district: Towns of Beetown, Cassville, Clifton, Ellenboro, Glen Haven, Harrison, Hazel Green, Jamestown, Lima, Paris, Platteville, Potosi, Smelser, and Waterloo; villages of Cassville, Hazel Green, Livingston, and Potosi; cities of Platteville and Cuba City.



McINTYRE  
Grant, 2nd



KEEGAN  
Green



BOYSON  
Green Lake and  
Waushara

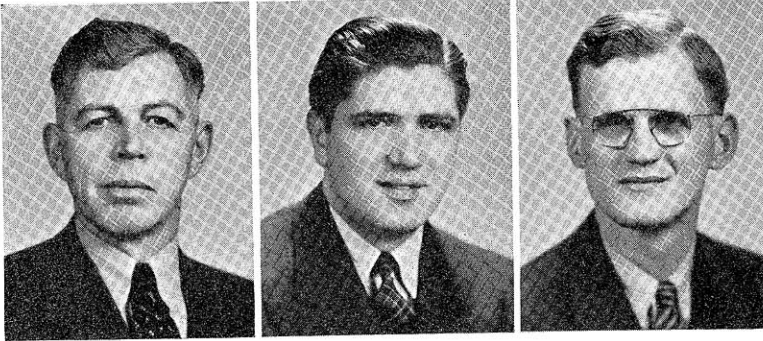
P. BRADLEY McINTYRE (Rep.) was born at Muscoda on February 9, 1872. He attended the Muscoda grade and high schools and completed the commercial course at the Dixon, Illinois Business College in 1892. For two years after his graduation he was an accountant in an insurance company but resigned to return to Muscoda where he operated a farm for ten years. From 1905 to 1931 he was connected with a number of agricultural manufacturing concerns as traveling salesman, assistant sales manager, and sales manager. Since 1931 he has been with the Federal Land Bank of St. Paul as an appraiser of Wisconsin farms. Mr. McIntyre was town clerk of Muscoda from 1897 to 1903 and chairman of the town in 1904. This is his third term in the assembly. Home Address: 344 West Maple Street, Lancaster.

Grant County, second district: Towns of Bloomington, Boscobel, Castle Rock, Fennimore, Hickory Grove, Liberty, Little Grant, Marion, Millville, Mt. Hope, Mt. Ida, Muscoda, North Lancaster, Patch Grove, South Lancaster, Watterstown, Wingville, Woodman, and Wyalusing; villages of Bagley, Bloomington, Blue River, Montfort, Mt. Hope, Muscoda, Patch Grove, and Woodman; cities of Boscobel, Fennimore, and Lancaster.

HARRY A. KEEGAN (Rep.) was born at Madison, South Dakota, on November 18, 1882. He attended high school for one year and then took a two-year course at Monroe Business College, Monroe, Wisconsin. He was in the retail grocery business at Monroe for nine years. For the past twenty-four years he has been a dairy farmer. Mr. Keegan has served his community as a member of the city council and as treasurer of the school board of Monroe township. For over four years he was a member of Company H of the Wisconsin National Guard. During the past four years he has been vice president of the Green County Mutual Insurance Company. This is his second term in the assembly. Home Address: Route 4, Monroe.

ROBERT H. BOYSON (Rep.) was born at Tustin in Waushara County where he was educated in the elementary schools. Up to 1918 he had a general store and saloon, between 1914 and 1937 he was a dealer in horses, cattle, and automobiles, and since 1926 he has engaged in farming. Mr. Boyson has held a number of public offices: school clerk between 1926 and 1934, treasurer of the cheese factory until 1918, and sheriff of Waushara County for the last four years. He served with the motorized artillery during the World War and is a member of the American Legion. This is his first term in the legislature. Home Address: Wautoma.





JAMES  
Iowa

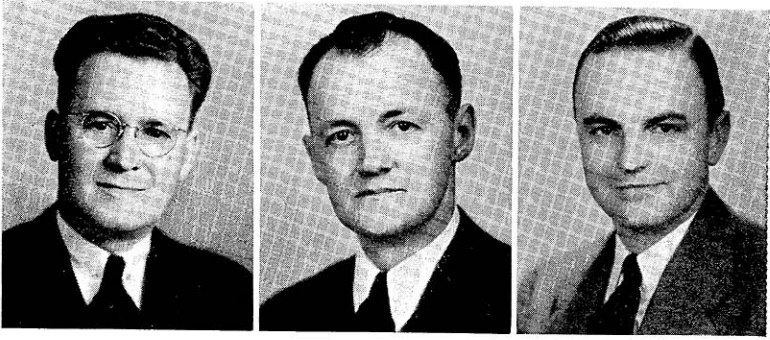
VARDA  
Iron and Vilas

JOHNSON  
Jackson

GLENN H. JAMES (Rep.) was born at Montfort on April 19, 1890. He attended the public schools and was graduated from the Montfort High School in 1906. He has farmed all his life and has resided on the same farm since 1912. Mr. James was clerk of the rural school board for eighteen years, a member of the town board for eight years, and chairman of the town of Eden for four years prior to his election to the assembly in 1938. Home Address: Montfort.

JOHN P. VARDA (Prog.) was born at Hurley on October 2, 1916. After his graduation from high school he attended the University of Wisconsin where he was graduated from the law school with the degree of LL.B. in 1940. Since 1940 he has been a practicing attorney in Eagle River. This is his first term in the assembly. Home Address: Hurley.

OSWALD H. JOHNSON (Rep.), son of the late Hans A. and Bertilde Johnson, was born at Black River Falls on January 16, 1912. He is a graduate of Black River Falls High School and received the degree of Ph.B. from Carroll College in 1937. He worked for Wadham's Oil Company as an oil station attendant and branch clerk for two years following his graduation from high school. Mr. Johnson owns and operates a general insurance agency in Black River Falls. He is a member of the city council of Black River Falls and was elected to the assembly in 1940. Home Address: Black River Falls.



DAUGS  
Jefferson

BRUNNER  
Juneau

PFENNIG  
Kenosha, 1st

PALMER F. DAUGS (Dem.) was born in the town of Farmington, Jefferson County, on February 10, 1903. He attended high school in Fort Atkinson and the College of Business Administration of Marquette University. He is a salesman. Mr. Daugs is secretary of the Southern Wisconsin Lakeland Association, a member of Delta Sigma Pi, International Commerce Fraternity, a charter and key member of the Fort Atkinson Lions Club, and has held many offices in civic and welfare organizations in Jefferson County. He is serving his fifth consecutive term in the assembly and is deeply interested in local government. He has sponsored bills on installment payment of real estate taxes, consolidation of counties, nonpartisan election of county officials, modernization of county government to allow choice of management, and state-wide citizenship training financed by the state. Mr. Daugs was secretary of the interim committee on Taxation Problems created by the 1933 Legislature. He has had a perfect attendance record in four legislative sessions. Home Address: 112 Louise Street, Lake Mills.

PAT W. BRUNNER (Rep.) was born in the town of Lemonweir on September 8, 1903. After attending the elementary and high schools in Mauston he farmed for four years and was a stationary engineer for four years. For the past twelve years Mr. Brunner has been engaged in general merchandizing. He was elected to the assembly for the first time in 1940. Home Address: Lyndon Station.

FREDERICK S. PFENNIG (Rep.) was born at Kenosha on October 26, 1905. He was educated in the elementary schools of Kenosha, was graduated from St. Johns Military Academy, and attended Northwestern University. Since 1926 Mr. Pfennig has been vice president of Charles H. Pfennig, Inc. He is serving his first term in the assembly. Home Address: 306 - 76th Street, Kenosha.

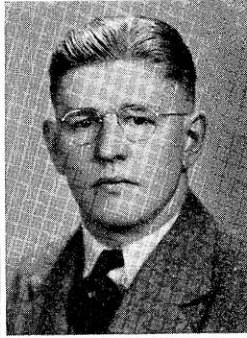
Kenosha County, first district: Second, third, fourth, eighth, ninth, tenth, and twelfth wards of the city of Kenosha.



SIEBERT  
Kenosha, 2nd



MLEZIVA  
Kewaunee



KRAUSE  
La Crosse, 1st

MATT G. SIEBERT (Dem.) was born March 11, 1883 at Stevens Point. He was a paper maker at Stevens Point from 1899 to 1902, and from 1908 to 1916 was secretary and business agent for Local 523 Kenosha of the Hotel and Restaurant Employees and Bartenders International Alliance of America. Since 1920 he has been in the hotel business in Salem, Wisconsin. He was town chairman and a member of the Kenosha County Board in 1926, 1927, 1934, and 1935. He was elected to the assembly in 1934 and re-elected in 1938 and 1940. Home Address: Box 16, Salem.

Kenosha County, second district: Towns of Brighton, Bristol, Paris, Pleasant Prairie, Randall, Salem, Somers, and Wheatland; village of Silver Lake; first, fifth, sixth, seventh, and eleventh wards of the city of Kenosha.

JOSEPH M. MLEZIVA (Rep.) was born in Kewaunee County on January 21, 1890. He received his early education in the rural schools and continued his studies at Green Bay Business College and North Chicago Business College. During the six years that he worked in Chicago for Western Electric, Wells-Fargo Express, and Sears, Roebuck and Company, he attended night school at Lewis Institute, Crane Technical High School, and Northwestern University School of Commerce. When his father died in 1915 he returned to the home farm which he still owns and operates. Mr. Mleziva has held many business, farm, and public offices. He served six years as treasurer of Kewaunee County, four years as town treasurer, and three years as treasurer of his school district. He has been president of the Kewaunee County Pure-Bred Seed Growers Association, manager and treasurer of the Luxemburg Livestock Shipping Association for six years, a director of the Green Bay Production Credit Association from 1934 to 1937, a U. S. and Wisconsin crop reporter since 1926, and a committeeman and farm reporter for the Agricultural Soil Conservation Program. He reorganized the Farmers Trading Company at Luxemburg and was its president and treasurer for three years. In 1938 he was awarded a certificate of recognition as a Master Farmer of America. This is his first term in the assembly. Home Address: Route 1, Luxemburg.

EDWARD C. KRAUSE (Rep.) was born at La Crosse on December 14, 1914. He received his elementary education in the public and parochial schools of La Crosse and was graduated from Central High School in 1933. Mr. Krause attended La Crosse State Teachers College for one semester in 1935. He was secretary for a clothing company in 1936 and at the present time is a salesman. This is his first term in the legislature. Home Address: 525 South 10th Street, La Crosse.

La Crosse County, first district: The first, second, third, fourth, fifth, sixth, seventh, ninth, tenth, eleventh, twelfth, thirteenth, fourteenth, fifteenth, sixteenth, nineteenth, and twentieth wards of the city of La Crosse.



MILLER  
La Crosse, 2nd



YOUNGBLOOD  
Lafayette



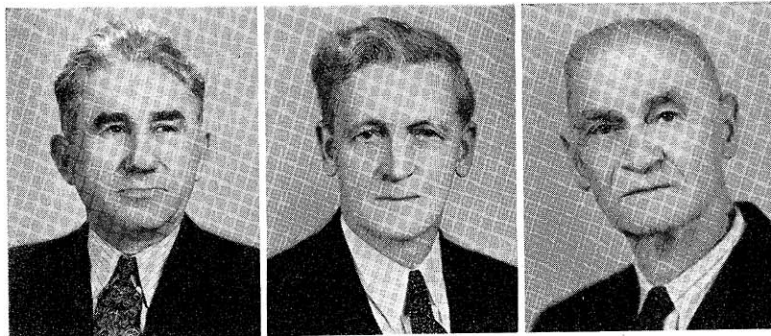
CAVANAUGH  
Langlade

WILLIAM F. MILLER (Rep.) was born in the town of Barre, La Crosse County on September 24, 1869 and has always lived on a farm. He was educated in the common schools. Besides operating his farm, he has been manager of the Farmers Cooperative Supply and Shipping Association for two years, a director of the Shelby Farmers Fire Insurance Company for twenty years and a member of the State Board of Vocational Education from 1925 to 1931. For the past six years he has been a member of the village council. He served in the assembly from 1921 to 1925, from 1929 to 1933, and from 1939 to the present time. Home Address: West Salem.

La Crosse County, second district: The eighth, seventeenth, eighteenth, and twenty-first wards of the city of La Crosse, and the entire county outside La Crosse.

HENRY YOUNGBLOOD (Rep.) was born on May 9, 1879 in the town of Wiota, Lafayette County. He was educated in the common schools. Mr. Youngblood has been a farmer all his life and in 1915 bought a farm of his own on which he now resides. He has held a number of public offices: supervisor of his town in 1926-27; town chairman from 1928 to 1933; member of the road and bridge committee of Lafayette County from 1929 to 1932. He has also served on the drought committee, seed and feed committee, and has been rural advisor on a federal resettlement project for Lafayette and Iowa Counties. This is his third term in the assembly. Home Address: Route 1, Woodford.

JAMES T. CAVANAUGH (Dem.) born at Milwaukee, September 1, 1903, has lived most of his life at Antigo. He attended St. John's School there and the Antigo High School. His college work was done at St. Mary's College, Winona, Minnesota and at the Law School of Marquette University. In 1931, Mr. Cavanaugh was admitted to the bar. Previous to this he was employed as a passenger brakeman on the North Western Railroad. He has been a member of the assembly from 1933 to 1939 and was re-elected in 1940. Home Address: 438½ Edison Street, Antigo.



AuBUCHON  
Lincoln

EGAN  
Manitowoc, 1st

RILEY  
Manitowoc, 2nd

W. H. AuBUCHON (Prog.) was born at Farmington, Missouri on May 28, 1889. Here he attended the public schools and Ozark Business University and later continued his training at Gregg Normal in Chicago. He taught school from 1910 to 1938 and established the Merrill Commercial College at Merrill, Wisconsin in 1915. Mr. AuBuchon is now in the real estate business. He has been an alderman of Merrill and is the present mayor of that city serving his fifth consecutive term. This is his first term in the assembly. Home Address: Merrill.

JOHN EGAN (Rep.) was born on February 28, 1876 in the town of Centerville, Manitowoc County where he was educated in the common schools. He later attended the State Teachers College at Oshkosh. Mr. Egan taught school for four years and from 1912 to 1940 was a conservation warden. He has been very active in the Boy Scout movement for the past twenty-five years and is the holder of the Silver Beaver Award in scouting. He had held no public office until his election to the assembly in 1940. Home Address: 1415 South 14th Street, Manitowoc.

Manitowoc County, first district. Towns of Centerville, Liberty, Manitowoc Rapids, Meeme, and Newton; city of Manitowoc.

FRANK E. RILEY (Rep.) was born on March 5, 1865 at Fitzwilliam, New Hampshire. He has lived in Two Rivers since 1868. After attending the public schools until he was fourteen years of age he became associated with his father in the painting and decorating business until 1898. Mr. Riley was postmaster of Two Rivers from 1898 to 1914 and from 1919 to 1923. During the sessions of 1915 and 1917 he served in the post office of the legislature. He has held a number of public offices—assessor at Two Rivers for two years, alderman for one year and a member of the draft board from 1916 to 1918. For fifteen years prior to 1938 he was in the hardware business. This is his second term in the assembly. Home Address: Two Rivers.

Manitowoc County, second district: Towns of Cato, Cooperstown, Eaton, Franklin, Gibson, Koesuth, Maple Grove, Mishicot, Rockland, Schleswig, Two Creeks, and Two Rivers; villages of Reedsville and Valders; cities of Kiel and Two Rivers.



LUECK  
Marathon, 1st



FEHLHABER  
Marathon, 2nd



SENGSTOCK  
Marinette

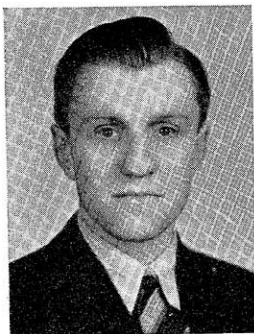
MARTIN C. LUECK (Rep.) was born at Hamburg on February 27, 1888. He was educated in the common schools and took a two-year course in the Marathon County School of Agriculture and Domestic Economy. Mr. Lueck has been a farmer all his life. He has held a number of public offices: town assessor for ten years, district school clerk for eighteen years, and member of the county board since 1934. This is his first term in the assembly. Home Address: Hamburg

Marathon County, first district: Towns of Bergen, Berlin, Bern, Bevent, Brighton, Cassel, Cleveland, Day, Eau Pleine, Elderon, Emmet, Frankfort, Franzen, Green Valley, Guenther, Halsey, Hamburg, Holton, Hull, Johnson, Knowlton, Kronenwetter, McMillan, Maine, Marathon, Mosinee, Reid, Rib Falls, Rib Mountain, Reitbrock, Spencer, Stettin and Wein; that part of Abbotsford village in Marathon County and villages of Athens, Edgar, Elderon, Fenwood, Marathon, Spencer, and Stratford; the city of Mosinee and that part of the city of Colby in Marathon County.

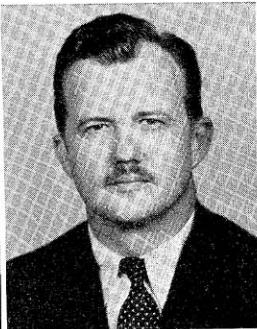
ORVILLE W. FEHLHABER (Rep.) was born at Wausau on March 16, 1903. After his graduation from Wausau High School he attended the University of Wisconsin where he received his LL.B. degree from the law school in 1928. Since that time he has been a practicing attorney. During 1923 and 1924 he was with Halsey, Stuart and Company, dealers in investment securities. Mr. Fehlhaber was a United States Court Commissioner from 1933-1940. This is his first term in the legislature. Home Address: 1405 Prospect Avenue, Wausau.

Marathon County, second district: Towns of Easton, Harrison, Hewitt, Norrie, Plover, Ringle, Texas, Wausau, Weston; villages of Brokaw, Hatley, Rothschild, and Schofield; city of Wausau.

ROY H. SENGSTOCK (Rep.) was born at Marinette on February 3, 1913. He was educated in the schools of that city and is a graduate of the Marinette County Rural Normal School. He was employed as a factory worker, taught school three years, and since 1931 has been in the insurance business. At present Mr. Sengstock is manager of the Graves and Sengstock Insurance Agency. He is active in politics. He is secretary of the Republican Party in the eighth congressional district, chairman of the Young Republicans in his district, and secretary of the Marinette County Republican Committee. During the 1939 session of the legislature, Mr. Sengstock was a temporary assistant in the executive office. This is his first term in the legislature. Home Address: Marinette.



DELA HUNT  
Milwaukee, 1st



BIEMILLER  
Milwaukee, 2nd



LUEBKE  
Milwaukee, 3rd

ROBERT G. DELA HUNT (Rep.) was born at Milwaukee on March 20, 1912. After his graduation from Marquette High School he attended Marquette University where he was graduated from the law school in 1937. Since that date he has been a practicing attorney in the city of Milwaukee. This is his first term in the legislature. Home Address: 1924 North Cambridge Avenue, Milwaukee.

Milwaukee County, first district: The first and third wards of the city of Milwaukee.

ANDREW J. BIEMILLER (Prog.) was born in 1906 at Sandusky, Ohio where he was educated in the public schools. He received his B.A. degree from Cornell University in 1926 and studied in the graduate school of the University of Pennsylvania from 1929 to 1931. From 1926 to 1931 he was an instructor in history at the University of Syracuse and the University of Pennsylvania. Mr. Biemiller came to Milwaukee in 1932 where he was educational director of the Socialist Party and editor of its weekly paper, the Wisconsin Leader, until 1936. He is an active member of the Progressive Party Federation. Mr. Biemiller has long been a member of the American Federation of Teachers, served on the executive board of the Milwaukee Federated Trades Council, and is a special organizer for the Wisconsin State Federation of Labor. He is vice president of the Wisconsin Turner district. Mr. Biemiller is serving his third term in the assembly and is floor leader for the Progressive Party. Home Address: 1958 North 20th Street, Milwaukee.

Milwaukee County, second district: Second and tenth wards of the city of Milwaukee.

WILLIAM LUEBKE, JR. (Prog.) was born on April 28, 1906 in Milwaukee where he was educated in the elementary and vocational schools. He attended high school at night and took a number of home study courses. In the summer of 1933 he was a student in the University of Wisconsin School for Workers in Industry. He was formerly an electrician but at the present time is a salesman. Mr. Luebke was a candidate for the assembly in 1938 and received a tie vote. He ran again in 1940 and this time defeated his opponent. This is his first term in the legislature. Home Address: 3904 West Scott Street, Milwaukee.

Milwaukee County, third district: Towns of Franklin and Greenfield; village of West Milwaukee; city of West Allis.



TEHAN  
Milwaukee, 4th

KRYSZAK  
Milwaukee, 5th

RUBIN<sup>1</sup>  
Milwaukee, 6th

ROBERT E. TEHAN (Dem.) was born at Milwaukee on January 7, 1905. He attended Gesu Grade School and Marquette Academy and received his B.A. degree from Marquette University in 1927 and his LL.B. degree in 1929. Before becoming an attorney he was employed in the railroad shops at Milwaukee and as treasurer of the Pabst Theater. He is a member of both the Milwaukee and the Wisconsin State Bar Associations. This is his third term in the assembly. Home Address: 1623 West Wisconsin Avenue, Milwaukee.

Milwaukee County, fourth district: The fourth ward of the city of Milwaukee.

MARY O. KRYSZAK (Dem.) has lived in Milwaukee all her life. She was graduated from St. Mary's High School and the Spencerian Business College and later attended the University of Wisconsin. She has been a school teacher, music teacher, accountant, librarian, and newspaper writer, as well as housewife and mother of three children. From 1921 to 1939 she was managing editor of the weekly publication, *Głos Polek*, (Polish Women's Voice). She contributes columns on legislative matters to both the Milwaukee Polish dailies. Mrs. Kryszak is active in many civic, relief, and political organizations. During the World War she was president of the Defense Council and chairman of the Liberty Loan Drives in Milwaukee. In 1933 she was chairman of the N.R.A. drive in the south side district and a member of the Women's Division State Advisory Committee. She is a member of the Motion Picture Commission, the Executive Commission on Infantile Paralysis, the Milwaukee Archdiocesan Catholic Women's Council, Americanization League of America, and chairman of the South Side Democratic Women's Civic Club. Mrs. Kryszak, the only woman member in the legislature, is serving her fifth term in the assembly. Home Address: 2003 South 11th Street, Milwaukee.

Milwaukee County, fifth district: Fifth and eighth wards of Milwaukee.

BEN RUBIN<sup>1</sup> (Prog.) has been a resident of Milwaukee for more than twenty-five years. For the past fifteen years he has been employed by the Milwaukee Board of Park Commissioners. Mr. Rubin has been actively connected with the labor movement for more than thirty-five years. He was a member of the assembly in 1931 and has served continuously in that body since 1937. Home Address: 2138 North 2nd Street, Milwaukee.

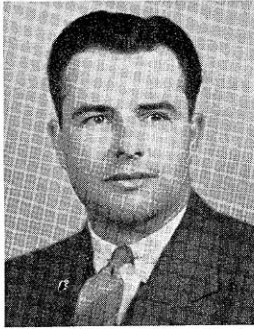
Milwaukee County, sixth district: The sixth ward of the city of Milwaukee.

<sup>1</sup>Deceased February 24, 1942.





KOEGEL  
Milwaukee, 7th



DOYNE  
Milwaukee, 8th



GRAF  
Milwaukee, 9th

ARTHUR KOEGEL (Prog.) was born in Milwaukee, May 2, 1889 and after being graduated from the public schools, took a technical course. His occupation is bricklaying and he has been a member of the Bricklayers, Masons, and Plasterers Union for twenty-six years. This is Mr. Koegel's fifth term in the assembly. Home Address: 2548A North 15th Street, Milwaukee.

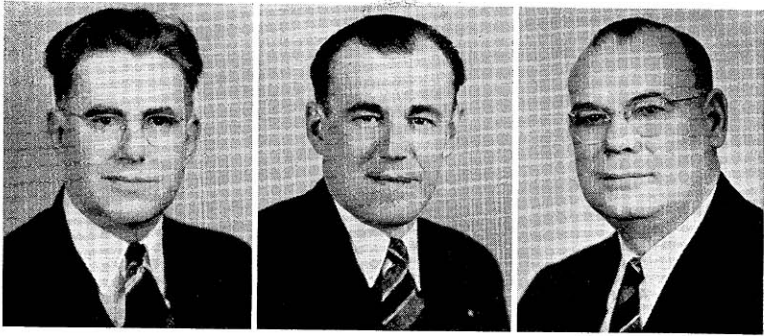
Milwaukee County, seventh district: Seventh ward of the city of Milwaukee.

JOHN L. DOYNE (Dem.) was born at Chicago on March 13, 1913. After his graduation from the Horace Mann High School at Gary, Indiana he attended Marquette University at Milwaukee where he was graduated from the College of Business Administration in 1934. In 1937 he received the degree of LL.B. from the Marquette University Law School. While in college he was active in student activities and was twice listed in the "Who's Who" of outstanding college students in the United States. Since 1937 he has been a practicing attorney in Milwaukee. This is the first time he has held any public office. Home Address: 436 North 32nd Street, Milwaukee.

Milwaukee County, eighth district: The sixteenth and twenty-third wards of the city of Milwaukee.

EDWARD L. GRAF (Rep.) was born on a farm at Fredonia, Ozaukee County on January 17, 1878. He was educated in the common schools and attended the Cream City Commercial Law School. He taught in the rural schools for five years from 1895 to 1900, from 1900 to 1920 he was an accountant, and since 1921 he has been a real estate broker. Mr. Graf is serving his second term in the assembly. Home Address: 2963 North 46th Street, Milwaukee.

Milwaukee County, ninth district: The ninth and twenty-sixth wards of the city of Milwaukee.



McPARLAND  
Milwaukee, 10th

RYCZEK  
Milwaukee, 11th

PYSZCZYNSKI  
Milwaukee, 12th

LELAND S. McPARLAND (Dem.) was born at Thorp on December 18, 1896. He received his common and high school education at Thorp, attended Oshkosh State Teachers College for two years, and studied law at Marquette University. He taught school from 1919 to 1927 and since 1927 has engaged in the practice of law. Mr. McParland was city attorney of Cudahy from 1932 to 1936. During the World War he served in the United States Navy from 1917 to 1918. This is his first term in the assembly. Home Address: 3764 East Armour Avenue, Cudahy.

Milwaukee County, tenth district: Towns of Lake and Oak Creek; cities of Cudahy and South Milwaukee.

ERVIN JOHN RYCZEK (Dem.) was born at Milwaukee on September 20, 1909. He attended St. Adalberts Parochial School and South Division High School and was graduated from Marquette High School in 1928. In 1938 he was a student at Spencerian Business College in Milwaukee. Since 1930 Mr. Ryczek has been an assistant funeral director. He had held no public office until his election to the assembly in 1940. Home Address: 1910 West Becher Street, Milwaukee.

Milwaukee County, eleventh district: Eleventh and twenty-fourth wards of the city of Milwaukee.

PETER PYSZCZYNSKI (Dem.) was born in Milwaukee on June 27, 1892. He was educated in the public and parochial schools. For eleven years prior to 1921 he was a shoe worker and since that time he has owned and operated a recreation parlor and tavern. He is a member of the Modern Woodmen of America, the International League of America, Bartenders Union Local 64, and the Milwaukee Polish Citizens Club. Mr. Pyszczynski was one of the organizers of the Milwaukee Century Club, Inc., and has been a member of its board of directors for ten years. He had held no public office until his election to the assembly in 1936 where he has served continuously since that date. Home Address: 2932 South 13th Street, Milwaukee.

Milwaukee County, twelfth district: Twelfth and fourteenth wards of the city of Milwaukee.



NAWROCKI  
Milwaukee, 13th



McBRIDE  
Milwaukee, 14th



COLLAR  
Milwaukee, 15th

WILLIAM L. NAWROCKI (Dem.) was born on December 4, 1899 in Milwaukee. He was graduated from the elementary schools of that city and attended St. Johns High School. For eight years prior to 1926 he was a shoe worker and since 1927 he has been a stock clerk. Mr. Nawrocki served as county committeeman from 1937 to 1940. This is his first term in the assembly. Home Address: 2664 North Fratney Street, Milwaukee.

Milwaukee County, thirteenth district: Thirteenth and twenty-first wards of the city of Milwaukee.

JOHN C. McBRIDE (Rep.) was born at Milwaukee on September 16, 1908. He attended Marquette University and was graduated from the University of Wisconsin Law School in 1935. Since that time he has been a practicing attorney in Milwaukee. He was elected to the assembly in 1939 to fill a vacancy created by the retirement of Milton T. Murray and was re-elected for the full term in 1940. Home Address: 3026 North Frederick Avenue, Milwaukee.

Milwaukee County, fourteenth district: Town of Milwaukee; villages of Fox Point, River Hills, Shorewood and Whitefish Bay; eighteenth ward of the city of Milwaukee.

CHARLES E. COLLAR (Rep.), son of the late Dyton A. Collar, was born in Hortonville on April 20, 1877. He received his early education in Hortonville and attended Appleton High School and Oshkosh State Teachers College. He has been in the shoe business for many years and at the present time is district manager for the Martin Shoe Company. Mr. Collar is a former president of the Milwaukee Shoe Retailers Association. He enlisted in the Spanish-American War and saw service in Puerto Rico. He was mustered out as first sergeant on the non-commissioned staff. He also served six years in the Wisconsin National Guard. Mr. Collar is a member of the United Spanish War Veterans, Veterans of Foreign Wars, Knights of Columbus, Elks, and a number of musical organizations. This is his first term in the legislature. Home Address: 2106 North 49th Street, Milwaukee.

Milwaukee County, fifteenth district; the fifteenth and nineteenth wards of the city of Milwaukee.



WEGNER  
Milwaukee, 16th



DOUBLE  
Milwaukee, 17th



WEINHEIMER  
Milwaukee, 18th

HERMAN B. WEGNER (Prog.) was born on January 3, 1891 at Milwaukee. He attended parochial and public schools and at the age of fourteen became an apprentice in the glove cutting trade. In 1915 he changed to shoe cutting and in 1923 to leather garment cutting, which trade he followed until 1937. Mr. Wegner is now a salesman with the Gross Coal Company. He is a member of the Amalgamated Clothing Workers of America, and has been an active member of the Glove Workers International Union and the United Shoe Workers Union. Mr. Wegner has been a member of the Socialist Party for the past twenty-three years. He was elected to the assembly on the Socialist ticket for the first time in 1932 and has served continuously since that time. Home Address: 1305 West Cottage Place, Milwaukee.

Milwaukee County, sixteenth district: The twenty-fifth ward of the city of Milwaukee.

WILLIAM F. DOUBLE (Rep.) was born at Milwaukee on June 12, 1910. After attending Ripon College and Marquette University he was graduated from Marquette Law College in 1934. He worked for the Nash Motors Company and for a transportation and a construction company before he became a practicing attorney in Milwaukee. At Ripon he served in the Reserve Officers Training Corps for two years and in the Wisconsin National Guard for one year. This is Mr. Double's second term in the assembly. Home Address: 2867 South Superior Street, Milwaukee.

Milwaukee County, seventeenth district: Seventeenth and twenty-seventh wards of the city of Milwaukee.

FRANK WEINHEIMER (Prog.) was born at Milwaukee on February 1, 1887. He received an elementary education and at the age of fourteen began work with a printing company. He was active in the Pressmen's Union and the American Federation of Labor over a long period of years. Since January 1940 Mr. Weinheimer has been a salesman for E. J. Kelly Company. This is the first public office he has ever held. Home Address: 3811 North 24th Street, Milwaukee.

Milwaukee County, eighteenth district: Twentieth ward of the city of Milwaukee.



WESTFAHL  
Milwaukee, 19th



HAGEDORN  
Milwaukee, 20th



NICOL  
Monroe

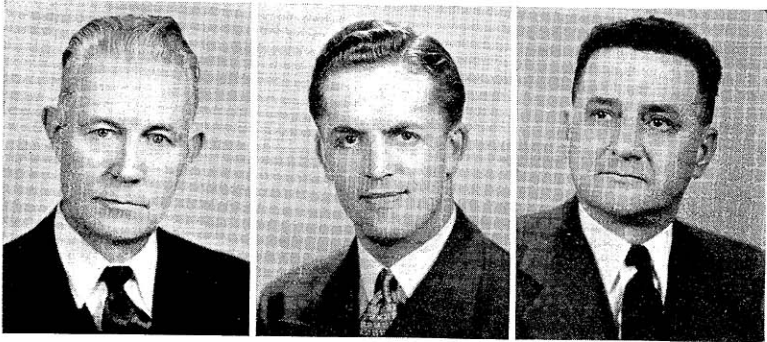
CHARLES F. WESTFAHL (Rep.) was born on April 10, 1885 in Milwaukee where he attended the public schools and Rhodes Business College. He was superintendent of the Westfahl File Company but is now in the real estate business. In 1931 he served as assemblyman from his district and he was re-elected in 1938 and 1940. Home Address: 2437 North 49th Street, Milwaukee.

Milwaukee County, nineteenth district: The twenty-second ward of the city of Milwaukee.

ERIC E. HAGEDORN (Rep.) was born in Milwaukee on August 21, 1896. He received his early education in the Grace Lutheran School and was graduated from Lutheran High School in 1912. He attended Milwaukee School of Engineering from 1913 to 1915 and later took a one-year correspondence course in law. He has been an electrical engineer, superintendent of Jung Electric Company, Milwaukee, for two years, sales manager of Electrical Equipment Company, and at present manager and secretary of the Airforce Corporation. Mr. Hagedorn is widely known as a former amateur football player and coach as well as a baseball player. He enlisted in the navy and served as commander of the eighth battalion at the Great Lakes Naval Station for two and one-half years. He is a member of the American Legion as well as a number of civic organizations. This is his first term in the assembly. Home Address: 2412 North 64th Street, Wauwatosa.

Milwaukee County, twentieth district: Towns of Granville and Wauwatosa; city of Wauwatosa.

ALEX L. NICOL (Prog.) was born on March 13, 1895 in the township of Sparta, Monroe County. Directly after his graduation from Sparta High School in 1916 he was called into military service on the Mexican border. After he was discharged he attended Oshkosh Normal School until he again entered the service in March of 1917. He served eleven months in France as a first lieutenant and commanded Company L, 128th Infantry, 32nd Division. Mr. Nicol was wounded twice and awarded the Distinguished Service Cross. After spending two years in government hospitals he was discharged in October 1920. He held the office of county clerk from 1920 to 1939, and is serving his fourth term as a member of the school board. He was elected to the assembly in 1938 and again in 1940. Home Address: 319 East Main Street, Sparta.



YOUNGS  
Oconto

CATLIN  
Outagamie, 1st

LANG  
Outagamie, 2nd

JOHN E. YOUNGS (Rep.) was born at Plainfield on August 2, 1883 and received his education in the Oconto public schools. Since 1906 he has been a barber. Mr. Youngs has always been active in conservation and civic work. He was sealer of weights and measures in 1912 and 1913, secretary of the police and fire commission from 1918 to 1922, member of the board of education from 1922 to 1929, and member of the board of supervisors of Oconto County since 1937. This is his second term in the assembly. Home Address: 522-1st Street, Oconto.

MARK S. CATLIN, JR. (Rep.) was born on October 18, 1910 at Appleton. He was graduated from Appleton High School in 1927 and attended Lawrence College for one year. He received his B.A. degree from the University of Wisconsin and his law degree from the same institution in 1933. Since 1933 he has been a practicing attorney in Appleton. Mr. Catlin has been a member of the assembly since he was first elected to that body in 1936 and served as Republican floor leader during the 1941 session. Home Address: 322 South Court Street, Appleton.

Outagamie County, first district: Towns of Bovina, Center, Dale, Ellington, Grand Chute, and Greenville; village of Shiocton; city of Appleton.

LLOYD LANG (Rep.) was born on November 29, 1899 at Marinette where he received his education. He was graduated from the local high school in 1918. He has been a chemical engineer for the past twenty years and a sales engineer from 1936 to 1941. Mr. Lang has been president of the village of Kimberly and a member of the county board for the past six years. This is his first term in the assembly. Home Address: 420 Main Street, Kimberly.

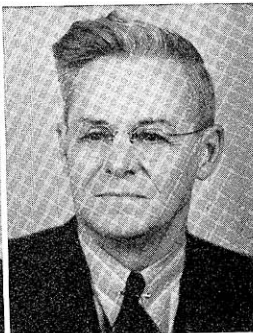
Outagamie County, second district: Towns of Black Creek, Buchanan, Cicero, Deer Creek, Freedom, Hortonia, Kaukauna, Liberty, Maple Creek, Maine, Oneida, Osborne, Seymour, and Vandenbroek; villages of Black Creek, Bear Creek, Combined Locks, Hortonville, Kimberly, and Little Chute; cities of Kaukauna, Seymour and third ward of New London.



BICHLER<sup>1</sup>  
Ozaukee



GUNDERSON  
Pierce



KENNEDY<sup>2</sup>  
Polk

NICHOLAS J. BICHLER<sup>1</sup> (Dem.) was born in the town of Belgium, November 26, 1895. He was educated in the public and parochial schools and attended Pio Nono College. After being graduated from St. Norberts College at De Pere, he took the short course in agriculture at the University of Wisconsin. Since 1920 he has farmed and engaged in the real estate business. For five years he was chairman of the town of Belgium and a member of the Ozaukee County Board until 1935. This is his fourth term in the assembly. Home Address: Route 1, Belgium.

SELMER W. GUNDERSON (Rep.) was born at Colfax on February 25, 1890. He was educated in the elementary schools of Madison and attended the Colfax High School for one year. From 1910 to 1918 he was cashier for the Soo Line Railroad. Since 1918 he has engaged in dairy farming. Mr. Gunderson has been secretary of the Pierce County Guernsey Breeders Association for fifteen years, director of the Wisconsin State Guernsey Breeders Association for twelve years and was elected its vice president in 1940. This is his first term in the assembly. Home Address: Route 1, Spring Valley.

DOUGALD DUNCAN KENNEDY<sup>2</sup> (Prog.) was born at Osceola on November 28, 1879. He began farming soon after his graduation from Amery High School. Mr. Kennedy farmed in North Dakota from 1902 to 1908, and in Alberta, Canada from 1908 to 1914, when he moved to his farm in the town of Garfield in Polk County. He has served on the town board and has been prominent in the co-operative movement both in Canada and in the United States. This is his third term in the assembly. Home Address: R. F. D., Amery.

<sup>1</sup> Resigned September 30, 1941.

<sup>2</sup> Deceased April 15, 1941.



KOSTUCK  
Portage



HEDEN  
Price



CORBETT  
Racine, 1st

JOHN T. KOSTUCK (Prog.) a resident of Stevens Point, was born there on October 2, 1893. Leaving school at the end of the third grade, he went to work on a farm. At the age of fourteen when he was assisting in blasting stone, he met with an accident which made him blind. He entered the Wisconsin State School for the Blind and after ten years was graduated from the high school department in 1918. Then he attended the University of Wisconsin, specializing in political science and economics. After teaching for three years in the high school department of the School for the Blind at Staunton, Virginia, he entered the piano business at Stevens Point. He now devotes full time to his legislative work and is serving his sixth consecutive term in the assembly. Mr. Kostuck is the only blind member ever elected to the legislature. Home Address: 130 Algoma Street, Stevens Point.

ERNEST A. HEDEN (Rep.) was born at Ogema on February 12, 1888. He is a graduate of Gustavus Adolphus College at St. Peter, Minnesota. For twenty-one years prior to 1935 he was a banker and from 1911 to the present time he has been engaged in the logging business. Mr. Heden is circuit court commissioner and jury commissioner of Price County. This is his second term in the assembly. Home Address: Ogema.

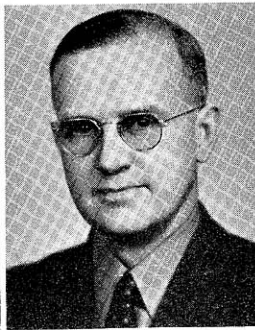
THOMAS P. CORBETT (Rep.) was born at Marinette on September 15, 1914. He attended both elementary and high school in Racine. After his graduation he entered Marquette University where he received the degree of Ph.B. in 1937 and LL.B. in 1939. From 1932 to 1939 Mr. Corbett was a salesman. Since 1939 he has engaged in the practice of law. This is his first term in the legislature. Home Address: 1015 College Avenue, Racine.

Racine County, first district: The first, second, third, sixth, tenth, eleventh, thirteenth, and fourteenth wards of the city of Racine.





HILKER  
Racine, 2nd



RUNDEN  
Racine, 3rd



THOMSON  
Richland

EDWARD F. HILKER (Rep.) was born on April 13, 1881 at Racine where he attended the common schools and business college. In 1898 he volunteered in the Spanish-American War. Mr. Hilker was formerly in the wholesale candy business and the coal business and at the present time is a salesman. He is interested in athletics and has played on and managed the Racine Ball Club. He is active in the affairs of his community, having served as alderman of his ward for fourteen years. In 1936 Mr. Hilker was a delegate at large to the Republican National Convention at Cleveland. He is serving his fifth term in the assembly. Home Address: 319 Lafayette Avenue, Racine.

Racine County, second district: The fourth, fifth, seventh, eighth, twelfth, and fifteenth wards of the city of Racine.

RANDOLPH H. RUNDEN (Rep.) was born at Chicago on August 27, 1897. After his graduation from high school he attended the University of Wisconsin from 1915 to 1917. Since that time he has engaged in farming. Mr. Runden has held a number of public offices: town treasurer for one year, town chairman since 1935, member of the county board, director of the Dover-Norway Insurance Company and commissioner for the Norway-Dover Drainage District. He is serving his first term in the assembly. Home Address: Route 1, Union Grove.

VERNON W. THOMSON (Rep.), son of the late Mr. A. A. Thomson and Mrs. Thomson, was born at Richland Center on November 5, 1905. In 1927 he received his B.A. degree from the University of Wisconsin and his LL.B. from the same school in 1932. Since that time he has been a practicing attorney at Richland Center. He was assistant district attorney of Richland County from 1933 to 1935 and from 1933 to 1937 city attorney of Richland Center. From 1933 to 1935 he was the enrolling official of the Civilian Conservation Corps for Richland County. Prior to practicing law he taught for two years in the Viroqua High School and for three years in the Madison Vocational School. For the past several years Mr. Thomson has been president of the library board at Richland Center. In 1936 and 1940 he was a delegate from the third congressional district to the National Republican Convention, and in 1940 was chairman of the State Republican Platform Convention. He has been a member of the assembly since 1935 and speaker of that body during the last two sessions. Home Address: Richland Center.



GRASSMAN  
Rock, 1st

ENGEBRETSON  
Rock, 2nd

BURNS  
Rusk and Sawyer

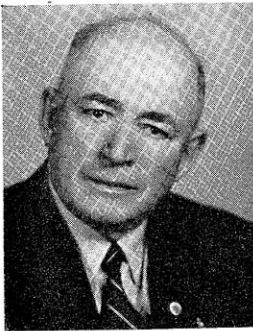
EDWARD GRASSMAN (Rep.) was born in Richland County. After having been graduated from Sextonville High School, he attended Whitewater State Normal and Valparaiso University and also took a six months' correspondence course in order to acquire a first grade teacher's certificate. He taught for the next eight years and then took up leaf tobacco buying and farming. Mr. Grassman has held a number of public offices: alderman of Edgerton, 1922-26; mayor for the next biennium; and county supervisor for the three years preceding his election to the assembly in 1932. He has served in the assembly continuously since 1933. Home Address: 501 Washington Street, Edgerton.

Rock County, first district: Towns of Center, Fulton, Harmony, Janesville, Lima, Milton, Magnolia, Porter, and Union; village of Milton; cities of Edgerton, Evansville, and Janesville.

BURGER M. ENGEBRETSON (Rep.) was born at Oslo, Norway on June 21, 1896. He was educated in the public schools of Beloit and attended the University of Wisconsin. He is a World War veteran. Mr. Engebretson has been in the insurance and real estate business for the past seventeen years. He was elected twice to the board of supervisors of Rock County. This is his third term in the assembly. Home Address: 742 McKinley Avenue, Beloit.

Rock County, second district: Towns of Avon, Beloit, Bradford, Clinton, Johnstown, La Prairie, Newark, Plymouth, Rock, Spring Valley, and Turtle; villages of Clinton, Footville, and Orfordville; city of Beloit.

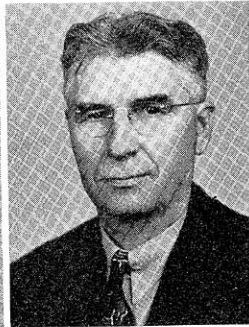
ROBERT H. BURNS (Rep.) was born on August 14, 1870 in Richland County. After his graduation from normal school and college he engaged in educational work serving as county superintendent of schools in Richland County from 1899 to 1907 and in Rusk County from 1919 to 1923. He has been an insurance manager and salesman and at the present time is engaged in farming. Mr. Burns served as city commissioner of Ladysmith for two years. This is his second term in the assembly. Home Address: Route 2, Ladysmith.



RUNDELL  
St. Croix



WOERTH  
Sauk

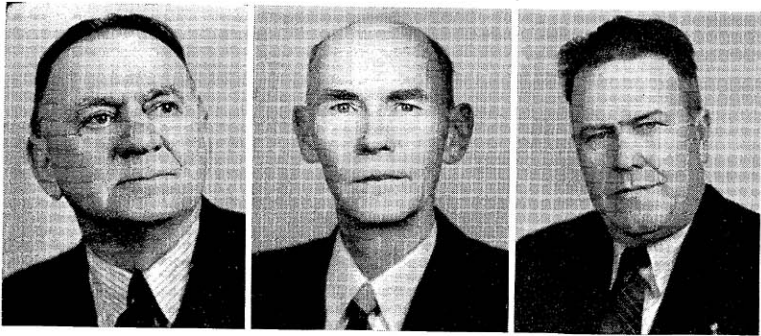


EBERT  
Shawano

ELMER LLOYD RUNDELL (Rep.) was born at Livingston on September 15, 1879. After his graduation from Platteville State Teachers College in 1900 he was principal of a school in Minnesota for two years. Prior to that time he taught for one year in a rural school in Wisconsin. Since 1910 he has been a dairy farmer and a breeder of pure bred Guernseys. On his farm was bred the highest producing Guernsey cow in the United States west of the Alleghanies. Mr. Rundell is treasurer of the Roberts High School and has been either clerk or director of the rural school in his district for the past thirty-eight years. He served as president of the Wisconsin-Illinois Guernsey Breeders Association in 1922-23. This is his first term in the assembly. Home Address: Roberts.

GEORGE J. WOERTH (Prog.) was born on December 4, 1875 at Loganville. He was educated in public and parochial schools and Wartburg College at Waverly, Iowa. In 1910 he moved to Sauk City where he has held a number of public offices and is now serving as city assessor. Mr. Woerth is interested in conservation. He is a member of the Wisconsin Wild Life Federation and is a life member of the Twin City Rod and Gun Club. With the exception of the 1939 term he has served continuously in the assembly since 1935. Home Address: Sauk City.

CHARLES J. EBERT (Rep.) was born on April 30, 1885 in the town of Seymour, Outagamie County, where he was educated in the rural schools. Mr. Ebert is a cheese manufacturer. He is serving his eighteenth term as village president, has been a member of the county board, and bank director since 1933. He has served six years as secretary of the Wisconsin Cheese Maker's Association and at the present time is treasurer of the Wisconsin Dairy Industries Association and secretary of the Wisconsin Natural Cheese Marketing Association. This is his first term in the legislature. Home Address: Gresham.



THEISEN  
Sheboygan, 1st

LARSON  
Sheboygan, 2nd

NELSON  
Taylor

JOSEPH M. THEISEN (Dem.) was born at Sheboygan on February 24, 1877 and has lived there all his life. He was educated in the Holy Name Parochial School of that city and attended Sheboygan Business College. For seventeen years he did general office work with the Mattoon Manufacturing Company and Northern Furniture Company and was cost accountant, for eleven and seven years respectively, with the Falls Motors Corporation and the American Chair Company. He has been active in singing societies for the past forty years and has acted as secretary of the state organization for twenty years. For nineteen years he was secretary of the North Side Improvement Association. In 1906 and 1907 he was a member of the Sheboygan Library Board and served the city as alderman from 1907 to 1909. He served as a member of the assembly in the 1933, 1935, and 1937 sessions and was re-elected in 1940. Home Address: 1904 Calumet Drive, Sheboygan.

Sheboygan County, first district: The city of Sheboygan.

EDWIN J. LARSON (Rep.) was born at Waupaca on November 29, 1885. He is a graduate of Plymouth High School. Between 1920 and 1930 he was president and general manager of the Plymouth Refrigerating Company. Since 1930 he has been in the real estate, loans, and insurance business. The only public office Mr. Larson had held before his election to the assembly in 1938 was that of alderman in Plymouth during 1926 and 1927. Home Address: 132 High Street, Plymouth.

Sheboygan County, second district: The entire county outside the city of Sheboygan.

CARL M. NELSON (Rep.) was born in the town of Deer Creek, Taylor County on November 12, 1892. He received his education in the local grade school and spent one winter in attendance at the Southern Minnesota Normal College at Austin, Minnesota. He has been a farmer all of his life. From 1927 to 1935 Mr. Nelson was chairman of the town of Deer Creek. He acted as vice chairman of the Taylor County Board in 1931 and from 1932 to 1935 was chairman of the board. During the World War, he served in the First Marine Aviation Force for nineteen months, spending about seven months in active service in France and Belgium. This is his fourth term in the assembly. Home Address: Route 1, Medford.



BROM  
Trempealeau



FOWELL  
Vernon



RICE  
Walworth

MARTIN D. BROM (Rep.) was born in 1880 in the town of Dodge. He received his education in the local public and parochial schools. Mr. Brom was a member of the county board from 1911 to 1918, patrol superintendent of county highways from 1919 to 1924, manager of the Farmers Cooperative Oil Company from 1930 to 1935, and sheriff in 1927 and 1928 and from 1936 to 1940. He has engaged in farming most of his life. This is his first term in the legislature. Home Address: Arcadia.

CHARLES W. FOWELL, JR. (Rep.) was born in the township of Sullivan, Richland County on May 7, 1901. He attended the common schools. From 1919 to 1927 he was a locomotive fireman and engineer and from 1927 to 1934 he owned and operated a restaurant at Viroqua. Mr. Fowell served as sheriff of Vernon County for two consecutive terms ending in 1938. This is his second term in the assembly. Home Address: Viroqua.

ORA R. RICE (Rep.) was born at Boscobel on September 16, 1885. He is a graduate of Boscobel High School and received his dental degree from Northwestern University Dental College in 1907. Since 1907 he has practiced dentistry in Delavan and the past six years has devoted considerable time to farming. Dr. Rice has held a number of elective and appointive offices: alderman of Delavan in 1916 and 1917; mayor of the city from 1918 to 1922; and secretary of the Walworth County Mediation Board for the past six years. This is his third term in the assembly. Home Address: Delavan.



SCHMITZ  
Washington

DAVIS  
Waukesha, 1st

LUDVIGSEN  
Waukesha, 2nd

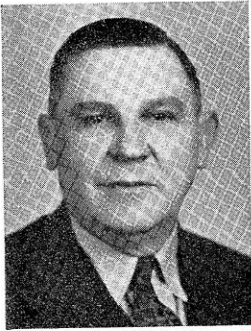
JOSEPH A. SCHMITZ (Rep.) was born on July 5, 1898 at Milwaukee where he attended the graded schools, Marquette Academy, and the Milwaukee State Teachers College. After he returned from the service in the World War he spent five years as a draftsman, engineer, and water main inspector for the city of Milwaukee. In 1924 he entered the building contracting business and in 1928 became part owner and operator of the Abbot Crest and Jackson Hotels in Milwaukee. Later he moved to a small farm near Nashota. He is now living in the village of Germantown where he is serving his sixth year as justice of the peace. This is his second term in the legislature. Home Address: Germantown.

GLENN R. DAVIS (Rep.) was born in the town of Vernon, Waukesha County on October 28, 1914. He was graduated from the Mukwonago High School and received the degree of B.Ed. in 1934 from Platteville Teachers College. After teaching for four years during which time he studied law during the summer, he completed his law work at the University of Wisconsin Law School where he received his LL.B. in 1940. Since that time he has engaged in the practice of law at Waukesha. This is Mr. Davis' first term in the assembly. Home Address: Route 2, Waukesha.

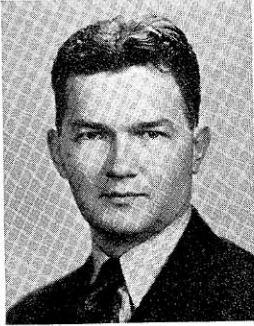
Waukesha County, first district: Towns of Eagle, Genesee, Mukwonago, Muskego, New Berlin, Ottawa, Vernon, and Waukesha; villages of Big Bend, Dousman, Eagle, Mukwonago, North Prairie, and Wales; city of Waukesha.

ALFRED R. LUDVIGSEN (Rep.) was born on the old farm homestead in the town of Merton, Waukesha County on March 17, 1886. He received his education in the public schools and at Luther College, Racine. His early years were spent in farming. For many years he has been engaged in landscape work and in the development and sale of lake frontage which he owns. He served as a member of the Waukesha County Board and chairman of the town of Merton during the years 1923-28. Since 1923 he has been secretary of the Waukesha County Farm Drainage District Board and from 1930-34 was chairman of the Waukesha County Republican Committee. This is his fourth term in the assembly. Home Address: Route 1, Hartland.

Waukesha County, second district: Towns of Brookfield, Delafield, Lisbon, Menomonie, Merton, Oconomowoc, Pewaukee, and Summit; villages of Chenequa, Hartland, Lac La Belle, Lannon, Menomonee Falls, Merton, Butler, Sussex, and Pewaukee; city of Oconomowoc.



SPEARBRAKER  
Waupaca



NIEMUTH  
Winnebago, 1st



FRITZEN  
Winnebago, 2nd

JULIUS SPEARBRAKER (Rep.) was born on September 8, 1886 at Clintonville where he has resided ever since. After his graduation from high school he attended Marquette University for one year. At the present time he is in the general insurance business. Mr. Spearbaker has held a number of positions of trust and honor—city clerk of Clintonville from 1912 to 1934, member and secretary of the municipal water and light commission for twenty-three years, member of the library board for twenty-one years, and jury commissioner of Waupaca County for many years. In 1940 he was a delegate to the Republican National Convention in Philadelphia. This is his second term in the assembly. Home Address: 16 Ninth Street, Clintonville.

LEO T. NIEMUTH (Rep.) was born at Oshkosh on April 17, 1904. He was educated in the elementary schools and high school of that city. Mr. Niemuth has done clerical and accounting work for twelve years and has been a representative of the New York Life Insurance Company for one year. He was alderman of Oshkosh for six years and vice mayor and council president during 1935 and 1936. He is serving his third consecutive term in the assembly. Home Address: 523 Elmwood Avenue, Oshkosh.

Winnebago County, first district: City of Oshkosh.

JAMES C. FRITZEN (Rep.) was born on April 14, 1889 at Neenah where he was educated in the public schools. At the present time he is a merchant. For twenty years ending in 1924 he was associated with his father in the retail grocery business. Mr. Fritzen was a member of the Winnebago County Board from 1922-1927 and postmaster of Neenah from 1927-1935. He served overseas during the World War and has been a member of the American Legion since its organization. He is serving his second term in the assembly. Home Address: 309 East Wisconsin Avenue, Neenah.

Winnebago County, second district: All the towns, villages and cities of the county except the city of Oshkosh.



**KROHN**  
Wood



**MAY**  
Chief Clerk



**KELLMAN**  
Sergeant-at-Arms

CHESTER A. KROHN (Prog.) was born at Marshfield on April 16, 1915. After his graduation from high school he attended the University of Wisconsin where he received the degree of Ph.B. He worked at various jobs, such as salesman, night cook, legislative messenger, to earn his way through college. Mr. Krohn is a high school teacher. He is a former member of the Marshfield Library Board, the Wood County Conservation Board, and is clerk of the Marshfield Board of Education. This is Mr. Krohn's first term in the assembly. Home Address: Marshfield

ARTHUR L. MAY was born in Chicago on January 6, 1901. He attended the elementary schools of Chicago and Wisconsin Rapids and was graduated from Central High School in Madison. In 1932 he received the degree of LL.B. from the University of Wisconsin Law School. Mr. May has been a farmer, mechanic, businessman, and since 1932 has engaged in the practice of law. He served as justice of the peace from 1931 to 1939. He was elected chief clerk of the assembly in 1941. Home Address: 330 North Carroll Street, Madison.

NORRIS J. KELLMAN, the son of Mr. and Mrs. Frank A. Kellman, was born on October 23, 1898 at Galesville. After his graduation from Galesville High School he attended La Crosse State Teachers College for one year and was graduated from the University of Wisconsin in 1923. For ten years he was assistant postmaster at Galesville and for the past sixteen years he has been in the general insurance business. Mr. Kellman was a member of the board of supervisors of Trempealeau County for four years. He served in the World War and was one of the youngest men in the state to be commissioned as a second lieutenant. He has held a number of offices in the American Legion including that of commander of his local post for three years. In 1936 he was an alternate to the Republican National Convention in Cleveland and his father was a delegate. In 1940 he was a delegate to the 1940 convention of the party in Philadelphia and his father was an alternate. Mr. Kellman was a member of the assembly in the 1939 session and in 1941 was elected sergeant-at-arms of that body. Home Address: Galesville.