
Local Government

CITY GOVERNMENT IN WISCONSIN

By FREDERICK N. MACMILLIN, *Executive Secretary League of Wisconsin Municipalities*

THE cities of Wisconsin are the political subdivisions of the state which have been granted the most governmental powers. It has recently been stated by the Supreme Court of the state that "one of the fundamental ideas of cities is that they may make such laws and regulations as are necessary to the peace and good order of the city due to any peculiar condition which may exist within its boundaries." One important reason for this is the concentration of population in the 145 cities of the state, for more than fifty-eight percent of the residents of the state live in cities, even though the area of cities is insignificant compared to that of the rest of the state, the villages and towns. Cities, like villages, are municipal corporations, while the balance of the area of the state is divided up into towns which are not incorporated.



F. N. MACMILLIN

Under all forms of city government in Wisconsin the power to enact ordinances protecting the health, safety, and welfare of a city is imposed upon the council. At one time the extent of this ordinance making power and the power to engage in activities for the benefit of citizens of a city was restricted to those matters that the legislature had specifically entrusted to the common council by a city charter or by state law. In 1921 all special city charters, except those of cities of the first class (Milwaukee only), were repealed and all such cities were brought under the general city charter law, provided in chapter 62 of the statutes, together with other provisions scattered throughout the statutes. In subsection (5) of section 62.11 of the statutes, city councils are granted broad powers to legislate for the government and good order of the city, for its commercial benefit, and for the health, safety, and welfare of the public. This power has been liberally construed by the state supreme court. This broad grant of power does not permit cities to enact ordinances in conflict with state law, but cities are permitted (unless specifically prohibited) to enact ordinances more stringent or more detailed than the state law or regulations established pursuant to state law.

The power of city governing bodies (also villages) to enact local legislation was extended by the home rule amendment to the state

constitution and adopted at a referendum in 1924. This grant of power direct from the voters authorizes cities and villages to determine their local affairs and government, subject only to the state constitution and to enactments of the legislature of statewide concern that affect with uniformity every city or every village. Education has been held by the supreme court to be a matter of statewide concern, while zoning has been held to be a matter of local concern. The court has also stated that the state may continue to legislate for cities even in the field of local affairs and government, and by classes, since cities should not be compelled to exercise their home rule power if they did not so desire; but that a city could, under its home rule power, elect not to be governed by any state law in the field of local affairs and government, or by enactments of statewide concern that do not with uniformity affect every city or every village.

No very extensive use has been made of home rule powers by cities to date, largely because of uncertainty as to the exact scope. If the ultimate interpretation by the Wisconsin Supreme Court is similar to that under the California home rule amendment, which is most similar to the Wisconsin amendment, Wisconsin cities will have a full measure of local government. The California court has held that their home rule amendment "was enacted upon the principle that the municipality itself knew better what it wanted and needed than did the state at large, and to give that municipality the exclusive privilege and right to direct legislation which would carry out and satisfy its wants and needs." The California court has abstained from defining "municipal affairs" but in its own words "has carefully and judiciously discriminated between local and state affairs, and as a matter of fact in the larger number of litigated cases has held the 'affair' in question to be within the purview of municipal activity."

Prior to 1892 the state legislature had been granting individual charters to cities and villages. Since the adoption of a constitutional amendment at this time changing section 31 of article IV of the state constitution, the state has legislated for classes of cities because the state could no longer even amend existing city charters. The classification of cities is: first class, cities that have reached 150,000 population (Milwaukee only); second class, 39,000 to 150,000 population (seven cities); third class, 10,000 to 39,000 population (eighteen cities); fourth class, under 10,000. A village may change to a city after it contains 1,200 population, or a district containing a population of 1,500 and consisting of or containing one incorporated or unincorporated village may become a city.

Many laws affect all classes of cities, or several classes, while some laws may be made applicable to cities in other classes if any city so elects. There are numerous laws applicable to cities of the first class (Milwaukee) which have not been included in the statutes, and for which reference must be made to the various session laws. For this reason, many of the general comments following do not apply to Milwaukee, which is governed under special provisions.

The principal statutes relating to cities are found in chapter 62,

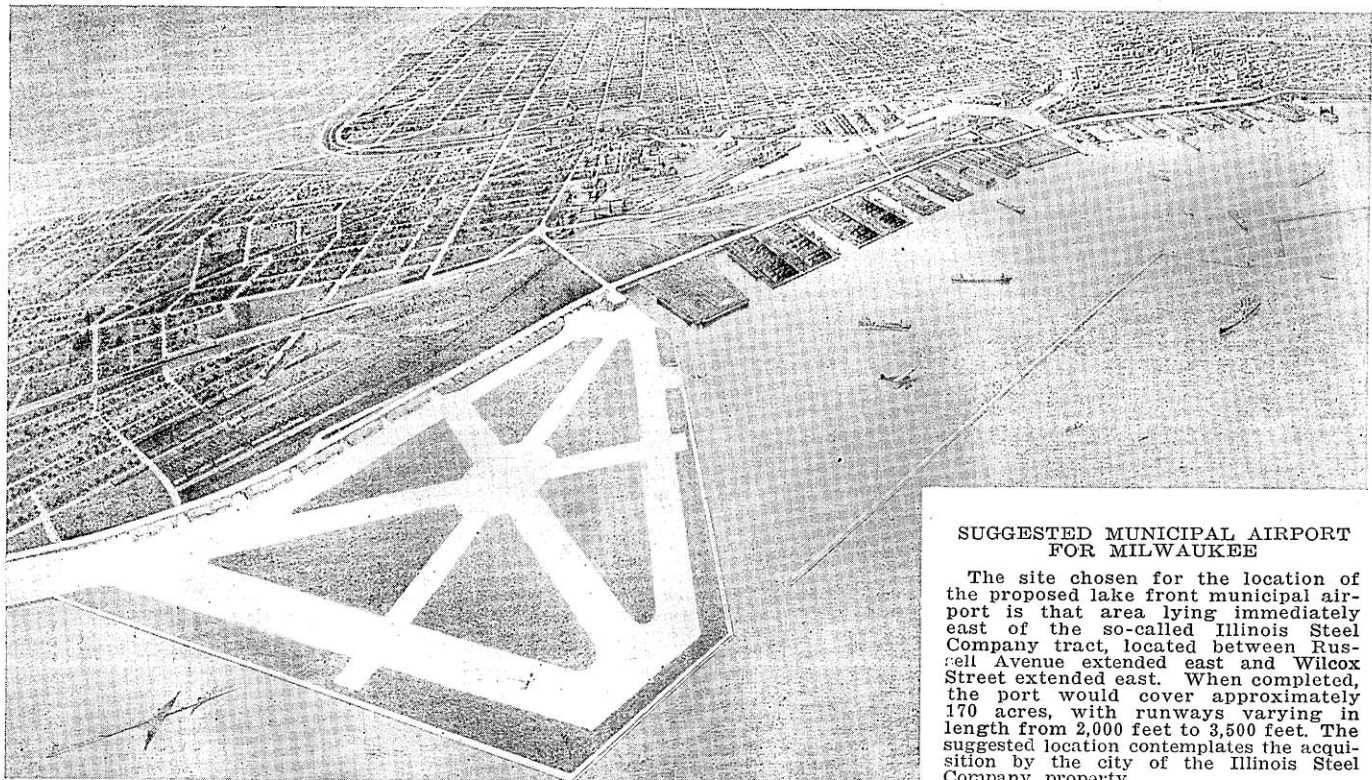
the general city charter law; chapter 66, containing miscellaneous provisions applying to cities, villages, and towns, such as consolidation, various police regulations, municipal utilities, metropolitan sewage districts, etc.; chapters 25 and 67, relating to municipal borrowing; chapter 27, relating to parks; chapter 43, relating to libraries; chapter 141, relating to health departments; chapter 144, relating to sewers; chapter 145, relating to plumbing; chapter 157, relating to cemeteries; and chapter 197, relating to municipal acquisition of utilities, etc. Specific provisions relating to city government are scattered through the statutes, the provisions relative to eminent domain, elections, taxation, traffic regulation, etc., being found with the general provisions upon these subjects.

On April 1, 1931, there were 129 cities operating under the mayor-council form of government, while a few cities were operating under the city manager form or variations of the commission form. The mayor-council form provides for the election by the voters of a mayor and an alderman from each ward (these aldermen being referred to collectively as the common council), together with certain other officials such as the treasurer, comptroller, etc. The number of aldermen varies. There may be one or two aldermen from each ward. The number of wards may be changed by the council, the maximum and minimum population requirements varying with second, third, and fourth class cities.

The number of other local officials elected by the people under the mayor-council form (for example, city clerk, city attorney, sometimes even chief of police) depends upon the provisions in the existing charter of each city at the time of the enactment of the general city charter law in 1921, and the actions taken subsequently by the voters under section 62.09 (b) of the statutes.

In most cities the mayor is the chief executive officer, charged with the responsibility of having the city ordinances and state laws enforced, and of having city officers and employes discharge their duties. By virtue of his duty to submit to the council information and recommend measures, and because of his duty to preside at council meetings, he usually assumes the leadership in city government. He may veto ordinances and other council actions, but the council may override the veto by a three-fourths vote. Except where the voters at a referendum have granted to the fire and police commission the power to organize and supervise the police and fire department pursuant to section 62.13 (6) of the statutes, the mayor is the head of the police and fire departments.

There are various other city officials such as city clerk, city attorney, city engineer, tax assessor, health commissioner or board of health, street commissioner, board of police and fire commissioners, chief of police, chief of fire department, board of public works, etc. The selection of these officials varies, depending upon the provisions in the original charters, and the subsequent actions of the voters. Many of them are appointed by the mayor, subject to confirmation by the common council.



**SUGGESTED MUNICIPAL AIRPORT
FOR MILWAUKEE**

The site chosen for the location of the proposed lake front municipal airport is that area lying immediately east of the so-called Illinois Steel Company tract, located between Russell Avenue extended east and Wilcox Street extended east. When completed, the port would cover approximately 170 acres, with runways varying in length from 2,000 feet to 3,500 feet. The suggested location contemplates the acquisition by the city of the Illinois Steel Company property.

Cities over 4,000 population must, and smaller cities may, have a board of police and fire commissioners appointed by the mayor, not more than three of the same political party. The board appoints the chiefs of the police and fire departments, and each chief appoints, subject to the board's approval, the subordinates from eligible lists established by the board after examinations.

Unless the duties are assumed by the council by a two-thirds vote, every city has a board of public works to superintend all public works, and keep the streets, alleys, sewers, and public works and places in repair.

The services supplied to citizens by cities in the state are expanding. There are 126 of the 145 cities that have sewerage systems of some kind. Virtually all of the cities in the state have public water



Hangar at the Present Milwaukee Airport.

systems, and in all except ten instances these are municipally owned. The number of cities collecting garbage from homes is constantly increasing, while some collect rubbish, ashes, etc. Numerous cities are now providing for building inspection, not only as to the construction of the building, but also the plumbing and electrical installations. Cities over 5,000 are required to inspect weights and measures.

In addition to almost an equal number of villages, there are 48 cities owning a municipal electric utility. A majority of these purchase their electric current wholesale, but several have installed Diesel engines recently.

Section 66.06 (10) of the statutes requires that a city owning a water or electric utility provide for the nonpartisan management thereof by the creation of a utility commission to be appointed by the council, or the management may be entrusted to the board of public works.

Wisconsin cities are giving increasing attention to planning their physical development. More than 30 cities have adopted zoning or-

dinances while many others are planning to enact such provisions. City plan commissions and park commissioners have been created in numerous cities, and Wisconsin cities are doing much to provide adequate recreation for citizens, not only by park facilities, but through playgrounds, public band concerts, tennis courts, municipal golf courses, swimming pools and bathing beaches, and the like.

Exclusive of the expenditures for schools the cities of the state are spending more than eighty millions of dollars annually, of which more than twenty-two millions are paid on debts, over eighteen millions for highways and bridges, about eleven millions for protection of persons and property, not quite nine millions for health and sanitation, and nearly four millions each for general governmental purposes and for recreation. The expenditure of more than eleven million dollars for public industries (chiefly water and electric) is more than offset by commercial revenue of over fifteen million.

The general property tax produces more than half of the revenue of cities, while over sixteen million dollars was borrowed and more than six million was received from special assessments (chiefly for street, sewer, and water improvements).

City Manager Cities

Wisconsin cities are given the option of changing to the city manager form of government by chapter 64 of the statutes. Beginning with Kenosha in 1922, the plan has subsequently been adopted by Janesville, Two Rivers, Rhinelander, Stevens Point, Beloit, and Fort Atkinson. The village of Shorewood has adopted a similar plan by ordinance. This city manager plan is similar to that in effect in other states, and is to a large extent superimposed upon the form of government in effect in other Wisconsin cities, concentrating most of the administrative authority and responsibility in the city manager, who functions to a large extent as the general manager of a business concern. The legislative and policy determining powers are exercised by a council elected at large, usually a body of five members. The chief feature of the plan is that of having a relatively permanent professional executive.

Commission Governed Cities

The number of cities operating under the commission form of government pursuant to the optional provisions in chapter 63 of the statutes is gradually decreasing. The cities which elect three commissioners at large to act as both the legislative and administrative body are Antigo, Eau Claire, Fond du Lac, Ladysmith, Menomonie, Oshkosh, and Port Washington.

Two cities, Green Bay and Superior, are operating under a modified commission form of government pursuant to this same chapter of the statutes. This is in reality not the commission form, but a modification of the aldermanic form with a large council elected by wards.

WISCONSIN CITIES AND VILLAGES

City	County	Population 1930	Year In- corporated	Type of Government
First Class Cities				
Milwaukee.....	Milwaukee.....	578,249	1846	Mayor-Council
Second Class Cities (39,000 to 150,000)				
Kenosha.....	Kenosha.....	50,262	1850	City Manager
La Crosse.....	La Crosse.....	39,614	1856	Mayor-Council
Madison.....	Dane.....	57,899	1856	Mayor-Council
Oshkosh.....	Winnebago.....	40,108	1853	Commission
Racine.....	Racine.....	67,542	1848	Mayor-Council
Sheboygan.....	Sheboygan.....	39,251	1853	Mayor-Council
Superior.....	Douglas.....	36,113	1889	Commission
Third Class Cities (10,000 to 39,000)				
Appleton.....	Outagamie.....	25,267	1857	Mayor-Council
Ashland.....	Ashland.....	10,622	1887	Mayor-Council
Beloit.....	Rock.....	23,611	1857	
Cudahy.....	Milwaukee.....	10,631	1898	Mayor-Council
Eau Claire.....	Eau Claire.....	26,287	1872	Commission
Fond du Lac.....	Fond du Lac.....	26,449	1852	Commission
Green Bay.....	Brown.....	37,415	1854	Mayor-Council ²
Janesville.....	Rock.....	21,628	1853	City Manager
Manitowoc.....	Manitowoc.....	22,963	1870	Mayor-Council
Marinette.....	Marinette.....	13,734	1887	Mayor-Council
South Milwaukee.....	Milwaukee.....	10,706	1897	Mayor-Council
Stevens Point.....	Portage.....	13,623	1858	City Manager
Two Rivers.....	Manitowoc.....	10,082	1878	City Manager
Watertown.....	Dodge, Jefferson.....	10,613	1853	Mayor-Council
Waukesha.....	Waukesha.....	17,176	1895	Mayor-Council
Wausau.....	Marathon.....	23,758	1872	Mayor-Council
Wauwatosa.....	Milwaukee.....	21,194	1897	Mayor-Council
West Allis.....	Milwaukee.....	34,671	1906	Mayor-Council
Fourth Class Cities (under 10,000)				
Adams.....	Adams.....	1,231	1926	Mayor-Council
Algoma.....	Kewaunee.....	2,202	1879	Mayor-Council
Alma.....	Buffalo.....	1,009	1885	Mayor-Council
Altoona.....	Eau Claire.....	1,044	1887	Mayor-Council
Amery.....	Polk.....	1,354	1919	Mayor-Council
Antigo.....	Langlade.....	8,610	1885	Commission
Arcadia.....	Trempealeau.....	1,499	1925	Mayor-Council
Augusta.....	Eau Claire.....	1,359	1885	Mayor-Council
Baraboo.....	Sauk.....	5,545	1882	Mayor-Council
Barron.....	Barron.....	1,863	1887	Mayor-Council
Bayfield.....	Bayfield.....	1,195	1913	Mayor-Council
Beaver Dam.....	Dodge.....	9,867	1856	Mayor-Council
Berlin.....	Green Lake, Wau- shara.....	4,106	1857	Mayor-Council
Black River Falls.....	Jackson.....	1,950	1883	Mayor-Council
Bloomer.....	Chippewa.....	1,865	1920	Mayor-Council
Boscobel.....	Grant.....	1,762	1873	Mayor-Council
Brodhead.....	Green.....	1,533	1891	Mayor-Council
Buffalo.....	Buffalo.....	261	1859	Mayor-Council
Burlington.....	Racine.....	4,114	1900	Mayor-Council
Cedarburg.....	Ozaukee.....	2,055	1885	Mayor-Council
Chetek.....	Barron.....	1,076	1891	Mayor-Council
Chilton.....	Calumet.....	1,945	1877	Mayor-Council
Chippewa Falls.....	Chippewa.....	9,539	1869	Commission
Clintonville.....	Waupaca.....	3,572	1887	Mayor-Council

WISCONSIN CITIES AND VILLAGES—Continued

City	County	Population 1930	Year In- corporated	Type of Government
Colby	Clark, Marathon	849	1891	Mayor-Council
Columbus	Columbia	2,514	1874	Mayor-Council
Crandon	Forest	1,679	1898	Mayor-Council
Cuba City	Grant	1,157	1925	Mayor-Council
Cumberland	Barron	1,532	1919	Mayor-Council
Darlington	Lafayette	1,764	1877	Mayor-Council
Delavan	Walworth	3,301	1889	Mayor-Council
De Pere	Brown	5,521	1883	Mayor-Council
Dodgeville	Iowa	1,937	1889	Mayor-Council
Durand	Pepin	1,590	1887	Mayor-Council
Edgerton	Rock	2,906	1883	Mayor-Council
Elkhorn	Walworth	2,340	1897	Mayor-Council
Elroy	Juneau	1,546	1885	Mayor-Council
Evansville	Rock	2,269	1896	Mayor-Council
Fennimore	Grant	1,341	1919	Mayor-Council
Fort Atkinson	Jefferson	5,793	1878	City Manager
Fountain City	Buffalo	880	1889	Mayor-Council
Glenwood	St. Croix	771	1895	Mayor-Council
Greenwood	Clark	651	1891	Mayor-Council
Hartford	Washington	3,754	1883	Mayor-Council
Hayward	Sawyer	1,207	1915	Mayor-Council
Horicon	Dodge	2,214	1897	Mayor-Council
Hudson	St. Croix	2,725	1856	Mayor-Council
Hurley	Iron	3,264	1918	Mayor-Council
Jefferson	Jefferson	2,639	1878	Mayor-Council
Juneau	Dodge	1,154	1887	Mayor-Council
Kaukauna	Outagamie	6,581	1885	Mayor-Council
Kewaunee	Kewaunee	2,409	1883	Mayor-Council
Kiel	Calumet, Manitowoc	1,803	1920	Mayor-Council
Kilbourn	Columbia	1,489	1925	Mayor-Council
Ladysmith	Rusk	3,493	1905	Commission
Lake Geneva	Walworth	3,073	1885	Mayor-Council
Lake Mills	Jefferson	2,007	1905	Mayor-Council
Lancaster	Grant	2,432	1878	Mayor-Council
Marshfield	Wood	8,778	1883	Mayor-Council
Mauston	Juneau	2,107	1887	Mayor-Council
Mayville	Dodge	2,521	1885	Mayor-Council
Medford	Taylor	1,918	1889	Mayor-Council
Mellen	Ashland	1,629	1907	Mayor-Council
Menasha	Winnebago	9,062	1874	Mayor-Council
Menomonie	Dunn	5,595	1882	Commission
Merrill	Lincoln	8,458	1883	Mayor-Council
Mineral Point	Iowa	2,274	1857	Mayor-Council
Mondovi	Buffalo	1,623	1889	Mayor-Council
Monroe	Green	5,015	1882	Mayor-Council
Montreal	Iron	1,819	1924	Mayor-Council
Neenah	Winnebago	9,151	1873	Mayor-Council
Neillsville	Clark	2,118	1882	Mayor-Council
Nekoosa	Wood	2,005	1926	Mayor-Council
New Holstein	Calumet	1,274	1926	Mayor-Council
New Lisbon	Juneau	1,076	1889	Mayor-Council
New London	Outagamie, Waupaca	4,661	1877	Mayor-Council
New Richmond	St. Croix	2,112	1885	Mayor-Council
Oconomowoc	Waukesha	4,190	1875	Mayor-Council
Oconto	Oconto	5,030	1869	Mayor-Council
Oconto Falls	Oconto	1,921	1919	Mayor-Council
Onalaska	La Crosse	1,408	1878	Mayor-Council
Owen	Clark	1,102	1925	Mayor-Council
Park Falls	Price	3,036	1912	Mayor-Council
Peshtigo	Marinette	1,579	1903	Mayor-Council
Phillips	Price	1,901	1891	Mayor-Council
Pittsville	Wood	508	1887	Mayor-Council
Platteville	Grant	4,047	1876	Mayor-Council
Plymouth	Sheboygan	3,882	1877	Mayor-Council
Portage	Columbia	6,308	1854	Mayor-Council
Port Washington	Ozaukee	3,693	1882	Commission
Prairie du Chien	Crawford	3,943	1872	Mayor-Council

WISCONSIN CITIES AND VILLAGES—Continued

City	County	Population 1930	Year In- corporated	Type of Government
Prescott.....	Pierce.....	755	1871	Mayor-Council
Princeton.....	Green Lake.....	1,183	1920	Mayor-Council
Reedsburg.....	Sauk.....	2,967	1887	Mayor-Council
Rhineland.....	Oneida.....	8,019	1884	City Manager
Rice Lake.....	Barron.....	5,177	1887	Mayor-Council
Richland Center.....	Richland.....	3,632	1887	Mayor-Council
Ripon.....	Fond du Lac.....	3,984	1858	Mayor-Council
River Falls.....	Pierce, St. Croix.....	2,363	1875	Mayor-Council
Seymour.....	Outagamie.....	1,201	1879	Mayor-Council
Shawano.....	Shawano.....	4,188	1874	Mayor-Council
Sheboygan Falls.....	Sheboygan.....	2,934	1913	Mayor-Council
Shullsburg.....	Lafayette.....	1,041	1889	Mayor-Council
Sparta.....	Monroe.....	4,949	1883	Mayor-Council
Spooner.....	Washburn.....	2,426	1909	Mayor-Council
Stanley.....	Chippewa.....	1,988	1888	Mayor-Council
Stoughton.....	Dane.....	4,497	1882	Mayor-Council
Sturgeon Bay.....	Door.....	4,983	1883	Mayor-Council
Tomah.....	Monroe.....	3,354	1883	Mayor-Council
Tomahawk.....	Lincoln.....	2,919	1891	Mayor-Council
Viroqua.....	Vernon.....	2,792	1883	Mayor-Council
Washburn.....	Bayfield.....	2,238	1904	Mayor-Council
Waupaca.....	Waupaca.....	3,131	1875	Mayor-Council
Waupun.....	Fond du Lac, Dodge.....	5,768	1878	Mayor-Council
West Bend.....	Washington.....	4,760	1885	Mayor-Council
Westby.....	Vernon.....	1,366	1920	Mayor-Council
Whitewater.....	Walworth.....	3,465	1885	Mayor-Council
Wisconsin Rapids.....	Wood.....	8,726	1869	Mayor-Council

(1) Under the statutes, a city changes from one class to another, when after the official census is published, the city has enacted the legislation for such changed classification and the mayor has proclaimed the change.

(2) Green Bay has a special form of commission government, which is more like the mayor-council form of government than the usual commission type.

Villages⁽¹⁾

Villages	County	Population 1930	Year In- corporated
Abbotsford.....	Clark, Marathon.....	781	1894
Ableman.....	Sauk.....	470	1894
Adell.....	Sheboygan.....	262	1918
Albany.....	Green.....	728	1883
Alma Center.....	Jackson.....	383	1902
Almond.....	Portage.....	449	1905
Amherst.....	Portage.....	577	1900
Amherst Junction.....	Portage.....	210	1912
Aniwa.....	Shawano.....	296	1899
Arena.....	Iowa.....	273	1923
Argyle.....	Lafayette.....	692	1903
Athens.....	Marathon.....	935	1901
Auburndale.....	Wood.....	234	1861
Avoca.....	Iowa.....	342	1870
Bagley.....	Grant.....	284	1919
Baldwin.....	St. Croix.....	808	1874
Balsam Lake.....	Polk.....	315	1905
Bangor.....	La Crosse.....	835	1899
Barneveld.....	Iowa.....	301	1906
Barton.....	Washington.....	811	1924
Bay City.....	Pierce.....	290	1910
Bear Creek.....	Outagamie.....	411	1902

(1) All villages except the village of Shorewood are governed by a president and board of trustees. Shorewood has a village manager type of government very similar to the city manager form.

WISCONSIN CITIES AND VILLAGES—Continued

Villages	County	Population 1930	Year In- corporated
Belgium	Ozaukee	268	1922
Bell Center	Crawford	177	1901
Belleville	Dane	564	1892
Belmont	Lafayette	452	1894
Benton	Lafayette	869	1892
Big Bend	Waukesha	309	1928
Big Falls	Waupaca	178	1925
Birchwood	Washburn	565	1921
Birnamwood	Shawano	557	1895
Biron	Wood	380	1910
Black Creek	Outagamie	526	1904
Black Earth	Dane	490	1857
Blair	Trempealeau	702	1894
Blanchardville	Lafayette	651	1890
Bloomington	Grant	591	1880
Blue Mounds	Dane	182	1912
Blue River	Grant	346	1916
Bonduel	Shawano	534	1916
Bowler	Shawano	318	1923
Boyeville	Dunn	573	1922
Boyd	Chippewa	540	1891
Brandon	Fond du Lac	646	1920
Brillion	Calumet	1,167	1885
Brokaw	Marathon	514	1908
Brooklyn	Dane, Green	406	1905
Brownstown	Green	291	1890
Bruce	Rusk	548	1901
Butler	Waukesha	703	1913
Butternut	Ashland	604	1903
Cable	Bayfield	240	1920
Cadott	Chippewa	631	1895
Cambria	Columbia	671	1866
Cambridge	Dane	500	1891
Cameron	Barron	760	1894
Campbellsport	Fond du Lac	789	1902
Camp Douglas	Juneau	438	1893
Cascade	Sheboygan	286	1914
Butler	Waukesha	703	1913
Casco	Kewaunee	246	1920
Cashton	Monroe	680	1901
Cassville	Grant	875	1920
Catawba	Price	282	1922
Cazenovia	Richland	466	1903
Cecil	Shawano	356	1905
Cedar Grove	Sheboygan	814	1900
Centuria	Polk	435	1904
Chaseburg	Vernon	218	1922
Chenequa	Waukesha	339	1928
Clayton	Polk	341	1910
Clear Lake	Polk	733	1894
Clinton	Rock	902	1881
Clyman	Dodge	200	1924
Cobb	Iowa	276	1902
Cochrane	Buffalo	418	1910
Coleman	Marinette	407	1903
Colfax	Dunn	919	1904
Combined Locks	Outagamie	545	1920
Conrath	Rusk	97	1915
Coon Valley	Vernon	462	1907
Cornell	Chippewa	1,510	1913
Cottage Grove	Dane	261	1924
Couderay	Sawyer	171	1922
Cross Plains	Dane	302	1920
Curtiss	Clark	164	1917
Dallas	Barron	428	1903
Dane	Dane	230	1899
Deerfield	Dane	501	1891
Deer Park	St. Croix	187	1913
De Forest	Dane	540	1903
Denmark	Brown	779	1915
De Soto	Crawford, Vernon	322	1886
Dorchester	Clark	400	1901
Dousman	Waukesha	256	1917

WISCONSIN CITIES AND VILLAGES—Continued

Villages	County	Population 1930	Year In- corporated
Downing	Dunn	302	1909
Doylestown	Columbia	238	1907
Dresser Junction	Polk	285	1919
Eagle	Waukesha	392	1899
Eagle River	Vilas	1,386	1921
Eastman	Crawford	271	1910
East Troy	Walworth	800	1900
Eden	Fond du Lac	223	1912
Edgar	Marathon	667	1898
Eland	Shawano	319	1905
Elderon	Marathon	181	1917
Eleva	Trempealeau	357	1902
Elkhart Lake	Sheboygan	571	1894
Elk Mound	Dunn	376	1909
Ellsworth	Pierce	1,124	1887
Elmwood	Pierce	737	1905
Embarrass	Waupaca	256	1895
Ephriam	Door	191	1919
Exeland	Sawyer	196	1920
Fairchild	Eau Claire	634	1880
Fairwater	Fond du Lac	301	1922
Fall Creek	Eau Claire	528	1906
Fall River	Columbia	375	1903
Fenwood	Marathon	136	1904
Ferryville	Crawford	266	1912
Fontana	Walworth	385	1924
Footville	Rock	358	1918
Fox Lake	Dodge	901	1858
Fox Point	Milwaukee	474	1926
Frederick	Polk	680	1903
Fredonia	Ozaukee	312	1922
Fremont	Waupaca	416	1882
Friendship	Adams	438	1907
Galesville	Trempealeau	1,069	1837
Gays Mills	Crawford	579	1900
Genoa City	Walworth	683	1901
Germantown	Washington	255	1927
Gillett	Oconto	1,076	1900
Gilman	Taylor	414	1914
Glenbeulah	Sheboygan	284	1913
Glen Flora	Rusk	137	1915
Grafton	Ozaukee	1,065	1896
Granton	Clark	310	1916
Grantsburg	Burnett	777	1837
Gratiot	Lafayette	287	1891
Green Lake	Green Lake	569	1871
Gresham	Shawano	310	1908
Hammond	St. Croix	395	1880
Hancock	Waushara	420	1902
Hartland	Waukesha	945	1891
Hatley	Marathon	251	1912
Haugen	Barron	249	1918
Hawkins	Rusk	372	1922
Hazel Green	Grant	601	1867
Highland	Iowa	739	1873
Hilbert	Calumet	519	1898
Hillsboro	Vernon	972	1885
Hixton	Jackson	270	1920
Hollandale	Iowa	241	1910
Hortonville	Outagamie	906	1894
Hustisford	Dodge	537	1870
Hustler	Juneau	161	1914
Independence	Trempealeau	866	1885
Ingram	Rusk	153	1907
Iola	Waupaca	763	1892
Iron Ridge	Dodge	260	1913
Ironton	Sauk	184	1914
Jackson	Washington	227	1912
Johnson Creek	Jefferson	457	1903
Junction City	Portage	275	1911

WISCONSIN CITIES AND VILLAGES—Continued

Villages	County	Population 1930	Year In- corporated
Kendall	Monroe	517	1849
Kennan	Price	194	1903
Kewaskum	Washington	799	1895
Kimberly	Outagamie	2,256	1910
Kingston	Green Lake	270	1858
Knapp	Dunn	424	1905
Kohler	Sheboygan	1,748	1912
Lac Labelle	Waukesha		1931
La Farge	Vernon	756	1899
Lake Nebagamon	Douglas	367	1907
Lakewood Bluff	Dane		Dec.1930
Lannon	Waukesha	434	
La Valle	Sauk	415	1883
Lena	Oconto	413	1921
Lime Ridge	Sauk	230	1910
Linden	Iowa	498	1900
Little Chute	Outagamie	2,833	1899
Livingston	Grant, Iowa	485	1914
Lodi	Columbia	1,055	1872
Loganville	Sauk	228	1917
Lohrville	Waushara	262	1910
Lomira	Dodge	603	1899
Lone Rock	Richland	424	1886
Lowell	Dodge	288	1893
Loyal	Clark	862	1893
Lublin	Taylor	159	1915
Luck	Polk	560	1905
Luxemburg	Kewaunee	475	1908
Lyndon Station	Juneau	276	1903
Lynxville	Crawford	230	1889
McFarland	Dane	313	1920
Maiden Rock	Pierce	311	1887
Manawa	Waupaca	711	1900
Marathon	Marathon	808	1884
Marion	Waupaca	992	1898
Markesan	Green Lake	872	1858
Marshall	Dane	441	1905
Mason	Bayfield	153	1925
Mattoon	Shawano	508	1901
Mazomanie	Dane	747	1899
Melrose	Jackson	480	1914
Melvina	Monroe	143	1922
Menomonee Falls	Waukesha	1,291	1892
Merrillan	Jackson	554	1881
Merrimac	Sauk	250	1899
Merton	Waukesha	232	1922
Middleton	Dane	933	1905
Milltown	Polk	450	1910
Milton	Rock	1,128	1904
Minong	Washburn	292	1915
Mosinee	Marathon	1,229	1889
Montello	Marquette	1,245	1868
Montfort	Grant	554	1893
Monticello	Green	644	1891
Mount Hope	Grant	256	1919
Mount Horeb	Dane	1,425	1899
Mukwonago	Waukesha	846	1905
Muscoda	Grant	900	1894
Necedah	Juneau	761	1870
Nelsonville	Portage	198	1913
Neosho	Dodge	262	1902
Neshkoro	Marquette	342	1906
New Auburn	Chippewa	376	1917
New Glarus	Green	1,010	1901
Niagara	Marinette	2,033	1914
North Fond du Lac	Fond du Lac	2,244	1903
North Freedom	Sauk	554	1893
North Hudson	St. Croix	625	1912
North Prairie	Waukesha	292	1919
Norwalk	Monroe	565	1894
Oakfield	Fond du Lac	577	1903
Ogdensburg	Waupaca	176	1912

WISCONSIN CITIES AND VILLAGES—Continued

Villages	County	Population 1930	Year In- corporated
Oliver	Douglas	167	1917
Omro	Winnebago	1,255	1857
Ontario	Monroe, Vernon	433	1890
Oregon	Dane	857	1883
Orfordville	Rock	502	1910
Osceola	Polk	607	1886
Osseo	Trempealeau	933	1893
Oostburg	Sheboygan	671	1909
Oxford	Marquette	397	1912
Palmyra	Jefferson	642	1866
Pardeeville	Columbia	873	1894
Patch Grove	Grant	243	1921
Pepin	Pepin	603	1860
Pewaukee	Waukesha	1,067	1876
Plain	Sauk	331	1912
Plainfield	Waushara	537	1882
Plover	Portage	326	1857
Plum City	Pierce	320	1909
Poplar	Douglas	449	1917
Port Edwards	Wood	988	1902
Potosi	Grant	447	1846
Pound	Marinette	246	1914
Poynette	Columbia	672	1892
Prairie du Sac	Sauk	949	1885
Prairie Farm	Barron	301	1901
Prentice	Price	437	1899
Pulaski	Brown	839	1910
Randolph	Columbia, Dodge	1,161	1870
Random Lake	Sheboygan	576	1907
Readstown	Vernon	544	1898
Redgranite	Waushara	977	1904
Reedsville	Manitowoc	617	1892
Reeseville	Dodge	422	
Rewey	Iowa	249	1902
Rib Lake	Taylor	1,180	1902
Ridgeland	Dunn	197	1921
Ridgeway	Iowa	365	1902
Rio	Columbia	641	1887
River Hills	Milwaukee		Apr. 1930
Rochester	Racine	246	1912
Rockdale	Dane	135	1914
Rockland	La Crosse	190	1919
Rosendale	Fond du Lac	305	1915
Rosholt	Portage	515	1907
Rothschild	Marathon	499	1917
Royalton	Waupaca	304	1919
St. Cloud	Fond du Lac	365	1909
St. Croix Falls	Polk	952	1888
Sauk City	Sauk	1,137	1854
Saukville	Ozaukee	399	1915
Scandinavia	Waupaca	350	1894
Schofield	Marathon	1,287	1904
Sharon	Walworth	733	1892
Sheldon	Rusk	161	1917
Shell Lake	Washburn	826	1908
Shiocton	Outagamie	506	1903
Shorewood	Milwaukee	13,479	1900
Shorewood Hills	Dane	347	1927
Silver Lake	Kenosha	356	1926
Sister Bay	Door	238	1912
Slinger	Washington	760	1869
Soldiers Grove	Crawford	710	1888
Solon Springs	Douglas	282	1920
Somerset	St. Croix	480	1915
South Wayne	Lafayette	316	1911
Spencer	Marathon	456	1902
Spring Green	Sauk	779	1869
Spring Valley	Pierce	896	1895
Star Prairie	St. Croix	250	1900
Steuben	Crawford	262	1900
Stockbridge	Calumet	377	1908
Stockholm	Pepin	205	1903

WISCONSIN CITIES AND VILLAGES—Continued

Villages	County	Population 1930	Year In- corporated
Stoddard	Vernon	316	1911
Stratford	Marathon	960	1910
Sturtevant	Racine	746	1907
Sullivan	Jefferson	323	1915
Sun Prairie	Dane	1,337	1868
Suring	Oconto	421	1914
Sussex	Waukesha	496	1924
Taylor	Jackson	339	1919
Theresa	Dodge	427	1898
Thiensville	Ozaukee	500	1910
Thorp	Clark	892	1893
Tigerton	Shawano	831	1896
Tony	Rusk	160	1911
Trempealeau	Trempealeau	541	1867
Turtle Lake	Barron	598	1898
Union Center	Juneau	157	1913
Union Grove	Racine	755	1893
Unity	Clark, Marathon	319	1903
Valders	Manitowoc	504	1919
Verona	Dane	455	1920
Viola	Richland, Vernon	699	1899
Waldo	Sheboygan	315	1922
Wales	Waukesha	132	1922
Walworth	Walworth	920	1901
Waterford	Racine	739	1906
Waterloo	Jefferson	1,272	1859
Wausaukee	Dane	640	1893
Wausaukee	Marinette	663	1924
Wautoma	Waushara	1,044	1901
Wauzeka	Crawford	519	1890
Webster	Burnett	501	1916
Westfield	Marquette	769	1902
West Milwaukee	Milwaukee	4,168	1906
West Salem	La Crosse	1,011	1893
Weyauwega	Waupaca	1,067	1856
Weyerhauser	Rusk	321	1906
Wheeler	Dunn	229	1920
Whitefish Bay	Milwaukee	5,362	1892
Whitehall	Trempealeau	915	1887
White Lake	Langlade	530	1926
Wild Rose	Waushara	512	1904
Williams Bay	Walworth	630	1919
Wilson	St. Croix	200	1911
Wilton	Monroe	449	1890
Winnebago	Winnebago	821	1871
Withse	Clark	380	1901
Wittenburg	Shawano	863	1893
Wonewoc	Juneau	717	1878
Woodman	Grant	101	1917
Woodville	St. Croix	403	1911
Wrightstown	Brown	612	1901
Wyeville	Monroe	149	1923
Wycena	Columbia	490	1909

COUNTY OFFICERS 1931-1932

County	Voting Pre- cincts	County Seat	County Superintendent Term Expires July, 1933†	County Judge Term Expires January, 1932
1 Adams	20	Friendship	Irvin S. Jones	Charles H. Gilman
2 Ashland	27	Ashland	Richard C. Taggart	James McCully
3 Barron	41	Barron	August Newman	H. S. Comstock
4 Bayfield	37	Washburn	Elsie M. Miller	Hartvig P. Axelberg
5 Brown	48	Green Bay	E. A. Seymour	Carlton Merrill
6 Buffalo	28	Alma	G. M. Hutchinson	G. L. Pattison
7 Burnett	23	Grantsburg	O. H. Caspers	J. E. Spanberg
8 Calumet	15	Chilton	Anna E. Barnard	Helmuth G. Arps
9 Chippewa	43	Chippewa Falls	Anna Johnson	Dayton E. Cook
10 Clark	53	Neillsville	Margaret V. N. Walters	Oscar W. Schoengrath
11 Columbia	41	Portage	Anna R. Nelson	Alonza F. Kellogg
12 Crawford	24	Prairie du Chien	Fred E. Porter	Jeremiah O'Neill
13 Dane	83	Madison	1st. Esther Krakow 2nd. T. S. Thompson	George Kroncke
14 Dodge	59	Juneau	Paul L. Kaiser	E. H. Naber
15 Door	20	Sturgeon Bay	Wm. J. Gilson	Jacob Debas
16 Douglas	47	Superior	Vera C. Rehnst and	William E. Haily
17 Dunn	33	Menomonie	John W. Klingman	William S. Swenson
18 Eau Claire	28	Eau Claire	Mildred D. V. ...	George L. Blum
19 Florence	8	Florence	Grace W. Kimball	Frank Waring
20 Fond du Lac	51	Fond du Lac	Myron J. Lowe	August E. Richter
21 Forest	19	Crandon	*Ann Gray	T. J. Conway
22 Grant	69	Lancaster	Frank E. Ralph	Walter J. Brennan
23 Green	27	Monroe	Alta Rouse	William A. Loveland
24 Green Lake	21	Green Lake	George V. Kelley	Perry Niskern
25 Iowa	31	Dodgeville	Lillian Ellis	Aldro Jenks
26 Iron	20	Hurley	Ida B. Bradley	James E. Flandrena
27 Jackson	29	Bk. River Falls	Vella S. Van Wo. mer	Frank Johnson
28 Jefferson	46	Jefferson	Eva Bock	L. L. Darling
29 Juneau	32	Mauston	Stephen D. Macomber	Robert P. Clark
30 Kenosha	34	Kenosha	R. S. Ihlenfeldt	Robert V. Baker
31 Kewaunee	14	Kewaunee	Thomas Frawley	George H. Crowns
32 La Crosse	38	La Crosse	Emily C. Stromstad	†R. V. Ahlstrom
33 Lafayette	28	Darlington	Howard Teasdale	Jefferson B. Simpson
34 Langlade	25	Antigo	*Maud B. Gibbs	John W. Parsons
35 Lincoln	23	Merrill	*Nellie Evjue	Milton C. Porter
36 Manitowoc	36	Manitowoc	E. S. Mueller	John Chloupek
37 Marathon	69	Wausau	Adolph R. Thiede	George J. Leicht
38 Marinette	35	Marinette	Christine Christensen	William F. Haase
39 Marquette	18	Montello	Samuel Long	John A. Metzler
40 Milwaukee	437	Milwaukee	Edward T. Griffin	M. S. Sheridan
41 Monroe	38	Sparta	Ollie M. Swanson	John C. Karel (6-33)
42 Oconto	40	Oconto	S. V. Wilson	Randolph A. Richards
43 Oneida	25	Rhineland	J. M. Reed	Herbert F. Jones
44 Outagamie	46	Appleton	Arthur G. Meating	H. V. Steele
45 Ozaukee	21	Pt. Washington	Richard F. Beger	Fred F. Heinemann
46 Pepin	13	Durand	Fra Buchanan	J. E. Uselding
47 Pierce	27	Ellsworth	*Mark L. Saxton	W. B. Newcomb
48 Polk	36	Balsam Lake	P. J. Lynch	Warren P. Knowles
49 Portage	33	Stevens Point	Marion E. Bannach	Carl M. Lynn
50 Price	27	Phillips	Pearl Salter	William F. Owen
51 Racine	43	Racine	Edith L. McEachron	Asa K. Owen
52 Richland	22	Richland Ctr.	J. Louise Earl	J. Allen Simpson
53 Rock	45	Janesville	Gilmore T. Longbotham	P. L. Lincoln
54 Rusk	39	Ladysmith	George E. Sanford	Alexander E. Matheson
55 St. Croix	39	Hudson	*R. J. Sorenson	Glenn H. Williams
56 Sauk	40	Baraboo	Mattie Mc Millan	Otto W. Arnuist
57 Sawyer	22	Hayward	Bertena Bushland	Henry J. Bohn
58 Shawano	40	Shawano	A. L. Pahr	John K. Swenson
59 Sheboygan	45	Sheboygan	W. J. Berger	F. A. Jaeckel
60 Taylor	28	Medford	Arthur J. Latton	Paul T. Krez
61 Trempealeau	25	Whitehall	Tillie C. Sylfest	M. A. Buckley
62 Vernon	36	Viroqua	Nell M. Mahoney	John C. Gaveney
63 Vilas	16	Eagle River	A. J. Austin	D. O. Mahoney
64 Walworth	34	Elkhorn	Maude Mitchell	Frank Carter
65 Washburn	29	Shell Lake	Lucy A. Leonard	Roscoe R. Luce
66 Washington	25	West Bend	M. T. Buckley	L. J. Jones
67 Waukesha	44	Waukesha	Arthur Tews	Frank W. Bucklin
68 Waupaca	46	Waupaca	Carl H. Bacher	David W. Agnew
69 Waushara	25	Wautoma	Arthur Dietz	Wm. N. Martin
70 Winnebago	44	Oshkosh	Avery C. Jones	George P. Sorenson
71 Wood	48	Wis. Rapids	S. G. Corey	Daniel E. McDonald
				Frank W. Calkins
Total	2,826			

*Appointed for unexpired term.
†Appointed pending Judicial Election.
‡XVIII O.A.G., 173.

COUNTY OFFICERS 1931-1932—Continued

	County Seat	County Clerk	Treasurer
1 Adams	Friendship	Carl M. Smedbron	A. D. Fuller
2 Ashland	Ashland	Edwin H. Quistorff	Henry D. Klein
3 Barron	Barron	F. S. Woodard	Verna I. Timblin
4 Bayfield	Washburn	Ludwig Tranmal	Randall W. Smith
5 Brown	Green Bay	Harold J. Neville	Ole Hansen
6 Buffalo	Alma	Samuel Meyer	Esther Brevick
7 Burnett	Grantsburg	Chas. G. Hjort	Julius Ortpendahl
8 Calumet	Chilton	John H. Brocker	Wm. L. Griem
9 Chippewa	Chippewa Falls	Wm. N. Hebert	John F. Kelly
10 Clark	Neilsville	John J. Irvine	Mary Rude
11 Columbia	Portage	H. R. Tongen	Mary L. Diehl
12 Crawford	Prairie du Chien	Lester R. Daugherty	Wm. J. Rider
13 Dane	Madison	Selma Fjeldstad	C. L. Femrite
14 Dodge	Juneau	Emil F. Becker	Alice E. Krueger
15 Door	Sturgeon Bay	Ralph Herlache	Emil Miller
16 Douglas	Superior	A. R. Cole	W. C. Smith
17 Dunn	Menomonie	Leonard Kingsley	Anna C. Nesseth
18 Eau Claire	Eau Claire	John H. Nygaard	Joseph Figlmiller
19 Florence	Florence	C. Elmer Erickson	Chas. R. Tiderman
20 Fond du Lac	Fond du Lac	Martha M. Bartlett	Michael Washbush
21 Forest	Crandon	W. E. Mountain	John Kuss
22 Grant	Lancaster	James T. Webb	Lincoln W. Hounsell
23 Green	Monroe	Clarence W. Lengacher	E. G. Stauffacher
24 Green Lake	Green Lake	G. A. Weinkauff	Geo. S. Thrasher
25 Iowa	Dodgeville	Mrs. Frank C. Mitchell	Mrs. Hillary Heibel
26 Iron	Hurley	Benjamin Chartier	Luella Trier
27 Jackson	Black River Falls	James H. Hammer	Albert Knutson
28 Jefferson	Jefferson	Wm. A. Muck	Frederick Bullwinkel
29 Juneau	Mauston	James Allaby	Ross Williams
30 Kenosha	Kenosha	Iva B. Russell	George F. Lauer
31 Kewaunee	Kewaunee	Jos. G. Lazansky	Jos. M. Mileziva
32 La Crosse	La Crosse	Esther M. Domke	Marvin Johnson
33 Lafayette	Darlington	E. P. Noble	Elmer J. Knautz
34 Langlade	Antigo	Wm. I. Strong	John Callahan
35 Lincoln	Merrill	Lester W. Ittkey	August J. Braun
36 Manitowoc	Manitowoc	Albert W. Tetzlaff	Arthur E. Mueller
37 Marathon	Wausau	Edward H. Kuhlmann	William R. Kumbier
38 Marinette	Marinette	Peter H. McAlister	Ben H. Clough
39 Marquette	Montello	J. C. Bennett	Edw. Gelhar
40 Milwaukee	Milwaukee	William J. Cary	Patrick McManus
41 Monroe	Sparta	A. L. Nicol	O. J. Jackson
42 Oconto	Oconto	Mildred Elliott	Asa Couillard
43 Oneida	Rhineland	John J. Verage	Anna Moe Gruper
44 Outagamie	Appleton	John E. Hantschel	Marie Ziegenhagen
45 Ozaukee	Pt. Washington	John Bichler	Max M. Gunther
46 Pepin	Durand	W. P. Unser	C. V. Hewitt
47 Pierce	Ellsworth	O. J. Hohle	Fred W. Kendall
48 Polk	Balsam Lake	V. A. Hanson	Edw. Anderson
49 Portage	Stevens Point	Gladys Gordon	Earl Newby
50 Price	Phillips	Joshua Jones	Genevieve J. Anderson
51 Racine	Racine	Harry Basinger	Martin Christensen
52 Richland	Richland Center	E. H. Martin	Clare Barnes
53 Rock	Janesville	Sylvia Fero	Arthur M. Church
54 Rusk	Ladysmith	Elmer W. Hill	Y. V. Sims
55 St. Croix	Hudson	S. N. Swanson	P. G. Olson
56 Sauk	Baraboo	William H. Ode	J. V. Johnson
57 Sawyer	Hayward	Elmer Anderson	Ola F. Frets
58 Shawano	Shawano	O. O. Wiegand	A. H. Gustman
59 Sheboygan	Sheboygan	Henry W. Timmer	F. W. Zimmerman
60 Taylor	Medford	Fred Herrmann	J. M. Zenner
61 Trempealeau	Whitehall	Alice M. Larson	George Larson
62 Vernon	Viroqua	Berlie Moore	Amund Belland
63 Vilas	Bagle River	Mary Thomas	Chas. H. Adams
64 Walworth	Elkhorn	Leo D. Dunlap	Harley C. Norris
65 Washburn	Shell Lake	Ole Sohlt	Geo. L. Cott
66 Washington	West Bend	R. G. Kraemer	Paul L. Justman
67 Waukesha	Waukesha	William Koehler	Daniel J. Pierner
68 Waupaca	Waupaca	Lewis F. Schoemaker	L. J. Stadler
69 Waushara	Wautoma	J. J. Johnson	Ward B. Kent
70 Winnebago	Oshkosh	Geo. W. Manuel	Earl E. Fuller
71 Wood	Wisconsin Rapids	Sam Church	James E. La Vigne

COUNTY OFFICERS 1931-1932—Continued

County	Voting Pre- cincts	County Seat	Surveyor	Coroner
1 Adams	20	Friendship		Robert Roseberry
2 Ashland	27	Ashland	Jerod W. Day	Louis Sollie
3 Barron	41	Barron	J. A. H. Johnson	J. H. Wallis
4 Bayfield	37	Washburn	Roy W. Markham	Edwin H. Bratley
5 Brown	48	Green Bay	Harry Alberts	Frank Hodek
6 Buffalo	28	Alma		H. F. Stohr
7 Burnett	23	Grantsburg	Darius Connor	Jos. B. Hanson
8 Calumet	15	Chilton	Leonard Suttner	John J. Minahan
9 Chippewa	43	Chippewa Falls	Erick O. Shurvey	Henry Larson
10 Clark	53	Neillsville	S. F. Hewett	H. A. Frank
11 Columbia	41	Portage	H. J. Corning	W. J. Scott
12 Crawford	24	Prairie du Chien	John J. Hurlbut	Ernest S. Otteson
13 Dane	83	Madison	Philip H. Hintz	W. E. Campbell
14 Dodge	59	Juneau	George E. Perry	W. J. Schmidt
15 Door	20	Sturgeon Bay	Richard Rasmuson	Elmer Christensen
16 Douglas	47	Superior	Donald McKercher	Zina A. Downs
17 Dunn	33	Menomonie	W. A. Harding	Carl Olson
18 Eau Claire	28	Eau Claire	A. H. Seaver	Robert H. Stokes
19 Florence	8	Florence	A. A. Bradley	Tony Grell
20 Fond du Lac	51	Fond du Lac	George Marshall	Edward J. Schnelf
21 Forest	19	Crandon	W. H. Brigham	George Marsh
22 Grant	69	Lancaster	John T. Buser	George B. Harrower
23 Green	27	Monroe		Frank A. Shriner
24 Green Lake	21	Green Lake	C. G. Walker	Geo. W. Morton
25 Iowa	31	Dodgeville	T. Harry Arthur	W. J. Roberts
26 Iron	20	Hurley	Matt Plunkett	Jos. Charbonneau
27 Jackson	29	Blk. River Falls	David A. Blencoe	H. Kalling
28 Jefferson	46	Jefferson	Chas. Rockwell	Louis J. Auerbach
29 Juneau	32	Mauston	S. L. Kennedy	Roy J. Pharo
30 Kenosha	34	Kenosha	Ben A. Robinson	Ant. B. Schmitz
31 Kewaunee	14	Kewaunee	Gerald Tegen	Harold Greise
32 La Crosse	38	La Crosse	Charles M. Jarvis	Raymond C. Dwyer
33 Lafayette	28	Darlington		James Kough
34 Langlade	25	Antigo	Malcolm Hutchinson	Jake Lingle
35 Lincoln	28	Merrill	Herman Thomas	Alfred H. Schram
36 Manitowoc	36	Manitowoc	Otto Gass	W. G. Kemper
37 Marathon	69	Wausau	R. H. Brown	George W. Krueger
38 Marinette	35	Marinette	James E. Murphy	Ed. A. Anderson
39 Marquette	18	Montello	George E. Phillips	Arthur W. Jaster
40 Milwaukee	437	Milwaukee	Theodore S. Engel	Henry J. Grundman
41 Monroe	38	Sparta	Otto Bergman	Walter R. Nissemann
42 Oconto	40	Oconto	W. J. Kingston	Clyde M. Davis
43 Oneida	25	Rhineland	Harry C. Hall	August Carlson
44 Outagamie	46	Appleton	F. M. Charlesworth	H. E. Ellsworth
45 Ozaukee	21	Pt. Washington		George B. Horn
46 Pepin	13	Durand		C. A. Van Brunt
47 Pierce	27	Ellsworth		Roland A. Hoyer
48 Polk	36	Balsam Lake	C. P. A. Jensen	W. C. Park
49 Portage	33	Stevens Point	Julian F. Maxfield	Harry D. Boston
50 Price	27	Phillips	Frank Henry	W. W. Blume
51 Racine	43	Racine	Louis F. Pope	W. F. Kisow
52 Richland	22	Richland Center	Alvin Bannister	Sabus N. Haas
53 Rock	45	Janesville	B. J. Sunny	E. J. Overton
54 Rusk	39	Ladysmith	John Diamond	O. B. Ellingboe
55 St. Croix	39	Hudson	Russell McConnell	W. W. Beebe
56 Sauk	40	Baraboo	H. C. Amundson	F. E. Tryon
57 Sawyer	22	Hayward	C. J. Kielcheski	W. F. Buck
58 Shawano	40	Shawano	J. J. Melendy	Walter Garfield
59 Sheboygan	45	Sheboygan	J. Donohue	C. N. Sonnenburg
60 Taylor	28	Medford	Chas. H. J. Beyer	T. C. Hartwig
61 Trempealeau	25	Whitehall	Lloyd Warner	J. E. Rhode
62 Vernon	36	Viroqua	E. J. Older	M. D. Helgeson
63 Vilas	16	Eagle River	W. J. Walsh	P. J. Gaffney
64 Walworth	34	Elkhorn	William Child	William F. Best
65 Washburn	29	Shell Lake	Richard Andrews	Frank L. Roberts
66 Washington	25	West Bend		Clem Reinders
67 Waukesha	44	Waukesha	W. G. Caldwell	John Schaeffel
68 Waupaca	46	Waupaca	Albert D. Millerd	Adam Schider
69 Waushara	25	Wautoma		Frank W. Cartey
70 Winnebago	44	Oshkosh	A. E. McMahon	Martin Potratz
71 Wood	48	Wisconsin Rapids		Geo. R. Baker
Total	2,826			

COUNTY OFFICERS 1931-1932—Concluded

Dist.ict Attorney	Sheriff	Register of Deeds	Cleik of Court
1 Fulton Collipp	S. R. Stone	Clara R. Smith	C. B. Meteyard
2 G. Arthur Johnson	Elmer Sanders	William C. Knowlcs	Thos. Upthegrove
3 A. J. Connors	Zean Douglas	Ann E. Blessingham	E. V. Babecek
4 Charles F. Morris	Hjalmar Frostman	Nels Myhre	John Froseth
5 Verne C. Lewellen	Joe Francis	Rigney Dwyer	Leo Ruel
6 Grover L. Broadfoot	Louis Kochenderfer	Chas. H. Kaste	Darwin W. Ulrich
7 Olive J. Strang	Chas. H. Saunders	Agnes Olsen	Alton K. Johnson
8 Edward S. Eick	Gerhard B. Jensen	Chas. M. Luther	Michael Schwarz
9 Clarence Rinehard	John Hepfler	Olaf C. Thorpe	R. J. Emerson
10 Hugh G. Haight	Wm. Bradford	George Rude	Allen Wildish
11 Ross H. Bennett	Alfred E. Gilbert	Arthur W. English	David R. Owen
12 James P. Cullen	A. N. Scoville	Thomas E. Gander	Clinton E. Roach
13 Fred E. Risser	Frank T. Finn	C. A. Lewis	Mary Grane
14 Earl E. Schumacher	Henry E. Lehmann	Nelson Bonner	Edwin C. Beske
15 Grover M. Stapletoer	Walter C. Olson	Bert Carmody	Frank Wellener
16 Claude F. Cooper	Frank Carlson	Wm. McDougal	Charles E. Nelson
17 Albert L. Quiling	I. L. Harmon	Maude Lanckton	L. G. Ketchpaw
18 Arthur M. Croker	A. J. Craney	Leonard P. Loken	Hans S. Lund
19 Laurence Gooding	James Doyle	Clarence Bomberg	Chase O. Youngs
20 F. W. Horn	George Freund	John J. Brunkhoist	Cora B. Stevens
21 Otto F. Christenson	Edward Moore	E. O. Woodbury	Guy L. Ferguson
22 Randal J. Elmer	Joe R. Greer	M. Ethel Utt	Fred C. Burr
23 R. W. Peterson	Myron West	Belle Burke	Max G. Booth
24 Charlton H. James	Walter Smith	Geo. W. Williams	Lillian A. Leigh
25 R. C. Trembath	J. D. Raisbeck	Mrs. Frank Crook	Ina M. Potterton
26 Harry M. Perry	Frank J. Erspamer	Herbert E. Becker	Lloyd Hunt
27 Harold W. Hartwig	Carl M. Anderson	Bertilde Johnson	Laurence Emerson
28 Edward Vinopal, Jr.	John C. Gruel	Corydon T. Fargo	J. C. Brandel
29 Morris Barnett	Elmer H. Hempelman	Herman M. Ruh	Vernon Wright, Sr.
30 L. W. Bruemmer	Steve Robinson	John F. Schmitt	G. A. Strangberg
31 Rud. M. Schlabach	Joseph Kassner	Louis G. Stangel	George C. Webb
32 Albert G. Hawley	Albert F. Riley	Charles J. Wachs	Leonard Kleeber
33 James R. Durfee	Frank T. Hinkins	Irenus M. Byrne	James W. Metcalf
34 Leonard F. Schmitt	Thos. E. Ford	Adela Freideman	A. J. Nowotny
35 Lyman F. Fischer	Fred G. Krueger	Fremont C. Waller	Geo. A. Schroeder
36 Walter A. Graunke	Herman Carstens	Gust. Eggert	Charles E. Cary
37 Norman B. Langill	Simon Schaumburger	George A. Runkel	Henry A. Beilke
38 John Conant	Lester B. Lindsay	Adeline B. Pratt	Warner A. Lund
39 George A. Bowman	John D. Cotter	Al E. Wall	S. B. Robinson
40 Wm. M. Gleiss	Al Benson	Phillip C. Westfahl	Charles C. Maas
41 Giles V. Megan	Wm. C. Albrecht	Harold E. Markham	Ole H. Doxrud
42 Earl L. Kennedy	Adolf E. Duescher	John Wesner	J. E. Keefe
43 Stanley A. Staidl	Hans Rodd	Chas. E. Davis	Hannah A. McRae
44 N. H. Roden	John F. Lappen	Albert G. Koch	Sydney M. Shannon
45 W. E. Thurston	Jacob Dahm	O. F. Boerner	Wm. Schuknecht
46 Theodore A. Waller	W. A. Parker	W. C. Thompson	Reuben Anderson
47 James L. McGinnis	Martin L. Kjelstad	John L. Swanson	Roy D. Morton
48 John A. Meleski	James A. Olson	J. H. Towers	Walter T. Peterson
49 Louis A. Koenig	John F. Kubisiak	Ed. Larson	Preston E. Webster
50 Charles F. Prudent	Nick Bey	Walter F. Koch	Henry Niebauer
51 Sidney J. Hanson	John H. Anderson	Louis L. Peterson	Helena L. Blythe
52 Harry S. Fox	Herman Kidd	Charles Carlson	F. D. Reed
53 H. F. Duckart	Jed S. Fessenden	F. P. Smiley	Jesse Earle
54 R. A. Forsythe	E. Wilson	Gertie J. Wick	C. D. Swaim
55 Clifford M. La Mar	August Larson	Harriet E. Walker	Norman G. Larson
56 Jens Jorgenson	Ernest C. Mueller	Della Yotti	H. H. Prange
57 Louis W. Cattan	Art Hanson	Walter J. Duffy	Alex Pearson
58 Herman C. Runge	Louis Hoffman	Tillie Stark	Clifton A. Perry
59 T. W. Andresen	Ernst C. Zehms	Edwin Koellmer	M. W. Hickey
60 John A. Markham	George R. Baird	G. A. Gowey	M. W. Truax
61 Martin Gulbrandser	Cinton B. Immel	Morris Hanson	Eugene J. Kidder
62 Edmund Drager	Stener Jacobson	Paul T. Paulsen	Luna Goshing
63 A-thur T. Thorson	Thcs. MacGregor	Fern Scott	J. F. Habrich
64 Glenn R. Douglas	James Mason	Frank G. Holmes	John G. Vess
65 John A. Cannon	J. J. Waggoner	Frank Keeler	J. W. McCulloch
66 Herman R. Salen	Theo. Holtebeck	William T. Leins	John H. Klessig
67 Lloyd D. Smith	Phil Herbrand	Marie L. Latner	Samuel D. Connell
68 Earl F. Kileen	Arthur Steenbock	Peter H. Jorgensen	Irgebet Ovrom
69 Frank B. Keefe	Frank P. Schultz	E. R. Barnard	W. L. Roberts
70 Chas. M. Pors	Arthur L. Nelscn	Selba G. Stocum	Frank W. Schneider
	Wm. A. Berg	Henry Ebbe	A. B. Bever