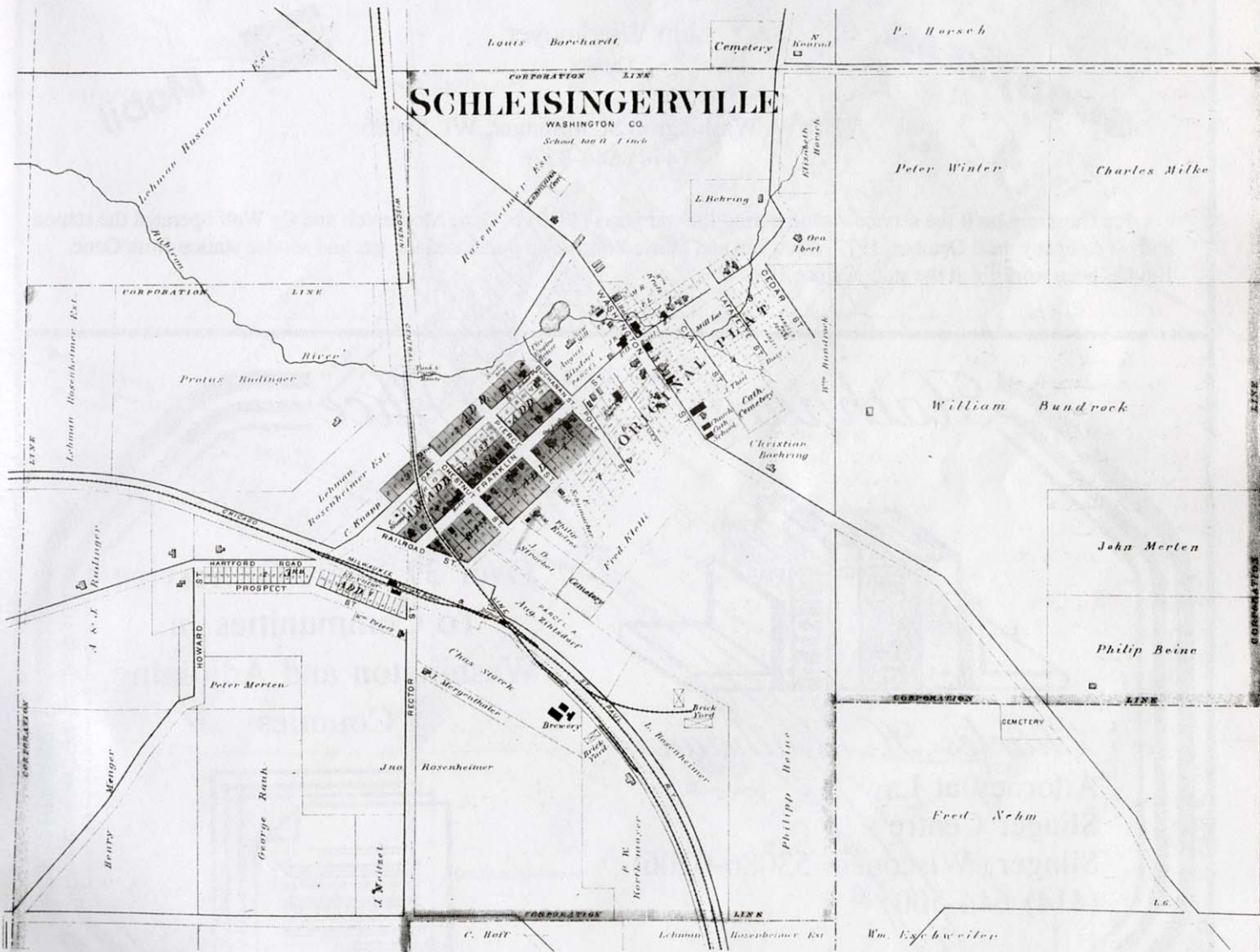


# MAPS

## 1892 PLAT MAP

This map was substantially reduced in size to try to get the entire village limits on the picture. Note the tributary of the Rubicon River that runs through the village.

Also note that the village was laid out based upon the trails that were in existence. This is not a typical North-South, East-West layout. This often causes confusion when someone asks whether a building is on the north or south side of a street.



The map on the next page is the exact same 1892 PLAT MAP. It has been expanded to get a better view of the main portion of the village. The outer edges have been lost. Refer to the "Development of Slinger" article to see when the various parts of the village were developed.



# JIM'S SLINGER SERVICE, INC.

## Auto & Truck General Repairs

Air Conditioning Service  
Wheel Alignment  
Emission Control Testing  
Towing Service  
Welding & Fabrication



Gas, Diesel Fuel, & Kerosene  
Boat Trailer Repair  
24 Hr. Card System  
Full Tire Service  
Gift Certificates Available

**WE FIX EVERYTHING BUT BROKEN HEARTS!**

**GOODYEAR**

Jim Wiedmeyer  
Owner

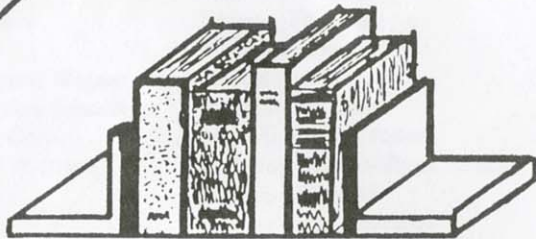
**UNIROVAL**

**Mobil**

201 W. Washington St. • Slinger, WI 53086  
(414) 644-8276

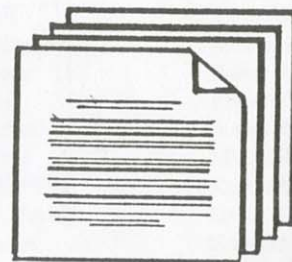
Joe Gundrum built the service station during the war years (1940's). Gene Mechenich and Cy Wolf operated the station and oil company until October, 1977, when Jim and Marie Wiedmeyer purchased the gas and service station from Gene. Jim has been working at the station since 1962.

## *Kathaway Law Office*



*Charles H. Kathaway*  
Attorney at Law  
Slinger Centre  
Slinger, Wisconsin 53086-0206  
(414) 644-5001

Over 37 Years Of Service  
To Communities In  
Washington and Adjoining  
Counties

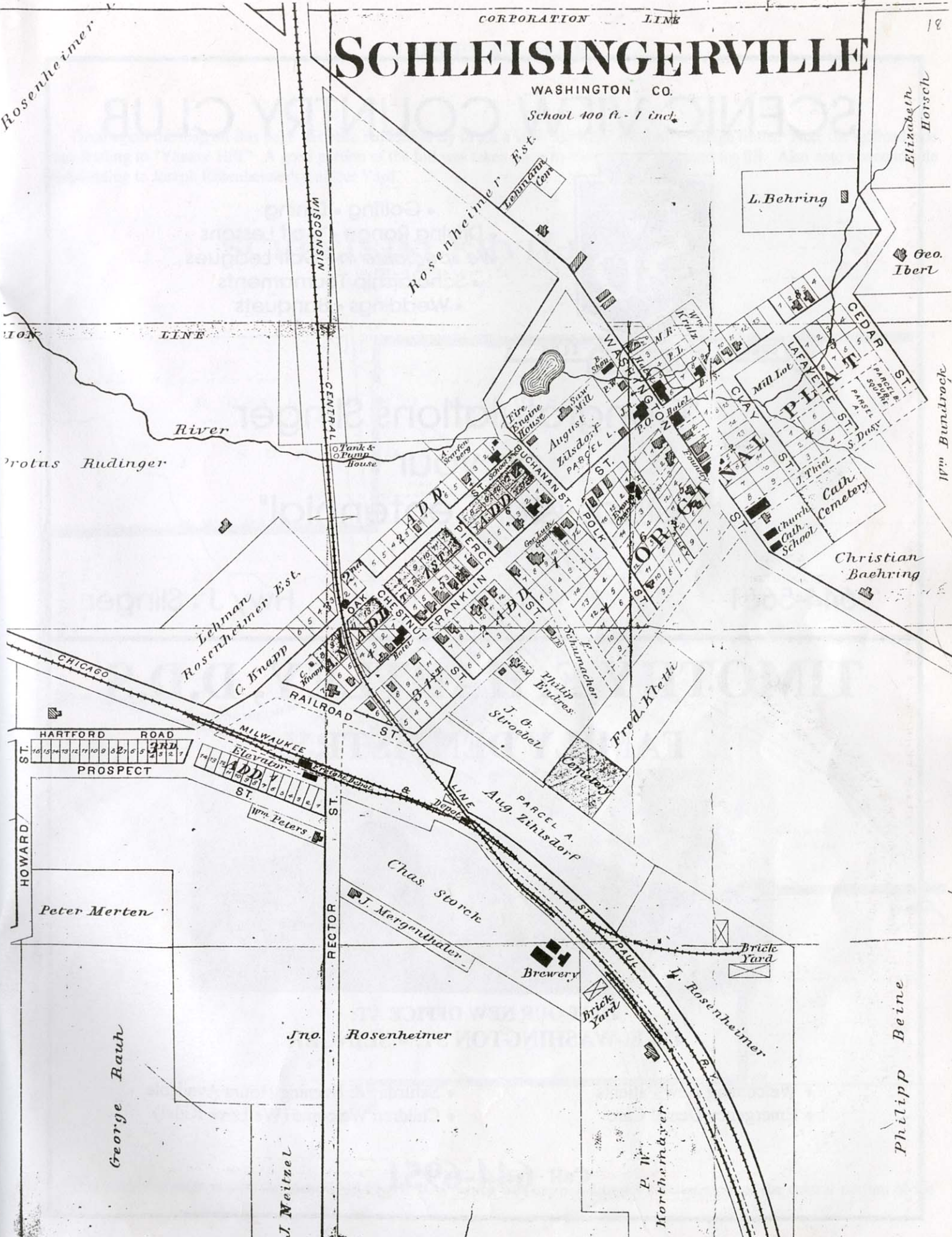




# SCHLEISINGERVILLE

WASHINGTON CO.

School 400 ft - 1 inch.



Rosenheimer

ION LINE

River

protas Rudinger

WISCONSIN CENTRAL

Rosenheimer 1<sup>st</sup> Est.

L. Behring

Elizabeth Horsch

Geo. Ibert

14<sup>th</sup> Bundrock

Lehman Est. Rosenheimer Est.

C. Knapp

RAILROAD

HARTFORD ROAD PROSPECT

HOWARD

Peter Merten

George Raub

J. Neitnel

Jno. Rosenheimer

J. Mergenthaler

Brewery

Brick Yard

P. W. Kortheimer

Brick Yard

J. Rosenheimer

Philipp Beine

Christian Baehring

Church Cath. School

Cath. Cemetery

MILL LOT  
LAFAYETTE  
PINE  
CEDAR  
ST. DASH  
PARCEL SOUTH  
PARCEL NORTH

WASH. ST.  
M.R.  
Kritz  
Hotel  
P.O.  
Zinsdorf  
PARCEL L.

SUCHANAN ST.  
Fire Engine House  
Saw Mill  
August Zinsdorf  
PARCEL L.

FRANKLIN ST.  
Chestnut  
Percy

Philip Endres  
J. G. Stroebel  
Cemetery

Fred. Kretze

Aug. Zinsdorf  
PARCEL A.

Chas. Storck



# SCENIC VIEW COUNTRY CLUB



- Golfing • Dining
- Driving Range • Golf Lessons
- We specialize in* • Golf Leagues
- Scholarship Tournaments
- Weddings • Banquets

"Congratulations Slinger  
on your  
Quas-Qui Centennial"

644-5661

Hwy J • Slinger

## TIMOTHY E. HARTLEY, D.D.S FAMILY DENTISTRY



VISIT OUR NEW OFFICE AT:  
410 E. WASHINGTON ST. • SLINGER

- ◆ Welcoming New Patients
- ◆ Emergency Dental Care
- ◆ Saturday & Evening Hours Available
- ◆ Children Welcome (We Love Kids!)

Call **644-6951**

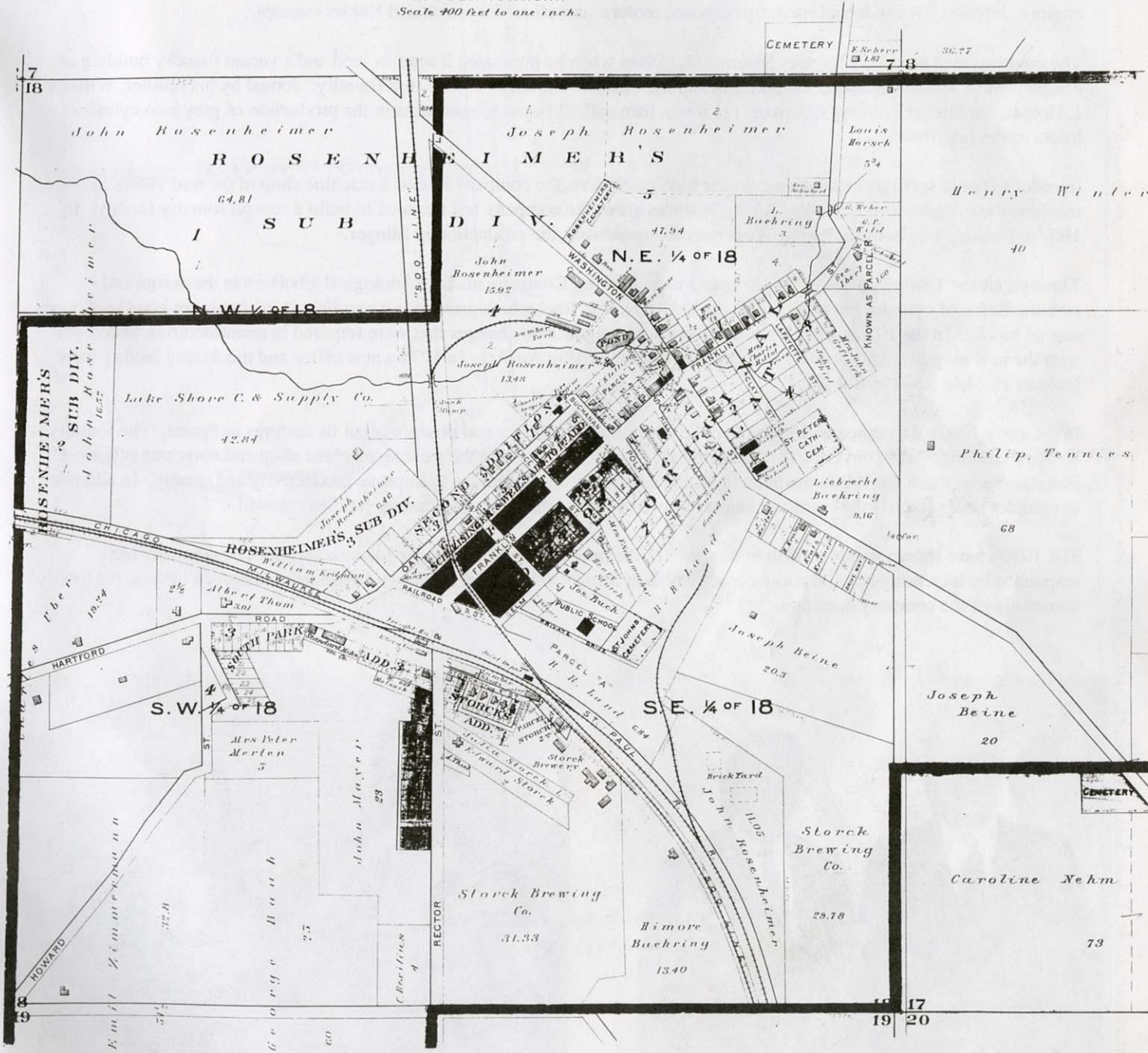


# 1915 PLAT MAP

Once again the map on this page has been reduced to try to get a view including the entire village limits. Note the railroad side track leading to "Yankee Hill." A good portion of the hill was taken away by the railroad and used for fill. Also note a second side track leading to Joseph Rosenheimer's Lumber Yard.

## SCHLEISINGERVILLE

IN POLK TOWNSHIP  
Scale 400 feet to one inch.



The following page is also the same 1915 PLAT MAP which was expanded to get a better view of the central portion of the village.



# Slinger Manufacturing Company, Inc.



Celebrating its 50th Anniversary in business in 1994, the Slinger Manufacturing Company is the leading producer of cast iron cylinder liners used in small to medium sized engines and compressors in the United States. Cylinder liners or "sleeves" are used in aluminum block engines to provide durability and wear resistance in the combustion area of the engines. The sleeve forms the "heart" of the engine. Slinger makes the sleeves used in Harley Davidson Motorcycles, Briggs & Stratton engines, Johnson, Evinrude and Mercury outboard motors, as well as Tecumseh and Kohler engines.

The company was started in 1944 by Maurice O. Holtan when he purchased 9 acres of land and a vacant foundry building in Slinger. M.O. Holtan equipped the building and the business started as a grey iron foundry. Joined by his brother, William J. Holtan, the Slinger Foundry Company (as it was then called) began to specialize in the production of grey iron cylinder liners in the late 1940's.

In order to better serve its expanding cylinder liner customers, the company started a machine shop in the mid 1950's to machine the cylinder liner castings. As the business grew, the company felt the need to build a second foundry facility. In 1957 a foundry was built in Sparta, Wisconsin to supplement the production in Slinger.

Throughout the 1960's and the 1970's Slinger Manufacturing Company made technological advances in the design and manufacturing of cylinder liners. It patented the "Ribondex" liner which provided an excellent iron/aluminum bond in diecast engine blocks. In the 1970's John J. Holtan oversaw the significant changes that were required in manufacturing to comply with the new air pollution standards that resulted from the Clean Air Act. In 1974 a new office and machining facility were built on Hilldale Road in Slinger.

In the early 1980's the company decided to close its foundry in Slinger and produce all of its castings in Sparta. The foundry building in Slinger was converted to a machining facility supplementing the existing machine shop and corporate offices in Slinger. Throughout the 1980's the manufacturing equipment was upgraded to improve productivity and quality. In addition to cylinder liner products the company began to diversify into other grey iron casting products as well.

The 1990's have shown steady growth in demand for the products made by Slinger Manufacturing. The company has responded by increasing its production capacity both at Slinger and Sparta. Managed by Daniel and Steven Holtan, the family ownership of the company continues.



Maurice O. Holtan      William J. Holtan

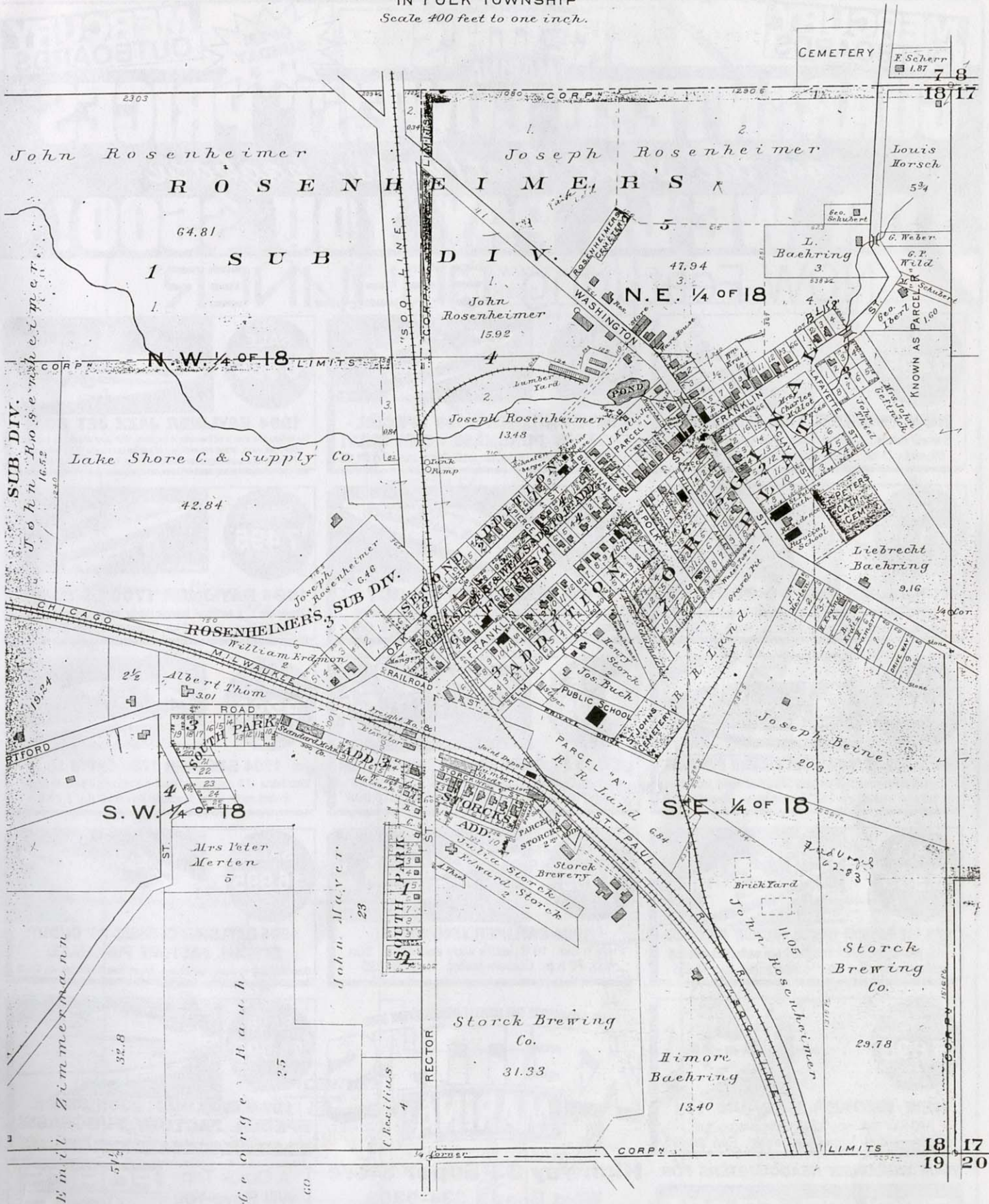


Daniel A. Holtan      Steven T. Holtan



# SCHLEISINGERVILLE

IN POLK TOWNSHIP  
Scale 400 feet to one inch.





# ASK FOR TIM!

MERCURY  
OUTBOARDS

WE GUARANTEE THE LOWEST PRICES EVERY DAY!

KEITH'S  
MARINA

OPEN  
SUNDAY  
11-3

MERCURY  
OUTBOARDS

## GUARANTEED LOWEST PRICES\*\*

*on the same boat/motor package*

## OR WE'LL PAY YOU \$500!

### NOW Featuring BAYLINER®

**SALE**  
**\$3,495\***



**NEW SMOKER 142 MAGNUM**  
Swivel seats, casting deck, live wells, 25 h.p. Mercury D.M. Custom trailer! Reg. \$4,995

**SALE**  
**\$9,295\***



**NEW BAYLINER 1800 SPECIAL**  
**FACTORY PURCHASE - ONE ONLY!**  
18 1/2 ft., ultra streamlined, 120 h.p., trim and tilt. Custom trailer. Reg. \$11,495

**SALE**  
**\$6,995\***



**1994 BAYLINER JAZZ JET BOAT**  
The hottest new boat to hit the water in decades. With Jazz you can do it all... ski, dive, fish, swim, cruise and explore... or just flat-out boogie 'til the sun sets. Powered by a super-responsive Mercury 90 h.p. Sport Jet™. Reg. \$8,995

**SALE**  
**\$5,195\***



**818 SYLVAN FISHING PONTOON**  
18 ft. Deluxe Fishing, live well, 2 pedestal seats, deluxe top, new 40 h.p. Reg. \$7,995

**SALE**  
**\$11,995\***



**NEW MAXUM 19 SELECT**  
V-6 Mercruiser, super ultra deluxe, Kenwood stereo, Custom trailer with brakes. Reg. \$16,995. **ONE ONLY!**

**SALE**  
**\$7,495\***



**1994 BAYLINER 1700 LS CAPRI**  
Ultra deluxe 17 ft. runabout, upscale interior, curved glass windshield, in-dash cooler, stereo, 90 h.p., Custom trailer. Reg. \$8,995.

**SALE**  
**\$8,495\***



**NEW SYLVAN 17 PRO SPECIAL FACTORY PURCHASE**  
17 1/2 ft. twin console Fish and Ski, 2 live wells, lockable rod storage, new 90 h.p. TNT, custom trailer. Reg. \$11,995

**SALE**  
**\$5,595\***



**NEW 15 FT. SMOKERCRAFT RESORTER**  
40 h.p. Outboard, custom trailer, bow mount trolling motor, LCR Fish Finder. Reg. \$6,995

**SALE**  
**\$9,295\***



**1994 BAYLINER 1750 CAPRI LS**  
Ultra deluxe 17 ft. runabout. Upscale interior, curved glass windshield, in-dash cooler, stereo, Mercruiser stern drive. Reg. \$10,995

**SALE**  
**\$6,995\***



**1994 162 MAGNUM SPECIAL FACTORY PURCHASE**  
16 ft. twin console Fish and Ski, 2 live wells, lockable rod storage, new 40 h.p. Merc, custom trailer. Reg. \$9,995

**SALE**  
**\$6,995\***



**1994 BAYLINER 1600 CAPRI**  
Fish 'n Ski! 16 ft., extra wide and deep. Sun top, 70 h.p., Custom trailer. Reg. \$8,995

**SALE**  
**\$16,995\***



**1994 BAYLINER CLASSIC 22' CUDDY**  
**SPECIAL FACTORY PURCHASE!**  
Deluxe cabin cruiser with enclosed head, full canvas, stove and dinette, V-6 Mercruiser. Reg. \$21,995

**SALE**  
**\$6,695\***



**NEW SMOKER MAGNUM 161**  
40 h.p. Mercury, 2 live wells, stereo, full instrumentation, ShoreLand'r trailer. Reg. \$8,495

WE GUARANTEE THE LOWEST PRICES EVERY DAY!

KEITH'S  
MARINA

**SALE**  
**\$21,995\***



**1994 BAYLINER 2355 CIERA**  
**SPECIAL FACTORY PURCHASE!**  
Sun bridge with huge 8 1/2 ft. beam, stand-up head, wrap around windshield, ultra deluxe! V-6 Mercruiser. Reg. \$27,995

YOUR WISCONSIN HEADQUARTERS FOR  
**SMOKER CRAFT**

**Highway 33 Super Store**  
**West Bend • 334-9389**

Hwy. 33 West • Open Mon. - Fri. 9-5; Sat. 9-3; Sun. 11-2  
\*Freight and set up extra! \*\* (Must be Bona-fide Sale Order.) Limited Availabilities.

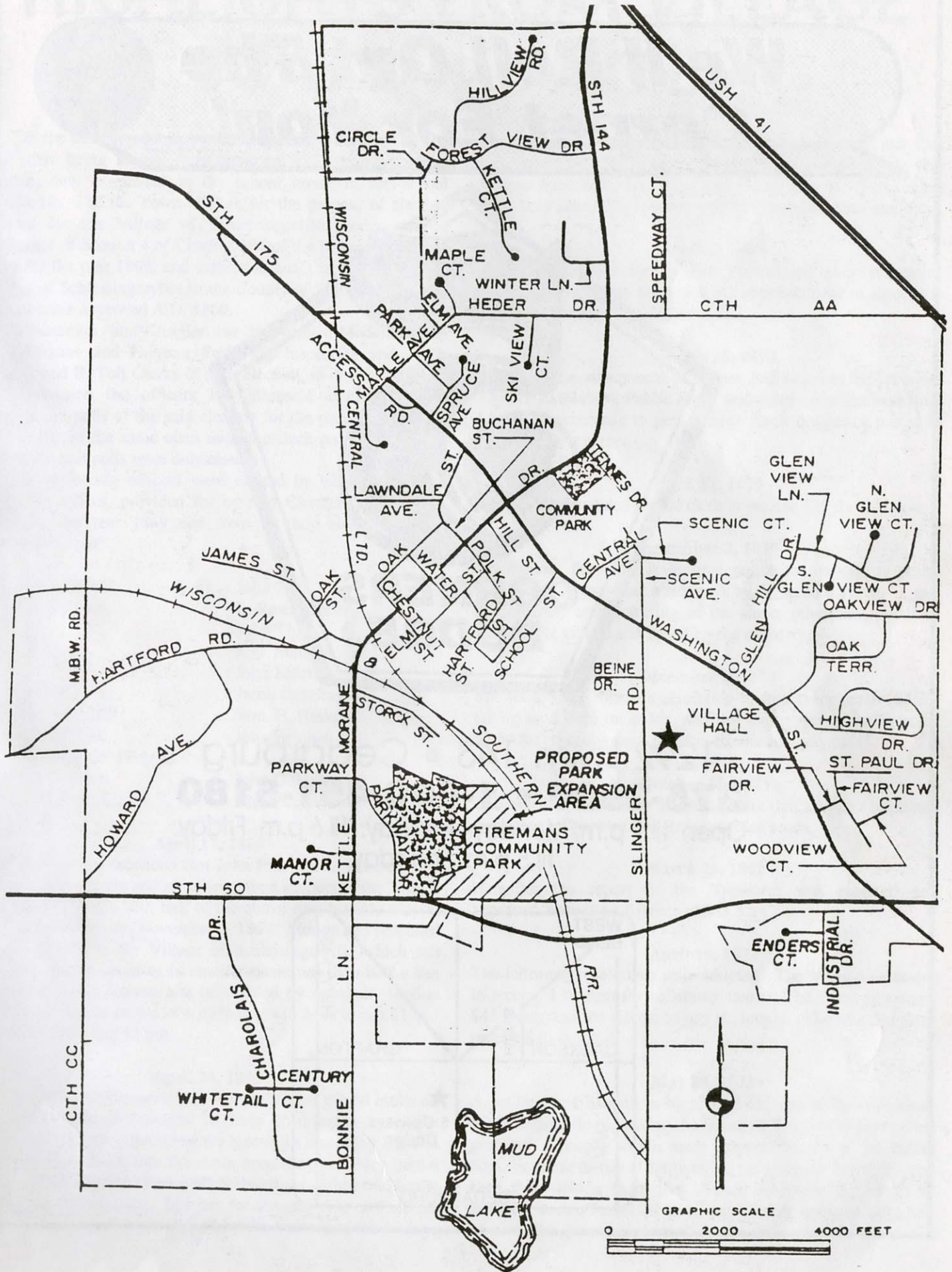
A Quick Trip  
Will Save You  
Money!

**FORCE**  
Outboards  
A BRUNSWICK MARINE Company

# ASK FOR TIM!



# 1993 SLINGER MAP





**We'll Roll Out The  
Carpet For You!**



1292 Hwy. 143 • Cedarburg  
**375-3900 • 1-800-451-5180**  
Open 'til 9 p.m. Monday-Thursday; 'til 6 p.m. Friday;  
'til 5 p.m. Saturday

