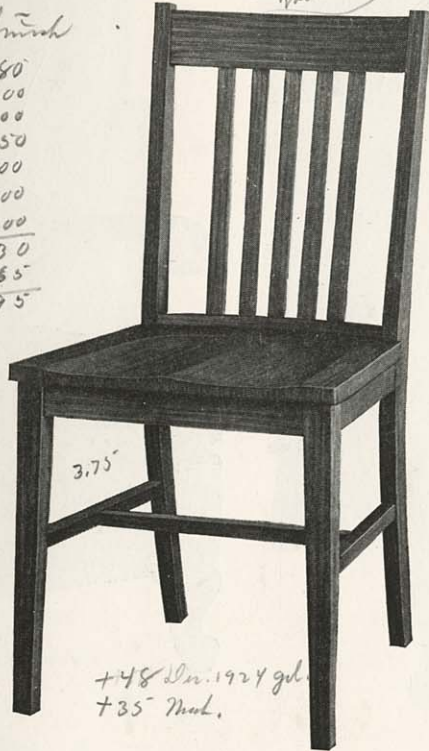


CROCKER CHAIR COMPANY

HOTEL CHAIRS

Wash. finish

dip water stain	2.80
sand	5.00
dip oil stain	2.00
Sprayer	4.50
Sand	4.00
Spray (varnish)	3.00
Spray (haze)	2.00
<hr/>	
	23.30
Indirect labor	11.65
<hr/>	
	34.95



Gold. finish

dip 160 in 10 hrs.	2.80
Fill & dry. 20 hrs.	4.60
Sand	4.00
Spray Varnish	1.85
" Haze	1.37
<hr/>	
	14.62
Indirect L.	7.31
<hr/>	
	21.93

+48 Dec. 1924 gold
+35 Wash.

No. 6692-1

Width of Seat 17 inches
Height of Back 17 inches



No. 6692-2

Width between Arms 19 inches
Height of Back 21½ inches



No. 6692-4

Width between Arms 19 inches
Height of Back 21½ inches

Quartered Oak—Golden Oak Dull or Birch—American Walnut or Brown Mahogany Finish Dull

CROCKER CHAIR COMPANY



No. 7901

Width between Arms 23 inches
Height of Back 20 inches

Seat—Kapok (Silk Floss), filled Cushion over double Cone Springs. Back—Marshall Spring Cushion over Pillow Springs.
Solid Mahogany—Brown Mahogany Finish, Rubbed



No. 7909

Width between Arms 22½ inches
Height of Back 28 inches



No. 7485-2UE

Width between Arms 20 inches—Height of Back 20 inches. Spring Edge Seat

Solid Walnut—Florentine Finish (Highlighted) American Walnut or Brown Mahogany Waxed
A rich brown finish, beautifully highlighted, lacquered and rubbed smooth



No. 7485-4UE

CROCKER CHAIR COMPANY



No. 7481-2UE

Width between Arms 19 $\frac{3}{4}$ inches
 Height of Back 22 inches
 Birch—American Walnut or Brown
 Mahogany, Rubbed



No. 7483-2UE

Width between Arms 19 $\frac{3}{4}$ inches
 Height of Back 22 inches
 Solid Walnut—American Walnut
 or Brown Mahogany, Rubbed



No. 9271-1UE

Width of Seat 20 inches
 Height of Back 27 $\frac{1}{4}$ inches



No. 9271-2UE

Width between Arms 20 inches
 Height of Back 27 $\frac{1}{2}$ inches

Solid Walnut—Florentine Finish (Highlighted)

A rich brown finish, beautifully highlighted, lacquered and rubbed smooth

CROCKER CHAIR COMPANY



No. 9271-1
Width of Seat 20 inches
Height of Back 27 inches



No. 9271-2
Width between Arms 20 inches
Height of Back 28 inches



No. 9265-1
Width of Seat 20 inches
Height of Back 27 inches

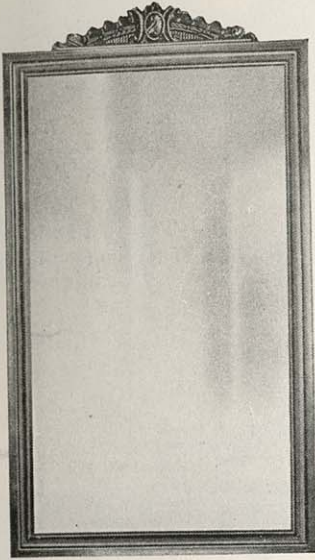


No. 9265-2
Width between Arms 20 inches
Height of Back 28 inches

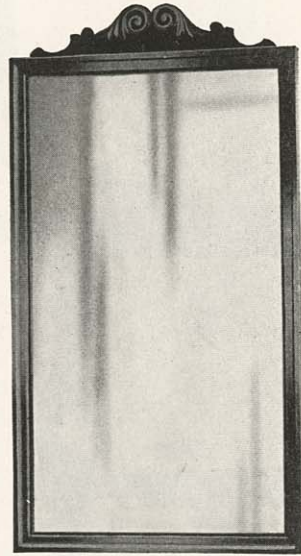
Solid Walnut—Florentine Finish (Highlighted)

A rich brown finish, beautifully highlighted, lacquered and rubbed smooth

CROCKER CHAIR COMPANY



No. 8805
Console Mirror
16 x 28 inches



No. 8801
Console Mirror
16 x 28 inches



No. 7805
Console Table
Top 26 x 12½ inches



No. 7803
Console Table
26 x 12 inches

Solid Walnut—Florentine Finish (Highlighted)
A rich brown finish, beautifully highlighted, lacquered and rubbed smooth

CROCKER CHAIR COMPANY



No. 7828
End Table
Top 26 x 12 inches
Solid Walnut—Florentine Finish
(Highlighted)

7.50



No. 7848
End Table
Top 26 x 12 inches
Solid Walnut—Florentine Finish
(Highlighted)

10.75

+405



No. 7838
End Table
Top 26 x 12 inches
Solid Walnut—Florentine Finish
(Highlighted)

8.00

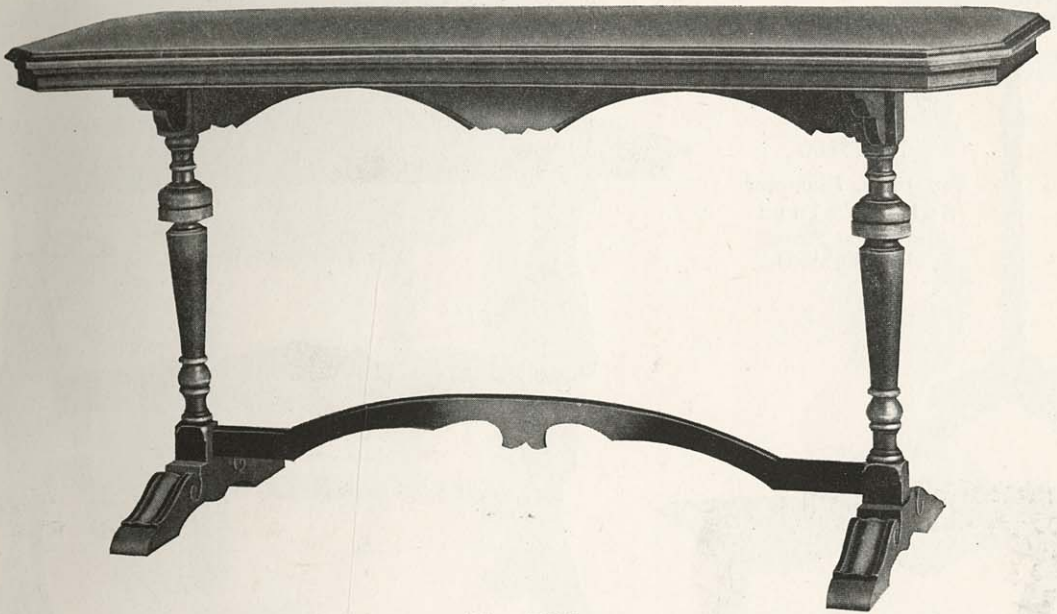


No. 7847
Davenport Table—Top 60 x 20 inches
Walnut—Florentine Finish (Highlighted)
Base of Solid Walnut, Top 5 Ply Veneer with Walnut Edge
No. 7846—Center Table to Match, Top 50 x 24 inches

30.00

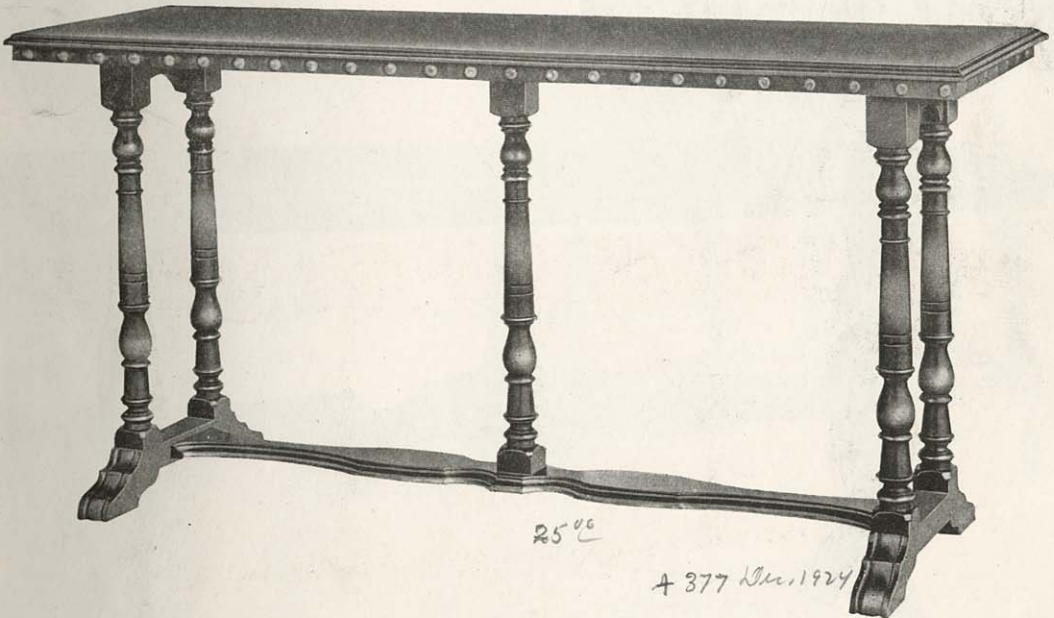
+615

CROCKER CHAIR COMPANY



No. 7837

Davenport Table—Top 60 x 20 inches
Walnut—Florentine Finish (Highlighted)
Base of Solid Walnut, Top 5 Ply Veneer with Walnut Edge
No. 7836—Center Table to Match, Top 50 x 24 inches



No. 7827

Davenport Table—Top 60 x 20 inches
Walnut—Florentine Finish (Highlighted)
No. 7826—Center Table to Match, Top 50 x 24 inches
A rich brown finish, beautifully highlighted, lacquered and rubbed smooth

CROCKER CHAIR COMPANY



No. 7800
Top 12 in. Diameter
Solid Walnut
Florentine Finish
(Highlighted)



No. 7813
Hall Table
Top 40 x 17 inches
Solid Walnut—Florentine Finish (Highlighted)



No. 7818
End Table
Top 24 x 12 in.
Solid Walnut
Florentine Finish
(Highlighted)



No. 7817
Davenport Table—Top 60 x 20 inches
Walnut—Florentine Finish (Highlighted)
Base of Solid Walnut, Top 5 Ply Veneer with Walnut Edge
No. 7816—Center Table to Match, Top 50 x 24 inches
A rich brown finish, beautifully highlighted, lacquered and rubbed smooth

CROCKER CHAIR COMPANY



No. 7753
 Gate Leg Table
 Top 36 x 42 inches open
 Top 36 x 12 inches closed



No. 8810
 Top 18 x 18 inches



No. 8809
 Clover Leaf Table
 Top 21 inches



No. 7752
 Butterfly Drop Leaf Table
 Top 36 inches diameter
 Top 36 x 12 inches closed

Solid Walnut—Florentine Finish (Highlighted)
 A rich brown finish, beautifully highlighted, lacquered and rubbed smooth

CROCKER CHAIR COMPANY



No. 7754

Extension Drop Leaf Table. Top 36 x 48 open
Extends to 6 ft. Top 36 x 26 inches closed

Birch—Florentine Walnut Finish (Highlighted)
American Walnut Finish Dull or Decorated Enamel



No. 7804

Drop Leaf Table
Top 28 x 28 inches

Solid Walnut—Florentine Finish (Highlighted)



No. 7809

Gate Leg Table
Top 36 x 42 inches

Solid Walnut—Florentine Finish (Highlighted)



No. 7759

Extension Drop Leaf Table

Top 36 x 48 inches open
Extends to 6 feet. Top 36 x 26 inches closed

Birch—Florentine Finish (Highlighted)
American Walnut or Brown Mahogany Dull or
Decorated Enamels

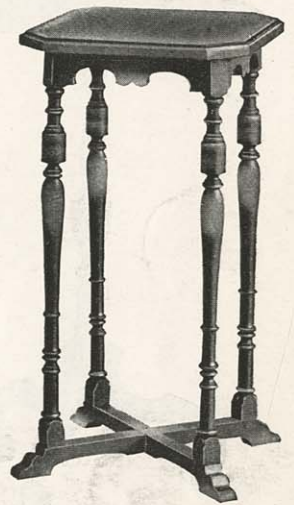
CROCKER CHAIR COMPANY



No. 7802
Telephone Stand
Top 20 x 14 inches



No. 7801
Telephone Chair
Width of Seat 13 1/4 inches
Height of Back 13 inches



No. 7806
Stand
Top 13 x 13 inches



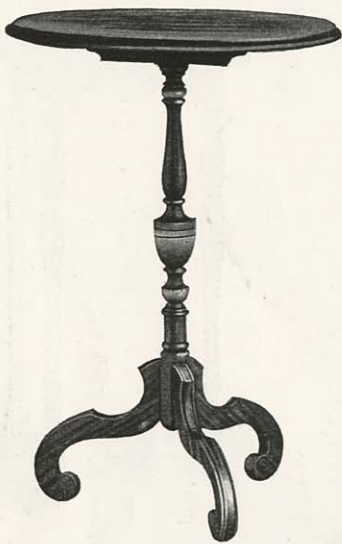
No. 8803
Telephone Stand
Top 24 x 14 inches



No. 8804
Bench
Seat 18 x 11 1/2 inches

Solid Walnut—Florentine Finish (Highlighted)
A rich brown finish, beautifully highlighted, lacquered and rubbed smooth

CROCKER CHAIR COMPANY



No. 8808
Tilting Top Table
Oval Top 19 x 14 inches
Solid Walnut—Florentine
Finish (Highlighted)



No. 8806
Telephone Stand
Top 24 x 13½ inches



No. 8807
Stool
Width of Seat 17 inches
Depth of Seat 12 inches

Birch—Brown Mahogany Finish Rubbed



No. 7807
Ladies' Desk
Top 30 x 16 inches



No. 8812-1
Desk Chair
Width of Seat 16 inches
Height of Back 15 inches

Solid Walnut—Florentine Finish (Highlighted)



No. 7809
Gate Leg Table
Top 36 x 42 inches

No. 8812-1
Chair
Width of Seat 16 inches
Height of Back 15 inches

Solid Walnut—Florentine Finish (Highlighted)
A rich brown finish, beautifully highlighted, lacquered and rubbed smooth

CROCKER CHAIR COMPANY



No. 6396-2

Width between Arms 18½ inches
Height of Back 20 inches



No. 6396-4

Width between Arms 18½ inches
Height of Back 20 inches



No. 6398-2

Width between Arms 19 inches
Height of Back 22 inches



No. 6398-4

Width between Arms 19 inches
Height of Back 22 inches

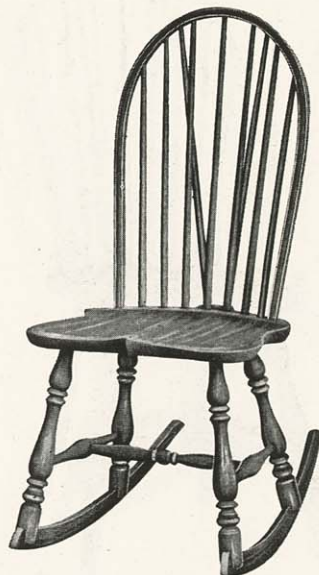
Birch—American Walnut or Brown Mahogany Rubbed

CROCKER CHAIR COMPANY



No. 7304-1

Width of Seat 16 inches
Height of Back 20½ inches



No. 7304-3

Width of Seat 16 inches
Height of Back 20½ inches



No. 7304-2

Width between Arms 19 inches
Height of Back 22 inches



No. 7304-4

Width between Arms 19 inches
Height of Back 22 inches

Birch—American Walnut or Brown Mahogany Rubbed

CROCKER CHAIR COMPANY



No. 7302-1
Width of Seat 16 inches
Height of Back 20½ inches



No. 7302-3
Width of Seat 16 inches
Height of Back 20½ inches



No. 7302-2
Width between Arms 19 inches
Height of Back 22 inches



No. 7302-4
Width between Arms 19 inches
Height of Back 22 inches

Birch—American Walnut or Brown Mahogany Rubbed

CROCKER CHAIR COMPANY

*Amor rubbing cat 6 small hump 45¢
5 arm " " }*



No. 6392-2

Width between Arms 19 inches
Height of Back 22 inches



No. 6392-4

Width between Arms 19 inches
Height of Back 22 inches



No. 6382-2

Width between Arms 18 inches
Height of Back 15 inches



No. 6394-2

Width between Arms 19 inches
Height of Back 23 inches



No. 6394-4

Width between Arms 19 inches
Height of Back 23 inches

Birch—American Walnut or Brown Mahogany Rubbed

CROCKER CHAIR COMPANY



No. 6384-2

Width between Arms 18½ inches
Height of Back 22 inches



No. 6384-4

Width between Arms 18½ inches
Height of Back 22 inches



No. 6086-1

Width of Seat 19½ inches
Height of Back 16½ inches



No. 6086-2

Width between Arms 19 inches
Height of Back 23 inches



No. 6086-4

Width between Arms 19 inches
Height of Back 23 inches

Birch—American Walnut or Brown Mahogany Dull

CROCKER CHAIR COMPANY



No. 6084-1
Width of Seat 18 inches
Height of Back 17 inches

No. 6084-1



No. 6084-2
Width between Arms 18 inches
Height of Back 22½ inches



No. 6084-4
Width between Arms 18 inches
Height of Back 22½ inches

Birch—American Walnut or Brown Mahogany Dull
Banister Decorated in Dull Gold

CROCKER CHAIR COMPANY



No. 6386-2

Width between Arms 19 inches
Height of Back 19 inches



No. 6386-4

Width between Arms 19 inches
Height of Back 19 inches

Birch—American Walnut or Brown Mahogany Dull



No. 6072-2

Width between Arms 18½ inches
Height of Back 22½ inches



No. 6072-4

Width between Arms 18½ inches
Height of Back 22½ inches

Birch—American Walnut or Brown Mahogany Dull

CROCKER CHAIR COMPANY



+ 33 Nov. 1924

No. 6072-1

Width of Seat 18 inches
Height of Back 16½ inches

Dip stain 40 per hr. 1.00
Sand 5¢ 5.00
Dip oil stain . 24 2.00
Shellac. (10 per hr) 4.50
Sand. 4.00
Spray (varnish) 30 per hr. 3.00
helper 50
Spray (haze) 40 per hr. 2.00
helper

21.50
 10.7
 $\$ 32.20$



✓
6072 finish

No. 6072-3

Width of Seat 18 inches
Height of Back 16½ inches



6072 finish

No. 6074-1

Width of Seat 16 inches
Height of Back 18½ inches



+ 77 Dec. 1924

No. 7000-1

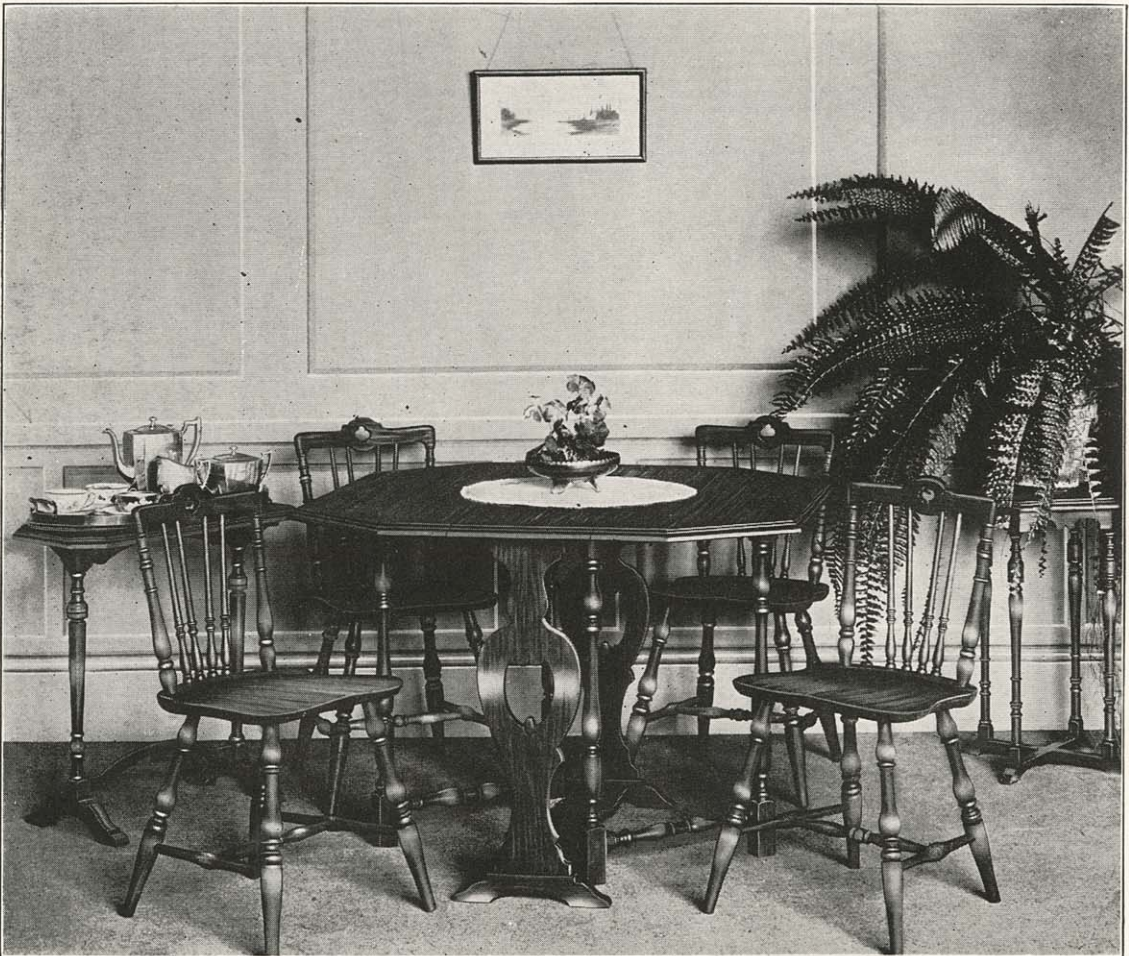
Width of Seat 15¾ inches
Height of Back 17 inches
Oak—Silver Grey Finish
Birch—Mahogany Finish Dull with Gold Striping
Also in Decorated Enamels

Birch—American Walnut or Brown Mahogany Dull
Decorated Enamels

CROCKER CHAIR COMPANY

COMBINATION ENAMELS

- Combination No. 1—**Ivory**—trimmed with **Lavender** and striped in **Blue**.
- Combination No. 3—**French Grey**—trimmed with **Blue** and striped in **Black**.
- Combination No. 4—**Ivory**—trimmed with **Blue** and striped in **Black**.
- Combination No. 5—**Ivory**—trimmed with **Mahogany Enamel** and striped in **Sage Green**.
- Combination No. 6—**Ivory**—trimmed with **Tan** and striped in **Autumn Brown**.
- Combination No. 7—**Pearl Grey**—trimmed with **Old Rose** and with double striping in **Violet and Old Rose**.
- Combination No. 8—**Pearl Grey**—trimmed with **Blue** and with double striping in **Black and Blue**.
- Combination No. 9—**Dawn Grey**—trimmed with **Antique Silver** and striped in **Silver and Deep Grey**.
- Combination No. 10—**Colonial Buff**—trimmed with **Light Blue** and striped in **Black**.
- Combination No. 11—**Ebony**—trimmed with **Gold** and Flower Decoration on table top.
- Combination No. 20—**Green**—trimmed with **Old Rose** and striped with **Old Gold**.
- Combination No. 21—**Antique Silver** and striped in **Blue**.
- Combination No. 22—**Black Enamel** and striped with **Orange**.



Breakfast Suites in Attractive Enamels
Also in American Walnut or Brown Mahogany Finish Rubbed

CROCKER CHAIR COMPANY



No. 7744
Server
Top 18 x 36 inches



No. 7745
China Cabinet
Top 18 x 36 inches



No. 5752-10
No. 5752-46—Same but with Removable Enameled Metal Sanitary Tray
No. 5752-48—Same but with Removable Aluminum Tray

Birch—American Walnut or Brown Mahogany Rubbed
Also in Decorated Enamel Combinations
Refer to Page 42

CROCKER CHAIR COMPANY



No. 6086-1

Width of Seat 19½ inches
Height of Back 16½ inches



No. 7746

Gate Leg Table
Top Open 42 inches Diameter
Top 12 x 42 inches Closed



No. 7740

Drop Leaf Table
Top 33 x 48 inches Open
Top 33 x 24 inches Closed



No. 6094-1

Width of Seat 14¾ inches
Height of Back 15 inches

Birch—American Walnut or Brown Mahogany Rubbed
Also in Decorated Enamel Combinations
Refer to Page 42

9 15.50

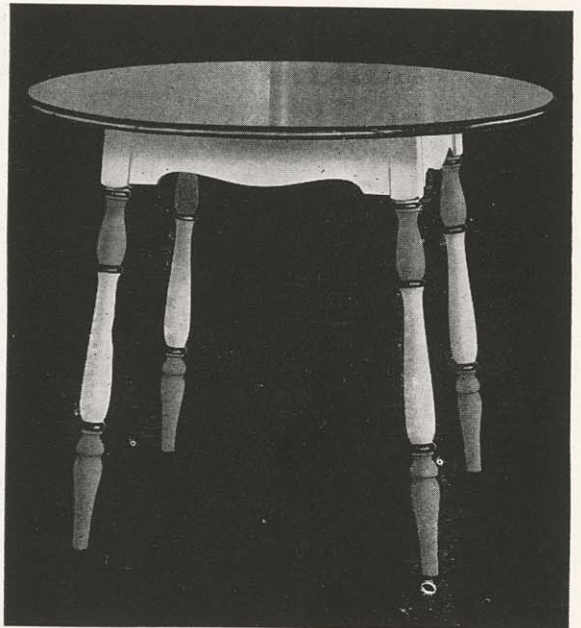
+373 Nov. 1924

CROCKER CHAIR COMPANY



No. 6084-1

Width of Seat 18 inches
Height of Back 17 inches



11.50

No. 7741

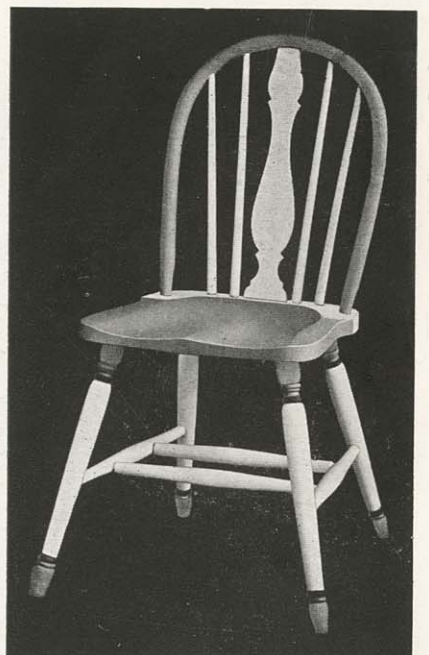
Round Table
Top 36 inches Diameter



No. 7743

Drop Leaf Table
Top 33 x 42 inches Open
Top 33 x 22 inches Closed

6072
square top



No. 6074-1

Width of Seat 16 inches
Height of back 18½ inches

Birch—American Walnut or Brown Mahogany Rubbed
also in Decorated Enamel Combinations
Refer to Page 42

CROCKER CHAIR COMPANY



No. 7742 *11.50*

Oblong Table

Top 30 x 36 inches

Birch—American Walnut or Brown Mahogany Rubbed
also in Decorated Enamel Combinations
Refer to Page 42



3.00

No. 6096-1 *+59*

Width of Seat 15 $\frac{1}{4}$ inches

Height of Back 16 $\frac{1}{2}$ inches

Decorated Enamels



3.25

5.00

No. 7002-1 *+17*

Width of Seat 15 $\frac{1}{4}$ inches

Height of Back 16 inches

Decorated Enamels

CROCKER CHAIR COMPANY

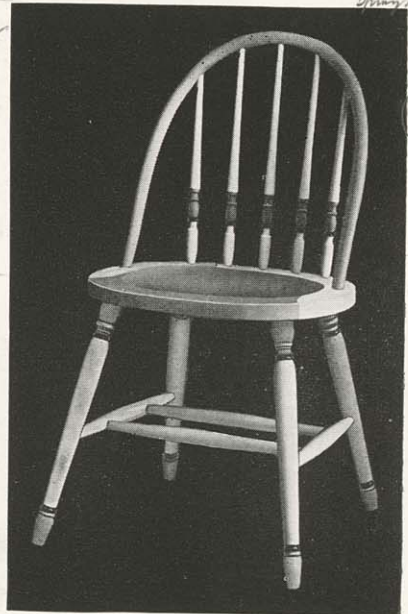


2 coats color
for spindles,
legs, seat
etc.
9 per hr.
each coat.
stripping
13 per hr.

No. 7757^{9.00} + 114 Dec. 1924

Top 30 x 36 inches Open
Top 30 x 16 inches Closed

Birch—American Walnut or Brown
Mahogany Dull
Also in Deco't'd Enamel Combinations
Refer to Page 42



25 feet
1 coat
2nd
1 coat
39 per
hour

Modern
Enamel

No. 6072-1 + 79 Nov. 1924

Width of Seat 18 inches
Height of Back 16½ inches

Oak—Silver Grey Finish
Birch—American Walnut or Brown
Mahogany Dull
Also in Deco't'd Enamel Combinations
Refer to Page 42



5.00 No. 7000-1 + 154

Width of Seat 15¾ inches
Height of Back 17 inches



No. 7758 10.00 + 134 Dec. 1924

Top 32 x 40 inches Open
Top 32 x 20 inches Closed

Oak—Silver Grey Finish
Birch—American Walnut or Brown Mahogany Dull
Also in Decorated Enamel Combinations
Refer to Page 42

CROCKER CHAIR COMPANY



No. 7513
Cane Seat



No. 7513-35
Cane Seat



No. 7513-3
Cane Seat



No. 7512



No. 7512-35



No. 7512-3

Gum—American Walnut or Brown Mahogany Rubbed
Old Ivory or White Enamel

CROCKER CHAIR COMPANY



No. 7525
Cane Seat

No. 7524—Same with Wood Seat



No. 7525-35
Cane Seat

No. 7524-35—Same with Wood Seat



No. 7525-3
Cane Seat

No. 7524-3—Same with Wood Seat

Gum—American Walnut or Brown Mahogany Rubbed
Ivory or White Enamel



No. 7511
Cane Seat



No. 7509-35
Cane Seat



No. 7511-3
Cane Seat

Walnut—American Walnut or Brown Mahogany Rubbed

CROCKER CHAIR COMPANY



No. 6595
Cane Seat



No. 6591-35
Cane Seat



No. 6595-3
Cane Seat

Gum—American Walnut or Brown Mahogany Rubbed



No. 6594



No. 6590-35



No. 6594-3

Gum—American Walnut or Brown Mahogany Rubbed
Birdseye Maple

CROCKER CHAIR COMPANY



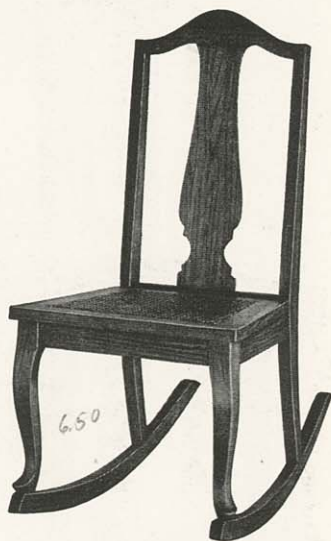
No. 7555
Cane Seat

x 110



+103

No. 7557-35
Cane Seat



No. 7555-3
Cane Seat

+120



No. 7554

+110



No. 7556-35

+115



No. 7554-3

+120

Gum—American Walnut or Brown Mahogany Rubbed

CROCKER CHAIR COMPANY



No. 7530



No. 6586-35



No. 7530-3



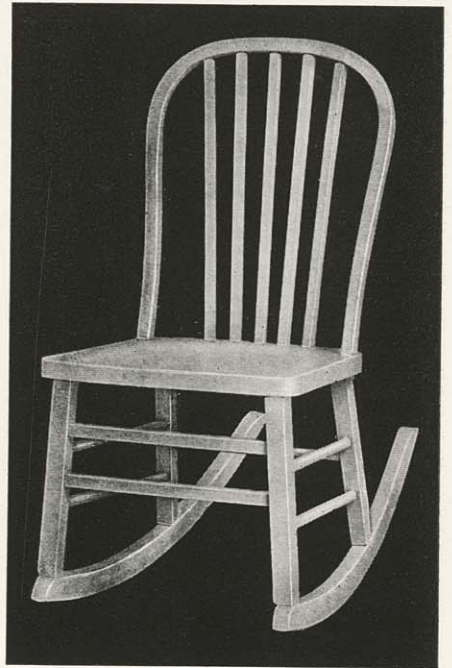
No. 7530 1/2

Quartered Oak—Golden Polished
Gum—American Walnut or Brown Mahogany Rubbed
Natural Gum Finish
Birdseye Maple
Ivory or White Enamel

CROCKER CHAIR COMPANY



No. 5026-1



No. 5026-3



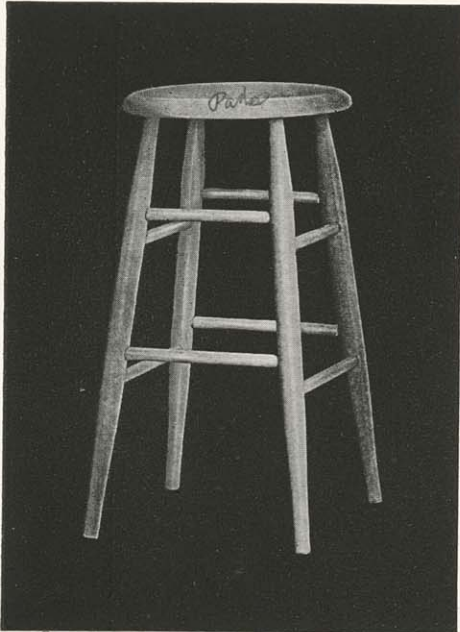
No. 120-1



No. 120-3

Ivory or White Enamel

CROCKER CHAIR COMPANY



2.60
No. 70A +31
 Height 24 inches
 Wood Seat, Diameter 12½ inches
 15



1.75
No. 70B +22
 Height 18 inches
 Wood Seat, Diameter 12½ inches
 10



Finnish Metal 14.00

1.65
No. 200 +13



No. 5754-10
 No. 5754-46—Same but with Removable Enameled Metal Sanitary Tray
 No. 5754-48—Same but with Removable Aluminum Tray



1.75
 2.25
No. 36A *gvl-24*
 White Enamel or Golden Gloss
 Height 26 inches
 Wood Seat, Diameter 13 inches



No. 5756-10
 No. 5756-46—Same but with Removable Enameled Metal Sanitary Tray
 No. 5756-48—Same but with Removable Aluminum Tray

White Enamel

CROCKER CHAIR COMPANY

3.50



No. 15BT

Height 15 inches
Rubber Tips

Cork Seat, Diameter 14 inches

2.50

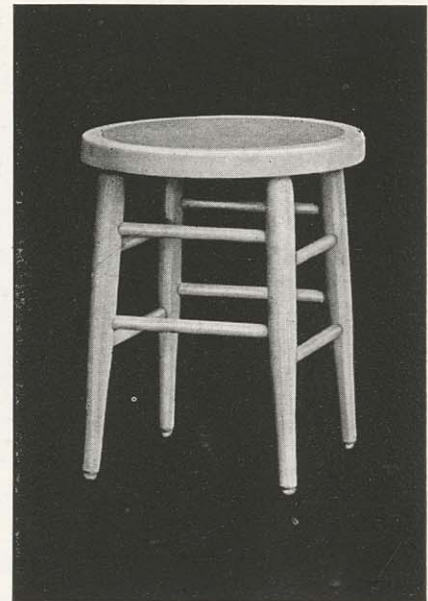


No. 20BT

Height 18 inches
Rubber Crutch Tips

Wood Seat, Diameter 13 inches

Primes -	2.25	material
Sands -	1.60	* 6.00
Crutch -	2.25	
Drawl -	6.00	



No. 235BT

Height 15 inches
Rubber Tips

Cork Seat, Diameter 12 1/2 inches



No. 2001

Height 16 inches
Rubber Crutch Tips

Wood Seat, Diameter 12 inches



No. 2002T

Height 15 inches
Rubber Crutch Tips

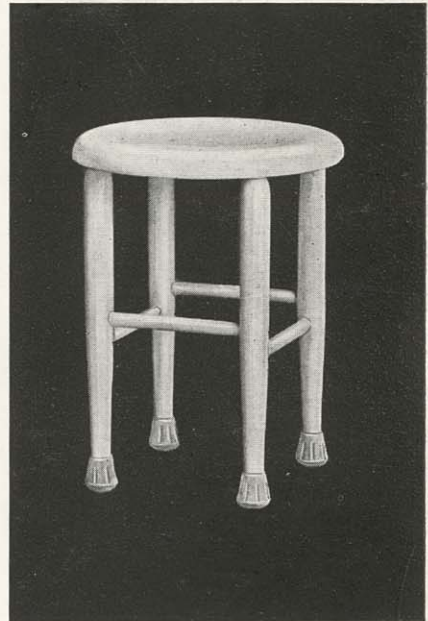
Wood Seat, Diameter 13 inches

No. 2002—Same without rubber tips

White Enamel

55

Part 1, 1/2 crutch & legs



No. 244BT

Height 15 inches
Rubber Crutch Tips

Wood Seat, Diameter 13 inches

2.00

+39