

# THROUGH THE YEARS

with

**CHARLES E. BROUGHTON**



Broughton Sheboygan County Marsh Dam—12,000 acres of haven for wild life and fish.

For nearly half a century Charles E. Broughton, newspaper publisher and radio owner, has left his mark on the life of this community.

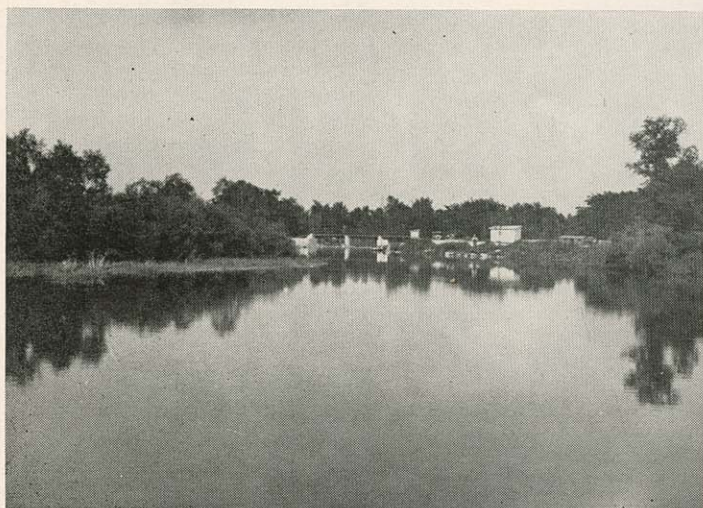
Always protecting the rights of the many, as a fearless editor and publisher his paper was dedicated to that principle.

High on the list of his achievements, and one perhaps which has touched the most people, is the founding of the Kiddies Camp. Since 1926 successive groups of underprivileged children have passed through that camp, each group enjoying a long eight weeks' vacation, with healthful food and recreation. For many years he took a keen

interest in the Orthopedic school. His great love for children is reflected in these activities as well as in his work in founding the Wisconsin Elks Association Crippled

*(Continued on page 71)*

Broughton Sheboygan County Marsh  
"The Sportsman's Paradise"



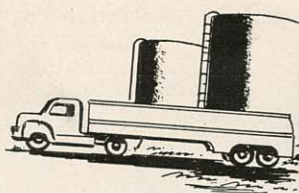




RAPIDLY completing nearly a QUARTER CENTURY of SERVICE to  
SHEBOYGAN

WINGROVE OIL COMPANY—Sheboygan's Largest and Most Reliable  
Fuel Oil Distributor has Progressed with the Community

Our Motto—"Quality backed by a million gallon fuel oil storage" has  
been Sheboygan's assurance of an uninterrupted supply of premium  
heating oils.



**Wingrove  
Oil Co.**

**Dial 7744**

*Remember  
Wingrove's*

**AUTOMATIC WATCH  
TANK SERVICE**



**1,000,000  
GALLONS  
WINGROVE FUEL OIL**





Broughton Drive

Children's Commission, as director of the Wisconsin Association for the Disabled for many years; as chairman and treasurer of the Sheboygan County Chapter for the National Foundation for Infantile Paralysis.

His love for humanity is reflected in the countless drives he has sponsored to collect funds for the needy. He was Chairman of the Major Disaster Relief Committee of the American Red Cross for many years; sponsored drives for Greek Relief, Netherlands Relief, Flood Relief and many, many others.

Mr. Broughton was always famous as a conservationist, and the Broughton Sheboygan County Marsh Park is a monument to that interest. He has served as a member of the Advisory Council of the Wisconsin Conservation Commission, has represented the public interest on cruises of state forest lands to determine which of them should be sold for selective logging; he founded the Broughton Boy Scout Award, which is based on conservation work and love of the great outdoors; as well as the 4-H Club Conservation Awards, in cooperation with the State 4-H Club office of the College of Agriculture, University of Wisconsin. This award finances 4-H Club delegates to the State 4-H Conservation Training Camp and

finances a trip as an award to the Club which is chosen for outstanding achievement in conservation activities each year.

In 1946 Mr. Broughton was elected Grand Exalted Ruler of the Benevolent and Protective Order of Elks. He was one of the first seven individuals in the world to receive the Salvation Army Distinguished Service Award. He served as Chairman of the Federal Home Loan Bank Board of Chicago for eleven years. Since 1951, when he retired from the Sheboygan Press, selling out his interest in the Press Publishing Company, he has become active in the radio business, now serving as President of WHBL, Inc.

Not many men know during their lifetime that they have won a lasting place in the affection and respect of the communities in which they have lived their lives. Mr. Broughton has been honored by the Sheboygan County Board, which named the Broughton Sheboygan County Marsh Park, and by the Common Council of the City of Sheboygan, who paid him honor by naming the city's most beautiful and scenic roadway Broughton Drive. Most important, the many honors and awards came entirely unsought by him.





# CENTENNIAL CONGRATULATIONS

FROM THE MEMBERS OF

ALLIED FLORISTS  
OF SHEBOYGAN



ALTMAN'S FLORAL STUDIO  
DON CAAN'S FLOWERS  
GIESE-EICKBERG FLOWERS  
M & M FLORAL SHOPPE  
OLSON'S FLORAL SHOPPE  
SHEBOYGAN GREENHOUSES  
VISTA GARDENS FLORAL ARTISTRY



*"Say it with Flowers"*







## THE MAYLINE CO.

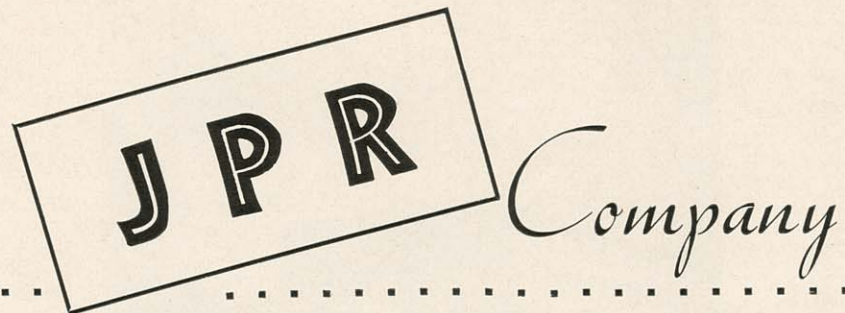
The Mayline Company, formerly the Engineering Manufacturing Company, is one of Sheboygan's youngest and most progressive industries. It was originally founded in Chicago by the late H. L. DeLisle under the name of the Engineering Sales Company, using the trade name Esco, and later moved to Two Rivers, Wisconsin where it remained until the spring of 1939. At that time the need for larger quarters for a growing concern caused the transfer to Sheboygan. The home office and plant are now located at 619 North Commerce Street. Here 75,000 sq. ft. of manufacturing space plus several acres of land are being utilized to the utmost.

The company produces a line of high grade drafting room furniture and equipment. In the instrument field it pioneered straightedges and T-Squares made from phenol laminate—a plastic material of unusual strength, dimensional stability, and wearing qualities.

In 1946 the company was incorporated and purchased from the estate with E. H. May as President and Treasurer, Mary May as Vice President and Secretary and Harold Mais as Assistant Secretary and Treasurer. At this time many new items were added such as 4-Post Drafting Tables, Blue Print Files and a complete school line. The trade name was changed to Mayline. In 1953 the company name was changed to Mayline Company.

Evidence of its growth is attested to by the company's acquisition, as of January 1, 1953, of 75,000 sq. ft. additional manufacturing space. This doubles the company's original production facilities. Products being fabricated in the new plant include Steel Blue Print Files and Steel 4-Post Drafting Tables in addition to metal parts required for the company's other products.





# BUILDING MATERIALS

READY MIX CONCRETE

CONCRETE BLOCK

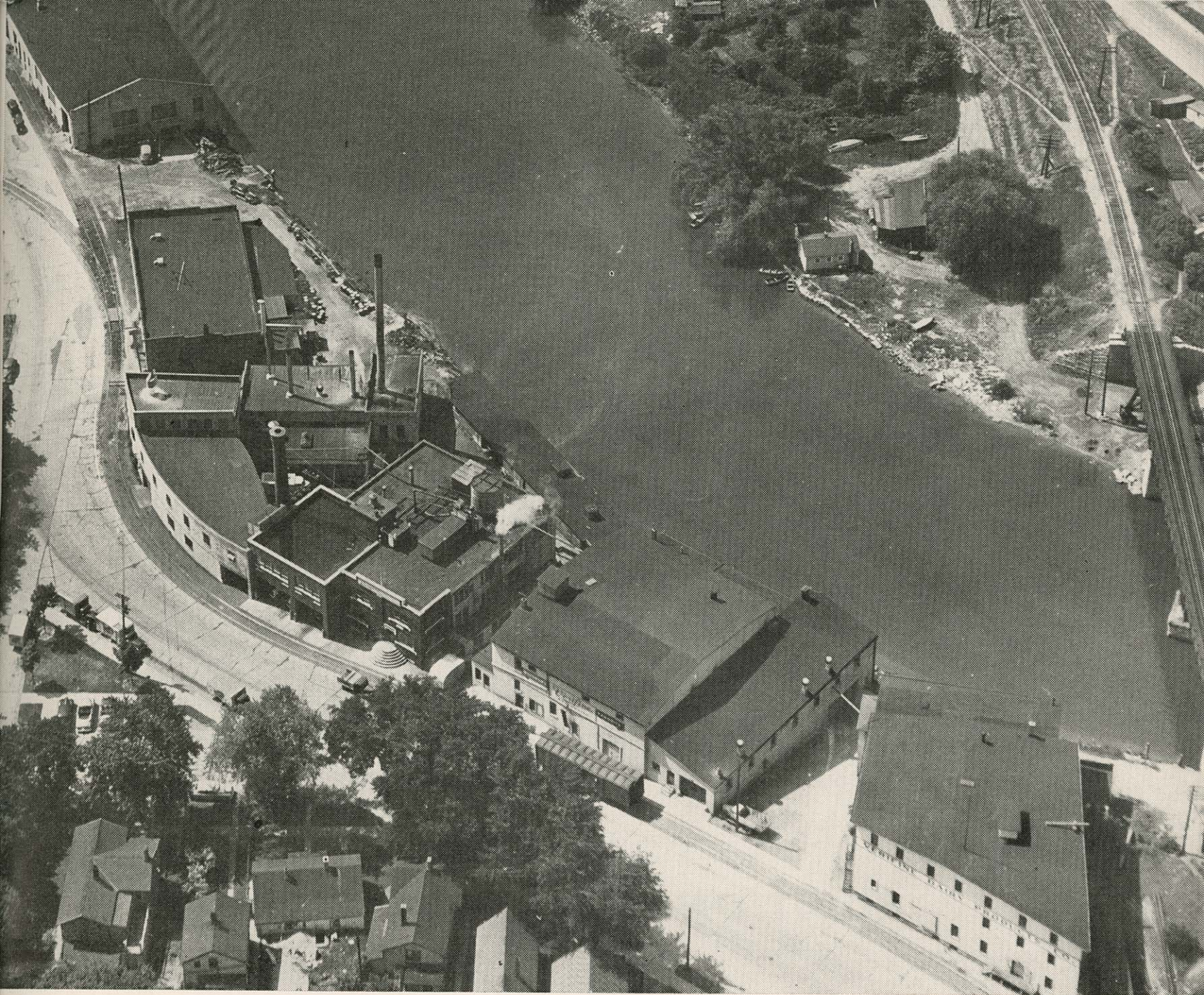
CELOCRETE BLOCK

2215 CALUMET DRIVE

PHONE 4477

SHEBOYGAN, WISCONSIN





**GROWING WITH SHEBOYGAN**  
**SINCE 1911**



**VERIFINE DAIRY PRODUCTS CO.**

*Manufacturers and Distributors of a Complete Line of*  
**DAIRY PRODUCTS and ICE CREAM PRODUCTS**





Wade House at Greenbush, also known as Half Way House between Fond du Lac and Sheboygan. Now restored to its original state by the Kohler Foundation and operated as a museum by the State Historical Society.

## ADDITIONAL PATRON LIST

HILL'S DEPARTMENT STORE



MONTGOMERY WARD CO.



SEARS ROEBUCK & CO.



GMACH'S RESTAURANT



ALFRED JUNG CO.



JUNG SHOE CO.

KLEIN'S MENS CLOTHES



LITTLE FOLKS SHOP



MICKELSON'S SERVICE STATION



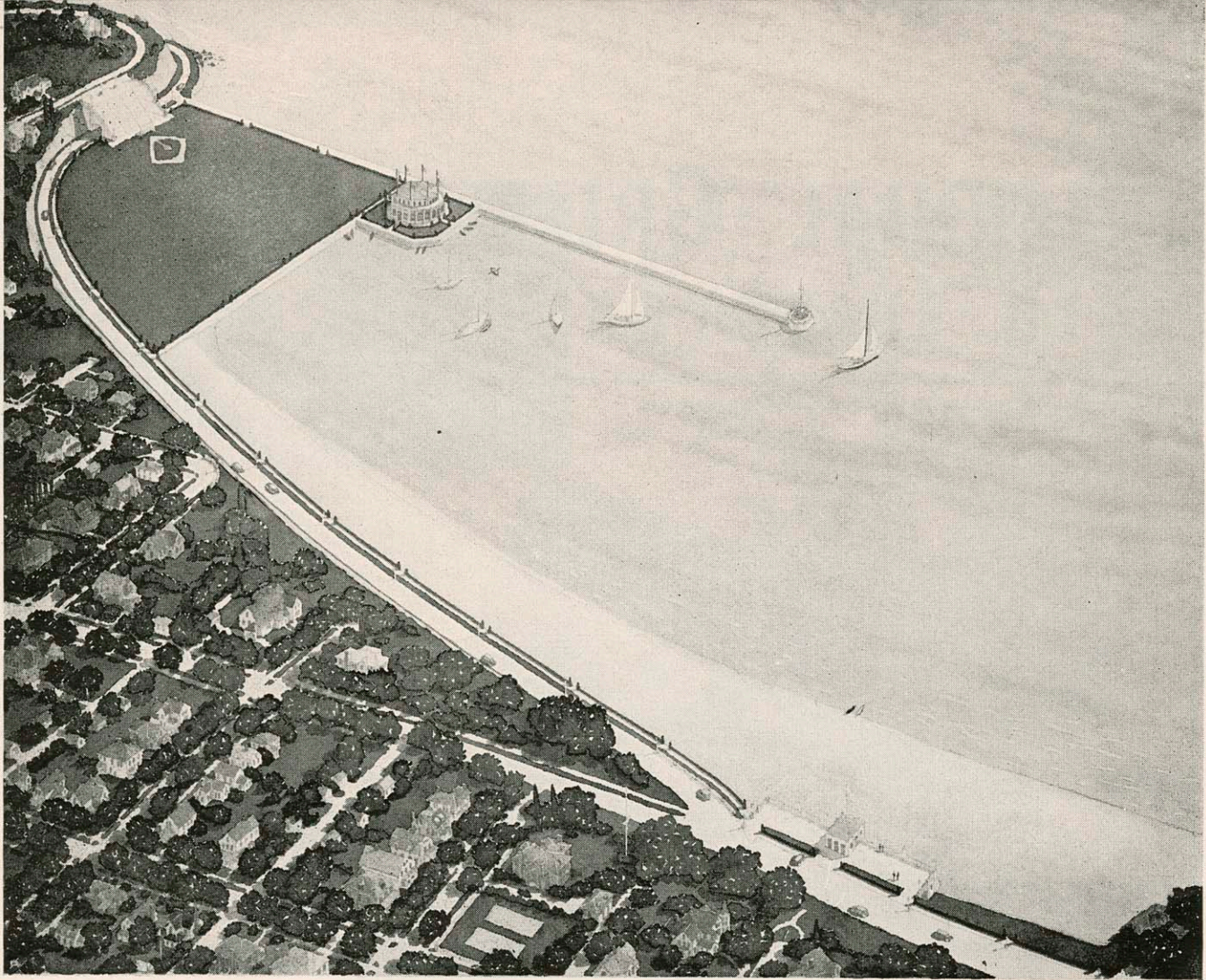
W. F. SACHSE'S SONS



SHEBOYGAN PAINT CO.







Proposed Lake Front Athletic Field and Yacht Basin.

---

ESTABLISHED 1885

## **HOME LOAN HEADQUARTERS**

**OFFICE 512 SOUTH 8th STREET**

**Sheboygan Savings and Loan Association**

**SHEBOYGAN • WISCONSIN**