

# "MAKE YOUR SPARE TIME—PARK TIME"

**To ALL  
Sheboygan Citizens,  
Friends, and the  
Many 1953  
Centennial Guests:**



**GORDON Z. RAYNER**  
Superintendent of Parks

The Sheboygan Park Department joins all City Officials in extending a hearty welcome.

The Park Department operates as a division of the Department of Public Works and has jurisdiction of more than 289 acres of fine Park developments in addition to the direct administration of the street tree forestry ordinance. The Park Department operates with 28 full time men and an additional 30 part time men to afford all Sheboygan an outstanding Park System, designed to follow the principles conveyed in the slogan of the American Institute of Park Executives, "To make more abundant facilities for a more expressive life for all".

We, in the Park Department, recognize the basic functions of Parks to make contributions to the safety, health, and character of the people by furnishing facilities and scenic interests where skills can be exercised and developed during leisure time in pleasureable settings, and with provisions for relaxation and happiness at any time.

Included in this Centennial Souvenir Program are several pictures of outstanding Park developments, and a chart describing Sheboygan's Park facilities with their location, total acreage, and facilities. It is the wish of every Park employee that Centennial visitors avail themselves and make full use of the Park facilities. These people will be helpful to make your Park visit an enjoyable treat. To the regular Park visitor, the Park facility chart will also include notes on Park regulations to again aid in making your Park visit a glorious affair.

To afford outdoors recreational areas in the safest and most beautiful settings, the Park worker is dealing with natural phenomenons that have no substitutes and no automatic switches. The Park man must be constantly

alert for changes to all Park life caused by physical changes to the environment so that continuity, preservation, and better appearance of all Park decorations are assured at all times.

## GENERAL PARK SEASON

1. Sheboygan's outstanding Zoo, located at Vollrath Park, is open throughout the entire year.
2. Neighborhood Parks are open from May 15th through September 15th.
3. Large Parks are open from May 1st to October 1st.
4. Shelter Houses, available for picnic and party groups, located at Roosevelt Park and Kiwanis Park, are open throughout the year, except on New Year's Eve.
5. Quarry Bathing Beach opens June 15th and closes after Labor Day.
6. Lake Beaches, located at Deland Lakefront Park, General King Park, Clifton Avenue on the North Side, and Ashland Avenue on the South Side, are open July 1st through August 31st.

## PICNIC PERMITS

To insure fair use of all facilities, all groups of 15 people or more must have a picnic permit. Picnic permits are available at the Office of the Department of Public Works, located on the 3rd floor of the City Hall. Dates for picnic permits can be checked and tentative reservations made for picnic areas by telephoning 5011 and ask for the Department of Public Works. Permits must be picked up and the \$10.00 deposit made within 24 hours after reservation has been made.

*(Continued on page 59)*

An invitation to enjoy nature—Evergreen Park

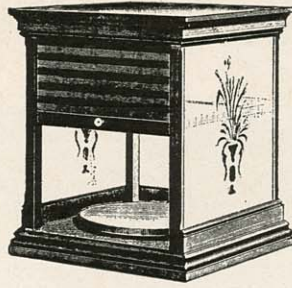


Grand for relaxation and refreshment—Shooting Park

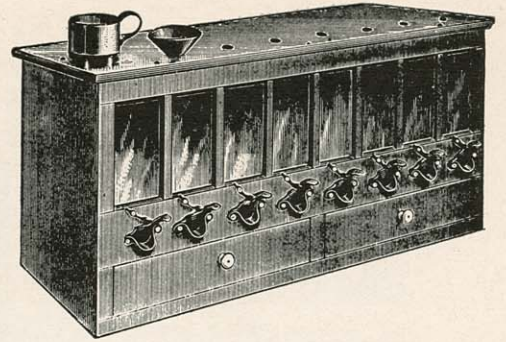


# THEN.....

*From The Archives*



CHEESE SAFE



PATENT SHOT CASE

With a function to perform in tune with the problems of the day, these items were selected from a Dillingham catalog of days past.

# Now.....



Furniture designed for today . . . Modern materials and methods for modern living.

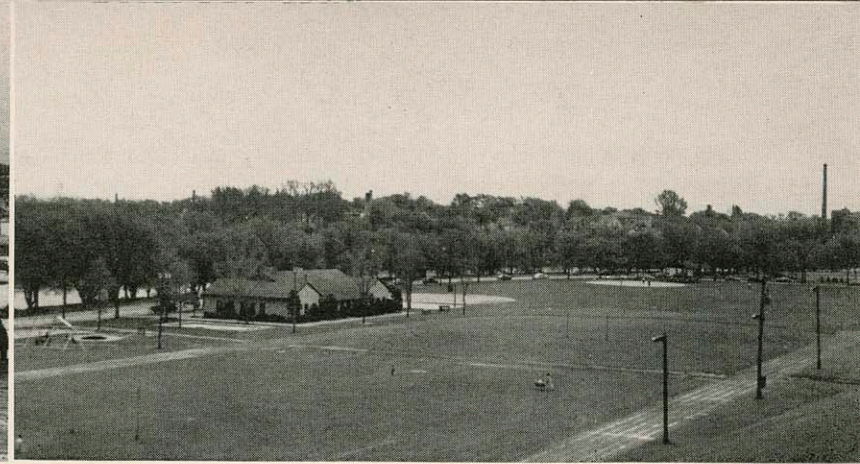
Then, as now, Dillingham keeps in tune with today.

## DILLINGHAM MANUFACTURING COMPANY

SHEBOYGAN ▼ WISCONSIN



Kiwanis Park—1937



Kiwanis Park—1953

PARK FACILITIES CHART		Total Acreage	Date Acquired	How Acquired (Noted)		Facilities																																
NAME AND LOCATION OF PARK				A	B	Amphitheater	Archery	Band Stand	Basketball	Bridle Trails	Comfort Station	Concession Stand	Cooking Grills	Football	Fountain or Springs	Flower Beds	Hiking Trails	Horseshoe Courts	Picnic Areas	Play Apparatus	Sand Box	Shelters	Shuffleboard	Softball Fields	Softball (Lighted)	Hardball	Hardball (Lighted)	Skiing	Stage (Portable)	Supervised Play	Swimming Beaches	Sled Slides	Toboggan Slide	Tennis Courts	Tennis (Lighted)	Track & Field	Wading Pool	Zoo
COLE PARK 4th St. & Grant Ave.		2.50	1908	A					X	X			X				X	X	X																		X	
DELAND PARK Broughton Drive		43.80	1927-1936	A B					X	X	X	X	X	X	X	2	X	X	X	X		2		1			X	X	X				2					
END PARK 13th St. & Bell Ave.		3.47	1904	A					X	X							X	X	X							X											X	
EVERGREEN PARK Highway 42 & North City Limits		135.63	1918-1940	B	X			X	X	X	X	X	X	X	9	X	X	X	X	X		5				X		X			X							
FOUNTAIN PARK 8th St. & Erie Ave.		2.62	1836	C		X			X	X			X	X												X												
GENERAL KING PARK 7th St. & Spring Ave.		6.50	1934	B					X	X	X		X				X	X	X							X	X											
KIWANIS PARK 17th St. & Ontario Ave.		26.00	1924	A B	X	X		X	X	X	X						4	X	X	X	X	4		1		X	X		X			2	X	X			X	
MOOSE PARK 18th St. & Indiana Ave.		3.90	1930	D			X		X	X						2	X	X	X	X	X	2				X	X		X			2						X
NORTHEAST PARK 6th St. & Evergreen Parkway		12.00	1922	B	(Under Development)																																	
SHERIDAN PARK 14th St. & New Jersey Ave.		2.62	1836	C		X		X	X				X				X	X	X							X											X	
SHOOTING PARK Lakeshore Drive, South of Wilson		10.40	1912	B		X		X	X							2	X	X	X	X		2																
ROOSEVELT PARK 12th St. & Mead Ave.		9.11	1930	B			X	X	X	X		X			2	X	X	X	X	X	X	3	1	1	1				X		2	2		X			X	
VOLLRATH PARK 3rd St. & Park Ave.		16.13	1917	A B	X			X	X	X		X	X				X	X	X		2				X	X		X			4	2					X	
SOUTHWEST PARK 24th St. & Union Ave.		6.75	1946	B	(Under Development)																																	
TRIANGLES & BOULEVARDS N. 3rd, N. 7th, North Ave., Geele, S. 17th & Union Ave.		3.70		C																																		
RIVER ISLANDS Penn Ave. & W. Water St.		4.00		C																																		
TOTALS		289.13			1	2	3	3	1	15	6	11	2	2	7	3	21	11	11	11	6	3	20	1	3	1	3	8	2	5	4	1	16	6	1	5	1	3

NOTES: A—Donation; B—City Purchase; C—Original City Plat; D—Leased. Additional Rinks at Grant School, Longfellow School, Cooper Avenue, and Washington School. Additional Tennis Courts: 2 at Cooper Ave., 2 at Kuehne Court. Two Portable Stages available for use at locations indicated.

**WHILE USING PARKS**

Help preserve Park property! It belongs to you! Enjoy it!  
Do not destroy it!

1. Help keep your Parks clean—Trash cans are provided.

2. Build fires only in fire places provided, and make sure your fire is out before leaving.

3. Your help in reporting vandalism will stop any misuse and make your Parks a better place in which to relax.



Kohler Co. General Office with its familiar clock tower

**I**N this year of Sheboygan's Centennial, Kohler Co. is also celebrating an anniversary—its 80th.

The modest business which J. M. Kohler established in 1873 to manufacture plows, farm machinery and other products has in the intervening years grown and expanded. Some years after its incorporation, the company began the manufacture of bathtubs, lavatories, sinks and other plumbing fixtures of enameled iron.

Other products have since been added until today Kohler Co. produces a complete line of fixtures of vitreous china as well as of enameled cast iron and makes the brass fittings, valves, faucets, drains and traps which are necessary parts of every fixture.

Products not directly related to plumb-



Lincoln Circle—a neighborhood of small homes

Kohler Public Schools are surrounded by large playground areas. This modern building houses the grades



ing include heating equipment for homes—electric plants to supply current for farms and isolated places, for standby and portable power—air-cooled engines for garden tractors, weed cutters, portable saws, pumps.

The company has become a leading supplier of precision controls for jet engines, commercial and military aircraft, industrial test equipment.

During the years Kohler Co. has built a solid reputation for quality and service. Its present position of leadership is the result of the high degree of competence and resourcefulness which is characteristic of the Kohler organization.

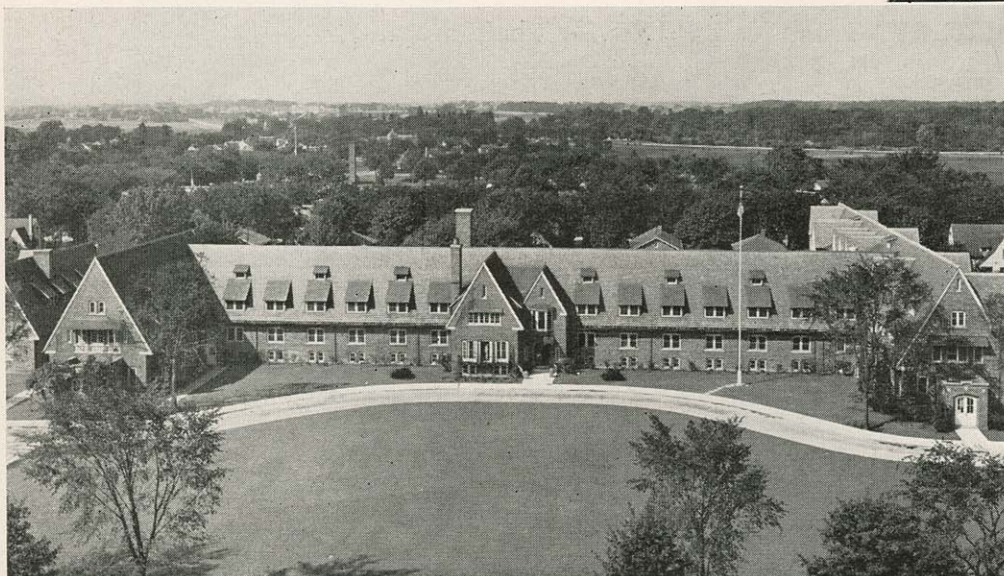
Kohler Co. extends best wishes to Sheboygan on the occasion of the 100th anniversary of its existence as a city.



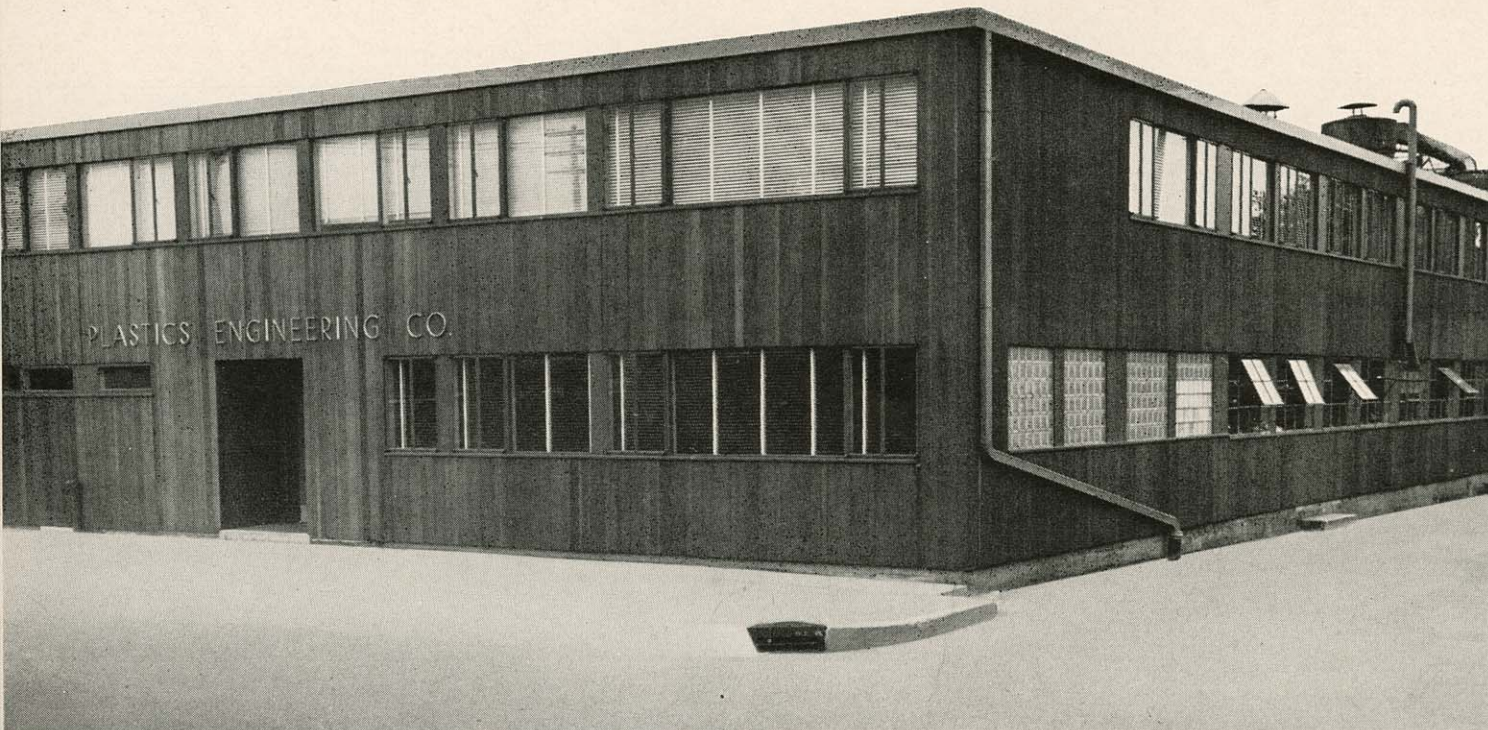
Ravine Park during High School Scroll Ceremony



Right: The Waelderhaus, home of Girl Scouts, was built as a memorial to the founder of Kohler Co., John M. Kohler, by his daughter, Marie Christine



Left: The American Club



## **PLENCO PHENOLICS**

PHENOLIC THERMOSETTING MOLDING COMPOUNDS in general purpose, heat resisting, impact, colors and mottles and other grades to suit varied applications.

PHENOLIC SYNTHETIC RESINS in dry, lump or finely ground particle sizes.

PHENOLIC SYNTHETIC RESINS for shell molding in foundries.

PHENOLIC MOLDED PARTS.

**PLASTICS ENGINEERING CO.**

**1607 GEELE AVE. ▼ SHEBOYGAN, WIS.**



**J. J. KOESELL**  
Founder

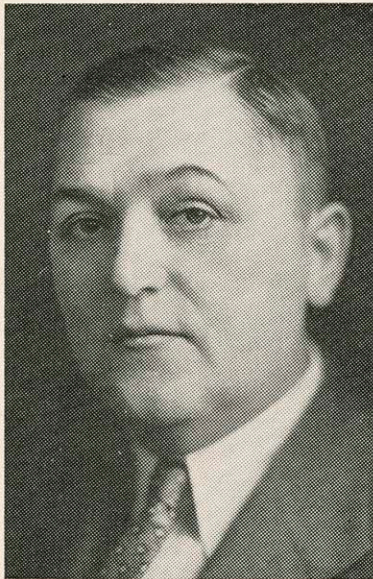
**64**



1889

**YEARS**

## The J. J. Koepsell Company



**A. J. KOESELL**  
President

The J. J. Koepsell Company was founded in 1889 by the late John J. Koepsell as a retail hardware and ship chandlery store.

The company was closely identified with much of Sheboygan's early Marine history. During those days the harbor teemed with activity and as many as thirty to forty sailing vessels operated out of Sheboygan and made this their home port. Large quantities of vessel supplies and ship chandlery were supplied by the company to this fleet during the spring outfitting periods and throughout the sailing seasons.

About forty years ago the company engaged in the wholesale plumbing, heating and industrial supply business and has since become one of Wisconsin's leading wholesale organizations. During this forty year period many additional lines of merchandise have been added, including electrical, refrigeration and radio supplies as well as major home appliances.

During World War II the company was called upon to assist in the design of the sanitary systems used aboard landing craft which played such an important part in the successful prosecution of the war. Large quantities of this equipment together with other materials and supplies were shipped by the company to shipyards throughout the United States and to many other points throughout the world. The company is justly proud of the commendation received from the Navy Department for its outstanding contribution to the war effort.

The accompanying illustration shows the company's present large and modern wholesale plant which is served by rail, water and truck. The latest material handling equipment plus the most modern offices and display rooms assure the company's clientele of the utmost in service and merchandising cooperation.



**W. J. KOESELL**  
Vice-President

1953

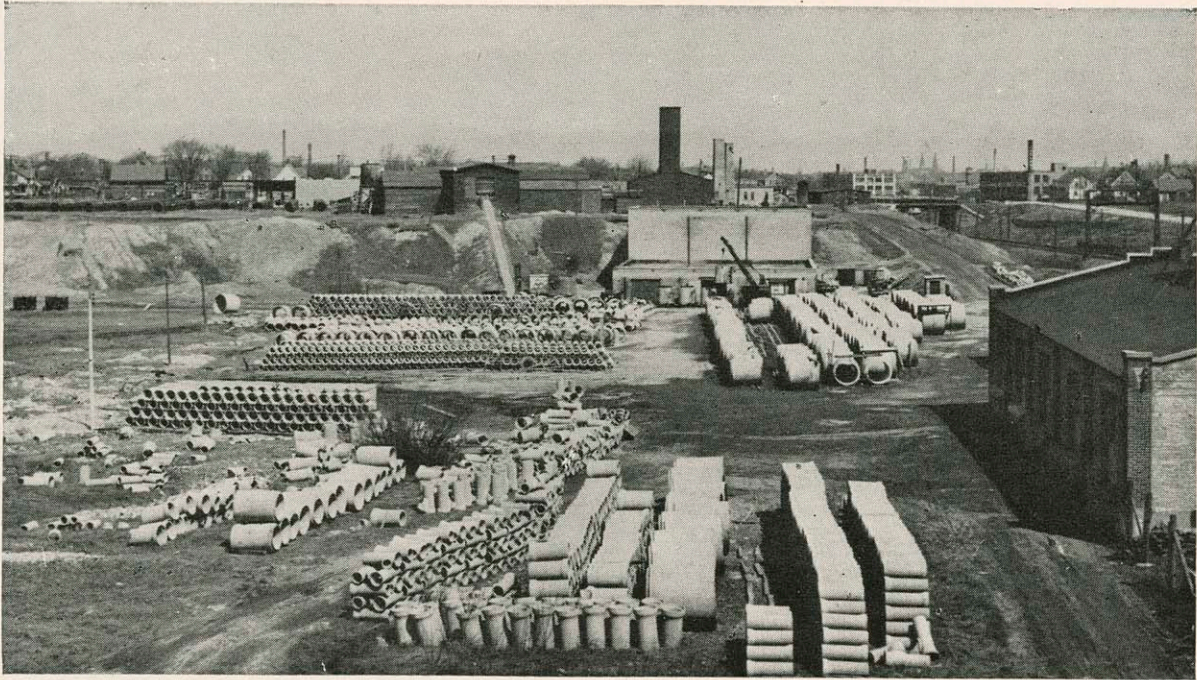


**73 YEARS OF PROGRESS . . . .**  
*with a Growing Community*



**LARSON**  
*Plywood Co.*  
SHEBOYGAN  
WISCONSIN





1888 — 1953

**T**HE Van Der Vaart Brick & Building Supply Co. had its beginning in 1888 and was known as the Oscar Zimbal Brick Co. on 33 acres of land located on South 15th Street and Georgia Avenue and was engaged in the manufacture of common brick.

In 1926 Mr. Zimbal sold this property to Mr. John Van Der Vaart, who became President, and his son George, who became Treasurer and General Manager. The name was changed to the Van Der Vaart Brick Co.

At the death of George in 1932, Mr. Louis Gartman became Vice-President and General Manager, and at the death of Mr. John Van Der Vaart in 1936, Mr. Gartman became President and General Manager.

From 1888 to 1926 the entire function of this company was the manufacture of common brick, but in 1927, the company added a complete line of hard material building supplies.

In 1931, a subsidiary company was formed and

called the Wisconsin Concrete Pipe and Culvert Co. whose function was the manufacture of concrete sewer and culvert pipe in sizes from 6 inch through 72 inch in diameter. In 1940 the production of ready mix concrete was added, and at the present time, is serving the Sheboygan area with 12 modern ready mix trucks.

In 1944, the Wiegand Concrete Products Co. of Green Bay was purchased and the company name was changed to the Wisconsin Concrete Products Co. and is engaged in the manufacture of concrete sewer and culvert pipe, as well as concrete block and brick.

Upon the death of Mr. Louis Gartman in 1945, the Van Der Vaart Brick & Building Supply Co. was purchased by the Pauly's of Manitowoc, its present owners, and is managed by Mr. Royal Fenn of Sheboygan. At the present time the officers are as follows: Donald P. Pauly, President; J. Kenneth Madden, Vice-President; Emil J. Pauly, Secretary and Treasurer.

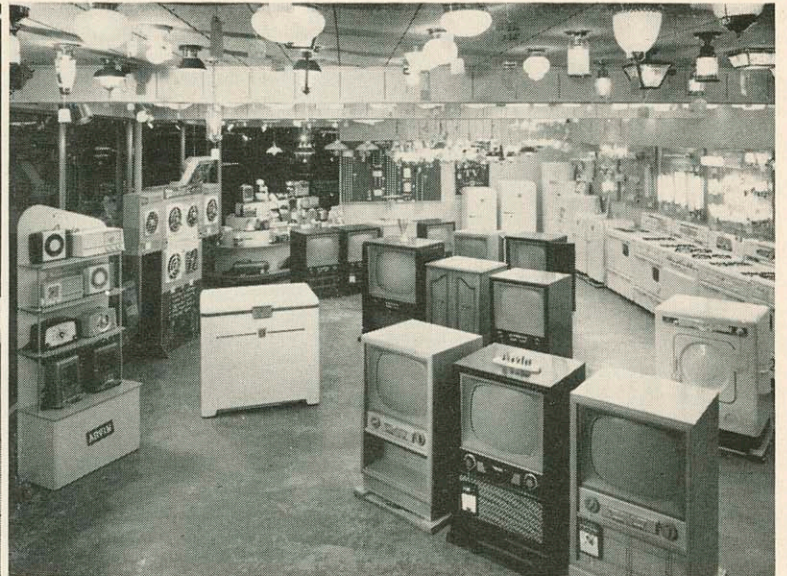
## VAN DER VAART BRICK & BUILDING SUPPLY CO.

MANUFACTURERS • WHOLESALEERS • RETAILERS

**SHEBOYGAN  
WISCONSIN**



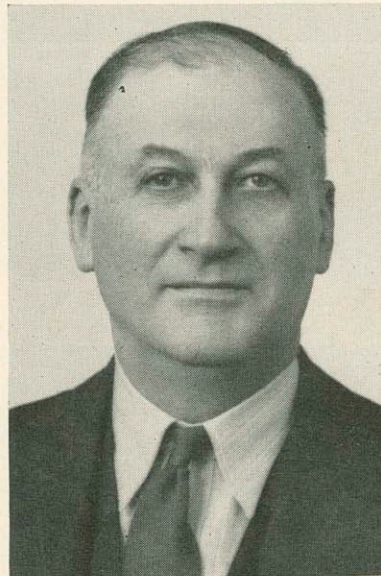
Plumbing Supply



Electrical Supply

*Congratulations to  
Sheboygan on its  
100th Anniversary*

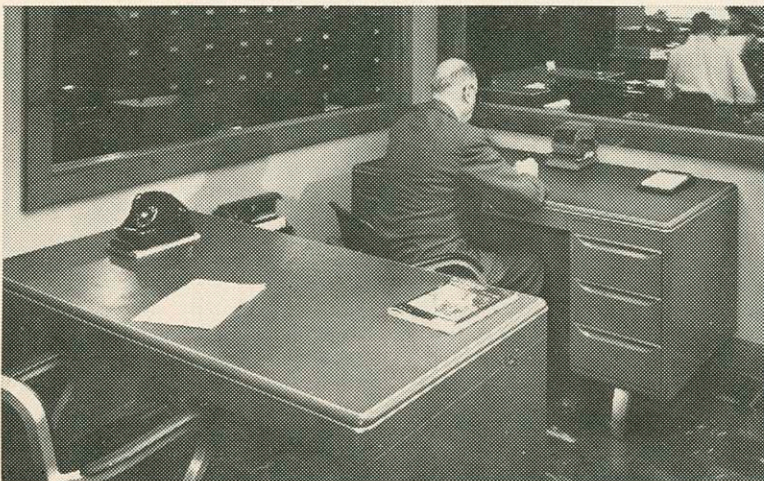
. . . . . and to all who  
helped its great progress  
in a civic and industrial way



PAUL HONOLD



BILL HONOLD



Private Office



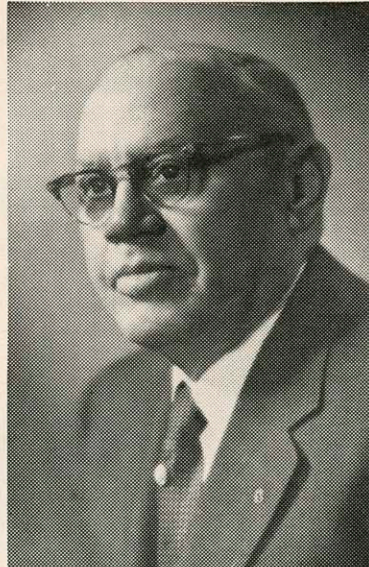
General Office

**HONOLD & LA PAGE, Inc.**

**A GROWING WHOLESALER IN  
A GROWING COMMUNITY**

# 55 Years of Progress to Our Community

All of the large family of employees at Wolfs are proud of the part they play in keeping Sheboygan a fine, clean place to live. Many of our family have been together 10, 20, even 30 years, and we are growing each year.



**ERNST WOLF**  
President



**HAROLD WHITAKER**  
Vice-President

Yes, our modern delivery equipment which you see every day compared to the old Model T, signifies the difference in delivery. Our plant has been modernized just as our delivery fleet to keep up with the trend to faster, better service. Yes, service is our business and we guarantee complete satisfaction. We are grateful for the opportunity to grow with our great community.

**WOLF'S**  
INC.  **LAUNDRY  
DRY CLEANERS**  
SHEBOYGAN, WISCONSIN  
Dial 9494

The Voice of Dairyland

*Sheboygan's*

*Number*

*Salesman is*

**WHBL**

Every Day More and More  
Advertisers Reach:

\*42,520 radio families in daytime

\*26,310 radio families at nighttime

\*Broadcast Measurement Bureau

*Independently  
Owned and Operated*

C. E. BROUGHTON  
President

BEN F. HOVEL  
Vice-Pres. & General Manager

**1330**

**On Your Radio Dial**