

CHURCH HISTORY

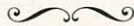
COMPILED BY MRS. HELEN CLARK RITGER

Assembly of God Pentecostal

A GROUP OF people were gathered together by Miss Olga Wisthof in September, 1937, in the home of Mr. and Mrs. Herbert Bethke. Thereafter, families met in homes of members, conducting prayer meetings and Bible Study, until 1939, when the church at 502 South Commercial Street was purchased from the Scandinavian Lutheran organization.

The following pastors have served the church: Rev. Carl Erickson, Rev. Devore Walterman, Rev. David Wakefield, Rev. Allan McKellips, Rev. Darrell Meyrer, Rev. Hardy L. Thompson. Rev. A. R. Portinga is the present pastor.

The General Council of the Assemblies of God was organized in Hot Springs, Arkansas, in 1914. Though the movement is young, the church in Neenah is one of 7,514 churches in the United States.



Calvary Baptist

FIVE Neenah men, W. J. Garfield, Elbert S. Shumway, E. J. Nussbicker, Oscar Sindahl and Clyde Smith, were the founders of this church, originally known as the First Fundamental Church of Neenah. It had been incorporated as the "Union Gospel Tabernacle" in 1931. This group of men held meetings in the homes of members. In 1931 they took over the church which was, years ago, used by the Norwegian Methodists, corner of Isabella and Caroline Streets.

The first pastor of the church was the Rev. W. G. Wittenborn, who served the congregation from 1931 to 1940, and during his time, arrangements were made to purchase the former Norwegian Methodist Church, and the congregation took the name of the "First Fundamental Church." Rev. A. A. Bandow served as pastor 1940-1949.

Since the church is Baptist in nature, the name was formally changed to Calvary Baptist Church in November, 1955.

During recent years larger quarters have been necessary, and a wing

was added to the church. Because of its steady growth, the church purchased the property of Our Savior's Lutheran Church, on Isabella Street, in 1955. This includes the Church Building and the Parsonage, now occupied by this congregation. Tentative plans are to use the former church building for Sunday School purposes and a youth center.

The present membership of the church is 120; average Sunday School attendance is 150.

The present pastor is the Rev. Roland Aggers, who has been serving since 1952.



Church of Christ

THE Church of Christ began meeting in Neenah, October, 1949, with two families, the Lloyd Caters, 144 Fourth Street, and Paul Butterfields, rural Neenah. The first meeting place was the voting precinct house, corner Van and Adams Streets.

Others were added to the group, until the congregation grew to forty adult members in 1955.

Since members lived throughout Fox River cities, it was decided to build centrally in Appleton, at the corner of Badger School Road and Spencer Road, near Highway 41. This building was erected in 1954 and will seat about 125.

Reverend James R. Wilburn began work with the group in 1953, and still continues with them to the present time.



First Church of Christ Scientist

THE First Church of Christ Scientist, Neenah, began through the loyalty of Mrs. Sarah E. Heywood to the teachings of Mary Baker Eddy, discoverer and founder of Christian Science.

A small group of interested persons gathered for services Sunday mornings, 1897, at the home of Stephan B. Morgan. Beginning June, 1900, services were held in the parlors of the Universalist Church, North Commercial Street, Neenah. In May, 1906, the Hall at 113 West Wisconsin Avenue was secured for services. Wednesday evening services were begun, and in 1910 a Sunday School was formed.

The Trinity Episcopal Church property, 229 East Wisconsin Avenue, was purchased in 1915. In November of that same year a Reading Room was opened in the church building. Reading Rooms were later established in buildings on West Wisconsin Avenue. The present Reading Room, open to the public, was opened April 12, 1954, on the ground floor at 107 Church Street.

In 1955 the old church building was torn down and a new one erected on the same location. This new church, of red brick, Georgian style, was ready for occupancy Thanksgiving Day, November 22, 1956, and was open to the public December 2, 1956.

Church services are conducted by two Readers, who are elected by the membership every three years. One reads from the Bible, and the other reads from the Christian Science Textbook, by Mary Baker Eddy.



First Evangelical United Brethren

THIS congregation outgrew its little church on the Island where the Roosevelt School now stands, corner of East Forest Avenue and Second Street, on land presented to the congregation by ex-Governor Doty. According to early records, this was the first Protestant church building erected in Neenah-Menasha, in 1859.

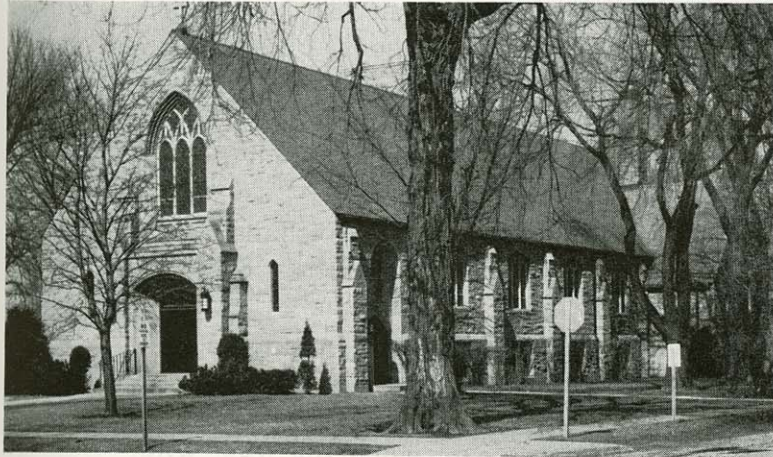
In 1890 a larger church was built on the corner of Bond Street and West Forest Avenue, when Rev. G. F. Kickhoefer was pastor. The present parsonage adjoining the church was built in 1916.

Rev. Jacob Schneller served as pastor 1898-1902, and the Schneller family took root in Neenah. Parishioners will recall Rev. Carl Zietlow, Rev. Roy Berg and Rev. K. S. Knoespel, who served before Rev. Hayes, the present pastor, who came in 1955.

The congregation grew steadily, and it was decided to build an addition and remodel the church, as more room was needed. The "new" church was dedicated in June, 1940.

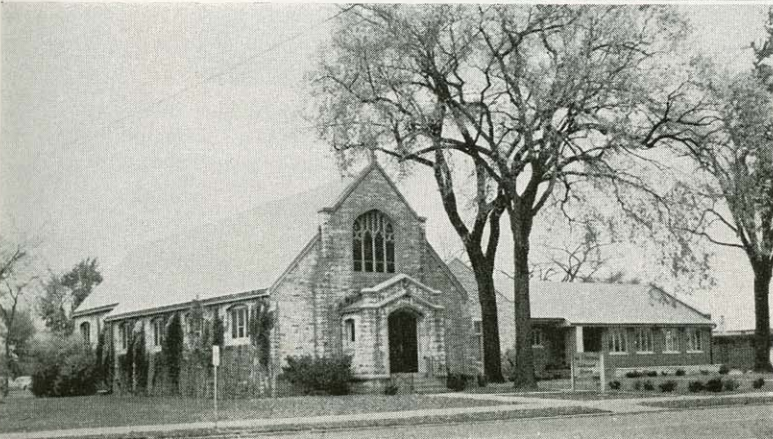
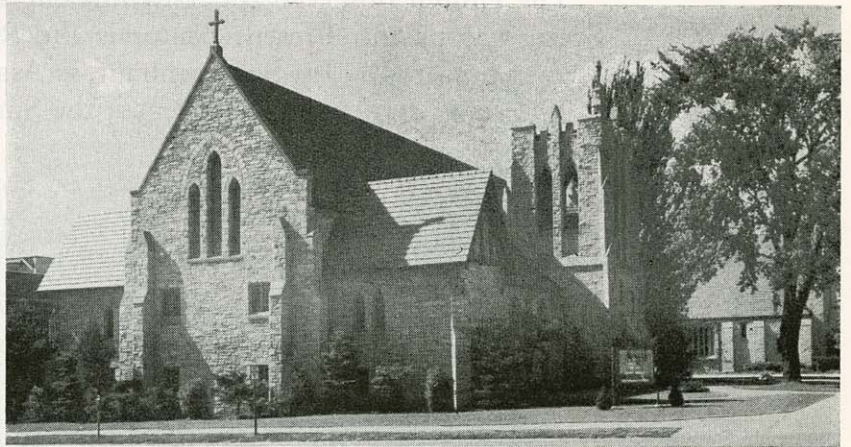
Due to the union of the two denominations—the Evangelical Church and the United Brethren Church, November 16, 1946, the local church became known as the First Evangelical United Brethren Church.

Grace Evangelical Lutheran Church



St. Margaret-Mary's Catholic Church

First Methodist Church



St. Thomas Episcopal Church

This church observed the 100th birthday of its founding in October, 1956.

The present membership is 326, with a Sunday School enrollment of 180.



First Methodist Church

THE First Methodist Church, formally organized in 1849, continued to expand rapidly after it moved into the "Old School" Presbyterian Church building on East Wisconsin Avenue, which it purchased in 1874. The present property on the corner of Doty Avenue and South Commercial Street was purchased and a new structure was built and dedicated in 1906.

The Clayton Church (an out-charge of Neenah), the Neenah Danish and the Menasha Methodist Churches were closed, and their members joined the First Methodist Church.

Early in 1937 a disastrous fire destroyed the church building, necessitating the construction of the present church, which was dedicated in 1939.

The church observed its centennial in 1949, while the Rev. Roy Steen was pastor. Present pastor is the Rev. Norman S. Ream. A former pastor, Dr. Ira Schlagenhauf, is Associate Pastor.

The congregation numbers 1,050; the Sunday School enrollment is 500.

Ministers of the Neenah Methodist Church

1849—William H. Sampson	1874—W. J. Olmstead
1850-56—Attached to another charge	1875—J. T. Woodhead
1856—Albert Baker	1877—N. J. Aplin
1859—Supply unknown	1879—L. F. Cole
1860—Samuel Lugg	1881—G. W. Horton
1860—A. Foster	1883—C. M. Heard
1863—C. W. Brooks	1884—T. C. Wilson
1866—T. C. Wilson	1887—J. S. Lean
1868—L. L. Knox	1890—S. Joliffe
1869—Thomas Walker	J. H. Tippett
1870—J. H. Gaskill	S. Schneider
1871—J. H. Waldron	J. D. Cole
1873—M. G. Bristol	1901—James E. Garrett

1906—Rev. Drew
 1909—Rev. Turner
 1914—Rev. Heywood
 1922—Ira Schlagenhauf
 1927—T. Reykdall
 1932—Rev. Matthews

1934—Rev. Perry
 1935—Henry Johnson
 1939—W. A. Riggs
 1948—Roy P. Steen
 1953—Norman S. Ream

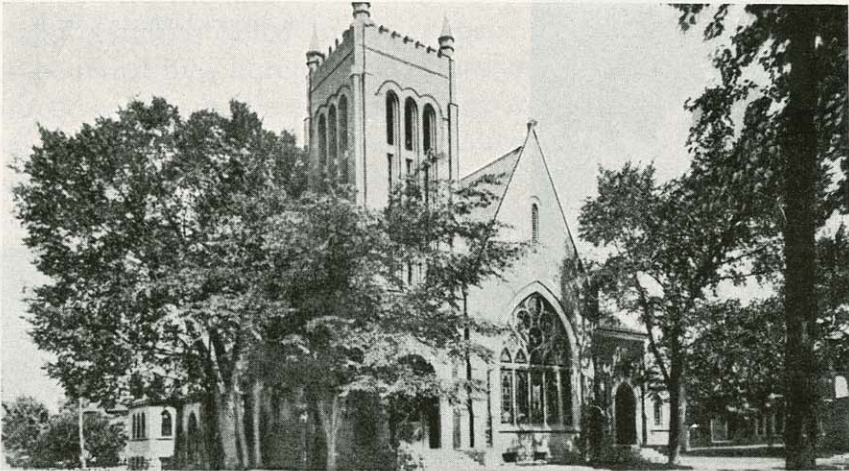


First Presbyterian Church

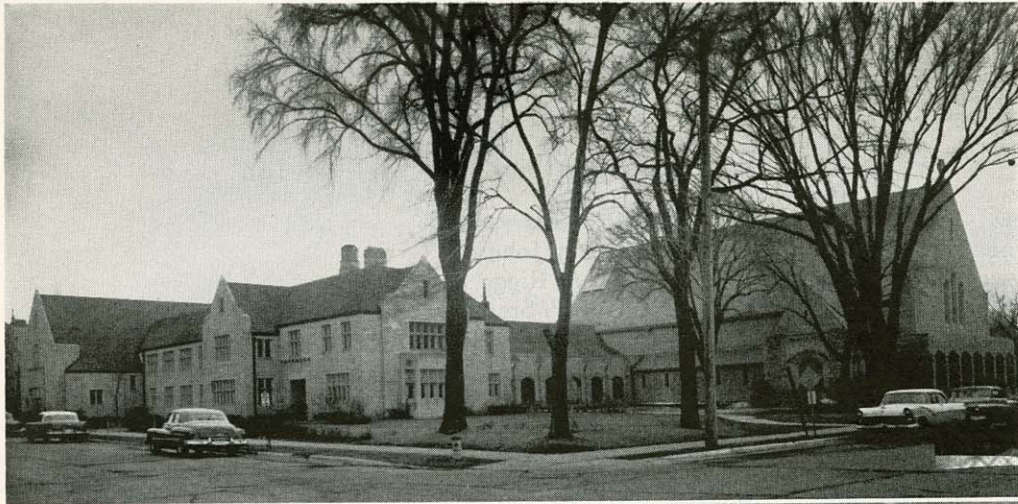
ORGANIZATION of the First Presbyterian Church of Neenah goes back to December 15, 1848, two years after this area, then known as Winnebago Rapids, was opened to public sale. The year before (1847) a Congregational Church had been organized by Reverend O. P. Clinton. Later, the Congregational group merged with the Presbyterian congregation. The first meeting of the newly-formed Presbyterian Church was in a large room over the store of Yale & Jones, which stood on the site of Shattuck Park. This room was used until 1852, when a church was built in the 300 block of East Wisconsin Avenue.

Pastors serving since 1848:

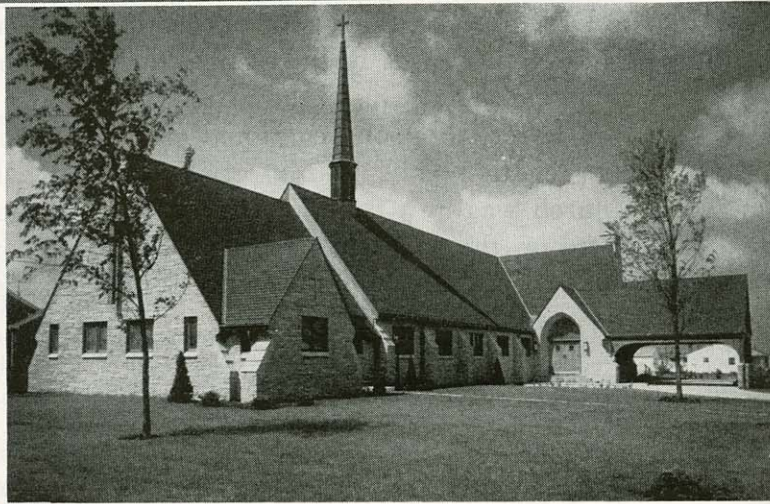
1848-1853—Reverend H. M. Robertson
 1854-1861—Reverend J. H. Rosseel
 1861-1864—Reverend H. B. Thayer
 1864-1867—Reverend A. A. Dinsmore
 1867-1869—Reverend J. C. Kelly



First Presbyterian Church, dedicated in 1901. This building took the place of a wooden structure built in 1864. On October 10, 1954, the new sanctuary on the southwest corner of the block to the east was dedicated, whereupon this edifice was demolished and the site was converted into a parking lot.



First Presbyterian Church



Our Savior's Lutheran Church



Immanuel's Evangelical and Reformed Church



Assembly of God Pentecostal

A nine-year division of the church occurred between 1860 and 1869 in which a Second Presbyterian Church was served by four pastors—Reverend J. E. Pond, Reverend H. G. McArthur, Reverend James Bassett and Reverend J. H. Walker. This congregation built a church on the corner of Smith and Church Streets. When the First and Second churches reunited, the combined group met in that church, enlarging it in 1871.

Then came Reverend John E. Chapin, who stepped into the reunited congregation and served for thirty-three years, until he retired in 1903. Following Dr. Chapin, the pastors have been:

1903-1916—Reverend John L. Marquis
 1916-1932—Reverend D. C. Jones
 1932-1944—Reverend W. R. Courtenay
 1944-1947—Reverend George T. Peters
 1947— —Reverend John E. Bouquet

An Associate Pastor, Reverend Robert Ranck, served the church from January 15, 1956, to February 1, 1958.

During the later years of Dr. Chapin's pastorate, the need for a new church building was apparent. In 1901 the old structure was razed and a new one erected on the same site on the corner of Church and Smith Streets.

Coming into the late 1930's and early 1940's, increasing membership and activities called for larger space. The west two-thirds of the block bounded by Church Street, Doty and Columbian Avenues, was acquired, on which the present edifice was constructed. The educational wing, including chapel and Fellowship Hall, was dedicated in May, 1951. The present sanctuary, built on the southwest corner of Church Street and Columbian Avenue, was dedicated October 10, 1954.

The Presbyterian Church observed its centennial in October-December, 1948.

Church membership, as of July, 1957, is 1,570, and 795 are enrolled in the church school.

The property on which the old church stood, while still owned by the church, is converted into a public parking lot, except for Sundays and on weekdays, when special services or large gatherings are scheduled at the church.



Grace Evangelical Lutheran Church

ON MAY 23, 1948, sixteen families of the Trinity Lutheran Church of Neenah organized the Grace Evangelical Lutheran Church to help alleviate the overcrowded condition in their ever-increasing Trinity Church. Until the chapel on Cecil and Birch Streets was dedicated on December 11, 1949, Grace Congregation conducted its services in the Recreation Building, South Park Avenue.

Grace congregation now numbers approximately 100 families. Rev. W. F. Wichmann is the pastor. A long range program includes erection of its own school, a parsonage on Birch and Cecil Streets, and a church building. The present chapel will then become a parish hall.



Immanuel's Evangelical and Reformed Church

IMMANUEL'S congregation continued to occupy the first church, which they purchased from the English Methodists in 1874, located at the corner of Oak Street and Doty Avenue, until 1909. In that year the present church building was erected, during the pastorate of Rev. August Kleinhans who served 1879-1920. In 1924-25, an addition was built to the present building, during the pastorate of Rev. Emil Kollath, who served the church from 1922-45. Rev. Kollath was followed by the Rev. Otto Scheib, 1945-52.

Immanuel's congregation officially united with the Evangelical Church of North America in 1925, and became known as Immanuel's Evangelical and Reformed Church, when this denomination merged with the Reformed Church of the United States in 1934.

Previous to this event, the congregation of Immanuel's Church had no denominational affiliation, existing for almost fifty years as an independent congregation, and had carried its history under several names.

A remodeling program was carried out in 1953, with a rededication service October, 1953.

The present membership of Immanuel's Church stands at 471 individuals, with Rev. H. E. Norenberg serving as their pastor since 1952.

Martin Luther Evangelical Lutheran Church

MARTIN LUTHER EVANGELICAL LUTHERAN CHURCH is among the newer congregations in Neenah, having been organized December 15, 1941, as a mission church of Trinity Lutheran Church. It consisted of families formerly affiliated with the Trinity Church and newcomers to Neenah on the west side of the city. Temporary quarters were the Fourth Ward Voters' Poll, located on the corner of Van and Adams Streets. Rev. A. F. Geiger was the organizing pastor, who remained through 1945.

In March, 1942, property on the northeast corner of South Lake and Adams Streets was purchased for a building site. Because of building restrictions in effect during World War II, all building activity had to be delayed.

By November, 1947, the first church was completed. The permanent church was built in 1955, and dedication services were held Sunday, June 17, 1956. The first church was then converted into an educational building, and opened in the fall of 1957.

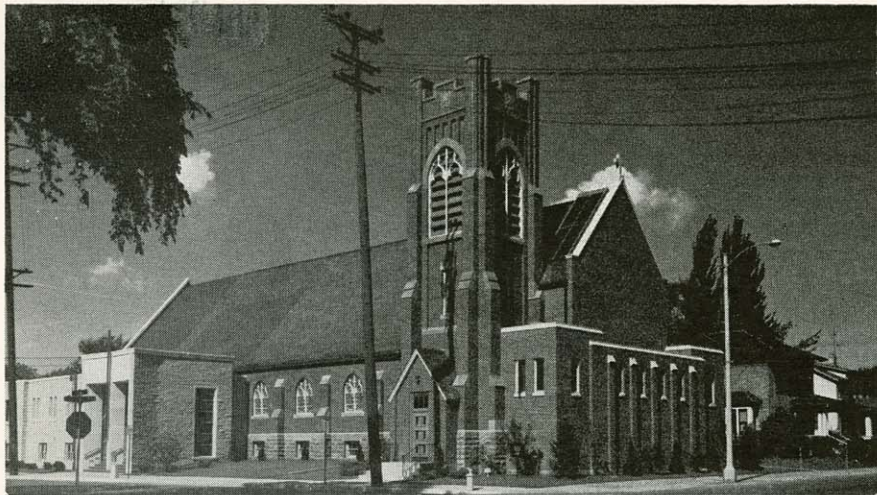
The present pastor is Rev. Paul G. Hartwig, who began serving in January, 1946. The present membership is 546.

*Our Savior's Lutheran Church*

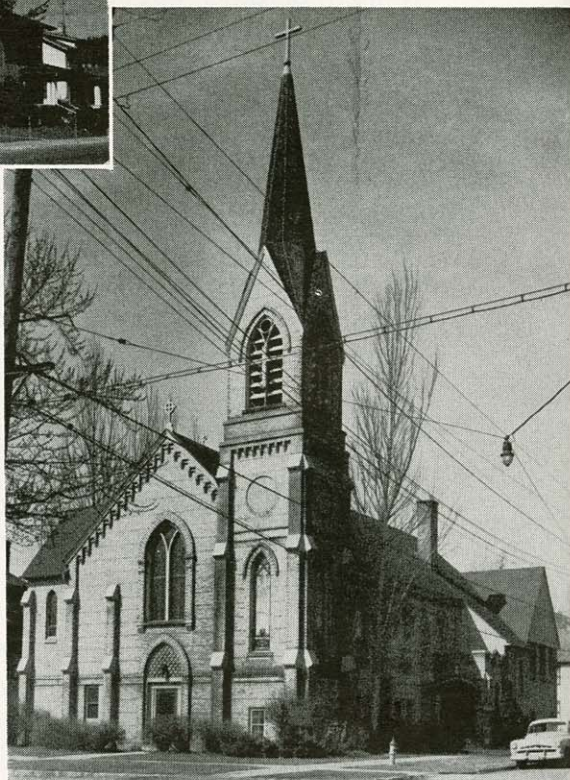
THE congregation of Our Savior's Lutheran Church grew steadily and flourished after its organization in 1872. The little white church on Torrey Street was no longer adequate, and, in the early '80s, property was purchased on Isabella Street. The little white church was moved to this location, and a front addition was added, plus other improvements.

During the next ten years the membership increased, and it was deemed necessary to build a new and much larger church, which was formally dedicated in 1905.

The demand for worship services in the English language increased, and consequently two services were held each Sunday morning, one in Danish and the other in English. Now, for the past fifteen or twenty years, services have been conducted entirely in English.



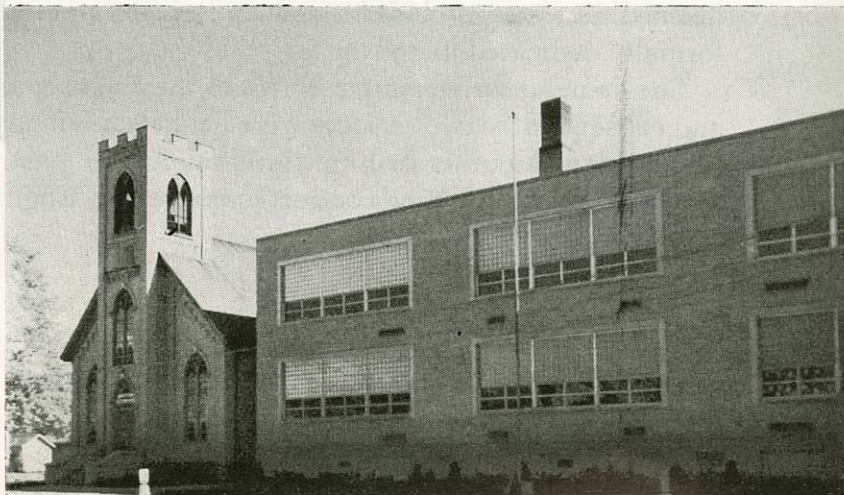
St. Paul's Lutheran Church



First Evangelical United Brethren Church



St. Patrick's Catholic Church



Trinity Lutheran Church

Our Savior's Lutheran Church had been in this same location for 51 years, but in 1955 the church and parsonage on Isabella Street were sold to the Calvary Baptist congregation. A new house of worship was erected on the corner of South Commercial and Meade Streets, and dedication ceremonies were held Sunday, July 1, 1956.

Church membership is 535 baptized members.

The first full-time pastor was the Rev. N. Thomsen, who served until 1880. He was followed by the Revs. Thomas Helvig, A. Hansen, J. N. Jersild, H. P. Jensen, J. Soe, C. C. Kloth, M. N. Andreason, J. A. Larsen, A. Jensen, A. H. Andersen, and the present pastor, Paul G. Rasmussen, who came to the church in 1951.



Saint Margaret-Mary's Catholic Church

THE congregation of St. Margaret-Mary's came into being by an official letter of the late Most Reverend Paul Peter Rhode, then Bishop of Green Bay, and dated May 4, 1932. The Rev. Joseph Van Bogart was appointed its first pastor and organizer. Divine services were first held in St. Patrick's Church, Menasha, for members of the newly formed parish.

The first meeting was held, on May 17, 1932, and it was decided to incorporate the parish under the Wisconsin statutes. On September 12 ground was broken for the combined church and rectory at the corner of Divison and Reed Streets.

First masses in the new church were offered Easter Sunday morning, April 16, 1933, in the basement social hall. On Sunday, July 11, of the same year, St. Margaret Mary's Church was solemnly dedicated by Bishop Rhode.

Father Van Bogart was a most zealous leader, but his health became impaired and he left Neenah in 1938. He died in 1946 at Holy Cross Church, Mishicot.

Father Van Bogart was succeeded by the present pastor, the Rev. Joseph P. Glueckstein. During his pastorate, the church debt was liquidated in 1941. During the early '50s another extensive building program was launched, resulting in a parochial grade school, Sisters'

Convent, and, finally, a modern gymnasium. The Rev. Willard C. McKinnon came as Asst. Pastor in 1950, remaining through 1957. Father James Craanen succeeds Father McKinnon.

St. Margaret-Mary's parish at present numbers over 1,000 families, or about 3,500 persons.

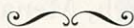


St. Patrick's Catholic Church

THIS church, located on Nicolet Boulevard, Menasha, served Catholic Church members in Neenah until 1933, when St. Margaret Mary's Church was built. This church was known as St. Charles Borromeo until 1883, when it was destroyed by fire. A new church was then built on the same location, and the name changed to St. Patrick's.

Its first pastor was Father William DeKolver, who served thirty-one years, 1884-1915, when he retired. He was succeeded by Father George A. Clifford, 1915-1932, and Father William Mortell, 1932-1939. The present pastor is Father Joseph Ahearn, who has served since 1939. St. Patrick's parish at present numbers over 1,000 families.

The present school was built in 1940.



St. Paul's English Evangelical Lutheran Church

THERE were five Evangelical Lutheran Congregations in Neenah-Menasha, not one of which used the English language in conducting services of worship. A missionary pastor at Oshkosh, Rev. William C. Stump, came to Neenah in the spring of 1912, and arrangements were made for services to be held in a small chapel owned by the Norwegian Lutherans, located on Bond Street near High Street. The church was organized Sept. 22, 1912.

This small chapel was purchased in 1913 and services were held there regularly. A rapidly growing congregation called for larger quarters. The present location, corner North Commercial and West North Water Streets, was secured in 1914. St. Paul's Evangelical Lutheran Church was dedicated May 21, 1916. Rev. A. J. Sommer was the first pastor, and served for fourteen years. Mr. Sommer was followed by Rev. Chas. E. Fritz, who served from 1927-1935.

Property to the north on Commercial Street and west on West North Water Street has since been acquired. An expansion program was necessary, and St. Paul's Church underwent extensive remodeling. This was completed and dedication of the new, enlarged and completely remodeled church took place April 15, 1956.

St. Timothy Lutheran Congregation, Menasha, was organized in 1945, to aid in the expansion program, and as a convenience to church members residing in Menasha.

On September 8, 1957, St. Mark's Mission church was organized, and is meeting at 700 Main Street. Rev. Charles Luhn is pastor, with 150 adult members comprising the congregation.

Rev. Samuel H. Roth came to the church in 1936, serving until his retirement in 1957. Rev. Arthur R. Tingley, formerly Associate Pastor, who came to the parish in 1954, was named Pastor.

The baptized membership is 1,975.



St. Thomas Episcopal Church

ST. THOMAS EPISCOPAL CHURCH, located symbolically almost on the line between Neenah and Menasha, came into being in 1915. Prior to that, two congregations existed, St. Stephen's in Menasha, and Trinity in Neenah. The Menasha church had its beginning in 1857, when the first Episcopal services were conducted in that city by Reverend Charles C. Edmonds, of Green Bay. The Neenah church, Trinity, owes its origin to the missionary activities of St. Stephen's priests, who conducted occasional services in Neenah, resulting in the organization of a congregation in April, 1868. The Neenah congregation erected a modest church structure in 1869, on the corner of East Franklin and Walnut Streets. Failing to achieve adequate financial and numerical strength as separate organizations, the decision was reached in 1915 to combine.

Among the first acts of the combined parishes was purchase of the Ballou property on Washington Street, Menasha, for use as a rectory and parish hall. The new church building was begun in the fall of that year (1915) and the finished edifice was consecrated on May 14 of the following year. Membership of the congregation in 1915 comprised 81

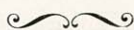
families and individuals, 197 baptized persons and 93 communicants.

Rectors in order of succession were:

Rev. Herbert A. Wilson	1915-1917	Rev. Albert A. Chambers	1936-1942
Rev. W. G. Studwell	1917-1920	Rev. Herman A. Berngen	1942-1944
Rev. Raymond A. Heron	1920-1925	Rev. Crawford W. Brown	(interim)
Rev. Gordon A. Fowkes	1926-1932	Rev. John B. Reinheimer	1945-1955
Rev. Malcolm J. VanZandt	1932-1936	Rev. Thomas K. Chaffee	1955-
Rev. Leonard G. Mitchell	(interim)		

A combination guild hall and gymnasium was erected to the north of the parish house in 1921. In 1954, thirty-three years later, the old parish house and gymnasium were razed and a new parish house erected. Thus the following year the educational and social activities of the congregation moved into a modern and enlarged home.

As of 1956 family units and individuals totaled 251, with 541 baptized persons and church school enrollment of 155.



Seventh Day Adventist Church

THE SEVENTH DAY ADVENTIST CHURCH, Neenah, came into existence in 1885, and a church building was erected on the west side of Henry Street, near Caroline Street. The church was organized as a Danish Seventh Day Adventist, but later had services in English.

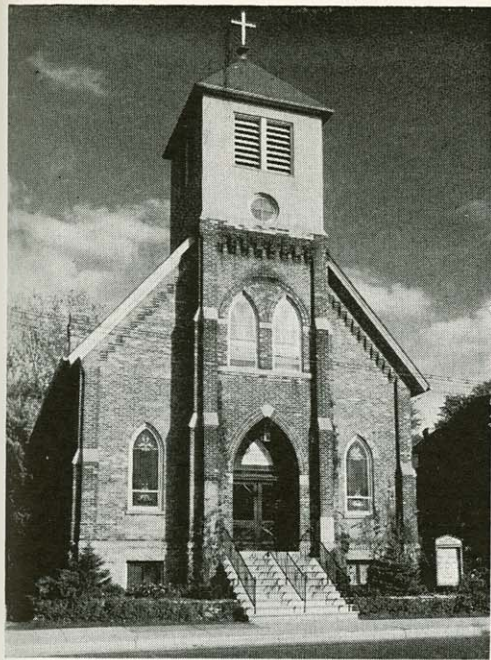
Eld. J. C. Nielsen was one of the first Ministers, also Eld. H. R. Johnson. Some of the early leaders were Mr. Andrew Christensen, Mr. A. W. Jorgensen, Mr. Hans Sorensen, and Mr. Nels Burtelsen.

The church had visiting ministers and local leaders part of the time. The young people moved away, the older members died, and those remaining joined the Appleton Seventh Day Adventist Church. The Neenah property was sold in 1943.



Trinity Lutheran Church

TRINITY LUTHERAN CHURCH was organized on December 26, 1865 by Rev. E. F. Waldt. The little church, which the congregation had constructed in 1867, on the corner of Washington and Walnut Streets, was not adequate to serve the fast-growing congregation, and, in



Calvary Baptist Church

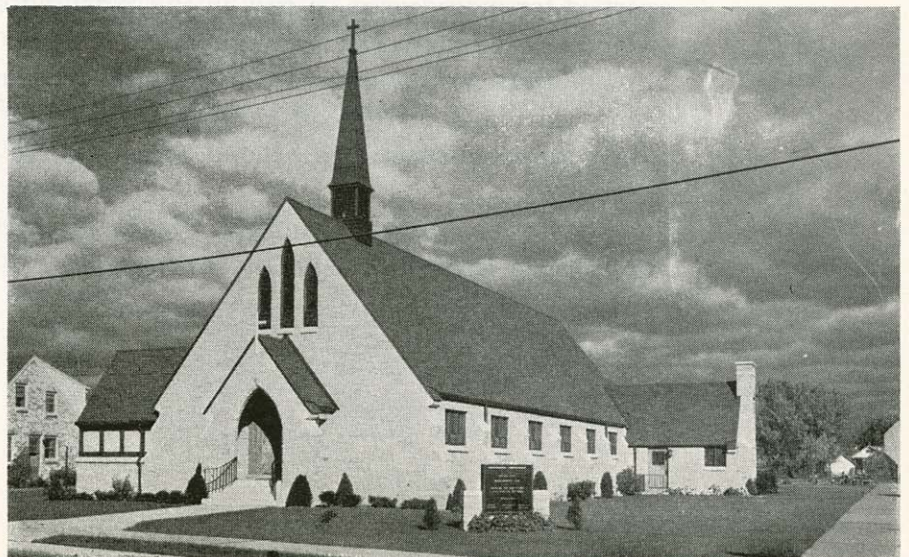


First Church of Christ Scientist



Whiting Memorial Baptist Church

Martin Luther Evangelical Lutheran Church



1888, a new and much larger edifice was built and dedicated, on Oak Street, between Washington and East Franklin Avenue. It is still serving as their church.

During the pastorate of Rev. Albert Froehlke, who served the church for 38 years, from 1897 to 1935, membership grew to more than a thousand individuals. After the first World War, both English and German services were conducted. For six years three services were conducted each Sunday.

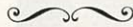
In 1941 Trinity called upon the Wisconsin Synod to establish a mission congregation. Today the Martin Luther Evangelical Lutheran Church is a growing congregation of over 500 people. Further expansion was necessary, and Grace Evangelical Lutheran Church was organized.

The total membership of Trinity at the present time is approximately 1,900, or about 675 families.

Rev. E. C. Reim served the church from 1935-1940. Rev. Gerhard A. Schaefer is the present pastor, having served since 1940.

Plans are in progress for erection of a new church, to be constructed on the same location.

The school in connection with Trinity has always enjoyed a sound and steady growth.



Universalist Church

THE Universalist Church, also known as "The Church of The Good Shepherd," had its own church building on the Island, near the dividing line on North Commercial Street, erected in 1867. The church had numerous pastors; a well-remembered one, Mrs. Mary J. DeLong, served for many years. A pew in the Washington, D. C., Universalist Church is dedicated to her memory.

The church needed remodeling and repairs, and for some time meetings were held in the "little white church on the island," corner of East Forest Avenue and Second Street, where Roosevelt School now stands.

The former church building was rededicated in April, 1896, and Rev. Eddy served for several years.

Due to its declining membership, the church building was sold in 1904 to Samuel A. Cook, who tore it down and built the present S. A. Cook Armory on the same site.



Welsh Churches

THE Welsh Calvinistic Methodist Church was known as the "Brick Church" and was located on Division Street. It was organized in 1848, with five members. There was no resident pastor, but services were held from time to time with visiting ministers from Oshkosh, Cambria, Randolph, Columbus, Wild Rose and other Welsh communities filling the pulpit. At about the turn of the century, services were discontinued and the members transferred to other churches.

The Welsh Congregational Church was called the "White Church" and was located on East Columbian Avenue near Pine Street. There were about two dozen families making up the membership, and a Sabbath School of about 25 members was conducted jointly with the Welsh Calvinistic Methodist Church. Many of the members attended other Protestant churches on Sunday mornings, and Welsh services were held on Sunday afternoons. Visiting ministers from neighboring Welsh churches conducted the services. This church was organized in 1861 and continued to be active until about 1908, when services were discontinued and the members transferred to other local churches.



Whiting Memorial Baptist Church

THE "Little White Church," as it was known in the 1870's and 1880's, located on the east side of North Commercial Street midway between Nicolet Boulevard and the Northwestern railroad tracks, continued to serve as the house of worship for the Baptist Church of Menasha and Neenah until 1891. At this time the building was remodeled, and the name changed to Doty Island Baptist Church, during the pastorate of Rev. N. F. Clark.

The Danish Baptist Church had been organized in 1867, services being held in the Brown schoolhouse, corner of Caroline and Isabella

Streets. Lay preacher members conducted the services, until in 1870, the Rev. Lars Knudson, from Denmark, came to be the first full-time pastor. He served until 1885. In 1876 a one-room church was built on the corner of Washington Avenue and Spruce Street.

In 1898 the members of the Danish Baptist Church joined the Doty Island Baptist Church, and the name was changed to the Union Baptist Church of Neenah. The church building was then known as the "Little Red Church."

In 1916 George Whiting presented to the church the property on the corner of North Commercial and High Streets, and also a substantial gift of money toward a new building. Mr. Whiting's wife, Edna, was the daughter of the Rev. Oliver Babcock, who had served twice as pastor of the church, from 1867 to 1873, and from 1884 to 1885. The new structure was dedicated in 1917 and the name changed again to "Memorial Baptist Church," as a tribute to Mr. Whiting's wife and mother. A disastrous fire damaged the building in 1922, but it was promptly restored. In 1925 Mr. Whiting made further gifts to the church and was persuaded to have his name incorporated into the name of the congregation, as "Whiting Memorial Baptist Church."

1951 was the Centennial Year of the Church, and the "100 years of Baptist Witness" was appropriately celebrated.

The church is affiliated with the Wisconsin Baptist State Convention and the American Baptist Convention. The present membership is close to 300, and the pastor is the Rev. K Aart Van Dam.

Pastors serving the Whiting Memorial Baptist Church since 1898:

1898—S. M. Beeman
 1899—P. S. Calvin
 1902—Alfred Goodwin
 1910—W. L. Clapp
 1913—J. W. Johnson
 1915—F. L. Holden

1918—U. E. Gibson
 1937—W. L. Harms
 1950—A. G. Sinclair
 1953—Theodore F. Krause
 1958—K Aart Van Dam

