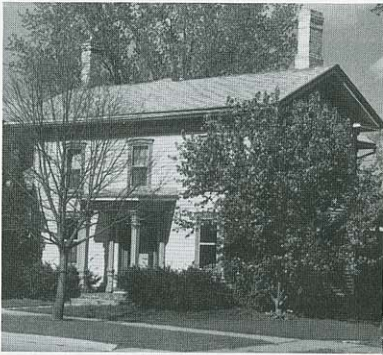


## SOUTH ACADEMY STREET



120  
ca. 1876

One of few brick houses in the District, 120 retains most of its original details including bracketed eaves, prominent hoods at the windows and entry, and an elliptical window in the gable end. Charles B. Withington, who resided here between about 1876 and 1905, was an inventor.

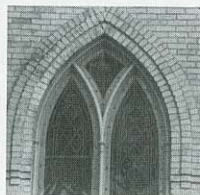


121  
Chase  
ca. 1858

This Italianate house has a prominent central entry framed with sidelights and pilasters, and a porch carried by decorative posts. The windows have pedimented lintels with footed sills. William Chase was employed as a cooper.



169  
St. Paul's German  
Lutheran Church  
1883, steeple 1893  
*Photograph 1888.*



The German Evangelical congregation, the earliest group of Lutherans to organize in Janesville, were housed in this cream brick Gothic Revival building for many years. They organized in 1865 and met in the old Baptist Church until the construction of this building in 1883. The steeple was completed ten years later. It has since housed the Seventh Day Adventist and, since 1987, the All Saints Anglican congregations.

# SOUTH ACADEMY STREET



220  
Durkee-Tallman  
1869  
G.F. Schulze, architect

*Photograph 1888.*



Limestone-trimmed cream brick was employed in this handsome example of the Italianate style. Of particular note are the elaborate carved stone lintels with shield keystones, and the broad wooden frieze under the eaves decorated with modillions and brackets.

The house was built for Mrs. S.G. Durkee, the widow of a downtown merchant. In 1874, the house was sold for back taxes to chemist William H. Tallman (1832-1902), the son of William M. Tallman and the operator of the Tallman Perfume Factory. The property remained in the Tallman family until the late 1950s, and today it is used as a funeral home.

Established in 1857, the Tallman Perfume Factory was housed in the former Baptist Church at 102 South Cherry, and was in operation until about 1900. The firm employed about fifty persons, primarily young women, and manufactured a variety of perfumes, plasters, and toilet waters. One account noted that the atmosphere around the factory was "redolent with intoxicating scents and essences of the Far East."

168

HOLLAND'S JANESVILLE DIRECTORY.

ESTABLISHED 1857,

**WM. H. TALLMAN,**

Successor to TALLMAN & COLLINS,

**Manufacturing Perfumer,**

AND DISTILLER OF ODORS.

Received the only Prize given to the United States for Perfumes  
at the Paris Exposition in 1867.

**LABORATORY,**

**JANESVILLE, WIS.**

SEND FOR PRICE LIST.