



APPENDIX.

A FEW DRESSES SUITABLE FOR BOYS.

ARCITE (Chaucer). *Juste-au-corps* of brown moire antique; gold belt; dark blue trunk hose.

ASTROLOGER. Long velvet toga, with wide hanging sleeves, bordered with satin, bearing the signs of the zodiac in gold; high pointed velvet cap, entwined with a gold snake; wizard's wand, large spectacles, book, and telescope; long pointed shoes.

BABY'S OPERA (*By Walter Crane*). The costumes in this are very suitable for children. **Musicians** in tabards, the stockings of two colours; shoes, square toed. **King Cole:** Fat burly figure; loose brown flowing robe, with ermine; large beard, and regal cap. **Boy:** Trousers to knee; loose shirt; hat with band round; trumpet in hand. **Jack Horner:** Blue cap; slashed jacket, with three rows of buttons; breeches.

BEAU, OLD FASHIONED. Long skirted coat; silk stockings, high boots, breeches, and waistcoat; hat, and stick; watch and seals.

BEAST. (*Fairy Prince, as worn by Duke of Connaught at Marlborough House Fancy Ball.*) Ruby velvet doublet; grey satin tights; ruby shoes; a leopard's skin, with claws attached to shoulders by jewels; small round ruby cap and feather.

BECKFORD, MASTER HORACE (*From Cosway's Picture*). High hat and feathers; hair hanging down in curls; tight jacket and breeches; with lace collar and turn back cuffs; silk stockings and shoes; scarves tied round leg, with bows on outside of leg; stick in hand.

BEEF-EATER (*or Yeoman of the Guard*). Long-skirted scarlet Tudor coat, trimmed with black velvet and gold, crown and Tudor rose embroidered on breast; close plaited muslin ruff at throat; full sleeves to wrist; low-crowned black velvet hat, blue, red, and white ribbons round; rosettes of the same on black shoes and at the knees of breeches; red stockings; sword in belt, halberd carried in hand.

BLUEBEARD. Flowing Eastern robe; red silk turban; scarf of many colors round waist; loose silk trousers to ankle, one yellow the other red; red pointed shoes; beard, blue; carries key.

BOY BLUE. Dressed as Gainsborough's Blue Boy, Black shoes, with large blue rosettes; the same at knee; blue stockings, velvet breeches, and close-fitting jacket, buttoning in front; blue satin cloak, fastened to shoulders, bordered with gold braid: the sleeves to wrist, slashed twice inside the arm, showing white under-sleeve; Vandyke lace cuffs; large lace collar; plumed hat; hair curled.

BUNTHORN (*Patience*). Velvet jacket and breeches; large flat velvet cap, with wig of light hair beneath; velvet shoes, and silk stockings.

CAVALIER DRESS (*For boy, after Von Hugenburg*). Dutch type. Broad-brimmed Flemish hat, with ostrich feathers; doublet and waistcoat; breeches to knee; swordbelt crossing bodice; tie at throat; hat and plumes; shoes with bows; gauntlet gloves.

CHARLES, PRINCE OF WALES (*Son of Charles I.*). (*See Illustration.*) As Vandyke painted him, is clad in satin breeches and habit with vandyked lace collar, ribbon bows at knee and waist, sleeves slashed inside the arm. The shoes have large rosettes coming well up on to the instep; the hair is cut square across the forehead and curled at the back. This is a favourite dress for Pages at weddings.

CHRISTMAS, FATHER. Long loose robe of white, red, or brown, the shoulders covered with tufts of frosted wadding; a belt round waist; wallet, staff, white hair and beard; holly wreath.



CLOWN (*Ordinary*). Black or white shoes, white stockings with blue or red clocks; short white calico trousers with frills at knee, and a close-fitting dress fantastically ornamented with blue and red; face painted white, triangular patches of red on either cheek, very red lips; close curling stiff red point from back of head, which shakes at every movement. (In Louis XV's reign). Loose trousers to knee; full jacket with large collar, confined at waist by belt; sleeves to wrist, with pendent ones over the hand, all made in white cotton or merino piped with red, and large red buttons in front; white felt pointed hat, with colored ribbons.

COCK ROBIN. Short brown pleated skirt, with rows of Marabout feathers; round bodice with pointed basque at the back, like the tail of a bird, made of feathers or plush; red waistcoat, high collar; red necktie; cap with a peak as much like a bird's head as possible.

CONSCRIPT. Long kid gaiters fastened with buttons to the knee; yellow breeches with gold embroidery at the pockets; red cloth coat with yellow epaulettes, cuffs, and facings; Lancer cap.

COLE, KING. (*See* BABY OPERA.)

COOK, BOY. All in white; shoes, stockings, knee breeches; loose blouse, with frilled collar; round cap; apron, the corner tucked in at waist. Or, jacket and breeches of white satin slashed with blue, white linen apron; muslin ruffles; shoulder sash of blue moire, to which is suspended a huge carving knife; white cap with blue puffings; white stockings and shoes, and blue rosette.

CUPID. Dress of blue and silver gauze, smothered in roses; bow and arrow, and silver gauze wings.

DICK TURPIN. Scarlet coat and waistcoat, with gold braid and buttons; lace cravat and ruffles; high jack-boots; leather breeches; three-cornered hat and flowing wig; belt and pistols.

DUTCH FISHER BOY. Wooden shoes; full breeches, coarse knitted stockings; striped blouse; red tie and cap.

FRANCIS I. A flat-brimmed cap, sometimes jewelled, and always bordered with an ostrich feather; doublet of plain or figured silk, with slashed puff sleeves to the elbow, and tight to the wrist; over the doublet a breastplate as part of armour; Norman chaussés or hose, striped and fitting exactly to the limbs; broad toed shoes with slashed tips.

FERAMOZ (*Poet of Cashmere*). White gauze and silver turban,

with jewels; satin jacket embroidered, having hanging over sleeves; under-vest and sleeves of brocade; full white lawn shirt, showing Indian scarf round waist; velvet breeches, with silver buttons to the knee; silk stockings, small low shoes; a guitar in hand.

FIGARO (*Barber of Seville*). Dark green velvet Spanish jacket embroidered in silver; white satin waistcoat; green velvet breeches with pink buttons; pink sash with silver fringe, and necktie; Spanish hat; pink bows on shoes, white silk stockings; mandoline in hand.

FLY COSTUME FOR BOY OF FOUR. Golden yellow satin skirt, ornamented with black braid and studded with small gauze flies. The short upper skirt forms a sort of long basque, and is sewn to the waistband; rows of gold braid across the high bodice, and round the short sleeves; loose jacket ornamented with gauze; fly in the centre of back, and smaller ones in front; black velvet toque, with gold band round; a gold fly securing the aigrette.

FIANCÉ, (VILLAGE). Striped blue and white silk trousers, silk stockings of a darker shade of blue; black shoes with buckles; red silk waistcoat; white shirt; dark blue cloth jacket, with revers and large buttons; large bouquet of flowers, fastened to the jacket with a bunch of ribbons; high hat.

GARIBALDI. Red shirt and grey trousers, with silver stripe; large felt hat and ostrich feather.

GOBLIN. Tight-fitting red justaucorps with red vandyke tunic; winged hood with cape; fork in hand.

GREEK. White plaited fustanetta, or petticoat, wide silk belt, ornamented with gold; short embroidered vest, buttoned at throat; jacket; full trousers to knee, and gaiters; fez; dagger stuck in belt. Made in satin, cashmere, or cloth.

GRENADIER (1760). High white gaiters buttoned to knee; blue coat turned back with red; red cuffs; white waistcoat and breeches; red and white pointed cap; sword; hair in pigtail.

HAMLET. Long black cloth cloak; scalloped black velvet jerkin trimmed with jet, black velvet sword-belt, and bonnet with black plume; black silk tights, black velvet shoes slashed with satin.

HEARTS, KING OF. Red and white striped stockings; blue justaucorps, cut in points, and covered with hearts; a large satin collar,

in the shape of two hearts; red cap, with hearts; tight and hanging sleeves; sceptre with hearts.

HENRY VI. wears a felt hood or bonnet, with short tippet and single feather; a doublet of braided silk, cut round even with the shoulders, a separate scarf covering the latter; loose sleeves trimmed with fur; tight hose; high boots of brown leather, long-toed and spurred.

HERALD. White felt hat with feather; the tabard coat yellow, green, or blue, with the arms embroidered in gold or silver, and a shoulder jacket of contrasting color; tights, silk hose; trousers striped or parti-colored. A trumpet in hand.

HIGHLAND PIPER. Boots, white gaiters, plaid stockings; kilted skirt; sporran; uniform coat; plaid, fastened with brooch on left shoulder; bagpipes.

INCROYABLE. Short-waisted long brown coat, with wide lapels; yellow satin waistcoat; cloth breeches having blue ties at knee; striped stockings and shoes; a watch and watch-chain hanging at both sides; lace frills at wrist and neck; large necktie; cocked hat.

IRISH CAR DRIVER. Green coat patched with cloth, brass buttons; brocaded waistcoat; drab breeches with patches; high collar and red tie; blue darned stockings; leather shoes; hat trimmed with green and sprigs of shamrock.

ITALIAN. Stockings crossed with colored ribbon; blue cloth breeches, buckled at the side; a leather waistcoat fastened with silver, steel or leather buttons, cut low and straight, showing the shirt; a short jacket bordered with gold, and a pointed hat with ribbons; coins and amulets. The **Pifferari**, in addition, have a long brown caped cloak, and carry their musical pipes. **The Italian Fishermen of Naples and Barri, Masaniello, &c.,** are represented with silk tights, striped trousers rolled up well above the knee; a shirt of the same, open at the neck to show gold charms; earrings in the ears; a red or brown cap; and a brown jacket slung from the shoulders; a scarf round waist.

JACK HORNER. Blue breeches; a long waistcoat; long-skirted red coat, with gold buttons down the front, and on the wide turn-back cuffs and pockets; a black tricorne hat bordered with gold braid; a plum dangling from the watch-chain.

JACK (JACK AND JILL). Smock frock and round felt hat. Or, breeches and long waistcoat, long-skirted coat of velvet, cambric shirt, velvet cape, ruff at throat red rosette on each cuff and corner of coat.

JAMES EDWARD, PRINCE, SON OF JAMES II. (*after N. de Largillière*). He died in Paris, 1746. The costume of the Prince of Wales resembles the one worn by courtiers towards the end of Charles II's reign. Wig formally curled, and no longer flowing; three-cornered hat, low in the crown and wide in the brim, with feather edging; a neckcloth or cravat of Brussels or Flanders lace, tied in a knot under the chin, the ends hanging down square; short doublet or coat of dark green, blue, or drab cloth, with buttons and buttonholes all down the front, the cuffs and pockets similarly adorned; the skirts of the coat terminating above the knees, and its sleeves reaching to the elbows, with shirt sleeves bulging out, ruffed and adorned profusely with ribbons and lace; short trousers of dark velvet, loose to the knees, with a fringe of lace or a cambric edging; blue or scarlet stockings, with silver clocks; high-heeled, lace-edged shoes, with diminutive buckles in front, fastening a lace bow to the instep.

JESTER, FOOL, AND FOLLY. Pointed shoes; tights, the legs of different colors; parti-colored short full trunks; close-fitting habit with basque cut in points, bordered with gold, a bell at each point; sleeves with the same points and bells; hood, with cape of two colors, also cut in points; a fool's bauble in the hand. Red and blue is the usual mixture, also green and gold, amber and blue, amber and violet.

JOCRISSE. Jacket and knee breeches of puce-colored satin; waistcoat of strawberry plush; buckled shoes; silk Madras handkerchief round the throat, high linen collar; gold buttons; puce felt hat.

JOCKEY. Top-boots; satin breeches; jacket and cap of two colors; whip in hand.

JOHN BULL. Top-boots and breeches; long coat; low-crowned hat.

JOHN, LITTLE. Green cloth doublet trimmed with squirrel fur; green breeches slashed with satin; white and green satin sleeves, under the pendent ones, belonging to a doublet of green silk; green stockings and buckskin shoes; green velvet cap with eagle feather; hunting-horn and knife.

KING (*Sing a Song of Sixpence*). Long flowing mantle trimmed with gold braid or fur; puffed satin habit; breeches and silk stockings; diadem on head.

MALTA, KNIGHT OF. Silk shoes and stockings; black puffed

trousers and jacket with ruff; red round cloak to waist, bordered with gold braid, a cross on either side; flowing hair, hat, and feather. A ruff and cloak over boy's ordinary dress would suffice, if a saving of time and trouble be an object.

MALTESE WATER-CARRIER. Sabots, blue stockings, white trousers; red silk sash; blue jersey, striped jacket, red cap barrel; and cup.

MARLBOROUGH, DUKE OF. Full wig; large lace neckcloth; hanging cuffs and ruffles; square-cut coat and long-flapped waiscoat; a sash over the right shoulder; blue or scarlet silk stockings, with gold or silver clocks, drawn high up over the knee; square-toed shoes, with high heels and small buckles.

MARQUIS, LOUIS XVI. Blue velvet coat and breeches embroidered in gold; lace sleeves and cravat; white satin vest worked to match; three-cornered hat edged with gold lace, having white plume; shoes with diamond buckles; sword.

MARQUIS OF CARABAS. Tights; velvet shoes; velvet habit bordered with gold; belt round waist; hanging sleeves; large hat and feather.

MASHER. Suitable for a boy of very tender years, who appears in the exact counterpart of a man's dress suit.

MEPHISTOPHELES (*Faust*). Silk tights, full short trunks round hips; tight-fitting habit; short cloak attached to shoulders; a cap with two upstanding feathers like horns. This is generally carried out entirely in red velvet, or in scarlet satin and black velvet.

MERCURY. Mantle attached to shoulders, and drawn through the girdle at the waist; peplum and skirt all made in white veiling; caduces carried in the hand; sandals laced up the leg; wings on the cap and heels.

MEXICAN BOY. (*See Illustration*). Long jean breeches or some thick woollen stuff of white or nankeen color, a pancho over the shoulders of bright red, green, and black woollen stuff, easily reproduced, coarse pointed straw hat, black shoes.

MIGNON OF THE COURT OF HENRY III. Black shoes,



white stockings; full knickerbockers to the knee; a blouse, confined at the waist by a belt, long full sleeves to wrist; a shoulder-cloak, and round cap made of striped satin or calico; a close muslin ruff at the throat.

MONK. Long brown ample robe, with wide sleeves, and a cord round the waist. The Franciscans have a small cape and hood; the Capuchins' cape is as large as that of an Inverness wrapper. Rosary at side.

MUSICIANS. (*See* BABY OPERA.)

NIGHT AND MORNING. Half black, half white satin tights, *juste-au-corps*, and round hat; the face half black, the hair powdered on one side; one glove black, one white; the same with shoes.

OLDEN TIME, GENTLEMAN OF. Silk stockings; shoes with buckles; knee breeches; very long flowered waistcoat, with flap pockets; long coat, steel buttons, and ruffles; a frill to shirt; bald head or white hair; a stick in the hand.

PAGE (*The Betrothed*). Tights; long skirted habit; sleeves with double puffs, slashed from elbow; wide lace collar. (*Temp.* Charles I.) Velvet coat and breeches, with ribbon rosettes; silk stockings, shoes with bows; vandyke collar and cuffs; satin-lined coat; large hat and feather; all to be of the one tone. (*Temp.* Elizabeth.) Silk stockings; trunks; satin habit and shoulder-cloak, elaborately braided; ruff and low-crowned hat. (*See also* CHARLES, PRINCE OF WALES).

PANGLOSS, DR. A black velvet suit in the Georgian style, with long skirted coat and waistcoat, breeches, and silk stockings, buckled shoes, white wig and spectacles.

PAUL PRY. High boots, trousers of red and white striped calico, tucked into them; waistcoat to match, with large watch and chain, powdered bag-wig, blue tail-coat and brass buttons, umbrella under arm.

PIEMAN, in white suit and apron; cook's white cap,

PIRATES OF PENZANCE. **Frederick.** In undress uniform. **Pirate King**, cocked hat; coat with epaulettes; plaited petticoat and loose under-bodice; belt with pistols; stockings and shoes; banner with death's head and cross-bones. **Samuel**, similar dress to PIRATE KING, only a sailor's cap instead of cocked hat; sailor collar, and no epaulettes. **Sergeant of Police** in policeman's uniform.

PROSPERO. Black velvet robe trimmed with sable and gold, made with long hanging sleeves, scarlet under sleeves, barred with gold; large collar facings of scarlet and black with hieroglyphic signs; skull cap similarly bordered; flowing grey wig, beard and moustache; red stockings, pointed shoes.

PUNCHINELLE. Bodice and tunic in yellow satin, striped with black bands, bound with gold; skirt of red velveteen; red pompons and belt; black lace ruffles, cuffs and basque glittering with gold; red and black hat with gold spangles and tufted plume; wooden shoes.

PURITAN BOY. Brown velvet breeches; brown cloth coat and cloak; white tippet; felt hat.

PUSS IN BOOTS. Cat's head and bodice; groom's coat made of white fur with leather belt; top boots, and breeches.

REYNOLDS, after SIR JOSHUA. There is a good dress in "Feeding the Chickens;" black shoes with black bows; red stockings; blue petticoat with blue band; high white pinafore with red sash, made with a wide falling collar, bordered with a frill; sleeves to elbow; a red bow at throat. Another, in "Doubtful Security," the child wears shoes with straps; a yellow and blue skirt; low white pinafore with pink sash. **The Angerstein Children.** The boy has a frill and a turned-down collar, edged with lace. The manner in which the boy's hair is arranged is characteristic of the period—short over the eyebrows, and falling in curls on the shoulders, most becoming to youthful faces. **The Affectionate Brothers:** The attire of the three boys is quaint and picturesque, and the group as a whole would make an admirable *tableau vivant* enacted by children—the eldest boy with coat, waistcoat, and breeches of maroon-colored or black velvet; the little boy with jacket and trousers combined, and made of light colored cloth; and the baby all in white, with a gaily-trimmed Gainsborough hat in miniature, and a cherry-colored sash round its tiny waist.

RICHARD I. (Coeur-de-Lion). A maroon velvet tunic trimmed with gold lace, three lions couchant embroidered in gold on the breast; white silk tights; velvet trunks; gold and satin shoes; jewelled belt, sword, and dagger.

RISING SUN. As a schoolboy, with a large linen collar bordered with a frill; shell jacket with many buttons; trousers buttoned over that.

ROBINSON CRUSOE. Knickerbockers and long coat of fur, with

robins sewn about it; belt round the waist; silk tights, sandals, green parrot on shoulders; tawling piece, pistols, hatchet, and umbrella.

SAILOR, ENGLISH. A favorite costume at fancy balls. It is best to obtain the real sailor dress from a nautical outfitter, either in white drill or serge; viz., loose trousers, loose jacket tucked into them; a belt round the waist; the sleeves of the jacket fastening at the wrist, having a sailor's collar, very open at the neck, with a silk handkerchief tied in a sailor's knot beneath it; a man-of-war straw hat, or a sou'-wester and peajacket. The drill suits have the jacket trimmed with blue down the front and on the cuffs and collar.

SCHOOLBOY. For a tall boy; green jacket, with triple row of buttons down the front; large frilled collar; grey trousers, short, and buttoned over the jacket; shoes with straps; a satchel with books slung over shoulder.

SCHOOLMASTER. Cloth coat made long, with gold buttons; striped blue waiscoat; nankeen breeches, fastened at the knee with the same buttons; white and blue woollen stockings; high collar, and blue silk necktie; spelling book under the arm; Madras handkerchief escaping from the pocket; periwig, brown jersey; quill pen in the ear; birch in the hand; muslin frilling round the waist.

SHEPHERD. Blue stockings, black shoes; figured blue cotton bodice showing only at neck; and breeches, bunches of ribbon at knee; Holland smock, long sleeves bordered with pink and blue ribbon, embroidered in silk with flowers; white wig.

SHEPHERD (FRENCH, OF 14th CENTURY). Loose blouse reaching to knee, sleeves tight to wrist; high stockings, long pointed shoes; girdle with carved horn attached; a crook with spear-like point.

SHEPHERD OF ABRUZZI. Brown trousers and garters tied with strap of leather; brown coat, and sleeves slung to waist, colored scarf round waist; sheepskin at back; high hat.

SHEPHERD, WATTEAU. Pink knee breeches, with blue puffings down the outer side of the legs; a white waistcoat with small frill; a coat coming slightly below the hips, showing the waistcoat, and having tight sleeves to the elbow, with big white puffings and ruffles to the wrist, a band of pink with blue rosettes inserted over the upper part of the puffing; a circular cape of violet and yellow; a Gainsborough-shaped hat; silk stockings, low shoes with large blue rosettes on the

instep; and a crook with a bunch of blue and yellow ribbons on the top.

SIMPLE SIMON. Old-fashioned smock; corduroy trousers; hob-nailed shoes.

SLOPER. Tight brown trousers; blue coat, brass buttons, handkerchief coming out of pocket; old black gloves; white hat and black band; large green umbrella, and distinctive false nose.

SURFACE, CHARLES (*School for Scandal*). Silk stockings, shoes with buckles; breeches; long-tailed coat and waistcoat; powdered hair and bag wig; lace ruffles and lace necktie, fastened with a diamond star. This is always a most elaborate costume, the coat, waistcoat, and trousers made of light satin, and richly embroidered in gold and silver. For example, blue satin coat, with white satin vest and breeches; or lilac or light pink satin suit.

TOUCHSTONE. Red and white Folly dress, with bells and fool's cap.

TRADESMAN IN THE REIGN OF LOUIS

XI. Brown velvet doublet bordered with blue; yellow sleeves, large blue collar lined with red; yellow leather purse fastened to the belt; brown hat turned up with red and yellow feather.

TURKISH (*see Illustration*). The pointed cap in the illustration is encircled with black, which could be rendered by black beads. The full breeches are blue, the habit white with an oriental shawl crossing the breast, the right arm is tattooed, and a black ribbon and bow surrounds the other.

TYROLEAN. Brown or grey coat, and breeches ending above the knee; white stockings; black shoes. The coat bound with green, having green collars and cuffs, is wide and open, showing the shirt and vest, across which there are bands of black velvet; and round the waist an elaborate silver embroidered belt. High pointed hat entwined with silver cord; flowers at the side.

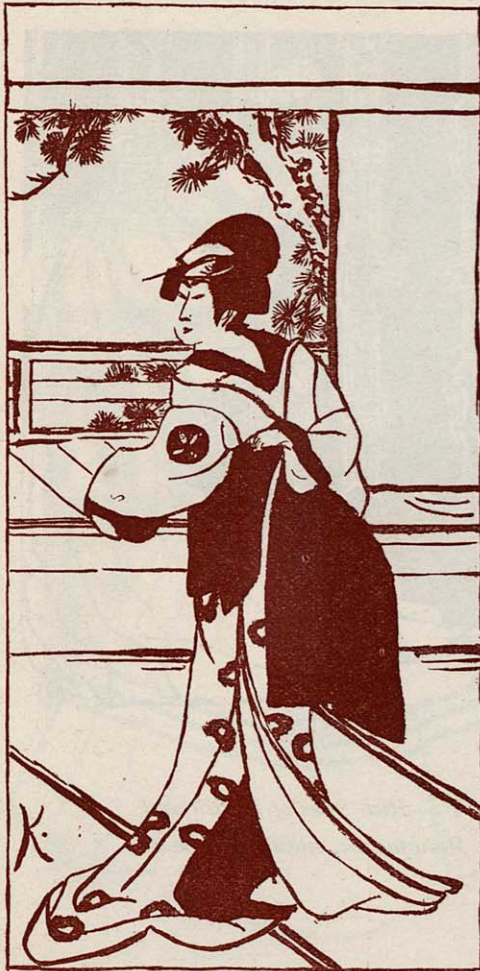
WALTER OF SALUCES (*Chaucer*). Dalmatic of green and gold brocade; purple velvet belt; silver ornaments and clasp; crimson cloak lined with fur; wreath of ivy.



WHITTINGTON. Light brown pointed shoes covering front of foot; loose brown habit with belt round waist, open at neck to show chemisette; tight sleeves with puffed epaulette; stick on shoulder with bundle; short brown breeches; blue worsted stockings.

YANKEE. Skirt and trousers of striped cotton, with high collar black necktie, and large-brimmed hat.





DEBENHAM
& FREEBODY

*are prepared to make to order
any of the*

FANCY DRESSES

*described in this Volume.
Sketches, Descriptions, and
Patterns of Materials with
full information as to details
will be forwarded POST
FREE on application.*

*Where customers desire to
make their own Dresses,*

*Debenham & Freebody
will be happy to supplement
the information given in this
Volume, and to supply suitable
materials, and the various
sundry requisites, e.g., Boots,
Shoes, Sandals, Gilt Orna-
ments, Gems, Daggers, Hel-
mets, Masks, Powder, Swords,
Toys, etc., etc.*

COURT AND
RECEPTION
GOWNS.

COSTUMES,
BALL DRESSES.

TAILOR MADE
GARMENTS.

BICYCLING AND
GOLFING COSTUMES.

MANTLES,
MILLINERY,
LINGERIE, ETC., ETC.



*SPECIALITY:—Rich Silks of British and
French Manufacture, suitable for Court
Trains.*

DEBENHAM & FREEBODY, WIGMORE STREET,
LONDON, W.



OLD ENGLISH
AND DUTCH
FURNITURE.

OLD ORIENTAL
RUGS AND
CARPETS.

OLD ORIENTAL
CHINA AND
POTTERY.

OLD BROCADES
& EMBROIDERIES.

OLD SILVER,
ETC. ETC.

DEBENHAM & FREEBODY, WIGMORE STREET,
LONDON, W.

89043240282



b89043240282a

[Advt.]

COUNTRY AGENCY.

Post Orders and Matching.



THE above department offers great facilities to Country and Provincial houses of business. The very large and rapid increase which has taken place in this department we attribute entirely to the improved methods which from season to season have been adopted, extended, developed, and as far as possible perfected.

During the above mentioned period *not only* has the total NUMBER OF ORDERS received ENORMOUSLY INCREASED, but the average value of each order has grown in even greater proportion, thereby indicating a confidence on the part of our customers that their larger orders will be executed by us at the right price, promptly, and in a manner consistent with their interests.

The following paragraphs briefly draw attention to the main features of our POST ORDER, MATCHING, AND COUNTRY AGENCY DEPARTMENT:—

PROMPTNESS. By special arrangements with the Postal Authorities, we receive our letters at the earliest possible hour. We are able therefore in a very large number of cases to post our REPLIES with or without patterns so as to be delivered to customers THE SAME AFTER-NOON OR EVENING. *This does not apply to Scotland or Ireland, where replies cannot arrive until the following morning however early they may be posted.*

ACCURACY. By a system of DOUBLE CHECKS, as well in the case of patterns as of goods, and by the most careful supervision, we have reduced mistakes to a minimum.

MATCHING FACILITIES. The immense variety of shades and designs which we keep in stock AT EVERY PERIOD OF THE SEASON is the chief cause of the satisfactory way in which we are able to execute the orders with which we are entrusted.

DEBENHAM & FREEBODY, LONDON, W.

P.T.O.

Post Orders and Matching (continued).

EXACT QUANTITIES, however small, are supplied on wholesale terms.

PROCURED PATTERNS. In the cases (very few in proportion to the whole number of orders) where our customers' requirements are *not* met by our own stocks, we INSTANTLY PROCURE PATTERNS FROM OTHER HOUSES. No house of any importance, retail or wholesale is omitted, and our matchers regularly visit all the chief houses in the *West End, City, Knightsbridge, Kensington, Westbourne Grove, Edgware Road, Lisson Grove, Oxford Street, Holborn, Leicester Square*, and even, where necessary, such localities as *Gracechurch Street, Shore-ditch, the Borough, Newington Causeway, etc., etc.* Procured patterns are marked with a bare profit calculated to cover the expenses only.

PROCURED GOODS. In the cases referred to in the preceding paragraph we will at once procure goods if instructed by you to do so. *Your instructions may be given either (1) in each particular case upon receipt of patterns, or (2) by means of a general instruction, empowering us to exercise our discretion in all cases where we are unable to supply the goods required from our own stock.* The second of these methods is very strongly recommended as **saving a clear 24 hours**. A very large number of our best customers have given us this discretion, and it is the rarest possible occurrence for any dissatisfaction to be expressed with our selections.

N.B.—Procured goods cannot be taken back. The reasons for this condition are obvious.

SPECIAL ORDERS receive the attention of a staff working under the PERSONAL DIRECTION OF THE HEAD OF THIS DEPARTMENT. Arrangements including a special cycle delivery are made, whereby in every case goods are despatched by the earliest possible conveyance. Special orders should be marked "Special" clearly and plainly at the commencement of the letter or memorandum; *i.e., inside the letter as well as outside the envelope.* Telegrams are treated with the same promptitude as special orders.

STOCK ORDERS. Sets of Patterns can be lent to customers who are desirous of placing Seasons' and other large orders and contracts by letter.

DEBENHAM & FREEBODY, LONDON, W.

Post Orders and Matching (continued).

PATTERN BOOKS AND SHADE CARDS for permanent use and reference are supplied from all departments, and in great variety, to customers desirous of availing themselves of such facilities.

PATTERN CIRCULARS AND OTHER CIRCULARS. Throughout the season we make a constant practice of issuing circulars containing information, and as often as possible samples of special lines and purchases. In the same manner we endeavour, with the least possible delay, to bring to the notice of our customers novelties and changes in the direction of fashion.

A REGISTER OF APPLICANTS FOR SITUATIONS is kept, and full information is given in answer to enquiries from our customers. We are always willing, if instructed to do so, to insert advertisements and to interview applicants. In cases where our customers desire to interview applicants themselves, we are always pleased to give them facilities for doing so in our offices, by appointment.

SUGGESTIONS FROM CUSTOMERS as to possible improvements in this Department are always most gladly received. Indeed, many of the Reforms recently made have been the results of information coming to us in this way. We are always happy (when at all possible) to carry out any **SPECIAL IDEAS** which may suggest themselves to our correspondents, either by way of improving our *business methods generally* or to meet *individual requirements*.

COMPLAINTS should be marked "PRIVATE."

DEBENHAM & FREEBODY,

MILL HILL PLACE (Welbeck Street,)

LONDON, W.

